

Sensitivity of modeled atmospheric nitrogen species and nitrogen deposition to variations in sea salt emissions in the North and Baltic Sea regions

D. Neumann, V. Matthias, J. Bieser, A. Aulinger, and M. Quante

Helmholtz-Zentrum Geesthacht, Institute of Coastal Research, Max-Planck-Straße 1,
21502 Geesthacht, Germany

Correspondence to: D. Neumann (daniel.neumann@hzg.de)

Abstract

Coarse sea salt particles are emitted ubiquitously from the ~~oceans' surfaces by wave breaking and bubble bursting~~ ocean surface by wave-breaking and bubble-bursting processes. These particles impact the atmospheric chemistry by affecting the condensation of gas-phase species and, thus, indirectly the nucleation of new fine particles, particularly in regions with high-significant air pollution. In this study, atmospheric particle concentrations are modeled for the North Sea and Baltic Sea regions, ~~Northwestern Europe~~, in Northwestern Europe using the Community Multiscale Air Quality (CMAQ) modeling system and ~~evaluated against~~ are compared to European Monitoring and Evaluation Programme (EMEP) measurement data. ~~As model extension, sea salt emissions are scaled by water salinity because of low salinity~~ In order to take into the effect of the low salinity, particularly in large parts of the Baltic Sea and in certain river estuaries, into account, the sea salt emission module is extended by a salinity depended scaling of the sea salt emissions. The resulting improvement in predicted sea salt concentrations is assessed. The contribution of surf zone emissions is ~~separately considered~~ considered separately. Additionally, the ~~impact~~ impacts of sea salt particles on atmospheric nitrate, ~~ammonium and sulfate concentrations is and ammonium concentrations and on nitrogen deposition are~~ evaluated.

The comparisons with observational data show that sea salt concentrations are commonly overestimated at coastal stations and partly underestimated ~~when going farther~~ inland. The introduced salinity scaling improves the predicted Baltic Sea sea salt concentrations considerably. ~~Dates~~ The dates of measured peak concentrations are appropriately reproduced by the model. The impact of surf zone emissions is negligible in both seas. Nevertheless, they might be relevant because surf zone emissions were cut at an upper threshold in this study. Deactivating sea salt leads to ~~a minor increase of~~ minor increases in $\text{NH}_3 + \text{NH}_4^+$ and $\text{HNO}_3 + \text{NO}_3^-$ and a ~~minor decrease of~~ decrease in NO_3^- concentrations. However, the overall effect ~~is very low and lower on~~ $\text{NH}_3 + \text{NH}_4^+$ and $\text{HNO}_3 + \text{NO}_3^-$ concentrations is smaller than the deviation from ~~measurements. Size resolved measurements of , , and are needed for the measurements.~~ Nitrogen wet deposition is underestimated by the model at

most stations. In coastal regions, the total nitrogen deposition (wet and dry) is considerably affected by sea salt particles. Approximately 3 %–7 % of atmospheric nitrogen deposition into the North Sea is caused by sea salt particles. The contribution is lower in the Baltic Sea region.

The stations in the EMEP network provide a solid basis for model evaluation and validation. However, for a more detailed analysis on the impact of sea salt particles on atmospheric nitrogen species, size-resolved measurements of Na^+ , NH_4^+ , and NO_3^- are needed.

1 Introduction

Atmospheric sea salt particles are generated from saline water droplets emitted from the sea surface by wind-governed processes and the breaking of waves. Sea salt particle generation is influenced by sea surface temperature, salinity and the composition of the sea surface micro-layer (Martensson et al., 2003; Jaeglé et al., 2011; Gantt et al., 2011). It is considerably enhanced in the surf zone, where waves break along the coast.

Sea salt particles affect the abundance and chemistry of atmospheric pollutants in various ways. Gas-phase species condense on coarse sea salt particles instead of nucleating as new ones, and undergo heterogeneous reactions on the particle surfaces (Seinfeld and Pandis, 2006, Chp. 10.4.4 and 10.4.6). Coarse particles have higher dry deposition velocities than fine particles, which leads to faster dry deposition of those species adhering to the coarse particles. Additionally, hydrochloric acid (HCl) is released from sea salt particles, which affects ozone chemistry in polluted marine air (Cai et al., 2008; Crisp et al., 2014; Knipping and Dabdub, 2003). The effect of sea salt particles on atmospheric chemistry is most relevant in coastal regions where anthropogenic and natural land-emitted species and sea salt particles coincide.

The North and Baltic Sea regions are areas of high anthropogenic activity, including heavy industry, shipping, road transport, agriculture, power generation and residential heating. These activities emit various air pollutants, such as NO_x , SO_2 , NH_3 and particulate matter. Although emissions have been reduced over the past 30 years (Löfblad et al., 2004; Crippa et al., 2015), their effects on human health and their environmental impact are still significant. In this air pollution regime, sea salt is expected to play an important role in affecting the deposition and heterogeneous chemistry of relevant pollutants. The target of this study was to evaluate the following questions for the central European domain using the EPA's Community Multiscale Air Quality (CMAQ) modeling system:

- a. What effects do sea salt emissions have on atmospheric ammonium and nitrate concentrations and on nitrogen deposition?

- b. How strongly do surf zone emissions contribute to total sea salt and what influence do these emissions have on (a)?
- c. Are sea salt emissions well represented in CMAQ for this region?

These analyses were conducted by setting up ~~three~~ four sea salt emission cases and comparing the model results to each other and to European Measurement and Evaluation Program (EMEP) measurement data. Manders et al. (2010) recently evaluated sea salt measurements from various EMEP stations. Modeling air quality in the Eastern Mediterranean Sea using CMAQ, Im (2013) found a strong impact of sea salt emissions on atmospheric nitrate concentrations and considered surf zone emissions to be important. Liu et al. (2015) ~~found a strong~~ also found large impact of sea salt particles on nitrate ~~as well~~ in a modeling study in the Pearl River Delta, China.

In models, sea salt emissions are parameterized by wind speed and other meteorological and oceanic parameters. Several current parameterizations are based on the wind dependence derived by Monahan and Muircheartaigh (1980) and Monahan et al. (1986). Spada et al. (2013) and Lewis and Schwartz (2004) provided a useful overview and comparison of available sea salt emission parameterizations. Additionally, Jaeglé et al. (2011) and Ovadnevaite et al. (2014) recently published improved approaches that include wind speed, salinity, SST, and wave data. However, sea salt emissions are still not well parameterized in the surf zone, an area of increased wave breaking along the coastline. CMAQ employs a parameterization published by Gong (2003) that expands the Monahan et al. (1986) parameterization to smaller particle diameters. This study adds a dependence on salinity.

2 Materials and methods

2.1 Target region

The study region is located in the northeast corner of the Atlantic Ocean and includes the North and Baltic Seas. The North Sea is directly connected to the Atlantic Ocean via the

English Channel to the southwest and via the Norwegian Sea to the north. The English Channel is a region of major shipping activity because nearly all ships traveling from outer Europe to the large North European ports, such as Antwerp, Rotterdam and Hamburg, pass through it. In addition to shipping, considerable anthropogenic activity occurs on land, such as industry, agriculture and road traffic. The North Sea has a salinity of approximately 35‰, which is similar to the Atlantic Ocean. The Baltic Sea is connected to the North Sea via a natural passage between Denmark and Norway/Sweden. In the Baltic Sea, the salinity is approximately 20‰ in the western parts and decreases to below 8‰ in the eastern parts. During winter, northeastern parts of the Baltic Sea are covered by sea ice. High anthropogenic activity also occurs on the land and water. However, shipping activity is not as pronounced as in the North Sea.

2.2 Model set up

The simulations were performed with the Community Multi-scale Air Quality (CMAQ) modeling system, which was developed and maintained by the US EPA. Version 5.0.1 was used for this study. The cb05tucl mechanisms, i.e., the Carbon Bond 05 mechanism Yarwood et al. (2005) with updated toluene (Whitten et al., 2010) and chlorine chemistry (Tanaka et al., 2003; Sarwar et al., 2007), represented the gas phase chemistry. Heterogeneous chemistry is covered by the AERO05 mechanism, which is based on the ~~ISORROPIA2 (Fountoukis and Nenes, 2007)~~ ISORROPIA 1.7 (Nenes et al., 1998, 1999) mechanism. Among other processes, this mechanism governs the condensation of HCl, NH₃, HNO₃ and H₂SO₄ on particles and the nucleation of new particles. HCl, NH₃ and HNO₃ may evaporate back into the gas phase, whereas H₂SO₄ does not. The aerosol phase is modeled by three lognormal-distributed modes that are each represented by three moments (Binkowski and Roselle, 2003). The AERO05 mechanism is described in the CMAQ Wiki (<http://www.airqualitymodeling.org/cmaqwiki>). CMAQ also includes in-cloud chemistry.

The study region is covered by a grid with a resolution of 24 km × 24 km ~~resolution~~ and is enclosed by a grid with a resolution of 72 km × 72 km ~~resolution~~ covering Europe (Fig. [11](#)). The boundary conditions of the outer grid are taken from monthly means of the tM5 global

chemistry transport model system (Huijnen et al., 2010), and the boundary conditions of the 24 km grid are taken from the enclosing 72 km grid. Wind-blown dust is not included in the outer boundary conditions.

Two three-month periods – January to February and July to August 2008 – denoted as winter and summer, respectively, are considered. No model input data were available for December 2007, and no German EMEP measurement data were available for September to December ~~2008 were available.~~ 2008. Therefore, it was decided to represent winter and summer by two months each. A 10 day spin-up phase, which was initiated from standardized spatially homogeneous initial conditions, preceded each of the two periods.

2.3 Input data

Meteorological input data were calculated by COSMO-CLM (Consortium for Small-scale Modeling in Climate Mode) version 4.8 on a rotated lon-lat grid of 0.22° resolution with hourly output (Geyer and Rockel, 2013; Geyer, 2014). The model grid covers Europe, parts of Greenland and the southern coast of the Mediterranean Sea. The data were remapped onto the CMAQ grid, and relevant variables were extracted and converted using a modified version of CMAQ's Meteorology-Chemistry Interface Processor (MCIP) (Otte and Pleim, 2010).

The European land-based emissions were compiled with SMOKE for Europe (~~Bieser et al., 2011~~), (Bieser et al., 2011), and agricultural emissions were updated according to Backes et al. (2015a, b). Shipping emissions were calculated on the basis of Automated Identification System (AIS) data (Aulinger et al., 2015). Sea salt emissions were calculated inline (Kelly et al., 2010; Gong, 2003) ~~-Details and scaled by annual average salinity.~~ Details on the sea salt emissions are given in the next section. The salinity data were taken from runs of a hydrodynamic model based on HAMSOM (HAMBurg Shelf Ocean Model). A detailed description of the hydrodynamic model and recent updates were published by Schrum and Backhaus (1999) and Barthel et al. (2012), respectively.

2.4 Sea salt emissions

Physically, sea salt particles are dried sea water droplets that are ejected from the sea surface into the atmosphere (Lewis and Schwartz, 2004). Under most weather conditions, the generation of sea salt particles is dominated by bubble bursting: air is mixed into sea water by breaking waves and forms air bubbles that rise to the sea surface and burst. Small water droplets are ejected from the breaking hull of the bubble (film droplets). Through the abruptly changing pressure within the bursting bubble, some water is sucked from below the bubble into the air (jet droplets). The fraction of sea surface covered by bursting bubbles is denoted as white cap coverage. Droplets, which are emitted primarily when waves break and which are torn by the wind from wave crests, are ~~denoted as spume and splash~~ termed splash and spume droplets, respectively. High wind speeds of ~~approximately larger than larger than approximately~~ 10 m s^{-1} are needed for both processes to be relevant for atmospheric sea salt particle generation. The naming conventions for spume and splash droplets are not consistent throughout the literature.

The amount of sea salt per droplet and the resulting sea salt particle size are governed by the sea surface salinity (Martensson et al., 2003). Sea surface temperature, biofilms and other surfactants affect the sea salt particle size spectra (Martensson et al., 2003; Gantt et al., 2011). In the surf zone, sea salt emissions are enhanced due to a higher number of breaking waves. Additionally, sea salt particles may be electrically charged (Gathman and Hoppel, 1970; Bowyer et al., 1990).

2.4.1 Sea salt emission parameterizations in CMAQ

Edward Monahan and colleagues (Monahan et al., 1982; Monahan and Muircheartaigh, 1980) derived a parameterization that describes the generation of sea salt particles by bursting bubbles. A sea salt particle number flux distribution was estimated for 100 % white cap coverage and multiplied by the white cap coverage W , which is fitted by a power law to the 10m wind speed (u_{10}) as given in Eq. (1) (Monahan et al., 1986, Eq. 12). Sea salt emissions in CMAQ are calculated following Gong (2003), an enhancement of Monahan

et al. (1982) that incorporates smaller radii (see Eq. 2). Particle number, dry surface, dry mass flux and water content at an ambient relative humidity (RH) are calculated explicitly in CMAQ. Water content is calculated using a polynomial fit published by Zhang et al. (2005). The total emitted dry sea salt mass is split into 7.55 % SO_4^{2-} , 53.98 % Cl^- , and 38.56 % Na^+ (Kelly et al., 2010). The model Na^+ represents Na^+ , Mg^{2+} , K^+ , and Ca^{2+} .

$$W = 3.84 \times 10^{-6} \times u_{10}^{3.41} \quad (1)$$

$$\begin{aligned} \frac{dF}{dr_{80}} &= W \times 3.5755 \times 10^5 \times r_{80}^{-A} \times (1 + 0.057 \times r_{80}^{3.45}) \times 10^{1.607 \times e^{-B^2}} \\ &= 1.373 \times u_{10}^{3.41} \times r_{80}^{-A} \times (1 + 0.057 \times r_{80}^{3.45}) \times 10^{1.607 \times e^{-B^2}} \end{aligned} \quad (2)$$

$$A = 4.7 \times (1 + \theta \times r_{80})^{-0.017 \times r_{80}^{-1.44}}$$

$$B = \frac{0.433 - \log(r_{80})}{0.433}$$

In the above equations, r_{80} [μm] is the particle radius at 80 % ~~relative humidity~~RH, u_{10} [m s^{-1}] is the 10m wind speed and θ is an adjustable parameter, which is set to 30. The term dF/dr is the number flux [$\text{number m}^{-2} \mu\text{m}^{-1} \text{s}^{-1}$] of sea salt particles. The parameterization is valid in a size range of $0.06 \mu\text{m} \leq r_{80} \leq 20 \mu\text{m}$.

2.4.2 Surf zone emissions

In the surf zone, the sea salt particle number flux is considerably higher than in the open ocean. Addressing surf zone emissions is quite difficult because they depend on the direction of waves and the wind, as well as on local coastal features, such as steep cliffy coasts and flat beaches. In the employed CMAQ version, the surf zone is parameterized by setting the white cap coverage W to 1. The surf zone area is proposed to be a 50 m wide strip along the coastline (Kelly et al., 2010). CMAQ simulations in parts of Florida performed well with this definition of surf zone (J. T. Kelly, personal communication, 2014). Equation (3) shows a modified emission function in-cooperating surf zone and open ocean fractions.

These fractions need to be pre-calculated for each model domain.

$$\frac{dF_{\text{eff}}}{dr_{80}} = (W \times \text{open} + \text{surf}) \times \frac{1}{W} \times \frac{dF}{dr_{80}} \quad (3)$$

For this study, the ratios of open ocean and surf zone surface per grid cell were calculated by ArcGIS based on the Natural Earth data set: ~~the~~. The surf zone area was obtained by placing a 50 m wide strip along the coastline and calculating the area of that strip. Overlapping areas were ignored. Grid cells with long fragmented coastlines and many islands do not necessarily have a large surf zone area because some parts of the coastline and islands are protected by others. Therefore, the surf zone fraction per grid cell was cut at a threshold (see Supplement for details).

2.4.3 Salinity dependence

The salinity in large parts of the Baltic Sea is less than 10‰, in contrast to the North Sea ~~'s~~ value of 35‰. Therefore, the sea salt emissions must be corrected to account for differences in salinity. The open ocean and surf zone coverage data were scaled by the salinity S ($S/0.035$, with $0.035 = 35\text{‰}$) to obtain salinity-dependent sea salt emissions (Martensson et al., 2003). CMAQ sea salt emissions would otherwise not depend on salinity. Sea ice cover is not considered. Finally, Eq. (4) for sea salt emissions was obtained:

$$\frac{dF_{\text{eff}}}{dr_{80}} = \frac{S}{0.035} \times (W \times \text{open} + \text{surf}) \times \frac{1}{W} \times \frac{dF}{dr_{80}} \quad (4)$$

The technical procedure of including salinity dependence is described in the Supplement Sect. A ~~and references to the model the salinity data were calculated with are given in~~ Sect. 2.3. Annual average salinity data from the year 1993 were used. Annual averages were taken because the oceanic data are time independent in CMAQ. Unfortunately, data for the year 2008 were not available to the authors when the CMAQ model runs were performed. According to Matthäus et al. (1997) and Nausch et al. (2009), the difference in the sea surface salinity between the years 1993 and 2008 is low. Its affect on the sea salt

emissions is low compared to the difference between salinity-scaled and non-salinity-scaled sea salt emissions (for example, see Fig. S4). Therefore, we assume that employing salinity data from the year 1993 instead of 2008 has no relevant impact on the results of this study.

2.4.4 Sea salt emission scenarios

Three different sea salt emission cases are investigated in this study: base, noSurf and zero. The base case corresponds to the standard CMAQ sea salt emissions extended by the salinity scaling described in Sect. 2.4.3. The zero case contains no sea salt emissions. In the noSurf case, the surf zone is treated as the open ocean. In the full case, the standard CMAQ sea salt emissions without any extensions are used (no salinity scaling). The cases are listed in Table 1.

2.5 Evaluation procedure

The CMAQ simulation results were evaluated against concentration measurements performed at EMEP stations. The data were obtained via EBAS (<http://ebas.nilu.no/>). The stations were chosen according to the availability of data for comparison (Fig. 2). Three stations – Westerland (DE0001R), Waldhof (DE0002R), and Zingst (DE0009R) – are described in detail in Sect. 33; the data from the other stations are evaluated only statistically and the original data are included in the Supplement. The Westerland station is located directly on the North Sea coast, Zingst is located on the Baltic Sea coast, and Waldhof is located approximately 200 km inland. Thus, these stations' measurements cover three different sea salt emission regimes. All stations are divided into coastal (within 50 km downwind to the coast) and inland stations.

Species including Na^+ , ~~corrected~~, $\text{NH}_3 + \text{NH}_4^+$ and $\text{HNO}_3 + \text{NO}_3^-$ were compared. Sodium–Sea salt emissions are the major source of atmospheric sodium cations (Na^+) ~~represent pure sea salt~~. They are ~~Na⁺ does not evaporate from sea salt particles in contrast to Cl⁻ and it does not condense onto particles in contrast to HCl and H₂SO₄~~. Therefore, Na^+ is a good tracer for sea salt particles and is considered for evaluating sea

salt particle predictions. ~~Corrected sulfate, $x\text{SO}_4$, is defined as total sulfate minus sea salt sulfate. Because natural sulfate sources such as DMS are quite low, $x\text{SO}_4$ commonly represents anthropogenically emitted sulfate.~~ Ammonium (NH_4^+) and ammonia (NH_3) as well as nitrate (NO_3^-) and nitric acid (HNO_3) are considered as sums only. Because these substances ~~are collected with three~~ were collected with three-stage filter packs at ~~certain EMEP stations~~ most of the considered EMEP stations in 2008, the individual measurements of NH_4^+ , NH_3 , NO_3^- , and HNO_3 are subject to large uncertainties, whereas the sums are accurately determined (EMEP, 2014, Chp. 3).

Daily mean concentrations are compared as plotted time series ~~, box-plots, and box plots~~ and via three statistical metrics ~~: mean-normalized bias (MNB), (Eqs. (A1), (A2), and (A3)):~~ residual absolute error (RAE), mean normalized bias (MNB), and Spearman's correlation coefficient (R). See Schlünzen and Sokhi (2008) for descriptions of these figures. The box plots contain data ~~of~~ from only those days for which measurement data are available.

Nitrogen deposition is considered in Sect. 3.3. It is calculated according to Eqs. (B1) to (B3). The nitrogen wet deposition is compared to measurement data at most of the stations in Fig. 2 (where available) via R and the mean values (μ_{sim} and μ_{obs}). R was only calculated when more than ten measurements were available. Measured rain water concentrations were converted into nitrogen deposition per area by the measured amount of rain water. No validation of total nitrogen deposition (wet + dry) against measurement data is performed due to the lack of dry deposition measurement data.

3 Results

3.1 Emissions

Figure 3 shows modeled monthly averaged sea salt emissions for the base emission case (top row) in winter and summer (left and right columns, respectively). The bottom row shows ~~differences between~~ the differences between the noSurf and base cases.

According to Fig. 3, winter sea salt emissions are two to five times higher than summer sea salt emissions due to higher wind speeds. In the Baltic Sea, sea salt emissions are considerably lower than in the North Sea, which is caused by the salinity-dependent down-scaling of the sea salt emissions. Because wind speeds decrease towards the coast and are highest above open waters, sea salt emissions decrease towards the coast as well. Comparing the base and noSurf sea salt emissions, the greatest differences are observed along the Norwegian and British Atlantic coasts, and lowest differences are observed along the Baltic Sea coast.

Figure 4 shows daily averaged sea salt emissions in three coastal grid cells. Although the surf zone covers only a small fraction of the grid cell surface, surf zone emissions contribute a considerable share of sea salt emissions in low wind speed situations. This result emphasizes the importance of correctly parameterizing surf zone sea salt emissions.

3.2 Concentrations

~~Modeled~~ The modeled and measured concentrations of two ~~9060~~ day time series ~~at three EMEP stations (summer and winter) at 16 EMEP stations are analyzed in this section based on key statistical figures. Three of these EMEP stations, i.e., Westerland (DE0001R), Waldhof (DE0002R), and Zingst (DE0009R), are described and discussed in this section. For each species and station, more detail by considering~~ the actual time series, ~~and~~ box plots of the data ~~and statistical key figures are presented~~. For the box plots, only the modeling data points that had corresponding measurement data points were used. The corresponding raw ~~and statistical~~ data from the ~~remaining 12~~ stations are attached as Supplement.

3.2.1 Sodium

The concentration time series in Fig. 5 shows that the dates of peaks are consistent across all three stations. The correlation coefficient is greater than 0.75 in winter and greater than 0.70 in summer. However, the magnitudes of the peak values do differ in most situations. The model overestimates these values. During winter, overestimations of peak concentra-

tions occur at all stations, which is indicated by the box plots (Fig. 5) and the bias values (Table 2). Coastal and inland station cannot be distinguished via the MNB during winter, but the RAE is higher at coastal stations than at inland ones. The correlation coefficient is nearly 0.6 or above at all stations except at Ulborg, Keldsnor, and Virolahti II. During summer, sea salt is moderately overestimated at coastal stations (Westerland and Zingst) and underestimated inland (Waldhof), as indicated by the plots and bias values. The MNBs of the other stations, except those of Tange and Keldsnor, support this finding. The measured base line concentrations, i.e., when no peaks are present, are well matched by the model. Winter sodium concentrations are approximately twice as high as summer concentrations (see scale in Fig. 5). The RAE and the MNB values are lower at most stations during summer than during winter, whereas R does not show any tendency between the two seasons.

~~Surf zone emissions lead~~ Deactivating surf zone emissions leads to a reduction in the modeled concentrations most of the time. MNB is reduced at all stations. This reduction leads to ~~an improved bias in overestimation situations.~~ a lower bias in situations when concentrations are overestimated in the base case. However, the concentrations are further underestimated in situations when concentrations are already underestimated in the base case. Surf zone emissions lead to a slight improvement in R and the RAE. No clear differences between the effects of summer and winter are visible through deactivating surf zone emissions. Surf zone emissions have an important impact in certain low-emission periods, such as in mid-February and at the end of July, when surf zone emissions contribute more than the half of the atmospheric sodium.

The zero case is not considered here. The orange ~~line represents~~ asterisks represent a simulation without salinity-dependent scaling of sea salt emissions denoted as the full case. The simulation considerably overestimated sodium concentrations at Zingst (Baltic Sea coast). At all coastal stations, the full case leads to higher MNB values than the base case. The impacts on the two Finish stations Utö and Virolahti II on the eastern Baltic Sea coast are particularly strong. Salinity scaling of emissions is therefore important. Because sodium concentrations are not underestimated at Zingst and not as overestimated as in the

non-salinity-scaling case, we assume that the applied linear salinity scaling of the sea salt emissions in the Baltic Sea is a valid procedure as a first-order correction.

3.2.2 Corrected sulfate

The temporal occurrence of peak concentrations is well represented by the modeled corrected ($x\text{SO}_4$) concentrations in Fig. 6. The correlation coefficients are greater than 0.6, except for Waldhof in winter (0.57). Generally, winter peak concentrations are underestimated, particularly in late February, but the background concentrations at Westerland and Zingst are slightly overestimated, as indicated by the MNB. Summer peak concentrations are better matched than the winter peak concentrations. Baseline concentrations are partly over- and partly underestimated.

The sea salt emission time series plots of the base and noSurf case do not show any relevant differences. The R , MNB, and RAE values confirm this observation. Deactivating sea salt emissions leads to a slight reduction in $x\text{SO}_4$ peak concentrations in a few situations.

3.2.2 Ammonia and ammonium

$\text{NH}_3 + \text{NH}_4^+$ ($s\text{NH}_4$, s = sum) concentrations are slightly underestimated at Westerland, as shown in the time series (Fig. ???) and indicated by the box plots and the MNB (Table 4). During summer, the absolute MNB value is high, but the correlation is strong, which can also be seen-observed directly in the time series in Fig. ???; the shape is well matched, but the predicted magnitude is generally too low. In winter, certain peak concentrations are overestimated, which improves the MNB and RAE values, but decreases R . At Waldhof, baseline concentrations are well matched, but peak concentrations are overestimated. In winter, the MNB is lower than during summer due to a strongly underestimated time period at the end of February. The correlation coefficient is 0.59 in winter and increases slightly in summer to 0.63. At Zingst, the measured concentrations are most consistent in terms of the order of magnitude, which is represented by $\text{MNB} \approx 0$ and by a low RAE. The occurrence

of peaks is well matched, but the correlation coefficient is below-less than 0.5 in summer. This pattern is caused by peak concentrations that are sometimes over- and sometimes underestimated. For example, in late July, CMAQ predicts a decrease in concentrations, but measured concentrations increase. This episode will be analyzed in more detail in Sect. 4.3. At most of the 16 stations, the correlation is better and the RAE is worse in winter compared to summer.

The effect of surf zone sea salt emissions on sNH_4 is negligible, as indicated by the plots and statistics. During winter, zero case sNH_4 concentrations increase slightly, particularly when peak concentrations occur. Because these peak concentrations are already overestimated in the base case, deactivating sea salt emissions decreases the prediction quality. The impact of deactivating sea salt emissions on the MNB, the RAE and R values is low and no clear increase or decrease of the MNB or R are induced. The RAE rather decreases at coastal stations and rather increases at inland stations.

3.2.3 Nitrate and nitric acid

~~When analyzing $+(\text{sNO}_3, \text{s} = \text{sum})$ concentrations, one has to distinguish between Westerland on one side and Waldhof and Zingst on the other side.~~ At Westerland, several measured sNO_3 concentrations in the EMEP database are marked as “under detection limit”, which leaves only 21 comparable values in winter and 26 in summer. In mid-February, very high concentrations are predicted, even though the measured values were below the detection limit. Due to the low number of valid measurements, Westerland was not analyzed further.

At Waldhof, the average concentrations are well represented, as indicated by box plots (Fig. 8??) and MNB (Table 5). In winter, the timing of peaks is well matched, but their heights are overestimated in some situations and underestimated in others. This leads to a high RAE value of approximately 0-60.7. Additionally, in mid-February, one wide and high peak is considerably overestimated. In summer, the RAE improves. However, the correlation coefficient decreases from 0.64 to 0.34 due to two quite poorly matched peaks at the beginning and end of August. The winter concentrations at Zingst are very well represented

by CMAQ. The time series plots and box plots agree with each other, yielding an R value of 0.76. In summer, the correlation decreases. A period of highly underestimated sNO_3 concentrations exists in late July at Zingst and Waldhof. Comparing all the stations, R and the RAE are higher in winter meaning that the correlation improves but the error worsens from summer to winter. During winter, the sNO_3 concentrations are underestimated at several stations, as indicated by negative MNBs. In summer, the MNBs are positive at all stations.

In the no surf zone case, sNO_3 concentrations are slightly higher than those of the base case (higher MNB) but R does not change by more ± 0.01 . Deactivating sea salt emissions generally increases predicted sNO_3 concentrations -.The at most stations as indicated by the higher MNB values. The RAE and R values show no tendency. The prediction quality, i.e., R and MNB, increases at Waldhof and Zingst because slightly underestimated concentrations are increased, which automatically improves MNB.

Because sNO_3 concentrations do not necessarily represent NO_3^- concentrations, Fig. ?? shows the NO_3^- concentrations at the three known stations, and Table 6 shows the bias of the zero case NO_3^- and sNO_3 concentrations with respect to the base case concentrations. Usable measurement data were only available for Melpitz. Therefore, no comparison to measurement data is performed here.

The MNB for NO_3^- concentrations is negative with a few exceptions. Thus, nitrate concentrations are commonly higher in the presence of sea salt. The exceptions are inland stations at which positive MNBs occur. In contrast, the MNB values for sNO_3 concentrations are positive at all stations throughout the year which indicates the increase in sNH_3 concentrations in the absence of sea salt, as noted above.

3.3 Nitrogen deposition

Figures ?? (a) and (b) show the nitrogen deposition in the base case during winter and summer, respectively. In most regions, nitrogen deposition is higher during summer than during winter - up to twice as high and in some regions even higher. During winter, the deposition is highest in western France, the Netherlands, Belgium, north-western Germany and northern Italy (Po Valley). During summer, the greatest deposition occurs in the same

regions and, additionally, above the northern part of the Alps. The Po Valley deposition is on the same order of magnitude during both seasons, but the deposition in the other regions exhibits the described seasonal pattern.

The nitrogen deposition difference between the noSurf and the base case (Figs. ?? (c) and (d), noSurf - base) show that deactivating surf zone emissions leads to a strong reduction in the nitrogen deposition along the coast line of the southern North Sea and the western Baltic Sea. The nitrogen deposition is slightly increased far from the coast in inland regions and above the ocean. The differences are higher in summer than during winter. The differences are also higher in regions with high nitrogen deposition.

Deactivating sea salt emissions completely (Figs. ?? (e) and (f); note the different scales compared to (c) and (d)) considerably reduces the nitrogen deposition in large parts of Denmark, the Netherlands, Belgium, and the southern UK by up to 10% and even more in a few regions. The nitrogen deposition into the southern North Sea is reduced as well. In turn, the nitrogen deposition increases considerably along the Norwegian Atlantic coast during winter and moderately in Eastern Europe during summer.

Table 7 shows the summed nitrogen deposition into the North and Baltic Sea in the four emission cases during winter and summer. The nitrogen deposition into the North Sea is approximately 7% higher during summer than during winter. In the Baltic Sea region, this difference is 6%.

In the noSurf case, nitrogen deposition is reduced by less than 1% compared to the base case. In the zero case during winter, however, the nitrogen deposition into the North Sea is reduced by approximately 7% ($\approx 22 \text{ kt N yr}^{-1}$). During summer, it is reduced by only 2.6%. The deposition difference for the Baltic Sea is considerably lower, with values of 3.4% and 0% for winter and summer, respectively. The deposition into the North Sea is not affected by applying salinity scaling (full case). However, nitrogen deposition into the Baltic Sea is slightly higher if no salinity scaling is applied.

Figure ?? and Table 8 show the nitrogen wet deposition in $\text{kg N ha}^{-1} \text{ d}^{-1}$ at the known EMEP stations. Oxidized and reduced nitrogen is not individually considered here but given in the supplement. The nitrogen deposition is underestimated in most measurement periods

as the plots in Fig. ?? indicate. In a few situations, nitrogen deposition are overestimated at Waldhof and Zingst.

A comparison of the mean values in Table 8 confirms that the model considerably underestimates nitrogen wet deposition also at most other stations. Exceptions are the stations Zingst and Råö at which the nitrogen depositions are only slightly underestimated. The correlation coefficient is higher during winter than during summer. During summer, it is below 0.5 at four of seven stations. The Norwegian stations Birkenes and Hurdal and the Polish station Leba show the highest correlations throughout the year.

4 Discussion

4.1 Salinity dependence and particle size spectra

The salinity dependence of sea salt emissions was analyzed by Martensson et al. (2003) in laboratory studies. They found that for particles below $0.1\mu\text{m}$ dry radius, the number flux remains roughly unchanged, but the number flux distribution was shifted to smaller radii by a factor of $(S/0.035)^{1/3}$ (Martensson et al., 2003, Fig. 5). Thus, the volume flux is reduced by $S/0.035$ and the surface flux by $(S/0.035)^{2/3}$. For particles larger than $0.1\mu\text{m}$ (dry radius), they found that the number flux was reduced by an order of magnitude. In the approach chosen in this study, the number, surface, and volume fluxes are all scaled by $S/0.035$. Technically, this process was performed by scaling the fractions of the open ocean and surf zone in one input file by $S/0.035$. The resulting salinity dependence is not in accordance with the findings of Martensson et al. (2003), neither in terms of the fine particles nor the coarse ones. However, this method was the only way to include basic salinity dependence without modifying the CMAQ code. Thus, the chosen solution is easily applicable to other CMAQ versions and by other CMAQ users. Changing the CMAQ code would have meant that the changes needed to be applied in each new CMAQ version.

Two different sea salt fluxes exist: the sea salt surface flux and the effective sea salt flux. The effective sea salt flux represents the sea salt particles emitted from the sea surface

that do not fall back into the ocean immediately. The surface flux represents all particles emitted from the sea surface. The effective flux is a combination of the surface flux and the atmospheric behavior of the sea salt particles which ~~means~~ represents the surface emissions flux minus instant dry deposition. Martensson et al. (2003) measured the surface flux, whereas Gong (2003) described the effective flux. The shift in the number flux distribution of particles less than 1 μm in size due to salinity variations, which Martensson et al. (2003) observed, might not be directly applicable to the effective flux. The shape of the distribution might change as well. Changes in the ~~relative humidity~~ RH might alter the particle size distribution, as well. Additionally, de Leeuw et al. (2000, Sect. 6) noted that the bubble-bursting process itself might be affected by low-salinity conditions. Therefore, scaling bulk sea salt emissions by functions dependent upon salinity and ~~relative humidity~~ RH is not necessarily a correct approach. Changes in the ~~distribution's shape~~ shape of the distribution need to be evaluated in the laboratory and in real world studies.

4.2 Discussion of the sea salt results

The sodium concentrations were well matched in terms of the order of magnitude and the temporal occurrence of peaks. Measurements at Zingst, Utö, and Virolahti II showed that sea salt emissions were considerably overestimated in this region if salinity scaling was not applied. Therefore, salinity downscaling is important. Further studies should investigate whether an improved downscaling procedure (see Sect. 4.1) improves predicted sea salt concentrations.

Sea-Sodium concentrations are overpredicted at all stations during summer. During winter, however, sea salt concentrations tend to be over-predicted at coastal stations (~~Westerland more so than Zingst~~) and under-predicted at inland stations (~~Waldhof~~). ~~This pattern~~. The inland station Tange shows overpredictions throughout the year. Amongst the inland stations, Tange is located closest to the coast. The pattern of overpredictions at the coast and underpredictions inland may be due to a combination of over-predicted sea salt emissions and over-predicted dry deposition velocities for coarse sea salt particles. Additionally, certain peaks are better matched in terms of magnitude than others. This difference

may be attributable to meteorological conditions, droplet generation processes missing from Gong's sea salt emission parameterization, [the sea surface temperature \(SST\)](#) and the sea surface micro layer (SML).

[Based on laboratory studies, Martensson et al. \(2003\) found that the sea salt emission size spectrum depends on SST. Jaeglé et al. \(2011\) and Gantt et al. \(2015\) improved sea salt particle model results by applying SST dependence to sea salt source functions. The results of Martensson et al. \(2003\), Jaeglé et al. \(2011\), Callaghan et al. \(2014\), and Salter et al. \(2015\) clearly show that sea salt emissions decrease when the SST decreases. The \$\text{Na}^+\$ concentrations might be overestimated at coastal stations during winter because Gong \(2003\) does not consider the SST when calculating sea salt emissions. However, this factor does not explain the general overestimation in summer.](#)

[The SML that is formed by mainly surface active organic compounds affects the bubble-bursting process and, thus, sea salt emissions. Because the marine biological activity is higher during summer than during winter, one might expect that the SML affects sea salt emissions more during summer than during winter. This could explain the general overestimation of \$\text{Na}^+\$ concentrations during summer. However, the impact of the SML on sea salt emissions is currently poorly understood and little investigated.](#)

Because Gong's parameterization lacks [SST and SML dependence](#), splash and spume droplet generation ~~as well as~~, [and](#) non-wind-related bubble bursting, repeating the simulations with other sea salt ~~emissions~~ [emission](#) parameterizations might yield interesting results. To analyze the impact of the SML, satellite-derived chlorophyll *a* data could be correlated with the deviations between the measured and modeled results. However, chlorophyll *a* data may not be the ideal proxy (Fuentes et al., 2010).

Under low wind conditions, surf zone emissions are a major source of atmospheric sea salt in the coastal grid cells. The contribution of these emissions decreases under high wind conditions ~~–~~ [\(Fig. 4\)](#). In this study, the maximum fraction of surf zone per grid cell (24 km × 24 km grid) was capped at 0.47 % to reduce the amount of surf zone emissions. Commonly, this parameter is not capped. Without capping, the fraction of surf zone was ~~greater than 10 %~~ [considerably greater](#) in certain coastal grid cells, particularly along the

Norwegian Atlantic coast, with its numerous fjords and islands. Not capping the surf zone would have led to considerably higher surf zone emissions. [Along the Dutch, German, and western Danish coast, most grid cells were not affected by the capping \(see Supplement, Fig. S2\).](#) de Leeuw et al. (2000) found through measurements at a beach in late January that surf zone emissions can contribute approximately 10 times more to ambient atmospheric sea salt concentrations than open ocean emissions. However, at other times, surf zones contribute just 0.1 times as much as the open ocean. The surf zone emissions in grid cells with a large proportion of surf zone, without capping, might be comparable to the maximum-contribution situations observed in de Leeuw et al. (2000). However, the observed high contributions did not occur continuously. Additionally, the measurements were collected in January, when winds are stronger than those in summer. Therefore, the modeled surf zone emissions were reduced by capping the surf zone fraction. Mechanistically, modifying the white cap coverage would have been more correct. In the new CMAQ v5.1 release, surf zone emissions will be reduced by 50 % by setting the white cap coverage to 0.5. This step was not included in this study because changes in the CMAQ code were avoided in order to make the chosen procedure simpler and more applicable in other CMAQ versions. As an alternative, one might choose another parameterization [for the surf zone emissions](#). For example, de Leeuw et al. (2000) and Chomka and Petelski (1997) presented alternative surf zone emission parameterizations. In their study, [which was discussed above](#), de Leeuw et al. (2000) analyzed measured surf zone-related sea salt concentrations, meteorological data and video data of the surf zone. They found no correlation between surf zone width or wave height and the surf zone production of sea salt.

Im (2013) estimated a considerably higher contribution of surf zone emissions to atmospheric sea salt concentrations. In that study, the surf zone fraction per grid cell was not capped and was calculated by multiplying the length of the coastlines by 50 m (and dividing by grid cell area). In our study, the surf zone size was calculated in a way so as to not count overlapping surf zones twice. [Additionally, the Greek coastal waters contain more islands](#)

and the coastline is less straight than the man-made coastlines of the Netherlands and Germany. Therefore, the surf zone contribution estimated in this study is lower.

Salinity in coastal waters is commonly lower than in open ocean ~~waters~~-water due to freshwater inflow. Thus, surf zone emissions are indirectly scaled down in this study. ~~Im (2013); Kelly et al. (2010, 2014)~~ Im (2013) and Kelly et al. (2010, 2014) do not consider salinity. Hence, this study's surf zone emissions are reduced compared to those in the named studies due to ~~salinity-dependent~~ salinity-dependent scaling.

Sea ice is not considered in this study. If the sea surface is covered with sea ice, no sea salt particles are emitted by bursting bubbles. Therefore, sea salt emissions can be deactivated in regions with sea ice cover. For the study region, sea surface salinity is very low in areas with significant sea ice cover (northeastern Baltic Sea). Additionally, these areas are commonly ~~in the downwind direction~~ downwind relative to the considered EMEP stations, except the two Finish stations Utö and Virolahti II. Therefore, the overestimation of sea salt emissions introduced by not considering sea ice is expected to be negligible. Moreover, sea salt particles have been found to be re-emitted by wind-blown snow from sea ice (Tian-Kunze et al., 2009; Yang et al., 2008). Additionally, the edges of sea ice required a similar treatment as the surf zone. Therefore, deactivating sea salt emissions above sea ice would not necessarily improve sea salt emission prediction quality.

4.3 Discussion of atmospheric nitrogen ~~and sulfur~~ compounds

The concentrations of sNH₄ were found to be well matched at Zingst, under-predicted at Westerland, and over-predicted at Waldhof. Because land-based NH₃ emissions are not the topic of this paper, Waldhof will not be discussed further. Backes et al. (2015a) described and discussed the employed NH₃ emissions in detail.

A one-week episode of north-easterly winds during the end of July corresponds in the time series plots to a strong decline in sNH₄ concentrations at Zingst and a strong increase at Westerland. The increase at Westerland is due to NH₃-rich air from Denmark. Although modeled concentrations increased considerably, measured concentrations increased even more. This result might be due to under-predicted emissions or over-predicted NH₃/NH₄⁺

deposition. The discrepancy is not caused by sea salt. Remarkably, at Zingst, the modeled sNH_4 concentrations decreased, whereas the measured concentrations increased during this episode. No major landmasses are on the route between the Swedish coast and Zingst, the path by which the air masses likely travelled. If we consider the measured NH_3 and NH_4^+ concentrations individually (which one should not do, EMEP, 2014, Chp. 3), the measured sNH_4 consists primarily of NH_3 (> 95 % by mass, not shown here). Because NH_3 has a short atmospheric lifespan, we assume that most sNH_4 is transported over a short distance and does not originate from Sweden. The NH_3 may be emitted from the sea surface (Barrett, 1998; Paulot et al., 2015). Norman and Leck (2005) found oceanic emissions to be relevant contributors to atmospheric NH_3 in remote marine regions. These oceanic NH_3 emissions would explain the generally under-predicted concentrations at coastal stations. However, these emissions are approximately two to three orders of magnitude lower than land-based emissions. Additionally, a brief ~~look-on~~ examination of chlorophyll *a* data (Lavender et al., 2015) does not indicate the presence of algae blooms. Therefore, marine NH_3 cannot account for the entire difference at Zingst. Another reason might be incorrectly predicted wind directions caused by sea and land breezes and planetary boundary layer height (e.g. Miao et al., 2009). Sea and land breezes during day and night do not form in COSMO-CLM with the given setup, version and grid resolution (M. Schulz, personal communication, 2015). Furthermore, certain land-based NH_3 sources, which are located close to the measurement station, might not be considered by the employed emission dataset. This topic needs to be considered further.

Predicted and measured sNO_3 concentrations are not well correlated at Westerland in either seasons and at all stations in summer. Approximately half of the measurements at Westerland were under the detection limit and not in the EMEP database. Thus, the peak concentrations were measured and compared. Comparing peak concentrations is biased because they are often over- or underestimated, e.g., via smoothing in the discretization. Therefore, an analysis of the sNO_3 Westerland data is problematic. Additionally, peaks arise in the model results that do not exist in the measurements. This effect may be due to the

employed shipping emission inventory, which contains the weekly averaged shipping emissions of 2011 (whereas the model year is 2008) or due to problems with the measurements.

Surf zone emissions of sea salt have a negligible impact on atmospheric sNH_4 and sNO_3 concentrations at most EMEP stations. Deactivating sea salt emissions completely showed that sea salt particles slightly affect the sNH_4 and sNO_3 concentrations: These concentrations rose when sea salt was deactivated which means that the presence of sea salt particles decreases them. NO_3^- concentrations, in contrast, increase in the presence of sea salt at most stations throughout the year. At some inland stations, sea salt particles lead to a decrease in NO_3^- concentrations. Additionally, the negative MNB values of other inland stations are closer to 0 than those of coastal stations. Thus, the impact of sea salt particles on NO_3^- decreases with distance from the coast. This pattern is expected because sea salt concentrations decrease from the coast to inland locations. As Fig. ?? indicates, the zero case NO_3^- peak concentrations are higher than base case peak concentrations although the MNBs are negative. Therefore, the impact of sea salt on NO_3^- is not as clear as one might assume from the table of MNB values.

Im (2013), Liu et al. (2015) and Kelly et al. (2014) found that sea salt has a significant impact on atmospheric nitrate concentrations. In Im (2013) and Liu et al. (2015), particulate nitrate concentrations considerably increased when sea salt was added. They increased even more when surf zone emissions were activated (Im, 2013, Table 4). For summer months, their results agree completely with the results of this study but inland stations deviate during winter. Additionally, the peak concentrations differ from the MNBs in this study and the result of other studies. The emission and meteorological regimes in the Mediterranean and Pearl River Delta regions are different from those in the North Sea region, which may account for the different behavior. Due to high agricultural activity in the North Sea region, sufficient fine particles and ammonia are available in summer months for the condensation of ammonium nitrate onto existing particles. As described above, ammonium and nitrate concentrations correlate well in the model but are less correlated in reality. If the nitrate condensation is NH_3 limited in the Mediterranean region, modeled nitrate may condense on particles only in exchange for the release of HCl. According to the both other studies, HCl displacement

is a relevant process in those regions. Hence, comparing the $\text{NH}_3/\text{NH}_4^+$ concentrations would be interesting. Additionally, Sahara dust is blown from the boundaries into the model domain of Im (2013). The dust may have an indirect effect on atmospheric chemistry that is not present in this study because desert dust is not included in ~~this study's boundary conditions~~ the boundary conditions of this study.

~~When sea salt emissions were deactivated, sNH_4 and sNO_3 concentrations increased and xSO_4 concentrations decreased. This observation is confusing because we expected xSO_4~~

4.4 Discussion of nitrogen deposition

The nitrogen deposition is higher during summer because the nitrogen emissions are higher during summer, too. While anthropogenic NO_x emissions are higher in winter due to residential heating, NH_3 emissions are considerably higher during summer due to animal husbandry and agricultural activities (involving, for example, fertilizers and manure). The Po Valley is an exception. It is one of the largest and densest industrialized regions in Europe and features high NO_x emissions throughout the year leading to the high nitrogen depositions.

A comparison of modeled and measured nitrogen wet depositions showed that the wet deposition is underestimated by the model by up to a factor of two.

The nitrogen deposition into the North Sea was 1.01 kt N d^{-1} (369 kt N yr^{-1}) during winter and 1.08 kt N d^{-1} (395 kt N yr^{-1}) during summer in the year 2008. The literature values are 622 kt N yr^{-1} (de Leeuw et al., 2003), 709 kt N yr^{-1} (Hertel et al., 2002), and 430 kt N yr^{-1} (Bartnicki and Fagerli, 2008) for the whole years 2003, and concentrations to increase: the lack of sea salt results in fewer coarse particles, more condensation on fine particles and more nucleation. Because fine particles are deposited more slowly than coarse ones, we expected the concentrations of condensing species to rise. Particulate sulfate does not evaporate back into the gas phase. Consequently, it remains adhered to coarse sea salt particles, which is why we expected an increase in sulfate in 1999, and 2005, respectively. These literature annual values are considerably higher

than the winter and summer results in this study. The North Sea is defined similar to the OSPAR region II in the cited publications and in this study. Thus, the zero case. The decreased sulfate concentrations may be due to decreased sulfate production by heterogeneous chemical reactions. In CMAQ, is formed from via heterogeneous reactions on wet particle surfaces (Seinfeld and Pandis, 2006, Chp. 6.13) and by gas phase reactions. Deactivating English Channel (until approximately 5degree W) and the Skagerrak are considered to be parts of the North Sea. Therefore, the considered North Sea area is comparable between the studies. In this study, the Baltic Sea featured nitrogen deposition of 0.57 kt N d^{-1} (207 kt N yr^{-1}) during winter and 0.60 kt N d^{-1} (220 kt N yr^{-1}) during summer, whereas 264 kt N yr^{-1} (HELCOM, 2005), 204 kt N yr^{-1} (Bartnicki and Fagerli, 2008), $201 - 300 \text{ kt N yr}^{-1}$ (Langner et al., 2009), and $\approx 200 \text{ kt N yr}^{-1}$ (Bartnicki et al., 2011) were found in other studies for the years 2000, 2005, 1992–2001, and 2006, respectively. Although Bartnicki and Fagerli (2008) and Bartnicki et al. (2011) obtained results similar to those in this study, HELCOM (2005) and Langner et al. (2009) estimated deposition rates that were considerably higher and similar to those of the North Sea.

One reason for lower nitrogen deposition in this study compared compared to other ones might be that the nitrogen deposition in other months was considerably higher. Additionally, inter-annual variation in the meteorological conditions and nitrogen emissions might have contributed to the low results in this study. The nitrogen deposition might be generally underestimated in the model setup because of the underestimation in the wet deposition. However, it is not known whether the dry deposition compensates the latter underestimation. The nitrogen deposition along the coastline is considerably higher than at the open ocean (see Fig. ??) which is caused by the coincidence of marine coarse sea salt particles and nitrogen species emitted on the land. Thus, the procedure of dividing the nitrogen deposition between deposition into water and deposition onto land in coastal regions might lead to differences in the stated nitrogen deposition.

The surf zone sea salt emissions decreases the availability of wet particles considerably, therefore reducing heterogeneous production. This process is confirmed by increased

~~production of in the gas phase and slightly higher concentrations when do affect nitrogen deposition in coastal regions, but the effect is very small (Fig. ??). The impact of the surf zone emissions on the nitrogen deposition into the entire North Sea and Baltic Sea is negligible (Table 7).~~

In general, sea salt particles considerably increase the nitrogen deposition in coastal regions and, particularly, in Denmark. Additionally, the nitrogen deposition above the open ocean is affected. The Po Valley nitrogen deposition is nearly unaffected by sea salt emissions ~~are deactivated, which can be found in the model output~~ because the sea salt concentrations are very low in this region due to its geographic location.

The impact of ~~surf zone emissions on atmospheric sNH_4 , sNO_3 , and xSO_4 concentrations is negligible.~~ sea salt emissions on the nitrogen deposition into the Baltic Sea is generally small. Because the full and base case lead to quite similar nitrogen depositions, we assume that the low impact is not caused by the salinity-scaled sea salt emissions and is instead due to low nitrogen emissions upwind of the Baltic Sea. However, a comparison of the zero, base, and full cases indicates that sea salt-induced nitrogen deposition would be twice as high if no salinity scaling was applied.

The salinity scaling (base vs. full) is not relevant for nitrogen deposition into the North Sea. However, sea salt induced nitrogen deposition is higher than in the Baltic Sea region. During winter, $\approx 7\%$ is induced by sea salt. Unfortunately, we are not aware of comparable studies on the impact of sea salt particles on nitrogen deposition into the North Sea.

5 Conclusions

Measured sea salt concentrations are fairly well represented in the given model setup. Commonly, sea salt peak concentrations are overestimated. The current parameterization might overestimate sea salt emissions under strong wind conditions during the winter. This overestimation should be evaluated in future studies. A few peak concentrations are underestimated, indicating that one or more sea salt particle generation processes are not considered in the current sea salt emission parameterizations. These parameterizations

should be tested with alternative sea salt emission source functions to determine whether these alternatives provide better predictions in these situations. However, the underestimated peak concentrations may be due to differences between the modeled meteorology and the real-world meteorology, as well. Figure 5 clearly shows The evaluation of the Zingst, Utö, and Virolahti II data in Fig. 5 and Table 2 clearly show that salinity-dependent scaling of sea salt emissions is important in marginal seas with salinities that differ from 35‰.

Surf zone emissions do not generally improve or deteriorate estimated sea salt concentrations in the presented model setup. Their effect on $x\text{SO}_4$, sNH_4 , and sNO_3 , and NO_3^- on its own is negligible. At a finer grid resolution, however, the impact of surf zone emissions might be relevant due to a relatively higher surf zone fraction. The general effect of sea salt particles on atmospheric $x\text{SO}_4$, sNH_4 , and sNO_3 concentrations is low. The concentrations concentrations of sNH_4 and sNO_3 increased when sea salt emissions were deactivated, whereas $x\text{SO}_4$ concentrations decreased although the effect is small. In contrast, the MNBs for the NO_3^- time series decreased except at inland stations during winter where the MNBs increased. However, NO_3^- peak concentrations in the absence of sea salt emissions often exceeded the peak concentrations in the presence of sea salt emissions, which contradicts the MNB values. The latter is expected to be caused by reduced production on particle surfaces. Im (2013); Liu et al. (2015) and Kelly et al. (2014) found that sea salt had a stronger strong negative impact on nitrate than found is this study, which agrees with the summer MNB results but disagrees with the winter results at inland stations and with peak concentrations. We assume that this difference is due to different emission and air pollution regimes, in particular due especially with respect to NH_3 emissions. In one 10 day episode in late July, sNH_4 concentrations were considerably underestimated by the model. The reason for this is unclear. However, it this underestimation is not related to sea salt particles.

Surf zone sea salt emissions have a negligible effect on the nitrogen deposition. However, sea salt emissions in general have a relevant impact on nitrogen deposition in some regions, and this impact varies intra-annually. Therefore, sea salt emissions need to be considered in nitrogen deposition studies. The literature values on the modeled total nitrogen deposition

into the North Sea are up to a factor of two as high as the nitrogen depositions in this study. The nitrogen wet deposition is underestimated in this study's model setup which might lead to an underestimation of the total nitrogen deposition. However, it is unknown how accurate the model predicts the nitrogen dry deposition and whether the model tends to over- or underestimate the dry deposition.

For an improved validation, it would be favorable to have ~~hourly-resolved measurements of these species and~~ individual measurements of NO_3^- , HNO_3 , NH_4^+ , and NH_3 available. Data from both coastal and inland stations are needed ~~in order~~ to evaluate whether either the emission parameterization or modeled atmospheric transport processes lead to observed discrepancies. Size resolved sea salt measurements would be of high value for this process. Finally, more experimental work is needed ~~in the subject of determining to~~ determine parameterizations for surf zone emissions.

The Supplement related to this article is available online at [doi:10.5194/acpd-0-1-2016-supplement](https://doi.org/10.5194/acpd-0-1-2016-supplement).

Acknowledgements. Beate Geyer provided COSMO-CLM meteorology data which can be accessed via the Climate and Environmental Retrieval and Archive (CERA) of the German Climate Computing Centre (DKRZ). Salinity data were extracted from ECOSMO simulations by Corinna Schrum. We thank Anna Backes, Matthias Karl and Markus Schultze from our institute ~~for~~ discussions on the model results. Additionally, Anna Backes provided ~~GIS-related~~ GIS-related data for this study. Uma Shankar, James Kelly and Brett Gantt (US EPA) ~~answered very detailed on questions on~~ provided very detailed answer to questions about the inline sea salt emissions of CMAQ. A general thanks goes out to the US EPA and the CMAQ development team for providing this high quality chemistry transport model as an open source product. The EMEP measurement data were extracted from the EBAS database which is maintained and further developed by the Norwegian Institute for Air Research (NILU). Statistical evaluation and most plotting were performed ~~by R. Remaining using R. The remaining~~ plots were created with the Generic Mapping Tools (GMT) developed and maintained by Paul Wessel, Walter H. F. Smith, Remko Scharroo, Joaquim Luis and Florian Wobbe. ~~Simulation data was~~ The simulation data were processed with the Climate

Data Operators (cdo) by Uwe Schultz-Weider from [the](#) Max-Planck-Institute for Meteorology and with the netCDF Operators (NCO) by Charlie Zender and Henry Butowsky. [Parts of the study were funded by the project *Measurements of shipping emissions in the marine troposphere* \(MeSMarT\) of the German Federal Maritime and Hydrographic Agency \(Bundesamt für Seeschifffahrt und Hydrographie, BSH\).](#)

The article processing charges for this open-access publication were covered by a Research Centre of the Helmholtz Association.

References

- Aulinger, A., Matthias, V., Zeretzke, M., Bieser, J., Quante, M., and Backes, A.: The impact of shipping emissions on air pollution in the Greater North Sea region – Part 1: Current emissions and concentrations, *Atmos. Chem. Phys. Discuss.*, 15, 11277–11323, doi:10.5194/acpd-15-11277-2015, 2015.
- Backes, A., Aulinger, A., Bieser, J., Matthias, V., and Quante, M.: Ammonia Emissions In Europe, Part I: Development of a dynamical ammonia emissions inventory, *Atmos. Environ.*, in revision, 2015a.
- Backes, A., Aulinger, A., Bieser, J., Matthias, V., and Quante, M.: Ammonia emissions in Europe, Part II: How ammonia emission abatement strategies affect secondary aerosols, *Atmos. Environ.*, in revision, 2015b.
- Barrett, K.: Oceanic ammonia emissions in Europe and their transboundary fluxes, *Atmos. Environ.*, 32, 381–391, doi:10.1016/S1352-2310(97)00279-3, 1998.
- Barthel, K., Daewel, U., Pushpadas, D., Schrum, C., Årthun, M., and Wehde, H.: Resolving frontal structures: on the payoff using a less diffusive but computationally more expensive advection scheme, *Ocean Dynam.*, 62, 1457–1470, doi:10.1007/s10236-012-0578-9, 2012.
- Bartnicki, J. and Fagerli, H.: Airborne load of nitrogen to European seas, *Ecol. Chem. Eng. S*, 15, 297–313, 2008.
- Bartnicki, J., Semeena, V. S., and Fagerli, H.: Atmospheric deposition of nitrogen to the Baltic Sea in the period 1995–2006, *Atmos. Chem. Phys.*, 11, 10 057–10 069, doi:10.5194/acp-11-10057-2011, 2011.

- Bieser, J., Aulinger, A., Matthias, V., Quante, M., and Builtjes, P.: SMOKE for Europe - adaptation, modification and evaluation of a comprehensive emission model for Europe, *Geosci. Model Dev.*, 4, 47–68, doi:10.5194/gmd-4-47-2011, 2011.
- Binkowski, F. S. and Roselle, S. J.: Models-3 Community Multiscale Air Quality (CMAQ) model aerosol component 1. Model description, *J. Geophys. Res.-Atmos.*, 108, 4183, doi:10.1029/2001JD001409, 2003.
- Bowyer, P. A., Woolf, D. K., and Monahan, E. C.: Temperature dependence of the charge and aerosol production associated with a breaking wave in a whitecap simulation tank, *J. Geophys. Res.-Oceans*, 95, 5313–5319, doi:10.1029/JC095iC04p05313, 1990.
- Cai, X., Ziemba, L. D., and Griffin, R. J.: Secondary aerosol formation from the oxidation of toluene by chlorine atoms, *Atmos. Environ.*, 42, 7348–7359, doi:10.1016/j.atmosenv.2008.07.014, 2008.
- Callaghan, A. H., Stokes, M. D., and Deane, G. B.: The effect of water temperature on air entrainment, bubble plumes, and surface foam in a laboratory breaking-wave analog, *J. Geophys. Res.-Oceans*, 119, 7463–7482, doi:10.1002/2014JC010351, 2014.
- Chomka, M. and Petelski, T.: Sea spray emission over the coastal zone, *J. Aerosol Sci.*, 28, 103–104, doi:10.1016/S0021-8502(97)85052-5, 1997.
- Crippa, M., Janssens-Maenhout, G., Dentener, F., Guizzardi, D., Sindelarova, K., Muntean, M., Van Dingenen, R., and Granier, C.: Forty years of improvements in European air quality: the role of EU policy–industry interplay, *Atmos. Chem. Phys. Discuss.*, 15, 20245–20285, doi:10.5194/acpd-15-20245-2015, 2015.
- Crisp, T. A., Lerner, B. M., Williams, E. J., Quinn, P. K., Bates, T. S., and Bertram, T. H.: Observations of gas phase hydrochloric acid in the polluted marine boundary layer, *J. Geophys. Res.-Atmos.*, 119, 6897–6915, doi:10.1002/2013JD020992, 2014.
- de Leeuw, G., Neele, F. P., Hill, M., Smith, M. H., and Vignati, E.: Production of sea spray aerosol in the surf zone, *J. Geophys. Res.-Atmos.*, 105, 29397–29409, doi:10.1029/2000JD900549, 2000.
- de Leeuw, G., Skjøth, C., Hertel, O., Jickells, T., Spokes, L., Vignati, E., Frohn, L., Frydendall, J., Schulz, M., Tamm, S., Sørensen, L., and Kunz, G.: Deposition of nitrogen into the North Sea, *Atmos. Environ.*, 37, 145–165, doi:10.1016/S1352-2310(03)00246-2, 2003.
- EMEP: EMEP Manual for Sampling and Analysis, EMEP, available at: <http://www.nilu.no/projects/ccc/manual/index.html> (last access: 30 October 2015), 2014.
- Fuentes, E., Coe, H., Green, D., de Leeuw, G., and McFiggans, G.: On the impacts of phytoplankton-derived organic matter on the properties of the primary marine aerosol – Part 1: Source fluxes, *Atmos. Chem. Phys.*, 10, 9295–9317, doi:10.5194/acp-10-9295-2010, 2010.

- Gantt, B., Meskhidze, N., Facchini, M. C., Rinaldi, M., Ceburnis, D., and O'Dowd, C. D.: Wind speed dependent size-resolved parameterization for the organic mass fraction of sea spray aerosol, *Atmos. Chem. Phys.*, 11, 8777–8790, doi:10.5194/acp-11-8777-2011, 2011.
- Gantt, B., Kelly, J. T., and Bash, J. O.: Updating sea spray aerosol emissions in the Community Multiscale Air Quality (CMAQ) model version 5.0.2, *Geosci. Model Dev.*, 8, 3733–3746, doi:10.5194/gmd-8-3733-2015, 2015.
- Gathman, S. G. and Hoppel, W. A.: Surf electrification, *J. Geophys. Res.*, 75, 4525–4529, doi:10.1029/JC075i024p04525, 1970.
- Geyer, B.: High-resolution atmospheric reconstruction for Europe 1948–2012: coastDat2, *Earth Syst. Sci. Data*, 6, 147–164, doi:10.5194/essd-6-147-2014, 2014.
- Geyer, B. and Rockel, B.: coastDat-2 COSMO-CLM Atmospheric Reconstruction, World Data Center for Climate (WDCC), Hamburg, Germany, doi:10.1594/WDCC/coastDat-2_COSMO-CLM, 2013.
- Gong, S. L.: A parameterization of sea-salt aerosol source function for sub- and super-micron particles, *Global Biogeochem. Cy.*, 17, 1097, doi:10.1029/2003GB002079, 2003.
- HELCOM: Airborne nitrogen loads to the Baltic Sea, Tech. rep., Helsinki Commission, Baltic Marine Environment Protection Commission, available at: <http://www.helcom.fi/Lists/Publications/Airborne%20nitrogen%20loads%20to%20the%20Baltic%20Sea.pdf>, (last access: 11 Jan 2016), 2005.
- Hertel, O., Skjøth, C. A., Frohn, L., Vignati, E., Frydendall, J., de Leeuw, G., Schwarz, U., and Reis, S.: Assessment of the atmospheric nitrogen and sulphur inputs into the North Sea using a Lagrangian model, *Phys. Chem. Earth, Pt A/B/C*, 27, 1507–1515, doi:10.1016/S1474-7065(02)00153-5, 2002.
- Huijnen, V., Williams, J., van Weele, M., van Noije, T., Krol, M., Dentener, F., Segers, A., Houweling, S., Peters, W., de Laat, J., Boersma, F., Bergamaschi, P., van Velthoven, P., Le Sager, P., Eskes, H., Alkemade, F., Scheele, R., Nédélec, P., and Pätz, H.-W.: The global chemistry transport model TM5: description and evaluation of the tropospheric chemistry version 3.0, *Geosci. Model Dev.*, 3, 445–473, doi:10.5194/gmd-3-445-2010, 2010.
- Im, U.: Impact of sea-salt emissions on the model performance and aerosol chemical composition and deposition in the East Mediterranean coastal regions, *Atmos. Environ.*, 75, 329–340, doi:10.1016/j.atmosenv.2013.04.034, 2013.
- Jaeglé, L., Quinn, P. K., Bates, T. S., Alexander, B., and Lin, J.-T.: Global distribution of sea salt aerosols: new constraints from in situ and remote sensing observations, *Atmos. Chem. Phys.*, 11, 3137–3157, doi:10.5194/acp-11-3137-2011, 2011.

- Kelly, J. T., Bhawe, P. V., Nolte, C. G., Shankar, U., and Foley, K. M.: Simulating emission and chemical evolution of coarse sea-salt particles in the Community Multiscale Air Quality (CMAQ) model, *Geosci. Model Dev.*, 3, 257–273, doi:10.5194/gmd-3-257-2010, 2010.
- Kelly, J. T., Baker, K. R., Nowak, J. B., Murphy, J. G., Markovic, M. Z., VandenBoer, T. C., Ellis, R. A., Neuman, J. A., Weber, R. J., Roberts, J. M., Veres, P. R., de Gouw, J. A., Beaver, M. R., Newman, S., and Misenis, C.: Fine-scale simulation of ammonium and nitrate over the South Coast Air Basin and San Joaquin Valley of California during CalNex-2010, *J. Geophys. Res. Atmos.*, 119, 3600–3614, doi:10.1002/2013JD021290, 2014.
- Knippling, E. M. and Dabdub, D.: Impact of chlorine emissions from sea-salt aerosol on coastal urban ozone, *Environ. Sci. Technol.*, 37, 275–284, doi:10.1021/es025793z, 2003.
- Langner, J., Andersson, C., and Engardt, M.: Atmospheric input of nitrogen to the Baltic Sea basin: present situation, variability due to meteorology and impact of climate change, *Boreal Environ. Res.*, 14, 226–237, 2009.
- Lavender, S., Jackson, T., and Sathyendranath, S.: The Ocean Colour Climate Change Initiative – merging ocean colour observations seamlessly, *Ocean Challenge*, 21, 29–31, 2015.
- Lewis, E. R. and Schwartz, S. E.: Sea Salt Aerosol Production: Mechanisms, Methods, Measurements and Models – A Critical Review, vol. 152, AGU, Washington, D. C., doi:10.1029/GM152, 2004.
- Liu, Y., Zhang, S., Fan, Q., Wu, D., Chan, P., Wang, X., Fan, S., Feng, Y., and Hong, Y.: Accessing the Impact of Sea-Salt Emissions on Aerosol Chemical Formation and Deposition over Pearl River Delta, China, *Aerosol Air Qual. Res.*, 15, 2232–2245, doi:10.4209/aaqr.2015.02.0127, 2015.
- Löblblad, G., Tarrasón, L., Tørseth, K., and Dutchak, S.: EMEP Assessment Part I – European Perspective, Tech. rep., Norwegian Meteorological Institute, Oslo, Norway, P. O. Box 43, N-313, 2004.
- Manders, A., Schaap, M., Querol, X., Albert, M., Vercauteren, J., Kuhlbusch, T., and Hoogerbrugge, R.: Sea salt concentrations across the European continent, *Atmos. Environ.*, 44, 2434–2442, doi:10.1016/j.atmosenv.2010.03.028, 2010.
- Martensson, E. M., Nilsson, E. D., de Leeuw, G., Cohen, L. H., and Hansson, H.-C.: Laboratory simulations and parameterization of the primary marine aerosol production, *J. Geophys. Res. Atmos.*, 108, 4297, doi:10.1029/2002JD002263, 2003.
- Matthäus, W., Nehring, D., Lass, H. U., Nausch, G., Nagel, K., and Siegel, H.: Hydrographisch-chemische Zustandseinschätzung der Ostsee 1996, *Marine Science Reports* 24, Leibniz Institute for Baltic Sea Research Warnemünde, available at: http://www.io-warnemuende.de/tl_files/

- forschung/meereswissenschaftliche-berichte/mebe24_1997-zustand-hc.pdf, (last access: 02 Feb 2016), 1997.
- Miao, J.-F., Wyser, K., Chen, D., and Ritchie, H.: Impacts of boundary layer turbulence and land surface process parameterizations on simulated sea breeze characteristics, *Ann. Geophys.*, 27, 2303–2320, doi:10.5194/angeo-27-2303-2009, 2009.
- Monahan, E. C. and Muircheartaigh, I. O.: Optimal power-law description of oceanic whitecap coverage dependence on wind speed, *J. Phys. Oceanogr.*, 10, 2094–2099, doi:10.1175/1520-0485(1980)010<2094:OPLDOO>2.0.CO;2, 1980.
- Monahan, E. C., Davidson, K. L., and Spiel, D. E.: Whitecap aerosol productivity deduced from simulation tank measurements, *J. Geophys. Res.-Oceans*, 87, 8898–8904, doi:10.1029/JC087iC11p08898, 1982.
- Monahan, E. C., Spiel, D. E., and Davidson, K. L.: *A Model of Marine Aerosol Generation via Whitecaps and Wave Disruption*, Oceanographic Sciences Library, Springer, Dordrecht, the Netherlands, 167–174, 1986.
- Nausch, G., Feistel, R., Umlauf, L., Nagel, K., and Siegel, H.: Hydrographisch-chemische Zustandseinschätzung der Ostsee 2008, *Marine Science Reports* 77, Leibniz Institute for Baltic Sea Research Warnemünde, available at: http://www.io-warnemuende.de/tl_files/forschung/meereswissenschaftliche-berichte/mebe77_2008-zustand-hc-und-schwermetalle.pdf, (last access: 02 Feb 2016), 2009.
- Nenes, A., Pandis, S. N., and Pilinis, C.: ISORROPIA: A New Thermodynamic Equilibrium Model for Multiphase Multicomponent Inorganic Aerosols, *Aquat. Geochem.*, 4, 123–152, doi:10.1023/A:1009604003981, 1998.
- Nenes, A., Pandis, S. N., and Pilinis, C.: Continued development and testing of a new thermodynamic aerosol module for urban and regional air quality models, *Atmos. Environ.*, 33, 1553–1560, doi:10.1016/S1352-2310(98)00352-5, 1999.
- Norman, M. and Leck, C.: Distribution of marine boundary layer ammonia over the Atlantic and Indian Oceans during the Aerosols99 cruise, *J. Geophys. Res.-Atmos.*, 110, D16302, doi:10.1029/2005JD005866, 2005.
- Otte, T. L. and Pleim, J. E.: The Meteorology-Chemistry Interface Processor (MCIP) for the CMAQ modeling system: updates through MCIPv3.4.1, *Geosci. Model Dev.*, 3, 243–256, doi:10.5194/gmd-3-243-2010, 2010.

- Ovadnevaite, J., Manders, A., de Leeuw, G., Ceburnis, D., Monahan, C., Partanen, A.-I., Korhonen, H., and O'Dowd, C. D.: A sea spray aerosol flux parameterization encapsulating wave state, *Atmos. Chem. Phys.*, 14, 1837–1852, doi:10.5194/acp-14-1837-2014, 2014.
- Paulot, F., Jacob, D. J., Johnson, M. T., Bell, T. G., Baker, A. R., Keene, W. C., Lima, I. D., Doney, S. C., and Stock, C. A.: Global oceanic emission of ammonia: constraints from seawater and atmospheric observations, *Global Biogeochem. Cy.*, 29, 1165–1178, doi:10.1002/2015GB005106, 2015.
- Sarwar, G., Luecken, D., and Yarwood, G.: Chapter 2.9 Developing and implementing an updated chlorine chemistry into the community multiscale air quality model, in: *Air Pollution Modeling and Its Application XVIII*, edited by: Borrego, C. and Renner, E., vol. 6 of *Developments in Environmental Science*, 168–176, Elsevier, Amsterdam, the Netherlands, doi:10.1016/S1474-8177(07)06029-9, 2007.
- Salter, M. E., Zieger, P., Acosta Navarro, J. C., Grythe, H., Kirkevåg, A., Rosati, B., Riipinen, I., and Nilsson, E. D.: An empirically derived inorganic sea spray source function incorporating sea surface temperature, *Atmos. Chem. Phys.*, 15, 11 047–11 066, doi:10.5194/acp-15-11047-2015, 2015.
- Schlünzen, K. H., and Sokhi, R. S.: Joint Report of COST Action 728 and GURME. Overview of Tools and Methods for Meteorological and Air Pollution Mesoscale Model Evaluation and User Training, WMO TD No 1457, WMO, Geneva, Switzerland, 2008.
- Schrum, C. and Backhaus, J. O.: Sensitivity of atmosphere-ocean heat exchange and heat content in the North Sea and the Baltic Sea, *Tellus A*, 51, 526–549, doi:10.1034/j.1600-0870.1992.00006.x, 1999.
- Seinfeld, J. H. and Pandis, S. N.: *Atmospheric Chemistry and Physics: from Air Pollution to Climate Change*, 2nd edn., Wiley-Interscience, Hoboken, New Jersey, USA, 2006.
- Spada, M., Jorba, O., Pérez García-Pando, C., Janjic, Z., and Baldasano, J. M.: Modeling and evaluation of the global sea-salt aerosol distribution: sensitivity to size-resolved and sea-surface temperature dependent emission schemes, *Atmos. Chem. Phys.*, 13, 11735–11755, doi:10.5194/acp-13-11735-2013, 2013.
- Tanaka, P. L., Allen, D. T., McDonald-Buller, E. C., Chang, S., Kimura, Y., Mullins, C. B., Yarwood, G., and Neece, J. D.: Development of a chlorine mechanism for use in the carbon bond IV chemistry model, *J. Geophys. Res.-Atmos.*, 108, 4145, doi:10.1029/2002JD002432, 2003.
- Tian-Kunze, X., Kaleschke, L., Weller, R., König-Langlo, G., Wangenbach, D., Rast, S., Santos, G., Richter, A., and Begoin, M.: Sea ice as a source of sea salt aerosol: A trajectory study of 25

- years of year-round sea salt aerosol record at Neumayer, Antarctica, in: Geophysical Research Abstracts Vol. 11, EGU 2009, Vienna, Austria, p. 8934, 2009.
- Whitten, G. Z., Heo, G., Kimura, Y., McDonald-Buller, E., Allen, D. T., Carter, W. P., and Yarwood, G.: A new condensed toluene mechanism for Carbon Bond: CB05-TU, Atmos. Environ., 44, 5346–5355, doi:10.1016/j.atmosenv.2009.12.029, 2010.
- Yang, X., Pyle, J. A., and Cox, R. A.: Sea salt aerosol production and bromine release: Role of snow on sea ice, Geophys. Res. Lett., 35, L16815, doi:10.1029/2008GL034536, 2008.
- Yarwood, G., Rao, S., Yocke, M., and Whitten, G. Z.: Updates to the Carbon Bond Chemical Mechanism: CB05, Final report to project rt-04-00675, U. S. Environmental Protection Agency, Research Triangle Park, NC 27703, USA, 2005.
- Zhang, K. M., Knipping, E. M., Wexler, A. S., Bhawe, P. V., and Tonnesen, G. S.: Size distribution of sea-salt emissions as a function of relative humidity, Atmos. Environ., 39, 3373–3379, doi:10.1016/j.atmosenv.2005.02.032, 2005.

Appendix A: Statistical evaluation

The statistical measures residual absolute error (RAE), mean normalized bias (MNB), and Spearman's correlation coefficient (R) are calculated according to Eqs. (A1), (A2), and (A3), respectively.

$$\text{RAE} = \frac{1}{n} \times \sum_{i=1}^n |P_i - O_i| \quad (\text{A1})$$

$$\text{MNB} = \frac{1}{n} \times \sum_{i=1}^n \frac{P_i - O_i}{O_i} \quad (\text{A2})$$

$$\text{R} = 1 - \frac{6}{n(n^2 - 1)} \times \sum_{i=1}^n (P_i - O_i)^2 \quad (\text{A3})$$

with

P_i	i^{th} predicted value
p_i	rank of the i^{th} predicted value
O_i	i^{th} observed value
o_i	rank of the i^{th} observed value
n	number of observations

Appendix B: Deposition calculation

The nitrogen deposition is calculated from the dry and wet depositions of NO , NO_2 , HNO_3 , NO_3^- , NH_3 , NH_4^+ , NO_3 , HONO , peroxyacyl nitrate (PAN), and peroxyntiric acid (PNA) according to Eqs. (B1) to (B3). HNO_3 and NO_3^- as well as NH_3 and NH_4^+ are separately listed in the CMAQ wet deposition output in order to distinguish the amount of particulate (ions) and gas compounds that were washed out.

$$\text{WetDep}_N = M_N \cdot \sum_{s \in \text{species}} \frac{\text{WetDep}_s}{M_s} \quad (\text{B1})$$

$$\text{DryDep}_N = M_N \cdot \sum_{s \in \text{species}} \frac{\text{DryDep}_s}{M_s} \quad (\text{B2})$$

$$\text{Dep}_N = \text{DryDep}_N + \text{WetDep}_N \quad (\text{B3})$$

$$\text{species} = \{\text{NO}, \text{NO}_2, \text{HNO}_3, \text{NO}_3^-, \text{NH}_3, \text{NH}_4^+, \text{NO}_3, \text{HONO}, \text{PAN}, \text{PNA}\}$$

with

DryDep_s dry deposition of species s

WetDep_s wet deposition of species s

Dep_s deposition of species s (sum of dry and wet deposition)

M_s molar mass of species s

Table 1. Sea salt emission ~~scenarios~~cases.

case	description
base	standard CMAQ emissions <u>sea salt emissions but scaled by salinity</u> : 50 m surf zone, coast <u>line from</u>
line from	Natural Earth data set, linearly scaled <u>with</u> with salinity
noSurf	like base but surf zone is treated like open ocean
zero	no sea salt
<u>full</u>	<u>standard CMAQ sea salt emissions (like base case but no salinity scaling)</u>

Table 2. Statistical values (\overline{RAE} , \overline{NMB} and \overline{MNB} , and \overline{R}) for the comparison of measured and modeled (base and noSurf scenarios) sodium concentrations at three all considered stations (DE0001R, DE0002R and DE0009R Fig. 2) and during two time periods (winter and summer 2008).

Na ⁺ Station	Case	winter 2008				summer 2008			
		n	RAE	MNB	R	n	RAE	MNB	R
Westerland DE0001R Coast	base	60	1.89	1.01	0.76	61	0.72	2.37	0.70
	noSurf	60	1.84	0.65	0.75	61	0.63	1.17	0.79
	full	60	2.01	1.31	0.75	61	0.87	3.51	0.49
Waldhof DE0002R Inland	base	55	0.42	1.75	0.67	60	0.18	-0.33	0.70
	noSurf	55	0.40	1.02	0.74	60	0.20	-0.43	0.71
	full	55	0.45	2.51	0.63	60	0.18	-0.21	0.65
<u>Neuglobsow</u> <u>DE0007R</u> <u>Inland</u>	<u>base</u>	<u>60</u>	<u>0.30</u>	<u>1.27</u>	<u>0.76</u>	<u>59</u>	<u>0.18</u>	<u>-0.36</u>	<u>0.71</u>
	<u>noSurf</u>	<u>60</u>	<u>0.29</u>	<u>0.66</u>	<u>0.81</u>	<u>59</u>	<u>0.19</u>	<u>-0.47</u>	<u>0.73</u>
	<u>full</u>	<u>60</u>	<u>0.35</u>	<u>2.40</u>	<u>0.69</u>	<u>59</u>	<u>0.17</u>	<u>-0.16</u>	<u>0.68</u>
Zingst DE0009R Coast	base	60	0.72	1.24	0.79	61	0.26	0.20	0.69
	noSurf	60	0.64	0.69	0.82	61	0.31	-0.16	0.62
	full	60	1.40	3.28	0.69	61	0.70	1.75	0.36
<u>Melpitz</u> <u>DE0044R</u> <u>Inland</u>	<u>base</u>	<u>59</u>	<u>0.25</u>	<u>0.43</u>	<u>0.66</u>	<u>61</u>	<u>0.11</u>	<u>-0.35</u>	<u>0.69</u>
	<u>noSurf</u>	<u>59</u>	<u>0.25</u>	<u>0.32</u>	<u>0.67</u>	<u>61</u>	<u>0.12</u>	<u>-0.43</u>	<u>0.70</u>
	<u>full</u>	<u>59</u>	<u>0.25</u>	<u>0.54</u>	<u>0.66</u>	<u>61</u>	<u>0.11</u>	<u>-0.24</u>	<u>0.65</u>
<u>Tange</u> <u>DK0003R</u> <u>Inland</u>	<u>base</u>	<u>56</u>	<u>1.03</u>	<u>1.12</u>	<u>0.67</u>	<u>61</u>	<u>0.44</u>	<u>0.88</u>	<u>0.65</u>
	<u>noSurf</u>	<u>56</u>	<u>0.96</u>	<u>0.56</u>	<u>0.74</u>	<u>61</u>	<u>0.41</u>	<u>0.02</u>	<u>0.74</u>
	<u>full</u>	<u>56</u>	<u>1.11</u>	<u>1.37</u>	<u>0.60</u>	<u>61</u>	<u>0.50</u>	<u>1.50</u>	<u>0.46</u>

<u>Keldsnor</u>	<u>base</u>	<u>60</u>	<u>1.26</u>	<u>0.75</u>	<u>0.48</u>	<u>56</u>	<u>0.46</u>	<u>0.21</u>	<u>0.26</u>
<u>DK0005R</u>	<u>noSurf</u>	<u>60</u>	<u>1.07</u>	<u>0.11</u>	<u>0.65</u>	<u>56</u>	<u>0.50</u>	<u>-0.32</u>	<u>0.53</u>
<u>Coast</u>	<u>full</u>	<u>60</u>	<u>1.64</u>	<u>1.47</u>	<u>0.39</u>	<u>56</u>	<u>0.85</u>	<u>1.03</u>	<u>0.09</u>
<u>Anholt</u>	<u>base</u>	<u>59</u>	<u>1.26</u>	<u>0.51</u>	<u>0.81</u>	<u>51</u>	<u>0.60</u>	<u>0.05</u>	<u>0.69</u>
<u>DK0008R</u>	<u>noSurf</u>	<u>59</u>	<u>1.19</u>	<u>0.32</u>	<u>0.82</u>	<u>51</u>	<u>0.67</u>	<u>-0.23</u>	<u>0.70</u>
<u>Coast</u>	<u>full</u>	<u>59</u>	<u>1.61</u>	<u>0.75</u>	<u>0.77</u>	<u>51</u>	<u>0.62</u>	<u>0.36</u>	<u>0.66</u>
<u>Ulborg</u>	<u>base</u>	<u>60</u>	<u>1.41</u>	<u>1.63</u>	<u>0.77</u>	<u>54</u>	<u>0.68</u>	<u>1.22</u>	<u>0.52</u>
<u>DK0031R</u>	<u>noSurf</u>	<u>60</u>	<u>1.22</u>	<u>0.38</u>	<u>0.85</u>	<u>54</u>	<u>0.48</u>	<u>-0.03</u>	<u>0.76</u>
<u>Coast</u>	<u>full</u>	<u>60</u>	<u>1.48</u>	<u>1.83</u>	<u>0.75</u>	<u>54</u>	<u>0.75</u>	<u>1.66</u>	<u>0.48</u>
<u>Utö</u>	<u>base</u>	<u>59</u>	<u>0.59</u>	<u>1.26</u>	<u>0.59</u>	<u>61</u>	<u>0.24</u>	<u>0.24</u>	<u>0.67</u>
<u>FI0009R</u>	<u>noSurf</u>	<u>59</u>	<u>0.52</u>	<u>0.92</u>	<u>0.62</u>	<u>61</u>	<u>0.26</u>	<u>-0.29</u>	<u>0.74</u>
<u>Coast</u>	<u>full</u>	<u>59</u>	<u>3.16</u>	<u>6.09</u>	<u>0.57</u>	<u>61</u>	<u>0.99</u>	<u>4.79</u>	<u>0.41</u>
<u>Virolahti II</u>	<u>base</u>	<u>60</u>	<u>0.24</u>	<u>1.50</u>	<u>0.37</u>	<u>60</u>	<u>0.12</u>	<u>0.07</u>	<u>0.74</u>
<u>FI0017R</u>	<u>noSurf</u>	<u>60</u>	<u>0.21</u>	<u>1.05</u>	<u>0.42</u>	<u>60</u>	<u>0.14</u>	<u>-0.16</u>	<u>0.70</u>
<u>Coast</u>	<u>full</u>	<u>60</u>	<u>1.01</u>	<u>6.27</u>	<u>0.23</u>	<u>60</u>	<u>0.34</u>	<u>2.61</u>	<u>0.73</u>
<u>Birkenes</u>	<u>base</u>	<u>60</u>	<u>0.89</u>	<u>5.77</u>	<u>0.57</u>	<u>61</u>	<u>0.26</u>	<u>1.12</u>	<u>0.35</u>
<u>NO0001R</u>	<u>noSurf</u>	<u>60</u>	<u>0.81</u>	<u>4.31</u>	<u>0.58</u>	<u>61</u>	<u>0.23</u>	<u>-0.14</u>	<u>0.60</u>
<u>mixed</u>	<u>full</u>	<u>60</u>	<u>0.92</u>	<u>6.13</u>	<u>0.57</u>	<u>61</u>	<u>0.27</u>	<u>1.34</u>	<u>0.29</u>
<u>Hurdal</u>	<u>base</u>	<u>59</u>	<u>0.49</u>	<u>3.80</u>	<u>0.30</u>	<u>55</u>	<u>0.10</u>	<u>0.23</u>	<u>0.51</u>
<u>NO0056R</u>	<u>noSurf</u>	<u>59</u>	<u>0.42</u>	<u>2.80</u>	<u>0.42</u>	<u>55</u>	<u>0.10</u>	<u>-0.22</u>	<u>0.51</u>
<u>Inland</u>	<u>Inland</u>	<u>59</u>	<u>0.52</u>	<u>4.17</u>	<u>0.28</u>	<u>55</u>	<u>0.10</u>	<u>0.56</u>	<u>0.43</u>

Table 3. Similar to Table 2 but with the addition of $x\text{SO}_4$ (corrected sulfate) concentrations. Three sea salt emissions scenarios — base, noSurf, and zero — are considered.

$x\text{SO}_4$			R	MNB	RAE	n
win	base	DE1	0.67	0.17	0.22	58
	noSurf		0.67	0.17	0.22	58
	zero		0.66	0.17	0.22	58
	base	DE2	0.64	−0.15	0.55	54
	noSurf		0.63	−0.15	0.55	54
	zero		0.63	−0.15	0.55	54
	base	DE9	0.75	0.16	0.36	60
	noSurf		0.75	0.15	0.36	60
	zero		0.75	0.15	0.36	60
sum	base	DE1	0.73	−0.11	0.13	60
	noSurf		0.73	−0.11	0.13	60
	zero		0.71	−0.11	0.13	60
	base	DE2	0.57	0.12	0.21	60
	noSurf		0.57	0.11	0.21	60
	zero		0.58	0.08	0.20	60
	base	DE9	0.68	0.08	0.18	61
	noSurf		0.68	0.08	0.18	61
	zero		0.68	0.05	0.18	61

Table 4. Similar to Table 2 but ~~with the addition of~~ showing sNH_4 ($\text{NH}_3 + \text{NH}_4^+$) concentrations. Three sea salt emissions scenarios – base, noSurf, and zero – are considered.

sNH ₄ Station	Case	winter 2008				summer 2008			
		n	RAE	MNB	R	n	RAE	MNB	R
Westerland DE0001R Coast	base	58	1.00	-0.46	0.60	61	1.29	-0.57	0.69
	noSurf	58	0.99	-0.45	0.61	61	1.29	-0.56	0.69
	zero	58	0.96	-0.39	0.60	61	1.27	-0.55	0.69
Waldhof DE0002R Inland	base	54	1.28	0.25	0.59	60	0.88	0.39	0.63
	noSurf	54	1.28	0.26	0.59	60	0.88	0.39	0.63
	zero	54	1.31	0.31	0.59	60	0.89	0.40	0.62
<u>Neuglobsow</u> <u>DE0007R</u> <u>Inland</u>	<u>base</u>	<u>57</u>	<u>1.01</u>	<u>0.21</u>	<u>0.63</u>	<u>59</u>	<u>0.93</u>	<u>0.68</u>	<u>0.36</u>
	<u>noSurf</u>	<u>57</u>	<u>1.01</u>	<u>0.22</u>	<u>0.63</u>	<u>59</u>	<u>0.93</u>	<u>0.68</u>	<u>0.36</u>
	<u>zero</u>	<u>57</u>	<u>1.04</u>	<u>0.28</u>	<u>0.64</u>	<u>59</u>	<u>0.94</u>	<u>0.69</u>	<u>0.35</u>
Zingst DE0009R Coast	base	57	0.81	-0.19	0.72	59	0.60	-0.02	0.46
	noSurf	57	0.81	-0.19	0.72	59	0.60	-0.01	0.46
	zero	57	0.77	-0.12	0.71	59	0.60	0.00	0.47
<u>Tange</u> <u>DK0003R</u> <u>Inland</u>	<u>base</u>	<u>60</u>	<u>1.23</u>	<u>3.84</u>	<u>0.56</u>	<u>55</u>	<u>1.28</u>	<u>0.72</u>	<u>0.40</u>
	<u>noSurf</u>	<u>60</u>	<u>1.24</u>	<u>3.86</u>	<u>0.56</u>	<u>55</u>	<u>1.29</u>	<u>0.73</u>	<u>0.41</u>
	<u>zero</u>	<u>60</u>	<u>1.31</u>	<u>4.13</u>	<u>0.57</u>	<u>55</u>	<u>1.32</u>	<u>0.75</u>	<u>0.40</u>
<u>Keldsnor</u> <u>DK0005R</u> <u>Coast</u>	<u>base</u>	<u>59</u>	<u>0.71</u>	<u>0.01</u>	<u>0.66</u>	<u>55</u>	<u>0.70</u>	<u>0.17</u>	<u>0.38</u>
	<u>noSurf</u>	<u>59</u>	<u>0.71</u>	<u>0.02</u>	<u>0.66</u>	<u>55</u>	<u>0.71</u>	<u>0.18</u>	<u>0.38</u>
	<u>zero</u>	<u>59</u>	<u>0.70</u>	<u>0.09</u>	<u>0.65</u>	<u>55</u>	<u>0.71</u>	<u>0.20</u>	<u>0.37</u>
<u>Anholt</u> <u>DK0008R</u> <u>Coast</u>	<u>base</u>	<u>59</u>	<u>0.40</u>	<u>-0.06</u>	<u>0.78</u>	<u>51</u>	<u>0.24</u>	<u>0.38</u>	<u>0.67</u>
	<u>noSurf</u>	<u>59</u>	<u>0.41</u>	<u>-0.05</u>	<u>0.78</u>	<u>51</u>	<u>0.24</u>	<u>0.39</u>	<u>0.67</u>
	<u>zero</u>	<u>59</u>	<u>0.41</u>	<u>0.07</u>	<u>0.78</u>	<u>51</u>	<u>0.26</u>	<u>0.44</u>	<u>0.66</u>

<u>Ulborg</u> <u>DK0031R</u> <u>Coast</u>	<u>base</u>	<u>60</u>	<u>0.48</u>	<u>0.08</u>	<u>0.79</u>	<u>55</u>	<u>0.68</u>	<u>0.51</u>	<u>0.80</u>
	<u>noSurf</u>	<u>60</u>	<u>0.49</u>	<u>0.09</u>	<u>0.79</u>	<u>55</u>	<u>0.68</u>	<u>0.52</u>	<u>0.79</u>
	<u>zero</u>	<u>60</u>	<u>0.53</u>	<u>0.21</u>	<u>0.78</u>	<u>55</u>	<u>0.70</u>	<u>0.56</u>	<u>0.79</u>
<u>Utö</u> <u>FI0009R</u> <u>Coast</u>	<u>base</u>	<u>59</u>	<u>0.32</u>	<u>0.93</u>	<u>0.81</u>	<u>61</u>	<u>0.13</u>	<u>0.08</u>	<u>0.57</u>
	<u>noSurf</u>	<u>59</u>	<u>0.32</u>	<u>0.95</u>	<u>0.81</u>	<u>61</u>	<u>0.13</u>	<u>0.08</u>	<u>0.57</u>
	<u>zero</u>	<u>59</u>	<u>0.33</u>	<u>1.25</u>	<u>0.82</u>	<u>61</u>	<u>0.14</u>	<u>0.12</u>	<u>0.55</u>
<u>Virolahti II</u> <u>FI0017R</u> <u>Coast</u>	<u>base</u>	<u>60</u>	<u>0.39</u>	<u>2.00</u>	<u>0.75</u>	<u>60</u>	<u>0.18</u>	<u>0.54</u>	<u>0.64</u>
	<u>noSurf</u>	<u>60</u>	<u>0.39</u>	<u>2.03</u>	<u>0.74</u>	<u>60</u>	<u>0.18</u>	<u>0.54</u>	<u>0.64</u>
	<u>zero</u>	<u>60</u>	<u>0.43</u>	<u>2.32</u>	<u>0.75</u>	<u>60</u>	<u>0.19</u>	<u>0.57</u>	<u>0.64</u>
<u>Birkenes</u> <u>NO0001R</u> <u>mixed</u>	<u>base</u>	<u>51</u>	<u>0.22</u>	<u>1.11</u>	<u>0.52</u>	<u>53</u>	<u>0.25</u>	<u>0.02</u>	<u>0.40</u>
	<u>noSurf</u>	<u>51</u>	<u>0.23</u>	<u>1.14</u>	<u>0.52</u>	<u>53</u>	<u>0.25</u>	<u>0.04</u>	<u>0.40</u>
	<u>zero</u>	<u>51</u>	<u>0.28</u>	<u>1.61</u>	<u>0.50</u>	<u>53</u>	<u>0.26</u>	<u>0.10</u>	<u>0.36</u>
<u>Hurdal</u> <u>NO0056R</u> <u>Inland</u>	<u>base</u>	<u>53</u>	<u>0.72</u>	<u>3.71</u>	<u>0.19</u>	<u>58</u>	<u>0.17</u>	<u>0.24</u>	<u>0.31</u>
	<u>noSurf</u>	<u>53</u>	<u>0.73</u>	<u>3.78</u>	<u>0.18</u>	<u>58</u>	<u>0.18</u>	<u>0.25</u>	<u>0.31</u>
	<u>zero</u>	<u>53</u>	<u>0.80</u>	<u>4.17</u>	<u>0.18</u>	<u>58</u>	<u>0.18</u>	<u>0.29</u>	<u>0.32</u>
<u>Jarczew</u> <u>PL0002R</u> <u>Inland</u>	<u>base</u>	<u>58</u>	<u>1.25</u>	<u>-0.44</u>	<u>0.69</u>	<u>56</u>	<u>1.24</u>	<u>-0.29</u>	<u>0.44</u>
	<u>noSurf</u>	<u>58</u>	<u>1.25</u>	<u>-0.43</u>	<u>0.69</u>	<u>56</u>	<u>1.24</u>	<u>-0.29</u>	<u>0.44</u>
	<u>zero</u>	<u>58</u>	<u>1.21</u>	<u>-0.41</u>	<u>0.68</u>	<u>56</u>	<u>1.24</u>	<u>-0.29</u>	<u>0.44</u>
<u>Leba</u> <u>PL0004R</u> <u>Coast</u>	<u>base</u>	<u>60</u>	<u>0.74</u>	<u>-0.43</u>	<u>0.78</u>	<u>61</u>	<u>0.43</u>	<u>0.06</u>	<u>0.46</u>
	<u>noSurf</u>	<u>60</u>	<u>0.74</u>	<u>-0.42</u>	<u>0.77</u>	<u>61</u>	<u>0.43</u>	<u>0.06</u>	<u>0.46</u>
	<u>zero</u>	<u>60</u>	<u>0.69</u>	<u>-0.37</u>	<u>0.78</u>	<u>61</u>	<u>0.42</u>	<u>0.08</u>	<u>0.45</u>
<u>Råö</u> <u>SE0014R</u> <u>Coast</u>	<u>base</u>	<u>60</u>	<u>0.33</u>	<u>0.22</u>	<u>0.68</u>	<u>61</u>	<u>0.26</u>	<u>0.31</u>	<u>0.38</u>
	<u>noSurf</u>	<u>60</u>	<u>0.33</u>	<u>0.23</u>	<u>0.68</u>	<u>61</u>	<u>0.26</u>	<u>0.32</u>	<u>0.38</u>
	<u>zero</u>	<u>60</u>	<u>0.34</u>	<u>0.45</u>	<u>0.67</u>	<u>61</u>	<u>0.28</u>	<u>0.37</u>	<u>0.36</u>

Table 5. Similar to Table 2 but ~~with the addition of~~ showing sNO_3 ($\text{HNO}_3 + \text{NO}_3^-$) ~~concentrations~~concentrations. Three sea salt emissions scenarios – base, noSurf, and zero – are considered.

sNO ₃ Station	Case	winter 2008				summer 2008			
		n	RAE	MNB	R	n	RAE	MNB	R
Westerland DE0001R Coast	base	21	0.76	1.17	0.10	26	0.25	0.41	-0.14
	noSurf	21	0.76	1.19	0.10	26	0.26	0.43	-0.14
	zero	21	0.81	1.48	0.11	26	0.28	0.57	-0.13
Waldhof DE0002R Inland	base	50	0.67	0.00	0.64	59	0.31	0.05	0.34
	noSurf	50	0.67	0.01	0.64	59	0.31	0.06	0.34
	zero	50	0.68	0.10	0.67	59	0.32	0.16	0.34
<u>Neuglobsow</u> <u>DE0007R</u> <u>Inland</u>	<u>base</u>	<u>53</u>	<u>0.59</u>	<u>0.39</u>	<u>0.63</u>	<u>54</u>	<u>0.25</u>	<u>0.04</u>	<u>0.39</u>
	<u>noSurf</u>	<u>53</u>	<u>0.59</u>	<u>0.40</u>	<u>0.63</u>	<u>54</u>	<u>0.25</u>	<u>0.05</u>	<u>0.39</u>
	<u>zero</u>	<u>53</u>	<u>0.62</u>	<u>0.50</u>	<u>0.65</u>	<u>54</u>	<u>0.26</u>	<u>0.16</u>	<u>0.41</u>
Zingst DE0009R Coast	base	54	0.56	-0.17	0.76	56	0.26	-0.23	0.55
	noSurf	54	0.57	-0.16	0.76	56	0.26	-0.22	0.55
	zero	54	0.58	-0.08	0.77	56	0.26	-0.14	0.55
<u>Tange</u> <u>DK0003R</u> <u>Inland</u>	<u>base</u>	<u>60</u>	<u>0.33</u>	<u>0.44</u>	<u>0.77</u>	<u>61</u>	<u>0.23</u>	<u>-0.43</u>	<u>0.52</u>
	<u>noSurf</u>	<u>60</u>	<u>0.33</u>	<u>0.47</u>	<u>0.77</u>	<u>61</u>	<u>0.23</u>	<u>-0.42</u>	<u>0.51</u>
	<u>zero</u>	<u>60</u>	<u>0.37</u>	<u>0.76</u>	<u>0.77</u>	<u>61</u>	<u>0.20</u>	<u>-0.29</u>	<u>0.52</u>
<u>Keldsnor</u> <u>DK0005R</u> <u>Coast</u>	<u>base</u>	<u>60</u>	<u>0.52</u>	<u>-0.04</u>	<u>0.66</u>	<u>56</u>	<u>0.32</u>	<u>-0.30</u>	<u>0.57</u>
	<u>noSurf</u>	<u>60</u>	<u>0.53</u>	<u>-0.02</u>	<u>0.66</u>	<u>56</u>	<u>0.32</u>	<u>-0.28</u>	<u>0.58</u>
	<u>zero</u>	<u>60</u>	<u>0.57</u>	<u>0.07</u>	<u>0.64</u>	<u>56</u>	<u>0.30</u>	<u>-0.20</u>	<u>0.58</u>
<u>Anholt</u> <u>DK0008R</u> <u>Coast</u>	<u>base</u>	<u>59</u>	<u>0.38</u>	<u>-0.08</u>	<u>0.76</u>	<u>51</u>	<u>0.26</u>	<u>-0.39</u>	<u>0.49</u>
	<u>noSurf</u>	<u>59</u>	<u>0.39</u>	<u>-0.06</u>	<u>0.76</u>	<u>51</u>	<u>0.26</u>	<u>-0.38</u>	<u>0.50</u>
	<u>zero</u>	<u>59</u>	<u>0.42</u>	<u>0.08</u>	<u>0.74</u>	<u>51</u>	<u>0.24</u>	<u>-0.28</u>	<u>0.46</u>

<u>Ulborg</u> <u>DK0031R</u> <u>Coast</u>	<u>base</u>	<u>60</u>	<u>0.34</u>	<u>-0.25</u>	<u>0.74</u>	<u>55</u>	<u>0.23</u>	<u>-0.48</u>	<u>0.59</u>
	<u>noSurf</u>	<u>60</u>	<u>0.35</u>	<u>-0.23</u>	<u>0.74</u>	<u>55</u>	<u>0.22</u>	<u>-0.47</u>	<u>0.60</u>
	<u>zero</u>	<u>60</u>	<u>0.38</u>	<u>-0.09</u>	<u>0.75</u>	<u>55</u>	<u>0.21</u>	<u>-0.38</u>	<u>0.59</u>
<u>Utö</u> <u>FI0009R</u> <u>Coast</u>	<u>base</u>	<u>59</u>	<u>0.26</u>	<u>0.85</u>	<u>0.71</u>	<u>61</u>	<u>0.19</u>	<u>-0.63</u>	<u>0.57</u>
	<u>noSurf</u>	<u>59</u>	<u>0.27</u>	<u>0.88</u>	<u>0.71</u>	<u>61</u>	<u>0.19</u>	<u>-0.62</u>	<u>0.57</u>
	<u>zero</u>	<u>59</u>	<u>0.31</u>	<u>1.06</u>	<u>0.72</u>	<u>61</u>	<u>0.18</u>	<u>-0.58</u>	<u>0.61</u>
<u>Virolahti II</u> <u>FI0017R</u> <u>Coast</u>	<u>base</u>	<u>59</u>	<u>0.35</u>	<u>1.41</u>	<u>0.58</u>	<u>61</u>	<u>0.12</u>	<u>-0.45</u>	<u>0.68</u>
	<u>noSurf</u>	<u>59</u>	<u>0.36</u>	<u>1.45</u>	<u>0.58</u>	<u>61</u>	<u>0.12</u>	<u>-0.45</u>	<u>0.69</u>
	<u>zero</u>	<u>59</u>	<u>0.39</u>	<u>1.64</u>	<u>0.60</u>	<u>61</u>	<u>0.11</u>	<u>-0.39</u>	<u>0.69</u>
<u>Birkenes</u> <u>NO0001R</u> <u>mixed</u>	<u>base</u>	<u>60</u>	<u>0.19</u>	<u>1.24</u>	<u>0.45</u>	<u>52</u>	<u>0.17</u>	<u>-0.30</u>	<u>0.18</u>
	<u>noSurf</u>	<u>60</u>	<u>0.19</u>	<u>1.25</u>	<u>0.45</u>	<u>52</u>	<u>0.17</u>	<u>-0.28</u>	<u>0.20</u>
	<u>zero</u>	<u>60</u>	<u>0.25</u>	<u>1.79</u>	<u>0.48</u>	<u>52</u>	<u>0.16</u>	<u>-0.11</u>	<u>0.17</u>
<u>Hurdal</u> <u>NO0056R</u> <u>Inland</u>	<u>base</u>	<u>60</u>	<u>0.34</u>	<u>1.86</u>	<u>0.44</u>	<u>52</u>	<u>0.11</u>	<u>-0.36</u>	<u>0.34</u>
	<u>noSurf</u>	<u>60</u>	<u>0.35</u>	<u>1.90</u>	<u>0.45</u>	<u>52</u>	<u>0.11</u>	<u>-0.35</u>	<u>0.35</u>
	<u>zero</u>	<u>60</u>	<u>0.39</u>	<u>2.15</u>	<u>0.43</u>	<u>52</u>	<u>0.11</u>	<u>-0.22</u>	<u>0.34</u>
<u>Jarczew</u> <u>PL0002R</u> <u>Inland</u>	<u>base</u>	<u>58</u>	<u>0.45</u>	<u>-0.14</u>	<u>0.67</u>	<u>61</u>	<u>0.14</u>	<u>-0.19</u>	<u>0.49</u>
	<u>noSurf</u>	<u>58</u>	<u>0.45</u>	<u>-0.14</u>	<u>0.66</u>	<u>61</u>	<u>0.14</u>	<u>-0.19</u>	<u>0.49</u>
	<u>zero</u>	<u>58</u>	<u>0.44</u>	<u>-0.09</u>	<u>0.66</u>	<u>61</u>	<u>0.13</u>	<u>-0.13</u>	<u>0.50</u>
<u>Leba</u> <u>PL0004R</u> <u>Coast</u>	<u>base</u>	<u>60</u>	<u>0.34</u>	<u>0.13</u>	<u>0.75</u>	<u>61</u>	<u>0.14</u>	<u>-0.03</u>	<u>0.51</u>
	<u>noSurf</u>	<u>60</u>	<u>0.35</u>	<u>0.14</u>	<u>0.76</u>	<u>61</u>	<u>0.14</u>	<u>-0.01</u>	<u>0.50</u>
	<u>zero</u>	<u>60</u>	<u>0.37</u>	<u>0.24</u>	<u>0.75</u>	<u>61</u>	<u>0.16</u>	<u>0.10</u>	<u>0.52</u>
<u>Råö</u> <u>SE0014R</u> <u>Coast</u>	<u>base</u>	<u>60</u>	<u>0.41</u>	<u>0.05</u>	<u>0.60</u>	<u>61</u>	<u>0.24</u>	<u>-0.39</u>	<u>0.54</u>
	<u>noSurf</u>	<u>60</u>	<u>0.41</u>	<u>0.07</u>	<u>0.60</u>	<u>61</u>	<u>0.24</u>	<u>-0.38</u>	<u>0.53</u>
	<u>zero</u>	<u>60</u>	<u>0.43</u>	<u>0.30</u>	<u>0.58</u>	<u>61</u>	<u>0.22</u>	<u>-0.30</u>	<u>0.54</u>

Table 6. MNB values of hourly NO_3^- and sNO_3 concentrations in the zero case with respect to the base case. Base case concentrations are considered as observations for the MNB calculation (see Eq. (A2)). Thus, positive values indicate the zero case concentrations exceed base case concentrations and negative concentrations indicate the opposite.

Station	winter		summer	
	NO_3^-	sNO_3	NO_3^-	sNO_3
DE0001R	-0.55	0.09	-0.79	0.13
DE0002R	0.05	0.12	-0.19	0.11
DE0007R	0.00	0.11	-0.31	0.14
DE0009R	-0.19	0.10	-0.54	0.12
DE0044R	-0.02	0.10	-0.25	0.10
DK0003R	0.03	0.24	-0.35	0.25
DK0005R	-0.17	0.12	-0.52	0.14
DK0008R	-0.40	0.15	-0.75	0.16
DK0031R	-0.35	0.20	-0.58	0.20
FI0009R	-0.66	0.13	-0.85	0.15
FI0017R	-0.49	0.11	-0.61	0.13
NO0001R	-0.57	0.17	-0.76	0.30
NO0056R	-0.28	0.07	-0.61	0.16
PL0002R	-0.19	0.07	-0.36	0.10
PL0004R	-0.34	0.09	-0.62	0.13
SE0014R	-0.50	0.15	-0.80	0.16

Table 7. Nitrogen deposition into the North Sea and Baltic Sea in kt N d^{-1} in the base, noSurf, zero, and full cases during winter and summer. The North Sea and Baltic Sea cover $6.50 \times 10^{11} \text{ m}^2$ and $4.13 \times 10^{11} \text{ m}^2$, respectively, in this study's model setup. The exact regions considered are plotted in Sect. S6 of the Supplement.

region	season	base	noSurf	zero	full	
North Sea	winter	1.01	1.00	0.94	1.01	kt N d^{-1}
	summer	1.08	1.08	1.05	1.08	
Baltic Sea	winter	0.57	0.56	0.55	0.58	kt N d^{-1}
	summer	0.60	0.60	0.60	0.61	
North Sea	winter	100.0%	99.7%	93.1%	99.9%	rel. to base
	summer	100.0%	99.7%	97.4%	100.0%	
Baltic Sea	winter	100.0%	99.8%	96.6%	103.2%	rel. to base
	summer	100.0%	99.9%	100.0%	101.2%	

Table 8. Similar to Table 2 but showing R and mean values of model (μ_{sim}) and observational data (μ_{obs}) of nitrogen wet deposition [$\text{kg N ha}^{-1} \text{d}^{-1}$] for the base case. Reduced nitrogen and oxidized nitrogen are not shown individually. R of time series with a length of 10 or shorter is not shown. The length of the measurement intervals at the individual stations varies between 1 day, 1 week, and 2 weeks. Therefore, the number of measurements intervals for the comparison differs considerably between the stations.

STATION	winter				summer			
	n	R	μ_{sim}	μ_{obs}	n	R	μ_{sim}	μ_{obs}
DE0001R	7	-	0.009	0.020	7	-	0.013	0.040
DE0002R	19	0.56	0.023	0.059	30	0.20	0.016	0.046
DE0007R	22	0.42	0.017	0.034	22	0.10	0.013	0.050
DE0009R	7	-	0.008	0.014	7	-	0.016	0.019
DE0044R	6	-	0.008	0.016	8	-	0.014	0.032
DK0005R	3	-	0.006	0.010	4	-	0.013	0.024
DK0008R	3	-	0.011	0.013	4	-	0.018	0.015
DK0031R	3	-	0.007	0.023	4	-	0.013	0.018
FI0017R	7	-	0.006	0.019	8	-	0.008	0.012
NO0001R	36	0.68	0.012	0.079	27	0.66	0.019	0.032
NO0056R	25	0.60	0.000	0.054	28	0.54	0.008	0.028
PL0002R	24	0.71	0.010	0.045	17	-0.34	0.008	0.079
PL0004R	31	0.55	0.013	0.030	28	0.59	0.020	0.035
SE0014R	38	0.62	0.013	0.038	26	0.20	0.032	0.033

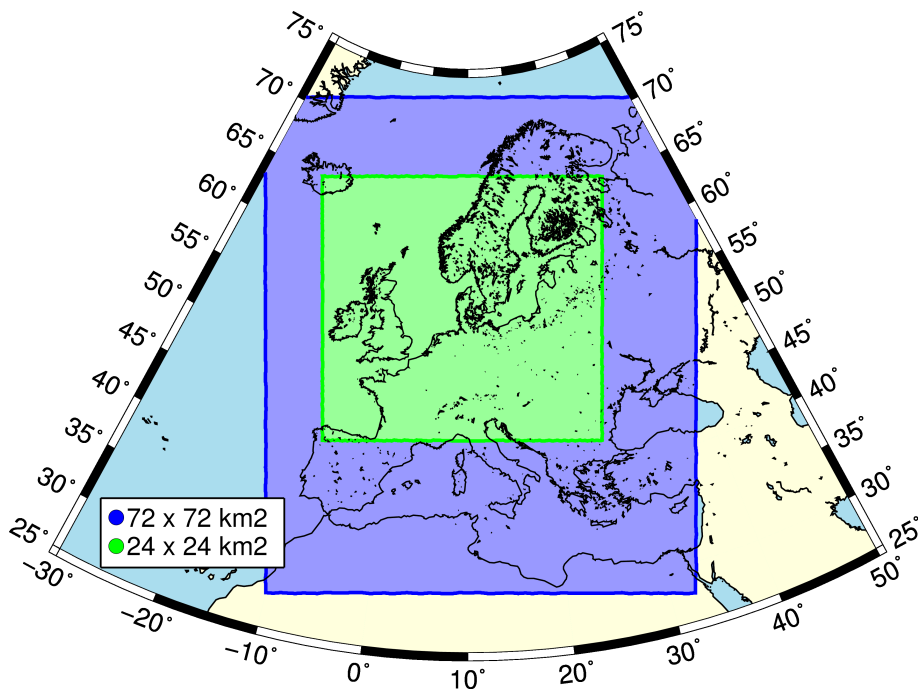


Figure 1. Study region and size of the model grids. The coarse grid (blue) includes Europe and parts of northern Africa. The first nested grid (green) includes Northwestern Europe, including the North and Baltic Seas.



Figure 2. The EMEP stations chosen for the comparison to [the CMAQ data](#). Red circles indicate the [stations-discussed-station data, which are plotted](#) in Sect. 4. [Data from the other stations are attached in the Supplement3.](#)

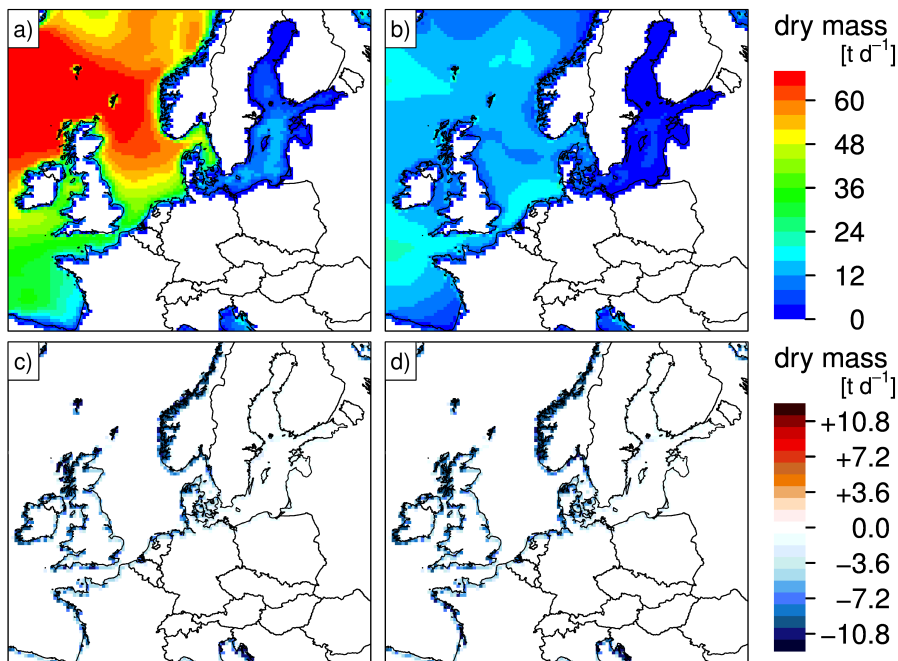


Figure 3. Average total sea salt emissions in t/d of the base case (top, **a** and **b**) in winter 2008 (**a**) and summer 2008 (**b**). The difference to the noSurf ~~—base~~-case (noSurf - base) is shown in the bottom row (**c** and **d**).

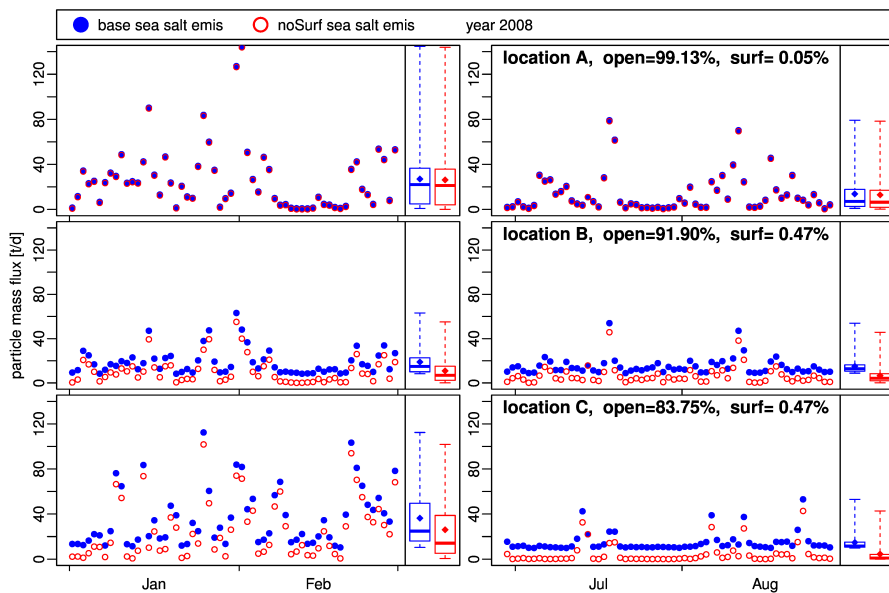


Figure 4. Daily averaged sea salt emission flux in t/d in three exemplary coastal grid cells (one per row) in winter 2008 (left) and summer 2008 (right). The fraction of open ocean and surf zone is listed in the plots on the right. The remaining share is land. Location A is located on the Dutch coast, location B is on the German coast and location C is on the Norwegian Atlantic coast.

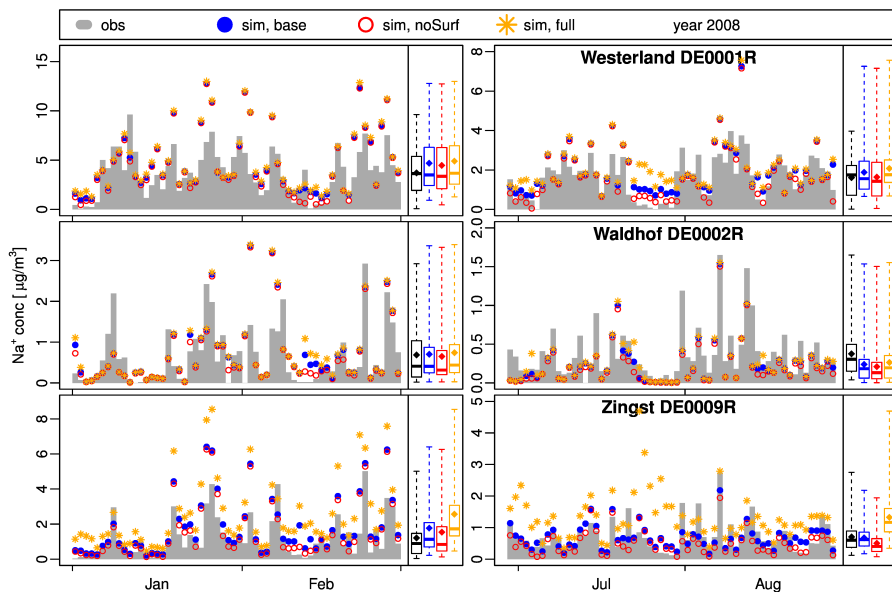


Figure 5. Measured (gray bars and black boxplots) and modeled (colored symbols) sodium concentrations at three stations (top to bottom) during winter 2007/08 (left) and summer 2008 (right). The orange line indicates sodium concentrations without salinity-dependent downscaling of sea salt emissions. On the left of each plot, the time series of the data are plotted. To the right of each time series, box plots showing the minimum, 25 % percentile, median, 75 % percentile, maximum and mean values (rhombus) are shown.



Figure 6. Similar to Fig. 5 but with the addition of SO_4^{2-} values and showing base, noSurf, and zero sea salt emission cases.

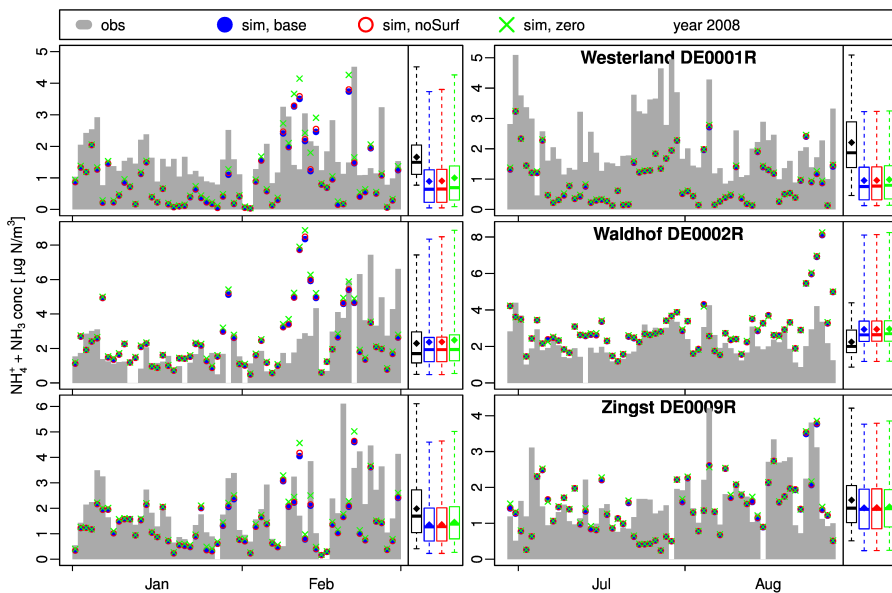


Figure 7. Similar to Fig. 6-5 but with the addition of showing sNH_4 values of the base, noSurf, and zero sea salt emission cases.

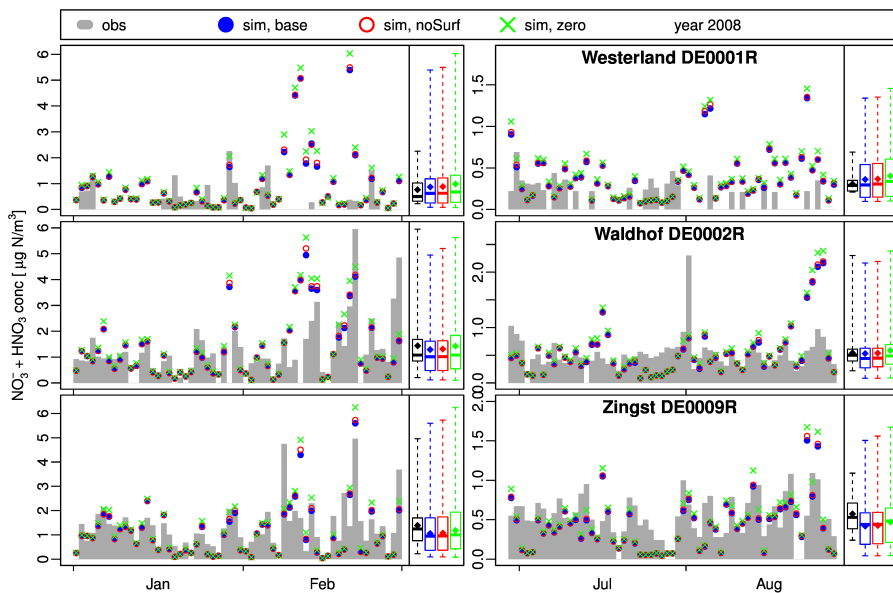


Figure 8. Similar to Fig. 6?? but with addition of showing sNO_3 values.

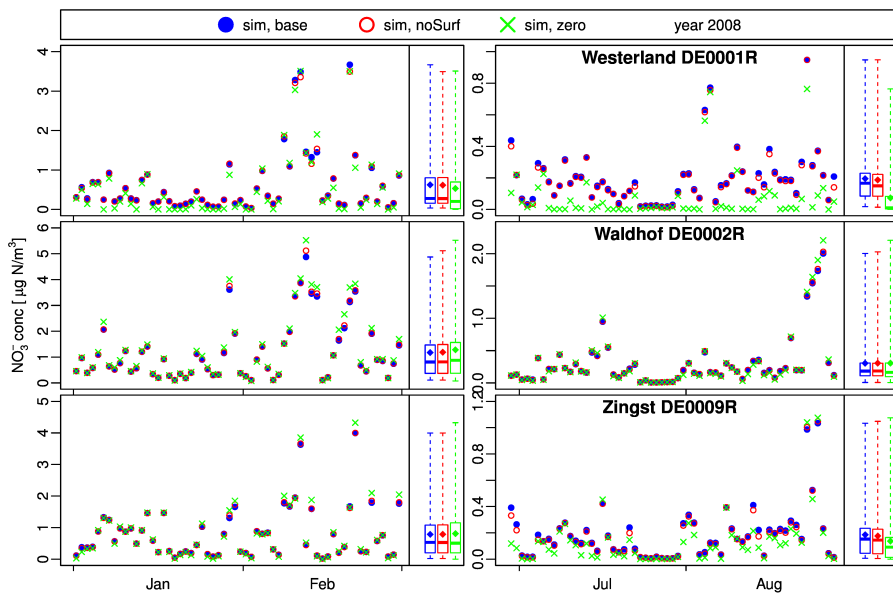


Figure 9. Similar to Fig. ?? but showing NO_3^- values.

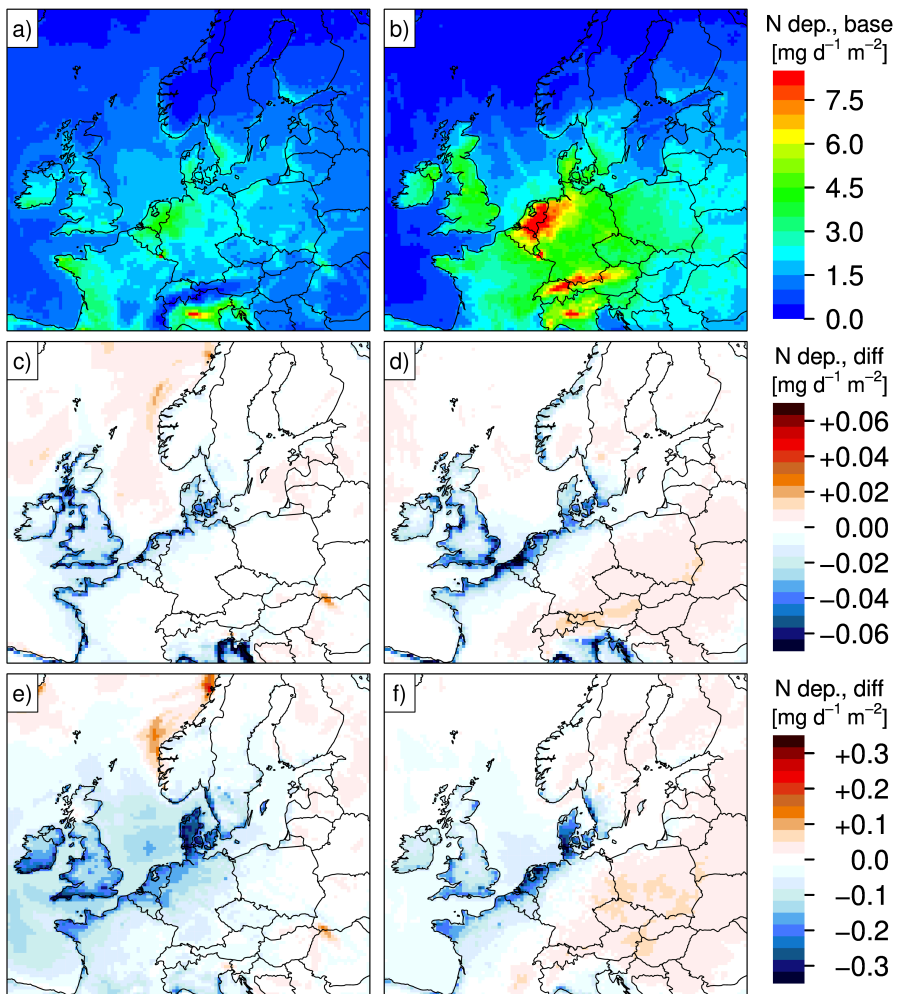


Figure 10. Total nitrogen deposition (dry plus wet deposition) in $\text{mg N m}^{-2} \text{d}^{-1}$ in the study region during winter (left: a, c, e) and during summer (right: b, d, f). (a) + (b): nitrogen deposition in the base case; (c) + (d): nitrogen deposition difference between noSurf and base case (noSurf - base); (e) + (f): nitrogen deposition difference between zero and base case (zero - base). Note: The color scale of the plots (c) and (d) is different from that of the plots (e) and (f).

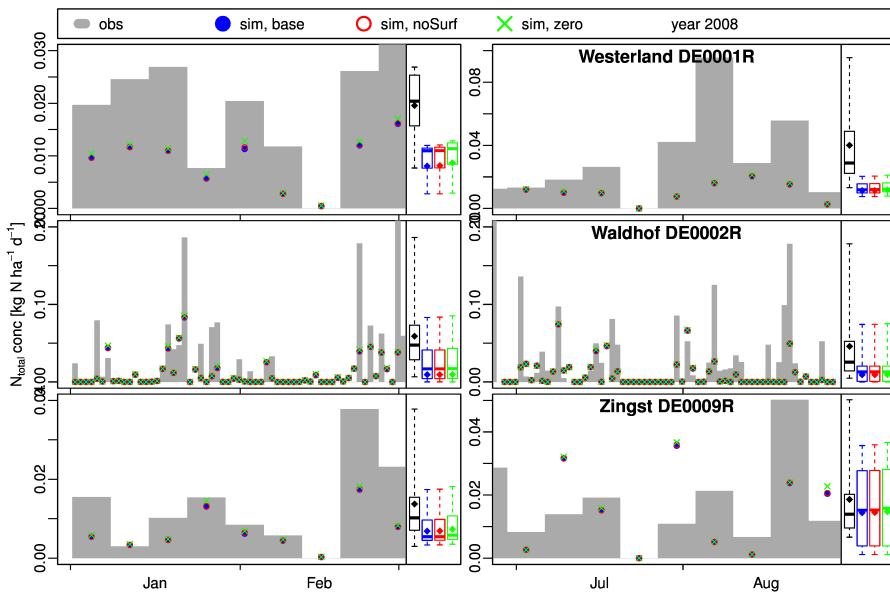


Figure 11. Similar to Fig. ?? but showing nitrogen (reduced and oxidized) deposition [$\text{kg N ha}^{-1} \text{d}^{-1}$]. The different interval length is due to different measurement intervals at the individual stations.