



**Aerosol chemistry
above Eastern
Mediterranean during
strong northern
winds**

E. Athanasopoulou et al.

Aerosol chemistry above an extended Archipelago of the Eastern Mediterranean basin during strong northern winds

**E. Athanasopoulou^{1,2}, A. P. Protonotariou², E. Bossioli², A. Dandou²,
M. Tombrou², J. D. Allan^{1,3}, H. Coe¹, N. Mihalopoulos^{4,5}, J. Kalogiros⁴,
A. Bacak¹, J. Sciare^{6,7}, and G. Biskos^{7,8,9}**

¹School of Earth, Atmosphere and Environmental Sciences, University of Manchester, M13 9PL Manchester, UK

²Department of Applied Physics, National and Kapodistrian University of Athens, 15784 Athens, Greece

³National Centre for Atmospheric Science, University of Manchester, Manchester M13 9PL, UK

⁴Institute for Environmental Research and Sustainable Development, National Observatory of Athens, 15236 Athens, Greece

⁵Chemistry department, University of Crete, 71003 Heraklion Crete, Greece

⁶Laboratoire des Sciences du Climat et de l'Environnement, LSCE, UMR8212, CNRS-CEA-UVSQ, 91191 Gif-sur-Yvette, France

⁷Energy Environment and Water Research Center, The Cyprus Institute, Nicosia, Cyprus

⁸Department of Environment, University of Aegean, 81100 Mytilene, Greece

Title Page

Abstract

Introduction

Conclusions

References

Tables

Figures



Back

Close

Full Screen / Esc

Printer-friendly Version

Interactive Discussion



⁹Faculty of Civil Engineering and Geosciences, Delft University of Technology, Delft, the Netherlands

Received: 4 February 2015 – Accepted: 15 March 2015 – Published: 27 March 2015

Correspondence to: E. Athanasopoulou (eathana@phys.uoa.gr)

Published by Copernicus Publications on behalf of the European Geosciences Union.

ACPD

15, 9355–9403, 2015

**Aerosol chemistry
above Eastern
Mediterranean during
strong northern
winds**

E. Athanasopoulou et al.

Title Page

Abstract

Introduction

Conclusions

References

Tables

Figures



Back

Close

Full Screen / Esc

Printer-friendly Version

Interactive Discussion



Abstract

Detailed aerosol chemical predictions by a carefully designed model system (i.e. PM-CAMx, WRF, GEOS-CHEM), along with airborne and ground-based observations, are presented and analyzed over a wide domain covering the Aegean Archipelago. The studied period is ten successive days during the summer of 2011, characterized by the most frequent prevailing wind conditions (Etesian regime). The submicron aerosol load in the lower troposphere above the Archipelago (< 2.2 km altitude) is homogeneously enriched in sulfate (average modeled and measured submicron sulfate of 5.5 and 5.8 $\mu\text{g m}^{-3}$, respectively), followed by organics (2.3 and 4.4 $\mu\text{g m}^{-3}$) and ammonium (1.5 and 1.7 $\mu\text{g m}^{-3}$). Aerosol concentrations smoothly decline aloft, reaching lower values (< 1 $\mu\text{g m}^{-3}$) above 4.2 km altitude. Model performance is found good (according the selected evaluation criteria) for sulfate, ammonium, chloride, elemental carbon, organic carbon and total PM₁₀ mass concentration, indicating a satisfactory representation of the aerosol chemistry and precursors. Higher model discrepancies are confined to the highest (e.g. peak sulfate values) and lowest ends (e.g. nitrate) of the airborne aerosol mass size distribution, as well as in airborne organic concentrations (model underestimation around 50%). The latter is most probably related to the intense fire activity upwind the Archipelago (i.e. Balkan area and Black Sea coastline), which is not represented in the current model application. Overall, the model system shows the best agreement with observations under strong northeastern winds over the Archipelago and up to 2.2 km altitude. The activation of the chemical ageing of biogenic particles is suggested to be used for the aerosol chemistry module, when treating organics in a sufficient nitrogen and sulfate-rich environment, such as that over the Aegean basin. More than 70% of the predicted aerosol mass over the Aegean Archipelago during a representative Etesian episode is related to transport of aerosols and their precursors from outside the modeling domain.

Aerosol chemistry above Eastern Mediterranean during strong northern winds

E. Athanasopoulou et al.

Title Page

Abstract

Introduction

Conclusions

References

Tables

Figures

◀

▶

◀

▶

Back

Close

Full Screen / Esc

Printer-friendly Version

Interactive Discussion



1 Introduction

The geographical characteristics, specific atmospheric conditions, large range of natural and anthropogenic sources in the Mediterranean basin, create a complex environmental situation contributing to the aerosol load. The major motivations for characterizing aerosols in the Mediterranean are their subsequent climate forcing (Nabat et al., 2014), as well as relevant air quality and health issues (Rodríguez et al., 2002; Medina et al., 2004). During summertime, regional circulation phenomena and increased photochemistry, favor the accumulation and secondary formation of atmospheric aerosols (Millan et al., 1997; Rodríguez et al., 2002; Pey et al., 2013). The atmosphere over the Aegean Archipelago (also referred as the Aegean Sea), part of the Eastern Mediterranean (EM), is frequently affected by strong northern winds during the warm period. These winds are often bound to the Etesian flow (Maheras, 1986; Kotroni et al., 2001; Tylris and Lelieveld, 2013; Anagnostopoulou et al., 2014), which is the most common synoptic situation over the Aegean Sea (AS) during summer, transporting dry and cool air masses downwind southern Russia, Ukraine, central/eastern Europe, the Balkan states and Turkey (Vrekoussis et al., 2005; Bryant et al., 2006; Sciare et al., 2008). The emissions from biomass burning and important urban and industrial centers situated in these regions, combined with the intense photochemical ageing of the arriving plumes and the decreased deposition of species in marine environment makes the atmosphere above the AS a favorable area for aerosol investigation particularly during regional-range transport phenomena observed in summer.

Previous aerosol modeling studies covering the AS (Lazaridis et al., 2005; Fountoukis et al., 2011; Im et al., 2012) have shown the predominance of non sea-salt sulfate in the fine aerosol mode, in agreement with previous ground-based observations (Mihalopoulos et al., 1997; Bardouki et al., 2003; Kanakidou et al., 2011), unlike anywhere else in Europe. Together with the high degree of oxidation of the organic matter (Hildebrandt et al., 2010), these findings are both consistent with the atmospheric conditions stated above. In addition, the important role of natural aerosol sources (sea-salt

ACPD

15, 9355–9403, 2015

Aerosol chemistry above Eastern Mediterranean during strong northern winds

E. Athanasopoulou et al.

Title Page

Abstract

Introduction

Conclusions

References

Tables

Figures

◀

▶

◀

▶

Back

Close

Full Screen / Esc

Printer-friendly Version

Interactive Discussion

**Aerosol chemistry
above Eastern
Mediterranean during
strong northern
winds**

E. Athanasopoulou et al.

Title Page

Abstract

Introduction

Conclusions

References

Tables

Figures

◀

▶

◀

▶

Back

Close

Full Screen / Esc

Printer-friendly Version

Interactive Discussion

production and long-range transported dust plumes) has been investigated, not only on the total PM₁₀ mass levels (particulate matter with aerodynamic diameter < 10 μm) and on model performance, but also on the gas-aerosol interactions towards the modification of inorganic aerosol composition (Kallos et al., 2007; Astitha and Kallos, 2008; Athanasopoulou et al., 2008; Im, 2013). Another common output of model applications over this Archipelago is the exogenous influence (short-, medium- and long-range transport) on aerosol chemical composition, PM₁₀ concentration levels (European limit exceedances) and regional climate, in comparison with the contribution of local sources (Lazaridis et al., 2005; Kallos et al., 2007; Im and Kanakidou, 2012).

The relation between meteorology and aerosol load is not yet extensively studied over the EM. Recently, Im et al. (2012) and Megaritis et al. (2013) have studied the influence of temperature increases up to 5 K on the chemical composition of the aerosol particles. Their results are contradictory for sulfate (negative and positive changes in mass concentrations, respectively), but they are in agreement for nitrate (decrease in mass concentrations) and organics (increase in mass concentrations). Inversely, the effect of aerosols on regional climate has been investigated by Solomos et al. (2011) and Kallos et al. (2014), who showed that the properties of atmospheric particles can modify the cloud structure and precipitation during a heavy rainfall event over the EM. Given the complexity of the aerosol mixture in the Mediterranean basin, further studies on the chemical characterization and size distribution of the aerosol mass will elucidate the interactions between airborne particles, meteorology and climate in the region.

A satisfactory representation of aerosol chemical species by model applications is a challenging task. Predictions over the AS from the aforementioned studies have been evaluated against concurrent or past measurements (Chabas and Lefevre, 2000; Kouvarakis et al., 2001; Smolik et al., 2003; Eleftheriadis et al., 2006; Gerasopoulos et al., 2006, 2007; Sciare et al., 2003, 2008; Koulouri et al., 2008; Pikridas et al., 2010; Im et al., 2012). Comparisons showed a moderate to large underestimation of the simulated PM₁₀ (Lazaridis et al., 2005; Im and Kanakidou, 2012) or organic mass concentration (Fountoukis et al., 2011), despite that inorganic species are well-represented

(Astitha and Kallos, 2008; Athanasopoulou et al., 2008; Fountoukis et al., 2011). Improved model performance for precipitation is achieved when cloud condensation nuclei activation of aerosols is included (Kallos et al., 2014).

Most of the above modeling studies focus on the surface representation of aerosols and are compared against ground-based observational data from the station of Finokalia in Crete Island (south AS). A few modeling studies that investigated the vertical profiles of dust and sea-salt aerosols found that particles over the EM did not elevate higher than two kilometers (Astitha and Kallos, 2008; Solomos et al., 2011). The latter study, which was compared against airborne measurements conducted near the Israeli coast, showed a good correlation between modeled and airborne measurements of aerosol mass concentrations. An earlier airborne experiment over the Aegean Archipelago (not bound to a regional model application), showed that the atmosphere 3.5 km a.s.l. is almost completely depleted of particles during Etesians (Formenti et al., 2002). This study also confirmed that additional quantities of aged aerosols from fossil fuel combustion and forest fires are transported southward. Recently, four clustered airborne campaigns performed during a ten-day period of strong northern winds (including Etesians), provided among others a unique dataset including measurements of the chemical composition of submicron particles above the AS and western Turkey. The first results from these measurements are selectively presented in Bezantakos et al. (2013) and Tombrou et al. (2013, 2015).

The present study provides predictions of the size distribution and the chemical composition of aerosol particles observed over the wider region of the Aegean Archipelago during the same 10 day period (August–September 2011), taking full advantage of the aforementioned airborne dataset and supportive ground-based aerosol observations. Detailed coupling of gases and aerosols between the PMCAMx and GEOS-CHEM chemical transport models (CTM) is carefully designed and applied here for the first time, in order to capture more efficiently the airflows over the Aegean basin. Outputs from the PMCAMx model are compared against the complete set of experimental aerosol data, providing the first extensive evaluation of aerosol simulation perfor-

Aerosol chemistry above Eastern Mediterranean during strong northern winds

E. Athanasopoulou et al.

Title Page

Abstract

Introduction

Conclusions

References

Tables

Figures

◀

▶

◀

▶

Back

Close

Full Screen / Esc

Printer-friendly Version

Interactive Discussion

mances over a wide region of the Mediterranean basin. The large number of prediction-observation pairs enables the investigation of the parameters that significantly affect aerosol model performance. An inter-comparison among different scenarios is performed with respect to the airborne observations, in order to improve predictions of the organic aerosol fraction in the marine environment. This combined use of CTMs and monitoring data, which is emphasized by the latest European air quality directive, is taking advantage of the capabilities of the applied model system. The current model applications presented here complement the newly existing aerosol dataset regarding the origin and chemical ageing of the organic matter (primary, oxygenated, anthropogenic and biogenic), the chemical composition and particle size distribution and the role of non-local sources of air pollution on the mass of each aerosol species under different paths of northern transport.

2 Experimental data

2.1 Airborne measurements

Airborne data from four EUFAR (<http://www.eufar.net/>) campaigns (i.e. AEGEAN-GAME, ACEMED, CarbonExp and CIMS) are utilized in this study. The measurements were conducted using the UK BAe-146-301 Atmospheric Research Aircraft, which was operated through the Facility for Airborne Atmospheric Measurements (FAAM, <http://www.faam.ac.uk/>). Nine flights were performed between 31 August and 9 September 2011 (cf. Fig. 1). In all flights, the aircraft took off from and landed at the airport of Chania (NW Crete). Five of the flights passed over the AS (1, 2, 4, and 7 September), one oriented towards Thessaloniki passing over Athens (8 September), while for the rest the aircraft flew over the western coast of Turkey up to the SW coast of the Black Sea. With the exception of the last flight on 8 September, all flights were performed from 08:00 to 15:00 UTC. Flight paths in the Greek airspace were at altitudes up to 5 km a.s.l., while those over Turkey were above 2 and up to 7.6 km a.s.l.

Aerosol chemistry above Eastern Mediterranean during strong northern winds

E. Athanasopoulou et al.

Title Page

Abstract

Introduction

Conclusions

References

Tables

Figures

◀

▶

◀

▶

Back

Close

Full Screen / Esc

Printer-friendly Version

Interactive Discussion



The airborne measurements during these campaigns provided, among other atmospheric parameters, the chemical composition of aerosols. High-time resolution measurements of the sulfate (SO_4^{2-}), nitrate (NO_3^-), ammonium (NH_4^+), chloride (Cl^-) and organic (OA) content of the sub-micron particles (PM_{10}) were performed by an airborne compact Time-of-Flight Aerosol Mass Spectrometer (cToF-AMS) (Canagaratna et al., 2007; Morgan et al., 2010). Aerosol mass concentrations are reported at ambient temperature and pressure (i.e. a conversion from standard temperature and pressure to ambient conditions has been applied). In common with other AMS measurements, these measurements nominally represent the submicron, non-refractory component of the aerosols, therefore do not include any sulfate, nitrate or chloride associated with sea salt or dust particles. The collection efficiency (CE) was estimated based on the parameterisation described by Middlebrook et al. (2012), which was close to unity based on the acidic nature of the particles. Because no on-board validation of this chemical data was available (no other composition data was obtained and the possible presence of sea salt particles would confound a comparison with the particle sizing instruments), it is prudent to assign an uncertainty of ca. 30–35 % to the AMS measurements, as suggested by Bahreini et al. (2009).

Wind speed and direction, air temperature and water vapor mixing ratio were also available and here used for model evaluation (Sect. 4.1). More information on the flights, instrumentation and measured data during this period can be found in Bezan-takos et al. (2013) and Tombrou et al. (2015).

2.2 Ground measurements

Ground-based measurements of the chemical composition and physical properties of the particles in the region were conducted at two remote stations located at Vigla (39°58' N, 25°04' E, 420 m a.s.l.) on the island of Lemnos and Finokalia, (35°20' N, 25°40' E, 150 m a.s.l.) on the island of Crete, between 29 August and 9 September 2011. Both sites are far from major cities and local anthropogenic sources (Fig. 1a). To determine the aerosol chemical composition observed at Vigla and Finokalia, par-

ticles were collected every 1, 6 or 8 h using PM₁₀ and PM₁ samplers. The ground aerosol data used in this study are the PM₁₀ elemental (EC) and organic carbon (OC) (6 h samples), the PM₁ SO₄²⁻ (hourly samples) and the total PM₁₀ mass (8 h samples).

OC and EC concentrations on the collected samples were measured with a Sunset lab instrument (Sunset Laboratory Inc.; OR, USA) implemented with the EUSAAR-2 protocol (Cavalli et al., 2010). Punches of 2 cm² from each filter were also analyzed by Ion Chromatography for the major anions and cations. Analytical procedures as well as uncertainty and detection limits of the methods are reported in detail by Paraskevopoulou et al. (2014). Finally, measurements of anions in PM₁ were performed at Finokalia using a Particle-into-Liquid-Sampler (PILS) (Orsini et al., 2003) running at 15.5 LPM and coupled with an Ion Chromatograph (IC). More information on the PILS-IC settings used here are available in Sciare et al. (2011).

Wind speed, wind direction, as well as the concentrations of ozone (O₃) and nitrogen oxide (NO_x: NO + NO₂) measured at the Finokalia station are also used herein (cf. Sect. 4.1).

3 Methodology

3.1 Model framework

The model system used in this study is comprised of the regional aerosol model PM-CAMx, the regional meteorological model WRF/ARW (hereafter referred as WRF, Skamarock et al., 2008) and the global chemistry transport model GEOS-CHEM (Bey et al., 2001), following the methodology described by Tombrou et al. (2009). The main characteristics of the models are given in Table 1 and Supplement. All air quality predictions presented in this study correspond to the PMCAMx runs.

PMCAMx is the research version of a former version (v.4) of the publicly available 3-D, Eulerian chemical transport model CAMx (Environ, 2004). Aerosols therein, are represented by a detailed chemical composition: potassium (K⁺), calcium (Ca²⁺), mag-

**Aerosol chemistry
above Eastern
Mediterranean during
strong northern
winds**

E. Athanasopoulou et al.

Title Page

Abstract

Introduction

Conclusions

References

Tables

Figures

◀

▶

◀

▶

Back

Close

Full Screen / Esc

Printer-friendly Version

Interactive Discussion



**Aerosol chemistry
above Eastern
Mediterranean during
strong northern
winds**

E. Athanasopoulou et al.

[Title Page](#)[Abstract](#)[Introduction](#)[Conclusions](#)[References](#)[Tables](#)[Figures](#)[◀](#)[▶](#)[◀](#)[▶](#)[Back](#)[Close](#)[Full Screen / Esc](#)[Printer-friendly Version](#)[Interactive Discussion](#)

nesium (Mg^{2+}), NH_4^+ , sodium (Na^+), SO_4^{2-} , NO_3 , Cl^- , water (H_2O), EC, reactive and inert primary organic aerosols (APO and POA, respectively), oxidized APO (AOO) and secondary organic aerosols of anthropogenic (ASOA) and biogenic (BSOA) origin. All these species are distributed over ten discrete and internally mixed size sections, in the diameter range 0.04 to 40 μm (cut-off diameters: 0.04, 0.08, 0.1, 0.3, 0.6, 1.2, 2.5, 5, 10, 20, 40 μm). This chemical and size treatment results in 400 aerosol model components in total.

The aerosol related dynamical processes considered in PMCAMx include primary emissions, new particle formation by nucleation, condensation, evaporation, wet and dry deposition, coagulation and chemistry. The incorporated chemical modules are shown in Table 1. The ageing rate constants for primary and secondary organic aerosols (both anthropogenic and biogenic) are 4×10^{-11} and $1 \times 10^{-11} \text{ cm}^3 \text{ mol}^{-1} \text{ s}^{-1}$, respectively (Murphy et al., 2011).

3.2 Model coupling

In the frame of this study, the two chemical models are coupled offline, so that GEOS-CHEM provides concentrations for a series of species at the boundaries (lateral and top; BCs) of the PMCAMx domain for each hour of the simulation period. A three-dimensional initialization field (29 August 2011, 00:00 Local Standard Time; LST) is also extracted from GEOS-CHEM and used by PMCAMx. Differences in the chemistry and spatial resolution used by the two models demanded a chemical and three-dimensional matching between the two models with respect to the gas and aerosol fields. The chemical linking between the two air quality models (Table 2) involves 41 gaseous species (20 of which are VOCs) and 63 aerosol species (SO_4^{2-} , NO_3^- , NH_4^+ , APO, ASOA, BSOA, EC, Na^+ , Cl^- , Mg^{2+} , Ca^{2+} and other, distributed over the size bins treated by PMCAMx). A conversion factor of 2.1 was used to calculate total organic aerosols (OA) from the OC GEOS-CHEM outputs, which value is suitable for non-urban areas (Turpin and Lim, 2001) and has already been reported in the literature for OA over

**Aerosol chemistry
above Eastern
Mediterranean during
strong northern
winds**

E. Athanasopoulou et al.

Title Page

Abstract

Introduction

Conclusions

References

Tables

Figures

◀

▶

◀

▶

Back

Close

Full Screen / Esc

Printer-friendly Version

Interactive Discussion

Crete (Sciare et al., 2005; Hildbrandt et al., 2010). In order to assess the relative contribution of the different OA precursors to the total SOA transported from outside the PMCAMx modeling domain (GEOS-CHEM BCs), each of the five lumped SOA species treated by the volatility basis set (VBS) scheme in PMCAMx is coupled to each unique oxidative product treated by GEOS-CHEM (instead to that of the uniform distribution of their mixture, Sect. 4.3). Sea-salt and dust species treated by GEOS-CHEM are chemically resolved to the PMCAMx species following Athanasopoulou et al. (2008) and Kandler et al. (2007), respectively (cf. Table 2).

The hourly meteorological fields provided offline by the WRF to the PMCAMx, include horizontal wind speed, temperature, diffusion coefficients (K_v), pressure and water vapor, cloud optical depth, cloud and precipitated water. K_v values are calculated directly during the WRF run, and are then adjusted for the heights under 100 m, which is found to benefit air quality predictions (Environ, 2011b). Minimum K_v value is set to $0.1 \text{ m}^2 \text{ s}^{-1}$.

3.3 Simulations setup

The PMCAMx simulation domain is the greater area of the Aegean Archipelago (Fig. 1a; 34.1 to 42.5° N , 18.4 to 29° E) with 0.056° ($\sim 6.2 \text{ km}$) horizontal grid resolution and 5.8 km vertical extent (14 layers, first layer top at 21 m a.g.l.). The simulations are realized during the period from 29 August to 9 September 2011, so that they are directly comparable with measurements. Model outputs are extracted on hourly basis. The first two days are used as a spin-up.

Emissions from the anthropogenic, agricultural activities and forests used by the PMCAMx model for the area of Greece are based on a National database provided by the Ministry of Environment for the year 2002. The emission rates for the area of Turkey are retrieved from the EMEP emission dataset (<http://www.ceip.at/webdab-emission-database/officially-reported-emission-data/>). Analytical information on the setup for the WRF and GEOS-CHEM simulations, as well as on the emissions treated by the chemical models is given in the Supplement (Sect. S1).

Aerosol chemistry above Eastern Mediterranean during strong northern winds

E. Athanasopoulou et al.

Title Page

Abstract

Introduction

Conclusions

References

Tables

Figures

◀

▶

◀

▶

Back

Close

Full Screen / Esc

Printer-friendly Version

Interactive Discussion



The standard model application that provides the base-case outputs follows the modeling configuration described so far. The first applied scenario aims at investigating the exogenous aerosol fraction over the Aegean Archipelago (trans-boundary pollution). This is captured by the coupling between PMCAMx and GEOS-CHEM models and was identified through a combination of two simulations: the standard run (i.e. BCs provided by GEOS-CHEM) and a scenario with constant, minimum BCs (scenario 1). The different contribution to aerosol levels from sources in Greece and the Turkish area (covered by the simulation domain) is calculated by switching off the emissions from Turkey in scenario 1 (scenario 2) (Sects. 4.2 to 4.4).

To assess the sensitivity of organic aerosol simulation performance, a series of model scenarios was performed. Here, results on the OA sensitivity to their ageing process are presented, following previous model studies (Tsimpidi et al., 2010; Fountoukis et al., 2011): one scenario with the BSOA ageing switched off (scenario 3) and another with the ASOA ageing constant multiplied by four (scenario 4) (Sect. 4.3).

The sensitivity of simulated aerosol mass loading on modeled meteorology is also examined. Apart from the standard model setup, where WRF uses the YSU planetary boundary layer (PBL) parameterization (Table 1), two additional PMCAMx simulations were performed using WRF inputs from an application with the Bougeault–Lacarrère (BOULAC) PBL parameterization scheme (Bougeault and Lacarrère, 1989) (scenario 5) and with Quasi-Normal Scale Elimination (QNSE) (Sukoriansky et al., 2005) (scenario 6). This selection was based on wind speed differences between seven different PBL schemes (Dandou et al., 2014) (Sects. 4.2 to 4.3).

In order to compare predicted vs. measured nitrate aerosol fractions (i.e. using the AMS data), a sea-salt aerosols free case was applied (scenario 7) (Sect. 4.5). A summary of all model applications is given in Table 3.

3.4 Model evaluation statistics

Aerosol predictions are compared against AMS measurements using the statistical measures of Mean Bias (MB) and Error (ME), Mean Fractional Bias (MFB) and Er-

ror (MFE), Normalized Mean Bias (NMB) and Error (NME), Root Mean Square Error (RMSE), and correlation coefficient (r and r^2). The formulas of these indices are given in Table S2. The airborne observational data that fall within a computational cell during a model time step (hour) are averaged, in order to be directly comparable with the model outputs.

In order to estimate which parameters systematically affect the model discrepancies, a multiple linear regression was used for each aerosol species among the model biases and basic, local variables (e.g. co-ordinates, day/flight, time, wind speed and wind direction). Based on the regression results, paired samples were created between the model biases and each parameter that significantly affects them (e.g. the model biases and the observed wind speeds were paired and formed one sample).

Each of these paired samples were sub-divided in two samples, on the basis of thresholds considering the model performance; i.e. the threshold is set for the parameter value where performance goals are met (or not) for the $\sim 75\%$ of the predicted values of the one (or the other) sub-sample. In particular, the threshold regarding altitude is estimated to be at 2.2 km, close to the PBL height over the domain. Other thresholds set for the paired samples are the longitude of 27° that separates the Aegean Sea from Turkey, the zero degree winds that divide NW from NE sectors and the wind speed of 9 m s^{-1} . The statistical hypothesis tests (F and t tests) confirmed that for all cases the two sub-samples were significantly different from each other. This procedure specified under which conditions (e.g. wind speed values and direction) aerosol model performance over the AS is systematically good or poor and is presented in Sects. 4.2 to 4.4.

4 Results and discussion

The following sections analyze the model results with respect to the measurements. In parallel, measurement findings are supported by the capabilities of the current model system. Model outputs are thoroughly evaluated against airborne AMS and ground-

Aerosol chemistry above Eastern Mediterranean during strong northern winds

E. Athanasopoulou et al.

Title Page

Abstract

Introduction

Conclusions

References

Tables

Figures



Back

Close

Full Screen / Esc

Printer-friendly Version

Interactive Discussion



**Aerosol chemistry
above Eastern
Mediterranean during
strong northern
winds**

E. Athanasopoulou et al.

[Title Page](#)[Abstract](#)[Introduction](#)[Conclusions](#)[References](#)[Tables](#)[Figures](#)[◀](#)[▶](#)[◀](#)[▶](#)[Back](#)[Close](#)[Full Screen / Esc](#)[Printer-friendly Version](#)[Interactive Discussion](#)

based observations. MFB and MFE were selected as the most appropriate metrics to summarize aerosol model (PMCAMx) performance (Boylan and Russell, 2006). The calculated values are compared against the proposed goals and criteria for each aerosol species (Table S2), in order to characterize model performance as good (the level of accuracy that is considered to be close to the best a model can be expected to achieve) or average (the level of accuracy that is considered to be acceptable for modeling applications). When the standards are not met for one or more species, the model skills (with regard to these species) are characterized as poor, and the reasons for the model discrepancies are further investigated.

The WRF model was evaluated following the model-evaluation benchmarks suggested by Tesche et al. (2001) and Emery et al. (2001). In particular, Mean Absolute Gross Error (MAGE), MB, RMSE and Index of Agreement (IA) are compared against the proposed benchmark values (Table S2).

4.1 Meteorology and gas-phase chemistry

Strong northerly winds dominated during the simulated period, as also shown by Tombrou et al. (2015). In most cases, both the predicted and the observed winds were NE and NW, which seems to depend on the latitude. Nevertheless, local surface winds observed at the site of Finokalia exhibit a strong western component (Fig. S1a). This pattern is attributed to the effect of local topography, while predictions reflect a representative value of a grid cell (an area of $\sim 38 \text{ km}^2$), mainly covered by sea.

An overall good agreement is found between the airborne measured and simulated values over the Archipelago, as far as humidity, air temperature and wind direction are concerned (cf. Table S3). Regarding wind speed, model performance is weaker (2 out of the 3 proposed benchmarks are reached, as shown in Table S2). The predicted mean value (8.0 ms^{-1}) along all flight tracks is in good agreement with the measured one (8.4 ms^{-1} ; Table S3). More specifically, the average (maximum) predicted value was 9.0 (16.5) and 7.5 (19.5) ms^{-1} upon the flight tracks below and above 2.2 km a.s.l., respectively. The corresponding measured wind speeds were 9.7 (22.4)

Aerosol chemistry above Eastern Mediterranean during strong northern winds

E. Athanasopoulou et al.

Title Page

Abstract

Introduction

Conclusions

References

Tables

Figures

⏪

⏩

◀

▶

Back

Close

Full Screen / Esc

Printer-friendly Version

Interactive Discussion

and 7.8 (24.1) m s^{-1} . As far as the surface-wind speed (at 10 m a.g.l.) is concerned, the 9 day average (minimum to maximum) surface wind speed predictions at Finokalia were 7.5 (3.0 to 10.7) m s^{-1} , while the respective measurements were 6.8 (1.1 to 9.1) m s^{-1} . The different scale between point measurements and model results, which represent
 5 volume averages, contributes to this divergence.

On 4 and 7 September 2011 were typical Etesian days with strong-channeled north-easterly surface winds ($> 15 \text{ m s}^{-1}$) over the Archipelago (Tyrllis and Lelieveld, 2012). Under such conditions, the afternoon marine atmospheric boundary layer was around 1000, 700 and 500 m in the north, SW and SE Aegean, respectively, successfully represented by the PBL schemes used in this study (Tombrou et al., 2015; Dandou et al.,
 10 2014).

Gas-phase comparisons between PMCAMx and ground concentration measurements do not exhibit any significant inconsistencies. The 12 day average (minimum to maximum) NO_x and O_3 predictions at Finokalia were 0.4 (0.1 to 2.8) and 62 (42 to 72) ppbv, while the respective measurements were 0.5 (0 to 1.4) and 66 (41 to 89) ppbv. The temporal correlation between predictions and measurements is also good, i.e. NME of the hourly data series is 55 and 10 %, respectively (Fig. S1b and c).
 15

Overall, the aerosol model performance during the studied period is independent of any systematic and important meteorological and/or gaseous inconsistencies.
 20

4.2 Sulfate aerosols ($\text{PM}_1 \text{ SO}_4$)

4.2.1 Model evaluation

Figure 2a shows all available prediction-observation pairs of the airborne $\text{PM}_1 \text{ SO}_4$ in the greater area of the Archipelago. The average profile of airborne sulfate is rather homogeneous up to 2.2 km a.s.l. and shows average modeled (measured) concentration of 5.8 (5.5) $\mu\text{g m}^{-3}$. Concentrations smoothly decline aloft, reaching lower values ($< 1 \mu\text{g m}^{-3}$) above 4.2 km. The high uniformity and content in the vertical is a first indi-
 25

**Aerosol chemistry
above Eastern
Mediterranean during
strong northern
winds**

E. Athanasopoulou et al.

Title Page

Abstract

Introduction

Conclusions

References

Tables

Figures

◀

▶

◀

▶

Back

Close

Full Screen / Esc

Printer-friendly Version

Interactive Discussion

cation that the low troposphere above the AS is a receptor of distant industrial plumes and medium-range sources, especially under strong NE winds (Fig. S1a). This also explains the higher sulfate concentration values in the lower troposphere above the AS (modeled: $5 \mu\text{g m}^{-3}$ and measured: $4.7 \mu\text{g m}^{-3}$) than above Turkey (are 3.6 and $3.7 \mu\text{g m}^{-3}$, respectively).

The average model performance statistics have satisfactory values with 77 % of the data pairs being within the 2 : 1 and 1 : 2 lines (Table S3). The MFB and MFE, when compared with the goals, rate the sulfate model system performance as good, with only 15 % of the MFE values calculated for each data pair being outside the criteria lines.

The good model performance is also supported by checking each ground data pairs. Figure 3 shows all predictions of PM_{10} SO_4 against the respective available (PILS-IC) measurements from ground level, while Table S4 embeds the average ground statistics. The average modeled (measured) concentration is 5.9 (6.4) $\mu\text{g m}^{-3}$, representative of the aforementioned domain-wide average within the PBL over the Archipelago. Most of MFE values meet the criteria with few outliers observed (14 % of the cases). Evidently, there is no clear diurnal cycle of sulfate during the studied period (Fig. 3). This is attributed to the lack of strong local sulfur dioxide (SO_2) sources (Pikridas et al., 2010), as well as to the continuous dispersion of the overflying plumes, during their transport over the sea.

Sulfate is the dominant species of the atmospheric aerosols, as indicated both by observations and predictions. This is in line with the majority of earlier long term observations and campaigns in the region (Sciare et al., 2008; Pikridas et al., 2010; Im et al., 2012). PM_{10} SO_4 production is related to its gaseous precursors (SO_2) mostly emitted from the industrialized areas in the Balkans, Turkey and E. Europe (Sciare et al., 2003a, b; Pikridas et al., 2010), which is converted to sulfuric acid (H_2SO_4) that has low vapor pressure and nucleates or condenses mainly in the aerosol fine mode (Mihalopoulos et al., 2007). The satisfactory comparison between model predictions and spatially divergent observations of sulfate over the greater area of the AS proves the good representation of its sources and processes in the applied model system.

4.2.2 Exogenous influences

Confidence in this model system allows the provision of supplementary information on the role of sulfur transport from outside the PMCAMx domain, not provided by the measurements. The origin of sulfate from the hot spot regions upwind the Archipelago is tracked by the calculation of the transported mass to the total PM₁ SO₄ predictions (standard run – scenario 1, light red shaded area in Fig. 3). It is found that a notable part of area-wide episodic events is attributed by about 85 % to trans-boundary transport of sulfate particles and its gaseous precursor during most of the studied period. The spatial distribution of daily mean sulfate concentrations over the domain of interest together with the contribution of the trans-boundary transport (standard run – scenario 1, iso-lines) is given for a representative Etesian day (Fig. 4a). The exact origin of SO₄, determined by back-trajectory calculations (Bezantakos et al., 2013), is the Eastern Europe and the wider Black Sea region. The remaining 10–15 % SO₄ of PM₁ is equally formed by sulfur emissions in the western continental part of Greece and sources in the Turkish area of the domain (scenario 2-scenario 1, not shown).

A different pattern is observed on 31 August 2011, when the observed winds at Finokalia change to NW (Fig. S1a). The concentration map of this episode indicates that the air parcels passing over continental Greece (Athens and Peloponnese) head towards the south AS (Fig. 4b). During that day, trans-boundary pollution in the area is less important compared to the rest of the studied period. In particular, the submicron sulfate over the south AS (Finokalia) is equally shaped by the local (domain-wide) and by the exogenous sources, with the 80 % of the former originating from the Greek territory (scenario 2-scenario 1; not shown). Interestingly, the peak values ($\sim 10 \mu\text{g m}^{-3}$) at Finokalia observed during the sulfur transport from Greek power plants towards the south AS (Fig. 3) are lower than those related to the transport from the Balkans and from further NE ($\sim 12 \mu\text{g m}^{-3}$). Model inconsistencies during this plume transport (Fig. 3) are related to the strong gradient from near source to background, which is not accurately resolved and captured by the model's grid resolution. The exogenous influ-

Title Page

Abstract

Introduction

Conclusions

References

Tables

Figures



Back

Close

Full Screen / Esc

Printer-friendly Version

Interactive Discussion



ence on SO₄ concentrations in the N. Aegean remains high (70 %) on 31 August and originates from the continental area between the Black and the Caspian Sea (Bezan-takos et al., 2013).

4.2.3 Model performance issues

5 The high spatial and temporal resolution of airborne measurements, allows for an extended diagnostic evaluation and may help to better address poor model system performance over the EM. Increased model discrepancies are mostly attributable to the lower and the higher ends of airborne PM₁ SO₄ concentrations distribution (minimum and maximum observed values shown in Fig. 2a). Poor model performance for lower
10 aerosol concentrations is explained below, although being typical for aerosol concentrations below 2 µg m⁻³ (Boylan and Russell, 2006). The largest model underestimations occur mainly at the area of Chania, where measurements frequently exceed 14 µg m⁻³. Measurements during take-offs and landings are contaminated by local airport emissions, while predictions cannot ideally reproduce concentrated plumes, but are representative of a much wider area (~ 38 km²) and time scales (1 h). Indeed, sulfate model
15 predictions in the greater area of Chania (6 to 10 µg m⁻³) are much closer to previous measurements (7 to 9 µg m⁻³) in a nearby, suburban area (Kopanakis et al., 2012). The maximum sulfate aerosol concentration (23.4 µg m⁻³) is observed in the lower troposphere (~ 1.7 km) over Athens (2 September 2011, around 10:00 UTC). Here, the model under-prediction (4.6 µg m⁻³), is intensified by the narrow shape of Athens pollution plume (relatively to the size of the model grid size), as well as by the spatial and temporal changes in actual conditions and fuels used for transportation in the greater Athens area, that are not captured in emission inventories.

For more in-depth examinations regarding model system skills for sulfate predictions,
25 MFE for airborne data are broken down for those parameters significantly affecting model performance (Table 4). As shown in this table, sulfate model performance is not consistent throughout the troposphere: it meets the goals at altitudes lower than 2.2 km a.s.l., but is poor at higher altitudes. This is more pronounced over Turkey (25 %

Aerosol chemistry above Eastern Mediterranean during strong northern winds

E. Athanasopoulou et al.

Title Page

Abstract

Introduction

Conclusions

References

Tables

Figures

◀

▶

◀

▶

Back

Close

Full Screen / Esc

Printer-friendly Version

Interactive Discussion



of the total number of data pairs over 27 to 29° E, correspond to altitudes from 4 to 7 km a.s.l.) and it is because a few large deviations between low concentration values (below $1 \mu\text{g m}^{-3}$) can have a significant impact on the overall performance assessment.

The other two parameters affecting sulfate model skills are related to the wind conditions. Good model performance is observed under strong ($> 9 \text{ m s}^{-1}$) NE winds above the Archipelago (local measurements along the flight tracks), that are typical of an Etesian pattern (Tombrou et al., 2015). Under NW and/or winds of lower intensity, sulfate predictions are still acceptable. The sensitivity of sulfate on the simulated wind is further examined by scenarios 5 (BOULAC PBL scheme) and 6 (QNSE PBL scheme), providing the lowest and strongest wind speeds respectively, below 2.2 km altitude. The average value inside the PBL layer ranges between 5.3 and $5.8 \mu\text{g m}^{-3}$, for an average wind speed variation from 8.6 (BOULAC) to 9.8 (QNSE) m s^{-1} (below 2.2 km altitude) among the runs. Changes among concentration fields are anti-correlated with the wind fields, due to the higher dispersion of pollution that is associated with stronger winds. The aerosol model skills are rather insensitive to these variations, although scenario 6 exhibited the lowest MFB and MFE values (12.9 and 56.3%, respectively) and the highest correlation with measurements ($r^2 = 0.4$). Lastly, sulfate predictions showed a similar performance for all days (flights), independently of the time of day and latitude.

4.3 Organic aerosols (PM₁ OA and PM₁₀ OC)

4.3.1 Model evaluation

Experimentally determined concentrations of the organic fraction of the submicron particles over the AS (Fig. 2b) are much lower than sulfate. In particular, the average measured concentration below 2.2 km a.s.l. is $4.2 \mu\text{g m}^{-3}$, with peaks ranging from 7 to $11 \mu\text{g m}^{-3}$. Similar findings have been previously observed in the AMS measurements at Finokalia (Hildebrandt et al., 2010; Pikridas et al., 2010).

Aerosol chemistry above Eastern Mediterranean during strong northern winds

E. Athanasopoulou et al.

Title Page

Abstract

Introduction

Conclusions

References

Tables

Figures

◀

▶

◀

▶

Back

Close

Full Screen / Esc

Printer-friendly Version

Interactive Discussion

Aerosol chemistry above Eastern Mediterranean during strong northern winds

E. Athanasopoulou et al.

Title Page

Abstract

Introduction

Conclusions

References

Tables

Figures

◀

▶

◀

▶

Back

Close

Full Screen / Esc

Printer-friendly Version

Interactive Discussion

Measurements of organic compounds over the Archipelago below 2.2 km altitude are moderately underestimated by this model system (average predicted PM_1 OA value is $2.3 \mu\text{g m}^{-3}$), which is consistent with findings reported by many modeling studies (e.g. Zhang et al., 2014 and references therein). Also, the comparison of GEOS-CHEM results with integrated global airborne observations resulted in the underestimation of the median OA concentrations in 13 of the 17 aircraft campaigns over central Europe, north America and western Africa (Heald et al., 2011). The main reasons for such underestimations are the poor model representation of SOA, as well as the lack of additional sources and sinks of OA. The most probable reason for the OA underestimation found in this study is the missing representation of fire emissions for the current model application. Biomass burning plumes may enter the free troposphere and be advected over very long distances, especially under strong winds. Back trajectory calculations from 400 to 4500 m a.s.l. (Bezantakos et al., 2013) show that the air masses arriving over the Archipelago during the studied period, originate from (or pass over) the Balkan area and the west coastline of the Black Sea, where several fire spots are located during (and prior to) the study period (Fig. S2). The regional (“diffuse”) biomass burning influence on OA concentrations over the AS is found to reach up to 50% (Sciare et al., 2011; Bougiatioti et al., 2014), a value which is similar to the underestimation of the OA mass by the current application (i.e. around 54%).

The calculated organic aerosol model skills in the PBL show an acceptable performance, with the 58% of the model predictions meeting the performance criteria (Table S3). Also, PBL model predictions are better correlated to the observed aerosol distribution for organics ($r^2 = 0.6$) than for sulfate ($r^2 = 0.3$). This can be explained by the fact that the injection heights of the sulfuric compounds emitted from the industry range from 0 to 1 km a.g.l. (e.g. Mailler et al., 2013), whereas the large oxygenated fraction of organics in the AS troposphere creates a more homogeneous field.

Modeled organic concentrations (PM_{10} OA) are divided here by a factor of 2.1, to extract the organic carbon mass concentrations over non-urban areas (see explanation in Sect. 3.2), which can be compared to ground PM_{10} OC measurements. Model per-

formance is good (Fig. 5 and Table S4), with the 41 % (82 %) of the model predictions meeting the performance goals (criteria). The average PM₁₀ OC concentration values are similar over the north and south AS (2.3 and 2.9 μg m⁻³, respectively), indicating the absence of major local OA sources, which can also explain the smaller range of their spatial variability.

4.3.2 OA analysis

The experimental data obtained during this study cannot separate SOA from OA, their biogenic from their anthropogenic part, as well as the fine from the coarse organic PM₁₀ fraction. Model outputs are used to help untangle these contributions (cf. Fig. 5). Similar predictions over both measurement sites, suggest again the large spatial homogeneity of organic particles over the Archipelago. Up to 40 % of PM₁₀ organics are located between 1 and 10 μm (which is slightly higher compared to the 25 % experimentally determined at Finokalia by Sciare et al., 2003a), the 75 % of which is coarse (PM_{2.5-10}). Submicron OA over the AS are mainly secondary (95 %) and originate primarily (80 %) from biogenic sources, which is explained in the next paragraph. Most of these results are consistent with previous studies covering the region of the AS (Hildebrandt et al., 2010; Athanasopoulou et al., 2013), and are explained by the aged nature of the OA over the sea, especially during the summer period.

4.3.3 Exogenous influences

Organic aerosol mass and gaseous (VOC) precursors from the Balkans and further north, shapes more than 90 % of their total concentration levels over the AS during the Etesian event (Fig. 4c). The effect of organic-rich plumes from continental Greece during the non-Etesian event (with prevailing NW winds, Fig. 4d), as well as the domain-wide photochemistry, decrease slightly the role of exogenous sources (now 70 % on average) over the whole region of the AS. Examining the different chemical constituents of the transported SOA and precursors (34 to 41 gaseous and 4 to 11 aerosol paired

**Aerosol chemistry
above Eastern
Mediterranean during
strong northern
winds**

E. Athanasopoulou et al.

Title Page

Abstract

Introduction

Conclusions

References

Tables

Figures

⏪

⏩

◀

▶

Back

Close

Full Screen / Esc

Printer-friendly Version

Interactive Discussion



species as listed in Table 2) in the studied domain, shows that the exogenous organic mass is primarily originating from isoprene (mean NE boundary concentration values of 1 to 2 $\mu\text{g m}^{-3}$), while aromatics are 2 to 6 times lower. The rest transported organic species (α -pinene, myrcene, sesquiterpenes, etc.) are insignificant.

4.3.4 Model performance issues

Regarding the sensitivity of OA concentration performance, most of the applied model scenarios (changes in road transport, maritime and industrial emissions) showed either insignificant changes in the organic aerosol predictions, or (when boundary concentrations were increased) unrealistic OA concentration results. These findings further support that fire activity is the main deficiency in the current model application with respect to organic aerosols. In addition and unlike previous findings in the area of study (Fountoukis et al., 2011), our results indicate that the activation of the BSOA chemical ageing (standard run) leads to a significant improvement of the OA levels over the Aegean Sea (continuous green line in Fig. 2b). In particular, the BSOA oxidation in the Aegean troposphere increases by 50 to 80 % the total OA mass predictions during the whole simulation period. The reason that BSOA are likely to undergo atmospheric ageing lies in the sufficient quantities of anthropogenic nitrogen and sulfur pollutants in the atmosphere over the AS ($\text{NO}_x = 1$ to 2 ppb, mean molar ratio $\text{NH}_4^+/\text{SO}_4 \leq 2$), which facilitates BSOA oxidation (Zhao et al., 2013, and references therein). As a consequence, deactivating BSOA ageing (scenario 3, dotted green line in Fig. 2b) changed the model skills for organics from average to poor (average predicted value from scenario 3 is 0.7 $\mu\text{g m}^{-3}$ for the atmosphere up to 2.2 km a.s.l. over the AS).

The sensitivity of model results on ASOA ageing was limited to 5 % both for the average OA concentration predictions and chemical composition (standard run-scenario 4). In particular, the faster rate of the oxidation of anthropogenic SOA resulted in a minor increase (up to 10 %) of the predicted OA during the whole simulation period of scenario 4. Such a different model response to BSOA/ASOA changes stems from the isoprene/aromatics concentration ratio from GEOS-CHEM, which takes the average

Aerosol chemistry above Eastern Mediterranean during strong northern winds

E. Athanasopoulou et al.

Title Page

Abstract

Introduction

Conclusions

References

Tables

Figures

◀

▶

◀

▶

Back

Close

Full Screen / Esc

Printer-friendly Version

Interactive Discussion



value of 9/1 over the Aegean. Scenario 4 had a positive though minor effect on performance metrics.

The calculated statistics for the paired sampling for airborne organics (Table 4) showed results similar to sulfate. In particular, unlike previous comparative results (Heald et al., 2011), it is found here that the differences between modeled and observed OA concentrations are not consistent throughout the troposphere. The poor model performance in the upper atmosphere and especially in the area above Turkey (elevated flight paths, low concentration values, as described in the previous section), deteriorates the overall organic model performance.

Wind also affects the quality of organic aerosol predictions, but only regarding direction (under NE winds organic predictions are acceptable, while under NW winds organics are poorly predicted). The day, time of day, latitude and wind speed do not affect organic aerosol model performance. The latter is also confirmed by scenarios 5 and 6 (MFE = 72 to 80 %), although scenario 5, which was based on slightly lower winds (i.e. lower dispersion), produced slightly higher concentration values having the subsequent (though minor) reduced model bias.

4.4 Ammonium aerosols (PM₁ NH₄)

The hourly variation of airborne ammonium concentration predictions is consistent with the observations (Fig. 2c). Apart from the expected and already discussed inconsistencies in the observed peak values, performance issues are tied with sulfate inconsistencies (e.g. during 4 September 11). This is related to the fact that during summer most of the ammonium is associated with the sulfate rather than the nitrate fraction.

The average predicted (observed) PBL concentration of PM₁ NH₄ is 1.6 (1.4) μg m⁻³, which is consistent with the ground ammonium concentrations in earlier measurements at Finokalia (Kouvarakis et al., 2001; Metzger et al., 2006; Pikridas et al., 2010). Regardless of the high uncertainties in ammonia emissions usually incorporated in the photochemical models (Skjøth et al., 2011), the reproduction of the observed data by the current model system is high, i.e. the 70 % (79 %) of the MFE values meets the

Aerosol chemistry above Eastern Mediterranean during strong northern winds

E. Athanasopoulou et al.

Title Page

Abstract

Introduction

Conclusions

References

Tables

Figures

◀

▶

◀

▶

Back

Close

Full Screen / Esc

Printer-friendly Version

Interactive Discussion



goals (criteria). The overall model performance for the ammonium species is good and optimized over the Archipelago and under strong winds (Table 4). The rest of the examined parameters (flight/day, time of day, altitude, latitude and wind direction) do not seem to affect model performance with respect to ammonium.

5 Air parcels arriving in the simulation domain are predicted to contribute ca. 70 % of the average $PM_1 NH_4$ concentrations when originating from NE direction (Fig. 4e) and by a lower percentage (though above 50 %) when originating from NW (Fig. 4f).

4.5 Nitrate and chloride aerosols ($PM_1 NO_3$ and Cl)

10 The measured non-refractory submicron nitrate concentrations below 2.2 km a.s.l. ($0.2 \mu g m^{-3}$ in average) are strongly overestimated by the model system ($1.9 \mu g m^{-3}$) (as shown in Table S3). This is attributed to two distinct reasons: the sea-salt component of nitrate (standard run-scenario 7), which is not captured by the AMS measurements, accounts for the 54 % of $PM_1 NO_3^-$ predictions. Also, the average exogenous contribution from upwind (standard run-scenario 1) is ca. $1 \mu g m^{-3}$, which is unrealistic according to current measurements. When subtracting these mass fractions from total $PM_1 NO_3$ predictions, the model results become more realistic. Nevertheless, it should be taken in mind, that performance issues are commonly tied to low concentrations ($< 1 \mu g m^{-3}$) cases, not only because they greatly degrade normalized model performance, but also due to the higher uncertainty of measurements.

15 Measured (submicron non-refractory) and modeled chloride is low ($< 0.8 \mu g m^{-3}$), because of the insignificant sea-salt content in the submicron fraction, the inability of AMS to measure sea-salt chloride, as well as its gradual displacement by nitrate and sulfate ions. Nevertheless, model performance is found good (Table S3).

4.6 Particulate elemental carbon ($PM_{10} EC$)

25 Figure 6 shows the diurnal variation of the $PM_{10} EC$ for the ground sites of the south and north Aegean basin. Both the absolute values and their temporal evolution are

well reproduced by the model. In particular, the average measured (and modeled) concentration is ca. $0.3 \mu\text{g m}^{-3}$, and therefore the model performance is rated as good (Table S4), with a few exceptional outliers. Elemental carbon is dominated by combustion sources. Thus, it can be assumed that the fossil fuel sources are well represented by the emission datasets used by this model system.

As for sulfate, the footprint of continental Greek sources (mainly from the Athens metropolitan area) is apparent in EC concentrations at Finokalia during the prevailing NW directions (0.6 to $1.2 \mu\text{g m}^{-3}$). During the rest of the period, EC levels fluctuate in similar levels at both sites.

The OC/EC ratio from the measured (modeled) data during this period is as high as 4.7 (4.0) and 4. (7.1) at the north (Vigla) and south (Finokalia) AS (Fig. 6), being at similar levels with those measured previously Finokalia (Koulouri et al., 2008; Pikridas et al., 2010; Im et al., 2012). OC/EC slopes greater than 2, suggest the significant fraction of secondary species in the organic aerosol mass in background areas, as predicted and previously discussed in Sect. 4.3. The lower OC/EC slope at Finokalia during 31 August (1.9) is close to previous findings in urban areas (Favez et al., 2008; Theodosi et al., 2010) and is related to the higher EC levels during the urban plume transport from NW. The latter was also depicted in the spatial distribution of sulfate (Fig. 4b).

4.7 Particulate matter (PM₁₀)

The average predicted total PM₁₀ mass at Finokalia during the simulated period is found $30.1 \mu\text{g m}^{-3}$. This value is very close to the average of the concurrent observations ($29 \mu\text{g m}^{-3}$), as well as to previous measurements in non-urban areas of the Mediterranean region (Rodriguez et al., 2001; Gerasopoulos et al., 2006; Lazaridis et al., 2008; Koulouri et al., 2008; Kopanakis et al., 2012). The performance skills of the model system on PM₁₀ predictions are rated as good (Table S4) and the daily evolution of PM₁₀ predictions is satisfactory (Fig. 7). Atypically high PM₁₀ concentration

Aerosol chemistry above Eastern Mediterranean during strong northern winds

E. Athanasopoulou et al.

Title Page

Abstract

Introduction

Conclusions

References

Tables

Figures

◀

▶

◀

▶

Back

Close

Full Screen / Esc

Printer-friendly Version

Interactive Discussion

levels observed at Finokalia on 1 September suggest that the quality of sampling on this particular day might be questionable.

The combined use of measurement and modeling techniques during this period is useful for the estimation of the chemical composition and the size distribution of PM₁₀ measurements at Finokalia (Fig. 7). Sulfate account for the 45 % of PM₁ mass, followed by OM. The latter represents the 20 % of PM₁ (2.6 μg m⁻³), which is similar to measurements at Finokalia (Pikridas et al., 2010). The predicted submicron ammonium content at Finokalia (1.7 μg m⁻³) is consistent either with the current airborne or with the past ground-based observations at this site (Sect. 4.4). The contribution of the rest aerosol species (Cl and EC) is minor (2 %). The levels of the submicron nitrate are greatly overestimated by the model system (Sect. 4.5).

Submicron aerosol is the largest fraction of the PM_{2.5} mass (76 %), but accounts for the 42 % of total PM₁₀. This is mostly related to the elevated coarse aerosol concentrations (14.2 μg m⁻³), which shape the PM_{2.5}/PM₁₀ ratio around 54 %. Previous ground-based observations over the EM have resulted in fractions ca. 50 % (Kanakidou et al., 2011), further supporting the satisfactory aerosol predictions over the whole size range by this model system.

Given the similar levels of ground and airborne measurements over the AS and below 2.2 km a.s.l. (discussed in Sects. 4.2–4.5), it can be stated that the current analysis of the ground PM₁₀ measurements performed by the model, is representative of the PBL above the Archipelago during strong northern winds.

5 Summary and conclusions

A recently applied model system consisting of three well-established atmospheric models (namely, PMCAMx, WRF and GEOS-CHEM), and a unique aerosol dataset collected in the EM are synergistically used in the frame of this study during a 10 day period characterized by strong northern winds (August–September 2011). The aircraft dataset used represents a spatially diverse set of aerosol observations (covering

**Aerosol chemistry
above Eastern
Mediterranean during
strong northern
winds**

E. Athanasopoulou et al.

Title Page

Abstract

Introduction

Conclusions

References

Tables

Figures

◀

▶

◀

▶

Back

Close

Full Screen / Esc

Printer-friendly Version

Interactive Discussion



the horizontal area of ca. $3 \times 10^5 \text{ km}^2$ and extending from the sea surface to 7.5 km aloft), employed to perform the most extensive – to our knowledge – model evaluation of major aerosol chemical component concentrations over the EM to date (> 1300 observation-prediction samples per species).

The vertical resolution in the measurements allowed the exploration of the aerosol profiles above the Aegean Sea. The PBL above the Archipelago ($< 2.2 \text{ km a.s.l.}$) is homogeneously enriched in sulfate (average modeled and measured PM_{10} SO_4 of 5.5 and $5.8 \mu\text{g m}^{-3}$, respectively), followed by organics (2.3 and $4.4 \mu\text{g m}^{-3}$) and ammonium (1.5 and $1.7 \mu\text{g m}^{-3}$). Aerosol concentrations smoothly decline aloft reaching low values ($< 1 \mu\text{g m}^{-3}$) above 4.2 km.

Aerosol model performance within the PBL is largely within an acceptable level of accuracy (for all major chemical species except from nitrate), or even close to the best level of accuracy (sulfate, ammonium and chloride satisfy the criteria), with 50 to 80% reproduction of these standards. Comparison with the ground-based observations (356 observation-prediction samples in total) suggested an even higher model quality, with a good reproducibility of all studied species and a few outliers ($< 15\%$ outside the criteria lines).

Wide and commonly found under-predictions in sulfate, elemental carbon and coarse aerosols (cf. Nopmongkol et al., 2012) are not observed in the current study. Also, in contrast to the uncertainties in ammonia emissions usually reported in air quality modeling (e.g. Skjøth et al., 2011), the observed ammonium levels are well reproduced here. These findings support that the power plants, motorways and natural aerosol sources, including agricultural activities of the surrounding area of the Archipelago and upwind are well represented and treated by this model system.

Relatively high OC/EC ratios (4 to 5) from the ground observations are successively reproduced by the PMCAMx model (OC/EC: 4 to 7), suggesting the large oxygenation rate of the organic matter above the Archipelago, nicely represented by the employed OA chemical module. The activation of the chemical ageing of BSOA in this formulation, greatly improves model performance due to the sufficient NO_x concentration and

Aerosol chemistry above Eastern Mediterranean during strong northern winds

E. Athanasopoulou et al.

Title Page

Abstract

Introduction

Conclusions

References

Tables

Figures

◀

▶

◀

▶

Back

Close

Full Screen / Esc

Printer-friendly Version

Interactive Discussion

**Aerosol chemistry
above Eastern
Mediterranean during
strong northern
winds**

E. Athanasopoulou et al.

Title Page

Abstract

Introduction

Conclusions

References

Tables

Figures

◀

▶

◀

▶

Back

Close

Full Screen / Esc

Printer-friendly Version

Interactive Discussion

the sulfate-rich Aegean environment. On the other hand, OA predictions showed minor (or unrealistic) response to anthropogenic emissions and BCs variations. The fire activity, not taken into account by the current model application, is the main cause of OA underestimation (around 54 %), which is consistent with local measurements of the fire-induced OA fraction (e.g. Bougiatioti et al., 2014). This finding serves as a challenge for future model development.

Model performance was also dependent on the altitude (below and above 2.2 km), the longitude (western and eastern than 27° E, i.e. above the AS and W. Turkey, respectively), the wind speed (above and below 9 ms⁻¹) and wind direction (NE and NW) over the studied area. The (time of) day and latitude did not affect model biases. The sensitivity of aerosol predictions on different PBL schemes showed a minor effect on aerosol concentrations (e.g. 5.3 to 5.8 and 2.1 to 2.4 μg m⁻³ for airborne sulfate and organics, respectively), and did not change model performance. Overall, aerosol predictions within the PBL over the Archipelago under strong NE winds showed the best performance.

More than 70 % of the predicted aerosol mass over the AS during the Etesians is associated with the transport of aerosols and their precursors from outside the PMCAMx modeling domain. In the case of organics, this mass originates primarily from the oxidation of isoprene. These findings underline the significance of the detailed gaseous and aerosol model coupling developed in this study, towards more accurate model predictions. The origin of the transported plume during NW winds, distinctively identified from the model simulations (Greek industrialized areas) and the daily evolution of sulfate, EC (and OC/EC) and total PM₁₀, shapes half of the total sulfate mass, the rest being attributed to the exogenous sources. Also, the observed peak in submicron sulfate during this event at Finokalia (10 μg m⁻³) is lower than the concentrations during the Etesian flow (12 to 14 μg m⁻³). Therefore, developing abatement strategies to reduce aerosol levels in the EM is both a national and transnational task. Key findings from the current and similar applications can provide information on the origin of air parcels

and the contribution of local and exogenous sources, thus on the effective design of air policies.

A forthcoming application of the same model system aims at investigating its performance, as well as aerosol levels and interactions during recent Saharan dust intrusions in the troposphere over the Aegean Sea.

The Supplement related to this article is available online at doi:10.5194/acpd-15-9355-2015-supplement.

Acknowledgements. This work is in the frame of the AERAS-EtS research project, which is implemented within the framework of the Action “Supporting Postdoctoral Researchers” of the Operational Program “Education and Lifelong Learning” (Action’s Beneficiary: General Secretariat for Research and Technology), and is co-financed by the European Social Fund (ESF) and the Greek State. Experimental data are available from: the AEGEAN-GAME-2 and ACEMED campaigns funded by EUFAR under FP7, the CarbonExp campaign funded by ESA and the CIMS project funded by the NERC campaign. Airborne data were obtained using the BAe-146-301 Atmospheric Research Aircraft flown by Directflight Ltd and managed by the Facility for Airborne Atmospheric Measurements (FAAM), which is a joint entity of NERC and the Met Office. We gratefully acknowledge the FAAM Team, M. Smith, A. Wellpott and A. Dean for all their effort to make campaigns successful. Many thanks to P. Brown and to the mission scientists D. Kindred and S. Abel, as well as the lidar person J. Kent, all from Met. Office. E. Athanasopoulou thanks C. Fountoukis and S. N. Pandis for the use of the updated PMCAMx code, as well as V. Amiridis, D. Schuettemeyer and C. Percival for the use of the AMS data from the ACEMED, CarbonExp and CIMS flights.

References

Anagnostopoulou, C., Zanis, P., Katragkou, E., Tegoulas, I., and Tolika, K.: Recent past and future patterns of the Etesian winds based on regional scale climate model simulations, *Clim. Dynam.*, 42, 1819–1836, doi:10.1007/s00382-013-1936-0, 2014.

**Aerosol chemistry
above Eastern
Mediterranean during
strong northern
winds**

E. Athanasopoulou et al.

Title Page

Abstract

Introduction

Conclusions

References

Tables

Figures

◀

▶

◀

▶

Back

Close

Full Screen / Esc

Printer-friendly Version

Interactive Discussion



**Aerosol chemistry
above Eastern
Mediterranean during
strong northern
winds**

E. Athanasopoulou et al.

Title Page

Abstract

Introduction

Conclusions

References

Tables

Figures

◀

▶

◀

▶

Back

Close

Full Screen / Esc

Printer-friendly Version

Interactive Discussion



Astitha, M. and Kallos, C.: Gas-phase and aerosol chemistry interactions in South Europe and the Mediterranean region, *Environ. Fluid Mech.*, 9, 3–22, doi:10.1007/s10652-008-9110-7, 2008.

Athanasopoulou, E., Tombrou, M., Pandis, S. N., and Russell, A. G.: The role of sea-salt emissions and heterogeneous chemistry in the air quality of polluted coastal areas, *Atmos. Chem. Phys.*, 8, 5755–5769, doi:10.5194/acp-8-5755-2008, 2008.

Athanasopoulou, E., Vogel, H., Vogel, B., Tsimpidi, A. P., Pandis, S. N., Knöbe, C., and Fountoukis, C.: Modeling the meteorological and chemical effects of secondary organic aerosols during an EUCAARI campaign, *Atmos. Chem. Phys.*, 13, 625–645, doi:10.5194/acp-13-625-2013, 2013.

Bahreini, R., Ervens, B., Middlebrook, A. M., Warneke, C., de Gouw, J. A., DeCarlo, P. F., Jimenez, J. L., Brock, C. A., Neuman, J. A., Ryerson, T. B., Stark, H., Atlas, E., Brioude, J., Fried, A., Holloway, J. S., Peischl, J., Richter, D., Walega, J., Weibring, P., Wollny, A. G., and Fehsenfeld, F. C.: Organic aerosol formation in urban and industrial plumes near Houston and Dallas, Texas, *J. Geophys. Res.*, 114, D00F16, doi:10.1029/2008JD011493, 2009.

Bardouki, H., Berresheim, H., Vrekoussis, M., Sciare, J., Kouvarakis, G., Oikonomou, K., Schneider, J., and Mihalopoulos, N.: Gaseous (DMS, MSA, SO₂, H₂SO₄ and DMSO) and particulate (sulfate and methanesulfonate) sulfur species over the northeastern coast of Crete, *Atmos. Chem. Phys.*, 3, 1871–1886, doi:10.5194/acp-3-1871-2003, 2003.

Bey, I., Jacob, D. J., Yantosca, R. M., Logan, J. A., Field, B. D., Fiore, A. M., Li, Q., Liu, H. Y., Mickley, L. J., and Schultz, M. G.: Global modeling of tropospheric chemistry with assimilated meteorology: model description and evaluation, *J. Geophys. Res.*, 106, 23073–23095, doi:10.1029/2001JD000807, 2001.

Bezantakos, S., Barmounis, K., Giamarelou, M., Bossioli, E., Tombrou, M., Mihalopoulos, N., Eleftheriadis, K., Kalogiros, J., D. Allan, J., Bacak, A., Percival, C. J., Coe, H., and Biskos, G.: Chemical composition and hygroscopic properties of aerosol particles over the Aegean Sea, *Atmos. Chem. Phys.*, 13, 11595–11608, doi:10.5194/acp-13-11595-2013, 2013.

Bossioli, E., Tombrou, M., Karali, A., Dandou, A., Paronis, D., and Sofiev, M.: Ozone production from the interaction of wildfire and biogenic emissions: a case study in Russia during spring 2006, *Atmos. Chem. Phys.*, 12, 7931–7953, doi:10.5194/acp-12-7931-2012, 2012.

Bougeault, P. and Lacarrere, P.: Parameterization of orography-induced turbulence in a mesobeta-scale model, *Mon. Weather Rev.*, 117, 1872–1890, doi:10.1175/1520-0493(1989)117<1872:POOITl>2.0.CO;2, 1989.

**Aerosol chemistry
above Eastern
Mediterranean during
strong northern
winds**

E. Athanasopoulou et al.

[Title Page](#)[Abstract](#)[Introduction](#)[Conclusions](#)[References](#)[Tables](#)[Figures](#)[◀](#)[▶](#)[◀](#)[▶](#)[Back](#)[Close](#)[Full Screen / Esc](#)[Printer-friendly Version](#)[Interactive Discussion](#)

- Bougiatioti, A., Stavroulas, I., Kostenidou, E., Zarrmpas, P., Theodosi, C., Kouvarakis, G., Canonaco, F., Prévôt, A. S. H., Nenes, A., Pandis, S. N., and Mihalopoulos, N.: Processing of biomass-burning aerosol in the eastern Mediterranean during summertime, *Atmos. Chem. Phys.*, 14, 4793–4807, doi:10.5194/acp-14-4793-2014, 2014.
- 5 Boylan, J. W. and Russell, A. G.: PM and light extinction model performance metrics, goals, and criteria for three-dimensional air quality models, *Atmos. Environ.*, 40, 4946–4959, doi:10.1016/j.atmosenv.2005.09.087, 2006.
- Bryant, C., Eleftheriadis, K., Smolik, J., Zdimal, V., Mihalopoulos, N., and Colbeck, I.: Optical properties of aerosols over the eastern Mediterranean, *Atmos. Environ.*, 40, 6229–6244, doi:10.1016/j.atmosenv.2005.06.009, 2006.
- 10 Canagaratna, M. R., Jayne, J. T., Jimenez, J. L., Allan, J. D., Alfarra, M. R., Zhang, Q., Onasch, T. B., Drewnick, F., Coe, H., Middlebrook, A., Delia, A., Williams, L. R., Trimborn, A. M., Northway, M. J., DeCarlo, P. F., Kolb, C. E., Davidovits, P., and Worsnop, D. R.: Chemical and microphysical characterization of ambient aerosols with the aerodyne aerosol mass spectrometer, *Mass Spectrom. Rev.*, 26, 185–222, doi:10.1002/mas.20115, 2007.
- 15 Carter, W. P. L.: A detailed mechanism for the gas-phase atmospheric reactions of organic compounds, *Atmos. Environ. A-Gen.*, 24, 481–518, doi:10.1016/0960-1686(90)90005-8, 1990.
- Carvalho, A., Flannigan, M. D., Logan, K., Miranda, A. I., and Borrego, C.: Fire activity in Portugal and its relationship to weather and the Canadian Fire Weather Index System, *Int. J. Wildland Fire*, 17, 328–338, 2008.
- 20 Cavalli, F., Viana, M., Yttri, K. E., Genberg, J., and Putaud, J.-P.: Toward a standardised thermal-optical protocol for measuring atmospheric organic and elemental carbon: the EUSAAR protocol, *Atmos. Meas. Tech.*, 3, 79–89, doi:10.5194/amt-3-79-2010, 2010.
- Chabas, A., Jeannette, D., and Lefèvre, R. A.: Crystallization and dissolution of airborne sea-salts on weathered marble in a coastal environment at Delos (Cyclades–Greece), *Atmos. Environ.*, 34, 219–224, doi:10.1016/S1352-2310(99)00256-3, 2000.
- 25 Dandou, A., Tombrou, M., Kalogiros, J., Bossioli, E., Bezantakos, S., Biskos, G., Kouvarakis, G. N., Mihalopoulos, N., Allan, J., and Coe, H.: Simulation of Marine Boundary Layer Evolution in the Aegean Sea during Etesians, COMECAP2014 e-book of proceedings, Crete University Press, Heraklion, Greece, Vol. 1, ISBN: 978-960-524-430-9, 220–224, 2014.
- 30 Eleftheriadis, K., Colbeck, I., Housiadas, C., Lazaridis, M., Mihalopoulos, N., Mitsakou, C., Smolík, J., and Ždímal, V.: Size distribution, composition and origin of the submicron aerosol

**Aerosol chemistry
above Eastern
Mediterranean during
strong northern
winds**

E. Athanasopoulou et al.

[Title Page](#)[Abstract](#)[Introduction](#)[Conclusions](#)[References](#)[Tables](#)[Figures](#)[◀](#)[▶](#)[◀](#)[▶](#)[Back](#)[Close](#)[Full Screen / Esc](#)[Printer-friendly Version](#)[Interactive Discussion](#)

in the marine boundary layer during the eastern Mediterranean “SUB-AERO” experiment, Atmos. Environ., 40, 6245–6260, doi:10.1016/j.atmosenv.2006.03.059, 2006.

Emery, C., Tai, E., and Yarwood, G.: Enhanced meteorological modeling and performance evaluation for two Texas Ozone Episodes, Report to the Texas Natural Resources Conservation Commission, prepared by ENVIRON, International Corp., Novato, CA, 2001.

Environ: User’s guide to the comprehensive air quality model with extensions (CAMx), version 4.10s, report, ENVIRON Int. Corp., Novato, Calif., 2004.

Fountoukis, C., Racherla, P. N., Denier van der Gon, H. A. C., Polymeneas, P., Charalampidis, P. E., Pilinis, C., Wiedensohler, A., Dall’Osto, M., O’Dowd, C., and Pandis, S. N.: Evaluation of a three-dimensional chemical transport model (PMCAMx) in the European domain during the EUCAARI May 2008 campaign, Atmos. Chem. Phys., 11, 10331–10347, doi:10.5194/acp-11-10331-2011, 2011.

Gerasopoulos, E., Kouvarakis, G., Babasakalis, P., Vrekoussis, M., Putaud, J.-P., and Mihalopoulos, N.: Origin and variability of particulate matter (PM₁₀) mass concentrations over the Eastern Mediterranean, Atmos. Environ., 40, 4679–4690, doi:10.1016/j.atmosenv.2006.04.020, 2006.

Gerasopoulos, E., Koulouri, E., Kalivitis, N., Kouvarakis, G., Saarikoski, S., Mäkelä, T., Hillamo, R., and Mihalopoulos, N.: Size-segregated mass distributions of aerosols over Eastern Mediterranean: seasonal variability and comparison with AERONET columnar size-distributions, Atmos. Chem. Phys., 7, 2551–2561, doi:10.5194/acp-7-2551-2007, 2007.

Heald, C. L., Coe, H., Jimenez, J. L., Weber, R. J., Bahreini, R., Middlebrook, A. M., Russell, L. M., Jolleys, M., Fu, T.-M., Allan, J. D., Bower, K. N., Capes, G., Crosier, J., Morgan, W. T., Robinson, N. H., Williams, P. I., Cubison, M. J., DeCarlo, P. F., and Dunlea, E. J.: Exploring the vertical profile of atmospheric organic aerosol: comparing 17 aircraft field campaigns with a global model, Atmos. Chem. Phys., 11, 12673–12696, doi:10.5194/acp-11-12673-2011, 2011.

Hildebrandt, L., Kostenidou, E., Mihalopoulos, N., Worsnop, D. R., Donahue, N. M., and Pandis, S. N.: Formation of highly oxygenated organic aerosol in the atmosphere: insights from the Finokalia Aerosol Measurement Experiments, Geophys. Res. Lett., 37, L23801, doi:10.1029/2010GL045193, 2010.

Im, U.: Impact of sea-salt emissions on the model performance and aerosol chemical composition and deposition in the East Mediterranean coastal regions, Atmos. Environ., 75, 329–340, doi:10.1016/j.atmosenv.2013.04.034, 2013.

**Aerosol chemistry
above Eastern
Mediterranean during
strong northern
winds**

E. Athanasopoulou et al.

[Title Page](#)[Abstract](#)[Introduction](#)[Conclusions](#)[References](#)[Tables](#)[Figures](#)[◀](#)[▶](#)[◀](#)[▶](#)[Back](#)[Close](#)[Full Screen / Esc](#)[Printer-friendly Version](#)[Interactive Discussion](#)

- Im, U. and Kanakidou, M.: Impacts of East Mediterranean megacity emissions on air quality, *Atmos. Chem. Phys.*, 12, 6335–6355, doi:10.5194/acp-12-6335-2012, 2012.
- Im, U., Markakis, K., Koçak, M., Gerasopoulos, E., Daskalakis, N., Mihalopoulos, N., Poupkou, A., Kindap, T., Unal, A., and Kanakidou, M.: Summertime aerosol chemical composition in the Eastern Mediterranean and its sensitivity to temperature, *Atmos. Environ.*, 50, 164–173, doi:10.1016/j.atmosenv.2011.12.044, 2012.
- Kallos, G., Astitha, M., Katsafados, P., and Spyrou, C.: Long-range transport of anthropogenically and naturally produced particulate matter in the Mediterranean and North Atlantic: current state of knowledge, *J. Appl. Meteorol. Clim.*, 46, 1230–1251, doi:10.1175/JAM2530.1, 2007.
- Kallos, G., Solomos, S., Kushta, J., Mitsakou, C., Spyrou, C., Bartsotas, N., and Kalogeri, C.: Natural and anthropogenic aerosols in the Eastern Mediterranean and Middle East: possible impacts, *Sci. Total Environ.*, 488–489, 389–397, doi:10.1016/j.scitotenv.2014.02.035, 2014.
- Kanakidou, M., Mihalopoulos, N., Kindap, T., Im, U., Vrekoussis, M., Gerasopoulos, E., Dermitzaki, E., Unal, A., Koçak, M., Markakis, K., Melas, D., Kouvarakis, G., Youssef, A. F., Richter, A., Hatzianastassiou, N., Hilboll, A., Ebojje, F., Wittrock, F., von Savigny, C., Burrows, J. P., Ladstaetter-Weissenmayer, A., and Moubasher, H.: Megacities as hot spots of air pollution in the East Mediterranean, *Atmos. Environ.*, 45, 1223–1235, doi:10.1016/j.atmosenv.2010.11.048, 2011.
- Kopanakis, I., Eleftheriadis, K., Mihalopoulos, N., Lydakis-Simantiris, N., Katsivela, E., Pentari, D., Zarmpas, P., and Lazaridis, M.: Physico-chemical characteristics of particulate matter in the Eastern Mediterranean, *Atmos. Res.*, 106, 93–107, doi:10.1016/j.atmosres.2011.11.011, 2012.
- Koulouri, E., Saarikoski, S., Theodosi, C., Markaki, Z., Gerasopoulos, E., Kouvarakis, G., Mäkelä, T., Hillamo, R., and Mihalopoulos, N.: Chemical composition and sources of fine and coarse aerosol particles in the Eastern Mediterranean, *Atmos. Environ.*, 42, 6542–6550, doi:10.1016/j.atmosenv.2008.04.010, 2008.
- Kouvarakis, G., Mihalopoulos, N., Tselepidis, A., and Stavrakakis, S.: On the importance of atmospheric inputs of inorganic nitrogen species on the productivity of the Eastern Mediterranean Sea, *Global Biogeochem. Cy.*, 15, 805–817, doi:10.1029/2001GB001399, 2001.
- Lane, T. E., Donahue, N. M., and Pandis, S. N.: Simulating secondary organic aerosol formation using the volatility basis-set approach in a chemical transport model, *Atmos. Environ.*, 42, 7439–7451, doi:10.1016/j.atmosenv.2008.06.026, 2008.

**Aerosol chemistry
above Eastern
Mediterranean during
strong northern
winds**

E. Athanasopoulou et al.

Title Page

Abstract

Introduction

Conclusions

References

Tables

Figures

◀

▶

◀

▶

Back

Close

Full Screen / Esc

Printer-friendly Version

Interactive Discussion



- Lazaridis, M., Spyridaki, A., Solberg, S., Smolík, J., Zdimal, V., Eleftheriadis, K., Aleksandropoulou, V., Hov, O., and Georgopoulos, P. G.: Mesoscale modeling of combined aerosol and photo-oxidant processes in the Eastern Mediterranean, *Atmos. Chem. Phys.*, 5, 927–940, doi:10.5194/acp-5-927-2005, 2005.
- 5 Lazaridis, M., Dzubova, L., Kopanakis, I., Ondracek, J., Glytsos, T., Aleksandropoulou, V., Voulgarakis, A., Katsivela, E., Mihalopoulos, N., and Eleftheriadis, K.: PM₁₀ and PM_{2.5} Levels in the Eastern Mediterranean (Akrotiri Research Station, Crete, Greece), *Water Air Soil Poll.*, 189, 85–101, doi:10.1007/s11270-007-9558-y, 2008.
- Maheras, P.: Le problem des Etesiens, *Mediterranee*, 40, 57–66, 1986.
- 10 Mailler, S., Khvorostyanov, D., and Menu, L.: Impact of the vertical emission profiles on background gas-phase pollution simulated from the EMEP emissions over Europe, *Atmos. Chem. Phys.*, 13, 5987–5998, doi:10.5194/acp-13-5987-2013, 2013.
- Medina, S., Plasencia, A., Ballester, F., Mucke, H. G., and Schwartz, J.: Apheis: Public Health Impact of PM₁₀ in 19 European Cities, *J. Epidemiol. Commun. H.*, 58, 831–836, 2004.
- 15 Megaritis, A. G., Fountoukis, C., Charalampidis, P. E., Pilinis, C., and Pandis, S. N.: Response of fine particulate matter concentrations to changes of emissions and temperature in Europe, *Atmos. Chem. Phys.*, 13, 3423–3443, doi:10.5194/acp-13-3423-2013, 2013.
- Metzger, S., Mihalopoulos, N., and Lelieveld, J.: Importance of mineral cations and organics in gas-aerosol partitioning of reactive nitrogen compounds: case study based on MINOS results, *Atmos. Chem. Phys.*, 6, 2549–2567, doi:10.5194/acp-6-2549-2006, 2006.
- 20 Middlebrook, A. M., Bahreini, R., Jimenez, J. L., and Canagaratna, M. R.: Evaluation of composition-dependent collection efficiencies for the Aerodyne Aerosol Mass Spectrometer using field data, *Aerosol Sci. Tech.*, 46, 258–271, doi:10.1080/02786826.2011.620041, 2012.
- 25 Mihalopoulos, N., Stephanou, E., Kanakidou, M., Pilitsidis, S., and Bousquet, P.: Tropospheric aerosol ionic composition in the Eastern Mediterranean region, *Tellus B*, 49, 313–326, doi:10.3402/tellusb.v49i3.15970, 1997.
- Mihalopoulos, N., Kerminen, V. M., Kanakidou, M., Berresheim, H., and Sciare, J.: Formation of particulate sulfur species (sulfate and methanesulfonate) during summer over the Eastern Mediterranean: a modelling approach, *Atmos. Environ.*, 41, 6860–6871, doi:10.1016/j.atmosenv.2007.04.039, 2007.
- 30

**Aerosol chemistry
above Eastern
Mediterranean during
strong northern
winds**

E. Athanasopoulou et al.

[Title Page](#)[Abstract](#)[Introduction](#)[Conclusions](#)[References](#)[Tables](#)[Figures](#)[◀](#)[▶](#)[◀](#)[▶](#)[Back](#)[Close](#)[Full Screen / Esc](#)[Printer-friendly Version](#)[Interactive Discussion](#)

- Millán, M. M., Salvador, R., Mantilla, E., and Kallos, G.: Photooxidant dynamics in the Mediterranean basin in summer: results from European research projects, *J. Geophys. Res.-Atmos.*, 102, 8811–8823, 1997.
- Morgan, W. T., Allan, J. D., Bower, K. N., Highwood, E. J., Liu, D., McMeeking, G. R., Northway, M. J., Williams, P. I., Krejci, R., and Coe, H.: Airborne measurements of the spatial distribution of aerosol chemical composition across Europe and evolution of the organic fraction, *Atmos. Chem. Phys.*, 10, 4065–4083, doi:10.5194/acp-10-4065-2010, 2010.
- Murphy, B. N., Donahue, N. M., Fountoukis, C., and Pandis, S. N.: Simulating the oxygen content of ambient organic aerosol with the 2D volatility basis set, *Atmos. Chem. Phys.*, 11, 7859–7873, doi:10.5194/acp-11-7859-2011, 2011.
- Nabat, P., Somot, S., Mallet, M., Sevault, F., Chiacchio, M., and Wild, M.: Direct and semi-direct aerosol radiative effect on the Mediterranean climate variability using a coupled regional climate system model, *Clim. Dynam.*, 44, 1–29, doi:10.1007/s00382-014-2205-6, 2014.
- Nopmongkol, U., Koo, B., Tai, E., Jung, J., Piyachaturawat, P., Emery, C., Yarwood, G., Pirovano, G., Mitsakou, C., and Kallos, G.: Modeling Europe with CAMx for the Air Quality Model Evaluation International Initiative (AQMEII), *Atmos. Environ.*, 53, 177–185, doi:10.1016/j.atmosenv.2011.11.023, 2012.
- Orsini, D. A., Ma, Y., Sullivan, A., Sierau, B., Baumann, K., and Weber, R. J.: Refinements to the particle-into-liquid sampler (PILS) for ground and airborne measurements of water-soluble aerosol composition, *Atmos. Environ.*, 37, 1243–1259, 2003
- Paraskevopoulou, D., Liakakou, E., Gerasopoulos, E., Theodosi, C., and Mihalopoulos, N.: Long-term characterization of organic and elemental carbon in the PM_{2.5} fraction: the case of Athens, Greece, *Atmos. Chem. Phys.*, 14, 13313–13325, doi:10.5194/acp-14-13313-2014, 2014.
- Pey, J., Alastuey, A., and Querol, X.: PM₁₀ and PM_{2.5} sources at an insular location in the western Mediterranean by using source apportionment techniques, *Sci. Total Environ.*, 456–457, 267–277, doi:10.1016/j.scitotenv.2013.03.084, 2013a.
- Pikridas, M., Bougiatioti, A., Hildebrandt, L., Engelhart, G. J., Kostenidou, E., Mohr, C., Prévôt, A. S. H., Kouvarakis, G., Zarrmpas, P., Burkhardt, J. F., Lee, B.-H., Psychoudaki, M., Mihalopoulos, N., Pilinis, C., Stohl, A., Baltensperger, U., Kulmala, M., and Pandis, S. N.: The Finokalia Aerosol Measurement Experiment – 2008 (FAME-08): an overview, *Atmos. Chem. Phys.*, 10, 6793–6806, doi:10.5194/acp-10-6793-2010, 2010.

**Aerosol chemistry
above Eastern
Mediterranean during
strong northern
winds**

E. Athanasopoulou et al.

Title Page

Abstract

Introduction

Conclusions

References

Tables

Figures

◀

▶

◀

▶

Back

Close

Full Screen / Esc

Printer-friendly Version

Interactive Discussion

Poupkou, A., Zanis, P., Nastos, P., Papanastasiou, D., Melas, D., Tourpali, K., and Zerefos, C.: Present climate trend analysis of the Etesian winds in the Aegean Sea, *Theor. Appl. Climatol.*, 106, 459–472, doi:10.1007/s00704-011-0443-7, 2011.

Rodríguez, S., Querol, X., Alastuey, A., Kallos, G., and Kakaliagou, O.: Saharan dust contributions to PM₁₀ and TSP levels in Southern and Eastern Spain, *Atmos. Environ.*, 35, 2433–2447, doi:10.1016/S1352-2310(00)00496-9, 2001.

Rodríguez, S., Querol, X., Alastuey, A., and Plana, F.: Sources and processes affecting levels and composition of atmospheric aerosol in the western Mediterranean, *J. Geophys. Res.*, 107, 4777, doi:10.1029/2001JD001488, 2002.

Sciare, J., Bardouki, H., Moulin, C., and Mihalopoulos, N.: Aerosol sources and their contribution to the chemical composition of aerosols in the Eastern Mediterranean Sea during summertime, *Atmos. Chem. Phys.*, 3, 291–302, doi:10.5194/acp-3-291-2003, 2003a.

Sciare, J., Cachier, H., Oikonomou, K., Ausset, P., Sarda-Estève, R., and Mihalopoulos, N.: Characterization of carbonaceous aerosols during the MINOS campaign in Crete, July–August 2001: a multi-analytical approach, *Atmos. Chem. Phys.*, 3, 1743–1757, doi:10.5194/acp-3-1743-2003, 2003b.

Sciare, J., Oikonomou, K., Favez, O., Liakakou, E., Markaki, Z., Cachier, H., and Mihalopoulos, N.: Long-term measurements of carbonaceous aerosols in the Eastern Mediterranean: evidence of long-range transport of biomass burning, *Atmos. Chem. Phys.*, 8, 5551–5563, doi:10.5194/acp-8-5551-2008, 2008.

Sciare, J., d'Argouges, O., Sarda-Estève, R., Gaimoz, C., Dolgorouky, C., Bonnaire, N., Favez, O., Bonsang, B., and Gros, V.: Large contribution of water-insoluble secondary organic aerosols in the region of Paris (France) during wintertime, *J. Geophys. Res.*, 116, D22203, doi:10.1029/2011JD015756, 2011.

Shrivastava, M. K., Lane, T. E., Donahue, N. M., Pandis, S. N., and Robinson, A. L.: Effects of gas particle partitioning and aging of primary emissions on urban and regional organic aerosol concentrations, *J. Geophys. Res.*, 113, D18301, doi:10.1029/2007JD009735, 2008.

Skamarock, W. C., Klemp, J. B., Dudhia, J., Gill, D. O., Barker, D. M., Wang, W., and Powers, J. G.: A Description of the Advanced Research WRF Version 3, NCAR Technical Note TN-468+STR, Boulder, Colorado, USA, 113 pp., 2008.

Skjøth, C. A., Geels, C., Berge, H., Gyldenkerne, S., Fagerli, H., Ellermann, T., Frohn, L. M., Christensen, J., Hansen, K. M., Hansen, K., and Hertel, O.: Spatial and temporal variations

**Aerosol chemistry
above Eastern
Mediterranean during
strong northern
winds**

E. Athanasopoulou et al.

Title Page

Abstract

Introduction

Conclusions

References

Tables

Figures

◀

▶

◀

▶

Back

Close

Full Screen / Esc

Printer-friendly Version

Interactive Discussion

in ammonia emissions – a freely accessible model code for Europe, *Atmos. Chem. Phys.*, 11, 5221–5236, doi:10.5194/acp-11-5221-2011, 2011.

Smolík, J., Ždímal, V., Schwarz, J., Lazaridis, M., Havárnek, V., Eleftheriadis, K., Mihalopoulos, N., Bryant, C., and Colbeck, I.: Size resolved mass concentration and elemental composition of atmospheric aerosols over the Eastern Mediterranean area, *Atmos. Chem. Phys.*, 3, 2207–2216, doi:10.5194/acp-3-2207-2003, 2003.

Solomos, S., Kallos, G., Kushta, J., Astitha, M., Tremback, C., Nenes, A., and Levin, Z.: An integrated modeling study on the effects of mineral dust and sea salt particles on clouds and precipitation, *Atmos. Chem. Phys.*, 11, 873–892, doi:10.5194/acp-11-873-2011, 2011.

Sukoriansky, S., Galperin, B., and Staroselsky, I.: A quasynormal scale elimination model of turbulent flows with stable stratification, *Phys. Fluids*, 17, 085107, doi:10.1063/1.2009010, 2005.

Tesche, T. W., McNally, D. E., Emery, C. A., and Tai, E.: Evaluation of the MM5 model over the Midwestern U.S. for three 8 h oxidant episodes, Prepared for the Kansas City Ozone Technical Work Group, prepared by Alpine Geophysics, LLC, Ft. Wright, KY and ENVIRON International Corp., Novato, CA, 2001.

Tombrou, M., Bossioli, E., Protonotariou, A. P., Flocas, H., Giannakopoulos, C., and Dandou, A.: Coupling GEOS-CHEM with a regional air pollution model for Greece, *Atmos. Environ.*, 43, 4793–4804, doi:10.1016/j.atmosenv.2009.04.003, 2009.

Tombrou, M., Bossioli, E., Kalogiros, J., Allan, J. D., Bacak, A., Biskos, G., Coe, H., Dandou, A., Kouvarakis, G., Mihalopoulos, N., Percival, C. J., Protonotariou, A. P., and Szabó-Takács, B.: Physical and chemical processes of air masses in the Aegean Sea during Etesians: Aegean-GAME airborne campaign, *Sci. Total Environ.*, 506–507, 201–216, doi:10.1016/j.scitotenv.2014.10.098, 2015.

Tsimpidi, A. P., Karydis, V. A., Zavala, M., Lei, W., Molina, L., Ulbrich, I. M., Jimenez, J. L., and Pandis, S. N.: Evaluation of the volatility basis-set approach for the simulation of organic aerosol formation in the Mexico City metropolitan area, *Atmos. Chem. Phys.*, 10, 525–546, doi:10.5194/acp-10-525-2010, 2010.

Turpin, B. J. and Lim, H.-J.: Species contributions to $PM_{2.5}$ mass concentrations: revisiting common assumptions for estimating organic mass, *Aerosol Sci. Tech.*, 35, 602–610, doi:10.1080/02786820119445, 2001.

Tyrlis, E. and Lelieveld, J.: Climatology and dynamics of the summer Etesian winds over the Eastern Mediterranean, *J. Atmos. Sci.*, 70, 3374–3396, doi:10.1175/JAS-D-13-035.1, 2013.

**Aerosol chemistry
above Eastern
Mediterranean during
strong northern
winds**

E. Athanasopoulou et al.

[Title Page](#)[Abstract](#)[Introduction](#)[Conclusions](#)[References](#)[Tables](#)[Figures](#)[◀](#)[▶](#)[◀](#)[▶](#)[Back](#)[Close](#)[Full Screen / Esc](#)[Printer-friendly Version](#)[Interactive Discussion](#)

- Volkamer, R., Jimenez, J. L., San Martini, F., Dzepina, K., Zhang, Q., Salcedo, D., Molina, L. T., Worsnop, D. R., and Molina, M. J.: Secondary organic aerosol formation from anthropogenic air pollution: rapid and higher than expected, *Geophys. Res. Lett.*, 33, L17811, doi:10.1029/2006GL026899, 2006.
- 5 Vrekoussis, M., Liakakou, E., Koçak, M., Kubilay, N., Oikonomou, K., Sciare, J., and Mihalopoulos, N.: Seasonal variability of optical properties of aerosols in the Eastern Mediterranean, *Atmos. Environ.*, 39, 7083–7094, doi:10.1016/j.atmosenv.2005.08.011, 2005.
- Zanis, P., Ntogras, C., Zakey, A., Pytharoulis, I., and Karacostas, T.: Regional climate feedback of anthropogenic aerosols over Europe using RegCM3, *Clim. Res.*, 52, 267–278, doi:10.3354/cr01070, 2012.
- 10 Zhang, H., Chen, G., Hu, J., Chen, S.-H., Wiedinmyer, C., Kleeman, M., and Ying, Q.: Evaluation of a seven-year air quality simulation using the Weather Research and Forecasting (WRF)/Community Multiscale Air Quality (CMAQ) models in the eastern United States, *Sci. Total Environ.*, 473–474, 275–285, doi:10.1016/j.scitotenv.2013.11.121, 2014.

Aerosol chemistry above Eastern Mediterranean during strong northern winds

E. Athanasopoulou et al.

Title Page

Abstract

Introduction

Conclusions

References

Tables

Figures

◀

▶

◀

▶

Back

Close

Full Screen / Esc

Printer-friendly Version

Interactive Discussion

Table 1. Main characteristics of the WRF meso-scale meteorological model, the GEOS-Chem v8-03-01 global and the PMCAMx regional CTM applications.

	WRF	GEOS-Chem	PMCAMx
Chemical and Physical mechanisms	Planetary boundary layer (PBL) parameterization: YSU (Hong et al., 2006) (standard run). BOULAC (Bougeault and Lacarrère, 1989) and QNSE (Sukoriansky et al., 2005) are used in 2 additional scenarios.	NO _x -O _x -hydrocarbon-aerosol species module (the SOA module by Chung and Seinfeld, 2002 and Henze et al., 2008 is included). The mechanism is combined to the ISORROPIA II aerosol thermodynamics (Fountoukis and Nenes, 2007).	Gaseous chemistry: SAPRC99 (Carter, 1990), Inorganic aerosol chemistry: ISORROPIA II (Fountoukis and Nenes, 2007), Organic aerosol chemistry: VBS (Shrivastava et al., 2008; Lane et al., 2008)
Initial, Lateral and Boundary conditions	National Centers for Environmental Prediction (NCEP) operational Global Final Analyses (1.0° × 1.0°)	From the global GEOS-chem simulation (4.0° × 5.0°)	From the global GEOS-chem simulation (0.5° × 0.667°)
Input data	Sea surface temperature (SST): Real-Time Global SST analysis data (0.5° × 0.5°) Land use categories: 24 Soil categories: 16 (US Geological Survey)	Anthropogenic emissions: Wang et al., 1998; Benkovitz et al., 1996; Yevich and Logan, 2003; Piccot et al., 1992 Natural emissions: Price and Rind, 1992 Meteorological data: Goddard Earth Observing System (GEOS-5)/NASA Global Modeling and Assimilation Office	Anthropogenic, agricultural, forests: Hellenic Ministry of Environment (2002); EMEP Sea-salt and dust: Athanasopoulou et al., 2008, 2010 Meteorological data: from the WRF simulation (0.056° × 0.056°)
Vertical grid	35 sigma levels (from ca.10 m a.g.l. to 50 hPa)	47 hybrid eta levels (from ca. 50 m a.g.l. to 0.01 hPa)	14 levels (from surface to ca. 5.8 km)
Parent and nesting domains (extended areas of)	A. Europe (0.5° × 0.5°) B. Greece and Italy (0.167° × 0.167°) C. Aegean Archipelago (0.056° × 0.056°)	A. Global domain (4° × 5°) B. Europe (0.5° × 0.667°)	Aegean Archipelago (0.056° × 0.056°)

Aerosol chemistry above Eastern Mediterranean during strong northern winds

E. Athanasopoulou et al.

Table 2. The chemical coupling (in ppb) between the PMCAMx (SAPRC, ISORROPIAII and VBS mechanisms) and the GEOS-CHEM (SOA mechanism) model. Aerosols are shown in bold. The numbers next to PMCAMx aerosol species correspond to their size bins. $PM_{2.5}$ in PMCAMx corresponds to the bins 1 to 6, while the rest bins (7 to 10) are $PM_{2.5-40}$. Sea-salt aerosols (SSA) in GEOS-CHEM are simulated in two bins (effective diameter ranges 0.2 to 5 and 5 to 8 μm), while dust particles (DST) are split in 4 bins (effective diameters 1.4, 2.8, 4.8 and 9 μm).

No	PMCAMx	GEOS-CHEM	No	PMCAMx	GEOS-CHEM
1	NO_2	NO_x	30	SO_2	SO_2
2	O_3	$\text{NO}_x\text{-O}_x$	31	Sulfuric acid (SULF)	SULF + Methyl Sulfonic Acid
3	Peroxyacetyl Nitrate (PAN)	PAN	32	NH_3	NH_3
4	Higher peroxyacetyl nitrate	Lumped Peroxypropionyl Nitrate	33	Hydrogen Peroxide (H_2O_2)	H_2O_2
5	PAN compound from methacrolein	Peroxyethacetyl Nitrate	34–37	ASOA gaseous precursors (CAS1-4)	Oxidised aromatics
6	Organic nitrate	Lumped Alkyl Nitrate	38	BSOA gaseous precursors (CBS1)	Oxidised α -pinene, β -pinene, sabinene, carene, terpenoid ketones, limonene, terpenes
7	Peroxynitric acid (HNO_4)	HNO_4	39	BSOA gaseous precursors (CBS2)	Oxidised Myrcene, terpenoid alcohols, ocimene
8	Formaldehyde (HCHO)	HCHO	40	BSOA gaseous precursors (CBS3)	Oxidised Sesquiterpenes
9	Acetaldehyde (CCHO)	Acetaldehyde ALD2	41	BSOA gaseous precursors (CBS4)	Oxidised Isoprene
10	Higher aldehyde (RCHO)	RCHO	1–3	APO4-6	Organic carbon (OCPI + OCPO)
11	Isoprene (ISOP)	0.2ISOP	4–7	ASOA1-4	Aerosol aromatics
12	Methylvinyl ketone (MVK)	MVK	8	BSOA1	aerosol α-pinene, etc.
13	Methacrolein (METH)	Methacrolein (MACR)	9	BSOA2	aerosol myrcene, etc.
14	Terpene	α -pinene, β -pinene, sabinene, carene, terpenoid ketones, Limonene, Myrcene, terpenoid alcohols, ocimene	10	BSOA3	aerosol sesquiterpenes
15	HNO_3	HNO_3	11	BSOA4	aerosol isoprene
16	Acetone (ACET)	0.3ACET	12–14	PEC4-6	black carbon (BCPI+BCPO)
17	Methylethyl ketone (MEK)	0.3MEK	15–20	NO_3 4–9	$\text{NO}_3 + \text{ssNO}_3 + 0.009\text{SSA}_{1-2}$
18	Methyl hydroperoxide (COOH)	Methyl hydroperoxide (MP)	21–23	NH_4 4–6	NH_4
19	CO	CO	24–26	SO_4 4–6	$\text{SO}_4 + 0.25\text{ssSO}_4 + 0.03\text{SSA}_1$
20	Lumped alkanes 1	0.5Ethane	27–29	SO_4 7–9	$0.75\text{ssSO}_4 + 0.03\text{SSA}_2$
21	Lumped alkanes 2	0.33Propane	30–35	Cl 4–9	$0.42\text{SSA}_{1-2} + 0.01\text{DST}_{1-4}$
22	Lumped alkanes 3	0.09Lumped alkanes	36–38	Na 4–6	$0.46\text{SSA}_1 + 0.05\text{DST}_{1-2}$
23	Lumped alkanes 4	0.09Lumped alkanes	39–41	Na 7–9	$0.46\text{SSA}_2 + 0.04\text{DST}_{1-2}$
24	Lumped alkanes 5	0.09Lumped alkanes	42–44	Ca 4–6	$0.009\text{SSA}_1 + 0.07\text{DST}_{1-2}$
25	Lumped aromatics 1	0.16Benzene + 0.14Toluene	45–47	Ca 7–9	0.04DST_{3-4}
26	Lumped aromatics 2	0.13Xylene	48–53	K 4–9	$0.009\text{SSA}_{1-2} + 0.03\text{DST}_{1-4}$
27	Lumped olefins 1	0.17Lumped alkenes	54–59	Mg 4–9	$0.06\text{SSA}_{1-2} + 0.05\text{DST}_{1-4}$
28	Lumped olefins 2	0.17Lumped alkenes	60	Si, Al (CRST6)	0.81DST_{1-2}
29	N_xO_y	N_2O_5	61–63	Si, Al (CRST7–9)	0.83DST_{3-4}

Title Page

Abstract

Introduction

Conclusions

References

Tables

Figures

◀

▶

◀

▶

Back

Close

Full Screen / Esc

Printer-friendly Version

Interactive Discussion



Table 3. Description of the modeling scenarios performed by the PMCAMx model during 29 August–9 September 2011.

Scenario	Scenario's Description	Objective	Other information
Base-case	Standard run	Aerosol chemistry over the Aegean Archipelago (or Aegean Sea)	Inputs by WRF/YSU; PMCAMx/GEOS -CHEM coupling; SOA aging constant = $1 \times 10^{-11} \text{ cm}^3 \text{ mol}^{-1} \text{ s}^{-1}$
1	Constant, minimum* boundary conditions	Exogenous/trans-boundary aerosol fraction	PMCAMx is not coupled with GEOS-CHEM
2	Scenario 1 without emissions from the Turkish area of the domain	Aerosol fraction from sources in Greece/Turkey (covered by the domain)	
3	BSOA aging switched off	Sensitivity of organic aerosol performance on SOA aging	
4	ASOA aging $\times 4$		Only 29 Aug–2 Sep
5	Inputs by WRF/BOULAC	Sensitivity of aerosols on meteorology	YSU, BOULAC and QNSE schemes differ in the wind field predictions
6	Inputs by WRF/QNSE		
7	SSA-free simulation	Direct comparison of nitrate predictions and observations	AMS detects the non-refractory, submicron aerosol fraction

* aerosol species concentrations are equal to $10^{-9} \mu\text{g m}^{-3}$.

Aerosol chemistry above Eastern Mediterranean during strong northern winds

E. Athanasopoulou et al.

Title Page

Abstract

Introduction

Conclusions

References

Tables

Figures

◀

▶

◀

▶

Back

Close

Full Screen / Esc

Printer-friendly Version

Interactive Discussion



Table 4. Mean and Mean Fractional Error (MFE) values for the complete sample and for paired sub-samples of the airborne model-measurement dataset. Paired sampling is based on the methodology described in Sect. 3.4. Sub-samples titled in bold have the best skills. MFE with non-bold italic (*italic*) fonts indicate good (poor) model performance, according to the selected evaluation criteria (cf. Table S2). The rest model outputs (MFE with black non-italic fonts) are acceptable (average model performance).

Airborne PM ₁	Sulfate ($\mu\text{g m}^{-3}$)		Ammonium ($\mu\text{g m}^{-3}$)		Organics ($\mu\text{g m}^{-3}$)	
PMCAMx mean (min-max)	4.8 (0.3-12.1)		1.1 (0.05-4.2)		1.4 (0.01-6.8)	
AMS mean (min-max)	5 (0.2-23.4)		1 (0.05-5.2)		2.4 (0.05-10.7)	
MFE (% meets goals/criteria)	55 (56/73)		63 (70/79)		83 (51)	
1st pair of samples	< 2.2	> 2.2 km a.s.l.			< 2.2	> 2.2 km a.s.l.
PMCAMx mean (min-max)	5.5 (1.1-12.1)	3.8 (0.3-9.7)			2.3 (0.2-6.8)	0.9 (0.01-4.8)
AMS mean (min-max)	5.8 (0.2-23.4)	3.7 (0.2-15)			4.4 (0.1-10.7)	1.1 (0.05-9.4)
MFE (% meets goals/criteria)	44 (64/82)	72 (< 50/59)			74 (< 50/58)	89 (< 50/50)
2nd pair of samples	Aegean	Turkey	Aegean	Turkey	Aegean	Turkey
PMCAMx mean (min-max)	5 (0.5-12.1)	3.3 (0.3-10.7)	1.3 (0.06-4.2)	0.8 (0.05-2.7)	2 (0.1-5.6)	0.5 (0.01-4.8)
AMS mean (min-max)	4.7 (0.2-20.4)	3.5 (0.2-19.6)	1.1 (0.05-4)	0.4 (0.05-2)	3.4 (0.05-9.3)	0.7 (0.05-8)
MFE (% meets goals/criteria)	48 (63/79)	85 (< 40/46)	54 (79/87)	71 (62/76)	77 (< 60/60)	92 (< 30/36)
3rd pair of samples	NE	NW winds		NE	NW winds	
PMCAMx mean (min-max)	5.4 (0.7-11.5)	4 (0.3/12.1)		1.9 (0.02-5.6)	1 (0.01-6.8)	
AMS mean (min-max)	5.6 (0.2-23.4)	4.1 (0.2-20.4)		3.2 (0.05-10.4)	1.6 (0.05-10.7)	
MFE (% meets goals/criteria)	51 (60/77)	61 (< 60/69)		76 (< 60/62)	89 (< 40/42)	
4th pair of samples	U > 9	< 9 ms ⁻¹	U > 9	< 9 ms ⁻¹		
PMCAMx mean (min-max)	5.1 (0.4-12.1)	4.5 (0.3-11.3)	1.5 (0.06-4.2)	0.8 (0.05-3.1)		
AMS mean (min-max)	5.5 (0.2-23.4)	4.5 (0.2-20.42)	1.2 (0.05-4.3)	0.9 (0.05-5.2)		
MFE (% meets goals/criteria)	46 (62/82)	63 (< 60/65)	52 (80/100)	71 (61/72)		

[Title Page](#)
[Abstract](#)
[Introduction](#)
[Conclusions](#)
[References](#)
[Tables](#)
[Figures](#)
[◀](#)
[▶](#)
[◀](#)
[▶](#)
[Back](#)
[Close](#)
[Full Screen / Esc](#)
[Printer-friendly Version](#)
[Interactive Discussion](#)


Aerosol chemistry
above Eastern
Mediterranean during
strong northern
winds

E. Athanasopoulou et al.

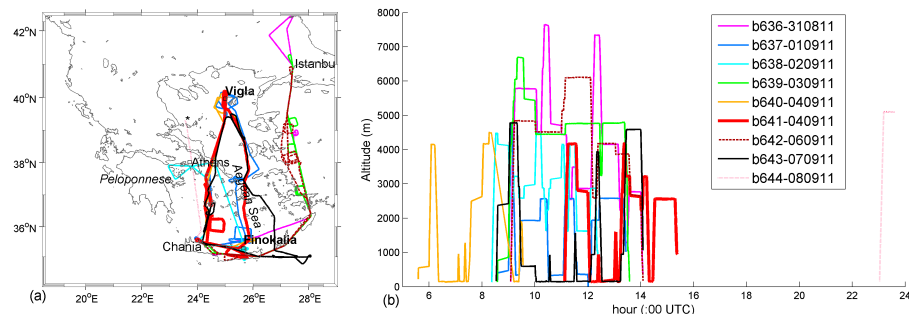


Figure 1. (a) Geographical map of the PMCAMx model domain covering the greater area of the Aegean Sea, showing also the trajectories for the nine flights during the modeling period (29 August–9 September 2011). All flights took off and landed at the airport of Chania. The aircraft over the Aegean Sea moved anti-clockwise. The ground monitoring sites are indicated by the bold fonts. The rest indicate areas discussed within text. (b) The aircraft altitude during the time frame of each flight.

Aerosol chemistry above Eastern Mediterranean during strong northern winds

E. Athanasopoulou et al.

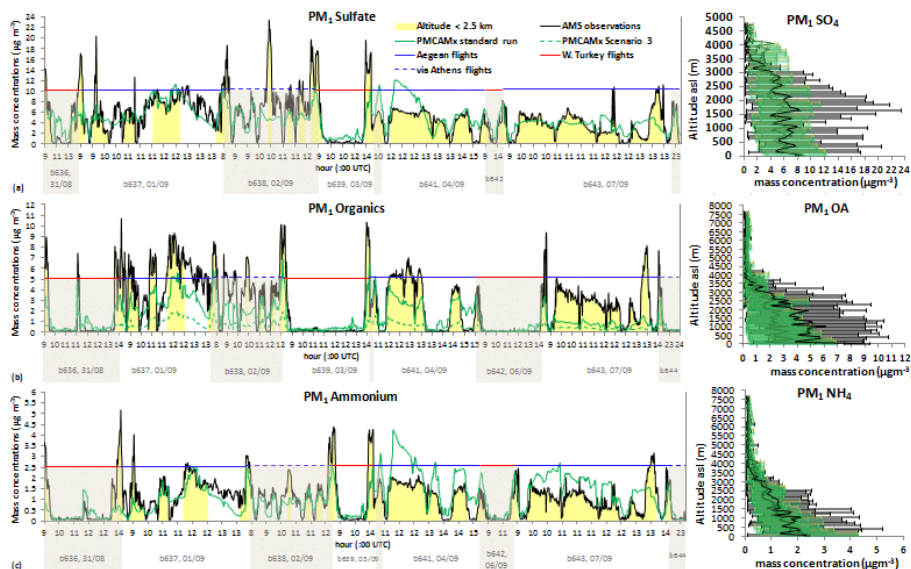


Figure 2. Comparison of PMCAMx results (green continuous line) with AMS airborne measurements (black continuous line) for total $\text{PM}_{1.0}$: **(a)** sulfate; the legend applies for all succeeding graphs, **(b)** organics (green dashed line for scenario 3 is also shown), **(c)** hourly particulate ammonium concentrations ($\mu\text{g m}^{-3}$) for all flights in the frame of the AEGEAN-GAME, ACEMED, CarbonExp and CIMS campaigns, during 31 August–9 September 2011. Data from the flights over the Aegean Sea, via Athens and over west Turkey are discriminated by the horizontal blue, dashed-blue and red lines, respectively. The yellow shaded area indicates mass concentrations below 2.2 km a.s.l. The flight numbers and dates are shown in the bottom. More detailed flight information is embedded in Fig. 1. On the right of each graph, the vertical profile of each species averaged per 100 m (error bars with minimum and maximum values) is shown.

Title Page

Abstract

Introduction

Conclusions

References

Tables

Figures

◀

▶

◀

▶

Back

Close

Full Screen / Esc

Printer-friendly Version

Interactive Discussion

Aerosol chemistry above Eastern Mediterranean during strong northern winds

E. Athanasopoulou et al.

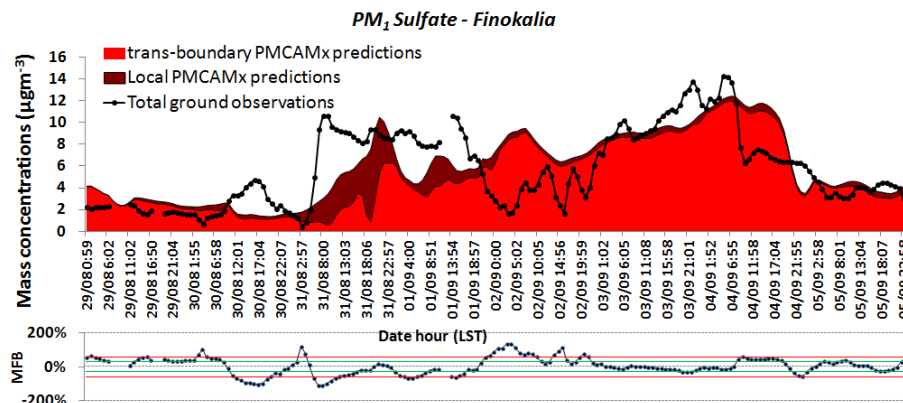


Figure 3. Comparison of PMCAMx (total shaded area) with hourly measurements (black dotted line) of total PM₁ sulfate concentrations ($\mu\text{g m}^{-3}$) over Finokalia during 31 August–9 September 2011. The contribution of PMCAMx predicted trans-boundary (standard run – scenario 1, in light red) and local (scenario 1, in dark red) to the total PM₁ sulfate mass is also shown. The ability of the model to reproduce observations is estimated through the calculation of the Mean Fractional Biases (MFB), shown in the bottom. Model performance is average (good), when MFB values are within the red (green) lines (Boylan and Russell, 2006).

[Title Page](#)
[Abstract](#)
[Introduction](#)
[Conclusions](#)
[References](#)
[Tables](#)
[Figures](#)
[◀](#)
[▶](#)
[◀](#)
[▶](#)
[Back](#)
[Close](#)
[Full Screen / Esc](#)
[Printer-friendly Version](#)
[Interactive Discussion](#)

Aerosol chemistry above Eastern Mediterranean during strong northern winds

E. Athanasopoulou et al.

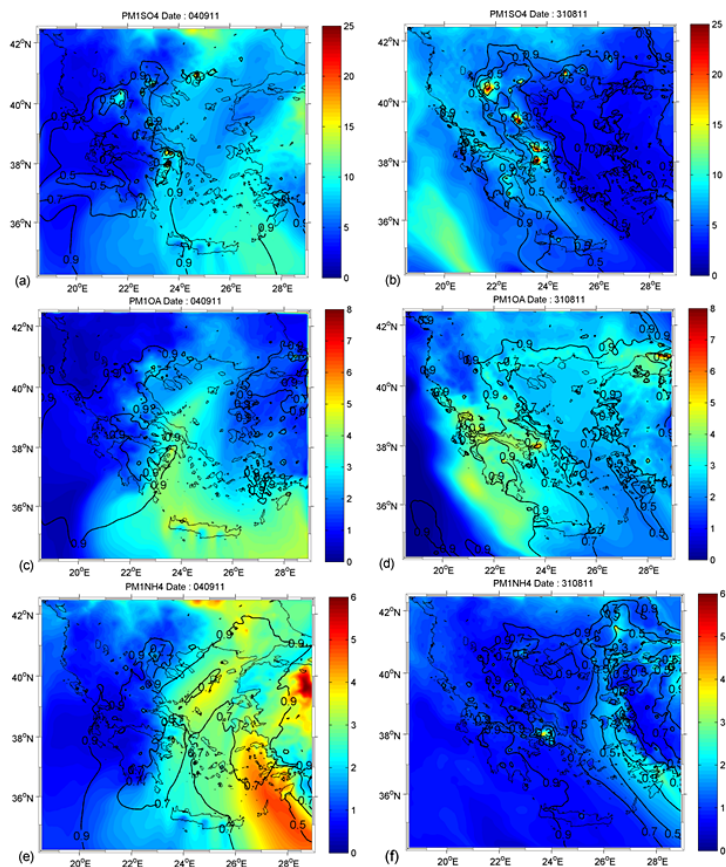


Figure 4. Daily average PM_1 lowest level concentration fields ($\mu\text{g m}^{-3}$) of sulfate, organics and ammonium species, during: **(a, c, e)** NE winds (4 September 2011) and **(b, d, f)** NW winds (31 August 2011), blowing over the Aegean Sea. Iso-lines show the contribution of trans-boundary sources to the total aerosol mass [(standard run – scenario1) / standard run].

[Title Page](#)
[Abstract](#)
[Introduction](#)
[Conclusions](#)
[References](#)
[Tables](#)
[Figures](#)
[◀](#)
[▶](#)
[◀](#)
[▶](#)
[Back](#)
[Close](#)
[Full Screen / Esc](#)
[Printer-friendly Version](#)
[Interactive Discussion](#)

Aerosol chemistry above Eastern Mediterranean during strong northern winds

E. Athanasopoulou et al.

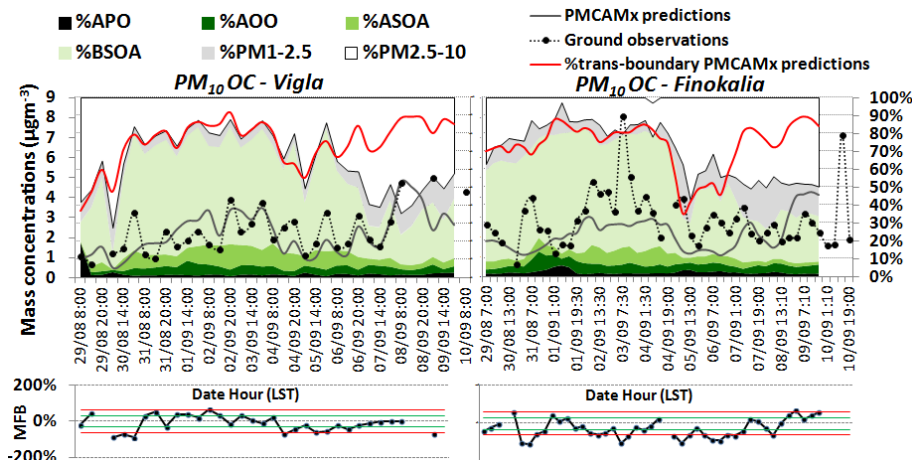


Figure 5. Comparison of PMCAMx (grey lines) with 6 h measurements (black dotted line) of total PM_{10} OC concentrations ($\mu\text{g m}^{-3}$) over Vigla (left) and Finokalia (right) during 31 August–9 September 2011. The relative contribution of PMCAMx predicted trans-boundary (standard run – scenario 1, red line) to the total PM_{10} OA mass is also shown. Green shaded areas represent the chemical composition of PM_1 OA predictions, grey shaded area shows the organics in the $\text{PM}_{1-2.5}$ size range, while the remaining (white shaded area) represents the organics in the coarse fraction ($\text{PM}_{2.5-10}$). All areas are percentage values. The ability of the model to reproduce observations is estimated through the calculation of the Mean Fractional Biases (MFB), shown in the bottom. Model performance is average (good), when MFB values are within the red (green) lines (Boylan and Russell, 2006). The predicted OC is acquired by dividing OA with 2.1 (Turpin and Lim, 2001).

[Title Page](#)
[Abstract](#)
[Introduction](#)
[Conclusions](#)
[References](#)
[Tables](#)
[Figures](#)
[◀](#)
[▶](#)
[◀](#)
[▶](#)
[Back](#)
[Close](#)
[Full Screen / Esc](#)
[Printer-friendly Version](#)
[Interactive Discussion](#)

Aerosol chemistry above Eastern Mediterranean during strong northern winds

E. Athanasopoulou et al.

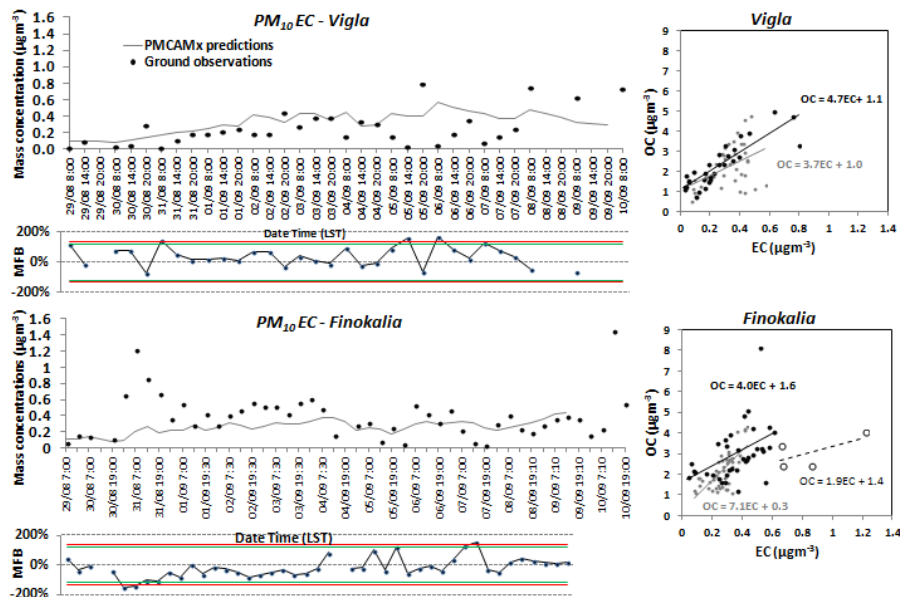


Figure 6. Comparison of PMCAMx (grey lines) with 6 h measurements (black dots) of PM_{10} elemental carbon concentrations ($\mu\text{g m}^{-3}$) over Vigla (top) and Finokalia (bottom) during 31 August–9 September 2011. The ability of the model to reproduce observations is estimated through the calculation of the Mean Fractional Biases (MFB), shown in the bottom of each graph. Model performance is average (good), when MFB values are within the red (green) lines (Boylan and Russell, 2006). OC vs. EC (grey/PMCAMx and black/measurements data points and lines) in PM_{10} is shown on the right of each graph. The black dashed line in Finokalia reflects the slope of OC to EC for the measurements during the NW transport from continental Greek sources (black empty circles, 31 August 2011).

Aerosol chemistry above Eastern Mediterranean during strong northern winds

E. Athanasopoulou et al.

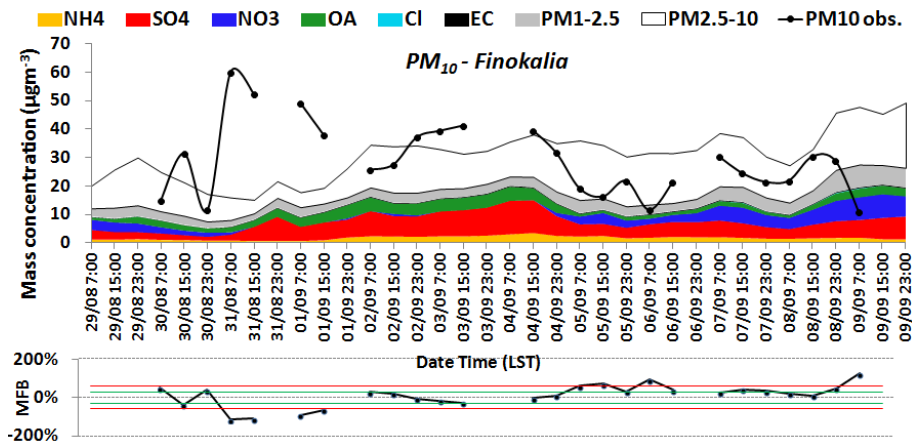


Figure 7. Comparison of PMCAMx (total shaded area) with 8 h measurements (black dotted line) of PM₁₀ concentrations ($\mu\text{g m}^{-3}$) over Finokalia during 31 August–9 September 2011. Color shaded areas represent the chemical composition of PM₁ predictions, the grey shaded area shows the PM_{1-2.5}, while the remaining (white shaded area) represents the coarse fraction (PM_{2.5-10}). The ability of the model to reproduce observations is estimated through the calculation of the Mean Fractional Biases (MFB), shown in the bottom. Model performance is average (good), when MFB values are within the red (green) lines (Boylan and Russell, 2006).