



Dust–air pollution
dynamics over the
Eastern
Mediterranean

M. Abdelkader et al.

This discussion paper is/has been under review for the journal Atmospheric Chemistry and Physics (ACP). Please refer to the corresponding final paper in ACP if available.

Dust–air pollution dynamics over the Eastern Mediterranean

M. Abdelkader¹, S. Metzger^{1,2}, M. Astitha³, Z. Levin^{1,4}, and J. Lelieveld^{1,2}

¹Energy, Environment and Water Research Center, The Cyprus Institute, Nicosia, 2121, Cyprus

²Air Chemistry Department, Max Planck Institute for Chemistry, Mainz, 55128, Germany

³Department of Civil Engineering, University of Connecticut, Storrs-Mansfield, 06269, USA

⁴Tel Aviv University, Tel Aviv, 39040, Israel

Received: 12 February 2015 – Accepted: 24 February 2015 – Published: 11 March 2015

Correspondence to: M. Abdelkader (m.abdelkader@cyi.ac.cy),
S. Metzger (s.metzger@cyi.ac.cy)

Published by Copernicus Publications on behalf of the European Geosciences Union.

Title Page

Abstract

Introduction

Conclusions

References

Tables

Figures



Back

Close

Full Screen / Esc

Printer-friendly Version

Interactive Discussion



Abstract

Interactions of desert dust and air pollution over the Eastern Mediterranean (EM) have been studied, focusing on two distinct dust transport events on 22 and 28 September 2011. The atmospheric chemistry–climate model EMAC has been used at about 50 km grid spacing, applying an online dust emission scheme and calcium as a proxy for dust reactivity. EMAC includes a detailed tropospheric chemistry mechanism, aerosol microphysics and thermodynamics schemes to describe dust “aging”. The model is evaluated using ground-based observations for aerosol concentrations and aerosol optical depth as well as satellite observations. Simulation results and back trajectory analysis show that the development of synoptic disturbances over the EM can enhance dust transport from the Sahara and Arabian deserts in frontal systems that also carry air pollution to the EM. The frontal systems are associated with precipitation that control the dust removal. Our results show the importance of chemical aging and deposition of the dust during transport. The relatively long travel periods of Saharan dust result in more sustained aging compared to Arabian dust. Sensitivity simulations indicate three times more rapid dust deposition of aged relative to pristine dust, which significantly decreases the dust lifetime and loading.

1 Introduction

1.1 Importance of atmospheric dust

The atmospheric dust cycle, a fundamental component of the Earth System, can strongly influence air quality and climate. Atmospheric dust causes a radiative forcing of climate by direct and indirect effects. Dust particles scatter solar shortwave radiation back to space, which can enhance the Earth’s albedo. Indirect effects result from dust particles acting as cloud condensation nuclei (CCN), which can affect the droplet number concentration and reflectivity of clouds, and either enhance (Yin et al.,

ACPD

15, 7493–7534, 2015

Dust–air pollution dynamics over the Eastern Mediterranean

M. Abdelkader et al.

Title Page

Abstract

Introduction

Conclusions

References

Tables

Figures



Back

Close

Full Screen / Esc

Printer-friendly Version

Interactive Discussion



2002) or suppress (Rosenfeld et al., 2001) precipitation formation depending on their mineralogy and solubility. Furthermore, pristine dust particles are the best natural ice nuclei (IN), especially over the Easter Mediterranean (EM) region (Ardon-Dryer and Levin, 2014). Moreover, dust particles provide a surface for heterogeneous chemical reactions, which affects dust–climate interactions (Dentener et al., 1996; Bauer et al., 2004; Mogili et al., 2006; Bauer et al., 2007; Astitha et al., 2010; Crowley et al., 2010, among others). Dust influences a wide range of atmospheric physical, chemical and biogeochemical processes, including the marine and terrestrial biosphere through the transport of nutrients like iron (Mahowald et al., 2009) and phosphorus (Nenes et al., 2011).

The impact of atmospheric dust on the Earth’s climate is controlled by the balance between the emissions and the removal of the dust from the atmosphere, which is altered by chemical and physical processes that occur during transport. This “aging” process poses one of the challenges in quantifying the direct and indirect radiative forcing of mineral dust. It is one of the central uncertainties in modeling the dust cycle in climate, atmospheric chemistry and Earth system models (Stocker et al., 2014) especially in view of dust removal by wet deposition (Schulz et al., 2012). Therefore, an accurate modeling of mineral dust emissions, transport, and chemistry is required to enhance our quantitative understanding of the global dust abundance, dust storm episodes and their impacts on climate, air quality and biogeochemical cycles.

1.2 Dust transport

The transport of Saharan dust in addition to that from the Middle East deserts are the main sources of atmospheric dust in the EM region (Pey et al., 2013), being a regular atmospheric phenomenon in this region (Ganor et al., 2010). Typically, the majority of dust outbreaks are related to steep surface pressure gradients between northern Africa and the Mediterranean (Dayan et al., 2008). Saharan dust is generally mobilized in Libya, Egypt and the Bodele Depression (Pey et al., 2013) during the local dry season from October to April (Goudie and Middleton, 2006) and then transported over the

Dust–air pollution dynamics over the Eastern Mediterranean

M. Abdelkader et al.

Title Page

Abstract

Introduction

Conclusions

References

Tables

Figures



Back

Close

Full Screen / Esc

Printer-friendly Version

Interactive Discussion



Dust–air pollution dynamics over the Eastern Mediterranean

M. Abdelkader et al.

[Title Page](#)[Abstract](#)[Introduction](#)[Conclusions](#)[References](#)[Tables](#)[Figures](#)[Back](#)[Close](#)[Full Screen / Esc](#)[Printer-friendly Version](#)[Interactive Discussion](#)

EM by Sharav cyclones (Ganor and Mamane, 1982; Moulin et al., 1998; Goudie and Middleton, 2006; Ganor et al., 2010) or Khamasin events (Ganor and Mamane, 1982). These cyclones are generated along the polar front and subtropical jet streams (Kallos et al., 2006) as a result of differential heating between relatively colder oceanic waters to the north and warmer land masses to the south (Goudie and Middleton, 2006). These synoptic conditions are usually associated with a cold front and are often accompanied by rain over the EM (Alpert and Ganor, 1993). In addition, the EM is affected by dust transport from the Negev desert, controlled by a range of synoptic systems, e.g., Cyprus Lows, Red Sea troughs, Persian troughs, anticyclones over the Levant and to the east of the region. The majority, i.e., about two thirds of the yearly dust events are caused by Cyprus lows (Dayan et al., 2008). Since Cyprus lows are often associated with precipitation, the residence time of dust particles in the atmosphere can be relatively short (approximately one day). Dayan et al. (1991, 2008) studied events where dust is transported from the Sahara, indicating that the average residence time is about four days before the dust is removed by rain. The combination of dust transport from the Sahara and Middle East deserts result in numerous and very intense dust episodes over the EM and Cyprus (Pey et al., 2013). In general, the transport of Saharan dust usually extends into relatively deep atmospheric layers and is characterized by a regional extension over the Mediterranean Basin. Typically, dust is transported over the EM at an elevation between 1.5 up to 6.5 km above sea level and commonly at about 2.5 km (Levin et al., 2005; Papayannis et al., 2005; Ganor et al., 2010; Mamouri et al., 2013). Since Saharan dust events last longer and have higher mass loadings compared to the Negev and Middle East desert dust events, they may have stronger impacts on the EM region (Dayan et al., 1991), however, there are large uncertainties. Especially the interaction between dust and anthropogenic pollution from eastern and western Europe (Levin et al., 2005) in addition to intercontinental air pollution transports from North America and Asia (Lelieveld et al., 2002) deserves attention, being the focus of this study.

1.3 Dust–air pollution interactions

During transport dust undergoes chemical aging as a result of the condensation of low or semi-volatile compounds on the particle surface. The chemical aging of the dust particles can affect water uptake, which in turn controls the gas-liquid-solid partitioning of various gaseous compounds, including sulfuric, nitric and hydrochloric acid. Previous studies (Levin et al., 1996) have focused on the dust coating by sulfate and the resulting effect on rain formation in the EM. More recent modeling studies addressed the relative importance of mineral cations and organics on the gas-aerosol partitioning of reactive nitrogen compounds, since cations such as calcium largely determine the neutralization level of sulfate, nitrate, chloride and organic compounds (Trebs et al., 2005; Metzger et al., 2006). In addition, various other heterogeneous reactions occur on the dry surface of dust particles that may depend on their mineralogy and alkalinity. Soluble compounds eventually alter the dust chemical composition, shape and size distribution and the atmospheric lifetime. Chemical aging of dust particles may further control the activation of CCN, reduce the IN efficiency (Reitz et al., 2011), or affect the scavenging efficiency (Manktelow et al., 2010). Typically, the atmospheric lifetime of dust particles depends on (1) dry removal, which mainly depends on the ambient (wet) particle size and (2) on wet deposition. The latter includes in- and below cloud scavenging, and depends on the chemical composition of the dust surface, which can include a large fraction of water. The fraction of coated dust surface, however, critically depends on the aging mechanism. Changes in composition, size and shape of the dust particles due to the various aging processes affect the associated radiative forcing. Scattering and adsorption of sunlight is important for the influence of dust on the Earth's climate. However, to what extent chemical aging of mineral dust is important for the climate feedback mechanisms is largely unknown (Koop and Mahowald, 2013).

1.4 Dust–air pollution modeling – this study

This work presents a modelling case study based on the atmospheric chemistry – climate model EMAC. The model setup includes a detailed treatment of dust aging, which is based on the condensation of different soluble compounds and the associated water uptake of various atmospheric particles and a chemical speciation of mineral dust and sea salt compounds, which are calculated online. Dry and wet dust removal are based on the ambient particle radius and pH dependent scavenging processes. The EMAC set-up is described in Sect. 2 and evaluated in Sect. 3.1 based on various long-term observations. In Sect. 3.2 we focus on the dynamics of two distinct events where dust-air pollution interactions over the EM play a role. Sect. 3.3 analyzes the dust outflow dynamics of the case studies, while Sects. 3.4 and 3.5 investigate the effects of dust aging. We conclude with Sect. 4.

2 Model description

The ECHAM5/MESSy2 atmospheric chemistry (EMAC) model is used to study dust-air pollution dynamics over the EM. EMAC is a numerical chemistry and climate simulation system that is based on sub-models that describe tropospheric and middle atmosphere processes and their interactions with oceans, land and human influences (Joeckel et al., 2010). This Modular Earth Submodel System (MESSy) links multi-institutional computer codes. The core atmospheric model is the 5th generation European Centre Hamburg Atmospheric general circulation Model (ECHAM5, Roeckner et al. (2006)). For the present study we applied EMAC (ECHAM5 version 5.3.02, MESSy version 2.41) with the submodels AEROPT, CLOUD, CONVECT, CVTRANS, DDEP, GMXE, JVAL, LNOX, MECCA, OFFEMIS, ONEMIS, RAD4ALL, SCAV, SEDI, TNUDGE, TROPOP (<http://www.messy-interface.org/>). For the global anthropogenic emissions we follow Pozzer et al. (2012) and de Meij et al. (2012) and use the EDGARv4 inventory, which has been prepared in the framework of the CIRCE project

Title Page

Abstract

Introduction

Conclusions

References

Tables

Figures



Back

Close

Full Screen / Esc

Printer-friendly Version

Interactive Discussion



**Dust–air pollution
dynamics over the
Eastern
Mediterranean**

M. Abdelkader et al.

Title Page

Abstract

Introduction

Conclusions

References

Tables

Figures

◀

▶

◀

▶

Back

Close

Full Screen / Esc

Printer-friendly Version

Interactive Discussion



with a focus on the Mediterranean region (<http://www.circeproject.eu>). The emission inventory includes greenhouse gases, NO_x , CO , NMVOCs, NH_3 , SO_2 , black carbon (BC) and organic carbon (OC) from fossil fuel and biofuel use. The emissions are geographically distributed according to the EDGAR4 2009 database which has a monthly resolution. The monthly large-scale biomass burning emissions of OC, BC and SO_2 , are based on GFED version 3 (Global Fire Emissions Database) (van der Werf et al., 2010).

The aerosol set up has been described in detail by Pringle et al. (2010); Tost et al. (2010); de Meij et al. (2012); Pozzer et al. (2012). The set up is based on the aerosol microphysics sub-model GMXe, described in Pringle et al. (2010), which is coupled to the gas–aerosol partitioning scheme ISORROPIA-II (Fountoukis and Nenes, 2007). GMXe describes the aerosol size distribution in seven log-normal modes, i.e., four soluble (nucleation, aitken, accumulation and coarse) and three insoluble modes (aitken, accumulation and coarse). Mineral dust emissions are calculated online each model time step and emitted in two insoluble modes (accumulation and coarse) following Astitha et al. (2012). Insoluble dust particles are transferred to the soluble modes upon chemical aging within GMXe. The aging depends on the available condensable compounds calculated within the chemistry scheme (Sander et al., 2005) and partition into the aerosol phase by the aerosol thermodynamic scheme (Fountoukis and Nenes, 2007).

For proper representation of chemical aging, we use a comprehensive chemistry scheme that allows the production of different aerosol precursor gases, i.e., the major inorganic acids (H_2SO_4 , HNO_3 , HCl) which are all subsequently considered for the chemical aging of dust and other primary aerosol particles (i.e., BC and OC). The condensation of the acids yields anions, i.e., sulfates (SO_4^{2-}), nitrates (NO_3^-), and chlorides (Cl^-), respectively, while the additional condensation of ammonia (NH_3) yields a semi-volatile cation (NH_4^+) and can neutralize the anions leading to hygroscopic salt compounds that coat (age) the dust particles. This transformation changes the solubility of the originally insoluble pristine particles, which in turn alters the aerosol size distribution. The latter is a key parameter and important for aerosol-radiation feedbacks and

aerosol in-cloud processing (nucleation scavenging) and below cloud processing (impaction scavenging). The scavenging processes applied in our study are based on Tost et al. (2006) and include a detailed scavenging chemistry that fully couples the aerosol and gas phase chemistry with liquid cloud water and ice crystals.

To additionally account for the major mineral cations, we have extended our EMAC version to include a simple chemical speciation of the natural aerosol emission fluxes. We consider the calcium cation (Ca^{2+}) as a chemically reactive tracer on the dust, being emitted in the insoluble accumulation and insoluble coarse modes as a fraction of the dust emission flux (25 and 5% for the accumulation and coarse mode, respectively). Additionally, we consider potassium (K^+) as a tracer of biomass burning emissions, being emitted here only in the insoluble aitenken mode. We apply chemical speciation for the bulk sea salt emission flux, i.e., we consider the cations sodium (Na^+), potassium (K^+), magnesium (Mg^{2+}), calcium (Ca^{2+}) and the anions chlorine (Cl^-) and sulfate (SO_4^{2-}). This chemical speciation has been determined such that the model concentrations best match the available EMEP and CASTNET measurement data for the period 2000–2013 (to be published separately). For the importance of mineral cations in gas–aerosol partitioning modelling studies with a focus on the EM we refer to Metzger et al. (2006).

To test the relevance of higher resolution simulations for an optimal dust representation in climate models, as emphasized by Gleser et al. (2012), we apply in this study EMAC at the spherical truncations T106 and T255, which correspond to quadratic Gaussian grids in latitude and longitude of approximately $1^\circ \times 1^\circ$ and $0.5^\circ \times 0.5^\circ$ (approximately 110 and 50 km), respectively, with 31 vertical hybrid pressure levels up to 10 hPa. Our model simulation period covers the years 2010 and 2011, in which we focus on two moderate dust events in late September 2011, since at the end of the summer dry season the air pollution build-up reaches a maximum in the EM. The EMAC meteorology is nudged towards ERA-Interim reanalysis data by a newtonian relaxation data assimilation method to best represent the actual meteorological conditions (Roeckner et al., 2006). The AEROPT submodel is used to calculate aerosol

Dust–air pollution dynamics over the Eastern Mediterranean

M. Abdelkader et al.

Title Page

Abstract

Introduction

Conclusions

References

Tables

Figures



Back

Close

Full Screen / Esc

Printer-friendly Version

Interactive Discussion



Dust–air pollution dynamics over the Eastern Mediterranean

M. Abdelkader et al.

Title Page

Abstract

Introduction

Conclusions

References

Tables

Figures

◀

▶

◀

▶

Back

Close

Full Screen / Esc

Printer-friendly Version

Interactive Discussion



optical depth (AOD), based on internal mixture assumption of different aerosols, using the aerosol information from the GMXe aerosol submodel. The modeled AOD at 550nm wavelength is compared to the measured AOD from the sun photometer instruments in the AERosol ROBotic NETwork (AERONET) (<http://aeronet.gsfc.nasa.gov>) over the entire period of the simulation. AERONET (Holben et al., 1998) provides the AOD at different wavelengths (340, 380, 440, 500, 670, 870, 940, 1020 nm). Only Level 2.0 direct sun algorithm wavelengths (cloud free conditions) is used in this study to calculate AOD at 550 nm for direct comparison with the modeled AOD following de Meij and Lelieveld (2011) (Eqs. 1 and 2). In order to increase the number of the calculated 550 nm data points, we calculate the 550 nm AOD from different wavelengths starting from closest to 550 nm depending on the availability of the AERONET data. For instance, the AOD at 500 and 670 nm wavelengths are used to interpolate to 550 nm. We repeat this procedure for all available wavelengths at each station. For comparison of the time history, the calculated 550 nm AOD from AERONET is averaged over the model output frequency (5 h) for a time consistent comparison. Additionally, skill scores are used to describe the model performance on a single station scale following Taylor (2001) – Eq. 4. The skill score accounts for the model bias and variance and helps evaluating the model performance.

3 Dust–air pollution interaction

Two distinct dust transport events are the basis of our study of dust–air pollution interactions over the EM. The selected cases represent moderate dust outflow accompanied by air pollution transport from Europe in addition to the local sources of air pollution in the EM. The prevailing synoptic conditions of the EM, schematically shown in Fig. 1, are characterized by a Cyprus low and main transport paths of dust and air pollution to the EM. During both dust events polluted air masses from central and southern Europe are carried into the low pressure system. Dust event outflow-1 originates from the Sahara and is transported over the EM as a result of the high pressure system over the

Sahara and the low pressure system over Cyprus. The latter also enhances the transport of air pollution from Europe. Both air pollution and dust are transported over the EM in a frontal system, which is typically associated with precipitation events (Alpert and Ganor, 1993) – shown in the low pressure area (Fig. 1). During the second event strong winds and a high pressure system over the Arabian Peninsula resulted in dust transport from the Negev, Sinai and Arabian deserts to the EM (outflow-2). Several measurement stations, used in the study to evaluate the model results, are included in the map (Fig. 1).

3.1 Long-term model evaluation

Understanding the interaction between dust and air pollution over the EM requires a realistic representation of aerosols and their precursor gases (e.g., strong acids) in the EMAC model. To evaluate the model set-up of our global simulations, we first consider a two year simulation at reduced resolution (T106L31, about 110 km grid spacing).

Figure 2 shows the calculated mean aerosol mass fraction of the fine and the coarse mode for the EMEP station CUT-TEPAK in Cyprus. Sulfate (46%) and ammonium (17%) dominate the fine mode, while (bulk) sea salt (44%) and dust (37%) dominate the coarse mode. Although these model results are shown for Cyprus, they also resemble the aerosol mass fractions obtained during the MINOS campaign (Metzger et al., 2006), which was carried out over Crete in the summer 2001 (Lelieveld et al., 2002).

Figure 3 shows monthly average time series of modeled and observed aerosol properties: sulfate, calcium, total (dry) particulate matter (PM_{2.5}) at the EMEP station Aya Marina and the AOD at the AERONET station CUT-TEPAK. The linear distance between the two stations is about 40 km and both are located in one model grid box at T106 resolution. Generally, the EMAC results compare well with these observations. The model captures the seasonal variability of sulfate, although the highest concentration during summer and early autumn are somewhat too low. EMAC seems to underestimate the high production yields of sulfates during summer, which mainly results

Dust–air pollution dynamics over the Eastern Mediterranean

M. Abdelkader et al.

Title Page

Abstract

Introduction

Conclusions

References

Tables

Figures



Back

Close

Full Screen / Esc

Printer-friendly Version

Interactive Discussion



Dust–air pollution dynamics over the Eastern Mediterranean

M. Abdelkader et al.

Title Page

Abstract

Introduction

Conclusions

References

Tables

Figures



Back

Close

Full Screen / Esc

Printer-friendly Version

Interactive Discussion



from the oxidation of the precursor gas SO_2 , enhanced by the prevailing subsidence of air over the EM region. For calcium, the model captures the concentration peaks, which correspond to the dust outflow into the Mediterranean from both the Saharan and Middle East deserts during the spring season. Capturing the peak concentrations of calcium shows the capability of EMAC to simulate the dust outflow throughout the year. Furthermore, simulated total PM also shows good agreement with the observed concentrations and the seasonality. However, the model captures the seasonality of PM in the year 2011 better than in 2010, partly related to the model spin up time in this year. The PM is the total (dry) mass of all aerosols considered in this set up, and is explicitly calculated from aerosol microphysics and thermodynamics as described in Pringle et al. (2010). These results are supported by the AOD comparison, corroborating that EMAC captures the observations. Considering that the PM and AOD are two independent observations, in addition to the independent species sulfate and calcium, these results confirm that this model configuration is capable of simulating the major aspects of atmospheric composition, needed to study the interaction between dust and air pollution.

3.2 EMAC case study

An episode of low visibility occurred over Cyprus in late September, 2011 as a result of increased atmospheric dust concentrations. Two dust events were reported, the first event started on 20 September and originated in the Sahara while the dust was removed mainly by precipitation over Cyprus. The second event started on 26 September from the Middle East deserts and the dust was transported over the EM and removed mainly by dry deposition. The two episodes are investigated using the high resolution model version (T225L31, about 50 km grid spacing), using the same EMAC set-up mentioned above.

(CUT-TEPAK). Generally, stations with aged dust particles show reduced agreement with observation. In addition to the aerosol dust loading (number and mass concentrations), the relative humidity and aerosol composition (e.g., as a function of air pollution) become important, as both determine the aerosol water uptake, which in turn affects the AOD.

3.3 Dust outflow characteristics

The true color image from the Moderate Resolution Imaging Spectro-radiometer (MODIS)-Aqua instrument, Fig. 6, shows both dust events over the EM. Figure 7 shows the daily average, vertically integrated dust load over the EM region for both dust events and HYSPLIT (<http://ready.arl.noaa.gov/>) backward trajectories, which show the pathways of the air masses that reached the CUT-TEPAK station on the 22 and 28 September 2011. The HYSPLIT trajectories are driven by NCEP (National Center for Environmental Prediction) reanalysis data that appear to be consistent with our model calculations. The streamlines and the velocity vectors refer to an elevation of about 2.5 km (700 hPa) and show the maximum dust concentration during atmospheric transport. In the dust outflow-1 event (Fig. 7, upper panels) the low pressure system (not shown here) over Cyprus resulted in cyclonic activity that enhanced dust transport from the Sahara and air pollution and moisture transport from central and southern Europe. The cyclonic activity of the 21 September then advected eastwards. The backward trajectories show that air masses reached the CUT-TEPAK station at different times from different sources; air masses carrying dust from Egypt and from Tunisia. The air masses from Egypt started at a lower elevation and were then lifted during transport across the Mediterranean, while the dust from Tunisia was transported over a long distance and at higher elevation. Polluted air masses, originating in continental Europe, reached CUT-TEPAK somewhat later in time. Typically, different air masses from different sources converged over CUT-TEPAK at 1.5 km altitude. Interestingly, dust from the Sahara is mixed with air pollution from Europe over Cyprus and the EM region. During the dust outflow-2 event (Fig. 7, middle panels) dust was emitted as a result of the strong sur-

Dust–air pollution dynamics over the Eastern Mediterranean

M. Abdelkader et al.

Title Page

Abstract

Introduction

Conclusions

References

Tables

Figures



Back

Close

Full Screen / Esc

Printer-friendly Version

Interactive Discussion



face winds (not shown) in the Negev and Arabian deserts and then transported to the EM according to the pressure gradients in the following days. This is confirmed by the backward trajectories which show the dust pathways. The dust reached Cyprus with the highest concentration on the 28 September. By the 29 September the dust was largely removed from the atmosphere. Typically, Europe is a main source of air pollution that is transported to the EM, usually at higher concentrations than in transport from the Middle East (Lelieveld et al., 2002). As a result, the Saharan dust outflow is more strongly mixed with, and subsequently chemically aged by European air pollution, compared to the Arabian dust outflow.

3.3.1 Dynamical and vertical structure (EMAC results)

In the outflow-1 class of events, dust is typically transported from the Sahara to the Mediterranean and then to the EM by Sharav cyclones (Goudie and Middleton, 2006; Ganor et al., 2010), associated with a cold front and often accompanied by rain (Alpert and Ganor, 1993). The model indeed simulates such a frontal system that carries the dust from the Sahara to the EM region (Fig. 8). Velocity vectors are shown at the elevation where the maximum dust concentrations occur during transport. The vertical cross sections at the latitude of the CUT-TEPAK station show the vertical extend of the dust outflow with a maximum concentration at 2.5 km a.s.l. (above sea level). As shown in the figure, the dust moved eastward at this elevation. The model simulation further shows that the dust is efficiently removed by the precipitation event on 22 September between 06:00 and 15:00 LT, which will be described in more detail below. For the dust outflow-2 event, Fig. 9 shows time series with enhanced dust loading over the EM region. The main dust source is located in the Negev and northern Saudi Arabian deserts, with additional dust originating in the eastern Sinai in Egypt. As a result of the strong surface winds during this period, dust was emitted from this area and transferred to the EM at about 2.5 km altitude a.s.l. in the following days. As shown in Fig. 9, the dust reaches Cyprus with the highest concentration on the 28 September. The cross sections show that the dust is lifted up as high as 6 km altitude with a mass concen-

Dust–air pollution dynamics over the Eastern Mediterranean

M. Abdelkader et al.

Title Page

Abstract

Introduction

Conclusions

References

Tables

Figures



Back

Close

Full Screen / Esc

Printer-friendly Version

Interactive Discussion



tration of $1 \mu\text{g m}^{-3}$, compared to the maximum height of 2.5 km (same concentration level) in the outflow-1 event. This could result from the prevailing subsidence over the Mediterranean, which prevents the Saharan dust from penetrating to higher altitudes. In contrast, the outflow-2 event is accompanied with strong convective activity over the Middle East deserts, which lifted the dust to higher altitudes. The cross sections in Fig. 9 show that the dust transport from the Middle East occurred at higher elevation than that from the Sahara.

3.3.2 EMAC vs. CALIPSO retrieved vertical structure

To study the vertical structure of the dust outflow-1 event, the Cloud-Aerosol Lidar and Infrared Pathfinder Satellite Observation (CALIPSO) Level 2 version 3.01, 5 km aerosol profile (APro-Prov) product is used. Unfortunately, no CALIPSO data are available for the outflow-2 case. CALIPSO is a space-borne LIDAR instrument that provides 2-D vertical distributions of atmospheric aerosols at 5 km horizontal resolution and 30–180 m vertical resolution. CALIPSO data retrievals discriminate aerosol layers from clouds and categorizes the particles according to six subtypes (dust, marine, smoke, polluted dust, polluted continental and clean continental), while the observations show the best agreement with AERONET products for dust dominated region (Schuster et al., 2012). Regardless of the CALIPSO uncertainties in retrieving different dust cases, the correlation coefficients are with about 0.58 higher compared to the other aerosol types (Schuster et al., 2012). Therefore, the CALIPSO data is particularly useful to study the vertical distribution and transport of atmospheric dust (Liu et al., 2008; Uno et al., 2011; Su and Toon, 2011; Johnson et al., 2012). The EMAC calculated dust concentrations and the corresponding extinction are interpolated in space and time to the CALIPSO tracks.

Figure 10 shows two CALIPSO tracks, following the satellite overpass time from left to right. The overpass time is shown in the track name in the upper left corner of each figure. Also included in the upper panels are the scatter plot comparisons between modeled and observed dust extinction, colored by the height of each observation

Dust–air pollution dynamics over the Eastern Mediterranean

M. Abdelkader et al.

Title Page

Abstract

Introduction

Conclusions

References

Tables

Figures

◀

▶

◀

▶

Back

Close

Full Screen / Esc

Printer-friendly Version

Interactive Discussion



Dust–air pollution dynamics over the Eastern Mediterranean

M. Abdelkader et al.

Title Page

Abstract

Introduction

Conclusions

References

Tables

Figures

◀

▶

◀

▶

Back

Close

Full Screen / Esc

Printer-friendly Version

Interactive Discussion

point. In the main figures, the solid black contours represent the modeled dust extinction and the colored areas represent the CALIPSO extinction observations. The upper panels show the extinction of dust only from both model and CALIPSO, the lower panels include the extinction of all aerosols excluding dust (brown-dotted line), the dust extinction (black line) and the CALIPSO aerosol subtype and cloud classifications. Referring to the upper panel of Fig. 10, the model captures the spatial variability, i.e., the horizontal and vertical extents of the dust plume in both tracks. In particular the height of the dust plume is captured well by the model, which is a critical parameter for determining the dust lifetime in the atmosphere (Levin et al., 2005). The scatter plot shows that the model somewhat underestimates the dust extinction at higher altitudes and overestimates it at lower altitudes. The best agreement is found at the peak concentration of the dust plume, between 2000–3000 m.

For this case, both the model and the CALIPSO results show that dust was removed during transport from the atmosphere by wet and dry deposition, since the height of the dust plume decreases from about 4000 m over the central Mediterranean on 21 September to about 2000 m over the EM on 22 September. This is also confirmed by the independent LIDAR ground observations at CUT-TEPAK station (Mamouri et al., 2013). Concerning the aging of the dust particles during transport, the model and CALIPSO results indicate less interaction between aerosol types and dust aging over North Africa compared to the Mediterranean, where usually stronger mixing between dust and air pollution occurs. This is indicated by many studies (Levin et al., 1996, 2005; Lelieveld et al., 2002). Air pollution in the EM consists of aerosol precursor gases (such as sulfuric, hydrochloric and nitric acid, ammonia) which can directly condense or form semi-volatile compounds on the dust surface (Metzger et al., 2006). The degree of dust aging is indicated by the differences between the black and brown-dotted contour lines, and by the CALIPSO classifications. Over the Mediterranean, from latitudes higher than 30° N, aging of dust is observed from both model (black and brown-dotted contours) and CALIPSO classifications (which subsequently shows smoke, polluted dust, polluted continental). The CALIPSO classification “polluted dust” may cover cases

where dust is mixed with other aerosols, but not necessarily chemically aged. With the current CALIPSO version 3.01 algorithm, it is not possible to distinguish between dust mixing and dust aging by air pollution. In such cases, polluted dust may represent aged dust. The comparison with our model results can help distinguish between the types of aerosol extinction.

3.3.3 Dust removal

To evaluate the dust scavenging and precipitation over the EM we use the Tropical Rainfall Measuring Mission (TRMM) level-3 (collection 3B42) 3 hourly product (<http://pmm.nasa.gov/TRMM>). Figure 11 shows the time evolution of the dust removal by wet and dry deposition mechanisms as well as the total dust removal at the surface. The blue contours show the TRMM precipitation observations at the surface with the modeled dust removed by wet scavenging overlaid. As shown in the figure, starting from 20 September, the dust was mainly removed by scavenging associated with strong precipitation. The precipitation events started on 20 September from 20 up to 40° E. The figure shows that the calculated dust wet scavenging largely coincides with the observed precipitation; however the model may overestimate wet scavenging of the dust. Dry removal was insignificant for the dust outflow-1 event. On 23 September the dust concentration decreased over the area from 35 to 50° E as a result of dilution during the dissolution of the low pressure system developed over the region. In the outflow-2 event the dust was largely removed from 26 September onward, which explains the increase of the dust concentration at the surface due to particle sedimentation from elevations above 2 km. The efficiency of the dust wet scavenging depends strongly on the aged dust fraction; by increasing the soluble dust fraction the dust wet scavenging increases, since aged dust particles can be more efficiently taken up by cloud droplets (Teller et al., 2012). This is captured by our model set up which employs the comprehensive scavenging mechanism of Tost et al. (2006).

Dust–air pollution dynamics over the Eastern Mediterranean

M. Abdelkader et al.

Title Page

Abstract

Introduction

Conclusions

References

Tables

Figures



Back

Close

Full Screen / Esc

Printer-friendly Version

Interactive Discussion



3.4 Dust removal sensitivity to dust aging

During the outflow-1 event the dust is efficiently removed by precipitation over the EM as a result of mixing of African dust with air pollution from Europe. This results in reduction of the AOD from 0.5 to 0.05 at the ATHENS-NOA station (Fig. 4). To study the impact of dust aging on the removal efficiency, it was switched off in a sensitivity simulation for which the condensation of soluble compounds on dust particles has been excluded. This results in dust wet removal by impaction scavenging only, while nucleation scavenging is not considered (Tost et al., 2006). Figure 12 shows the time evolution of dust wet removal for the aged and non-aged (hence pristine) dust cases at cross-sections passing over two different stations, ATHENS-NOA and CUT-TEPAK. The TRMM precipitation observations are overlaid. The right panels of the figures show the differences between the wet dust removal at the surface for both cases. The TRMM precipitation and dust removal in Fig. 12 differs from Fig. 11 as a result of different model resolutions (T106 and T255, respectively). The differences in the TRMM precipitation between Figs. 11 and 12 results from regriding of the TRMM precipitation (25 km resolution) to the model resolution (50 and 110 km). The dust removal by the higher model resolution, Fig. 11, resolves the observations better in space and time (note the slightly different time axis to focus on the dust outflow-1 event).

Figure 12 shows that the dust wet removal is simulated realistically in space and time at both stations, compared to the TRMM observations. The aged and non-aged cases show significant difference in the dust wet removal. Obviously, an additional amount of the dust is removed due to aging processes (EMAC results) as a result of mixing with air pollution from Europe. The average difference in the wet dust removal is 10 mg m^{-2} at ATHENS-NOA and twice as much dust is removed in the case of aging. At CUT-TEPAK, the dust concentration in the atmosphere is lower due to removal processes during transport, and also because of less precipitation compared to the TRMM observations at ATHENS-NOA. This results in stronger dust wet removal at ATHENS-NOA than at CUT-TEPAK. Figure 13 shows the total time integral of the dust removal for

Dust–air pollution dynamics over the Eastern Mediterranean

M. Abdelkader et al.

Title Page

Abstract

Introduction

Conclusions

References

Tables

Figures

◀

▶

◀

▶

Back

Close

Full Screen / Esc

Printer-friendly Version

Interactive Discussion



CUT-TEPAK and ATHENS-NOA as shown in Fig. 12. The total dust removal for the case of aging (labeled “EMAC”) is generally higher than by switching off the aging (labeled “NoAging”). This effect is more pronounced for the wet removal than for the dry deposition. Dry removal is enhanced in the case of aging due to the condensation of additional soluble compounds on the originally insoluble dust particles, which increases their size and weight and shifts them to the soluble mode. This inter-modal shift results in higher wet removal by the subsequent nucleation scavenging. In EMAC, the latter acts on dust particles which are only in the soluble mode and which are, if present, by definition aged (in our set-up). In contrast to the dry deposition, the ratios between the aging and non-aging cases are much higher for ATHENS-NOA than for CUT-TEPAK, which is mainly a result of the different dust loadings. As a result, the difference between the aged and non-aged is less significant at CUT-TEPAK compared to ATHENS-NOA. This suggests that during the transport from Africa to the EM region, aging largely determines the dust and air pollution lifetime over the EM.

3.5 Aged Dust Proxy (ADP)

To identify the dust-air pollution interactions, back trajectories of various model aerosol concentrations have been sampled along HYSPLIT back trajectories for both dust outflow cases, i.e., sulfuric, nitric and hydrochloric acid, insoluble coarse mode dust (DU_{ci}) as shown in Fig. 14. For the dust outflow-1 event four trajectories are calculated (trajectory Traj-1 to Traj-4), which represent the air masses arriving from the Sahara and Europe. For the dust outflow-2 event air masses originated over the Negev and Arabian deserts, as shown by trajectories Traj-5 to Traj-8. Different colors refer to the concentrations, while the marker types refer to different trajectories. Additionally shown is the ratio between the coarse mode soluble (DU_{cs}) and insoluble (DU_{ci}) dust mass fraction, which can be regarded as an aged dust proxy (ADP). The ADP is introduced to illustrate the aging mechanism in EMAC. In our EMAC aerosol set up, dust is originally emitted only in the insoluble accumulation (DU_{ai}) and coarse mode (DU_{ci}). Upon aging, which requires the condensation of strong acids, the aged dust

Dust–air pollution dynamics over the Eastern Mediterranean

M. Abdelkader et al.

Title Page

Abstract

Introduction

Conclusions

References

Tables

Figures



Back

Close

Full Screen / Esc

Printer-friendly Version

Interactive Discussion

fraction is transferred to the corresponding soluble mode, e.g., DU_{ai} to DU_{as} and DU_{ci} to DU_{cs}, whereby DU_{as} can further grow into DU_{cs}, as a result of aerosol hygroscopic growth or coagulation (Pringle et al., 2010). Thus, a low ADP indicates freshly emitted dust which is not aged, while high ADP values indicate aged dust. For very high ADP values, dust has been subject to long-range transport with significant aging, since practically all insoluble dust has been transferred into the soluble mode. This is the case north and west of Cyprus, where dust becomes strongly polluted during both dust events.

The dust concentration shows an increasing tendency along the trajectories Traj-1 and Traj-2 as they reach Cyprus. This results from the actual dust supply from the dust emission sources along Traj-2, which originates in Libya. Trajectories Traj-3 and Traj-4, which originate in Europe, show very low dust concentrations, due to the absence of dust emission sources in southern Europe (in EMAC). However, the trajectories of sulfuric and nitric acid show instead an increasing tendency along Traj-3 and Traj-4. The low pressure system over Cyprus during the 2nd dust event enhanced the transport of different aerosols and gases to the EM. The relatively low wind speed within the low pressure system, shown in Fig. 9, increased the residence time of pollution and dust, and allowed extended mixing and efficient dust aging. As a result, dust particles have been successively coated by different soluble compounds, which increases the ADP over time as the air masses approach Cyprus from the west (Traj-1 to Traj-4). Note that the ADP is higher for Traj-3 and Traj-4 due to the lower insoluble dust (DU_{ci}) concentration along these trajectories compared to Traj-1 and Traj-2. For the dust outflow-2 event, the ADP is much lower compared to the outflow-1 event since the dust does not encounter much air pollution from Europe and thus less effectively ages. Interestingly, as long as the sulfuric and nitric acid concentrations increase along Traj-5 to Traj-8 over the Mediterranean, the ADP increases from about 1 to 13. This underscores the strong interaction between the dust and air pollution over the EM due to the relatively high air pollution concentrations.

4 Conclusions

Interactions of dust and air pollution over the EM have been studied, focusing on two distinct dust transport events on 22 and 28 September 2011, using the atmospheric chemistry – climate model EMAC at relatively high spectral resolution (T255L31, about 50 km grid spacing). At lower resolution (T106L31, about 110 km grid spacing), in an extended 2 year simulation (2010–2011), the model performs reasonably well in simulating the PM and AOD over the EM, while at high resolution the model results closely agree with the observations. Concentrations of calcium cations, used as a proxy for dust reactivity, show good agreement with ground-based observations. The model captures the AOD at different AERONET stations in the region, however, with some underestimation at the CUT-TEPAK station in Cyprus, coincident with relatively strong aging and efficient removal of the dust.

Both, simulation results and backward trajectory analysis show that the development of a synoptic low pressure system over the EM enhances the dust transport from the Sahara along the cold front, which also carries dust from the Negev and Arabian deserts as well as air pollution to the EM. The model reproduces the frontal system and the associated precipitation. Our results show that the Saharan dust was mainly removed by precipitation, which is captured well by the model, consistent with observations. Generally, EMAC captures the dust transport in both cases, and the vertical structure of dust layers is reproduced accurately by the model, confirmed by CALISPO satellite observations. Also the mixing of dust with air pollution over the EM is captured well by the model compared to the CALISPO observations and aerosol classifications. Both, EMAC and CALISPO show that the mixing between dust and air pollution can be very efficient over the Mediterranean.

The model results indicate that the dust is rapidly aged, especially from the Sahara and to a lesser degree from the Negev and Arabian deserts. The level of aging depends mainly on the mixing time between dust and air pollution and concentrations of the latter. The longer travel period for Saharan dust therefore results in more efficient

ACPD

15, 7493–7534, 2015

Dust–air pollution dynamics over the Eastern Mediterranean

M. Abdelkader et al.

Title Page

Abstract

Introduction

Conclusions

References

Tables

Figures



Back

Close

Full Screen / Esc

Printer-friendly Version

Interactive Discussion



aging compared to Arabian dust arriving in the EM, illustrated by a newly introduced aged dust proxy. Based on a sensitivity study we find that the mixing of air pollution and dust enhances nucleation scavenging, resulting in three times more rapid dust scavenging compared to non-aged (pristine) dust, while uptake of pollution and consequent hygroscopic growth also enhances sedimentation and dry deposition. Our study suggests that the aging of dust over the EM can significantly decrease the dust lifetime and atmospheric loading.

Acknowledgements. All simulations in this study were carried out on the Cy-Tera Cluster. The Project Cy-Tera (NEA-ΥΠΟΔΟΜΗ/ΣΤΡΑΤΗ/0308/31) is co-financed by the European Regional Development Fund and the Republic of Cyprus through the Research Promotion Foundation. The research leading to these results has received funding from the European Research Council under the European Union's Seventh Framework Program (FP7/2007-2013) / ERC grant agreement no 226144. The authors thank the NASA AERONET team for providing the AERONET data used in this study and the team of Mr. Savvas Kleathous, Cyprus Ministry of Labour and Social Insurance, for providing the sulfate, calcium and PM observations at Agia Marina station (Cyprus).

References

- Alpert, P. and Ganor, E.: A jet stream associated heavy dust storm in the western Mediterranean, *J. Geophys. Res.*, 98, 7339, doi:10.1029/92JD01642, 1993. 7496, 7502, 7506
- Ardon-Dryer, K. and Levin, Z.: Ground-based measurements of immersion freezing in the eastern Mediterranean, *Atmos. Chem. Phys.*, 14, 5217–5231, doi:10.5194/acp-14-5217-2014, 2014. 7495
- Astitha, M., Kallos, G., Spyrou, C., O'Hirok, W., Lelieveld, J., and Denier van der Gon, H. A. C.: Modelling the chemically aged and mixed aerosols over the eastern central Atlantic Ocean — potential impacts, *Atmos. Chem. Phys.*, 10, 5797–5822, doi:10.5194/acp-10-5797-2010, 2010. 7495
- Astitha, M., Lelieveld, J., Abdel Kader, M., Pozzer, A., and de Meij, A.: Parameterization of dust emissions in the global atmospheric chemistry-climate model EMAC: impact of nudg-

Dust–air pollution dynamics over the Eastern Mediterranean

M. Abdelkader et al.

Title Page

Abstract

Introduction

Conclusions

References

Tables

Figures



Back

Close

Full Screen / Esc

Printer-friendly Version

Interactive Discussion



**Dust–air pollution
dynamics over the
Eastern
Mediterranean**

M. Abdelkader et al.

Title Page

Abstract

Introduction

Conclusions

References

Tables

Figures



Back

Close

Full Screen / Esc

Printer-friendly Version

Interactive Discussion



ing and soil properties, *Atmos. Chem. Phys.*, 12, 11057–11083, doi:10.5194/acp-12-11057-2012, 2012. 7499

Bauer, S. E., Balkanski, Y., Schulz, M., Hauglustaine, D. A., and Dentener, F.: Global modeling of heterogeneous chemistry on mineral aerosol surfaces: influence on tropospheric ozone chemistry and comparison to observations, *J. Geophys. Res.-Atmos.*, 109, D02304, doi:10.1029/2003JD003868, 2004. 7495

Bauer, S. E., Mishchenko, M. I., Lacis, A. A., Zhang, S., Perlwitz, J., and Metzger, S. M.: Do sulfate and nitrate coatings on mineral dust have important effects on radiative properties and climate modeling?, *J. Geophys. Res.*, 112, D0630, doi:10.1029/2005JD006977, 2007. 7495

Crowley, J. N., Ammann, M., Cox, R. A., Hynes, R. G., Jenkin, M. E., Mellouki, A., Rossi, M. J., Troe, J., and Wallington, T. J.: Evaluated kinetic and photochemical data for atmospheric chemistry: Volume V – heterogeneous reactions on solid substrates, *Atmos. Chem. Phys.*, 10, 9059–9223, doi:10.5194/acp-10-9059-2010, 2010. 7495

Dayan, U., Heffter, J., Miller, J., and Gutman, G.: Dust intrusion events into the Mediterranean Basin, *J. Appl. Meteorol.*, 30, 1185–1199, doi:10.1175/1520-0450(1991)030<1185:DIEITM>2.0.CO;2, 1991. 7496

Dayan, U., Ziv, B., Shoob, T., and Enzel, Y.: Suspended dust over southeastern Mediterranean and its relation to atmospheric circulations, *Int. J. Climatol.*, 28, 915–924, doi:10.1002/joc.1587, 2008. 7495, 7496

de Meij, A. and Lelieveld, J.: Evaluating aerosol optical properties observed by ground-based and satellite remote sensing over the Mediterranean and the Middle East in 2006, *Atmos. Res.*, 99, 415–433, doi:10.1016/j.atmosres.2010.11.005, 2011. 7501

de Meij, A., Pozzer, A., Pringle, K., Tost, H., and Lelieveld, J.: EMAC model evaluation and analysis of atmospheric aerosol properties and distribution with a focus on the Mediterranean region, *Atmos. Res.*, 114–115, 38–69, doi:10.1016/j.atmosres.2012.05.014, 2012. 7498, 7499

Dentener, F. J., Carmichael, G. R., Zhang, Y., Lelieveld, J., and Crutzen, P. J.: Role of mineral aerosol as a reactive surface in the global troposphere, *J. Geophys. Res.*, 101, 22869, doi:10.1029/96JD01818, 1996. 7495

Fountoukis, C. and Nenes, A.: ISORROPIA II: a computationally efficient thermodynamic equilibrium model for K^+ – Ca^{2+} – Mg^{2+} – NH_4^+ – Na^+ – SO_4^{2-} – NO_3^- – Cl^- – H_2O aerosols, *Atmos. Chem. Phys.*, 7, 4639–4659, doi:10.5194/acp-7-4639-2007, 2007. 7499

Dust–air pollution dynamics over the Eastern Mediterranean

M. Abdelkader et al.

Title Page

Abstract

Introduction

Conclusions

References

Tables

Figures



Back

Close

Full Screen / Esc

Printer-friendly Version

Interactive Discussion

- Ganor, E. and Mamane, Y.: Transport of Saharan dust across the eastern Mediterranean, *Atmos. Environ.*, 16, 581–587, doi:10.1016/0004-6981(82)90167-6, 1982. 7496
- Ganor, E., Osetinsky, I., Stupp, A., and Alpert, P.: Increasing trend of African dust, over 49 years, in the eastern Mediterranean, *J. Geophys. Res.*, 115, D07201, doi:10.1029/2009JD012500, 2010. 7495, 7496, 7506
- Gläser, G., Kerkweg, A., and Wernli, H.: The Mineral Dust Cycle in EMAC 2.40: sensitivity to the spectral resolution and the dust emission scheme, *Atmos. Chem. Phys.*, 12, 1611–1627, doi:10.5194/acp-12-1611-2012, 2012. 7500
- Goudie, A. and Middleton, N.: *Desert Dust in the Global System*, Springer, Berlin, New York, 292, 2006. 7495, 7496, 7506
- Holben, B., Eck, T., Slutsker, I., Tanré, D., Buis, J., Setzer, A., Vermote, E., Reagan, J., Kaufman, Y., Nakajima, T., Lavenu, F., Jankowiak, I., and Smirnov, A.: AERONET – a federated instrument network and data archive for Aerosol characterization, *Remote Sens. Environ.*, 66, 1–16, doi:10.1016/S0034-4257(98)00031-5, 1998. 7501
- Jöckel, P., Kerkweg, A., Pozzer, A., Sander, R., Tost, H., Riede, H., Baumgaertner, A., Grovov, S., and Kern, B.: Development cycle 2 of the Modular Earth Submodel System (MESSy2), *Geosci. Model Dev.*, 3, 717–752, doi:10.5194/gmd-3-717-2010, 2010. 7498
- Johnson, M. S., Meskhidze, N., and Praju Kiliyanpilakkil, V.: A global comparison of GEOS-Chem-predicted and remotely-sensed mineral dust aerosol optical depth and extinction profiles, *J. Adv. Model. Earth Syst*, 4, M07001, doi:10.1029/2011MS000109, 2012. 7507
- Kallos, G., Papadopoulos, A., Katsafados, P., and Nickovic, S.: Transatlantic Saharan dust transport: model simulation and results, *J. Geophys. Res.*, 111, D09204, doi:10.1029/2005JD006207, 2006. 7496
- Koop, T. and Mahowald, N.: Atmospheric science: the seeds of ice in clouds, *Nature*, 498, 302–303, doi:10.1038/nature12256, 2013. 7497
- Lelieveld, J., Berresheim, H., Borrmann, S., Crutzen, P. J., Dentener, F. J., Fischer, H., Feichter, J., Flatau, P. J., Heland, J., Holzinger, R., Korrmann, R., Lawrence, M. G., Levin, Z., Markowicz, K. M., Mihalopoulos, N., Minikin, A., Ramanathan, V., de Reus, M., Roelofs, G. J., Scheeren, H. A., Sciare, J., Schlager, H., Schultz, M., Siegmund, P., Steil, B., Stephanou, E. G., Stier, P., Traub, M., Warneke, C., Williams, J., and Ziereis, H.: Global air pollution crossroads over the Mediterranean, *Science*, 298, 794–799, doi:10.1126/science.1075457, 2002. 7496, 7502, 7506, 7508

**Dust–air pollution
dynamics over the
Eastern
Mediterranean**

M. Abdelkader et al.

Title Page

Abstract

Introduction

Conclusions

References

Tables

Figures



Back

Close

Full Screen / Esc

Printer-friendly Version

Interactive Discussion



- Levin, Z., Ganor, E., and Gladstein, V.: The effects of desert particles coated with sulfate on rain formation in the Eastern Mediterranean, *J. Appl. Meteorol.*, 35, 1511–1523, doi:10.1175/1520-0450(1996)035<1511:TEODPC>2.0.CO;2, 1996. 7497, 7508
- Levin, Z., Teller, A., Ganor, E., and Yin, Y.: On the interactions of mineral dust, sea-salt particles, and clouds: a measurement and modeling study from the Mediterranean Israeli Dust Experiment campaign, *J. Geophys. Res.-Atmos.*, 110, D20202, doi:10.1029/2005JD005810, 2005. 7496, 7508
- Liu, Z., Omar, A., Vaughan, M., Hair, J., Kittaka, C., Hu, Y., Powell, K., Trepte, C., Winker, D., Hostetler, C., Ferrare, R., and Pierce, R.: CALIPSO lidar observations of the optical properties of Saharan dust: a case study of long-range transport, *J. Geophys. Res.*, 113, D07207, doi:10.1029/2007JD008878, 2008. 7507
- Mahowald, N. M., Engelstaedter, S., Luo, C., Sealy, A., Artaxo, P., Benitez-Nelson, C., Bonnet, S., Chen, Y., Chuang, P. Y., Cohen, D. D., Dulac, F., Herut, B., Johansen, A. M., Kubilay, N., Losno, R., Maenhaut, W., Paytan, A., Prospero, J. M., Shank, L. M., and Siefert, R. L.: Atmospheric iron deposition: global distribution, variability, and human perturbations, *Annu. Rev. Marine Sci.*, 1, 245–278, doi:10.1146/annurev.marine.010908.163727, 2009. 7495
- Mamouri, R. E., Ansmann, A., Nisantzi, A., Kokkalis, P., Schwarz, A., and Hadjimitsis, D.: Low Arabian dust extinction-to-backscatter ratio: Arabian dust lidar ratio, *Geophys. Res. Lett.*, 4762–4766, doi:10.1002/grl.50898, 2013. 7496, 7508
- Manktelow, P. T., Carslaw, K. S., Mann, G. W., and Spracklen, D. V.: The impact of dust on sulfate aerosol, CN and CCN during an East Asian dust storm, *Atmos. Chem. Phys.*, 10, 365–382, doi:10.5194/acp-10-365-2010, 2010. 7497
- Metzger, S., Mihalopoulos, N., and Lelieveld, J.: Importance of mineral cations and organics in gas–aerosol partitioning of reactive nitrogen compounds: case study based on MINOS results, *Atmos. Chem. Phys.*, 6, 2549–2567, doi:10.5194/acp-6-2549-2006, 2006. 7497, 7500, 7502, 7508
- Mogili, P. K., Kleiber, P. D., Young, M. A., and Grassian, V. H.: Heterogeneous uptake of ozone on reactive components of mineral dust aerosol: an environmental aerosol reaction chamber study, *J. Phys. Chem. A*, 110, 13799–13807, doi:10.1021/jp063620g, 2006. 7495
- Moulin, C., Lambert, C. E., Dayan, U., Masson, V., Ramonet, M., Bousquet, P., Legrand, M., Balkanski, Y. J., Guelle, W., Marticorena, B., Bergametti, G., and Dulac, F.: Satellite climatology of African dust transport in the Mediterranean atmosphere, *J. Geophys. Res.*, 103, 13137, doi:10.1029/98JD00171, 1998. 7496

**Dust–air pollution
dynamics over the
Eastern
Mediterranean**

M. Abdelkader et al.

Title Page

Abstract

Introduction

Conclusions

References

Tables

Figures



Back

Close

Full Screen / Esc

Printer-friendly Version

Interactive Discussion



- Nenes, A., Krom, M. D., Mihalopoulos, N., Van Cappellen, P., Shi, Z., Bougiatioti, A., Zampas, P., and Herut, B.: Atmospheric acidification of mineral aerosols: a source of bioavailable phosphorus for the oceans, *Atmos. Chem. Phys.*, 11, 6265–6272, doi:10.5194/acp-11-6265-2011, 2011. 7495
- 5 Papayannis, A., Balis, D., Amiridis, V., Chourdakis, G., Tsaknakis, G., Zerefos, C., Castanho, A. D. A., Nickovic, S., Kazadzis, S., and Grabowski, J.: Measurements of Saharan dust aerosols over the Eastern Mediterranean using elastic backscatter-Raman lidar, spectrophotometric and satellite observations in the frame of the EARLINET project, *Atmos. Chem. Phys.*, 5, 2065–2079, doi:10.5194/acp-5-2065-2005, 2005. 7496
- 10 Pey, J., Querol, X., Alastuey, A., Forastiere, F., and Stafoggia, M.: African dust outbreaks over the Mediterranean Basin during 2001–2011: PM₁₀ concentrations, phenomenology and trends, and its relation with synoptic and mesoscale meteorology, *Atmos. Chem. Phys.*, 13, 1395–1410, doi:10.5194/acp-13-1395-2013, 2013. 7495, 7496
- 15 Pozzer, A., de Meij, A., Pringle, K. J., Tost, H., Doering, U. M., van Aardenne, J., and Lelieveld, J.: Distributions and regional budgets of aerosols and their precursors simulated with the EMAC chemistry-climate model, *Atmos. Chem. Phys.*, 12, 961–987, doi:10.5194/acp-12-961-2012, 2012. 7498, 7499
- 20 Pringle, K. J., Tost, H., Message, S., Steil, B., Giannadaki, D., Nenes, A., Fountoukis, C., Stier, P., Vignati, E., and Lelieveld, J.: Description and evaluation of GMXe: a new aerosol submodel for global simulations (v1), *Geosci. Model Dev.*, 3, 391–412, doi:10.5194/gmd-3-391-2010, 2010. 7499, 7503, 7512
- 25 Reitz, P., Spindler, C., Mentel, T. F., Poulain, L., Wex, H., Mildenerger, K., Niedermeier, D., Hartmann, S., Clauss, T., Stratmann, F., Sullivan, R. C., DeMott, P. J., Petters, M. D., Sierau, B., and Schneider, J.: Surface modification of mineral dust particles by sulphuric acid processing: implications for ice nucleation abilities, *Atmos. Chem. Phys.*, 11, 7839–7858, doi:10.5194/acp-11-7839-2011, 2011. 7497
- 30 Roeckner, E., Brokopf, R., Esch, M., Giorgetta, M., Hagemann, S., Kornblueh, L., Manzini, E., Schlese, U., and Schulzweida, U.: Sensitivity of simulated climate to horizontal and vertical resolution in the ECHAM5 atmosphere model, *J. Climate*, 19, 3771–3791, doi:10.1175/JCLI3824.1, 2006. 7498, 7500
- Rosenfeld, D., Rudich, Y., and Lahav, R.: Desert dust suppressing precipitation: a possible desertification feedback loop, *P. Natl. Acad. Sci. USA*, 98, 5975–5980, doi:10.1073/pnas.101122798, 2001. 7495

**Dust–air pollution
dynamics over the
Eastern
Mediterranean**

M. Abdelkader et al.

[Title Page](#)[Abstract](#)[Introduction](#)[Conclusions](#)[References](#)[Tables](#)[Figures](#)[Back](#)[Close](#)[Full Screen / Esc](#)[Printer-friendly Version](#)[Interactive Discussion](#)

- Sander, R., Kerkweg, A., Jöckel, P., and Lelieveld, J.: Technical note: The new comprehensive atmospheric chemistry module MECCA, *Atmos. Chem. Phys.*, 5, 445–450, doi:10.5194/acp-5-445-2005, 2005. 7499
- Schulz, M., Prospero, J. M., Baker, A. R., Dentener, F., Ickes, L., Liss, P. S., Mahowald, N. M., Nickovic, S., García-Pando, C. P., Rodríguez, S., Sarin, M., Tegen, I., and Duce, R. A.: Atmospheric transport and deposition of mineral dust to the ocean: implications for research needs, *Environ. Sci. Technol.*, 46, 10390–10404, doi:10.1021/es300073u, 2012. 7495
- Schuster, G. L., Vaughan, M., MacDonnell, D., Su, W., Winker, D., Dubovik, O., Lapyonok, T., and Trepte, C.: Comparison of CALIPSO aerosol optical depth retrievals to AERONET measurements, and a climatology for the lidar ratio of dust, *Atmos. Chem. Phys.*, 12, 7431–7452, doi:10.5194/acp-12-7431-2012, 2012. 7507
- Stocker, T. F., Qin, D., Plattner, G. K., Tignor, M., Allen, S. K., Boschung, J., Nauels, A., Xia, Y., Bix, V., and Midgley, P. M.: *Climate Change 2013: the Physical Science Basis: Working Group I Contribution to the Fifth Assessment Report of the Intergovernmental Panel on Climate Change*, Cambridge University Press, New York, 2014. 7495
- Su, L. and Toon, O. B.: Saharan and Asian dust: similarities and differences determined by CALIPSO, AERONET, and a coupled climate-aerosol microphysical model, *Atmos. Chem. Phys.*, 11, 3263–3280, doi:10.5194/acp-11-3263-2011, 2011. 7507
- Taylor, K. E.: Summarizing multiple aspects of model performance in a single diagram, *J. Geophys. Res.*, 106, 7183, doi:10.1029/2000JD900719, 2001. 7501
- Teller, A., Xue, L., and Levin, Z.: The effects of mineral dust particles, aerosol regeneration and ice nucleation parameterizations on clouds and precipitation, *Atmos. Chem. Phys.*, 12, 9303–9320, doi:10.5194/acp-12-9303-2012, 2012. 7509
- Tost, H., Jöckel, P., Kerkweg, A., Sander, R., and Lelieveld, J.: Technical note: A new comprehensive SCAVenging submodel for global atmospheric chemistry modelling, *Atmos. Chem. Phys.*, 6, 565–574, doi:10.5194/acp-6-565-2006, 2006. 7500, 7509, 7510
- Tost, H., Lawrence, M. G., Brühl, C., Jöckel, P., The GABRIEL Team, and The SCOUT-O3-DARWIN/ACTIVE Team: Uncertainties in atmospheric chemistry modelling due to convection parameterisations and subsequent scavenging, *Atmos. Chem. Phys.*, 10, 1931–1951, doi:10.5194/acp-10-1931-2010, 2010. 7499
- Trebs, I., Metzger, S., Meixner, F. X., Helas, G., Hoffer, A., Rudich, Y., Falkovich, A. H., Moura, M. A. L., da Silva, R. S., Artaxo, P., Slanina, J., and Andreae, M. O.: The NH_4^+ – NO_3^- – Cl^- – SO_4^{2-} – H_2O aerosol system and its gas phase precursors at a pasture site in the

Dust–air pollution dynamics over the Eastern Mediterranean

M. Abdelkader et al.

Title Page

Abstract

Introduction

Conclusions

References

Tables

Figures

◀

▶

◀

▶

Back

Close

Full Screen / Esc

Printer-friendly Version

Interactive Discussion



Amazon Basin: how relevant are mineral cations and soluble organic acids?, J. Geophys. Res.-Atmos., 110, D07303, doi:10.1029/2004JD005478, 2005. 7497

Uno, I., Eguchi, K., Yumimoto, K., Liu, Z., Hara, Y., Sugimoto, N., Shimizu, A., and Takemura, T.: Large Asian dust layers continuously reached North America in April 2010, Atmos. Chem. Phys., 11, 7333–7341, doi:10.5194/acp-11-7333-2011, 2011. 7507

van der Werf, G. R., Randerson, J. T., Giglio, L., Collatz, G. J., Mu, M., Kasibhatla, P. S., Morton, D. C., DeFries, R. S., Jin, Y., and van Leeuwen, T. T.: Global fire emissions and the contribution of deforestation, savanna, forest, agricultural, and peat fires (1997–2009), Atmos. Chem. Phys., 10, 11707–11735, doi:10.5194/acp-10-11707-2010, 2010. 7499

Yin, Y., Wurzler, S., Levin, Z., and Reisin, T. G.: Interactions of mineral dust particles and clouds: effects on precipitation and cloud optical properties, J. Geophys. Res.-Atmos., 107, 4724, doi:10.1029/2001JD001544, 2002. 7494

Dust–air pollution dynamics over the Eastern Mediterranean

M. Abdelkader et al.

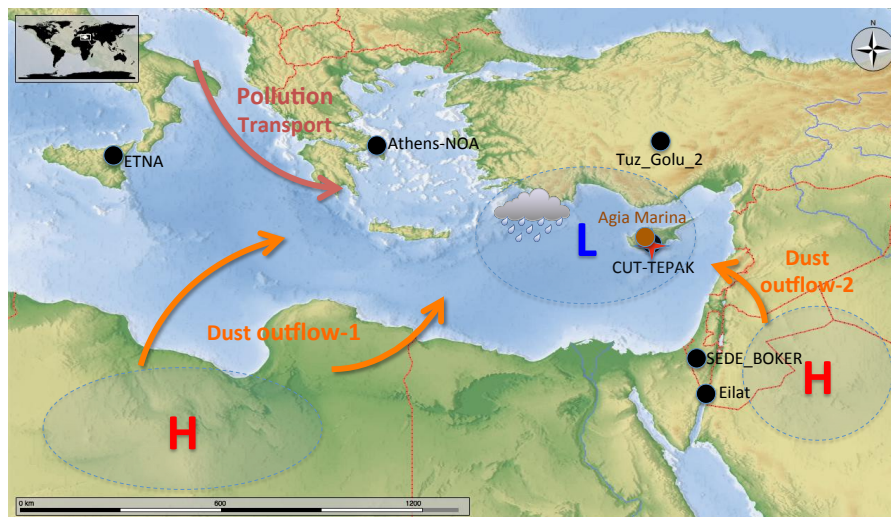


Figure 1. Schematic representation of the prevailing synoptic conditions. Cyprus low, main transport pathways for dust (orange) and air pollution (red) during both dust outflow event to the EM. Observational stations are included: AERONET (black), EMEP station Agia Marina (brown).

Title Page

Abstract

Introduction

Conclusions

References

Tables

Figures

◀

▶

◀

▶

Back

Close

Full Screen / Esc

Printer-friendly Version

Interactive Discussion



Dust–air pollution dynamics over the Eastern Mediterranean

M. Abdelkader et al.

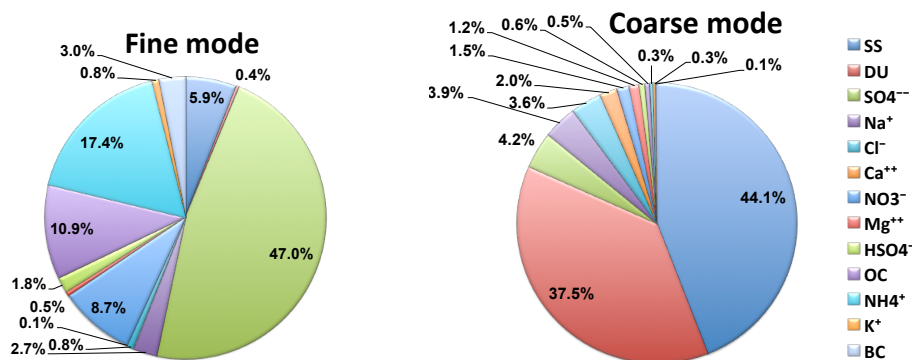


Figure 2. Aerosol mass fractions based on two years of model results for CUT-TEPAK in Cyprus.

Title Page

Abstract Introduction

Conclusions References

Tables Figures

◀ ▶

◀ ▶

Back Close

Full Screen / Esc

Printer-friendly Version

Interactive Discussion



Dust–air pollution dynamics over the Eastern Mediterranean

M. Abdelkader et al.

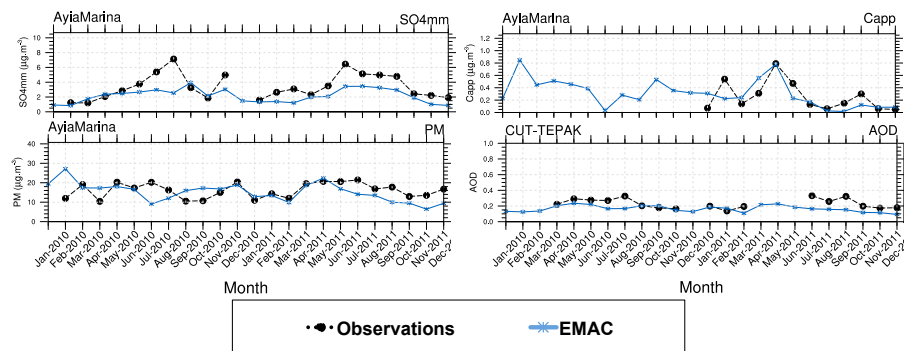


Figure 3. EMAC (T106L31) results (blue line): Aerosol sulfate (SO_4^{2-}), calcium (Ca^{2+}), total particulate (dry) matter (PM) and AOD (550 nm) compared to observations (black circles) at the EMEP station Ayia Marina and the AERONET station CUT-TEPAK in Cyprus, 2010–2011 (monthly means).

Title Page

Abstract

Introduction

Conclusions

References

Tables

Figures

◀

▶

◀

▶

Back

Close

Full Screen / Esc

Printer-friendly Version

Interactive Discussion



Dust–air pollution dynamics over the Eastern Mediterranean

M. Abdelkader et al.

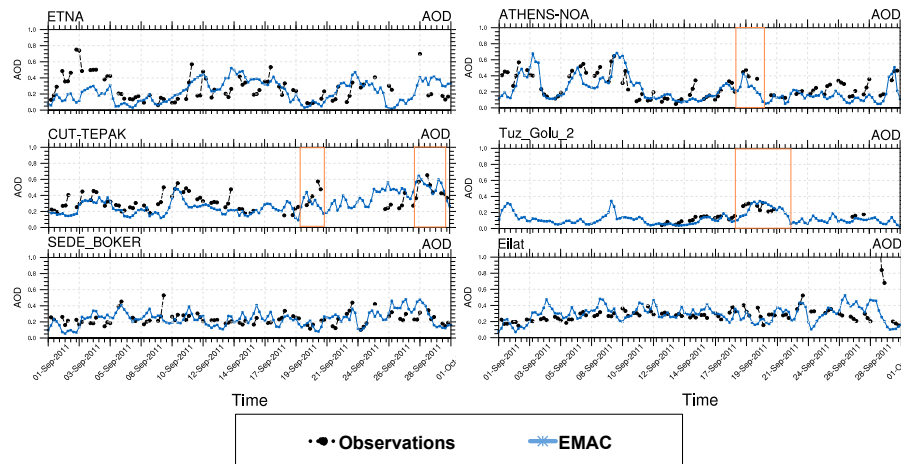


Figure 4. EMAC (T255L31) model results (blue line) of AOD (550 nm) and AERONET observations (black dots). The orange boxes delineate the dust outflow events.

Title Page

Abstract

Introduction

Conclusions

References

Tables

Figures



Back

Close

Full Screen / Esc

Printer-friendly Version

Interactive Discussion



Dust–air pollution dynamics over the Eastern Mediterranean

M. Abdelkader et al.

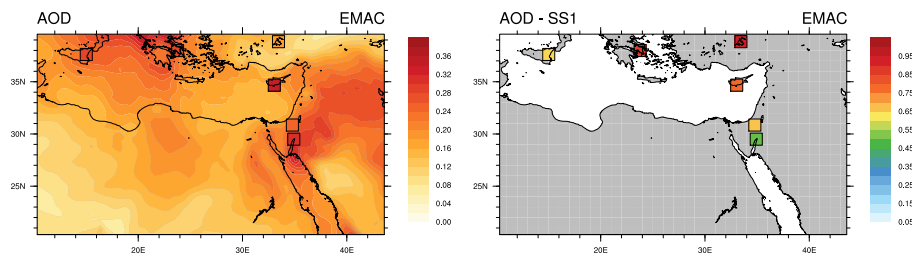


Figure 5. EMAC (T255L31) model results of AOD (550 nm) for September 2011 (left) and skill score (right). The six AERONET stations of Fig. 4 are included (squares).

[Title Page](#)[Abstract](#)[Introduction](#)[Conclusions](#)[References](#)[Tables](#)[Figures](#)[◀](#)[▶](#)[◀](#)[▶](#)[Back](#)[Close](#)[Full Screen / Esc](#)[Printer-friendly Version](#)[Interactive Discussion](#)

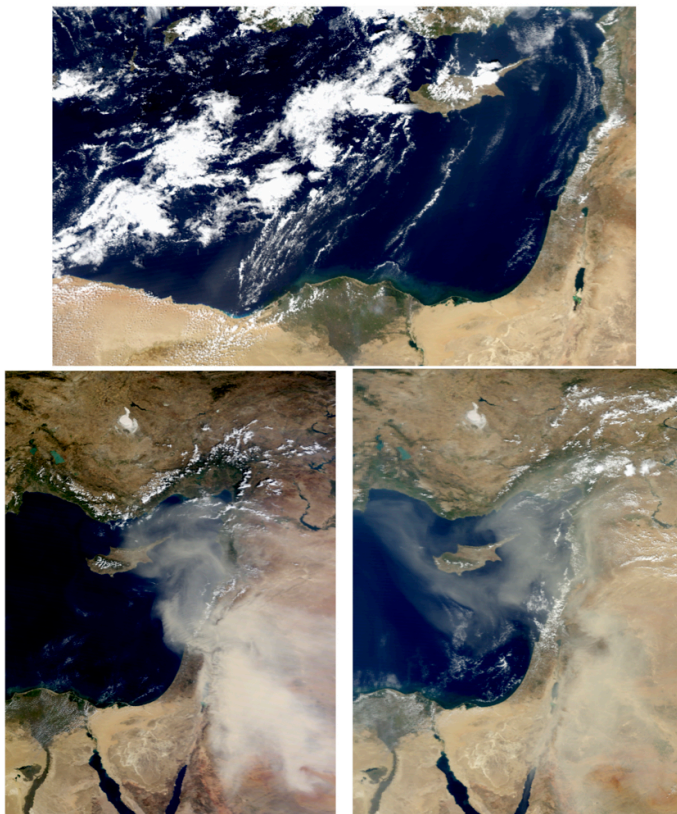


Figure 6. MODIS-Aqua true color image (top) for 22 September (11:10 UTC overpass time) with clouds and dust outflow from Libya to the EM. (Bottom) MODIS-Terra true color images: (left) 28 September 2011 (08:55 UTC overpass time), (right) 29 September 2011 (08:00 UTC overpass time) with dust outflow from the Negev and Arabian deserts to the EM.

Dust–air pollution dynamics over the Eastern Mediterranean

M. Abdelkader et al.

Title Page

Abstract

Introduction

Conclusions

References

Tables

Figures



Back

Close

Full Screen / Esc

Printer-friendly Version

Interactive Discussion



Dust–air pollution dynamics over the Eastern Mediterranean

M. Abdelkader et al.

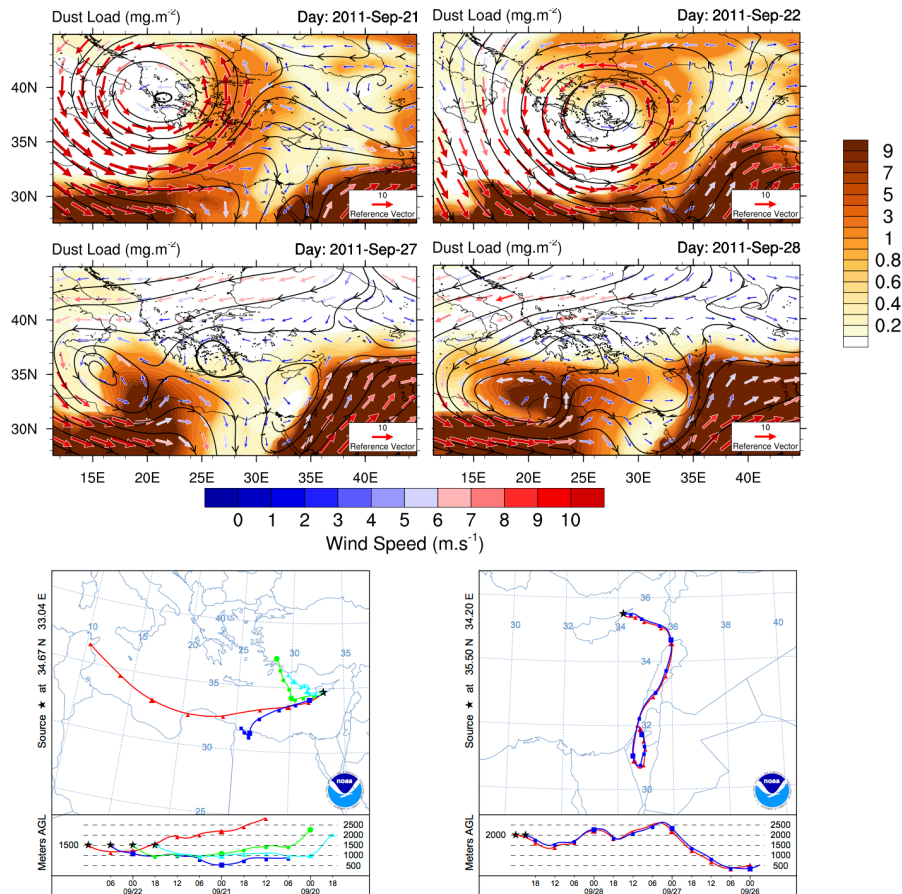


Figure 7. Daily average dust load over the Eastern Mediterranean and HYSPLIT model backward trajectories ending at 12:00 UTC 22 September at the CUT-TEPAK station and 21:00 on 28 September 2011 at 35.5° N and 34.3° E for both dust outflow events.

Dust–air pollution dynamics over the Eastern Mediterranean

M. Abdelkader et al.

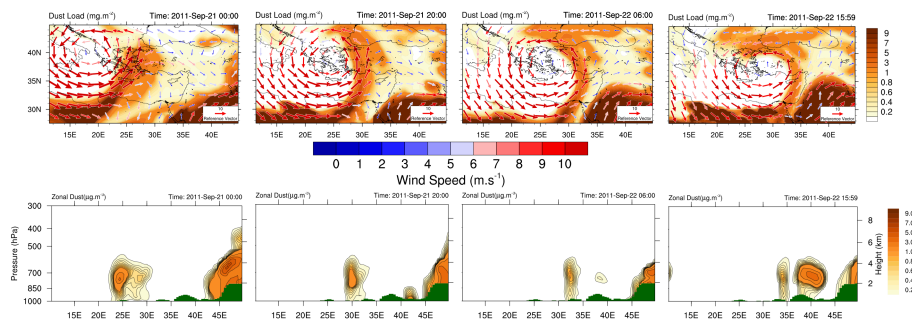


Figure 8. Time series of (top) dust load and (bottom) vertical cross-sections at the CUT-TEPAK station for the first event, the green shaded area represents the orography.

[Title Page](#)[Abstract](#)[Introduction](#)[Conclusions](#)[References](#)[Tables](#)[Figures](#)[◀](#)[▶](#)[◀](#)[▶](#)[Back](#)[Close](#)[Full Screen / Esc](#)[Printer-friendly Version](#)[Interactive Discussion](#)

Dust–air pollution dynamics over the Eastern Mediterranean

M. Abdelkader et al.

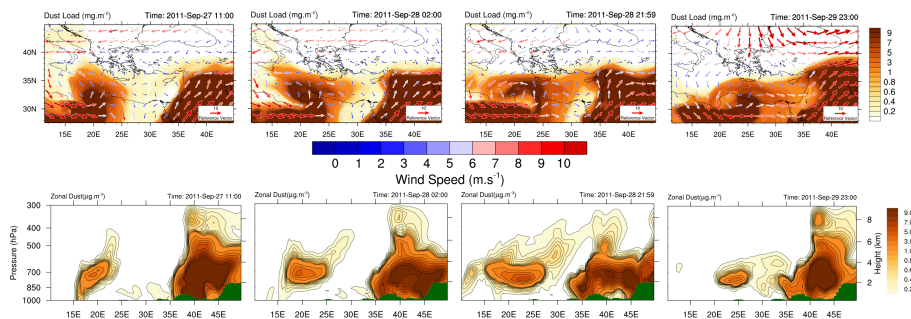


Figure 9. Time series of (top) dust load and (bottom) vertical cross-sections at the CUT-TEPAK station for the second event, the green shaded area represents the orography.

[Title Page](#)
[Abstract](#)
[Introduction](#)
[Conclusions](#)
[References](#)
[Tables](#)
[Figures](#)
[Back](#)
[Close](#)
[Full Screen / Esc](#)
[Printer-friendly Version](#)
[Interactive Discussion](#)


Dust–air pollution dynamics over the Eastern Mediterranean

M. Abdelkader et al.

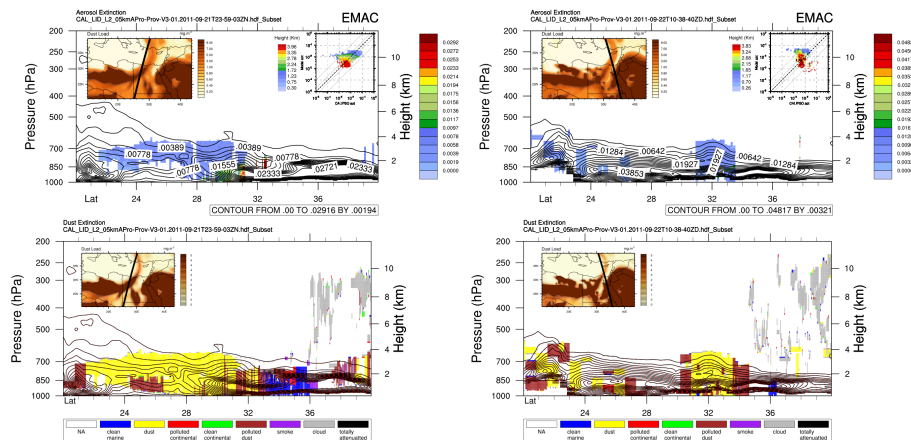


Figure 10. Collocated EMAC calculations and CALIPSO observations of extinction and dust load for two different CALIPSO tracks during the first dust outflow event – overpasses from Africa to the EM, (top) dust extinction (bottom) CALIPSO aerosol classifications, dust extinction (black line) and total extinction (brown dotted line).

Title Page

Abstract

Introduction

Conclusions

References

Tables

Figures



Back

Close

Full Screen / Esc

Printer-friendly Version

Interactive Discussion



Dust–air pollution dynamics over the Eastern Mediterranean

M. Abdelkader et al.

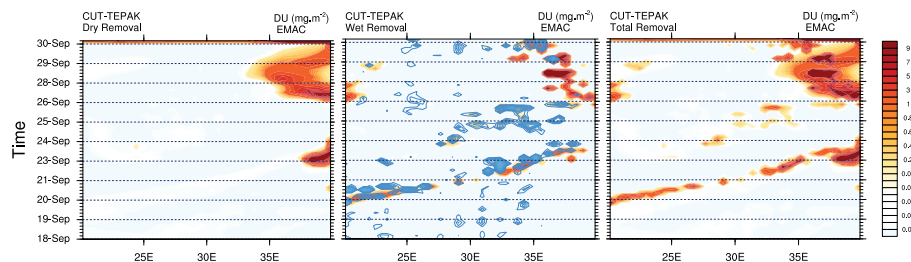


Figure 11. Time evolution of dry, wet and total removal of dust at CUT-TEPAK; (blue) TRIMM observations, (orange) EMAC precipitation (see text).

[Title Page](#)[Abstract](#)[Introduction](#)[Conclusions](#)[References](#)[Tables](#)[Figures](#)[Back](#)[Close](#)[Full Screen / Esc](#)[Printer-friendly Version](#)[Interactive Discussion](#)

Dust–air pollution dynamics over the Eastern Mediterranean

M. Abdelkader et al.

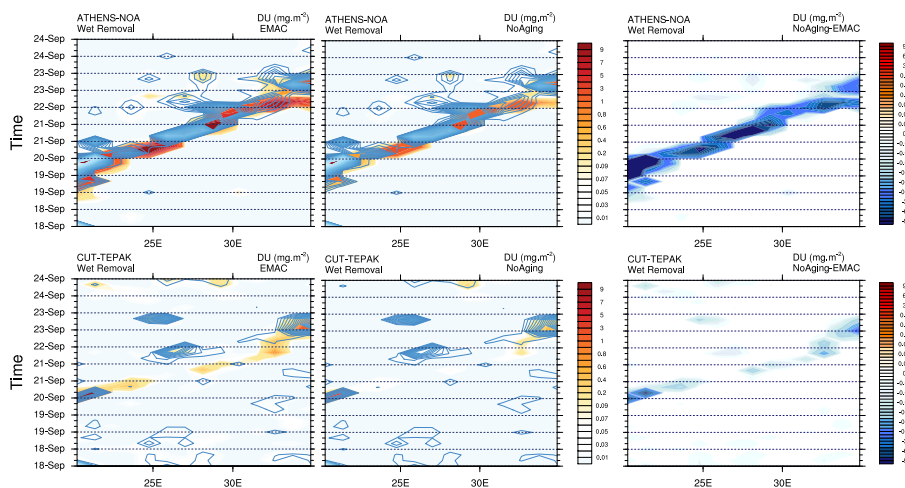


Figure 12. Time evolution of dust wet removal at the CUT-TEPAK and ATHENS-NOA stations for two simulations considering aged dust (EMAC) and non-aged, pristine dust particles (NoAging); (blue) TRIMM observations, (orange) EMAC precipitation (see text).

Title Page

Abstract

Introduction

Conclusions

References

Tables

Figures



Back

Close

Full Screen / Esc

Printer-friendly Version

Interactive Discussion



Dust–air pollution dynamics over the Eastern Mediterranean

M. Abdelkader et al.

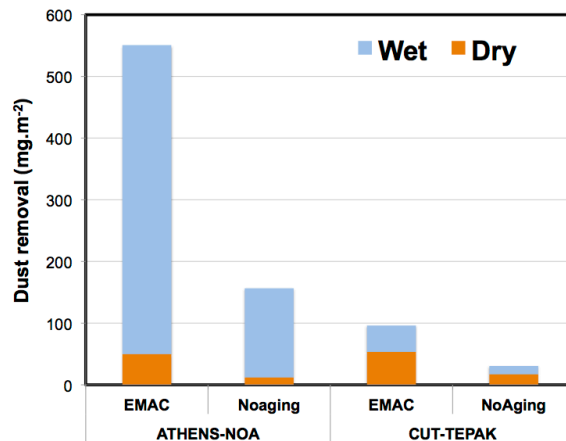


Figure 13. Sensitivity of dust removal (wet and dry) to dust aging: integrated dust removal over the period from 18 to 24 September, 2011.

[Title Page](#)[Abstract](#)[Introduction](#)[Conclusions](#)[References](#)[Tables](#)[Figures](#)[Back](#)[Close](#)[Full Screen / Esc](#)[Printer-friendly Version](#)[Interactive Discussion](#)

Dust–air pollution dynamics over the Eastern Mediterranean

M. Abdelkader et al.

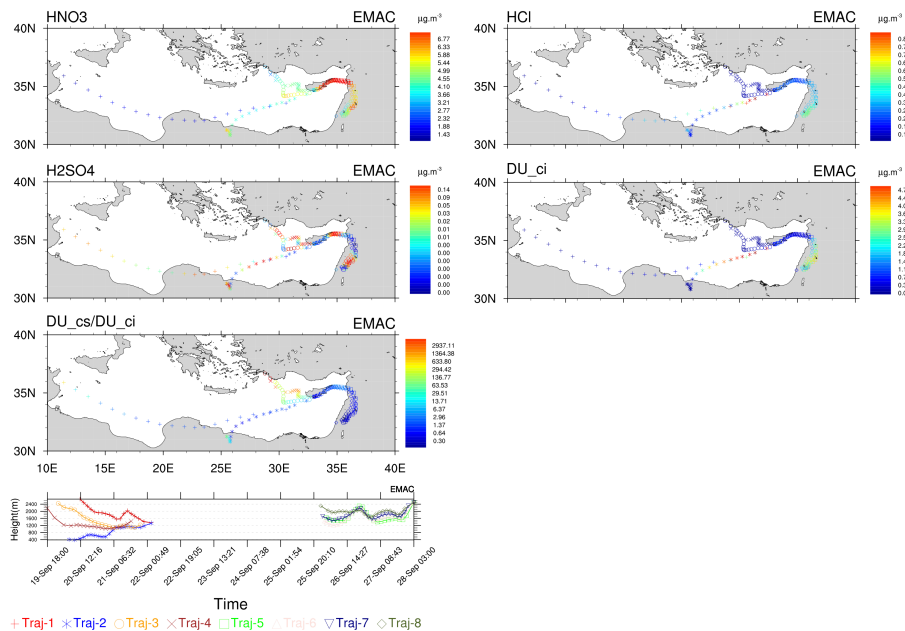


Figure 14. Sampled model concentrations for both dust outflow events; HNO_3 , H_2SO_4 , HCl , insoluble (pristine) dust fraction (DU_{ci}) and the aged dust proxy, ADP ($\text{DU}_{cs}/\text{DU}_{ci}$).

Title Page

Abstract

Introduction

Conclusions

References

Tables

Figures

◀

▶

◀

▶

Back

Close

Full Screen / Esc

Printer-friendly Version

Interactive Discussion

