



Supplement of

Reassessing the ratio of glyoxal to formaldehyde as an indicator of hydrocarbon precursor speciation

J. Kaiser et al.

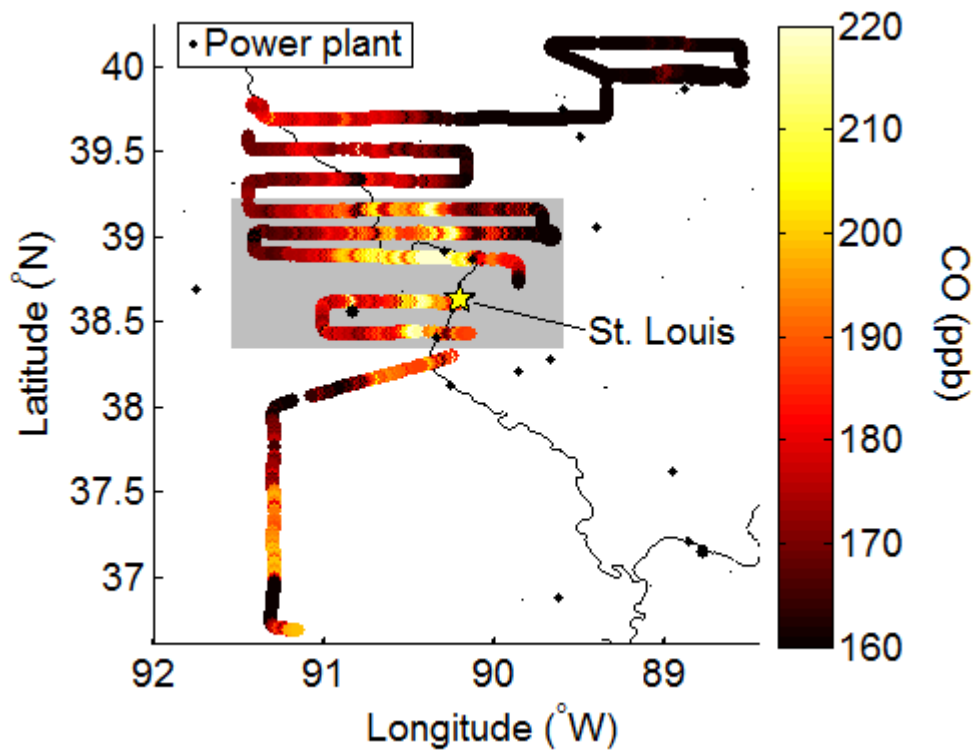
Correspondence to: J. Kaiser (jen.b.kaiser@gmail.com)

1 This supporting information provides average flight conditions (Table S1), an additional
2 example in-and out of plume measurements of R_{GF} from the outflow of St. Louis (Fig. S1
3 and Fig. S2), as well as the individual vertical profile locations and measurements (Fig.
4 S3 and Fig. S4).
5

1 Table S1. Summary of meteorological conditions for flights used in the analysis of R_{GF} .

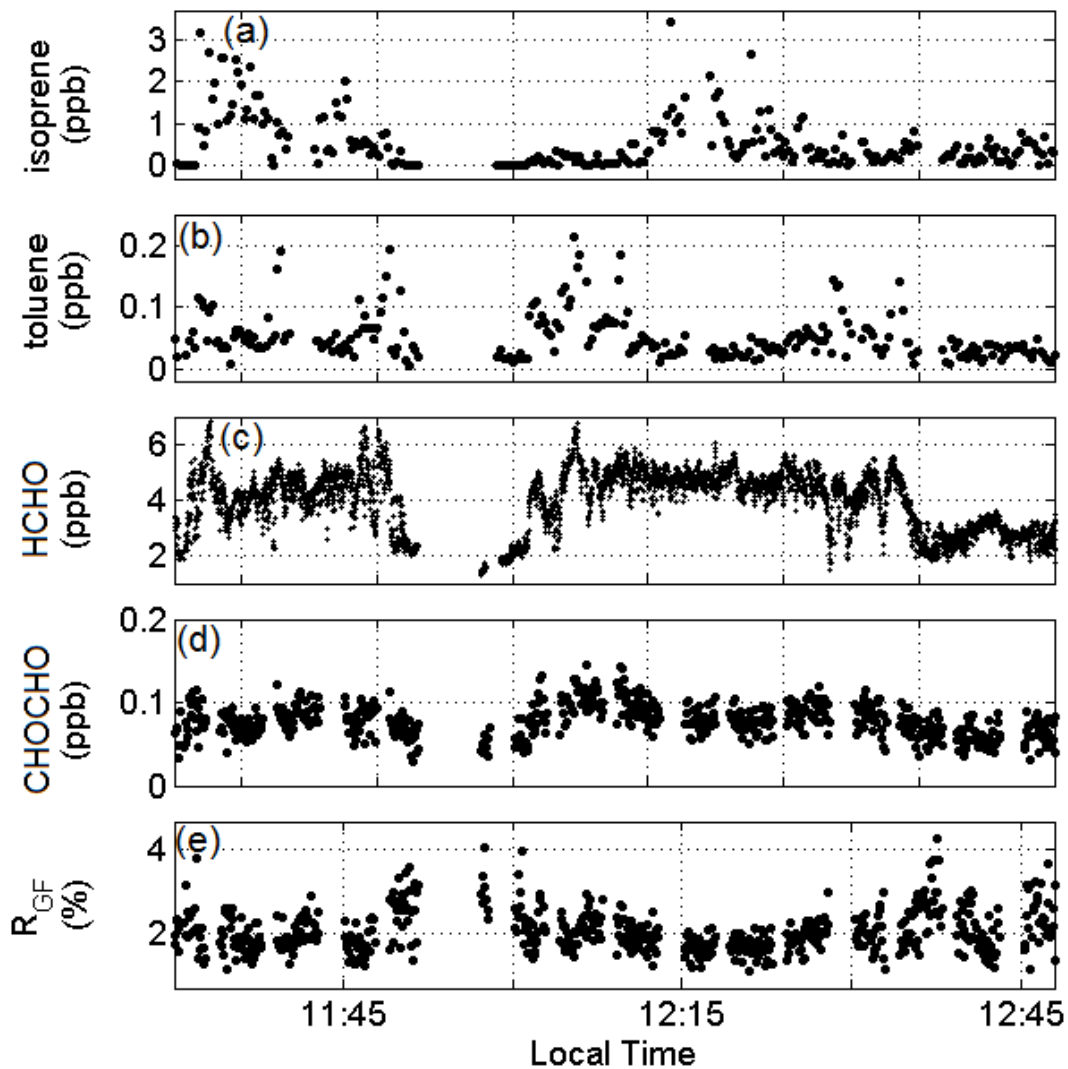
Flight date	Focal region	Time range (local)*	Average temperature (°C)
10 June 2014	Haynesville shale	11:21-15:08	25.2±1.3
11 June 2014	Birmingham	13:15-17:29	26.3±1.4
12 June 2014	Atlanta	09:51-15:26	25.8±1.3
16 June 2014	Atlanta	10:47-16:14	22.9±1.0
22 June 2014	Atlanta/Birmingham	10:37-16:39	22.3±1.4
23 June 2014	Indianapolis	10:50-13:20	22.9±0.8
25 June 2014	Haynesville shale	11:41-16:03	25.7±1.5
26 June 2014	Fayetteville shale/Ozarks	10:42-14:42	24.7±1.2
29 June 2014	Birmingham	12:21-16:55	24.2±1.0
05 July 2014	St. Louis/Ozarks	10:44-15:23	21.2±1.2
06 July 2014	Marcellus shale	11:11-14:09	21.4±0.7
08 July 2014	Fayetteville shale	10:59-16:07	25.4±1.9
10 July 2014	Hog farms	10:12-13:16	23.8±0.9

2 *Transit to and from region of flight's focus not included



1

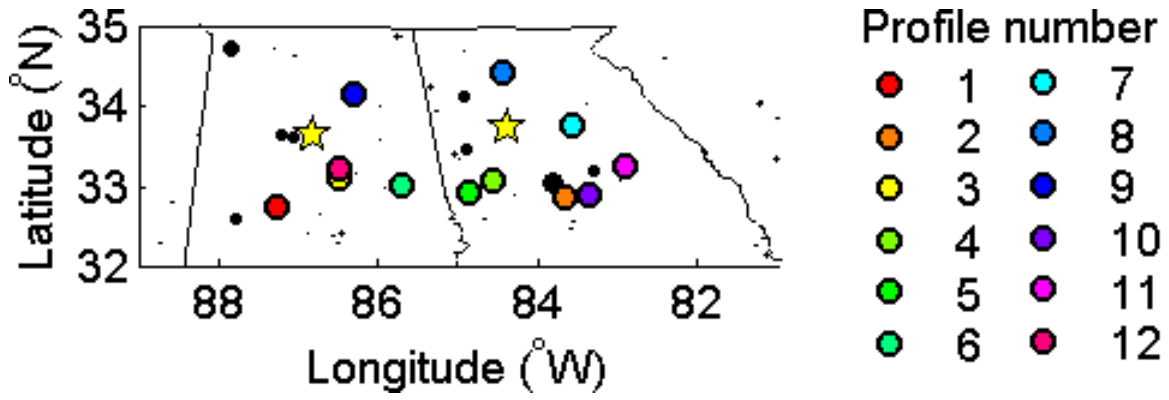
2 Figure S1. Flight track for July 5th colored by CO, which shows the outflow of St. Louis
3 and nearby power plants on the surrounding background. Measurements acquired during
4 the area shown in box are shown in Fig. S2.



1

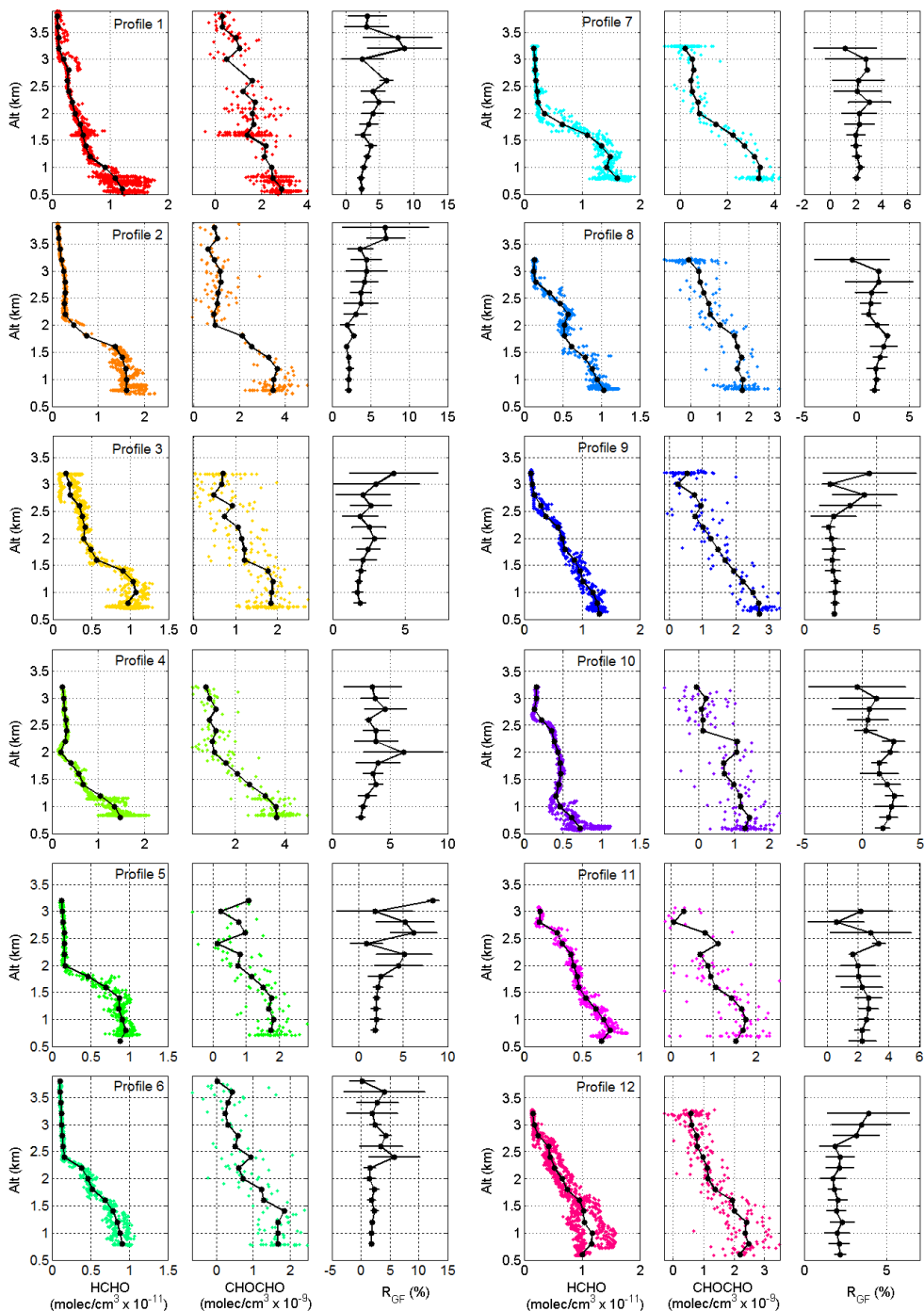
2 Figure S2. Measurements acquired on the July 5th flight corresponding to the boxed in
 3 region in Fig. S1. As in the June 12th flight near Atlanta, VOC speciation has little
 4 relationship with observed R_{GF} .

5



1

2 Figure S3. Locations of vertical profile measurements extending >3 km. Power plants
 3 markers are scaled by NO_x emissions.



1

2 Figure S4. Vertical profiles of HCHO and CHOCHO concentrations and R_{GF} at locations
 3 shown in Fig. S3. Small markers indicate measurements, black circles represent the
 4 average value in a 200 m altitude bin, and in the R_{GF} panels, error bars represent the
 5 standard deviation of R_{GF} as calculated from the standard deviation of glyoxal and HCHO
 6 in that altitude bin.