



Ozone and NO_x
chemistry in the
eastern US

T. P. Canty et al.

This discussion paper is/has been under review for the journal Atmospheric Chemistry and Physics (ACP). Please refer to the corresponding final paper in ACP if available.

Ozone and NO_x chemistry in the eastern US: evaluation of CMAQ/CB05 with satellite (OMI) data

T. P. Canty¹, L. Hembeck¹, T. P. Vinciguerra¹, D. C. Anderson¹, D. L. Goldberg¹, S. F. Carpenter¹, D. J. Allen¹, C. P. Loughner², R. J. Salawitch¹, and R. R. Dickerson¹

¹University of Maryland, College Park, MD, USA

²ESSIC-NASA Goddard Space Flight Center, USA

Received: 6 December 2014 – Accepted: 14 January 2015 – Published: 17 February 2015

Correspondence to: T. P. Canty (tcanty@atmos.umd.edu)

Published by Copernicus Publications on behalf of the European Geosciences Union.

Title Page

Abstract

Introduction

Conclusions

References

Tables

Figures



Back

Close

Full Screen / Esc

Printer-friendly Version

Interactive Discussion



Abstract

Regulatory air quality models, such as the Community Multiscale Air Quality model (CMAQ), are used by federal and state agencies to guide policy decisions that determine how to best achieve adherence with National Ambient Air Quality Standards for surface ozone. We use observations of ozone and its important precursor NO_2 to test the representation of the photochemistry and emission of ozone precursors within CMAQ. Observations of tropospheric column NO_2 from the Ozone Monitoring Instrument (OMI), retrieved by two independent groups, show that the model overestimates urban NO_2 and underestimates rural NO_2 under all conditions examined for July and August 2011 in the US Northeast. The overestimate of the urban to rural ratio of tropospheric column NO_2 for this baseline run of CMAQ (CB05 mechanism, mobile NO_x emissions from the National Emissions Inventory; isoprene emissions from MEGAN v2.04) suggests this model may under estimate the importance of interstate transport of NO_x . This CMAQ simulation leads to a considerable overestimate of the 2 month average of 8 h daily maximum surface ozone in the US Northeast, as well as an overestimate of 8 h ozone at AQS sites during days when the state of Maryland experienced NAAQS exceedances. We have implemented three changes within CMAQ motivated by OMI NO_2 as well as aircraft observations obtained in July 2011 during the NASA DISCOVER-AQ campaign: (a) the modeled lifetime of organic nitrates within CB05 has been reduced by a factor of 10, (b) emissions of NO_x from mobile sources has been reduced by a factor of 2, and (c) isoprene emissions have been reduced by using MEGAN v2.10 rather than v2.04. Compared to the baseline simulation, the CMAQ run using all three of these changes leads to a considerably better simulation of the ratio of urban to rural column NO_2 , better agreement with the 2 month average of daily 8 h maximum ozone in the US Northeast, fewer number of false positives of an ozone exceedance throughout the domain, as well as an unbiased simulation of surface ozone at ground based AQS sites in Maryland that experienced an ozone exceedance during July and August 2007. These modifications to CMAQ may provide a framework for use in stud-

ACPD

15, 4427–4461, 2015

Ozone and NO_x chemistry in the eastern US

T. P. Canty et al.

Title Page

Abstract

Introduction

Conclusions

References

Tables

Figures



Back

Close

Full Screen / Esc

Printer-friendly Version

Interactive Discussion



ies focused on achieving future adherence to specific air quality standards for surface ozone by reducing emission of NO_x from various anthropogenic sectors.

1 Introduction

The spatial scale of tropospheric ozone production is of enormous consequence, especially for the eastern US where cross-state transport of air pollutants is a major policy concern (EPA vs. EME Homer City Generation, 2014). As early as the 1980's (Logan, 1989), analysis of measurements indicated that surface ozone episodes covered areas approaching 10⁶ km². Numerous observational studies have demonstrated the transport of ozone and its precursors from west to east and the impact of upwind emissions on high concentrations of pollution ozone (Brent et al., 2013; Hains et al., 2008; He et al., 2014, 2013a, b; Ryan et al., 1998; Taubman et al., 2004, 2006). Dramatic improvements in air quality have been observed due to reductions in the emission of ozone precursors (Butler et al., 2011; Fiore et al., 1998; Gego et al., 2007; He et al., 2013b; Marufu et al., 2004; Walsh et al., 2008). Numerical simulations of ozone show a dependence on NO_x (NO + NO₂) concentrations, but do not always capture the regional nature of photochemical smog events nor the strength of the response to NO_x emissions controls (Fujita et al., 2013; Gilliland et al., 2008; Godowitch et al., 2008a, b; Hogrefe et al., 2011; Pollack et al., 2013; Wilson et al., 2012; Yegorova et al., 2011; Zhou et al., 2013).

The Community Multiscale Air Quality model (CMAQ) is used extensively for regulatory purposes (Byun et al., 2006). State Implementation Plans (SIPs) quantify future emission reductions that will bring nonattainment areas into compliance with the National Ambient Air Quality Standard (NAAQS) for surface ozone. The recommendations submitted in the SIPs are based on analysis of output from air quality models such as CMAQ that simulate meteorology and the nonlinearities inherent in tropospheric ozone chemistry. Oxides of nitrogen play a controlling role in ozone production in the eastern US and comparison of monitor records with CMAQ output suggest that this model

Ozone and NO_x chemistry in the eastern US

T. P. Canty et al.

Title Page

Abstract

Introduction

Conclusions

References

Tables

Figures



Back

Close

Full Screen / Esc

Printer-friendly Version

Interactive Discussion



Ozone and NO_x chemistry in the eastern US

T. P. Canty et al.

Title Page

Abstract

Introduction

Conclusions

References

Tables

Figures



Back

Close

Full Screen / Esc

Printer-friendly Version

Interactive Discussion



overestimates NO_x concentrations in urban areas, but underestimates NO_x in rural areas (Castellanos et al., 2011). The overestimate of NO_x in urban areas, coupled with the underestimate in rural areas, means CMAQ may keep NO_x too closely confined to source regions, thereby underestimating the interstate transport of ozone precursors. Such disagreement may stem from the complicated nature of NO_x emissions, recycling, and removal. Organo-nitrate compounds can act as reservoirs or sinks for NO_x and have received substantial attention for many years (Atlas et al., 1988; Beaver et al., 2012; Day et al., 2003; Lockwood et al., 2010; Neff et al., 2002; Perring et al., 2013, 2010, 2009; Xie et al., 2013). The production and loss mechanisms that govern the concentrations of organo-nitrate species are largely simplified in most air quality models. Ground based and aircraft measurements of ozone and its precursors provide important constraints on the concentrations of trace gases and can be used to validate model output. However, these data are geographically limited. In contrast, satellites provide a measure of the spatial variation of these species over a much larger domain. In this study, we investigate the regional representation of NO₂ in CMAQ by comparing model output to satellite observations from the Ozone Monitoring Instrument (OMI) (e.g., Boersma et al., 2011; Buscela et al., 2013) during July and August 2007. Modifications to the chemical mechanism and emissions inventories considered by the model are suggested to improve agreement between model and observations. More relevant to policy makers is the ability of air quality models to reproduce surface ozone. We extend our analysis to include comparisons between model output and ozone observed at ground based stations throughout the domain (i.e. most of the United States eastward of the Mississippi river).

2 Data description: OMI satellite

OMI is one of four instruments onboard the NASA Aura satellite, now in its tenth year. The satellite is in a sun synchronous orbit, providing OMI a daytime overpass at ~ 13:40 LT. NO₂ columns are retrieved using differential optical absorption spectroscopy

**Ozone and NO_x
chemistry in the
eastern US**

T. P. Canty et al.

Title Page

Abstract

Introduction

Conclusions

References

Tables

Figures



Back

Close

Full Screen / Esc

Printer-friendly Version

Interactive Discussion



(DOAS) in the 405–465 nm range. There are two operational retrievals of tropospheric column NO₂ based on radiances measured by OMI; the Derivation of OMI tropospheric NO₂ (DOMINO) product (Boersma et al., 2007, 2011) provided by the Royal Netherlands Meteorological Institute (KNMI) and the NASA Goddard Space Flight Center (GSFC) product (Buscela et al., 2013). The differences between the two data products are primarily due how the stratospheric component of the signal is removed from the total column observation.

Retrievals of tropospheric column NO₂ (hereafter, column NO₂) from OMI are available for the width of the atmosphere observed along the viewing track (or swath) of the instrument. These level 2 (L2) observations do not occur on a regularly spaced grid. For more meaningful comparison between satellite retrievals and model output, we generate level 3 (L3) products on a 0.25° × 0.25° (latitude, longitude) grid for both observed and calculated column NO₂. Column NO₂ from OMI is weighted based on satellite viewing angle using the formulation of Buscela et al. (2013). These same weights are applied to column NO₂ from CMAQ to assure a meaningful comparison.

Column NO₂ measurements are only considered for the gridding procedure when solar zenith angle is less than 85° and cloud fraction is less than 30%. Observations are also screened for a quality flag provided in the data files, called xtrackqualityflag for both retrievals. This flag allows OMI data products to be used in a manner than minimizes the influence of the row anomaly along the observing swath (see <http://www.knmi.nl/omi/research/product/rowanomaly-background.php> for more information). We only include retrievals where xtrackqualityflag equals zero. Summary quality flags provide quality assurance that at least 50% of the tropospheric column is determined by observed information. In our study, retrievals are only used when this flag also equals zero.

The production of ozone in our region of study is NO_x-limited for nearly all of the domain. An analysis of satellite observations acquired in 2005 to 2007 shows that ozone production is VOC-limited for only a small part of New York City, with the rest of the domain being NO_x-limited (Duncan et al., 2010). Hence the general focus of

this manuscript on model representation of nitrogen oxides. The results of this study may not be applicable to regions where production of ozone is VOC dominated, which occurs primarily in rural regions such as the so-called isoprene volcano of the Ozarks (Carlton and Baker, 2011) or regions of intense hydrocarbon processing such as Houston, Texas (Li et al., 2007).

3 Model description

For this analysis we use the Community Multiscale Air Quality (CMAQ) modeling system version 4.7.1 (<https://www.cmascenter.org/cmaq/>). This model has been used extensively by states that are members of the Ozone Transport Commission (OTC) in preparation for the 2015 ozone SIP call. For this analysis, CMAQ simulations were performed for the Eastern US with a 12km × 12km horizontal resolution and a 34 layer (σ coordinate) vertical grid from the surface to ~ 20 km with hourly output. Simulated meteorology is driven by output from the Weather Research Forecasting (WRF v3.1.1) model for year 2007 and processed for use in CMAQ by the Meteorological Chemistry Interface Processor (MCIP).

Emissions inventories for year 2007 were developed by the Mid-Atlantic Regional Air Management Association, Inc. (MARAMA) specifically for use in OTC modeling efforts. Biogenic emissions were estimated using the Model of Emissions of Gases and Aerosols in Nature (MEGAN v2.04) (Guenther et al., 2006). Emissions from on-road mobile sources were developed using the Motor Vehicle Emission Simulator (MOVES) while off-road emissions were supplied by the National Mobile Inventory Model (NMIM). Emissions due to aircraft are included in the inventories based on take-off and landing data for individual airports. Emission inventories and WRF/MCIP meteorology are merged and gridded using the Sparse Operator Kernel Emissions (SMOKE v3.1, <https://www.cmascenter.org/smoke/>) model to generate time-varying, three dimensional CMAQ ready emission fields. CMAQv4.7.1 uses the 2005 Carbon Bond (CB05) chemical mechanism (Yarwood et al., 2005). Though there is a more re-

Ozone and NO_x chemistry in the eastern US

T. P. Canty et al.

Title Page

Abstract

Introduction

Conclusions

References

Tables

Figures



Back

Close

Full Screen / Esc

Printer-friendly Version

Interactive Discussion



cent version of the Carbon Bond chemical mechanism (CB6) it is not available for use in publically available versions of CMAQ as of the submission of this manuscript.

We have added lightning generated NO_x (L_{NO_x}), assuming a NO_x production rate of 500 moles/flash, to the merged emissions files following the parameterization described in Allen et al. (2012). The production of L_{NO_x} is correlated to lightning flashes observed by the National Lightning Detection network (NLDN), which records cloud to ground flashes (CG). The amount of intercloud lightning (IC) is calculated based on a climatological IC/CG ratio (Bocchippio et al., 2001). In general, the amount of NO_x supplied by lightning is much smaller than anthropogenic sources, especially in urban areas. This may not necessarily be true in the future as further pollution control measures are enacted to reduce the emissions of NO_x from power plants, vehicles, etc. Neglecting L_{NO_x} may result in modelled NO_x being biased low, especially in rural regions where NO_x levels are already much lower than in urban regions.

Modeled tropospheric column NO_2 is calculated by integrating the CMAQ NO_2 profiles from the surface to the level of the tropopause provided by either the DOMINO or GSFC retrieval teams. The model results are convolved with the air mass factors and averaging kernels (DOMINO) or scattering weights (GSFC) appropriate for the two satellite retrievals. We interpolate the CMAQ output to the pressure grid of the averaging kernel/scattering weight. The DOMINO tropospheric averaging kernel is calculated by taking the product of the averaging kernel and the ratio of the satellite air mass factor to the tropospheric air mass factor (Boersma et al., 2011). CMAQ output is multiplied by the tropospheric averaging kernel and then integrated over pressure. In a similar fashion, GSFC scattering weights are used with model profiles of NO_2 to generate CMAQ tropospheric column NO_2 for direct comparison with the GSFC tropospheric NO_2 product (Buscela et al., 2013; Lamsal et al., 2014).

Only those model grid points closest to the center of each pixel along the satellite swath are considered. To generate a model L3 gridded product, CMAQ output at each model grid cell is only used if the co-located satellite retrieval satisfies the quality flags and cloud fraction limits described above (i.e., we only use those CMAQ points where

Ozone and NO_x chemistry in the eastern US

T. P. Canty et al.

Title Page

Abstract

Introduction

Conclusions

References

Tables

Figures



Back

Close

Full Screen / Esc

Printer-friendly Version

Interactive Discussion



the closest satellite retrieval is also considered “valid”). CMAQ output is screened and gridded in an identical fashion as the respective OMI retrievals, to generate model L3 products (one for the DOMINO retrieval, the other for the GSFC retrieval) appropriate for comparison to the satellite data.

4 Analysis and results

4.1 Model/satellite comparisons

Gridded, L3 satellite retrievals of tropospheric column NO_2 over the Eastern US for the July/August 2007 period of study are shown in Fig. 1. Both the DOMINO and GSFC retrievals exhibit similar patterns of elevated NO_2 over urban centers and lower, but substantial and quantifiable NO_2 in rural regions. The two retrieval products are well correlated ($r^2 = 0.82$). Column NO_2 found by the DOMINO retrieval is $\sim 20\%$ higher than column NO_2 found using the GSFC retrieval. It is beyond the scope of this paper to probe the cause of this disagreement. As such, we will compare both satellite retrievals to model output separately. This difference between data sets may affect attempts to estimate emissions of NO_x from satellite retrievals. Our focus is on the *ratio* of column NO_2 between urban and rural regions; both retrievals yield similar scientific conclusions.

Figure 2 shows comparisons of the baseline CMAQ model (MDL_{BSE}) value of column NO_2 to the satellite data product found by both retrievals. Regions of elevated column NO_2 are calculated over urban regions, roughly similar to observation, but the air quality model estimates significantly smaller levels of column NO_2 over rural areas than reported by OMI. The correlation between model and observed NO_2 , shown for both retrievals in Fig. 2, is largely driven by the high density of points where column NO_2 is below $5 \times 10^{15} \text{ cm}^{-2}$ (Fig. 2, right panels). In this region of the distribution, observed NO_2 is larger than the baseline air quality model for both satellite retrievals. The mean ratio of model to observations across the domain, which is predominantly rural, is 0.34

Ozone and NO_x chemistry in the eastern US

T. P. Canty et al.

Title Page

Abstract

Introduction

Conclusions

References

Tables

Figures



Back

Close

Full Screen / Esc

Printer-friendly Version

Interactive Discussion



the averaging kernels) found for the MDL_{NTR} simulation and OMI column NO₂ is shown in Fig. 5. There is slightly better agreement between modeled and column NO₂ and both satellite retrievals for the entire domain compared to the baseline simulation, generally due to increased NO₂ in rural areas for MDL_{NTR}. However, for MDL_{NTR}, modeled column NO₂ in urban regions (red points, Fig. 5) lies further from observed NO₂ than found for the baseline simulations.

In CB05, 100 % of the NO_x from photolysis of NTR or its products is recycled. Loss through OH attack, also fast for isoprene nitrates, yields HNO₃, a NO_x sink in the troposphere. The model output presented here can be considered a bounding scenario since this treatment of NO_x is an over-simplification. If NO_x recycling were not 100 % efficient, we would expect a decrease in column NO₂ throughout the domain, and a corresponding reduction in O₃. It is beyond the scope of this study to assess the sensitivity of NO₂ and O₃ to this level of detail of the CB05 mechanism.

Emissions from airplanes en route are not considered in the emissions inventories. However, the overall contribution from aircraft aloft to the tropospheric column is relatively minor (i.e. less than 1 % of tropospheric column) and would not explain the urban/rural discrepancy between satellite observations and model output (Jacobson et al., 2013).

4.3 Emissions of NO_x from mobile sources

A comparison of NO_x from emission inventories for 2011 to observations taken during DISCOVER-AQ (July 2011) has quantified a potential overestimation of mobile NO_x (Anderson et al., 2014). The ratio of CO/NO_y from observations was roughly a factor of 2 greater than the ratio based on the National Emissions Inventory data used in CMAQ. Model CO is only ~ 15 % greater than observed for this time period, indicative of a large overestimate of mobile NO_x emissions (Anderson et al., 2014). This conclusion is in agreement with a study by Yu et al. (2012), who compared aircraft data from the TexAQS/GoMACCS campaign to CMAQ simulations that considered 2001 NEI point and source emissions projected to 2006, mobile emissions generated from the EPA

and GSFC, respectively). While the modifications to the CB05 chemical mechanism and emissions inventories have somewhat reconciled the differences between modeled and remotely sensed urban tropospheric column NO_2 , rural NO_2 is still underestimated by the model. Mean ratios for the domain (0.34 and 0.38) are similar to results from the baseline model. Essentially, these modifications to the model have improved the urban disagreement, but overall model performance is unchanged.

4.4 Biogenic emissions

As stated above, the original emissions inventories generated by MARAMA include biogenic sources from the Model of Emissions of Gases and Aerosols in Nature (MEGAN v2.04) (Guenther et al., 2006). Since the 2007 emissions inventories were made available, an updated version of MEGAN was released (v2.10, Guenther et al., 2012). One of the main differences in biogenic emissions between the two versions of MEGAN is that isoprene, the dominant VOC in the mid-Atlantic region, has decreased by about 25 % in the latest version. Emissions of biogenic isoprene calculated using MEGAN v2.10 are significantly less sensitive to high levels of photochemically active radiation (PAR) compared to earlier versions of MEGAN, resulting in lower isoprene during midday near the time of OMI overpass. An in-depth analysis of the sensitivity of regulatory air quality models to simulation of biogenic emissions will be the subject of a forthcoming paper.

Fundamentally, isoprene oxidation is initiated by reaction with OH to generate isoprene peroxy radical intermediates, termed RO_2 . In the presence of NO_x , these RO_2 intermediates react with NO, producing MVK, MACR, HCHO, and a small amount of organic nitrates (Paulot et al., 2009). Overall, when output from the latest version of MEGAN is incorporated into the emissions inventories (MDL_{MGN}) there is an overall increase in column NO_2 across the model domain due to the reduction in NO_x sinks (Fig. 7).

Combining the modifications to the CB05 chemical mechanism with the changes to mobile and biogenic emissions yields the best overall agreement between model and

Ozone and NO_x chemistry in the eastern US

T. P. Canty et al.

Title Page

Abstract

Introduction

Conclusions

References

Tables

Figures



Back

Close

Full Screen / Esc

Printer-friendly Version

Interactive Discussion



observations (MDL_{TOT} , Fig. 8). The correlation between measured and modeled NO_2 is larger for MDL_{TOT} ($r^2 = 0.77$, 0.64 for DOMINO, GSFC) than for any other model scenario. While further work is needed, we have succeeded in decreasing the urban overestimate and rural underestimate of tropospheric column NO_2 compared to satellite data by: (a) using the latest version of MEGAN, (b) prescribing a factor of 2 reduction in mobile NO_x emissions throughout the domain, and (c) reducing the lifetime of NTR within CB05 by a factor of 10. Future work will investigate the importance of soil emissions of HONO, which are not included in the current versions of MEGAN and the chemical kinetics of other species that are important precursors to surface ozone. Prior studies indicate that soil emissions may account for 7% of column NO_2 during the summer ozone season (Choi et al., 2008) and that HONO could be an important morning source of OH in an urban, VOC rich environment (Ren et al., 2013).

5 Ozone

The focus of state implementation plans is attainment of the 8 h standard for surface ozone. It should be noted that CMAQ is most often used in a relative sense for this purpose. For instance, modifications to emissions inventories from a wide variety of sources, which represent future conditions based on possible proposed regulations, are run through CMAQ. Output from this model is compared to a base scenario to determine how much surface ozone is expected to decrease if these policy measures were to be enacted. For this study, we instead focus on the ability of CMAQ to reproduce observed surface ozone. In Fig. 9, we compare average maximum daily 8 h average ozone from the four modeling scenarios considered above (MDL_{BSE} , MDL_{NTR} , MDL_{N50} , and MDL_{TOT}) to measured surface ozone from ground based air quality observing sites (AQS). We have chosen to show the average of the daily maximum 8 h ozone for July and August 2007 at each mode grid point. While it may seem that there were no violations of the 75 ppb standard, based on the scatter plots of model and observed ozone (Fig. 9, bottom), this is certainly not the case. There were exceedances

Ozone and NO_x chemistry in the eastern US

T. P. Canty et al.

Title Page

Abstract

Introduction

Conclusions

References

Tables

Figures



Back

Close

Full Screen / Esc

Printer-friendly Version

Interactive Discussion



of the 75 ppb ozone standard during this time; however, we have averaged these events with days having lower ozone. There were no locations where the 62 day average of daily maximum 8 h ozone exceeded 75 ppb for this time period. An additional comparison, shown at the end of this section, will focus on days when the surface ozone standard was exceeded in Maryland.

All of the CMAQ simulations presented in Fig. 9 generally over-estimate observed surface ozone. Ozone from MDL_{BSE} is 26 % greater than observed (ratio of 1.26 denoted on Fig. 9), with 87 locations averaging higher than 75 ppb within the model. CMAQ results for MDL_{NTR} lead to a further increase (32 %) in modeled ozone (an ozone dis-benefit from this model change). While the changes made to CB05 for MDL_{NTR} provide a much more realistic representation of NO_x chemistry (see Fig. 4), comparison of ozone found using MDL_{NTR} and the baseline run suggests the presence of compensating errors in the chemistry and/or dynamics that control ozone. The inclusion of a 50 % reduction of mobile NO_x (MDL_{N50}) (Anderson et al., 2014) leads to a decrease in modeled ozone compared to results from the MDL_{NTR} run. Simulated ozone is still 24 % greater than measured, although there is slight improvement compared to the baseline run. Improved agreement between model and AQS observations of ozone occurs when updated biogenic emissions are also included, together with the aforementioned changes to mobile NO_x and the lifetime of NTR. In this scenario, MDL_{TOT}, the model/measurement discrepancy for ozone is reduced to 19 % and there are only 40 false positives. The reason for this model behavior is that the reduction in isoprene emission upon use of MEGANv2.10 leads to decreases in HO₂ and RO₂, important ozone precursors.

If a ground based ozone monitor reports 8 h average ozone exceeding the NAAQS standard, currently 75 ppb, it is considered to be in non-attainment. These sites are the subject of intense focus by state agencies to determine the fundamental causes of the ozone exceedance (e.g. local sources of pollution vs. out of state upwind sources). A comparison of ozone from non-attainment sites in the Maryland during July and August 2007 to CMAQ model output is shown in

Ozone and NO_x chemistry in the eastern US

T. P. Canty et al.

Title Page

Abstract

Introduction

Conclusions

References

Tables

Figures



Back

Close

Full Screen / Esc

Printer-friendly Version

Interactive Discussion



ject to errors from a variety of sources, the urban/rural ratio provides a rigorous test of CMAQ's ability to simulate the photochemistry of NO₂ and the transport of this important, criteria air pollutant. Because CMAQ using the CB05 mechanism overestimates the urban to rural ratio of tropospheric column NO₂, this model may underestimate the interstate transport of NO_x and/or NO_x reservoirs.

The CB05 chemical mechanism represents all alkyl nitrates as isopropyl nitrate – a reasonable simplification given the state of knowledge at the time of creation. However, there is substantial evidence indicating an entire family of alkyl nitrates and substituted alkyl nitrates (Horowitz et al., 2007; Perring et al., 2009; Beaver et al., 2012). These can have lifetimes as short as hours and recycle NO_x much faster than do short chain alkyl nitrates. Reducing the simulated lifetime of NTR in CB05 from ~ 10 days to ~ 1 day improves the agreement between measured and modeled tropospheric column NO₂ for the Baltimore–Washington area. This modification to CB05 reduces, but does not eliminate the urban/rural NO₂ bias within CMAQ. Implementation of a factor of 2 reduction in NO_x emissions from mobile sources (Anderson et al., 2014) decreases NO₂ in urban regions that have a high density of vehicular traffic, which improves the CMAQ representation of the ratio of urban to rural NO₂. Use of the latest MEGAN emission scenario for VOCs, v2.10 (Guenther et al., 2012), reduces NO₂ throughout the domain and further improved the CMAQ representation of urban to rural NO₂, due to smaller levels of RO₂ that are driven by lower emission rates for isoprene.

We have also examined the effect of these various model runs on the CMAQ representation of surface ozone. Reducing the lifetime of NTR by a factor of 10 increases the average daily 8 h maximum ozone by ~ 5%; decreasing mobile source NO_x emissions by a factor of 2 decreases ozone by about 6%. The use of MEGAN v2.10 causes surface ozone to fall by 2.5% relative to a simulation that is identical, except for use of MEGAN 2.04. Combining all three of these model changes (i.e., factor of 10 reduction in NTR lifetime, factor of 2 reduction in mobile NO_x, MEGAN v2.10) leads to the best simulation of surface ozone for the mid-Atlantic. This model run leads to agreement with the 2 month average of daily 8 h maximum ozone at the ±20% level, fewest num-

Ozone and NO_x chemistry in the eastern US

T. P. Canty et al.

Title Page

Abstract

Introduction

Conclusions

References

Tables

Figures



Back

Close

Full Screen / Esc

Printer-friendly Version

Interactive Discussion



Ozone and NO_x chemistry in the eastern US

T. P. Canty et al.

Title Page

Abstract

Introduction

Conclusions

References

Tables

Figures



Back

Close

Full Screen / Esc

Printer-friendly Version

Interactive Discussion



ber of false positives of an ozone exceedance throughout the domain, as well as an unbiased simulation of surface ozone at ground based AQS sites that experienced an ozone exceedance (8 h ozone greater than 75 ppb) within Maryland during July and August 2007. The prescription of an unbiased simulation of ozone, coupled with a fairly accurate simulation of the urban to rural ratio of column NO₂, may provide a framework for use in studies focused on achieving future adherence to specific air quality standards for surface ozone by reducing emission of NO_x from various anthropogenic sectors.

Acknowledgements. We greatly appreciate the financial support for this research provided by the NASA Aura Science Team, the NASA ACOMAP, ACAST and MAP programs, as well as the Maryland Department of the Environment. We appreciate the willingness of Jim Crawford, Ken Pickering, Ron Cohen, and Andy Weinheimer to provide support for our use of NASA DISCOVER-AQ measurements acquired in the mid-Atlantic during summer 2011.

References

- Allen, D. J., Pickering, K. E., Pinder, R. W., Henderson, B. H., Appel, K. W., and Prados, A.: Impact of lightning-NO on eastern United States photochemistry during the summer of 2006 as determined using the CMAQ model, *Atmos. Chem. Phys.*, 12, 1737–1758, doi:10.5194/acp-12-1737-2012, 2012.
- Anderson, D. C., Loughner, C. P., Weinheimer, A., Diskin, D., Canty, T. P., Salawitch, R. J., Worden, H., Freid, A., Mikoviny, T., Wisthaler, A., and Dickerson, R. R.: Measured and modeled CO and NO_y in DISCOVER-AQ: an evaluation of emissions and chemistry over the eastern US, *Atmos. Environ.*, 96, 78–87, 2014.
- Atlas, E.: Evidence for greater than or equal to C₃ alkyl nitrates in rural and remote atmospheres, *Nature*, 331, 426–428, 1988.
- Beaver, M. R., Clair, J. M. St., Paulot, F., Spencer, K. M., Crouse, J. D., LaFranchi, B. W., Min, K. E., Pusede, S. E., Wooldridge, P. J., Schade, G. W., Park, C., Cohen, R. C., and Wennberg, P. O.: Importance of biogenic precursors to the budget of organic nitrates: observations of multifunctional organic nitrates by CIMS and TD-LIF during BEARPEX 2009, *Atmos. Chem. Phys.*, 12, 5773–5785, doi:10.5194/acp-12-5773-2012, 2012.

**Ozone and NO_x
chemistry in the
eastern US**

T. P. Canty et al.

Title Page

Abstract

Introduction

Conclusions

References

Tables

Figures



Back

Close

Full Screen / Esc

Printer-friendly Version

Interactive Discussion



Boccippio, D., Cummins, K., Christian, H., and Goodman, S.: Combined satellite- and surface-based estimation of the intra-cloud-to-ground lightning ratio over the continental United States, *Mon. Weather Rev.*, 129, 108–122, 2001.

Boersma, K. F., Eskes, H. J., Dirksen, R. J., van der A, R. J., Veefkind, J. P., Stammes, P., Huijnen, V., Kleipool, Q. L., Sneep, M., Claas, J., Leitão, J., Richter, A., Zhou, Y., and Brunner, D.: An improved tropospheric NO₂ column retrieval algorithm for the Ozone Monitoring Instrument, *Atmos. Meas. Tech.*, 4, 1905–1928, doi:10.5194/amt-4-1905-2011, 2011.

Brent, L. C., Thorn, W. J., Gupta, M., Leen, B., Stehr, J. W., He, H., Arkinson, H. L., Weinheimer, A., Garland, C., Pusede, S. E., Wooldridge, P. J., Cohen, R. C., and Dickerson, R. R.: Evaluation of the use of a commercially available cavity ringdown absorption spectrometer for measuring NO₂ in flight, and observations over the Mid-Atlantic States, during DISCOVER-AQ, *J. Atmos. Chem.*, August, 1–19, doi:10.1007/s10874-013-9265-6, 2013.

Bucsele, E. J., Krotkov, N. A., Celarier, E. A., Lamsal, L. N., Swartz, W. H., Bhartia, P. K., Boersma, K. F., Veefkind, J. P., Gleason, J. F., and Pickering, K. E.: A new stratospheric and tropospheric NO₂ retrieval algorithm for nadir-viewing satellite instruments: applications to OMI, *Atmos. Meas. Tech.*, 6, 2607–2626, doi:10.5194/amt-6-2607-2013, 2013.

Butler, T. J., Vermeylen, F. M., Rury, M., Likens, G. E., Lee, B., Bowker, G. E., and McCluney, L.: Response of ozone and nitrate to stationary source NO_x emission reductions in the eastern USA, *Atmos. Environ.*, 45, 1084–1094, doi:10.1016/j.atmosenv.2010.11.040, 2011.

Byun, D. and Schere, K. L.: Review of the governing equations, computational algorithms, and other components of the models-3 Community Multiscale Air Quality (CMAQ) modeling system, *Appl. Mech. Rev.*, 59, 51–77, 2006.

Carlton, A. G. and Baker, K.: Photochemical modeling of the Ozark isoprene volcano: MEGAN, BEIS, and their impacts on air quality predictions, *Environ. Sci. Technol.*, 45, 4438–4445, doi:10.1021/es200050x, 2011.

Castellanos, P.: Analysis of Air Quality with Numerical Simulations (CMAQ), and Observations of Trace Gases, The University of Maryland, College Park, 168 pp., 2009.

Castellanos, P., Marufu, L. T., Doddridge, B. G., Taubman, B. F., Schwab, J. J., Hains, J. C., Ehrman, S. H., and Dickerson, R. R.: Ozone, oxides of nitrogen, and carbon monoxide during pollution events over the eastern United States: an evaluation of emissions and vertical mixing, *J. Geophys. Res.*, 116, D16307, doi:10.1029/2010JD014540, 2011.

Ozone and NO_x chemistry in the eastern US

T. P. Canty et al.

Title Page

Abstract

Introduction

Conclusions

References

Tables

Figures



Back

Close

Full Screen / Esc

Printer-friendly Version

Interactive Discussion



- Choi, Y., Wang, Y., Zeng, T., Cunnold, D., Yang, E.-S., Martin, R., Chance, K., Thouret, V., and Edgerson, E.: Springtime transitions of NO₂, CO, and O₃ over North America: model evaluation and analysis, *J. Geophys. Res.*, 113, D20311, doi:10.1029/2007JD009632, 2008.
- Day, D. A., Dillon, M. B., Wooldridge, P. J., Thornton, J. A., Rosen, R. S., Wood, E. C., and Cohen, R. C.: On alkyl nitrates, O₃, and the “missing NO_y”, *J. Geophys. Res.*, 108, 4501, doi:10.1029/2003JD003685, 2003.
- Duncan, B. N., Yoshida, Y., Olson, J. R., Sillman, S., Martin, R. V., Lamsal, L., Hu, Y., Pickering, K. E., Retscher, C., Allen, D. J., and Crawford, J. H.: Application of OMI observations to a space-based indicator of NO_x and VOC controls on surface ozone formation, *Atmos. Environ.*, 44, 2213–2223, 2010.
- EPA v. EME: Homer City Generation, 12–1183, US, 11–1302, 2014.
- Farmer, D. K., Wooldridge, P. J., and Cohen, R. C.: Application of thermal-dissociation laser induced fluorescence (TD-LIF) to measurement of HNO₃, Σalkyl nitrates, Σperoxy nitrates, and NO₂ fluxes using eddy covariance, *Atmos. Chem. Phys.*, 6, 3471–3486, doi:10.5194/acp-6-3471-2006, 2006.
- Fiore, A. M., Jacob, D. J., Logan, J. A., and Yin, J. H.: Long-term trends in ground level ozone over the contiguous United States, 1980–1995, *J. Geophys. Res.*, 103, 1471–1480, 1998.
- Flynn, C. M., Pickering, K. E., Crawford, J. H., Lamsal, L. N., Krotkov, N. A., Herman, J., Weinheimer, A., Chen, G., Liu, X., Szykman, J., Tsay, S. C., Laughner, C. P., Hains, J., Lee, P., Dickerson, R. R., Stehr, J. W., and Brent, L.: The relationship between column-density and surface mixing ratio: statistical analysis of O₃ and NO₂ data from the July 2011 Maryland DISCOVER-AQ mission, *Atmos. Environ.*, 92, 429–441, 2014.
- Fujita, E. M., Campbell, D. E., Stockwell, W. R., and Lawson, D. R.: Past and future ozone trends in California’s South Coast Air Basin: reconciliation of ambient measurements with past and projected emission inventories, *J. Air Waste Manage.*, 63, 54–69, 2013.
- Gego, E., Porter, P. S., Gilliland, A., and Rao, S. T.: Observation-based assessment of the impact of nitrogen oxides emissions reductions on ozone air quality over the eastern United States, *J. Appl. Meteorol. Clim.*, 46, 994–1008, 2007.
- Gilliland, A. B., Hogrefe, C., Pinder, R. W., Godowitch, J. M., Foley, K. L., and Rao, S. T.: Dynamic evaluation of regional air quality models: assessing changes in O₃ stemming from changes in emissions and meteorology, *Atmos. Environ.*, 42, 5110–5123, 2008.
- Godowitch, J. M., Hogrefe, C., and Rao, S. T.: Diagnostic analyses of a regional air quality model: changes in modeled processes affecting ozone and chemical-transport in-

**Ozone and NO_x
chemistry in the
eastern US**

T. P. Canty et al.

Title Page

Abstract

Introduction

Conclusions

References

Tables

Figures



Back

Close

Full Screen / Esc

Printer-friendly Version

Interactive Discussion



dicators from NO_x point source emission reductions, *J. Geophys. Res.*, 113, D19303, doi:10.1029/2007JD009537, 2008a.

Godowitch, J. M., Gilliland, A. B., Draxler, R. R., and Rao, S. T.: Modeling assessment of point source NO_x emission reductions on ozone air quality in the eastern United States, *Atmos. Environ.*, 42, 87–100, 2008b.

Goldberg, D. L., Loughner, C. P., Tzortziou, M., Stehr, J. W., Pickering, K. E., Marufu, L. T., and Dickerson, R. R.: Higher surface ozone concentrations over the Chesapeake Bay than over the adjacent land: observations and models from the DISCOVER-AQ and CBODAQ campaigns, *Atmos. Environ.*, 84, 9–19, 2014.

Guenther, A., Karl, T., Harley, P., Wiedinmyer, C., Palmer, P. I., and Geron, C.: Estimates of global terrestrial isoprene emissions using MEGAN (Model of Emissions of Gases and Aerosols from Nature), *Atmos. Chem. Phys.*, 6, 3181–3210, doi:10.5194/acp-6-3181-2006, 2006.

Guenther, A. B., Jiang, X., Heald, C. L., Sakulyanontvittaya, T., Duhl, T., Emmons, L. K., and Wang, X.: The Model of Emissions of Gases and Aerosols from Nature version 2.1 (MEGAN2.1): an extended and updated framework for modeling biogenic emissions, *Geosci. Model Dev.*, 5, 1471–1492, doi:10.5194/gmd-5-1471-2012, 2012.

Hains, J. C., Taubman, B. F., Thompson, A. M., Stehr, J. W., Marufu, L. T., Doddridge, B. G., and Dickerson, R. R.: Origins of chemical pollution derived from Mid-Atlantic aircraft profiles using a clustering technique, *Atmos. Environ.*, 42, 1727–1741, 2008.

He, H., Hembeck, L., Hosley, K. M., Canty, T. P., Salawitch, R. J., and Dickerson, R. R.: High ozone concentrations on hot days: the role of electric power demand and NO_x emissions, *Geophys. Res. Lett.*, 40, 5291–5294, 2013a.

He, H., Stehr, J. W., Hains, J. C., Krask, D. J., Doddridge, B. G., Vinnikov, K. Y., Canty, T. P., Hosley, K. M., Salawitch, R. J., Worden, H. M., and Dickerson, R. R.: Trends in emissions and concentrations of air pollutants in the lower troposphere in the Baltimore/Washington airshed from 1997 to 2011, *Atmos. Chem. Phys.*, 13, 7859–7874, doi:10.5194/acp-13-7859-2013, 2013b.

He, H., Loughner, C. P., Stehr, J. W., Arkinson, H. L. Brent, L. C., Follette-Cook, M. B., Tzortziou, M. A. Pickering, K. E., Thompson, A. M., Martins, D. K., Diskin, G. S., Anderson, B. E., Crawford, J. H., Weinheimer, A. J., Lee, P., Hains, J. C., Dickerson, R. R.: An elevated reservoir of air pollutants over the Mid-Atlantic States during the 2011 DISCOVER-AQ

Ozone and NO_x chemistry in the eastern US

T. P. Canty et al.

Title Page

Abstract

Introduction

Conclusions

References

Tables

Figures



Back

Close

Full Screen / Esc

Printer-friendly Version

Interactive Discussion



campaign: airborne measurements and numerical simulations, *Atmos. Environ.*, 85, 18–30, doi:10.1016/j.atmosenv.2013.11.039, 2014.

Hogrefe, C., Isukapalli, S. S., Tang, X. G., Georgopoulos, P. G., He, S., Zalewsky, E. E., Hao, W., Ku, J. Y., Key, T., and Sistla, G.: Impact of biogenic emission uncertainties on the simulated response of ozone and fine particulate matter to anthropogenic emission reductions, *J. Air Waste Manage.*, 61, 92–108, 2011.

Horowitz, L. W., Fiore, A. M., Milly, G. P., Cohen, R. C., Perring, A., Wooldridge, P. J., Hess, P. G., Emmons, L. K., and Lamarque, J.: Observational constraints on the chemistry of isoprene nitrates over the eastern United States, *J. Geophys. Res.*, 112, D12S08, doi:10.1029/2006JD007747, 2007.

Jacobson, M. Z., Wilkerson, J. T., Naiman, A. D., and Lele, S. K.: The effects of aircraft on climate and pollution. Part II: 20-year impacts of exhaust from all commercial aircraft worldwide treated individually at the subgrid scale, *Faraday Discuss.*, 165, 369–381, 2013.

Lamsal, L. N., Krotkov, N. A., Celarier, E. A., Swartz, W. H., Pickering, K. E., Bucsel, E. J., Gleason, J. F., Martin, R. V., Philip, S., Irie, H., Cede, A., Herman, J., Weinheimer, A., Szykman, J. J., and Knepp, T. N.: Evaluation of OMI operational standard NO₂ column retrievals using in situ and surface-based NO₂ observations, *Atmos. Chem. Phys.*, 14, 11587–11609, doi:10.5194/acp-14-11587-2014, 2014.

Leucken, D. and Schwede, D.: Improving the treatment of oxidized nitrogen in CMAQ influence of gas phase chemical and physical parameterizations, talk presented at Community Modeling and Analysis System conference, October 2014.

Li, G., Zhang, R., Fan, J., and Tie, X.: Impacts of biogenic emissions on photochemical ozone production in Houston, Texas, *J. Geophys. Res.*, 112, D10309, doi:10.1029/2006JD007924, 2007.

Lockwood, A. L., Shepson, P. B., Fiddler, M. N., and Alaghmand, M.: Isoprene nitrates: preparation, separation, identification, yields, and atmospheric chemistry, *Atmos. Chem. Phys.*, 10, 6169–6178, doi:10.5194/acp-10-6169-2010, 2010.

Logan, J. A.: Ozone in rural-areas of the United States, *J. Geophys. Res.*, 94, 8511–8532, 1989.

Loughner, C. P., Allen, D. J., Pickering, K. E., Zhang, D. L., Shou, Y. X., and Dickerson, R. R.: Impact of fair-weather cumulus clouds and the Chesapeake Bay breeze on pollutant transport and transformation, *Atmos. Environ.*, 45, 4060–4072, 2011.

**Ozone and NO_x
chemistry in the
eastern US**

T. P. Canty et al.

Title Page

Abstract

Introduction

Conclusions

References

Tables

Figures



Back

Close

Full Screen / Esc

Printer-friendly Version

Interactive Discussion



Luke, W. T., Dickerson, R. R., and Nunnermacker, L. J.: Direct measurements of the photolysis rate coefficients and Henry Law constants of several alkyl nitrates, *J. Geophys. Res.*, 94, 14905–14921, 1998.

Marufu, L. T., Taubman, B. F., Bloomer, B., Piety, C. A., Doddridge, B. G., Stehr, J. W., and Dickerson, R. R.: The 2003 North American electrical blackout: an accidental experiment in atmospheric chemistry, *Geophys. Res. Lett.*, 31, L13106, doi:10.1029/2004GL019771, 2004.

Müller, J.-F., Peeters, J., and Stavrou, T.: Fast photolysis of carbonyl nitrates from isoprene, *Atmos. Chem. Phys.*, 14, 2497–2508, doi:10.5194/acp-14-2497-2014, 2014.

Napelenok, S. L., Pinder, R. W., Gilliland, A. B., and Martin, R. V.: A method for evaluating spatially-resolved NO_x emissions using Kalman filter inversion, direct sensitivities, and space-based NO₂ observations, *Atmos. Chem. Phys.*, 8, 5603–5614, doi:10.5194/acp-8-5603-2008, 2008.

Neff, J., Holland, E., Dentener, F., McDowell, W., and Russell, K.: The origin, composition and rates of organic nitrogen deposition: a missing piece of the nitrogen cycle?, *Biogeochemistry*, 57–58, 99–136, 2002.

Paulot, F., Crouse, J. D., Kjaergaard, H. G., Kroll, J. H., Seinfeld, J. H., and Wennberg, P. O.: Isoprene photooxidation: new insights into the production of acids and organic nitrates, *Atmos. Chem. Phys.*, 9, 1479–1501, doi:10.5194/acp-9-1479-2009, 2009.

Pavlakakis, K. G., Hatzidimitriou, D., Drakakis, E., Matsoukas, C., Fotiadi, A., Hatzianastassiou, N., and Vardavas, I.: ENSO surface longwave radiation forcing over the tropical Pacific, *Atmos. Chem. Phys.*, 7, 2013–2026, doi:10.5194/acp-7-2013-2007, 2007.

Perring, A. E., Bertram, T. H., Wooldridge, P. J., Fried, A., Heikes, B. G., Dibb, J., Crouse, J. D., Wennberg, P. O., Blake, N. J., Blake, D. R., Brune, W. H., Singh, H. B., and Cohen, R. C.: Airborne observations of total RONO₂: new constraints on the yield and lifetime of isoprene nitrates, *Atmos. Chem. Phys.*, 9, 1451–1463, doi:10.5194/acp-9-1451-2009, 2009.

Perring, A. E., Bertram, T. H., Farmer, D. K., Wooldridge, P. J., Dibb, J., Blake, N. J., Blake, D. R., Singh, H. B., Fuelberg, H., Diskin, G., Sachse, G., and Cohen, R. C.: The production and persistence of ΣRONO₂ in the Mexico City plume, *Atmos. Chem. Phys.*, 10, 7215–7229, doi:10.5194/acp-10-7215-2010, 2010.

Perring, A. E., Pusede, S. E., and Cohen, R. C.: An observational perspective on the atmospheric impacts of alkyl and multifunctional nitrates on ozone and secondary organic aerosol, *Chem. Rev.*, 113, 5848–5870, doi:10.1021/cr300520x, 2013.

**Ozone and NO_x
chemistry in the
eastern US**

T. P. Canty et al.

Title Page

Abstract

Introduction

Conclusions

References

Tables

Figures



Back

Close

Full Screen / Esc

Printer-friendly Version

Interactive Discussion



Pollack, I. B., Ryerson, T. B., Trainer, M., Neuman, J. A., Roberts, J. M., and Parrish, D. D.: Trends in ozone, its precursors, and related secondary oxidation products in Los Angeles, California: a synthesis of measurements from 1960 to 2010, *J. Geophys. Res.*, 118, 5893–5911, 2013.

5 Ren, X., Van Duin, D., Cazorla, M., Chen, S., Brune, W. H., Flynn, J. H., Grossberg, N., Lefer, B. L., Rappengluck, B., Wong, K. W., Tsai, C., Stutz, J., Dibb, J. E., Jobson, B. T., Luke, W., and Kelley, P.: Atmospheric oxidation chemistry and ozone production: results from SHARP 2009 in Houston, Texas, *J. Geophys. Res.*, 118, 5770–5780, doi:10.1002/jgrd.50342, 2103.

10 Ryan, W. F., Doddridge, B. G., Dickerson, R. R., Morales, R. M., Hallock, K. A., Roberts, P. T., Blumenthal, D. L., Anderson, J. A., and Civerolo, K. L.: Pollutant transport during a regional O₃ episode in the mid-Atlantic states, *J. Air Waste Manage.*, 48, 786–797, 1998.

Taubman, B. F., Marufu, L. T., Piety, C. A., Doddridge, B. G., Stehr, J. W., and Dickerson, R. R.: Airborne characterization of the chemical, optical, and meteorological properties, and origins of a combined ozone/haze episode over the eastern US, *J. Atmos. Sci.*, 61, 1781–1793, 2004.

15 Taubman, B. F., Hains, J. C., Thompson, A. M., Marufu, L. T., Doddridge, B. G., Stehr, J. W., Piety, C. A., and Dickerson, R. R.: Aircraft vertical profiles of trace gas and aerosol pollution over the mid-Atlantic United States: statistics and meteorological cluster analysis, *J. Geophys. Res.*, 111, D10S07, doi:10.1029/2005JD006196, 2006.

Walsh, K. J., Milligan, M., Woodman, M., and Sherwell, J.: Data mining to characterize ozone behavior in Baltimore and Washington, DC, *Atmos. Environ.*, 42, 4280–4292, 2008.

20 Wilson, R. C., Fleming, Z. L., Monks, P. S., Clain, G., Henne, S., Konovalov, I. B., Szopa, S., and Menut, L.: Have primary emission reduction measures reduced ozone across Europe? An analysis of European rural background ozone trends 1996–2005, *Atmos. Chem. Phys.*, 12, 437–454, doi:10.5194/acp-12-437-2012, 2012.

25 Xie, Y., Paulot, F., Carter, W. P. L., Nolte, C. G., Luecken, D. J., Hutzell, W. T., Wennberg, P. O., Cohen, R. C., and Pinder, R. W.: Understanding the impact of recent advances in isoprene photooxidation on simulations of regional air quality, *Atmos. Chem. Phys.*, 13, 8439–8455, doi:10.5194/acp-13-8439-2013, 2013.

30 Yarwood, G., Rao, S., Yocke, M., and Whitten, G. Z.: Updates to the Carbon Bond Chemical Mechanism: CB05, ENVIRON International Corp, 2005.

**Ozone and NO_x
chemistry in the
eastern US**

T. P. Canty et al.

[Title Page](#)[Abstract](#)[Introduction](#)[Conclusions](#)[References](#)[Tables](#)[Figures](#)[Back](#)[Close](#)[Full Screen / Esc](#)[Printer-friendly Version](#)[Interactive Discussion](#)

Yegorova, E. A., Allen, D. J., Loughner, C. P., Pickering, K. E., and Dickerson, R. R.: Characterization of an eastern US severe air pollution episode using WRF/Chem, *J. Geophys. Res.*, 116, D17306, doi:10.1029/2010JD015054, 2011.

5 Yu, S. C., Mathur, R. Pleim, J., Pouliot, G., Wong, D., Eder, B., Schere, K., Gilliam, R., and Rao, S. T.: Comparative evaluation of the impact of WRF-NMM and WRF-ARW meteorology on CMAQ simulations for O₃ and related species during the 2006 TexAQs/GoMACCS campaign, *Atmos. Pollut. Res.*, 3, 149–162, doi:10.5094/APR.2012.015, 2012.

Zhou, W., Cohan, D. S., and Napelenok, S. L.: Reconciling NO_x emissions reductions and ozone trends in the US, 2002–2006, *Atmos. Environ.*, 70, 236–244, 2013.

Ozone and NO_x
chemistry in the
eastern US

T. P. Canty et al.

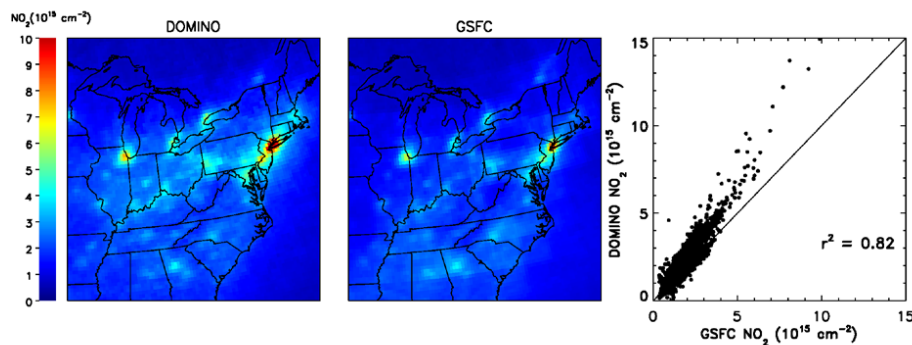


Figure 1. Average OMI tropospheric column NO₂ observations for July and August 2007 for both the DOMINO (left) and GSFC (middle) retrievals. The level 2 swath data for both retrievals has been screened, weighted based on viewing angle and gridded onto a 0.25° × 0.25° lat/lon grid. Only observations where cloud fraction is less than 30% are used in the gridding process. Both data sets indicate that the highest levels of tropospheric NO₂ occur over urban regions. A scatter plot of DOMINO vs. GSFC observations (right) indicates that the DOMINO retrieval is roughly 20% higher, on average, than the GSFC satellite product.

[Title Page](#)[Abstract](#)[Introduction](#)[Conclusions](#)[References](#)[Tables](#)[Figures](#)[◀](#)[▶](#)[◀](#)[▶](#)[Back](#)[Close](#)[Full Screen / Esc](#)[Printer-friendly Version](#)[Interactive Discussion](#)

Ozone and NO_x
chemistry in the
eastern US

T. P. Canty et al.

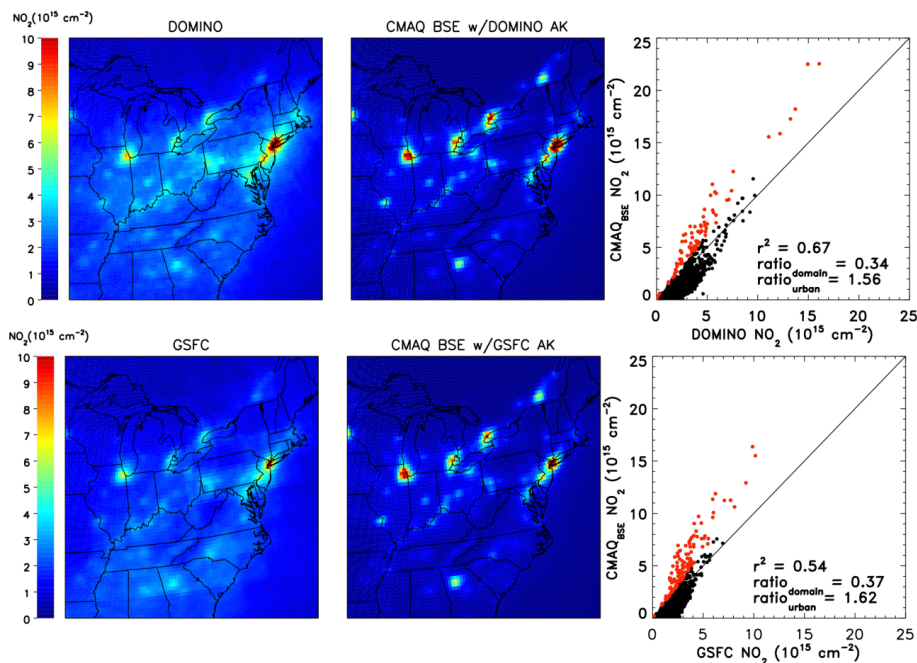


Figure 2. Comparison of satellite observations of tropospheric column NO₂ (left panels) to output from a baseline CMAQ model run (CMAQ_{BSE}) convolved with the satellite averaging kernels for the DOMINO retrieval (top middle) and GSFC retrieval (bottom middle). Model output is screened, weighted, and gridded in the same manner as the satellite retrievals. A scatter plot comparison of model to satellite (right panels) indicates the model can explain ~ 50–70 % of the satellite observations. Much of this correlation is driven by the large concentration of points below $5 \times 10^{15} \text{ cm}^{-2}$, where the model underpredicts the satellite. The red points represent areas where the model is at least 25 % greater than observations.

Ozone and NO_x
chemistry in the
eastern US

T. P. Canty et al.

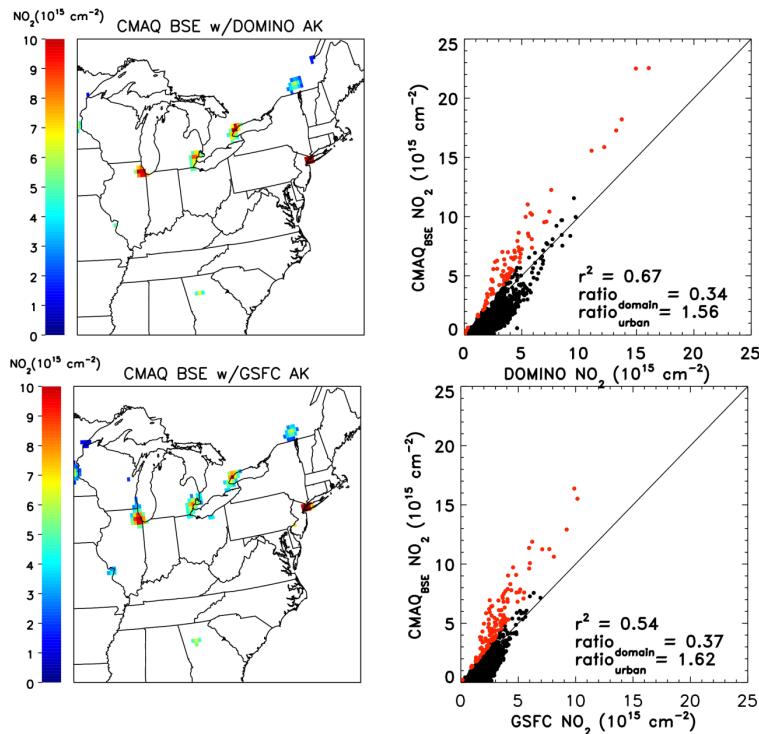


Figure 3. The same model output as Fig. 2 except results are only shown for regions where the simulations are at least 25 % greater than observations (left panels). This clearly shows that model is biased high over urban regions indicated by the red points in the scatter plots (right panels). The variance (r^2) in both panels is calculated using all model grid points. The mean ratio for all points within the domain ($\text{ratio}_{\text{domain}}$) and for the urban regions (red points, $\text{ratio}_{\text{urban}}$) is provided.

Title Page

Abstract

Introduction

Conclusions

References

Tables

Figures



Back

Close

Full Screen / Esc

Printer-friendly Version

Interactive Discussion



Ozone and NO_x
chemistry in the
eastern US

T. P. Canty et al.

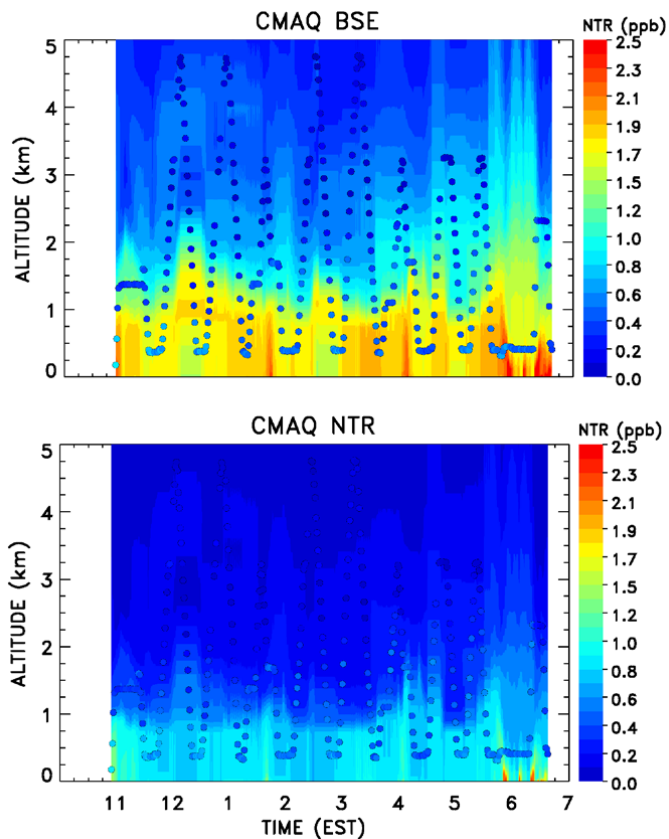


Figure 4. (Top Panel) Comparison of baseline CMAQ simulations of organic nitrates (NTR) (colored contours) to NTR observed during the DISCOVER–AQ field mission on 29 July 2011 (colored points). (Bottom Panel) As in the top panel, except the CB05 chemical mechanism in CMAQ has been modified such that the lifetime of NTR is reduced by a factor of 10 (colored contours).

[Title Page](#)[Abstract](#)[Introduction](#)[Conclusions](#)[References](#)[Tables](#)[Figures](#)[◀](#)[▶](#)[◀](#)[▶](#)[Back](#)[Close](#)[Full Screen / Esc](#)[Printer-friendly Version](#)[Interactive Discussion](#)

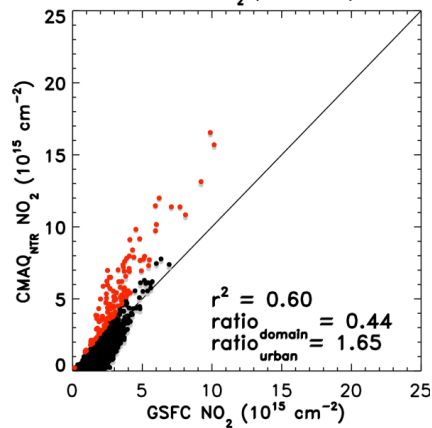
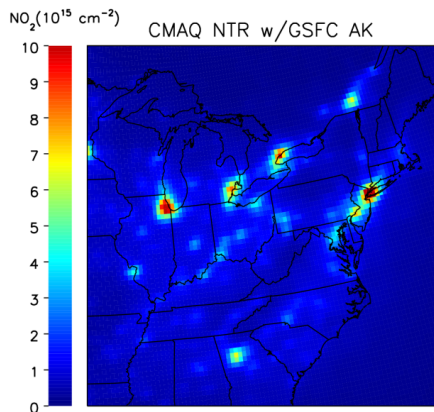
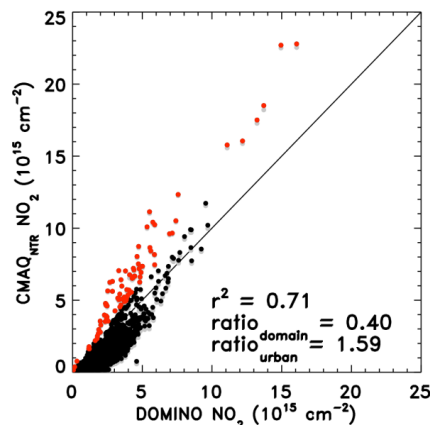
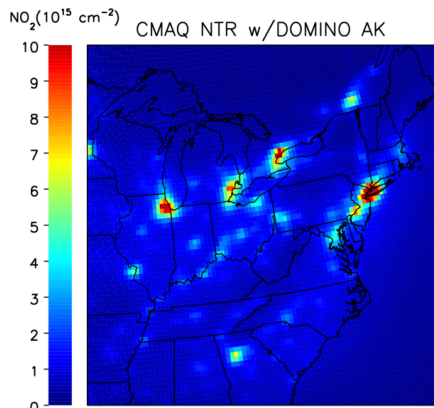


Figure 5. Similar to Fig. 2 except the chemical mechanism in the CMAQ model has been modified such that the lifetime of NTR is reduced by a factor of 10 (CMAQ_{NTR}). Gray points on the scatter plots represent the results shown in Fig. 2 (right panels). As in Fig. 3, red points represent urban regions.

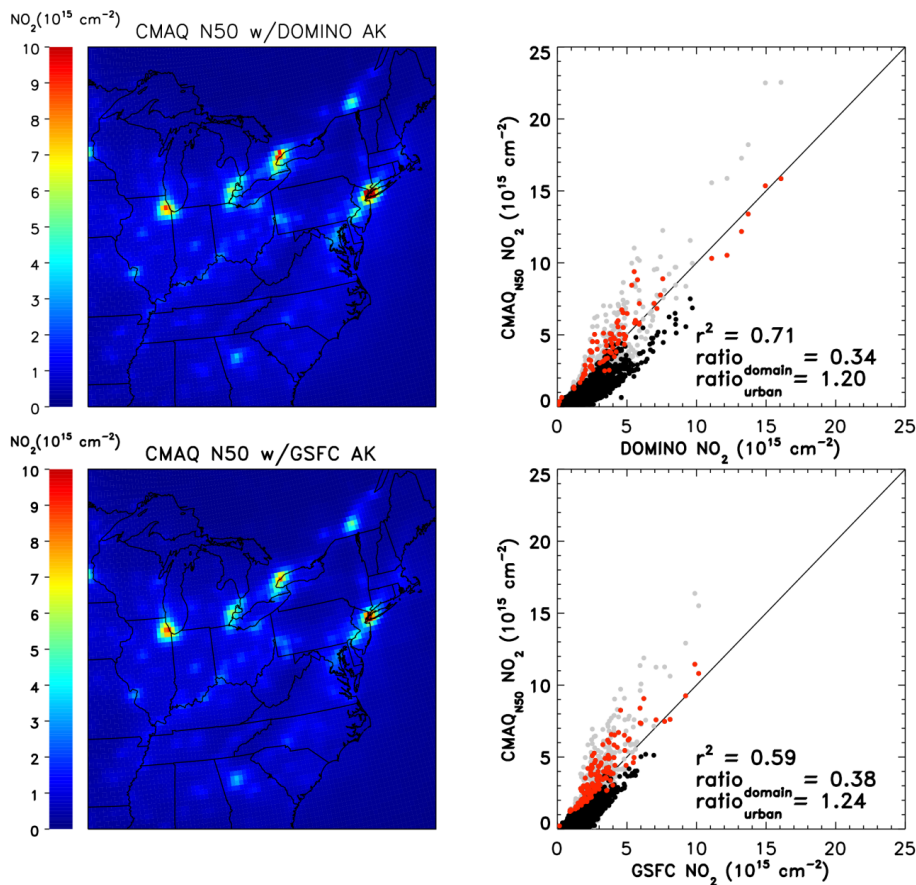


Figure 6. Same as Fig. 5 except model results include both changes to NTR chemistry and a 50 % reduction in the emissions of NO_x from mobile sources (CMAQ_{N50}). Gray points on the scatter plots represent the results shown in Fig. 2 (right panels).

Title Page

Abstract

Introduction

Conclusions

References

Tables

Figures

◀

▶

◀

▶

Back

Close

Full Screen / Esc

Printer-friendly Version

Interactive Discussion



Ozone and NO_x chemistry in the eastern US

T. P. Canty et al.

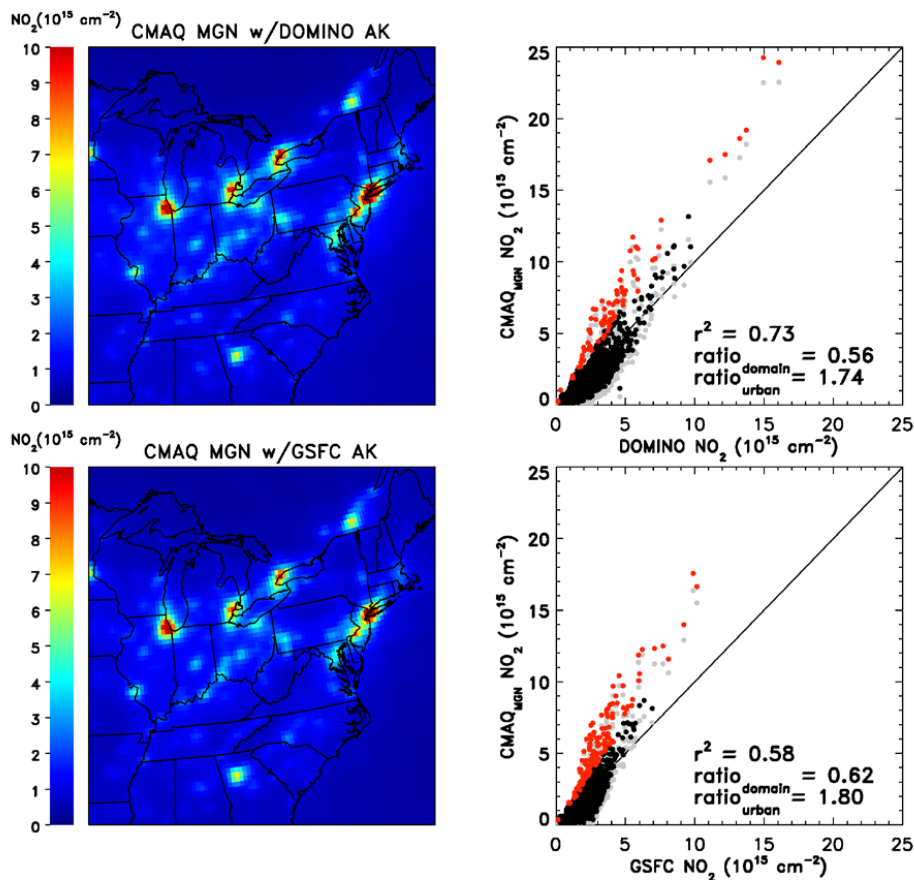


Figure 7. Same as Fig. 5 except model include updated biogenic emissions from MEGANv2.10 (CMAQ_{MGN}). Gray points on the scatter plots represent the results shown in Fig. 2 (right panels).

Title Page

Abstract Introduction

Conclusions References

Tables Figures

◀ ▶

◀ ▶

Back Close

Full Screen / Esc

Printer-friendly Version

Interactive Discussion



Ozone and NO_x
chemistry in the
eastern US

T. P. Canty et al.

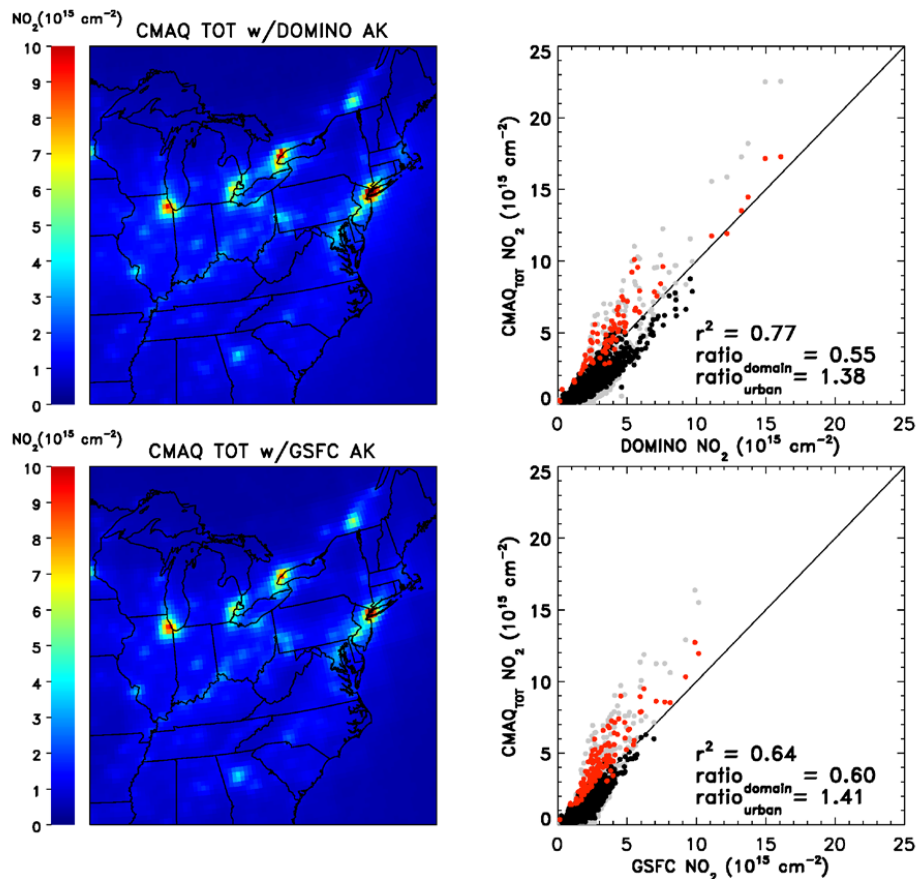


Figure 8. Same as Fig. 5 except model results include changes to NTR chemistry, a 50 % reduction in the emissions of NO_x from mobile sources, and updated biogenic emissions (CMAQ_{TOT}). Gray points on the scatter plots represent the results shown in Fig. 2 (right panels).

Ozone and NO_x chemistry in the eastern US

T. P. Canty et al.

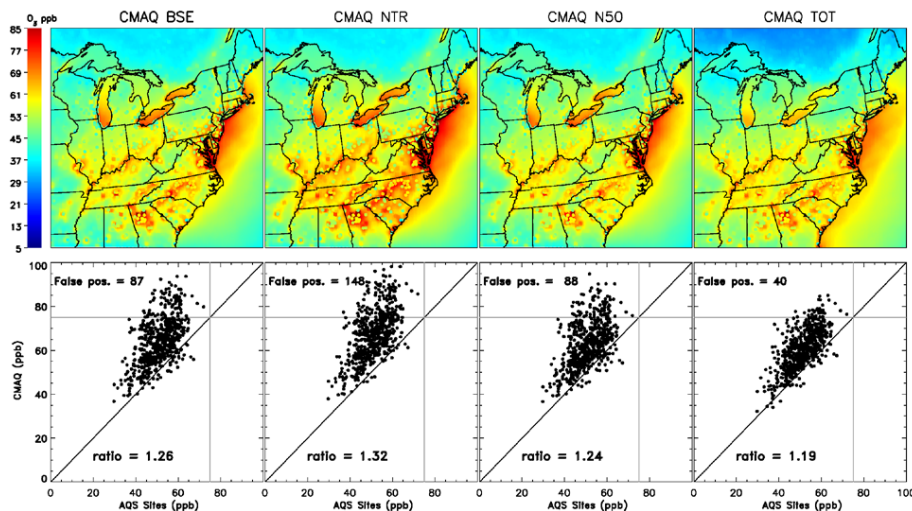


Figure 9. Average daily maximum 8 h daily ozone for July and August 2007 for four model cases: MDL_{BSE} (top left), MDL_{NTR} (top middle left), MDL_{N50} (top middle right), and MDL_{TOT} (top right) and ground based observations. Colored contours represent the CMAQ model output. Colored points denote average daily maximum 8 h daily ozone from ground based AQS sites for the same time period. Scatter plots of each CMAQ model output vs. observations are shown (bottom panels). Gray horizontal and vertical lines indicate the 75 ppb ozone exceedance level. The number of times the model output is greater than 75 ppb while the observations are less than 75 ppb is shown (false positive). The mean ratio between CMAQ surface ozone and observations at air quality sites is indicated for each model simulation.

Title Page

Abstract

Introduction

Conclusions

References

Tables

Figures



Back

Close

Full Screen / Esc

Printer-friendly Version

Interactive Discussion



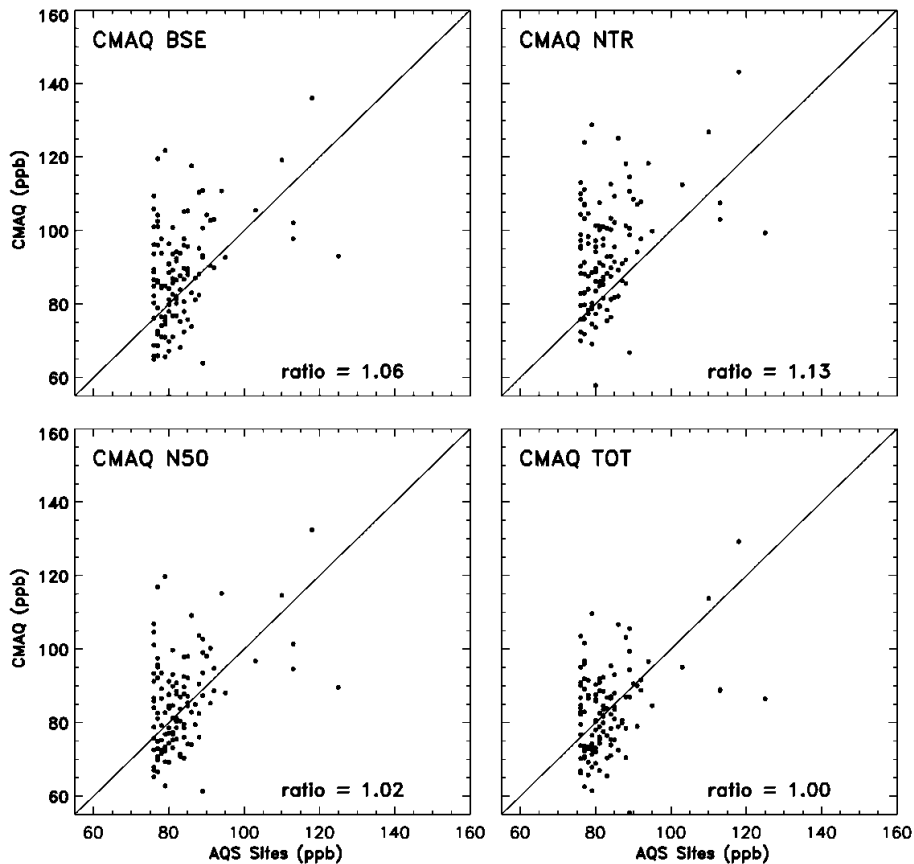


Figure 10. Comparison of average 8 h surface ozone calculated from baseline CMAQ model output (top left), MDL_{NTR} model output (top right), MDL_{N50} model output (bottom left panel), and MDL_{TOT} (bottom right) to observations from ground based AQS sites for those days and locations in Maryland that experienced exceedances (8 h average ozone greater than 75 ppb) during July and August 2007.

Title Page	
Abstract	Introduction
Conclusions	References
Tables	Figures
◀	▶
◀	▶
Back	Close
Full Screen / Esc	
Printer-friendly Version	
Interactive Discussion	

