

General Comments

The authors have done a commendably thorough job of revising the paper in response to my comments and those of the other reviewers. In particular, the revisions to section 5 on tracer correlations are very helpful in clarifying that material. I think the paper is now largely suitable for publication in ACP. There are a number of minor points remaining, and also a few clarifications (primarily to some of the new material in section 5) that I would like to see addressed before publication, as detailed below (there are still a number of grammatical issues, but I am assuming these will be addressed in the copy-editing process).

Dear Gloria Manney,

Thanks you again for your constructive comments. Following your recommendations, we improved the new Figure 8 through adding grid background and clarifying vertical motions. To render this response easy to read, you will find your original comments in italic letters, our answers in roman letters and the references to the manuscript (and in the manuscript) are highlighted in red.

Specific Comments

- *There are several places in the paper where the vortex (before or well after the SSW) is referred to as "stable" (e.g., lines 276, 332, 334, 381, 402, 504). It would be helpful to clarify what this term is being used to convey. "Stable" has a formal definition in the sense of the necessary and sufficient conditions for various sorts of fluid dynamical instabilities (typically baroclinic or barotropic instability in the polar stratosphere). I don't believe that is what is meant here (and would require a calculation of the conditions for stability if so). It would be helpful to say what is meant (e.g., not changing rapidly, "strong" in some defined sense, etc).*

We agree it is not clear using "stable" to describe vortex. The explicit statement for "stable" should be 1) the shape of polar vortex is basically symmetric around the North Pole and is not changing rapidly; 2) the vortex edge, that can be quantified by PV gradient along vortex edge, is well identified. As the referee recommended, 'strong vortex' or 'well-defined vortex edge' indicates better in this sense. Please find the changed text in **Lines 284, 342, 344, 391, 412 and 515**.

- *line 24, add "e.g.," before references (since EP flux is so widely used, there are many publications that could be listed here).*

The "e.g.," is added.

- *line 44, insert "down" between "breaking" and "and". Also would be good to add Randall et al. (2009, GRL, doi:10.1029/2009GL039706) to the references listed here.*

'Breaking' was changed to 'breaking down' and the citation was added.

- *lines 54-55, please specify how long before and how long after.*

According to the paper, strong transport and mixing of tracers to mid-latitude is more rapid and complete than that in 2006 winter. The discussion of the periods relates to the level of concern. Therefore, we reformulate the sentence and only discussed the middle stratosphere according to the Fig.3 middle panel (850 K)(Manney *et al.*, 2009). The amount of air transported out of the polar vortex into the mid-latitudes in mid-stratosphere was weak until one week before the onset of the major SSW and became strong with a weak vortex transport barrier within a month after SSW onset until the reestablishment of a vortex barrier (Manney *et al.*, 2009).

- *lines 62-64, it would be good to also mention the Manney et al (2015) finding of continued confinement of air in the vortex, as this was also important to the observed behavior (and leads into the discussion of the importance of representing mixing that follows).*

We agree. See the changed text in **Line 66**.

- *lines 70-74, this is not very clear to me; I think it would help here to define what the distinction is between "mixing" and "advection", since "mixing" is used to describe a number of processes, some of which are simply small-scale transport (that is, advection); is this just a matter of scale in your usage?*

The difference between 'advection' and 'mixing' lies in the reversibility of the transport as can be described within Lagrangian transport models. The 'advection', the reversible part of transport, describes the advection of APs driven by wind field (trajectory in Lagrangian transport) while 'mixing' refers to mass transfer between air parcels and is associated with the dissipation of fine structure like streamers or filaments due to scale collapse. The definition of advection and mixing does relates to scale. We changed the corresponding sentences and try to explain the two concepts more clearly. See the changed text in **the second paragraph at page 3**.

- *line 78, I would say "one main difficulty" or "an important difficulty" – I think saying it is the *only* one, as implied by "the" is a bit strong.*

We agree. The words have been changed accordingly.

- *lines 82-87, is the material about the Riese et al (2012) paper relevant to this paper?*

It is relevant. Because this study points out the importance of representation of mixing in model (CLaMS) to the tracer distributions and ,as a result, their radiative effects. A model with a explicit mixing parametrization like CLaMS can realize the quantification of 'mixing' effect and compare the result with tracer observations.

- *lines 91-92, probably should specify "...within the extratropical surf zone" *in winter*.*

We agree. The text has been changed.

- *lines 99-100, should qualify that these extended lifetimes are in the absence of chlorine-catalyzed ozone loss in the lower stratospheric vortices.*

We agree. The sentence has been changed accordingly.

- *lines 112-113, why would this effect be exaggerated in models?*

The sentence has been extended. By 'exaggerated mixing in models', we mean that the strength of transport barrier at vortex edge is likely underestimated in model simulations so that the intensity of mixing will be overestimated. Hoppe *et al.* (2014) implemented CLaMS into ECHAM/MESSy Atmospheric Chemistry model (EMAC) and compare the result with the standard flux-form semi-Lagrangian (FFSL) transport scheme in EMAC. The study shows CLaMS produces a more realistic (stronger) polar vortex edge than FFSL.

- *line 149, it is not clear to me in what way the maximum polar cap temperature characterizes the response of the BDC to SSWs better.*

Firstly, the SSW are identified by the zonal mean wind reversal at 10hPa and 60°N(CP07). Secondly, the SSW central day is defined as the day when 5 day smoothed polar cap temperature at 10hPa reach its peak within ± 5 days of the wind reversal date. The advantage of finding the central date in this way is 1) wind reversal criteria as the classic definition is considered; 2) high day-to-day variation of wind field is avoided; 3) the mean temperature background of each year is included. The main concern of this method is polar cap temperature because the temperature and its variation directly contribute to the eddy heat flux ($\overline{v'T'}$) and are more closely related to the residual circulation (the divergence of eddy heat flux). However, this definition of central date make only 1 day difference in this SSW because 2009 SSW is such a strong one that the variation of wind and temperature field agreed well. The method is still used here also to keep consistent with our previous studies. Perhaps, the definition is not clearly described so we added some explanation into the manuscript. Please check [Lines 155-158](#).

- *line 243, might specify that 1000K is relevant since all the analysis here is for levels well below that.*

We agree. The text was added to [Line 251](#).

- *lines 250-259, I think the only Livesey et al reference that is needed here is Livesey et al (2013, Tech Memo), which is the data quality document that supercedes the 2011 one. The URL given is that for this document and could be moved to the citation in the reference list as "Available at..."*

The reference was modified as the suggestions. Please check [the first paragraph of section 3.2](#).

- lines 271-272, can you give any possible explanation for this small bias?

Three possible explanation for this bias: 1) not enough NO_xchemistry 2) too much ozone production 3) too fast poleward transport from the tropics. We added these explanation into manuscript. The text was added to [Line 278-280](#)

- lines 316-318, does enhanced wave forcing really necessarily drive mixing "across the vortex edge" as is implied here? Certainly there is more mixing in a zonal mean sense, and also more mixing in the "surf zone" around the vortex. But in cases where the lower stratospheric vortex remains strong after an SSW (e.g., 2013), would that necessarily mean more mixing across the vortex edge?

We agree that the statement is too strong and not well-thought-out. The strength of mixing not only relates to the enhanced wave forcing but also depends on the strength of vortex transport barrier. See the changed text in [Line 325-328](#).

- lines 353-354, The subtropical barrier is only clearly apparent in Fig. 6b for 500-700K, not at either the higher or lower layers – is it really limited to that layer?

As to this point, we did not investigate sufficiently and therefore have not enough material to conclude. In the paper, we can say the strongest mixing minimum is around these levels.

- lines 378-385, this isn't very clear to me, from the text or the figure. The figure seems to indicate that mixing can be associated with either EP flux convergence or divergence at different times. Can you be more explicit about why this is the case?

The message is that mixing is associated with E-P flux convergence (indicating the enhanced wave forcing) under a weak transport barrier condition. I am not quite sure about the question, however I guess you refer to the Figure 7 (a) where mixing marked "A" seems associated with E-P flux divergence. That is because the vortex barrier was strong and therefore the high mixing state can only be found equatorward of vortex edge, which means mixing state distribution is relatively stationary and not associated with wave forcing very well under a strong vortex condition. Please see [Lines 390- 393](#).

- lines 390 and 394, I think you mean "separated" rather than "segregated".

Changed.

- line 420, and Figure 8, that the "whole correlation inclines to one side" is hard to see here, as are some of the other changes in the lines in the schematic. One simple thing I think might help is to put a grid (probably in dotted lines) behind the lines on the panels (especially those on the right) so that the read could more easily see when a line has moved between on panel and the next.

As the referee recommended, we added a grid behind the right panel in order to show the changes of correlation lines more clearly.

- *More on Figure 8: -Re line 425, why do you not show/discuss vertical motions before and after the SSW? In fact, the diabatic descent is enhanced for at least a month after the SSW, and *confined* descent is expected to be weaker *during* the event when the vortex is compromised (I'm not aware of a study showing this for 2009, but certainly that was the case in 2006, e.g., Manney et al, 2008, JGR, and Manney et al, 2009, ACP). And in fact, in the conclusions (line 573) you stated that descent is enhanced through late March, about two months after the SSW.*

I think the conflict comes from the different altitudes we concerned. The two papers you mentioned (Manney et al, 2008, JGR, and Manney et al, 2009, ACP) focused on the vertical motions (enhanced diabatic descent) in upper stratosphere and lower mesosphere which relates to the stratopause fold and strong vortex recovery in upper stratosphere. However, in section 2 and conclusions we refer to the middle and lower stratosphere which response to SSW a bit later than upper stratosphere but the enhanced descent stayed longer. As discussed in Section 2 Line ** and Figure 2, the vertical motions described by θ in CLaMS shows the diabatic descent started to enhance about 5 days before the central date from 1000 K to 700 K and the downwelling acceleration propagated down to 400 K in the next one month. Moreover, the accelerated descent in middle to upper stratosphere was strong and short that only existed for 2 weeks while that in lower stratosphere stayed until late March.

-most of the lettering within the panels themselves is too small to read – care should be taken to make sure it is legible in the final published paper.

The letters in this figure are enlarged properly.

-when you label the y-axis "Altitude" here, does that really mean potential temperature (this makes a big difference in what is interpreted as vertical motion)?

The "Altitude" label is the right label for y-axis. They refer to the altitudes in km unit in real physical space. The light gray curves on the background are the isentropes and the vertical motions of the fragments indicates the vertical motion cross isentropes (diabatic descent or ascent). The potential temperature values are labeled on the isentropes curves. In this way, we make it corresponding to the gray curves in the tracer space (right panel).

-it isn't clear to me from the figure or the text what becomes of fragments C and F.

That was a mistake. The fragments B in Fig. 8 (c1) should be fragment C, which indicates the fragments re-organize together and contribute to the vortex recovery. Fragments B indicates the vortex fragments mixed out with lower-latitude fragments. Fragment F shows the equator fragments transport to mid-latitude and mix out. The text and Figure were corrected accordingly. Please check [Line 448-449](#) and [Figure 8](#).

- *line 476, why don't you limit MLS to the same EqLs as for CLaMs? I think this is an important question in light of the fact (now discussed) that limitations on the domain can result in*

"artificial" changes in racer correlations.

On the top panel of MLS plot, we show the whole NH because we want to have three correlations (pole, surf zone and tropics). Then the three correlation lines as suggested in the diagram (Fig.8) can be seen in observations. Furthermore, to compare with the bottom panel, correlation line shown in non-mixing run is confirmed from lower latitudes. For the middle and bottom panels, we have to reduce the range of the eqlats in order to show that the weakening of tropical correlation and enhancement of mid-latitude correlation is associated with mixing.

- *lines 487-489, I think you mean that it is obvious that the APs are missing because there are APs in the box in Fig. 9a3 but not in Fig. 9c3? The wording could be changed to clarify this.*

The sentence there was changed as [Line 497](#).

- *lines 502 and 506, this is the first mention that I saw of "chaotic advection"; this should be defined, as well as (per a comment above) how it differs from plain "advection" and/or from "mixing".*

"Chaotic advection" of tracers refers to the pronounced streamers and filaments driven by wave breaking and flow deformation. "Chaotic advection" is the advection that still can be well resolved under the model scale while mixing is the smaller scale process that dissipates those streamers and filaments. See [Line 512](#).

- *lines 524-527, it still isn't clear to me what the "effective" vertical resolution of CLaMS is as compared to that of MLS.*

The horizontal and vertical resolution of CLaMS in this part of the atmosphere (i.e. the mean horizontal and vertical distance between the APs) are around 100 km and 400 m, respectively. That means, the filaments could be observed on such spatial scales and are smoothed out by much coarser vertical scales of the MLS instrument (and to less extent by the ACE instrument).

- *lines 529-531 and 535-543, it would be helpful to clarify the importance of sunlight exposure in this discussion. Also, in addition to Kuttippurath and Nikulin, Manney et al (2015, ACP; for Dec/Jan) and Livesey et al (2015, ACPD, for the full winter) also show the amount of lower stratospheric chemical loss in 2008/2009 compared with other winters.*

The discussion about the influence of sunlight exposure when the vortex split during 2013 SSW (Manney et al 2015, ACP) is a very interesting point. That definitely worth to study further, although ozone loss during 2009 winter seems not significantly influenced by the change of sunlight exposure. Nevertheless, it is a good point in this discussion. Please find the changes in Lines 541-542.

- *line 546, how is the "most probable location determined"?*

Here to run the trajectories, we need a probable location. We estimated the location as what we did in Fig. 10. We tracked the APs with N₂O mixing ratio 140 ppbv ± 10 ppbv and O₃ about 7.4 ppmv ± 0.2 ppmv to the physical space. The corresponding latitudes and pot. temperature are calculated with a distribution of possibilities. The largest possibility were found at 35°N and 600K. A similar method was applied in the next paragraph. Check **Lines 558-559**.

- *line 546, and following, ozone here is given in ppbv, but the figures are labeled in ppmv, please change one or the other for consistency (I'd suggest ozone always be given in ppmv).*

We changed the unit of ozone consistently to ppmv.

- *line 579, would be good to say how the subtropical barrier was affected, that is, whether it was strengthened or weakened, or its location changed.*

The distribution of simulated mixing intensity shows that the subtropical barrier was weakened after the onset of the major SSW although the position of the barrier did not significantly change in the equivalent latitude space. In contrast, the edge of the polar vortex was shifted to higher eq. latitudes values indicating an enhanced vortex decay after the major SSW.

- *line 584, I don't think "triggered" is the right word here – you haven't shown a causal connection. I would simply say something like "associated with".*

We agree and changed accordingly.

- *line 586-587, This is a bit strong. In the revised paper you have, in fact, done a very nice job of showing how *difficult* it is to use tracer correlations to separate dynamical and chemical effects, even if you have additional information as you do from CLaMS and MLS.*

That is true, so the text (**Lines 598-599**) have be rewritten.

- *line 590, "almost half of the vortex" – in area, or what?*

It refers to the vortex correlation.

- *lines 593-594, would be helpful to note the altitude regions where these loss processes are occurring.*

According to our study, the extra-tropical ozone loss due to NO_x catalytic cycles domains ozone loss between 600 K to 800 K. The altitude range has been added to the text (**Line 606**).

- *lines 601-603, two points: first, this speculation should also apply to final warmings after winters with significant chemical processing; second, whether the air at lower latitudes is higher in ozone than the vortex air depends on altitude (in much of the lower stratosphere, for instance, in absence of chemical loss in the vortex, ozone is lowest at low latitudes).*

Both remarks are good suggestions. We changed the paragraph based on the suggestions.

- *lines 640-641, how did you determine that the small vertical ozone variability and not the better resolution is the primary factor?*

The better vertical resolution of ozone also matters but is not the main factor. Because even if assuming that ozone and N₂O profiles have the same resolution. the filaments or vortex remnants still cause much larger vertical variability to N₂O than to ozone profile (because of the comparison of the horizontal and vertical tracer gradient). Based on this, we say the resolution is not the primary factor here.

References

- Hoppe, C. M., L. Hoffmann, P. Konopka, J.-U. Groö, F. Ploeger, G. Günther, P. Jöckel, and R. Müller (2014), The implementation of the CLaMS lagrangian transport core into the chemistry climate model EMAC 2.40.1: application on age of air and transport of long-lived trace species, *Geoscientific Model Development*, 7(6), 2639–2651.
- Manney, G. L., M. J. Schwartz, K. Krüger, M. L. Santee, S. Pawson, J. N. Lee, W. H. Daffer, R. A. Fuller, and N. J. Livesey (2009), Aura microwave limb sounder observations of dynamics and transport during the record-breaking 2009 arctic stratospheric major warming, *Geophysical Research Letters*, 36(12), L12,815, doi:10.1029/2009GL038586.

Impact of the 2009 major sudden stratospheric warming on the composition of the stratosphere

Mengchu Tao¹, Paul Konopka¹, Felix Ploeger¹, Jens-Uwe Grooß¹, Rolf Müller¹, C. Michael Volk², Kaley A. Walker³, and Martin Riese¹

¹Forschungszentrum Jülich (IEK-7: Stratosphere), Germany

²Department of Physics, University of Wuppertal, Germany

³Department of Physics, University of Toronto, Toronto, Ontario, Canada

Correspondence to: M. Tao (m.tao@fz-juelich.de)

Abstract. In a case study of a remarkable major Sudden Stratospheric Warming (SSW) during the boreal winter 2008/09, we investigate how transport and mixing triggered by this event affect the composition of the entire stratosphere in the northern hemisphere. We simulate this event with the Chemical Lagrangian Model of the Stratosphere (CLaMS), both with optimized mixing parameters and with no mixing, i.e. with transport occurring only along the Lagrangian trajectories. The results are investigated by using tracer-tracer correlations and by applying the Transformed Eulerian Mean formalism. The CLaMS simulation of N₂O and O₃ and in particular of the O₃-N₂O tracer correlations with optimized mixing parameters shows good agreement with the Aura Microwave Limb Sounder (MLS) data. The spatial distribution of mixing intensity in CLaMS correlates fairly well with the Eliassen-Palm flux convergence. This correlation illustrates how planetary waves drive mixing. By comparing simulations with and without mixing, we find that after the SSW poleward transport of air increases not only across the vortex edge but also across the subtropical transport barrier. Moreover, the SSW event, at the same time, accelerates polar descent and tropical ascent of the Brewer-Dobson circulation. The accelerated ascent in the tropics and descent at high latitudes first occurs in the upper stratosphere and then propagates downward to the lower stratosphere. This downward propagation takes over one month from the potential temperature level of 1000 K to 400 K.

1 Introduction

A major Sudden Stratospheric Warming (major SSW) is a dramatic phenomenon with strong wind disturbance and polar temperature rise in the winter stratosphere, associated with transport of air

from low to high latitudes (see e.g. Andrews et al., 1987). The mechanism of SSWs has been understood as a result of tropospheric waves propagating upwards into the stratosphere and breaking at a certain level (Matsuno, 1971). Planetary-scale waves can be diagnosed by the Eliassen-Palm (EP) flux and its divergence (e.g., Eliassen, 1951; Plumb and Bell, 1982). In particular, positive and negative values of the EP flux divergence quantify the acceleration and deceleration of the westerly zonal flow, respectively, driving the Brewer-Dobson (BD) circulation (e.g., Holton et al., 1995).

Resolving filamentary structures explicitly and realistically representing the dissipation/mixing processes in models is important for simulating non-linear chemical reactions accurately (Tuck, 1986; Orsolini et al., 1997; Edouard et al., 1996; Konopka et al., 2003). However, resolving these structures accurately is a general difficulty for chemical transport models (e.g., Sutton et al., 1994; Fairlie et al., 1997; Manney et al., 1998). During a SSW event, strong large-scale planetary waves propagate, break and finally dissipate – a process that occurs almost isentropically, i.e. on levels with a constant potential temperature. In the stratospheric chemical tracer fields, the SSW itself is characterized by the existence of filamentary structures on a broad range of spatial scales (see e.g. McIntyre and Palmer, 1983; Konopka et al., 2003, 2005; Grooß et al., 2005). Therefore, quantitative understanding of SSWs is a challenge for current chemical transport models in particular in terms of coupling between dynamics, transport and chemistry.

To improve the understanding of SSWs, many case studies based on reanalysis data, modeling and/or satellite data have been performed. Manney et al. (2005, 2008) described the synoptic evolution during the 2004 and 2006 Sudden Stratospheric Warmings (SSW). Based on the Aura Microwave Limb Sounder (MLS) observations, the meteorology and trace gases from the UTLS to the lower mesosphere during 2006 and 2009 SSW were extensively studied (Manney et al., 2009a, b). Using satellite temperature measurements during three major SSWs, an anomalously strong descent of mesospheric air into the upper stratosphere was found along with the stratopause breaking down and then reforming above 75 km (Manney et al., 2008, 2009b; Randall et al., 2009; Orsolini et al., 2010). The major SSW in 2009 was the most intensive and prolonged case in the record (Manney et al., 2009b) and this event happened although typical known external factors, e.g. the Quasi-Biennial Oscillation, the Southern Oscillation, the 11-year sunspot cycle, were all unfavorable for the occurrence of a SSW (Labitzke and Kunze, 2009). Ayarzagüena et al. (2011) and Harada et al. (2010) studied this event from the perspective of tropospheric forcing. Both studies pointed out that the pronounced planetary wave-2 in the stratosphere, which triggers the SSW, is associated with a high-pressure ridge over the Pacific.

The remarkable stratospheric warming event in 2009 strongly influenced the distribution of chemical species. The amount of air transported out of the polar vortex into the mid-latitudes in mid-stratosphere was weak until one week before the onset of the major SSW and became strong with a weak vortex transport barrier within a month after SSW onset until the reestablishment of a vortex barrier (Manney et al., 2009b). Kuttippurath and Nikulin (2012) diagnosed an increasing trend of

occurrence of NH major SSWs in recent years (1999–2011). They confirmed a weakening in the chlorine-induced ozone loss after the onset of major SSWs during 2003/04, 2005/06 and 2008/09 winters. Sofieva et al. (2012) used Global Ozone Monitoring by Occultation of Stars (GOMOS) satellite measurements to study the O_3 , NO_2 and NO_3 distribution during the three major SSWs and found that changes in chemical composition due to major SSWs can extend into the mesosphere and even into the lower thermosphere. Manney et al. (2015) studied the 2012/13 winter and pointed out that, although the chlorine-induced ozone loss became weak after the onset of SSW, the ozone loss was still significant due to the unusual low temperature in the lower stratospheric polar vortex and continued confinement of air in the vortex mainly in December and January.

From the Lagrangian perspective, modelling of transport can be divided into advection and mixing. Advection is the reversible part of transport which describes transport of an air parcel along a 3D trajectory. Mixing, the irreversible part of transport, makes the representation of transport barriers in Eulerian models difficult (Sankey and Shepherd, 2003; Hegglin and Shepherd, 2007; Hoppe et al., 2014). Compared to Eulerian transport models with an implicit numerical diffusion, Lagrangian transport models have advantages in separating mixing from advection and thus explicitly describe the mixing process in the atmosphere. Here, we use the Chemical Lagrangian Model of the Stratosphere (CLaMS), which is a chemistry transport model with Lagrangian transport and parametrized mixing induced by atmospheric deformation (McKenna et al., 2002b; Konopka et al., 2004, 2007). The concept of deformation-induced mixing parametrization is based on that horizontal flow deformation produces pronounced filaments and streamers in stratosphere, which induce non-linear behavior on small scales with subsequent mixing. Advection in CLaMS is driven by the European Centre for Medium-range Weather Forecasts (ECMWF) ERA-Interim reanalysis horizontal winds and cross isentropic vertical transport is deduced from diabatic heating rates (Dee et al., 2011; Ploeger et al., 2010).

An appropriate representation of mixing in the models is one main difficulty for an accurate description of the permeability of transport barriers like the polar vortex edge or the tropical pipe (Tuck, 1986; Plumb, 1996; Steinhorst et al., 2005; Hoppe et al., 2014). Mixing itself is an irreversible process which, in a stably stratified stratosphere, is mainly driven by isentropic stirring that is associated with large-scale wave breaking and wind shear (McIntyre and Palmer, 1983). Riese et al. (2012) assessed the influence of uncertainties in the atmospheric mixing strength on the global distribution of the greenhouse gases H_2O , O_3 , CH_4 and N_2O in the upper troposphere and lower stratosphere (UTLS) and on the associated radiative effects. Their results show that simulated radiative effects of H_2O and O_3 , both characterized by steep gradients in the UTLS, are particularly sensitive to the atmospheric mixing strength.

To separate and quantify the impact of mixing on transport and chemistry of stratospheric constituents during a SSW, we utilize tracer-tracer correlations. Chemical constituents in the stratosphere whose chemical sources and sinks are slow compared with dynamical timescales, are influenced by

the Brewer-Dobson circulation and by quasi-isentropic mixing (which is most efficient within the extratropical surf zone **in winter**) and show compact tracer-tracer relations (Plumb, 2007). Mixing is suppressed at the edge of the winter polar vortex and at the edges of the tropics, so that tracer relationships distinct from those of middle latitudes occur in the tropics and in the polar vortices (e.g., Plumb, 1996; Volk et al., 1996; Müller et al., 1996, 2001; Plumb, 2007). Here, we focus on the relationship of O_3 with the long-lived tracer N_2O . Because chemical production and loss terms of O_3 increase strongly with altitude in the stratosphere, ozone can not be considered long-lived at altitudes above ≈ 20 km and relations with N_2O are not necessarily compact (Hegglin and Shepherd, 2007). Conditions are different in the polar vortex in winter, where the lifetime of ozone exceeds half a year **in the absence of chlorine-catalyzed ozone loss in the lower stratospheric vortex** (Sankey and Shepherd, 2003). However, the transport barriers in the stratosphere are sufficiently strong to allow distinct tracer-tracer relationships, in particular different O_3 - N_2O relationships to develop in the polar vortex, the mid latitudes and in the tropics (Michelsen et al., 1998; Ray et al., 2002; Müller et al., 2005; Hegglin and Shepherd, 2007).

Because different O_3 - N_2O relationships prevail in the polar vortex, in mid-latitudes and in the tropics, mixing of air masses from these different regions will change O_3 - N_2O relationships, even if relations in a particular region are linear (Fig. 1, top panel). Mixing between the polar vortex and mid-latitudes and between mid-latitudes and the tropics occurs along quasi-isentropic surfaces (Proffitt et al., 1990; Müller et al., 2005). Because the location of the isentropes in O_3 - N_2O space, mixing of mid-latitude and polar air will lead to higher ozone and higher N_2O in the polar region and mixing of mid-latitude and tropical air will lead to lower N_2O and lower ozone in the tropics (Fig. 1, top panel). The effect of mixing between polar and mid-latitude air on O_3 - N_2O relationships and the occurrences of this process along quasi-isentropic surfaces is also clearly visible in model simulations (Sankey and Shepherd, 2003; Müller et al., 2005; Lemmen et al., 2006). **However, the strength of transport barrier at vortex edge is likely underestimated in model simulations (Hoppe et al., 2014) so that the intensity of mixing will be overestimated.**

Upwelling and downwelling of stratospheric air changes tracer mixing ratios at a particular altitude (or potential temperature level) but does *not* change the tracer-tracer correlation (Ray et al., 2002). Therefore O_3 - N_2O relationships will not be affected by up- and downwelling (Fig. 1, middle panel), while however the location of the potential temperature surfaces in O_3 - N_2O space will change. Because of the vertical profile of ozone and N_2O below altitudes of ≈ 700 K, downwelling in the polar region will lead to an upward bending (more ozone, less N_2O) of the isentropes, while upwelling in the tropics will lead to downward bending (less ozone, more N_2O) of the isentropes (Fig. 1, middle panel, grey lines).

Finally, chemistry will impact O_3 - N_2O relationships; indeed ozone-tracer relations have been used extensively to examine lower stratospheric ozone loss in the polar regions (e.g., Proffitt et al., 1990; Müller et al., 1996, 2001; Tilmes et al., 2006). On the timescales and for the altitudes of in-

terest here, only chemical change for ozone needs to be taken into account. Thus, chemical loss of ozone in the polar regions shifts the O_3 - N_2O relationship downward, towards lower ozone mixing ratios and chemical production of ozone in the tropics will shift the O_3 - N_2O relationship upwards towards higher ozone mixing ratios (solid and dashed black lines in Fig. 1, bottom panel). In a model simulation the impact of chemistry on ozone-tracer relations can be investigated further through simulations using passive (i.e., chemically inert) ozone; this point will be discussed below in section 5.

The motivation of this work is to improve our understanding of transport and its impact on chemistry in a stratosphere under strongly disturbed dynamical conditions. In particular, the 2009 major SSW is an excellent case for studying: 1) the multi-timescale (days to months) responses to the wave forcing; 2) the evolution of mixing and its effect on distribution of chemical composition; 3) the observed tracer-tracer correlations using CLaMS simulations. In section 2, we will present an overview of the dynamical background of the stratospheric winter 2008/09. The CLaMS setup and validation of CLaMS result with the MLS observations of N_2O and O_3 will be presented in section 3. Section 4 will discuss the simulated mixing intensity in relation to wave forcing. Finally, section 5 will present the N_2O - O_3 correlations and their interpretation in terms of mixing, advection and chemistry caused by the major SSW in January 2009. Finally, the main results will be concluded in section 6.

2 Dynamical background

The definitions for SSW and classifications are extensively discussed by Butler et al. (2015). According to commonly used criteria (Christiansen, 2001; Charlton and Polvani, 2007), we identify the warming event on January 24th by the reversal of $60^\circ N$ westerly zonal-mean wind at 10 hPa. As has been pointed out (Taguchi, 2011; Gómez-Escolar et al., 2014), use of the highest polar cap temperature instead of the zonal wind reversal at $60^\circ N$ and 10 hPa, characterizes the response of the BDC to SSWs better. Thus, we identify the central SSW day as the date when 5-day smoothed polar cap temperature at 10hPa reach its peak within ± 5 days of the wind reversal date. January 23rd is used as the central day in our study because the polar cap temperature reached its peak on January 23rd.

Figure 2 gives an overview of the dynamical background during the boreal winter 2008/09 based on ERA-Interim reanalysis. Fig. 2a shows that the sudden rise of the polar cap temperature started in the upper stratosphere, around January 10th at 1 hPa. Thereafter, the warming propagated downward, arriving at 10 hPa and descended to the lower stratosphere until late January. The increase of polar temperature was accompanied by the generation of easterlies, which are also shown in Fig. 2a (black contours). The rise in easterlies and temperature lasted only 10 days at 1 hPa followed by a strong polar vortex cooling while the disturbance of wind and temperature in the lower stratosphere lasted more than 1 month without a complete recovery until the final warming in the spring of 2009.

Before the major SSW, the lower stratosphere in the tropics was slightly warmer than the long-term average due to the westerly phase of the QBO in this winter. Similar to the warming in the high latitudes, the tropical cooling (Fig. 2b) also started at about January 15th at 1 hPa and descended from the upper to the lower stratosphere over 2 weeks. As discussed in Randel et al. (2002), time-dependent upwelling in the tropical lower stratosphere is correlated with transient extratropical planetary waves, which transport heat from the tropics to high latitudes and, in turn, drive the BD-circulation.

A widely used diagnostic of the upward-propagating planetary waves is the vertical component of the EP flux, for which the strongest contribution results from the horizontal eddy heat flux $\overline{v'T'}$ with $v' = v - \bar{v}$, $T' = T - \bar{T}$ and with overbar denoting zonal mean and primes describing the deviations (i.e. fluctuations) for the temperature T and for the meridional velocity v (Andrews et al., 1987; Newman et al., 2001). Fig. 2(e) shows the time evolution of the eddy heat flux at 100 hPa averaged between 40 and 70°N, which explains more than 80% of the variability of the total vertical component of the EP flux. In addition, contributions of the wave-1 and wave-2 components to the mean eddy heat flux are also shown.

Newman et al. (2001) pointed out that the eddy heat flux measures activity of the waves and is highly correlated with the time evolution of the stratospheric polar temperature. As can be deduced from Fig. 2e and Fig. 2a (or Fig. 2b), the mean eddy heat flux at 100 hPa was well correlated with warming at the North Pole and cooling in the tropics. It shows a 1~2 weeks oscillation ranging within 0-25 K m s⁻¹ in December and it began to increase from January 6th reaching the first peak on January 18th. After several days of a slight decay, it rose up to the second peak on January 27th and then gradually declined to zero around mid-February with some small fluctuations afterwards. The dominant wave number before and during the major SSW was wave-2 that led to the vortex split. The dominant and extraordinary planetary wave-2 is associated with unusual development of the upper tropospheric ridge over Alaska (Ayarzagüena et al., 2011; Harada et al., 2010). However, after the major SSW, the main contribution to the total eddy heat flux resulted from higher wave numbers.

Large-scale tropospheric waves can propagate upward into the stratosphere through weak westerlies and break at the critical level, disturbing the mean flow (Dickinson, 1968; Matsuno, 1971). Such a transient wave breaking converts the zonal flow momentum to mean meridional circulation, and thus drives the extra-tropical downwelling and tropical upwelling of the BD circulation (e.g., Holton et al., 1995). The temperature perturbations discussed above and shown in Fig. 2 (a,b) result directly from diabatic heating and cooling caused by these wave-driven vertical motions. Subsequently, temperatures gradually relax toward their radiative equilibrium values by additional radiative cooling or heating, causing vertical motion, i.e. down- or upwelling through isentropic surfaces. The polar and tropical (total) diabatic heating rate anomalies from the 24-year mean of ECMWF meteorological ERA-Interim reanalysis (Dee et al., 2011) are shown in Fig. 2 (d,e). As expected,

diabatic polar downwelling and tropical upwelling (quantified by these heating rates) were both ac-
 205 celerated after the onset of the major SSW. The polar vortex descent rate strongly increased around
 Jan. 25th up to 15 K/day on 1000 K and only around 3 K/day on 500 K during the late January. The
 variability of polar vortex descent rate reported here is consistent with the findings by Manney et al.
 (2009b) and Lahoz et al. (2011) where the tracer isopleths method based on MLS observations of
 N_2O , CO and H_2O was used. The onset of the heating rate anomalies at each altitude, and thus their
 210 downward propagation, is roughly synchronous with the temperature anomalies shown in Fig. 2
 (a,b). The radiative decay of the anomalies takes only about 10 days at 1000 K, but more than one
 month below 500K. This is consistent with the stratospheric radiative relaxation time inferred from
 satellite measurements (Mlynczak et al., 1999), which was found to increase from 10 days at 1 hPa
 to about 100 days at 50 hPa. This is also consistent with a strong suppression of planetary wave
 215 propagation into the vortex after the major SSW (Hitchcock and Shepherd, 2013).

3 Model description and validation

3.1 Model setup

CLaMS is a Lagrangian chemistry transport model that can be run with or without mixing, so
 that the whole transport is carried out only along 3d forward trajectories. However, a pure La-
 220 grangian transport approach gives rise to many unrealistic small-scale structures due to lack of mix-
 ing (Konopka et al., 2004; Khosrawi et al., 2005). Hence, irreversible small-scale mixing between
 air parcels (APs) should be considered. With the concept that (small-scale) mixing is driven by
 large-scale flow deformation, the CLaMS mixing procedure is realized through adaptive re-gridding
 of the irregular grid. More specifically, the APs are inserted or merged when the distances between
 225 the next neighbors increase above or decrease below a critical distance. The critical deformation γ_c
 is defined as $\gamma_c = \lambda_c \Delta t$, with the critical Lyapunov exponent λ_c and the advective time step Δt set
 to 1.5 day^{-1} and 24 hours, respectively (for more details see McKenna et al., 2002b; Konopka et al.,
 2004).

CLaMS simulations cover the 2008/09 boreal winter from December 1st, 2008 to April 1st, 2009
 230 and extend between the Earth's surface and the potential temperature $\theta = 2500 \text{ K}$ (i.e. roughly
 around the climatological position of the stratopause with $p \approx 0.3 \text{ hPa}$). The horizontal separation
 of the APs initialized on December 1st is 70 km in the NH, where all our results are obtained, and
 200km in the SH. During the course of the simulation, this irregular grid of APs undergoes advection
 along the trajectories, chemistry and mixing every time step, with $\Delta t = 24 \text{ hours}$ (Konopka et al.,
 235 2004; Grooß et al., 2005; Pommrich et al., 2014).

The horizontal winds are prescribed by the ECMWF ERA-Interim reanalysis (Dee et al., 2011).
 To resolve both transport processes in the troposphere influenced by the orography and in the strato-
 sphere where adiabatic horizontal transport dominates, a hybrid coordinate is used as proposed by

Mahowald et al. (2002). In the stratosphere and in the UTLS, potential temperature θ is employed as the vertical coordinate of the model above 300 hPa and the cross-isentropic velocity $\dot{\theta} = Q$ is deduced from the ERA-Interim forecast total diabatic heating rates Q , including the effects of all-sky radiative heating, latent heat release and diffusive heating as described by Ploeger et al. (2010). The time evolution of the anomaly of $\dot{\theta}$ averaged over the polar cap and over the tropics is shown in Fig. 2 (c,d) and was discussed in the previous section.

N_2O and O_3 , the most important species for this work, are initialized from the MLS data (more details on MLS can be found in the next subsection). The other chemical species are initialized from a multi-annual CLaMS simulation with simplified chemistry (Pommrich et al., 2014) as well as from gridded MLS data of HCl , H_2O and CO . The employed method uses tracer-tracer correlations (for more details see Grooß et al., 2014). At the upper boundary (2500 K) O_3 is set to the HALOE climatology after every 24 hours time step. However, the impact of the upper boundary condition on the chemical tracers is not significant below 1000 K and our following analysis are for levels below 1000 K. The chemistry module of CLaMS is described in details in McKenna et al. (2002a).

By switching off and on the mixing module, we get two sets of simulations: full chemistry without mixing and full chemistry with mixing. The simulation with full chemistry and with mixing is the reference as the best model representation of the real atmosphere. Both simulations include ozone calculated with full chemistry (O_3) and passively transported O_3 without any chemistry (pO_3).

3.2 Validation with the MLS observations

MLS observes microwave emission from the limb of the Earth’s atmosphere in the direction of the Aura orbit. The instrument measures vertical profiles every 165km (1.5° along the Aura orbit), providing about 3500 profiles per day. We use version 3.3 N_2O and O_3 from the MLS product (Livesey et al., 2013) both to initialize and to validate the CLaMS reference simulation. The vertical resolution of O_3 is about 2.5-3 km in the stratosphere with a 5-10% uncertainty (Livesey et al., 2013). The vertical resolution of N_2O is about 4-6 km with a 9-25% uncertainty for the region of interest in this study (Livesey et al., 2013). Averaging kernels are applied in the retrieval of the MLS profiles, which relate the retrieved MLS profiles to the true atmospheric state.

For comparison, we map CLaMS mixing ratios to the observed MLS profiles using a back and forward trajectory technique (Ploeger et al., 2013) and apply the MLS averaging kernels to CLaMS output in order to get comparable quantities (see Appendix). Because CLaMS APs are saved every day only at 12 UTC, we calculate the noon-positions of the MLS observations within 1 day window using back and forward trajectories, and then select the nearest CLaMS AP to the corresponding MLS observation. The mixing ratios at this AP are then compared with the respective MLS observations.

Hereby, a one-to-one MLS-CLaMS data set for N_2O and O_3 is established that is plotted in Fig. 3 as probability distribution functions (PDFs) calculated for the whole NH and for the entire simulation

275 period (around 10 thousand points). According to a high correlation coefficient both for N_2O (0.957) and for O_3 (0.989), our reference simulation matches the MLS observations fairly well. The largest difference was diagnosed in the θ -range between 650 and 1000 K where CLaMS O_3 slightly overestimates the MLS observations. **Three possible explanation for this small bias are: 1) not enough NO_x -induced ozone loss; 2) too much photolytical ozone production; 3) too fast poleward transport**
280 **from the tropics.**

For a further comparison, we investigate the horizontal distribution of N_2O . Figure 4 shows the comparison between the CLaMS simulation and MLS observations for five selected days at $\theta = 800$ K (top 2 panels) and 475 K (bottom 2 panels). On January 9th, the vortex was centered around the North Pole and **the vortex edge was well defined and not changing rapidly** in the middle and lower
285 stratosphere. Mainly influenced by the planetary wave-2, the polar vortex stretched to North America and Asia on both heights during the following days. Around the central day of the major SSW at January 23rd, a double center structure formed which split up until January 25th at 475 K and until January 28th at 475 K (not shown).

In the following days, an increasing number of filaments could be observed outside of the vortex
290 characterized by low N_2O values. The two vortex centers slowly rotated anticlockwise. One of the vortex remnants over eastern North America and the Atlantic stretched further, split and dissolved releasing its content to mid-latitudes, while another one stayed over northern Asia and the Pacific Ocean. Although in the following weeks most of the vortex fragments were mixed with mid-latitude air, a part of them, like those over northern Asia and the Pacific Ocean, re-organized as a new and
295 relatively weak vortex. However, this top-down process that has started in late February at 800 K (a weak, circumpolar vortex edge can be diagnosed at $\theta = 800$ K at February 20th, see Fig. 4) and was finished in mid March at 475 K (not shown) is excluded from our analysis, which ends with February 28th.

The distribution of simulated N_2O accurately represents the MLS observations, although more fil-
300 amentary structures are resolved in CLaMS simulations than MLS observations. It should be noted that applying averaging kernels to model result also smoothes out some valuable information, e.g. filamentary structures, and, consequently, may result in a misinterpretation of the stratospheric composition, especially for high-latitude N_2O . More details are discussed in the Appendix.

4 Planetary waves and mixing

305 4.1 Transport and mixing barriers in the winter hemisphere

In the winter stratosphere, there exist two main barriers to transport, shown by the two thick blue lines in Fig. 5 (Holton et al., 1995). One is the polar vortex edge, which can be identified as the maximum gradient of potential vorticity (PV) with respect to equivalent latitude within a certain range where maximum of wind speed along equivalent latitudes (in the following eq. latitude) occurs (Nash et al.,

1996). The second barrier (around 10-30°N eq. latitudes, varying with altitude) separates the mid-latitude surf zone (McIntyre and Palmer, 1983) from the region of tropical upwelling, the so-called tropical pipe (Plumb, 1996).

This subtropical barrier is not as well-defined as the polar vortex edge and is usually characterized by a much weaker PV gradient between tropics and mid-latitudes (Polvani et al., 1995) although large meridional tracer gradients can be diagnosed (Shuckburgh et al., 2001; Punge et al., 2009; Konopka et al., 2010). While the polar vortex edge is considered as a meridional transport barrier due to a strong polar jet, the subtropical barrier is only weakly influenced by the jets and is usually understood as a barrier for propagation of planetary waves. This barrier is strongly related to the phase of the Quasi-Biennial Oscillation (QBO): during the westerly QBO, planetary waves generated in the winter hemisphere can propagate across the equator to dissipate at the summer hemisphere easterlies, whereas such propagation is suppressed during the easterly QBO phase (Haynes and Shuckburgh, 2000; Shuckburgh et al., 2001; Punge et al., 2009). Thus, during the 2008/09 winter, the subtropical transport barrier was weakened by the westerly QBO phase (dashed thick blue line in Fig. 5).

In a winter with weak activity of planetary waves and a strong vortex, the exchange and mixing of air across the vortex edge is suppressed. However, once a strong sudden warming event happens that usually follows a significant weakening of vortex edge (with exceptions e.g. 2013 SSW Manney et al., 2015), enhanced wave forcing drives significant isentropic, two-way mixing (red curved arrows) as well as the large-scale BD circulation (gray arrows). The evolution of the dynamical fields, including cross-isentropic vertical velocity $\dot{\theta}$ and zonal wind, was discussed in the previous section (Fig. 2). But isentropic mixing and its relation to wave forcing need further investigation.

4.2 CLaMS mixing versus wave forcing

Mixing between the Lagrangian APs is parametrized in CLaMS through adaptive re-gridding. During this process, the involved APs (i.e. APs, which were generated by the mixing algorithm), are marked after every 24 hours time-step. Here we use the statistics of these events, i.e. the percentage of mixed APs relative to all transported APs, in the following denoted as mixing intensity. In this way, we illustrate the impact of the major SSW on the distribution and evolution of mixing resolved by the model.

Figure 6 shows the time evolution of the zonally averaged mixing intensity derived from CLaMS versus eq. latitude. Fig. 7 illustrates the relationship between the EP flux divergence and the CLaMS mixing intensity averaged over several stages of the polar vortex during the winter 2008/09: (a) strong vortex conditions in January between 3rd and 13th, (b) 10 day period before the major SSW, i.e. between 14th and 23rd of January, (c) 10 day period after the major SSW, i.e. between January 24th and February 3rd, and (d) weakened wave activities after the major SSW between 4th and 13th of February.

We notice that before mid January maximum mixing remains equatorward of 65°N and generally outside the polar vortex boundary as defined by the Nash criterion (Fig. 6). In particular above 700 K the rather abrupt poleward decrease in mixing strength clearly marks the polar mixing barrier isolating the core of the stable polar vortex from the surf zone. Note that the Nash criterion is not necessarily a perfect proxy for the mixing barrier, thus mismatch to within a few degrees latitude, as apparent in Fig. 6a. In mid-January the picture changes drastically. With the intensified wave activity disturbing the polar vortex, the westerlies decelerated. Consequently, the EP flux increased and its divergence became strongly negative meaning an enhanced convergence of the EP-flux (Fig. 7). Furthermore, the pattern of mixing intensity separated into two branches above 700K after Jan. 24th (Fig. 6a): one in high and another one in mid eq. latitudes (marked as A1 and A2 in Fig. 6a and Fig. 7c, respectively).

This distribution of mixing intensity indicates that both the polar and subtropical barrier (the latter above 700 K) are weakened by the major SSW. Furthermore, daily PV or tracer distributions over the NH (cf. Fig. 3) exhibit that at this time several vortex fragments move equatorward and mix with mid-latitude air. At the same time, several fragments of tropical air masses which are generated at low latitudes, are transported poleward and mixed with mid- or high latitude air.

Mixing intensity diagnosed in Fig. 6 shows some interesting, altitude-dependent patterns: At the highest levels (θ between 700 and 850 K) after the major SSW, the mid- and high-latitude mixing is comparable (cf. A1 versus A2 in Fig. 6a). At the levels between 500 and 700 K, the high-latitude mixing branch within the vortex dominates. Finally, in the lower stratosphere between 400 K and 500 K, mixing has intensified in the polar region after the major SSW while the mixing intensity in the surf zone (marked by B in Fig. 6(c)) has slightly increased during and after the major SSW. Note that the subtropical barrier can be identified as a minimum in mixing intensity between 10°N and 20°N eq. latitude (Fig. 6b). The position of this minimum does not significantly change during the time shown although the impact of the major SSW can be seen around February 1st, mainly at highest levels between 700 and 850 K.

From the vertical cross sections of EP flux shown in Fig. 7, we infer that in the first half of January, there were 3 intensive mixing regions (marked as A, B and C) with only weak, vertically propagating waves. As mentioned above, region A became stronger during the course of the winter and then divided into two branches (A1 and A2). Region B is related to the mid-latitude (surf zone) mixing in the lower stratosphere (400 - 500 K) that is influenced by the subtropical jet and the QBO. Region C is associated with strong vertical shear in the transition layer between the westerlies and easterlies of the QBO.

It is obvious that although before the major SSW high mixing intensities can be diagnosed in the surf zone outside of the polar vortex (region A), this signature intensifies after the onset of the major SSW (regions A1 and A2). Convergence of the EP flux indicates breaking of waves and thus leads to wave-mean-flow interaction. Once the local wind field is significantly disturbed by transport of

momentum and heat flux, subsequent stirring and stretching of eddies (resolved by the ECMWF winds) drives the mixing parametrization in CLaMS. Note that after Feb. 10th (20 days after the SSW), the mixing intensity quickly dropped as the vortex started to recover with a weak vortex edge between 50 and 60°N eq. latitude at 800 K and 50°N eq. latitude at 600 K (i.e. with a weak PV gradient according to the Nash criterion).

Based on the analysis of the temporal and spatial evolution of the mixing intensity resolved in CLaMS and the EP flux divergence, the simulated patterns show a clear and reasonable physical picture how mixing responds to large-scale wave forcing: when the transport barriers stay strong, the mixing pattern is also not changing dramatically (Fig. 7 a); when the general circulation is disturbed and the transport barriers are weakened, the pattern of mixing is highly associated with the local wave activities (Fig. 7 b and c). However, the question still arises whether mixing resolved by the model can also be seen in the observations. This would help to provide a more quantitative understanding of how the major SSW influences the chemical composition of the stratosphere.

5 Impact of the major SSW on transport and chemistry

5.1 N₂O-O₃ correlations: MLS versus CLaMS

As discussed in the last section, the subtropical barrier and even more so the polar vortex barrier suppress the exchange of air across those barriers before the major SSW. Hence, long-lived species are well-mixed in the regions separated by these barriers and strong isentropic gradients of these species are expected across such barriers. In the tracer-tracer space (in the following abbreviated as tracer space), these well-mixed regions manifest as compact correlations; however correlations between the tracers are different in the regions separated by barriers (for a review of this method see Plumb, 2007).

Figure 9 (a1)-(c1) show the N₂O-O₃ correlations of MLS observations plotted as probability distribution functions (PDFs). The data cover the NH with eq. latitudes between 0 and 90°N and within the potential temperature range between 450 and 700 K. The MLS observations are selected for three periods: December, 18-28th (one month before the major SSW), January, 18-28th (during the major SSW); February, 18-28th (one month after the major SSW). The gray lines in Fig. 9(a1)-(c1) indicate the isentropes calculated from the pressure altitude of the observations and corresponding ECMWF temperature.

Under relatively strong vortex conditions before the major SSW, two stronger and one weaker branches of N₂O-O₃ correlations with enhanced PDF values can be distinguished in Fig. 9(a1). These branches describe the well-mixed air masses within the polar vortex, the surf zone and the tropics (thin black lines from bottom to the top, respectively). The corresponding barriers in the physical space, i.e. the vortex edge and the subtropical barrier, manifest in tracer space as regions with lower PDF values separating the correlation branches (a detailed discussions follows in the next

subsection). After the major SSW (see Fig. 9(c1)), the polar correlation totally disappears in tracer space and the tropical correlation becomes slightly weaker. Conversely, the PDF of the mid-latitude correlation strengthens in the time period after the major SSW.

5.2 Tracer and physical space

Before transport and chemistry triggered by the major SSW in January 2009 will be described more quantitatively, Fig. 8 shows schematically how these physical processes can be interpreted and separated by using N_2O - O_3 correlations. Left column in Fig. 8 show the APs in physical space using eq. latitudes as the meridional axis. On their right side, the corresponding tracer space is shown in the same way as discussed in Fig. 1.

Through isentropic mixing, the APs in the mid-latitudes change their composition as they mix with other APs isentropically transported from higher or lower latitudes (like fragments B, E and F in Fig. 8(a1)(b1)). Consequently, mixing lines connecting the isolated correlations may appear or, when intensive and persistent mixing happens, the whole correlation line inclines to one side (e.g. the thick black correlations in Fig. 8(b2)). Moreover, the enhanced mixing also results in a decay or growth of certain correlation branches (shown as thinned or thickened black curves in Fig. 8(b2) and (c2)) and expressing the shrinking or expanding of corresponding regions.

Conversely, if the APs are affected purely by vertical transport like strong cross-isentropic motion during the SSW (i.e. by up- or downwelling), the composition of the APs (and thus their position in tracer space) stays the same although their θ -coordinate significantly changes. As discussed in Fig. 1 (a,b), in the absence of mixing and chemistry, an AP will not change its coordinates in the tracer space although it will move in the physical space (e.g. vertical displacement of APs shown in Fig. 8(b1)). Furthermore, if only APs within a limited range of potential temperature are considered, the cross-isentropic transport results in an additional flux of the APs out of (export) or into (import) the considered domain in tracer space. Such vertical export or import of APs reflects in tracer space as vanishing or growing of certain part of correlation line (vanished parts of vortex correlation are shown as dashed black curves in Fig. 8(b2/c2)). In the same way, export or import of APs from a limited range of latitudes (or eq. latitudes) may influence the tracer- tracer correlation, e.g. if the subtropical barrier moves toward the equator.

Generally, the major SSW itself creates vortex fragments which in the following time either can merge and reform a new polar vortex or can be isentropically mixed with the mid-latitude air. These two possibilities are exemplarily shown in Fig. 8(b1) and (c1) (**mixing - fragments B and E; recovery - fragments A, C and D**). Note that in the eq. latitude space the spatially separated vortex remnants form a compact and coherent circumpolar structure although smaller than the vortex at the beginning of the winter. Finally, also chemistry can influence the N_2O - O_3 correlations as discussed in Fig. 1(c). Particularly, halogen or NO_x -induced ozone loss would shift the polar or the surf zone correlations

downwards, whereas ozone production in the low latitudes would steepen the tropical or the surf zone correlations.

Our first goal is to understand the changes in the N_2O - O_3 correlations observed by MLS before and after the major SSW (Fig. 9(a1) to (c1)) as a result of different transport mechanisms (isentropic mixing, meridional transport). In particular, we would like to figure out why the polar and the tropical N_2O - O_3 correlations weakened after the major SSW and the mid-latitude correlation became stronger. First, we rule out ozone chemistry by using CLaMS simulations with passively transported O_3 (pO_3). At the end of this section, we will also include CLaMS results with the full stratospheric ozone chemistry.

5.3 Isentropic mixing versus cross-isentropic transport

Two sets of CLaMS simulations, with and without mixing, are used to study the mixing-induced differences between the PDFs of the pO_3 - N_2O correlations. The results are shown in Fig. 9 (middle/bottom row for mixing/non-mixing cases). As in Fig. 9(a1)-(c1), the PDFs are calculated for the same time periods before, during and after the major SSW (from a to c). However, the range of the considered eq. latitudes is confined to 40-90°N (instead of 0-90°N shown in Fig. 9(a1) to (c1)) to separate more clearly the effect of transport from the tropics on the composition of air in the mid-latitudes (see discussion below). To provide better comparability, correlation branches of the non-mixing experiment are also depicted in the mixing case as dashed lines (and vice versa).

5.3.1 Transport from the tropics

Using such a limited range of eq. latitudes we exclude the APs on the tropical side of the subtropical barrier (that is around 20°N eq. latitude) and, it is obvious that the PDFs of the CLaMS run with mixing do not show any tropical correlation in the eq. latitude 40°- 90°N (Fig. 9 (a2) to (c2)). However, a tropical correlation was found in the non-mixing run during and after the major SSW (Fig. 9(b3/c3) because in this idealized simulation tropical air was transported into the mid-latitudes but it has not been mixed. For a better comparison, this “artificial” tropical correlation (i.e. from Fig. 9 (b3/c3)) is also shown in Fig. 9 (b2/c2) (solid dashed line).

Thus, a clear difference in the result of the mixing and non-mixing case indicates that the tropical APs are transported from lower latitudes to mid-latitudes where they mix with the mid-latitude APs. Consequently, the slope of the surf-zone correlation moves towards the tropical correlation branch, especially between 550 K to 650 K (cf. Fig. 9 from (a2) to (c2) and (c2) with (c3)). This isentropic mixing in mid-latitudes is also consistent with the increased mixing intensity marked as A2 in Fig. 6 and Fig. 7. In contrast, an idealized, pure trajectory calculation (i.e. CLaMS without mixing) completely neglects this effect and produces N_2O - O_3 correlations which cannot be reconciled with MLS observations (i.e. for eq. latitudes 40-90°N, not shown).

5.3.2 Vortex breakup and decay

All APs which are transported along the trajectories without mixing do not change their composition and thus keep the same position in the N_2O - O_3 space unless they leave the considered range of eq. latitudes or potential temperatures. Besides the almost isentropic import of tropical APs that was mentioned in the last subsection, strong downwelling within the polar vortex, mainly during the major SSW itself, can also be diagnosed in the tracer space.

The isentropes move upwards in tracer space during the major SSW (Fig. 9 from column (a) to (b)), as a consequence of diabatic cooling (downwelling) associated with warming in the mid- and high-latitudes (see also Fig. 8). As a result of this cross-isentropic transport, the APs transported without mixing may be exported (or imported) from (or into) the considered θ -range between 450 and 700 K. E.g. the polar APs within the black solid squares in Fig. 9(a3) are missing in the box of Fig. 9(c3). The box is defined by the N_2O values between 80-130 ppbv and O_3 between 2.7-3.5 ppmv. Note that for CLaMS with mixing these regions are filled with APs indicating that mixing in the model re-establishes parts of the correlation.

To shed more light on the ongoing processes, we plot in Fig. 10 the eq. latitudes and the potential temperature coordinates of these missing APs at the end of each of the considered time periods (from the CLaMS run without mixing). Furthermore, the APs are colored by different ranges of pO_3 and the PDFs of their eq. latitudes and θ coordinates describe their mean horizontal and vertical position during the course of the winter.

Fig. 10 shows that after the major SSW onset, most of the APs which were originally located above 450K, have been transported downwards below 450K. Therefore, the downward cross-isentropic transport within the vortex (diabatic descent) with subsequent export of the APs out of the considered potential temperature range 450-700 K is the main reason for the missing correlation inside the square of Fig. 9(c3). Moreover, most of the APs were confined inside the polar vortex before the major SSW, while after the major SSW these APs were spread almost uniformly between 40 and 90°N eq. latitude (Fig. 10c) due to chaotic advection with pronounced streamers and filaments after a complete breakup of the two vortices over eastern North America and the Atlantic (see N_2O distribution at 475 K in Fig. 4).

In the CLaMS run with mixing, the situation is stable as long as the well-defined vortex edge constitutes an effective mixing barrier (Fig. 9, column (a)). Later, during the major SSW, descent and chaotic advection have the same effect as in the idealized CLaMS simulation without mixing, i.e. part of the APs carrying the signature of the polar correlation are again eventually exported from the considered θ -range as they descend below 450 K.

However, increased mixing between these descending polar APs with the APs outside the vortex, have two additional effects: i) the signature of the polar correlation is spread to mid-latitude APs that do not descend outside the considered θ -range, such that the signature remains visible (like vortex fragment D in Fig. 8 (b1/c1)), and ii) the mixing with mid-latitude (and even tropical) APs causes

the polar correlation branch to become less compact and shift toward the mid-latitude correlation branch (along the plotted isentropes (like air masses C and E in Fig. 8 (b1/c1)). These effects can be well discerned by comparing the vortex branch of the correlation for the mixed case (Fig. 9(b2/c2)) with the non-mixed case (Fig. 9(b3/c3) also denoted as dashed black curves in Fig. 9(b2/c2)).

After the breakup of the two vortices over eastern North America and Atlantic in mid-February, spreading of the polar APs across the hemisphere along with intense mixing with mostly mid-latitude and some tropical APs leads to an almost complete loss of the polar correlation branch (Fig. 9(c2)), which remains preserved only in a few unmixed vortex remnants (like fragments A, B and D in Fig. 8 (c1)). As explained by Plumb (2007), the fast and nearly hemisphere-wide isentropic mixing (as promoted by the major SSW) leads to a single compact extratropical correlation.

Note that the weak polar correlation which is present in CLaMS (see Fig. 9(c2)) is not resolved in the MLS observations. A potential explanation is the limited spatial resolution of the MLS instrument with vertical resolution of 4-6 km for N_2O and 2.5-3 km for O_3 , respectively, and horizontal resolution of 200 km for both species. This means that physical structures below these spatial scales are smoothed out by the MLS instrument (an effect sometimes called optical mixing, see Appendix).

5.4 Impact of chemistry

In general, Arctic O_3 loss triggered by activated chlorine mainly occurs in late winter and spring within a sufficiently cold polar vortex. The chlorine-induced ozone-loss also requires sunlight exposure (see e.g. Solomon, 1999). The NO_x -induced O_3 chemistry roughly follows the halogen chemistry after the vortex breakup with highest values occurring in the middle and lower stratosphere (see e.g. Solomon, 1999; WMO, 2014). To quantify the chemical effect on the N_2O - O_3 correlation, Fig. 11 shows the pO_3 - N_2O correlation within 0-90°N and 450-700 K range overlaid with the correlations from the full chemistry run (dashed curves).

In the early winter, we found a small but significant amount of ozone loss in the lower stratosphere (cf. dashed curve and PDFs between 450 K and 550 K in Fig. 11 b), which is consistent with the results of Manney et al. (2015). After the onset of the warming event, only few PSCs were formed and, consequently, the subsequent, chlorine-induced ozone-loss within the polar vortex was very limited (Kuttippurath and Nikulin, 2012; Manney et al., 2015). This can also be inferred from the CLaMS-based correlation with pO_3 (PDFs in Fig. 11c) that is very close to the correlation based on full-chemistry O_3 (dashed curve in Fig. 11c). Besides the chlorine-catalyzed ozone loss, the remaining O_3 chemistry is of importance in our interpretation of the N_2O - O_3 correlations, especially when the temperature rises after the major SSW and thus the chemical reactions are accelerated.

Two regions (marked in Fig. 11 as A and B) of this correlation plot have been investigated in more detail regarding the chemical change of ozone. Region (A) has N_2O mixing ratios near 140 ppbv and passive ozone near 7.4 ppmv on January 23rd, corresponding to a most probable location of 35°N and 650K (using a similar method as discussed in Fig. 10). It is evident that here the chemistry causes

560 ozone depletion. From the locations of 120 air parcels in this area, back-trajectories were calculated for one month along which the chemistry was calculated using the CLaMS chemistry module and additional output to analyze and quantify the contribution of the individual ozone depletion cycles (as defined by Crutzen et al., 1995) to the ozone loss term. The average ozone production over this month through oxygen photolysis was 0.85 ppmv which was outweighed by ozone loss of 1.45
565 ppmv, of which about half could be attributed to NO_x -catalyzed ozone loss cycles and the remaining half equally distributed to HO_x , ClO_x and O_x cycles.

In contrast, region (B) with N_2O mixing ratios of 260 ppbv and passive ozone mixing ratios of 3.8 ppmv corresponds to a most probable location of 11°N and 575 K. Here, the chemistry causes an ozone increase. A similar chemistry simulation along 132 one-month back-trajectories showed
570 an ozone production through oxygen photolysis of 800 ppbv and net ozone depletion by 260 ppbv. Therefore ozone production dominates in this part of the tropics. Since gas-phase chemical reactions are temperature-dependent, we investigated whether the temperature anomaly (see Fig. 1b) had a significant effect on ozone. An identical run along the 132 trajectories, however with temperatures set 3K higher, increased the ozone loss by 0.03 ppmv. The ozone production is not temperature-
575 dependent. A change in the ozone loss rate of 1 ppbv per day is negligible compared to the changes caused by dynamics that are discussed here. Complementary to our discussion above, we find that in polar latitudes the differences between correlations with or without chemistry are negligible indicating minor importance of the chlorine-induced ozone-loss during the 2008/09 winter.

6 Conclusions

580 A remarkable major SSW in January 2009 led to strongly disturbed stratospheric dynamics which manifested in both accelerated polar descent and tropical upwelling. During the following two weeks up to the end of January, this transient signal of cross-isentropic transport propagated down from around 1 hPa to 100 hPa. The radiative relaxation of this anomaly in diabatic heating was relatively fast (~ 10 days) in the upper stratosphere, but took more than a month in the lower stratosphere,
585 which resulted in accelerated polar descent and accelerated tropical upwelling through late March (Fig. 2).

Associated with the disturbed dynamical background during the major SSW, strong variability of N_2O and O_3 was observed by the MLS instrument. We used CLaMS to simulate transport, mixing and chemistry to interpret the observed change of stratospheric composition. By comparison with
590 MLS observations of N_2O - O_3 correlations, we showed how the polar vortex edge weakened and how the subtropical mixing barrier was affected by poleward transport followed by mixing in mid-latitudes during and after the major SSW.

As an important but uncertain piece of atmospheric modeling, the mixing process could be explicitly and reasonably described in CLaMS simulations. The distribution of simulated mixing intensity

showed that mixing across the vortex edge and also across the subtropical barrier (above 700 K) was enhanced after the onset of the major SSW, associated with wave forcing quantified in terms of the EP flux divergence.

The observation- and model-based O_3 - N_2O correlations have been shown to be a useful diagnostic to separate dynamical and chemical effects. Model results show that isentropic mixing is a key process to understand the drastic change of stratospheric composition triggered by the major SSW: the decay of the polar O_3 - N_2O correlation and the strengthening of the mid-latitude correlation. One month after the major SSW, almost half of the polar vortex correlation dissolved due to isentropic mixing, whereas the other part constituted the germ for the formulation of a new and relatively weak vortex. Halogen-induced ozone loss within the polar vortex was negligible in the late winter of 2008/09 winter and the dominant ozone chemistry during and after the major SSW was the extra-tropical ozone loss due to NO_x catalytic cycles mainly at 600 K - 800 K and ozone production in the tropics.

However, there is also a limitation of the applicability of the MLS satellite data with a vertical resolution of a few kilometers. As shown in the appendix, due to this limited spatial resolution, physical structures below these spatial scales and resolved by the model are smoothed out by the satellite's averaging kernel (an effect sometimes called optical mixing). Thus, although MLS satellite data offer a very good coverage, their poor vertical resolution does not allow us to narrow the possible range of the mixing parameters in CLaMS (i.e. of the critical Lyapunov exponent).

Finally, we can speculate that for a winter with significant, chlorine-induced ozone loss, followed by a strong major SSW and/or a final warming, the mid-latitude air can be influenced by processed, ozone-depleted air. Conversely, mid-latitude air (also O_3 -rich air compared to polar vortex air in mid-stratosphere) can be effectively transported into the high latitudes.

Appendix A

As discussed in subsection 3.2, the MLS averaging kernels were applied for both the N_2O and O_3 CLaMS output before comparing these distributions with the satellite-based observations. Given a “true” atmospheric profile x_i on n pressure levels $i = 1, \dots, n$, the averaging kernel can be understood as a smoothing procedure that determines mixing ratios at each level i by a weighted integration over all other levels with a strongest contribution of levels directly above or below the considered level i . The averaging kernel is a matrix A_{ij} with most significant terms around the diagonal and with all rows i fulfilling the normalization condition $\sum_{j=1, \dots, n} A_{ij} = 1$. Thus, applying averaging kernels to model data with a high spatial resolution like CLaMS means smoothing or removing small-scale structure from the model.

In Fig. 12, the PDFs of the N_2O - O_3 correlations are shown for February, 15th, 2009 as observed by the MLS instrument (top) and as derived from CLaMS simulations with and without smoothing

630 by the averaging kernel (bottom). In contrast to MLS, original CLaMS output shows the polar correlation, which disappears if the averaging kernel is applied to CLaMS output. This polar correlation can be attributed to some remnants of the polar vortex which are resolved by CLaMS. Within the model, the lifetime of the polar correlation is about three weeks longer compared to the last time this correlation was detected by the MLS instrument.

635 Thus, two questions arise: are these small-scale structures resolved with CLaMS realistic and is it the N_2O or rather the O_3 -related coarse sampling of the MLS instrument that smoothes out the polar correlation of N_2O - O_3 ? To get an impression of how the averaging kernel smoothes out the modeled small scale filaments and tracer gradients, Fig. 13 shows the spatial distribution of N_2O vortex remnants on February, 20th, 2009 before and after applying the MLS averaging kernel
640 procedure (left and right column, respectively). Here, N_2O distributions at two isentropic levels, 550 K (top row) and 650 K (bottom row) are shown, with black line denoting the strongly disturbed vortex edge.

N_2O and O_3 profiles from the Atmospheric Chemistry Experiment (ACE) are also used. An ACE profile crossed the potential surfaces $\theta = 550$ and 660 K on this day (red circles as the profile positions at noon on each isentrope). The nearest CLaMS APs are selected according to the same
645 procedure as for the MLS data (see subsection 3.2). Thus, the horizontal spatial distances of ACE profiles and corresponding CLaMS profiles are less than 50 km (1.5°). The vertical resolution of ACE profiles is about 3-4 km (Bernath et al., 2005; Boone et al., 2005).

It can be seen that the vertical variability of the untreated CLaMS simulation of N_2O is confirmed
650 by the corresponding ACE profile (top panel in Fig. 14). On the other hand, this variability is removed from the CLaMS simulation if the MLS averaging kernel is applied and, consequently, the comparison with the ACE observations becomes worse. However, the smoothing does not significantly change the O_3 profiles (bottom panel in Fig. 14). This is mainly because the vertical variability of O_3 is much smaller if compared with the N_2O profile and not because of a higher vertical
655 resolution of the MLS-based O_3 observations (i.e. 2.5-3 km for O_3 versus 5-6 km for N_2O).

This can also be inferred from the comparison of the horizontal and vertical gradients of both tracers. Within the vertical range between $\theta = 400$ and 800 K, the horizontal variability of N_2O across the vortex edge (~ 100 ppbv) is comparable with the vertical variability (~ 150 ppbv), whereas
660 O_3 gradient across polar vortex edge (around $1\sim 2$ ppmv) is much smaller than its vertical gradient in stratosphere (~ 5 ppmv). Therefore, the filaments or vortex remnants which are not completely mixed, and which are mainly formed by the horizontal transport, contribute to a more pronounced vertical variability of N_2O than of the O_3 profiles.

Acknowledgements. We thank ECMWF for providing reanalysis data and MLS team for providing the N_2O and
 O_3 data. Excellent programming support was provided by N. Thomas. We thank the Atmospheric Chemistry
665 Experiment (ACE) team, a Canadian-led mission mainly supported by the Canadian Space Agency and the

Natural Sciences and Engineering Research Council of Canada, for providing the N_2O and O_3 data. We thank Eric Ray, Gloria Manney and an anonymous reviewer for their very thoughtful and helpful reviews.

References

- Andrews, D. G., Holton, J. R., and Leovy, C. B.: Middle Atmosphere Dynamics, Academic Press, San Diego, USA, 1987.
- Ayarzagüena, B., Langematz, U., and Serrano, E.: Tropospheric forcing of the stratosphere: A comparative study of the two different major stratospheric warmings in 2009 and 2010, *Journal of Geophysical Research: Atmospheres* (1984–2012), 116, 2011.
- Bernath, P., McElroy, C., Abrams, M., Boone, C., Butler, M., Camy-Peyret, C., Carleer, M., Clerbaux, C., Coheur, P., Colin, R., DeCola, P., Bernath, P., McElroy, C., Abrams, M., Boone, C., Butler, M., Camy-Peyret, C., Carleer, M., Clerbaux, C., Coheur, P., Colin, R., DeCola, P., DeMaziere, M., Drummond, J., Dufour, D., Evans, W., Fast, H., Fussen, D., Gilbert, K., Jennings, D., Llewellyn, E., Lowe, R., Mahieu, E., McConnell, J., McHugh, M., McLeod, S., Michaud, R., Midwinter, C., Nassar, R., Nichitieu, F., Nowlan, C., Rinsland, C., Rochon, Y., Rowlands, N., Semeniuk, K., Simon, P., Skelton, R., Sloan, J., Soucy, M., Strong, K., Tremblay, P., Turnbull, D., Walker, K., Walkty, I., Wardle, D., Wehrle, V., Zander, R., and Zou, J.: Atmospheric Chemistry Experiment (ACE): Mission overview, *Geophys. Res. Lett.*, 32, doi:10.1029/2005GL022386, 2005.
- Boone, C. D., Nassar, R., Walker, K. A., Rochon, Y., McLeod, S. D., Rinsland, C. P., and Bernath, P. F.: Retrievals for the atmospheric chemistry experiment Fourier-transform spectrometer, *Applied optics*, 44, 7218–7231, 2005.
- Butler, A. H., Seidel, D. J., Hardiman, S. C., Butchart, N., Birner, T., and Match, A.: Defining sudden stratospheric warmings, *Bulletin of the American Meteorological Society*, doi:0.1175/BAMS-D-13-00173.1, 2015.
- Charlton, A. J. and Polvani, L. M.: A new look at stratospheric sudden warmings. Part I: Climatology and modeling benchmarks, *Journal of Climate*, 20, 449–469, 2007.
- Christiansen, B.: Downward propagation of zonal mean zonal wind anomalies from the stratosphere to the troposphere: Model and reanalysis, *Journal of Geophysical Research: Atmospheres* (1984–2012), 106, 27 307–27 322, 2001.
- Crutzen, P. J., Grooß, J.-U., Brühl, C., Müller, R., and Russell III, J. M.: A Reevaluation of the ozone budget with HALOE UARS data: No evidence for the ozone deficit, *Science*, 268, 705–708, 1995.
- Dee, D. P., Uppala, S. M., Simmons, A. J., Berrisford, P., Poli, P., Kobayashi, S., Andrae, U., Balmaseda, M. A., Balsamo, G., Bauer, P., Bechtold, P., Beljaars, A. C. M., van de Berg, L., Bidlot, J., Bormann, N., Delsol, C., Dragani, R., Fuentes, M., Geer, A. J., Haimberger, L., Healy, S. B., Hersbach, H., Holm, E. V., Isaksen, I., Kallberg, P., Kohler, M., Matricardi, M., McNally, A. P., Monge-Sanz, B. M., Morcrette, J. J., Park, B. K., Peubey, C., de Rosnay, P., Tavolato, C., Thepaut, J. N., and Vitart, F.: The ERA-Interim reanalysis: configuration and performance of the data assimilation system, *Q. J. R. Meteorol. Soc.*, 137, 553–597, doi:10.1002/qj.828, 2011.
- Dickinson, R. E.: On the exact and approximate linear theory of vertically propagating planetary Rossby waves forced at a spherical lower boundary, *Monthly Weather Review*, 96, 405–415, 1968.
- Edouard, S., Legras, B., Lefèvre, F., and Eymard, R.: The effect of small-scale inhomogeneities on ozone depletion in the Arctic, *Nature*, 384, 444–447, 1996.
- Eliassen, A.: Slow thermally or frictionally controlled meridional circulation in a circular vortex, *Astrophysica Norvegica*, 5, 19, 1951.

Fairlie, T. D., Pierce, R. B., Grose, W. L., Lingenfelter, G., Loewenstein, M., and Podolske, J. R.: Lagrangian forecasting during ASHOE/MAESA: Analysis of predictive skill for analyzed and reverse-domain-filled potential vorticity, *J. Geophys. Res.*, 102, 13 169–13 182, 1997.

710 Gómez-Escolar, M., Calvo, N., Barriopedro, D., and Fueglistaler, S.: Tropical Response to Stratospheric Sudden Warmings and its modulation by the QBO, *Journal of Geophysical Research: Atmospheres*, doi:10.1002/2013JD020560, 2014.

Groß, J.-U., Günther, G., Müller, R., Konopka, P., Bausch, S., Schlager, H., Voigt, C., Volk, C. M., and Toon, G. C.: Simulation of denitrification and ozone loss for the Arctic winter 2002/2003, *Atmos. Chem. Phys.*, 5, 1437–1448, 2005.

715 Groß, J.-U., Konopka, P., and Müller, R.: Ozone chemistry during the 2002 Antarctic vortex split, *J. Atmos. Sci.*, 62, 860–870, 2005.

Groß, J.-U., Engel, I., Borrmann, S., Frey, W., Günther, G., Hoyle, C., Kivi, R., Luo, B., Molleker, S., Peter, T., Pitts, M. C., Schlager, H., Stiller, G., Vömel, H., Walker, K. A., and Müller, R.: Nitric acid trihydrate nucleation and denitrification in the Arctic stratosphere, *acp*, 14, 1055–1073, 2014.

720 Harada, Y., Goto, A., Hasegawa, H., Fujikawa, N., Naoe, H., and Hirooka, T.: A major stratospheric sudden warming event in January 2009, *Journal of the Atmospheric Sciences*, 67, 2052–2069, 2010.

Haynes, P. and Shuckburgh, E.: Effective diffusivity as a diagnostic of atmospheric transport, 1, *Stratosphere*, *J. Geophys. Res.*, 105, 22 777–22 794, 2000.

725 Hegglin, M. I. and Shepherd, T. G.: O₃-N₂O correlations from the Atmospheric Chemistry Experiment: Revisiting a diagnostic of transport and chemistry in the stratosphere, *J. Geophys. Res.*, D19301, doi:10.1029/2006JD008281, 2007.

Hitchcock, P. and Shepherd, T. G.: Zonal-mean dynamics of extended recoveries from stratospheric sudden warmings, *Journal of the Atmospheric Sciences*, 70, 688–707, 2013.

730 Holton, J. R., Haynes, P., McIntyre, M. E., Douglass, A. R., Rood, R. B., and Pfister, L.: Stratosphere-troposphere exchange, *Rev. Geophys.*, 33, 403–439, 1995.

Hoppe, C. M., Hoffmann, L., Konopka, P., Groß, J.-U., Ploeger, F., Günther, G., Jöckel, P., and Müller, R.: The implementation of the CLaMS Lagrangian transport core into the chemistry climate model EMAC 2.40.1: application on age of air and transport of long-lived trace species, *Geoscientific Model Development*, 7, 2639–2651, 2014.

735 Khosrawi, F., Groß, J.-U., Müller, R., Konopka, P., Kouker, W., Ruhnke, R., Reddmann, T., and Riese, M.: Intercomparison between Lagrangian and Eulerian simulations of the development of mid-latitude streamers as observed by CRISTA, *Atmospheric Chemistry and Physics*, 5, 85–95, 2005.

740 Konopka, P., Groß, J.-U., Bausch, S., Müller, R., McKenna, D. S., Morgenstern, O., and Orsolini, Y.: Dynamics and chemistry of vortex remnants in late Arctic spring 1997 and 2000: Simulations with the Chemical Lagrangian Model of the Stratosphere (CLaMS), *Atmos. Chem. Phys.*, 3, 839–849, 2003.

Konopka, P., Steinhorst, H.-M., Groß, J.-U., Günther, G., Müller, R., Elkins, J. W., Jost, H.-J., Richard, E., Schmidt, U., Toon, G., and McKenna, D. S.: Mixing and Ozone Loss in the 1999-2000 Arctic Vortex: Simulations with the 3-dimensional Chemical Lagrangian Model of the Stratosphere (CLaMS), *J. Geophys. Res.*, 109, D02315, doi:10.1029/2003JD003792, 2004.

745

- Konopka, P., Grooß, J.-U., Hoppel, K. W., Steinhorst, H.-M., and Müller, R.: Mixing and chemical ozone loss during and after the Antarctic polar vortex major warming in September 2002, *J. Atmos. Sci.*, 62, 848–859, 2005.
- 750 Konopka, P., Günther, G., Müller, R., dos Santos, F. H. S., Schiller, C., Ravegnani, F., Ulanovsky, A., Schlager, H., Volk, C. M., Viciani, S., Pan, L. L., McKenna, D.-S., and Riese, M.: Contribution of mixing to upward transport across the tropical tropopause layer (TTL), *Atmos. Chem. Phys.*, 7, 3285–3308, 2007.
- Konopka, P., Grooß, J.-U., Günther, G., Ploeger, F., Pommrich, R., Müller, R., and Livesey, N.: Annual cycle of ozone at and above the tropical tropopause: observations versus simulations with the Chemical Lagrangian
- 755 Model of the Stratosphere (CLaMS), *Atmos. Chem. Phys.*, 10, 121–132, doi:10.5194/acp-10-121-2010, <http://www.atmos-chem-phys.net/10/121/2010/>, 2010.
- Kuttippurath, J. and Nikulin, G.: A comparative study of the major sudden stratospheric warmings in the Arctic winters 2003/2004–2009/2010, *Atmospheric Chemistry and Physics*, 12, 8115–8129, 2012.
- Labitzke, K. and Kunze, M.: On the remarkable Arctic winter in 2008/2009, *Journal of Geophysical Research: Atmospheres* (1984–2012), 114, D00I02, doi:10.1029/2009JD012273, 2009.
- 760 Lahoz, W., Errera, Q., Viscardy, S., and Manney, G.: The 2009 stratospheric major warming described from synergistic use of BASCOE water vapour analyses and MLS observations, *Atmospheric Chemistry and Physics*, 11, 4689–4703, 2011.
- Lemmen, C., Müller, R., Konopka, P., and Dameris, M.: Critique of the tracer-tracer correlation technique and its potential to analyse polar ozone loss in chemistry-climate models, *J. Geophys. Res.*, 111, D18307, doi:10.1029/2006JD007298, 2006.
- 765 Livesey, N. J., Read, W. G., Froidevaux, L., Lambert, A., Manney, G. L., Pumphrey, H. C., Santee, M. L., Schwartz, M. J., Wang, S., Cofield, R. E., Cuddy, D. T., Fuller, R. A., Jarnot, R. F., Jiang, J. H., Knosp, B. W., Stek, P. C., Wagner, P. A., and Wu, D. L.: Version 3.3 and 3.4 Level 2 data quality and description document, JPL D-33509, https://mls.jpl.nasa.gov/data/v3_data_quality_document.pdf, 2013.
- 770 Mahowald, N. M., Plumb, R. A., Rasch, P. J., del Corral, J., and Sassi, F.: Stratospheric transport in a three-dimensional isentropic coordinate model, *J. Geophys. Res.*, 107, 4254, doi:10.1029/2001JD001313, 2002.
- Manney, G. L., Bird, J. C., Donovan, D. P., Duck, T. J., Whiteway, J. A., Pal, S. R., and Carswell, A. I.: Modeling ozone laminae in ground-based Arctic wintertime observations using trajectory calculations and satellite data, *J. Geophys. Res.*, 103, 5797–5814, 1998.
- 775 Manney, G. L., Krüger, K., Sabutis, J. L., Amina Sena, S., and Pawson, S.: The remarkable 2003-2004 winter and other recent warm winters in the Arctic stratosphere in the late 1990s, *J. Geophys. Res.*, 110, D04107, doi:10.1029/2004JD005367, 2005.
- Manney, G. L., Krüger, K., Pawson, S., Minschwaner, K., Schwartz, M. J., Daffer, W. H., Livesey, N. J., Mlynczak, M. G., Remsberg, E. E., Russell, J. M., and Water, J. W.: The evolution of the stratopause during the 2006 major warming: Satellite data and assimilated meteorological analyses, *Journal of Geophysical Research: Atmospheres* (1984–2012), 113, doi:10.1029/2007JD009097, 2008.
- 780 Manney, G. L., Harwood, R. S., MacKenzie, I. A., Minschwaner, K., Allen, D. R., Santee, M. L., Walker, K. A., Heggin, M. I., Lambert, A., Pumphrey, H. C., Bernath, P. F., Boone, C. D., Schwartz, M. J., Livesey, N. J., Daffer, W. H., and Fuller, R. A.: Satellite observations and modeling of transport in the upper troposphere

through the lower mesosphere during the 2006 major stratospheric sudden warming, *Atmos. Chem. Phys.*, 9, 4775–4795, doi:10.5194/acp-9-4775-2009, 2009a.

Manney, G. L., Schwartz, M. J., Krüger, K., Santee, M. L., Pawson, S., Lee, J. N., Daffer, W. H., Fuller, R. A., and Livesey, N. J.: Aura Microwave Limb Sounder observations of dynamics and transport during the record-breaking 2009 Arctic stratospheric major warming, *Geophysical Research Letters*, 36, L12 815, doi:10.1029/2009GL038586, 2009b.

Manney, G. L., Lawrence, Z., Santee, M., Livesey, N., Lambert, A., and Pitts, M.: Polar processing in a split vortex: Arctic ozone loss in early winter 2012/2013, *Atmospheric Chemistry and Physics*, 15, 5381–5403, 2015.

Matsuno, T.: A dynamical model of the stratospheric sudden warming, *Journal of the Atmospheric Sciences*, 28, 1479–1494, 1971.

McIntyre, M. E. and Palmer, T. N.: Breaking planetary waves in the stratosphere, *Nature*, 305, 593–600, 1983.

McKenna, D. S., Grooß, J.-U., Günther, G., Konopka, P., Müller, R., Carver, G., and Sasano, Y.: A new Chemical Lagrangian Model of the Stratosphere (CLaMS): 2. Formulation of chemistry scheme and initialization, *J. Geophys. Res.*, 107, 4256, doi:10.1029/2000JD000113, 2002a.

McKenna, D. S., Konopka, P., Grooß, J.-U., Günther, G., Müller, R., Spang, R., Offermann, D., and Orsolini, Y.: A new Chemical Lagrangian Model of the Stratosphere (CLaMS): 1. Formulation of advection and mixing, *J. Geophys. Res.*, 107, 4309, doi:10.1029/2000JD000114, 2002b.

Michelsen, H. A., Manney, G. L., Gunson, M. R., and Zander, R.: Correlations of stratospheric abundances of NO_y , O_3 , N_2O , and CH_4 derived from ATMOS measurements, *J. Geophys. Res.*, 103, 28 347–28 359, 1998.

Mlynczak, M. G., Mertens, C. J., Garcia, R. R., and Portmann, R. W.: A detailed evaluation of the stratospheric heat budget: 2. Global radiation balance and diabatic circulations, *J. Geophys. Res.*, 104, 6039–6066, 1999.

Müller, R., Crutzen, P. J., Grooß, J.-U., Brühl, C., Russell III, J. M., and Tuck, A. F.: Chlorine activation and ozone depletion in the Arctic vortex: Observations by the Halogen Occultation Experiment on the Upper Atmosphere Research Satellite, *J. Geophys. Res.*, 101, 12 531–12 554, 1996.

Müller, R., Schmidt, U., Engel, A., McKenna, D. S., and Proffitt, M. H.: The O_3 – N_2O relationship from balloon-borne observations as a measure of Arctic ozone loss in 1991/92, *Q. J. R. Meteorol. Soc.*, 127, 1389–1412, 2001.

Müller, R., Tilmes, S., Konopka, P., Grooß, J.-U., and Jost, H.-J.: Impact of mixing and chemical change on ozone-tracer relations in the polar vortex, *Atmos. Chem. Phys.*, 5, 3139–3151, 2005.

Nash, E. R., Newman, P. A., Rosenfield, J. E., and Schoeberl, M. R.: An objective determination of the polar vortex using Ertel’s potential vorticity, *J. Geophys. Res.*, 101, 9471–9478, 1996.

Newman, P. A., Nash, E. R., and Rosenfield, J. E.: What controls the temperature of the Arctic stratosphere during the spring?, *J. Geophys. Res.*, 106, 19 999–20 010, doi:10.1029/2000JD000061, 2001.

Orsolini, Y. J., Hansen, G., Hoppe, U. P., Manney, G. L., and Fricke, K. H.: Dynamical modelling of wintertime lidar observations in the Arctic, *Q. J. R. Meteorol. Soc.*, 123, 785–800, 1997.

Orsolini, Y. J., Urban, J., Murtagh, D. P., Lossow, S., and Limpasuvan, V.: Descent from the polar mesosphere and anomalously high stratopause observed in 8 years of water vapor and temperature satellite observations by the Odin Sub-Millimeter Radiometer, *J. Geophys. Res.*, 115, 2010.

- 825 Ploeger, F., Konopka, P., Günther, G., J.-U-Groß, and Müller, R.: Impact of the vertical velocity scheme on modeling transport across the tropical tropopause layer, *J. Geophys. Res.*, 115, doi:10.1029/2009JD012023, 2010.
- Ploeger, F., Günther, G., Konopka, P., Fueglistaler, S., Müller, R., Hoppe, C., Kunz, A., Spang, R., Groß, J.-U., and Riese, M.: Horizontal water vapor transport in the lower stratosphere from subtropics to high latitudes
830 during boreal summer, *J. Geophys. Res.*, 118, 8111–8127, doi:10.1002/jgrd.50636, 2013.
- Plumb, R. A.: A “tropical pipe” model of stratospheric transport, *J. Geophys. Res.*, 101, 3957–3972, 1996.
- Plumb, R. A.: Tracer interrelationships in the stratosphere, *Rev. Geophys.*, 45, RG4005, doi:10.1029/2005RG000179, 2007.
- Plumb, R. A. and Bell, R. C.: A model of the quasi-biennial oscillation on an equatorial beta-plane, *Quarterly*
835 *Journal of the Royal Meteorological Society*, 108, 335–352, 1982.
- Polvani, L. M., Waugh, D., and Plumb, R. A.: On the subtropical edge of the stratospheric surf zone, *Journal of the atmospheric sciences*, 52, 1288–1309, 1995.
- Pommrich, R., Müller, R., Groß, J.-U., Konopka, P., Ploeger, F., Vogel, B., Tao, M., Hoppe, C., Günther, G., Spelten, N., et al.: Tropical troposphere to stratosphere transport of carbon monoxide and long-lived trace
840 species in the Chemical Lagrangian Model of the Stratosphere (CLaMS), *Geoscientific Model Development*, 7, 2895–2916, 2014.
- Proffitt, M. H., Margitan, J. J., Kelly, K. K., Loewenstein, M., Podolske, J. R., and Chan, K. R.: Ozone loss in the Arctic polar vortex inferred from high altitude aircraft measurements, *Nature*, 347, 31–36, 1990.
- Punge, H. J., Konopka, P., Giorgetta, M. A., and Müller, R.: Effects of the quasi-biennial oscillation on low-
845 latitude transport in the stratosphere derived from trajectory calculations, *J. Geophys. Res.*, 114, D03102, doi:10.1029/2008JD010518, 2009.
- Randall, C., Harvey, V. L., Siskind, D., France, J., Bernath, P., Boone, C., and Walker, K.: NO_x descent in the Arctic middle atmosphere in early 2009, *Geophysical Research Letters*, 36, doi:10.1029/2009GL039706, 2009.
- 850 Randel, W. J., Garcia, R. R., and Wu, F.: Time-Dependent Upwelling in the Tropical Lower Stratosphere Estimated from the Zonal-Mean Momentum Budget, *J. Atmos. Sci.*, 59, 2141–2152, 2002.
- Ray, E. A., Moore, F. L., Elkins, J. W., Hurst, D. F., Romashkin, P. A., Dutton, G. S., and Fahey, D. W.: Descent and mixing in the 1999-2000 northern polar vortex inferred from in situ tracer measurements, *J. Geophys. Res.*, 107, 8285, doi:10.1029/2001JD000961, 2002.
- 855 Riese, M., Ploeger, F., Rap, A., Vogel, B., Konopka, P., Dameris, M., and Forster, P. M.: Impact of uncertainties in atmospheric mixing on simulated UTLS composition and related radiative effects, *J. Geophys. Res.*, 117, D16, doi:doi:10.1029/2012JD017751, 2012.
- Sankey, D. and Shepherd, T. G.: Correlations of long-lived chemical species in a middle atmosphere general circulation model, *J. Geophys. Res.*, 108, 4494, doi:10.1029/2002JD002799, 2003.
- 860 Shuckburgh, E., Norton, W., Iwi, A., and Haynes, P.: Influence of the quasi-biennial oscillation on isentropic transport and mixing in the tropics and subtropics, *J. Geophys. Res.*, 106, 14 327–14 337, 2001.
- Sofieva, V., Kalakoski, N., Verronen, P., Päiväranta, S.-M., Kyrölä, E., Backman, L., and Tamminen, J.: Polar-night O₃, NO₂ and NO₃ distributions during sudden stratospheric warmings in 2003–2008 as seen by GO-MOS/Envisat, *Atmospheric Chemistry and Physics*, 12, 1051–1066, 2012.

- 865 Solomon, S.: Stratospheric ozone depletion: A review of concepts and history, *Rev. Geophys.*, 37, 275–316, doi:10.1029/1999RG900008, 1999.
- Steinhorst, H.-M., Konopka, P., Günther, G., and Müller, R.: How permeable is the edge of the Arctic vortex — Model studies of the winter 1999–2000, *J. Geophys. Res.*, 110, D06105, doi:10.1029/2004JD005268, 2005.
- Sutton, R. T., Maclean, H., Swinbank, R., O’Neill, A., and Taylor, F. W.: High-resolution stratospheric tracer
870 fields estimated from satellite observations using Lagrangian trajectory calculations, *J. Atmos. Sci.*, 51, 2995–3005, 1994.
- Taguchi, M.: Latitudinal Extension of Cooling and Upwelling Signals Associated with Stratospheric Sudden Warmings, *Journal of the Meteorological Society of Japan. Ser. II*, 89, 571–580, 2011.
- Tilmes, S., Müller, R., Engel, A., Rex, M., and Russell III, J.: Chemical ozone loss in the Arctic and Antarctic
875 stratosphere between 1992 and 2005, *Geophys. Res. Lett.*, 33, L20812, doi:10.1029/2006GL026925, 2006.
- Tuck, A. F.: Depletion of Antarctic ozone, *Nature*, 321, 729–730, 1986.
- Volk, C. M., Elkins, J. W., Fahey, D. W., Salawitch, R. J., Dutton, G. S., Gilligan, J. M., Proffitt, M. H., Loewenstein, M., Podolske, J. R., Minschwaner, K., Margitan, J. J., and Chan, K. R.: Quantifying transport between the tropical and mid-latitude lower stratosphere, *Science*, 272, 1763–1768, 1996.
- 880 WMO: Scientific Assessment of Ozone Depletion: 2014, Global Ozone Research and Monitoring Project–Report No. 56, Geneva, Switzerland, 2014.

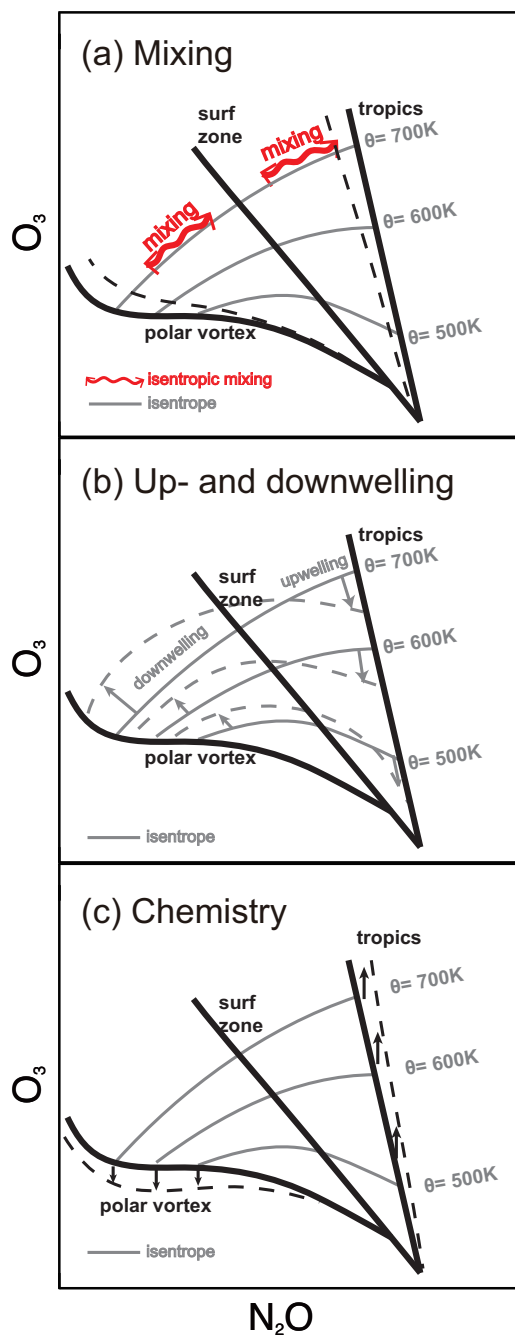


Figure 1. Schematic diagram shown the influences of (a) mixing, (b) up- and downwelling and (c) chemistry on N_2O - O_3 correlations.

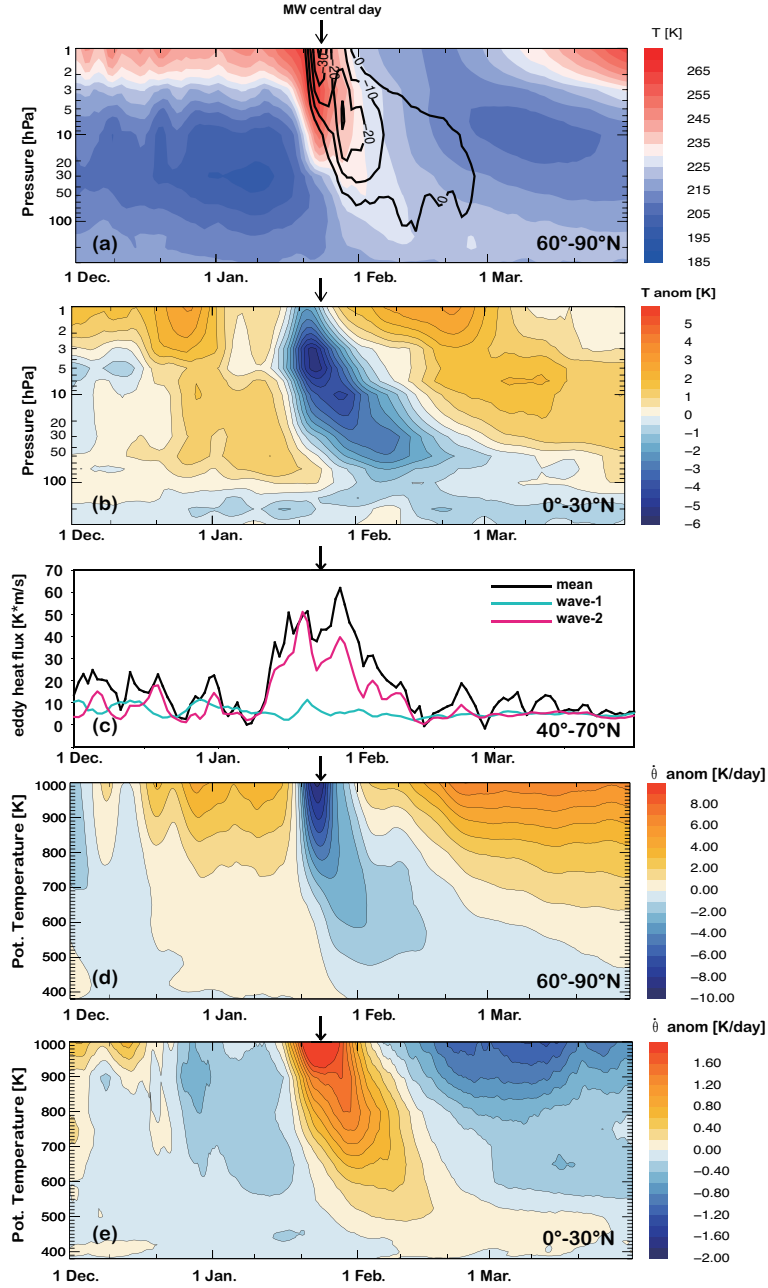


Figure 2. (a) Polar cap area weighted mean temperature ($60^\circ - 90^\circ\text{N}$) overlaid with zonal mean easterlies at 60°N (black contours in m/s), (b) tropical zonal mean temperature anomaly from the 24-year climatology ($0^\circ - 20^\circ\text{N}$), (c) eddy heat flux ($40^\circ - 70^\circ\text{N}$, black) on 100 hPa and its decomposition into wave-1 (blue) and wave-2 (red) components (d) polar mean ($60^\circ - 90^\circ\text{N}$) anomaly of the heating rates from the 24-year climatology $Q = d\theta/dt = \dot{\theta}$ (for more details see the text), (e) same as (d) but for $0^\circ - 30^\circ\text{N}$. The figures are based on the ERA-interim reanalysis.

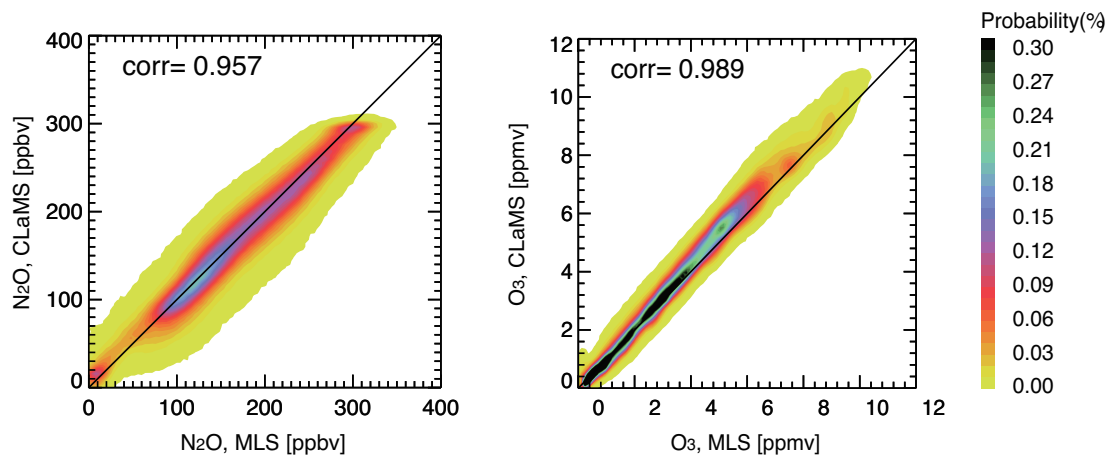


Figure 3. PDFs of MLS observations and CLaMS reference simulation for the entire simulation period from December 1st, 2008 to April 1st, 2009 for APs in the northern hemisphere with $400\text{ K} < \theta < 1000\text{ K}$ (left: N₂O, right: O₃).

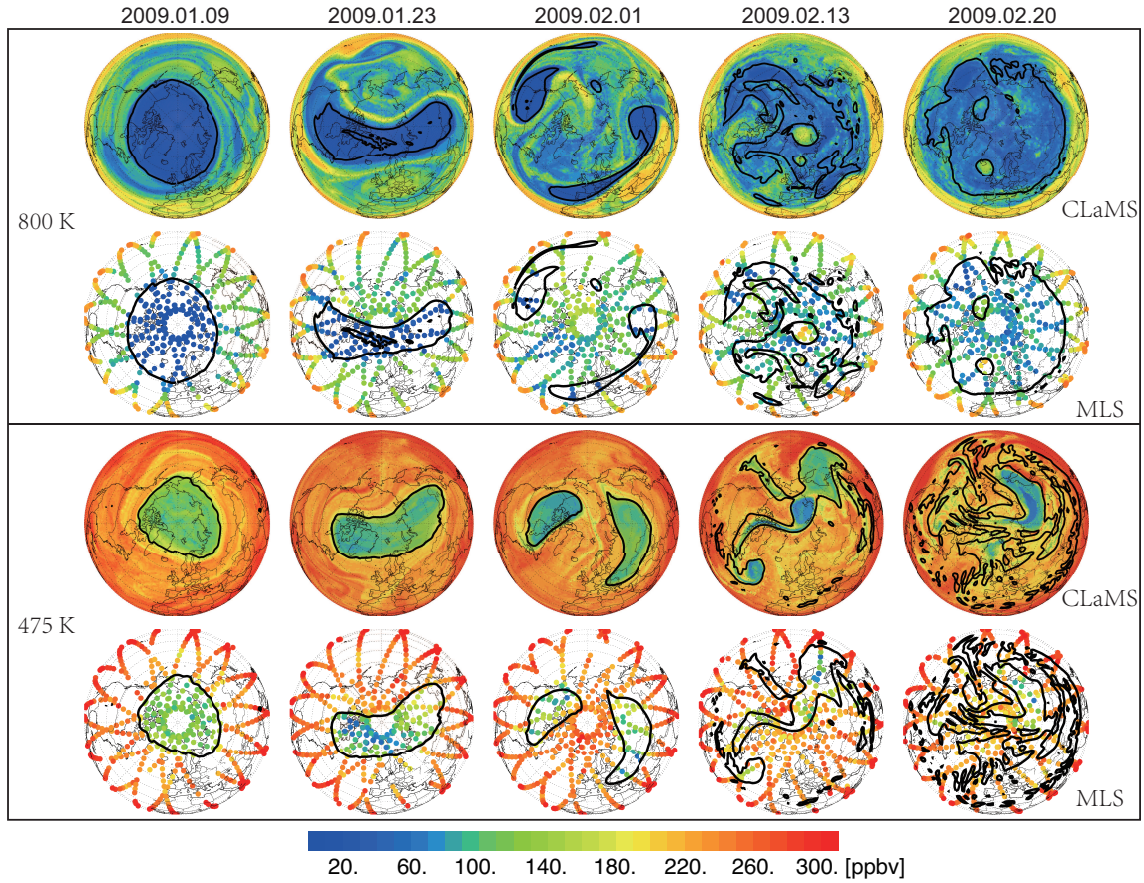


Figure 4. N_2O distribution at $\theta = 800$ K (top 2 rows) and 475 K (bottom 2 rows) interpolated from CLaMS simulation and MLS observations for five selected days in 2009 before and after the major SSW event. Nash's criteria (Nash et al., 1996) is applied to define the edge of the polar vortex shown as the black contours. According to this method, the vortex edge is identified as the maximum PV gradient with respect to equivalent latitude constrained by the location of the maximum wind jet calculated along equivalent latitudes.

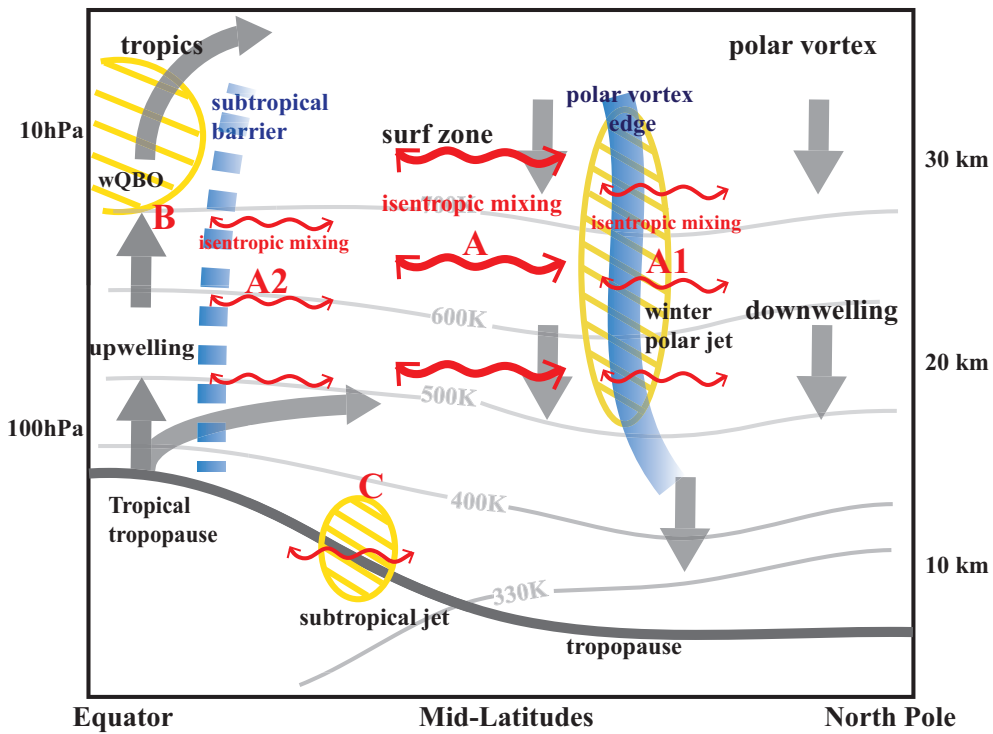


Figure 5. Schematic picture of transport and mixing processes in the winter stratosphere. The thick blue lines show the barriers, the gray arrows indicate the direction of the BD circulation. Yellow shaded areas stand for strong westerlies. Red two-headed arrows indicate isentropic mixing, with thicker and thinner arrows showing stronger mixing in the surf zone and weaker mixing across the transport barriers, respectively. For a better overview, the tropopause with the subtropical jet are also marked.

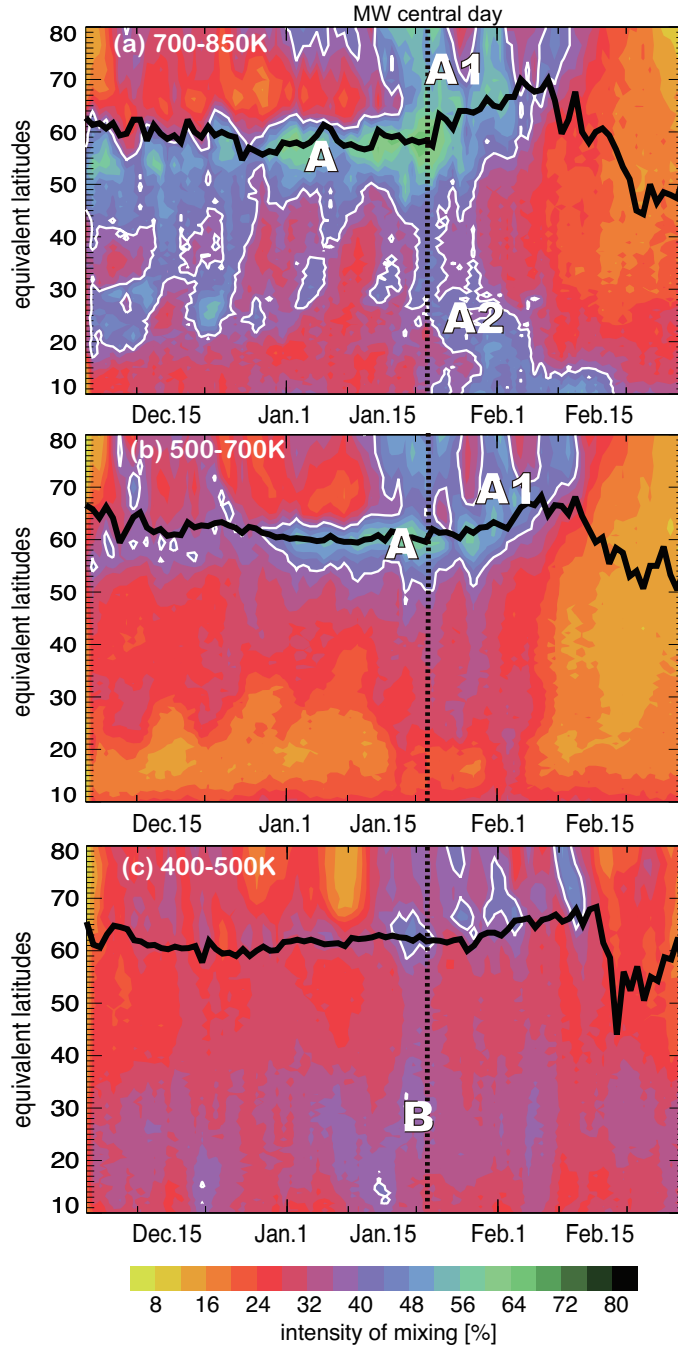


Figure 6. CLaMS zonal mean mixing intensity within 3 layers: (a) 700 - 850 K, (b) 500 - 700 K, (c) 400 - 500 K overlaid by the location of the vortex edge (thick black lines (Nash et al., 1996)) and the white contours indicate the mixing intensity of 40%. The letters mark the regions of high mixing intensity and correspond to the letters in Fig. 7.

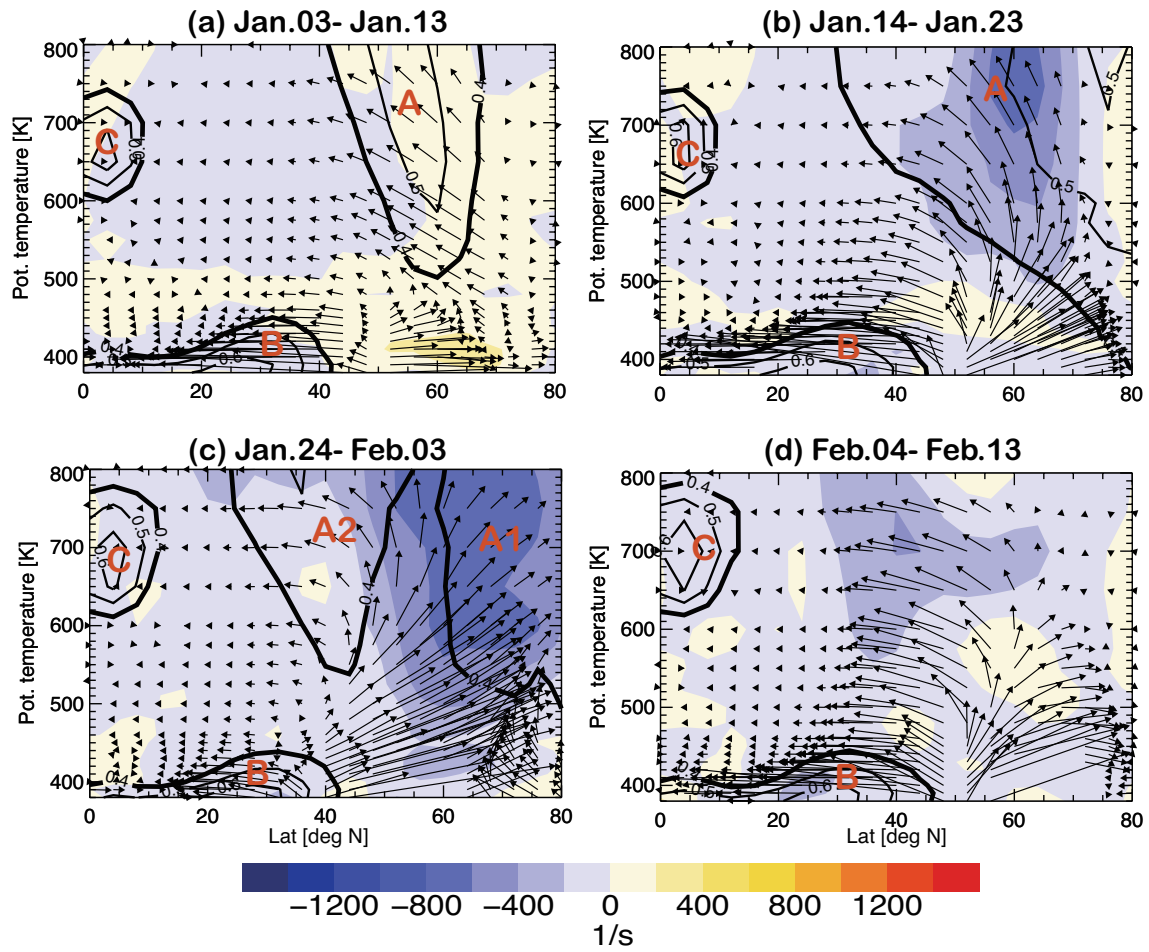


Figure 7. EP flux (arrows) and its divergence (colored bluish). Black contours indicate the mixing intensity larger than 0.4. The panels (a)-(d) show mean values averaged over 4 time periods: (a) Jan. 03 - Jan. 13 (b) Jan. 14 - Jan. 23 (c) Jan. 24 - Feb. 03 (d) Feb. 04 - Feb. 13

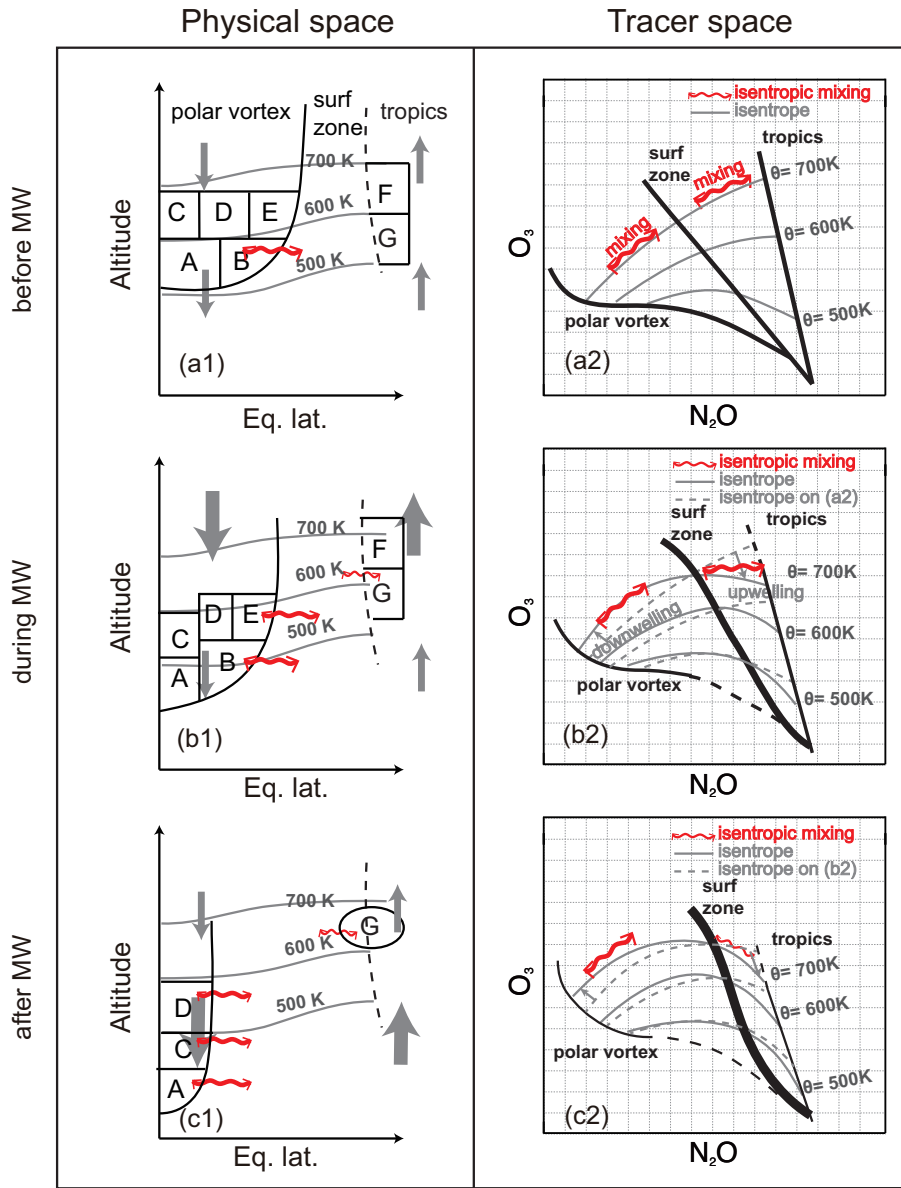


Figure 8. Schematic diagram of transport processes shown in physical space (left column) and tracer space (N_2O - O_3 , right column) before (top), during (middle) and after (bottom) the major SSW. In the physical space (left column), equivalent latitude are used as the horizontal coordinate to illustrate isentropic mixing (curved red arrows) and cross-isentropic transport (gray vertical arrows). The thickness of the gray arrows indicates the intensity of vertical motion. The characters denote exemplary the vortex and tropical air masses which interact with the mid-latitude air. Black curves in (a2)-(c2) show respective N_2O - O_3 correlations. Gray lines denote the isentropic levels. In the tracer space, the position of isentropes before (dashed) and after (solid) the major SSW is also marked. The change of the position of a prescribed point in the tracer space along the isentropes quantifies isentropic mixing whereas motion relative to these isentropes describes the effect of an idealized (mixing-free) cross-isentropic motion (up- or downwelling). Changes of the relative thickness of the different correlation branches mean their enhanced or weakened relative contributions to the composition of the considered part of the atmosphere (dashed indicates a possible missing part).

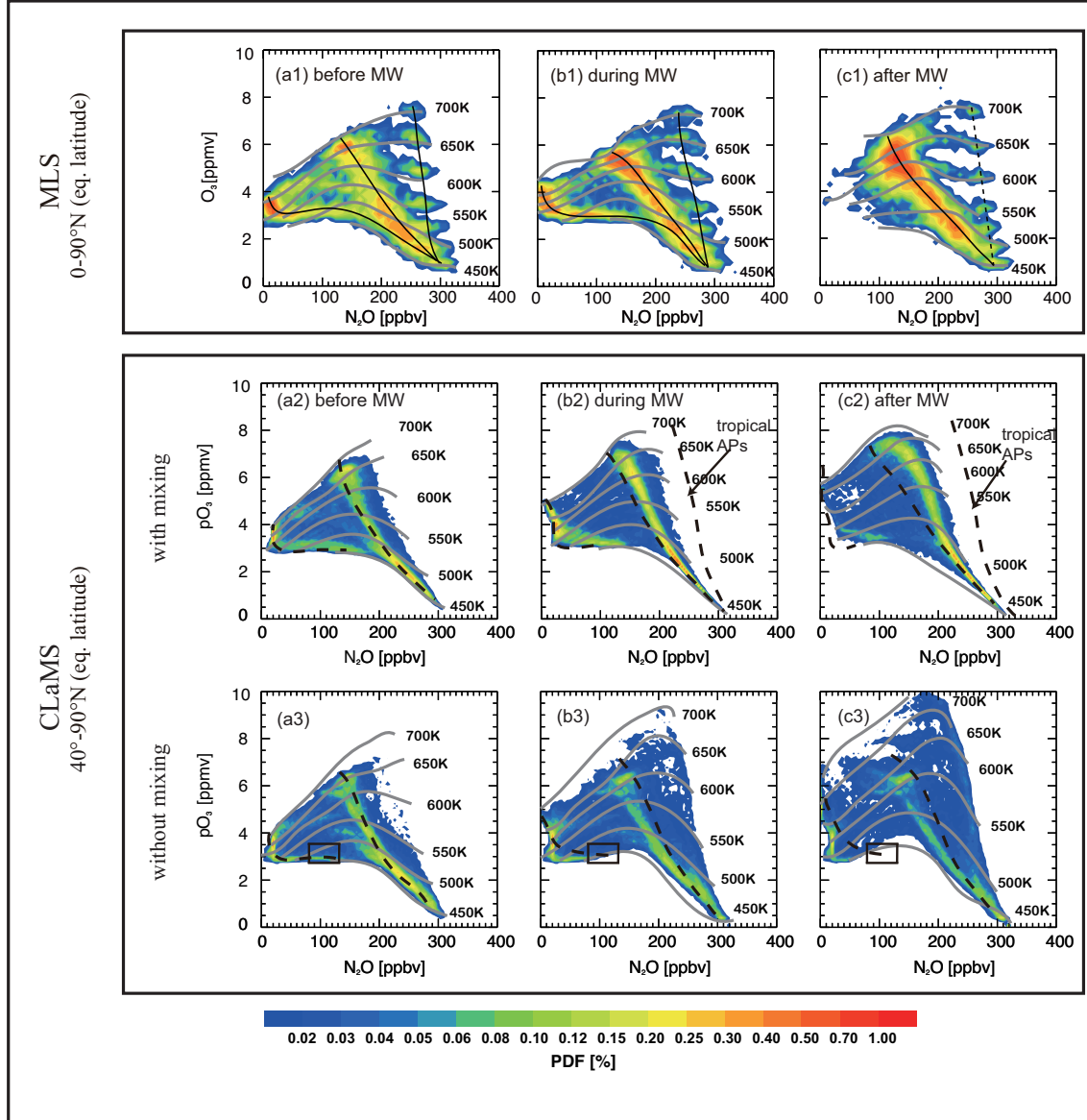


Figure 9. PDFs of N_2O - O_3 correlations (tracer space) shown for 3 periods: (a) December 18-28th, (b) January 18-28th, (c) February 18-28th. Top row (a1-c1) is based on the MLS observations within eq. latitudes $0\text{--}90^\circ\text{N}$ and potential temperature range between 450 and 700 K. The black lines in (a1-c1) represent the respective correlation branches (polar, surf-zone, tropics). Middle and bottom rows show CLaMS simulations without ozone chemistry but with and without mixing, respectively. CLaMS PDFs are calculated from the APs with the same potential temperature range but with eq. latitudes between 40 and 90°N . The gray lines mark the isentropes (450, 500, 550, 600, 650, and 700 K). For better comparison between CLaMS with and without mixing, the dashed black curves in (a2-c2) show the estimated N_2O - O_3 correlation line from the case without mixing (i.e. from a3 - c3). Reversely, dashed lines in (a3 - c3) are schematically transferred correlation branches from CLaMS with mixing (i.e. from a2 - c2).

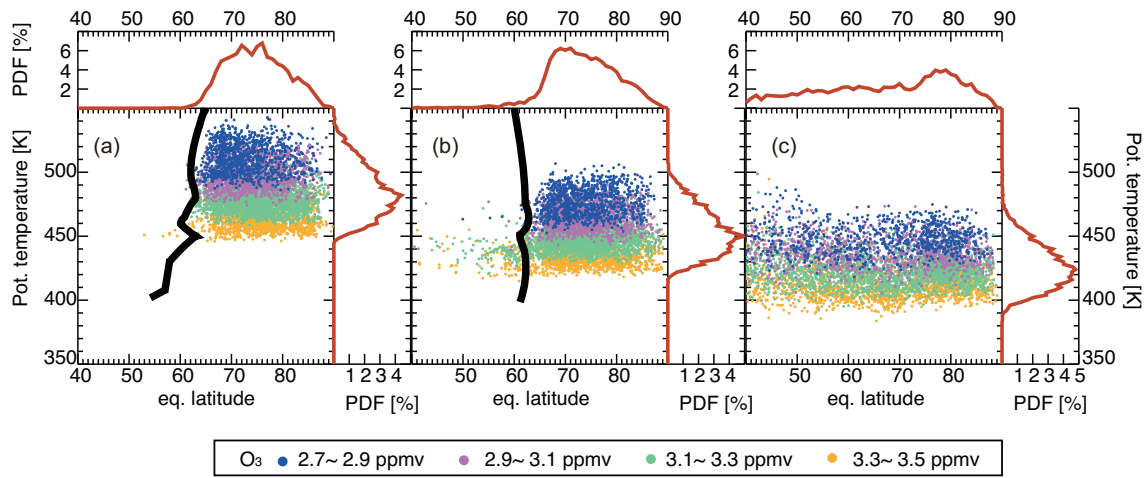


Figure 10. Spatial distribution in the eq. latitude- θ space of the APs defined by the mixing ratios of N_2O and pO_3 inside the square in Fig. 9(a3), i.e with N_2O and pO_3 values from 80 to 130 ppbv and from 2.7 to 3.5 ppmv, respectively, calculated from CLaMS run without mixing. (a) Dec. 23, 2008; (b) Jan. 23, 2009; (c) Feb. 23, 2009. Colors indicate different ranges of pO_3 values and are defined in the box. The PDFs along the eq. latitude and potential temperature axes are shown as red lines. Thick black lines denote the edge of the polar vortex.

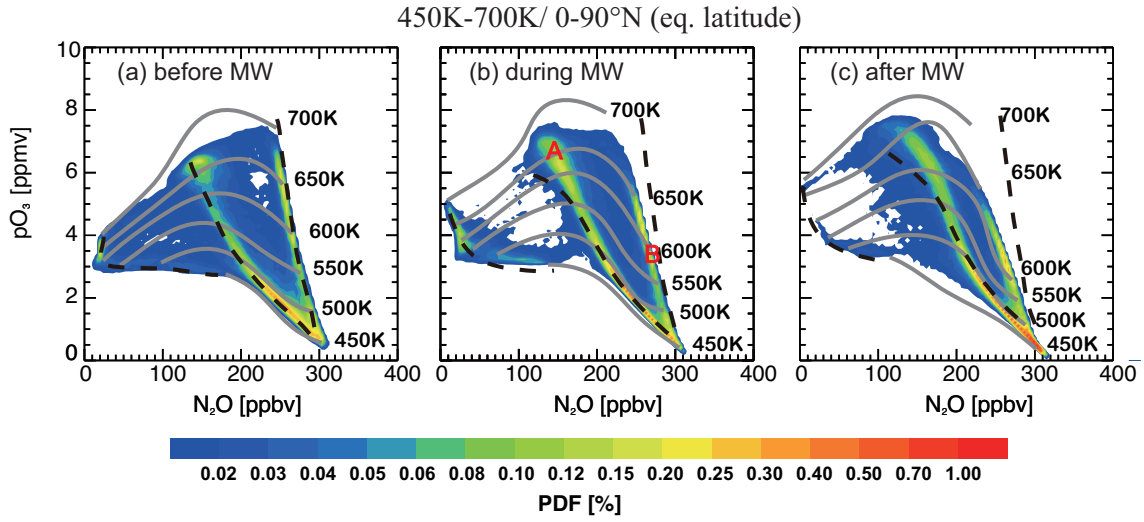


Figure 11. Impact of O_3 -chemistry on the temporal evolution of the N_2O - O_3 correlations. The PDFs are calculated from the N_2O - pO_3 correlations of APs with eq. latitudes 0-90°N and potential temperatures 450-700 K. The considered time periods are the same as in Fig. 9. The dashed black curves fit the maxima of the N_2O - O_3 correlations (PDFs) derived from a CLaMS run with a full stratospheric ozone chemistry. The correlation for passive ozone (pO_3) marked as A (N_2O near 140 ppbv and pO_3 near 7400 ppbv) and the correlation marked as B (N_2O near 140 ppbv and pO_3 near 7400 ppbv) show clear differences from the dashed curves showing simulation with full chemistry. The two groups of APs marked by those correlation features have been investigated in more detail of their ozone chemistry (see text).

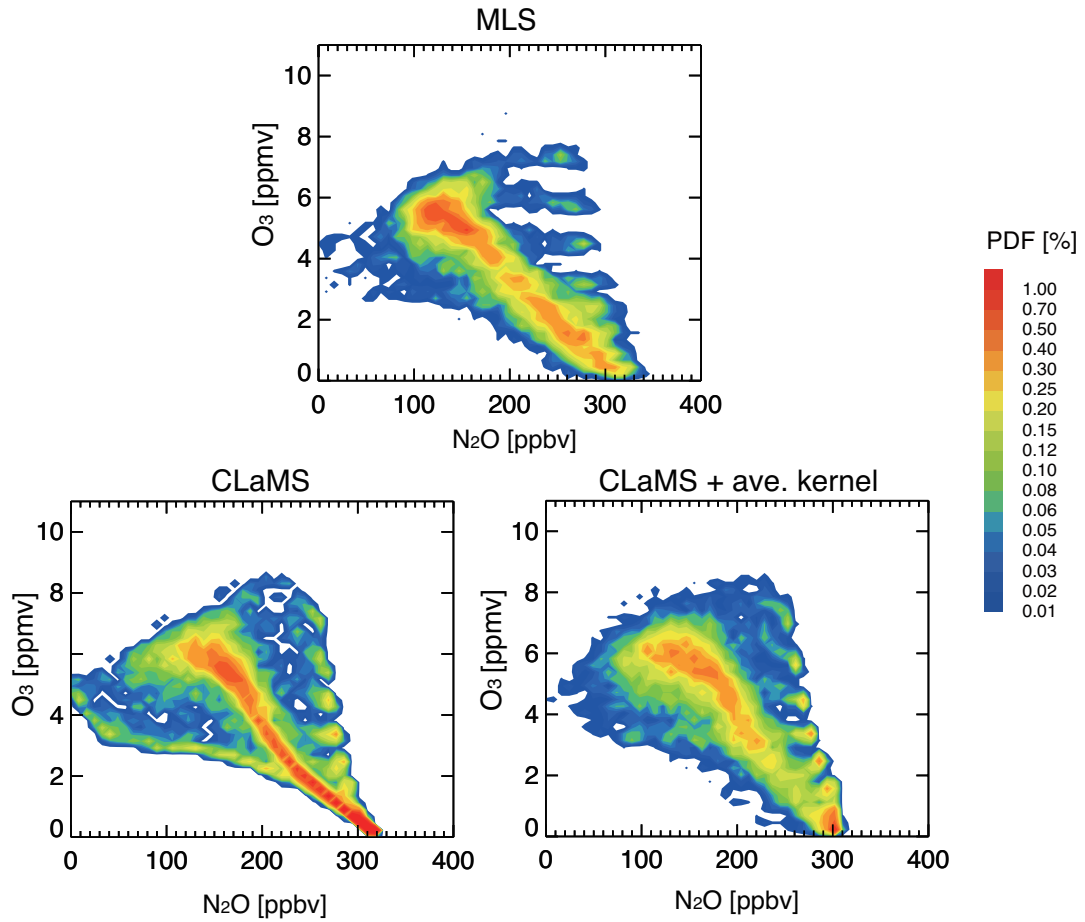


Figure 12. PDFs of N_2O - O_3 correlations on February, 15th, 2009 from MLS observations (top); from the reference CLaMS simulation without applying the averaging kernel (bottom left) and after applying the averaging kernel (bottom right).

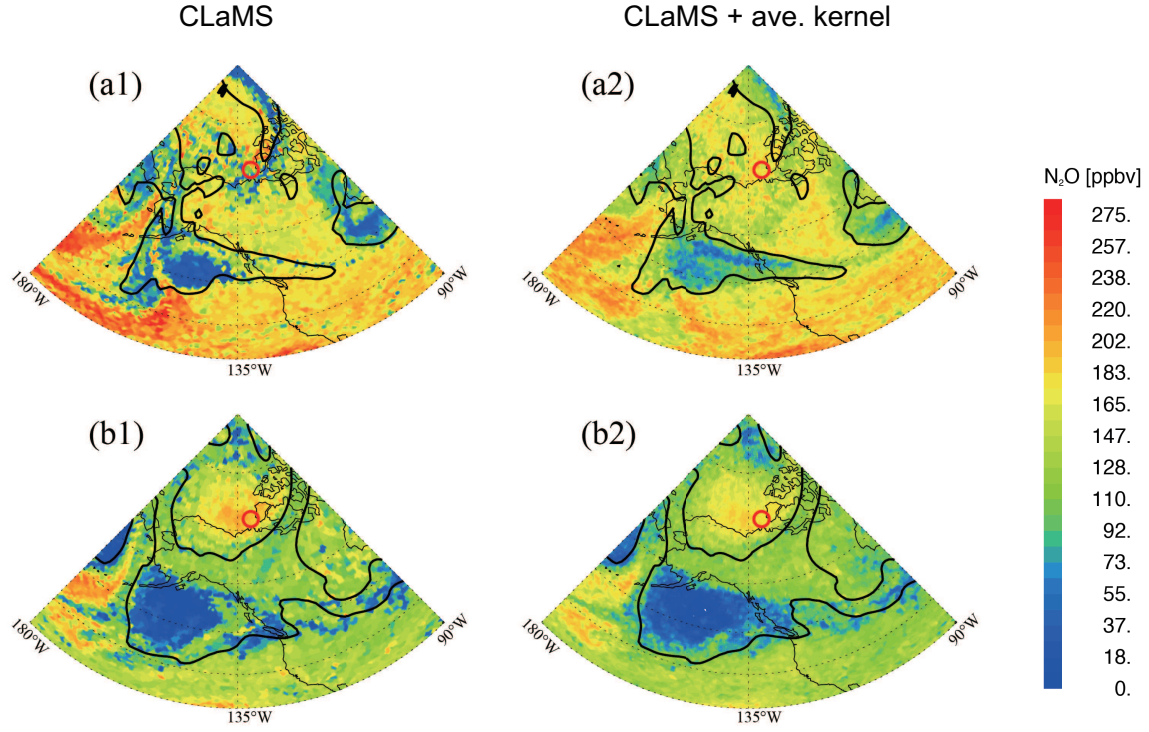


Figure 13. Spatial distribution of N_2O on February, 20th, 2009, i.e., almost 1 month after the major SSW at $\theta = 550$ K (top row) and 650 K (bottom row). Here the results of the reference run without and with the averaging kernel are shown in the left and right column, respectively. Black line is vortex edge, the red circles are the noon-footprints calculated by the observed ACE profile through back and forward trajectory.

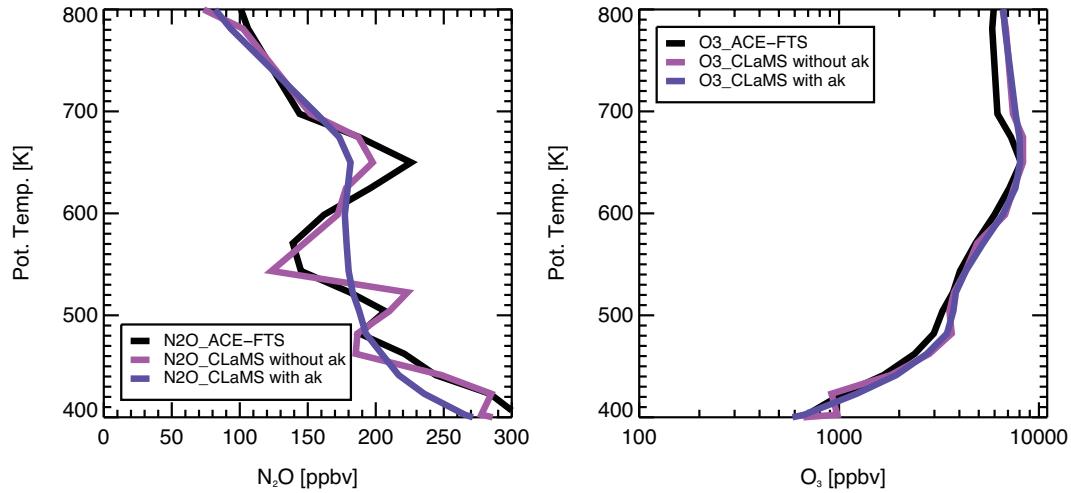


Figure 14. N_2O (top) and O_3 (bottom) profiles of ACE observations (black) on Feb. 20th located at 73.05°N , 137.11°W at 30 km and of corresponding CLaMS simulation before (blue) and after (purple) applying the MLS averaging kernel.