



This discussion paper is/has been under review for the journal Atmospheric Chemistry and Physics (ACP). Please refer to the corresponding final paper in ACP if available.

# Wind extraction potential from ensemble Kalman filter assimilation of stratospheric ozone using a global shallow water model

D. R. Allen, K. W. Hoppel, and D. D. Kuhl

Remote Sensing Division, Naval Research Laboratory, Washington, DC, USA

Received: 9 December 2014 – Accepted: 21 January 2015 – Published: 12 February 2015

Correspondence to: D. R. Allen (douglas.allen@nrl.navy.mil)

Published by Copernicus Publications on behalf of the European Geosciences Union.

## Wind extraction from ensemble Kalman filter assimilation of stratospheric ozone

D. R. Allen et al.

Title Page

Abstract

Introduction

Conclusions

References

Tables

Figures



Back

Close

Full Screen / Esc

Printer-friendly Version

Interactive Discussion



## Abstract

The feasibility of extracting wind information from stratospheric ozone observations is tested using ensemble Kalman filter (EnKF) data assimilation (DA) and a global shallow water model that includes advection of an ozone-like tracer. Simulated observations are created from a truth run (TR) that resembles the Northern Hemisphere winter stratosphere with a polar vortex disturbed by planetary-scale wave forcing. Ozone observations mimic sampling of a polar-orbiting satellite, while geopotential height observations are randomly placed in space and time. EnKF experiments are performed assimilating ozone, height, or both over a 10 day period. The DA is also implemented using two different pairs of flow variables: zonal and meridional wind (EnKF- $uv$ ) and streamfunction and velocity potential (EnKF- $\psi\chi$ ). Each experiment is tuned for optimal localization length, while the ensemble spread is adaptively inflated using the TR. The experiments are evaluated using the maximum wind extraction potential (WEP). Ozone-only assimilation improves winds (WEP = 46 % for EnKF- $uv$ , and 58 % for EnKF- $\psi\chi$ ), but suffers from spurious gravity wave generation. Application of nonlinear normal mode initialization (NMI) greatly reduces the unwanted imbalance and increases the WEP for EnKF- $uv$  (84 %) and EnKF- $\psi\chi$  (81 %). Assimilation of only height observations also improved the winds (WEP = 59 % for EnKF- $uv$ , and 67 % for EnKF- $\psi\chi$ ), with much less imbalance compared to the ozone experiment. The assimilation of both height and ozone performed the best, with WEP increasing to  $\sim 87\%$  ( $\sim 90\%$  with NMI) for both EnKF- $uv$  and EnKF- $\psi\chi$ , demonstrating that wind extraction from ozone assimilation can be beneficial even in a data-rich environment. Ozone assimilation particularly improves the tropical winds, which are not well constrained by height observations due to lack of geostrophy.

## Wind extraction from ensemble Kalman filter assimilation of stratospheric ozone

D. R. Allen et al.

Title Page

Abstract

Introduction

Conclusions

References

Tables

Figures



Back

Close

Full Screen / Esc

Printer-friendly Version

Interactive Discussion



# 1 Introduction

A key missing component of the global observing system (GOS) is measurement of the three-dimensional global wind (World Meteorological Organization, 2000). Upper air wind observations from radiosondes, pilot reports, and cloud and water vapor feature-tracking leave large gaps, particularly in the tropics, Southern Ocean, and in most of the stratosphere and mesosphere. Spaceborne Doppler Wind Lidar (DWL) has been proposed as the potential “missing link” in the GOS (Baker, 2014). When placed in low earth orbit, DWL can provide daily global wind profiles throughout the troposphere and lower stratosphere (National Research Council, 2007). The Atmospheric Dynamics Mission (ADM-Aeolus) (Stoffelen et al., 2005), will provide a proof-of-concept of this capability. However, the measurements will be limited to a single line-of-sight wind component, altitudes below  $\sim 26$  km, and simple along-track (as opposed to sweeping or conical) sampling. While future spaceborne DWL missions may provide improved observing capabilities, the technical challenges make this a very difficult and expensive solution to the problem of inadequate wind observations.

Another potential source of dynamical information comes from assimilation of trace gas (tracer) observations in a 4-D data assimilation system (DAS) that dynamically couples tracer and wind. The investigation of algorithms to extract wind information from tracers started with 1-D and 2-D simulations by Daley (1995, 1996) and Riishøjgaard (1996). These studies showed that wind information could be extracted from tracer observations when the continuity equation was coupled to the dynamical equations via either a 4D-Var algorithm or an extended Kalman filter (EKF). Extensions to the full 3-D atmosphere were performed in 4D-Var experiments by Peuch et al. (2000), Semane et al. (2009), and Allen et al. (2013). These further supported the potential of tracer assimilation to benefit the winds, but also highlighted limitations due to paucity of observations, insufficient data quality, and inadequate modeling of tracers in the forecast model, as well as phenomenological limitations due to geophysical variability.

## ACPD

15, 3955–3994, 2015

### Wind extraction from ensemble Kalman filter assimilation of stratospheric ozone

D. R. Allen et al.

Title Page

Abstract

Introduction

Conclusions

References

Tables

Figures



Back

Close

Full Screen / Esc

Printer-friendly Version

Interactive Discussion



**Wind extraction from ensemble Kalman filter assimilation of stratospheric ozone**

D. R. Allen et al.

Title Page

Abstract

Introduction

Conclusions

References

Tables

Figures

◀

▶

◀

▶

Back

Close

Full Screen / Esc

Printer-friendly Version

Interactive Discussion

Assimilation of infrared and microwave humidity channels from geostationary and polar-orbiting satellites has been shown to benefit tropospheric analyses and forecasts in the European Centre for Medium-Range Weather Forecasts (ECMWF) 4D-Var system (Andersson et al., 2007; Peubey and McNally, 2009). Peubey and McNally (2009) isolated the mechanisms whereby geostationary clear-sky radiances can impact the wind analyses in 4D-Var and showed that the dominant factor involves adjustment of the wind field in order to match observed humidity features (the so-called “tracer advection effect”). However, attempts to assimilate stratospheric ozone using 4D-Var algorithms and the resultant dynamical coupling have previously resulted in problems in operational numerical weather prediction (NWP) (Han and McNally, 2010; Dragani and McNally, 2013). These assimilation challenges led Allen et al. (2014) to re-examine the stratospheric tracer-wind problem at a more fundamental level using 4D-Var assimilation studies with a shallow water model (SWM) coupled to the tracer continuity equation. This idealized system allowed Allen et al. (2014) to probe the limits of wind extraction from assimilation of three readily-measured long-lived tracers: ozone ( $O_3$ ), nitrous oxide ( $N_2O$ ), and water vapor. It was shown that assimilation of global hourly tracer data was sufficient to analyze the horizontal wind components to a high degree of accuracy ( $\sim 0.3 \text{ ms}^{-1}$  random error for  $O_3$  and  $N_2O$ ).

While 4D-Var couples tracers and dynamical variables through the tangent linear model and its adjoint, the initial background error covariance normally does not include tracer-wind correlations (these correlations develop implicitly over the assimilation window). This limitation may be overcome by using an ensemble Kalman filter (EnKF) in which the error covariance between tracer and wind are explicitly calculated by the ensemble statistics. Milewski and Bourqui (2011) assimilated ozone and temperature profiles in an EnKF system using a 3-D model at relatively low resolution (spectral triangular truncation T21). They showed that background covariances are able to propagate information from the observed variables to wind. In particular, assimilation of either ozone or temperature observations in a polar-orbiting sampling pattern significantly improved the wind analysis.

**Wind extraction from ensemble Kalman filter assimilation of stratospheric ozone**

D. R. Allen et al.

Title Page

[Abstract](#)[Introduction](#)[Conclusions](#)[References](#)[Tables](#)[Figures](#)[Back](#)[Close](#)[Full Screen / Esc](#)[Printer-friendly Version](#)[Interactive Discussion](#)

In this paper, we take a similar approach to Milewski and Bourqui (2011), except that we use the SWM forecast model (at T42 resolution), and we assimilate ozone and height (in lieu of temperature for the SWM) observations, both separately and together, in order to examine whether value is added by assimilating ozone observations into a system already constrained by other observations. The SWM has been used in both 4D-Var (Courtier and Talagrand, 1990; Polavarapu et al., 2000; Jung et al., 2014) and EnKF (Kepert, 2009, 2011) simulations, since it provides a sufficiently complex system to simulate the key physical relations of the horizontal flow, including both slow balanced and fast unbalanced modes. As explained by Kepert (2009), the SWM provides a severe test for assimilation, since the weak dissipation will not remove imbalances introduced in the analysis; they will rather accumulate with time.

One of the goals of the current study is to probe the limits of ozone-wind extraction in an EnKF system. To accomplish this, it is necessary to quantify (and remove, if possible) spurious imbalance generated from noisy observations and imperfect modeling of background error covariances. A wide range of studies has been performed to examine balance in the context of 4-D data assimilation. For example, Neef et al. (2006, 2009) investigated balance with a low-order Lorenz-type model with the EKF and EnKF. Imbalance within SWM-DAS systems was analyzed in both 4D-Var (Courtier and Talagrand, 1990; Polavarapu et al., 2000) and EnKF (Kepert, 2009, 2011) using digital filter and nonlinear normal mode initialization techniques. Mitchell and Houtekamer (2002) considered the influence of covariance localization on balance with a 3-D dry, global, primitive-equation model. In all of these studies, imbalance was shown to be a serious issue in 4-D DAS. None of these studies was designed to examine balance in the context of the tracer assimilation problem, however. As part of this study we attempt to isolate and to the extent possible remove imbalance in order to minimize the analysis errors and to determine the extent to which the wind can be constrained by ozone observations.

The layout of the paper is as follows. Section 2 describes the SWM-DAS, including the forecast model, the EnKF, and the normal mode initialization procedure. Section 3

describes the experimental design and the error diagnostics. Section 4 presents the results and discussion from the three assimilation experiments, and conclusions are provided in Sect. 5.

## 2 Model description

### 2.1 Forecast model

The forecast model is a spectral SWM based on the vorticity-divergence formulation in Sect. 2a of Ritchie et al. (1988), with the inclusion of fourth-order semi-implicit diffusion applied to the vorticity, divergence, and geopotential. A spectral advection equation is coupled to the SWM, solving for the mixing ratio of a passive tracer as a function of time using the same fourth-order diffusion operator. We call the combined four equation system the Shallow Water Model with Tracer (SWM<sup>T</sup>). The system is run at triangular truncation T42, with model fields saved on the Gaussian grid (128 longitudes × 64 latitudes, for a grid resolution of ~ 2.8° at the equator). The discretization uses a leap-frog time integration and a semi-implicit approximation for terms that produce gravity waves (Ritchie, 1988). To restart the model after assimilating data, an Euler forward time stepping method is applied. The global mean geopotential height  $H$  is specified to be 10 km, resulting in a gravity wave speed ( $\sqrt{gH}$ , where  $g$  is the earth's gravitational acceleration) of 313 m s<sup>-1</sup>. To avoid numerical instability due to gravity waves, a short model time step of 120 s is used for all SWM<sup>T</sup> forecasts. The diffusion coefficient is set to  $5.0 \times 10^{15} \text{ m}^4 \text{ s}^{-1}$ , which provides an e-folding damping for the highest wavenumber of approximately one day.

### 2.2 Ensemble Kalman filter

To assimilate data into the SWM<sup>T</sup> system, we use the “perturbed observations” EnKF (Houtekamer and Mitchell, 1998; Evenson, 2003). The system solves for  $N_{\text{ens}}$  analysis

## Wind extraction from ensemble Kalman filter assimilation of stratospheric ozone

D. R. Allen et al.

Title Page

Abstract

Introduction

Conclusions

References

Tables

Figures



Back

Close

Full Screen / Esc

Printer-friendly Version

Interactive Discussion



states using the Kalman filter equation for the state vector  $\mathbf{x}$  of size  $N_{\text{state}}$ .

$$\mathbf{x}_i^a = \mathbf{x}_i^b + \mathbf{K}_{\text{ens}} \mathbf{d}_i \quad (1)$$

where a and b superscripts indicate analysis and background, and  $i = 1 \dots N_{\text{ens}}$  is an index for ensemble member.  $\mathbf{d}_i = \mathbf{y}_i - \mathbf{H}\mathbf{x}_i^b$  is the vector of innovations for member  $i$ ,  $\mathbf{y}_i$  is the vector of perturbed observations, and  $\mathbf{H}$  is the (linear) observation operator. The ensemble-based Kalman gain matrix is defined as follows

$$\mathbf{K}_{\text{ens}} = \mathbf{P}_{\text{ens}}^b \mathbf{H}^T \left[ \mathbf{H} \mathbf{P}_{\text{ens}}^b \mathbf{H}^T + \mathbf{R}_{\text{ens}} \right]^{-1} \quad (2)$$

with the ensemble background error covariance calculated by

$$\mathbf{P}_{\text{ens}}^b = \frac{1}{N_{\text{ens}} - 1} \sum_{i=1}^{N_{\text{ens}}} \left( \mathbf{x}_i^b - \overline{\mathbf{x}^b} \right) \left( \mathbf{x}_i^b - \overline{\mathbf{x}^b} \right)^T. \quad (3)$$

Here the overbar indicates the ensemble mean and  $\mathbf{R}_{\text{ens}}$  is the ensemble observation error covariance matrix. The background state is calculated using the non-linear SWM<sup>T</sup> forecast model  $M$ , subject to initial conditions

$$\mathbf{x}_i^b(t_n) = M \left[ \mathbf{x}_i^b(t_{n-1}) \right] \quad (4)$$

where  $n$  is a time index for analysis times ( $t_n$ ). Note that the SWM<sup>T</sup> time step is less than the analysis time step, so one application of Eq. (4) represents multiple SWM<sup>T</sup> time steps.

The EnKF analysis equation can be solved using different combinations of state variables. In this study, we compare results using zonal wind, meridional wind, height, and ozone  $\mathbf{x} = [u, v, z, q]$  (the EnKF- $uv$  system) and streamfunction, velocity potential, height, and ozone  $\mathbf{x} = [\psi, \chi, z, q]$  (the EnKF- $\psi\chi$  system). The latter combination was

## Wind extraction from ensemble Kalman filter assimilation of stratospheric ozone

D. R. Allen et al.

Title Page

Abstract

Introduction

Conclusions

References

Tables

Figures

◀

▶

◀

▶

Back

Close

Full Screen / Esc

Printer-friendly Version

Interactive Discussion



shown by Kepert (2009) to result in better balance of increments in a SWM-EnKF system with Schur product localization (discussed further below). We will test this for the SWM<sup>T</sup> system with ozone and height observations.

To avoid filter divergence, we apply an inflation factor to maintain reasonable spread in the ensemble. For EnKF- $uv$ , the factor is tuned so that the background global Root Mean Square Error (RMSE) of the ensemble mean vector wind matches the ensemble SPREAD. The RMSE and SPREAD for vector wind are defined as

$$V_{\text{RMSE}} = \sqrt{\frac{1}{N_{\text{state}}} \sum_{j=1}^{N_{\text{state}}} \left[ \overline{u_j^b} - u_j^{\text{TR}} \right]^2 + \left[ \overline{v_j^b} - v_j^{\text{TR}} \right]^2} \quad (5)$$

$$V_{\text{SPREAD}} = \sqrt{\frac{1}{(N_{\text{ens}} - 1) N_{\text{state}}} \sum_{i=1}^{N_{\text{ens}}} \sum_{j=1}^{N_{\text{state}}} \left[ u_{i,j}^b - \overline{u_j} \right]^2 + \left[ v_{i,j}^b - \overline{v_j} \right]^2} \quad (6)$$

where  $V$  represents the magnitude of the vector wind ( $\mathbf{V}$ ) and TR indicates the truth run (described in Sect. 3.1). For EnKF- $\psi\chi$ , the streamfunction is used rather than the vector wind in the covariance tuning. In both cases, the calculations of RMSE and SPREAD are not area-weighted, and therefore may be somewhat biased to match the higher latitudes, since the Gaussian grid is used. This tuning takes a similar approach to the 4D-Var simulations of Allen et al. (2014) in which the background error variances were modified to match the global RMSE of the tracer and wind components. This adaptive tuning approach provides a flexible way to examine how the system behaves over a wide range of parameters, without needing to separately tune the inflation factor for each case. It is of course not practical in an operational setting, since the true state is unknown, but for this idealized study it works well to prevent filter divergence.

To avoid spurious long-range correlations, localization is applied to the background error covariance. We apply the elementwise (Schur product) approach (e.g., Houtekamer and Mitchell, 2001) using Eq. (4.10) of Gaspari and Cohn (1999). The

**Wind extraction from ensemble Kalman filter assimilation of stratospheric ozone**

D. R. Allen et al.

Title Page	
Abstract	Introduction
Conclusions	References
Tables	Figures
◀	▶
◀	▶
Back	Close
Full Screen / Esc	
Printer-friendly Version	
Interactive Discussion	





localization matrix  $\mathbf{S}$  is applied directly to the background error covariance so the gain matrix becomes

$$\mathbf{K}_{\text{ens}} = \mathbf{S} \circ \mathbf{P}_{\text{ens}}^b \mathbf{H}^T \left[ \mathbf{H} \mathbf{S} \circ \mathbf{P}_{\text{ens}}^b \mathbf{H}^T + \mathbf{R}_{\text{ens}} \right]^{-1}. \quad (7)$$

To illustrate the ozone-wind interaction in the SWM<sup>T</sup>-EnKF system, Fig. 1 shows the ensemble mean analysis increments  $\mathbf{K}_{\text{ens}} \bar{\mathbf{d}}$  for assimilation of a single ozone observation at 120° E longitude, 40° N latitude for the EnKF- $uv$  and EnKF- $\psi\chi$  systems. For the EnKF- $\psi\chi$ , we convert the increments to wind increments after the analysis step. Specification of the initial 100 member ensemble for this system will be discussed in Sect. 3. The positive ensemble mean ozone innovation ( $\bar{\mathbf{d}} = 0.21$  parts per million by volume, ppmv) results in a positive ozone increment in the vicinity of the observation with maximum of 0.11 ppmv. Since the height correlates positively with ozone, a positive height increment also occurs (maximum of 84 m). Note that the ozone and height increments are similar for both systems, since these variables are unchanged; slight differences are due to differences in tuning of the background error covariances. The wind increments are very different, however. While both show anticyclonic circulation around the positive height increment, the winds are much stronger in the EnKF- $\psi\chi$ . As explained by Kepert (2009, 2011) the weakening of the winds in the EnKF- $uv$  is due to the effects of localization, which acts to decrease the local balance. As shown below, this adversely affects the system by generating spurious gravity waves.

### 2.3 Normal mode initialization

In general, analysis increments may project onto both slow balanced modes and fast unbalanced modes. Unless there is sufficient information in the background error covariance to distribute increments in a balanced way, the unbalanced modes will enter the system, and it may be difficult to remove these modes with limited observations (Neef et al., 2006, 2009). To quantify the imbalance in the SWM-EnKF, we use a non-linear normal mode initialization (NMI) procedure (Machenhauer, 1977), which has in

**Wind extraction from ensemble Kalman filter assimilation of stratospheric ozone**

D. R. Allen et al.

Title Page	
Abstract	Introduction
Conclusions	References
Tables	Figures
◀	▶
◀	▶
Back	Close
Full Screen / Esc	
Printer-friendly Version	
Interactive Discussion	



the past been extensively used in NWP to reduce the impact of inertia gravity waves caused by imbalance in the analysis increments. While digital filter initialization (e.g., Fillion et al., 1995) is more commonly used in NWP today, NMI allows discrimination between the gravity wave and rotational wave modes, which is very useful in the SWM context. Kepert (2009) used NMI to analyze imbalance caused by localization in the SWM-EnKF framework, and showed that while gravity waves can be reduced by judicious choice of balance constraints, some initialization may still be necessary in the EnKF (see also the discussion in Lorenc, 2003).

For example, the single-observation increments in Fig. 1 result in unbalanced motions in both versions of the SWM<sup>T</sup> system. Figure 2 shows the divergence anomalies due to the single-observation increments. These anomalies propagate radially outward from the observation location, as seen in these maps at 2 h intervals. Maps at later times (not shown) indicate that these oscillations propagate around the globe in ~ 1.5 days, consistent with waves traveling at the gravity wave phase speed of this system. The EnKF- $\psi\chi$  increments result in smaller divergence fields than the EnKF- $uv$ ; the maximum divergence anomaly at 1200 s for the EnKF- $\psi\chi$  is ~ 13 % of that caused by the EnKF- $uv$ , consistent with less imbalance. However, initialization may still be necessary in both systems to remove this spurious gravity “noise.”

In order to “initialize” the system (i.e., apply NMI to the analysis state vector), we first need the normal modes (NM) of the SWM system. These were calculated using the formulation outlined in Hogan et al. (1992). The resulting NM frequencies are shown in Fig. 3 as a function of zonal wavenumber and mode type. Negative (positive) wavenumbers indicate westward (eastward) propagating modes. These modes are separated into westward and eastward gravity wave (GW) and westward rotational wave (RW) modes. To balance the GW modes, we apply the Machenhauer (1977) condition, which reduces the time tendencies of the complex amplitudes of the modes. We apply five iterations to solve the nonlinear balance equation using a single 120 s time step for the calculation of the tendencies. We choose a linear cutoff frequency of

## Wind extraction from ensemble Kalman filter assimilation of stratospheric ozone

D. R. Allen et al.

Title Page

Abstract

Introduction

Conclusions

References

Tables

Figures



Back

Close

Full Screen / Esc

Printer-friendly Version

Interactive Discussion





divergence looks much more like the truth, indicating that the noise was due largely to spurious unbalanced modes. We note that this rather dramatic improvement from application of NMI is partly illustrating sensitivities in the SWM. Whereas in a full NWP system, physical and radiative processes may dampen the gravity waves, in the SWM with weak diffusion, the waves can remain in the system for a long time, unless assimilated data are at sufficient sampling frequency and precision to resolve the waves.

### 3 Experimental design

#### 3.1 Truth run

The truth run (TR) is designed to simulate Northern Hemisphere (NH) winter conditions in the middle stratosphere (the same TR was used in the 4D-Var tracer assimilation study by Allen et al., 2014). The initial conditions for SWM<sup>T</sup> include zero meridional wind and a zonally-symmetric zonal wind that varies with latitude ( $\phi$ ) as  $u(\phi) = u_{\max} \sin(2\phi)$  in the NH and is zero in the Southern Hemisphere (SH), with  $u_{\max} = 60 \text{ m s}^{-1}$ . The geopotential height is specified using the gradient wind balance with a global mean height of 10 km. The initial ozone is calculated using Aura Microwave Limb Sounder (MLS) ozone data (Waters et al., 1999; Livesey et al., 2011). The data are selected for a period with weak planetary wave activity (1–15 March 2011) and are interpolated to the 850 K isentropic level (approximately 32 km altitude or 10 hPa), representative of middle stratosphere conditions. The zonal mean and time mean mixing ratio as a function of latitude was calculated for this period and interpolated to the Gaussian grid. The ozone is treated as passive (i.e., no chemical source/sink) and there is no radiative interaction between ozone and dynamics. Note that in the TR there are no “restarts.” Therefore, an assimilation cycling run, which restarts after each cycle with a forward Euler step, would produce a slightly different result from the continuous TR, even if no data were assimilated. We could, in principle, restart the TR at the regular analysis time intervals, as was done in Kepert (2009);

## Wind extraction from ensemble Kalman filter assimilation of stratospheric ozone

D. R. Allen et al.

Title Page

Abstract

Introduction

Conclusions

References

Tables

Figures



Back

Close

Full Screen / Esc

Printer-friendly Version

Interactive Discussion



**Wind extraction from ensemble Kalman filter assimilation of stratospheric ozone**

D. R. Allen et al.

Title Page

Abstract

Introduction

Conclusions

References

Tables

Figures

◀

▶

◀

▶

Back

Close

Full Screen / Esc

Printer-friendly Version

Interactive Discussion



however, test runs performed with and without restarts in the TR resulted in negligible differences.

In order to create a realistic scenario of the NH winter stratosphere, the TR is forced by the bottom topography being raised and lowered in order to simulate planetary-scale waves (as in Norton, 1994). A mountain of height 1250 m is created with a 20 day cycle (4 days ramping up, 12 days constant, and 4 days ramping down). The mountain is a zonal wave 1 feature that peaks at 45° N. The topography is turned off after 20 days. Since the assimilation period corresponds to days 20–30 of this TR, there is no surface topography during the assimilation. NH maps of the ozone and height fields for the TR are provided in Fig. 5a–f. On day 20, a strong anticyclone (indicated by “H”) is present near 180° longitude, resembling an “Aleutian High,” with elevated ozone values. The polar vortex (indicated by “L”), identified by low ozone, is displaced off the pole into a comma shape. Over the next 10 days, the “Aleutian High” diminishes in strength and the vortex moves over the pole. Strong ozone advection occurs throughout this period. For example, a long tongue of lower ozone mixing ratio forms around a secondary anticyclone centered near 60° E longitude on day 28. This dynamical scenario produced by topographic wave forcing in the SMW<sup>T</sup> provides a realistic representation of the final stages of a stratospheric minor warming. In the SH (Fig. 5g–l), a strong anticyclone is centered just off the pole on Day 20. This anticyclone (“H”) propagates westward around the pole, making one cycle over this 10 d period. A weaker cyclone (“L”) also propagates westward around the pole opposite to the anticyclone. The ozone is advected along with these features, with relatively high (low) ozone in the anticyclone (cyclone). The westward flow in the SH is consistent with the easterly summer flow in the middle stratosphere (Andrews et al., 1987). Additional maps of potential vorticity and ozone for this TR are provided in Fig. 2 of Allen et al. (2014).

### 3.2 Observations

Observations are simulated by sampling the TR ozone and height fields using a bilinear interpolation in latitude and longitude. Gaussian random error is then added with

## Wind extraction from ensemble Kalman filter assimilation of stratospheric ozone

D. R. Allen et al.

Title Page

Abstract

Introduction

Conclusions

References

Tables

Figures

⏪

⏩

◀

▶

Back

Close

Full Screen / Esc

Printer-friendly Version

Interactive Discussion



a specified standard deviation (SD). The error SD for ozone was set to 0.08 ppmv, which is 1 % of the initial global mean, while the height error SD was set to 50 m. The height error can be approximately related to stratospheric temperature error by using a climatological estimate of the equator-to-pole gradient of temperature with respect to height in the NH winter middle stratosphere of  $\sim 5 \text{ K km}^{-1}$ . Using this conversion factor, 50 m error corresponds to  $\sim 0.25 \text{ K}$ . Both the ozone and height errors are smaller than those of any current operational instrument. The goal here is not to evaluate an actual observing system, but to demonstrate ozone-wind extraction in an idealized system. The observation errors are assumed to be uncorrelated, so the observation error covariance  $\mathbf{R}_{\text{ens}}$  is diagonal with elements given by the square of the error SDs.

Two sampling methods are performed (see Fig. 6). For ozone, the observation locations are taken from real ozone observations from the Aura MLS polar-orbiting satellite (sampling frequency of  $\sim 3450$  observations per day). For height, pseudo-random sampling in space and time is performed in order to approximate the global coverage provided by microwave and infrared radiance sensors. For each successive height observation, the sampling occurs at one of 3840 latitude/longitude points on an icosahedral equal-area grid. This allows the observations to not be too clumped together and provides a way to scale upward to a global equal area grid sampling, as was used in Allen et al. (2013). We choose the average data frequency for the height observations to be the same as the MLS sampling frequency ( $\sim 3450$  per day). In time, the height observations occur randomly over 10 days. For both observation types, the observation time is assigned to the nearest 20 min interval (0, 20, or 40 min). Since the analysis is performed sequentially every 20 min, time-interpolation is not necessary for observations.

### 3.3 Assimilation experiments

We use 100 ensemble members for all experiments in this paper. The initial ensemble perturbations are generated by sampling the TR fields at 6 h intervals (starting day 21) and then removing the ensemble mean. The assimilation experiments begin 20 days

## Wind extraction from ensemble Kalman filter assimilation of stratospheric ozone

D. R. Allen et al.

Title Page

Abstract

Introduction

Conclusions

References

Tables

Figures

◀

▶

◀

▶

Back

Close

Full Screen / Esc

Printer-friendly Version

Interactive Discussion



into the TR, with the ensemble perturbations centered on TR fields that are offset 6 h from the initial time. This initial 6 h offset, or mismatch, between the TR and the background fields is the source of the initial background error. In Sect. 4 we present results from three different experiments: (1) ozone only, (2) height only, and (3) ozone and height. For each experiment, assimilation runs were done for both EnKF- $uv$  and EnKF- $\psi\chi$  using localization lengths from 1000 to 5000 km, in 500 km increments. Tuning the length separately for each experiment and EnKF is necessary, since the DA responds differently depending on the field(s) observed and the analysis variables used. Since inflation is automatically adjusted in a self-consistent manner with the TR, it does not require tuning. Post-processing with NMI was also performed for each run. We note here that the same forecast model is used for the TR and for the assimilation experiments (i.e., “identical twin” experiments), making results overly optimistic.

### 3.4 Error metrics

To diagnose the results, several error metrics are examined, including the global RMSE (area-weighted) of the  $u$ ,  $v$ ,  $z$ , and  $q$ , along with the Wind Extraction Potential (WEP). Allen et al. (2014) defined WEP as a normalized diagnostic of the impact of tracer assimilation on the dynamics. The WEP is determined by first calculating the analyzed RMSE of the vector wind as a function of latitude ( $\phi$ ) and time ( $t$ ):

$$V_{\text{RMSE}}(\phi, t) = \sqrt{[u_{\text{RMSE}}(\phi, t)]^2 + [v_{\text{RMSE}}(\phi, t)]^2}. \quad (8)$$

The percentage difference in vector wind error relative to the initial error is then calculated,

$$V_{\text{DIFF}}(\phi, t) = \left[ \frac{V_{\text{RMSE}}(\phi, 0) - V_{\text{RMSE}}(\phi, t)}{V_{\text{RMSE}}(\phi, 0)} \right] \times 100\%, \quad (9)$$

and WEP is defined as the area-weighted global average of this quantity.



## Wind extraction from ensemble Kalman filter assimilation of stratospheric ozone

D. R. Allen et al.

Title Page

Abstract

Introduction

Conclusions

References

Tables

Figures



Back

Close

Full Screen / Esc

Printer-friendly Version

Interactive Discussion



A WEP value of 100 % indicates the analysis equals the truth (i.e.,  $V_{\text{RMSE}}(\phi, t) = 0$ ). Although WEP is relative to the initial error, and therefore will vary from one experiment design to another, it provides a useful normalized number for quantitative comparison between runs using the same initial error. In this paper, all experiments start with the same initial vector wind error with a global mean value,  $\tilde{V}_{\text{RMSE}}(0) = 4.55 \text{ m s}^{-1}$ , so WEP can be compared directly among all runs (here the tilde is used to refer to the global area-weighted mean). As a rule of thumb, an approximate conversion from WEP to wind component error can be derived by assuming RMS wind errors do not vary with latitude and assuming zonal and meridional wind errors are equal. Using Eqs. (8) and (9), this results in the following approximation

$$\tilde{u}_{\text{RMSE}}(t) = \tilde{u}_{\text{RMSE}}(0) \times [1 - \text{WEP}(t)/100]. \quad (10)$$

The initial global mean zonal wind RMSE,  $\tilde{u}_{\text{RMSE}}(0)$ , is  $\sim 3.3 \text{ m s}^{-1}$ , so WEP values of 50, 60, 70, 80, and 90 correspond to approximate wind component errors of 1.65, 1.30, 1.00, 0.66, and  $0.33 \text{ m s}^{-1}$ , respectively.

Experiment errors are generally presented as the “final” error of the 10 d simulations. To reduce random noise, the final errors are calculated as the average values over the last day of each 10 d simulation. To estimate the statistical uncertainty in the final errors, Experiment 3 was repeated ten times with different random observation perturbations, with a localization of 3500 km. The SD of the final values was  $\sim 0.5\%$  for WEP,  $\sim 0.02 \text{ m s}^{-1}$  for the wind components,  $\sim 0.4 \text{ m}$  for height, and  $\sim 0.002 \text{ ppmv}$  for ozone. The results in Table 1 are presented with the number of significant digits that reflect the uncertainties determined from this test.

The final diagnostic is designed to measure the amount of gravity wave “noise” in the system, also called “imbalance.” Imbalance is defined here using the uninitialized height  $z_{\text{uninit}}$  and initialized height  $z_{\text{init}}$  (i.e., after NMI has been applied). As with WEP, we first calculate the RMS difference between these two fields as a function of latitude

$$z_{\text{RMS}}(\phi) = \sqrt{\sum_{\lambda} [z_{\text{uninit}}(\lambda, \phi) - z_{\text{init}}(\lambda, \phi)]^2 / \text{NLON}} \quad (11)$$



where NLON is the number of longitude grids,  $\lambda$  is the longitude, and the summation is over all longitudes, and then we calculate the area-weighted global mean, where the summation is over all latitudes.

$$\text{Imbalance} = \frac{\sum_{\phi} z_{\text{RMS}}(\phi) \cos \phi}{\sum_{\phi} \cos \phi} \quad (12)$$

We note here that the TR used in this paper contains negligible gravity wave amplitudes at frequencies higher than  $1.0 \text{ day}^{-1}$ . The imbalance calculated by applying NMI to the TR is less than 1 m. So any imbalance greater than  $\sim 1 \text{ m}$  is due to spurious GW generation.

## 4 Results and discussion

### 4.1 Experiment 1: ozone only

In this section, we examine the performance of the SWM<sup>T</sup>-EnKF system when ozone data are assimilated alone. Figure 7 shows time series of error diagnostics for the two “optimal” runs from Experiment 1 (tuning of the covariance localization to determine the optimal run is described later in this section). Results are presented both for uninitialized (solid lines) and initialized (NMI, dotted lines) output. The uninitialized WEP steadily increases before leveling off at final values of  $\sim 46\%$  for EnKF- $uv$  and  $\sim 58\%$  for EnKF- $\psi\chi$ , with corresponding wind component errors of  $\sim 1.6 \text{ ms}^{-1}$  and  $\sim 1.3 \text{ ms}^{-1}$ . Most of the improvement occurs during the first five days. After applying NMI to these runs, the initialized WEP increases significantly for both systems, indicating that imbalance is limiting the wind improvement and error reduction.

The uninitialized height error for EnKF- $uv$  levels out at  $\sim 61 \text{ m}$ , while for EnKF- $\psi\chi$ , the uninitialized height error reaches  $\sim 43 \text{ m}$ . Much of the height error can be attributed to GW generated in the system. Figure 7e shows that the imbalance starts near zero,

## Wind extraction from ensemble Kalman filter assimilation of stratospheric ozone

D. R. Allen et al.

Title Page

Abstract

Introduction

Conclusions

References

Tables

Figures



Back

Close

Full Screen / Esc

Printer-friendly Version

Interactive Discussion



## Wind extraction from ensemble Kalman filter assimilation of stratospheric ozone

D. R. Allen et al.

[Title Page](#)

[Abstract](#)

[Introduction](#)

[Conclusions](#)

[References](#)

[Tables](#)

[Figures](#)



[Back](#)

[Close](#)

[Full Screen / Esc](#)

[Printer-friendly Version](#)

[Interactive Discussion](#)



but increases as GW are introduced into the system. For EnKF- $uv$ , the imbalance rises rapidly over the first two days until it nearly matches the uninitialized height error. After this time, the further growth of GW is likely restrained by the weak dissipation in the SWM<sup>T</sup> system. For EnKF- $\psi\chi$ , the imbalance grows more slowly, but is still close to the uninitialized height error at the end. Because the uninitialized height error and imbalance are still increasing at the end of 10 days, this suggests that the GW have not saturated for EnKF- $\psi\chi$ . Application of NMI results in dramatically reduced height errors for both systems. There is an  $\sim 1$  day oscillation in the initialized height errors, which is largely due to the one traveling eastward GW mode that is not initialized, which is present in the TR. The decreasing amplitude of the oscillation with time suggests that this mode is being resolved by the system through the ozone-wind extraction.

The ozone errors (Fig. 7f) show a sharp decrease over the first day, followed by a gradual decline. Although the errors in the dynamical variables have leveled out by day 10, the ozone errors appear to still be declining. Both runs show final ozone errors less than the observation error of 0.08 ppmv. As a global consistency check of the EnKF solution, we also calculated  $\bar{\chi}^2 = \bar{\mathbf{d}}^T [\mathbf{H}_{\text{ens}}^b \mathbf{H}^T + \mathbf{R}_{\text{ens}}]^{-1} \bar{\mathbf{d}}$ , where  $\bar{\mathbf{d}}$  is the ensemble mean innovation. For a well-tuned system, this “chi-squared” diagnostic should equal the number of observations (Ménard et al., 2000). Since the SPREAD is tuned to match a subset of the elements of the state vector rather than the entire state vector, we don’t expect the normalized  $\bar{\chi}^2$  to be exactly unity, but it should be relatively close, at least in the time-average. For these experiments,  $\bar{\chi}^2$  (not shown) starts out slightly high, but levels out to a time-mean (averaged from 2–10 d) of 0.99 for EnKF- $uv$  and 0.97 for EnKF- $\psi\chi$ .

In Fig. 8, the analysis errors are projected onto the GW and RW modes. As expected from the imbalance calculations, the uninitialized EnKF- $uv$  has much larger GW error due to larger imbalance in the increments. However, the EnKF- $uv$  has slightly smaller RW errors. This is consistent with the initialized EnKF- $uv$  having slightly larger WEP than the initialized EnKF- $\psi\chi$  (Fig. 7a). This difference may be partly due to background

error estimation biases caused by the  $\psi\chi$ -localization, as discussed in Kepert (2009). These biases will either overweight or underweight the background at different scales, resulting in a suboptimal solution. We could try to correct for this effect by altering the observation error covariance as in Kepert (2009), but this does not account for the scale dependence of the bias. The situation in our case is also complicated by the adaptive inflation, which uses different state variables in EnKF- $uv$  and EnKF- $\psi\chi$ .

Figure 9 (column 1) presents several global error diagnostics vs. localization length for Experiment 1. We define the “optimal” runs for each experiment as those that maximize WEP. These are indicated by squares (triangles) for uninitialized (initialized) results in Fig. 9a and are also listed in Table 1. In Fig. 9a and b the uninitialized WEP and zonal wind errors (meridional wind errors are very similar and are not shown) exhibit strong dependence on  $L$ , with maximum WEP occurring at  $L = 1500$  km for EnKF- $uv$  and  $L = 2500$  km for EnKF- $\psi\chi$ . The optimal EnKF- $\psi\chi$  run results in larger WEP and smaller wind error compared EnKF- $uv$ , which would appear to favor the choice of  $\psi\chi$  or  $uv$ . However, EnKF- $\psi\chi$  is much more sensitive to variations in  $L$ , with WEP values actually becoming negative at small and large  $L$ .

Figure 9c shows a height error minimum at  $L = 2000$  km for uninitialized EnKF- $\psi\chi$ , while for uninitialized EnKF- $uv$  the height error increases monotonically with  $L$ . The increase of height error with  $L$  is driven by the increase of imbalance with  $L$ , as seen in Fig. 9d. This increase in imbalance with longer  $L$  when assimilating only ozone observations is a new finding, which is opposite to the tendency of localization to create imbalance when assimilating dynamical observations, as will be shown in our Experiment 2 and discussed by Mitchell et al. (2002) and Kepert et al. (2009, 2011). It is likely that ozone observations cause increased imbalance with  $L$  due to spurious ensemble correlation between ozone and the dynamical variables at large distances, which are projected onto the gravity modes. Over most of the range of localizations, the EnKF- $uv$  has larger imbalance than EnKF- $\psi\chi$ , which is consistent with the single-observation simulations. The ozone errors (Fig. 9e) show a broad minimum, with the EnKF- $uv$  providing slightly better values at all  $L$ .

## Wind extraction from ensemble Kalman filter assimilation of stratospheric ozone

D. R. Allen et al.

Title Page

Abstract

Introduction

Conclusions

References

Tables

Figures



Back

Close

Full Screen / Esc

Printer-friendly Version

Interactive Discussion



After application of NMI, for both EnKF- $uv$  and EnKF- $\psi\chi$  the wind and height errors are smaller and WEP is larger at all values of  $L$ . The ozone error does not change, since the NMI is applied only to the dynamical fields. The initialized results show WEP maximizing at  $\sim 84\%$  for EnKF- $uv$  and  $\sim 81\%$  for EnKF- $\psi\chi$  (see squares on Fig. 9a).

The length scales corresponding to these values increase to 2000 km for EnKF- $uv$  and 3500 km for EnKF- $\psi\chi$ , suggesting the correlations at larger lengths are more reliable. That EnKF- $uv$  outperforms EnKF- $\psi\chi$  when NMI is applied is consistent with Keperth (2009), who showed that EnKF- $uv$  (with NMI) resulted in smaller height and wind errors than the EnKF- $\psi\chi$  (with NMI) due to background error estimation biases caused by the  $\psi\chi$ -localization.

Up to this point, we have examined globally-averaged analysis errors. To determine regional impact, we also examine how the errors vary with latitude for Experiment 1, shown in Fig. 10 (column 1). The initial wind errors (black lines in Fig. 10a and b) are largest in the NH tropics and midlatitudes and near the North Pole (global maps of initial wind and height errors are provided in Fig. 3 of Allen et al., 2014). After assimilating ozone, the uninitialized wind errors are reduced at most latitudes. Small increases in uninitialized zonal wind error occur near  $70^\circ\text{S}$  and  $70^\circ\text{N}$ . That the tropical bias has been removed is important, since the tropical winds are not as well constrained in the stratosphere by radiance observations alone. The uninitialized height errors (Fig. 10c) are more uniform after ozone assimilation, and show slight improvement in some regions. However, uninitialized height errors have also increased over large portions of the globe, particularly for EnKF- $uv$ . This is due largely to the imbalance generated by the ozone observations. Results with NMI (dotted lines on Fig. 10a–c) show reduced height (and wind) errors at all latitudes compared to the original analyses, due to removal of spurious GW. Ozone errors (Fig. 10d) are also reduced at all latitudes in this ozone assimilation Experiment, with slightly larger errors in the tropics.

## Wind extraction from ensemble Kalman filter assimilation of stratospheric ozone

D. R. Allen et al.

Title Page

Abstract

Introduction

Conclusions

References

Tables

Figures



Back

Close

Full Screen / Esc

Printer-friendly Version

Interactive Discussion



## 4.2 Experiment 2: height only

We now examine the results of Experiment 2, when only height data are assimilated. For both EnKF- $uv$  and EnKF- $\psi\chi$ , Fig. 9 (column 2) shows that WEP increases and wind errors decrease with less localization (larger  $L$ ), with optimal values occurring at  $L = 5000$  km. The EnKF- $\psi\chi$  generally performs slightly better than EnKF- $uv$ . The minimum wind errors are  $\sim 1.3 \text{ ms}^{-1}$  for EnKF- $uv$  and  $1.0 \text{ ms}^{-1}$  for EnKF- $\psi\chi$ , which are reasonable values for a well-constrained stratospheric analysis. For example, Hertzog et al. (2004) compared NH stratospheric analyses with observations from long-duration balloon flights and calculated error SDs of the zonal wind components of  $\sim 1.3 \text{ ms}^{-1}$  for ECMWF and  $\sim 1.9 \text{ ms}^{-1}$  for National Centers for Environmental Prediction, when the observations were low-pass filtered to remove the variance due to inertia-gravity waves.

The most striking difference between Experiments 1 and 2 is that assimilation of height observations results in much less imbalance (note different vertical scales in Fig. 9d and i). The imbalance, like the wind and height errors, decreases with less localization, which is opposite to what occurred in Experiment 1. However, this is consistent with previous studies that have examined balance in the EnKF in the context of assimilation of dynamical variables (e.g., Mitchell et al., 2002). This result provides a caution that while reducing the localization may reduce imbalance for some observations, it may increase imbalance when assimilating ozone. Applying NMI to the analyses results in almost no change to the WEP and wind errors, but does improve the height errors, particularly for EnKF- $uv$ .

The errors as a function of latitude for Experiment 2 are shown in Fig. 10 (column 2). The wind errors (Fig. 10e and f) are largest in the tropics and decrease towards the poles. This is expected, since the height is more strongly correlated with wind in the extratropics due to geostrophic balance. In the tropics this balance breaks down, and it is more difficult for the EnKF to correct the winds with height observations alone. The analyzed height errors (Fig. 10g) are markedly reduced from the initial errors, with slightly larger values in the tropics. Experiment 2 also improves the ozone, but only by

ACPD

15, 3955–3994, 2015

### Wind extraction from ensemble Kalman filter assimilation of stratospheric ozone

D. R. Allen et al.

Title Page

Abstract

Introduction

Conclusions

References

Tables

Figures



Back

Close

Full Screen / Esc

Printer-friendly Version

Interactive Discussion



a small amount (Fig. 10h). The small ozone improvement is in the extratropics, likely due to more accurate winds that drive ozone advection.

### 4.3 Experiment 3: ozone and height

The final experiment examines the value of adding ozone assimilation to the analyses produced by the height only assimilation. The results as a function of  $L$  are shown in Fig. 9 (column 3). Not surprisingly, the additional data provided in this experiment results in the smallest errors and highest WEP values, confirming that ozone and height observations provide complimentary information to the DA system. Large WEP values occur for a broad range of  $L$ , indicating that the results are not very sensitive to the choice of localization length. The lowest uninitialized wind errors occur at  $L = 3500$  km for both EnKF- $uv$  and EnKF- $\psi\chi$ , and the maximum uninitialized WEP ( $\sim 87\%$ ) is larger than when either ozone or height are assimilated separately. The application of NMI slightly increases the optimal WEP to  $\sim 90\%$  for both systems.

The uninitialized height error and imbalance for Experiment 3 (Fig. 9m and n) show broad minima, which reflects the combined tendencies of the height observations to increase imbalance at small  $L$  and the ozone observations to increase imbalance at large  $L$ . The imbalance remains relatively low in these experiments ( $< 30\%$ ), with the EnKF- $uv$  showing somewhat higher values than EnKF- $\psi\chi$ . The error in initialized height (dashed lines of Fig. 9m) does show a significant decrease, suggesting that there is some GW noise in Experiment 3, but it is much less than when ozone is assimilated alone. It appears that combining height observations with ozone observations acts as a filter to dampen the GW that would otherwise be generated by the ozone observations alone. This suggests that the ozone assimilation is still exciting some GW, but the impact on wind error is very much reduced when assimilating heights.

The errors as a function of latitude for the optimal results from Experiment 3 are presented in Fig. 10 (column 3). Wind errors are quite small ( $< 0.5 \text{ ms}^{-1}$ ) across the globe, with the primary benefit occurring in the tropics, where wind errors are much less than either Experiment 1 or 2. The ozone in Experiment 3 is also better than

## Wind extraction from ensemble Kalman filter assimilation of stratospheric ozone

D. R. Allen et al.

Title Page

Abstract

Introduction

Conclusions

References

Tables

Figures



Back

Close

Full Screen / Esc

Printer-friendly Version

Interactive Discussion



Experiment 1. Having a better background ozone field (due to better winds) allows more efficient use of the ozone observations. This likely provides a positive feedback in the system that enhances the ozone impact. The addition of ozone also tends to flatten height errors with latitude. Application of NMI does not impact the wind errors very much, but does reduce the height errors as seen in Fig. 10k.

Additional experiments (not shown) were performed with a much smaller height error SD of 10 m. Decreasing the height error for height-only assimilation increased the maximum WEP to 84 % for EnKF- $uv$  and 89 % for EnKF- $\psi\chi$ . The impact of adding ozone assimilation in these experiments was also positive, increasing the maximum WEP to 92 % for EnKF- $uv$  and 91 % for EnKF- $\psi\chi$ , with most of the wind improvements occurring in the tropics. These results suggest that even in a very well-tuned system, high quality ozone observations can, in principle, further improve the winds.

## 5 Conclusions

The EnKF DA is able to employ cross-correlations between state variables in the ensemble background states to couple tracer and dynamical variables. This study examined several aspects of extraction of wind information from EnKF ozone assimilation using an SWM coupled with ozone advection. Three sets of experiments were performed that assimilated ozone, geopotential height, or both. Modest improvements to the winds were observed when either ozone or height were assimilated separately. Final WEP values of 46 % (58 %) were obtained for ozone and 60 % (67 %) for height with the EnKF- $uv$  (EnKF- $\psi\chi$ ) system. When NMI was applied to the ozone experiment, WEP jumped to 84 % (81 %), showing that gravity wave noise was generating significant error. NMI applied to the height experiment resulted in WEP increases of less than 1 %, suggesting very small imbalance.

When assimilating both ozone and height, WEP rose to  $\sim 87\%$  for both systems. Imbalance was also much less than when ozone was assimilated alone. The height observations provided a form of GW filtering in the EnKF DA, greatly reducing the

### Wind extraction from ensemble Kalman filter assimilation of stratospheric ozone

D. R. Allen et al.

Title Page

Abstract

Introduction

Conclusions

References

Tables

Figures



Back

Close

Full Screen / Esc

Printer-friendly Version

Interactive Discussion





need for initialization. This is important, since over-filtering could be a problem if NMI is applied to the upper stratosphere/mesosphere (Sankey et al., 2007) and the tropics (Nezlin et al., 2009), where unbalanced modes play an important role in the real atmosphere (see also Koshyk et al., 1999). Applying NMI to the combined experiment resulted in a modest increase in WEP to  $\sim 90\%$ . The greatest impact of ozone assimilation on the winds was found to occur in the tropics, which are less well constrained by height assimilation due to lack of geostrophy.

This study also compared results from EnKF systems that used different flow variables. While the EnKF- $uv$  system with ozone observations generated greater imbalance, this system was also able to more accurately determine the wind structure of the rotational wave modes. This may be due to biases in the specification of the background error covariance in the ENKF- $\psi\chi$ , as discussed by Kepert (2009). As a result, when NMI was applied, the EnKF- $uv$  performed slightly better than the EnKF- $\psi\chi$ . For height assimilation, the EnKF- $\psi\chi$  performed better, due to less imbalance, while the combined assimilation of ozone and height produced similar results in the two systems.

In each experiment the localization length was tuned to maximize the wind extraction. Previous studies have shown that tighter localization increases imbalance, which may be detrimental. We showed that while this was the case for height observations, for ozone observations the imbalance actually increased with localization length. The cause is uncertain, but may be due to spurious long-range correlations between ozone and the dynamical fields, which projects onto the gravity modes of the SWM.

While under the ideal conditions used in this study WEP values of up to  $\sim 90\%$  were achieved (wind component errors  $\sim 0.3\text{ ms}^{-1}$ ), there are many challenges to demonstrating that the ozone-wind coupling in operational DA systems is, or can be, beneficial. There are observation system challenges such as frequency, latency, precision, and bias. There are also modeling challenges such as accurate ozone transport, chemistry, and radiation. The results here were obtained with a single-layer model, relatively low resolution (T42), and a rather simple wave-forcing scenario. Given these caveats,

## Wind extraction from ensemble Kalman filter assimilation of stratospheric ozone

D. R. Allen et al.

Title Page

Abstract

Introduction

Conclusions

References

Tables

Figures

◀

▶

◀

▶

Back

Close

Full Screen / Esc

Printer-friendly Version

Interactive Discussion







## Wind extraction from ensemble Kalman filter assimilation of stratospheric ozone

D. R. Allen et al.

Title Page

Abstract

Introduction

Conclusions

References

Tables

Figures

◀

▶

◀

▶

Back

Close

Full Screen / Esc

Printer-friendly Version

Interactive Discussion



- Dragani, R. and McNally, A. P.: Operational assimilation of ozone-sensitive infrared radiances at ECMWF, Q. J. Roy. Meteor. Soc., 139, 2068–2080, doi:10.1002/qj.2106, 2013.
- Evensen, G.: The ensemble Kalman filter: theoretical formulation and practical implementation, Ocean Dynam., 53, 343–367, doi:10.1007/s10236-003-0036-9, 2003.
- 5 Fillion, L., Mitchell, H. L., Ritchie, H., and Staniforth, A.: The impact of a digital filter finalization technique in a global data assimilation system, Tellus A, 47, 304–323, doi:10.1034/j.1600-0870.1995.t01-2-00002.x, 1995.
- Gaspari, G. and Cohn, S. E.: Construction of correlation functions in two and three dimensions, Q. J. Roy. Meteor. Soc., 125, 723–757, doi:10.1002/qj.49712555417, 1999.
- 10 Han, W. and McNally, A. P.: The 4D-Var assimilation of ozone-sensitive infrared radiances measured by IASI, Q. J. Roy. Meteor. Soc., 136, 2025–2037, doi:10.1002/qj.708, 2010.
- Hertzog, A., Basdevant, C., Vial, F., and Mechoso, C. R.: The accuracy of stratospheric analyses in the Northern Hemisphere inferred from long-duration balloon flights, Q. J. Roy. Meteor. Soc., 130, 607–626, doi:10.1256/qj.03.76, 2004.
- 15 Hogan, T. F., Rosmond, T. E., and Gelaro, R.: The NOGAPS forecast model: a technical description, NRL Publication AD-A247 216, 218 pp., Naval Research Laboratory: Monterey, California, USA, available at: <http://www.dtic.mil/docs/citations/ADA247216> (last access: 5 February 2015), 1992.
- Houtekamer, P. L. and Mitchell, H. L.: Data assimilation using an ensemble Kalman filter technique, Mon. Weather Rev., 126, 796–811, doi:10.1175/1520-0493(1998)126<0796:Dauaek>2.0.Co;2, 1998.
- 20 Houtekamer, P. L. and Mitchell, H. L.: A sequential ensemble Kalman filter for atmospheric data assimilation, Mon. Weather Rev., 129, 123–137, doi:10.1175/1520-0493(2001)129<0123:Asekff>2.0.Co;2, 2001.
- 25 Jung, B.-J., Kim, S., and Jo, Y.: Representer-based variational data assimilation in a spectral element shallow water model on the cubed-sphere grid, Tellus A, 66, 24493, doi:10.3402/tellusa.v66.24493, 2014.
- Kepert, J. D.: Covariance localisation and balance in an ensemble Kalman filter, Q. J. Roy. Meteor. Soc., 135, 1157–1176, doi:10.1002/qj.443, 2009.
- 30 Kepert, J. D.: Balance-aware covariance localisation for atmospheric and oceanic ensemble Kalman filters, Comput. Geosci., 15, 239–250, doi:10.1007/s10596-010-9188-0, 2011.

## Wind extraction from ensemble Kalman filter assimilation of stratospheric ozone

D. R. Allen et al.

Title Page

Abstract

Introduction

Conclusions

References

Tables

Figures

◀

▶

◀

▶

Back

Close

Full Screen / Esc

Printer-friendly Version

Interactive Discussion



Koshyk, J. N. and Hamilton, K.: The horizontal kinetic energy spectrum and spectral budget simulated by a high-resolution troposphere-stratosphere-mesosphere GCM, *J. Atmos. Sci.*, 58, 329–348, doi:10.1175/1520-0469(2001)058<0329:Thkesa>2.0.Co;2, 2001.

Livesey, N. J., Read, W. G., Froidevaux, L., Lambert, A., Manney, G. L., Pumphrey, H. C., Santee, M. L., Schwartz, M. J., Wang, S., Cofield, R. E., Cuddy, D. T., Fuller, R. A., Jarnot, R. F., Jiang, J. H., Knosp, B. W., Stek, P. C., Wagner, P. A., and Wu, D. L.: Earth Observing System (EOS) Aura Microwave Limb Sounder (MLS) Version 3.3 Level 2 data quality and description document, JPL D-33509, 162 pp., Jet Propulsion Laboratory, Pasadena, California, USA, available at: [http://mls.jpl.nasa.gov/data/v3-3\\_data\\_quality\\_document.pdf](http://mls.jpl.nasa.gov/data/v3-3_data_quality_document.pdf) (last access: 5 February 2015), 2001.

Lorenc, A. C.: The potential of the ensemble Kalman filter for NWP – a comparison with 4D-Var, *Q. J. Roy. Meteor. Soc.*, 129, 3183–3203, doi:10.1256/qj.02.132, 2003.

Machenhauer, B.: On the dynamics of gravity oscillations in a shallow water model, with applications to normal mode initialization, *Contrib. Atmos. Phys.*, 50, 253–271, 1977.

Ménard, R., Cohn, S. E., Chang, L.-P., and Lyster, P. M.: Assimilation of chemical tracer observations using a Kalman filter, Part I, Formulation, *Mon. Weather Rev.*, 128, 2654–2671, doi:10.1175/1520-0493(2000)128<2654:Aoscto>2.0.Co;2, 2000.

Milewski, T. and Bourqui, M. S.: Assimilation of stratospheric temperature and ozone with an ensemble Kalman filter in a chemistry-climate model, *Mon. Weather Rev.*, 139, 3389–3404, doi:10.1175/2011mwr3540.1, 2011.

Mitchell, H. L. and Houtekamer, P. L.: Ensemble size, balance, and model-error representation in an ensemble Kalman filter, *Mon. Weather Rev.*, 130, 2791–2808, doi:10.1175/1520-0493(2002)130<2791:Esbame>2.0.Co;2, 2002.

National Research Council: Earth Science and Applications from Space: National Imperatives for the Next Decade and Beyond, National Academy Press, Washington, DC, 428 pp., available at: [http://www.nap.edu/catalog.php?record\\_id=11820](http://www.nap.edu/catalog.php?record_id=11820) (last access: 5 February 2015), 2007.

Neef, L. J., Polavarapu, S. M., and Shepherd, T. G.: Four-dimensional data assimilation and balanced dynamics, *J. Atmos. Sci.*, 63, 1840–1858, doi:10.1175/jas3714.1, 2006.

Neef, L. J., Polavarapu, S. M., and Shepherd, T. G.: A low-order model investigation of the analysis of gravity waves in the ensemble Kalman filter, *J. Atmos. Sci.*, 66, 1717–1734, doi:10.1175/2008jas2585.1, 2009.

## Wind extraction from ensemble Kalman filter assimilation of stratospheric ozone

D. R. Allen et al.

Title Page

Abstract

Introduction

Conclusions

References

Tables

Figures

◀

▶

◀

▶

Back

Close

Full Screen / Esc

Printer-friendly Version

Interactive Discussion



Nezlin, Y., Rochon, Y. J., and Polavarapu, S.: Impact of tropospheric and stratospheric data assimilation on the mesosphere, *Tellus A*, 61, 154–159, doi:10.1111/j.1600-0870.2008.00368.x, 2009.

Norton, W. A.: Breaking Rossby waves in a model stratosphere diagnosed by a vortex-following coordinate system and a technique for advecting material contours, *J. Atmos. Sci*, 51, 644–673, doi:10.1175/1520-0469(1994)051<0654:BRWIAM>2.0.CO;2, 1994.

Peubey, C. and McNally, A. P.: Characterization of the impact of geostationary clear-sky radiances on wind analyses in a 4D-Var context, *Q. J. Roy. Meteor. Soc.*, 135, 1863–1876, doi:10.1002/qj.500, 2009.

Peuch, A., Thepaut, J. N., and Pailleux, J.: Dynamical impact of total-ozone observations in a four-dimensional variational assimilation, *Q. J. Roy. Meteor. Soc.*, 126, 1641–1659, doi:10.1002/qj.49712656605, 2000.

Polavarapu, S., Tanguay, M., and Fillion, L.: Four-dimensional variational data assimilation with digital filter initialization, *Mon. Weather Rev.*, 128, 2491–2510, doi:10.1175/1520-0493(2000)128<2491:FDVDAW>2.0.CO;2, 2000.

Riishøjgaard, L. P.: On four-dimensional variational assimilation of ozone data in weather-prediction models, *Q. J. Roy. Meteor. Soc.*, 122, 1545–1571, doi:10.1002/qj.49712253505, 1996.

Ritchie, H.: Application of the semi-Lagrangian method to a spectral model of the shallow water equations, *Mon. Weather Rev.*, 116, 1587–1598, doi:10.1175/1520-0493(1988)116<1587:AOTSLM>2.0.CO;2, 1988.

Sankey, D., Ren, S., Polavarapu, S., Rochon, Y. J., Nezlin, Y., and Beagley, S.: Impact of data assimilation filtering methods on the mesosphere, *J. Geophys. Res.*, 112, D24104, doi:10.1029/2007JD008885, 2007.

Semane, N., Peuch, V.-H., Pradier, S., Desroziers, G., El Amraoui, L., Brousseau, P., Massart, S., Chapnik, B., and Peuch, A.: On the extraction of wind information from the assimilation of ozone profiles in Météo-France 4-D-Var operational NWP suite, *Atmos. Chem. Phys.*, 9, 4855–4867, doi:10.5194/acp-9-4855-2009, 2009.

Stoffelen, A., Pailleux, J., Kallen, E., Vaughan, J. M., Isaksen, L., Flamant, P., Wergen, W., Andersson, E., Schyberg, H., Culoma, A., Meynard, R., Endemann, M., and Ingmann, P.: The atmospheric dynamics mission for global wind field measurement, *B. Am. Meteorol. Soc.*, 86, 73–87, doi:10.1175/bams-86-1-73, 2005.

## Wind extraction from ensemble Kalman filter assimilation of stratospheric ozone

D. R. Allen et al.

Title Page

Abstract

Introduction

Conclusions

References

Tables

Figures



Back

Close

Full Screen / Esc

Printer-friendly Version

Interactive Discussion



- Waters, J. W., Read, W. G., Froidevaux, L., Jarnot, R. F., Cofield, R. E., Flower, D. A., Lau, G. K., Pickett, H. M., Santee, M. L., Wu, D. L., Boyles, M. A., Burke, J. R., Lay, R. R., Loo, M. S., Livesey, N. J., Lungu, T. A., Manney, G. L., Nakamura, L. L., Perun, V. S., Ridenoure, B. P., Shippony, Z., Siegel, P. H., and Thurstans, R. P.: The UARS and EOS Microwave Limb Sounder (MLS) experiments, *J. Atmos. Sci.*, 56, 194–218, doi:10.1175/1520-0469(1999)056<0194:TUAEML>2.0.CO;2, 1999.
- Williamson, D. L. and Temperton, C.: Normal mode initialization for a multilevel grid-point model, Part II, nonlinear aspects, *Mon. Weather Rev.*, 109, 744–757, doi:10.1175/1520-0493(1981)109<0744:Nmifam>2.0.Co;2, 1981.
- World Meteorological Organization: Statement of guidance regarding how well satellite capabilities meet WMO user requirements in several application areas, WMO Satellite Rep, SAT-22, 29 pp., available at: [http://library.wmo.int/opac/index.php?lvl=notice\\_display&id=11446#.U-5jq2Pb70c](http://library.wmo.int/opac/index.php?lvl=notice_display&id=11446#.U-5jq2Pb70c) (last access: 5 February 2015), 2000.

## Wind extraction from ensemble Kalman filter assimilation of stratospheric ozone

D. R. Allen et al.

Title Page

Abstract

Introduction

Conclusions

References

Tables

Figures

◀

▶

◀

▶

Back

Close

Full Screen / Esc

Printer-friendly Version

Interactive Discussion

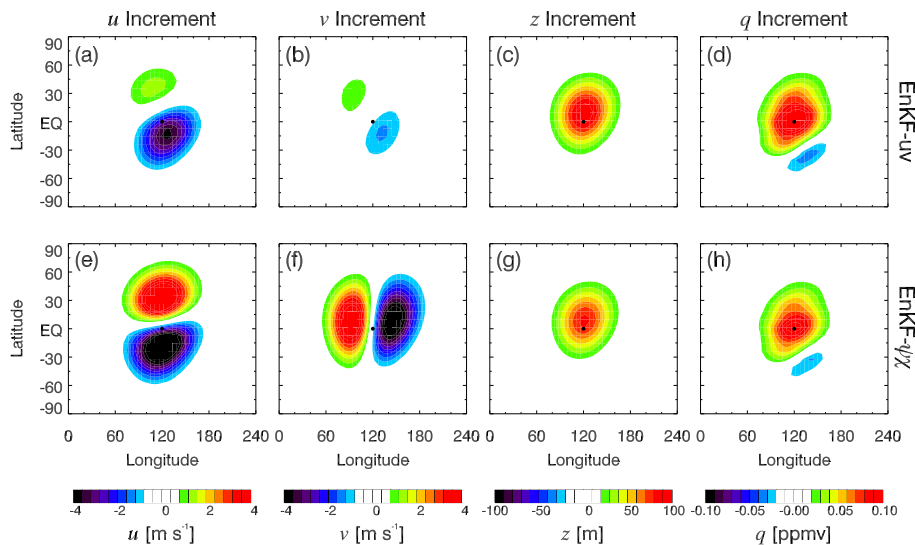


**Table 1.** Results for the optimal runs (i.e., maximum WEP) for each experiment. The localization length ( $L$ ) is provided along with WEP and global mean RMSE for  $u$ ,  $v$ ,  $z$ , and  $q$ .

Experiment	$L$ (km)	WEP (%)	$u$ error ( $\text{m s}^{-1}$ )	$v$ error ( $\text{m s}^{-1}$ )	$z$ error (m)	$q$ error (ppmv)
<b>1. Ozone</b>						
$uv$	1500	45.5	1.58	1.59	60.9	0.054
$\psi\chi$	2500	57.8	1.25	1.25	42.7	0.070
$uv$ (NMI)	2000	83.7	0.55	0.46	14.4	0.047
$\psi\chi$ (NMI)	3500	80.6	0.62	0.58	12.8	0.058
<b>2. Height</b>						
$uv$	5000	59.5	1.27	1.38	11.6	0.179
$\psi\chi$	5000	66.7	1.03	1.13	8.1	0.151
$uv$ (NMI)	5000	60.4	1.25	1.35	6.8	0.179
$\psi\chi$ (NMI)	5000	67.0	1.03	1.12	6.6	0.151
<b>3. Both</b>						
$uv$	3500	86.7	0.40	0.41	11.0	0.039
$\psi\chi$	3500	87.5	0.37	0.39	8.5	0.040
$uv$ (NMI)	3500	90.1	0.32	0.31	2.6	0.039
$\psi\chi$ (NMI)	4500	89.5	0.33	0.32	2.8	0.041

## Wind extraction from ensemble Kalman filter assimilation of stratospheric ozone

D. R. Allen et al.



**Figure 1.** Analysis increments due to assimilation of a single ozone observation (time = 1200 s) at 120° E, 40° N (indicated by black dot) using EnKF- $uv$  (top row) and EnKF- $\psi\chi$  (bottom row) with  $L = 2000$  km. Variables are given by column: zonal wind ( $u$  [ $\text{m s}^{-1}$ ], column 1), meridional wind ( $v$  [ $\text{m s}^{-1}$ ], column 2), height ( $z$  [m], column 3), and ozone ( $q$  [ppmv], column 4). Red (blue) contours indicate high (low) values for each variable.

Title Page

Abstract

Introduction

Conclusions

References

Tables

Figures

◀

▶

◀

▶

Back

Close

Full Screen / Esc

Printer-friendly Version

Interactive Discussion

## Wind extraction from ensemble Kalman filter assimilation of stratospheric ozone

D. R. Allen et al.

Title Page

Abstract

Introduction

Conclusions

References

Tables

Figures



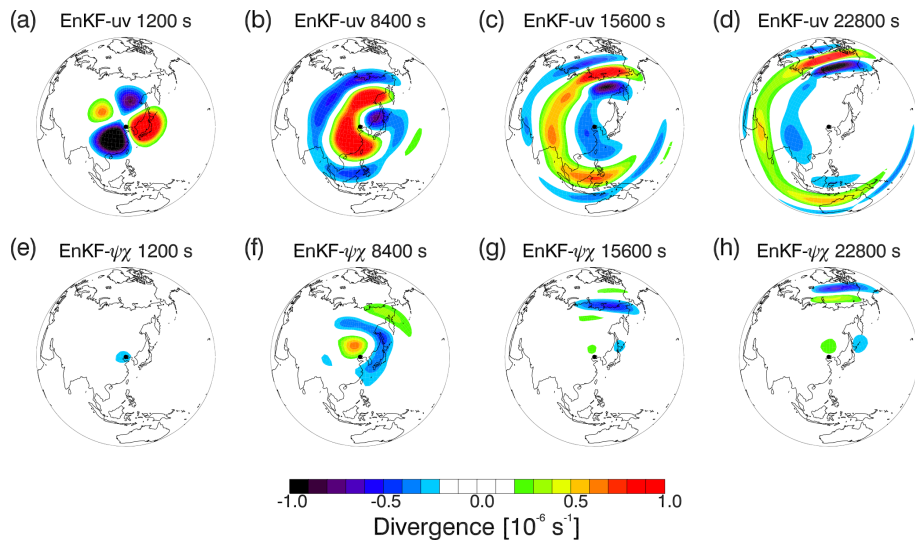
Back

Close

Full Screen / Esc

Printer-friendly Version

Interactive Discussion

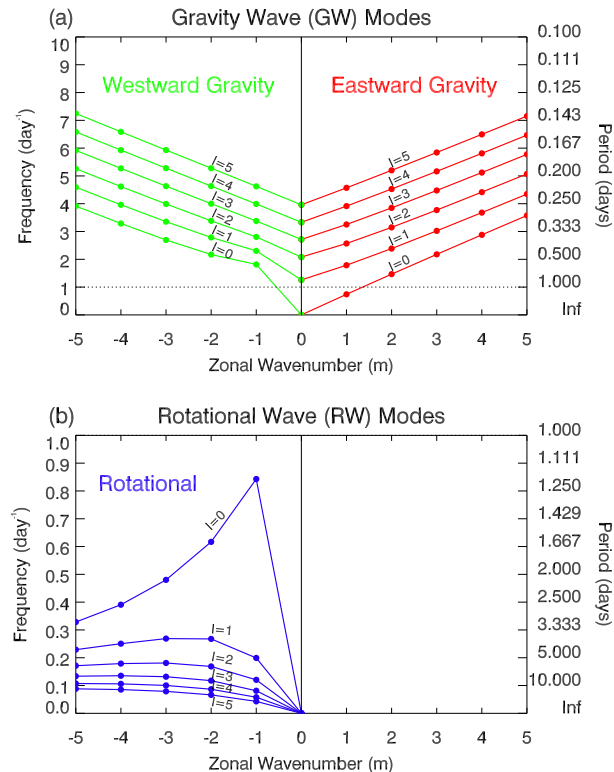


**Figure 2.** Divergence anomalies [ $10^{-6} \text{ s}^{-1}$ ] due to single-observation increments (see Fig. 1) at time = 1200, 8400, 15 600, and 22 800 s for EnKF- $uv$  (top row) and EnKF- $\psi\chi$  (bottom row). Red (blue) contours indicate high (low) values of divergence.



## Wind extraction from ensemble Kalman filter assimilation of stratospheric ozone

D. R. Allen et al.



**Figure 3.** The normal mode frequencies [ $\text{day}^{-1}$ ] for the spectral SWM at triangular truncation T42 as a function of zonal wavenumber ( $m$ ) for the first six values of the meridional wavenumber  $l = n - |m|$ , where  $n$  is the total wavenumber. Positive (negative) values of  $m$  indicate eastward (westward) motion. Modes are separated into **(a)** eastward and westward gravity wave (GW) modes, and **(b)** rotational wave (RW) modes. The cutoff frequency ( $1.0 \text{ day}^{-1}$ ) for the NMI is indicated by the dotted line. Note that the frequency scales are different for the two plots for easier viewing.

Title Page

Abstract

Introduction

Conclusions

References

Tables

Figures

◀

▶

◀

▶

Back

Close

Full Screen / Esc

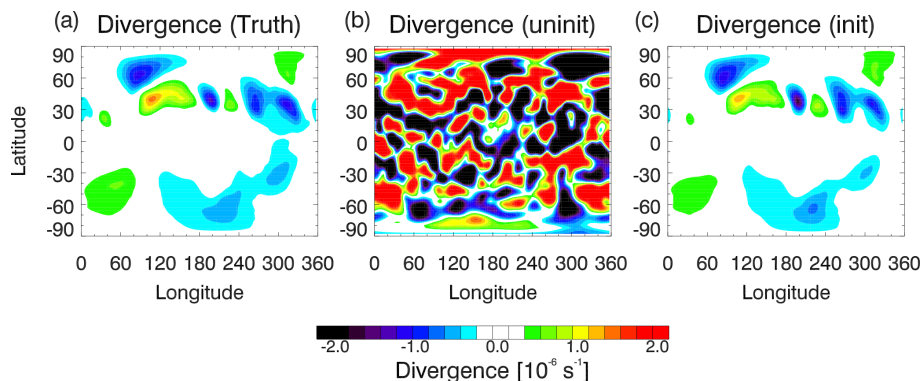
Printer-friendly Version

Interactive Discussion



## Wind extraction from ensemble Kalman filter assimilation of stratospheric ozone

D. R. Allen et al.



**Figure 4.** Divergence [ $10^{-6} \text{ s}^{-1}$ ] maps for the **(a)** truth run (TR), **(b)** uninitialized analysis, and **(c)** initialized analysis from day 2 of Experiment 1 with EnKF- $uv$  and  $L = 2000 \text{ km}$ . For each plot, red (blue) contours indicate high (low) values.

Title Page

Abstract

Introduction

Conclusions

References

Tables

Figures

◀

▶

◀

▶

Back

Close

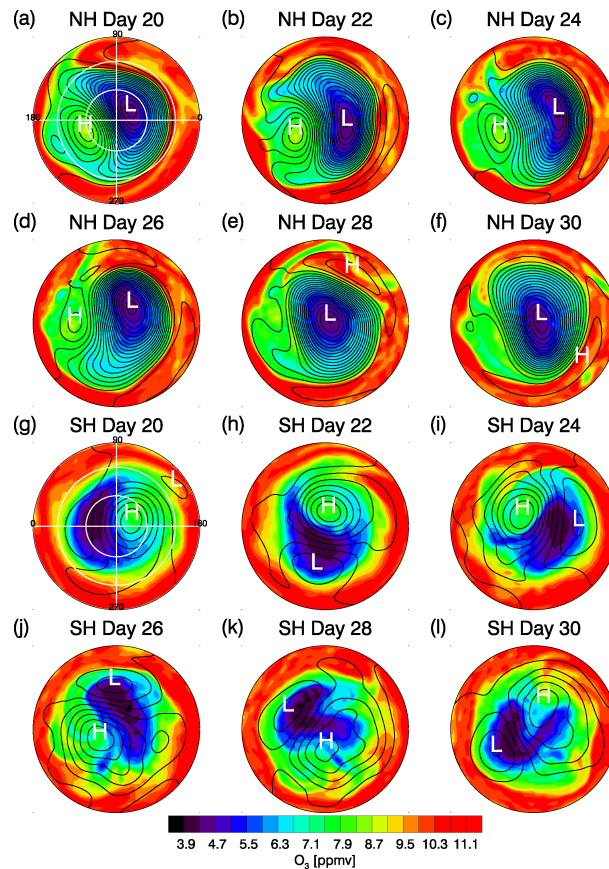
Full Screen / Esc

Printer-friendly Version

Interactive Discussion

## Wind extraction from ensemble Kalman filter assimilation of stratospheric ozone

D. R. Allen et al.



**Figure 5.** Maps of ozone [ppmv] (colors) overlaid with height (black lines) at 200 m intervals for days 20, 22, 24, 26, 28, and 30 of the truth run (TR). (a)–(f) are NH and (g)–(l) are SH. For each plot, red (blue) contours indicate high (low) ozone values. The plots for day 20 include longitude (latitude) grid lines at 90° (30°) intervals, with 0, 90, 180, and 270° longitude marked. The hemispheric maximum and minimum heights are indicated by “H” and “L”, respectively.

Title Page

Abstract

Introduction

Conclusions

References

Tables

Figures

◀

▶

◀

▶

Back

Close

Full Screen / Esc

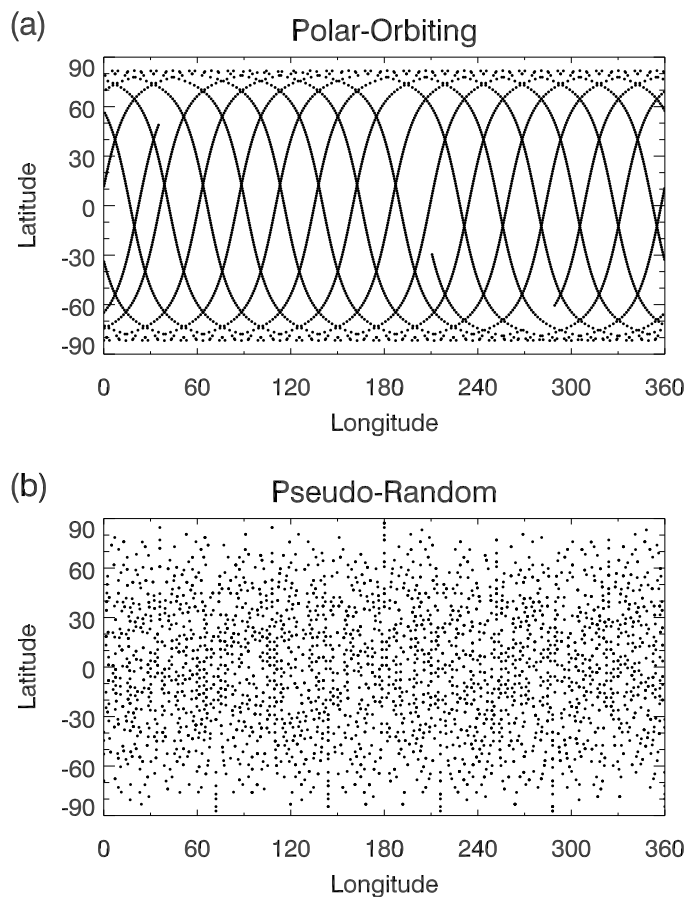
Printer-friendly Version

Interactive Discussion



## Wind extraction from ensemble Kalman filter assimilation of stratospheric ozone

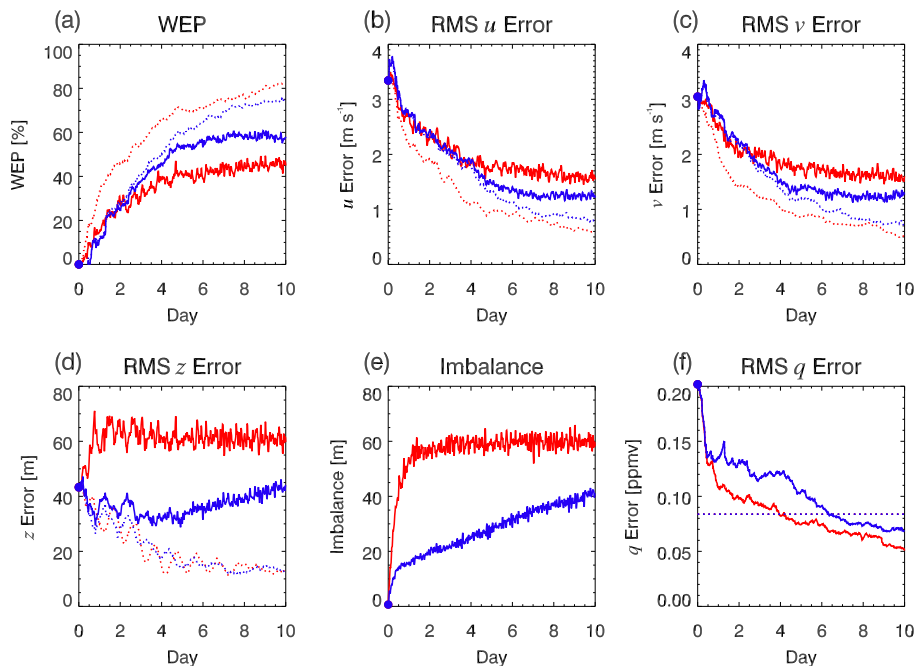
D. R. Allen et al.



**Figure 6.** Sampling patterns for 24 h of **(a)** polar-orbiting ozone data and **(b)** pseudo-random height data.

## Wind extraction from ensemble Kalman filter assimilation of stratospheric ozone

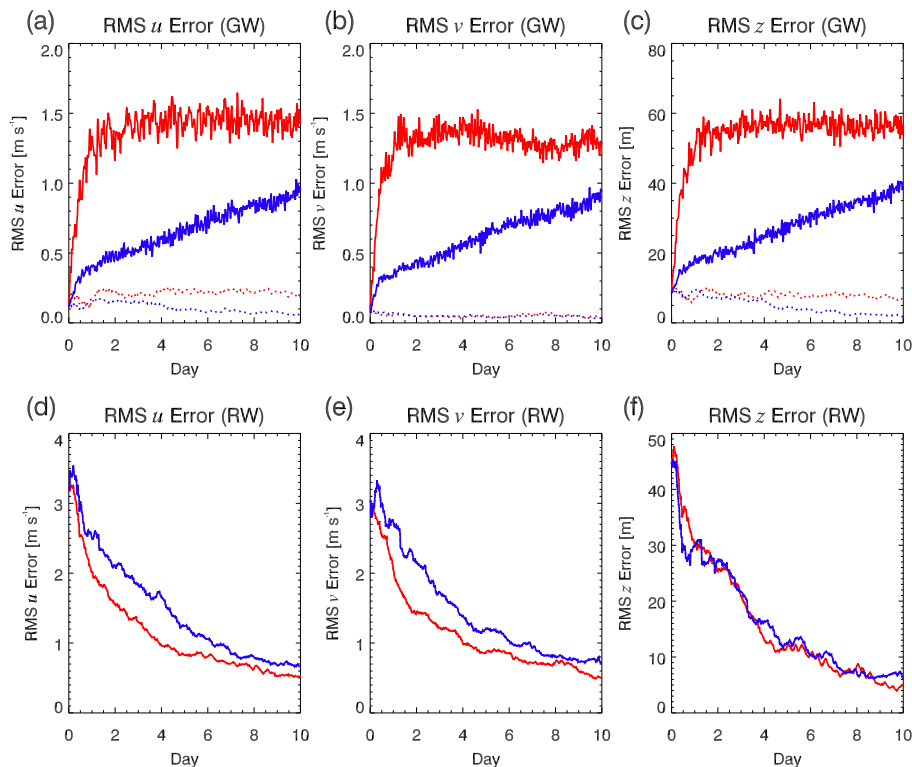
D. R. Allen et al.



**Figure 7.** Diagnostics from optimal runs of Experiment 1: Ozone only ( $L = 1500$  km for EnKF- $uv$  and  $L = 2500$  km for EnKF- $\psi\chi$ ). **(a)** WEP [%], **(b)–(d)** RMS errors for  $u$  [ $\text{m s}^{-1}$ ],  $v$  [ $\text{m s}^{-1}$ ], and  $z$  [m], respectively, **(e)** Imbalance [m], and **(f)** RMSE for  $q$  [ppmv]. EnKF- $uv$  is red and EnKF- $\psi\chi$  is blue. Solid (dotted) lines indicate uninitialized (initialized) results (there are no dotted lines in **(f)** because the ozone error does not change, since the NMI is applied only to the dynamical fields). In **(f)** the ozone observation error SD is indicated by the horizontal dotted line. Blue circles at day 0 indicate the initial values.

## Wind extraction from ensemble Kalman filter assimilation of stratospheric ozone

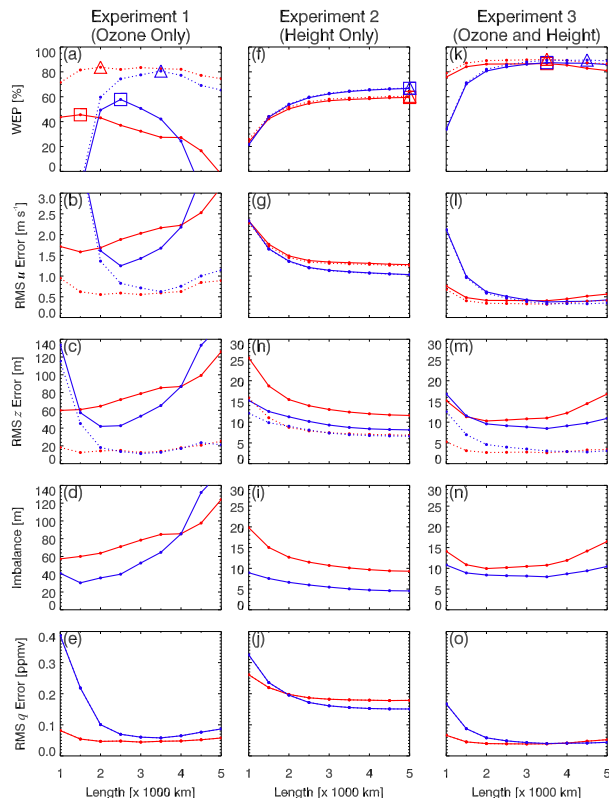
D. R. Allen et al.



**Figure 8.** RMS errors for  $u$  [ $\text{m s}^{-1}$ ],  $v$  [ $\text{m s}^{-1}$ ], and  $z$  [m] (columns 1, 2, and 3, respectively) for gravity wave (GW) modes (row 1) and rotational wave (RW) modes (row 2) for the optimal runs of Experiment 1: Ozone only with EnKF- $uv$  (red) and EnKF- $\psi\chi$  (blue). Solid (dotted) lines indicate uninitialized (initialized) results.

## Wind extraction from ensemble Kalman filter assimilation of stratospheric ozone

D. R. Allen et al.

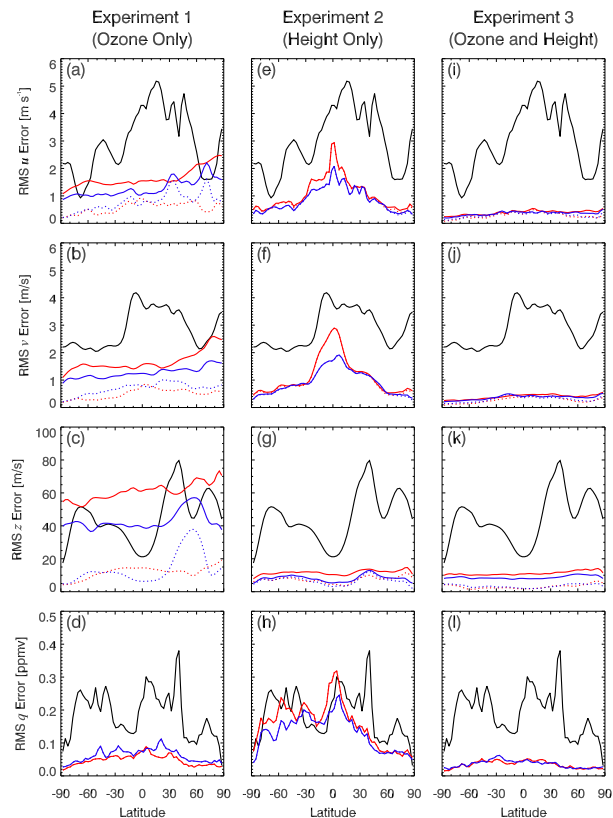


**Figure 9.** WEP (row 1), RMS errors for  $u$  [ $\text{m s}^{-1}$ ],  $v$  [ $\text{m s}^{-1}$ ],  $z$  [m], and  $q$  [ppmv] (rows 2, 3, and 5, respectively), and Imbalance (row 4) as a function of localization length ( $L$ ) for Experiments 1, 2, and 3 (columns 1, 2, and 3, respectively). Red is for EnKF- $uv$  and blue is for EnKF- $\psi\chi$ . Solid (dotted) lines indicate uninitialized (initialized) results (there are no dotted lines in row 5, because the ozone error does not change, since the NMI is applied only to the dynamical fields). The optimal runs (i.e., maximum WEP) values are highlighted with squares (triangles) for uninitialized (initialized) results in row 1.

[Title Page](#)
[Abstract](#)
[Introduction](#)
[Conclusions](#)
[References](#)
[Tables](#)
[Figures](#)
[Back](#)
[Close](#)
[Full Screen / Esc](#)
[Printer-friendly Version](#)
[Interactive Discussion](#)

## Wind extraction from ensemble Kalman filter assimilation of stratospheric ozone

D. R. Allen et al.



**Figure 10.** RMS errors as a function of latitude for  $u$  [ $\text{m s}^{-1}$ ],  $v$  [ $\text{m s}^{-1}$ ],  $z$  [m], and  $q$  [ppmv] (rows 1, 2, 3, and 4, respectively) for the optimal runs (as shown in Table 1 and in the highlighted squares of Fig. 9) of Experiments 1, 2, and 3 (columns 1, 2, and 3, respectively). Black lines show initial errors and red (blue) lines show EnKF- $uv$  (EnKF- $\psi\chi$ ) errors. Solid (dotted) lines indicate uninitialized (initialized) results (there are no dotted lines in row 4 because the ozone error does not change, since the NMI is applied only to the dynamical fields).