

Author's Response to the review comments of ACP 2014-1015 *Vertical profiles of optical and microphysical particle properties above the northern Indian Ocean during CARDEX 2012* including a marked-up manuscript

by Friederike Höpner on behalf of the authors
December 16, 2015

We thank **referee#2** for her/his constructive comments which we will account for in the revised manuscript. Below is a point-by-point response to the comments. A marked-up manuscript is provided in the end.

1. *Page 3909, line 5: Please specify the start and end of the campaign period.*

We have added the specific time in the revised version in the abstract and introduction as follows:

'The Cloud Aerosol Radiative Forcing Experiment (CARDEX), conducted from 16 February to 30 March 2012...'

2. *Page 3909, line 20: 'more frequently': Please quantify the number of elevated layers observed using the backscatter signal*

Since we do not have detailed lidar or in-situ data for INDOEX, we can not quantify the frequency difference of elevated aerosol layers. The comparison is based on mean particle number concentration profiles and their standard deviation.

We have reformulated the sentence.

'This feature is different compared to what was observed during the Indian Ocean Experiment (INDOEX) conducted in winter 1999, where aerosol number concentrations generally decreased with height.'

3. *Page 3909, line 23-26: Please rephrase the sentence.*

We have rephrased the sentence as follows:

'By combining vertical in-situ measured particle absorption with scattering calculated with Mie-theory, layers with single-scattering albedo (SSA) values of specific source regions were derived and utilized to calculate vertical particle absorption profiles from MiniMPL profiles.' → 'Layers with source region specific single-scattering albedo (SSA) values were derived by combining vertical in-situ particle absorption coefficients and scattering coefficients calculated with Mie-theory. Those SSA layers were utilized to calculate vertical particle absorption profiles from MiniMPL profiles'

4. *Page 3910, line 9-11: Lower MAE for 880 nm...what about 520 nm?*

We have calculated the MAE as well for 520 nm. The information is included in the abstract and section 3.3 in the revised manuscript.

5. *Page 3910, line 26: Delete the word very*

'very' has been deleted.

'A very recent study by Samset et al. (2014)...' → 'A recent study....'

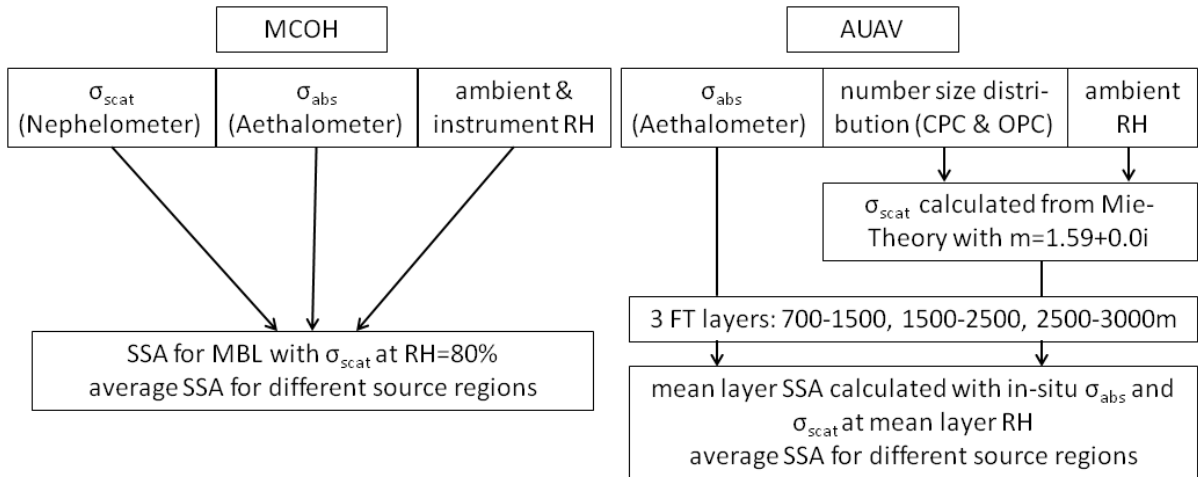


Fig. 1. Flow chart describing the determination of SSA profiles from surface and AUAV measurements. figure

6. Page 3912, line 17: Please provide a reference if possible.

We have provided the reference Bosch et al., 2014 and Ramana and Ramanathan, 2006 in the revised manuscript.

7. Page 3914, section 2.2 state if the klett method is used

We added the information in section 2.2 and even a bit more specific information in 2.6 in section 2.6: 'First, the extinction profile from the MiniMPL was calculated from the measured elastic backscatter signal and an assumed lidar ratio with the solution of the lidar equation presented by Fernald (1984) according to the method described in Klett (1981).'

8. Page 3916, line 12 typo error

We cannot find any typo error here. It may appear as an error as the reference is Ramana and Ramanathan (2006). To be more clear we will change to the following:

'...can be found in Corrigan et al. (2006) as well as Ramana and Ramanathan (2006)'

9. Page 3916, line 28-29: The authors assume that arrival heights of 400 and 2000 m give a good indication for the air mass origin within the MBL and FT. Could you explain how you have selected the specific heights? Isn't it possible to perform trajectory analysis for the center of each elevated layer observed

We have chosen only two heights throughout the period for consistency. The altitudes have been determined using the MPL estimates of the boundary layer top height, which was found to be between 600 and 1400m.

An extended explanation has been added to the revised version.

10. Page 3917, section 2.5: In addition to Figure 1, please provide a flow chart for the methodology used to estimate the vertical distribution of SSA.

We thank the referee for the idea, which adds more clarification to section 2.5

A flow chart similar to figure 5 has been added to the supplements.

11. *Page 3918, line 12-16: The authors should also present the SSA from AERONET even if AERONET provide only total columnar values.*

AERONET SSA is now presented in the results part in section 3.1.4.

12. *Page 3918, line 26,27: Please add sr after the lidar ratio values*

The revised manuscript has been modified accordingly.

13. *Page 3920, line 14-18: please rephrase. It is not clear to me what you want to state*

The sentence has been reformulated.

'A CARDEX-specific MAE was calculated relating σ_{abs} at 880 nm linearly to the EC mass concentration from filter measurements (equivalent to EBC in Eq. (4)). An inversely proportional relation between $\sigma_{\text{abs}}(800\text{ nm})$ and the EC mass concentration as in Eq. (4) is valid since the particle absorption σ_{abs} at 880 nm is considered to be dominated by BC absorption which can be approximately quantified by the filter derived EC mass concentration (e.g. Yang et al., 2009). At lower wavelengths, other absorbing species as dust or organic carbon become more relevant for the particle absorption.

14. *Page 3921, line 5-8: Same as comment 9. Also, the information on the vertical scale is important for the three groups of clusters. Did the author check the height information during the air mass transportation?*

Please see answer to comment 9. We checked also the trajectory height information during the air mass transport. Complementary information regarding the height information has been included in section 2.4, 3.1 and within the discussion of the example cases in section 3.2.

15. *Page 3922, line 5: Are you sure that on 10 of February you have the lower values?*

The concentration is decreasing rapidly on February 10 due to changing wind direction. We have specified the time of day in the revised manuscript version as follows:

'The lowest values were found during the short period with pure marine air mass origin (10 Feb. p.m. – 12 Feb. a.m.).

16. *Figure 3: Could you explain the relatively large values of PM10 before 11 February with air masses coming from Arabian Sea comparing with lower values after 2nd of March? Could it maybe that trajectory height information would give a clear indication if and when the air masses are really affected from local pollution or marine aerosols?*

High values of particle number concentration for AS air masses before Feb. 11th are most likely due to transport close to the urban Indian west coast. Emissions from India will influence the air mass during those days. In order to account for differences in AS air mass characteristics due to slightly different transport paths, we have reformulated the text as follows::

'Air masses from AS are likely influenced by dust from desert regions in South Asia or the Arabian Peninsula. AS air masses may also be transported along the urban Indian west coast which can result in higher particle number concentration as seen e.g. on 9 and 10 February or 12 to 14 March.'

17. *Page 3923, line 10 (Figure 4): Please provide the mean AOD also for the period 1-15 February since no information on AOD is given from AERONET sunphotometer (Figure 3 a) for this time period*

The mean AOD field from MODIS has been added (see Fig.9) and described in the text.

18. *Page 3923, line 17-21: Is this confirmed by lidar measurements? A plot with the number of layers for 5 days period, or a plot showing the vertical distribution of the layers would be helpful for the reader.*

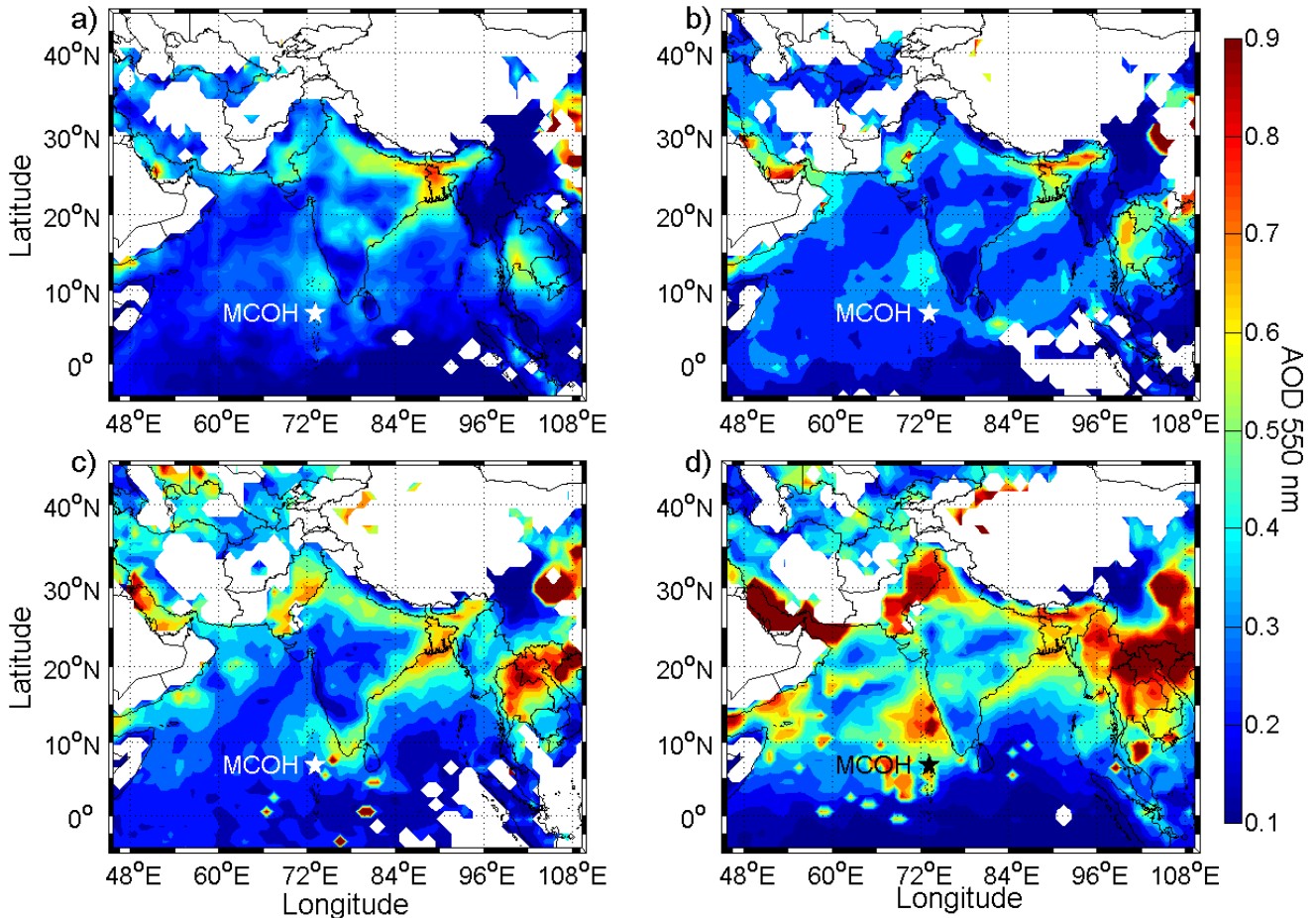


Fig. 2. Mean AOD at 550 nm derived from measurements by the MODIS instrument onboard the Terra satellite. (a) 1 till 14 February 2012, (b) 15 till 29 February 2012, (c) 1 till 15 March 2012. (d) 16 till 31 March 2012.

Lidar measurements show high backscatter signals in the boundary layer and lofted aerosol layers in some occasion. A timeseries of the vertical extinction from the MPL shown in figure 3 has been added to the supplements.

19. Page 3926, line 22-26: Please compare the common SSA dataset (16 days period)

A comparison with the common SSA dataset has been done and included in table 3.

20. Page 3931, line 16-18: For the two last flight days, where does the air masses coming from? Do you have any idea of the aerosol type and therefore the ssa values for these cases?

We apologize for the confusion. The outliers are from March 23.

The air masses in the free troposphere are classified as air masses from the Indo-Gangetic Plain. Compared to other days within the same classification, those air masses have been transported more over central India and the western IGP. There was less influence from the polluted eastern outflow of the IGP but maybe more influence from dust regions. Hence, the real SSA could be higher for this day compared to the mean SSA.

The issue has been described in more detail in the revised version.

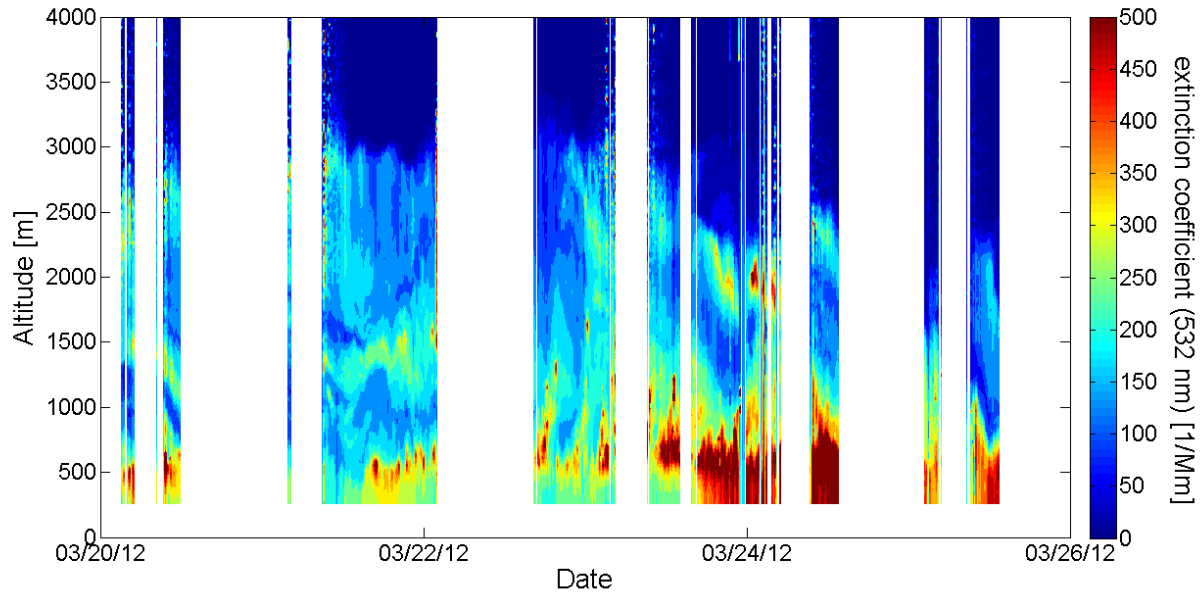


Fig. 3. Timeseries of vertical MPL extinction profiles from 20 – 26 March 2012.

Yang, M., Howell, S. G., Zhuang, J., and Huebert, B. J.: Attribution of aerosol light absorption to black carbon, brown carbon, and dust in China – interpretations of atmospheric measurements during EAST-AIRE, *Atmos. Chem. Phys.*, 9, 2035–2050, doi:<http://dx.doi.org/10.5194/acp-9-2035-2009>10.5194/acp-9-2035-2009, 2009.

We thank **referee#3** for her/his constructive comments which we will account for in the revised manuscript. Below is a point-by-point response to the comments. A marked-up manuscript is provided as well.

1. *Single-scattering albedo (SSA) profiles: Profiles of SSA have been constructed from few UAV-borne measurements of aerosol light absorption, and profiles of aerosol scattering coefficients calculated from measured size distributions and Mie theory. Measured relative humidity was then used to convert the calculated dry values at ambient conditions. This approach contains a number of assumptions and potential sources of uncertainties which require further explanation or examination. This concern in particular:*

- (a) *uncertainties of the measured light absorption by the Aethalometer (how was it corrected for scattering, filter loading etc.?)*

Please note that the uncertainties of the Aethalometer measurements are already mentioned in section 2.1 and the correction method in 2.3. The correction method is based on Arnott et al. (2005) and Corrigan et al. (2006). For clarification, we have extended the description of the data correction and uncertainties of calculated light absorption in section 2.1 and 2.3.

- (b) *uncertainties in the calculated scattering coefficient (What is the error when using PSL refractive index for size distribution inversion? How variable is the humidity growth factor and the resulting hygroscopic enhancement of the scattering coefficient when probing air masses of different origins and thus aerosol chemical composition?)*

Particle sizes from the OPC measurements underestimate in general the real particle diameter the most common atmospheric particles when calibrated with PSL (e.g. Liu & Daum (2000)). Typically the particle diameter is underestimated by approximately 10%. Hence, scattering coefficients calculated by Mie-Theory will be lower for the probed ambient particle population.

When we use the ambient refractive index, the scattering will to some extent be wrong. Mie-scattering was calculated from OPC measurements close to the ground for an average refractive index of $m = 1.54 + 0.022i$ from INDOEX (Müller et al., 2003) and for the PSL refractive index $m = 1.59 + 0.0i$. The results were compared to the particle scattering measurements at the surface and the best fit was found for the PSL refractive index (see figures 1 and 2). That is why we decided to use the PSL refractive index. The mean difference between the surface particle scattering and the calculated Mie-scattering was 25% and is considered as uncertainty for Mie-scattering.

Possible uncertainties in the calculated scattering coefficient are now discussed in more detail in Section 2.5, including errors when using PSL refractive index and the possible hygroscopic enhancement.

- (c) *Uncertainties in the vertical profiles of considered properties when inferring them from the lidar measurements and few collocated measurements by the UAV (Which lidar ratios have been applied for the different aerosol types?). In general, the entire method is reasonable, but the single steps require detailed discussion of assumptions and uncertainties.*

The Lidar ratios used are stated in Section 2.6 but are now for clarity repeated in section 3.2. The possible uncertainties are described in section 2.6.

2. *Evaluation of absorption profiles: The construction and evaluation of absorption profiles inferred from lidar measurements is based on collocated UAV measurements combined with calculating lidar absorption coefficients from particle number concentrations. The correlation used here is derived from surface measurements. However, it is well known that aerosol in the free troposphere is decoupled from the surface. Thus this step requires an in-depth discussion of the approach and of related uncertainties. In particular, statement is expected whether or not the proposed methodology for constructing vertical profiles of absorption coefficients have worked. Looking at Fig. 8 a discussion of statistical significance of the regression analyses is required.*

The problem of a decoupled boundary layer is already mentioned in the manuscript (Section 3.1.3, 3.2.3). However, we now emphasize this issue in various sections of the revised version.

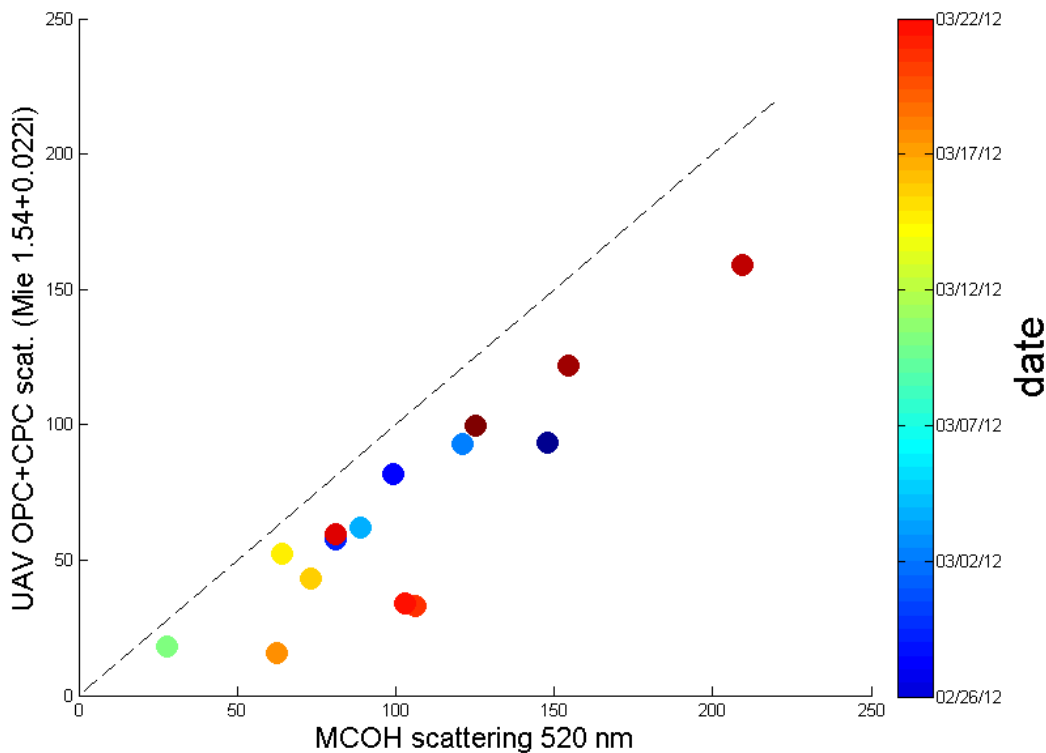


Fig. 4. Mie-Scattering with refractive index of $1.54 \pm 0.022i$ vs. surface particle scattering.

A discussion of statistical significance and a statement regarding the robustness of the methodology has been added to section 3.2.3.

3. *The determination of mass absorption efficiency requires a detailed analysis of systematic errors. In the presented approach the MAE values have been determined against NIOSH as the thermal-optical reference method for EC determination. However, IMPROVE and EUSAAR2 protocols are widely agreed for determining EC from filter samples, which differ significantly from NIOSH. The presented MAE values have to be discussed in this context. What MAE values could be expected when applying other thermal protocols than NIOSH?*

Generally we agree with the reviewer that there may be discrepancies among the different OC/EC isolation techniques. There has been a continuous development of these methods, trying to overcome the inherent artifact of pyrolysis during the initial phases of the program, with new procedures presented with regular intervals (e.g., Hadley et al., 2008; Boparai et al., 2008). There is thus no final version of this approach.

However, we respectfully disagree with the reviewer's notion that the Birch and Cary (1996) NIOSH protocol is somehow obsolete as one of the standard protocols for OC/EC analysis. This is for instance evidenced by the 100+ citations of this reference since January 2014 (800+ citations in total, source: Web of Science). However, we do acknowledge the relevance in comparing different approaches. For the present study, the EC used for the MAE-calculations is taken from Bosch et al. (2014). Unfortunately, re-analysis using other techniques (e.g., IMPROVE or EUSAAR2) is not possible, since the filter samples have been used up for filter area-intensive isotopic analysis. It is therefore difficult to assess the associated uncertainties propagated into the MAE values for these samples.

4. *Presentation of results in its abstract, the manuscript promises vertical profiles of aerosol optical properties over the Indian Ocean for different air masses or aerosol types, respectively. Although the material is available the presentation of the results makes it difficult for the reader to extract the key pieces of information and to assess respective assumptions and uncertainties. The following structure for the results section starts with methodological part and finishes with air mass specific results. This structure may improve the presentation of the material:*

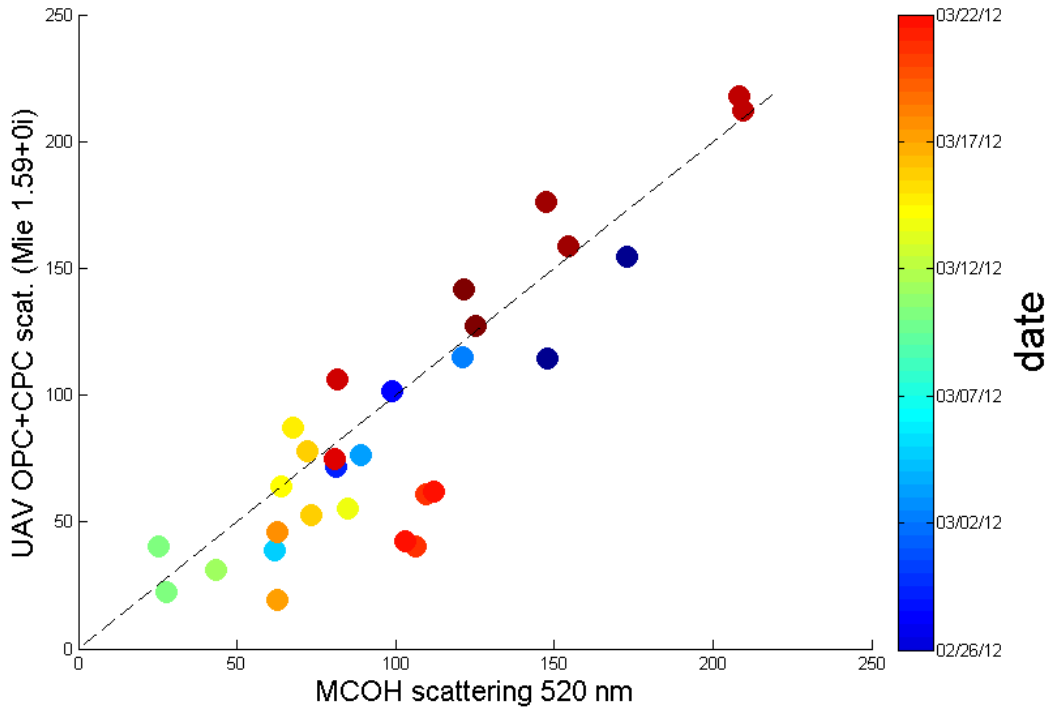


Fig. 5. Mie-Scattering with refractive index of $1.59 \pm 0.0i$ vs. surface particle scattering.

Section 3.1 Evaluation of vertical profiles, including in-depth discussion of uncertainties

Section 3.2 Absorption values and MAE

Section 3.3 Air mass classification

Section 3.4 Aerosol optical properties for probed air mass types, including comparison to earlier observations

We appreciate the reviewer's concerns of insufficient clarity of the results section but we think the presentation of the meteorological conditions and air mass sources of the field campaign combined with general results fits better in the beginning of the results section to get a good overview. Therefore, we have chosen to leave the main structure of section 3 unchanged.

However, we have clarified the key points, including assumptions and uncertainties, in the beginning of Section 3.2.

Minor issues:

1. *Please add instrument models to Table 1*

Instrument model numbers have been added to Table 1.

2. *In Table 3, units of properties should be given*

The unit for the absorption coefficient has been added to Table 3 and Table 4 as well.

3. *In Fig. 3 harmonized color-coding should be used for all displayed data*

Displaying the AOD without color-coding was intentional since the AOD gives information about the total atmospheric column but the air mass sources were usually different in the boundary layer and free troposphere. Hence, an explicit color-coding for AOD is not possible.

References:

- Birch, M.E. and Cary, R.A. (1996) Elemental Carbon-Based Method for Monitoring Occupational Exposures to Particulate Diesel Exhaust. *Aerosol Science and Technol.* 25, 221-241.
- Boparai, P., Lee, J., Bond T.C. (2008) Revisiting Thermal-Optical Analyses of Carbonaceous Aerosol Using a Physical Model. *Aerosol Science and Technol.* 42, 930-948.
- Bosch C, Andersson A, Kirillova EN, Budhavant K, Tiwari S, Praveen PS, Russell LM, Beres N, Ramanathan V, Gustafsson 2014) Source-diagnostic dual-isotope composition and optical properties of water-soluble organic carbon and elemental carbon in the South Asian outflow intercepted over the Indian Ocean. *J. Geophys. Res.* DOI: 10.1002/2014JD022127
- Hadley, O.L., Corrigan, C.E., Kirchstetter, T.W. (2008) Modified Thermal-Optical Analysis Using Spectral Absorption Selectivity To Distinguish Black Carbon from Pyrolyzed Organic Carbon. *Environ. Sci. Technol.* 42, 8459-8464.
- Liu, Y. and Daum, P. H. (2000): The effect of refractive index on size distributions and light scattering coefficients derived from optical particle counters, *J. Aerosol. Sci.*, 31(8), 945–957, 2000.
- Müller, D. Franke, K. Ansmann, A., Althausen, D. (2003): Indo-Asian pollution during INDOEX: Microphysical particle properties and single-scattering albedo inferred from multiwavelength lidar observations. *J. Geophys. Res.* 108, DOI: 10.1029/2003JD003538.

Vertical profiles of optical and microphysical particle properties above the northern Indian Ocean during CARDEX 2012

F. Höpner (1), F. A.-M. Bender (1), A. M. L. Ekman (1), P. S. Praveen (2), C. Bosch (3), J. A. Ogren (4), A. Andersson (3), Ö. Gustafsson (3), V. Ramanathan (5)

(1) Department of Meteorology (MISU) and the Bolin Centre for Climate Research, Stockholm University, Stockholm, Sweden

(2) International Centre for Integrated Mountain Development, Kathmandu, Nepal

(3) Department of Environmental Science and Analytical Chemistry (ACES) and the Bolin Centre for Climate Research, Stockholm University, Stockholm, Sweden

(4) Earth System Research Laboratory, National Oceanic and Atmospheric Administration, Boulder Colorado, USA

(5) Scripps Institute of Oceanography, University of California, San Diego, USA

Abstract. A detailed analysis of optical and microphysical properties of aerosol particles during the dry winter monsoon season above the northern Indian Ocean is presented. The Cloud Aerosol Radiative Forcing Experiment (CARDEX), conducted ~~in February and~~ from 16 February to 30 March 2012 at the Maldives Climate Observatory on Hanimaadhoo island (MCOH) in the Republic of the Maldives, used autonomous unmanned aerial vehicles (AUAV) to perform vertical in-situ measurements of particle number concentration, particle number size distribution as well as particle absorption. These measurements were used together with surface-based Mini Micro Pulse Lidar (MiniMPL) observations and aerosol in-situ and off-line measurements to investigate the vertical distribution of aerosol particles.

Air masses were mainly advected over the Indian subcontinent and the Arabian Peninsula. ~~Mean~~ The mean surface aerosol number concentration was $1717 \pm 604 \text{ cm}^{-3}$ and the highest values were found in air masses from the Bay of Bengal and Indo-Gangetic Plain ($2247 \pm 370 \text{ cm}^{-3}$). Investigations of the free tropospheric air showed that elevated aerosol layers with up to 3 times higher aerosol number concentrations than at the surface occurred mainly during periods with air masses originating from the Bay of Bengal and the Indo-Gangetic Plain. ~~Compared to~~ This feature is different compared to what was observed during the Indian Ocean Experiment (INDOEX) conducted in winter 1999, ~~elevated aerosol layers with increased aerosol number concentration were observed more frequently in 2012. However~~ where aerosol number concentrations generally decreased with height. In contrast, lower particle absorption at the surface ($\sigma_{\text{abs}}(520 \text{ nm}) = 8.5 \pm 4.2 \text{ W m}^{-1}$) was found during CARDEX compared to INDOEX 1999.

~~By~~ Layers with source region specific single-scattering albedo (SSA) values were derived by combining vertical in-situ ~~measured particle absorption with scattering~~ particle absorption coefficients and scattering coefficients calculated with Mie-theory, ~~layers with single-scattering albedo (SSA) values of specific source regions were derived and~~ . These SSA layers were utilized to calculate vertical particle absorption profiles from MiniMPL profiles. SSA surface values for dry conditions were found to be 0.94 ± 0.02 and 0.91 ± 0.02 for air masses from the Arabian Sea (and Middle East countries) and India (and Bay of Bengal), respectively. Lidar-derived particle absorption profiles showed both a similar magnitude and structure as the in-situ profiles measured with the AUAV. However, primarily due to insufficient accuracy in the SSA estimates, the lidar-derived absorption profiles have large uncertainties and are generally weakly correlated to vertically in-situ measured particle absorption.

Furthermore, the mass absorption efficiency (MAE) for the northern Indian Ocean during the dry monsoon season was calculated to determine equivalent black carbon (EBC) concentrations from particle absorption measurements. A mean MAE of 11.6 and $6.9 \text{ m}^2 \text{ g}^{-1}$ for 520 and 880 nm , respectively, was found, likely representing internally mixed BC containing particles. Lower MAE values for 880 nm and 520 nm were found for air masses originating from dust regions such as the Arabian Peninsula and western Asia (~~$5.6 \text{ m}^2 \text{ g}^{-1}$~~ $\text{MAE}(880 \text{ nm}) = 5.6 \text{ m}^2 \text{ g}^{-1}$, $\text{MAE}(520 \text{ nm}) = 9.5 \text{ m}^2 \text{ g}^{-1}$) or from closer source regions as southern India (~~$4.3 \text{ m}^2 \text{ g}^{-1}$~~ $\text{MAE}(880 \text{ nm}) = 4.3 \text{ m}^2 \text{ g}^{-1}$, $\text{MAE}(520 \text{ nm}) = 7.3 \text{ m}^2 \text{ g}^{-1}$).

1 Introduction

Anthropogenic aerosols influence the Earth's energy budget as aerosols can directly scatter and absorb solar radiation and affect cloud radiative properties (Boucher et al., 2013). Whereas the net direct radiative forcing of anthropogenic aerosols is an estimated cooling of $-0.35 (\pm 0.5) \text{ W m}^{-2}$, black carbon (BC) containing particles contribute to a positive direct radiative forcing at the top of the atmosphere (TOA) of $+0.4 (+0.05 \text{ to } +0.8) \text{ W m}^{-2}$ (Boucher et al., 2013).

The term BC is a qualitative description of light-absorbing carbonaceous substances, produced by fossil fuel combustion and biomass burning (Bond et al., 2013; Petzold et al., 2013). Lacking an uniform definition, BC measured by optical methods in the present study is referred to as the equivalent black carbon (EBC) in accordance to Petzold et al. (2013).

Even though BC is estimated to be one of the most important sources for human-caused changes in atmospheric heating next to carbon dioxide, its positive radiative impact is uncertain (Bond et al., 2013). A ~~very~~ recent study by Samset et al. (2014) shows that global aerosol-climate models tends to overestimate the radiative forcing in remote regions and at high altitudes compared to an indicated general underestimation of global BC radiative forcing in atmospheric models (Bond et al., 2013; Andreae and Ramanathan, 2013). Thus, observations are still needed to gain a better understanding of BC physical and chemical properties. In-situ measurements of the vertical profile of BC-containing particles are of particular interest for radiative forcing calculations, but have been performed only occasionally (e.g. Babu et al., 2008, 2011; Corrigan et al., 2008; Wofsy, 2011; Oshima et al., 2012; Sheridan et al., 2012).

The emissions of anthropogenic aerosols, in particular absorbing aerosols, are still increasing in Asian countries such as China and India (Granier et al., 2011; Moorthy et al., 2013). During the dry winter monsoon season every year, polluted air masses from southern Asia are transported towards the northern Indian Ocean. Due to large-scale subsidence over the ocean during that period, the vertical dispersion of pollution is reduced and aerosol particles can be transported over long distances (Lelieveld et al., 2001; Lawrence and Lelieveld, 2010).

Several major field campaigns have been performed to investigate the advection of polluted air masses from southern Asia to the pristine northern Indian Ocean in winter time like e.g. the Indian Ocean Experiment (INDOEX) in 1999, the Maldives Autonomous Unmanned Aerial Vehicle Campaign (MAC) and the Integrated Campaign for Aerosols, Gases and Radiation Budget (ICARB) in 2006, leading to the identification of an elevated aerosol layer above the marine boundary layer (MBL), referred to as an Atmospheric Brown Cloud (ABC) (e.g. Ramanathan et al., 2001; Sheridan et al., 2002; Franke et al., 2003; Corrigan et al., 2008; Moorthy et al., 2008). Previous studies have revealed a significant atmospheric heating and surface cooling by ABCs (e.g. Ramanathan et al., 2001, 2007b; Satheesh et al., 2008).

Aerosol measurements at the surface will not necessarily indicate the presence of elevated aerosol layers since the vertical exchange between the MBL and free troposphere (FT) can be weak (e.g. Corrigan et al., 2008). Thus, detailed vertical aerosol profiles are necessary to obtain complete information of the elevated aerosol layer composed of light-scattering and absorbing aerosols.

The present study is based on the field campaign Cloud Aerosol Radiative Forcing Experiment (CARDEX) ([see also Bosch et al., 2014; Pistone et al., 2015](#)) ([see also Ramanathan et al., 2011; Bosch et al., 2014; Pistone et al., 2015](#)), which was conducted in the vicinity of the Maldives Climate Observatory in Hanimaadhoo (MCOH) ~~in February and from 16 February to 30~~ March 2012. CARDEX was conducted by the Scripps Institution of Oceanography at the University of California at San Diego, in collaboration with the Desert Research Institute, Stockholm University, Argonne National Laboratory and the Max Planck Institute in Hamburg. ~~The focus of the study is CARDEX augmented the existing measurement suite at the observatory to investigate the relationships between boundary layer turbulence, clouds, and absorbing soot aerosol. The CARDEX experiment is described in Ramanathan et al. (2011).~~

~~The focus of this study is in particular~~ on the vertical profiles of long-range transported absorbing aerosols over the northern Indian Ocean under cloud-free conditions, utilizing a combination of surface and vertical in-situ measurements as well as ground-based remote sensing instruments.

MCOH, located at 6.78° N, 73.18° E on one of the northernmost Maldives islands (Thiladhummathi Atoll) was founded as a part of the Atmospheric Brown Cloud project in 2004 to investigate the interaction between aerosols, radiation and climate over the Indian Ocean during different monsoon periods (Ramana and Ramanathan, 2006). During the winter monsoon and pre-monsoon, MCOH is a receptor site of long-range transported pollutants from emission regions of South Asia, the Middle East and Africa ([Bosch et al., 2014](#)). Local pollution levels are usually low since MCOH is at the northern tip of the island and the wind direction is dominantly north-easterly during the dry monsoon season ([Ramana and Ramanathan, 2006](#)). Therefore the Maldives islands in general, and MCOH in particular, offer favourable conditions for the study of processed anthropogenic aerosols.

Here, a detailed analysis of air mass origin is performed, relating source regions to microphysical and optical particle properties. Furthermore, typical vertical aerosol profiles occurring during the dry monsoon season are studied. In particular, the dependence of single scattering albedo (SSA) on air mass source region is investigated. Vertical in-situ measurements, performed with three autonomous unmanned aerial vehicles (AUAV) during CARDEX, are compared with ground-based lidar measurements of aerosol extinction. Furthermore, an approach for estimating particle absorption from lidar measurements and characteristic SSA profiles is presented, and evaluated against vertical in-situ measurements (see Fig. 6). Hereby we investigate the possibility of using ground-based lidar measurements to determine and monitor the vertical distribution of absorbing aerosols in the area, and evaluate the main sources of uncertainty related to such an approach.

Air mass source- and site-specific Mass Absorption Efficiencies (MAE) are calculated from surface absorption EC mass concentration measurements. This MAE is then used to estimate an EBC concentration from absorption measurements only.

2 Experimental methods

2.1 Autonomous unmanned aerial vehicles

~~During CARDEX, three AUAVs were used~~ One of the central components of CARDEX was the deployment of light-weight AUAVs to obtain vertical profiles up to 3 km of aerosol properties, cloud microphysics, turbulence and water vapour radiation and turbulent fluxes as well as radiation. ~~Robotic aircraft~~ cloud microphysics. Robotic aircrafts were used already in the early 1990s to measure general meteorological parameters (Holland et al., 2001). The advanced instruments onboard the AUAV, used during CARDEX, were modified and developed at the Scripps Institution of Oceanography (Corrigan et al., 2008). The AUAVs were used in a stacked mode where up to three AUAVs were flown simultaneously at different altitudes.

18 CARDEX research flights were performed from an airport, located around 3 km southwest of MCOH, between 23 February and 26 March 2012. The payload on the aerosol AUAV was a TSI condensation particle counter (Model 3007) that measured the total particle number concentration for aerosol particles with diameter larger than $D_p = 10$ nm. The instrument accuracy of the AUAV CPC was within $\pm 10\%$. Furthermore, an optical particle counter (OPC, MetOne Model 9722) that determines the particle number size distribution in 8 channels between $D_p = 0.3 \mu\text{m}$ and $D_p = 3.5 \mu\text{m}$ was installed. The OPC was calibrated with PSL-polystyrene latex (PSL) particles with a refractive index of $m = 1.59 + 0.0i$. Measurement artifacts due to rapid changes in temperature and humidity may have influenced the determination of the particle size (Corrigan et al., 2008).

A modified Magee AE-31 aethalometer that detects the attenuation of light of a particle-loaded filter for three wavelengths (370, 520, 880 nm) was also deployed. From the light attenuation, particle absorption can be calculated according to the correction method of Arnott et al. (2005) with adaptations by Corrigan et al. (2006). Scattering and filter loading effects were accounted for with the values reported in Table 1 in Arnott et al. (2005) and Table 2 in Corrigan et al. (2006). Necessary particle scattering was calculated with Mie-Theory from vertical OPC and CPC measurements (see Sect. 2.3.2.5). The uncertainty of the AUAV aethalometer can range from 5 to is considered to be lower than from the original 7-wavelength aethalometer (see Sect. 2.3) due to the reduction of the wavelengths (Corrigan et al., 2008). Extensive analysis of the 7-wavelength aethalometer deployed at MCOH gives an uncertainty range of 5 – 40% (Corrigan et al., 2006).% (Corrigan et al., 2006).

General meteorological parameters such as relative humidity, pressure and temperature were also measured with a vertical resolution of 1–4 m.

The maximum flight time of the AUAV was 5 h (Corrigan et al., 2008). For detecting the particle absorption with the Aethalometer, the AUAV needed to stay at a constant altitude for about 20 min (level flight) because variations in pressure, temperature and relative humidity give an unstable signal (Corrigan et al., 2008). Thus, for each single flight, several level flights were performed, usually on the descending flight, to measure the particle absorption. Typically, a flight with the aerosol instrument took around 1.5 h. A full description of the aerosol AUAV and its payload and radiation packages can be found in Corrigan et al. (2008) ~~and Roberts et al. (2008).~~ The stacked AUAV flights with aerosol and radiation measurements have been documented in Ramanathan et al. (2007b). The description of the turbulent water vapor flux measurement packages are given in Thomas et al. (2011). The package consists of the following: a turbulent gust probe; a fast response Crypton-Hygrometer water vapor sensor; an inertial navigation system (INS) coupled to global positioning system (GPS); and a 100 Hz data logging system (Thomas et al., 2011).

2.2 Mini Micro Pulse Lidar

In addition to the in-situ measurements on the AUAV, a Mini Micro Pulse Lidar system (MiniMPL) from SigmaSpace was used to measure the elastic backscatter signal which can be transformed to 180 ° particle backscatter and total particle extinction at 532 nm. ~~From these measurements, the vertical particle extinction can be determined with an assumed lidar ratio by using the Klett-method (see Sect. 2.6).~~ The MiniMPL is based on standard MPL systems, first described by Spinhirne (1993) and Spinhirne et al. (1995). It has a single channel at 532 nm with a pulse repetition frequency (PRF) of 4000 Hz. Transmitted laser pulses are scattered back from molecules, aerosols and clouds in the atmosphere. The backscattered signal is received by photodiode detectors and converted into a height profile by measuring the time between transmittance and detection of the laser pulse (Welton et al., 2002).

With the high PRF, a good signal-to-noise ratio can be achieved due to averaging many low-energy pulses in a short time (Spinhirne, 1993). The MiniMPL can detect the near-range atmosphere from about 250 m up to 15 km with a vertical resolution of 30 m. The low minimum range and high spatial resolution make the MiniMPL suitable for comparison with the in-situ AUAV measurements.

The raw signal was corrected for different instrumental and background effects. In the near range of the telescope the signal can usually not be accurately imaged because of the difference in the transmitter and receiver field of view (overlap error) (Welton et al., 2002). Even though the overlap is considered to be 100 % for the MiniMPL, a geometrical factor calibration, referred to as overlap here as well, has to be applied (SigmaSpace, personal communication, 2014). Furthermore, the photodiode detector can release photoelectrons during turn on already before triggering the laser pulse (Welton et al., 2000). This is called the afterpulse noise and needs to be corrected for. The so called background noise is caused by the sunlight. The measured signal in between two pulses is referred to as the background signal and must be subtracted from the final signal (Welton et al., 2000).

2.3 Stationary instruments at the Maldives Climate Observatory Hanimaadhoo (MCOH)

Continuous measurements of physical and chemical particle properties, solar radiation and meteorological parameters have been performed regularly at MCOH since 2004. The instruments for measuring the solar radiation and meteorological parameters (temperature, relative humidity, pressure, wind, precipitation) were mounted on top of a 15 m tower, which is higher than the surrounding canopy. Hence, the local vegetation should not affect the measurements. The aerosol instruments were located inside the station and sampling of aerosols was done through a 15 m long inlet close to the tower. An impactor at the top of the inlet pipe ensured that particles with a diameter $D_p > 10 \mu\text{m}$ were removed, resulting in collection of PM_{10} (particles with $D_p \leq 10 \mu\text{m}$). The collection efficiency was better than 90 % for particles with $D_p = 10 \mu\text{m}$ and as high as 98 % for particles with $D_p < 5 \mu\text{m}$ (Corrigan et al., 2006).

MCOH data presented in this study are from several aerosol instruments. A condensation particle counter (TSI CPC, model 3022) measured the total aerosol particle number concentration between the particle diameters $D_p = 10 \text{ nm}$ and $D_p = 10 \mu\text{m}$. Particle scattering coefficient (σ_{scat}) at three different wavelengths (450, 550, 700 nm) was measured with a nephelometer (TSI, model 3563). The sampling air was not dried before the instruments inlet. However, relative humidities usually $\sim 10 \%$ below the ambient relative humidity were detected inside the nephelometer. The nephelometer data were corrected for truncation errors and instrument geometry characteristics (Anderson and Ogren, 1998). According to Bond et al. (2009) the utilized correction method leads to an error of the scattering coefficient up to maximum 5% depending on the SSA and the wavelength dependence of the absorption.

With a 7-wavelength aethalometer (Magee scientific, model AE-31), the particle absorption at 370, 430, 470, 520, 590, 700 and 880 nm was determined. The absorption coefficient (σ_{abs}) was calculated from the aethalometer attenuation according to the method of Arnott et al. (2005) considering the scattering and filterloading effects. Values from Table 1 in Arnott et al. (2005) have been used, with the same correction method as described in Section 2.1. Scattering coefficients from the MCOH nephelometer were used to correct for the deposition of scattering aerosol particles on the filter.

For about half of the field campaign, aerosol number size distributions between $D_p = 0.5 \mu\text{m}$ and $D_p = 10 \mu\text{m}$ were measured by an aerodynamic particle sizer (TSI APS, model 3321).

A detailed descriptions of the MCOH observatory as well as the first annual cycle of the aerosol observations from MCOH are given in Ramanathan et al. (2007a). More information on the general instrumentation setup at MCOH can also be found in Corrigan et al. (2006) and as well as Ramana and Ramanathan (2006).

Furthermore, fine-particulate matter with particle diameters $D_p < 2.5 \mu\text{m}$ ($\text{PM}_{2.5}$) was sampled on pre-combusted quartz-filters for subsequent chemical analysis. Elemental carbon (EC) and organic carbon (OC) mass were determined with the NIOSH 5040 method by a thermal-optical transmission analyzer (Sunset Laboratory) after the field campaign (Bosch et al., 2014).

AERONET (AErosol RObotic NETwork) sun photometer measurements are performed continuously at MCOH and the ground based passive remote sensing instrument measures columnar aerosol optical depth (AOD) under clear sky conditions (Holben et al., 1998). Additionally, e.g. aerosol absorption optical depth (AAOD) and SSA values can be determined. AERONET data used in this study are quality-assured level 2.0 data. All described instruments are summarized in Table 1.

2.4 Trajectory analysis

7-day-backward trajectories were used to determine the origin of the air masses arriving at MCOH in the MBL and FT. The trajectories were calculated with the HYSPLIT model developed by NOAA Air Resource Laboratory (Draxler, 1999). Backward trajectories arriving at heights of 400 and 2000 m were assumed to give a good indication for the air mass origin within the MBL and FT, respectively. This assumption is based on the MPL estimates of the MBL maximum height. Furthermore, trajectory height information was used to determine the vertical transport of the detected air masses. The data were sorted into three different air mass groups for subsequent analysis (see Sect. 3).

2.5 Single scattering albedo profiles

The single scattering albedo (SSA), defined as the ratio of σ_{scat} to the particle extinction coefficient σ_{ext}

$$\text{SSA} = \frac{\sigma_{\text{scat}}}{\sigma_{\text{ext}}}, \quad (1)$$

is an important particle property for describing the absorption ability of aerosols. σ_{ext} is the sum of σ_{scat} and σ_{abs} . The SSA is also needed for deriving ~~absorption~~ [the absorption coefficient](#) from lidar measurements (see Sect. 2.6).

The SSA at the surface was determined from in-situ absorption and scattering measurements at MCOH for this study. ~~SSA~~ [The uncertainty for the calculated surface SSA may be up to 10%. The SSA](#) is mainly influenced by the aerosol composition and size distribution, which are dependent on the air mass sources. Another important factor is the relative humidity since the particle scattering is enhanced by hygroscopic growth (e.g. Fitzgerald et al., 1982; Clarke et al., 2002; Zieger et al., 2013; Titos et al., 2014). As the air mass origin and relative humidity changes with height, the SSA may therefore also vary in the vertical column.

To determine the varying SSA in the column, vertically resolved particle absorption and scattering measurements are required. During the CARDEX research flights, vertical profiles of particle absorption were measured with an onboard Aethalometer. However, only a ~~couple of few~~ measurements could be performed for each flight, as described in Sect. 2.1. Vertical profiles of particle scattering were not measured, but can be calculated with Mie-Theory from [vertical particle size distributions, that were determined from combined OPC and CPC vertical measurements](#). ~~In measurements with the assumption of a bimodal size distribution. Particle sizes from the OPC measurements underestimate in general the real particle diameter for the most common atmospheric particles when calibrated with PSL. Hence, scattering coefficients calculated by Mie-Theory will be lower for the probed ambient particle population (Collins et al., 2000; Liu and Daum, 2000, e.g.). However, comparisons of calculated Mie-Scattering with MCOH surface measurements of particle scattering give the best agreement when using PSL refractive index in the Mie-calculations. Thus, in~~ this study a complex refractive index of $m = 1.59 + 0.0i$ was used ~~to account for the OPC calibration (see Sect. 2.1) in the calculations. The mean difference between the surface particle scattering and the calculated Mie-scattering was 25% and is considered as uncertainty for Mie-scattering.~~

Mie-Scattering was calculated at ambient relative humidity since the OPC measurements ~~show give~~ ambient particle number size ~~distribution distributions~~ in which particles may have changed in size ~~and shape~~ by hygroscopic growth ~~compared to dry aerosol particles. Those particles are expected to be rather spherical because of hygroscopic growth, thus satisfying the assumption of Mie-Theory.~~ Finally, scattering profiles were calculated for dry atmospheric conditions with the hygroscopic enhancement factor found by Clarke et al. (2002) for the northern Indian Ocean in February and March.

$$f(\text{RH}) = \frac{\sigma_{\text{scat}}(\text{RH})}{\sigma_{\text{scat}}(\text{dry})} = 0.841 \cdot \left(\frac{1 - \text{RH}}{100} \right)^{-0.368} \quad (2)$$

[Hygroscopic growth factors of aerosol particles above the Northern Indian Ocean during INDOEX were found to be between 1.6 and 2.0 on average for 90% relative humidity \(Maßling et al., 2003\). Similar scattering enhancement factors of 1.5 to 2 were detected in independent measurements in the same time period \(Eldering et al., 2001\).](#)

An SSA profile with 4 layers was utilized to account for variations in relative humidity and aerosol composition throughout the vertical column. SSA values in the MBL were based on surface measurements, while SSA in the three FT layers (700–1500, 1500–2500 and 2500–3000 m) were calculated from Mie-scattering and individual in-situ absorption values. Mie-scattering was scaled to the layer mean ambient relative humidity using Eq. (2). Mean SSA values in each layer were then established for different source regions (see Sect. 3.2). [Figure S1 shows a flow chart for the complete determination of the SSA values.](#)

SSA calculations from continuous AERONET sun photometer measurements were not used [for further calculations](#) because of temporal differences compared to the flight times. Only a small number of days with simultaneous AERONET SSA and flight data were available. Furthermore, an altitude dependent SSA is important for the following analysis and can not be provided from AERONET measurements. [However, AERONET SSA is presented in section 3.1.4 for comparison.](#)

2.6 Lidar-derived absorption

With the aid of SSA profiles (see Sect. 2.5) we estimated an absorption coefficient and subsequently an EBC profile from MPL measurements. With the following method, lidar measurements have the potential to provide continuous absorption profiles that can be compared to in-situ measurements (see Fig. 6).

First, the extinction profile from the MiniMPL was calculated from the measured ~~180° backscatter~~ [elastic backscatter signal](#) and an assumed lidar ratio ~~, i. e. with the solution of the lidar equation presented by Fernald (1984) according to the method described in Klett (1981).~~ [The Lidar ratio is defined as](#) the ratio between extinction and 180° backscatter. The lidar ratios used

here are based on previous studies over the northern Indian Ocean in the same winter monsoon season. For air masses arriving from the polluted northern part of the Indian subcontinent a lidar ratio of 65 sr was used, while the lidar ratio for air coming from southern India, the southern Bay of Bengal and Indonesia was set to 50 sr, in accordance with Franke et al. (2003) (see Sect. 3). A higher lidar ratio indicates larger absorption coefficients (Müller et al., 2003). A generalization of lidar ratios for specific air masses is certainly a source of error and might influence the determination of the extinction profiles. Lidar ratios can vary in the vertical column which is not considered in this study.

An alternative method for determining the lidar extinction is to use the AERONET AOD. The vertical integration of the extinction profile gives the columnar AOD. Thus, the lidar extinction can be constrained by the AERONET AOD through a recursive algorithm (Welton et al., 2000). This means in turn that the lidar ratio is assumed constant through the column which might not be valid for all profiles.

To determine the particle absorption coefficient from the lidar extinction profile, the SSA profiles as described in Sect. 2.5 for the lidar wavelength 532 nm are used.

$$\sigma_{\text{abs}} = \sigma_{\text{ext}} - \sigma_{\text{scat}} = \sigma_{\text{ext}} \times (1 - \text{SSA}) \quad (3)$$

With a given mass absorption efficiency an EBC profile can be calculated from the lidar-derived absorption profile (see Sect. 2.8).

Uncertainties in absorption values are dependent on uncertainties-the error in the SSA calculation and grouping by air mass and height level and hence dependent on, that was estimated to be up to 50%. Related possible sources of error are the accuracy of the in-situ absorption and particle number size distribution measurements. Grouping by the air mass origin and height level may add additional uncertainties. Since lidar extinction profiles will be averaged over about 20 min, the temporal variability will play a role as well. Standard deviations of the temporal average are used as uncertainty estimates of the extinction profiles.

2.7 Evaluation methods

Different methods were used to evaluate the lidar-derived absorption profiles. The most direct method is the comparison of the lidar-derived absorption profile with the measured absorption profiles from the AUAV aethalometer. However, sparse in-situ absorption data (with uncertainties of up to 40 %) makes it challenging to compare the two different absorption profiles quantitatively.

Thus, an additional comparison method was used based on the assumption that absorption can be related to the particle number concentration measured by the onboard CPC. According to Corrigan et al. (2008), a high correlation between the absorption coefficient and total particle concentration in the vertical is justified. MCOH surface measurements from winter 2006 and 2012 give a reasonable linear correlation ($R^2 = 0.67$) between total particle concentration and particle absorption coefficient for 520 nm. To account for various aerosol types we used different linear relations $\sigma_{\text{abs}} = a \times N$ (a – correlation factor, N – total particle number concentration) for different air mass source regions, assuming similar compositions and optical properties for each air mass type. From that an absorption profile can be estimated from AUAV CPC measurements. Note, that the relations may have large uncertainties in the free troposphere since it can be decoupled from the marine boundary layer. This is a coarse method to verify if the lidar-derived absorption profiles give reasonable results.

2.8 Mass Absorption efficiency

Additionally, an EBC mass concentration can be determined from particle absorption measurements using the mass absorption efficiency (MAE).

$$\text{EBC} = \frac{\sigma_{\text{abs}}}{\text{MAE}} \quad (4)$$

MAE describes the efficiency of particle mass absorption and is typically given in $\text{m}^2 \text{g}^{-1}$. MAE varies for different aerosol compounds and mixtures and its value needs to be assumed or determined as a function of the aerosol type.

A CARDEX-specific MAE was calculated using σ_{abs} for 880 nm and relating it linearly to the EC mass concentration from filter measurements , as particle absorption (equivalent to EBC in Eq. 4). An inversely proportional relation between σ_{abs} (800 nm) and the EC mass concentration as in Eq. 4 is valid since the particle absorption σ_{abs} at 880 nm is considered to be dominated by BC absorption and BC is mainly composed of EC and hence can be quantified with which can be approximately quantified by the filter derived EC mass concentration (e.g. Yang et al., 2009). At lower wavelengths, other absorbing species as dust or organic carbon become more important for the particle absorption.

The uncertainty of the MAE determination is dependent on the accuracy of the surface absorption measurements (up to 40%) and the analysis of the EC filters. The results of the filter analysis was not compared with other analysis techniques which might add additional errors to the MAE results.

3 Results and discussion

3.1 Relationship between aerosol particle properties and source region

During CARDEX, polluted air masses from south and southeast Asia were transported to the Maldives by the northeast monsoon. Therefore, long-range transported polluted aerosols, including BC-containing particles, could be prevalent observed in February. Furthermore, aerosols, originating from western Asia as well as the Arabian Peninsula, likely including dust particles, were detected. Those air masses which crossed the Arabian Sea were observed mainly in March, towards the beginning of the pre-monsoon season when the surface wind typically changes to a northwesterly direction. Figure 7 shows the 7 day backward trajectories arriving at MCOH at 00:00 and 12:00 UTC in February and March in the MBL (400 m) and FT (2000 m). Altitude resolved trajectories showed that MBL air masses in general originated from below 1000 m and FT 2000 m during the last 2 and 4 days, respectively. FT air masses arriving at 2000 m rarely originated from altitudes below 2000 m.

Lidar profiles showed that the MBL height was typically between 400 and 800 m during CARDEX. Microwave radiometer measurements in combination with profiles of the meteorological parameters have shown that the cumulus cloud base typically coincides with the MBL top, indicated by a temperature inversion (Pistone et al., 2015). Visual observations confirmed frequent occurrences of haze layers and shallow convective clouds during CARDEX.

Three main air mass clusters were observed in the MBL: 1. Indo–Gangetic Plain (Pakistan and northern India) + Bay of Bengal (IGP), 2. Southern Asia + Bay of Bengal (+ Indonesia) (SI), 3. Arabian Sea and Arabian Peninsula, Iran, Pakistan or Indian west coast (AS). Those air mass clusters are in accordance to other studies at MCOH (e.g. Gustafsson et al., 2009; Engström and Leck, 2011; Bosch et al., 2014). Even though the Maldives are surrounded by ocean, only two days in the beginning of the campaign were dominated by pristine marine air masses from a southern direction in the MBL. During that time vertical profile measurements were not performed. Thus a marine air mass cluster is not included in the following analysis. In the FT, only the clusters IGP and SI were found. Each prevailing wind direction in the MBL and FT lasted for several days. Air masses were usually arriving from different clusters in the MBL and FT during CARDEX.

3.1.1 Surface particle concentration

The timeseries of PM₁₀ total particle number concentration at MCOH and from the 18 research flights shown in Fig. 8 give an overview of the timing of the different air mass periods in the MBL and in the FT during CARDEX and the prior weeks. The MBL AUAV and MCOH surface measurements of particle number concentration are in good agreement (within 12.5 % on average). The mean PM₁₀ particle number concentration at MCOH and on the AUAV in the MBL were $1717 \pm 604 \text{ cm}^{-3}$ and $1650 \pm 570 \text{ cm}^{-3}$, respectively. Hourly mean aerosol number concentrations at MCOH ranged from 340 to 3500 cm^{-3} . The lowest values were found during the short period with complete-pure marine air mass origin (10–11 February 10 Feb. p.m. – 12 Feb. a.m.). Marine air masses are expected to have particle number concentrations between 200 and 800 cm^{-3} (Heintzenberg et al., 2000). This indicates that cases with particle number concentrations above 1000 cm^{-3} are likely to have been influenced by transported continental air masses or local emissions. However, local emissions were found to be low since the OC/EC ratio did not show any clear diurnal cycle which suggests no significant influence from local photochemical processes (Bosch et al., 2014).

Air masses transported with the northeasterly winds from the Indian subcontinent and the Bay of Bengal (cluster IGP) had the highest aerosol number concentrations with an average of $2247 \pm 370 \text{ cm}^{-3}$. Those air masses are likely to have passed over the highly polluted Indo–Gangetic Plain in northern India and Pakistan. The mean aerosol number concentrations for the Arabian sea (cluster AS) and southern India (cluster SI) aerosols were 1375 ± 531 and $1660 \pm 523 \text{ cm}^{-3}$, respectively. Aerosols from SI passed only over the southern tip of India where the particle number concentration and emissions are typically lower than e.g. in northern India (Dey and Di Girolamo, 2010). However, some of those air masses may have passed urban areas in southern India like Bangalore, Chennai or Trivandrum which are known for high aerosol concentration (Moorthy et al., 2005). Air masses from AS are likely influenced by dust from desert regions in South Asia or the Arabian Peninsula and may be affected by. AS air masses may be as well transported along the urban Indian west coast –which can result in higher particle number concentration as seen e.g. on 9 and 10 February or 12 to 14 March.

The lower mean particle number concentration for SI and AS are supported by long-term satellite observations, which show significantly lower AOD values (558 nm) over the Arabian Sea and southern India compared to IGP and the northern Bay of Bengal for the winter and pre-monsoon season (Moorthy et al., 2008; Dey and Di Girolamo, 2010).

3.1.2 AOD

There was a general decrease in the aerosol particle number concentration at the surface from February to March. However, no decrease in AERONET AOD at 500 nm was found. The surface particle number concentration variations do not correlate with the AOD variation ($R^2 = 0.04$) (see Fig. 8a and c). The columnar AOD varies between 0.2 and 0.9 with a mean
340 $AOD(500\text{ nm}) = 0.42 \pm 0.15$.

Figure 9 shows the mean AOD field over the northern Indian Ocean and Indian subcontinent derived from the satellite based MODIS instrument (Moderate Resolution Imaging Spectroradiometer) on Terra (e.g. King et al., 2003) for ~~three~~ four consecutive two-week periods from ~~15~~ February until 31 March 2012 (MODIS collection 5.1 data). High AOD values above the Indo-Gangetic Plain and the outflow region above the Bay of Bengal close to the Indian East coast can be seen in all ~~three~~ four time periods. Increasing AOD above the Arabian Sea and southern Asia towards the end of the campaign is consistent with
345 the seasonal development seen in long-term satellite observations shown in Dey and Di Girolamo (2010). March marks the beginning of the pre-monsoon season and northwesterly to westerly winds at the surface transport mainly dust to the Arabian Sea and northern as well as central India. The relatively high mean AOD during the last ~~third~~ period of the field campaign, seen in Fig. 8a ($AOD(500\text{ nm}) > 0.6$) and ~~9e~~ d, must be caused by high aerosol concentrations above the mixed layer and/or
350 large dust or sea salt particles in the MBL since only relatively low particle number concentration were found in the MBL (see Fig. 8c). Relatively high particle number concentrations in the FT during the last 6 flights (see Fig. 8b) indicate that an increase in the FT aerosol burden may have contributed to the high AOD values. In addition, the timeseries of the lidar extinction from 20 – 26 March in Fig. S2 show high extinction values in the MBL. This can be either a sign of large particles and/or high relative humidity which leads to high backscatter signals.

3.1.3 Vertical particle number concentration profiles

Between 1000 and 3000 m altitude, the particle number concentration is quite variable, as indicated by the standard deviation (SD) shown in Fig. 8b. The 18 research flights with the AUAVs could measure PM_{10} particle number concentration in-situ during different air mass periods in the MBL and FT. The particle number concentrations in the FT were up to 3 times
360 higher than the concentration in the MBL during elevated pollution plume episodes. Those elevated aerosol layers were mostly unrelated to the surface aerosol concentration. This indicates a boundary layer decoupled from the free troposphere. Only a weak correlation between FT and MBL particle number concentration could be found ($R^2 = 0.31$), in general agreement with Corrigan et al. (2008), who found a correlation coefficient of $R^2 = 0.42$ at MCOH in March 2006.

Figure 10b and c shows the median PM_{10} particle number concentration profiles for the different source regions in the MBL and FT for CARDEX. The particle number concentration is in general rather constant throughout the MBL, as expected for
365 a well-mixed MBL. Periods with aerosols transport from IGP and the Bay of Bengal (4 flights) generally have a higher particle number concentration in the MBL compared to air originating from southern India (5 flights) and the Arabian Sea (9 flights). Half of the flights were performed during conditions with FT flow from IGP. Even if the variability is quite large, it is clear that an elevated aerosol layer in the FT appears more often during periods of long-range transport from IGP, whereas air masses arriving from southern India show a decrease of the particle number concentration with height on average.

The median PM_{10} number concentration profile is shown in Fig. 10a together with the corresponding profiles from the field campaigns INDOEX in February and March 1999 and MAC in March 2006. Significantly higher particle number concentrations were detected in 2006 and 2012 compared to INDOEX in 1999, in particular above the MBL. The 23 research flights performed during INDOEX showed a mean particle number concentration for particles bigger than $D_p = 6\text{ nm}$ of $1194 \pm 635\text{ cm}^{-3}$ in the mixed layer up to 1 km over the Maldives Islands (de Reus et al., 2001) compared to $1215 \pm 350\text{ cm}^{-3}$ for particles bigger
375 than $D_p = 10\text{ nm}$ during MAC. The mean particle number concentration during CARDEX was as large as $1520 \pm 740\text{ cm}^{-1}$ for particles bigger than $D_p = 10\text{ nm}$. The difference above the MBL is even larger.

A higher columnar aerosol load in 2006 and 2012 could be explained with a general increase in emissions over Asia. Several emission inventories show that the BC, NO_x and SO_2 emissions over India have increased between 1999 and 2010 (Granier et al., 2011). Long-term observations in India showed also that AOD (500 nm) is increasing at a rate of 2.3 % on average compared to 1985 (Moorthy et al., 2013). Another reason for differences in aerosol concentration above the MBL can be different meteorological conditions during the different field campaigns. According to Verver et al. (2001), major wind and relative humidity anomalies were observed in 1999. Especially in February 1999, a stronger northern convergence zone occurred compared to the climatological monthly mean circulation between 1990 and 1999. Verver et al. (2001) identified several convective precipitation events in February 1999 which may have influenced the aerosol particle concentration significantly through wet
385 removal.

The particle number concentration profiles show a completely different structure in 1999, 2006 and 2012. While the INDOEX (1999) vertical profile shows a decrease in particle number concentration with height, the distinct peaks between 1000 and

2500 m detected in the MAC and CARDEX profiles indicate that elevated aerosol layers were associated with larger particle number concentrations or more frequently occurring during the two later campaigns. A small variability for the INDOEX profile indicates similar particle number concentration for all flights. The variability in vertical profiles of particle number concentration during MAC and CARDEX on the other hand is larger. As elevated aerosol layers mainly occur with air masses from IGP and the Bay of Bengal, the difference in particle concentration at higher altitudes could mean that more cases with IGP affected air in the FT were detected during MAC 2006 compared to CARDEX and INDOEX.

Even though elevated aerosol layers were identified by vertical optical measurements during INDOEX (see e.g. Ramanathan et al., 2001; Sheridan et al., 2002; Franke et al., 2003), higher aerosol concentration above the MBL were not detected with in-situ flight measurements of particle number concentration (see Fig. 10a). Possible explanations could be differences in meteorology, timing as well as measurement area between the different INDOEX measurements and compared to MAC and CARDEX. The flights described by de Reus et al. (2001) during INDOEX cover a large area around the Maldives with measurements as far south as over the southern Indian Ocean ($\approx 7^\circ \text{N}$ – 7°S and 67 – 79°E). However, one would expect a greater variation for such a large measurement area which is not the case for the INDOEX flights.

3.1.4 Surface particle optical properties

Table 2 gives an overview of the measured optical properties at MCOH and of the AUAV data compared to previous field campaigns. All properties are given for $\text{RH} < 40\%$, partly calculated with Eq. (2). The particle absorption is related to the air mass source in a similar way as the particle number concentration. For CARDEX, the highest mean particle absorption, $11.2 \pm 2.2 \text{ M m}^{-1}$, was found for aerosols from IGP and the Bay of Bengal. Significantly lower mean absorption coefficients were measured in air masses from southern India ($8.4 \pm 4.5 \text{ M m}^{-1}$) and the Arabian Sea ($5.6 \pm 2.8 \text{ M m}^{-1}$).

Compared to 1999, the absorption coefficient is smaller in the whole column while the scattering is larger at the surface. The mean absorption coefficient measured at MCOH in February and March 2006 is similar to that measured in 1999, but the mean particle scattering in the MBL is instead comparable to CARDEX. Higher scattering coefficients in 2006 and 2012 are in agreement with the higher particle number concentrations. Lower absorption coefficients in 2012 could possibly be explained by changes in emissions over southern Asia. As a consequence of higher particle scattering and lower absorption the SSA was higher in 2012 and 2006 compared to 1999.

A comparison between ambient surface SSA for 450 nm and AERONET SSA for 439 nm ~~show~~ shows a weak correlation ($R^2 = 0.04$) and general higher surface values than the AERONET SSA. The averaged AERONET SSA values for 439 nm and 675 nm for the different source regions in the MBL are given in table 3. However, AERONET SSA data ~~was~~ were only available for 16 days for the two month campaign period. Furthermore, AERONET calculates the SSA for the whole column which will be influenced by potential elevated aerosol layers.

3.2 Vertical profiles of particle optical properties

Vertical profiles of particle optical properties were derived from MiniMPL and in-situ aerosol measurements ~~as~~. Particle extinction profiles were determined from MiniMPL measurements. Particle size distributions from OPC measurements onboard the AUAV were used to calculate particle scattering with Mie-Theory. Furthermore, mean SSA values for different height levels and air masses were defined with Mie-Scattering and in-situ absorption measurements onboard the AUAV. These SSA values were utilized to calculate absorption profiles from the Lidar extinction profiles. Detailed methods, assumptions and related uncertainties are described in Sect. 2.

Additionally, evaluation of the lidar-derived absorption profiles was performed, using the vertical in-situ absorption measurements as well as simplified absorption profiles calculated from a linear correlation between particle concentration and absorption at the surface (see Sect. 2.7). Table 3 gives the lists those relations used for the AUAV CPC based absorption coefficient ~~as well as the SSA values used for lidar-derived absorption calculations for the different source regions.~~ Note, that the relations may not be representative for the whole column since the air masses above the MBL can have aerosol particles with different chemical composition and particle properties even though the air mass origins from the same source region (Corrigan et al., 2008).

Table 3 also shows SSA values for 4 different altitude ranges and at air mass specific relative humidity which was determined from mean RH profiles. The relative humidity in the MBL was on average increasing towards the top of the MBL and was set to 80 % for the SSA calculations for all cases since no major differences were found for different source regions. As discussed by Pistone et al. (2015), the FT was observed to be either “wet” or “dry”. Low relative humidities were mainly detected during periods with air masses from IGP. This is consistent with the typical large scale subsidence over the northern Indian Ocean (Pistone et al., 2015). The mean SSA for IGP air masses above 1500 m was calculated to be 0.82 for “dry” atmospheric conditions ($\text{RH} < 40\%$). In the lowest FT (700–1500 m), SSA was calculated for $\text{RH} = 75\%$ to 0.88 ± 0.026 . “Wet” conditions

occurred when air masses arrived from southern India and Indonesia (Pistone et al., 2015). The relative humidity for SSA calculation was set to $RH = 65\%$ through the whole FT. SSA in the upper part of the measurement range (2500–3000 m) was calculated to be 0.94 ± 0.04 while the SSA between 700 and 1500 m was similar to the SSA for IGP influenced aerosols but with larger variation (0.89 ± 0.11).

~~SSA values~~ Vertical SSA results based on lidar measurements from INDOEX performed by Müller et al. (2003) show similar values with a mean SSA of 0.90 ± 0.06 and a somewhat lower SSA of 0.88 ± 0.05 for air masses from polluted source regions. However, SSA values as low as 0.8 have been also found for air masses from IGP (Müller et al., 2003).

SSA values in an altitude range from 1 to 3 km during INDOEX were found to be 0.85 ± 0.06 for ambient atmospheric conditions (Sheridan et al., 2002), comparable to the present results. The fairly high SD for some of the determined SSA values will lead to an increase in uncertainty of the lidar-derived absorption. The uncertainty of the lidar-derived absorption was calculated to be as high as 50 % in some cases (error propagation) and therefore set to 50 %.

Since the FT was never influenced by air masses from the Arabian Sea during CARDEX, typical examples for FT air from IGP and southern India are shown in the following in combination with the evaluation of the different methods for deriving particle absorption profiles.

3.2.1 Air Case study with air masses from the Indo–Gangetic Plain in the free troposphere

Figure 11 gives an example of vertical profiles of optical properties for the end of the campaign (24 March 2012) showing the PM_{10} particle number concentration for ascending (upleg) and descending (downleg) flights, the relative humidity, the lidar extinction (with ~~lidar ratio~~ a lidar ratio of 65 sr or AOD constrained), scattering calculated using Mie-Theory and absorption measured directly onboard the AUAVs and at MCOH as well as calculated using either the lidar-derived extinction (and SSA values for different altitude regions) or the measured particle number concentration (and the linear relation presented in Table 3) (see Sect. 2). Figure 11 shows also the ~~calculated~~-EBC profile calculated from the specific MAE for CARDEX (see Sect. 3.3).

~~At the end of the campaign~~ On 24 March, air masses were coming from AS in the MBL and from IGP in the FT. ~~The FT air mass travelled above the IGP at 3 – 4.5 km height above mean sea level for 2 days, followed by a 3 day travel above the Bay of Bengal in 2 – 3 km above mean sea level.~~

A distinct elevated aerosol layer with high aerosol concentration between 1500 and 2300 m was detected with the onboard CPC (Fig. 11a). The calculated Mie-scattering less clearly indicates such a peak of particle scattering in the same region. High Mie-scattering in the MBL with lower particle number concentration is likely a result of scattering from larger particles such as dust or sea salt. ~~This assumption can be supported by the trajectory height information which shows an air mass transport close to the ground prior to arrival.~~

The lidar extinction (Fig. 11b) indicates large values in the MBL which ~~is~~ are either due to ~~dust or sea salt particles and/or~~ high relative humidity and haze ($RH \approx 90\%$ in MBL), leading to high backscatter signals or due to instrument issues. With the given analytical method for determining absorption, a humidity-caused signal can not be distinguished from an aerosol signal. The increasing extinction measured by the lidar below 1000 m can not be related to aerosols given the nearly constant aerosol number concentration in the MBL. Lidar-derived absorption is therefore only given for the FT.

The lidar extinction derived with a given lidar ratio of 65 sr (Fig. 11b, blue line) shows an increase at around 2000 m which indicates that the lidar measurements capture an elevated aerosol layer. However, the aerosol layer seems to be thinner compared to the one seen by in-situ measurements but the difference in timing of the measurements must also be considered. The lidar profile shown was measured about 8 h later than the flight time to avoid clouds and strong background noise from incoming sun light. Closer investigation of the timeseries of the lidar signal indicates that the elevated aerosol, measured by the flights, weakened significantly during the day. The lidar extinction derived with the lidar ratio most likely captured a newly evolved aerosol layer.

Figure 11b also shows the lidar extinction constrained by co-located AOD measurements (green line). The advantage here is that a lidar profile temporally close to the flight time could be chosen, resulting in a better agreement to the scattering calculated by Mie-Theory.

The two right panels of Fig. 11 show the results from the different methods of absorption profiling and subsequent EBC determination. The lidar-derived absorption is shown with a 50 % uncertainty range. ~~The which includes the high uncertainty of the SSA determination. The temporal variance of the extinction profiles may add more uncertainty.~~ The absorption derived from lidar measurements (with lidar ratio) and mean SSA values seems to capture the actual measured absorption well (red dots). However, it is not consistent with the profile of AUAV CPC derived absorption below 1500 m. High relative humidities towards the top of the MBL may have caused a strong backscattering signal and hence a strong lidar-derived particle absorption. The lidar-derived absorption based on extinction constrained by AERONET AOD and mean SSA overestimates the particle absorption compared to the in-situ measurements (see Fig. 11d). It seems that in general the climatological mean SSA values are too low for this specific day, which might be because of high relative humidities throughout the FT.

A partly plotted particle absorption profile (blue and green dashed lines) show the lidar-derived absorption between 1500 and 2500 m calculated with the actual SSA, which was determined from the Mie-scattering and the in-situ absorption measurements at the altitudes where SSA values are available. Lower lidar-derived absorption (with real SSA) indicates that the SSA actually was larger than the mean value for this altitude range on the flight day. Especially the lidar-derived absorption with real SSA in Fig. 11d represents the in-situ measurements well inside the elevated aerosol layer.

3.2.2 Southern-Indian-Case study with air masses from southern India in the free troposphere

Figure 12 shows the corresponding profiles as in Fig. 11 for a day with air masses from southern India in the FT. A significantly lower particle number concentration, Mie-scattering, particle extinction as well as absorption was detected through the whole column on 4 March compared to 24 March 2012. EBC values are calculated to be below $1 \mu\text{g m}^{-3}$. However, a weak elevated aerosol layer can be seen between 2000 and 3000 m. Typically, the aerosol number concentration on average decreases constantly with height in air masses from southern India (see Fig. 10) but 4 March shows the highest aerosol number concentration in the free troposphere for this type of air mass (see Fig. 8). The weak elevated aerosol layer can be explained by forest fires in southern India which occurred during that part of the CARDEX campaign in the beginning of March, as discussed by Chakrabarty et al. (2014). Altitude resolved trajectories verified that the FT air mass travelled at 3–4 km above mean sea level above the forest fire location 2 days before arriving at MCOH.

The lidar extinction and lidar-derived absorption also indicate the presence of this aerosol layer. The lidar profile with a given lidar ratio in this case of 50 sr was taken around 6 h after the flight measurements in this case, which explains the vertical shift of the aerosol layer. A strong increase in lidar extinction for both methods in the MBL is related to increasing relative humidity towards the MBL. The relative humidity is below 40 % in the FT, while it is up to 90 % in the MBL.

The rightmost panel shows the lidar-derived absorption which was calculated from the lidar extinction constrained by the AERONET AOD instead of using a given lidar ratio. Since this profile is determined at the same time as the flights a better agreement between in-situ measured and lidar-derived absorption is achieved. The relatively high in-situ absorption at around 1500 m can only be achieved with the lidar-derived absorption calculated with the actual SSA. This indicates that the determination of the SSA is the critical factor in the absorption calculation. On the other hand the actual measured absorption may be biased high since no indication for high particle absorption at that altitude can be seen in the particle number concentration profile.

3.2.3 Comparison of absorption values derived with different methods

Figure 13 shows a comparison of the particle absorption derived from the different methods and the in-situ measured absorption (see Sec. 2.7). The correlation between the calculated absorption values and the in-situ measured absorption is relatively weak in all cases ($R^2 \leq 0.39$).

The particle absorption calculated from the relation with particle number concentration (see Table 3) shows fairly good agreement with the 1 : 1 line in Fig. 13a. The linear regression is statistically significant at the 95% significance level. The absorption was calculated for different source regions based on surface measurements. However, air masses from a certain source region might not have the same optical properties in the FT as in the MBL (Corrigan et al., 2008). Further, the correlation shown in Table 3 might be better if several years of observations could have been considered.

Except for some outliers, the absorption calculated with the AOD constrained extinction follows the 1 : 1 line fairly well (Fig. 13c). The correlation coefficient is here the best for the particle absorption calculated with the actual SSA (open circles). The regression analysis is statistically significant for the slope coefficient for both calculation alternatives.

The rather high lidar-derived absorption values above 40 Mm^{-1} – 50 Mm^{-1} were found to be from the last two AUAV flight days. The 23 March 2012. This AUAV flight day was classified as a day with air masses from the IGP. Compared to other IGP influenced days, the air mass was transported rather over central India and the western IGP but was not affected by the highly polluted eastern outflow of the IGP. A dust influence can also not be excluded. Thus, the utilized mean SSA values must be much lower than are likely to be underestimating the real SSA during those two days and hence produced this day, hence producing high particle absorption.

The absorption values calculated using a given lidar ratio show the poorest correlation with the in-situ observations and the regression is not statistically significant at the 95% significance level (see Fig. 13b). One main issue may be the time difference between the flight observations and the lidar profiling. However, the lidar-derived absorption profile follows the general structure of the in-situ measured aerosol profiles in the free troposphere (see Figs. 11 and 12).

A somewhat better agreement was achieved with the use of the actual SSA (see Fig. 13b, open circles). It seems that the correct determination of the SSA is a crucial point in deriving the absorption from lidar measurements. A longer time series of vertical in-situ measurements could help to obtain a better source dependent SSA profile. Direct measurements of vertical scattering

profiles as already performed for other aircraft campaigns (e.g. Sheridan et al., 2012; Johnson et al., 2008) would reduce the uncertainty in absorption calculations.

545 The rather poor correlation between the in-situ measurements and the other methods for determining the absorption coefficient does not imply that the methods are unusable. Even the onboard in-situ measurements, which were used as reference, can have uncertainties of up to 40% and offer a poor constraint on the lidar derived absorption profiles. The comparison however indicates that the general vertical structure was captured.

3.3 CARDEX MAE

550 Figure 14 shows the comparison between measured EC mass ($PM_{2.5}$) and particle absorption at 880 nm. There is a clear linear relation between the particle absorption at 880 nm and the EC mass (see Sect. 2.8). The highest particle absorption and EC mass was measured during periods with air masses from IGP in the MBL, while the lowest values for both particle properties were detected with AS air mass influences, as discussed in Sect. 3.1.

A specific MAE value for MCOH during the dry monsoon season can be calculated with the method described in Sect. 2.8 (similar to Corrigan et al., 2006). Without any distinction between different source regions, a MAE for EBC at 880 nm is calculated to be $6.9 \text{ m}^2 \text{ g}^{-1}$. Adjusted to 520 nm the EBC MAE would be $11.6 \text{ m}^2 \text{ g}^{-1}$. The adjustment was performed according to Yang et al. (2009) with the assumption that the absorption Ångström exponent is 1 for BC particles.

560 Bond and Bergstrom (2006) gave a MAE estimate for freshly emitted carbonaceous particles of $7.5 \pm 1.2 \text{ m}^2 \text{ g}^{-1}$ for 550 nm. MAE values for internally mixed carbonaceous aerosol is estimated to be around $12.5 \text{ m}^2 \text{ g}^{-1}$ (Bond et al., 2013). The overall EBC MAE for CARDEX of $11.6 \text{ m}^2 \text{ g}^{-1}$ represents processed carbonaceous aerosol particles and is also close to the general estimate by Bond et al. (2013).

Furthermore, specific MAE values for each air mass can be determined using the relation between the $\sigma_{\text{abs}}(880 \text{ nm})$ and EC mass (see Table 4). Assuming that the slope of the linear relation determines the MAE, air masses from IGP have an MAE(880 nm) of $6.6 \text{ m}^2 \text{ g}^{-1}$ (MAE(520 nm) = $11.2 \text{ m}^2 \text{ g}^{-1}$), which is also similar to the overall MAE of $6.9 \text{ m}^2 \text{ g}^{-1}$. Air masses from SI and AS have a significantly lower MAE for 880 nm with 4.3 and $5.6 \text{ m}^2 \text{ g}^{-1}$, (MAE(520 nm) = $7.3 \text{ m}^2 \text{ g}^{-1}$), MAE(520 nm) = $9.5 \text{ m}^2 \text{ g}^{-1}$, respectively. For the Arabian Sea, the lower MAE could be explained by a larger contribution from bigger particles, such as dust, since the MAE decreases with increasing particle size for $D_p \geq 300 \text{ nm}$ (Bond and Bergstrom, 2006). MAE of dust is in general smaller compared to BC-containing particles as well. Air masses passing over southern India may contain relatively freshly emitted BC particles and these have in general a lower MAE than particles with a longer transport time (Bond et al., 2013). According to Arnott et al. (2005), various multiple scattering correction factors should be used for different internally mixed aerosols. This attempt might additionally change the determination of MAE additionally.

570 On the other hand, fairly high intercept values for all three source-specific relations indicate that it is not only the slope that determines the MAE. With a larger dataset a more accurate relation could likely be achieved and this will be investigated in future studies. The MAE is used to estimate EBC profiles from the absorption profiles as described in Sect. 2 and shown in Sect. 3.2.

4 Summary and conclusion

This study presented aerosol in-situ and lidar-derived measurements, with a focus on aerosol optical properties, from the field campaign CARDEX that took place during the dry monsoon season, February and March 2012, close to the permanent station MCOH on the northern Maldives island Hanimaadhoo.

Air mass cluster analysis confirmed that elevated aerosol layers occur mainly during air mass influence from the Indian subcontinent. The highest aerosol particle number concentrations through the whole column were found for air masses which passed over the highly polluted Indo–Gangetic Plain and which were then transported over the Bay of Bengal to the northern Indian Ocean.

585 Comparison with previous field campaigns over the same region (INDOEX in 1999 and MAC in 2006) were presented. Elevated aerosol layers were consistently found in in-situ particle number concentration measurements both during MAC and CARDEX, but not during INDOEX. Particle absorption was lower in CARDEX compared to INDOEX and MAC while the scattering was higher, i.e. the SSA was higher during CARDEX.

A main aim of the study was to investigate the possibility of using ground-based lidar measurements to determine the vertical distribution of absorbing aerosols. In-situ AUAV-based measurements of absorption profiles were thus compared with lidar-derived absorption profiles, where the latter require input of vertically resolved SSA values. SSA values for different altitude intervals and different air masses were estimated using in-situ observations of absorption and particle scattering calculated using

Mie-theory. The evaluation of the lidar-derived absorption profiles showed a large sensitivity to the given SSA values. Using campaign-averaged, source-specific, SSA values, the overall shape of the lidar-derived absorption profile appeared reasonable, but the correlation with the in-situ measured absorption values was rather poor ($R^2 = 0.15$). Constraining the lidar-derived extinction to AERONET observed AOD improved the correlation with observations ($R^2 = 0.34$) which is likely due to closer agreement in time with the measurement flights. [Results with better statistical significance were found if the absorption profile is determined from simple linear regression with the total particle number. However, the surface based regression may not be valid for the free troposphere.](#)

[Determination of vertical profiles of absorption coefficients remains difficult and involves high uncertainties in general.](#) Longer time series of vertically resolved SSA values may help improve the lidar-derived absorption profiles.

Surface measurements of particle absorption and elemental carbon mass concentration were used to determine a specific mass absorption efficiency (MAE) for the northern Indian Ocean during the dry monsoon season. A mean MAE of $11.6 \text{ m}^2 \text{ g}^{-1}$ for 520 nm was found. This result represents approximately internally mixed BC containing particles according to Bond et al. (2013) who gave an estimate of $12.5 \text{ m}^2 \text{ g}^{-1}$ for processed carbonaceous aerosol. Lower MAE values were found for air masses originating from southern India and the Arabian Sea. MAE is necessary for calculating equivalent black carbon concentrations from absorption measurements.

Acknowledgements. The CARDEX field campaign was sponsored and funded by the National Science foundation and conducted by the Scripps Institution of Oceanography at the University of California at San Diego in collaboration with the Desert Research Institute, Stockholm University, Argonne National Laboratory and the Max Planck Institute at Hamburg. V. Ramanathan is the principal investigator of CARDEX, E. Wilcox is the Co-PI and H. Nguyen was the field director who conducted the campaign with full support by the government of Maldives.

[We thank the AERONET PI Brent Holben for his effort in establishing and maintaining the MCO-Hanimaadhoo site.](#)

C. Bosch, A. Andersson and Ö. Gustafsson also acknowledge financial support from the Swedish funding agencies FORMAS (214-2009-970), STEM (35450-2), and Sida (AKT-2010-038). C. Bosch acknowledges additional financial support from EU Marie Curie Programme (PIEF-GA-2011-198507).

Full details of the CARDEX campaign can be found in: http://www-ramanathan.ucsd.edu/files/CARDEX_prop_Jun_20.pdf. This study is Paper#2 from the CARDEX campaign.

References

references

- Anderson, T. L. and Ogren, J. A.: Determining aerosol radiative properties using the TSI 3568 Integrating Nephelometer, *Aerosol Sci. Tech.*, 29, 57–69, 1998.
- Andreae, M. O. and Ramanathan, V.: Climates dark forcings, *Science*, 340, 280–281, 2013.
- Arnott, W. P., Hamasha, K., Moosmüller, H., Sheridan, P. J., and Ogren, J. A.: Towards aerosol light-absorption measurements with 7-wavelength Aethalometer: evaluation with a photoacoustic instrument and 3-wavelength Nephelometer, *Aerosol Sci. Tech.*, 39, 17–29, 2005.
- Babu, S., Satheesh, S., Moorthy, K., Dutt, C., Nair, V. S., Alappattu, D. P., and Kunhikrishnan, P.: Aircraft measurements of aerosol black carbon from a coastal location in the north-east part of peninsular India during ICARB, *J. Earth Syst. Sci.*, 117, 263–271, 2008.
- Babu, S. S., Sreekanth, V., Moorthy, K. K., Mohan, M., Kirankumar, N., Subrahmanyam, D. B., Gogoi, M. M., Kompalli, S. K., Beegum, N., Chaubey, J. P., Kumar, V. A., and Manchanda, R. K.: Vertical profiles of aerosol black carbon in the atmospheric boundary layer over a tropical coastal station: perturbations during an annular solar eclipse, *Atmos. Res.*, 99, 471–478, 2011.
- Bond, T. C. and Bergstrom, R. W.: Light absorption by carbon particle: an investigative review, *Aerosol Sci. Tech.*, 40, 27–67, 2006.
- [Bond, T. C., Covert, D. S., and Müller, T.: Truncation and Angular-Scattering Corrections for Absorbing Aerosol in the TSI 3563 Nephelometer, *Aerosol Sci. Tech.*, 43, 866–871, 2009.](#)
- Bond, T. C., Doherty, S. J., Fahey, D. W., Forster, P. M., Berntsen, T., DeAngelo, B. J., Flanner, M. G., Ghan, S., Kärcher, B., Koch, D., Kinne, S., Kondo, Y., Quinn, P. K., Sarofim, M. C., Schultz, M. G., Schulz, M., Venkataraman, C., Zhang, H., Zhang, S., Bellouin, N., Guttikunda, S. K., Hopke, P. K., Jacobson, M. Z., Kaiser, J. W., Klimont, Z., Lohmann, U., Schwarz, J. P., Shindell, D., Storelvmo, T., Warren, S. G., and Zender, C. S.: Bounding the role of black carbon in the climate system: a scientific assessment, *J. Geophys. Res.-Atmos.*, 118, 5380–5552, 2013.
- Bosch, C., Andersson, A., Kirillova, E., Budhavant, K., Tiwari, S., Praveen, P. S., Russel, L. M., Beres, N. D., Ramanathan, V., and Gustafsson, Ö.: Source-diagnostic dual-isotope composition and optical properties water-soluble organic carbon and elemental carbon in South Asian outflow intercepted over the Indian Ocean, *J. Geophys. Res.*, 119, 11743–11759, 2014.
- Boucher, O., Randall, D., Artaxo, P., Bretherton, C., Feingold, G., Forster, P., Kerminen, V.-M., Kondo, Y., Liao, H., Lohmann, U., Rasch, P., Satheesh, S. K., Sherwood, S., Stevens, B., and Zhang, X. Y.: Clouds and aerosols, in: *Climate Change 2013: The Physical Science*

- 645 Basis. Contribution of Working Group I to the Fifth Assessment Report of the Intergovernmental Panel on Climate Change, Cambridge University Press, Cambridge, UK and New York, NY, USA, 614–623, 2013.
- Chakrabarty, R. K., Nicholas, D. B., Moosmüller, H., China, S., Mazzoleni, C., Dubey, M. K., Liu, L., and Mishchenko, I.: Soot superaggregates from flaming wildfires and their direct radiative forcing, *Nature, scientific report*, 4, 5508, doi:10.1038/srep05508, 2014.
- Clarke, A. D., Howell, S. G., Quinn, P. K., Bates, T. S., Ogren, J., Andrews, E. A. J., Massling, A., Mayol-Bracero, O., Maring, H., Savoie, D.,
650 and Cass, G. R.: INDOEX aerosol: a comparison and summary of chemical, microphysical, and optical properties observed from land, ship, and aircraft, *J. Geophys. Res.*, 107, D198033, doi:10.1029/2001JD000572, 2002.
- [Collins, D. R. and Johnsson, H. H. and Seinfeld, J. H. and Flagan, R. C. and Gasso, S. and Hegg, D. A. and Russell, P. B. and Schmid, B. and Livingston, J. M. and Öström, E. and Noone, K. J. and Russel, L. M. and Putaud, J. P.: In situ aerosol-size distributions and clear-column radiative closure during ACE-2, *Tellus B*, 52\(2\), 498–525, 2000.](#)
- 655 Corrigan, C. E., Ramanathan, V., and Schauer, J. J.: Impact of monsoon transitions on the physical and optical properties of aerosols, *J. Geophys. Res.*, 111, D18208, doi:10.1029/2005JD006370, 2006.
- Corrigan, C. E., Roberts, G. C., Ramana, M. V., Kim, D., and Ramanathan, V.: Capturing vertical profiles of aerosols and black carbon over the Indian Ocean using autonomous unmanned aerial vehicles, *Atmos. Chem. Phys.*, 8, 737–747, doi:http://dx.doi.org/10.5194/acp-8-737-2008, 2008.
- 660 de Reus, M., Krejci, R., Williams, J., Fischer, H., Scheele, R., and Ström, J.: Vertical and horizontal distributions of the aerosol number concentration and size distribution over the northern Indian Ocean, *J. Geophys. Res.*, 106, 28629–28641, 2001.
- Dey, S. and Di Girolamo, L.: A climatology of aerosol optical and microphysical properties over the Indian subcontinent from 9 years (2000–2008) of Multiangle Imaging Spectroradiometer (MISR) data, *J. Geophys. Res.*, 115, D15204, doi:10.1029/2009JD013395, 2010.
- Draxler, R. R.: HYSPLIT4 User's Guide, Tech. Rep., NOAA Air Resources Laboratory, Silver Spring, MD, 1999.
- 665 [Eldering, A. and Ogren, J. A. and Chowdhury, Z. and Hughes, L. S. and Cass, G. R.: Aerosol optical properties during INDOEX based on measured aerosol particle size and composition, *J. Geophys. Res.*, 107, D22,8001, doi:10.1029/2001JD001672, 2002.](#)
- Engström, J. E. and Leck, C.: Reducing uncertainties associated with filter-based optical measurements of light absorbing carbon particles with chemical information, *Atmos. Meas. Tech.*, 4, 1553–1566, doi:http://dx.doi.org/10.5194/amt-4-1553-2011, 2011.
- 670 [Fernald, F. G.: Analysis of atmospheric lidar observations: Some comments, *Appl. Opt.*, 23, 652–653, 1984.](#)
- Fitzgerald, J., Hoppel, W., and Vietti, M.: The size and scattering coefficient of urban aerosol ~~ppartiele~~-particle at Washington, DC as a function of relative humidity, *J. Atmos. Sci.*, 39, 1838–1852, 1982.
- Franke, K., Ansmann, A., Müller, D., Althausen, D., Venkataraman, C., Reddy, M. S., Wagner, F., and Scheele, R.: Optical properties of the Indo-Asian haze layer over the tropical Indian Ocean, *J. Geophys. Res.*, 108, D24059, doi:10.1092/2002JD002473, 2003.
- 675 Granier, C., Bessagnet, B., Bond, T., D'Angiola, A., Denier van der Gon, H., Frost, G. J., Heil, A., Kaiser, J. W., Kinne, S., Klimont, Z., Kloster, S., Lamarque, J.-F., Liousse, C., Masui, T., Meleux, F., Mieville, A., Ohara, T., Raut, J.-C., Riahi, K., Schultz, M. G., Smith, S. J., Thompson, A., van Aardenne, J., van der Werf, G. R., and van Vuuren, D. P.: Evolution of anthropogenic and biomass burning emissions of air pollutants at global and regional scales during the 1980–2010 period, *Climatic Change*, 109, 163–190, 2011.
- Gustafsson, Ö., Kruså, M., Zencak, Z., Sheesley, R. J., Granat, L., Engström, E., Praveen, P. S., Rao, P. S. P., Leck, C., and Rodhe, H.: Brown cloud over south Asia: biomass or fossil fuel combustion, *Science*, 323, 495–498, 2009.
- 680 Heintzenberg, J., Covert, D. C., and Van Dingenen, R.: Size distribution and chemical composition of marine aerosols: a compilation and review, *Tellus B*, 52, 1104–1122, 2000.
- Holben, B. N., Eck, T. F., Slutsker, I., Tanre, D., P. B. J., Setzer, A., Vermote, E., Reagan, J. A., Kaufman, Y. J., Nakajima, T., Lavenu, F., Jankowiak, I., and Smirnov, A.: Aeronet – a federated instrument network and data archive for aerosol characterization, *Remote Sens. Environ.*, 66, 1–16, 1998.
- 685 Holland, G. H., Webster, P. J., Curry, J. A., Tyrell, G., Gauntlett, D., Brett, G., Becker, J., Hoag, R., and Vaglianti, W.: The aerosonde robotic aircrafts: a new paradigm for environmental observations, *B. Am. Meteorol. Soc.*, 82, 889–901, 2001.
- Johnson, B. T., Osborne, S. R., Haywood, J. M., and Harrison, M. A. J.: Aircraft measurements of biomass burning aerosol over West Africa during DABEX, *J. Geophys. Res.*, 113, D00C06, doi:10.1029/2007JD009451, 2008.
- 690 King, M. D., Menzel, W. P., Kaufman, Y. J., Tanre, D., Gao, B.-C., Platnick, S., Ackerman, S. A., Remer, L. A., Pincus, R., and Hubanks, P. A.: Cloud and aerosol properties, precipitable water, and profiles of temperature and water vapor from MODIS, *IEEE T. Geosci. Remote*, 41, 442–458, 2003.
- [Klett, J. D.: Stable analytical inversion solution for processing lidar returns, *Appl. Opt.*, 20, 211–220, 1981](#)
- Lawrence, M. G. and Lelieveld, J.: Atmospheric pollutant outflow from southern Asia: a review, *Atmos. Chem. Phys.*, 10, 11017–11096, doi:http://dx.doi.org/10.5194/acp-10-11017-2010, 2010.
- 695 Lelieveld, J., Crutzen, P. J., Ramanathan, V., Andreae, M. O., Brenninkmeijer, C. A. M., Campos, T., Cass, G. R., Dickerson, R., Fischer, H., de Gouw, J. A., Hansel, A., Jefferson, M. G., Kley, D., de Laat, A. T. J., Lal, S., Lawrence, M. G., Lobert, J. M., Mayol Bracero, O. L., Mitra, A. P., Novakov, T., Oltmans, S. J., Prather, K. A., Reiner, T., Rodhe, H., Scheeren, H. A., Sikka, D., and Williams, J.: The Indian Ocean Experiment: widespread air pollution from south and southeast Asia, *Science*, 291, 1031–1036, 2001.
- 700 [Maßling, A. and Wiedensohler, A. and Busch, B. and Neusüß, C. and Quinn, P. and Bates, T. and Covert, D.: Hygroscopic properties of different aerosol types over the Atlantic and Indian Oceans, *Atmos. Chem. and Phys.*, 3, 1377–1397, doi:10.5194/acp-3-1377-2003, 2003.](#)
- Moorthy, K. K., Sunilkumar, S. V., Pillai, P. S., Parameswaran, K., Nair, P. R., Ahmed, Y. N., Ramgopal, K., Narasimhulu, K., Reddy, R. R., Vinoj, V., Satheesh, S. K., Niranjana, K., Rao, B. M., Brahmanandam, P. S., Saha, A., Badarinath, K. V. S., Kiran Chand, T. R., and

- Latha, K. M.: Wintertime spatial characteristics of boundary layer aerosols over peninsular India, *J. Geophys. Res.-Atmos.*, 110, D08207, doi:10.1029/2004JD005520, 2005.
- Moorthy, K. K., Satheesh, S. K., Babu, S. S., and Dutt, C. B. S.: Integrated Campaign for Aerosols, Gases and Radiation Budget (ICARB): an overview, *J. Earth Syst. Sci.*, 117, 243–262, 2008.
- Moorthy, K. K., Babu, S. S., Manoj, M. R., and Satheesh, S. K.: Buildup of aerosols over the Indian region, *Geophys. Res. Lett.*, 40, 1011–1014, 2013.
- Müller, D. and Franke, K. and Ansmann, A. and Althausen, D.: Indo-Asian pollution during INDOEX: Microphysical particle properties and single-scattering albedo inferred from multiwavelength lidar observations, *J. Geophys. Res.*, 108, doi:10.1029/2003JD003538, 2003.
- Liu, Y. and Daum, P. H.: The effect of refractive index on size distributions and light scattering coefficients derived from optical particle counters, *J. Aerosol. Sci.*, 31(8), 945–957, 2000.
- Oshima, N., Kondo, Y., Moteki, N., Takegawa, N., Koike, M., Kita, K., Matsui, H., Kajino, M., Nakamura, H., Jung, J. S., and Kim, Y. J.: Wet removal of black carbon in Asian outflow: Aerosol Radiative Forcing in East Asia (A-FORCE) aircraft campaign, *J. Geophys. Res.-Atmos.*, 117, doi:10.1029/2011JD016552, 2012.
- Petzold, A., Ogren, J. A., Fiebig, M., Laj, P., Li, S.-M., Baltensperger, U., Holzer-Popp, T., Kinne, S., Pappalardo, G., Sugimoto, N., Wehrli, C., Wiedensohler, A., and Zhang, X.-Y.: Recommendations for reporting "black carbon" measurements, *Atmos. Chem. Phys.*, 13, 8365–8379, doi:http://dx.doi.org/10.5194/acp-13-8365-2013, 2013.
- Pistone, K., ~~Wileox, E.~~ Praveen, P. S., Thomas, R. M., ~~Ramanathan, V., Wilcox, E., and Bender, F. A.-M., Feng, Y., and Ramanathan, V.:~~ The role of atmospheric properties in aerosol indirect effects in a trade cumulus regime, ~~in preparation.~~ *Atmos. Chem. Phys. Discuss.*, 15, 29347–29402, doi:10.5194/acpd-15-29347-2015, 2015.
- Ramana, M. V. and Ramanathan, V.: Abrupt transition from natural to anthropogenic aerosol radiative forcing: observations at the ABC-Maldives Climate Observatory, *J. Geophys. Res.*, 111, D20207, doi:10.1029/2006JD007063, 2006.
- Ramanathan, V., Crutzen, P. J., Lelieveld, J., Mitra, A. P., Althausen, D., Anderson, J., Andreae, M. O., Cantrell, W., Cass, G. R., Chung, C. E., Clarke, A. D., Coakley, J. A., Collins, W. D., Conant, W. C., Dulac, F., Heintzenberg, J., Heymsfield, A. J., Holben, B. N., Howell, S. G., Hudson, J., Jayaraman, A., Kiehl, J. T., Krishnamurti, T. N., Lubin, D., McFarquhar, G., Novakov, T., Ogren, J. A., Podgorny, I. A., Prather, K. A., Priestley, K., Prospero, J. M., Quinn, P. K., Rajeev, K., Rasch, P., Rupert, S., Sadourny, R., Satheesh, S. K., Shaw, G. E., Sheridan, P., and Valero, F. P. J.: Indian Ocean Experiment: an integrated analysis of the climate forcing and effects of the great Indo-Asian haze, *J. Geophys. Res.*, 106, 28371–28398, 2001.
- Ramanathan, V., Li, M. V., Ramana, M. V., Praveen, P. S., Kim, D., Corrigan, C. E., and Nguyen, H.: Atmospheric Brown Clouds: Hemispherical and regional variations in long range transport, absorption, and radiative forcing, *J. Geophys. Res.*, 112, D22S21, doi:10.1029/2006JD008124, 2007.
- Ramanathan, V., Ramana, M. V., Roberts, G. C., Kim, D., Corrigan, C. E., Chung, C. E., and Winker, D.: Warming trends in Asia amplified by brown cloud solar absorption, *Nature*, 448, 575–578, 2007.
- Ramanathan, V., Thomas, R. M., Praveen, P. S., Nguyen, H. V., Wilcox, E., Bender, F. A.-M., Pistone, K.: Cloud Aerosol Radiative Forcing Dynamics EXperiment (CARDEX) http://www-ramanathan.ucsd.edu/files/CARDEX_prop_Jun_20.pdf, 2011.
- Roberts, G. C., Ramana, M. V., Corrigan, C., Kim, D., and Ramanathan, V.: Simultaneous observations of aerosol–cloud–albedo interactions with three stacked unmanned aerial vehicles, *PNAS*, 105(21), 7370–7375, 2008.
- Samset, B. H., Myhre, G., Herber, A., Kondo, Y., Li, S.-M., Moteki, N., Koike, M., Oshima, N., Schwarz, J. P., Balkanski, Y., Bauer, S. E., Bellouin, N., Bernsten, T. K., Bian, H., Chin, M., Diehl, T., Easter, R. C., Ghan, S. J., Iversen, T., Kirkevåg, A., Lamarque, J.-F., Lin, G., Liu, X., Penner, J. E., Schulz, M., Seland, Ø., Skeie, R. B., Stier, P., Takemura, T., Tsigaridis, K., and Zhang, K.: Modelled black carbon radiative forcing and atmospheric lifetime in AeroCom Phase II constrained by aircraft observations, *Atmos. Chem. Phys.*, 14, 12465–12477, doi:http://dx.doi.org/10.5194/acp-14-12465-2014, 2014.
- Satheesh, S. K., Moorthy, K. K., Babu, S. S., Vinoj, V., and Dutt, C. B. S.: Climate implications of large warming by elevated aerosol over India, *Geophys. Res. Lett.*, 35, L19809, doi:10.1029/2008GL034944, 2008.
- Sheridan, P. J., Jefferson, A., and Ogren, J. A.: Spatial variability of submicrometer aerosol radiative properties over the Indian Ocean during INDOEX, *J. Geophys. Res.*, 107, INX2 10-1–INX2 10-17, doi:10.1029/2000JD000166, 2002.
- Sheridan, P. J., Andrews, E., Ogren, J. A., Tackett, J. L., and Winker, D. M.: Vertical profiles of aerosol optical properties over central Illinois and comparison with surface and satellite measurements, *Atmos. Chem. Phys.*, 12, 11695–11721, doi:http://dx.doi.org/10.5194/acp-12-11695-2012, 2012.
- Spinhirne, J. D.: Micro pulse lidar, *IEEE T. Geosci. Remote*, 31, 48–55, 1993.
- Spinhirne, J. D., Rall, J., and Scott, V. S.: Compact eye-safe lidar systems, *The Review of Laser Engineering*, 23, 26–32, 1995.
- Thomas, R. M., Lehman, K., Nguyen, Jackson, D.L., Wolfe, D., and Ramanathan, V.: Measurement of turbulent water vapor fluxes using a lightweight unmanned aerial vehicle system, *Atmos. Meas. Tech.*, 4, 5529–5568, 2011.
- Titos, G., Jefferson, A., Sheridan, P. J., Andrews, E., Lyamani, H., Alados-Arboledas, L., and Ogren, J. A.: Aerosol light-scattering enhancement due to water uptake during the TCAP campaign, *Atmos. Chem. Phys.*, 14, 7031–7043, doi:http://dx.doi.org/10.5194/acp-14-7031-2014, 2014.
- Verver, G. H. L., Sikka, D., Lobert, J. M., Stossmeister, G., and Zachariasse, M.: Overview of the meteorological conditions and atmospheric transport processes during INDOEX 1999, *J. Geophys. Res.*, 106, 28399–28413, 2001.
- Welton, E. J., Voss, K. J., Gordon, H. R., Maring, H., Smirnov, A., Holben, B., Schmid, B., and Livingston, J. M., Russell, P. B., Durkee, P. A., Formenti, P., and Andreae, M. O.: Ground-based lidar measurements of aerosols during ACE-2: instrument description, results, and

- comparisons with other ground-based and airborne measurements, *Tellus B*, 52, 636–651, 2000.
- 765 Welton, E. J., Voss, K. J., Quinn, P. K., Flatau, P. J., Markowicz, K., Campbell, J. R., Spinhirne, J. D., Gordon, H. R., and Johnson, J. E.: Measurements of aerosol vertical profiles and optical properties during INDOEX 1999 using micropulse lidars, *J. Geophys. Res.-Atmos.*, 107, INX2-1 – INX2-20 doi10.1029/2000JD000038, 2002.
- Wofsy, S.: HIAPER Pole-to-Pole Observations (HIPPO): fine-grained, global-scale measurements of climatically important atmospheric gases and aerosols, *Philos. T. R. Soc. A*, 369, 2073–2086, 2011.
- 770 Yang, M., Howell, S. G., Zhuang, J., and Huebert, B. J.: Attribution of aerosol light absorption to black carbon, brown carbon, and dust in China – interpretations of atmospheric measurements during EAST-AIRE, *Atmos. Chem. Phys.*, 9, 2035–2050, doi:http://dx.doi.org/10.5194/acp-9-2035-200910.5194/acp-9-2035-2009, 2009.
- Zieger, P., Fierz-Schmidhauser, R., Weingartner, E., and Baltensperger, U.: Effects of relative humidity on aerosol light scattering: results from different European sites, *Atmos. Chem. Phys.*, 13, 10609–10631, doi:http://dx.doi.org/10.5194/acp-13-10609-201310.5194/acp-13-10609-2013, 2013.

Table 1. Instruments used during CARDEX at MCOH and onboard the AUAV. table

Instrument	Property	Measurement location
SigmaSpace Mini Pulse Lidar (MPL)	Vertical atmospheric backscatter coefficient at $\lambda = 532$ nm	MCOH
TSI Condensation particle counter (CPC, model 3022)	Total aerosol particle number concentration $D_p = 10$ nm – 10 μ m	MCOH AUAV
TSI Nephelometer (model 3563)	Particle scattering coefficient $\lambda = 450, 550, 700$ nm	MCOH
Magee Aethalometer (model AE-31)	Particle absorption coefficient $\lambda = 370, 430, 470, 520, 590, 700, 880$ nm	MCOH AUAV
Met One Optical particle counter (OPC, model 9722)	Aerosol particle number size distribution $D_p = 0.3 - 3.5$ μ m	AUAV
AERONET sun photometer	(Absorption) Aerosol optical depth (AOD, AAOD), SSA	MCOH
Thermal-optical transmission analyzer	PM _{2.5} EC, OC concentration	MCOH

Table 2. Mean particle properties during CARDEX at the surface and in some cases above the MBL at dry conditions (RH < 40 %) compared to MAC 2006 and INDOEX 1999. Particle properties for CARDEX are given for the different source regions, Indo-Gangetic Plain (IGP), southern India (SI) and Arabian Sea (AS), for BL and FT.

Parameter Wavelength	CARDEX 2012	MAC 2006	INDOEX 1999 (Sheridan et al., 2002)
absorption coeff. [$M m^{-1}$] 550 nm	BL IGP 11.2 ± 2.2		
	BL SI 8.4 ± 4.5	BL 13.8 ± 5.4	BL 14 ± 7
	BL AS 5.6 ± 2.8		
	FT IGP 12.7 ± 6.0		1–3 km 16 ± 10
	FT SI 6.6 ± 5.8		
scattering coeff. [$M m^{-1}$] 550 nm	BL IGP 112 ± 33		
	BL SI 80 ± 29	BL 88.9 ± 41.2	BL 63 ± 29
extinction coeff. [$M m^{-1}$] 550 nm	BL IGP 123 ± 34		
	BL SI 88 ± 33	BL 138 ± 37	BL 83 ± 48
SSA 550 nm	BL AS 87 ± 42		
	BL IGP 0.91 ± 0.02		
	BL SI 0.91 ± 0.02	BL 0.90 ± 0.03	BL 0.81 ± 0.04
	BL AS 0.94 ± 0.02		

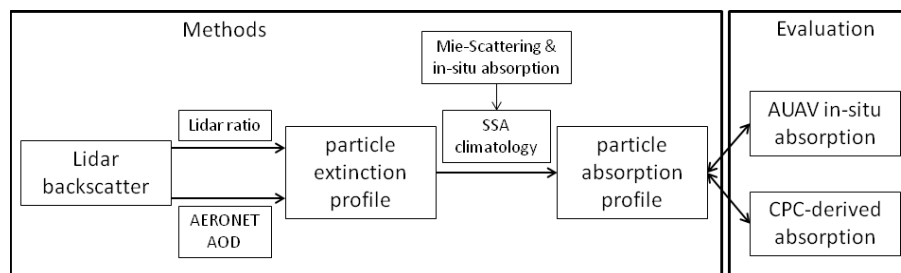
**Fig. 6.** Flow chart describing the derivation of particle absorption profiles from lidar measurements, and their evaluation against in-situ observations.

Table 3. Coefficients used to describe the relationship between particle absorption (σ_{abs}) and particle number concentration N for different source regions. Also shown is the mean SSA for various height levels used to calculate the lidar-derived absorption coefficients [as well as the AERONET SSA at ambient relative humidity](#).

Parameter	Indo–Gangetic Plain	Southern India	Arabian Sea
σ_{abs} (532 nm) [Mm^{-1}]	$5.02 \times 10^{-3} \cdot N$ $R^2 = 0.35$	$5.33 \times 10^{-3} \cdot N$ $R^2 = 0.48$	$4.24 \times 10^{-3} \cdot N$ $R^2 = 0.63$
SSA surface (532 nm)	0.94 ± 0.014 (at RH = 80 %)	0.94 ± 0.016 (at RH = 80 %)	0.96 ± 0.012 (at RH = 80 %)
SSA 700–1500 m (532 nm)	0.88 ± 0.026 (at RH = 75 %)	0.89 ± 0.11 (at RH = 65 %)	x
SSA 1500–2500 m (532 nm)	0.82 ± 0.11 (at RH < 40 %)	0.85 ± 0.11 (at RH = 65 %)	x
SSA 2500–3000 m (532 nm)	0.82 ± 0.14 (at RH < 40 %)	0.94 ± 0.04 (at RH = 65 %)	x
SSA AERONET (439 nm)	0.91 ± 0.02	0.92 ± 0.02	0.92 ± 0.02
SSA AERONET (675 nm)	0.89 ± 0.05	0.91 ± 0.03	0.93 ± 0.01

Table 4. Relation between particle absorption at 880 nm and the $\text{PM}_{2.5}$ EC mass concentration for different source regions.

Source region	$\sigma_{\text{abs}}(880 \text{ nm}) = a m_{\text{EC}} + b$	R^2
All together	$\sigma_{\text{abs}}(880 \text{ nm}) = 6.9 m_{\text{EC}} - 0.09$	0.81
Indo–Gangetic Plain	$\sigma_{\text{abs}}(880 \text{ nm}) = 6.6 m_{\text{EC}} + 0.67$	0.81
Southern India	$\sigma_{\text{abs}}(880 \text{ nm}) = 4.3 m_{\text{EC}} + 0.8$	0.83
Arabian Sea	$\sigma_{\text{abs}}(880 \text{ nm}) = 5.6 m_{\text{EC}} + 0.4$	0.79

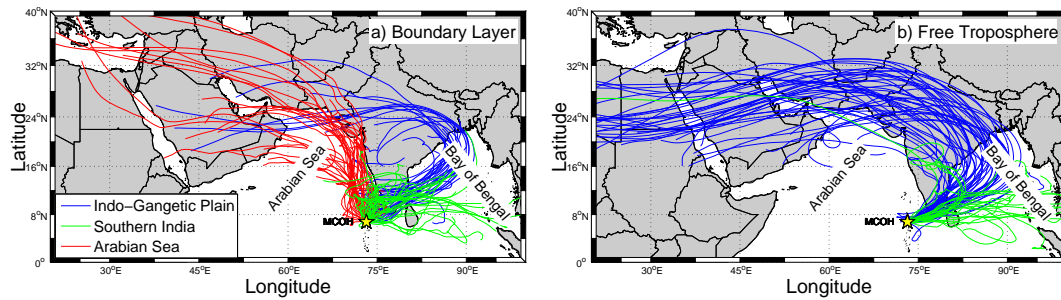


Fig. 7. 7-day-backward trajectories calculated by the HYSPLIT model arriving in the MBL at 400 m (a) and in the FT 2000 m (b) above MCOH at 00:00 and 12:00 UTC each day during CARDEX in February and March 2012. Colours represent the air mass source regions Indo–Gangetic Plain (blue), southern India (green) and the Arabian Sea (red).

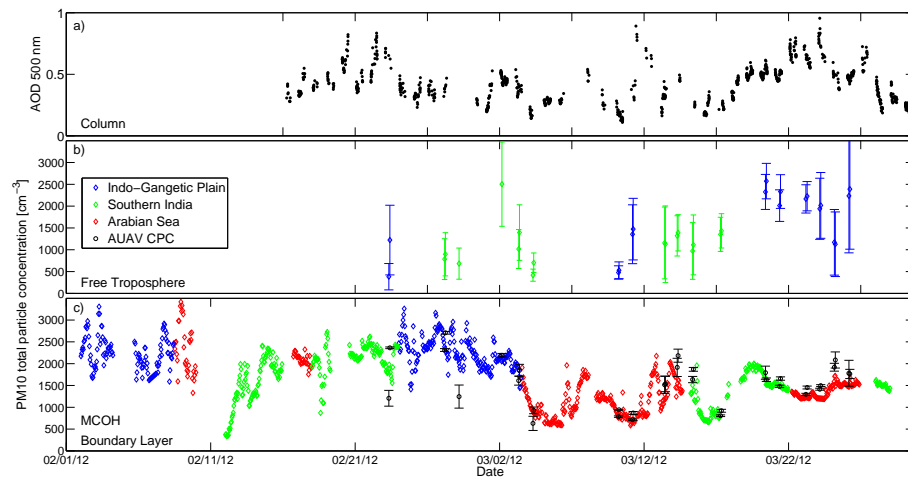


Fig. 8. (a) Time series of AOD at 500 nm measured by AERONET sun photometer. (b) Time series of the mean total particle concentration with SD in the FT (1000–3000 m) measured by CPC onboard AUAV. (c) Time series of PM₁₀ total particle concentration measured by CPC at MCOH (colored diamonds) and mean total particle concentration with SD in the MBL (0–500 m) (black circles) measured by the onboard AUAV CPC. The color coding corresponds to the trajectory cluster analysis shown in Fig. 1 (3 clusters in MBL and 2 clusters in FT).

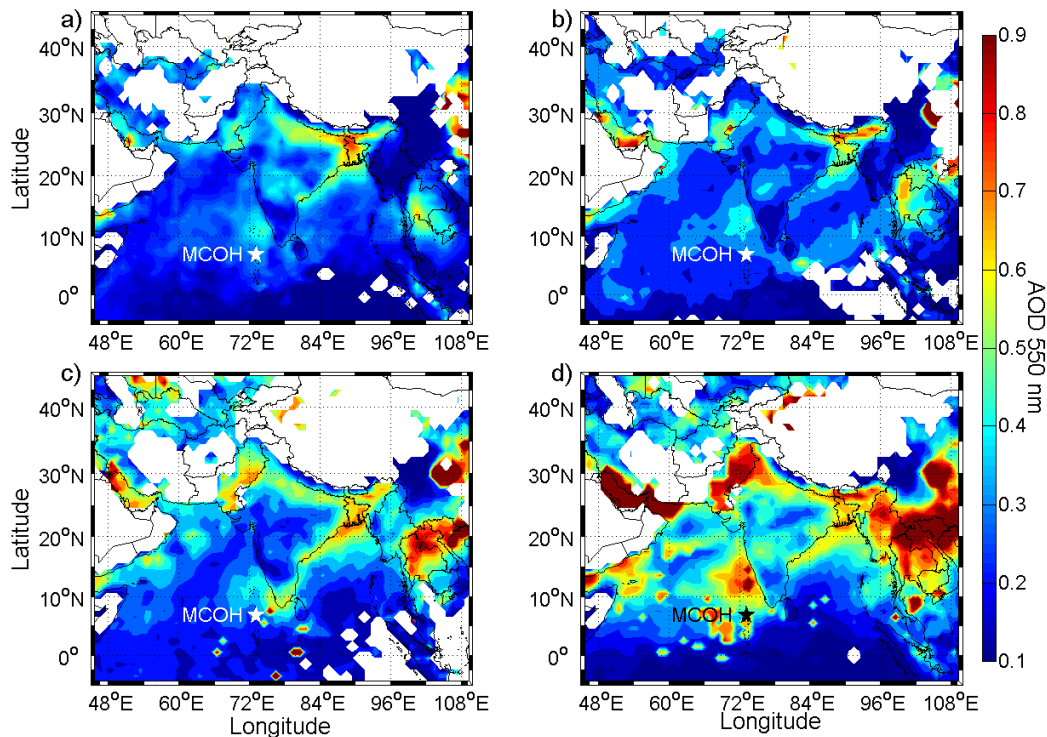


Fig. 9. Mean AOD at 550 nm derived from measurements by the MODIS instrument onboard the Terra satellite. (a) 1 till 14 February 2012, (b) 15 till 29 February 2012, (c) 1 till 15 March 2012, (d) 16 till 31 March 2012.

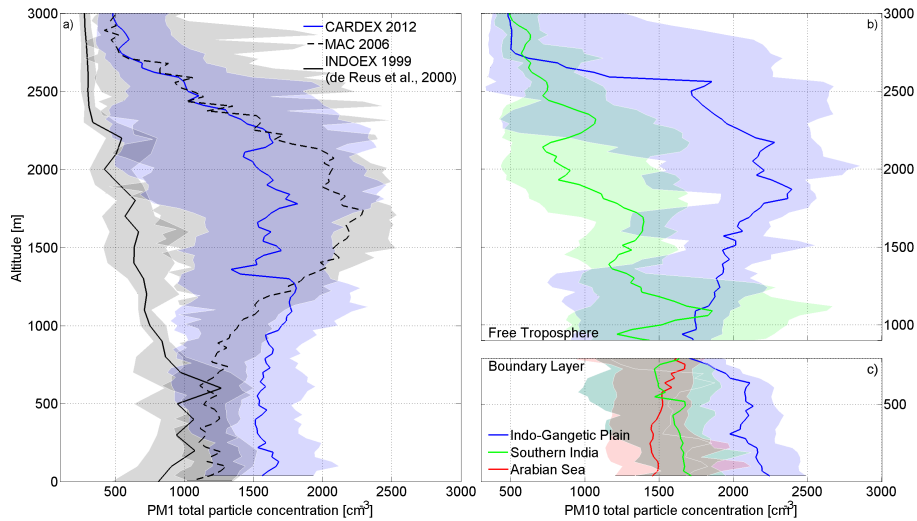


Fig. 10. (a) Vertical profile of the median PM_{10} particle number concentration during CARDEX (blue), MAC (black dashed) and INDOEX (black solid) with 25 and 75 % percentiles, measured by a CPC onboard the AUAV. (b) and (c) Median PM_{10} particle number concentration during CARDEX with 25 and 75 % percentiles in the FT and MBL, respectively for air masses originating from the Indo-Gangetic Plain, southern India and Arabian sea (blue, green, red).

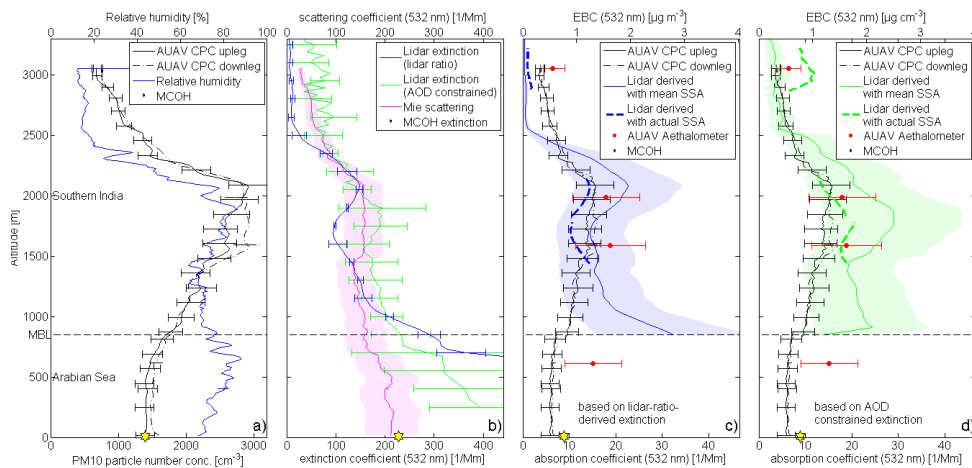


Fig. 11. 24 March 2012. (a) Profile of PM_{10} particle number concentration measured by AUAV CPC for upleg (black solid) and downleg (black dashed) flights and vertical relative humidity profile (blue). (b) Profile of particle extinction measured with the miniMPL (blue), scattering calculated with Mie-Theory (magenta). (c) Profile of particle absorption and EBC measured by an onboard aethalometer (red dots), estimated from lidar measurements (blue) with mean SSA and 50 % uncertainty (blue shading), estimated from lidar measurements with actual SSA (blue dashed) and AUAV CPC approach (black). (d) Same as (c) but with lidar extinction constrained by AERONET AOD (green and green dashed).

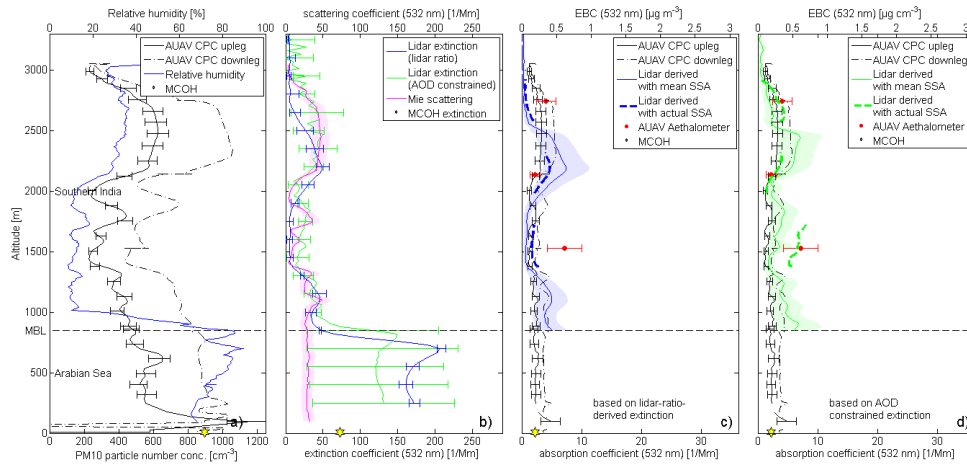


Fig. 12. 4 March 2012. **(a)** Profile of PM_{10} particle number concentration measured by AUAV CPC for upleg (black solid) and downleg (black dashed) flights and relative humidity profile (blue). **(b)** Profile of particle extinction measured with the miniMPL (blue), scattering calculated with Mie-Theory (magenta). **(c)** Profile of particle absorption and EBC measured by an onboard aethalometer (red dots), estimated from lidar measurements (blue) with mean SSA and 50% uncertainty (blue shading), estimated from lidar measurements with actual SSA (blue dashed) and AUAV CPC approach (black). **(d)** Same as **(c)** but with lidar extinction constrained by AERONET AOD (green and green dashed).

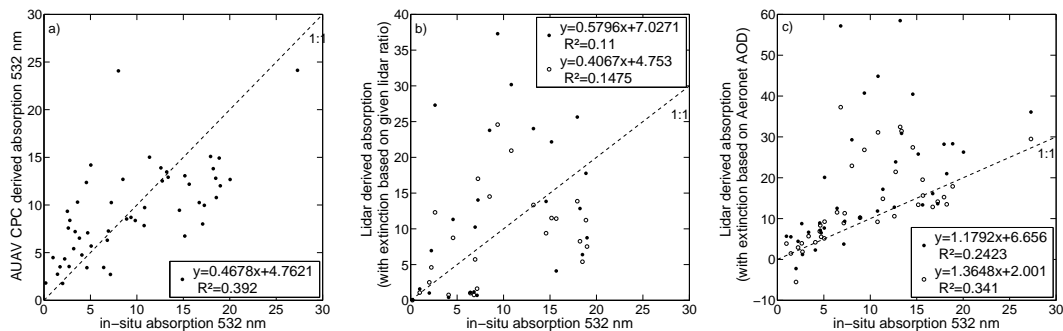


Fig. 13. Scatter plot of **(a)** AUAV CPC derived absorption and in-situ absorption, **(b)** Lidar-derived absorption with extinction based on a given lidar ratio depending on air mass source region and source-specific SSA (closed circles) or actual SSA (open circles) against the in-situ absorption and **(c)** Lidar-derived absorption with extinction constrained by the AERONET AOD and source-specific SSA (closed circles) or actual SSA (open circles) against the in-situ absorption. Particle absorption is given for 532 nm.

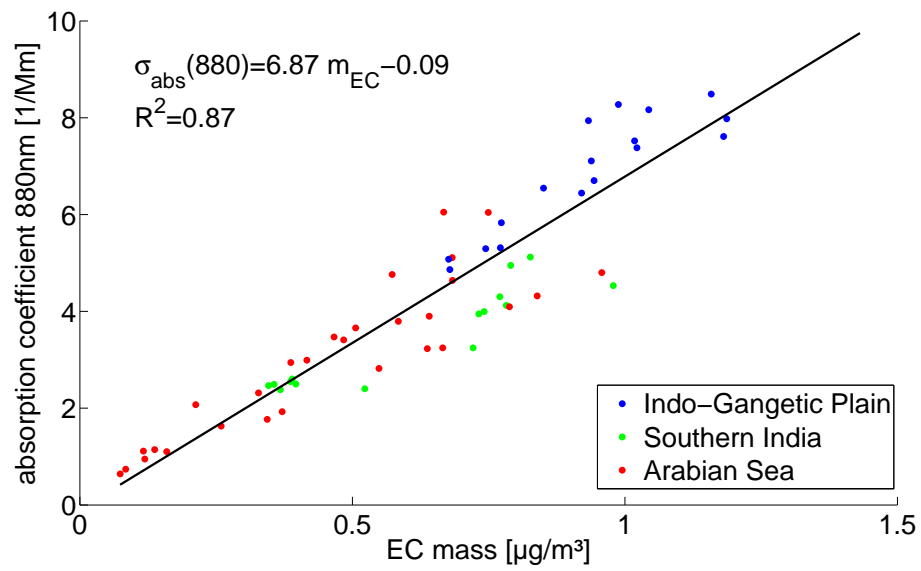


Fig. 14. Particle absorption coefficient for 880 nm against PM_{2.5} EC mass concentration, grouped by source regions according to Fig. 7.