

# Response to the Comments of the Editor

We are grateful to the editor for his useful comments that helped us to improve our paper. In this response, each comment is numbered like C1 etc. (Comment 1) and the corresponding answer is like A1 etc. (Answer 1), except the first two comments.

5 Lines indicated are usually for those in the revised version. For convenience, the original comments from the editor are shown by blue color, responses by black color, and text in our revised and previous papers by red color.

Comments to the Author:

I do feel that some of the previous criticism of the referees remains valid and I request  
10 that you consider making changes in response to the comments below prior to submitting a final version. I am not demanding these changes – it is up to you whether you make them or not. But my view is that your paper will have most impact if it is as clear as possible, both in detail and in emphasising what is new about the work.

General comment: To me the natural major question motivated by your study is – is  
15 there strong overall relationship between times of high Be7 concentration and evidence from trajectory calculations of transport from the tropopause region. (That might be a useful quality control on trajectory calculations.) I still find it quite difficult to decide whether you have answered that question and if you have, what the answer is. Any extra summary sentence you can provide to make that clearer – if only to confirm that  
20 you are not intending to address that question would be helpful.

A. There is one premise for considering their relationship: Even when  $^7\text{Be}$  concentrations are high on some day, trajectories of all the 5 times (00, 06, 12, 18, 24 UTC) on that day do not necessarily reach high altitudes. As stated as “At certain times on these days, it is highly possible that parcels originating from within or near the stratosphere  
25 arrive in Fukuoka,” (1.206–207; 1.209–210 in the previous version), trajectories of at least one time can reach high altitudes. This is our basic idea.

Under this premise, we have thought we had already shown that, when  $^7\text{Be}$  concentrations are high at Fukuoka, backward trajectories reach high altitudes. The corresponding part is “The maxima of the highest reached altitude,  $\hat{z}_1$ , for these 47 cases are  
30 all more than 6000 m.” (1.275–276; 1.276–277 in the previous version). However, when we read this part afresh, we felt that it is too weak, as you could not find the answer for your question. Then, we added the following sentence after the above sentence:

“Thus, it is evidenced that the high concentraion of  $^7\text{Be}$  is originated from the upper troposphere/lower stratosphere.” (l.276–278).

Title: One referee requests strongly that you include Be7 in the title – because that is an important aspect of your study that distinguishes it from previous studies. I don’t  
5 insist on a change – but have you considered:

‘Fast descent from the stratosphere to the surface at Fukuoka studied using Be7 measurements and trajectory calculations.

A. The title was changed to “Fast descent routes from within or near the stratosphere to the surface at Fukuoka, Japan, studied using  $^7\text{Be}$  measurements and trajectory  
10 calculations”, which slightly differs from your suggestion. This is because “routes” is an important keyword in this study, all the trajectories do not necessarily reach the stratosphere in a strict sense, and Fukuoka is not a worldwide popular city.

C1. l15: ‘Because parcels descend, pushing low isentropic surfaces, their potential temperature decreases upon mixing with parcels having low potential temperature in the  
15 lower layers.’ – I found it very difficult to understand the meaning of or the logic of this sentence. The idea of ‘descending parcels pushing isentropic surfaces’ does not really make any sense. I recommend that you omit the second two sentences of the paragraph and retain only the first, perhaps adding ‘e.g. through mixing’ – i.e. ‘potential temperature decreases along trajectories, e.g., through mixing’.

20 A1. We rewrote this paragraph by using the second option, as follows: In some cases, parcels descend within mid-latitudes. In such routes, because the potential temperature is much higher at high altitudes than at low altitudes, descent with conservation of the potential temperature is impossible, and the potential temperature decreases along the trajectories through mixing. (l.11–14), although “e.g.,” was removed.

25 C2. l23: Again I found it difficult to identify the precise meaning of this sentence, particularly ‘cannot descend in the stratosphere when moving from high to mid-latitudes’ – are you saying that there are no isentropic surfaces that intersect the surface at mid latitudes that are in the stratosphere at high latitudes? Again I think that saying less is probably better. Perhaps the whole final sentence could be omitted.

30 A2. The whole final sentence was omitted.

C3. l57: ‘Because the deepest area of the troposphere is above the Earth’s surface ...’ – this is very confusing. Surely all the the troposphere is above the Earth’s surface. A

change is needed.

A3. We changed this part to “Because the deepest area of the troposphere is just above the Earth’s surface” (1.51).

C4. 190-99: You are making the point here that following trajectories to the surface is difficult – notwithstanding that several previous papers, e.g. Wernli and Bourqui (2002) have studied aspects of ‘deep exchange’ and I think that important point is the difference between a chosen surface such as 700hPa and the Earth’s surface – i.e. many calculated trajectories starting in the upper troposphere/lower stratosphere reach 700hPa but very few reach the Earth’s surface itself. It might be helpful to say that explicit. Otherwise readers may remain confused about what the difficulty actually is.

A4. This sentence was corrected to “More importantly, many calculated trajectories starting in the upper troposphere/lower stratosphere reach 700 hPa but very few reach the Earth’s surface itself, that is, most trajectories cannot reach the surface.” (1.87–89).

C5. 1118: ‘the ratio is still small in rapid descent’ – it might be clearer to say ‘small values of this ratio indicate rapid descent’.

A5. Corrected as suggested.

C6. 1230-241: Calculations of trajectories is now fairly routine and some of the details here – e.g. how you deal with the pole – are perhaps not needed. But, on balance, it is good to have all details provided. For me the question is – do you have any confidence in the trajectories within the atmospheric boundary layer? Do JRA-55 velocities contain any parametrisation of boundary layer turbulence, for example? Note that some standard trajectory codes such as FLEXPART include a ‘boundary-layer parametrization’– i.e. a stochastic addition to the velocity field. If you cannot point to previous evidence that JRA-55 velocities + your trajectory code provide a good representation then you should clearly note this as an uncertainty and something that might be improved in a future study.

A6. JRA-55 velocities do not contain any parametrisation of boundary layer turbulence. Also, our trajectory code has no boundary-layer parametrization. We recognize this defect, and, therefore, we wrote “Numerous starting points are used for three reasons. First, the  $^7\text{Be}$  concentration at FIHE is not necessarily determined by one trajectory over FIHE but by many trajectories near FIHE, because diffusion is strong in the boundary layer. (1.213–215; 1.216–218 in the previous version). Is this still insufficient?

C7. l266: Like one of the referees, I remain confused about where ‘267 times’ comes from.

Which of the various numbers that appear in the text or in the tables do I add together to give 267? You might not consider this sort of detail important, but if the reader is not sure about how exactly you have defined your various calculations then their confidence in the whole paper will be reduced.

A7. First of all, we really apologize that there were several mistakes in the previous version: 267 was wrong but 260 is right, and Table 2 should have been given as

	DJF	March	April	May	JJA	SON	Total
HC events (number of days)	7 (9)	16 (18)	12 (12)	5 (11)	2 (2)	2 (4)	44 (56)

that is, 11 (11)  $\rightarrow$  12 (12) in April, and 43 (56)  $\rightarrow$  44 (56) in Total.

The mistake in Table 2 is a careless mistake. The most important number is 56, so we paid relatively little attention to the other numbers. The number of 267 was calculated as 56 days  $\times$  5 – 13, where 13 was obtained as 56 – 43 under the idea that 1 is subtracted for each of consecutive high-concentration days. However, this is also a careless mistake. For example, in three consecutive high-concentration days, not 1 but 2 must be subtracted, because trajectories are calculated at not 14 times but 13 times (00, 06, 12, 18, 00, 06, 12, 18, 00, 06, 12, 18, 00 UTC). Two, three, four, and five consecutive high-concentration days are 3, 5, 1, and 1 times, respectively. Therefore,  $3 \times 1 + 5 \times 2 + 1 \times 3 + 1 \times 4 = 20$  must be subtracted. Thus,  $280 - 20 = 260$  is the right number.

The detailed derivation of this number (20) is lengthy, therefore the first of this paragraph was rewritten as “As stated above, backward trajectories were traced from the five times over one day in general. Thus, all of the traced times were superficially 56 days  $\times$  5 (= 280) but strictly 260, because, for instance, in a case of two consecutive high-concentration days, traced times are not 10 but 9 and so on. However, all of these times were not objectives for analysis, because all trajectories could not originate in altitude ranges other than the stratosphere and its adjacent region.” (l.256–260).

# Fast descent routes from within or near the stratosphere to ~~Earth's~~ the surface ~~in-at~~ Fukuoka, Japan, studied using <sup>7</sup>Be measurements and trajectory calculations

H. Itoh<sup>1</sup> and Y. Narazaki<sup>2</sup>

<sup>1</sup>Department of Earth and Planetary Sciences, Kyushu University, 744, Motoooka, Nishi, Fukuoka, 819-0395, Japan

<sup>2</sup>Fukuoka Institute of Health and Environmental Sciences, 39, Mukai-Zano, Dazaifu, Fukuoka, 818-0315, Japan

*Correspondence to:* H. Itoh (itoh@weather.geo.kyushu-u.ac.jp)

**Abstract.** By using high concentrations of <sup>7</sup>Be as an indicator, we clarify fast descent routes from within or near the stratosphere to Earth's surface, with the study site being in Fukuoka, Japan. Most routes arise from high latitudes through the following processes. First, the descent associated with a tropopause fold occurs, followed by southward movement with slow descent at the rear side of a strong trough. Because this motion occurs along an isentropic surface, the descending air parcels nearly conserve the potential temperature. As an extension, a strong descent associated with a sharp drop in the isentropic-surface height occurs at the southern edge of the trough; this transports air parcels to low altitudes. This process involves irreversible phenomena such as filamentation and cutoff of potential vorticity. Finally, upon meeting appropriate near-surface disturbances, parcels at low altitudes are transported to Earth's surface.

In some cases, parcels descend within mid-latitudes. In such routes, because the potential temperature is much higher at high altitudes than at low altitudes, descent with conservation of the potential temperature is impossible, and the potential temperature decreases along the trajectories. ~~In these cases, the entire flow does not move downward; instead, only part of the flow in a diffuent-wind field descends. Because parcels descend, pushing low isentropic surfaces, their potential temperature decreases upon mixing with parcels having low potential temperature in the lower layers~~ through mixing.

The prevalence of the high-latitude route is explained as follows. In the mid-latitude route, because parcels at high and relatively low altitudes mix, the high concentrations of <sup>7</sup>Be included in high-altitude parcels are difficult to maintain. Therefore, for parcels to arrive at low altitudes in the mid-latitude while maintaining high concentrations of <sup>7</sup>Be, i.e., conserving the potential temperature, their area of origin should be high altitudes in high latitudes where the potential temperature is almost the same as that in the arrival area.

~~Moreover, the initial descent must occur, because parcels cannot descend in the stratosphere when moving from high to mid-latitudes; parcels must already have descended from the stratosphere to the troposphere in high latitudes for effective descent with the movement to mid-latitudes.~~

In spring, tropopause folds are frequent in high latitudes, disturbances in the southward transport of parcels are strong, and disturbances occur by which parcels descend to the surface. Therefore, high concentrations of  $^7\text{Be}$  occur most frequently in spring.

## 1 Introduction

Stratosphere-to-troposphere transport (STT) has attracted much research interest in the fields of atmospheric dynamics and chemistry and environmental science. Therefore, numerous studies have focused on STT since its investigations started in the 1950s (e.g., Reed and Sander, 1953; Machta, 1957). Thus far, the average features of the STT have been clarified considerably (Holton et al., 1995; Stohl et al., 2003; US Environmental Protection Agency, 2006, etc.). The intrusion of stratospheric air into the extratropical troposphere involves synoptic-scale and mesoscale processes among which tropopause folds and cutoff lows are the most important (Stohl et al., 2003; Sprenger et al., 2003, Nieto et al., 2008). However, many STT studies focused on stratospheric air infiltration to the troposphere, and, therefore, they only examined the transport process to the upper- and mid-troposphere.

Only recently, full-fledged studies on deep intrusions to the troposphere (deep STT) have been conducted, although, before the 2000s, there were several papers showing that stratospheric intrusions influence surface ozone (e.g., Oltmans and Levy, 1992). By using one-year reanalysis data from the European Centre for Medium-Range Weather Forecasts (ECMWF), Wernli and Bourqui (2002) obtained numerous forward trajectories to arrive below the 700 hPa level within a four-day period. As a result, it was confirmed that deep STT occurs frequently during winter and that its source regions are the storm tracks between 40 and 50° N. Furthermore, the geographical distribution of deep STT events was shown to be different from that of full sets of STT events. By extending the analysis period to 15 years, Sprenger and Wernli (2003) conducted similar analyses, the results of which nearly matched those of Wernli and Bourqui (2002). They further examined destinations, in which the maximum was shown to be along the west coast of North America. James et al. (2003a, b), by using a Lagrangian particle dispersion model, extended the considered time-scales and included transport processes such as convection and turbulence that were not included in the trajectory model. Škerlak et al. (2014) investigated deep STT by using 33 year ECMWF reanalysis data. According to their results, deep STT shows especially strong geographical and seasonal variations. The global hot spots for deep STT include the west coast of North America and the Tibetan Plateau, particularly in boreal winter and spring. However, in these studies, the descent mechanism was not examined.

Because the deepest area of the troposphere is ~~above~~ just above the Earth's surface, a study of descending air from the stratosphere to the surface is very intriguing as "the deepest STT". Fur-

thermore, if rapidly descending air from the stratosphere exists on the surface, it is interesting to  
note how this air is substantially and chemically different from general tropospheric air and what  
happens as a result from the perspective of atmospheric chemistry and environmental science. The  
surface in mountainous areas has similar height to 700 hPa or so. Therefore, there has been a grow-  
ing number of publications in which destination sites are in mountainous areas, in particular, in the  
Tibetan Plateau or its vicinity (e.g., Cristofanelli et al., 2010; Chen et al. 2011; Bracci et al., 2012;  
Chen et al. 2013; Ma et al., 2014; Ohja et al., 2014; Chen et al. 2016). Backward trajectory analysis  
suggests that the position of the subtropical jet stream could play an important role in deep strato-  
spheric intrusions (Cristofanelli et al., 2010). Impact of deep STT to atmospheric composition of not  
only ozone but also other atmospheric tracers has been investigated at high-lying sites (Trickl et al.,  
2010; Bracci et al., 2012). However, since the top of the mixed layer sometimes reaches more than  
9000 m a.s.l. over the Tibetan Plateau (Chen et al. 2013), features of STT and descent routes from  
the stratosphere are much different from those over non-mountainous areas.

In non-mountainous areas on the other hand, systematic deepest STT studies have not been con-  
ducted thus far. At most, studies have discussed whether surface ozone is influenced by stratospheric  
ozone. Lin et al. (2012) showed that a global high-resolution chemistry-climate model can cap-  
ture the observed layered features and sharp ozone gradients of deep stratospheric intrusions. These  
stratospheric intrusions led to elevated background ozone concentrations. Ambrose et al. (2011),  
Lefohn et al. (2012), Langford et al. (2012), Yates et al. (2013), Langford et al. (2015), and Lin et al.  
(2015) also investigated influences of STT to elevated ozone concentrations at several stations in the  
USA, by using numerical models and aircraft and lidar observations. Identifying the descent down  
to the surface is a challenge. However, in these studies, the identification is insufficient, because air  
parcels originally in the stratosphere were not sequentially traced to the surface. Moreover, an indi-  
cator that directly demonstrated stratospheric intrusions to the surface was not used; therefore, it is  
difficult to judge whether the result was actually influenced by stratospheric air.

In this context, the present study investigates the descending air from the stratosphere to Earth's  
surface in a non-mountainous area. This study aims at answering the following questions: Can strato-  
spheric air rapidly descend to the surface? If so, what route does it follow, and what mechanism is it  
based on?

The problem is to find a way how such a study can be conducted. It looks simple on the sur-  
face, because we can calculate forward trajectories of parcels originating in the stratosphere with  
the destination being Earth's surface, i.e., an extension of Wernli and Bourqui (2002), or backward  
trajectories in which the parcels originate at Earth's surface with the destination being the strato-  
sphere. However, doing so is difficult: A trajectory between the stratosphere and surface has a longer  
completion time, as is clearly shown later. More importantly, many calculated trajectories starting  
in the upper troposphere/lower stratosphere reach 700 hPa but very few reach the Earth's surface

95 itself, that is, most trajectories cannot reach the surface. In short, even if numerous trajectories are calculated, nearly all such calculations are of no use.

Thus, an appropriate indicator is required for effective trajectory calculations. In this study, we used the concentration of beryllium 7 ( $^7\text{Be}$ ) as an indicator;  $^7\text{Be}$  is a radioactive isotope, most of which (about 70%) is produced in the stratosphere (the remaining 30 % in the upper troposphere) by cosmic-ray spallation (Masarik and Beer, 1999; Nagai et al., 2000; Land and Feichter, 2003; Usoskin and Kovaltsov, 2008; Bezuglov et al., 2012), and it has a half-life as short as 53 days. Therefore, observations of high concentrations of  $^7\text{Be}$  on the surface are direct indications of phenomena in which stratospheric air (or near-stratospheric air) promptly descends to the surface, because  $^7\text{Be}$  decays during extended air travel durations in the troposphere, where high concentrations cannot be sustained. The two characteristics of stratospheric origin and short half-life time are unique to  $^7\text{Be}$  and are not provided by other substances. By setting the starting points and times of backward trajectories to the point at which high concentrations of  $^7\text{Be}$  are observed, trajectory calculations can be conducted effectively. Note that, because high concentrations of  $^7\text{Be}$  do not automatically guarantee stratospheric (or near-stratospheric) origins, other criteria are put together, as described in Sect. 3.

Numerous STT studies have employed  $^7\text{Be}$  concentrations. However, when  $^7\text{Be}$  is used alone, rapid descent might be missed because  $^7\text{Be}$  concentrations become low when wet scavenging is performed on descending air (Gerasopoulos et al., 2001). Instead, the ratio of  $^{10}\text{Be}$  to  $^7\text{Be}$  is used (e.g., Raisbeck et al., 1981):  $^{10}\text{Be}$  is also a radioactive isotope that is mainly produced in the stratosphere; however, its half-life time is  $1.39 \times 10^6$  years, which is significantly longer. Thus, even when subjected to wet scavenging, ~~the ratio is still small in~~ small values of this ratio indicate rapid descent. However, for the purpose of this study, it is suffice to use  $^7\text{Be}$  concentrations alone. This is because the objective is not to obtain all STT events and their statistical characteristics; instead, it suffices to consider a few tens of fast descent events. Missing some fast descents is not a weak point for the present purpose. In addition, as high concentrations of  $^7\text{Be}$  are indicative of an absence of wet scavenging, it is simpler to trace backward trajectories in such cases, which is preferable for the present purpose.

In previous studies using  $^7\text{Be}$ , its concentration was most often measured at mountain observatories in East Asia and Europe or through aircraft observations, and the STT was then studied using these data. In East Asia, Tsutsumi et al. (1998) measured the ozone and  $^7\text{Be}$  concentrations at Mt. Fuji (3776 m a.s.l.) in Japan and found that both concentrations became large at some times. Backward trajectory analysis beginning at these times indicated the intrusion of a stratosphere-origin airmass into the troposphere. Zheng et al. (2011) observed  $^{10}\text{Be}/^7\text{Be}$  on the Tibetan Plateau and found that it exhibited marked seasonal variations. By aircraft observations, Jordan et al. (2003) produced a large dataset of  $^7\text{Be}$  concentrations. Upon analyzing this dataset, they inferred some STT mechanisms, including tropopause folds and mixing associated with subtropical jets. In Europe, El-



bern et al. (1997) identified many stratospheric intrusion events at the two European summits, by using  $^7\text{Be}$  and ozone concentrations. Stohl et al. (2000) combined ozone and  $^7\text{Be}$  measurements on the Alps and northern Apennines and numerical-model calculations, investigating stratospheric intrusions. In the project titled Influence of Stratosphere–Troposphere Exchange in a Changing Climate on Atmospheric Transport and Oxidation Capacity (STACCATO), combined measurements of  $^{10}\text{Be}$  and  $^7\text{Be}$  concentrations were carried out regularly during the course of a full year at two high-altitude stations (Stohl et al. 2003). In addition, the STT was studied on an integrated basis using several methods including numerical simulation. Zanis et al. (2003) showed that the  $^{10}\text{Be}/^7\text{Be}$  ratio is generally high under synoptic situations related to stratospheric intrusion episodes. Cristofanelli et al. (2003) and Usoskin et al. (2009) compared numerical model results with measured  $^7\text{Be}$  concentrations at the surface, which revealed that all models captured the general behavior of the intrusion event. Cristofanelli et al. (2006) evaluated effects of stratospheric intrusions to surface ozone and  $^7\text{Be}$  concentrations at the Mt. Cimone station (2165 m a.s.l.) by calculating backward trajectories. By using a  $^7\text{Be}$  and  $\text{H}_2\text{O}$  thresholds, Trickl et al. (2010) examined deep intrusions of stratospheric air reaching at the Zugspitze summit (2962 m a.s.l.) in Germany. In summation, although the usefulness of  $^7\text{Be}$  observations and numerical models for STT studies has been confirmed, no studies have focused on the access of stratospheric air to the surface other than that in mountainous areas, nor have its mechanisms been examined.

From the very start, it is impossible to present mechanisms from the aforementioned  $^7\text{Be}$  observational data, except one data at the Mt. Cimone station (Cristofanelli et al., 2006; Tositti et al., 2014). That is, in these data, sampling periods are long (one week or so) or observational periods are short (one year or less). Data from short sampling periods (one day or so) are required to narrow down the starting times of trajectory calculations, and extended consecutive observations are needed to provide generality to the proposed mechanisms. On the other hand, we have the necessary data in a non-mountainous area, which include short sampling periods and extended consecutive observations, as presented in Sect. 2. Thus, we can effectively perform numerous calculations of backward trajectories.

The remainder of this paper is organized as follows. In Sect. 2, the observational results of  $^7\text{Be}$  concentrations are shown. In Sect. 3, high-concentration  $^7\text{Be}$  events are extracted, and on the basis of this information, we propose a method for obtaining rapid descent routes using backward trajectories. In Sect. 4, we present the results and clarify the routes from the stratosphere to the surface. Moreover, the mechanism for fast routes is presented by specifying the phenomena associated with the routes. In Sect. 5, the discussions are presented. Finally, in Sect. 6, the conclusions are provided.

## 165 2 Observational results of $^7\text{Be}$ concentration

$^7\text{Be}$  concentrations have been consecutively measured since 1998 (Narazaki and Fujitaka, 2009) at the Fukuoka Institute of Health and Environmental Sciences (FIHE) located in Dazaifu, Fukuoka Prefecture, Japan (33.5° N, 130.5° E, 30 m a.s.l.; Fig. 1). Sampling intervals are once every one to five days before March 2011 and nearly every day since then. However, measurements were not  
170 available between 6 October and 19 November 2014, when the buildings were being retrofitted for earthquake resistance. The measurement times are around 00:00 UTC (09:00 Japan Standard Time). Among previous studies, only Kikuchi et al. (2009) examined the data of  $^7\text{Be}$  concentration almost daily over several years at a non-mountainous site.

The  $^7\text{Be}$  concentrations were measured as follows: aerosol samples were collected on quartz fiber  
175 paper (QR-100; 20.3 cm  $\times$  25.4 cm; ADVANTEC Co., Ltd.) using high-volume air samplers (HVC-1000N, HV-1000F, and HV-1000R; Shibata Science Co., Ltd.). The flow rate was 1000 L min<sup>-1</sup>, and the integrated air volume was 1440–5500 m<sup>3</sup> per sample. The paper collecting the aerosol was folded with the sampling side inside to create 12 sheets that were then punched through by a punch with a diameter of 48 mm. To reduce their volume, the 12 sheets of paper were then pressurized  
180 with a force of about 10 t by a pressure machine to form a disk of 2 mm thickness. The  $^7\text{Be}$  activity was measured using a high-purity germanium detector system (Canberra). The  $^7\text{Be}$  concentrations were obtained after being adjusted to the sampling dates on which the radioactivity decayed with the half-life time of  $^7\text{Be}$ . Error of  $^7\text{Be}$  concentrations is typically 5%.

The analysis period is six years from 2009 to 2014. This period is sufficiently long to capture  
185 statistical characteristics with a high degree of confidence.

Figure 2 shows observational results of  $^7\text{Be}$  concentrations. The measurement period is from April 2011, when the measurement was changed to once per day, to September 2014, prior to the earthquake-resistant retrofitting. The concentrations are quite low during summer, suggesting large seasonal variations. This result is the same as those reported by Megumi et al. (2000) and Kikuchi  
190 et al. (2009)<sup>1</sup> who presented observational results for other locations in Japan. However, Narazaki and Fujitaka (2009) also indicated several observational locations at which double peaks in spring and autumn are prominent.

Table 1 shows the seasonal averages and standard deviations (SDs) of  $^7\text{Be}$  concentrations. Because the time resolution of the measurement is not constant, these values are calculated by considering  
195 the weight of time. DJF represents December, January, and February; MAM, March, April, and May; JJA, June, July, and August; and SON, September, October, and November. In the following, DJF, MAM, JJA, and SON are referred to as winter, spring, summer, and autumn, respectively, for simplicity. The averages are arranged by spring, winter, autumn, and summer in order of magnitude. However, because the differences are small except for summer, we consider the averages in spring,

---

<sup>1</sup>Kikuchi et al. (2009) reported the existence of double peaks in spring and autumn. However, the concentrations in winter are nearly the same as those in spring and autumn, as far as we can see the figure.

200 winter, and autumn to be nearly identical. The SDs are largest in spring, indicating a large time variation.

Peaks of  $^7\text{Be}$  concentrations are observed in various seasons worldwide, and many studies have aimed at understanding how these peaks are determined (e.g., Feely et al., 1989; Buraeva et al., 2007). However, the focus of the present study does not require the identification of the factors  
205 determining seasonal variations.

### 3 Method for obtaining fast descent routes

#### 3.1 Method and data

In this study,  $^7\text{Be}$  concentrations of more than  $10 \text{ mBq m}^{-3}$  are defined as high-concentration events.  $10 \text{ mBq m}^{-3}$  is more than the average +2 SDs ( $9.58 \text{ mBq m}^{-3}$ ) from Table 1; therefore, this value is  
210 statistically significant (see also Fig. 2). Because the measurement time (starting and closing times of measurement) is around 00:00 UTC, high-concentration days are used almost interchangeably with high-concentration events.

At certain times on these days, it is highly possible that parcels originating from within or near the stratosphere arrive in Fukuoka, where Fukuoka refers to the area around FIHE in this study. We  
215 then calculated the backward trajectories from the five time points of 00:00, 06:00, 12:00, 18:00, and 24:00 (i.e., 00:00 on the following day) UTC on these days. These times are the output times for the Japanese 55 year Reanalysis (JRA-55) data. More specifically, the trajectories were traced from 1734 starting points near FIHE, which are on six levels (in intervals of 25 m from 25 to 150 m altitude above the surface), and  $17 \times 17$  grid points with a grid interval of 5 km centered at FIHE on  
220 one altitude surface. Numerous starting points are used for three reasons. First, the  $^7\text{Be}$  concentration at FIHE is not necessarily determined by one trajectory over FIHE but by many trajectories near FIHE, because diffusion is strong in the boundary layer. Second, the amount of air descending from the stratosphere can be evaluated from numerous trajectories. Third, to form clear statistical characteristics, numerous trajectories are needed. If the trajectories reach the stratosphere or its vicinity  
225 within 10 days, they are considered to exhibit fast descent routes from the stratosphere to Fukuoka. Moreover, we can present the mechanism of fast descent routes by specifying the meteorological phenomena occurring at these times.

The parcel positions were calculated by using the fourth-order Runge–Kutta scheme; the integration time step and period were 10 min and 10 days, respectively, and the wind, which advects the  
230 parcels, was interpolated linearly in time and in the vertical direction and by cubic splines in the horizontal plane. We assume that parcels were transported latitudinally and longitudinally by the meridional and zonal wind components, respectively. However, because such calculations cannot be conducted near the pole, they were performed in the following manner: first, the near-pole area was defined as the area north of  $89.57^\circ \text{ N}$ , which is the northernmost Gaussian latitude. This spherical

235 area was approximated as a plane, and the zonal and meridional winds were converted to the two components perpendicular to each other within this plane. The parcels were assumed to be advected by these wind components. The vertical motion is expressed by the vertical  $p$  velocity. Therefore, parcel positions were first calculated in the pressure value, and then, by using the pressure and height data, the height value was obtained.

240 The model-grid data for the JRA-55 served as the meteorological data to trace the backward trajectories (Kobayashi et al. 2015). Moreover, we used the isentropic and pressure-level data to specify the phenomena associated with the descent routes. In the model-grid data, the horizontal resolution is about  $0.5625^\circ$  ( $640 \times 320$  Gaussian grids) except near the poles, where the data grids are reduced. The number of vertical levels is 60 with a top level of about 10 Pa. The pressure-level data have a resolution of  $1.25^\circ$  in the longitudinal and latitudinal directions and 37 vertical levels, of which 23 levels below 200 hPa were used for the analysis. In the isentropic data, the two datasets in which the resolutions are the same as the model-grid data and  $1.25^\circ$  were used. The number of vertical levels is 21, of which only eight levels below the 340 K surface were used (the lowest level is the 270 K surface).

250 High-concentration events of  $^7\text{Be}$  are shown in the second row in Table 2. The total number of events was 4344, covering 56 days. However, we should be cautious that the sampling intervals, i.e., averaging periods are not constant, because a longer averaging period relates to statistically fewer high-concentration days. Therefore, prior to March 2011, the high-concentration days may be underestimated. However, this difference is not considered in the present study.

255 Seasonal variations show that high-concentration days are predominant in spring (March, April and May), totaling 41 days (73 %). Two events in summer, on 1 and 2 June, should essentially be regarded as May events. If these are added to spring events, the appearance ratio in spring becomes 77 %. Following spring, seven winter events (nine days) are found. As the averaged concentrations are nearly the same among winter, spring and autumn, as observed previously, this means that the rapid descent routes from the stratosphere to Fukuoka occur frequently only in spring. The reason for such a large number of high-concentration days in spring is discussed in Sect. 5.

### 3.2 Case selection for analysis

As stated above, backward trajectories were traced from the five times over one day. ~~However in general. Thus, all of these times (267 times) the traced times were superficially  $56 \text{ days} \times 5 (= 280)$  but strictly 260, because, for instance, in a case of two consecutive high-concentration days, traced times are not 10 but 9 and so on. However, all of these times~~ were not objectives for analysis, because ~~among the five times,~~ all trajectories could ~~not~~ originate in altitude ranges other than the stratosphere and its adjacent region. Therefore, in this subsection, we simply explain how to select cases for analysis. The detail is described in the supplementary material.

270 First, two indices are defined. The first is  $\hat{z}_1$  defined as follows. Let  $\hat{z}_i$  ( $i = 1, \dots, 1734$ ) be the highest altitude reached in each trajectory, where  $i$  is a suffix in order of the altitude. Therefore,  $\hat{z}_1$  is the highest altitude among all 1734 trajectories. Because this value is, of course, one index to determine the parcel origin,  $\hat{z}_1$  is the first index used to select object times for analysis. However, the  $^7\text{Be}$  concentration observed at the surface does not necessarily correspond only to  $\hat{z}_1$ , because  
 275 even if  $\hat{z}_1$  is high, the  $^7\text{Be}$  concentration at the surface, which is observed as a somewhat mixture of air parcels originating from many trajectories, may not become high when all the other trajectories come from low altitudes. Then, as the second index, we use the top-1 %, i.e., top-18 average of  $\hat{z}_i$ . This value is represented as  $\hat{z}_a$ . That is,

$$\hat{z}_a = \frac{1}{N_a} \sum_{i=1}^{N_a} \hat{z}_i, \quad (1)$$

280 where  $N_a = 18$ . Objects for analysis are basically selected as the time when  $\hat{z}_a$  is the maximum and  $\hat{z}_1 \geq 8000$  m.

Based on the maximum of  $\hat{z}_a$  only, 47 cases are selected, as shown in the third row of Table 2. The maxima of the highest reached altitude,  $\hat{z}_1$ , for these 47 cases are all more than 6000 m. Thus, it is evidenced that the high concentraion of  $^7\text{Be}$  is originated from the upper troposphere/lower stratosphere.  
 285 However, in 14 cases among them,  $\hat{z}_1$  is less than 8000 m; the remaining 33 cases, which are considered as reaching the stratosphere or adjacent regions, are chosen as objects for analysis. Among the objects for analysis,  $\hat{z}_1$  of more than 10 000 and 9000 m is attained in 5 and 14 cases, respectively. Even in the 14 cases of  $\hat{z}_1 < 8000$  m, if the tracing times of backward trajectories were extended, the trajectories could reach altitudes higher than 8000 m. However, this type of  
 290 research is beyond the scope of the present study.

The details of the 33 cases are shown in the supplementary material. The case numbers are assigned in chronological order. The maxima of the potential vorticity (PV) of parcels on trajectories have all more than 2 PVU ( $10^{-6} \text{ m}^2 \text{ s}^{-1} \text{ K kg}^{-1}$ ); the minimum is 2.35 PVU and 30 cases exceed 3 PVU. Because 2 PVU is said to be an index of stratospheric air (e.g., Hoskins et al., 1985; Wernli  
 295 and Bourqui, 2002; Sprenger and Wernli, 2003), all cases have the characteristic of stratospheric air in terms of PV. As PV is not well conserved (not shown), the Lagrangian time changes of PV are not mentioned in the following analyses.

## 4 Results

In this section, the terms “top 1 %” and “top 25 %” are frequently used. Their meanings are the  
 300 same as those in the previous section, i.e., top 1 and 25 % of  $\hat{z}_i$ , the highest reached altitude, of each trajectory. Furthermore,  $z_i(t)$  is defined as the trajectory with  $i$ -th highest altitude, which is a function of time,  $t$ . For simplicity,  $\hat{z}_i$  or the highest reached altitude is omitted hereafter.

## 4.1 Overall characteristics

Figure 3 shows top-1 % averaged trajectories for two days from their highest altitudes for all the 33 cases. The averages of latitude and longitude were not obtained as the simple arithmetic averages of latitude and longitude but as averages of points on a sphere. The average in altitude was

$$\bar{z}(t) = \frac{1}{N_a} \sum_{i=1}^{N_a} z_i(t). \quad (2)$$

The highest altitude in the average trajectory is the maximum of  $\bar{z}(t)$ . This value is generally smaller than  $\hat{z}_a$ . If the top-1 % trajectories vary widely among each other, the average trajectory is meaningless. However, because such cases are few, we consider that the overall features of descent routes can be captured.

Figure 3a shows that the longitudes of the trajectories vary among cases and do not have a strong tendency, although most trajectories attain the highest altitude in the eastern hemisphere. Conversely, trajectories in Fig. 3b show systematic motion in latitude and altitude. That is, the highest altitudes are located at high latitudes for many trajectories, and the altitudes lower as one moves to mid-latitudes. More specifically, with the exception of case 7, all cases attain their highest altitudes north of 45° N, and 25 cases attain them north of 60° N, i.e., in high latitudes. Thus, the routes from high latitudes are the main descent routes. The clarification of this mechanism is the most important task in this study. Figure 3b shows that parcels lower the altitude while conserving their potential temperature in many cases. However, in case 7 and in a few other cases, the potential temperature is changed. Also in this respect, the characteristics of case 7 differ from those of many other cases. Case 19 shows a large descent of 6892 m for two days, with 4659 m recorded on the first day. The cause of this rapid descent is investigated in Sect. 4.2.3.

To pursue the route from high latitudes, we further examine the 25 cases in which the highest altitude is attained north of 60° N. Figure 4 shows the paths of the maximum latitudinal movement and maximum descent per day for these 25 cases. The maximum latitudinal movement per day means that moving distance per day in the southward direction is the maximum along a trajectory. The maximum descent per day has a similar meaning. Table 3 presents the times when these values are reached, along with the highest altitude, as the time from the starting time of backward trajectories. In Fig. 4, the maximum-descent paths (lines terminated by red symbols) are generally located at the low latitude side, compared with the paths of the maximum latitudinal movement (black symbols), which indicate that the large latitudinal movement is followed by the large descent. Furthermore, the latitudinal movement is accompanied by relatively slow descent. According to Fig. 4 and Table 3, the following processes occur in the usual time sequence (forward trajectory): first, the highest altitude is achieved (its time is denoted as  $t_a$ ). Slightly more than two days later, a large movement in the latitudinal direction begins with slow descent (start time:  $t_m$ ), and slightly little less than two days after that, the largest descent occurs (start time:  $t_d$ ). Because  $t_a - t_m$  and  $t_m - t_d$  are positive even

at the edges of the confidence intervals of 99 % (26.7 and 17.7 h), the reversal of these times does not occur statistically. In fact, the reversal occurs only in a few cases, i.e., in three cases for  $t_a - t_m$  (within three hours for all three cases), and only in one case (case 24) for  $t_m - t_d$  among all 25 cases.

Figure 5 shows the top-1 % averaged trajectories for the last two days of travel. At a glance, these trajectories are not systematic and approach Fukuoka from all directions. The variations in height and latitude are small for two days, and a relatively long time is needed to finally arrive at Fukuoka at low altitudes, with the exception of three cases (cases 9, 23, and 31). These results are consistent with those in Table 3 in that it takes an average of 91 h (115.0 – 24.0) to reach the surface after the largest descent. Therefore, a long time is generally required to reach the surface from low altitudes such as 700 hPa, which is the destination given by Wernli and Bourqui (2002) and others. Thus, almost all calculations of backward and forward trajectories without an indicator would be of no use, as stated in the Introduction.

Disturbances affecting the arrival to the surface vary among cases, e.g., descending current associated with anticyclones and downward flow at the southwest side of extratropical cyclones. That is, no specific disturbance is involved in the transport of air parcels to Fukuoka; however, good matching between the parcel positions a few days prior to their arrival at Fukuoka and the disturbances is necessary.

In summary, the majority of the high-latitude routes take the following paths with a few exceptions. First, after attaining the highest altitude, air parcels descend slightly at high latitudes, followed by large movement toward low latitudes with slow descent. Then, a large descent occurs. From low altitudes, various disturbances are attributed to the long time required for the parcels to reach finally the surface.

In the following subsection, we examine in detail the mechanism for the high-latitude route, and we analyze a few characteristic cases other than this route.

## 4.2 Case studies

### 4.2.1 Descent routes from high latitudes

As stated in the previous subsection, the main route is the descent from the high latitudes north of 60° N. The mechanism of this route is clarified first.

Case 1 (starting time of 18:00 UTC 17 March 2009) is considered typical. Figure 6 shows the top-1% trajectories. With a few exceptions, the trajectories attain their highest altitudes about 10 days before the starting time of the backward trajectories (18:00 UTC 7 March). Afterwards, air parcels descend to about 7000 m at 65–75° N, then moving to mid-latitudes with slow descent from about 18:00 UTC 10 March. Subsequently, they descend rapidly, and a long time is required to reach the surface from about 2500 m. In short, the features represented by this case are typical of the descent route from high latitudes.

The first inspection is devoted to the mechanism of the descent from the highest altitude. Figure 7 shows the 300 hPa surface at 18:00 UTC 7 March (the last time of backward trajectories), and the vertical section of PV along 45° E 6 h later. The air parcels on the trajectories are also plotted to reveal their relationship with the trajectory. This time is chosen to represent the point at which the parcels on the trajectories record the highest altitude. Near 65° N in Fig. 7b, the area with large PV hangs deeply into the troposphere. Because this feature is also seen in a longitude-vertical section (not shown), this phenomenon is considered a tropopause fold. Air parcels with large PV exist near this region, and weak subsidence is dominant at the northeast side of this disturbance. The parcels at high altitudes descend by this subsidence (Fig. 7b)<sup>2</sup>. This is the mechanism of the initial descent from the stratosphere.

Next, the mechanism of the southward movement with slow descent is revealed. Figure 8 shows the disturbance involved in the movement of parcels at 18:00 UTC 10 March when the southward movement begins, and at 18:00 UTC 11 March, one day afterwards. It is clear that parcels are located on the rear side of a developed trough accompanied by strong southward wind. At 18:00 UTC 11 March, the trough develops further, as indicated by the change in the tilt of the trough axis from N–NE to S–SW. The slow descent is closely related to the downward inclination to the south of the isentropic surface: Fig. 9a shows the height and wind at the 300 K isentropic surface at the same time as that in Fig. 8b. The height decreases toward the south so that parcels necessarily descend with the southward movement, if the potential temperature is conserved. In fact, Fig. 6b reveals that conservation is achieved.

The rapid descent can be attributed to extension of the southward movement. At the southern edge of the trough, the height on the isentropic surface decreases dramatically (Fig. 9). In the case of weak troughs, streamlines could head north and upward after turning near the southern edge. In fact, we calculated forward trajectories in the case of weak troughs, confirming such movement (not shown). However, in this case, the trough axis indicates the tilt from N–NE to S–SW (Fig. 8b); therefore, the parcels are transported in a different direction from the moving direction of the system. Thus, the parcels cannot move along with the system; that is, they cannot turn around the southern edge of the trough, and the altitudes of the parcels decrease dramatically (Figs. 9b and 6b). This irreversible process is closely related to the filamentation of the PV, as shown in Fig. 9b (Hoskins et al., 1985). When considering this event at a constant pressure level, we see that strong downward flow is dominant, and parcels descend under this flow, as shown near 120° E in Fig. 10. Subsequently, the parcels lag far behind the trough system and drift at low altitudes (not shown).

Finally, a near-surface disturbance is necessary for air parcels to reach the surface. In this case, it is a trough over the Sea of Okhotsk. Air parcels located around the subsidence region in the southern edge of the trough descend with eastward movement, arriving at Fukuoka (not shown).

---

<sup>2</sup>Ascending parcels are those entering near 45° E from the west, as seen in Fig. 6a.



It is well known that the atmospheric boundary layer (ABL) shows a clear daily variation, in which the mixed layer develops during daytime, while the stable layer is formed during nighttime.

Therefore, the taking-in of air parcels above the ABL into the ABL must also show a daily variation. Then, the time (daytime and nighttime) dependency of the behavior of the air parcels on the trajectories entering the ABL is investigated. The results are shown in Fig. 11. Figure 11a illustrates that the parcels between about 500 and 1500 m rapidly descend at daytime, while they stay at relatively near-constant altitudes at nighttime. Figure 11b indicates that the fast descent during daytime is closely related to the mixed layer (constant potential-temperature layer) extending to about 1500 m. On the other hand, the potential temperature has a strong vertical contrast at nighttime (not shown). Thus, the air parcels above the ABL are easily taken into the ABL during daytime, while it is difficult for them to enter the ABL during nighttime. However, the mixed layer has much smaller horizontal scales than the grid scale, a further analysis considering smaller scales is necessary.

Case 3 is presented as another case of the high-latitude route with a starting time of 06:00 UTC 3 May 2009 (Fig. 12). Although the positions of air parcels 10 days before the starting time and behaviors at low altitudes are different from those in Fig. 6, Fig. 12b is similar to Fig. 6b. That is, it shows the sequence of the descent at the initial time, southward movement with slow descent, and rapid descent, and the potential temperature is conserved in this sequence. Although figures are not shown, closer inspection shows that the same processes as in case 1 are involved: the initial descent is associated with a tropopause fold, the southward movement is accompanied by the northerly wind at the rear side of a developed trough, and the rapid descent is associated with the large drop in height at the southern edge of the trough. The only difference is that a cutoff low is included as an irreversible process in the last process.

The other cases attaining the highest altitude at high latitudes also show similar routes in the respect of the southward movement with slow descent along an isentropic surface followed by rapid descent at the southern edge of a developed trough (not shown). The behaviors of the air parcels near the ABL top during daytime and nighttime are also similar in general. Although a tropopause fold is also seen in many cases, it is not always included. In particular, in the case of  $\hat{z}_1$  of about 8000 m at the initial, the parcels seem to be directly transported southward with no initial descent. Even in these cases, tropopause folds may occur before the last time of backward trajectories, but this is left as future work.

#### 4.2.2 Descent routes within mid-latitudes

Figure 13 shows backward trajectories starting at 18:00 UTC 25 December 2009 (case 7), which is an example of the descent from high altitudes at mid-latitudes. We can clearly see that the potential temperature is not conserved; instead, it decreases. This decrease is expected: because the potential temperature at high altitudes is high, air parcels conserving potential temperature cannot fall from those positions to the surface where the potential temperature is low. Moreover, the top-1 % averaged

route is largely different from the top-25 % averaged route. That is, the top-1 % trajectories are  
445 unique among the top-25 % trajectories; they are not representative of trajectories reaching relatively  
high altitudes. In these respects, the mid-latitude route differs from the high-latitude route.

We first explain why the potential temperature decreases with descent. Figure 14 shows the po-  
tential temperature and parcel positions on backward trajectories at 18:00 UTC 16 December. The  
time is just before the marked descent. The potential temperatures of air parcels have various values,  
450 which ultimately mix<sup>3</sup>. Because the number of parcels with high potential temperature at high alti-  
tudes is relatively small, the potential temperature is not conserved and decreases. The fact that the  
top-1 % averaged route differs from the top-25 % is a manifestation of this mixing.

However, the reason for such mixing is still poorly understood. Then, the relationship between  
the parcel positions on trajectories and the horizontal pattern on an isentropic surface is shown in  
455 Fig. 15. The area near air parcels at high altitudes (the area near 40–45° N and 60–75° E) corresponds  
to a diffluent-wind area associated with a blocking high (area of low height nearly coincides with  
the blocking high; not shown), and the northward and southward flows with descent are split. The  
parcels on the trajectories ride on the southward flow of these two flows. That is, descending parcels  
are not most of the parcels coming from the west but parts of them, because the other parts ride  
460 on the northward flow. Moreover, Fig. 16 shows that descending parcels push isentropic surfaces  
(moving direction of air parcels and isentropic surfaces are not parallel). Therefore, many parcels do  
not descend as a whole; rather, only parts of them descend as the isentropic surfaces are pushed. For  
such descent, descending parcels are easily mixed with parcels having low potential temperature,  
which originally exist in lower layers in which descending parcels arrive.

465 Compared with these characteristics, we reconsider the reason for the conservation of the potential  
temperature in the high-latitude route. The flow in the high-latitude route is along an isentropic sur-  
face. Therefore, all parcels head southward; that is, they face the same direction. This characteristic  
allows the potential temperature to be conserved in the high-latitude route.

Other than case 7, all top-1 % trajectories of cases 5 and 26 show the mid-latitude route. In these  
470 parcels on the trajectories as well, only a part of the flows descend from a diffluent-wind field,  
pushing isentropic surfaces, although the characteristic of a blocking-high accompaniment is not  
seen.

#### 4.2.3 Other characteristic routes

Figure 17 shows the top-1 % backward trajectories of case 19 (starting time of 12:00 UTC 16 May  
475 2011), which is an example showing the rapid descent illustrated in Fig. 3. As the highest altitude  
reached in the average route is attained near 50° N (Fig. 17b), this case is not classified as a high-  
latitude route even though the parcels actually originate from high latitudes. However, unlike general

---

<sup>3</sup>Strictly speaking, parcels themselves do not mix; instead, they approach each other. However, the distances among them  
are less than the grid length; thus, we express this state as “mixed”. Similar expressions are used below.

cases of the high-latitude route, the trajectories do not show slow descent with southward movement; instead, they move to about  $50^\circ$  N while maintaining almost constant altitude. This occurs because  
 480 this movement is associated with the extension of the polar vortex southward to the Altai-Sayan region (around  $90^\circ$ E and  $50^\circ$ N) rather than with the flow at the rear side of a trough (not shown). Because this process is also the cut-off of strong PV near the polar region, it can be grasped as the southward movement of tropopause folding (not shown. see also Fig. 18b). After that, the parcels descend rapidly. Because this descent from high altitudes to low altitudes occurs within the mid-  
 485 latitudes, the potential temperature is not conserved along the trajectories (Fig. 17b), as in case 7.

The most interesting point in this case is its fast speed of descent of 4659 m per one day and 6892 m per two days. Figure 18 shows the horizontal pattern and parcel positions of the trajectories just prior to the large descent. The parcels showing large descent are located near  $50^\circ$  N and  $105^\circ$  E. Figure 18a shows that the parcels are located south of a diffluent-wind field. Furthermore,  
 490 the potential temperature is high at both its south and east sides; thus, the gradient of the potential temperature is large in both directions. Considering this situation in terms of the isentropic surface, the height decreases dramatically in the direction of parcel movement. In fact, as confirmed by Fig. 18b, the height decreases by more than 4000 m at the southeast side where the parcels actually move. Moreover, the parcels exist in a diffluent-wind field, and their downward motion pushes  
 495 isentropic surfaces. Consequently, parcels with high potential temperature at high altitudes mix with parcels having low potential temperature at lower altitudes, leading to a decrease in the high potential temperature. By repeating this process, parcels that are originally at high altitudes descend to low altitudes. These facts and considerations indicate that parcels exist in the strong-subsidence region on an isobaric surface (Fig. 18a) and experience rapid descent.

## 500 5 Discussion

### 5.1 Reason that the high-latitude route is the majority

In the previous section, it is shown that the descent route from high latitudes is dominant among all descent routes. Here, its necessity is elucidated.

First, we conclude from our analysis that it is rare for parcels to be transported within mid-latitudes  
 505 from high to low altitudes while maintaining high concentrations of  $^7\text{Be}$  included in high-altitude parcels (Kownacka, 2002; Land and Feichter, 2003): in this route, as mentioned in Sect. 4.2.2, parcels at high altitudes necessarily mix with those at low altitudes. This means that  $^7\text{Be}$  concentrations inevitably decrease; therefore, the mid-latitude route is not a typical one, as observational events of high concentrations of  $^7\text{Be}$  indicate. Therefore, for parcels to arrive at the near-surface level (about  
 510 2000–3000 m) at mid-latitudes while conserving their potential temperature, i.e., maintaining high concentrations of  $^7\text{Be}$ , their starting area should be high latitudes, where the potential temperature is nearly the same as that in the arrival area. Moreover, owing to its long-distance transport, large-scale

disturbances are always included. Thus, parcels always ride on the northerly wind associated with developed troughs.

515 In the high-latitude route, the altitudes of the parcels are generally lowered by tropopause folding, and the parcels are then transported to mid-latitudes. This process is also inevitable and is explained below.

Figure 19 shows the meridional inclination of each potential temperature with reference to the monthly-mean potential temperature at 8000 and 10 000 m at 70° N. The inclination of the potential  
520 temperature in each month is not markedly different with reference to the 8000 m potential temperature, although the potential temperature itself is different. That is, no particular month is easier than the other for effective parcel descent from high to low altitudes during the movement from high to mid-latitudes. In contrast, a significant difference is noted between the inclinations of the two reference altitudes of 8000 and 10 000 m. That is, isentropic surfaces for the 8000 m reference have large  
525 inclinations, whereas those for the 10 000 m reference have little inclinations.

On the basis of these results, the following conclusions are drawn. First, when parcels are transported from high to mid-latitudes at altitudes of more than 10 000 m, the height changes little. In contrast, when the starting altitudes are near 8000 m, the parcel height decreases dramatically during the movement to mid-latitudes. Thus, for parcels in the stratosphere to effectively reach low al-  
530 titudes at mid-latitudes, the parcel height must diminish to less than 10 000 m. Furthermore, a larger decrease is related to more effective access to the surface. For this reason, a potential path for parcel descent is with tropopause folding at the initial stage.

## 5.2 Reason for frequent high-concentration days in spring

In this subsection, we clarify the reason for the large number of high-concentration days of  $^7\text{Be}$   
535 at Fukuoka in spring. Three possibilities are given considering the descent route: the frequency of tropopause folding at high latitudes, disturbances that transport parcels southward from high latitudes, and near-surface disturbances in the transport of parcels to the surface are different between spring and other seasons. Of course, high-concentration days of  $^7\text{Be}$  appear easily when frequencies of tropopause folding are high, disturbances transporting the parcels southward are strong, and  
540 parcels are effectively transported to the surface by near-surface disturbances. The difference in the meridional inclination of isentropic surfaces in the troposphere is one possibility. However, as shown in the previous subsection, this difference is small enough to be excluded from the possibilities. Then, these three are examined. The data used for these analyses are the 1.25°-grid isentropic analysis data for frequencies of tropopause folding and disturbances transporting parcels southward  
545 in addition to the model-grid data for near-surface disturbances.

The climatological tropopause folding was examined by Sprenger et al. (2003) (see also Añel et al. 2008). However, their definition seems to cover exclusively folding with bending, but does not cover folding with straightly trailing down. Therefore, we make our own definition, examining

tropopause folding. The definition is the state at which the PV surface of 3 PVU trails down to less than 6000 m, although this definition may be a bit exclusive, and it may apply to cases with no precise tropopause folding. Figure 20 shows the seasonal difference in the frequencies of tropopause folding at 30° W–120° E, hereafter referred to as the Eurasian region. This region nearly corresponds to the starting region of the parcels, as shown in Fig. 3a. Figure 20 shows that the tropopause folds are frequent at high latitudes in spring and at 40–50° N in winter. The frequencies are generally slightly higher in spring than in winter. For our purposes, however, we consider that these two seasons show no significant differences. Low frequencies in summer and autumn can explain the lower number of high-concentration days in these two seasons. Needless to say, a more detailed analysis of tropopause folding in high latitudes is necessary, because its definition adopted in this study is rough.

Next, disturbances transporting parcels southward are examined. Because parcels are transported by the northerly wind at the rear side of troughs, the strength of the northerly is examined such that the 2–8-day period component of the meridional wind is extracted, and its variance is compared. The variances in winter and spring among the four seasons are shown in Fig. 21. Although the variance is larger in winter than in spring in the Pacific and Atlantic regions, it is larger in spring than in winter in the Eurasian region in question. In winter, we consider that disturbances in that region are weak because the connection is weak from the storm track region in the Atlantic to the polar frontal jet in the Eurasian region, and disturbances in the Atlantic are connected to the strong-wind region in the Mediterranean. In contrast, in spring, owing to the weak wind in the Mediterranean, the polar frontal jet is connected to the storm track region in the Atlantic; thus, the disturbances are considered to be strong in the polar frontal jet. For the other seasons, the variance in autumn shows almost the same feature as that in spring, and the variance in summer is very small (not shown).

Finally, the differences in near-surface disturbances are investigated. The working hypothesis is that near-surface disturbances and their associated wind systems show marked characteristics between seasons, and some wind systems match and other systems mismatch parcels coming to Fukuoka by subsidence from low altitudes at mid-latitudes. For example, in winter, parcels are usually transported to Japan from the north within low altitudes owing to the dominance of the northerly winter monsoon, resulting in a mismatch of the wind system with the descent routes clarified thus far. Then, we examined the differences in backward trajectories between January 2011, when no high-concentration events occurred, and April of the same year. Backward trajectories were calculated for 31 and 30 times starting from 00:00 UTC on all days in January and April, respectively.

Figure 22 shows the results. The backward trajectories drastically differ between January and April: all trajectories in January move northward, advancing to higher latitudes while maintaining relatively low altitudes, whereas those in April show both northward and southward movements with many ascending to relatively high altitudes. Of course, eastward and westward movements also exist (not shown). This characteristic of movements in various directions in April is consistent with that shown in Fig. 5. These features in January and April are confirmed to be similar in other years.

Similar calculations were conducted in July and October. The trajectories in October are similar to those in April. In July, many trajectories move southward, although some move in other directions. In addition, many trajectories remain within very low altitudes of less than 2000 m for four days.

From the above, the reason for the frequent high-concentration days in spring is clear: in spring, tropopause folds are frequent at high latitudes, disturbances transporting parcels southward are strong, and near-surface disturbances lowering parcels to the surface are ubiquitous. On the other hand, some of these conditions are unfavorable in the other three seasons. In winter, although tropopause folds are frequent, the wind transporting parcels southward is not as strong, and in particular, near-surface disturbances transporting them to the surface do not exist in general. In autumn, although the last two conditions are favorable, tropopause folds are not frequent. In summer, all three conditions are unfavorable. As a result, high-concentration events of  $^7\text{Be}$  are virtually absent.

## 6 Conclusions and future perspective

By using high concentrations of  $^7\text{Be}$  as an indicator, fast descent routes from within or near the stratosphere to Earth's surface, with the study site being in Fukuoka, Japan, were elucidated. Here, "fast" means "within 10 days".

The majority of descent routes are from high latitudes and follow a particular sequence, as shown in Fig. 23: first, a descent associated with tropopause folding occurs, followed by southward movement with slow descent by the northerly wind at the rear side of a strong trough. Because this motion is along isentropic surfaces, air parcels descend while nearly conserving their potential temperature. In this extension, a strong descent associated with a sharp drop in isentropic-surface height occurs at the southern edge of the trough. This process involves irreversible phenomena such as filamentation and cutoff of potential vorticity. Therefore, descending parcels migrate at low altitudes without the turnaround along the southern edge of a trough and subsequent northward movement with slow ascent. Finally, by meeting near-surface disturbances to transport parcels from low altitudes to Earth's surface, the parcels are transported to the surface. These disturbances have no specific form but various forms. The daily variation of the atmospheric boundary layer (ABL) is important for the air parcels on the trajectories intruding into the ABL. That is, the air parcels above the ABL are easily taken into the ABL due to the development of the mixed layer during daytime, while it is difficult for them to enter the ABL during nighttime.

In some cases, parcels descend directly from high altitudes within mid-latitudes. In such cases, the potential temperature is not conserved; instead, it decreases. This result occurs because the potential temperature is high in these regions, and large descent never occurs while conserving the potential temperature. Thus, a decrease in potential temperature is inevitable for large descents. For this to occur, a diffuent-wind field on isentropic surfaces is necessary, where some part of the flow moves northward, and the other part moves southward with descent. When these descending parcels push

low isentropic surfaces, their potential temperature decreases upon mixing with parcels having lower potential temperature at lower altitudes. Then, by the repetition of this process, the height of the parcels decreases drastically. The route from low altitudes to the surface is the same as in the high-latitude route as mentioned above.

625 We clarified the necessity that the high-latitude route is dominant. In the mid-latitude route, the mixing between parcels at high and relatively low altitudes is inevitable; that is, the high concentrations of  $^7\text{Be}$  in high-altitude parcels are difficult to maintain. Therefore, for parcels to arrive at low altitudes in the mid-latitudes while maintaining high concentrations of  $^7\text{Be}$ , i.e., conserving the potential temperature, their starting area should be high altitudes at high latitudes, where the potential  
630 temperature is nearly the same as that in the arrival area. In addition, we revealed the reason for the mandatory initial descent; when parcels in the stratosphere start to move to mid-latitudes, descent never occurs. In contrast, for descent to be effective, it is necessary that parcels must already be lowered from the stratosphere to the troposphere at high latitudes before moving to mid-latitudes.

Many high-concentration events of  $^7\text{Be}$  occur in spring because in this season, tropopause folds  
635 are frequent at high latitudes, disturbances transporting parcels southward are strong, and near-surface disturbances lowering them to the surface are ubiquitous. On the other hand, because some of these conditions are unfavorable in the other three seasons, high-concentration events of  $^7\text{Be}$  are not frequent. In particular, they are virtually absent in summer.

Finally, we present a view of future work following the present study. This study examined fast  
640 descent routes to a specific location, i.e., Fukuoka, Japan. However, by extending the present results, we can examine fast descent routes to other locations; we believe that the majority of them are from regions in which tropopause folds are frequent. As confirmed in relation to Fig. 20, such regions include the northeastern part of the Asian continent and the northern and northeastern parts of North America in spring, in addition to the northern part of North America and storm track regions in the  
645 Pacific and Atlantic in winter (not shown). Then, if forward trajectories are traced from these regions with starting times at which tropopause folding occurs, some trajectories may arrive at the surface. From these calculations, many fast descent routes will be revealed.

Furthermore, it is interesting to consider the material and chemical differences in the air in regions of fast descent routes from those of general tropospheric air. We can easily predict elevated ozone  
650 concentrations and low specific humidity; however, other characteristics are possible. Therefore, several new research topics such as chemical reactions in the air will be discussed in future.

*Acknowledgements.* We would like to thank S. Miyahara for many useful comments in the development of this work. Thanks are extended to the three anonymous reviewers [and the editor \(P. Haynes\)](#) for many valuable and constructive comments. In particular, one reviewer recommended an analysis of the difference in the behaviour  
655 of the air parcels on the trajectories between daytime and nighttime in the atmospheric boundary layer. These

comments led to substantial improvements of the paper. The GFD-DENNOU Libraries and GrADS were used for producing the figures.



## References

- Ambrose, J. L., Reidmiller, D. R., Jaffe, D. A., Causes of high O<sub>3</sub> in the lower free troposphere over the Pacific Northwest as observed at the Mt. Bachelor Observatory. *Atmos. Environ.* 45, 5302–5315, 2011.
- Añel, J. A., Antuña, J. C., de la Torre, L., Castanheira, J. M., and Gimeno, L., Climatological features of global multiple tropopause events, *J. Geophys. Res.*, 113, D00B08, doi:10.1029/2007JD009697, 2008.
- Bezuglov, M. V., Malyshevsky, V. S., Fomin, G. V., Torgovkin, A. V., Shramenko, B. I., and Malykhina, T. V.: Photonuclear production of cosmogenic beryllium-7 in the terrestrial atmosphere, *Phys. Rev. C*, 86, 024609, doi:10.1103/PhysRevC.86.024609, 2012.
- Bracci, A., Cristofanelli, P., Sprenger, M., Bonafe, U., Calzolari, F., Duchi, R., Laj, P., Marinoni, A., Roccato, F., E. Vuillermoz, E., and Bonasoni, P., Transport of stratospheric air masses to the Nepal Climate Observatory-Pyramid (Himalaya; 5079 m MSL): A synoptic-scale investigation, *J. Appl. Meteor. Climatology*, 51, 1489–1507, 2012.
- Buraeva, E. A., Davydov, M. G., Zorina, L. V., Malyshevskii, V. S., and Stasov, V. V.: Content of cosmogenic <sup>7</sup>Be in the air layer at the ground at temperate latitudes, *Atom. Energy*, 102, 463–468, 2007.
- Chen, X., Añel, J. A., Su, Z., de la Torre, L., Kelder, H., van Peet, J., and Ma, Y., The deep atmospheric boundary layer and its significance to the stratosphere and troposphere exchange over the Tibetan Plateau. *PLoS ONE*, 8, e56 909, doi:10.1371/journal.pone.0056909, 2013.
- Chen, X., Ma, Y., Kelder, H., Su, Z., Yang, K., On the behavior of the tropopause folding events over the Tibetan Plateau, *Atmos. Chem. Phys.* 11, 5113–5122. 2011.
- Chen, X., Škerlak, B., Rotach, M. W., Añel, J. A., Su, Z., Ma, Y., Li, M., Reasons for the extremely high-ranging planetary boundary layer over the western Tibetan Plateau in winter, *J. Atmos. Sci.*, doi:10.1175/JAS-D-15-0148.1, in press, 2016.
- Cristofanelli, P., Bonasoni, P., Collins, W., Feichter, J., Forster, C., James, P., Kentarchos, A., Kubik, P. W., Land, C., Meloen, J., Roelofs, G. J., Siegmund, P., Sprenger, M., Schnabel, C., Stohl, A., Tobler, L., Tositti, L., Trickl, T., and Zanis, P.: Stratosphere-to-troposphere transport: a model and method evaluation, *J. Geophys. Res.*, 108, 8525, doi:10.1029/2002JD002600, 2003.
- Cristofanelli, P., Bonasoni, P., Tositti, L., Bonafé, U., Calzolari, F., Evangelisti, F., Sandrini, S., Stohl, A., A 6-year analysis of stratospheric intrusions and their influence on ozone at Mt. Cimone (2165 m above sea level). *J. Geophys. Res.*, 111, D03306, doi:10.1029/2005JD006553, 2006.
- Cristofanelli, P., Bracci, A., Sprenger, M., Marinoni, A., Bonafe, U., Calzolari, F., Duchi, R., Laj, P., Pichon, J. M., Roccato, F., Venzac, H., Vuillermoz, E., and Bonasoni, P., Tropospheric ozone variations at the Nepal Climate Observatory-Pyramid (Himalayas, 5079m a.s.l.) and influence of deep stratospheric intrusion events, *Atmos. Chem. Phys.*, 10, 6537–6549, 2010.
- Eisele, H., Scheel, H. E., Sladkovic, R., and Trickl, T., High-resolution lidar measurements of stratosphere-troposphere exchange, *J. Atmos. Sci.*, 56, 319–330, 1999.
- Elbern, H., Kowol, J., Sladkovic, R., and Ebel, A.: Deep stratospheric intrusions: a statistical assessment with model guided analysis, *Atmos. Environ.*, 31, 3207–3226, 1997.
- Feely, H. W., Larsen, R. J., and Sanderson, C. G.: Factors that cause seasonal variations in beryllium-7 concentrations in surface air, *J. Environ. Radioactiv.*, 9, 223–249, 1989.

- Gerasopoulos, E., Zanis, P., Stohl, A., Zerefos, C. S., Papastefanou, C., Ringer, W., Tobler, L., Hübener, S., Gäggeler, H. W., Kanter, H. J., Tositti, L., and Sandrini, S.: A climatology of  $^7\text{Be}$  at four high-altitude stations at the Alps and the Northern Apennines, *Atmos. Environ.*, 35, 6347–6360, 2001.
- 700 Holton, J. R., Haynes, P. H., McIntyre, M. E., Douglass, A. R., Rood, R. B., and Pfister, L.: Stratosphere-troposphere exchange, *Rev. Geophys.*, 33, 403–440, 1995.
- Hoskins, B. J., McIntyre, M. E., and Robertson, A. W.: On the use and significance of isentropic potential vorticity maps, *Q. J. Roy. Meteor. Soc.*, 111, 877–946, 1985.
- James, P., Stohl, A., Forster, C., Eckhardt, S., Seibert, P., and Frank, A.: A 15-year climatology of stratosphere-troposphere exchange with a Lagrangian particle dispersion model: 1. Methodology and validation, *J. Geophys. Res.*, 108, 8519, doi:10.1029/2002JD002637, 2003a.
- 705 James, P., Stohl, A., Forster, C., Eckhardt, S., Seibert, P., and Frank, A.: A 15-year climatology of stratosphere-troposphere exchange with a Lagrangian particle dispersion model: 2. Mean climate and seasonal variability, *J. Geophys. Res.*, 108, 8522, doi:10.1029/2002JD002639, 2003b.
- 710 Jordan, C. E., Dibb, J. E., and Finkel, R. C.:  $^{10}\text{Be}/^7\text{Be}$  tracer of atmospheric transport and stratosphere-troposphere exchange, *J. Geophys. Res.*, 108, 4234, doi:10.1029/2002JD002395, 2003.
- Kikuchi, S., Sakurai, H., Gunji, S., and Tokanai, F.: Temporal variation of  $^7\text{Be}$  concentrations in atmosphere for 8 y from 2000 at Yamagata, Japan: solar influence on the  $^7\text{Be}$  time series, *J. Environ. Radioactiv.*, 100, 515–521, 2009.
- 715 Kobayashi, S., Ota, Y., Harada, Y., Ebita, A., Moriya, M., Onoda, H., Onogi, K., Kamahori, H., Kobayashi, C., Endo, H., Miyaoka, K., and Takahashi, K.: The JRA-55 reanalysis: General specifications and basic characteristics, *J. Meteorol. Soc. Jpn.*, 93, 5–48, 2015.
- Kownacka, L., Vertical distributions of beryllium-7 and lead-210 in the tropospheric and lower stratospheric air, *NUKLEONIKA*, 47, 79–82, 2002.
- 720 Land, C., and Feichter, J., Stratosphere-troposphere exchange in a changing climate simulated with the general circulation model MAECHAM4, *J. Geophys. Res.*, 108, 8523, doi:10.1029/2002JD002543, 2003.
- Langford, A. O., Brioude, J., Cooper, O. R., Senff, C. J., Alvarez II, R. J., Hardesty, R. M., Johnson, B. J., and Oltmans, S. J., Stratospheric influence on surface ozone in the Los Angeles area during late spring and early summer of 2010, *J. Geophys. Res.*, 117, D00V06, doi:10.1029/2011JD016766, 2012.
- 725 Langford, A. O., Senff, C. J., Alvarez, R. J., Brioude, J., Cooper, O. R., Holloway, J. S., Lin, M. Y., Marchbanks, R. D., Pierce, R. B., Sandberg, S. P., Weickmann, A. M., and Williams, E. J.: An overview of the 2013 Las Vegas Ozone Study (LVOS): impact of stratospheric intrusions and long-range transport on surface air quality, *Atmos. Environ.*, 109, 305–322, doi:10.1016/j.atmosenv.2014.08.040, 2015.
- Lefohn, A. S., Wernli, H., Shadwick, D., Oltmans, S. J., Shapiro, M., Quantifying the importance of stratospheric-tropospheric transport on surface ozone concentrations at high- and low-elevation monitoring sites in the United States. *Atmos. Environ.* 62, 646–656, 2012.
- 730 Lin, M., Fiore, A. M., Cooper, O. R., Horowitz, L. W., Langford, A. O., Levy, H., Johnson, B. J., Naik, V., Oltmans, S. J., and Senff, C. J.: Springtime high surface ozone events over the western United States: quantifying the role of stratospheric intrusions, *J. Geophys. Res.*, 117, D00V22, doi:10.1029/2012JD018151, 2012.

- 735 Lin, M., Fiore, A. M., Horowitz, L. W., Langford, A. O., Oltmans, S. J., Tarasick, D., and Rieder, H. E.,  
Climate variability modulates western US ozone air quality in spring via deep stratospheric intrusions, *Nature*  
*Commun.*, 6:7105, doi:10.1038/ncomms8105, 2015.
- Ma, J., Lin, W. L., Zheng, X. D., Xu, X. B., Li, Z., and Yang, L. L., Influence of air mass downward transport on  
the variability of surface ozone at Xianggelila Regional Atmosphere Background Station, southwest China,  
740 *Atmos. Chem. Phys.*, 14, 5311–5325, 2014.
- Machta, L., 1957: Discussion of meteorological factors and fallout distribution, U.S. Weather Bureau, 11 pp.
- Masarik, J., and Beer, J., Simulation of particle fluxes and cosmogenic nuclide production in the Earth's atmo-  
sphere, *J. Geophys. Res.*, 104, 12 099–12 111, 1999.
- Megumi, K., Matsunami, T., Ito, N., Kiyoda, S., Mizohata, A., and Asano, T.: Factors, especially sunspot  
745 number, causing variations in surface air concentrations and depositions of  $^7\text{Be}$  in Osaka, Japan, *Geophys.*  
*Res. Lett.*, 27, 361–364, 2000.
- Nagai, H., Tada, W., and Kobayashi, T.: Production rates of  $^7\text{Be}$  and  $^{10}\text{Be}$  in the atmosphere, *Nucl. Instrum.*  
*Methods*, 172, 796–801, 2000.
- Narazaki, Y. and Fujitaka, K.: Cosmogenic  $^7\text{Be}$ : atmospheric concentration and deposition in Japan, *Japanese J.*  
750 *Health Phy.*, 44, 95–105, 2009.
- Nieto, R., Sprenger, M., Wernli, H., Trigo, R. M., and Gimeno, L., Identification and climatology of cut-off  
lows near the tropopause, *Trend. Direct. Climate Res.*, *Ann. N.Y. Acad. Sci.*, 1146, 256–290, 2008.
- Ojha, N., Najaa, M., Sarangi, T., Kumar, R., Bhardwaj P, Lal, S., Venkataramani , S., Sagar, R., Kumar, A.,  
Chandola, H. C., On the processes influencing the vertical distribution of ozone over the central Himalayas:  
755 Analysis of yearlong ozonesonde observations, *Atmos. Environ.*, 88, 201–211, 2014.
- Oltmans, S. J., Levy, II. H., Seasonal cycle of surface ozone over the western North Atlantic. *Nature*, 358,  
392–394, 1992.
- Raisbeck, G. M., Yiou, F., Fruneau, M., Loiseaux, J. M., Lieuvain, M., and Ravel, J. C.: Cosmogenic  $^{10}\text{Be}/^7\text{Be}$   
as a probe of atmospheric transport processes, *Geophys. Res. Lett.*, 8, 1015–1018, 1981.
- 760 Reed, R. J., and F. Sanders, An investigation of the development of a mid-tropospheric frontal zone and its  
associated vorticity field, *J. Meteor.*, 10, 338–349, 1953.
- Škerlak, B., Sprenger, M., and Wernli, H.: A global climatology of stratosphere–troposphere exchange using the  
ERA-Interim data set from 1979 to 2011, *Atmos. Chem. Phys.*, 14, 913–937, doi:10.5194/acp-14-913-2014,  
2014.
- 765 Sprenger, M. and Wernli, H.: A Northern Hemisphere climatology of cross-tropopause exchange for the ERA15  
time period (1979–1993), *J. Geophys. Res.*, 108, D128521, doi:10.1029/2002JD002636, 2003.
- Sprenger, M., Croci Maspoli, M., and Wernli, H.: Tropopause folds and cross-tropopause transport: a global  
investigation based upon ECMWF analyses for the time period March 2000 to February 2001, *J. Geophys.*  
*Res.*, 108, 8518, doi:10.1029/2002JD002587, 2003.
- 770 Stohl, A., Bonasoni, P., Cristofanelli, P., Collins, W., Feichter, J., Frank, A., Forster, C., Gerasopoulos, E.,  
Gäggeler, H., James, P., Kentarchos, T., Kromp-Kolb, H., Krüger, B., Land, C., Meloen, J., Papayannis, A.,  
Priller, A., Seibert, P., Sprenger, M., Roelofs, G. J., Scheel, H. E., Schnabel, C., Siegmund, P., Tobler, L.,  
Trickl, T., Wernli, H., Wirth, V., Zanis, P., and Zerefos, C.: Stratosphere-troposphere exchange: a review, and  
what we have learned from STACCATO, *J. Geophys. Res.*, 108, 8516, doi:10.1029/2002JD002490, 2003.

- 775 Stohl, A., Spichtinger-Rakowsky, N., Bonasoni, P., Feldmann, H., Memmesheimer, M., Scheel, H. E., Trickl, T., Hubener, S., Ringer, W., and Mandl, M.: The influence of stratospheric intrusions on Alpine ozone concentrations. *Atmos. Environ.*, 34, 1323–1354, 2000.
- Tositti, L., Brattich, E., Cinelli, G., Baldacci, D., 12 years of  $^7\text{Be}$  and  $^{210}\text{Pb}$  in Mt. Cimone, and their correlation with meteorological parameters, *Atmos. Environ.*, 87, 108–122, 2014.
- 780 Trickl, T., Feldmann, H., Kanter, H. J., Scheel, H. E., Sprenger, M., Stohl, A., and Wernli, H., Forecasted deep stratospheric intrusions over Central Europe: case studies and climatologies, *Atmos. Chem. Phys.*, 10, 499–524, 2010.
- Trickl, T., Vogelmann, H., Giehl, H., Scheel, H. E., Sprenger, M., and Stohl, A., How stratospheric are deep stratospheric intrusions? *Atmos. Chem. Phys.*, 14, 9941–9961, 2014.
- 785 Tsutsumi, Y., Igarashi, Y., Zaizen, Y., and Makino, Y.: Case studies of tropospheric ozone events observed at the summit of Mount Fuji, *J. Geophys. Res.*, 103, 16935–16951, 1998.
- US Environmental Protection Agency (US EPA): Air Quality Criteria for Ozone and Related Photochemical Oxidants (2006 Final), EPA/600/R-05/004aF-cF, US Environ. Prot. Agency, Washington, D.C., USA, 821 pp., 2006.
- 790 Usoskin, I. G. and Kovaltsov, G. A.: Production of cosmogenic  $^7\text{Be}$  isotope in the atmosphere: Full 3-D modeling, *J. Geophys. Res.*, 113, D12107, doi:10.1029/2007JD009725, 2008.
- Usoskin, I. G., Field, C. V., Schmidt, G. A., Leppänen, A.-P., Aldahan, A., Kovaltsov, G. A., Possnert, G., and Ungar, R. K.: Short-term production and synoptic influences on atmospheric  $^7\text{Be}$  concentrations, *J. Geophys. Res.*, 114, D06108, doi:10.1029/2008JD011333, 2009.
- 795 Wernli, H. and Bourqui, M.: A Lagrangian “1-year climatology” of (deep) cross-tropopause exchange in the extratropical Northern Hemisphere, *J. Geophys. Res.*, 107, D24021, doi:10.1029/2001JD000812, 2002.
- Yates, E. L., Iraci, L. T., Roby, M. C., Pierce, R. B., Johnson, M. S., Reddy, P. J., Tadić, J. M., Loewenstein, M., and Gore, W., Airborne observations and modeling of springtime stratosphere-to-troposphere transport over California, *Atmos. Chem. Phys.*, 13, 12481–12494, 2013.
- 800 Zanis, P., Gerasopoulos, E., Priller, A., Schnabel, C., Stohl, A., Zerefos, C., Gäggeler, H. W., Tobler, L., Kubik, P. W., Kanter, H. J., Scheel, H. E., Luterbacher, J., and Berger, M.: An estimate of the impact of stratosphere-to-troposphere transport (STT) on the lower free tropospheric ozone over the Alps using  $^{10}\text{Be}$  and  $^7\text{Be}$  measurements, *J. Geophys. Res.*, 108, 8520, doi:10.1029/2002JD002604, 2003.
- Zheng, X.-D., Shen, C.-D., Wan, G.-J., Liu, K.-X., Tang, J., and Xu, X.-B.:  $^{10}\text{Be}/^7\text{Be}$  implies the contribution of stratosphere-troposphere transport to the winter-spring surface  $\text{O}_3$  variation observed on the Tibetan Plateau, *Chinese Sci. Bull.*, 56, 84–88, 2011.
- 805

**Table 1.** Averages and standard deviations (SDs) of seasonal  $^7\text{Be}$  concentrations in  $\text{mBq m}^{-3}$ . “Days” denotes the total days of measurement. They are not integers because measurement times are not just 00:00 UTC. For instance, when measurement times are 00:00 UTC on some day and 01:00 UTC on the following day,  $(1 + 1/24)$  days are added. The much lesser number of measurement days in SON than in the other seasons is attributed to the missing data owing to the earthquake-resistant retrofitting in 2014.

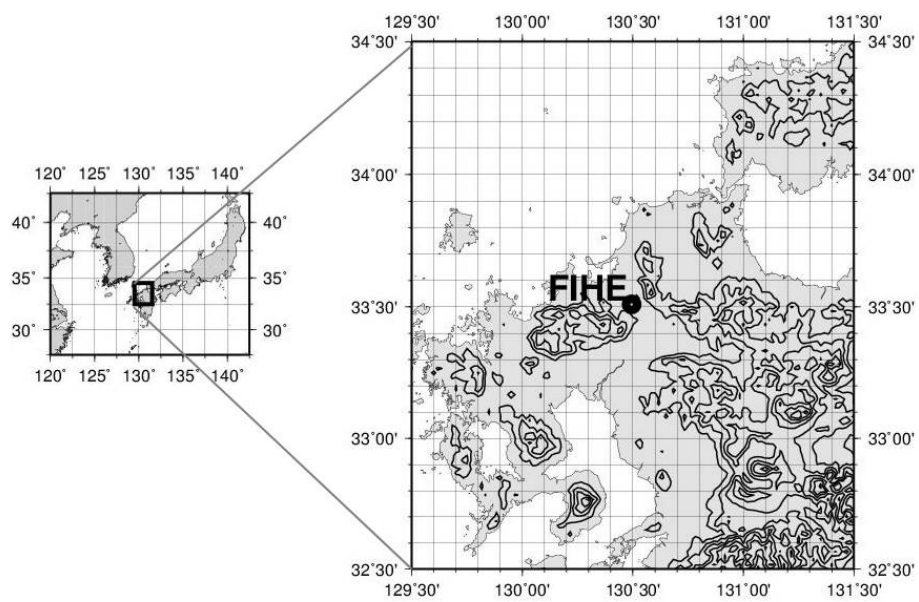
	Average	SD	Days
Total	5.20	2.19	2133.5
DJF	6.08	1.96	533.3
MAM	6.33	2.60	547.1
JJA	2.67	1.90	554.8
SON	5.83	2.22	498.3

**Table 2.** Numbers of seasonal and monthly high-concentration (HC) events of  $^7\text{Be}$  and  $\hat{z}_a$  maximum events. Because the sampling intervals are not necessarily one day, the number of days is equal to or more than the number of events. The meanings of  $\hat{z}_a$  and  $\hat{z}_1$  are referred to in the text. The bottom four rows indicate classifications of the highest reached altitude in each event.

	DJF	March	April	May	JJA	SON	Total
HC events (number of days)	7 (9)	16 (18)	<del>11 (11)</del> <u>12 (12)</u>	5 (11)	2 (2)	2 (4)	<del>43 (44)</del> <u>44 (56)</u>
$\hat{z}_a$ maximum events	7	15	12	9	1	2	47
$\hat{z}_1 \geq 10000 \text{ m}$	1	1	1	1	1	0	5
$9000 \leq \hat{z}_1 < 10000 \text{ m}$	0	2	3	2	1	1	9
$8000 \leq \hat{z}_1 < 9000 \text{ m}$	2	6	4	6	0	1	19
$\hat{z}_1 < 8000 \text{ m}$	4	6	4	0	0	0	14

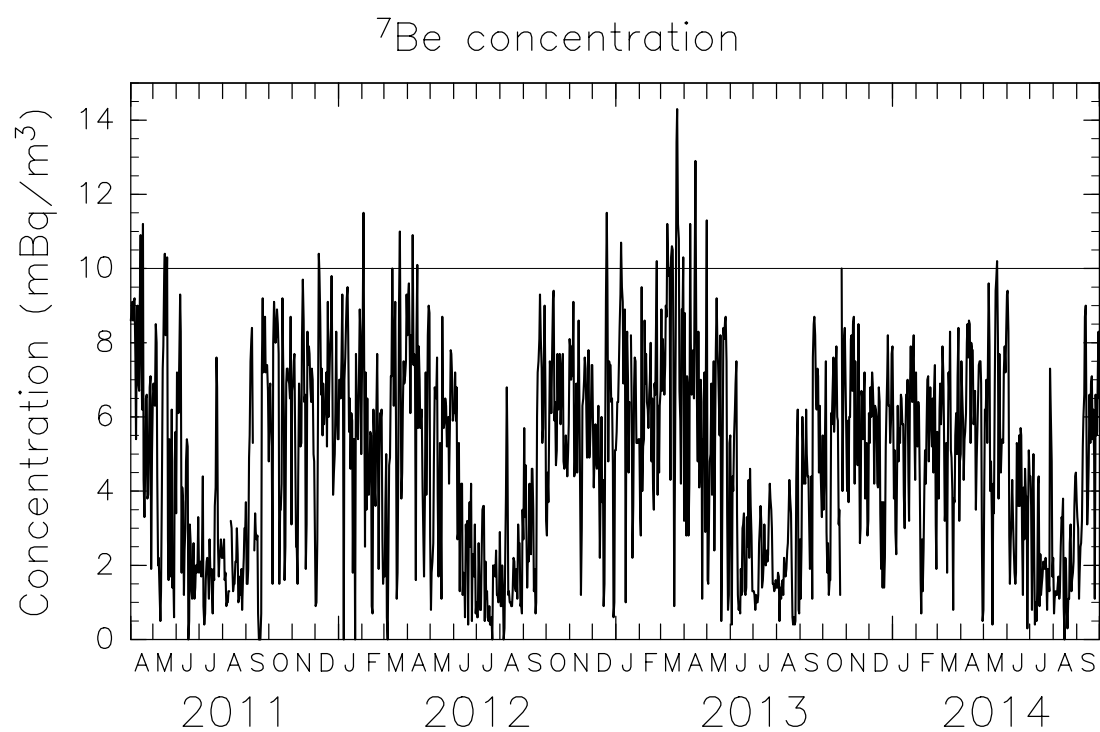
**Table 3.** Time from the beginning of backward trajectories to the point of highest altitude ( $t_a$ ), start time of maximum latitudinal movement per day ( $t_m$ ), start time of the largest descent per day ( $t_d$ ), and values of  $t_a - t_m$  and  $t_m - t_d$  with confidence intervals of 99 % are added. All the units are h. These values are shown for the 25 cases attaining the highest altitude north of 60° N.

Maximum altitude ( $t_a$ )	Latitudinal movement ( $t_m$ )	Descent ( $t_d$ )	$t_a - t_m$	$t_m - t_d$
211.7	157.4	115.0	$54.2 \pm 27.5$	$42.4 \pm 24.7$

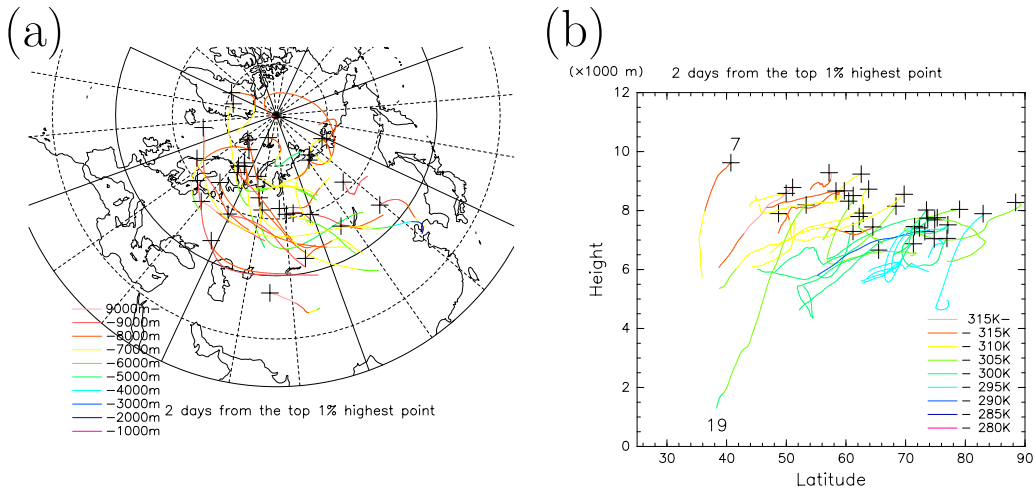


**Figure 1.** Map of the area near the Fukuoka Institute of Health and Environmental Sciences. Contours indicate altitude a.s.l. at intervals of 200 m.

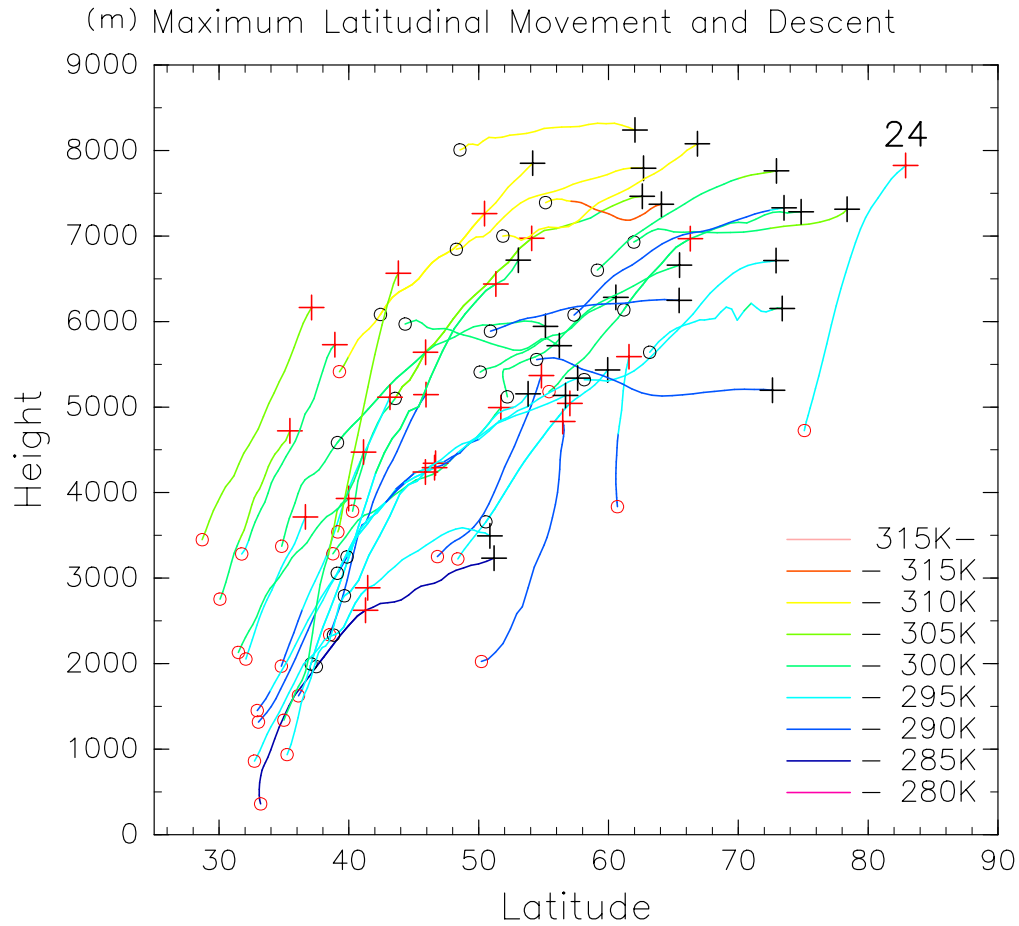




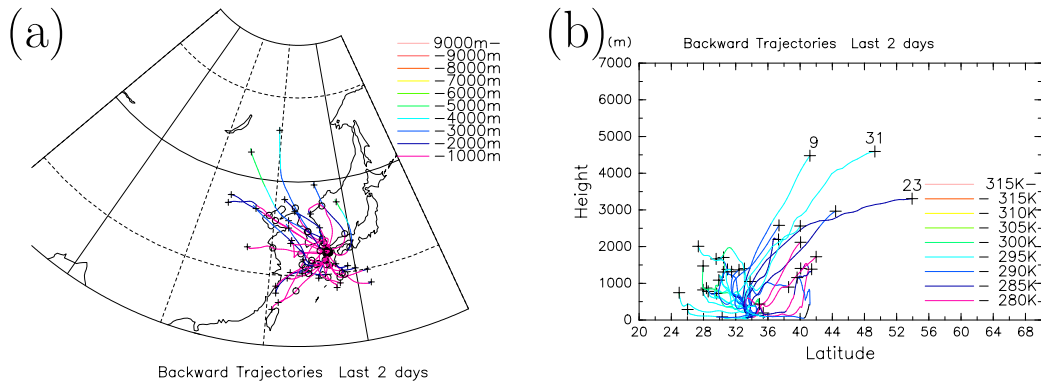
**Figure 2.** Time change of  $^7\text{Be}$  concentrations from 1 April 2011 to 30 September 2014. The ordinate is  $^7\text{Be}$  concentration (unit: mBq m<sup>-3</sup>), and the abscissa is time. The horizontal line indicates 10 mBq m<sup>-3</sup>.



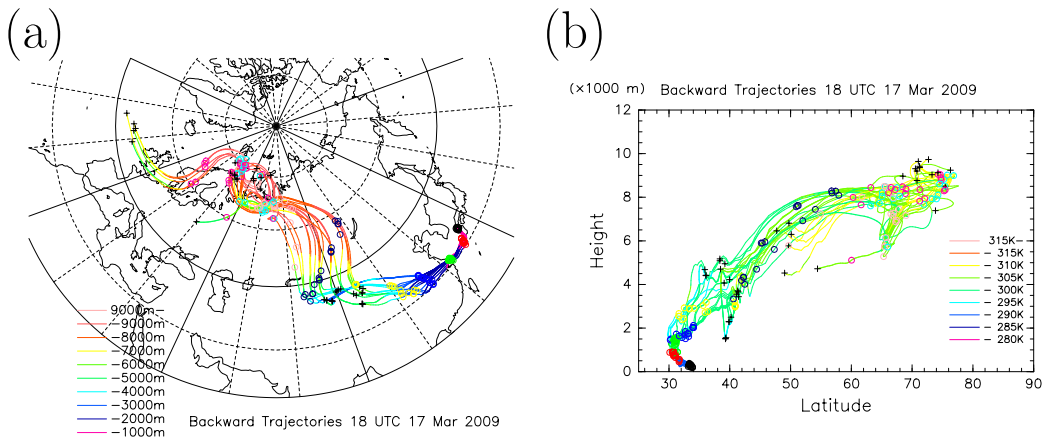
**Figure 3.** Top-1 % averaged trajectories for two days from their highest altitude. **(a)** Horizontal component of the trajectories and **(b)** trajectories in the latitude-vertical section for all 33 cases are shown. Colors indicate altitudes in panel **(a)** and potential temperature in panel **(b)**. The symbol + shows the position of the highest altitude of each top-1% averaged trajectory. The two numerals, 7 and 19, are the case numbers.



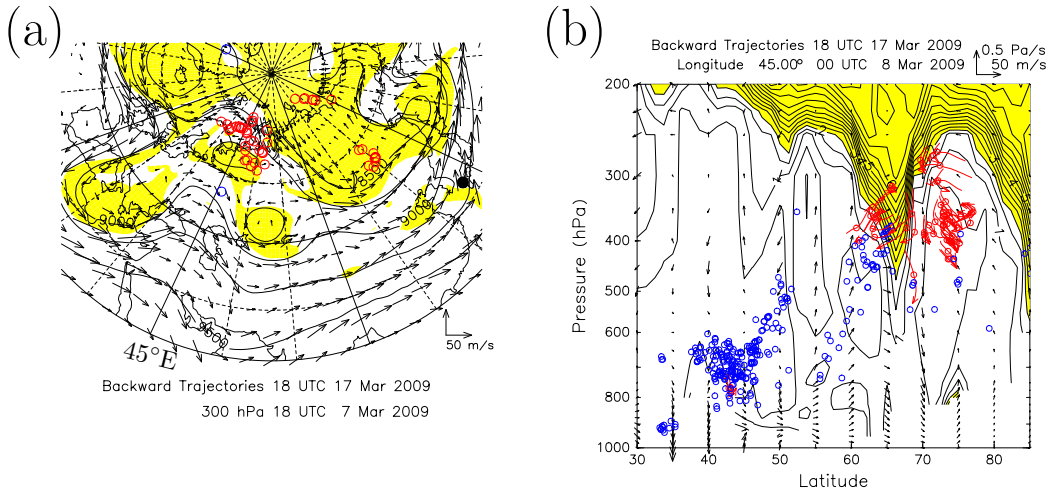
**Figure 4.** Paths showing the maximum latitudinal movement and maximum descent per day. The black (red) symbols of + and o indicate the starting and final positions, respectively, for the latitudinal movement (descent). The 25 cases showing the highest altitude north of 60° N are illustrated. The line color represents the potential temperature. The numeral (24) attached to the descent route shows the case number.



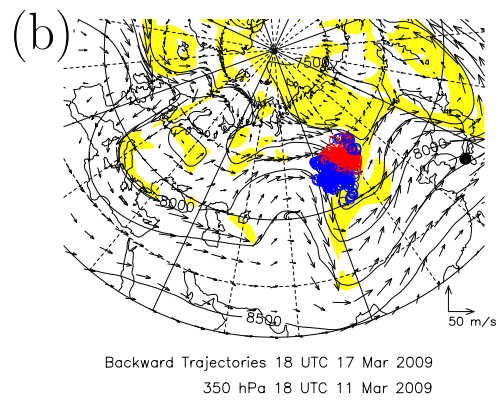
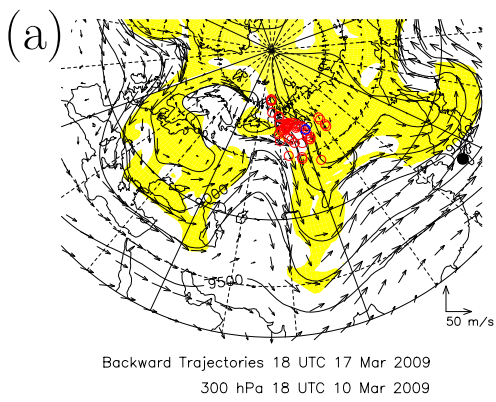
**Figure 5.** Top-1 % averaged trajectories for the last two days of travel. **(a)** Horizontal component of the trajectories and **(b)** trajectories in the latitude-vertical section for all 33 cases are shown. The colors are the same as those in Fig. 3. The + symbol indicates the position before two days of object times for analysis. The three numerals (9, 23, and 31) in panel **(b)** indicate the case numbers.



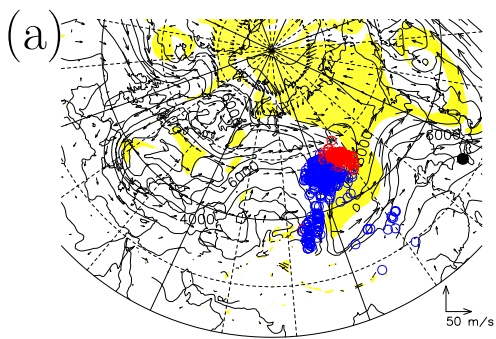
**Figure 6.** Backward trajectories starting at 18:00 UTC 17 March 2009 (case 1). **(a)** Horizontal component of the routes and **(b)** routes in the latitude-vertical section of the top-1 % trajectories (18 lines) and the top-25 % averaged trajectory (thick line) are shown. The colors are the same as those in Fig. 3. The  $\circ$  symbol indicates positions at each 24 h interval, whereas the  $+$  symbol shows the fifth day and the last. The difference in days is represented by different colors.



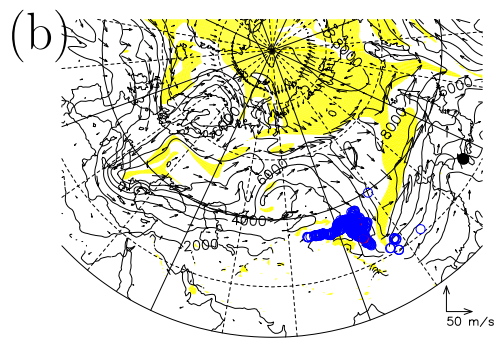
**Figure 7.** (a) 300 hPa surface map at 18:00 UTC 7 March and (b) the latitude-vertical section along  $45^\circ$  E at 00:00 UTC 8 March 2009. Height (contour; unit: m), wind (arrow), and PV (shading) are shown in panel (a), and PV (contour and shading; unit: PVU) and meridional and vertical flow (arrow) are shown in panel (b). The ordinate in panel (b) is pressure. Yellow areas in panels (a, b) indicate areas of more than 2 PVU. The symbol  $\circ$  represents positions of air parcels in backward trajectories for case 1, where all parcels are plotted within a height difference of 1000 m in panel (a) and within a longitudinal difference of 500 km in panel (b). Red (blue) colors indicate parcels with more (less) than 2 PVU of PV. The black-filled circle in (a) indicates the position of Fukuoka. For parcels with more than 2 PVU or less than 350 hPa, their movements between 6 h before and after the present time are plotted by arrows in panel (b). Flow speeds are indicated at the lower-right side in panel (a) and upper-right side in panel (b).



**Figure 8.** Same as Fig. 7a but for (a) 300 hPa surface at 18:00 UTC 10 March and (b) 350 hPa surface at 18:00 UTC 11 March 2009 in case 1.



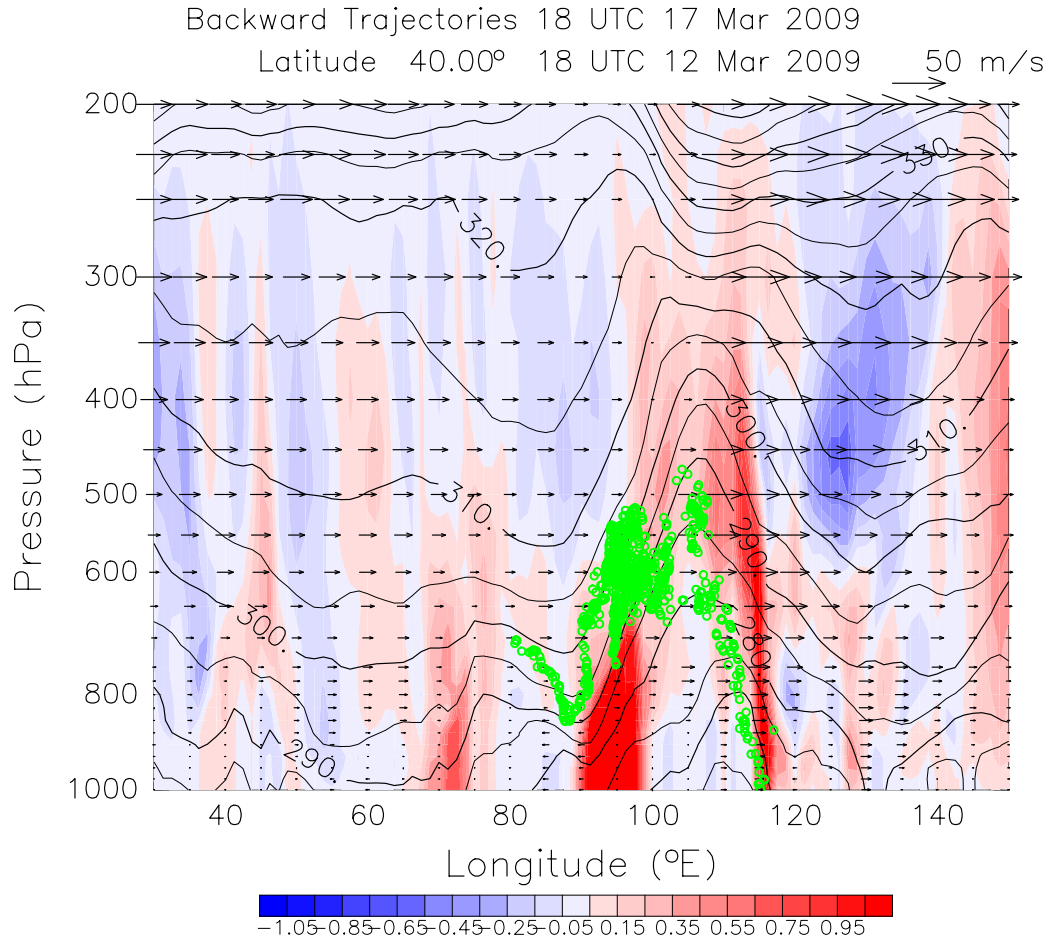
Backward Trajectories 18 UTC 17 Mar 2009  
300K 18 UTC 11 Mar 2009



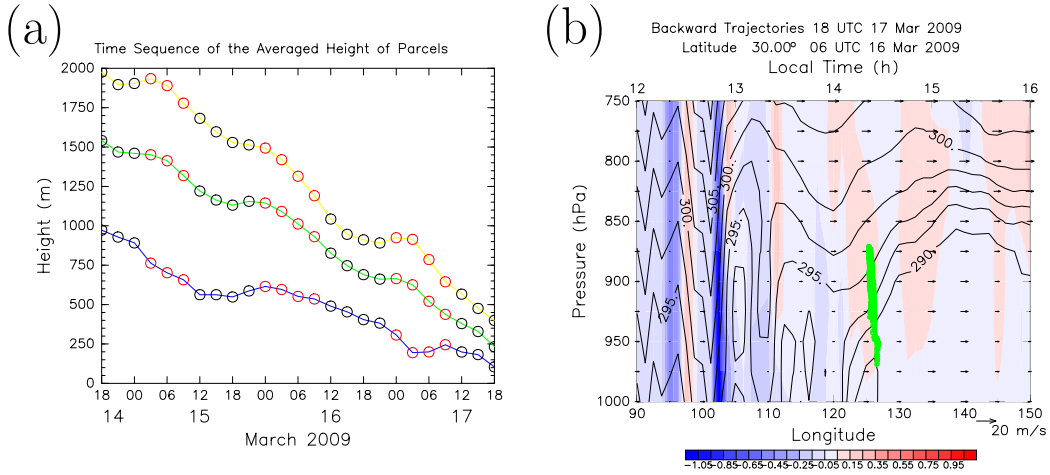
Backward Trajectories 18 UTC 17 Mar 2009  
300K 18 UTC 12 Mar 2009

**Figure 9.** Same as Fig. 7a but for the 300 K isentropic surfaces at **(a)** 18:00 UTC 11 March, and **(b)** 18:00 UTC 12 March 2009 in case 1.



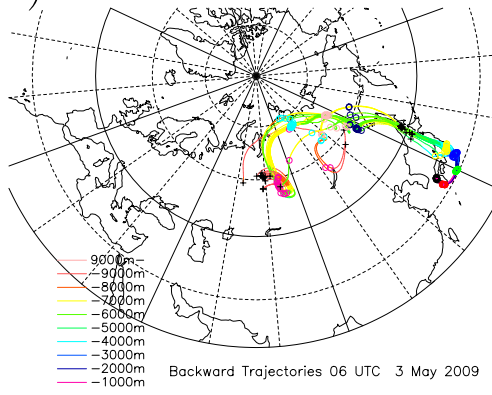


**Figure 10.** Longitude-vertical section along 40° N at 18:00 UTC 12 March 2009. Colors indicate vertical motions (unit:  $\text{Pa s}^{-1}$ ), and contours represent potential temperature (unit: K). Arrows show zonal wind, and their magnitudes are indicated at the upper-right side. Parcel positions within 500 km from 40° N in case 1 are plotted in green. The strong subsidence near 90° E may not be accurate because this area is a mountainous region.

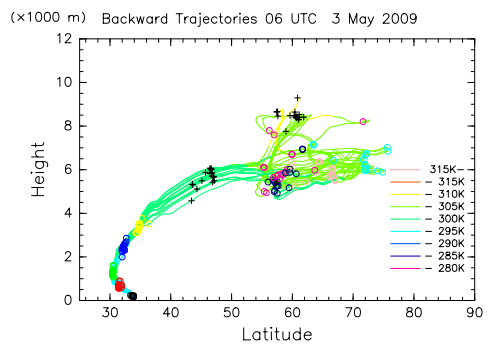


**Figure 11.** (a) Time change of the average heights of all the air parcels (green line), lowest-10 % parcels (blue line) and highest-10 % parcels (yellow line) on the trajectories for case 1. The ordinate is height, and the abscissa is time. The red and black circles indicate the average heights at daytime (8:00-20:00 Local Time) and nighttime (20:00-8:00 Local Time), respectively. (b) Same as Fig. 10 but for a small area along 30° N at 06:00 UTC 16 March 2009. In addition, the local time (h) is indicated in the upper axis.

(a)

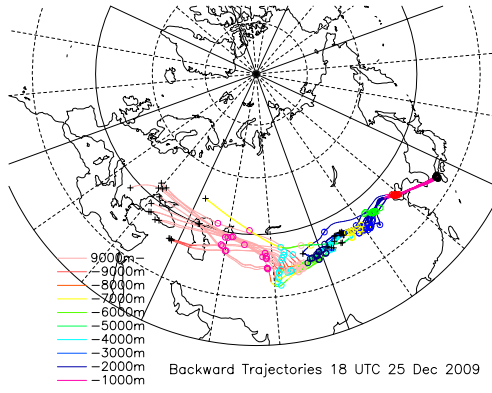


(b)

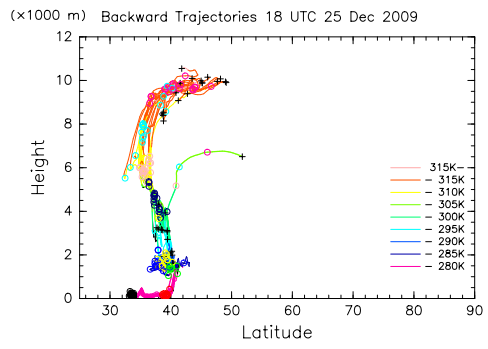


**Figure 12.** Same as Fig. 6 but for case 3 (starting time of 06:00 UTC 3 May 2009).

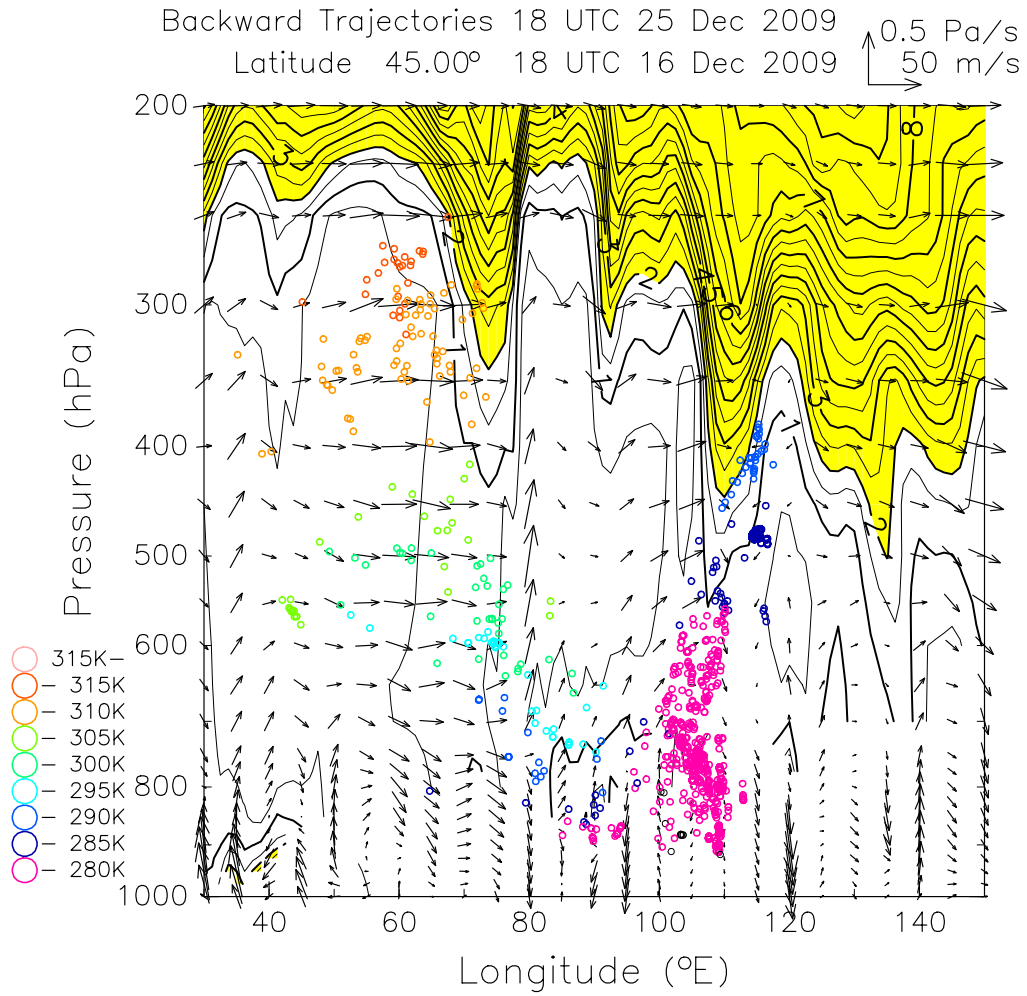
(a)



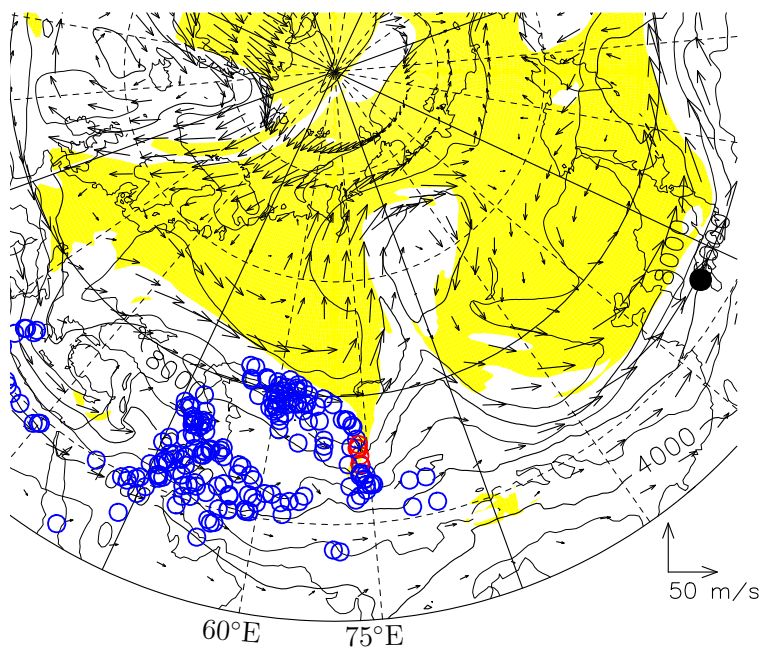
(b)



**Figure 13.** Same as Fig. 6 except for case 7 (starting time of 18:00 UTC 25 December 2009).

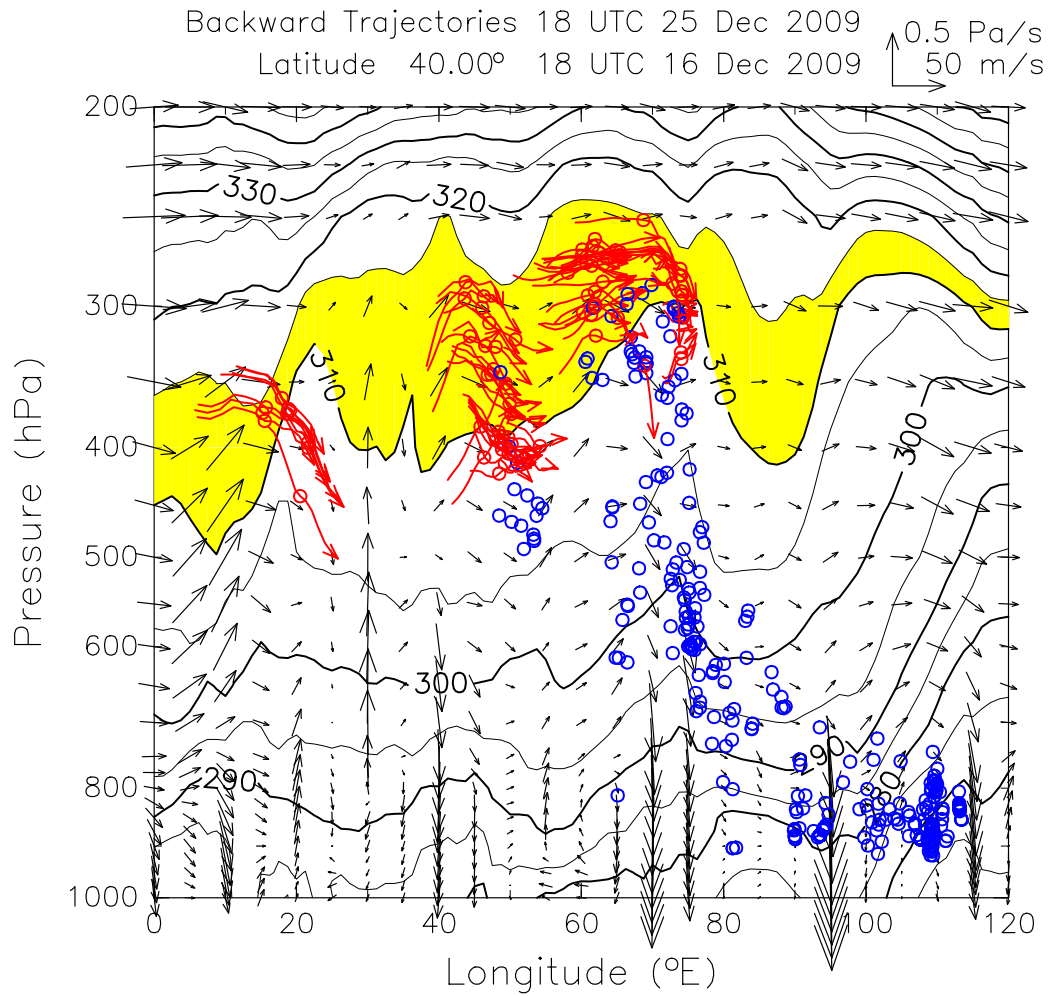


**Figure 14.** PV and parcel positions on backward trajectories in the longitude-vertical section along 45° N at 18:00 UTC 16 December 2009. Parcels within 500 km from 45° N are plotted with the potential temperature represented by color.



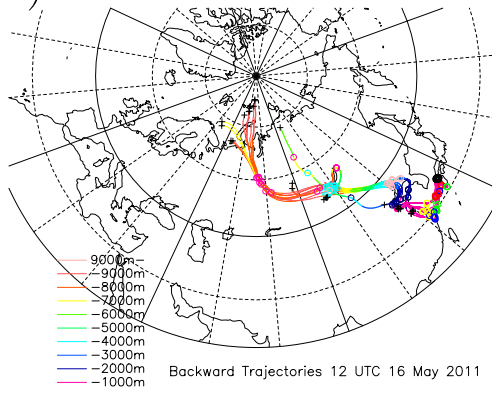
Backward Trajectories 18 UTC 25 Dec 2009  
 310K 18 UTC 16 Dec 2009

**Figure 15.** Same as Fig. 7a except for the 310 K isentropic surface at 18:00 UTC 16 December 2009.

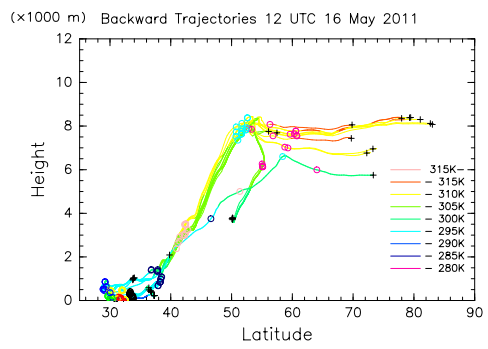


**Figure 16.** Potential temperature and parcel positions on backward trajectories in the longitude-vertical section along 40° N at 18:00 UTC 16 December 2009. Parcels with red (blue) color show potential temperature values of more (less) than 310 K. Movement between 6 h before and after the present time for red parcels is indicated by arrows.

(a)

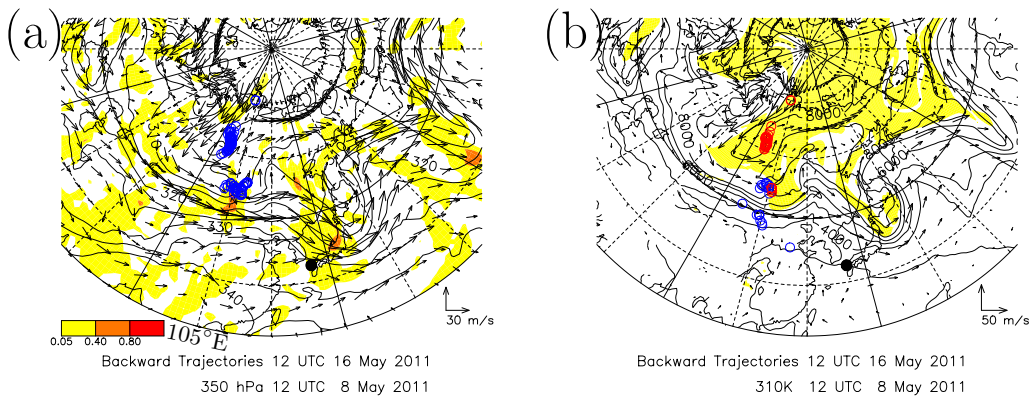


(b)

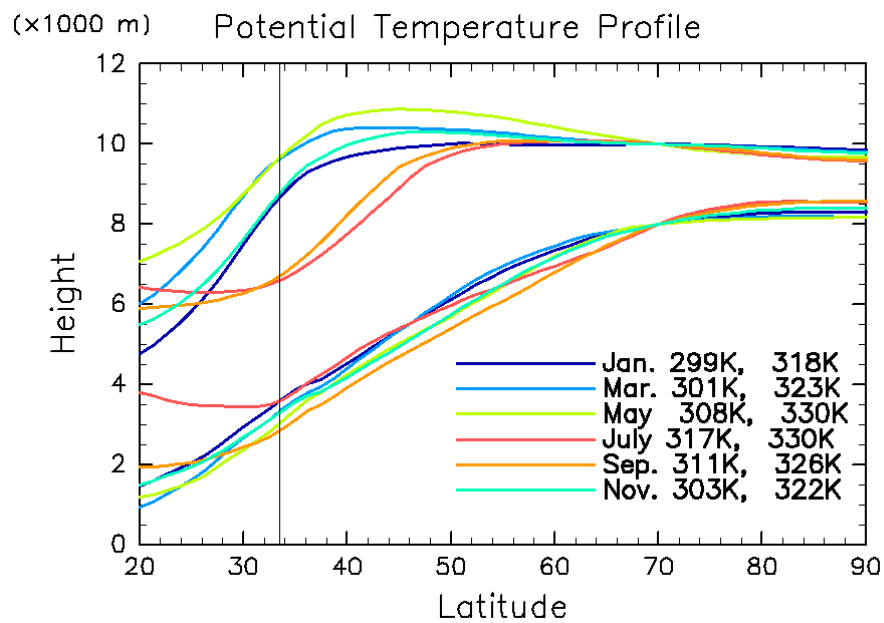


**Figure 17.** Same as Fig. 6 except for case 19 (starting time of 12:00 UTC 16 May 2011).

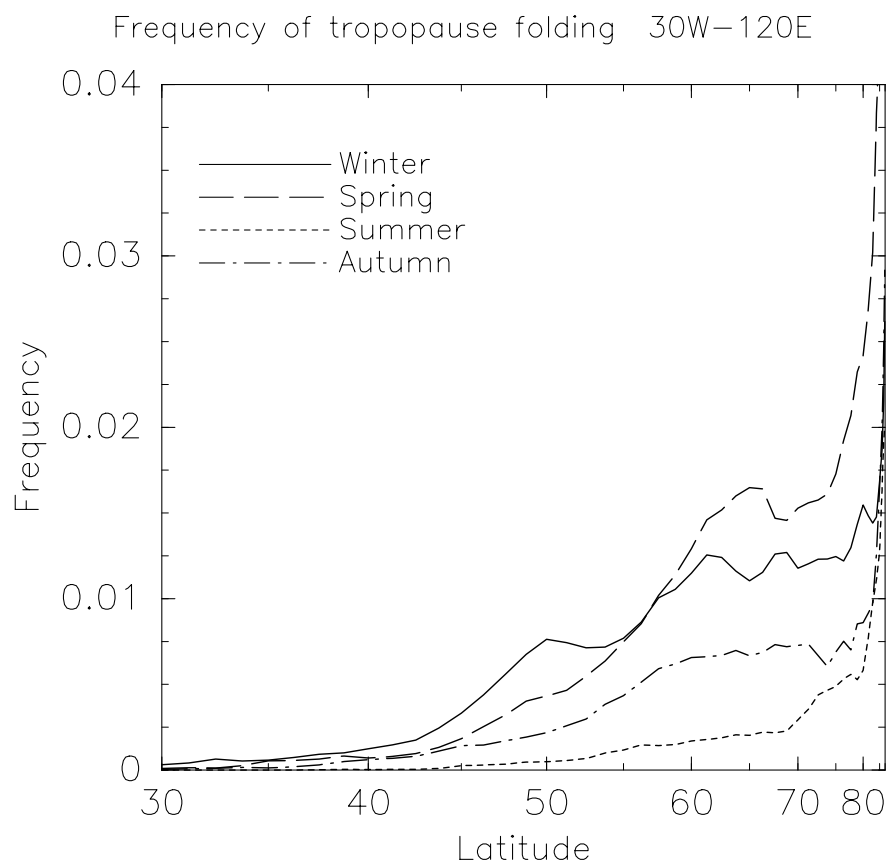




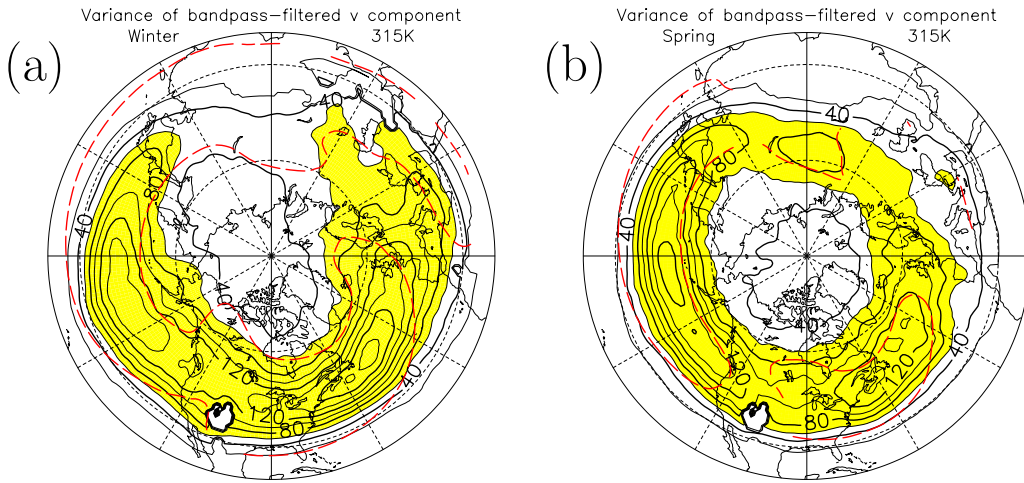
**Figure 18.** (a) Potential temperature (contour; unit: K), downward flow (shading; unit:  $\text{Pa s}^{-1}$ ), and wind (arrows) on the 350 hPa level and (b) height (contour; unit: m) and wind (arrows) on the 300 K isentropic surface at 12:00 UTC 8 May 2011. Yellow colors indicate areas of more than 2 PVU in panel (b). The parcel positions are shown within height differences of 1000 m.



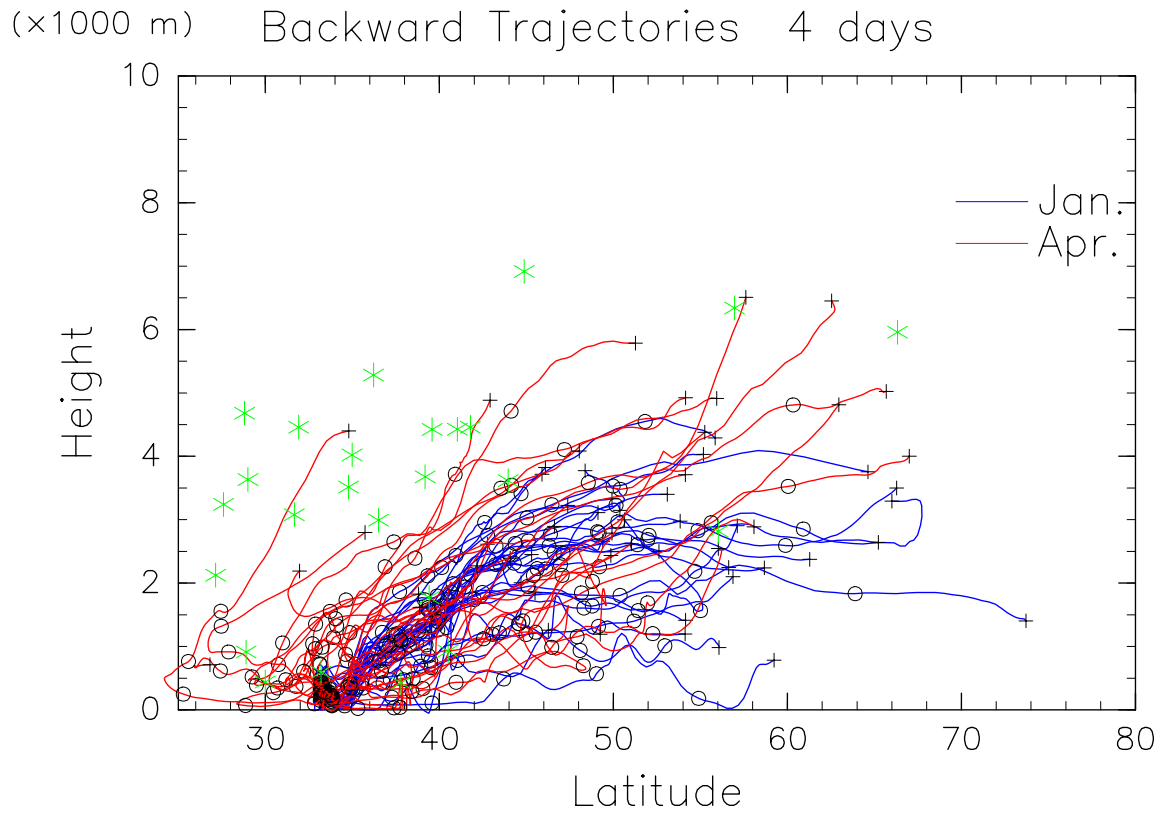
**Figure 19.** Meridional inclination of each potential temperature with reference to the monthly-mean potential temperature at 8000 and 10 000 m heights at 70° N. The potential temperature is shown at the right side of each month (left: 8000 m; right: 10 000 m). The averages between 30° W and 120° E are shown for only the odd months.



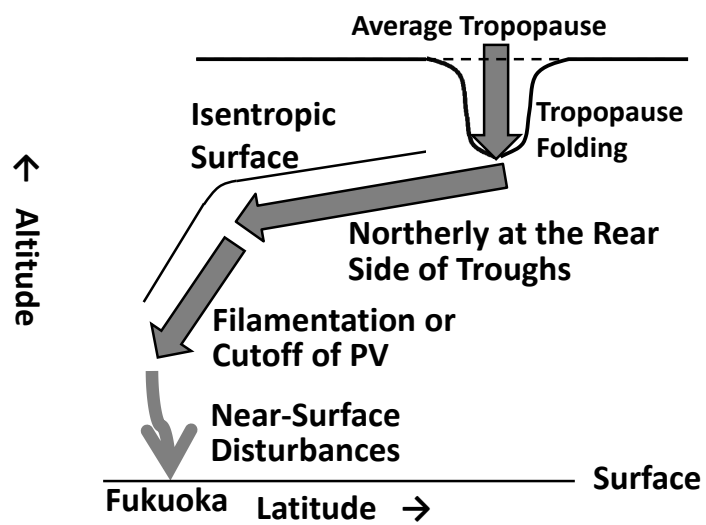
**Figure 20.** Seasonal frequencies of tropopause folding. The abscissa is the latitude elongated and contracted by the area factor. The frequencies are averaged between 30° W and 120° E.



**Figure 21.** Variances of the bandpass filtered meridional-wind component (unit:  $\text{m}^2 \text{s}^{-2}$ ) at the 315 K isentropic surface in winter (left) and spring (right). Areas with more than  $60 \text{ m}^2 \text{s}^{-2}$  are shown in yellow. Red dashed lines indicate the climatological zonal-wind component of  $15 \text{ m s}^{-1}$ . These values are calculated between 2009 and 2014. Values are missing in some regions of low latitudes owing to a lack of data for low potential temperature.



**Figure 22.** Projections of backward trajectories to the latitude-vertical section for four days from 00:00 UTC on all days in January and April in 2010. The  $\circ$  and  $+$  symbols indicate positions at 00:00 UTC. The green star marks represent the parcels on four days before the starting time on the trajectories that show the highest altitude for all 33 cases.



**Figure 23.** Schematic diagram of the descent from high latitudes.