



*Supplement of*

## **Drivers of changes in stratospheric and tropospheric ozone between year 2000 and 2100**

**A. Banerjee et al.**

*Correspondence to:* A. Banerjee (ab4283@columbia.edu)

The copyright of individual parts of the supplement might differ from the CC-BY 3.0 licence.

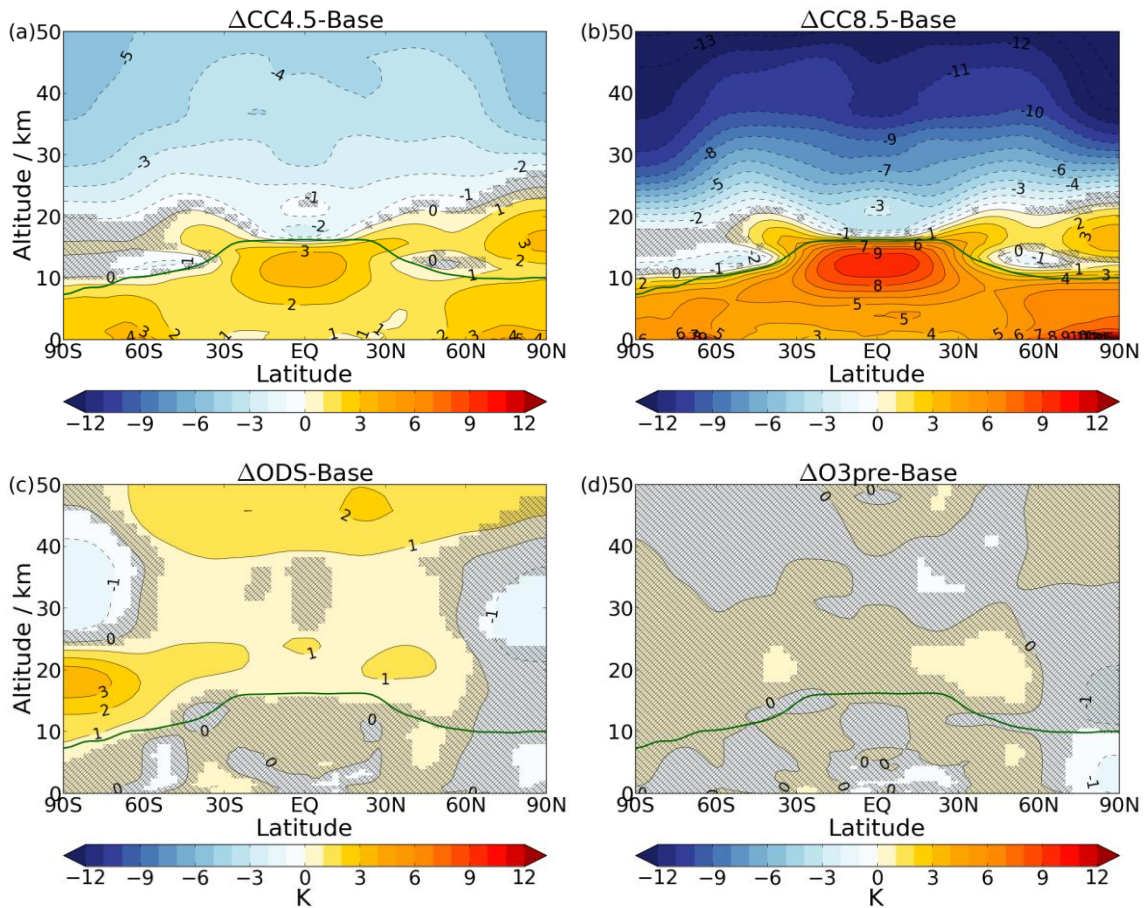


Figure S1. Changes in annual and zonal mean temperature for single-forcing experiments. Areas where the changes are not statistically significant at the 95 % level according to a two-tailed Student's t-test are hatched out. The solid green line indicates the thermal tropopause of the Base run.

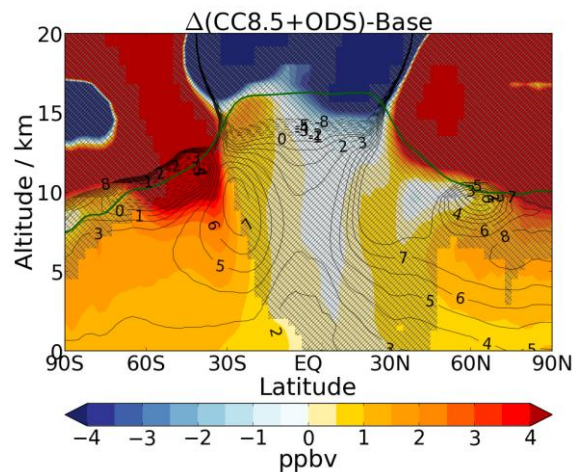


Figure S2. As for Fig. 3 (main text), but showing the change in  $O_3S$  (contours) from Base to  $\Delta(CC8.5+ODS)$  as well as the deviation from additivity (shading) of the response. Areas where the shading is not significant at the 95 % level according to a two-tailed Student's t-test are hatched out. The solid green line indicates the thermal tropopause of the Base run.