

Mixing layer height and its implications for air pollution over Beijing, China

G. Tang¹, J. Zhang², X. Zhu¹, T. Song¹, C. Münkel³, B. Hu¹, K. Schäfer⁴, Z. Liu¹, J. Zhang¹, L. Wang¹, J. Xin¹, P. Suppan⁴, and Y. Wang¹

¹State Key Laboratory of Atmospheric Boundary Layer Physics and Atmospheric Chemistry (LAPC), Institute of Atmospheric Physics, Chinese Academy of Sciences, Beijing 100029, China

²Key Laboratory of Middle Atmosphere and Global Environment Observation (LAGEO), Institute of Atmospheric Physics, Chinese Academy of Sciences, Beijing 100029, China

³Vaisala GmbH, 22607 Hamburg, Germany

⁴Karlsruhe Institute of Technology (KIT), Institute of Meteorology and Climate Research, Atmospheric Environmental Research (IMK-IFU), 82467 Garmisch-Partenkirchen, Germany

Correspondence to: Y. Wang (wys@mail.iap.ac.cn)

Abstract

The mixing layer is an important meteorological factor that affects air pollution. In this study, the atmospheric mixing layer height (MLH) was observed in Beijing from July 2009 to December 2012 using a ceilometer. By comparison with radiosonde data, we found that the ceilometer underestimates the MLH under conditions of neutral stratification caused by strong winds, whereas it overestimates the MLH when sand-dust is crossing. Using meteorological, $PM_{2.5}$, and PM_{10} observational data, we screened the observed MLH automatically; the ceilometer observations were fairly consistent with the radiosondes, with a correlation coefficient greater than 0.9. Further analysis indicated that the MLH is low in autumn and winter and high in spring and summer in Beijing. There is a significant correlation between the sensible heat flux and MLH, and the diurnal cycle of the MLH in summer is also affected by the circulation of mountainous plain winds. Using visibility as an index to classify the degree of air pollution, we found that the variation in the sensible heat and buoyancy term in turbulent kinetic energy (TKE) is insignificant when visibility decreases from 10 to 5 km, but the reduction of shear term in TKE is near 70%. When visibility decreases from 5 to 1 km, the variation of the shear term in TKE is insignificant, but the decrease in the sensible heat and buoyancy term in TKE is approximately 60%. Although the correlation between the daily variation of the MLH and visibility is very poor, the correlation between them is significantly enhanced when the relative humidity increases beyond 80%. This indicates that humidity-related physiochemical processes is the primary source of atmospheric particles under heavy pollution and that the dissipation of atmospheric particles mainly depends on the MLH. The presented results of the atmospheric mixing layer provide useful empirical information for improving meteorological and atmospheric chemistry models and the forecasting and warning of air pollution.

1 Introduction

The mixing layer is formed when discontinuous turbulence exists due to discontinuities in temperature stratification between the upper and lower layers of the atmosphere. The atmospheric mixing layer height (MLH) is an important meteorological factor that affects the vertical diffusion of atmospheric pollutants and water vapour concentrations; therefore, it impacts the formation and dissipation of air pollutants (Stull, 1988). Continuous observations of the MLH are helpful for improving the parameterisations of boundary layer models, and they play an important role of improving the simulation accuracy of meteorological models and optimising the simulation results for pollutants.

Three primary observation methods are used to determine the MLH: meteorological radiosondes, aeroplane surveys, and ground-based remote sensing. As the most conventional observation approach, meteorological radiosonde profiles utilise a large number of observation stations distributed globally and provide high-quality data. However, because of the high cost of the observation, only two observations at 00:00 and 12:00 UTC are available from most stations (Seibert et al., 2000). When solar radiation increases in the morning, the growth rate of the MLH reaches hundreds of metres per hour and convection develops quickly; even if hourly observations were available, they could not provide sufficient temporal resolution of the evolution of MLH (Seibert et al., 2000). Although aeroplane surveys can be used to obtain high-resolution meteorological and pollutant profiles, the constraints of air traffic control, weather conditions, and observation cost limit these data to short time periods. Therefore, to acquire continuous observations with high spatial and temporal resolution, ground-based remote sensing has become the most advanced approach to MLH measurement.

Acoustic radar (sodar), laser radar (lidar) and electromagnetic radar (Doppler radar) are the three methods used to perform ground-based remote sensing. Sodar can obtain the vertical profiles of wind and temperature, and these can be used to calculate the MLH. Doppler wind radar can obtain variations of the wind vectors at different altitudes and identify the mixing layer through wind shear. Lidar can obtain the vertical profile of the aerosol

concentration and discern the atmospheric MLH by calculating the height at which sudden changes in the profile occur.

Beyrich (1997), Seibert et al. (2000), and Emeis et al. (2008) conducted reviews of these three methods, comparing their advantages and disadvantages. The sodar detection height is usually less than 1000 m, which is not conducive for observing the MLH under convection states. The lowest detection height of wind radar is normally above 200 m, and the vertical resolution is limited to 50–250 m, factors that make the interpretation of wind radar data not always straightforward (Seibert et al., 2000). Prior to the application of modern laser ceilometers, lidar was costly and not widely used. In recent years, lidar observation technology has developed rapidly, and an increasing number of applications have used lidar for MLH observations (White et al., 1999; Steyn, et al., 1999; Högeli et al., 2000; Chen et al., 2001; Schneider and Eixmann, 2002; Kunz et al., 2002; Strawbridge and Snyder, 2004; He et al., 2006; Wiegner et al., 2006; Sicard et al., 2006; Hennemuth and Lammert, 2006; Emeis et al., 2007; Wang et al., 2012; Yang et al., 2013; Luo et al., 2014; Scarino et al., 2014). Meanwhile, eye-safe ceilometers that permit observation of the MLH with a near-infrared band laser have been developed. Due to their simple operation and low cost, these instruments have become the optimal method for MLH observation, and they have been widely used in recent years (Münkel and Räsänen, 2004; Emeis et al., 2004; Emeis and Schäfer, 2006; Eresmaa et al., 2006; Münkel et al., 2007; McKendry et al., 2009; Kamp and McKendry, 2010; Muñoz and Undurraga, 2010; Flentje et al., 2010; Chen et al., 2011; Haefelin et al., 2012; Emeis et al., 2012; Pappalardo et al., 2014; Wiegner et al., 2014; Haeffelin et al., 2014; Sicard et al., 2015; Tang et al., 2015).

Beijing, located on the North China Plain, is the centre of politics, culture, and economics in China. With the rapid development of the economy and the concomitant increase in energy usage, serious air pollution and heavy haze occurs frequently (Tang et al., 2009, 2012, 2015; Xin et al., 2010; Wang et al., 2014b; Zhang et al., 2014; Yang et al., 2015). Previous studies of Beijing have indicated that visibility declines dramatically when the concentration of particles increases; the weather conditions typically include high relative humidity (RH),

stable atmospheric stratification, and low wind speed (WS) with southerly flow during the polluted period (Ding et al., 2005; Liu et al., 2014; Zhang et al., 2015).

Although many studies have provided detailed descriptions of other weather conditions during heavy pollution periods, variations in atmospheric MLH are not well understood. As a key meteorological factor, MLH has a strong influence on the occurrence, maintenance, and dissipation of heavy pollution. For most areas in northern China, the meteorological radiosondes can only acquire the MLH in the morning (08:00 LT) and at night (20:00 LT), so observations of the convective mixing layer at noon are lacking. In certain studies, simulations with numerical models, short-time ground-based remote sensing, or meteorological profiles are used to provide a preliminary description of MLH during heavy pollution periods (He and Mao, 2005; Yang et al., 2005; Zhang et al., 2006; Chen et al., 2009; Quan et al., 2013; Hu et al., 2014; Zhang et al., 2015), but continuous high-resolution observations over a long time period have not been conducted for this region. Without the continuous high-resolution characteristics of MLH, its impact on air pollution cannot be studied thoroughly (Schäfer et al., 2006).

To compensate for the deficiencies in the aforementioned studies, a ceilometer was used to conduct continuous high-resolution observations for 3 years and 6 months (from July of 2009 to December of 2012) in Beijing. By comparing the obtained data with multiple meteorological and pollutant data sets, we verified the applicability of the ceilometer and obtained the temporal variations of the MLH over 3 years. By combining the meteorological data, we were able to determine the variations of the mixing layer and the atmospheric diffusion capability in different seasons. Finally, we used visibility as an index to classify the degree of air pollution, and analysed the thermal/dynamic parameters inside the mixing layer under different degrees of pollution; then, we delineated the influence of MLH on air pollution and revealed the critical meteorological factors that affect the formation and dissipation of heavy air pollution in Beijing.

2 Methods

2.1 Sites and instruments

To understand the characteristics of the mixing layer in the Beijing area, we conducted observations for 3 years and 6 months (from 15 July 2009 to 16 December 2012) in Beijing. The observation sites, parameters, and time periods are shown in Figure 1 and Table 1.

2.1.1 BJT site

The site used to measure the MLH was built in the courtyard of the Institute of Atmospheric Physics, Chinese Academy of Sciences, to the west of the Jiande bridge in the Haidian district, Beijing (ID: BJT). This site is located between the north third and the north fourth ring road, and the Beijing–Tibet motorway is on the eastern side. The geographic location of the station is 39.974° N, 116.372° E, and the elevation (a.s.l.) is approximately 60 m.

The instrument used to observe the MLH was a single-lens ceilometer (CL31, Vaisala, Finland). This instrument utilises pulsed diode laser lidar technology (910 nm waveband) to measure the attenuated backscatter coefficient profile and then determine the MLH. For practical measurements, the time resolution was set to 16 s, the vertical resolution was set to 10 m, and the measurement range was 7.7 km. Because the atmospheric aerosol concentration is relatively high in Beijing, the CL31 lens was cleaned with clear water every 3 days.

The conventional meteorological data during the same period included temperature, RH, WS, and wind direction observations at 8, 15, 32, 47, 65, 80, 100, 120, 140, 160, 180, 200, 240, 280, and 320 m along the tower in a vertical direction, and the temporal resolution was 5 min. The detailed description is provided by Song et al. (2013). The thermodynamic parameters (sensible heat, latent heat, friction velocity, etc.) and the total (285–2800 nm) and net (0.2–100 μ m) radiation during the same period were observed using a ultrasonic anemometers (CSAT3, Campbell Scientific, USA), a pyranometer (CM11, Kipp & Zonen, Netherlands) and a net radiometer (NR Lite2, Kipp & Zonen, Netherlands), respectively. All

of these data were obtained on the meteorological tower at a height of 280 m and processed with a resolution of 30 min. The detailed description is provided by Hu et al. (2012) and Song and Wang (2012). The sensible heat (Q_H), latent heat (Q_E), friction velocity (u_*), and turbulence kinetic energy (TKE) were calculated as follows (Stull, 1988; Garratt, 1992):

$$Q_H = \rho c_p \overline{w'\theta'_v} \quad (1)$$

$$Q_E = L_v \overline{w'q'} \quad (2)$$

$$u_* = \left(\overline{u'w'^2} + \overline{v'w'^2} \right)^{1/4} \quad (3)$$

$$\frac{TKE}{m} = \frac{1}{2} \left(\overline{u'^2} + \overline{v'^2} + \overline{w'^2} \right) = \bar{e} \quad (4)$$

where ρ is the air density (kg m^{-3}), c_p is the specific heat capacity for air at constant pressure ($\text{J kg}^{-1} \text{K}^{-1}$), θ_v is the virtual potential temperature (K), L_v is the latent heat of vaporisation of water (J kg^{-1}), q is the water vapor density (kg m^{-3}), m is the mass (kg), \bar{e} is the TKE per unit mass ($\text{m}^2 \text{s}^{-1}$), and u , v , and w are the streamwise, cross-stream and vertical wind velocities (m s^{-1}), respectively.

To identify the sand-dust crossing, the ratio of $\text{PM}_{2.5}$ and to PM_{10} was used as an index. If there was no sand-dust crossing, the ratio of $\text{PM}_{2.5}$ to PM_{10} might almost exceed 50 % (Liu et al., 2014). A sudden decrease in the ratio to 30 % or lower and PM_{10} concentration higher than $500 \mu\text{g m}^{-3}$ usually indicate a sand-dust crossing. The ground observations of $\text{PM}_{2.5}$ and PM_{10} during the same period were made by the ambient particulate monitor (RP1400a, Thermo Fisher Scientific, USA). The data were acquired at a time resolution of 5 min and processed with a resolution of 60 min. A detailed description is provided by Liu et al. (2014).

To illustrate the variations of the chemical compositions in particles, the ground-based observations of organic matters (OM), sulphate (SO_4^{2+}), nitrate (NO_3^-), ammonium (NH_4^+)

and chloride (Cl^-) in PM_{10} were observed by a high-resolution time-of-flight aerosol mass spectrometer (Aerodyne Research Inc., USA). The data were acquired at a time resolution of 5 min and processed with a resolution of 60 min. A detailed description have been reported elsewhere (Zhang et al., 2014).

2.1.2 ZBAA site

The meteorological radiosondes were measured by the international standard weather station (ID: ZBAA) that is located outside the south second ring road in the Fengtai district, Beijing, 10 km from the ~~station of the Institute of Atmospheric Physics~~BJT site. The geographic position of station ZBAA is 39.484° N and 116.282° E, and the elevation (a.s.l.) is approximately 34 m.

The meteorological radiosondes observed at station ZBAA included two categories: conventional observations, which were conducted at 08:00 LT in the morning and at 20:00 LT in the evening each day; and intensified observations, which were conducted at 14:00 LT in the afternoon every Thursday. The observed meteorological parameters included atmospheric pressure, temperature, RH, WS, wind direction, and ozone. In this study, the methods of Eresmaa et al. (2006) and Mönkel et al. (2007) were used to divide the radiosondes into stable and convective states according to the atmospheric stratification status. The meteorological radiosondes were defined as encountering a convective state when they exhibited negative lapse rates for the θ_v within 200 m and bulk Richardson numbers (R_B) within 100 m, and other profiles were defined as a stable state. In this project, the R_B was determined by the formula of Stull (1988), as follows:

$$R_B = \frac{g\Delta\theta_v\Delta z}{\theta_v\left((\Delta u)^2 + (\Delta v)^2\right)} \quad (5)$$

where g is the acceleration of gravity (m s^{-2}), and z is the height (m).

PM concentration proved to be a good indicator for characterization of the degree of air pollution. However, haze was defined by the visibility in China as shown in Table 2

(CMA, 2010), and it was remarkably negatively correlated with PM concentration (Yang et al., 2015). Because PM data were occasionally missing, visibility was used as an index to classify the degree of air pollution. Visibility at station ZBAA, which was obtained from the Department of Atmospheric Science, College of Engineering, University of Wyoming (<http://weather.uwyo.edu/surface/meteorogram/>), was measured by a visibility sensor (PWD12, Vaisala, Finland) with an accuracy of $\pm 10\%$.

2.2 Determination of the MLH

2.2.1 MLH retrieval by ceilometer

Because the lifetime of particles can be several days or even weeks, the distribution of particle concentrations in the MLH is more uniform than that of gaseous pollutants. However, the particle concentration in the mixing layer and that in the free atmosphere are significantly different. In the attenuated backscatter coefficient profile, the position at which a sudden change occurs in the profile indicates the top of the atmospheric mixing layer. In this study, we used the [gradient method-Vaisala software product BL-VIEW](#) to determine the MLH by selecting the location with the maximum negative gradient ($-d\beta/dx$) in the attenuated backscatter coefficient profile as the top of the mixing layer (Steyn, et al., 1999; [Münkel et al., 2007](#)). To eliminate the influence of inherent noise and aerosol layers on the data, spatial and temporal averaging must be carried out before the gradient method is used to calculate the MLH (Münkel et al., 2007; Tang et al., 2015). Time averaging is dependent on the current signal noise; the intervals vary from 14 to 52 min for the CL31. Height averaging intervals range from 80 m at ground level to 360 m at 1600 m height and beyond. Additional features of this algorithm, which is used in the Vaisala software product BL-VIEW, are cloud and precipitation filtering and outlier removal.

2.2.2 MLH retrieval by radiosonde

A number of methods have been developed for analysis of the mixing layer through the meteorological radiosonde (Beyrich, 1997; Sibert et al., 2000; Wang and Wang, 2014a).

In this study, we calculated the MLH for the convective and stable states, respectively. For the convective state, we used the Holzworth method (Holzworth, 1964, 1967), which is the method most widely applied to obtain the MLH by analysing profiles in the θ_v . In a stable state, a low-level jet often occurs in Beijing, and we can determine the MLH by analysing the position of the low-level jet (Tang et al., 2015). If the low-level jet does not exist under stable weather conditions, the altitude at which the R_B is greater than 1 is the MLH (Vogelezang and Holtslag, 1996; Eresmaa et al., 2006).

3 Results and discussions

3.1 Verification of the MLH

Previous studies with ceilometers did not resolve issues concerning the applicability of ceilometers in Chinese areas with high aerosol concentrations. According to the methods described in Sect. 2.1.2, 260 and 540 effective observations were obtained for the convective and stable states, respectively. The MLH data acquired by meteorological radiosondes and by ceilometer were compared for the two types of weather conditions (Fig. 2). Using the MLH calculated by the radiosondes as a reference, the comparison showed that the MLH observed from the ceilometer was overestimated or underestimated in a portion of the samples.

Because the ceilometer determines the MLH by measuring the attenuated backscatter profile, if the concentration of atmospheric particles is relatively low, it will be difficult to determine the MLH based on a sudden change in the backscatter profile, and use of this method will lead to a higher absolute error ($AE_{MLH_{ceilometer} - MLH_{radiosonde}}$) of the measured MLH (Eresmaa et al., 2006; Muñoz and Undurraga, 2010). When taking the visibility into account, we found that the underestimations of the observed MLH always occurred when visibility was good. However, there were still a number of samples that had low $AE_{absolute\ error}$ under conditions of good visibility (Fig. 2). Consequently, clear days with good visibility are not the main reason for underestimation of the observed MLH.

To investigate why the ceilometer results produced underestimations, we analysed those samples with good visibility and small [AE_{absolute error}](#). The results showed that although the visibility was good, the [AE_{absolute error}](#) of the MLH was still small when the aerosol concentration showed large differences in the vertical direction. After taking the RH and wind vectors into account, we found that underestimations were always accompanied by low RH and strong northerly wind (Figs. 3 and 4). The local meteorological conditions in Beijing indicated that this kind of meteorological condition is usually caused by the bypass of a cold air mass. When a strong northerly winds with a dry and clear air masses prevails in Beijing, atmospheric aerosols spread rapidly to the downstream region, resulting in a dramatic decrease in local aerosol concentration and good visibility. In addition, the dry air mass suppresses the liquid-phase and heterogeneous reactions of the gaseous precursors and the hygroscopic growth of aerosols can also be neglected. Therefore, the formation of aerosols cannot compensate for the transportation loss, leading to low and uniform aerosol concentrations in the vertical direction. Once the aerosol concentration becomes uniform in the vertical direction, the ceilometer cannot calculate the MLH [correctly](#) through sudden changes in the attenuated backscatter profiles, resulting in serious underestimations. An analysis of the relationship between the R_B and the [AE_{absolute error}](#) showed that when the ceilometer-measured MLH is subject to large [AE_{absolute error}](#), the R_B below 100 m is approximately 0 (Fig. S1). Thus, the near-neutral atmospheric stratification caused by the passage of a cold air mass is the primary reason for the serious underestimations.

With respect to overestimations of the ceilometer results, we may take the meteorological radiosonde at 14:00 LT on 29 December 2009 as an example (Fig. 5). The MLH is determined at approximately 1100 m, where the θ_v and the WS begin to increase; the ozone concentration is transported from the background area, where ozone is present at approximately 40 ppbv. However, the ceilometer recorded a higher MLH at approximately ~~1600~~[1500](#) m, where there was a sudden change in the backscatter gradient. When we measured the $PM_{2.5}/PM_{10}$ ratio at this moment, we found that the ratio was only 0.15, a clear characteristic of a sand-dust crossing. Due to the large number of dust particles, the aerosol concentrations became uniform below ~~1600~~[1500](#) m. This led to a sudden change

in the backscatter gradient at ~~1600~~1500 m and made it difficult to identify the real MLH at 1100 m; thus, an erroneously high MLH was determined. This result shows that sand-dust crossing is the main reason for the overestimations (Figs. 2 and 5).

Because the detected aerosol layers are not only the result of ongoing vertical mixing but also always originate from advective transport or past accumulation processes, interpreting data from aerosol lidars is often not straightforward (Russell et al., 1974; Coulter, 1979; Baxter, 1991; Batchvarova et al., 1999). Therefore, improving the algorithm cannot resolve the underestimations and overestimations of the ceilometer observations; the only option that can be used to rectify the MLH is to eliminate the data with large AEabsolute error. After determining the reasons for the underestimations and overestimations, the elimination is much easier to implement. For underestimations, the meteorological data were used to eliminate the periods when cold air passed with a sudden change in temperature and WS. For overestimations, we referred to the sand-dust weather almanac to identify the sand-dust days firstly (CMA, 2012, 2013, 2014, 2015). Using the principal described in Sect. 2.1.1, the exact times of sand-dust starting and ending were determined as the times which the the ratio of PM_{2.5} to PM₁₀ suddenly decreased or increased, respectively. Finally, the data obtained during the sand-dust periods were eliminated.

After the screening process, the post-elimination ceilometer data and meteorological radiosondes are strongly correlated, with a correlation coefficient greater than 0.9, demonstrating the effectiveness of the elimination method (Fig. 6). Consequently, the elimination results are good. This method replaces the time-consuming method of filtering the data manually and is of great practical value for future measurements of MLH with ceilometers.

3.2 MLH variations

To provide a detailed description of variations in the MLH, we selected continuous measured MLH and meteorological data over a 3-year period (from December 2009 to November 2012). First, the availability was verified after the MLH elimination by the aforementioned method. The results of the evaluation indicate that the availability in different seasons is significantly negatively correlated with WS and positively correlated with RH (Fig. 7a). For

spring and winter seasons with large WS and low RH, the availability is low, whereas for summer and autumn seasons with small WS and high RH, the availability is high. In particular, the availability is lowest in January at 63.5% and highest in June at 95.0%. The successful retrieval of MLH over the 3-year period is approximately 80%, much higher than in a previous study (Muñoz and Undurraga, 2010).

Using the validated data, we analyzed seasonal variations over 3 years. The results showed that the changes of the monthly mean were similar in different years, and no inter-annual trend can be found (Fig. S28). Therefore, we examined the averaged seasonal variation, and the monthly mean of the daily minimum, average, and maximum were calculated, respectively. The daily minimum of the mixing layer was high in winter and spring, and low in summer and autumn. The maximum monthly mean of the daily minimum MLH was 351 ± 185 m in May, and the minimum was 238 ± 202 m in October. The daily minimum MLH generally occurred during night-time under conditions of stable stratification, and the nocturnal stable boundary layer height was closely related to WS (Zilitinkevich and Baklanov, 2002; Hyun et al., 2005); therefore, the seasonal variation in daily minimum MLH **was consistent** had relationship with the seasonal variation in WS (Fig. 7a).

Compared with the daily minimum MLH, both the monthly mean of the daily average and the maximum MLH exhibited different seasonal variations. As shown in Fig. 7b, two platform periods (from March to August and from October to January) and two transitional periods (February and September) occur for the monthly average MLH. The MLH is similar from October to January at approximately 500 m, and it is similar from March to August at approximately 700 m. February and September are the two transitional months and have values of approximately 600 m. The month with the highest MLH is May at 739 ± 137 m (mean \pm standard deviation of the mean), and the MLH is lowest in December at 435 ± 148 m. The seasonal variation in the daily maximum MLH is similar to the monthly mean with the highest in May at 1480 ± 448 m and the lowest in December at 787 ± 297 m.

Previous studies have suggested that the seasonal variation in the MLH may be related to radiation flux (Kamp and McKendry, 2010; Muñoz and Undurraga, 2010), but our study was not entirely consistent as shown in Fig. 7b. Although spring had a significantly higher total

radiation flux than summer, the MLH in spring is equal to that in summer. This is because more data were eliminated for winter and spring, especially for weather with dry wind and relatively high MLHs. Thus, using the monthly mean of MLH is not a good method by which to analyse the reasons for MLH variations.

To gain a better understanding of the MLH variations, we use the daily mean instead of the monthly mean to do the analysis. As the most simple framework in which we can analyse the MLH variations in Beijing, we consider the thermodynamic model of the mixing layer growth (Stull, 1988), as follows:

$$\frac{\partial z_i}{\partial t} = \frac{w'\theta'_s - w'\theta'_{z_i}}{\gamma z_i} \quad (6)$$

where z_i is the MLH (m), t is the time (s), θ_s is the virtual potential temperature near the ground (K), θ_{z_i} is the virtual potential temperature in the top of the mixing layer (K), and γ is the lapse rate of the virtual potential temperature (K m^{-1}). Suppose the heat from the ground is the only way to warm the mixing layer and the heat flux at height z_i is zero, then the MLH is related to $\overline{w'\theta'_s}$. Considering that Q_H is defined as the equation (1), MLH is correspondingly related to Q_H . Therefore, the relationship between daily changes in the Q_H at 280 m and MLH was analysed. The results showed that the average Q_H and MLH from 12:00 to 17:00 LT were well correlated, with a correlation coefficient of 0.65. Because net radiation (Q^*) should be balanced by the Q_H , Q_E , and soil heat flux (Q_G) given as follows (Stull, 1988):

$$Q^* = Q_H + Q_E + Q_G \quad (7)$$

the strong correlation between the Q_H and MLH proves the dominant role of radiation in the variation of MLH (Fig. 89).

3.3 Impact of mountainous plain winds on MLH

We analysed the diurnal variations of MLH on a monthly basis and found that the MLH develops in four stages: from 09:00 to 14:00 LT, which is the fast development stage; from

14:00 to 18:00 LT, which is the maintenance stage; from 18:00 to 20:00 LT, which is the rapid decrease stage; and from 20:00 LT to the next morning at 08:00 LT, which is the stable boundary layer stage (Fig. S3S2). These stages of development and dissipation mechanisms are consistent with the description reported by Stull (1988). The daily MLH range is 728, 828, 562, and 407 m for spring, summer, autumn and winter, respectively. The relatively low ranges in autumn and winter are obviously related to the low radiation flux. However, it should be noted that summer has lower radiation and a larger daily range than spring (Fig. 7). Therefore, our study will emphasise the reasons for the differences in the daily MLH range in summer and spring.

As shown in Sect. 3.2, the monthly average MLH is similar between spring and summer. However, when the daily growth rates in spring and summer were compared using the T test, the results showed the difference was significant ($P < 0.05$) between the two seasons. As shown in Figure 9a10a, at night-time in spring, the MLH is high and almost constant, whereas at night-time in summer, the MLH shows a gradual decreasing trend. After sunrise and before 12:00 LT, the rate of increase in the MLH is relatively high in spring, reaching 114 m h^{-1} , whereas the rate in summer is relatively low, 102 m h^{-1} . Between 12:00 and 14:00 LT in spring, the rate of increase in the MLH is 119 m h^{-1} , whereas in summer the rate of increase is significantly enhanced, reaching 165 m h^{-1} . Such changes reflect the convex and concave characteristics in spring and summer during the development stage of the MLH, respectively.

The development of MLH is mainly related to the turbulent energy and the production of the turbulent energy is closely related to two components: the heat flux caused by radiation ($\frac{g}{\theta_v} \overline{w'\theta_v'}$) and the momentum flux generated by wind shear ($-\overline{w'w'} \frac{\partial \bar{u}}{\partial z}$) (Stull, 1988). Because the seasonal variation in heat flux is difficult to explain the daily MLH range, we analysed the seasonal variations of the horizontal wind vector.

To avoid the impact of near-surface buildings on the wind measurements, we selected the wind vector at 100 m on the Beijing tower. Figure 9b-10b shows that there is obvious seasonal variation of the wind vector. In winter and spring, Beijing is affected by the Siberian High; at these times, a strong prevailing northwest wind with dry air mass always occurs.

Therefore, winter season is dominated by a northwesterly wind, whereas spring typically exhibits a northwest wind in the morning and a southwest wind in the afternoon. In summer, the northward lift and westward intrusion of a subtropical high causes the southerly moist air mass with small WS to arrive and dominate. Because Beijing is located west of the Taihang Mountains and south of the Yanshan Mountains (Fig. 1), without the passage of large- or medium-scale meteorological systems in the summer, the local mountainous plain wind is superimposed on the southerly air flow and these two systems jointly affect the meteorological characteristics of the North China Plain. Therefore, the alternation between the mountainous winds that begin at 03:00 LT at night and the plain winds that begin at 12:00 LT in the afternoon occurs in summer. In September, with the southward and eastward movement of the subtropical high, the circulation of mountainous plain winds starts to weaken, and this circulation disappears in November.

When this regional circulation occurs along with surface cooling that occurs at night in summer, the cold air near the surface forms a shallow down-sliding flow from the northeast to the southwest. The cold air flows into the North China Plain and accumulates in a cold pool, increasing the thickness of the inversion layer, and the thickness of the mixing layer gradually decreases. After sunrise, the radiation increases; the MLH increases rapidly under the impact of thermal buoyancy lift, and this type of cold drainage flow is maintained until 12:00 LT. After 12:00 LT, the plain wind from the southwesterly direction gradually dominates and is maintained until approximately 03:00 LT in the morning of the next day. According to Fig. 9e10c, from 03:00 LT to 12:00 LT in summer, the troposphere below 300 m gradually cools down from low to high due to the cold drainage flow in the northeasterly direction, and the MLH exhibits a gradually decreasing trend from 03:00 to 06:00 LT. However, this trend does not occur in spring (Fig. 9a10a). Similarly, between 09:00 and 12:00 LT in summer, the cold drainage flow suppresses the development of the MLH with a low growth rate; in spring, without this inhibitory effect, the growth rate of the MLH is high. After 12:00 LT in summer, the southerly plain wind causes the growth rate to increase between 12:00 and 14:00 LT.

In summary, the mountainous wind in summer causes the mixing layer to decline gradually at night; this also suppresses the development of the mixing layer before noon, and the prevalence of plain winds after noon causes the mixing layer to increase rapidly. Therefore, compared to the spring, the regional circulation in summer produces a concave-down variation in the rapid development stage of the MLH in summer. [Although some interpretations for the influences of mountain plain winds are given, more intensive observations over northern China are suggested validating this phenomenon by meteorological radiosondes and so on.](#)

3.4 Implications for air pollution

3.4.1 Thermal/dynamic parameters under different degrees of pollution

To analyse variations in the thermal dynamic parameters inside atmospheric mixing layers under different degrees of pollution, visibility was used as a reference. WS , RH , Q_H , Q_E , u_* , and \bar{e} at 280 m were obtained ~~under different visibility conditions (Tab. 2 and according to visibility~~ (Fig. 4011). Clear days were defined as days when the visibility is ≥ 10 km, and slight, light, medium, and heavy haze pollution corresponded with $5 \text{ km} \leq \text{visibility} < 10 \text{ km}$, $3 \text{ km} \leq \text{visibility} < 5 \text{ km}$, $2 \text{ km} \leq \text{visibility} < 3 \text{ km}$ and $\text{visibility} < 2 \text{ km}$, respectively (CMA, 2010). [The statistics of the thermal/dynamic parameters were obtained under different degrees of air pollution \(Tab. 2\).](#) On clear days with atmospheric visibility ≥ 10 km, RH was the lowest, with an average of 43.3%, and Q_H , u_* and \bar{e} were the highest, averaging 20.4 W m^{-2} , 0.45 m s^{-1} , and $0.99 \text{ m}^2 \text{ s}^{-2}$, respectively. The MLH was 664 m on average, and the maximum in the afternoon reached 1145 m. Compared with clear days, during ~~light-slight~~ haze pollution the RH significantly increased to 63.1%, and the u_* and \bar{e} significantly declined to 0.32 m s^{-1} and $0.64 \text{ m}^2 \text{ s}^{-2}$, respectively, with a reduction of approximately 30%; the Q_H and MLH was 19.7 W m^{-2} and 671 m, respectively, without any significant changes. With the pollution aggravated, the RH continued to increase; during light, medium, and heavy haze it reached to 73.4, 79.6, and 86.4%, respectively. The u_* and \bar{e} remained almost constant, and the Q_H and MLH showed significantly declining trend.

The measured values under light, medium, and heavy haze were as follows: u_* was 0.28, 0.26, and 0.23, respectively; \bar{e} was 0.56, 0.52, and 0.46, respectively; Q_H was 15.2, 12.8, and 7.8, respectively; and the MLH was 586, 430, and 320, respectively, can refer to [Tab. 2 in detail](#).

In summary, when clear days change to slight haze, the WS, u_* , and \bar{e} decline significantly but the Q_H and MLH do not change significantly. When slight haze evolves to light, medium, and heavy haze, significant changes in u_* and \bar{e} do not occur, but the Q_H and MLH decrease significantly. It should be noted that although the RH varied considerably at different pollution stages, significant changes in Q_E did not occur; its values was 18.7, 19.9, 21.5, 18.8, and 19.8 $W m^{-2}$ on clear days and under conditions of slight, light, medium, and heavy haze, respectively. Thus, when clear days change to slight haze, dynamic effects have a relatively large impact on the mixing layer, whereas when slight haze evolves to heavy haze, thermodynamic effects play a dominant role.

To verify these results, we examined the TKE budget equation. If we presume a horizontal average and neglect the advection of wind, the forecast equation of the TKE can be written as follows (Stull, 1988; Garratt, 1992):

$$\frac{\partial \bar{e}}{\partial t} = -\overline{w'w'} \frac{\partial \bar{u}}{\partial z} + \frac{g}{\theta_v} \overline{w'\theta_v'} - \frac{\partial(\overline{w'e})}{\partial z} - \frac{1}{\rho} \frac{\partial(\overline{w'p'})}{\partial z} - \varepsilon, \quad (8)$$

where p is the air pressure (Pa), and ε is the dissipation term of TKE ($m^2 s^{-3}$). The first term on the right side of the equation is the production and loss term caused by wind shear; the second term is the buoyancy production and depletion term, and the third and fourth terms are the turbulent transport and pressure-related terms, respectively. Because the turbulent transport term does not generate or destroy the TKE but simply moves the TKE from one position to another or redistributes it, the integral of this term in the mixing layer remains constant at zero. Moreover, because the time period of pollution usually corresponds to the stable state, the pressure-related term is also small at this time. Therefore, we did not consider the third and fourth terms of TKE in this study.

To differentiate the contribution of horizontal and vertical turbulence to the TKE, the shear and buoyancy terms in the TKE forecast equation were analysed as in the previous study (Ye et al., 2015). ~~As shown in Fig. 10d, the buoyancy term on clear days, slight, light, medium, and heavy hazy days is 0.67×10^{-3} , 0.64×10^{-3} , 0.5×10^{-3} , 0.49×10^{-3} , 0.39×10^{-3} , and 0.24×10^{-3} , respectively, and the shear term under these conditions is 1.02×10^{-3} , 0.66×10^{-3} , 0.37×10^{-3} , 0.26×10^{-3} , and 0.23×10^{-3} , respectively.~~ When visibility decreases from 10 to 5 km, the variation in the buoyancy term is insignificant, but the reduction in the shear term is near 70%; when visibility decreases from 5 to 1 km, the variation in the shear term is insignificant, but the decrease in the buoyancy term is approximately 60% (Fig. 11d). Therefore, the key meteorological factor for the conversion from clear to slight hazy days is the decrease of the shear term in TKE, and it is mainly characterised by a significant reduction in the horizontal wind velocity; for the conversion from slight haze to light, medium, and heavy haze, the decrease of the buoyancy term in TKE is crucial, and it is mainly characterised by a significant reduction in the Q_H and MLH.

3.4.2 Critical meteorological factors for air pollution

At least one previous study indicates when the MLH decreases, the concentration of atmospheric particles increases and visibility decreases (Tang et al., 2015). However, analyses of the MLH and particle concentration or visibility indicates that the correlation between these is not strong (Li et al., 2015). We analysed the correlation between daily averages of MLH and visibility in this study and found that the correlation between them is poor, with a correlation coefficient of only 0.08 (Fig. 11); this finding is consistent with the results of previous study (Li et al., 2015).

According to the discussion in Sect. 3.4.1, in addition to MLH, WS is another factor in controlling air pollution. The MLH and WS represent the vertical and horizontal diffusion capabilities of pollutants, respectively. Synthesising these two factors, the product of the MLH and the WS (ventilation coefficient: VC) is usually used as an index to measure the capability of atmospheric diffusion; a higher VC indicates stronger capability (Tang et al., 2015). As shown in Figure 12a, the VC is highest in spring with approximately $2000 \text{ m}^2 \text{ s}^{-1}$,

Discussion Paper | Discussion Paper | Discussion Paper

followed by summer, autumn, and winter, when the VC is 1782, 1095 and 1072 m² s⁻¹, respectively. However, although the atmospheric diffusion capability in summer is much better than that in autumn and winter ~~and the VC in summer can be 1.7 times higher than in autumn and winter~~, the visibility is lowest (~ 9 km) and the PM_{2.5} concentration is highest ($\sim 85 \mu\text{g m}^{-3}$) in summer (Fig. 12a). By focusing on visibility ≥ 10 km and visibility < 10 km separately, we find that the frequency of haze occurrence is highest (up to 73 %) in summer, whereas it is approximately 40 % in other seasons (Fig. 12b). Therefore, strong diffusion capability cannot explain the occurrence of heavy pollution in summer.

To obtain a clear understanding of the relationship between the atmospheric MLH and air pollution, we analysed the correlation between daily averages of the MLH and visibility according to the RH and found that the relationship between them showed significant differences under different RH. When the RH was lower than 80 %, the correlation between the MLH and visibility was poor, but when the RH exceeded 80 %, the correlation coefficient of these two measurements significantly increased to as much as 0.72 (Tab. 3 and Fig. 11-13). If we assume that no transport from other regions occurs, local contributions (local emissions and secondary formation) will dominate the particle concentration; if we further suppose that the local emission is constant every day, due to the dominant role of the aqueous, heterogeneous, and hygroscopic processes for the formation of particles in Beijing (Guo et al., 2014; Sun et al., 2014), there will be little difference in the formation of particles under a fixed RH, and the column concentration in the MLH will be almost constant. Under such circumstances, the relationship between the MLH and visibility should be strong. Thus, poor correlation between the MLH and visibility indicates a significant influence from regional transportation, and their good correlation indicates the dominant role of local contributions. Tang et al. (2015) found that in light pollution, regional transport contributes heavily, whereas in heavy pollution, local contributions dominate. Because low and high RH correspond to light and heavy pollution, respectively, the two conclusions are strongly consistent.

~~In our data, scatters under poor relationship always corresponded to clear days and good visibility, and scatters under strong relationship corresponded to hazy days and poor~~

~~visibility~~ To clarify the contributions of local emissions and secondary formation during high RH conditions, we analysed the chemical compositions in PM₁ under different degrees of air pollution (Fig. 11). ~~Previous studies have indicated that there are considerable differences in the chemical composition of particles present on clear and hazy days (Zhang et al., 2014). As the particle concentration increases~~ 14). ~~As the air pollution aggravated~~, the percentage of ~~sulphates, nitrates, and ammonium aerosols~~ SO₄²⁺, NO₃⁻, and NH₄⁺ with strong hygroscopicity increases ~~from 31.8 to 61.9% from clear to heavy hazy days~~, whereas the percentage of ~~organic matter aerosols~~ OM with weak hygroscopicity decreases ~~from 58.0 to 33.7% during the transition of air pollution~~. Thus, the aerosols exhibit higher sulphate, nitrate, and ammonium ratios on hazy days, which indicates the dominant role of the secondary formation (Zhang et al., 2014).

From the aforementioned analyses, the reasons for the relationships observed under conditions of low and high RH can be clearly understood. Under low RH condition, since the significant impact of the regional transportation, the processes of local emissions, regional transportation, and physiochemical formation jointly dominate the concentration of atmospheric particles; thus, the poor correlation between the MLH and visibility is occurred due to the multi-source of particles. For high RH, the RH plays an important role in transforming the trace gases to aerosols. Thus, an increase in the RH is favourable for the formation of particles from the liquid-phase, heterogeneous reactions and the hygroscopic growth processes, and the primary source of particles will change to local humidity-related physiochemical processes during heavy pollution periods. The strong correlation of these factors under high RH indicates the dominant role of local secondary processes in heavy pollution.

Overall, the high correlation between the MLH and visibility under high RH indicates that humidity-related physiochemical processes is the primary source of atmospheric particles in heavy pollution and that the dissipation of atmospheric particles mainly depends on the vertical diffusion capability, which is dominated by the atmospheric MLH. From the aforementioned conclusion, the MLH and RH are extracted as the key meteorological factors for the evolution of heavy air pollution, a finding that is relevant to the dissipation and formation of the atmospheric particles. ~~Because of a sudden change of the correlation between the~~

MLH and visibility when the RH exceeds 80 (Tab. S1), a critical threshold of 80 is determined for the RH. To determine the critical threshold for the MLH, we analysed the fitting equation when the RH exceeds 80 and calculated the MLH corresponding to four different stages with visibilities of 10, 5, 3, and 2 (Fig. 11). It is found that the threshold of MLH for the four stages are 1209, 618, 382, and 263, respectively. This means that when the RH is higher than 80, slight, light, medium, and heavy haze will occur with MLH lower than 1209, 618, 382, and 263, respectively.

After determining the critical meteorological factors for air pollution, the cause of the poor visibility in summer can be analysed according to the aforementioned conclusions. As shown in Figure 7a, summer exhibits higher RH and lower WS. The meteorological conditions in summer shows that low WS is a prerequisite for hazy days and that high RH is conducive to the formation of particles. In addition, due to the intrusion of the west Pacific subtropical high, the frequency of cloud fraction $> 50\%$ is the highest in summer, with greater than 70% (Fig. 12b). When this cloud fraction increases, radiation levels will dramatically decline, and the MLH will decrease significantly as well. Such conditions cause a rapid weakening of the atmospheric diffusion capability along with more rapid formation of particles under high RH; heavy pollution will occur frequently, thus leading to the enhanced concentration of particles and decreased visibility (Fig. 12a).

4 Conclusions

Continuous high-resolution observations of MLH are required to understand the characteristics of the atmospheric mixing layer in the Beijing and North China Plain areas. To acquire the high-resolution observations of MLH, a study using a ceilometer was performed from July 2009 to December 2012 in the Beijing urban area.

Based on a comparison with radiosondes, we determined that the ceilometer underestimates the MLH during near-neutral stratification caused by strong winds and that it overestimates the MLH during dust crossing. By combining meteorological, $\text{PM}_{2.5}$, and PM_{10} data, we screened the observation results for the MLH; the availability of the acquired data

is close to 80 %. The screened ceilometer observations are fairly consistent with the meteorological radiosondes, with a correlation coefficient greater than 0.9. This method replaces the time-consuming method of filtering the data manually and is of great practical value for future measurements of the MLH with ceilometers.

The characteristics of the MLH indicate that the MLH in Beijing is low in autumn and winter, and high in spring and summer. There is a significant correlation between the Q_H and MLH, which characterises the dominant role of the radiation in the variation of the MLH. In addition, the diurnal cycle in the MLH during summer is also affected by the circulation of mountainous plain winds. The mountainous wind in summer causes a gradual decline in the mixing layer at night, which suppresses its development before noon, and the plain wind after noon contributes to the increase in the MLH. Therefore, compared with spring, the mountainous plain winds in summer lead to a concave-down of the mixing layer in the fast development stage.

By applying visibility as an index for the classification of degree of air pollution, it is found that in comparison with clear days, changes in the Q_H and buoyancy term in TKE are insignificant on slight hazy days, but a reduction in the shear term is obvious; in comparison with slight hazy days, the variation of the shear term in TKE is insignificant, but the declines in Q_H and the buoyancy term in TKE are significant. At the slight pollution stage, the air pollution has nothing to do with the MLH but depends on the horizontal diffusion capability as affected by the horizontal wind speed. At the heavy pollution stage, the air pollution is determined by the vertical diffusion capability as affected by the MLH.

Although the correlation between the daily MLH and visibility is very poor, the correlation between them is significantly enhanced when the RH increases. The high correlation between the MLH and visibility under high RH indicates that humidity-related physiochemical processes is the primary source of atmospheric particles under heavy pollution, whereas the dissipation of atmospheric particles depends primarily on the vertical diffusion capability, which is dominated by the atmospheric MLH.

The aforementioned results provide reliable basic data for better portraying the structure of the boundary layer and improving the parameterisations of the boundary layer in me-

eteorological models. Studies of the atmospheric mixing layer and its thermal dynamic parameters at different stages of air pollution reveal the critical meteorological factors for the formation, evolution, and dissipation of heavy pollution, thus providing a useful empirical information for improving atmospheric chemistry models and the forecasting and warning of air pollution.

Acknowledgements. This work was supported by CAS Strategic Priority Research Program Grants (nos. XDB05020000 and XDA05100100), the National Natural Science Foundation of China (nos. 41230642 and 41222033) and the National Data Sharing Infrastructure of Earth System Science. We also gratefully acknowledge the Department of Atmospheric Science, College of Engineering, University of Wyoming for the provision of the meteorological data used in this publication.

References

- Aron, R.: Mixing height – an inconsistent indicator of potential air pollution concentrations, *Atmos. Environ.*, 17, 2193–2197, 1983.
- Barbara, H. and Andrea, L.: Determination of the atmospheric boundary layer height from radiosonde and lidar backscatter, *Bound.-Lay. Meteorol.*, 120, 181–200, 2006.
- Batchvarova, E., Cai, X., Gryning, S. E., Steyn, D.: Modelling internal boundary layer development in a region with complex coastline. *Bound.-Lay. Meteorol.*, 90, 1–20, 1999.
- Baxter, R. A.: Determination of mixing heights from data collected during the 1985 SCCAMP field program. *J. Appl. Meteorol.*, 30, 598–606, 1991.
- Beyrich, F.: Mixing height estimation from SODAR data – a critical discussion, *Atmos. Environ.*, 31, 3941–3953, 1997.
- Chen, W., Kuze, H., Uchiyama, A., Suzuki, Y., and Takeuchi, N.: One-year observation of urban mixed layer characteristics at Tsukuba, Japan using a micro pulse lidar, *Atmos. Environ.*, 35, 4273–4280, doi:10.1016/S1352-2310(01)00181-9, 2001.
- Chen, Y., Zhao, C., Zhang, Q., Deng, Z., Huang, M., and Ma, X.: Aircraft study of Mountain Chimney Effect of Beijing, China, *J. Geophys. Res.*, 114, D08306, doi:10.1029/2008JD010610, 2009.
- Chen, Z., Liu, W., Zhang, Y., He, J., and Ruan, J.: Mixing layer height and meteorological measurements in Hefei China during the total solar eclipse of 22 July, 2009, *Opt. Laser Technol.*, 43, 50–54, doi:10.1016/j.optlastec.2010.04.022, 2011.
- China Meteorological Administration (CMA): Observation and forecasting levels of haze, QX/T 113-2010, Beijing, 2010.
- China Meteorological Administration (CMA): sand-dust weather almanac (2009), China Meteorological Press, Beijing, 2012.
- China Meteorological Administration (CMA): sand-dust weather almanac (2010), China Meteorological Press, Beijing, 2013.
- China Meteorological Administration (CMA): sand-dust weather almanac (2011), China Meteorological Press, Beijing, 2014.
- China Meteorological Administration (CMA): sand-dust weather almanac (2012), China Meteorological Press, Beijing, 2015.
- Coulter, R. L.: A comparison of three methods for measuring mixing layer height. *J. Appl. Meteorol.*, 18, 1495–1499, 1979.

- Devara, P. C. S., Ernest, R. P., Murthy, B. S., Pandithurai, G., Sharma, S., and Vernekar, K. G.: Intercomparison of nocturnal lower-atmospheric structure observed with LIDAR and SODAR techniques at Pune, India, *J. Appl. Meteorol.*, 34, 1375–1383, 1995.
- Ding, G. A., Chen, Z. Y., Gao, Z. Q., Yao, W. Q., Li, Y., Cheng, X. H., Meng, Z. Y., Yu, H. Q., Wong, K. H., Wang, S. F., and Miao, Q. J.: Vertical structures of PM₁₀ and PM_{2.5} and their dynamical character in low atmosphere in Beijing urban areas, *Sci. China Ser. D*, 35, 31–44, 2005.
- Emeis, S. and Schäfer, K.: Remote sensing methods to investigate boundary-layer structures relevant to air pollution in cities, *Bound.-Lay. Meteorol.*, 121, 377–385, 2006.
- Emeis, S., Münkel, C., Vogt, S., Müller, W. J., and Schäfer, K.: Atmospheric boundary-layer structure from simultaneous SODAR, RASS, and ceilometer measurements, *Atmos. Environ.*, 38, 273–286, 2004.
- Emeis, S., Jahn, C., Münkel, C., Münsterer, C., and Schäfer, K.: Multiple atmospheric layering and mixing-layer height in the Inn valley observed by remote sensing, *Meteorol. Z.*, 16, 415–424, 2007.
- Emeis, S., Schäfer, K., and Münkel, C.: Surface-based remote sensing of the mixing-layer height – a review, *Meteorol. Z.*, 17, 621–630, 2008.
- Emeis, S., Schäfer, K., Münkel, C., Friedl, R., and Suppan, P.: Evaluation of the interpretation of ceilometer data with RASS and radiosonde data, *Bound.-Lay. Meteorol.*, 143, 25–35, 2012.
- Eresmaa, N., Karppinen, A., Joffre, S. M., Räsänen, J., and Talvitie, H.: Mixing height determination by ceilometer, *Atmos. Chem. Phys.*, 6, 1485–1493, doi:10.5194/acp-6-1485-2006, 2006.
- Flentje, H., Heese, B., Reichardt, J., and Thomas, W.: Aerosol profiling using the ceilometer network of the German Meteorological Service, *Atmos. Meas. Tech. Discuss.*, 3, 3643–3673, doi:10.5194/amtd-3-3643-2010, 2010.
- Garratt, J. R.: *The Atmospheric Boundary Layer*, Cambridge University Press, Cambridge, UK, 1992.
- Guo, S., Hu, M., Zamora, M., Peng, J., Shang, D., Zheng, J., Du, Z., Wu, Z., Shao, M., Zeng, L., Molina, M., and Zhang, R.: Elucidating severe urban haze formation in China, 111, 17373–17378, doi:10.1073/pnas.1419604111, 2014.
- Haefelin, M., Angelini, F., Morille, Y., Martucci, G., Frey, S., Gobbi, G. P., Lolli, S., O'Dowd, C. D., Sauvage, L., Xueref-Rémy, I., Wastine, B., and Feist, D. G.: Evaluation of mixing-height retrievals from automatic profiling lidars and ceilometers in view of future integrated networks in Europe, *Bound.-Lay. Meteorol.*, 143, 49–75, 2012.
- Hägeli, P., Steyn, D. G., and Strawbridge, K. B.: Spatial and temporal variability of mixed-layer depth and entrainment zone thickness, *Bound.-Lay. Meteorol.*, 97, 47–71, 2000.

- He, Q. and Mao, J.: Observation of urban mixed layer at Beijing using a micro pulse lidar, *Acta Meteorol. Sin.*, 63, 374–384, 2005 (in Chinese).
- He, Q. S., Mao, J. T., Chen, J. Y., and Hu, Y. Y.: Observational and modeling studies of urban atmospheric boundary-layer height and its evolution mechanisms, *Atmos. Environ.*, 40, 1064–1077, doi:10.1016/j.atmosenv.2005.11.016, 2006.
- Holzworth, C. G.: Estimates of mean maximum mixing depths in the contiguous United States, *Mon. Weather Rev.*, 92, 235–242, 1964.
- Holzworth, C. G.: Mixing depths, wind speeds and air pollution potential for selected locations in the United States, *J. Appl. Meteorol.*, 6, 1039–1044, 1967.
- Hu, B., Wang, Y. S. and Liu, G. R.: Relationship between net radiation and broadband solar radiation in the Tibetan Plateau. *Adv. Atmos. Sci.*, 29(1), 135–143, doi:10.1007/s00376-011-0221-6, 2012.
- Hu, X., Ma, Z., Lin, W., Zhang, H., Hu, J., Wang, Y., Xu, X., Fuentes, J. D., and Xue, M.: Impact of the Loess Plateau on the atmospheric boundary layer structure and air quality in the North China Plain: a case study, *Sci. Total Environ.*, 499, 228–237, doi:10.1016/j.scitotenv.2014.08.053, 2014.
- Hyun, Y., Kim, K., and Ha, K.: A comparison of methods to estimate the height of stable boundary layer over a temperate grassland, *Agr. Forest Meteorol.*, 132, 132–142, doi:10.1016/j.agrformet.2005.03.010, 2005.
- Kamp, D. and McKendry, I.: Diurnal and seasonal trends in convective mixed-layer heights estimated from two years of continuous ceilometer observations in Vancouver, BC, *Bound.-Layer. Meteorol.*, 137, 459–475, 2010.
- Kunz, G. J., Leeuw, G., Becker, E., and O’Dowd, C. D.: Lidar observations of atmospheric boundary layer structure and sea spray aerosol plumes generation and transport at Mace Head, Ireland (PARFORCE experiment), *J. Geophys. Res.*, 107, 8106, doi:10.1029/2001JD001240, 2002.
- Li, M., Tang, G., Huang, J., Liu, Z., An, J., and Wang, Y.: Characteristics of winter atmospheric mixing layer height in Beijing-Tianjin-Hebei region and their relationship with the atmospheric pollution, *Environ. Sci.*, 36, 1935–1943, 2015 (in Chinese).
- Liu, Z., Hu, B., Wang, L., Wu, F., Gao, W., and Wang, Y.: Seasonal and diurnal variation in particulate matter (PM₁₀ and PM_{2.5}) at an urban site of Beijing: analyses from a 9-year study, *Environ. Sci. Pollut. R.*, 22, 627–642, 2014.
- Luo, T., Yuan, R., and Wang, Z.: Lidar-based remote sensing of atmospheric boundary layer height over land and ocean, *Atmos. Meas. Tech.*, 7, 173–182, doi:10.5194/amt-7-173-2014, 2014.

- McKendry, I. G., Kamp, D., Strawbridge, K. B., Christen, A., and Crawford, B.: Simultaneous observations of boundary-layer aerosol layers with CL31 ceilometer and 1064/532 nm lidar, *Atmos. Environ.*, 43, 5847–5852, doi:10.1016/j.atmosenv.2009.07.063, 2009.
- Münkel, C. and Räsänen, J.: New optical concept for commercial lidar ceilometers scanning the boundary layer, *P. SPIE*, 5571, 364–374, 2004.
- Münkel, C., Eresmaa, N., Räsänen, J., and Karppinen, A.: Retrieval of mixing height and dust concentration with lidar ceilometer, *Bound.-Lay. Meteorol.*, 124, 117–128, 2007.
- Muñoz, R. C. and Undurraga, A. A.: Daytime mixed layer over the Santiago Basin: Description of two years of observations with a lidar ceilometer, *J. Appl. Meteorol. Clim.*, 49, 1728–1741, 2010.
- Pappalardo, G., Amodeo, A., Apituley, A., Comeron, A., Freudenthaler, V., Linné, H., Ansmann, A., Bösenberg, J., D'Amico, G., Mattis, I., Mona, L., Wandinger, U., Amiridis, V., Alados-Arboledas, L., Nicolae, D., and Wiegner, M.: EARLINET: towards an advanced sustainable European aerosol lidar network, *Atmos. Meas. Tech.*, 7, 2389–2409, doi:10.5194/amt-7-2389-2014, 2014.
- Quan, J., Gao, Y., Zhang, Q., Tie, X., Cao, J., Han, S., Meng, J., Chen, P., and Zhao, D.: Evolution of planetary boundary layer under different weather conditions, and its impact on aerosol concentrations, *Particuology*, 11, 34–40, doi:10.1016/j.partic.2012.04.005, 2013.
- Russell, P. B., Uthe, E. E., Ludwig, F. L., Shaw, N. A.: A comparison of atmospheric structure as observed with monostatic acoustic sounder and lidar techniques. *J. Geophys. Res.*, 79, 5555–5566, 1974.
- Scarino, A. J., Obland, M. D., Fast, J. D., Burton, S. P., Ferrare, R. A., Hostetler, C. A., Berg, L. K., Lefer, B., Haman, C., Hair, J. W., Rogers, R. R., Butler, C., Cook, A. L., and Harper, D. B.: Comparison of mixed layer heights from airborne high spectral resolution lidar, ground-based measurements, and the WRF-Chem model during CalNex and CARES, *Atmos. Chem. Phys.*, 14, 5547–5560, doi:10.5194/acp-14-5547-2014, 2014.
- Schäfer, K., Emeis, S., Hoffmann, H., and Jahn, C.: Influence of mixing layer height upon air pollution in urban and sub-urban area, *Meteorol. Z.*, 15, 647–658, doi:10.1127/0941-2948/2006/0164, 2006.
- Schneider, J. and Eixmann, R.: Three years of routine Raman lidar measurements of tropospheric aerosols: Backscattering, extinction, and residual layer height, *Atmos. Chem. Phys.*, 2, 313–323, doi:10.5194/acp-2-313-2002, 2002.
- Schween, J. H., Hirsikko, A., Löhnert, U., and Crewell, S.: Mixing-layer height retrieval with ceilometer and Doppler lidar: from case studies to long-term assessment, *Atmos. Meas. Tech.*, 7, 3685–3704, doi:10.5194/amt-7-3685-2014, 2014.

- Seibert, P., Beyrich, F., Gryning, S.-E., Joffre, S., Rasmussen, A., and Tercier, P.: Review and inter-comparison of operational methods for the determination of the mixing height, *Atmos. Environ.*, 34, 1001–1027, 2000.
- Sicard, M., Pérez, C., Rocadenbosch, F., Baldasano, J. M., and Garcia-Vizcaino, D.: Mixed-Layer depth determination in the Barcelona coastal area from regular lidar measurements: Methods, results and limitations, *Bound.-Lay. Meteorol.*, 119, 135–157, 2006.
- Sicard, M., D'Amico, G., Comerón, A., Mona, L., Alados-Arboledas, L., Amodeo, A., Baars, H., Baldasano, J. M., Belegante, L., Biniotoglou, I., Bravo-Aranda, J. A., Fernández, A. J., Fréville, P., García-Vizcaino, D., Giunta, A., Granados-Muñoz, M. J., Guerrero-Rascado, J. L., Hadjimitsis, D., Haeefe, A., Hervo, M., Iarlori, M., Kokkalis, P., Lange, D., Mamouri, R. E., Mattis, I., Molero, F., Montoux, N., Muñoz, A., Muñoz Porcar, C., Navas-Guzmán, F., Nicolae, D., Nisantzi, A., Papaniannopoulos, N., Papayannis, A., Pereira, S., Preißler, J., Pujadas, M., Rizi, V., Rocadenbosch, F., Sellegri, K., Simeonov, V., Tsaknakis, G., Wagner, F., and Pappalardo, G.: EARLINET: potential operability of a research network, *Atmos. Meas. Tech.*, 8, 4587–4613, doi:10.5194/amt-8-4587-2015, 2015.
- Song, T. and Wang, Y.: Carbon dioxide fluxes from an urban area in Beijing, *Atmos. Res.*, 106, 139–149, doi:10.1016/j.atmosres.2011.12.001, 2012.
- Song, T., Sun, Y., and Wang, Y.: Multilevel measurements of fluxes and turbulence over an urban landscape in Beijing, *Tellus B*, 65, 20421, doi:10.3402/tellusb.v65i0.20421, 2013.
- Steyn, D. G., Baldi, M., and Hoff, R. M.: The detection of mixed layer depth and entrainment zone thickness from lidar backscatter profiles, *J. Atmos. Ocean. Tech.*, 16, 953–959, 1999.
- Strawbridge, K. B. and Snyder, B. J.: Planetary boundary layer height determination during Pacific 2001 using the advantage of a scanning lidar instrument, *Atmos. Environ.*, 38, 5861–5871, doi:10.1016/j.atmosenv.2003.10.065, 2004.
- Stull, R. B.: *An Introduction to Boundary Layer Meteorology*, Kluwer Academic Publishers, Dordrecht, 1988.
- Sun, Y., Wang, Z., Fu, P., Jiang, Q., Yang, T., Li, J., and Ge, X.: The impact of relative humidity on aerosol composition and evolution processes during wintertime in Beijing, China, *Atmos. Environ.*, 77, 927–934, doi:10.1016/j.atmosenv.2013.06.019, 2013.
- Tang, G., Li, X., Wang, Y., Xin, J., and Ren, X.: Surface ozone trend details and interpretations in Beijing, 2001–2006, *Atmos. Chem. Phys.*, 9, 8813–8823, doi:10.5194/acp-9-8813-2009, 2009.

- Tang, G., Wang, Y., Li, X., Ji, D., Hsu, S., and Gao, X.: Spatial-temporal variations in surface ozone in Northern China as observed during 2009–2010 and possible implications for future air quality control strategies, *Atmos. Chem. Phys.*, 12, 2757–2776, doi:10.5194/acp-12-2757-2012, 2012.
- Tang, G., Zhu, X., Hu, B., Xin, J., Wang, L., Münkkel, C., Mao, G., and Wang, Y.: Impact of emission controls on air quality in Beijing during APEC 2014: lidar ceilometer observations, *Atmos. Chem. Phys.*, 15, 12667–12680, doi:10.5194/acp-15-12667-2015, 2015.
- Vogelezang, D. H. P. and Holtzlag, A. A. M.: Evolution and model impacts of alternative boundary layer formulations, *Bound.-Lay. Meteorol.*, 81, 245–269, 1996.
- Wang, X. Y. and Wang, K. C.: Estimation of atmospheric mixing layer height from radiosonde data, *Atmos. Meas. Tech.*, 7, 1701–1709, doi:10.5194/amt-7-1701-2014, 2014a.
- Wang, Y. H., Hu, B., Ji, D. S., Liu, Z. R., Tang, G. Q., Xin, J. Y., Zhang, H. X., Song, T., Wang, L. L., Gao, W. K., Wang, X. K., and Wang, Y. S.: Ozone weekend effects in the Beijing-Tianjin-Hebei metropolitan area, China, *Atmos. Chem. Phys.*, 14, 2419–2429, doi:10.5194/acp-14-2419-2014, 2014b.
- Wang, Z., Cao, X., Zhang, L., Notholt, J., Zhou, B., Liu, R., and Zhang, B.: Lidar measurement of planetary boundary layer height and comparison with microwave profiling radiometer observation, *Atmos. Meas. Tech.*, 5, 1965–1972, doi:10.5194/amt-5-1965-2012, 2012.
- White, A. B., Senff, C. J., and Banta, R. M.: A Comparison of mixing depths observed by ground-based wind profilers and an airborne lidar, *J. Atmos. Ocean. Tech.*, 16, 584–590, 1999.
- Wiegner, M., Emeis, S., Freudenthaler, V., Heese, B., Junkermann, W., Münkkel, C., Schäfer, K., Seefeldner, M., and Vogt, S.: Mixing layer height over Munich, Germany: variability and comparisons of different methodologies, *J. Geophys. Res.*, 111, D13201, doi:10.1029/2005JD006593, 2006.
- Wiegner, M., Madonna, F., Biniotoglou, I., Forkel, R., Gasteiger, J., Geiß, A., Pappalardo, G., Schäfer, K., and Thomas, W.: What is the benefit of ceilometers for aerosol remote sensing? An answer from EARLINET, *Atmos. Meas. Tech.*, 7, 1979–1997, doi:10.5194/amt-7-1979-2014, 2014.
- Xin, J., Wang, Y., Tang, G., Wang, L., Sun, Y., Wang, Y. H., Hu, B., Song, T., Ji, D. S., Wang, W. F., Li, L., and Liu, G. R.: Variability and reduction of atmospheric pollutants in Beijing and its surrounding area during the Beijing 2008 Olympic Games, *Chinese Sci. Bull.*, 55, 1937–1944, 2010.
- Yang, D. W., Li, C., Lau, A. K.-H., and Li, Y.: Long-term measurement of daytime atmospheric mixing layer height over Hong Kong, *J. Geophys. Res.*, 118, 2422–2433, 2013.

- Yang, H., Liu, W., Lu, Y., Xie, P., Xu, L., Zhao, X., Yu, T., and Yu, J.: PBL observations by lidar at Peking, *Optical Tech.*, 31, 221–226, 2005.
- Yang, Y. R., Liu, X. G., Qu, Y., An, J. L., Jiang, R., Zhang, Y. H., Sun, Y. L., Wu, Z. J., Zhang, F., Xu, W. Q., and Ma, Q. X.: Characteristics and formation mechanism of continuous hazes in China: a case study during the autumn of 2014 in the North China Plain, *Atmos. Chem. Phys.*, 15, 8165–8178, doi:10.5194/acp-15-8165-2015, 2015.
- Ye, X., Wu, B., and Zhang, H.: The turbulent structure and transport in fog layers observed over the Tianjin area, *Atmos. Res.*, 153, 217–234, doi:10.1016/j.atmosres.2014.08.003, 2015.
- Zhang, J. K., Sun, Y., Liu, Z. R., Ji, D. S., Hu, B., Liu, Q., and Wang, Y. S.: Characterization of submicron aerosols during a month of serious pollution in Beijing, 2013, *Atmos. Chem. Phys.*, 14, 2887–2903, doi:10.5194/acp-14-2887-2014, 2014.
- Zhang, Q., Quan, J., Tie, X., Li, X., Liu, Q., Gao, Y., and Zhao, D.: Effects of meteorology and secondary particle formation on visibility during heavy haze events in Beijing, China, *Sci. Total Environ.*, 502, 578–584, doi:10.1016/j.scitotenv.2014.09.079, 2015.
- Zhang, X., Cai, X., and Chai, F.: Structures and characteristics of the atmospheric boundary layer over Beijing area in autumn, *Acta Sci. Natur. Univ. Pekinensis*, 42, 220–225, 2006 (in Chinese).
- Zilitinkevich, S. and Baklanov, A.: Calculation of the height of the stable boundary layer in practical applications, *Bound.-Lay. Meteorol.*, 105, 389–409, 2002.

Table 1. Site description and instrument list. BJT refers to the Beijing tower; ZBAA is the international standard weather station.

Sites	Long, lat	Instruments	Time interval	Time resolution
BJT	116.372, 39.974	CL31	15 Jul 2009–16 Dec 2012	10 min
		PM _{2.5} , PM ₁₀	15 Jul 2009–31 Dec 2012	60 min
		Tower-based meteorology	15 Jul 2009–31 Dec 2012	30 min
		Chemical compositions in PM₁	24 Nov 2010–31 Dec 2012	60 min
ZBAA	116.282, 39.484	Weather balloons	15 Jul 2009–31 Dec 2012	1 per week at 14:00 LT
		Weather balloons	1 Jan 2012–31 Dec 2012	08:00 and 20:00 LT
		Ground-based meteorology	15 Jul 2009–31 Dec 2012	30 min

Table 2. Statistics of the thermal/dynamic parameters according to visibility under different degrees of air pollution.

Parameters	Clear days	Slight haze	Light haze	Medium haze	Heavy haze
	Vis \geq 10 km	5 km \leq Vis < 10 km	3 km \leq Vis < 5 km	2 km \leq Vis < 3 km	Vis < 2 km
WS (m s^{-1})	3.8	2.5	2.1	2.0	1.8
RH (%)	43.3	63.1	73.4	79.6	86.4
MLH (m)	664	671	586	430	320
Q^* (W m^{-2})	77.6	74.6	63.9	53.6	32.8
Q_H (W m^{-2})	20.4	19.7	15.2	12.8	7.8
Q_E (W m^{-2})	18.7	19.9	21.5	18.8	19.8
u_* (m s^{-1})	0.45	0.32	0.28	0.26	0.23
$\bar{\epsilon}$ ($\text{m}^2 \text{s}^{-2}$)	0.99	0.64	0.56	0.52	0.46
BT ($\times 10^{-3} \text{ m}^2 \text{ s}^{-3}$)	0.67	0.64	0.49	0.39	0.24
ST ($\times 10^{-3} \text{ m}^2 \text{ s}^{-3}$)	1.02	0.66	0.37	0.26	0.23

WS: wind speed; RH: relative humidity; Q^* : net radiation; Q_H : sensible heat; Q_E : latent heat; u_* : friction velocity; $\bar{\epsilon}$: TKE per unit mass; BT: buoyancy term in TKE; ST: shear term in TKE.

Table 3. Correlation coefficients (R) between the MLH and visibility according to RH (%).

	<u>RH < 40</u>	<u>40 < RH < 50</u>	<u>50 < RH < 60</u>	<u>60 < RH < 70</u>	<u>70 < RH < 80</u>	<u>80 < RH < 90</u>	<u>RH > 90</u>
<u>R</u>	<u>0.15</u>	<u>0.04</u>	<u>0.01</u>	<u>0.09</u>	<u>0.41</u>	<u>0.70</u>	<u>0.77</u>

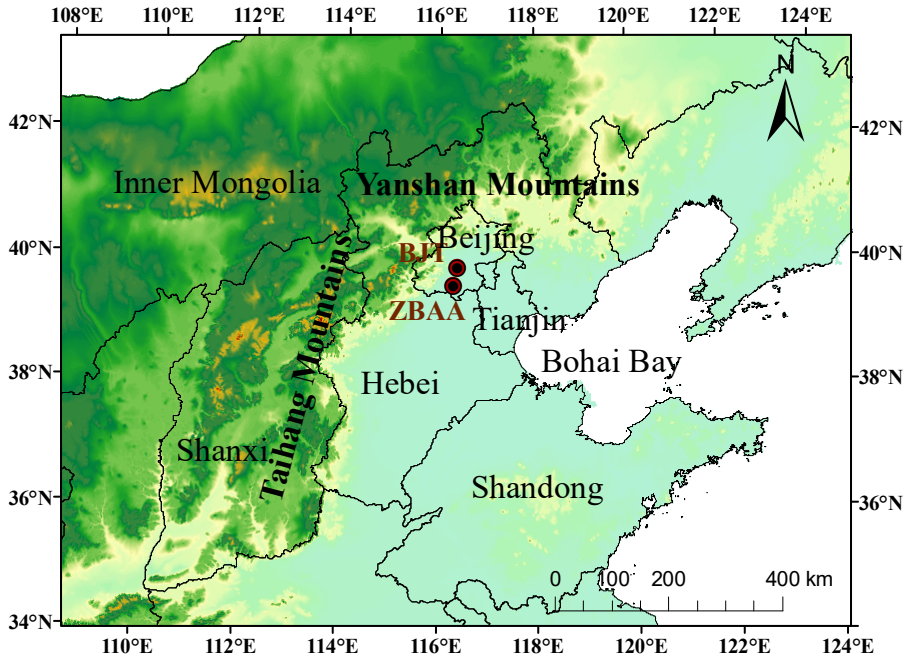


Figure 1. Topography and the observation sites.

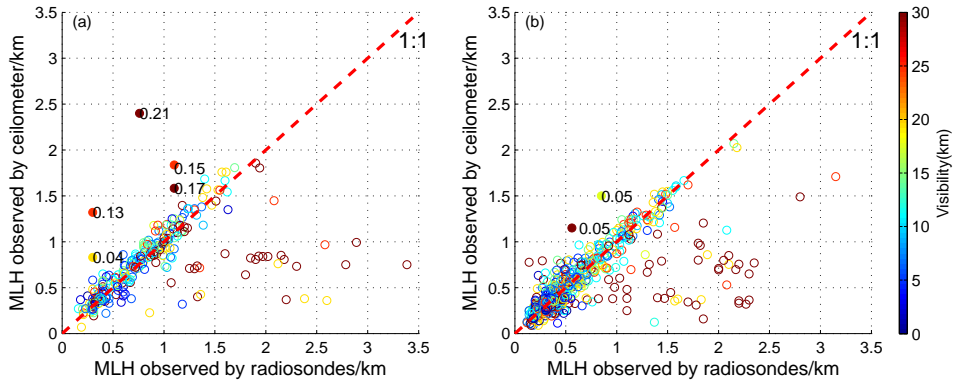


Figure 2. Comparison of MLH between radiosondes and the ceilometer according to visibility for convective (a) and stable (b) states, the number marked with the solid circle refers to the ratios of $PM_{2.5}$ and PM_{10} when sand-dust is crossing.

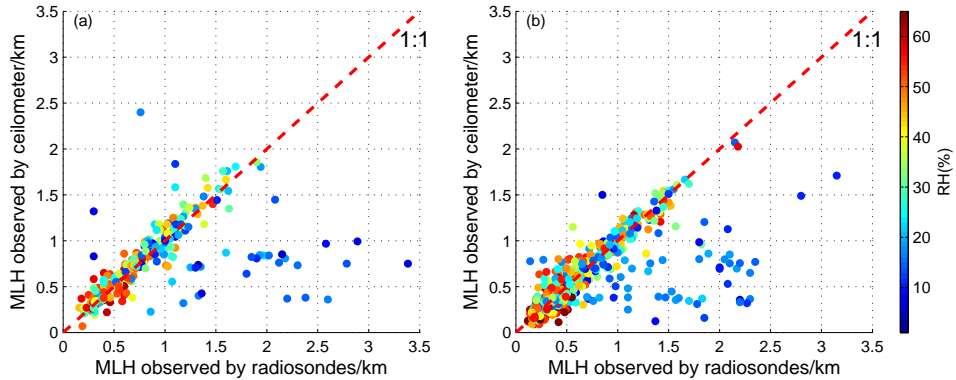


Figure 3. Comparison of MLH between radiosondes and the ceilometer according to RH for convective **(a)** and stable **(b)** states.

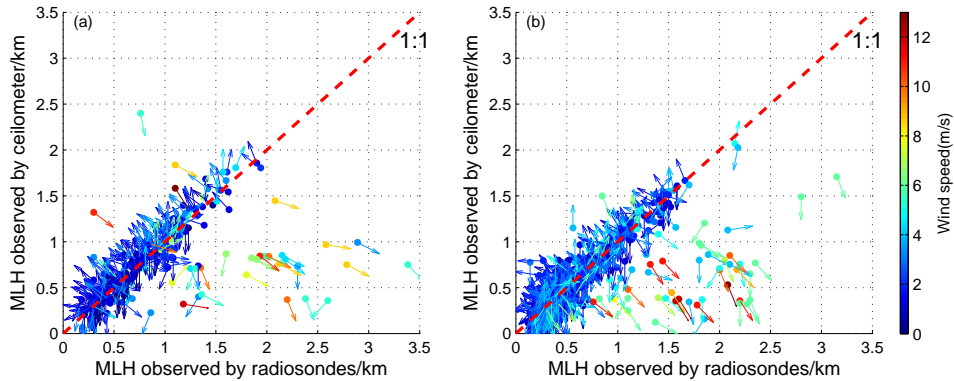


Figure 4. Comparison of MLH between radiosondes and the ceilometer according to wind vectors for convective **(a)** and stable **(b)** states.

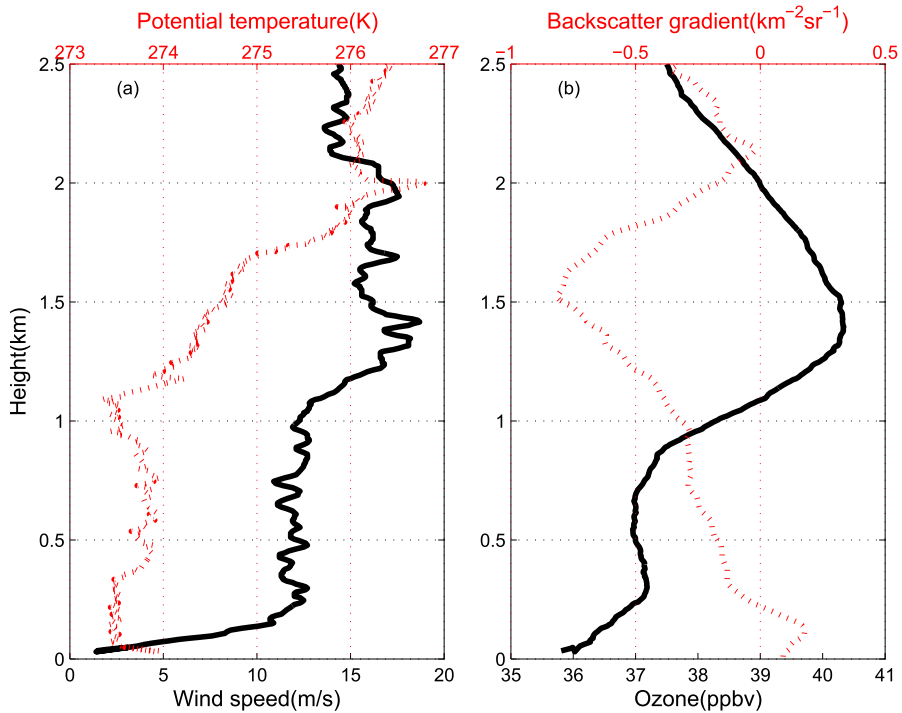


Figure 5. Virtual potential temperature and wind speed **(a)**, and ozone and backscatter gradients **(b)** at 14:00 LT on 29 December 2009 in Beijing.

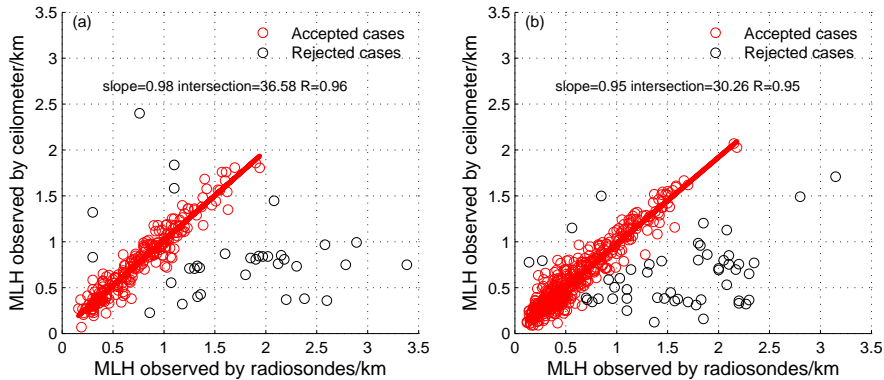


Figure 6. Comparison of MLH between the ceilometer and radiosondes for convective (a) and stable (b) states.

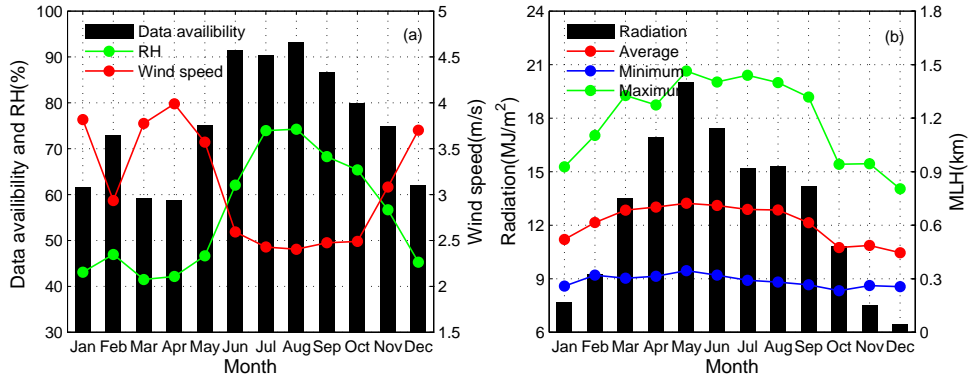


Figure 7. Monthly variations in the effective rate, wind speed, and RH **(a)**, and MLH and total radiation flux **(b)** in Beijing.

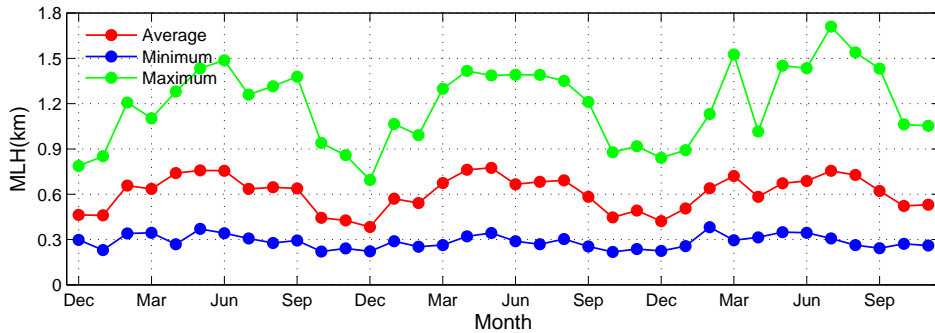


Figure 8. Correlation between sensible heat and Monthly variations of the MLH from December 2009 to November 2012 in Beijing.

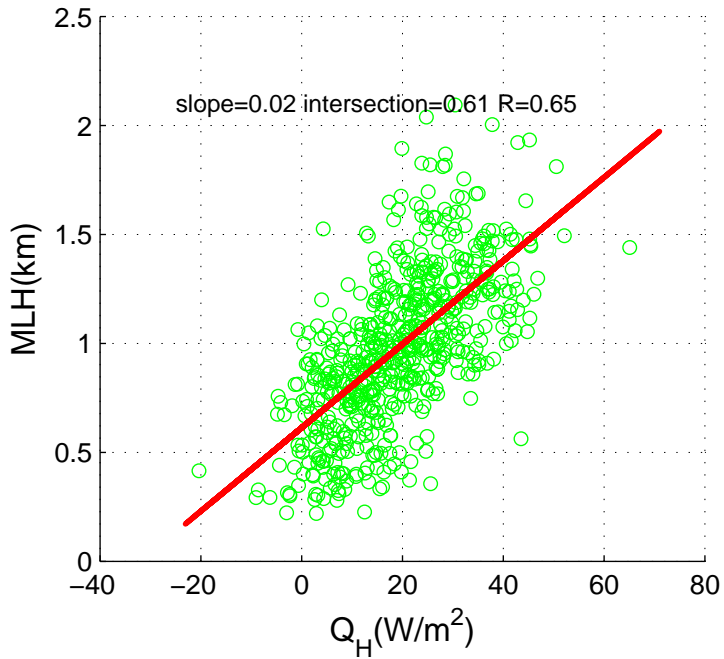


Figure 9. Correlation between the sensible heat (Q_H) and MLH in Beijing.

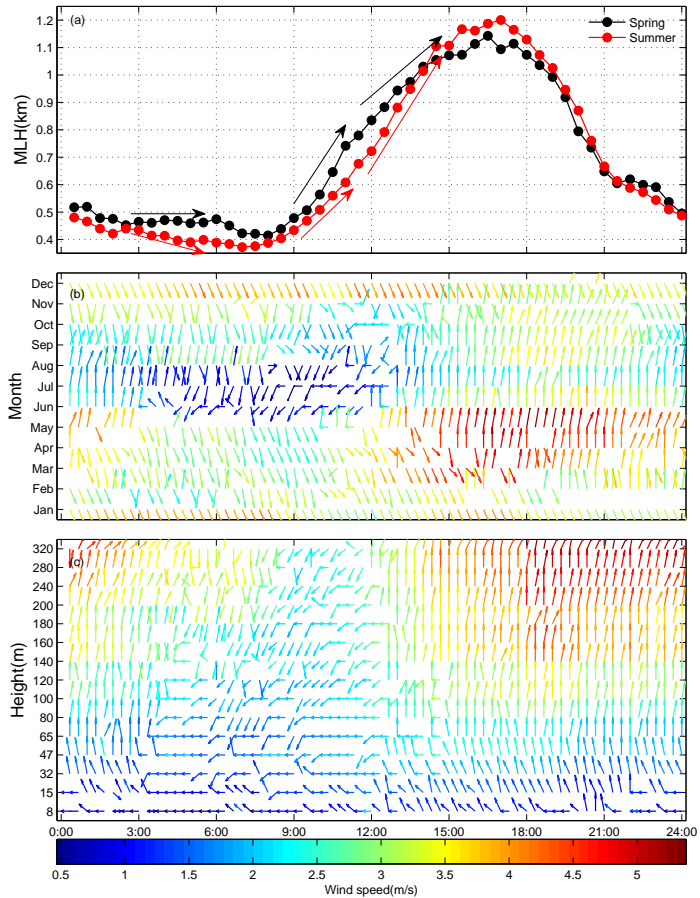


Figure 10. Daily variations in MLH in spring and summer (a), seasonal wind vectors at 100 m (b), and vertical profiles of wind vectors in July (c) in Beijing.

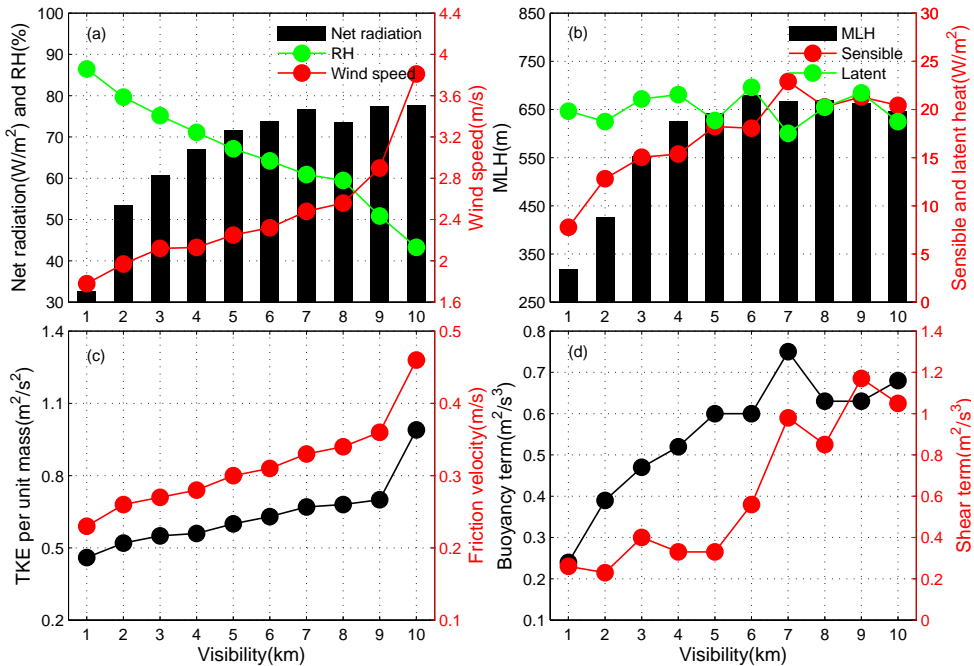


Figure 11. Variations in net radiation, RH, and wind speed (a), MLH, sensible and latent heat (b), TKE per unit mass, and friction velocity (c), and buoyancy and shear term in TKE (d) according to visibility.

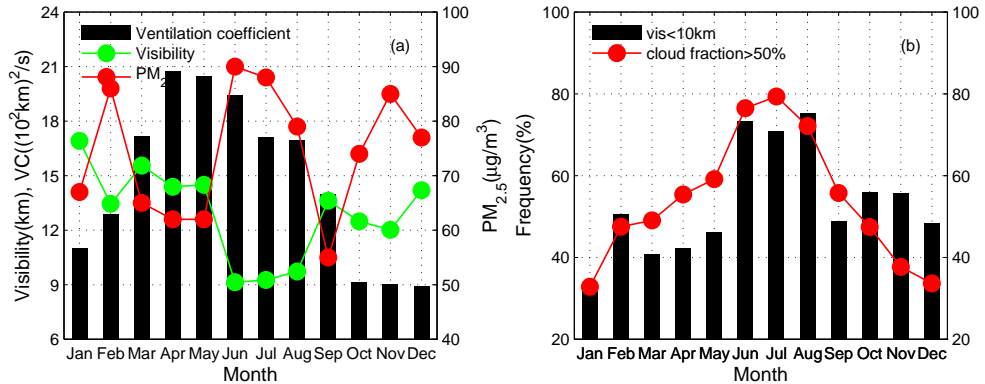


Figure 12. Monthly variations in visibility, $PM_{2.5}$, and ventilation coefficients (a) and frequency of visibility < 10 km, and cloud fraction > 50 % (b) in Beijing.

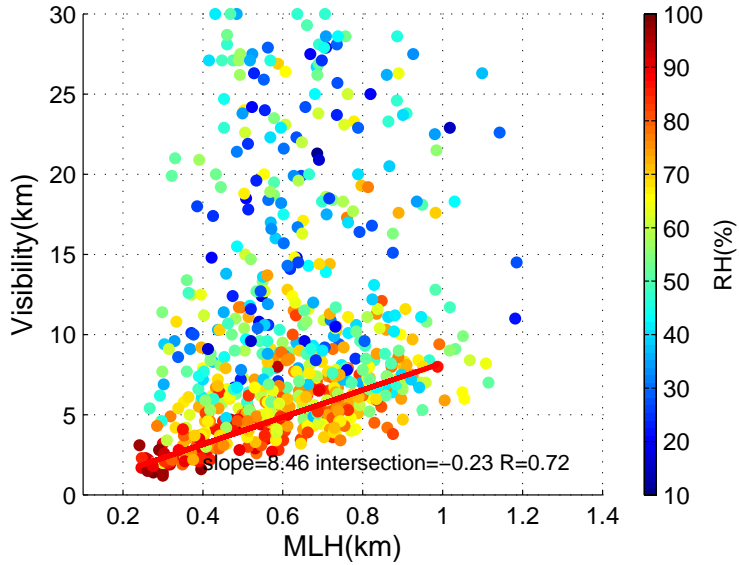


Figure 13. Correlation between the MLH and visibility according to RH in Beijing.

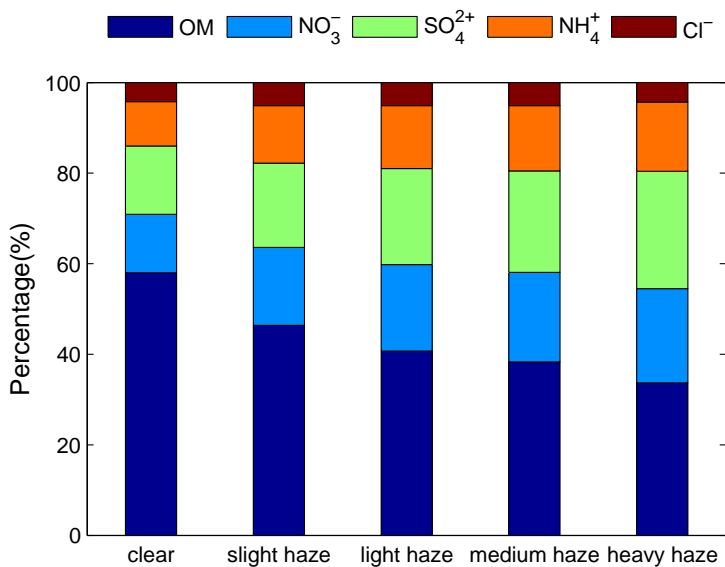


Figure 14. Monthly variations in visibility Percentage of OM, NO₃⁻, and ventilation coefficients (a) and frequency of visibility <10 SO₄²⁺, NH₄⁺ and cloud fraction >50 (b) Cl⁻ in PM₁ under different degrees of air pollution in Beijing.

Response to comments by referee 1

We would like to thank you for your comments and helpful suggestions. We revised our manuscript according to these comments and suggestions.

General comments:

The paper has been improved considerably: it is much better structured and more precise than before. The "acp-2015-691-author_response-version2.pdf" demonstrates that nothing remains as it had been. The point-to-point response gives further useful insight, so only very few questions remain to be clarified.

So, in spite of the improvements, I recommend to address the points listed below to make the paper more convincing. The first part of the paper dealing with the retrieval of the MLH is certainly easier to optimize; more critical is the second part, when MLH is linked to other parameters. This is due to the fact that there are several parameters (wind field [local and regional], radiation, aerosol chemistry including hygroscopic growth, and more) interacting with the ML at local and regional scales. Consequently, the discussion must often remain qualitative as it was not possible to measure all parameters at all relevant sites and to investigate what is the reason for what. With respect to the first part the authors assume that the MLH determined by BL-VIEW is correct under all meteorological conditions (which might not be true – I don't suggest this, but it could be). As the complete discussion of the second part is however based on this assumption, the first part must be very clear.

As a consequence I recommend to explicitly mention in the conclusions that more studies are required to check whether the conclusions of this paper are generally valid, and to include short comments (see below) whenever a statement/conclusion is uncertain or the validity might be limited.

Response:

Thank you for your suggestions.

As for the validation of the MLH, it is not always correct under all meteorological conditions. The MLH observed by ceilometer is not correct during strong wind days and sand-dust crossing. In order to do the analysis in the second part, we have deleted all the wrong data. The only problem is the seasonal variations of the MLH, because more data were deleted in the spring. We have explained this problem in Sect. 3.2.

As for the regional and local contribution, when we discussed with our colleagues about your comments, we don't want to compromise to acquire an uncertain conclusion. In the original version of our manuscript, we give a citation (Zhang et al., 2014) to explain the secondary formation of particles, which make the conclusion not very solid. In order to verify it, we added the observations of chemical compositions of particles to substitute the citation in the revised manuscript.

I feel that all figures/tables except Fig. S1 are worthwhile to be included into the main manuscript.

Response: Thank you for your suggestion. Fig. S3 and Fig. 9a are nearly the same except for adding the results of two seasons. I think Fig. S3 is not suitable to be moved into the main manuscript. Therefore, we have moved Fig. S2 and Tab. S1 to the main manuscript according to your suggestion.

Specific comments:

1. The MLH-error

- Page 9: "In this study, we used the gradient method...". This sounds as if the authors have developed an own retrieval. This is however not the case: they have used BL-VIEW provided by Vaisala. This should be clearly stated here. If there are different versions of this software or if there are different parameters that can be changed by the user, the selected configuration shall be mentioned here. The reason is, that this selection might influence the retrieved MLH and thus, that the complete discussion might depend on this selection. So whenever the authors come to a certain (critical) conclusion I recommend to mention that this conclusion is based on certain assumptions (e.g., that the MLH is accurate within 100 m). As an example: in case that the ceilometer fails to retrieve the MLH (too low aerosol backscatter) or if the "wrong" aerosol layer is assumed to be the MLH, then the calculated correlations between MLH and other parameters (second part of the paper) could be erroneous. But I agree that it is beyond the scope of this paper to review MLH-retrievals by ceilometers.

Response:

Thank you for your suggestions. We have revised this sentence to "In this study, we used the Vaisala software product BL-VIEW to determine the MLH....".

As for the MLH error, we have deleted all the erroneous data when we do the analysis in the second part.

- Page 10: It still remains unclear what the "absolute error (AE) of the measured MLH" is. The reader can understand it either in the sense of "accuracy of BL-VIEW" or as "the difference between $MLH_{\text{sonde}} = MLH_{\text{reference}}$ and MLH_{ceilo} ". Both errors exist, but the authors only understand it according to the second option. Maybe one sentence can be added to avoid any misunderstanding. By the way: I would avoid the acronym AE, first, because it is normally used for Angström exponent, and second, because it is not necessary.

Response:

Thank you for your suggestion. We have added an explanation to eliminate the misunderstanding as "absolute error ($MLH_{\text{ceilometer}} - MLH_{\text{radiosonde}}$) of the measured MLH".

In addition, we have deleted all the acronym of AE in the revised manuscript.

- Page 11: "Once the aerosol concentration becomes uniform in the vertical direction, the ceilometer cannot calculate the MLH through sudden changes in the attenuated backscatter profiles, resulting in serious underestimations." I don't understand this: If no MLH is retrieved from the ceilometer, why is this an underestimate? Is the MLH set to zero? This would not make sense. Please explain (maybe when BL-VIEW features are discussed in section 2.2.1).

Response:

I am sorry for the misunderstanding. MLH can be calculated in this way. It is just not reasonable. In order to eliminate the misunderstanding, we have revised this sentence as follows.

Once the aerosol concentration becomes uniform in the vertical direction, the ceilometer cannot calculate the MLH correctly through sudden changes in the attenuated backscatter profiles, resulting in serious underestimations.

- Page 13 (and many similar cases): "at 739 ± 137 m": it must be explained what the second number means and how it is calculated. Is it the error of the quantity, is it its temporal variability or something else.

The expression "consistent" (twice on page 13) is qualitative only; a more precise description would be welcome.

Response:

739 ± 137 is the mean \pm standard deviation of the mean. We have added the explanation in the revised manuscript.

As for the first "consistent", we have revised it to "had relationship with". As for the second one, the sentence followed by the first sentence is the explanation, so I think it is not necessary to revise it.

2. Potential over-interpretation

- Fig. 9a; Page 15: In the point-to-point response it is stated that the gradual decrease of the MLH in summer is really significant (in a statistical sense). However, a problem remains, when the trend is smaller than the uncertainty of the MLH-retrieval itself. This might lead to an over-interpretation of the data. I am not saying that the observed trend is not real, but one has to be cautious. This point should become clear when the above mentioned amendments have been made, or a brief remark might be added.

Response:

Thank you for your suggestion. We think you are right about the uncertainty of the explanations. This phenomenon should be verified by more intensive observations using radiosondes or mooring boats. Therefore, we added a brief remark in the end of this section as follows.

Although some interpretations for the influences of mountain plain winds are given, more intensive observations over northern China are suggested validating this phenomenon by meteorological radiosondes and so on.

- Page 20: The paragraph starting with "In our data, scatters under poor..." is still sort of difficult to understand (what is scatters?), is partly relying on assumptions/speculations and consequently can be omitted or drastically shortened. If the data on the chemical composition are not measured or available, they should not be used in the discussion. Otherwise this might lead to another over-interpretation, in particular as the uncertainties of the MLH are not well characterized in this paper (see previous comments). This makes the paper "vulnerable" and rather weakens than strengthens the benefit. So I recommend skipping everything that cannot be proven by real facts/measurements.

Having this in mind the whole section 3.4.2 should be checked for potential optimizations.

Response:

Thanks for your suggestion. Scatters are the scatters in Fig. 13. I am sorry for the misunderstanding, we have revised this paragraph. Most important, in order to give more confidence of our conclusion, we added the measurements of the chemical composition of PM1. The revised paragraph is as follows.

To clarify the contributions of local emissions and secondary formation during high RH conditions, we analysed the chemical compositions in PM1 under different degrees of air pollution (Fig. 14). As the air pollution aggravated, the percentage of sulphate, nitrate, and

ammonium with strong hygroscopicity increases from 31.8 to 61.9% from clear to heavy hazy days, whereas the percentage of organic matter with weak hygroscopicity decreases from 58.0 to 33.7 % during the transition of air pollution. Thus, the aerosols exhibit higher sulphate, nitrate, and ammonium ratios on hazy days, which indicates the dominant role of the secondary formation.

• Page 21: "the critical threshold for the MLH...". I still don't understand what is meant and how it has been derived. I see from the new table, that at relative humidities larger than 80% the correlation between MLH and visibility suddenly becomes very high, but I don't see how the "critical thresholds" are derived.

Please explain in more detail and in a conclusive way.

Response:

Thank you for your suggestions. After a considerable discussion with our colleague, we decided to delete the second half of this paragraph. The RH variate significantly among rural, suburban and urban areas, so the threshold will change in different areas, which makes the second half of this paragraph meaningless.

Minor and technical comments:

• Fig. 1: I am not sure if this is really important but I feel that the (city limits) of Beijing should be marked, in particular as it is referenced on page 16.

Response: Thank you for your suggestion. We have added the label of Beijing in Fig. 1.

• Page 5: "in the morning (00:00UTC) and at night (12:00UTC),..." Here, local time should be given (it is however given later in the manuscript). This is also a not-mandatory change.

Response: 00:00UTC and 12:00UTC have changed to 08:00LT and 20:00LT.

• Eq. 3: Symbol u^* is not explained here

Response: We have explained u^* , please see line 3 in page 5.

• Page 8: "10 km from the station of the Institute of Atmospheric Physics". Suggestion: replace with "10 km from the BJT-site".

Response: Thank you. We have revised it according to your suggestion.

• Page 9 (Section 2.2.1): I am not sure if it is worthwhile to mention that the authors are aware of the water absorption issue (see point-to-point response).

Response: I think it is not necessary to introduce the water absorption issue because the influences on the MLH retrieval are negligible.

• Fig.2: It is still hard to find to which dot a number (PM-ratio) belongs (see my first review and point-to-point response). The meaning of the numbers should be mentioned in the text.

Thank you for your suggestion. We have revised Fig. 2.

• Fig.5: It is still unclear how the authors retrieve 1600 m, the derivative of the backscatter profile rather suggests 1500 m. Add a vertical line where you assume the MLH.

Thank you for your suggestion. I am sorry for the wrong number, it should be 1500m. In order to make this figure easier to read, we added the grids in this figure.

- Fig. S2 (and more): Dots are much too large; it is impossible to infer MLHs from them. And include grids to facilitate the reading (see above)! This is also true for Fig. 7b, though it is only possible for the left axis (height). I appreciate that many figures have been improved in this respect.

Thank you for your suggestion. We have revised Fig. S2 and Fig. 7b.

- Eq. 7: It is only used in Section 3.4.1. So maybe it should be moved to that part of the paper (not mandatory).

Eq. 7 is used in section 3.2.

- Fig. 8: Add the symbol QH in the figure caption.

Thank you for your suggestion. We have revised Fig. 8.

- Page 14: Second line below Eq. 6: should be Θ_{zi} or (to be fully consistent) $\Theta_{v,zi}$.

Thank you for your suggestion. We have revised it.

- Page 15, first line: "The daily MLH range is 728": range is meant as "diurnal amplitude"?

Yes.

- Page 17: "(Tab. 2 and Fig. 10)". It should be mentioned that it is the same information but the figure has a better resolution with respect to visibility.

Thank you for your suggestion. We have revised it.

- Page 17: "during light haze pollution the RH significantly increased to 63.1 %". Must be slight haze!

Thank you for your suggestion. We have revised it.

- Page 17: End of paragraph starting with "The measured values under light..." can be drastically shortened (refer to the table).

Thank you for your suggestion. We have revised it.

- Page 18. "As shown in Fig. 10d, ..." Should be "as shown in Tab.2" and can be drastically shortened.

Thank you for your suggestion. We have revised it.

- Page 19: In the text a poor correlation of 0.08 is mentioned whereas in the figure a correlation coefficient of 0.72 is shown. The difference is explained later but here it is misleading.

Thank you for your suggestion. We have deleted Fig. 11.

- Page 19: the "ventilation coefficient". Is this quantity introduced by the authors or it is a common parameter (if so, give a citation).

The citation is Tang et al., 2015.

- Page 19: "However, although the atmospheric...": This sentence is hard to understand. Please rephrase.

Thank you for your suggestion. We have revised it.