

Replies to the Reviewers of manuscript acp-2014-1004

## Stratosphere–troposphere exchange (STE) in the vicinity of North Atlantic cyclones

by P. Reutter, B. Skerlak, M. Sprenger, and H. Wernli

### Authors' response to referees

We would like to thank both referees for their very helpful and constructive comments on our manuscript, which resulted in a major revision of our methodology, and as we hope an improved manuscript. The most fundamental change concerns our cyclone identification. Both referees criticised our original approach to identify cyclones solely from the SLP field and mentioned that, in this way, the “cyclone area” misses important parts that are relevant for STE associated to the dynamics of the cyclone (e.g., STE occurring in parts of the upper-level trough that induces cyclogenesis). We fully agree with this criticism and redesigned our cyclone identification method, now also considering geopotential height anomalies at 700, 500 and 300 hPa (as explained below and of course in the revised manuscript). We then had to recalculate all our statistics (which is why we took so long with the revisions) and redo all figures with the new results. The good news is that qualitatively our results from the original version remain valid, and in addition, with the new method, several of the results become more clear-cut.

Remarks by the referees are marked in **red**, our replies are in **black**, and changes to the manuscript are written in **green**.

### Anonymous referee #1

“1. Introduction: - Paragraph of history of STE studies on cyclones (Pages 2539-2540): While this summary is certainly informative, it would benefit from some better synthesis of these studies and reduction in length. Currently, it reads more as a collection of thoughts than a building block for the paper.”

- There is little pointed motivation for the current study in the Introduction.

Following the summary of previous work, the text jumps into the focus of this study and the questions it intends to address without providing emphasis on what gaps in our understanding remain and why quantifying them in the present study is worthwhile.”

We agree about the second point (“... the text jumps into the focus ...”) and we now explain better that this compilation of case study results, which do not convey a

clear picture are which are in parts contradicting, call for a more systematic, climatological investigation of STE and the processes leading to STE in extratropical weather systems. Our study tries to make a contribution to this task, by looking at STE in cyclones, and by stratifying the results according to cyclone intensity, the period in the cyclone lifecycle, and the regional preference relative to the cyclone centre. We hope that with such an improved motivation part, also the “historical summary” can be more appreciated. A much shorter alternative would be to just write “Several studies investigated STE in individual cyclones, quantified the mass flux and identified the relevant processes (...), leading overall to a rather confusing and partly inconsistent picture. Therefore ...” but we think that having some more details might be of interest for many readers and we therefore prefer to keep this fairly long summary paragraph on case studies of STE in cyclones. However, we significantly shortened the first part of the introduction, which provides general information about STE, STE processes and STE climatologies. We now include fewer references on these aspects (which are not directly relevant for this study) and thereby put more emphasis on the key aspects of this study.

Please see the attached revised manuscript with all the highlighted changes at the end of this document.

“2. On the cyclone identification: What is the reasoning for using surface pressure alone to identify STE within cyclones rather than in tandem with a level near the extratropical tropopause? It seems to me that, for reasons you already outline in Section 4.1 and evidence given in Figures 9 & 10, considering only transport within the domain of the surface cyclone biases your understanding of the process. I expect this choice erroneously leads to one of the main findings of the current study: that most STT is confined to the west of cyclone center during intensifying and mature stages (due to westward tilt of cyclone with height) and near the cyclone centre during the decaying stage. There is no justifiable reason to me to consider only those particles that cross the tropopause within the domain of the surface cyclone rather than the upper- level cyclone, since these features are part of the same dynamical system. Using the upper-level cyclone identification would provide more representative results regarding the location of STE with respect to cyclone position and improve the broader attribution of STE to cyclones. I suggest the authors use both surface and upper-level cyclone positions to better quantify transport associated with these flow features and its occurrence relative to cyclone centre.”

We are very happy for this constructive criticism (and the very similar one by the 2<sup>nd</sup> referee). We agree that our SLP-based cyclone identification biased our results (to a certain degree) and we designed an alternative approach, which is explained in the revised methodology section 2.2 as follows:

## *2.2 Cyclone identification tool*

*Extratropical cyclones are identified based on vertical extension of the method described in Wernli and Schwierz (2006). As in this former study, cyclones are defined and tracked based upon closed contours of the sea-level pressure (SLP) field, enclosing a local minimum of SLP – but their two-dimensional shape is modified here by considering also negative geopotential height anomalies at 700, 500 and 300 hPa. This technique is briefly described in the next paragraphs. It serves to obtain a two-dimensional “cyclone region” at every 6-hourly time step along a cyclone track, obtained from tracking SLP minima, which also reflects the structure of the cyclone-trough system in the middle and upper troposphere and is therefore ideally suited for attributing STE to cyclones.*

*First only SLP contours are considered at 0.5 hPa intervals between 920 and 1050hPa and the regions within closed isobars are accepted as cyclone regions if they additionally fulfil the following criteria: (i) the local minimum of SLP within the enclosing contour is not located over topography exceeding 1500 m height; and (ii) the length of the enclosing contour is smaller than 7500 km, hence excluding unrealistically large features that typically go along with very flat SLP distributions. The first criterion makes sure that spurious SLP minima due to reduction to sea level are excluded from the climatology. The resulting cyclone climatology is a data set of pairs (Cmin; Creg) where Cmin is defined as the location (longitude and latitude) of the cyclone centre and Creg is a region attributed to this cyclone, defined so far only by the outermost enclosing SLP contour and represented by a 0/1 label field on the 1° resolution grid. Cmin is used for cyclone tracking (see below) and for the composite analysis in Sect. 3.4.*

*The cyclone region Creg is now modified using anomalies of geopotential height at 700, 500 and 300 hPa. These anomalies were calculated at every grid point as deviations from the 10-day running mean. This field typically shows negative values near cyclones identified from the SLP field. At 500 and 700 hPa these negative anomalies typically correspond to the location of the upper-level trough that is essential for the formation of the cyclone. In rare cases where no upper-level trough is associated with the surface cyclone, there would be no or just a weak negative geopotential height anomaly at upper levels. Now similarly to our contour search with the SLP field, closed contours of the geopotential height anomaly field are identified at the three pressure levels. Again a maximum contour length of 7500 km limits the size of the negative anomaly features. The cyclone region Creg, defined so*

far by the SLP feature alone, is horizontally extended if it overlaps with an anomaly feature at 700 hPa. The extended region  $C_{reg}$  now encompasses the union of features at both levels. Then, in next steps, the same procedure is repeated for 500 and 300 hPa, allowing the cyclone region to horizontally grow if the anomaly features at the higher level overlaps with the so-far defined region. The result of this procedure is the final two-dimensional cyclone region  $C_{reg}$ , which encloses and is larger than the cyclone area identified from the SLP field alone. This method is strongly flow-dependent, i.e., it can distinguish between smaller and larger cyclones in comparison to a more static approach, which would use, e.g., a constant cyclone radius.

It is then straightforward to attribute every STE event unambiguously to a cyclone. An STE event “belongs” to a cyclone if it occurs within its associated cyclone region. However, a complication arises for multi-centre cyclones, where nearby local pressure minima are found within the same enclosing isobar. Since the two minima likely belong to two different cyclone tracks, it is important, in this case, to split the cyclone region between the different centres according to their relative depth. . Note that multi-centre cyclones also bring a slight ambiguity into the definition of the cyclone region  $C_{reg}$  because the horizontal 'growing' algorithm, as defined above by the overlap criterion, must decide to which cyclone centre the extension is attributed. Here, we adopt the pragmatic approach that the maximum overlap decides.

Finally, as mentioned above, cyclone centres at individual times are combined into time-continuous cyclone tracks. To this end we apply the relatively simple approach described in Wernli and Schwierz (2006), with some refinements that were already used for the IMILAST cyclone identification and tracking intercomparison (Neu et al., 2013): (i) the allowance and bridging of 12 h intervals without cyclones with closed SLP contours; and (ii) a more sophisticated ‘first guess’ forward-projection of the cyclone movement, based on the preceding cyclone path. The cyclone tracks are important for this study to determine the overall deepening of the cyclone, to relate the deepening to the associated STE, and to distinguish between the deepening, the mature (time of SLP minimum  $\pm 12$  h), and finally the decaying phases of a cyclone’s life cycle.

“3. On the discussion comparing Figures 9 & 10, specifically lines 15-23 on page 2551: I am not convinced that the differences in exchanged mass between phases for TST are not comparable to the differences for STT. The magnitudes of TST are about half as large as that for STT in these plots and using the same scale likely hides some of the differences between phases. For STT, the magnitude of mass exchange increases by a factor of  $\sim 3$  between intensifying and mature phases, with values ranging from  $\sim 0.1$  to  $0.2 \times 10^{15}$  kg at SLP < 970 hPa during the mature

phase. For TST, the factor increase in mass exchange between phases appears to be similar to me, but the magnitude at SLP < 970 hPa is between ~0.75 and 1.25. I suggest the authors look at ratios between phases in these distributions to develop a clearer understanding of how STT and TST compare during cyclone lifecycles.”

The reviewer is right, many thanks also for this useful remark! The relative differences between phases are comparable for both STT and TST as shown in the new Fig. 11, reproduced here as Fig. 1. The results shown in this figure are based on the median values of each minimum SLP class. (For instance, a value of 0.5 means that 50% of the mass is exchanged in the considered phase compared to the mature phase.) Interestingly, this analysis shows also a strong dependence on the minimum pressure, but as noted by the referee not on the direction of exchange. This means that more intense cyclones have an enhanced exchange also in the intensification and in particular in the decaying phases, while for weak cyclones mass exchange occurs dominantly during the mature phase. We add this figure to the manuscript.

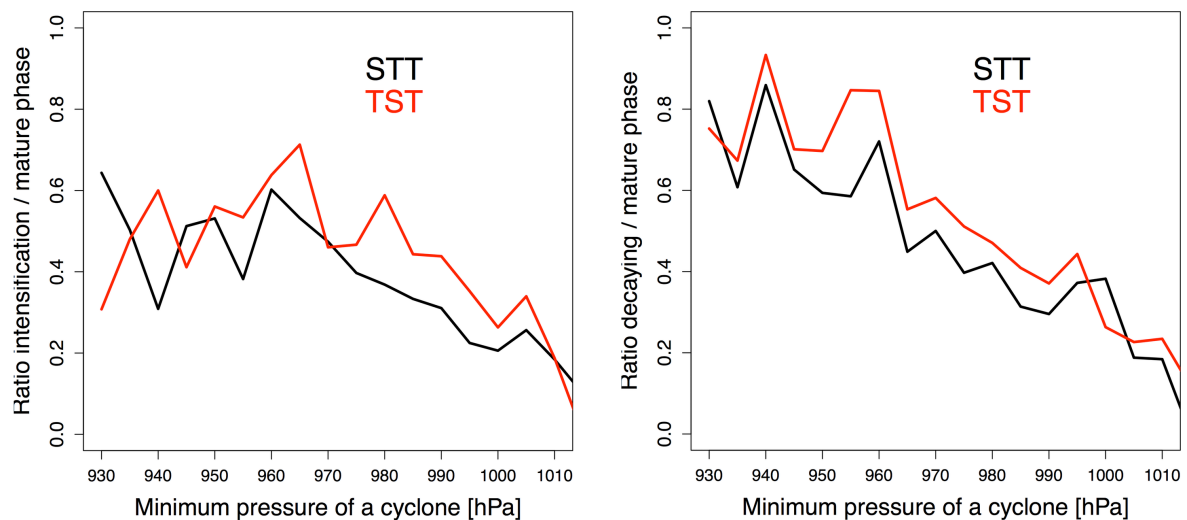


Figure 1: Ratio between the exchanged mass during the intensification and the mature phase (left) and between the decaying and mature phase (right) for STT (black) and TST (red) as a function of the cyclone’s minimum SLP (only for winter). The ratio is calculated using the median from the box and whisker plots of Figs. 9 and 10 of the manuscript. Note, results are presented here up to 1010 hPa due to the low number of cyclones for higher minimum SLP.

Therefore, we have reformulated parts of Section 4.3:

*The exchanged TST mass is shown in Fig. 10 (first row). The evolution of the exchanged mass between the different lifecycle phases shows a similar behaviour compared to STT. Although the absolute numbers are smaller for TST, the relative differences are comparable. Figure 11 shows the differences between the lifecycle phases for winter cyclones as a function of cyclone intensity. The quantity shown is the ratio between the median value of the*

exchanged STT (TST) mass of the intensification and mature phases (left) and decaying and mature phases (right). A value of 0.5 means that during the intensification (decaying) phase the exchanged mass corresponds to 50% of the mass exchanged during the mature phase. Interestingly, the curves are very similar for STT and TST and show a clear dependence on the cyclones' minimum SLP. While weak cyclones exchange most mass during the mature phase, more intense cyclones exchange proportionally more mass also during the intensification and decay. This implies that the processes responsible for STE are working more effectively over a longer time period for intense than for weak cyclones.

Also, we changed the conclusion:

*The relative variability between the phases is very similar for STT and TST. It is notable that the variability between the three phases also shows a clear dependence on the cyclones' minimum SLP. STE occurs in all phases for intense cyclones, but virtually only during the mature phase for weak cyclones; leading to the assumption that the duration of the processes responsible for the mass exchange act longer for intense than for weak cyclones.*

#### Specific Comments

Page 2540, line 1: "date" should be "data"

We replaced "date" with "data"

Page 2541, line 14: An outlook for what?

We have rewritten this sentence:

*In Sect. 5 the results are summarized, **discussed and an outlook for future work** is given.*

Page 2544, line 23: What characteristics classify intensification as "explosive"? It would help to specify that here and possibly reference the work of Fred Sanders, John Gyakum and Lance Bosart. e.g., Sanders & Gyakum (1980): Mon. Wea. Rev., 108, 1589-1606; Bosart(1981): Mon. Wea. Rev., 109, 1542-1566.

After the definition of Sanders & Gyakum (1980) an explosive cyclogenesis is characterised by a deepening of at least 12 hPa within 12 hours. This is not the case for the cyclone "Xynthia", therefore, we replace the term "explosive" by the term "rapidly" to indicate strong development of the cyclone.

Page 2545, lines 26-28: What is the typical lifetime of a North Atlantic cyclone?

Figure 2 presents the lifetime distribution of all cyclones included in our data set. The mean lifetime is 79.4 hrs and the median lifetime is 66 hrs. Note, in this study we take all cyclones into account, which have a minimum lifetime of 24 hrs. The maximum lifetime in our data set is 390 hrs. We included some of these values in the revised version:

“After the mature stage, SLP rises and the cyclone decays slowly. “Xynthia” is last found by the tracking algorithm after 180 h of overall lifetime, which is exceptionally long for a North Atlantic cyclone. *The mean lifetime of all cyclones used in the present study is 79.4 h, the median is 66 h, and the maximum 390 h.*”

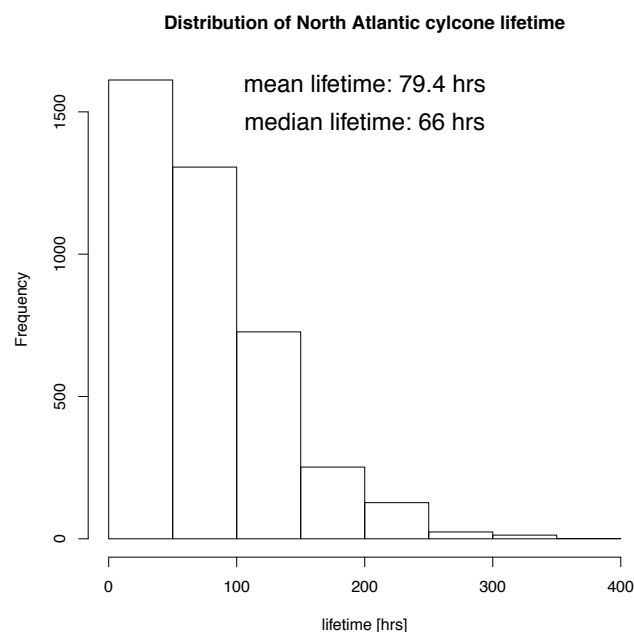


Figure 2: Lifetime distribution [hrs] based on the data set described in the manuscript.

Page 2548, line 27: “s445” should be “445”

We corrected this typo in the revised version. However, the exact values in the manuscript changed due to the recalculation.

Page 2549, lines 19-20: “includes” should be “include”

We replaced “includes” with “include”

Page 2550, lines 25-27: Citation? Also, I assume you are referring to upper-level wind speeds?

Yes, we are referring to upper-level winds. We now reference Fig. 8 in the paper by Catto et al. (2010):

Catto, J. L., Shaffrey, L. C., and Hodges, K. I.: Can climate models capture the structure of extratropical cyclones?, *J. Climate*, 23, 1621-1635, doi: 10.1175/2009JCLI3318.1, 2010.

Page 2553, line 12: "A very strong" is subjective, not scientific. Suggest replacing with "One"

We agree and replaced "A very strong" with "One".

Figures 9 & 10: The grey and black lines are difficult to see atop the colour-filled background here. Also, there needs to be a scale provided for the density in these plots.

We corrected this.



## Anonymous referee #2

1) The attribution of STE to a specific cyclone is made in reference to the location of the sea level pressure minimum. In the case study analysis presented in Sect. 3.1, it is noted that according to the methodology used in this study, the STT identified to the northwest of the surface cyclone center was not associated with the cyclone. However, as the authors note, it is well known that developing baroclinic waves (e.g., cyclones in their deepening phase) have westward tilts with height. The notch and anticyclonic curvature in the tropopause level potential vorticity structure to the northwest of the cyclone center, in the vicinity of the identified STT, is directly associated with the dynamic and thermodynamic processes that occur within the cyclone. Very few synoptic meteorologists would consider this region as 'not associated with the cyclone'. By not representing STE in regions like this one (immediately to the north- west or west of the cyclone center) the results of the climatology misrepresent the total STE values in the vicinity of deepening cyclone. In particular, I think that in the deepening (baroclinic) phase that the STT that should be attributed to a cyclone is vastly underrepresented by the analysis, therefore also calling the results comparing TST to STT in the various phases of the cyclone lifecycle also into question.

To the authors' credit, they to note that their analysis can be considered a conservative estimate of STE. However, I think that a discussion and perhaps analysis of how sensitive this method of diagnosing STE in the vicinity of cyclones is to the definition of cyclone area would be valuable in adding credibility to the analysis. Otherwise, it might be worth focusing the analysis on the portion of the cyclone lifecycle in which the upper-level and lower-level cyclone features are co-located and vertically stacked (i.e., the barotropic – mature and decaying – phases of the cyclone lifecycle).

We fully agree and have completely redone our evaluation with a new, vertically extended, cyclone identification algorithm. See our detailed response to comment 2 of the first referee.

The introduction contains a very thorough review of STE research, but seems more appropriate for a review paper or thesis length manuscript. Perhaps this review can be shortened, doing so would provide 'space' for the recommended analysis/discussion mentioned above.

See our detailed response to comment 1 of the first referee.

Typos: P2540 L1: "date" should be "data"

We replaced "date" with "data"

P2548 L27: The 's' should be removed before 445

We corrected this. However, the numbers have changed due to the new calculations.

P2548 L28: "the the average" should be "the average"

We corrected this.

P2554 L17: "muss flux" should be "mass flux"

We corrected this.

Fig. 2: It is hard to see the southern end point of the cross section line. Which 320 K PV contour does the red line represent? Figs 9 & 10: What are the values that correspond to the color fills? Perhaps the gray line could be thicker.

The red line represents the 2 PVU contour.

We also improved the Figs. 9 & 10 as proposed and included a colour bar.

Manuscript prepared for Atmos. Chem. Phys. Discuss.  
with version 2014/09/16 7.15 Copernicus papers of the L<sup>A</sup>T<sub>E</sub>X class copernicus.cls.  
Date: 3 August 2015

# Stratosphere–troposphere exchange (STE) in the vicinity of North Atlantic cyclones

**P. Reutter<sup>1</sup>, B. Škerlak<sup>2</sup>, M. Sprenger<sup>2</sup>, and H. Wernli<sup>2</sup>**

<sup>1</sup>Institute for Atmospheric Physics, University of Mainz, Mainz, Germany

<sup>2</sup>Institute for Atmospheric and Climate Science, ETH Zurich, Zürich, Switzerland

Correspondence to: P. Reutter (preutter@uni-mainz.de)

## Abstract

It is well known that the storm tracks are a preferred region of stratosphere–troposphere exchange (STE), but a systematic and climatological investigation of the connection between cyclones and STE has not yet been performed. We use two ~~established~~ ERA-Interim climatologies of STE and cyclones for the years 1979–2011 to quantify the amount of STE that occurs during the life cycle of North Atlantic cyclones. A Lagrangian method serves to identify individual STE events, and a sophisticated cyclone identification tool detects cyclones, their shape and size from the sea-level pressure field and from geopotential height anomalies at 300–700 hPa. Combining the two data sets reveals that roughly ~~half~~ 50–60 % of the total STE in the North Atlantic occurs in the vicinity of cyclones and that both downward and upward fluxes of mass across the tropopause (STT and TST, respectively) are more intense in deeper cyclones (lower minimum ~~pressure~~SLP) compared to less intense cyclones. In summer, STT and TST in the vicinity of cyclones are almost equal; in the other seasons, STT is larger by ~~15–45~~25–60 %. ~~Gross-tropopause~~ Compared to climatology, cross-tropopause mass fluxes are enhanced by a factor of about ~~two~~ compared to climatology 2 and 1.5 for STT and TST, respectively, when a cyclone is present. On average, STE is strongest during the mature phase of cyclones, i.e., in a 24 h time window around the time of maximum intensity. Systematic patterns of exchange locations relative to the cyclone centre are identified via composite analysis and shed light on the different characteristics of STT and TST. During cyclone intensification and in the mature stage, TST is mainly confined to the cyclone centre, whereas STT occurs mainly in a region further southwest. During the decay of the cyclones, both STT and TST are most frequent close to the cyclone centre, in a region with a fairly low tropopause.

## 1 Introduction

The exchange of air across the extratropical tropopause plays an important role for the chemical composition of the stratosphere and the troposphere. For instance, the injection

tion of stratospheric air into the troposphere can enhance the ozone concentration in the troposphere significantly (e.g., Danielsen, 1968; Stevenson et al., 2006), even down to the boundary layer (~~Davies and Schuepbach, 1994; Davies and Schuepbach, 2014~~) (Johnson and Viezee, 1967; Lefohn et al., 2011; Lin et al., 2012). On the other side, the amount of water vapour in the extratropical lower stratosphere can strongly increase when tropospheric air is transported across the tropopause (~~e.g., Stohl et al., 2003; Krebsbach et al., 2006~~) (e.g., Krebsbach et al., 2006). Even polluted air from the boundary layer can be transported into the extratropical lower stratosphere (e.g., Arnold et al., 1997; Chen et al., 2012). It is therefore relevant to understand and quantify the physical processes leading to and the flow features associated with stratosphere–troposphere exchange (STE) in the extratropics.

In this study, as in many previous studies (e.g., Holton et al., 1995; Stohl et al., 2003), the extratropical tropopause is defined as an the 2-pvu isosurface of potential vorticity (PV). ~~Typical values best representing the dynamical transport barrier lie in the range of 1–4~~ ( $1 \text{ pvu} = 10^{-6} \text{ K m}^2 \text{ kg}^{-1} \text{ s}^{-1}$ ) ~~(see e.g., Kunz et al., 2011) with 2 being a commonly used value (see e.g., Škerlak et al., 2014)~~. Therefore, as a consequence of the material conservation of PV for adiabatic and frictionless flow (~~Ertel, 1942; Kleinschmidt, 1950~~) (Ertel, 1942), STE must be associated with processes that lead to a material production or destruction of PV such as cloud microphysical processes (e.g., latent heating due to condensation), radiation, or friction (e.g., associated with turbulence). Furthermore, these physical processes occur preferentially in the vicinity of certain dynamical flow *features*. This distinction between processes and features is important: processes refer to the physical mechanisms that change PV, whereas features refer to the meteorological flow setting wherein these processes (likely a combination thereof) occur. In the last decades, the processes and flow structures associated with STE have been intensively investigated, as discussed in the review articles by Reiter (1975); Holton et al. (1995); and Stohl et al. (2003). Different studies highlighted the importance of different processes, for instance turbulence by shear instability (~~Traub and Lelieveld, 2003~~) (Shapiro, 1980; Traub and Lelieveld, 2003) the breaking of

gravity waves ([Wang, 2003](#)) (Whiteway et al., 2003; Lane and Sharman, 2006), cloud diabatic processes in stratiform and convective clouds ([Gray, 2003](#); [Bourqui, 2006](#)) (Wirth, 1995; Poulida et al., 1996), and radiative cooling due to strong vertical humidity gradients near the tropopause (Zierl and Wirth, 1997). Regarding flow features, a strong focus has been on STE in tropopause folds that occur near the polar and subtropical jets ([Danielsen, 1968](#); [Vaughan et al., 1994](#); [Sprenger et al., 2003](#); [Škerlak et al., 2015](#)). ~~The first of these studies investigated the exchange processes in a fold in detail, also using airborne radioactivity measurements~~(see [Škerlak et al. \(2015\)](#), and references therein). Sprenger et al. (2003) compiled a one-year climatology of folds and showed that for STE in the subtropics, folds are highly important (around 60 % of total STE occurs near folds), whereas in the extratropics, where folds are comparatively rare, they only account for about 20 % of total STE. Using a similar approach, Sprenger et al. (2007) quantified the importance of isentropic PV streamers and cutoffs, resulting from Rossby wave breaking, for STE and found that about 70 % of all STE events between 290 and 350 K occur in the vicinity of such a PV feature<sup>1</sup>. In the current study, the occurrence of STE in the feature category of extratropical cyclones is quantified.

Several studies in the last decade used global re-analysis data to provide a climatological picture of STE ([Seo and Bowman, 2001](#); [Sprenger and Wernli, 2003](#); [James et al., 2003](#); [Berthet et al., 2007](#); [Škerlak et al. \(2014\)](#), and references therein). These climatologies indicate that the distribution of STE in the extratropics has a strong seasonal cycle and pronounced geographic variability. In particular, it was shown that maxima of STE are located over the storm track regions in the North Atlantic and North Pacific during all seasons (except summer)

---

<sup>1</sup>Note that the different features categories are not mutually exclusive; for instance, a tropopause fold can occur as part of a PV cutoff, and therefore the sum of the percentages associated with different features can exceed 100 %.

with an averaged mass flux of approximately  $500 \text{ kg km}^{-2} \text{ s}^{-1}$  from the stratosphere to the troposphere (STT) and approximately  $300 \text{ kg km}^{-2} \text{ s}^{-1}$  in the opposite direction (TST) (~~Škerlak et al., 2014~~) (Škerlak et al., 2014). This indicates qualitatively that STE is likely enhanced in the vicinity of cyclones compared to the climatological average.

Previous studies estimated the amount of STE in the vicinity of individual cyclones by considering idealized baroclinic waves (Bush and Peltier, 1994) or real case studies (e.g. Bourqui, 2006). Some of them then extrapolated their results to the global scale. Due to the considerable variability of cyclone life-cycles and their associated STE processes, this approach is highly uncertain, indicating the need for a systematic climatological investigation. However, these case studies nicely reveal the complex spatio-temporal structures and diverse physical processes associated with STE in cyclones, as briefly summarized here. A first pioneering case study of STE in an extratropical cyclone by Lamarque and Hess (1994) considered a moderately intense winter cyclone over the US and **emphasized that the PV perspective is ideal for identifying the physical processes leading to the exchange. For the cyclone considered, they** concluded that diabatic processes were much more important than diffusive processes. Intense TST occurred mainly in the western part of the associated upper-level PV structure and STT in the eastern part (i.e., above the cyclone warm sector). A second pioneering case study considered an explosively deepening cyclone (Spaete et al., 1994) and found a similar spatial distribution of STT and TST relative to the cyclone centre. For a North Atlantic winter cyclone, also of moderate intensity, Wernli and Davies (1997) found intense STT during the 24 h of cyclone intensification and much weaker STT during the previous and subsequent days. TST was generally weaker but increased with time and balanced STT on the last day of the cyclone life cycle. TST mainly occurred near the cyclone centre and further north, whereas STT peaked to the rear of the cyclone and along the cold front. Wirth and Egger (1999) used different methods to quantify STE in a decaying Mediterranean cutoff cyclone in summer and showed that convective heating in the centre of the cyclone was mainly responsible for intense STT. Later, Bourqui (2006) considered a similar system in autumn and confirmed the dominance of STT over TST for cyclones associated with an upper-level cutoff. Another study on STE in a cutoff

cyclone over Northeast China by Liu et al. (2013) used satellite ~~date data~~ to quantify the irreversible transport of stratospheric ozone into the troposphere. For a North Atlantic winter cyclone and using a passive tracer in a mesoscale model, Gray (2003) also highlighted the role of deep convection for producing intense STT, however along the long trailing cold front. This is in agreement with the later studies by Brioude et al. (2006), who looked at STE in the extratropical transition of tropical storm *Arthur* and pointed to the possible role of deep convection for mixing stratospheric air in folded regions irreversibly into the troposphere, and ~~the investigation of trace gas measurements in~~ by Cooper et al. (2002), who looked at several warm season North Atlantic cyclones ~~by Cooper et al. (2002), who and~~ emphasized the dry intrusion airstream, which often goes along with a tropopause fold in the rear of an extratropical cyclone, as a preferred region for STT. In contrast, Kowol-Santen et al. (2000) concluded that turbulence in a tropopause fold was more important for STE than cloud diabatic processes. Their study object was a pronounced PV streamer in winter, which broke up into an upper-level cutoff and was associated at its northern end with a surface cyclone over Iceland and further south with a mesocyclone near Portugal. Also using a Lagrangian approach, Sigmond et al. (2000) quantified STE in a stationary North Sea spring cyclone and found STT mainly in a folded upper-level trough and TST in the upper-level ridge. For an intense North American cyclone in early winter, Olsen and Stanford (2001) used trajectories and identified STT due to latent heating in the cyclone centre and due to turbulence further south. This brief summary of case studies of STE in various types of cyclones very clearly highlights the great case-to-case variability of the main processes leading to STE and their preferred location within the cyclonic system. Also the quantitative estimates of STE provided by these case studies are very variable.

~~To investigate the details of the relationship~~ This corroborates the need for a more robust, climatological analysis of the quantitative link between STE and ~~North Atlantic cyclones~~ cyclones.

To this end, we combine a climatology of extratropical cyclones based on ~~the identification of closed sea level pressure (SLP) contours (Wernli and Schwierz, 2006)~~ an extended version of the cyclone identification approach by Wernli and Schwierz (2006) (see Section



140 [2.2.](#)) with a recently published climatology of STE ([Škerlak et al., 2014](#)) based on a large set of kinematic trajectories ([Škerlak et al., 2014](#)). By combining these climatologies – which are both derived from the ERA-Interim reanalysis data set provided by the European Centre of Medium-Range Weather Forecasts (ECMWF) (Dee et al., 2011) – the following questions can be addressed:

- 145 – What percentage of the total STT and TST mass flux occurs in the vicinity of extratropical North Atlantic cyclones? What is the regional and seasonal variability of this number?
- Does STT and TST associated with an individual cyclone depend on its intensity, as expressed by its minimum SLP sea level pressure (SLP)?
- 150 – Are there, on average, preferred locations for STT and TST within cyclones?
- What is the timing of STE with respect to the evolution of the cyclone, i.e., is STE more intense during cyclone intensification, in the mature stage, or during decay?

Answering these questions requires sophisticated methods (e.g., to relate individual STE events to cyclones and to a specific phase of their evolution), which are presented in Sect. 2. Section 3 first shows an illustrative case study of a cyclone and its associated STE, and in Sect. 4 the findings of combining the cyclone and STE climatologies are presented. In Sect. 5 the results are summarized, [discussed](#) and an outlook [for future studies](#) is given.

## 2 Data and methods

### 2.1 ERA-Interim

160 We use the ERA-Interim reanalysis data set from the European Centre of Medium-Range Weather Forecasts (ECMWF) (Dee et al., 2011). It is based on a 4-D-Var data assimilation technique and is available every 6 h. In this study, we analyse the first 33 yr from 1979

to 2011. The data is available at a T255 spectral grid which corresponds to approximately 80 km. We interpolate all data on a regular grid with  $1^\circ$  resolution in the zonal and meridional directions. The 60 vertical hybrid sigma-pressure model levels reach from the surface up to 0.1 hPa. We compute secondary variables such as potential vorticity (PV) and potential temperature ( $\Theta$ ) directly on the model levels.

## 2.2 Cyclone identification tool

Extratropical cyclones are identified based on [a vertical extension of](#) the method described in Wernli and Schwerz (2006). ~~Isobars of sea-level pressure (SLP)~~ [As in this former study, cyclones are defined and tracked based upon closed contours of SLP, but here their two-dimensional shape is modified by considering also negative geopotential height anomalies at 700, 500 and 300 hPa. This technique is briefly described in the next paragraphs. It serves to obtain a two-dimensional “cyclone region” at every 6-hourly time step along a cyclone track, which also reflects the structure of the cyclone-trough system in the middle and upper troposphere and is therefore ideally suited for attributing STE to cyclones.](#)

[First SLP contours](#) are considered at 0.5 hPa intervals between 920 and 1050 hPa and ~~then~~ the regions within closed isobars [that encircle a local SLP minimum](#) are accepted as cyclone regions if they additionally ~~fulfill~~ [fulfil](#) the following criteria: (i) the ~~local minimum of SLP within the enclosing contour~~ [enclosed SLP minimum](#) is not located over topography exceeding 1500 m height; and (ii) the length of the enclosing contour is smaller than 7500 km, hence excluding unrealistically large features that typically go along with very flat ~~pressure~~ [SLP](#) distributions. The first criterion makes sure that spurious SLP minima due to reduction to sea level are excluded from the climatology. The resulting cyclone climatology is a ~~data set of pairs~~  $(C_{\min}, C_{\text{reg}})$  where  $C_{\min}$  is defined as the location (longitude and latitude) of the cyclone centre and  $C_{\text{reg}}$  is a ~~region~~ [region](#) attributed to this cyclone, defined ~~so far only~~ [by](#) the outermost enclosing ~~isobar~~ [SLP contour](#) and represented by a 0/1 label field on the  $1^\circ$  resolution grid.

190 Use is made of both cyclone features:  $C_{\min}$  is needed as input for the cyclone tracking and, e.g., used for cyclone tracking (see below) and for the composite analysis in Sect. 3.4.

The cyclone region  $C_{\text{reg}}$  is required to attribute every STE event unambiguously to a cyclone, i. e., an STE event “belongs” to a cyclone if it occurs within its associated cyclone region now modified using anomalies of geopotential height at 700, 500 and 300 hPa. These anomalies were calculated at every grid point as deviations from the 10-day running mean. In most cases this field shows negative values near cyclones identified from the SLP field. At 500 and 700 hPa these negative anomalies typically correspond to the location of the upper-level trough that is essential for the formation of the cyclone. Note that here we make use of the In rare cases where no upper-level trough is associated with the surface cyclone, there would be no or just a weak negative geopotential height anomaly at upper levels. Now similarly to our contour search with the SLP field, closed contours of the geopotential height anomaly field are identified at the three pressure levels. Again a maximum contour length of 7500 km limits the size of the negative anomaly features. The cyclone region  $C_{\text{reg}}$ , defined so far by the SLP feature alone, is horizontally extended if it overlaps with an anomaly feature at 700 hPa. The extended region  $C_{\text{reg}}$  now encompass the union of features at both levels. Then, in next steps, the same procedure is repeated for 500 and 300 hPa, allowing the cyclone region to horizontally grow if the anomaly features at the higher level overlaps with the so-far defined region  $C_{\text{reg}}$ . The result of this procedure is the final two-dimensional cyclone region  $C_{\text{reg}}$ , which encloses and is larger than the cyclone area identified from the SLP field alone. This method is strongly flow-dependent size attribution of cyclones: our approach, i. e., it can distinguish between smaller and larger cyclones in comparison to a more static approach, which would use, e.g., a constant cyclone radius.

It is then straightforward to attribute every STE event unambiguously to a cyclone. An STE event “belongs” to a cyclone if it occurs within its associated cyclone region. However, a complication arises for multi-centre cyclones, where nearby local pressure minima are found within the same enclosing isobar. Since the two minima likely belong to two different cyclone tracks, it is important, in this case, to split the cyclone region between the different centres according to their relative depth. Note that multi-centre cyclones also

bring a slight ambiguity into the definition of the cyclone region  $C_{reg}$ , because the horizontal 'growing' algorithm, as defined above by the overlap criterion, must decide to which cyclone centre the extension is attributed. Here, we adopt the pragmatic approach that the maximum overlap decides.

As Finally, as mentioned above, cyclone centres at individual times are combined into time-continuous cyclone tracks, as also. To this end we apply the relatively simple approach described in Wernli and Schwerz (2006). Further refinements to the tracking algorithm, as already invoked, with some refinements that were already used for the IMILAST cyclone identification and tracking intercomparison (Neu et al., 2013) are: (i) the allowance and bridging of 12 h intervals without cyclones with closed SLP contours; and (ii) a more sophisticated 'first guess' forward-projection of the cyclone movement, based on the preceding cyclone path. The cyclone tracks are important for this study to determine the overall deepening of the cyclone, to relate the deepening to the associated STE, and to distinguish between the deepening, the mature (time of SLP minimum  $\pm 12$  h), and finally the decaying phases of a cyclone phase of a cyclones life cycle.

### 2.3 STE identification with LAGRANTO

Our study uses the Lagrangian methodology introduced by Wernli and Bourqui (2002) and further refined by Škerlak et al. (2014) Škerlak et al. (2014) to quantify STT and TST. It is based on the dynamical tropopause definition, namely the combination of the  $\pm 2$  pvu and 380 K isosurfaces (whichever is lower) (Hoskins et al., 1985; Holton et al., 1995). This definition allows to detect STE using the PV and  $\Theta$  fields along kinematic air parcel trajectories. We start trajectories on a dense grid with 80 km horizontal and 30 hPa vertical grid spacing and compute them for 24 h. STT and TST can then be identified in the extratropics as transitions from  $|PV| > 2$  pvu to  $|PV| < 2$  pvu, or vice versa, and similarly in the tropics by considering crossings of the 380 K surface. To filter out spurious exchange events due to diabatically or frictionally produced low-level PV anomalies, we additionally use a 3-D-labelling algorithm presented in Škerlak et al. (2014) Škerlak et al. (2014) to objectively separate the stratosphere from the troposphere in challenging situations (see also

Škerlak et al., 2015 Škerlak et al., 2015 ). The selected STE trajectories are then extended for 4 days in both directions and it is checked whether they stay at least 48 h on both sides of the tropopause, thus filtering out “transient” exchange events (Wernli and Bourqui, 2002; Škerlak et al., 2014).

## 2.4 Combination of cyclone and STE data

To compute the STE mass flux associated with a specific cyclone, we select the STE trajectories that cross the tropopause within the cyclone area defined by the **outermost closed SLP contour (see above) procedure explained above**. Since each trajectory represents a certain mass  $\Delta m \approx \frac{1}{g} \Delta x \Delta y \Delta p = 6.52 \times 10^{11}$  kg, this allows us to compute mass fluxes in both directions separately ( $\Delta x$ ,  $\Delta y$  and  $\Delta p$  represent the spacing of the trajectory starting points in the horizontal and vertical directions, respectively). Note that this approach is fully dynamic in the sense that for a small cyclone the STE event must occur close to the cyclone centre in order to be associated with the cyclone, whereas for large cyclones an STE event can also be associated with the cyclone if its location is fairly distant from the cyclone centre. **In some cases (see below), the** adopted definition of the cyclone area **might appear a bit too is rather** restrictive, i.e., **the cyclone area might rather indicate a conservative estimate of the region dynamically influenced by the cyclone evolution regions along a trailing cold front outside of the closed contours are not considered as part of the cyclone area**. Therefore our estimates of STE attributed to cyclones should **also** be regarded as a conservative estimate or lower bound. Also, for every STE event classified as associated to a cyclone, the coordinates relative to the cyclone centre are determined, which later allows producing composites of STT and TST relative to the cyclone centre.

## 3 Introductory case study: cyclone “Xynthia” in February 2010

In this section, we will show a case study to illustrate our methods.

### 3.1 A synoptic scale perspective

We have chosen the winter storm “Xynthia”, which caused severe storm surges and flooding in Western Europe in February 2010 (Liberato et al., 2013). This long-lived cyclone originated in the subtropical North Atlantic near  $55^{\circ}$  W, intensified ~~explosively rapidly~~ and reached the French Atlantic coast with a core pressure of about 970 hPa at 00:00 UTC 28 February (Fig. 1). The cyclone then moved to the Baltic Sea, weakened, became stationary and persisted until 8 March. The situation at 06:00 UTC 26 February 2010 is shown in Fig. 2. A large number of STT events occur right at the cyclone centre (near  $30^{\circ}$  W/ $30^{\circ}$  N, central pressure 998 hPa). A vertical cross-section along  $30^{\circ}$  W from  $15^{\circ}$  to  $45^{\circ}$  N is shown in Fig. 3. The strong baroclinic zone to the north of the cyclone is not associated with a tropopause fold. A closer analysis (not shown) reveals that most of these STT events can be associated with material PV destruction above a local latent heating maximum due to in-cloud freezing. Note also the STE events associated with the subtropical jet stream over North Africa shown in Fig. 2. At 00:00 UTC 27 January 2010, Xynthia has moved north-eastward and significant STT occurs on its north-western side (Fig. 4) in a region with a rather low tropopause (reaching down to 400 hPa). ~~These exchange events, however, are not~~ Nearly all of these exchange events are associated to the cyclone by our method ~~since they occur outside the outermost closed SLP contour~~ (gray area in Fig. 4). ~~This illustrates how our method only takes~~ Figures 2 and 4 illustrate that our method is capable of taking into account exchange events that occur in the direct vicinity of the cyclone centre ~~. This example shows that we use a conservative estimate and/or in the upstream trough. Due to the limited maximum extension~~ of the cyclone area ~~in order to~~ (see section 2.2), we obtain a trustworthy lower bound of STE attributed to cyclones.

### 3.2 STE integrated along cyclone track

Time series of ~~sea level pressure~~ SLP and exchanged mass for STT and TST events for cyclone “Xynthia” are presented in Fig. 1. This shall illustrate the combination of the cyclone and STE data. The ~~sea level pressure~~ SLP shows the three different phases of the life

cycle of a cyclone. During the intensification phase, the sea-level pressure SLP is reduced rapidly by over 30 hPa in 72 hours. In the mature phase the minimum pressure SLP of 968.98 hPa is reached, which defines the intensity of “Xynthia”. The minimum pressure is reached 78 h SLP is reached 72 h after the first detection of the cyclone by the tracking algorithm. After the mature stage, the sea-level pressure SLP rises and the cyclone decays slowly. “Xynthia” is last found by the tracking algorithm after 288 h 180 h of overall lifetime, which is an exceptionally long life time exceptionally long for a North Atlantic cyclone. The mean lifetime of all cyclones used in the present study is 79.4 h, the median is 66 h, and the maximum 390 h. The grey boxes in Fig. 1 indicate the intensification (–36 to –12 hrs prior to the time of minimum pressure SLP) and the decaying phase (12 to 36 hrs after the time of minimum pressure SLP), respectively. Note, to have comparable time windows for all cyclones, regardless of their lifetime, the intensification and decaying phases are limited to 24 h. The mature phase of the cyclone is defined as the time window 12 hrs before and after the time the minimum is reached and is indicated by the yellow box in Fig. 1.

The exchanged masses of STT and TST for each 6 hourly time step are shown as blue and red lines in Fig. 1, respectively. In the beginning of the lifecycle, no STE events are found in the vicinity of “Xynthia”. STT is dominant during the intensification and mature phase of the cyclone, while TST becomes more important in the long decaying phase of “Xynthia”. In the end, the total exchanged mass for STT accounts to  $4.25 \times 10^{14}$  kg  $12.98 \times 10^{14}$  kg and for TST to  $7.12 \times 10^{14}$  kg  $6.95 \times 10^{14}$  kg.

This above mentioned method is now applied to all North Atlantic cyclones from 1979 to 2011 and the results are presented in the following.

## 4 Climatology

### 4.1 Fraction of STE associated with cyclones

The seasonally averaged mass fluxes of STT and TST in the North Atlantic are shown in Figs. 5 and 6, respectively. The white contours indicate the percentage of the total mass

flux that is due to exchange events associated with cyclones. The highest relative fraction (around 70%) is found for STT south of Greenland-Newfoundland in winter (DJF). In spring (MAM) and fall (SON), around 60% of the total STT flux is associated with cyclones in this region while in summer (JJA), this value drops to 40%. During this time the maximum of 50% is found west of the British Isles. The values for TST are ~~approximately 10 percentage points lower throughout the year but the patterns are comparable to the ones for STT in the same order, except for summer, when over 50% of the total TST flux is associated with cyclones over the Hudson Bay and eastern parts of Canada.~~ Note, that the percentage values are large where the cyclones typically become mature, large and stationary (e.g., ~~between Greenland and Iceland~~). ~~In the mature stage, cyclones tend to be more barotropic, i.e., the main upper-level disturbance becomes vertically aligned with the surface low and therefore it makes sense that in this stage a lot of the STE occurs within the cyclone masks. In contrast, in the early phase of the cyclones' life cycles, e.g., in the western North Atlantic, the cyclones typically have a westward tilt with height, i. e., the upper-level intrusions develop upstream of the surface cyclones and as an effect the fraction of STE associated with cyclones is smaller in these regions.~~ central North Atlantic).

## 4.2 Influence of cyclone intensity

In this section, we investigate the climatological relationship between STE in the vicinity of North Atlantic cyclones and their intensity. The intensity of a cyclone is defined as the minimum pressure-SLP of the cyclone during its lifecycle. All cyclones in the period investigated in this study (1979–2011) are grouped into bins with a width of 5 hPa, ranging from 930 hPa to 1035 hPa. In Fig. 7, the dependency of the exchanged mass per cyclone on the cyclone intensity is shown using box-and-whisker plots for STT and TST in winter (DJF) and summer (JJA). The median of each pressure bin is given by the bold black line, 50% of the data are within the box and the whiskers (dashed lines) denote the 1.5 interquartile range. The statistical outliers are marked as circles.



For winter and summer and for both directions (STT and TST) a clear dependence of the exchanged mass on the minimum pressureSLP of the cyclone can be seen. With decreasing minimum pressureSLP, more mass is exchanged between stratosphere and troposphere along the cyclone track. In winter (DJF) more mass is exchanged for STT than for TST, especially for cyclones with higher intensities, i.e., lower minimum pressureSLP. The STE values integrated along the track of cyclone “Xynthia” (core pressure of 969 hPa), portrayed previously in Fig. 1, are relatively extremely high for STT ( $0.44 \times 10^{15}$  kg  $1.30 \times 10^{15}$  kg) compared to the statistical distribution shown in Fig. 7 (top left) and exceptionally also very high for TST ( $0.71 \times 10^{15}$  kg), i. e., in the range of the statistical outliers.  $0.70 \times 10^{15}$  kg.

During the summer months (JJA) more mass is exchanged for TST than for STT. Also, the variability of the results is increasing with decreasing minimum pressure, indicated by the larger boxes in each bin, which include 50% of the data. It can also be seen that during summer the exchanged mass for STT and TST is very similar. Additionally, the dependence of the exchanged mass on the minimum SLP is stronger, i.e., the pathway of the median values is steeper with decreasing minimum SLP compared to the winter months. However, no cyclones with minimum pressureSLP of less than 955 hPa 960 hPa are found.

In Table 1, the total exchanged mass for STT and TST along cyclone tracks and for the complete North Atlantic are listed for all seasons. Spring (MAM, not shown in Fig. 7) shows more exchanged mass for STT, while in fall (SON) both directions of exchange show a more or less equal magnitude.

However As an average over all seasons, 34% more mass is exchanged near North Atlantic cyclones for STT than for TST. Averaged over the entire region 60% of the total STT is associated with cyclones and 49% of TST, and these values have only little seasonal variation. Next, the possibility that the increase of exchanged mass for more intense cyclones (see Fig. 7) is solely due to a longer life time has to be excluded. Therefore, in a next step, the exchanged mass is weighted with the size and the life time of each cyclone to determine the mass flux in the vicinity of a cyclone as a function of its minimum pressureSLP. Figure 8 shows the mass flux per cyclone depending on its minimum pressureSLP. Similar to the total exchanged mass, the mass flux also shows an increase with decreasing mini-

380 mum ~~pressure~~ SLP of a cyclone. Nevertheless, there are some important differences. The increase of mass flux is not as steep compared to the exchanged mass, because the life-time and the size of the cyclones are taken into account. Overall, the results show a higher variability which does not strongly depend on the minimum ~~pressure~~ SLP. Note that the variability is clearly higher during winter than during summer. Additionally, the number of  
385 outliers (marked by circles) is significantly higher in winter due to very small or very short lived cyclones. During winter, the mass flux is definitely higher for STT than for TST. ~~During summer, however, TST shows a larger mass flux, which is consistent with the results from the total exchanged mass.~~

Table 2 lists the average mass flux for STT and TST in all seasons. The ~~result~~ results  
390 show the same characteristics as the exchanged mass (see Table 1) with the highest fluxes in winter for STT. Additionally, winter shows the greatest discrepancy between STT and TST, where the STT flux is ~~42%~~ 56% larger than the TST flux. In summer the STT flux is lowest for all seasons, ~~while the TST flux is highest~~. Overall, the yearly average of the mass flux in the vicinity of a North Atlantic cyclone is ~~s445 and 375 kg km<sup>-2</sup> s<sup>-1</sup>~~ 340.7 and  
395 254.2 kg km<sup>-2</sup> s<sup>-1</sup> for STT and TST, respectively. Comparing these results to the ~~the~~ average mass flux across the tropopause in the entire Northern Hemisphere (approximately 175 kg km<sup>-2</sup> s<sup>-1</sup>) allows to conclude that the mass flux in the vicinity of North Atlantic cyclones is significantly higher compared to cyclone-free regions.

### 4.3 Position of STE relative to cyclone centre

400 In addition to a quantitative attribution of STE to cyclones, it is also of interest to study where STE takes place relative to the cyclone centre, i.e. to assess whether there are distinct patterns discernible or if STE is randomly distributed around the centre. To address this question, composites of STE are compiled (Figs. 9 and 10). Our method works as follows: every extra-tropical cyclone is placed in the centre of a rotated longitude/latitude  
405 grid and the coordinates of all STE events attributed to this cyclone are then transformed accordingly. Thus, the locations of the STE events are shown relative to the cyclone centre. This is repeated for all cyclones and associated STE events in the climatology, resulting in

a STE density around the cyclone centres. Note that the coordinate transformation, placing the cyclone centre at the intersection of the rotated  $0^\circ$  meridian and equator, guarantees that all cyclones and exchange events are treated equivalently. No distortion due to the converging meridians toward the poles occurs and the spacing of  $1^\circ$  in the rotated grid corresponds to  $\sim 110$  km in good approximation. Hence, the domain shown in Figs. 9 and 10 covers an area of approximately  $2000 \text{ km} \times 2000 \text{ km}$  around the cyclone centre.

In addition to STE composites relative to the cyclone centre, Figs. 9 and 10 also includes include composites of the cyclone mask (see Sect. 2) and of PV at the 315 K isentrope. The former gives a good idea of the horizontal extension of the cyclones included in the composite; the latter shows the upper-level dynamical evolution of the PV field and is hence a proxy of the upper-level forcing of the cyclone. At the same time, by definition, this field also shows the mean position of the dynamical tropopause at this isentropic level. Finally, note that in Figs. 9 and 10, only cyclones in the North Atlantic region which deepen by at least 10 hPa during their lifetime are considered (see Sect. 2). The results are presented for three different stages of the cyclones lifecycle; (i) 36 to 12 h before the minimum pressure SLP is reached (intensification phase), (ii) 12 h before and 12 h after the time of maximum intensity (mature phase), and (iii) 12 to 36 h after the minimum pressure SLP (decaying phase). Additionally, for each phase of the life cycle the mass flux for STT and TST is shown.

With respect to STT (Fig. 9, second row) several distinct features are discernible: (i) During the intensification phase (left), most STT takes place in a sector south-west of the cyclone centre. The maximum is found well within the mean cyclone mask and resembles a rectangle of nearly  $400 \text{ km} \times 300 \text{ km}$  width. In this intensification phase, the PV contours also indicate a clear structure, where the highest PV values are reminiscent of a stratospheric PV trough to the north-west of the cyclone centre. (ii) During the mature phase (Fig. 9, middle column), the pattern changes: the STT maximum is shifted further to the south and significant STT can now also be found to the south-east of the cyclone centre. The shift in the STT pattern goes along with a clear evolution of PV at 315 K. In fact, the PV signal is indicative for cyclonic rolling-up of the upper-level PV trough. (iii) This evolu-

tion becomes most pronounced in the decaying phase (right column). Here, the averaged upper-level PV has formed a distinct, nearly axisymmetric PV cutoff situated exactly over the cyclone centre. The distribution of STT becomes much more symmetric, and is also located near the cyclone centre. ~~Furthermore, the horizontal extent of regions with substantial STT is strikingly reduced compared to the previous two time periods considered.~~

The magnitude of the exchanged STT mass (Fig. 9, first row) is also changing with time. The dependence of the mass on the minimum ~~pressure~~ SLP (based on the complete life cycle) is visible for all life cycle stages. However, the lowest exchanged mass can be found during the intensification phase. The exchanged STT mass is highest when the cyclones reach their minimum ~~pressure~~ SLP. This is the time when the geographical distribution of the STT events shows the largest asymmetry. Here, most of the STT mass exchange occurs south of the cyclone centre, where the highest wind speeds of Northern Hemisphere extratropical cyclones are expected (Catto et al., 2010, Fig. 8). In the decaying phase the exchanged mass is reduced, but slightly higher compared to the intensification phase.

A similar analysis can be repeated with respect to TST (Fig. 10, second row). Again the same time windows of the cyclones' lifetimes are considered (from left to right) and the same cyclones are included in the composites. Compared to the STT pattern, the TST pattern is much more spatially confined and axisymmetrically distributed around the cyclone centre. Especially in the intensification and mature phase, the TST decays rapidly for distances larger than  $\approx 250$  km away from the centre. There is a slight indication of a small geographical shift toward the south-east from the intensification to the mature phase, most likely associated with the corresponding evolution of the upper-level PV signal. Indeed, in the intensification phase the highest number of TST events are found in a narrow region on the downstream side of the PV trough; at minimum ~~pressure~~ SLP, however, the peak TST is found right below the rolling-up PV trough. During the decaying phase (right) the horizontal extension of the TST widens and is slightly shifted to the south-west of the cyclone centre, nearly perfectly aligned with the upper-level PV signal.

The exchanged TST mass is shown in Fig. 10 (first row). The evolution of the exchanged mass between the different ~~time windows is clearly not varying as much as for the STT mass.~~

In all life stages an increase of exchanged TST mass with decreasing minimum pressure is visible. However, the overall exchanged mass for each individual pressure class is only slightly increased during the period of minimum pressure, which is in contrast to the STT mass at this time. It is noticeable that lifecycle phases shows a similar behaviour compared to STT. Although the absolute numbers are smaller for TST, the increased exchanged STT mass coincides with the asymmetry of the geographical distribution of the exchange events. In contrast, the geographical pattern of the TST exchange events is more or less symmetric through all life stages. relative differences are comparable. Figure 11 shows the differences between the lifecycle phases for winter cyclones as a function of cyclone intensity. The quantity shown is the ratio between the median value of the exchanged STT (TST) mass of the intensification and mature phases (left) and decaying and mature phases (right). A value of 0.5 means that during the intensification (decaying) phase the exchanged mass corresponds to 50% of the mass exchanged during the mature phase. Interestingly, the curves are very similar for STT and TST and show a clear dependence on the cyclones' minimum SLP. While weak cyclones exchange most mass during the mature phase, more intense cyclones exchange proportionally more mass also during the intensification and decay. This implies that the processes responsible for STE are working more effectively over a longer time period for intense than for weak cyclones.

## 5 Conclusions, discussion and outlook

In this study we investigated stratosphere–troposphere exchange in the vicinity of extratropical cyclones over the North Atlantic. A chain of sophisticated tools and methods based on ERA-Interim data enabled us to obtain a detailed attribution of individual STE events to a particular cyclone track in the extratropical North Atlantic from 1979 to 2011. A case study of a winter cyclone was presented to illustrate the methods and conceptual approach. The results of the climatological investigations are summarized and discussed in the following.

## 5.1 Main results

### 5.1.1 Fraction of STE associated with cyclones

As indicated by earlier case studies summarized in the introduction, STE is typically enhanced in the vicinity of extratropical cyclones. STE in cyclones therefore contributes significantly to total STE and this has been quantified for the first time in this study for the North Atlantic storm track. The highest fraction of STE associated with cyclones compared to all STE events over the North Atlantic can be found during winter, when up to ~~70~~60 % of the STT mass flux occurs near cyclones. In spring and fall, this value drops to around ~~60~~50 %. The lowest fraction can be found during summer, when over a large area less than 50 % of the STT mass flux can be attributed to cyclones. The values for the TST mass flux are spatially similarly distributed but ~~approximately 10 percentage points lower than the values of STT throughout the year~~ slightly higher than for STT during summer.

### 5.1.2 Influence of cyclone intensity on STE

The exchanged mass across the tropopause in the vicinity of a cyclone is strongly dependent on the cyclone intensity, expressed as the minimum SLP during its lifecycle. With increasing cyclone intensity (i.e., lower minimum SLP), the spatially and temporally integrated STT and TST mass fluxes along the cyclone tracks are enhanced. In winter, the dependency is stronger for STT than for TST. During summer, both directions of exchange have a comparable dependency on the intensity.

When considering the averaged mass flux along a cyclone track, i.e., dividing the integrated exchange values by the size and lifetime of the cyclone, the results show the same overall behaviour. However, the variability of the data within the intensity classes is increasing due to the variability of size and lifetime of North Atlantic cyclones. On average, the STT mass flux for a cyclone with a minimum SLP of 1000 hPa in winter (summer) is approximately ~~240 kg km<sup>-2</sup> s<sup>-1</sup>~~ (~~160 kg km<sup>-2</sup> s<sup>-1</sup>~~ 404 kg km<sup>-2</sup> s<sup>-1</sup> (252 kg km<sup>-2</sup> s<sup>-1</sup>), and for a cyclone with a minimum SLP of ~~960 hPa~~ 965 hPa the corresponding average flux

amounts to  $400 \text{ kg km}^{-2} \text{ s}^{-1}$  ( $350 \text{ kg km}^{-2} \text{ s}^{-1}$   $527 \text{ kg km}^{-2} \text{ s}^{-1}$  ( $439 \text{ kg km}^{-2} \text{ s}^{-1}$ )). The TST mass flux for a winter (summer) cyclone with a minimum core pressure of 1000 hPa is about  $175 \text{ kg km}^{-2} \text{ s}^{-1}$  ( $250 \text{ kg km}^{-2} \text{ s}^{-1}$   $166 \text{ kg km}^{-2} \text{ s}^{-1}$  ( $219 \text{ kg km}^{-2} \text{ s}^{-1}$ )), and for a cyclone with a minimum core pressure of 960 hPa about  $350 \text{ kg km}^{-2} \text{ s}^{-1}$  ( $375 \text{ kg km}^{-2} \text{ s}^{-1}$   $965 \text{ hPa}$  about  $338 \text{ kg km}^{-2} \text{ s}^{-1}$  ( $413 \text{ kg km}^{-2} \text{ s}^{-1}$ )). Note that the dependency of the averaged mass flux on the cyclone intensity is weaker compared to the integrated exchanged mass. The reason for the dependency of the exchanged mass (or mass flux) on the intensity of cyclones is difficult to unravel from a climatological study alone. A very strong One hypothesis is that the increase in exchanged mass with increasing cyclone intensity is associated with enhanced diabatic processes, in particular latent heat release in clouds, and potentially also the infrared cooling at cloud top level. Climatological studies on cyclone intensification (e.g., Čampa and Wernli, 2012) clearly showed that latent heating is enhanced in strongly intensifying cyclones. This is corroborated by climatological studies of rainfall in extratropical cyclones, which show an increase of surface precipitation for more intense cyclones (Field and Wood, 2007). Since process studies (e.g., Lamarque and Hess, 1994, and others discussed in the introduction) highlighted the importance of the diabatic PV modification for STE, it is very likely that the same diabatic processes leading to cyclone intensification also increase the cross-tropopause mass exchange. In addition, the tropopause near intense cyclones is typically very low (Čampa and Wernli, 2012) and often forms filaments reaching deep into the troposphere. It is conceivable that the strong vertical wind shear in these regions results in more turbulence and hence more exchange.

### 5.1.3 Position of STE relative to cyclone centre

Composites of STE exchange locations relative to the cyclone centre were obtained to assess differences in the spatial distribution of STT and TST events. In the intensification phase most STT occurs south-west of the cyclone centre. This pattern moves to the south of the cyclone centre when the cyclone reaches its maximum intensity (minimum pressure SLP). In the decaying phase the STT pattern becomes much more axisymmetric and is located right above the cyclone centre. It is notable that the pattern of STT goes along

545 with the PV anomaly at 315 K indicating a cyclonic roll-up of the upper-level PV trough. In  
contrast, the TST pattern is much more spatially confined and axisymmetric. In the inten-  
sification phase the TST pattern is centred slightly downstream of the upper-level trough.  
However, during the mature phase of the cyclone the maximum of the TST pattern is aligned  
550 below the rolling-up PV trough. In the decaying phase the pattern of TST widens and is lo-  
cated south-west of the cyclone centre.

#### 5.1.4 STE with respect to the evolution of a cyclone

The timing of STE with respect to the cyclone lifecycle shows some differences for STT and  
TST. Both show the highest amount of exchanged mass during the time of the cyclones  
maximum intensity. However, the median ~~mass~~ mass flux for STT at that time is clearly  
555 higher ~~and the variability is significantly increased. The higher variability of the STT is also  
present in the intensification and decaying phases of the cyclone. Additionally, the median  
of the STT is slightly higher in the decaying phase compared to the intensification phase.  
The exchanged TST mass in the intensification and decaying phases are equally strong, but  
overall weaker than the exchanged STT mass. As mentioned above, it is remarkable that  
the variability of the TST mass is always significantly lower compared to the STT mass. This  
leads to the~~. The relative variability between the phases is very similar for STT and TST. It  
is notable that the variability between the three phases also shows a clear dependence on  
the cyclones' minimum SLP. STE occurs in all phases for intense cyclones, but virtually only  
during the mature phase for weak cyclones; leading to the assumption that the ~~intensity of  
a cyclone is a more robust measure for TST than for STT. The results for STT suggest that  
other parameters of the cyclone play also an important role in governing the mass flux from  
the stratosphere to the troposphere. duration of the processes responsible for the mass  
exchange act longer for intense than for weak cyclones.~~

#### 5.2 Caveats

570 Several caveats concerning the data set and the methods are discussed in the following.



## 5.2.1 STE in ERA-Interim data set

The calculation of STE due to sub-grid-scale convective processes, which could be of importance in the vicinity of cyclones, is not possible using kinematic trajectories based on resolved wind fields in ERA-Interim reanalysis data. Therefore, the mass flux across the tropopause is probably underestimated. However, a quantification of this underestimation cannot be given using the presented method. For further information see also Škerlak et al. (2014), Škerlak et al. (2014) and references therein.

## 5.2.2 Size of cyclones Cyclone size and tracking

The size of the cyclone determines how many STE events are associated with it. Therefore, different definitions of the size will lead to different quantifications of the cross-tropopause transport assigned to a cyclone. ~~As it was shown in the case study in Sect. 3, situations can occur where a large number of STE events are not attributed to a cyclone, because they are not within the outermost closed contour of SLP, although the distance of the exchange to the cyclone centre is small. This could be avoided by using a fixed radius around the cyclone centre. However, this method then would ignore the individual characteristics of a cyclone.~~

## 5.2.3 Cyclone track

While the definition of a cyclone affects its size, the identification of the cyclone track affects the lifetime and adds an uncertainty into the quantitative results of the exchanged mass (mass flux) per cyclone. An intercomparison of 15 different detection and tracking tools for extratropical cyclones (Neu et al., 2013) revealed that uncertainties are most notable for weak cyclones. However, the methods agreed well for cyclones in oceanic regions and also reproduced similar geographical patterns of cyclone frequency. Using a different method might therefore change the quantitative results of the investigation, but not the overall conclusion that there is a strong dependency of the STE flux on cyclone intensity.

### 5.3 STE in future climate

This investigation showed that cyclones play a very important role for extratropical STE. It was found that the exchanged mass (and mass flux) strongly depend on the intensity of a cyclone. It was also found that the preferred locations for STT and TST relative to the cyclone centre as well as their intensity vary between different stages of the cyclone's life cycle.

To make a statement on STE in the vicinity of cyclones for a future climate, projections of storm track activity under global warming can be used. Chang et al. (2012) examined storm track changes in the future climate using multi-model ensembles from the Coupled Model Intercomparison Project (CMIP5, Taylor et al., 2012) and found no systematic shift of Northern Hemisphere (NH) storm tracks during the NH winter and only a slight poleward shift during NH summer. Additionally, they found that the cyclone frequency is projected to be smaller over Europe and North America. Also, they noticed that the intensity of the cyclones is slightly decreased. This would lead to an overall decrease in exchanged mass across the tropopause in the vicinity of cyclones, when our results are taken into account. However, it has to be noted that Chang et al. (2012) found that the models generally simulate storm tracks that are too weak. Our results imply that a small deviation in the intensity of a cyclone can lead to a significant under- or overestimation of the STE mass flux. Hence, this implies that models have to be very accurate in their description of the processes governing the life cycle of cyclones in order to project STE in the vicinity of cyclones, and therefore STE in general, properly.

### 5.4 Outlook

One way for future studies to gain more insight into the dependency of STE on cyclone intensity is a systematic and detailed climatological evaluation of the processes involved in STE near cyclones with different intensities to test the above-mentioned hypothesis concerning the importance of diabatic processes. One approach could be to retrieve physical tendencies along trajectories within cyclones in order to investigate the influence of diabatic

processes depending on cyclone intensity, which could be done from a climatological point of view. Another possibility is to conduct case studies of cyclones with various intensities in order to trace the PV rates of different diabatic processes within the cyclones. Additionally, it would also be worth looking into cases, where cyclones with very different intensities are associated with a similar mass flux (amount of exchanged mass) or, vice versa, cases, where cyclones with similar intensity end up in very different mass fluxes (amount of exchanged mass).

*Acknowledgements.* We thank MeteoSwiss and the ECMWF for granting access to the ERA-Interim data set [and the two anonymous referees for their constructive critique of the former version of this paper](#). P. Reutter thanks P. Spichtinger for helpful discussions.

## References

- Arnold, F., Schneider, J., Gollinger, K., Schlager, H., Schulte, P., Hagen, D. E., Whitefield, P. D., and van Velthoven, P.: Observation of upper tropospheric sulfur dioxide- and acetone-pollution: potential implications for hydroxyl radical aerosol formation, *Geophys. Res. Lett.*, 24, 57–60, 1997.
- Berthet, G., Esler, J. G., and Haynes, P. H.: A Lagrangian perspective of the tropopause and the ventilation of the lowermost stratosphere, *J. Geophys. Res.*, 112, D18102, doi:10.1029/2006JD008295, 2007.
- Bourqui, M. S.: Stratosphere–troposphere exchange from the Lagrangian perspective: a case study and method sensitivities, *Atmos. Chem. Phys.*, 6, 2651–2670, doi:10.5194/acp-6-2651-2006, 2006.
- Brioude, J., Cammas, J.-P., and Cooper, O. R.: Stratosphere–troposphere exchange in a summer-time extratropical low: analysis, *Atmos. Chem. Phys.*, 6, 2337–2353, doi:10.5194/acp-6-2337-2006, 2006.
- Bush, A. B. G. and Peltier, W. R.: Tropopause folds and synoptic-scale baroclinic wave life cycles, *J. Atmos. Sci.*, 51, 1581–1604, doi:10.1175/1520-0469(1994)051<1581:TFASSB>2.0.CO;2, 1994.
- Čampa, J. and Wernli, H.: A PV perspective on the vertical structure of mature midlatitude cyclones in the Northern Hemisphere., *J. Atmos. Sci.*, 69, 725–740, 2012.
- [Catto, J. L., and Shaffrey, L. C., and Hodges, K. I.: Can climate models capture the structure of extratropical cyclones?, \*J. Climate\*, 23, 1621–1635, doi: 10.1175/2009JCLI3318.1, 2010.](#)

- Chang, E. K. M., Guo, Y., and Xia, X.: CMIP5 multimodel ensemble projection of storm track change under global warming, *J. Geophys. Res.*, 117, D23, doi:10.1029/2012JD018578, 2012.
- 655 Chen, B., Xu, X. D., Yang, S., and Zhao, T. L.: Climatological perspectives of air transport from atmospheric boundary layer to tropopause layer over Asian monsoon regions during boreal summer inferred from Lagrangian approach, *Atmos. Chem. Phys.*, 12, 5827–5839, doi:10.5194/acp-12-5827-2012, 2012.
- Cooper, O. R., Moody, J. L., and Parrish, D. D.: Trace gas composition of midlatitude cyclones over the western North Atlantic Ocean: a seasonal comparison of O<sub>3</sub> and CO, *J. Geophys. Res.*, 107, D7, doi:10.1029/2001JD000902, 2002.
- 660 Danielsen, E. F.: Stratospheric-tropospheric exchange based on radioactivity, ozone and potential vorticity, *J. Atmos. Sci.*, 25, 502–518, doi:10.1175/1520-0469(1968)025<0502:STEBOR>2.0.CO;2, 1968.
- Davies, T. D. and Schuepbach, E.: Episodes of high ozone concentrations at the earth's surface resulting from transport down from the upper troposphere/lower stratosphere: a review and case studies, *Atmos. Environ.*, 28, 53–68, doi:10.1016/1352-2310(94)90022-1, 1994.
- 665 Dee, D. P., Uppala, S. M., Simmons, A. J., Berrisford, P., Poli, P., Kobayashi, S., Andrae, U., Balmaseda, M. A., Balsamo, G., Bauer, P., Bechtold, P., Beljaars, A. C. M., van de Berg, L., Bidlot, J., Bormann, N., Delsol, C., Dragani, R., Fuentes, M., Geer, A. J., Haimberger, L., Healy, S. B., Hersbach, H., Holm, E. V., Isaksen, I., Kallberg, P., Köhler, M., Matricardi, M., McNally, A. P., Monge-Sanz, B. M., Morcrette, J.-J., Park, B.-K., Peubey, C., de Rosnay, P., Tavolato, C., Thepaut, J.-N., and Vitart, F.: The ERA-Interim reanalysis: configuration and performance of the data assimilation system, *Q. J. Roy. Meteor. Soc.*, 137, 553–597, doi:10.1002/qj.828, 2011.
- Ertel, H.: Ein neuer hydrodynamischer Wirbelsatz, *Meteorol. Z.*, 59, 271–281, 1942.
- 675 Field, P. R. and Wood, R.: Precipitation and cloud structure in midlatitude cyclones, *J. Climate*, 20, 233–254, 2007.
- Gray, S. L.: A case study of stratosphere to troposphere transport: the role of convective transport and the sensitivity to model resolution, *J. Geophys. Res.*, 108, 4590, doi:10.1029/2002JD003317, 2003.
- 680 Holton, J. R., Haynes, P. H., McIntyre, M. E., Douglass, A. R., Rood, R. B., and Pfister, L.: Stratosphere–troposphere exchange, *Rev. Geophys.*, 33, 403–440, doi:10.1029/95RG02097, 1995.

- 685 Hoskins, B. J., McIntyre, M. E., and Robertson, A. W.: On the use and significance of isentropic potential vorticity maps, *Q. J. Roy. Meteor. Soc.*, 111, 877–946, doi:10.1002/qj.49711147002, 1985.
- James, P., Stohl, A., Forster, C., Eckhardt, S., Seibert, P., and Frank, A.: A 15-year climatology of stratosphere–troposphere exchange with a Lagrangian particle dispersion model: 1. Methodology and validation, *J. Geophys. Res.*, 108, 8519, doi:10.1029/2002JD002637, 2003.
- 690 Johnson, W. B. and Viezee, W.: Stratospheric ozone in the lower troposphere – I. Presentation and interpretation of aircraft measurements, *Atmos. Environ.*, 15, 1309–1323, doi:10.1016/0004-6981(81)90325-5, 1967.
- Kleinschmidt, E.: Über Aufbau und Entstehung von Zyklonen, Teil 1, *Meteorol. Rundsch.*, 3, 1–6, 1950.
- Kowol-Santen, J., Elbern, H., and Ebel, A.: Estimation of cross-tropopause airmass fluxes at midlatitudes: comparison of different numerical methods and meteorological situations, *Mon. Weather Rev.*, 128, 4045–4057, 2000.
- Krebsbach, M., Schiller, C., Brunner, D., Günther, G., Hegglin, M. I., Mottaghy, D., Riese, M., Spelten, N., and Wernli, H.: Seasonal cycles and variability of O<sub>3</sub> and H<sub>2</sub>O in the UT/LMS during SPURT, *Atmos. Chem. Phys.*, 6, 109–125, doi:10.5194/acp-6-109-2006, 2006.
- 700 Kunz, A., Konopka, P., Müller, R., and Pan, L. L.: Dynamical tropopause based on isentropic potential vorticity gradients, *J. Geophys. Res.*, 116, 2156–2202, doi:10.1029/2010JD014343, 2011.
- Lamarque, J.-F., and Hess, P. G.: Cross-tropopause mass exchange and potential vorticity budget in a simulated tropopause folding, *J. Atmos. Sci.*, 51, 2246–2246, doi:10.1175/1520-0469(1994)051<2246:CTMEAP>2.0.CO;2, 1994.
- 705 Lane, T. and Sharman, R.: Gravity wave breaking, secondary wave generation, and mixing above deep convection in a three-dimensional cloud model, *Geophys. Res. Lett.*, 33, L23813, doi:10.1029/2006GL027988, 2006.
- Lefohn, A. S., Wernli, H., Shadwick, D., Limbach, S., Oltmans, S. J., and Shapiro, M.: The importance of stratospheric-tropospheric transport in affecting surface ozone concentrations in the western and northern tier of the United States, *Atmos. Environ.*, 45, 4845–4857, doi:10.1016/j.atmosenv.2011.06.014, 2011.
- 710 Liberato, M. L. R., Pinto, J. G., Trigo, R. M., Ludwig, P., Ordóñez, P., Yuen, D., and Trigo, I. F.: Explosive development of winter storm Xynthia over the subtropical North Atlantic Ocean, *Nat. Hazards Earth Syst. Sci.*, 13, 2239–2251, doi:10.5194/nhess-13-2239-2013, 2013.

- 715 Lin, M., Fiore, A. M., Cooper, O. R., Horowitz, L. W., Langford, A. O., Levy, H., Johnson, B. J.,  
Naik, V., Oltmans, S. J., and Senff, C. J.: Springtime high surface ozone events over the western  
United States: quantifying the role of stratospheric intrusions, *J. Geophys. Res.*, 117, D00V22,  
doi:10.1029/2012JD018151, 2012.
- 720 Liu, C., Liu, Y., Liu, X., and Chance, K.: Dynamical and chemical features of a cutoff low over north-  
east China in July 2007: results from satellite measurements and reanalysis, *Adv. Atmos. Sci.*,  
30, 525–540, 2013.
- Neu, U., Akperov, M. G., Bellenbaum, N., Benestad, R., Blender, R., Caballero, R., Coccozza, A.,  
Dacre, H. F., Feng, Y., Fraedrich, K., Grieger, J., Gulev, S., Hanley, J., Hewson, T., Inatsu, M.,  
Keay, K., Kew, S. F., Kindem, I., Leckebusch, G. C., Liberato, M. L. R., Lionello, P., Mokhov, I. I.,  
725 Pinto, J. G., Raible, C. C., Reale, M., Rudeva, I., Schuster, M., Simmonds, I., Sinclair, M.,  
Sprenger, M., Tilinina, N. D., Trigo, I. F., Ulbrich, S., Ulbrich, U., Wang, X. L., and Wernli, H.:  
IMILAST: a community effort to intercompare extratropical cyclone detection and tracking algo-  
rithms, *Bull. Amer. Meteor. Soc.*, 94, 529–547, doi:10.1175/BAMS-D-11-00154.1, 2013.
- Olsen, M. and Stanford, J.: Evidence of stratosphere-to-troposphere transport within a mesoscale  
730 model and Total Ozone Mapping Spectrometer total ozone, *J. Geophys. Res.*, 106, 27323–27334,  
2001.
- Poulida, O., Dickerson, R., and Heymsfield, A.: Stratosphere–troposphere exchange in a mid-  
latitude mesoscale convective complex 1. Observations, *J. Geophys. Res.*, 101, 6823–6836,  
doi:10.1029/95JD03523, 1996.
- 735 Reiter, E. R.: Stratospheric-tropospheric exchange processes, *Rev. Geophys.*, 13, 459–474,  
doi:10.1029/RG013i004p00459, 1975.
- Seo, K.-H. and Bowman, K. P.: A climatology of isentropic cross-tropopause exchange, *J. Geophys.*  
*Res.*, 106, 28159–28172, 2001.
- Shapiro, M. A.: Turbulent mixing within tropopause folds as a mechanism for the exchange of  
740 chemical constituents between the stratosphere and troposphere, *J. Atmos. Sci.*, 37, 994–1004,  
doi:10.1175/1520-0469(1980)037<0994:TMWTFA>2.0.CO;2, 1980.
- Sigmond, M., Meloan, J., and Siegmund, P. C.: Stratosphere–troposphere exchange in an  
extratropical cyclone, calculated with a Lagrangian method, *Ann. Geophys.*, 18, 573–582,  
doi:10.1007/s00585-000-0573-1, 2000.
- 745 Škerlak, B., Sprenger, M., and Wernli, H.: A global climatology of stratosphere–troposphere ex-  
change using the ERA-Interim data set from 1979 to 2011, *Atmos. Chem. Phys.*, 14, 913–937,  
doi:10.5194/acp-14-913-2014, 2014a.

- Škerlak, B., Sprenger, M., Pfahl, S., Tyrlis, E., and Wernli, H.: Tropopause folds in ERA-Interim: Global climatology and relation to extreme weather events, *J. Geophys. Res. Atmos.*, [in-review](#), [2014b-120](#), [4860-4877](#), [2015](#).
- 750
- Spaete, P., Johnson, D. R., and Schaack, T. K.: Stratospheric-tropospheric mass exchange during the Presidents' Day Storm., *Mon. Weather Rev.*, 122, 424–439, 1994.
- Sprenger, M. and Wernli, H.: A northern hemispheric climatology of cross-tropopause exchange for the ERA15 time period (1979–1993), *J. Geophys. Res.*, 108, 8521, doi:10.1029/2002JD002636, 2003.
- 755
- Sprenger, M., Croci Maspoli, M., and Wernli, H.: Tropopause folds and cross-tropopause exchange: a global investigation based upon ECMWF analyses for the time period March 2000 to February 2001, *J. Geophys. Res.*, 108, 8518, doi:10.1029/2002JD002587, 2003.
- 760
- Sprenger, M., Wernli, H., and Bourqui, M.: Stratosphere–troposphere exchange and its relation to potential vorticity streamers and cutoffs near the extratropical tropopause, *J. Atmos. Sci.*, 64, 1587–1602, doi:10.1175/JAS3911.1, 2007.
- 765
- Stevenson, D. S., Dentener, F. J., Schultz, M. G., Ellingsen, K., van Noije, T. P. C., Wild, O., Zeng, G., Amann, M., Atherton, C. S., Bell, N., Bergmann, D. J., Bey, I., Butler, T., Cofala, J., Collins, W. J., Derwent, R. G., Doherty, R. M., Drevet, J., Eskes, H. J., Fiore, A. M., Gauss, M., Hauglustaine, D. A., Horowitz, L. W., Isaksen, I. S. A., Krol, M. C., Lamarque, J.-F., Lawrence, M. G., Montanaro, V., Müller, J.-F., Pitari, G., Prather, M. J., Pyle, J. A., Rast, S., Rodriguez, J. M., Sander-son, M. G., Savage, N. H., Shindell, D. T., Strahan, S. E., Sudo, K., and Szopa, S.: Multimodel ensemble simulations of present-day and near-future tropospheric ozone, *J. Geophys. Res.*, 111, D08301, doi:10.1029/2005JD006338, 2006.
- 770
- Stohl, A., Bonasoni, P., Cristofanelli, P., Collins, W., Feichter, J., Frank, A., Forster, C., Gerasopoulos, E., Gäggeler, H., James, P., Kentarchos, A. S., Kromp-Kolb, H., Krüger, B., Land, C., Meloan, J., Papayannis, A., Priller, A., Seibert, P., Sprenger, M., Roelofs, G. J., Scheel, H. E., Schnabel, C., Siegmund, P., Tobler, L., Trickl, T., Wernli, H., Wirth, V., Zanis, P., and Zerefos, C.: Stratosphere–troposphere exchange: a review, and what we have learned from STACCATO, *J. Geophys. Res.*, 108, 8516, doi:10.1029/2002JD002490, 2003.
- 775
- Taylor, K. E., Stouffer, R. J., and Meehl, G. A.: An overview of CMIP5 and the experiment desing, *B. Am. Meteorol. Soc.*, 93, 485–498, doi:10.1175/BAMS-D-11-00094.1, 2012.
- Traub, M. and Lelieveld, J.: Cross-tropopause transport over the eastern Mediterranean, *J. Geophys. Res.*, 108, 4712, doi:10.1029/2003JD003754, 2003.

- 780 Vaughan, G., Price, J. D., and Howells, A.: Transport into the troposphere in a tropopause fold, *Q. J. Roy. Meteor. Soc.*, 120, 1085–1103, 1994.
- Wang, P.: Moisture plumes above thunderstorm anvils and their contributions to cross-tropopause transport of water vapor in midlatitudes, *J. Geophys. Res.*, 108, D6, doi:10.1029/2002JD002581, 2003.
- 785 Wernli, H. and Bourqui, M.: A Lagrangian “1-year climatology” of (deep) cross-tropopause exchange in the extratropical Northern Hemisphere, *J. Geophys. Res.*, 107, 4021, doi:10.1029/2001JD000812, 2002.
- Wernli, H. and Davies, H.: A Lagrangian-based analysis of extratropical cyclones. 1: The method and some applications, *Q. J. Roy. Meteor. Soc.*, 123, 467–489, 1997.
- 790 Wernli, H. and Schwierz, C.: Surface cyclones in the ERA-40 dataset (1958–2001). Part I: Novel identification method and global climatology, *J. Atmos. Sci.*, 63, 2486–2507, doi:10.1175/JAS3766.1, 2006.
- Whiteway, J., Pavelin, E., Busen, R., Hacker, J., and Vosper, S.: Airborne measurements of gravity wave breaking at the tropopause, *Geophys. Res. Lett.*, 30, 2070, doi:10.1029/2003GL018207, 2003.
- 795 Wirth, V.: Diabatic heating in an axisymmetric cut-off cyclone and related stratosphere–troposphere exchange, *Q. J. Roy. Meteor. Soc.*, 121, 127–147, doi:10.1002/qj.49712152107, 1995.
- Wirth, V. and Egger, J.: Diagnosing extratropical synoptic-scale stratosphere–troposphere exchange: a case study, *Q. J. Roy. Meteor. Soc.*, 125, 635–655, doi:10.1002/qj.49712555413, 1999.
- 800 Zierl, B. and Wirth, V.: The influence of radiation on tropopause behavior and stratosphere–troposphere exchange in an upper tropospheric anticyclone, *J. Geophys. Res.*, 102, 23883–23894, doi:10.1029/97JD01667, 1997.

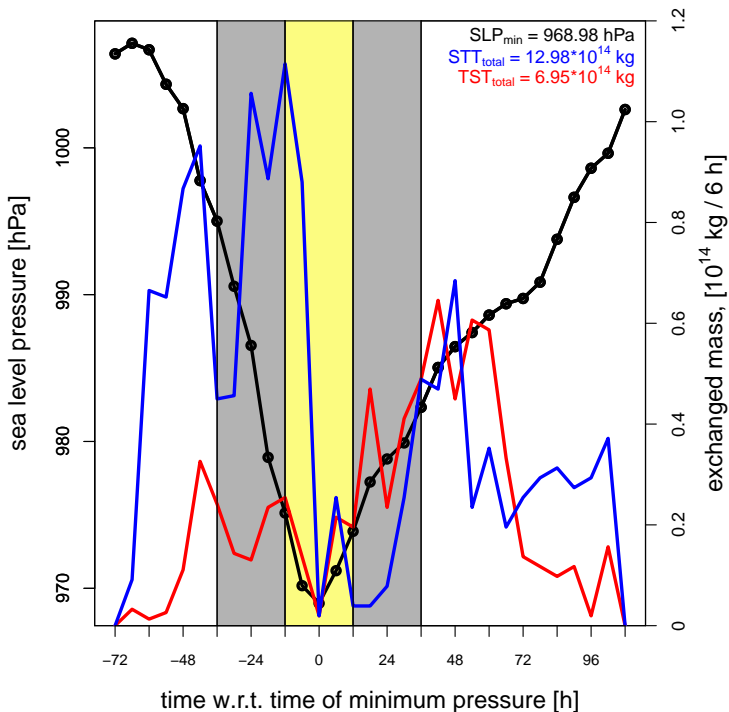


**Table 1.** Total mass [ $10^{17}$  kg] per season from 1979 to 2011 for STT and TST in the vicinity of cyclones over the North Atlantic and the total mass over the entire North Atlantic as well as the ratio between STT and TST. The minimum lifetime of a cyclone is one day.

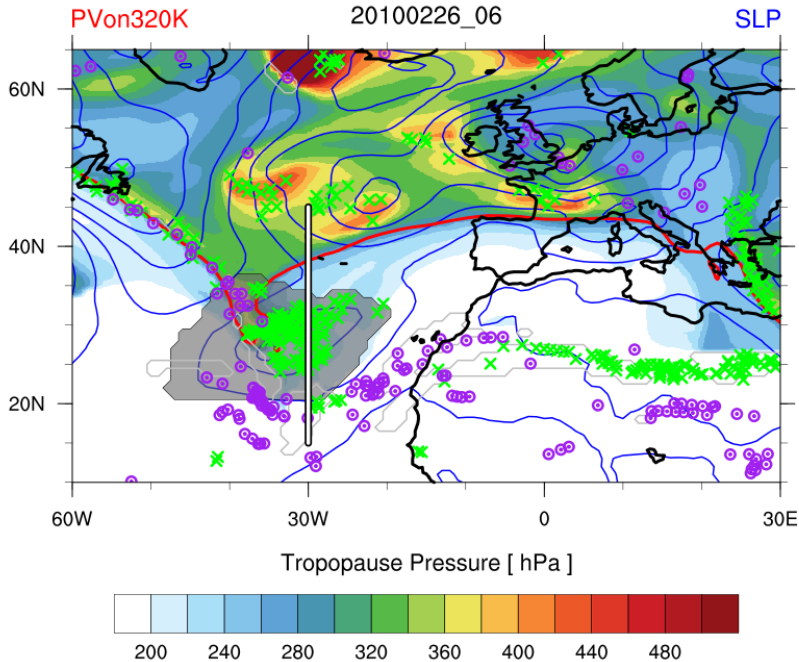
Seasons	near cyclones			North Atlantic		
	STT	TST	STT/TST	STT	TST	STT/TST
DJF	9.1-13.3	6.9-8.4	1.31-1.58	22.0	17.8	1.24
MAM	9.0-11.2	7.9-8.1	1.14-1.38	18.5	16.2	1.14
JJA	7.9-8.9	9.0-8.1	0.88-1.10	15.0	16.4	0.91
SON	9.7-11.3	9.2-8.8	1.05-1.28	19.1	17.6	1.09
TOTAL	35.7-44.7	33.0-33.4	1.08-1.34	74.6	68.0	1.10

**Table 2.** Average mass flux [ $\text{kg km}^{-2} \text{s}^{-1}$ ] per season from 1979 to 2011 for STT and TST in the vicinity of cyclones over the North Atlantic and the average over the entire North Atlantic as well as the ratio between STT and TST. The minimum lifetime of a cyclone is one day.

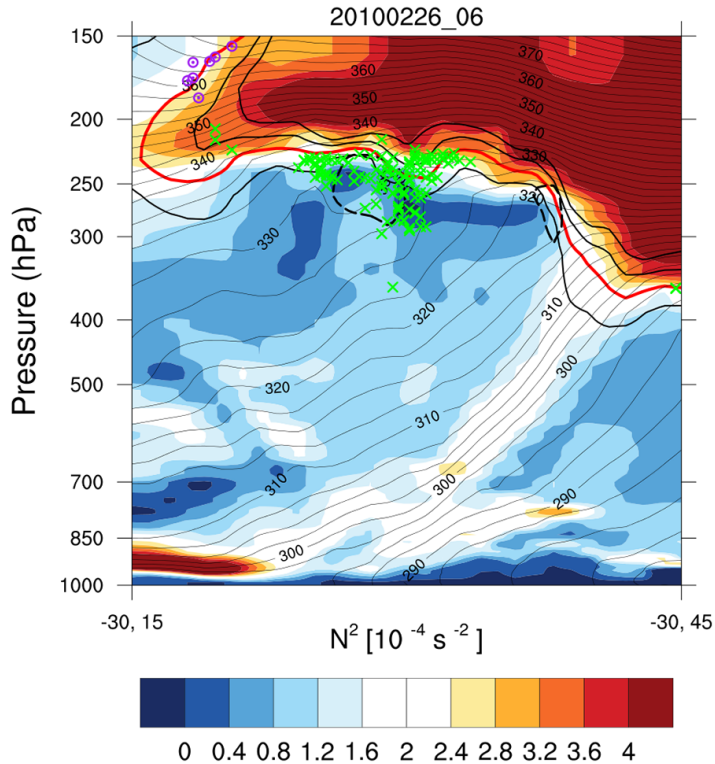
Seasons	near cyclones			North Atlantic		
	STT	TST	STT/TST	STT	TST	STT/TST
DJF	583.2-421.9	409.9-271.0	1.42-1.56	311.0	252.0	1.23
MAM	462.4-342.8	389.1-243.7	1.19-1.41	262.1	229.0	1.14
JJA	398.0-254.4	420.7-230.9	0.95-1.10	212.8	231.9	0.92
SON	480.4-344.0	420.8-271.3	1.14-1.27	271.0	248.8	1.09
MEAN	481.0-340.7	410.1-254.2	1.17-1.34	264.2	240.4	1.10



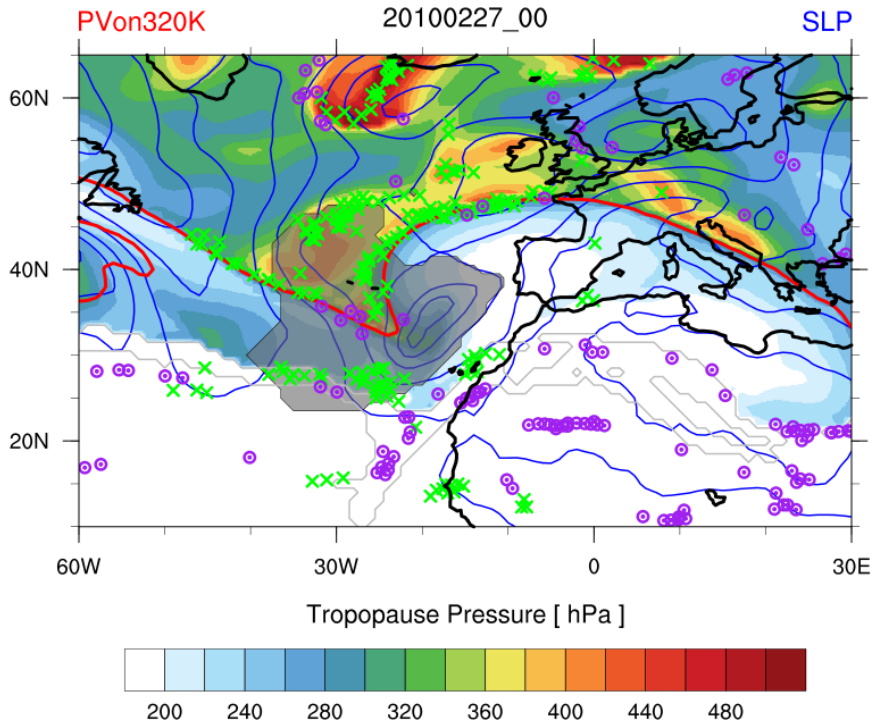
**Figure 1.** Time series of the sea level pressure SLP (hPa) in black and the exchanged mass ( $10^{14}$  kg) of STT (blue) and TST (red) as a function of time (h) with respect to the time of minimum pressure SLP of cyclone “Xynthia”. 0h corresponds with 00:00 UTC of 28 February 2010. The grey boxes correspond to the deepening and decaying phase of the cyclone, respectively, and the yellow box indicates the mature phase. The separation into phases is later used for the analysis in Sect. 4.3 (see also Figs. 9 and 10).



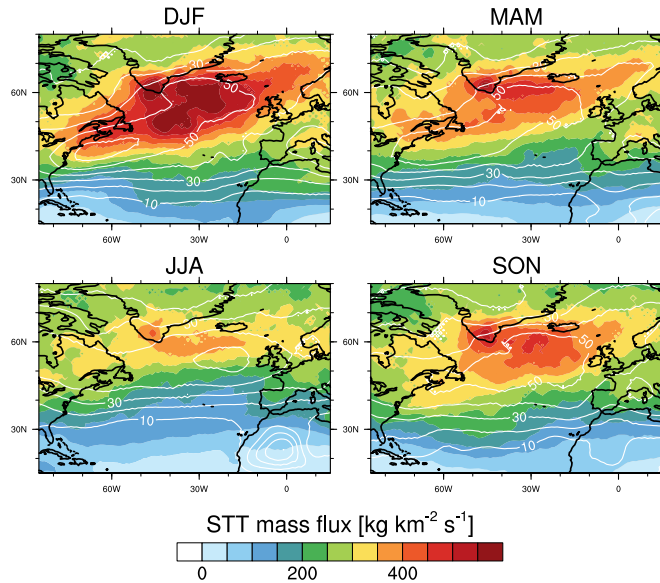
**Figure 2.** Pressure at the dynamical tropopause (in hPa, coloured), PV at 320 K (red line), and contours of sea-level pressure SLP (blue, contour interval 5 hPa) at 06:00 UTC 26 February 2010. Cyclones Cyclone Xynthia, as identified by our method, are-is shaded gray. STT and TST events occurring within a 6-h symmetric time window are depicted by green crosses and purple dotted circles, respectively. Gray contours indicate a folded tropopause (i.e., multiple vertical crossings).



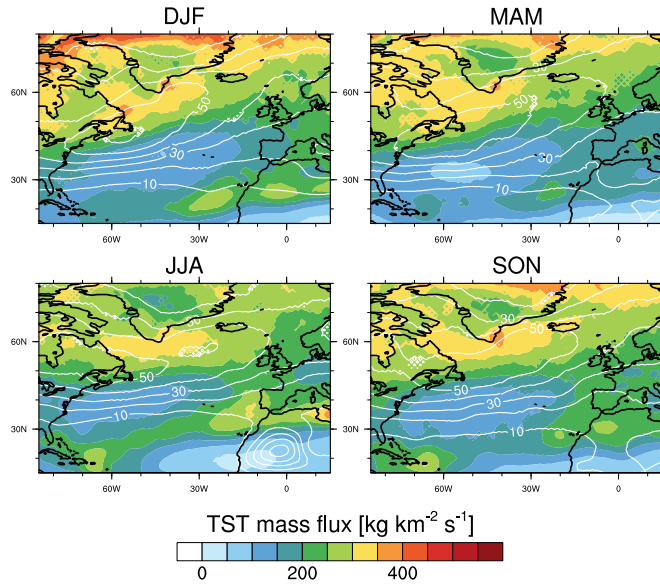
**Figure 3.** Vertical cross-section along  $30^\circ \text{ W}$  from  $15$  to  $45^\circ \text{ N}$  (white line in Fig. 2) at 06:00 UTC 26 February 2010. The Brunt–Väisälä frequency  $N^2$  is shown with coloured contours (in  $10^{-4} \text{ s}^{-2}$ ), the thin black lines show isentropes (in K) and the thick contours are isosurfaces of PV ( $1\text{--}4 \text{ pvu}$ ,  $2 \text{ pvu}$  red, rest black). STT and TST events occurring in a symmetric 6 h time window and within  $\pm 5^\circ$  longitude are shown with green crosses and purple dotted circles, respectively.



**Figure 4.** As Fig. 2 but at 00:00 UTC 27 February 2010.

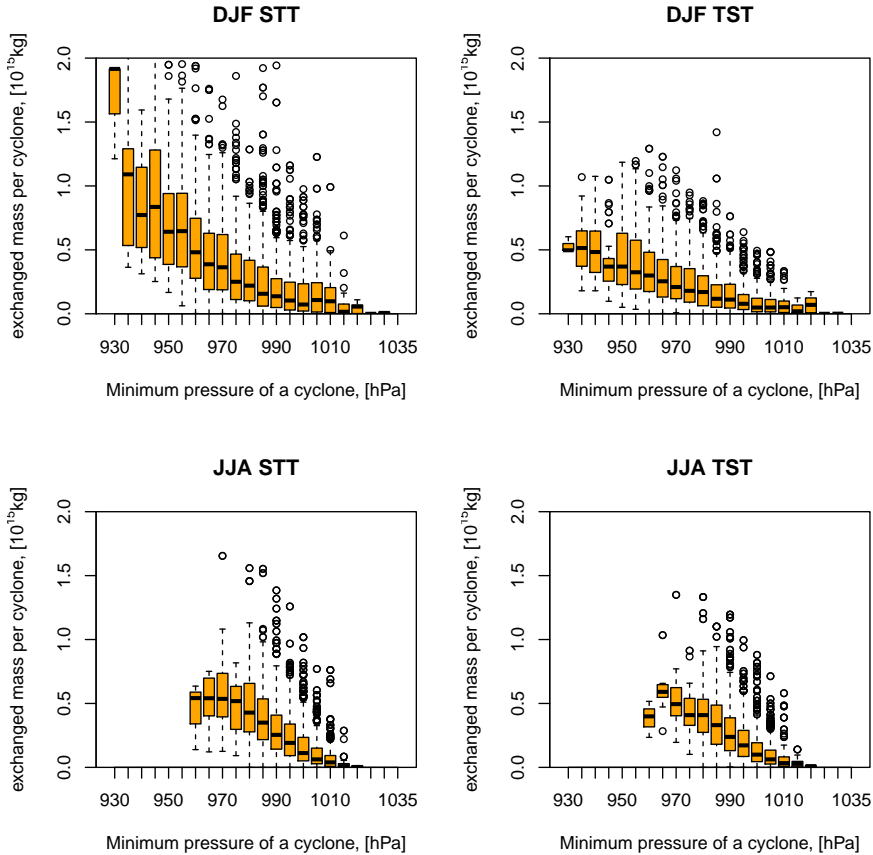


**Figure 5.** Seasonally averaged STT mass flux for 1979–2011. The white contours indicate the fraction of the mass flux that is associated with cyclones (in %, contour interval 10 %).



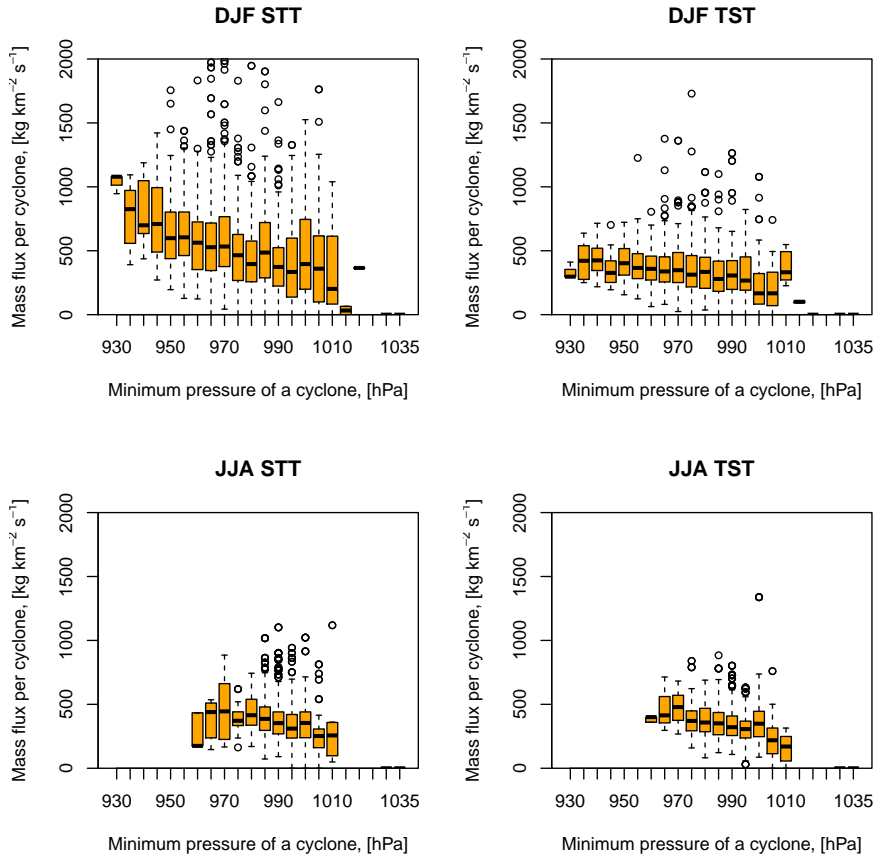
**Figure 6.** As Fig. 5 but for TST instead of STT.



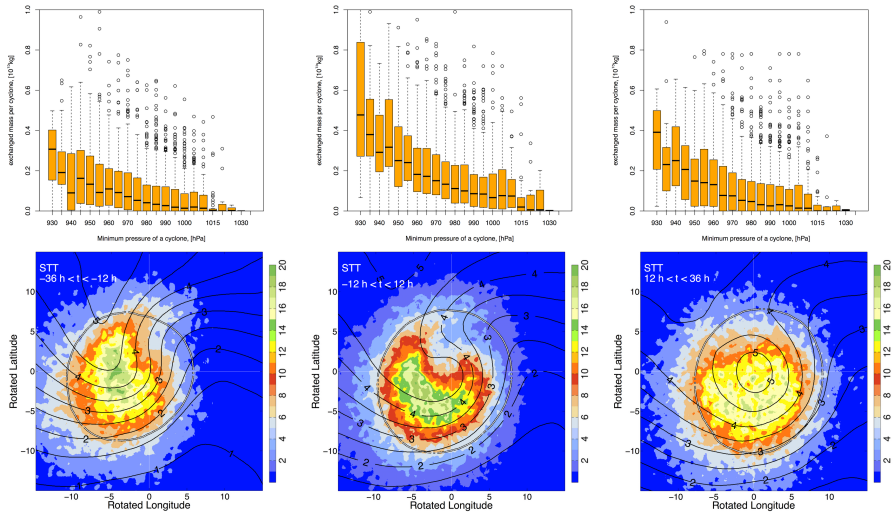


**Figure 7.** Box-and-Whisker plot showing the dependency of the total exchanged mass per cyclone ( $10^{15}$  kg) for STT (left column) and TST (right column) on the minimum **pressure**-SLP (hPa) of a cyclone over the North Atlantic during DJF (upper row) and JJA (lower row).

## Northern Atlantic



**Figure 8.** As Fig. 7 but for mass flux ( $\text{kg km}^{-2} \text{s}^{-1}$ ).



**Figure 9.** Box and Whisker plots for exchanged mass of STT (first row) and PV- and exchange composites relative to cyclone centre for STT (second row) for the winter months (DJF). Black lines denote PV at 315 K, colouring shows the density of exchange events, the grey line shows the mean extension of a cyclone. The left column shows the result for the intensification phase, the middle column for the mature phase and the right column for the decaying phase. [The values for the mean STT and TST flux per cyclone must be multiplied by 245 to get the flux in  \$\text{kg km}^{-2} \text{s}^{-1}\$ .](#) Note, all STE events within a 6-h time window centred around the cyclone time are taken into account.

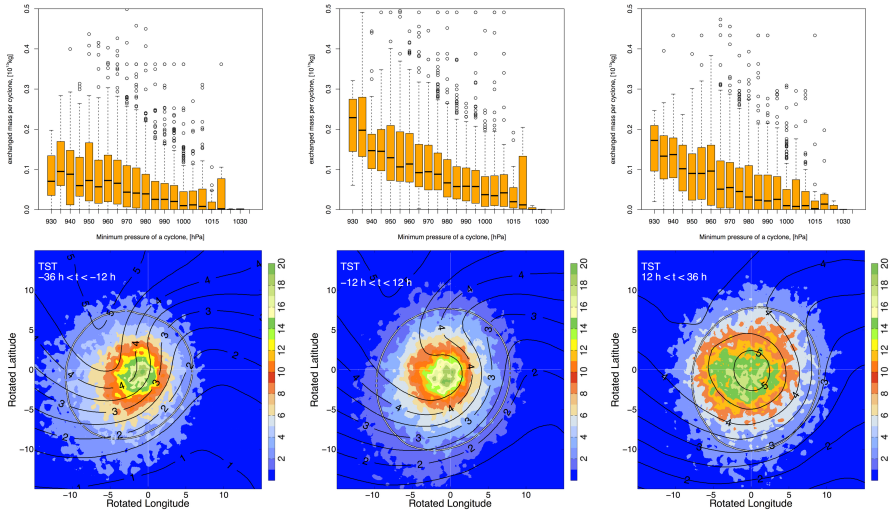
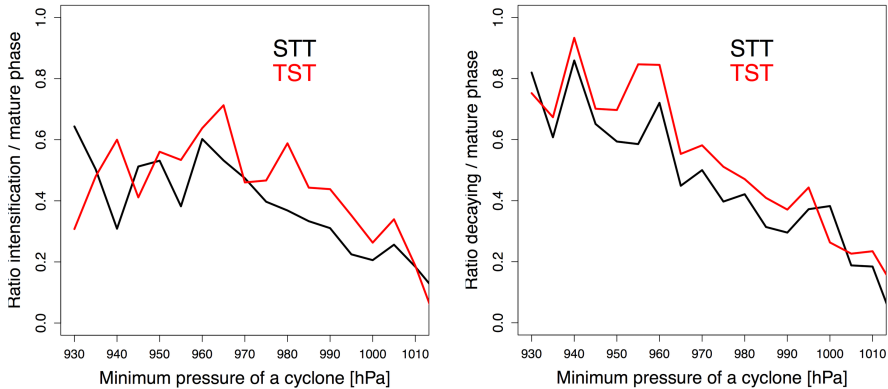


Figure 10. As Fig. 9 but for TST instead of STT.



**Figure 11.** [Ratio between the exchanged mass during the intensification and the mature phase \(left\) and between the decaying and mature phase \(right\) for STT \(black\) and TST \(red\) as a function of the cyclone's minimum SLP \(only for winter\). The ratio is calculated using the median from the box and whisker plots of Figs. 9 and 10. Note, results are presented here up to 1010 hPa due to the low number of cyclones for higher minimum SLP.](#)