



This discussion paper is/has been under review for the journal Atmospheric Chemistry and Physics (ACP). Please refer to the corresponding final paper in ACP if available.

# Exploring the uncertainty associated with satellite-based estimates of premature mortality due to exposure to fine particulate matter

B. Ford<sup>1</sup> and C. L. Heald<sup>2</sup>

<sup>1</sup>Department of Atmospheric Science, Colorado State University, Fort Collins, CO, USA

<sup>2</sup>Department of Civil and Environmental Engineering and Department of Earth, Atmospheric and Planetary Sciences, MIT, Cambridge, MA, USA

Received: 8 July 2015 – Accepted: 19 August 2015 – Published: 16 September 2015

Correspondence to: B. Ford (bonne@atmos.colostate.edu)

Published by Copernicus Publications on behalf of the European Geosciences Union.

## Exploring exposure uncertainty

B. Ford and C. L. Heald

Title Page

Abstract

Introduction

Conclusions

References

Tables

Figures



Back

Close

Full Screen / Esc

Printer-friendly Version

Interactive Discussion



## Abstract

The negative impacts of fine particulate matter ( $PM_{2.5}$ ) exposure on human health are a primary motivator for air quality research. However, estimates of the air pollution health burden vary considerably and strongly depend on the datasets and methodology. Satellite observations of aerosol optical depth (AOD) have been widely used to overcome limited coverage from surface monitoring and to assess the global population exposure to  $PM_{2.5}$  and the associated premature mortality. Here we quantify the uncertainty in determining the burden of disease using this approach, discuss different methods and datasets, and explain sources of discrepancies among values in the literature. For this purpose we primarily use the MODIS satellite observations in concert with the GEOS-Chem chemical transport model. We contrast results in the United States and China for the years 2004–2011. We estimate that in the United States, exposure to  $PM_{2.5}$  accounts for approximately 4 % of total deaths compared to 22 % in China (using satellite-based exposure), which falls within the range of previous estimates. The difference in estimated mortality burden based solely on a global model vs. that derived from satellite is approximately 9 % for the US and 4 % for China on a nationwide basis, although regionally the differences can be much greater. This difference is overshadowed by the uncertainty in the methodology for deriving  $PM_{2.5}$  burden from satellite observations, which we quantify to be on order of 20 % due to uncertainties in the AOD-to-surface- $PM_{2.5}$  relationship, 10 % due to the satellite observational uncertainty, and 30 % or greater uncertainty associated with the application of concentration response functions to estimated exposure.

## 1 Introduction

By 2030, air pollution will be the leading environmentally-related cause of premature mortality worldwide (OECD, 2012). The World Health Organization (WHO) estimates that exposure to outdoor air pollution resulted in 3.7 million premature deaths in 2012.

ACPD

15, 25329–25380, 2015

## Exploring exposure uncertainty

B. Ford and C. L. Heald

Title Page

Abstract

Introduction

Conclusions

References

Tables

Figures



Back

Close

Full Screen / Esc

Printer-friendly Version

Interactive Discussion



**Exploring exposure uncertainty**

B. Ford and C. L. Heald

Title Page

Abstract

Introduction

Conclusions

References

Tables

Figures



Back

Close

Full Screen / Esc

Printer-friendly Version

Interactive Discussion



Many epidemiological studies have shown that chronic exposure to fine particulate matter ( $PM_{2.5}$ ) is associated with an increase in the risk of mortality from respiratory diseases, lung cancer, and cardiovascular disease, with the underlying assumption that a causal relationship exists between PM and health outcomes (Dockery et al., 1993; Jerrett et al., 2005; Krewski et al., 2000; Pope III et al., 1995, 2002, 2004, 2006). This has been shown through single and multi-population time series analyses, long-term cohort studies, and meta-analyses.

In order to stress the negative impacts of air pollution on human health and inform policy development (particularly with regard to developing strategies for intervention and risk reduction), many studies have calculated the total number of premature deaths each year attributable to air pollution exposure or the “burden of disease”. One of the main obstacles in attributing specific health impacts of  $PM_{2.5}$  is determining personal exposure and linking this to health outcomes. Jerrett et al. (2005) suggest personal monitors would be the optimal method, but point out that the financial costs and time-intensiveness limit widespread use. Many studies have instead relied on fixed-site monitors within a certain radius to estimate exposure. However, these monitoring networks are generally located in urban regions and provide no information on concentration gradients between sites. Thus, epidemiological studies typically quantify the aggregate population response determined from a subset of individuals.

Estimating the burden of disease associated with particulate air pollution requires robust estimates of  $PM_{2.5}$  exposure. Fixed-site monitoring networks can be costly to operate and maintain, and the sampling time period for many of these monitors in the United States is often only every third or sixth day. Due to the high spatial and temporal variability in aerosol concentrations, this makes it difficult to determine exposure and widespread health impacts. Worldwide, monitoring networks are even scarcer, with many developing countries lacking any long-term measurements. “Satellite-based” concentrations are now used extensively for estimating mortality burdens and health impacts (e.g. Crouse et al., 2012; Hystad et al., 2012; Evans et al., 2013). Satellite observations of aerosol optical depth (AOD) offer much needed observational constraints

## Exploring exposure uncertainty

B. Ford and C. L. Heald

Title Page

Abstract

Introduction

Conclusions

References

Tables

Figures



Back

Close

Full Screen / Esc

Printer-friendly Version

Interactive Discussion



for population-level exposure estimates in regions where surface air quality monitoring is limited; however they represent the vertically-integrated extinction of radiation due to aerosols, and thus additional information on the vertical distribution and the optical properties of particulate matter is required (often provided by a model) to translate these observations to surface air quality (van Donkelaar et al., 2006, 2010; Liu et al., 2004, 2005). Alternatively, studies have relied on model-based estimates of PM<sub>2.5</sub> exposure. Table 1 shows that the resulting estimates of premature mortality vary widely. Here, we discuss both of these methods and contrast the uncertainty in these approaches for estimating exposure for both the US, where air quality has improved due to regulations and control technology, and China, where air quality is a contemporary national concern. Our objective is to investigate the factors responsible for uncertainty in chronic PM<sub>2.5</sub> burden of disease estimates, and use these uncertainties to contextualize the comparison of satellite-based and model-based estimates of premature mortality with previous work.

## 2 Methods and tools

### 2.1 General formulation to calculate the burden of disease

To estimate the burden of premature mortality due to a specific factor like PM<sub>2.5</sub> exposure, we rely on Eqs. (1) and (2) (Eqs. 6 and 8 in Ostro, 2004, and as previously used in van Donkelaar et al., 2011; Evans et al., 2013; Marlier et al., 2013; Zheng et al., 2015). The attributable fraction (AF) of mortality due to PM<sub>2.5</sub> exposure depends on the relative risk value (RR), which here is the ratio of the probability of mortality (all-cause or from a specific disease) occurring in an exposed population to the probability of mortality occurring in a non-exposed population. The total burden due to PM<sub>2.5</sub> exposure ( $\Delta M$ ) can be estimated by convolving the AF with the baseline mortality (equal to the baseline mortality rate  $M_b \times$  exposed population  $P$ ). The relative risk is assumed to change ( $\Delta RR$ ) with concentration, so that, in general, exposure to higher concentra-

tions of  $PM_{2.5}$  should pose a greater risk for premature mortality (Sect. 2.4).

$$AF = (RR - 1)/(RR) \text{ (or the alternate form of } AF = \Delta RR/(\Delta RR + 1) \text{)} \quad (1)$$

$$\Delta M = M_b \times P \times AF \quad (2)$$

Application of this approach requires information on the baseline mortality rates and population, along with the RR, which is determined through a concentration response function (including a shape and initial relative risk, Sect. 2.4), and ambient surface  $PM_{2.5}$  concentrations.

## 2.2 Baseline mortality and population

For population data, we use the Gridded Population of the World, Version 3 (GPWv3), created by the Center for International Earth Science Information Network (CIESIN) and available from the Socioeconomic Data and Applications Center (SEDAC). This gridded dataset has a native resolution of 2.5 arc-minutes ( $\sim 5$  km at the equator) and provides population estimates for 1990, 1995, and 2000, and projections (made in 2004) for 2005, 2010, and 2015. We linearly interpolate between available years to get population estimates for years not provided. Population density for China and the United States for the year 2000 are shown in Fig. 1 along with the projected change in population density by the year 2015, illustrating continued growth of urbanized areas (at the expense of rural regions in China). We also compare mortality estimates using only urban area population (similar to Lelieveld et al., 2013 which estimates premature mortality in mega-cities). For this, we rely on the populated places dataset (provided by Natural Earth) which is determined from LandScan population estimates (Bright et al., 2008). In the US, approximately 80 % of the population lives in urban areas. For China, 36 % of the population lived in urban areas in 2000, but this number rose to 53 % in 2013 (World Bank, 2015).

To determine baseline mortalities in the US for cardiovascular disease, lung cancer, and respiratory disease, we use death rates for each cause of death for all ages from

the Center for Disease Control (cdc.gov) for each year and each state which we then multiply by the gridded population to obtain the total baseline mortality. Other studies have also used country-wide (or region) (e.g. Evans et al., 2013) or county-level (e.g. Fann et al., 2013) average deaths rates.

Mortality values are not as readily available for China, so we rely on country-wide values for baseline mortality (WHO age-standardized mortality rates by cause). Therefore, in China spatial variations in  $M_b$  are only due to variations in population and not regional variations in actual death rates (i.e. we do not account for death-specific mortality rates varying between provinces). In order to account for some regional variability in mortality rates, we use a population threshold to distinguish between urban and rural regions for lung cancer mortality rates (Chen et al., 2013).

### 2.3 Relative risk

The relative risk (RR) is a ratio of the probability of a health endpoint (in this case premature mortality) occurring in a population exposed to a certain level of pollution to the probability of that endpoint occurring in a population that is not exposed. Values greater than one suggest an increased risk, while a value of one would suggest no change in risk. These values are determined through epidemiological studies which relate individual health impacts to changes in concentrations, and literature values span a large range (Fig. 2). While these studies attempt to account for differences in populations, lifestyles, pre-existing conditions, and co-varying pollutants, relative risk ratios determined from each study still differ. This is likely due to variables not taken into consideration, errors in exposure estimates (“exposure misclassification”) (Sheppard et al., 2012), and because, although the long-term effects of exposure to atmospheric pollutants have been well-documented, the pathophysiological mechanisms linking exposure to mortality risk are still unclear (Chen and Goldberg, 2009; Pope III and Dockery, 2013; Sun et al., 2010) making it difficult to determine how transferable results are from the context in which they were generated.

## Exploring exposure uncertainty

B. Ford and C. L. Heald

Title Page

Abstract

Introduction

Conclusions

References

Tables

Figures



Back

Close

Full Screen / Esc

Printer-friendly Version

Interactive Discussion



## Exploring exposure uncertainty

B. Ford and C. L. Heald

Title Page

Abstract

Introduction

Conclusions

References

Tables

Figures



Back

Close

Full Screen / Esc

Printer-friendly Version

Interactive Discussion



We use risk ratios for cardiovascular and lung cancer premature mortality due to chronic exposure determined by Krewski et al. (2009), which is an extended analysis of the American Cancer Society study (Pope III et al., 1995), and for respiratory disease, from Laden et al. (2006) which is an updated and extended analysis of the Harvard Six Cities study (Pope III et al., 2002). We use the updated Krewski et al. (2009) risk ratios as they are widely used in similar studies due to the large study population with national coverage, 18 year time span, and extensive analysis of confounding variables (ecological covariates, gaseous pollutants, weather, medical history, age, smoking, etc.). Using these same risk ratios also makes our results more directly comparable to studies in Table 1 which rely on the risk ratios from these three studies (Krewski et al., 2009; Laden et al., 2006; Pope III et al., 2002).

## 2.4 Concentration response function

In order to determine an attributable fraction, it is necessary to understand how the response changes with concentration (i.e. does the relative risk increase, decrease, or level off with higher concentrations?). The shape of this concentration response function is an area of on-going epidemiological research (e.g. Burnett et al., 2014; Pope III et al., 2015).

For our initial results, we rely on Eq. (3), where the change in relative risk (RR, given as per  $10 \mu\text{g m}^{-3}$ ) linearly depends on the surface  $\text{PM}_{2.5}$  concentration ( $C$ , in  $\mu\text{g m}^{-3}$ ). In this equation,  $C_0$  can be considered the “policy relevant (PRB)/target”, “natural background” or “threshold”/“counterfactual”/“lowest effect level” surface  $\text{PM}_{2.5}$  concentration. As studies have shown that there is no concentration level below which there is no adverse health effect for PM (e.g. Pope III et al., 2002; Shi et al., 2015), in our initial analysis, we assume this value is zero. However, other studies often set  $C_0$  to the value of the lowest measured level (LML) observed in the epidemiology study from which the RRs are derived (e.g. Evans et al., 2013 use  $5.8 \mu\text{g m}^{-3}$  with the RR from Krewski et al., 2009) or use the “policy relevant” background (PRB) concentration, which is generally determined from model simulations in which domestic anthropogenic emissions

have been turned off (e.g. Fann et al., 2012).

$$\Delta RR = (RR - 1) \times (C - C_0)/10 \quad (3)$$

Linear response functions are generally a good fit to observed responses at lower concentrations (Pope III et al., 2002). However, some studies have suggested that linear response functions can greatly overestimate RR at high concentrations, where responses may start to level off. This is uncertain, as most epidemiology studies of the health effects of air pollution exposure have generally been conducted under lower concentrations (i.e. in the US). In order to determine the shape of this response at higher concentrations, smoking has been used as a proxy (Pope III et al., 2011, 2009), which does show a diminishing response at higher concentrations. Therefore, both log-linear (Eqs. 4 and 5, where  $\beta = 0.15515/0.23218$  for heart disease/lung cancer from Pope III et al., 2002, or  $\beta = 0.18878/0.21136$  for heart disease/lung cancer from Krewski et al., 2009 in Eq. (5) and  $\beta = 0.01205/0.01328$  for heart disease/lung cancer from Krewski et al., 2009, in Eq. 4) and power law (Eq. 6, where  $I$  is the inhalation rate of  $18 \text{ m}^3 \text{ day}^{-1}$ ,  $\beta = 0.2730/0.3195$ ,  $\alpha = 0.2685/0.7433$  for heart disease/lung cancer from Pope III et al., 2011, and as used in Marlier et al., 2013) functions have been also explored in this study. We note that Cohen et al. (2005) and Anenberg et al. (2010) reference Eq. (4) as a log-linear function (and take the log of  $C-C_0$ , also referred to as a log-log model), while Ostro (2004) and Evans et al. (2013) use this as their linear function and instead use Eq. (5) as their log-linear function. Another method to limit the response at high concentrations is to simply use a “ceiling,” “maximum exposure/high-concentration threshold,” or “upper truncation” value in which it is assumed that the response remains the same for any value above it (e.g. Anenberg et al., 2012; Cohen et al., 2005; Evans et al., 2013). This can be a somewhat arbitrary value or the highest

Exploring exposure uncertainty

B. Ford and C. L. Heald

Title Page

Abstract

Introduction

Conclusions

References

Tables

Figures



Back

Close

Full Screen / Esc

Printer-friendly Version

Interactive Discussion





observed concentration in the original epidemiological study.

$$\Delta RR = \exp[\beta(C - C_0)] - 1 \quad (4)$$

$$\Delta RR = [(C + 1)/(C_0 + 1)]^\beta - 1 \quad (5)$$

$$\Delta RR = \alpha(I \times C)^\beta \quad (6)$$

5 Recently, Burnett et al. (2014) fit an integrated exposure response (IER) model using RRs from a variety of epidemiological studies on ambient and household air pollution, active smoking, and second hand tobacco smoke in order to determine RR functions over all global PM<sub>2.5</sub> exposure ranges for ischemic heart disease, cerebrovascular disease, chronic obstructive pulmonary disease, and lung cancer (Eq. 7). The fitted values  
10 for each cause of death are given in Table 2.

for  $C < C_0$ ,  $\Delta RR = 0$

for  $C \geq C_0$ ,  $\Delta RR = \alpha\{1 - \exp[-\gamma(C - C_0)^\rho]\}$  (7)

In the following sections, we will discuss the uncertainty on the burden of disease associated with the shape of the concentration response function and threshold concentration.  
15

## 2.5 Estimating surface PM<sub>2.5</sub>

We use both a global model and satellite observations to estimate surface PM<sub>2.5</sub> concentrations and translate these to PM<sub>2.5</sub> exposure and health burden. In addition, we use surface measurements of PM<sub>2.5</sub> to test the accuracy of these estimates.

### 2.5.1 Unconstrained model simulation 20

We use the global chemical transport model GEOS-Chem (geos-chem.org) to simulate both surface PM<sub>2.5</sub> and AOD. We use v9.01.03 of the model, driven by GEOS-5 meteorology, in the nested grid configuration over North America and Asia (0.5° × 0.667°

25337

## Exploring exposure uncertainty

B. Ford and C. L. Heald

Title Page

Abstract

Introduction

Conclusions

References

Tables

Figures

◀

▶

◀

▶

Back

Close

Full Screen / Esc

Printer-friendly Version

Interactive Discussion



Exploring exposure  
uncertainty

B. Ford and C. L. Heald

Title Page

Abstract

Introduction

Conclusions

References

Tables

Figures

◀

▶

◀

▶

Back

Close

Full Screen / Esc

Printer-friendly Version

Interactive Discussion



horizontal resolution) for 2004–2011. Using this longer time period gives greater confidence in our uncertainty results. The GEOS-Chem aerosol simulation includes sulfate, nitrate, ammonium (Park et al., 2004), primary carbonaceous aerosols (Park et al., 2003), dust (Fairlie et al., 2007; Ridley et al., 2012), sea salt (Alexander et al., 2005), and secondary organic aerosols (SOA) (Henze et al., 2008). Most anthropogenic and biofuel emissions over the USA are from the EPA NEI05 inventory (Hudman et al., 2007, 2008) and from Streets et al. (2006) over Asia; although anthropogenic emissions of black and organic carbon over North America follow Cooke et al. (1999) with the seasonality from Park et al. (2003). Biogenic VOC emissions are calculated interactively following MEGAN (Guenther et al., 2006), while year-specific biomass burning is specified according to the GFED2 inventory (van der Werf et al., 2006). Surface dry  $PM_{2.5}$  is calculated by combining sulfate, nitrate, ammonium, elemental carbon, organic matter, fine dust, and accumulation mode sea salt concentrations in the lowest model grid box. In the following discussion, these values are referred as the “unconstrained model.” Simulated AOD is calculated at 550 nm based on aerosol optical and size properties as described in Ford and Heald (2013).

### 2.5.2 Satellite-based

We also derive a satellite-based surface  $PM_{2.5}$  using satellite observed aerosol optical depth, with additional constraints from the GEOS-Chem model, in a similar manner to Liu et al. (2004, 2007) and van Donkelaar et al. (2006, 2010, 2011). This method relies on the following relationship:

$$PM_{2.5, \text{surface}} = \eta \times AOD_{\text{satellite}} \quad (8)$$

Where the satellite-derived  $PM_{2.5}$  is estimated by multiplying the satellite observed AOD by the value  $\eta$ , which is the ratio of model simulated surface  $PM_{2.5}$  to simulated AOD at the time of the satellite overpass. This is then a combined product which relies on a chemical transport model to simulate the spatially and temporally varying relationship between AOD and surface  $PM_{2.5}$  by accounting for all the aerosol properties and

varying physical distribution and then constraining these results by “real” (i.e. satellite) measurements of AOD. Using the satellite to constrain the model concentrations is extremely useful in regions where emissions inventories and model processes are less well known.

For AOD, we use observations from both of the Moderate Resolution Imaging Spectroradiometer (MODIS) instruments and from the Multi-angle Imaging Spectro-Radiometer (MISR) instrument. For this work we use MODIS 550 nm Level 2, Collection 6, Atmosphere Products for Aqua as well as Level 2, Collection 5 for Terra and Aqua. We filter these data for cloud fraction ( $CF < 0.2$ ) and remove observations with high AOD ( $> 2.0$ ), as cloud contamination causes known biases in the AOD (Zhang et al., 2005) as in Ford and Heald (2012) although we note that this could remove high pollution observations, particularly in China. For MISR, we also use the Level 2 AOD product (F12, version 22, 500 nm). We note that this is a slightly different wavelength than from the MODIS instrument, but we neglect that difference for these comparisons. We use both of these observations for comparison as MODIS has a greater number of observations while MISR is generally considered to better represent the spatial and temporal variability of AOD over China (Cheng et al., 2012; Qi et al., 2013; You et al., 2015). Satellite observations are gridded to the GEOS-Chem nested grid resolution. We sample GEOS-Chem to days and grid boxes with valid satellite observations to calculate the  $\eta$  used to translate the AOD to surface  $PM_{2.5}$ .

In Fig. 3, we show the long-term average (2004–2011) of satellite-based  $PM_{2.5}$  for the US and China using MODIS Aqua Collection 6 and compare this to model-only estimates. In the following sections, most of our results will be shown using Collection 6; but reference and comparisons will be made to other products as a measure of uncertainty. In general the unconstrained model and satellite-based estimates show similar spatial features and magnitudes, with stronger local features apparent in the satellite-based  $PM_{2.5}$ . The satellite-based estimate suggests that concentrations should be higher over much of the western US, particularly over California, Nevada, and Arizona (comparisons with surface measurements are discussed in Sect. 2.5.3). In China, the satellite-

## Exploring exposure uncertainty

B. Ford and C. L. Heald

Title Page

Abstract

Introduction

Conclusions

References

Tables

Figures



Back

Close

Full Screen / Esc

Printer-friendly Version

Interactive Discussion



derived  $PM_{2.5}$  is higher in Eastern China, around Beijing and the Heibei province, Tianjin, and Shanghai, but lower in many of the central provinces. While many previous studies suggest that MODIS may be biased high (and MISR biased low) over China (e.g. Cheng et al., 2012; Qi et al., 2013; You et al., 2015) and the Indo–Gangetic Plain (Bibi et al., 2015); Wang et al. (2013) note that the GEOS-Chem model underestimates  $PM_{2.5}$  in the Sichuan basin, suggesting that the MODIS satellite-based estimate could reduce the bias in this province.

### 2.5.3 Surface-based observations

We use observations of  $PM_{2.5}$  mass from two networks in the United States (where long-term values are more readily available than in China) to evaluate the model and satellite-derived  $PM_{2.5}$ : the Interagency Monitoring of Protected Visual Environments (IMPROVE) and the EPA Air Quality System (AQS) database. The IMPROVE network measures  $PM_{2.5}$  over a 24 h period every third day and these measurements are then analyzed for concentrations of fine, total, and speciated particle mass (Malm et al., 1994). We use the reconstructed fine mass (RCFM) values, which are the sum of ammonium sulfate, ammonium nitrate, soil, sea salt, elemental carbon and organic matter.

Previous studies have generally shown good agreement between measurements and GEOS-Chem simulations of  $PM_{2.5}$  (e.g. Ford and Heald, 2013; van Donkelaar et al., 2010). In Fig. 4, we show the long-term average of  $PM_{2.5}$  at AQS and IMPROVE sites in the US overlaid on simulated concentrations. In general, GEOS-Chem agrees better with measurements at IMPROVE sites, likely because these are located in rural regions where simulated values will not be as impacted by the challenge of resolving urban plumes in a coarse Eulerian model. There are noted discrepancies in California (Schiferl et al., 2014) and the Appalachia/Ohio River Valley region where the model is biased low. The model has a low mean bias of  $-25\%$  compared to measurements at the EPA AQS sites and a bias of  $-6\%$  compared to measurements at IMPROVE sites. Annual mean bias at individual sites ranges from  $-100$  to  $150\%$ . At these same AQS

Title Page

Abstract

Introduction

Conclusions

References

Tables

Figures



Back

Close

Full Screen / Esc

Printer-friendly Version

Interactive Discussion



sites, the satellite-derived PM<sub>2.5</sub> is less biased (−12 % using MODIS C6 or −8 % using MISR).

To estimate the uncertainty in satellite AOD, we also rely on surface-based measurements of AOD from the global AErosol ROBotic NETwork (AERONET) of sun photometers. AOD and aerosol properties are recorded at eight wavelengths in the visible and near-infrared (0.34–1.64 μm) and are often used to validate satellite measurements (e.g. Remer et al., 2005). AERONET AOD has an uncertainty of 0.01–0.015 (Holben et al., 1998). For this work, we use hourly Version 2 Level 2 measurements sampled to two hour windows around the times of the satellite overpasses. We also perform a least-square polynomial fit to interpolate measurements to 550 nm.

### 3 Estimated health burden associated with exposure to PM<sub>2.5</sub>

We compare national exposure estimates for the US and China using unconstrained and satellite-based (MODIS and MISR) annual average PM<sub>2.5</sub> concentrations (Fig. 5). For the US, satellite-based estimates suggest a slightly greater fraction of the population is exposed to higher annual average concentrations, while in China, the satellite-based estimates suggest a lower fraction. Using MISR AOD suggests higher annual average concentrations in the US and much lower in China, as MISR has a high bias in regions of low AOD and a low bias in regions of high AOD (Kahn et al., 2010). The large discrepancy between results from MISR and MODIS could be due to differencing in sampling, but studies have also shown that MODIS is biased high in China and MISR is biased low (Cheng et al., 2012; Qi et al., 2013; You et al., 2015). We discuss the uncertainties in these estimates in Sect. 4.

These exposure estimates are used to calculate an initial fraction of mortality associated with heart disease, lung cancer, and respiratory disease attributable to chronic exposure using both model and satellite-based annual average concentrations for the US and China (Table 1). In the US, we estimate that exposure to PM<sub>2.5</sub> accounts for approximately 4 % of total deaths (13 % of heart diseases and 12 % of respiratory

## Exploring exposure uncertainty

B. Ford and C. L. Heald

Title Page

Abstract

Introduction

Conclusions

References

Tables

Figures



Back

Close

Full Screen / Esc

Printer-friendly Version

Interactive Discussion



diseases) compared to 22% (40% of heart and 25% of respiratory) in China using satellite-based concentrations. We present these as an average over the 2004–2011 time period in order to provide more robust results that are not driven by an outlier year, as there is considerable year-to-year variability in AOD and surface PM<sub>2.5</sub> concentrations (for example, heavy dust years in China). However, there are trends in population (Fig. 1) and surface concentrations that can influence these results. For example, there is a significant decreasing trend in AOD over the northeastern US simulated in the model which is also noticeable in the satellite observations and the surface concentrations (Hand et al., 2012). This decreasing trend can be attributed to declining SO<sub>2</sub> emissions in the US as noted in Leibensperger et al. (2012). Trends in China are more difficult to ascertain as emissions have been variable over this period in general (Lu et al., 2011; Zhao et al., 2013) with widespread increases from 2004 to 2008 followed by variable trends in different regions through 2011. The difference between mortality burden estimates using model or satellite concentrations is approximately 9% for the US and 4% for China on a nationwide basis, although regionally the difference can be much greater. A question we aim to address here is whether these model and satellite-based estimates are significantly different.

We compare our results to premature mortality burden estimates from other studies in Table 1. In general, our estimates for the US and China are higher than most previous global estimates, except for Anenberg et al. (2010) (although their estimates are for all of North America and all of Asia) and Fann et al. (2012). In particular, our estimates appear to be twice those found by Lelieveld et al. (2013). The spread among these studies can be attributed to the data used (i.e. MODIS Collection 5 rather than Collection 6 and choice of baseline mortality rates) as well as the risk ratios and response functions. For example, Evans et al. (2013) also use satellite-based concentrations (using MISR/MODIS Collection 5 and GEOS-Chem), but their resulting mortality estimates are much lower. However, unlike this study, they use a threshold value and a different response function with lower baseline mortalities. In the following sections,

## Exploring exposure uncertainty

B. Ford and C. L. Heald

Title Page

Abstract

Introduction

Conclusions

References

Tables

Figures



Back

Close

Full Screen / Esc

Printer-friendly Version

Interactive Discussion



we delineate the uncertainty in our results and reasons for differences from previous studies.

## 4 Uncertainty in satellite-based PM<sub>2.5</sub>

Uncertainties in the PM<sub>2.5</sub> concentrations derived from satellite observations arise from the two pieces of information which inform this estimate: (1) satellite AOD and (2) model  $\eta$ . Here we explore the limitations and uncertainties associated with each of these inputs.

### 4.1 Uncertainty associated with satellite AOD

While satellite observations of aerosols are often used for model validation (e.g. Ford and Heald, 2012), these are indirect measurements with their own limitations and errors. The uncertainty in satellite AOD can be due to a variety of issues such as the presence of clouds, the choice of optical model used in the retrieval algorithm, and surface properties (Toth et al., 2014; Zhang and Reid, 2006). For validation of satellite products, studies have often relied on comparisons against AOD measured with sun photometers at AERONET ground sites (e.g. Kahn et al., 2005; Levy et al., 2010; Remer et al., 2005, 2008; Zhang and Reid, 2006). The uncertainty in AOD over land from MODIS is estimated as  $0.05 \pm 15\%$  (Remer et al., 2005), while Kahn et al. (2005) suggest that 70% of MISR AOD data are within 0.05 (or 20%  $\times$  AOD) of AERONET AOD.

There are also discrepancies between AOD measured by the different instruments due to different observational scenarios and instrument design. The Aqua platform has an afternoon overpass while the Terra platform has a morning overpass. It might be expected that there would be some differences in retrieved AOD associated with diurnal variations in aerosol loading. However, the difference of 0.015 in the globally averaged AOD between MODIS onboard Terra and Aqua (Collection 5), although within

Title Page

Abstract

Introduction

Conclusions

References

Tables

Figures



Back

Close

Full Screen / Esc

Printer-friendly Version

Interactive Discussion





**Exploring exposure  
uncertainty**

B. Ford and C. L. Heald

Title Page

Abstract

Introduction

Conclusions

References

Tables

Figures



Back

Close

Full Screen / Esc

Printer-friendly Version

Interactive Discussion



the uncertainty range of the retrieval, is primarily attributed to uncertainties and a drift in the calibration of the Terra instrument, noted in Zhang and Reid (2010) and Levy et al. (2010). Collection 6 (as will be discussed further) reduces the AOD divergence between the two instruments (Levy et al., 2013). MISR employs a different multi-angle measurement technique with a smaller swath width; as a result the correlation between MISR AOD and MODIS AOD is only 0.7 over land (0.9 over ocean) (Kahn et al., 2005).

Not only are there discrepancies in AOD between instruments, there are also differences between product versions for the same instrument. The MODIS Collection 6 Level 2 AOD is substantially different from Collection 5.1 (Levy et al., 2013). In general, AOD decreases over land and increases over ocean with Collection 6. These changes are due to a variety of algorithm updates including better detection of thin cirrus clouds, a wind speed correction, a cloud mask that now allows heavy smoke retrievals, better assignments of aerosol types, and updates to the Rayleigh optical depths and gas absorption corrections (Levy et al., 2013). These differences can also impact the derived  $PM_{2.5}$  (and can explain some differences between our results and previous studies). In particular, because Collection 6 suggests higher AOD over many of the urbanized regions, the derived  $PM_{2.5}$  and resulting exposure estimates (all other variables constant) are greater. The difference between these two retrieval products, given the same set of radiance measurements from the same platform, gives a sense of the uncertainty in the satellite AOD product (Fig. 5a).

We estimate the uncertainty in satellite AOD used here by comparing satellite observations to AERONET and determining the normalized mean bias (NMB) between AOD from each satellite instrument and AERONET for the US and China. Although there a very limited number of sites in China, from these comparisons, we find that the satellites generally agree with AERONET better in the eastern US and eastern China and have larger biases in the west near deserts and at coastal regions where it may be challenging to distinguish land and water in the retrieval algorithm. NMBs at each AERONET site are generally similar among the instruments, with greater differences at these western sites. While Collection 6 does reduce the bias at several sites along



the East Coast in the US, it is generally more biased at the Four Corners region of the US. We use these NMBs to regionally “bias correct” our AOD values and estimate the associated range of uncertainty in our premature mortality estimates. Compared to the standard MODIS AOD retrieval uncertainty, our overall NMB is less in the eastern US (−1 %) and western China (11 %) and higher in the western US (40 %) and eastern China (18 %).

There may also be biases associated with the satellite sampling, should concentrations on days with available observations be skewed. In order to assess the sampling bias, we use the model and compare the annual mean to the mean of days with valid observations (Fig. 5b). In general, sampling leads to an underestimation in AOD (average of 20 % over the US). This can partly be attributed to the presence of high aerosol concentrations below or within clouds which cannot be detected by the satellite, the mistaken identification of high aerosol loading as cloud in retrieval algorithms, as well as the removal of anomalously high AOD values (> 2.0) from the observational record. This suggests that the average AOD values can also be influenced by the chosen filtering and data quality standards. Analysis of the impact of satellite data quality on the AOD to  $PM_{2.5}$  relationship is discussed in Toth et al. (2014). They find that using higher quality observations does tend to improve correlations between observed AOD and surface  $PM_{2.5}$  across the US though in general correlations are low (< 0.55).

## 4.2 Uncertainty associated with model $\eta$

In general, the model simulates  $PM_{2.5}$  well (Fig. 4) and represents important processes; but, satellite AOD can help to constrain these estimates to better represent measured concentrations (van Donkelaar et al., 2006). However, in specific regions or periods of time, errors in  $\eta$  could lead to discrepancies between satellite-derived and actual surface mass. In order to assess the potential uncertainty in model-based  $\eta$ , we perform multiple sensitivity tests to determine the impact that different aerosol properties, grid-size resolution and time scales will have on  $\eta$  and, ultimately, on the resulting satellite-based  $PM_{2.5}$  (listed in Table 3). These sensitivity tests are performed solely

## Exploring exposure uncertainty

B. Ford and C. L. Heald

Title Page

Abstract

Introduction

Conclusions

References

Tables

Figures



Back

Close

Full Screen / Esc

Printer-friendly Version

Interactive Discussion



## Exploring exposure uncertainty

B. Ford and C. L. Heald

Title Page

Abstract

Introduction

Conclusions

References

Tables

Figures



Back

Close

Full Screen / Esc

Printer-friendly Version

Interactive Discussion



with model output, which can provide a complete spatial and temporal record, and results from the modified simulations are compared to the standard model simulation. We note that these are “errors” only with respect to our baseline simulation; we do not characterize how each sensitivity simulation may be “better” or “worse” compared to true concentrations of surface  $\text{PM}_{2.5}$ , but rather how different they are from the baseline, thus characterizing the uncertainty in derived  $\text{PM}_{2.5}$  resulting from the model estimates of  $\eta$ . We make these comparisons for both the US and China and show results in Fig. 7. Because mass concentrations in China are generally much higher, the absolute value of potential errors can also be much greater.

The timescale of the estimated  $\text{PM}_{2.5}$  influences the error metric we choose for this analysis. We use the NMB for estimating error associated with annual  $\text{PM}_{2.5}$  exposure (the metric of interest for chronic exposure). This allows for the possibility that day-to-day errors may compensate, resulting in a more generally unbiased annual mean value. The error on any given day of satellite-estimated  $\text{PM}_{2.5}$  is likely larger, and not characterized by the NMB used here.

Our first sensitivity tests relate specifically to the methodology. To derive a satellite-based  $\text{PM}_{2.5}$  with this method requires that model output for every day and that there are valid satellite observations. Running a model can be labor intensive, at the same time there are specific regions and time periods with poor satellite coverage. Therefore, it might be beneficial to be able to use a climatological  $\eta$  or a climatological satellite AOD. To test the importance of daily variability in AOD, we compute daily  $\eta$  values and then solve for daily surface  $\text{PM}_{2.5}$  values using a seasonally averaged model simulated AOD (AvgAOD). This mimics the error introduced by using seasonally averaged satellite observations, an attractive proposition to overcome limitations in coverage. This approximation often produces the greatest error ( $\sim 20\%$  in the US and  $0\text{--}50\%$  in China) especially in regions where AOD varies more dramatically and specifically where transported layers aloft can significantly increase AOD (Fig. 7). For the seasonally averaged  $\eta$  test (AvgEta), we estimate daily  $\text{PM}_{2.5}$  values (which are averaged into the annual concentration) from the seasonally averaged  $\eta$  and daily AOD values. As

regional  $\eta$  relationships can be more consistent over time than  $PM_{2.5}$  or AOD, this test evaluates the necessity of using daily model output to define the  $\eta$  relationship. The error in the annual average of daily  $PM_{2.5}$  values determined using a seasonally averaged  $\eta$  creates results that are very similar to the error found calculating an annual average of daily  $PM_{2.5}$  values calculated using a seasonally averaged AOD.

The model  $\eta$  also inherently prescribes a vertical distribution of aerosol, which may be inaccurately represented by the model and introduce errors in the satellite-derived  $PM_{2.5}$ . Previous studies have shown that an accurate vertical distribution is essential for using AOD to predict surface  $PM_{2.5}$  (e.g. Li et al., 2015; van Donkelaar et al., 2010). We test the importance of the variability of the vertical distribution in the  $\eta$  relationship for predicting surface  $PM_{2.5}$  concentrations by comparing values from the standard simulation against using an  $\eta$  from a seasonally averaged vertical distribution (AvgProf). For this comparison, we allow the column mass loading to vary day-to-day, but we assume that the profile shape does not change (i.e. we re-distribute the simulated mass to the same seasonally averaged vertical profile). We note that this is not the same as assuming a constant  $\eta$ , as relative humidity and aerosol composition are allowed to vary. Additionally, this differs from other studies (van Donkelaar et al., 2010; Ford and Heald, 2013) in that we are not testing the representativeness of the seasonal average profile, but testing the importance of representing the daily variability in the vertical profile. From Fig. 7, we see that using a seasonally averaged vertical distribution (AvgProf) can lead to large errors in surface concentrations. Information on how the pollutants are distributed is extremely important because changes in column AOD can be driven by changes in surface mass loading, but also by layers of lofted aerosols that result from production aloft or transport. This is important in areas that are occasionally impacted by transported elevated biomass burning plumes or dust. In China, large errors often occur in western and central China, especially during the spring when these regions are influenced by transported dust from the Taklamakan and Gobi Deserts (Wang et al., 2008). Similar to the average AOD and  $\eta$  (AvgAOD and AvgEta), average vertical distributions generally overpredicts  $PM_{2.5}$  due to the presence of outliers. This stresses

## Exploring exposure uncertainty

B. Ford and C. L. Heald

Title Page

Abstract

Introduction

Conclusions

References

Tables

Figures



Back

Close

Full Screen / Esc

Printer-friendly Version

Interactive Discussion



the importance of not only getting the mean profile correct, but the necessity of also simulating the variability in the profile on shorter timescales.

We also test the sensitivity of derived  $PM_{2.5}$  to aerosol water uptake. This is done by recalculating  $\eta$  using a seasonally averaged relative humidity (RH) profile (AvgRH).

This generally reduces the seasonally averaged AOD (less water uptake) in every season (because hygroscopic growth of aerosols is non-linear with RH). This leads to an overestimate of  $\eta$  that when applied to the AOD values from the standard simulation and generally overestimates surface  $PM_{2.5}$  in regions with potentially higher RH and more hygroscopic aerosols (eastern US). This is because, for the same AOD, a higher  $\eta$  value would suggest more mass at the surface in order to compensate for optically smaller particles aloft.

A higher resolution model, although more computationally expensive, will likely better represent small scale variability and is better suited for estimating surface air quality. Pungler and West (2013) find that coarse resolution models often drastically underestimate exposure in urban areas. We therefore investigate the grid-size dependence of our simulated  $\eta$ . For this, we determine the  $\eta$  values from a simulation running at  $2^\circ \times 2.5^\circ$  grid resolution (with the same emission inputs and time period), re-grid these values to the nested grid resolution ( $0.5^\circ \times 0.666^\circ$ ) and solve for the derived  $PM_{2.5}$  concentrations using the AOD values from the nested simulation (noted as  $2 \times 2.5$  in Fig. 7). From Fig. 7, we see larger discrepancies in regions which are dominated by more spatially variable emissions (Northeastern US and China) rather than areas with broad regional sources (Southeastern US). However, compared to the other sensitivity tests, using the coarser grid leads to mean errors of only 10–15% in the US and in China, which suggests that spatially averaged  $\eta$  are potentially more useful than temporally averaged  $\eta$  for constraining surface  $PM_{2.5}$ . This is in line with the conclusions from Thompson and Selin (2012) who show that very coarse grids can overpredict pollutant concentrations and consequently health impacts (associated with exposure to ozone), but using very fine grids does not significantly decrease the error in simulated concentrations compared to observations.

## Exploring exposure uncertainty

B. Ford and C. L. Heald

Title Page

Abstract

Introduction

Conclusions

References

Tables

Figures



Back

Close

Full Screen / Esc

Printer-friendly Version

Interactive Discussion



Exploring exposure  
uncertainty

B. Ford and C. L. Heald

Title Page

Abstract

Introduction

Conclusions

References

Tables

Figures



Back

Close

Full Screen / Esc

Printer-friendly Version

Interactive Discussion



The GEOS-Chem simulation of surface nitrate aerosol over the US is biased high (Heald et al., 2012). This can be an issue in regions where nitrate has a drastically different vertical profile (or  $\eta$ ) from other species. To test how this nitrate bias could impact  $\eta$  and the derived  $\text{PM}_{2.5}$ , we compute  $\eta$  without nitrate aerosol, and then derive  $\text{PM}_{2.5}$  using the standard AOD (No  $\text{NO}_3$ ). This is not a large source of potential error ( $< 15\%$ ), with only slightly larger errors in winter and in regions where nitrate has a significant high bias (central US). Furthermore, these errors are less than the bias between the model and surface observations of nitrate in the US ( $1\text{--}2\ \mu\text{g m}^{-3}$  compared to  $2\text{--}7\ \mu\text{g m}^{-3}$ ), suggesting that even though there is a known bias in the model, using satellite observations may largely correct for this by constraining the total AOD when estimating satellite-derived  $\text{PM}_{2.5}$ . We also did this comparison for China. Measured nitrate concentrations are not widely available for evaluation, but Wang et al. (2014) suggests that model nitrate is also too high in eastern China. The NMB is even less in regions in China ( $< 10\%$ ), with negative values in eastern China (where nitrate concentrations are high) and positive values in western and central China (where nitrate concentrations are lower and have less bias compared to observations).

To further explore the role of aerosol composition (and possible mischaracterization in the model), we take the simulated mass concentrations and compute the AOD assuming that the entire aerosol mass is sulfate ( $\text{SO}_4$  in Fig. 7) or, alternatively, hydrophobic black carbon (BC in Fig. 7). Black carbon has a high mass extinction efficiency, which is constant with RH given its hydrophobic nature; while sulfate is very hygroscopic, resulting in much higher extinction efficiencies at higher relative humidity values. Overall, assuming that all the mass is sulfate leads to low biases on the order of  $15\text{--}20\%$  as the AOD in many regions in the US is dominated by inorganics. Errors are largest in regions and seasons with larger contributions of less hygroscopic aerosols (organic carbon and dust) and/or high relative humidity. Assuming the entire aerosol mass is black carbon can lead to greater errors than sulfate because BC has a larger mass extinction at lower relative humidity values and hydrophobic black carbon generally makes up a small fraction of the mass loading in all regions in the US and

**Exploring exposure  
uncertainty**

B. Ford and C. L. Heald

Title Page

Abstract

Introduction

Conclusions

References

Tables

Figures



Back

Close

Full Screen / Esc

Printer-friendly Version

Interactive Discussion



China. When RH is low, this assumption increases the AOD, which leads to an under prediction in the derived  $PM_{2.5}$ . When RH is high, this decreases the AOD and leads to an over prediction in derived  $PM_{2.5}$ . The largest percentage changes occur in the southwestern US and western China ( $\sim -30\%$ ) due to the low relative humidity, low mass concentrations, and large contribution of dust.

We also compare these sensitivity tests on daily timescales. We do not show the results here because we rely on chronic exposure (annual average concentrations) for calculating mortality burdens. The normalized mean biases in annual average concentrations (Fig. 7) are generally much less (range of  $\pm 20\%$  in US and  $\pm 50\%$  in China) than potential random errors in daily values as many of these daily errors cancel out in longer term means. This is the case for our sensitivity tests regarding the vertical profile and relative humidity, which have much larger errors on shorter timescales. However, because our method to test the sensitivity to aerosol type assumes that all aerosol mass is black carbon or sulfate, we introduce a systematic bias that is not significantly reduced in the annual NMB. This highlights the differing potential impacts due to systematic and random errors, which is an important distinction for determining the usefulness of this method. Systematic errors may not be as obvious on short timescales compared to random errors (related to meteorology and/or representation of plumes) that can lead to large biases in daily concentrations. However, these random errors have less impact when we examine annual average concentrations and mortality burdens. Systematic errors, potentially related to sources or processes, may be harder to counteract even on longer timescales and even when the model is constrained by satellite observations. However, we also show that random daily errors can bias the long term mean, stressing the importance of not only correcting regional biases, but also in accurately simulating daily variability.

We translate this potential uncertainty in  $\eta$  to potential uncertainty in mortality estimates determined from the satellite-based  $PM_{2.5}$ . We use the normalized mean bias in annual  $PM_{2.5}$  determined from the sensitivity tests for RH, the vertical profile, grid resolution, and aerosol composition for each grid box and then use these values to

“bias correct” our satellite-based annual  $PM_{2.5}$  concentrations and re-calculate exposure (shown in Fig. 5) and mortality (discussed in Sect. 6). From Fig. 5, we see that the uncertainty in  $\eta$ , when translated to an annual exposure level, are larger than the differences in exposure levels estimated from model and satellite-based  $PM_{2.5}$ , suggesting that satellite-based products which rely strongly on the model or which do not account for the variability in the aforementioned variables, does not necessarily provide a definitively better estimate of exposure. Secondly, these uncertainties in many regions are greater than the difference between both the model and surface  $PM_{2.5}$  and the satellite-based and surface observations. While these comparisons are limited spatially and temporally, this highlights that constraining the model with the satellite observations can improve estimates of  $PM_{2.5}$  but there remains a large amount of uncertainty in these estimates.

### 4.3 Selection of concentration response function and relative risk

The choice of the shape of the concentration response function (CRF) and relative risk ratio value explains much of the difference in burden estimated in different studies listed in Table 1. In general, it is difficult to determine risks at the population level and ambient air quality measurements may not necessarily be representative of an individual’s actual exposure. Studies have found that using ambient concentrations tend to under predict health effects (e.g. Hubbell et al., 2009). However, personal monitoring is costly and time-intensive, and therefore, epidemiology studies generally rely on determining population level concentration response functions rather than personal-level exposure responses. However, populations also respond differently; and therefore the shape and magnitude of this response varies among studies.

For an initial metric of the uncertainty in the risk ratios that we used, we can include the range using the 95 % confidence interval determined in the Laden et al. (2006) and Krewski et al. (2009) studies. A confidence interval shows the statistical range within which the true PM coefficient for the study population is likely to lie, which could be a single city, region, or population group. The Krewski et al. (2009) study, which is

## Exploring exposure uncertainty

B. Ford and C. L. Heald

Title Page

Abstract

Introduction

Conclusions

References

Tables

Figures



Back

Close

Full Screen / Esc

Printer-friendly Version

Interactive Discussion





## Exploring exposure uncertainty

B. Ford and C. L. Heald

Title Page

Abstract

Introduction

Conclusions

References

Tables

Figures



Back

Close

Full Screen / Esc

Printer-friendly Version

Interactive Discussion



a reanalysis of the American Cancer Society (ACS) Cancer Prevention Study II (CPS-II), included 1.2 million people in the Los Angeles and New York City regions, whereas the Laden et al. (2006) study, an extended analysis of the Harvard Six Cities Studies, included 8096 white participants. Using just these confidence intervals as a measure of uncertainty suggests that there exists a large range of uncertainty in population-level health responses to exposure and caution should be exercised when attempting to transfer these values beyond the population from which they were determined in order to estimate national-level mortality burdens based on ambient concentrations.

To test the impact of methodological choices associated with the burden calculation, we compare results using different concentration response functions and relative risk ratios that previous studies have used. Table 4 lists the different choices that we explore regarding the CRF and relative risk, the study that used these values, and the resulting percent change in burden compared to our initial estimates. In particular we compare our results using risk ratio values from Pope III et al. (2002) and Laden et al. (2006), and log-linear and power law relationships. Figure 8 shows that the largest difference in burden is associated with using the higher risk ratios from Laden et al. (2006) vs. using Krewski et al. (2009), the former suggest a much greater mortality response to  $PM_{2.5}$  exposure.

We also test the use of a “threshold” value. Most experts in health impacts of ambient air quality agree that there is no population-level threshold (although there may be individual-level thresholds, e.g. Roman et al., 2008); however, there are few epidemiological studies in regions with very low annual average concentrations (Crouse et al., 2012 records a  $1.9 \mu\text{g m}^{-3}$  annual concentration in rural Canada) making it difficult to determine the health risks in relatively clean conditions. Therefore, the lowest measured concentration is often used to account for uncertainty in the shape of the response function at very low concentrations. Other studies have not used a threshold value, but a PRB concentration (generally  $0\text{--}2 \mu\text{g m}^{-3}$ ) to calculate mortality attributable to concentrations due to national anthropogenic emissions (not transport or natural



sources, i.e. the concentration levels to which policies might be able to reduce, e.g. Fann et al., 2012).

Our estimates of Sect. 3 also use the same relative risk values for every location. However, studies have found that different populations have varied responses to exposure (potential for “effect modification”) (Dominici et al., 2003). One of the main uncertainties in our method is relying on risk ratios determined from epidemiology studies conducted in the United States, which may not represent the actual risks for populations in China. Long-term epidemiology studies examining exposure to  $PM_{2.5}$  across broad regions of China are scarce, but studies using  $PM_{10}$  have suggested lower exposure-response coefficients than determined by studies conducted in the US and Europe (Aunan and Pan, 2004).

We also explore using different “threshold” values. In the US, using the lowest measured value of  $5.8 \mu g m^{-3}$  from the Krewski et al. (2009) study has a significant impact, reducing our burden estimates by more than half (which consequently would put our estimates into agreement with Lelieveld et al., 2013 as it reduce the impact to zero in any rural region with low concentration). Using a CF value of  $4 \mu g m^{-3}$  or a regional PRB concentration also reduces our estimates but not by as much, suggesting that the choice of this value is very important in the US where annual mean concentrations are relatively low. However, in China these threshold values have less than a 10 % impact on our results because annual mean concentrations are high enough that subtracting a threshold makes little difference. Conversely, using a ceiling value of  $30 \mu g m^{-3}$  or ( $50 \mu g m^{-3}$ ) produces no difference in the US (0 % of the population experiences annual concentration values greater than  $30 \mu g m^{-3}$ ), while strongly reducing burden estimates in China.

We also see that the shape of the CRF produces different results between the US and China. Using a power law or log-linear function increase relative risks at low concentrations and decreases risk ratios at high concentrations such that total disease burden estimates increase in the US and decrease in China. In the US, a log-linear CRF is almost equivalent to a linear response because of the low concentrations. In

Exploring exposure uncertainty

B. Ford and C. L. Heald

Title Page

Abstract

Introduction

Conclusions

References

Tables

Figures



Back

Close

Full Screen / Esc

Printer-friendly Version

Interactive Discussion



general, the shape of the concentration response function is more important at low or very high concentrations.

## 5 Discussion and conclusions

Calculating health burdens is an extremely important endeavor for informing air pollution policy, but literature estimates cover a large range due to differences in methodology regarding both the measurement of ambient concentrations and the health impact assessment. Satellite observations have proved useful in estimating exposure and the resulting health impacts (e.g. van Donkelaar et al., 2015; Yao et al., 2013). However, there remain large uncertainties associated with these satellite measurements and the methods for translating them into surface air quality that needs to be further investigated. Our goal with this work is to explore how mortality burden estimates are made and how choices within this methodology can explain some of these discrepancies. We also aim to provide a context for interpreting the quantification of PM<sub>2.5</sub> chronic exposure health burdens.

In Fig. 9, we show the mortality burdens for respiratory disease, lung cancer and heart disease associated with chronic exposure to ambient PM<sub>2.5</sub> and calculated using annual average model-based and “satellite-based” values (from MISR and MODIS) for both the US and China. We show here that the satellite-based estimates suggest slightly higher national burdens in the US and slightly lower in China. However, our values using these different annual average concentrations fall within the range of values found in the literature (Table 1).

We further contrast these estimates to the range in uncertainty associated with our observations and methodology. The difference between the burden calculated using strictly the model or the satellite-based approach is greater than the uncertainty range in the satellite AOD, suggesting that this difference is outside of the scope of measurement limitations and errors. However, the potential uncertainty in the satellite-based estimate due to the conversion from AOD to surface PM<sub>2.5</sub> (represented by the model

## Exploring exposure uncertainty

B. Ford and C. L. Heald

Title Page

Abstract

Introduction

Conclusions

References

Tables

Figures



Back

Close

Full Screen / Esc

Printer-friendly Version

Interactive Discussion



## Exploring exposure uncertainty

B. Ford and C. L. Heald

Title Page

Abstract

Introduction

Conclusions

References

Tables

Figures



Back

Close

Full Screen / Esc

Printer-friendly Version

Interactive Discussion



$\eta$ ) is substantially larger, larger even than the difference between model-derived and satellite-derived estimates. Therefore, while constraining the model estimate of  $\text{PM}_{2.5}$  by actual observations should improve our health effect estimates, the uncertainty in the required model information may limit the accuracy of this approach. Again, we stress that these are “potential” model uncertainties which may overestimate the true uncertainty in regions where the model accurately represents the composition and distribution of aerosols. We also acknowledge that we have investigated a limited set of factors; additional biases may exacerbate these uncertainties.

Figure 9 also conveys the range in mortality estimates for the US and China that can result from varying choices for the risk ratio or shape of the concentration response. While epidemiology studies attempt to statistically account for differences in populations and confounding variables, there is still a large spread in determined risk ratios. Just as important, or perhaps more so than determining ambient concentrations, correctly applying response functions is a determining factor in quantifying the burden of mortality due to outdoor air quality. Differences in exposure estimates can be overshadowed by these different epidemiological approaches. As an added example, we calculated the mortality burden using only populated places, similar to Lelieveld et al. (2013) and find that for the US this decreased the burden by 13%, (satellite-based, 18% for model). For China, this reduces the burden estimate by 72%. Disease burdens estimated in various studies can therefore only be truly compared when the methodology is harmonized.

Satellite measurements have provided great advancements in monitoring global air quality, providing information in regions with previously few measurements. However, further progress still needs to be made in determining how to characterize exposure to ambient  $\text{PM}_{2.5}$  using these satellite observations. As air pollution is a leading environmentally-related cause of premature mortality, the difficulties in applying this data should not negate the importance of this endeavor. Overcoming sampling limitations in satellite observations and better accounting for regional biases could help to reduce the uncertainty in satellite-retrieved AOD. Future geostationary satellites will

## Exploring exposure uncertainty

B. Ford and C. L. Heald

Title Page

Abstract

Introduction

Conclusions

References

Tables

Figures



Back

Close

Full Screen / Esc

Printer-friendly Version

Interactive Discussion



be critical to advance this methodology and will provide extremely valuable information for daily monitoring and tracking of air quality. Furthermore, these geostationary observations, in concert with greater surface monitoring, will offer new constraints for epidemiological studies to develop health risk assessments and lessen the uncertainty in applying concentration-response functions and determining health burdens.

*Acknowledgements.* This work was supported in part by the MIT Center for Environmental Health Science (via NIH grant P30-ES002109). We acknowledge useful discussions with Jennifer Peel.

## References

Abbey, D. E., Hwang, B. L., Burchette, R. J., Vancuren, T., and Mills, P. K.: Estimated long-term ambient concentrations of PM<sub>10</sub> and development of respiratory symptoms in a nonsmoking population, *Arch. Environ. Health*, 50, 139–152, doi:10.1080/00039896.1995.9940891, 1995.

Alexander, B., Park, R. J., Jacob, D. J., Li, Q. B., Yantosca, R. M., Savarino, J., Lee, C. C. W., and Thiemens, M. H.: Sulfate formation in sea-salt aerosols: Constraints from oxygen isotopes, *J. Geophys. Res.*, 110, D10307, doi:10.1029/2004JD005659, 2005.

Anenberg, S. C., Horowitz, L. W., Tong, D. Q., and West, J. J.: An estimate of the global burden of anthropogenic ozone and fine particulate matter on premature human mortality using atmospheric modeling, *Environ. Health Persp.*, 118, 1189–1195, doi:10.1289/ehp.0901220, 2010.

Aunan, K. and Pan, X.-C.: Exposure-response functions for health effects of ambient air pollution applicable for China – a meta-analysis, *Sci. Total Environ.*, 329, 3–16, doi:10.1016/j.scitotenv.2004.03.008, 2004.

Beelen, R., Hoek, G., van den Brandt, P. A., Goldbohm, R. A., Fischer, P., Schouten, L. J., Jerrett, M., Hughes, E., Armstrong, B., and Brunekreef, B.: Long-term effects of traffic-related air pollution on mortality in a Dutch cohort (NLCS-AIR study), *Environ. Health Persp.*, 116, 196–202, doi:10.1289/ehp.10767, 2008.

Burnett, R. T., Pope III, C. A., Ezzati, M., Olives, C., Lim, S. S., Mehta, S., Shin, H. H., Singh, G., Hubbell, B., Brauer, M., Anderson, H. R., Smith, K. R., Balmes, J. R., Bruce, N. G.,

Exploring exposure  
uncertainty

B. Ford and C. L. Heald

Title Page

Abstract

Introduction

Conclusions

References

Tables

Figures



Back

Close

Full Screen / Esc

Printer-friendly Version

Interactive Discussion



Kan, H., Laden, F., Prüss-Ustün, A., Turner, M. C., Gapstur, S. M., Diver, W. R., and Cohen, A.: An integrated risk function for estimating the global burden of disease attributable to ambient fine particulate matter exposure, *Environ. Health Perspect.*, 122, 397–40, doi:10.1289/ehp.1307049, 2014.

5 Carey, I. M., Atkinson, R. W., Kent, A. J., van Staa, T., Cook, D. G., and Anderson, H. R.: Mortality associations with long-term exposure to outdoor air pollution in a national English cohort, *Am. J. Resp. Crit. Care*, 187, 1226–1233, doi:10.1164/rccm.201210-1758OC, 2013.

Chen, H. and Goldberg, M. S.: The effects of outdoor air pollution on chronic illnesses, *McGill J. Med. MJM*, 12, 58–64, 2009.

10 Chen, W., Zheng, R., Zhang, S., Zhao, P., Li, G., Wu, L., and He, J.: The incidences and mortalities of major cancers in China, 2009, *Chin. J. Cancer Res.*, 32, 106–112, doi:10.5732/cjc.013.10018, 2013.

Cheng, T., Chen, H., Gu, X., Yu, T., Guo, J., and Guo, H.: The inter-comparison of MODIS, MISR and GOCART aerosol products against AERONET data over China, *J. Quant. Spectrosc. Ra.*, 113, 2135–2145, doi:10.1016/j.jqsrt.2012.06.016, 2012.

15 Cohen, A. J., Ross Anderson, H., Ostro, B., Pandey, K. D., Krzyzanowski, M., Künzli, N., Gutschmidt, K., Pope, A., Romieu, I., Samet, J. M., and Smith, K.: The global burden of disease due to outdoor air pollution, *J. Toxicol. Envi. Heal. A*, 68, 1301–1307, doi:10.1080/15287390590936166, 2005.

20 Cooke, W. F., Lioussé, C., Cachier, H., and Feichter, J.: Construction of a 1° × 1° fossil fuel emission data set for carbonaceous aerosol and implementation and radiative impact in the ECHAM4 model, *J. Geophys. Res.*, 104, 22137–22162, doi:10.1029/1999JD900187, 1999.

Crouse, D. L., Peters, P. A., van Donkelaar, A., Goldberg, M. S., Villeneuve, P. J., Brion, O., Khan, S., Atari, D. O., Jerrett, M., Pope, C. A., Brauer, M., Brook, J. R., Martin, R. V., Stieb, D., and Burnett, R. T.: Risk of nonaccidental and cardiovascular mortality in relation to long-term exposure to low concentrations of fine particulate matter: a Canadian national-level cohort study, *Environ. Health Persp.*, 120, 708–714, doi:10.1289/ehp.1104049, 2012.

25 Dockery, D. W., Pope, C. A., Xu, X., Spengler, J. D., Ware, J. H., Fay, M. E., Ferris, B. G., and Speizer, F. E.: An association between air pollution and mortality in six US cities, *New Engl. J. Med.*, 329, 1753–1759, doi:10.1056/NEJM199312093292401, 1993.

30 Dominici, F., Daniels, M., McDermott, A., Zeger, S. L., and Samet, J. Shape of the exposure–response relation and mortality displacement in the NMMAPS database, in: Revised Analy-

## Exploring exposure uncertainty

B. Ford and C. L. Heald

Title Page

Abstract

Introduction

Conclusions

References

Tables

Figures



Back

Close

Full Screen / Esc

Printer-friendly Version

Interactive Discussion



ses of Time-Series of Air Pollution and Health, special report, Health Effects Institute, Boston, MA, 91–96, 2003.

Evans, J., van Donkelaar, A., Martin, R. V., Burnett, R., Rainham, D. G., Birkett, N. J., and Krewski, D.: Estimates of global mortality attributable to particulate air pollution using satellite imagery, *Environ. Res.*, 120, 33–42, doi:10.1016/j.envres.2012.08.005, 2013.

Fairlie, D. T., Jacob, D. J., and Park, R. J.: The impact of transpacific transport of mineral dust in the United States, *Atmos. Environ.*, 41, 1251–1266, doi:10.1016/j.atmosenv.2006.09.048, 2007.

Fang, Y., Naik, V., Horowitz, L. W., and Mauzerall, D. L.: Air pollution and associated human mortality: the role of air pollutant emissions, climate change and methane concentration increases from the preindustrial period to present, *Atmos. Chem. Phys.*, 13, 1377–1394, doi:10.5194/acp-13-1377-2013, 2013.

Fann, N., Lamson, A. D., Anenberg, S. C., Wesson, K., Risley, D., and Hubbell, B. J.: Estimating the national public health burden associated with exposure to ambient PM<sub>2.5</sub> and ozone, *Risk Anal.*, 32, 81–95, doi:10.1111/j.1539-6924.2011.01630.x, 2012.

Fann, N., Fulcher, C. M., and Baker, K.: The recent and future health burden of air pollution apportioned across US sectors, *Environ. Sci. Technol.*, 47, 3580–3589, doi:10.1021/es304831q, 2013.

Ford, B. and Heald, C. L.: An A-train and model perspective on the vertical distribution of aerosols and CO in the Northern Hemisphere, *J. Geophys. Res.*, 117, D06211, doi:10.1029/2011JD016977, 2012.

Ford, B. and Heald, C. L.: Aerosol loading in the Southeastern United States: reconciling surface and satellite observations, *Atmos. Chem. Phys.*, 13, 9269–9283, doi:10.5194/acp-13-9269-2013, 2013.

Franklin, M., Zeka, A., and Schwartz, J.: Association between PM<sub>2.5</sub> and all-cause and specific-cause mortality in 27 US communities, *J. Expo. Sci. Env. Epid.*, 17, 279–287, doi:10.1038/sj.jes.7500530, 2006.

Guenther, A., Karl, T., Harley, P., Wiedinmyer, C., Palmer, P. I., and Geron, C.: Estimates of global terrestrial isoprene emissions using MEGAN (Model of Emissions of Gases and Aerosols from Nature), *Atmos. Chem. Phys.*, 6, 3181–3210, doi:10.5194/acp-6-3181-2006, 2006.

Exploring exposure  
uncertainty

B. Ford and C. L. Heald

Title Page

Abstract

Introduction

Conclusions

References

Tables

Figures



Back

Close

Full Screen / Esc

Printer-friendly Version

Interactive Discussion



- Hand, J. L., Schichtel, B. A., Pitchford, M., Malm, W. C., and Frank, N. H.: Seasonal composition of remote and urban fine particulate matter in the United States, *J. Geophys. Res.*, 117, D05209, doi:10.1029/2011JD017122, 2012.
- Hart, J. E., Garshick, E., Dockery, D. W., Smith, T. J., Ryan, L., and Laden, F.: Long-term ambient multipollutant exposures and mortality, *Am. J. Resp. Crit. Care*, 183, 73–78, doi:10.1164/rccm.200912-1903OC, 2011.
- Heald, C. L., Collett Jr., J. L., Lee, T., Benedict, K. B., Schwandner, F. M., Li, Y., Clarisse, L., Hurtmans, D. R., Van Damme, M., Clerbaux, C., Coheur, P.-F., Philip, S., Martin, R. V., and Pye, H. O. T.: Atmospheric ammonia and particulate inorganic nitrogen over the United States, *Atmos. Chem. Phys.*, 12, 10295–10312, doi:10.5194/acp-12-10295-2012, 2012.
- Henze, D. K., Seinfeld, J. H., Ng, N. L., Kroll, J. H., Fu, T.-M., Jacob, D. J., and Heald, C. L.: Global modeling of secondary organic aerosol formation from aromatic hydrocarbons: high- vs. low-yield pathways, *Atmos. Chem. Phys.*, 8, 2405–2420, doi:10.5194/acp-8-2405-2008, 2008.
- Hoek, G., Krishnan, R. M., Beelen, R., Peters, A., Ostro, B., Brunekreef, B., and Kaufman, J. D.: Long-term air pollution exposure and cardio- respiratory mortality: a review, *Environ. Health*, 12, 43, doi:10.1186/1476-069X-12-43, 2013.
- Holben, B. N., Eck, T. F., Slutsker, I., Tanré, D., Buis, J. P., Setzer, A., Vermote, E., Reagan, J. A., Kaufman, Y. J., Nakajima, T., Lavenu, F., Jankowiak, I., and Smirnov, A.: AERONET – a federated instrument network and data archive for aerosol characterization, *Remote Sens. Environ.*, 66, 1–16, doi:10.1016/S0034-4257(98)00031-5, 1998.
- Hubbell, B., Fann, N., and Levy, J. I.: Methodological considerations in developing local-scale health impact assessments: balancing national, regional, and local data, *Air Qual. Atmosphere Health*, 2, 99–110, doi:10.1007/s11869-009-0037-z, 2009.
- Hudman, R. C., Jacob, D. J., Turquety, S., Leibensperger, E. M., Murray, L. T., Wu, S., Gilliland, A. B., Avery, M., Bertram, T. H., Brune, W., Cohen, R. C., Dibb, J. E., Flocke, F. M., Fried, A., Holloway, J., Neuman, J. A., Orville, R., Perring, A., Ren, X., Sachse, G. W., Singh, H. B., Swanson, A., and Wooldridge, P. J.: Surface and lightning sources of nitrogen oxides over the United States: magnitudes, chemical evolution, and outflow, *J. Geophys. Res.*, 112, D12S05, doi:10.1029/2006JD007912, 2007.
- Hudman, R. C., Murray, L. T., Jacob, D. J., Millet, D. B., Turquety, S., Wu, S., Blake, D. R., Goldstein, A. H., Holloway, J., and Sachse, G. W.: Biogenic vs. anthropogenic sources of CO in the United States, *Geophys. Res. Lett.*, 35, L04801, doi:10.1029/2007GL032393, 2008.



Exploring exposure  
uncertainty

B. Ford and C. L. Heald

Title Page

Abstract

Introduction

Conclusions

References

Tables

Figures



Back

Close

Full Screen / Esc

Printer-friendly Version

Interactive Discussion



Hystad, P., Demers, P. A., Johnson, K. C., Brook, J., Donkelaar, A. van, Lamsal, L., Martin, R., and Brauer, M.: Spatiotemporal air pollution exposure assessment for a Canadian population-based lung cancer case-control study, *Environ. Health*, 11, 22, doi:10.1186/1476-069X-11-22, 2012.

5 Jerrett, M., Arain, A., Kanaroglou, P., Beckerman, B., Potoglou, D., Sahuvaroglu, T., Morrison, J., and Giovis, C.: A review and evaluation of intraurban air pollution exposure models, *J. Expo. Anal. Env. Epid.*, 15, 185–204, doi:10.1038/sj.jea.7500388, 2005.

10 Jerrett, M., Burnett, R. T., Beckerman, B. S., Turner, M. C., Krewski, D., Thurston, G., Martin, R. V., van Donkelaar, A., Hughes, E., Shi, Y., Gapstur, S. M., Thun, M. J., and Pope, C. A.: Spatial analysis of air pollution and mortality in California, *Am. J. Resp. Crit. Care*, 188, 593–599, doi:10.1164/rccm.201303-0609OC, 2013.

15 Kahn, R. A., Gaitley, B. J., Martonchik, J. V., Diner, D. J., Crean, K. A., and Holben, B.: Multiangle Imaging Spectroradiometer (MISR) global aerosol optical depth validation based on 2 years of coincident Aerosol Robotic Network (AERONET) observations, *J. Geophys. Res.-Atmos.*, 110, D10S04, doi:10.1029/2004JD004706, 2005.

Kahn, R. A., Gaitley, B. J., Garay, M. J., Diner, D. J., Eck, T. F., Smirnov, A., and Holben, B. N.: Multiangle Imaging Spectroradiometer global aerosol product assessment by comparison with the Aerosol Robotic Network, *J. Geophys. Res.-Atmos.*, 115, D23209, doi:10.1029/2010JD014601, 2010.

20 Katanoda, K., Sobue, T., Satoh, H., Tajima, K., Suzuki, T., Nakatsuka, H., Takezaki, T., Nakayama, T., Nitta, H., Tanabe, K., and Tominaga, S.: An association between long-term exposure to ambient air pollution and mortality from lung cancer and respiratory diseases in Japan, *J. Epidemiol. Jpn. Epidemiol. Assoc.*, 21, 132–143, 2011.

25 Krewski, D., Burnett, R. T., Goldberg, M. S., Hoover, K., Siemiatyckis, J., Jerrett, M., Abrahamowicz, M., and White, W. H.: Reanalysis of the Harvard Six Cities Study and the American Cancer Society Study of Particulate Air Pollution and Mortality, Health Effect's Institute, Cambridge, MA, 2000.

30 Krewski, D., Jerrett, M., Burnett, R. T., Ma, R., Hughes, E., Shi, Y., Turner, M. C., Pope 3rd, C. A., Thurston, G., Calle, E. E., Thun, M. J., Beckerman, B., DeLuca, P., Finkelstein, N., Ito, K., Moore, D. K., Newbold, K. B., Ramsay, T., Ross, Z., Shin, H., and Tempalski, B.: Extended follow-up and spatial analysis of the American Cancer Society study linking particulate air pollution and mortality, *Res. Rep. Health Eff. Inst.*, 140, 5–114, 115–136, 2009.



## Exploring exposure uncertainty

B. Ford and C. L. Heald

Title Page

Abstract

Introduction

Conclusions

References

Tables

Figures



Back

Close

Full Screen / Esc

Printer-friendly Version

Interactive Discussion



- Künzli, N., Medina, S., Kaiser, R., Quénel, P., Horak, F., and Studnicka, M.: Assessment of deaths attributable to air pollution: should we use risk estimates based on time series or on cohort studies?, *Am. J. Epidemiol.*, 153, 1050–1055, doi:10.1093/aje/153.11.1050, 2001.
- Laden, F., Schwartz, J., Speizer, F. E., and Dockery, D. W.: Reduction in fine particulate air pollution and mortality, *Am. J. Resp. Crit. Care*, 173, 667–672, doi:10.1164/rccm.200503-443OC, 2006.
- Leibensperger, E. M., Mickley, L. J., Jacob, D. J., Chen, W.-T., Seinfeld, J. H., Nenes, A., Adams, P. J., Streets, D. G., Kumar, N., and Rind, D.: Climatic effects of 1950–2050 changes in US anthropogenic aerosols – Part 1: Aerosol trends and radiative forcing, *Atmos. Chem. Phys.*, 12, 3333–3348, doi:10.5194/acp-12-3333-2012, 2012.
- Lelieveld, J., Barlas, C., Giannadaki, D., and Pozzer, A.: Model calculated global, regional and megacity premature mortality due to air pollution, *Atmos. Chem. Phys.*, 13, 7023–7037, doi:10.5194/acp-13-7023-2013, 2013.
- Lepeule, J., Laden, F., Dockery, D., and Schwartz, J.: Chronic exposure to fine particles and mortality: an extended follow-up of the Harvard Six Cities study from 1974 to 2009, *Environ. Health Persp.*, 120, 965–970, doi:10.1289/ehp.1104660, 2012.
- Levy, R. C., Remer, L. A., Kleidman, R. G., Mattoo, S., Ichoku, C., Kahn, R., and Eck, T. F.: Global evaluation of the Collection 5 MODIS dark-target aerosol products over land, *Atmos. Chem. Phys.*, 10, 10399–10420, doi:10.5194/acp-10-10399-2010, 2010.
- Levy, R. C., Mattoo, S., Munchak, L. A., Remer, L. A., Sayer, A. M., Patadia, F., and Hsu, N. C.: The Collection 6 MODIS aerosol products over land and ocean, *Atmos. Meas. Tech.*, 6, 2989–3034, doi:10.5194/amt-6-2989-2013, 2013.
- Li, J., Carlson, B. E., and Laciš, A. A.: How well do satellite AOD observations represent the spatial and temporal variability of PM<sub>2.5</sub> concentration for the United States?, *Atmos. Environ.*, 102, 260–273, doi:10.1016/j.atmosenv.2014.12.010, 2015.
- Lim, S. S., Vos, T., Flaxman, A. D., Danaei, G., Shibuya, K., Adair-Rohani, H., Amann, M., Anderson, H. R., Andrews, K. G., Aryee, M., Atkinson, C., Bacchus, L. J., Bahalim, A. N., Balakrishnan, K., Balmes, J., Barker-Collo, S., Baxter, A., Bell, M. L., Blore, J. D., Blyth, F., Bonner, C., Borges, G., Bourne, R., Boussinesq, M., Brauer, M., Brooks, P., Bruce, N. G., Brunekreef, B., Bryan-Hancock, C., Bucello, C., Buchbinder, R., Bull, F., Burnett, R. T., Byers, T. E., Calabria, B., Carapetis, J., Carnahan, E., Chafe, Z., Charlson, F., Chen, H. L., Chen, J. S., Cheng, A. T. A., Child, J. C., Cohen, A., Colson, K. E., Cowie, B. C., Darby, S., Darling, S., Davis, A., Degenhardt, L., Dentener, F., Des Jarlais, D. C., Devries, K., Dherani,

Exploring exposure  
uncertainty

B. Ford and C. L. Heald

Title Page

Abstract

Introduction

Conclusions

References

Tables

Figures



Back

Close

Full Screen / Esc

Printer-friendly Version

Interactive Discussion



M., Ding, E. L., Dorsey, E. R., Driscoll, T., Edmond, K., Ali, S. E., Engell, R. E., Erwin, P. J., Fahimi, S., Falder, G., Farzadfar, F., Ferrari, A., Finucane, M. M., Flaxman, S., Fowkes, F. G. R., Freedman, G., Freeman, M. K., Gakidou, E., Ghosh, S., Giovannucci, E., Gmel, G., Graham, K., Grainger, R., Grant, B., Gunnell, D., Gutierrez, H. R., Hall, W., Hoek, H. W., Hogan, A., Hosgood, H. D., Hoy, D., Hu, H., Hubbell, B. J., Hutchings, S. J., Ibeanusi, S. E., Jacklyn, G. L., Jasrasaria, R., Jonas, J. B., Kan, H. D., Kanis, J. A., Kassebaum, N., Kawakami, N., Khang, Y. H., Khatibzadeh, S., Khoo, J. P., Kok, C., Laden, F., Lalloo, R., Lan, Q., Lathlean, T., Leasher, J. L., Leigh, J., Li, Y., Lin, J. K., Lipshultz, S. E., London, S., Lozano, R., Lu, Y., Mak, J., Malekzadeh, R., Mallinger, L., Marcenes, W., March, L., Marks, R., Martin, R., McGale, P., McGrath, J., Mehta, S., Mensah, G. A., Merriman, T. R., Micha, R., Michaud, C., Mishra, V., Hanafiah, K. M., Mokdad, A. A., Morawska, L., Mozaffarian, D., Murphy, T., Naghavi, M., Neal, B., Nelson, P. K., Nolla, J. M., Norman, R., Olives, C., Omer, S. B., Orchard, J., Osborne, R., Ostro, B., Page, A., Pandey, K. D., Parry, C. D. H., Passmore, E., Patra, J., Pearce, N., Pelizzari, P. M., Petzold, M., Phillips, M. R., Pope, D., Pope, C. A., Powles, J., Rao, M., Razavi, H., Rehfuss, E. A., Rehm, J. T., Ritz, B., Rivara, F. P., Roberts, T., Robinson, C., Rodriguez-Portales, J. A., Romieu, I., Room, R., Rosenfeld, L. C., Roy, A., Rushton, L., Salomon, J. A., Sampson, U., Sanchez-Riera, L., Sanman, E., Sapkota, A., Seedat, S., Shi, P. L., Shield, K., Shivakoti, R., Singh, G. M., Sleet, D. A., Smith, E., Smith, K. R., Stapelberg, N. J. C., Steenland, K., Stockl, H., Stovner, L. J., Straif, K., Straney, L., Thurston, G. D., Tran, J. H., Van Dingenen, R., van Donkelaar, A., Veerman, J. L., Vijayakumar, L., Weintraub, R., Weissman, M. M., White, R. A., Whiteford, H., Wiersma, S. T., Wilkinson, J. D., Williams, H. C., Williams, W., Wilson, N., Woolf, A. D., Yip, P., Zielinski, J. M., Lopez, A. D., Murray, C. J. L., and Ezzati, M.: A comparative risk assessment of burden of disease and injury attributable to 67 risk factors and risk factor clusters in 21 regions, 1990–2010: a systematic analysis for the Global Burden of Disease Study 2010, *Lancet*, 25 380, 2224–2260, doi:10.1016/S0140-6736(12)61766-8, 2012.

Lipsett, M. J., Ostro, B. D., Reynolds, P., Goldberg, D., Hertz, A., Jerrett, M., Smith, D. F., Garcia, C., Chang, E. T., and Bernstein, L.: Long-term exposure to air pollution and cardiorespiratory disease in the California Teachers Study cohort, *Am. J. Resp. Crit. Care*, 184, 828–835, doi:10.1164/rccm.201012-2082OC, 2011.

Liu, Y., Park, R. J., Jacob, D. J., Li, Q., Kilaru, V., and Sarnat, J. A.: Mapping annual mean ground-level PM<sub>2.5</sub> concentrations using Multiangle Imaging Spectroradiometer aerosol op-

## Exploring exposure uncertainty

B. Ford and C. L. Heald

Title Page

Abstract

Introduction

Conclusions

References

Tables

Figures



Back

Close

Full Screen / Esc

Printer-friendly Version

Interactive Discussion



tical thickness over the contiguous United States, *J. Geophys. Res.-Atmos.*, 109, D22206, doi:10.1029/2004JD005025, 2004.

Liu, Y., Sarnat, J. A., Kilaru, V., Jacob, D. J., and Koutrakis, P.: Estimating ground-level  $PM_{2.5}$  in the eastern United States using satellite remote sensing, *Environ. Sci. Technol.*, 39, 3269–3278, 2005.

Liu, Y., Koutrakis, P., and Kahn, R.: Estimating fine particulate matter component concentrations and size distributions using satellite-retrieved fractional aerosol optical depth: part 1—method development, *J. Air Waste Manage.*, 57, 1351–1359, 2007.

Malm, W. C., Sisler, J. F., Huffman, D., Eldred, R. A., and Cahill, T. A.: Spatial and seasonal trends in particle concentration and optical extinction in the United States, *J. Geophys. Res.-Atmos.*, 99, 1347–1370, doi:10.1029/93JD02916, 1994.

Marlier, M. E., DeFries, R. S., Voulgarakis, A., Kinney, P. L., Randerson, J. T., Shindell, D. T., Chen, Y., and Faluvegi, G.: El Nino and health risks from landscape fire emissions in south-east Asia, *Nat. Clim. Change*, 3, 131–136, doi:10.1038/nclimate1658, 2013.

McDonnell, W. F., Nishino-Ishikawa, N., Petersen, F. F., Chen, L. H., and Abbey, D. E.: Relationships of mortality with the fine and coarse fractions of long-term ambient  $PM_{10}$  concentrations in nonsmokers, *J. Expo. Anal. Env. Epidemiol.*, 10, 427–436, 2000.

Miller, K. A., Siscovick, D. S., Sheppard, L., Shepherd, K., Sullivan, J. H., Anderson, G. L., and Kaufman, J. D.: Long-term exposure to air pollution and incidence of cardiovascular events in women, *New Engl. J. Med.*, 356, 447–458, doi:10.1056/NEJMoa054409, 2007.

Naess, Ø., Nafstad, P., Aamodt, G., Claussen, B., and Rosland, P.: Relation between concentration of air pollution and cause-specific mortality: four-year exposures to nitrogen dioxide and particulate matter pollutants in 470 neighborhoods in Oslo, Norway, *Am. J. Epidemiol.*, 165, 435–443, doi:10.1093/aje/kwk016, 2007.

OECD: OECD Environmental Outlook to 2050, OECD Publishing, available at: [http://www.oecd-ilibrary.org/environment/oecd-environmental-outlook-to-2050\\_9789264122246-en](http://www.oecd-ilibrary.org/environment/oecd-environmental-outlook-to-2050_9789264122246-en) (last access: 24 June 2015), 2012.

Ostro, B.: Outdoor Air Pollution: Assessing the Environmental Burden of Disease at National and Local Levels. Environmental Burden of Disease Series, No. 5, edited by: Prüss-Üstün, A., Campbell-Lendrum, D., Corvalán, C., Woodward, A., World Health Organization, Geneva, available at: [http://www.who.int/quantifying\\_ehimpacts/publications/ebd5.pdf](http://www.who.int/quantifying_ehimpacts/publications/ebd5.pdf) (last access: 6 March 2015), 2004.

## Exploring exposure uncertainty

B. Ford and C. L. Heald

Title Page

Abstract

Introduction

Conclusions

References

Tables

Figures



Back

Close

Full Screen / Esc

Printer-friendly Version

Interactive Discussion



Park, R. J., Jacob, D. J., Chin, M., and Martin, R. V.: Sources of carbonaceous aerosols over the United States and implications for natural visibility, *J. Geophys. Res.*, 108, 2002–3190, 2003.

Park, R. J., Jacob, D. J., Field, B. D., Yantosca, R. M., and Chin, M.: Natural and transboundary pollution influences on sulfate-nitrate-ammonium aerosols in the United States: implications for policy, *J. Geophys. Res.-Atmos.*, 109, D15204, doi:10.1029/2003JD004473, 2004.

Pope III, C. A. and Dockery, D. W.: Health effects of fine particulate air pollution: lines that connect, *J. Air Waste Manage.*, 1995, 56, 709–742, 2006.

Pope III, C. A. and Dockery, D. W.: Air pollution and life expectancy in China and beyond, *P. Natl. Acad. Sci. USA*, 110, 12861–12862, doi:10.1073/pnas.1310925110, 2013.

Pope III, C. A., Bates, D. V., and Raizenne, M. E.: Health effects of particulate air pollution: time for reassessment?, *Environ. Health Persp.*, 103, 472–480, 1995.

Pope III, C. A., Burnett, R. T., Thun, M. J., Calle, E. E., Krewski, D., Ito, K., and Thurston, G. D.: Lung cancer, cardiopulmonary mortality, and long-term exposure to fine particulate air pollution, *JAMA J. Am. Med. Assoc.*, 287, 1132–1141, 2002.

Pope III, C. A., Burnett, R. T., Thurston, G. D., Thun, M. J., Calle, E. E., Krewski, D., and Godleski, J. J.: Cardiovascular mortality and long-term exposure to particulate air pollution: epidemiological evidence of general pathophysiological pathways of disease, *Circulation*, 109, 71–77, doi:10.1161/01.CIR.0000108927.80044.7F, 2004.

Pope III, C. A., Muhlestein, J. B., May, H. T., Renlund, D. G., Anderson, J. L., and Horne, B. D.: Ischemic heart disease events triggered by short-term exposure to fine particulate air pollution, *Circulation*, 114, 2443–2448, doi:10.1161/CIRCULATIONAHA.106.636977, 2006.

Pope III, C. A., Burnett, R. T., Krewski, D., Jerrett, M., Shi, Y., Calle, E. E., and Thun, M. J.: Cardiovascular mortality and exposure to airborne fine particulate matter and cigarette smoke: shape of the exposure–response relationship, *Circulation*, 120, 941–948, doi:10.1161/CIRCULATIONAHA.109.857888, 2009.

Pope III, C. A., Burnett, R. T., Turner, M. C., Cohen, A., Krewski, D., Jerrett, M., Gapstur, S. M., and Thun, M. J.: Lung cancer and cardiovascular disease mortality associated with ambient air pollution and cigarette smoke: shape of the exposure–response relationships, *Environ. Health Persp.*, 119, 1616–1621, doi:10.1289/ehp.1103639, 2011.

Pope III, C. A., Cropper, M., Coggins, J., and Cohen, A.: Health benefits of air pollution abatement policy: role of the shape of the concentration–response function, *J. Air Waste Manage.*, 65, 516–522, doi:10.1080/10962247.2014.993004, 2015.

Exploring exposure  
uncertainty

B. Ford and C. L. Heald

Title Page

Abstract

Introduction

Conclusions

References

Tables

Figures



Back

Close

Full Screen / Esc

Printer-friendly Version

Interactive Discussion



Punger, E. M. and West, J. J.: The effect of grid resolution on estimates of the burden of ozone and fine particulate matter on premature mortality in the USA, *Air Qual. Atmosphere Health*, 6, 563–573, doi:10.1007/s11869-013-0197-8, 2013.

Qi, Y., Ge, J., and Huang, J.: Spatial and temporal distribution of MODIS and MISR aerosol optical depth over northern China and comparison with AERONET, *Chinese Sci. Bull.*, 58, 2497–2506, doi:10.1007/s11434-013-5678-5, 2013.

Remer, L. A., Kaufman, Y. J., Tanré, D., Mattoo, S., Chu, D. A., Martins, J. V., Li, R.-R., Ichoku, C., Levy, R. C., Kleidman, R. G., Eck, T. F., Vermote, E., and Holben, B. N.: The MODIS aerosol algorithm, products, and validation, *J. Atmos. Sci.*, 62, 947–973, doi:10.1175/JAS3385.1, 2005.

Remer, L. A., Kleidman, R. G., Levy, R. C., Kaufman, Y. J., Tanré, D., Mattoo, S., Martins, J. V., Ichoku, C., Koren, I., Yu, H., and Holben, B. N.: Global aerosol climatology from the MODIS satellite sensors, *J. Geophys. Res.-Atmos.*, 113, D14S07, doi:10.1029/2007JD009661, 2008.

Ridley, D. A., Heald, C. L., and Ford, B.: North African dust export and deposition: A satellite and model perspective, *J. Geophys. Res.*, 117, D02202, doi:10.1029/2011JD016794, 2012.

Schiferl, L. D., Heald, C. L., Nowak, J. B., Holloway, J. S., Neuman, J. A., Bahreini, R., Pollack, I. B., Ryerson, T. B., Wiedinmyer, C., and Murphy, J. G.: An investigation of ammonia and inorganic particulate matter in California during the CalNex campaign, *J. Geophys. Res.-Atmos.*, 119, 2013JD020765, doi:10.1002/2013JD020765, 2014.

Sheppard, L., Burnett, R. T., Szpiro, A. A., Kim, S.-Y., Jerrett, M., Pope, C. A., and Brunekreef, B.: Confounding and exposure measurement error in air pollution epidemiology, *Air Qual. Atmosphere Health*, 5, 203–216, doi:10.1007/s11869-011-0140-9, 2012.

Shi, L., Zanobetti, A., Kloog, I., Coull, B. A., Koutrakis, P., Melly, S. J., and Schwartz, J. D.: Low-concentration PM<sub>2.5</sub> and mortality: estimating acute and chronic effects in a population-based study, *Environ. Health Perspect.*, doi:10.1289/ehp.1409111, in press, 2015.

Silva, R. A., West, J. J., Zhang, Y., Anenberg, S. C., Lamarque, J.-F., Shindell, D. T., Collins, W. J., Dalsoren, S., Faluvegi, G., Folberth, G., Horowitz, L. W., Nagashima, T., Naik, V., Rumbold, S., Skeie, R., Sudo, K., Takemura, T., Bergmann, D., Cameron-Smith, P., Cionni, I., Doherty, R. M., Eyring, V., Josse, B., MacKenzie, I. A., Plummer, D., Righi, M., Stevenson, D. S., Strode, S., Szopa, S., and Zeng, G.: Global premature mortality due to anthropogenic outdoor air pollution and the contribution of past climate change, *Environ. Res. Lett.*, 8, 034005, doi:10.1088/1748-9326/8/3/034005, 2013.

Exploring exposure  
uncertainty

B. Ford and C. L. Heald

Title Page

Abstract

Introduction

Conclusions

References

Tables

Figures



Back

Close

Full Screen / Esc

Printer-friendly Version

Interactive Discussion



Streets, D. G., Zhang, Q., Wang, L., He, K., Hao, J., Wu, Y., Tang, Y., and Carmichael, G. R.: Revisiting China's CO emissions after the Transport and Chemical Evolution over the Pacific (TRACE-P) mission: synthesis of inventories, atmospheric modeling, and observations, *J. Geophys. Res.-Atmos.*, 111, D14306, doi:10.1029/2006JD007118, 2006.

5 Sun, Q., Hong, X., and Wold, L. E.: Cardiovascular effects of ambient particulate air pollution exposure, *Circulation*, 121, 2755–2765, doi:10.1161/CIRCULATIONAHA.109.893461, 2010.

Thompson, T. M. and Selin, N. E.: Influence of air quality model resolution on uncertainty associated with health impacts, *Atmos. Chem. Phys.*, 12, 9753–9762, doi:10.5194/acp-12-9753-2012, 2012.

10 Toth, T. D., Zhang, J., Campbell, J. R., Hyer, E. J., Reid, J. S., Shi, Y., and Westphal, D. L.: Impact of data quality and surface-to-column representativeness on the PM<sub>2.5</sub>/satellite AOD relationship for the contiguous United States, *Atmos. Chem. Phys.*, 14, 6049–6062, doi:10.5194/acp-14-6049-2014, 2014.

15 US EPA: Quantitative Health Risk Assessment for Particulate Matter – Final Report, Office of Air Quality Planning and Standards, US Environmental Protection Agency, Research Triangle Park, NC, EPA-452/R-10-005, June 2010, available at: [http://www.epa.gov/ttn/naaq/standards/pm/s\\_pm\\_2007\\_risk.html](http://www.epa.gov/ttn/naaq/standards/pm/s_pm_2007_risk.html) (last access: 9 June 2015), 2010.

van Donkelaar, A., Martin, R. V., and Park, R. J.: Estimating ground-level PM<sub>2.5</sub> using aerosol optical depth determined from satellite remote sensing, *J. Geophys. Res.-Atmos.*, 111, 212, doi:10.1029/2005JD006996, 2006.

20 van Donkelaar, A., Martin, R. V., Brauer, M., Kahn, R., Levy, R., Verduzco, C., and Villeneuve, P. J.: Global estimates of ambient fine particulate matter concentrations from satellite-based aerosol optical depth: development and application, *Environ. Health Persp.*, 118, 847–855, doi:10.1289/ehp.0901623, 2010.

25 van Donkelaar, A., Martin, R. V., Levy, R. C., da Silva, A. M., Krzyzanowski, M., Chubarova, N. E., Semutnikova, E., and Cohen, A. J.: Satellite-based estimates of ground-level fine particulate matter during extreme events: a case study of the Moscow fires in 2010, *Atmos. Environ.*, 45, 6225–6232, doi:10.1016/j.atmosenv.2011.07.068, 2011.

30 van Donkelaar, A., Martin, R. V., Brauer, M., and Boys, B.: Use of satellite observations for long-term exposure assessment of global concentrations of fine particulate matter, *Environ. Health Persp.*, 123, 135–143, doi:10.1289/ehp.1408646, 2015.

Wang, X., Huang, J., Ji, M., and Higuchi, K.: Variability of East Asia dust events and their long-term trend, *Atmos. Environ.*, 42, 3156–3165, doi:10.1016/j.atmosenv.2007.07.046, 2008.

Exploring exposure  
uncertainty

B. Ford and C. L. Heald

Title Page

Abstract

Introduction

Conclusions

References

Tables

Figures



Back

Close

Full Screen / Esc

Printer-friendly Version

Interactive Discussion



Wang, Y., Zhang, Q. Q., He, K., Zhang, Q., and Chai, L.: Sulfate-nitrate-ammonium aerosols over China: response to 2000–2015 emission changes of sulfur dioxide, nitrogen oxides, and ammonia, *Atmos. Chem. Phys.*, 13, 2635–2652, doi:10.5194/acp-13-2635-2013, 2013.

Wang, Y., Zhang, Q., Jiang, J., Zhou, W., Wang, B., He, K., Duan, F., Zhang, Q., Philip, S., and Xie, Y.: Enhanced sulfate formation during China's severe winter haze episode in January 2013 missing from current models, *J. Geophys. Res.-Atmos.*, 119, 2013JD021426, doi:10.1002/2013JD021426, 2014.

van der Werf, G. R., Randerson, J. T., Giglio, L., Collatz, G. J., Kasibhatla, P. S., and Arellano Jr., A. F.: Interannual variability in global biomass burning emissions from 1997 to 2004, *Atmos. Chem. Phys.*, 6, 3423–3441, doi:10.5194/acp-6-3423-2006, 2006.

World Bank: World Development Indicators 2015, World Bank, Washington, DC, 2015.

Yao, J., Brauer, M., and Henderson, S. B.: Evaluation of a wildfire smoke forecasting system as a tool for public health protection, *Environ. Health Persp.*, 121, 1142–1147, doi:10.1289/ehp.1306768, 2013.

You, W., Zang, Z., Pan, X., Zhang, L., and Chen, D.: Estimating  $PM_{2.5}$  in Xi'an, China using aerosol optical depth: a comparison between the MODIS and MISR retrieval models, *Sci. Total Environ.*, 505, 1156–1165, doi:10.1016/j.scitotenv.2014.11.024, 2015.

Zeger, S. L., Dominici, F., McDermott, A., and Samet, J. M.: Mortality in the Medicare population and chronic exposure to fine particulate air pollution in urban centers (2000–2005), *Environ. Health Persp.*, 116, 1614–1619, doi:10.1289/ehp.11449, 2008.

Zhang, J. and Reid, J. S.: MODIS aerosol product analysis for data assimilation: assessment of over-ocean level 2 aerosol optical thickness retrievals, *J. Geophys. Res.-Atmos.*, 111, D22207, doi:10.1029/2005JD006898, 2006.

Zhang, J. and Reid, J. S.: A decadal regional and global trend analysis of the aerosol optical depth using a data-assimilation grade over-water MODIS and Level 2 MISR aerosol products, *Atmos. Chem. Phys.*, 10, 10949–10963, doi:10.5194/acp-10-10949-2010, 2010.

Zhang, J., Reid, J. S., and Holben, B. N.: An analysis of potential cloud artifacts in MODIS over ocean aerosol optical thickness products, *Geophys. Res. Lett.*, 32, L15803, doi:10.1029/2005GL023254, 2005.



## Exploring exposure uncertainty

B. Ford and C. L. Heald

**Table 1.** Premature mortality from PM<sub>2.5</sub> exposure by all-cause (All), heart disease (heart), and lung cancer (LC) as estimated in other studies for the globe, US, and China. Values are for ( $\times 1000$  deaths per year). All cause values for this study are calculated as the sum of heart disease, lung cancer, and respiratory disease deaths (as opposed to calculating this based on an all-cause CRF). \*Study provide several estimates determined using different CRFs. Table 3 provides additional information on the data sources and concentrations response functions used in these studies.

Study	US (North America)			China (Asia/Western Pacific)			All	Global Heart	LC
	All	Heart	LC	All	Heart	LC			
Evans et al. (2013)							3313	1256	222
Fann et al. (2012)*	130–320								
Anenberg et al. (2010)*	141	124	17	2736	2584	152	3381 (2077–7714)	3499 (1800–4549)	222 (39–336)
Lelieveld et al. (2013)	55	46	9.1	1006	898	108	2200	2000	186
Cohen et al. (2005)				487			800	712	6.4
Lim et al. (2012)							3100		
WHO (2014)	152			1669			3700	1505	227
Fang et al. (2013)		38	4.4		661	53		1532	95
Silva et al. (2013)							2100	1950	150
US EPA (2010)*	26–360								
Li et al. (2015)	142								
This Study: Satellite	113	82	15	2084	1512	220	–	–	–
This Study: Model	104	75	14	2171	1570	231	–	–	–

Title Page

Abstract

Introduction

Conclusions

References

Tables

Figures



Back

Close

Full Screen / Esc

Printer-friendly Version

Interactive Discussion





## Exploring exposure uncertainty

B. Ford and C. L. Heald

Title Page

Abstract

Introduction

Conclusions

References

Tables

Figures



Back

Close

Full Screen / Esc

Printer-friendly Version

Interactive Discussion

**Table 2.** Parameters for the IER model given in Eq. (8) determined in Burnett et al. (2014) and as in Zheng et al. (2014).

Disease	$\alpha$	$\gamma$	$C_0$	$\rho$
Ischemic Heart Disease	1.65	0.0483	7.45	0.467
Cerebrovascular Disease	1.31	0.0120	7.36	1.274
Chronic Obstructive Pulmonary Disease	22.16	0.00110	7.34	0.697
Lung Cancer	159.22	0.00020	7.35	0.759

## Exploring exposure uncertainty

B. Ford and C. L. Heald

Title Page

Abstract

Introduction

Conclusions

References

Tables

Figures

|◀

▶|

◀

▶

Back

Close

Full Screen / Esc

Printer-friendly Version

Interactive Discussion

**Table 3.** List of model sensitivity tests and descriptions with results shown in Fig. 7.

Sensitivity Test	Description
AvgAOD	AOD is held constant through season while $\eta$ varies daily.
AvgEta	AOD varies daily, while $\eta$ is held constant through season.
AvgProf	Column mass varies daily, but shape of vertical profile is held constant for season. AOD and $\eta$ vary daily but are re-calculated for redistributed mass.
AvgRH	AOD and $\eta$ vary daily but are re-calculated assuming relative humidity remains constant throughout season.
$2 \times 2.5$	$\eta$ values are calculated for simulation run at coarser ( $2^\circ \times 2.5^\circ$ ) resolution and then regrid to nested resolution ( $0.5^\circ \times 0.666^\circ$ ).
SO <sub>4</sub>	Assume all mass in column is sulfate and recalculate $\eta$ .
BC	Assume all mass in column is black carbon and recalculate $\eta$ .
No NO <sub>3</sub>	Calculate AOD and $\eta$ without the contribution of nitrate.

**Table 4.** Input for premature mortality burden estimate sensitivity tests and the resulting percent change in mortality due to chronic exposure determined from satellite-based concentrations. Parentheses are for values determined from model simulated concentrations.

RR source	Threshold	CRF shape	% Change USA	% Change China	Study using method	In Fig. 8
Krewski et al. (2009)	No	Linear	base	base	Fann et al. (2012)	K-L
Krewski et al. (2009)	Yes, LML	Linear	-56 (-62)	-8 (-8)	Annenburg et al. (2010)	K-L-LML
Krewski et al. (2009)	Yes, CF	Linear	-38 (-43)	-6 (-5)		K-L-CF
Krewski et al. (2009)	Yes, PRB	Linear	-10 (-11)			K-L-PRB
Krewski et al. (2009)	No	Linear to 30 $\mu\text{g m}^{-3}$	0 (0)	-30 (-33)	Annenburg et al. (2010)	K-L-30
Krewski et al. (2009)	No	Linear to 50 $\mu\text{g m}^{-3}$	0 (0)	-4 (-8)		K-L-50
Krewski et al. (2009)	Yes, LML	Log-Linear (Eq. 6)	-23 (-30)	-13 (-15)	Evans et al. (2013); Fann and Risley (2013); US EPA (2010)	K-LL-LML
Krewski et al. (2009)	Yes, CF	Log-Linear (Eq. 6)	28 (23)	-2 (-4)		K-LL-CF
Krewski et al. (2009)	No	Log-Linear (Eq. 5)	10 (10)	26 (26)		K-LL
Krewski et al. (2009)	Yes, LML	Log-Linear (Eq. 5)	-53 (-59)	14 (16)	US EPA (2010)	K-LL-LML
Pope et al. (2002)	No	Power Law	44 (52)	-17 (-18)	Marlier et al. (2013)	K-PL
Pope et al. (2002)	Yes, LML	Power Law	-8 (-8)	-44 (-46)		K-PL-LML
Pope et al. (2002)	Yes, PRB	Power Law	21 (35)			K-L-PRB
Laden et al. (2006)	No	Linear	105 (108)	47 (45)	Fann et al. (2012)	L-L
Laden et al. (2006)	Yes, LML	Linear	-14 (-24)	38 (36)	Annenburg et al. (2010); US EPA (2010)	L-L-LML
Laden et al. (2006)	Yes, CF	Linear	32 (24)	51 (49)		L-L-CF
Burnett et al. (2014)	Yes, fitted	IER	-26 (-33)	-18 (-20)	Lim et al. (2012); Zheng et al. (2014)	B-IER

Title Page

Abstract

Introduction

Conclusions

References

Tables

Figures

I ◀

▶ I

◀

▶

Back

Close

Full Screen / Esc

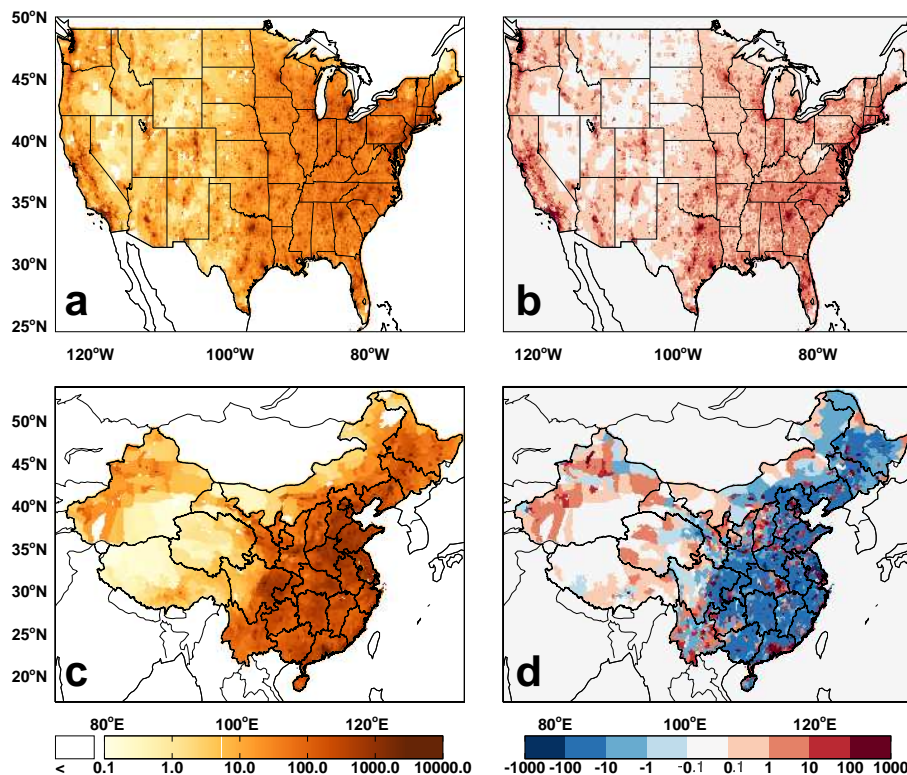
Printer-friendly Version

Interactive Discussion



## Exploring exposure uncertainty

B. Ford and C. L. Heald

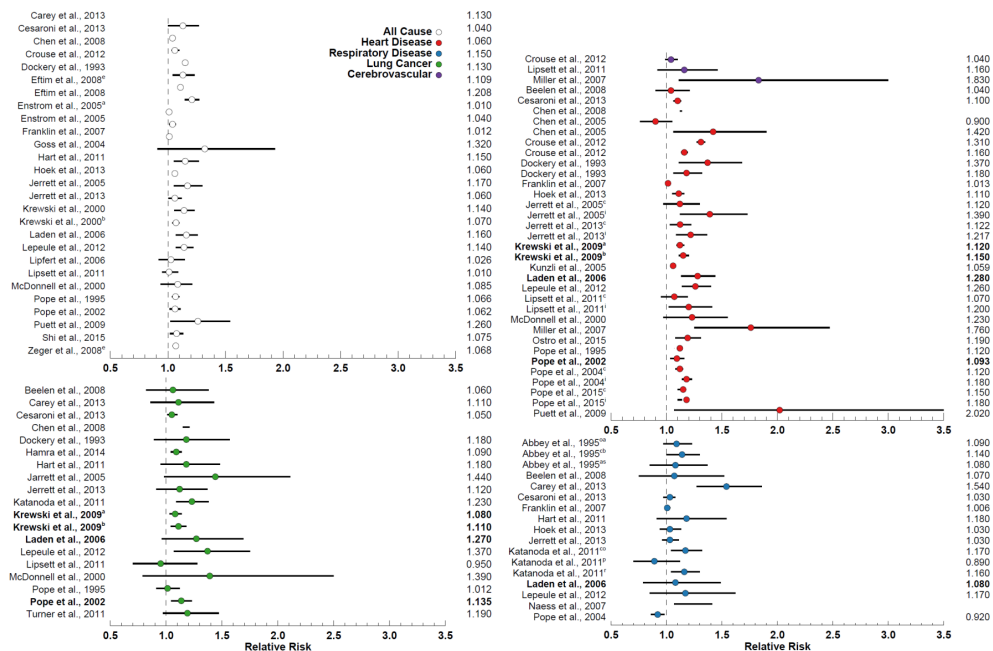


**Figure 1.** Population density (per km<sup>2</sup>) for the year 2000 from the GPWv3 data for (a) the continental US and (c) China. The projection for increase in population density by the year 2015 for (b) the continental US and (d) China.



## Exploring exposure uncertainty

B. Ford and C. L. Heald



**Figure 2.** Relative risk ratios from select previous studies for mortality due to chronic exposure to PM<sub>2.5</sub> (given as per 10 μg m<sup>-3</sup> increase) colored by cause of death. Studies applied in this work are highlighted in bold.

Title Page

Abstract

Introduction

Conclusions

References

Tables

Figures

◀

▶

◀

▶

Back

Close

Full Screen / Esc

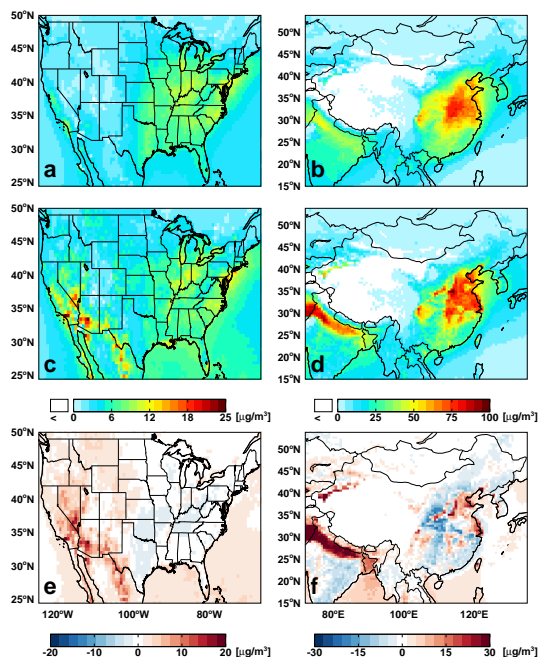
Printer-friendly Version

Interactive Discussion



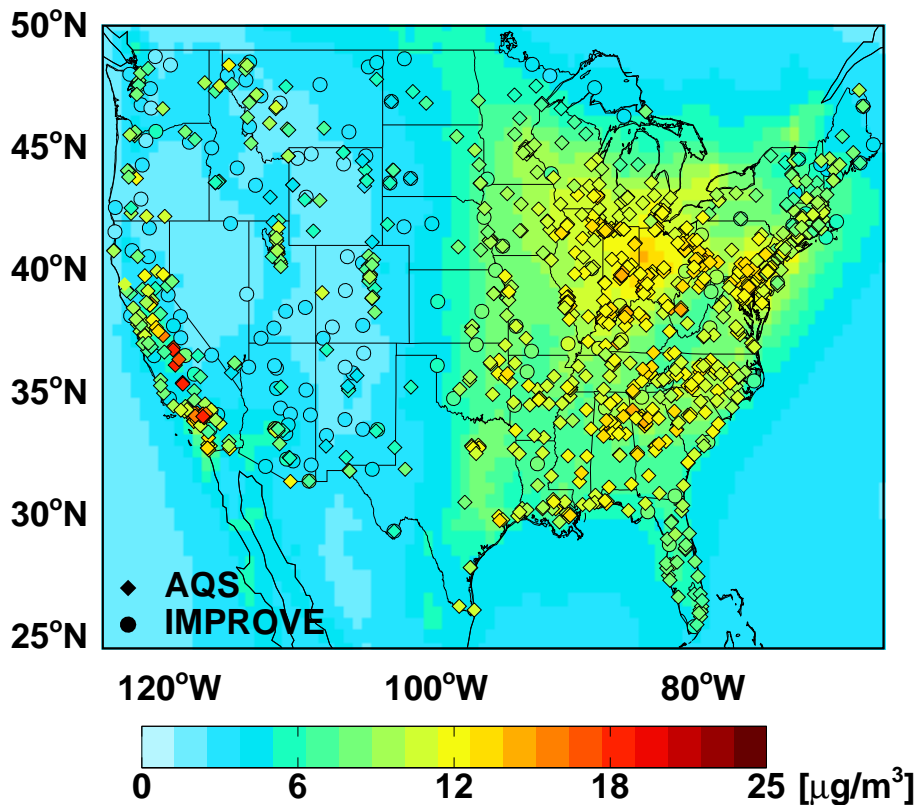
## Exploring exposure uncertainty

B. Ford and C. L. Heald



**Figure 3.** Long-term average (2004–2011) unconstrained model simulation of PM<sub>2.5</sub> for the (a) continental US and (b) China, along with the (MODIS-Aqua Collection 6) satellite-based PM<sub>2.5</sub> for the (c) continental US and (d) China, and the difference between the satellite-constrained and unconstrained model PM<sub>2.5</sub> concentrations.

[Title Page](#)[Abstract](#)[Introduction](#)[Conclusions](#)[References](#)[Tables](#)[Figures](#)[◀](#)[▶](#)[◀](#)[▶](#)[Back](#)[Close](#)[Full Screen / Esc](#)[Printer-friendly Version](#)[Interactive Discussion](#)



**Figure 4.** GEOS-Chem simulated average surface  $\text{PM}_{2.5}$  mass for years 2004–2011 overlaid with measurements at IMPROVE (circles) and AQS sites (diamonds).

Exploring exposure uncertainty

B. Ford and C. L. Heald

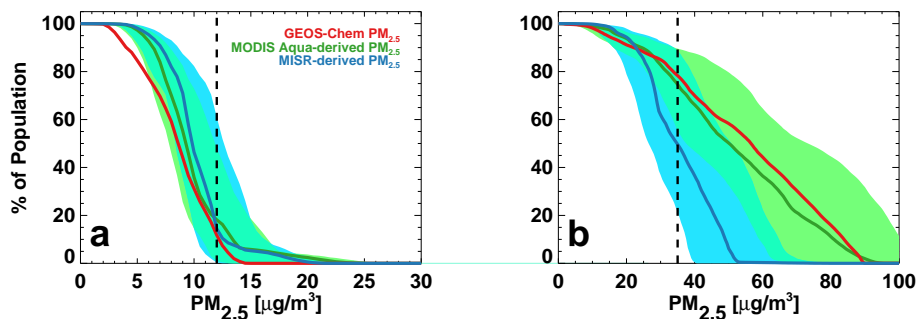
Title Page	
Abstract	Introduction
Conclusions	References
Tables	Figures
◀	▶
◀	▶
Back	Close
Full Screen / Esc	
Printer-friendly Version	
Interactive Discussion	





## Exploring exposure uncertainty

B. Ford and C. L. Heald

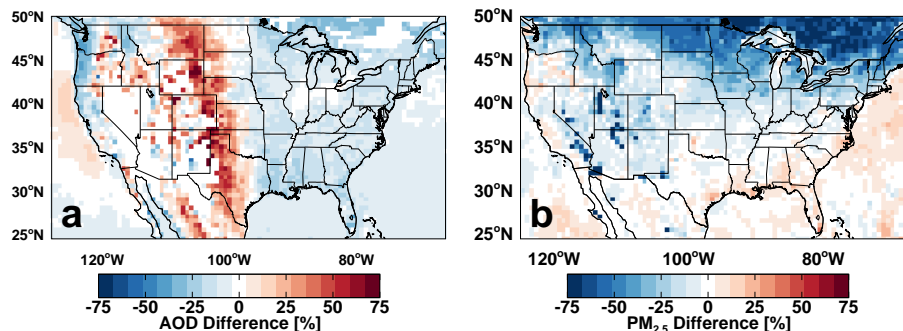


**Figure 5.** Percent of the population exposed to different annual PM<sub>2.5</sub> concentrations in the US (a) and China (b). Lines denote estimates using the unconstrained GEOS-Chem simulation (red) or using satellite-based estimates with MODIS (green) and MISR (blue). Shading represents potential uncertainty associated with the model  $\eta$  (described in Sect. 4.2) and dashed black lines represent national annual air quality standards.

[Title Page](#)[Abstract](#)[Introduction](#)[Conclusions](#)[References](#)[Tables](#)[Figures](#)[Back](#)[Close](#)[Full Screen / Esc](#)[Printer-friendly Version](#)[Interactive Discussion](#)

## Exploring exposure uncertainty

B. Ford and C. L. Heald

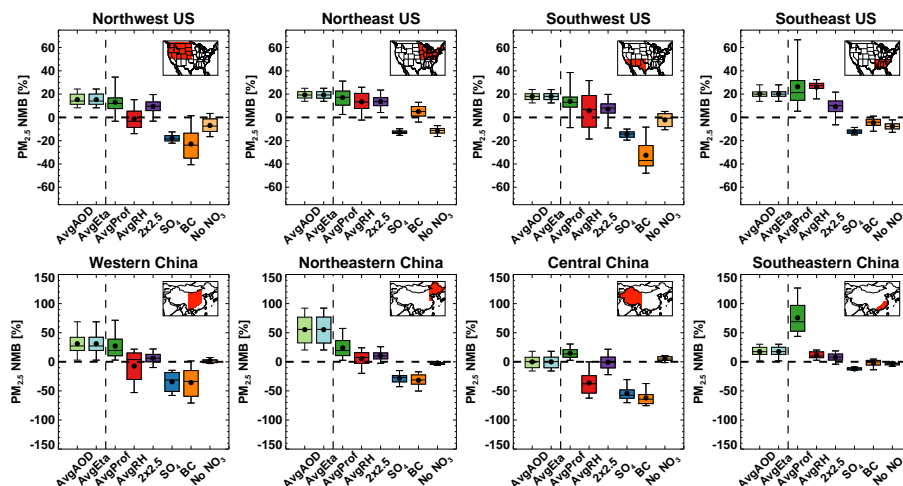


**Figure 6.** (a) Percent difference between annual mean AOD from MODIS Collection 6 and Collection 5 and (b) simulated bias in satellite-derived annual average surface  $PM_{2.5}$  associated with satellite sampling.

[Title Page](#)[Abstract](#)[Introduction](#)[Conclusions](#)[References](#)[Tables](#)[Figures](#)[Back](#)[Close](#)[Full Screen / Esc](#)[Printer-friendly Version](#)[Interactive Discussion](#)

## Exploring exposure uncertainty

B. Ford and C. L. Heald



**Figure 7.** Distribution of normalized mean biases in annual average  $\text{PM}_{2.5}$  for grid boxes in different regions of the US (top row) and China (bottom row) determined from sensitivity tests to investigate the uncertainty in  $\eta$ . Sensitivity tests are described in Table 3.

Title Page

Abstract

Introduction

Conclusions

References

Tables

Figures



Back

Close

Full Screen / Esc

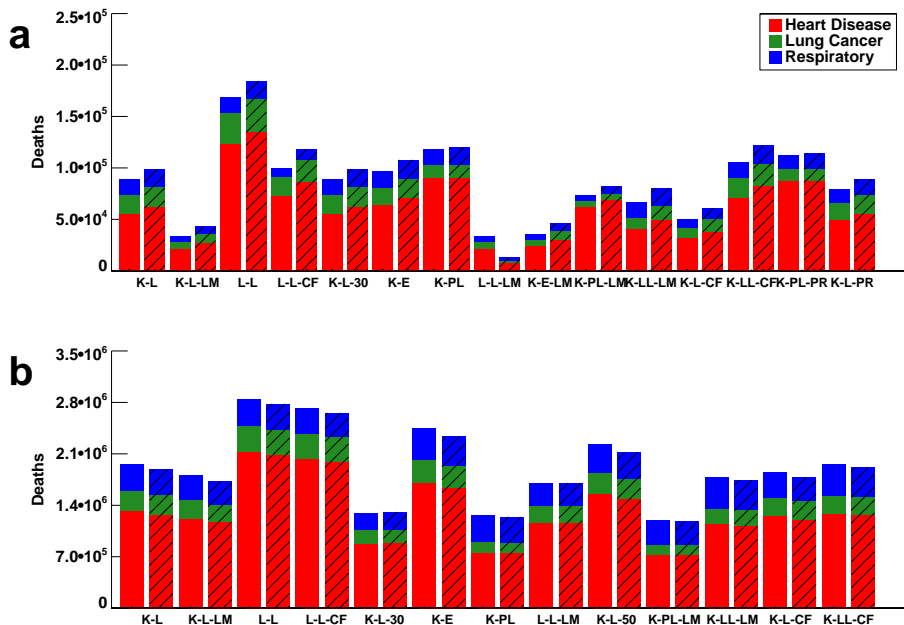
Printer-friendly Version

Interactive Discussion



Exploring exposure uncertainty

B. Ford and C. L. Heald



**Figure 8.** Premature mortality estimates for (a) the US and (b) China determined using different RR, CRFs, and threshold/ceiling values, as described in Table 3. Colors represent cause of death estimated using PM<sub>2.5</sub> concentrations from unconstrained model simulations (solid) and satellite-based estimates (hatched).

Title Page	
Abstract	Introduction
Conclusions	References
Tables	Figures
⏪	⏩
◀	▶
Back	Close
Full Screen / Esc	
Printer-friendly Version	
Interactive Discussion	



