



**Technical Note: NPF
event forecasts in
Hyytiälä, Finland**

T. Nieminen et al.

Technical Note: New particle formation event forecasts during PEGASOS-Zeppelin Northern mission 2013 in Hyytiälä, Finland

T. Nieminen^{1,2}, T. Yli-Juuti^{1,3,4}, H. E. Manninen¹, T. Petäjä¹, V.-M. Kerminen¹, and
M. Kulmala¹

¹Department of Physics, University of Helsinki, P.O. Box 64, 00014 Helsinki, Finland

²Helsinki Institute of Physics, University of Helsinki, P.O. Box 64, 00014 Helsinki, Finland

³Multiphase Chemistry Department, Max Planck Institute for Chemistry, Hahn-Meitner Weg 1,
55128 Mainz, Germany

⁴Department of Applied Physics, University of Eastern Finland, P.O. Box 1627, 70211 Kuopio,
Finland

Received: 4 November 2014 – Accepted: 12 January 2015 – Published: 27 January 2015

Correspondence to: T. Nieminen (tuomo.nieminen@helsinki.fi)

Published by Copernicus Publications on behalf of the European Geosciences Union.

Title Page

Abstract

Introduction

Conclusions

References

Tables

Figures



Back

Close

Full Screen / Esc

Printer-friendly Version

Interactive Discussion



Abstract

New particle formation (NPF) occurs frequently in the global atmosphere. During recent years detailed laboratory experiments together with intensive field observations in different locations have provided insights into the vapours responsible for the initial formation of particles and their subsequent growth. In this regard, the importance of sulphuric acid, stabilizing bases such as ammonia and amines as well as extremely low volatile organics have been proposed. The instrumentation to observe freshly formed aerosol particles has developed to a stage where the instruments can be implemented as part of airborne platforms, such as aircrafts or a Zeppelin-type airship. Flight measurements are technically more demanding and require a greater detail of planning than field studies at the ground level. The high cost of flight hours, limited time available during a single research flight for the measurements and different instrument payloads in Zeppelin airship for various flight missions demanded an analysis tool that would forecast whether or not there is a good chance for a NPF event. Here we present a generalized methodology to derive NPF event probability that was used to optimise flying hours during Zeppelin campaign in Finland during the PEGASOS-Zeppelin Northern mission in 2013. Based on the existing knowledge we derived a method for estimating the nucleation probability that utilizes forecast air mass trajectories, weather forecasts and air quality model predictions. With the forecast tool we were able to predict the occurrence of NPF events for the next day with more than 90 % success rate (10 out of 11 NPF event days correctly predicted).

1 Introduction

Formation and growth of secondary aerosol particles has been observed in numerous locations and in different environments in the planetary boundary layer (for an overview see e.g. Kulmala et al., 2004; Kulmala and Kerminen, 2008). Numerous investigations have attempted to connect new particle formation (NPF) to atmospheric

ACPD

15, 2459–2485, 2015

Technical Note: NPF event forecasts in Hyytiälä, Finland

T. Nieminen et al.

Title Page

Abstract

Introduction

Conclusions

References

Tables

Figures



Back

Close

Full Screen / Esc

Printer-friendly Version

Interactive Discussion



Technical Note: NPF event forecasts in Hyytiälä, Finland

T. Nieminen et al.

Title Page

Abstract

Introduction

Conclusions

References

Tables

Figures

◀

▶

◀

▶

Back

Close

Full Screen / Esc

Printer-friendly Version

Interactive Discussion



trace gas concentrations, atmospheric chemistry and meteorological processes (e.g. Weber et al., 1995; Riipinen et al., 2007; Paasonen et al., 2010). Most of the NPF observations are based on stationary ground-level measurements during which the sampled air masses and prevailing meteorological conditions are continuously changing. Typically the growth of the newly formed particles can be followed for several hours from these fixed points measurements, indicating that NPF usually occurs over large areas (Dal Maso et al., 2007; Hussein et al., 2009). In order to obtain more information on the spatial extent of NPF events both in the vertical and horizontal directions, measurements using aircrafts are needed. As part of the 4 year-long EU funded PEGASOS (Pan-European Gas–Aerosol–Climate Interaction Study) project, a Zeppelin NT airship was performing atmospheric aerosol, trace gas and photochemistry measurement flights in Central Finland during May–June 2013. In order to most efficiently utilize the flight hours of the airship, it was necessary to prepare forecasts on the probability of NPF events in the coming days.

Most of the Zeppelin measurement flights during the campaign were directed to the vicinity of the University of Helsinki SMEAR II measurement station in Hyytiälä (Hari and Kulmala, 2005). Measurements of aerosol number size-distributions, trace gas concentrations and basic meteorological quantities were started at the SMEAR II station in January 1996. These long time-series records have been used to extensively characterize the conditions in which NPF occurs (or does not occur) in this boreal forest environment, based on both the local atmospheric conditions as well as the synoptic situation and air mass origins and transport route to the station (Boy and Kulmala, 2002; Boy et al., 2003; Lyubovtseva et al., 2005; Dal Maso et al., 2007; Sogacheva et al., 2008; Nieminen et al., 2014).

Field observations, laboratory experiments and theoretical considerations have shown that sulphuric acid is one of the key components in atmospheric NPF events, but in addition also trace amounts of other vapors such as ammonia, amines or oxidized organics are needed (e.g. Kulmala et al., 2013). Particularly the contribution of extreme low volatile organics seems to be crucial in the boreal forest environment (Kul-

mala et al., 1998; Yli-Juuti et al., 2011; Ehn et al., 2014). Proxies for the concentrations of these trace gases or their precursors have been developed based on campaign-wise measurements (Petäjä et al., 2009; Lappalainen, 2009). Based on the concentrations and emissions of these trace gases, several parametrizations have been developed to describe the occurrence and intensity of NPF (e.g. Buzorius et al., 2003; Bonn et al., 2009; Paasonen et al., 2010; Häkkinen et al., 2013).

In this work, we describe forecasts for the occurrence of NPF at the SMEAR II station. The forecasts are based on the above-mentioned long-time series observations of the typical conditions during NPF days and non-NPF days, the air mass origins as well as weather and air-quality forecasts.

2 Materials and methods

The main objective of the NPF forecasts was to predict whether during the next three days NPF events are likely to occur at the SMEAR II station area. A time period of three days was chosen in order to have long enough time for preparing the measurement instruments needed on different flights while still maintaining reliability of the input data used in making the NPF forecasts. The final NPF forecast was always given for the next day, as the Zeppelin measurement flights were typically planned one day in advance.

2.1 Predictions for trace gas concentrations, particulate matter and meteorology

Forecasts for concentrations of trace gases SO_2 , O_3 , NO_x , CO and OH as well as particulate matter (PM_{10} , comprising the total mass concentration of particles smaller than $10\text{ }\mu\text{m}$ in diameter) and relative humidity were obtained from the Finnish Meteorological Institute's SILAM (System for Integrated modelLling of Atmospheric coMposition) air quality model (Sofiev et al., 2006). This model provides predictions for the above mentioned variables for the next 5 days at several heights above the ground. All SILAM

Title Page

Abstract

Introduction

Conclusions

References

Tables

Figures

◀

▶

◀

▶

Back

Close

Full Screen / Esc

Printer-friendly Version

Interactive Discussion



forecast data are freely accessible via internet (<http://silam.fmi.fi/>), and the forecast for the Northern Europe area is updated once per day. For the purposes of the current NPF event forecasts, we used predictions for the ground level (15 m above ground) during next 3 days from the model grid point nearest to Hyytiälä SMEAR II station with the time resolution of 1 h.

As supporting data, we also used several “traditional” weather forecasts available on the internet (including forecasts by Finnish Meteorological Institute, Foreca and Norwegian Meteorological Institute), mainly to evaluate the probabilities of cloudiness and rain. During the campaign time, the weather was rather variable and the forecasts were changing rapidly (even several times a day) from clear skies to partly cloudy and possibly rainy. All these conditions are known to affect directly the probability of NPF.

2.2 Air mass back-trajectories

Air mass arrival directions and source areas were forecasted for 96 h prior to the arrival of air at Hyytiälä using the HYSPLIT single particle Lagrangian transport model developed by NOAA and freely available on the internet (<http://www.arl.noaa.gov/HYSPLIT.php>). As input meteorological data for the model, we used the US National Weather Service’s Global Forecasting System (GFS) weather forecast data. The horizontal location accuracy of the air mass trajectory calculations using HYSPLIT has been estimated to be on the order of 10–30 % of the total distance the air parcel has travelled (Stunder, 1996; Stohl, 1998; Draxler and Hess, 1998, 2010). We considered trajectories arriving at the 250 m height above ground calculated 96 h backwards in time, and typically air masses travelled less than 1000 km during this time, meaning that the air mass source area predictions were accurate within 100–300 km or less. Also, since we did not consider just individual air mass back-trajectories but rather took into account all the air masses that were to arrive during the morning and early afternoon (which is the typical time of NPF occurrence in Hyytiälä), the effect of uncertainties in the position of individual trajectories was diminished.

Technical Note: NPF event forecasts in Hyytiälä, Finland

T. Nieminen et al.

Title Page

Abstract

Introduction

Conclusions

References

Tables

Figures



Back

Close

Full Screen / Esc

Printer-friendly Version

Interactive Discussion



2.3 NPF event forecasts and nucleation probability parameters

Typical conditions on NPF and non-NPF days in Hyytiälä are shown in Table 1 for May and June during years 1996–2012. In a data-mining study of the SMEAR II station long-time series records of aerosol size distributions and meteorological parameters, Hyvönen et al. (2005) found that the condensation sink (describing the pre-existing aerosol surface area) and relative humidity were the two parameters most effectively separating NPF days from non-NPF days. Particle formation was occurring only on days with a low CS and low RH. On the other hand, photochemical production of vapors participating in nucleation and growth, namely sulphuric acid and oxidation products of organics, is more efficient in clear-sky conditions with high UV radiation intensity compared to cloudy conditions. Thus, our main criteria in forecasting NPF to occur was clear sky conditions, low condensation sink (in practise low PM_{10} concentration, which was obtained from SILAM) and low relative humidity. Note that typically in spring and summer time, days with low relative humidity are typically also warm and sunny, so these conditions are not necessarily independent of each other. However, the difference between NPF days and non-NPF days is also seen in the absolute humidity (water vapor concentration, see Table 1).

The air mass source area and transport route to Hyytiälä were considered when making the NPF forecasts. In the long-time series analysis by Dal Maso et al. (2007), the occurrence of NPF in Hyytiälä was observed to be highly favorable in air masses originating from the Arctic Ocean and Northern Atlantic, and on the other hand suppressed in southern air masses. This is typically connected to clean air arriving from the west and more polluted air originating from Central and Eastern Europe, directly influencing the sink for newly formed particles. However, in air masses originating from south and south-east to Hyytiälä, SO_2 concentrations are typically higher than in westerly air masses, which would favor NPF due to a higher production rate of sulphuric acid (Riuttanen et al., 2013). Table 2 summarizes the criteria used for making the NPF

Technical Note: NPF event forecasts in Hyytiälä, Finland

T. Nieminen et al.

Title Page

Abstract

Introduction

Conclusions

References

Tables

Figures



Back

Close

Full Screen / Esc

Printer-friendly Version

Interactive Discussion



forecasts. The flowchart representing the main decision making for the NPF forecasts is shown in Fig. 1.

We also developed several “nucleation parameters” to forecast the intensity of NPF. The parameters that worked best were either related to only the proxy concentration of sulphuric acid, or to proxies for both sulphuric acid and oxidation products of volatile organic compounds (such as monoterpenes). Paasonen et al. (2010) studied several different parameterizations for the formation rate of 2 nm particles, and found that at the Hyytiälä site nucleation rate could be mainly explained by the sulphuric acid concentration to the power of one or two.

The simplest nucleation parameter is described by the following equation:

$$NP_1 = \frac{[SO_2] \cdot [OH]}{PM_{10} \cdot RH} \quad (1)$$

where the sulphur dioxide concentration (SO_2), hydroxyl radical concentration (OH), particulate mass concentration (PM_{10}) and relative humidity (RH) are taken from the SILAM air quality forecasts for the grid point closest to Hyytiälä. From SILAM forecast, the particulate mass concentration is available. In Hyytiälä, the PM_{10} concentrations correlate well with the condensation sink CS which describes the total sink of the newly formed particles due to the pre-existing aerosol population. The PM_{10} concentrations (in units $\mu g m^{-3}$) can be scaled to CS (in units s^{-1}) using the linear relationship $CS = 4.59 \times 10^{-4} \cdot PM_{10}$ (linear regression based on measurement data from Hyytiälä in 1996–2012 with correlation coefficient $r = 0.81$). The relative humidity is included as RH^{-1} in Eq. (1) in order to take into account the observed anti-correlation between the relative humidity and particle formation intensity, mainly due to the fact that the highest sulphuric acid concentrations are limited to times of low ambient relative humidity (Hamed et al., 2011).

Technical Note: NPF event forecasts in Hyytiälä, Finland

T. Nieminen et al.

[Title Page](#)[Abstract](#)[Introduction](#)[Conclusions](#)[References](#)[Tables](#)[Figures](#)[◀](#)[▶](#)[◀](#)[▶](#)[Back](#)[Close](#)[Full Screen / Esc](#)[Printer-friendly Version](#)[Interactive Discussion](#)

A nucleation parameter taking into account the oxidation products of monoterpenes, in addition to sulphuric acid, is described by the following equation:

$$NP_2 = \frac{[SO_2] \cdot [OH]}{PM_{10} \cdot RH} \cdot \frac{\exp(aT) \cdot (k_{OH}[OH] + k_{O_3}[O_3])}{BLH \cdot PM_{10}} \quad (2)$$

Here, the concentrations of sulphur dioxide SO_2 , hydroxyl radicals OH and ozone O_3 (in units of cm^{-3}), particulate mass PM_{10} (in units $\mu g m^{-3}$), as well as relative humidity RH (in percentages) and temperature T (in units $^{\circ}C$) were obtained from SILAM forecasts. The concentrations of monoterpenes were predicted based on the ambient temperature, as their concentrations have been shown to follow an exponential temperature dependence in Hyytiälä with the scaling coefficient $a = 0.078^{\circ}C^{-1}$ (Lappalainen et al., 2009). The OH and O_3 concentrations were used to calculate the proxy concentrations of the monoterpene oxidation products, and the reaction coefficients $k_{OH} = 7.5 \times 10^{-11} cm^3 s^{-1}$ and $k_{O_3} = 1.4 \times 10^{-17} cm^3 s^{-1}$ are the averages of the reaction coefficients for individual monoterpene species weighted according to their typical concentrations observed in Hyytiälä (Hakola et al., 2003; Yli-Juuti et al., 2011). The modelled boundary layer height BLH is included in Eq. (2) to take into account the dilution of monoterpene emissions into the developing boundary layer.

3 Results

3.1 Overview of the conditions during the campaign

The PEGASOS-Zeppelin Northern mission took place between 3 May and 11 June 2013. An overview of the meteorological conditions as well as trace gas and particle concentrations observed at the SMEAR II station during the campaign is shown in Fig. 2. Most of the days were sunny with either clear or partly clear skies. Rain occurred on 13 days during the campaign. The air was rather clean from anthropogenic pollution, especially in the first and last week of the campaign. Occasionally, there were pollution

Title Page

Abstract

Introduction

Conclusions

References

Tables

Figures



Back

Close

Full Screen / Esc

Printer-friendly Version

Interactive Discussion



episodes seen e.g from a ten-fold rise of the SO₂ concentration from its typical level of about 0.1 ppb. At the end of May, a longer period of transport of polluted continental air occurred.

Figure 3 shows the arrival routes of air masses to Hyytiälä during the period of our measurement campaign. These trajectories were calculated for the 250 m arrival height and 96 h backwards in time. From the beginning of the campaign until middle of May, approximately 17 May, the air masses originated mainly from over the Atlantic, and arrived at Hyytiälä either directly from the west over Scandinavia or from south-west making a turn over the Baltic sea. Air in Hyytiälä was relatively clean during this time, characterized by low particulate mass and trace gas concentrations. Especially SO₂ had very low concentrations during this time, with the exception of one pollution-related peak on 9 May. After the mid-May, air masses turned to arrive mainly from east at Hyytiälä, originating either from over the Arctic Ocean or from the continental north-west Russia. During this time until early June, the condensation sink and PM₁₀ concentrations were higher than in early May, indicating more polluted air. Also high concentration peaks in the trace gases SO₂ and CO were more frequent during this time. During the last weeks of the campaign in the beginning of June, air masses turned again to arrive at Hyytiälä from west over Scandinavia, resulting in cleaner air with low particulate matter and trace gas concentrations.

3.2 Performance of the NPF forecasts and nucleation parameters

Figure 4 shows the particle number size-distributions along with the forecasted NPF occurrence and the time-series of the nucleation parameters NP₁ and NP₂. In the beginning of the campaign, several strong NPF bursts occurred (high nucleation mode particle concentrations on 3, 6 and 8 of May), and our forecasts were able to capture these as well as the days with no new particle formation. Both of the nucleation parameters peaked on these three NPF event days, and were clearly lower on the days between NPF events, except NP₁ which had a relatively high value also on 4 May. During the beginning of the campaign time, air masses originated mainly from over the Atlantic

Title Page

Abstract

Introduction

Conclusions

References

Tables

Figures

◀

▶

◀

▶

Back

Close

Full Screen / Esc

Printer-friendly Version

Interactive Discussion



Technical Note: NPF event forecasts in Hyytiälä, Finland

T. Nieminen et al.

Title Page

Abstract

Introduction

Conclusions

References

Tables

Figures

◀

▶

◀

▶

Back

Close

Full Screen / Esc

Printer-friendly Version

Interactive Discussion



Ocean and arrived at Hyytiälä after passing over Scandinavia. On some of these days, the air was remarkably clean, characterized by very low SO_2 concentrations (below 0.1 ppb), resulting in low sulphuric acid concentrations and weak or no NPF event on clear-sky conditions. The daytime peak value of 10^4 or higher for nucleation parameter NP_1 was typically associated with the occurrence of NPF.

After mid-May until early June, the air masses arrived at the Hyytiälä mainly from east, either spending several days over the continental Russia or, in some cases, coming more directly from over the Arctic Ocean via northwest Russia. The air mass circulation was driven by a persistent high-pressure system residing over the central Finland. This resulted in a rather unusual air mass transport pattern to Hyytiälä, and also made the NPF forecasting more challenging. During this time, there were situations when the polluted air masses resulted in a high condensation sink, preventing the occurrence of NPF. Also the SILAM forecasts for the SO_2 and PM_{10} concentrations were less accurate during the easterly air masses compared with air masses coming from west or south. This might be related to less accurate emission data for these species over the Russian area.

The nucleation parameter NP_2 started to have high values more frequently after the middle of May. One factor influencing this was the higher air temperatures during this time compared to beginning of the campaign, as the emissions of monoterpenes are highly influenced by the ambient temperature. NPF events, however, were not as frequent during this time. On one hand, this period was influenced by the more polluted air masses arriving at Hyytiälä from the east. On the other hand, during this time there were quite many days (13 out of 22 days after 20 May) when a growing particle mode was observed to appear in Hyytiälä starting from sizes above 10–20 nm. These types of NPF events are typically observed during the summer time in Hyytiälä, and they might be connected to higher particle growth rates during the summer, leading to observing the newly formed particles after they have already grown for several hours (Buenrostro Mazon et al., 2009). When the nucleation parameter NP_2 had daytime maximum values

higher than 0.02, NPF occurrence started to be more probable than the day being a non-event day.

The particle number size distributions measured by the DMPS during the whole campaign are shown in the upper panel of Fig. 4. Using the criteria by Dal Maso et al. (2005), each day was classified as either a NPF event, non-event or undefined day. Table 3 shows the forecast and the corresponding event classification for each day. During the 40 day campaign, clear regional NPF events occurring during several hours were observed on 11 days in Hyytiälä, and 10 of these days were also forecasted to be either NPF day or to have a possibility of NPF to occur. The NPF day which we forecasted to be non-NPF day (9 June) was cloudy and had a possibility of rain according to weather forecasts, and the airmasses were forecasted to originate from west, which is not the direction from where airmasses typically arrive to Hyytiälä on NPF event days (Dal Maso et al., 2007). On 10 days of the campaign there was no particle formation occurring in Hyytiälä, and these were also forecasted to be non-NPF days, except one day (28 May) for which a possible NPF event was forecasted. This was most probably caused by the very low SO₂ concentration. On only one of the days forecasted to be non-NPF day, was there appearance and growth of new nucleation mode particles.

4 Summary and conclusions

Here we present a way to forecast new particle formation events. Being able to make such forecast accurately is very important, for example, when airborne measurements are performed. As a summary, we made NPF forecast for 40 days. The forecasts were found to work reasonably well. Only one day when nucleation was forecasted to occur was a non-nucleation event day. In total 23 days were predicted to be either NPF event days or probable NPF event days, and on 10 of them there was an NPF event, 11 were undefined (when it could not be reliably determined whether NPF occurred or not), and two were non-event days.

Technical Note: NPF event forecasts in Hyytiälä, Finland

T. Nieminen et al.

Title Page

Abstract

Introduction

Conclusions

References

Tables

Figures



Back

Close

Full Screen / Esc

Printer-friendly Version

Interactive Discussion



The main challenges in making the NPF forecasts were to obtain as reliable input data as possible from SILAM, HYSPLIT and weather forecasts. The methods utilized here are most likely also applicable to other locations where there is sufficiently long datasets available characterizing the conditions favourable for the occurrence of particle formation.

Acknowledgements. This research is supported by the Academy of Finland Centre of Excellence program (project numbers 1118615 and 272041). The EU FP7 project PEGASOS (project number 265148) is acknowledged for the Zeppelin NT measurements. T. Yli-Juuti acknowledges financial support from Max Planck Society. H. E. Manninen acknowledges support by the Finnish Cultural Foundation. The authors acknowledge the NOAA Air Resources Laboratory (ARL) for the provision of the HYSPLIT transport and dispersion model and READY website (<http://www.ready.noaa.gov>), and the Finnish Meteorological Institute for the publicly available SILAM air quality model forecasts used in this publication (<http://silam.fmi.fi/>).

References

- Bonn, B., Boy, M., Kulmala, M., Groth, A., Trawny, K., Borchert, S., and Jacobi, S.: A new parametrization for ambient particle formation over coniferous forests and its potential implications for the future, *Atmos. Chem. Phys.*, 9, 8079–8090, doi:10.5194/acp-9-8079-2009, 2009.
- Boy, M. and Kulmala, M.: Nucleation events in the continental boundary layer: Influence of physical and meteorological parameters, *Atmos. Chem. Phys.*, 2, 1–16, doi:10.5194/acp-2-1-2002, 2002.
- Boy, M., Rannik, Ü., Lehtinen, K. E. J., Tarvainen, V., Hakola, H., and Kulmala, M.: Nucleation events in the continental boundary layer: long-term statistical analyses of aerosol relevant characteristics, *J. Geophys. Res.*, 108, 4667–4675, 2003.
- Buenrostro Mazon, S., Riipinen, I., Schultz, D. M., Valtanen, M., Dal Maso, M., Sogacheva, L., Junninen, H., Nieminen, T., Kerminen, V.-M., and Kulmala, M.: Classifying previously undefined days from eleven years of aerosol-particle-size distribution data from the SMEAR II station, Hyytiälä, Finland, *Atmos. Chem. Phys.*, 9, 667–676, doi:10.5194/acp-9-667-2009, 2009.

Technical Note: NPF event forecasts in Hyytiälä, Finland

T. Nieminen et al.

Title Page

Abstract

Introduction

Conclusions

References

Tables

Figures

◀

▶

◀

▶

Back

Close

Full Screen / Esc

Printer-friendly Version

Interactive Discussion



Technical Note: NPF event forecasts in Hyytiälä, Finland

T. Nieminen et al.

Title Page

Abstract

Introduction

Conclusions

References

Tables

Figures

◀

▶

◀

▶

Back

Close

Full Screen / Esc

Printer-friendly Version

Interactive Discussion



Buzorius, G., Rannik, Ü., Aalto, P., Dal Maso, M., Nilsson, E. D., Lehtinen, K. E. J., and Kulmala, M.: On particle formation prediction in continental boreal forest using micrometeorological parameters, *J. Geophys. Res.*, 108, 4377, doi:10.1029/2002JD002850, 2003.

Dal Maso, M., Kulmala, M., Riipinen, I., Wagner, R., Hussein, T., Aalto, P. P., and Lehtinen, K. E. J.: Formation and growth of fresh atmospheric aerosols: eight years of aerosol size distribution data from SMEAR II, Hyytiälä, Finland, *Boreal Environ. Res.*, 10, 323–336, 2005.

Dal Maso, M., Sogacheva, L., Aalto, P. P., Riipinen, I., Komppula, M., Tunved, P., Korhonen, L., Suur-Uski, V., Hirsikko, A., Kurtén, T., Kerminen, V.-M., Lihavainen, H., Viisanen, Y., Hansson, H.-C., and Kulmala, M.: Aerosol size distribution measurements at four Nordic field stations: identification, analysis and trajectory analysis of new particle formation bursts, *Tellus B*, 59, 350–361, 2007.

Draxler, R. R. and Hess, G. D.: An overview of the HYSPLIT_4 modelling system for trajectories, dispersion and deposition, *Aust. Meteorol. Mag.*, 47, 295–308, 1998.

Draxler, R. R. and Hess, G. D.: Description of the HYSPLIT_4 modeling system. NOAA Technical Memorandum ERL ARL-224, available at: <http://www.arl.noaa.gov/documents/reports/arl-224.pdf> (last access: 15 September 2014), 2010.

Ehn, M., Thornton, J. A., Kleist, E., Sipilä, M., Junninen, H., Pullinen, I., Springer, M., Rubach, F., Tillmann, R., Lee, B., Lopez-Hilfiker, F., Andres, S., Acir, I.-H., Rissanen, M., Jokinen, T., Schobesberger, S., Kangasluoma, J., Kontkanen, J., Nieminen, T., Kurtén, T., Nielsen, L. B., Jørgensen, S., Kjaergaard, H. G., Canagaratna, M., Dal Maso, M., Berndt, T., Petäjä, T., Wahner, A., Kerminen, V.-M., Kulmala, M., Worsnop, D. R., Wildt, J., and Mentel, T. F.: A large source of low-volatility secondary organic aerosol, *Nature*, 506, 476–479, 2014.

Hakola, H., Tarvainen, V., Laurila, T., Hiltunen, V., Hellen, H., and Keronen, P.: Seasonal variation of VOC concentrations above a boreal coniferous forest, *Atmos. Environ.*, 37, 1623–1634, 2003.

Hamed, A., Korhonen, H., Sihto, S.-L., Joutsensaari, J., Järvinen, H., Petäjä, T., Arnold, F., Nieminen, T., Kulmala, M., Smith, J. N., Lehtinen, K. E. J., and Laaksonen, A.: The role of relative humidity in continental new particle formation, *J. Geophys. Res.*, 116, D03202, doi:10.1029/2010JD014186, 2011.

Hari, P. and Kulmala, M.: Station for measuring ecosystem–atmosphere relations (SMEAR II), *Boreal Environ. Res.*, 10, 315–322, 2005.

Technical Note: NPF event forecasts in Hyytiälä, Finland

T. Nieminen et al.

Title Page

Abstract

Introduction

Conclusions

References

Tables

Figures



Back

Close

Full Screen / Esc

Printer-friendly Version

Interactive Discussion



- Hussein, T., Junninen, H., Tunved, P., Kristensson, A., Dal Maso, M., Riipinen, I., Aalto, P. P., Hansson, H.-C., Swietlicki, E., and Kulmala, M.: Time span and spatial scale of regional new particle formation events over Finland and Southern Sweden, *Atmos. Chem. Phys.*, 9, 4699–4716, doi:10.5194/acp-9-4699-2009, 2009.
- 5 Hyvönen, S., Junninen, H., Laakso, L., Dal Maso, M., Grönholm, T., Bonn, B., Keronen, P., Aalto, P., Hiltunen, V., Pohja, T., Launiainen, S., Hari, P., Mannila, H., and Kulmala, M.: A look at aerosol formation using data mining techniques, *Atmos. Chem. Phys.*, 5, 3345–3356, doi:10.5194/acp-5-3345-2005, 2005.
- Häkkinen, S. A. K., Manninen, H. E., Yli-Juuti, T., Merikanto, J., Kajos, M. K., Nieminen, T.,
10 D'Andrea, S. D., Asmi, A., Pierce, J. R., Kulmala, M., and Riipinen, I.: Semi-empirical parameterization of size-dependent atmospheric nanoparticle growth in continental environments, *Atmos. Chem. Phys.*, 13, 7665–7682, doi:10.5194/acp-13-7665-2013, 2013.
- Kulmala, M. and Kerminen, V.-M.: On the formation and growth of atmospheric nanoparticles, *Atmos. Res.*, 90, 132–150, 2008.
- 15 Kulmala, M., Toivonen, A., Mäkelä, J. M., and Laaksonen, A.: Analysis of the growth of nucleation mode particles observed in Boreal forest, *Tellus B*, 50, 449–462, 1998.
- Kulmala, M., Vehkamäki, H., Petäjä, T., Dal Maso, M., Lauri, A., Kerminen, V.-M., Birmili, W., and McMurry, P. H.: Formation and growth rates of ultrafine atmospheric particles: a review of observations, *J. Aerosol Sci.*, 35, 143–176, 2004.
- 20 Kulmala, M., Kontkanen, J., Junninen, H., Lehtipalo, K., Manninen, H. E., Nieminen, T., Petäjä, T., Sipilä, M., Schobesberger, S., Rantala, P., Franchin, A., Jokinen, T., Järvinen, E., Äijälä, M., Kangasluoma, J., Hakala, J., Aalto, P. P., Paasonen, P., Mikkilä, J., Vanhanen, J., Aalto, J., Hakola, H., Makkonen, U., Ruuskanen, T., Mauldin, R. L., Duplissy, J., Vehkamäki, H., Bäck, J., Kortelainen, A., Riipinen, I., Kurtén, T., Johnston, M. V.,
25 Smith, J. N., Ehn, M., Mentel, T. F., Lehtinen, K. E. J., Laaksonen, A., Kerminen, V.-M., and Worsnop, D. R.: Direct observations of atmospheric aerosol nucleation, *Science*, 339, 943–946, 2013.
- Lappalainen, H. K., Sevanto, S., Bäck, J., Ruuskanen, T. M., Kolari, P., Taipale, R., Rinne, J., Kulmala, M., and Hari, P.: Day-time concentrations of biogenic volatile organic compounds in a boreal forest canopy and their relation to environmental and biological factors, *Atmos. Chem. Phys.*, 9, 5447–5459, doi:10.5194/acp-9-5447-2009, 2009.
- 30

Technical Note: NPF event forecasts in Hyytiälä, Finland

T. Nieminen et al.

Title Page

Abstract

Introduction

Conclusions

References

Tables

Figures



Back

Close

Full Screen / Esc

Printer-friendly Version

Interactive Discussion



Lyubovtseva, Y. S., Sogacheva, L., Dal Maso, M., Bonn, B., Keronen, P., and Kulmala, M.: Seasonal variations of trace gases, meteorological parameters, and formation of aerosols in boreal forests, *Boreal Environ. Res.*, 10, 493–510, 2005.

Nieminen, T., Asmi, A., Dal Maso, M., Aalto, P. P., Keronen, P., Petäjä, T., Kulmala, M., and Kerminen, V.-M.: Trends in atmospheric new particle formation: 16 years of observations in boreal forest environment, *Boreal Environ. Res.*, 19, 191–214, 2014.

Paasonen, P., Nieminen, T., Asmi, E., Manninen, H. E., Petäjä, T., Plass-Dülmer, C., Flen-tje, H., Birmili, W., Wiedensohler, A., Hörrak, U., Metzger, A., Hamed, A., Laaksonen, A., Facchini, M. C., Kerminen, V.-M., and Kulmala, M.: On the roles of sulphuric acid and low-volatility organic vapours in the initial steps of atmospheric new particle formation, *Atmos. Chem. Phys.*, 10, 11223–11242, doi:10.5194/acp-10-11223-2010, 2010.

Petäjä, T., Mauldin, III, R. L., Kosciuch, E., McGrath, J., Nieminen, T., Paasonen, P., Boy, M., Adamov, A., Kotiaho, T., and Kulmala, M.: Sulfuric acid and OH concentrations in a boreal forest site, *Atmos. Chem. Phys.*, 9, 7435–7448, doi:10.5194/acp-9-7435-2009, 2009.

Riipinen, I., Sihto, S.-L., Kulmala, M., Arnold, F., Dal Maso, M., Birmili, W., Saarnio, K., Teinilä, K., Kerminen, V.-M., Laaksonen, A., and Lehtinen, K. E. J.: Connections between atmospheric sulphuric acid and new particle formation during QUEST III–IV campaigns in Heidelberg and Hyytiälä, *Atmos. Chem. Phys.*, 7, 1899–1914, doi:10.5194/acp-7-1899-2007, 2007.

Riuttanen, L., Hulkkonen, M., Dal Maso, M., Junninen, H., and Kulmala, M.: Trajectory analysis of atmospheric transport of fine particles, SO_2 , NO_x and O_3 to the SMEAR II station in Finland in 1996–2008, *Atmos. Chem. Phys.*, 13, 2153–2164, doi:10.5194/acp-13-2153-2013, 2013.

Sofiev, M., Siljamo, P., Valkama, I., Ilvonen, M., and Kukkonen, J.: A dispersion modelling system SILAM and its evaluation against ETEX data, *Atmos. Environ.*, 40, 674–685, 2006.

Sogacheva, L., Saukkonen, L., Nilsson, E. D., Dal Maso, M., Schultz, D. M., De Leeuw, G., and Kulmala, M.: New aerosol particle formation in different synoptic situations at Hyytiälä, Southern Finland, *Tellus B*, 60, 485–494, 2008.

Stohl, A.: Computation, accuracy and applications of trajectories – a review and bibliography, *Atmos. Environ.*, 32, 947–966, 1998.

Stunder, B. J. B.: An assessment of the quality of forecast trajectories, *J. Appl. Meteorol.*, 35, 1319–1331, 1996.

Weber, R. J., McMurry, P. H., Eisele, F. L., and Tanner, D. J.: Measurement of expected nucleation precursor species and 3 to 500 nm diameter particles at Mauna Loa Observatory, Hawaii, J. Atmos. Sci., 52, 2242–2257, 1995.

5 Yli-Juuti, T., Nieminen, T., Hirsikko, A., Aalto, P. P., Asmi, E., Hörrak, U., Manninen, H. E., Pa-
tokoski, J., Dal Maso, M., Petäjä, T., Rinne, J., Kulmala, M., and Riipinen, I.: Growth rates
of nucleation mode particles in Hyytiälä during 2003–2009: variation with particle size, sea-
son, data analysis method and ambient conditions, Atmos. Chem. Phys., 11, 12865–12886,
doi:10.5194/acp-11-12865-2011, 2011.

**Technical Note: NPF
event forecasts in
Hyytiälä, Finland**

T. Nieminen et al.

Title Page

Abstract

Introduction

Conclusions

References

Tables

Figures



Back

Close

Full Screen / Esc

Printer-friendly Version

Interactive Discussion



Technical Note: NPF event forecasts in Hyytiälä, Finland

T. Nieminen et al.

Table 1. Conditions observed at Hyytiälä during NPF and non-NPF days in months May–June 1996–2012. For each variable the median value is given and the interquartile range (25 and 75 percentiles) is shown in brackets.

Parameter	NPF day	Non-NPF day
Temperature (°C)	11 (8–14)	13 (9–17)
Global radiation (W m^{-2})	560 (430–610)	230 (120–530)
Relative humidity (%)	45 (39–55)	76 (59–91)
Absolute humidity (ppth)	6.5 (4.9–8.0)	10.2 (8.6–12.4)
SO ₂ (ppb)	0.12 (0.04–0.23)	0.09 (0.04–0.19)
O ₃ (ppb)	39 (35–44)	34 (28–41)
Condensation sink (10^{-3} s^{-1})	2.2 (1.4–3.3)	3.9 (2.7–6.2)
PM ₁₀ ($\mu\text{g m}^{-3}$)	3.7 (2.3–5.5)	6.6 (4.6–10.5)

[Title Page](#)
[Abstract](#)
[Introduction](#)
[Conclusions](#)
[References](#)
[Tables](#)
[Figures](#)
[◀](#)
[▶](#)
[◀](#)
[▶](#)
[Back](#)
[Close](#)
[Full Screen / Esc](#)
[Printer-friendly Version](#)
[Interactive Discussion](#)


Technical Note: NPF event forecasts in Hyytiälä, Finland

T. Nieminen et al.

Title Page

Abstract

Introduction

Conclusions

References

Tables

Figures

◀

▶

◀

▶

Back

Close

Full Screen / Esc

Printer-friendly Version

Interactive Discussion



Table 2. Criteria for the NPF forecasts (the source for each data is shown in parenthesis).

NPF forecast	Criteria
NPF day	<ul style="list-style-type: none"> – Sunny, clear skies (according to weather forecasts) – Low PM_{10} concentration, smaller than $3.7 \mu g m^{-3}$ (SILAM) – Low RH during the day, smaller than 45 % (SILAM) – SO_2 concentration higher than 0.12 ppb (SILAM) – Airmasses originating from the Arctic Ocean or Northern Atlantic (HYSPLIT trajectories)
Weak NPF/Possibility of NPF/No continuous growth of nucleation mode particles	<ul style="list-style-type: none"> – Sunny day with some clouds, or partly cloudy (according to weather forecasts) – PM_{10} $3.7\text{--}6.6 \mu g m^{-3}$ and $SO_2 > 0.12$ ppb; OR $PM_{10} > 6.6 \mu g m^{-3}$ and $SO_2 > 0.23$ ppb (SILAM) – RH during the day 45–76 % (SILAM) – Airmasses not coming directly from the west–north–west, or passing over known areas of anthropogenic pollution (HYSPLIT trajectories)
No NPF	<ul style="list-style-type: none"> – Cloudy day, rain (according to weather forecasts) – High PM_{10}, higher than $6.6 \mu g m^{-3}$ (SILAM) – High RH, higher than 76 % (SILAM) – SO_2 concentration smaller than 0.09 ppb (SILAM) – Airmasses originating from south (continental Europe) or east, or passing over known areas of anthropogenic pollution (HYSPLIT trajectories)

Table 3. NPF event forecasts (2nd column), and NPF event classification based on measured particle size distributions (3rd column) for each day of the campaign. Class I and II NPF events refer to the classification by Dal Maso et al. (2005). Remarks on the 4th column show the basis for the NPF event forecast.

Date	Forecast	Classification	Remarks
3 May	NPF event very probable	NPF (class II)	Airmasses coming from north to north-west. Low SO ₂ and PM ₁₀ . Sunny the whole morning until mid-afternoon. RH drops to 25 % during the day.
4 May	No NPF	Undefined	Airmasses coming from south-west. Elevated SO ₂ and PM ₁₀ concentrations. Cloudy day with small chance of occasional rain.
5 May	No NPF	No NPF	Airmasses coming from south-west over southern Sweden, turning to west late in evening. Low SO ₂ and PM ₁₀ concentration. Cloudy day with light rain throughout the day until evening. In the evening partly cloudy.
6 May	NPF day	NPF (class I)	Airmasses originating from west and circulating over western Finland. Relatively clean air, SO ₂ and PM ₁₀ concentrations low during morning and increasing towards evening. Sunny until midday, afternoon clouds possible. RH dropping to 40 % during the morning.
7 May	NPF occurring, but no continuous growth of nucleation mode	NPF (class II)	Airmasses coming from south-west over Denmark and southern Sweden. Elevated SO ₂ and PM ₁₀ concentrations. Partly cloudy day. RH dropping to 55 %.
8 May	NPF day	NPF (class I)	Westerly airmasses coming over Central Sweden. Low SO ₂ and PM ₁₀ concentrations. Sunny day, warm temperatures (over +15 °C). RH dropping to 35 % during the morning.
9 May	No NPF	No NPF	Airmasses coming from southwest-south and circulating over southern Finland. Elevated SO ₂ and PM ₁₀ concentrations. Cloudy and rainy day.
10 May	No NPF	No NPF	Airmasses coming from south over Baltic countries and southern Finland. Low SO ₂ and somewhat elevated PM ₁₀ concentrations. Cloudy day with occasional light rain.
11 May	No NPF	Undefined	Airmasses coming from southwest over northern Germany, Denmark and southern Sweden. Low SO ₂ , somewhat elevated PM ₁₀ concentrations. Cloudy morning, partly cloudy in afternoon, small chance of rain. Clear skies in the evening.
12 May	Chance of weak NPF	Undefined	Airmasses from south-west over northern France, Denmark and southern Sweden. Elevated SO ₂ and relatively low PM ₁₀ concentrations. Partly cloudy, warm (over +15 °C), RH dropping to 45 %.

Technical Note: NPF event forecasts in Hyytiälä, Finland

T. Nieminen et al.

Title Page

Abstract

Introduction

Conclusions

References

Tables

Figures



Back

Close

Full Screen / Esc

Printer-friendly Version

Interactive Discussion



Table 3. Continued.

Date	Forecast	Classification	Remarks
13 May	No NPF	Undefined	Airmasses from south-west over England, Denmark and southern Sweden. SO ₂ concentration somewhat elevated, high PM ₁₀ concentrations. Partly cloudy day, early morning sunny. Warm (over +15 °C), RH dropping to 45 %.
14 May	Possibility of NPF	Undefined	Airmasses from south-west over Denmark and southern Sweden. Somewhat elevated SO ₂ and relatively low PM ₁₀ concentrations. Possibility for clear sky in the morning, more clouds in the afternoon. Warm day (over +15 °C), RH dropping to 40 %.
15 May	Weak possibility of NPF	NPF (class I)	Airmasses from south-west over England, Northern Germany and Southern Sweden. Somewhat elevated SO ₂ . Low PM ₁₀ concentrations. Partly cloudy early morning (possibility for clear sky), clear sky in the afternoon. Warm (over +15 °C). RH dropping to 35 % during the day.
16 May	NPF day	NPF (class II)	Airmasses from south-west over Northern Germany and Southern Sweden, circulating over Southern Finland. Low SO ₂ . Low PM ₁₀ concentrations. Clear sky in the morning, possibility of some clouds towards afternoon, warm (over +15 °C). RH dropping to 35 % during the day.
17 May	NPF occurring but no continuous growth of the nucleation mode	No NPF	Airmasses from south-west over England, Germany, and Southern Sweden, towards afternoon circulating over Northeast Russia. Low SO ₂ . Slightly elevated PM ₁₀ concentrations. Partly cloudy, very warm (over +20 °C). RH dropping to 45 % during the day.
18 May	No NPF	Undefined	Airmasses circulating over Finland and Northwest Russia. High SO ₂ , elevated PM ₁₀ concentrations. Cloudy, some rain, warm (over +15 °C). RH dropping to 45 % during the day.
19 May	No NPF	No NPF	Airmasses coming from east. Low SO ₂ and PM ₁₀ concentrations. Cloudy and some rain, very warm (over +20 °C). RH dropping to 50 % during the day.
20 May	No NPF	Undefined	Airmasses coming from east. Low SO ₂ and PM ₁₀ concentrations. Cloudy and some rain in the morning, very warm (over +20 °C). RH > 90 % during the day.

Technical Note: NPF event forecasts in Hyytiälä, Finland

T. Nieminen et al.

Title Page

Abstract

Introduction

Conclusions

References

Tables

Figures



Back

Close

Full Screen / Esc

Printer-friendly Version

Interactive Discussion



Table 3. Continued.

Date	Forecast	Classification	Remarks
21 May	Possibility of NPF, no continuous growth of nucleation mode particles	Undefined	Airmasses coming from northeast. Elevated SO ₂ , low PM ₁₀ concentrations. Partly cloudy until afternoon, possibly clear skies in the evening. Very warm (over +20 °C). RH dropping to 55 % during the day.
22 May	Possibility of weak NPF, but no continuous growth of nucleation mode	NPF (class II)	Airmasses coming from Arctic Ocean and circulating via north-west Russia. Elevated SO ₂ and PM ₁₀ concentrations. Partly cloudy day, cloudier towards the afternoon with a chance of rain. Warm (over +15 °C). RH dropping to 45 % during the day.
23 May	Possibility of weak NPF, but no continuous growth of nucleation mode	NPF (class II)	Airmasses coming from Arctic Ocean and circulating over north-west Russia. Low SO ₂ and PM ₁₀ concentrations. Partly cloudy in the morning, cloudy skies towards the evening.
24 May	No NPF	No NPF	Airmasses coming from Arctic Ocean and circulating via north-west Russia. Low SO ₂ and PM ₁₀ concentrations. Cloudy day, chance of rain throughout the day.
25 May	NPF day	NPF (class II)	Airmasses coming from south-east and circulating over Central Finland. Low SO ₂ and somewhat elevated PM ₁₀ concentrations. Sunny day with few clouds, very warm (over +20 °C), RH dropping to 35 % during the morning.
26 May	NPF day	NPF	Airmasses coming from east and circulating via Northern Finland to Hyytiälä. Low SO ₂ and PM ₁₀ concentrations. Sunny day, some clouds in the afternoon, very warm (over +20 °C), RH dropping to 35 % during the morning.
27 May	No NPF	Undefined	Airmasses coming from east. High SO ₂ and elevated PM ₁₀ concentrations. Cloudy and a chance of rain in the morning, partly cloudy in the afternoon.
28 May	NPF occurring, no continuous growth of nucleation mode particles	No NPF	Airmasses coming from Arctic Ocean via northwest Russia to Hyytiälä. Low SO ₂ and PM ₁₀ concentrations. Partly cloudy in the morning, clear skies towards afternoon. Very warm (over +20 °C), RH dropping to 35 % during the morning.
29 May	Possibility of NPF	Undefined	Airmasses coming from Arctic Ocean via northwest Russia to Hyytiälä. Low SO ₂ and PM ₁₀ concentrations. Partly cloudy in the morning, clear skies towards the evening. Very warm (over +20 °C).

Technical Note: NPF event forecasts in Hyytiälä, Finland

T. Nieminen et al.

Table 3. Continued.

Date	Forecast	Classification	Remarks
30 May	Possibility of NPF	Undefined	Airmasses coming from Arctic Ocean via northwest Russia to Hyytiälä. Low SO ₂ and low PM ₁₀ concentrations. Partly cloudy, with chances of rain in the evening. Very warm (over +20 °C), RH dropping to 45 % during the morning.
31 May	No NPF	Undefined	Airmasses coming from Arctic Ocean via northwest Russia to Hyytiälä. Low SO ₂ and PM ₁₀ concentrations. Partly cloudy and chances of rainshowers during the day.
1 Jun	No NPF	No NPF	Airmasses coming from southeast. Low SO ₂ and PM ₁₀ concentrations. Partly cloudy in the morning, more clouds towards afternoon, chances of light rain in the afternoon the day.
2 Jun	Possibility of NPF	Undefined	Airmasses coming from southeast. Elevated SO ₂ and PM ₁₀ concentrations. Partly cloudy, very warm (over +20 °C), RH dropping to 45 % during the morning.
3 Jun	NPF day	Undefined	Airmasses coming from southeast. High SO ₂ and elevated PM ₁₀ concentrations. Clear skies, some clouds in the afternoon, very warm (over +25 °C), RH dropping to 35 % during the morning.
4 Jun	Possibility of weak NPF	Undefined	Airmasses coming from southeast. Low SO ₂ and PM ₁₀ concentrations. Partly cloudy morning, some rain in the afternoon, warm (over +20 °C). RH dropping to 35 % during the day.
5 Jun	Possibility of NPF	Undefined	Airmasses coming from southeast. Elevated SO ₂ and low PM ₁₀ concentrations. Clear sky in the morning, partly cloudy starting from noon, possibility of rain in the evening, very warm (over +25 °C). RH dropping to 25 %.
6 Jun	Possibility of weak NPF	Undefined	Airmasses coming from east in the morning and turning to northwest in the afternoon. High SO ₂ and elevated PM ₁₀ concentrations. Partly cloudy morning, rain and thunderstorms in the afternoon, warm (over +20 °C).
7 Jun	No NPF	No NPF	Airmasses coming from northeast. Low SO ₂ and elevated PM ₁₀ concentrations. Cloudy, rain and thunderstorms, moderate temperature (over +15 °C).

Title Page

Abstract

Introduction

Conclusions

References

Tables

Figures



Back

Close

Full Screen / Esc

Printer-friendly Version

Interactive Discussion



Technical Note: NPF event forecasts in Hyytiälä, Finland

T. Nieminen et al.

Table 3. Continued.

Date	Forecast	Classification	Remarks
8 Jun	NPF day	NPF (class II)	Airmasses coming from west, circulating over Sweden. Elevated SO ₂ and low PM ₁₀ concentrations. Almost clear sky in the morning, partly cloudy in the afternoon, warm (over +20 °C). RH dropping to 25 % during the day.
9 Jun	No NPF	NPF (class II)	Airmasses coming from west. Low SO ₂ and PM ₁₀ concentrations. Cloudy/partly cloudy, rain in the afternoon, moderate temperature (over +15 °C). RH dropping to 45 % during the day.
10 Jun	Possibility of weak NPF	Undefined	Airmasses coming from northwest. Low SO ₂ and PM ₁₀ concentrations. Almost clear sky in the early morning, partly cloudy towards noon, chance of rain in the afternoon, moderate temperature (over +15 °C).
11 Jun	No NPF	No NPF	Airmasses coming from northwest. Elevated SO ₂ and PM ₁₀ concentrations. Partly cloudy, chance of rain, moderate temperature (over +15 °C). RH dropping to 50 % during the day.

Title Page

Abstract

Introduction

Conclusions

References

Tables

Figures

◀

▶

◀

▶

Back

Close

Full Screen / Esc

Printer-friendly Version

Interactive Discussion



Technical Note: NPF event forecasts in Hyytiälä, Finland

T. Nieminen et al.

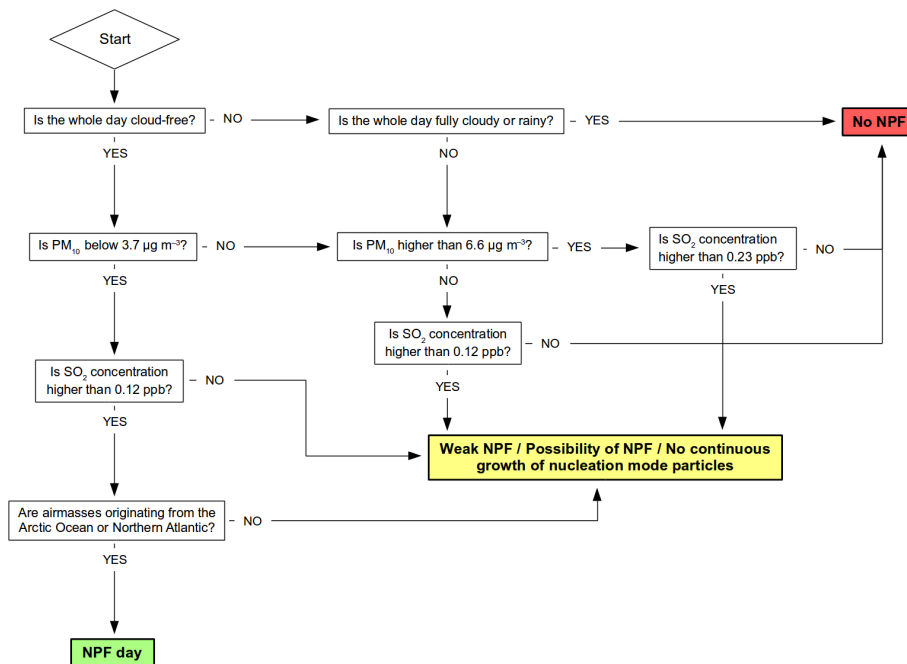


Figure 1. Flowchart of the decision making process for the NPF forecasts.

Title Page

Abstract

Introduction

Conclusions

References

Tables

Figures



Back

Close

Full Screen / Esc

Printer-friendly Version

Interactive Discussion



Technical Note: NPF event forecasts in Hyttiälä, Finland

T. Nieminen et al.

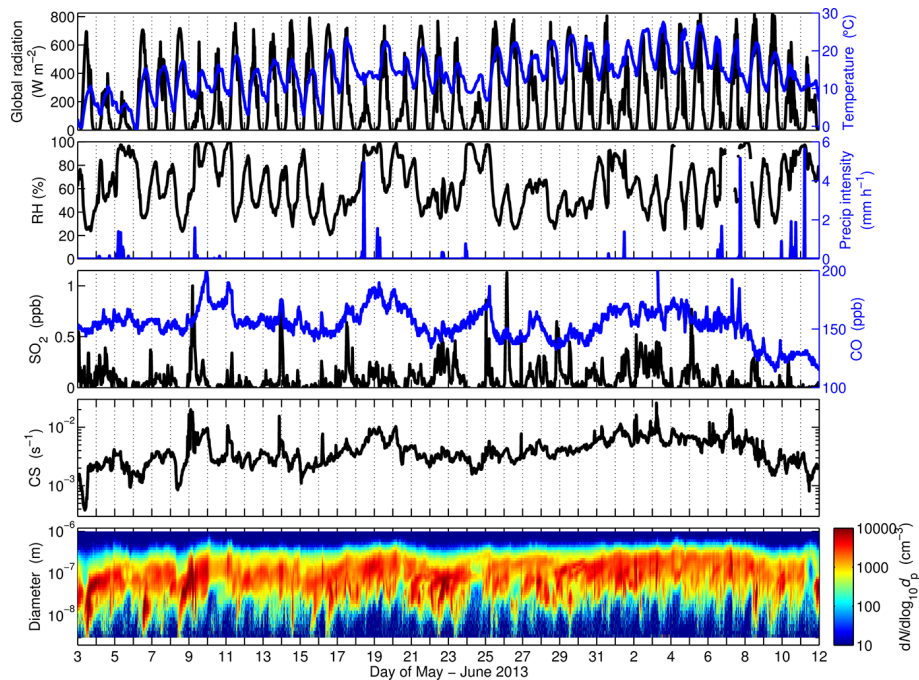


Figure 2. Overview of the meteorological parameters, trace gas concentrations and particle size distributions during the campaign 3 May–11 June 2013.

[Title Page](#)
[Abstract](#)
[Introduction](#)
[Conclusions](#)
[References](#)
[Tables](#)
[Figures](#)

[Back](#)
[Close](#)
[Full Screen / Esc](#)
[Printer-friendly Version](#)
[Interactive Discussion](#)


**Technical Note: NPF
event forecasts in
Hyytiälä, Finland**

T. Nieminen et al.

Title Page

Abstract

Introduction

Conclusions

References

Tables

Figures



Back

Close

Full Screen / Esc

Printer-friendly Version

Interactive Discussion

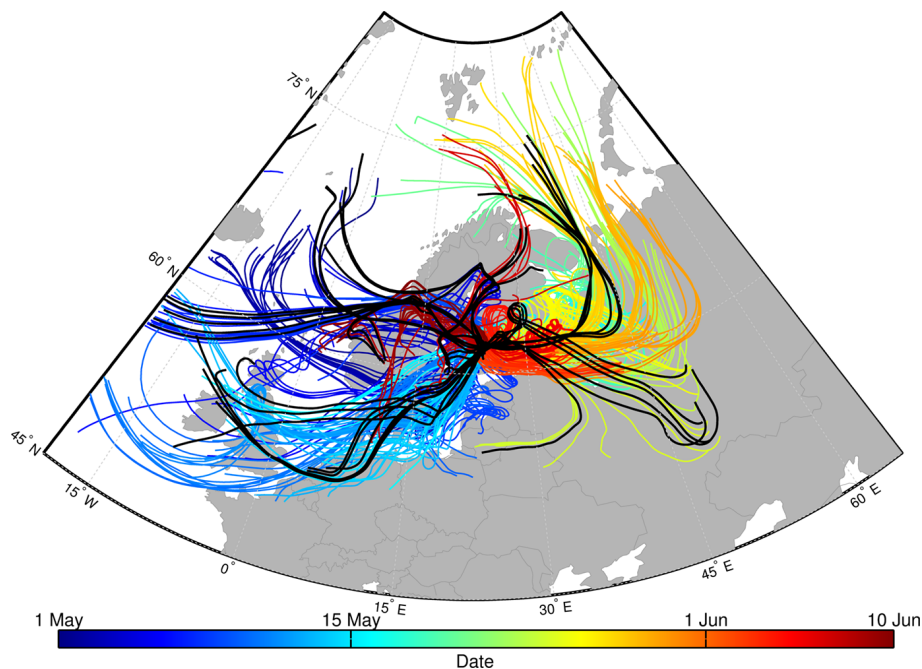


Figure 3. Airmass arrival trajectories to Hyytiälä 3 May–11 June 2013 calculated using HYS-PLIT model. The color indicates the arrival date and each trajectory represents airmass route during 96 h before arrival. Airmass trajectories arriving on NPF days between 10:00–14:00 LT are marked with black lines.

Technical Note: NPF event forecasts in Hyytiälä, Finland

T. Nieminen et al.

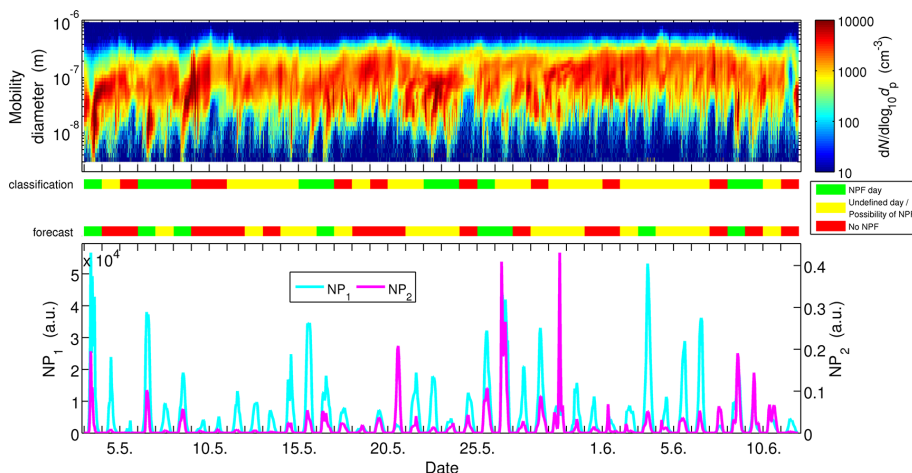


Figure 4. Particle number concentration size distributions (top panel), and nucleation parameters NP_1 and NP_2 (bottom panel) during the campaign time 3 May–11 June 2013. The colorbars between the panels indicate the NPF forecast and classification: green for NPF days, yellow for weak or possible NPF days, and red for non-NPF days (upper colorbar shows the NPF event classification based on the DMPS data, and lower colorbar the forecast for each day).

[Title Page](#)
[Abstract](#)
[Introduction](#)
[Conclusions](#)
[References](#)
[Tables](#)
[Figures](#)
[◀](#)
[▶](#)
[◀](#)
[▶](#)
[Back](#)
[Close](#)
[Full Screen / Esc](#)
[Printer-friendly Version](#)
[Interactive Discussion](#)
