

**Answers to the Editor comments on the *Atmos. Chem. Phys. Discuss.* Manuscript  
“New particle formation event forecasts during PEGASOS–Zeppelin Northern  
mission 2013 in Hyytiälä, Finland” by Nieminen *et al.***

*We thank the Editor for his comments on our manuscript. Below are our answers to each of the comments.*

Comments to the Author:

Dear authors,

Apologies for the delay in dealing with this paper. In going through the revised papers with some care, I have identified a number of small corrections / additions I feel are necessary before the paper can be published in ACP. In addition, I have spotted a large number of types / technical errors that need to be corrected.

I am confident that you will be able to address these quite easily.

With best regards,

Eiko Nemitz

Scientific Comments:

Line 23: This needs rephrasing as the methodology is not as generalised as the authors suggest as admitted in their response to Referee #2.

*We rephrased the two sentences on lines 22–24 in order to clarify that the methodology was developed for Hyytiälä conditions: “Here we present a methodology to forecast NPF event probability at the SMEAR II site in Hyytiälä, Finland. This methodology was used to optimise flight hours during the PEGASOS-Zeppelin Northern mission in May–June 2013.”*

Line 107/108: I do not understand this sentence. Do you mean you calculated footprints rather than trajectories?

*We mean estimating air mass source areas based on back-trajectories. We clarified the manuscript by modifying the sentence on lines 107–108: “.. the air mass source area predictions based on the back-trajectory calculations could be considered accurate within 100–300 km or better”.*

Table 1. Please clarify in the caption to this table over which time frame these data were averaged and on what time resolution. For example, is the temperature provided the inter-day median of mean diurnal temperatures? Or were temperatures only averaged over a fraction of the day? Were interquartile ranges calculated between days or on the basis of the original raw (hourly?) data? This affects the results.

*We modified the table caption into: “Conditions observed at Hyytiälä during NPF and non-NPF days between 8:00 and 11:00 in months May–June 1996–2012. For each variable the median value is given and the interquartile range (25th and 75th percentiles) is shown in brackets. The median and interquartile values are calculated from all data at 30 min time resolution in the time window 8–11.” We also added at the beginning of section 2.3 on line 113 the sentence “The conditions are shown for the time window 9–12, which is the time when NPF typically starts in Hyytiälä.”*

Table 2. Please clarify in the caption whether the criteria were combined, by a logical OR or a logical AND.

*We added to the table caption sentence “All the criteria within the category must be fulfilled, i.e. the criteria are combined with logical AND.”*

Summary and conclusions. Please elaborate on the final sentence, which was also requested by Referee #2. This work cites a great number of papers that have contributed to establishing the conditions under which NPF at Hyytiala is likely. This indicates the amount of work involved. Also, in my opinion it is much more likely to develop the required relationships for remote sites where air masses are homogeneous over large periods of time. It is likely to be much more difficult to find robust relationships in much more heterogeneous landscapes with cities, intensive agriculture and industry, where a small change in wind direction might bring very different air masses to the site. For these sites the understanding of what causes NPF is much less developed.

*We modified the last sentence to emphasize that our focus was to forecast regional scale NPF events. We added a sentence about the difficulty of forecasting NPF in urban areas: “The methods utilized here are most likely also applicable to other locations where there is sufficiently long datasets available to characterise the conditions favourable for the occurrence of regional-scale particle formation. In urban areas and inside cities our methods are less likely to be applicable due to the day-to-day variation of emissions of vapours and particles from local anthropogenic sources.”*

Technical Comments:

*We corrected all of these.*

Line 40: Should read “fixed point measurements”

Line 52: Better: “have been used extensively to characterise ...”

Line 61: Better: “campaign-based”

Line 67: Better: “long-term time series”

Line 71: “were likely to occur”

Line 74: Better: “was always provided”

Line 83: “... from the TNO-MACC data set”

Line 84: “... on wild fires ... “ and also “wind-blown”

Line 88: Better: “For the purpose of ...”

Line 89: “... during the next three days ...”

Line 98: “were forecast”

Line 107: “within 100-300 km or better.”

Line 137: Correct subscripts for SO<sub>2</sub> and PM<sub>10</sub>

Line 150: “The particulate mass concentration is available from the SILAM forecast.”

Line 164: “from the SILAM forecasts.”

Line 209: “from the east”

Line 216: “from the west or the south.”

Line 222: “On the other hand this period included quite a few days (13 out of ...”

Line 226: “leading to the observation of newly formed”

Line 227: “Days on which the maximum value of the nucleation parameter NP<sub>2</sub> exceeded 0.02 started to be more likely an NPF event day rather than a non-event day.”

Line 246: “NPF events lasting for several hours”

Line 247: “forecast to be” (also lines 248, 254, 261, 269, table 4)

Line 252: “except for two days”

Line 257: “score indices”

Line 266: “such forecasts”

Line 275. “datasets available to characterise the conditions favourable for the occurrence of particle formation.”

Table 4; Header of last column should read “Non-NPF”

# New particle formation event forecasts during PEGASOS–Zeppelin Northern mission 2013 in Hyytiälä, Finland

T. Nieminen<sup>1,2</sup>, T. Yli-Juuti<sup>1,3,4</sup>, H. E. Manninen<sup>1</sup>, T. Petäjä<sup>1</sup>, V.-M. Kerminen<sup>1</sup>, and M. Kulmala<sup>1</sup>

<sup>1</sup>Department of Physics, University of Helsinki, P.O. Box 64, FI-00014, University of Helsinki, Finland

<sup>2</sup>Helsinki Institute of Physics, P.O. Box 64, FI-00014, University of Helsinki, Finland

<sup>3</sup>Multiphase Chemistry Department, Max Planck Institute for Chemistry, Hahn-Meitner Weg 1, 55128 Mainz, Germany

<sup>4</sup>Department of Applied Physics, University of Eastern Finland, P.O. Box 1627, FI-70211 Kuopio, Finland

## Abstract

New particle formation (NPF) occurs frequently in the global atmosphere. During recent years detailed laboratory experiments together with intensive field observations in different locations have provided insights into the vapours responsible for the initial formation of particles and their subsequent growth. In this regard, the importance of sulphuric acid, stabilizing bases such as ammonia and amines as well as extremely low volatile organics have been proposed. The instrumentation to observe freshly formed aerosol particles has developed to a stage where the instruments can be implemented as part of airborne platforms, such as aircrafts or a Zeppelin-type airship. Flight measurements are technically more demanding and require a greater detail of planning than field studies at the ground level. The high cost of flight hours, limited time available during a single research flight for the measurements and different instrument payloads in Zeppelin airship for various flight missions demanded an analysis tool that would forecast whether or not there is a good chance for a NPF event. Here we present a generalized methodology to derive forecast NPF event probability at the SMEAR II site in Hyytiälä, Finland. This methodology was used to optimise flying flight hours during Zeppelin campaign in Finland during the PEGASOS-Zeppelin Northern mission in May–June 2013. Based on the existing knowledge we derived a method for estimating the nucleation probability that utilizes forecast air mass trajectories, weather forecasts and air quality model predictions. With the forecast tool we were able to predict the occurrence of NPF events for the next day with more than 90% success rate (10 out of 11 NPF event days correctly predicted). To our knowledge, no similar forecasts of NPF occurrence have been developed for other sites. This method of forecasting NPF occurrence could be applied also at other locations, provided that long-term observations of conditions favouring particle formation are

available.

## 1. Introduction

Formation and growth of secondary aerosol particles has been observed in numerous locations and in different environments in the planetary boundary layer (for an overview see e.g. Kulmala et al., 2004; Kulmala and Kerminen, 2008). Numerous investigations have attempted to connect new particle formation (NPF) to atmospheric trace gas concentrations, atmospheric chemistry and meteorological processes (e.g. Weber et al., 1995; Riipinen et al., 2007; Paasonen et al., 2010). Most of the NPF observations are based on stationary ground-level measurements during which the sampled air masses and prevailing meteorological conditions are continuously changing. Typically the growth of the newly formed particles can be followed for several hours from these fixed points measurements, indicating that NPF usually occurs over large areas (Dal Maso et al., 2007; Hussein et al., 2009). In order to obtain more information on the spatial extent of NPF events both in the vertical and horizontal directions, measurements using aircrafts are needed. As part of the 4 year-long EU funded PEGASOS (Pan-European Gas-Aerosol-Climate Interaction Study) project, a Zeppelin NT (Neue Technologie) airship was performing atmospheric aerosol, trace gas and photochemistry measurement flights in Central Finland during May–June 2013. In order to most efficiently utilize the flight hours of the airship, it was necessary to prepare forecasts on the probability of NPF events in the coming days.

Most of the Zeppelin measurement flights during the campaign were directed to the vicinity of the University of Helsinki SMEAR II measurement station in Hyytiälä (Hari and Kulmala, 2005). Measurements of aerosol number size-distributions, trace gas concentrations and basic meteorological quantities were started at the SMEAR II station in January 1996. These long time-series records have been used ~~to~~ extensively to characterize the conditions in which NPF occurs (or does not occur) in this boreal forest environment, based on both the local atmospheric conditions as well as the synoptic situation and air mass origins and transport route to the station (Boy and Kulmala, 2002; Boy et al., 2003; Lyubovtseva et al., 2005; Dal Maso et al., 2007; Sogacheva et al., 2008; Nieminen et al., 2014).

Field observations, laboratory experiments and theoretical considerations have shown that sulphuric acid is one of the key components in atmospheric NPF events, but in addition also trace amounts of other vapors such as ammonia, amines or oxidized organics are needed (e.g. Kulmala et al., 2013). Particularly the contribution of extreme low volatile organics seems to be crucial in the boreal forest environment (Kulmala et al., 1998; Yli-Juuti et al., 2011; Ehn et al., 2014). Proxies for the concentrations of these trace gases or their precursors have been developed based on campaign-wise measurements (Petäjä et al., 2009; Lappalainen et al., 2009). Based on the concentrations and

emissions of these trace gases, several parametrizations have been developed to describe the occurrence and intensity of NPF (e.g. Buzorius et al., 2003; Bonn et al., 2008; Paasonen et al., 2010; Häkkinen et al., 2013).

In this work, we describe forecasts for the occurrence of NPF at the SMEAR II station. The forecasts are based on the above-mentioned long-term time series observations of the typical conditions during NPF days and non-NPF days, the air mass origins as well as weather and air-quality forecasts.

## 2. Materials and methods

The main objective of the NPF forecasts was to predict whether during the next three days NPF events are likely to occur at the SMEAR II station area. A time period of three days was chosen in order to have long enough time for preparing the measurement instruments needed on different flights while still maintaining reliability of the input data used in making the NPF forecasts. The final NPF forecast was always given for the next day, as the Zeppelin measurement flights were typically planned one day in advance. All the NPF forecast results presented in this work refer to the final NPF forecasts, i.e. forecasts for the next day.

### 2.1 Predictions for trace gas concentrations, particulate matter and meteorology

Forecasts for concentrations of trace gases SO<sub>2</sub>, O<sub>3</sub>, NO<sub>x</sub>, CO and OH as well as particulate matter (PM<sub>10</sub>, comprising the total mass concentration of particles smaller than 10 µm in diameter) and relative humidity were obtained from the Finnish Meteorological Institute's SILAM (System for Integrated modelLling of Atmospheric coMposition) air quality model (Sofiev et al., 2006). This model provides predictions for the above mentioned variables for the next 5 days at several heights above the ground. Input information for SILAM includes anthropogenic emissions from the TNO-MACC data set, IS4FIRES information on wild-land fires, as well as emission calculations for sea salt, pollen, wind-blown dust, and natural volatile organic compounds. The weather forecast input data are obtained from the FMI HIRLAM model. The horizontal resolution of SILAM in the Scandinavian area is 6–7 km. All SILAM forecast data are freely accessible via internet (<http://silam.fmi.fi/>), and the forecast for the Northern Europe area is updated once per day. For the purposes of the current NPF event forecasts, we used predictions for the ground level (15 m above ground) during next three days from the model grid point nearest to Hyytiälä SMEAR II station with the time resolution of 1 hour.

As supporting data, we also used several “traditional” weather forecasts available on the internet (including forecasts by Finnish Meteorological Institute, Foreca and Norwegian Meteorological

Institute), mainly to evaluate the probabilities of cloudiness and rain. During the campaign time, the weather was rather variable and the forecasts were changing rapidly (even several times a day) from clear skies to partly cloudy and possibly rainy. All these conditions are known to affect directly the probability of NPF.

## 2.2 Air mass back-trajectories

Air mass arrival directions and source areas were forecasted for 96 hours prior to the arrival of air at Hyytiälä using the HYSPLIT single particle Lagrangian transport model developed by NOAA and freely available on the internet (<http://www.arl.noaa.gov/HYSPLIT.php>). As input meteorological data for the model, we used the US National Weather Service's Global Forecasting System (GFS) weather forecast data which extends 192 hours forwards in time. The horizontal location accuracy of the air mass trajectory calculations using HYSPLIT has been estimated to be on the order of 10–30% of the total distance the air parcel has travelled (Stunder, 1996; Stohl, 1998; Draxler and Hess, 1998, 2010). We considered trajectories arriving each hour to Hyytiälä at 250-m height above ground calculated 96 hours backwards in time. Typically air masses travelled less than 1000 km during this time, meaning that the air mass source area predictions based on the back-trajectory calculations were could be considered accurate within 100–300 km or less better. Also, since we did not consider just individual air mass back-trajectories but rather took into account all the air masses that were to arrive during the morning and early afternoon (which is the typical time of NPF occurrence in Hyytiälä), the effect of uncertainties in the position of individual trajectories was diminished.

## 2.3 NPF event forecasts and nucleation probability parameters

Typical conditions on NPF and non-NPF days in Hyytiälä are shown in Table 1 for May and June during years 1996–2012. The conditions are shown for the time window 8–11, which is the time when NPF typically starts in Hyytiälä. In a data-mining study of the SMEAR II station long-time series records of aerosol size distributions and meteorological parameters, Hyvärinen et al. (2005) found that the condensation sink (describing the pre-existing aerosol surface area) and relative humidity were the two parameters most effectively separating NPF days from non-NPF days. Particle formation was occurring only on days with a low CS and low RH. On the other hand, photochemical production of vapors participating in nucleation and growth, namely sulphuric acid and oxidation products of organics, is more efficient in clear-sky conditions with high UV radiation intensity compared to cloudy conditions. Thus, our main criteria in forecasting NPF to occur was clear sky conditions, low condensation sink (in practice low PM<sub>10</sub> concentration, which was obtained from SILAM) and low relative humidity in the early morning to noon-time, as this is the time when regional NPF events start in Hyytiälä (Kulmala et al., 2013). Note that in spring and summer time, days with low relative

humidity are typically also warm and sunny, so these conditions are not necessarily independent of each other. However, the difference between NPF days and non-NPF days is also seen in the absolute humidity (water vapor concentration, see Table 1).

The air mass source area and transport route to Hyytiälä were considered when making the NPF forecasts. In the long-time series analysis by Dal Maso et al. (2007), the occurrence of NPF in Hyytiälä was observed to be highly favorable in air masses originating from the Arctic Ocean and Northern Atlantic, and on the other hand suppressed in southern air masses. This is typically connected to clean air arriving from the west and more polluted air originating from Central and Eastern Europe, directly influencing the sink for newly formed particles. However, in air masses originating from south and south-east to Hyytiälä, SO<sub>2</sub> concentrations are typically higher than in westerly air masses, which would favor NPF due to a higher production rate of sulphuric acid (Riuttanen et al., 2013). Table 2 summarizes the criteria used for making the NPF forecasts. The flowchart representing the main decision making process for the NPF forecasts is shown in Figure 1. The threshold values for SO<sub>2</sub> and PM<sub>10</sub> shown in the flowchart are based on the observed range of these variables on NPF and non-NPF days (Table 1).

We also developed several “nucleation parameters” to forecast the intensity of NPF. The parameters that worked best were either related to only the proxy concentration of sulphuric acid, or to proxies for both sulphuric acid and oxidation products of volatile organic compounds (such as monoterpenes). Paasonen et al. (2010) studied several different parameterizations for the formation rate of 2 nm particles, and found that at the Hyytiälä site nucleation rate could be mainly explained by the sulphuric acid concentration to the power of one or two.

The simplest nucleation parameter is described by the following equation:

$$NP_1 = \frac{[SO_2] \cdot [OH]}{PM_{10} \cdot RH} \quad (1)$$

where the sulphur dioxide concentration (SO<sub>2</sub>), hydroxyl radical concentration (OH), particulate mass concentration (PM<sub>10</sub>) and relative humidity (RH) are taken from the SILAM air quality forecasts for the grid point closest to Hyytiälä. ~~From SILAM forecast, the~~ The particulate mass concentration is available from the SILAM forecasts. In Hyytiälä, the PM<sub>10</sub> concentrations correlate well with the condensation sink CS which describes the total sink of the newly formed particles due to the pre-existing aerosol population. The PM<sub>10</sub> concentrations (in units µg m<sup>-3</sup>) can be scaled to CS (in units s<sup>-1</sup>) using the linear relationship CS = 4.59·10<sup>-4</sup>·PM<sub>10</sub> (linear regression based on measurement data from



Hyytiälä in 1996–2012 with correlation coefficient  $r=0.81$ ). The relative humidity is included as  $RH^{-1}$  in Equation 1 in order to take into account the observed anti-correlation between the relative humidity and particle formation intensity, mainly due to the fact that the highest sulphuric acid concentrations are limited to times of low ambient relative humidity (Hamed et al., 2011).

A nucleation parameter taking into account the oxidation products of monoterpenes, in addition to sulphuric acid, is described by the following equation:

$$NP_2 = \frac{[SO_2] \cdot [OH]}{PM_{10} \cdot RH} \cdot \frac{\exp(aT) \cdot (k_{OH}[OH] + k_{O_3}[O_3])}{BLH \cdot PM_{10}} \quad (2)$$

Here, the concentrations of sulphur dioxide  $SO_2$ , hydroxyl radicals  $OH$  and ozone  $O_3$  (in units of  $cm^{-3}$ ), particulate mass  $PM_{10}$  (in units  $\mu g\ m^{-3}$ ), as well as relative humidity  $RH$  (in percentages) and temperature  $T$  (in units  $^{\circ}C$ ) were obtained from [the](#) SILAM forecasts. The concentrations of monoterpenes were predicted based on the ambient temperature, as their concentrations have been shown to follow an exponential temperature dependence in Hyytiälä with the scaling coefficient  $a=0.078\ ^{\circ}C^{-1}$  (Lappalainen et al., 2009). The  $OH$  and  $O_3$  concentrations were used to calculate the proxy concentrations of the monoterpene oxidation products, and the reaction coefficients  $k_{OH}=7.5 \times 10^{-11}\ cm^3s^{-1}$  and  $k_{O_3}=1.4 \times 10^{-17}\ cm^3s^{-1}$  are the averages of the reaction coefficients for individual monoterpene species weighted according to their typical concentrations observed in Hyytiälä (Hakola et al., 2003; Yli-Juuti et al., 2011). The modelled boundary layer height  $BLH$  is included in Equation 2 to take into account the dilution of monoterpene emissions into the developing boundary layer.

### 3. Results

#### 3.1 Overview of the conditions during the campaign

The PEGASOS-Zeppelin Northern mission was a 40-day-long measurement campaign between 3 May and 11 June 2013. An overview of the meteorological conditions as well as trace gas and particle concentrations observed at the SMEAR II station during the campaign is shown in Figure 2. Most of the days were sunny with either clear or partly clear skies. Rain occurred on 13 days during the campaign. The air was rather clean from anthropogenic pollution, especially in the first and last week of the campaign. Occasionally, there were pollution episodes seen e.g from a ten-fold rise of the  $SO_2$  concentration from its typical level of about 0.1 ppb. At the end of May, a longer period occurred during which more polluted continental air was transported from Central Europe to Hyytiälä.

Figure 3 shows the arrival routes of air masses to Hyytiälä during the period of our measurement campaign. These trajectories were calculated for the 250-m arrival height above ground, and 96 hours backwards in time. From the beginning of the campaign until middle of May, approximately 17th May, the air masses originated mainly from over the Atlantic, and arrived at Hyytiälä either directly from the west over Scandinavia or from south-west making a turn over the Baltic sea. Air in Hyytiälä was relatively clean during this time, characterized by low particulate mass and trace gas concentrations. Especially SO<sub>2</sub> had very low concentrations during this time, with the exception of one pollution-related peak on 9 May. After mid-May, air masses turned to arrive mainly from east at Hyytiälä, originating either from over the Arctic Ocean or from the continental north-west Russia. During this time until early June, the condensation sink and PM<sub>10</sub> concentrations were higher than in early May, indicating more polluted air. Also high concentration peaks in the trace gases SO<sub>2</sub> and CO were more frequent during this time. During the last weeks of the campaign in the beginning of June, air masses turned again to arrive at Hyytiälä from west over Scandinavia, resulting in cleaner air with low particulate matter and trace gas concentrations.

### 3.2 Performance of the NPF forecasts and nucleation parameters

Figure 4 shows the particle number size-distributions along with the forecasted NPF occurrence and the time-series of the nucleation parameters NP<sub>1</sub> and NP<sub>2</sub>. In the beginning of the campaign, several strong NPF bursts occurred (high nucleation mode particle concentrations on 3, 6 and 8 of May), and our forecasts were able to capture these as well as the days with no new particle formation. Both of the nucleation parameters peaked on these three NPF event days, and were clearly lower on the days between NPF events, except NP<sub>1</sub> which had a relatively high value also on 4 May. During the beginning of the campaign time, air masses originated mainly from over the Atlantic Ocean and arrived at Hyytiälä after passing over Scandinavia. On some of these days, the air was remarkably clean, characterized by very low SO<sub>2</sub> concentrations (below 0.1 ppb), resulting in low sulphuric acid concentrations and weak or no NPF event on clear-sky conditions. The daytime peak value of 10<sup>4</sup> or higher for nucleation parameter NP<sub>1</sub> was typically associated with the occurrence of NPF.

After mid-May until early June, the air masses arrived at Hyytiälä mainly from the east, either spending several days over continental Russia or, in some cases, coming more directly from over the Arctic Ocean via northwest Russia. The air mass circulation was driven by a persistent high-pressure system residing over Central Finland. This resulted in a rather unusual air mass transport pattern to Hyytiälä, and also made the NPF forecasting more challenging. During this time, there were situations when the polluted air masses resulted in a high condensation sink, preventing the occurrence of NPF. Also the SILAM forecasts for the SO<sub>2</sub> and PM<sub>10</sub> concentrations were less accurate during the easterly air masses compared with air masses coming from the west or the south. This might be related to less

accurate emission data for these species over the Russian area.

The nucleation parameter  $NP_2$  started to have high values more frequently after the middle of May. One factor influencing this was the higher air temperatures during this time compared to the beginning of the campaign, as the emissions of monoterpenes are highly influenced by the ambient temperature. NPF events, however, were not as frequent during this time. On one hand, this period was influenced by the more polluted air masses arriving at Hyytiälä from the east. On the other hand, ~~during this time there were quite many~~ this period included quite a few days (13 out of 22 days after 20th May) when a growing particle mode was observed to appear in Hyytiälä starting from sizes above 10–20 nm. These types of NPF events are typically observed during the summer time in Hyytiälä, and they might be connected to higher particle growth rates during the summer, leading to ~~observing~~the observation of the newly formed particles after they have already grown for several hours (Buenrostro Mazon et al., 2009). ~~When the nucleation parameter  $NP_2$  had daytime maximum values higher than 0.02, NPF occurrence started to be more probable than the day being a non-event day. Days on which the maximum value of the nucleation parameter  $NP_2$  exceeded 0.02 started to be more likely and NPF event day rather than a non-event day.~~

The nucleation parameters  $NP_1$  and  $NP_2$  have a clear connection to the NPF: they represent the ratios between the source and sink terms for the newly formed particles. However, the numerical values for  $NP_1$  and  $NP_2$  and especially their uncertainty depend greatly on the weather forecast and air-quality forecast data taken from the SILAM model. As it is out of the scope of this work to evaluate the accuracy of the SILAM predictions for the various parameters used, the values of  $NP_1$  and  $NP_2$  presented in this study should be regarded as qualitative. When comparing the different days during the campaign, they did however provide useful information to support the NPF forecasting.

The particle number size distributions measured by the Differential Mobility Particle Sizer (DMPS) during the whole campaign are shown in the upper panel of Figure 4. Using the criteria developed by Dal Maso et al. (2005), each day was classified as either a NPF event, non-event or undefined day. On NPF event days a new mode of particles smaller than 25 nm is observed and these particles can be observed growing to larger sizes during several hours. NPF event days are further classified according to the possibility to reliably derive particle formation and growth rates (Class I) or not (Class II). The days when no new sub-25 nm particles were appearing were classified as non-NPF days. Undefined days are those days for which it was not possible to unambiguously determine whether NPF occurred or not. Table 3 shows the forecast and the corresponding event classification for each day. During the 40 day campaign, clear regional NPF events ~~occurring during~~lasting for several hours were observed on 11 days in Hyytiälä. Six of these days were also forecasted to be NPF days, and four to have a possibility of NPF to occur. The NPF day which we forecasted to be a non-NPF day (9th June) was

cloudy and had a possibility of rain according to weather forecasts, and the airmasses were forecasted to originate from west, which is not the direction from where airmasses typically arrive to Hyytiälä on NPF event days (Dal Maso et al., 2007). On 10 days of the campaign there was no particle formation occurring in Hyytiälä, and these were also forecasted to be non-NPF days, except for two days (17th and 28th May) for which a possible NPF event was forecasted. This was most probably caused by the very low SO<sub>2</sub> concentration. On only one of the days forecasted to be non-NPF day, was there appearance and growth of new nucleation mode particles.

Comparison of the event classification and the event forecasts is shown in Table 4. We follow the method of Hyvönen et al. (2005) for calculating the score ~~indexes~~indices for the performance of the event forecasts on the 21 days classified as either NPF or non-NPF days (undefined days are removed from this comparison). Out of these 21 days our forecasts had two false NPF event days (non-event day forecasted to be either event or to have a possibility for event) giving a 10% false-event fraction, and one NPF event day forecasted to be a non-event day giving a 5% missed-event fraction. The total error of the NPF forecasts (false and missed events) during the 21 classified days of the 40-day campaign was  $(2+1)/21 = 14\%$ , which is comparable to the performance of the classification methods presented in the study by Hyvönen et al. (2005).

#### 4. Summary and conclusions

Here we present a way to forecast new particle formation events. Being able to make such forecasts accurately is very important, for example, when airborne measurements are performed. As a summary, we made NPF forecast for 40 days. The forecasts were found to work reasonably well. Only one day when nucleation was forecasted to occur was a non-nucleation event day. In total 24 days were predicted to be either NPF event days or probable NPF event days, and on 10 of them there was an NPF event, 11 were undefined (when it could not be reliably determined whether NPF occurred or not), and two were non-event days.

The main challenges in making the NPF forecasts were to obtain as reliable input data as possible from SILAM, HYSPLIT and weather forecasts. The methods utilized here are most likely also applicable to other locations where there is sufficiently long datasets available ~~characterizing to~~characterise the conditions favourable for the occurrence of regional-scale particle formation. In urban areas and inside cities our methods are less likely to be applicable due to the day-to-day variation of emissions of vapours and particles from local anthropogenic sources.

#### Acknowledgements

This research is supported by the Academy of Finland Centre of Excellence program (project numbers 1118615 and 272041). The EU FP7 project PEGASOS (project number 265148) is acknowledged for the Zeppelin NT measurements. T. Yli-Juuti acknowledges financial support from Max Planck Society. H. E. Manninen acknowledges support by the Finnish Cultural Foundation. The authors acknowledge the NOAA Air Resources Laboratory (ARL) for the provision of the HYSPLIT transport and dispersion model and READY website (<http://www.ready.noaa.gov>), and the Finnish Meteorological Institute for the publicly available SILAM air quality model forecasts used in this publication (<http://silam.fmi.fi/>).

## References

- Bonn, B., Boy, M., Kulmala, M., Groth, A., Trawny, K., Borchert, S., and Jacobi S.: A new parametrization for ambient particle formation over coniferous forests and its potential implications for the future. *Atmospheric Chemistry and Physics* 9, 8079–8090, 2008.
- Boy, M., and Kulmala, M.: Nucleation events in the continental boundary layer: Influence of physical and meteorological parameters. *Atmospheric Chemistry and Physics* 2, 1–16, 2002.
- Boy, M., Rannik, Ü., Lehtinen, K. E. J., Tarvainen, V., Hakola, H., and Kulmala, M.: Nucleation events in the continental boundary layer: Long-term statistical analyses of aerosol relevant characteristics. *Journal of Geophysical Research* 108(D21), 4667, 2003.
- Buenrostro Mazon, S., Riipinen, I., Schultz, D. M., Valtanen, M., Dal Maso, M., Sogacheva, L., Junninen, H., Nieminen, T., Kerminen, V.-M., and Kulmala, M.: Classifying previously undefined days from eleven years of aerosol-particle-size distribution data from the SMEAR II station, Hyytiälä, Finland. *Atmospheric Chemistry and Physics* 9, 667–676, 2009.
- Buzorius, G., Rannik, Ü., Aalto, P., Dal Maso, M., Nilsson, E. D., Lehtinen, K. E. J., and Kulmala, M.: On particle formation prediction in continental boreal forest using micrometeorological parameters. *Journal of Geophysical Research* 108(D13), 4377, 2003.
- Dal Maso, M., Kulmala, M., Riipinen, I., Wagner, R., Hussein, T., Aalto, P. P., and Lehtinen, K. E. J.: Formation and growth of fresh atmospheric aerosols: eight years of aerosol size distribution data from SMEAR II, Hyytiälä, Finland. *Boreal Environment Research* 10, 323–336, 2005.
- Dal Maso, M., Sogacheva, L., Aalto, P. P., Riipinen, I., Komppula, M., Tunved, P., Korhonen, L., Suur-Uski, V., Hirsikko, A., Kurtén, T., Kerminen, V.-M., Lihavainen, H., Viisanen, Y., Hansson, H.-C., and Kulmala, M.: Aerosol size distribution measurements at four Nordic field stations: identification, analysis and trajectory analysis of new particle formation bursts. *Tellus* 59B, 350–361, 2007.
- Draxler, R. R., and Hess, G. D.: An overview of the HYSPLIT\_4 modelling system for trajectories, dispersion and deposition. *Australian Meteorological Magazine* 47, 295–308, 1998.
- Draxler, R. R., and Hess, G. D.: Description of the HYSPLIT\_4 modeling system. NOAA Technical Memorandum ERL ARL-224. <http://www.arl.noaa.gov/documents/reports/arl-224.pdf>
- Ehn, M., Thornton, J. A., Kleist, E., Sipilä, M., Junninen, H., Pullinen, I., Springer, M., Rubach, F., Tillmann, R., Lee, B., Lopez-Hilfiker, F., Andres, S., Acir, I.-H., Rissanen, M., Jokinen, T., Schobesberger, S., Kangasluoma, J., Kontkanen, J., Nieminen, T., Kurtén, T., Nielsen, L. B., Jørgensen, S., Kjaergaard, H. G., Canagaratna, M., Dal Maso, M., Berndt, T., Petäjä, T., Wahner, A., Kerminen, V.-M., Kulmala, M., Worsnop, D. R., Wildt, J., and Mentel, T. F.: A large source of low-volatility secondary organic aerosol. *Nature* 506, 476–479, 2014.
- Hakola, H., Tarvainen, V., Laurila, T., Hiltunen, V., Hellen, H., and Keronen, P.: Seasonal variation of VOC concentrations above a boreal coniferous forest. *Atmospheric Environment* 37, 1623–1634, 2003.
- Hari, P., and Kulmala, M.: Station for measuring ecosystem–atmosphere relations (SMEAR II). *Boreal Environment Research* 10, 315–322, 2005.
- Hamed, A., Korhonen, H., Sihto, S.-L., Joutsensaari, J., Järvinen, H., Petäjä, T., Arnold, F., Nieminen, T., Kulmala, M., Smith, J. N., Lehtinen, K. E. J., and Laaksonen, A.: The role of relative humidity in continental new particle formation. *Journal of Geophysical Research* 116, D03202, 2011.

333 Hussein, T., Junninen, H., Tunved, P., Kristensson, A., Dal Maso, M., Riipinen, I., Aalto, P. P.,  
334 Hansson, H.-C., Swietlicki, E., and Kulmala, M.: Time span and spatial scale of regional new particle  
335 formation events over Finland and Southern Sweden. *Atmospheric Chemistry and Physics* 9, 4699–  
336 4716, 2009.

337 Hyvönen, S., Junninen, H., Laakso, L., Dal Maso, M., Grönholm, T., Bonn, B., Keronen, P., Aalto, P.,  
338 Hiltunen, V., Pohja, T., Launiainen, S., Hari, P., Mannila, H., and Kulmala, M.: A look at aerosol  
339 formation using data mining techniques. *Atmospheric Chemistry and Physics* 5, 3345–3356, 2005.

340 Häkkinen, S. A. K., Manninen, H. E., Yli-Juuti, T., Merikanto, J., Kajos, M. K., Nieminen, T.,  
341 D'Andrea, S. D., Asmi, A., Pierce, J. R., Kulmala, M., and Riipinen, I.: Semi-empirical  
342 parameterization of size-dependent atmospheric nanoparticle growth in continental environments.  
343 *Atmospheric Chemistry and Physics* 13, 7665–7682, 2013.

344 Kulmala, M., Toivonen, A., Mäkelä, J. M., and Laaksonen, A.: Analysis of the growth of nucleation  
345 mode particles observed in Boreal forest. *Tellus* 50B, 449–462, 1998.

346 Kulmala, M., Vehkamäki, H., Petäjä, T., Dal Maso, M., Lauri, A., Kerminen, V.-M., Birmili, W., and  
347 McMurry, P. H.: Formation and growth rates of ultrafine atmospheric particles: a review of  
348 observations. *Journal of Aerosol Science* 35, 143–176, 2004.

349 Kulmala, M., and Kerminen, V.-M.: On the formation and growth of atmospheric nanoparticles.  
350 *Atmospheric Research* 90, 132 – 150, 2008.

351 Kulmala, M., Kontkanen, J., Junninen, H., Lehtipalo, K., Manninen, H. E., Nieminen, T., Petäjä, T.,  
352 Sipilä, M., Schobesberger, S., Rantala, P., Franchin, A., Jokinen, T., Järvinen, E., Äijälä, M.,  
353 Kangasluoma, J., Hakala, J., Aalto, P. P., Paasonen, P., Mikkilä, J., Vanhanen, J., Aalto, J., Hakola, H.,  
354 Makkonen, U., Ruuskanen, T., Mauldin, R. L., Duplissy, J., Vehkamäki, H., Bäck, J., Kortelainen, A.,  
355 Riipinen, I., Kurtén, T., Johnston, M. V., Smith, J. N., Ehn, M., Mentel, T. F., Lehtinen, K. E. J.,  
356 Laaksonen, A., Kerminen, V.-M., and Worsnop, D. R.: Direct observations of atmospheric aerosol  
357 nucleation. *Science* 339, 943–946, 2013.

358 Lappalainen, H. K., Sevanto, S., Bäck, J., Ruuskanen, T. M., Kolari, P., Taipale, R., Rinne, J.,  
359 Kulmala, M., and Hari, P.: Day-time concentrations of biogenic volatile organic compounds in a boreal  
360 forest canopy and their relation to environmental and biological factors. *Atmospheric Chemistry and*  
361 *Physics* 9, 5447–5459, 2009.

362 Lyubovtseva, Y. S., Sogacheva, L., Dal Maso, M., Bonn, B., Keronen, P., and Kulmala, M.: Seasonal  
363 variations of trace gases, meteorological parameters, and formation of aerosols in boreal forests.  
364 *Boreal Environment Research* 10, 493–510, 2005.

365 Nieminen, T., Asmi, A., Dal Maso, M., Aalto, P. P., Keronen, P., Petäjä, T., Kulmala, M., and  
366 Kerminen, V.-M.: Trends in atmospheric new particle formation: 16 years of observations in boreal  
367 forest environment. *Boreal Environment Research* 19 (suppl. B), 191–214, 2014.

368 Paasonen, P., Nieminen, T., Asmi, E., Manninen, H. E., Petäjä, T., Plass-Dülmer, C., Flentje, H.,  
369 Birmili, W., Wiedensohler, A., Hörrak, U., Metzger, A., Hamed, A., Laaksonen, A., Facchini, M. C.,  
370 Kerminen, V.-M., and Kulmala, M.: On the roles of sulphuric acid and low-volatility organic vapours  
371 in the initial steps of atmospheric new particle formation. *Atmospheric Chemistry and Physics* 10,  
372 11223–11242, 2010.

373 Petäjä, T., Mauldin, R. L., Kosciuch, E., McGrath, J., Nieminen, T., Paasonen, P., Boy, M., Adamov,  
374 A., Kotiaho, T., and Kulmala, M.: Sulfuric acid and OH concentrations in a boreal forest site.

375 Atmospheric Chemistry and Physics 9, 7435–7448, 2009.

376 Riipinen, I., Sihto, S.-L., Kulmala, M., Arnold, F., Dal Maso, M., Birmili, W., Saarnio, K., Teinilä, K.,  
 377 Kerminen, V.-M., Laaksonen, A., and Lehtinen, K. E. J.: Connections between atmospheric sulphuric  
 378 acid and new particle formation during QUEST III–IV campaigns in Heidelberg and Hyytiälä.  
 379 Atmospheric Chemistry and Physics 7, 1899–1914, 2007.

380 Riuttanen, L., Hulkkonen, M., Dal Maso, M., Junninen, H., and Kulmala, M.: Trajectory analysis of  
 381 atmospheric transport of fine particles, SO<sub>2</sub>, NO<sub>x</sub> and O<sub>3</sub> to the SMEAR II station in Finland in 1996–  
 382 2008. Atmospheric Chemistry and Physics 13, 2153–2164, 2013.

383 Sofiev, M., Siljamo, P., Valkama, I., Ilvonen, M., and Kukkonen, J.: A dispersion modelling system  
 384 SILAM and its evaluation against ETEX data. Atmospheric Environment 40, 674–685, 2006.

385 Sogacheva, L., Saukkonen, L., Nilsson, E. D., Dal Maso, M., Schultz, D. M., De Leeuw, G., and  
 386 Kulmala, M.: New aerosol particle formation in different synoptic situations at Hyytiälä, Southern  
 387 Finland. Tellus 60B, 485–494, 2008.

388 Stohl, A.: Computation, accuracy and applications of trajectories—a review and bibliography.  
 389 Atmospheric Environment 32, 947–966, 1998.

390 Stunder, B. J. B.: An assessment of the quality of forecast trajectories. Journal of Applied Meteorology  
 391 35, 1319–1331, 1996.

392 Weber, R. J., McMurry, P. H., Eisele, F. L., and Tanner, D. J.: Measurement of expected nucleation  
 393 precursor species and 3 to 500 nm diameter particles at Mauna Loa Observatory, Hawaii. J. Atmos.  
 394 Sci. 52, 2242–2257, 1995.

395 Yli-Juuti, T., Nieminen, T., Hirsikko, A., Aalto, P. P., Asmi, E., Hörrak, U., Manninen, H. E.,  
 396 Patokoski, J., Dal Maso, M., Petäjä, T., Rinne, J., Kulmala, M., and Riipinen, I.: Growth rates of  
 397 nucleation mode particles in Hyytiälä during 2003–2009: variation with particle size, season, data  
 398 analysis method and ambient conditions. Atmospheric Chemistry and Physics 11, 12865–12886, 2011.



## 399 Tables and Figures

400 | **Table 1.** Conditions observed at Hyytiälä during NPF and non-NPF days between 8:00 and 11:00 in  
 401 months May–June 1996–2012. For each variable the median value is given and the interquartile range  
 402 (25th and 75th percentiles) is shown in brackets. The median and interquartile values are calculated  
 403 from all data at 30 min time resolution in the time window 8–11.

Parameter	NPF day	Non-NPF day
Temperature (°C)	11 (8–14)	13 (9–17)
Global radiation (W m <sup>-2</sup> )	560 (430–610)	230 (120–530)
Relative humidity (%)	45 (39–55)	76 (59–91)
H <sub>2</sub> O (parts-per-thousand)	6.5 (4.9–8.0)	10.2 (8.6–12.4)
SO <sub>2</sub> (ppb)	0.12 (0.04–0.23)	0.09 (0.04–0.19)
O <sub>3</sub> (ppb)	39 (35–44)	34 (28–41)
Condensation sink (10 <sup>-3</sup> s <sup>-1</sup> )	2.2 (1.4–3.3)	3.9 (2.7–6.2)
PM <sub>10</sub> (µg m <sup>-3</sup> )	3.7 (2.3–5.5)	6.6 (4.6–10.5)

**Table 2.** Criteria for the NPF forecasts (the source for each data is shown in parenthesis). All the criteria within the category must be fulfilled, i.e. the criteria are combined with logical AND.

NPF forecast	Criteria
NPF day	<ul style="list-style-type: none"> <li>Sunny, clear skies (according to weather forecasts)</li> <li>Low PM<sub>10</sub> concentration, smaller than 3.7 µg m<sup>-3</sup> (SILAM)</li> <li>Low RH during the day, smaller than 45% (SILAM)</li> <li>SO<sub>2</sub> concentration higher than 0.12 ppb (SILAM)</li> <li>Airmasses originating from the Arctic Ocean or Northern Atlantic (HYSPLIT trajectories)</li> </ul>
Weak NPF / Possibility of NPF / No continuous growth of nucleation mode particles	<ul style="list-style-type: none"> <li>Sunny day with some clouds, or partly cloudy (according to weather forecasts)</li> <li>PM<sub>10</sub> 3.7–6.6 µg m<sup>-3</sup> and SO<sub>2</sub> &gt; 0.12 ppb; OR PM<sub>10</sub> &gt; 6.6 µg m<sup>-3</sup> and SO<sub>2</sub> &gt; 0.23 ppb (SILAM)</li> <li>RH during the day 45–76% (SILAM)</li> <li>Airmasses not coming directly from the west–north–west, or passing over known areas of anthropogenic pollution (HYSPLIT trajectories)</li> </ul>
No NPF	<ul style="list-style-type: none"> <li>Cloudy day, rain (according to weather forecasts)</li> <li>High PM<sub>10</sub>, higher than 6.6 µg m<sup>-3</sup> (SILAM)</li> <li>High RH, higher than 76% (SILAM)</li> <li>SO<sub>2</sub> concentration smaller than 0.09 ppb (SILAM)</li> <li>Airmasses originating from south (continental Europe) or east, or passing over known areas of anthropogenic pollution (HYSPLIT trajectories)</li> </ul>

**Table 3.** NPF event forecasts (2nd column), and NPF event classification based on measured particle size distributions (3rd column) for each day of the campaign. Class I and II NPF events refer to the classification by Dal Maso et al. (2005). Remarks on the 4th column show the basis for the NPF event forecast.

Date	Forecast	Classification	Remarks
3 May	Possibility of NPF	NPF (class II)	Airmasses coming from north to north-west. Low SO <sub>2</sub> and PM <sub>10</sub> . Sunny the whole morning until mid-afternoon. RH drops to 25% during the day.
4 May	No NPF	Undefined	Airmasses coming from south-west. Elevated SO <sub>2</sub> and PM <sub>10</sub> concentrations. Cloudy day with small chance of occasional rain.
5 May	No NPF	No NPF	Airmasses coming from south-west over southern Sweden, turning to west late in evening. Low SO <sub>2</sub> and PM <sub>10</sub> concentration. Cloudy day with light rain throughout the day until evening. In the evening partly cloudy.
6 May	NPF day	NPF (class I)	Airmasses originating from west and circulating over western Finland. Relatively clean air, SO <sub>2</sub> and PM <sub>10</sub> concentrations low during morning and increasing towards evening. Sunny until midday, afternoon clouds possible. RH dropping to 40% during the morning.
7 May	No continuous growth of nucleation mode particles	NPF (class II)	Airmasses coming from south-west over Denmark and southern Sweden. Elevated SO <sub>2</sub> and PM <sub>10</sub> concentrations. Partly cloudy day. RH dropping to 55%.
8 May	NPF day	NPF (class I)	Westerly airmasses coming over Central Sweden. Low SO <sub>2</sub> and PM <sub>10</sub> concentrations. Sunny day, warm temperatures (over +15°C). RH dropping to 35% during the morning.
9 May	No NPF	No NPF	Airmasses coming from southwest-south and circulating over southern Finland. Elevated SO <sub>2</sub> and PM <sub>10</sub> concentrations. Cloudy and rainy day.
10 May	No NPF	No NPF	Airmasses coming from south over Baltic countries and southern Finland. Low SO <sub>2</sub> and somewhat elevated PM <sub>10</sub> concentrations. Cloudy day with occasional light rain.
11 May	No NPF	Undefined	Airmasses coming from southwest over northern Germany, Denmark and southern Sweden. Low SO <sub>2</sub> , somewhat elevated PM <sub>10</sub> concentrations. Cloudy morning, partly cloudy in afternoon, small chance of rain. Clear skies in the evening.
12 May	Weak NPF	Undefined	Airmasses from south-west over northern France, Denmark and southern Sweden. Elevated SO <sub>2</sub> and relatively low PM <sub>10</sub> concentrations. Partly cloudy, warm (over +15°C), RH dropping to 45%.
13 May	No NPF	Undefined	Airmasses from south-west over England, Denmark and southern Sweden. SO <sub>2</sub> concentration somewhat elevated, high PM <sub>10</sub> concentrations. Partly cloudy day, early morning sunny. Warm (over +15°C), RH dropping to 45%.
14 May	Possibility of NPF	Undefined	Airmasses from south-west over Denmark and southern Sweden. Somewhat elevated SO <sub>2</sub> and relatively low PM <sub>10</sub> concentrations. Possibility for clear sky in the morning, more clouds in the afternoon. Warm day (over +15°C), RH dropping to 40%.

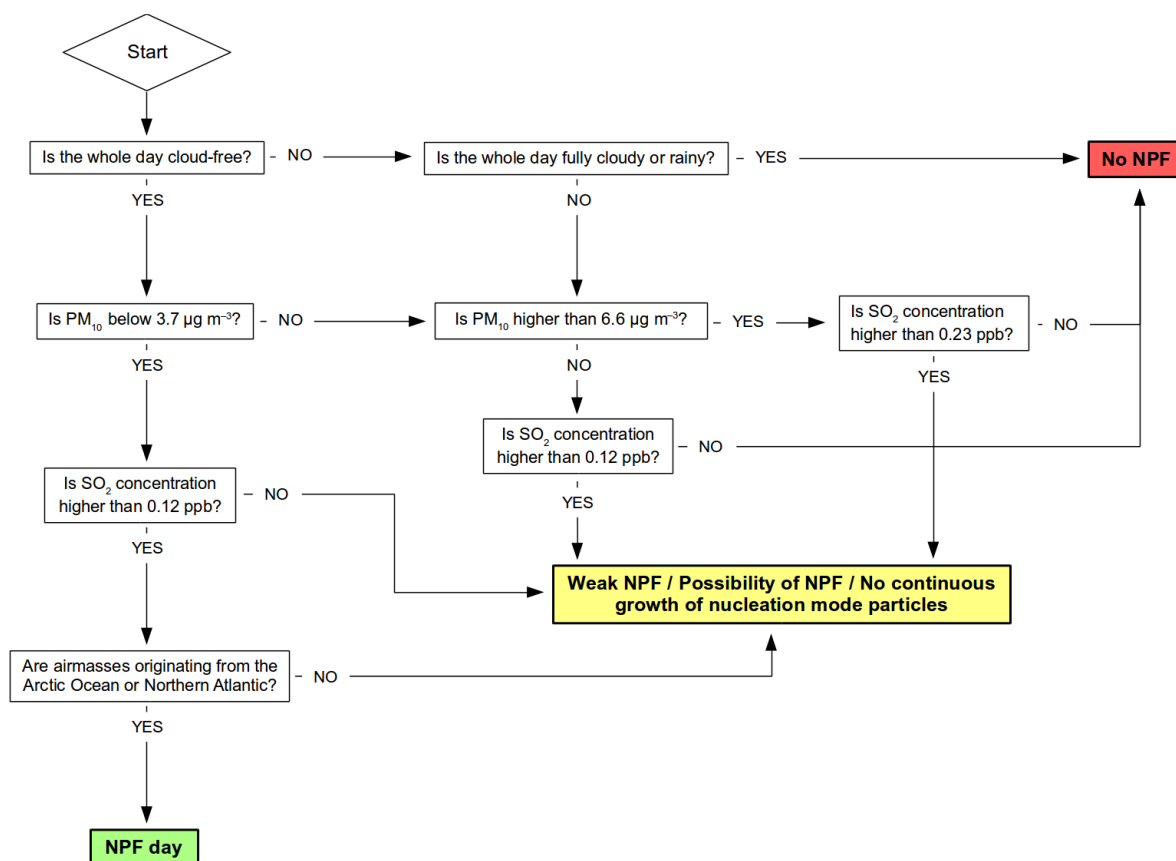
15 May	Possibility of NPF	NPF (class I)	Airmasses from south-west over England, Northern Germany and Southern Sweden. Somewhat elevated SO <sub>2</sub> . Low PM <sub>10</sub> concentrations. Partly cloudy early morning (possibility for clear sky), clear sky in the afternoon. Warm (over +15°C). RH dropping to 35% during the day.
16 May	NPF day	NPF (class II)	Airmasses from south-west over Northern Germany and Southern Sweden, circulating over Southern Finland. Low SO <sub>2</sub> . Low PM <sub>10</sub> concentrations. Clear sky in the morning, possibility of some clouds towards afternoon, warm (over +15°C). RH dropping to 35% during the day.
17 May	No continuous growth of nucleation mode particles	No NPF	Airmasses from south-west over England, Germany, and Southern Sweden, towards afternoon circulating over Northeast Russia. Low SO <sub>2</sub> . Slightly elevated PM <sub>10</sub> concentrations. Partly cloudy, very warm (over +20°C). RH dropping to 45% during the day.
18 May	No NPF	Undefined	Airmasses circulating over Finland and Northwest Russia. High SO <sub>2</sub> , elevated PM <sub>10</sub> concentrations. Cloudy, some rain, warm (over +15°C). RH dropping to 45% during the day.
19 May	No NPF	No NPF	Airmasses coming from east. Low SO <sub>2</sub> and PM <sub>10</sub> concentrations. Cloudy and some rain, very warm (over +20°C). RH dropping to 50% during the day.
20 May	No NPF	Undefined	Airmasses coming from east. Low SO <sub>2</sub> and PM <sub>10</sub> concentrations. Cloudy and some rain in the morning, very warm (over +20°C). RH > 90% during the day.
21 May	Possibility of NPF	Undefined	Airmasses coming from northeast. Elevated SO <sub>2</sub> , low PM <sub>10</sub> concentrations. Partly cloudy until afternoon (no continuous growth of nucleation mode particles), possibly clear skies in the evening. Very warm (over +20°C). RH dropping to 55% during the day.
22 May	Possibility of NPF	NPF (class II)	Airmasses coming from Arctic Ocean and circulating via northwest Russia. Elevated SO <sub>2</sub> and PM <sub>10</sub> concentrations. Partly cloudy day, cloudier towards the afternoon (no continuous growth of nucleation mode) with a chance of rain. Warm (over +15°C). RH dropping to 45% during the day.
23 May	Possibility of NPF	NPF (class II)	Airmasses coming from Arctic Ocean and circulating over northwest Russia. Low SO <sub>2</sub> and PM <sub>10</sub> concentrations. Partly cloudy in the morning, cloudy skies towards the evening (no continuous growth of nucleation mode).
24 May	No NPF	No NPF	Airmasses coming from Arctic Ocean and circulating via northwest Russia. Low SO <sub>2</sub> and PM <sub>10</sub> concentrations. Cloudy day, chance of rain throughout the day.
25 May	NPF day	NPF (class II)	Airmasses coming from south-east and circulating over Central Finland. Low SO <sub>2</sub> and somewhat elevated PM <sub>10</sub> concentrations. Sunny day with few clouds, very warm (over +20°C), RH dropping to 35% during the morning.
26 May	NPF day	NPF	Airmasses coming from east and circulating via Northern Finland to Hyytiälä. Low SO <sub>2</sub> and PM <sub>10</sub> concentrations. Sunny day, some clouds in the afternoon, very warm (over +20°C), RH dropping to 35% during the morning.
27 May	No NPF	Undefined	Airmasses coming from east. High SO <sub>2</sub> and elevated PM <sub>10</sub> concentrations. Cloudy and a chance of rain in the

			morning, partly cloudy in the afternoon.
28 May	No continuous growth of nucleation mode particles	No NPF	Airmasses coming from Arctic Ocean via northwest Russia to Hyytiälä. Low SO <sub>2</sub> and PM <sub>10</sub> concentrations. Partly cloudy in the morning, clear skies towards afternoon. Very warm (over +20°C), RH dropping to 35% during the morning.
29 May	Possibility of NPF	Undefined	Airmasses coming from Arctic Ocean via northwest Russia to Hyytiälä. Low SO <sub>2</sub> and PM <sub>10</sub> concentrations. Partly cloudy in the morning, clear skies towards the evening. Very warm (over +20°C).
30 May	Possibility of NPF	Undefined	Airmasses coming from Arctic Ocean via northwest Russia to Hyytiälä. Low SO <sub>2</sub> and low PM <sub>10</sub> concentrations. Partly cloudy, with chances of rain in the evening. Very warm (over +20°C), RH dropping to 45% during the morning.
31 May	No NPF	Undefined	Airmasses coming from Arctic Ocean via northwest Russia to Hyytiälä. Low SO <sub>2</sub> and PM <sub>10</sub> concentrations. Partly cloudy and chances of rainshowers during the day.
1 June	No NPF	No NPF	Airmasses coming from southeast. Low SO <sub>2</sub> and PM <sub>10</sub> concentrations. Partly cloudy in the morning, more clouds towards afternoon, chances of light rain in the afternoon the day.
2 June	Possibility of NPF	Undefined	Airmasses coming from southeast. Elevated SO <sub>2</sub> and PM <sub>10</sub> concentrations. Partly cloudy, very warm (over +20°C), RH dropping to 45% during the morning.
3 June	NPF day	Undefined	Airmasses coming from southeast. High SO <sub>2</sub> and elevated PM <sub>10</sub> concentrations. Clear skies, some clouds in the afternoon, very warm (over +25°C), RH dropping to 35% during the morning.
4 June	Possibility of NPF	Undefined	Airmasses coming from southeast. Low SO <sub>2</sub> and PM <sub>10</sub> concentrations. Partly cloudy morning, some rain in the afternoon, warm (over +20°C). RH dropping to 35% during the day.
5 June	Possibility of NPF	Undefined	Airmasses coming from southeast. Elevated SO <sub>2</sub> and low PM <sub>10</sub> concentrations. Clear sky in the morning, partly cloudy starting from noon, possibility of rain in the evening, very warm (over +25°C). RH dropping to 25%.
6 June	Possibility of NPF	Undefined	Airmasses coming from east in the morning and turning to northwest in the afternoon. High SO <sub>2</sub> and elevated PM <sub>10</sub> concentrations. Partly cloudy morning, rain and thunderstorms in the afternoon, warm (over +20°C).
7 June	No NPF	No NPF	Airmasses coming from northeast. Low SO <sub>2</sub> and elevated PM <sub>10</sub> concentrations. Cloudy, rain and thunderstorms, moderate temperature (over +15°C).
8 June	NPF day	NPF (class II)	Airmasses coming from west, circulating over Sweden. Elevated SO <sub>2</sub> and low PM <sub>10</sub> concentrations. Almost clear sky in the morning, partly cloudy in the afternoon, warm (over +20°C). RH dropping to 25% during the day.
9 June	No NPF	NPF (class II)	Airmasses coming from west. Low SO <sub>2</sub> and PM <sub>10</sub> concentrations. Cloudy/partly cloudy, rain in the afternoon, moderate temperature (over +15°C). RH dropping to 45% during the day.

10 June	Possibility of NPF	Undefined	Airmasses coming from northwest. Low SO <sub>2</sub> and PM <sub>10</sub> concentrations. Almost clear sky in the early morning, partly cloudy towards noon, chance of rain in the afternoon, moderate temperature (over +15°C).
11 June	No NPF	No NPF	Airmasses coming from northwest. Elevated SO <sub>2</sub> and PM <sub>10</sub> concentrations. Partly cloudy, chance of rain, moderate temperature (over +15°C). RH dropping to 50% during the day.

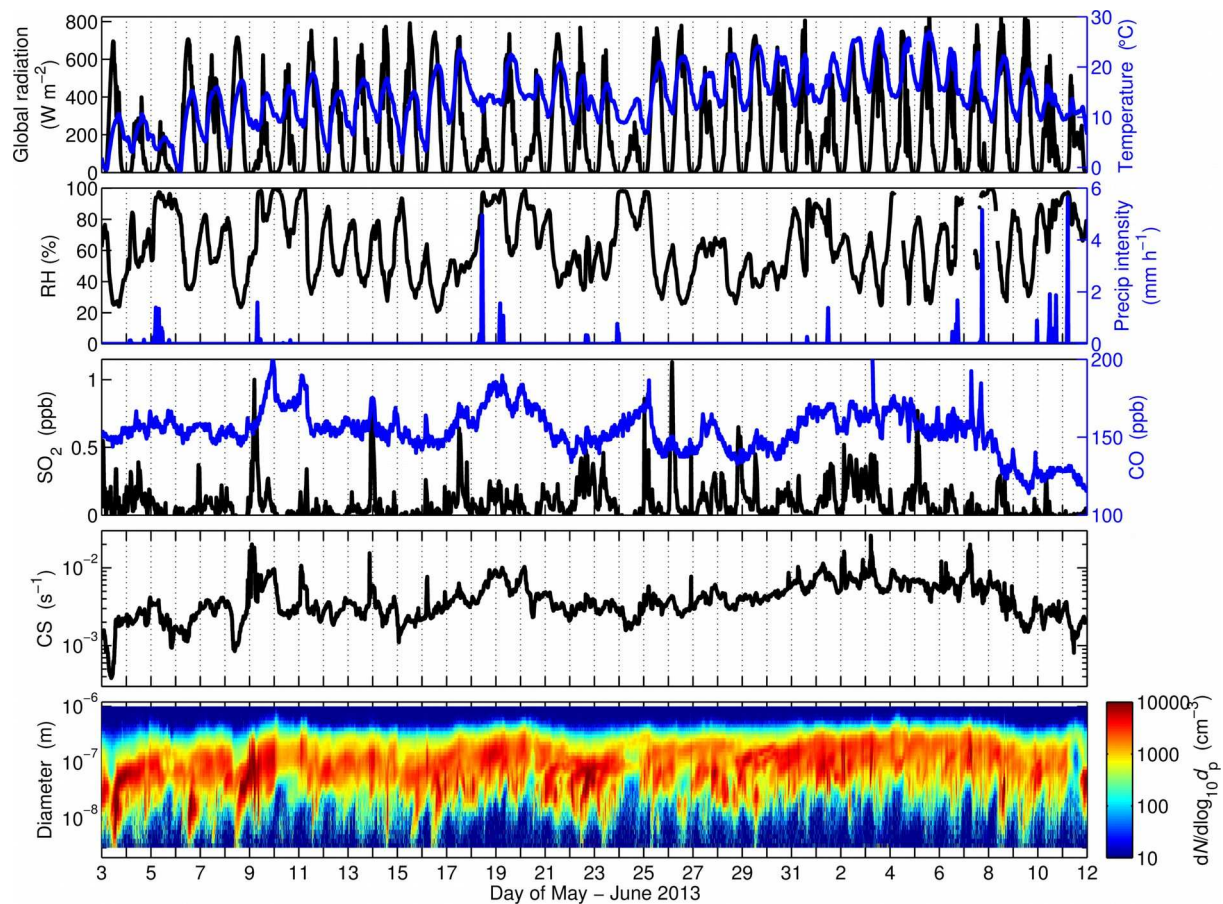
**Table 4.** Comparison of the NPF classification based on DMPS data (rows), and the NPF forecasts (columns). On days marked with green color the forecasts were succesful in predicting whether NPF occurred in Hyytiälä or not, and on days marked with red the forecast was wrong according to observations. The days classified as undefined according to observations are left out of the comparison with forecasts.

	“NPF” forecast <sup>ed</sup> (8 days)	“Weak NPF / Possibility of NPF / No continuous growth” forecast <sup>ed</sup> (16 days)	“Non-NPF” forecast <sup>ed</sup> (16 days)
NPF day observed (11 days)	6	4	1
Undefined day observed (19 days)	2	10	7
Non-NPF day observed (10 days)	0	2	8

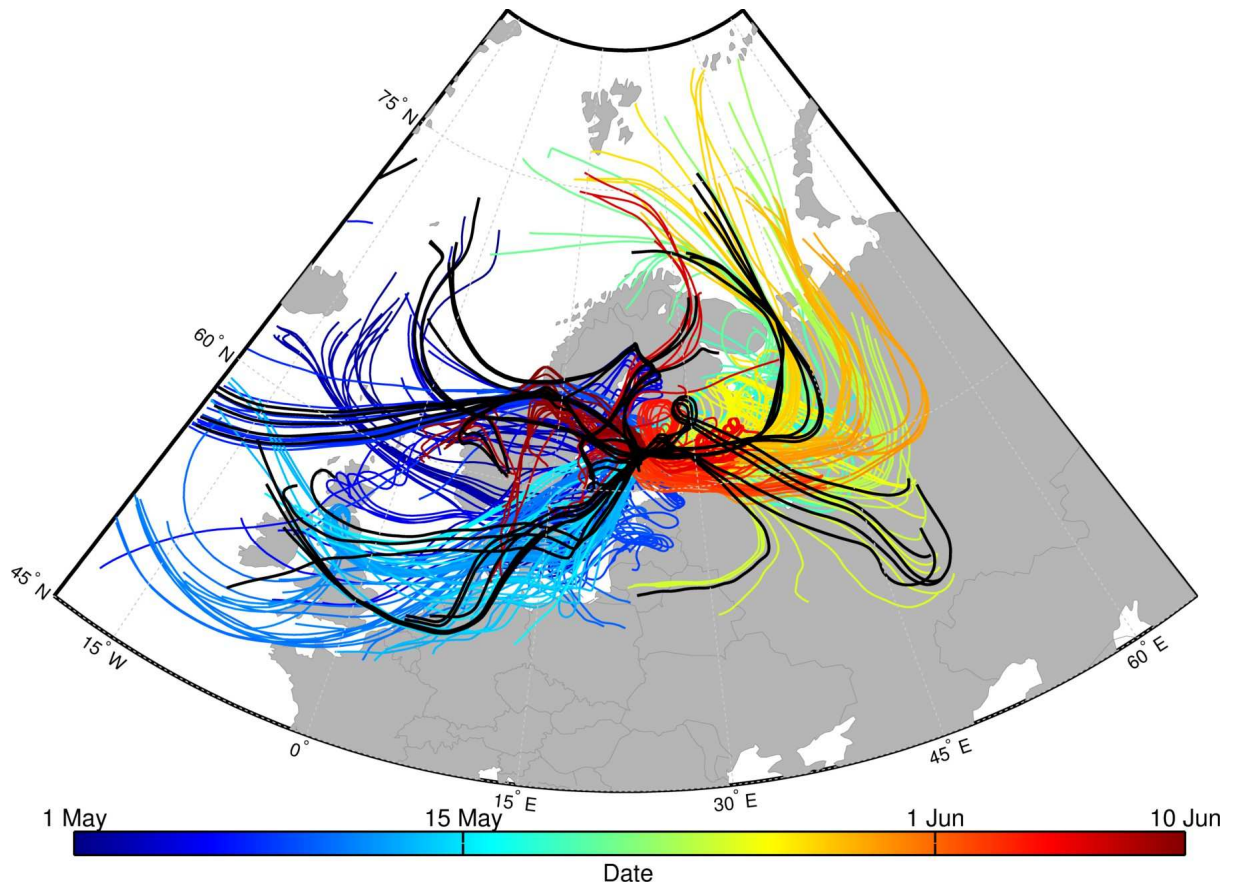


415 **Figure 1.** Flowchart of the decision making process for the NPF forecasts.

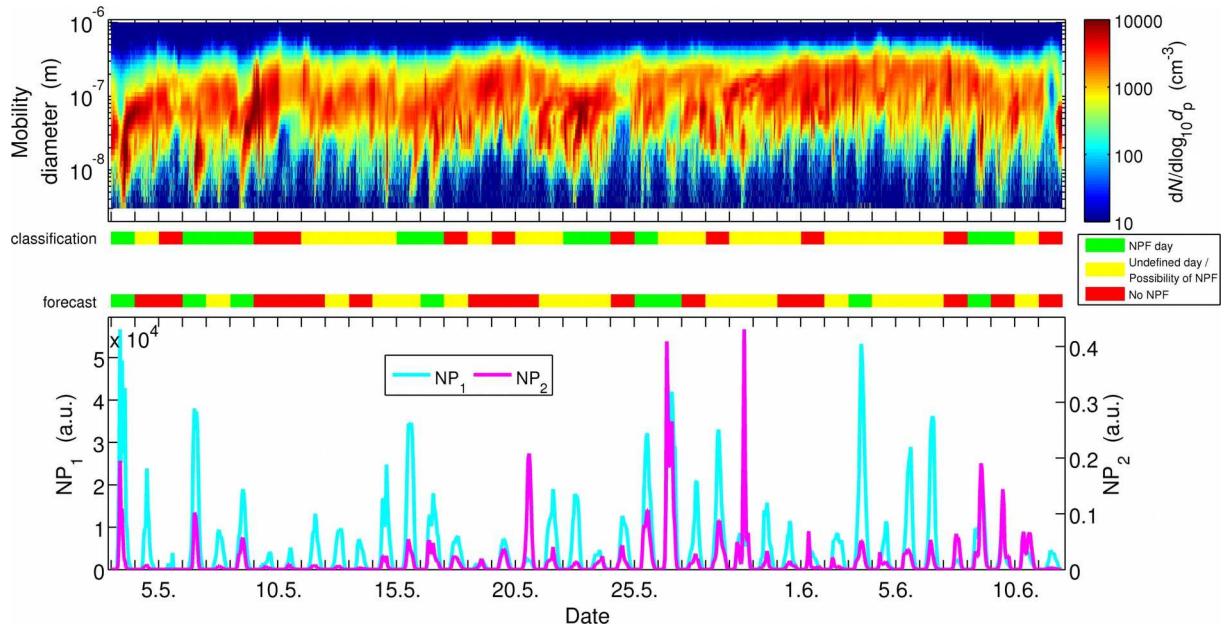




**Figure 2.** Overview of the meteorological parameters, trace gas concentrations and particle size distributions during the campaign 3.5.–11.6.2013.



**Figure 3.** Airmass arrival trajectories to Hyytiälä 3.5.–11.6.2013 calculated using HYSPLIT model. The color indicates the arrival date and each trajectory represents airmass route during 96 hours before arrival. Airmass trajectories arriving on NPF days between 10–14 local time are marked with black lines.



**Figure 4.** Particle number concentration size distributions (top panel), and nucleation parameters  $NP_1$  and  $NP_2$  (bottom panel) during the campaign time 3.5.–11.6.2013. The colorbars between the panels indicate the NPF forecast and classification: green for NPF days, yellow for weak or possible NPF days, and red for non-NPF days (upper colorbar shows the NPF event classification based on the DMPS data, and lower colorbar the forecast for each day).