

Instantaneous longwave radiative impact of ozone: An application on IASI/MetOp observations

S. Doniki, D. Hurtmans, L. Clarisse, C. Clerbaux, H. M. Worden, K. W. Bowman and P.-F. Coheur

Reply to Anonymous Referee #1

We would like to thank the anonymous referee for his/her positive comments and the useful remarks, which helped to improve the manuscript. Our point-by-point responses to the comments are given below in blue.

First of all I have to admit that the topic of this paper is somewhere at the border of my personal research field. That means that I am not aware of all the existing literature in this field and I also may be unaware the current state of the art. Instead I concentrate in my review on the conclusiveness of the arguments, the consistency and the organization of the manuscript. Since ACP is not only read by retrieval experts, I paid particular attention to the understandability by atmospheric scientists from other research fields.

Summary: I find the paper useful and well organized and I haven't detected any major problems with the paper. Thus I recommend publication in ACP (subject to the caveat above). The authors may wish to consider the following comments listed below:

Title: The title adequately represents the content of the paper.

Abstract: the abstract adequately represents the main contents of the paper. All statements in the abstract are supported by the main part of the paper.

Introduction: The introduction puts the work presented in the manuscript in the context of existing work and justifies why the topic of the manuscript is important. I have only one very minor comment:

p21179 l24/25: The 'A' in 'AR5' seems to stand for 'assessment'. Wouldn't it thus be more intuitive to use the term 'IPCC assessment report' (instead of 'IPCC report' only) also in the text?

Following the suggestion of the referee we have revised the manuscript as follows:
“According to the latest IPCC assessment report (IPCC AR5)...”.

Section 2 IASI: This section reads well and seems to contain all required information.

Section 3: Calculations with FORLI: This section describes the retrieval algorithm used. Not many technical details are presented but this seems adequate because for these other papers are referenced and thus pure duplication of existing literature is avoided. Minor comments:

p21182 l20: I find it preferable to avoid acronyms and proper names in the section header. Couldn't a more generic wording be used, e.g. 'The retrieval algorithm' or something similar?

We understand the referee's concern; however, as there are more than one retrieval algorithms for the IASI mission, we want to explicitly point out that we use FORLI for the retrieval, as well that all changes and extra calculations done for the instantaneous radiative kernels and the longwave radiative effect are made on FORLI, using its characteristics and assumptions. We would like to keep the header as it is, if no major objection arises.

p21182 l22: The abbreviation 'ULB' seems not be defined.

The referee is correct indeed. The manuscript now reads "... software built at the Université Libre de Bruxelles (ULB) to serve ...”.

p21182 l24: The meaning of 'level 1C radiance observation' should be defined. It cannot be expected that every ACP reader knows the hierarchy of data products and the meaning of related abbreviations.

We agree with the referee. We have included the definition of the data levels and the related reference for more information. The manuscript now reads: "... for each Level 1C observation (observed spectrum after applying geolocation, calibration, resampling, apodization and quality control, as indicated in EUMETSAT (2014)).”. We've also added the following reference in the revised manuscript: “EUMETSAT: IASI Level 1: Product Guide, EUM/OPS-EPS/MAN/04/0032 v4C, 2014.”.

p21182 l25: Rodgers (2000) certainly is a correct reference for OEM. In his book, however, Rodgers does not use the term 'optimal estimation method'. This contradiction can be solved by either referencing some other work by Rodgers (e.g. Rev. Geophys. 1976) where he still uses the term 'optimal estimation method' or by mentioning that in his book the method is called 'maximum a posteriori'.

The referee is correct. We have fixed the issue as follows: “The retrieval algorithm is based on the maximum a posteriori solution as described in Rodgers (2000), also known as the optimal estimation method (OEM).”.

p21182 127: To a reader whose research field is not high-resolution radiative transfer calculation it may not be clear what the meaning of the LUTs is and why they are important. Please insert ‘... look-up tables (LUTs) of absorption cross-sections...’ or whatever specification is appropriate.

The referee is correct. However, in the next paragraph there is a description of the main elements of FORLI for the ozone product, where the definition of the look-up tables is included. Therefore, we found it more appropriate to remove the text in the parenthesis in page 21182, lines 26-27 to avoid confusion and repetition. The manuscript now reads: “A detailed description of FORLI, methods, input parameters and approximations can be found ...”.

p21183 112: For the retrieval it is adequate to discard cloud-covered pixels in order to avoid retrieval artifacts. However, if you have only clear-sky data available, will the estimated radiative impact of ozone be representative also on a global scale, or will there be a clear-sky sampling bias in your estimates?

This is a good point. As it can be seen in Table 3 in Worden et al. (2011), there’s an almost 40% difference between clear-sky and all-sky (incl. cloudy scenes) averages of tropospheric LWRE (that, computed with the anisotropy approximation though). So yes, we expect that there will be a clear-sky bias in our calculations. However, we can only process clear-sky data and therefore we provide only clear-sky IRKs and LWRE. If we want to compare with some other reference and/or model, only clear-sky scenes should be considered for all datasets. In order to address the referee’s comment we have added the following text in page 21195, line 5: “... around 45000 data points are included. Moreover we recall that only cloud-free measurements are processed, which will cause biases in the distributions and time series in comparison to what would correspond to (real) all-sky conditions, as discussed in Worden et al. (2011).”.

The all-sky calculation should be motivation for further investigation, but this is beyond the scope of the present paper. Here, we focus on the description of a new method for the IRK calculations, on first results from IASI, and on how these can be exploited.

p21183 118/19: What you do here is certainly adequate, but a reader from outside the retrieval community might miss the point here. Perhaps add some further information of the kind: ‘Since the retrieval does not use the whole ozone band which is relevant in the context longwave radiative forcing but only those parts which contain most information on the ozone vertical distribution,...’

We have addressed this comment by changing the manuscript as suggested (page 21183, line 20 and after) to: “... after the last iteration. As noted above, for the retrieval FORLI uses a limited band, which nevertheless contains most of the information on the ozone vertical distribution. However, as we show in Sect. 4, the calculation of the IRKs, and consequently of the LWRE, is based on the integral over the wavenumber, among others. Thus, it is most appropriate to use the full ozone band to avoid underestimations. Furthermore, since the IRKs and LWRE are strongly...”.

p21183 126: Here a reference to the concept of averaging kernels and degrees of freedom by Rodgers may be adequate.

We agree that an explanation was missing. The manuscript now reads “... pieces of information can be retrieved. These independent pieces of information, also known as degrees of freedom for signal (DOFs), are the trace of the averaging kernels matrix (AVKs) (see Rodgers (2000) for details). The maximum sensitivity, which can be obtained by the peak of the AVKs, is found from the mid-troposphere ...”.

p21184 18-23: The reader may ask to which degree the remaining biases affect the estimate of the radiative forcing contribution. My first idea would be that spectroscopic error might indeed cancel out here: wrong spectroscopic data cause wrong ozone amounts, but I would expect first order cancellation of both these errors when these quantities are then used to estimate the radiative forcing impact. This would then be a further advantage of your method. The adequate place for the discussion of this issue would be the end of Section 5.1. If my argument is valid or not, however, depends on how the LWRE errors are actually estimated, and the suggested cancellation may not actually happen.

At this point of the article we discuss the errors and biases on the retrieved ozone product of IASI-FORLI as presented in other studies, after a short presentation of the product itself (page 21183, line 25 – end of Sect. 3). The error estimation for the LWRE is indeed presented at the end of Sect. 5.1. We address the referee’s concerns about the error budget along with his last comment, which points to the end of Sect. 5.1.

Section 4: IASI instantaneous radiative kernels This technical section seems to include all relevant information. I admit that I have not double-checked the entire formalism. Just a few minor comments:

p. 21186 113: Why adverb ‘arbitrarily’. ‘Precision’ is a noun. Thus wouldn’t the adjective ‘arbitrary’ be correct?

The issue is fixed. The manuscript now reads “... be approximated to arbitrary precision using ...”.

p. 21189 11/2 While the acronym FORLI has already been defined, the acronym FORLI-O₃ has not been defined, and the reader can only guess that this might mean FORLI along with the O₃ LUTs. Please specify.

As FORLI is used to retrieve other species than O₃, namely CO and HNO₃, in order to distinguish which species we refer to, we usually write “FORLI-O₃, FORLI-CO etc.”. However, since in this paper we only refer to O₃, this is not as useful and we have removed the “-O₃”. The manuscript now reads: “... with the forward model of FORLI the spectra and ...”.

Based on this comment we have also removed the “-O₃” in page 21192, line 11 and page 21194, line 16.

Section 5: Longwave radiative effect Also this section reads convincing.

p21192 112: THE top row (?)

The issue is fixed. The manuscript now reads “The top row represents ...”.

p21194 15: not sure if the term ‘artifact’ is adequate here. It is somewhat counterintuitive to call something an ‘artifact’ if it is closer to truth. Perhaps ‘...but this is a cancellation of errors owed to...’

We agree. The manuscript now reads “... but this is due to the compensation of positive and negative biases for ...”.

p21194 end of Sect. 5.1: c.f. my comment to p21184 18-23. The line intensity error, however, is not (fully) included in the error obtained from the RMS. Thus my suggested error compensation does not happen. I have, however, another question w.r.t. the error estimation: The retrieval error is inferred from the RMS, i.e., it uses the information from the residual between the modeled and the measured spectrum. Thus it seems not possible in any straight

forward manner to attribute a different retrieval error to different altitudes of the retrieved ozone profile. Instead only one retrieval error per observation can be inferred. The long wave radiative effect, however, depends also in the distribution of ozone over altitude; attribution to the ozone amount to the incorrect altitude may also cause an error of the longwave radiative effect. Beyond this, as stated above in the paper, the smoothing error makes a considerable contribution. As far as I can see, these error sources are not considered in the error estimate of the LWRE.

The referee has a good point. For the error of the LWRE we consider the following two contributions: that originating from errors on the forward model and that coming from the retrieval. A good estimation of the forward model error is the RMS of the residual between the observed and the modeled spectrum. For the error on the ozone profile we consider the total retrieval error from the optimal estimation method. Now, we have to keep in mind that the LWRE refers to a column of ozone: even if the retrieval errors on the ozone profile can at some altitudes reach 20%, those on the columns, and in particular the total column, are much smaller. For instance, the IASI-FORLI ozone tropospheric column is found to have an error of $\pm 15\%$, while the total column has an error of $\pm 7\%$ in some cases, but usually is around $\pm 3\%$ (see end of Sect. 3 and Hurtmans et al. (2012)). This error makes overall small contribution to the total LWRE error, which is therefore mostly driven by the forward model error. It is true, that this error estimation may not be totally appropriate for the tropospheric column, but it is not straightforward to attribute part of the forward model error to different altitudes and our discussion therefore refers to the total column.

Note that Worden et al. (2011) presented their error budget as well only for the total LWRE and they too use the RMS residual to account for most errors. In detail, they assumed that the IRKs, coming from the Jacobians and retrieved with respect to the $\ln\text{VMR}$, are without error. The IRKs with respect to the VMR include the retrieval error (see Table 1 in Worden et al. (2011)). Likewise, for the LWRE they use the $\ln\text{VMR}$ (with corresponding IRKs in $\ln\text{VMR}$) instead of the VMR, to avoid retrieval errors. In Worden et al. (2011) however they use the anisotropy approximation, which gives additional errors, as shown in Table 2 of their study.

In order to clarify the manuscript with regard to the error budget, we have rewritten the end of Sect. 5.1 regarding the LWRE error budget as follows:

“To produce an error budget for the LWRE, we account for the following two contributions: that of the forward model, for the part of the IRK formulation and that of the retrieval, for the

profile of O₃, based on Eq. (9). A good estimation of the forward model errors is the root-mean-square (RMS) value of the spectral residual between the observed and the modeled spectrum. The LWRE, as the product of Eq. (9), refers to a column of ozone. For the integrated total LWRE, the contribution of the retrieval is very small, and therefore we consider only the RMS to account for all errors. A typical RMS for good quality ozone retrievals with FORLI is around $2.24 \times 10^{-8} \text{ Wcm}^{-2}\text{sr}^{-1}\text{cm}$, which translates for the total LWRE global average to a $\pm 3.2\%$ error. In some cases the RMS can be larger, but the data are not kept when its value is above $3.5 \times 10^{-8} \text{ Wcm}^{-2}\text{sr}^{-1}\text{cm}$, which places an upper bound of $\pm 4.6\%$ on the LWRE error.”

Section 6: Conclusions The Conclusions adequately summarize the main finding of the paper, and useful recommendations are provided.

Reply to Anonymous Referee #2

We would like to thank the anonymous referee for his/her positive comments and the useful remarks, which helped to improve the manuscript. Our point-by-point responses to the comments are given below in blue.

General Comments

In this new study Doniki et al. discuss the calculation of instantaneous radiative kernels (IRKs) for hyperspectral infrared nadir sounders. In particular, IRKs for tropospheric and total column ozone measurements by IASI/MetOp-A are discussed. The paper presents a new method for calculation the IRKs, which is shown to be more accurate (removing biases up to +/-25%), but also more computationally expensive than the anisotropy approximation. First results with the new method for 12 days in the year 2011 are presented.

I found that the scientific analysis of this study is sound and that the presentation of the paper is clear. Minor comments and suggested technical corrections are listed below. The paper fits in the scope of ACP. The results are likely of interest for a broad community, including radiative transfer and retrieval experts, but also climate modellers seeking to validate radiative forcing calculations with their models. Therefore I would recommend the paper to be published.

Specific Comments

p21183, 112-13: How many profiles are remaining after cloud filtering and a posteriori quality checks? Is the remaining part still globally representative?

As it can be seen in Fig. 4 and 5, where we present the clear-sky tropospheric and total LWRE respectively (raw data, i.e. no gridding applied, each dot corresponds to an observation), we have different views for morning and evening overpasses, and the globe is covered sufficiently in both views. The white spaces represent either not covered areas or areas over which the observations were removed by one of the quality flags. A typical day contains around 500,000 clear-sky observations, which we believe are representative for the global clear-sky LWRE. In case a day has notably few observations, we avoid using it. For example, in Sect. 5.2 and in Fig. 6, 7 and 8, where we present the annual variation based on a single-day per month data, for the months of November and December we have switched to

the 16th of the month, as for the 15th no global coverage was achieved due to IASI technical incidents and after flag application (see subsection 5.2, page 21195, line 1-2).

p21185, 19: it might be good to properly define the range of spectral integration here and in other places/equations to avoid confusion between integration over the 9.6 micron ozone band and the full spectral range?

We thank the referee for pointing this. According to this remark, we have changed the following equations:

- Eq. (2)
- Eq. (5)
- Eq. (6), where again $\nu_1=985 \text{ cm}^{-1}$ and $\nu_2=1080 \text{ cm}^{-1}$
- Eq.(7)

Technical Corrections

p21181, 123: onboard _the_MetOp-A

The referee is correct and the issue is fixed. The manuscript now reads "... onboard the MetOp-A and B satellites, ...".

p21188, 111: nadir -> with respect to nadir / the nadir direction (?)

The manuscript has been changed to "... averaged per 10° viewing angle bins with respect to nadir for one day, ...".

List of changes:

1. Page 2, line 43 (previously in ACPD page 21179, line 24-25): following the comment of Referee #1, the word “assessment” was added: “... IPCC assessment report ...”.
2. Page 3, line 94 (previously in ACPD page 21181, line 23): following the comment of Referee #2, a “the” was added: “... onboard the MetOp-A and B ...”.
3. Page 4, line 116 (previously in ACPD page 21182, line 22): following the comment of Referee #1, the definition of ULB was added: “... built at the Université Libre de Bruxelles (ULB) ...”.
4. Page 4, line 118 – 120 (previously in ACPD page 21182, line 24): following the comment of Referee #1, the definition of level 1C radiance was added: “... Level 1C observation (observed spectrum after applying geolocation, calibration, resampling, apodization and quality control, as indicated in EUMETSAT (2014)).”.
5. Page 4, line 120 – 122 (previously in ACPD page 21185, line 25): following the comment of Referee #1, we changed the term of the “optimal estimation method” to the “maximum a posteriori”... the maximum a posteriori solution as described in Rodgers (2000), also known as the optimal estimation method (OEM).”.
6. Page 4, line 123 (previously in ACPD page 21182, line 27): following the comment of Referee #1, we have removed the parenthesis for the look-up tables.
7. Page 5, line 141 (previously in ACPD page 21183, line 18 – 19): following the comment of Referee #1, we have added the following text: “... As noted above, for the retrieval FORLI uses a limited band, which nevertheless contains most of the information on the ozone vertical distribution. However, as we show in Sect. 4, the calculation of the IRKs, and consequently of the LWRE, is based on the integral over the wavenumber, among others. Thus, it is most appropriate to use the full ozone band to avoid underestimations. Furthermore, since the IRKs and LWRE ...”.
8. Page 5, line 150 – 153 (previously in ACPD page 21183, line 26): following the comment of Referee #1, we have added the following text: “... These independent pieces of information, also known as degrees of freedom for signal (DOFs), are the trace of the averaging kernels matrix (AVKs) (see Rodgers (2000) for details). The maximum sensitivity, which can be obtained by the peak of the AVKs, is found ...”.
9. Page 6, line 186 (previously in ACPD page 21185, line 9): following the comment of Referee #2, we changed the limits of the integral over the wavenumber in Equation (2) from “ v ” to “ v_1 ” and “ v_2 ”.

10. Page 7, line 209 (previously in ACPD page 21186, line 13): following the comment of Referee #1, we changed the word “arbitrarily” to “arbitrary”.
11. Page 8, line 241 (previously in ACPD page 21188, line 5): following the comment of Referee #2, we changed the limits of the integral over the wavenumber in Equation (5) from “ v ” to “ v_1 ” and “ v_2 ”.
12. Page 8, line 247 (previously in ACPD page 21188, line 11): following the comment of Referee #2, we change the text from “nadir” to “... bins with respect to nadir for one day ...”.
13. Page 8, line 255 – 256 (previously in ACPD page 21188, line 20): following the comment of Referee #2, we changed the limits of the integral over the wavenumber in Equation (6) from “ v ” to “ v_1 ” and “ v_2 ”. We have also added “where again $v_1=985\text{ cm}^{-1}$ and $v_2=1080\text{ cm}^{-1}$.”.
14. Page 8, line 259 (previously in ACPD page 21189, line 1 – 2): following the comment of Referee #1, we have removed the indication “-O₃” from “FORLI”.
15. Page 8, line 269 (previously in ACPD page 21189, line 12): following the comment of Referee #2, we changed the limits of the integral over the wavenumber in Equation (7) from “ v ” to “ v_1 ” and “ v_2 ”.
16. Page 11, line 337 (previously in ACPD page 21192, line 11): following the comment of Referee #1, we have removed the indication “-O₃” from “FORLI”.
17. Page 11, line 337 (previously in ACPD page 21192, line 12): following the comment of Referee #1, a “the” was added: “... The top row ...”.
18. Page 12, line 379 (previously in ACPD page 21194, line 5): following the comment of Referee #1, the text “an artifact owed” was removed and replaced by “due”.
19. Page 12, line 386 – 394 (previously in ACPD page 21194, line 13 – 16): following the comments of Referee #1, this last paragraph has changed to the following: “To produce an error budget for the LWRE, we account for the following two contributions: that of the forward model, for the part of the IRK formulation and that of the retrieval, for the profile of O₃, based on Eq. (9). A good estimation of the forward model errors is the root-mean-square (RMS) value of the spectral residual between the observed and the modeled spectrum. The LWRE, as the product of Eq. (9), refers to a column of ozone. For the integrated total LWRE, the contribution of the retrieval is very small, and therefore we consider only the RMS to account for all errors. A typical RMS for good quality ozone retrievals with FORLI ...”.

20. Page 13, line 408 – 411: following the comment of Referee #1, we have added the following text to remind the readers we only process clear-sky data: “... Moreover we recall that only cloud-free measurements are processed, which will cause biases in the distributions and time series in comparison to what would correspond to (real) all-sky conditions, as discussed in Worden et al. (2011)”.
21. Page 19, line 626 – 628: the following reference was added: “EUMETSAT: IASI Level 1: Product Guide, EUM/OPS-EPS/MAN/04/0032 v4C, available at: <http://www.eumetsat.int/website/home/Data/Products/Level1Data/index.html> (last access: 03 November 2015), 2014.”.
22. Page 28, Figure 6. Figure has change (panels e and k)

Instantaneous longwave radiative impact of ozone: an application on IASI/MetOp observations

S. Doniki¹, D. Hurtmans¹, L. Clarisse¹, C. Clerbaux^{1,2}, H. M. Worden³,
K. W. Bowman⁴, and P.-F. Coheur¹

¹Spectroscopie de l'Atmosphère, Service de Chimie Quantique et Photophysique, Université Libre de Bruxelles (ULB), Brussels, Belgium

²Sorbonne Universités; UPMC Université Paris 06; Université Versailles St.-Quentin, CNRS/INSU, LATMOS-IPSL, Paris, France

³Atmospheric Chemistry Observations & Modeling (ACOM) Laboratory, National Center of Atmospheric Research (NCAR), Boulder, Colorado, USA

⁴Jet Propulsion Laboratory (JPL), California Institute of Technology, Pasadena, California, USA

Correspondence to: S. Doniki (sdoniki@ulb.ac.be)

Abstract. Ozone is an important greenhouse gas in terms of anthropogenic radiative forcing (RF). RF calculations for ozone were until recently entirely model based and significant discrepancies were reported due to different model characteristics. However, new instantaneous radiative kernels (IRKs) calculated from hyperspectral thermal IR satellites have been able to help adjudicate between different climate model RF calculations. IRKs are defined as the sensitivity of the outgoing longwave radiation (OLR) flux with respect to the ozone vertical distribution in the full 9.6 μm band. Previous methods applied to measurements from the Tropospheric Emission Spectrometer (TES) on Aura, rely on an anisotropy approximation for the angular integration. In this paper, we present a more accurate but more computationally expensive method to calculate these kernels. The method of direct integration is based on similar principles with the anisotropy approximation, but deals more precisely with the integration of the Jacobians. We describe both methods and highlight their differences with respect to the IRKs and the ozone longwave radiative effect (LWRE), i.e. the radiative impact in OLR due to absorption by ozone, for both tropospheric and total columns, from measurements of the Infrared Atmospheric Sounding Interferometer (IASI) onboard MetOp-A. Biases between the two methods vary from -25 to $+20$ % for the LWRE, depending on the viewing angle. These biases point to the inadequacy of the anisotropy method, especially at nadir, suggesting that the TES derived LWRE are biased low by around 25 % and that chemistry-climate model OLR biases with respect to TES are underestimated. In this paper we also exploit the sampling performance of IASI to obtain first daily global distributions of the LWRE, for 12 days (the 15th of each month) in 2011, calculated with the direct integration method. We show that the temporal variation of global and latitudinal averages of the LWRE shows patterns which are controlled by changes in the surface temperature and ozone variation due to specific processes, such as the ozone hole in the Polar regions and stratospheric intrusions into the troposphere.

1 Introduction

25 Ozone in the atmosphere is a key substance for both atmospheric chemistry and climate. It is a secondary pollutant, the abundance of which is controlled by the emissions of its precursors, the availability of oxidizing agents and sunlight and of ozone depleting substances (ODS). Ozone is also a highly radiatively active gas for both solar (shortwave, SW) and terrestrial (longwave, LW) radiation. Even small changes in the atmospheric distribution of ozone have an impact on the radiative forcing (RF) of climate (e.g. Forster et al., 2007). To understand and accurately represent the impact of ozone on climate, a good knowledge of the ozone distribution is required, both horizontally and vertically, as well as its long-term trends, both in the troposphere and the stratosphere. Especially in the troposphere, ozone acts as a greenhouse gas (GHG), while its amount has substantially increased since the pre-industrial times, due to increase of precursor emissions. Nowadays tropospheric ozone is the third most important GHG in terms of radiative forcing, after the well mixed GHGs (Myhre et al., 2013), however it is distinguished from the other GHGs due to its high spatial and temporal variability, caused by its relatively short lifetime.

It is well known that ozone RF is strongly dependent on its vertical distribution, as well on the surface temperature and the vertical profiles of temperature, humidity and clouds (e.g. Lacis et al., 1990; Forster and Shine, 1997; Gauss et al., 2003; Worden et al., 2008, 2011; Bowman et al., 2013). Ozone RF calculations and changes over time are entirely model based since no ozone records are available for the pre-industrial era. These calculations depend on the assumptions and radiative transfer code of each model, leading to intermodel discrepancies. According to the latest IPCC [assessment](#) report (IPCC AR5) (Myhre et al., 2013), the contribution of anthropogenic tropospheric ozone to RF is around $+0.40 \text{ W m}^{-2}$ ($+0.20$ to $+0.60 \text{ W m}^{-2}$) with this value representing the ensemble of model calculations. For the time period of 1750 to 2011, studied in the IPCC AR5, Søvde et al. (2011) report a value of $+0.45 \text{ W m}^{-2}$ for tropospheric ozone, while Skeie et al. (2011) report a slightly lower value of $+0.41 \text{ W m}^{-2}$ (0.21 to 0.61), same as Stevenson et al. (2013) under the Atmospheric Chemistry and Climate Model Intercomparison Project (ACCMIP). Stratospheric ozone has less impact on the RF: IPCC reports a value of $-0.05 \pm 0.1 \text{ W m}^{-2}$ (Myhre et al., 2013), while Conley et al. (2013) for the ACCMIP report a RF of -0.02 W m^{-2} (-0.09 to 0.05). Stratospheric ozone RF is not much affected by recent changes in concentrations (following for instance a decrease in emissions of ODS). Confidence intervals remain quite large in all studies, with questionable reliability, since until recently the present-day components of these estimates could not be tested against observations on large scales.

Satellite measurements of vertical distribution of ozone on the global scale have started to be available in the last decade, but there are only a few previous studies that have used these satellite data for quantifying the radiative effect of ozone (Worden et al., 2008; Joiner et al., 2009). Particularly attractive in this context are infrared nadir sounders, which have sufficient vertical sensitivity to distinguish tropospheric and stratospheric ozone distributions and allow direct measurements of the

top of the atmosphere (TOA) radiance in the IR ozone band globally, with high sampling. In 2011, Worden et al. (2011) used the measurements of Aura-TES (Tropospheric Emission Spectrometer) to calculate the longwave radiative effect (LWRE) due to ozone with respect to TOA radiative flux. This radiative effect is different from the radiative forcing defined in IPCC (Ramaswamy et al., 2001), as it is not calculated at the tropopause and does not refer to ozone concentration changes with respect to pre-industrial levels. Worden et al. (2011) introduced the innovative concept of instantaneous radiative kernel (IRK), which represents the sensitivity of the TOA radiative flux with respect to the observed ozone profile in the 9.6 μm ozone band. With the IRK it is possible to calculate the longwave radiative effect due to ozone in each atmospheric layer. Aghedo et al. (2011) used the IRKs from TES to evaluate the ozone radiative impact of model ozone biases from chemistry-climate models included in ACCMIP. Bowman et al. (2013) revealed a correlation between model OLR bias and RF in the ACCMIP models. This correlation was used to reduce the intermodel spread in RF by around 30 % (Myhre et al., 2013). Both studies have revealed that models show large biases locally, especially in the tropics, but that globally the agreement is better due to compensating errors. These studies show that small biases in the vertical structure of ozone can accumulate to large biases in OLR with implications in the radiative forcing used by the IPCC.

In this paper we use IASI observations to obtain the first daily global distributions of the ozone's IRKs and LWRE. IASI achieves nearly global coverage owing to a 2200 km large swath (scanning angle ranging from -48 to 48°). Here we developed a new retrieval methodology (called the direct integration method) to deal with the off-nadir angles. Even though the method is computationally expensive, it is significantly more accurate than the TOA anisotropy method used in Worden et al. (2011) and subsequent studies with TES, even for the nadir view.

The paper is organized as follows. Section 2 presents IASI and its characteristics. Section 3 describes the Fast Optimal Retrieval on Layers for IASI (FORLI), the ozone retrieval algorithm for IASI developed at ULB, as well as additional calculations that were implemented into FORLI to assist the computations of IRKs and LWRE. In Sect. 4 we describe both methods for computing the IRKs and highlight the differences between them. In Sect. 5 we provide and analyze the LWRE for both tropospheric and total ozone obtained from IASI. This is achieved for the two integration methods and the results are discussed on this basis. We underline the bias of the anisotropy method and previous measurements of LWRE from TES. Finally, using 12 days of observations in 2011 we provide a first analysis of the LWRE seasonal variation on the globe. The conclusions and summary are given in Sect. 6.

2 IASI

IASI is a Michelson interferometer onboard [the](#) MetOp-A and B satellites, designed to measure the radiation emitted by the Earth and the atmosphere in the thermal infrared (TIR) spectral range (Cler-

baux et al., 2009). MetOp-A and B, launched in October 2007 and September 2012 respectively, with a third one scheduled for 2018, are polar orbiting, sun-synchronous satellites, with equator crossing times around 9:30 and 21:30 LT. IASI uses nadir geometry, complemented by off-nadir measurements up to 48.3° on both sides of the satellite track (swath of ~ 2200 km), in such a way that the instrument covers the globe twice a day, providing a total of around 1.3 million observations. Each instantaneous field-of-view of IASI is composed of 2×2 circular pixels and each pixel has a 12 km diameter footprint on the ground at nadir. IASI covers the spectral range from 645 to 2760 cm^{-1} , with a 0.25 cm^{-1} sampling (0.5 cm^{-1} apodized resolution for the Level 1C data) and radiometric noise between 0.25 and 0.3 K around 1000 cm^{-1} at a reference temperature of 280 K.

The primary goal of IASI is to provide data of high radiometric quality to improve numerical weather prediction (Hilton et al., 2011). In addition to the weather related information, IASI was also designed to provide high quality measurements for atmospheric composition monitoring. The instrument has already proved its capabilities by measuring global distributions and time series of some strong absorbers such as CO, CO₂, CH₄, O₃ and H₂O, but also short-lived species such as SO₂, NH₃, CH₃OH, HCOOH and others (Clerbaux et al., 2009; Coheur et al., 2009; Clarisse et al., 2011; Hilton et al., 2011). IASI provides also information concerning cloud and aerosol properties, surface emissivity and contributes to climate related programs such as the Global Climate Observing System (GCOS/WMO; <http://www.wmo.int/pages/prog/gcos/>) (Hilton et al., 2011).

3 Calculations with FORLI

The Fast Optimal Retrieval on Layers for IASI (FORLI) is a radiative transfer and retrieval software built at [ULB—the Université Libre de Bruxelles \(ULB\)](http://www.ulb.ac.be/) to serve the atmospheric composition objectives of the IASI mission. FORLI is running at ULB in near-real time, providing total columns and vertical profiles of O₃, CO and HNO₃ for each Level 1C ~~radiance observation~~ observation (observed spectrum after applying geolocation, calibration, resampling, apodization and quality control, as indicated in EUMETSAT (2014)). The retrieval algorithm is based on the ~~Optimal Estimation Method (OEM)~~ maximum a posteriori solution as described in Rodgers (2000), also known as the optimal estimation method (OEM). A detailed description of FORLI, methods, input parameters (~~including look-up tables (LUTs) used to speed up the radiative transfer calculations~~) and approximations can be found in Hurtmans et al. (2012). The main elements for the ozone retrievals are given below.

The ozone product of FORLI (version v20100815) is retrieved in the spectral range of 1025–1075 cm^{-1} , which contains most information on the ozone vertical distribution. Note that the spectral range also includes a few water vapor lines and a small contribution of methanol. For the retrieval the model uses pre-calculated tables (LUTs) of O₃ absorbance at different pressures, temperatures and humidity, which were computed initially using the line parameters from the HITRAN 2004

database (Rothman et al., 2005). It also uses as input for each pixel the temperature and humidity profiles and the cloud fraction, retrieved at EUMETSAT from the IASI Level 2 Product Processing Facility (August et al., 2012) and disseminated in near-real time through the EUMETCast system. Only scenes with less than 13 % cloud coverage (clear-sky) are processed for ozone, of which only
135 those that pass a-posteriori quality checks are finally selected. The output consists of the ozone profile in a vertical grid of 40 layers between the surface and 40 km, with one more layer from 40 km to TOA, along with the averaging kernels and the relative total error profile on the same grid. Surface temperature and total column of water vapor are also retrieved simultaneously.

To obtain the IRKs and LWRE, from the retrieved ozone profile, we re-compute the spectrum and
140 the corresponding Jacobians in a broader band ($985\text{--}1080\text{ cm}^{-1}$, that includes the full $9.6\text{ }\mu\text{m}$ band), in an additional step after the last iteration. As ~~the IRKs and LWRE noted above, for the retrieval FORLI uses a limited band, which nevertheless contains most of the information on the ozone vertical distribution. However, as we show in Sect. 4, the calculation of the IRKs, and consequently of the LWRE, is based on the integral over the wavenumber, among others. Thus, it is most appropriate~~
145 ~~to use the full ozone band to avoid underestimations. Furthermore, since the IRKs and LWRE are~~ strongly dependent on the spectrum itself, we perform these forward calculations at a high spectral sampling of 0.0025 cm^{-1} . We found that performing these calculations at the IASI sampling (0.25 cm^{-1}) caused differences up to 20 % in the final LWRE.

Previous studies describing ozone profiles and columns retrieved from the IASI measurements
150 have shown that, for a profile, 2.5 to 4 independent pieces of information can be retrieved. ~~These independent pieces of information, also known as degrees of freedom for signal (DOFs), are the trace of the averaging kernels matrix (AVKs) (see Rodgers (2000) for details).~~ The maximum sensitivity, ~~which can be obtained by the peak of the AVKs,~~ is found from the mid-troposphere to the mid-stratosphere, allowing to derive tropospheric and stratospheric ozone almost independently
155 (e.g. Boynard et al., 2009; Wespes et al., 2012; Saffieddine et al., 2014). Some information is also available on the lower tropospheric levels, mostly in summer during daytime. The error budget is dominated by the smoothing error, with some contribution from the retrieval error, which includes the quality of the spectral fit (root-mean-square of the observed minus the calculated radiance), spectroscopic and forward model errors (Boynard et al., 2009). For a single IASI-FORLI measurement
160 the uncertainty is estimated to $\pm 15\%$ for the tropospheric column and to $\pm 7\%$ for the total column of ozone (Hurtmans et al., 2012).

For this study we used an updated version of FORLI, with the LUTs recalculated to cover the spectral band from $960\text{ to }1105\text{ cm}^{-1}$ and updated using HITRAN 2012 (Rothman et al., 2013) instead of HITRAN 2004. The updated spectroscopic line list was used in an effort to reduce biases in
165 the O_3 product. Indeed, comparisons of the previous product with ground-based, sondes and satellite data (e.g. Boynard et al., 2009; Scannell et al., 2012; Dufour et al., 2012; Gazeaux et al., 2013) showed that the retrieved ozone total column using the thermal infrared spectral range seemed to be

biased high by 3–4 %, with some larger differences at high latitudes. The comparison with sonde data also shows a systematic bias of 1.6 % for the tropospheric column and 2–3 % for the stratospheric column. Moreover, a mean systematic bias of around 10 % is found in the upper troposphere – lower stratosphere (UTLS), reaching 25 % at 10 km, which is common to different algorithms and retrieval schemes (Dufour et al., 2012), possibly indicating issues with the O₃ spectroscopy around 9.6 μm. With the updated spectroscopy, there is preliminary evidence that retrieved O₃ columns are lower by 4–5 %, which would largely improve the comparisons with Brewer spectrometers and the UV-satellite sensors.

4 IASI instantaneous radiative kernels

In this section we will outline the different methods for calculating the IRKs and LWRE. We begin with a couple of definitions. The TOA flux, F_{TOA} (in W m^{-2}), is defined (Suttles et al., 1988) as:

$$F_{\text{TOA}} = \int_{v_1}^{v_2} \int_0^{2\pi} \int_0^{\pi/2} L_{\text{TOA}}(v, \theta, \phi) \cos \theta \sin \theta d\theta d\phi dv = 2\pi \int_{v_1}^{v_2} \int_0^{\pi/2} L_{\text{TOA}}(v, \theta) \cos \theta \sin \theta d\theta dv \quad (1)$$

with $L_{\text{TOA}}(v, \theta, \phi)$ the upwelling TOA radiance at the zenith angle θ , azimuth angle ϕ , and wavenumber ν (where $v_1 = 985$ and $v_2 = 1080 \text{ cm}^{-1}$ in our study). In the last equation we assumed azimuthal symmetry, in which case the integral over the angle ϕ reduces to 2π (Suttles et al., 1988; Loeb et al., 2003). The instantaneous radiative kernel IRK (in $\text{W m}^{-2} \text{ ppb}^{-1}$) (Worden et al., 2011) represents the sensitivity of F_{TOA} to a change in the vertical distribution of an atmospheric parameter and is defined by:

$$\frac{\partial F_{\text{TOA}}}{\partial q(z_l)} = 2\pi \int_{v_1}^{v_2} \int_0^{\pi/2} \frac{\partial L_{\text{TOA}}(v, \theta)}{\partial q(z_l)} \cos \theta \sin \theta d\theta dv \quad (2)$$

where $q(z_l)$ is the atmospheric parameter at mean altitude z of layer l (the ozone abundance in our study). Note that all zenith angles are converted to equivalent TOA nadir angles for IASI and will be used as so hereafter.

190 4.1 IASI-FORLI radiance Jacobians

The analytic Jacobians $\partial L_{\text{TOA}}(v, \theta) / \partial q(z_l)$ represent the sensitivity of the IASI TOA spectral radiances, measured with different angles along the swath, to the ozone abundance at each vertical level. They have units of $\text{W cm}^{-2} \text{ sr}^{-1} \text{ cm ppb}^{-1}$ and correspond to layer averaged values, which are each assigned to the mean altitude – or corresponding pressure – of each layer. For most layers, air temperature is lower than the surface temperature and Jacobians have a negative sign, as we follow the convention that an increase in the abundance of the absorbing gas results in a reduced TOA radiance. Note also that the units of the retrieved parameter may vary, e.g. ozone can be represented

in units of volume mixing ratio (VMR, in ppb), $\ln(\text{VMR})$, Dobson Units (DU) etc. The Jacobians can be obtained or converted with respect to the preferred units, which however will have an impact
 200 to the altitude of the maximum sensitivity.

As an example, Fig. 1 shows the IASI-FORLI radiance Jacobians for ozone with respect to VMR (ppb). The Jacobian is found to peak in the mid- and upper- troposphere, around 600 to 250 hPa. These results for IASI are in agreement with previous studies and are explained by the fact that thermal IR instruments have in general their highest sensitivity to the ozone profile in the mid-
 205 troposphere (Bowman et al., 2002; Coheur et al., 2005; Boynard et al., 2009; Worden et al., 2011). Interfering water vapor and methanol lines have little impact on the ozone sensitivity, since the high spectral sampling of IASI allows the spectral distinction between the different species.

4.2 Angular integration of moments

The angular integral in Eq. (1) can be approximated to ~~arbitrarily~~arbitrary precision using the
 210 Gaussian Quadrature (GQ) (Abramowitz and Stegun, 1972; Li, 2000), where the integral is replaced by a sum over a finite number of angles. In particular, for a function $g(\theta)$, the integral over $g(\theta) \cos(\theta) \sin(\theta)$ can be written using the GQ as:

$$\int_0^{\pi/2} g(\theta) \cos \theta \sin \theta d\theta = \int_0^1 g(\cos^{-1} x) x dx = \int_0^1 x^k f(x) dx \approx \sum_{i=1}^n w_i f(x_i) \quad (3)$$

with $x = \cos \theta$ and $dx = -\sin \theta d\theta$. The GQ parameters $x_i = \cos \theta_i$, θ_i and weights w_i are provided
 215 in Table 1 for the first order of moment ($k = 1$) and for 5 nodes ($n = 5$).

4.3 Anisotropy approximation

The anisotropy is defined as the ratio of the equivalent Lambertian flux to the actual flux and is given by (Suttles et al., 1988):

$$R_v(\theta) = \frac{\pi L_{\text{TOA}}(v, \theta)}{F_{\text{TOA}}(v)} = \frac{L_{\text{TOA}}(v, \theta)}{2 \int_0^{\pi/2} L_{\text{TOA}}(v, \theta) \cos \theta \sin \theta d\theta} \approx \frac{L_{\text{TOA}}(v, \theta)}{2 \left[\sum_{i=1}^5 w_i L_{\text{TOA}}(v, \theta_i) \right]} \quad (4)$$

220 where L_{TOA} is the radiance observed with a viewing angle θ and F_{TOA} is the angular integrated flux over a hemisphere, both depending on v . In the last step, the 5-node GQ was applied. The anisotropy ratio is frequently used in climate related studies (Clerbaux et al., 2002; Worden et al., 2011). The equation above implies that knowledge of the anisotropy and the radiance in just one direction allows evaluating the total flux. The anisotropy can be calculated when all relevant surface and atmospheric
 225 parameters are known, by simulating spectra over the different GQ angles (see Table 1).

The anisotropy is strongly dependent on cloud coverage, day–night, surface type and temperature, temperature lapse rate and water vapor columnar content (Suttles et al., 1988; Loeb et al., 2003). It has been previously used in broadband radiometers such as the Earth Radiation Budget Experiment

(ERBE) and the Clouds and Earth's Radiant Energy System (CERES) (e.g. Stubenrauch et al., 1994; 230 Li, 1996; Loeb et al., 2003). The choice of using an anisotropy approximation for performing the angular integration in Eq. (1) was also recently made by Worden et al. (2011) to calculate the O₃ IRKs from Aura-TES data.

For small viewing angles, the anisotropy is always larger than 1 throughout the whole spectral range, gradually decreasing to 1 as the angle approaches 41° and drops below 1, when the angle 235 becomes larger than 41°. Using less than five nodes leads to a small positive bias of around 2%, whereas using more than five nodes, does not improve the results significantly in terms of accuracy. So while Worden et al. (2011) used the 1-node GQ, here we use the 5-node approximation to avoid any biases that might be introduced in this stage.

Once the anisotropy has been obtained, the flux can be calculated using Eq. (4) as $F_v = \pi L_v(\theta)/R_v(\theta)$ 240 and the IRK as:

$$\frac{\partial F_{\text{TOA}}}{\partial q(z_1)} = \frac{\partial}{\partial q(z_1)} \int_{\underline{v}_1}^{\underline{v}_2} \frac{\pi L_{\text{TOA}}(v, \theta)}{R(v, \theta)} dv \approx \int_{\underline{v}_1}^{\underline{v}_2} \frac{\partial L_{\text{TOA}}(v, \theta)}{\partial q(z_1)} \frac{\pi dv}{R(v, \theta)}, \quad (5)$$

where in the last step anisotropy was assumed constant with respect to $q(z_1)$. So while the ozone dependence is taken into account in the Jacobian, it is assumed not to play a major role for the anisotropy itself. However, as we will demonstrate in Sect. 4.5, this leads in general to significant 245 errors in the computation of the TOA fluxes.

Example IRKs calculated by Eq. (5) are given in Fig. 2 with red lines. These correspond to IRKs averaged per 10° viewing angle bins (~~nadir~~) with respect to nadir for one day, on 15 April 2011.

4.4 Direct integration of Jacobians

For this work with IASI we have developed an approach which avoids the main approximation of 250 the anisotropy method. Our method will be referred to as direct integration for the sake of convenience. The direct integration method is based on the direct application of the Gaussian Quadrature to the definition of the IRK (Eq. 2). In the anisotropy method the Gaussian Quadrature is applied on the radiances L_{TOA} , whereas in the direct integration approach it is applied to the Jacobians $\partial L_{\text{TOA}}(v, \theta, \phi)/\partial q(z_1)$. The IRKs are now calculated as:

$$\frac{\partial F_{\text{TOA}}}{\partial q(z_1)} = 2\pi \sum_{i=1}^5 w_i \int_{\underline{v}_1}^{\underline{v}_2} \frac{\partial L_{\text{TOA}}(v, \theta_i)}{\partial q(z_1)} dv. \quad (6)$$

where again $v_1 = 985 \text{ cm}^{-1}$ and $v_2 = 1080 \text{ cm}^{-1}$. For the selection of these angles we follow the 5-node GQ, as for the anisotropy, but the $f(x_i)$ function in Eq. (3) does not refer anymore to the radiances, but to the Jacobians.

Using the angles given in Table 1 we compute with the forward model of ~~FORLI-O₃~~ FORLI 260 the spectra and Jacobians of Eq. (6) for each IASI measurement, based on the ozone vertical profile,

spectrum and other parameters obtained at the last iteration of the retrieval process. Each set of Jacobians is weighted by the proper factor, w_i , and integrated over the spectral band, with resulting units of $\text{W m}^{-2} \text{ppb}^{-1}$. The IRK of each layer is then calculated and stored. IRKs calculated with this method are given in Fig. 2 (blue lines), where they are compared to those calculated by using the anisotropy method.

4.5 IRK comparison

Applying the chain rule on the second term in Eq. (5), but this time assuming R is a function of the ozone abundance, we get:

$$\frac{\partial F_{\text{TOA}}}{\partial q(z_1)} = \int_{\underline{v}_1}^{\underline{v}_2} \frac{\partial L_{\text{TOA}}(v, \theta)}{\partial q(z_1)} \frac{\pi dv}{R(\theta, v)} - \int_{\underline{v}_1}^{\underline{v}_2} F_{\text{TOA}}(v) \frac{\partial}{\partial q(z_1)} \ln(R(\theta, v, q(z_1))) dv. \quad (7)$$

The first term on the left hand of Eq. (7) is the IRK in the anisotropy approximation. The second term quantifies the difference between the direct integration method and the anisotropy method. Note that calculating this extra term is computationally expensive and application of the chain rule is therefore best avoided by direct integration. The magnitude of this extra term can be assessed by comparing the IRKs of both methods, as in Fig. 2.

Figure 2 shows the average IRKs of a single day, 15 April 2011, as computed by both the direct integration method (blue lines) and the anisotropy approximation (red lines). The average is performed on the global distribution of ozone profiles, considering bins of 10° from nadir. The last bin goes up to 48.3° , the maximum angle of the IASI viewing swath. Following Worden et al. (2011), IRKs are plotted under the convention that the reduction of TOA flux corresponds to positive forcing; therefore we present the results as positive quantities. The IRKs peak for both methods around the mid-troposphere, which is consistent with the findings of previous studies (Lacis et al., 1990; Worden et al., 2011). The maximum sensitivity for the direct integration method is $0.80 \pm 0.02 \text{ mW m}^{-2} \text{ppb}^{-1}$ on average for all bins and it is found at 8 km altitude. An important result of Fig. 2 is that the anisotropy approximation underestimates the IRKs by about 22 % at the maximum sensitivity for the bins of 0 to 10° (Fig. 2a) compared to the direct integration results. The difference decreases as the viewing angle increases (Fig. 2b and c) and tends to zero when the angle approaches 41° (Fig. 2d). Interestingly, the angle of 41° is also the result of the 1-node GQ for the anisotropy approximation. For viewing angles larger than 41° (Fig. 2e), the anisotropy approximation overestimates the IRKs compared to the direct integration by 10 % at the maximum sensitivity altitude. The fact that the second term on the left hand of Eq. (7) depends on the observation angle through the logarithm of R , explains the change from underestimation to overestimation as the viewing angle increases from 0 to 48° . It is worth stressing that IASI has most of its measurements between 0 and 41° , which means that on global basis the anisotropy method would create a significant underestimation of the IRKs. In integrated layer amounts the anisotropy method exhibits an underestimation of about 20 % in the

295 troposphere and 25 % in total for viewing angles of 0 to 10°, and an overestimation of about 10 and 12 % for the troposphere and total respectively and for angles larger than 41°.

The estimated errors for the IRKs for the two methods presented above are mainly associated with the retrieval of the ozone profile itself, as presented in Sect. 3. The contribution of the forward model errors is generally small and already accounted for in the retrieved O₃ profile error.

300 5 Longwave radiative effect

The IRK defined by Eq. (2) refers to the TOA flux sensitivity to a change in the vertical distribution of ozone and is thus characterizing a single observation. For a specific location and time i , we can apply the IRK to an associated difference in ozone abundance, e.g. the difference between a model (sim) and an observation (ref), as:

$$305 \Delta_{\text{LWRE}} = \frac{\partial F_{\text{TOA}}^i}{\partial q_i(z_1)} [q_i^{\text{sim}}(z_1) - q_i^{\text{ref}}(z_1)] \quad (8)$$

where Δ_{LWRE} , in W m^{-2} , is the difference of the TOA longwave radiative effect (LWRE) due to a difference in the ozone amount. Such a difference can be used for instance to assess the results of chemistry-climate models vs. satellite derived results. This concept was used by Aghedo et al. (2011) to compute the TES ozone IRKs and LWRE and study model-to-observation biases in the vertical and latitudinal distribution of these quantities with four different chemistry-climate models for one month. They found for tropical and mid-latitude regions significant biases between -0.4 and $+0.7 \text{ W m}^{-2}$ for the tropospheric O₃ LWRE, when TES had LWRE values around 0.65 W m^{-2} for the same regions. Likewise, Bowman et al. (2013) studied the biases between TES and the chemistry-climate models participating in ACCMIP, also for the seasonal variations of ozone. In their results, 315 the biases in ozone in individual atmospheric layers were small, slightly negative for the Southern (SH) and positive for the Northern Hemisphere (NH), but accumulated to considerable biases in terms of LWRE. The LWRE biases were found between -0.13 and $+0.2 \text{ W m}^{-2}$ for different models and regions. Zonally integrated biases in the ACCMIP ensemble exceeded 0.1 W m^{-2} with individual models exceeding 0.3 W m^{-2} . The ACCMIP model ensemble bias was at 0.12 W m^{-2} 320 locally, while the LWRE of TES was around 0.5 W m^{-2} for the same region. These biases were reduced to $39 \pm 41 \text{ mW m}^{-2}$ in a global scale due to zonally compensating errors. These OLR biases were correlated with the ACCMIP model-based RF. Based upon this correlations the intermodel spread was reduced by 30 % in IPCC AR5 (Myhre et al., 2013). It is important to point out however, that the TES IRKs and LWRE in both studies were computed using the anisotropy approximation. 325 Based upon the direct integration method, the OLR biases from those studies are likely underestimated.

From Eq. (8), if we assume a reference of zero, we can use the retrieved ozone profile, accompanied by its own IRK, to compute the absolute LWRE (Worden et al., 2011) for ozone as:

$$\text{LWRE}_i \approx \frac{\partial F_{\text{TOA}}^i}{\partial q_i(z_l)} q_i(z_l) \quad (9)$$

330 which represents the reduction in OLR due to ozone absorption with respect to each atmospheric state at mean altitude z of layer l . From Eq. (9) we can calculate the LWRE with respect to the ozone profile in each vertical layer, but we can also calculate LWRE separately for total columns and tropospheric or other subcolumns by simply summing over the appropriate vertical layers.

5.1 LWRE comparison

335 Figure 3 shows the zonal average vertical profiles of LWRE for a single day of IASI measurements (15 April 2011) separated between local morning and evening overpasses. The ozone vertical profiles were retrieved with FORLI- Θ_3 using the parameters specified in Sect. 3. ~~Top~~The top row represents the results with the IRKs computed with the direct integration method (Eq. 6), whereas the second row gives the IRKs calculated with the anisotropy approximation (Eq. 5). All IASI viewing angles
340 are included. The two methods show similar broad patterns with expectedly high LWRE values in the stratosphere, larger in the inter-tropical belt and lower in the polar regions due to higher and lower surface temperatures respectively. The high LWRE found over the NH midlatitudes are consistent with the high cooling rates in the stratospheric midlatitudes for this mid-spring period (see Clough and Iacono, 1995). We can also notice high LWRE values in the NH midlatitude mid-
345 troposphere, which are explained by the combined effect of enhanced ozone, due to Brewer–Dobson circulation late effects in spring, and warm land, in contrast with the cooler and less polluted SH dominated by ocean. The NH midlatitude regions, mainly mid-tropospheric, but also stratospheric, are highly affected by the surface temperature, as it can be seen by comparing the AM and PM values of the LWRE in Fig. 3 (bottom panel). Differences in these regions are up to 25 mW m^{-2}
350 near 250 hPa and 15 mW m^{-2} in the mid-troposphere. As it will be shown later in Fig. 6, these differences are mostly related to changes in temperature (7 K between AM and PM at midlatitudes) than to changes in the ozone content (4.2 DU difference between AM and PM). However, at this stage it is difficult to quantify with sufficient accuracy the respective contributions of the O_3 abundance and the temperature on the LWRE value. Note that the possibility to infer the diurnal change in the
355 LWRE was not possible with TES, considering the much more limited spatial sampling.

The third row of Fig. 3 shows the difference between the LWRE from the direct integration method and the anisotropy approximation. We see significant differences over the entire profile, with absolute differences following the distribution of the LWRE, with a maximum of 16 mW m^{-2} in the stratosphere. In the mid-troposphere the differences are about $6\text{--}7 \text{ mW m}^{-2}$ in the inter-tropical region, decreasing to almost zero at the higher latitudes, where the LWRE itself is almost vanishing.
360 Overall we see an underestimation of the LWRE at all altitudes for the anisotropy method, this being

consistent with the IRK comparison (Fig. 2) and the fact that the majority of the IASI measurements are made at angles between 0 and 41° (corresponding to the negative bias of the anisotropy approximation for the IRKs).

365 The difference in the LWRE between the two methods is obvious also when comparing the total or tropospheric O₃ LWRE values spatially, as shown in Figs. 4 and 5 respectively. As for the zonal averages in Fig. 3, the general patterns are similar between the two methods, with the highest values of the LWRE in the inter-tropical belt and over several continental regions of the NH, logically related to the higher surface temperatures. This effect is more enhanced on the tropospheric LWRE (Fig. 5) than on the total (Fig. 4). Despite this qualitative agreement, the angle-dependent bias of the anisotropy method is obvious in the bottom panels of Figs. 4 and 5: the anisotropy approximation is biased low over most of the IASI swath (red to light blue colors in the bottom panels), and biased high (blue colors only) at the edges of the swath. The bottom panels of Figs. 4 and 5 correspond to the second term of the right hand of Eq. (7), integrated over all (total) and tropospheric layers (Fig. 5) respectively. The negative bias of the anisotropy approximation for the LWRE is larger at near nadir and reaches almost 1 W m⁻² (25 %) on the total LWRE and around 0.4 W m⁻² (25 %) on the tropospheric. The positive bias is smaller, around 20 %, for both total and tropospheric LWRE (0.5 and 0.2 W m⁻² respectively) due to the fact that both methods tend to agree at a viewing angle of 41°. Note that in the polar regions the effect is not seen, but this is an artifact owed due to the compensation of positive and negative biases for overlapping orbits and the very low values of LWRE. Finally the differences between morning and evening overpasses of Fig. 4 top panels, where the hotspots appearing at the AM view, disappear during the PM view, enforces the assumption that the differences in the LWRE vertical distribution between morning and evening (Fig. 3, bottom panel) are indeed due to temperature difference. Here we chose to show results only for 15 April 2011, since the pattern of the differences between the two methods is the same for all days, as it is angle related.

380 ~~Considering the methods used for calculating~~ To produce an error budget for the LWRE, its value will have an error which is the combination of the error on the retrieved ozone profile and we account for the following two contributions: that of the forward model, for the part of the IRK formulation and that of the retrieval, for the profile of O₃, based on Eq. (9). A good estimation of the forward model errors is the ~~forward model. Here we use the~~ root-mean-square (RMS) value of the spectral residual ~~after the retrieval between the observed and the modeled spectrum. The LWRE, as the product of Eq. (9), refers to a column of ozone. For the integrated total LWRE, the contribution of the retrieval is very small, and therefore we consider only the RMS~~ to account for all errors. A typical RMS for good quality ~~FORLI-O₃ retrievals~~ ozone retrievals with FORLI is around $2.24 \times 10^{-8} \text{ W cm}^{-2} \text{ sr}^{-1} \text{ cm}$, which translates for the total LWRE global average to a $\pm 3.2\%$ error. In some cases the RMS can be larger, but the data are not kept when its value is above $3.5 \times 10^{-8} \text{ W cm}^{-2} \text{ sr}^{-1} \text{ cm}$, which places an upper bound of $\pm 4.6\%$ on the LWRE error.

5.2 LWRE annual variation

As already mentioned in the introduction, the ozone radiative forcing is not only dependent on the local ozone profile, but also on the surface temperature, the atmospheric temperature profile and the humidity profile.

Figure 6 shows the seasonality of both tropospheric and total O₃ LWRE, based on the direct integration method. Due to the computational resources the data were obtained globally but only for a single day per month, the 15th each month for the year of 2011 (note that for November and December 2011, the 16th was selected, as for the 15th the IASI spatial coverage was not global). The results will therefore be affected by the single-day atmospheric conditions, which might not be representative of the whole month, but this is expected to be minimized by the fact that we look at latitudinal averages, in which typically around 45 000 data points are included. Moreover we recall that only cloud-free measurements are processed, which will cause biases in the distributions and time series in comparison to what would correspond to (real) all-sky conditions, as discussed in Worden et al. (2011). More specifically Figs. 6, 7 and 8 show the monthly variability of the O₃ LWRE, the surface temperature and the O₃ columnar amount, separately for polar regions (60–90° N and 60–90° S), midlatitudes (30–60° N and 30–60° S) and tropical regions (30° N–30° S). The time series are also separated between local day and night, marked with red and blue lines respectively. Note that the average values are area weighted to avoid as much as possible biases due to varying sampling as a function of region. The area weighting is achieved as follows: we first sort all IASI measurements based on latitude and longitude in a 1° × 1° grid. We then calculate the mean LWRE of all LWRE values that hit each grid cell (LWRE_{*i*}^{mean}), as well as the area of each grid cell in km² (*W_i*). Not all grid cells end up filled necessarily. For each area of interest we calculate the area weighted LWRE average by:

$$\langle \text{LWRE} \rangle = \frac{\sum_i \text{LWRE}_i^{\text{mean}} \times W_i}{\sum_i W_i} \quad (10)$$

Note also the different scales in the *y* axes between tropospheric and total LWRE of the same zone, but also between different zones for the same quantity. The analysis of Fig. 6 reveals the following main patterns:

- a. The O₃ LWRE is consistently larger for the IASI morning measurements. The morning/evening differences are not seen in the SH Polar and midlatitudes, but appear clearly for the three other latitudinal bands, reaching at NH midlatitudes during spring and summer around 0.16 and 0.38 W m⁻² for the tropospheric and total LWRE respectively. As seen in Fig. 7, and in the morning/evening differences of both tropospheric and total O₃ columns in Fig. 8, these variations are not related to changing ozone, but to changes in temperatures, which reach almost 7 K during spring and summer for the same region. The larger impact at the northern latitudes

(and reversely the absence of impact between 30–90° S) is therefore explainable by the importance of the continental areas. Note that it is the first time that the diurnal variability in the LWRE is characterized empirically on such large scales.

- 435 b. The LWRE in the NH Polar region (Fig. 6a and b) is characterized by low values for the beginning of the year, with a maximum in July and gradually falling back to low values towards the end of the year, which is consistent with the surface temperature variation (Fig. 7a). The relative amplitude of the seasonal cycle is similar between tropospheric and total LWRE, around a factor of 3 and a factor of 2 respectively between extremes. A noticeable feature in Fig. 6b is
- 440 the relatively constant low values of the LWRE in January–April 2011. This is due to the fact that the beginning of 2011 for Polar NH was characterized by the impact of an unusually prolonged and severe polar vortex, which started at the end of 2010 and finally collapsed around April 2011, causing a serious depletion of ozone (Manney et al., 2011; Balis et al., 2011). This can also be seen in Fig. 8b, where the O₃ total column shows a relatively low plateau between
- 445 January and March and a sudden maximum in April, while in normal conditions we would expect a smoother increase of ozone from January to April. Another feature for the Polar NH is the plateau in the LWRE for the tropospheric column (Fig. 6a) between April and May 2011, which could be due to the effect of stratospheric intrusions – as it can be seen by the sharp peak in the O₃ tropospheric column (Fig. 8a). After July 2011 we see a smooth decrease of the
- 450 tropospheric LWRE, consistent with the simultaneous decrease of the O₃ tropospheric column and the surface temperature. Note that for this region the total LWRE is constantly five to ten times larger compared to the tropospheric LWRE.
- c. The NH midlatitude (Fig. 6c and d) is the region where the largest LWRE are calculated, both for tropospheric (around 0.8 W m⁻² in July during daytime) and total LWRE (2.8 W m⁻²
- 455 in daytime in July also). The seasonality in this latitude band is well marked, with minima in winter and maxima during summer, especially on the tropospheric LWRE with amplitude as large as 0.6 W m⁻² (corresponding to an increase of a factor of 3 from winter to summer). This seasonality in the troposphere is related to temperature (see Fig. 7b), but also to enhanced photochemical production of O₃ from precursors in summer (Fig. 8c). As stressed above, the
- 460 temperature impact is also reflected in the large day–night difference, as for 15 July 2011 a 7 K difference in the surface temperature causes differences of up to 0.16 W m⁻² for the tropospheric and 0.38 W m⁻² for the total LWRE, while the difference in the O₃ amount between day and night is negligible for both columns.
- d. The tropical total O₃ LWRE (Fig. 6f) shows little variation over the months. The relatively
- 465 high values of LWRE (around 2.8 W m⁻²) for this low-O₃ region is due to the high temperatures (Fig. 7c). The small increase observed between July and October is due to an increase in ozone as seen in Fig. 8f, which following previous study would be mainly in the lower

stratosphere (Stolarski, 2014). The tropospheric LWRE (Fig. 6e) in the tropics shows more variability with the seasonal cycle characterized by a double maximum in May and October–November respectively. These maxima are consistent with the maxima of the O₃ tropospheric column in Fig. 8e, which are associated with transport of ozone rich air masses following enhanced biomass burning (Galanter et al., 2000; Ziemke et al., 2009) and lightning periods (Martin et al., 2000; Sauvage et al., 2007; Ziemke et al., 2011), especially for the SH tropics.

470

e. Moving to the SH, at midlatitudes, the total LWRE (Fig. 6h) is characterized by a relatively weak variability ($2.2 \pm 0.2 \text{ W m}^{-2}$), apart from a small decrease after July, that is likely associated with the expansion of the Antarctic polar vortex area and its low temperatures towards southern midlatitudes. The minimum value in October is consistent with the surface temperature minimum (Fig. 7d), while the O₃ total column (Fig. 8h) reaches its maximum value around the same time (SH spring). The high values in November–December 2011 follow the pattern of the surface temperature, as we enter the SH summer. The seasonality is more pronounced for the tropospheric LWRE at southern midlatitudes (Fig. 6g) with maxima between October and February (relatively constant at 0.5 W m^{-2}) and minima in SH winter, which can be associated with the corresponding seasonality of the surface temperature (Fig. 7d) and the O₃ tropospheric columns (Fig. 8g). Note that the maximum tropospheric LWRE of the SH is almost twice lower compared to that in the NH (Fig. 6c), which is consistent with the lower ozone content of the region (Fig. 8g and h compared to Fig. 8c and d).

475

480

485

f. For the polar regions of the SH, the total LWRE (Fig. 6j) shows a seasonality that is closely following the ozone total column variation (Fig. 8j). The impact of the Antarctic polar vortex is well seen, starting building up in May, reaching its maximum covered area in September to first half of November (NOAA ESRL/GMD, 2015) and completely collapsing in December. The O₃ in the vortex decreases following catalytic destruction in winter/spring, reaching its minimum column in September 2011 (Fig. 8j) and this explains the rapid decrease after August 2011 of the total LWRE, reaching also its lowest value in October–November 2011. The temperature has a weaker impact on the seasonality in this polar region, as can be seen also from the absence of day-night differences. Note that the SH Polar LWRE maximum barely reaches 1.2 W m^{-2} compared to the 2 W m^{-2} maximum found in the NH Polar region. The tropospheric O₃ LWRE (Fig. 6i) is characterized by a very different seasonality than the total LWRE with a rapid increase from June to July, which is consistent with the increase of O₃ tropospheric column (Fig. 8i) for the same period, possibly caused by stratospheric intrusions. Higher tropospheric O₃ values are also reported in NOAA ESRL/GMD (2015) for the same period of 2011. After the peak, from August and thereafter, the tropospheric LWRE follows a progressive decrease, which is much slower than the decrease of O₃ tropospheric column.

490

495

500

This slower decrease is explained again by the competing effects of ozone and temperature, with the temperature (Fig. 7e) compensating here the decreases in tropospheric O₃.

505 g. Finally, global averages of both tropospheric and total O₃ LWRE (Fig. 6k and l) show little variation throughout the year, as the effects of the one hemisphere appear to almost counterbalance the effects of the other. Nonetheless the impact of the NH is quite evident, as both global averages exhibit a moderate peak in July, following the NH polar and midlatitude patterns. This is also supported by the O₃ global average tropospheric and total columns
510 (Fig. 8k and l), which follow the same annual variation with the NH – mostly midlatitude – O₃ columns. These global averages can be compared with other studies. For instance, Worden et al. (2011) calculated with TES a global (80° N–80° S) average clear-sky tropospheric O₃ LWRE for August 2006 of $0.50 \pm 0.24 \text{ W m}^{-2}$, while in this paper for 15 August 2011 we find $0.60 \pm 0.12 \text{ W m}^{-2}$ for the morning overpasses and $0.54 \pm 0.08 \text{ W m}^{-2}$ for the evening
515 overpasses. It should be kept in mind, however, that our calculations are based on single day distributions and more importantly using the direct integration method, as opposed to the anisotropy method used in Worden et al. (2011). A detailed comparison between IASI and TES-derived LWRE will be done in a separate study.

6 Conclusions

520 With the use of the IASI – FORLI-O₃ TOA radiance Jacobians with respect to the ozone vertical distribution we were able to quantify the sensitivity of the OLR to ozone by calculating the instantaneous radiative kernels (IRKs) for clear sky scenes. Furthermore we calculated the longwave radiative effect (LWRE) of ozone due to absorption. These calculations were performed using two different methods: the anisotropy approximation, which is a simplified approach with a moderate
525 need on computational resources and the direct integration method, which follows more strictly the application of the IRK definition, but demands more computational resources. A step-by-step comparison between the two methods was conducted for both the IRKs and the LWRE, using global daily data from the IASI instrument on MetOp-A satellite. We have shown that the anisotropy approximation results in biases from –25 to +12 % on the IRKs, depending on the viewing angle, and
530 –25 to +20 % for the LWRE. The two methods coincide for the viewing angle of 41° from nadir, with the anisotropy results being biased low and high for smaller and larger angles respectively. Regardless of the bias, the anisotropy approximation captures the variability of the LWRE similar to the direct integration method, and could be used, if accuracy is not a priority. However, for future comparisons with climate models or other thermal IR instruments, these biases need to be avoided
535 and the use of the direct integration method is recommended. The vertical distribution of the LWRE for a single day was also investigated, separately for day and night views. Although both methods show the same global patterns, the anisotropy method substantially underestimates on the global

scale the LWRE in the layers of maximum sensitivity, as most IASI viewing angles are between 0 and 41°. The day–night difference in the LWRE was evaluated for the first time, owing to the bi-daily coverage of IASI, and we found a significant role of the temperature in the flux sensitivity, with changes in the LWRE varying from –10 to 25 mW m⁻² locally between day and night. The larger differences are over the NH midlatitudes in the UTLS, which corresponds to the maximum in the LWRE itself.

For the first time we were also able to investigate the annual variation of the tropospheric and total O₃ LWRE, separately for day and night overpasses of IASI, with respect to changes in surface temperature and ozone abundance. The impact of the surface temperature on the seasonality is clear, especially for the NH regions, dominated by continents, as well as on the diurnal cycle, with the day time LWRE being consistently larger at almost all times and almost all latitudes. In addition to surface temperature, changes in ozone affect the seasonality of the LWRE, in some regions differently for the tropospheric and the total amounts (e.g. in the Antarctic, when the ozone hole strongly affects the total LWRE). The seasonality was looked at in different latitude bands, revealing a much stronger LWRE of ozone in the NH (maximum at midlatitudes in summer), where we find larger O₃ columns and higher surface temperatures, compared to the SH. This is also evident in the global averages, which mostly follow the NH variations. Overall, the NH LWRE seasonality seems to be mostly driven by the surface temperature, while the SH, especially the polar region, is more influenced by the O₃ amount. Further investigation is needed to quantify the respective contribution of temperature and ozone on the LWRE, as these two parameters seem to have a competing effect on its seasonality. The contribution of other parameters, such as humidity in the 9.6 μm band, should also be investigated.

Finally, the IRKs and LWRE can also serve to assess and constrain climate model biases in the calculation of the radiative forcing, as was done previously but with the use of the anisotropy approximation. However, the direct integration method gives more accurate results and in cooperation with the high spatiotemporal coverage of IASI instruments, it would enforce the capabilities of climate models.

Acknowledgements. IASI has been developed and built under the responsibility of the “Centre National d’Etudes Spatiales” (CNES, France). It is flown on board the MetOp satellites as part of the EUMETSAT Polar System. The IASI L1 and L2 data are received through the EUMETCast near real-time data distribution service. The research in Belgium was funded by the F.R.S.-FNRS, the Belgian State Federal Office for Scientific, Technical and Cultural Affairs and the European Space Agency (ESA-Prodex arrangements IASI.Flow and BO3M-SAF). We acknowledge support from the O₃-CCI project funded by ESA and by the O3M-SAF project funded by EUMETSAT. L. Clarisse and P.-F. Coheur are respectively Research Associate (Chercheur Qualifié) and Senior Research Associate (Maître de Recherches) with the Belgian F.R.S.-FNRS. C. Clerbaux is grateful to CNES for scientific collaboration and financial support. Kevin W. Bowman and Helen M. Worden were funded by a NASA-ROSES 2013 Aura Science Team proposal.

575 References

- Abramowitz, M. and Stegun, I.: Handbook of Mathematical Functions with Formulas, Graphs, and Mathematical Tables, National Bureau of Standards, Applied Mathematics Series – 55, Dover, Mineola, NY, USA, 1972.
- Aghedo, A. M., Bowman, K. W., Worden, H. M., Kulawik, S. S., Shindell, D. T., Lamarque, J. F., Faluvegi, G.,
580 Parrington, M., Jones, D. B. A., and Rast, S.: The vertical distribution of ozone instantaneous radiative forcing from satellite and chemistry climate models, *J. Geophys. Res.*, 11, D01305, doi:10.1029/2010jd014243, 2011.
- August, T., Klaes, D., Schlüssel, P., Hultberg, T., Crapeau, M., Arriaga, A., O’Carroll, A., Coppens, D.,
585 Munro, R., and Calbet, X.: IASI on and Metop-A: operational level 2 retrievals after five years in orbit, *J. Quant. Spectrosc. Ra.*, 113, 1340–1371, doi:10.1029/2010jd014243, 2012.
- Balis, D., Isaksen, I. S. A., Zerefos, C., Zyrichidou, I., Eleftheratos, K., Tourpali, K., Bojkov, R., Rognerud, B.,
Stordal, F., Søvde, O. A., and Orsolini, Y.: Observed and modelled record ozone decline over the Arctic during winter/spring 2011, *Geophys. Res. Lett.*, 3, L23801, doi:10.1029/2011GL049259, 2011.
- Bowman, K. W., Steck, T., Worden, H. M., Worden, J., Clough, S., and Rodgers, C.: Capturing time and vertical
590 variability of tropospheric and ozone: a study using TES nadir retrievals, *J. Geophys. Res.*, 107, D23, doi:10.1029/2002JD002150, 2002.
- Bowman, K. W., Shindell, D. T., Worden, H. M., Lamarque, J.F., Young, P. J., Stevenson, D. S., Qu, Z.,
de la Torre, M., Bergmann, D., Cameron-Smith, P. J., Collins, W. J., Doherty, R., Dalsøren, S. B., Faluvegi, G.,
595 Folberth, G., Horowitz, L. W., Josse, B. M., Lee, Y. H., MacKenzie, I. A., Myhre, G., Nagashima, T., Naik, V.,
Plummer, D. A., Rumbold, S. T., Skeie, R. B., Strode, S. A., Sudo, K., Szopa, S., Voulgarakis, A., Zeng, G.,
Kulawik, S. S., Aghedo, A. M., and Worden, J. R.: Evaluation of ACCMIP outgoing longwave radiation from tropospheric ozone using TES satellite observations, *Atmos. Chem. Phys.*, 13, 4057–4072, doi:10.5194/acp-13-4057-2013, 2013.
- Boynard, A., Clerbaux, C., Coheur, P.-F., Hurtmans, D., Turquety, S., George, M., Hadji-Lazaro, J., Keim, C.,
600 and Meyer-Arnek, J.: Measurements of total and tropospheric ozone from IASI: comparison with correlative satellite, ground-based and ozonesonde observations, *Atmos. Chem. Phys.*, 9, 6255–6271, doi:10.5194/acp-9-6255-2009, 2009.
- Clarisse, L., R’Honi, Y., Coheur, P.-F., Hurtmans, D., and Clerbaux, C., Thermal infrared nadir observations of
24 atmospheric gases, *Geophys. Res. Lett.*, 3, L10802, doi:10.1029/2011GL047271, 2011.
- 605 Clerbaux, N., Dewitte, S., Gonzalez, L., Bertrand, C., Nicula, B., and Ipe, A., Outgoing longwave flux estimation: improvement of angular modelling using spectral information, *Remote Sens. Environ.*, 85, 389–395, doi:10.1016/S0034-4257(03)00015-4, 2002.
- Clerbaux, C., Boynard, A., Clarisse, L., George, M., Hadji-Lazaro, J., Herbin, H., Hurtmans, D., Pommier, M.,
Razavi, A., Turquety, S., Wespes, C., and Coheur, P.-F.: Monitoring of atmospheric composition using the
610 thermal infrared IASI/MetOp sounder, *Atmos. Chem. Phys.*, 9, 6041–6054, doi:10.5194/acp-9-6041-2009, 2009.
- Clough, S. A. and Iacono, M. J.: Line-by-line calculation of atmospheric fluxes and cooling rates: 2. Application to carbon dioxide, ozone, methane, nitrous oxide and the halocarbons, *J. Geophys. Res.*, 100, 16519–16535, doi:10.1029/95JD01386, 1995.

- 615 Coheur, P.-F., Barret, B., Turquety, S., Hurtmans, D., Hadji-Lazaro, J., and Clerbaux, C.: Retrieval and characterization of ozone vertical profiles from a thermal infrared nadir sounder, *J. Geophys. Res.*, 110, D24303, doi:10.1029/2005JD005845, 2005.
- Coheur, P.-F., Clarisse, L., Turquety, S., Hurtmans, D., and Clerbaux, C.: IASI measurements of reactive trace species in biomass burning plumes, *Atmos. Chem. Phys.*, 9, 5655–5667, doi:10.5194/acp-9-5655-2009, 620 2009.
- Conley, A. J., Lamarque, J.-F., Vitt, F., Collins, W. D., and Kiehl, J.: PORT, a CESM tool for the diagnosis of radiative forcing, *Geosci. Model Dev.*, 6, 469–476, doi:10.5194/gmd-6-469-2013, 2013.
- Dufour, G., Eremenko, M., Griesfeller, A., Barret, B., LeFlochmoën, E., Clerbaux, C., Hadji-Lazaro, J., Coheur, P.-F., and Hurtmans, D.: Validation of three different scientific ozone products retrieved from IASI 625 spectra using ozonesondes, *Atmos. Meas. Tech.*, 5, 611–630, doi:10.5194/amt-5-611-2012, 2012.
- [EUMETSAT: IASI Level 1: Product Guide, EUM/OPS-EPS/MAN/04/0032 v4C, available at: http://www.eumetsat.int/website/home/Data/Products/Level1Data/index.html \(last access: 03 November 2015\), 2014.](http://www.eumetsat.int/website/home/Data/Products/Level1Data/index.html)
- Forster, P., Ramaswamy, V., Artaxo, P., Berntsen, T., Betts, R., Fahey, D. W., Haywood, J., Lean, J., Lowe, D. C., 630 Myhre, G., Nganga, J., Prinn, R., Raga, G., Schulz, M., and Dorland, R. V.: Changes in Atmospheric Constituents and in Radiative Forcing, in: *Climate Change 2007: The Physical Science Basis, Contribution of Working Group I to the Fourth Assessment Report of the Intergovernmental Panel on Climate Change*, Cambridge University Press, Cambridge, UK and New York, NY, USA, 2007.
- Forster, P. M. D. and Shine, K. P.: Radiative forcing and temperature trends from stratospheric ozone changes, 635 *J. Geophys. Res.*, 102, 10841–10855, doi:10.1029/96JD03510, 1997.
- Galanter, M., Levy, H., and Carmichael, G. R.: Impacts of biomass burning on tropospheric CO, NO_x, and O₃, *J. Geophys. Res.*, 105, 6633–6653, doi:10.1029/1999JD901113, 2000.
- Gauss, M., Myhre, G., Pitari, G., Prather, M. J., Isaksen, I. S. A., Berntsen, T. K., Brasseur, G. P., Dentener, F. J., Derwent, R. G., Hauglustaine, D. A., Horowitz, L. W., Jacob, D. J., Johnson, M., Law, K. S., Mickley, L. J., 640 Müller, J.-F., Plantévin, P.-H., Pyle, J. A., Rogers, H. L., Stevenson, D. S., Sundet, J. K., van Weele, M., and Wild, O.: Radiative forcing in the 21st century due to ozone changes in the troposphere and the lower stratosphere, *J. Geophys. Res.*, 108, 4292, doi:10.1029/2002JD002624, 2003.
- Gazeaux, J., Clerbaux, C., George, M., Hadji-Lazaro, J., Kuttippurath, J., Coheur, P.-F., Hurtmans, D., Deshler, T., Kovilakam, M., Campbell, P., Guidard, V., Rabier, F., and Thépaut, J.-N.: Intercomparison of polar ozone profiles by IASI/MetOp sounder with 2010 Concordiasi ozonesonde observations, *Atmos. Meas. Tech.*, 6, 613–620, doi:10.5194/amt-6-613-2013, 2013.
- Hilton, F., Armante, R., August, T., Barnet, C., Bouchard, A., Camy-Peyret, C., Capelle, V., Clarisse, L., Clerbaux, C., Coheur, P.-F., Collard, A., Crevoisier, C., Dufour, G., Edwards, D., Faijan, F., Fourrié, N., Gambacorta, A., Goldberg, M., Guidard, V., Hurtmans, D., Illingworth, S., Jacquinet-Husson, N., Kerzenmacher, T., 650 Klaes, D., Lavanant, L., Masiello, G., Matricardi, M., McNally, A., Newman, S., Pavelin, E., Payan, S., Péquignot, E., Peyridieu, S., Phulpin, T., Remedios, J., Schlüssel, P., Serio, C., Strow, L., Stubenrauch, C., Taylor, J., Tobin, D., Wolf, W., and Zhou, D.: Hyperspectral earth observation from IASI: five years of accomplishments, *B. Am. Meteorol. Soc.*, 93, 347–370, doi:10.1175/BAMS-D-11-00027.1, 2011.

- Hurtmans, D., Coheur, P.-F., Wespes, C., Clarisse, L., Scharf, O., Clerbaux, C., Hadji-Lazaro, J., George, M.,
655 and Turquety, S.: FORLI radiative transfer and retrieval code for IASI, *J. Quant. Spectrosc. Ra.*, 113, 1391–
1408, doi:10.1016/j.jqsrt.2012.02.036, 2012.
- Joiner, J., Schoeberl, M. R., Vasilkov, A. P., Oreopoulos, L., Platnick, S., Livesey, N. J., and Levelt, P. F.:
Accurate satellite-derived estimates of the tropospheric ozone impact on the global radiation budget, *Atmos.*
Chem. Phys., 9, 4447–4465, doi:10.5194/acp-9-4447-2009, 2009.
- 660 Lacis, A. A., Wuebbles, D. J., and Logan, J. A.: Radiative forcing of climate by changes in the vertical distri-
bution of ozone, *J. Geophys. Res.*, 95, 9971–9981, doi:10.1029/JD095iD07p09971, 1990.
- Li, J.: Gaussian quadrature and its application to infrared radiation, *J. Atmos. Sci.*, 57, 753–765, 2000.
- Li, Z.: On the angular correction of satellite radiation measurements: the performance of ERBE angular depen-
dence model in the Arctic, *Theor. Appl. Climatol.*, 54, 235–248, doi:10.1007/BF00865166, 1996.
- 665 Loeb, N. G., Manalo-Smith, N., Kato, S., Miller, W. F., Gupta, S. K., Minnis, P., and Wielicki, B. A.: Angular
distribution models for top-of-atmosphere radiative flux estimation from the clouds and the earth’s radiant
energy system instrument on the tropical rainfall measuring mission satellite, Part I: Methodology, *J. Appl.*
Meteorol., 42, 240–265, 2003.
- Manney, G. L., Santee, M. L., Rex, M., Livesey, N. J., Pitts, M. C., Veefkind, P., Nash, E. R., Wohltmann, I.,
670 Lehmann, R., Froidevaux, L., Poole, L. R., Schoeberl, M. R., Haffner, D. P., Davies, J., Dorokhov, V., Ger-
mandt, H., Johnson, B., Kivi, R., Kyro, E., Larsen, N., Levelt, P. F., Makshtas, A., McElroy, C. T., Naka-
jima, H., Parrondo, M. C., Tarasick, D. W., von der Gathen, P., Walker, K. A., and Zinoviev, N. S.: Unprece-
dented Arctic ozone loss in 2011, *Nature*, 478, 469–475, doi:10.1038/nature10556, 2011.
- Martin, R. V., Jacob, D. J., Logan, J. A., Ziemke, J. M., and Washington, R.: Detection of a lightning influence
675 on tropical tropospheric ozone, *Geophys. Res. Lett.*, 27, 1639–1642, doi:10.1029/1999GL011181, 2000.
- Myhre, G., Shindell, D., Bréon, F.-M., Collins, W., Fuglestedt, J., Huang, J., Koch, D., Lamarque, J.-F., Lee, D.,
Mendoza, B., Nakajima, T., Robock, A., Stephens, G., Takemura, T., and Zhang, H.: Anthropogenic and
natural radiative forcing, in: *Climate Change 2013: The Physical Science Basis, Contribution of Working*
Group I to the Fifth Assessment Report of the Intergovernmental Panel on Climate Change, Cambridge
680 University Press, Cambridge, UK and New York, NY, USA, 2013.
- NOAA: Earth System Research Laboratory Global Monitoring Division (ESRL/GMD), Boulder, Colorado,
USA, available at: <http://www.esrl.noaa.gov/gmd> (last access: 24 April 2015), 2015.
- Ramaswamy, V.: Radiative forcing in climate change, in: *Climate Change 2001: The Scientific Basis. Contribu-*
tion of Working Group I to the Third Assessment Report of The Intergovernmental Panel on climate change,
685 Cambridge University Press, Cambridge, UK and New York, NY, USA, 2001.
- Rodgers, C. D.: *Inverse Methods for Atmospheric Sounding: Theory and Practice*, World Scientific Publishing
Co. Pte. Ltd., Signapore, 2, 2000.
- Rothman, L., Jacquemart, D., Barbe, A., Benner, D. C., Birk, M., Brown, L., Carleer, M., Chackerian Jr., C.,
Chance, K., Coudert, L., Dana, V., Devi, V., Flaud, J.-M., Gamache, R., Goldman, A., Hartmann, J.-M.,
690 Jucks, K., Maki, A., Mandin, J.-Y., Massie, S., Orphal, J., Perrin, A., Rinsland, C., Smith, M., Tennyson, J.,
Tolchenov, R., Toth, R., Auwera, J. V., Varanasi, P., and Wagner, G.: The HITRAN 2004 molecular spectro-
scopic database, *J. Quant. Spectrosc. Ra.*, 96, 139–204, doi:10.1016/j.jqsrt.2004.10.008, 2005.

- Rothman, L., Gordon, I., Babikov, Y., Barbe, A., Benner, D. C., Bernath, P., Birk, M., Bizzocchi, L., Boudon, V., Brown, L., Campargue, A., Chance, K., Cohen, E., Coudert, L., Devi, V., Drouin, B., Fayt, A., Flaud, J.-M., 695 Gamache, R., Harrison, J., Hartmann, J.-M., Hill, C., Hodges, J., Jacquemart, D., Jolly, A., Lamouroux, J., Roy, R. L., Li, G., Long, D., Lyulin, O., Mackie, C., Massie, S., Mikhailenko, S., Müller, H., Naumenko, O., Nikitin, A., Orphal, J., Perevalov, V., Perrin, A., Polovtseva, E., Richard, C., Smith, M., Starikova, E., Sung, K., Tashkun, S., Tennyson, J., Toon, G., Tyuterev, V., and Wagner, G.: The HITRAN2012 molecular spectroscopic database, *J. Quant. Spectrosc. Ra.*, 130, 4–50, doi:10.1016/j.jqsrt.2013.07.002, 2013.
- 700 Søvde, O. A., Hoyle, C. R., Myhre, G., and Isaksen, I. S. A.: The HNO₃ forming branch of the HO₂ + NO reaction: pre-industrial-to-present trends in atmospheric species and radiative forcings, *Atmos. Chem. Phys.*, 11, 8929–8943, doi:10.5194/acp-11-8929-2011, 2011.
- Safieddine, S., Boynard, A., Coheur, P.-F., Hurtmans, D., Pfister, G., Quennehen, B., Thomas, J. L., Raut, J.-C., Law, K. S., Klimont, Z., Hadji-Lazaro, J., George, M., and Clerbaux, C.: Summertime tropospheric ozone 705 assessment over the Mediterranean region using the thermal infrared IASI/MetOp sounder and the WRF-Chem model, *Atmos. Chem. Phys.*, 14, 10119–10131, doi:10.5194/acp-14-10119-2014, 2014.
- Sauvage, B., Martin, R. V., van Donkelaar, A., and Ziemke, J. R.: Quantification of the factors controlling tropical tropospheric ozone and the South Atlantic maximum, *J. Geophys. Res.*, 11, D11309, doi:10.1029/2006JD008008, 2007.
- 710 Scannell, C., Hurtmans, D., Boynard, A., Hadji-Lazaro, J., George, M., Delcloo, A., Tuinder, O., Coheur, P.-F., and Clerbaux, C.: Antarctic ozone hole as observed by IASI/MetOp for 2008–2010, *Atmos. Meas. Tech.*, 5, 123–139, doi:10.5194/amt-5-123-2012, 2012.
- Skeie, R. B., Berntsen, T. K., Myhre, G., Tanaka, K., Kvalevåg, M. M., and Hoyle, C. R.: Anthropogenic radiative forcing time series from pre-industrial times until 2010, *Atmos. Chem. Phys.*, 11, 11827–11857, 715 doi:10.5194/acp-11-11827-2011, 2011.
- Stevenson, D. S., Young, P. J., Naik, V., Lamarque, J.-F., Shindell, D. T., Voulgarakis, A., Skeie, R. B., Dal-soren, S. B., Myhre, G., Berntsen, T. K., Folberth, G. A., Rumbold, S. T., Collins, W. J., MacKenzie, I. A., Doherty, R. M., Zeng, G., van Noije, T. P. C., Strunk, A., Bergmann, D., Cameron-Smith, P., Plummer, D. A., Strode, S. A., Horowitz, L., Lee, Y. H., Szopa, S., Sudo, K., Nagashima, T., Josse, B., Cionni, I., Righi, M., 720 Eyring, V., Conley, A., Bowman, K. W., Wild, O., and Archibald, A.: Tropospheric ozone changes, radiative forcing and attribution to emissions in the Atmospheric Chemistry and Climate Model Intercomparison Project (ACCMIP), *Atmos. Chem. Phys.*, 13, 3063–3085, doi:10.5194/acp-13-3063-2013, 2013.
- Stolarski, R. S., Waugh, D. W., Wang, L., Oman, L. D., Douglass, A. R., and Newman, P. A.: Seasonal variation of ozone in the tropical lower stratosphere: southern tropics are different from northern tropics, *J. Geophys. Res.*, 119, 6196–6206, doi:10.1002/2013JD021294, 2014.
- 725 Stubenrauch, C., Duvel, J.-P., and Kandel, R.: Determination of longwave anisotropic emission factors from combined broad- and narrow-band radiance measurements, *Adv. Space Res.*, 14, 103–107, doi:10.1016/0273-1177(94)90356-5, 1994.
- Suttles, J. T., Green, R. N., Smith, G. L., Wielicki, B. A., Walker, I. J., Taylor, V. R., and Stowe, L. L.: Angular 730 Radiation Model for Earth-Atmosphere System, Vol. II, NASA Ref. Public. 1184, NASA, Greenbelt, Md., USA, 1988.

- Wespes, C., Emmons, L., Edwards, D. P., Hannigan, J., Hurtmans, D., Saunio, M., Coheur, P.-F., Clerbaux, C., Coffey, M. T., Batchelor, R. L., Lindenmaier, R., Strong, K., Weinheimer, A. J., Nowak, J. B., Ryerson, T. B., Crouse, J. D., and Wennberg, P. O.: Analysis of ozone and nitric acid in spring and summer Arctic pollution using aircraft, ground-based, satellite observations and MOZART-4 model: source attribution and partitioning, *Atmos. Chem. Phys.*, 12, 237–259, doi:10.5194/acp-12-237-2012, 2012.
- 735
- Worden, H. M., Bowman, K. W., Worden, J. R., Eldering, A., and Beer, R.: Satellite measurements of the clear-sky greenhouse effect from tropospheric ozone, *Nat. Geosci.*, 1, 305–308, doi:10.1038/ngeo182, 2008.
- Worden, H. M., Bowman, K. W., Kulawik, S. S., and Aghedo, A. M.: Sensitivity of outgoing longwave radiative flux to the global vertical distribution of ozone characterized by instantaneous radiative kernels from Aura-TES, *J. Geophys. Res.*, 116, D03309, doi:10.1029/2006JD007258, 2011.
- 740
- World Meteorological Organization (WMO): *Meteorology A Three-Dimensional Science: second Session of the Commission for Aerology*, WMO Bulletin IV, WMO, Geneva, 134–138, 1957.
- Ziemke, J. R., Chandra, S., Duncan, B. N., Schoeberl, M. R., Torres, O., Damon, M. R., and Bhartia, P. K.: Recent biomass burning in the tropics and related changes in tropospheric ozone, *Geophys. Res. Lett.*, 36, L15819, doi:10.1029/2009GL039303, 2009.
- 745
- Ziemke, J. R., Chandra, S., Labow, G. J., Bhartia, P. K., Froidevaux, L., and Witte, J. C.: A global climatology of tropospheric and stratospheric ozone derived from Aura OMI and MLS measurements, *Atmos. Chem. Phys.*, 11, 9237–9251, doi:10.5194/acp-11-9237-2011, 2011.

Table 1. Zenith angle, cosine of zenith angle, equivalent TOA nadir angle for IASI and corresponding weight for the 5-node GQ.

Zenith angle ($^{\circ}$)			
θ_i	$x_i = \cos\theta_i$	TOA Nadir angle ($^{\circ}$)	Weight, w_i
84.3452	0.098535	61.2563	0.015748
72.2698	0.304536	57.0576	0.073909
55.8040	0.562025	46.7816	0.146387
36.6798	0.801987	31.7557	0.167175
16.2213	0.960190	14.2483	0.096782

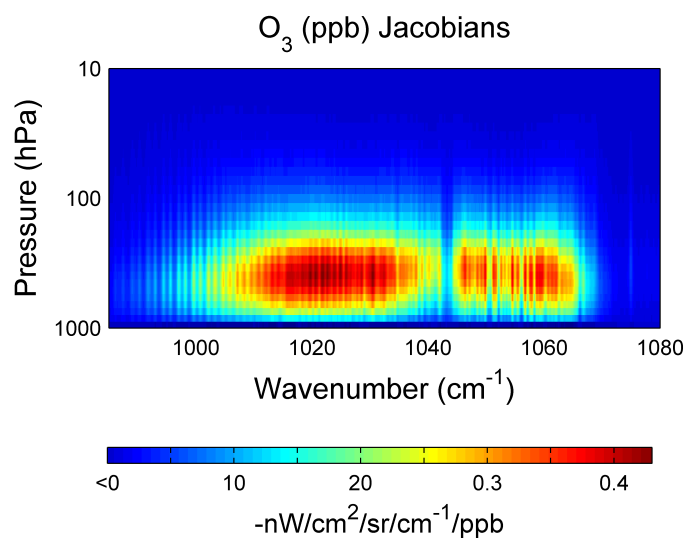


Figure 1. Example of O_3 Jacobians for a single observation in the $9.6\ \mu m$ spectral band, with respect to ozone in ppb for an observation taken on 15 January 2011, at ($51.13^{\circ} N$, $42.3^{\circ} W$) and 04:57 UTC and for 47.48° viewing angle.

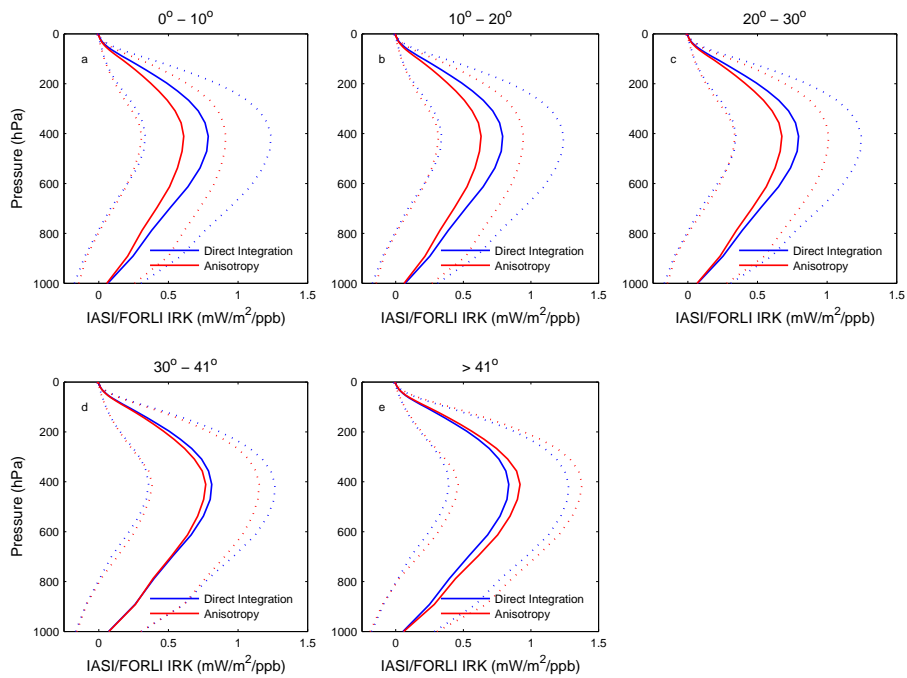


Figure 2. Global average clear-sky ozone IRK profiles as computed via the anisotropy approximation (red line) and the direct integration (blue line) on 15 April 2011. The dashed lines indicate $\pm 1\sigma$ standard deviations with the same color index. The averages were calculated in bins of 10° of nadir viewing angle, from 0 to 30° (a to c), (d) 30 to 41° and (e) for angles larger than 41° to maximum 48.3° for IASI.

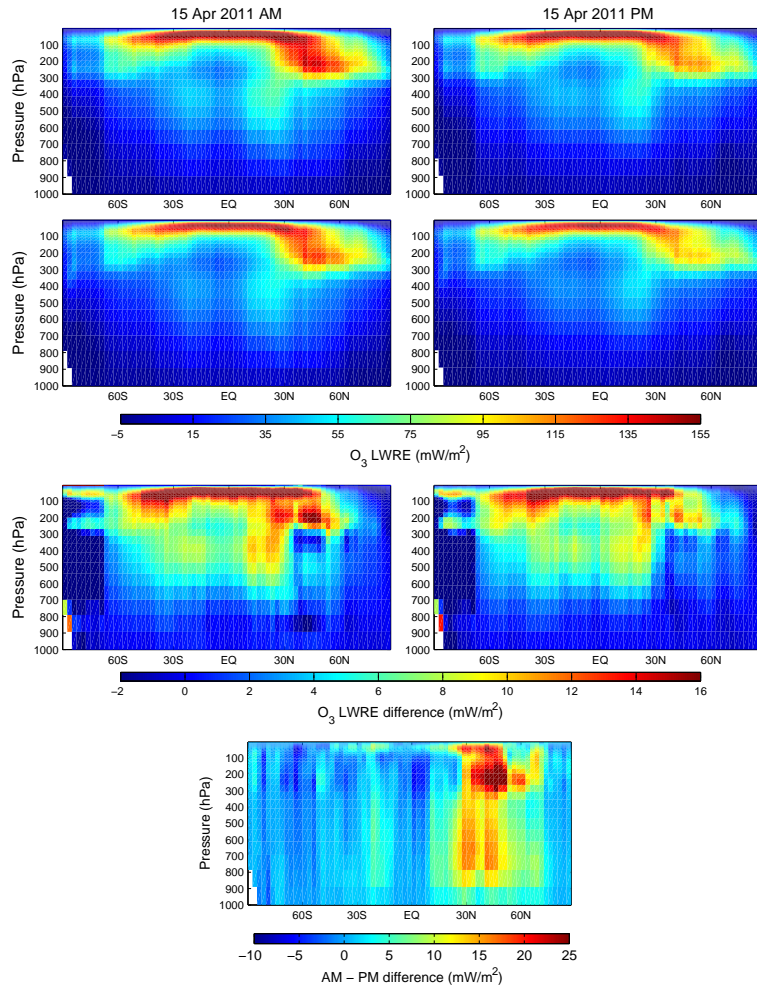


Figure 3. Single-day clear-sky zonal average ozone LWRE profiles for local AM (left) and PM (right) IASI overpasses, on 15 April 2011. The top and second row panels provide the LWRE calculated using the direct integration method and the anisotropy approximation respectively. The third row shows the difference between the two methods. The bottom panel gives the difference between day and night view for the direct integration method.

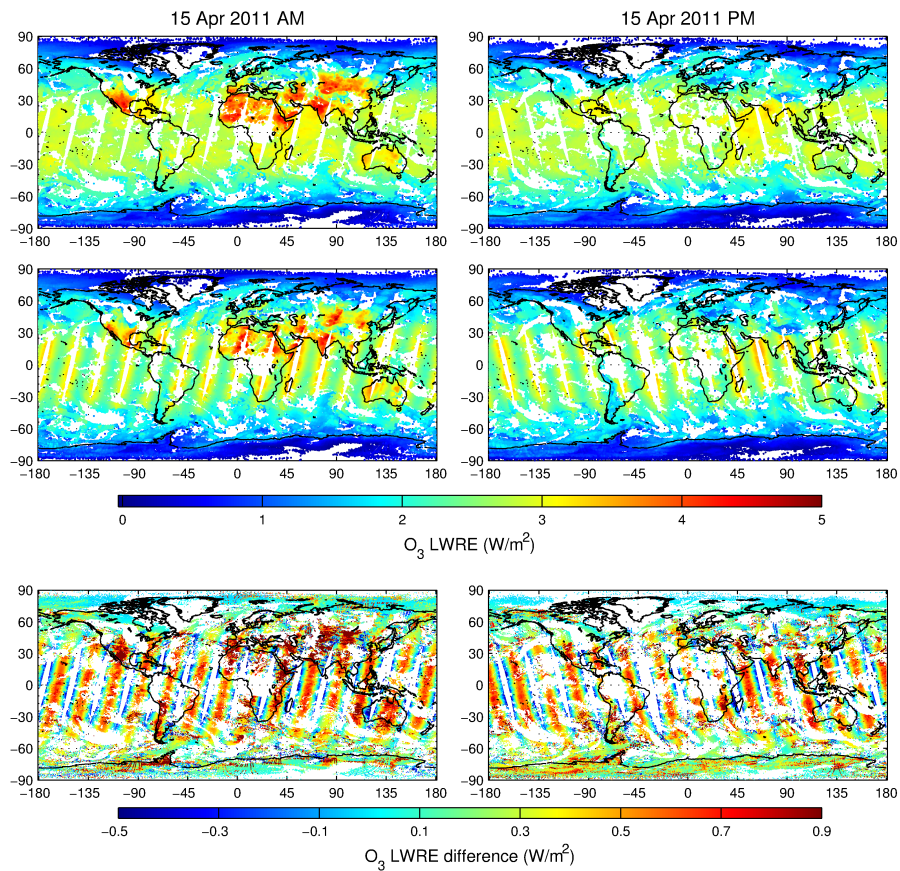


Figure 4. Global distribution of the total O_3 LWRE for AM (left) and PM (right) overpasses of IASI, on 15 April 2011. (top) Calculation using the direct integration method, (middle) calculation using the anisotropy approximation and (bottom) the difference between the two methods.

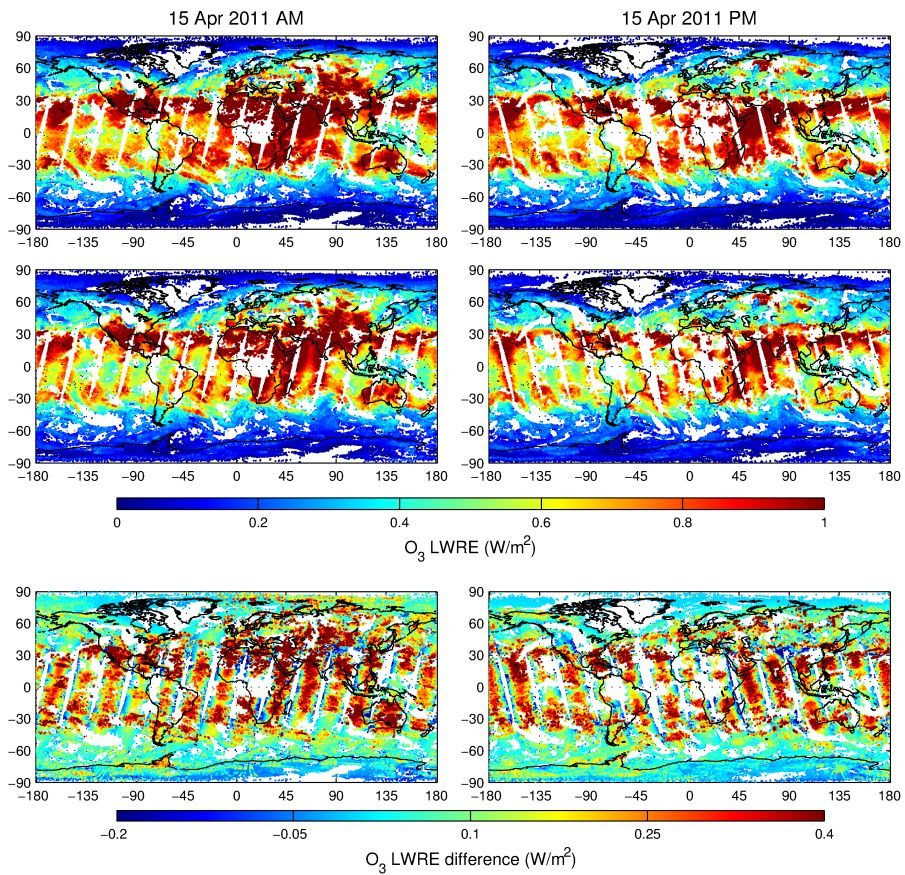


Figure 5. Same as Fig. 4 for the tropospheric O₃ LWRE. The calculation of the tropospheric LWRE relies on the definition of the tropopause by the WMO (1957).

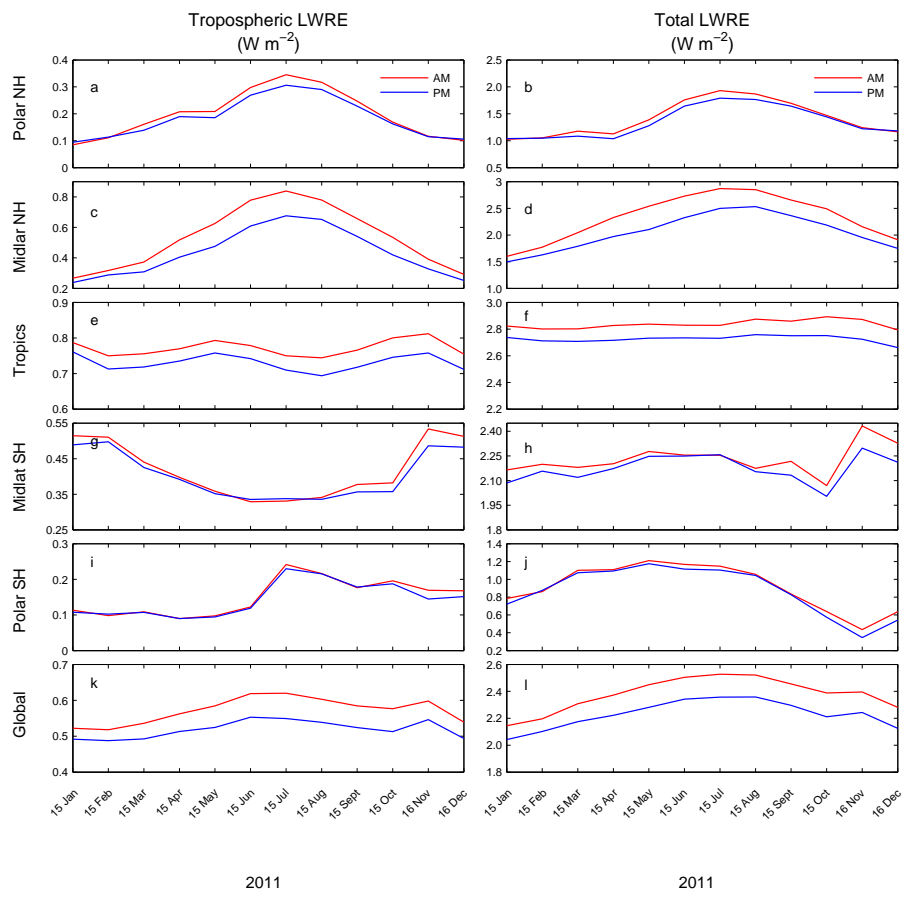
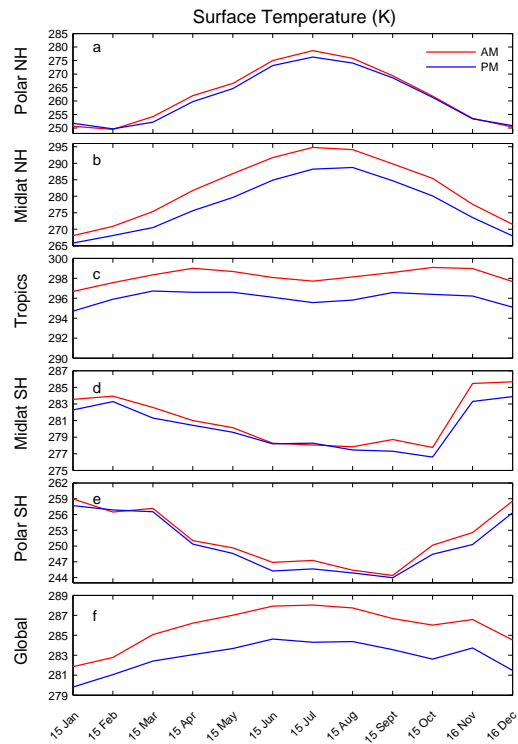


Figure 6. Zonal and global seasonal variation of (left) tropospheric O₃ LWRE and (right) total O₃ LWRE in W m⁻² for the year 2011. Panels (a, b) and (c, d) refer to Northern Hemisphere Polar and Midlatitude regions respectively; panels (e) and (f) represent the Tropics; panels (g, h) and (i, j) refer to SH Midlatitudes and Polar regions. Panels (k, l) refer to global averages.



2011

Figure 7. Same as Fig. 6 for surface temperature in K.

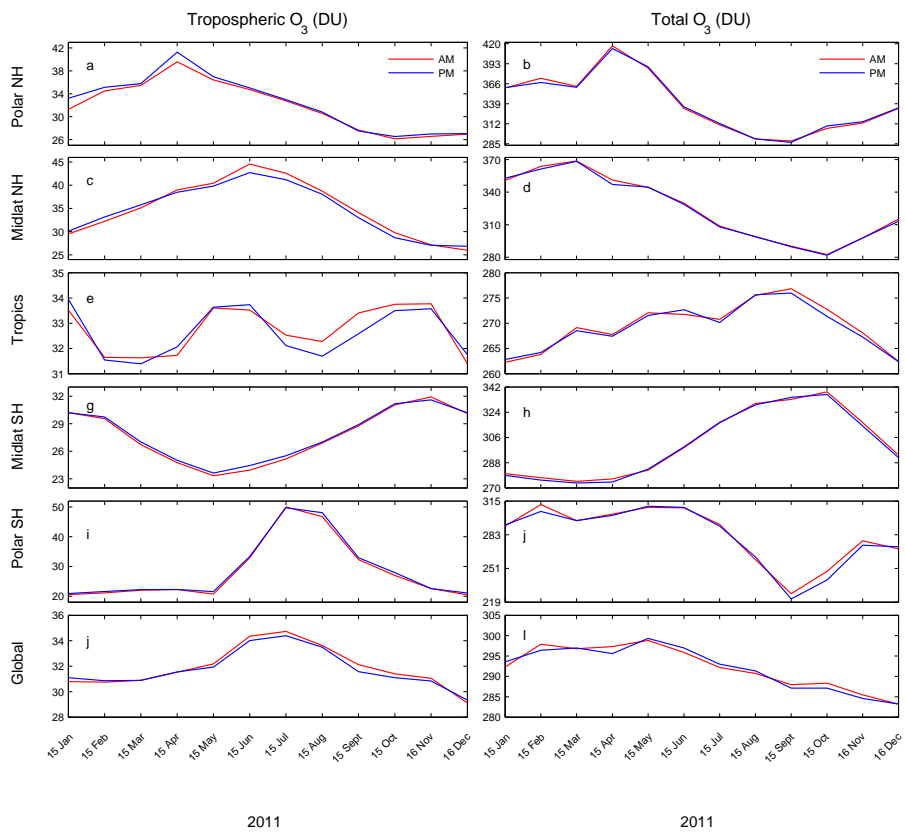


Figure 8. Same as Fig. 6 for tropospheric and total columns of O₃ in DU.