



**Dust particle internal structure and light scattering**

O. Kempainen et al.

# Effects of dust particle internal structure on light scattering

O. Kempainen<sup>1,2</sup>, T. Nousiainen<sup>1</sup>, and G. Y. Jeong<sup>3</sup>

<sup>1</sup>Earth Observation, Finnish Meteorological Institute, P.O. Box 503, 00101, Helsinki, Finland

<sup>2</sup>Department of Applied Physics, Aalto University, Espoo, Finland

<sup>3</sup>Department of Earth and Environmental Sciences, Andong National University, Andong 760-749, Republic of Korea

Received: 8 June 2015 – Accepted: 7 July 2015 – Published: 28 July 2015

Correspondence to: O. Kempainen (osku.kempainen@fmi.fi)

Published by Copernicus Publications on behalf of the European Geosciences Union.

Title Page

Abstract

Introduction

Conclusions

References

Tables

Figures



Back

Close

Full Screen / Esc

Printer-friendly Version

Interactive Discussion



Abstract

There is a large variety of internal structures inside atmospheric dust particles, making them inherently inhomogeneous. Such structures may have a large effect on ground-level and atmospheric radiation. So far, dust particle internal structures and their effect on the light scattering properties have proved to be hard to quantify, in part due to challenges in obtaining information about these structures. Recently, internal structures of individual dust particles were revealed through focused ion beam milling and analyzed. Here, we perform a sensitivity study to evaluate the optical impacts of some of the typical internal structures revealed. To obtain suitable model particles, the first step is to generate inhomogeneous particles with varying internal structures by using an algorithm that is based on three-dimensional Voronoi tessellation. The parameters for the particle generation are obtained from studies of real-world Asian dust particles. The second step is to generate homogeneous versions of the generated particles by using an effective-medium approximation, for comparison. Third, light scattering by both versions of these particles is simulated with discrete-dipole approximation code. This allows us to see how different internal structures affect light scattering, and how important it is to account for these structures explicitly. Further, this allows us to estimate the potential inaccuracies caused by using only homogeneous model particles for atmospheric studies and remote sensing measurements. The results show that the effects vary greatly between different kinds of internal structures and single-scattering quantity considered, but for most structure types the effects are overall notable. Most significantly, hematite inclusions in particles impact light scattering heavily. Furthermore, internal pores and hematite-rich coating both affect some form of light scattering noticeably. Based on this work, it seems that it is exceedingly important that the effects of dust particle internal structures on light scattering are accounted for in a wide variety of applications.

Dust particle internal structure and light scattering

O. Kempainen et al.

Title Page

Abstract

Introduction

Conclusions

References

Tables

Figures



Back

Close

Full Screen / Esc

Printer-friendly Version

Interactive Discussion



# 1 Introduction

Mineral dust particles are an important part of the atmosphere (Zender et al., 2003). Their impact on incoming ground-level solar radiation, including aerosol radiative forcing, can be considerable (Durant et al., 2009; Haywood et al., 2011). At areas with high dust concentrations, their effect on the amount of incoming radiative energy at the surface can be roughly ten percent when the Sun is at the zenith, and even more when it is close to the horizon. Interestingly, this effect can either increase or decrease the amount of radiative energy reaching the surface (Forster et al., 2007). Due to its abundance and impact, accounting for dust is imperative in most radiative balance calculations and atmospheric remote sensing. However, due to the large variance in dust effects on radiation, the impacts are challenging to account for, particularly when using simplified models.

The reasons for the large variance of the impact of dust on radiation can be many, but in addition to the obvious variations in particle size and concentration, shapes and internal structures may play a role. It is known that many dust particles contain materials with significant dielectric contrast, for example iron oxides or internal pores. Transmission electron microscopic (TEM) analysis of cross-sections of single particles showed that internal pores of varying sizes are common features of Asian dust particles. Additionally, submicron iron oxides, such as hematite and goethite, are often distributed within clay medium (Jeong and Nousiainen, 2014). Furthermore, it has been shown by, e.g., Vilaplana et al. (2006); Nousiainen et al. (2011a, b, 2003); Muinonen et al. (2009) that inhomogeneity can affect light scattering by particles significantly, and that scattering by such particles is not easily mimicked by ensembles of simple homogeneous model particles.

While particle size distributions and many other population-level parameters are possible to measure by remote sensing (Chou et al., 2008; Kim et al., 2008), shapes and internal structures are much harder to determine. For example, derivation of the true three-dimensional shape requires application of atomic force microscopy (e.g. Chou

ACPD

15, 20349–20394, 2015

## Dust particle internal structure and light scattering

O. Kempainen et al.

Title Page

Abstract

Introduction

Conclusions

References

Tables

Figures



Back

Close

Full Screen / Esc

Printer-friendly Version

Interactive Discussion



et al., 2008; Woodward et al., 2015), or stereogrammetry from electron microscope images (Lindqvist et al., 2014). Internal structures can be analyzed, e.g., by slicing open dust particles with a focused ion beam, as done by Jeong and Nousiainen (2014). The impacts of real shapes and internal structures on scattering have barely been touched, because it is very hard to retrieve the three-dimensional composition, and especially to measure light scattering by the same particles whose structures are retrieved. Without coinciding data, the connection between optical properties and physical properties cannot be established.

Here we carry out a sensitivity study on the impacts of internal structures. Our approach is to create an algorithm that allows us to generate discrete-dipole approximation (DDA) models of particles with desired types and amounts of internal structures, for which accurate light scattering simulations can be then easily run, thus allowing taking internal structures into account explicitly and accurately. What we aim to do is to generate a set of particles that are complex-shaped and irregular, as are real dust particles, and possess internal structure characteristics that resemble those observed in real dust. The clear benefit of this pure modeling approach is that it allows us to calculate accurate values for individual optical properties, linked to known individual physical properties. We will be testing how various internal structures change light scattering compared to a baseline version, which is composed only of optically similar minerals. Further, knowing the composition of the inhomogeneous particles perfectly allows us to calculate homogeneous versions of the same particles with an effective-medium approximation (EMA), and simulate light scattering by both the inhomogeneous and the homogeneous versions of the particles. This, then, allows us to quantify the errors in light scattering caused by using the homogeneous version of the particle instead of the true form of the particle.

The main purpose of this study is to investigate the effects of different types of internal structures on the single-scattering properties. We will be examining particles with various internal structures, such as empty cavities and materials with high real and imaginary refractive index, such as hematite and other iron oxides. The article is struc-

Dust particle internal structure and light scattering

O. Kempainen et al.

Title Page	
Abstract	Introduction
Conclusions	References
Tables	Figures
⏮	⏭
⏪	⏩
Back	Close
Full Screen / Esc	
Printer-friendly Version	
Interactive Discussion	



5 tured as follows: Sect. 2 introduces the physical dust particles on which the computa-  
tional particle generator is based on, Sect. 3 summarizes the relevant single-scattering  
theory, Sect. 4 explains the model particle generator algorithm in detail, Sect. 5 shows  
the results of the scattering calculations for inhomogeneous and homogeneous par-  
ticles and, finally, Sect. 6 contains the summary of the work, and discussion of the  
significance of the results.

## 2 Internal structures in Asian dust particles

10 Asian dust is an important mineral dust lifted from arid regions in the northwestern  
China and southern Mongolia, and transported in a long range across East Asia and  
the North Pacific (Jeong et al., 2014, and references therein). The details of the par-  
ticle interiors were recently discovered by Jeong and Nousiainen (2014). Most of the  
dust particles are composites of several mineral types of varying grain sizes. Rela-  
tively coarser minerals are quartz, plagioclase, K-feldspar, calcite, and muscovite, while  
finer minerals are illite-smectite series clay minerals and iron oxides. The basic inter-  
15 nal structures of dust particles result from the agglomeration of these mineral grains  
in the source soils. Within the dust particles, coarser minerals tend to form separated  
grains, while very fine grains of clay minerals and iron oxides form tight aggregates. In  
clay-rich dust particles, coarser grains such as quartz, plagioclase and muscovite are  
enclosed in the clay medium, while in clay-poor particles, quartz and plagioclase grains  
20 are commonly crusted with coatings of clay agglomerates. Submicron irregular pores  
are common in the dust particles. Example internal structure and mineral distribution  
of an Asian dust particle (3.8  $\mu\text{m}$  in diameter, Fig. 1a) is presented in Fig. 1b, showing  
a porous agglomerate of several mineral types.

25 Jeong and Nousiainen (2014) grouped internal structures into single and poly-  
crystalline cores of quartz, feldspars, calcite, and amphibole often with oriented clay  
coatings; clay agglomerates showing preferred to random orientations commonly with  
coarser mineral inclusions; and platy coarse phyllosilicates. Iron oxides in Asian dust

### Dust particle internal structure and light scattering

O. Kempainen et al.

Title Page	
Abstract	Introduction
Conclusions	References
Tables	Figures
◀	▶
◀	▶
Back	Close
Full Screen / Esc	
Printer-friendly Version	
Interactive Discussion	



are mostly goethite and hematite. Although their contents are low in mineral dust, their potential to optical properties is known to be significant (Sokolik and Toon, 1999; Lafon et al., 2006). Although they occur as their own agglomerates, they are commonly distributed as submicron grains through the clay medium as shown in Fig. 1c–d. Certainly, there must be wide ranges of internal structures and mineral compositions from porous to nonporous, coated to non-coated, preferred to randomly oriented, from monocrystalline to polycrystalline, and iron-poor to iron-rich (Jeong and Nousiainen, 2014). Currently, the statistics of structural types are not available yet because the number of dust particles subjected to TEM analysis is not sufficient. Evidently, further extensive TEM works in combination with high resolution scanning electron microscopy (SEM) are required to establish the population of the internal structures.

### 3 Single-scattering concepts

The foundation of all radiative effects comes from single-scattering interactions. The scattering matrix for a particle,

$$\begin{pmatrix} I_s \\ Q_s \\ U_s \\ V_s \end{pmatrix} = \frac{1}{k^2 d^2} \begin{bmatrix} S_{11} & S_{12} & S_{13} & S_{14} \\ S_{21} & S_{22} & S_{23} & S_{24} \\ S_{31} & S_{32} & S_{33} & S_{34} \\ S_{41} & S_{42} & S_{43} & S_{44} \end{bmatrix} \begin{pmatrix} I_i \\ Q_i \\ U_i \\ V_i \end{pmatrix}, \quad (1)$$

characterizes the single-scattering event by linking the properties of incident (i) and scattered (s) radiation by the particle. Here  $[I, Q, U, V]^T$  is the Stokes vector describing the properties of light:  $I$  describes the intensity,  $Q$  and  $U$  the linear polarization, and  $V$  the circular polarization of the wave. The wavenumber  $k = 2\pi\lambda^{-1}$  is related to the radiation wavelength  $\lambda$ , and  $d$  is the distance from the scattering particle. Although the full matrix contains 16 elements, they are not independent, and under certain conditions, the matrix simplifies to only 6 independent elements:  $S_{11}$ ,  $S_{12}$ ,  $S_{22}$ ,  $S_{33}$ ,  $S_{34}$ , and  $S_{44}$  (Hovenier and van der Mee, 2000). These conditions are that the particles be randomly

## Dust particle internal structure and light scattering

O. Kempainen et al.

Title Page

Abstract

Introduction

Conclusions

References

Tables

Figures

◀

▶

◀

▶

Back

Close

Full Screen / Esc

Printer-friendly Version

Interactive Discussion



oriented, and that either the particles are mirror symmetric, or the particles and their mirror particles are present with equal numbers. However, it has been shown by, e.g., Muñoz et al. (2012); Nousiainen and Kandler (2015) that even when these condition are not strictly true, for ensembles of complex particles, such as dust, the scattering matrix closely conforms to the simplified form.

Here, we study the effects of internal structures primarily in terms of individual scattering matrix elements, from where all other effects can be determined. We also link these effects to relevant radiative transfer and remote sensing quantities by calculating four scalar scattering quantities, which are described below.

The single-scattering albedo,  $\bar{\omega}$ , describes the amount of energy being scattered in a single scattering event compared that being absorbed. To be precise, it is the ratio of scattering and extinction cross-sections:

$$\bar{\omega} = \frac{C_{\text{sca}}}{C_{\text{ext}}}, \quad (2)$$

where  $C_{\text{sca}}$  is the scattering cross-section, a measure of the total power scattered by the particle, and  $C_{\text{ext}}$  is the sum of scattering and absorption cross-sections.

The asymmetry parameter  $g$  is used to describe how the scattered intensity varies between the forward ( $\theta < 90^\circ$ ) and backward ( $\theta > 90^\circ$ ) hemispheres of the scatterer, where  $\theta$  is the scattering angle, the angular difference in propagation directions between the incident and the scattered radiation. The asymmetry parameter is obtained from  $S_{11}$  by:

$$g = \frac{2\pi}{k^2 C_{\text{sca}}} \int_0^\pi \sin \theta \cos \theta S_{11}(\theta) d\theta. \quad (3)$$

In many lidar applications, a quantity called lidar ratio,  $R$ , is used. The lidar ratio is the ratio of the extinction to the backscattering cross-section:

$$R = \frac{C_{\text{ext}}}{C_{\text{back}}} = \frac{k^2 C_{\text{ext}}}{S_{11}(180^\circ)}, \quad (4)$$

where  $S_{11}(180^\circ)$  is the value of  $S_{11}$  at  $\theta = 180^\circ$ , that is, the intensity at the exact backscattering direction.

Linear depolarization ratio,  $\delta_L$ , is another quantity typically used in lidar applications. One reason is that the scattering matrix element  $S_{22}$  is usually very sensitive to the shape of the particle, and therefore the linear depolarization ratio can be used to extract information about the particle shape, or at least to detect the presence of non-spherical particles. Linear depolarization ratio is defined as

$$\delta_L = \frac{S_{11}(180^\circ) - S_{22}(180^\circ)}{S_{11}(180^\circ) + S_{22}(180^\circ)}. \quad (5)$$

As an example, spherical, isotropic particles have  $S_{11} = S_{22}$ , which means that the linear depolarization ratio would be exactly zero.

## Light scattering simulations

We performed the light scattering simulations of the generated inhomogeneous and homogeneous particles with a discrete-dipole approximation (DDA) (Purcell and Pennypacker, 1973) light scattering software ADDA 1.2 MPI (Yurkin and Hoekstra, 2011). DDA is a flexible method for simulating light scattering by irregularly shaped particles, discretized into a regular lattice of individual dipoles. DDA is also capable of handling arbitrary collections of different materials: In an extreme case every lattice element can have a different refractive index. Therefore, DDA is extremely well suited for a detailed study of internal structures, such as performed in this paper.

## Dust particle internal structure and light scattering

O. Kempainen et al.

Title Page

Abstract

Introduction

Conclusions

References

Tables

Figures

◀

▶

◀

▶

Back

Close

Full Screen / Esc

Printer-friendly Version

Interactive Discussion





## Dust particle internal structure and light scattering

O. Kempainen et al.

Title Page

Abstract

Introduction

Conclusions

References

Tables

Figures

◀

▶

◀

▶

Back

Close

Full Screen / Esc

Printer-friendly Version

Interactive Discussion



DDA is generally accurate as long as the target dipole resolution is sufficient. In this work, the target shapes for all size parameters were composed of roughly two hundred and twenty thousand dipoles. The value  $y = |m|k|$ , where  $m$  is the refractive index,  $k$  is the wavenumber and  $l$  is the dipole size, is typically used to evaluate the applicability of the DDA method. The largest  $y$  value for the particles in this study was approximately 0.7, which is below the commonly cited DDA accuracy limit of  $y \leq 1$  (Zubko et al., 2010). We used a three-particle ensemble for results, and each internal structure case of each of these three particles was simulated with size parameters  $\{0.5, 1, 2, 3, \dots, 20\}$ . Furthermore, scattering by each inhomogeneous and homogeneous particle was averaged over 8192 random orientations for each size parameters.

The simulations were run on the Finnish Meteorological Institute Cray XC30 super-computer Voima. In the calculations we used 64 computer cores per simulation, and 10 concurrent simulations were run in parallel. With this setup, the total amount of CPU time used was approximately 110 000 h for three distinct versions of the five cases and their EMA versions.

## 4 Particle generation model and scattering simulations

### 4.1 Generating the particle geometry

Our method for generating the particle models involves multiple stages that can be run separately if needed. The overview of each main stage is given below. The algorithm assumes that the particle can be represented by a regular three-dimensional lattice of individual volume elements, or dipoles. With a good enough dipole resolution, the representation can replicate most large-scale structures of real dust particles with a sufficient accuracy. This representation also allows us to trivially convert the algorithm output to a DDA format for light scattering simulations. The generation process is summarized in Fig. 2.

## Stage 1: tessellation

To generate computational models of realistic particles with internal structure, we employ an algorithm with three-dimensional Voronoi tessellation at its core (Aurenhamer, 1991). The underlying idea is that the tessellation cells are roughly analog to the mineral grains within real (agglomerate) particles. While this is only an approximation, with the right mean size and shape of the grain, the method can be plausible. Voronoi tessellation has been used for irregular dust particle shape generation by e.g. Ishimoto et al. (2010), but our novel approach is to use the tessellation for generating internal particle structures instead of just the overall shape.

The generation of model shapes begins with an enclosed, discretized space composed of empty volume elements. The first step of the algorithm is to randomly place a given number of points within this volume. These act as *seeds* for the next step, which is to go through every *element* in the volume and to find the seed closest to it, as measured by a weighted distance, described below. The set of elements for which a given seed is closest forms a *cell* of that seed. Each element within a cell has the same composition as the seed, but different seeds can have different compositions.

The formula for weighted distance is:

$$d_w = \sqrt{w_x \Delta x^2 + w_y \Delta y^2 + w_z \Delta z^2}, \quad (6)$$

where  $\Delta \cdot$  correspond to the distances along different axes, and  $w \cdot$  correspond to the weight specific to different axes. In this formalism, a lower weight for an axis causes the grains to be elongated along that axis. The above equation is easily generalizable to have axis directions corresponding to arbitrary vectors, but in this case we have limited the directions to the major axes of the dipole lattice, hence the simplified form above. In this work we used  $w_x = w_y = 1$ ,  $w_z = 2/3$ , to produce slightly elongated cells.

After the whole volume has been divided into cells, the volume is culled to extract a model particle from it. Here we have used an ellipsoid with the same axis proportions as the ellipsoidal grain axis proportions as the culling shape. The generated particles

ACPD

15, 20349–20394, 2015

### Dust particle internal structure and light scattering

O. Kempainen et al.

Title Page

Abstract

Introduction

Conclusions

References

Tables

Figures

◀

▶

◀

▶

Back

Close

Full Screen / Esc

Printer-friendly Version

Interactive Discussion



have aspect ratios close to 1.5. The culling is done in such a way that each cell with at least one element outside of the culling shape is removed from the volume, and the remaining cells form the particle. In this work we used 800 seeds within the original volume, yielding mean cell size of roughly 1200 elements, which translates to roughly 0.5 % of the final culled particle volume.

## Stage 2: cell separation

The next step is to separate the cells from each other. This is accomplished by finding the geometrical center of the particle, and forming unit vectors that point from it to the seeds of each cell. The cells are then moved to the direction specified by their corresponding vectors by a user-specified distance, and the final locations are discretized by rounding the cell element to the nearest integer. Therefore, the cells do not change sizes or shapes, but are separated from each other. This step is to allow separating individual cells or crystals from each other, which is often the case also with real dust particles and thus yields more realistic model shapes. The displacement length used in this work was 5, where 1 is the size of one lattice element, or a dipole in the DDA targets.

## Stage 3: concave hull

The cell separation creates gaps between the cells, and the next step is to fill these gaps, and to soften sharp edges and other roughness characteristics around the particle. This is accomplished with a method called concave hull (Lindqvist et al., 2009). The concave hull method works by testing each element of the original volume in the following way: if a sphere with a constant radius  $r$ , a so-called generating sphere, centered at the element, does not overlap with any non-empty element, each element within the sphere is flagged. Otherwise, nothing is done. After all the elements have been checked with the generating sphere, all previously empty elements that have not been flagged are assigned to consist of a filling material with user-specified composition.

## Dust particle internal structure and light scattering

O. Kempainen et al.

Title Page

Abstract

Introduction

Conclusions

References

Tables

Figures

◀

▶

◀

▶

Back

Close

Full Screen / Esc

Printer-friendly Version

Interactive Discussion



tion. The  $r$  used in this work was 3 element lengths, which was enough to fill the inner seams caused by cell separation, and to partially fill some deep “valleys” at the surface.

## Stage 4: coating

The fifth step is to coat the particles. The method for coating is simple: a layer of coating is added by setting each empty element that is orthogonally adjacent to a non-empty element as non-empty, assigning these elements to be composed of a coating material. Multi-layer coatings are formed by using the method iteratively. We used a three-layer coating in this work for both the normal coating and the hematite-rich coating cases.

## Stage 5: nodes (optional)

There is an additional optional step, which can be used to add further internal structures in the form of inclusions. To generate inclusions in the original shape we insert nodes inside the particle. Nodes are generated simply by finding a random element in the particle, and growing a sphere of a given radius around the element, replacing parts of any existing cell with the node cell.

Here we have used nodes to generate both hematite inclusions and internal pores. The approach allows us to add these features into generated model particles without introducing any other changes in their shapes. For both the hematite nodes and internal pores, we generated 20 nodes with a radius of 8 element lengths, which made the nodes comparable in size to cells.

## 4.2 Assigning the mineral composition

The above section contains the technical description of the shape-generating algorithm. The model is given physical relevance by introducing *materials*. Henceforth, each cell is stochastically assigned a material in such a way that the model particles would represent real dust particles composition as specified by the input parameters of the model. Mineral volume composition representative of Asian dust was derived from TEM

## Dust particle internal structure and light scattering

O. Kempainen et al.

Title Page

Abstract

Introduction

Conclusions

References

Tables

Figures



Back

Close

Full Screen / Esc

Printer-friendly Version

Interactive Discussion



and SEM data in Jeong and Achterberg (2014). Additionally, the concave hull filling cell, the coating cell, and the node cells from above are given a material corresponding to real-world materials.

The end product of this process is a list of volume elements that contain their position and refractive index. This is exactly what is needed for DDA simulations, hence making it straightforward to simulate scattering by these particles.

### 4.3 Homogenization

Once the particles with internal structure have been generated with the algorithm described above, we will generate their homogenized versions. This is achieved with a simple effective-medium approximation (EMA). We calculate the effective refractive index  $m_{\text{eff}}$  of the homogenized particle as a volume-weighted average of the refractive indices of the constituent elements: (Chýlek et al., 2000)

$$m_{\text{eff}} = \sum_i f_i m_i, \tag{7}$$

where  $f_i$  is the volume fraction of the  $i$ th material, and  $m_i$  is the refractive index of the  $i$ th material.

This simple and straightforward mixing rule is chosen instead of any of the more sophisticated ones for simplicity: The more sophisticated EMA's are derived under different assumptions about the mixture, and therefore different EMA's might be optimal for different model particles considered here.

## 5 Results

### 5.1 Particle generation results and the model correspondence with real dust particles

In total, we studied five distinct internal structure cases. The five cases are:

## Dust particle internal structure and light scattering

O. Kempainen et al.

Title Page	
Abstract	Introduction
Conclusions	References
Tables	Figures
◀	▶
◀	▶
Back	Close
Full Screen / Esc	
Printer-friendly Version	
Interactive Discussion	



## Dust particle internal structure and light scattering

O. Kempainen et al.

Title Page

Abstract

Introduction

Conclusions

References

Tables

Figures

◀

▶

◀

▶

Back

Close

Full Screen / Esc

Printer-friendly Version

Interactive Discussion



- *Case 1*: an inhomogeneous particle composed of dielectrically similar minerals (no strong contrasts in the refractive index)
- *Case 2*: Case 1 particle with 15 % hematite added as spherical inclusions (replacing the original material)
- *Case 3*: Case 1 particle with 17 % air added as spherical internal pores (replacing the original material)
- *Case 4*: Case 1 particle with both hematite (15 %) and pores (17 %) added
- *Case 5*: Case 1 particle with the original coating material replaced by a hematite-rich material

For each case, the particle resembles the “baseline” Case 1 in other respects than the added features. Therefore, for instance, apart from the added hematite, the mineral volume fractions in Case 2 resemble those in Case 1. While they are not identical due to the stochastic nature of inclusion locations, they are close enough to plausibly assume that the changes seen are not caused by the differing non-hematite mineral content but instead are caused by hematite. In fact, in the text below we compare the other cases to Case 1 for specifically this reason.

For all of these cases, we use a three-particle ensemble for all of the results. We decided to use an ensemble to average out oscillations by single particles, and to see if the effects of different internal structures are consistent across all three different generated particles. Therefore, the particle generator is run three times with the same input parameters, the DDA simulations are run for the all three versions of the five cases, and for each case we calculate the average of the three results. Because the generator is stochastic in nature, the three individual particles differ from each other despite having identical input parameters; however, all of the results are qualitatively similar for each individual particle.

Tables 1–5 show the ensemble-averaged mineral composition of the five different internal structure cases we have used here, as well as the EMA refractive indices for

each case. The refractive indices for the minerals at  $\lambda = 550$  nm are retrieved from MinDat database (<http://www.mindat.org>, accessed 21 May 2015). Empty is used to denote internal pores, CM to denote clay mixture, and HRCM to denote hematite-rich clay mixture. CM refractive index is calculated with EMA from the mineral composition of the first stage (tessellation) of the Case 1 particle, and HRCM refractive index is calculated likewise from the first stage of the Case 1 particle, but with 15 % hematite content added. CM is used as the filling material, and as the coating material of all cases apart from Case 5. HRCM is used as the coating material of Case 4.

Due to the very large variability of the types and structures of real-world dust particles and the lack of information of the three-dimensional structures of the particles, quantitative validation of the generated shapes is challenging. Instead, we can compare the particle compositions to those of real particles, and compare the cross-sections visually. Looking at Fig. 3a, which depicts one example cross-section of Case 1 particle, we see that the grains are oriented and shaped in a somewhat random way. Figure 3b shows the same particle, but with a three-dimensional rendering with a part of the particle cut off to show some of the internal structure. The grains of different materials seem to be scattered relatively randomly through the particle. Additionally, the characteristic sizes of the grains are generally 0.5–1  $\mu\text{m}$  with the largest  $r$  used in this study, 1.75  $\mu\text{m}$ . Comparing these parameters to the electron microscopy images by Jeong and Nousiainen (2014), especially the rock fragment dust particle (Fig. 13 in the reference), we see clear similarities. Although the model particle grains are slightly less irregular than some grains in the real particles, we see that the overall shapes, sizes and orientations are similar. However, the model particle grains are proportionally smaller than those in the real rock fragment dust particle, with radii of roughly 1/6 of the particle radius instead of roughly 1/14 of the particle radius that the rock fragment dust particle has. Still, since the model particles themselves are smaller than the particles shown in Jeong and Nousiainen (2014), the absolute sizes of the grains end up being close to each other. One thing to note is that the coating thickness of the real dust particles seems to be roughly 0.5  $\mu\text{m}$ , instead of roughly 0.1  $\mu\text{m}$  of the model particles.

# Dust particle internal structure and light scattering

O. Kempainen et al.

Title Page

Abstract

Introduction

Conclusions

References

Tables

Figures

◀

▶

◀

▶

Back

Close

Full Screen / Esc

Printer-friendly Version

Interactive Discussion



## Dust particle internal structure and light scattering

O. Kempainen et al.

Title Page

Abstract

Introduction

Conclusions

References

Tables

Figures

◀

▶

◀

▶

Back

Close

Full Screen / Esc

Printer-friendly Version

Interactive Discussion



Regardless, as we show below, even this very thin coating causes clear effects when it contains hematite, and the effects would likely be only larger if the coating layer were thicker. Overall, although there are differences in details, we believe that our model particles are useful and sufficiently similar to observed real characteristics to serve as proxies in the sensitivity studies conducted here. Additionally, it could be argued that the correspondence of the particles does not matter significantly as long as they are not extremely unrealistic, such as very thin rods or perfect spheres, as long as the internal features are of the correct size scale.

In addition to the grains and the coating, the model particles contain inclusions and pores, as described above. The nodes are generated to be comparable to grains in size, that is, diameters of 0.5–1  $\mu\text{m}$  at the largest size parameters studied (not shown). While internal pore sizes and shapes vary greatly in real dust particles, at least the iron-oxide-rich dust particle (Fig. 12 in Jeong and Nousiainen, 2014) shows pores with characteristic lengths of roughly 1  $\mu\text{m}$ .

## 5.2 Results of the light-scattering simulations

Here we show the effect of taking inhomogeneity into account in light scattering simulations for several different internal structure scenarios. The scattering matrix elements will be analyzed as a function of the scattering angle after integrating the values over a size distribution. As the size distribution we use a lognormal distribution with the geometric mean radius  $r_g = 0.4$  and the geometric standard deviation  $\sigma_g = 2$ , resulting in  $r_{\text{eff}} = 0.82$   $\mu\text{m}$ . This distribution follows the one by Lindqvist et al. (2014); Kempainen et al. (2015b), and is designed to provide reasonable contributions both from small and large size parameters, while also providing an effective radius reasonably close to those in real-world applications. Therefore, we kept the wavelength constant at  $\lambda = 550$  nm, while varying the particle  $r$ .

It should be reiterated that the primary purpose here is not to study the single-scattering properties themselves, but how they differ when the internal structure is accounted for either explicitly or through an effective medium approximation. In particular,



## Dust particle internal structure and light scattering

O. Kempainen et al.

Title Page

Abstract

Introduction

Conclusions

References

Tables

Figures



Back

Close

Full Screen / Esc

Printer-friendly Version

Interactive Discussion



we are interested in establishing which types of internal structures have large effects on scattering. For each of the five cases, we show light scattering by the inhomogeneous particle (called IHG), light scattering by IHG Case 1 (called the baseline), as well as the homogeneous version of the particle (called EMA), for straightforward comparison of the effects of inhomogeneity. As a reminder, the baseline and the EMA versions of the particles are identical in size and shape to the corresponding IHG versions, and the only difference is in the local refractive indices within the lattice elements.

Below, we study each of the six independent scattering matrix elements separately. For each matrix element, we show all of the five cases, comparing the IHG version of the particle with the baseline and the EMA versions. Case 1, the baseline, is not discussed separately along the other cases because EMA values for it are virtually identical to the IHG values for all of the scattering matrix elements.  $S_{11}$  is shown as it is, using a logarithmic scale, and the other elements are shown as ratios  $S_i/S_{11}$ , where  $S_i$  is the element in question. Additionally, the ratios with  $S_{12}$  and  $S_{34}$  are shown as negatives, instead, as per the usual convention.

Added contrast shows a clear effect on  $S_{11}$ , as seen in Fig. 4. In particular, added hematite nodes (Cases 2 and 4) and, to a lesser extend internal pores (Case 3), seem to decrease  $S_{11}$  compared to the baseline Case 1. The values at side-scattering and back-scattering angles are especially reduced. In addition to this reduction, the form of the scattering function is smoothened in these cases. It is notable that the smoother form of the scattering function resembles that of the real dust particles better than the Case 1 version (Muñoz et al., 2012). Case 5, with the hematite-rich coating, does not differ noticeably from the baseline. For particles that differ from the baseline, Cases 2, 3 and 4, the performance of EMA for replicating the baseline varies. For the particle with added pores (Case 3), EMA seems to work reasonably well in replicating the IHG values, with only slight differences being seen at the side-scattering angles. However, for Cases 2 and 4, which include hematite inclusions, EMA values are clearly different from the true IHG values, in particular at the backscattering direction, where the EMA values can be up to 30 % too large.

## Dust particle internal structure and light scattering

O. Kempainen et al.

Title Page

Abstract

Introduction

Conclusions

References

Tables

Figures

◀

▶

◀

▶

Back

Close

Full Screen / Esc

Printer-friendly Version

Interactive Discussion



For  $-S_{12}/S_{11}$  (Fig. 5), internal pores (Cases 3 and 4) seem to have the largest effects on scattering compared to the baseline, with the particle with only the hematite nodes (Case 2) also showing clear impact. For all of these cases, added internal structure increases  $-S_{12}/S_{11}$  at most scattering angles. The particle with the hematite coating, Case 5, shows smaller difference to the baseline than the cases mentioned above, and the effect is of the opposite direction: the hematite-rich coating decreases  $-S_{12}/S_{11}$  instead of increasing it. EMA seems to replicate the true scattering function of the IHG version relatively poorly for all of the Cases 2–5. For Cases 2–4,  $-S_{12}/S_{11}$  for the EMA particle are lower than those of the corresponding IHG particles. However, for Case 5, EMA seems to smoothen out the angular dependency, and therefore the direction of the error varies depending on the scattering angle.

Figure 6 shows that hematite has a very significant effect on  $S_{22}/S_{11}$  regardless of it being present as inclusions (Cases 2 and 4) or as a part of the coating material (Case 5). For Cases 2 and 4, the angle dependence of the scattering matrix values is overall smoother than that of the baseline case. Case 3, with only the internal pores, also shows similar behavior to Cases 2 and 4, but with a much smaller magnitude. The particle with hematite coating (Case 5) also shows clear difference, but instead of the angular dependency being changed, the values are overall higher than the baseline. For  $S_{22}/S_{11}$ , the EMA versions of the particles generally do not replicate the true IHG values well. For Cases 2 and 4, the EMA values are slightly closer to the true values than the baseline, but the difference is still significant. For Case 3, EMA seems to, in fact, be further from the true values than the baseline. Finally, for Case 5, the EMA values are virtually identical to the baseline values.

$S_{33}/S_{11}$  values (Fig. 7) for the IHG versions of the particles are generally lower than the baseline. The particle with internal pores, Case 3, is an exception, and for it the baseline and IHG are virtually identical. Interestingly, the difference between EMA values and the baseline is very small for all of the cases, in particular Cases 4 and 5, for which it is indistinguishable. For all of the cases, EMA results in larger than true values.

## Dust particle internal structure and light scattering

O. Kempainen et al.

Title Page

Abstract

Introduction

Conclusions

References

Tables

Figures

◀

▶

◀

▶

Back

Close

Full Screen / Esc

Printer-friendly Version

Interactive Discussion



It is clear from Fig. 8 that the impact of internal structure on  $-S_{34}/S_{11}$  varies significantly depending on the exact type of the structure. Hematite nodes in Cases 2 and 4 smoothen out the angular dependency greatly apart from forward-scattering angles, where the values are amplified. Because of this smoothening, the  $-S_{34}/S_{11}$  values are overall smaller for the Case 2 and 4 IHG particles than those of the baseline. For the particle with internal pores, Case 3, the values are also smaller than the baseline, but the angular profile is not smoothened. For the hematite-coated Case 5, the IHG values are higher than those of the baseline, unlike for all of the other cases. Like with Case 3, the Case 5 angular dependency is not smoothened. Compared to the IHG and baseline values, the validity of EMA varies from case to case. For Cases 2 and 4, EMA works decently well, and although the values are not particularly close to those of IHG, at least they are closer than those of the baseline. However, for Cases 3 and 5, EMA values are more erroneous than even the baseline.

Lastly, the effects of the added forms of internal structure on  $S_{44}/S_{11}$  are shown in Fig. 9, and are quite consistent for all of the cases studied. All of the IHG values are lower than those of the baseline, although for Case 3 the difference is clearly smaller than for the other cases. Again, the EMA versions of the particles do not replicate the  $S_{44}/S_{11}$  values of the IHG versions closely. For Cases 2 and 3 the EMA values are slightly higher than the real values, while for Cases 4 and 5 the difference is higher. Interestingly, for Case 3 again, the scattering matrix element values for the EMA particle are further from the real values than the baseline.

### 5.3 Scalar scattering quantities

In addition to the effect of internal structures on the scattering matrix elements, we also explore the impacts of the same types of internal structures on four scalar quantities that are often used in climate or remote sensing applications. These quantities, namely albedo, asymmetry parameter, linear depolarization ratio and lidar ratio, are shown below as a function of the particle size parameter. The format is similar to that used for the scattering matrix elements, where we show results separately for the IHG, the baseline,

and the EMA particles, and compare them to see how added internal structures affect the values. In addition to the size-parameter-dependent figures, we also show the values of the size-distribution-averaged results in Table 6 for each case. In addition to the values themselves, the table also shows the difference, and the relative difference, that is, the difference as a percentage to the IHG value.

Single-scattering albedos for the original (IHG), Case 1 (baseline), and homogenized (EMA) versions of the three-particle ensembles of the five internal structure cases are shown in Fig. 10. Neither Case 1 nor Case 3 contain any absorbing materials, and therefore their albedoes are uniformly one, and do not require any further discussion. Case 2 and Case 4 behave similarly to each other. For them, the albedo decreases as the particle size increases due to the hematite inclusions approaching the wavelength size. For sizes where the inclusions are larger than the wavelength of the incoming radiation, roughly size parameter 10 and larger, the albedo stabilizes to an almost constant value. For these cases, EMA overestimates albedo of the IHG version by 5–10 % between size parameters roughly 5 and 15. At small sizes, the inclusions are much smaller than the wavelength, and therefore the EMA and the IHG values are close to each other. At the largest sizes, it seems like EMA is approaching the values of the IHG particle and becoming even smaller. It would be interesting to see if at very large size parameters this development continues and EMA ends up underestimating albedo. For Case 5, the albedo decreases almost linearly as the size parameter increases, when the coating starts to interact with light more strongly. With increased coating thickness or even larger particle sizes, it is reasonable to assume that the albedo would decrease even further. Case 5 also shows a small, but consistent, difference in albedo between the IHG and the EMA particles, with EMA being lower.

Asymmetry parameter for the original and homogenized versions of the five internal structure cases are shown in Fig. 11. For the particles with hematite nodes, Cases 2 and 4, the asymmetry parameter is higher than that of the baseline by roughly 20 % at most size parameters. For the particles with only the pores added (Case 3) and the particles with the hematite coating (Case 5), the asymmetry parameter is virtually

**Dust particle internal structure and light scattering**

O. Kempainen et al.

Title Page

Abstract

Introduction

Conclusions

References

Tables

Figures

◀

▶

◀

▶

Back

Close

Full Screen / Esc

Printer-friendly Version

Interactive Discussion



identical to the baseline. For all of the particles shown here, EMA performs reasonably well for the asymmetry parameters, following the IHG values closely.

The linear depolarization ratio for the original and homogenized versions of the five internal structure cases are shown in Fig. 12. Added hematite seems to have a very significant increase on linear depolarization ratio, regardless of whether it is present as inclusions (Cases 2 and 4) or as part of the coating material (Case 5). The effect of hematite is to decrease linear depolarization ratio by up to 40 % at large size parameters, and coating seems to have a stronger impact than inclusions. Internal pores have a smaller effect, and increase the linear depolarization rate by roughly 10 %. For Cases 2 and 4, EMA is closer to the true IHG values than the baseline, but the difference is still notable. However, for Cases 3 and 5, EMA performs badly and has values very close to those of the baseline.

Lidar ratio for the original and homogenized versions of the five internal structure cases are shown in Fig. 13. Hematite nodes (Cases 2 and 4) seem to affect the lidar ratio greatly, whereas internal pores or hematite coating (Cases 3 and 5) do not. At large size parameters, the presence of hematite nodes roughly triples the lidar ratio from the baseline values, and even at smaller size parameters, the difference is notable. For Cases 2 and 4, EMA results are typically between those for the baseline and IHG, meaning that the EMA manages to partially account for the impact of the additional internal structure. Still, EMA results differ from those of IHG by 20–50 %. The direction of the difference between IHG and EMA depend on the exact size parameter. For Cases 3 and 5, EMA values are indistinguishable from the IHG values.

## 6 Summary and conclusions

In this work, we studied the effects of dust particle internal structure in a computational way based on real internal structures revealed by Jeong and Nousiainen (2014). First, we generated qualitatively realistic dust particles with various internal structures by using a sophisticated computational model. Second, homogeneous versions of these

### Dust particle internal structure and light scattering

O. Kempainen et al.

Title Page	
Abstract	Introduction
Conclusions	References
Tables	Figures
◀	▶
◀	▶
Back	Close
Full Screen / Esc	
Printer-friendly Version	
Interactive Discussion	



particles were generated with an effective-medium approximation. Third, light scattering simulations for both versions of the particles were run with a discrete-dipole approximation program called ADDA.

Five distinct internal structure cases were studied, and for each case we used a three-particle ensemble. First, we studied particle whose composite minerals had similar refractive indices. This was considered our baseline, to which the other cases were compared to. Second, we added hematite inclusions to the baseline particles. Third, we added internal pores to the baseline. Fourth, both hematite inclusions and internal pores were added to the baseline. Fifth, the coating material of the baseline was replaced with a hematite-containing material, but no nodes or pores were added.

These models of internal structures were selected by their common occurrence in the Asian dust particles on the basis of systematic TEM data provided in Jeong and Nousiainen (2014) Although many more cases are possible, we restricted the analysis to five cases to include major features of internal structures while keeping the computation load manageable. Natural dust particles contain two major mineral types of iron oxides: goethite and hematite. We selected hematite as a representative iron oxide in the structural model because its high refractive indices and effect on optical properties were treated previously (Sokolik and Toon, 1999; Lafon et al., 2006). Of course, iron oxide contents of dust particles vary in a wide range, thus 15 volume % hematite observed in natural particle is likely a case of rather high content of iron oxides. However, the purpose of the calculation here was to show clearly the effect of hematite on diverse optical properties.

For each of these cases, we studied light scattering by both the inhomogeneous and homogenized versions of the particles and compared them against the baseline. The results show that most types of internal structure have clear effects on light scattering, and that many of those effects are not properly accounted for by the effective-medium approximation (EMA) that we used. Our findings are consistent with those of Kocifaj and Videen (2008) that the performance of EMA is inconsistent when the inhomogeneity is in macroscopic scale. Possible errors from the use of EMA's for such particles

Dust particle internal structure and light scattering

O. Kempainen et al.

Title Page

Abstract

Introduction

Conclusions

References

Tables

Figures



Back

Close

Full Screen / Esc

Printer-friendly Version

Interactive Discussion



## Dust particle internal structure and light scattering

O. Kempainen et al.

Title Page

Abstract

Introduction

Conclusions

References

Tables

Figures



Back

Close

Full Screen / Esc

Printer-friendly Version

Interactive Discussion



are thus hard to predict, and will depend on the quantity of interest. Overall, hematite inclusions turned out to be the most impactful of the forms of internal structure studied here, affecting all of the scattering matrix elements and scalar scattering quantities. Hematite-rich coating affects all of the scattering matrix elements apart from  $S_{11}$ , and for linear depolarization ratio has an even greater effect than hematite inclusions. Internal pores affect especially  $-S_{12}/S_{11}$  very significantly, but also the other scattering matrix elements to a lesser degree; scalar scattering quantities considered, on the other hand, remain relatively close to the baseline. Additionally, in many cases, having both hematite nodes and internal pores present amplifies the effects compared to having only the hematite nodes, instead of dampening the effects in some way. Finally, having a particle composed of several different materials, but with similar refractive indices, is the exception. In our analysis such a particle could safely be treated as homogeneous, and even using a very simple mixing rule for the effective refractive index calculations provided accurate results.

All four of the scalar variables studied, the single-scattering albedo, asymmetry parameter, linear depolarization ratio and lidar ratio, were affected noticeably by some forms of internal structure. For albedo, adding hematite content lowered the values significantly. For asymmetry parameter, hematite nodes, but not hematite-rich coating, increased the values clearly. For linear depolarization ratio, all forms of hematite lowered the values greatly. Finally, for lidar ratio, added hematite nodes increased the values two- or three-fold. Interestingly, we can compare the differences to those caused by adding surface roughness, as done by Kempainen et al. (2015a). As an example, increasing surface roughness has a similarly sized effect on linear depolarization ratio as that of adding hematite, but of the opposite direction.

Based on these results, it appears that the internal structure of real dust particles need to be accounted for in single-scattering simulations to obtain accurate results. Not only is it common in real dust particles, it also has major effects on scattering matrix elements and many scalar scattering quantities. Furthermore, the form of the internal structure matters. For example, light scattering changes considerably depending on



## Dust particle internal structure and light scattering

O. Kempainen et al.

Title Page

Abstract

Introduction

Conclusions

References

Tables

Figures

◀

▶

◀

▶

Back

Close

Full Screen / Esc

Printer-friendly Version

Interactive Discussion



whether hematite is present as inclusions, or mixed in the coating material. Additionally, at least for the simple mixing rule tested here, a homogenized particle created with an effective-medium approximation is unable to well mimic scattering by the original inhomogeneous version of the particle in most cases. In fact, in some cases using an effective-medium approximation causes results to be more wrong than ignoring the internal structure altogether. Therefore, if accuracy is desired in the results, accounting for internal structure should be done explicitly.

*Acknowledgements.* This research has been funded by the Academy of Finland (grant 255718), the Finnish Funding Agency for Technology and Innovation (Tekes; grant 3155/31/2009), the Magnus Ehrnrooth Foundation, and the National Research Foundation of Korea grant NRF-2011-0028597. Maxim Yurkin is acknowledged for making his ADDA code publicly available (<https://code.google.com/p/a-dda/>).

## References

- Aurenhammer, F.: Voronoi diagrams a survey of a fundamental geometric data structure, *ACM Comput. Surv.*, 23, 345–405, 1991. 20358
- Chou, C., Formenti, P., Maille, M., Ausset, P., Helas, G., Harrison, M., and Osborne, S.: Size distribution, shape, and composition of mineral dust aerosols collected during the African monsoon multidisciplinary analysis special observation period 0: dust and biomass-burning experiment field campaign in Niger, January 2006, *J. Geophys. Res.-Atmos.*, 113, D00C10, doi:10.1029/2008JD009897, 2008. 20351
- Chýlek, P., Videen, G., Geldart, D. J. W., Dobbie, J. S., and Tso, H. C. W.: Effective medium approximations for heterogeneous particles, in: *Light Scattering by Nonspherical Particles*, edited by: Mishchenko, M. I., Hovenier, J. W., and Travis, L. D., chap. 9, Academic Press, San Diego, USA, 273–308, 2000. 20361
- Durant, A., Harrison, S., Watson, I., and Balkanski, Y.: Sensitivity of direct radiative forcing by mineral dust to particle characteristics, *Prog. Phys. Geog.*, 33, 80–102, 2009. 20351
- Forster, P., Ramaswamy, V., Artaxo, P., Berntsen, T., Betts, R., Fahey, D., Haywood, J., Lean, J., Lowe, D., Myhre, G., Nganga, J., Prinn, R., Raga, G., Schulz, M., and Dorland, R. V.: Changes in atmospheric constituents and in radiative forcing, in: *Climate Change 2007: The*



## Dust particle internal structure and light scattering

O. Kempainen et al.

Title Page

Abstract

Introduction

Conclusions

References

Tables

Figures

◀

▶

◀

▶

Back

Close

Full Screen / Esc

Printer-friendly Version

Interactive Discussion



Physical Science Basis. Contribution of Working Group I to the Fourth Assessment Report of the Intergovernmental Panel on Climate Change, edited by: Solomon, S., Qin, D., Manning, M., Chen, Z., Marquis, M., Averyt, K., Tignor, M., and Miller, H., chap. 2, Cambridge University Press, Cambridge, UK and New York, NY, USA, 130–234, 2007. 20351

- 5 Haywood, J. M., Johnson, B. T., Osborne, S. R., Mulcahy, J., Brooks, M. E., Harrison, M. A. J., Milton, S. F., and Brindley, H. E.: Observations and modelling of the solar and terrestrial radiative effects of Saharan dust: a radiative closure case-study over oceans during the GERBILS campaign, Q. J. Roy. Meteor. Soc., 137, 1211–1226, doi:10.1002/qj.770, 2011. 20351
- 10 Hovenier, J. and van der Mee, C.: Basic relationships for matrices describing scattering by small particles, in: Light Scattering by Nonspherical Particles, edited by: Mishchenko, M. I., Hovenier, J. W., and Travis, L. D., chap. 3, Academic Press, San Diego, USA, 61–85, 2000. 20354
- 15 Ishimoto, H., Zaizen, Y., Uchiyama, A., Masuda, K., and Mano, Y.: Shape modeling of mineral dust particles for light-scattering calculations using the spatial Poisson–Voronoi tessellation, J. Quant. Spectrosc. Ra., 111, 2434–2443, 2010. 20358
- Jeong, G. Y. and Achterberg, E. P.: Chemistry and mineralogy of clay minerals in Asian and Saharan dusts and the implications for iron supply to the oceans, Atmos. Chem. Phys., 14, 12415–12428, doi:10.5194/acp-14-12415-2014, 2014. 20361
- 20 Jeong, G. Y. and Nousiainen, T.: TEM analysis of the internal structures and mineralogy of Asian dust particles and the implications for optical modeling, Atmos. Chem. Phys., 14, 7233–7254, doi:10.5194/acp-14-7233-2014, 2014. 20351, 20352, 20353, 20354, 20363, 20364, 20369, 20370
- Jeong, G. Y., Kim, J. Y., Seo, J., Kim, G. M., Jin, H. C., and Chun, Y.: Long-range transport of giant particles in Asian dust identified by physical, mineralogical, and meteorological analysis, Atmos. Chem. Phys., 14, 505–521, doi:10.5194/acp-14-505-2014, 2014. 20353
- 25 Kempainen, O., Nousiainen, T., and Lindqvist, H.: The impact of surface roughness on scattering by realistically shaped wavelength-scale dust particles, J. Quant. Spectrosc. Ra., 150C, 55–67, doi:10.1016/j.jqsrt.2014.05.024, 2015a. 20371
- 30 Kempainen, O., Nousiainen, T., Merikallio, S., and Räisänen, P.: On retrieving refractive index of dust-like particles using shape distributions of ellipsoids, Atmos. Chem. Phys. Discuss., 15, 16861–16900, doi:10.5194/acpd-15-16861-2015, 2015b. 20364

## Dust particle internal structure and light scattering

O. Kempainen et al.

Title Page

Abstract

Introduction

Conclusions

References

Tables

Figures



Back

Close

Full Screen / Esc

Printer-friendly Version

Interactive Discussion



- Kim, S.-W., Yoon, S.-C., and Kim, J.: Columnar Asian dust particle properties observed by sun/sky radiometers from 2000 to 2006 in Korea, *Atmos. Environ.*, 42, 492–504, 2008. 20351
- Kocifaj, M. and Videen, G.: Optical behavior of composite carbonaceous aerosols: DDA and EMT approaches, *J. Quant. Spectrosc. Ra.*, 109, 1404–1416, doi:10.1016/j.jqsrt.2007.11.007, 2008. 20370
- Lafon, S., Sokolik, I. N., Rajot, J. L., Caquineau, S., and Gaudichet, A.: Characterization of iron oxides in mineral dust aerosols: implications for light absorption, *J. Geophys. Res.-Atmos.*, 111, D21207, doi:10.1029/2005JD007016, 2006. 20354, 20370
- Lindqvist, H., Muinonen, K., and Nousiainen, T.: Light scattering by coated Gaussian and aggregate particles, *J. Quant. Spectrosc. Ra.*, 110, 1398–1410, doi:10.1016/j.jqsrt.2009.01.015, 2009. 20359
- Lindqvist, H., Jokinen, O., Kandler, K., Scheuvers, D., and Nousiainen, T.: Single scattering by realistic, inhomogeneous mineral dust particles with stereogrammetric shapes, *Atmos. Chem. Phys.*, 14, 143–157, doi:10.5194/acp-14-143-2014, 2014. 20352, 20364
- Muinonen, K., Nousiainen, T., Lindqvist, H., Muñoz, O., and Videen, G.: Light scattering by Gaussian particles with internal inclusions and roughened surfaces using ray optics, *J. Quant. Spectrosc. Ra.*, 110, 1628–1639, doi:10.1016/j.jqsrt.2009.03.012, 2009. 20351
- Muñoz, O., Moreno, F., Guirado, D., Dabrowska, D., Volten, H., and Hovenier, J.: The Amsterdam–Granada light scattering database, *J. Quant. Spectrosc. Ra.*, 113, 565–574, 2012. 20355, 20365
- Nousiainen, T. and Kandler, K.: Light scattering by atmospheric mineral dust particles, in: *Light Scattering Reviews 9*, edited by: Kokhanovsky, A. A., Springer Praxis Books, Springer, Berlin, Heidelberg, Germany, 3–52, doi:10.1007/978-3-642-37985-7, 2015. 20355
- Nousiainen, T., Muinonen, K., and Räisänen, P.: Scattering of light by large Saharan dust particles in a modified ray optics approximation, *J. Geophys. Res.*, 108, 4025, doi:10.1029/2001JD001277, 2003. 20351
- Nousiainen, T., Kahnert, M., and Lindqvist, H.: Can particle shape information be retrieved from light-scattering observations using spheroidal model particles?, *J. Quant. Spectrosc. Ra.*, 112, 2213–2225, doi:10.1016/j.jqsrt.2011.05.008, 2011a. 20351
- Nousiainen, T., Muñoz, O., Lindqvist, H., Mauno, P., and Videen, G.: Light scattering by large Saharan dust particles: comparison of modeling and experimental data for two samples, *J. Quant. Spectrosc. Ra.*, 112, 420–433, doi:10.1016/j.jqsrt.2010.09.003, 2011b. 20351

**Dust particle internal structure and light scattering**

O. Kempainen et al.

Title Page

Abstract

Introduction

Conclusions

References

Tables

Figures



Back

Close

Full Screen / Esc

Printer-friendly Version

Interactive Discussion



- Purcell, E. M. and Pennypacker, C. R.: Scattering and absorption of light by nonspherical dielectric grains, *Astrophys. J.*, 186, 705–714, 1973. 20356
- Sokolik, I. R. and Toon, O. B.: Incorporation of mineralogical composition into models of the radiative properties of mineral aerosol from UV to IR wavelengths, *J. Geophys. Res.*, 104, 9423–9444, 1999. 20354, 20370
- 5 Vilaplana, R., Moreno, F., and Molina, A.: Study of the sensitivity of size-averaged scattering matrix elements of nonspherical particles to changes in shape, porosity and refractive index, *J. Quant. Spectrosc. Ra.*, 100, 415–428, doi:10.1016/j.jqsrt.2005.11.068, 2006. 20351
- Woodward, X., Kostinski, A., China, S., Mazzoleni, C., and Cantrell, W.: Characterization of dust particles' 3D shape and roughness with nanometer resolution, *Aerosol Sci. Tech.*, 49, 229–238, 2015. 20352
- 10 Yurkin, M. A. and Hoekstra, A. G.: The discrete-dipole-approximation code ADDA: capabilities and known limitations, *J. Quant. Spectrosc. Ra.*, 112, 2234–2247, 2011. 20356
- Zender, C. S., Bian, H., and Newman, D.: The mineral Dust Entrainment And Deposition (DEAD) model: description and 1990s dust climatology, *J. Geophys. Res.*, 108, 4416, doi:10.1029/2002JD002775, 2003. 20351
- 15 Zubko, E., Petrov, D., Grynko, Y., Shkuratov, Y., Okamoto, H., Muinonen, K., Nousiainen, T., Kimura, H., Yamamoto, T., and Videen, G.: Validity criteria of the discrete dipole approximation, *Appl. Optics*, 49, 1267–1279, 2010. 20357

**Dust particle internal structure and light scattering**

O. Kempainen et al.

**Table 1.** The mineral content for the particle in Case 1. Despite the large number of different minerals, all of the refractive indices are close to each other.

Mineral	Volume fraction (%)	Refractive index
Homogenized (EMA)	100	1.55
CM	31.19	1.55
Illite	21.06	1.57
Quartz	13.31	1.55
Smectite	12.77	1.52
Plagioclase	8.93	1.53
Calcite	3.85	1.60
Gypsum	2.78	1.52
Chlorite	2.19	1.58
K-eldspar	1.89	1.52
Kaolinite	1.86	1.56
Amphibole	0.18	1.62

Title Page

Abstract

Introduction

Conclusions

References

Tables

Figures



Back

Close

Full Screen / Esc

Printer-friendly Version

Interactive Discussion



## Dust particle internal structure and light scattering

O. Kempainen et al.

**Table 2.** The mineral content for the particle in Case 2. Compared to the Case 1, the particle has added hematite, which has a drastically different refractive index than the other minerals.

Mineral	Volume fraction (%)	Refractive index
Homogenized (EMA)	100	$1.78 + i0.0135$
CM	39.05	1.55
Illite	14.88	1.57
Hematite	14.65	$3.09 + i0.0925$
Quartz	9.00	1.55
Smectite	7.96	1.52
Plagioclase	6.17	1.53
Calcite	2.37	1.60
Gypsum	1.66	1.52
Chlorite	1.59	1.58
K-eldspar	1.34	1.52
Kaolinite	1.16	1.56
Amphibole	0.16	1.62

Title Page

Abstract

Introduction

Conclusions

References

Tables

Figures

◀

▶

◀

▶

Back

Close

Full Screen / Esc

Printer-friendly Version

Interactive Discussion



## Dust particle internal structure and light scattering

O. Kempainen et al.

**Table 3.** The mineral content for the particle in Case 3. The internal pore volume is shown in the table as Empty. Other than the porosity, the overall content is similar to that of Case 1.

Mineral	Volume fraction (%)	Refractive index
Homogenized (EMA)	100	1.46
CM	36.42	1.55
Empty	17.27	1.00
Illite	14.88	1.57
Quartz	9.00	1.55
Smectite	7.96	1.52
Plagioclase	6.17	1.53
Calcite	2.37	1.60
Gypsum	1.66	1.52
Chlorite	1.59	1.58
K-eldspar	1.34	1.52
Kaolinite	1.16	1.56
Amphibole	0.16	1.62

[Title Page](#)
[Abstract](#)
[Introduction](#)
[Conclusions](#)
[References](#)
[Tables](#)
[Figures](#)
[◀](#)
[▶](#)
[◀](#)
[▶](#)
[Back](#)
[Close](#)
[Full Screen / Esc](#)
[Printer-friendly Version](#)
[Interactive Discussion](#)


# Dust particle internal structure and light scattering

O. Kempainen et al.

**Table 4.** The mineral content for the particle in Case 4, which is in some sense the combination of Cases 2 and 3, containing both the hematite nodes and the internal pores.

Mineral	Volume fraction (%)	Refractive index
Homogenized (EMA)	100	1.68 + i0.0135
CM	21.78	1.55
Empty	17.27	1.00
Illite	14.88	1.57
Hematite	14.65	3.09 + i0.0925
Quartz	9.00	1.55
Smectite	7.96	1.52
Plagioclase	6.17	1.53
Calcite	2.37	1.60
Gypsum	1.66	1.52
Chlorite	1.59	1.58
K-eldspar	1.34	1.52
Kaolinite	1.16	1.56
Amphibole	0.16	1.62

Title Page

Abstract

Introduction

Conclusions

References

Tables

Figures

◀

▶

◀

▶

Back

Close

Full Screen / Esc

Printer-friendly Version

Interactive Discussion







## Dust particle internal structure and light scattering

O. Kempainen et al.

**Table 6.** Scalar scattering quantities for the size distribution averaged three-particle ensembles. Inhomogeneous (IHG), Case 1 (baseline) and homogeneous (EMA) values are shown separately, as well as their differences as percentages of the IHG value.

Case	IHG	Baseline	EMA	(IHG – Baseline) / IHG (%)	(IHG – EMA) / IHG (%)
Albedo					
Case 1	1.00	1.00	1.00	0.00	0.00
Case 2	0.82	1.00	0.86	–22.21	–5.17
Case 3	1.00	1.00	1.00	0.00	0.00
Case 4	0.82	1.00	0.87	–21.96	–5.89
Case 5	0.98	1.00	0.97	–2.43	0.51
Asymmetry parameter					
Case 1	0.62	0.62	0.62	0.00	0.04
Case 2	0.57	0.62	0.58	–8.46	–0.66
Case 3	0.64	0.62	0.68	2.89	–5.88
Case 4	0.59	0.62	0.61	–6.19	–4.09
Case 5	0.62	0.62	0.61	–0.25	2.41
Linear depolarization ratio					
Case 1	0.31	0.31	0.31	0.00	0.19
Case 2	0.35	0.31	0.35	13.30	–0.04
Case 3	0.25	0.31	0.25	–24.33	–0.58
Case 4	0.32	0.31	0.35	3.54	–10.60
Case 5	0.26	0.31	0.33	–19.88	–29.21
Lidar ratio					
Case 1	45.51	45.51	45.59	0.00	–0.17
Case 2	44.26	45.51	34.08	–2.83	23.00
Case 3	57.09	45.51	66.28	20.28	–16.10
Case 4	47.81	45.51	39.89	4.80	16.57
Case 5	40.58	45.51	39.83	–12.14	1.85

Title Page

Abstract

Introduction

Conclusions

References

Tables

Figures



Back

Close

Full Screen / Esc

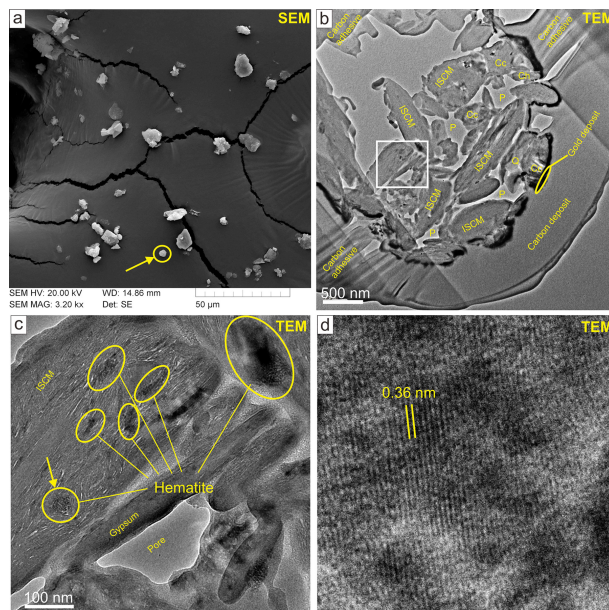
Printer-friendly Version

Interactive Discussion



## Dust particle internal structure and light scattering

O. Kempainen et al.

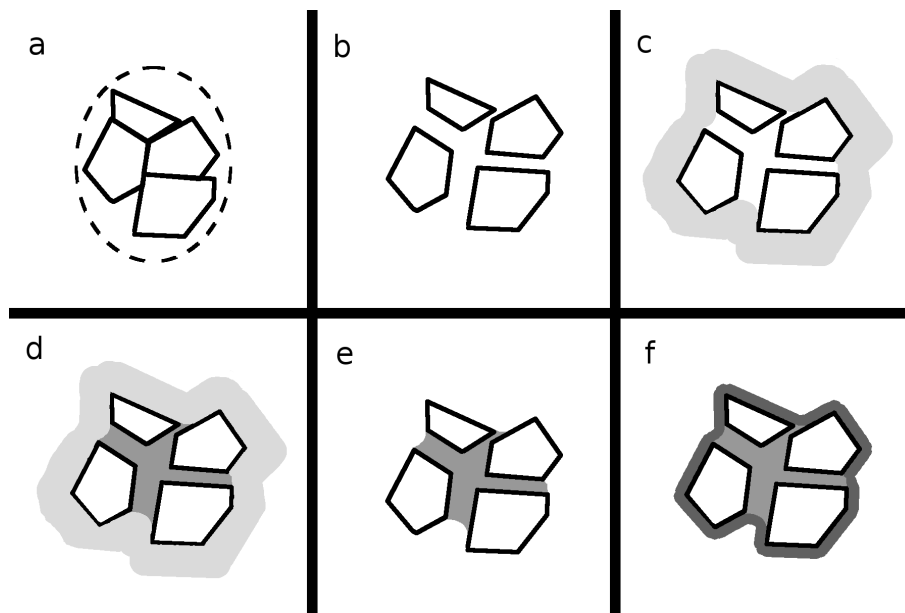


**Figure 1.** Example internal structure and mineral distribution in Asian dust particle. Panel (a) is an SEM image showing a dust particle of 3.8 μm in diameter (arrow) processed with focused ion beam to prepare a thin slice for TEM analysis. Panel (b) is a TEM image of the slice showing mineral grains and interstitial pores. Cc = calcite, Ch = chlorite, ISCM = illite-smectite series clay minerals, P = pore, Q = quartz. Gold deposition was applied for electrical conduction for SEM observation. Carbon was deposited before focused ion beam process. Panel (c) is a magnified image from the square in Panel (b) showing the submicron hematite grains enclosed in the illite-smectite series clay minerals. Panel (d) is a lattice fringe image of hematite indicated as arrow in Panel (c).

[Title Page](#)[Abstract](#)[Introduction](#)[Conclusions](#)[References](#)[Tables](#)[Figures](#)[◀](#)[▶](#)[◀](#)[▶](#)[Back](#)[Close](#)[Full Screen / Esc](#)[Printer-friendly Version](#)[Interactive Discussion](#)

**Dust particle internal structure and light scattering**

O. Kempainen et al.



**Figure 2.** A schematic two-dimensional figure of the particle generation process. Panel (a) shows a simple four-cell tessellation, with the dashed ellipse showing an example culling surface. Panel (b) shows the cell separation. Panel (c) shows the formation of the concave hull, while Panel (d) shows the filling process based on the hull. Panel (e), shows the particle with no coating, and finally, Panel (f) shows the particle with coating added.

Title Page

Abstract

Introduction

Conclusions

References

Tables

Figures

◀

▶

◀

▶

Back

Close

Full Screen / Esc

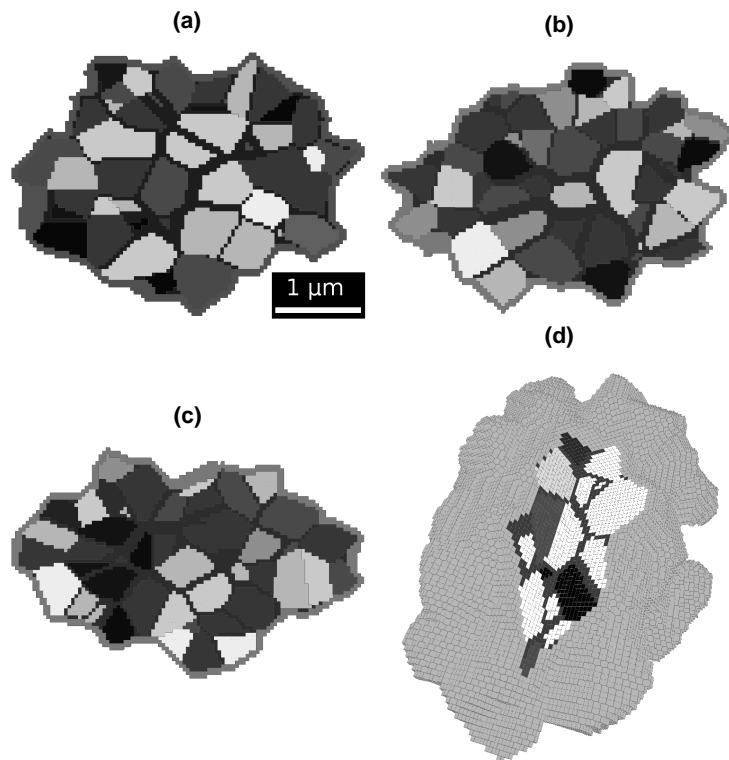
Printer-friendly Version

Interactive Discussion



**Dust particle internal structure and light scattering**

O. Kempainen et al.



**Figure 3.** Example cross-sections of Case 1 versions of all three of the ensemble constituent particles (Panels **a–c**), and a three-dimensional rendering (Panel **d**) of the particle in Panel **(a)**, with a part of the particle cut out to reveal the inner structure. Different shades of gray correspond to different minerals. The scale bar in Panel **(a)** shows the approximate size of the features at the largest particle  $r$  used in this study,  $1.75\ \mu\text{m}$ .

Title Page

Abstract

Introduction

Conclusions

References

Tables

Figures

◀

▶

◀

▶

Back

Close

Full Screen / Esc

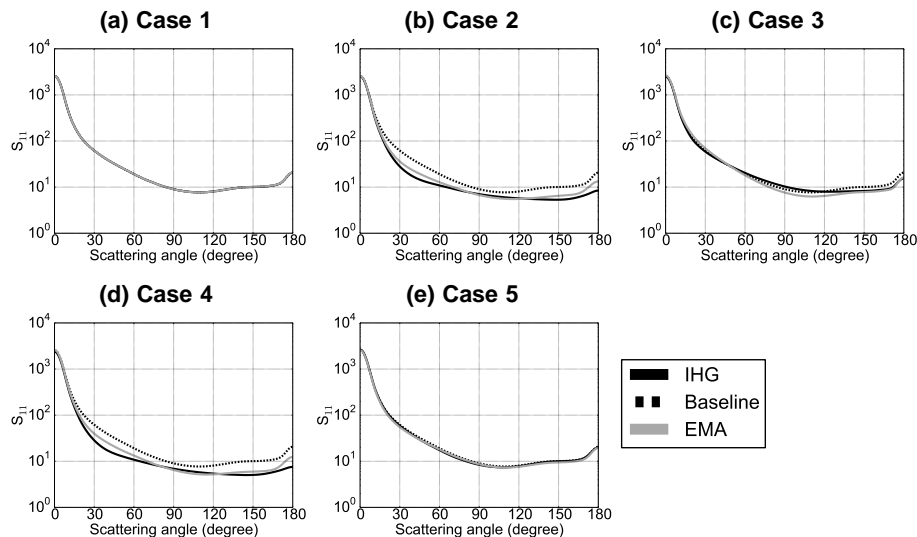
Printer-friendly Version

Interactive Discussion



# Dust particle internal structure and light scattering

O. Kempainen et al.

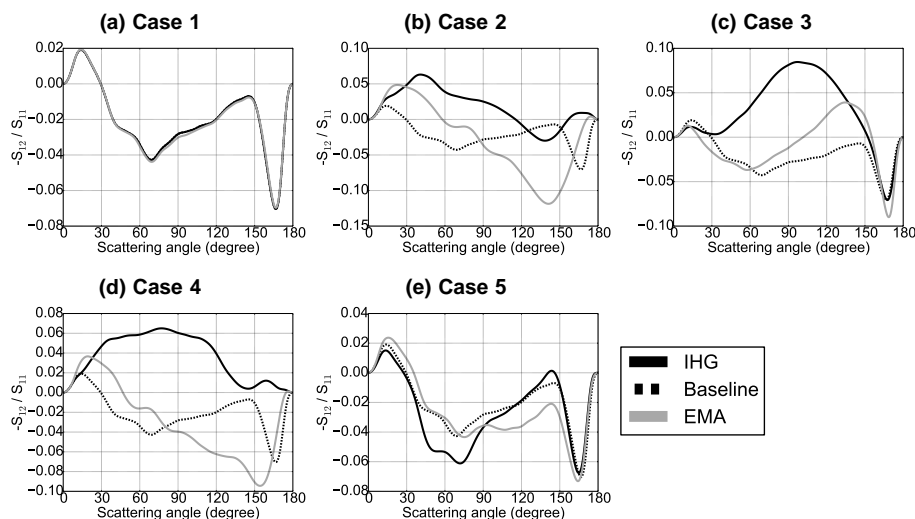


**Figure 4.**  $S_{11}$  values for the inhomogeneous (IHG), the baseline, and the homogeneous (EMA) versions of all five of the internal structure cases as a function of the scattering angle.

[Title Page](#)
[Abstract](#)
[Introduction](#)
[Conclusions](#)
[References](#)
[Tables](#)
[Figures](#)
[⏪](#)
[⏩](#)
[◀](#)
[▶](#)
[Back](#)
[Close](#)
[Full Screen / Esc](#)
[Printer-friendly Version](#)
[Interactive Discussion](#)


# Dust particle internal structure and light scattering

O. Kempainen et al.

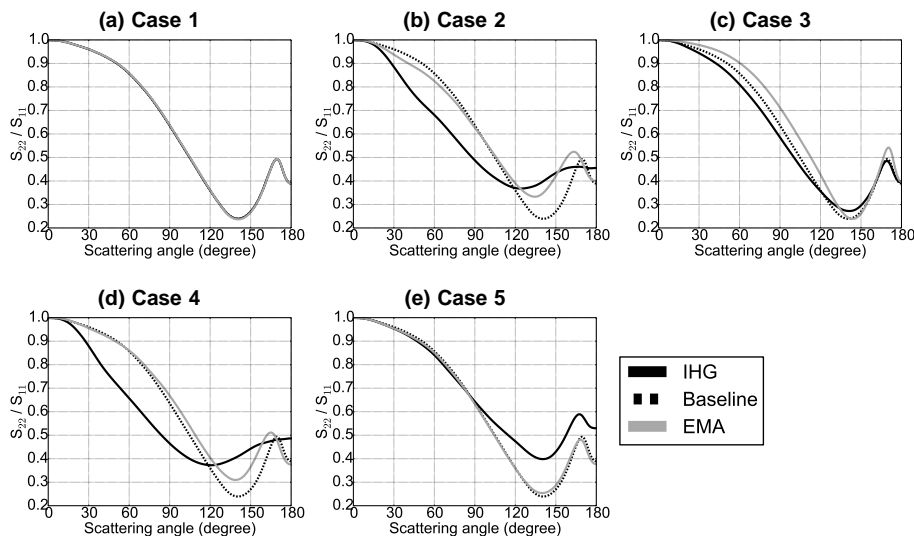


**Figure 5.**  $-S_{12}/S_{11}$  values for the inhomogeneous (IHG), the baseline, and the homogeneous (EMA) versions of all five of the internal structure cases as a function of the scattering angle.

[Title Page](#)
[Abstract](#)
[Introduction](#)
[Conclusions](#)
[References](#)
[Tables](#)
[Figures](#)
[◀](#)
[▶](#)
[◀](#)
[▶](#)
[Back](#)
[Close](#)
[Full Screen / Esc](#)
[Printer-friendly Version](#)
[Interactive Discussion](#)


# Dust particle internal structure and light scattering

O. Kempainen et al.

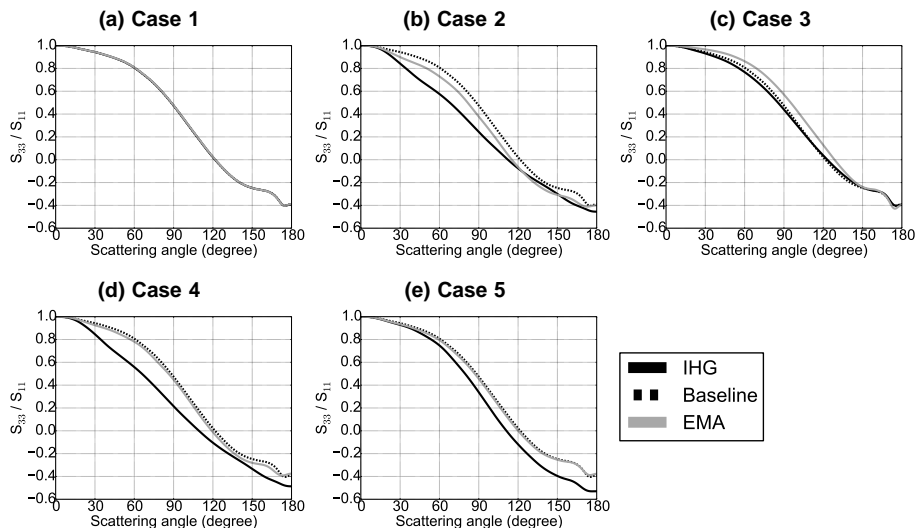


**Figure 6.**  $S_{22}/S_{11}$  values for the inhomogeneous (IHG), the baseline, and the homogeneous (EMA) versions of all five of the internal structure cases as a function of the scattering angle.

[Title Page](#)
[Abstract](#)
[Introduction](#)
[Conclusions](#)
[References](#)
[Tables](#)
[Figures](#)
[◀](#)
[▶](#)
[◀](#)
[▶](#)
[Back](#)
[Close](#)
[Full Screen / Esc](#)
[Printer-friendly Version](#)
[Interactive Discussion](#)


**Dust particle internal structure and light scattering**

O. Kempainen et al.



**Figure 7.**  $S_{33}/S_{11}$  values for the inhomogeneous (IHG), the baseline, and the homogeneous (EMA) versions of all five of the internal structure cases as a function of the scattering angle.

Title Page

Abstract

Introduction

Conclusions

References

Tables

Figures



Back

Close

Full Screen / Esc

Printer-friendly Version

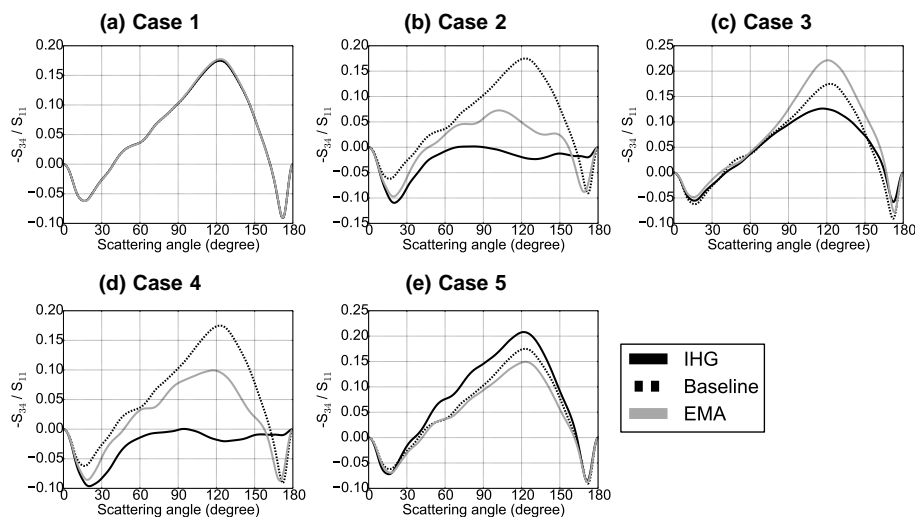
Interactive Discussion





# Dust particle internal structure and light scattering

O. Kempainen et al.

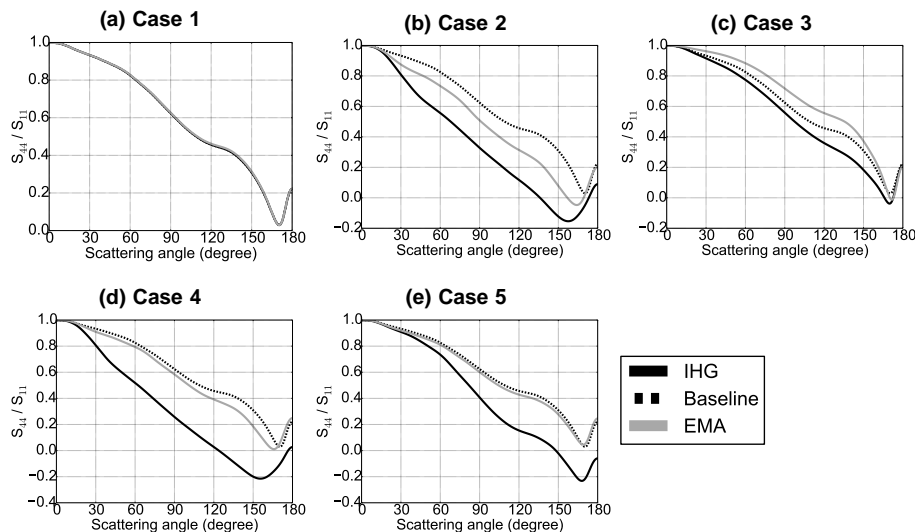


**Figure 8.**  $-S_{34}/S_{11}$  values for the inhomogeneous (IHG) and the homogeneous (EMA) versions of all five of the internal structure cases as a function of the scattering angle.

[Title Page](#)[Abstract](#)[Introduction](#)[Conclusions](#)[References](#)[Tables](#)[Figures](#)[◀](#)[▶](#)[◀](#)[▶](#)[Back](#)[Close](#)[Full Screen / Esc](#)[Printer-friendly Version](#)[Interactive Discussion](#)

# Dust particle internal structure and light scattering

O. Kempainen et al.

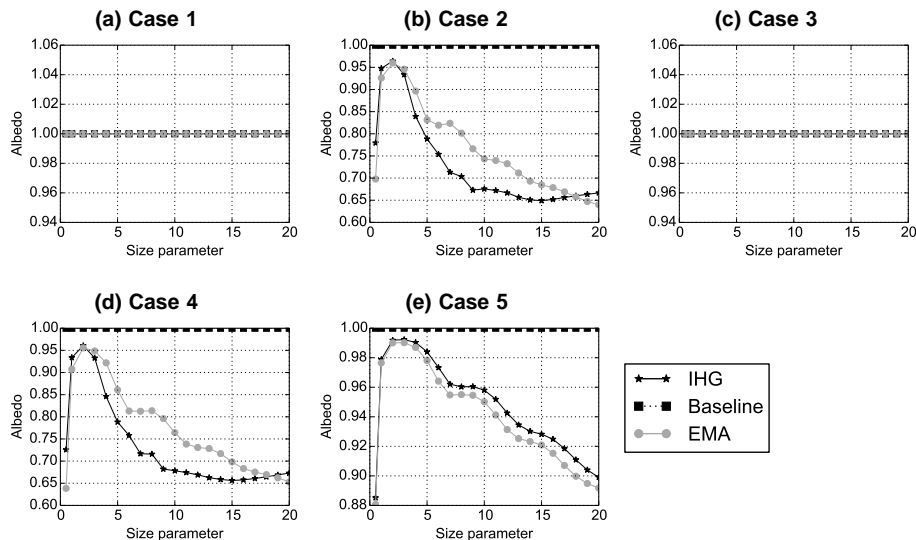


**Figure 9.**  $S_{44}/S_{11}$  values for the inhomogeneous (IHG), the baseline, and the homogeneous (EMA) versions of all five of the internal structure cases as a function of the scattering angle.

[Title Page](#)[Abstract](#)[Introduction](#)[Conclusions](#)[References](#)[Tables](#)[Figures](#)[◀](#)[▶](#)[◀](#)[▶](#)[Back](#)[Close](#)[Full Screen / Esc](#)[Printer-friendly Version](#)[Interactive Discussion](#)

**Dust particle internal structure and light scattering**

O. Kempainen et al.



**Figure 10.** Albedo for the inhomogeneous (IHG), the baseline, and the homogeneous (EMA) versions of all five particle cases as a function of the size parameter of the particle.

Title Page

Abstract

Introduction

Conclusions

References

Tables

Figures

◀

▶

◀

▶

Back

Close

Full Screen / Esc

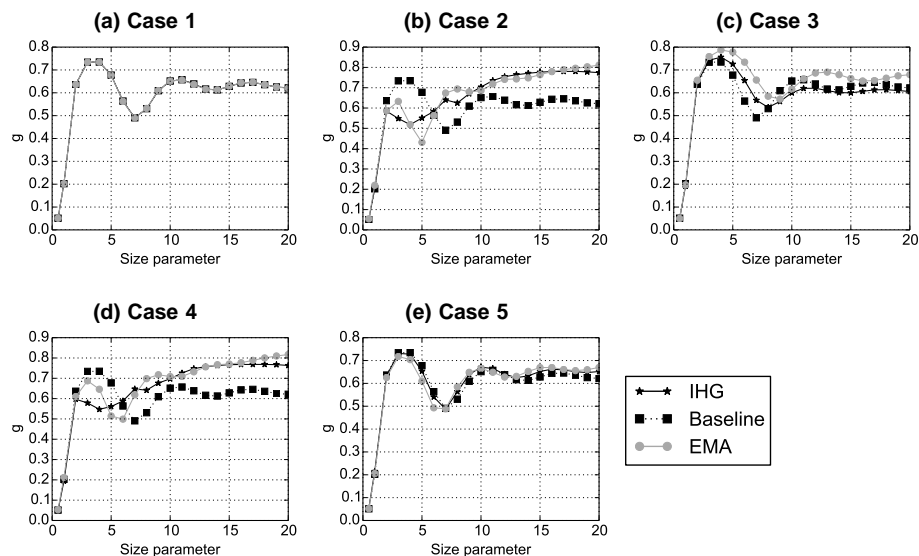
Printer-friendly Version

Interactive Discussion



# Dust particle internal structure and light scattering

O. Kempainen et al.

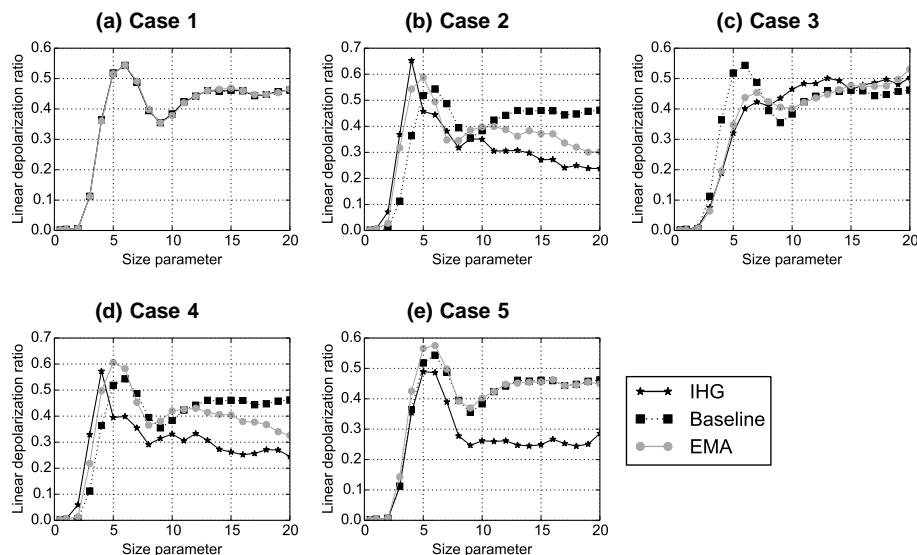


**Figure 11.** Asymmetry parameter for the inhomogeneous (IHG), the baseline, and the homogeneous (EMA) versions of all five particle cases as a function of the size parameter of the particle.

[Title Page](#)[Abstract](#)[Introduction](#)[Conclusions](#)[References](#)[Tables](#)[Figures](#)[Back](#)[Close](#)[Full Screen / Esc](#)[Printer-friendly Version](#)[Interactive Discussion](#)

**Dust particle internal structure and light scattering**

O. Kempainen et al.

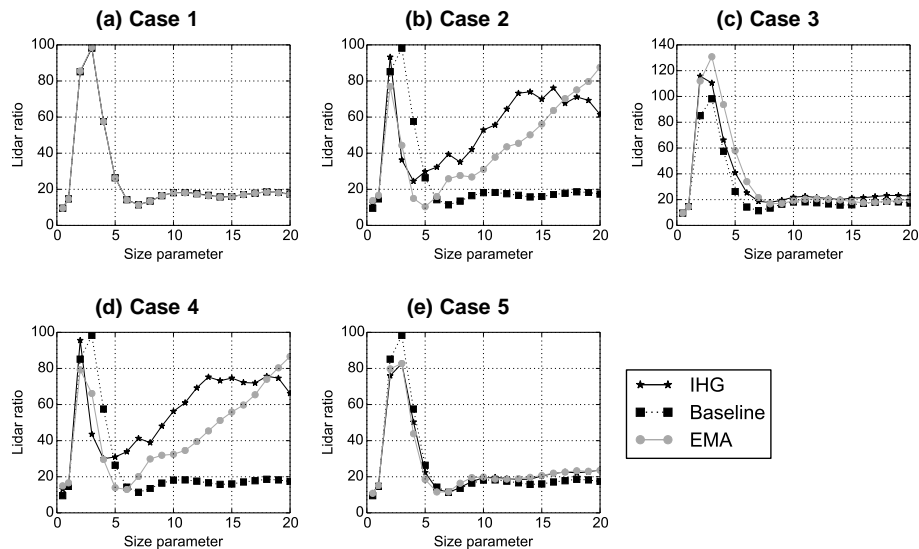


**Figure 12.** Linear depolarization ratio for the inhomogeneous (IHG), the baseline, and the homogeneous (EMA) versions of all five particle cases as a function of the size parameter of the particle.

[Title Page](#)[Abstract](#)[Introduction](#)[Conclusions](#)[References](#)[Tables](#)[Figures](#)[Back](#)[Close](#)[Full Screen / Esc](#)[Printer-friendly Version](#)[Interactive Discussion](#)

# Dust particle internal structure and light scattering

O. Kempainen et al.



**Figure 13.** Lidar ratio for the inhomogeneous (IHG), the baseline, and the homogeneous (EMA) versions of all five particle cases as a function of the size parameter of the particle.

[Title Page](#)
[Abstract](#)
[Introduction](#)
[Conclusions](#)
[References](#)
[Tables](#)
[Figures](#)
[◀](#)
[▶](#)
[◀](#)
[▶](#)
[Back](#)
[Close](#)
[Full Screen / Esc](#)
[Printer-friendly Version](#)
[Interactive Discussion](#)
