

Post bubble close-off fractionation of gases in polar firn and ice cores: Effects of accumulation rate on permeation through overloading pressure

T. Kobashi^{1,2,3,*}, T. Ikeda-Fukazawa⁴, M. Suwa⁵, J. Schwander^{1,2}, T. Kameda⁶, J. Lundin⁷, A. Hori⁶, H. Motoyama³, M. Döring^{1,2}, M. Leuenberger^{1,2}

[1]{Climate and Environmental Physics, University of Bern, Bern, Switzerland}

[2]{Oeschger Center for Climate Change Research, University of Bern, Bern, Switzerland}

[3]{National Institute of Polar Research, Tokyo, Japan}

[4]{Department of Applied Chemistry, Meiji University, Kanagawa, Japan}

[5]{The World Bank, Washington D.C., USA}

[6]{Department of Civil and Environmental Engineering, Kitami Institute of Technology, Kitami, Japan}

[7]{Department of Earth & Space Sciences, University of Washington, Seattle, USA}

Correspondence to: T. Kobashi (kobashi@climate.unibe.ch)

Abstract

Gases in ice cores are invaluable archives of past environmental changes (e.g., the past atmosphere). However, gas fractionation processes after bubble closure in the firn are poorly understood, although increasing evidence indicates preferential leakages of smaller molecules (e.g., neon, oxygen, and argon) from the closed bubbles through the ice matrix. These fractionation processes are believed to be responsible for the observed millennial $\delta\text{O}_2/\text{N}_2$ variations in ice cores, linking ice core chronologies with orbital parameters. In this study, we investigated high-resolution $\delta\text{Ar}/\text{N}_2$ of GISP2, NGRIP, and Dome Fuji ice cores for the past few thousand years. We find that $\delta\text{Ar}/\text{N}_2$ at multi-decadal resolution on the gas age scale in the GISP2 ice core has a significant negative correlation with accumulation rate and a positive correlation with air contents over the past 6000 years, indicating that changes in overloading

pressure induced $\delta\text{Ar}/\text{N}_2$ fractionation in the firn. Furthermore, GISP2 temperature and accumulation rate for the last 4000 years have nearly equal effects on $\delta\text{Ar}/\text{N}_2$ with sensitivities of $0.72 \pm 0.1 \text{ ‰ } ^\circ\text{C}^{-1}$ and $-0.58 \pm 0.09 \text{ ‰ } (0.01 \text{ m ice yr}^{-1})^{-1}$, respectively. To understand the fractionation processes, we applied a permeation model for two different processes of bubble pressure build-up in the firn, “pressure sensitive process (e.g., microbubbles: 0.3 to 3 % of air contents)” with a greater sensitivity to overloading pressures and “normal bubble process”. The model indicates that $\delta\text{Ar}/\text{N}_2$ in the bubbles under the pressure sensitive process are negatively correlated with the accumulation rate due to changes in overloading pressure. On the other hand, the normal bubbles experience only limited depletion ($< 0.5\text{‰}$) in the firn. Colder temperatures in the firn induce more depletion in $\delta\text{Ar}/\text{N}_2$ through thicker firn. The pressure sensitive bubbles are so depleted in $\delta\text{Ar}/\text{N}_2$ at the bubble close-off depth that they dominate the total $\delta\text{Ar}/\text{N}_2$ changes in spite of their smaller air contents. The model also indicates that $\delta\text{Ar}/\text{N}_2$ of ice cores should have experienced several permil of depletion during the storage 14 to 18 years after coring. Further understanding of the $\delta\text{Ar}/\text{N}_2$ fractionation processes in the firn, combining with nitrogen and argon isotope data, may lead to a new proxy for the past temperature and accumulation rate.

1 Introduction

Atmospheric gases trapped in the firn layer (unconsolidated snow layer; ~70 m at the Greenland Summit) and preserved in the underlying ice sheets provide precious and continuous records of the past atmosphere and environments (Petit et al., 1999; Spahni et al., 2005; Ahn and Brook, 2008; Kobashi et al., 2008a). However, to reconstruct the original environmental records, it is important to understand the processes of air trapping in the firn, and how the air is retained in the ice until it is analysed in laboratories. Two processes are well-known that change air composition before the air is trapped within bubbles in the firn. First, gravitational fractionation separates gases according to their mass differences and diffusive column height of the firn layer (Craig et al., 1988; Schwander, 1989). Second, a temperature gradient (ΔT) between the top and bottom of the firn layer induces thermal fractionation generally pulling heavier gases toward

1 the colder end (Severinghaus et al., 1998). In this study, we investigate a third process that
2 occurs after the bubbles are closed (post bubble close-off fractionation) and that preferentially
3 affects gases with smaller molecular sizes ($< 3.6 \text{ \AA}$; for example, helium, neon, oxygen, and
4 argon), but also gases with larger molecular sizes in smaller magnitudes (Ikeda-Fukazawa et
5 al., 2005; Huber et al., 2006; Ikeda-Fukazawa and Kawamura, 2006; Severinghaus and Battle,
6 2006; Ahn et al., 2008). This fractionation continues deep in ice sheets smoothing signals (Ahn
7 et al., 2008; Bereiter et al., 2014), and the process continues during/after coring (Ikeda-
8 Fukazawa et al., 2005; Kobashi et al., 2008b; Suwa and Bender, 2008b; Bereiter et al.,
9 2009; Vinther et al., 2009).

10 Clear evidence of the diffusive gas loss from ice cores through ice crystals has been
11 observed in the oxygen content in ice cores as a depletion of oxygen relative to nitrogen (Bender
12 et al., 1995; Ikeda-Fukazawa et al., 2005; Suwa and Bender, 2008b). Depletion of air content by
13 $\sim 10 \%$ was observed for the Camp Century ice core after storage for 35 years, although possible
14 analytical differences between early and late measurements cannot be rejected (Vinther et al.,
15 2009). The process is highly temperature dependent, and the gas loss is induced by the pressure
16 gradients between the bubbles and the atmosphere (Ikeda-Fukazawa et al., 2005). In ice sheets,
17 the concentration gradients at different depths drive the gas diffusion through ice crystals, which
18 smooth climate signals (Bereiter et al., 2014). Firn air studies showed that smaller molecules
19 such as helium, neon, oxygen, and argon preferentially leak out from the closed bubbles, leading
20 to enrichments of these gases in open pores near the bubble-close-off depth, which leads to
21 depletions of lighter gases in the closed bubbles (Huber et al., 2006; Severinghaus and Battle,
22 2006; Battle et al., 2011). However, the mechanisms creating $\delta\text{Ar}/\text{N}_2$ or $\delta\text{O}_2/\text{N}_2$ variations in the
23 time domain (i.e., ice cores) are still poorly understood.

On a longer time scale (i.e., orbital), variations in $\delta\text{O}_2/\text{N}_2$ closely follow local insolation changes (Bender, 2002; Kawamura et al., 2007; Suwa and Bender, 2008a; Landais et al., 2012). As a possible mechanism, it has been hypothesized that changes in local insolation affect physical properties of the snow at the surface that persist into the bubble close-off depth, controlling the $\delta\text{O}_2/\text{N}_2$ fractionation (insolation hypothesis) (Bender, 2002; Fujita et al., 2009). In addition, air content in ice cores are also found to covary with $\delta\text{O}_2/\text{N}_2$ on the orbital time scale, indicating common causes (Raynaud et al., 2007; Lipenkov et al., 2011). According to this hypothesis, the orbital signals in $\delta\text{O}_2/\text{N}_2$ in ice cores are linked to the ice chronology rather than to the gas chronology, which differ by up to a few thousand years. Therefore, the precise understanding of the gas loss process in the firn is essential to determine how climate signals in the bubbles are placed between the ice-ages and gas-ages on the orbital time scale.

In this paper, encouraged by the observation of a significant negative correlation between $\delta\text{Ar}/\text{N}_2$ and accumulation rate over the past 6000 years in GISP2 ice core (Fig. 1), we investigated the processes of multi-decadal to centennial $\delta\text{Ar}/\text{N}_2$ variability in three ice cores (GISP2, NGRIP, and Dome Fuji) as well as gas loss processes during storage. $\delta\text{Ar}/\text{N}_2$ variations are generally highly correlated with $\delta\text{O}_2/\text{N}_2$ in ice cores, suggesting similar processes driving these variations (Bender et al., 1995). As $\delta\text{Ar}/\text{N}_2$ is nearly constant in the atmosphere over the relevant period (Kobashi et al., 2010), it is better suited to assess the permeation processes in the firn and ice cores than $\delta\text{O}_2/\text{N}_2$ that varied in the atmosphere by $\sim 1.5\text{‰}$ during the glacial-interglacial cycles (Bender et al., 1995). In the following sections, we first describe the data and investigate the relationships between $\delta\text{Ar}/\text{N}_2$ and changes in accumulation rates and surface temperatures. Then, the fractionation processes are examined by applying a permeation model to the ice cores and the firn under two processes, “pressure sensitive processes (e.g.,

microbubbles)", and "normal bubble process". Finally, we discuss our findings, draw conclusions and mention implications.

2 Data description

$\delta\text{Ar}/\text{N}_2$ data from three ice cores covering the past millennia (NGRIP, Dome Fuji, and GISP2) were used for the analyses. GISP2 and NGRIP data have been published earlier (Kobashi et al., 2008b, 2015), and Dome Fuji data is new. Importantly, storage histories of these cores (i.e., temperatures) are known and methods for measuring $\delta\text{Ar}/\text{N}_2$ are all comparable. GISP2 and NGRIP ice cores were drilled from the Greenland ice sheet, and Dome Fuji was drilled from the Antarctic ice sheet (Table 1). For GISP2, sample resolution varies from 10 to 20 years with high resolution analyses covering the past 1000 years (Kobashi et al., 2008b, 2010) and around the 8.2ka event (8100 ± 500 years Before Present [B.P., "Present" is defined as 1950]) (Kobashi et al., 2007). For NGRIP, sample resolution is about 10 years throughout the past 2100 years (Kobashi et al., 2015). Both GISP2 and NGRIP have similar annual average temperatures of approximately -30°C (Table 1). However, accumulation rate of NGRIP (~ 0.19 m ice/year) is 20 % less than that (0.024 m ice/year) of GISP2 over the past 2100 years, and importantly its variation (standard deviation after 21-year Running Means; RMs) is lower by 40 % than that of GISP2 (see later discussion). Dome Fuji has a radically different environment from Greenland with the current annual average air temperature of -54.3°C and a mean accumulation rate of ~ 0.03 m ice/year (Watanabe et al., 2003).

For the time scale of GISP2 and NGRIP ice ages, we used the GICC05 (Vinther et al., 2006; Seierstad et al., 2014). To obtain gas ages, we applied a firn densification-heat diffusion model (Goujon et al., 2003) that calculates firn density structure, close-off depth, and delta age. The gas age uncertainties relative to ice age were estimated as ~ 10 % of the estimated gas age-ice

age difference (Goujon et al., 2003). To investigate the $\delta\text{Ar}/\text{N}_2$ fractionation, we used reconstructed temperature records from argon and nitrogen isotopes in the trapped air within the GISP2 ice core for the past 4000 years (Kobashi et al., 2011) and NGRIP for the past 2100 years (Kobashi et al., 2015), and layer-counted accumulation rate data for the Holocene (Alley et al., 1997; Cuffey and Clow, 1997; Gkinis et al., 2014). Dome Fuji have neither precise temperatures nor accumulation rates over the past 2100 years. The annual resolution accumulation rate data were smoothed with 21-year running means (RMs) to correspond to gas diffusion and the bubble close-off process in the firm (Kobashi et al., 2015). A spline fit (Enting, 1987) was applied to gas data (e.g., $\delta\text{Ar}/\text{N}_2$) with a 21-year cut off period to be consist with 21 RMs of other parameters, and used for the following analyses to investigate signals longer than the decadal time scale.

GISP2 and NGRIP ice cores were analysed for $\delta\text{Ar}/\text{N}_2$ ~14 years after coring, however, with different temperature histories. GISP2 (82.4 m -540 m) was drilled in summer 1991. After shipment, they were stored at -29 °C in a commercial freezer until they were moved to a freezer (-36 °C) at the National Ice Core Laboratory (NICL) in February 1993 (G. Hargreaves, pers. comm., 2015). The ice samples were then cut and moved to the Scripps Institution of Oceanography, where $\delta\text{Ar}/\text{N}_2$ was measured in 2005 (Kobashi et al., 2008b). One the other hand, NGRIP2 ice cores (one of the two NGRIP ice cores; 64.6m to 445.2m) were drilled in summer 1999 (Dahl-Jensen et al., 2002). Shallower parts (64.6m to 254.4m) were stored in a freezer at the University of Copenhagen around -24 °C (J. P. Steffensen, pers. comm., 2015), and deeper parts (255.5m to 445.2m) were in a freezer of a commercial facility rented by the Alfred Wegener Institute (AWI) at -30 °C (S. Kipfstuhl, pers. comm., 2015). In fall 2011, we cut the ice samples, and shipped them to a freezer at the National Institute of Polar Research at -30 °C until 2013 when we analysed the ice cores (Kobashi et al., 2015). The ice cores from

Dome Fuji were drilled in late 1995, and stored at -50 °C with a short period (2.5 months) at < -25 °C during shipment from Antarctica to Japan (S. Fujita, pers. comm., 2015). The ice core was analysed in early 2014.

The conventional delta notation is used to express $\delta\text{Ar}/\text{N}_2$ as follows:

$$\delta\text{Ar}/\text{N}_2 = [(\text{Ar}/\text{N}_2)_{\text{sample}} / (\text{Ar}/\text{N}_2)_{\text{standard}} - 1]10^3 (\text{‰}) \quad (1)$$

where the subscript “sample” indicates ice core values, and “standard” is the present atmospheric composition. For GISP2, mass 40 of argon and 29 of nitrogen, and for NGRIP and Dome Fuji, mass 40 of argon and 28 of nitrogen were used to calculate $\delta\text{Ar}/\text{N}_2$. All $\delta\text{Ar}/\text{N}_2$ data presented in this study were corrected for gravitational and thermal fractionations in the firm using the conventional method based on $\delta^{15}\text{N}$ (Bender et al., 1995; Severinghaus and Battle, 2006; Severinghaus et al., 2009) as follows:

$$\delta\text{Ar}/\text{N}_{2\text{corr}} = \delta\text{Ar}/\text{N}_2 - 11\delta^{15}\text{N} \quad (2)$$

The coefficient 11 arises because the mass difference of $\delta\text{Ar}/\text{N}_2$ (^{40}Ar and $^{29}\text{N}_2$) is 11 times larger than that of the nitrogen isotopes ($^{29}\text{N}_2$ and $^{28}\text{N}_2$). This coefficient is replaced with 12 for the calculation of $\delta\text{Ar}/\text{N}_{2\text{corr}}$ for NGRIP and Dome Fuji because the mass difference between ^{40}Ar and $^{28}\text{N}_2$ is 12. As the temperature sensitivities of $\delta^{15}\text{N}$ and $\delta\text{Ar}/\text{N}_2$ are slightly different, the correction is not perfect. However, the variability induced by the gas loss is much bigger than the uncertainties introduced by the differences of the thermal sensitivities. After these

corrections, the $\delta\text{Ar}/\text{N}_{2\text{corr}}$ variations in the ice cores can be attributed only to gas loss. $\delta\text{Ar}/\text{N}_{2\text{corr}}$ of the GISP2 data using the mass 28 or 29 leads to negligible differences (an average difference is $0.4 \times 10^{-3} \text{ ‰}$ and the standard deviation is $0.94 \times 10^{-3} \text{ ‰}$), which is much smaller than the measurement uncertainty of $\delta\text{Ar}/\text{N}_2$ ($1\sigma < 0.7 \text{ ‰}$). We also note that standard deviation (0.07‰) of $\delta^{15}\text{N} \times 11$ in GISP2 is much smaller than standard deviation of raw $\delta\text{Ar}/\text{N}_2$ (1.33‰) over the past 6000 years, indicating that the variations of $\delta\text{Ar}/\text{N}_{2\text{corr}}$ mostly originate from the raw $\delta\text{Ar}/\text{N}_2$ not from $\delta^{15}\text{N}$. For the sake of simplicity, we denote all the $\delta\text{Ar}/\text{N}_{2\text{corr}}$ as $\delta\text{Ar}/\text{N}_2$ in later sections.

The significance of correlations were calculated considering the autocorrelation of time series (Ito and Minobe, 2010; Kobashi et al., 2013). We consider $> 95\%$ confidence as significant, unless otherwise noted. All error bounds in figures and texts are 2σ .

3 Post-coring fractionation

Before evaluating $\delta\text{Ar}/\text{N}_2$ in ice cores for the changes that have occurred in the firn, it is necessary to consider the post-coring fractionation (Ikeda-Fukazawa et al., 2005). For this purpose, we applied a molecular diffusion model (permeation model) through ice crystals (Ikeda-Fukazawa et al., 2005). It has been applied to observed depletions of oxygen in the Dome Fuji and GISP2 ice cores by $\sim 10 \text{ ‰}$ with respect to nitrogen (Ikeda-Fukazawa et al., 2005; Suwa and Bender, 2008b). The model was also implemented with modifications for gas permeation processes in the firn (Severinghaus and Battle, 2006) and in ice cores (Bereiter et al., 2009). The gas permeation in ice cores is driven by the pressure gradients between two spaces isolated by ice walls (e.g., between bubbles or between bubbles and the atmosphere). The concentration (U_m ; $\text{mol} \cdot \text{mol}_{\text{ice}}^{-1}$) of species m (i.e., nitrogen, oxygen, and argon) in bubbles in one mole of ice after a time t can be described as follows (Ikeda-Fukazawa et al., 2005):

$$U_m = U_m^0 - k_m X_m (P^i Z_m^i - P^a Z_m^s) S / V t \quad (3)$$

where U_m^0 ($\text{mol} \cdot \text{mol}_{\text{ice}}^{-1}$) is the original concentration of species m . k_m ($\text{m} \cdot \text{s}^{-1}$) is the mass transfer coefficient and equals to $D_m / \Delta l$, where D_m ($\text{m}^2 \cdot \text{s}^{-1}$) is the diffusion coefficient of the species m , and Δl (m) is the thickness of the surface layer of ice (Ikeda-Fukazawa et al., 2005). X_m ($\text{mol} \cdot \text{mol}_{\text{ice}}^{-1} \cdot \text{MPa}^{-1}$) is the solubility of species m in ice. P^i and P^a are the pressures in the bubbles and in the atmosphere, respectively. Z_m^i and Z_m^s are molar fractions of species m in the bubbles and in the atmosphere, respectively. S (m^2) and V (m^3) represent the surface area and the volume of an ice sample such that S/V can be understood as specific surface area (m^{-1}), an important variable for the gas exchange between the atmosphere and the ice (Matzl and Schneebeli, 2006).

For Eq. (3), we assumed an initial air content of 6.53×10^{-5} mole in one mole of ice (a typical air content in ice cores). U_m^0 for each gas is calculated from the total air content multiplied by the atmospheric molar ratio of each gas. In this case, Z_m^i and Z_m^s are set to the atmospheric partial pressures for each molecule. Another factor that affects the gas loss is the specific surface area. GISP2 ice core has a larger diameter (0.132 m) and longer length (1 m) during the storage than that for NGRIP core (diameter 0.098 m and length 0.55m). Dome Fuji core has a diameter of 0.093 m and length of 0.50 m. Therefore, the specific surface areas (S/V) were calculated to be 32.3 m^{-1} , 44.5 m^{-1} , and 47.0 m^{-1} for GISP2, NGRIP, and Dome Fuji, respectively. It is noted that these specific surface areas are approximations as ice cores during the storage often have different shapes, and we shaved the ice surface by ~ 5 mm before the analyses (Kobashi et al., 2008b; Kobashi et al., 2015). However, we also note that shallow late

Holocene ice cores often had near intact shapes (no sampling) at the time of our sampling from ice cores.

Diffusivity (D_{Ar}) and solubility (X_{Ar}) for argon in ice are less known than those of nitrogen and oxygen. Therefore, we attempted to estimate two possible functions (Ar (I) and Ar (II)) for $k_{Ar}X_{Ar}$ ($= D_{Ar}/\Delta l \cdot X_{Ar}$) in relation to those for nitrogen and oxygen (Fig. 2). $K_{N_2}X_{N_2}$ and $k_{O_2}X_{O_2}$ in different temperatures can be estimated using Eqs. (4) and (8) with $\Delta l = 12$ mm and 7 mm for nitrogen and oxygen in Ikeda-Fukazawa et al. (2005) for the Dome Fuji core (Fig. 2), which were consistent with various observations (Ikeda-Fukazawa et al., 2005; Severinghaus and Battle, 2006; Suwa and Bender, 2008b; Bereiter et al., 2009).

First estimate of Ar (I) uses a diffusion coefficient (D_{Ar} ; $4.0 \times 10^{-11} \text{ m}^2 \text{ s}^{-1}$) of argon at 270 K calculated from molecular dynamic simulations with those of nitrogen (D_{N_2} ; $2.1 \times 10^{-11} \text{ m}^2 \text{ s}^{-1}$) and oxygen (D_{O_2} ; $4.7 \times 10^{-11} \text{ m}^2 \text{ s}^{-1}$) (Ikeda-Fukazawa et al., 2004). Owing to the molecular-size dependent fractionation, argon permeation occurs slower than oxygen but faster than nitrogen (Fig. 2), which cannot be explained by their mass differences (Huber et al., 2006; Severinghaus and Battle et al., 2006). Then, temperature-dependent k_{Ar} and X_{Ar} were estimated assuming that the geometrical relationship between D_{N_2} , D_{Ar} , and D_{O_2} at 270 K from the molecular dynamics simulations holds for k_{Ar} and X_{Ar} at different temperatures as follows:

$$k_{Ar} = k_{O_2} - (D_{O_2 \text{ at } 270K} - D_{Ar \text{ at } 270K}) / (D_{O_2 \text{ at } 270K} - D_{N_2 \text{ at } 270K}) (k_{O_2} - k_{N_2}) \quad (4)$$

$$X_{Ar} = X_{O_2} - (D_{O_2 \text{ at } 270K} - D_{Ar \text{ at } 270K}) / (D_{O_2 \text{ at } 270K} - D_{N_2 \text{ at } 270K}) (X_{O_2} - X_{N_2}) \quad (5)$$

Second, we estimated Ar (II) from an observation that $\delta Ar/N_2$ in ice are often depleted about half of $\delta O_2/N_2$ in ice cores (Bender et al., 1995). To satisfy this condition, $k_{Ar}X_{Ar}$ can be written as:

$$k_{Ar}X_{Ar} = (k_{N_2}X_{N_2} + k_{O_2}X_{O_2}) / 2 \quad (6)$$

1 Estimated $k_{Ar}X_{Ar}$ for Ar (I) and Ar (II) are higher than $k_{N_2}X_{N_2}$ and increase with temperatures,
2 resulting in a general depletion of $\delta Ar/N_2$ in ice compared to the atmospheric composition, and
3 the depletion is faster in warmer temperatures (Fig. 2). The use of Ar (I) induces faster depletion
4 of $\delta Ar/N_2$ than that of Ar (II) owing to faster permeation of argon. With the two estimates of
5 $k_{Ar}X_{Ar}$, we explore the range of uncertainties associated with argon permeation.

6 In a pioneering study by Bender et al. (1995), $\delta Ar/N_2$ in a shallow core of GISP2 was
7 analysed after one week, three months, and seven months of drilling in 1989 to study the time
8 dependent gas loss process (Fig. 3). As the data from three different periods are not significantly
9 different, we consider the $\delta Ar/N_2$ as the original values before the coring. By comparing the
10 data (Bender et al., 1995) with our dataset analysed 14 years after the coring (Kobashi et al.,
11 2008b), we estimated the post-coring fractionation of $\delta Ar/N_2$ in GISP2 to be $-1.5 \pm 0.6 \text{ ‰}$, a
12 difference of the two datasets for common depths (124 to 214 m) (Fig. 3). Using this value, we
13 derived an unknown parameter (i.e., bubble pressure) in Eq. (3). The bubble pressures are
14 calculated as $0.6 \pm 0.2 \text{ MPa}$ and $0.8 \pm 0.3 \text{ MP}$ for two different estimates of $k_{Ar}X_{Ar}$ of Ar(I) and
15 Ar(II), respectively, which agree with the normal bubble pressure at 150-200 m deep in Vostok
16 (Lipenkov, 2000). Using the estimated bubble air pressure and aforementioned parameters, the
17 amounts of depletion in $\delta Ar/N_2$ after coring are estimated as $-3.0 \pm 1.2 \text{ ‰}$, $-2.5 \pm 1.0 \text{ ‰}$, and
18 $1.5 \pm 0.7 \text{ ‰}$ for NGRIP shallow, and NGRIP deep, and Dome Fuji, respectively (Table 2). As
19 a result, it is possible to derive the original $\delta Ar/N_2$ values before coring for GISP2, NGRIP
20 shallow, and NGRIP deep, and Dome Fuji as $-2.4 \pm 0.6 \text{ ‰}$, $-3.3 \pm 1.2 \text{ ‰}$, -3.4 ± 1.0 , and $6.3 \pm$
21 0.8 , respectively (Table 2).

4 Post bubble close-off fractionation in firn: Empirical evidence

4.1 GISP2 $\delta\text{Ar}/\text{N}_2$ variation over the Holocene

The $\delta\text{Ar}/\text{N}_2$ record over the Holocene in the GISP2 ice core exhibit relatively constant values around -3 ‰, except for a prominent rise of up to 10 ‰ around 7000 B.P. (Fig. 4). The rise is located within the depths of the brittle zone (650 to 1400 m), where air in the bubbles changes to clathrate inducing anomalously high pressure (Gow et al., 1997). The dissociation pressure of nitrogen in the clathrate phase is higher than that of argon (or oxygen) so that nitrogen is enriched in the gas phase in relation to the clathrate (more stable state), resulting in a preferential leakage of nitrogen, and thus argon (or oxygen) enrichments in these depths (Ikeda et al., 1999; Ikeda-Fukazawa et al., 2001; Kobashi et al., 2008b). As the dissociation of gases from the clathrate depends on various factors, $\delta\text{Ar}/\text{N}_2$ in these depths are highly variable (Fig. 4). It is noted that $\delta^{15}\text{N}$ and $\delta^{40}\text{Ar}$ exhibit little influences from the anomalous $\delta\text{Ar}/\text{N}_2$ fractionation, indicating that the processes are mass independent in first order (Huber et al., 2006; Severinghaus and Battle, 2006) (Fig. 4).

Changes in the surface temperatures and accumulation rates are the dominant controlling factors for the state of firn layers (e.g., density profile, bubble close-off depth, and firn thickness) (Herron and Langway, 1980; Schwander et al., 1997; Goujon et al., 2003). Therefore, we investigated if changes in surface temperature or accumulation rate have any controls on the $\delta\text{Ar}/\text{N}_2$ variations. We found a significant negative correlation ($r = -0.35$, $p = 0.03$) between $\delta\text{Ar}/\text{N}_2$ on the gas age scale and the accumulation rate for the past 6000 years, a time interval in which the abnormal $\delta\text{Ar}/\text{N}_2$ fractionation is not observed (Fig. 1 and 4). This negative correlation is opposite of what an earlier study (Severinghaus and Battle, 2006) suggested for the permeation fractionation in the firn (positive correlation). In addition, the significant correlation was found for $\delta\text{Ar}/\text{N}_2$ on the “gas ages” scale rather than the “ice ages” that the

insolation hypothesis predicts; an indication that new processes need to be considered for the gas loss processes in the firn.

GISP2 data for over the past 4000 years provides a unique opportunity to investigate $\delta\text{Ar}/\text{N}_2$ variations because precise temperature (Kobashi et al., 2011) and accumulation rate by layer counting (Alley et al., 1997; Cuffey and Clow, 1997) are available. Using these data, we applied a linear regression and lag analysis on $\delta\text{Ar}/\text{N}_2$. It is found that the surface temperature is positively correlated with $\delta\text{Ar}/\text{N}_2$ on the gas ages ($r = 0.47$, $p = 0.04$; $r = 0.28$, $p = 0.001$ after linear detrending) with a 68-year lag (Fig. 5a), indicating that cooler (warmer) temperatures induced more (less) depletions in $\delta\text{Ar}/\text{N}_2$ with a multidecadal lag. On the other hand, the accumulation rate is negatively correlated with $\delta\text{Ar}/\text{N}_2$ on the gas ages ($r = -0.47$, $p = 0.12$; $r = -0.26$, $p = 0.01$ after linear detrending) with a 38-year lag (Fig. 5b), indicating that high (low) accumulation rates induced more (less) depletions in $\delta\text{Ar}/\text{N}_2$ over the past 4000 years. We note that the surface temperature and accumulation rate have a negative but insignificant correlation ($r = -0.32$, $p = 0.13$; after linear detrending $r = -0.11$, $p = 0.2$) over the past 4000 years.

To estimate the relative contribution of the accumulation rate and the surface temperature changes on $\delta\text{Ar}/\text{N}_2$, we applied a multiple linear regression, which finds the best linear combination of variables (i.e., temperature and accumulation rate) for a response variable (i.e., $\delta\text{Ar}/\text{N}_2$). Before the regression is applied, the temperature and accumulation records were shifted toward younger ages to account for the lags (38 years and 68 years for accumulation rate and temperature, respectively), and $\delta\text{Ar}/\text{N}_2$ is corrected for the post-coring fractionation (1.5 ‰ added). As ordinary least squares including the multiple linear regression underestimate the variance of target time series when the data is noisy (Von Storch et al., 2004), we used “variance matching” by linearly scaling regression coefficients according to the ratio between the variance of the target and model time series. Figure 5c shows the original and modeled

results of $\delta\text{Ar}/\text{N}_2$ over the past 4000 years. As expected, the model of the multiple linear regression captures the $\delta\text{Ar}/\text{N}_2$ variations better than the individual variables do (Figs. 5a-c) with a correlation coefficient of $r = 0.58$, $p = 0.09$ ($r = 0.36$, $p < 0.001$ after linear detrending). For the centennial variations, the model captures nearly half of the total variance of the observed $\delta\text{Ar}/\text{N}_2$ variations with a 95% confidence ($r = 0.71$, $p = 0.05$ after linear detrending with 200-year RMs). The high and significant correlation between the model and observed $\delta\text{Ar}/\text{N}_2$ indicates that changes in the surface temperature and accumulation rate play important roles in controlling the $\delta\text{Ar}/\text{N}_2$ variations. From the multiple linear regression, $\delta\text{Ar}/\text{N}_2$ on the gas ages in GISP2 can be expressed by temperature ($^{\circ}\text{C}$) and accumulation rate (m ice/year) as a function of time after adjusting for the lags:

$$\delta\text{Ar}/\text{N}_2(t) = A \times \text{temperature}(t + t_{\text{temp}}) + B \times \text{accumulation}(t + t_{\text{accm}}) + C \quad (7)$$

where $A = 0.72 \pm 0.06 \text{ ‰ } ^{\circ}\text{C}^{-1}$, $B = -58.8 \pm 4.3 \text{ ‰ } (\text{m yr}^{-1})^{-1}$, $C = 32.7 \pm 1.8 \text{ ‰}$, and t , t_{temp} , and t_{accm} are time (years), lags (years) for temperature and accumulation rate, respectively.

Next, we attempted to use oxygen isotopes of ice ($\delta^{18}\text{O}_{\text{ice}}$) as a temperature proxy for the same regression analyses of $\delta\text{Ar}/\text{N}_2$ since we do not have the N_2 -Ar isotope based temperature information before 4000 years B.P. Although a $\delta^{18}\text{O}_{\text{ice}}$ record from an ice core contains large noises that could be transferred to an estimated temperature record, stacking several $\delta^{18}\text{O}_{\text{ice}}$ records contains substantial noise and provides a better temperature record (White et al., 1997; Kobashi et al., 2011). Thus, we stacked three oxygen isotope records (GISP2, GRIP, and NGRIP) over the Holocene in the 20-year RMs (Stuiver et al., 1995; Vinther et al., 2006). The stacked record was calibrated to temperatures using the relation obtained from borehole

temperature profiles (Cuffey and Clow, 1997). Using the regression coefficients obtained in Fig. 5c, a $\delta\text{Ar}/\text{N}_2$ model was calculated from the oxygen-isotope-based temperature and the accumulation rate (Fig. 5d). We found that the correlation between the model and the observed $\delta\text{Ar}/\text{N}_2$ performs not as well as the one with the temperature and accumulation rate for the past 4000 years (Fig. 5c), but does slightly better than the correlations with the temperature or accumulation rate individually (Figs. 5a,b).

The $\delta\text{Ar}/\text{N}_2$ regression model with the $\delta^{18}\text{O}_{\text{ice}}$ -based temperatures and accumulation rates can span the entire Holocene, including the periods when the observed $\delta\text{Ar}/\text{N}_2$ are highly variable owing to the post coring fractionation as discussed earlier. Except the time interval around 7000 years B.P., the model and observed $\delta\text{Ar}/\text{N}_2$ exhibit rather constant values of -1 to -3 ‰ during the Holocene (Fig. 6). Interestingly, the model indicates that the constant $\delta\text{Ar}/\text{N}_2$ during the early Holocene is the result of a cancellation between the effects of the accumulation rate and the temperature, both of which were rapidly rising in the early Holocene (Fig. 6). The $\delta\text{Ar}/\text{N}_2$ variations remained higher or noisier from the early Holocene to ~6000 B.P. than that for the later period, which probably make it difficult to decipher the original multidecadal to centennial signals in $\delta\text{Ar}/\text{N}_2$ (Fig. 6).

4.2 NGRIP and Dome Fuji $\delta\text{Ar}/\text{N}_2$ variation over the past 2100 years

$\delta\text{Ar}/\text{N}_2$ of NGRIP ice cores provides a good comparative dataset with the GISP2 data (Fig. 7). Average $\delta\text{Ar}/\text{N}_2$ for the past 2100 years are -3.36 ‰ and -2.40 ‰ for NGRIP and GISP2, respectively (Fig. 7). The $\delta\text{Ar}/\text{N}_2$ variability in NGRIP ($1\sigma = 0.91$ ‰) over the past 2100 years is 24% smaller than that of GISP2 ($1\sigma = 1.19$ ‰) after correcting for the post-coring fractionation (Table 2), likely owing to the smaller variations of the accumulation rate at NGRIP

1 than that of GISP2 (Fig. 7). The pooled standard deviations of replicated samples are 0.94 ‰
 2 for NGRIP over the past 2100 years, and 0.66‰ for GISP2 over the past 1000 years (replicates
 3 are available only for the past 1000 years in GISP2) (Kobashi et al., 2008b). The noisier data
 4 for NGRIP than that for GISP2 should not be analytical as the mass spectrometer used for the
 5 NGRIP had better precision on $\delta\text{Ar}/\text{N}_2$ than the one used for GISP2 (Kobashi et al.,
 6 2008b;Kobashi et al., 2015). $\delta\text{Ar}/\text{N}_2$ for GISP2 and NGRIP are weakly but significantly
 7 correlated with a correlation coefficient of $r = 0.24$, $p = 0.02$ (after linear detrending) for the
 8 past 1000 years of the high resolution part of GISP2, but not for the deeper part likely owing to
 9 the difference of sampling densities between the two periods (Kobashi et al., 2015). The surface
 10 temperatures at NGRIP were only weakly correlated with $\delta\text{Ar}/\text{N}_2$ in the deeper part of NGRIP
 11 ($r = 0.20$, $p = 0.06$ after linear detrending) and were uncorrelated in the shallower part. No
 12 significant correlations were found between $\delta\text{Ar}/\text{N}_2$ and the accumulation rate for NGRIP,
 13 probably due to the lower variation of the accumulation rate at NGRIP than that of GISP2. It is
 14 consistent with the fact that the signal to noise ratio ($\text{SNR} = \text{variance of signals}/\text{variance of}$
 15 $\text{analytical errors} = 1.2$) for NGRIP is about one fifth of that for GISP2 (6.1) estimating the
 16 NGRIP signals from Eq. (7).

17 From the relationship between $\delta\text{Ar}/\text{N}_2$ and the temperature or accumulation rate of
 18 GISP2 in Eq. (7), we can calculate expected $\delta\text{Ar}/\text{N}_2$ for NGRIP and Dome Fuji. Using the past
 19 2100 years of temperatures and accumulation rates for NGRIP (Fig. 7a,b) and the current
 20 observation (Table 1) for Dome Fuji, expected $\delta\text{Ar}/\text{N}_2$ from Eq. (7) were calculated as $0.3 \pm$
 21 1.3 ‰ and $-6.4 \pm 1.2 \text{ ‰}$, respectively. The value for NGRIP is significantly higher than the
 22 observed value of $-3.3 \pm 1.2 \text{ ‰}$ corrected for the post-coring fractionation (Table 2). For Dome
 23 Fuji, the value is similar to the observed $-6.3 \pm 0.8 \text{ ‰}$ corrected for the post-coring fractionation
 24 (Fig. 7 and Table 2). This may indicate that the relationship of $\delta\text{Ar}/\text{N}_2$ with the temperature and

1 accumulation rate becomes non-linear when the firn thickness becomes thinner than that of
2 GISP2 as $\delta\text{Ar}/\text{N}_2$ is not expected to be positive without the existence of clathrate (see later
3 discussion).

4 $\delta\text{Ar}/\text{N}_2$ ice core data of NGRIP from the depth range 64.6-80 m exhibit some interesting
5 features (Fig. 8). The depth from ~60 to 78 m corresponds to the lock-in zone in NGRIP, where
6 vertical mixing of gas is limited so that $\delta^{15}\text{N}$ stays nearly constant in these depths (Huber et al.,
7 2006; Kawamura et al., 2006). Therefore, the shallowest data at 64.6 m are located in the lock-
8 in zone. Generally, gas data from the lock-in zone are not used owing to possible contamination
9 (Aydin et al., 2010). However, a recent study (Mitchell et al., 2015) demonstrated that $\delta^{15}\text{N}$ can
10 be used to estimate the amount of ambient air contamination using ice samples in the lock-in
11 zone, and the original methane concentration in the firn was reconstructed with a range of
12 uncertainties. Therefore, we interpret the observed rapid decreases of $\delta^{15}\text{N}$ and $\delta^{40}\text{Ar}$ toward
13 shallower depths in the lock-in-zone as the result of mixing with ambient air (Fig. 8d). Based
14 on isotope mass balance, we calculated the original $\delta\text{Ar}/\text{N}_2$ values, which exhibited highly
15 depleted values as low as -50 ‰ (Fig. 8e). The depleted $\delta\text{Ar}/\text{N}_2$ in the lock-in-zone provides a
16 clue to the processes of gas loss in the firn (see later discussion).

18 **5 Post bubble-close-off fractionation in firn: Process study**

19 Air bubbles in the polar firn or ice can be categorized into two types (Lipenkov, 2000):
20 normal bubbles and microbubbles (< 50 μm). They can be distinguished as a bimodal
21 distribution in ice cores (Lipenkov, 2000; Ueltzhöffer et al., 2010; Bendel et al., 2013). The air
22 volume contribution of the microbubbles to the total air content is estimated to be 0.3% in the
23 Vostok ice core (Lipenkov, 2000), but the value is not known for Greenland ice cores.

1 Importantly, the two types of bubbles have significantly different bubble pressure histories in
2 the firn. The normal bubbles form at the bubble close-off depth. Most of the air in ice cores is
3 captured as normal bubbles, and the air-trapping processes are relatively well known
4 (Schwander et al., 1997;Goujon et al., 2003;Mitchell et al., 2015). Normal bubble pressures
5 build up according to increasing density (normal bubble process; Severinghaus and Battle,
6 2006). On the other hand, the microbubbles are believed to form near the surface (Lipenkov,
7 2000). So, they are highly pressurized and have rounded shape by the time when the bubbles
8 reach the bubble close-off depth (Lipenkov, 2000;Ueltzhöffer et al., 2010). As a result, the
9 microbubbles are more sensitive to changes in the overloading pressure at the bubble close-off
10 depth (pressure sensitive process).

11 Owing to the different bubble pressure histories in the firn, $\delta\text{Ar}/\text{N}_2$ or $\delta\text{O}_2/\text{N}_2$ in the
12 microbubbles and normal bubbles are expected to be different due to the differential permeation
13 of each molecule. In this study, we attempted to quantify two types of the gas loss processes,
14 “pressure sensitive process (microbubble)” and “normal bubble process”, in the firn using a
15 permeation model (Ikeda-Fukazawa et al., 2005) combined with the inputs from firn-
16 densification heat-diffusion models (Schwander et al., 1993; Spani et al., 2003; Goujon et al.,
17 2003).

19 **5.1 Pressure sensitive process (microbubbles)**

20 We first look into the pressure sensitive process as exemplified by the microbubbles.
21 Microbubbles are believed to form in the shallow firn by sublimation-condensation processes
22 (Lipenkov, 2000). These bubbles have smaller sizes, smoothed spherical surfaces, and can
23 generally be found in the interior of the ice crystals (Lipenkov, 2000). The bubble pressure
24 reaches near overloading pressure at the bubble close-off depth, and so it is sensitive to changes

in the overloading pressure. As the actual contribution of microbubbles and air content involved in the pressure sensitive processes is not known, we consider a 2% contribution of air to the total air. As it will be discussed later, more air fraction than simply from microbubbles (0.3 % in Vostok) are likely involved in the pressure sensitive process. Therefore, we conducted additional calculations with 0.3 %, 1 %, and 3 % microbubble contributions, and assessed the impacts to the total $\delta\text{Ar}/\text{N}_2$.

To model the gas permeation process from the microbubbles, we assumed steady state with given surface temperatures and accumulation rates, and calculated the ages, firn densities, porosities, and overloading pressures at given depths, using a firn densification-heat diffusion model (Schwander et al., 1993; Spahni et al., 2003). Then, they are interpolated for annual layers in the firn for the following calculation.

Changes in the concentrations of species m were calculated according to the following Eq. (8) similar to Eq. (3).

$$U_m(l+1) = U_m(l) - k_m X_m (P^i(l) Z_m^i(l) - P^a Z_m^s(l)) \left(\frac{s}{v} \right) s_o / s(l) t C(l) \quad (8)$$

$$Z_m^i(l) = \frac{U_m(l)}{U_{Ar}(l) + U_{O_2}(l) + U_{N_2}(l)}$$

where l is an annual layer from the surface to below the firn layer (e.g., $l = 1$ to 2000), and $s_o/s(l)$ in a layer l is the open porosity ratio. s , s_c , and s_o are the total, closed, and open porosities ($s_o = s - s_c$), respectively (Spahni et al., 2003; see also the next section “normal bubble process”). In a steady state, l can be considered as a time variable. At $l = 1$, the microbubbles in an annual layer are at surface, although they are not active in terms of permeation at these

depths (Fig. 9). With l increasing in a one year step, the microbubbles move deeper in the firn with l annual layers overlying. $C(l)$ is a coefficient defining the gas concentration in annual layer l relative to the total air in ice. It is assumed that the pressure $P^i(l)$ in the microbubbles starts increasing with overloading pressure from the depth of which the normal bubbles generation initiates (firn density of around 0.7 g/cm^3) (Fig. 9c), and that pressure changes were considered to be negligible above that depth (Lipenkov, 2000). Initial $P^i(0)$ was set at 0.065 MPa similar to the atmospheric pressure at the Greenland Summit (Schwander et al., 1993) with a 0.3 MPa lag from overloading pressure as in Fig. 9 (Lipenkov, 2000). We estimated the specific surface area ($S/V(l)$) in a layer l from the linear relationship between the specific surface areas (m^{-1}) and densities ρ from the Greenland Summit (Lomonaco et al., 2011) with an equation: $S/V(l) (\text{m}^{-1}) = -16799 \rho(l) (\text{g cm}^{-3}) + 14957$. The initial gas content in the microbubbles was set at 0.3 to 3% of the air content ($6.53226 \times 10^{-5} \text{ mole} \times 0.01$) per 1 mole of ice, and it is composed of nitrogen (78.084%), oxygen (20.9476%), and argon (0.934%). The specific surface area S/V was multiplied by the open porosity ratio $s_o/s(l)$ (Spahni et al., 2003; Fig. 9a) as the gas loss occurs toward open pores. $k_m X_m$ was calculated as for the post coring fractionation, and we used the estimate, Ar (II) for argon.

Figure 9 shows model results with a temperature of -31°C , an accumulation rate of 0.25 m ice/year (similar to GISP2 condition), and 2% microbubble contribution. It shows that the gas permeation from the microbubbles starts soon after the pressure was applied in the microbubbles (Figs. 9c,d). As oxygen has a larger permeability than that of argon, $\delta\text{O}_2/\text{N}_2$ depletion is larger than $\delta\text{Ar}/\text{N}_2$ (Fig. 9b). At the temperature of -30°C and accumulation rate of $0.25 \text{ m ice yr}^{-1}$, the depletion reaches up to 133 ‰ for $\delta\text{Ar}/\text{N}_2$, and 243 ‰ for $\delta\text{O}_2/\text{N}_2$ in the model, which corresponds to 12 % gas loss from the original air content of the microbubbles (Fig. 9c).

1

2 5.2 Normal bubble process

3 Most of the air in ice cores is trapped as normal bubbles near the lock-in depth. As a
 4 result, bulk air pressure in the normal bubbles does not build up as high as the microbubbles in
 5 the lock-in zone (Lipenkov, 2000). We used Eq. (8) to model the permeation process for the
 6 normal bubbles. As for the microbubbles, we assumed steady state with the given temperatures
 7 and accumulation rates. The general characters of the firm in various depths (ages, densities,
 8 porosities, loading pressures, bubble close-off depths) were calculated using the firm-
 9 densification heat diffusion model (Schwander et al., 1993; Spahni et al., 2003), and they were
 10 interpolated for annual layers as for the microbubbles. We first calculated how much bubble air
 11 is generated in each annual layer according to the increase in the closed porosity (s_c) with depth
 12 as the following equation.

13

$$14 \quad V_0(l+1) = a \{ (s_c(l+1) - s_c(l)(\rho_{ice} - \rho(l+1)) / (\rho_{ice} - \rho(l)) \} / \rho(l+1) \quad (9)$$

15

16 where $V_0(l)$ is newly trapped air in an annual layer l , ρ_{ice} is the density of ice, and $\rho(l)$ is the
 17 density at depth l . $s_c(l)$ is the closed porosity in an annual layer l , and a is a scaling coefficient.
 18 s_c can be written as (Schwander, 1989; Spahni et al., 2003):

19

$$20 \quad s_c = \begin{cases} s \cdot \exp \left[75 \cdot \left(\frac{\rho(l)}{\rho_{co}} - 1 \right) \right], & 0 < \rho(l) < \rho_{co} \\ s, & \rho(l) > \rho_{co} \end{cases} \quad (10)$$

21

where ρ_{co} is the density at the depth in which the air is totally enclosed in bubbles. The sum of all the newly generated air ($\sum_{l=1}^{2000} V_0(l)$) are set to have the air content of 6.53×10^{-5} mole per mole of ice. Then, $V_0(l)$ was scaled accordingly using the coefficient a , and converted to the volume (m^3) with the atmospheric pressure (0.065 MPa) as in Fig. 10a.

The normal bubbles start forming at approximately 40 m depth and the formation is maximum around the bubble close-off depth of 60 to 75 m at -31°C and $0.24 \text{ m ice yr}^{-1}$ in the model (Fig. 10a). Then, the permeation from each annual layer was calculated according to Eq. (8). The difference from the microbubble permeation process is that the volume of the normal bubbles decreases according to increasing density towards deeper depth, leading to generally smaller pressure build-up and total permeation from the bubbles in the firn (Fig. 10a). $C(l)$ in Eq. (8) was calculated from $V_0(l)$ for each annual layer l by setting the sum of $C(l)$ as $1 - 0.02 = 0.98$ (if microbubble contribution is 2 %) (Fig. 10e). Other parameters in Eq. (8) were set to be the same as for the microbubbles.

Figure 10 shows the evolution of the normal bubble volumes, the nitrogen and argon concentrations, the $\delta\text{Ar}/\text{N}_2$ in each annual layer, and the air content and bulk $\delta\text{Ar}/\text{N}_2$ with depth at a temperature of -31°C and an accumulation rate of $0.24 \text{ m ice yr}^{-1}$ as for the microbubbles for Fig. 9. A new generation of closed pore volumes in annual layers generally increases towards deeper depths (Fig. 10a). When open pore space disappears completely, we assume the gas permeation to the open pore stops. As argon (oxygen) permeation in ice is faster than nitrogen by 289 (479) % at -31°C (Ar (II), Fig. 2), $\delta\text{Ar}/\text{N}_2$ ($\delta\text{O}_2/\text{N}_2$) within the bubbles decreases when the permeation proceeds. At the temperature of -31°C and accumulation rate of $0.24 \text{ m ice yr}^{-1}$, the $\delta\text{Ar}/\text{N}_2$ depletion can reach about -5 ‰ for those bubbles formed at shallow depths (Fig. 10d). However, the amount of air contained in these bubbles is so small (Fig. 10a) that the influence on the total $\delta\text{Ar}/\text{N}_2$ is limited (Fig. 10e). The depth vs. $\delta\text{Ar}/\text{N}_2$

relationship of the total air from the normal bubbles (Fig. 10e) indicates that the total $\delta\text{Ar}/\text{N}_2$ reaches the minimum of -0.39 ‰ at the middle of the bubble close-off depth of 73.2 m. Then, the total $\delta\text{Ar}/\text{N}_2$ increases to -0.29 ‰ as a large amount of ambient air with $\delta\text{Ar}/\text{N}_2 = 0$ is trapped in these depths (Fig. 10a,d,e).

5.3 Total air in bubbles

The permeation models for the normal and microbubbles were run for various firm conditions with different surface temperatures, accumulation rates, and microbubble contributions to investigate their effects on the $\delta\text{Ar}/\text{N}_2$ in the bubbles (Figs. 11 and Table 3). Resultant air content (i.e., nitrogen, argon, and oxygen) for each annual layer from the micro- and normal bubbles were added to calculate the combined effects of the accumulation rates and temperatures on total $\delta\text{Ar}/\text{N}_2$ (Fig. 11). Results show that the normal bubbles experience only limited $\delta\text{Ar}/\text{N}_2$ depletion ($> -0.5\text{‰}$) by the different temperatures or accumulation rates we considered (Table 3). On the other hand, $\delta\text{Ar}/\text{N}_2$ in the microbubbles varies with temperatures through thickening of the firm, leading to higher pressures in the bubbles and longer duration exposed to the gas loss in the firm (Table 3). Higher accumulation rate with the same temperatures induces more depletion as it is primarily controlled by the changes in loading pressure (Figs. 11c and Table 3). As a result, the total $\delta\text{Ar}/\text{N}_2$ generally reflects the variation of $\delta\text{Ar}/\text{N}_2$ in the microbubbles ($r = 0.95$; Table 3). Overall, the total $\delta\text{Ar}/\text{N}_2$ have high correlation with temperatures ($r = 0.97$) than that ($r = 0.57$) with accumulation rates in the model (Table 3).

The modeled $\delta\text{Ar}/\text{N}_2$ agrees with the observed $\delta\text{Ar}/\text{N}_2$ corrected for the post-coring fractionation within their uncertainty ranges (Table 2). Extremely cold temperature in Dome

Fuji with low accumulation rate induces a long duration (274 years) of the bubble exposed to the permeation in the firn, leading to a large depletion of $\delta\text{Ar}/\text{N}_2$ of the microbubbles and so in the total air (Table 3). The variations of $\delta\text{Ar}/\text{N}_2$ in normal bubbles are limited, and clearly microbubbles (or the pressure sensitive process) play a critical role for the variation of $\delta\text{Ar}/\text{N}_2$ in ice cores. The $\delta\text{Ar}/\text{N}_2$ minima in the firn ranges from -14 ‰ to -83 ‰ depending on the temperatures and accumulation rates. The most depleted $\delta\text{Ar}/\text{N}_2$ with a temperature of -30 °C and accumulation rate of 0.2 m ice yr⁻¹ in Fig. 11c capture the highly depleted observation-based estimates of $\delta\text{Ar}/\text{N}_2$ in NGRIP ice core (Fig. 8e). As the normal bubble process alone does not produce such depleted values in the firn (Fig. 11a), the observed highly-depleted $\delta\text{Ar}/\text{N}_2$ (Fig. 8e) is an evidence for the involvement of the microbubble process (or pressure sensitive process). The total $\delta\text{Ar}/\text{N}_2$ at the bubble close-off depth increases to less depleted values from the minimum owing to the rapid inclusion of the ambient air (Fig. 11c).

The calculated dependencies of the $\delta\text{Ar}/\text{N}_2$ variations on the temperature (0.24 ‰ °C⁻¹ for an accumulation rate of 0.25 m ice yr⁻¹) and accumulation rate (-0.05 ‰ (0.01 m ice yr⁻¹)⁻¹ at -30 °C) with the 2 % microbubble contribution (Table 3) is lower than that of the observed ones in GISP2 ice cores (0.72 ± 0.1 ‰ °C⁻¹ and -0.58 ± 0.09 ‰ (0.01 m ice yr⁻¹)⁻¹), respectively. Considering a possibility of larger volume contributions on the pressure sensitive process, we calculated the permeation model with microbubbles volume contributions from 0.3 % to 3 % to the total air. The 3 % microbubble contribution induces more depletion in the total $\delta\text{Ar}/\text{N}_2$ (Fig. 11d). Also, the dependencies of $\delta\text{Ar}/\text{N}_2$ on temperatures and accumulation rates linearly increase to 0.38 ‰ °C⁻¹ with an accumulation rate of 0.25 m ice yr⁻¹, and -0.11 ‰ (0.01 m ice yr⁻¹)⁻¹ with a temperature at -30 °C, respectively. The fact that they are still lower than those of the observations, indicates the involvements of larger air contents as microbubbles and/or normal bubbles influenced by the pressure sensitive process. This is plausible

1 considering the inhomogeneity of firn (Hörhold et al., 2012) and resultant differential
2 pressurization of bubbles.

3 An evidence for the larger air involvement in the pressure sensitive process is the
4 significantly positive correlation between $\delta\text{Ar}/\text{N}_2$ and air contents over the past 6000 years in
5 GISP2 (Fig. 1). This correlation indicates that the bubble air was squeezed out before close-off
6 resulting in smaller air contents when overloading pressure was higher, eventually inducing
7 higher pressure in the bubbles and so enhanced $\delta\text{Ar}/\text{N}_2$ depletions. This observation is also
8 consistent with recent findings that abrupt increases of accumulation rate at abrupt warming
9 during the last glacial period induced reductions in air contents (Eicher et al., Climate of the
10 Past, submitted, 2015). In addition, artificial sintering of snow with higher pressure has been
11 shown to contain much smaller air content than ice cores owing to the lack of time to develop
12 spherical cavities by vapour transport (B. Stauffer, pers. comm., 2015). These lines of evidence
13 indicate that higher overloading pressure at the lock-in-zone have impacts on normal as well as
14 microbubbles. The inclusion of this process in the model is beyond the scope of the current
15 paper, and we leave it for future studies.

16 We also investigated the observed lags of the $\delta\text{Ar}/\text{N}_2$ variations in GISP2 from the
17 changes in the surface temperatures and accumulation rates by 68 and 38 years, respectively
18 (Fig. 5). Presumably, the lags are introduced during the process of transferring surface
19 temperature and accumulation rate signals into overloading pressure at the bubble close-off
20 depths. Therefore, two transient simulations were conducted using a firn densification and heat
21 diffusion model (Goujon et al., 2003). First, the model was run with a constant temperature (-
22 30 °C) and accumulation rate (0.2 m ice yr⁻¹) over thousands of years to reach an equilibrium
23 state. Then, surface temperature and accumulation rate anomalies of -35 °C and 0.26 m ice yr⁻¹
24 for 20 years were introduced, separately (Fig. 12a). The surface anomalies of the temperature

and accumulation rate were set to induce similar $\delta\text{Ar}/\text{N}_2$ changes by 3.5 ‰ from the relationship obtained by the multiple linear regressions on the $\delta\text{Ar}/\text{N}_2$ of GISP2.

We found that the surface temperature anomaly takes 20 years to reach the minimum temperature at the bubble close-off depth (Fig. 12b). The cooling induces maximum firn thickening after 56 years. The accumulation rate anomaly also induces firn thickening with an 11-year lag (Fig. 12c). Overloading pressures at the bubble close-off depth reach similar maximum values with 85- and 21-year lags from the surface temperature and accumulation rate anomalies, respectively (Fig. 12d). Apparently, the surface temperature anomaly takes longer to reach the maximum increase in the overloading pressure than that of the accumulation rate anomaly, which is consistent with the observation (68 and 38 years, respectively). The accumulation rate anomaly is almost instantaneously but increasingly felt by the bubble close-off depth through overloading pressure, compared to the temperature anomaly that takes decades to reach the bubble close-off depth. In addition, we note that similar magnitudes of the overloading pressure anomalies were induced by the temperature and accumulation rate anomalies (Fig. 12d). Therefore, we conclude that the overloading pressure is the carriers of the surface temperature and accumulation rate signals, linking the $\delta\text{Ar}/\text{N}_2$ variations through the permeation.

6 Discussions

The processes responsible for the $\delta\text{Ar}/\text{N}_2$ variations should also play similar roles on the variations of $\delta\text{O}_2/\text{N}_2$ in ice cores but with larger magnitudes owing to the larger permeability of oxygen (Bender et al., 1995; Huber et al., 2006; Severinghaus and Battle, 2006; Battle et al., 2011). In earlier studies, causes of the $\delta\text{O}_2/\text{N}_2$ variation were attributed on the metamorphisms of surface snow induced by local insolation changes (Bender, 2002; Kawamura et al., 2007).

1 The altered snow properties remain until the snow reaches the bubble close-off depth and affects
2 the preferential oxygen loss (Bender, 2002). Our work demonstrates that the permeation
3 processes in the firn can be induced by changes in the surface temperature and the accumulation
4 rate through the changes in overloading pressure, indicating a possibility that the $\delta\text{O}_2/\text{N}_2$
5 variations in the orbital scale are also a result of the surface temperature and accumulation rate
6 changes. It is noted that $\delta\text{Ar}/\text{N}_2$ in GISP2 also shows a significant positive correlation ($r = 0.38$,
7 $p < 0.001$ after linear detrending) with the air content (Kobashi et al., 2008b) over the past 6000
8 years, indicating a similar link between $\delta\text{O}_2/\text{N}_2$ and air content in the orbital time scale
9 (Raynaud et al., 2007; Lipenkov et al., 2011). As the time scale we considered in this study is
10 different from the orbital scale variation, other mechanisms may play a role in controlling the
11 $\delta\text{O}_2/\text{N}_2$ variations in ice cores. However, the mechanisms discussed here must be considered in
12 future studies.

13 Although the gas permeation from ice is generally believed to be a mass independent
14 process (no effects on isotopes), there is some evidence of isotopic fractionation (Bender et al.,
15 1995; Severinghaus et al., 2003; Severinghaus and Battle, 2006; Kobashi et al.,
16 2008b; Severinghaus et al., 2009; Battle et al., 2011). In particular, poor quality ice cores often
17 exhibit isotope fractionation (e.g, $\delta^{18}\text{O}$ and $\delta^{40}\text{Ar}$) with highly depleted $\delta\text{O}_2/\text{N}_2$ or $\delta\text{Ar}/\text{N}_2$
18 (Bender et al., 1995; Severinghaus et al., 2009). This mass dependent fractionation is explained
19 by the existence of micro-cracks in poor quality ice samples that permit a relatively large air
20 flow. On the other hand, slowly occurring gas permeations through ice crystals in good quality
21 ice cores (e.g, NGRIP, GISP2, and Dome Fuji) appear to have small or non-existent effects on
22 isotopes (Kobashi et al., 2008b; Suwa and Bender, 2008b). As small mass dependent
23 fractionation of $\delta^{15}\text{N}$ and $\delta^{40}\text{Ar}$ during the gas loss are similar to the gravitational fractionation
24 (Kobashi et al., 2008b), the removal of the gravitational components also cancels the post-

1 coring isotopic fractionation. As a result, the estimated temperature gradients in the firn are
2 little affected by the gas loss (Kobashi et al., 2008b).

3 Another sign of isotopic fractionation during the gas loss is $\delta^{40}\text{Ar}$ enrichment in ice cores,
4 which produces calculated temperature gradients in the firn to be lower than expected from firn
5 modeling (Kobashi et al., 2010;Kobashi et al., 2011;Kobashi et al., 2015). The systematically
6 higher $\delta^{40}\text{Ar}$ is believed to be caused by processes during the bubble close-off, but so far no
7 clear evidence has been found in firn air studies (Huber et al., 2006;Severinghaus and Battle,
8 2006) except $\delta^{18}\text{O}$ of O_2 (Battle et al., 2011). If the enrichment of $\delta^{40}\text{Ar}$ occurs in the firn, it
9 should be correlated with $\delta\text{Ar}/\text{N}_2$. Therefore, the corrections for the $\delta^{40}\text{Ar}$ enrichment have been
10 applied using $\delta\text{Ar}/\text{N}_2$ (Kobashi et al., 2010;Kobashi et al., 2011;Kobashi et al., 2015) or $\delta\text{Kr}/\text{Ar}$
11 (Severinghaus et al., 2003)), or a constant value (Orsi, 2013;Kobashi et al., 2015). All these
12 methods of correction generate similar surface temperature histories (Kobashi et al.,
13 2010;Kobashi et al., 2015). Another possible causes for the systematic offset are related to the
14 standardizations to the atmosphere (in this case both nitrogen and argon isotopes can be
15 affected.), or methodological differences during the extraction from ice samples (Kobashi et al.,
16 2008b). In these cases, a constant shift should be a better solution.

17 Some uncertainties remain regarding the bubble air pressures for the modelling of post
18 coring fractionation. First, Lipenkov (2000) reported that bubble air pressure increases toward
19 deeper depth through the increase of ice loads, which should have induced a decrease in $\delta\text{Ar}/\text{N}_2$
20 toward deeper depth. However, the $\delta\text{Ar}/\text{N}_2$ data do not exhibit any trends with depth (Fig. 7),
21 indicating that some other processes (e.g, changes in bubble diameters, S/V , and relaxation of
22 ice after coring especially at depth deeper than 300 m (Gow and Williamson, 1975)) may have
23 cancelled the depth effect. At even deeper depths where the bubbles exist as clathrate, the
24 pressure between ice and clathrate boundaries can be estimated from the dissociation pressures

of clathrates, and it should be independent of depth (Ikeda-Fukazawa et al., 2005). In the future studies, it would be necessary to consider changes in each parameters in ice cores and investigate post-coring fractionation. Second, we identified that overloading pressure at the bubble close-off depth plays an important role in the post bubble close-off fractionation in the firn. These pressure anomalies should also remain in ice cores, and play some roles for the post coring fractionation. For example, the relationship of $\delta\text{Ar}/\text{N}_2$ with temperatures and accumulate rates in GISP2 may have overestimated by the imprints of differential post coring fractionations owing to the different bubble pressures induced by temperatures and accumulation rates at the time of the bubble close-off. Of course, the imprints of the post-coring fractionation increase if the duration of storage is longer at warmer temperatures, emphasizing the need for colder storage temperatures and the timing of measurements to recover the original signals.

For future studies on $\delta\text{Ar}/\text{N}_2$ or $\delta\text{O}_2/\text{N}_2$ in ice cores, the following suggestions should be taken into account. First, the solubility and diffusivity of argon, oxygen, and nitrogen in ice are not well constrained (Salamatin et al., 2001; Ikeda-Fukazawa et al., 2005; Bereiter et al., 2014). As precise $\delta\text{Ar}/\text{N}_2$ or $\delta\text{O}_2/\text{N}_2$ data from various ice cores are building up, the reanalyses from these cores could provide stronger constraints on the permeability. Second, although $\delta\text{Ar}/\text{N}_2$ is less susceptible to the post coring gas loss than $\delta\text{O}_2/\text{N}_2$, we have shown that ice core preservation is critical to retrieve the original $\delta\text{Ar}/\text{N}_2$ signals. To preserve original signals, ice cores need to be stored in low temperatures (ideally $< -50\text{ }^\circ\text{C}$) (Ikeda-Fukazawa et al., 2005; Bereiter et al., 2009; Landais et al., 2012), and/or to be analysed soon after the coring. Third, we also found that the use of large ice samples (600-700 g) for each analysis reduced the noise in $\delta\text{O}_2/\text{N}_2$ and $\delta\text{Ar}/\text{N}_2$ substantially (Headly, 2008), compared to the data from smaller samples in GISP2 (Suwa and Bender, 2008b). This observation emphasizes the importance of samples sizes. Fourth, observations on the bubbles in the firn and ice cores, especially on the

microbubbles (e.g., numbers, volume contributions, pressure, and gas composition) are lacking, which are critical for further advances in understanding of permeation in the firn and ice cores. Fifth, we have shown that $\delta\text{Ar}/\text{N}_2$ could be estimated from local temperatures and accumulation rates. Therefore, combined with nitrogen and argon isotopes, it may be possible to retrieve the information of past temperatures and accumulation rates from $\delta\text{Ar}/\text{N}_2$ in ice cores. Finally, the high resolution analyses (10-20 years) provided key observations for the effects of the accumulation rates and temperatures on the permeation, which warrants further similar studies along with surface temperature reconstructions.

7 Conclusions

Gas fractionation after bubble close-off in the firn is complex and associated processes are poorly understood, especially in ice cores. In this study, we investigated the gas permeation processes in the firn and ice cores using high resolution $\delta\text{Ar}/\text{N}_2$ data from GISP2, NGRIP, and Dome Fuji ice cores for the past few millennia. We found that $\delta\text{Ar}/\text{N}_2$ on the gas-age in the GISP2 ice core is significantly negatively correlated with the accumulation rate and positively with air contents over the past 6000 years. Further, the precise surface temperatures (Kobashi et al., 2011) and accumulation rates (Alley et al., 1997; Cuffey and Clow, 1997) over the past 4000 years from the GISP2 ice core have nearly equal controls on the $\delta\text{Ar}/\text{N}_2$ variations over the past 4000 years with the sensitivities of $0.72 (\text{‰ } ^\circ\text{C}^{-1})$ and $-0.58 (\text{‰ } (0.01 \text{ m ice yr}^{-1})^{-1})$. To understand the processes of the $\delta\text{Ar}/\text{N}_2$ fractionation, we applied a permeation model (Ikeda-Fukazawa et al., 2005), in which air in the bubbles leak out by steric diffusion through ice crystals, driven by the pressure gradients between the bubbles and the atmosphere. The permeation model in the firn was applied considering two processes on the bubbles, “pressure sensitive process (e.g., microbubbles)” and “normal bubble process”. Microbubbles are

believed to form near the surface. Therefore, by the time when the microbubbles reach the bubble close-off depth, they develop pressures as high as overloading ice pressure that are strongly associated with changes in the accumulation rates at surface. Several evidences indicate that the pressure sensitive process occur on a larger air fraction than that only from the microbubbles. On the other hand, the normal bubbles develop slightly higher pressures than that of the atmosphere at the bubble close-off depth such that the permeation in the firn is limited ($> -0.5 \text{ ‰}$). The model also indicates that $\delta\text{Ar}/\text{N}_2$ of the microbubbles is negatively correlated with changes in accumulation rates through increases in the overloading pressures, although it underestimates the magnitude observed in GISP2 ice core. Colder temperatures are found to induce more depletions in $\delta\text{Ar}/\text{N}_2$ through higher overloading pressure (thicker firn) and longer exposure time to the permeation, which explains a larger depletion in Dome Fuji ice core. Further understanding of the gas permeation processes in the firn may lead to a new tool to estimate the past accumulation rates and/or surface temperature.

Acknowledgements.

We appreciate G. Hargreaves at US. National Ice Core Laboratory and J.P. Steffensen at Center for Ice and Climate, S. Kipfstuhl at Alfred Wegener Institute, S. Fujita at National Institute of Polar Research for ice core information. We thank T. Uchida, and B. Vinther for discussion, and R. Spahni for help on firn modeling. This project is supported by KAKENHI 23710020, 25740007, 22221002, 21221002, and 21671001, and EU Marie Curie Fellowship for T. Kobashi. The NGRIP and Dome Fuji ice cores were analyzed at National Institute of Polar Research by T. Kobashi supported by the Senshin-project and NIPR ice core center. The GISP2 ice core was analyzed by T. Kobashi at Scripps Institution of Oceanography, supported by J. Severinghaus. The early version of the paper was written when T. Kobashi was visiting the

Centre for Ice and Climate (CIC), University of Copenhagen in spring 2015 hosted by T. Blunier and B. Vinther. Finally, we thank two anonymous reviewers, whose comments substantially improved this manuscript.

References

Ahn, J., and Brook, E. J.: Atmospheric CO₂ and climate on millennial time scales during the last glacial period, *Science*, 322, 83-85, 2008.

Ahn, J., Headly, M., Wahlen, M., Brook, E. J., Mayewski, P. A., and Taylor, K. C.: CO₂ diffusion in polar ice: observations from naturally formed CO₂ spikes in the Siple Dome (Antarctica) ice core, *J. Glaciol.*, 54, 685-695, 2008.

Alley, R. B., Shuman, C. A., Meese, D. A., Gow, A. J., Taylor, K. C., Cuffey, K. M., Fitzpatrick, J. J., Grootes, P. M., Zielinski, G. A., Ram, M., Spinelli, G., and Elder, B.: Visual-stratigraphic dating of the GISP2 ice core: Basis, reproducibility, and application, *J. Geophys. Res.-Oceans*, 102, 26367-26381, 1997.

Aydin, M., S. Montzka, M. Battle, M. Williams, W. J. De Bruyn, J. Butler, K. Verhulst, C. Tatum, B. Gun, and D. Plotkin, Post-coring entrapment of modern air in some shallow ice cores collected near the firn-ice transition: evidence from CFC-12 measurements in Antarctic firn air and ice cores, *Atmos. Chem. Phys.*, 10, 5135-5144, 2010.

Battle, M., Severinghaus, J., Sofen, E., Plotkin, D., Orsi, A., Aydin, M., Montzka, S., Sowers, T., and Tans, P.: Controls on the movement and composition of firn air at the West Antarctic Ice Sheet Divide, *Atmos. Chem. Phys.*, 11, 11007-11021, 2011.

Bendel, V., Ueltzhöffer, K. J., Freitag, J., Kipfstuhl, S., Kuhs, W. F., Garbe, C. S., and Faria, S. H.: High-resolution variations in size, number and arrangement of air bubbles in the EPICA DML (Antarctica) ice core, *J. Glaciol.*, 59, 972-980, 2013.

Bender, M., Sowers, T., and Lipenkov, V.: On the Concentrations of O₂, N₂, and Ar in Trapped Gases from Ice Cores, *J. Geophys. Res.-Atmos.*, 100, 18651-18660, 1995.

Bender, M. L.: Orbital tuning chronology for the Vostok climate record supported by trapped gas composition, *Earth Planet. Sc. Lett.*, 204, 275-289, 2002.

1 Bereiter, B., Schwander, J., Lüthi, D., and Stocker, T. F.: Change in CO₂ concentration and
2 O₂/N₂ ratio in ice cores due to molecular diffusion, *Geophys. Res. Lett.*, 36, L05703,
3 10.1029/2008GL036737, 2009.

4 Bereiter, B., Fischer, H., Schwander, J., and Stocker, T.: Diffusive equilibration of N₂, O₂ and
5 CO₂ mixing ratios in a 1.5-million-years-old ice core, *The Cryosphere*, 8, 245-256, 2014.

6 Craig, H., Horibe, Y., and Sowers, T.: Gravitational separation of gases and isotopes in polar
7 ice caps, *Science*, 242, 1675-1678, 1988.

8 Cuffey, K. M., and Clow, G. D.: Temperature, accumulation, and ice sheet elevation in central
9 Greenland through the last deglacial transition, *J. Geophys. Res.-Oceans*, 102, 26383-26396,
10 1997.

11 Dahl-Jensen, D., Gundestrup, N. S., Miller, H., Watanabe, O., Johnsen, S. J., Steffensen, J. P.,
12 Clausen, H. B., Svensson, A., and Larsen, L. B.: The NorthGRIP deep drilling programme, *Ann.*
13 *Glaciol.*, 35, 1-4, 2002.

14 Eicher, O., Baumgartner, M., Schilt, A., Schmitt, J., Schwander, J., Stocker, T. J., H. Fischer,
15 Climatic and insolation control on the high-resolution total air content in the NGRIP ice core,
16 *Clim. Past.*, submitted, 2015.

17 Enting, I. G.: On the use of smoothing splines to filter CO₂ data, *J. Geophys. Res.-Atmos.*, 92,
18 10977-10984, 1987.

19 Fujita, S., Okuyama, J., Hori, A., and Hondoh, T.: Metamorphism of stratified firn at Dome
20 Fuji, Antarctica: A mechanism for local insolation modulation of gas transport conditions
21 during bubble close off, *J. Geophys. Res.-Earth*, 114, F03023, doi:10.1029/2008JF001143,
22 2009.

23 Gkinis, V., Simonsena, S. B., Buchardta, S. L., White, J. W. C., and Vinther, B. M.: Water
24 isotope diffusion rates from the NorthGRIP ice core for the last 16,000 years – Glaciological
25 and paleoclimatic implications, *Quaternary Sci. Rev.*, 405, 132–141, 2014.

26 Goujon, C., Barnola, J. M., and Ritz, C.: Modeling the densification of polar firn including heat
27 diffusion: Application to close-off characteristics and gas isotopic fractionation for Antarctica
28 and Greenland sites, *J. Geophys. Res.-Atmos.*, 108, 4792, doi:10.1029/2002JD003319, 2003.

1 Gow, A. J., Meese, D. A., Alley, R. B., Fitzpatrick, J. J., Anandakrishnan, S., Woods, G. A.,
2 and Elder, B. C.: Physical and structural properties of the Greenland Ice Sheet Project 2 ice
3 core: A review, *J. Geophys. Res.-Oceans*, 102, 26559-26575, 1997.

4 Gow, A., and Williamson, T.: Gas inclusions in the Antarctic ice sheet and their glaciological
5 significance, *J. Geophys. Res.*, 80, 5101-5108, 1975.

6 Headly, M. A.: Krypton and xenon in air trapped in polar ice cores: paleo-atmospheric
7 measurements for estimating past mean ocean temperature and summer snowmelt frequency,
8 Ph.D., University of California, San Diego, La Jolla, 247 pp., 2008.

9 Herron, M. M., and Langway, C. C.: Firn densification: an empirical model, *J. Glaciol.*, 25,
10 373-385, 1980.

11 Hörhold, M. W., Laepple, T., Freitag, J., Bigler, M., Fischer, H., and Kipfstuhl, S.: On the
12 impact of impurities on the densification of polar firn, *Earth Planet. Sc. Lett.*, 325-326, 93-99,
13 2012.

14 Huber, C., Beyerle, U., Leuenberger, M., Schwander, J., Kipfer, R., Spahni, R., Severinghaus,
15 J. P., and Weiler, K.: Evidence for molecular size dependent gas fractionation in firn air derived
16 from noble gases, oxygen, and nitrogen measurements, *Earth Planet. Sc. Lett.*, 243, 61-73, 2006.

17 Ikeda-Fukazawa, T., Hondoh, T., Fukumura, T., Fukazawa, H., and Mae, S.: Variation in N₂/O₂
18 ratio of occluded air in Dome Fuji antarctic ice, *J. Geophys. Res.-Atmos.*, 106, 17799-17810,
19 2001.

20 Ikeda-Fukazawa, T., Kawamura, K., and Hondoh, T.: Mechanism of molecular diffusion in ice
21 crystals, *Mol. Simult.*, 30, 973-979, 2004.

22 Ikeda-Fukazawa, T., Fukumizu, K., Kawamura, K., Aoki, S., Nakazawa, T., and Hondoh, T.:
23 Effects of molecular diffusion on trapped gas composition in polar ice cores, *Earth Planet. Sc.*
24 *Lett.*, 229, 183-192, 2005.

25 Ikeda-Fukazawa, T., and Kawamura, K.: Effects of ions on dynamics of ice surface, *Chem.*
26 *Phys. Lett.*, 417, 561-565, 2006.

27 Ikeda, T., Fukazawa, H., Mae, S., Pepin, L., Duval, P., Champagnon, B., Lipenkov, V. Y., and
28 Hondoh, T.: Extreme fractionation of gases caused by formation of clathrate hydrates in Vostok
29 Antarctic ice, *Geophys. Res. Lett.*, 26, 91-94, 1999.

1 Ito, H., and Minobe, S.: Data analysis for meteorology and physical oceanography,
2 Meteorological Research Note, 233, Meteorological Society of Japan, 263 pp., 2010.

3 Kawamura, K., Severinghaus, J. P., Ishidoya, S., Sugawara, S., Hashida, G., Motoyama, H.,
4 Fujii, Y., Aoki, S., and Nakazawa, T.: Convective mixing of air in firn at four polar sites, *Earth*
5 *Planet. Sc. Lett.*, 244, 672-682, 2006.

6 Kawamura, K., Parrenin, F., Lisiecki, L., Uemura, R., Vimeux, F., Severinghaus, J. P., Hutterli,
7 M. A., Nakazawa, T., Aoki, S., and Jouzel, J.: Northern Hemisphere forcing of climatic cycles
8 in Antarctica over the past 360,000 years, *Nature*, 448, 912-916, 2007.

9 Kobashi, T., Severinghaus, J., Brook, E. J., Barnola, J. M., and Grachev, A.: Precise timing and
10 characterization of abrupt climate change 8,200 years ago from air trapped in polar ice,
11 *Quaternary Science Reviews*, 26, 1212-122, doi:10.1016/j.quascirev.2007.1001.1009, 2007.

12 Kobashi, T., Severinghaus, J. P., and Barnola, J. M.: 4 ± 1.5 °C abrupt warming 11,270 years ago
13 identified from trapped air in Greenland ice, *Earth Planet. Sc. Lett.*, 268, 397-407, 2008a.

14 Kobashi, T., Severinghaus, J. P., and Kawamura, K.: Argon and nitrogen isotopes of trapped
15 air in the GISP2 ice core during the Holocene epoch (0-11,600 B.P.): Methodology and
16 implications for gas loss processes, *Geochim. Cosmochim. Ac.*, 72, 4675-4686, 2008b.

17 Kobashi, T., Severinghaus, J. P., Barnola, J. M., Kawamura, K., Carter, T., and Nakaegawa, T.:
18 Persistent multi-decadal Greenland temperature fluctuation through the last millennium,
19 *Climatic Change*, 100, 733-756, 2010.

20 Kobashi, T., Kawamura, K., Severinghaus, J. P., Barnola, J.-M., Nakaegawa, T., Vinther, B.
21 M., Johnsen, S. J., and Box, J. E.: High variability of Greenland surface temperature over the
22 past 4000 years estimated from trapped air in an ice core, *Geophys. Res. Lett.*, 38,
23 doi:10.1029/2011GL049444, 2011.

24 Kobashi, T., Shindell, D. T., Kadera, K., Box, J. E., Nakaegawa, T., and Kawamura, K.: On the
25 origin of Greenland temperature anomalies over the past 800 years, *Clim. Past*, 9, 583-596,
26 2013.

27 Kobashi, T., J. Box, B. Vinther, K. Goto - Azuma, T. Blunier, J. White, T. Nakaegawa, and C.
28 Andresen, Modern solar maximum forced late twentieth century Greenland cooling, *Geophys.*
29 *Res. Lett.*, 42, 5992-5999, 2015.

1 Landais, A., Dreyfus, G., Capron, E., Pol, K., Loutre, M., Raynaud, D., Lipenkov, V. Y.,
2 Arnaud, L., Masson-Delmotte, V., and Paillard, D.: Towards orbital dating of the EPICA Dome
3 C ice core using $\delta\text{O}_2/\text{N}_2$, *Clim. Past*, 8, 191-203, 2012.

4 Lipenkov, V. Y.: Air bubbles and air-hydrate crystals in the Vostok ice core, *Physics of Ice*
5 *Core Records*, 327-358, 2000.

6 Lipenkov, V. Y., Raynaud, D., Loutre, M., and Duval, P.: On the potential of coupling air
7 content and O_2/N_2 from trapped air for establishing an ice core chronology tuned on local
8 insolation, *Quaternary Sci. Rev.*, 30, 3280-3289, 2011.

9 Lomonaco, R., Albert, M., and Baker, I.: Microstructural evolution of fine-grained layers
10 through the firn column at Summit, Greenland, *J. Glaciol.*, 57, 755-762, 2011.

11 Matzl, M., and Schneebeli, M.: Measuring specific surface area of snow by near-infrared
12 photography, *J. Glaciol.*, 52, 558-564, 2006.

13 Mitchell, L. E., Buizert, C., Brook, E. J., Breton, D. J., Fegyveresi, J., Baggenstos, D., Orsi, A.,
14 Severinghaus, J., Alley, R. B., Albert, M., Rhodes, R. H., McConnell, J. R., Sigl, M., Maselli,
15 O., Gregory, S., and Ahn, J.: Observing and modeling the influence of layering on bubble
16 trapping in polar firn, *J. Geophys. Res.-Atmos.*, 120, 2558–2574, 10.1002/2014JD022766,
17 2015.

18 Orsi, A. J.: Temperature reconstruction at the West Antarctic Ice Sheet Divide, for the last
19 millennium from the combination of borehole temperature and inert gas isotope measurements,
20 Ph.D. Thesis, University of California, San Diego, La Jolla, CA, 243 pp., 2013.

21 Petit, J. R., Jouzel, J., Raynaud, D., Barkov, N., Barnola, J., Basile, I., Bender, M., Chappellaz,
22 J., Davis, M., and Delaygue, G.: Climate and atmospheric history of the past 420,000 years
23 from the Vostok ice core, Antarctica, *Nature*, 399, 429-436, 1999.

24 Raynaud, D., Lipenkov, V., Lemieux-Dudon, B., Duval, P., Loutre, M. F., and Lhomme, N.:
25 The local insolation signature of air content in Antarctic ice. A new step toward an absolute
26 dating of ice records, *Earth Planet. Sc. Lett.*, 261, 337-349, 2007.

27 Salamatin, A. N., Lipenkov, V. Y., Ikeda-Fukazawa, T., and Hondoh, T.: Kinetics of air-
28 hydrate nucleation in polar ice sheets, *J. Cryst. Growth*, 223, 285-305, 2001.

29 Schwander, J.: The transformation of snow to ice and the occlusion of gases, in: *Glaciers and*
30 *Ice Sheets*, edited by: Oeschger, H., C. C. Langway Jr., John Wiley, New York, 53-67, 1989.

1 Schwander, J., Barnola, J. M., Andrie, C., Leuenberger, M., Ludin, A., Raynaud, D., and
2 Stauffer, B.: The age of the air in the firn and the ice at Summit, Greenland, *J. Geophys. Res.-*
3 *Atmos.*, 98, 2831-2838, 1993.

4 Schwander, J., Sowers, T., Barnola, J. M., Blunier, T., Fuchs, A., and Malaize, B.: Age scale of
5 the air in the summit ice: Implication for glacial-interglacial temperature change, *J. Geophys.*
6 *Res.-Atmos.*, 102, 19483-19493, 1997.

7 Seierstad, I. K., Abbott, P. M., Bigler, M., Blunier, T., Bourne, A. J., Brook, E., Buchardt, S.
8 L., Buizert, C., Clausen, H. B., Cook, E., Dahl-Jensen, D., Davies, S. M., Guillevic, M., Johnsen,
9 S. J., Pedersen, D. S., Popp, T. J., Rasmussen, S. O., Severinghaus, J., Svensson, A., and Vinther,
10 B. M.: Consistently dated records from the Greenland GRIP, GISP2 and NGRIP ice cores for
11 the past 104 ka reveal regional millennial-scale $\delta^{18}\text{O}$ gradients with possible Heinrich event
12 imprint, *Quaternary Sci. Rev.*, 106, 29-16, 10.1016/j.quascirev.2014.10.032, 2014.

13 Severinghaus, J. P., Sowers, T., Brook, E. J., Alley, R. B., and Bender, M. L.: Timing of abrupt
14 climate change at the end of the Younger Dryas interval from thermally fractionated gases in
15 polar ice, *Nature*, 391, 141-146, 1998.

16 Severinghaus, J. P., Grachev, A., Luz, B., and Caillon, N.: A method for precise measurement
17 of argon 40/36 and krypton/argon ratios in trapped air in polar ice with applications to past firn
18 thickness and abrupt climate change in Greenland and at Siple Dome, Antarctica, *Geochim.*
19 *Cosmochim. Ac.*, 67, 325-343, 2003.

20 Severinghaus, J. P., and Battle, M. O.: Fractionation of gases in polar ice during bubble close-
21 off: New constraints from firn air Ne, Kr and Xe observations, *Earth Planet. Sc. Lett.*, 244, 474-
22 500, 2006.

23 Severinghaus, J. P., Beaudette, R., Headly, M., Taylor, K., and Brook, E.: Oxygen-18 of O_2
24 records the impact of abrupt climate change on the terrestrial biosphere, *Science*, 324, 1431-
25 1434, 2009.

26 Spahni, R., Schwander, J., Fluckiger, J., Stauffer, B., Chappellaz, J., and Raynaud, D.: The
27 attenuation of fast atmospheric CH_4 variations recorded in polar ice cores, *Geophys. Res. Lett.*,
28 30, doi:10.1029/2003GL017093, 2003.

29 Spahni, R., Chappellaz, J., Stocker, T. F., Loulergue, L., Hausammann, G., Kawamura, K.,
30 Fluckiger, J., Schwander, J., Raynaud, D., Masson-Delmotte, V., and Jouzel, J.: Atmospheric

1 methane and nitrous oxide of the late Pleistocene from Antarctic ice cores, *Science*, 310, 1317-
2 1321, 2005.

3 Stuiver, M., Grootes, P. M., and Braziunas, T. F.: The GISP2 delta O-18 climate record of the
4 past 16,500 years and the role of the sun, ocean, and volcanoes, *Quaternary Res.*, 44, 341-354,
5 1995.

6 Suwa, M., and Bender, M. L.: Chronology of the Vostok ice core constrained by O₂/N₂ ratios
7 of occluded air, and its implication for the Vostok climate records, *Quaternary Sci. Rev.*, 27,
8 1093-1106, 2008a.

9 Suwa, M., and Bender, M. L.: O₂/N₂ ratios of occluded air in the GISP2 ice core, *J. Geophys.*
10 *Res.-Atmos.*, 113, D11119, 10.1029/2007JD009589, 2008b.

11 Ueltzhöffer, K. J., Bendel, V., Freitag, J., Kipfstuhl, S., Wagenbach, D., Faria, S. H., and Garbe,
12 C. S.: Distribution of air bubbles in the EDML and EDC (Antarctica) ice cores, using a new
13 method of automatic image analysis, *J. Glaciol.*, 56, 339-348, 2010.

14 Vinther, B. M., Clausen, H. B., Johnsen, S. J., Rasmussen, S. O., Andersen, K. K., Buchardt, S.
15 L., Dahl - Jensen, D., Seierstad, I. K., Siggaard - Andersen, M. L., and Steffensen, J. P.: A
16 synchronized dating of three Greenland ice cores throughout the Holocene, *J. Geophys. Res.-*
17 *Atmos.*, 111, 10.1029/2005JD006921, 2006.

18 Vinther, B. M., Buchardt, S. L., Clausen, H. B., Dahl-Jensen, D., Johnsen, S. J., Fisher, D. A.,
19 Koerner, R. M., Raynaud, D., Lipenkov, V., Andersen, K. K., Blunier, T., Rasmussen, S. O.,
20 Steffensen, J. P., and Svensson, A. M.: Holocene thinning of the Greenland ice sheet, *Nature*,
21 461, 385-388, 2009.

22 Von Storch, H., Zorita, E., Jones, J. M., Dimitriev, Y., González-Rouco, F., and Tett, S. F.:
23 Reconstructing past climate from noisy data, *Science*, 306, 679-682, 2004.

24 Watanabe, O., Kamiyama, K., Motoyama, H., Fujii, Y., Igarashi, M., Furukawa, T., Goto-
25 Azuma, K., Saito, T., Kanamori, S., Kanamori, N., Yoshida, N., and Uemura, R.: General
26 tendencies of stable isotopes and major chemical constituents of the Dome Fuji deep ice core,
27 *Mem. Natl. Inst. Polar Res., Spec. Issue*, 57, 1-24, 2003.

28 White, J. W. C., Barlow, L. K., Fisher, D., Grootes, P., Jouzel, J., Johnsen, S. J., Stuiver, M.,
29 and Clausen, H.: The climate signal in the stable isotopes of snow from Summit, Greenland:

- 1 Results of comparisons with modern climate observations, J. Geophys. Res.-Oceans, 102,
- 2 26425-26439, 1997.
- 3
- 4

Tables

Table 1. Environmental parameters for GISP2, NGRIP and Dome Fuji. Temperatures for GISP2 and NGRIP are averages over the past 2100 years (Kobashi et al., 2015). Accumulation rates (Alley et al., 1997; Cuffey and Clow, 1997; Gkinis et al., 2014) for GISP2 and NGRIP are averages for the past 2100 years, and accumulation rate variations are calculated as standard deviations of accumulation rates in 21-year RMs. Annual average temperature and accumulation rate for Dome Fuji are from Watanabe et al. (2003).

	Latitude	Longitude	Altitude m a.s.l.	Average temperature (°C)	Accumulation rate (m ice/yr)	Accumulation rate variation (m ice/yr)
GISP2	72.59 °N	38.46 °W	3203	-31.0	0.24	0.013
NGRIP	75.1 °N	42.32 °W	3230	-31.5	0.19	0.008
Dome Fuji	77.32 °S	39.67 °E	3810	-54.3	0.03	N/A

1 Table 2.1 Estimated post-coring fractionation on $\delta\text{Ar}/\text{N}_2$. The original values are averages over
2 the past 2100 years for GISP2 and Dome Fuji. NGRIP shallow and deep are averages of the
3 corresponding depths defined in the text.

	Period 1		Period 2		$\delta\text{Ar}/\text{N}_2$ (‰)		
	Duration (years)	Temp. (°C)	Duration (years)	Temp. (°C)	Est. post- coring depletion	Observation in ice cores	Est. Average values before coring
GISP2	2	-29	12	-36	1.5 ± 0.6	-3.9 ± 0.2	-2.4 ± 0.6
NGRIP	12	-24	2	-30	3.0 ± 1.2	-6.3 ± 0.1	-3.3 ± 1.2
shallow							
NGRIP	14	-30	-	-	2.5 ± 1.0	-5.9 ± 0.2	-3.4 ± 1.0
deep							
Dome	0.2	-25	18	-50	1.5 ± 0.7	-7.8 ± 0.3	-6.3 ± 0.8
Fuji							

4
5 Table 2.2 $k_{\text{N}_2}X_{\text{N}_2}$ and $k_{\text{Ar}}X_{\text{Ar}}$ ($\text{m}\cdot\text{s}^{-1}\cdot\text{mol}\cdot\text{mol}_{\text{ice}}^{-1}\cdot\text{MPa}^{-1}$) in various temperatures. See also Figure
6 2.

	-24 °C	-25 °C	-29 °C	-30 °C	-36 °C	-50 °C
$k_{\text{N}_2}X_{\text{N}_2}$	7.54×10^{-18}	7.33×10^{-18}	6.54×10^{-18}	6.36×10^{-18}	5.31×10^{-18}	3.37×10^{-18}
$k_{\text{Ar}}X_{\text{Ar}}$	2.78×10^{-17}	2.69×10^{-17}	2.34×10^{-17}	2.26×10^{-17}	1.82×10^{-17}	1.05×10^{-17}
(Ar I)						
$k_{\text{Ar}}X_{\text{Ar}}$	2.27×10^{-17}	2.19×10^{-17}	1.91×10^{-17}	1.84×10^{-17}	1.49×10^{-17}	8.71×10^{-18}
(Ar II)						

Table 3. Modelled and observed $\delta\text{Ar}/\text{N}_2$ in various conditions with microbubble contribution of 2 %. In the first left column, T: indicates temperature ($^{\circ}\text{C}$) and A: indicates accumulation rate (m ice/year). Duration is the time, for which bubbles experience from the depth of 20 % bubble-closure to the depth of complete bubble close-off. Average pressure is the average overloading pressure between the depths of the 20 % bubble-closure and complete bubble close-off. The average depth is the middle depth between the 20 % bubble-closure and complete bubble close-off. Depth width is the depth range from 20 % to 100 % bubble closed. Microbubbles, normal bubbles, and total $\delta\text{Ar}/\text{N}_2$ are the values after all the bubbles are closed (i.e., in ice cores). Observed $\delta\text{Ar}/\text{N}_2$ is the values corrected for the post-coring fractionation in Table 2.

	Surface condition.			Model						11 Observed
	Temp. ($^{\circ}\text{C}$)	Accm. (m ice/yr.)	Duration (yr.)	Ave. press. (MPa)	Avg. depth (m)	Depth width (m)	Micro- Bubb. $\delta\text{Ar}/\text{N}_2$ (‰)	Normal - Bubb. $\delta\text{Ar}/\text{N}_2$ (‰)	Total $\delta\text{Ar}/\text{N}_2$ (‰)	$\delta\text{Ar}/\text{N}_2$ (‰)
GISP2	-31	0.24	31	0.54	72.8	8.7	-133.2	-0.31	-2.74	-2.4 ± 0.6
NGRIP	-31.5	0.19	36	0.50	68.0	8.3	-120.8	-0.34	-2.56	-3.3 ± 1.2
Dome Fuji	-54.3	0.03	274	0.62	89.6	10.3	-599.8	-0.43	-6.43	-6.3 ± 0.8
T: -25 A: 0.2	-25	0.2	27	0.42	54.4	6.5	-41.8	-0.33	-1.13	—
T: -25 A: 0.25	-25	0.25	23	0.45	59.1	6.9	-60.6	-0.30	-1.45	—
T: -25 A: 0.3	-25	0.3	21	0.48	63.4	7.5	-74.4	-0.28	-1.68	—
T: -30 A: 0.2	-30	0.2	33	0.49	65.4	8.0	-103.3	-0.33	-2.25	—
T: -30 A: 0.25	-30	0.25	29	0.53	71.3	8.8	-121.7	-0.30	-2.54	—
T: -30 A: 0.3	-30	0.3	27	0.56	76.6	9.8	-135.4	-0.27	-2.75	—
T: -35 A: 0.2	-35	0.2	40	0.58	79.5	9.8	-184.2	-0.33	-3.58	—
T: -35 A: 0.25	-35	0.25	36	0.63	86.9	10.9	-203.0	-0.30	-3.83	—
T: -35 A: 0.3	-35	0.3	34	0.67	93.5	12.4	-216.6	-0.27	-4.01	—

Figure Captions

Figure 1. $\delta\text{Ar}/\text{N}_2$ vs. accumulation rates or air contents in GISP2 over the past 6000 years. Note that $\delta\text{Ar}/\text{N}_2$ is corrected values for the post coring fractionation (1.5‰ added). A spline with a 21-year cut off period (blue line) was applied to the $\delta\text{Ar}/\text{N}_2$ data. Two σ error bounds are shown, which were estimated by 1000 times of Monte Carlo simulation. Accumulation rates (m ice yr^{-1}) (black line) were filtered by 21-year RMs. Note that the y-axis for the accumulation rate is reversed. $\delta\text{Ar}/\text{N}_2$ vs. accumulation rates are significantly negatively correlated over the past 6000 years ($r = -0.35$, $p = 0.03$). $\delta\text{Ar}/\text{N}_2$ and air contents are significantly positively correlated over the past 6000 years ($r = 0.38$, $p < 0.001$ after linear detrending). A slight shift of the air contents around 3700 B.P. is probably due to the analytical changes that occurred between two different periods of measurements (Kobashi et al., 2008b). The correlations between $\delta\text{Ar}/\text{N}_2$ and air contents before and after 3700 B.P. are similar and significant ($r = 0.30$, $p = 0.002$ and $r = 0.26$, $p = 0.008$, respectively). Therefore, the $\delta\text{Ar}/\text{N}_2$ variation can explain 7 to 14 % of the total variance of the air contents.

Figure 2. $k_m \cdot X_m$ for oxygen, argon, and nitrogen for different temperatures. Ar (I) and Ar (II) were calculated from Eqs. (4) - (5) and (6), respectively (see text).

Figure 3. Comparison of $\delta\text{Ar}/\text{N}_2$ for shallow GISP2 cores (124- 214 m) measured in different periods. Colour data points (yellow triangles, orange squares, and grey diamonds) are individual data from Bender et al. (1995), and black data points with error bounds are from Kobashi et al. (2008b). We did not use shallower data of Bender et al. (1995) as they exhibit depletions similar to our shallow NGIRP data (Fig. 8), and also an anomalous value (-16.91 ‰ at 145.4m) in the

Bender dataset was excluded. Squares, diamonds, and triangles represent the data measured after one week, three months, and seven months of coring, respectively (Bender et al., 1995). The average difference between the Kobashi and Bender datasets is -1.51 ± 0.58 ‰, which we interpret as the post coring fractionation for GISP2.

f

Figure 4. $\delta^{15}\text{N}$, $\delta^{40}\text{Ar}/4$, and $\delta\text{Ar}/\text{N}_2$ from GISP2 ice core over the Holocene (Kobashi et al., 2008b). The grey arrow indicates the brittle zone (Gow et al., 1997).

Figure 5. Observed, modeled $\delta\text{Ar}/\text{N}_2$, surface temperatures, and accumulation rates from GISP2 ice core over the past 4000 years. Note that the observed $\delta\text{Ar}/\text{N}_2$ is corrected for the post coring fractionation (1.5‰ added). (a) $\delta\text{Ar}/\text{N}_2$ and surface temperatures (Kobashi et al., 2011). Ages of the temperatures were adjusted for the lag (68 years). (b) $\delta\text{Ar}/\text{N}_2$ and accumulation rates in 21-year RMs (Alley et al., 1997; Cuffey and Clow, 1997). Ages of the accumulation rates were adjusted for the lag (38 years) (c) Observed and modeled $\delta\text{Ar}/\text{N}_2$ from multiple linear regression (see text). (d) Observed and modeled $\delta\text{Ar}/\text{N}_2$ of multiple linear regression using $\delta^{18}\text{O}_{\text{ice}}$ as a temperature proxy (see text).

Figure 6. Observed and modeled $\delta\text{Ar}/\text{N}_2$ over the Holocene, and decomposition of $\delta\text{Ar}/\text{N}_2$ into the effects of accumulation rates and temperatures. Note that the observed $\delta\text{Ar}/\text{N}_2$ is corrected values for the post coring fractionation (1.5‰ added). (a) Observed and modelled $\delta\text{Ar}/\text{N}_2$. (b) Decomposition of $\delta\text{Ar}/\text{N}_2$ into the effects of temperatures and accumulation rates using multiple linear regression (see text).

Figure 7. Surface temperatures, accumulation rates, $\delta^{15}\text{N}$, $\delta\text{Ar}/\text{N}_2$ for GISP2, NGRIP, and Dome Fuji over the past 2100 years. (a) Surface temperatures for GISP2 (black) and NGRIP (blue) (Kobashi et al., 2015). (b) Accumulation rates in 21-year RMs for GISP2 (black: Alley et al., 1997; Cuffey and Clow, 1997) and NGRIP (blue: Gkinis et al., 2014). (c) Raw $\delta^{15}\text{N}$ and spline for NGRIP and GISP2 (Kobashi et al., 2010, 2015). (d-f) $\delta\text{Ar}/\text{N}_2$ and the values corrected for the post-coring fractionation for GISP2, NGRIP, and Dome Fuji. Blue and black lines are the raw and corrected values for the post coring fractionations, respectively. A red point with error bounds (2σ) indicates estimated $\delta\text{Ar}/\text{N}_2$ for Dome Fuji using Eq. (7).

Figure 8. $\delta^{15}\text{N}$, $\delta^{40}\text{Ar}/4$, and $\delta\text{Ar}/\text{N}_2$ in the NGRIP ice core from shallower depths (60-100 m). (a) $\delta^{15}\text{N}$, (b) $\delta^{40}\text{Ar}/4$, (c) $\delta\text{Ar}/\text{N}_2$, (d) estimated original air fractions, (e) estimated original $\delta\text{Ar}/\text{N}_2$. The estimated original air fractions relative to the value at 75.6 m was calculated with a mass balance calculation, assuming that $\delta^{15}\text{N}$ in the lock-in zone is constant with the value of 0.289 ‰ at 75.6 m and $\delta^{15}\text{N}$ of the ambient air is 0.0 ‰. From the calculated original air fraction, the original $\delta\text{Ar}/\text{N}_2$ were estimated again by the mass balance calculation, assuming that the ambient $\delta\text{Ar}/\text{N}_2$ is 0.0 ‰. Green shaded area indicates the lock-in zone. Black dotted lines in $\delta^{15}\text{N}$, $\delta^{40}\text{Ar}$, and estimated original air fraction are the values at 75.6 m (red dotted line).

Figure 9. Simulated $\delta\text{Ar}/\text{N}_2$ vs. depth relationship in the microbubbles with a temperature of -31 °C, accumulation rate of 0.24 m ice yr⁻¹, and microbubble contribution of 2 %. (a) Density and closed porosity (s_c). (b) $\delta\text{Ar}/\text{N}_2$ and $\delta\text{O}_2/\text{N}_2$. (c) Air content and air pressure in the microbubbles. (d) Nitrogen and argon concentrations.

Figure 10. Traces of simulated $\delta\text{Ar}/\text{N}_2$ changes for each annual layer for the normal bubbles. The model calculates bubble generation for each annual layer, gas permeation into open air, and finally trapping into ice (see text). The model is calculated assuming an equilibrium state with a temperature of $-31\text{ }^\circ\text{C}$ and accumulation rate of $0.24\text{ m ice yr}^{-1}$, and microbubble contribution of 2 % (same as for Fig. 9). (a) Changes in the volumes of the normal bubbles for each annual layer induced by density changes with depth. (b) Nitrogen concentrations as in (a). (c) Argon concentrations as in (a). (d) $\delta\text{Ar}/\text{N}_2$ as in (a). (e) Air contents with depth, $\delta\text{Ar}/\text{N}_2$, and $C(l)$ for the bulk normal bubbles (sum of the values in annual layers for each depth) for the normal bubbles. Different colours (a to d) indicate values for each annual layer, showing how the bubbles that generated in different annual layers evolve with time.

Figure 11. The simulated $\delta\text{Ar}/\text{N}_2$ fractionation with depth in the firn for the normal and microbubbles with different temperatures and accumulation rates. Microbubble contribution was set to 2 % except the panel (d). See also Table 3. (a) $\delta\text{Ar}/\text{N}_2$ changes in the normal bubbles. (b) $\delta\text{Ar}/\text{N}_2$ changes in the microbubbles. (c) Total $\delta\text{Ar}/\text{N}_2$ changes (changes in the sum of the micro- and normal bubbles). (d) Total $\delta\text{Ar}/\text{N}_2$ changes as in (c), but with different microbubble contributions (0.3 to 3 %) with a temperature of $-30\text{ }^\circ\text{C}$ and accumulation rate of $0.25\text{ m ice yr}^{-1}$.

Figure 12. Two model experiments for the effects of surface temperatures and accumulation rates on the overloading pressure at the bubble close-off depth. (a) Input data for the accumulation rate (0.2 m ice yr^{-1}) and surface temperature ($-30\text{ }^\circ\text{C}$) with 20-year anomalies ($+0.06\text{ m yr}^{-1}$ and $-5\text{ }^\circ\text{C}$) for the year 1000-981 B.P., respectively. When one input was used for an experiment, the other was set constant. Zero in the panel (a) indicates the central year (model

1 year 990 B.P.) of the anomalies. (b) Temperatures at the bubble close-off depth. (c) Firn
2 thickness. (d) Overloading pressures at the bubble close-off depth. The orange line is the
3 accumulation rate experiment, and the blue line is the temperature experiment. Numbers on
4 peaks in (b)-(d) are lags in years from the central year of the initial anomalies in the panel (a).

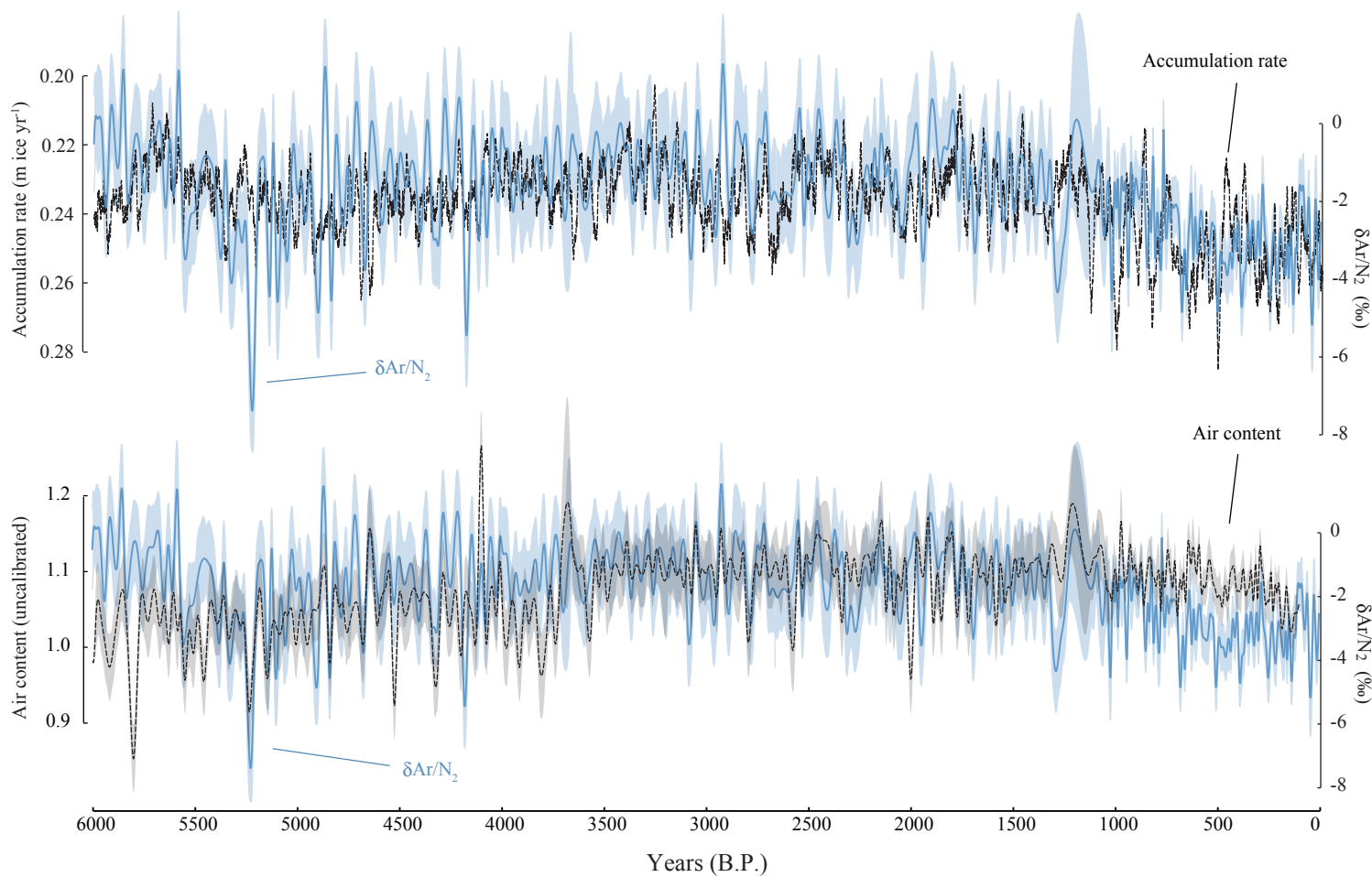


Figure 1.

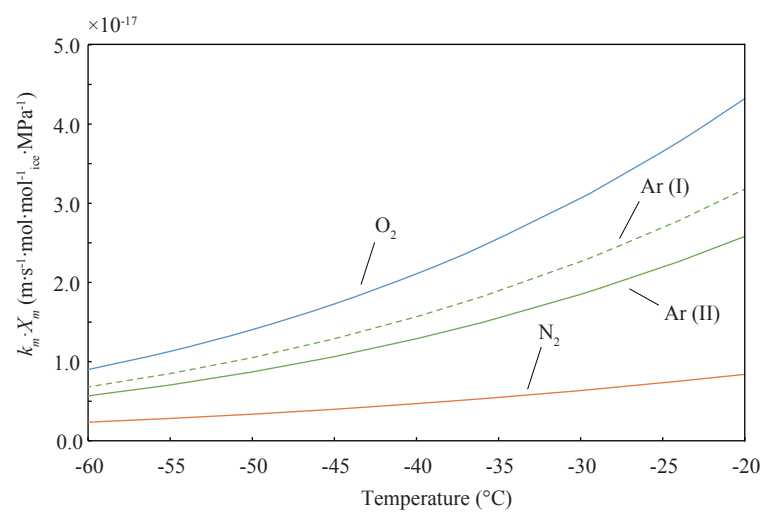


Figure 2.

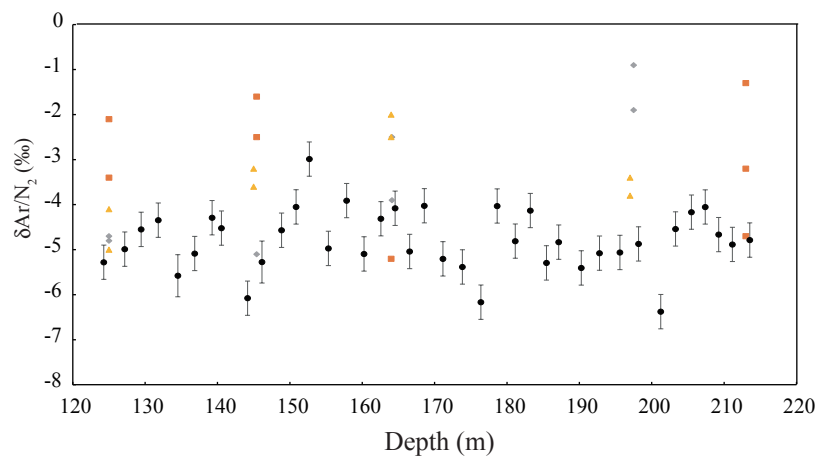


Figure 3.

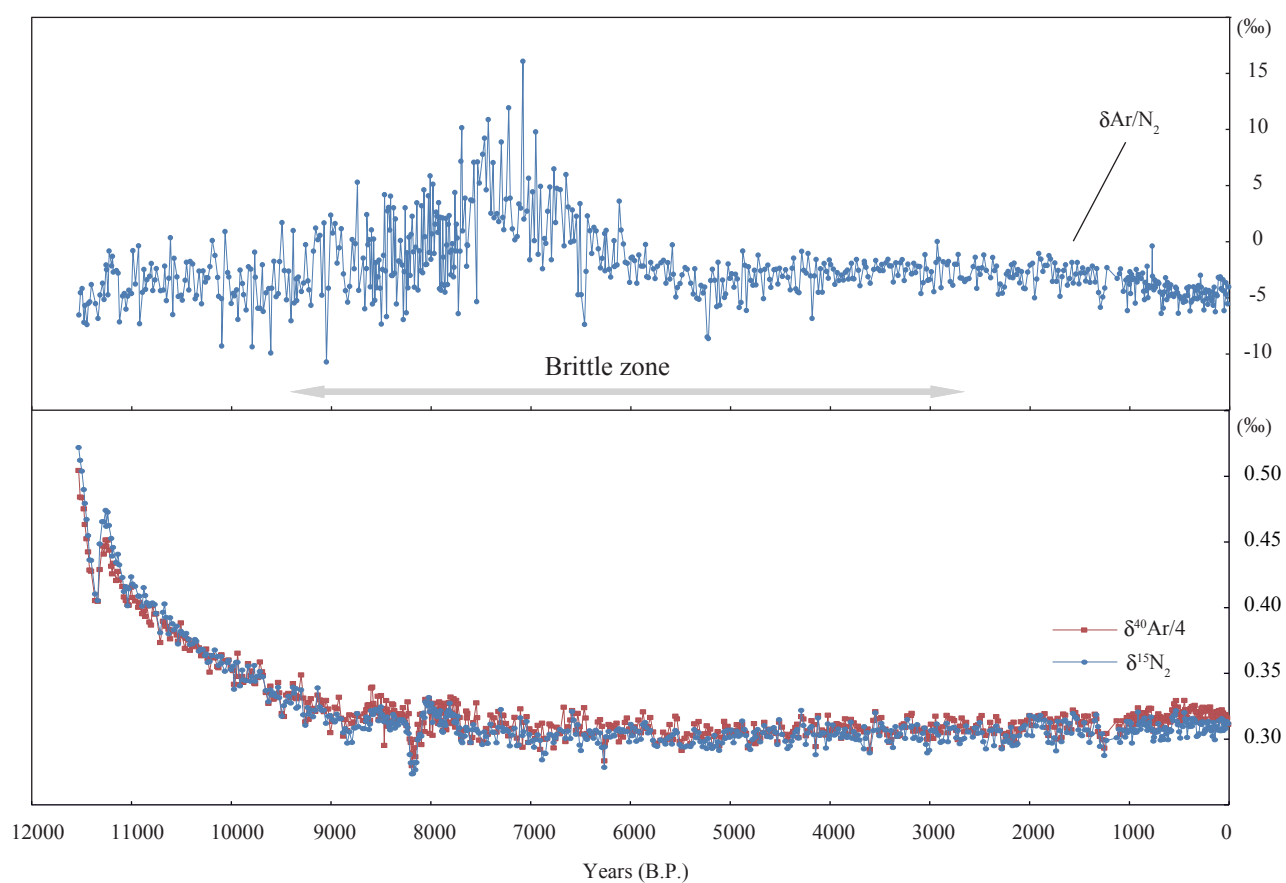


Figure 4.

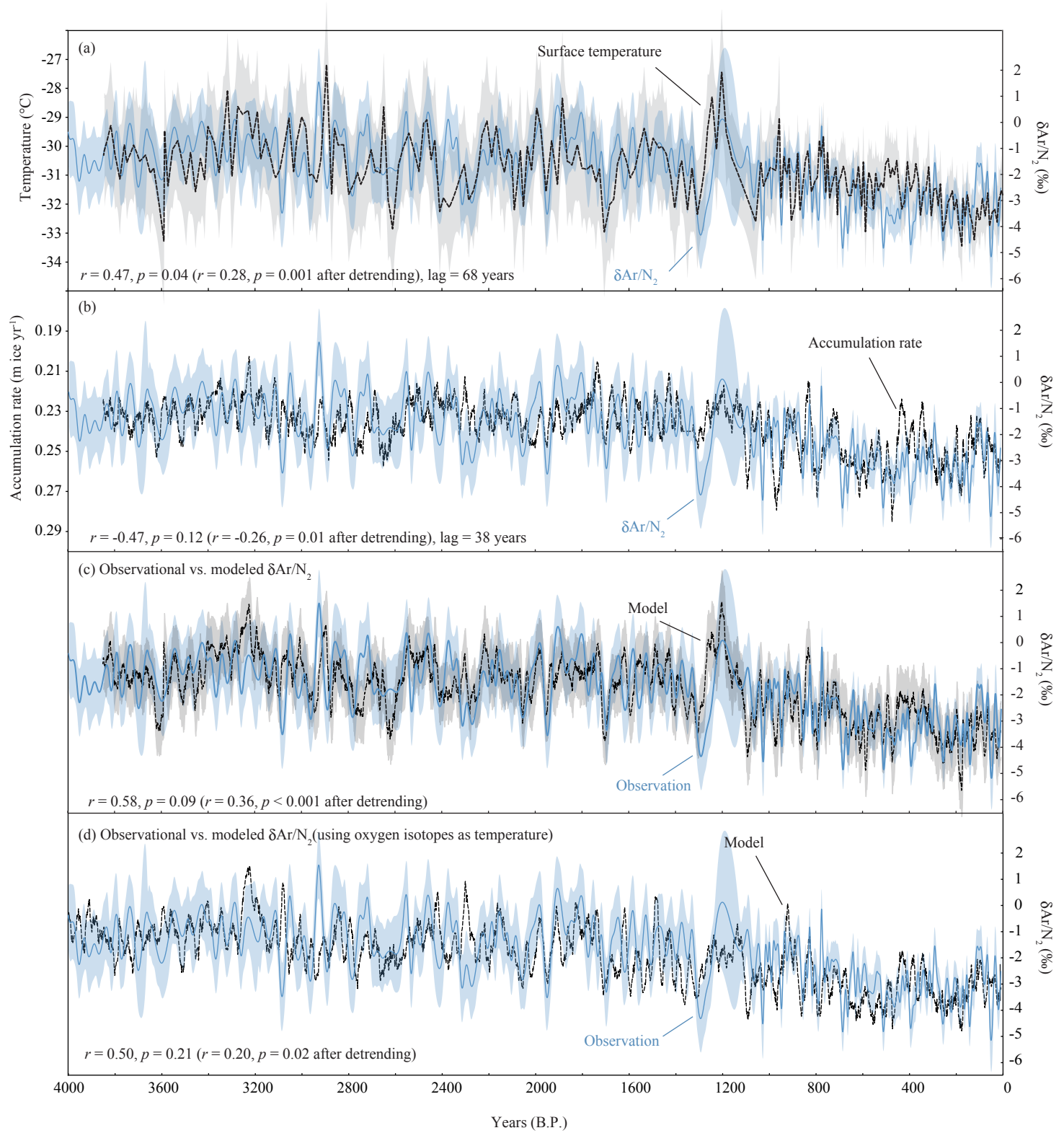


Figure 5.

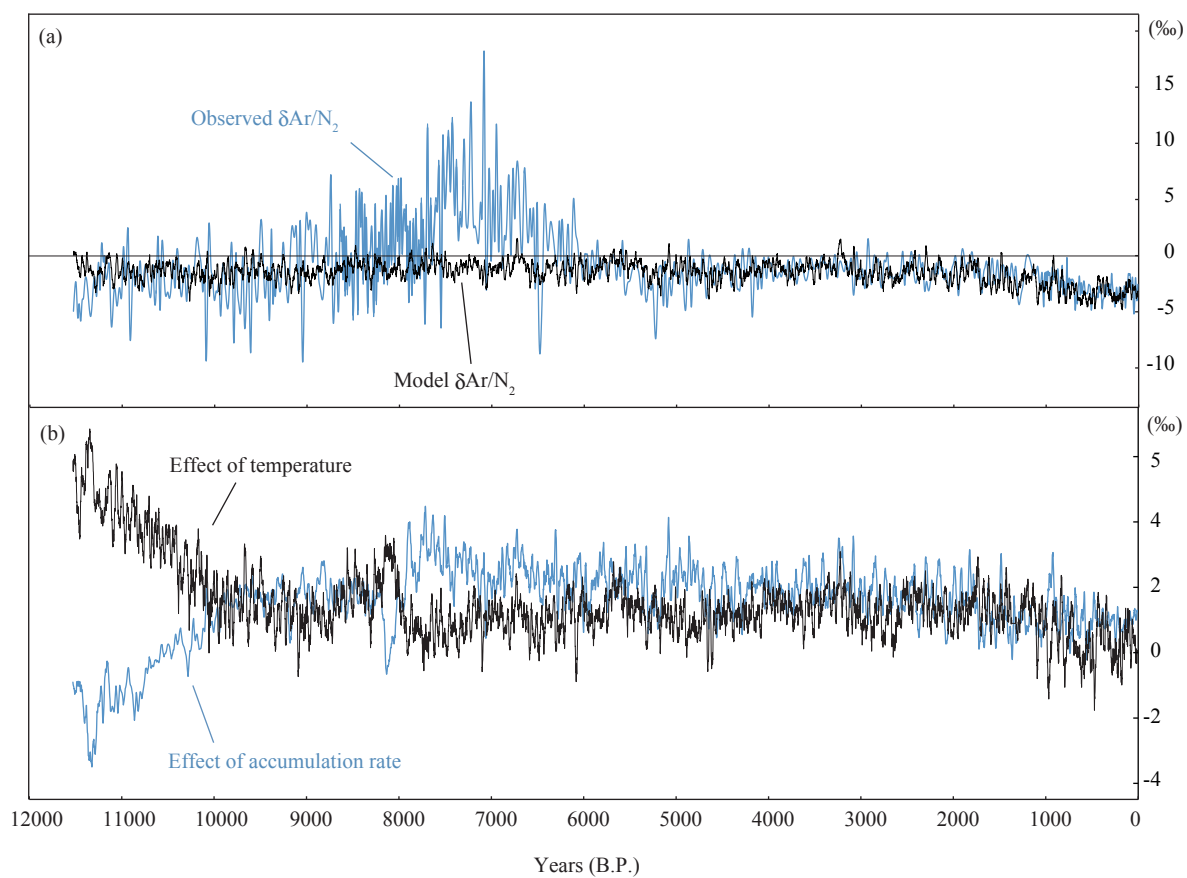


Figure 6.

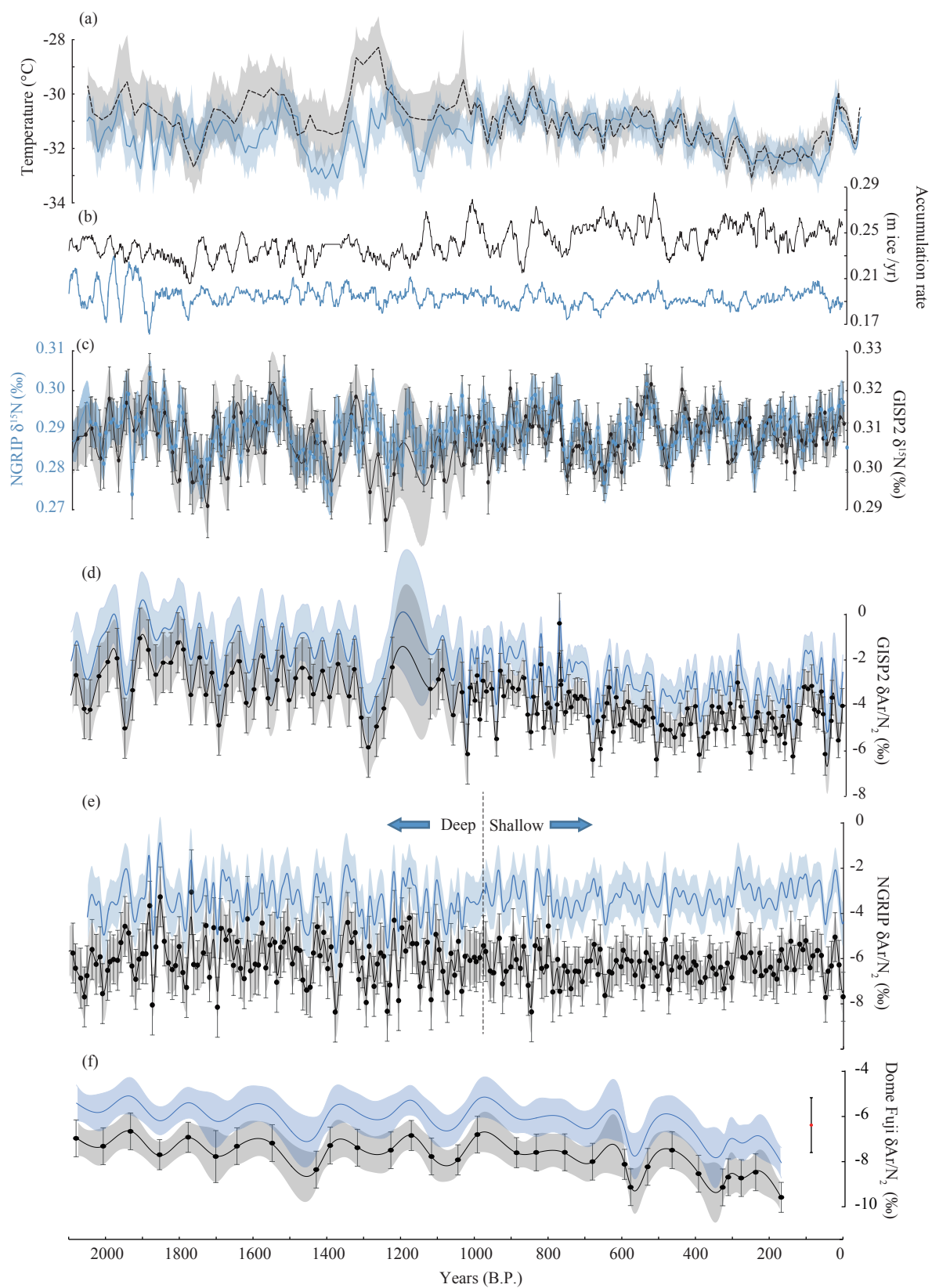


Figure 7.

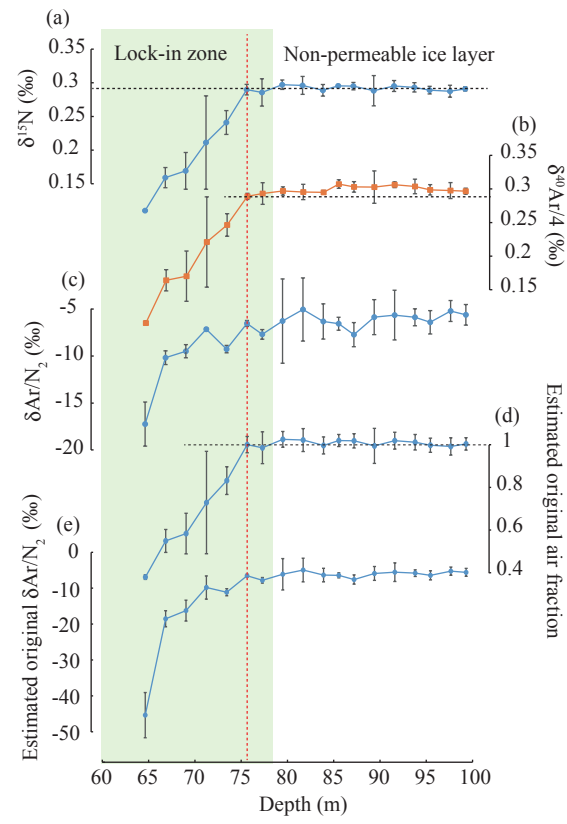


Figure 8.

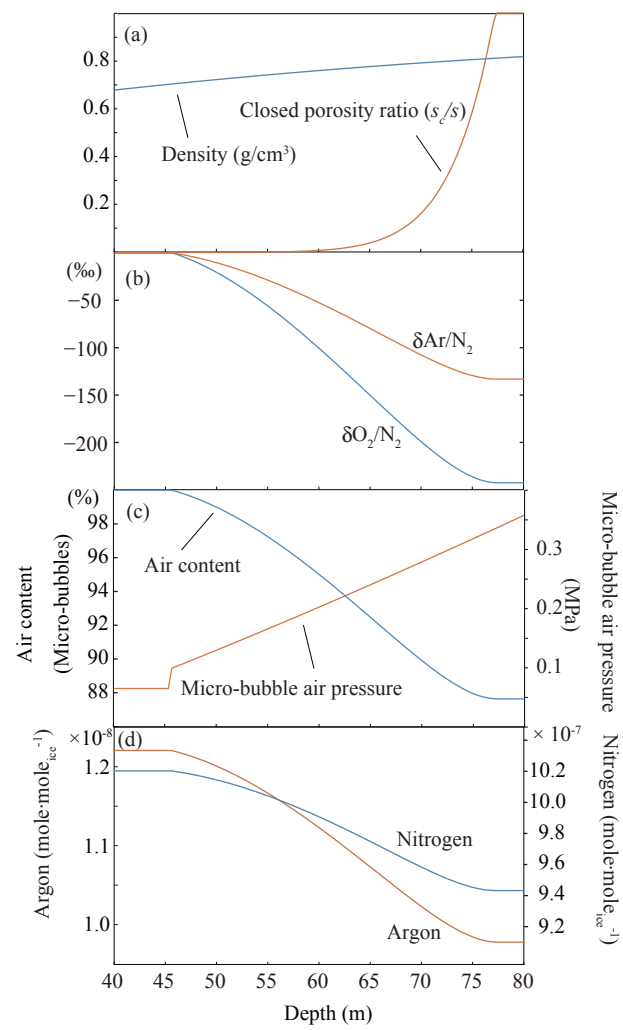


Figure 9.

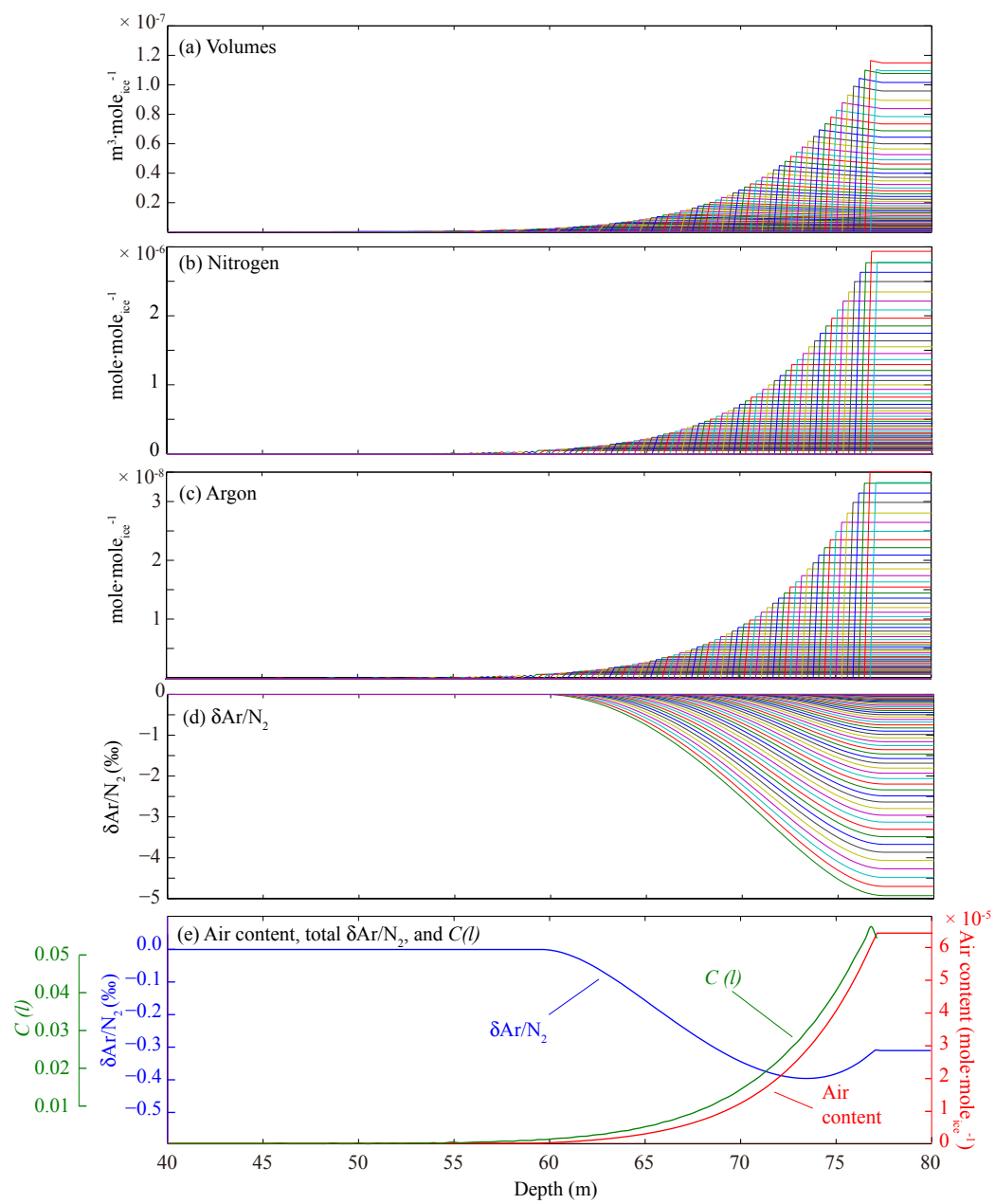


Figure 10.

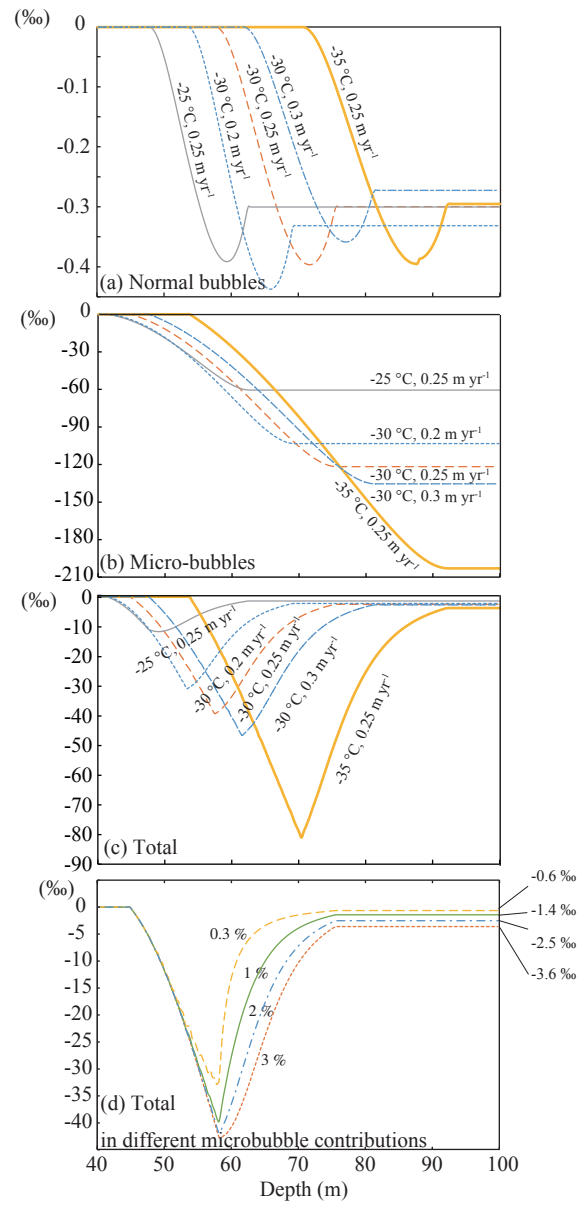


Figure 11.

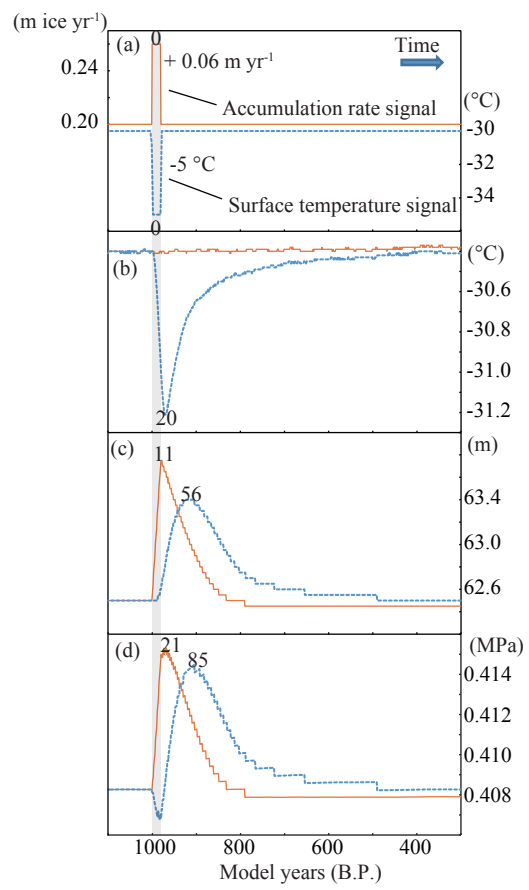


Figure 12.