

Dear Prof. Bond and the anonymous reviewers,

Thanks a lot for your valuable comments and suggestions on our manuscript.

The paper entitled “[Quantitative Assessment of Atmospheric Emissions of Toxic Heavy Metals from Anthropogenic Sources in China: Historical trend, Spatial Distribution, Uncertainties and Control Policies](#)” (No. [acp-2015-189](#)) by Hezhong Tian et al. has been revised carefully according to your correction request and the review reports.

In addition, we have tried to improve our English language under the help of a native English speaker – Mr. Freed, C.N., who is an expert on air pollution control at US EPA.

By now, all the corrections and responses have been incorporated into the new revised manuscript. The detailed point-to-point responses and corrections are listed as follows.

If further responses should be made, please don't hesitate to let us know.

We do appreciate your valuable comments and suggestions on our manuscript.

Yours Sincerely

Corresponding author

Dr. Hezhong Tian

School of Environment, Beijing Normal University

No.19 Xijiekouwai St., Beijing 100875, P.R. China

Tel & Fax: 86-10-5880-0176

E-mail: hztian@bnu.edu.cn

Interactive Comments on “Quantitative Assessment of Atmospheric Emissions of Toxic Heavy Metals from Anthropogenic Sources in China: Historical trend, Spatial Distribution, Uncertainties and Control Policies” by H.Z. Tian et al.

MS No.: acp-2015-189

Corresponding Author: Prof. / Dr. Hezhong TIAN

Editor Initial Decision: Publish subject to technical corrections (21 Aug 2015) by Tami Bond

Comments to the Author:

Reviewer comments on this manuscript were positive and supportive of publication. The reviewers noted some areas for clarification in the paper. Authors have responded extensively to these comments, including addition of uncertainty analysis, several citations, and comparison with observations (although the latter does not cover the whole period).

Response:

The authors are very grateful to the editor for your general and specific comments and instructions on this manuscript. The detailed comments and suggestions are very valuable for the improvement of the paper.

We have addressed all the comments and made point-by-point responses as below. All the relevant corrections and changes have been incorporated into the new revised manuscript and given in the detailed list of corrections.

Specific comments:

1) The added text needs some editing by a native English speaker. The errors are not large but do affect readability.

Response: Thanks for the comment. The good suggestions have been taken.

We have requested Mr. Chuck Freed who comes from U.S. EPA to help improve the English writing of the added text as well as the whole text in the new revised manuscript.

2) Referee #1 inquired how to set the S-curve parameters. Authors have answered that question, yet they also show that the curve is set between two very distant points (1890 and 1990 in Figure 1). The timing and rate of the decreased emission factor are really unconstrained, which means that many of the trends are probably more uncertain than indicated. I do not think that authors need to alter the calculations, as it's likely that no data are available to improve confidence. Authors should at least acknowledge this issue in their discussion of uncertainty.

Response: Thanks for the good comment. The valuable suggestions have been addressed.

We have added the related description in the Section 3.4 in the new revised manuscript on clear version on Page 28 Lines 883-888. Please see “Particularly, it should be acknowledged that emission trends of HMs are probably more uncertain than indicated. This is mainly because dynamic emission factor curves of certain sectors are set between two very distant points (e.g., 1890 and 1990 in Fig. 1), which means that the timing and rate of the decreased emission factors are really unconstrained. Nevertheless, no data are available to improve the confidence presently, which merits further investigation in the future. ”

1 **Quantitative Assessment of Atmospheric Emissions of Toxic Heavy**
2 **Metals from Anthropogenic Sources in China: Historical trend,**
3 **Spatial Distribution, Uncertainties and Control Policies**

4 **H. Z. Tian^{1,*}, C. Y. Zhu¹, J. J. Gao¹, K. Cheng^{1,2}, J. M. Hao³, K. Wang¹, S. B.**
5 **Hua¹, Y. Wang¹, J. R. Zhou¹**

6 ¹State Key Joint Laboratory of Environmental Simulation & Pollution Control, School
7 of Environment, Beijing Normal University, Beijing 100875, China

8 ²School of Environment, Henan Normal University, Henan Key Laboratory for
9 Environmental Pollution Control, Key Laboratory for Yellow River and Huai River
10 Water Environment and Pollution Control, Ministry of Education, Xinxiang 453007,
11 China

12 ³State Environmental Protection Key Laboratory of Sources and Control of Air
13 Pollution Complex, School of Environment, Tsinghua University, Beijing 10084,
14 China

15

16 *Correspondence to:* H.Z. Tian (hztian@bnu.edu.cn)

17

Abstract. Anthropogenic atmospheric emissions of typical toxic heavy metals have received worldwide concerns due to their adverse effects on human health and the ecosystem. By determining the best available representation of time-varying emission factors with S-shape curves, we establish the multiyear comprehensive atmospheric emission inventories of 12 typical toxic heavy metals (Hg, As, Se, Pb, Cd, Cr, Ni, Sb, Mn, Co, Cu and Zn) from primary anthropogenic activities in China for the period of 1949–2012 for the first time. Further, we allocate the annual emissions of these heavy metals in 2010 at a high spatial resolution of $0.5^{\circ} \times 0.5^{\circ}$ grid with ArcGIS methodology and surrogate indexes, such as regional population and gross domestic product (GDP). Our results show that the historical emissions of Hg, As, Se, Cd, Cr, Ni, Sb, Mn, Co, Cu and Zn during the period of 1949–2012, have been increased by about 22–128 times at an annual average growth rate of 5.1–8.0%, reaching about 526.9–22319.6 t in 2012. Nonferrous metal smelting, coal combustion of industrial boilers, brake and tyre wear, and ferrous metals smelting represent the dominant sources for Hg/ Cd, As/ Se/ Pb/ Cr/ Ni/ Mn/ Co, Sb/ Cu, and Zn, respectively. In terms of spatial variation, the majority of emissions are concentrated in relatively developed regions, especially for the northern, eastern and southern coastal regions. In addition, because of the flourishing nonferrous metals smelting industry, several southwestern and central-southern provinces play a prominent role in some specific toxic heavy metals emissions, like Hg in Guizhou and As in Yunnan. Finally, integrated countermeasures are proposed to minimize the final toxic heavy metals discharge on accounting of the current and future demand of energy-saving and pollution reduction in China.

Key words: heavy metals (HMs), anthropogenic sources, time-varying dynamic emission factor, emission inventory, temporal and spatial distribution characteristics, coal combustion, non-ferrous smelting, China

1 Introduction

Heavy Metals (HMs) is a general collective term which applies to the group of metals (e.g. Hg, Pb, Cd, Cr, Ni, Sb, Mn, Co, Cu, Zn, etc.) and metalloids (e.g. As, Se, etc.) with atomic density greater than 4.5 g cm^{-3} . Although these elements are present in only trace levels in feed coals and raw materials, the huge coal consumption and enormous output of various industrial products have resulted in significant emissions of HMs into the atmosphere. As a result, the mean atmospheric concentration of As, Cd, Ni, and Mn are reported at 51.0 ± 67.0 , 12.9 ± 19.6 , 29.0 ± 39.4 , and $198.8 \pm 364.4 \text{ ng m}^{-3}$ in China respectively, which are much higher than the limit ceilings of 6.6, 5, 25, and 150 ng m^{-3} for WHO guidelines, respectively (Duan and Tan, 2013). Mukherjee et al. (1998) and Song et al. (2003) indicate that various HMs can remain in the atmosphere for 5–8 days and even for 30 days when discharged from elevated stacks associated with fine particles. Therefore, these toxic substances can be transported for long distances before they finally settle down through wet and dry deposition into soil and aqueous systems, causing widespread adverse effects and even trans-boundary environmental pollution disputes. In particularly, the International Agency for Research on Cancer (IARC) has assigned several HMs, like As and its inorganic compounds, Cd and its compounds, Cr (VI) compounds and Ni compounds, to the group of substances that are carcinogenic to humans. Besides, Pb and its compounds, Sb_2O_3 , and Co along with its compounds are suspected of being probably carcinogens (IARC, 2014).

Since 1980s, the United States, the United Kingdom, Australia and several some other developed countries have begun to compile their national emission inventories of varied hazardous air pollutants (including HMs), such as the US National Emission Inventory (NEI), the UK National Atmospheric Emission Inventory (NAEI), and the Australian National Pollutant Inventory (NPI). Further ~~Besides~~, the quantitative assessments of global contamination of air by HMs from anthropogenic sources have been estimated in previous studies (Nriagu, 1979; Nriagu and Pacyna, 1988; Pacyna and Pacyna, 2001; Streets et al., 2011; Tian et al., 2014b). With the increasing ~~contradiction between economic growth and~~ environmental pollution associated with economic growth, some researchers have paid special attention to estimating China's HM emission inventory, especially for Hg, which is regarded as a global pollutant (Fang et al., 2002; Streets et al., 2005; Wu et al., 2006). Streets et al. (2005) and Wu

et al. (2006) have developed Hg emission inventory from anthropogenic activities of China for the year 1999 and 1995 to 2003, respectively. The research group led by Tian have established the integrated emission inventories of eight HMs (Hg, As, Se, Pb, Cd, Cr, Ni and Sb) from coal combustion or primary anthropogenic sources on the provincial level during 1980 to 2009 (Cheng et al., 2015; Tian et al., 2010, 2012a–c, 2014a, b). However, comprehensive and detailed studies on anthropogenic atmospheric emissions of 12 typical toxic HMs with highly resolved temporal and spatial distribution information in China are still quite limited. Moreover, we have little knowledge on what the past and accelerated emission levels of HMs are like from anthropogenic sources during the historical period since the founding of the People's Republic of China in 1949 to the time carrying on the reformation and opening policy (1949 to (-1978).

In this study, for the first time, we have evaluated the historical trend and spatial distribution characteristics by source categories and provinces of atmospheric emissions of 12 typical HMs (Hg, As, Se, Pb, Cd, Cr, Ni, Sb, Mn, Co, Cu and Zn) from primary anthropogenic activities during the period of 1949–2012. ~~Particularly~~Especially, we have attempted to determine the temporal variation profiles of emission factors for several significant sources categories (e.g. nonferrous metal smelting, ferrous metal smelting, cement production, MSW incineration, etc.) during the long period of 1949 to 2012, which ~~include the~~are brought about by technological upgrade of industrial process and the progress of ~~the~~ application rate for various air pollutant control devices (APCDs).

2 Methodologies, data sources and key assumptions

We estimate the atmospheric emissions of the targeted 12 HMs (Hg, As, Se, Pb, Cd, Cr, Ni, Sb, Mn, Co, Cu and Zn) from primary anthropogenic sources by combining the specific annual activities and dynamic emission factors by source category in this study. Table S1 in the separate Supplementary Material file lists ~~ss-out~~ the targeted heavy metal species and the associated emission sources. Generally, we classify all sources into two major categories: coal combustion sources and non-coal combustion sources.

2.1 Methodology of HM emissions from coal combustion sources

Currently, coal plays a dominant role in China's energy consumption, making up

about 70 percent of its total primary energy consumption (Tian et al., 2007; Tian et al., 2012b). Consequently, tons of hazardous HM pollutants can be released into the atmospheric environment, although the concentration of heavy metals in Chinese coals is normally at parts per million (ppm) levels.

Atmospheric emissions of varied HMs from coal combustion are calculated by combining the provincial average concentration of each heavy metal in feed coals, the detailed coal consumption data, and the specific emission factors, which are further classified into subcategories with respect to different boiler configurations and the application rates and removal efficiencies of various APCDs. The basic formulas can be expressed as follows:

$$E(t) = \sum_i \sum_j \sum_k \left[C_{i,j,k} \times A_{i,j,k} \times R_{i,j} \times (1 - \eta_{PM(i,j)}) (1 - \eta_{SO_2(i,j)}) (1 - \eta_{NO_x(i,j)}) \right] \quad (1)$$

where E is the atmospheric emissions of Hg, As, Se, Pb, Cd, Cr, Ni, Sb, Mn, Co, Cu and Zn; C is the averaged concentration of each HM in feed coals in one province; A is the amount of annual coal consumption; R is the fraction of each heavy metal released with flue gas from varied coal combustion facilities; η_{PM} , η_{SO_2} and η_{NO_x} represent the averaged fraction of one heavy metal which is removed from flue gas by the conventional PM/SO₂/NO_x emission control devices, respectively; i represents the province (autonomous region or municipality); j represents the sub-category emission source which is classified by different ~~economic~~ sectors of the economy and combustion facilities, as well as the ~~installed~~~~equipped~~ PM, SO₂ and NO_x control devices (the detailed source classification can be seen in Supplement Table S2); k represents the type of coal as consumed (raw coal, cleaned coal, briquette, and coke); and t represents the calendar year.

2.1.1. Average concentrations of varied HMs in feed coals

Previous studies have demonstrated that concentrations of HMs in Chinese coals vary substantially depending on the type of the feed coals and their origin, as well as the affinity of the particular element for pure coal and mineral ~~material~~~~sters~~ (Tang et al., 2002; Ren et al., 2006).

In this study, we have compiled and summarized provincial-level test data of HM content in coal from published literature to date: Hg (879 samples), As (1018 samples), Se (472 samples), Pb (831 samples), Cd (616 samples), Cr (956 samples),

Ni (863 samples), Sb (1612 samples), Mn (545 samples), Co (888 samples), Cu (765 samples) and Zn (828 samples), and then we calculate the average concentration of each heavy metal in coal as produced and coal as consumed on a provincial-level by using bootstrap simulation and coal transmission matrix (Tian et al., 2011a; Tian et al., 2013; Tian et al., 2014a). More details about the algorithms to determine HM concentrations in cleaned coals, briquettes and coke are given in our previous publications (Tian et al., 2010; Tian et al., 2012a). The brief introduction of bootstrap simulation as well as averaged concentration values of Hg, As, Se, Pb, Cd, Cr, Ni, Sb, Mn, Co, Cu and Zn in feed coals on the provincial-level can be seen in Supplement Section S1–S2 and Table S3–S9, respectively.

2.1.2. HM emission factors from coal combustion sources

In this study, various coal combustion facilities are separated into five sub-categories: pulverized-coal boilers, stoker fired boilers, fluidized-bed furnaces, coke furnaces, and domestic coal-fired stoves. Therein, pulverized-coal boilers are predominant in coal-fired power plants in most of the provinces in China, representing over 85.0% of the total installed capacities. The remaining share is divided between fluidized-bed furnaces and stoker fired boilers, which are mainly used in relatively small unit-size coal-fired power plants. Different from the thermal power plants sector, stoker fired boilers make uptake a large proportion of thein coal-fired industrial sector and other commercial coal-fired sectors. The release rates of HMs in flue gas from various boiler categories vary substantially due to the different combustion patterns and operating conditions, as well as their genetic physical and chemical characteristics (Reddy et al., 2005). Therefore, it is necessary to develop a detailed specification of the methods by which the coals are fed and burned in China. In this study, we have compiled the release rates of Hg, As, Se, Pb, Cd, Cr, Ni, Sb, Mn, Co, Cu and Zn for different combustion boilers from published literatures (see Supplement Table S10). The arithmetic mean values of release rates of these 12 HMs from different combustion boilers reported in the literatures are adopted to calculate the final emissions (see Table 1).

Besides, the conventional APCDs used to reduce criteria air pollutants (e.g., PM, SO₂, and NO_x) from boilers can be effective in reducing the final HM discharge from the stack flue gas. By the end of 2012, the application rate of dust collectors for removing fly ash in thermal power plants of China has been dominated by

electrostatic precipitators (ESPs), with a share of approximately 94% of the totals, followed by about 6 percent ~~for~~ fabric filters (FFs) or FFs plus ESPs. Meanwhile, the wet flue gas desulfurization (WFGD) and selective catalytic reduction (SCR) have been increasingly ~~used~~utilized in coal-fired power plants to reduce SO₂ and NO_x emissions in recent years, and the installed capacity proportion of FGD and SCR have amounted to about 86.2% and 25.7% of the total capacity, respectively (MEP, 2014a, b). However, compared with coal-fired power plant boilers, there are still many small and medium scale industrial boilers which are equipped with cyclones and wet dust collectors to reduce fly ash emissions, and fewer FGD and de-NO_x devices have been installed to abate SO₂ and NO_x emissions. In this study, we adopt the arithmetic mean values of those reported in the available literatures as the average synergistic removal efficiencies by different APCD configurations, as shown in Table 1 and Supplement Table S11.

The rResidential sector is another important coal consumer in China. The traditional cook stoves and improved cook stoves are major combustion facilities for residential cooking and heating, both of which are normally without any PM and SO₂ control devices. There is little information about the real-world test results of HM emissions through residential coal use of China. Hence, we choose to use the averaged emission factors for coal/briquette combustion provided by AP42 (US EPA, 1993), NPI (DEA,1999) and NAEI (UK, 2012), and the assumed emission factors of Hg, As, Se, Pb, Cd, Cr, Ni, Sb, Mn, Co, Cu and Zn by residential coal use are also listed in Table 1.

2.2 Methodology of HM emissions from non-coal combustion sources

HM emissions from non-coal categories are calculated as a product of annual activity data (e.g., fuel consumption, industrial products yields, etc.) and specific emission factors of varied HMs. The basic calculation can be described by the following equation:

$$E(t) = \sum_i \sum_j (A_{i,j} \times EF_j) \quad (2)$$

where E is the atmospheric emissions of each heavy metal; A is the annual production yield of industrial producing processes, volume of municipal solid wastes incineration, or liquid fuel and biofuel consumption, etc.; EF is the assumed average emission factors; and j is the emission source classified by source sub-categories (see

Supplement Table S1).

Notably, atmospheric emissions of Pb have significantly dropped in China, as a result of unleaded gasoline introduction since the early 2000s. The proportion of lead in leaded gasoline emitted to the air is estimated at about 77% (Biggins and Harrison, 1979) or 75% (Hassel et al., 1987), and thus this parameter is assumed at about 76% for the period before 2000 in this study. Consequently, for leaded gasoline used by motor vehicles in China, the total Pb emitted to the atmosphere is calculated according to the following equation:

$$E(t) = \sum_i (0.76 \times C_{Pb} \times A_i) \quad (3)$$

where $E(t)$ is the emissions of Pb from motor vehicle gasoline combustion in calendar year t ; C_{Pb} is the average content of lead in gasoline; A_i is annual gasoline consumption in one province, autonomous region or municipality i .

For brake and tyre wear, the atmospheric emissions of several HMs are estimated by the following equation:

$$E(t) = \sum_i \sum_j \sum_k (P_{i,j} \times M_j \times EF_{j,k} \times C_k) \quad (4)$$

where $E(t)$ is the atmospheric emissions of As, Se, Pb, Cd, Cr, Ni, Sb, Mn, Co, Cu or Zn in calendar year t ; $P_{i,j}$ is the population of vehicles in category j (passenger car, bus and coach, light-duty truck, and heavy-duty vehicle) in province, autonomous region or municipality i ; M_j is the average annual mileage driven by vehicle in category j ; $EF_{j,k}$ is the emission factor of TSP (total suspended particles) for brake lining or tyre k by vehicle category j ; C_k is the averaged concentration of each heavy metal in brake lining or tyre k . Relevant parameters are summarized in the Supplement Table S12–S13.

2.2.1. Algorithm for determination of dynamic emission factors

Because remarkable changes in products, devices, processes as well as practices (technology improvement) have imposed positive effects on emission reductions of pollutants with the growth of the economy and the increasing awareness of environment protection, the resulting pollutant emission level at any given time is a competition between technology improvement and production growth. Consequently, one of the major challenges in this study is to develop a reasonable representation of the time-varying dynamic emission factors of HMs associated with each primary industrial activity.

Taking into consideration the updated air pollutant control technologies updating, and outdated enterprises that have shut down, the HM emission factors show a gradually declining trend. Generally, the patterns of technologies diffusion across through competitive markets are evident, and an S-shaped curve is a typical result when plotting the proportion of a useful service or product supplied by each major competing technology (Grübler et al., 1999). At the earliest stage of industrialization, growth rates in the removal efficiency of an air pollutant is slow as the advanced technology with high investment and operation cost is applied only in specialized niche sectors. Subsequently, along with the progress on technology and awareness of public environmental protection, growth rates accelerates as early commercial investments have resulted in standard-setting and compounding cost reductions, which lead to the increased application of advanced technologies for emission reductions of air pollutants in a wider array of settings. Eventually, growth rate in the removal efficiency will gradually approach to nearly to zero as the potential market of optimal control technology of HM emissions is saturated. By using the S-shaped curve, both historical and future emissions of carbon aerosol and Hg to the atmosphere from human activities have been evaluated by Bond et al. (2007) and Streets et al. (2004, 2011). Their results show that S-shaped curve fits historical and future trends better than polynomial or linear fits, even though it cannot account for economic shocks because of the form of monotonous smooth transitions. Therefore, S-shaped curves are applied to estimate the dynamic HM emission factors from primary industrial process sources in this study. The basic formulas can be expressed as follows:

$$EF_k(t) = (EF_{a_k} - EF_{b_k}) e^{\left(-\frac{(t-t_0)^2}{2s_k^2}\right)} + EF_{b_k} \quad (5)$$

where $EF_k(t)$ is the emission factor for process k in calendar year t ; EF_{a_k} represents the emission level for process k in pre-1900; EF_{b_k} is the best emission factor achieved in China for process k at present; s_k is the shape parameter of the curve for process k (like the SD); and t_0 is the time at which the technology transition begins (pre-1900).

Based on the above method, we build the dynamic representation of HM emission factors to reflect the transition from uncontrolled processes in pre-1900 to the relatively high efficiency abatement processes in 2012. Parameters for some of

these transitions are discussed throughout the paper, and are summarized in Supplement Table S14. Actually, on the basis of Eq. (5), the specific values of the shape parameter of the curve (s) can be determined when we obtain the definite values of unabated emission factor in pre-1900 and the best emission factor achieved at present for each industrial process in China. In addition, several values of s are cited from Street et al. (2011) if only limited information about the emission level for certain processes can be gained.

2.2.2. Dynamic HM emission factors of nonferrous metals smelting

By 2010, bath smelting (e.g. Ausmelt smelting, Isa smelting, etc.), flash smelting and imperial smelting process (ISP) ~~smelting~~ represent the three most commonly used techniques for copper smelting, ~~for representing~~ about 52%, 34% and 10% of Chinese copper production, respectively. For lead smelting, sintering plus blast furnace technique (traditional technique) and bath smelting (e.g. oxygen side-blowing, oxygen bottom-blowing, etc.) plus blast furnace technique (advanced technique) are the two most commonly used techniques in China, accounting for about 48% and 47% of lead production, respectively. With respect to zinc smelting, hydrometallurgy is the predominant technique in China, ~~for representing~~ about 77% of the zinc production capacity. The remaining share is divided among vertical retort (VR) pyrometallurgy (~10%), imperial smelting process (ISP) pyrometallurgy (~7%) and other pyrometallurgy (~6%). Especially, VR pyrometallurgy is regarded as an outdated technique which is mandated to be shut down gradually and will be totally eliminated in the near future.

Because of limited information and lack of field experimental tests on HM emissions in these source categories in China, some emission factors for this source category are cited from published literature, with only nationally averaged levels. Streets et al. (2011) indicate that China, Eastern Europe and Former USSR can be regarded as a uniform region with similar levels of technology development, whose emission factor trajectories are identical. Therefore, we presume the emission factors of HMs with higher abatement implementation in Eastern Europe, Caucasus and Central Asia countries are equivalent to those in China ~~for~~ the same calendar year (see Fig. 1a). Based on above assumptions and default abatement efficiencies of HMs in nonferrous metals smelting sectors (EEA, 2013), as well as other specific emission factors of HMs from published literature to date (Nriagu, 1979; Pacyna, 1984; Pacyna

and Pacyna, 2001), the unabated emission factors are determined (see Supplement Table S15–S16).

Presently, compared to those for primary smelting of Cu/ Pb/ Zn, there is much less information about emission factors of HMs for secondary metals smelting of Cu/ Pb/ Zn and other nonferrous metals (Al, Ni and Sb) smelting from the published literature. Hence, it is much more difficult to estimate the all-timing emission factors of HMs from above sectors by using of S-shaped cCurves due to a lacking of necessary baseline information. We presume the average emission factors for secondary metal (Cu, Pb and Zn) smelting, aluminum smelting, antimony smelting and nickel smelting remain unchanged before the year 1996, at which the *Emission Standard of Pollutants for Industrial Kiln and Furnace* was first issued in China. We also presume the average emission factors of HMs from secondary metals smelting and other nonferrous metals smelting for developing countries used in Pacyna and Pacyna report (2001) and Eastern Europe, Caucasus and Central Asia countries with limited abatement referred in EEA Guidebook (EEA, 2009; S. V. Kakareka, personal communication, 2008), as well as United Kingdom applied in emission factors database of NAEI pre-1990 (UK, 1995) are reasonable for China before the year 1996. Subsequently, atmospheric emission factors of HMs from nonferrous metals industry in China decrease gradually with the implementation of tightened emission limits regulated by the gradually stricter *Emission Standards of Pollutants from Nonferrous Metals Industry* (e.g., GB 9078–1996, GB 25465–2010, GB 25466–2010, GB 25467–2010, etc.).

With respect to gold smelting (large scale) and mercury mining industries, the time-varying Hg emission factors from these two subcategories are determined by referring to studies carried out by Feng (2005), Streets et al. (2005; 2011), Pacyna and Pacyna (2006) and Pirrone et al., (2010). Specific emission factors of HMs from nonferrous metals smelting sectors can be seen in Supplement Table S16.

2.2.3. Dynamic HM emission factors of ferrous metal smelting

Currently, the blast furnace is the most primary technique for pig iron production in China. For steel making, there are two main routes: (1) “Ore-BF-BOF-Steelmaking route” based on blast furnace (BF) and basic oxygen furnace (BOF), (2) “scrap-EAF-Steelmaking route” based on electric arc furnace (EAF) using steel scrap or sponge iron as basic raw materials (Zhang and Wang, 2008). In spite of

environmental friendly and flexibility to produce a variety of value added grades of steel for EAF, the share of electric furnace steel in Chinese output of crude steel only accounts for about 8.9% in 2012 mainly due to the shortness of steel scrap resources in China (CISA, 2013).

Comparing ~~with~~ the national emission standard of air pollutants for the iron smelting industry in China with those in certain European Union countries (e.g. United Kingdom, Germany, Netherlands, Austria, etc.), we choose to use the emission factors of HMs for the iron smelting industry obtained from emission factors database of NAEI in 2000 as the national average emission factors for iron smelting of China in 2015. This is mainly because the PM emission limits of existing facilities for iron smelting of China in 2015 (20 mg m^{-3}) is approximately comparable to these of European Union countries in the early 2000s (IRIS, 2005; MEP, 2012). With respect to steel smelting, the emission factors of HMs with higher abatement in Eastern Europe, Caucasus and Central Asia countries are chosen as the national average emission factors of this sector in China at the same calendar year (see Fig. 1b). The unabated emission factors of HMs for pig iron and steel production are determined by using ~~theof the~~ similar method discussed above for the nonferrous metals smelting industry. Please see Supplement Table S16 and Table S17 for more details about specific emission factors.

2.2.4. Dynamic HM emission factors of non-metallic mineral manufacturing

Cement, glass and brick manufacturing are the major mineral commodity industries. During the manufacturing process, various HMs vaporizing from raw materials and feed fuels associated with fine particulate matters are emitted from the kiln system at high temperatures.

Currently, the new dry rotary kiln process is the dominant technology in cement manufacturing factories of China, representing over 92% of the national total cement output. The emission ceilings of air pollutants for cement, glass or brick manufacturing specified in the present standards of China (e.g., GB 4915–2013, GB 26453–2011, GB 29620–2013, etc.) are less stringent compared with those of developed countries (see Supplement Table S18). By contrasting the emission limits of air pollutants from non-metallic minerals (cement, glass and brick) manufacturing between China and developed countries, we presume the best emission factors of air pollutants achieved in China today are approximately identical to the average

emission factors of developed countries in the end of 1990s. With respect to cement production, the unabated emission factors of HMs can be obtained from the Web Factor Information Retrieval System (WebFIRE) (US EPA, 2012). Moreover, the average emission factors for glass and brick manufacturing are assumed to remain unchanged pre-1996. Subsequently, atmospheric emission factors of HMs from these two sub-source categories decrease gradually with the implementation of gradually tightened emission limits from above mentioned Emission Standards of Pollutants from non-metallic mineral manufacturing industry. Specific emission factors of various HMs from non-metallic mineral manufacturing can be seen in Supplement Table S16.

2.2.5. HM emission factors of biomass burning

China is the biggest developing country in the world. The rural population still accounts for nearly 47.4% of total population in 2012 (NBS, 2013a), and it has had a long history of using agricultural residues and firewood to satisfy household energy demand for cooking and heating. Recently, crop residues have become more commonly burned in open fields during the harvest season. Abundant gaseous and particulate pollutants emitted by open biomass burning have caused severe regional air pollution and contributed to worsening of haze events in the central and eastern China (Cheng et al., 2014; Li et al., 2014).

In this paper, the total mass of ten crop straws burned is calculated based on the method discussed in previous studies by Tian et al. (2011b) and Lu et al. (2011), including paddy, wheat, maize, other grains, legumes, tubers, cotton, oil plants, fiber crops and sugar crops. **Because of quite limited field test data about HM emission characteristics from crop straw for household use and firewood for open burning, we presume HM emission factors from biofuel for open burning are equal to those for household use. It is acknowledged that this simple assumption may introduce additional uncertainties, and thus relatively large uncertainty ranges for HM emission factors of biofuel combustion are applied in the analysis, which merits substantial deep investigation in the future.** The average emission factors of HMs from these ten crop straw and firewood are summarized in Supplement Table S16.

2.2.6. HM emission factors of liquid fuels combustion

Besides major conventional pollutants (PM, SO₂ and NO_x), liquid fuels

combustion generates emissions of potentially toxic HMs. Here, the liquid fuels are sorted into crude oil, fuel oil, kerosene, diesel and gasoline.

Historically, leaded gasoline combustion by vehicles has been recognized as the most significant contributor for the increase of human blood lead level (Robbins et al., 2010). Leaded gasoline has been forced out of the market place in China since July 1, 2000 due to the adverse health effects on the neurologic and/or hematologic systems (Xu et al., 2012). Compared to the Pb content limits of 0.64 g L⁻¹ (GB 484-64, 1949-1990,) and 0.35 g L⁻¹ (GB 484-89, 1991-2000) in leaded gasoline, the average lead content in unleaded gasoline is regulated less than 0.005 g L⁻¹ (GB 17930-1999, 2001-2012). Consequently, C_{Pb} in equation 3 is chosen to be 0.64 g L⁻¹, 0.35 g L⁻¹, and 0.005 g L⁻¹ for the three corresponding periods, respectively (Qin, 2010). All the other average emission factors of HMs from each type of liquid fuel are summarized in Supplement Table S16.

2.2.7. Dynamic HM emission factors of municipal solid waste incineration

For municipal solid waste (MSW) incineration, emission characteristics of HMs significantly depend on the concentration of metals in the feed wastes, the performance of installed APCDs, combustion temperatures, as well as composition of the gas stream (Chang et al., 2000).

Presently, stoke grate and fluidized-bed combustion are the major MSW incineration technologies being used in China. Because of relatively high costs and the heat content requirement for the feed MSW (> 6000-6500 kJ kg⁻¹, or supplementary fuel is necessary), stoke grate incinerators are typically used in eastern coastal areas, especially in the economically more developed cities (Nie, 2008), taking a share of over 58% by the end of 2010 (Cheng and Hu, 2010; Tian et al., 2012d). Fluidized-bed incinerators, in contrast, are mainly adopted in the eastern small and mid-sized cities, as well as the large cities in the middle and western parts of China, taking a relatively small proportion, mainly due to the lower treatment capacities (Cheng and Hu, 2010).

To estimate the hazardous air pollutant emission inventory from MSW incineration in China, Tian et al. (2012d) have compiled and summarized the comprehensive average emission factors of hazardous HMs (Hg, As, Pb, Cd, Cr, Ni and Sb) for MSW incineration from published literature. Additionally, the emission ceiling of HMs for the existing incinerators in the newly issued standard (GB

18485–2014) which will be conducted in 2016 is approximately comparable to those in Directive 2000/76/EC (see Supplement Table S18). Here, we presume the best emission factors of HMs in China for MSW at 2016 are almost equivalent to those in developed EU countries at 2000. Based on specific emission factors of HMs for MSW incineration from published literature (Nriagu, 1979; Pacyna, 1984; Nriagu and Pacyna, 1988) and certain emission factors of HMs with uncontrolled technology from *AP42, Fifth Edition, Volume I, Chapter 2: Solid Waste Disposal* (US EPA, 1996), the unabated emission factors of HMs from this source category are determined. Specific emission factors of various HMs from MSW incineration can be seen in Supplement Table S16.

2.2.8. HM emission factors of brake and tyre wear

Brake linings as well as tyres wear of vehicles is known as one of the important emission sources of particulate matter to the surrounding environment, particularly in urban areas (Hjortenkrans et al., 2007). Notably, not all of the worn materials of brake lining and tyre will be emitted into atmosphere as airborne particulate matter (Hulskotte et al., 2006). Here, we adopt the average emission factors of TSP from brake wear and tyre wear for passenger cars (0.0075 g km^{-1} and 0.0107 g km^{-1}), light-duty trucks (0.0117 g km^{-1} and 0.0169 g km^{-1}) and heavy-duty vehicles (0.0365 g km^{-1} and 0.0412 g km^{-1}) obtaining from EEA Guidebook (EEA, 2013) as the average emission factors of airborne particulate matter from brake and tyre wear.

In addition to steel as brake pad support material, the agents present in brake linings usually consist of Sb, Cu, Zn, Ba, Sn and Mo (Bukowiecki et al., 2009). Further, antimony is presented in brake linings as Sb_2S_3 that serves as a lubricant and filler to improve friction stability and to reduce vibrations. Then, Sb_2S_3 is oxidized to Sb_2O_3 (possibly [a](#) carcinogenic substance) during the braking process, which have been proved to be partially soluble in physiological fluids (Gao et al., 2014; von Uexküll et al., 2005). Because of the excellent characteristic of thermal conductivity, copper or brass are widely used for automotive braking as a major ingredient in friction materials (Österle et al., 2010). Additionally, although zinc is a less specific marker for brake wear than antimony and copper, it has also been reported to be another important constituent of brake wear (Johansson et al., 2009). Hence, the HMs (especially for Sb and Cu) associated with particulate matter are mainly emitted from brake wear due to relatively higher average contents of HMs in brake lining,

compared to those from tyre wear (EEA, 2013).

Because of limited information and lack of field experimental tests on HM contents in brake linings and tyre in Chinese vehicles, and the substantial quantity of vehicles sold in China that are imported from foreign countries or manufactured by the foreign-invested transnational vehicle companies, we presume the composition of worn materials from brake and tyre wear in term of HMs are consistent with foreign countries (see Supplement Table S13).

2.3 Activity data

Coal and liquid fuels consumption data by sectors in provincial-level (e.g., power plant, coal-fired industrial boiler, coal-fired residential sector, coal-fired other sectors, etc.) are collected from *China Energy Statistical Yearbooks*. Industrial production data by provinces (e.g., the output of ferrous/nonferrous metals products, production of cement/glass/brick, amount of municipal wastes incineration, population of vehicle, etc.) are compiled from relevant statistical yearbooks, such as *China Statistical Yearbooks*, *the Yearbook of Nonferrous Metals Industry of China*, *China Steel Yearbook*, etc. The detailed data sources for the main sectors are listed in Supplement Table S19. Furthermore, trends of activity levels by different sectors in China between 2000 and 2012 are summarized in Supplement Fig. S1–S5.

2.4 Evaluation of Potential Uncertainties

It is necessary to examine the potential uncertainty in emissions by sources and regions to quantify the reliability and identify improvements space of emission inventories in the future. A detailed uncertainty analysis is conducted by combining uncertainties of both activity levels and emission factors, through adopting Monte Carlo simulation (Zhao et al., 2011; Tian et al., 2014a; Tian et al., 2014b). Streets et al. (2003) indicate that there is no way to judge the accuracy of activity data estimates. Furthermore, uncertainties are still inevitable when representative values are selected for specific emission sources, countries and regions in spite of emission factors adopted from detailed experiments.

Most of the input parameters of specific activity levels and emission factors, with corresponding statistical distribution, are specified on the basis of the data fitting, or referred to the related published references (Wu et al., 2010; Zhao et al., 2011; Tian et al., 2012a, b). Besides, for parameters with limited observation data, the probability

distributions such as normal distribution and triangular distribution are assumed by the authors for corresponding sources. Further details about the probability distribution for each source discussed in this study are listed in Table S20. Finally, all of the input parameters are placed in a Monte Carlo framework, 10 000 times of simulations are run to estimate the uncertainty ranges of varied HM emissions with a 95% confidence interval.

3 Results and discussion

3.1 Temporal trend of HM emissions by source categories

The historical trend of atmospheric emissions of Hg, As, Se, Pb, Cd, Cr, Ni, Sb, Mn, Co, Cu and Zn by different source categories from 1949 to 2012 are illustrated in Fig. 2. The total emissions of HMs from primary anthropogenic sources since 1949 have shown substantial shifts among varied source categories that reflect technological and economic trends and transition ~~during over~~ this over 60 years long period. Within the year ~~after of~~ the establishment of the People's Republic of China in 1949, the total emissions of Hg, As, Se, Pb, Cd, Cr, Ni, Sb, Mn, Co, Cu and Zn from anthropogenic sources are estimated at about 11.5–312.6 t (see Table 2). The discharges of HMs on a national scale have increased by 3–20 times from 1949 to 1960 due to the increasing demands for energy consumption and industrial production (especially for the period of the Great Leap Forward from 1958 to 1960 resulting in a remarkably ~~ex~~ increasing output of industrial products), then, a substantial decrease ~~tumultuously~~ in 1961 and 1962 ~~of by~~ 27.6–55.7% compared to ~~those in~~ 1960 on account of the serious imbalance of economic structure and the Great Leap Forward Famine caused by policy mistakes together with natural disaster (Kung and Lin, 2003). In spite of the negative growth of heavy metal emissions in individual years such as 1967, 1974 and 1976, the annually averaged growth rates of national emissions of HMs from primary anthropogenic sources are still as high as 0.2–8.4% during the periods from 1963 to 1977.

Subsequently, the policy of openness and reformation ~~was~~ issued by the Chinese central government. With the implementation of this policy from 1978 to 2012, China's GDP has been growing at an average annual growth rate of about 9.8% resulting in tremendous energy consumption and enormous output of industrial products. As can be seen from Fig. 2, historically there have been two periods during which the total emissions of HMs (except Pb) increased rapidly after 1978. The first

one is the period of 1978 to 2000, except for one remarkable fluctuation from 1998 to 1999, which reflects a decrease in input of raw materials and output of industrial products mainly owing to the influence of Asian financial crisis (Hao et al., 2002). The second one is the period of the 10th Five-Year Plan (10th FYP, from 2001 to 2005), a sharp increase of FYP emissions of Hg, As, Se, Cd, Cr, Ni, Sb, Mn, Co, Cu and Zn have occurred, with the emissions increasing from about 268.0–11308.6 t in 2001 ~~increase~~ to about 378.9–15987.9 t in 2005, at an annually average growth rate of 4.8–12.0%, respectively (see Table 2).

In terms of the lead content requirement in gasoline, the past 64 years since the foundation of the PR China (1949 to 2012) can be divided into two phases: the leaded gasoline period (1949 to 1990: gasoline with high lead content (0.64 g L^{-1}); 1991–2000: gasoline with low lead content (0.35 g L^{-1}) and the unleaded gasoline period (2001 to 2012, 0.005 g L^{-1}). As a result, the discharge of Pb from primary anthropogenic sources has experienced two fluctuations over the 64 year period. The first sharp emission decline occurs in 1991, and the total emissions hayes decreased by 26.2% from 17 644.0 t in 1990 to 13 029.6 t in 1991, ~~this is~~ mainly because the average Pb content in leaded gasoline regulated by GB 484–89 is decreased about 45.3% compared to that in GB 484–64. The other sharp decline occurs in 2001, and the total Pb emissions from primary anthropogenic sources are reduced abruptly by about 61.6% in 2001. Subsequently, along with the rapid increase of vehicle volume and oil consumption, a substantial increase is once again experienced from 7747.2 t in 2001 to 14 397.6 t in 2012, at an annual average growth rate of about 5.8%.

Due to the technological progress resulting in relatively low emission factors of HMs and economic development bringing about high coal consumption and industrial products output, the trends of total atmospheric emissions for different HMs in China are diverse during the period of 2006 to 2012 (Cheng et al., 2015). Generally speaking, the national atmospheric emissions of Hg, Pb, Cd, Cr, Sb, Cu and Zn have increased at an annual average growth rate of 1.5–7.2% from 2006 to 2012. In spite of the remarkable growth in coal consumption and gross industrial production, the national As, Se, Ni, Mn and Co emissions are well restrained in this period. These are mainly due to the different volatility of these 12 elements during high temperature process resulting in diverse release rates of furnaces and synergistic removal efficiencies of control measures (Xu et al., 2004).

Due to limited information about historical ground-level concentrations of

twelve HMs in different cities in China, the temporal characteristics of atmospheric concentrations of four HMs (As, Pb, Cr and Cu) in Beijing during 2000 to 2012 are used as valid index to verify whether or not the trend of historical HM emissions are reasonable (see Supplement Fig. S6). The data sources and specific values about atmospheric concentrations of As, Pb, Cr and Cu in Beijing during 2000 to 2012 are listed in Supplement Table S21. It should be acknowledged that this verification method applied in this study has certain limitations on account of sampling's discrepancies, including sampling time, sampling site and detection method, etc. Therefore, the historical variation trends of HM emissions may be innot ~~well~~ consistent with those of ambient concentrations of HMs in some years.

As can be seen from Fig. S6, minimum values of the atmospheric concentrations of As, Pb, Cr and Cu occur in 2008. This is mainly because most of aerosol samples compiled from published papers are collected ~~at~~during August in ~~that~~is-year, the time ~~during which China-as has hosted~~of the Beijing Olympics under which a series of strict measures about energy-saving and pollution reduction ~~were~~are implemented, such as ~~moving or~~ suspending production of high polluting industries in the Beijing and neighboring municipalities, restricting vehicle driving on alternate days under an even-odd license plate system, limiting pollutant emissions from coal combustion facilities in Beijing and the surrounding provinces, etc. Consequently, the variation trends of atmospheric concentrations of As, Pb, Cr and Cu have some discrepancies with those of historical emissions of the above four HMs in Beijing in 2008. However, the historical emission trends of As, Pb, Cr and Cu are consistent ~~well~~ with those of atmospheric concentrations of the above four HMs during 2000 to 2012 in general (see Fig. S6), which indicate that the historical trend of HM emissions estimated by this study are reasonable.

Until now, the comprehensive and special studies on various HM (except Hg) emissions in China are quite limited. Therefore, only a detailed comparison with Hg emission estimates from other studies are discussed in this study (see Fig. 3). Specifically, limited data of China's Hg emissions can be cited directly from the global Hg inventories estimated by Pacyna and Pacyna (2001), Pacyna et al. (2006, 2010) and Streets et al. (2011). In consequence, here, we mainly focus on comparing our estimations with the results about the specialized China's Hg emission inventories estimated by Streets et al. (2005) and Wu et al. (2006).

Overall, the estimated Hg emissions from fuel combustion (except for the

subcategory of coal consumption by residential sectors) in this work are substantially well consistent with those reported by Streets et al. (2005) and Wu et al. (2006), although the values calculated for the same year ~~calculated~~ are somewhat different. This may be mainly attributed to the difference in the averaged provincial content of Hg in raw coal. In our study, according to a comprehensive investigation of published literature, we determine the national averaged Hg content in China to be 0.18 mg kg⁻¹ by using a bootstrap simulation method, a little lower than those used by above two studies (0.19 mg kg⁻¹). Another important factor influencing the result is the difference of removal effectiveness of Hg through traditional APCDs. Nevertheless, the estimated Hg emissions from coal consumption by residential sectors by Streets et al. (2005) and Wu et al. (2006) are higher than our estimation in the same year. This is mainly because the emission factor of Hg from coal consumption by residential sectors is cited from Australia NPI in this paper, which is only approximately half of that ~~which from~~ EPA adopted in the above two studies. In terms of Hg emissions from industrial processes, the estimated Hg emissions in this study are generally lower than those in other Hg emission inventories in the same year. This may be because ~~that~~ we have adopted S-shaped ~~c~~Curves to quantify the positive effects on emission reduction of pollutants by technology improvement, so that the emission factors adopted in this study are generally lower than those used in studies of Streets et al. (2005), Wu et al. (2006) and Wu et al. (2012) in the same year. Besides, some anthropogenic sources with high uncertainties are not taken into account in this work due to the lack of detailed activity data for the long period. Certain natural sources (e.g., forest burning, grassland burning, etc.) are also not included in this study. Consequently, our estimated total Hg emissions are lower than those in inventories estimated by Streets et al. (2005) and Wu et al. (2006).

3.1.1. HM emissions from coal combustion by power plants

The power plant sector represents the largest consumer of coal in China. The thermal power generation has increased from 3.6 TWh in 1949 to 3925.5 TWh in 2012 (NBS, 2013a). Meanwhile, coal burned by power plants has increased from 5.2 to 1785.3 Mt (NBS, 2013b), with an annual growth rate of 9.9% and a percentage share of the total coal consumption increasing from 22.7 to 50.6%. For the period of 1949 to 2005, the emissions of HMs from coal combustion by power plants have increased in rough proportion to coal consumption. However, this trend began to

change after 2006 due to the implementation of policies of energy-saving and pollution reduction, especially the strengthening of SO₂ emission control for coal-fired power plants (Zhu et al., 2015).

Presently, the combination of pulverized-coal boilers plus ESPs plus WFGD is the most common APCDs configuration in coal-fired power plants of China. By the end of 2012, the installed capacities of FGD in power plants have increased by nearly 14 times compared with those in 2005, reaching about 706.4 GWe, accounting for approximately 86.2% of the installed capacity of total thermal power plants (MEP, 2014a). Of all of the units with FGD installation, approximately 89.7% adopt limestone gypsum WFGD process. The discharges of Hg, As, Se, Pb, Cd, Cr, Ni, Sb, Mn, Co, Cu and Zn from coal combustion by power plants in 2012 are estimated at about 15.2–3038.9 t (see Fig. 2), which have decreased by 1.7–11.8% annually since 2006. Moreover, the distinction of integrated co-benefit removal efficiencies of these elements for the typical APCD configurations is the primary reason for the obvious variations of the declining rates among varied HMs, as illustrated in Table 1 and Fig. 2.

3.1.2. HM emissions from coal consumption by industrial boilers

In general, coal combusted by industrial boilers is used to provide hot water and heating for industrial production processes. With the development of China's economy (GDP increased from CNY (Chinese Yuan) 46.6 billion in 1949 to CNY 51 894.2 billion in 2012), coal consumption by industrial boilers has increased at a relatively lower growth rate than the power sector, from 11.5 Mt in 1949 to 1205.6 Mt in 2012 (NBS, 2013b). According to the statistical data from China Machinery Industry Yearbook, the combination of stoker fired boiler plus wet scrubber and cyclone is the most common configuration in coal-fired industrial sectors of China, especially for the small and medium scale boilers (CMIF, 2013).

As can be seen from Fig. 2, the emission trends of HMs from coal consumption by industrial boilers are consistent with the national total emissions trends between 1949 and 1997, and negative growths appear in 1998 and 1999 due to the decreased coal consumption resulting by the Asian financial crisis (Hao et al., 2002; Tian et al., 2007, 2012b). Subsequently, the emissions of different toxic HMs from coal consumption by industrial boilers have ~~appeared~~ distinct variation tendencies mainly due to the different removal efficiencies of HMs through typical APCDs.

Generally, Hg and Pb emissions from coal consumption by industrial boilers have increased almost monotonically from 85.1 and 3717.8 t in 2000 to 179.0 and 5770.0 t in 2012, with an annual growth rate of about 6.4 and 3.7%, respectively. However, the discharges of Mn from coal consumption by industrial boilers have decreased to about 1.2 times from 5866.0 to 4951.8 t during this period (2000–2012). Moreover, the discharges of other nine HMs (As, Se, Cd, Cr, Ni, Sb, Co, Cu and Zn) from coal consumption by industrial boilers present a trend of first an increase and then a decrease overall as a whole with the implementation of policies of saving-energy and pollution reduction in coal-fired industrial boilers sector, especially the growing application of high-efficiency dust collectors and various types of combined dust and SO₂ removal devices.

3.1.3. HM emissions from metal smelting and other primary sources

Historically, a sharp fluctuation of Hg discharges from nonferrous metals smelting sector has occurred in the period of Great Leap Forward to Great Leap Forward Famine (increase from 92.6 t in 1957 to 221.7 t in 1959, then decrease rapidly to 104.0 t in 1963), this is mainly due to the rapid increase or decline of mercury mining outputs in this period (increase from 1060 t in 1957 to 2684 t in 1959, then decrease rapidly to 1345 t in 1963). Subsequently, a sharp increase of emissions of Hg has occurred, with the emission from about 60.6 t in 1998 increases to about 218.6 t in 2012, at an annually averaged growth rate of 9.6%. Simultaneously, the primary contributor of Hg emissions from the nonferrous metals smelting sector has changed to the subsector of primary-Zn smelting, which makes up about about 36.9–52.7% of the sector during 1998 to 2012. Unlike Hg emissions, the emissions of As, Se, Pb, Cd, Ni, Sb, Cu and Zn from nonferrous metals smelting sector have increased by approximately 7–15 times to 442.3, 1856.4, 251.8, 412.7, 140.6, 1240.9 and 4025.6 t in 2012, respectively. This is mainly because the reduced shares of HM emissions from nonferrous metals smelting sector, caused by increasing advanced pollutants control devices installation, have been partly counteracted by the rapid growth of nonferrous metals production.

A steady increase of HM emissions from the pig iron and steel industry accompanying by certain undulations has occurred from 1949 to 1999 (see Fig. 2). Specifically, because of the emphasis on the backyard furnaces for steel production in the period of the Great Leap Forward Movement, a sharp fluctuation of emissions has

occurred during the period of 1958 to 1963, with the emissions of Hg, As, Se, Pb, Cd, Cr, Ni, Sb, Mn, Cu and Zn almost doubling (NBS, 2013b). Although emission factors have leveled off between 2000 and 2012, the output of pig iron and steel has rapidly increased from 131.0 and 128.5 Mt in 2000 to 663.5 and 723.9 Mt in 2012 and, as a result, the emissions of Hg, As, Se, Pb, Cd, Cr, Ni, Sb, Mn, Cu and Zn from this sector have quadrupled or quintupled in the past twelve years. Especially, the share of Zn emissions from ferrous metals smelting sector to the national emissions has increased from 13.1 to 32.2%. Therein, the steel making industry represents the dominant contributor to the Zn emissions, accounting for about 60.9–62.9% during this period.

In order to facilitate understanding of historical HM emissions in China, the details about temporal variation trends of HM emissions from liquid fuels combustion and brake and tyre wear are discussed in the Supplement Section S3.

3.2 Composition of HM Emissions by province and source category in 2010

The total emissions of Hg, As, Se, Pb, Cd, Cr, Ni, Sb, Mn, Co, Cu and Zn from primary anthropogenic sources by provinces in China for the year 2010 are estimated at about 72955.1 t. As can be seen in Fig. 4, coal combustion sources represent the major contributors of Hg, As, Se, Pb, Cr, Ni, Mn, Co and Cu emissions and are responsible for about 50.6, 74.2, 64.6, 60.1, 90.4, 56.2, 80.9, 98.6 and 53.4% respectively of total emissions, while their contribution to the total Cd, Sb and Zn emissions are relatively lower, at about 32.7, 39.3 and 39.8%, respectively.

Among all the coal consuming sub-sectors, coal consumption by industrial boilers ranks as the primary source in the national total emission of twelve HMs, with the average proportion about 57.7% of the total emission from coal combustion. This may be attributed to the significant coal consumption of industrial boilers (about 1117.3 Mt in 2010) and the relatively high share of boilers with inadequate APCDs (Cheng et al., 2015; NBS, 2013b).

As the largest coal consumer in China, coal consumption by power plants is identified as the second largest contributor and accounts for about 14.0% in national total emission of twelve HMs. In order to achieve the emission reduction of PM, SO₂ and NO_x for satisfying the national or local emission reduction goals for the year 2010 (the end year of 11th FYP) (NBS, 2011; Tian et al., 2014a), a series of control policies have been implemented, including replacement of small coal-fired

plant units with large and high efficiency units and the continuously increasing installation~~application~~ rate of advanced APCDs systems (e.g., ESP, FFs, WFGD, SCR, etc.). Consequently, the final discharge rates of HM from power plants have decreased obviously even though the volume of coal consumption has grown substantially (see Fig. 2 and Fig. S1).

China has been the world's largest producer of pig iron and steel by a rapidly growing margin. By the end of 2012, the output of steel has amounted to 723.9 Mt, accounting for about 46% of worldwide steel production (CISA, 2013). Despite the enormous achievement ~~obtained~~ by China's iron and steel industry, China is still featured as a steel producer with low energy efficiency and high pollutants emissions level compared with other major steel-producing countries (Guo and Fu, 2010). Because of limited application of FGD and de-NO_x devices and poor control of PM, ferrous metals smelting sector ranks as the third largest contributor, responsible ~~for~~occupying about 13.2% of the national total emissions of twelve HMs. In terms of Zn emissions, the share from this sector is dominant, accounting for about 32.2% of the total.

Regarding nonferrous metals smelting emissions, the primary smelting processes resulting in HM emissions discharge far more pollution than those emitted from the secondary smelting processes. Nonferrous metals smelting, as the fourth largest contributor, accounting for about 11.0% of total emissions, represents the primary contributor to the discharges of Hg and Cd. Therein, primary-Cu smelting contributes the largest part of most of these elements, including 89.5% for As, 37.3% for Pb, 74.8% for Cd, 38.7% for Ni and 76.6% for Cu; primary-Pb smelting is the major source of Sb and Pb; primary-Zn smelting accounts for the largest proportion of Hg and Zn emissions among the nonferrous metals smelting category. Besides, with respect to Hg emissions from the nonferrous metals smelting sector, the mercury smelting industry is the other dominant sub-category source, with a share of about 33.0% of nonferrous metals smelting emission in 2010.

It can be concluded that the emissions of HMs from brake wear are ~~well~~ associated with the vehicle population~~amount~~, vehicle mileage as well as the content~~contents~~ of HMs in brake linings and tyres. Currently, numerous ~~of~~ studies have reported that airborne HMs (e.g. Sb, Cu, Zn, etc.) in urban areas are associated with road traffic and more definitely with emissions from brake wear (Gómez et al., 2005; Hjortenkrans et al., 2007). As can be seen from Fig. 4h, k, brake and tyre wear

sector ~~is the largest source, takes the largest part of~~ 39.9 and 26.3%, ~~of~~ national Sb and Cu emissions, respectively. ~~B~~Therein, brake wear is the ~~absolutely~~ dominant sub-contributor, accounting for over 99.9 and 99.6% for Sb and Cu emissions from this sector in 2010, respectively. This is mainly due to the high contents of Sb and Cu in the brake linings (see Table S13, Hjortenkrans et al., 2007) and the explosive expansion of ~~the~~ vehicle population in China (see Fig. S5). Nevertheless, the adverse effects of airborne PM originating ~~ed~~ from brake wear on human health and ~~the~~ ecosystem ~~have~~are still not received sufficient attention from the policymakers as well as the public.

~~A~~Specially, ~~although the~~ non-metallic mineral manufacturing sector is not the dominant source for most of HMs, the discharge of Se from this sector ~~makes~~ ~~it~~~~explains~~ the largest contributor ~~to~~of the total. ~~Within~~~~Among~~ this category, ~~the~~ glass production sector discharges about 92.9% of the total Se emissions due to the widespread application of selenium powder as decolorizing agent in ~~the~~ glass production process and ~~the~~ huge output of glass production (Kavлак and Graedel, 2013).

As can be seen from Fig. 4a-1, the source contributions on the provincial scale in 2010 vary substantially due to the difference of industrial conformations and energy structures (Cheng et al., 2015; NBS, 2013a, b). Among the provinces with high HM emissions, Shandong ranks as the largest province with As, Se, Cd, Ni, Mn and Cu emissions; accounting for about 8.1–10.6% of the national emissions; Hebei contributes the largest part of about 9.3 and 11.3% ~~to~~in national Pb and Zn emissions ~~respectively~~; Guizhou represents the primary province with Hg and Sb emissions; the key provinces with Cr and Co emissions are found in Yunnan and Shanxi, respectively. These can be mainly attributed to the follow reasons (NBS, 2013a, b; Wu et al., 2008): (1) the enormous coal consumption of industrial boilers, ~~considerable~~~~prosperous~~ electric power generation, ~~a substantial~~~~explosive~~ increase of vehicle population and ~~the~~ huge output of industrial products in Shandong, (2) the flourishing pig iron and steel production in Hebei, (3) the dominant outputs of mercury and obviously high average concentration of Sb in feed coals in Guizhou (about $6.0 \mu\text{g g}^{-1}$, which is approximately four times higher than the national averaged concentration of Sb in coal as consumed in China, see Table S8), (4) the booming coke making industry in Shanxi, (5) the relatively higher concentration of Cr in feed coals in Yunnan (about $71.7 \mu\text{g g}^{-1}$, which is two times higher than the national averaged concentration of Cr

in coal as consumed in China, see Table S8).

3.3 Spatial variation characteristics of HM emissions

The spatial distribution patterns of HM emissions from anthropogenic sources are illustrated in Fig. 5. In this study, 1796 power plants with capacity larger than 6000 kW, 566 copper/lead/zinc smelting plants, 33 large iron and steel plants and 101 MSW incineration plants are identified as large point sources and their emissions are precisely allocated at their latitude/longitude coordinates (the geographical distribution of 2496 point sources in China is shown in Supplement Fig. S7). It should be noted here, the emissions from point sources of nonferrous metals smelting industry and ferrous metals smelting industry contain two parts: emissions originating from fuel combustion and emissions emitted from industrial production processes. Except for the emissions from point sources discussed above, the remaining anthropogenic sources in the provincial level are all treated as regional area sources. The specific method of geographical location for area sources has been discussed in our previous studies (Tian et al., 2012b; Tian et al., 2012c).

The spatial variation is closely related with the unbalanced economic development and population density in the Chinese mainland, so that these twelve typical HM emissions are distributed very unevenly from one area to another, with the annual As emissions at the province level ranging from 0.009 kg km⁻² in Qinghai to 1.6 kg km⁻² in Shandong, for instance. One notable characteristic of the spatial distribution of China's HM emissions is that the HM emission intensities are much higher in the central and eastern China than those in the western China, and the coastal regions are zoned as the most polluted areas of varied HMs. The emissions of HMs from Hebei, Shandong, Henan, Jiangsu, Shanxi, and Liaoning provinces almost account for about 39.4% of the total emissions of these HMs. These above six provinces are characterized by extensive economy growth mode, large volume of coal consumption and various industrial products output, as well as a high population density. Therefore, more energy consumption and higher travel demand characterize need to be fulfilled in these six provinces, compared to those in other provinces and districts, resulting in higher HM emission intensity.

Moreover, several provinces in the southwestern and central-southern regions also play a prominent role for these twelve HM emissions, especially for Guizhou, Sichuan, Yunnan, Hubei and Hunan provinces. In general, Guizhou province starts

out with high emissions of HMs from coal consumption by other sectors, mainly owing to both the high HM contents in the feed coals and the large magnitude of coal consumption by this sector. In addition, the nonferrous industries of Hunan and Yunnan provinces are flourishing, especially the copper and zinc smelting industries. Consequently, ~~the~~ nonferrous metals smelting sector is ~~seen as demonstrated as~~ one of major source of Cu and Zn emissions in these two provinces.

The situations of atmospheric HM concentrations in ~~the~~ aerosols of 44 major cities in China during the last 10 years have been reviewed comprehensively by Duan and Tan (2013). Their results indicate that the ambient concentrations of HMs (As, Pb, Cd, Cr, Ni, Mn, Cu and Zn) is high in some cities, including Beijing, Tianjin, Shijiazhuang, Shenyang, Harbin, Jinan, Zhengzhou, Hangzhou, Nanjing, Hefei, Xian, Yinchuan, Urumqi, Wuhan, Changsha, Chongqing, Guangzhou, Shenzhen, Foshan, Shaoguan, ~~and others. etc.~~ For HM emissions on the urban scale in 2010, these ~~above~~ twenty cities with high HMs concentrations also represent ~~the primary~~ cities with ~~the~~ high HM emissions in China (see Fig. 5). In general, the spatial distribution characteristics of gridded HM emissions from primary anthropogenic sources for the year 2010 in this study are reasonable and representative of the real situation of these HM pollutions.

3.4 Uncertainty analysis

Emissions of varied HMs from primary anthropogenic sources with uncertainties in 2010 are summarized in Fig. 6 and Supplement Table S22. As can be seen, the overall uncertainties of the total emissions in our inventories quantified by Monte Carlo simulation are -39.1–50.8%. Among all the coal combustion sectors, uncertainties for thermal power plants emissions are smallest, whereas those for coal-fired residential sectors and coal-fired other sectors are considerable. These are mainly attributed to the relatively poor resolution of coal burning technologies and emission control devices in these two sub-categories. In contrast, relatively higher uncertainties are observed in the non-coal combustion categories, particular for non-metallic mineral manufacturing and brake and tyre wear emissions. These high uncertainties of HM emissions can be mainly attributed to imprecise statistics information, poor source understanding, as well as ~~the absence of~~ lacking adequate field test data in China.

~~Especially, the earlier statistical data for activity levels~~ are considered to have high uncertainty for developing countries ~~y~~ (including China) with less developed

statistical systems. Unfortunately, we have to acknowledge that it is quite difficult to accurately assess the specific uncertainty of activity data from China's earlier official statistics. Akimoto et al. (2006) argue that the data of energy consumption of China during 1996–2003 is not recommended for use in the study of emission inventories due to the probable underestimates. However, the discrepancies in coal consumption from the power sector are considered to be less than $\pm 5\%$, which do not dominate the emission uncertainties (Wu et al., 2010; Zhao, et al., 2008). In order to approximately quantify the uncertainty of activity data, we divide the whole period of 1949 to 2012 into three stages with respect to economic development and emission control: before reform and opening (1949–1978), intermediate stage (1979–2005), and the substantial control stage of atmospheric pollutants (2006–2012). For the activity level of anthropogenic sources obtained from official statistics after 2006, we assume normal distributions with sector-dependent uncertainties (see Supplement Table S20). On the basis of above discussion and consideration, the uncertainty of activity data from official statistics during the two early periods of 1949–1978 and 1979–2005, are assumed to be about 2 and 1.5 times of those in the period of 2006–2012, respectively.

The combined uncertainty bounds for the national emissions of twelve HMs during the historical period are shown in Fig. S8. In general, the range of uncertainty has gradually diminished over time. For example, we calculate an uncertainty level of -90.1–125.7% (95% confidence interval) in the estimate of national Hg emissions in 1949, which is higher than those of the other eleven HM emissions (between -90.0% and 119.3%). This is mainly attributed to remarkable emissions from several Hg sources that have the largest uncertainty in both activity levels and emission factors, such as gold smelting and mercury mining. Since then, the relative uncertainties have gradually decreased from the beginning to the end of the period. This is primarily because more reliable activity data with a smaller coefficient of variation (CV) from related yearbooks and reports became available. The uncertainty range of national Hg emissions is estimated to -40.6–55.8% by 2003, which compares well~~is well~~
~~comparable~~ with estimates of $\pm 44\%$ for China's Hg emissions by Wu et al. (2006). By the end of 2012, the overall uncertainty level has been reduced to -39.0–47.0% for the national HM emissions. Particularly, it should be acknowledged that emission trends of HMs are probably more uncertain than indicated. This is mainly because dynamic emission factor curves of certain sectors are set between two very distant points (e.g., 1890 and 1990 in Fig. 1), which means that the timing and rate of the decreased

emission factors are really unconstrained. Nevertheless, no data are available to improve the confidence presently, which merits further investigation in the future.

Generally speaking, emission inventories are never complete and perfect, and most emissions estimates possess a significant associated uncertainty mainly owing to the lack of representativeness of specific emission factors and the reliability of each-source specific activity data. In this study, we have made great efforts to evaluate the historical trend of these HM emissions by collecting detailed activity levels for various source categories, adopting the best available dynamic emission factors for various anthropogenic sources in China today, and integrating publication literature and reports from developed countries and districts. Nevertheless, considerable uncertainties are still present, and this may lead to under- or over-estimation of HM emissions from some source categories. Consequently, more detailed investigation and long-term field tests for all kinds of coal-fired facilities and industrial production processes are in great demand.

3.5 Proposals for future control policies

Presently, control of atmospheric HM emissions still has not received sufficient attention by the government and public in spite of the frequent occurrence of HM pollution in China (especially for provinces with high point sources of HM emissions). The implementation of more rigorous emission standards on primary anthropogenic sources (thermal power plant, coal-fired boiler, nonferrous metallurgy, pig iron and steel production, etc.) and national ambient air quality standards (NAAQS) are regarded as the important triggers to promote enterprises with diminished HM emissions. Therefore, the MEP should speed up the revision of the system of hazardous air pollutant (including HM) emission standards, and strengthen the amendment of NAAQS. Especially, brake wear has been confirmed to be the main source of HM emissions from traffic, particularly in urban areas. However, there is no related emission standard of air pollutants for brake wear. In the near future, the promulgation of emission standards of brake wear should be expected, which will further strengthen the control of atmospheric HM emissions in China.

In addition, some specific actions are suggested as follows: (1) lower or stop mining and burning of coal with high HM concentrations in certain provinces where the coals are mainly mined from by small coal mines such as Zhejiang and Guangxi (or lower or stop ~~using~~utilizing high-sulfur coal in corresponding provinces due to the

high affinity between HMs and pyrite in coal) (Yuan et al., 2013; Zhu et al., 2015); (2) promote coal washing before combustion (the removal efficiencies of coal preparation to lower heavy metals can reach as high as approximately 30.0–60.0%, see Supplement table S9); (3) increase the application rate of advanced APCDs configurations in newly built or retrofitted coal-fired boilers; (4) initiate pilot-tests or demonstration projects for specified mercury control (SMC) technologies in some sectors with high Hg emissions and develop comprehensive HM control technologies capable of simultaneously removing multiple heavy metals; (5) strengthen energy conservation and boost electricity and/or heat generation using cleaned energy and renewable energy, such as nuclear, wind and solar energy; (6) suspend small-scale coal-fired boilers and industrial production plants with backward emission control technologies (e.g., cement plants, ferrous smelting plants, nonferrous smelting plants, etc.); (7) eliminate outdated production technology, such as VR pyrometallurgy and ISP pyrometallurgy; (8) improve cyclic utilization rate of nonferrous metals and ferrous metals during the period of 12th FYP; (9) etc.

4 Conclusions

We have calculated the historical emissions of 12 typical HMs from primary manmade activities during the period of 1949–2012, based on the detailed statistical data at provincial level from various statistical yearbooks and adopting comprehensive time-varying dynamic emission factors from relevant researches and literature. Undoubtedly, taking consideration of the economic transition and emission control technology improvement, the dynamic emission factors used in this study will enhance the accuracy and reliability of the estimation of HM emissions.

The total national atmospheric emissions of Hg, As, Se, Pb, Cd, Cr, Ni, Sb, Mn, Co, Cu and Zn from anthropogenic sources have increased by about 22–128 times during the period of 1949–2012, reaching at about 526.9–22319.6 t in 2012.

In spite of the increasing coal consumption and gross industrial production, the national emissions of certain HMs (e.g., As, Se, Ni, Mn, Co, etc.) have been well restrained with the implementation of energy-saving and pollution reduction policies during 2006 to 2012. Especially, the declining share of HM emissions from industrial process sources (e.g., nonferrous metals smelting, ferrous metals smelting, non-metallic mineral manufacturing, etc.) caused by increasing installation of advanced pollutants control devices, has been partially counteracted by the added

965 industrial production yields. Additionally, both high contents of antimony and copper
966 in brake lining and the rapid growth of civilian vehicle population are thought to be
967 the primary reasons for continuous significant growth rate of Sb and Cu emissions
968 from brake and tyre wear during 2000 to 2012.

969 The spatial distribution characteristics of HM emissions are closely related with
970 the unbalanced regional economic development and population density in China. One
971 notable characteristic is that the HM emission intensities are much higher in the
972 central and eastern China than those in western China, and the coastal regions are
973 | zoned as the most polluted areas of HMs. Notably, because of the flourishing of
974 nonferrous metals smelting industry, the southwestern and central-southern provinces
975 also play a prominent role in HM emissions.

976 The overall uncertainties in our bottom-up inventories are thought to be
977 reasonable and acceptable with the adequate data availability. Nevertheless, to
978 | achieve the more reliable estimations of HM emissions in China, much more detailed
979 investigation and long-term field tests for all kinds of coal-fired facilities and
980 | industrial process are still in great ly needed-demand in the future.

981 *Acknowledgments.* This work is funded by the National Natural Science Foundation
982 of China (21177012, 21377012 and 40975061), the Special Program on Public
983 Welfare of the Ministry of Environmental Protection (201409022), Open fund of State
984 Environmental Protection Key Laboratory of Sources and Control of Air Pollution
985 Complex (SCAPC201305), and the special fund of State Key Joint Laboratory of
986 Environmental Simulation and Pollution Control (13L02ESPC).

References

- Akimoto, H., Ohara, T., Kurokawa, J. and Horii, N.: Verification of energy consumption in China during 1996–2003 by using satellite observational data, *Atmos. Environ.*, **40**, 7664–7667, doi:10.1016/j.atmosenv.2006.07.052, 2006.
- Annema, J. A.: SPIN document “Productie van secundair staal”, RIVM rapportnr, the Netherlands, 1993.
- Biggins, P. D., and Harrison, R. M.: Atmospheric chemistry of automotive lead, *Environ. Sci. Technol.*, **13**, 558–565, doi:10.1021/es60153a017, 1979.
- Bond, T. C., Bhardwaj, E., Dong, R., Jogani, R., Jung, S., Roden, C., Streets, D. G., and Trautmann, N. M.: Historical emissions of black and organic carbon aerosol from energy - related combustion, 1850 – 2000, *Global Biogeochem. Cycles*, **21**, 1 – 16, doi:10.1029/2006GB002840, 2007.
- Bukowiecki, N., Lienemann, P., Hill, M., Figi, R., Richard, A., Furger, M., Rickers, K., Falkenberg, G., Zhao, Y., and Cliff, S. S.: Real-world emission factors for antimony and other brake wear related trace elements: size-segregated values for light and heavy duty vehicles, *Environ. Sci. Technol.*, **43**, 8072–8078, doi:10.1021/es9006096, 2009.
- Chang, M. B., Huang, C. K., Wu, H. T., Lin, J. J., and Chang, S. H.: Characteristics of heavy metals on particles with different sizes from municipal solid waste incineration, *J. Hazard. Mater.*, **79**, 229–239, doi:10.1016/S0304-3894(00)00277-6, 2000.
- Cheng, H. F., and Hu, Y. A.: Municipal solid waste (MSW) as a renewable source of energy: Current and future practices in China, *Bioresour. Technol.*, **101**, 3816–3824, doi:10.1016/j.biortech.2010.01.040, 2010.
- Cheng, K., Wang, Y., Tian, H. Z., Gao, X., Zhang, Y. X., Wu, X. C., Zhu, C. Y., Gao, J. J.: Atmospheric emission characteristics and control policies of five precedent-controlled toxic heavy metals from anthropogenic sources in China, *Environ. Sci. Technol.*, **49**, 1206–1214, doi:10.1021/es5037332, 2015.
- Cheng, Z., Wang, S. X., Fu, X., Watson, J. G., Jiang, J. K., Fu, Q., Chen, C., Xu, B., Yu, J., Chow, J. C., and Hao, J. M.: Impact of biomass burning on haze pollution in the Yangtze River delta, China: a case study in summer 2011, *Atmos. Chem. Phys.*, **14**, 4573–4585, doi:10.5194/acp-14-4573-2014, 2014.
- China Iron and Steel Association (CISA), P. R. China: China Steel Yearbook, China Steel Industry Press, Beijing, 2013 (in Chinese).
- China Machinery Industry Federation (CMIF), P. R. China: China Machinery Industry Yearbook, China Machine Press, Beijing, 2013.
- Department of Environment of Australia (DEA): Emissions estimation technique manual for aggregated emissions from domestic solid fuel burning, National Pollutant Inventory (NPI), 1999.
- Duan, J. C., and Tan, J. H.: Atmospheric heavy metals and arsenic in China: situation, sources and control policies, *Atmos. Environ.*, **74**, 93–101, doi:10.1016/j.atmosenv.2013.03.031, 2013.
- European Commission (EC): Integrated Pollution Prevention and Control (IPPC), Best available techniques reference document on the production of iron and steel, 2001.
- European Environment Agency (EEA): EMEP/EEA air pollutant emission inventory guidebook 2009, available at: <http://www.eea.europa.eu/publications/emep-eea-emission-inventory-guidebook-2009> (last access: 24 December 2013), 2009.
- European Environment Agency (EEA): EMEP/EEA air pollutant emission inventory guidebook 2013, available at: <http://www.eea.europa.eu/publications/emep-eea-guidebook-2013> (last access: 12 November 2013), 2013.
- Fang, F. M., Wang, Q. C., Ma, Z. W., Liu, R. H., and Cao, Y. H.: Estimation of atmospheric input of mercury to South Lake and Jingyue Pool, *Chinese Geog. Sci.*, **12**, 86–89, doi:10.1007/s11769-002-0076-y, 2002.
- Feng, X.: Mercury pollution in China—an overview, Springer Publishers, 657–678, doi:10.1007/0-387-24494-827, 2005.
- Gao, J. J., Tian, H. Z., Cheng, K., Lu, L., Wang, Y. X., Wu, Y., Zhu, C. Y., Liu, K. Y., Zhou, J. J., Liu, X. G., Chen, J., and Hao, J. M.: Seasonal and spatial variation of trace elements in

- multi-size airborne particulate matters of Beijing, China: Mass concentration, enrichment characteristics, source apportionment, chemical speciation and bioavailability, *Atmos. Environ.*, 99, 257–265, doi:10.1016/j.atmosenv.2014.08.081, 2014.
- Grübler, A., Nakićenović, N., and Victor, D. G.: Dynamics of energy technologies and global change, *Energy policy*, 27, 247–280, doi:10.1016/S0301-4215(98)00067-6, 1999.
- Hao, J. M., Tian, H. Z., and Lu, Y. Q.: Emission inventories of NO_x from commercial energy consumption in China, 1995–1998, *Environ. Sci. Technol.*, 36, 552–560, doi:10.1021/es015601k, 2002.
- Hassel, D., Jost, P., and Dursbeck, F.: Das Abgas-Emissionsverhalten von Personenkraftwagen in der Bundesrepublik Deutschland im Bezugsjahr, 1985, UBA-Berichte, 7, 1987.
- Hjortenkrans, D. S., Bergbäck, B. G., and Hågerud, A. V.: Metal emissions from brake linings and tires: case studies of Stockholm, Sweden 1995/1998 and 2005, *Environ. Sci. Technol.*, 41, 5224–5230, doi:10.1021/es070198o, 2007.
- Hulskotte, J. H. J., Schaap, M., and Visschedijk, A. J. H.: Brake wear from vehicles as an important source of diffuse copper pollution, 10th International specialized conference on diffuse pollution and sustainable basin management, 18–22, 2006.
- International Agency for Research on Cancer (IARC): Agents classified by the iarc monographs, volumes 1-111, online available at: <http://monographs.iarc.fr/ENG/Classification/index.php> (last access: 23 October 2014), 2014.
- Industrial emissions Reporting Information System (IRIS), European Commission, available at: <http://iris.eionet.europa.eu/ippc/reporting-period-2003-2005/elv-reports/key-results/> (last access: 18 September 2014), 2005.
- Jockel W., and Hartje J.: Datenerhebung über die emissionen umweltgefährdender schwermetalle, forschungsbericht 91-104 02 588, TÜV Rheinland e.V. Köln, 1991.
- Johansson, C., Norman, M., and Burman, L.: Road traffic emission factors for heavy metals, *Atmos. Environ.*, 43, 4681–4688, doi:10.1016/j.atmosenv.2008.10.024, 2009.
- Kavлак, G., and Graedel, T. E.: Global anthropogenic selenium cycles for 1949–2010, *Resour. Conserv. Recycl.*, 73, 17–22, doi:10.1016/j.resconrec.2013.01.013, 2013.
- Kung, J. K. s., and Lin, J. Y.: The Causes of China's Great Leap Famine, 1959–1961, *Econ. Dev. Cultural Change*, 52, 51–73, doi:10.1086/380584, 2003.
- Li, J. F., Song, Y., Mao, Y., Mao, Z. C., Wu, Y. S., Li, M. M., Huang, X., He, Q. C., and Hu, M.: Chemical characteristics and source apportionment of PM_{2.5} during the harvest season in eastern China's agricultural regions, *Atmos. Environ.*, 92, 442–448, doi:10.1016/j.atmosenv.2014.04.058, 2014.
- Lu, B., Kong, S. F., Han, B., Wang, X. Y., and Bai, Z. P.: Inventory of atmospheric pollutants discharged from biomass burning in China continent in 2007, *Chin. Environ. Sci.*, 31, 186–194, 2011 (In Chinese with English abstract).
- Ministry of Environmental Protection of the People's Republic of China (MEP), P. R. China: Emission standard of air pollutants for iron smelt industry, Beijing, 2012 (in Chinese).
- Ministry of Environmental Protection of the People's Republic of China (MEP), P. R. China: The list of desulfurization facilities equipped by coal-fired boiler in China, available at: <http://www.mep.gov.cn/gkml/hbb/bgg/201407/W020140711581927228220.pdf> (last access: 8 July 2014), 2014a.
- Ministry of Environmental Protection of the People's Republic of China (MEP), P. R. China: The list of denitration facilities equipped by coal-fired boiler in China, available at: <http://www.mep.gov.cn/gkml/hbb/bgg/201407/W020140711581927393439.pdf> (last access: 8 July 2014), 2014b.
- Mukherjee, A. B.: Nickel: a review of occurrence, uses, emissions, and concentration in the environment in Finland, *Environ. Rev.*, 6, 173–187, doi:10.1139/a99-001, 1998.
- National Bureau of Statistics (NBS), P. R. China: Report on “12th Five-Year Plan” of the electric power industry. National Bureau of Statistics of China, Beijing, China, 2011 (in Chinese).
- National Bureau of Statistics (NBS), P. R. China: China Energy Statistical Yearbook, China Statistics Press, Beijing, 2013b.
- National Bureau of Statistics (NBS), P. R. China: China Statistical Yearbook, China Statistics Press, Beijing, 2013a.
- Nie, Y. F.: Development and prospects of municipal solid waste (MSW) incineration in China, *Front. Environ. Sci. Engin. China*, 2, 1–7, doi:10.1007/s11783-008-0028-6, 2008.

- Nriagu, J. O.: Global inventory of natural and anthropogenic emissions of trace metals to the atmosphere, *Nature*, 279, 409–411, doi:10.1038/279409a0, 1979.
- Nriagu, J. O., and Pacyna, J. M.: Quantitative assessment of worldwide contamination of air, water and soils by trace metals, *Nature*, 333, 134–139, doi:10.1038/333134a0, 1988.
- Österle, W., Prietzel, C., Klotz, H., and Dmitriev, A. I.: On the role of copper in brake friction materials, *Tribol. Int.*, 43, 2317–2326, doi:10.1016/j.triboint.2010.08.005, 2010.
- Pacyna, E. G., Pacyna, J. M., Steenhuisen, F., Wilson, S.: Global anthropogenic mercury emission inventory for 2000, *Atmos. Environ.*, 40, 4048–4063, doi:10.1016/j.atmosenv.2006.03.041, doi:10.1016/j.atmosenv.2006.03.041, 2006.
- Pacyna, J. M.: Estimation of the atmospheric emissions of trace elements from anthropogenic sources in Europe, *Atmos. Environ.*, 18, 41–50, doi:10.1016/0004-6981(84)90227-0, 1984.
- Pacyna, J. M., and Pacyna, E. G.: An assessment of global and regional emissions of trace metals to the atmosphere from anthropogenic sources worldwide, *Environ. Rev.*, 9, 269–298, doi:10.1139/a01-012, 2001.
- Pirrone, N., Cinnirella, S., Feng, X., Finkelman, R. B., Friedli, H. R., Leaner, J., Mason, R., Mukherjee, A. B., Stracher, G. B., Streets, D. G., Telmer, K.: Global mercury emissions to the atmosphere from anthropogenic and natural sources. *Atmos. Chem. Phys.*, 10, 5951–5964, doi:10.5194/acp-10-5951-2010, 2010.
- Qin, J. F.: Estimation of lead emission to atmospheric from gasoline combustion, *Guangdong Trace Ele. Sci.*, 17, 27–34, 2010 (in Chinese).
- Reddy, M. S., Basha, S., Joshi, H. V., and Jha, B.: Evaluation of the emission characteristics of trace metals from coal and fuel oil fired power plants and their fate during combustion, *J. Hazard. Mater.*, 123, 242–249, doi:10.1016/j.jhazmat.2005.04.008, 2005.
- Ren, D. Y., Zhao, F. H., Dai, S., and Zhang, J.: Geochemistry of trace elements in coal, Science Press, Beijing, 2006 (in Chinese).
- Robbins, N., Zhang, Z. F., Sun, J., Ketterer, M. E., Lalumandier, J. A., and Shulze, R. A.: Childhood lead exposure and uptake in teeth in the Cleveland area during the era of leaded gasoline, *Sci. Total Environ.*, 408, 4118–4127, doi:10.1016/j.scitotenv.2010.04.060, 2010.
- Song, D. Y., Qin, Y., and Wang, W. F.: Burning and migration behavior of trace elements of coal used in power plant, *J. China Univ. Min. Technol.*, 32, 316–320, 2003 (in Chinese with English abstract).
- Streets, D. G., Bond, T. C., Lee, T., and Jang, C.: On the future of carbonaceous aerosol emissions, *J. Geophys. Res.*, 109, 1–19, doi:10.1029/2004JD004902, 2004.
- Streets, D. G., Bond, T. C., Carmichael, G. R., Fernandes, S. D., and Fu, Q.: An inventory of gaseous and primary aerosol emissions in Asia in the year 2000, *J. Geophys. Research*, 108, 8809, doi:10.1029/2002JD003093, 2003.
- Streets, D. G., Hao, J. M., Wu, Y., Jiang, J. K., Chan, M., Tian, H. Z., and Feng, X. B.: Anthropogenic mercury emissions in China, *Atmos. Environ.*, 39, 7789–7806, doi:10.1016/j.atmosenv.2005.08.029, 2005.
- Streets, D. G., Devane, M. K., Lu, Z., Bond, T. C., Sunderland, E. M., and Jacob, D. J.: All-time releases of mercury to the atmosphere from human activities, *Environ. Sci. Technol.*, 45, 10485–10491, doi:10.1021/es202765m, 2011.
- Tang, X. Y., Zhao, J. Y., and Huang, W. H.: Nine metal elements in coal of China, *Coal Geol. China*, 14, 43–54, 2002 (in Chinese).
- Theloke, J., Kummer, U., Nitter, S., Gefeller, T., and Friedrich, R.: Überarbeitung der Schwermetallkapitel im CORINAIR Guidebook zur Verbesserung der Emissionsinventare und der Berichterstattung im Rahmen der Genfer Luftreinhaltekonvention. Report for Umweltbundesamt, 2008.
- Tian, H. Z., Hao, J. M., Hu, M. Y., and Nie, Y. F.: Recent trends of energy consumption and air pollution in China, *J. Energy Eng.*, 133, 4–12, doi:10.1061/(ASCE)0733-9402(2007)133:1(4), 2007.
- Tian, H. Z., Wang, Y., Xue, Z. G., Cheng, K., Qu, Y. P., Chai, F. H., and Hao, J. M.: Trend and characteristics of atmospheric emissions of Hg, As, and Se from coal combustion in China, 1980–2007, *Atmos. Chem. Phys.*, 10, 11905–11919, doi:10.5194/acp-10-11905-2010, 2010.
- Tian, H. Z., Cheng, K., Wang, Y., Zhao, D., Chai, F. H., Xue, Z. G., and Hao, J. M.: Quantitative assessment of variability and uncertainty of hazardous trace element (Cd, Cr, and Pb) contents in Chinese coals by using bootstrap simulation, *J. Air Waste Manage. Assoc.*, 61,

- 755–763, doi:10.3155/1047-3289.61.7.755, 2011a.
- Tian, H. Z., Zhao, D., and Wang, Y.: Emission inventories of atmospheric pollutants discharged from biomass burning in China, *Acta Sci. Circumstantiae*, 31, 349–357, 2011b (in Chinese with English abstract).
- Tian, H. Z., Cheng, K., Wang, Y., Zhao, D., Lu, L., Jia, W. X., and Hao, J. M.: Temporal and spatial variation characteristics of atmospheric emissions of Cd, Cr, and Pb from coal in China, *Atmos. Environ.*, 50, 157–163, doi:10.1016/j.atmosenv.2011.12.045, 2012a.
- Tian, H. Z., Lu, L., Cheng, K., Hao, J. M., Zhao, D., Wang, Y., Jia, W. X., and Qiu, P. P.: Anthropogenic atmospheric nickel emissions and its distribution characteristics in China, *Sci. Total Environ.*, 417, 148–157, doi:10.1016/j.scitotenv.2011.11.069, 2012b.
- Tian, H. Z., Zhao, D., Cheng, K., Lu, L., He, M. C., and Hao, J. M.: Anthropogenic atmospheric emissions of antimony and its spatial distribution characteristics in China, *Environ. Sci. Technol.*, 46, 3973–3980, doi:10.1021/es2041465, 2012c.
- Tian, H., Lu, L., Hao, J. M., Gao, J. J., Cheng, K., Liu, K. Y., Qiu, P. P., and Zhu, C. Y.: A review of key hazardous trace elements in Chinese coals: Abundance, occurrence, behavior during coal combustion and their environmental impacts, *Energy Fuels*, 27, 601–614, doi:10.1021/ef3017305, 2013.
- Tian, H., Liu, K. Y., Zhou, J. J., Lu, L., Hao, J. M., Qiu, P. P., Gao, J. J., Zhu, C. Y., Wang, K., and Hua, S. B.: Atmospheric emission inventory of hazardous trace elements from China's coal-fired power plants—Temporal trends and spatial variation characteristics, *Environ. Sci. Technol.*, 48, 3575–3582, doi:10.1021/es404730j, 2014a.
- Tian, H. Z., Gao, J. J., Lu, L., Zhao, D., Cheng, K., and Qiu, P. P.: Temporal trends and spatial variation characteristics of hazardous air pollutant emission inventory from municipal solid waste incineration in China, *Environ. Sci. Technol.*, 46, doi:10.1021/es302343s, 2012d.
- Tian, H. Z., Zhou, J. R., Zhu, C. Y., Zhao, D., Gao, J. J., Hao, J. M., He, M. C., Liu, K. Y., Wang, K., and Hua, S. B.: A Comprehensive global inventory of atmospheric antimony emissions from anthropogenic activities, 1995–2010, *Environ. Sci. Technol.*, 48, 10235–10241, doi:10.1021/es405817u, 2014b.
- United Kingdom (UK): emission factor databases of NAEL, 1970–1995, available at: <http://naei.defra.gov.uk/data/ef-all-results?q=14774>, (last access: 10 August 2014), 1995.
- United Kingdom (UK): emission factor databases of NAEL, available at: <http://naei.defra.gov.uk/data/ef-all-results?q=15354> (last access: 11 September 2014), 2012.
- US Environmental Protection Agency (US EPA): AP 42, fifth edition, volume I, chapter 1, section 1.1: bituminous and subbituminous coal combustion, available at: <http://www.epa.gov/ttn/chief/ap42/ch01/index.html> (last access: 12 October 2014), 1993.
- US Environmental Protection Agency (US EPA): Web Factor Information Retrieval System (WebFIRE), available at: <http://cfpub.epa.gov/webfire/index.cfm?action=fire.FactorsBasedOnDetailedSearch> (last access: 21 September 2014), 2012.
- US Environmental Protection Agency (US EPA): AP 42, fifth edition, volume I, chapter 2, section 2.1: refuse combustion, available at: <http://www.epa.gov/ttn/chief/ap42/ch02/index.html> (last access: 23 July 2014), 1996.
- Van der Most, P. F. J. and Veldt, C.: Emission factors Manual PARCOM-ATMOS, TNO-MEP, Apeldoorn, the Netherlands, 1991.
- von Uexküll, O., Skerfving, S., Doyle, R., and Braungart, M.: Antimony in brake pads—a carcinogenic component?, *J. Cleaner Prod.*, 13, 19–31, doi:10.1016/j.jclepro.2003.10.008, 2005.
- Wu, Q. R., Wang, S. X., Zhang, L., Song, J. X., Yang, H., and Meng, Y.: Update of mercury emissions from China's primary zinc, lead and copper smelters, 2000–2010, *Atmos. Chem. Phys.*, 12, 11153–11163, doi:10.5194/acp-12-11153-2012, 2012.
- Wu, Y., Streets, D. G., Wang, S. X., and Hao, J. M.: Uncertainties in estimating mercury emissions from coal-fired power plants in China, *Atmos. Chem. Phys.*, 10, 2937–2946, doi:10.5194/acp-10-2937-2010, 2010.
- Wu, Y., Wang, S. X., Streets, D. G., Hao, J. M., Chan, M., and Jiang, J. K.: Trends in anthropogenic mercury emissions in China from 1995 to 2003, *Environ. Sci. Technol.*, 40, 5312–5318, doi:10.1021/es060406x, 2006.

- Wu, Y. Y., Qin, Y., Yi, T. S., and Xia, X. H.: Enrichment and geochemical origin of some trace elements in high-sulfur coal from Kaili, eastern Guizhou Province, *Geochimica*, 37, 615-622, 2008 (in Chinese with English abstract).
- Xu, H. M., Cao, J. J., Ho, K. F., Ding, H., Han, Y. M., Wang, G. H., Chow, J. C., Watson, J. G., Khol, S. D., Qiang, J., and Li, W. T.: Lead concentrations in fine particulate matter after the phasing out of leaded gasoline in Xi'an, China, *Atmos. Environ.*, 46, 217–224, doi:10.1016/j.atmosenv.2011.09.078, 2012.
- Xu, M. H., Yan, R., Zheng, C. G., Qiao, Y., Han, J., Sheng, C. D.: Status of trace element emission in a coal combustion process: a review. *Fuel Process. Technol.*, 85, 215-23, doi:10.1016/S0378-3820(03)00174-7, 2004.
- Yuan, X. L., Mi, M., Mu, R. M., and Zuo, J.: Strategic route map of sulphur dioxide reduction in China, *Energy Policy*, 60, 844–851, doi:10.1016/j.enpol.2013.05.072, 2013.
- Zhang, J. L., and Wang, G. S.: Energy saving technologies and productive efficiency in the Chinese iron and steel sector, *Energy*, 33, 525–537, doi:10.1016/j.energy.2007.11.002, 2008.
- Zhao, Y., Nielsen, C. P., Lei, Y., McElroy, M. B., and Hao, J. M.: Quantifying the uncertainties of a bottom-up emission inventory of anthropogenic atmospheric pollutants in China, *Atmos. Chem. Phys.*, 11, 2295–2308, doi:10.5194/acp-11-2295-2011, 2011.
- Zhu, C. Y., Tian, H. Z., Cheng, K., Liu, K. Y., Wang, K., Hua, S. B., Gao, J. J., and Zhou, J. R.: Potentials of whole process control of heavy metals emissions from coal-fired power plants in China, *J. Cleaner Prod.*, doi: 10.1016/j.jclepro.2015.05.008, 2015 (in Press).

1234 **Table 1.** Averaged release rates and removal efficiencies of various HMs from coal-fired facilities and the installed APCDs.

Category		Hg	As	Se	Pb	Cd	Cr	Ni	Sb	Mn	Co	Cu	Zn
Release rate (%)	Pulverized-coal boiler	99.4	98.5	96.2	96.3	94.9	84.5	57.1	89.4	75.7	85.4	92.7	91.6
	Stoker fired boiler	83.2	77.2	81	40.1	42.5	26.7	10.5	53.5	16.2	25.2	25.7	16.3
	Fluidized-bed furnace	98.9	75.6	98.1	77.3	91.5	81.3	68.4	74.4	51.2	62.8	60.9	61.2
	Coke furnace	85.0	30.0	40.0	31.5	20.0	24.0	9.8	53.5	28.2	31.7	22.0	44.0
	Residential stoves (mg kg ⁻¹)	0.065	0.095	0.65	3.7	0.033	0.52	0.30	0.009	0.22	0.047	0.094	0.33
Removal efficiency (%)	ESP	33.2	86.2	73.8	95.0	95.5	95.5	91.0	83.5	95.8	97.0	95.0	94.5
	EF	67.9	99.0	65.0	99.0	97.6	95.1	94.8	94.3	96.1	98.0	98.0	98.0
	Cyclone	6.0	43.0	40.0	12.1	22.9	30.0	39.9	40.0	67.0	72.0	60.0	64.0
	Wet scrubber	15.2	96.3	85.0	70.1	75.0	48.1	70.9	96.3	99.0	99.8	99.0	99.0
	WFGD	57.2	80.4	74.9	78.4	80.5	86.0	80.0	82.1	58.5	56.8	40.4	58.2
	SCR+ESP+WFGD	74.8	97.3	93.4	98.9	99.1	99.4	98.2	97.0	98.3	98.7	97.0	97.7

Table 2. HM emissions from primary anthropogenic sources in China, 1949–2012 (t/year).

Year	Hg	As	Se	Pb	Cd	Cr	Ni	Sb	Mn	Co	Cu	Zn
1949	12.7	45.2	53.7	312.6	15.5	158.6	147.3	16.3	212.1	11.5	74.0	226.8
1978	144.1	593.6	607.6	7206.2	82.5	1021.2	891.9	151.1	3616.5	295.3	1356.8	3396.0
1980	163.1	791.3	825.8	9744.8	98.0	1481.4	1101.5	193.9	4637.4	387.2	1745.6	4128.4
1985	209.7	1055.5	1168.7	12922.5	123.7	2353.5	1250.0	250.6	5736.8	478.8	2194.9	4896.5
1990	261.3	1311.7	1546.4	17644.0	156.2	3374.7	1667.5	337.3	7607.8	624.0	2880.5	6541.9
1995	351.1	1699.7	2179.8	17620.3	223.3	5155.0	2354.2	499.4	9454.9	778.7	4131.5	9564.5
2000	316.1	1673.2	2113.0	20193.5	255.9	4928.7	2407.0	566.1	10034.7	842.7	4733.0	10788.6
2005	492.3	2454.4	3058.1	10887.1	378.9	6828.5	3246.4	797.9	12195.4	1075.8	7101.1	15987.9
2006	509.3	2501.2	3146.8	11250.2	398.5	7179.0	3356.7	826.2	12181.6	1042.8	7201.1	16895.0
2007	533.8	2407.2	3067.2	11729.0	420.8	7445.2	3369.6	822.8	12528.9	1064.5	7600.0	18147.6
2008	564.8	2489.7	3136.1	12213.6	442.4	7755.7	3248.3	962.9	12499.8	1056.5	8208.7	18337.4
2009	589.7	2325.8	2936.1	12519.9	453.7	7810.2	3250.8	1006.0	12195.4	1010.7	8428.6	19035.8
2010	672.0	2322.9	2880.5	13194.5	455.8	7465.2	3138.6	1068.1	12015.9	919.2	8318.8	20503.7
2011	688.4	2422.8	3062.4	14032.4	493.9	7733.0	3440.1	1172.8	12657.3	981.2	9115.5	21876.0
2012	695.1	2529.0	3061.7	14397.6	526.9	7834.1	3395.5	1251.7	13006.6	1004.6	9547.6	22319.6

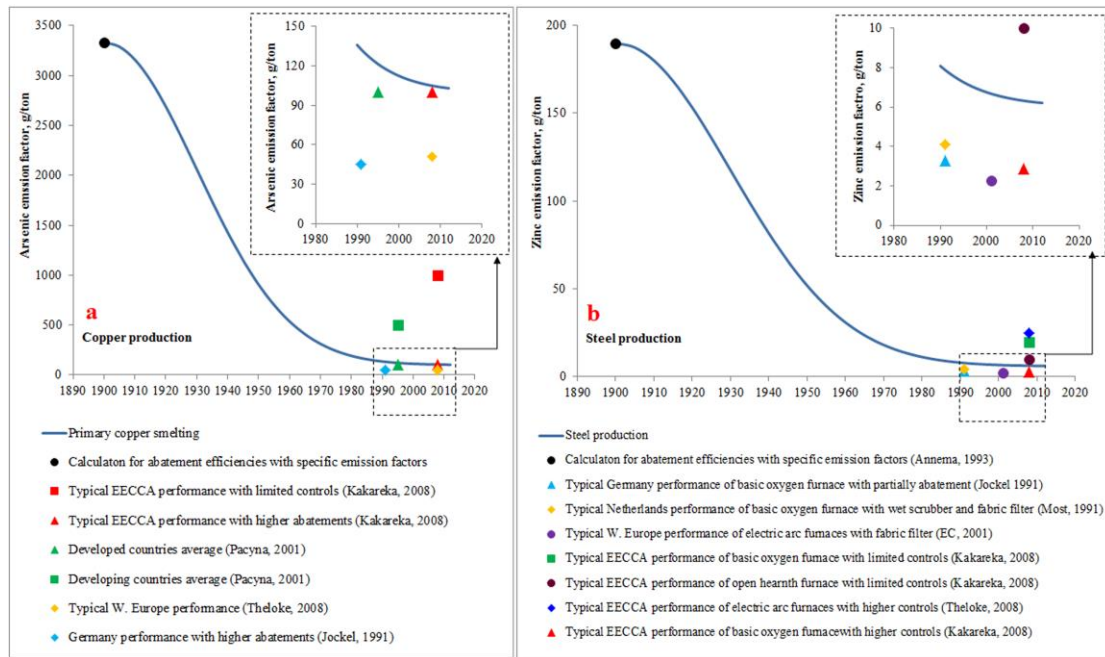


Figure 1. Time variation of arsenic emission factors for copper production and zinc emission factors for steel making in China (an example for instance)

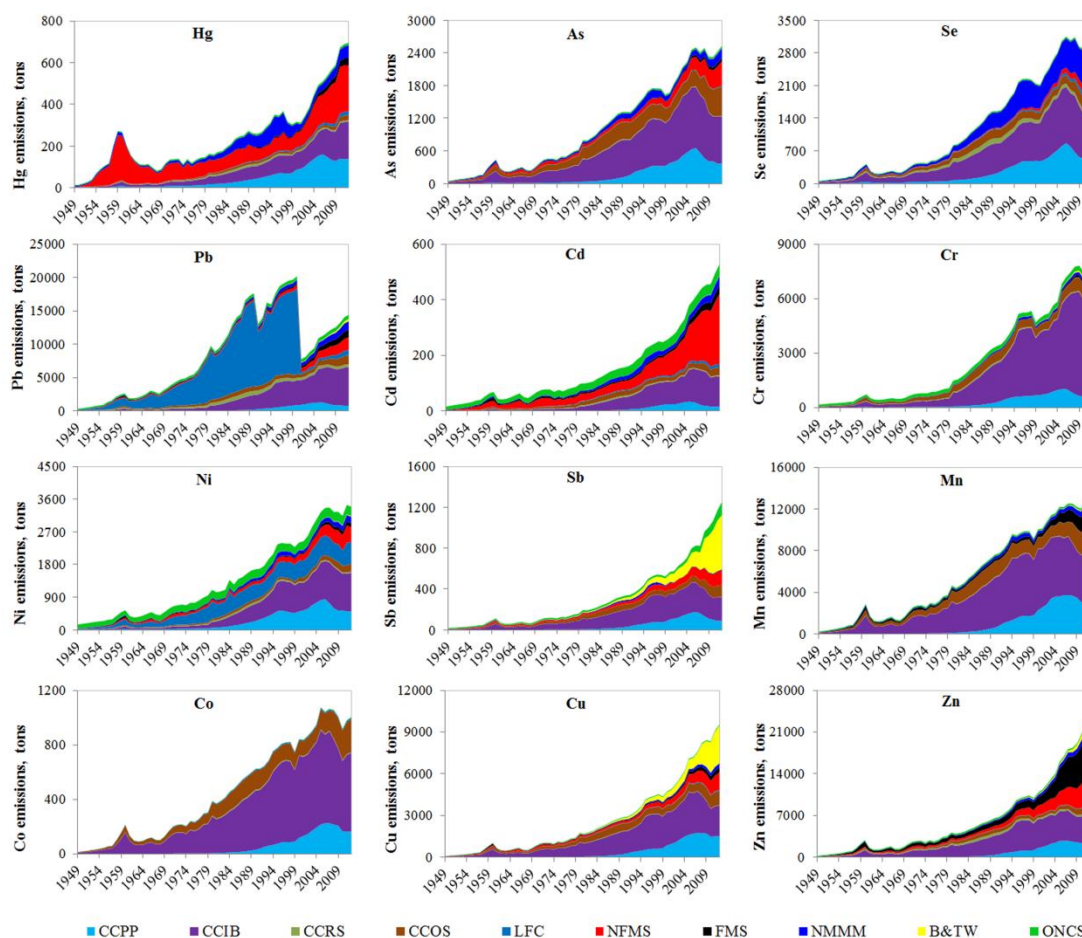


Figure 2. Historical trends of atmospheric HMs (Hg, As, Se, Pb, Cd, Cr, Ni, Sb, Mn, Co, Cu and Zn) emissions from primary anthropogenic sources in China, 1949–2012. CAPP, coal consumption by power plants; CCIB, coal consumption by industrial boilers; CCRS, coal consumption by residential sectors; CCOS, coal consumption by other sectors; LFC, liquid fuels combustion; NFMS, nonferrous metals smelting; FMS, ferrous metal smelting; NMMM, non-metallic minerals manufacturing; B&TW, brake and tyre wear; ONCS, other non-coal sources (including BB, biomass burning; MSWI, municipal solid waste incineration)

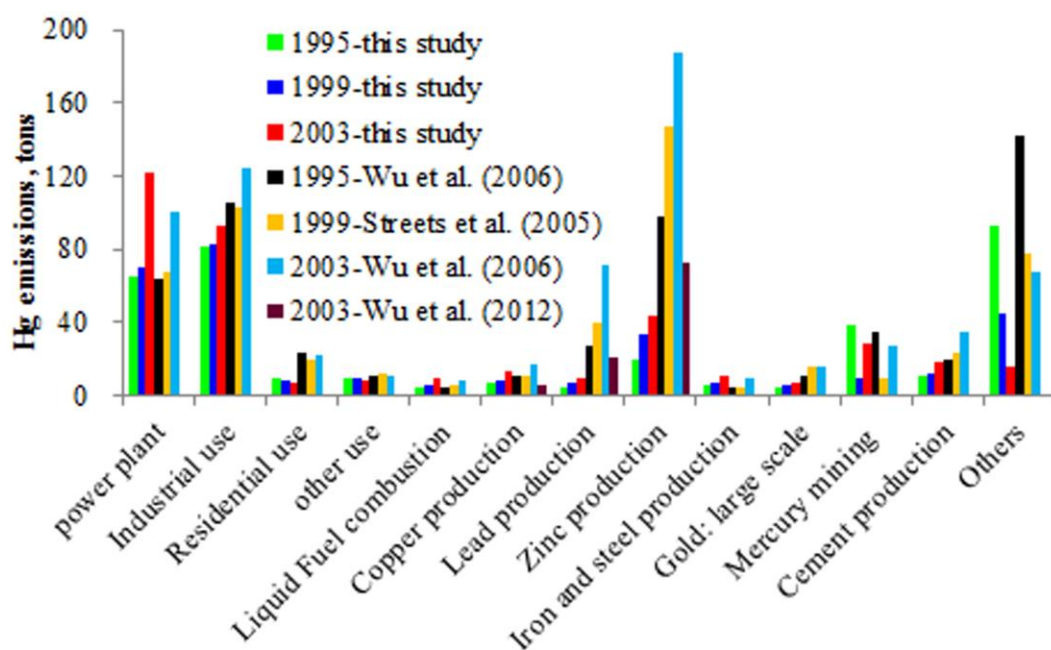


Figure 3. Estimate of annual Hg emissions from primary anthropogenic sources among various studies (t yr^{-1}).

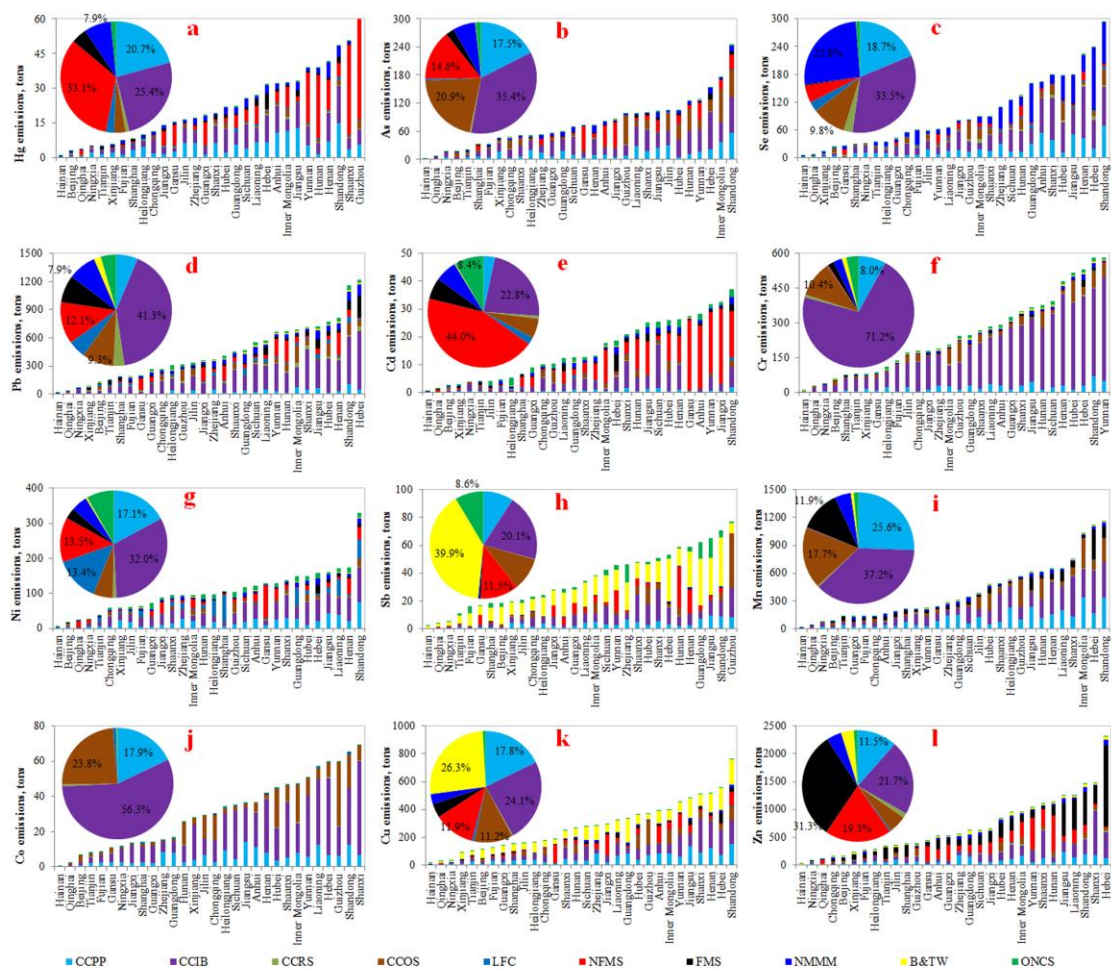


Figure 4. Provincial HM emissions from anthropogenic sources and national composition by source categories in 2010.

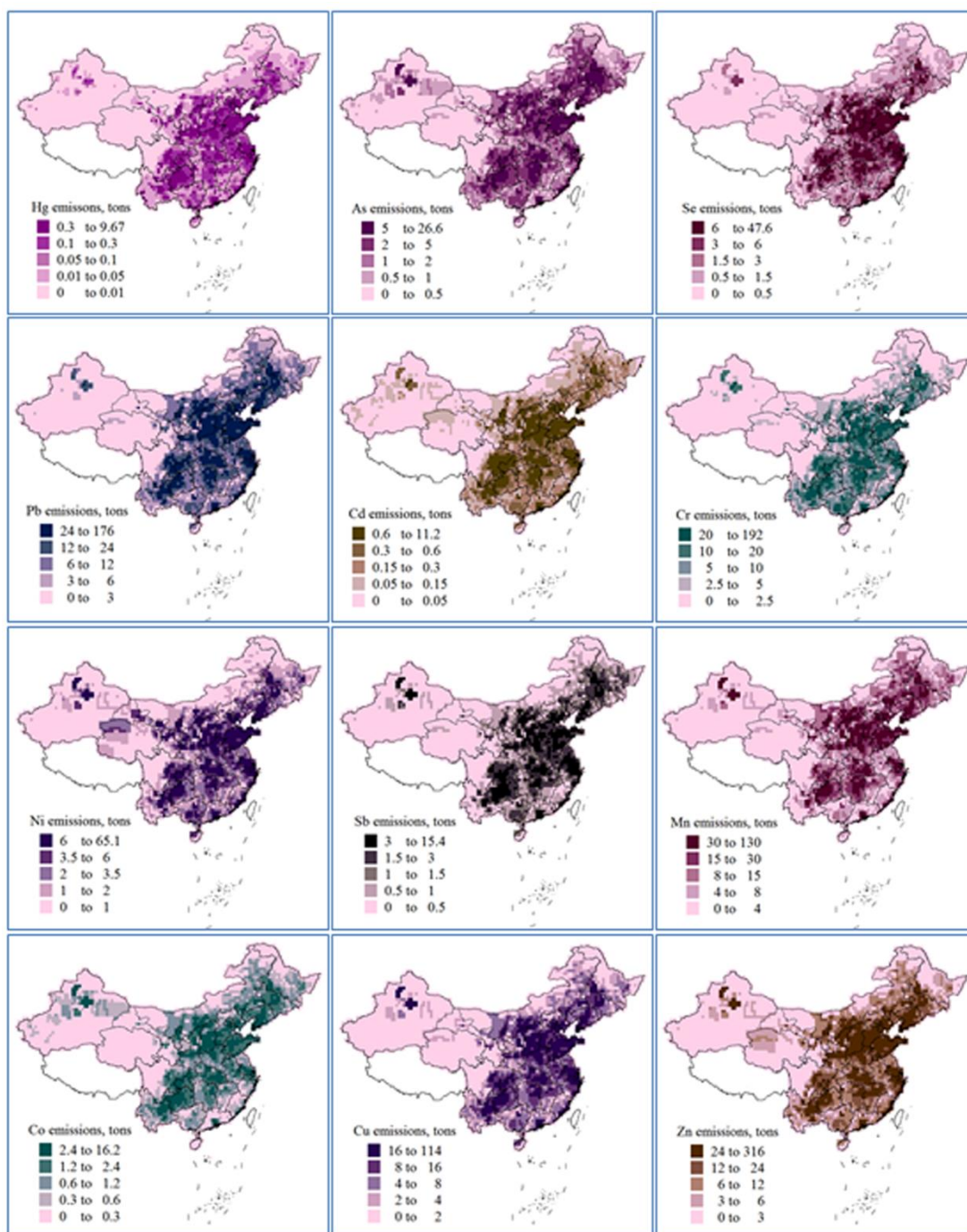


Figure 5. Gridded HM emissions from anthropogenic sources for the year 2010 ($0.5^{\circ} \times 0.5^{\circ}$ resolution; units, kilograms per year per grid cell).

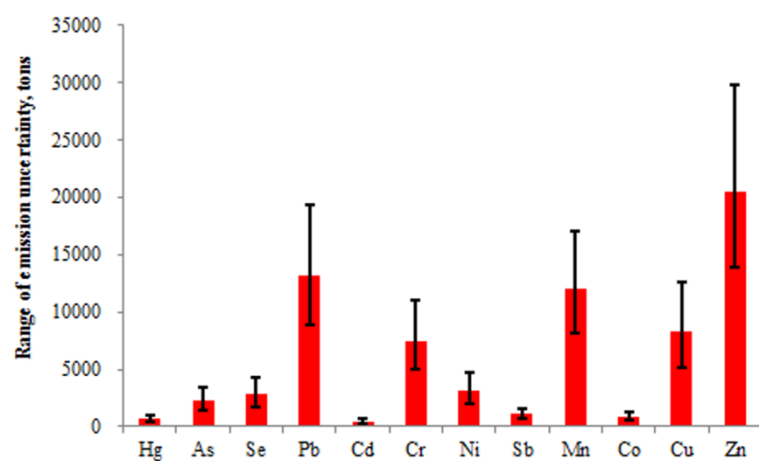


Figure 6. Uncertainties in the total emissions of HMs in China in 2010 (Uncertainties in the emissions of HMs by source categories in China in 2010 can be seen Supplement Table S22).