



This discussion paper is/has been under review for the journal Atmospheric Chemistry and Physics (ACP). Please refer to the corresponding final paper in ACP if available.

# Comparison of the CMAM30 data set with ACE-FTS and OSIRIS: polar regions

D. Pendlebury<sup>1</sup>, D. Plummer<sup>2</sup>, J. Scinocca<sup>2</sup>, P. Sheese<sup>1</sup>, K. Strong<sup>1</sup>, K. Walker<sup>1,3</sup>, and D. Degenstein<sup>4</sup>

<sup>1</sup>Department of Physics, University of Toronto, Toronto, Canada

<sup>2</sup>Canadian Centre for Climate Modelling and Analysis, Victoria, Canada

<sup>3</sup>Department of Chemistry, University of Waterloo, Waterloo, Canada

<sup>4</sup>Department of Physics and Engineering Physics, University of Saskatchewan, Saskatoon, Canada

Received: 1 March 2015 – Accepted: 19 March 2015 – Published: 16 April 2015

Correspondence to: D. Pendlebury (diane@atmos.physics.utoronto.ca)

Published by Copernicus Publications on behalf of the European Geosciences Union.

CMAM30 data set  
validation: polar  
regions

D. Pendlebury et al.

Title Page

Abstract

Introduction

Conclusions

References

Tables

Figures



Back

Close

Full Screen / Esc

Printer-friendly Version

Interactive Discussion



## Abstract

CMAM30 is a 30 year data set extending from 1979 to 2010 that is generated using a version of the Canadian Middle Atmosphere Model (CMAM) in which the winds and temperatures are relaxed to the Interim Reanalysis product from the European Centre Medium-Range for Weather Forecasts (ERA-Interim). The data set has dynamical fields that are very close to the reanalysis below 1 hPa and chemical tracers that are self-consistent with respect to the model winds and temperature. The chemical tracers are expected to be close to actual observations. The data set is here compared to two satellite records – the Atmospheric Chemistry Experiment Fourier Transform Spectrometer and the Odin Optical Spectrograph and InfraRed Imaging System – for the purpose of validating the temperature, ozone, water vapour and methane fields. Data from the Aura Microwave Limb Sounder is also used for validation of the chemical processing in the polar vortex. It is found that the CMAM30 temperature is warm by up to 5 K in the stratosphere, with a low bias in the mesosphere of  $\sim 5\text{--}15$  K. Ozone is reasonable ( $\pm 15\%$ ) except near the tropopause globally, and in the Southern Hemisphere winter polar vortex. Water vapour is consistently low by 10–20%, with corresponding high methane of 10–20%, except in the Southern Hemisphere polar vortex. Discrepancies in this region are shown to stem from the treatment of polar stratospheric cloud formation in the model.

## 1 Introduction

Reanalysis data sets such as those used in this study (the ECMWF Reanalysis Interim product, or ERA-Interim) are the result of high-resolution models that assimilate past measurements to produce a consistent product that is a reliable representation of the atmospheric state over a given time period. However, while dynamical fields, water vapour (or specific humidity) and ozone are provided by the reanalysis, other species are not. In addition, while the reanalysis models employ sophisticated

ACPD

15, 11179–11221, 2015

### CMAM30 data set validation: polar regions

D. Pendlebury et al.

Title Page

Abstract

Introduction

Conclusions

References

Tables

Figures



Back

Close

Full Screen / Esc

Printer-friendly Version

Interactive Discussion



**CMAM30 data set  
validation: polar  
regions**

D. Pendlebury et al.

Title Page

Abstract

Introduction

Conclusions

References

Tables

Figures



Back

Close

Full Screen / Esc

Printer-friendly Version

Interactive Discussion



physical schemes for some processes (such as land–surface interaction and convec-  
tion), they have very basic chemistry schemes (e.g. Dee et al., 2011) and generally  
do not include physical processes that are necessary for an accurate representa-  
tion of the stratosphere and mesosphere, such as gravity wave momentum deposi-  
tion. Chemistry–climate models (CCMs) with full interactive chemistry are capable of  
modelling many of these atmospheric processes, but cannot be compared directly to  
observations since they are not expected to capture the true day-to-day variability of  
the atmosphere. The CMAM30 data set, based on the Canadian Middle Atmosphere  
Model (CMAM), bridges this gap by using a fully interactive CCM but with the dynamical  
fields “nudged” (relaxed) to ERA-Interim values. By construction, the CMAM30 data set  
should capture the correct daily, seasonal and interannual variability of the winds and  
temperatures below 1 hPa, while providing trace gas information that is consistent with  
those fields. In addition, data sets such as CMAM30 that use specified dynamics can  
be used to isolate deficiencies in physical parameterizations in the underlying model  
(e.g. Brakebusch et al., 2013).

There are several limitations to this approach. First, the model has relatively coarse  
spatial resolution, and should therefore not be expected to reproduce small-scale  
structures. Even structures on the finest model scales will be heavily damped by the  
model diffusion. For example, structures related to cross-tropopause transport such  
as tropopause folds and mixing, even by planetary-scale waves, would be difficult to  
reproduce exactly. Other differences between the CMAM30 data set and observations  
may arise because while the large-scale dynamical fields are constrained to be close to  
ERA-Interim winds and temperatures, the chemical fields evolve according to the model  
chemistry, and small-scale dynamics and the physical parameterizations that mimic the  
subscale behaviour can affect even the large-scale dynamical fields. Several recent pa-  
pers have validated several aspects of CMAM30, but in a limited context. McLandress  
et al. (2013) compared CMAM30 polar cap mesospheric temperatures and mid-latitude  
zonal mean zonal winds to data from the Microwave Limb Sounder instrument on-  
board the Aura satellite for the extended Northern winters of 2006 and 2009 and found

good agreement. Hegglin et al. (2014) and Shepherd et al. (2014) used CMAM30 water vapour and ozone in order to make better sense of the long-term observational records of these species. However, the comparisons of CMAM30 data to observations made in these papers are limited in their extent. It is therefore necessary to provide a more complete validation of the chemical and dynamical fields from the CMAM30 data set.

To accomplish this task, data from the Atmospheric Chemistry Experiment Fourier Transform Spectrometer (ACE-FTS) instrument on-board the ACE satellite, the Optical Spectrograph and Infrared Imaging System (OSIRIS) on-board the Odin satellite, and the Microwave Limb Sounder instrument on-board the Aura satellite (Aura-MLS) are used. In this paper, the focus is on temperature, ozone, water vapour and methane. Here, we will compare coincident profiles from the satellites and the CMAM30 data set to establish the reliability of the model over the satellite period by looking at the median biases and median deviation about the biases. Essentially, the CMAM30 data is subsampled in approximately the same way that the satellite instruments “see” the atmosphere, avoiding errors due to differences between using the full model grid and the subsampling of the atmosphere by the satellite instruments (see Toohey and von Clarmann, 2013, for more details). Special attention will be given to regions and time periods where the model bias is greater, to examine possible causes for the discrepancies. In addition, the polar vortex chemical processing will be compared for two winters – a typical Southern Hemisphere (SH) winter and a cold Northern Hemisphere (NH) winter – to investigate the treatment of polar stratospheric clouds and their effect on ozone in the model.

The paper is structured as follows: Sect. 2 briefly describes the model and the specification of the model dynamics, and Sect. 3 describes the observational data used. Section 4 describes the results, outlining the method used for the profile comparisons, with particular focus on the polar regions. A separate paper focusing on the tropical region and the Brewer–Dobson circulation is forthcoming. Section 5 summarizes the results.

---

**CMAM30 data set  
validation: polar  
regions**D. Pendlebury et al.

---

[Title Page](#)[Abstract](#)[Introduction](#)[Conclusions](#)[References](#)[Tables](#)[Figures](#)[Back](#)[Close](#)[Full Screen / Esc](#)[Printer-friendly Version](#)[Interactive Discussion](#)

## 2 Model

The CMAM is a comprehensive chemistry–climate model with T47 spectral resolution ( $3.75^\circ \times 3.75^\circ$ ) and 71 vertical levels up to 0.01 hPa ( $\sim 98$  km altitude). The CMAM30 data set uses the ERA-Interim products to nudge the temperature and winds on large spatial scales ( $< T21$ ) with a Newtonian relaxation time scale of 24 h. ERA-Interim data are available up to 1 hPa, although the atmospheric model used in the reanalysis had a model lid at 0.1 hPa (Dee et al., 2011). The nudging of CMAM is applied at full strength up to 1 hPa, as no significant artefacts were found by abruptly stopping the application of nudging at this level. However, the ERA-Interim data set does contain a number of significant discontinuities in temperature on levels at and above 5 hPa associated with changes in the assimilated satellite temperature sounders, as these are the only source of temperature data at these altitudes (Dee and Uppala, 2009). To avoid introducing spurious trends into the CMAM simulation, the global-average temperatures in the ERA-Interim data for levels at 5 hPa and above were modified before being used in the nudging following the method described in McLandress et al. (2014). As the CMAM is known to have good representation of the upper stratosphere and lower mesosphere (e.g. Fomichev et al., 2007) and because the general behaviour of the mesosphere is slaved to the stratosphere (Nezlin et al., 2009), the day-to-day evolution of the region above 1 hPa is not expected to deviate greatly from reality. The CMAM30 is sampled every 6 h with data interpolated to a set of 63 constant pressure surfaces, chosen to be close to the underlying model levels above 100 hPa. For more details on the CMAM see Scinocca et al. (2008) and on the CMAM30 data set see McLandress et al. (2014) and Shepherd et al. (2014).

Of particular importance to the work presented here is the treatment of polar stratospheric clouds (PSCs) in the model. PSCs form when the temperature dips below 196 K for Type 1 PSCs, which are composed of nitric acid, sulphuric acid and water, and below 188 K for Type 2 PSCs, which are solid water (Peter, 1997). PSCs are important for ozone depletion in the polar vortex during spring for two reasons: firstly,

### CMAM30 data set validation: polar regions

D. Pendlebury et al.

Title Page

Abstract

Introduction

Conclusions

References

Tables

Figures



Back

Close

Full Screen / Esc

Printer-friendly Version

Interactive Discussion



heterogeneous reactions take place on PSC surfaces converting chlorine reservoirs to reactive chlorine, and secondly, the sedimentation of the heavier ice particles containing  $\text{HNO}_3$  produces denitrification of the lower stratosphere polar vortex, preventing the replenishment of the chlorine reservoir  $\text{ClONO}_2$ .

In the CMAM, the abundance of stratospheric ternary solution PSCs, often referred to as Type 1b, is calculated following Carslaw et al. (1995). Water ice particles, Type 2 PSCs, are based on a condition requiring a 40% supersaturation with respect to the frost point (Consideine et al., 2000). Solid Nitric Acid Trihydrate (NAT) PSC particles are not accounted for in the CMAM PSC scheme. The equilibrium-based calculation of PSCs sequesters  $\text{HNO}_3$  and water in the aerosol phase, although the model does not account for sedimentation of the solid particles regardless of how long they persist. Therefore denitrification/dehydration of the polar vortex over the winter season does not occur, with  $\text{HNO}_3$  and water vapour returning to the gas phase based on thermodynamic equilibrium.

### 3 Observations

The primary observational data used here are from the ACE-FTS and OSIRIS instruments. Since OSIRIS measurements include only ozone and temperature relevant to this study, and since ACE-FTS measurements are spatially sparse with gaps in certain months due to the nature of its polar orbit and solar occultation viewing geometry, Aura-MLS measurements, which are spatially denser than ACE-FTS and provide more constituents than OSIRIS, are used when necessary.

#### 3.1 OSIRIS data

The Odin satellite was launched in February 2001, and has a sun-synchronous orbit with an ascending node of  $\sim 18:00$  LT. The OSIRIS instrument operates between 280 and 810 nm, observing Rayleigh and Mie scattered sunlight and airglow emissions in

**CMAM30 data set  
validation: polar  
regions**

D. Pendlebury et al.

Title Page

Abstract

Introduction

Conclusions

References

Tables

Figures



Back

Close

Full Screen / Esc

Printer-friendly Version

Interactive Discussion



**CMAM30 data set  
validation: polar  
regions**

D. Pendlebury et al.

Title Page

Abstract

Introduction

Conclusions

References

Tables

Figures



Back

Close

Full Screen / Esc

Printer-friendly Version

Interactive Discussion



the Earth's limb (Llewellyn et al., 2004). A vertical profile is taken by nodding the entire satellite, allowing the instrument to measure from the upper troposphere ( $\sim 7$  km) to the mid- to upper mesosphere (65–90 km) with a 1 km field of view, and a vertical resolution of approximately 1.5 km. During each orbit, 30–60 vertical scans are made, with a focus on the NH during March to September, and on the SH during October to February. Near-global coverage ( $82^\circ$  S to  $82^\circ$  N) is achieved in October and February due to the change in orbital geometry.

The OSIRIS data used here are ozone volume mixing ratios included in the OSIRIS level 2 v5.07 data set from January 2002 to December 2010 (Degenstein et al., 2009). Validation of v5.07 with SAGE II for 2001 to 2005 can be found in Adams et al. (2013), with agreement generally within 5 % below 50 km, and with multiple data sets in Adams et al. (2014). Note that the temperatures provided with the OSIRIS level 2 data are not actually retrieved values, but are taken from ECMWF operational analyses. A comparison with these temperatures is therefore not included here. Instead, OSIRIS temperatures derived from the  $O_2$  A-band emission spectra near 762 nm (see Sheese et al., 2010, 2012, for details) are used. Temperature data are available between 45 and 110 km, but temperatures between 80 and 86 km are deemed unreliable, due to uncertainties in  $O_2$  absorption in the A-band. The temperature data also exhibit a cold bias of 10–15 K near 85 km (Sheese et al., 2011) (the upper boundary of the Rayleigh-scatter derived temperatures), and a cold bias of 5–15 K near 48 km due to multiple scatter effects not taken into account in the retrieval. However, between 55 and 80 km, these temperatures are valid, and are typically within 4–5 K of other satellite data (Sheese et al., 2012).

### 3.2 ACE-FTS data

The ACE-FTS is a high spectral resolution ( $0.02 \text{ cm}^{-1}$ ) solar occultation instrument, operating in the spectral range of  $750\text{--}4400 \text{ cm}^{-1}$ , that derives vertical profiles of temperature and concentrations of a number of species related to ozone chemistry (Bernath et al., 2005; Boone et al., 2005), including ozone, water vapour, and methane. Since

## CMAM30 data set validation: polar regions

D. Pendlebury et al.

Title Page

Abstract

Introduction

Conclusions

References

Tables

Figures



Back

Close

Full Screen / Esc

Printer-friendly Version

Interactive Discussion



the ACE mission was designed primarily to observe the Earth's atmosphere at high latitudes, the orbit does not measure at all latitudes in all months. Instead, the orbit allows for measurements at high latitudes for much of the year, crossing the terminator during February, April, August and October. For each day, up to 15 sunrise and 15 sunset profiles are available, with a vertical resolution of 3–4 km throughout the upper troposphere to the lower thermosphere. The satellite was launched in August 2003, and has been providing measurements since February 2004. Profiles up to December 2010 are used here.

In this study, the 1 km vertical gridded data from ACE-FTS level 2 v3.5 are used (Boone et al., 2013). Version 2.2 temperature, ozone, water vapour and methane were validated by Sica et al. (2008), Dupuy et al. (2009), Carleer et al. (2008) and de Mazière et al. (2008), respectively. Comparisons between v2.2 and v3.0/3.5 trace gas data sets are described by Waymark et al. (2013), with some small changes from v3.0 and v3.5. In addition to the measurements, corresponding Derived Meteorological Products (DMPs) taken from the GEOS5 model are also available for each ACE-FTS occultation (see Manney et al., 2007). The scaled potential vorticity (sPV) is used to determine whether an ACE-FTS profile is inside or outside the polar vortex. For the evaluation of the chemical processing of the polar vortex, HCl (Mahieu et al., 2008), ClONO<sub>2</sub> and HNO<sub>3</sub> (Wolff et al., 2008) are also used to diagnose the representation of PSCs in the CMAM.

### 3.3 Aura-MLS data

For the evaluation of the chemical processing of the winter polar vortex, Aura-MLS data are included. Like OSIRIS, the Aura Microwave Limb Sounder scans the Earth's atmosphere in the limb from the surface to 90 km, providing near-global coverage from 82° N to 82° S, daily. It measures thermal emissions at submillimetre and millimetre wavelengths. The Aura satellite was launched in July 2004, but only data from January to April of 2005, and July to December of 2006 are used here. Version 3.3/3.4 of the data set has been used in this study. The validation of the species used in this



**CMAM30 data set  
validation: polar  
regions**

D. Pendlebury et al.

Title Page

Abstract

Introduction

Conclusions

References

Tables

Figures



Back

Close

Full Screen / Esc

Printer-friendly Version

Interactive Discussion



study for version 2.2 of the Aura-MLS data set can be found Froidevaux et al. (2008a) for HCl, Santee et al. (2008) for ClO, Lambert et al. (2007) for H<sub>2</sub>O, Froidevaux et al. (2008a) for O<sub>3</sub>, Santee et al. (2007) for HNO<sub>3</sub>, and Schwartz et al. (2008) for temperature. The Aura-MLS observations also provide corresponding DMPs taken from MERRA (Modern Era Retrospective-analysis for Research and Applications) for sPV to determine the position of the polar vortex (see Manney et al., 2007).

#### 4 Results

A coincident profile approach to comparisons between the CMAM30 data set and observational data is taken here. In order to make use of as many profiles as possible, the model data are interpolated to the time and tangent-height location of each profile measurement for both instruments (tangent heights for ACE-FTS and OSIRIS are 30 and 25 km, respectively). Since the measurements are actually taken through a slant column of the atmosphere rather than at a single geo-location, this approach introduces some error into the analysis. The slant path error may be an issue for ACE-FTS measurements when smaller scales are present, at higher altitudes (i.e., far from the tangent height), and for high beta angles. Beta angles for ACE-FTS are typically less than 50° from the zenith, with 13% of measurements taken at beta angles between 50 and 65°. These profiles are taken at lower latitudes and when the satellite orbit crosses the equator. For calculating differences, all observational data are interpolated onto the CMAM30 pressure levels except for the OSIRIS temperatures derived from the O<sub>2</sub> A-band. Because only polar vortex averages are compared, there is no need for interpolation of the CMAM30 data to the location of each profile.

For a spatial picture (latitude by height cross section), the results are binned by latitude (5°) and zonally and monthly averaged. For time series, the results are binned by 30° latitude and zonally averaged. For each species and temperature profile, the median bias for the model (CMAM30 – satellite) or (CMAM30 – satellite)/satellite for relative differences, and the median absolute deviation (MAD) are calculated. The me-



**CMAM30 data set  
validation: polar  
regions**

D. Pendlebury et al.

[Title Page](#)[Abstract](#)[Introduction](#)[Conclusions](#)[References](#)[Tables](#)[Figures](#)[Back](#)[Close](#)[Full Screen / Esc](#)[Printer-friendly Version](#)[Interactive Discussion](#)

Comparisons with the retrieved OSIRIS temperatures of Sheese et al. (2010) show a low bias in the model of  $\sim 10$  K, below 85 km (see Fig. 1). Note that the OSIRIS temperatures are shown as a function of altitude and only above 55 km, above the region of nudging for the model. CMAM30 temperatures are compared using geopotential height as the altitude. Above 85 km, the CMAM30 temperatures show a high bias of up to 20 K during summer months (NH July/SH January), although Sheese et al. (2011) point out that above 85 km the retrieved temperatures from OSIRIS themselves indicate a low bias of 10–15 K in comparison to data from SABER on TIMED (Sounding of the Atmosphere using Broadband Emission Radiometry on Thermosphere Ionosphere Mesosphere Energetics Dynamics) and SOFIE on AIM (Solar Occultation For Ice Experiment on Aeronomy of Ice in the Mesosphere), indicating that the CMAM30 high bias in the upper altitude region is closer to 5–10 K compared to those satellites. This large discrepancy is not seen in the ACE-FTS temperature comparisons. Note that the largest biases are near 85 km, where OSIRIS temperatures have not been validated.

Comparisons with ACE-FTS show that overall, much of the stratosphere in CMAM30 is slightly warm on average throughout the year, while the mesosphere (above 1 hPa) is cooler than the measurements (see Fig. 3). Above 1 hPa, CMAM30 exhibits a cold bias of up to 12–15 K compared to ACE-FTS, associated with high variability where median temperatures deviate more than  $\pm 10$  K. (Note that high MAD may indicate high variability, small sample size, or both.) The CMAM30 temperature comparison agrees with the results from OSIRIS (see above) if the cold bias in OSIRIS temperatures above 85 km is taken into account. Of particular note is the cold bias in SH winter (July) and autumn (April) in the lower mesosphere, and the warm bias in the upper mesosphere, which is most apparent in July. This vertical dipole structure, which can also be seen in SH summer, is the result of insufficient gravity wave drag in the model stratosphere and lower mesosphere. Below 1 hPa, the winds are constrained by the ERA-Interim winds, but above this level the winds take on the climatological structure of the free-running model, which is characterized by a too strong SH winter westerly jet; a manifestation of the so-called “cold pole problem” common to most CCMs (SPARC CCMVal, 2010).

**CMAM30 data set  
validation: polar  
regions**

D. Pendlebury et al.

Title Page

Abstract

Introduction

Conclusions

References

Tables

Figures



Back

Close

Full Screen / Esc

Printer-friendly Version

Interactive Discussion



The warm bias in the SH upper mesosphere in CMAM30 is due to too strong non-orographic gravity wave drag in the upper mesosphere that results from filtering by the too strong lower mesospheric westerlies. An example of this phenomenon, but for the case of NH winter, is seen in Fig. 5 of McLandress et al. (2013) in their simulation of the CMAM in which the orographic gravity wave drag was turned off.

Agreement with ozone (Figs. 2 and 4) seems to be better, with most of the CMAM30 stratosphere within  $\pm 10\%$  of the measurements. Agreement in the lowermost extratropical stratosphere, particularly in the SH, and the tropical lower stratosphere, is not particularly good, with large, mostly positive biases in the CMAM30. In this region, the ozone mixing ratio is relatively small and so even absolute differences of only 0.1 ppmv may lead to large relative differences. In addition, it is a region of high variability due to isentropic transport of tropical tropospheric air poleward and extratropical lower stratospheric air equator-ward, and a region of sharp vertical gradients that are not well resolved by the model that may cause the tropopause in the model to be too low in altitude. Note that the ozone is almost uniformly high in CMAM30 compared to OSIRIS by more than 50 % near and below 100 hPa. Of particular interest is the springtime (October) SH polar lower stratosphere, where CMAM30 shows considerable disagreement with OSIRIS (Fig. 2d). Note that compared to ACE-FTS, CMAM30 shows a low bias in the upper troposphere/ lower stratosphere in the tropics (see Fig. 4), in contrast to the OSIRIS data. Above 10 hPa, CMAM30 shows a low bias in ozone compared to both satellite data sets, related to the decrease in altitude of the ozone profile; CMAM30 profiles generally decrease too rapidly above the ozone maximum. At 0.1 hPa, the diurnal cycle of ozone becomes important in the comparisons, and while ACE-FTS ozone profiles extend to this altitude, they have not been validated above 70 km (Dupuy et al., 2009).

Comparisons with ACE-FTS water vapour (see Fig. 5) show that CMAM30 has an overall low bias of approximately 10–20 % throughout the stratosphere. The low bias is a well-known deficiency of the CMAM model (SPARC CCMVal, 2010), but it is interesting to see that it persists even with specified dynamics. Figure 5 indicates that the

**CMAM30 data set  
validation: polar  
regions**

D. Pendlebury et al.

Title Page

Abstract

Introduction

Conclusions

References

Tables

Figures



Back

Close

Full Screen / Esc

Printer-friendly Version

Interactive Discussion



low bias is more pronounced just above the tropical tropopause, and therefore may be due to too much dehydration of the air entering the stratosphere through the tropical tropopause layer. Aside from this persistent low bias, the behaviour of water vapour throughout the stratosphere is otherwise reasonable, i.e. there is little variability in the difference between CMAM30 and ACE-FTS. Most of the variability occurs in the vicinity of the tropopause, except in the wintertime (July) southern polar vortex, where the bias in CMAM30 water vapour becomes close to zero and even positive. This feature is explored below.

Figure 6 shows that, overall, methane has a high bias in the CMAM30 compared to ACE-FTS of 10–20 %. The fact that water vapour is consistently low and methane consistently high may indicate that there is not enough production of water vapour through the oxidation of methane, consistent with a fast Brewer–Dobson circulation. Note that although there are regions of large discrepancy between CMAM30 methane and ACE-FTS measurements at high latitudes that appear to propagate downward over the course of a few months, these discrepancies are likely a problem of vertical resolution in the model. The methane profiles exhibit a kink between 10 and 1 hPa, which descends over a season. While the model can simulate this feature, the CMAM30 methane does not decrease as rapidly as the ACE-FTS observations over the narrow vertical range. Because of the small values of methane at these altitudes, a discrepancy of only 0.1 ppmv in methane can translate to a relative error of well over 100 %. The high MAD values around the regions of higher discrepancy are likely due to the variability and the descent of the kink. Above and below this region, however, CMAM30 does a good job of representing the methane, aside from an overall high bias (i.e., the variability of the bias is low).

Figures 7 to 10 show the time series comparisons for the NH and SH polar regions (60 to 90° N and 60 to 90° S, respectively). The time series plots show that the differences in the zonally averaged plots are repeated year after year. Most notable in the ozone profile differences for both OSIRIS and ACE-FTS is the overabundance of ozone in the model in the winter/spring in the SH lower stratosphere (Figs. 8a and 9b).

**CMAM30 data set  
validation: polar  
regions**

D. Pendlebury et al.

Title Page

Abstract

Introduction

Conclusions

References

Tables

Figures

◀

▶

◀

▶

Back

Close

Full Screen / Esc

Printer-friendly Version

Interactive Discussion



In this region, the ozone amounts are low, and in the late winter/spring, as the Sun rises, the ozone hole develops, leading to even lower ozone concentrations. It is clear that the CMAM30 data set does not simulate enough ozone destruction during this period, also evidenced by the comparison of October total column ozone over the South Pole in Shepherd et al. (2014). In addition, comparisons with the ACE-FTS profiles of water vapour show that in the same region and time period (Fig. 9c), there is an overabundance of water vapour in CMAM30 (up to 50%), indicating that the dehydration of the polar vortex due to PSC formation is weak. Results from the NH (Fig. 10c) do not show the same discrepancy in water vapour, perhaps to be expected since Arctic stratospheric temperatures are typically too warm to allow for Type 2 PSC particle formation and dehydration of the Arctic vortex, and show only a notable high bias in ozone during three winters: 2005, 2007, and 2008 (Figs. 8b and 10b). The descent of the high bias in methane (see above) can clearly be seen in Figs. 9d and 10d, primarily during the summer and fall for each hemisphere.

## 4.2 Southern polar winter/spring

The southern polar vortex is typically strong and chemically isolated. Results from Sect. 4.1 show that the polar vortex in the lower stratosphere in CMAM30 is too wet and there is too much ozone. There are two possible explanations for this behaviour: either chemical destruction of ozone during winter and spring is too low and dehydration of the polar vortex (e.g., due to PSC formation) is too low, or the polar vortex is too isolated with too little transport out of the lower stratospheric vortex. The latter problem would allow a build-up of ozone by ozone-rich air descending from the mesosphere inside the polar vortex. It may also account for a build-up of water vapour in the lower stratospheric vortex, although this is harder to account for given the overall dry bias in the CMAM30 data. In addition, CMAM30 methane would further indicate that the polar vortex isolation is not the answer to this puzzle. The comparison of the methane vertical profiles from CMAM30 with ACE-FTS observations show, in fact, some combination of too little descent within the vortex and/or too much mixing of mid-latitude

air into the vortex. The growth in CMAM30 biases in ozone relative to the CMAM30 methane biases between 30 July (Fig. 11) and 25 September (Fig. 12) suggests that an underestimate of ozone chemical destruction accounts for a significant part of the CMAM30 ozone biases at the end of September.

Individual profiles comparing CMAM30 to OSIRIS and ACE-FTS are shown in Figs. 11 and 12, for selected dates during the winter/spring of 2006, chosen as a typical year. OSIRIS does not measure during polar night, so only measurements in late August and beyond are available. Also, because of the orbit of the ACE satellite, ACE-FTS measurements do not reach the pole until late winter, and are outside or on the edge of the polar vortex during mid-winter. Near 50 hPa, a maximum high bias in water vapour is reached during August and early September when ACE-FTS measures near the pole, and diminishes in October and November (Fig. 9c). The high bias in CMAM30 ozone persists throughout the late winter/spring (Fig. 9b).

Figures 11 and 12 also show the CMAM30 temperature, ozone, water vapour and methane on the 500 K isentropic surface from the CMAM30 data. Grey shaded regions indicate selected scaled potential vorticity (sPV) values associated with the polar vortex such that no shading (greater than  $-1$  PVU) is outside the polar vortex, greys are inside the surf zone and inside the polar vortex ( $-1$ ,  $-1.2$ ,  $-1.4$ ,  $-1.8$  and  $-2$  PVU). Temperatures that are less than 188 and 196 K are denoted by white contours for each isentropic map, and the locations of the tangent height of the satellite observations are also indicated (white crosses for ACE-FTS and white X's for OSIRIS).

Throughout the winter, the polar vortex is stable and for the most part zonally symmetric except for a small wavenumber 1 signature. The gradients of the chemical species follow the potential vorticity pattern closely throughout the winter. This pattern extends from  $\sim 400$  up to  $\sim 2500$  K, above which the diurnal cycles of ozone become important (not shown). As the season progresses and the wave 1 pattern becomes more pronounced, ACE-FTS can sample both inside and outside the vortex on one day (see Fig. 12). There is considerable agreement between the ACE-FTS and CMAM30

**CMAM30 data set  
validation: polar  
regions**

D. Pendlebury et al.

Title Page

Abstract

Introduction

Conclusions

References

Tables

Figures



Back

Close

Full Screen / Esc

Printer-friendly Version

Interactive Discussion



profiles in terms of the shape even though the CMAM30 water vapour (methane) profiles show a low (high) bias, except in the lowest part of the stratosphere.

As the season progresses, the discrepancy in the lower stratosphere water vapour disappears (see Fig. 9c). The model sequesters water vapour in the presence of sufficiently low temperatures into PSCs, but they do not sediment out; rather they remain as PSCs until the temperature warms sufficiently that they become water vapour again. By the end of September only very small regions of the vortex are at temperatures cold enough to support water–ice PSCs, so the water has been returned to the gas phase. Separate plots of PSC concentration (not shown) on the 500 K surface show an increase over the winter months and decrease during spring, in accordance with the area of temperatures below the 196 K threshold.

Figure 13 shows daily polar vortex averages over the winter to diagnose the chemical destruction of ozone. Both ACE-FTS ( $\text{O}_3$ ,  $\text{H}_2\text{O}$ ,  $\text{HNO}_3$ ,  $\text{ClONO}_2$  and  $\text{HCl}$ ) and Aura-MLS data ( $\text{O}_3$ ,  $\text{H}_2\text{O}$ ,  $\text{HNO}_3$ ,  $\text{ClO}$  and  $\text{HCl}$ ) are compared to CMAM30 data. For both satellites, the sPV values from the derived meteorological products from GEOS5 (ACE-FTS) and MERRA (Aura-MLS) are used to determine if profile measurements are inside or outside the polar vortex. The polar vortex is defined as  $\text{sPV} < -1.2$  PVU for the SH and  $\text{sPV} > 1.2$  PVU for the NH, although the results are similar for values of sPV between  $-1.2$  to  $-2$  PVU (and  $1.2$  to  $2$  PVU for the NH). For the SH, 2006 was chosen as a typical year, and for the NH, 2005 was chosen since it was a year with no SSWs during this winter, producing a cold and persistent polar vortex (see below). Note in Fig. 10 that the ozone discrepancies are greatest in the 2004/2005 NH winter/spring season. Instrument errors are calculated according to the reported errors for each profile and averaged using the square root of the sum of squares of the errors.

The top panels of Fig. 13 show the area of the polar vortex (as measured by the satellite instruments) on the 500 K isentropic surface (blue), the area of the polar vortex where  $T < 196$  K (green), and the area of the polar vortex where  $T < 188$  K (pink) for the SH winter (2006) and the NH winter (2005). For the purpose of assigning area to each satellite profile, a footprint of 500 km is assumed for ACE-FTS, and a footprint

## CMAM30 data set validation: polar regions

D. Pendlebury et al.

Title Page

Abstract

Introduction

Conclusions

References

Tables

Figures



Back

Close

Full Screen / Esc

Printer-friendly Version

Interactive Discussion







**CMAM30 data set  
validation: polar  
regions**

D. Pendlebury et al.

Title Page

Abstract

Introduction

Conclusions

References

Tables

Figures



Back

Close

Full Screen / Esc

Printer-friendly Version

Interactive Discussion



duced by heterogenous chemistry on PSCs surfaces and can destroy ozone during the dark winter months. CMAM30 produces only half of the ClO concentration compared to Aura-MLS. Correspondingly, CMAM30 also shows too much HCl (blue) for the winter before September compared to both Aura-MLS and ACE-FTS, although a “bite”, out of the HCl can be seen as HCl is converted to more reactive chlorine species on PSC surfaces. Note the rapid decline in HCl around 31 July when ClONO<sub>2</sub> and ClO begin to increase, and the rapid increase in HCl during the first week of October. ClONO<sub>2</sub> in the CMAM30 data is also high compared to ACE-FTS from mid-August to late September. During this time period, ACE-FTS measures almost no ClONO<sub>2</sub>, while CMAM30 shows a persistent increase in concentration, indicating that the chlorine reservoir recovers too quickly. By the end of September, ACE-FTS and CMAM30 amounts agree well.

### 4.3 Northern polar winter/spring

Northern Hemisphere winters experience SSWs in some years, some of which are dynamically very strong and greatly disturb the vortex. In such cases, large wavenumber 1 and 2 disturbances are seen before the SSW. After the SSW, depending on the winter, the vortex can be very warm and weak, with an almost isothermal stratosphere. During winters with no SSW, the polar vortex is less dynamically active, more isolated and colder, although it rarely becomes as cold as the southern polar vortex.

Figure 13 (right column) shows the evolution of the polar vortex for NH winter/spring for a winter with no SSWs (2005). This is the only winter during the ACE-FTS and Aura-MLS satellite observational periods overlapping with the CMAM30 data set that does not have an SSW during winter. The polar vortex area (blue) is slightly reduced compared to the SH winter, but the regions of  $T < 188$  K (pink) and  $T < 196$  K (green) are greatly reduced (top right panel). The model shows a small amount of solid phase HNO<sub>3</sub> (green), and a corresponding dip in the gas phase HNO<sub>3</sub> (blue), at the end of January (middle right panel of Fig. 13), but otherwise there are no signs of PSC formation in the model. Note, however, that formation of NAT (Type 1a PSC) is not

simulated in the CMAM. The gas phase  $\text{HNO}_3$  for the NH polar vortex also agrees well over the whole season, although is slightly high compared to Aura-MLS measurements during January and February except during the aforementioned increase in solid phase  $\text{HNO}_3$ . Gas phase water vapour in the CMAM30 is low by  $\sim 20\%$  over the entire time period, consistent with the results shown in Fig. 5.

The right bottom panel of Fig. 13 shows that throughout most of the late winter/early spring, CMAM30 has too much ozone (purple) compared to ACE-FTS and Aura-MLS, but the bias is greatly reduced compared to the SH winter/spring. The seasonal variation in HCl (blue) from Aura-MLS and ACE-FTS agrees well over the season, but both data sets disagree with CMAM30, which shows no variation in HCl over the season. As in the SH, however, CMAM30 shows much less ClO (green) than Aura-MLS, and this discrepancy can account for the lack of seasonal variation in HCl in the model. CMAM30 ClONO<sub>2</sub> (pink) compares reasonably well with ACE-FTS, although there is a lot of variability in the ACE-FTS data despite averaging over the polar vortex. However, overall, despite the disagreement between the active chlorine and the chlorine reservoir HCl, by April, ozone in the CMAM30 agrees well with the satellite data, indicating that the treatment of PSCs in the model in the NH may not be as critical as in the SH, even during cold Arctic winters. These results are supported by the monthly zonal mean differences of ozone (Figs. 2, 4, 8, 10) showing that the high bias in ozone during January and February over high northern latitudes is not as high or as long-lasting as during the SH winter/spring season over high southern latitudes.

Since the CMAM30 nudges spatial scales up to wavenumber 21, it should be expected to faithfully reproduce SSWs and the large-scale dynamical variability of the stratosphere. Agreement should be expected to decrease somewhat into the mesosphere, where there is no nudging and smaller spatial scales dominate. Unsurprisingly, an examination of the dynamical fields during SSW events (start date and type – split vs. displacement) in the CMAM30 data set shows exact agreement with the ERA-Interim data set; however the chemical tracers may deviate from observations.

**CMAM30 data set  
validation: polar  
regions**

D. Pendlebury et al.

Title Page

Abstract

Introduction

Conclusions

References

Tables

Figures



Back

Close

Full Screen / Esc

Printer-friendly Version

Interactive Discussion





an accompanying paper that examines the agreement of the CMAM30 data set in the tropical regions, the tropical upwelling in the model, and the residual circulation.

Methane shows more disagreement in the mesosphere (up to 100%). However in this region, methane concentrations are extremely low and even small absolute differences produce large relative differences. Also, above  $\sim 40$  km ACE-FTS shows more disagreement with other satellite instruments (de Mazière et al., 2008). There is also more variability at these altitudes, which is likely due to the abrupt change in the methane profile, which descends over a season (see Figs. 9d and 10d).

The SH polar winter/spring is less dynamically active than many other regions of the stratosphere. The CMAM30 data set shows a high bias in water vapour in the lower stratosphere, indicating a lack of polar vortex dehydration, and high ozone. Further analysis and comparisons with Aura-MLS show that these discrepancies are due to the treatment of polar stratospheric clouds (PSCs) in the model. While the model sequesters solid  $\text{HNO}_3$  and  $\text{H}_2\text{O}$  in the aerosol phase when temperatures reach 196 and 188 K, respectively, there is no sedimentation of PSC particles regardless of how long they persist, which does not allow for enough denitrification in the lower stratosphere. In addition, the dehydration of the lower stratospheric vortex in the model does not seem to be enough during the winter months, since although the CMAM30 exhibits a low bias of water vapour of  $\sim 10$ – $20$  % globally, water vapour in this region can be  $\sim 20$ – $30$  % too high.

It should be noted that the version of the CMAM used to produce the CMAM30 data set treats the advection of inorganic chlorine species by combining them into one of two advected tracers: HCl and  $\text{ClO}_x$ . While HCl is treated explicitly, the advected  $\text{ClO}_x$  family must be partitioned into the individual chemical species before chemistry is calculated, which is accomplished by using the relative concentrations at each model grid point from the previous time step. This treatment effectively locks the  $\text{ClONO}_2$  concentration to the model grid and does not allow for re-generation of  $\text{ClONO}_2$  as air masses are advected from dark to sunlit portions of the polar vortex (Jaeglé et al., 1997). During polar night, the dominant reaction for chlorine activation is through the reaction of

**CMAM30 data set  
validation: polar  
regions**

D. Pendlebury et al.

Title Page

Abstract

Introduction

Conclusions

References

Tables

Figures



Back

Close

Full Screen / Esc

Printer-friendly Version

Interactive Discussion



**CMAM30 data set  
validation: polar  
regions**

D. Pendlebury et al.

Title Page

Abstract

Introduction

Conclusions

References

Tables

Figures



Back

Close

Full Screen / Esc

Printer-friendly Version

Interactive Discussion



HCl with  $\text{ClONO}_2$ , producing  $\text{Cl}_2$  and  $\text{HNO}_3$ . In CMAM, as the winter progresses this pathway to chlorine activation shuts down once the  $\text{ClONO}_2$  is depleted, since  $\text{ClONO}_2$  is typically less abundant than HCl, leaving too much HCl and too little reactive chlorine. A later version of the CMAM advects  $\text{ClONO}_2$  as a separate species, allowing for regeneration of  $\text{ClONO}_2$  within the sunlit portions of the polar vortex, and allowing more conversion of HCl to reactive chlorine. These results are similar to those of Wohltmann et al. (2013), who found a consistent overestimation of HCl in the presence of PSCs regardless of which PSC processes were used, although their work focused on a NH winter with a major SSW. Similar results, again for the Arctic winter, were also found in Brakebusch et al. (2013), in which the Whole Atmosphere Community Climate Model was nudged to a meteorological analysis. The  $\text{ClONO}_2$  was found to be underestimated in early winter, leading to a high bias in ozone. However, the situation in Brakebusch et al. (2013) changes in late winter with an overestimate of  $\text{HNO}_3$  leading to high  $\text{ClONO}_2$ .

In the NH polar winter/spring, which is warmer and more dynamically active, the CMAM30 profiles agree well with both ACE-FTS and OSIRIS profiles, except for the uniform low bias of 10–20% in water vapour, and high bias of methane. The large-scale dynamical variability is well captured by the CMAM30 data set. In addition, the treatment of PSCs in the model is not as important for the NH winter/spring as for the SH. Even during a cold year without an SSW, water vapour shows very little change from the consistent low bias, and ozone shows only a temporary high bias. Overall, CMAM30 has a good, self-consistent representation of the stratosphere for ozone, temperature, water vapour and methane, when the overall biases in water vapour and methane are taken into account. However, treatment of PSCs in the SH polar vortex is not sufficient to accurately simulate the dehydration and ozone destruction in during the SH late winter/spring.

*Acknowledgements.* Thanks to C. McLandress with help on the manuscript. This work and the development of the CMAM30 data set were funded by the Canadian Space Agency (CSA). Odin is a Swedish-led satellite project funded jointly by Sweden (Swedish National Space Board),

Canada (CSA), France (Centre National d'Etudes Spatiales), and Finland (Tekes), with support by the third party mission programme of the European Space Agency. The Atmospheric Chemistry Experiment (ACE) is a Canadian-led mission supported primarily by the CSA. The Aura satellite is flown and funded by the U. S. National Aeronautics and Space Agency (NASA).

## 5 References

- Adams, C., Bourassa, A. E., Bathgate, A. F., McLinden, C. A., Lloyd, N. D., Roth, C. Z., Llewellyn, E. J., Zawodny, J. M., Flittner, D. E., Manney, G. L., Daffer, W. H., and Degenstein, D. A.: Characterization of Odin-OSIRIS ozone profiles with the SAGE II dataset, *Atmos. Meas. Tech.*, 6, 1447–1459, doi:10.5194/amt-6-1447-2013, 2013. 11185
- 10 Adams, C., Bourassa, A. E., Sofieva, V., Froidevaux, L., McLinden, C. A., Hubert, D., Lambert, J.-C., Sioris, C. E., and Degenstein, D. A.: Assessment of Odin-OSIRIS ozone measurements from 2001 to the present using MLS, GOMOS, and ozonesondes, *Atmos. Meas. Tech.*, 7, 49–64, doi:10.5194/amt-7-49-2014, 2014. 11185
- 15 Bernath, P. F., McElroy, C. T., Abrams, M. C., Boone, C. D., Butler, M., Camy-Peyret, C., Carleer, M., Clerbaux, C., Coheur, P.-F., Colin, R., DeCola, P., DeMazière, M., Drummond, J. R., Dufour, D., Evans, W. F. J., Fast, H., Fussen, D., Gilbert, K., Jennings, D. E., Llewellyn, E. J., Lowe, R. P., Mahieu, E., McConnell, J. C., McHugh, M., McLeod, S. D., Michaud, R., Midwinter, C., Nassar, R., Nichitiu, F., Nowlan, C., Rinsland, C. P., Rochon, Y. J., Rowlands, N., Semeniuk, K., Simon, P., Skelton, R., Sloan, J. J., Soucy, M.-A., Strong, K., Tremblay, P., Turnbull, D., Walker, K. A., Walkty, I., Wardle, D. A., Wehrle, V., Zander, R., and Zou, J.: Atmospheric Chemistry Experiment (ACE): mission overview, *Geophys. Res. Lett.*, 32, L15S01, doi:10.1029/2005GL022386, 2005. 11185
- 20 Boone, C. D., Nassar, R., Walker, K. A., Rochon, Y., McLeod, S. D., Rinsland, C. P., and Bernath, P. F.: Retrievals for the atmospheric chemistry experiment Fourier-transform spectrometer, *Appl. Opt.*, 44, 7218–7231, 2005. 11185
- 25 Boone, C. D., Walker, K. A., and Bernath, P. F.: Version 3 retrievals for the atmospheric chemistry experiment fourier transform spectrometer (ACE-FTS), in: *The Atmospheric Chemistry Experiment ACE at 10: A Solar Occultation Anthology*, edited by: Bernath, P. F., A. Deepak Publishing, Hampton, Virginia, USA, 103–127, 2013. 11186

## CMAM30 data set validation: polar regions

D. Pendlebury et al.

Title Page

Abstract

Introduction

Conclusions

References

Tables

Figures



Back

Close

Full Screen / Esc

Printer-friendly Version

Interactive Discussion



## CMAM30 data set validation: polar regions

D. Pendlebury et al.

Title Page

Abstract

Introduction

Conclusions

References

Tables

Figures



Back

Close

Full Screen / Esc

Printer-friendly Version

Interactive Discussion



- Brakebusch, M., Randall, C. E., Kinnison, D. E., Tilmes, S., Santee, M. L., and Manney, G. L.: Evaluation of whole atmosphere community climate model simulations of ozone during Arctic winter 2004–2005, *J. Geophys. Res.*, 118, 2673–2688, doi:10.1002/jgrd.50226, 2013. 11181, 11200
- 5 Carleer, M. R., Boone, C. D., Walker, K. A., Bernath, P. F., Strong, K., Sica, R. J., Randall, C. E., Vömel, H., Kar, J., Höpfner, M., Milz, M., von Clarmann, T., Kivi, R., Valverde-Canossa, J., Sioris, C. E., Izawa, M. R. M., Dupuy, E., McElroy, C. T., Drummond, J. R., Nowlan, C. R., Zou, J., Nichitiu, F., Lossow, S., Urban, J., Murtagh, D., and Dufour, D. G.: Validation of water vapour profiles from the Atmospheric Chemistry Experiment (ACE), *Atmos. Chem. Phys. Discuss.*, 8, 4499–4559, doi:10.5194/acpd-8-4499-2008, 2008. 11186
- 10 Carslaw, K., Luo, B., and Peter, T.: An analytic expression for the composition of aqueous  $\text{HNO}_3\text{-H}_2\text{SO}_4$  stratospheric aerosols including gas phase removal of  $\text{HNO}_3$ , *Geophys. Res. Lett.*, 22, 1877–1880, 1995. 11184
- Considine, D. B., Douglass, A. R., Connell, P. S., Kinnison, D. E., and Rotman, D. A.: A polar stratospheric cloud parameterization for the global model initiative three-dimensional model and its response to stratospheric aircraft, *J. Geophys. Res.*, 105, 3955–3973, 2000. 11184
- 15 Dee, D. P. and Uppala, S. M.: Variational bias correction of satellite radiance data in the ERA-Interim reanalysis, *Q. J. Roy. Meteor. Soc.*, 135, 1830–1841, 2009. 11183
- Dee, D. P., Uppala, S. M., Simmons, A. J., Berrisford, P., Poli, P., Kobayashi, S., Andrae, U., Balmaseda, M. A., Balsamo, G., Bauer, P., Bechtold, P., Beljaars, A. C. M., van de Berg, I., Biblot, J., Bormann, N., Delsol, C., Dragani, R., Fuentes, M., Greer, A. J., Haimberger, L., Healy, S. B., Hersbach, H., Holm, E. V., Isaksen, L., Kallberg, P., Kohler, M., Matricardi, M., McNally, A. P., Mong-Sanz, B. M., Morcrette, J.-J., Park, B.-K., Peubey, C., de Rosnay, P., Tavolato, C., Thepaut, J. N., and Vitart, F.: The ERA-Interim reanalysis: configuration and performance of the data assimilation system, *Q. J. Roy. Meteor. Soc.*, 137, 553–597, 2011. 11181, 11183
- 20 Degenstein, D. A., Bourassa, A. E., Roth, C. Z., and Llewellyn, E. J.: Limb scatter ozone retrieval from 10 to 60 km using a multiplicative algebraic reconstruction technique, *Atmos. Chem. Phys.*, 9, 6521–6529, doi:10.5194/acp-9-6521-2009, 2009. 11185
- 30 De Mazière, M., Vigouroux, C., Bernath, P. F., Baron, P., Blumenstock, T., Boone, C., Brogniez, C., Catoire, V., Coffey, M., Duchatelet, P., Griffith, D., Hannigan, J., Kasai, Y., Kramer, I., Jones, N., Mahieu, E., Manney, G. L., Piccolo, C., Randall, C., Robert, C., Senten, C., Strong, K., Taylor, J., Tétard, C., Walker, K. A., and Wood, S.: Validation of ACE-FTS v2.2



## CMAM30 data set validation: polar regions

D. Pendlebury et al.

Title Page

Abstract

Introduction

Conclusions

References

Tables

Figures



Back

Close

Full Screen / Esc

Printer-friendly Version

Interactive Discussion



methane profiles from the upper troposphere to the lower mesosphere, *Atmos. Chem. Phys.*, 8, 2421–2435, doi:10.5194/acp-8-2421-2008, 2008. 11186, 11199

Dupuy, E., Walker, K. A., Kar, J., Boone, C. D., McElroy, C. T., Bernath, P. F., Drummond, J. R., Skelton, R., McLeod, S. D., Hughes, R. C., Nowlan, C. R., Dufour, D. G., Zou, J., Nichitui, F., Strong, K., Baron, P., Bevilacqua, R. M., Blumenstock, T., Bodeker, G. E., Borsdorff, T., Bourassa, A. E., Bovensmann, H., Boyd, I. S., Bracher, A., Brogniez, C., Burrows, J. P., Catoire, V., Ceccherini, S., Chabrillat, S., Christensen, T., Coffey, M. T., Cortesi, U., Davies, J., De Clercq, C., Degenstein, D. A., De Mazière, M., Demoulin, P., Dodion, J., Firanski, B., Fischer, H., Forbes, G., Froidevaux, L., Fussen, D., Gerard, P., Godin-Beekmann, S., Goutail, F., Granville, J., Griffith, D., Haley, C. S., Hannigan, J. W., Höpfner, M., Jin, J. J., Jones, A., Jones, N. B., Jucks, K., Kagawa, A., Kasai, Y., Kerzenmacher, T. E., Kleinböhl, A., Klekociuk, A. R., Kramer, I., Küllmann, H., Kuttippurath, J., Kyrölä, E., Lambert, J.-C., Livesey, N. J., Llewellyn, E. J., Lloyd, N. D., Mahieu, E., Manney, G. L., Marshall, B. T., McConnell, J. C., McCormick, M. P., McDermid, I. S., McHugh, M., McLinden, C. A., Mellqvist, J., Mizutani, K., Murayama, Y., Murtagh, D. P., Oelhaf, H., Parrish, A., Petelina, S. V., Piccolo, C., Pommereau, J.-P., Randall, C. E., Robert, C., Roth, C., Schneider, M., Senten, C., Steck, T., Strandberg, A., Strawbridge, K. B., Sussmann, R., Swart, D. P. J., Tarasick, D. W., Taylor, J. R., Tétard, C., Thomason, L. W., Thompson, A. M., Tully, M. B., Urban, J., Vanhellefont, F., Vigouroux, C., von Clarmann, T., von der Gathen, P., von Savigny, C., Waters, J. W., Witte, J. C., Wolff, M., and Zawodny, J. M.: Validation of ozone measurements from the Atmospheric Chemistry Experiment (ACE), *Atmos. Chem. Phys.*, 9, 287–343, doi:10.5194/acp-9-287-2009, 2009. 11186, 11190

Fomichev, V. I., Jonsson, A. I., de Grandpré, J., Beagley, S. R., McLandress, C., Semeniuk, K., and Shepherd, T. G.: Response of the middle atmosphere to CO<sub>2</sub> doubling: results from the Canadian Middle Atmosphere Model, *J. Clim.*, 20, 1121–1144, doi:10.1175/JCLI4030.1, 2007. 11183

Froidevaux, L., Jiang, Y. B., Lambert, A., Livesey, N. J., Read, W. G., Waters, J. W., Fuller, R. A., Marcy, T. P., Popp, P. J., Gao, R. S., Fahey, D. W., Jucks, K. W., Stachnik, R. A., Toon, G. C., Christensen, L. E., Webster, C. R., Bernath, P. F., Boone, C. D., Walker, K. A., Pumphrey, H. C., Harwood, R. S., Manney, G. L., Schwartz, M. J., Daffer, W. H., Drouin, B. J., Cofield, R. E., Cuddy, D. T., Jarnot, R. F., Knosp, B. W., Perun, V. S., Snyder, W. V., Stek, P. C., Thurstans, R. P., and Wagner, P. A.: Validation of Aura Microwave Limb Sounder HCl measurements, *J. Geophys. Res.*, 113, D15S20, doi:10.1029/2007JD009025, 2008. 11187

## CMAM30 data set validation: polar regions

D. Pendlebury et al.

Title Page

Abstract

Introduction

Conclusions

References

Tables

Figures



Back

Close

Full Screen / Esc

Printer-friendly Version

Interactive Discussion



- Hegglin, M. I., Plummer, D. A., Shepherd, T. G., Scinocca, J. F., Anderson, J., Froidevaux, L., Funke, B., Hurst, D., Rozanov, A., Urban, J., von Clarmann, T., Walker, K. A., Wang, H. J., Tegtmeier, S., and Weigel, K.: Vertical structure of stratospheric water vapour trends derived from merged satellite data, *Nat. Geosci.*, 7, 768–776, doi:10.1038/ngeo2236, 2014. 11182
- 5 Jaeglé, L., Webster, C. R., May, R. D., Scott, D. C., Stimpfle, R. M., Kohn, D. W., Wennberg, P. O., Hanisco, T. F., Cohen, R. C., Proffitt, M. H., Kelly, K. K., Elkins, J., Baumgardner, D., Dye, J. E., Wilson, J. C., Pueschel, R. F., Chan, K. R., Salawitch, R. J., Tuck, A. F., Hovde, S. J., and Yung, Y. L.: Evolution and stoichiometry of heterogeneous processing in the Antarctic stratosphere, *J. Geophys. Res.*, 102, 13235–13253, doi:10.1029/97JD00935, 1997. 11199
- 10 Lambert, A., Read, W., Livesey, N., Santee, M., Manney, G., Froidevaux, L., Wu, D., Schwartz, M., Pumphrey, H., Jimenez, C., Nedoluha, G., Cofield, R., Cuddy, D., Daffer, W., Drouin, B., Fuller, R., Jarnot, R., Knosp, B., Pickett, H., Perun, V., Snyder, W., Stek, P., Thurstans, R., Wagner, P., Waters, J., Jucks, K., Toon, G., Stachnik, R., Bernath, P., Boone, C., Walker, K., Urban, J., Murtagh, D., Elkins, J., and Atlas, E.: Validation of the Aura Microwave Limb
- 15 Sounder middle atmosphere water vapor and nitrous oxide measurements, *J. Geophys. Res.*, 112, D24S36, doi:10.1029/2007JD008724, 2007. 11187
- Llewellyn, E. J., Lloyd, N. D., Degenstein, D. A., Gattinger, R. L., Petelina, S. V., Bourassa, A. E., Wiensz, J. T., Ivanov, E. V., McDade, I. C., Solheim, B. H., McConnell, J. C., Haley, C. S., von Savigny, C., Sioris, C. E., McLinden, C. A., Griffioen, E., Kaminski, J., Evans, W. F. J., Puckrin, E., Strong, K., Wehrle, V., Hum, R. H., Kendall, D. J. W., Matsushita, J.,
- 20 Murtagh, D. P., Brohede, S., Stegman, J., Witt, G., Barnes, G., Payne, W. F., Piché, L., Smith, K., Warshaw, G., Deslauniers, D., Marchand, P., Richardson, E. H., King, R. A., Wevers, I., McCreath, W., Kyrölä, E., Oikarinen, L., Leppelmeier, G. W., Auvinen, H., Mégie, G., Hauchecorne, A., Lefèvre, F., de La Nöe, J., Ricaud, P., Frisk, U., Sjöberg, F., von Schéele, F., and Nordh, L.: The OSIRIS instrument on the Odin spacecraft, *Can. J. Phys.*, 82, 411–422, doi:10.1139/p04-005, 2004. 11185
- 25 Mahieu, E., Duchatelet, P., Demoulin, P., Walker, K. A., Dupuy, E., Froidevaux, L., Randall, C., Catoire, V., Strong, K., Boone, C. D., Bernath, P. F., Blavier, J.-F., Blumenstock, T., Coffey, M., De Mazière, M., Griffith, D., Hannigan, J., Hase, F., Jones, N., Jucks, K. W., Kagawa, A., Kasai, Y., Mebarki, Y., Mikuteit, S., Nassar, R., Notholt, J., Rinsland, C. P., Robert, C., Schrems, O., Senten, C., Smale, D., Taylor, J., Tétard, C., Toon, G. C., Warneke, T., Wood, S. W., Zander, R., and Servais, C.: Validation of ACE-FTS v2.2 measurements of
- 30

## CMAM30 data set validation: polar regions

D. Pendlebury et al.

Title Page

Abstract

Introduction

Conclusions

References

Tables

Figures



Back

Close

Full Screen / Esc

Printer-friendly Version

Interactive Discussion



HCl, HF, CCl<sub>3</sub>F and CCl<sub>2</sub>F<sub>2</sub> using space-, balloon- and ground-based instrument observations, *Atmos. Chem. Phys.*, 8, 6199–6221, doi:10.5194/acp-8-6199-2008, 2008. 11186

Manney, G. L., Daffer, W. H., Zawodny, J. M., Bernath, P. F., Hoppel, K. W., Walker, K. A., Knosp, B. W., Boone, C., Remsberg, E. E., Santee, M. L., Harvey, V. L., Pawson, S., Jackson, D. R., Deaver, L., McElroy, C. T., McLinden, C. A., Drummond, J. R., Pumphrey, H. C., Lambert, A., Schwartz, M. J., Froidevaux, L., McLeod, S., Takacs, L. L., Suarez, M. J., Trepte, C. R., Cuddy, D. C., Livesey, N. J., Harwood, R. S., and Waters, J. W.: Solar occultation satellite data and derived meteorological products: Sampling issues and comparisons with Aura Microwave Limb Sounder, *J. Geophys. Res.*, 112, D24S50, doi:10.1029/2007JD008709, 2007.

McLandress, C., Scinocca, J. F., Shepherd, T. G., Reader, M. C., and Manney, G. L.: Dynamical control of the mesosphere by orographic and nonorographic gravity wave drag during the extended Northern winters of 2006 and 2009, *J. Atmos. Sci.*, 70, 2152–2169, doi:10.1175/JAS-D-12-0297.1, 2013. 11181, 11190

McLandress, C., Plummer, D. A., and Shepherd, T. G.: Technical Note: A simple procedure for removing temporal discontinuities in ERA-Interim upper stratospheric temperatures for use in nudged chemistry-climate model simulations, *Atmos. Chem. Phys.*, 14, 1547–1555, doi:10.5194/acp-14-1547-2014, 2014. 11183

Nezlin, Y., Rochon, Y. J., and Polavarapu, S.: Impact of tropospheric and stratospheric data assimilation on mesosphere prediction, *Tellus A*, 61, 154–159, 2009. 11183

Peter, T.: Microphysics and heterogeneous chemistry of polar stratospheric clouds, *Annu. Rev. Phys. Chem.*, 48, 785–822, 1997. 11183

Rousseeuw, P. J. and Croux, C.: Alternatives to the Median Absolute Deviation, *J. Am. Stats. Assoc.*, 88, 1273–1283, 1993. 11188

Santee, M. L., Lambert, A., Read, W., Livesey, N., Cofield, R., Cuddy, D., Daffer, W., Drouin, B., Froidevaux, L., Fuller, R., Jarnot, R., Knosp, B., Manney, G., Perun, V., Snyder, W., Stek, P., Thurstans, R., Wagner, P., Waters, J., Muscari, G., deZafra, R., Dibb, J., Fahey, D., Popp, P., Marcy, T., Jucks, K., Toon, G., Stachnik, R., Bernath, P., Boone, C., Walker, K., Urban, J., and Murtagh, D.: Validation of Aura Microwave Limb Sounder HNO<sub>3</sub> Measurements, *J. Geophys. Res.*, 112, D24S40, doi:10.1029/2007JD008721, 2007. 11187

Santee, M. L., Lambert, A., Read, W., Livesey, N., Manney, G., Cofield, R., Cuddy, D., Daffer, W., Drouin, B., Froidevaux, L., Fuller, R., Jarnot, R., Knosp, B., Perun, V., Snyder, W., Stek, P., Thurstans, R., Wagner, P., Waters, J., Connor, B., Urban, J., Murtagh, D., Ricaud, P., Barrett, B., Kleinboehl, A., Kuttippurath, J., Kullmann, H., von Hobe, M., Toon, G., and Stachnik, R.:

## CMAM30 data set validation: polar regions

D. Pendlebury et al.

Title Page

Abstract

Introduction

Conclusions

References

Tables

Figures



Back

Close

Full Screen / Esc

Printer-friendly Version

Interactive Discussion



Validation of the Aura Microwave Limb Sounder CIO Measurements, *J. Geophys. Res.*, 113, D15S22, doi:10.1029/2007JD008762, 2008. 11187

Schwartz, M. J., Lambert, A., Manney, G. L., Read, W. G., Livesey, N. J., Froidevaux, L., Ao, C. O., Bernath, P. F., Boone, C. D., Cofield, R. E., Daffer, W. H., Drouin, B. J., Fetzer, E. J., Fuller, R. A., Jarnot, R. F., Jiang, J. H., Jiang, Y. B., Knosp, B. W., Kruger, K., Li, J.-L. F., Mlynchzak, M. G., Pawson, S., Russell, J. M., Santee, M. L., Snyder, W. V., Stek, P. C., Thurstans, R. P., Tompkins, A. M., Wagner, P. A., Walker, K. A., Waters, J. W., and Wu, D. L.: Validation of the Aura Microwave Limb Sounder temperature and geopotential height measurements, *J. Geophys. Res.*, 113, D15S11, doi:10.1029/2007JD008783, 2008. 11187

Scinocca, J. F., McFarlane, N. A., Lazare, M., Li, J., and Plummer, D.: Technical Note: The CCCma third generation AGCM and its extension into the middle atmosphere, *Atmos. Chem. Phys.*, 8, 7055–7074, doi:10.5194/acp-8-7055-2008, 2008. 11183

Sheese, P. E., Llewellyn, E. J., Gattinger, R. L., Bourassa, A. E., Degenstein, D. A., Lloyd, N. D., and McDade, I. C.: Temperatures in the upper mesosphere and lower thermosphere from OSIRIS observation of O<sub>2</sub> A-band emission spectra, *Can. J. Phys.*, 88, 919–925, doi:10.1139/P10-093, 2010. 11189

Sheese, P. E., McDade, I. C., Gattinger, R. L., and Llewellyn, E. J.: Atomic oxygen densities retrieved from Optical Spectrograph and Infrared Imaging System observations of O<sub>2</sub> A-band airglow emission in the mesosphere and lower thermosphere, *J. Geophys. Res.*, 116, 2993–3006, doi:10.1029/2010JD014640, 2011. 11185, 11189

Sheese, P. E., Strong, K., Llewellyn, E. J., Gattinger, R. L., Russell III, J. M., Boone, C. D., Hervig, M. E., Sica, R. J., and Bandoro, J.: Assessment of the quality of OSIRIS mesospheric temperatures using satellite and ground-based measurements, *Atmos. Meas. Tech.*, 5, 2993–3006, doi:10.5194/amt-5-2993-2012, 2012. 11185

Shepherd, T. G., Plummer, D. A., Scinocca, J. F., Hegglin, M. I., Fioletov, V. E., Reader, M. C., Remsberg, E., von Clarmann, T., and Wang, H. J.: Reconciliation of halogen-induced ozone loss with the total-column ozone record, *Nat. Geosci.*, 7, 443–449, doi:10.1038/ngeo2155, 2014. 11182, 11183, 11192

Sica, R. J., Izawa, M. R. M., Walker, K. A., Boone, C., Petelina, S. V., Argall, P. S., Bernath, P., Burns, G. B., Catoire, V., Collins, R. L., Daffer, W. H., De Clercq, C., Fan, Z. Y., Firanski, B. J., French, W. J. R., Gerard, P., Gerding, M., Granville, J., Innis, J. L., Keckhut, P., Kerzenmacher, T., Klekociuk, A. R., Kyrö, E., Lambert, J. C., Llewellyn, E. J., Manney, G. L., McDermid, I. S., Mizutani, K., Murayama, Y., Piccolo, C., Raspollini, P., Ridolfi, M., Robert, C., Stein-

**CMAM30 data set  
validation: polar  
regions**

D. Pendlebury et al.

Title Page

Abstract

Introduction

Conclusions

References

Tables

Figures



Back

Close

Full Screen / Esc

Printer-friendly Version

Interactive Discussion



brecht, W., Strawbridge, K. B., Strong, K., Stübi, R., and Thuraiajah, B.: Validation of the Atmospheric Chemistry Experiment (ACE) version 2.2 temperature using ground-based and space-borne measurements, *Atmos. Chem. Phys.*, 8, 35–62, doi:10.5194/acp-8-35-2008, 2008. 11186

5 SPARC CCMVal: SPARC Report on the evaluation of chemistry-climate models, vol. SPARC Report No. 5, WCRP-132, WMO/TD-No. 1526, edited by: Eyring, V., Shepherd, T. G. and Waugh, D. W., 2010. 11189, 11190

Toohey, M. and von Clarmann, T.: Climatologies from satellite measurements: the impact of orbital sampling on the standard error of the mean, *Atmos. Meas. Tech.*, 6, 937–948, doi:10.5194/amt-6-937-2013, 2013.

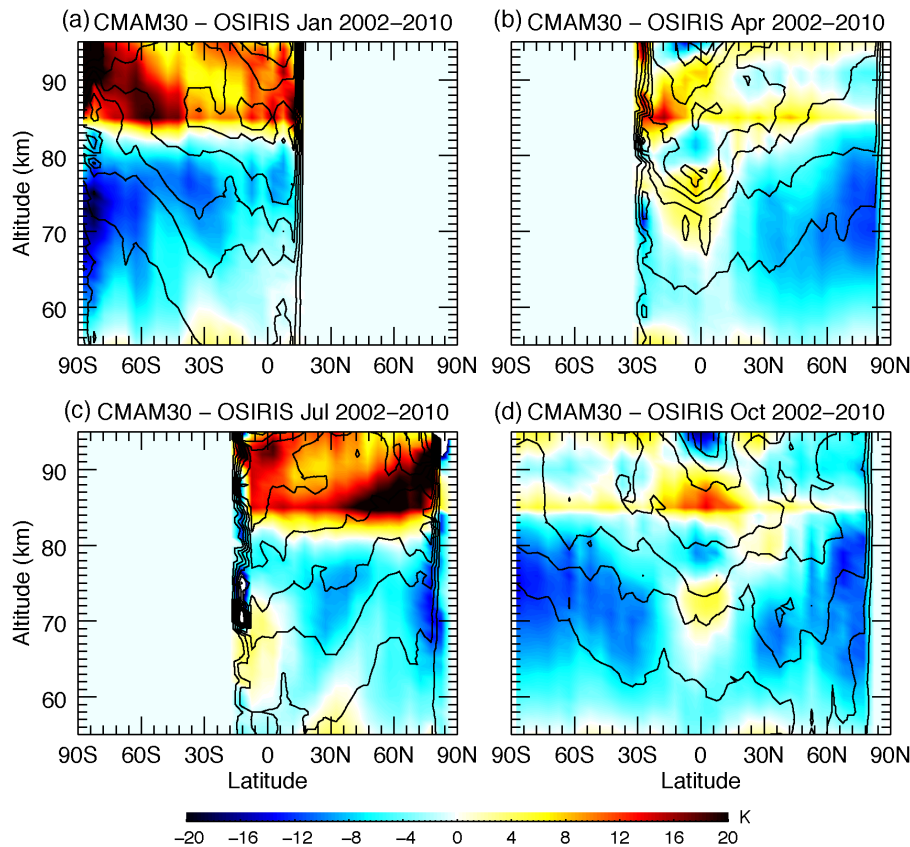
10 Waymark, C., Walker, K., Boone, C. D., and Bernath, P. F.: ACE-FTS version 3.0 data set: validation and data processing update, *Ann. Geophys.*, 56, 1395–1427, doi:10.4401/ag-6339, 2013. 11186

15 Wohltmann, I., Wegner, T., Müller, R., Lehmann, R., Rex, M., Manney, G. L., Santee, M. L., Bernath, P., Sumińska-Ebersoldt, O., Stroh, F., von Hobe, M., Volk, C. M., Hösen, E., Ravegnani, F., Ulanovsky, A., and Yushkov, V.: Uncertainties in modelling heterogeneous chemistry and Arctic ozone depletion in the winter 2009/2010, *Atmos. Chem. Phys.*, 13, 3909–3929, doi:10.5194/acp-13-3909-2013, 2013. 11200

20 Wolff, M. A., Kerzenmacher, T., Strong, K., Walker, K. A., Toohey, M., Dupuy, E., Bernath, P. F., Boone, C. D., Brohede, S., Catoire, V., von Clarmann, T., Coffey, M., Daffer, W. H., De Mazière, M., Duchatelet, P., Glatthor, N., Griffith, D. W. T., Hannigan, J., Hase, F., Höpfner, M., Huret, N., Jones, N., Jucks, K., Kagawa, A., Kasai, Y., Kramer, I., Küllmann, H., Kuttippurath, J., Mahieu, E., Manney, G., McElroy, C. T., McLinden, C., Mébarki, Y., Mikuteit, S., Murtagh, D., Piccolo, C., Raspollini, P., Ridolfi, M., Ruhnke, R., Santee, M., Senten, C., Smale, D., Tétard, C., Urban, J., and Wood, S.: Validation of HNO<sub>3</sub>, ClONO<sub>2</sub>, and N<sub>2</sub>O<sub>5</sub> from the Atmospheric Chemistry Experiment Fourier Transform Spectrometer (ACE-FTS), *Atmos. Chem. Phys.*, 8, 3529–3562, doi:10.5194/acp-8-3529-2008, 2008. 11186

CMAM30 data set  
validation: polar  
regions

D. Pendlebury et al.



**Figure 1.** Temperature differences for CMAM30 vs. OSIRIS profiles, derived from the O<sub>2</sub> A-band. Shown are averages over the entire time period for January (a), April (b), July (c) and October (d). The median temperature difference is shown by the colour scale and the contours indicate the MAD with contour intervals of 2 K. Reds indicate where CMAM30 has a warm bias compared with observations, and blues indicate where CMAM30 has a cold bias.

Title Page

Abstract

Introduction

Conclusions

References

Tables

Figures

◀

▶

◀

▶

Back

Close

Full Screen / Esc

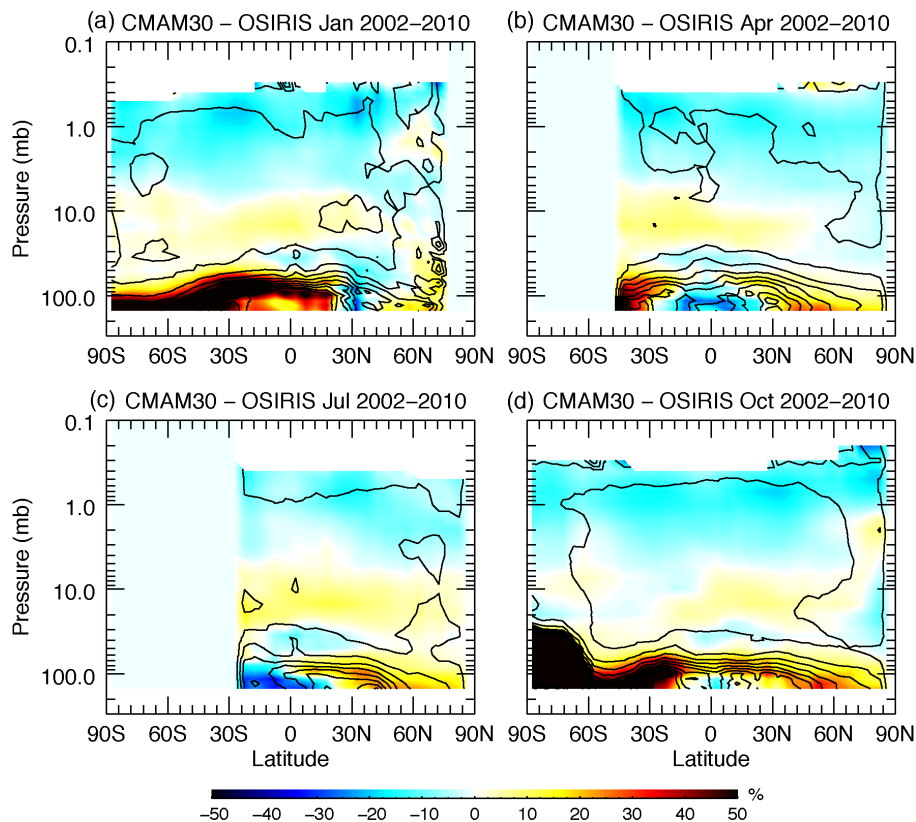
Printer-friendly Version

Interactive Discussion



CMAM30 data set  
validation: polar  
regions

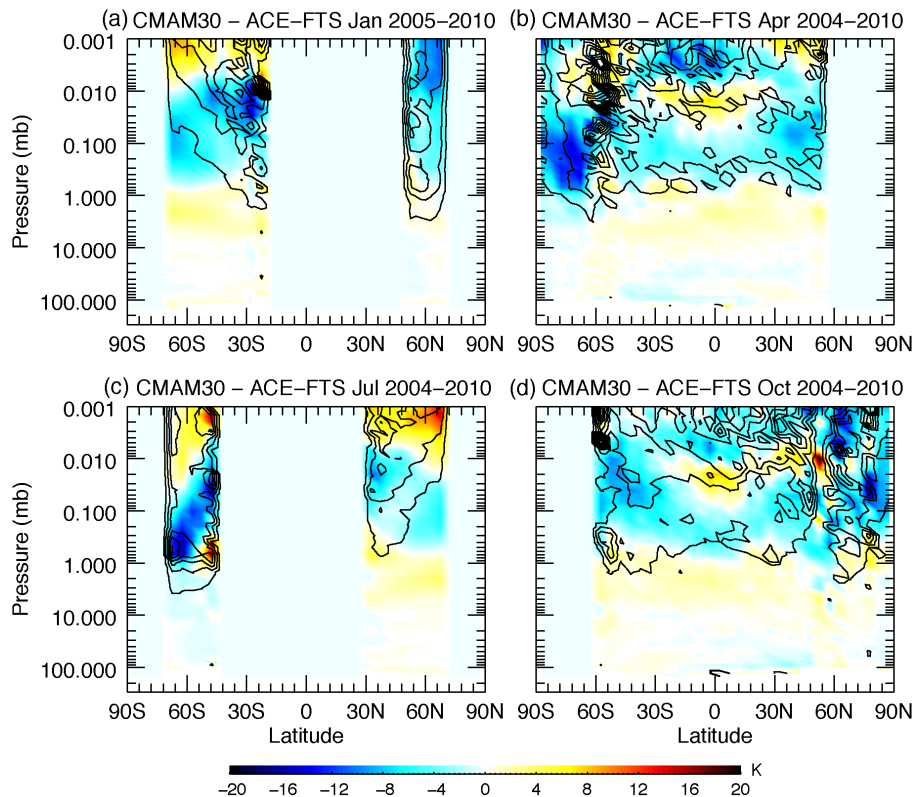
D. Pendlebury et al.



**Figure 2.** Same as Fig. 1 but for CMAM30 vs. OSIRIS relative differences for ozone profiles. MAD contour levels are 5%. Reds indicate where CMAM30 ozone is too high compared to OSIRIS, and blues indicate where CMAM30 ozone is low. Note that the vertical axis here is pressure.

## CMAM30 data set validation: polar regions

D. Pendlebury et al.



**Figure 3.** Same as for Fig. 1 but for CMAM30 vs. ACE-FTS temperature differences for 2004 to 2010 for January (a), 9 April (b), July, (c) and October (d). Note that the vertical axis here is pressure.

Title Page

Abstract

Introduction

Conclusions

References

Tables

Figures

◀

▶

◀

▶

Back

Close

Full Screen / Esc

Printer-friendly Version

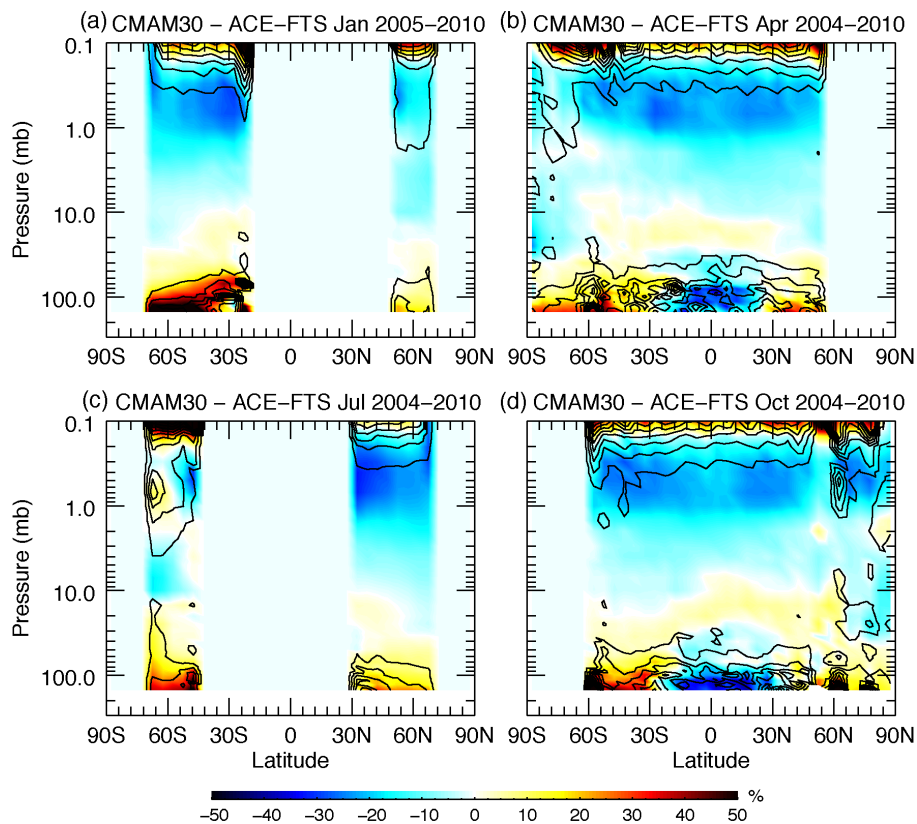
Interactive Discussion





CMAM30 data set  
validation: polar  
regions

D. Pendlebury et al.

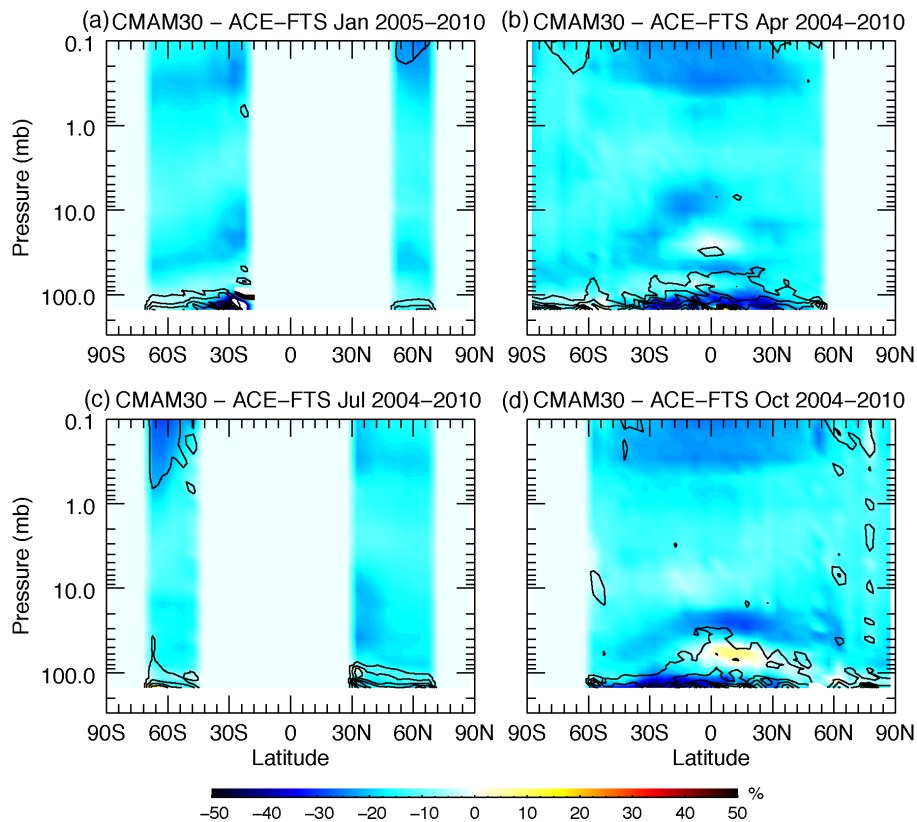


**Figure 4.** Same as for Fig. 2 but for CMAM30 vs. ACE-FTS relative differences for ozone profiles for 2004 to 2010.

[Title Page](#)[Abstract](#)[Introduction](#)[Conclusions](#)[References](#)[Tables](#)[Figures](#)[◀](#)[▶](#)[◀](#)[▶](#)[Back](#)[Close](#)[Full Screen / Esc](#)[Printer-friendly Version](#)[Interactive Discussion](#)

## CMAM30 data set validation: polar regions

D. Pendlebury et al.



**Figure 5.** Same as for Fig. 2 but for CMAM30 vs. ACE-FTS relative differences for water vapour profiles for 2004 to 2010.

Title Page

Abstract

Introduction

Conclusions

References

Tables

Figures

◀

▶

◀

▶

Back

Close

Full Screen / Esc

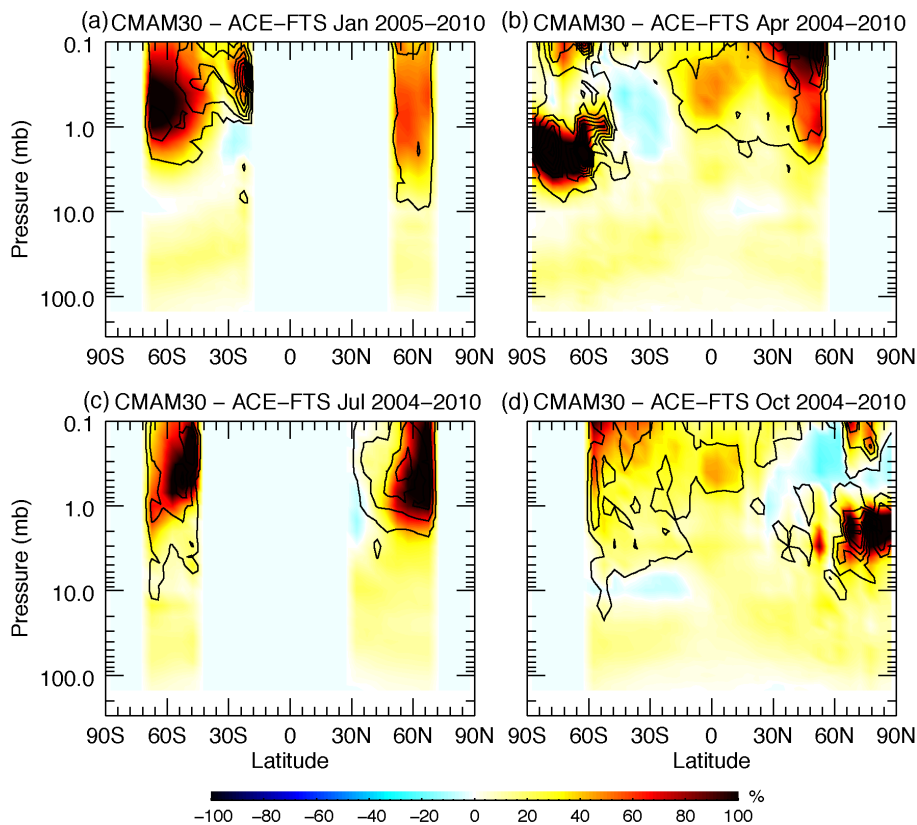
Printer-friendly Version

Interactive Discussion



CMAM30 data set  
validation: polar  
regions

D. Pendlebury et al.

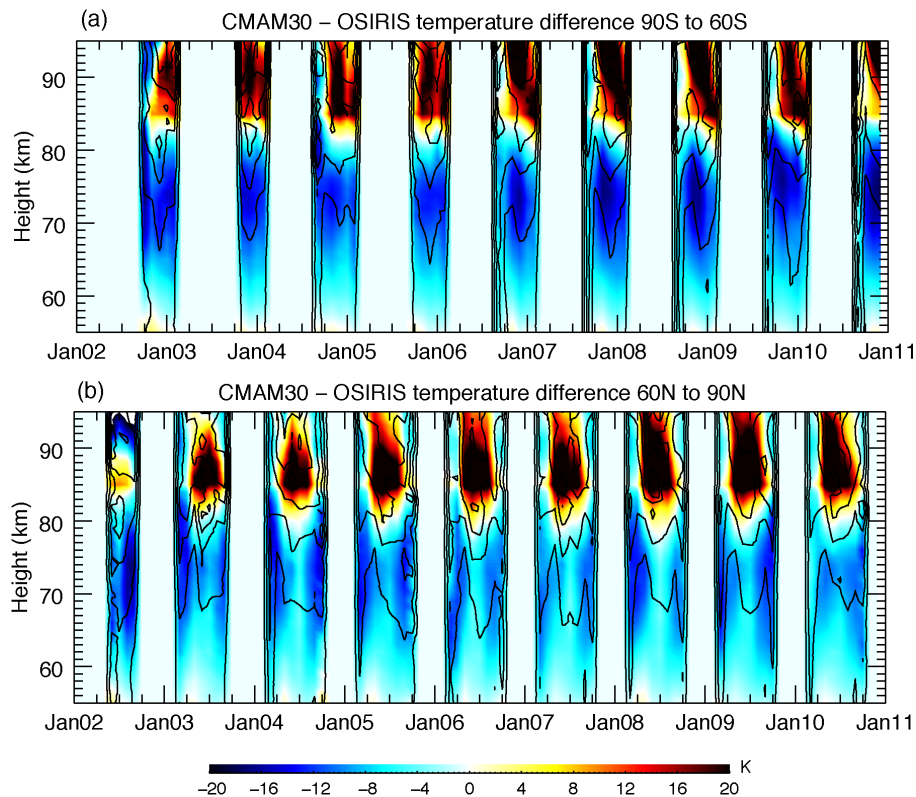


**Figure 6.** Same as for Fig. 2 but for CMAM30 vs. ACE-FTS relative differences for methane profiles for 2004 to 2010.

[Title Page](#)[Abstract](#)[Introduction](#)[Conclusions](#)[References](#)[Tables](#)[Figures](#)[◀](#)[▶](#)[◀](#)[▶](#)[Back](#)[Close](#)[Full Screen / Esc](#)[Printer-friendly Version](#)[Interactive Discussion](#)

CMAM30 data set  
validation: polar  
regions

D. Pendlebury et al.



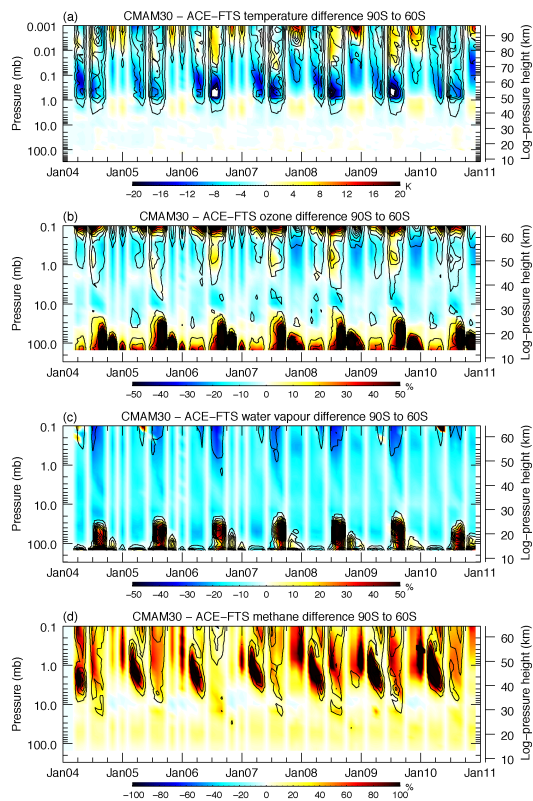
**Figure 7.** Time series comparison of coincident profiles between CMAM30 temperatures and OSIRIS temperatures derived from the O<sub>2</sub> A-band for 90 to 60° S (a) and 60 to 90° N (b). Colours indicate the median bias of CMAM30 data. Contours indicate the MAD with contour intervals of 2 K.

[Title Page](#)[Abstract](#)[Introduction](#)[Conclusions](#)[References](#)[Tables](#)[Figures](#)[◀](#)[▶](#)[◀](#)[▶](#)[Back](#)[Close](#)[Full Screen / Esc](#)[Printer-friendly Version](#)[Interactive Discussion](#)



## CMAM30 data set validation: polar regions

D. Pendlebury et al.



**Figure 9.** Time series of relative differences of coincident profiles between CMAM30 and ACE-FTS for 90° S to 60° S for temperature (a), ozone (b), water vapour (c) and methane (d). Colours indicate the median bias of CMAM30 data. Contours indicate the MAD with contour interval of 2 K for temperature and 5% for tracers.

Title Page

Abstract

Introduction

Conclusions

References

Tables

Figures



Back

Close

Full Screen / Esc

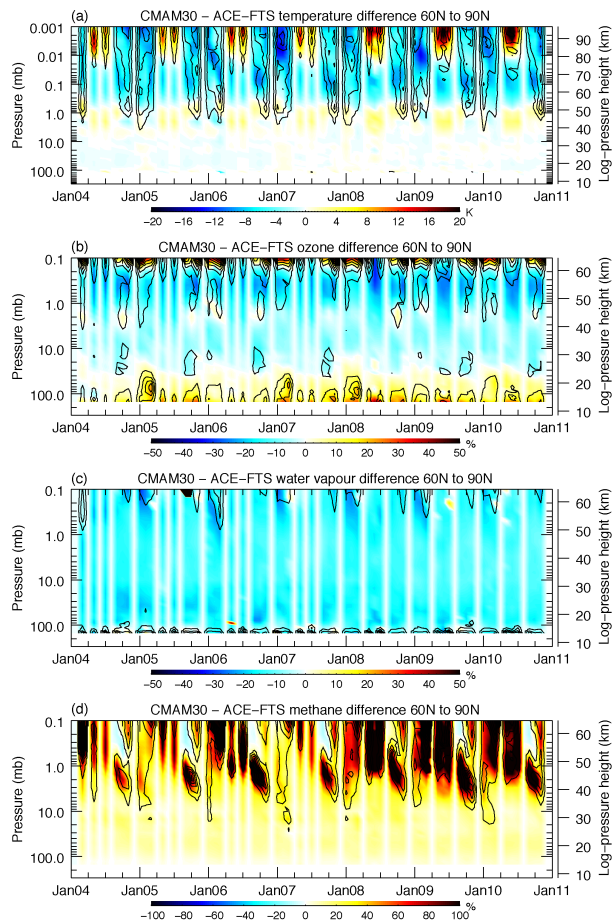
Printer-friendly Version

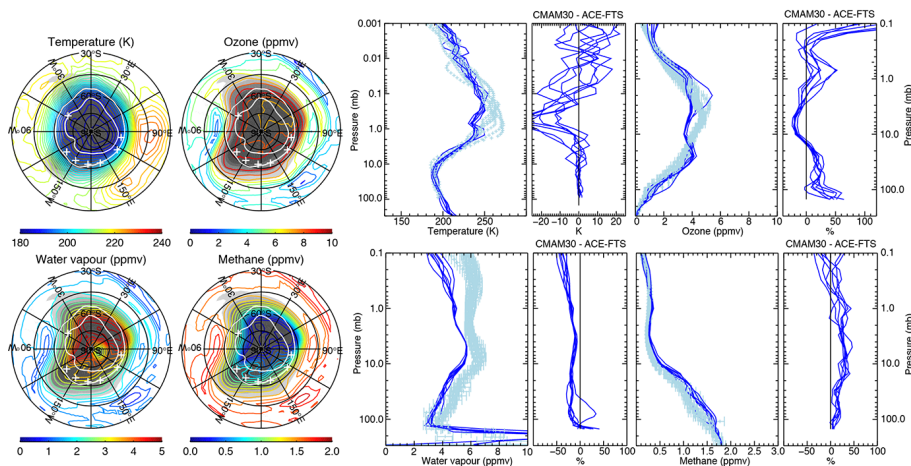
Interactive Discussion



CMAM30 data set  
validation: polar  
regions

D. Pendlebury et al.

**Figure 10.** Same as for Fig. 9 but for 60 to 90° N.[Title Page](#)[Abstract](#)[Introduction](#)[Conclusions](#)[References](#)[Tables](#)[Figures](#)[Back](#)[Close](#)[Full Screen / Esc](#)[Printer-friendly Version](#)[Interactive Discussion](#)



**Figure 11.** Left panels show the CMAM30 temperature, ozone, water vapour and methane on the 500 K isentropic surface for 30 July 2006. Coloured contours are the constituent/temperature values. Scaled potential vorticity is shaded in grey (no shading less than  $-1$  PVU, light shading at  $-1$  and  $-1.2$  PVU, darker shading  $-1.8$  and  $-2$  PVU). Right panels show coincident profiles for CMAM30 (dark blue) and ACE-FTS measurements (light blue) for temperature, ozone, water vapour and methane. Differences between CMAM30 and ACE-FTS are shown to the right of each panel. Locations of each profile are marked on the isentropic plots for ACE-FTS profiles (white crosses). Note there are no OSIRIS data available for this date.

## CMAM30 data set validation: polar regions

D. Pendlebury et al.

Title Page

Abstract

Introduction

Conclusions

References

Tables

Figures



Back

Close

Full Screen / Esc

Printer-friendly Version

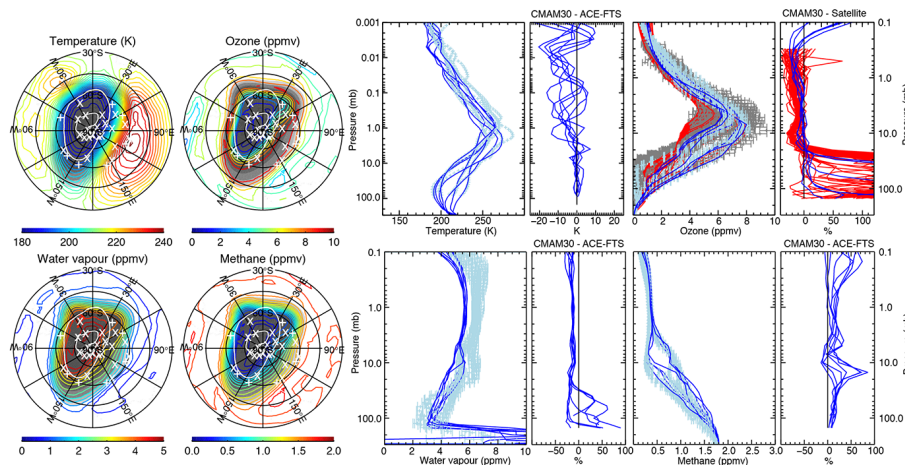
Interactive Discussion





CMAM30 data set  
validation: polar  
regions

D. Pendlebury et al.



**Figure 12.** Same as Fig. 11 but for 25 September 2006. OSIRIS measurements are grey, with CMAM30 coincident profiles in red and differences with respect to OSIRIS in red. Locations of each profile are marked on the isentropic plots for ACE-FTS profiles (white crosses) and for OSIRIS (white x's).

Title Page

Abstract

Introduction

Conclusions

References

Tables

Figures



Back

Close

Full Screen / Esc

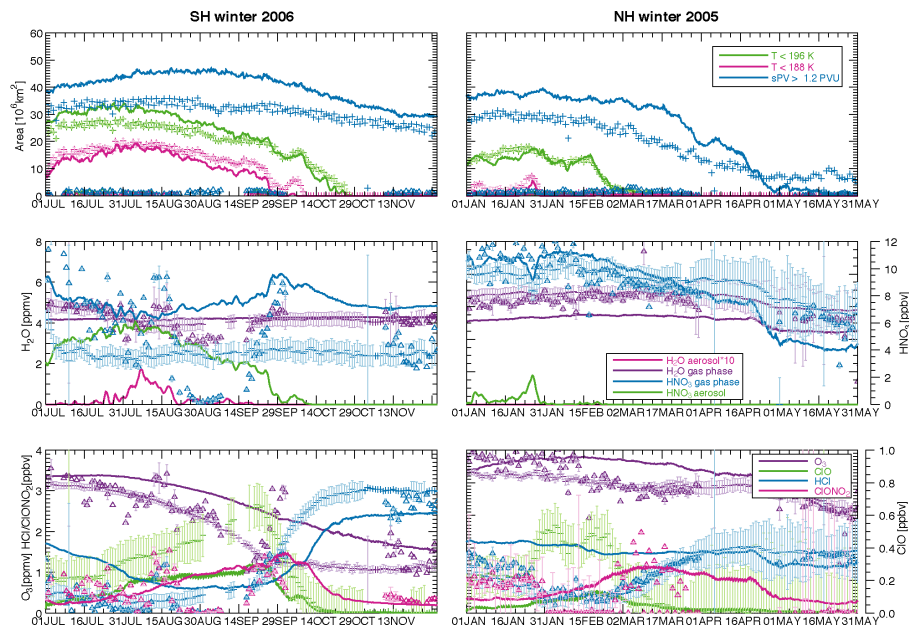
Printer-friendly Version

Interactive Discussion



## CMAM30 data set validation: polar regions

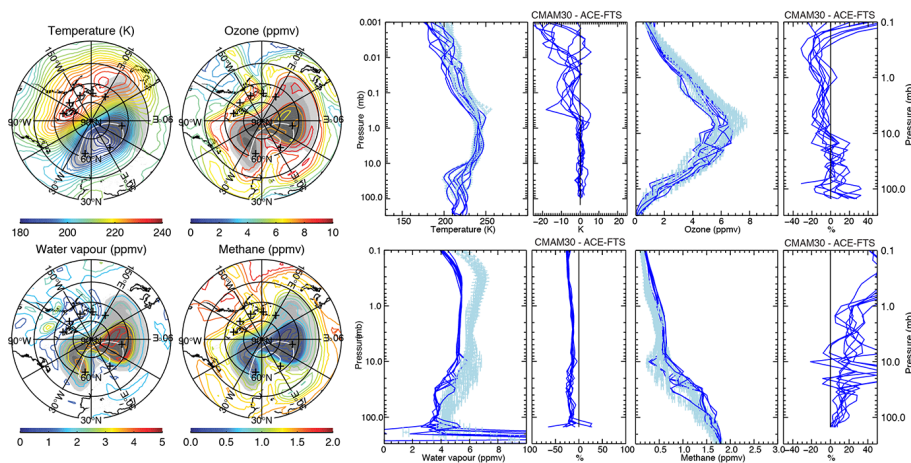
D. Pendlebury et al.



**Figure 13.** Polar vortex diagnostics for SH winter 2006 (left column) and NH winter 2005 (right column). Top panels show the area of polar vortex defined as  $sPV < \pm 1.2$  PVU (blue), area where temperature is below 196 K (green) and below 188 K (pink). The middle panels show polar vortex averaged  $H_2O$  (purple),  $HNO_3$  (blue), solid  $H_2O$  or PSC aerosol (pink) and solid  $HNO_3$  (green). Bottom panels show polar vortex averaged ozone (purple), HCl (blue), ClO (green, Aura-MLS and CMAM30 only) and  $ClONO_2$  (pink, ACE-FTS and CMAM30 only). CMAM30 is shown as solid lines, ACE-FTS as triangles with error bars (typically too small to see), and Aura-MLS as crosses with error bars. Solid water vapour (PSC aerosol, CMAM30 only) amounts are scaled by a factor of 10. Note that  $HNO_3$ , and ClO amounts for the middle and bottom panels respectively, are denoted on the rightmost axes for both left and right columns.

## CMAM30 data set validation: polar regions

D. Pendlebury et al.



**Figure 14.** Same as for Fig. 11 but for 25 January 2006 in the NH. Scaled PV values are 1, 1.2, 1.4, 2, 3.25 PVU. The location of the ACE-FTS profiles are marked on the maps by black crosses. No OSIRIS data are available for this date.

Title Page

Abstract

Introduction

Conclusions

References

Tables

Figures



Back

Close

Full Screen / Esc

Printer-friendly Version

Interactive Discussion

