

Interactive comment on “Trace metal characterization of aerosol particles and cloud water during HCCT 2010” by K. W. Fomba et al.

Author’s response and the changes made in the manuscript are in italics

Anonymous Referee #1

Received and published: 12 May 2015

General comment:

This study tries to demonstrate the role of cloud in processing of trace metals associated with atmospheric particles/aerosols in different size ranges. Four full cloud events (FCE) have been investigated in which air masses were found to pass through all three monitoring stations namely Mt. Schmücke (in-cloud mountain station), Goldlauter (GL, upwind of the summit station) and Gehlberg (GB, downwind of the summit station). Various aspect affecting the size distribution of trace metals in aerosol due to cloud processing have been highlighted. Overall, this study is very interesting and of great interest for Aerosol-Cloud-Chemistry community. This manuscript fits well in the special issue of this journal (HCCT-2010) and thus, I recommend to publish this upon minor revision.

Specific comments:

1. Page 10901, Line 9-14: Proper reference indicating role of trace metals influencing OH radical budget must be cited.

References were added: (Deguillaume et al., 2005; Spokes et al., 1994)

2. Page 10901-10902, Line 27-28, 1-2: Statement is not very clear. Kindly reword it.

The sentences have been reworded to now read “Trace metal concentrations vary according to their sources. Crustal sources are usually found to strongly influence concentrations of trace metals such as Fe, Al, Ti and Mn”

3. Page 10910, Line 1-4: Fig. 2 shows scatter plot of Levoglucosan with K, Zn, Pb and As. Plots have 5 data points but there are 4 FCE. Is it only PM_{1.2}?

Figures have been changed and now have 4 points. There was one point included from an event that was not included in the discussions. Yes, correlations are on PM 1.2 since the levoglucosan concentrations were found mainly in the fine mode.

4. Page 10910, Line 26-27: Correlations are NOT conserved for any metal. It is weaker at GB for all except Zn. Correlation coefficient for Ti is missing.

The sentence has been changed and the word “not” have been replaced with the word “changes” to read

“However, changes in the correlations were observed as the air mass passed through the cloud at the mountain station before arriving at Gehlberg.”

The correlation coefficient of Ti was missing because there was no correlation of Ti with Lev at GB. However, to avoid ambiguity, Ti has been taken out of the table and the discussions with respect to Ti have been removed accordingly on page 11 lines 26-28 and Page 12 line 1.

5. Kindly mention the level of significance (p-values) for all correlation plots.

The p-values were less than 0.05. However, it should be acknowledged that the data points for these correlations are few and thus the conclusions based on these correlations have been revised and corresponding sentences have been made on page 11, lines 6 -7. The included text now reads:

“The p-values of these plots were less than 0.05. Nevertheless, since these correlations are based on statistically few data points their values are used to mainly indicate possible trends between these components. Source attributions are only made in cases where similar observations were reported elsewhere. ”

In addition the statements that suggested similar source regions based on the correlations have been removed, i.e. Page 12, 4-6 and Page 13 lines 6-8 and 9-17.

6. Pg 10911, Line 16-18: Proper reference must be cited for EC and OC emissions.

These citations (Herrmann et al., 2006; Saarikoski et al., 2008) have now been included.

7. Page 10918, Line 21: Table 1 and 3.

Table 2 has been replaced by Table 3.

Anonymous Referee #2

Received and published: 15 May 2015

This manuscript presents and discusses trace metal data for samples that were collected in September-October 2010 at the top of the Mt. Schmücke mountain site and at two stations upwind and downwind of Mt. Schmücke. The data are related to each other and to some extent compared with previous data from the same site and other rural sites. Attempts were made to assess the sources of the various trace metals. Although the data analysis is rather standard, the interpretation is fairly convincing. As discussed in detail below, the manuscript is on a few occasions unclear and it has some other weaknesses. Revision is needed before this manuscript can be published in ACP.

Specific Comments

Discussion Paper

1. Page 10903, line 21, and further within the manuscript: Here it said that polycarbonate foils were used in the impactors. Later, it becomes polycarbonate filters (thus with pores). Were it foils or filters and if it were filters what was the pore size? Also, were the aluminum foils and polycarbonate foils/filters coated with a grease? If not, was there no danger of particle bounce off?

The word polycarbonate filters has been replaced with polycarbonate foils throughout the manuscript.

In the case of this experiment, there was hardly a risk for particle bounce off since the relative humidity was rather high. Corresponding sentence has been added on page 5 lines 5-8 which reads:

“For the regulation of the humidity, seven parallel tubes were used after the isokinetic inlet to regulate the relative humidity to approx. 80 % via heating/cooling of the tubes. This was done in order to avoid water condensation on the impaction substrates under very humid conditions during cloud appearance at Mt. Schmücke and also to avoid particle bounce off during very dry conditions.”

Nevertheless, the application of grease would interfere with our chemical analyses and, thus, this was not done for our impactor sampling.

2. Page 10905, line 8: Acronyms and abbreviations (here DI) should be defined (written full-out) when first used. Presumably, DI stands for deionized.

Deionized water has been defined

3. Pages 10906-10908, section 3.1: The data from the current study are compared with data from a few other rural sites, but several more data sets from rural sites in Europe are available. Under References below, I list a number of publications from the past ten years, which contain aerosol trace metal data for rural sites in Europe. Why is no comparison made with those data? On which basis were the data sets and rural sites selected that were used for the comparison?

The suggested references have been incorporated into the discussions and the comparisons to the obtained concentrations of this study have been done. In addition, Table1 has been updated to list most of the references during the past 10 years. The text has been changed accordingly on Page 8 lines 8-31 and now reads:

“For trace metals such as Cr and Zn, their mean concentrations were higher than those reported at Boccadifalco, Italy (Dongarra et al., 2010), Puy de Dôme, France (Vlastelic et al., 2014) K-Puska, Hungary (Maenhaut et al., 2008), Monte Cimone, Italy (Marenco et al., 2006) Monte Martono, Italy (Moroni et al., 2015) and at Auchencorth (UK) (Allen et al., 2001) although in the case of Zn the average concentration was comparable with that observed at Castlemorton (UK) (Allen et al., 2001) but lower than that reported at the, Schmücke (Rüd, 2003) and at Bertiz, Spain (Aldabe et al., 2011). However, the concentration ranges were similar to those reported by Rüd (2003). Trace metals such as Sr and As showed comparable average values and ranges to those reported at other rural sites in Italy (Dongarra et al., 2010; Allen et al., 2001; Hueglin et al., 2005), UK and Switzerland as well as at Bertiz (Aldabe et al., 2011) and Diabla Gora, Poland (Rogula-Kozłowska et al., 2014).

Se, Rb, mean concentrations were lower than those reported at Bertiz, Spain (Aldabe et al., 2011) and Puy de Dôme, France (Vlastelic et al., 2014). For trace metals such as Ti, Co, Fe, Ni, Cu, Pb, the mean concentrations were lower than those reported in the above stated sites except for Fe and Cu which were higher than the values reported at Bertiz, Spain (Aldabe et al., 2011) and at Hyytiälä, Finland (Maenhaut et al., 2011), respectively. However, the concentration ranges of these metals were within the same order of magnitude as those reported at the other rural sites. The lower average values obtained during HCCT-2010 than those reported at other rural sites are likely due to the different geographical settings of the sampling sites and the different particulate matter size ranges sampled at some of these sites. The measurements at the UK sites were based on total suspended particulate matter (TSP) while the measurements at Payerne in Switzerland (Hueglin et al., 2005) and the measurements from Rüd (2003), Puy de Dôme (Vlastelic et al., 2014), (Vlastelic et al., 2014) K-Puska (Maenhaut et al., 2008) were done on PM10 particles and those during HCCT-2010 on PM3.5 particles.”

4. Pages 10913-10914, section 3.3: Although it is also stated in some other publications that “an enrichment factor above 10 is considered as a significant enrichment”, deducing from it that “enrichment factors between 0.70 and 10 are considered to be similar and within the error range of the reference source, implying that the elements with such factors might have originated from a similar source” is in my opinion not justified or at least grossly exaggerated. To my feeling, it should be “between 0.70 and 2” or at most “between 0.70 and 3” in the above statement. Also, there are no literature references given for backing up the above statement in the manuscript.

This was an overestimation. The sentence has been changed on page 14 lines 22-25 to now read:

“Enrichment factors between 0.70 and 2 are considered to be similar and within the error range of the reference source, implying that the elements with such factors might have originated from

a similar source while enrichment factors between 2 and 10 are considered to be moderately enriched”

5. Page 10929, Table 2: Acronyms and abbreviations (here LEV) should be defined (written full-out) when first used. Presumably, LEV stands for levoglucosan. There is actually no need for this acronym as it not used elsewhere in the text.

We agree, LEV has been changed to Levoglucosan

6. Pages 10933-10935, Figures 2-4: The symbols and text in these figures are too Small

Figures have been changed and the text and symbols sizes have been increased.

7. Problems with references:

Page 10918, lines 4 and 13: “Schwanz (1998)” is not in the Reference list. There is “Schwanz et al. (1998)” in that list, to which no reference is made within the text.

This reference has been edited and now appears correctly.

Page 10922, lines 26-27: There is no reference made within the text to “Desboeufs et al. (2001)”.

Desboeufs et al has been removed from the reference list.

Page 10928, heading of Table 1: “Hueglin et al. (2011)” is not in the Reference list.

This heading reference has been changed to Hueglin et al. (2005)

Page 10930, footnote for Ref. E: “Wrzesinsky et al. (2000)” is not in the Reference list; there is “Wrzesinsky and Klemm (2000)” in that list.

The footnote reference has been changed to Wrzesinsky and Klemm (2000)

8. Technical and other minor corrections:

p. 10900, l. 3: Replace “were performed” by “was performed”. *Replaced*

p. 10900, l. 25: Replace “mark increase” by “marked increase”. *Replaced*

p. 10902, l. 4: Replace “have been observed” by “has been observed”. *Replaced*

p. 10902, l. 5: Replace “have also been” by “has also been”. *Replaced*

p. 10902, l. 22: Replace “(Tilgner et al., 2014)” by “Tilgner et al. (2014)”. *Replaced*

p. 10903, l. 11: Replace “(Tilgner et al., 2014)” by “Tilgner et al. (2014)”. *Replaced*

p. 10905, l. 25: Replace “influence by” by “influenced by”. *Replaced*

p. 10906, l. 8-9: Replace “(Oktavia et al., 2008)” by “Oktavia et al. (2008)”. *Replaced*

p. 10906, l. 23: Replace “(Rüd, 2003)” by “Rüd (2003)”. *Replaced*

p. 10907, l. 22: Replace “and those” by “than those”. *Replaced*
 p. 10908, l. 1: Replace “(Rüd, 2003)” by “Rüd (2003)”. *Replaced*
 p. 10909, l. 2: Replace “easily loss” by “easily lost”. *Replaced*
 p. 10910, l. 12: Replace “have been” by “has been”. *Replaced*
 p. 10910, l. 14: Replace “(Schmidl et al., 2008)” by “Schmidl et al. (2008)”. *Replaced*
 p. 10910, l. 24: Replace “metals may” by “metals that may”. *Replaced*
 p. 10910, l. 25: Replace “or are simply” by “or is simply”. *Replaced*
 p. 10913, l. 25: Replace “mostly present in the coarse mode as in” by “more present in the coarse mode than in”. *Replaced*
 p. 10915, l. 25: Replace “China, (Guo” by “China (Guo”. *Replaced*
 p. 10915, l. 26: Replace “(Wang et al., 2014)” by “Wang et al. (2014)”. *Replaced*
 p. 10915, l. 29: Replace “influence hence” by “influence, hence”. *Replaced*
 p. 10916, l. 24: Replace “Fig. 7 below” by “Fig. 7”. *Replaced*
 p. 10918, l. 21: Replace “and 2 above” by “and 2”. *Replaced*
 p. 10919, l. 4: Replace “and Cr,” by “and Cr”. *Replaced*
 p. 10919, l. 16: Replace “Mn, in” by “Mn in”. *Replaced*
 p. 10919, l. 22: Replace “Cr, concentrations” by “Cr concentrations”. *Replaced*
 p. 10920, l. 26: Replace “year ago” by “years ago”. *Replaced*
 p. 10928, heading of Table 1: Replace “UK) Ref 5” by “UK), Ref 5”. *Replaced*

These references have been incorporated into the discussions.

References

Aldabe, J., Elustondo, D., Santamaria, C., Lasheras, E., Pandolfi, M., Alastuey, A., Querol, X., and Santamaria, J. M.: Chemical characterisation and source apportionment of PM_{2.5} and PM₁₀ at rural, urban and traffic sites in Navarra (North of Spain), *Atmospheric Research*, 102, 191-205, 2011.

Maenhaut, W., Raes, N., Chi, X., Cafmeyer, J., and Wang, W.: Chemical composition and mass closure for PM_{2.5} and PM₁₀ aerosols at K-pusztá, Hungary, in summer 2006. *X-Ray Spectrometry*, 37, 193-197 2008.

Maenhaut, W., Nava, S., Lucarelli, F., Wang, W., Chi, X., and Kulmala, M.: Chemical composition, impact from biomass burning, and mass closure for PM_{2.5} and PM₁₀ aerosols at Hyytiälä, Finland, in summer 2007, *X-Ray Spectrometry*, 40, 168-171, 2011.

Marenco, F., Bonasoni, P., Calzolari, F., Ceriani, M., Chiari, M., Cristofanelli, P., D'Alessandro, A., Fermo, P., Lucarelli, F., Mazzei, F., Nava, S., Piazzalunga, A., Prati, P., Valli, G., and Vecchi, R.: Characterization of atmospheric aerosols at Monte Cimone, Italy, during summer 2004: Source apportionment and transport mechanisms, *Journal of Geophysical Research-Atmospheres*, 111(D24), D24202, DOI: 10.1029/2006JD007145, 2006.

Masiol, M., Squizzato, S., Ceccato, D., and Pavoni, B.: The size distribution of chemical

elements of atmospheric aerosol at a semi-rural coastal site in Venice (Italy). The role of atmospheric circulation, *Chemosphere*, 119, 400-406, 2015.

Moroni, B., Castellini, S., Crocchianti, S., Piazzalunga, A., Fermo, P., Scardazza, F., and Cappelletti, D.: Ground-based measurements of long-range transported aerosol at the rural regional background site of Monte Martano (Central Italy), *Atmospheric Research*, 155, 26-36, 2015.

Rogula-Kozłowska, W., Klejnowski, K., Rogula-Kopiec, P., Osrodka, L., Krajny, E., Blaszcak, B., and Mathews, B.: Spatial and seasonal variability of the mass concentration and chemical composition of PM_{2.5} in Poland, *Air Quality Atmosphere and Health*, 7, 41-58, 2014.

Vlastelic, I., Suchorski, K., Sellegri, K., Colomb, A., Nauret, F., Bouvier, L., and Piro, J. L.: The trace metal signature of atmospheric aerosols sampled at a European regional background site (Puy de Dôme, France), *Journal of Atmospheric Chemistry*, 71, 195212, 2014. Interactive comment on *Atmos. Chem. Phys. Discuss.*, 15, 10899, 2015.

Anonymous Referee #3

Received and published: 18 May 2015

General comments: The paper is generally well written and the data presented in the paper are important for aerosol – cloud interaction studies. However, the parts related to general comments on aerosol origin and relations between individual species found by chemical analysis in aerosols have tendency to overstate what it is found in the data that are actually composed from few data points only. The correlations between different species in aerosol connected with anthropogenic emissions tend to be high as they are often driven by meteorological situation causing various atmospheric mixing. The changes in size distribution and concentrations between upwind and downwind sites are quite different from each other if one takes into account that these four events were carefully selected from many sampling days.

The interpretations based on the correlations have been reviewed and these sections have been revised accordingly. The discussion on the source apportionment based on the correlations has also been changed.

One would expect more detailed evaluation of connected meteorology or possible sources interacting with the transported aerosol at the downwind site to improve reasoning about these differences. Therefore, I think, the paper needs major revision before it will be suitable for publication in ACP

- *A detailed evaluation of the connected meteorology and interconnection of the three sites have been presented by Tilgner et al. 2014. Therein, the general synoptic weather situations, including the mesoscale flow conditions, local meteorological conditions and local flow conditions, SF₆ tracer experiments to access the connection of the air masses between the three measurement sites during this experiment as well as implementation of regional models to describe the general meteorological conditions during this experiment have been discussed.*

The other minor comments are below:

The sampling dates and times of samples analyzed here should be given earlier than in the last picture description

- *Sampling dates and times have been added at the beginning of the results section on Page 7 lines 19-21 and which now reads,*

“The presented results are focused on data obtained during four full cloud events (FCE); FCE1.1 (14/9/2010 11:00 to 15/9/2010 01:00), FCE 11.3 (02/10/10 14:30 to 19:30) , FCE 13.3 (10/6/2010 12:15 to 10/7/2010 3:15), and FCE 22.1 (10/19/2010 21:30 to 10/20/2010 3:30).”

p. 5, line1: the lowest cut point (stage 1) is missing in the list.

The information about the lower cutoff has been added. The sentence now reads,

“The collected particle diameter ranged from 0.05 to 10 μm with lower stage cutoffs (stages 1 to 5) at aerodynamic diameters of 0.05 μm , 0.14 μm , 0.42 μm , 1.2 μm and 3.5 μm , respectively.”

p. 9, line 5-6: Entrainment of air above may also increase the concentration.

We agree. A corresponding sentence has been added and it now reads:

“Entrainment of cleaner air from above might also reduce concentrations, or in the case of more polluted air mass from above, increases the concentration.”

p. 9, line 27: There is apparent increase of Ni, Cr (at least 3 times what authors call Insignificant) and Cu concentration at GB site in FCE 11.3 sample (Fig. 1), but there is almost no comment about it.

As suggested on P. 9 lines 8-11, local traffic emission may influence these concentrations. A corresponding sentence has been added to the manuscript which now reads.

Although entrainment of more polluted air mass from above may increase aerosol concentrations, the increase in the trace metal concentrations was not uniform for all investigated trace metals but rather more specific for these trace metals only. Meteorological studies from Tilgner et al. 2014, revealed a more stable stratification during this event with no large differences observed in the coefficient of divergence of the particles, thereby suggesting that the possibility of entrainment of polluted air masses from above was rather low.

The increased trace metals are often found from traffic emissions relating to car brake wear and/or fuel combustion. The GB measurement site was close to the main road linking GB and Mt. Schmücke and could be influenced locally by the traffic especially during weekends (period of this event) when more touristic activities are present in this region. This, thus, suggests that traffic emissions may have influenced the concentrations of these trace metals during this event.

P.10, lines 1-13: It is not very clear what statement is related to what sample. Please improve.

This section has been improved, and paragraphing has been implemented to separate the various comments. In addition, the statements referring to specific samples have been linked.

p. 10, line 3-5: It is not clear if the words “in general” are related to selected 4 cases or much broader number of events.

The word in general has been removed, since it led to ambiguity.

Fig 2 and 3: Graphs contain 5 points, but only 4 events are discussed.

Figures have been updated.

Chapter 3.2.1. : It is difficult to speculate about sources based on 4 data points. The only important fact seems to be higher decrease of levoglucosane concentration in comparison with these four combustion related metals (K, Zn, As, Pb). The crustal element correlation with OC shows, as mentioned in the text later, that the basic correlation among aerosol components is often driven by meteorology. The same probably holds for fig. 4.

The suggestion with respect to the sources has been considered and the section has been revised accordingly. The speculation to sources has also been weakened. Pages 11, lines 6-30. This section now reads:

“Nevertheless, since these correlations are based on statistically few data points their values are used to mainly indicate possible trends between these components. In some cases these trends match observations observed elsewhere. Alongside potassium, levoglucosan is known (Schkolnik and Rudich, 2006; Simoneit et al., 1999; Iinuma et al., 2007) to be a good tracer for particles originating from biomass burning. The correlations with levoglucosan could be indicative of a common source, such as biomass burning. Zn amongst other elements has been observed in biomass combustion emissions (Fine et al., 2004) and although it is not largely accumulated in plants as has been observed by Schmidl et al.(2008), plumes of biomass burning as well as the applied fuel (Boman et al., 2006) or emissions from the walls of the combustion chambers can influence their concentrations in the atmosphere. These correlations, however, may also be simply due to changes in similar meteorological conditions.

Table 2 shows the correlation coefficients of levoglucosan and other trace metals in PM_{1.2} particles at both valley stations before and after the passage of air mass through the cloud. Positive correlations were also observed for Mn and Fe with levoglucosan at Goldlauter the upwind side. However, changes in the correlations were observed as the air mass passed through the cloud at the mountain station before arriving at Ghlberg. As shown in Table 2, the correlations of K, Fe, and As with levoglucosan became weaker suggesting that deposition of levoglucosan and particles containing such metals during the air mass transport over the mountain to GB may have significantly affected the state at which these components were present at GL. Levoglucosan is a water soluble compound that can dissolve in cloud water and may also be lost from particles, aqueous reaction in cloud drops, or deposition of the cloud droplets. Such losses may account for the lower (about 40%) concentration of levoglucosan observed at the downwind stations as depicted in Figure 2b and the observed change in the correlation with the trace metals observed in Table 2”.

In addition the statements that suggested similar source regions based on the correlations have been removed, i.e. Page 12, 28-29 and Page 13 lines 3 – 10.

Chapter 3.2.2. : The same is valid as for previous chapter and correlations. Discussion of sources is quite speculative based on 4 points. The authors are advised to study them only from point of view of their changes between the sites.

Same as above, section has been revised and the discussion with respect to the sources has been reviewed and arguments weakened on Page 13 lines 6 – 19. The text now reads:

“Good correlations were also observed for selenium with EC as well as Zn with OC. As explained above changes in meteorological conditions may lead to correlations between aerosol components. However, it has been observed elsewhere that these components could originate from sources such as fossil fuel or coal combustion (Hashimoto et al., 1970; Pacyna, 1984; Zhang et al., 2014), long range transport or traffic emissions relating to tire or brake wear (Handler et al., 2008).

p. 17, line 21. Probably should be Fe (III) instead of Fe (II):

Fe (II) has been replaced by Fe (III)

p. 17, line 25. The sentence needs correction.

The sentence has been rephrased. And now reads

“Due to the fast oxidation of Cu (I) to Cu (II) it is easier to measure Cu (II) than Cu (I).”

p. 18, line 17. Table numbers should be corrected.

Table numbers have been corrected

p. 20, line 18-20: Remove the sentence, it partially contradicts the next sentence and there is no need to speculate about aerosol origin in this paper.

The Sentence has been removed.

Trace metal characterization of aerosol particles and cloud water during HCCT 2010

**Khanneh Wadinga Fomba¹, Dominik van Pinxteren¹, Konrad Müller¹, Yoshiteru
linuma¹, Taehyoung Lee^{2,*}, Jeffrey L. Collett Jr.², and Hartmut Herrmann¹**

[1] Leibniz-Institute for Tropospheric Research (TROPOS), Permoserstr. 15, 04318 Leipzig,
Germany

[2] Department of Atmospheric Science, Colorado State University, Ft. Collins, CO, 80523, USA

[*] Now at: Hankuk University of Foreign Studies, Department of Environmental Sciences,
Yongin, South Korea

Correspondence to: Hartmut Herrmann (herrmann@tropos.de)

Abstract

Trace metal characterization of bulk and size resolved aerosol and cloud water samples ~~was~~were performed during the Hill Cap Cloud Thuringia (HCCT) campaign. Cloud water was collected at the top of Mt. Schmücke while aerosol samples were collected at two stations upwind and downwind of Mt. Schmücke. Fourteen trace metals including Ti, V, Fe, Mn, Co, Zn, Ni, Cu, As, Sr, Rb, Pb, Cr, and Se were investigated during four full cloud events (FCE) that fulfilled the conditions of a continuous air mass flow through the three stations. Aerosol particle trace metal concentrations were found to be lower than those observed in the same region during previous field experiments but were within a similar range to those observed in other rural regions in Europe. Fe and Zn were the most abundant elements with concentration ranges of 0.2 - 111.6 ng/m³ and 1.1 - 32.1 ng/m³, respectively. Fe, Mn and Ti were mainly found in coarse mode aerosols while Zn, Pb and As were mostly found in the fine mode. Correlation and enrichment factor analysis of trace metals revealed that trace metals such as Ti and Rb were mostly of crustal origin while trace metals such as Zn, Pb, As, Cr, Ni, V, and Cu were of anthropogenic origin. Trace metals such as Fe, Mn, were of mixed origins including crustal and combustion sources. Trace metal cloud water concentration decreased from Ti, Mn, Cr, to Co with average concentrations of 9.18 µg/l, 5.59 µg/l, 5.54 µg/l, and 0.46 µg/l, respectively. A non-uniform distribution of soluble Fe, Cu and Mn was observed across the cloud drop sizes. Soluble Fe and Cu were found mainly in cloud droplets with diameters between 16 and 22 µm while Mn was found mostly in larger drops greater than 22 µm. Fe (III) was the main form of soluble Fe especially in the small and larger drops with concentrations ranging from 2.2 µg/l to 37.1 µg/l. In contrast to other studies, Fe (II) was observed mainly in the evening hours, implying its presence was not directly related to photochemical processes. Aerosol cloud interaction did not lead to a marked increase in soluble trace metal concentrations, but led to differences in the chemical composition of the aerosol due to preferential loss of aerosol particles through physical processes including cloud drop deposition to vegetative surfaces.

1. Introduction

Aerosol trace metals play important roles in aerosol cloud interactions as they can serve as good catalysts for aqueous phase reactions. They are useful in understanding chemical processes and in the identification of parameters that are important in controlling aerosol behavior. Dissolved trace metals can form complexes with water, sulfate, and organic compounds and can thereby influence their redox cycles (Zuo and Hoigne, 1994; Jacob and Hoffmann, 1983). They play important roles in the oxidation of S (IV) to S (VI) which has been shown to substantially influence the sulfate budget and thus the formation of cloud droplets (Harris et al., 2013). Transition metal ions such as iron and copper significantly influence the OH radical budget in aqueous media as they can react efficiently with many oxidizing and reducing agents such as HO₂/O₂ radicals and hydrogen peroxide in aqueous media (Deguillaume et al., 2005; Spokes et al., 1994). On the other hand photochemical dissociation of metal complexes may also lead to sources of OH radicals and hydrogen peroxide. Trace metals, therefore, play important roles in the variation of the oxidative capacity of the atmosphere (Deguillaume et al., 2005; Spokes et al., 1994). Nevertheless, their reactivity is closely related to their concentrations in aqueous media (Clarke and Radojevic, 1987). To assess the importance and further understand the various reactions that are influenced by trace metals, it is necessary to quantify their concentrations in cloud drops and aerosol particles.

Trace metals in continental aerosols originate from extremely complex mixtures of gaseous and particulate components comprising of motor vehicle emissions, abrasion of tires or brake linings, road dust, fly ashes from wood, coal, lignite and oil combustion, refuse incineration, and also crustal weathering. This mixture influences the chemical composition and properties of the aerosol as well as the state at which trace metals are available in the aerosol particles. Depending on the location and meteorological conditions, the sources of trace metals can differ significantly, leading to variations in the trace metal and chemical composition of the aerosol. ~~The trace metal~~ concentrations vary according to their ~~major~~ sources. ~~of the trace metals with e~~Crustal sources are usually found to strongly influence concentrations of trace metals such as Fe, Al, Ti and Mn with concentration ~~in~~ ranges of up to a few µg/m³, especially during dust storms. However, in rural and continental background regions, trace metal concentrations are relatively lower. In cloud water a wide range of concentrations ~~have~~ has been observed (Deguillaume et al., 2005) which ~~have~~ has also been found to influence the chemical reactions they take part in, as well as the

composition of the aerosol after cloud processing. During the past years some studies have reported trace metal concentrations in different cloud conditions during various field measurements (Plessow et al., 2001; Cini et al., 2002; Hutchings et al., 2009; Mancinelli et al., 2005; Burkhard et al., 1992; Siefert et al., 1998; Liu et al., 2012; Brüggemann et al., 2005; Wang et al., 2014; Straub et al., 2012; Li et al., 2013; Guo et al., 2012; Rao and Collett, 1998) showing strong variability due to the location and air mass history.

During the Hill Cap Cloud Thuringia (HCCT) experiment that took place in autumn 2010, trace metals were characterized both in aerosol particles at two valley stations, upwind of and downwind from the Schmücke mountain, as well as in cloud water collected at the top of the mountain. The aim was to characterize the trace metal content in the aerosol before and after the particles interact with the cloud and also in cloud water in order to investigate the role of trace metals in altering the chemical composition of the cloud and the properties of the particles after passing through the cloud. Four full cloud events (FCE) during which the air mass was found to have traveled through all three stations and the strict criteria of the experiment were fulfilled as described in [Tilgner \(2014\)](#) were chosen. In this study the temporal variation of the trace metals during the selected FCE and the changes in trace metal particle size distribution and their properties after the passage of the particles through the cloud will be presented.

2. Experimental setup

2.1 Sampling site

The HCCT-2010 experiment was carried out in the Thüringer Wald, Germany. Based on the experience from the previous FEBUKO (Herrmann et al., 2005) field studies at the same site, sampling was done in the months of September and October in 2010. Three measurement stations were built. One in-cloud mountain station, Mt. Schmücke, and two valley stations, Goldlauter (GL, upwind of the summit station) and Gehlberg (GB, downwind of the summit station) were setup. Cloud water collection was carried out only at Mt. Schmücke while aerosol particle sampling was conducted at the valley stations. A detailed description of the experiment, sampling site and meteorological conditions during the experiment has been reported by [Tilgner et al. \(2014\)](#).

2.2 Aerosol sampling

Size resolved aerosol particle sampling was conducted using a humidity controlled low pressure five-stage Berner impactor with a PM₁₀ cut off. The collected particle diameter ranged from 0.05 to 10 µm with lower stage cutoffs (stages 1 to 5) at aerodynamic diameters of [0.05 µm](#), 0.14 µm, 0.42 µm, 1.2 µm and 3.5 µm, respectively. For the regulation of the humidity, seven parallel tubes were used after the isokinetic inlet to regulate the relative humidity to approx. 80 % via heating/cooling of the tubes. This was done in order to avoid water condensation on the impaction substrates under very humid conditions during cloud appearance at Mt. Schmücke [and particle bounce off during very dry condition](#). The impactors were operated with aluminum foils and polycarbonate foils placed upon them as impaction substrates. The aluminum foils were used for aerosol mass, organic/elemental carbon (OC/EC) and inorganic ions as well as levoglucosan analysis, while the polycarbonate foils were used for trace metal analysis. Bulk particulate matter sampling was completed on Munktell quartz fiber filters using a high-volume sampler (Digitel DHA-80) with a PM₁₀ inlet. The inlet height of the collectors was 4 m above ground level.

2.3 Cloud water sampling

Bulk cloud water was collected using 4 stainless steel compact Caltech Active Strand Cloudwater Collectors (CASCC2) (Demos et al., 1996). As will be further discussed below, due to the utilization of the stainless steel collector, high blanks of some trace metals were observed. For size resolved cloud water collection, a 3-stage plastic CASCC (Raja et al., 2008) cloud water collector with nominal cloud droplet cutoffs (50% lower cut size specified as drop diameter) at 4 µm, 16 µm and 22 µm was used. Bulk cloud water samples were collected every hour, while size-resolved samples were taken at a 2 h time resolution during cloud events. Aliquots were taken immediately after sample collection for on-site analysis or stabilization of trace species and the remainders of the sample volumes were frozen. For soluble trace metal redox state analysis, which was completed immediately after collection of the samples at the sampling site, 1 ml cloud water was filtered through a 0.45 µm syringe filter and 0.5 ml filtrate was obtained for the analysis.

2.4 Chemical analysis

Total trace metal analysis was performed using Total reflection X-Ray Fluorescence (TXRF) analysis. Size resolved trace metals were analyzed from the polycarbonate foils that were placed

on the aluminum foils on each impactor stage. Only filters from impactor stages 1 to 4 were used for trace metal analysis since impaction spots on the 5th stage were mostly not visible. Thus the trace metal concentration at the valley stations is representative of PM_{3.5}. For TXRF analysis, the impacted spots on the polycarbonate foils were cut and placed on a TXRF carrier and were spiked with conc. HNO₃ and Ga (as an internal standard) and subsequently left to evaporate at 100°C. The carrier was thereafter, cooled to room temperature and measured. Blank filters that were loaded in the impactor but no air sucked through them were also analyzed using the same procedure as the sampled filters. Further details of the sample preparation procedure as well as the limitations of this method have been previously described (Fomba et al., 2013). The analyzed aerosol trace metals were Ti, V, Cr, Mn, Fe, Co, Ni, Cu, Zn, Se, Pb, As, Rb and Sr. Trace metal blank correction for the aerosol samples was performed by subtracting the elemental average concentrations of the blank filters from each analyzed sample. Due to this procedure, values for trace metals with low concentrations (< 0.01 ng/m³) especially for the fine mode particles in stages 1 and 2 were accompanied with uncertainties of about 15 % especially for metals such as V, As, and Sr. PM₁₀ soluble aerosol trace metals were also analyzed using TXRF from 0.45 µm syringe filtrates of PM₁₀ filters extracted in [deionized \(DI\)](#) water. The extracts were filtered in order to eliminate the contribution of particulate matter to the measured soluble concentrations.

For cloud water analysis, aliquots were spiked with 69% conc. HNO₃ solution and heated in a water bath at 60°C for 4 h. After cooling, aliquots of 100 µl were taken and brought onto the TXRF carrier surface via pipetting (4 x 25µl). Ga was then added to the sample to serve as internal standard for the TXRF measurements. These analyses could not be performed on size resolved cloud water samples due to insufficient sample volume and were thus performed only on bulk cloud water samples. For the bulk cloud water samples only Ti, V, Cr, Mn, Co, Se, Pb, As, Rb and Sr were analyzed. Fe, Ni, Cu, and Zn were excluded from the analysis due to contamination arising from sample collection and preparation. For the analysis of organic/elemental carbon (OC/EC), inorganic ions and levoglucosan, the same procedure as described earlier (Muller et al., 2010; Iinuma et al., 2007) was used.

Cloud water trace metal blanks were measured from blank samples that were collected after cleaning of the stainless steel bulk cloud water collector with deionized water after each cloud event. The blanks were not subtracted since they were considered to be [influenced](#) by residual materials in the collectors from previous cloud events that were not fully removed during the

cleaning process. Therefore, the first collected sample of each event was not considered in the data analysis due to likely strong influence of the wash-off of the collectors. However, most trace metal blanks were lower than 25% of the hourly cloud water concentrations except for Fe, Cu, Ni and Zn whose blanks were mostly higher (up to 65%) of the hourly concentrations. The results of these 4 trace metals were thus considered to be very inaccurate and were, therefore, not considered in the further analysis of the results.

For the analyses of the soluble transition metal ions (TMI) redox states, a DIONEX ICS 900 ion chromatography instrument, equipped with a CS5A column and a UV-VIS detector was used. Using this instrument, transition metal ions such as Fe (III), Fe (II), Cu (II), and Mn (II) can be determined via post column derivatization simultaneously. This is performed via a procedure similar to the one reported by Oktavia et al. (2008), however using a 4-(2-pyridylazo) resorcinol (PAR, P/N 039672) as post column reagent. This combination renders a good separation of the above mentioned ions making the analysis easier to handle. TMI redox state measurements were only performed on size resolved cloud water samples. As indicated above, similar redox state measurements on bulk cloud water samples were not considered for the data interpretation due to their high blank values.

3. Results and discussion

The presented results are focused on data obtained during four full cloud events (FCE); FCE1.1 (14/9/2010 11:00 to 15/9/2010 01:00), FCE 11.3 (02/10/10 14:30 to 19:30), FCE 13.3 (10/6/2010 12:15 to 10/7/2010 3:15), and FCE 22.1 (10/19/2010 21:30 to 10/20/2010 3:30). The results will be presented in two sections. The first section will be focused on the aerosol particle analysis and the second on the cloud water analysis.

3.1 Aerosol trace metal concentrations

The aerosol trace metal concentrations during HCCT-2010 at the valley stations are presented in Table 1. Reported trace metal concentrations in other rural regions in Europe and during previous experiments in this region reported by Rüd (2003) are also presented in Table 1 for comparison. Amongst the 14 investigated elements, Fe was the most abundant element. Similar findings were obtained by Rüd (2003) during the FEBUKO experiment. The next most abundant trace metals were Zn, Cr, and Pb. Iron concentrations were within the range of 0.2 - 111.6 ng/m³ with an

average value of 16.5 ng/m³ while Zn, Cr, and Pb values were within the ranges of 1.1 - 32.1 ng/m³, 0.4 - 21.9 ng/m³ and 0.3 - 2.9 ng/m³ with average values of 11.1 ng/m³, 2.7 ng/m³ and 1.3 ng/m³, respectively. The average aerosol particle mass concentrations of the other elements were all less than 1 ng/m³ but their concentrations ranged between 0.01 ng/m³ and 4 ng/m³. The concentration ranges of elements such as Cr, Mn, and Zn were within the same order of magnitude as those reported by Rüd (2003) during the FEBUKO campaign in the same location. Comparatively, the mean concentrations and the obtained concentration ranges during HCCT-2010 were in good agreement with those reported at other rural regions in Europe. For trace metals such as Cr and Zn, their mean concentrations were higher than those reported at Boccadifalco, ~~(Italy)~~ (Dongarra et al., 2010), [Puy de Dôme, France](#) (Vlastelic et al., 2014) [K-Puska, Hungary](#) (Maenhaut et al., 2008), [Monte Cimone, Italy](#) (Marenco et al., 2006) [Monte Martono, Italy](#) (Moroni et al., 2015) and at Auchencorth (UK) (Allen et al., 2001) although in the case of Zn the average concentration was comparable with that observed at Castlemorton (UK) (Allen et al., 2001) but lower than that reported at [the Schmücke](#) ~~by~~ (Rüd, ~~(2003)~~) [and at Bertiz, Spain](#) (Aldabe et al., 2011). However, the concentration ranges were similar to those reported by Rüd (2003). Trace metals such as Sr and As showed comparable average values and ranges to those reported at other rural sites in Italy (Dongarra et al., 2010; Allen et al., 2001; Hueglin et al., 2005), UK and Switzerland [as well as at Bertiz \(Aldabe et al., 2011\) and Diabla Gora, Poland](#) (Rogula-Kozłowska et al., 2014).

~~For trace metals such as~~ [Se, Rb, mean concentrations were lower than those reported at Bertiz, Spain \(Aldabe et al., 2011\) and Puy de Dôme, France \(Vlastelic et al., 2014\). For trace metals such as](#) ~~-Ti, Co, Fe, Ni, Cu, Se, Pb, Rb,~~ the mean concentrations were lower than those reported in the above stated sites [except for Fe and Cu which were higher than the values reported at Bertiz, Spain \(Aldabe et al., 2011\) and at Hyytiälä, Finland \(Maenhaut et al., 2011\),](#) ~~However~~ [respectively. However,](#) the concentration ranges ~~were of these metals were~~ within the same order of magnitude [as those reported at the other rural sites](#). The lower average values obtained during HCCT-2010 ~~th~~ [and](#) those reported at other rural sites are likely due to the different geographical settings of the sampling sites and the different particulate matter size ranges sampled at some of these sites. The measurements at the UK sites were based on total suspended particulate matter (TSP) while the measurements at Payerne in Switzerland (Hueglin et al., 2005) and the measurements from Rüd (2003), [Puy de Dôme \(Vlastelic et al., 2014\),](#)

(Vlastelic et al., 2014) K-Puska (Maenhaut et al., 2008) were done on PM₁₀ particles and those during HCCT-2010 on PM_{3.5} particles. In addition, Goldlauter and Gehlberg do not experience frequent strong air mass outflow from major urban cities as do the other investigated sites. The differences in the observed concentrations between HCCT-2010 and those reported by Rüd (2003) during the FEBUKO experiment could also be due to a reduction in particulate matter emission in Germany and central Europe during the past 15 years. It has been observed in other rural regions in Germany that the PM₁₀ concentration has dropped by more than 10% within the past decade (Spindler et al., 2013). Although these values varied during the campaign as shown in their ranges, their size distributions were different as the air mass parcel crossed the mountain station to the downwind station.

Please insert Table 1 here

3.1.1 Aerosol trace metal size distribution

Figure 1 shows the size distribution of the trace metals during four full cloud events (FCE 1.1, FCE 11.3, FCE 13.3 and FCE 22.1). In principle, the aerosol mass may decrease during the passage of the air mass parcel through the cloud and over the mountain due to particle and/or cloud droplet deposition during air mass transit across the forested mountain. Entrainment of cleaner air from above might also reduce concentrations, or in the case of more polluted air mass from above, increases the concentration. However, during HCCT, the meteorological analysis as reported by Tilgner et al. (2014) did not show strong entrainment from more polluted air masses especially during the selected events. In Figure 1, such a trend is observed for FCE 1.1, 13.3 and 22.1 wherein the total trace metal mass decreased from the upwind side (GL) to the downwind side (GB) of the mountain. During FCE 11.3, there was no significant difference in the total particle trace metal mass, suggesting there may have been limited deposition or an influence from local sources such as traffic as seen in the increase in the Cr, Cu and Ni concentrations. During FCE 1.1 Fe was mostly found in the coarse mode while Zn and Pb were mostly found in the fine modes (stages 2 and 1) at Goldlauter. In Gehlberg, the trace metal size distribution changed with the trace metals concentrated in the fine mode as compared to the coarse mode observed in Goldlauter. The different concentrations and size distributions are indicative of preferential particle loss during this event as a significant part of the concentration difference is largely due to

the decrease in the Fe concentration by a factor of 4 in the fourth stage. The decrease in the mass concentration is related to loss of Fe-containing material after passage of the air mass through the cloud, especially as iron is mostly found in the coarse mode. Coarse mode particles are usually emitted from mechanical processes such as re-suspension of soil particles in the atmosphere or abrasion of car parts due to friction or from other industrial processes. These particles are larger and heavier and can therefore be easily ~~loss-~~lost through deposition.

Please insert Figure 1 here

During FCE 11.3 the size distribution did not vary largely. Although a decrease in the fine mode fraction was apparent especially due to loss of Zn and Pb containing particles, the changes in the coarse mode fraction were not significant. ~~Although observed~~ Cr, Cu, and Ni concentrations were found to be higher~~showed a slight increase~~ at GB. Although, entrainment of more polluted air masses may lead to an increase in the concentration of trace metals in the downwind site, meteorological studies by Tilgner et al. 2014 revealed a more stable stratification during this event with no large differences observed in the coefficient of divergence of the particles, suggesting that the possibility of entrainment of polluted air masses from above was rather low. These increased trace metals are often found from traffic emissions relating to car brake wear (Maenhaut et al., 2005) or from fuel combustion (Lee and Vonlehmd.Dj, 1973). The GB measurement site was close to the main road linking GB and Mt. Schmücke and could be influenced by traffic especially during weekends (period of this event) when more touristic activities are present in this region, thus, suggesting that traffic emissions may have influenced these concentrations., ~~these were not very significant.~~ A different trend was observed during the FCE 13.3 during which the total mass of the trace metals decreased. No significant changes in the shape of the size distribution of most elements were observed. The major elements observed were also Fe, Zn and Pb. A similar trend was observed during FCE 22.1 ~~when-~~with the trace metal concentration ~~decreased-~~decreasing from GL to GB and the size distribution of these metals ~~did~~ not ~~change-~~changing significantly. Slight increases in Cr and Cu were observed in the coarse mode fraction at GB. ~~In general during~~

During most of the FCE's the total trace metal concentration dropped from GL to GB ~~while-in~~ ~~most cases~~ preserving the size distribution. An exception was observed during FCE 11.3 where a

significant difference was not observed in the coarse mode fraction. Fe, Rb, Sr, Mn and Ti were mostly found in the coarse mode while Pb, Zn, As, Se, Cr, Ni were mostly found in the fine mode aerosol particles. Fe and Zn were the most deposited trace metals especially during FCE 1.1 and FCE 11.3. Although back trajectory analysis showed slight differences between the air mass origins during FCE 1.1, 11.3, and 13.3, this difference was not strongly reflected in the trace metal distributions and no significant difference in the relative contribution of a particular metal was observed. Details on the likely sources of these trace metals will be further discussed in section 3.3 below.

3.2 Correlation between trace metals and other aerosol chemical components

3.2.1 Levoglucosan

Figure 2 shows scatter plots of levoglucosan with potassium, zinc, lead and arsenic in the particulate matter at the upwind (GL) and downwind (GB) stations in PM_{1.2} particles. These elements showed good correlation with levoglucosan, both in PM_{1.2} and PM_{3.5} particles. The p-values of these plots were less than 0.05. Nevertheless, since these correlations are based on statistically few data points their values are used to mainly indicate possible trends between these components. In some cases these trends match observations observed elsewhere. Alongside potassium, levoglucosan is known (Schkolnik and Rudich, 2006; Simoneit et al., 1999; Iinuma et al., 2007) to be a good tracer for particles originating from biomass burning. The correlations ~~between potassium with~~ and levoglucosan ~~coulds be~~ indicative of a common source, ~~likely such as~~ biomass burning. ~~The good correlation also observed between Zn and levoglucosan implies that biomass burning could also account for the observed Zn concentrations found in the particles at the valley stations.~~ Zn amongst other elements ~~have~~ has been observed in biomass combustion emissions (Fine et al., 2004) and although it is not largely accumulated in plants as has been observed by Schmidl et al.(2008), plumes of biomass burning as well as the applied fuel (Boman et al., 2006) or emissions from the walls of the combustion chambers can influence their concentrations in the atmosphere. These correlations, however, may also be simply due to changes in similar meteorological conditions. ~~Trace metals may also originate from the walls of the combustion chambers as well as the applied fuel (Boman et al., 2006) used for biomass burning (Fine et al., 2001).~~

Please insert Figure 2 here

~~The correlations of As and Pb with levoglucosan, although weaker, also suggest a possible common source such as biofuel combustion as well as waste incineration (Pacyna, 1984; Pacyna et al., 2007).~~ Table 2 shows the correlation coefficients of levoglucosan and other trace metals in PM_{1,2} particles at both valley stations before and after the passage of air mass through the cloud. Positive correlations were also observed for Mn, and Fe ~~and Ti~~ with levoglucosan at Goldlauter the upwind side. ~~This correlation to trace metals such as Ti, Mn, and Fe is likely related to trace metals may have originated from mixed long range transported aged particles, or are simply due to changes in similar meteorological conditions.~~ However, changes in some the correlations were ~~were not observed conserved~~ as the air mass passed through the cloud at the mountain station before arriving at Gehlberg. As shown in Table 2, the correlations of K, Fe, and As, ~~and Ti~~ with levoglucosan became weaker suggesting that deposition of levoglucosan and particles containing such metals during the air mass transport over the mountain to GB may have significantly affected the state at which these components were present at GL. Levoglucosan is a water soluble compound that can dissolve in cloud water and may also be lost from particles, aqueous reaction in cloud drops, or deposition of the cloud droplets. Such losses may account for the lower (about 40%) concentration of levoglucosan observed at the downwind stations as depicted in Figure 2b and the observed change in the correlation with the trace metals observed in Table 2. Similarly, trace metals can also be deposited during their transport.

Please insert Table 2 here

The combination of these losses may lead to differences in the correlations observed between the upwind and downwind stations. In principle, no differences in this tendency were observed for the coarse and fine mode concentrations of these components, indicating that the fine mode aerosols carried most of the observed levoglucosan. Similar observation has been reported elsewhere (Herckes et al., 2006).

3.2.2 Elemental and organic carbon

Elemental carbon (EC) is often considered as soot particles that are emitted from diesel engines, or from other combustion processes as well as from industrial emissions while organic carbon (OC) has both anthropogenic and biogenic sources (Herrmann et al., 2006; Saarikoski et al.,

2008). In rural areas such as Goldlauter (GL) and Gehlberg (GB), EC could originate from combustion processes or long range transport from industrial and urban regions. Figures 3 and 4 shows scatter plots of Ti, Mn, and Fe against OC as well as Pb, As, and Zn against EC at the upwind stations, respectively. The scatter plots reveal good correlation between these components in PM_{3.5} particles. Good correlations were also observed for selenium with EC as well as Zn with OC. As explained above changes in meteorological conditions may lead to correlations between aerosol components. However, it has been observed elsewhere that these components could originate from sources ~~The good correlation of As, Pb, and Se with EC suggest that they could have similar source origins, such as soot originating from fossil fuel or coal combustion (Hashimoto et al., 1970; Pacyna, 1984; Zhang et al., 2014), long range transport or traffic emissions relating to tire or brake wear (Handler et al., 2008). Likewise, the good correlations of Fe, Mn, and Ti with organic carbon suggest that organic carbon and these trace metals might have similar sources, possibly including re-suspended soil or coal combustion emissions containing both OC and such trace metals. Rural areas such as GL and GB are known for higher agricultural activities and heating of the homes using coal pellets (Zhang et al., 2014) in comparison to urban regions. Another source of organics and these trace metals are fuel combustion, long range transport and traffic emissions. Traffic emissions relating to tire or brake wear and fuel combustion have been found as possible sources for these metals in the atmosphere (Handler et al., 2008).~~

Please insert Figures 3 and 4 here

EC correlation with Pb, Se, As and Zn remained stable after passage of air masses through the cloud, implying that the Se, Pb or As containing material might have not been strongly deposited or lost during their transport through the cloud or the deposition of these metals and EC were similar. Apparently, these elements are mostly present in particles in the fine mode. OC also showed good correlation with Fe after passage of air mass through the cloud but poor correlation with Ti and Mn. The poor correlation after passage of air mass through the cloud as already explained above is probably related to preferential loss via wet or dry deposition of Ti or Mn as well as of OC/EC containing particles.

3.2.3 Other correlations

At the upwind station, oxalate showed good correlation with iron ($r^2 = 0.69$). This correlation between oxalate and iron as also observed above for iron and organic carbon indicates that the studied aerosols could be aged aerosols from sources such as biomass burning or even crustal sources especially for the coarse mode fractions. This correlation did not change significantly after the passage of the air parcel through the cloud especially during the FCEs. Despite the fact that the photolysis of iron oxalate complexes in aqueous media is known (Weller et al., 2013) to lead to the destruction of oxalate which may indirectly lead to a poor correlation between iron and oxalate after the air mass passes through the cloud, and also particulate matter loss due to droplet deposition, a significant change of the correlation was not observed. However, this could also be due to the fact that most of the cloud events were observed in the evening hours where photochemical processes such as photolysis are not significant.

3.3 Enrichment factor analysis

Enrichment factor (EF) analysis was performed on $PM_{3.5}$ aerosol trace metals to evaluate the contribution of crustal material to the aerosol trace metals obtained at the valley stations. The evaluation was done using (Wedepohl, 1995) upper continental crust composition with Ti chosen as a marker for crustal material. The EF of an element Z in the aerosol with respect to its composition in the crust is given as

$$EF = \frac{(Z/Ti)_{Aerosol}}{(Z/Ti)_{Crust}}$$

An enrichment factor above 10 is considered as a significant enrichment of the element and below 0.70 as a strong depletion in comparison to the composition of the reference source. Enrichment factors between 0.70 and ~~10~~ 2 are considered to be similar and within the error range of the reference source, implying that the elements with such factors might have originated from a similar source. while enrichment factors between 2 and 10 are considered to be moderately enriched. Figure 5 shows the size resolved enrichment factors with respect to Ti for the measured elements of the various impactor stages at the valley stations GL and GB during HCCT 2010. The values are average enrichment factor values for the FCE's and the standard deviation plotted as error bars to indicate the variability of the values for each element at the various stations. As shown in Figure 5, the enrichment factors decreased with particle size with lower enrichment observed for the coarse mode fraction (such as stage 4) in comparison to the fine mode fraction

(stages 1 and 2). In principle, no significant difference especially for the fine mode particles was observed between the enrichment factors of the elements at the upwind and downwind stations, implying that the aerosol cloud interactions did not lead to heavy loss of only a particular element with respect to Ti. Slight differences were observed with slightly higher enrichment factors observed at the downwind stations in comparison to the upwind station in the coarse mode fraction. This slight increase could be as a result of preferential loss through, for example, deposition processes of crustal material containing Ti which is ~~mostly~~more present in the coarse mode ~~than~~s in the fine mode.

Please insert Figure 5 here

Despite these changes, clear trends with increasing enrichment factors from Rb to Se could be observed. Trace metals were identified and grouped according to their similar EF. One group of trace metals including Mn, Fe, Co, Rb and Sr showed little to no enrichment at all the stages at both the upwind and downwind stations with $EF < 10$ indicating that their occurrences were predominantly of crustal origin. Slightly elevated enrichment factors observed for Fe and Mn in fine mode fraction stages 2 and 3 is likely related to the emission of these elements from other sources such as coal combustion as well as biomass burning. The good correlations observed above between iron and oxalate or levoglucosan as well as between Mn, Fe, and organic carbon is a further indication of the likely influence of these combustion sources. The second group of elements includes V, Cr and Ni. These elements showed high enrichment at all the stages and at both stations indicating they were of anthropogenic origin. Such metals are known to originate from fuel oil or coal combustion (Lee and Vonlehmd.Dj, 1973). The last group of trace metals including Cu, Zn, AS, Pb and Se, showed very high enrichment factors with values higher than 1000 in the fine mode. The very high enrichment is also indicative of their anthropogenic origins. Cu and Zn are known to be emitted from exhaust gas (Pakkanen et al., 2003) and also car brake linings and tire wear in urban aerosols (Maenhaut et al., 2005). Zn, As, Se, and Pb have been observed from high temperature combustion processes such as coal combustion or waste incineration processes as well as from non-metallurgic industrial processes (Belis et al., 2013; Minguillon et al., 2007; Pacyna et al., 2007). The correlations observed between Zn, As, Pb, and elemental carbon further supports the likely influence of such sources. These metals were also

strongly enriched in the fine fraction of the aerosol particles and could have also originated from long range transport due to the long atmospheric lifetimes of fine particles. Back trajectory analysis of the air masses during these four events showed that the air masses crossed populated and industrial regions in Germany and France prior to their arrival at the measurement site.

3.4 Cloud water trace metal concentration

The average concentrations and the range of the various metal concentrations observed at Mt. Schmücke are presented in Table 3. Reported concentrations from previous FEBUKO experiment performed at the same location in 2002 and also reported concentrations from fog and cloud measurements done at other mountain sites in the world are also presented. For comparison of the cloud data with the valley stations, and for the understanding of the changes from sample to sample, and to obtain the equivalent air loading, the variation of the liquid water content (LWC), which alters dilution of solutes in the cloud water, was removed by multiplying the cloud water aqueous concentration with the LWC.

Please insert Table 3 here

Trace metal concentrations decreased from Ti, Mn, Cr, to Co in cloud water. The average Ti concentration was observed at 9.8 $\mu\text{g/l}$ (2.6 ng/m^3) while for Mn, Cr and Co, average concentrations of 5.59 $\mu\text{g/l}$ (1.54 ng/m^3), 5.54 $\mu\text{g/l}$ (1.5 ng/m^3) and 0.46 $\mu\text{g/l}$ (0.13 ng/m^3), respectively, were observed. The average concentrations of Sr, Pb, and Se ranged between 1.38 $\mu\text{g/l}$ to 2.45 $\mu\text{g/l}$ while for V, As, Rb, and Co, their concentrations were < 1 $\mu\text{g/l}$. Compared to previous FEBUKO experiments, apart from Cr, the average trace metal concentrations observed during HCCT were lower for most of the elements but their concentration ranges were similar to those observed during FEBUKO. The lower average concentrations might be due to reduction in particulate matter emissions over the time period of these studies in this area. Pb concentrations during HCCT were lower than those reported at Mt. Brocken (Plessow et al., 2001) and at Fichtelgebirge (Wrzesinsky and Klemm, 2000) but were higher than those reported in fogs at rural regions in Pennsylvania (Straub et al., 2012) and in marine clouds (Vong et al., 1997; Wang et al., 2014). Rb, Sr and As concentrations were similar to those observed at Mt.

1 Brocken. However, As values were lower than those observed at Fichtelgebirge (Wrzesinsky and
2 Klemm, 2000). Mn and Se concentrations were within a similar order of magnitude as those
3 reported at Mt. Brocken, Fichtelgebirge and in marine clouds. However, the concentrations were
4 far lower than those reported in cloud water at Mt. Tai, china; (Guo et al., 2012; Liu et al., 2012).
5 Lower concentrations than those observed in this study have also been reported by [Wang et al.](#)
6 (2014) at higher elevated stratocumulus clouds collected via measurements using aircraft in
7 California. The differences in these concentrations are related to differences in location and
8 source influence, hence differences in air mass origin and in the cloud droplet composition.

10 **3.4.1 Temporal variation of trace metals during selected FCE**

11 Figure 6 shows the temporal variation of the trace metals during the four FCE and the variations
12 between the cloud events. Often, higher trace metal concentrations were observed during the first
13 hours of the events and subsequently decreased during the course of the event. This trend was
14 mostly observed during FCE 1.1 and FCE 11.3 while during FCE 1.1 very small differences were
15 observed between the temporal variations of the metals. During FCE 1.1 the trace metal
16 concentrations show uniform variation with slight increase in concentrations observed after 17:00
17 h. While As, Pb, Se, V, and Mn, showed similar trends, Ti and Cr showed very different patterns.
18 Similar trends were observed during FCE 11.3, 13.3 and FCE 22.1 for As, Pb and Mn. Ti trends
19 were unique throughout the FCE. During FCE 13.3 and FCE 22.1, Co, V, Cr, showed similar
20 temporal variations. The temporal variations in the trace metal concentrations are likely due to
21 the temporal changes in the trace metal concentrations in the activated cloud condensation nuclei
22 (CCN) and changes in air mass origin. The similar trend in the temporal variation of the trace
23 metals is indicative of their similar origin. Ti is a good tracer for crustal sources while Pb and V
24 are good tracers of anthropogenic activities. Thus the origins of the trace metals were similar
25 throughout most of the events and were of anthropogenic and crustal origins.

26 *Please insert Figure 6 here*

3.4.2 Size resolved soluble metal ions

Soluble Fe (III), Fe (II), Cu (II) and Mn (II) were measured from 0.45 µm syringe filtered samples collected using a plastic 3-stage CASC collector with Teflon collection surfaces. However, because of low sampling amounts only the analyses during FCE 1.1 were successful. The size distribution and temporal variations of these ions are shown in ~~Figure~~[Fig. 7](#) below. The nominal cloud water size cut-offs were 22 µm, 16 µm and 4 µm for stages (St.) 1, 2 and 3, respectively. Fe (II) was mainly found on the second stage (size range: 16 - 22 µm) with concentrations of up to 28.2 µg/l meanwhile Fe (III) was found on all of the stages during the event with observed concentrations ranging up to 37.1 µg/l. The lowest concentration of Fe (III) was found in the larger droplets (stage 1). Soluble Cu (II) was concentrated in the first and second stages, likewise Mn (II). The Cu (II) concentrations ranged from 0.4 µg/l to 10.5 µg/l with higher concentrations observed on the second stage. Mn (II) concentrations varied from 1.1 µg/l to 24.5 µg/l with about 48% present in the larger droplets (stage 1) which was different to the size distribution of the other measured transition metal ions (TMIs).

Similar soluble trace metal concentrations have been reported in fogs (Straub et al., 2012) and cloud water (Li et al., 2013; Parazols et al., 2006; Hutchings et al., 2009) in other regions. The differences in the size distribution of these trace metals suggest that these TMIs might have had different source origins especially for Mn and Fe. Although Mn as well as Fe has high crustal abundance, both also have different anthropogenic sources such as waste incineration or metallurgical industries for Mn and fly ash for Fe. Fine mode iron can also be emitted from fuel combustion processes (Sholkovitz et al., 2012) which can thus explain its occurrence in this size fraction. Thus the differences in the size distribution of these metal ions could be due to their source origins during this event or the differences in the efficiency of activation of the particles containing these metals. Fe (II) was observed mostly during evening hours during which photochemical processes are expected to be low due to lower solar radiation. This indicates that the observed night time Fe (II) concentrations were not directly related to photochemical processes. Fe (III) is known to be the most stable form of iron but it can be reduced to Fe (II) via HO_x radicals or Cu (I). The production of HO_x radicals is predominantly photochemically driven. Their reactions with Fe(II) are, therefore expected to be faster in the presence of UV light such as during daytime; meanwhile, the reduction of Fe (III) to Fe (II) via Cu (I) is not directly limited by solar radiation and thus could be dominant at night (Deguillaume et al., 2004).

Please insert Figure 7 here

Due to the fast oxidation of Cu (I) to Cu (II) it is easier to measure Cu (II) than Cu (I). During
~~Although Cu (I) is difficult to measure due to its fast oxidation to Cu (II), during~~ FCE 1.1 Cu (II) was successfully measured with results revealing comparable concentrations as those reported elsewhere (Deguillaume et al., 2005; Li et al., 2013; Hutchings et al., 2009). The Cu (II) temporal variation is also shown in Figure 7. The observed Cu (II) concentration in the same size fraction as soluble iron indicates that the Fe (II) at night could have been related to aqueous phase reductions of Fe (III) to Fe (II) by Cu (I) species. Fe (III) catalyzed oxidation of sulfur (IV) has been suggested to be another important source of Fe (II) in cloud water during nighttime (Schwanz, 1998; Millero et al., 1995). However, with no data available on sulfur (IV) measurements during FCE1.1, conclusions about the contribution of this pathway cannot be made. Anthropogenic sources of Fe in the environment, e.g. in fly ash, biomass burning emissions and other combustion sources have been found to contain considerable concentration of Fe (II) (Trapp et al., 2010). This suggests that, although aqueous phase reduction processes could have contributed to the observed night time Fe (II) concentrations, the source of the aerosol cannot be neglected. Night time concentrations of Fe (II) have also been observed in different studies but no unique reason for their occurrence has been presented yet (Schwanz, 1998; Kotronarou and Sigg, 1993; Siefert et al., 1998; Parazols et al., 2006). The variation of the soluble trace metal concentrations with cloud drop size suggests that the metal catalyzed oxidation of S (IV) may be strongly drop size dependent since the concentrations of TMI influence the in cloud S (IV) oxidation rates (Rao and Collett, 1998).

3.5 Comparison between trace metal concentrations in cloud water and in particles

3.5.1 Total trace metal concentration

As shown in Tables 1 and ~~2-3~~^{above}, Mn, Rb and Ti in cloud water were higher than at the valley stations. However, although the average values for Mn and Ti were higher in cloud water as compared to those from the valley stations, the concentration ranges were similar. One reason for the observed difference in the Mn, Ti and Rb concentrations could have been the analyzed particle size from the impactor samples collected from the valley stations. Mn, Ti and Rb are often of crustal origin and also often found in the coarse aerosol fraction. As explained above, the

aerosol trace metal analysis was performed only on PM_{3.5} particles. Thus the difference in the sampled particle sizes may explain the observed difference. For other trace metals such as V, Co, Se, As and Sr, only small differences were observed with slightly lower concentrations observed in the cloud water in comparison to those at the valley stations. The average Pb and Cr concentrations were also lower in cloud water as compared to the concentrations at the valley stations. The observed differences between the cloud water and aerosol particle concentrations are also related to the strong variation of the trace metal concentrations during the FCEs due to their varying sources as well as the variation in the activation of the particles to suitable cloud condensation nuclei.

3.5.2 Soluble trace metal concentration

Soluble aerosol trace metal concentrations were measured from 0.45 µm syringe filtrates obtained from DI water extracts of PM₁₀ bulk samples and the concentrations were compared with those obtained from filtered cloud water to find out if there were significant changes in the soluble trace metal concentration after the passage of the air mass through the cloud. Table 4 summarizes the soluble metal concentrations during selected FCEs. Due to the observed high blanks of Fe, Zn, Cu, Mn, in bulk cloud water samples, their values were not discussed except during FCE 1.1 whereby the values of the sized resolved analysis presented above are included (in bold). The size resolved data were converted to bulk concentrations by multiplying the volume weighted mean size-resolved concentrations with the bulk LWC. As shown in Table 4, during FCE 1.1 no significant change in the soluble content of the trace metals was observed before and after the cloud. Mn, Cu, Ni, and Zn, as well as As, Se, Sr, V, Cr, concentrations were of the same order of magnitude while only slight increases were registered for Pb concentrations. Cu, Mn, and Fe concentrations were within same order of magnitude as those at the valley stations, suggesting that there might have been no significant in-cloud processing of the particles containing these metals that affected trace metal solubility. During FCE 11.3 small increases in the soluble concentration of Cr, Mn, Ni, Cu, Zn, As and Pb were observed between Goldlauter and Gehlberg. ~~For Fe, Ti and Rb, a decrease in the concentration was observed. Fe, Ti and Rb are often from crustal origin and may be lost via deposition during air mass transfer.~~ However, during FCE 13.3 the soluble content decreased from Goldlauter to Gelberg for elements such as V, Mn, Fe, Ni, Cu, Zn, As, Se, Rb, Sr while a slight increase could only be observed for Ti and Cr. Similarly, during

FCE 22.1 an increase in soluble content was observed for Ti, V, Fe, Cu, while a decrease was observed for Cr, Mn, Ni, Zn, As, Se, Rb, Sr, and Pb.

Please insert Table 4 here

Although it is known that cloud processes enhance the solubility of trace metals, especially for elements such as Fe via acid dissolution or complexation with organic acids such as oxalic acid, no clear trend and significant difference was observed between the upwind station (GL) and the downwind station (GB) soluble iron concentrations. Since most of the FCE were observed in the evening period, the possibilities for photochemical processes to occur were limited. As with iron, no clear trend in the variation of the soluble trace metal concentrations was observed for the other metal ions during all the FCE. The variation in the observed concentrations during the different FCE is also related to influences in air mass origin and the loss due to preferential deposition of larger or more efficiently cloud-scavenged particles.

4. Summary

The characterization of trace metals in size resolved and bulk aerosol particles at the valley upwind (Goldlauter, GL) and downwind (Gehlberg, GB) stations as well as in cloud water at Mt. Schmücke during four cloud events during HCCT has been presented. The concentrations of the 14 investigated trace metals showed variations between the cloud events with Fe and Zn being the most abundant observed trace metals in the aerosol. The most deposited trace metals between the upwind and downwind stations were also Fe and Zn. Aerosol particle trace metal concentrations were lower than those observed in the same region during the FEBUKO field experiments about 9 years ago. The decrease in metal concentrations could be related to decreases in emission as well as differences in the PM size fraction analyzed (PM_{3.5} vs. PM₁₀). Aerosol and cloud trace metal concentrations observed in this study were within a similar range to those observed in other rural regions in Europe. Strong changes in aerosol particle chemical properties were observed as particles passed through clouds with changes in the correlation between some chemical components observed. Trace metals such as Zn, Pb, Fe, Mn and Ti showed good correlation with levoglucosan, oxalate, and organic and elementary carbon suggesting their similar source origins. In addition to correlation analysis, enrichment factor analysis showed that trace metals during HCCT were of various origins, including crustal,

1 biomass burning, coal combustion, long range transport, and traffic sources. Soluble aerosol trace
2 metal concentrations did not show strong variations after aerosol cloud interaction. However, size
3 resolved soluble trace metal concentrations in cloud water showed a non-uniform distribution of
4 Fe, Cu and Mn across the drop sizes with Cu and Fe mainly found in drop sizes between 16 and
5 22 μm and Mn in drop sizes greater than 22 μm . Such variations suggest that TMI catalytic
6 process such as TMI enhanced oxidation of S (IV) may be drop size dependent. Soluble iron was
7 mainly found in its Fe (III) state. Strong temporal variation was observed in the soluble Fe
8 concentrations with Fe (II) dominating the soluble iron concentrations during some episodes. In
9 contrast to other studies, Fe (II) was mostly observed in the evening hours implying its presence
10 in cloud water was not directly related to photochemical processes.

References

- Aldabe, J., Elustondo, D., Santamaria, C., Lasheras, E., Pandolfi, M., Alastuey, A., Querol, X., and Santamaria, J. M.: Chemical characterisation and source apportionment of PM_{2.5} and PM₁₀ at rural, urban and traffic sites in Navarra (North of Spain), *Atmos Res*, 102, 191-205, DOI 10.1016/j.atmosres.2011.07.003, 2011.
- Allen, A. G., Nemitz, E., Shi, J. P., Harrison, R. M., and Greenwood, J. C.: Size distributions of trace metals in atmospheric aerosols in the United Kingdom, *Atmos Environ*, 35, 4581-4591, 2001.
- Belis, C. A., Karagulian, F., Larsen, B. R., and Hopke, P. K.: Critical review and meta-analysis of ambient particulate matter source apportionment using receptor models in Europe, *Atmos Environ*, 69, 94-108, DOI 10.1016/j.atmosenv.2012.11.009, 2013.
- Boman, C., Öhman, M., and Nordin, A.: Trace Element Enrichment and Behavior in Wood Pellet Production and Combustion Processes, *Energ Fuel*, 20, 993-1000, 10.1021/ef050375b, 2006.
- Bruggemann, E., Gnauk, T., Mertes, S., Acker, K., Auel, R., Wieprecht, W., Moller, D., Collett, J. L., Chang, H., Galgon, D., Chemnitzer, R., Rud, C., Junek, R., Wiedensohler, W., and Herrmann, H.: Schmucke hill cap cloud and valley stations aerosol characterisation during FEBUKO (I): Particle size distribution, mass, and main components, *Atmos Environ*, 39, 4291-4303, DOI 10.1016/j.atmosenv.2005.02.013, 2005.
- Burkhard, E. G., Mehmood, G., and Husain, L.: Determination of Trace-Elements in Cloud Water and Aerosols Using Instrumental Neutron-Activation Analysis and Hydride Generation with Atomic-Absorption Spectrometry, *J Radioan Nucl Ch Ar*, 161, 101-112, Doi 10.1007/Bf02034884, 1992.
- Cini, R., Prodi, F., Santachiara, G., Porcu, F., Bellandi, S., Stortini, A. M., Oppo, C., Udusti, R., and Pantani, F.: Chemical characterization of cloud episodes at a ridge site in Tuscan Appennines, Italy, *Atmos Res*, 61, 311-334, Pii S0169-8095(01)00139-9, Doi 10.1016/S0169-8095(01)00139-9, 2002.
- Clarke, A. G., and Radojevic, M.: Oxidation of SO₂ in Rainwater and Its Role in Acid-Rain Chemistry, *Atmos Environ*, 21, 1115-1123, Doi 10.1016/0004-6981(87)90238-1, 1987.
- Deguillaume, A. M., Marie, O., Carde, A., Mourey, F., Rouveau, M., Faure, P., Schlemmer, B., and Touratier, S.: Long-term evaluation of practices in surgical antibiotic prophylaxis at Saint Louis Hospital, *Int J Antimicrob Ag*, 24, S226-S226, 2004.
- Deguillaume, L., Leriche, M., Desboeufs, K., Mailhot, G., George, C., and Chaumerliac, N.: Transition metals in atmospheric liquid phases: Sources, reactivity, and sensitive parameters, *Chem Rev*, 105, 3388-3431, Doi 10.1021/Cr040649c, 2005.
- Demoz, B. B., Collett, J. L., and Daube, B. C.: On the Caltech Active Strand Cloudwater Collectors, *Atmos Res*, 41, 47-62, Doi 10.1016/0169-8095(95)00044-5, 1996.
- Dongarra, G., Manno, E., Varrica, D., Lombardo, M., and Vultaggio, M.: Study on ambient concentrations of PM₁₀, PM_{10-2.5}, PM_{2.5} and gaseous pollutants. Trace elements and chemical speciation of atmospheric particulates, *Atmos Environ*, 44, 5244-5257, DOI 10.1016/j.atmosenv.2010.08.041, 2010.
- Fine, P. M., Cass, G. R., and Simoneit, B. R. T.: Chemical characterization of fine particle emissions from fireplace combustion of woods grown in the northeastern United States, *Environ Sci Technol*, 35, 2665-2675, Doi 10.1021/Es001466k, 2001.

- 1 Fine, P. M., Cass, G. R., and Simoneit, B. R. T.: Chemical characterization of fine particle
2 emissions from the wood stove combustion of prevalent United States tree species,
3 *Environ Eng Sci*, 21, 705-721, DOI 10.1089/ees.2004.21.705, 2004.
- 4 Fomba, K. W., Muller, K., van Pinxteren, D., and Herrmann, H.: Aerosol size-resolved trace
5 metal composition in remote northern tropical Atlantic marine environment: case study
6 Cape Verde islands, *Atmos Chem Phys*, 13, 4801-4814, DOI 10.5194/acp-13-4801-2013,
7 2013.
- 8 Guo, J., Wang, Y., Shen, X. H., Wang, Z., Lee, T., Wang, X. F., Li, P. H., Sun, M. H., Collett, J.
9 L., Wang, W. X., and Wang, T.: Characterization of cloud water chemistry at Mount Tai,
10 China: Seasonal variation, anthropogenic impact, and cloud processing, *Atmos Environ*,
11 60, 467-476, DOI 10.1016/j.atmosenv.2012.07.016, 2012.
- 12 Handler, M., Puls, C., Zbiral, J., Marr, I., Puxbaum, H., and Limbeck, A.: Size and composition
13 of particulate emissions from motor vehicles in the Kaisermuhlen-Tunnel, Vienna, *Atmos*
14 *Environ*, 42, 2173-2186, DOI 10.1016/j.atmosenv.2007.11.054, 2008.
- 15 Harris, E., Sinha, B., van Pinxteren, D., Tilgner, A., Fomba, K. W., Schneider, J., Roth, A.,
16 Gnauk, T., Fahlbusch, B., Mertes, S., Lee, T., Collett, J., Foley, S., Borrmann, S., Hoppe,
17 P., and Herrmann, H.: Enhanced Role of Transition Metal Ion Catalysis During In-Cloud
18 Oxidation of SO₂, *Science*, 340, 727-730, DOI 10.1126/science.1230911, 2013.
- 19 Hashimoto, Y., Hwang, J. Y., and Yanagisa, S.: Possible Source of Atmospheric Pollution of
20 Selenium, *Environ Sci Technol*, 4, 157-162, DOI 10.1021/Es60037a002, 1970.
- 21 Herckes, P., Engling, G., Kreidenweis, S. M., and Collett, J. L.: Particle size distributions of
22 organic aerosol constituents during the 2002 Yosemite Aerosol Characterization Study,
23 *Environ Sci Technol*, 40, 4554-4562, DOI 10.1021/Es0515396, 2006.
- 24 Herrmann, H., Wolke, R., Muller, K., Brüggemann, E., Gnauk, T., Barzagli, P., Mertes, S.,
25 Lehmann, K., Massling, A., Birmili, W., Wiedensohler, A., Wierprecht, W., Acker, K.,
26 Jaeschke, W., Kramberger, H., Svrčina, B., Bachmann, K., Collett, J. L., Galgon, D.,
27 Schwirn, K., Nowak, A., van Pinxteren, D., Plewka, A., Chemnitz, R., Rud, C.,
28 Hofmann, D., Tilgner, A., Diehl, K., Heinold, B., Hinneburg, D., Knöth, O., Sehili, A. M.,
29 Simmel, M., Würzler, S., Majdik, Z., Mauersberger, G., and Müller, F.: FEBUKO and
30 MODMEP: Field measurements and modelling of aerosol and cloud multiphase
31 processes, *Atmos Environ*, 39, 4169-4183, DOI 10.1016/j.atmosenv.2005.02.004, 2005.
- 32 Herrmann, H., Brüggemann, E., Franck, U., Gnauk, T., Loschau, G., Müller, K., Plewka, A., and
33 Spindler, G.: A source study of PM in Saxony by size-segregated characterisation, *J*
34 *Atmos Chem*, 55, 103-130, DOI 10.1007/s10874-006-9029-7, 2006.
- 35 Hueglin, C., Gehrig, R., Baltensperger, U., Gysel, M., Monn, C., and Vonmont, H.: Chemical
36 characterisation of PM_{2.5}, PM₁₀ and coarse particles at urban, near-city and rural sites in
37 Switzerland, *Atmos Environ*, 39, 637-651, DOI 10.1016/j.atmosenv.2004.10.027, 2005.
- 38 Hutchings, J. W., Robinson, M. S., McIlwraith, H., Kingston, J. T., and Herckes, P.: The
39 Chemistry of Intercepted Clouds in Northern Arizona during the North American
40 Monsoon Season, *Water Air Soil Poll*, 199, 191-202, DOI 10.1007/s11270-008-9871-0,
41 2009.
- 42 Iinuma, Y., Brüggemann, E., Gnauk, T., Müller, K., Andreae, M. O., Helas, G., Parmar, R., and
43 Herrmann, H.: Source characterization of biomass burning particles: The combustion of
44 selected European conifers, African hardwood, savanna grass, and German and
45 Indonesian peat, *J Geophys Res-Atmos*, 112, -, ArtID 08209 DOI 10.1029/2006jd007120,
46 2007.

- 1 Jacob, D. J., and Hoffmann, M. R.: A Dynamic-Model for the Production of H⁺, NO₃⁻, and SO₄²⁻
2 in Urban Fog, *J Geophys Res-Oc Atm*, 88, 6611-6621, Doi 10.1029/Jc088ic11p06611,
3 1983.
- 4 Kotronarou, A., and Sigg, L.: SO(2) Oxidation in Atmospheric Water - Role of Fe(II) and Effect
5 of Ligands, *Environ Sci Technol*, 27, 2725-2735, Doi 10.1021/Es00049a011, 1993.
- 6 Lee, R. E., and Vonlehmd.Dj: Trace Metal Pollution in Environment, *Japca J Air Waste Ma*, 23,
7 853-857, 1973.
- 8 Li, W. J., Wang, Y., Collett, J. L., Chen, J. M., Zhang, X. Y., Wang, Z. F., and Wang, W. X.:
9 Microscopic Evaluation of Trace Metals in Cloud Droplets in an Acid Precipitation
10 Region, *Environ Sci Technol*, 47, 4172-4180, Doi 10.1021/Es304779t, 2013.
- 11 Liu, X.-h., Wai, K.-M., Wang, Y., Zhou, J., Li, P.-h., Guo, J., Xu, P.-j., and Wang, W.-x.:
12 Evaluation of trace elements contamination in cloud/fog water at an elevated mountain
13 site in Northern China, *Chemosphere*, 88, 531-541,
14 <http://dx.doi.org/10.1016/j.chemosphere.2012.02.015>, 2012.
- 15 Maenhaut, W., Raes, N., Chi, X. G., Cafmeyer, J., Wang, W., and Salma, I.: Chemical
16 composition and mass closure for fine and coarse aerosols at a kerbside in Budapest,
17 Hungary, in spring 2002, *X-Ray Spectrom*, 34, 290-296, Doi 10.1002/Xrs.820, 2005.
- 18 Maenhaut, W., Raes, N., Chi, X. G., Cafmeyer, J., and Wang, W.: Chemical composition and
19 mass closure for PM_{2.5} and PM₁₀ aerosols at K-puszt, Hungary, in summer 2006, *X-
20 Ray Spectrom*, 37, 193-197, Doi 10.1002/Xrs.1062, 2008.
- 21 Maenhaut, W., Nava, S., Lucarelli, F., Wang, W., Chi, X. G., and Kulmala, M.: Chemical
22 composition, impact from biomass burning, and mass closure for PM(2.5) and PM(10)
23 aerosols at Hyytiala, Finland, in summer 2007, *X-Ray Spectrom*, 40, 168-171, Doi
24 10.1002/Xrs.1302, 2011.
- 25 Mancinelli, V., Decesari, S., Facchini, M. C., Fuzzi, S., and Mangani, F.: Partitioning of metals
26 between the aqueous phase and suspended insoluble material in fog droplets, *Ann Chim-
27 Rome*, 95, 275-290, DOI 10.1002/adic.200590033, 2005.
- 28 Marenco, F., Bonasoni, P., Calzolari, F., Ceriani, M., Chiari, M., Cristofanelli, P., D'Alessandro,
29 A., Fermo, P., Lucarelli, F., Mazzei, F., Nava, S., Piazzalunga, A., Prati, P., Valli, G., and
30 Vecchi, R.: Characterization of atmospheric aerosols at Monte Cimone, Italy, during
31 summer 2004: Source apportionment and transport mechanisms, *J Geophys Res-Atmos*,
32 111, Artn D24202, Doi 10.1029/2006jd007145, 2006.
- 33 Masiol, M., Squizzato, S., Ceccato, D., and Pavoni, B.: The size distribution of chemical
34 elements of atmospheric aerosol at a semi-rural coastal site in Venice (Italy). The role of
35 atmospheric circulation, *Chemosphere*, 119, 400-406, DOI
36 10.1016/j.chemosphere.2014.06.086, 2015.
- 37 Millero, F. J., Gonzalezdávila, M., and Santanacasio, J. M.: Reduction of Fe(II) with Sulfite in
38 Natural-Waters, *J Geophys Res-Atmos*, 100, 7235-7244, Doi 10.1029/94jd03111, 1995.
- 39 Minguillon, M. C., Querol, X., Alastuey, A., Monfort, E., Mantilla, E., Sanz, M. J., Sanz, F.,
40 Roig, A., Renau, A., Felis, C., Miro, J. V., and Artinano, B.: PM₁₀ speciation and
41 determination of air quality target levels. A case study in a highly industrialized area of
42 Spain, *Sci Total Environ*, 372, 382-396, DOI 10.1016/j.scitotenv.2006.10.023, 2007.
- 43 Moroni, B., Castellini, S., Crocchianti, S., Piazzalunga, A., Fermo, P., Scardazza, F., and
44 Cappelletti, D.: Ground-based measurements of long-range transported aerosol at the rural
45 regional background site of Monte Martano (Central Italy), *Atmos Res*, 155, 26-36, DOI
46 10.1016/j.atmosres.2014.11.021, 2015.

- 1 Muller, K., Lehmann, S., van Pinxteren, D., Gnauk, T., Niedermeier, N., Wiedensohler, A., and
2 Herrmann, H.: Particle characterization at the Cape Verde atmospheric observatory during
3 the 2007 RHAMBLE intensive, *Atmos Chem Phys*, 10, 2709-2721, 2010.
- 4 Oktavia, B., Lim, L. W., and Takeuchi, T.: Simultaneous Determination of Fe(III) and Fe(II) Ions
5 via Complexation with Salicylic Acid and 1,10-Phenanthroline in Microcolumn Ion
6 Chromatography, *Anal Sci*, 24, 1487-1492, DOI 10.2116/analsci.24.1487, 2008.
- 7 Pacyna, E. G., Pacyna, J. M., Fudala, J., Strzelecka-Jastrzab, E., Hlawiczka, S., Panasiuk, D.,
8 Nitter, S., Pregger, T., Pfeiffer, H., and Friedrich, R.: Current and future emissions of
9 selected heavy metals to the atmosphere from anthropogenic sources in Europe, *Atmos*
10 *Environ*, 41, 8557-8566, DOI 10.1016/j.atmosenv.2007.07.040, 2007.
- 11 Pacyna, J. M.: Estimation of the Atmospheric Emissions of Trace-Elements from Anthropogenic
12 Sources in Europe, *Atmos Environ*, 18, 41-50, 1984.
- 13 Pakkanen, T. A., Kerminen, V. M., Loukkola, K., Hillamo, R. E., Aarnio, P., Koskentalo, T., and
14 Maenhaut, W.: Size distributions of mass and chemical components in street-level and
15 rooftop PM₁ particles in Helsinki, *Atmos Environ*, 37, 1673-1690, Doi 10.1016/S1352-
16 2310(03)00011-6, 2003.
- 17 Parazols, M., Marinoni, A., Amato, P., Abida, O., Laj, P., and Mailhot, G.: Speciation and role of
18 iron in cloud droplets at the puy de Dome station, *J Atmos Chem*, 54, 267-281, DOI
19 10.1007/s10874-006-9026-x, 2006.
- 20 Plessow, K., Acker, K., Heinrichs, H., and Moller, D.: Time study of trace elements and major
21 ions during two cloud events at the Mt. Brocken, *Atmos Environ*, 35, 367-378, Doi
22 10.1016/S1352-2310(00)00134-5, 2001.
- 23 Raja, S., Raghunathan, R., Yu, X. Y., Lee, T. Y., Chen, J., Kommalapati, R. R., Murugesan, K.,
24 Shen, X., Qingzhong, Y., Valsaraj, K. T., and Collett, J. L.: Fog chemistry in the Texas-
25 Louisiana Gulf Coast corridor, *Atmos Environ*, 42, 2048-2061, DOI
26 10.1016/j.atmosenv.2007.12.004, 2008.
- 27 Rao, X., and Collett, J. L.: The drop size-dependence of iron and manganese concentrations in
28 clouds and fogs: Implications for sulfate production, *J Atmos Chem*, 30, 273-289, Doi
29 10.1023/A:1006044614291, 1998.
- 30 Rogula-Kozłowska, W., Klejnowski, K., Rogula-Kopiec, P., Osrodka, L., Krajny, E., Blaszcak,
31 B., and Mathews, B.: Spatial and seasonal variability of the mass concentration and
32 chemical composition of PM_{2.5} in Poland, *Air Qual Atmos Hlth*, 7, 41-58, DOI
33 10.1007/s11869-013-0222-y, 2014.
- 34 Rüd, C.: Bestimmung von Metallen in Aerosolpartikeln und Wolkenwasser mittels Atom-
35 Absorptionsspektrometrie, Diplomarbeit, Universität Leipzig, 2003.
- 36 Saarikoski, S., Timonen, H., Saarnio, K., Aurela, M., Jarvi, L., Keronen, P., Kerminen, V. M.,
37 and Hillamo, R.: Sources of organic carbon in fine particulate matter in northern
38 European urban air, *Atmos Chem Phys*, 8, 6281-6295, 2008.
- 39 Schkolnik, G., and Rudich, Y.: Detection and quantification of levoglucosan in atmospheric
40 aerosols: A review, *Anal Bioanal Chem*, 385, 26-33, DOI 10.1007/s00216-005-0168-5,
41 2006.
- 42 Schmidl, C., Marr, I. L., Caseiro, A., Kotianová, P., Berner, A., Bauer, H., Kasper-Giebl, A., and
43 Puxbaum, H.: Chemical characterisation of fine particle emissions from wood stove
44 combustion of common woods growing in mid-European Alpine regions, *Atmos Environ*,
45 42, 126-141, <http://dx.doi.org/10.1016/j.atmosenv.2007.09.028>, 2008.
- 46 Schwanz, M., Warneck, P., Preiss, M., and Hoffmann, P.: Chemical speciation of iron in fog
47 water, *Contr. Atmos. Phys.*, 71-1, 131-143, 1998.

- 1 Sholkovitz, E. R., Sedwick, P. N., Church, T. M., Baker, A. R., and Powell, C. F.: Fractional
2 solubility of aerosol iron: Synthesis of a global-scale data set, *Geochim Cosmochim Ac*,
3 89, 173-189, DOI 10.1016/j.gca.2012.04.022, 2012.
- 4 Siefert, R. L., Johansen, A. M., Hoffmann, M. R., and Pehkonen, S. O.: Measurements of trace
5 metal (Fe, Cu, Mn, Cr) oxidation states in fog and stratus clouds, *J Air Waste Manage*, 48,
6 128-143, 1998.
- 7 Simoneit, B. R. T., Schauer, J. J., Nolte, C. G., Oros, D. R., Elias, V. O., Fraser, M. P., Rogge, W.
8 F., and Cass, G. R.: Levoglucosan, a tracer for cellulose in biomass burning and
9 atmospheric particles, *Atmos Environ*, 33, 173-182, Doi 10.1016/S1352-2310(98)00145-
10 9, 1999.
- 11 Spindler, G., Gruner, A., Muller, K., Schlimper, S., and Herrmann, H.: Long-term size-segregated
12 particle (PM₁₀, PM_{2.5}, PM₁) characterization study at Melpitz - influence of air mass
13 inflow, weather conditions and season, *J Atmos Chem*, 70, 165-195, DOI
14 10.1007/s10874-013-9263-8, 2013.
- 15 Spokes, L. J., Jickells, T. D., and Lim, B.: Solubilization of Aerosol Trace-Metals by Cloud
16 Processing - a Laboratory Study, *Geochim Cosmochim Ac*, 58, 3281-3287, Doi
17 10.1016/0016-7037(94)90056-6, 1994.
- 18 Straub, D. J., Hutchings, J. W., and Herckes, P.: Measurements of fog composition at a rural site,
19 *Atmos Environ*, 47, 195-205, DOI 10.1016/j.atmosenv.2011.11.014, 2012.
- 20 Tilgner, A., Schöne, L., Bräuer, P., van Pinxteren, D., Hoffmann, E., Spindler, G., Mertes, S.,
21 Birmili, W., Otto, R., Merkel, M., Weinhold, K., Wiedensohler, A., Deneke, H., Haunold,
22 W., Engel, A., Weber, A., and Herrmann, H.: Critical assessment of meteorological
23 conditions and airflow connectivity during HCCT-2010, *Atmos. Chem. Phys. Discuss.*,
24 14, 1861-1917, 10.5194/acpd-14-1861-2014, 2014.
- 25 Trapp, J. M., Millero, F. J., and Prospero, J. M.: Trends in the solubility of iron in dust-dominated
26 aerosols in the equatorial Atlantic trade winds: Importance of iron speciation and sources,
27 *Geochem Geophys Geosy*, 11, Artn Q03014, Doi 10.1029/2009gc002651, 2010.
- 28 Vlastelic, I., Suchorski, K., Sellegri, K., Colomb, A., Nauret, F., Bouvier, L., and Piro, J. L.: The
29 trace metal signature of atmospheric aerosols sampled at a European regional background
30 site (puy de Dôme, France), *J Atmos Chem*, 71, 195-212, DOI 10.1007/s10874-014-9290-
31 0, 2014.
- 32 Vong, R. J., Baker, B. M., Brechtel, F. J., Collier, R. T., Harris, J. M., Kowalski, A. S.,
33 McDonald, N. C., and McInnes, L. M.: Ionic and trace element composition of cloud
34 water collected on the Olympic Peninsula of Washington State, *Atmos Environ*, 31, 1991-
35 2001, Doi 10.1016/S1352-2310(96)00337-8, 1997.
- 36 Wang, Z., Sorooshian, A., Prabhakar, G., Coggon, M. M., and Jonsson, H. H.: Impact of
37 emissions from shipping, land, and the ocean on stratocumulus cloud water elemental
38 composition during the 2011 E-PEACE field campaign, *Atmos Environ*, 89, 570-580,
39 <http://dx.doi.org/10.1016/j.atmosenv.2014.01.020>, 2014.
- 40 Wedepohl, K. H.: The Composition of the Continental-Crust, *Geochim Cosmochim Ac*, 59,
41 1217-1232, 1995.
- 42 Weller, C., Horn, S., and Herrmann, H.: Effects of Fe(III)-concentration, speciation, excitation-
43 wavelength and light intensity on the quantum yield of iron(III)-oxalato complex
44 photolysis, *J Photoch Photobio A*, 255, 41-49, DOI 10.1016/j.jphotochem.2013.01.014,
45 2013.
- 46 Wrzesinsky, T., and Klemm, O.: Summertime fog chemistry at a mountainous site in central
47 Europe, *Atmos Environ*, 34, 1487-1496, Doi 10.1016/S1352-2310(99)00348-9, 2000.

- 1 Zhang, W., Tong, Y. D., Wang, H. H., Chen, L., Ou, L. B., Wang, X. J., Liu, G. H., and Zhu, Y.:
2 Emission of Metals from Pelletized and Uncompressed Biomass Fuels Combustion in
3 Rural Household Stoves in China, Sci Rep-Uk, 4, Artn 5611, Doi 10.1038/Srep05611,
4 2014.
- 5 Zuo, Y. G., and Hoigne, J.: Photochemical Decomposition of Oxalic, Glyoxalic and Pyruvic-Acid
6 Catalyzed by Iron in Atmospheric Waters, Atmos Environ, 28, 1231-1239, 1994.

1
2
3
4
5

6
7

Table 1: Aerosol trace metal averages and concentration ranges during HCCT at the valley stations and results from the FEBUKO experiment by Rüd (2003) Ref 1, and from other rural regions for comparison. Ref 2: G. Dongarra et al., 2010 (Boccadifalco, Italy), Ref 3: Allen A.G. et al. 2001 (Auchencorth, UK), Ref 4: Allen A.G. et al. 2001 (Castlemorton, UK) Ref 5: Hueglin C. et al. 2011, (Payerne, Switzerland), Ref 6: Hueglin C. et al. 2011, (Chaumont, Switzerland).

	HCCT 2010		Ref 1		Ref 2		Ref 3	Ref 4	Ref 5	Ref 6
	PM 3.5		PM10		PM 2.5		TSP	TSP	PM10	PM2.5
	Mean ± SD	Range	Mean	Range	Mean ± SD	Range	Mean ± SD	Mean ± SD	Mean	Mean
Ti	0.87 ± 0.88	0.04–3.88			9.6 ± 10	1.9–29				
V	0.18 ± 0.11	0.03–0.44	2.6	1.2–4.8					0.7	0.8
Cr	2.67 ± 4.31	0.35–21.87	0.52	10–28	1.0 ± 1.4	0.1–3.5				
Mn	0.42 ± 0.47	0.01–2.37	4.6	0.7–7	1.8 ± 1.4	0.02–5.0	1.5 ± 1.2	1.7 ± 2.1	2.8	0.8
Co	0.02 ± 0.03	0.01–0.11			0.1 ± 0.1	0.01–0.3		0.06 ± 1.4		
Fe	16.5 ± 21.2	0.22–111.6	340	102–1152	97 ± 60	14–218		78 ± 2.5	89	26
Ni	0.38 ± 0.69	0.02–2.54			6.1 ± 3.3	2.4–12	0.8 ± 1.3	1.3 ± 1.8	1.2	1.3
Cu	0.70 ± 0.44	0.10–2.19	17	6–58	7.2 ± 3.1	1.2–13	1.1 ± 1.2	1.1 ± 2.2	6	6
Zn	11.08 ± 7.6	1.14–32.09	18	6.2–41	9.2 ± 4.7	5.9–16	5.2 ± 1.2	11 ± 2		
Se	0.57 ± 0.86	0.02–3.67		<14				1.1 ± 1.3	0.16	0.22
Pb	1.34 ± 0.74	0.25–2.87	8.2	2.8–23	5.6 ± 2.0	2.5–10	10 ± 1.9	7.9 ± 2.2	10	4.7
As	0.28 ± 0.28	0.01–1.21		<2.3	0.2 ± 0.1	0.04–0.4			0.53	0.16
Rb	0.04 ± 0.03	0.01–0.12							0.3	0.15
Sr	0.43 ± 0.34	0.02–1.73			1.1 ± 0.8	0.03–2.9	0.41 ± 1	0.71 ± 1.4		

All values are given in ng/m³

Table 1: Aerosol trace metal concentration averages \pm standard deviation and ranges during HCCT at the valley stations and results from the FEBUKO experiment by Rüd (2003) Ref 1 and other studies. Ref 2: G. Boccadifalco, Italy (Dongarra et al., 2010), Ref 3, 4: Auchencorth, Castlemorton, UK (Allen A.G. et al. 2001), Ref 5 and 6; Payerne and Chaumont,, Switzerland (Hueglin C. et al. 2005), Ref 7: Venice, Italy (Masiol et al., 2015) , Ref 8: Puy de Dôme, France (Vlastelic et al., 2014), Ref: 9 K-Puska, Hungary (Maenhaut et al., 2008), Ref 10: Hyytiälä, Finland (Maenhaut et al., 2011), Ref 11: Diabla Gora, Poland (Rogula-Kozłowska et al., 2014). Ref 12: Bertiz ,Spain (Aldabe et al., 2011), Ref: 13 Monte Cimone, Italy (Marenco et al., 2006), Ref 14: Monte Martono, Italy (Moroni et al., 2015)

Elements			Ti	V	Cr	Mn	Co	Fe	Ni	Cu	Zn	Se	Pb	As	Rb	Sr
HCCT-2010	PM3.5	Mean \pm SD	0.9 \pm 0.9	0.18 \pm 0.1	2.7 \pm 4.3	0.4 \pm 0.5	0.02 \pm 0.03	16.5 \pm 21.2	0.38 \pm 0.7	0.7 \pm 0.44	11.1 \pm 7.6	0.57 \pm 0.9	1.3 \pm 0.7	0.28 \pm 0.3	0.04 \pm 0.03	0.43 \pm 0.3
		Range	0.04-3.9	0.03-0.4	0.35-21.9	0.01-2.4	0.01-0.11	0.22-111.6	0.02-2.5	0.10-2.19	1.1-32.1	0.02-3.7	0.25-2.9	0.01-1.21	0.01-0.1	0.02-1.7
Ref1	PM2.5	Mean \pm SD	9.6 \pm 10		1.0 \pm 1.4	1.8 \pm 1.4	0.1 \pm 0.1	97 \pm 60	6.1 \pm 3.3	7.2 \pm 3.1	9.2 \pm 4.7		5.6 \pm 2.0	0.2 \pm 0.1		1. \pm 0.8
		Range	1.9–29		0.1–3.5	0.02–5.0	0.01–0.3	14–218	2.4–12	1.2–13	5.9–16		2.5–10	0.04–0.4		0.03–2.9
Ref 2	TSP	Mean \pm SD				1.5 \pm 1.2			0.8 \pm 1.3	1.1 \pm 1.2	5.2 \pm 1.2		10 \pm 1.9			0.41 \pm 1
Ref 3	TSP	Mean \pm SD				1.7 \pm 2.1	0.06 \pm 1.4	78 \pm 2.5	1.3 \pm 1.8	1.1 \pm 2.2	11 \pm 2	1.1 \pm 1.3	7.9 \pm 2.2			0.71 \pm 1.4
Ref 4	PM10	Mean		0.7		2.8		89	1.2	6		0.16	10	0.53	0.3	
Ref 5	PM2.5	Mean		0.8		0.8		26	1.3	6		0.2	4.7	0.16	0.15	
Ref 6	PM10	Mean		2.6	0.5	4.6		340		17	18		8.2			
		Range		1.2-4.8	10-28	0.7-7		102-1152		6-58	6.2-41	<14	2.8-23	<2.3		
Ref 7	PM1	Mean	3.1	3.1	5.9	6.8		66.5	3	3.8	38.8					
	1 to 4	Mean	9.2	0.2	3.2	3.1		53.7	12.6	27.2	49.8					
	PM>4	Mean	8.3		10.1	0.7		12.7	1.1	1.3	3.2					
Ref 8	PM 10	Mean \pm SD	6 \pm 10	0.2 \pm 0.3	1.6 \pm 4.7	2.3 \pm 3.8	0.05 \pm 0.08	62 \pm 89	1.9 \pm 4.2	5.8 \pm 22.1	9.4 \pm 15.2	0.02 \pm 0.03	1.3 \pm 4.4	0.05 \pm 0.06	0.16 \pm 0.23	0.55 \pm 0.79
Ref 9	PM10	Median	4.4			2.6		86		1.93	10		4			
		IQR	3.2-6.0			2.1-4.0		59-137		1.58-3.2	8-18.3		3.2-6.0			
Ref 10	PM2.5	Median	0.92			0.52		17.1	0.5	0.34	6		1.59			
	PM10	Median	5.7			2		67	0.44	0.67	6.7		1.45			
		IQR	2.4-8.4			1.2-2.9		46-98	0.28-0.6	0.38-1.0	2.8-10.3		0.65-3.0			
Ref 11	PM2.5	Mean range							0.4-1.1				2.3-13.7	0.2-0.6		
Ref 12	PM10	Mean	11.26		1.3	2.2	0.12	0.09	0.9	2.03	17.3	0.27	2.88	0.1	0.58	1.2
		Range	3.9-80.9		< 10.9	< 18.2	<0.01-1.1	<0.01-0.7	0.01-21.8	< 8.1	3.0-79.5	0.1-0.6	< 11.6	<0.01-0.7	0.16-2.1	<0.01-5.1
Ref 13	PM10	Mean \pm SD	30 \pm 50	3.1 \pm 1.5		6.2 \pm 7		260 \pm 440	1.4 \pm 0.5	2.9 \pm 3.1	9.9 \pm 6		3.9 \pm 2.4			2.7 \pm 2.8
Ref 14	PM2.5	Mean \pm SD	2.0 \pm 1.6		1.8 \pm 0.85	0.7 \pm 0.5		48 \pm 44	0.5 \pm 0.18	5.0 \pm 1.0	5.9 \pm 3.3		1.7 \pm 0.27			

IQR=Inter quartile ranges, All concentrations are in ng/m³.

1
2
3

4
5
6
7
8
9
10
11
12
13
14
15
16

Table 2: Correlation coefficients (r^2) between levoglucosan and Zn, K, Pb, Fe, and As ~~and Ti~~ before (GL) and after (GB) air mass parcel passed through the cloud with ~~p-values less than 5%~~.

PM_{1,2}		Zn	K	Pb	AS	Fe	Mn
Levoglucosan	GL	0.59	0.81	0.64	0.97	0.95	0.70
	GB	0.88	0.64	0.54	0.38	0.55	0.66

1 Table 3: Mean and range of trace metal concentrations in cloud water at Mt. Schmücke during HCCT 2010.

	HCCT		[ng/m³]		[ng/m³]		Ref. A		Ref. B		Ref. C		Ref. D		Ref. E		Ref. F	
	Mean	Range	Mean	Range	Mean	Range	Median	Range	Mean	Range	Mean	Mean	Range	Mean	Range	Mean	Range	
Ti	9.18	0.1 - 79.1	2.60	0.01 - 24.1			2.3	< 1 - 466										
V	0.71	0.1 - 2.5	0.19	0.03 - 0.5		0 - 26	1.8	0.4 - 15.0			1.3					1.3	0.5 - 1.4	
Cr	5.54	0.3 - 52	1.54	0.11 - 14	0.52	< 9.3	< 0.3	< 0.3 - 9.0					1.1	< 3.6				
Mn	5.59	0.1 - 30.1	1.50	0.01 - 8.1		4.8 - 133	7.8	1.0 - 158	66.3	< 1645	1.1					4.4	3.2 - 14.0	
Co	0.46	0.1 - 3.5	0.13	0.01 - 0.9			0.08	<0.02- 2.1										
Se	1.38	0.1 - 4.9	0.42	0.01 - 1.7		< 9.6			13.2	< 99.9		4.7	1.1 - 11.5					
Pb	1.40	0.3 - 10.5	0.38	0.04 - 2	4.2	2.8 - 63	11	1.97 - 84.0			0.5	27.6	3.4 - 61.4	0.6	0.4 - 2.3			
As	0.63	0.2 - 4.1	0.15	0.03 - 0.4			0.4	0.4 - 6.6				3.1	< 13.2					
Rb	0.57	0.1 - 1.7	0.16	0.01 - 0.3			<1	< 1 - 6										
Sr	2.45	0.2 - 13.5	0.66	0.02 - 3.6			2.3	0.1 - 68.7										

2 Concentrations are in µg/l except otherwise mentioned

Ref. A	Rüd 2003	Mt. Schmücke
Ref. B	Plessow et al.	Mt. Brocken
Ref. C	Guo et al.	Mt. Tai
Ref. D	Vong et al.	Marine clouds
Ref. E	Wrzesinsky and et al. Klemm(2000)	Fichtelgebirge
Ref. F	Straub et al.	Fog in rural Pennsylvania

3

1

2 Table 4: PM₁₀ soluble aerosol trace metal content at the upwind station Goldlauter (GL), downwind station Gehlberg (GB) and soluble
3 trace metals in cloud water at Mt. Schmücke (SM) during four FCE.

EVENTS		Ti	V	Cr	Mn	Fe	Ni	Cu	Zn	As	Se	Rb	Sr	Pb
FCE 1.1	GL	0.27	0.19	0.37	1.01	1.81	0.69	1.77	13.63	0.80	0.32	0.21	0.81	0.95
	SM	0.15	0.17	0.93	0.57	1.69	0.14	1.35		0.08	0.32	0.07	0.89	0.48
	GB	0.09	0.24	0.46	0.84	-	0.39	1.34	13.68	0.62	0.32	0.11	0.72	1.53
FCE11.3	GL	0.40	0.00	0.25	0.19	1.20	0.18	0.37	7.38	0.39	0.17	0.19	0.25	0.26
	SM	0.11	0.00	0.24	0.38					0.02	0.51	0.11	0.35	0.34
	GB	0.28	0.00	0.47	0.34	0.64	0.22	-	9.86	0.60	0.71	0.08	0.74	0.39
FCE13.3	GL	0.10	0.11	0.28	0.70	5.82	0.70	3.23	5.28	0.22	1.09	0.16	0.33	0.88
	SM	0.41	0.16	0.23	0.64					0.08	0.64	0.16	0.40	0.58
	GB	-	0.06	0.45	0.42	3.86	0.24	0.73	4.08	0.19	0.63	0.10	0.16	0.97
FCE22.1	GL	0.12	0.00	1.19	0.30	1.14	0.43	0.54	3.48	0.30	0.12	0.12	0.30	0.36
	SM	0.31	0.10	0.29	0.61					0.10	0.10	0.10	0.61	0.98
	GB	0.38	0.12	0.20	0.16	1.44	0.10	-	2.36	0.08	0.06	0.06	0.22	0.29

4 Concentrations are in ng/m³

5

6

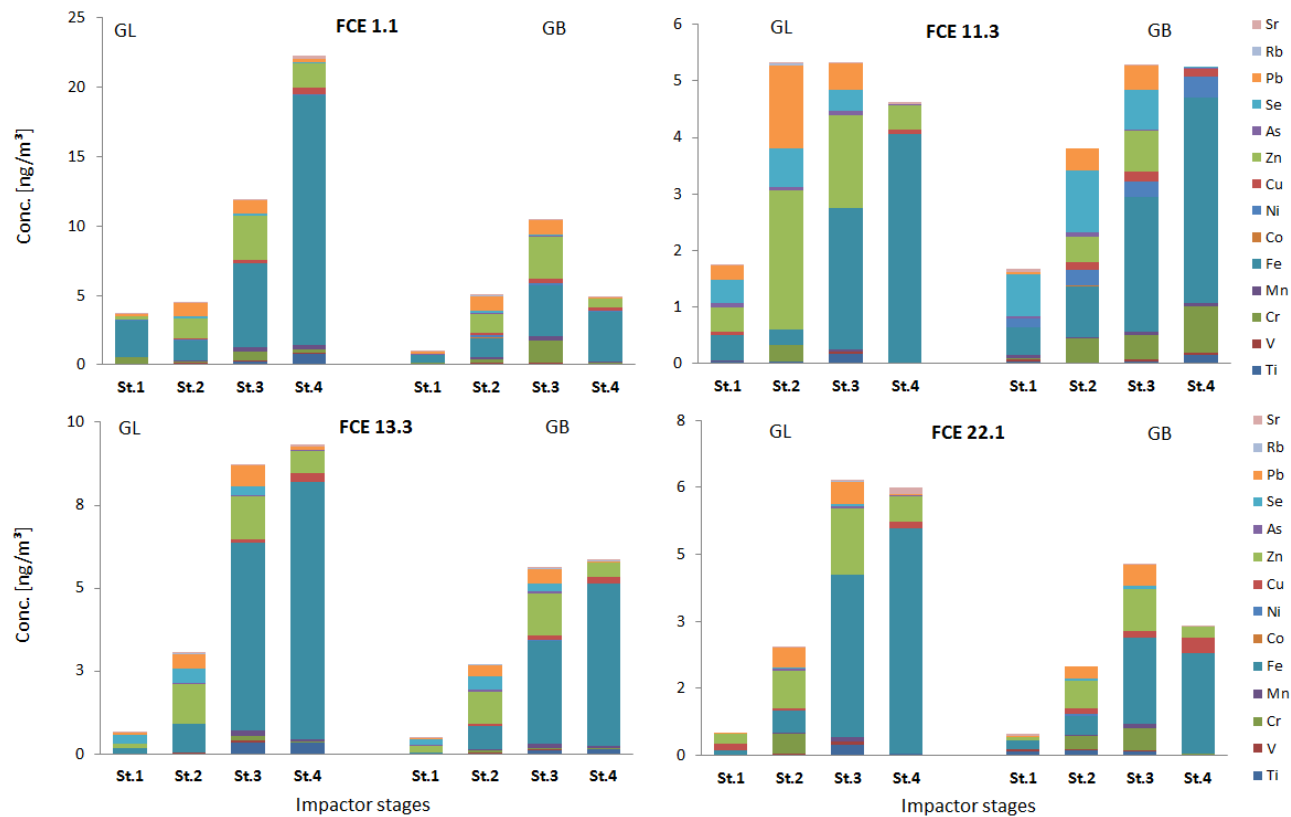


Figure 1: Aerosol particle size resolved trace metal concentrations during four full cloud events at Goldlauter (GL) and Gehlberg (GB). The PM stage cut offs for St.1 to St. 4 are 0.05, 0.14, 0.42, 1.2, and 3.5 μ m, respectively.

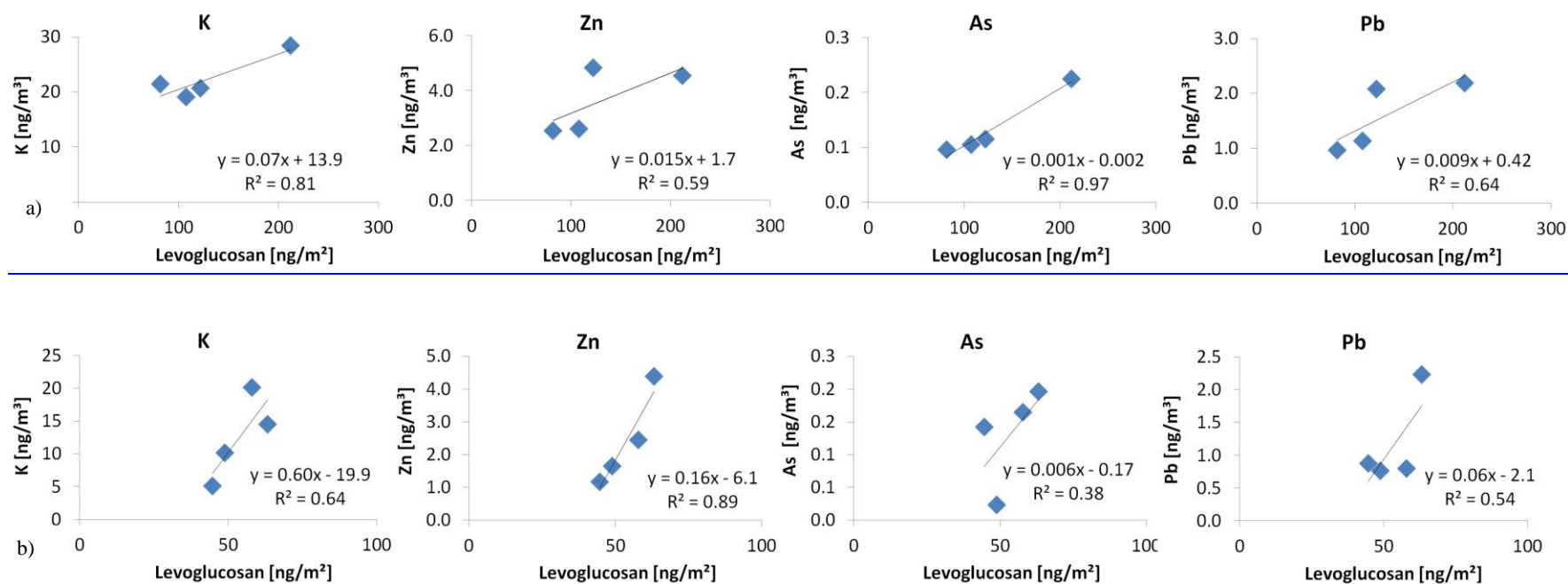


Figure 2: Scatter plots of levoglucosan a biomass burning tracer and K, Zn, As and Pb, in PM_{1.2} particulate matter at a) upwind GL and b) downwind GB stations during HCCT2010.

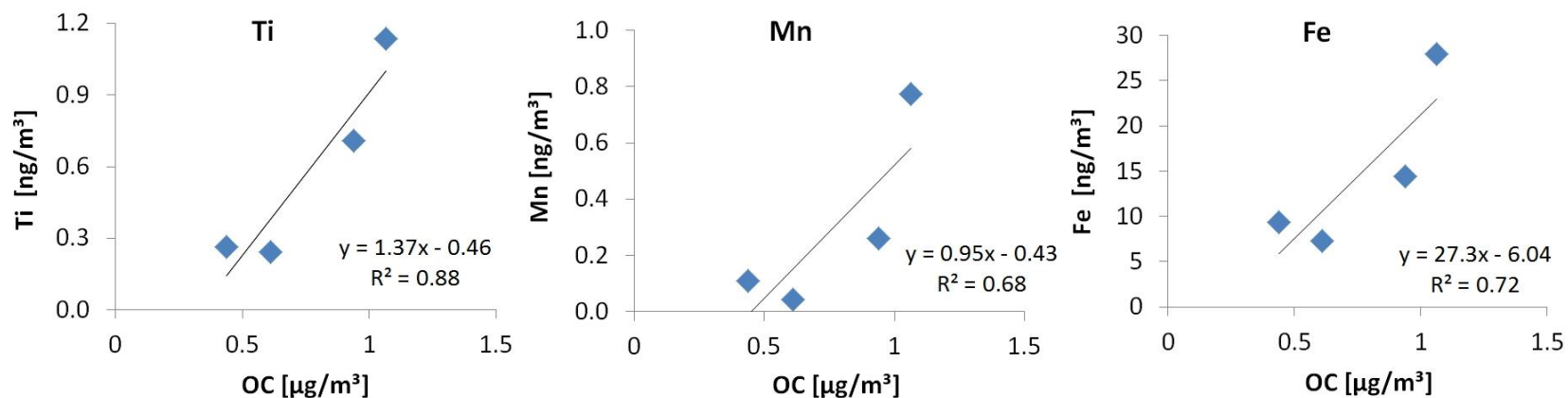


Figure 3: PM_{3.5} scatter plots of Ti, Mn and Fe against OC at the upwind stations.

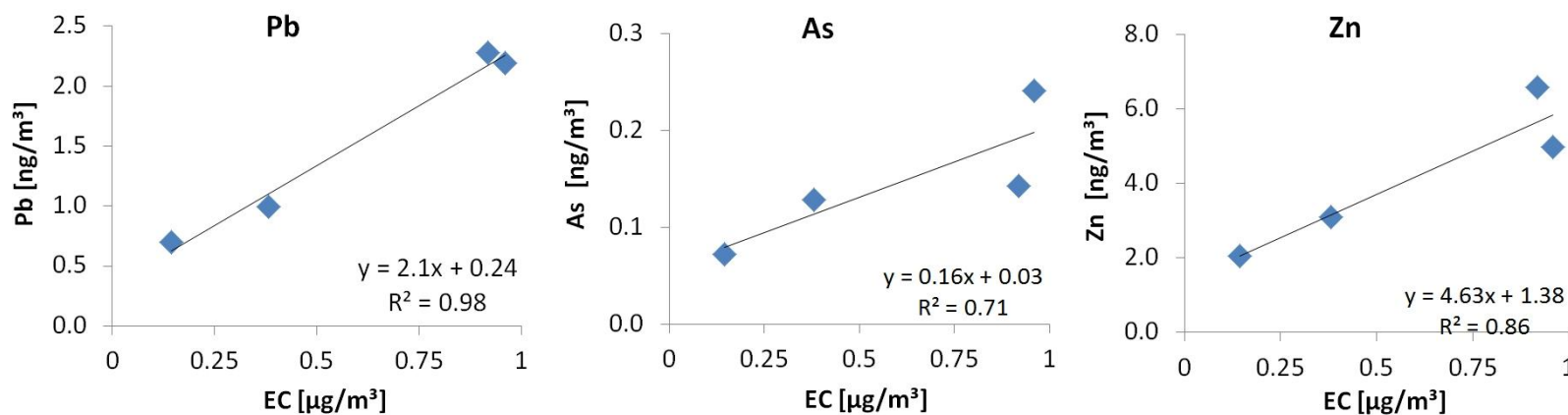
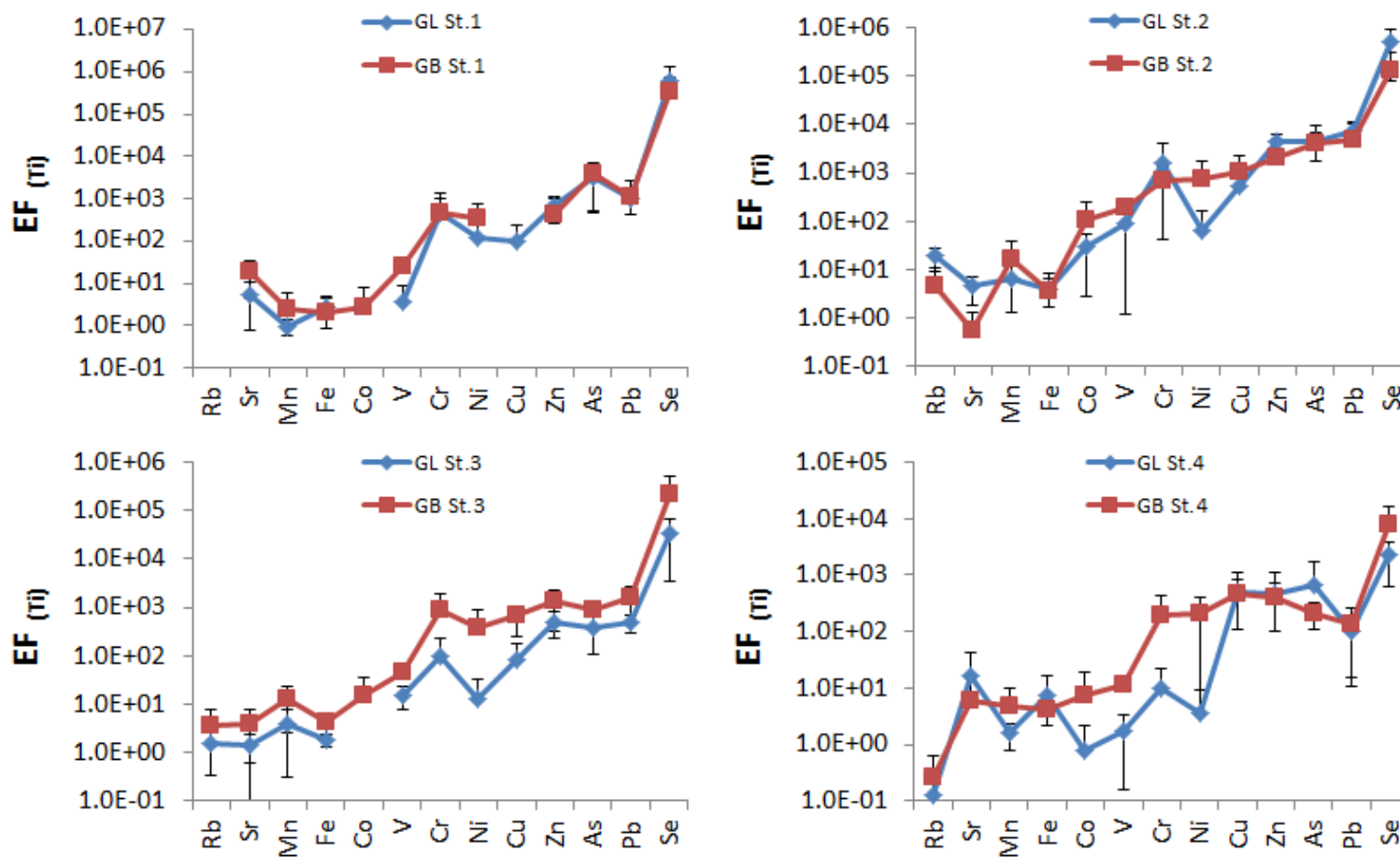


Figure 4: PM_{3.5} scatter plots of Pb, As, Zn against EC at the upwind stations.

1



2

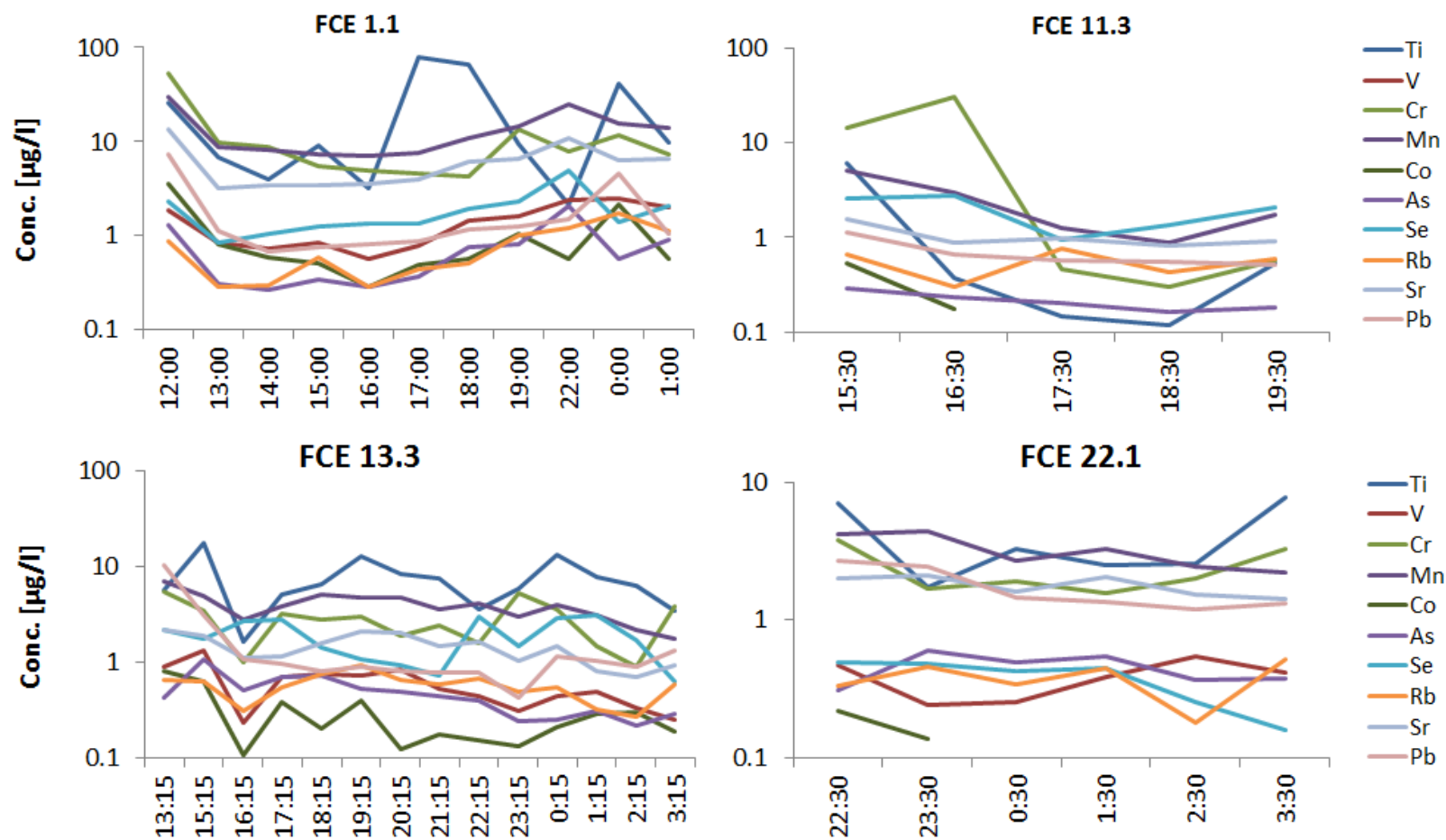
Figure 5: Size resolved enrichment factor analysis of aerosol trace metals at the valley stations. Plotted values are average over all FCE with their respective standard deviations plotted as error bars.

3

4

5

1

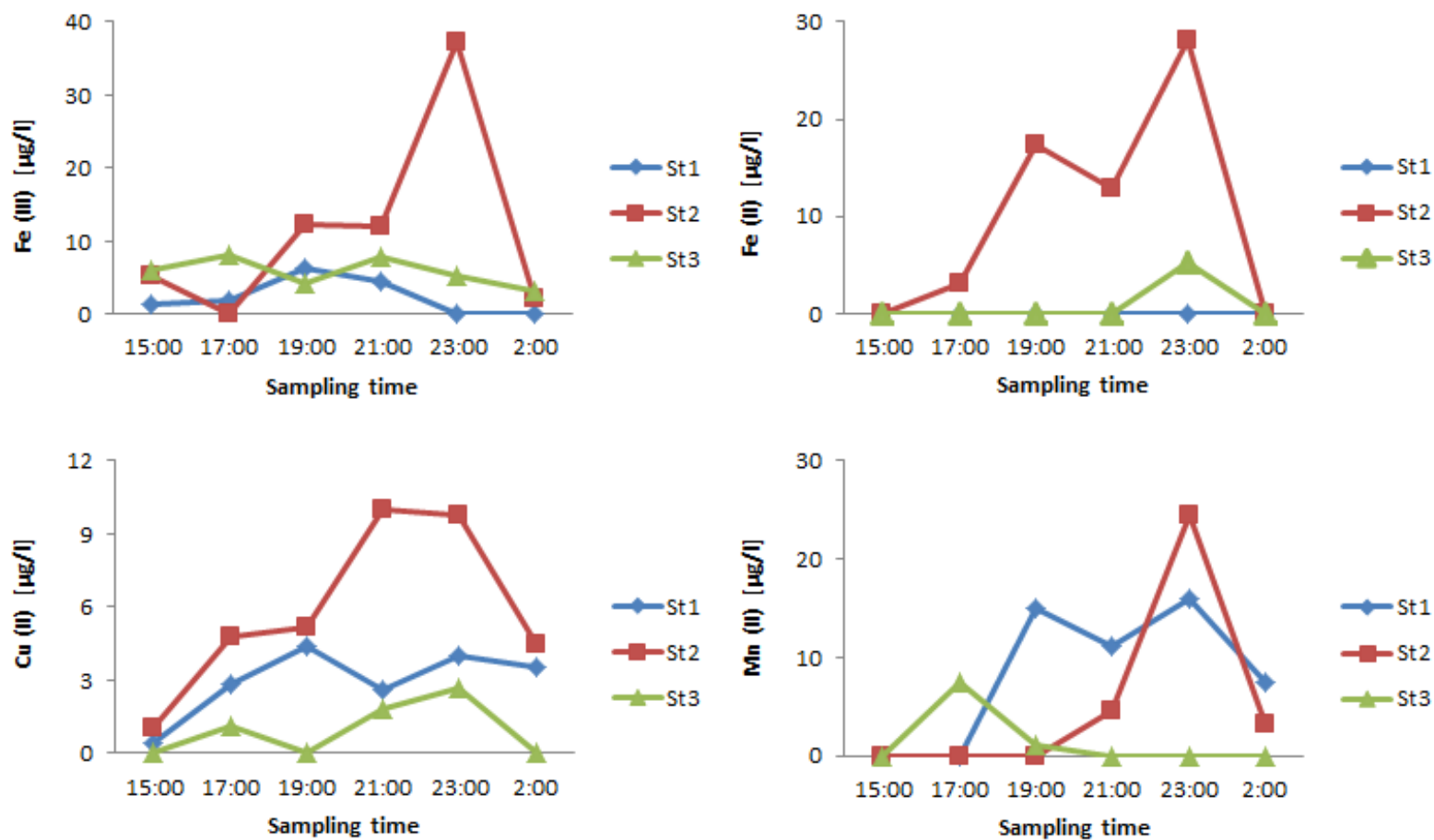


2

3 Figure 6: Trends in total trace metal cloud water concentrations during selected full cloud events, FCE 1.1: 14-15/09/2010, FCE 11.3:
 4 02/10/2010, FCE 13.3: 06-07/10/2010 and FCE 22.1: 19-20/10/2010.

5

6



1
2 Figure 7: Temporal variation of size resolved soluble transition metal ions, Fe (III), Fe (II), Cu (II) and Mn (II) in cloud water on the 14-
3 15/09/2010 during FCE 1.1. The nominal stage cut-offs were 22 µm, 16 µm and 4 µm for st1, st2 and st3, respectively.

4