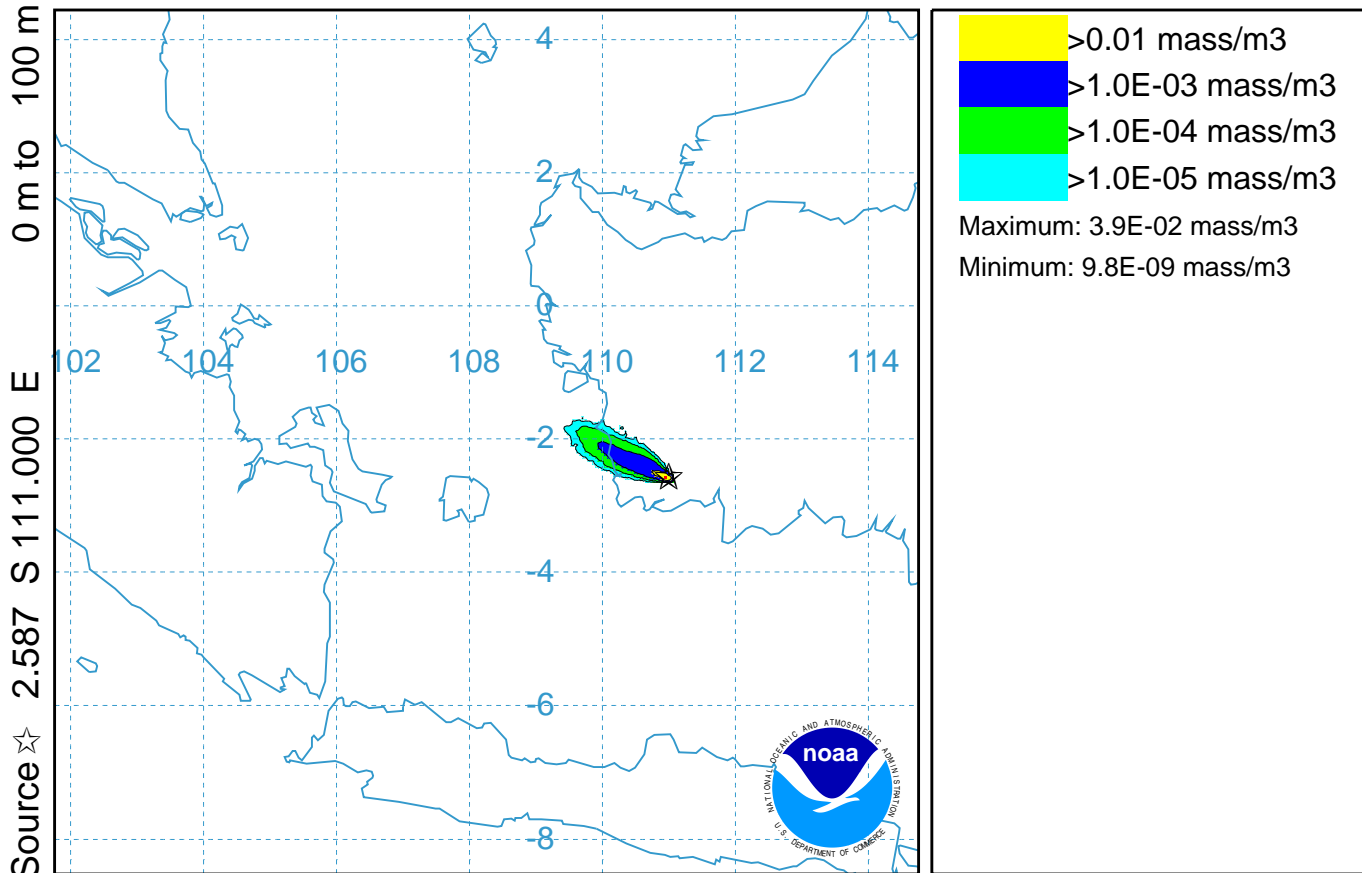


# NOAA HYSPLIT MODEL

Concentration (mass/m<sup>3</sup>) averaged between 0 m and 100 m  
Integrated from 1400 15 Oct to 0200 16 Oct 06 (UTC)  
PM25 Release started at 1400 15 Oct 06 (UTC)

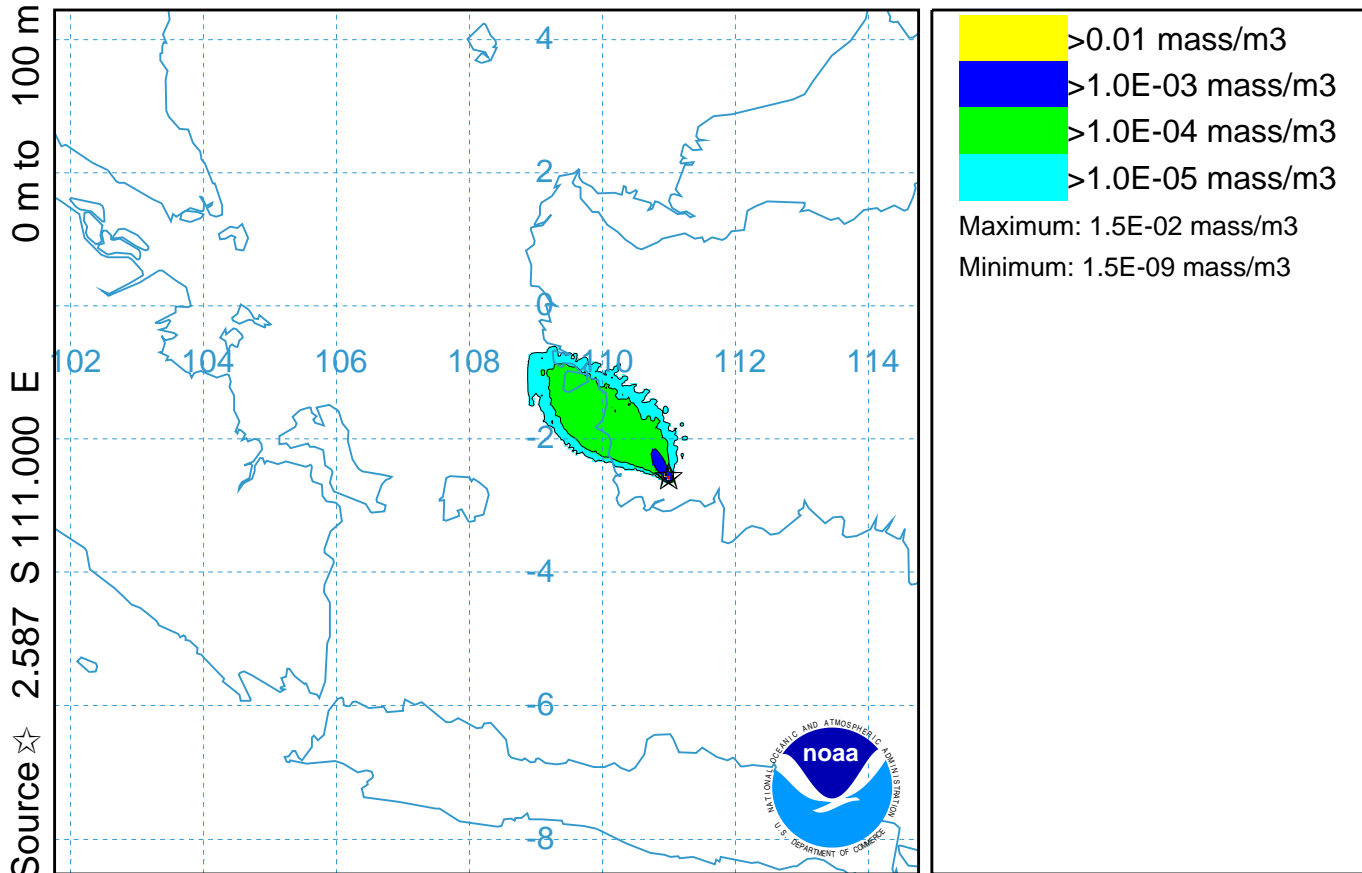


## GDAS METEOROLOGICAL DATA

Job ID: 21377 Job Start: Wed Nov 5 12:22:50 UTC 2014  
Release: lat.: -2.587000 lon.: 111.000000 Hgt: 0 to 100 m  
Pollutant: PM25 - Unspecified  
Release Quantity: 10000000000 mass Start: 06 10 15 14 0 Duration: 84 hrs, 0 m  
Pollutant Averaging/Integration Period: 12 hrs and 0 min  
Dry Deposition rate: 0.1 cm/s Wet Removal: None #Part: 94000  
Meteorology: 0000Z 15 Oct 2006 - GDAS1  
This is not a NOAA product. It was produced by: unknown

# NOAA HYSPLIT MODEL

Concentration (mass/m<sup>3</sup>) averaged between 0 m and 100 m  
Integrated from 0200 16 Oct to 1400 16 Oct 06 (UTC)  
PM25 Release started at 1400 15 Oct 06 (UTC)

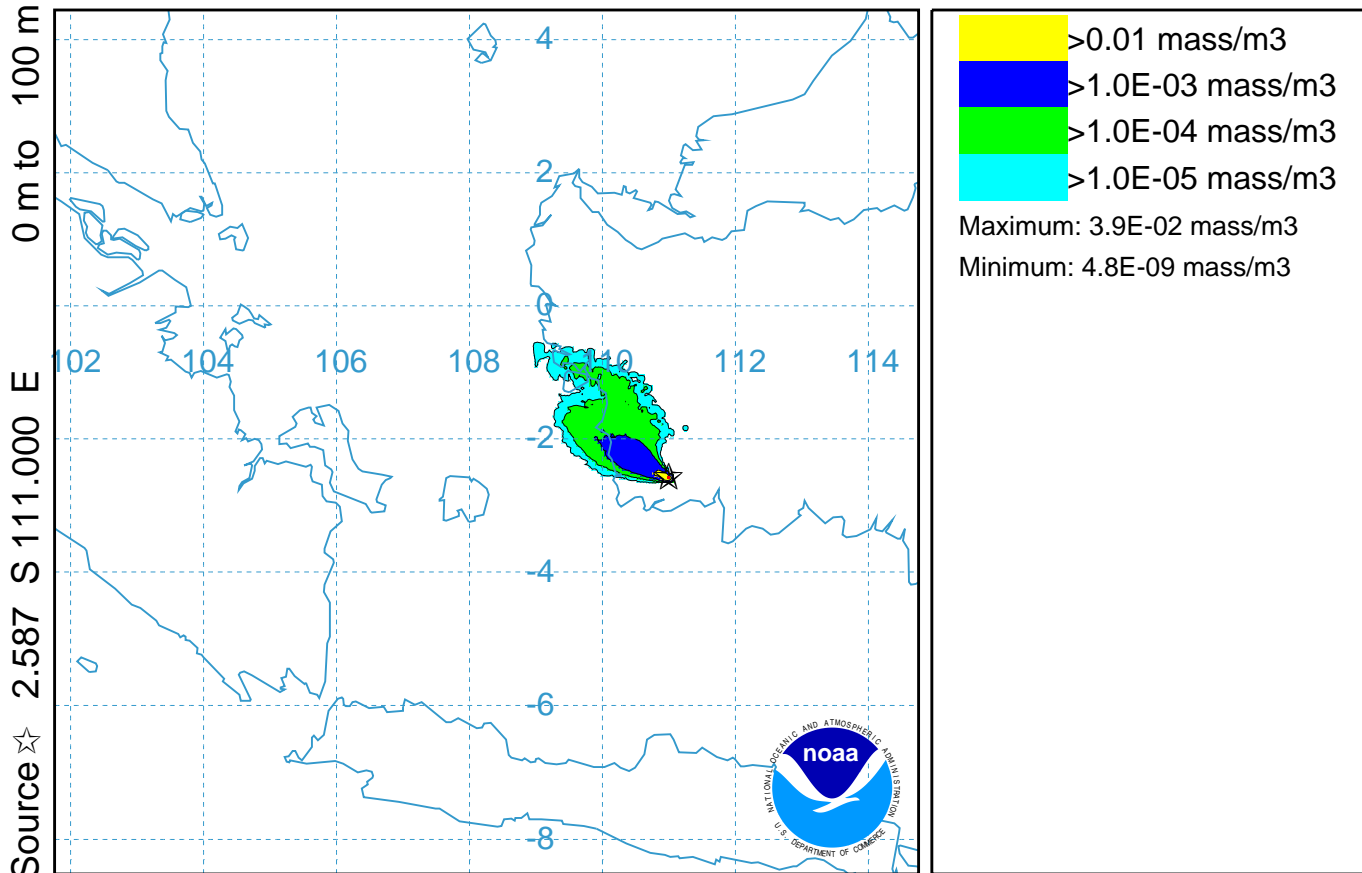


## GDAS METEOROLOGICAL DATA

Job ID: 21377 Job Start: Wed Nov 5 12:22:50 UTC 2014  
Release: lat.: -2.587000 lon.: 111.000000 Hgt: 0 to 100 m  
Pollutant: PM25 - Unspecified  
Release Quantity: 10000000000 mass Start: 06 10 15 14 0 Duration: 84 hrs, 0 m  
Pollutant Averaging/Integration Period: 12 hrs and 0 min  
Dry Deposition rate: 0.1 cm/s Wet Removal: None #Part: 94000  
Meteorology: 0000Z 15 Oct 2006 - GDAS1  
This is not a NOAA product. It was produced by: unknown

# NOAA HYSPLIT MODEL

Concentration (mass/m<sup>3</sup>) averaged between 0 m and 100 m  
Integrated from 1400 16 Oct to 0200 17 Oct 06 (UTC)  
PM25 Release started at 1400 15 Oct 06 (UTC)

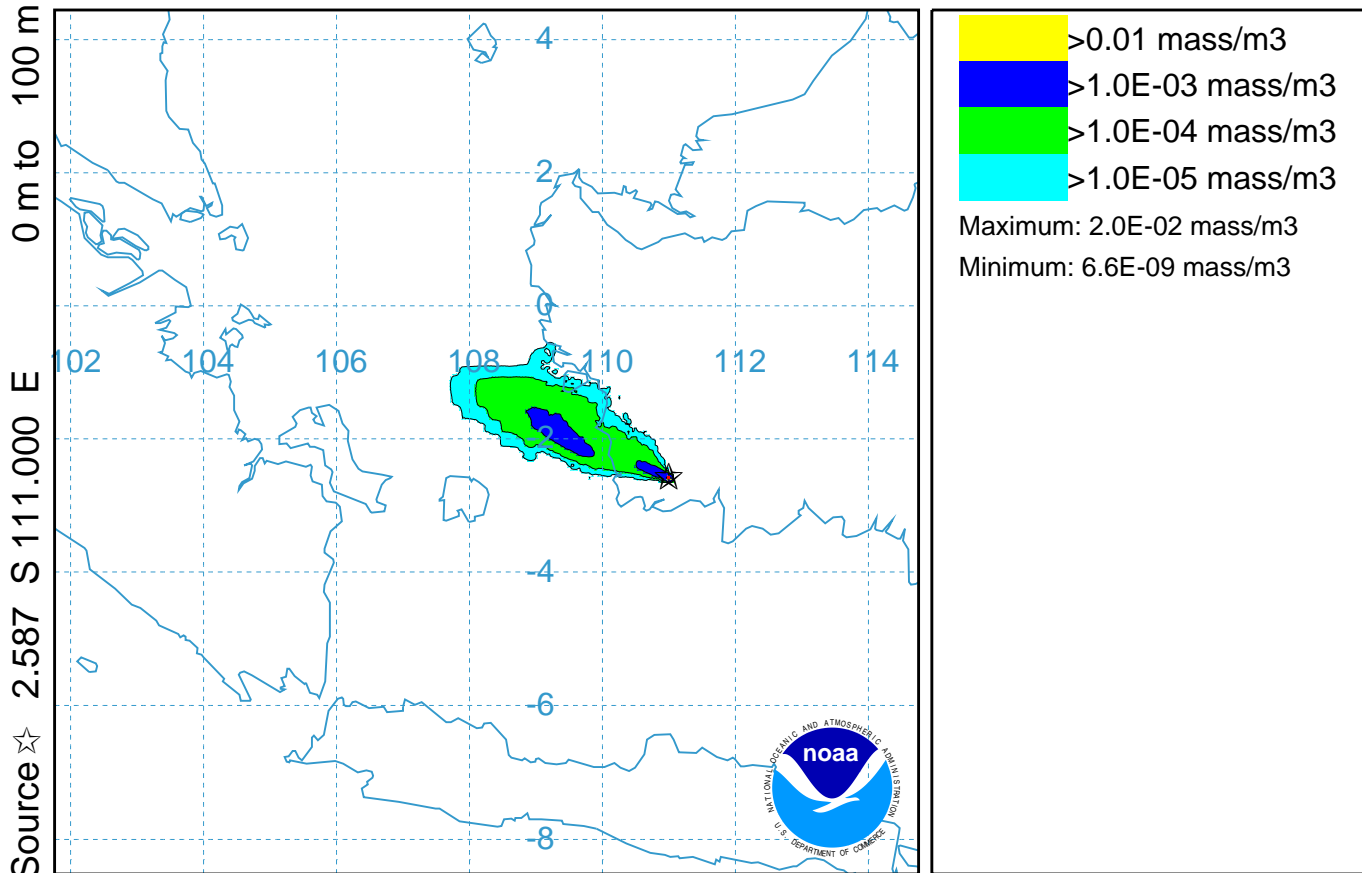


## GDAS METEOROLOGICAL DATA

Job ID: 21377 Job Start: Wed Nov 5 12:22:50 UTC 2014  
Release: lat.: -2.587000 lon.: 111.000000 Hgt: 0 to 100 m  
Pollutant: PM25 - Unspecified  
Release Quantity: 10000000000 mass Start: 06 10 15 14 0 Duration: 84 hrs, 0 m  
Pollutant Averaging/Integration Period: 12 hrs and 0 min  
Dry Deposition rate: 0.1 cm/s Wet Removal: None #Part: 94000  
Meteorology: 0000Z 15 Oct 2006 - GDAS1  
This is not a NOAA product. It was produced by: unknown

# NOAA HYSPLIT MODEL

Concentration (mass/m<sup>3</sup>) averaged between 0 m and 100 m  
Integrated from 0200 17 Oct to 1400 17 Oct 06 (UTC)  
PM25 Release started at 1400 15 Oct 06 (UTC)

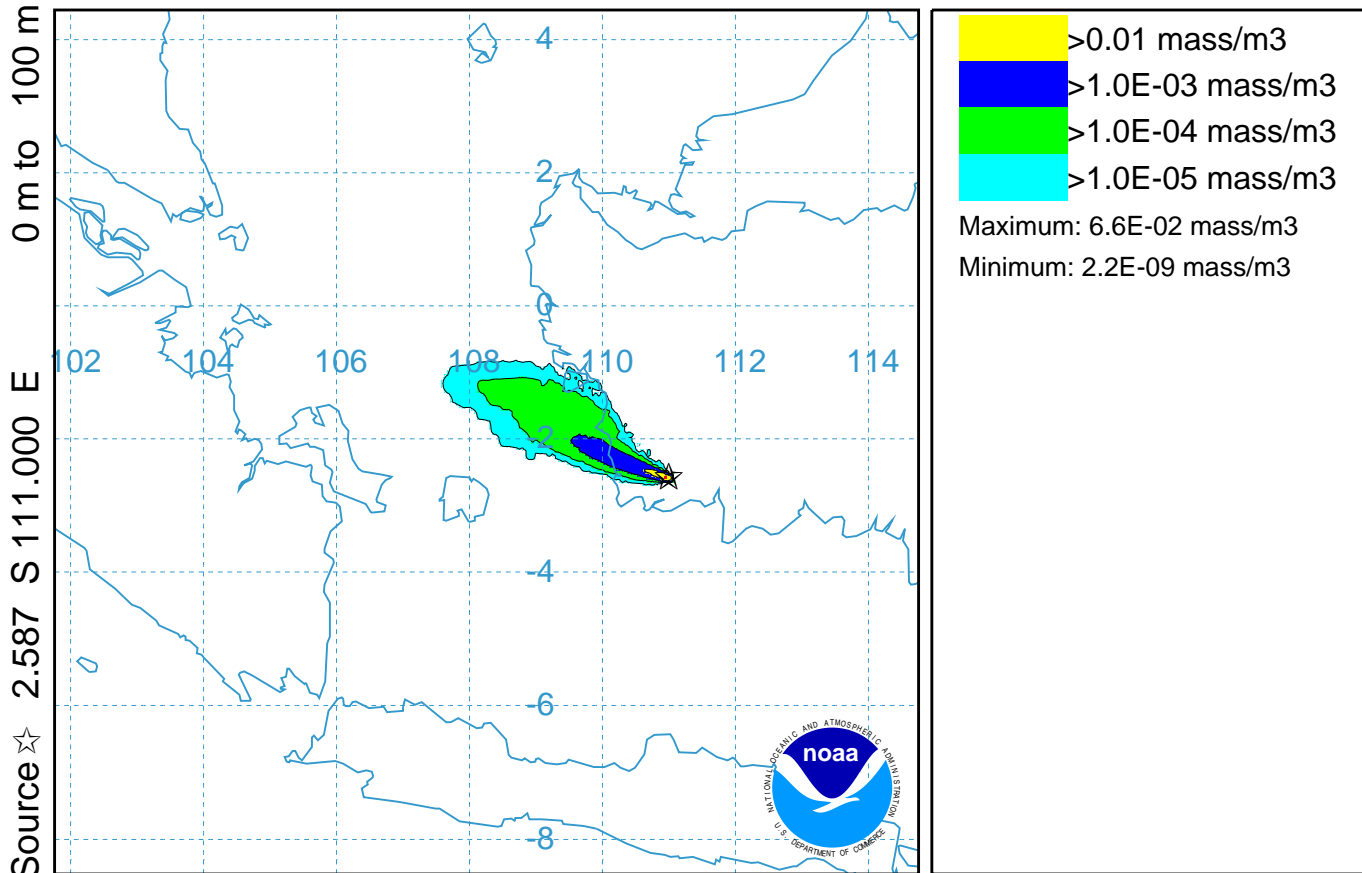


## GDAS METEOROLOGICAL DATA

Job ID: 21377 Job Start: Wed Nov 5 12:22:50 UTC 2014  
Release: lat.: -2.587000 lon.: 111.000000 Hgt: 0 to 100 m  
Pollutant: PM25 - Unspecified  
Release Quantity: 10000000000 mass Start: 06 10 15 14 0 Duration: 84 hrs, 0 m  
Pollutant Averaging/Integration Period: 12 hrs and 0 min  
Dry Deposition rate: 0.1 cm/s Wet Removal: None #Part: 94000  
Meteorology: 0000Z 15 Oct 2006 - GDAS1  
This is not a NOAA product. It was produced by: unknown

# NOAA HYSPLIT MODEL

Concentration (mass/m<sup>3</sup>) averaged between 0 m and 100 m  
Integrated from 1400 17 Oct to 0200 18 Oct 06 (UTC)  
PM25 Release started at 1400 15 Oct 06 (UTC)

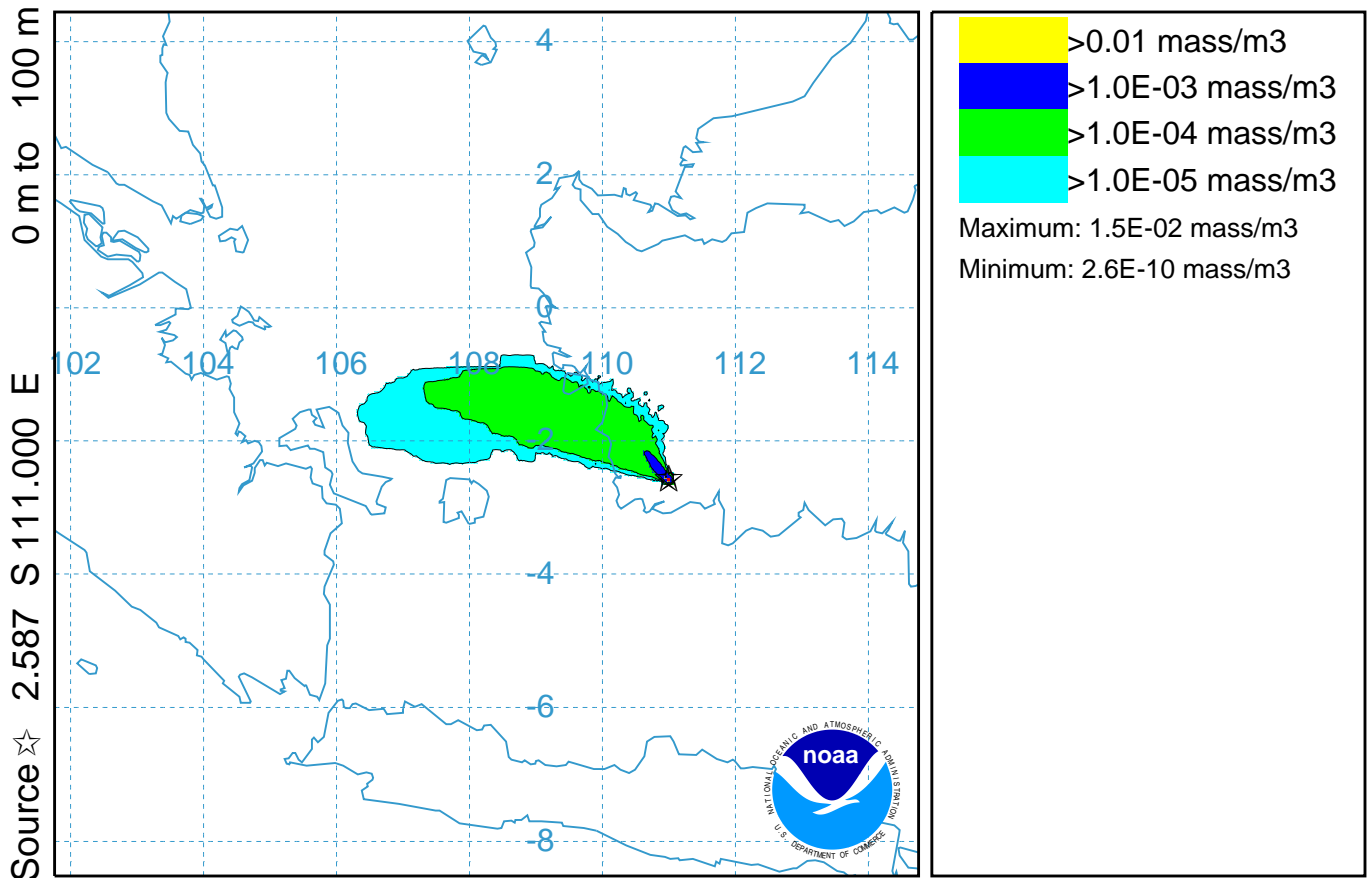


## GDAS METEOROLOGICAL DATA

Job ID: 21377 Job Start: Wed Nov 5 12:22:50 UTC 2014  
Release: lat.: -2.587000 lon.: 111.000000 Hgt: 0 to 100 m  
Pollutant: PM25 - Unspecified  
Release Quantity: 10000000000 mass Start: 06 10 15 14 0 Duration: 84 hrs, 0 m  
Pollutant Averaging/Integration Period: 12 hrs and 0 min  
Dry Deposition rate: 0.1 cm/s Wet Removal: None #Part: 94000  
Meteorology: 0000Z 15 Oct 2006 - GDAS1  
This is not a NOAA product. It was produced by: unknown

# NOAA HYSPLIT MODEL

Concentration (mass/m<sup>3</sup>) averaged between 0 m and 100 m  
Integrated from 0200 18 Oct to 1400 18 Oct 06 (UTC)  
PM25 Release started at 1400 15 Oct 06 (UTC)

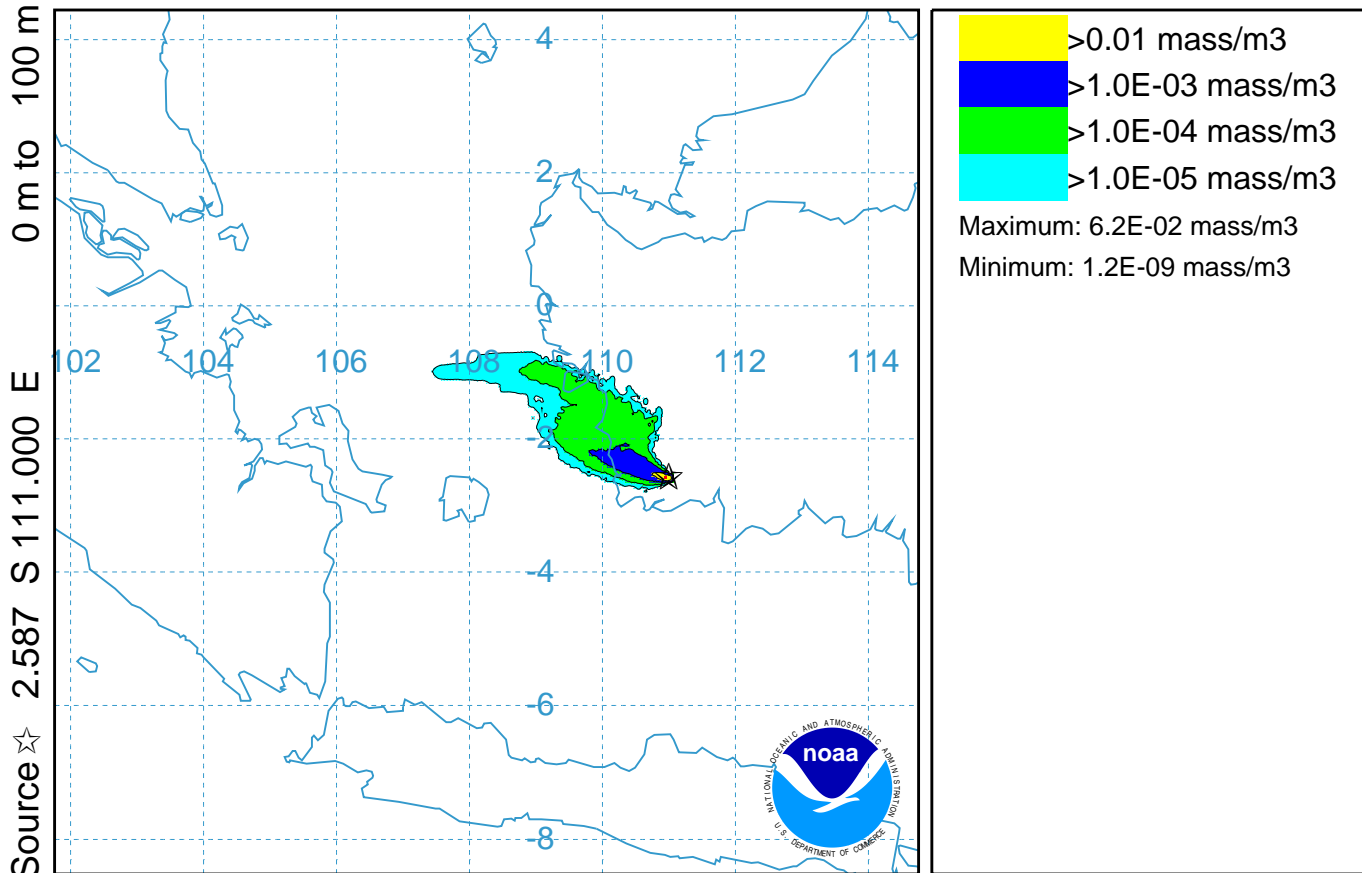


## GDAS METEOROLOGICAL DATA

Job ID: 21377 Job Start: Wed Nov 5 12:22:50 UTC 2014  
Release: lat.: -2.587000 lon.: 111.000000 Hgt: 0 to 100 m  
Pollutant: PM25 - Unspecified  
Release Quantity: 10000000000 mass Start: 06 10 15 14 0 Duration: 84 hrs, 0 m  
Pollutant Averaging/Integration Period: 12 hrs and 0 min  
Dry Deposition rate: 0.1 cm/s Wet Removal: None #Part: 94000  
Meteorology: 0000Z 15 Oct 2006 - GDAS1  
This is not a NOAA product. It was produced by: unknown

# NOAA HYSPLIT MODEL

Concentration (mass/m<sup>3</sup>) averaged between 0 m and 100 m  
Integrated from 1400 18 Oct to 0200 19 Oct 06 (UTC)  
PM25 Release started at 1400 15 Oct 06 (UTC)



## GDAS METEOROLOGICAL DATA

Job ID: 21377 Job Start: Wed Nov 5 12:22:50 UTC 2014  
Release: lat.: -2.587000 lon.: 111.000000 Hgt: 0 to 100 m  
Pollutant: PM25 - Unspecified  
Release Quantity: 10000000000 mass Start: 06 10 15 14 0 Duration: 84 hrs, 0 m  
Pollutant Averaging/Integration Period: 12 hrs and 0 min  
Dry Deposition rate: 0.1 cm/s Wet Removal: None #Part: 94000  
Meteorology: 0000Z 15 Oct 2006 - GDAS1  
This is not a NOAA product. It was produced by: unknown