

This discussion paper is/has been under review for the journal Atmospheric Chemistry and Physics (ACP). Please refer to the corresponding final paper in ACP if available.

Size distribution, mixing state and source apportionments of black carbon aerosols in London during winter time

D. Liu¹, J. D. Allan^{1,6}, D. E. Young¹, H. Coe¹, D. Beddows⁴, Z. L. Fleming², M. J. Flynn¹, M. W. Gallagher¹, R. M. Harrison^{4,7}, J. Lee³, A. S. H. Prevot⁵, J. W. Taylor¹, J. Yin⁴, P. I. Williams^{1,6}, and P. Zotter⁵

¹School of Earth, Atmospheric and Environmental Science, University of Manchester, Manchester, UK

²Department of Chemistry & National Centre for Atmospheric Science, University of Leicester, Leicester, UK

³Department of Chemistry & National Centre for Atmospheric Science, University of York, York, UK

⁴Division of Environmental Health and Risk Management, School of Geography, Earth and Environmental Sciences, University of Birmingham, Birmingham, UK

⁵Laboratory of Atmospheric Chemistry, Paul Scherrer Institute (PSI), 5232 Villigen PSI, Switzerland

⁶National Centre for Atmospheric Science, University of Manchester, Manchester, UK

⁷Department of Environmental Sciences/Center of Excellence in Environmental Studies, King Abdulaziz University, Jeddah, Saudi Arabia

16291

Received: 30 May 2014 – Accepted: 12 June 2014 – Published: 20 June 2014

Correspondence to: D. Liu (dantong.liu@manchester.ac.uk)

Published by Copernicus Publications on behalf of the European Geosciences Union.

Abstract

Black carbon aerosols (BC) at a London urban site were characterized in both winter and summer time 2012 during the Clean Air for London (ClearfLo) project. Positive matrix factorization (PMF) factors of organic aerosol mass spectra measured by a high resolution aerosol mass spectrometer (HR-AMS) showed traffic-dominant sources in summer but in winter the influence of additional non-traffic sources became more important, mainly from solid fuel sources (SF). Measurements using a single particle soot photometer (SP2, DMT), showed the traffic-dominant BC exhibited an almost uniform BC core size (D_c) distribution with very thin coating thickness throughout the detectable range of D_c . However the size distribution of D_c (project average mass median $D_c = 149 \pm 22$ nm in winter, and 120 ± 6 nm in summer) and BC coating thickness varied significantly in winter. A novel methodology was developed to attribute the BC number concentrations and mass abundances from traffic (BC_{tr}) and from SF (BC_{sf}), by using a 2-D histogram of the particle optical properties as a function of BC core size, as measured by the SP2. The BC_{tr} and BC_{sf} showed distinctly different D_c distributions and coating thicknesses, with BC_{sf} displaying larger D_c and larger coating thickness compared to BC_{tr} . BC particles from different sources were also apportioned by applying a multiple linear regression between the total BC mass and each AMS-PMF factor (BC-AMS-PMF method), and also attributed by applying the absorption spectral dependence of carbonaceous aerosols to 7-wavelength Aethalometer measurements (Aethalometer method).

Air masses that originated from westerly (W), southeasterly (SE), or easterly (E) sectors showed BC_{sf} fractions that ranged from low to high, and whose mass median D_c values were 137 ± 10 nm, 143 ± 11 nm, and 169 ± 29 nm respectively. The corresponding bulk relative coating thickness of BC (coated particle size/BC core – D_p/D_c) for these same sectors was 1.28 ± 0.07 , 1.45 ± 0.16 , and 1.65 ± 0.19 . For W, SE and E air masses, the number fraction of BC_{sf} ranged from $6 \pm 2\%$ to $11 \pm 5\%$ to $18 \pm 10\%$ respectively, but importantly the larger BC core sizes lead to an increased fraction of

16293

BC_{sf} in terms of mass than number (for W–SE–E air masses, the BC_{sf} mass fractions ranged from $16 \pm 6\%$ – $24 \pm 10\%$ – $39 \pm 14\%$ respectively). An increased fraction of non-BC particles (particles that did not contain a BC core) was also observed when SF sources were more significant. The BC mass attribution by the SP2 method agreed well with the BC-AMS-PMF multiple linear regression method (BC-AMS-PMF : SP2 ratio = 1.05, $r^2 = 0.80$) over the entire experimental period. Good agreement was found between BC_{sf} attributed with the Aethalometer model and the SP2. However, the assumed Absorption Ångström Exponent (α_{wb}) had to be changed according to the different air mass sectors to yield the best comparison with the SP2. This could be due to influences of fuel type or burn phase.

1 Introduction

Increased anthropogenic emissions into the atmosphere have led to severe air quality issues, especially for urbanized megacities with high population densities. Understanding, identifying and characterising the sources of air pollution and their effects on surrounding areas, is important for validating environmental pollution control policies, as well as for climate radiative forcing assessment at local and global scales (Lawrence et al., 2007). Aerosol emissions have been widely recognized as having adverse effects on the environment, the hydrological cycle, support ecosystems and human health of the exposed population (Gurjar et al., 2010). The Greater London urban area is the most populated conurbation in Europe and covers an area of 1738 km^2 . The Clean Air for London (ClearfLo) campaign was conducted during 2012 with two intensive observation periods (IOPs), one in winter and one in summer, to investigate the range of pollutant sources to which the London population are exposed to and to provide comprehensive aerosol and trace gas composition data for tackling air quality issues.

Environmental regulation has targeting emissions from fossil fuel combustion by transport, power plants and a variety of industrial activities. However residential solid fuel burning for space heating purposes (SF, such as coal or wood burning) has re-

16294

ceived less attention in terms of enforcement of regulations in recent years. There are a growing number of studies (especially in the rest of Europe) that highlight the importance of residential burning and their contribution to particulate matter (PM) loadings, especially during winter time when space heating activities are high and boundary layer mixing is suppressed. These studies examined a variety of environments including rural sites, alpine valleys, as well as urban sites across mid-western Europe (Crippa et al., 2013), including the following: Switzerland (Szidat et al., 2007; Sandradewi et al., 2008; Herich et al., 2011), UK (Allan et al., 2010; Liu et al., 2011; Harrison et al., 2012a), France (Favez et al., 2010; Healy et al., 2012; Laborde et al., 2013), Austria (Caseiro et al., 2009), Norway (Yttri et al., 2009) and Ireland (Dall'Osto et al., 2013). Organic mass fractions in sub-micron aerosols contributed by the SF sources reported in these studies ranged from 15–50 %, consistently highlighting the importance of wood burning as a source contribution during winter (Herich et al., 2014).

These studies aimed to evaluate SF source influences through a variety of receptor-based source apportionment methodologies. A widely accepted method is to use a single SF tracer, such as soluble potassium or levoglucosan (Puxbaum et al., 2007), identified by higher organic carbon fraction compared to elemental carbon (OC/EC), or by radiocarbon measurements, which are used to separate modern non-fossil ^{14}C and fossil particulate carbon (Szidat et al., 2007). Site receptor models are widely utilized for source apportionment (Viana et al., 2008), and linearly assign several identified source factor profiles to the measured total mass concentration, speciated chemical composition and some other undetermined additive properties in a time series. Depending on whether the source profiles are assumed a priori, the receptor models can be mainly classified as relying on the methodologies of chemical mass balance (CMB) and factor analysis (FA). The former requires prior knowledge of source profiles whereas the latter determines the number and characteristics of the sources a posteriori. CMB has been commonly applied to offline analysis (e.g. Chow et al., 2007), while FA has been applied to Aerodyne Aerosol Mass Spectrometer (AMS) organic mass spectral data to attribute sources (Zhang et al., 2005; Lanz et al., 2010). Positive matrix factoriza-

16295

tion (PMF, Paatero, 1997) analysis is often applied to AMS organic matrices to evaluate sources under a variety of environments, e.g. using the PMF Evaluation Toolkit (PET), introduced by Ulbrich et al. (2009). In addition, the multi-linear engine (ME-2) (Canonaco et al., 2013) can serve as a compromise between the CMB and FA (Lanz et al., 2008). Other methodologies include source attribution based on the spectral dependence of light absorption of brown carbon using mult λ wavelength Aethalometer instruments (Sandradewi et al., 2008). This has become popular, as the measurement is suited to routine monitoring applications.

The methodologies above have mostly focused on the organic carbon content of SF sources, however the information of source attribution for black carbon aerosols (BC) is sparse, due to the difficulties in measuring the refractory component in the aerosols. Given BC is the principal source of particulate light absorption in the atmosphere (Bond et al., 2013) with adverse effects on human health (e.g. Jansen et al., 2005; Mordukhovich et al., 2009), it is of great importance to understand BC sources and how its properties are dictated by those sources. The study presented here uses data from the North Kensington site in London during the ClearfLo experiment campaign conducted in 2012. The physical properties of BC were characterized in detail by a single particle soot photometer (SP2, DMT). A source apportionment methodology has been developed based on the measured BC size distribution and mixing state. It is the first time that BC sources are quantitatively attributed directly from their physical properties in this way and this apportionment is used to evaluate the estimates from the other methodologies. This study provides detailed insights on source-specific BC properties and these properties have a significant impact on both air quality and climate radiative forcing.

2 Experimental site and data analysis

This study reports continuous measurements from the Clean Air for London (ClearfLo) experimental campaign which is described by Bohnenstengel et al. (2013) and (<http://>

16296

//www.clearflo.ac.uk) for two intensive observation periods (IOPs) during 2012. Both IOPs lasted for four weeks and were conducted in winter (11 January–8 February) and summer (18 July–22 August) respectively; the latter IOP occurring during the period of the London 2012 Olympic Games. The experimental site was located in the grounds of a school in North Kensington, which is representative of a typical London urban background environment and also the site of a DEFRA Automated Urban and Rural Network (AURN) monitoring site (<http://uk-air.defra.gov.uk/networks/>). The London urban environment in winter is significantly influenced by solid fuel burning sources, such as wood burning for residential heating (Allan et al., 2010). In contrast vehicle emissions form the majority of the BC source in summer.

The scientific objective of this study was to investigate how the combined sources during the winter season influenced the BC physical properties, and to compare and contrast the different methods used to quantitatively apportion the BC from different sources and provide a critical assessment of their accuracy and reliability.

2.1 The Single Particle Soot Photometer

The physical properties of individual refractory BC particles (rBC, Petzold et al., 2013) were characterized using a single particle soot photometer (SP2) manufactured by DMT Inc. The instrument operation and data interpretation procedures of the specific Manchester SP2 instrument have been described elsewhere (Liu et al., 2010; McMeeking et al., 2010). Briefly, the SP2 uses an intra-cavity Nd:YAG laser at 1064 nm to determine the optical size of a single particle by light scattering and, if material within the particle absorbs at the laser wavelength, the refractory mass of the particle is quantified by detection of the laser induced incandescence radiation. In the atmosphere the main light-absorbing component at this wavelength is BC. The SP2 incandescence signal was used to obtain single particle rBC mass after calibration using Aquadag sample black carbon particle standards (Aqueous Deflocculated Acheson Graphite, manufactured by Acheson Inc., USA). It has however been shown that BC particle standards generated from Aquadag do not represent ambient BC and a further correction of 0.75

16297

is required (Moteki and Kondo, 2010; Laborde et al., 2012b; Baumgardner et al., 2012). The measured rBC mass is converted to a mass equivalent diameter ($\rho = 1.8 \text{ g cm}^{-3}$ for atmospheric BC (Bond and Bergstrom, 2006)), which is termed the BC core diameter (D_c), which is the diameter of a sphere containing the same mass of rBC as measured in the particle. Any measured particle with a detectable incandescence signal is referred to as a BC particle, whereas a particle which only exhibits a scattering signal is termed a non-BC particle. The total rBC mass loading is reported as the sum of all detected single particle rBC masses. **Because a certain amount of rBC mass exists at core sizes too small to be detected, this missing mass is predicted based on the extrapolation of a lognormal fit on the D_c mass distribution.** In this study, the extrapolated mass ranged from 1–8% depending on the D_c distribution. All of the concentrations reported are at STP volumes (273.15 K, 1013.25 mbar).

The scattering signal of a BC particle will be distorted during its transit through the laser beam because of the mass loss of a BC particle by laser heating, thus the leading edge scattering signal before the onset of volatilisation is extrapolated to reconstruct the scattering signal of a BC-containing particle (Gao et al., 2007). The technical details for the methodology of leading edge only (LEO) fitting as used in this study can be found in the Appendix A. The optical diameter of a BC particle or the coated BC size (D_p) is derived by inputting the LEO fitted scattering signal and BC core size into Mie calculations, and using a core refractive index ($m = 2.26 - 1.26i$) (Moteki et al., 2010) and a coating refractive index $m = 1.5 + 0i$ (Sect. 3.4). The relative or absolute coating thickness of a BC particle is calculated as D_p/D_c and $(D_p - D_c)/2$ respectively. The optical size of a non-BC particle is again calculated using Mie theory using $m = 1.5 + 0i$, thus the optical sizes of coated BC and non-BC are directly comparable using the analysis here. Given the coating thickness for individual particles is D_c size dependent, a bulk coating thickness is evaluated as the cubed root of the total volume of the BC

particles divided by the total volume of the BC cores, as expressed as Eq. (1):

$$\frac{D_p}{D_c} = \left(\frac{\sum_i D_{p,i}^3}{\sum_i D_{c,i}^3} \right)^{\frac{1}{3}}, \quad (1)$$

where D_p and D_c are the coated BC diameter and BC core diameters respectively, i denotes the i th single BC particle. The volume weighted bulk D_p/D_c is considered to be a representative diagnostic for the overall mixing state of the entire population of BC particles.

2.2 The HR-ToF-AMS and PMF analysis

The chemical composition of non-refractory PM_{10} species were measured by the Aerodyne high-resolution time-of-flight aerosol mass spectrometer (HR-ToF-AMS, hereafter AMS), which operated in the standard configuration at NK, taking both MS and PToF data. Further details will be presented in Young et al. (2014) but a brief description relevant to this work is given here. A detailed description of the instrument can be found elsewhere (DeCarlo et al., 2006; Canagaratna et al., 2007). As the AMS sampled in an alternating sequence with other black carbon and aerosol volatility measurements, 5 min averaged ambient samples in “V mode” were only obtained every 30 min. A time and composition dependent collection efficiency (CE) was applied to the data based on the algorithm by Middlebrook et al. (2012) and was validated by comparing the volume concentration with that of the DMPS measurements. The AMS was calibrated using 350 nm mono-disperse ammonium nitrate particles.

Positive matrix factorization (PMF) (Paatero, 1997) was performed on the organic data matrix from the “V-mode” data, permitting analysis of peaks according to elemental composition (Sun et al., 2011). While the “W-mode” data could in theory provide a more detailed analysis, too low a fraction of peaks were consistently fit by PIKA (due to the lower signal-to-noise) to permit a meaningful PMF analysis. A front-end for using the related ME-2 algorithm (Lanz et al., 2008; Paatero, 1999) is currently available

16299

(Canonaco et al., 2013), which in some circumstances can produce more accurate data. However, the benefits of this approach are most significant when applied to unit mass resolution (UMR) data (from the Q-AMS, C-TOF-AMS and ACSM), where key peaks (such as $C_3H_7^+$ and $C_2OH_3^+$) cannot be explicitly separated and therefore contribute to rotational ambiguity under normal PMF analysis. As this is not an issue with the HR-TOF-AMS data presented here, it was decided that it would be most appropriate to use PMF, so the results would not be influenced by a priori assumptions regarding the aerosol’s behaviour.

The data were preprocessed in the recommended method of practice as described by Ulbrich et al. (2009). Isotopes were not included in the organic matrix and the peaks at m/z 30 and 46 were removed as they were not deemed to have been successfully retrieved using PIKA. Five factors were identified: oxygenated OA (OOA), cooking OA (COA), hydrocarbon-like OA (HOA) and two solid fuel OA (SFOA 1 and SFOA 2), which had the appearance of “split” factors. While the 4-factor solution (which contained only one SFOA factor) seemed to be valid, the 5-factor solution gave improvements to diagnostics (e.g. Q) and correlations with ancillary data (e.g. NO_x , BC and CO), so it was deemed that the 5-factor solution with the split SFOA factors was the most appropriate. The two SFOA factors had distinctly different amounts of hydrocarbon and oxygen-containing peaks in their mass spectra and could be linked to the ratio of levoglucosan to potassium (Young et al., 2014). It is possible that these two factors represent changes in composition with burn phase, although fuel type cannot be ruled out explicitly. However, it should be noted that Yin et al. (2014) found no relationship between this split and the relative amounts of coal and wood burning. The 6-factor solution was discarded due to its significant dependency on initialisation seed (unlike the solutions with 5 or fewer factors) and as well as the production of a factor that did not appear physically meaningful.

2.3 The Aethalometer

A 7-wavelength Aethalometer (MAGEE Scientific, model AE31) was used to measure the mass concentration of light absorbing black carbon particles. In this instrument aerosol particles are collected onto a quartz fibre filter and the resulting light attenuation at $\lambda = 370, 470, 520, 590, 660, 880,$ and 950 nm is measured. The measured data was corrected for multiple scattering of the light beam within the unloaded filter matrix (C value) and for the “shadowing effect” (f value) caused by the already deposited particles which may “shadow” the freshly-collected ones so that the new particles are not exposed to the same intensity of light, and do not make the same contribution to the attenuation per unit mass. The approach proposed by Weingartner et al. (2003) using an f value of 1.2 and a C value of 3.095 was used to correct the data. The C value was calculated comparing the uncorrected Aethalometer data with a Thermo Scientific Multi Angle Absorption Photometer (MAAP) using only data with attenuation values smaller than 10 (Collaud Coen et al., 2010) where no shadowing effect is expected.

The Absorption Ångström exponent, α , is then calculated according to

$$\alpha = \ln(b_{\text{abs},\lambda_1}/b_{\text{abs},\lambda_2})/\ln(\lambda_2/\lambda_1),$$

where absorption, b_{abs} , in the IR at 950 nm is assumed to be representative for BC (or elemental carbon) whilst 470 nm in the UV indicates the presence of aromatic organic absorbing compounds. The Absorption Ångström exponent was calculated here using the absorption measured at wavelengths $\lambda_1 = 470$ and $\lambda_2 = 950$ nm (e.g. Sandradewi et al., 2008). This calculation was repeated at wavelengths $\lambda = 370$ and 880 nm for the purpose of an examination of the two- λ Aethalometer measurement which is routinely applied to UK monitoring networks. The $\alpha_{470-950\text{nm}}$ was found to agree well with that calculated using the usual $\alpha_{370-880\text{nm}}$ to within $\pm 5\%$.

The BC mass in this study is reported as the refractory BC (rBC, Petzold et al., 2013) mass measured by the SP2 instrument, but not the Aethalometer derived BC mass, i.e. from directly measured absorption coefficient (b_{abs} , in Mm^{-1}) to BC mass (in

16301

$\mu\text{g m}^{-3}$) by assuming a mass absorption cross section (MAC, in $\text{m}^2 \text{g}^{-1}$). Only b_{abs} from Aethalometer measurement is used, given the discussion of MAC value that should be used is out of scope of this paper.

2.4 The potassium ion and levoglucosan measurements

A small portion of the Digital filter samples was extracted with 10 mL de-ionised water by undergoing 40 min mechanical agitation to ensure thorough removal of the water-soluble aerosol. The resulting solutions were filtered and analysed for ion potassium using a DIONEX ICS-2000 ion chromatography system coupled with a gradient pump, which generates one eluent from two different solutions, de-ionised water and concentrated potassium hydroxide solution. The sample concentrations were calibrated with a series of mixed standards of known concentration (0.01–10 ppm).

A method similar to that in Yin et al. (2010) and Wagener et al. (2012) has been applied but modified for the detection of levoglucosan. In brief, one quarter of the Digital quartz fibre filter sample was spiked with an internal standard (IS), methyl-beta-D-xylopyranoside (from Sigma-Aldrich Ltd) and extracted with DCM and methanol (2 : 1) under mild sonication at room temperature. The combined extract was filtered/dried and concentrated down to nearly dryness and derivatised by addition of N,O-bis(trimethylsilyl)trifluoroacetamide plus 1% trimethylchlorosilane (BSTFA + 1% TMCS) and pyridine under 70°C for 1 h, and finally cooled in a desiccator. The quantification was based on the IS and a six point authentic standard calibration curve, with selected ion monitoring (SIM) mode on an Agilent GC-MS instrument. The ions monitored were 204 and 217 for the IS and 204, 217 and 333 for levoglucosan.

2.5 The gas measurements

CO measurements were provided with an Aerolaser AL 5002 UV fluorescence instrument which was calibrated using a 200 ppb CO standard provided by Air Products and certified to NPL standards. NO and NO₂ data were provided by an Air Quality De-

16302

sign custom built high sensitivity Chemiluminescence analyser with a Blue Light NO₂ converter. The NO instrument was calibrated using a 5 ppm NO in nitrogen standard (supplied by BOC) - diluted to 20 ppb using scrubbed zero air (BOC BTCA 178). The NO₂ calibration was provided by gas phase titration of the NO standard with O₃. NO_y was also measured using a TEI 42i TL NO analyser with a Molybdenum converter.

2.6 Meteorology and dispersion modelling

In order to identify the origin of air masses and estimate transit times over possible source regions, the UK Met Office Numerical Atmospheric-dispersion Modelling Environment (NAME) dispersion model (Jones et al., 2007) was run using Unified Model (UM) reanalysis meteorological data to generate hourly surface source footprints that describe the origin and pathways of air arriving at the site after 1, 2 or 3 days' transport in a similar manner to Liu et al., (2013). The "1 day footprint", defined as the location where air was found within 100 m of the surface and hence directly influenced by local sources, was chosen to represent the urban environment representative of this study and its immediate local/regional sources rather than the long range transport influences that would be characterised by over 24 h. Air masses were categorized according to the main regions within the domain of passage (i.e. over the Benelux, North France, Atlantic, North Sea etc.) for the 1 day footprints (Fig. 1a) according to the technique described in Fleming et al. (2012). The contributions, based on the accumulated time the air mass had spent during the 1 day journey to the station, from each region were calculated as fractions of all the regions for each 3 hourly period. The air masses arriving at the London site can have a variety of influences and this method highlights the periods that are influenced by several regions or just one region in particular. The time periods where the air mass fraction was greater than the 40th percentile of that region's average air mass fraction were deemed to be strongly influenced by that region (Liu et al., 2013), but there were times when there were 2 or even 3 strongly influenced regions as shown in Fig. 2f.

16303

Air masses were classified into broader sectors (Fig. 2f): westerly air masses (W) is a combination of air types with footprints from the Atlantic, Ireland and Wales, when the air mass was largely influenced by the relatively cleaner Atlantic ocean sector; easterly air masses (E) when air had passed over the north sea and Benelux area; south easterly air masses (SE) which represent air masses transported over north France, the English Channel and the southeast UK. The typical footprints of W, E, and SE air masses are shown in Fig. 1b. As Fig. 2f shows, clear shifts in air masses occurred at midday on the 18 January and the afternoon of 28 January when winds shifted from the SE to W and then back to E. The E and SE air mass assignments overlapped for the first few days between 15 January–17 January, due to more complex meteorological conditions which resulted in air masses arriving from a variety of different sectors and which were not uniquely classifiable. The W air mass, which brought warmer Atlantic air, generally corresponded with higher ambient temperatures ($8.0 \pm 2.7^\circ\text{C}$), whereas the E air mass, originating from continental Europe, led to colder temperatures ($1.8 \pm 2.1^\circ\text{C}$), less cloud cover and thus allowed stronger nocturnal inversions to develop.

3 Results

3.1 Overview

Consistent with the view that westerly air masses will bring relatively cleaner air from the Atlantic sector whereas easterly air masses will have spent significant time over continental Europe, particularly Benelux and Northern France, aerosol loadings were lower in W air masses, whilst enhanced mass loadings were observed for all aerosol components when air came from the east (Table 1). This highlights the clear regional influences on these pollutants at the London urban site, consistent with the synoptic influences of pollutants reported e.g. in Manchester, UK (Martin et al., 2011) and in Harwell (Charron et al., 2013). Harrison et al., 2012b also showed an increased PM_{2.5} in the UK when easterly wind associated with air masses from the European main-

16304

land. The site was also heavily influenced by local sources. In particular due to higher ambient temperature during westerly air masses (8.0 ± 2.7 °C), residential heating activities including from solid fuel burning were reduced and so local emissions were generally lower compared to when easterly air masses prevailed. The lower ambient temperatures during easterly air masses (1.8 ± 2.1 °C) also lead to reduced boundary layer depth, further increasing the concentrations of local pollutants. The BC-related properties for these periods will be discussed in more detail in Sect. 3.3.

3.2 BC source attribution by Aethalometer

BC mass was attributed between traffic (BC_{tr}) and wood burning sources (BC_{wb}) by linear application of the constant Absorption Ångström Exponent (α) for pure traffic (α_{tr}) and pure wood burning (α_{wb}) to the Aethalometer measured α at λ 470 and 950 nm (Sandradewi et al., 2008), according to Eqs. (2a)–(2d):

$$b_{abs, total, \lambda} = b_{abs, tr, \lambda} + b_{abs, wb, \lambda} \quad (2a)$$

$$\frac{b_{abs, tr, 470 nm}}{b_{abs, tr, 950 nm}} = \left(\frac{470}{950} \right)^{-\alpha_{tr}} \quad (2b)$$

$$\frac{b_{abs, wb, 470 nm}}{b_{abs, wb, 950 nm}} = \left(\frac{470}{950} \right)^{-\alpha_{wb}} \quad (2c)$$

$$BC_{wb} = BC_{total} \times \frac{b_{abs, wb, 950 nm}}{b_{abs, total, 950 nm}} \quad (2d)$$

The Aethalometer attribution method is based on the higher absorption λ dependence of carbonaceous aerosols produced from wood burning sources compared to the fossil fuel combustion sources. A significant fraction of absorbing organic carbon aerosols (known as the brown carbon) produced from wood burning have an enhanced light absorption at shorter λ ; whereas the absorption of BC is dominant at longer λ . The key factors for the accuracy of the model is to assign appropriate α values for the pure

16305

traffic and pure wood burning sources; otherwise the uncertainties of the assumed α will lead to considerable variations of the model outputs (Harrison et al., 2012a, 2013).

In this study, the value of α_{tr} is obtained by the project average of the directly measured α (Herich et al., 2011) during the summer IOP when the site was dominated by traffic BC sources ($\alpha_{tr} = 1.04$). The α of wood burning has been shown to exhibit a large range depending on the burning conditions, types of wood as well as aging of the biomass smoke (Saleh et al., 2013 and references therein). Since it has been impossible to obtain the real α_{wb} value for the London urban environment, the approach of this study is to set $\alpha_{wb} = 1.9$ at a first instance according to Sandradewi et al. (2008), but this value will be further evaluated by externally comparing with the other mass attribution methods.

3.3 BC source attribution by BC mass and AMS-PMF

The AMS-PMF results are shown in Fig. 3a. These were consistent with previous observations during UK winter time (Allan et al., 2010; Liu et al., 2011), where the organic aerosol loadings showed contributions from both traffic sources (HOA) and solid fuel burning (SFOA), the latter which is thought to be due to a combination of wood and coal burning for residential space heating. In this study, the contribution from solid fuel burning sources is split into SFOA I and SFOA II (Sect. 2.2). Given both solid fuel burning and traffic sources can contribute significantly to BC mass (f_{BC}), a multiple linear regression analysis was used to quantify each contributing factor, as described in Eq. (3). This is similar to the approach described by Liu et al., (2011) where the SFOA_{total} component, described in Eq. (3), is the sum of (SFOA I) and (SFOA II). The modelled results are shown in Table 2a.

$$f_{BC}(HOA, SFOA_{total}) = a(HOA) + b(SFOA_{total}) + c \quad (3)$$

The regression results show that the BC mass in W air masses is dominated by the traffic source because of the large BC/HOA derivative ($a = 1.25$). The BC/HOA mass ratio for E and SE air masses was similar but reduced ($a = 0.98$ – 1.08). It should be

16306

noted that there is a high background (c) for SE air masses which will lead to large uncertainty when determining the BC/SFOA_{total} derivative (b). A regression forcing the background to zero was also tested ($c = 0$), however this made little difference to the BC/SFOA_{total} in W or E air masses, although the coefficient b for SE air masses was increased significantly because of the added higher background. The BC/HOA emission factor a in the London urban environment is higher than that observed in Paris suburban environment ($a = 0.84$) (Laborde et al., 2013) and even higher than at a rural elevated site Holme Moss, which was downwind of Manchester and surrounding settlements ($a = 0.62 \pm 0.014$) (Liu et al., 2011). The BC/HOA tends to have a decreasing trend when away from the traffic sources.

The coefficient of solid fuel burning influenced factor (b) was found to vary from site to site, e.g. as reported in Liu et al. (2011), b was 0.51 ± 0.009 , while Laborde et al. (2013) suggest b is close to zero (0.002 ± 0.008). The variation in the mass ratio BC/SFOA_{total} suggests the influence of additional complex SF sources but nevertheless a higher BC/SFOA_{total} ratio will suggest a larger influence of SF, e.g. the elevated rural site, Holme Moss, was more strongly influenced by solid fuel burning from surrounding villages, while London is less so because of the proximity of the prevailing urban environment.

It is postulated that different air masses may have been influenced by different sources of solid fuel burning, and this is further examined using a tri-linear regression by dividing the solid fuel burning sector into more detailed SFOA I and SFOA II, factors as expressed in Eq. (4):

$$f_{BC}(\text{HOA}, \text{SFOA I}, \text{SFOA II}) = i(\text{HOA}) + j(\text{SFOA I}) + k(\text{SFOA II}) + l \quad (4)$$

The retrieved mass ratio BC/SFOA II (k) suggests SFOAII sector significantly influences both the W and E air masses (Table 2b), but interestingly for E air masses a higher BC/SFOA I is found ($j = 0.33$), whereas the SFOAI sector influence in W air masses is low ($j = 0.09$). This suggests the prevalence of BC from the SFOAII for both W and E air masses, however an additional SF source appears to be only present

16307

during E air masses. This additional solid fuel burning is of a similar magnitude to the SFOAII source. If we assume that the towns and villages surrounding London use similar space heating fuel sources, this additional solid fuel burning source will have arrived at the site through regional transport. Given the split of SFOA could be explained as different burn phases (Young et al., 2014), the SFOA from W air mass may have been dominant by one burn phase. The tri-linear regression however does not improve the background level for SE air masses, but the background forcing-zero regression suggest SFOA I ($j = 0.21$) and SFOA II ($k = 0.27$) both significantly influence the measurement site. However, the high background with SE air masses may be due to the complex meteorological conditions or possible multiple sources that cannot be well resolved by the BC-AMS-PMF analysis. The BC from solid fuel burning (BC_{sf}) mass fraction is calculated as the fraction of $j(\text{SFOA I}) + k(\text{SFOA II})$ from the tri-linear regression, as Fig. 3c shows.

3.4 BC physical properties and source attribution by SP2

The coating thickness for a given single BC particle is obtained by using an inverse Mie scattering model in conjunction with the BC core size to obtain the equivalent diameter of a sphere with the BC assumed to be a concentric spherical inclusion and with the same scattering cross section as the measured particle after LEO fitting, as described by Taylor et al. (2014). The first step of this approach is to validate the BC core refractive index (m) against ambient particles at the SP2 incident light wavelength ($\lambda = 1064$ nm). The optimum value of m for BC core was validated by comparing the measured scattering signal with the modelled scattering of the uncoated BC core for the particles after passing through a thermo-denuder (TD, Huffman et al., 2008) at a temperature of 250°C , and by assuming any coatings associated with BC particles were subsequently removed, i.e. the scattering signal of these assumed uncoated BC particles should be equal to the Mie calculated scattering of the BC core; and the determination of the m of BC core using this method is largely independent of the uncertain particle shape effect at $\lambda = 1064$ nm (Moteki et al., 2010).

16308

Based on the determined E_s as a function of D_c size, at each binned D_c size, a threshold scattering enhancement $E_{s\text{-thre}}$ can be obtained from the minima of each E_s distribution (within $1 < E_s < 30$). Figure 5c shows an example of how $E_{s\text{-thre}}$ is determined at a specified D_c . The $E_{s\text{-thre}}$ as a function of D_c can then be empirically fitted as a power function:

$$E_{s\text{-thre}} = 1.0637 + 0.012343 \times D_c^{-2.6131} \quad (6)$$

For a given size of D_c , any BC particle with $E_s > E_{s\text{-thre}}$ is considered to be the BC from non-traffic sources in this model, based on the assumption that for a given source, the coating thickness distribution is unimodal at the point of emission. The $E_{s\text{-thre}}$ as a function of D_c is shown as the dark dotted line in the left panel of Fig. 5a, the BC particles above the line are grouped as the BC from solid fuel burning (BC_{sf}) and below the line is the BC from traffic (BC_{tr}).

A fraction of aged BC_{tr} with thicker coatings may lie beyond the $E_{s\text{-thre}}$ reference line hence the BC_{tr} will be underestimated. It has been shown previously that the diagnostic $-\log(\text{NO}_x/\text{NO}_y)$ is positively correlated with BC coating thickness, e.g. as reported during the CalNex project (Cappa et al., 2012; Taylor et al., 2014), when the measurement site was mainly influenced by traffic sources and also experiencing strong photochemical activity. The ageing scale of BC during the London experiment was also examined using this metric, as Fig. 2c shows. Only a very weak correlation between BC coating thickness and $-\log(\text{NO}_x/\text{NO}_y)$ was observed for W air mass ($r^2 = 0.15$) when the site was less influenced by solid fuel burning ($\text{SFOA}/\text{HOA} < 3$), but for the rest of the period no correlation was found, i.e. for the E air mass, the significant increase of BC coating thickness is not associated with an increase in $-\log(\text{NO}_x/\text{NO}_y)$ from 28 January–2 February. In any event, even an increase in $-\log(\text{NO}_x/\text{NO}_y)$ from 0.04 to 0.13 will only result in a maximum variation in the BC_{tr} number fraction of $< 5\%$. Furthermore, the generally much lower $-\log(\text{NO}_x/\text{NO}_y)$ found in the winter IOP compared with the summer IOP suggests the majority of BC are local from primary sources rather than aged BC during winter time (as further discussed below). The ageing influence on this

16311

BC mass attribution model is thus deemed to be low. BC_{sf} may also contain some fraction of BC with thinner coatings that is located below the $E_{s\text{-thre}}$ threshold used here, which will compensate the postulation above.

The mean mass median diameter of black carbon core (MMD, with the value in bracket denoting the **geometric standard deviation σ_g**) of W, SE and E air masses are 135 nm (1.64), 145 nm (1.62) and 167 nm (1.75) respectively. The broader D_c distribution ($\sigma_g = 1.75$) when E air mass suggests more mixed BC sources, whereas for Westerlies it is more likely to be comprised of less mixed sources. One may postulate that the increased BC core size is possibly the result of the ageing/coagulation of BC, however a close comparison with the summer dataset largely excludes this possibility, as shown in the upper panel of Fig. 6a. The experiment was repeated at the same location in summer time, and the air masses classified in the same manner. It can be clearly seen that the D_c size distribution in summer was independent of the air masses (little variation in MMD and σ_g), because during summer the BC source was dominated by traffic emissions and solid fuel burning sources were almost absent. Given that in summer time we expect stronger photochemical activity compared to winter time, the similar D_c size observed during summer suggests little influence by ageing processes on the mono-source of BC, further supporting the presence of the stronger non-traffic source during winter time.

The winter/summer results suggest that self-coagulation of BC (that leads to the enlargement of D_c) is fairly weak following emission and during transport. The coagulation process of BC may have been only significant at the emission stage when the BC concentration is high, which cannot be observed at the receiving site. It is possible that the ageing scale or transport range observed at this urban site may not be long enough to lead to a significant increase in D_c . However the larger BC cores will be preferentially removed by wet deposition (Moteki et al., 2012), and if so the scavenged reservoir of BC after ageing/transport will tend towards even smaller D_c compared to initial emission sources.

The coated BC optical size (D_p) distribution is shown in Fig. 6b. Consistent with Fig. 4a, the D_p size, within the D_c range 110–150 nm, when W air masses show mainly a single BC mode without a significant D_p shift compared to the selected D_c range, and which results in a main mode with $D_p/D_c \sim 1$ with a minor tail extending to larger D_p . Consistent with Fig. 5a, the E and SE air mass results show apparent bimodal D_p distributions, i.e. for E air mass, the larger mode in D_p peaks at ~ 360 nm, clearly indicating a thicker coating for the majority of the BC particles. The D_p size distributions over the entire D_c range exhibit a clear increase in coated BC size as expected for the W–SE–E air masses, peaking at ~ 140 nm, 300 nm and 360 nm respectively. There is no clear variation of size for the non-BC particles in all air masses (which peak ~ 300 nm, Fig. 6c); these particles that do not contain a BC core have been formed both before/when combustion processes hereby following condensation processes during transport.

With the assumption that the traffic-dominant BC will exhibit a consistent and stable D_c size distribution, the BC mass attribution using the $E_{s-thre} - D_c$ model is further verified by comparing the separated BC_{tr} size distribution from mixed sources and the BC size distribution when the site is less influenced by solid fuel burning (number fraction of $BC_{sf} < 5\%$), as shown in Fig. 7. The attributed BC_{tr} size distribution from mixed sources compares well with the traffic-dominant BC size distribution, but the size of attributed BC_{tr} is only slightly larger because the classification is not perfect, i.e. some BC_{sf} may have been included in the modelled BC_{tr} . The BC core sizes measured in summer were smaller compared to the winter, because these had no detectable influences from SF. The attributed BC_{sf} core peaked at $D_c \sim 210$ nm.

The SF source strongly affects the BC-related properties, as summarized in Fig. 8. Increased BC_{sf} mass fractions enlarge D_c and increase the coating thickness of BC. It is interesting to note that an increase in SF influence has decreased the BC mass fraction (Fig. 8e) while the SF source contains more non-BC particles (Fig. 8f). The SF source produces a larger fraction of particles that do not contain a BC core, which is consistent with other studies (e.g. Kondo et al., 2011) which show that a significant frac-

16313

tion of non-BC particles are emitted with SF particles, and these non-BC particles may have contributed to the thicker coating thickness of BC_{sf} particles through coagulation (Kondo et al., 2011).

In order of air masses W–SE–E (i.e. BC_{sf} mass fraction ranging from low to high), D_c was found to range from 137 ± 10 nm– 143 ± 11 nm– 169 ± 29 nm respectively, while the associated bulk relative coating thicknesses (D_p/D_c) were 1.28 ± 0.07 , 1.45 ± 0.16 and 1.65 ± 0.19 . The BC_{sf} number fraction in order of W–SE–E air masses was $6 \pm 2\%$, $11 \pm 5\%$ and $18 \pm 10\%$, but importantly the larger BC core size of BC_{sf} leads to higher fractions in terms of mass at $16 \pm 6\%$, $24 \pm 10\%$ and $39 \pm 14\%$ (Table 1). The BC_{sf} mass fraction reported in this study (overall average $26 \pm 13\%$) is generally consistent with those reported from urban environments by the other studies, e.g. in Grenoble, France (average $\sim 20\%$, Favez et al., 2010) and the long term observations for three cities in Switzerland, 24–33% (Herich et al., 2011); whilst they are lower than seen in rural environment, e.g. in Roveredo, Switzerland (51%, Sandradewi et al., 2008) and at Holme Moss, UK (45%, Liu et al., 2011). However they are higher than observed in the Paris urban environment (15% BC_{sf} by Healy et al., 2012; only minor BC_{sf} by Laborde et al., 2013).

4 Discussions

4.1 The diurnal variations of BC-related properties

To investigate the influences of local sources under different synoptic conditions, a detailed diurnal analysis was performed and is shown in Fig. 9. The BC mass loadings all show similar trends with the first peak coinciding with the morning rush hour and a later peak starting from late afternoon (Fig. 9a). The BC morning peak corresponds with the HOA peak (Fig. 9f) suggesting the main source for all three types of air mass is traffic. The BC evening peak corresponds with elevated SFOA for W and E air masses (Fig. 9g), suggesting the additional important contributing sources of solid fuel burning

16314

(SF) in the evening. However, the SE air mass shows somewhat different behaviour with a higher HOA peak from late afternoon and significant SFOA from early evening onwards throughout midnight. The significance of the SF influence is shown in the first order using SFOA/HOA (Fig. 9h), showing a clear consistent trend with the lowest SF influence occurring with morning rush hour but with increased influence due to SF starting from late afternoon, and with SF dominating at midnight. The source attribution of BC mass using both SP2 (Sect. 3.4) and BC-AMS-PMF methodology (Sect. 3.3) shows a similar trend (Fig. 9i and j). These diurnal trends are generally consistent with the previous study by Allan et al. (2010) and Liu et al. (2011) where the site was also influenced by both traffic source and solid fuel burning.

Consistent with the view that BC from the traffic source is associated with particles with a smaller BC core and less coated compared to BC particles from solid fuel burning, the smallest D_c (Fig. 9b) and thinnest coatings (Fig. 9c) coincided with the morning rush hour and the increasing SF influence then leads to an increased D_c size and coating thickness. It is noted that the D_c size variation is not apparent for SE air masses. The diurnal variation of D_c size in the summer experiment is also included for reference: the BC measured in summer exhibited smaller D_c size with weak variation throughout the day. The larger D_c size observed in winter for all of the air masses suggests the ubiquitous and increasing influence of SF during winter which will result in a higher Absorption Ångström exponent (α). The lowest α was observed at morning rush hour for E and SE (Fig. 9e) air masses however there was no apparent variation in α for W air masses (but lower α for W), possibly because the SF fraction was not large enough to make a measurable change. The value of α in summer was lower throughout the day, again consistent with the ubiquitous influence of SF only in winter. It is also noted that although E air masses had the highest fraction of SF, the associated α did not show a higher α , i.e. throughout midnight periods the α for E air masses was lower than that from SE air masses. This indicates that the E air masses may contain additional sources which exhibit lower α : Saleh et al., 2013 showed that the α for fresh biomass smoke can be lower than 1.5, and comparison with Aethalometer data in Switzerland (Zot-

16315

ter et al., 2011, 2014) also showed that the α for wood burning can vary significantly (1.2–2.1).

4.2 Intercomparisons of BC source attribution techniques

An intercomparison among the BC source attribution techniques, including the SP2 attribution, BC-AMS-PMF and Aethalometer method, is shown in Fig. 10. The Aethalometer attribution is calculated at both 470–950 nm and 370–880 nm, based on an assumption that the Absorption Ångström Exponent (α) of traffic is 1.04 (obtained from summer experiment when traffic as source is dominant, Fig. 9e) and the α of wood burning is set to be 1.9 at a first instance (Sect. 3.2). The three methods overall compare with each other very well, apart from a discrepancy between the SP2/BC-AMS-PMF and Aethalometer method occurred at 31 January–2 February and 8 February when the air mass was easterly and mostly influenced by SF sources. The top panel in Fig. 10 shows the number fraction of BC_{sf} as attributed exclusively by the SP2 method. The BC from solid fuel burning contributed much more significantly in terms of mass than number because of the larger BC_{sf} core size. Also note that the BC_{tr} number fraction will be underestimated because of the lower cut off of the SP2 measurement, thus the true BC_{sf} number fraction will be lower.

A statistical comparison among the BC mass attribution techniques is shown in Fig. 11, and the results are summarized in Table 3. The BC-AMS-PMF method correlates tightly with the SP2 method and well falls on the 1 : 1 line (slope = 1.05, $r^2 = 0.80$) for the entire experimental period. The Aethalometer attribution @470–950 nm correlated well with @370–880 nm, however the attribution @370–880 nm was associated with larger variations during W air masses when aerosol concentrations were lower. For E and SE air masses, compared to the BC-AMS-PMF method, the Aethalometer method exhibited a tighter correlation with the SP2 method ($r^2 = 0.83$ and 0.70 respectively) and a slope closer to 1 for W air masses.

The retrieved BC_{tr} and BC_{sf} were further examined by comparing with the trace gas species in Table 4. Consistent with the study by Herich et al. (2011), strong correlations

16316

was observed for BC_{tr} vs. NO_x , and BC_{sf} vs. $SFOA_{total}$, K and Levoglucosan. The BC_{tr} as attributed by both the SP2 and Aethalometer methods correlates well with NO_x . A bilinear correlation between BC and NO_x is also tested, i.e. $(NO_x) = a(BC_{tr}) + b(BC_{sf}) + c$, which will yield a negative value of b , the BC_{sf} is thus considered to contribute the NO_x insignificantly during the experiment. Corresponding with the higher BC_{sf} mass fraction from the SP2, the BC_{tr}/NO_x mass ratio is only slightly lower for the SP2 method compared to the Aethalometer method. It is noted for the period of E air mass, when the discrepancy occurred, the SP2 attributed BC_{tr} yielded a higher correlation with NO_x ($r^2 = 0.87$) compared to the Aethalometer method ($r^2 = 0.70$). The SP2 attributed BC_{sf} correlated better with $SFOA_{total}$ because the SP2 method agrees well with the BC-AMS-PMF method. The Levoglucosan concentration correlated significantly better with the Aethalometer attributed BC_{sf} ($r^2 = 0.85$) for the entire period, however the correlation was weaker with the SP2 attributed BC_{sf} ($r^2 = 0.62$) again due to the influence of E air masses.

The only considerable discrepancy between the methods occurred during E air masses – the Aethalometer method (or levoglucosan concentration) is a factor of approximately 1.7 lower than the SP2 method (or BC-AMS-PMF method). The reason for this is that the Aethalometer attribution relies on the assumed Absorption Ångström Exponent (α), however, when the site was largely influenced by SF, although the ambient exhibited a higher SFOA/HOA (Fig. 8g) and larger BC core size (Fig. 8c), the measured α was not correspondingly higher (Fig. 8h). The α of wood burning is highly variable and will change significantly even during the course of a wood fire and also depends strongly on the burning conditions and used wood types as well as the ageing of the biomass smoke (Saleh et al., 2013), therefore it is possible that this apparent discrepancy reflects a change in α .

Another possible source of disagreement is the role of coal burning. This is also used for domestic space heating, however it has a different emissions profile. The Aethalometer and Levoglucosan methods are based around knowledge of wood burning sources, whereas the SP2 and AMS methods are more empirical in nature, so may

16317

include contributions from coal burning. Indeed, Yin et al. (2014) found evidence for this in Chemical Mass Balance (CMB) modelling of filter samples analysed using GC-MS and also found that the best correlation with the AMS SFOA factor was achieved with a summation of the wood and coal burning estimates.

Normalising the attributed BC_{sf} from the Aethalometer and SP2 methods, an “optimized” α for the solid fuel burning source can be retrieved, as summarized in the right hand column of Table 3. The retrieved α for solid fuel burning for W and SE air masses falls exactly within the range (1.8–1.9) as suggested by Sandradewi et al., (2008), however the value of α for the E air mass is lower (1.60). The $\alpha_{wb} = 1.60$ falls well within the reported α for the fresh wood burning source (Saleh et al., 2013). The E air masses are therefore likely to have brought pollutants from some additional sources which contain significant fractions of aerosols with lower α_{wb} . These sources correspond with a lower content of levoglucosan as observed in this study, which may be explained by the possible coal burning contribution, as the coal burning emissions contain a lesser fraction of levoglucosan (Zhang et al., 2008), however the coal sources cannot be clearly discriminated by the AMS-PMF analysis in this study.

Another hypothesis is that α may have undergone modification during atmospheric transport and ageing/processes, because levoglucosan is chemically unstable (Hoffmann et al., 2010) and if the chromophores in brown carbon are nitrated aromatics (Mohr et al., 2013), which are also chemically unstable, then both the levoglucosan and brown carbon concentrations will diminish as a result. However the ageing process has been observed to enhance the short wavelength absorption of secondary organic aerosol hereby increase α (Saleh et al., 2013), the lower α from E air masses thus more likely result from additional sources rather than ageing processes.

This analysis does not completely exclude the possibility that the SP2 method may have overestimated the BC_{sf} by accounting for a fraction of thickly coated BC_{tr} although this effect is deemed to be low during winter time (Sect. 3.4), i.e. some fraction of aged BC_{tr} may have been transported and externally imposed on the more local traffic sources at the site. Another bias may result from the assumed equal mass absorption

16318

cross sections ($MAC = \frac{b_{abs}}{Mass}$) between the BC_{tr} and BC_{sf} when calculating the BC_{sf} mass fraction, using the $\frac{b_{abs,wb,950nm}}{b_{abs,total,950nm}}$ ratio (Eq. 5). If the BC_{sf} has a lower MAC than BC_{tr} , then the estimated mass of BC_{sf} ($Mass = \frac{b_{abs}}{MAC}$) could be underestimated.

5 Conclusions

5 Carbonaceous aerosols in a London urban site were characterized during the ClearLo project during both winter and summer seasons in 2012. The traffic-dominant BC particles exhibited an almost invariant BC core size (D_c) distribution and very thin coating thickness throughout the detectable range of D_c . However the size distribution of D_c and BC coating thickness varied significantly in winter due to the influence of additional
 10 non-traffic sources, i.e. solid fuel/biofuel burning sources (SF) associated with residential space heating. A novel methodology was developed to attribute the BC number concentrations and mass abundances from traffic (BC_{tr}) and from SF (BC_{sf}), by using a 2-D histogram “fingerprint” of the particle optical properties as a function of BC core size, as measured by the SP2. The BC_{tr} and BC_{sf} showed clearly different D_c distributions and coating thicknesses. Compared to traffic sources, SF sources introduce BC
 15 particles with larger rBC cores, and the thicker coatings associated with these result in larger size distributions, particularly during easterly air masses, resulting in a D_c size mode which peaks at ~ 167 nm increasing to particle size ~ 360 nm. These larger BC particles, with thicker coatings, are more likely to exhibit stronger hygroscopicity (Liu
 20 et al., 2013) and to be scavenged by wet deposition (Moteki et al., 2012). The larger SF absorbing particles will also have greater potential to enhance the semi-direct effect (Koch and Del Genio, 2010) through interaction with cloud processes. An increased fraction of non-BC particles (particles that not contain a BC core) was also seen when air masses were influenced by SF sources, which means compared to the BC mass,
 25 an even higher fraction of particulate matter, i.e. the organic matter, was introduced by SF sources.

16319

The SP2 BC mass attribution agrees well with the BC-AMS-PMF multiple linear regression and the Aethalometer attribution for the entire experiment; only apart from when easterly air masses the BC_{sf} attributed by the Aethalometer method was lower compared to the SP2 or BC-AMS-PMF methods, but the Aethalometer method correlated better with the levoglucosan concentration. The additional sources with lower
 5 Absorption Ångström exponent (α) and lower content of levoglucosan are likely to contribute the pollutants transported from easterly air masses, such as the possible coal burning or other uncertain non-traffic sources; these additional sources may in turn lead to an overestimation of the wood burning sources by the SP2 or BC-AMS-PMF
 10 method. **More work is needed to further investigate these complex non-traffic sources and to obtain appropriate α values for different solid fuel/biofuel sources is essential to assure reliable Aethalometer model outputs.**

Appendix A: The Leading Edge Only (LEO) fitting on the scattering properties of light-absorbing particles from SP2

$$15 \quad S(t) = Ae^{-\frac{(t-t_C)^2}{2\sigma^2}} \quad (A1)$$

The scattering signal of a particle passing through the SP2 laser beam is proportional to the incident laser intensity. Given the Gaussian profile of the laser intensity, the scattering signal (S) at a given elapsed time (t) can be described by a Gaussian function, as Eq. (A1) expresses. The A is the peak amplitude of the scattering signal, t_C
 20 is the elapsed time when the particle reaches the laser beam centre and $S(t)$ reaches the peak intensity A .

As Fig. A1a shows, the $S(t)$ of a non-absorbing particle will exhibit the ideal Gaussian shape, however the $S(t)$ of an absorbing particle such as a BC-containing particle will be distorted during its transit through the laser beam because of the mass loss of
 25 a BC particle by laser heating (Gao et al., 2007). According to Eq. (S1), the $S(t)$ is directly measured, and the A can be obtained as long as the t_C and σ are known

16320

as priori, hereby the $S(t)$ of a BC particle can be reconstructed. To determine the t_C when the peak laser intensity necessarily occurs, the notch position t_N is introduced which is the zero-crossing from the two-element-APD detector (TEAPD), as the left blue line of Fig. A1b shows. The notch position relative to the laser beam centre ($t_N - t_C$) should be constant for all particles because of the unchanged position of the notch on the TEAPD. The t_N and t_C can both be obtained for non-absorbing particles through direct measurements however only t_N can be obtained for BC. In practice, the $t_N - t_C$ is determined in real time by examining the mode value of the previous non-absorbing particles, i.e. the last 200 non-absorbing particles, which is then added onto the t_N of BC to determine the t_C of a BC particle. The σ (calculated by $\text{FWHM} = 2\sqrt{2\ln 2}\sigma$) is also obtained by the previous 200 non-absorbing particles. The relative laser profile $LP(t)$ (Fig. A1c) which is the Gaussian profile with $A = 1$ can then be determined if the t_C and σ are fixed.

The next question is how much leading edge only (LEO) fraction of $S(t)$ before the onset of volatilisation can be used to reconstruct the $S(t)$ of a BC particle. Two approaches are tested: the first one is referred as the $F\%$ laser power fitting (Taylor et al., 2014), which is according to the $LP(t)$, to use the data points ranging from the t_0 – when the $S(t)$ starts to be above the threshold S/N ratio until the t_F when the $S(t_F)$ corresponds to a fraction of peak laser intensity, as Fig. A1d shows. The $S(t)(t_0, t_F)$ is then used to be extrapolated using the predetermined t_C and σ . The 1% and 5% peak laser intensity are tested in this study. The other approach to determine the LEO range is comparing the measured $S(t)$ with the laser profile $LP(t)$ to examine the variation of the relative scattering cross section $\sigma_s(t) = S(t)/LP(t)$, referred as the scattering cross section fitting. For a non-absorbing particle which is not affected by the laser heating, the $\sigma_s(t)$ should be constant or stable, and this is validated by the $\sigma_s(t)$ of the non-absorbing particle (left panel of Fig. A1d); whereas for a BC particle, the $\sigma_s(t)$ will be diminished when the particle is evaporated by the laser heating (Laborde et al., 2012a). For a BC particle, the LEO range is determined by the stable range of $\sigma_s(t)$, i.e. determined by the adjacent % difference calculated as $(\sigma_s(t) - \sigma_s(t - 1))/\sigma_s(t)$. In this study,

16321

the $\sigma_s(t)$ is deemed to be stable when $(\sigma_s(t) - \sigma_s(t - 1))/\sigma_s(t) < 10\%$, as the red lines show. The scattering signal is then reconstructed using the stable $\sigma_s(t)$ range and the predetermined t_C and σ .

The 1% and 5% laser power show great correlations with the scattering cross section fitting, with the 1% laser power fitting obtaining a closer correlation (slope = 0.99, $r^2 = 0.95$; $N = 10^5$) than 5% laser power fitting (slope = 0.95, $r^2 = 0.97$; $N = 10^5$). However as Fig. A2 shows, the scattering cross section fitting has significantly increased the successful fraction of LEO fitting especially at the BC core diameter (D_c) range ~ 100 – 200 nm, because the lower S/N ratio for the first few points of the $F\%$ laser power fitting could reduce the quality of the LEO fitting. Given the $D_c \sim 100$ – 200 nm is the most interested D_c range in this study where the most BC mass loadings are populated, the scattering cross section fitting method is used for this dataset.

15 Data availability

Processed data is available through the ClearLo project archive at the British Atmospheric Data Centre (<http://badc.nerc.ac.uk/browse/badc/clearflo>). Raw data is archived at the University of Manchester and is available on request.

20 *Acknowledgements.* This work was supported through the UK Natural Environment Research Council (NERC) through the ClearLo (Grant ref: NE/H003150/1) and MC4 (Grant ref: NE/H008136/1) projects and a PhD studentship (D. Young). We would like to thank the Met Office for the use of the NAME dispersion model.

16322

References

- Akagi, S. K., Craven, J. S., Taylor, J. W., McMeeking, G. R., Yokelson, R. J., Burling, I. R., Urbanski, S. P., Wold, C. E., Seinfeld, J. H., Coe, H., Alvarado, M. J., and Weise, D. R.: Evolution of trace gases and particles emitted by a chaparral fire in California, *Atmos. Chem. Phys.*, 12, 1397–1421, doi:10.5194/acp-12-1397-2012, 2012.
- Allan, J. D., Williams, P. I., Morgan, W. T., Martin, C. L., Flynn, M. J., Lee, J., Nemitz, E., Phillips, G. J., Gallagher, M. W., and Coe, H.: Contributions from transport, solid fuel burning and cooking to primary organic aerosols in two UK cities, *Atmos. Chem. Phys.*, 10, 647–668, doi:10.5194/acp-10-647-2010, 2010.
- Baumgardner, D., Popovicheva, O., Allan, J., Bernardoni, V., Cao, J., Cavalli, F., Cozic, J., Diapouli, E., Eleftheriadis, K., Genberg, P. J., Gonzalez, C., Gysel, M., John, A., Kirchstetter, T. W., Kuhlbusch, T. A. J., Laborde, M., Lack, D., Müller, T., Niessner, R., Petzold, A., Piazzalunga, A., Putaud, J. P., Schwarz, J., Sheridan, P., Subramanian, R., Swietlicki, E., Valli, G., Vecchi, R., and Viana, M.: Soot reference materials for instrument calibration and intercomparisons: a workshop summary with recommendations, *Atmos. Meas. Tech.*, 5, 1869–1887, doi:10.5194/amt-5-1869-2012, 2012.
- Bond, T. C. and Bergstrom, R. W.: Light absorption by carbonaceous particles: an investigative review, *Aerosol Sci. Tech.*, 40, 27–67, 2006.
- Bond, T. C., Doherty, S. J., Fahey, D. W., Forster, P. M., Berntsen, T., DeAngelo, B. J., Flanner, M. G., Ghan, S., Kärcher, B., Koch, D., Kinne, S., Kondo, Y., Quinn, P. K., Sarofim, M. C., Schultz, M. G., Schulz, M., Venkataraman, C., Zhang, H., Zhang, S., Bellouin, N., Guttikunda, S. K., Hopke, P. K., Jacobson, M. Z., Kaiser, J. W., Klimont, Z., Lohmann, U., Schwarz, J. P., Shindell, D., Storelvmo, T., Warren, S. G., and Zender, C. S.: Bounding the role of black carbon in the climate system: a scientific assessment, *J. Geophys. Res.*, 118, 5380–5552, doi:10.1002/jgrd.50171, 2013.
- Canagaratna, M. R., Jayne, J. T., Jimenez, J. L., Allan, J. D., Alfarra, M. R., Zhang, Q., Onasch, T. B., Drewnick, F., Coe, H., Middlebrook, A., Delia, A., Williams, L. R., Trimborn, A. M., Northway, M. J., DeCarlo, P. F., Kolb, C. E., Davidovits, P., and Worsnop, D. R.: Chemical and microphysical characterization of ambient aerosols with the aerodyne aerosol mass spectrometer, *Mass Spectrom. Rev.*, 26, 185–222, doi:10.1002/Mas.20115, 2007.
- Canonaco, F., Crippa, M., Slowik, J. G., Baltensperger, U., and Prévôt, A. S. H.: SoFi, an IGOR-based interface for the efficient use of the generalized multilinear engine (ME-2) for the

16323

- source apportionment: ME-2 application to aerosol mass spectrometer data, *Atmos. Meas. Tech.*, 6, 3649–3661, doi:10.5194/amt-6-3649-2013, 2013.
- Cappa, C. D., Onasch, T. B., Massoli, P., Worsnop, D. R., Bates, T. S., Cross, E. S., Davidovits, P., Hakala, J., Hayden, K. L., Jobson, B. T., Kolesar, K. R., Lack, D. A., Lerner, B. M., Li, S.-M., Mellon, D., Nuaaman, I., Olfert, J. S., Petäjä, T., Quinn, P. K., Song, C., Subramanian, R., Williams, E. J., and Zaveri, R. A.: Radiative absorption enhancements due to the mixing state of atmospheric black carbon, *Science*, 337, 1078–1081, 2012.
- Caseiro, A., Bauer, H., Schmid, C., Pio, C. A., and Puxbaum, H.: Wood burning impact on PM₁₀ in three Austrian regions, *Atmos. Environ.*, 43, 2186–2195, 2009.
- Charron, A., Degrendele, C., Laongsri, B., and Harrison, R. M.: Receptor modelling of secondary and carbonaceous particulate matter at a southern UK site, *Atmos. Chem. Phys.*, 13, 1879–1894, doi:10.5194/acp-13-1879-2013, 2013.
- Chow, J. C., Watson, J. G., Lowenthal, D. H., Chen, L. W. A., Zielinska, B., Mazzoleni, L. R., and Magliano, K. L.: Evaluation of organic markers for chemical mass balance source apportionment at the Fresno Supersite, *Atmos. Chem. Phys.*, 7, 1741–1754, doi:10.5194/acp-7-1741-2007, 2007.
- Collaud Coen, M., Weingartner, E., Apituley, A., Ceburnis, D., Fierz-Schmidhauser, R., Flentje, H., Henzing, J. S., Jennings, S. G., Moerman, M., Petzold, A., Schmid, O., and Baltensperger, U.: Minimizing light absorption measurement artifacts of the Aethalometer: evaluation of five correction algorithms, *Atmos. Meas. Tech.*, 3, 457–474, doi:10.5194/amt-3-457-2010, 2010.
- Crippa, M., Canonaco, F., Lanz, V. A., Äijälä, M., Allan, J. D., Carbone, S., Capes, G., Dall'Osto, M., Day, D. A., DeCarlo, P. F., Di Marco, C. F., Ehn, M., Eriksson, A., Freney, E., Hildebrandt Ruiz, L., Hillamo, R., Jimenez, J.-L., Junninen, H., Kiendler-Scharr, A., Kortelainen, A.-M., Kulmala, M., Mensah, A. A., Mohr, C., Nemitz, E., O'Dowd, C., Ovadnevaite, J., Pandis, S. N., Petäjä, T., Poulain, L., Saarikoski, S., Sellegri, K., Swietlicki, E., Tiitta, P., Worsnop, D. R., Baltensperger, U., and Prévôt, A. S. H.: Organic aerosol components derived from 25 AMS datasets across Europe using a newly developed ME-2 based source apportionment strategy, *Atmos. Chem. Phys. Discuss.*, 13, 23325–23371, doi:10.5194/acpd-13-23325-2013, 2013.
- Dall'Osto, M., Ovadnevaite, J., Ceburnis, D., Martin, D., Healy, R. M., O'Connor, I. P., Kourtchev, I., Sodeau, J. R., Wenger, J. C., and O'Dowd, C.: Characterization of urban

16324

- aerosol in Cork city (Ireland) using aerosol mass spectrometry, *Atmos. Chem. Phys.*, 13, 4997–5015, doi:10.5194/acp-13-4997-2013, 2013.
- DeCarlo, P. F., Kimmel, J. R., Trimborn, A., Northway, M. J., Jayne, J. T., Aiken, A. C., Gonin, M., Fuhrer, K., Horvath, T., Docherty, K. S., Worsnop, D. R., and Jimenez, J. L.: Field-deployable, high-resolution, time-of-flight aerosol mass spectrometer, *Anal. Chem.*, 78, 8281–8289, doi:10.1021/ac061249n, 2006.
- Favez, O., El Haddad, I., Piot, C., Boréave, A., Abidi, E., Marand, N., Jaffrezo, J.-L., Besombes, J.-L., Personnaz, M.-B., Sciare, J., Wortham, H., George, C., and D'Anna, B.: Inter-comparison of source apportionment models for the estimation of wood burning aerosols during wintertime in an Alpine city (Grenoble, France), *Atmos. Chem. Phys.*, 10, 5295–5314, doi:10.5194/acp-10-5295-2010, 2010.
- Fine, P. M., Cass, G. R., and Simoneit, B. R. T.: Chemical characterization of fine particle emissions from the fireplace combustion of woods grown in the Midwestern and Western United States, *Environ. Eng. Sci.*, 21, 387–409, 2004.
- Fleming, Z. L., Monks, P. S., and Manning, A. J.: Review: untangling the influence of air-mass history in interpreting observed atmospheric composition, *Atmos. Res.*, 104–105, 1–39, 2012.
- Gao, R. S., Schwarz, J. P., Kelly, K. K., Fahey, D. W., Watts, L. A., Thompson, T. L., Spackman, J. R., Slowik, J. G., Cross, E. S., Han, J. H., Davidovits, P., Onasch, T. B., and Worsnop, D. R.: A novel method for estimating light-scattering properties of soot aerosols using a modified single-particle soot photometer, *Aerosol Sci. Tech.*, 41, 125–135, 2007.
- Gurjar, B. R., Jain, A., Sharma, A., Agarwal, A., Gupta, P., Nagpure, A. S., and Lelieveld, J.: Human health risks in megacities due to air pollution, *Atmos. Environ.*, 44, 4606–4613, 2010.
- Harrison, R. M., Beddows, D. C. S., Hu, L., and Yin, J.: Comparison of methods for evaluation of wood smoke and estimation of UK ambient concentrations, *Atmos. Chem. Phys.*, 12, 8271–8283, doi:10.5194/acp-12-8271-2012, 2012a.
- Harrison, R. M., Laxen, D., Moorcroft, S., and Laxen, K.: Processes affecting concentrations of fine particulate matter (PM_{2.5}) in the UK atmosphere, *Atmos. Environ.*, 46, 115–124, 2012b.
- Harrison, R. M., Beddows, D. C. S., Jones, A. M., Calvo, A., Alves, C., and Pio, C.: An evaluation of some issues regarding the use of aethalometers to measure woodsmoke concentrations, *Atmos. Environ.*, 80, 540–548, 2013.
- Healy, R. M., Sciare, J., Poulain, L., Kamili, K., Merkel, M., Müller, T., Wiedensohler, A., Eckhardt, S., Stohl, A., Sarda-Estève, R., McGillicuddy, E., O'Connor, I. P., Sodeau, J. R., and

16325

- Wenger, J. C.: Sources and mixing state of size-resolved elemental carbon particles in a European megacity: Paris, *Atmos. Chem. Phys.*, 12, 1681–1700, doi:10.5194/acp-12-1681-2012, 2012.
- Herich, H., Hueglin, C., and Buchmann, B.: A 2.5 year's source apportionment study of black carbon from wood burning and fossil fuel combustion at urban and rural sites in Switzerland, *Atmos. Meas. Tech.*, 4, 1409–1420, doi:10.5194/amt-4-1409-2011, 2011.
- Herich, H., Gianini, M. F. D., Piot, C., Močnik, G., Jaffrezo, J.-L., Besombes, J.-L., Prévôt, A. S. H., Hueglin, C.: Overview of the impact of wood burning emissions on carbonaceous aerosols and PM in large parts of the Alpine region, *Atmos. Environ.*, 89, 64–75, 2014.
- Hoffmann, D., Tilgner, A., Iinuma, Y., and Herrmann, H.: Atmospheric stability of levoglucosan: a detailed laboratory and modeling study, *Environ. Sci. Technol.*, 44, 694–699, doi:10.1021/es902476f, 2010.
- Huffman, J. A., Ziemann, P. J., Jayne, J. T., Worsnop, D. R., and Jimenez, J. L.: Development and characterization of a fast-stepping/scanning thermodenuder for chemically-resolved aerosol volatility measurements, *Aerosol Sci. Tech.*, 42, 395–407, 2008.
- Jacobson, M. Z.: Short-effects of controlling fossil-soot, solid fuel soot and gases, and methane on climate, Arctic ice, and air pollution health, *J. Geophys. Res.*, 115, D14209, doi:10.1029/2009JD013795, 2010.
- Jansen, K. L., Larson, T. V., Koenig, J. Q., Mar, T. F., Fields, C., Stewart, J., and Lippmann, M.: Associations between health effects and particulate matter and black carbon in subjects with respiratory disease, *Environ Health Perspect.*, 113, 1741–1746, 2005.
- Jones, A. R., Thomson, D. J., Hort, M., and Devenish, B.: The UK Met Office's Next-Generation Atmospheric Dispersion Model, NAME III. *Air Pollution Modeling and Its Application XVII*, edited by: Borrego, C. and Norman, A.-L., Springer, 580–589, 2007.
- Koch, D. and Del Genio, A. D.: Black carbon semi-direct effects on cloud cover: review and synthesis, *Atmos. Chem. Phys.*, 10, 7685–7696, doi:10.5194/acp-10-7685-2010, 2010.
- Kondo, Y., Matsui, H., Moteki, N., Sahu, L., Takegawa, N., Kajino, M., Zhao, Y., Cubison, M. J., Jimenez, J. L., Vay, S., Diskin, G. S., Anderson, B., Wisthaler, A., Mikoviny, T., Fuelberg, H. E., Blake, D. R., Huey, G., Weinheimer, A. J., Knapp, D. J., and Brune, W. H.: Emissions of black carbon, organic, and inorganic aerosols from biomass burning in North America and Asia in 2008, *J. Geophys. Res.-Atmos.*, 116, D08204, doi:10.1029/2010JD015152, 2011.

16326

- Laborde, M., Mertes, P., Zieger, P., Dommen, J., Baltensperger, U., and Gysel, M.: Sensitivity of the Single Particle Soot Photometer to different black carbon types, *Atmos. Meas. Tech.*, 5, 1031–1043, doi:10.5194/amt-5-1031-2012, 2012a.
- Laborde, M., Schnaiter, M., Linke, C., Saathoff, H., Naumann, K.-H., Möhler, O., Berlenz, S., Wagner, U., Taylor, J. W., Liu, D., Flynn, M., Allan, J. D., Coe, H., Heimerl, K., Dahlkötter, F., Weinzierl, B., Wollny, A. G., Zanatta, M., Cozic, J., Laj, P., Hitzenberger, R., Schwarz, J. P., and Gysel, M.: Single Particle Soot Photometer intercomparison at the AIDA chamber, *Atmos. Meas. Tech.*, 5, 3077–3097, doi:10.5194/amt-5-3077-2012, 2012b.
- Laborde, M., Crippa, M., Tritscher, T., Jurányi, Z., Decarlo, P. F., Temime-Roussel, B., Marand, N., Eckhardt, S., Stohl, A., Baltensperger, U., Prévôt, A. S. H., Weingartner, E., and Gysel, M.: Black carbon physical properties and mixing state in the European megacity Paris, *Atmos. Chem. Phys.*, 13, 5831–5856, doi:10.5194/acp-13-5831-2013, 2013.
- Lanz, V. A., Alfarra, M. R., Baltensperger, U., Buchmann, B., Hueglin, C., Szidat, S., Wehrl, M. N., Wacker, L., Weimer, S., Caseiro, A., Puxbaum, H., and Prevot, A. S. H.: Source attribution of submicron organic aerosols during wintertime inversions by advanced factor analysis of aerosol mass spectra, *Environ. Sci. Technol.*, 42, 214–220, 2008.
- Lanz, V. A., Prévôt, A. S. H., Alfarra, M. R., Weimer, S., Mohr, C., DeCarlo, P. F., Gianini, M. F. D., Hueglin, C., Schneider, J., Favez, O., D’Anna, B., George, C., and Baltensperger, U.: Characterization of aerosol chemical composition with aerosol mass spectrometry in Central Europe: an overview, *Atmos. Chem. Phys.*, 10, 10453–10471, doi:10.5194/acp-10-10453-2010, 2010.
- Lawrence, M. G., Butler, T. M., Steinkamp, J., Gurjar, B. R., and Lelieveld, J.: Regional pollution potentials of megacities and other major population centers, *Atmos. Chem. Phys.*, 7, 3969–3987, doi:10.5194/acp-7-3969-2007, 2007.
- Liu, D., Flynn, M., Gysel, M., Targino, A., Crawford, I., Bower, K., Choularton, T., Jurányi, Z., Steinbacher, M., Hüglin, C., Curtius, J., Kampus, M., Petzold, A., Weingartner, E., Baltensperger, U., and Coe, H.: Single particle characterization of black carbon aerosols at a tropospheric alpine site in Switzerland, *Atmos. Chem. Phys.*, 10, 7389–7407, doi:10.5194/acp-10-7389-2010, 2010.
- Liu, D., Allan, J., Corris, B., Flynn, M., Andrews, E., Ogren, J., Beswick, K., Bower, K., Burgess, R., Choularton, T., Dorsey, J., Morgan, W., Williams, P. I., and Coe, H.: Carbonaceous aerosols contributed by traffic and solid fuel burning at a polluted rural site

16327

- in Northwestern England, *Atmos. Chem. Phys.*, 11, 1603–1619, doi:10.5194/acp-11-1603-2011, 2011.
- Liu, D., Allan, J., Whitehead, J., Young, D., Flynn, M., Coe, H., McFiggans, G., Fleming, Z. L., and Bandy, B.: Ambient black carbon particle hygroscopic properties controlled by mixing state and composition, *Atmos. Chem. Phys.*, 13, 2015–2029, doi:10.5194/acp-13-2015-2013, 2013.
- Martin, C. L., Allan, J. D., Crosier, J., Choularton, T. W., Coe, H., and Gallagher, M. W.: Seasonal variation of fine particulate composition in the centre of a UK city, *Atmos. Environ.*, 45, 4379–4389, 2011.
- McMeeking, G. R., Hamburger, T., Liu, D., Flynn, M., Morgan, W. T., Northway, M., Highwood, E. J., Krejci, R., Allan, J. D., Minikin, A., and Coe, H.: Black carbon measurements in the boundary layer over western and northern Europe, *Atmos. Chem. Phys.*, 10, 9393–9414, doi:10.5194/acp-10-9393-2010, 2010.
- Middlebrook, A. M., Bahreini, R., Jimenez, J. L., and Canagaratna, M. R.: Evaluation of composition-dependent collection efficiencies for the Aerodyne Aerosol Mass Spectrometer using field data, *Aerosol Sci. Tech.*, 46, 258–271, doi:10.1080/02786826.2011.620041, 2012.
- Mohr, C., Lopez-Hilfiker, F. D., Zotter, P., Prevot, A. S. H., Xu, L., Ng, N. L., Herndon, S. C., Williams, L. R., Franklin, J. P., Zahniser, M. S., Worsnop, D. R., Knighton, W. B., Aiken, A. C., Gorkowski, K. J., Dubey, M. K., Allan, J. D., and Thornton, J. A.: Contribution of nitrated phenols to wood burning brown carbon light absorption in Delting, United Kingdom during winter time, *Environ. Sci. Technol.*, 47, 6316–6324, 2013.
- Mordukhovich, I., Wilker, E. H., Suh, H., Wright, R. O., Sparrow, D., Vokonas, P. S., and Schwartz, J.: Black carbon exposure, oxidative stress genes, and blood pressure in a repeated measures study, *Environ. Health Perspect.*, 117, 1767–1772, 2009.
- Moteki, N., Kondo, Y., and Nakamura, S.: Method to measure refractive indices of small non-spherical particles: application to black carbon particles, *J. Aerosol. Sci.*, 41, 513–521, 2010.
- Moteki, N. and Kondo, Y.: Dependence of Laser-Induced Incandescence on physical properties of black carbon aerosols: measurements and theoretical interpretation, *Aerosol Sci. Tech.*, 44, 663–675, 2010.
- Moteki, N., Kondo, Y., Oshima, N., Takegawa, N., Koike, M., Kita, K., Matsui, H., and Kajino, M.: Size dependence of wet removal of black carbon aerosols during transport from the boundary

16328

- layer to the free troposphere, *Geophys. Res. Lett.*, 39, L13802, doi:10.1029/2012GL052034, 2012.
- Paatero, P.: Least squares formulation of robust non-negative factor analysis, *Chemometr. Intell. Lab.*, 37, 23–35, 1997.
- 5 Petzold, A., Ogren, J. A., Fiebig, M., Laj, P., Li, S.-M., Baltensperger, U., Holzer-Popp, T., Kinne, S., Pappalardo, G., Sugimoto, N., Wehrli, C., Wiedensohler, A., and Zhang, X.-Y.: Recommendations for reporting "black carbon" measurements, *Atmos. Chem. Phys.*, 13, 8365–8379, doi:10.5194/acp-13-8365-2013, 2013.
- 10 Pratt, K. A., Murphy, S. M., Subramanian, R., DeMott, P. J., Kok, G. L., Campos, T., Rogers, D. C., Prenni, A. J., Heymsfield, A. J., Seinfeld, J. H., and Prather, K. A.: Flight-based chemical characterization of biomass burning aerosols within two prescribed burn smoke plumes, *Atmos. Chem. Phys.*, 11, 12549–12565, doi:10.5194/acp-11-12549-2011, 2011.
- 15 Puxbaum, H., Caseiro, A., S'anchez-Ochoa, A., Kasper-Giebl, A., Claeys, M., Gelencs'er, A., Legrand, M., Preunkert, S., and Pio, C.: Levoglucosan levels at background sites in Europe for assessing the impact of solid fuel combustion on the aerosol European background, *J. Geophys. Res.*, 112, D23S05, doi:10.1029/2006JD008114, 2007.
- Sahu, L. K., Kondo, Y., Moteki, N., Takegawa, N., Zhao, Y., Cubison, M. J., Jimenez, J. L., Vay, S., Diskin, G. S., Wisthaler, A., Mikoviny, T., Huey, L. G., Weinheimer, A. J., and Knapp, D. J.: Emission characteristics of black carbon in anthropogenic and solid fuel burning plumes over California during ARCTAS-CARB 2008, *J. Geophys. Res.*, 117, D16302, doi:10.1029/2011JD017401, 2012.
- 20 Saleh, R., Hennigan, C. J., McMeeking, G. R., Chuang, W. K., Robinson, E. S., Coe, H., Donahue, N. M., and Robinson, A. L.: Absorptivity of brown carbon in fresh and photo-chemically aged biomass-burning emissions, *Atmos. Chem. Phys.*, 13, 7683–7693, doi:10.5194/acp-13-7683-2013, 2013.
- Sandradewi, J., Prevot, A. S. H., Szidat, S., Perron, N., Alfarra, M. R., Lanz, V. A., Weingartner, E., and Baltensperger, U.: Using aerosol light absorption measurements for the quantitative determination of wood burning and traffic emission contributions to particulate matter, *Environ. Sci. Technol.*, 42, 3316–3323, 2008.
- 30 Schmidl, C., Marr, I. L., Caseiro, A., Kotianov'a, P., Berner, A., Bauer, H., Kasper-Giebl, A., and Puxbaum, H.: Chemical characterisation of fine particle emissions from wood stove

16329

- combustion of common woods growing in mid-European Alpine regions, *Atmos. Environ.*, 42, 126–141, 2008.
- Schwarz, J. P., Gao, R. S., Spackman, J. R., Watts, L. A., Thomson, D. S., Fahey, D. W., Ryerson, T. B., Peischl, J., Holloway, J. S., Trainer, M., Frost, G. J., Baynard, T., Lack, D. A., de Gouw, J. A., Warneke, C., and Del Negro, L. A.: Measurement of the mixing state, mass, and optical size of individual black carbon particles in urban and solid fuel burning emissions, *Geophys. Res. Lett.*, 35, L13810, doi:10.1029/2008GL033968, 2008.
- 5 Seinfeld, J. H. and Pandis, S. N.: *Atmospheric Chemistry and Physics*, John Wiley, Hoboken, NJ, 1203 pp., 2006.
- 10 Sun, Y.-L., Zhang, Q., Schwab, J. J., Demerjian, K. L., Chen, W.-N., Bae, M.-S., Hung, H.-M., Hogrefe, O., Frank, B., Rattigan, O. V., and Lin, Y.-C.: Characterization of the sources and processes of organic and inorganic aerosols in New York city with a high-resolution time-of-flight aerosol mass spectrometer, *Atmos. Chem. Phys.*, 11, 1581–1602, doi:10.5194/acp-11-1581-2011, 2011.
- 15 Szidat, S., Prévôt, A. S. H., Sandradewi, J., Alfarra, M. R., Synal, H.-A., Wacker, L., Baltensperger, U.: Dominant impact of residential wood burning on particulate matter in Alpine valleys during winter, *Geophys. Res. Lett.*, 34, L05820, doi:10.1029/2006GL028325, 2007.
- Taylor, J. W., Allan, J. D., Liu, D., Flynn, M., Weber, R., Zhang, X., Lefer, B. L., Grossberg, N., Flynn, J., and Coe, H.: Assessment of the sensitivity of core/shell parameters derived using the single-particle soot photometer to density and refractive index, *Atmos. Meas. Tech. Discuss.*, 7, 5491–5532, doi:10.5194/amtd-7-5491-2014, 2014.
- 20 Ulbrich, I. M., Canagaratna, M. R., Zhang, Q., Worsnop, D. R., and Jimenez, J. L.: Interpretation of organic components from Positive Matrix Factorization of aerosol mass spectrometric data, *Atmos. Chem. Phys.*, 9, 2891–2918, doi:10.5194/acp-9-2891-2009, 2009.
- 25 Viana, M., Kuhlbusch, T. A. J., Querol, X., Alastuey, A., Harrison, R. M., Hopke, P. K., Winiwarter, W., Vallius, A., Szidat, S., Prevot, A. S. H., Hueglin, C., Bloemen, H., Wahlin, P., Vecchi, R., Miranda, A. I., Kasper-Giebl, A., Maenhaut, W., and Hitzenberger, R.: Source apportionment of particulate matter in Europe: A review of methods and results, *J. Aerosol Sci.*, 39, 827–849, 2008.
- 30 Wagener, S., Langner, M., Hansen, U., Moriske, H. J., and Endlicher, W. R.: Spatial and seasonal variations of biogenic tracer compounds in ambient PM₁₀ and PM₁ samples in Berlin, Germany, *Atmos. Environ.*, 47, 33–42, 2012.

16330

- Weingartner, E., Saathoff, H., Schnaiter, M., Streit, N., Bitnar, B., and Baltensperger, U.: Absorption of light by soot particles: determination of the absorption coefficient by means of aethalometers, *J. Aerosol. Sci.*, 34, 1445–1463, 2003.
- Yin, J., Harrison, R. M., Chen, Q., Rutter, A., and Schauer, J. J.: Source apportionment of fine particles at urban background and rural sites in the UK atmosphere, *Atmos. Environ.*, 44, 841–851, 2010.
- Yttri, K. E., Dye, C., Braathen, O.-A., Simpson, D., and Steinnes, E.: Carbonaceous aerosols in Norwegian urban areas, *Atmos. Chem. Phys.*, 9, 2007–2020, doi:10.5194/acp-9-2007-2009, 2009.
- Young, D. E., Allan, J. D., Williams, P. I., Green, D. C., Harrison, R. M., Yin, J., Flynn, M. J., Gallagher, M. W., and Coe, H.: Investigating the annual behaviour of submicron secondary inorganic and organic aerosols in London, to be submitted to *Atmos. Chem. Phys.*, 2014.
- Zhang, Q., A'lfarra, M. R., Worsnop, D. R., Allan, J. D., Coe, H., Canagaratna, M. R., and Jimenez, J. L.: Deconvolution and quantification of hydrocarbon-like and oxygenated organic aerosols based on aerosol mass spectrometry, *Environ. Sci. Technol.*, 39, 4938–4952, 2005.
- Zhang, Y., Schauer, J. J., Zhang, Y., Zeng, L., Wei, Y., Liu, Y., and Shao, M.: Characteristics of particulate carbon emissions from real-world Chinese coal combustion, *Environ. Sci. Technol.*, 42, 5068–5073, 2008.
- Zheng, M., Cass, G. R., Schauer, J. J., and Edgerton, E. S.: Source apportionment of PM_{2.5} in the southeastern United States using solvent-extractable organic compounds as tracers, *Environ. Sci. Technol.*, 36, 2361–2371, 2002.
- Zotter, P., Herich, H., El Haddad, I., Zhang, Y. L., Močnik, G., Hueglin, C., Gysel, M., Baltensperger, U., Szidat, S., and Prévôt, A. S. H.: Evaluation of the absorption Angstrom exponents for traffic and wood burning in the Aethalometer based source apportionment using radiocarbon measurements, in preparation for *Atmos. Meas. Tech.*, 2014.

16331

Table 1. A summary of aerosol/trace gas properties recorded during the different air mass categories, mean $\pm \sigma$ (standard deviation), and with median values in bracket: BC-related properties; AMS aerosol nitrate, sulphate, total organic sub-micron mass, NO_x (ppb), CO (ppb) and ambient temperature properties.

	BC mass loading ($\mu\text{g m}^{-3}$)	BC core diameter (nm)	BC coating thickness $-D_o/D_c$	BC related properties		Absorption Ångström Exponent	BC mass fraction from SF -BC _{sf} /Total BC	BC number fraction from SF -BC _{sf} /Total BC
				BC mass fraction	NO _x (ppbv)			
	Nitrate ($\mu\text{g m}^{-3}$)	Sulphate ($\mu\text{g m}^{-3}$)	Organic ($\mu\text{g m}^{-3}$)	NO _x (ppbv)	CO (ppbv)	Temperature (°C)		
Westerly	0.90 ± 0.84 (0.67)	137 ± 10 (134)	1.28 ± 0.07 (1.27)	0.17 ± 0.08 (0.15)	230 ± 90 (202)	8.0 ± 2.7 (8.4)	0.16 ± 0.06 (0.15)	0.06 ± 0.02 (0.06)
Easterly	1.13 ± 0.61 (1.08)	169 ± 29 (159)	1.65 ± 0.19 (1.63)	0.06 ± 0.02 (0.05)	290 ± 79 (284)	1.8 ± 2.1 (2.0)	0.39 ± 0.14 (0.36)	0.18 ± 0.10 (0.15)
South Easterly	1.74 ± 1.35 (1.25)	143 ± 11 (143)	1.45 ± 0.16 (1.43)	0.09 ± 0.08 (0.07)	381 ± 157 (357)	5.0 ± 2.7 (4.7)	0.24 ± 0.10 (0.22)	0.11 ± 0.05 (0.10)
Overall	1.30 ± 1.11 (0.98)	149 ± 22 (144)	1.45 ± 0.020 (1.42)	0.11 ± 0.08 (0.08)	308 ± 138 (279)	4.9 ± 3.7 (4.4)	0.26 ± 0.13 (0.23)	0.12 ± 0.08 (0.10)

16332

Table 2. A) The bilinear regression results for the BC-AMS-PMF attribution. B) The tri-linear regression results for the BC-AMS-PMF attribution.

A)					
	<i>a</i>	<i>b</i>	<i>c</i>	<i>a₀(c = 0)</i>	<i>b₀(c = 0)</i>
Westerly	1.25 ± 0.06	0.13 ± 0.03	0.13 ± 0.03	1.32 ± 0.05	0.15 ± 0.03
Easterly	1.08 ± 0.06	0.22 ± 0.02	0.08 ± 0.04	1.14 ± 0.05	0.20 ± 0.01
South Easterly	0.98 ± 0.02	0.06 ± 0.01	0.41 ± 0.05	1.05 ± 0.02	0.12 ± 0.01
B)					
	<i>i</i>	<i>j</i>	<i>k</i>	<i>l</i>	
Westerly	1.18 ± 0.06	0.094 ± 0.126	0.37 ± 0.11	0.094 ± 0.04	
Easterly	1.07 ± 0.06	0.33 ± 0.0354	0.23 ± 0.049	0.10 ± 0.0435	
South Easterly	0.99 ± 0.03	0.12 ± 0.0244	0.025 ± 0.04	0.40 ± 0.0458	
	<i>i₀(l = 0)</i>	<i>j₀(l = 0)</i>	<i>k₀(l = 0)</i>	Modelled results ^a	
Westerly	1.22 ± 0.054	0.012 ± 0.13	0.52 ± 0.083	BC _{model} = 0.82 × BC _{measured} (offset = 0.094)	
Easterly	1.02 ± 0.030	0.36 ± 0.020	0.30 ± 0.022	BC _{model} = 0.91 × BC _{measured} (offset = 0.062)	
South Easterly	0.83 ± 0.024	0.21 ± 0.02	0.27 ± 0.035	BC _{model} = 0.98 × BC _{measured} (offset = -0.15)	

^a denotes an Orthogonal Distance Regression (ODR).

16333

Table 3. A summary of the correlations among different BC mass attribution techniques: the number is the slope of the linear regression and in bracket is r^2 . *N* denotes the data points used for linear regression; ^a denotes a linear regression constrained to an intercept of zero.

	BC-AMS-PMF method /SP2 method ^a	Aeth method@470–950 nm /SP2 method ^a	α_{bc} when Aeth method@470–950 nm /SP2 method is optimized	Aeth method@370–880 nm /SP2 method ^a	α_{bc} when Aeth method@370–880 nm /SP2 method is optimized
Westerly (<i>N</i> = 441)	1.26 (0.53)	0.94 (0.46)	1.86 ± 0.37	1.21(0.33)	1.98 ± 0.38
Easterly (<i>N</i> = 325)	1.04 (0.79)	0.58 (0.83)	1.58 ± 0.19	0.60(0.58)	1.60 ± 0.22
South Easterly (<i>N</i> = 407)	1.02 (0.41)	0.97 (0.70)	1.83 ± 0.31	0.96(0.43)	1.86 ± 0.32
Overall (<i>N</i> = 1173)	1.05 (0.80)	0.74 (0.53)		0.78(0.45)	

16334

Table 4. The correlations between BC_{tr} vs. NO_x , and BC_{sf} vs. $SFOA_{total}$, Potassium and Levoglucosan. The BC_{tr} and BC_{sf} attributed by the SP2 and Aethalometer method are shown. Daily averaged Potassium and Levoglucosan are used, with a total of 27 days' worth of data used for the linear regression.

	SP2 attributed BC_{tr}/NO_x $\mu\text{g m}^{-3} \text{ppm}^{-1}$	Aeth attributed BC_{tr}/NO_x $\mu\text{g m}^{-3} \text{ppm}^{-1}$	SP2 attributed $BC_{sf}/SFOA_{total}^a$	Aeth attributed $BC_{sf}/SFOA_{total}^a$
Westerly (<i>N</i> = 441)	27.8 ± 0.33 (0.94)	28.1 ± 0.40 (0.93)	0.13 ± 0.003 (0.83)	0.12 ± 0.004 (0.68)
Easterly (<i>N</i> = 325)	21.1 ± 0.47 (0.87)	22.5 ± 0.84 (0.70)	0.20 ± 0.004 (0.75)	0.11 ± 0.002 (0.69)
South Easterly (<i>N</i> = 407)	17.8 ± 0.27 (0.92)	17.9 ± 0.32 (0.89)	0.11 ± 0.003 (0.85)	0.11 ± 0.003 (0.79)
	SP2 attributed BC_{sf}/K	Aeth attributed BC_{sf}/K	SP2 attributed $BC_{sf}/Levoglucosan$	Aeth attributed $BC_{sf}/Levoglucosan$
Overall (<i>N</i> = 27)	4.13 ± 0.57 (0.70) Offset -0.01 ± 0.06	3.26 ± 0.33 (0.81) Offset -0.01 ± 0.032	5.52 ± 0.91 (0.62) Offset -0.08 ± 0.07	4.75 ± 0.41 (0.85) Offset -0.10 ± 0.03

^a denotes a linear regression constrained to an intercept of zero.

Table A1. Symbols and acronyms.

Symbols/Acronyms	Meaning
AMS	Aerosol mass spectrometer
BC	Black carbon
BC_{tr}	Black carbon from traffic sources
BC_{sf}	Black carbon from solid fuel burning sources
D_c	The black carbon core diameter
D_p	The entire particle diameter
E_s	The enhancement of scattering
E_{s-thre}	The threshold scattering enhancement
HOA	Hydrocarbon-like organic aerosol
<i>m</i>	Refractive index
α	The Absorption Ångström exponent
σ_g	Geometric standard deviation
PMF	Positive matrix factorization
SP2	Single particle soot photometer
SF	Solid fuel burning
SFOA	Solid fuel burning organic aerosol
TD	Thermodenuder

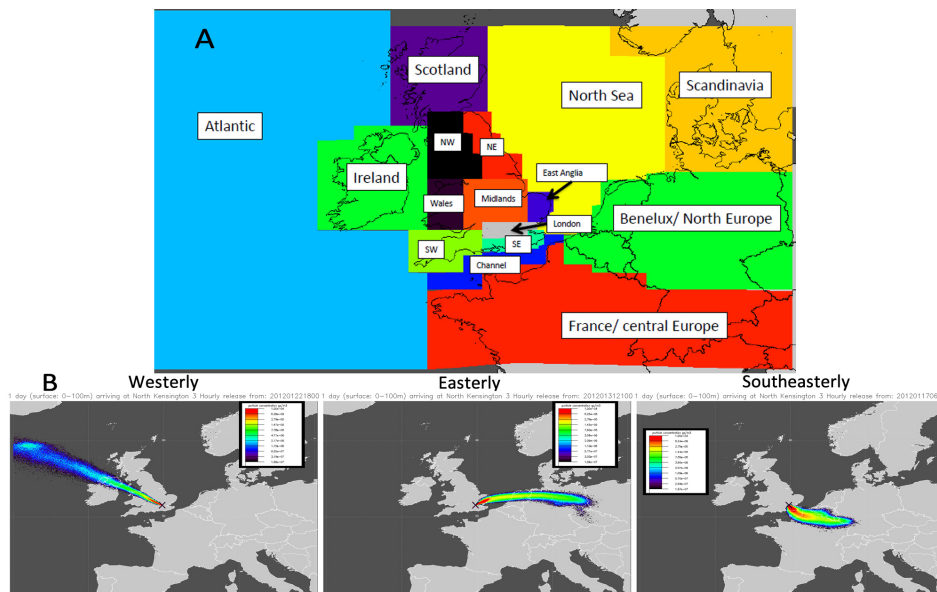


Figure 1. (A) The designated regional influences within the domain of passage for 1 day footprints in the NAME model. (B) Typical footprints for each broadly classified air mass category, the image is coloured by the particle density, with the cross marking the location of receptor.

16337

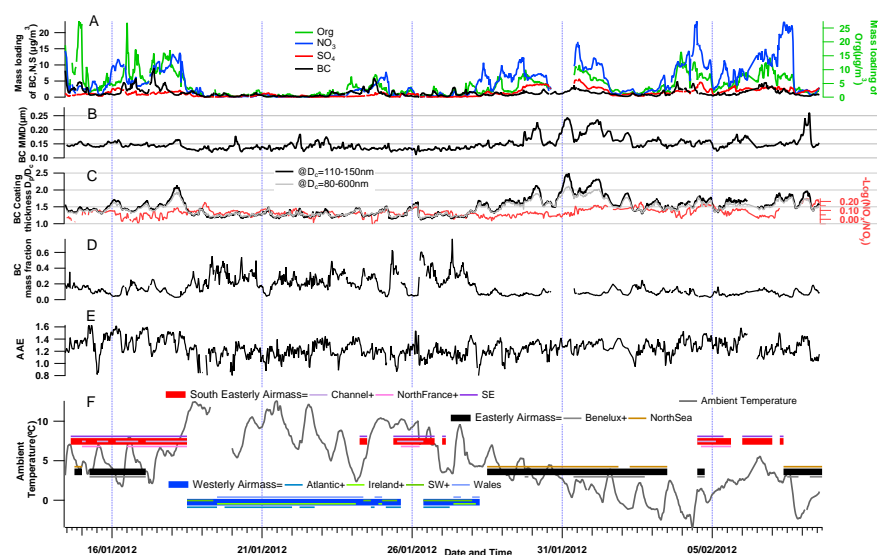


Figure 2. The aerosol/trace gas properties and air mass history for the entire experimental period. (A) rBC mass loadings from SP2, non-refractory compositions (sulphate, nitrate and total organic) from AMS; (B) mass median diameter (MMD) of BC cores (D_c); (C) bulk coating thickness, D_p/D_c (see the definition in Sect. 2.1), within the D_c range 110–150 nm, and the entire SP2 detectable D_c range (80–600 nm), with the right red axis showing the chemical age metric $-\log(\text{NO}_x/\text{NO}_y)$; (D) rBC mass fraction calculated as rBC mass/(rBC mass + total non-refractory mass from AMS); (E) the Absorption Ångström exponent (AAE, α) calculated from Aethalometer data (at λ 's 470 and 950 nm); (F) classified air mass category and the dominant regional air mass types derived from NAME modelling, with the grey line showing the local air temperature.

16338

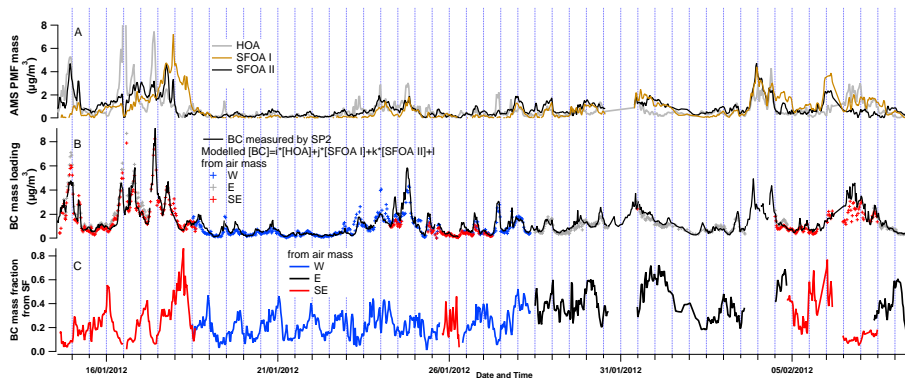


Figure 3. (A) Time series of AMS-PMF mass loading results for HOA, SFOA I, SFOA II; (B) Modelled BC mass by tri-linear regression compared with the measurements for different air masses (note the bi-linear regression is also tested but not shown in this figure); (C) BC-AMS-PMF attributed BC_{sf} mass fraction by tri-linear regression.

16339

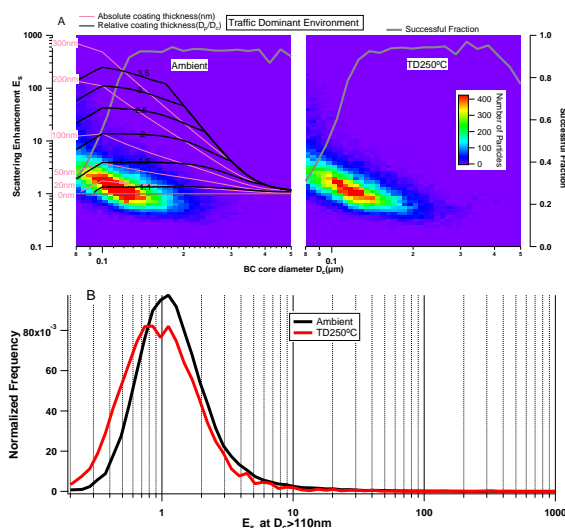


Figure 4. BC optical properties when the environment is dominated by traffic source (22–24 January during W air masses). (A) The scattering enhancement (E_s) as a function of BC core diameter (D_c). The image plot is a two dimensional histogram for the detected particles. The solid grey line, with corresponding scale on right axis, shows the number fraction of BC particles that were successfully determined according to their scattering signal at each D_c size. The left panel is for the ambient data whereas the right panel is the same group of BC particles after passing through the thermo-denuder (TD) at 250 °C. The thinner red and black contours show the corresponding absolute coating thickness (in nm) and relative coating thickness (D_p/D_c) respectively. (B) The area normalized histogram of E_s for the particles with $D_c > 110$ nm.

16340

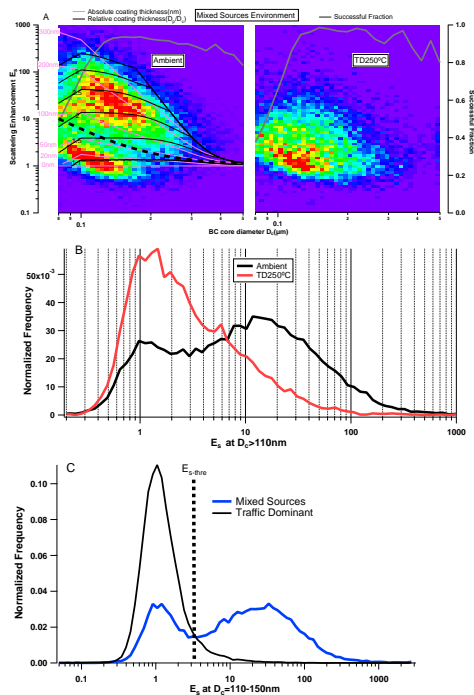


Figure 5. BC optical properties when environment is significantly influenced by solid fuel burning (31 January–1 February when E air mass). The legends in the plot are identical with Fig. 4. In particular, the thick dotted black line on the left panel of (A) shows the reference line used to discriminate the BC from traffic or solid fuel burning source. (C) the E_s distribution at $D_c = 110$ – 150 nm for the traffic and mixed sources, with the dotted line showing the determination of $E_{s\text{-thre}}$.

16341

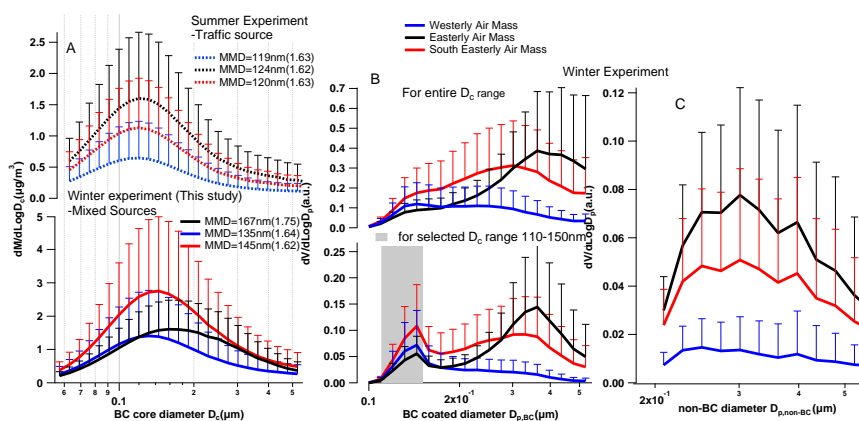


Figure 6. BC-related size distributions classified by air masses. The error bars are the $\pm\sigma$ (standard deviation): (A) BC core (D_c) size distribution for both winter and summer experiments, with the dotted lines showing the summer experiment; the text boxes denote the mass median diameter, MMD, and the geometric mean σ_g (in brackets) for each size distribution; (B) coated BC size (D_p) distribution for the selected D_c range, 110–150 nm (with the grey shaded box showing the range of values) and for the entire detectable D_c range in winter; (C) the size distribution of non-BC particles which do not contain BC core in winter.

16342

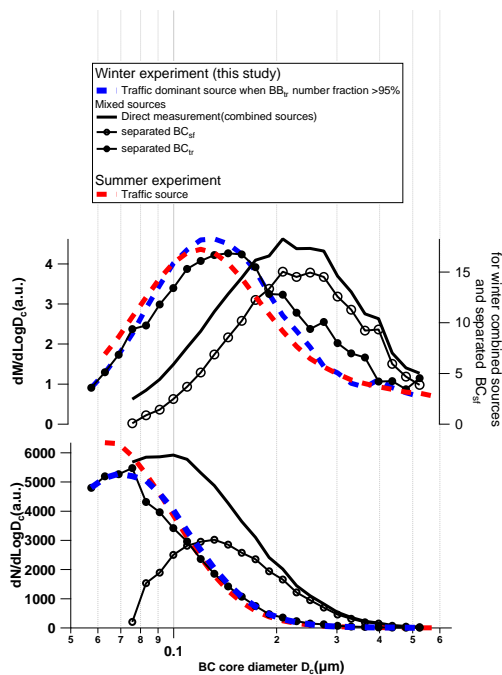


Figure 7. Mass and number size distributions of BC core: when traffic dominant source during winter; attributed BC_{tr} and BC_{sf} from mixed sources; the BC in summer experiment when traffic source dominant.

16343

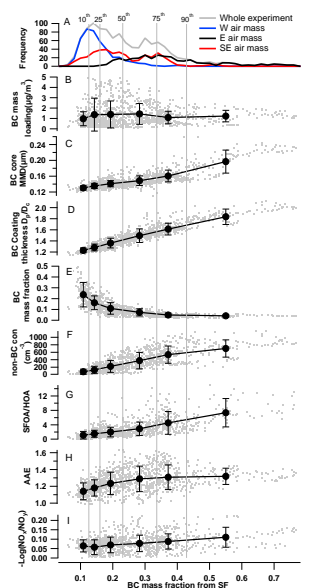


Figure 8. The BC-related properties as a function of BC_{sf} mass fraction as attributed by the SP2. The data points are grouped according to the percentiles of BC_{sf} mass fraction, i.e. min to 10th percentile of BC_{sf} fraction; 10th to 25th percentile of BC_{sf} fraction etc. Each solid round marker shows the average within the grouped points with the error bar showing the standard deviation ($\pm\sigma$). **(A)** of the histograms of BC_{sf} mass fraction for W, E, SE air mass and for the entire experiment; **(B)** BC mass loadings; **(C)** BC core diameter; **(D)** BC coating thickness; **(E)** BC mass fraction; **(F)** non-BC concentration at 200–530 nm; **(G)** SFOA/HOA from AMS-PMF analysis; **(H)** the Absorption Ångström Exponent calculated at $\lambda = 470$ and 950 nm; **(I)** $-\log(\text{NO}_x/\text{NO}_y)$.

16344

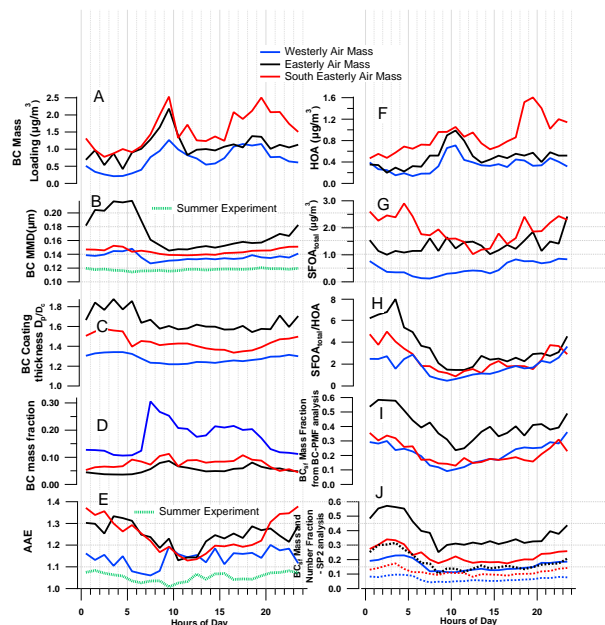


Figure 9. The diurnal trends of BC-related parameters classified by air mass. The lines show the median values of the dataset. **(A)** rBC mass loading; **(B)** BC core MMD, with the dotted green line showing the summer result; **(C)** BC coating thickness D_p/D_c ; **(D)** BC mass fraction; **(E)** the Absorption Ångström Exponent with dotted green line showing the summer result; **(F)** HOA mass loading from AMS-PMF; **(G)** SFOA_{total} (SFOA I + SFOA II) mass loading from AMS-PMF; **(H)** SFOA_{total}/HOA ratio; **(I)** BC mass fraction from solid fuel burning attributed by BC-AMS-PMF method (Sect. 3.3); **(J)** BC mass/number fraction from solid fuel burning attributed by SP2 method (Sect. 3.5), with the dotted lines showing the number fraction.

16345

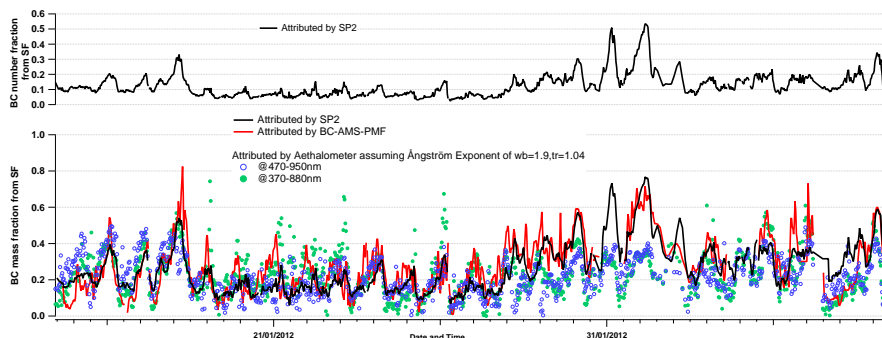


Figure 10. Intercomparisons among different techniques of BC source attribution. The above panel shows the number fraction of BC from solid fuel burning source which can only be obtained from SP2 attribution.

16346

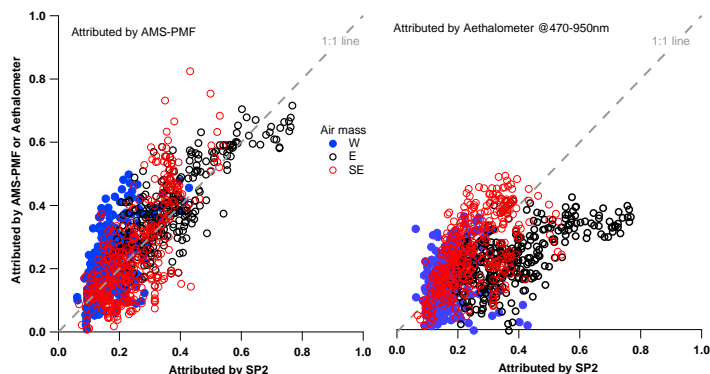


Figure 11. Comparisons between BC-AMS-PMF and Aethalometer ($\lambda_{470-950\text{nm}}$) attributed BC_{sf} mass fraction and the SP2 attribution for different air masses.

16347

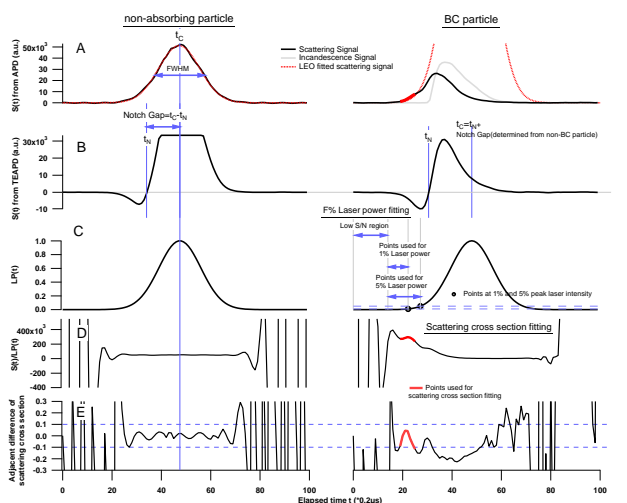


Figure A1. The methodology of leading edge only (LEO) Gaussian fitting. The left panel is a typical example of a single particle event for a non-absorbing particle and the right panel is for an absorbing BC particle. **(A)** the black line is the measured raw scattering signal $S(t)$ from APD as a function of elapsed time t , the t_C is when the peak $S(t)$ occurs at the laser beam centre, red dot line is the LEO fitted signal, with the grey line on the right panel showing the incandescence signal of the BC particle; **(B)** the two-element APD (TEAPD) signal used to determine the notch position t_N (the zero-crossing point) and the notch gap $t_C - t_N$; **(C)** the laser profile $LP(t)$ as determined by the σ and t_C , with the blue double-end arrows showing the data points used for the “F% laser power” fitting method, the data points up to 1% and 5% peak laser intensity are shown; **(D)** the relative scattering cross section $\sigma_s(t) = S(t)/LP(t)$; **(E)** the adjacent difference of $\sigma_s(t)$ calculated as $(\sigma_s(t) - \sigma_s(t - 1))/\sigma_s(t)$. The thick red lines on panel **(A)**, **(D)** and **(E)** show the data points used for scattering cross section LEO fitting.

16348

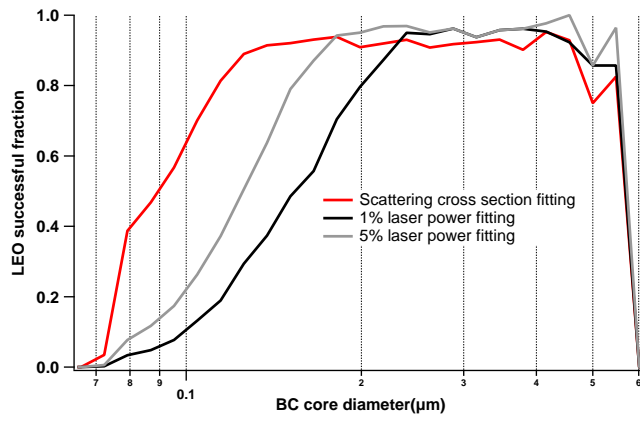


Figure A2. The LEO successful fraction as a function of BC core diameter for different LEO fitting methods.