

Interactive comment on “Evolution of the complex refractive index in the near UV spectral region in ageing secondary organic aerosol” by J. M. Flores et al.

J. M. Flores et al.

flores@weizmann.ac.il

Received and published: 18 February 2014

The caption from Fig. 2 is incorrect, it seems that the caption from Fig. 5 was accidentally written in its place. The correct caption for Fig. 2 is below, or you can take the attached figure with the caption.

Fig. 2. Time series of the three experiments performed. The BVOC experiment is shown in the left panel, the sequential experiment in the middle panel, and the mixture experiment is shown in the right panel. The mixing ratio of ozone (black line), the mixture of α -pinene and limonene (monoterpenes; dotted green line), and p-xylene-

C143

d10 (red dashed line) are shown in the top panels. The total mass (black line), median diameter (black dash-dot line), and OH concentration (purple dots) are shown in the middle panels. The temperature (black dash line), relative humidity (black dotted line), and pressure (blue dots) are shown in the lower panels. The photolysis rates of NO₂ (orange area) are presented in all panels to indicate the diurnal cycles; the rate values are shown in the right top axis. NO_x levels were below 1pptv and are not shown here.

Interactive comment on Atmos. Chem. Phys. Discuss., 14, 4149, 2014.

C144

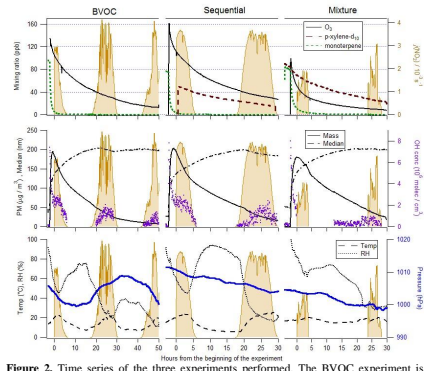


Figure 2. Time series of the three experiments performed. The BVOC experiment is shown in the left panel, the sequential experiment in the middle panel, and the mixture experiment is shown in the right panel. The mixing ratio of ozone (black line), the mixture of α -pinene and limonene (monoterpenes; dotted green line), and p-xylene- d_{10} (red dashed line) are shown in the top panels. The total mass (black line), median diameter (black dash-dot line), and OH concentration (purple dots) are shown in the middle panels. The temperature (black dash line), relative humidity (black dotted line), and pressure (blue dots) are shown in the lower panels. The photolysis rates of NO_2 (orange area) are presented in all panels to indicate the diurnal cycles; the rate values are shown in the right top axis. NO_x levels were below 1pptv and are not shown here.

Fig. 1.

C145