



This discussion paper is/has been under review for the journal Atmospheric Chemistry and Physics (ACP). Please refer to the corresponding final paper in ACP if available.

Seasonal variation of aerosol water uptake

N. Rastak et al.

Seasonal variation of aerosol water uptake and its impact on the direct radiative effect at Ny-Ålesund, Svalbard

N. Rastak¹, S. Silvergren³, P. Zieger¹, U. Wideqvist¹, J. Ström¹,
B. Svenningsson³, M. Maturilli⁴, M. Tesche¹, A. M. L. Ekman², P. Tunved¹, and
I. Riipinen¹

¹Department of Applied Environmental Science (ITM) and Bert Bolin Centre for Climate Research, Stockholm University, Sweden

²Department of Meteorology (MISU) and Bert Bolin Centre for Climate Research, Stockholm University, Sweden

³Division of Nuclear Physics, Lund University, Sweden

⁴Alfred Wegener Institute, Helmholtz Centre for Polar and Marine Research, Potsdam, Germany

Received: 25 November 2013 – Accepted: 4 March 2014 – Published: 17 March 2014

Correspondence to: N. Rastak (narges.rastak@itm.su.se)

Published by Copernicus Publications on behalf of the European Geosciences Union.

Title Page

Abstract

Introduction

Conclusions

References

Tables

Figures

◀

▶

◀

▶

Back

Close

Full Screen / Esc

Printer-friendly Version

Interactive Discussion



Abstract

In this study we investigated the impact of water uptake by aerosol particles in ambient atmosphere on their optical properties and their direct radiative effect (ADRE, Wm^{-2}) in the Arctic at Ny-Ålesund, Svalbard, during 2008. To achieve this, we combined three models, a hygroscopic growth model, Mie model and a radiative transfer model, with an extensive set of observational data. We found that the seasonal variation of dry aerosol scattering coefficients showed minimum values during the summer season and the beginning of fall (July, August and September), when small particles (< 100 nm in diameter) dominate the aerosol size distribution. The maximum scattering by dry particles was observed during Arctic haze period (March, April and May) when average size of the particles was larger. Considering the hygroscopic growth of aerosol particles in the ambient atmosphere had a significant impact on the aerosol scattering coefficients: the aerosol scattering coefficients were enhanced by on average a factor of 4.30 ± 2.26 (mean \pm standard deviation), with lower values during the haze period (March, April, May) as compared to summer and fall. Hygroscopic growth of aerosol particles was found to cause 1.6 to 3.7 times more negative ADRE on the surface, with the smallest effect during the haze period (March, April and May) and the highest during late summer and beginning of fall (July, August and September).

1 Introduction

Atmospheric aerosol particles influence the Earth's energy budget directly by scattering and absorbing radiation (McCormick and Ludwig, 1967; Charlson and Pilat, 1969; Atwater, 1970; Mitchell Jr., 1971; Coakley et al., 1983) and indirectly by acting as cloud condensation nuclei and thereby modifying cloud properties (Twomey, 1977; Albrecht, 1989; Charlson et al., 1992; Hegg, 1994; Boucher and Lohmann, 1995). A better understanding on the radiative impacts of atmospheric aerosols is needed for quantifying the factors determining the Earth's energy balance and driving changes in global climate

ACPD

14, 7067–7111, 2014

Seasonal variation of aerosol water uptake

N. Rastak et al.

Title Page

Abstract

Introduction

Conclusions

References

Tables

Figures

◀

▶

◀

▶

Back

Close

Full Screen / Esc

Printer-friendly Version

Interactive Discussion



(IPCC, 2013). In this study we focus on the Aerosol Direct Radiative Effect (ADRE), whose magnitude is determined by the chemical composition, size distribution, shape, and particle concentration profiles of the atmospheric aerosols, the Earth's surface albedo and the solar zenith angle (Yu et al., 2006).

Water is an important chemical component in atmospheric aerosol particles, thus affecting ADRE (e.g. Myhre et al., 2004). For example, it has been estimated that increasing the relative humidity (RH) from 40 % to 80–90 % could double the direct negative radiative forcing caused by aerosols (Piliinis et al., 1995; Fierz-Schmidhauser et al., 2010a). The water content of a given atmospheric aerosol population is determined by the ambient RH together with the composition, particularly water-solubility, and dry size distribution of the aerosol particles. In situ measurements of aerosol size distributions and optical properties, however, often take place at dry or nearly dry conditions. Therefore, to evaluate the impact of aerosol water content on ADRE, the measurements at dry conditions need to be corrected for the hygroscopic growth of the aerosol particles under humid ambient atmospheric conditions. The water uptake (hygroscopicity) of aerosol particles in equilibrium with the atmospheric water vapour can be modeled using the κ -Köhler theory (e.g. Petters and Kreidenweis, 2007), where the aerosol water uptake is represented with a single hygroscopicity parameter- κ .

Numerous experimental and modeling studies have investigated the influence of RH on optical properties of aerosol particles, which is often described with the enhancement factor $f(\text{RH})$, defined as the ratio of aerosol scattering coefficient at a given RH and the scattering coefficient at dry conditions (see e.g. Zieger et al., 2010). $f(\text{RH})$ has been investigated in a number of studies at various locations (see Table 1), typically by comparing the signal of a nephelometer operated at a given RH to a corresponding instrument at dry conditions. The reported values vary from almost no enhancement ($f = 1$) to a considerable effect on the optical properties ($f > 3$), depending on the location and atmospheric conditions. Fierz-Schmidhauser et al. (2010c) measured the hygroscopic growth and optical properties of 100 nm ammonium sulfate and sodium chloride particles in laboratory and found values of f (85 %) ranging from 6 to 18.

Seasonal variation of aerosol water uptake

N. Rastak et al.

Title Page

Abstract

Introduction

Conclusions

References

Tables

Figures

◀

▶

◀

▶

Back

Close

Full Screen / Esc

Printer-friendly Version

Interactive Discussion



Seasonal variation of aerosol water uptake

N. Rastak et al.

Title Page

Abstract

Introduction

Conclusions

References

Tables

Figures

◀

▶

◀

▶

Back

Close

Full Screen / Esc

Printer-friendly Version

Interactive Discussion



Temperature variability and climate trends in the Arctic region tend to be more pronounced than the corresponding trends and variability for the Northern Hemisphere or the globe as a whole, resulting from the different feedbacks active in the Arctic environment. This characteristic feature of the climate system is referred to as the Arctic amplification and it is expected to become stronger in the upcoming decades (Serreze and Barry, 2011). The impacts of Arctic amplification can also extend outside the Arctic region (Lawrence et al., 2008). Arctic temperatures have increased at almost twice the global average rate over the past 100 years (IPCC, 2013), contributed in a continuous reduction of Arctic summer sea ice cover and surface albedo since 1979 (Serreze et al., 2007). The Arctic region thus appears to be more sensitive to greenhouse gas-induced warming than the rest of the globe. Shindell and Faluvegi (2009) also showed that the Arctic climate is particularly sensitive to changes in Northern Hemisphere aerosol forcing, induced both by e.g. altered particle and precursor emissions as well as atmospheric water content.

In this manuscript we investigate the seasonality of the enhancement of the direct aerosol forcing in the Arctic caused by aerosol hygroscopic growth, focusing on the year 2008. We calculate seasonal enhancement factors $f(\text{RH})$ by driving a coupled hygroscopic growth and aerosol light scattering model with measured atmospheric aerosol size distribution, composition, temperature, and RH data collected at the Mt. Zeppelin station in Ny-Ålesund, Svalbard. We evaluate the model calculations using campaign-wise data on the hygroscopic growth and aerosol optical properties (Silvergren et al., 2014; Zieger et al., 2010). Furthermore, we investigate the influence of the hygroscopic growth on the direct radiative forcing.

2 Mt Zeppelin station, Ny-Ålesund, Svalbard

All the measurements except for the soundings and surface albedo used in this study (see Sect. 4) were conducted at the Mt Zeppelin station. The observatory is located in the Arctic on Zeppelin Mountain, close to Ny-Ålesund, in the archipelago of Svalbard

at 78°54' N, 11°53' E (Fig. 1). The station is located in an almost pristine Arctic environment, away from major pollution sources. Influence from local pollution sources, such as from the nearby community of Ny-Ålesund, is also limited by the location of the observatory at 474 m above sea level (m.a.s.l.). The unique location of the observatory makes it an ideal platform for monitoring global atmospheric change and long-range pollution transport. The observatory belongs to the Norwegian Polar Research Institute (NP) and the Norwegian Institute for Air Research (NILU) is responsible for the scientific program performed at the station (Ström et al., 2003; Tunved et al., 2013). The soundings and surface albedo measurements were conducted at the village of Ny-Ålesund.

3 Model setup

To examine the effect of hygroscopic growth on aerosol optical properties and the aerosol direct effect in the Arctic, three different models were utilized. First, we modeled the hygroscopic growth of aerosol particles in ambient atmosphere using the κ -Köhler theory (Petters and Kreidenweis, 2007). In the next step, we investigated the effect of this hygroscopic growth on aerosol particle optical properties by coupling the hygroscopic model to a Mie scattering model (Wiscombe, 1979). Finally, a radiative transfer model (Santa Barbara Disort Atmospheric Radiation Transfer, SBDART, Ricchiuzzi et al., 1998) was used to look into the local effect of hygroscopicity on direct radiative effect of aerosol particles. A scheme of the models and their required inputs is shown in Fig. 2. All the input data were taken from the year 2008 from which an extensive set of chemico-physical observations was available. The three models are described in more detail in the following subsections.

Seasonal variation of aerosol water uptake

N. Rastak et al.

Title Page

Abstract

Introduction

Conclusions

References

Tables

Figures

◀

▶

◀

▶

Back

Close

Full Screen / Esc

Printer-friendly Version

Interactive Discussion



3.1 Hygroscopic growth model

If the atmospheric RH is high enough, aerosol particles containing soluble material are capable of absorbing water and produce saturated aqueous solutions (Seinfeld and Pandis, 1998). The hygroscopicity of an aerosol particle is defined by its growth factor (GF), which is the ratio between the aerosol particle diameter after absorbing water (i.e. the wet droplet diameter), and its dry diameter. Water uptake of an aerosol particle can be modeled by the κ -Köhler theory assuming thermodynamic equilibrium between atmospheric water vapour and the aerosol particle, where the aerosol water uptake is represented with a single hygroscopicity parameter, κ . Typical values of κ vary from 0 for nonhygroscopic components to about 1.4 for highly hygroscopic salts such as sodium chloride (Petters and Kreidenweis, 2007). According to the κ -Köhler theory, the saturation ratio (S) over a solution droplet is related to the ambient relative humidity (RH) and can be described by:

$$S(D_p) = \frac{RH}{100} = \frac{D_p^3 - D_d^3}{D_p^3 - D_d^3(1 - \kappa)} \exp\left(\frac{4\sigma_{s/a}M_w}{RT\rho_w D_p}\right), \quad (1)$$

where D_d (m) is the dry diameter of the aerosol particle, D_p (m) is the wet diameter, ρ_w (kg m^{-3}) is the density of water, M_w (kg mol^{-1}) is the molar mass of water, R is the universal molar gas constant and $\sigma_{s/a}$ is equal to the surface tension of the solution/air interface. In the following the surface tension of pure water 0.072 J m^{-2} was applied. The total hygroscopicity parameters κ for the multi-component aerosol particles considered in this study were calculated using the simple mixing rule,

$$\kappa = \sum_i \varepsilon_i \kappa_i. \quad (2)$$

ε_i and κ_i are the volume fraction and hygroscopicity parameter of each component, respectively. RH values above 95 % were fixed as 95 % in the calculations, due to the

Title Page

Abstract

Introduction

Conclusions

References

Tables

Figures

◀

▶

◀

▶

Back

Close

Full Screen / Esc

Printer-friendly Version

Interactive Discussion



uncertainties in the measurements at high values. This might lead to a small negative bias in the GFs at high RHs.

3.2 Mie model

Aerosol optical properties such as extinction coefficient (scattering + absorption) are functions of particle size, chemical composition (which defines the complex refractive index of the particle) and the wavelength of the incident light (Ouimette and Flagan, 1982). The interaction of a single spherical particle with radiation can be computed from Mie theory (van de Hulst, 1957; Kerker, 1969; McCartney, 1976). In the present study, the Mie model, MIEV0 by Wiscombe (1979) was used. The entire package of numerical code is available from the internet server <http://www.scattport.org/index.php/light-scattering-software?start=100>. The Mie model was run for the whole year of 2008 with input as defined in Fig. 2. Two base cases were investigated: the “dry” base case where RH was assumed to be 0 (and $GF = 1$), and the “wet” base case using ambient RH and the corresponding hygroscopic growth factors (see Table 2).

3.3 Radiative transfer model

The Santa Barbara DISORT (discrete ordinate) Atmospheric Radiative Transfer model was used to calculate the solar irradiance for clear sky conditions (SBDART, Ricchiazzi et al., 1998). The investigated wavelength range covers 0.25 to 4 μm using a wavelength increment of 0.005 μm . The radiative transfer model requires the atmospheric profiles of pressure (hPa), temperature (K), water vapor density (gm^{-3}) and ozone density (gm^{-3}) (see Sect. 4.1.3 for more information). In the current setup the model also requires specification of the aerosol optical depth (AOD), single scattering albedo ω , and the asymmetry parameter g of the phase function at each atmospheric layer. These parameters were calculated using the Mie model (see Sect. 3.2) over the indicated wavelength range. The solar zenith angle was predefined in the code according to the time of the day, time of year and geographical coordinates.

Seasonal variation of aerosol water uptake

N. Rastak et al.

Title Page

Abstract

Introduction

Conclusions

References

Tables

Figures

◀

▶

◀

▶

Back

Close

Full Screen / Esc

Printer-friendly Version

Interactive Discussion



Seasonal variation of aerosol water uptake

N. Rastak et al.

Title Page

Abstract

Introduction

Conclusions

References

Tables

Figures

◀

▶

◀

▶

Back

Close

Full Screen / Esc

Printer-friendly Version

Interactive Discussion



Instantaneous aerosol direct radiative effect (ADRE, Wm^{-2}) can be calculated from the outputs provided by the SBDART-model. Herein, we designate a perturbation of net (downward minus upward) radiant energy by total aerosol (natural plus anthropogenic) on the surface as aerosol direct radiative effect (ADRE) while the direct radiative forcing (RF) only considers the anthropogenic components (see IPCC, 2013). A positive radiative effect indicates addition of energy to the Earth system (i.e., a warming effect) whereas a negative effect indicates a net loss of energy (i.e., a cooling effect). Daily values of the ADRE were calculated based on the dry and wet base case calculations (see Table 2) from 8.00 to 12.00 a.m. (to correspond to the timing of the RH soundings) for six days (1st, 5th, 10th, 15th, 20th, 25th) of each month. We focused on the radiative forcing in the morning due to the availability of the RH soundings which were reported around 10.00 to 12.00 a.m. for each day. Monthly averages based on these six values were constructed from March to September, which were the months with sufficient sunlight available.

4 Experimental data

In the following subsections we describe the measurements used as inputs for the models (see Fig. 2, Sect. 4.1) or model evaluation (Sect. 4.2).

4.1 Model input data

4.1.1 Aerosol size distribution and relative humidity measurements

The aerosol number size distribution measurements (between 10 and 790 nm) have been conducted since March 2002 at Mt Zeppelin (Tunved et al., 2013), using a closed loop Differential Mobility Particle Sizer (DMPS) with a medium size Hauke differential mobility analyzer (DMA) (Knutson and Whitby, 1976; Jokinen and Makela, 1997). The particles are counted using a condensation particle counter (TSI3010). In the present

study, one year (2008) of hourly averaged aerosol number size distributions was used. The RH measurements were obtained on an hourly basis using Relative Humidity Sensor 3445-Aanderaa (sensor operated by NILU).

4.1.2 Aerosol chemical composition

To calculate the hygroscopic growth of aerosol particles, aerosol chemical composition determined from filter measurements was used. Chemical speciation was made using two different observational data sets: one for the division between organic and elemental carbon (OC/EC) and inorganic aerosol components, and one for attaining the composition of the inorganic aerosol fraction.

First, aerosol particles ($D_d < 10 \mu\text{m}$) were collected at the Zeppelin station on a monthly basis from 1 September 2007 to 9 September 2008, using a Sierra Andersen (Sierra Instruments Inc.) high-volume sampler equipped with a PM_{10} inlet and operating with an air flow rate of approximately $1.7 \text{ m}^3 \text{ min}^{-1}$. Twelve Whatman sheets quartz filter Grade QM-A $20 \times 25 \text{ cm}$ ($8 \times 10 \text{ in}$) were used. All filters were preheated to 800°C over 12 h before sampling. Filters were extracted in 200 mL of Milli-Q water and 6% of the extract was removed for H-TDMA analysis. The filter samples were analyzed for the organic and elemental carbon (OC/EC) concentration using a Sunset Laboratories Thermo–Optical Transmittance Carbon Aerosol Analysis Instrument (Wallén et al., 2010).

Subsamples of each filter (1.5 cm^2) were analyzed for OC/EC before and after extraction in Milli-Q water (2 mL cm^{-2}). The OC remaining on the filter after extraction was considered as Less Water Soluble OC (LWS-OC). The difference of the amount of OC between non-extracted and the extracted filter subsamples is an indirect way to measure the water soluble organic carbon, and was denoted as More Water Soluble organic carbon (MWS-OC). MWS-OS was also determined directly on subsamples of the 200 mL water extracts and an average of the methods was used in the following work (Silvergren et al., 2014). These analyses provided us with monthly mass fraction of inorganics, MWS-OC, LWS-OC and EC. The OC/EC composition for the period from

Seasonal variation of aerosol water uptake

N. Rastak et al.

Title Page

Abstract

Introduction

Conclusions

References

Tables

Figures

◀

▶

◀

▶

Back

Close

Full Screen / Esc

Printer-friendly Version

Interactive Discussion



10 September 2008 to 31 December 2008 was assumed to be the same as for the corresponding period during the previous year.

In the next step, the inorganic fraction was assumed to consist of a sulfate (NO_3^- , NH_4^+ , SO_4^{2-} , Ca^{2+} , K^+) and a sea salt (Na^+ , Cl^- , Mg^{2+}) fraction. The fractions were determined using daily samples, collected with an open face filter pack system (no particle size cut-off, but shielded by a cylinder, which reduces the sampling efficiency of particles larger than $10\ \mu\text{m}$) and analyzed by Ion Chromatography (Hjellbrekke and Fjæraa, 2010; Aas et al., 2009; Ström et al., 2003).

The final chemical aerosol components are thus: OC (divided into MWS-OC and LWS-OC), sulfate, sea salt and EC. The physical and chemical properties of these components needed as input in the model calculations are presented in Table 3. For sulfate and sea salt we assumed the properties of ammonium sulfate and sodium chloride, respectively. The averaged chemical composition (Fig. 3) is dominated by inorganics, the contribution of EC to aerosol composition is very small ($< 2\%$) throughout the year. This implies that the aerosol light extinction is dominated by the scattering over the absorbing component (see the refractive indices of the chemical components in Table 3).

Besides assuming the OC/EC division to be similar in the falls of 2008 and 2007, internally mixed aerosol particles with homogenous chemical composition over the whole size range were assumed. While these are certainly simplifications, it has been shown in previous studies that Arctic aerosol particles at Ny-Ålesund, Svalbard are largely internally mixed, at least in March and April (Covert and Heintzenberg, 1993; Engvall et al., 2009). Also, as shown later in this work, the size dependence of the chemical composition does not appear to be a major factor dominating the optical properties and the direct radiative effect of the aerosol.

Seasonal variation of aerosol water uptake

N. Rastak et al.

[Title Page](#)[Abstract](#)[Introduction](#)[Conclusions](#)[References](#)[Tables](#)[Figures](#)[◀](#)[▶](#)[◀](#)[▶](#)[Back](#)[Close](#)[Full Screen / Esc](#)[Printer-friendly Version](#)[Interactive Discussion](#)

4.1.3 Vertical profiles

Atmospheric profiles of pressure, temperature, RH and ozone were estimated using a combination of available daily routine radiosoundings performed at Ny-Ålesund by the Alfred Wegener Institute (AWI) and standard atmospheric profiles for polar summer and polar winter (<http://www.atm.ox.ac.uk/RFM/atm>). The SDBART model is divided into 60 vertical levels. For the first 40 levels the increment is 0.5 km, and above this the increment is 20 km for each layer. By using linear interpolation, the various profiles were harmonized to match the vertical levels used in SDBART.

Since no direct measurements on the vertical profiles of aerosol particle number distributions were conducted in Ny-Ålesund, we assumed a vertical scale factor that relates the aerosol number concentrations at a given altitude to the surface measurements (at 474 m.a.s.l.). The vertical profile of the aerosol particle number size distribution was estimated based on mean extinction coefficient profiles obtained from observations with the spaceborne Cloud-Aerosol Lidar and Infrared Pathfinder Satellite Observations (CALIPSO) lidar over the Arctic (Di Pierro et al., 2013). Winker et al. (2013) present Arctic extinction profiles that show an exponential decrease with height. The Zeppelin observations were considered as being representative for the lowermost kilometer of the atmospheric column. Above this height, we scaled the in-situ findings by assuming an exponential decay in aerosol concentration with height. This lead to a scale factor that is unity at the height of Zeppelin station and decreases exponentially to zero at 10 km height. The chemical composition was kept the same for all vertical layers.

4.1.4 Surface albedo

Surface albedo data were taken from ground-based measurements at Ny-Ålesund using CMP11 pyranometers at 11 m.a.s.l (<http://doi.pangaea.de/10.1594/PANGAEA.808703>). During the polar night which starts and ends around mid-October and mid-February, respectively, no albedo measurements were available. Data was further re-

Title Page

Abstract

Introduction

Conclusions

References

Tables

Figures

◀

▶

◀

▶

Back

Close

Full Screen / Esc

Printer-friendly Version

Interactive Discussion



duced by only allowing measurements exceeding 10 W m^{-2} . The daily mean values for the year 2008 from March to September were used as input to SBDART.

4.2 Model evaluation data

4.2.1 H-TDMA measurements of aerosol particle hygroscopic growth

5 The hygroscopic growth calculations were evaluated using data collected with a Hygroscopic Tandem Differential Mobility Analyzer (H-TDMA) between September 2007 and August 2008. TDMA was first introduced by Liu et al. (1978) as a technique to study the change in particle diameter as a response to changes in surrounding conditions (i.e. temperature or humidity). H-TDMA instruments have successfully been used in
10 a multitude of studies to investigate particle size changes associated with changes in humidity (e.g. Sekigawa, 1983; McMurry and Stolzenburg, 1989; Swietlicki et al., 2008; Nilsson et al., 2009; Achtert et al., 2009). In the current study water extracts of the monthly filter samples of aerosol particles were analyzed by an H-TDMA by atomizing the extracts and measuring the hygroscopic growth factor of the dried 80, 90, 100,
15 110 and 120 nm particles. Note that the growth factors inferred from the H-TDMA measurements do not represent the size-dependent chemical composition at the Zeppelin site, but rather an average bulk composition. During the measurements, the humidity was set to approximately 90 % RH in the second DMA, and the temperature was set to 293.15 K. Each scan took 300 s and at least four scans were averaged for each size
20 bin (Silvergren et al., 2014).

4.2.2 Dry scattering coefficient

The Mie calculations (see Fig. 2) for dry aerosol particles were evaluated using data from a 3-wavelength integrating nephelometer (TSI Inc., Model 3563) operated at wavelengths 450, 550, and 700 nm (Anderson et al., 1996) throughout the year 2008

Title Page

Abstract

Introduction

Conclusions

References

Tables

Figures

◀

▶

◀

▶

Back

Close

Full Screen / Esc

Printer-friendly Version

Interactive Discussion



at almost dry conditions, with the RH inside the instrument below 20 %. The scattering coefficients were averaged over 10 min.

4.2.3 Wet scattering coefficient

A field campaign was carried out at the Zeppelin station from 15 July to 12 October 2008, where a humidified nephelometer, hereafter referred to as the wet nephelometer, was used to measure light scattering coefficients at 450, 550, and 700 nm. The RH was changed in the instrument between 20 % and 95 % (Zieger et al., 2010; Fierz-Schmidhauser et al., 2010b). The wet nephelometer measurements were used to evaluate the Mie model in the humidified conditions. Furthermore, an estimate for the GF could be back-calculated from comparing the predicted scattering enhancement factors for different hygroscopic growth factors to the measured values of the humidified nephelometer (see Zieger et al., 2010 for the procedure).

5 Results and discussion

5.1 Model evaluation

5.1.1 Monthly HTDMA growth factor measurements vs. the hygroscopic model

To evaluate the hygroscopic growth model, monthly growth factor measurements were compared to model calculations for the period September 2007 to August 2008 (Fig. 4). The RH in the model was set to 90 % and the temperature to 293.15 K, i.e. the same as in the HTDMA set-up, and the averaged growth factors for a particle size range of 80–120 nm were calculated for each month. The model results show a very good agreement with the measurements for autumn and early winter (September–January) with the predicted values within 1.8 % of the measurements, but a positive bias of on average 8.4 % for spring and summer (February–August). The good agreement for fall and winter gives confidence on our assumed chemical composition during this time,

tween the dry scattering coefficients calculated with the Mie model for the dry case (see Table 2) and those measured with the dry nephelometer is presented in Fig. 5a. The modeled and measured scattering coefficients show a good agreement ($R^2 = 0.95$). For most of the days the modeled coefficients are within 20 % of the measured values (see Fig. 5b), which gives confidence in modeling the optical properties of the aerosols using Mie theory.

5.1.3 Wet scattering coefficient measurements vs. the Mie model during the campaign

The comparison between the calculated and measured wet scattering coefficients during the campaign is presented in Fig. 6a. The calculated and modelled coefficients show a reasonable agreement with $R^2 = 0.64$. The histogram in Fig. 6b shows that for most of the days the deviation between the modeled and measured scattering coefficient is less than 40 %, with an average bias of -10% . This small negative bias is probably explained by particles > 790 nm not covered by the DMPS-based size distribution that we used as an input for the model.

The average modelled enhancement factor $f(\text{RH} = 85\%)$ during the campaign period was 3.84 ± 0.36 (mean \pm standard deviation), which is slightly higher than 3.24 ± 0.63 reported in Zieger et al. (2010). The main reason for this difference is probably related to somewhat different dry references used in the studies (see Zieger et al., 2010 for details). The different dry reference values can be partly due to the different operating conditions, and partly due to e.g. different inlet structures and resulting losses.

Zieger et al. (2010) parameterized their measured $f(\text{RH})$ -factors by an empirical γ -fit. In addition, they used their measured enhancement factors and size distribution together with an assumption on dry refractive index to retrieve the apparent hygroscopic growth factor. These growth factors retrieved from the humidified nephelometer measurements were compared to the averaged growth factors (diameter > 100 nm), calculated using the hygroscopic growth model (see Fig. 7). The deviation of our model

Seasonal variation of aerosol water uptake

N. Rastak et al.

[Title Page](#)[Abstract](#)[Introduction](#)[Conclusions](#)[References](#)[Tables](#)[Figures](#)[◀](#)[▶](#)[◀](#)[▶](#)[Back](#)[Close](#)[Full Screen / Esc](#)[Printer-friendly Version](#)[Interactive Discussion](#)

calculations from these retrieved growth factors during the campaign is between -5% and 10% , which is in line with the comparisons to the H-TDMA data.

5.2 Seasonal variations in 2008

5.2.1 Relative humidity and hygroscopic growth factors

5 The seasonal variation of the RH measurements and the modeled GFs for the year 2008 are presented in Fig. 8. The RH measurements show no clear seasonal trend, except during March and the beginning of April when average RH values are in general lower ($< 80\%$) compared to the rest of the year. RH varies significantly not only from day to day but also during the day. The error bars in Fig. 8a indicate the standard
10 deviation for each day. The low RH values coincide with the the Arctic haze period (see e.g. Tunved et al., 2013 and references therein) and the smallest sea salt fraction in the particles (see Fig. 3), when polluted air masses from lower latitudes are transported to the Arctic. The annual variability in RH values during 2008 is similar to observations for other years as well.

15 The daily averaged GF calculated with the hygroscopic growth model follow the behavior of the RH, as expected (see Fig. 8b). To separate the effect of RH and chemical composition on growth factor calculations, we also looked into the modeled GF at a fixed relative humidity (85%) and dry diameter (200 nm) (see Fig. 8c). These results suggest that the particles were less hygroscopic during spring (March–May) as compared with other seasons (June–February). Comparison between Fig. 8b and c shows,
20 however, that while RH is the main parameter controlling the magnitude of the ambient growth factor values, the chemical composition plays an important role in affecting the seasonal variation of the hygroscopic growth.

25 The annual mean GF(RH = ambient) and GF(RH = 85%) averaged over the whole size distribution were calculated to be 1.64 ± 0.28 (mean \pm standard deviation) and 1.6 ± 0.05 , respectively.

Seasonal variation of aerosol water uptake

N. Rastak et al.

Title Page

Abstract

Introduction

Conclusions

References

Tables

Figures

◀

▶

◀

▶

Back

Close

Full Screen / Esc

Printer-friendly Version

Interactive Discussion



5.2.2 Number size distributions, scattering coefficients and enhancement factors

Seasonal variations of aerosol number size distributions, scattering coefficients σ_{sp} and enhancement factors $f(\text{RH})$ are presented in Fig. 9.

Figure 9a shows the domination of particles larger than 100 nm during the haze period (March, April and May) and high concentrations of particles smaller than 100 nm during summer (June, July and August). The winter period from October to February displays extremely low particle concentrations. The same type of seasonal variation can be distinguished in size distribution measurements from the Zeppelin station for other years as well (Tunved et al., 2013).

Figure 9b shows a clear seasonal variability in dry σ_{sp} calculated by the Mie model, with minimum values during late summer and the beginning of fall (July, August and September). These low values are most likely related to the low concentration of particles larger than 100 nm in diameter. Summer is followed by a moderate increase of dry σ_{sp} towards fall and winter. The gradual increase continues until March and is then followed by a more abrupt increase. The maximum dry scattering is observed during March, April and May, associated with the increase in number concentration of larger particles (diameter > 100 nm). The overall seasonal changes in the scattering coefficients are similar for the wet (ambient RH) and the dry (RH = 0 %) case, except for late August and early September when the wet σ_{sp} is almost as high as March, April and May.

The enhancement factor $f(\text{RH})$ displays less distinct seasonal variation than the scattering coefficient itself (see Fig. 9c) although there is a tendency of systematically lower values during March to early April. These low values coincide with both less hygroscopic aerosol particles and lower values of atmospheric RH as compared with the rest of the year, along with the dominance of larger particles over smaller particles. To separate the effects of RH and chemical composition, enhancement factors were also calculated for a fixed RH (85 %). Like $f(\text{RH} = \text{ambient})$, $f(\text{RH} = 85 \%)$ is lower during

Title Page

Abstract

Introduction

Conclusions

References

Tables

Figures

◀

▶

◀

▶

Back

Close

Full Screen / Esc

Printer-friendly Version

Interactive Discussion



Seasonal variation of aerosol water uptake

N. Rastak et al.

Title Page

Abstract

Introduction

Conclusions

References

Tables

Figures

◀

▶

◀

▶

Back

Close

Full Screen / Esc

Printer-friendly Version

Interactive Discussion



the haze period as compared with the summer and early fall (see Fig. 9d). Comparison between $f(\text{RH} = 85\%)$ and $f(\text{RH} = \text{ambient})$ values shows the large impact of RH variation. The seasonal trends in σ_{sp} and $f(\text{RH} = 85\%)$ show an anti-covariation during the haze period, with the largest values of σ_{sp} and lowest values of $f(\text{RH} = 85\%)$ (Fig. 9b and d). The calculated annual average $f(\text{RH} = \text{ambient})$ value for the whole year 2008 was 4.30 ± 2.26 (mean \pm standard deviation).

In Zieger et al., 2010, the same relation of a decrease in $f(\text{RH} = 85\%)$ with increasing particle size was demonstrated assuming invariant particle composition. Obviously, the impact of RH on the scattering characteristics of aerosol particles is less significant for large particles. In that study they also found no clear shift in $f(\text{RH})$ during the campaign, while the size and chemical composition clearly changed. This was attributed to compensating effects between size and chemical composition: smaller and less hygroscopic particles had the same magnitude in scattering enhancement as larger but more hygroscopic particles like sea salt.

5.2.3 Sensitivity of aerosol light scattering to RH, particle dry size and composition

The sensitivity of the calculated wet scattering coefficients to RH, particle dry size and composition as compared with the wet base case (see Table 2) is demonstrated in Fig. 10. The ambient RH was varied by $\pm 5\%$ of the base values and the particle dry size by $\pm 10\%$. The sensitivity to the aerosol chemical composition was tested in two ways: the daily averaged chemical compositions were replaced by monthly averaged chemical compositions or by pure ammonium sulfate. Figure 10 shows that the RH and dry size of the particle play the most important roles in determining the scattering coefficient. Increasing the RH by 5% of the base values, increases the hourly mean values of σ_{sp} by 10 to 100%, although in most cases the deviation is below 50%. Decreasing the RH by 5% decreases the hourly mean values of σ_{sp} by 0 to 40%. Increasing the initial dry diameter (D_{d}) by 10%, increases the hourly mean values of σ_{sp} by 20 to 50%, and decreasing the size by 10%, decreases the hourly mean values of σ_{sp} by 10 to

40%. As the whole particle size distribution is shifted with the factor, changes in the dry diameter are equivalent to changing number concentrations of optically active particles. Replacing the daily varying chemical composition of the particles by monthly varying chemical compositions changes the hourly mean values of σ_{sp} by -10 to 30% and replacing the daily varying chemical composition by pure ammonium sulfate changes the hourly mean values of σ_{sp} by -20 to 10%, with most of the values being between -5 and 5%. The latter result implies that assuming a composition of pure ammonium sulfate in calculations of the optical properties of Arctic aerosol particles results in most cases in a deviation from the true value by only 5%, which is in line with the findings of Zieger et al. (2010) for the summer and fall campaign.

5.3 Effect of aerosol water uptake on the direct radiative effect of aerosols

5.3.1 Vertical profiles for 11 April 2008

Example vertical profiles of the number size distribution scale factor (see Sect. 4.1.3), RH, scattering coefficient (σ_{sp}) and absorption coefficient (σ_{ap}) for 11 April 2008 are presented in Fig. 11a, b and c, respectively. RH values about 50% up to 2 km and lower values above were measured on this example day. A comparison between the absorption coefficients calculated for the dry and wet cases shows the negligible impact of RH (< 1%) on absorption properties of aerosol particles at the Zeppelin station. In contrast, a significant difference between the scattering coefficients calculated for the dry and wet cases is predicted, especially below 2 km (about 50%), where both RH and the aerosol particle concentrations are high.

5.3.2 Aerosol direct radiative effect (ADRE)

Comparison between the dry and wet monthly and annual averaged ADRE at the surface is presented in Fig. 12a. ADRE is calculated from March to September, using the daily mean surface albedo, aerosol size distribution data, and the vertical profiles de-

Seasonal variation of aerosol water uptake

N. Rastak et al.

Title Page

Abstract

Introduction

Conclusions

References

Tables

Figures

◀

▶

◀

▶

Back

Close

Full Screen / Esc

Printer-friendly Version

Interactive Discussion



**Seasonal variation of
aerosol water uptake**

N. Rastak et al.

Title Page

Abstract

Introduction

Conclusions

References

Tables

Figures

◀

▶

◀

▶

Back

Close

Full Screen / Esc

Printer-friendly Version

Interactive Discussion



scribed in Sect. 4.1.3. Larger particles backscatter more light (Bohren and Huffman., 1983), which results in less downward solar flux and a cooling effect at the surface. Therefore, the monthly mean ADRE (Wm^{-2}) calculated for the wet case is always more negative than the dry case and differs from month to month due to the changes in solar zenith angle, surface albedo, amount of solar radiation, RH, aerosol composition and number concentration profiles. The values of the monthly mean ADRE vary from -0.44 to -1.09 Wm^{-2} for the dry case and from -0.83 to -2.60 Wm^{-2} for the wet case. The dry ADRE peaks in April when the scattering coefficients are highest (see Fig. 9b). The wet ADRE is the highest in July, August and September. Humidity observations in the Arctic troposphere over Ny-Ålesund shows highest RH values below 1 km during July, August and September as compared with the other months, while there are no significant monthly differences at the higher altitudes ($> 1 \text{ km}$) (Treffeisen et al., 2007). The hygroscopic growth of aerosol particles, reflected in the ratio between the wet and dry ADRE, results in about 1.6 to 3.7 times more negative ADRE at the surface (Fig. 12b), with less impact of RH during the haze period (March, April and May) and higher impact during late summer and early fall (July, August and September). This is reasonable, since the haze period is characterized by less hygroscopic larger (diameter $> 100 \text{ nm}$) particles, while after the haze period there are a large number of smaller particles (diameter $< 100 \text{ nm}$) present, and the overall composition is dominated by sea salt (see Figs. 9a, 8b and 8c). The annual mean ADRE for the wet case is -0.92 Wm^{-2} , which is more than two times more negative than the dry case, for which the ADRE is -0.41 Wm^{-2} .

It is interesting to note that the seasonal variation of the direct aerosol effect displays somewhat different behavior from the aerosol scattering coefficients displayed in Fig. 9a, which expectedly peak during the haze period. This can be explained by the fact that the ADRE is the combined result of the magnitude of solar insolation, surface albedo and the scattering coefficient and vertical distribution of aerosol particles. The scattering coefficient of the aerosol population is in turn controlled by the particle concentration and the scattering efficiency of the individual particles. The latter is

controlled by particle size (governed by their dry size, ambient RH, and hygroscopicity) and refractive index (governed by the chemical composition). Thus, ADRE is a complex function of season, aerosol properties, RH, and surface albedo. While we believe that the seasonal trends in the calculated ADRE values are representative, their exact magnitude is subject to larger uncertainties due to lack of information about the exact vertical distribution of the aerosol particles and their chemical composition.

5.3.3 Sensitivity of ADRE to RH, particle dry size, composition and surface albedo

The sensitivity of the calculated ADRE to RH, particle size, composition and surface albedo as compared with the wet base case (see Table 2) is presented in Fig. 13. The variations in RH, particle dry size and composition are the same as those presented in Sect. 5.2.3 and Fig. 10. The surface albedo was varied by $\pm 10\%$. A ratio higher than one means a higher negative ADRE, therefore more cooling at the surface, as compared with the wet base case. The dry size become more significant compared to RH when calculating the ADRE instead of the surface layer scattering coefficients (see Fig. 10). For example, the effect of changing RH on the ADRE is at most 20% whereas the enhancement of σ_{sp} was calculated to be up to 100% (most of the cases below 50%). On the other hand, σ_{sp} changed by less than 50% when aerosol size was changed, whereas the changes in ADRE are in some cases above 80%. This can be explained by the fact that the ADRE is integrated over the whole vertical column and the largest effect of RH is near the surface (see Fig. 11c), while at higher altitudes the aerosol direct forcing is governed by the concentration and dry diameter of the particles. Figure 13 also demonstrates the importance of knowing the surface albedo for accurate predictions of ADRE, particularly during the early spring months.

Seasonal variation of aerosol water uptake

N. Rastak et al.

[Title Page](#)[Abstract](#)[Introduction](#)[Conclusions](#)[References](#)[Tables](#)[Figures](#)[I◀](#)[▶I](#)[◀](#)[▶](#)[Back](#)[Close](#)[Full Screen / Esc](#)[Printer-friendly Version](#)[Interactive Discussion](#)

6 Summary and conclusions

We have investigated the seasonality and impact of hygroscopic growth on aerosol optical properties and the aerosol direct radiative effect (ADRE) in the Arctic at Ny-Ålesund, Svalbard, using a comprehensive set of observational data combined with model calculations for the year 2008. An aerosol hygroscopic growth model based on the κ -Köhler theory was utilized to calculate the aerosol particle hygroscopic growth. The optical properties and ADRE were investigated by coupling the hygroscopic model to a Mie scattering model and a radiative transfer model. Measured aerosol size distributions, ambient RH together with aerosol chemical composition from filter samples were used as input to the model calculations. Comparisons between modelled and measured aerosol hygroscopicity and optical properties showed an agreement that gave confidence regarding the capability of the model setup to predict seasonal variations in aerosol hygroscopic growth, optical properties and ADRE.

The ambient aerosol scattering coefficients at the surface showed a clear seasonal variation with the highest values during the haze period (March, April and May) and the lowest values during summer (June and July). The hygroscopic growth of the aerosol particles was found to have a significant impact on the surface level scattering coefficients, with annual averaged enhancement factor $f(\text{RH})$ of 4.3 ± 2.26 at ambient RH compared to dry conditions. The impact was largest during summer and fall and smallest during the haze period in spring. The ambient RH was found to be the most important factor determining the ambient GF and $f(\text{RH})$ as compared with the aerosol particle dry size and composition. In most cases, the deviation from the true value of the aerosol scattering coefficient was less than 5% when assuming a composition of pure ammonium sulphate instead of using real composition measurements. The seasonal behaviour of the ADRE showed a different pattern compared to the scattering coefficients at the surface: the most negative values (i.e. the largest cooling effect) were found during July, August and September. The sensitivity of ADRE to ambient RH vs. aerosol properties was also different from the surface-level scattering coefficients with

ACPD

14, 7067–7111, 2014

Seasonal variation of aerosol water uptake

N. Rastak et al.

Title Page

Abstract

Introduction

Conclusions

References

Tables

Figures

◀

▶

◀

▶

Back

Close

Full Screen / Esc

Printer-friendly Version

Interactive Discussion



Seasonal variation of
aerosol water uptake

N. Rastak et al.

Title Page

Abstract

Introduction

Conclusions

References

Tables

Figures

◀

▶

◀

▶

Back

Close

Full Screen / Esc

Printer-friendly Version

Interactive Discussion



larger influence of aerosol size on the predicted ADRE. This is related to the fact that the ADRE is an integrated measure of the scattering over the whole vertical column as compared with the surface level observations of scattering coefficients. Humidity effects on the particle scattering are in general largest in the boundary layer. All in all, including the hygroscopicity of the aerosol particles increased the predicted ambient ADRE with a factor of about 1.6 to 3.7 compared to the dry ADRE, depending on the season.

Besides the strong seasonality of aerosol optical properties and ADRE at the Ny-Ålesund, our results demonstrate the importance of a correct predictions of aerosol hygroscopic growth for determining the direct aerosol effect on the Arctic radiative forcing and climate. Although the model results in this study were obtained specifically for the Zeppelin station during 2008, the developed method may be applied for other regions and time periods in future studies.

Acknowledgements. We thank Norwegian Institute for Air Research (NILU) for providing the Ion chromatography data from Zeppelin station. We also thank the Alfred Wegener Institute (AWI) for making the radio soundings and radiation data available. Financial support from the Swedish Environmental Protection Agency to conduct aerosol measurements at the Zeppelin station is acknowledged. The Nordic Centre of Excellence CRAICC (Cryosphere–Atmosphere Interactions in a Changing Arctic Climate), Vetenskapsrådet (grant 2011-5120), and the European Research Council (StG-278277 ATMOGAIN) are gratefully acknowledged. Paul Zieger was supported by a fellowship of the Swiss National Science Foundation (grant no. P300P2_147776).

References

- Aas, W., Solberg, S., Manø, S., and Yttri, K. E.: Overvåking av langtransportert forurenset luft og nedbør. Atmosfærisk tilførsel, 2008, OR 22/2009 (SFT (Klif) rapport nr 1051/2009), Norsk institutt for luftforskning, Kjeller, 2009.
- Achtert, P., Birmili, W., Nowak, A., Wehner, B., Wiedensohler, A., Takegawa, N., Kondo, Y., Miyazaki, Y., Hu, M., and Zhu, T.: Hygroscopic growth of tropospheric particle num-

Seasonal variation of aerosol water uptake

N. Rastak et al.

Title Page

Abstract

Introduction

Conclusions

References

Tables

Figures

◀

▶

◀

▶

Back

Close

Full Screen / Esc

Printer-friendly Version

Interactive Discussion



ber size distributions over the North China Plain, *J. Geophys. Res.*, 114, D00G07, doi:10.1029/2008JD010921, 2009.

Albrecht, B. A.: Aerosols, cloud microphysics, and fractional cloudiness, *Science*, 245, 1227–1230, 1989.

5 Anderson, T. L., Covert, D. S., Marshall, S. F., Laucks, M. L., Charlson, R. J., Waggoner, A. P., Ogren, J. A., Caldow, R., Holm, R. L., Quant, F. R., Sem, G. J., Wiedensohler, A., Ahlquist, N. A., and Bates, T. S.: Performance characteristics of a high-sensitivity, three-wavelength, total scatter/backscatter nephelometer, *J. Atmos. Ocean. Tech.*, 13, 967–986, doi:10.1175/1520-0426(1996)013<0967:PCOAHS>2.0.CO;2, 1996.

10 Atwater, M. A.: Planetary albedo changes due to aerosols, *Science*, 170, 64–66, doi:10.1126/science.170.3953.64, 1970.

Bohren, C. F. and Huffman, D. R.: *Absorption and Scattering of Light by Small Particles*, John Wiley & Sons, INC, New York, 1983.

Boucher, O. and Lohmann, U.: The sulfate-CCN-cloud albedo effect, *Tellus B*, 47, 281–300, doi:10.1034/j.1600-0889.47.issue3.1.x, 1995.

Carrico, C. M., Rood, M. J., Ogren, J. A., Neususs, C., Wiedensohler, A., and Heintzenberg, J.: Aerosol optical properties at Sagres, Portugal during ACE-2, *Tellus B*, 52, 498–525, 2000.

Chang, H. and Charalampopoulos, T. T.: Determination of the wavelength dependence of refractive indices of flame soot, *Proc. R. Soc. London A*, 430, 577–591, 1990.

20 Charlson, R. J. and Pilat, M. J.: Climate: the influence of aerosols, *J. Appl. Meteorol.*, 8, 1001–1002, doi:10.1175/1520-0450(1969)008<1001:CTIOA>2.0.CO;2, 1969.

Charlson, R. J., Schwartz, S. E., Hales, J. M., Cess, R. D., Coakley, J. A., Hansen, J. E., and Hofmann, D. J.: Climate forcing by anthropogenic aerosols, *Science*, 255, 423–430, 1992.

25 Coakley, J. A., Cess, R. D., and Yurevich, F. B.: The effect of tropospheric aerosols on the Earth's radiation budget: a parameterization for climate models, *J. Atmos. Sci.*, 40, 116–138, doi:10.1175/1520-0469(1983)040<0116:TEOTAO>2.0.CO;2, 1983.

Covert, D. S. and Heintzenberg, J.: Size distributions and chemical properties of aerosol at Ny-Ålesund, Svalbard, *Atmos. Environ. A-Gen.*, 27, 2989–2997, 1993.

30 Di Pierro, M., Jaeglé, L., Eloranta, E. W., and Sharma, S.: Spatial and seasonal distribution of Arctic aerosols observed by the CALIOP satellite instrument (2006–2012), *Atmos. Chem. Phys.*, 13, 7075–7095, doi:10.5194/acp-13-7075-2013, 2013.

Eldering, A.: Aerosol optical properties during INDOEX based on measured aerosol particle size and composition, *J. Geophys. Res.*, 107, 8001, doi:10.1029/2001JD001572, 2002.

Seasonal variation of aerosol water uptake

N. Rastak et al.

[Title Page](#)[Abstract](#)[Introduction](#)[Conclusions](#)[References](#)[Tables](#)[Figures](#)[◀](#)[▶](#)[◀](#)[▶](#)[Back](#)[Close](#)[Full Screen / Esc](#)[Printer-friendly Version](#)[Interactive Discussion](#)

- Engelhart, G. J., Asa-Awuku, A., Nenes, A., and Pandis, S. N.: CCN activity and droplet growth kinetics of fresh and aged monoterpene secondary organic aerosol, *Atmos. Chem. Phys.*, 8, 3937–3949, doi:10.5194/acp-8-3937-2008, 2008.
- Engvall, A.-C., Ström, J., Tunved, P., Krejci, R., Schlager, H., and Minikin, A.: The radiative effect of an aged, internally mixed Arctic aerosol originating from lower-latitude biomass burning, *Tellus B*, 61, 677–684, doi:10.1111/j.1600-0889.2009.00431.x, 2009.
- Fierz-Schmidhauser, R., Zieger, P., Gysel, M., Kammermann, L., DeCarlo, P. F., Baltensperger, U., and Weingartner, E.: Measured and predicted aerosol light scattering enhancement factors at the high alpine site Jungfraujoch, *Atmos. Chem. Phys.*, 10, 2319–2333, doi:10.5194/acp-10-2319-2010, 2010a.
- Fierz-Schmidhauser, R., Zieger, P., Vaishya, A., Monahan, C., Bialek, J., O'Dowd, C. D., Jennings, S. G., Baltensperger, U., and Weingartner, E.: Light scattering enhancement factors in the marine boundary layer (Mace Head, Ireland), *J. Geophys. Res.*, 115, D20204, doi:10.1029/2009JD013755, 2010b.
- Fierz-Schmidhauser, R., Zieger, P., Wehrle, G., Jefferson, A., Ogren, J. A., Baltensperger, U., and Weingartner, E.: Measurement of relative humidity dependent light scattering of aerosols, *Atmos. Meas. Tech.*, 3, 39–50, doi:10.5194/amt-3-39-2010, 2010c.
- Fitzgerald, J. W., Hoppel, W. A., and Vietti, M. A.: The size and scattering coefficient of urban aerosol particles at Washington, DC as a function of relative humidity, *J. Atmos. Sci.*, 39, 1838–1852, doi:10.1175/1520-0469(1982)039<1838:TSASCO>2.0.CO;2, 1982.
- Hegg, D. A.: Cloud condensation nucleus-sulfate mass relationship and cloud albedo, *J. Geophys. Res.*, 99, 25903–25907, 1994.
- Hess, M., Koepke, P., and Schult, I.: Optical properties of aerosols and clouds: the software package OPAC, *B. Am. Meteorol. Soc.*, 79, 831–844, doi:10.1175/1520-0477(1998)079<0831:OPOAAC>2.0.CO;2, 1998.
- Hjellbrekke, A. G. and Fjæraa, A. M.: Data report 2008 acidifying and eutrophying compounds and particulate matter, EMEP/CCC-Report 1/2010, Norwegian Institute for Air Research, Kjeller, 2010.
- Intergovernmental Panel on Climate Change (IPCC), *Climate Change 2013: The Scientific Basis: Contribution of Working Group I to the Fifth Assessment Report of the Intergovernmental Panel on Climate Change*, Cambridge Univ. Press, New York, 2013.
- Jokinen, V. and Makela, J. M.: Closed-loop arrangement with critical orifice for DMA sheath excess flow system, *J. Aerosol. Sci.*, 28, 643–648, 1997.

Seasonal variation of aerosol water uptake

N. Rastak et al.

Title Page

Abstract

Introduction

Conclusions

References

Tables

Figures

◀

▶

◀

▶

Back

Close

Full Screen / Esc

Printer-friendly Version

Interactive Discussion



- Kerker, M.: The scattering of light and other electromagnetic radiation, Academic Press, New York, London, 1969.
- Kim, J., Yoon, S.-C., Jefferson, A., and Kim, S.-W.: Aerosol hygroscopic properties during Asian dust, pollution, and biomass burning episodes at Gosan, Korea in April 2001, *Atmos. Environ.*, 40, 1550–1560, doi:10.1016/j.atmosenv.2005.10.044, 2006.
- 5 Knutson, E. O. and Whitby, K. T.: Anomalous unipolar diffusion charging of polystyrene latex aerosols, *J. Colloid Interf. Sci.*, 53, 493–495, 1975.
- Koehler, K. A., Kreidenweis, S. M., DeMott, P. J., Prenni, A. J., Carrico, C. M., Ervens, B., and Feingold, G.: Water activity and activation diameters from hygroscopicity data - Part II: Application to organic species, *Atmos. Chem. Phys.*, 6, 795–809, doi:10.5194/acp-6-795-2006, 2006.
- 10 Kotchenruther, R. A. and Hobbs, P. V.: Humidification factors of aerosols from biomass burning in Brazil, *J. Geophys. Res.-Atmos.*, 103, 32081–32089, doi:10.1029/98JD00340, 1998.
- Lawrence, D. M., Slater, A. G., Tomas, R. A., Holland, M. M., and Deser, C.: Accelerated Arctic land warming and permafrost degradation during rapid sea ice loss, *Geophys. Res. Lett.*, 35, L11506, doi:10.1029/2008GL033985, 2008.
- 15 Liu, B. Y. H., Pui, D. Y. H., Whitby, K. T., Kittelson, D. B., and Kousaka, Y.: Aerosol mobility chromatograph – new detector for sulphuric-acid aerosols, *Atmos. Environ.*, 12, 99–104, 1978.
- 20 Liu, X., Cheng, Y., Zhang, Y., Jung, J., Sugimoto, N., Chang, S.-Y., Kim, Y. J., Fan, S., and Zeng, L.: Influences of relative humidity and particle chemical composition on aerosol scattering properties during the 2006 PRD campaign, *Atmos. Environ.*, 42, 1525–1536, doi:10.1016/j.atmosenv.2007.10.077, 2008.
- McCartney, E. J.: *Optics of the Atmosphere*, John Wiley, New York, 1976.
- 25 McCormick, R. A. and Ludwig, J. H.: Climate modification by atmospheric aerosols, *Science*, 156, 1358–1359, doi:10.1126/science.156.3780.1358, 1967.
- McMurry, P. H. and Stolzenburg, M. R.: On the sensitivity of particle-size to relative humidity for Los-Angeles aerosols, *Atmos. Environ.*, 23, 497–507, 1989.
- Mitchell Jr., J. M.: The effect of atmospheric aerosols on climate with special reference to temperature near the Earth's surface, *J. Appl. Meteorol.*, 10, 703–714, 1971.
- 30 Myhre, G., Stordal, F., Berglen, T. F., Sundet, J. K., and Isaksen, I. S. A.: Uncertainties in the radiative forcing due to sulfate aerosols, *J. Atmos. Sci.*, 61, 485–498, doi:10.1175/1520-0469(2004)061<0485:UITRFD>2.0.CO;2, 2004.

Seasonal variation of
aerosol water uptake

N. Rastak et al.

Title Page

Abstract

Introduction

Conclusions

References

Tables

Figures

◀

▶

◀

▶

Back

Close

Full Screen / Esc

Printer-friendly Version

Interactive Discussion



- Nessler, R., Weingartner, E., and Baltensperger, U.: Adaptation of dry nephelometer measurements to ambient conditions at the Jungfraujoch, *Environ. Sci. Technol.*, 39, 2219–2228, 2005.
- 5 Nilsson, E., Swietlicki, E., Sjogren, S., Löndahl, J., Nyman, M., and Svenningsson, B.: Development of an H-TDMA for long-term unattended measurement of the hygroscopic properties of atmospheric aerosol particles, *Atmos. Meas. Tech.*, 2, 313–318, doi:10.5194/amt-2-313-2009, 2009.
- Petters, M. D. and Kreidenweis, S. M.: A single parameter representation of hygroscopic growth and cloud condensation nucleus activity, *Atmos. Chem. Phys.*, 7, 1961–1971, doi:10.5194/acp-7-1961-2007, 2007.
- 10 Pilinis, C., Pandis, S. N., and Seinfeld, J. H.: Sensitivity of direct climate forcing by atmospheric aerosols to aerosol size and composition, *J. Geophys. Res.*, 100, 18739, doi:10.1029/95JD02119, 1995.
- Quimette, J. R. and Flagan, R. C.: The extinction coefficient of multicomponent aerosols, *Atmos. Environ.*, 16, 2405–2416, 1982.
- 15 Quinn, P. K., Miller, T. L., Bates, T. S., Ogren, J. A., Andrews, E., and Shaw, G. E.: A 3-year record of simultaneously measured aerosol chemical and optical properties at Barrow, Alaska, *J. Geophys. Res.-Atmos.*, 107, 4130, doi:10.1029/2001JD001248, 2002.
- Quinn, P. K., Shaw, G., Andrews, E., Dutton, E. G., Ruoho-Airola, T., and Gong, S. L.: Arctic haze: current trends and knowledge gaps, *Tellus B*, 59, 99–114, doi:10.1111/j.1600-0889.2006.00238.x, 2007.
- 20 Radke, F. S., Lyons, J. H., Hegg, D. A., Hobbs, P. V., and Bailey, I. H.: Airborne observations of Arctic aerosols, I, Characteristics of Arctic haze, *Geophys. Res. Lett.*, 11, 393–396, 1984.
- Ricchiazzi, P., Yang, S., Gautier, C., and Sowle, D.: SBDART: a research and teaching software tool for plane-parallel radiative transfer in the Earth's atmosphere, *B. Am. Meteorol. Soc.*, 79, 2101–2114, 1998.
- 25 Schkolnik, G., Chand, D., Hoffer, A., Andreae, M. O., Erlick, C., Swietlicki, E., and Rudich, Y.: Constraining the density and complex refractive index of elemental and organic carbon in biomass burning aerosol using optical and chemical measurements, *Atmos. Environ.*, 41, 1107–1118, 2007.
- Seinfeld, J. H. and Pandis, S. N.: *Atmospheric Chemistry and Physics*, Wiley, New York, 1998.
- 30 Sekigawa, K.: Estimation of the volume fraction of water soluble material in submicron aerosols in the atmosphere, *J. Meteorol. Soc. Jpn.*, 61, 359–367, 1983.

Seasonal variation of aerosol water uptake

N. Rastak et al.

Title Page

Abstract

Introduction

Conclusions

References

Tables

Figures

◀

▶

◀

▶

Back

Close

Full Screen / Esc

Printer-friendly Version

Interactive Discussion



- Serreze, M. C. and Barry, R. G.: Processes and impacts of Arctic amplification: a research synthesis, *Global Planet. Change*, 77, 85–96, doi:10.1016/j.gloplacha.2011.03.004, 2011.
- Serreze, M. C., Holland, M. M., and Stroeve, J.: Perspectives on the Arctic's shrinking sea-ice cover, *Science*, 315, 1533–1536, doi:10.1126/science.1139426, 2007.
- 5 Sheridan, P. J., Delene, D. J., and Ogren, J. A.: Four years of continuous surface aerosol measurements from the Department of Energy's Atmospheric Radiation Measurement Program Southern Great Plains Cloud and Radiation Testbed site, *J. Geophys. Res.*, 106, 20735–20747, 2001.
- Shindell, D. and Faluvegi, G.: Climate response to regional radiative forcing during the twentieth century, *Nat. Geosci.*, 2, 294–300, 2009.
- 10 Ström, J., Umegård, J., Tørseth, K., Tunved, P., Hansson, H.-C., Holmén, K., Wismann, V., Herber, A., and König-Langlo, G.: One year of particle size distribution and aerosol chemical composition measurements at the Zeppelin Station, Svalbard, March 2000–March 2001, *Phys. Chem. Earth*, 28, 1181–1190, doi:10.1016/j.pce.2003.08.058, 2003.
- 15 Svenningsson, B., Rissler, J., Swietlicki, E., Mircea, M., Bilde, M., Facchini, M. C., Decesari, S., Fuzzi, S., Zhou, J., Mønster, J., and Rosenørn, T.: Hygroscopic growth and critical supersaturations for mixed aerosol particles of inorganic and organic compounds of atmospheric relevance, *Atmos. Chem. Phys.*, 6, 1937–1952, doi:10.5194/acp-6-1937-2006, 2006.
- Swietlicki, E., Hansson, H.-C., Hämeri, K., Svenningsson, B., Massling, A., Mcfiggans, G., McMurry, P. H., Petäjä, T., Tunved, P., Gysel, M., Topping, D., Weingartner, E., Baltensperger, U., Rissler, J., Wiedensohler, A., and Kulmala, M.: Hygroscopic properties of submicrometer atmospheric aerosol particles measured with H-TDMA instruments in various environments – a review, *Tellus B*, 60, 432–469, 2008.
- 20 Treffeisen, R., Krejci, R., Ström, J., Engvall, A. C., Herber, A., and Thomason, L.: Humidity observations in the Arctic troposphere over Ny-Ålesund, Svalbard based on 15 years of radiosonde data, *Atmos. Chem. Phys.*, 7, 2721–2732, doi:10.5194/acp-7-2721-2007, 2007.
- Tunved, P., Ström, J., and Krejci, R.: Arctic aerosol life cycle: linking aerosol size distributions observed between 2000 and 2010 with air mass transport and precipitation at Zeppelin station, Ny-Ålesund, Svalbard, *Atmos. Chem. Phys.*, 13, 3643–3660, doi:10.5194/acp-13-3643-2013, 2013.
- 30 Twomey, S.: The influence of pollution on the shortwave albedo of clouds, *J. Atmos. Sci.*, 34, 1149–1152, doi:10.1175/1520-0469(1977)034<1149:TIOPOP>2.0.CO;2, 1977.

Seasonal variation of aerosol water uptake

N. Rastak et al.

Title Page

Abstract

Introduction

Conclusions

References

Tables

Figures

◀

▶

◀

▶

Back

Close

Full Screen / Esc

Printer-friendly Version

Interactive Discussion



Wallén, A., Lidén, G., and Hansson, H.-C.: Measured elemental carbon by thermo-optical transmittance analysis in water-soluble extracts from diesel exhaust, woodsmoke, and ambient particulate samples, *J. Occup. Environ. Hyg.*, 7, 35–45, 2010.

Van de Hulst, H. C.: *Light Scattering by Small Particles*, John Wiley & Sons, Inc., New York, 1957.

Winker, D. M., Tackett, J. L., Getzewich, B. J., Liu, Z., Vaughan, M. A., and Rogers, R. R.: The global 3-D distribution of tropospheric aerosols as characterized by CALIOP, *Atmos. Chem. Phys.*, 13, 3345–3361, doi:10.5194/acp-13-3345-2013, 2013.

Wiscombe, W. J.: Mie scattering calculations: Advances in technique and fast, vector-speed computer codes, NCAR Tech. Note TN-140+STR, Natl. Cent. for Atmos. Res., Boulder, Colorado, 1979.

Yu, H., Kaufman, Y. J., Chin, M., Feingold, G., Remer, L. A., Anderson, T. L., Balkanski, Y., Belouin, N., Boucher, O., Christopher, S., DeCola, P., Kahn, R., Koch, D., Loeb, N., Reddy, M. S., Schulz, M., Takemura, T., and Zhou, M.: A review of measurement-based assessments of the aerosol direct radiative effect and forcing, *Atmos. Chem. Phys.*, 6, 613–666, doi:10.5194/acp-6-613-2006, 2006.

Zieger, P., Fierz-Schmidhauser, R., Gysel, M., Ström, J., Henne, S., Yttri, K. E., Baltensperger, U., and Weingartner, E.: Effects of relative humidity on aerosol light scattering in the Arctic, *Atmos. Chem. Phys.*, 10, 3875–3890, doi:10.5194/acp-10-3875-2010, 2010.

Zieger, P., Fierz-Schmidhauser, R., Weingartner, E., and Baltensperger, U.: Effects of relative humidity on aerosol light scattering: results from different European sites, *Atmos. Chem. Phys.*, 13, 10609–10631, doi:10.5194/acp-13-10609-2013, 2013.

Seasonal variation of aerosol water uptake

N. Rastak et al.

Title Page

Abstract

Introduction

Conclusions

References

Tables

Figures

◀

▶

◀

▶

Back

Close

Full Screen / Esc

Printer-friendly Version

Interactive Discussion

**Table 1.** Enhancement factors $f(\text{RH})$ reported in previous studies.

Reference	$f(\text{RH})$	RH	Site	Time period
Carrico et al. (2000)	1.46 ± 0.1	82 %	Sagres, Portugal	Jun–Jul 1997
Eldering et al. (2002)	1.5 to 2	ambient	Kaashidhoo Island, Republic of Maldives	Feb 1999
Fierz-Schmidhauser et al. (2010a)	1.2 to 3.3	85 %	Jungfrauoch, Switzerland	May 2008
Fierz-Schmidhauser et al. (2010b)	2.22 ± 0.17 (clean marine) 1.77 ± 0.31 (polluted air)	85 %	Mace Head, Ireland	Jan–Feb 2009
Fitzgerald et al. (1982)	factor of 3.5 (size range: 30–80 nm)	30–95 %	Washington, DC	Jul 1979
Kim et al. (2006)	2.75 ± 0.38	85 %	Gosan, Korea	Apr 2001
Kotchenruther et al. (1998)	1.01 to 1.51	80 %	Brazil	
Liu et al. (2008)	2.04 ± 0.28 (urban) 2.29 ± 0.28 (mixed) 2.68 ± 0.59 (marine)	80 %	Guangzhou city, China	Jul 2006
Nessler et al. (2005)	1.2 to 2.7 (summer) 1.4 to 3.8 (winter)	85 %	Jungfrauoch, Switzerland	
Sheridan et al. (2001)	1.0 to 3.3	85 %	North Oklahoma, South Kansas	1999
Zieger et al. (2010)	3.24 ± 0.63	85 %	Zeppelin station, Ny-Ålesund, Svalbard	Jul–Oct 2008
Zieger et al. (2013)	1.28 (mineral dust) 3.41 (Arctic aerosols)	85 %	Jungfrauoch, Ny-Ålesund, Mace Head, Cabauw, Melpitz	

Seasonal variation of aerosol water uptake

N. Rastak et al.

Title Page

Abstract

Introduction

Conclusions

References

Tables

Figures

I◀

▶I

◀

▶

Back

Close

Full Screen / Esc

Printer-friendly Version

Interactive Discussion

**Table 2.** The dry and wet base cases used in the model calculations.

	Chemical composition	RH	Particle size distribution
Wet case	Daily mean	Hourly mean	Hourly mean
Dry case	Daily mean	RH = 0 %	Hourly mean

Seasonal variation of aerosol water uptake

N. Rastak et al.

Title Page

Abstract

Introduction

Conclusions

References

Tables

Figures

◀

▶

◀

▶

Back

Close

Full Screen / Esc

Printer-friendly Version

Interactive Discussion



Table 3. Density (ρ), hygroscopicity parameter (κ) and refractive index (at 550 nm) for considered chemical components.

Component	ρ (gcm ⁻³)	κ	Refractive index (550 nm)
Sulfate (ammonium sulfate)	1.77 ^[1]	0.53 ^[4]	$1.43 + 1 \times 10^{-8} i$ ^[6]
Sea salt (sodium chloride)	2.17 ^[1]	1.12 ^[4]	$1.50 + 1 \times 10^{-8} i$ ^[6]
More Water Soluble Organics (MWS-OC)*	1.56 ^[2]	0.27 ^[4]	$1.53 + 6 \times 10^{-3} i$ ^[6]
Less Water Soluble Organics (LWS-OC)	1.50 ^[3]	0.10 ^[4]	$1.53 + 8 \times 10^{-3} i$ ^[6]
Elemental Carbon (EC)	1.80 ^[5]	0.00	$1.74 + 6 \times 10^{-1} i$ ^[7]

* Mean value for glutaric acid, malonic acid and levoglucosan.

[1] Svenningsson et al. (2006).

[2] Koehler et al. (2006), Svenningsson et al. (2006).

[3] Engelhart et al. (2008).

[4] Petters et al. (2007).

[5] Schkolnik et al. (2007).

[6] Hess et al. (1998), refractive indices as a function of wave length from the OPAC database were used in calculations.

[7] Chang and Charalampopoulos (1990), refractive index as a function of wave length was used in calculations.

Seasonal variation of aerosol water uptake

N. Rastak et al.

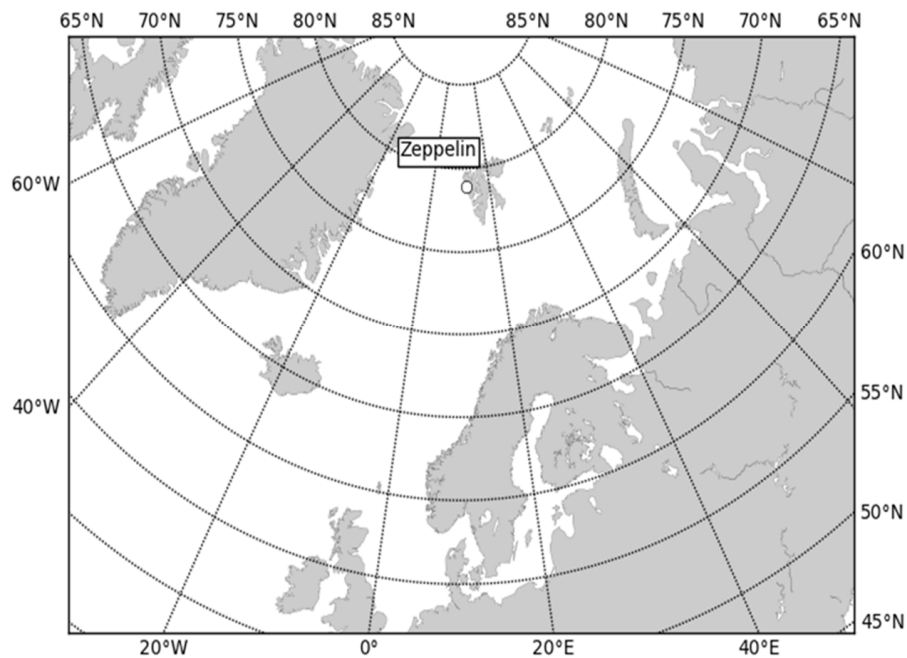


Fig. 1. Mt Zeppelin station, Ny Ålesund, Svalbard at $78^{\circ}54' \text{ N}$, $11^{\circ}53' \text{ E}$ (474 m a.s.l.).

[Title Page](#)[Abstract](#)[Introduction](#)[Conclusions](#)[References](#)[Tables](#)[Figures](#)[◀](#)[▶](#)[◀](#)[▶](#)[Back](#)[Close](#)[Full Screen / Esc](#)[Printer-friendly Version](#)[Interactive Discussion](#)

Seasonal variation of aerosol water uptake

N. Rastak et al.

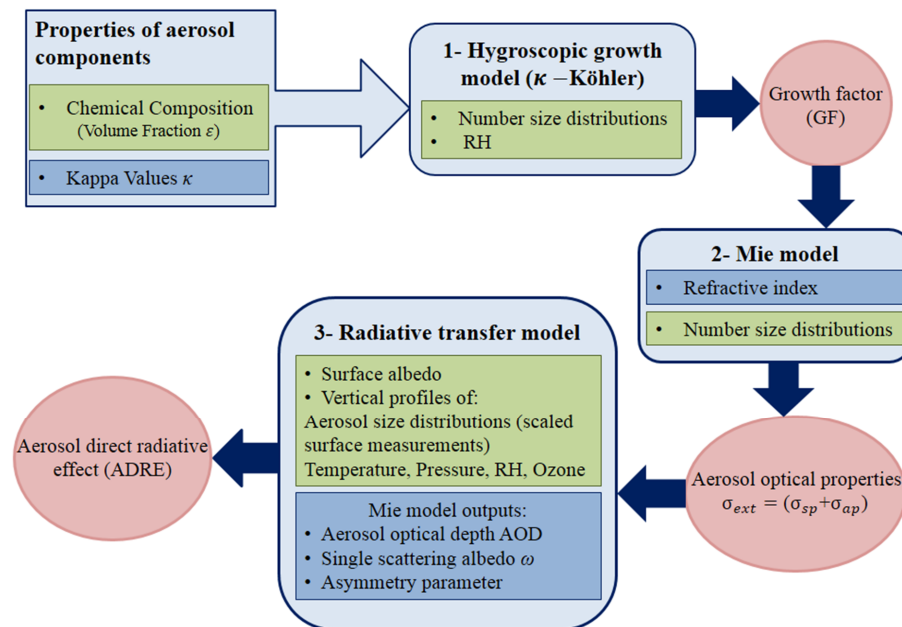


Fig. 2. Scheme of the models and their required input, starting with the hygroscopic growth model and ending with the radiative transfer model to calculate the aerosol direct radiative effect (ADRE). The light blue boxes refer to the different model calculations, the green boxes to experimental input data, and the dark blue boxes to additional input data (e.g. from literature), and the red circles denote model output.

Title Page

Abstract Introduction

Conclusions References

Tables Figures

◀ ▶

◀ ▶

Back Close

Full Screen / Esc

Printer-friendly Version

Interactive Discussion



Seasonal variation of aerosol water uptake

N. Rastak et al.

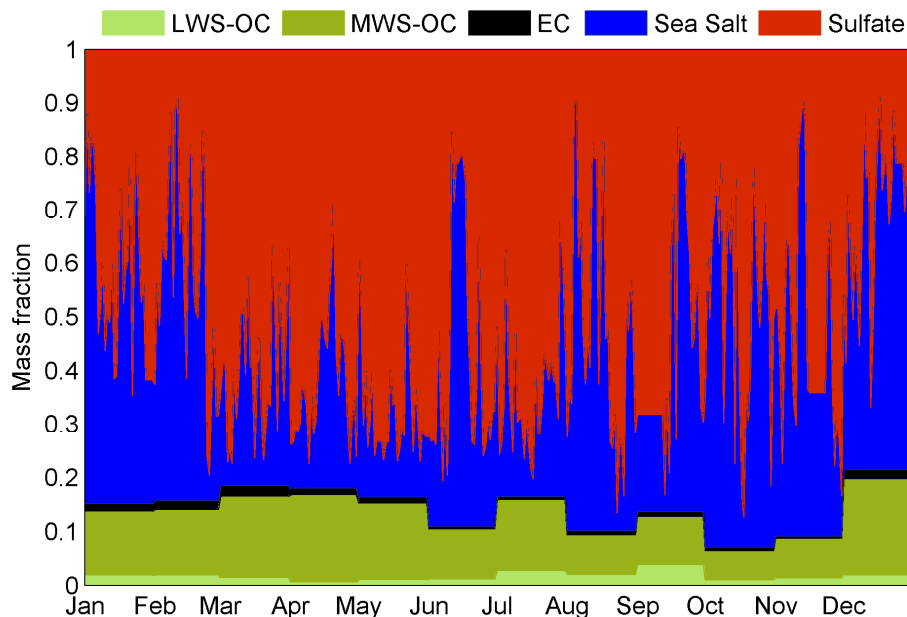


Fig. 3. The averaged chemical composition for year 2008 at Zeppelin station based on filter measurements, daily basis for inorganics (sea salt and sulfate) and monthly basis for organics (Less Water Soluble Organics (LWS-OC), More Water Soluble Organics (MWS-OC), Elemental Carbon (EC)).

[Title Page](#)[Abstract](#)[Introduction](#)[Conclusions](#)[References](#)[Tables](#)[Figures](#)[◀](#)[▶](#)[◀](#)[▶](#)[Back](#)[Close](#)[Full Screen / Esc](#)[Printer-friendly Version](#)[Interactive Discussion](#)

Seasonal variation of aerosol water uptake

N. Rastak et al.

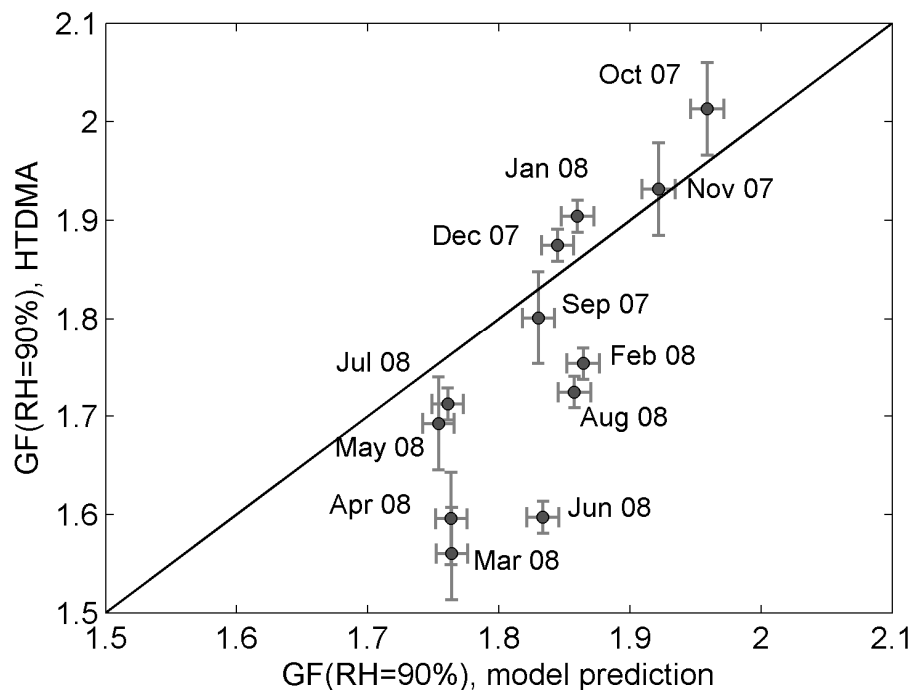


Fig. 4. Comparison of calculated monthly growth factors using the hygroscopic model and the sampled HTDMA measurements at RH = 90% for aerosol particles in the size range of 80–120 nm, from September 2007–August 2008.

Title Page

Abstract

Introduction

Conclusions

References

Tables

Figures

◀

▶

◀

▶

Back

Close

Full Screen / Esc

Printer-friendly Version

Interactive Discussion



Seasonal variation of aerosol water uptake

N. Rastak et al.

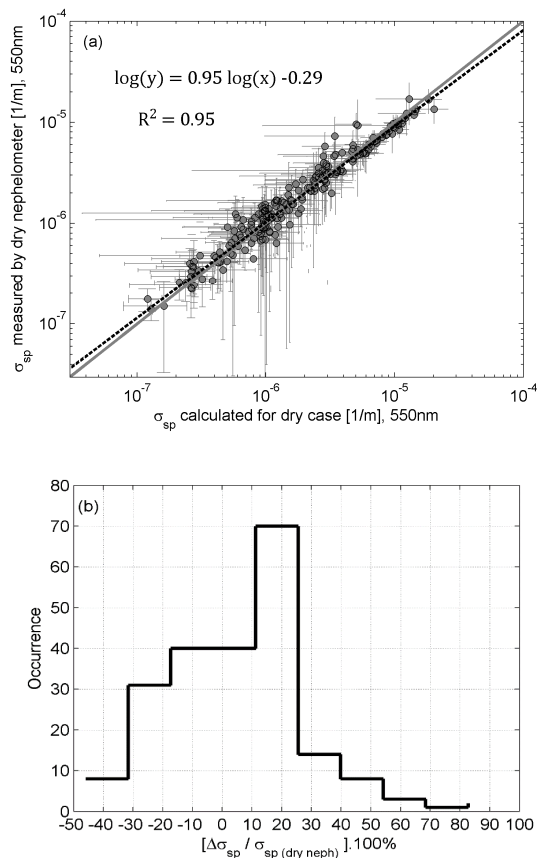


Fig. 5. (a) Correlation between modeled and measured daily mean dry scattering coefficients σ_{sp} (550 nm) for the year 2008. The error bars indicate the standard deviations of the daily averages. (b) Histogram of the deviation of modeled scattering coefficient from measurements in percentage (%).

Seasonal variation of aerosol water uptake

N. Rastak et al.

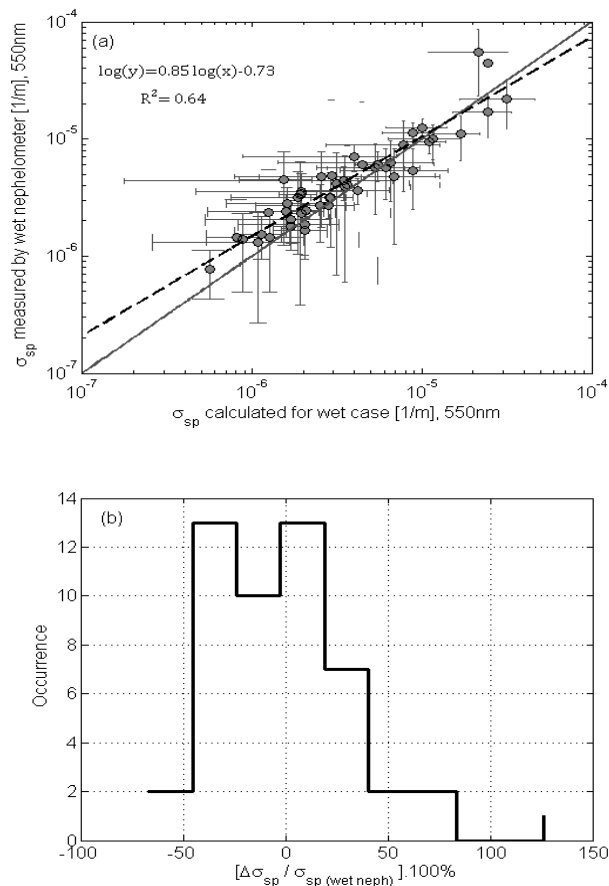


Fig. 6. (a) Correlation between modeled and measured daily mean wet scattering coefficients σ_{sp} (550 nm) for the campaign (15 July–12 October 2008). The error bars indicate the standard deviations of the daily averages. (b) Histogram of the deviation of modeled scattering coefficient from measurements in percentage (%).

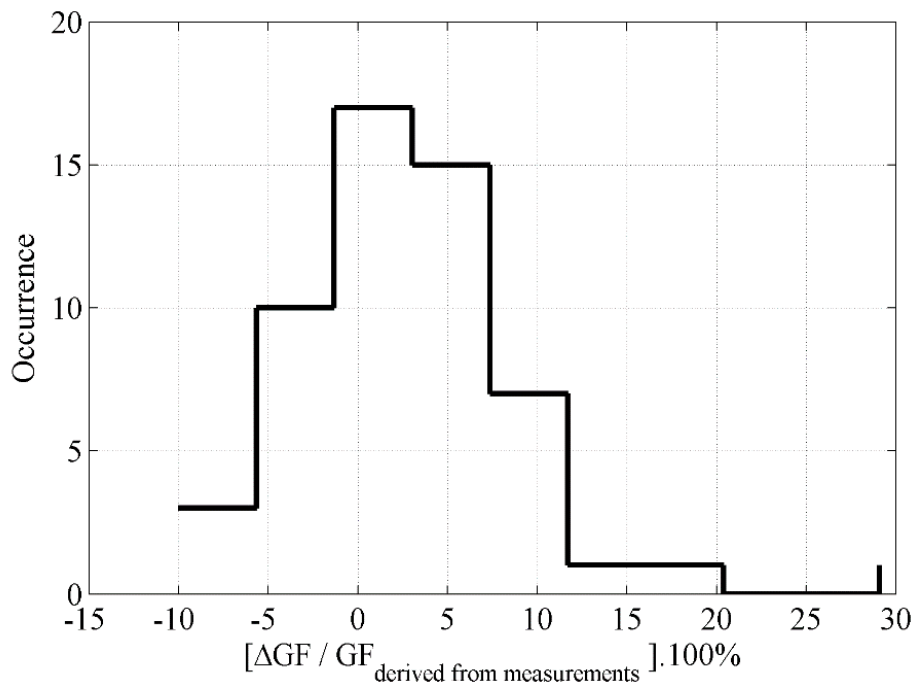


Fig. 7. Histogram of modeled growth factors deviation from values derived from measurements in percentage [%], during the campaign.

Seasonal variation of aerosol water uptake

N. Rastak et al.

Title Page	
Abstract	Introduction
Conclusions	References
Tables	Figures
◀	▶
◀	▶
Back	Close
Full Screen / Esc	
Printer-friendly Version	
Interactive Discussion	



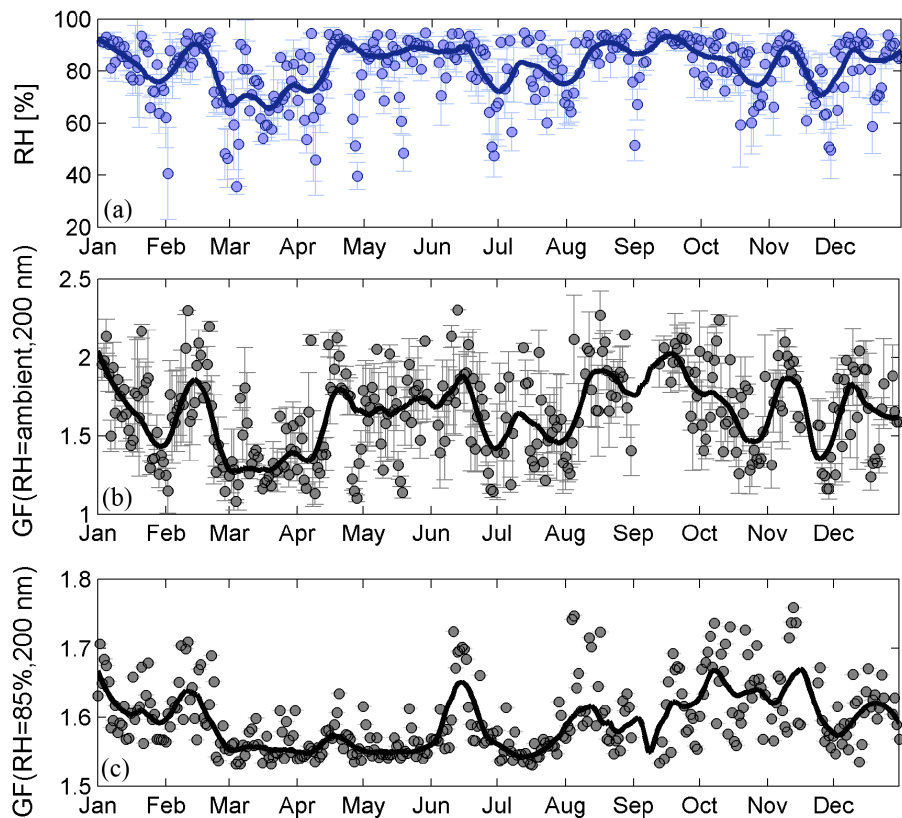


Fig. 8. (a) Daily mean relative humidity (%) measured at Zeppelin station for year 2008. (b) The calculated daily mean GFs assuming ambient RH for initial size of 200 nm. (c) The calculated daily mean GFs at RH = 85% for initial size of 200 nm. In Fig. 9a and b the error bars indicate standard deviations.

Seasonal variation of aerosol water uptake

N. Rastak et al.

Title Page	
Abstract	Introduction
Conclusions	References
Tables	Figures
◀	▶
◀	▶
Back	Close
Full Screen / Esc	
Printer-friendly Version	
Interactive Discussion	



Seasonal variation of aerosol water uptake

N. Rastak et al.

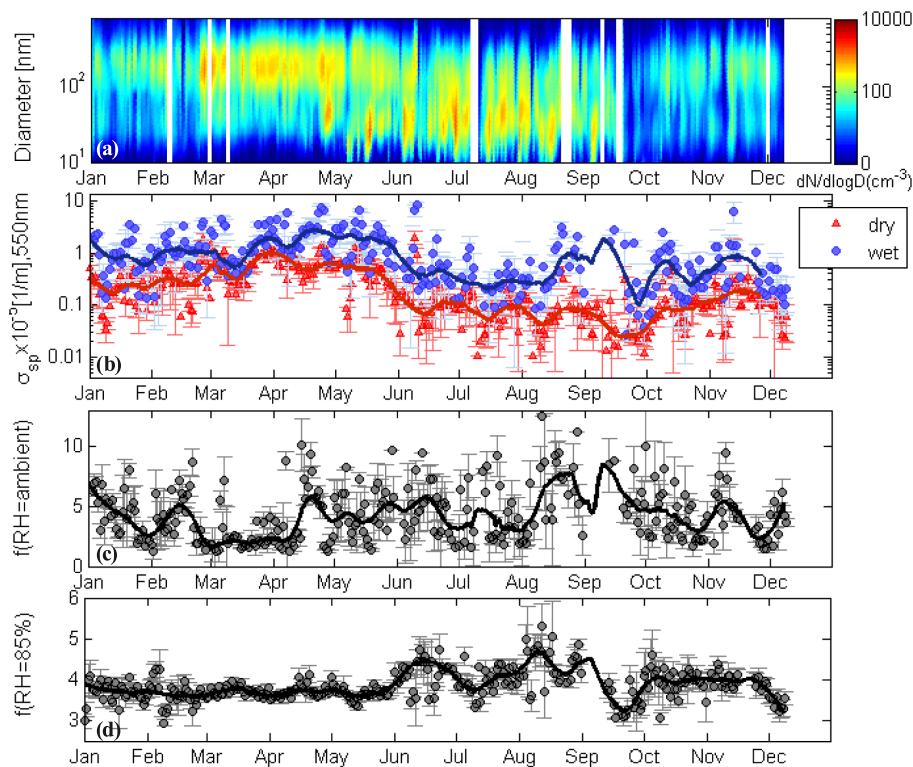


Fig. 9. (a) Number size distributions measured at Zeppelin station for year 2008. (b) The calculated daily mean scattering coefficients for the dry and wet cases (see Table 2). (c) The calculated daily mean enhancement factors f (RH = ambient) for the wet case. (d) The calculated daily mean enhancement factors f (RH = 85%). In all figures the error bars indicate standard deviations. Note that the scale is different in Fig. 9c and d.

Seasonal variation of aerosol water uptake

N. Rastak et al.

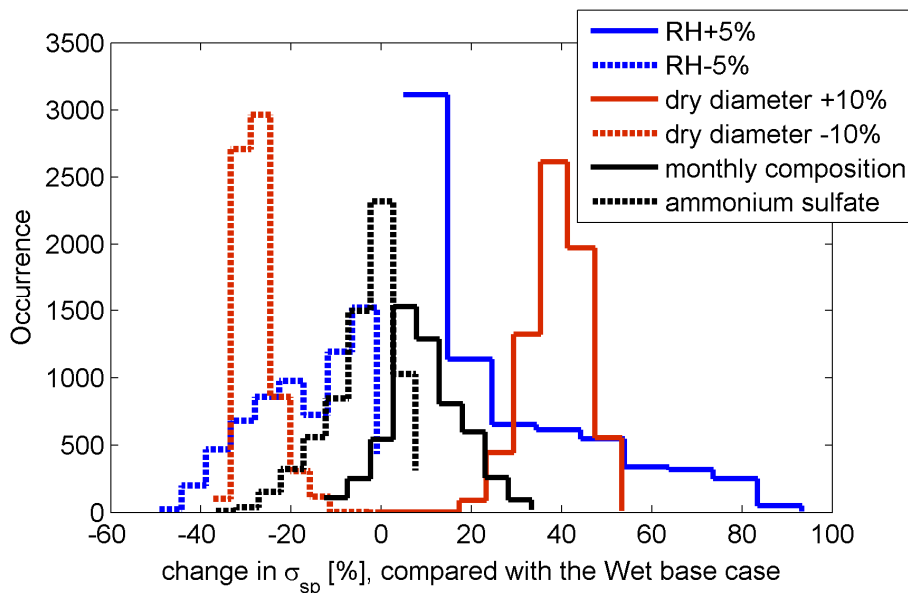


Fig. 10. Sensitivity of the hourly calculated scattering coefficients σ_{sp} to RH, aerosol dry size and chemical composition as compared with the wet base case (see Table 2).

Title Page

Abstract

Introduction

Conclusions

References

Tables

Figures

◀

▶

◀

▶

Back

Close

Full Screen / Esc

Printer-friendly Version

Interactive Discussion



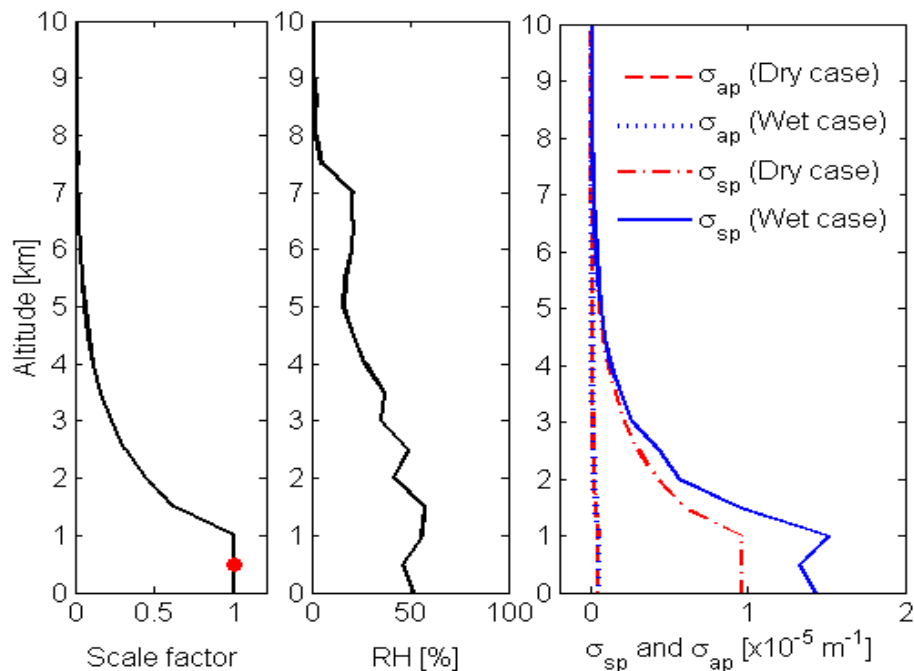


Fig. 11. Vertical profile of **(a)** scale factor for particle number size distributions, the red point shows the level of the station. **(b)** Ambient RH measured by soundings. **(c)** Scattering coefficient (σ_{sp}) and absorption coefficient (σ_{ap}) m^{-1} , modeled for dry and wet cases for 11 April 2008 at the Zeppelin station.

Seasonal variation of aerosol water uptake

N. Rastak et al.

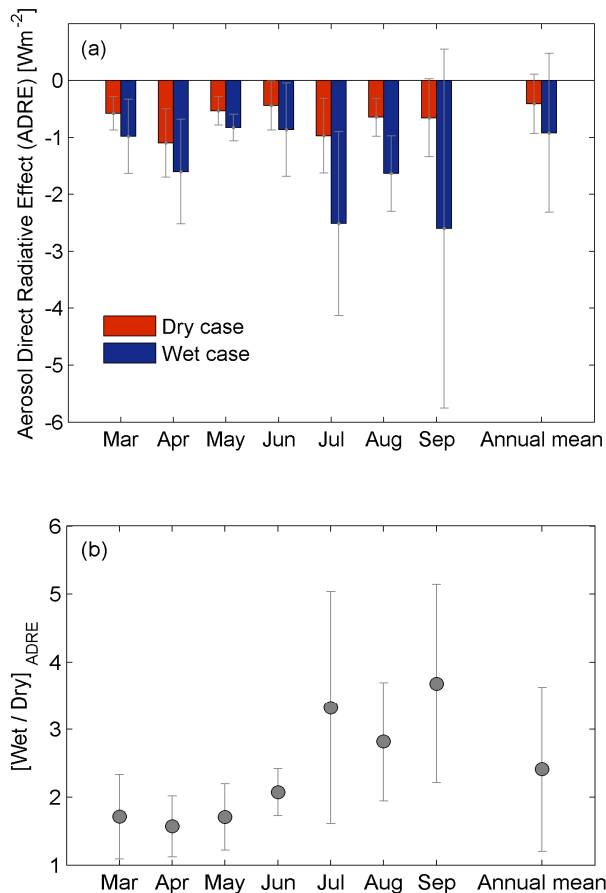


Fig. 12. (a) Monthly and annual averaged aerosol direct radiative effects (ADRE) for the dry and wet cases (see Table 2) at the Zeppelin station for 2008. For the months not shown the ADRE is assumed to be zero due to lack of sunlight. (b) The ratio between wet and dry ADRE. The error bars indicate the standard deviations.

Seasonal variation of aerosol water uptake

N. Rastak et al.

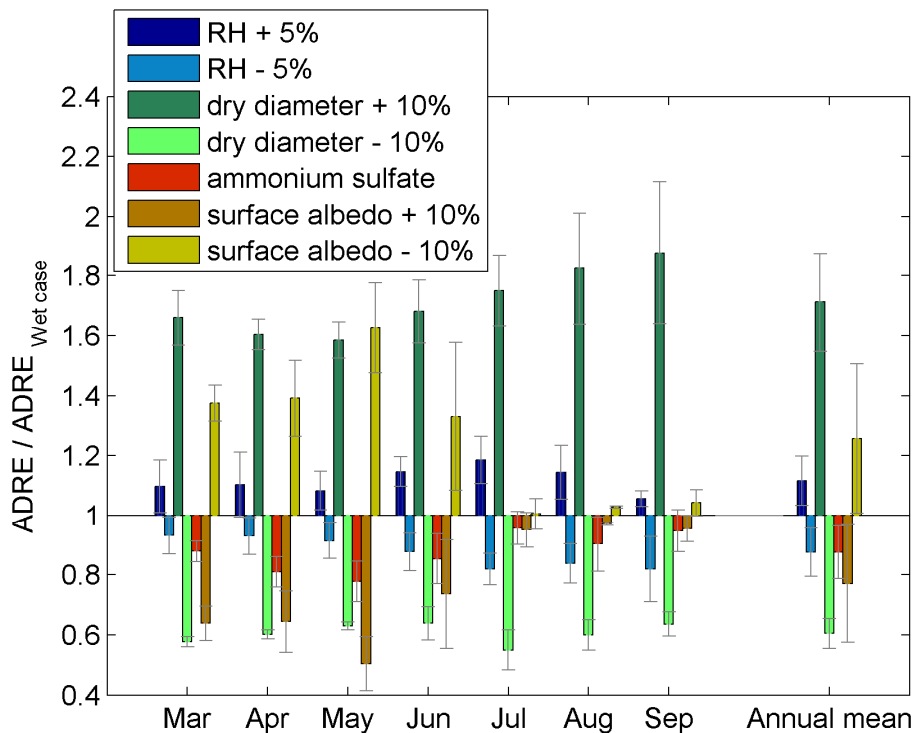


Fig. 13. The sensitivity of the ratio between the calculated ADRE (new cases) and the ADRE (wet case) to the parameters: RH, particle dry size, surface albedo and aerosol chemical composition.

Title Page

Abstract Introduction

Conclusions References

Tables Figures

◀ ▶

◀ ▶

Back Close

Full Screen / Esc

Printer-friendly Version

Interactive Discussion

