

Responses to Referee #1

Wyant et al. 2014, Global and Regional modeling...: the VOCA Intercomparison, ACPD

Thank you for your helpful comments.

This intercomparison contributed to the modeling plan that motivated VOCALS. While the study was professionally done, I was not sure what to take away from it. Comparisons are made and discussed, but little interpretation on what aspects of the individual model behavior limit aerosol-cloud interaction representations is provided, limited perhaps by the diversity of models evaluated.

The conclusion has been expanded to try and clarify the meaning of the study. Also an additional figure comparing mean N_d and CCN concentrations has been added to better illustrate one aspect of the model's capacity to simulate aerosol-cloud interactions. Intercomparison studies are by necessity better for pointing out general problem areas than the reasons for biases in particular models. This still serves the purpose both of informing the scientific community about the current state of modeling as illuminated by the intercomparison, and of inspiring developers to analyze individual models in more depth to provide the basis for model improvements.

If the above goal is too ambitious, could the authors instead provide the community with some guidance on where it should go with such comparisons?

What advice do the authors have for the modeling plans of future campaigns? Would such intercomparison exercises be better served by focusing on models of one type, such as done within GCSS, allowing for a further drilling down to specific process representations, e.g., aerosol wet deposition? This would still allow for one study per model type, and provide more of an apples-to-apples comparison.

Some suggestions and advice for a follow-on intercomparison study have been added to the conclusion. For some types of future studies, limiting the types of models participating would indeed allow more specific processes to be studied and problems to be addressed.

Is there a way to rank models, or can the authors suggest useful metrics [vertical resolution?]?

Our main goal for the intercomparison is to survey a broad range of models, see where the models are capable and deficient, have individual modeling groups learn about their model biases, and stimulate model improvement. If the class of models was limited and the input conditions were more stringent, ranking models could be useful. However, a ranked study would probably discourage participation.

On p. 25, we do see a paragraph that compares the performance of Pre-VOCA models to VOCA. Can we conclude from this that incorporating cloud-aerosol interactions does not improve the representation of cloud fraction? Some more in-depth discussion here would be a useful contribution of this manuscript.

This study is meant to complement Pre-VOCA by comparing those models with chemical transport and aerosol prediction capabilities with a comprehensive in-situ dataset from VOCALS-REx that allows far more aerosol, chemistry and cloud comparisons. As significant model and observational details have changed, and the model pool has changed, the results are not meant to be compared with Pre-VOCA and the conclusions to be reached by comparing the two studies are necessarily limited. We have added some text in the conclusions about why we do not think such a comparison would be particularly fruitful: "For many models in VOCA, the representation of aerosol processes is a relatively new feature, and at this stage of model development, we do not expect nor generally observe that their inclusion necessarily improves model performance relative to Pre-VOCA."

I also did not see much discussion of the Ron Brown datasets, despite those comprehensive aerosol and cloud datasets.

The cloud-top height measurements in Figure 5 were from the Ron Brown, and this has now been noted to the caption. We have also added Ron Brown data to Figures 3 (LWP), 4 (cloud-top), and 8 (DMS), and included discussion in the text where appropriate.

Abstract: Many of the statements within the abstract are vague (e.g. "some models simulate the regional low cloud cover well"... "Most models qualitatively simulate..."). Can this [and other statements] be sharpened? Some of the discussion section could probably be summarized in the abstract to add some interest here.

It is difficult to sharpen many of these statements in the abstract without specifying individual models. Even that would be qualified (e.g. no single model has an excellent match for mean cloud fraction). However, a part of the abstract has been enlarged to incorporate a few more of the points raised in the conclusion:

"Most models qualitatively simulate the observed offshore gradients of SO₂, sulfate aerosol, CCN concentration in the MBL as well as differences in concentration between the MBL and the free troposphere. Most models also qualitatively capture the decrease in cloud droplet number away from the coast. However, there are large quantitative inter-model differences in both means and gradients of these quantities. Many models are able to represent episodic offshore increases in cloud droplet number and aerosol concentrations associated with periods of offshore flow."

Figures:

fig. 3: worth mentioning AMSR-E is day+night in caption.

Added to caption.

fig. 4: a more general satellite-derived cloud top height would be useful here

As noted above, cloud-top observations from the Ron Brown were added. The uncertainties in satellite cloud-top height are great enough that we do not feel they would substantially improve the figure.

fig. 8, p 17: see also, for discussion of Ron Brown sulfur/DMS results, M. Yang and 20 co-authors, 2011: Atmospheric sulfur cycling in the southeastern Pacific - longitudinal distribution, vertical profile, and diel variability observed during VOCALS-REx. Atmos. Chem. Phys., 11, pp. 5079-5097. doi:10.5194/acp-11/5079-2011 for a discussion of the ship observations.

DMS observations from this study are now also plotted in Figure 8 and this study is cited in the text.

fig. 10: spell out SSA

done

fig. 11, discussed on p. 19: a consistent approach to estimating MODIS N_d from space is not yet in the literature (e.g. doi:10.1029/2011JD016155 and likely others). Would recommend including the equation used.

While there are numerous MODIS retrievals for N_d in the literature, the one we used here (Bennartz (2007) and George and Wood (2010)) agrees well with the aircraft observations in Bretherton et al. (2010). Rather than including the equation used, we have opted to add a reference to George and Wood (2010).

4, 6th line "spring" => "austral spring"

Unsure of the location the comment is referring to. We cannot locate a 'spring' that is not already 'austral spring'

References:

Bennartz, R: Global assessment of marine boundary layer cloud droplet number concentration from satellite., J. Geophys. Res., 112, D02201, doi:10.1029/2006JD007547, 2007.

Bretherton, C. S., Wood, R., George, R. C., Leon, D., Allen, G., and Zheng, X.: Southeast Pacific stratocumulus clouds, precipitation, and boundary layer structure sampled along 20° S during VOCALS-Rex, *Atmos. Chem. Phys.*, 10, 10639-10654. doi:10.5194/acp-10-10639-2010, 2010.

George, R. C., and Wood, R.: Subseasonal variability of low cloud radiative properties over the southeast Pacific Ocean, *Atmos. Chem. Phys.*, 10, 4047-4063, doi:10.5194/acp-10-4047-2010, 2010.

Note: Due to the substantial revision of the conclusions, ‘track-changes’ was turned off for this section.

Responses to Referee #3

Wyant et al. 2014, Global and Regional modeling...: the VOCA Intercomparison, ACPD

Thank you for your helpful comments.

General Comments:

However I think the conclusions section needs further work, as I didn't really come away with a clear sense of how this latest intercomparison has advanced our understanding, particularly when compared against the previous multi-model assessment, pre-VOCA.

VOCALS is the first extended study to compare marine aerosols in situ throughout the boundary layer using aircraft observations. So VOCA is novel as compared with Pre-VOCA as it compares models to a MBL dataset for an extended period with in situ data and compares aerosols. This difference from Pre-VOCA is already noted in the introduction. The start of the conclusion has been revised and expanded to better make these points.

On page 6542, lines 15-20, a number of questions are listed that provide the motivation for the paper, although there doesn't seem to be a clear attempt to come back to these questions towards the end of the manuscript. I suggest the conclusions section be restructured to directly tackle the questions raised at the start of the paper on page 6542, and where possible, to be more quantitative.

In revisiting these introductory questions, we have revised the second question to better match the direction of the paper: "How well do the geographical and vertical concentrations of aerosols agree?". In the revised conclusion each of our introductory questions is now addressed.

The authors reference the work of Yang et al 2011 on page 6542, line 1. Yang et al use WRF-CHEM to show that an explicit treatment of aerosols leads to a better simulation with respect to the observations, compared to simulations performed with a passive treatment of aerosols. However in general, the results from VOCA when compared to pre-VOCA do not necessarily seem to support this conclusion. Is this because there are too many other differences between models to allow for a fair comparison to be made? If so, I think it is important to say this.

While this study is a follow-on to Pre-VOCA, the two studies focus on different things, and involve different sets of models or versions of models. The experimental setup of the various models in this study was not controlled enough to provide specific guidance on the merits of explicit treatment of aerosols, or to refute or confirm these conclusions of Yang et al. 2011. The following statement was added in the conclusions to help clarify our position on the issue: "For many models in VOCA, the representation of aerosol processes is a relatively new feature, and at this stage of model development, we do not

expect, nor generally find, that their inclusion necessarily improves model performance relative to Pre-VOCA."

Maybe a good way to strengthen the conclusions section would be to suggest ways that future intercomparisons could be designed/improved to make it easier to glean insight. For instance, do we need a more standardised model setup to really be able to home in on the questions we want to answer? Would it be better in future to concentrate efforts around one or two common dynamical models, where the physics options, aerosol treatment, resolution etc can be varied systematically (possibly using factor separation methods) to help identify which specific aspects of a model are most important in terms of improving the agreement with the observations?

A paragraph was added to the conclusions to suggest future directions for a follow-on study.

Specific comments:

Page 6541, line 10-11: "Most of these models had no representation of aerosol-cloud interactions". Is this because the majority of models in pre-VOCA did not include an explicit treatment of aerosols? Or is it because the microphysics in the pre-VOCA models was too simplistic (i.e. single moment)?

The text has been revised to make the meaning clearer: "Most of these models had no explicit representation of aerosols."

Page 6542 line 7 – 'reported a large aerosol lifetime effect'. I wasn't sure what the authors meant by 'aerosol lifetime effect' here – do the authors mean that the emissions had a large impact on cloud lifetime?

This is referring to the feedback of reduced precipitation due to increased aerosol concentrations, which further maintains elevated aerosol concentrations. The statement was rephrased to make the meaning clearer: "Their follow-up modeling study (Q. Yang et al. 2012)...reported a large feedback of aerosol concentration on precipitation and aerosol lifetime over the clean ocean environment."

Page 6543, lines 9-10: "Each model submitted data on its native vertical levels". Do the authors think this could have been important in explaining some of the differences between models?

The main purpose for having models submit data on native vertical levels is to preserve details of boundary layer vertical structure in the analysis, so the text was edited slightly:

"Each model submitted data on its native vertical levels to preserve vertical structure for analysis."

Vertical resolution does have an impact on model performance, and this is already a component of several discussions later in the text.

Note: Due to the substantial revision of the conclusions, 'track-changes' was turned off for this section.

Responses to Editor's comments on original manuscript:

Wyant et al. 2014, Global and Regional modeling...: the VOCA Intercomparison, ACPD

Thank you again for your helpful earlier comments. Some of them were addressed in our first revision. Here are responses to those that we deferred to this phase of the review process.

Prior to final publication in ACP the authors should think seriously about the following:

1) How to convey a positive impression about model strengths, how model results agree with regard to circulation, cloud & aerosol content.

The purpose of this intercomparison is not particularly to convey a positive or a negative impression of the models. The purpose is to document the differences in the models, to show the status and capabilities of current models, and to give some insight into model problems. While the models generally agree in circulation they differ substantially in low cloud and aerosol properties, and we feel this is conveyed by the study.

2) How to use archived model data to diagnose and explain, e.g., covariation between model fields, conservation of constituents, the degree to which model low cloud and circulation can explain model performance relative to VOCALS observations.

We're not sure of the meaning of this statement.

3) How to design model intercomparison studies in the future to compensate for obvious deficiencies in prior strategy.

In our revisions to the conclusions, we discuss some possible new directions for follow-on intercomparison studies, including steps to improve the effectiveness of these studies.

SCIENCE COMMENT (optional)

The first two comments are prompted by the discussion on pages 17-18.

SC.1: DMS (Figure 8) and LWP (Figure 3) are similar over the remote ocean in the sense that the MBL concentrations of both constituents respond to rates of surface exchange. For what it's worth, the 3 WRF models display the same order of bias in DMS & LWP, and these biases cover a huge range: factors of 4 & 2, respectively. Hopefully, prior to final publication in ACP, the co-authors from these model groups can arrive at some understanding of how the surface fluxes differ, since most other explanations of the model differences of DMS & LWP have been eliminated.

We don't believe the differences in modeled LWP are due primarily to differences in latent heat flux. Latent heat flux (not shown) generally increases linearly from the coast for most models, the three WRF models differ by about 5% at 73W, 10% at 77W, and by 25% at 88W, but the PNNL WRF model has the lowest latent heat flux and the highest

mean LWP. Instead the differences in LWP between the WRF models probably have more to do with differing boundary layer schemes, vertical resolution, and perhaps differences in microphysics.

There are problems with the archived DMS fluxes (missing data from many groups and units problems in others), so further direct investigation of DMS discrepancies by comparing DMS fluxes is difficult here. However the mean longitudinal DMS gradient is opposite to that of CCN and N_d , so it does not appear that DMS is playing a key role in these simulations.

SC.2: It may be useful to treat sulfur-containing constituents as a family. Moreover, it should be possible to create a sulfur budget using the archived model fields.

We do not have all of the required archived information to complete the sulfur budget for any of the models. Furthermore a presentation of the complete sulfur budget is beyond the aims of this study.

The next comment is inspired by Figures 12 & 13.

SC.3: Further insight is needed as to how horizontal & vertical boundary conditions and data assimilation (where applicable) affect the results shown. To begin with, it would be interesting to see how the free-running models differ from assimilation models with regard to low cloud evolution. A Hovmoller for low cloud would be illuminating, to complement the mean results shown in Figure 2. Next, you may identify which models are expected to (and actually do) agree with the observed cloud. Similar diagrams for aerosol, DMS and O₃ would be equally useful. To the extent that aerosol-cloud interactions can be detected in the models, some illustration of these interactions (in Hovmoller format) may prove useful as well.

Time variability of various quantities, such as DMS, O₃, and SO₂ would be interesting to examine with respect to CCN and droplet concentrations. However, this would greatly expand the number of figures in the study. Since the time-mean concentrations vary so much between models, however, these additional figures are unlikely to provide much insight.

Note: Due to the substantial revision of the conclusions, ‘track-changes’ was turned off for this section.

Global and regional modeling of clouds and aerosols in the marine boundary layer during VOCALS: The VOCA Intercomparison

Matthew C. Wyant¹, Christopher S. Bretherton¹, Robert Wood¹, Gregory R. Carmichael², Antony Clarke³, Jerome Fast⁴, Rhea George¹, William I. Gustafson Jr.⁴, Cécile Hannay⁵, Axel Lauer^{6*}, Yanluan Lin^{7**}, Jean-Jacques Morcrette⁸, Jane Mulcahy⁹, Pablo E. Saide², Scott N. Spak², Qing Yang⁴

¹Department of Atmospheric Sciences, University of Washington, Seattle, WA, USA

²Center for Global and Regional Environmental Research (CGRER), University of Iowa, Iowa City, IA, USA

³School of Ocean and Earth Science Technology (SOEST), University of Hawaii at Manoa, Honolulu, HI, USA

⁴Pacific Northwest National Laboratory, Richland, WA, USA

⁵National Center for Atmospheric Research, Boulder, CO, USA

⁶International Pacific Research Center, University of Hawaii at Manoa, Honolulu, HI

⁷Geophysical Fluid Dynamics Laboratory, Princeton, NJ, USA

⁸European Center for Medium-Range Forecasts, Shinfield Park, Reading, UK

⁹Met Office, Exeter, UK

* Now at: Institute for Advanced Sustainability Studies, Potsdam, Germany

** Now at: Ministry of Education Key Laboratory for Earth System Modeling, Center of Earth System Sciences, Tsinghua University, Beijing, China

Revised for ACP

October 9, 2014

Correspondence to: Matthew Wyant (mwyant@atmos.washington.edu)

Abstract

A diverse collection of models are used to simulate the marine boundary layer in the Southeast Pacific region during the period of the October-November 2008 VOCALS REx field campaign. Regional models simulate the period continuously in boundary-forced free-running mode, while global forecast models and GCMs are run in forecast mode. The models are compared to extensive observations along a line at 20°S extending westward from the South American coast. Most of the models simulate cloud and aerosol characteristics and gradients across the region that are recognizably similar to observations, despite the complex interaction of processes involved in the problem, many of which are parameterized or poorly resolved. Some models simulate the regional low cloud cover well, though many models underestimate MBL depth near the coast. Most models qualitatively simulate the observed offshore gradients of SO₂, sulfate aerosol, CCN concentration in the MBL as well as differences in concentration between the MBL and the free troposphere. Most models also qualitatively capture the decrease in cloud droplet number away from the coast. However, there are large quantitative inter-model differences in both means and gradients of these quantities. Many models are able to represent episodic offshore increases in cloud droplet number and aerosol concentrations associated with periods of offshore flow. Most models underestimate CCN (at 0.1% supersaturation) in the MBL and free troposphere. The GCMs also have difficulty simulating coastal gradients in CCN and cloud droplet number concentration near the coast. The overall performance of the models demonstrates their potential utility in simulating aerosol-cloud interactions in the MBL, though quantitative estimation of

Deleted: , and the related gradient in cloud droplet concentrations, but

Deleted: large

aerosol-cloud interactions and aerosol indirect effects of MBL clouds with these models remains uncertain.

1. Introduction

The Southeast Pacific (SEP) region has an unusually extensive and persistent low-cloud cover supported by relatively low sea surface temperatures (SSTs) due to coastal upwelling, strong subsidence, and high static stability in the lower troposphere. There are typically strong east-west aerosol gradients in this marine boundary layer (MBL) between relatively pristine conditions in air masses advecting from the South Pacific Ocean and more polluted air near the west coast of South America (e.g. Bretherton et al. 2010, Allen et al. 2011). Anthropogenic aerosol and aerosol precursor emissions from industrial, agricultural, and transportation sources are incorporated into the MBL directly or through intermittent free-tropospheric flow over the ocean and subsequent entrainment into the MBL (e.g. Clarke et al. 2010, George et al. 2013).

The persistent clouds and aerosol gradients make the SEP an attractive ~~test bed~~ for evaluating how well modern [forecasting and](#) climate models can simulate aerosol-cloud interactions, a key uncertainty in understanding the 20th century climate record and an important issue for climate projection (IPCC 2007). This was a central motivation for the Variability of the American Monsoon Systems (VAMOS) Ocean-Cloud-Atmosphere-Land Study Regional Experiment (VOCALS-REx) field campaign, which took place in the SEP region during October and November 2008 (Wood et al. 2011a).

Deleted: testbed

In addition to the features given above, many factors coincide to make the SEP unique in terms of its persistent cloud deck. The subsiding air above the MBL is also exceptionally dry, enhancing radiative cooling of the MBL clouds. The temperature inversion at the top of the MBL in the region is extremely strong, commonly exceeding 12 K during the austral spring. Another prominent feature influencing regional meteorology and climate is the Andes mountain range, which forms a long, mostly north-south barrier to east-west flow in the MBL (Richter and Mechoso, 2006). This feature together with the strong inversion controls the circulations that affect aerosol and chemical transport pathways.

The meteorology of the region in the ~~austral spring season is dominated by a subtropical anticyclone~~. The flow in the MBL (Fig. 1) is typically southerly near the coast turning southeasterly away from the coast. There is a climatological advection of coastal air to the northwest, away from the coast and towards higher SSTs. The MBL deepens as it is advected offshore over higher SSTs. This flow pattern also carries aerosols from coastal anthropogenic and natural sources offshore. Aerosols generated farther inland and/or lofted upwards may also enter the SEP MBL through advection offshore at higher levels and entrainment into the MBL-top (Saide et al., 2012, George et al. 2013).

Deleted: A

Skillful simulation of aerosol-cloud interaction in the MBL requires a realistic representation of other boundary layer cloud processes in models. However, the accurate simulation of boundary layer clouds such as stratocumulus and trade cumulus is a long-standing challenge in climate and weather forecast modeling. The Pre-VOCALS Assessment (PreVOCA, Wyant et al. 2010) was designed to document and evaluate a

wide range of models in the SEP region and to provide a benchmark for future model comparisons to VOCALS-REx observations. PreVOCA examined simulations of the VOCALS-REx study region for October 2006 using a collection of 15 regional and global models and compared them with satellite data and ship-based climatologies available before VOCALS-REx. Most of these models had no explicit representation of aerosols. Many of the models produced serious biases in the time-mean geographic variability of low cloud in this region. In most models, the simulated MBL was too shallow near the coast. Nevertheless, a subset of models simulated the space-time distribution of cloud cover and thickness quite well.

Deleted: -cloud interactions

The extensive in-situ sampling during VOCALS-REx, especially from aircraft, provides more detailed and direct comparisons for models than were available for PreVOCA. These include comparisons of aerosol and chemical constituents (Bretherton et al. 2010; Allen et al. 2011) as well as MBL vertical structure and precipitation. This dataset is uniquely suited to testing simulations of MBL cloud, aerosols, and their interactions. The VOCALS Assessment (VOCA) was organized to capitalize on this opportunity. Participating models simulated the SEP during the month of VOCALS-REx when aircraft observations were being made. Sixteen modeling groups submitted simulations from global climate models, global operational forecast models, and regional models. In this study we focus on the subset of 9 VOCA models that have some representation of aerosols and their effects on clouds.

Deleted: a

There are a number of prior modeling studies of the SEP during VOCALS REx. Abel et al. (2010) evaluate the simulations of cloud cover, MBL depth, and precipitation over the entire REx period as well as over the diurnal cycle using a limited area model (LAM) configuration of the UK Met Office Unified Model. Q. Yang et al. (2011) compare their WRF-Chem simulations for VOCA with observations and find that their simulations with interactive aerosols perform better than those with a passive treatment of aerosols. Their follow-up modeling study (Yang et al., 2012) quantified the relative impacts of regional anthropogenic and oceanic emissions on aerosol properties, cloud macro- and microphysics, and cloud radiative forcing over the SEP during VOCALS, and reported a large feedback of aerosol concentration on precipitation and aerosol lifetime over the clean ocean environment. Saide et al. (2012), using a different configuration of WRF-Chem, compare their VOCA simulations with observations over the entire study period as well as over shorter episodes. They also find that aerosol indirect effects play an important role in their simulations, and that their treatment of aerosol wet deposition has a strong impact on their results. George et al. (2013) used WRF-Chem in a similar configuration to their runs presented here to study multi-day ‘hook’ events, where polluted continental air is carried offshore and influences stratocumulus clouds via aerosol indirect effects.

Deleted:
Deleted: effect
Deleted: more susceptible

This paper addresses several questions: Can the models represent the geographical contrasts in cloud microphysical properties in the SEP? How well do the geographical and vertical concentrations of aerosols agree? How well do the models represent the

Deleted: What can the models tell us about the origins and impacts of aerosols in the region

impacts of these aerosols in the clouds? What problems are common to many models?

Do these observations provide a good benchmark for aerosol/cloud interaction?

We will describe the setup of VOCA in Section 2. Section 3 compares the model results with each other and with observations. The results of the comparison will be discussed in Section 4 and conclusions presented in Section 5. Detailed descriptions of the models used are given in an Appendix.

2. Case Setup

VOCA covers the time interval from 0 UTC 15 Oct 2008 through 0 UTC 16 November 2008, the period of VOCALS REx intensive airborne observations. The outer study region for VOCA is shown in Fig. 1. The inner domain outlined in black extends from 12°S to 35°S and 68.5°W to 88°W, which includes the region of most of the REx research flights including the large set of flights along 20°S from the coast to 85°W. Simulation output data in the outer and inner region were horizontally averaged to a 1° x 1° grid and 0.25° x 0.25° grid, respectively, by the modeling groups. The models were not required to match their simulation domains to the outer and inner domains, or to necessarily include the outer study domain; the regional models in this comparison did not cover this outer study domain due to computational demands. Each model submitted data on its native vertical levels to preserve vertical structure for analysis. The data was submitted with 3-hour time resolution, with some data fields averaged over 3-hour intervals, and other fields provided at 3-hour snapshots. The experiment specification can be found at http://www.atmos.washington.edu/~mwyant/vocals/model/VOCA_Model_Spec.htm.

A diverse group of models are represented in this study. They include global general circulation models (GCMs): the National Center for Atmospheric Research (NCAR) Community Atmosphere Model versions 4 and 5, (CAM4 and CAM5, respectively) and the NOAA Geophysical Fluid Dynamics Atmospheric Model 3 (GFDL AM3). Simulations using global weather forecast models were provided by the European Centre for Medium-Range Weather Forecasts (ECMWF) and the UK Met Office (UKMO). Regional simulations using the Weather Research and Forecasting model coupled with Chemistry (WRF-Chem) were submitted independently by research groups from University of Iowa, Pacific Northwest National Laboratory, and the University of Washington (hereafter labeled IOWA, PNNL, and UW, respectively). Another regional simulation included in this study was produced by the International Pacific Research Center (IPRC) with their Regional Atmospheric Model (iRAM). Detailed descriptions of these models are given in the Appendix.

Table 1 shows a list of the VOCA simulations analyzed in this study and many of their important parameters and characteristics. All of the listed global models were run in forecast mode, i.e., as a series of short simulations initialized at subsequent times from externally specified conditions. This initialization constrains the large-scale environment while still allowing the model to develop internally consistent representations of cloud and boundary layer structure. Forecast-mode has proven to be a good framework for identifying climate model biases (e.g. Phillips et al. 2004, Boyle et al. 2008, Hannay et al. 2009). Daily forecasts were provided by the modeling groups (twice-daily for the

UKMO model), and for each model, data from these were stitched together to cover the REx period. The global weather forecast models used a data assimilation/forecast cycle that did not have a large initialization shock for boundary layer cloud, so the first forecast period (which presumably has the most accurate meteorological fields) was used in our study (e. g. 0-12 hours for UKMO). The global climate models were initialized from ECMWF high-resolution global analyses produced for the Year of Tropical Convection (YOTC), so there was a spin up period for each model to adjust to this analysis. For such models, a later forecast period was chosen for analysis. The global models each utilize different land emission schemes.

All of the regional models were run continuously in free-running mode, with forcing at the lateral boundaries. The lateral boundary conditions for IOWA, UW, and iRAM came from the NCEP global FNL analysis, and for PNNL they came from NCEP's Global Forecast System (GFS) analyses. A regional emissions inventory of natural and man-made emissions over land during the VOCALS REx period was developed at University of Iowa. This inventory is described by Mena-Carrasco et al. (2012) and available at

http://bio.cgrrer.uiowa.edu/VOCA_emis/. It includes emissions from anthropogenic sources and large nearby volcanoes, but not biogenic or biomass burning emissions. All of the WRF-Chem regional models incorporated these emissions in their simulations, but none of the other participating models use these emissions. Parameterizations for fluxes of sea-salt and dimethyl sulfide (DMS) from the sea-surface were provided in the VOCA specification but not required for participants. The specified coarse and fine mode sea-salt emissions are based on Gong et al. (1997) and Monahan et al. (1986), while ultrafine

Deleted:

Deleted: http://www.cgrrer.uiowa.edu/VOCA_emis/

emissions follow Clarke et al. (2006). The specification uses a simplified version of Nightingale et al. (2000) with a geographically uniform ocean surface DMS concentration of 2.8 nmol l^{-1} . Choice of emission parameterizations for any other aerosol types, such as dust, was left up to the participants. For regional models, the Model for Ozone and Related chemical Tracers version 4 (MOZART-4; Emmons et al. 2010) global model provided initial and lateral boundary conditions of aerosol and chemical species concentrations.

The models represent aerosol size and mass to varying degrees of precision and complexity. The IPRC model uses climatologically prescribed aerosol mass and size distributions and permits aerosols to affect clouds, and so surface aerosol emissions are not represented. The rest of the models use prognostic aerosol schemes – either they specify a small number of size modes (CAM5, GFDL, UW), or use sectional schemes with explicit aerosol size bins (PNL, ECMWF, UKMO, IOWA). For models with aerosol-cloud feedbacks, a fraction of the aerosols can become activated and become cloud-droplet nuclei. In this way, aerosol number concentration can affect cloud-droplet number concentration (N_d). N_d in turn affects drizzle formation and cloud reflectivity.

Cloud and precipitation scavenging reduces concentrations of both activated and unactivated aerosols in the MBL.

Deleted:

In this study, we rely heavily on in-situ aircraft observations along 20°S and between 70°W , at the Chilean coast, and 85°W , at the Improved Meteorology (IMET) moored research buoy situated about 1500 km offshore. Throughout VOCALS REx, several

aircraft, primarily the NSF C-130 and UK BAe146, regularly performed research flights in and above the MBL along this line (Bretherton et al. 2010; Allen et al. 2011). A common flight pattern included a sequence of 60-km level legs, one 150-300 m above the inversion, one in the middle of the cloud layer or, in the absence of clouds, just below the inversion base, and one in the lower MBL at 150m height. This pattern was repeated multiple times along the 20°S segment. Data from 23 flights are distributed fairly evenly throughout the 15 October to 16 November period and fairly evenly over the diurnal cycle. Almost all C-130 and BAe146 flights sampled out to 80°W, while 4 C-130 flights sampled the entire segment out to 85°W. Bretherton et al. (2010) and Allen et al. (2011) provided a thorough description of the flights and findings from this collection of flight data and other supporting observational data. Following those studies, we frequently sort aircraft leg-mean values into 5°- or 2.5°- longitude bins before further averaging in order to reduce sampling noise and facilitate comparisons with the models. The 25th- and 75th- percentile values of these leg-mean values are plotted in the figures as error bars and provide an estimate of the temporal and geographic variability in sampling. The actual measurement errors of the means should be much smaller than these ranges.

3. Results

3.1 Time-mean cloud macrophysics and precipitation

We begin by comparing simulated low-cloud fraction near 1530 UTC (approximately 10:30am local time) averaged over the one-month REx period (Fig. 2) with satellite cloud fraction from the Moderate Resolution Imaging Spectrometer (MODIS) Terra daytime

overpass (also approximately 10:30am local time). Note that the MODIS cloud fraction includes all clouds, not just low clouds, though low clouds strongly dominate the cloud fraction climatology. As in PreVOCA, many models have difficulty in simulating the geographic distribution of low-cloud fraction as compared with MODIS. The models' patterns of low-cloud cover are quite diverse. The PNNL, UW WRF, IOWA, and ECMWF models agree well with MODIS in the northeast part of the inner study region. In the southwest part of the region, PNNL and UW WRF have too little low cloud, while IOWA and ECMWF models have too much. In the southern half of the inner study region the CAM4 and CAM5, GFDL, UKMO, and IPRC models have too little low cloud in the southern part of the study region. While CAM5, with better vertical resolution, appears to be an improvement on CAM4 in the study region, the CAM5 low cloud fraction does not agree any better with MODIS than CAM4 in the outer region, despite better vertical resolution. The GFDL model also has too few low clouds near the coast. Along 20°S in the inner study region, the GFDL and UKMO models both significantly underestimate cloud fraction compared with MODIS.

Figure 3 compares the simulated liquid water path (LWP) along 20°S with mean C-130 airborne microwave radiometer observations (Zuidema et al. 2012) during VOCALS and with mean satellite observations from the Advanced Microwave Scanning Radiometer-EOS (AMSR-E) on NASA's AQUA satellite. The AMSR-E values include both daytime and nighttime passes. [Also plotted is a 2001-2008 October-November climatology of LWP along 20°S from the ship-based radiometer measurements of the Ron Brown from 2001-2008 \(de Szoeke et al. 2012\).](#) Both satellite and aircraft measure a mean increase in

LWP moving westward (offshore) from the near-coastal MBL and then a more constant LWP further offshore, while in the Ron Brown climatology the LWP increases further offshore. The LWP along 20°S varies considerably between models. Most of the models underpredict mean LWP over most of the 20°S profile, while a few models overpredict LWP nearer to the coast. Most models are a within a factor of two of the observed means.

Deleted:

Deleted: .

Deleted: of the models

Figure 4 shows the mean cloud-top height for all the models at 20°S compared with the mean of C-130 aircraft leg-mean cloud-top values and a Ron Brown, 2001-2008 cloud-top height climatology (de Szoeke et al. 2012). All of the models underestimate cloud-top height, with negative biases from 100 m to 700 m and particularly large biases near the coast. Similar underestimates of MBL depth near the coast were common in PreVOCA (Wyant et al. 2010). The WRF models compare better with aircraft observations than the other models along 20°S with negative biases less than 200 m in each longitude bin. The relative performance of various models is consistent with the study of Wang et al. (2011), which argues that both horizontal and vertical model resolution appear to be important in predicting MBL height. Most models match the observed westward increase of the cloud-top height. The main exception is the IPRC model in which cloud-top height rises too rapidly to the west, related to its strong negative bias in cloud-top height near the coast.

Deleted:

Deleted: usi

The general deepening of the boundary layer to the west along 20°S is also evident in Fig. 5, a comparison of the cloud fraction profiles at 75°W and 85°W. Also shown are profiles of cloud fraction from cloud-base and cloud-top measurements taken on Ronald H Brown cruises during VOCALS REx along 20°S, which were sorted into measurements west of

80°W and east of 80°W (Burleyson et al. 2013). The periods of these measurements (25 October to 2 November 2008 and 10 November to 2 December 2008) only partly overlap with the VOCA study period. The modeled and observed vertical extent of cloud fraction is broader to the west, consistent with a more decoupled vertical structure associated with cumuliform convection in the MBL and/or stronger time variations in inversion height. The overall distribution of modeled cloud heights is consistent with the cloud-top height comparison of Fig. 4. Models with fine vertical resolution in the MBL and lower troposphere (PNNL, IOWA) are able to represent the Gaussian shape of the measurements where models with coarser resolution show less smooth profiles. The height of peak cloud fraction in Fig. 5 is lower in almost all models than the corresponding observed peak, but in this case the comparison could be influenced by the mismatch of observation times and locations with those used for model averaging.

Mean surface precipitation rates in the region are generally very small, much less than 1 mm day⁻¹ (Bretherton et al. 2010, Wood et al. 2012, Rapp et al. 2013), but precipitation processes still play an important role in the MBL. Drizzle redistributes moisture downward and stabilizes the MBL through evaporation. In this environment cloud and precipitation scavenging is the dominant removal process of sub-micron aerosols. Precipitation feedbacks also may play a central role in the formation and maintenance of pockets of open cells (POCs), which are common features of the regional marine stratocumulus (Bretherton et al. 2004; Wood et al. 2008; Wood et al. 2011b, Ovchinnikov et al. 2013).

Figure 6 compares time-mean modeled surface precipitation, time-mean aircraft observations, and a 2006-2010 satellite precipitation climatology (Rapp et al. 2013) from the NASA CloudSat 2C-RAIN-PROFILE product that includes both daytime and nighttime passes. The aircraft measurements were made at about 150 m above the surface using the Particle Measuring Systems 2D-C instrument. Both observational datasets are subject to considerable uncertainty that is associated with both the measurement technique and the representativeness of the sampling. The models tend to produce more surface precipitation than suggested by CloudSat retrievals. Near the coast limited CloudSat observations suggest miniscule precipitation rates. Some models agree well with this (CAM5, UKMO, PNNL, and IOWA), while the other models predict more significant precipitation rates. Offshore, all models are within an order of magnitude of observed values.

3.2. Time-mean aerosol and chemical properties

We next compare the simulated aerosol and chemical properties along 20°S with the REx observations. We focus on aerosols that directly impact MBL clouds in this region through their capacity to act as cloud condensation nuclei (CCN). We compare modeled and C-130 measured CCN number concentration at 0.1% supersaturation in the free troposphere above the inversion (FT, Fig. 7, top-left panel) and at 150 m height (Fig. 7, bottom-left panel). The specification of 0.1% supersaturation was in retrospect suboptimal for the intercomparison, since it is somewhat lower than the 0.2-0.4% maximum supersaturation expected during the nucleation of cloud droplets given typical

MBL updraft strengths and aerosol size spectra (Martin et al. 1994, Snider et al. 2003, Hudson et al. 2010). This may lead to an underestimate of the actual number concentration of aerosol that nucleate cloud droplets. However, given other large parameterization uncertainties, this statistic is still a useful comparison between models and observations. In all figures, FT aircraft observations are sampled above cloud and between 1700 m and 3200 m, while model FT means are computed from the inversion height to 3200 m, following Allen et al. (2011). At 150 m, with the exception of the UKMO model, all of the models have mean CCN concentrations in the MBL and FT that are about half as large as observed or even less, both near shore and offshore. WRF-Chem models using the MOSAIC sectional aerosol scheme and the Abdul-Razzak and Ghan (2002) activation scheme (PNNL and IOWA) have significant concentrations of accumulation mode aerosol that do not activate at this low supersaturation, and aerosol concentrations show much better agreement with VOCALS observations in the MBL when these accumulation mode aerosols are considered (Q. Yang et al. 2011, Saide et al. 2012). East of 80°W, the UKMO model has excessive CCN concentrations at all longitudes, reaching a peak of 1700 cm^{-3} at 74°W. In the FT the model concentrations of the other models are also lower than observed. Most of the models have some semblance of the offshore CCN gradient seen in the observations.

Observational studies in the VOCALS region confirm that sulfate aerosol is the most important aerosol for nucleating cloud droplets (e.g. Twohy et al. 2013). While number concentration of accumulation-mode sulfate aerosol may be more directly relevant to cloud-aerosol interaction than sulfate mass, only the latter quantity was archived by most

models and will be compared with observations. In the right panels of Fig. 7, modeled total mean sulfate aerosol mass is compared with C-130 and BAe-146 Aerosol Mass Spectrometer (AMS) sulfate aerosol mass from 0.05 μm - 0.5 μm . Here the model MBL values are vertical means with the MBL thickness determined as for Fig. 4. In both the MBL and the FT, the models all have significant offshore gradients of sulfate aerosol comparable to the observations, consistent with a continental source. The models differ considerably in sulfate mass, especially in the MBL, but the majority of models tend to have less FT and more MBL sulfate aerosol mass than the AMS values. It should be noted that the AMS values represent a lower bound on actual sulfate mass, as there can be significant mass contained in aerosols larger than 0.5 μm diameter (e.g. Q. Yang et al. 2011). In the MBL, the models are more skillful representing sulfate mass than CCN number concentration, with most models within a factor of two of the observed means.

Deleted: For purposes of cloud-droplet nucleation, number concentration of accumulation-mode sulfate aerosol is a more directly relevant quantity than sulfate mass, but the former quantity was not archived by most models.¶

Two important atmospheric precursors to sulfate aerosol are dimethyl sulfide (DMS) and SO_2 . DMS is the only local source of (non-sea-salt) sulfate aerosol in remote ocean regions. Figure 8 shows a comparison of mean MBL DMS concentration of most of the models with aircraft observations. Also shown are mean near-surface atmospheric DMS observations from the Ron Brown during VOCALS-REx (M. Yang et al. 2011). The timing of these observations only partly overlaps the VOCA simulation period, as was the case with the Ron Brown cloud-fraction profiles shown above. The DMS concentrations vary widely across models but are generally higher than the aircraft observed values for some models, and vary strongly between models. The Ron Brown observed near-surface values are notably higher than aircraft values, which can be partially explained by the

Deleted:

Deleted: modeled

Deleted: ?

Deleted: concentrations are

Deleted: , much higher DMS concentrations

Deleted: some of

[general decrease of DMS concentration with height in the MBL \(e.g. M. Yang et al. 2011\)](#). The specified ocean surface DMS concentration is a spatially uniform 2.8 nM for the WRF models (as given in the VOCA specification). While it may differ somewhat in the other models, the differences are very unlikely to account for the wide variation between models. Differences in mean surface wind speed and advection patterns also can't account for DMS differences. Over most of the inner study region, the interquartile range across models of mean model surface wind speeds less than 2 m s^{-1} and the interquartile range of both meridional and zonal 10-m winds is less than 1.5 m s^{-1} . Furthermore, the inter-model differences in upstream mean model wind speed appear to be uncorrelated with model mean DMS concentrations. The large differences in MBL DMS concentration are most likely due to differences in surface flux parameterizations or differences in model chemistry. Both models and observations agree that MBL DMS concentrations are larger offshore than near the coast, possibly due to the much higher wind speed offshore. PNNL WRF-Chem significantly overestimates the DMS concentration in the atmosphere, and detailed investigation by [Q. Yang et al. \(2011\)](#) partially attributes this to overestimation of the DMS ocean-to-atmosphere transfer velocity. However, the PNNL WRF mean wind speeds along 20°S are very similar to UW WRF and GFDL, whose mean 20°S MBL DMS concentrations are much lower.

Both modeled and observed profiles of gas phase SO_2 along 20°S (Fig. 9) in the MBL and the FT show even sharper gradients near the coast than for SO_4 aerosol mass. There is abundant SO_2 near shore due to continental anthropogenic and natural sources, but the SO_2 is low offshore compared with aircraft values in both the MBL and the FT. The

abundance of modeled SO₂ in the near shore and the strong modeled offshore sulfate gradient in the MBL suggests the models are producing most of their MBL sulfate aerosol east of 80°W via oxidation of SO₂. This mechanism is generally consistent with findings of M. Yang et al. (2011) based on observed offshore SO₂ and SO₄ budgets in VOCALS-REx. The offshore model differences in the FT SO₂ are likely due to differences in background SO₂ in the models. The only model that matches the observed values (IOWA) has specified minimum thresholds for its SO₂ boundary conditions (Saide et al. 2012). For the offshore MBL, most models, including the three WRF-Chem simulations, underestimate SO₂, which has been hypothesized to be due to SO₂ to SO₄ aqueous reaction rates that are too fast (Saide et al. 2012). However the aircraft concentrations in the remote MBL are suspiciously high, as there were almost no measured SO₂ concentrations below 10 pptv during VOCALS flights, even during nighttime.

Formatted: Subscript

Formatted: Subscript

Another significant potential source of aerosol mass and number in the MBL, especially in the remote regions, is sea-spray aerosol (SSA) generated by bubble bursting. The SSA mass in the MBL is thought to be dominated by the largest 10% of the total number concentration, with dry diameters exceeding 1 μm while number concentrations and contributions to CCN are dominated by the smaller sizes (Clarke et al. 2006). Here we compare modeled SSA (dry) mass mixing ratio with C-130 aircraft observed estimates (Fig. 10). These estimates from Blot et al. (2013) are based on data from particle counters and a Giant Nuclei Impactor and consider SSA particle sizes from about 0.04μm to tens of micrometers. The observed trend to lower values west of 80°W has been attributed to

more effective removal by drizzle in spite of higher winds and SSA production (Blot et al. 2013). There is a substantial range in simulated SSA mass, with most models exceeding the observed mean values. However, the WRF-Chem models and the GFDL models are generally close to the aircraft interquartile ranges. The inter-model range of mean surface wind speeds in the study region is small (as noted above) and uncorrelated with SSA mass. Some models have upper size limits due to the sectional approach used (e.g. the MOSIAC model used in the PNNL WRF and IOWA WRF has a 10 μm cutoff) limiting their total SSA mass somewhat. The expected mass contribution of aerosols smaller than 0.04 μm is negligible.

We next compare [in Fig. 11](#) modeled cloud droplet number concentration (N_d) with aircraft-~~observed~~ N_d and MODIS N_d ~~retrieved using the method of George and Wood (2010)~~. Five of the seven plotted models underestimate droplet concentration compared with aircraft and MODIS observations, especially near the coast. (Note that model N_d is computed only in grid-cells where 3-hour cloud liquid water exceeds 0.1 g kg^{-1} .) The general under-prediction of N_d is consistent with the under-prediction of the larger CCN by all models shown above. However, other model parameterizations, especially the representation of local updraft velocity and its role in droplet activation, can also play a large role in ultimately determining N_d . The majority of models do show the expected gradient in N_d moving away from the coast. The high UKMO concentrations near the coast are consistent with the extremely high CCN concentrations in that model. But the CAM5 and GFDL models have droplet concentrations near the coast that are not appreciably higher than farther offshore.

- Deleted: ,
- Deleted:
- Deleted:
- Formatted: Font: Italic
- Formatted: Font: Italic, Subscript
- Deleted: observations (Fig. 11)

A strong connection between CCN and N_d in most models is evident in Figs. 12 and 13, which show their time evolution along 20°S over the duration of the experiment. CCN concentrations at 150 m are shown. Daily MODIS N_d from Bretherton et al. 2010 is also plotted during periods when local MODIS cloud fraction was greater than 80%, which are favorable for a reliable satellite-based N_d estimate. For some models, the LWC threshold for reporting simulated N_d often filters out results, especially during the early afternoon cloudiness minimum. Most models have higher CCN concentrations near the coast at most times, with occasional excursions of high CCN air westward coincident with periods of high N_d . The exceptions are the GFDL and the IPRC models. The GFDL model has comparatively low liquid water concentrations, so N_d is unreported over much of the experiment domain and time making it difficult to discern N_d variations. IPRC has fixed aerosol concentrations which causes CCN concentrations to have minimal time dependence. The other models differ considerably in the westward extent and timing of high CCN and N_d excursions. Most models qualitatively agree about two periods of high CCN and N_d , also observed by MODIS, one from Julian Days (JD) 291-295, and one from JD315-320. The models tend to show two secondary peaks in CCN near JD302 and JD310, also visible in the MODIS N_d , but the temporal variation of modeled N_d during the middle of the study period is not consistent between models.

Figure 14 also illustrates the strong connection between CCN and N_d . Plotted are mean values of modeled and observed CCN (0.1% supersaturation, 150m) and N_d binned by longitude along 20°S. While the models vary greatly in absolute droplet number relative

Formatted: Font: Italic

Formatted: Font: Italic, Subscript

Formatted: Font: Italic

Formatted: Font: Italic, Subscript

to CCN, and in gradient of CCN and N_d offshore, most models show a near one-to-one slope on the log-log plot, suggesting a nearly linear relationship between CCN and N_d .

Formatted: Font: Italic

Formatted: Font: Italic, Subscript

Formatted: Font: Italic

Formatted: Font: Italic, Subscript

Black carbon (BC) aerosol is a key tracer for the presence of sub-micrometer combustion derived aerosol. Although it is usually only a few percent of combustion aerosol mass, when BC is elevated above “clean” conditions it indicates combustion aerosol is contributing directly to aerosol mass, number and CCN. Unlike CO, BC in aged combustion aerosol is readily scavenged by precipitation such that ambient concentrations reflect the impact of both source and removal processes. Figure 15 compares BC aerosol mass for several models with binned C-130 aircraft measurements made with a single particle soot photometer, which measures BC aerosol of diameter 0.087 – 0.4 μ m (Shank et al. 2012). The models’ spread in MBL concentrations is large, especially near the coast, but with all models generally within one order of magnitude of observed means. Despite the large biases in many models, most do show an increase in black carbon concentration towards the coast in the MBL, as observed. One exception to this trend is UW. This model does not include biomass burning, which explains the large difference between it and the other models near land. The models generally underestimate BC in the FT. The FT observations are suggestive of an offshore maximum in BC that is not captured in any of the models. The spatial and temporal variability in aircraft measured BC in the FT makes evaluation of the model means difficult.

Deleted: Carbon

Deleted: 4

Two other trace gases measured during VOCALS flights are ozone and CO. Although they do not interact strongly with clouds, they provide an interesting comparison with models because this region is data-sparse and distant from other locations with extensive in-situ measurements through the lower troposphere. These gases (especially CO) are long lived; hence they are strongly determined by boundary conditions in the regional models. Thus these model comparisons, especially for CO, are a stronger test for global than regional models.

Ozone concentrations are compared in Fig. 16. As noted in Allen et al. (2011), mean O_3 concentrations measured in this region are higher in the free troposphere than in the MBL, generally consistent with subsidence of higher-ozone upper-tropospheric air, and the models reproduce this pattern. The PNNL WRF and IOWA WRF models match the observed means fairly well. Ozone can also be produced around anthropogenic pollution plumes. However, observed longitudinal gradients of O_3 are small in the boundary layer, and in the FT there actually is a 25% drop in concentration near the coast; Allen et al. (2011) attributed this to enhanced mixing with ozone-poor boundary-layer air, which overwhelms any coastal anthropogenic source. The IOWA WRF and GFDL runs have a lesser but noticeable coastal decrease in O_3 ; the CAM models have a slight ozone increase in the MBL and no decrease in the FT, suggestive of an overly strong coastal ozone source.

CO concentrations (not shown) were available only from the WRF-Chem regional models and the GFDL global runs. Aircraft mean values from 75°W to 85°W were 66

Deleted: 5

ppbv in the MBL and 75 ppbv in the FT with weak longitudinal variation, and the model means were generally within ± 10 ppbv of observed means along 20°S in both the MBL and FT. Because of the relatively long lifetime of CO, differences between model means are more closely tied to model boundary conditions or remote sources than to differences in model physics and chemistry.

4. Discussion

In evaluating the performance of the models with respect to aerosols and clouds, it is useful to group a few subsets of the models with similar characteristics. We begin with two contemporary GCMs in the study, GFDL and CAM5, which have comparable horizontal and vertical resolution in the MBL. Both models significantly under predict LWP and inversion height along 20°S , and the GFDL model is significantly deficient in cloud fraction all along 20°S , especially near the coast. Both are also deficient in CCN at 0.1% SS and have an apparent surplus of sulfate aerosol and SSA mass, suggesting that their aerosol size distributions may be skewed towards larger sizes. Neither model displays a mean offshore gradient in CCN despite having significant offshore gradients in sulfate aerosol. As a result, both models underestimate observed cloud-droplet concentrations, especially near the coast.

Deleted: They also are b

The three participating WRF-Chem models (PNNL, IOWA, and UW) show somewhat differing cloud characteristics but are similar in some other respects. Since they use

different PBL, microphysics, chemistry, and aerosol schemes, and use different horizontal and vertical grid resolutions, these models are expected to give a range of results. The three models produce similar geographic patterns of low cloud but the IOWA model predicts more low cloud in the southwest part of the study region than the other two models, while MODIS cloud fractions have intermediate values. Along 20°S, the PNNL model has the highest LWP while the IOWA and especially the UW model underpredict LWP away from the coast.

On the other hand, all three models only slightly underestimate the observed MBL depth. All three display prominent offshore gradients in CCN, N_d , and sulfate aerosol. All three significantly underpredict CCN concentrations at 0.1% supersaturation at 20°S. However the PNNL and IOWA models activate significantly more CCN at higher supersaturations (not shown). The UW and PNNL simulations only slightly under-predict N_d and the IOWA simulation is close to observations in the western part of the study region but over predicts N_d in the eastern part.

The simulations from the two global operational forecast models, ECMWF and UKMO, contrast sharply. These models are intermediate in vertical resolution between the WRF models and the global climate models. The ECMWF LWP and cloud fraction agree reasonably well with observations though the MBL depth is shallower than observed. The UKMO model maintains realistic MBL depth, but its low cloud fraction drops to 50%-60% away from the coast, somewhat less than observed, and the LWP is lower by a factor of two or more than observed. Because CCN concentration and N_d are unavailable

from the ECMWF simulations, it is difficult to evaluate the ECMWF aerosol distribution. In contrast to other models in the study, UKMO has very high concentrations of aerosol and CCN, leading to very large cloud droplet concentrations compared with those observed. The overestimation of sulfate aerosol was subsequently found to be due to a positive bias in the emission source strength used in these simulations introduced in error in the interpolation of the emissions onto the model grid.

Deleted: ph

5. Conclusions

The VOCALS-REx experiment in the SEP region provides a unique dataset of aerosols, chemical constituents and marine boundary layer clouds sampled extensively by aircraft and ship over a four-week period. This has provided the opportunity to compare and evaluate a large group of diverse models with extended in-situ data over the longitudinal transect at 20°S. Compared to the previous Pre-VOCA model assessment (Wyant et al. 2010) in the same region, which relied mostly on satellite measurements, the new emphasis of VOCA is on aerosol-determining processes and aerosol-cloud interactions in a marine stratocumulus regime. Hence our analysis in this paper has been limited to the subset of nine models participating in VOCA that have some representation of aerosol processes, which in some cases interacts with cloud microphysics.

Returning to the first question raised in the introduction, for many of the models, accurately predicting cloud fraction, liquid water path, and precipitation remain as major challenges and are critical for accurately simulating aerosol-cloud interactions. Despite good simulations of the SEP pressure and wind patterns, the mean distribution of low

cloud in the region is still problematic and not substantively improved for many global models since PreVOCA, while regional models participating in both studies (IPRC and especially PNNL-WRF) exhibit better performance. Most models still tend to underestimate LWP and boundary-layer depth in the study region, especially GCMs with low vertical resolution, and the inter-model spread in LWP is still large. For many models in VOCA, the representation of aerosol processes is a relatively new feature, and at this stage of model development, we do not expect, nor generally find, that their inclusion necessarily improves model simulation of cloud and boundary-layer properties relative to Pre-VOCA.

Turning to our second question about how well models represent the spatial distribution of aerosols, we find that along 20°S, most models were able to qualitatively represent offshore and vertical gradients in aerosols and aerosol related constituents, in particular the offshore reduction of aerosols in the MBL and an associated reduction in cloud-droplet concentration. The models also show some skill in simulating the time-variation of aerosol and cloud droplet number concentrations associated with episodic offshore flow in the VOCALS study region.

Our third question asked about the fidelity of modeled aerosol-cloud interaction. Most of the models in this study appear to be deficient in CCN at 0.1% supersaturation both in the MBL and free troposphere. However, droplet number concentrations are unbiased in a model ensemble-mean sense, indicating that for some models, significantly more accumulation mode aerosol is being activated than just the CCN at 0.1% supersaturation.

The GCMs in this study have difficulty with properly representing offshore gradients in CCN and cloud droplet number concentration near the coast. Low horizontal resolution may be to blame. There is also substantial scatter in model-predicted local sources of aerosol mass over the remote ocean due to DMS and SSA, even though the simulated wind speeds were realistic. While the global models tended to have better DMS representation than the regional models, the opposite occurred for SSA, where regional models showed lower biases.

Although simulation of aerosol-cloud interactions and aerosol indirect effects in the marine boundary layer clouds is a challenge, and further improvements are needed, the models do capture many of the essential cloud and aerosol controlling processes in the SEP. Indeed, regional models are already being successfully used to investigate aerosol processes in the SEP (e.g. Q. Yang et al. 2011, Saide et al. 2012, Yang et al. 2012, George et al., 2013). However, for those models with large mean biases in cloud and aerosol properties, accurately simulating impacts of aerosols on clouds and vice-versa is problematic. Thorough integration of interactive aerosols into operational weather prediction models, a relatively new development, may help stimulate progress in this area.

In answer to the last question raised in the introduction, the VOCA comparison presented here demonstrates that VOCALS-REx observations provide a good benchmark for aerosols and for cloud properties, providing a comprehensive observational basis for a first order look at aerosol-cloud interactions in a broad range of models. Future

comparisons using VOCALS-REx data or other field data could aim at better quantitative constraints on individual aerosol and cloud processes by enforcing more uniform land and ocean surface emission conditions and possibly specifying lateral advective conditions. Because of the large numbers of model fields and high resolution outputs of some models, the overall utility of the intercomparison could be improved by adding an additional quality-assurance phase to the submission process, where model setup and output over a relatively short simulation period could be evaluated and corrected prior to conducting experiments over long durations. Collection of additional model outputs, such as a broader selection of CCN activation supersaturations, more detailed aerosol size information, and rates of aerosol-related processes could be used to help better unravel individual model biases. An alternative but promising approach for some categories of models would be a variation of a kinematic driver framework (KiD, Shipway and Hill 2012) in order to analyze and compare microphysical and aerosol processes in various models.

Appendix: Model Descriptions

NCAR CAM4 and CAM5 are both part of the CESM1.0 release. The global NCAR CAM4 and CAM5 simulations were performed with similar setups with the finite volume dynamical core. Both use daily forecast runs initialized with ECMWF YOTC analyses interpolated onto the model grid, and are analyzed at hours 48-72. They use identical

horizontal resolution, but with fewer vertical levels in CAM4, especially in the boundary layer. CAM4 uses a prognostic (liquid and ice) single moment microphysics scheme (Rasch and Kristjansson, 1998). CAM5 uses the two-moment prognostic bulk scheme including prognostic number concentration (Gettelman et al. 2008; Morrison and Gettelman, 2008). The PBL schemes also differ: CAM4 uses the non-local diffusivity scheme (Holtslag and Boville, 1993) while CAM5 uses the TKE based turbulence scheme of Bretherton and Park (2009) and the shallow convection scheme of Park and Bretherton (2009).

CAM4 is run here with a bulk aerosol scheme (MOZART, Lamarque et al. 2005 while CAM5 uses a prognostic aerosol model with three modes (MAM3). For sea-salt, CAM4 uses 4 bins, with sea-surface emission following Mahowald et al. (2006). CAM5 uses the sea-salt emission parameterization of Martensson et al. (2003). For SO₂ emissions CAM4 uses Smith et al. (2001) while CAM5 uses Smith et al. (2004). For carbon emissions CAM4 uses Liousse et al. (1996) and Cooke et al. (1999), while CAM5 follows Bond et al. (2007) and Junker and Liousse (2008). For other land anthropogenic emissions, CAM5 uses the IPCC AR5 emissions (Lamarque et al. 2010). CAM4 uses a very similar radiation scheme to CAM 3 (Collins et al. 2006), while CAM5 uses the RRTMG scheme (Iacono et al. 2008) with a McICA approach. More detailed descriptions of CAM4 and CAM5 radiation, MAM3 and other physics can be found at <http://www.cesm.ucar.edu/models/>.

The IPRC model iRAM 1.2 is very similar to the version described in Lauer et al. (2009) but run at higher horizontal resolution ($0.25^\circ \times 0.25^\circ$). The simulations here used NCEP Final Analysis (FNL) for initial and boundary conditions. Monthly mean aerosol concentrations are prescribed for these simulations based on global model simulations of aerosol mass (see Lauer et al. 2007) and observed aerosol size distributions (see McNaughton 2008). Cloud microphysics are calculated with a two-moment bulk scheme (Phillips et al. 2007, 2008, 2009). Aerosol activation is tracked and affects cloud microphysics, but cloud evolution and precipitation do not affect aerosol mass concentrations or sizes outside of clouds. The PBL scheme uses a turbulence closure with prognostic turbulent kinetic energy (TKE) and dissipation rate (Detering and Etling 1985; Langland and Liou 1996). The radiation scheme is based on Edwards and Slingo (1996).

The three WRF Chem simulations were run continuously over the study period and have similarly sized domains. UW and IOWA use NCEP FNL analyses and PNNL uses NCEP GFS analyses for initial and boundary conditions together with MOZART model output for initializing concentrations of chemical species and aerosols. All use the VOCA standard anthropogenic and volcanic land emissions. All use the RRTM scheme (Mlawer et al., 1997) for LW radiation and the Goddard scheme (see Chou et al. 1998) for SW radiation. However the three simulations' horizontal and vertical resolutions differ, as do many of their other aerosol, cloud, and boundary layer physics parameterizations.

The IOWA run uses WRF Chem v3.3, and its configuration and physics are described in detail in Saide et al. (2012). The MOSAIC (Zaveri et al. 2008) 8-bin sectional aerosol

scheme is used, with the CBM-Z gas-phase chemical mechanism (Zaveri and Peters, 1999) and modified DMS reactions. Biogenic land emissions are based on the MEGAN algorithm (Guenther et al., 2006) and biomass burning emissions are estimated from FIRMS MODIS fire detections (Davies et al., 2009). A bulk two-moment Lin microphysics scheme (see Chapman et al. 2009) and a level-2.5 Mellor-Yamada-type PBL scheme (MYNN 2.5, Nakanishi and Niino 2004) are used.

The PNNL simulation uses modified WRF Chem v3.2.1 code, which was later released to the public in v3.3. The model is configured to use the MOSAIC 8-bin sectional aerosol module and the CBM-Z mechanism with DMS chemistry. The PNNL runs also use biogenic and biomass burning emissions from MEGAN and MODIS, respectively. The PNNL simulations differ in the use of the bulk two-moment microphysics scheme of Morrison (Morrison and Gettelman, 2008) and the YSU non-local PBL scheme (Hong et al., 2006). Additional details regarding the model's physical parameterizations and configuration for the PNNL simulations can be found in Q. Yang et al. (2011 and 2012).

The UW contribution also uses WRF Chem v3.2.1, though on a coarser horizontal and vertical grid than the IOWA and PNNL runs. Aerosols are represented with 3 modes using the Modal Aerosol Dynamics Model for Europe (MADE, Ackerman et al., 1998) together with a Secondary Organic Aerosol Model (SORGAM, Schell et al. 2001). The Regional Acid Deposition Model, version 2 (RADM2) (Chang et al., 1989) chemical mechanism is used with modified DMS reactions. The UW run neglects biogenic and biomass burning emissions. For DMS flux, the UW run follows the VOCA specification.

The same Lin microphysics scheme is used as the IOWA runs. Like CAM5, the TKE scheme of Bretherton and Park (2009) is used in the PBL but no shallow convection scheme is used.

The UKMO simulations use a deterministic global numerical weather prediction (NWP) configuration of the Met Office Unified Model (MetUM) (Davies et al., 2005) based on that in the Met Office's operational NWP suite between 9th March and 14th July 2010; this is designated global NWP cycle G52. Two main forecasts were run per day, each 5 days in length, initialized at 00UTC and 12UTC, for which the first 12 hours are analyzed in this study. The Coupled Large-scale Aerosol Simulator for Studies in Climate (CLASSIC) prognostic aerosol scheme from the Met Office Hadley Centre was used (Bellouin et al. 2011). Aerosol concentrations are initialized from HadGEM-2 climatologies from a 20-year HadGEM2 climate run with the CLASSIC scheme. Aerosol emissions used are based on the AeroCom-2 hindcast emissions (Diehl et al., 2012) based on the year 2006. DMS emissions come from HadGEM2-based climatology. Local SSA over the ocean are diagnosed based on surface wind speed, and are not transported or deposited. Biogenic land aerosol is not modeled explicitly but instead comes from a climatology based on earlier simulations. A single moment bulk microphysics scheme (Wilson and Ballard, 1999), the Lock et al. PBL (2000) scheme, and the 2-stream radiation scheme of Edwards and Slingo (1996) were used.

The ECMWF runs use the Monitoring Atmospheric Composition and Climate (MACC) cycle model 36R1. Full model documentation is available at

<http://www.ecmwf.int/research/ifsdocs/CY33r1/index.html>. Daily 24-hour forecast runs are used with aerosols in the model as passive tracers. The model uses the aerosol scheme of Morcrette et al. (2009), which has 3 bins each for sea-salt and dust, single prognostic variables for SO₂ and SO₄, and 12 prognostic variables in all. The ECMWF model uses a bulk single-moment microphysics scheme. The RRTM radiation scheme is used with a McICA approach (Morcrette et al. 2008). The PBL in the model uses an eddy-diffusivity mass-flux framework (Köhler et al. 2011).

The GFDL AM3 (Donner et al. 2011) was run in forecast mode on a cubed-sphere 48x48x6 grid with model output originally interpolated to a 2.0° latitude x 2.5° longitude grid. The runs were initialized with ECMWF reanalysis data. The GFDL modal aerosol scheme uses two modes for sulfate and organic aerosol, and three modes for sea salt (see Donner et al. 2011). Anthropogenic emissions are estimated from historical values of Lamarque et al. (2010). Biogenic emissions and DMS emissions from the ocean surface are also included. The microphysics scheme follows Rotstayn (1997) and Rotstayn et al. (2000) including prognostic cloud number concentration (Ming et al. 2006). The Lock et al. (2000) PBL scheme is used. The radiation scheme used is due to Freidenreich and Ramaswamy (1999) and Schwarzkopf and Ramaswamy (1999). See Donner et al. (2011) for more details.

Acknowledgements

The authors wish to thank Grant Allen for his providing of aircraft data for many of the figures. Thanks also to Romain Blot for providing sea salt measurements. Thanks to Matt Lebsack for providing CloudSat precipitation data and Dan Grosvenor for his assistance. The portion of this work conducted at University of Iowa was carried out with the aid of NASA grants NNX08AL05G and NNX11AI52G, EPA grant 83503701, grant number UL1RR024979 from the National Center for Research Resources (NCRR), a part of the National Institutes of Health (NIH), and Fulbright-CONICYT scholarship number 15093810. Its contents are solely the responsibility of the authors and do not necessarily represent the official views of the founding institutions. Funding for Pacific Northwest National Laboratory (PNNL) contributions to this research has been provided by the US National Oceanic and Atmospheric Administration (NOAA) Atmospheric Composition and Climate Program (NA10AANRG0083/56091). PNNL is operated for DOE by Battelle Memorial Institute under Contract No. DE-AC05-76RL01830.

References

- Abdul-Razzak, H., and Ghan, S. J.: A parameterization of aerosol activation. 3. Sectional representation, *J. Geophys. Res.*, 107, D3, AAC 1-1-AAC 1-6, 2002.
- Abel, S. J., Walters, D. N., and Allen, G.: Evaluation of stratocumulus cloud prediction in the Met Office forecast model during VOCALS-Rex, *Atmos. Chem. Phys.*, 10, 10541-10559. doi:10.5194/acp-10-10541-2010, 2010.
- Ackermann, I. J., Hass, H., Memmesheimer, M., Ebel, A., Binkowski, F. S., and Shankar, U.: Modal aerosol dynamics model for Europe: development and first applications, *Atmos. Env.*, 32, 2981-2999, doi:10.1016/S1352-2310(98)00006-5, 1998.
- Allen, G. and co-authors, 2011: South East Pacific atmospheric composition and variability sampled along 20S during VOCALS-Rex, *Atmos. Chem. Phys.*, 11, 5237-5262.
- Bellouin, N., Boucher, O., Haywood, J., Johnson, C., Jones, A., Rae, J., and Woodward, S.: Improved representation of aerosols for HadGEM2, Tech. Note 73, Hadley Cent. Met Office, Exeter, UK., 2007.
- Bellouin, N., Rae, J., Jones, A., Johnson, C., Haywood, J., and Boucher, O.: Aerosol forcing in the Climate Model Intercomparison Project CMIP5 simulations by HadGEM2-ES and the role of ammonium nitrate, *J. Geophys. Res.*, 116, D20 206, doi:10.1029/2011JD016074, 2011.
- Blot, R., Clarke, A. D., Freitag, S., Kapustin, V., Howell, S. G., Jensen, J. B., Shank, L. M., McNaughton, C. S., and Brekhovskikh, V.: Ultrafine sea spray aerosol over the south eastern Pacific: open-ocean contributions to marine boundary layer CCN, *Atmos. Chem. Phys.*, 13, 7263-7278, doi:10.5194/acp-13-7263-2013, 2013.
- Bond, T. C., Bhardwaj, E., Dong, R., Jogani, R., Jung, S., Roden, C., Streets, D. G., and Trautmann, N. M.: Historical emissions of black and organic carbon aerosol from energy-related combustion, 1850–2000, *Global Biogeochem. Cycles*, 21, GB2018, doi:10.1029/2006GB002840, 2007.
- Boyle, J., Klein, S., Zhang, G., Xie, S., and Wei, X.: Climate model forecast experiments for TOGA COARE. *Mon. Wea. Rev.*, 136, 808–832. doi: <http://dx.doi.org/10.1175/2007MWR2145.1>, 2008.
- Bretherton, C. S. and Park, S.: A new moist turbulence parameterization in the Community Atmosphere Model, *J. Climate*, 22, 3422-3448, 2009.
- Bretherton, C. S., T. Uttal, C. W. Fairall, S. Yuter, R. Weller, D. Baumgardner, K. Comstock, R. Wood, and Raga, G.: The EPIC 2001 stratocumulus study. *Bull. Amer. Meteor. Soc.*, 85, 967-977, 2004.

- Bretherton, C. S., Wood, R., George, R. C., Leon, D., Allen, G., and Zheng, X.: Southeast Pacific stratocumulus clouds, precipitation, and boundary layer structure sampled along 20° S during VOCALS-Rex. *Atmos. Chem. Phys.*, 10, 10639-10654. doi:10.5194/acp-10-10639-2010, 2010.
- Burleyson, C. D., de Szoeke, S. P., Yuter, S. E., Wilbanks, M., and Brewer, W. A.: Ship-based observations of the diurnal cycle of southeast Pacific marine stratocumulus clouds and precipitation, *J. Atmos. Sci.*, 70, 3876-3894, doi:10.1175/JAS-D-13-01.1, 2013.
- Chang, J. S., Binkowski, F. S., Seaman, N. L., McHenry, J. N., Samson, P. J., Stockwell, W. R., Walcek, C. J., Madronich, S., Middleton, P. B., Pleim, J. E., and Lansford, H. H.: The regional acid deposition model and engineering model. State-of-Science/Technology, Report 4, National Acid Precipitation Assessment Program, Washington D.C., 1989.
- Chapman, E. G., Gustafson Jr., W., I., Easter R. C., Barnard, J. C., Ghan, S. J., Pekour, M. S., Fast, J. D.: Coupling aerosol-cloud-radiative processes in the WRF-chem model: Investigating the radiative impact of large point sources, *Atmos. Chem. Phys.*, 9, 945-964, 2009.
- Chou, M. D., Suarez, M. J., Ho, C. H., Yan, M. M. H., and Lee, K. T.: Parameterizations for cloud overlapping and shortwave single-scattering properties for use in general circulation and cloud ensemble models, *J. Climate*, 11, 202-214, 1998.
- Clarke, A. D., Owens, S. R., and Zhou, J.: An ultrafine sea-salt flux from breaking waves: Implications for cloud condensation nuclei in the remote marine atmosphere., *J. Geophys. Res.*, 111, doi:10.1029/2005JD006565, 2006.
- Clarke, A. D., Freitag, S., Brekhovskikh, V., Campos, T., Snider, J. R., Kasputin, V., Howell, S., Shank, L., and McNaughton, C.: Combustion aerosol, entrainment, and clouds in the VOCALS region, *CLIVAR Exchanges*, 15, 25-28, 2010.
- Collins, W. D., Bitz, C. M., Blackmon, M. L., Bonan, G. B., Bretherton, C. S., Carton, J. A., Chang, P., Doney, S. C., Hack, J. J., Henderson, T. B., Kiehl, J. T., Large, W. G., McKenna, D. S., Santer, B. D., and Smith, R. D.: The community climate system model version 3 (CCSM3), *J. Climate*, 19, 2122-2143, 2006.
- Cooke, W. F., Liousse, C., and Cachier, H.: Construction of a 1° x 1° fossil fuel emission data set for carbonaceous aerosol and implementation and radiative impact in the ECHAM4 model, *J. Geophys. Res.*, 104(D18), 22137-22162, doi:10.1029/1999JD900187, 1999.
- Davies, T., Cullen, M. J. P., Malcolm, A. J., Mawson, M. H., Staniforth, A., White, A. A., and Wood, N.: A new dynamical core for the Met Office's global and regional modeling of the atmosphere, *Q. J. R. Met. Soc.*, 131, 1759-1782, 2005.

Davies, D. K., Ilavajahala, S., Wong, M. M., and Justice, C. O.: Fire Information for Resource Management System: Archiving and distributing MODIS active fire data, *IEEE Trans. Geosci. Remote Sens.*, 47, 72-79, doi:10.1109/TGRS.2008.2002076, 2009.

Detering, H. W., and Etling, D.: Application of the E- ϵ turbulence model to the atmospheric boundary layer, *Bound.-Layer Meteor.*, 33, 113-133, 1985.

de Szoeke, S. P., Yuter, S., Mechem, D., Fairall, C. W., Burleyson, C. D., and Zuidema, P.: Observations of stratocumulus clouds and their effect on the eastern pacific surface heat budget along 20°S, *J. Climate*, 25, 8542-8567, doi: 10.1175/JCLI-D-11-00618.1, 2012.

Deleted: c

Diehl, T., Heil, A., Chin, M., Pan, X., Streets, D., Schultz, M., and Kinne, S.: Anthropogenic, biomass burning, and volcanic emissions of black carbon, organic carbon, and SO₂ from 1980 to 2010 for hindcast model experiments, *Atmos. Chem. Phys. Discuss.*, 12, 24 895–24 954, doi:10.5194/acpd-12-24895-2012, 2012.

Donner, L. J., Wyman, B. L., Hemler, R. S. and 38 co-authors, 2011: The dynamical core, physical parameterizations, and basic simulation characteristics of the atmospheric component AM3 of the GFDL Global Coupled Model CM3. *J. Climate.*, 24, 3484-3519, 2011.

Edwards, J. M., and Slingo, A., Studies with a flexible new radiation code. I: Choosing a configuration for a large-scale model, *Quart. J. Roy. Meteor. Soc.*, 122, 689-719, 1996.

Emmons, L. K., [Walters, S.](#), [Hess, P. G.](#), [Lamarque, J.-F.](#), [Pfister, G. G.](#), [Fillmore, D.](#), [Granier, C.](#), [Guenther, A.](#), [Kinnison, D.](#), [Laepfle, T.](#), [Orlando, J.](#), [Tie, X.](#), [Tyndall, G.](#), [Wiedinmyer, C.](#), [Baughcum, S. L.](#), and [Kloster, S.](#); Description and evaluation of the Model for Ozone and Related chemical Tracers, version 4 (MOZART-4), *Geosci. Model Dev.*, 3, 43-67, doi:10.5194/gmd-3-43-2010, 2010.

Deleted: and 15 co-authors

Freidenreich, S. M., and Ramaswamy, V.: A new multiple-band solar radiative parameterization for general circulation models, *J. Geophys. Res.*, 104, 31389-31409, 1999.

[George, R. C.](#), and [Wood, R.](#): [Subseasonal variability of low cloud radiative properties over the southeast Pacific Ocean](#), *Atmos. Chem. Phys.*, 10, 4047-4063, doi:10.5194/acp-10-4047-2010, 2010.

George, R. C., Wood, R., Bretherton, C. S., and Painter, G.: Development and impact of hooks of large droplet concentration on remote southeast Pacific stratocumulus, *Atmos. Chem. Phys.*, 13, 6305-6328, doi:10.5194/acp-13-6305-2013, 2013.

Gettelman, A., Morrison, H., and Ghan, S. J.: A new two-moment bulk stratiform cloud microphysics scheme in the Community Atmospheric Model, Version 3 (CAM3). Part II: Single-column and global results, *J. Climate*, 21, 3660-3679, 2008.

Gong, S. L., Barrie, L. A., and Blanchet, J.-P.: Modeling sea-salt aerosols in the atmosphere. 1. Model development. *J. Geophys. Res.*, 102, D3, 3805-3818, 1997.

Guenther, A., Karl, T., Harley, P., Wiedinmyer, C., Palmer, P. I., and Geron, C.: Estimates of global terrestrial isoprene emissions using MEGAN (Model of Emissions of Gases and Aerosols from Nature), *Atmos. Chem. Phys.*, 6, 3181-3210, doi:10.5194/acp-6-3181-2006, 2006.

Hannay, C., Williamson, D. L., Hack, J. J., Kiehl, J. T., Olson, J. G., Klein, S. A., Bretherton, C. S., and Köhler, M.: Evaluation of forecasted Southeast Pacific stratocumulus in the NCAR, GFDL, and ECMWF models. *J. Climate*, 22, 2871–2889. doi: <http://dx.doi.org/10.1175/2008JCLI2479.1>, 2009.

Holtslag, A. A. M. and Boville, B. A.: Local versus nonlocal boundary-layer diffusion in a global climate model, *J. Climate*, 6, 1825-1842, 1993.

Hong, S.-Y., Noh, Y., and Dudhia, J.: A new vertical diffusion package with an explicit treatment of entrainment processes, *Mon. Wea. Rev.*, 134, 2318-2341, 2006.

Hudson, J. G., Noble, S., and Jha, V.: Stratus cloud supersaturations, *Geophys. Res. Lett.*, 37, L21813, doi:10.1029/2010GL045197, 2010.

Iacono, M. J., Delamere, J. S., Mlawer, E. J., Shephard, M. W., Clough, S. A., and Collins, W. D.: Radiative forcing by long-lived greenhouse gases: Calculations with the AER radiative transfer models, *J. Geophys. Res.*, 113, D13103, doi:10.1029/2008JD009944, 2008.

Junker, C., and Liousse, C.: A global emission inventory of carbonaceous aerosol from historic records of fossil fuel and biofuel consumption for the period 1860–1997, *Atmos. Chem. Phys.*, 8, 1195-1207, doi:10.5194/acp-8-1195-2008, 2008.

Köhler, M., Ahlgrimm, M., and Beljaars, A.: Unified treatment of dry convective and stratocumulus-topped boundary layers in the ECMWF model, *Quart. J. Roy. Meteor. Soc.*, 137, 43-57, doi:10.1002/qj.713, 2011.

Lauer, A., Eyring, V., Hendricks, J., Jöckel, P., and Lohmann, U.: Global model simulations of the impact of ocean-going ships on aerosols, clouds, and the radiation budget, *Atmos. Chem. Phys.*, 7, 1-19, 2007.

Lauer, A., Wang, Y., Phillips, V. T. J., McNaughton, C. S., Bennartz, R., and Clarke, A. D.: Simulating marine boundary layer clouds over the eastern Pacific in a regional

climate model with double-moment cloud microphysics, *J. Geophys. Res.*, 114, D21205, doi:10.1029/2009JD012201, 2009.

Lamarque, J.-F., Kiehl, J. T., Brasseur, G. P., Butler, T., Cameron-Smith, P., Collins, W. D., Collins, W. J., Granier, C., Hauglustaine, D., Hess, P. G., Holland, E. A., Horowitz, L., Lawrence, M. G., McKenna, D., Merilees, P., Prather, M. J., Rasch, P. J., Rotman, D., Shindell, D., and Thornton, P.: Assessing future nitrogen deposition and carbon cycle feedback using a multimodel approach: analysis of nitrogen deposition, *J. Geophys. Res.*, 110, D19303, doi: 10.1029/2005JD005825, 2005.

Lamarque, J.-F., and 21 co-authors: Historical (1850-2000) gridded anthropogenic and biomass burning emissions of reactive gasses and aerosols: methodology and application, *Atmos. Chem. Phys.*, 10, 7017-7039. doi:10.5194/acp-10-7017-2010, 2010.

Langland, R. H., and Liou, C.-S.: Implementation of an E- ϵ parameterization of vertical subgrid-scale mixing in a regional model, *Mon. Wea. Rev.*, 124, 905-918, 1996.

Liousse, C., Penner, J. E., Chuang, C., Walton, J. J., Eddleman, H., and Cachier, H.: A global three-dimensional model study of carbonaceous aerosols, *J. Geophys. Res.*, 101(D14), 19411–19432, doi:10.1029/95JD03426, 1996.

Lock, A. P., Brown, A. R., Bush, M. R., Martin, G. M., and Smith, R. N. B.: A new boundary layer mixing scheme. Part I: scheme description and single-column model tests, *Mon. Wea. Rev.*, 128, 3187-3199, 2000.

Mahowald, N. M., Lamarque, J.-F., Tie, X.X., Wolff, E.: Sea-salt aerosol response to climate change: Last Glacial Maximum, preindustrial, and doubled carbon dioxide climates, *J. Geophys. Res.*, 111, D05303, doi: 10.1029/2005JD006459, 2006.

Mårtensson, E. M., Nilsson, E. D., de Leeuw, G., Cohen, L. H., and Hansson, H. C.: Laboratory simulations are parameterization of the primary marine aerosol production, *J. Geophys. Res.*, 108, 4297, doi: 10.1029/2002JD002263, 2003.

Martin, G. M., Johnson, D. W., and Spice, A.: The measurement and parameterization of effective radius of droplets in warm stratocumulus clouds. *J. Atmos. Sci.*, 51, 1823–1842, 1994.

McNaughton, C. S.: Constraining climate model simulations of aerosol size distributions over the North Pacific and North America using in-situ airborne measurements, Ph. D. thesis, Univ. of Hawaii at Manoa, Honolulu, Hawaii, USA, 2008.

Mechoso, C. R., Wood, R., Weller, R., Bretherton, C. S., Clarke, A. D., Coe, H., Fairall, C., Farrar, J. T., Feingold, G., Garreaud, R., Grados, C., McWilliams, J., de Szoeke, S. P., Yuter, S. E., Zuidema, P.: Ocean-cloud-atmosphere-land interactions in the southeastern Pacific: The VOCALS Program. *Bull. Amer. Meteor. Soc.*, 95, 357-375, doi: 10.1175/BAMS-D-11-00246.1, 2014.

Mena-Carrasco, M., Oliva, E., Saide, P., Spak, S. N., de la Maza, C., Osses, M., Tolvett, S., Campbell, J. E., Tsao, T. C.-C., and Molina, L. T.: Estimating the health benefits from natural gas use in transport and heating in Santiago, Chile, *Sci. Tot. Env.*, 429, 257-265, doi: 10.1016/j.scitotenv.2012.04.037, 2012.

Ming, Y., V. Ramaswamy, V., Donner, L. J., and Phillips, V. T. J.: A new parameterization of cloud droplet activation applicable to general circulation models. *J. Atmos. Sci.*, 63, 1348-1356, 2006.

Mlawer, E.J., Taubman, S.J., Brown, P.D., Iacono, M.J., and Clough, S.A.: Radiative transfer for inhomogeneous atmosphere: RRTM, a validated correlated-k model for the longwave. *J. Geophys. Res.*, 102, 16663-16682, 1997.

Monahan, E. C., Spiel, D. E., and Davidson, K. L.: A model of marine aerosol generation via whitecaps and wave disruption, in *Oceanic Whitecaps and Their Role in Air-Sea Exchange Processes*, edited by E. C. Monahan and G. Mac Niocaill, pp. 167-193, Springer, New York, 1986.

Morcrette, J.-J., Barker, H. W., Cole, J. N. S., Iacono, M. J., and Pincus, R.: Impact of a new radiation package, McRad, in the ECMWF Integrated Forecasting System. *Mon. Wea. Rev.*, 136, 4773-4798, doi: 10.1175/2008MWR2363.1, 2008.

Morcrette, J.-J., Boucher, O., Jones, L., Salmond, D., Bechtold, P., Beljaars, A., Benedetti, A., Bonet, A., Kaiser, J. W., Razinger, M., Schulz, M., Serrar, S., Simmons, A. J., Sofiev, M., Suttie, M., Tompkins, A.M., Untch, A.: Aerosol analysis and forecast in the ECMWF Integrated Forecast System: Forward modelling. *J. Geophys. Res.*, 114, D06206, doi: 10.1029/2008JD011235, 2009.

Morrison, H., and Gettelman, A.: A new two-moment bulk stratiform cloud microphysics scheme in the Community Atmosphere Model, version 3 (CAM3). Part I: description and numerical tests, *J. Climate*, 21, 3642-3659, 2008.

Nakanishi, M. and Niino, H.: An improved Mellor-Yamada level-3 model with condensation physics: its design and verification. *Bound. Layer Meteor.*, 112, 1-31, 2004.

Nightingale, P. D., Malin, G., Law, C. S., Watson, A. J., Liss, P. S., Liddicoat, M. I., Boutin, J., and Upstill-Goddard, R. C.: In situ evaluation of air-sea gas exchange parameterizations using novel conservative and volatile tracers. *Glob. Biogeochem. Cyc.*, 14, 373-387, 2000.

Ovchinnikov, M., Easter, R. C., and Gustafson, W. I.: Untangling dynamical and microphysical controls for the structure of stratocumulus. *Geophys. Res. Lett.*, 40, 4432-4436, doi:10.1002/grl.50810, 2013.

Park, S. and Bretherton, C. S.: The University of Washington shallow convection and moist turbulence schemes and their impact on climate simulations with the community atmosphere model, *J. Climate*, 22, 3449-3469, 2009.

Phillips, T. J., Potter, G. L., Williamson, D. L., Cederwall, R. T., Boyle, J. S., Fiorino, M., Hnilo, J. J., Olson, J. G., Xie, S., and Yio, J. J.: Evaluating parameterizations in general circulation models: climate simulation meets weather prediction. *Bull. Amer. Meteor. Soc.*, 85, 1903–1915. doi: <http://dx.doi.org/10.1175/BAMS-85-12-1903>, 2004.

Phillips, V. T. J., Donner, L. J., and Garner, S. T.: Nucleation processes in deep convection simulated by a cloud-system-resolving model with double-moment bulk microphysics, *J. Atmos. Sci.*, 64, 738-761, doi:10.1175/JAS3869.1, 2007.

Phillips, V. T. J., DeMott, P. J., and Andronache, C.: An empirical parameterization of heterogeneous ice nucleation for multiple chemical species of aerosol, *J. Atmos. Sci.*, 65, 2757-2783, doi:10.1175/2007JAAS2546.1, 2008.

Phillips, V. T. J., Andronache, C., Christner, B., Morris, C. E., Sands, D. C., Bansemer, A., Lauer, A., McNaughton, C., and Seman, C.: Potential impacts from biological aerosols on ensembles of continental clouds simulated numerically, *Biogeosciences*, 6, 987-1014, 2009.

Rapp, A. D., Lebsock, M., and L'Ecuyer, T.: Low cloud precipitation climatology in the southeastern Pacific marine stratocumulus region using CloudSat, *Environ. Res. Lett.*, 8, 014027, doi:10.1088/1748-9326/8/1/014027, 2013.

Rasch, P. J. and Kristjánsson, J. E.: A comparison of the CCM3 model climate using diagnosed and predicted condensate parameterizations, *J. Climate*, 11, 1587-1614, 1998.

Richter, I. and Mechoso, C. R.: Orographic influences on subtropical stratocumulus, *J. Atmos. Sci.*, 63, 2585–2601, 2006.

Rotstayn, L. D.: A physically based scheme for the treatment of stratiform clouds and precipitation in large-scale models. I: Description and evaluation of the microphysical processes, *Q. J. Roy. Met. Soc.*, 123, 1227-1282, 1997.

Rotstayn, L. D.: On the “tuning” of autoconversion parameterizations in climate models, *J. Geophys. Res.*, 105, 15495-15507, 2000.

Saide, P. E., Spak, S. N., Carmichael, G. R., Mena-Carrasco, M. A., Yang, Q., Howell, S., Leon, D. C., Snider, J. R., Bandy, A. R., Collett, J. L., Benedict, K. B., de Szoek, S. P., Hawkins, L. N., Allen, G., Crawford, I., Crosier, J., and Springston, S. R.: Evaluating WRF-Chem aerosol indirect effects in Southeast Pacific marine stratocumulus during VOCALS-Rex. *Atmos. Chem. Phys.*, 12, 3045-3064. doi:10.5194/acp-12-3045-2012, 2012.

Schell B., Ackermann, I. J., Hass, H., Binkowski, F. S., and Ebel, A.: Modeling the formation of secondary organic aerosol within a comprehensive air quality model system, *J. Geophys. Res.*, 106, 28275-28293, 2001.

Formatted: Font: 12 pt

Formatted: Font: 12 pt

Schwarzkopf, M. D., and Ramaswamy, V.: Radiative effects of CH₄, N₂O, halocarbons, and the foreign-broadened H₂O continuum: A GCM experiment, *J. Geophys. Res.*, 104, 9467-9488, 1999.

Shank, L. M., Howell, S., Clarke, A. D., Freitag, S., Brekhovskikh, V., Kapustin, V., McNaughton, C., Campos, T., and Wood, R.: Organic matter and non-refractory aerosol over the remote Southeast Pacific: oceanic and combustion sources, *Atmos. Chem. Phys.*, 12, 557-576, doi:10.5194/acp-12-557-2012, 2012.

[Shipway, B. J., and Hill, A. A.: Diagnosis of systematic differences between multiple parametrizations of warm rain microphysics using a kinematic framework, *Q. J. R. Meteorol. Soc.*, 138, 2196-2211, 2012.](#)

Smith, S. J., Pitcher, H., and Wigley, T. M. L.: Global and regional anthropogenic sulfur dioxide emissions, *Glob. Biogeochem. Cy.*, 29, 99-119, 2001.

Smith, S. J., Andres, R., Conception, E., and Lurz, J.: Historical sulfur dioxide emissions 1850-2000: methods and results, Technical report, Pacific Northwest National Laboratory, Joint Global Change Research Institute, College Park, MD, USA, 2004.

Snider, J. R., Guibert S., Brenguier, J.-L., and Putaud, J.-P.: Aerosol activation in marine stratocumulus clouds: 2. Köhler and parcel theory closure studies, *J. Geophys. Res.*, 108(D15), 8629, doi:10.1029/2002JD002692, 2003.

Twohy, C. H., Anderson, J. R., Toohey, D. W., Andrejczuk, M., Adams, A., Lytle, M., George, R. C., Wood, R., Saide, P., Spak, S., Zuidema, P., and Leon, D.: Impacts of aerosol particles on the microphysical and radiative properties of stratocumulus clouds over the southeast Pacific Ocean. *Atmos. Chem. Phys.*, 13, 2541-2562, doi:10.5194/acp-13-2541-2013, 2013.

Wang, S., O'Neill, L. W., Jiang, Q., de Szoeko, S. P., Hong, X., Jin, H., Thompson, W. T., and Zheng, X.: A regional real-time forecast of marine boundary layers during VOCALS-REx, *Atmos. Chem. Phys.*, 11, 421-437, doi:10.5194/acp-11-421-2011, 2011.

Wilson, D. R. and Ballard, S. P.: A microphysically based precipitation scheme for the UK Meteorological Office Unified Model, *Q. J. Roy. Met. Soc.*, 125, 1607-1636, 1999.

Wood, R., Comstock, K. K., Bretherton, C. S., Cornish, C., Tomlinson, J., Collins D. R., and Fairall, C.: Open cellular structure in marine stratocumulus cloud sheets. *J. Geophys. Res.*, **113**, D12207, doi:10.1029/2007JD009371, 2008

[Wood, R. and 33 co-authors: The VAMOS Ocean-Cloud-Atmosphere-Land Study Regional Experiment \(VOCALS-REx\): goals, platforms, and field operations. Atmos. Chem. Phys., 11, 627-654. doi:10.5194/acp-11-627-2011, 2011a.](#)

Wood, R., Bretherton, C. S., Leon, D., Clarke, A. D., Zuideman, P., Allen, G., and Coe, H.: An aircraft case study of the spatial transition from closed to open mesoscale cellular convection over the Southeast Pacific. Atmos. Chem. Phys., 11, 2341-2370. doi: 10.5194/acp-11-2341-2011, 2011b.

Wood, R., Leon, D., Lebsock, M., Snider, J., and Clarke, A. D.: Precipitation driving of droplet concentration variability in marine low clouds, J. Geophys. Res., 117, D19210, doi:10.1029/2012JD018305, 2012.

Wyant, M. C. and 20 co-authors, 2010: The PreVOCA experiment: modeling the lower troposphere in the Southeast Pacific, Atmos. Chem. Phys., 10, 4757-4774, doi:10.5194/acp-10-4757-2010

[Yang, M., Huebert, B. J., Blomquist, B. W., Howell, S. G., Shank, L. M., McNaughton, C. S., Clarke, A. D., Hawkins, L. N., Russell, L. M., Covert, D. S., Coffman, D. J., Bates, T. S., Quinn, P. K., Zagorac, N., Bandy, A. R., de Szoeko, S. P., Zuideman, P. D., Tucker, S. C., Brewer, W. A., Benedict, K. B., and Collett, J. L.: Atmospheric sulfur cycling in the southeastern Pacific – longitudinal distribution, vertical profile, and diel variability observed during VOCALS-REx, Atmos. Chem. Phys., 11, 5079-5097, doi:10.5194/acp-11-5079-2011, 2011.](#)

Yang, Q., Gustafson Jr., W. I., Fast, J. D., Wang, H., Easter, R. C., Morrison, H., Lee, Y.-N., Chapman, E. G., Spak, S. N., and Mena-Carrasco, M. A.: Assessing regional scale predictions of aerosols, marine stratocumulus, and their interactions during VOCALS-Rex using WRF-Chem. Atmos. Chem. Phys., 11, 11951-11975, doi: 10.5194/acp-11-11951-2011, 2011.

Yang, Q., Gustafson Jr., W. I., Fast, J. D., Wang, H., Easter, R. C., Wang, M., Ghan, S. J., Berg, L. K., Leung, L. R., and Morrison, H.: Impact of natural and anthropogenic aerosols on stratocumulus and precipitation in the Southeast Pacific: a regional modelling study using WRF-Chem, Atmos. Chem. Phys., 12, 8777-8796, doi:10.5194/acp-12-8777-2012, 2012.

Zaveri, R. A., and Peters, L. K.: A new lumped structure photochemical mechanism for large-scale applications, J. Geophys. Res., 104, 30387 – 30415, 1999.

Zaveri, R. A., Easter, R. C., Fast, J. D., Peters, L.: Model for simulating aerosol interactions and chemistry (MOSAIC), J. Geophys. Res., 113, D13204, doi: 10.1029/2007JD008782, 2008

Zuidema, P., Leon, D., Pazmany, A., and Cadeddu, M.: Aircraft millimeter-wave passive sensing of cloud liquid water and water vapor during VOCALS-Rex, Atmos. Chem. Phys., 12, 355-369, doi: 10.5194/acp-12-355-2012, 2012.

Deleted: ¶

Wood, R. and 33 co-authors: The VAMOS Ocean-Cloud-Atmosphere-Land Study Regional Experiment (VOCALS-REx): goals, platforms, and field operations. Atmos. Chem. Phys., 11, 627-654. doi:10.5194/acp-11-627-2011, 2011.¶

| Model | Domain Extent | Horizontal Resolution, inner region (lat x lon) | Vertical Levels (>700 hPa) | Forecast Frequency | Forecast Hours Analyzed | Aerosol Scheme | PBL Scheme | Land Emissions | Micro-physics | Aerosol-Cloud feedback | Investigators |
|----------------------------------|---------------------|---|----------------------------|--------------------|-------------------------|------------------------------------|---|-------------------------|---------------------------|------------------------|--|
| CAM4 | Global | 1.9°x2.5° | 26(6) | Daily | 48-72 | MOZART bulk (Lamarque et al. 2005) | Holtzlag Boville (1993) | see Appendix | 1-moment | no | C. Hannay |
| CAM5 | Global | 1.9°x2.5° | 30 (10) | Daily | 48-72 | MAM 3 modes | UW PBL | Lamarque et al. (2010) | 2-moment Morrison | yes | C. Hannay |
| GFDL AM3 | Global | 2.0°x2.5° | 48 (12) | Daily | 24-48 | 2 or 3 modes (Donner et al. 2011) | Lock et al (2000) | Lamarque et al. (2010) | 1-moment Rotstayn | yes | Y. Lin |
| ECMWF/ MACC 36R1 | Global | 0.225°x0.225° | 91 (21) | Daily | 0-24 | Sectional 8 bins Morcrette (2009) | eddy-diff mass-flux (Köhler et al 2011) | Morcrette et al. (2009) | 1-moment bulk | No | J.-J. Morcrette |
| UKMO MetUM, G5.1 | Global | 0.375°x0.562° | 70 (20) | Twice Daily | 0-12 | CLASSIC Bellouin et al. (2007) | Lock et al. (2000) | AeroCom-2 | 1-moment Wilson & Ballard | yes | J. Mulcahy |
| IPRC iRAM 1.2 | 170W-40W 40S-40N | 0.25°x0.25° | 28 (12) | N/A | N/A | sectional Prescribed | E-ε turbulence closure | N/A | 2-moment Philipps | Aerosols affect clouds | A. Lauer Y. Wang |
| PNNL WRF-Chem 3.2.1 | 93W-63W 36S-11S | 9km x 9km | 64(48) | N/A | N/A | MOSAIC sectional 8 bins | YSU PBL | VOCA specified | 2-moment Morrison | yes | Q. Yang W.I. Gustafson J. D.Fast |
| IOWA WRF-Chem 3.3 | 91W-65W 40S-12S | 12km x 12km | 74 (53) | N/A | N/A | MOSAIC Sectional 8 bins | MYNN 2.5 | VOCA specified | 2-moment Lin | yes | P. Saide S. Spak G. Carmichael |
| UW WRF-Chem 3.2.1 | 93W-64W 40S-7S | 0.25°x0.25° | 27 (15) | N/A | N/A | MADE/SORG AM 3 modes | UW PBL | VOCA specified | 2-moment Lin | yes | R. George R. Wood |

Deleted: 0

Deleted: PS23, UM7.5

Table 1: Model parameters and physics.

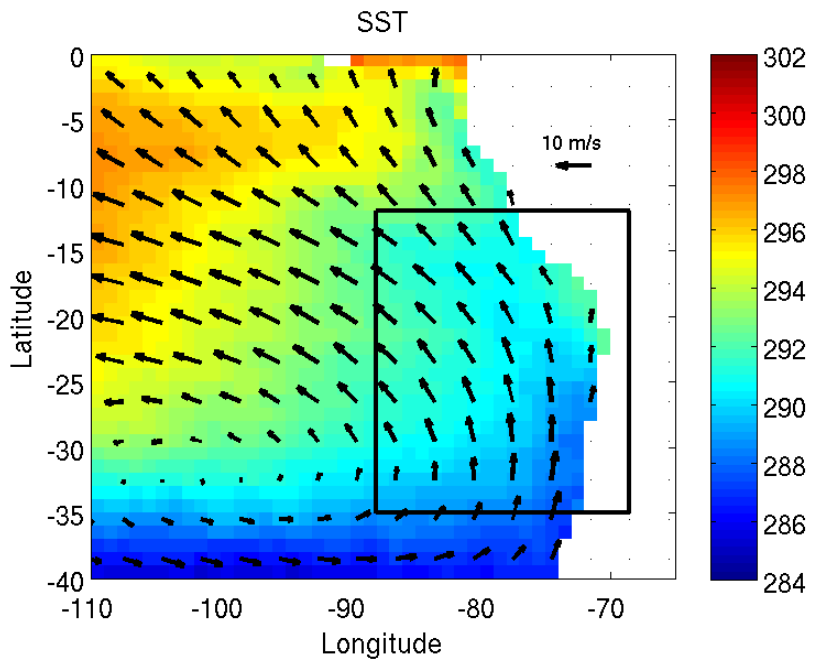


Fig. 1. Observed SST (K) from AMSR-E and surface winds from QuikSCAT in the outer VOCA study region during the REx period, 15 Oct – 16 Nov 2008. The inner study region is shown as a black rectangle.

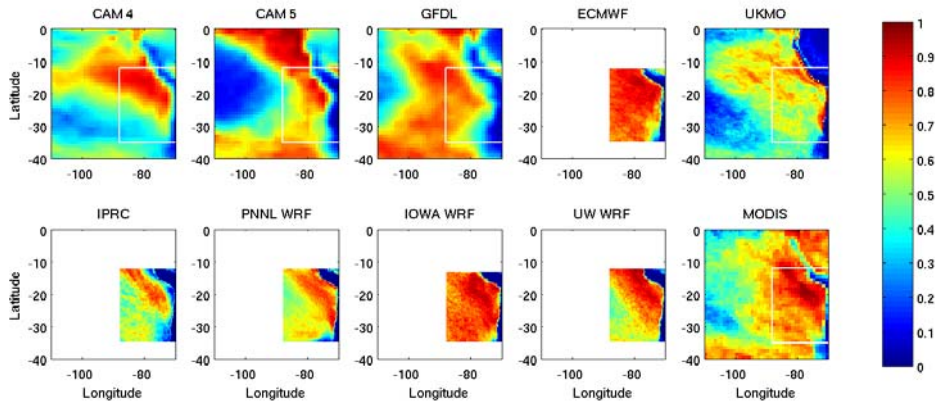


Fig. 2. Models' mean low cloud fraction at 10:30am local time (1530 UTC) compared with MODIS Terra daytime mean total cloud fraction. The extent of the inner VOCA study region is shown with a white rectangle.

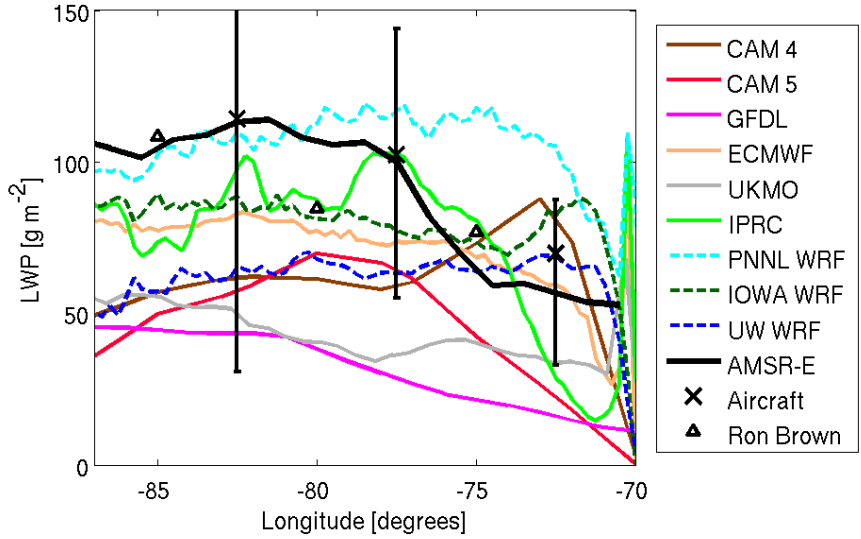


Fig. 3. Grid-box mean liquid water path (LWP) along 20°S compared with AMSR-E satellite mean of day and night passes and median LWP from microwave radiometer on the C-130 (Zuidema et al. 2012). Error bars represent interquartile ranges of aircraft leg-means. Also plotted as triangles are mean values measured by the Ron Brown from 2001-2008 (de Szoek et al. 2012)

Deleted:
Deleted: mean

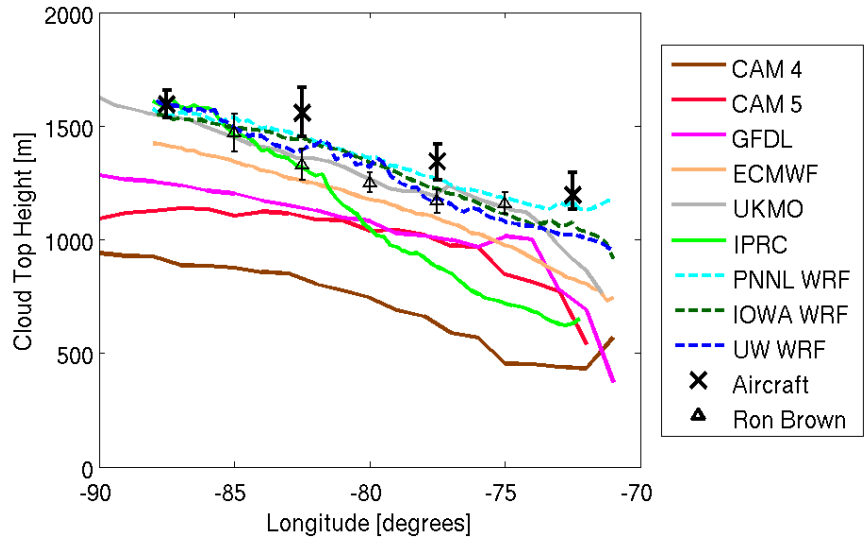


Fig. 4. Model-mean cloud-top height along 20° S compared with mean cloud-top measured using cloud radar from C-130 flights (Bretherton et al 2010). Mean observations from Ron Brown from 2001-2008 (de Szoeke et al. 2012) are plotted as triangles with bars as standard deviation.

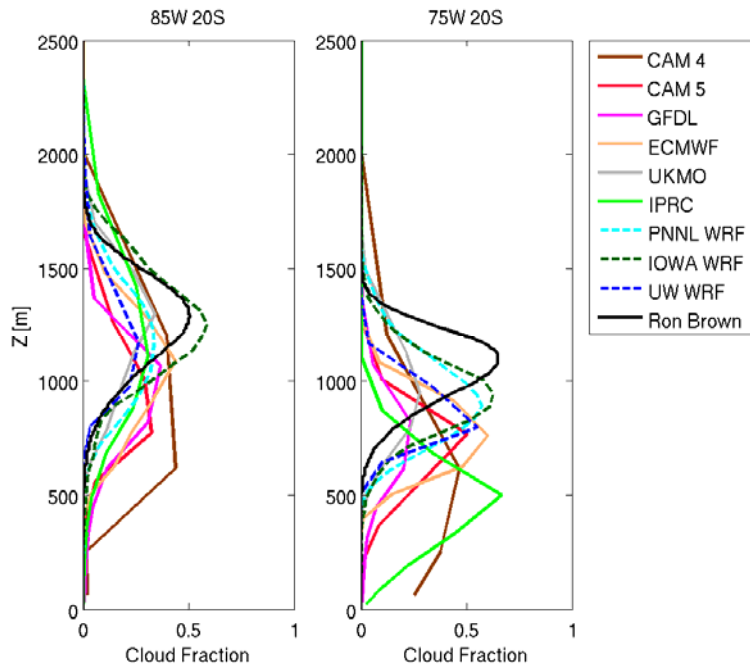


Fig. 5. Mean model cloud fraction at 85°W 20°S (left panel) and at 75°W 20°S (right panel). Also plotted is cloud fraction inferred from [Ron Brown](#) ship based measurements over nearby longitudes from Burleyson et al. (2013). See text for more details.

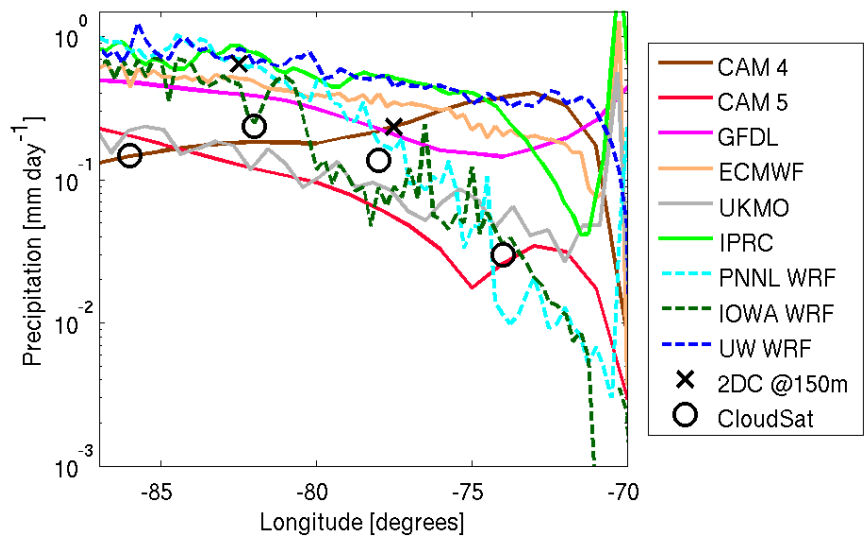


Fig. 6. Mean surface precipitation in mm day^{-1} along 20° S compared with leg-mean precipitation rate from C-130 estimates at 150m using a 2D-C probe, and with CloudSat climatology for Oct-Nov 2007-2010. The 2D-C precipitation mean for $70\text{-}75^\circ\text{W}$ is less than $0.001 \text{ mm day}^{-1}$ and not shown.

Deleted: Error-bars show interquartile values for the 2D-C measurements.

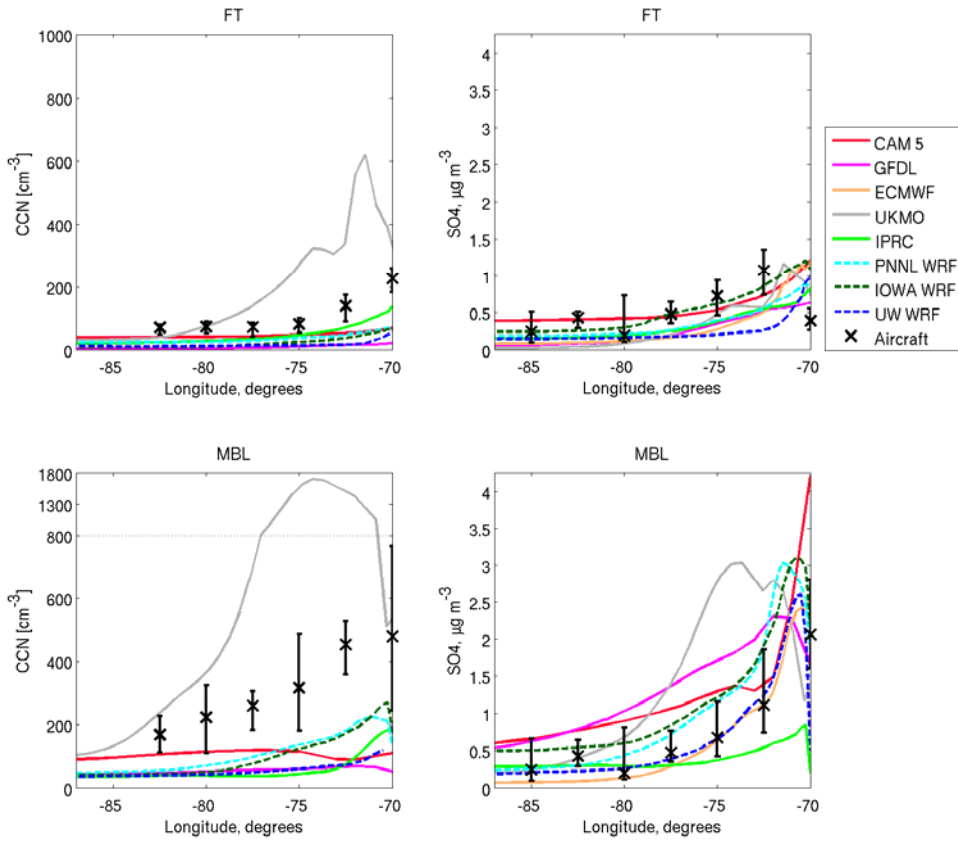


Fig. 7. CCN concentrations at 0.1% supersaturation in cm^{-3} along 20°S are shown in the left panels. Free tropospheric (FT) mean (top left) and concentration at 150m (lower left). C-130 nephelometer means are plotted with 'x' symbols. Sulfate aerosol (SO_4) dry mass concentrations in $\mu\text{g m}^{-3}$ of diameter range $0.05\mu\text{m} - 0.5 \mu\text{m}$ measured with AMS (C-130 and BAe-146) are compared with model dry mass concentration along 20°S (see Allen et al. 2011) in the right panels for the FT (top right panel) and MBL mean (bottom right panel). The lower left plot is linearly rescaled at the top of the plot. The lower right panel is modified from a figure in Mechoso et al. (2014) to add aircraft sampling variability.

Note that ECMWF CCN concentrations are unavailable.

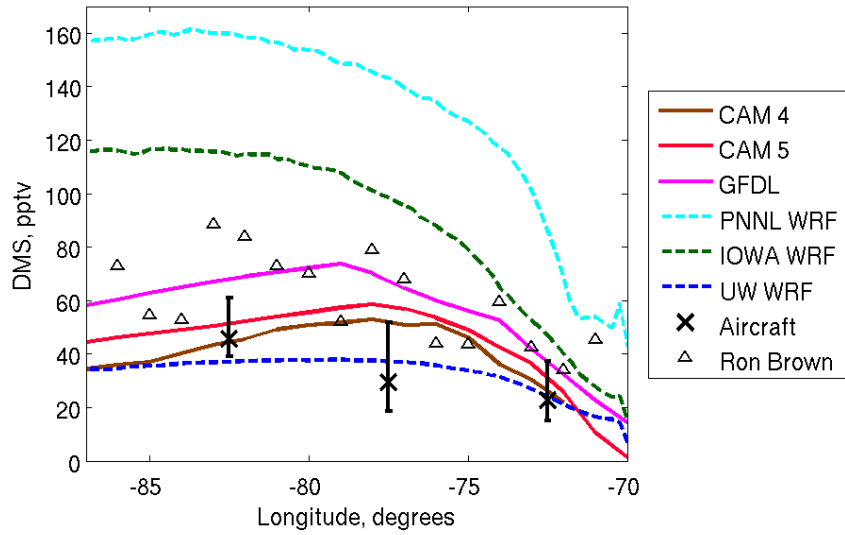


Fig. 8. MBL-mean DMS concentrations in pptv along 20°S for some models along with C-130 observed MBL-means marked by 'X'. Near-surface means from the Ron Brown ship-based measurements (M. Yang et al. 2011) are marked by triangles.

Deleted:

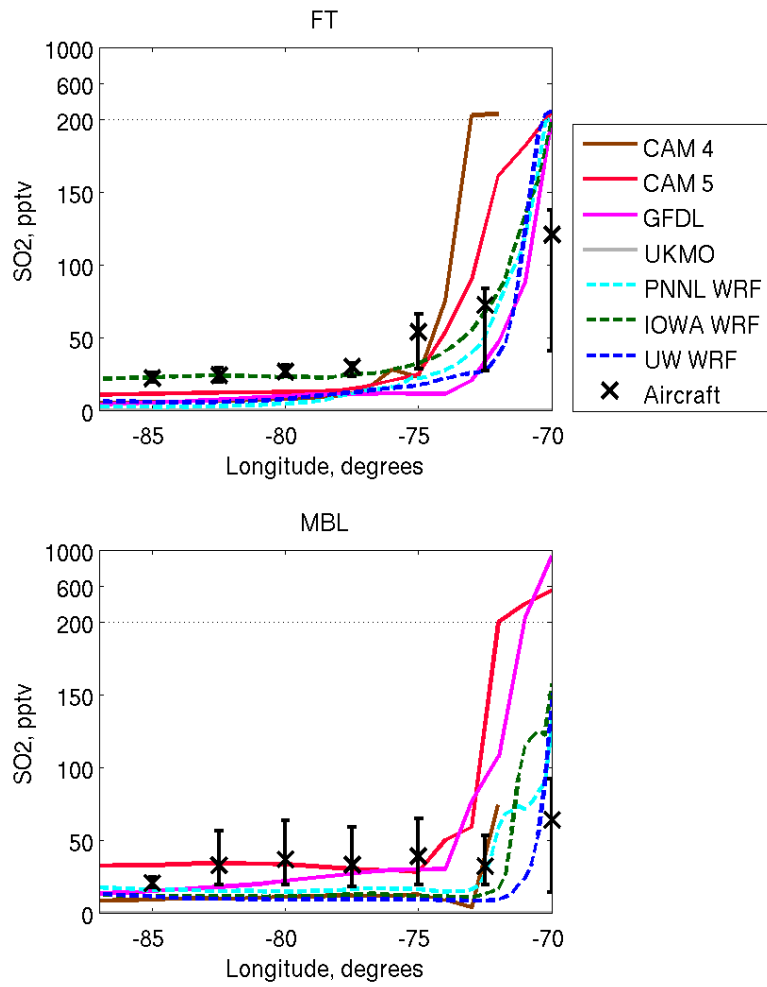


Fig. 9. Mean modeled SO₂ (gas) concentration along 20° S in pptv and C-130 aircraft means. The top sections of the both panels are rescaled.

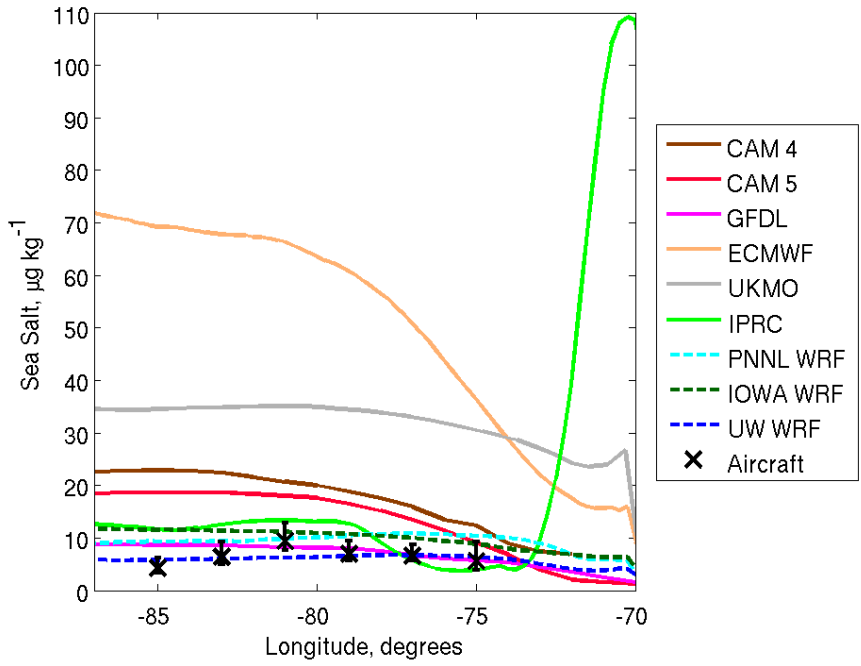


Fig. 10. Mean ~~sea-salt aerosol~~ dry mixing ratio along 20°S ($\mu\text{g kg}^{-1}$) compared with C-130 particle counter and Giant Nuclei Impactor measurements from Blot et al. (2013)

Deleted: aerosol
 Deleted: SSA

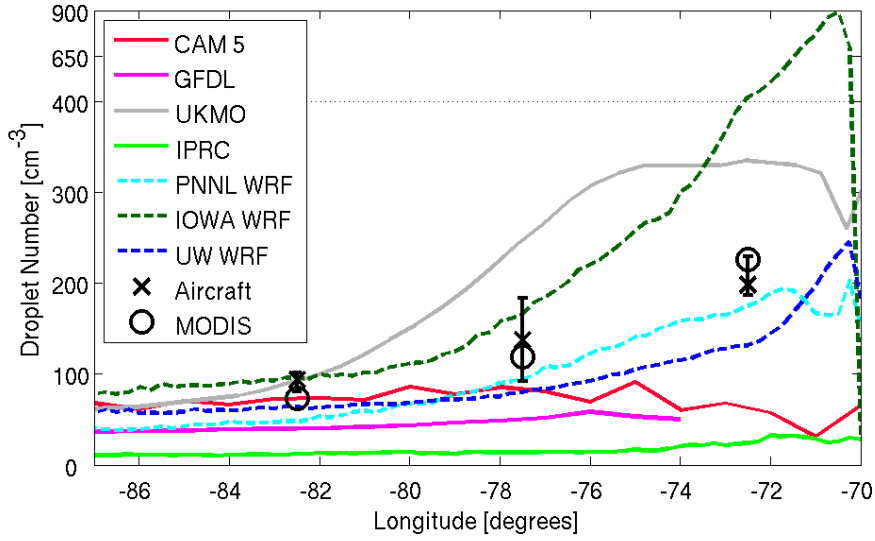


Fig. 11. Mean cloud droplet number concentration, N_d , in cm^{-3} along 20°S compared with mean C-130 measurements using a PMS cloud droplet probe and FSSP and also with MODIS estimates. This figure is modified from Mechoso et al. (2014) to add aircraft sampling variability and MODIS data. The top section of the plot is rescaled.

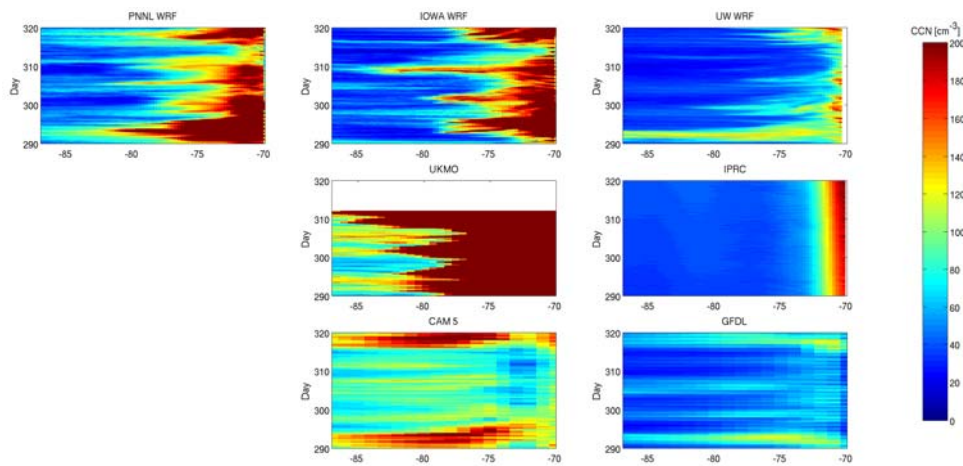


Fig. 12. Hovmöller diagrams of CCN at 0.1% supersaturation at 150m height along 20°S. CCN concentrations are given in cm^{-3} .

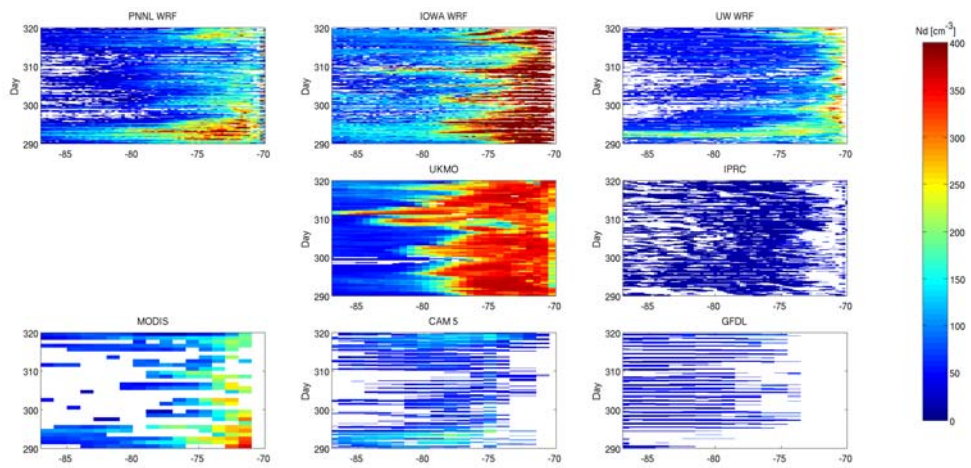


Fig. 13. Hovmöller diagrams of models' mean cloud droplet concentration, N_{d_s} in cm^{-3} along 20°S . Daily mean MODIS estimates from Bretherton et al. (2010) are shown in the lower left.

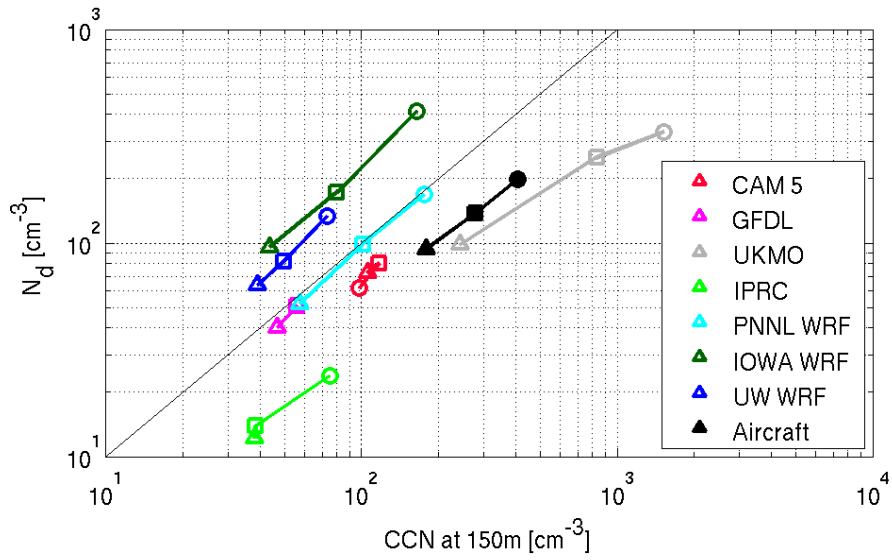


Figure 14. Mean cloud droplet concentration versus CCN (0.1% SS) at 150m for models and aircraft observations at 20°S. Values are binned from 80-85°W (triangles), 75-80°W (squares) and 71-75°W (circles). A one-to-one line is also plotted.

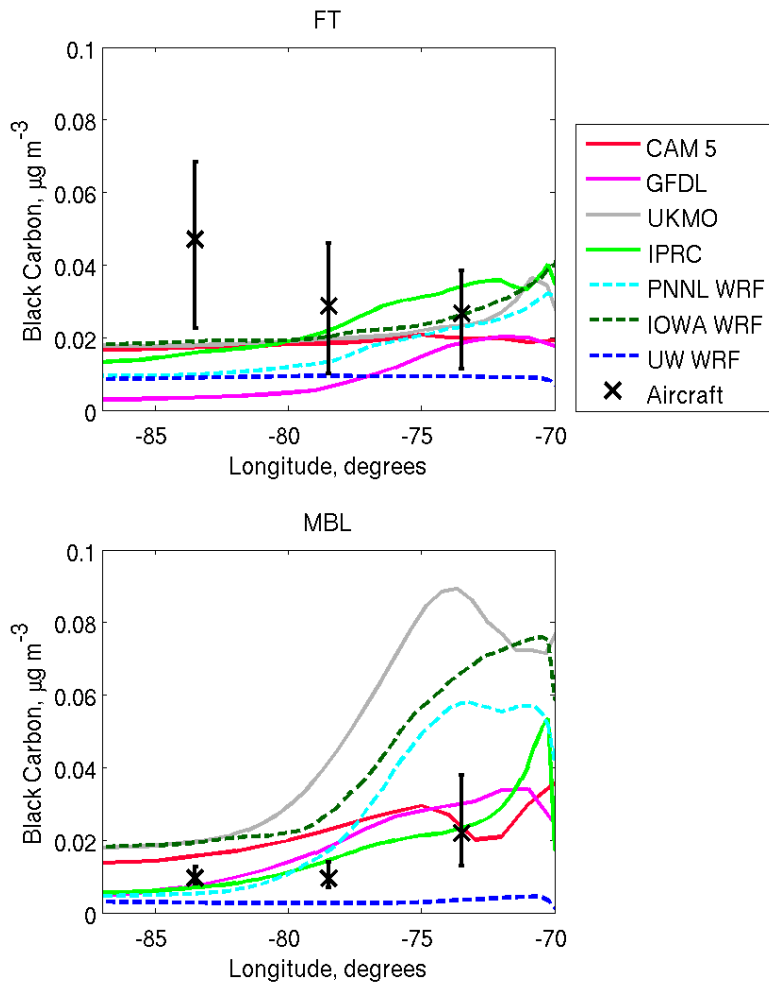


Fig. 15. Total modeled black carbon aerosol mass concentration ($\mu\text{g m}^{-3}$) along 20° S compared with C-130 single-particle soot photometer measurements (diameters 0.087-0.4 μm).

Deleted:

Deleted: 4

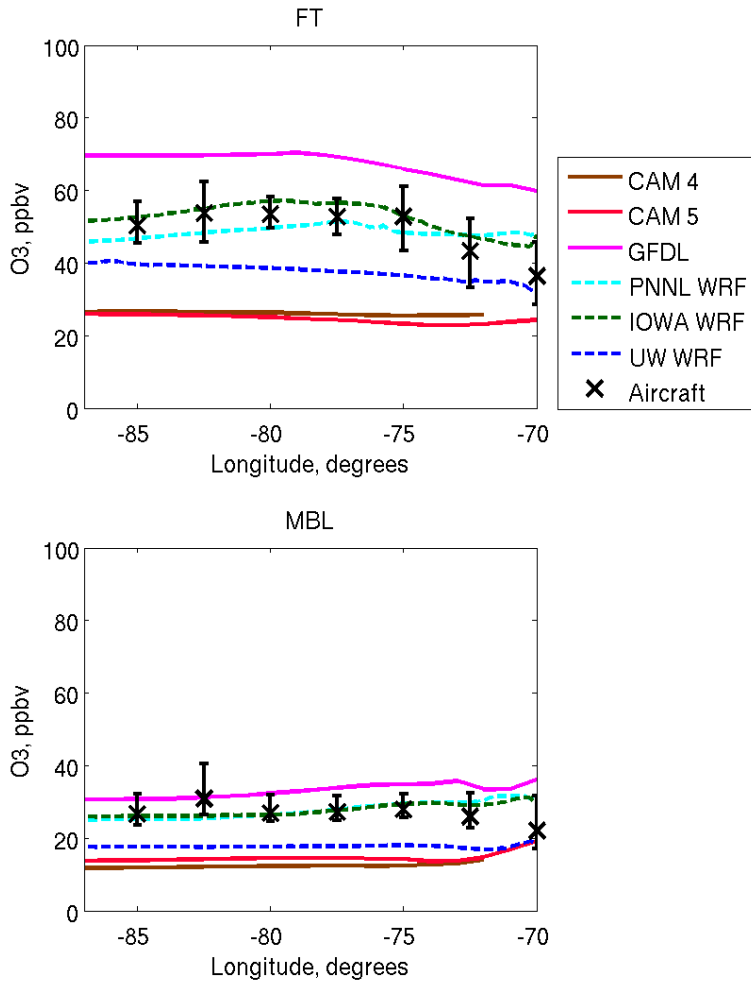


Fig. 16. Ozone concentration (ppbv) compared along 20° S with C-130 and BAe-146 aircraft observations.

Deleted: 5