

# Land surface spinup for episodic modeling

**Wayne M. Angevine<sup>1</sup>, Eric Bazile<sup>2</sup>, Dominique Legain<sup>3</sup>, and David Pino<sup>4</sup>**

<sup>1</sup>{Cooperative Institute for Research in Environmental Sciences (CIRES), University of Colorado, and NOAA Earth System Research Laboratory, Boulder, Colorado USA}

<sup>2</sup>{CNRM/GMAP/PRO, Meteo-France Toulouse, France}

<sup>3</sup>{CNRM-GAME, Meteo-France/CNRS Toulouse, France}

<sup>4</sup>{Department of Applied Physics, Universitat Politècnica de Catalunya-BarcelonaTech & Institute for Space Studies of Catalonia (IEEC-UPC), Barcelona, Spain}

Correspondence to: Wayne M. Angevine ([Wayne.M.Angevine@noaa.gov](mailto:Wayne.M.Angevine@noaa.gov))

## **Abstract**

Soil moisture strongly controls the surface fluxes in mesoscale numerical models, and thereby influences the boundary layer structure. Proper initialization of soil moisture is therefore critical for faithful simulations. In many applications, such as air quality or process studies, the model is run for short, discrete periods (a day to a month). This paper describes one method for soil initialization in these cases, self-spinup. In self-spinup, the model is initialized with a coarse-resolution operational model or reanalysis output, and run for a month, cycling its own soil variables. This allows the soil variables to develop appropriate spatial variability, and may improve the actual values. The month (or other period) can be run more than once if needed.

The case shown is for the Boundary Layer Late Afternoon and Sunset Turbulence experiment, conducted in France in 2011. Self-spinup adds spatial variability, which improves the representation of soil moisture patterns around the experiment location, which is quite near the Pyrenees Mountains. The self-spinup also corrects a wet bias in the large-scale analysis. The overall result is a much-improved simulation of boundary layer structure, evaluated by comparison with soundings from the field site.

Self-spinup is not recommended as a substitute for multi-year spinup with an offline land data assimilation system in circumstances where the data sets required for such spinup are available at the required resolution. Self-spinup may fail if the modeled precipitation is poorly simulated. It is an expedient for cases when resources are not available to allow a better method to be used.

1

## 2 **1 Introduction**

3 Episodic runs of atmospheric mesoscale numerical models are commonly used for air quality  
4 and research process studies, among other applications. Modeling for episodes of one to  
5 several days often uses coarse resolution analysis as initial conditions and interpolates them  
6 to fine grids (1-6 km). This type of modeling presents special challenges not faced by  
7 continuous operational systems. One of these is the proper initialization of soil moisture,  
8 which is critical to the simulation of surface fluxes, and consequently of the atmospheric  
9 boundary layer, a first-order control on simulated pollutant concentrations. Here, we describe  
10 a case where the usual approach fails, and demonstrate a self-spinup method to improve the  
11 results.

12 The preferred method for soil initialization is to “spin up” the soil for several years with an  
13 offline land data assimilation system (Koster and Coauthors, 2010; LeMone et al., 2008;  
14 Chen et al., 2007; Kumar et al., 2006). This must in general be done at the resolution to be  
15 used by the target model (Santanello et al., 2011), and therefore requires highly-resolved  
16 atmospheric fields and precipitation analyses. In case such a system and data are not  
17 available, spinning up the soil with the atmospheric model itself can improve results. This  
18 “open loop” approach was shown by Di Giuseppe et al., (2011) to improve the results of  
19 three-month simulations.

20 The purpose of soil spinup is to provide soil moisture and temperature that are appropriate for  
21 the target model. Because the mesoscale target model likely has different soil levels, soil  
22 properties, vegetation types, and tuning constants than the larger-scale model, the appropriate  
23 soil moisture and temperature are not necessarily the same in the two models. The criterion  
24 for appropriateness is that the target model produces correct surface fluxes. Even if the  
25 physics of the two models is identical, the greater spatial variability in the finer-grid target  
26 model requires some spinup. Our hypotheses, then, are that 1) self-spinup increases spatial  
27 variation of soil moisture and temperature (downscaling), and 2) self-spinup removes biases  
28 overall and/or in specific locations, land uses, or soil types.

29 The example used here is from the Boundary Layer Late Afternoon and Sunset Turbulence  
30 (BLLAST) field campaign conducted in June and July 2011 in France (Lothon and  
31 Coauthors, 2014). Extensive measurements were taken from 14 June to 8 July 2011 in and  
32 around Lannemezan, southern France, near to the Pyrenees Mountains. The campaign site

1 extended over an area of approximately 100 km<sup>2</sup> covered with heterogeneous vegetation  
2 including grass, corn, moor or forest. The site is quite near the Pyrenees and thus poses a  
3 challenge for modeling, requiring reasonably fine resolution to avoid confusing the local  
4 terrain elevation and land uses with the mountains. The project objective is to understand the  
5 main physical processes controlling the afternoon transition of the boundary layer from  
6 convective instability to nocturnal stability. Mesoscale models will be used, evaluated, and  
7 improved as part of the project. However, before the modeled afternoon transition can be  
8 compared with observations, the preceding conditions must match the observations to a  
9 reasonable degree. This study therefore emphasizes getting the model into a state where its  
10 boundary layer structure looks like the observations in the afternoon. Soil initialization is the  
11 key factor in achieving that agreement.

## 12 **2 Modeling strategy**

13 The Advanced Research core of the Weather Research and Forecasting model (WRF-ARW)  
14 was used in this study. Nested 9 and 3 km horizontal grids were used, each 100x100 points,  
15 centered roughly at the experiment site. Two-way nesting was used so that the 3-km solution  
16 influenced the outer grid. Fifty vertical levels strongly compressed near the surface were  
17 used (lowest eta levels 0.999, 0.998, etc. incrementing by 0.001 up to 0.990). Physics options  
18 were WRF single-moment three-class microphysics, RRTM-G short and longwave radiation,  
19 and Kain-Fritsch convection on the 9-km grid only. References and details can be found in  
20 (Skamarock et al., 2008). The outer 9-km domain covers roughly -5 to 6 degrees longitude  
21 and 38.5 to 47 degrees latitude, including much of France, Spain, the Bay of Biscay, and the  
22 northeastern Mediterranean Sea. All results shown are from the inner 3-km domain only, and  
23 its extent can be seen in the figures.

24 Vertical mixing was handled by the MYJ (Janjic, 2002) planetary boundary layer scheme and  
25 its matching surface layer. Mixing in MYJ depends only on the local gradient of buoyancy,  
26 and is parameterized by prognostic turbulent kinetic energy and a length scale. A number of  
27 studies, for example (Shin and Hong, 2011; Angevine et al., 2012; Garcia-Diez et al., 2013),  
28 have found that the scheme mixes too little and entrains too little, resulting in boundary layers  
29 that are shallower, cooler, and moister than observations. However, MYJ is widely used, and  
30 other schemes also have biases. Moreover, it is difficult to distinguish biases in the PBL  
31 schemes from other compensating errors even in carefully designed studies (Garcia-Diez et  
32 al., 2013).

This study primarily addresses how the land surface in the model should best be initialized. The Noah land surface model (LSM) (Chen and Dudhia, 2001) is used. The Noah LSM has four soil layers (thicknesses 0.1, 0.3, 0.6, 1 m). The soil levels are the same for moisture and temperature and are constant throughout the domain. The atmosphere is initialized each day at 0000 UTC with the ECMWF Interim Reanalysis (ERA-Interim) (Dee et al., 2011; Albergel et al., 2012), and the lateral boundary conditions for the outer (9-km) domain come from the same analysis. The ERA-Interim fields are on a 0.75x0.75 degree grid.

We chose one month as the basic spinup period. This is admittedly somewhat arbitrary. The optimal period and length of spinup cannot be specified generally *a priori* (Yang et al., 2011). In this case, the month of June corresponded approximately to the BLLAST experimental period. During June, the land state including soil moisture and snow in the higher elevations changes quickly, so including earlier periods would probably be less beneficial. The deep soil is weakly coupled to the surface, so its state does not contribute very much to short-term simulations, and spinning up its state requires a longer spinup period. Ultimately the wisdom of the choices we made here must be judged by the result, which for our objectives was satisfactory.

Three model runs were made, one with initialization only from the ERA-Interim analysis, one with soil moisture and temperature cycled once through the month of June, and one with two cycles. For “uncycled” or “ERA” runs, the soil moisture and temperature were initialized from ERA-Interim at 0000 UTC each day. For “cycle 1”, the soil moisture and temperature were initialized from ERA-Interim at 0000 UTC 1 June, then self-cycled for 30 days. That is, each day a run was started at 0000 UTC with the soil temperature and moisture from the 24-hour forecast of the previous day’s run. “Cycle 2” started at 0000 UTC 1 June with WRF soil moisture and temperature from cycle 1 at 0000 UTC 1 July.

### **3 Results**

Runs with simple interpolation of the ERA-Interim soil variables into WRF (“uncycled” or “ERA” runs) had a drastic cool, moist bias compared to soundings at the experiment site (figure 1, red lines). The figure shows the mean difference between each model run and soundings taken at approximately 1700 UTC on seven days. The days included were Intensive Observation Periods (IOPs) of the campaign, relatively undisturbed by synoptic systems, and were chosen for various of the other analyses of the BLLAST project (Lothon et al., 2014). Soundings at 1700 UTC were used on the premise that analysis of the afternoon

1 transition depends on correctly simulating midday conditions. The bias was largest below  
2 ~500m, indicating that the land surface is a likely source of this bias, most likely due to a soil  
3 that is too moist. This results in too much of the incoming solar radiation being allocated to  
4 evaporation and too little to sensible heating, reducing PBL warming, growth and  
5 entrainment. After cycling the soil for most of a month (cycle 1) or almost two months (cycle  
6 2), the results were much improved. The Noah LSM required two cycles for optimum  
7 performance. This solved the problem for further studies with mesoscale models in  
8 BLLAST, but we wanted to understand the mechanism more thoroughly.

9 Figure 2 shows soil moisture in the second layer of the inner domain for the different  
10 simulations. Throughout this paper “soil moisture” means soil moisture content as a volume  
11 ratio. We show the second layer for clarity, because the thin first layer has very strong daily  
12 cycles that obscure the trends we want to highlight. Due to the coarse ERA-Interim data  
13 resolution (0.75x0.75 degree grid), the Pyrenees are severely under-resolved (figure 2a), and  
14 after interpolation to the WRF grid, the Lannemezan site is in a broad area of moist soil  
15 representative of the mountains. After only one day of simulation, the spatial detail of soil  
16 moisture is visibly improved. After 30 days of free running (one cycle) the detail is fully  
17 resolved to the WRF grid. Moisture at and near Lannemezan is somewhat reduced. After  
18 two cycles (60 days) the overall moisture is somewhat further reduced but the level of detail  
19 is similar. Figure 3 shows soil temperature in the same format as figure 2. The initial soil  
20 temperature has more detail than moisture, because the WRF initialization modifies the  
21 temperature according to the terrain height. Soil temperature in the domain as a whole  
22 increases throughout the cycling runs, as would be expected for June, but the temperature in  
23 the immediate neighborhood of Lannemezan changes rather little.

24 The temporal and spatial variation of soil moisture are shown in figure 4 (note that each day  
25 of June is shown twice on the horizontal axis to illustrate the evolution through two cycles).  
26 The second soil layer (0.1-0.4 m) is shown in order to avoid the strong diurnal cycle in the  
27 top layer. The ERA-Interim moisture dries somewhat after approximately 8 June, and its  
28 spatial variation (standard deviation) has no trend. In the cycled WRF runs, moisture  
29 decreases except in early June when it rains. Rain causes the spatial variation to increase in  
30 WRF.

31 Soil moisture itself is difficult to evaluate because observations are sparse. In the BLLAST  
32 domain, observations from the SMOSMANIA network can be used (Albergel et al., 2008;  
33 Calvet et al., 2007). Figure 5 shows the locations of eight sites within the inner WRF domain

1 that had full data for June 2011. Figure 6 shows the average soil moisture from those sites.  
2 The distribution of sites is not uniform, and there is a great deal of site-to-site variation,  
3 which is not shown. Observations are a weighted average over all soil levels, the deepest of  
4 which is at 0.3 m. The model soil moisture is taken from the nearest grid point to each site.  
5 The observations show an abrupt increase in moisture on 6-7 June due to precipitation, which  
6 is also present to differing degrees in each of the models. ERA-Interim is more moist and  
7 dries more slowly than the observations. This bias was also found by (Greve et al., 2013) and  
8 (Albergel et al., 2012), and discussed by (De Rosnay et al., 2013). Cycling WRF runs  
9 respond less to the precipitation episodes on 6-7 and 12 June. After 15 June, the drying rate  
10 with Noah is similar to the observations, but cycle 2 starts lower, so the two Noah cycles  
11 bracket the observations.

12 For purposes of atmospheric modeling as opposed to hydrology, the important output of the  
13 LSM is not the soil moisture itself but the partitioning between sensible and latent heat fluxes  
14 (Santanello et al., 2013). Figure 7 shows the sensible heat flux from the Noah LSM at 1400  
15 UTC on the same days as figure 2. The heat flux from the Noah LSM has detail immediately  
16 despite the smooth soil moisture because the flux varies according to the soil and vegetation  
17 types, which have grid-scale variations. At the end of the first simulated month of June (day  
18 30) the pattern is quite different, particularly in the northeast quadrant of the domain where  
19 the flux is larger. After another cycle, day 60 has a similar spatial pattern but magnitude has  
20 increased further. At and in the immediate neighborhood of Lannemezan, the flux is nearly  
21 unchanged.

22 Precipitation in the model determines whether self-spinup succeeds or fails. After  
23 initialization, modeled precipitation is the only source of water to the soil. It must be at least  
24 approximately correct in amount and spatial distribution. Figure 8 shows analyzed  
25 precipitation for the part of the domain that falls within France, and modeled precipitation, as  
26 totals for the month of June. The modeled precipitation is for the first cycle. The analysis is  
27 from the SAFRAN system (Habets et al., 2008; Quintana-Segui et al., 2008). It is a dense but  
28 not regularly gridded analysis, but has been plotted with large enough pixels to fill the space  
29 and enable visual comparison with the model output. Correspondence between the analysis  
30 and the simulations is not perfect, but the overall amount and distribution is similar. WRF  
31 has too little rain overall and especially in the western part of the domain. Note that the  
32 amounts over the Pyrenees have been allowed to saturate on the color scale so that the  
33 smaller amounts away from the mountains can be seen. The modeled precipitation in cycle 2

1 is not shown, but differs little from cycle 1. Noah produces 2-3% less precipitation in cycle 2  
2 than in cycle 1. We also note that Lannemezan (red X) is in a region of strong gradients in  
3 precipitation as well as soil moisture and temperature.

4 How well did self-spinup work to achieve our objective of simulating reasonable conditions  
5 for further research on the BLLAST project? Figure 9 shows potential temperature profiles  
6 from frequent soundings (Legain et al., 2013) at experiment site 2 on 25 June, a day  
7 identified for further analysis. Noah cycle 2 has nearly no temperature bias in the boundary  
8 layer, although its boundary layer height is somewhat low (about 20%). This confirms the  
9 composite result in figure 1. The boundary layer is deeper and warmer in cycle 2 even  
10 though the heat flux at the site on that particular day is about the same. The same flux leads  
11 to a warmer and deeper boundary layer because the air upwind and the local soil are both  
12 warmer. On this basis we have chosen the Noah cycle 2 soil variables as the basis for further  
13 work on mesoscale modeling for BLLAST.

#### 14 **4 Conclusions**

15 We have shown that spinning up the soil in a mesoscale model by running the model itself  
16 with cycling soil variables can improve simulations over the default method of simply  
17 interpolating soil data from a coarser analysis. We call the method “self-spinup;” it is  
18 equivalent to the “open loop” method of Di Giuseppe et al., (2011). The somewhat arbitrary  
19 choice of a one-month spinup period (repeated twice) is vindicated by the results.

20 Self-spinup increases spatial variation of soil variables, that is, it downscales the soil data to  
21 the finer grid. It removes biases overall, in this case correcting a cool and moist bias.  
22 Evaluation against soil moisture data throughout the WRF domain indicates that the bias  
23 existed in the soil moisture itself, not primarily in other aspects of the model. In general,  
24 however, even if simulated soil moisture perfectly matches observations the atmospheric  
25 simulation may still be degraded by model errors, as implied by de Rosnay et al. (2013) and  
26 by Hacker and Angevine (2012).

27 A one-day simulation initialized with ERA-Interim soil moisture reduced by 33% at each  
28 point, based on figure 6, produced similar soundings to the cycled result in the early  
29 afternoon, but not as good in the late afternoon (not shown). Given a similar comparison of  
30 simulated to observed soil moisture, users could consider this simpler technique.

31 The surface heat and moisture fluxes are the primary control on boundary layer structure.  
32 However, that control is not necessarily exercised in the local column nor at the time of



1 evaluation. It is interesting to note that the heat fluxes in the BLLAST experiment area vary  
2 much less with spinup than they do for the domain as a whole, and yet the resulting boundary  
3 layer profiles change (improve) substantially. This indicates that the improvement is coming  
4 from parts of the domain outside the immediate area, and is probably generally true for any  
5 complex terrain situation. Experiment designs should take into account the need for  
6 measurements of key quantities over mesoscale domains (at least).

7 Self-spinup cannot be recommended if spinup with a land data assimilation system can be  
8 done with the skills, resources, and (above all) data that are available. The bias reduction  
9 found here could be fortuitous. We have no way of knowing whether self-spinup would have  
10 corrected a dry bias, for example. The optimal period and length of spinup cannot be  
11 specified generally (Yang et al., 2011). However, most episodic modeling experiments are  
12 conducted after the fact, so improved performance can be verified with data. Precipitation  
13 from the mesoscale model is the most likely source of errors in self-spinup. Here we found  
14 that the precipitation the model produced was broadly reasonable and apparently sufficient to  
15 improve the results.

## 16 17 **Acknowledgements**

18 Marie Lothon conceived and headed the planning and execution of BLLAST, and provided  
19 helpful comments on this paper. The BLLAST field experiment was made possible thanks to  
20 the contribution of several institutions and supports: INSU-CNRS (Institut National des  
21 Sciences de l'Univers, Centre national de la Recherche Scientifique, LEFE-IDAO program),  
22 Météo-France, Observatoire Midi-Pyrénées (University of Toulouse), EUFAR (European  
23 Facility for Airborne Research) and COST ES0802 (European Cooperation in the field of  
24 Scientific and Technical). The field experiment would not have occurred without the  
25 contribution of all participating European and American research groups, which all have  
26 contributed in a significant amount (see supports). The BLLAST field experiment was hosted  
27 by the instrumented site of Centre de Recherches Atmosphériques, Lannemezan, France  
28 (Observatoire Midi-Pyrénées, Laboratoire d'Aérologie). The 60m tower is partly supported  
29 by the POCTEFA/FLUXPYR European program, Frederique Said is acknowledged for  
30 providing the data. BLLAST data are managed by SEDOO, from Observatoire Midi-Pyrénées.  
31 The SMOSMANIA data were collected by Jean-Christoph Calvet at Meteo France and  
32 provided by the International Soil Moisture Network, Wouter Dorigo, TU Wien. David Pino  
33 was partially supported by Spanish MINECO projects CGL2009–08609, and CGL2012–

1 37416–C04–03. Joseph Santanello of NASA provided useful comments at several stages of  
2 the work described in this paper.  
3

1

## 2 **References**

- 3 Albergel, C., Ruediger, C., Pellarin, T., Calvet, J.-C., Fritz, N., Froissard, F., Suquia, D.,  
4 Petitpa, A., Piquet, B., and Martin, E.: From near-surface to root-zone soil moisture using an  
5 exponential filter: an assessment of the method based on in-situ observations and model  
6 simulations, *Hydrology and Earth System Sciences*, 12, 1323-1337, 10.5194/hess-12-1323-  
7 2008, 2008.
- 8 Albergel, C., De Rosnay, P., Balsamo, G., Isaksen, L., and Munoz-Sabater, J.: Soil moisture  
9 analyses at ECMWF: Evaluation using global ground-based in situ observations, *J.*  
10 *Hydrometeorology*, 13, 1442-1460, 10.1175/JHM-D-11-0107.1, 2012.
- 11 Angevine, W. M., Eddington, L., Durkee, K., Fairall, C., Bianco, L., and Brioude, J.:  
12 Meteorological model evaluation for CalNex 2010, *Monthly Weather Review*, 140, 3885-  
13 3906, DOI: 10.1175/MWR-D-12-00042.1, 2012.
- 14 Calvet, J.-C., Fritz, N., Froissard, F., Suquia, D., Petitpa, A., and Piquet, B.: In situ soil  
15 moisture observations for the CAL/VAL of SMOS: the SMOSMANIA network, *International*  
16 *Geoscience and Remote Sensing Symposium, IGARSS*, Barcelona, Spain, 2007, 1196-1199,
- 17 Chen, F., and Dudhia, J.: Coupling an advanced land surface - hydrology model with the  
18 Penn State - NCAR MM5 modeling system. Part I: Model implementation and sensitivity.,  
19 *Monthly Weather Review*, 129, 569-585, 2001.
- 20 Chen, F., Manning, K. W., LeMone, M. A., Trier, S. B., Alfieri, J. G., Roberts, R., Tewari,  
21 M., Niyogi, D., Horst, T. W., Oncley, S. P., Basara, J. B., and Blanken, P. D.: Description  
22 and Evaluation of the Characteristics of the NCAR High-Resolution Land Data Assimilation  
23 System, *Journal of Applied Meteorology and Climatology*, 46, 694-713, 10.1175/jam2463.1,  
24 2007.
- 25 De Rosnay, P., Drusch, M., Vasiljevic, D., Balsamo, G., Albergel, C., and Isaksen, L.: A  
26 simplified Extended Kalman Filter for the global operational soil moisture analysis at  
27 ECMWF, *Quarterly Journal of the Royal Meteorological Society*, 139, 1199-1213,  
28 10.1002/qj.2023, 2013.
- 29 Dee, D. P., Uppala, S. M., Simmons, A. J., Berrisford, P., Poli, P., Kobayashi, S., Andrae, U.,  
30 Balmaseda, M. A., Balsamo, G., Bauer, P., Bechtold, P., Beljaars, A., van de Berg, L., Bidlot,  
31 J., Bormann, N., Delsol, C., Dragani, R., Fuentes, M., Geer, A. J., Haimberger, L., Healy, S.,

1   Hersbach, H., Holm, E. V., Isaksen, L., Kallberg, P., Koehler, M., Matricardi, M., McNally,  
2   A. P., Monge-Sanz, B. M., Morcrette, J.-J., Peubey, C., de Rosnay, P., Tavalato, C., Thepaut,  
3   J.-N., and F., V.: The ERA-Interim reanalysis: Configuration and performance of the data  
4   assimilation system, *Quarterly Journal of the Royal Meteorological Society*, 137, 553-597,  
5   2011.

6   Di Giuseppe, F., Cesari, D., and Bonafe, G.: Soil initialization strategy for use in limited-area  
7   weather prediction systems, *Monthly Weather Review*, 139, 1844-1860,  
8   10.1175/2011MWR3279.1, 2011.

9   Garcia-Diez, M., Fernandez, J., Fita, L., and Yague, C.: Seasonal dependence of WRF model  
10   biases and sensitivity to PBL schemes over Europe, *Quarterly Journal of the Royal*  
11   *Meteorological Society*, 139, 501-514, 10.1002/qj.1976, 2013.

12   Greve, P., Warrach-Sagi, K., and Wulfmeyer, V.: Evaluating soil water content in a WRF-  
13   Noah downscaling experiment, *J. Applied Meteorology and Climatology*, 52, 2312-2327,  
14   10.1175/JAMC-D-12-0239.1, 2013.

15   Habets, F., Boone, A., Champeaux, J. L., Etchevers, P., Franchisteguy, L., Leblois, E.,  
16   Ledoux, E., Le Moigne, P., Martin, E., Morel, S., Noilhan, J., Quintana-Segui, P., Rousset-  
17   Regimbeau, F., and Vienneot, P.: The SAFTAN-ISBA-MODCOU hydrometeorological model  
18   applied over France, *J. Geophys. Res.*, 113, D06113, 10.1029/2007JD008548, 2008.

19   Hacker, J. P., and Angevine, W. M.: Ensemble Data Assimilation to Characterize Surface-  
20   Layer Errors in Numerical Weather Prediction Models, *Monthly Weather Review*, 141, 1804-  
21   1821, 10.1175/mwr-d-12-00280.1, 2012.

22   Janjic, Z.: Nonsingular implementation of the Mellor-Yamada level 2.5 scheme in the NCEP  
23   meso model, 60, 2002.

24   Koster, R. D., and Coauthors: Contribution of land surface initialization to subseasonal  
25   forecast skill: First results from a multi-model experiment, *Geophysical Research Letters*, 37,  
26   L02402, 10.1029/2009GL041677, 2010.

27   Kumar, S. V., Peters-Lidard, C. D., Tian, Y., Houser, P. R., Geiger, J., Olden, S., Lighty, L.,  
28   Eastman, J. L., Doty, B., Dirmeyer, P., Adams, J., Mitchell, K., Wood, E. F., and Sheffield,  
29   J.: Land information system: An interoperable framework for high resolution land surface  
30   modeling, *Environmental Modelling & Software*, 21, 1402-1415,  
31   <http://dx.doi.org/10.1016/j.envsoft.2005.07.004>, 2006.

1 Legain, D., Bousquet, O., Douffet, T., Tzanos, D., Moulin, E., Barrie, J., and Renard, J.-B.:  
2 High-frequency boundary layer profiling with reusable radiosondes, *Atmospheric*  
3 *Measurement Technology*, 6, 2195-2205, 10.5194/amt-6-2195-2013, 2013.

4 LeMone, M. A., Tewari, M., Chen, F., Alfieri, J. G., and Niyogi, D.: Evaluation of the Noah  
5 land surface model using data from a fair-weather IHOP\_2002 day with heterogeneous  
6 surface fluxes, *Monthly Weather Review*, 136, 4915-4941, 10.1175/2008MWR2354.1, 2008.

7 Lothon, M., and Coauthors: The BLLAST field experiment: Boundary-Layer Late Afternoon  
8 and Sunset Turbulence, *Atmos. Chem. Phys.*, 2014.

9 Quintana-Segui, P., Le Moigne, P., Durand, Y., Martin, E., and Habets, F.: Analysis of near-  
10 surface atmospheric variables: Validation of the SAFRAN analysis over France, *J. Applied*  
11 *Meteorology and Climatology*, 47, 92-107, 10.1175/2007JAMC1636.1, 2008.

12 Santanello, J. A., Peters-Lidard, C. D., and Kumar, S. V.: Diagnosing the sensitivity of local  
13 land-atmosphere coupling via the soil moisture - boundary layer interaction, *J.*  
14 *Hydrometeorology*, 12, 766-786, 10.1175/JHM-D-10-05014.1, 2011.

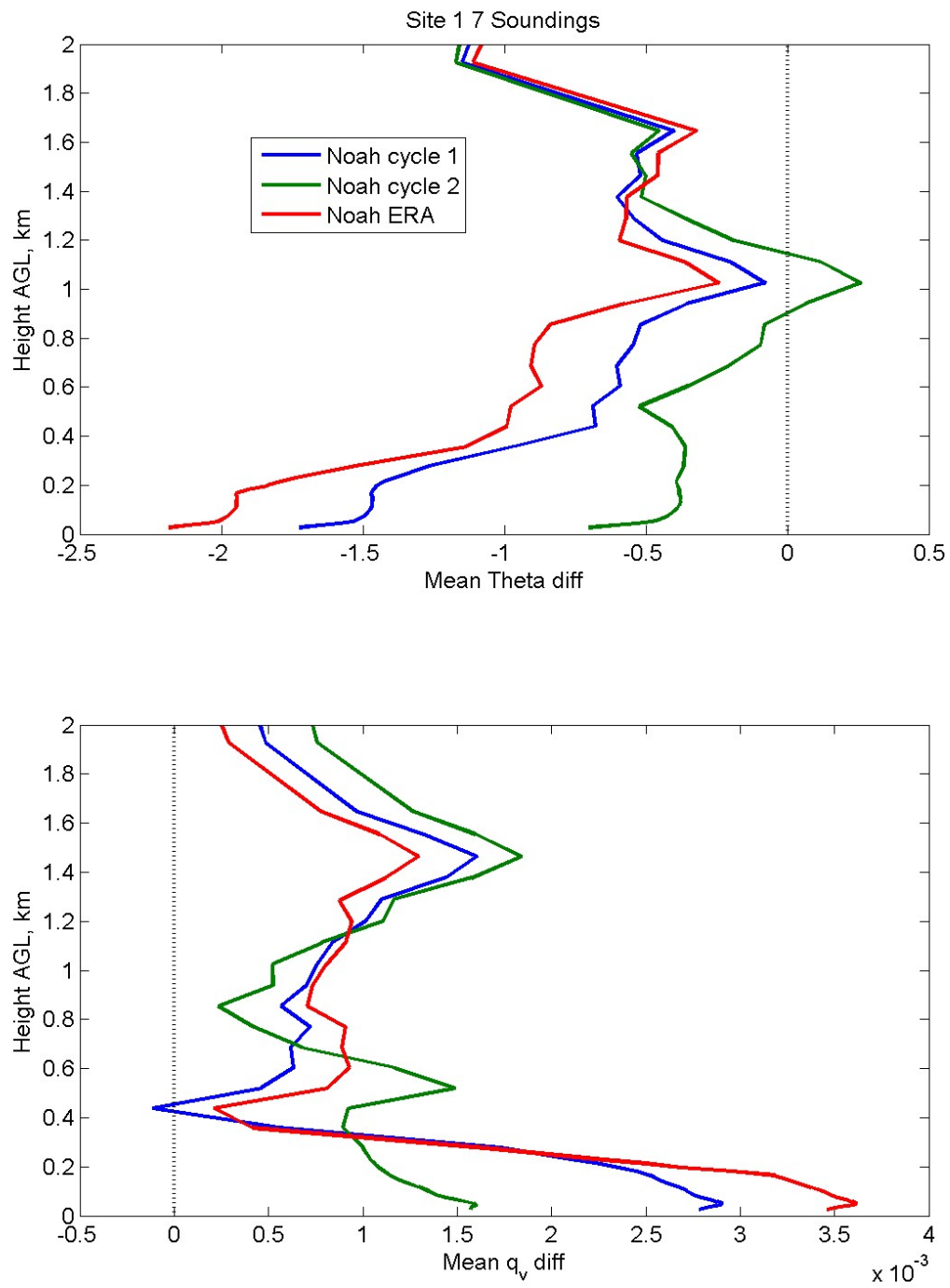
15 Santanello, J. A., Kumar, S. V., Peters-Lidard, C. D., Harrison, K., and Zhou, S.: Impact of  
16 Land Model Calibration on Coupled Land-Atmosphere Prediction, *Journal of*  
17 *Hydrometeorology*, 14, 1373-1400, 10.1175/jhm-d-12-0127.1, 2013.

18 Shin, H., and Hong, S.-Y.: Intercomparison of Planetary Boundary-Layer Parametrizations in  
19 the WRF Model for a Single Day from CASES-99, *Boundary-Layer Meteorology*, 139, 261-  
20 281, 10.1007/s10546-010-9583-z, 2011.

21 Skamarock, W. C., Klemp, J. B., Dudhia, J., Gill, D. O., Barker, D. M., Duda, M. G., Huang,  
22 X.-Y., Wang, W., and Powers, J. G.: A description of the Advanced Research WRF version  
23 3, NCAR Technical Note TN-475, 113, 2008.

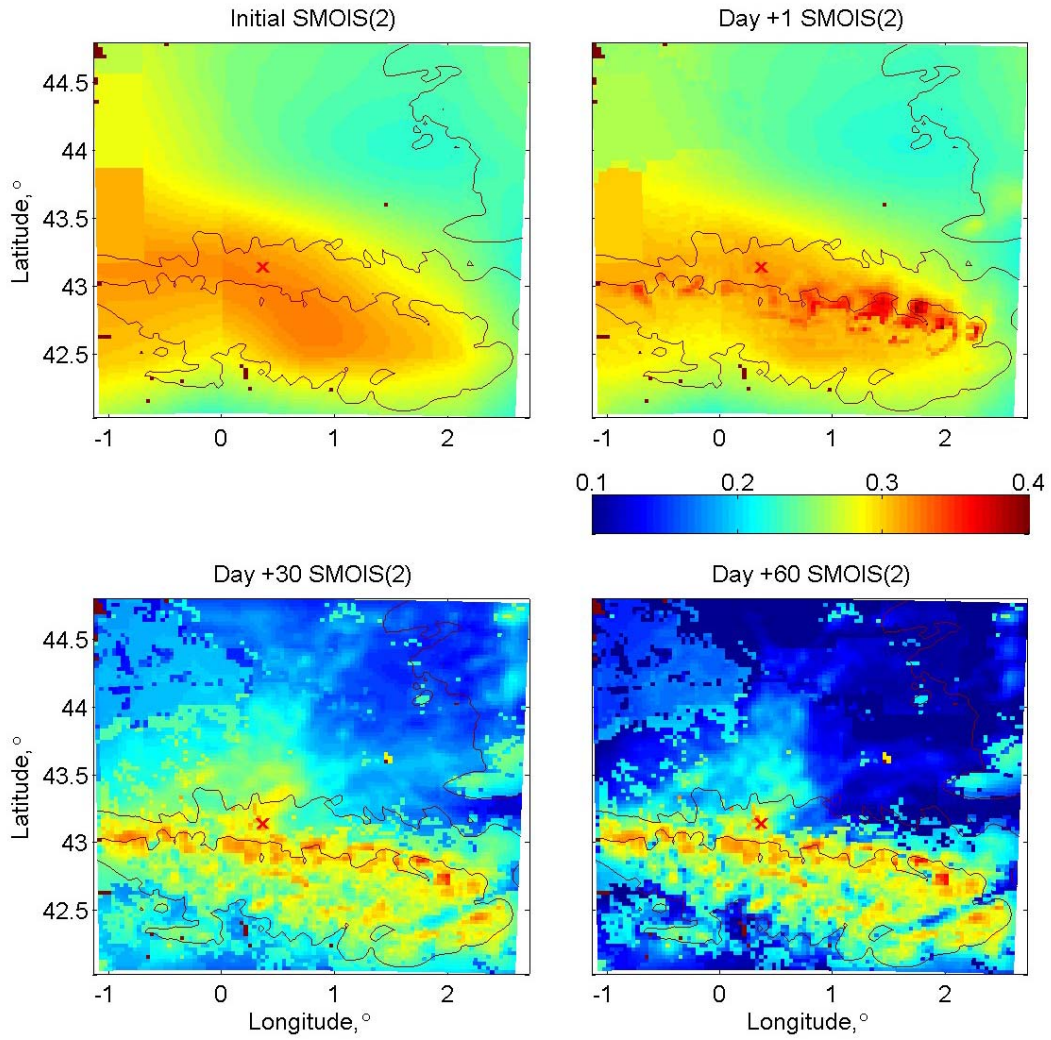
24 Yang, Y., Uddstrom, M., and Duncan, M.: Effects of short spin-up periods on soil moisture  
25 simulation and the causes over New Zealand, *J. Geophys. Res.*, 116, D24108,  
26 10.1029/2011JD016121, 2011.

27  
28  
29



1 Figure 1: Mean difference (model - measurement) of potential temperature (top) and specific  
2 humidity (bottom) for seven ~1700 UTC soundings (24,25,26,27,30 June, 1,2 July) at site 1.  
3 Model results are from the nearest grid point.

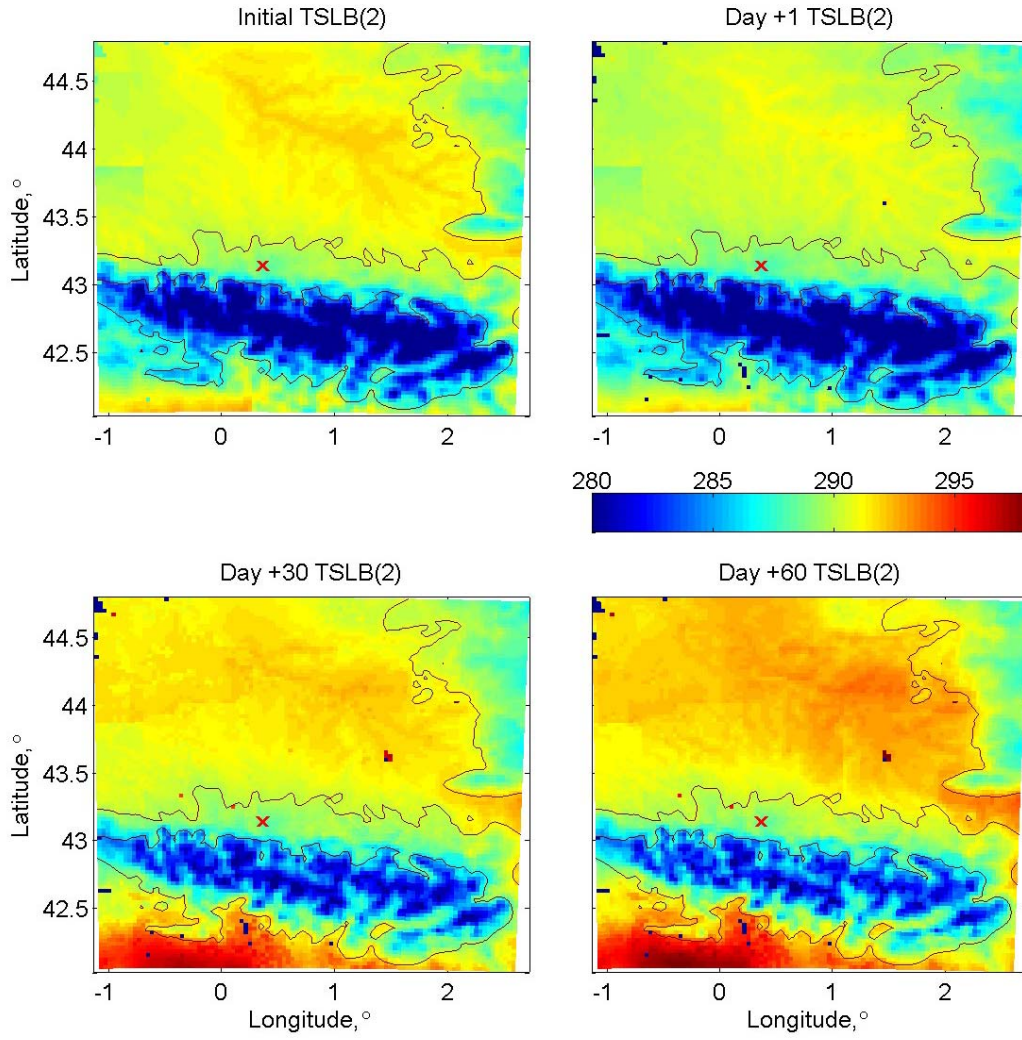
4



1

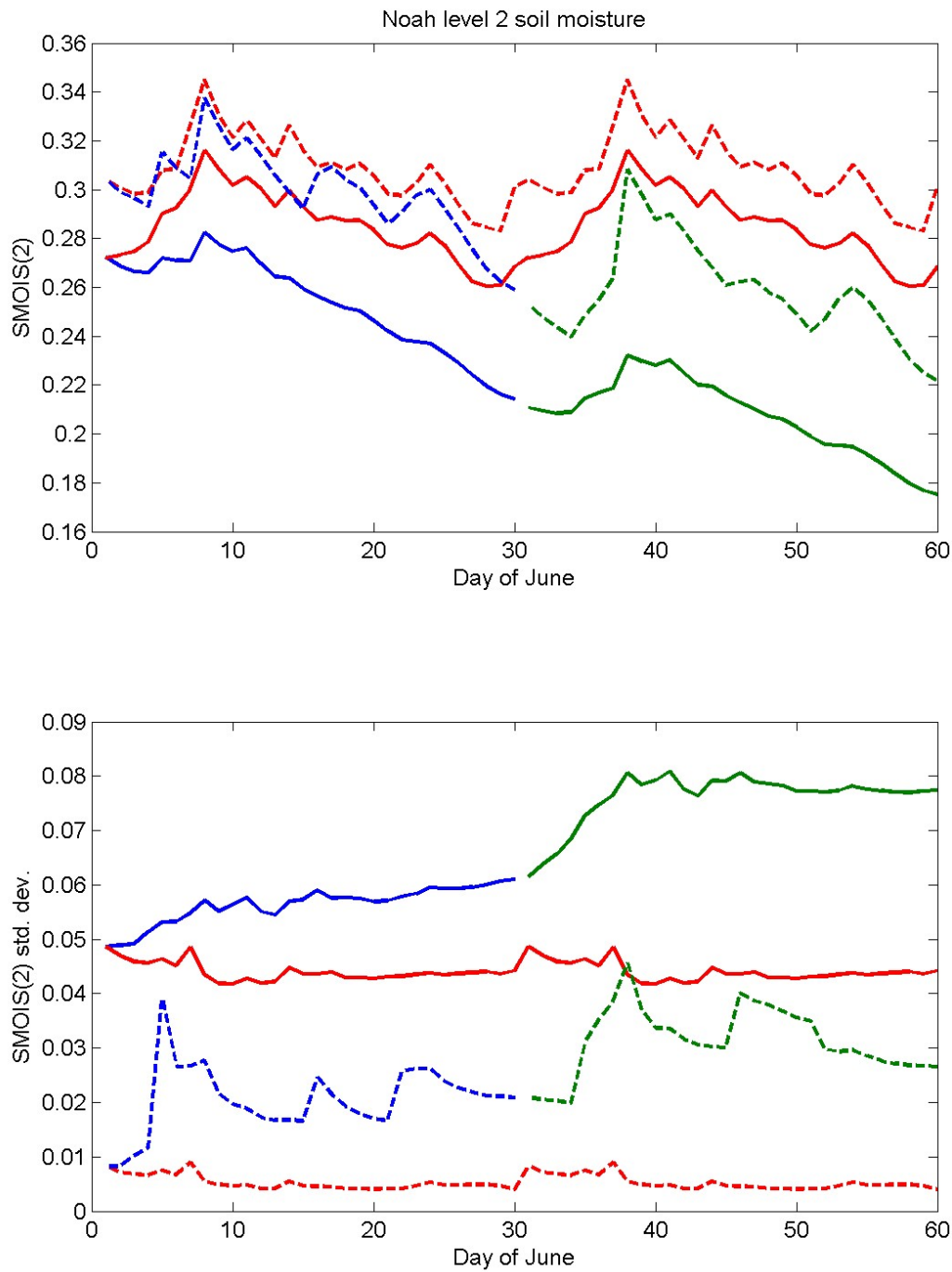
2 Figure 2: Soil moisture (dimensionless) in the second layer on the inner domain at different  
3 times in the cycling experiments. Initial time is 0000 UTC 1 June 2011. The red x is the  
4 Lannemezan measurement site. Elevation contours at 200 and 1000 m ASL are plotted.

5



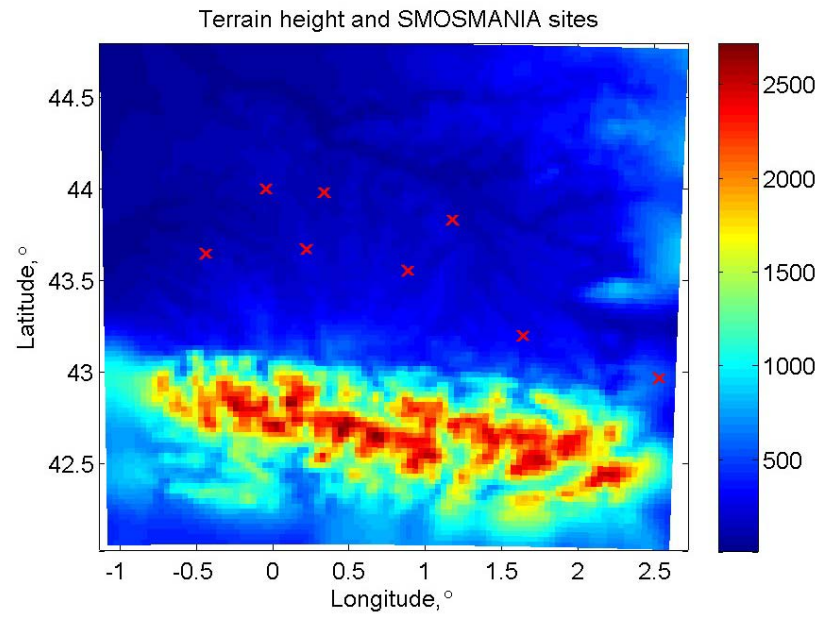
1 Figure 3: Soil temperature (K) in the second layer on the inner domain at different times in  
2 the cycling experiments. Initial time is 0000 UTC 1 June 2011. The red x is the Lannemezan  
3 measurement site. Elevation contours are plotted at 200 and 1000 m ASL.  
4





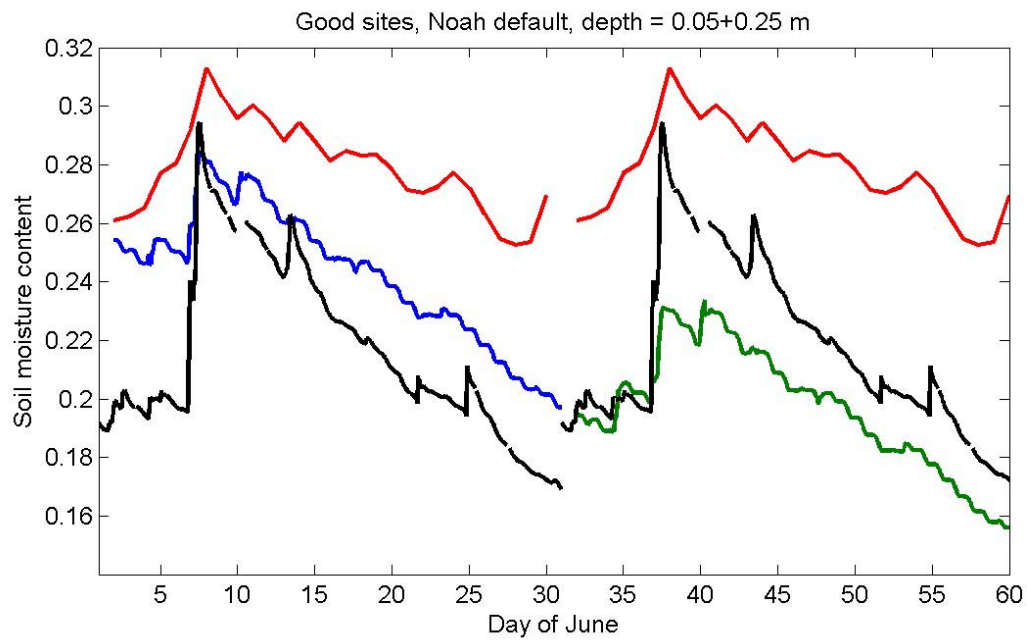
1 Figure 4: Soil moisture mean (top) and spatial standard deviation (bottom) during June 2011.  
2 Each day of June appears twice on the horizontal axis to show the evolution through two  
3 cycles. Color scheme: Red = ERA-Interim, blue = Noah cycle 1, green = Noah cycle 2.  
4 Solid lines are average over whole inner domain, dashed lines are average over 10x10 grid  
5 points extending northeast from the experiment site.  
6

1

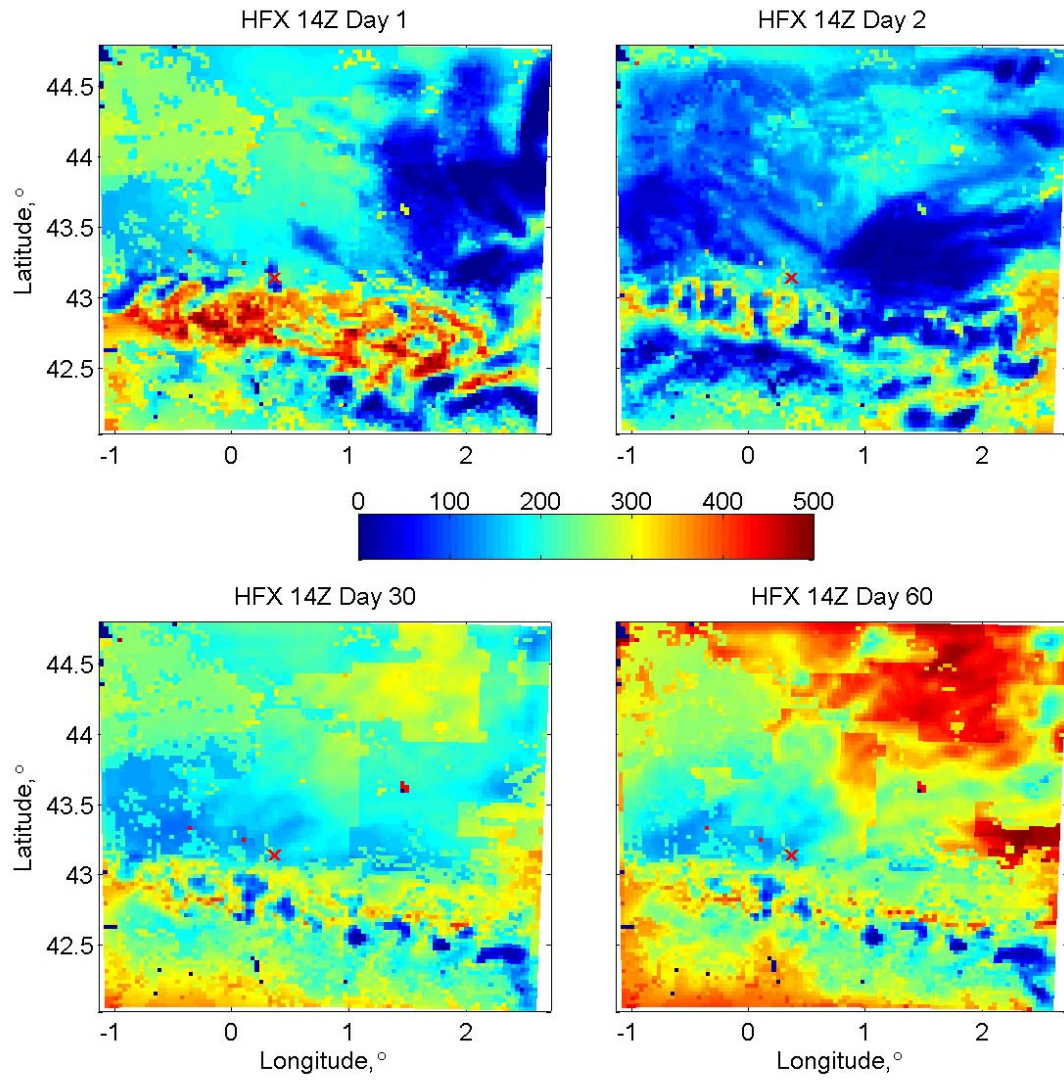


2 Figure 5: Terrain height on inner WRF domain with the eight SMOSMANIA sites used in  
3 figure 6 plotted as red X marks. Colorbar shows the terrain height scale in m ASL.

4

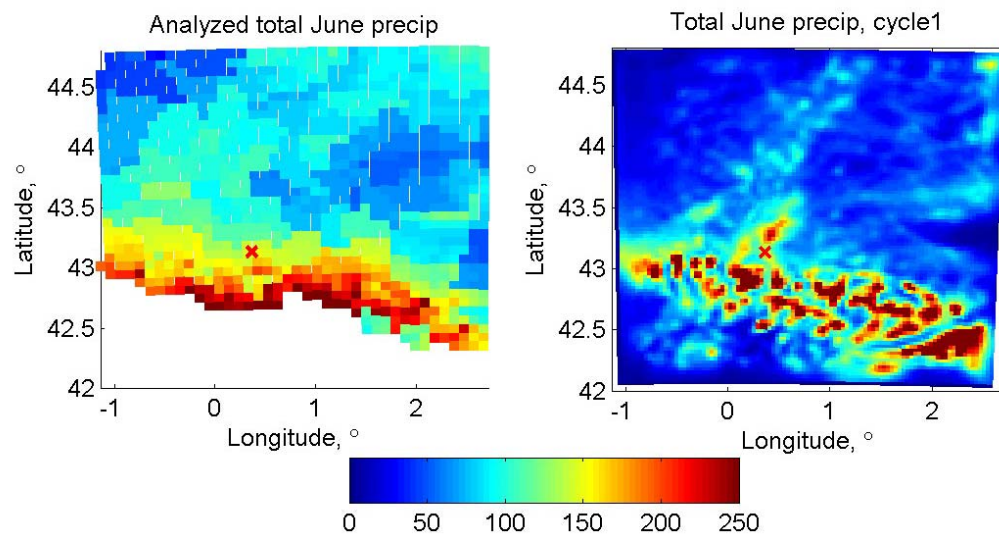


1 Figure 6: Average soil moisture for eight sites in the SMOSMANIA network. Each day of  
 2 June appears twice on the horizontal axis to show the evolution through two cycles. Color  
 3 scheme: Black = observations, red = ERA-Interim, blue = Noah cycle 1, green = Noah cycle  
 4 2.  
 5



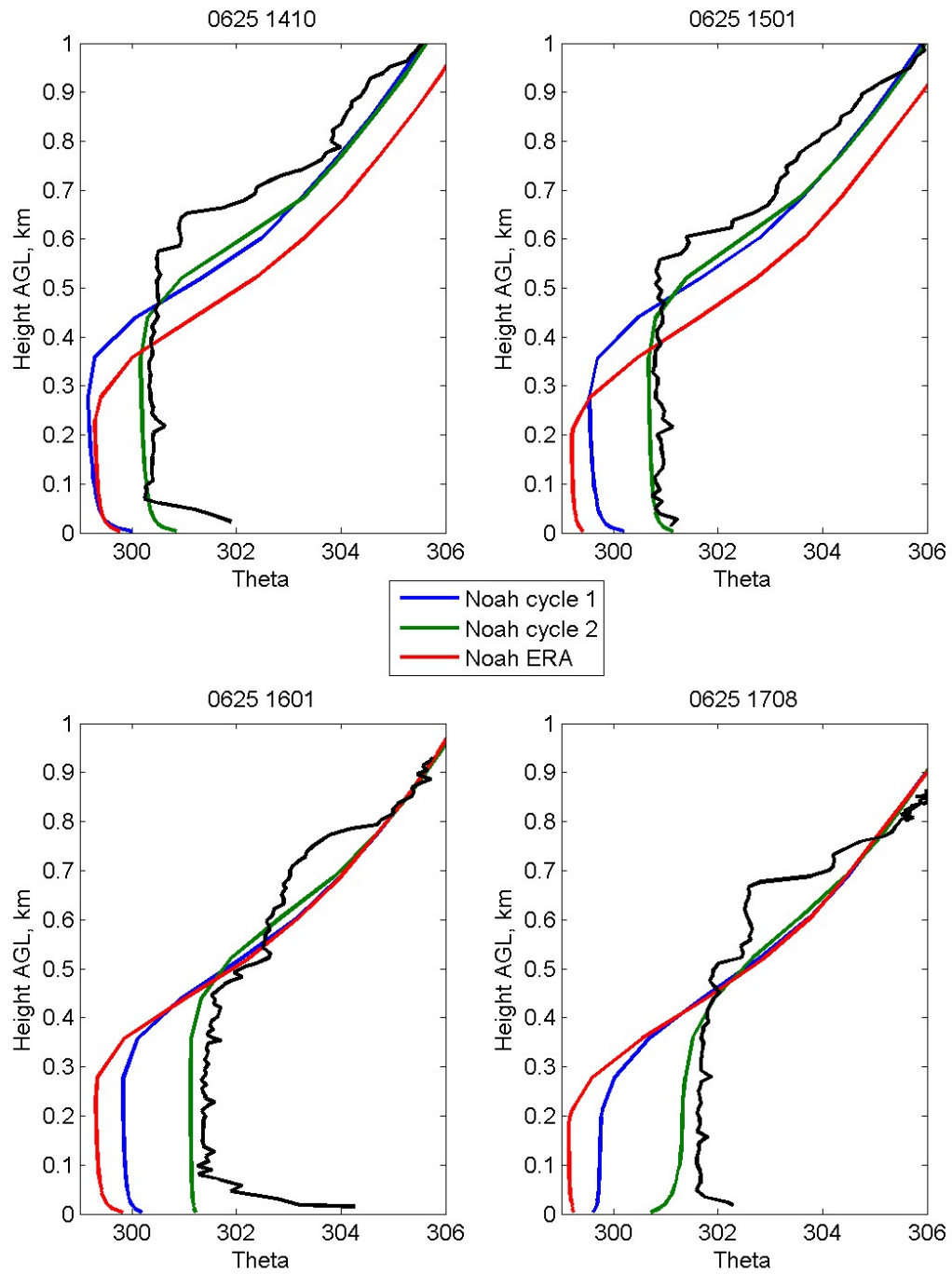
1 Figure 7: Sensible heat flux ( $\text{W m}^{-2}$ ) on the inner domain for the cycling experiments with  
2 Noah LSM. Plots are shown at 1400 UTC on the same days as in figure 2.  
3

1



2 Figure 8: Analyzed (left) and modeled precipitation total (mm) for the month of June in the  
3 first cycle.

4



1 Figure 9: Potential temperature profiles observed by four frequent soundings at BLLAST site  
 2 2 on 25 June 2011 (black) and simulations as shown in the legend. Model results are from  
 3 the nearest grid point.