



Supplement of

Direct measurements of near-highway emissions in a high diesel environment

H. L. DeWitt et al.

Correspondence to: H. L. DeWitt (helen-langley.dewitt@univ-amu.fr) and N. Marchand (nicolas.marchand@univ-amu.fr)

Supplementary Graphs

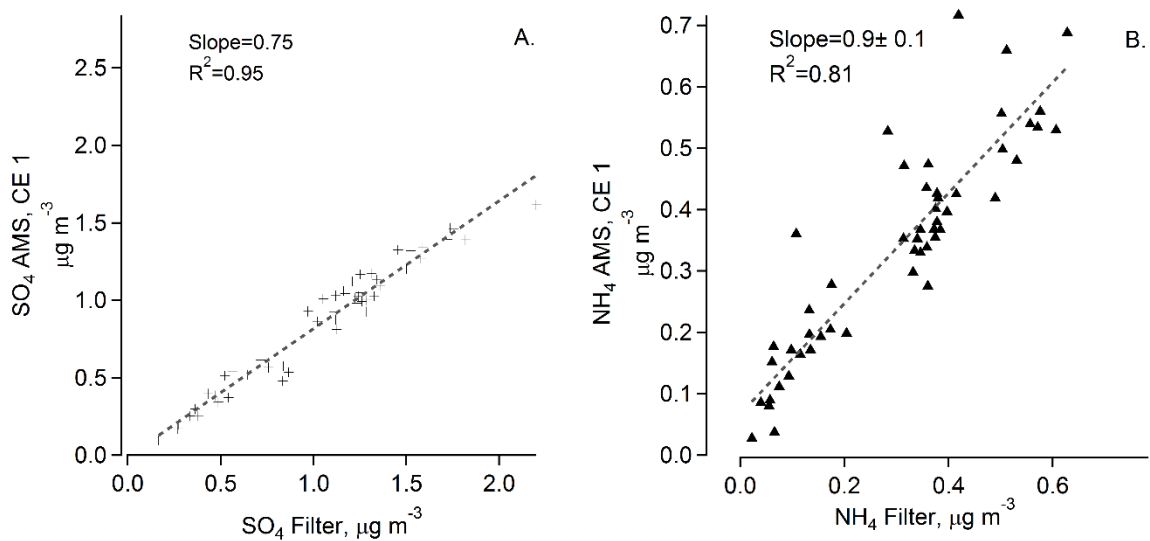


Figure S1: Comparison of filter data to AMS data

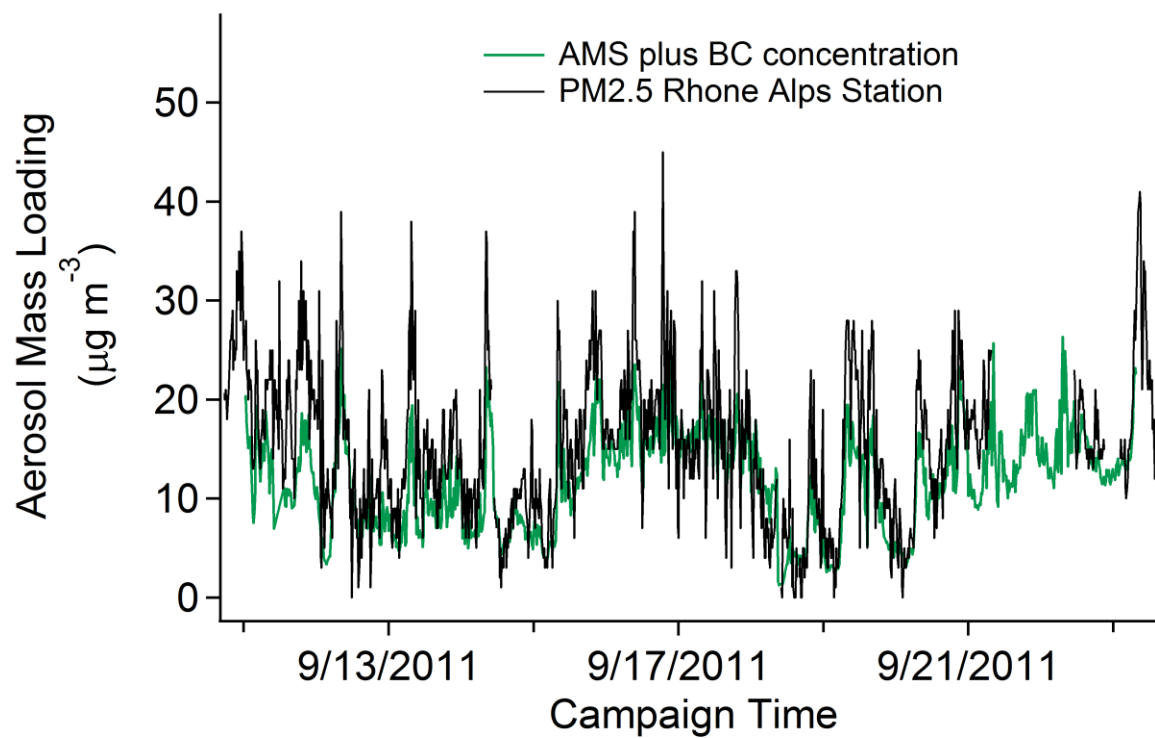


Figure S2: Rhone Alps PM2.5 data (black) time series compared to the AMS $\text{SO}_4+\text{NO}_3+\text{Org}+\text{NH}_4$ (CE=0.75) and MAAP BC data.

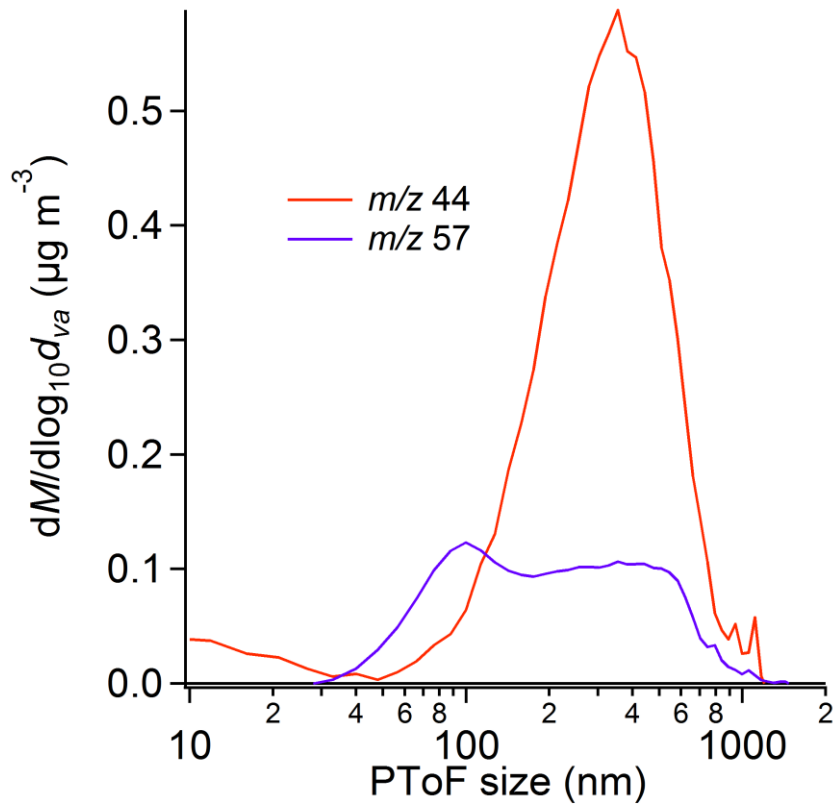


Figure S3: Campaign average of the pToF sizes for aerosol containing m/z 44 and m/z 57

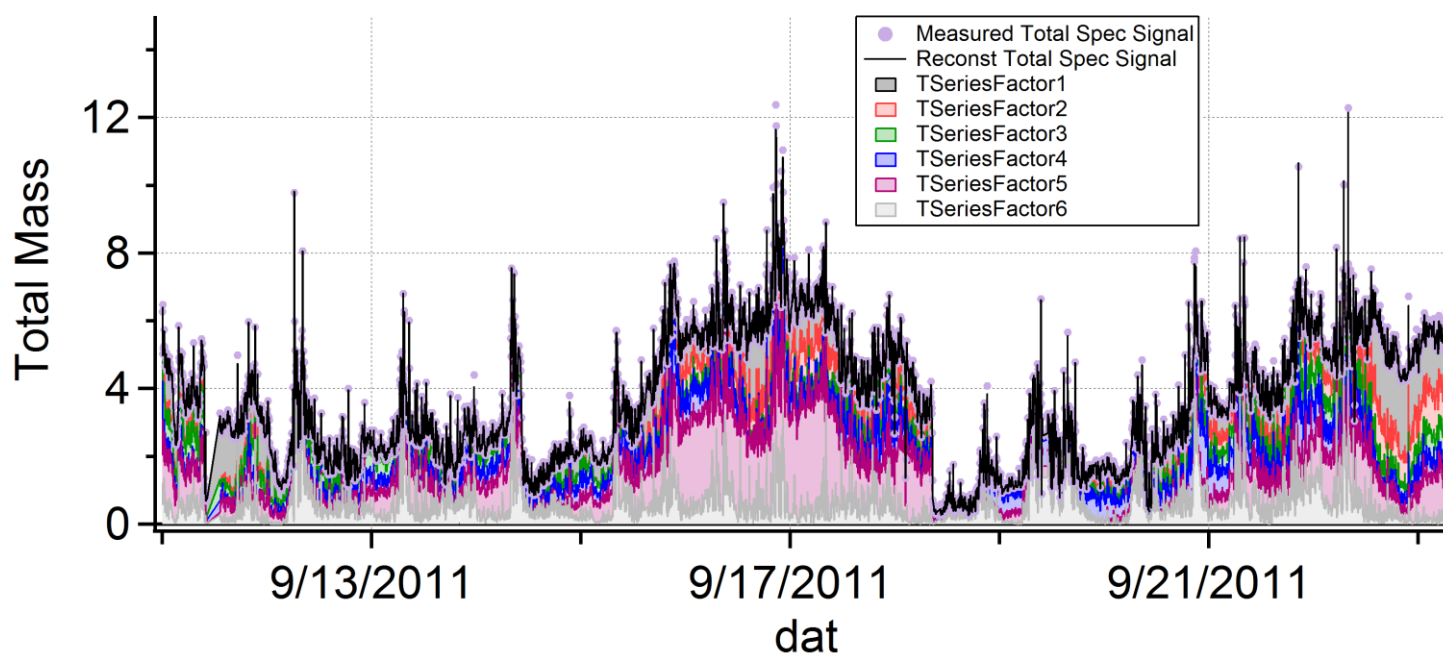


Figure S4:Tseries concentrations and total reconstructed signal for the six-factor PMF solution compared to the measured total signal (purple dots). Not CE corrected.

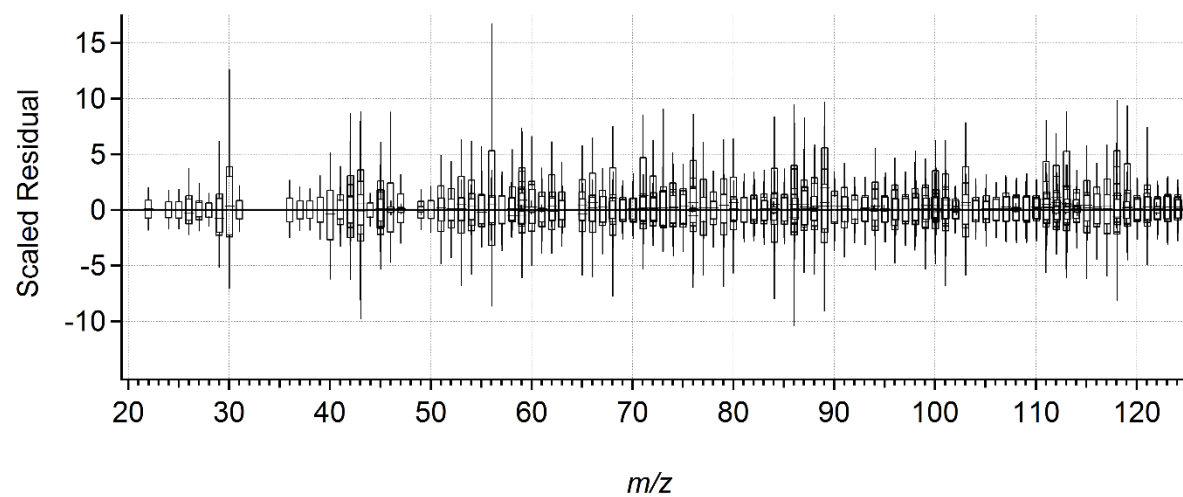


Figure S5: Scaled residuals for each high-resolution m/z input into the model for the six-factor PMF solution. Even distribution between positive and negative residuals.

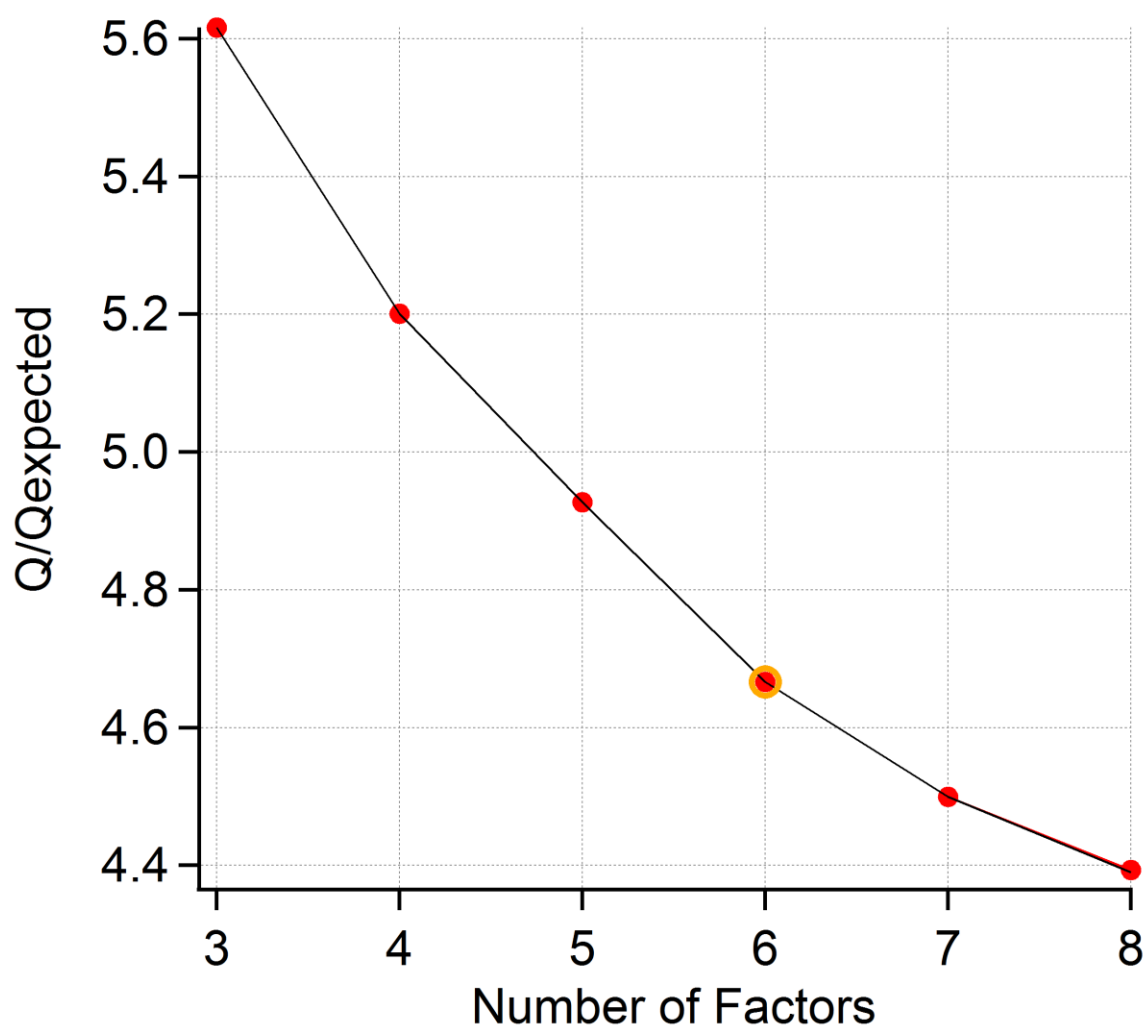


Figure S6: Q/Q_{expected} for 3-8 factor solutions.

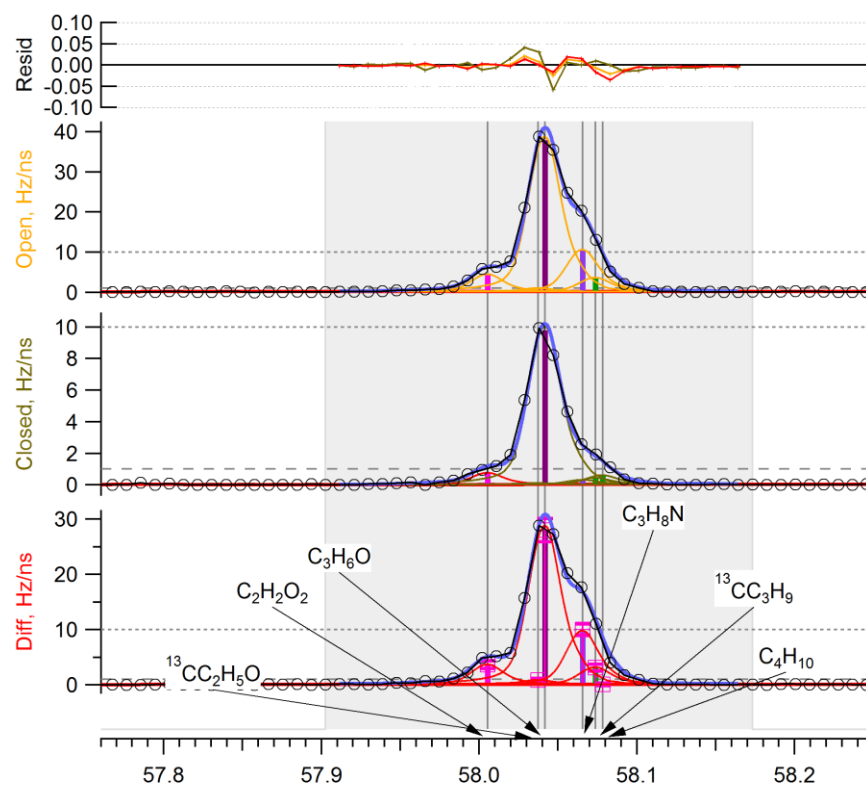


Figure S7: Nitrogen-containing organic peak fitting.

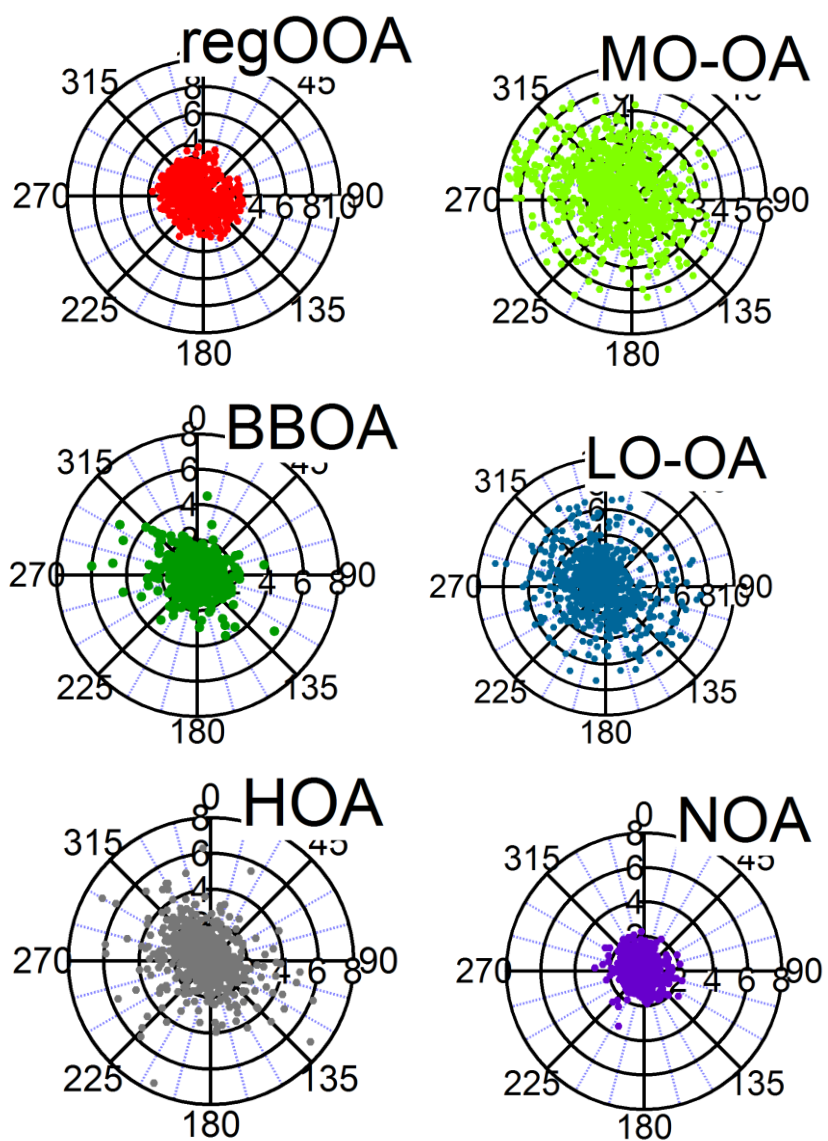


Figure S8: Polar graph plots of the six factor concentrations (radius, $\mu\text{g m}^{-3}$) and wind direction (angle, degrees).

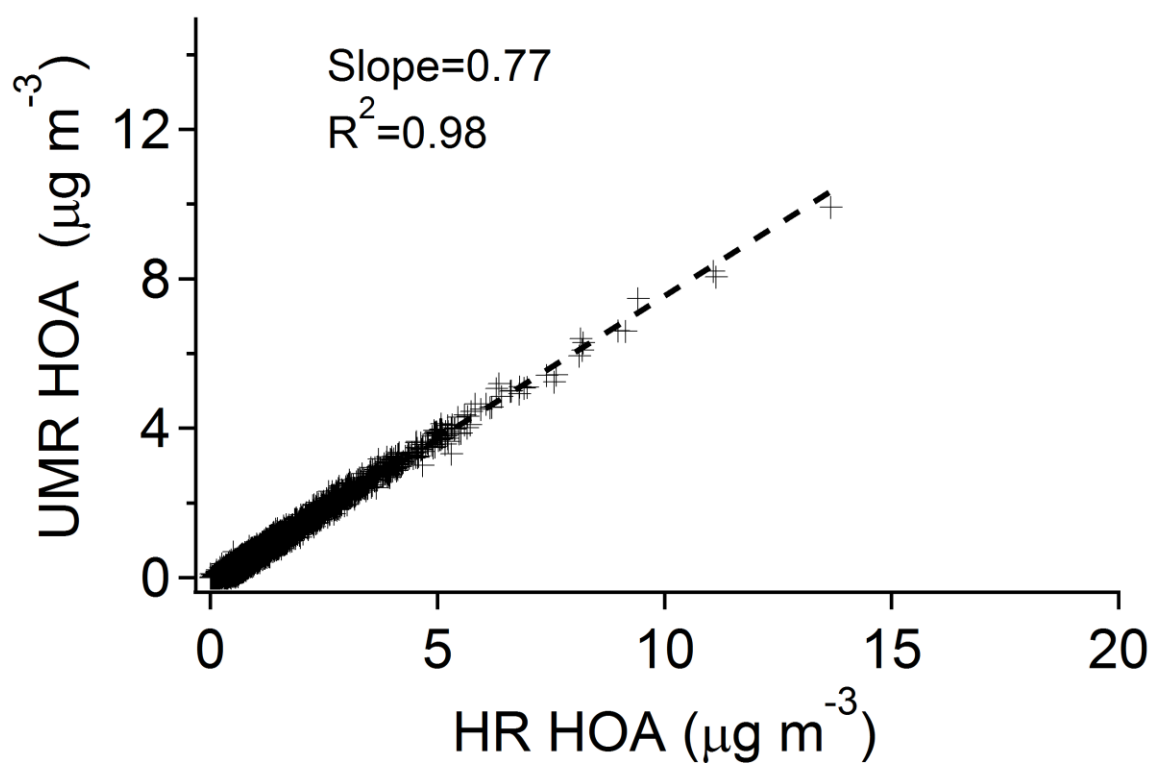


Figure S9: UMR HOA and HR HOA PMF factor time series concentration comparison. Not CE corrected.