



Supplement of

Total sulphate vs. sulphuric acid monomer in nucleation studies

K. Neitola et al.

Correspondence to: K. Neitola (kimmo.neitola@fmi.fi)

Supplementary material

1. Losses of sulphuric acid to particles

Losses of sulphuric acid to the particle phase were calculated using the DMPS measured number size distribution at the end of the flow tube. The total volume of the number size distribution was calculated and the particles were assumed to be composed of pure sulphuric acid. The assumption is the upper limit, as sulphuric acid is very hygroscopic and draws water from the humidified carrier gas and the contaminants from the carrier gas condense on the particles also. On the other hand, at the highest saturator temperature, the size distribution of the particles extends beyond the measurement range of the DMPS which causes the estimation of losses of sulphuric acid to the particles to be underestimated. This was the case when the temperature of the saturator was above 300 K.

Picture S1 presents the calculated losses of sulphuric acid to the particles (open stars) calculated from two independent measurement sets as a function of saturator temperature for MARGA and CIMS measurements at RH of 30 %. Also, gas phase monomer concentration measured by CIMS (red filled circles), the sum of gas phase monomer and losses to the particles (red triangles), total sulphate concentration measured by MARGA (blue triangles) and predicted sulphuric acid concentration by Eq. (1) (black solid line) are presented. The losses to the particle phase agree well between the two data sets (MARGA and CIMS) and overlap when the data sets have same saturator temperatures. The sum of gas phase monomer and the losses to the particle phase is one to two orders of magnitude lower than the prediction by Eq. (1) or the measured total sulphate measured with MARGA. The sulphuric acid undetected by mass spectrometers is not in the larger particles, as the figure S1 shows. We assume it to be hidden in small clusters that are below the detection limit of particle counters and are either unidentified from the mass spectra of CI-APi-TOF, or the sulphuric acid is bound to some base molecules in a configuration which prevents the ionization mechanism to work in the CI-inlet.

2. The inlet design

Figure S2 is a schematic figure of the saturator test's sampling line arrangement. Outlet of the saturator is a SS-tube (I.D. 4mm, length 6 cm) connected to the mixer part. Mixer part is made of SS-tubes (I.D. 10 mm, length between T-parts is 10 cm). Mixing flow enters the mixer by surrounding the flow from saturator. After the outlet of saturator ends, there is turbulent mixing before the flow is divided to the instruments and excess flow. Different configurations were tested (i.e. CIMS with the flow going straight from the mixer, CI-APi-TOF behind the 90 degree angle) but the difference was well within the uncertainty of the instruments.

3. Effect of different carrier gases on the measured sulphuric acid concentration

Separate experiments were done to make sure that the contaminant levels of the carrier gas (pressurized air) is not the cause of the discrepancy between CIMS measured monomer concentration and the total sulphate concentration. Three different purity carrier gases were used: purified, particle free pressurized air; nitrogen (5.0) and nitrogen (6.0). The N₂ (5.0) was taken from two sources; from a cylinder and from a liquid N₂ source. The purity is the same (5.0, i.e. 99.999 %)

but the relative amount of different contaminants might differ. The carrier gas experiments were conducted with the same setup as presented in Figure 1 in the manuscript.

Two separate purity sulphuric acid was used inside the saturator (100 % and 97 % wt.). The 100 % sulphuric acid is so called fuming sulphuric acid, as it acts as a source of SO_3 , which might react with water to produce sulphuric acid. This would cause the measured sulphuric acid monomer concentration to be higher with H_2SO_4 -purity of 100 % than with 97%. As the measurements were conducted in dry conditions (i.e. no added water vapour), the water originates from the carrier gas (N_2 (5.0) < 3 ppm, N_2 (6.0) < 0.5 ppm) and it is expected to react with the SO_3 that will produce sulphuric acid inside the saturator.

Sulphuric acid monomer concentration was measured using CI-APi-TOF. The monomer concentration was averaged over the time each saturator temperature was constant, as defined in the manuscript. The normalized monomer concentration as a function of saturator temperature for three different carrier gases and two sulphuric acid purities are presented in figure S3. The mixing and saturator flow rates are the same carrier gas. The values are normalized to the maximum value of monomer concentration for each of mixing flow rate. This was done to be able to compare the results from each of the H_2SO_4 -purity experiments, as the mixing flow rates were different. The flow rate through the saturator was 0.5 lpm throughout the experiment. It is evident from the figure that carrier gas purity, nor the sulphuric acid purity does not affect the measured monomer concentration, validating the original assumption of the SO_3 conversion already inside the saturator. The monomer concentration increases as a function of saturator temperature exponentially as expected. The difference between carrier gas purity (N_2 5.0 and 6.0) and between carrier gases (pressurized air and N_2) are small and well within the uncertainty of CI-APi-TOF (factor of two). Due to the high inlet flow rate of the CI-APi-TOF (10 lpm) only three points were measured for N_2 (6.0), as the bottled gas was consumed very fast. The data sets in figure S3 clearly demonstrate that the purity of the pressurized air does not affect the measured monomer values.

4. Saturator flow rate tests

A saturator flow rate test was done using different carrier gases. The CI-APi-TOF measured sulphuric acid monomer concentrations as a function of the saturator flow rate was compared to the predictions by Eq. (1) (black, solid line with $T_{sat} = 283$ K and grey, starred line with $T_{sat} = 293$ K) using different carrier gases (blue, red and black squares for pressurized air, N_2 5.0 and 6.0, respectively) at two different saturator temperatures (Fig. S4). The mixing flow rates were slightly different for the two temperatures (15.2 and 15.3 lpm for $T_{sat} = 283$ K and $T_{sat} = 293$ K, respectively). Only nitrogen (6.0, grey stars) was used for saturator temperature 293 K. 100 % sulphuric acid was used in this experiment. The measured monomer concentration was one to two orders of magnitude lower than the predicted values throughout the saturator flow rate range for both saturator temperatures. No difference between the carrier gases was observed and the measured points coincide at similar saturator temperatures.

Another flow rate experiment was conducted using 97 % sulphuric acid and CI-APi-TOF to investigate if different carrier gases affect the ratio between monomer, dimer and trimer, as it is suggested that the ratio depends on the contaminant concentration (Petäjä et al., 2011; Jen et al., 2014). Measured monomer, dimer and trimer concentrations were compared to each other and to the

predicted sulphuric acid concentration from Eq. (1) using three carrier gases (pressurized air, liquid N₂ 5.0 and bottled N₂ 6.0) at the saturator temperature of approximately 288 K (Fig. S5). The points in figure S5 are color coded for carrier gases and different shapes present monomer, dimer and trimer concentrations: black is N₂ (6.0), red is liquid N₂ (5.0) and blue is pressurized air, squares are monomer, triangles are dimer and stars are trimer concentrations. Experiment was started with the most pure carrier gas and then moving to the less pure one (i.e. N₂ 6.0 first, liquid N₂ 5.0 second and pressurized air third) to make sure that impurities from other carrier gases would not affect the measurements. Due to this order, the measured sulphuric acid concentration at the lowest two flow rates with N₂ (6.0) are lower than with the other carrier gases, as the measurement setup and lines were cleaned before the experiment and the walls were not yet saturated with sulphuric acid. The y-axis is limited to $5 \cdot 10^4 \text{ cm}^{-3}$, which is considered the lower detection limit of the CI-APi-TOF. The ratios of measured monomer to dimer, monomer to trimer or dimer to trimer concentration remain constant throughout the saturator flow rate range with all carrier gases and are constant even when comparing between carrier gases. This result clearly supports our conclusion that the discrepancy between the sulphuric acid concentrations measured with mass spectrometers and the total sulphate measured with MARGA is not dependent on the carrier gas.

5. The influence of mixing flow rate

The influence of the mixing flow rate was tested using N₂ (6.0). The mixing flow rate Q_{mix} was changed from 10 lpm to 16.8 lpm and the sulphuric acid monomer was measured using the CI-APi-TOF and compared to the prediction from Eq. (1) at the saturator temperature of 283 K. The saturator flow rate was 0.5 lpm. The ratio of maximum and minimum measured value was 1.73, compared to the ratio of the mixing flow rates of 1.68 shows that the only influence of the mixing flow rate is dilution, as expected.

6. Mass spectra from CI-APi-TOF and correlation to H₂SO₄ monomer concentration

The measurements with different carrier gases as a function of saturator temperature were further investigated to find out where the sulphuric acid was “hidden”. Each saturator temperature (278 K, 288 K, 298 K and 308 K) for the three carrier gases (pressurized air, liquid N₂, 5.0 and N₂, 6.0) were separated and the signals in the mass spectra of CI-APi-TOF were averaged over the time when the system was in steady state (i.e. measured monomer concentration was constant). The signals were averaged to nearest unit mass-to-charge (i.e. stick masses). The signals below 500 Th mass-to-charge (m/Q) were then correlated to 97 Th (HSO₄⁻), which is signal from sulphuric acid monomer alone (Figs. S6 to S8). In the figures S6 to S8, the left top panel is the coldest saturator temperature 278 K, right top panel 288 K, left lower panel 298 K and the right lower panel 308 K. The bottled nitrogen (6.0) ran out before the highest saturator temperature, so there are only three panels in figure S8. The number of correlating (and anti-correlating) peaks increases as a function of the increasing saturator temperature with all three carrier gases and the number of these peaks are similar with all carrier gases in similar temperatures. The correlating peaks (m/Q)-position differ between carrier gases suggesting different contaminants in the carrier gases. Figures S6 to S8 show that the sulphuric acid is distributed to a wide range of cluster configurations, which are not used in calculating the monomer, dimer or trimer concentrations. Unfortunately calculating the actual concentration of the sulphuric acid in these clusters is impossible as their charging efficiency (i.e.

calibration constant) and their chemical composition are unknown. This prevents summing the total sulphuric acid concentration even from the peaks that are correlating with 97 Th. The peaks in figures S6 to S8 are only those below 500 Th and showing relatively large (anti-) correlation with the HSO_4^- , but even identifying each of these peaks is a large task and it is not in the scope of this work. The actual mass spectrum of CI-APi-TOF contains even larger amount of signal peaks, as not all of the peaks (anti-) correlate with peak 97 Th. This is illustrated in figures S9 to S11, where one hour averaged spectra is presented first in a (m/Q)-range from 25 to 500 Th (S9) and then zoomed to range 300-500 Th (S10) and 400-500 Th (S11). N_2 (6.0) was used as carrier gas and the saturator temperature was 298 K. In figure S9 the peaks used for calculating the monomer, dimer and trimer concentration are named. When zooming to smaller mass-to-charge range, more and more peaks appear in to the spectrum. Here one must bear in mind that in figure S9 is only presented (m/Q)-ratio range from 25 to 500 but there are more, larger clusters beyond 500 Th, together with the fact that CI-inlet uses a selective charging mechanism, excluding large portion of possible cluster configurations from charging and hence, from detection.

References

- T. Petäjä, M. Sipilä, P. Paasonen, T. Nieminen, T. Kurtén, I. K. Ortega, F. Stratmann, H. Vehkamäki, T. Berndt and M. Kulmala: Experimental Observation of Strongly Bound Dimers of Sulfuric Acid: Application to Nucleation in the Atmosphere, *Phys. Rev. Lett.*, 106: 228302, 2011.
- C. N. Jen, P. H. McMurry and D. R. Hanson: Stabilization of Sulfuric Acid Dimers by Ammonia, Methylamine, Dimethylamine, and Trimethylamine, *J. of Geophys. Res. Atmos.*, accepted, 2014.

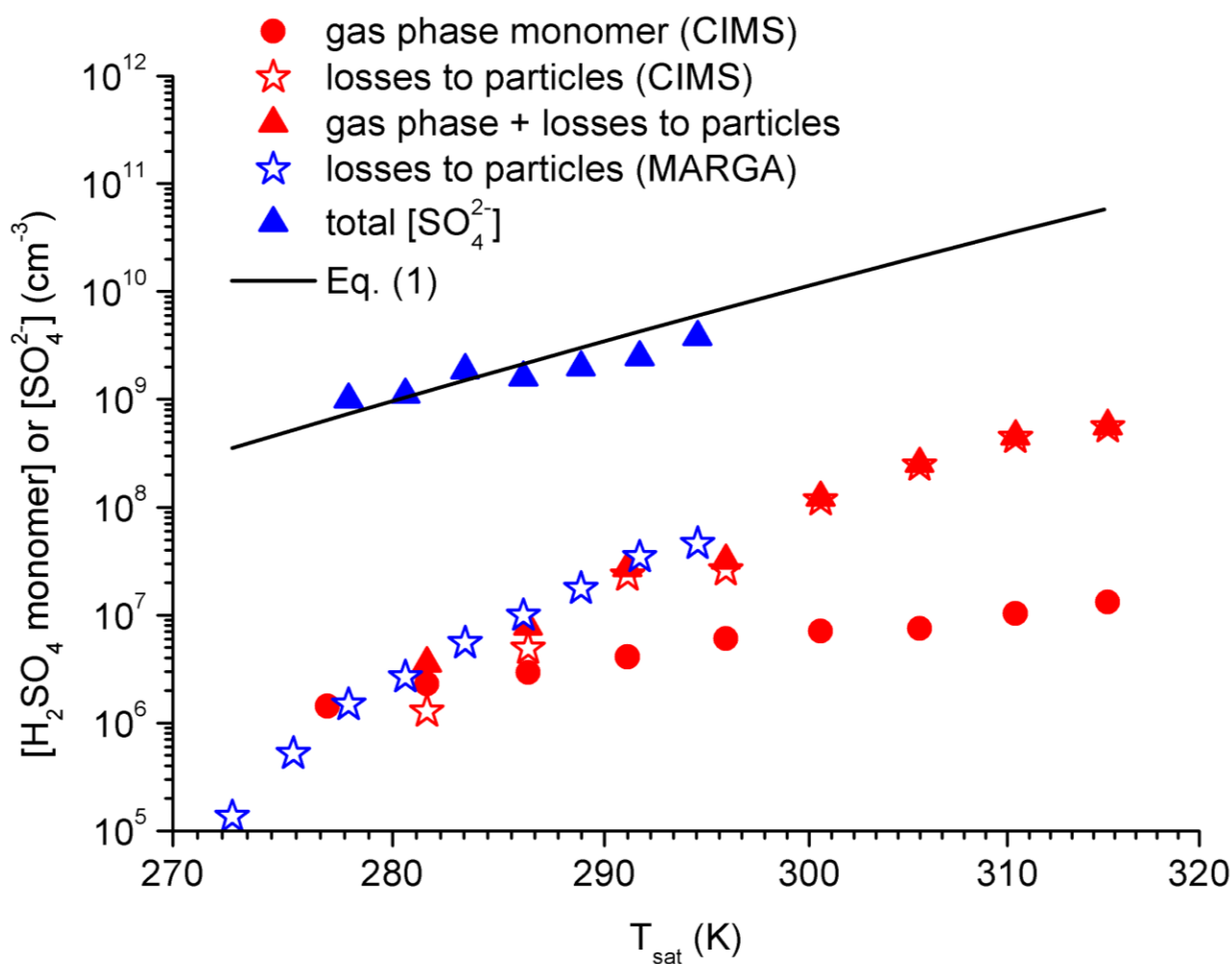


Figure S1. Calculated losses of sulphuric acid to the particles as a function of saturator temperature from two independent data sets for CIMS (open red stars) and MARGA (open blue stars) at RH of 30 % measured at the end of the flow chamber. Presented are also gas phase monomer concentration measured with CIMS (filled red circles), sum of gas phase monomer and losses to the particles (red triangles), total sulphate measured with MARGA (blue triangles) and predicted sulphuric acid concentration by Eq. (1) (black solid line), all as a function of saturator temperature.

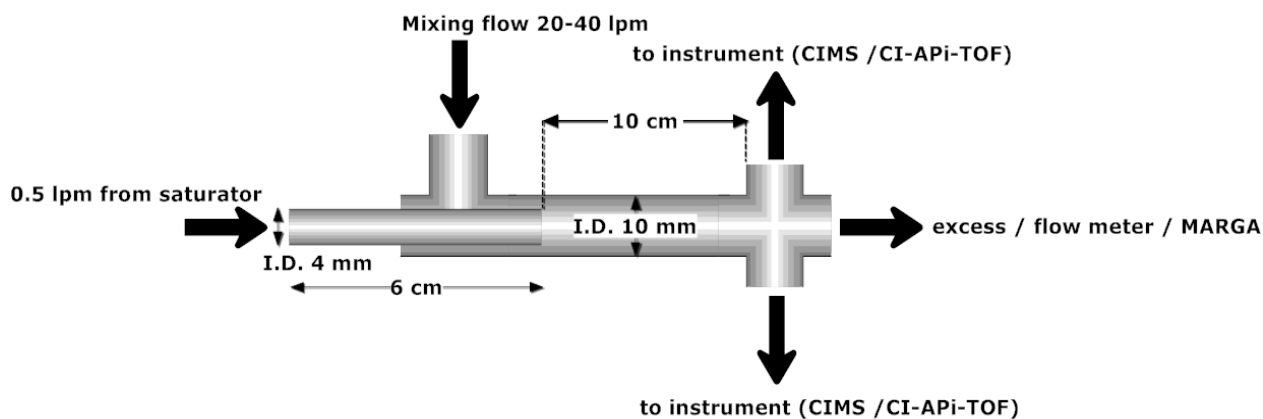


Figure S2. Inlet design for saturator tests. 0.5 lpm flow from the saturator is brought through a SS-tube (I.D. 4 mm, length 6 cm). Mixing flow (20-40 lpm) comes through an SS-tube (I.D. 10 mm). The I.D. 4 mm SS-tube ends 2 cm after the mixing flow T-part so that the mixing flow enters as sheath flow surrounding the I.D. 4 mm pipe (co-flow configuration). After the smaller pipe ends turbulent mixing takes place. Residence times between the T-parts are 12 ms and 24 ms for 20 lpm and 40 lpm mixing flows, respectively.

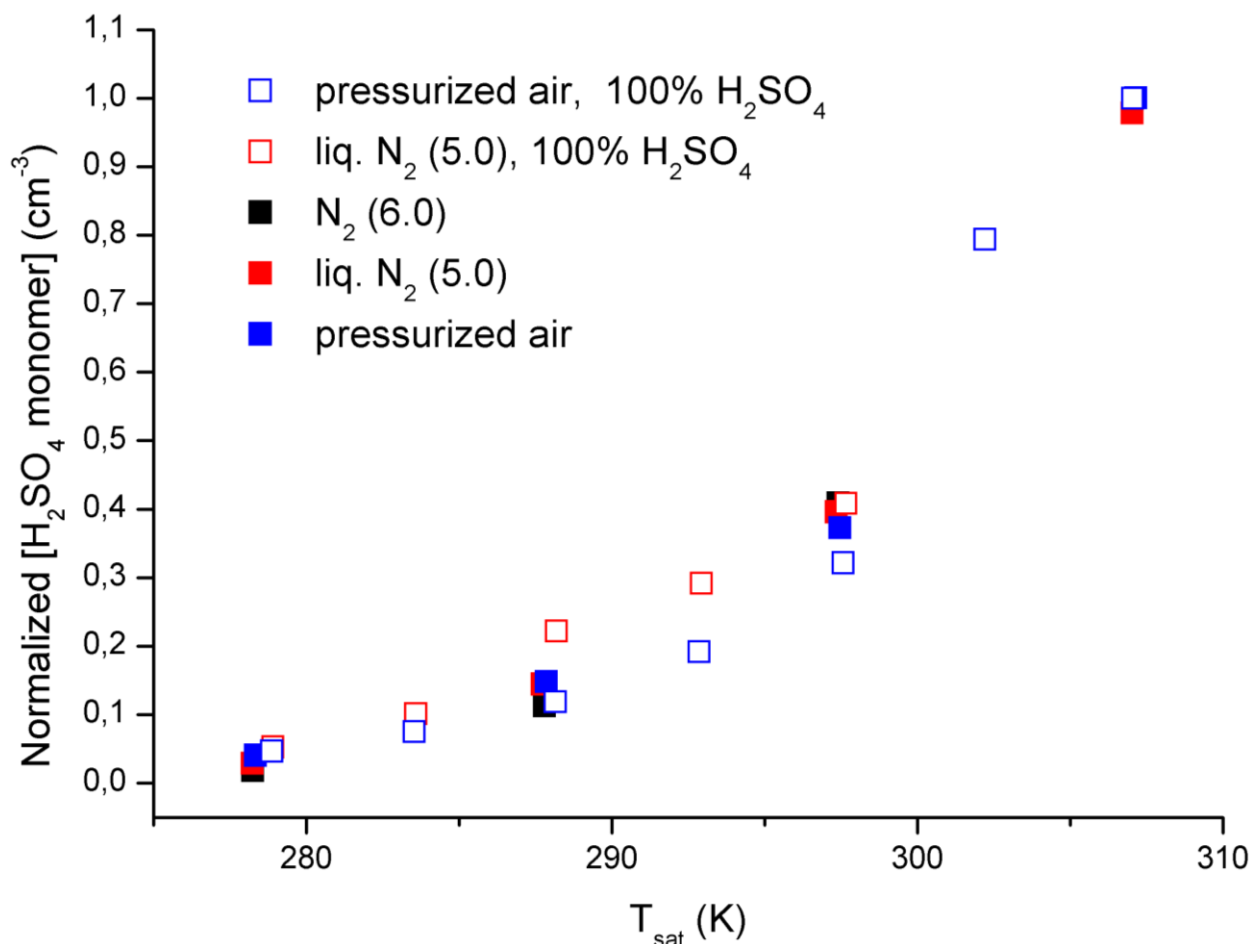


Figure S3. Normalized, averaged H_2SO_4 monomer concentration as a function of saturator temperature T_{sat} for three different carrier gases (pressurized air, N_2 , 5.0 and 6.0) and two sulphuric acid purity (100 % and 97 % wt.). Saturator flow rate was 0.5 lpm. Values are normalized to the maximum value of each mixing flow rate to make different experiments comparable.

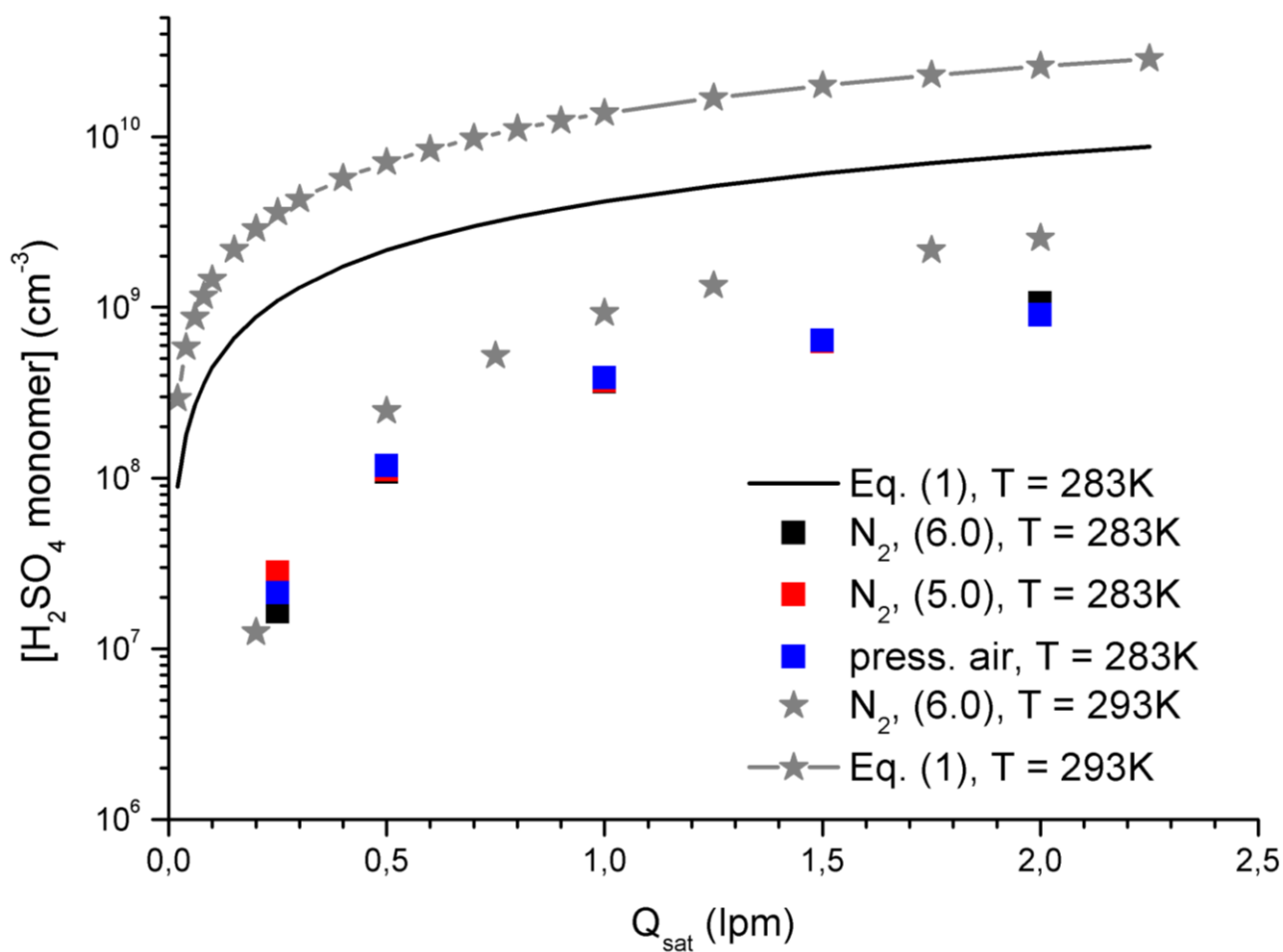


Figure S4. CI-APi-TOF measured H_2SO_4 monomer concentration as a function of saturator flow rate Q_{sat} compared to the predicted value from Eq. (1) for different carrier gases (pressurized air, N_2 5.0 and 6.0) at two saturator temperatures (283 K and 293 K). Only nitrogen (6.0) was used for saturator temperature of 293 K.

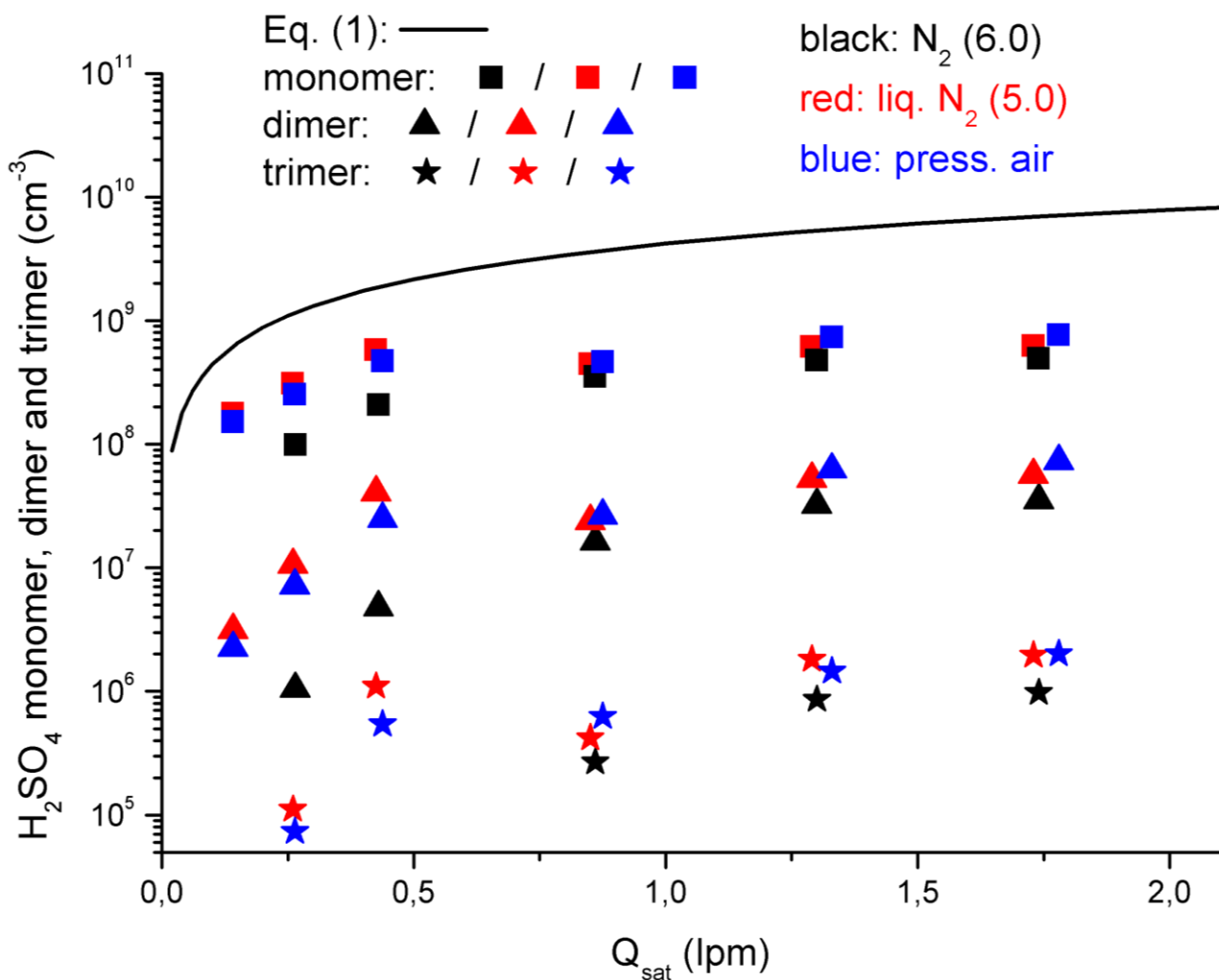


Figure S5. CI-APi-TOF measured H₂SO₄ monomer, dimer and trimer concentrations as a function of saturator flow rate Q_{sat} with three different carrier gases compared to the prediction from Eq. (1) at saturator temperature of 288 K. The first two points measured using N₂ (6.0) are lower than expected due to cleaned measurement lines, where the walls were not yet saturated. The y-axis is limited to $5 \cdot 10^4$ cm⁻³ which is considered to be the lower detection limit of the CI-APi-TOF.

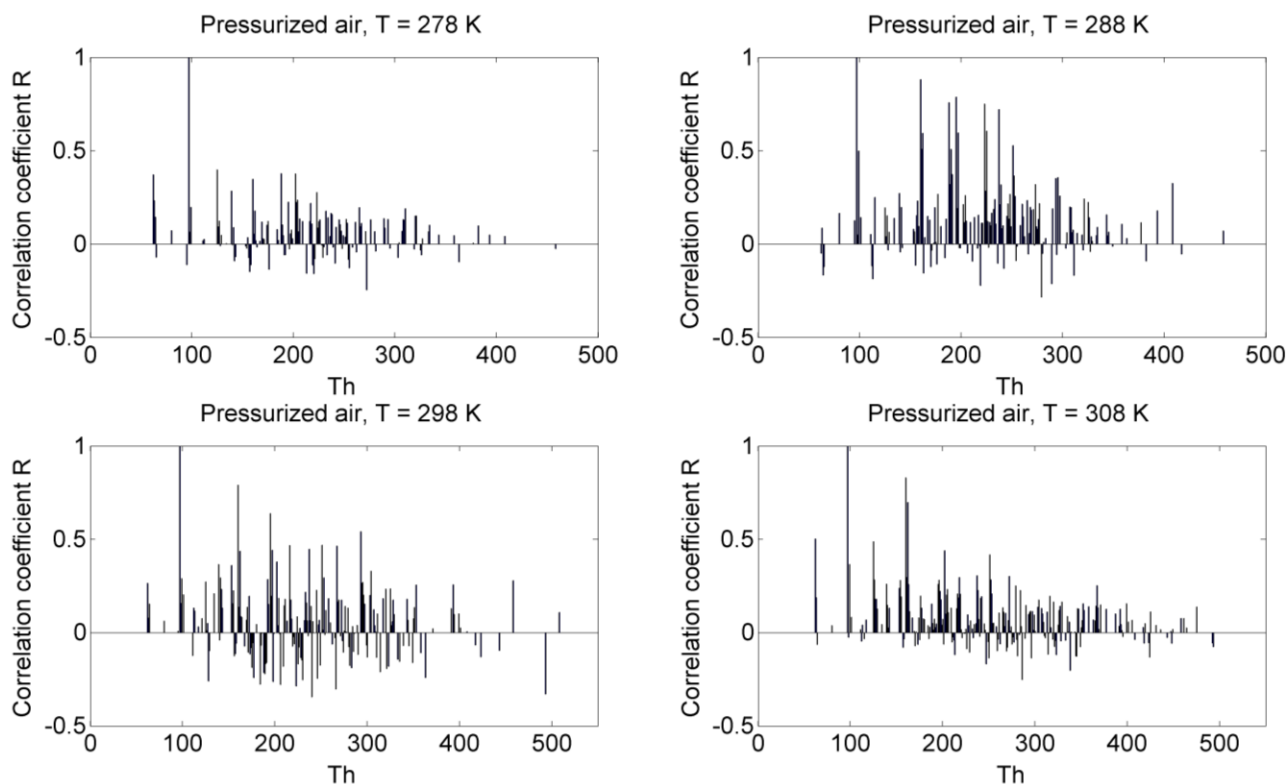


Figure S6. Correlation coefficient of stick masses below 500 Th to 97 Th (HSO_4^-) at four different saturator temperatures (278 K, 288 K, 298 K and 308 K) with pressurized air as a carrier gas.

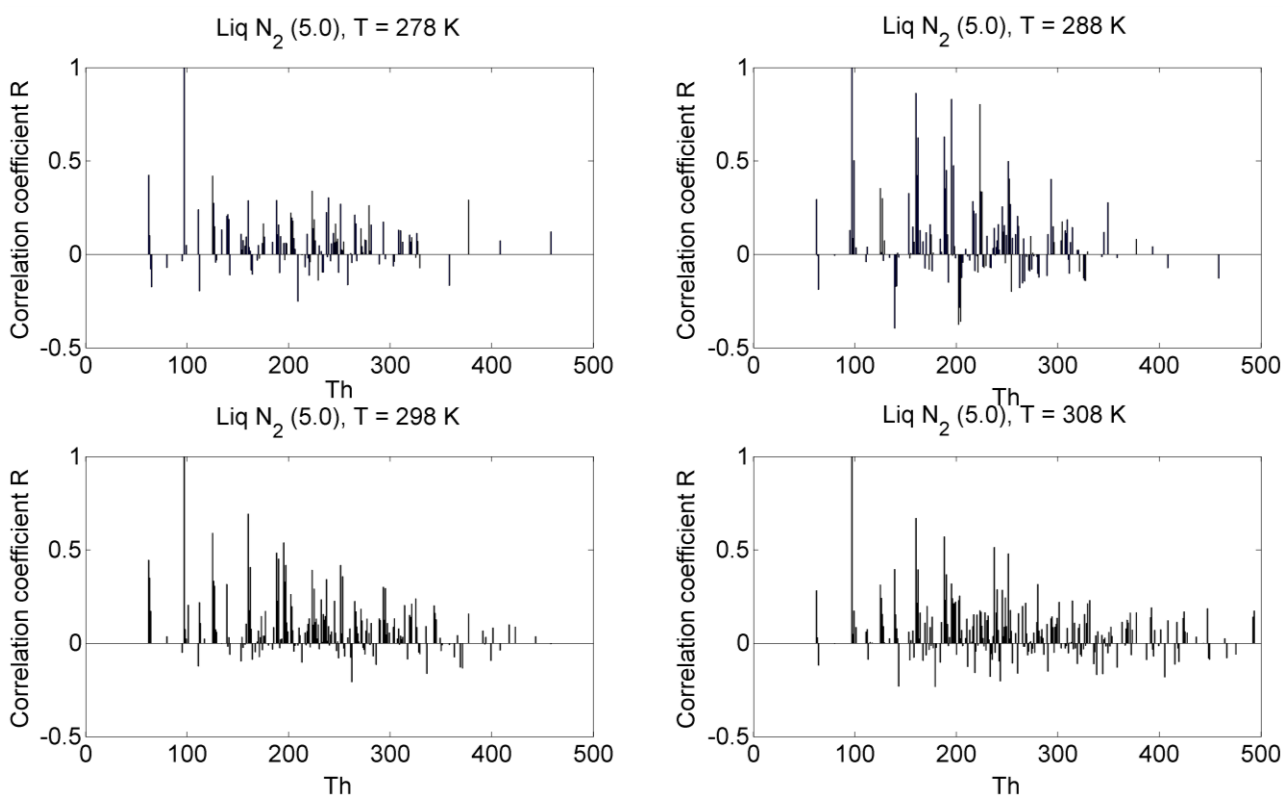


Figure S7. Correlation coefficient of stick masses below 500 Th to 97 Th (HSO_4^-) at four different saturator temperatures (278 K, 288 K, 298 K and 308 K) with N_2 (5.0) from liquid source as a carrier gas.

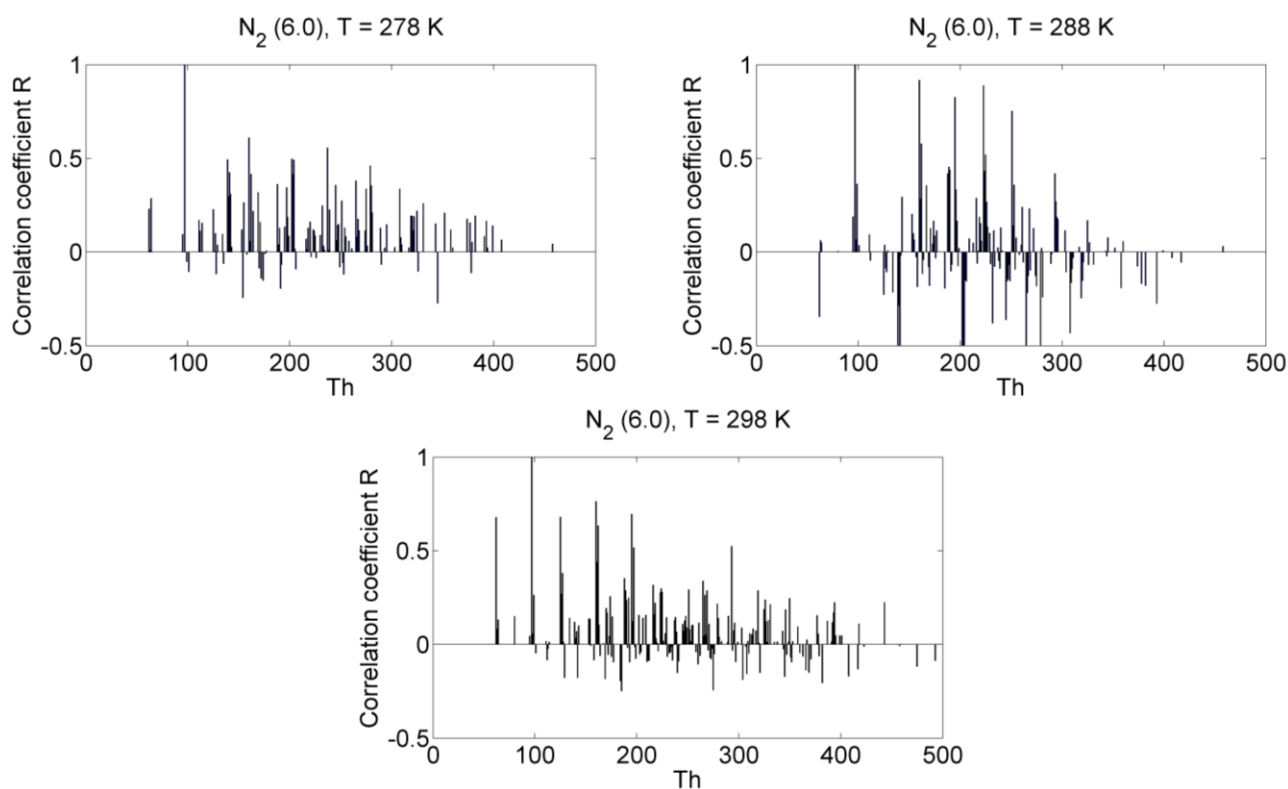


Figure S8. Correlation coefficient of stick masses below 500 Th to 97 Th (HSO_4^-) at three different saturator temperatures (278 K, 288 K and 298 K) with N_2 (6.0) as a carrier gas.

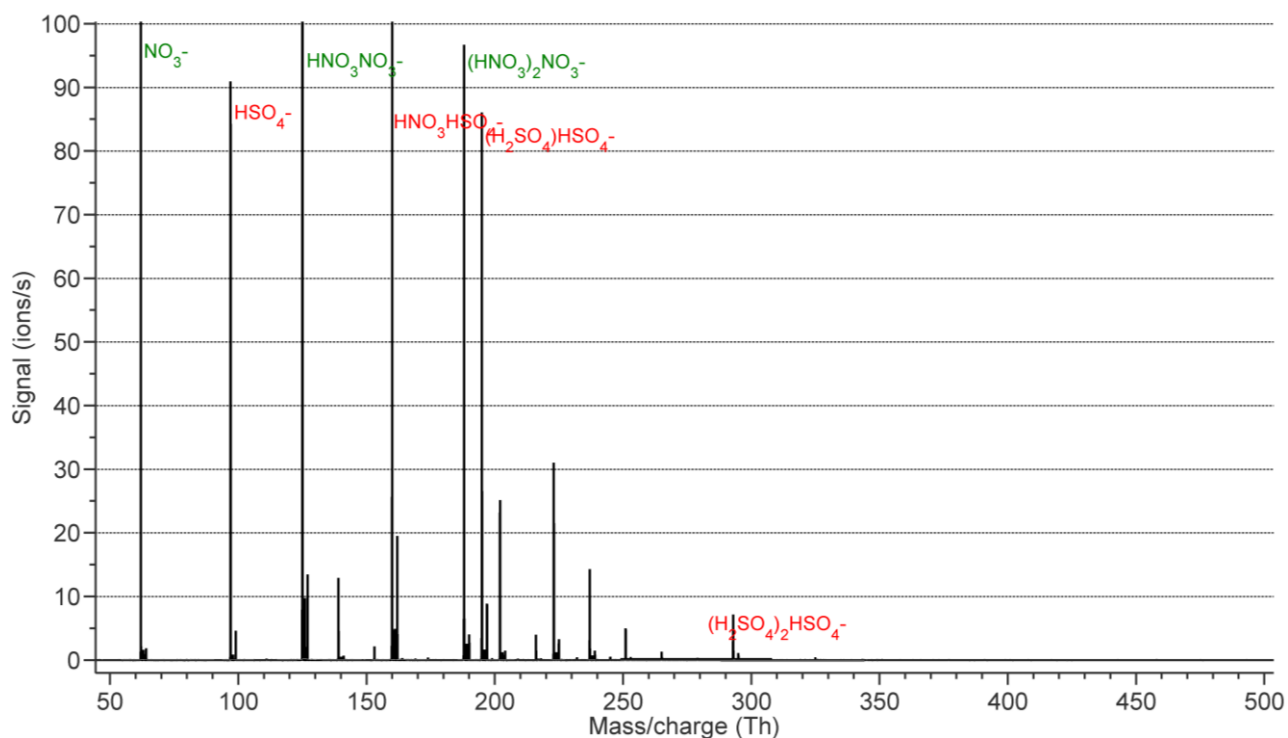


Figure S9. One hour averaged mass spectra from CI-APi-TOF from 25 to 500 Th with N_2 (6.0) as carrier gas at saturator temperature of 298 K. The peaks used for calculation of monomer, dimer and trimer concentrations are marked in the figure.

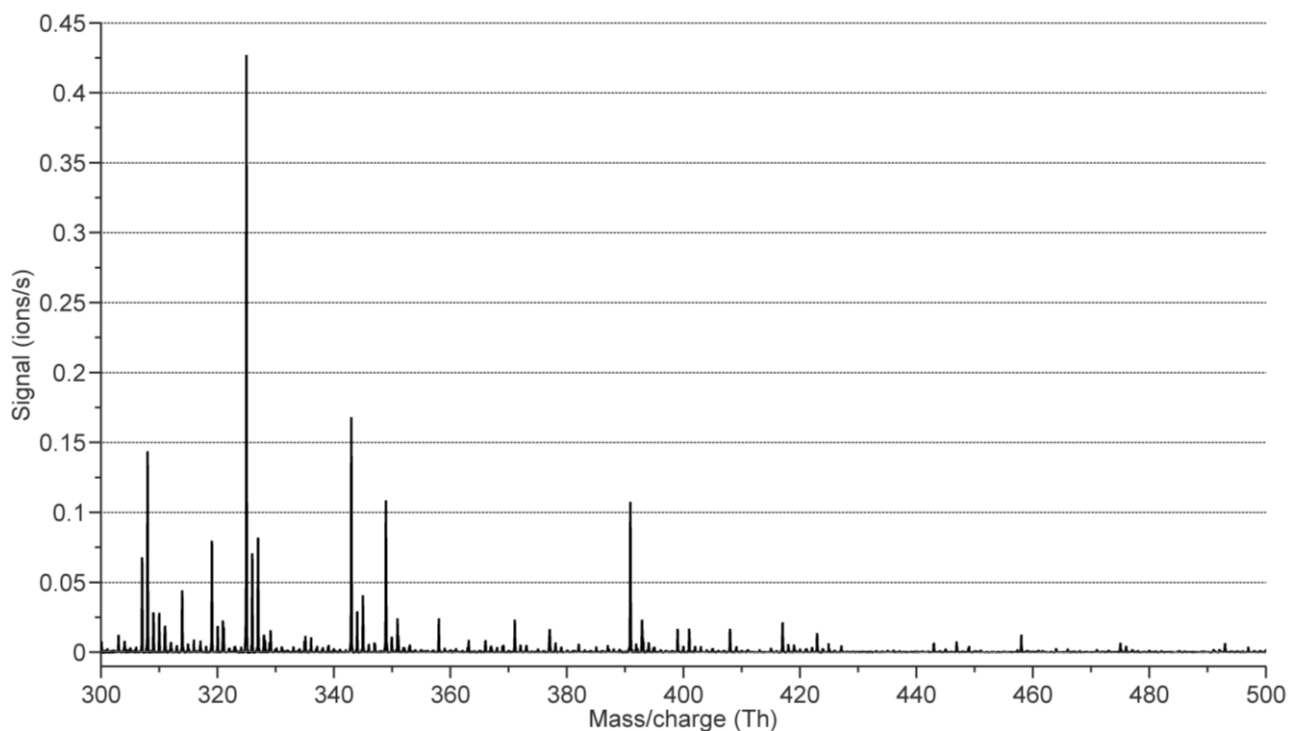


Figure S10. One hour averaged mass spectra from CI-APi-TOF from 300 to 500 Th with N₂ (6.0) as carrier gas at saturator temperature of 298 K. Zoomed from figure S9.

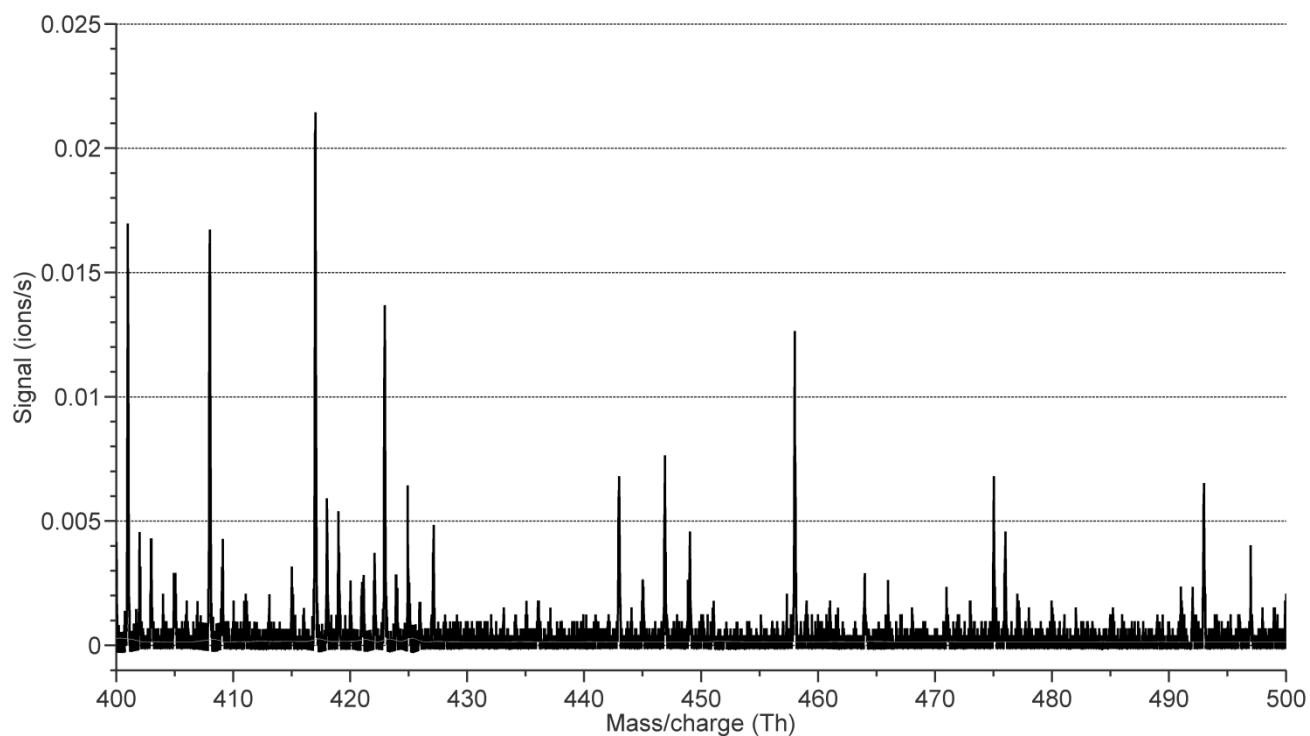


Figure S11. One hour averaged mass spectra from CI-APi-TOF from 400 to 500 Th with N₂ (6.0) as carrier gas at saturator temperature of 298 K. Zoomed from figure S9.