



Supplement of

A new model for the global biogeochemical cycle of carbonyl sulfide – Part 1: Assessment of direct marine emissions with an oceanic general circulation and biogeochemistry model

T. Launois et al.

Correspondence to: T. Launois (thomas.launois@lsce.ipsl.fr)

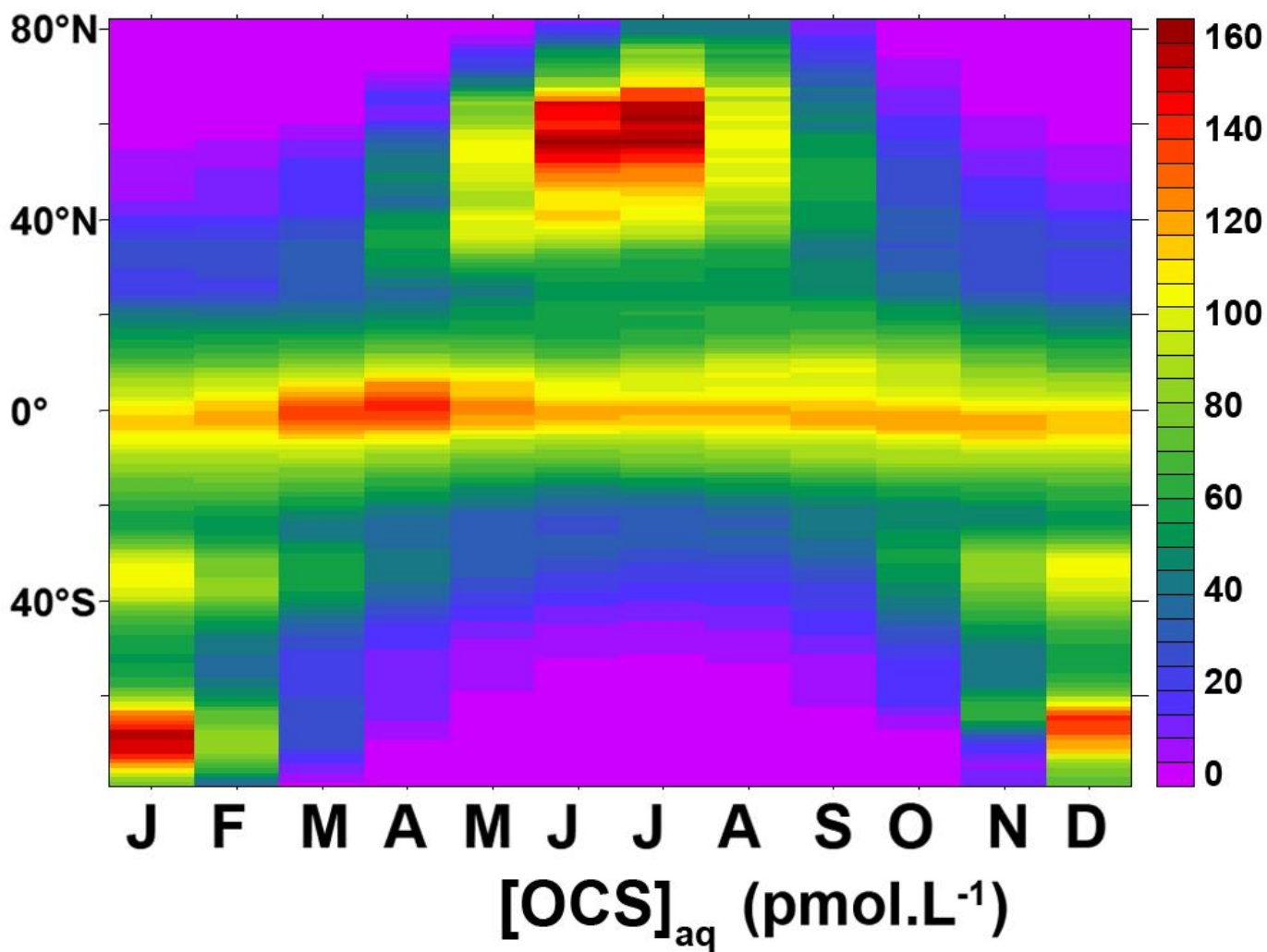


Fig S1: Latitude-time plot of zonal monthly mean concentration of OCS simulated with the NEMO-PISCES model using the a_{350} parameterization from Morel and Gentili (2009) and the hydrolysis constants established by Elliott et al. (1989).

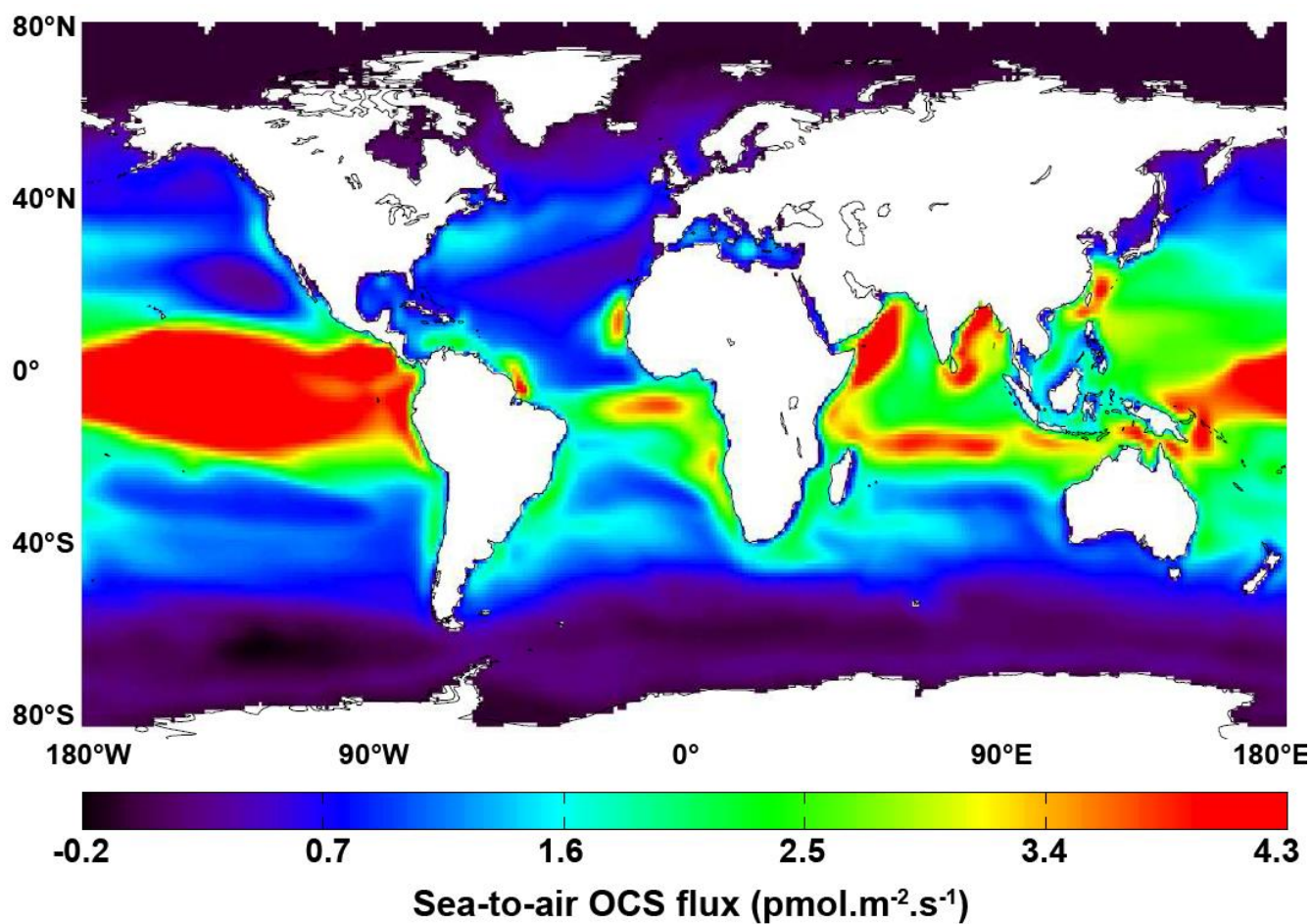


Fig S2: Annual mean sea-air OCS fluxes map simulated with NEMO-PISCES and the parameterizations of Morel and Gentili (2009) and Elliott et al. (1989) for a_{350} and the hydrolysis constant, respectively. Positive fluxes denote OCS outgassing towards the atmosphere. The piston velocity used to calculate surface fluxes was taken from Wanninkhof (1992)