



Microphysical and  
optical properties of  
ice clouds

C. Liu et al.

This discussion paper is/has been under review for the journal Atmospheric Chemistry and Physics (ACP). Please refer to the corresponding final paper in ACP if available.

# A two-habit model for the microphysical and optical properties of ice clouds

C. Liu<sup>1</sup>, P. Yang<sup>1</sup>, P. Minnis<sup>2</sup>, N. Loeb<sup>2</sup>, S. Kato<sup>2</sup>, A. Heymsfield<sup>3</sup>, and C. Schmitt<sup>3</sup>

<sup>1</sup>Department of Atmospheric Sciences, Texas A&M University, College Station, Texas, USA

<sup>2</sup>Science Directorate, NASA Langley Research Center, Hampton, Virginia, USA

<sup>3</sup>National Center for Atmospheric Research, Boulder, Colorado, USA

Received: 1 June 2014 – Accepted: 5 July 2014 – Published: 29 July 2014

Correspondence to: P. Yang (pyang@tamu.edu)

Published by Copernicus Publications on behalf of the European Geosciences Union.

Title Page

Abstract

Introduction

Conclusions

References

Tables

Figures



Back

Close

Full Screen / Esc

Printer-friendly Version

Interactive Discussion



## Abstract

To provide a better representation of natural ice clouds, a novel ice cloud model containing two particle habits is developed. The microphysical and optical properties of the two-habit model (THM) are compared with both laboratory and in situ measurements, and its performance in downstream satellite remote sensing applications is tested. The THM assumes an ice cloud to be an ensemble of hexagonal columns and twenty-element aggregates, and to have specific habit fractions at each particle size. The ice water contents and median mass diameters calculated based on the THM closely agree with in situ measurements made during 11 field campaigns. In this study, the scattering, absorption, and polarization properties of ice crystals are calculated with a combination of the invariant imbedding T-matrix, pseudo-spectral time domain, and improved geometric-optics methods over an entire range of particle sizes. The phase functions, calculated based on the THM, show excellent agreement with counterparts from laboratory and in situ measurements and from satellite retrievals. For downstream applications in the retrieval of cloud microphysical and optical properties from MODIS observations, the THM presents excellent spectral consistency; specifically, the retrieved cloud optical thicknesses based on the visible/near infrared bands and the thermal infrared bands agree quite well. Furthermore, a comparison between the polarized reflectivities observed by the PARASOL satellite and from theoretical simulations illustrates that the THM can be used to represent ice cloud polarization properties.

## 1 Introduction

Ice clouds, i.e., high clouds containing various ice crystal sizes and shapes, on average cover over 20 % of the Earth and up to 60–70 % of the tropical areas (Lynch et al., 2002; Nazaryan et al., 2008; Baran, 2009). Not surprisingly, ice clouds significantly influence both the climate system radiation budget and large-scale circulations in the

ACPD

14, 19545–19586, 2014

## Microphysical and optical properties of ice clouds

C. Liu et al.

Title Page

Abstract

Introduction

Conclusions

References

Tables

Figures



Back

Close

Full Screen / Esc

Printer-friendly Version

Interactive Discussion



**Microphysical and optical properties of ice clouds**

C. Liu et al.

Title Page

Abstract

Introduction

Conclusions

References

Tables

Figures



Back

Close

Full Screen / Esc

Printer-friendly Version

Interactive Discussion



atmosphere (Herman et al., 1980; Liou, 1986; Minnis et al., 1993; Sassen and Comstock, 2001; Stephens, 2005; Ramanathan, 2007; Loeb et al., 2009). However, owing to uncertainties in the ice microphysical properties (particle habit and size distribution) and optical properties (extinction coefficient, single-scattering albedo, and scattering phase matrix), ice clouds are still one of the least understood atmospheric components from the perspective of remote sensing and radiative transfer simulations involved in General Circulation Models (GCMs). Thus, a realistic and robust ice cloud model is being sought and of vital importance to atmospheric research.

A numerical model of ice clouds normally assumes either a single particle habit (i.e., particle shape) or an ensemble habits (Baran and Labonnote, 2007; Baran et al., 2009; Baran, 2009, 2012; Yang et al., 2013; Baum et al., 2014). The optical properties determined based on the particle habit/habits are fundamental to the downstream applications in remote sensing, radiative transfer and GCMs (Ebert and Curry, 1992; Fu and Liou, 1993; Fu, 1996, 2007; Minnis et al., 1998; Katagiri et al., 2010; Heymsfield and Miloshevich, 2003; Baum et al., 2011; Edwards et al., 2007; Yi et al., 2013). Thus, in order to reduce the uncertainties in downstream applications, an improved representation of ice cloud particle habits and optical properties is needed for the construction of a robust ice cloud model. Numerous laboratory and in situ measurements have been made to improve our knowledge on ice clouds, and various satellite observations have also played important roles in determining their microphysical and optical properties (Minnis et al., 1993b; Heymsfield and Miloshevich, 1995; Gayet et al., 2006, 2012; Lawson et al., 2008; Febvre et al., 2009; Heymsfield et al., 2013). The observations from different perspectives serve as the most practical and insightful standards from which to develop an ice cloud model. This study considers the currently available data in an attempt to improve the representation of ice clouds with a theoretical model based on two particle geometries.

As one of nature's greatest artworks, ice crystals show a myriad of variations in shape/habit for different meteorological conditions. Ice cloud habit study begins with an understanding of the microphysical processes necessary for nucleation, growth,

**Microphysical and optical properties of ice clouds**

C. Liu et al.

Title Page

Abstract

Introduction

Conclusions

References

Tables

Figures



Back

Close

Full Screen / Esc

Printer-friendly Version

Interactive Discussion



collision and aggregation within the atmosphere. Both laboratory and in situ observations have contributed meaningful information about ice crystal shapes (Magono and Lee, 1966; Heymsfield et al., 2002, 2005; Lawson et al., 2006). The studies indicate that ice crystals occur with geometries having various degrees of complexity, e.g., pristine hexagonal columns, plates, bullets, rosettes of different forms, and complicated and irregular aggregates. Furthermore, some detailed structures, such as surface roughness, hollow structure, and inhomogeneity (with air bubbles or ice nuclei inside), have been widely noted in the observations and considered for numerical studies (Ulanowski et al., 2012; Schmitt and Heymsfield, 2007; Labonnote et al., 2001). Both the ice crystal particle overall geometry and detailed structure have a significant effect on the optical properties. Thus, constructing an idealized model both geometrically and optically representative of natural particles is quite challenging.

In addition to observations of particle geometries, various measurements have been attempted to obtain reliable information on the microphysical and optical properties of ice clouds (Curry, 2000; Heymsfield et al., 2013). A series of field campaigns were held in a variety of midlatitude and tropical locations in both hemispheres over the period between 1999 and 2006 to study the microphysical properties of ice clouds (Heymsfield et al., 2013). The microphysical data collected includes the particle size distribution (PSD), ice water content (IWC), and median mass diameter ( $D_{mm}$ ). The  $D_{mm}$  is defined as the diameter at which the mass in the PSD with smaller particles equals that with larger ones. Meanwhile, the ice cloud optical properties were obtained in numerous laboratories and field campaigns. The polar nephelometer (PN) was widely used to measure the scattering phase function of an ensemble of cloud particles (water droplets, ice crystals, or mixture of both) (Sassen and Liou, 1979; Barkey and Liou, 2001; Auriol et al., 2001; Febvre et al., 2009). Although limited spatially and temporally, the measurements played an essential role in the numerical studies of ice clouds, and will be fully considered in this study.

Satellite observations are used to infer cloud properties by a comparison between sensor measurements and radiative transfer simulations for a set of known cloud and

**Microphysical and  
optical properties of  
ice clouds**

C. Liu et al.

Title Page

Abstract

Introduction

Conclusions

References

Tables

Figures



Back

Close

Full Screen / Esc

Printer-friendly Version

Interactive Discussion



atmospheric conditions (Wielicki et al., 1998; Winker et al., 2003; Platnick et al., 2003; Minnis et al., 2011). The satellite measurements may be at either visible/near-infrared solar bands or thermal infrared (IR) bands, and may also include polarization. Sensors on board satellites flying as part of the NASA Earth Observing System A-Train constellation simultaneously provide measurements encompassing all of these characteristics (L'Ecuyer and Jiang, 2010). The satellite-based retrieval of ice cloud properties, e.g., the effective particle diameter ( $D_{\text{eff}}$ ) and optical thickness ( $\tau$ ), relies on the use of accurate and efficient radiative transfer models to simulate the cloud radiances at the top of atmosphere, and the optical properties of a given ice cloud model are required for those simulations (Minnis et al., 1993a, 1993b, 2011; Platnick et al., 2003). However, when applied to satellite remote sensing (e.g., based on the Moderate Resolution Imaging Spectroradiometer (MODIS) observations), most ice cloud models encounter a challenge known as spectral inconsistency, i.e., significant differences occur in cloud optical thicknesses retrieved from different wavelengths (e.g., solar or thermal IR bands) from the same cloud model (Baum et al., 2014). Thus, another goal of this study is to construct an ice cloud model that can infer consistent optical properties in solar- and thermal IR-band retrievals.

Using the ice cloud polarization properties (e.g., polarized reflectivity) has gained more and more attention as a means to infer the microphysical and optical properties (Van Diedenhoven et al., 2012, 2013; Labonnote et al., 2001), and such applications can be widely found with available observations from the PARASOL (Polarization and Anisotropy of Reflectances for Atmospheric Sciences coupled with Observations from a Lidar) satellite (Labonnote et al., 2001; Baran and Labonnote, 2007; Baran, 2009; Cole et al., 2013). The radiometer/polarimeter on board POLDER (POLarization and Directionality of the Earth's Reflectances) measures the  $I$ ,  $Q$ , and  $U$  components of the Stokes vector at three wavelengths with up to 16 viewing angles for each pixel (Deschamps et al., 1994). Previous studies have indicated that the polarized reflectivities simulated based on several ice cloud models, using either an individual habit or a mixture of multiple habits, can closely match those of PARASOL observations

## Microphysical and optical properties of ice clouds

C. Liu et al.

Title Page

Abstract

Introduction

Conclusions

References

Tables

Figures



Back

Close

Full Screen / Esc

Printer-friendly Version

Interactive Discussion



(Doutriaux-Boucher et al., 2000; Baran, 2009; Cole et al., 2013). The polarized reflectivity data from the satellite have also been used to retrieve the ice particle habit (Sun et al., 2006) and degree of surface roughness (Cole et al., 2014). Thus, from another unique perspective of ice cloud, the polarization properties of a numerical model must be carefully checked.

With the variety of laboratory experiments, field campaigns, and satellite sensors to measure the microphysical and optical properties, constructing an ice cloud model that can consistently represent a wide range of perspectives is extremely challenging. This study strives to develop a robust ice cloud model based on two particle geometries, the two-habit model (THM), and to verify its performance in modeling the microphysical and optical properties of natural ice clouds. Section 2 reviews some of the previous ice cloud models and introduces the novel THM. Section 3 discusses the THM microphysical properties. Section 4 shows the optical properties of the THM, and comparisons with measurements. The THM performance in satellite remote sensing applications is presented in Sect. 5. Section 6 contains the conclusions.

## 2 Two-habit model

Ice cloud particle geometries show significant variations for different meteorological conditions, especially temperature and relative humidity (Magono and Lee, 1966; Heymsfield and Miloshevich, 1995). A tremendous amount of effort has been devoted to the detailed study of ice crystal geometries from both laboratory and in situ observations, and to classify ice crystals into multiple categories based on the general geometries. The most widely observed ice crystal types include hexagonal columns, hexagonal plates, bullet rosettes, and aggregates of various pristine particles (Magono and Lee, 1966; Korolev et al., 1999; Heymsfield et al., 2002, 2005; Evans et al., 2005; Lawson et al., 2006). A number of studies have been reported on building numerical models for ice clouds with idealized geometries, and in using the corresponding microphysical and optical properties to represent natural clouds. For different applications,

either the microphysical or the optical properties at certain wavelengths are normally considered in the models, and seldom does an ice cloud model consistently represent all ice cloud properties for different applications.

Due to the limitation in numerical simulations of light scattering by non-spherical particles, the single hexagonal column model for ice clouds was introduced to atmospheric applications in the late 1970s and early 1980s (Wendling et al., 1979; Takano and Liou, 1989a, 1989b), but additional particle habits have since been developed and applied (Macke, 1992; Takano and Liou, 1995; Macke et al., 1996; Yang and Liou, 1998; Um and McFarquhar, 2007, 2009). Various commonly occurring ice cloud habits are now widely used in radiative transfer and remote sensing, and popular examples include hexagonal columns and plates of various aspect ratios, droxtals, polycrystals, solid or hollow bullet rosettes, and aggregates of columns, plates or rosettes (e.g., Baran, 2009; Yang et al., 2013; and references cited therein). The models use either an individual particle habit or an ensemble of habits. When multiple habits are used, the habit fractions normally vary for different particle sizes. The optical database and parameterization based on the numerical models are normally made for further applications in remote sensing, radiative transfer and GCMs (Fu, 1996, 2007; Minnis et al., 1998; Edwards et al., 2007; Letu et al., 2012; Van Diedenhoven et al., 2014). Ice cloud models with a single habit have been found useful for some special applications as the computational burden for single-scattering simulations is minimized. However, the single habit models are quite problematic and are limited in the consistent representation of multiple ice cloud properties (Baum et al., 2014). Natural ice clouds show unclear variation of particle habits and have different habit preferences at different size ranges. Multiple ice habits definitely introduce much more freedom to accurately represent the microphysical and optical properties. However, without explicit theoretical or observational data, the choice of the habits and habit fractions is arbitrary. Furthermore, the accurate calculation of the scattering properties of different non-spherical habits is very time-consuming. Thus, we will attempt to construct an ice cloud model that can capture and represent all major properties by using as few particle habits as possible, which

Microphysical and optical properties of ice clouds

C. Liu et al.

Title Page

Abstract

Introduction

Conclusions

References

Tables

Figures



Back

Close

Full Screen / Esc

Printer-friendly Version

Interactive Discussion



will simplify the model and minimize the computational burden for the single-scattering properties.

A study by Schmitt and Heymsfield (2014) suggest that atmospheric ice particles can be separated into two categories in terms of particle complexity (i.e., simple and complex) by using particle imagery data from high-resolution aircraft particle imaging probes. A dimensionless parameter representing the particle “complexity” is defined based on particle projected area, area ratio and perimeter, and a cutoff value is chosen to identify pristine and complex ice particles imaged by the Cloud Particle Imager (CPI) probe with a resolution of a few microns. The results of two example data sets from in situ measurements indicate that complex particle habit fraction increases as the particle maximum dimension increases. The idea of separating ice crystals into two general categories and the conclusions obtained from the previous study are of great importance in the simplification of ice cloud models. Meanwhile, numerical studies indicate that the optical properties of particles of the same kind are not strongly affected by the different realizations/configurations, e.g. complex aggregates of hexagonal plates (Xie et al., 2011) or bullet-rosettes with different number or orientation of the elements (Um and McFarquhar, 2007). Thus, an ice cloud model can be significantly simplified by considering a simple habit and a complex habit to represent all particle combinations.

By following the observations and classifications given by Schmitt and Heymsfield (2014) and considering the computational burden, the use of only two particle habits in an ice cloud model is straightforward. The first step, in constructing the model, is to determine the most representative particle habits. A hexagonal column, considered as the simple/pristine particle, is the primary candidate, and a type of complex aggregate is the second most widely observed and studied particle. We use hexagonal columns as the aggregate monomers. By changing the geometric parameters related to the aspect ratio, number of the monomers, and aggregation realization, the optical properties of the particles are optimized to match those of natural ice clouds. The aspect ratio of a hexagonal column is defined as  $2a/L$ , where  $a$  is the semi-width of the hexagonal

## Microphysical and optical properties of ice clouds

C. Liu et al.

[Title Page](#)[Abstract](#)[Introduction](#)[Conclusions](#)[References](#)[Tables](#)[Figures](#)[Back](#)[Close](#)[Full Screen / Esc](#)[Printer-friendly Version](#)[Interactive Discussion](#)



**Microphysical and  
optical properties of  
ice clouds**

C. Liu et al.

Title Page

Abstract

Introduction

Conclusions

References

Tables

Figures



Back

Close

Full Screen / Esc

Printer-friendly Version

Interactive Discussion



cross section and  $L$  is the column length. A hexagonal column with an aspect ratio equal to one, and an aggregate with 20 hexagonal column monomers are used in this study. The relative sizes and aspect ratios of the 20 monomers are randomly generated, and they are point-attached to form the aggregate. The particle maximum dimension  $D$  is used to specify the particle size (i.e.,  $L$  for the hexagonal column, and the maximum distance between two points on the particle for the aggregate), and the size parameter, which is an important parameter for light scattering simulations, is defined as  $\pi D/\lambda$ .

In addition to the overall geometries of the two habits, the detailed structures of natural crystals are considered. In situ measurements have indicated that ice crystals have predominantly hollow structures (Walden et al., 2003; Schmitt and Heymsfield, 2007) and irregular geometries, and, for consideration of these facts in the THM, the hexagonal monomer of the aggregate is assumed to have hollow structures similar to those used by Yang et al. (2013). Figure 1 illustrates the geometry of a hollow hexagonal element. The depth of the hollow structure is  $d$  and  $d/L = 0.25$  in this study. From observations, surface roughness is widely noted as an ice crystal feature (Cross, 1969; Ulanowski et al., 2012; Neshyba et al., 2013), and numerical studies indicate the surface roughness to have significant influence on the particle optical properties and cloud radiative effect (Yi et al., 2013), especially the angular-dependent scattering phase matrix elements (Peltoniemi et al., 1989; Macke et al., 1996; Shcherbakov et al., 2006; Yang et al., 2008). Both the hexagonal column and the aggregate will be treated as roughened particles. The roughened surface definition may be found in Liu et al. (2013), and the degree of surface roughness is the same as that used by Yang et al. (2013) for severely roughened particles.

Figure 2 shows the two particle geometries used for the THM, and both the hollow structure and surface roughness are illustrated in the figure. The column is clearly a single but “compact” particle, whereas the aggregate is very complex and loose in the space. The processes necessary to form the hexagonal aggregate and its geometric parameters are detailed in the Appendix A.

### 3 Microphysical properties

With the explicit geometries of the two particle habits defined, the habit fraction, as a function of particle maximum dimension, becomes a key parameter to determine the microphysical properties of the THM. This section introduces the habit fraction used for the THM and compares the simulated microphysical properties, i.e., IWC and  $D_{mm}$ , with those from in situ measurements.

As discussed in Sect. 2, Schmitt and Heymsfield (2014) separate ice crystals into simple and complex categories by analyzing CPI images, and show that the complex habit fraction increases as the maximum dimension increases. In the THM, the hexagonal column and aggregate correspond, respectively, to the simple and complex particles. Considering that the exact percentages of the simple and complex particles may differ from case to case, the first role in qualitatively determining the habit fractions is to increase the aggregate fraction as the particle maximum dimension increases, which ensures that the geometric model represents natural crystals.

A more quantitative way to determine the habit fraction is to consider the microphysical data sets from the in situ measurements. The IWC and  $D_{mm}$  of ice clouds are highly related to the ice particle volume, which is a strong function of the particle maximum dimension. With a given PSD and the two particle habits in the THM, the IWC and  $D_{mm}$  are determined by:

$$IWC = \rho_{ice} \int_{D_{min}}^{D_{max}} [V_c(D)f_c(D) + V_a(D)f_a(D)] n(D)dD, \quad (1)$$

and

$$\rho_{ice} \int_{D_{mm}}^{D_{max}} [V_c(D)f_c(D) + V_a(D)f_a(D)] n(D) dD$$

Title Page

Abstract

Introduction

Conclusions

References

Tables

Figures

⏪

⏩

◀

▶

Back

Close

Full Screen / Esc

Printer-friendly Version

Interactive Discussion



$$= \rho_{\text{ice}} \int_{D_{\text{min}}}^{D_{\text{mm}}} [V_c(D) f_c(D) + V_a(D) f_a(D)] n(D) dD = \text{IWC}/2, \quad (2)$$

where  $\rho_{\text{ice}}$  is the density of ice,  $D_{\text{min}}$  and  $D_{\text{max}}$  are the minimum and maximum particle sizes in the distribution, and  $n(D)$  is the number concentration of particles with a maximum dimension of  $D$ .  $f_c(D)$  and  $f_a(D)$  are the habit fractions of the column and aggregate in the THM, and, for any size,  $f_c(D) + f_a(D) = 1$ .  $V_c(D)$  and  $V_a(D)$ , which are proportional to  $D^3$ , indicate particle volume for the two particle habits.

We use the microphysical data collected from 11 field campaigns, and a detailed summary of these data can be found in Heymsfield et al. (2013) and Baum et al. (2014). Coefficients for the gamma size distribution are fitted to the concentration vs. size data and provided for each individual PSD, and a total of over 14 000 PSDs with cloud temperatures under  $-40^\circ\text{C}$  are used to ensure the measured clouds are indeed ice clouds. With certain habit fractions, the IWC and  $D_{\text{mm}}$  based on the THM can be computed for each PSD by the integrals given by Eqs. (1) and (2), and may then be compared with the observations. We tested different habit fractions to minimize the differences between the simulated and observed IWC and  $D_{\text{mm}}$ . We choose a continuous habit fraction for the hexagonal column that leads to close agreement of the microphysical properties, and it is given by:

$$f_c(D) = \begin{cases} 0.8 & D < 100 \mu\text{m} \\ \frac{80}{D} & 100 \mu\text{m} \leq D < 2500 \mu\text{m} \\ 0.032 & D \geq 2500 \mu\text{m} \end{cases} \quad (3)$$

and the fraction of aggregate is given by  $f_a(D) = 1 - f_c(D)$ . Figure 3 shows the THM habit fractions obeying Eq. (3). The fraction of the aggregate, i.e., the complex particle, smoothly increases with increasing particle diameter, and the trend is the same as that obtained from ice crystal image analysis. For small particles with maximum dimensions

## Microphysical and optical properties of ice clouds

C. Liu et al.

Title Page

Abstract

Introduction

Conclusions

References

Tables

Figures



Back

Close

Full Screen / Esc

Printer-friendly Version

Interactive Discussion



less than  $100\ \mu\text{m}$ , we assume 80 % of the ice crystals to be hexagonal columns, but the fraction drops to only 3.2 % for particles larger than  $2500\ \mu\text{m}$ .

With the habit fractions given, Fig. 4 shows a comparison between the measured and calculated IWC and  $D_{\text{mm}}$  values for each of the PSDs from the 11 field campaigns.

The names of the field campaigns are listed in the figure and differentiated by both colors and symbols. The values, for both IWC and  $D_{\text{mm}}$ , calculated with the THM are in very close agreement with the observations. Slight differences are noticed for  $D_{\text{mm}}$  at values larger than  $500\ \mu\text{m}$ . The largest differences in the IWC are shown for data from the CRYSTAL-FACE campaign. Figure 4 indicates that with two particle habits and a given habit fraction, the THM can accurately represent the microphysical properties of ice clouds.

Note that, considering the uncertainties in the observations, the final habit fraction we use for the THM does not necessarily give the best fit to the in situ data, but we find that all habit fractions with similar trends lead to similar agreement in the microphysical properties. Furthermore, considering the significant variation of ice clouds under different meteorological conditions, no single “best” exists for all ice clouds, because the best for one condition may not represent the ice cloud properties under another condition. For applications of ice clouds having very different microphysical properties, the fractions of the two habits can be easily modified to match the specific properties. Thus, the continuous habit fraction given by Eq. (3) is used in the THM and the following simulations.

## 4 Optical properties

With the geometrical and microphysical model (i.e. the two particle habits as well as their habit fractions) problems solved, we turn to the optical properties of the THM.

First, we give a brief introduction of the numerical algorithms used to obtain the optical properties, and illustrate the single-scattering properties of the THM. The second

## Microphysical and optical properties of ice clouds

C. Liu et al.

Title Page

Abstract

Introduction

Conclusions

References

Tables

Figures



Back

Close

Full Screen / Esc

Printer-friendly Version

Interactive Discussion



subsection compares the modeled phase functions with the results from both measurements and satellite retrievals.

To better illustrate the advantages of the THM, here we also consider a single hexagonal column model for comparison. The single column model (SCM) is based on smooth particles, and the aspect ratio decreases as the particle size increases. The details of the single column model as well as its microphysical and optical properties can be found in Yang et al. (2013) and Bi et al. (2014).

#### 4.1 Single-scattering simulations

Numerical simulations of light scattering by non-spherical particles are a major challenge limiting the development of ice cloud models. The conventional geometric-optics method (CGOM), which is relatively simple and computationally efficient, is one of the most popular methods for the solution of light scattering by ice crystals (Takano and Liou, 1989a; Macke et al., 1996; Baran, 2009), although its accuracy in the case of small and moderate size parameters is questionable due to the inherent shortcomings of the ray-tracing technique. Bi et al. (2014) elaborate on the uncertainties with the CGOM in remote sensing applications and radiative transfer simulations by comparing with results from a benchmark scattering dataset obtained with a combination of the Invariant Imbedding T-matrix method (II-TM) (Bi and Yang, 2014) and the Improved Geometric-Optics Method (IGOM) (Yang and Liou, 1996; Bi et al., 2009). The study indicates that the CGOM errors in inferring the optical thickness and effective diameters from the MODIS observations can be up to 20 %, and on the order of  $10 \text{ W m}^{-2}$  in ice cloud radiative forcing calculations.

The single-scattering properties of ice crystals given by the II-TM (Bi and Yang, 2014) can be considered as a benchmark, because the II-TM solves Maxwell's equations from first principles. Note, the II-TM is applicable to moderately large size parameters for which the IGOM has reasonable accuracy. However, due to the loose structure of the hexagonal aggregate considered in the THM, the computational memory used by the II-TM simulations increases significantly as the particle size increases. To optimize

### Microphysical and optical properties of ice clouds

C. Liu et al.

Title Page

Abstract

Introduction

Conclusions

References

Tables

Figures



Back

Close

Full Screen / Esc

Printer-friendly Version

Interactive Discussion



## Microphysical and optical properties of ice clouds

C. Liu et al.

Title Page

Abstract

Introduction

Conclusions

References

Tables

Figures



Back

Close

Full Screen / Esc

Printer-friendly Version

Interactive Discussion



numerical computations, in this study the pseudo-spectral time domain method (PSTD) that is a numerically accurate technique (Liu, 1997; Liu et al., 2012a, b) is employed for the size parameters in the regime between the II-TM and IGOM simulations. The applicability and accuracy of these three methods have been extensively studied in previous studies, and, thus, are not recaptured here. Without discussing technical details, we use a synergic combination of those three numerical models to minimize the bias introduced by light scattering simulations, and single-scattering properties of the two particles habits with maximum diameters from 2 to 10 000  $\mu\text{m}$  at interested wavelengths are simulated.

For remote sensing applications, the bulk scattering properties of an ensemble of ice particles with specified size distributions are normally used. We assume a gamma size distribution (Hansen and Travis, 1974) to integrate the bulk scattering properties of the THM. The dimensionless effective variance is assumed to be 0.1, and the effective diameter values increase from 10 to 180  $\mu\text{m}$  in steps of 10  $\mu\text{m}$  (McFarquhar and Heymsfield, 1998).

Figure 5 shows the bulk non-zero phase matrix elements of the THM and SCM at the wavelengths of 0.67, 2.13 and 12.0  $\mu\text{m}$  in the case of an effective particle diameter of 30  $\mu\text{m}$  for both models. With the surface roughness considered in the THM, the halo peaks observed in the case of pristine hexagonal columns are smoothed out, and featureless phase matrix elements are obtained with the THM. In Fig. 5, the bulk extinction efficiency ( $Q_{\text{ext}}$ ), single-scattering albedo (SSA), and asymmetry factor ( $g$ ) are also given for both the THM and SCM. We call special attention to the fact that the SCM has larger asymmetry factors at all three wavelengths.

The bulk extinction efficiency, single-scattering albedo and asymmetry factor of the THM and SCM are shown in Fig. 6 as functions of the effective particle diameter. As expected, the extinction efficiency of the THM converges to 2 for larger particles, and the single-scattering albedo given by the two models are quite similar. It should be noticed that, at the 0.67  $\mu\text{m}$  visible wavelength, the THM results give an almost constant asymmetry factor with a value of approximately 0.76, whereas the values for the SCM

increase as the effective particle diameter increases (from 0.78 to almost 0.84). This becomes a significant advantage of the THM in cloud property retrieval, as will be stressed in the following section. Larger asymmetry factors are also obtained with SCM at the other two wavelengths.

## 4.2 Comparison with the observations

Compared with the large number of datasets on the microphysical properties of ice clouds and images of their geometries, our observations and understanding of the optical properties are relatively limited. The measured ice cloud phase functions have been widely used to construct and verify the numerical models (Baran et al., 2001, 2012), and results from the THM are compared with those from laboratory and in situ measurements as well as satellite retrievals.

The PN probe has been used in various laboratories and field campaigns to measure the scattering phase function of ice clouds simultaneously with the size distribution. The PN measurements suggest that ice clouds show featureless phase functions with a relatively flat trend at backscattering angles (Barkey and Liou, 2001; Febvre et al., 2009). We compare the phase functions simulated based on the THM with measurements from laboratory and in situ measurements at a visible and a near infrared wavelength respectively. Barkey and Liou (2001) reported the light scattering measurements of small ice crystals generated in a cloud chamber at a wavelength of  $0.67\ \mu\text{m}$ . In situ measurements of light scattering and microphysical characteristics presented by Febvre et al. (2009) show the phase function of ice clouds at  $0.80\ \mu\text{m}$ . Meanwhile, both studies measured the ice crystal number concentrations. Figure 7 shows comparisons of the bulk phase functions between the THM and the observations (left panels), and the corresponding number concentrations are given in the right panels. The effective diameters of the two cases are approximately  $5\ \mu\text{m}$  and  $35\ \mu\text{m}$ , respectively. The THM exhibits a reasonable agreement in both cases. Note that the phase function of the in situ observations is normalized to the values at  $30^\circ$ . Both the modeled and measured phase functions show similar and relatively smooth overall trends. The absence of halo

phenomena, i.e. scattering peaks commonly seen at 22° and 46°, is an indication of the irregularity or surface roughness of ice crystals, and demonstrates the necessity and importance of including the hollow structure and surface roughness in the THM. For the laboratory results (upper panel), the THM slightly overestimates the phase function values with scattering angles between 60° and 90°, but underestimates the values at scattering angles larger than 100°. The modeled phase function shows larger values at scattering angles between 60° and 120° compared with the in situ observations (lower panel).

Wang et al. (2014) retrieve the scattering phase function of ice clouds from satellite observations. To reduce the impact from surface reflection and highlight thin ice clouds in the upper troposphere, the reflectance at MODIS 1.38 μm channel is used to statistically derive the scattering phase function, and phase function values at 30 scattering angles between 90° and 180° are obtained for ice clouds over ocean and land. Figure 8 illustrates the modeled (both single-column and two-habit models) and retrieved phase functions of ice clouds, and the upper and lower panels are for the retrieved results respectively over ocean and land. The red circles in the figure represent the averaged phase functions, and the error bars indicate the standard deviations. Because the variation of a phase function with a change of effective diameter for the THM can be ignored compared with the standard deviations of the retrieved phase functions, especially for the backward scattering, the THM bulk phase function with a  $D_{\text{eff}}$  of 50 μm is used for comparison. The phase function of the SCM with the same effective particle diameter is used. The phase function given by the THM almost perfectly matches the retrieved values over ocean, which was also achieved by Wang et al. using three particle habits, whereas the one based on the SCM shows significant oscillation in the region. For ice cloud over land, the agreement between the satellite retrieval and numerical result is relatively limited, although the modeled results are within the standard deviations of the retrieval over the entire backward direction. The THM underestimates the phase function values for scattering angles larger than 120°. Note that, even considering phase functions of nine ice habits with three different degrees of surface roughness given by

**Microphysical and optical properties of ice clouds**

C. Liu et al.

Title Page

Abstract

Introduction

Conclusions

References

Tables

Figures



Back

Close

Full Screen / Esc

Printer-friendly Version

Interactive Discussion





Yang et al. (2013), Wang et al. (2014) cannot accurately match the inferred results over land, and this may be due to the larger uncertainties associated with the inferred phase function over land.

Overall, considering the comparisons between the phase functions calculated based on the THM and those from measurements or retrievals, the THM does show excellent representation of the optical properties of ice clouds at visible and near infrared wavelengths. However, we are far from claiming the THM to be an optimal ice cloud model, and the optical properties of the THM over longer wavelengths are not verified because of a lack of observations with which to compare.

## 5 Satellite remote sensing applications

Both the microphysical and optical properties of the THM match the measurements closely, and another important goal in the development of the THM is to improve the consistency in the downstream remote sensing of ice cloud properties. One issue is the significant difference between ice cloud optical thicknesses retrieved from solar and infrared observations (Wang et al., 2013b; Baum et al., 2014). The polarization properties observed from the PARASOL satellite are an important aspect widely used to test ice cloud models (Baran, 2009; Cole et al., 2013).

### 5.1 Comparison between the solar- and IR-band retrieved optical thicknesses

Two popular methods are normally used to retrieve ice cloud properties from satellite observations: the first is a bi-spectral method employing solar reflectance bands (the solar-band retrieval) (Nakajima and King, 1990); and the second is based on the IR bands (the IR-band retrieval) (Inoue, 1985; Heidinger and Pavolonis, 2009). To infer the optical thickness and effective particle diameter of ice clouds, an ice cloud model, i.e., the optical properties obtained from the given particle habit or habits, is fundamental for both the solar-band and IR-band retrievals. Thus, identical cloud properties are

## Microphysical and optical properties of ice clouds

C. Liu et al.

Title Page

Abstract

Introduction

Conclusions

References

Tables

Figures



Back

Close

Full Screen / Esc

Printer-friendly Version

Interactive Discussion



expected to result from using the solar-band and IR-band retrievals for the same target based on the same ice model; however, this does not hold true for most ice cloud models. The optical thicknesses retrieved from IR-band observations are generally smaller than those from solar-band retrievals (Baum et al., 2014).

Specifically, the solar-band retrieval is based on two solar reflectance bands, i.e., a weakly absorbing, visible or near-infrared window band (VIS/NIR) mainly sensitive to the cloud optical thickness  $\tau$ , and an ice absorbing shortwave infrared (SWIR) band sensitive to both  $\tau$  and  $D_{\text{eff}}$ . The approach based on a VIS/NIR and a SWIR band is used by the MODIS operational cloud-property retrieval (Platnick et al., 2003). Another method to obtain  $\tau$  and  $D_{\text{eff}}$  is the split-window technique (Inoue, 1985) based on multiple IR window channels (e.g. 8.5, 11.0 and 12.0  $\mu\text{m}$  for the MODIS observations), and the application of the algorithm can be found in the Advanced Very High Resolution Radiometer (AVHRR) (Heidinger and Pavolonis, 2009), as well as some studies based on MODIS observations (Minnis et al., 2011; Wang et al., 2013b). Note that the IR-band retrieval is not strongly sensitive to the explicit scattering properties, because of the strong absorption within ice crystals; whereas, the scattering properties are essential for the solar-band retrievals. Thus, the optical properties of the ice cloud model at the solar bands become the key parameters to determine the spectral consistency of the models.

A case study, using MODIS observations, is conducted to assess the spectral consistency of optical thickness retrievals based on both solar-band and IR-band observations. The solar-band retrieval uses MODIS reflectances at 0.86 and 2.13  $\mu\text{m}$  bands and the fast radiative transfer model (FRTM) developed by Wang et al. (2013a). By using pre-computed bidirectional reflectance/transmittance distribution functions and a numerical integral over a twisted icosahedral mesh, the FRTM is approximately two orders of magnitude faster than that of the standard 128-stream discrete ordinates radiative transfer code. The IR-band retrieval is based on the three MODIS IR bands at 8.5, 11, and 12  $\mu\text{m}$ , and a fast high-spectral resolution radiative transfer model (HRTM) developed by Wang et al. (2013b), is used to simulate radiances and resulting

## Microphysical and optical properties of ice clouds

C. Liu et al.

Title Page

Abstract

Introduction

Conclusions

References

Tables

Figures



Back

Close

Full Screen / Esc

Printer-friendly Version

Interactive Discussion



brightness temperatures at the three bands. The HRTM accounts for the gas absorption using a pre-computed transmittance database, and the optical properties of the ice cloud model are used to calculate the look-up-tables for cloud reflectance, transmittance, effective emissivity, and effective temperature functions.

Datasets from the Aqua/MODIS and the Modern Era Retrospective-Analysis for Research and Applications (MERRA) are used for the retrievals. The MODIS level-1B calibrated radiances (MYD021KM) product provides top of the atmosphere radiance/reflectance and brightness temperatures for the solar and IR bands. The 1 km-resolution geolocation and solar-satellite geometry are obtained from the MOD03 datasets. The MODIS level-2 cloud product (MYD06) is used to give cloud phase, cloud optical thickness and cloud top height. The over-ocean pixels identified as ice cloud by MYD06 are retrieved, and because the IR-band retrieval is inherently less sensitive to optically thick clouds, the cases with MODIS optical thicknesses larger than 5 are ignored. The atmospheric profile used for radiative transfer simulations and gas absorption is collocated from the MERRA data. The MERRA 3 hourly instantaneous atmospheric profile data (Int3\_3d\_ams\_Cp) provides temperatures, water vapor densities, and ozone densities at 42 pressure levels with a spatial resolution of  $1.25^\circ \times 1.25^\circ$ .

Figure 9 shows the retrieval results based on the single-column model and the THM, and the Aqua/MODIS granule used. The case study is carried out for a granule at 03:50 UTC on 24 February 2014 and shown in Fig. 9a. Figure 9b shows the retrieved optical thickness of thin ice cloud pixels, and the results are obtained based on the solar-band retrieval with the THM. Approximately half of the granule pixels show relatively small optical thicknesses (less than 5 from MYD06 Collection 6 data), and are used for both the solar- and IR-band retrievals. Figure 9c and d are comparisons of optical thicknesses inferred from the solar-band and IR-band retrievals made by histograms. The histograms indicate the occurrence of optical thickness values from the two retrievals, and the red color indicates a higher occurrence frequency. To facilitate interpretation of the results, a 1 : 1 line is included in the figure. Based on the single-column model, the solar-band retrieved optical thicknesses are clearly shown to be

## Microphysical and optical properties of ice clouds

C. Liu et al.

[Title Page](#)[Abstract](#)[Introduction](#)[Conclusions](#)[References](#)[Tables](#)[Figures](#)[Back](#)[Close](#)[Full Screen / Esc](#)[Printer-friendly Version](#)[Interactive Discussion](#)

higher than those from the IR-band, and the differences increase as the optical thickness increases. However, the THM shows much better spectral consistency with the high occurrence frequency closely following the 1 : 1 line. This is mainly because of the relatively small asymmetry factors of the THM at visible wavelengths (as shown in Fig. 6), which yield larger optical thickness from the solar-band retrieval compared with those based on the SCM.

## 5.2 Comparison between the simulated and observed polarized reflectivities

The polarization property of ice clouds obtained from the PARASOL satellite is an important and useful perspective for evaluating the performance of numerical models, because the measured polarized reflectivity is very sensitive to the  $P_{12}$  element of the phase matrix. We use PARASOL observations over ocean at  $0.865\ \mu\text{m}$  from 1 August 2007, and the dataset details can be found in Cole et al. (2013). Data from only one day of observations is used, because a previous study (Baum et al., 2014) indicates that the occurrence frequency of the PARASOL polarized reflectivities exhibits a very similar pattern over time. A vector adding-doubling radiative transfer model is used (Huang et al., 2014), and the simulation assumes a single-layer ice cloud with an optical thickness of 5 at a height of 9 km over an ocean surface. Cole et al. (2013) demonstrated that an ice cloud with an optical thickness of 5 is sufficient for the polarized reflectivity to be saturated. The simulated polarized reflectivities based on the THM are not strongly sensitive to the particle effective diameter, and the optical properties of ice clouds with effective diameters of  $50\ \mu\text{m}$  are used.

Figure 10 illustrates ice cloud polarized reflectivities from the PARASOL measurements over ocean (color contours) and the simulations (black dots) based on the bulk scattering properties developed using the single-column (left panel) and two-habit model (right panel). The same  $D_{\text{eff}}$  of  $50\ \mu\text{m}$  is used for both models. The color contours in Fig. 10 are the occurrence frequency of the PARASOL polarized reflectivities of ice clouds over ocean, and the red color indicates the region of high occurrence for the measurements. The black dots in the figure correspond to the model calculations

## Microphysical and optical properties of ice clouds

C. Liu et al.

Title Page

Abstract

Introduction

Conclusions

References

Tables

Figures



Back

Close

Full Screen / Esc

Printer-friendly Version

Interactive Discussion



## Microphysical and optical properties of ice clouds

C. Liu et al.

Title Page

Abstract

Introduction

Conclusions

References

Tables

Figures



Back

Close

Full Screen / Esc

Printer-friendly Version

Interactive Discussion



of a given set of solar-satellite geometries (i.e., solar zenith, viewing zenith and relative azimuth angles), and 3000 different geometries from the PARASOL data are used for the simulations. Due to the scattering peaks in both the phase function and the other phase matrix elements for the smooth hexagonal column, the single-column-based results show significant oscillations as well, and exhibit very different variations than the PARASOL observations. However, the numerical results based on the THM accurately match the satellite observations over the entire range of scattering angles. Considering similar patterns in the occurrence frequency of the PARASOL polarized reflectivities over time and the similar scattering phase matrices of the THM at different  $D_{\text{eff}}$ , the THM is expected to perform consistently in matching the observed polarized reflectivities of ice clouds.

Again, the THM not only infers similar optical thickness from the solar-band and IR-band retrievals, but also provides polarization properties similar to satellite observations. The excellent performance of the THM indicates a great potential for the remote sensing applications. More research is needed to discover whether the THM is a robust model for referring ice cloud properties based on observations from different wavelengths and sensors.

## 6 Conclusions

This study constructs an ice cloud model with two particle habits, and the performance and consistency of the THM in representing the microphysical and optical properties of ice clouds are investigated in detail. The THM includes a hexagonal column with an aspect ratio of unity and an aggregate containing 20 hexagonal columns, and both hollow structure and surface roughness are considered. The habit fractions of the two particle habits are determined to match the in situ measurements of ice cloud microphysical properties and the general trends, from analyses of particle imagery data sets, in the percentages of simple and complex crystals (i.e., more complex particles as particle

maximum dimension increases). The simulated IWC and  $D_{\text{mm}}$  values based on the THM agree closely with the in situ data sets.

The optical properties of the THM are calculated with a combination of the II-TM, PSTD and IGOM models for particle sizes from 2 to 10 000  $\mu\text{m}$  at wavelengths of interest, and the data library contains the extinction coefficient, single-scattering albedo, asymmetry parameter, and six independent nonzero phase matrix elements. The simulated phase functions based on the THM show excellent agreement with both the laboratory and in situ measurements at 0.67 and 0.80  $\mu\text{m}$  as well as satellite retrievals at 1.38  $\mu\text{m}$ .

In addition to the excellent performances in representing the microphysical and optical properties of natural ice clouds, an initial retrieval analysis demonstrates that the THM significantly improves the spectral consistency in the remote sensing of ice cloud properties from different satellite sensors or wavelengths. The optical thicknesses retrieved based on the two MODIS solar bands show close agreement with those inferred from the MODIS IR window measurements. Furthermore, a comparison between the simulated polarized reflectivities based on the THM and those measured from the PARASOL satellite indicates that the THM can closely represent the polarization properties of ice clouds.

We focused on the development and performance of the THM in representing ice cloud properties, but their effect on radiative forcing is not tested. Developing the THM optical property database over the whole spectral domain, obtaining the parameterized optical properties, performing retrievals over all ranges of viewing and illumination conditions, and investigating the radiative effects in the RTMs and GCMs are straightforward and will be discussed in further studies.

Microphysical and optical properties of ice clouds

C. Liu et al.

Title Page

Abstract

Introduction

Conclusions

References

Tables

Figures



Back

Close

Full Screen / Esc

Printer-friendly Version

Interactive Discussion



## Appendix A: Geometry of the hexagonal aggregate

The THM uses an aggregate of hexagonal columns as the complex particle, and 20 hexagonal columns with different sizes and aspect ratios are used to build the aggregate. Four steps are necessary to build the final aggregate as shown in Fig. 2b.

5 First, we randomly generate each of the column elements by giving its length and aspect ratio:

$$L = [(1 - A_1) + 2A_1\xi_1]L_o, \quad (\text{A1})$$

and

$$10 \frac{2a}{L} = A_2 + (1 - A_2)\xi_2, \quad (\text{A2})$$

where  $A_1$  and  $A_2$  are constants related to the geometries of the hexagonal columns, and  $\xi_1$  and  $\xi_2$  are independent random numbers distributed uniformly in  $[0, 1]$ .  $A_1$  determines the range of the column sizes, and  $A_2$  limits the minimum aspect ratio. We use values of 0.2 and 0.8 for  $A_1$  and  $A_2$ , respectively, to generate the 20 hexagonal columns used to build the aggregate. Here,  $L_o$  is the column average size. Once the aggregate is generated, the dimensions can be scaled to fit the ice crystal size in the single-scattering computations.

Secondly, the 20 hexagonal columns are attached to form an aggregate without overlapping. An improved particle-cluster aggregation algorithm, normally used for a fractal aggregate (Filippov et al., 2000; Liu et al., 2012c) with spherical monomers, is adapted, and the only difference is that each hexagonal column is randomly rotated to attach to another. For simplification, the rotation is managed to make only a vertex and a surface point-attached (without overlapping or surface-surface attachment).

25 The third step is to introduce a hollow structure into the hexagonal columns by replacing one hexagonal surface of each column using the hollow structure as shown in Fig. 1. The depth of the hollow is fixed at  $d/L = 0.25$ . To ensure the attachment of

the aggregate, the hollow structure is only added to a surface without any attached particles, and a hexagonal column with both hexagonal surfaces connected with other monomers is kept solid. The aggregate has only one solid column.

As a final step, surface roughness is added to the particle by replacing each of the smooth surfaces with roughened ones. In the II-TM and PSTD simulations, explicit particle geometries are achieved by following the rough surfaces defined by Liu et al. (2013). The tiled-facet approximation (Yang et al., 2008) is applied for the IGOM simulations, because of its efficiency without significant loss of accuracy (Liu et al., 2013).

The completed roughened aggregate is shown in Fig. 2b. Numerically, the aggregate is defined by the explicit vertices and surfaces of the columns. Thus, the volume and averaged projected area of the aggregate can be rigorously and numerically calculated, and will be used for the microphysical and optical properties of the THM. Note that the surface roughness has little effect on the microphysical properties of the THM, but its influence is shown in the optical properties.

*Acknowledgements.* This research was supported by NASA Grant NNX13AQ57G, and partly by the endowment funds associated with the David Bullock Harris Chair in Geosciences at the College of Geosciences, Texas A&M University. All computations were carried out at the Texas A&M University Supercomputing Facility EOS, and we gratefully acknowledge the assistance of Facility staff in porting our codes. The authors thank Febvre for the use of the phase function data from the in situ measurements.

## References

- Auriol, F., Gayet, J. F., Febvre, G., Jourdan, O., Labonnote, L. C., and Brogniez, G.: In situ observation of cirrus scattering phase functions with 22° and 46° halos: cloud field study on 19 February 1998, *J. Atmos. Sci.*, 58, 3376–3390, 2001.
- Barkey, B. and Liou, K. N.: Polar nephelometer for light-scattering measurements of ice crystals, *Opt. Lett.*, 26, 232–234, 2001.

## Microphysical and optical properties of ice clouds

C. Liu et al.

Title Page

Abstract

Introduction

Conclusions

References

Tables

Figures



Back

Close

Full Screen / Esc

Printer-friendly Version

Interactive Discussion





**Microphysical and  
optical properties of  
ice clouds**

C. Liu et al.

Title Page

Abstract

Introduction

Conclusions

References

Tables

Figures



Back

Close

Full Screen / Esc

Printer-friendly Version

Interactive Discussion



- Baran, A. J.: A review of the light scattering properties of cirrus, *J. Quant. Spectrosc. Ra.*, 110, 1239–1260, 2009.
- Baran, A. J.: From the single-scattering properties of ice crystals to climate prediction: a way forward, *Atmos. Res.*, 112, 45–69, 2012.
- 5 Baran, A. J. and Labonnote, L. C.: A self-consistent scattering model for cirrus, I: The solar region, *Q. J. Roy. Meteor. Soc.*, 133, 1899–1912, 2007.
- Baran, A. J., Francis, P. N., Labonnote, L. C., and Doutriaux-Boucher, M.: A scattering phase function for ice cloud: tests of applicability using aircraft and satellite multi-angle multi-wavelength radiance measurements of cirrus, *Q. J. Roy. Meteor. Soc.*, 127, 2395–2416, 10 2001.
- Baran, A. J., Connolly, P. J., and Lee, C.: Testing an ensemble model of cirrus ice crystals using midlatitude in situ estimates of ice water content, volume extinction coefficient and the total solar optical depth, *J. Quant. Spectrosc. Ra.*, 110, 1579–1598, 2009.
- Baran, A. J., Gayet, J.-F., and Shcherbakov, V.: On the interpretation of an unusual in-situ 15 measured ice crystal scattering phase function, *Atmos. Chem. Phys.*, 12, 9355–9364, doi:10.5194/acp-12-9355-2012, 2012.
- Baum, B. A., Yang, P., Heymsfield, A. J., Schmitt, C. G., Xie, Y., Bansemer, A., Hu, Y. X., and Zhang, Z.: Improvements in shortwave bulk scattering and absorption models for the remote sensing of ice clouds, *J. Appl. Meteorol. Clim.*, 50, 1037–1056, 2011.
- 20 Baum, B. A., Yang, P., Heymsfield, A. J., Bansemer, A., Cole, B. H., Merrelli, A., Schmitt, C., and Wang, C.: Ice cloud single-scattering property models with the full phase matrix at wavelengths from 0.2 to 100  $\mu\text{m}$ , *J. Quant. Spectrosc. Ra.*, 146, 123–139, 2014.
- Bi, L. and Yang, P.: Accurate simulation of the optical properties of atmospheric ice crystals with the invariant imbedding T-matrix method, *J. Quant. Spectrosc. Ra.*, 138, 17–35, 2014.
- 25 Bi, L., Yang, P., Kattawar, G. W., Baum, B. A., Hu, Y. X., Winker, D. M., Brock, R. S., and Lu, J. Q.: Simulation of the color ratio associated with the backscattering of radiation by ice particles at the wavelengths of 0.532 and 1.064  $\mu\text{m}$  wavelengths, *J. Geophys. Res.*, 114, D00H08, doi:10.1029/2009JD011759, 2009.
- Bi, L., Yang, P., Liu, C., Yi, B., Baum, B. A., van Dienenhoven, B., and Iwabuchi, H.: Assessment of the accuracy of the conventional ray-tracing technique: implications in remote sensing and radiative transfer involving ice clouds, *J. Quant. Spectrosc. Ra.*, 146, 158–174, 2014.
- 30

## Microphysical and optical properties of ice clouds

C. Liu et al.

Title Page

Abstract

Introduction

Conclusions

References

Tables

Figures



Back

Close

Full Screen / Esc

Printer-friendly Version

Interactive Discussion



Cole, B. H., Yang, P., Baum, B. A., Riedi, J., Labonnote, L. C., Thieuleux, F., and Platnick, S.: Comparison of PARASOL observations with polarized reflectances simulated using different ice habit mixtures, *J. Appl. Meteorol. Clim.*, 52, 186–196, 2013.

Cole, B. H., Yang, P., Baum, B. A., Riedi, J., and C.-Labonnote, L.: Ice particle habit and surface roughness derived from PARASOL polarization measurements, *Atmos. Chem. Phys.*, 14, 3739–3750, doi:10.5194/acp-14-3739-2014, 2014.

Cross, J. D.: Scanning electron microscopy of evaporating ice, *Science*, 164, 174–175, 1969.

Curry, J. A., Hobbs, P. V., King, M. D., Randall, D. A., Minnis, P., Isaac, G. A., Pinto, J. O., Uttal, T., Bucholtz, A., Cripe, D. G., Gerber, H., Fairall, C. W., Garrett, T. J., Hudson, J., Intrieri, J. M., Jakob, C., Jensen, T., Lawson, P., Marcotte, D., Nguyen, L., Pilewskie, P., Rangno, A., Rogers, D. C., Strawbridge, K. B., Valero, F. P. J., Williams, A. G., and Wylie, D.: FIRE Arctic clouds experiment, *B. Am. Meteorol. Soc.*, 81, 5–29, 2000.

Deschamps, P. Y., Bréon, F. M., Leroy, M., Podaire, A., Bricaud, A., Buriez, J. C., and Sèze, G.: The POLDER Mission: instrument characteristics and scientific objectives, *IEEE T. Geosci. Remote*, 32, 598–615, 1994.

Doutriaux-Boucher, M., Buriez, J. C., Brogniez, G., Labonnote, L. C., and Baran, A. J.: Sensitivity of retrieved POLDER directional cloud optical thickness to various particle models, *Geophys. Res. Lett.*, 27, 109–112, doi:10.1029/1999GL010870, 2000.

Ebert, E. E. and Curry, J. A.: A parameterization of ice cloud optical properties for climate models, *J. Geophys. Res.*, 97, 3831–3836, doi:10.1029/91JD02472, 1992.

Edwards, J. M., Havemann, S., Thelen, J. C., and Baran, A. J.: A new parameterization for the radiative properties of ice crystals: comparison with existing schemes and impact in a GCM, *Atmos. Res.*, 83, 19–35, 2007.

Evans, K. F., Wang, J. R., Racette, P. E., Heymsfield, G., and Li, L.: Ice cloud retrievals and analysis with the compact scanning submillimeter imaging radiometer and the cloud radar system during CRYSTAL FACE, *J. Appl. Meteorol.*, 44, 839–859, 2005.

Febvre, G., Gayet, J. F., Minikin, A., Schlager, H., Shcherbakov, V., Jourdan, O., Busen, R., Fiebig, M., Kärcher, B., and Schumann, U.: On optical and microphysical characteristics of contrails and cirrus, *J. Geophys. Res.*, 114, D02204, doi:10.1029/2008JD010184, 2009.

Filippov, A. V., Zurita, M., and Rosner, D. E.: Fractal-like aggregates: relation between morphology and physical properties, *J. Colloid Interf. Sci.*, 229, 261–273, 2000.

Fu, Q.: An accurate parameterization of the solar radiative properties of cirrus clouds for climate models, *J. Climate*, 9, 2058–2082, 1996.

## Microphysical and optical properties of ice clouds

C. Liu et al.

Title Page

Abstract

Introduction

Conclusions

References

Tables

Figures



Back

Close

Full Screen / Esc

Printer-friendly Version

Interactive Discussion



- Fu, Q.: A new parameterization of an asymmetry factor of cirrus clouds for climate models, *J. Atmos. Sci.*, 64, 4140–4150, 2007.
- Fu, Q. and Liou, K. N.: Parameterization of the radiative properties of cirrus clouds, *J. Atmos. Sci.*, 50, 2008–2025, 1993.
- 5 Gayet, J. F., Shcherbakov, V., Mannstein, H., Minikin, A., Schumann, U., Ström, J., Petzold, A., Ovarlez, J., and Immler, F.: Microphysical and optical properties of midlatitude cirrus clouds observed in the Southern Hemisphere during INCA, *Q. J. Roy. Meteor. Soc.*, 132, 2719–2748, 2006.
- Gayet, J.-F., Mioche, G., Bugliaro, L., Protat, A., Minikin, A., Wirth, M., Dörnbrack, A.,  
10 Shcherbakov, V., Mayer, B., Garnier, A., and Gourbeyre, C.: On the observation of unusual high concentration of small chain-like aggregate ice crystals and large ice water contents near the top of a deep convective cloud during the CIRCLE-2 experiment, *Atmos. Chem. Phys.*, 12, 727–744, doi:10.5194/acp-12-727-2012, 2012.
- Katagiri, G., Kikuchi, N., Nakajima, T. Y., Higurashi, A., Shimizu, A., Matsui, I., Havasaka, T.,  
15 Sugimoto, N., Takamura, T., and Nakajima, T.: Cirrus cloud radiative forcing derived from synergetic use of MODIS analyses and ground-based observations, *Sola*, 6, 25–28, 2010.
- Hansen, J. E. and Travis, L. D.: Light scattering in planetary atmospheres, *Space Sci. Rev.*, 16, 527–610, 1974.
- Heidinger, A. K. and Pavolonis, M. J.: Gazing at cirrus clouds for 25 years through a split window, Part I: methodology, *J. Appl. Meteorol. Clim.*, 48, 1100–1116, 2009.
- Herman, G. F., Wu, M. C., and Johnson, W. T.: The effect of clouds on the Earth's solar and infrared radiation budgets, *J. Atmos. Sci.*, 37, 1251–1261, 1980.
- Heymsfield, A. J. and Miloshevich, L. M.: Relative humidity and temperature influences on cirrus formation and evolution: observations from wave clouds and FIRE II, *J. Atmos. Sci.*,  
25 52, 4302–4326, 1995.
- Heymsfield, A. J. and Miloshevich, L. M.: Parameterizations for cross-section area and extinction of cirrus and stratiform ice cloud particles, *J. Atmos. Sci.*, 60, 936–956, 2003.
- Heymsfield, A. J., Lewis, S., Bansemer, A., Iaquinta, J., Miloshevich, L. M., Kajikawa, M.,  
Twohy, C., and Poellot, M. R.: A general approach for deriving the properties of cirrus and stratiform ice cloud particles, *J. Atmos. Sci.*, 59, 3–29, 2002.
- 30 Heymsfield, A. J., Miloshevich, L. M., Schmitt, C., Bansemer, A., Twohy, C., Poellot, M. R., Fridlind, A., and Gerber, H.: Homogeneous ice nucleation in subtropical and tropical convection and its influence on cirrus anvil microphysics, *J. Atmos. Sci.*, 62, 41–64, 2005.

**Microphysical and  
optical properties of  
ice clouds**

C. Liu et al.

Title Page

Abstract

Introduction

Conclusions

References

Tables

Figures



Back

Close

Full Screen / Esc

Printer-friendly Version

Interactive Discussion



Heymsfield, A. J., Schmitt, C., and Bansemer, A.: Ice cloud particle size distributions and pressure-dependent terminal velocities from in situ observations at temperatures from 0° to -86°C, *J. Atmos. Sci.*, 70, 4123–4154, 2013.

Huang, X., Yang, P., Kattawar, G. W., Liou, K. N.: Effect of mineral dust aerosol aspect ratio on polarized reflectance, *J. Quant. Spectrosc. Ra.*, submitted, 2014.

Inoue, T.: On the temperature and effective emissivity determination of semitransparent cirrus clouds by bi-spectral measurements in the 10 μm window region, *J. Meteorol. Soc. Jpn.*, 63, 88–89, 1985.

Korolev, A. V., Isaac, G. A., and Hallett, J.: Ice particle habits in Arctic clouds, *Geophys. Res. Lett.*, 26, 1299–1302, doi:10.1029/1999GL900232, 1999.

Labonnote, L. C., Brogniez, G., Buriez, J. C., Doutriaux-Boucher, M., Gayet, J. F., and Macke, A.: Polarized light scattering by inhomogeneous hexagonal monocrystals: validation with ADEOS-POLDER measurements, *J. Geophys. Res.*, 106, 12139–12153, doi:10.1029/2000JD900642, 2001.

Lawson, R. P., Baker, B., Pilson, B., and Mo, Q.: In situ observations of the microphysical properties of wave, cirrus and anvil clouds, Part II: cirrus clouds, *J. Atmos. Sci.*, 63, 3186–3203, 2006.

Lawson, R. P., Pilson, B., Baker, B., Mo, Q., Jensen, E., Pfister, L., and Bui, P.: Aircraft measurements of microphysical properties of subvisible cirrus in the tropical tropopause layer, *Atmos. Chem. Phys.*, 8, 1609–1620, doi:10.5194/acp-8-1609-2008, 2008.

L'Ecuyer, T. S. and Jiang, J. H.: Rouring the atmosphere aboard the A-Train, *Phys. Today*, 63, 36–41, 2010.

Letu, H., Nakajima, T. Y., and Matsui, T. N.: Development of an ice crystal scattering database for the global change observation mission/second generation global imager satellite mission: investigating the refractive index grid system and potential retrieval errors, *Appl. Optics*, 51, 6172–6178, 2012.

Liou, K. N.: Influence of cirrus clouds on weather and climate processes: a global perspective, *Mon. Weather Rev.*, 114, 1167–1199, 1986.

Liu, C., Panetta, R. L., and Yang, P.: Application of the pseudo-spectral time domain method to compute particle single-scattering properties for size parameters up to 200, *J. Quant. Spectrosc. Ra.*, 113, 1728–1740, 2012a.

## Microphysical and optical properties of ice clouds

C. Liu et al.

[Title Page](#)
[Abstract](#)
[Introduction](#)
[Conclusions](#)
[References](#)
[Tables](#)
[Figures](#)

[Back](#)
[Close](#)
[Full Screen / Esc](#)
[Printer-friendly Version](#)
[Interactive Discussion](#)


Liu, C., Bi, L., Panetta, R. L., Yang, P., and Yurkin, M. A.: Comparison between the pseudo-spectral time domain method and the discrete dipole approximation for light scattering simulations, *Opt. Express*, 20, 16763–16776, 2012b.

Liu, C., Panetta, R. L., and Yang, P.: The influence of water coating on the optical scattering properties of fractal soot aggregates, *Aerosol Sci. Tech.*, 46, 31–43, 2012c.

Liu, C., Panetta, R. L., and Yang, P.: The effects of surface roughness on the scattering properties of hexagonal columns with sizes from the Rayleigh to the geometric optics regimes, *J. Quant. Spectrosc. Ra.*, 129, 169–185, 2013.

Liu, Q. H.: The PSTD algorithm: a time-domain method requiring only two cells per wavelength, *Microw. Opt. Techn. Let.*, 15, 158–165, 1997.

Loeb, N. G., Wielicki, B. A., Doelling, D. R., Smith, G. L., Keyes, D. F., Kato, S., Manalo-Smith, N., and Wong, T.: Toward optimal closure of the Earth's top-of-atmosphere radiation budget, *J. Climate*, 22, 748–766, 2009.

Lynch, D. K., Sassen, K., Star, D., and Stephens, G. L.: *Cirrus*, Oxford University, Oxford, UK, 2002.

Macke, A.: Scattering of light by polyhedral ice crystals, *Appl. Optics*, 32, 2780–2788, 1993.

Macke, A., Mueller, J., and Raschke, E.: Single scattering properties of atmospheric ice crystal, *J. Atmos. Sci.*, 53, 2813–2825, 1996.

Magono, C. and Lee, C. W.: Meteorological classification of nature snow crystals, *J. Fac. Soc. Hokkaido Univ.*, 7, 321–335, 1966.

McFarquhar, G. M. and Heymsfield, A. J.: The definition and significance of an effective radius for ice clouds, *J. Atmos. Sci.*, 55, 2039–2052, 1998.

Minnis, P., Liou, K. N., and Takano, Y.: Inference of cirrus cloud properties using satellite-observed visible and infrared radiances, Part I: parameterization of radiance fields, *J. Atmos. Sci.*, 50, 1279–1304, 1993a.

Minnis, P., Liou, K. N., and Takano, Y.: Inference of cirrus cloud properties using satellite-observed visible and infrared radiances, Part II: verification of theoretical cirrus radiative properties, *J. Atmos. Sci.*, 50, 1305–1322, 1993b.

Minnis, P., Garber, D. P., Young, D. F., Arduini, R. F., Takano, Y.: Parameterizations of reflectance and effective emittance for satellite remote sensing of cloud properties, *J. Atmos. Sci.*, 55, 3313–3339, 1998.

Minnis, P., Sun-Mack, S., Young, D. F., Heck, P. W., Garber, D. P., Yan C., Spangenberg, D. A., Arduini, R. F., Trepte, Q. Z., Smith, W. L., Ayers, J. K., Gibson, S. C., Miller, W. F., Hong, G.,

**Microphysical and optical properties of ice clouds**

C. Liu et al.

[Title Page](#)[Abstract](#)[Introduction](#)[Conclusions](#)[References](#)[Tables](#)[Figures](#)[Back](#)[Close](#)[Full Screen / Esc](#)[Printer-friendly Version](#)[Interactive Discussion](#)

Chakrapani, V., Takano, Y., Liou K. N., Xie, Y., and Yang, P.: CERES edition-2 cloud property retrievals using TRMM VIRS and ERRRA and AQUA MODIS data – Part I: algorithms, IEEE T. Geosci. Remote, 49, 4374–4400, 2011.

5 Nakajima, T. and King, M. D.: Determination of the optical thickness and effective particle radius of clouds from reflected solar radiation measurements, Part I: theory, J. Atmos. Sci., 47, 1878–1893, 1990.

Nazaryan, H., McCormick, M. P., and Menzel, W. P.: Global characterization of cirrus clouds using CALIPSO data, J. Geophys. Res., 113, D16211, doi:10.1029/2007JD009481, 2008.

10 Peltoniemi, J. I., Lumme, K., Muinonen, K., and Irvine, W. M.: Scattering of light by stochastically rough particles, Appl. Optics, 28, 4088–4095, 1989.

Platnick, S., King, M. D., Ackerman, S. A., Menzel, W. P., Baum, B. A., Riédi, J. C., and Frey, R. A.: The MODIS cloud products: algorithms and examples from Terra, IEEE T. Geosci. Remote, 41, 459–473, 2003.

15 Ramanathan, V., Cess, R. D., Harrison, E. F., Minnis, P., Barkstrom, B. R., Ahmad, E., Hartmann, D.: Cloud-radiative forcing and climate: results from the earth radiation budget experiment, Science, 243, 57–63, 2007.

Sassen, K. and Comstock, J. M.: A midlatitude cirrus cloud climatology from the facility for atmospheric remote sensing, Part III: radiative properties, J. Atmos. Sci., 58, 2113–2127, 2001.

20 Sassen, K. and Liou, K. N.: Scattering of polarized laser light by water droplet, mixed-phase and ice crystal clouds, Part I: Angular scattering patterns, J. Atmos. Sci., 36, 838–851, 1979.

Schmitt, C. G. and Heymsfield, A. J.: On the occurrence of hollow bullet rosette- and column-shaped ice crystals in midlatitude cirrus, J. Atmos. Sci., 64, 4514–4519, 2007.

25 Schmitt, C. G. and Heymsfield, A. J.: Observational quantification of the separation of simple and complex atmospheric ice particles, Geophys. Res. Lett., 41, 1301–1307, doi:10.1002/2013GL058781, 2014.

Shcherbakov, V., Gayet, J. F., Baker, B., and Lawson, P.: Light scattering by single natural ice crystals, J. Atmos. Sci., 63, 1513–1525, 2006.

30 Stephens, G. L.: Cloud feedbacks in the climate system: critical review, J. Climate, 18, 237–273, 2005.

Sun, W., Loeb, N. G., and Yang, P.: On the retrieval of ice cloud particle shapes from POLDER measurements, J. Quant. Spectros. Ra., 101, 435–447, 2006.

**Microphysical and  
optical properties of  
ice clouds**

C. Liu et al.

[Title Page](#)[Abstract](#)[Introduction](#)[Conclusions](#)[References](#)[Tables](#)[Figures](#)[Back](#)[Close](#)[Full Screen / Esc](#)[Printer-friendly Version](#)[Interactive Discussion](#)

- Takano, Y. and Liou, K. N.: Solar radiative transfer in cirrus clouds, Part I. Single-scattering and optical properties of hexagonal ice crystals, *J. Atmos. Sci.*, 46, 3–19, 1989a.
- Takano, Y. and Liou, K. N.: Solar radiative transfer in cirrus clouds, Part II. Theory and computation of multiple scattering in an anisotropic medium, *J. Atmos. Sci.*, 46, 20–36, 1989b.
- 5 Takano, Y. and Liou, K. N.: Radiative transfer in cirrus clouds, Part III. Light scattering by irregular ice crystals, *J. Atmos. Sci.*, 52, 818–837, 1995.
- Ulanowski, Z., Hirst, E., Kaye, P. H., and Greenaway, R.: Retrieving the size of particle with rough and complex surfaces from two-dimensional scattering patterns, *J. Quant. Spectrosc. Ra.*, 113, 2457–2464, 2012.
- 10 Um, J. and McFarquhar, G. M.: Single-scattering properties of aggregates of bullet rosettes in cirrus, *J. Appl. Meteorol. Clim.*, 46, 757–775, 2007.
- Um, J. and McFarquhar, G. M.: Single-scattering properties of aggregates of plates, *Q. J. Roy. Meteor. Soc.*, 135, 291–304, 2009.
- van Diedenhoven, B., Cairns, B., Geogdzhayev, I. V., Fridlind, A. M., Ackerman, A. S., Yang, P., and Baum, B. A.: Remote sensing of ice crystal asymmetry parameter using multi-directional polarization measurements – Part 1: Methodology and evaluation with simulated measurements, *Atmos. Meas. Tech.*, 5, 2361–2374, doi:10.5194/amt-5-2361-2012, 2012.
- 15 van Diedenhoven, B., Cairns, B., Fridlind, A. M., Ackerman, A. S., and Garrett, T. J.: Remote sensing of ice crystal asymmetry parameter using multi-directional polarization measurements – Part 2: Application to the Research Scanning Polarimeter, *Atmos. Chem. Phys.*, 13, 3185–3203, doi:10.5194/acp-13-3185-2013, 2013.
- van Diedenhoven, B., Ackerman, A. S., Cairns, B., and Fridlind, A. M.: A flexible parameterization for shortwave optical properties of ice crystals, *J. Atmos. Sci.*, 71, 1763–1782, 2014.
- Walden, V. P., Warren, S. G., and Tuttle, E.: Atmospheric ice crystals over the Antarctic Plateau in winter, *J. Appl. Meteorol.*, 42, 1391–1405, 2003.
- 25 Wang, C., Yang, P., Nasiri, S. L., Platnick, S., Baum, B. A., Heidinger, A. K., and Liu, X.: A fast radiative transfer model for visible through shortwave infrared spectral reflectances in clear and cloudy atmospheres, *J. Quant. Spectrosc. Ra.*, 116, 122–131, 2013a.
- Wang, C., Yang, P., Platnick, S., Heidinger, A. K., Baum, B. A., Greenwald, T., Zhang, Z., and Holz, R. E.: Retrieval of ice cloud properties from AIRS and MODIS observations based on a fast high-spectral-resolution radiative transfer model, *J. Appl. Meteorol. Clim.*, 52, 710–726, 2013b.
- 30



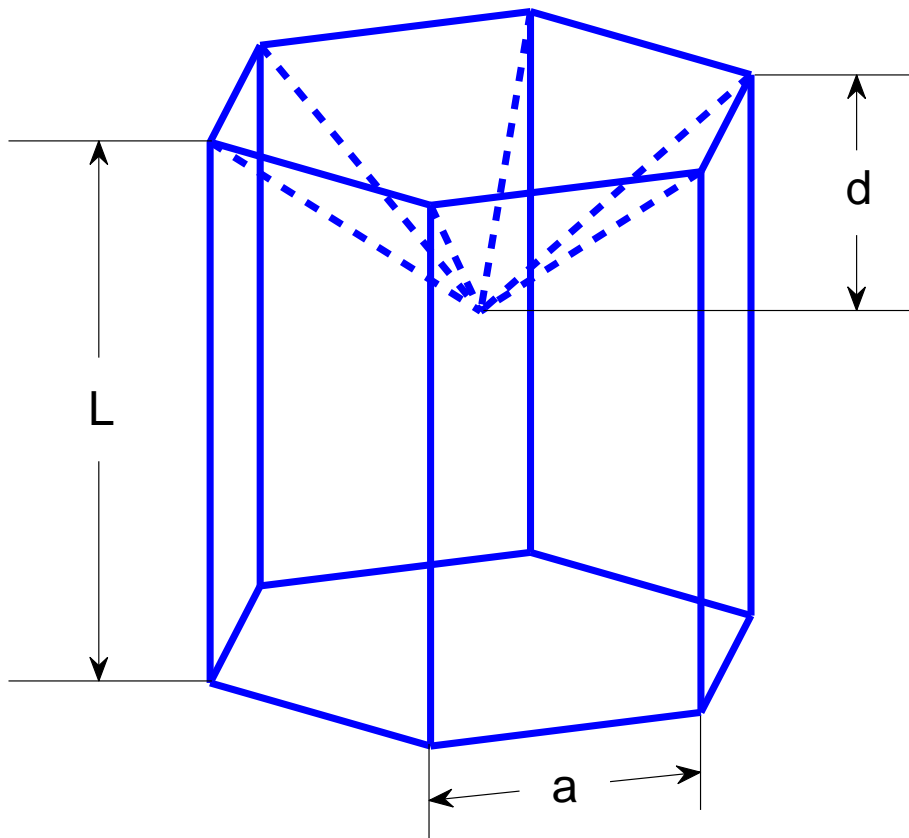
**Microphysical and optical properties of ice clouds**

C. Liu et al.

[Title Page](#)[Abstract](#)[Introduction](#)[Conclusions](#)[References](#)[Tables](#)[Figures](#)[Back](#)[Close](#)[Full Screen / Esc](#)[Printer-friendly Version](#)[Interactive Discussion](#)

- Wang, C., Yang, P., Dessler, A., Baum, B. A., and Hu, Y.: Estimation of the cirrus cloud scattering phase function from satellite observations, *J. Quant. Spectrosc. Ra.*, 138, 36–49, 2014.
- Wendling, P., Wendling, R., and Weickmann, H. K.: Scattering of solar radiation by hexagonal ice crystals, *Appl. Optics*, 18, 2663–2671, 1979.
- 5 Wielicki, B. A., Barkstrom, B. R., Baum, B. A., Charlock, T. P., Green, R. N., Kratz, D. P., Lee, R. B., Minnis, P., Smith, G. L., Wong, T., Young, D. F., Cess, R. D., Coakley, J. A., Crommelynck, D. A. H., Donner, L., Kandel, R., King, M. D., Miller, A. J., Ramanathan, V., Randall, D. A., Stowe, L. L., and Welch, R. M.: Clouds and the Earth's Radiant Energy System (CERES): algorithm overview, *IEEE T. Geosci. Remote*, 36, 1127–1141, 1998.
- 10 Winker, D. M., Pelon, J. R., and McCormick, M. P.: The CALIPSO mission: spaceborne lidar for observation of aerosols and clouds, *Proc. SPIE*, 4893, 1–11, 2003.
- Xie, Y., Yang, P., Kattawar, G. W., Baum, B. A., and Hu, Y.: Simulation of the optical properties of plate aggregates for application to the remote sensing of cirrus clouds, *Appl. Optics*, 50, 1065–1081, 2011.
- 15 Yang, P. and Liou, K. N.: Geometric-optics-integral-equation method for light scattering by non-spherical ice crystals, *Appl. Optics*, 35, 6568–6584, 1996.
- Yang, P. and Liou, K. N.: Single-scattering properties of complex ice crystals in terrestrial atmosphere, *Contr. Atmos. Phys.*, 71, 223–248, 1998.
- Yang, P., Kattawar, G. W., Hong, G., Minnis, P., and Hu, Y.: Uncertainties associated with the surface texture of ice particles in satellite-based retrieval of cirrus clouds: Part I. Single-scattering properties of ice crystals with surface roughness, *IEEE T. Geosci. Remote*, 46, 1940–1947, 2008.
- 20 Yang, P., Bi, L., Baum, B. A., Liou, K. N., Kattawar, G. W., Mishchenko, M. I., and Cole, B.: Spectrally consistent scattering, absorption, and polarization properties of atmospheric ice crystals at wavelengths from 0.2 to 100  $\mu\text{m}$ , *J. Atmos. Sci.*, 70, 330–347, 2013.
- 25 Yi, B., Yang, P., Baum, B. A., L'Ecuyer, T., Oreopoulos, L., Mlawer, E. J., Hyemsfield, A. J., and Liou, K. N.: Influence of ice particle surface roughening on the global cloud radiative effect, *J. Atmos. Sci.*, 70, 2794–2807, 2013.





**Figure 1.** Geometry of a hexagonal column with a hollow structure.  $L$  is equal to the maximum dimension  $D$  for the hexagonal column.

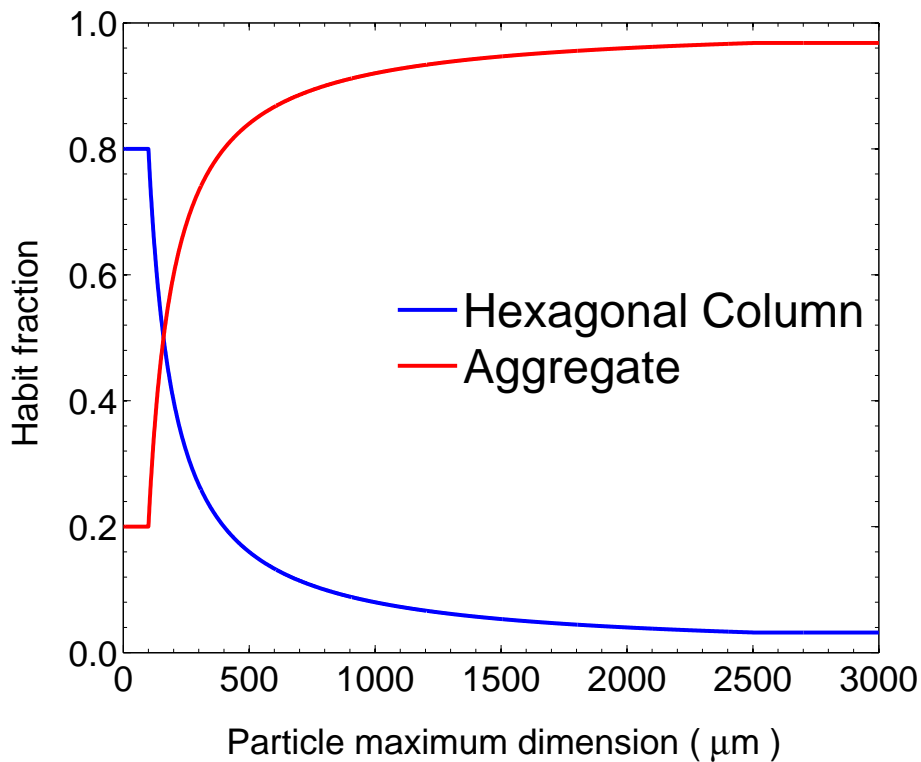
Microphysical and optical properties of ice clouds

C. Liu et al.

Title Page	
Abstract	Introduction
Conclusions	References
Tables	Figures
◀	▶
◀	▶
Back	Close
Full Screen / Esc	
Printer-friendly Version	
Interactive Discussion	







**Figure 3.** Ice crystal habit fraction as a function of particle maximum dimension for the two-habit model.

**Microphysical and optical properties of ice clouds**

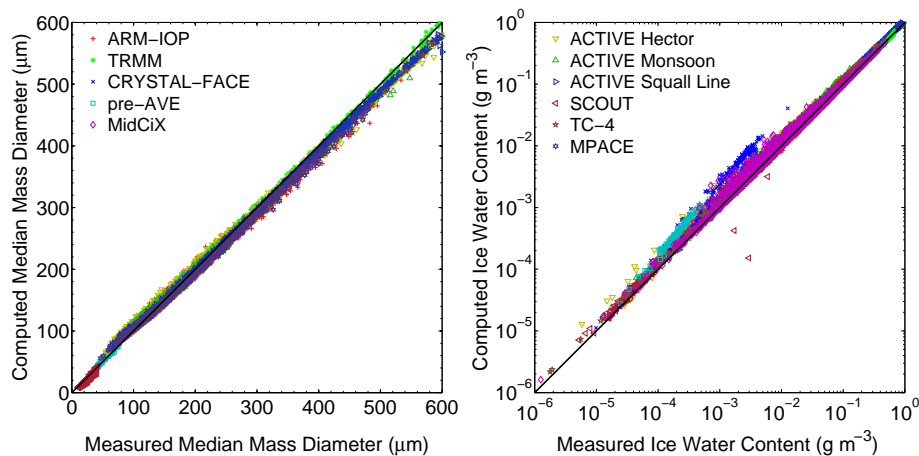
C. Liu et al.

Title Page	
Abstract	Introduction
Conclusions	References
Tables	Figures
◀	▶
◀	▶
Back	Close
Full Screen / Esc	
Printer-friendly Version	
Interactive Discussion	



## Microphysical and optical properties of ice clouds

C. Liu et al.

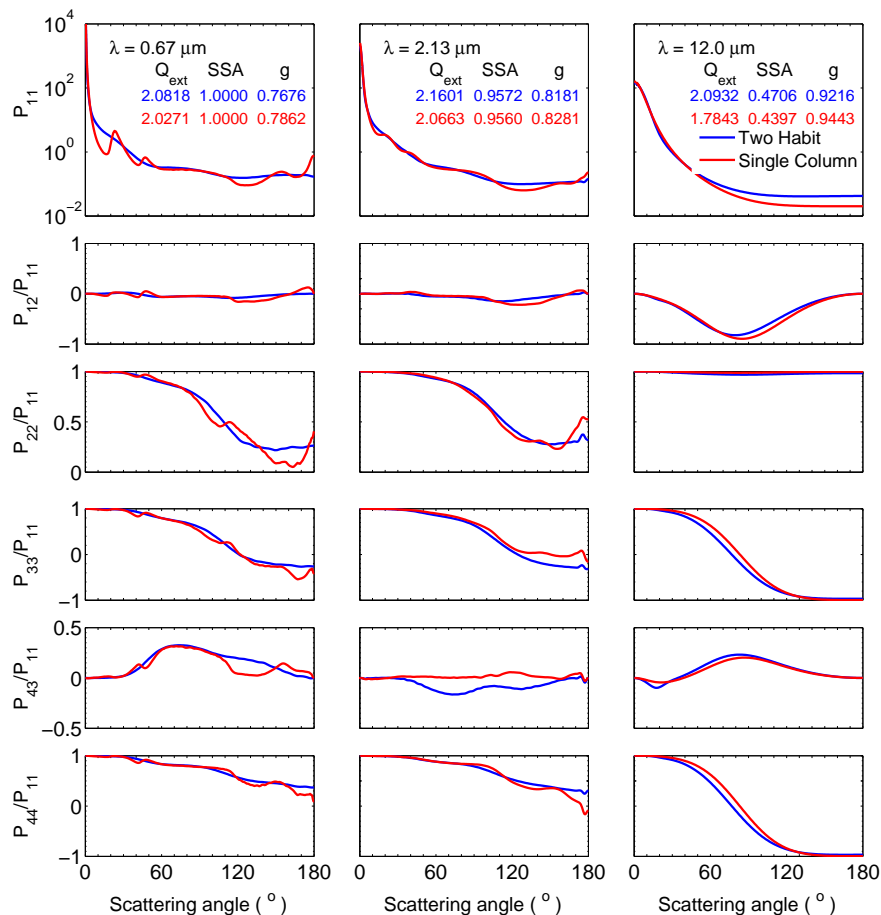


**Figure 4.** Comparison between the measured and calculated microphysical properties for each of the PSDs from 11 field campaigns: **(a)**  $D_{\text{mm}}$  and **(b)** IWC.

[Title Page](#)[Abstract](#)[Introduction](#)[Conclusions](#)[References](#)[Tables](#)[Figures](#)[Back](#)[Close](#)[Full Screen / Esc](#)[Printer-friendly Version](#)[Interactive Discussion](#)

Microphysical and optical properties of ice clouds

C. Liu et al.



**Figure 5.** Comparison of bulk non-zero phase matrix elements of the two-habit model and the single-column model with an effective diameter of 30 μm at wavelengths of 0.67, 2.13 and 12.0 μm.

Title Page

Abstract Introduction

Conclusions References

Tables Figures

◀ ▶

◀ ▶

Back Close

Full Screen / Esc

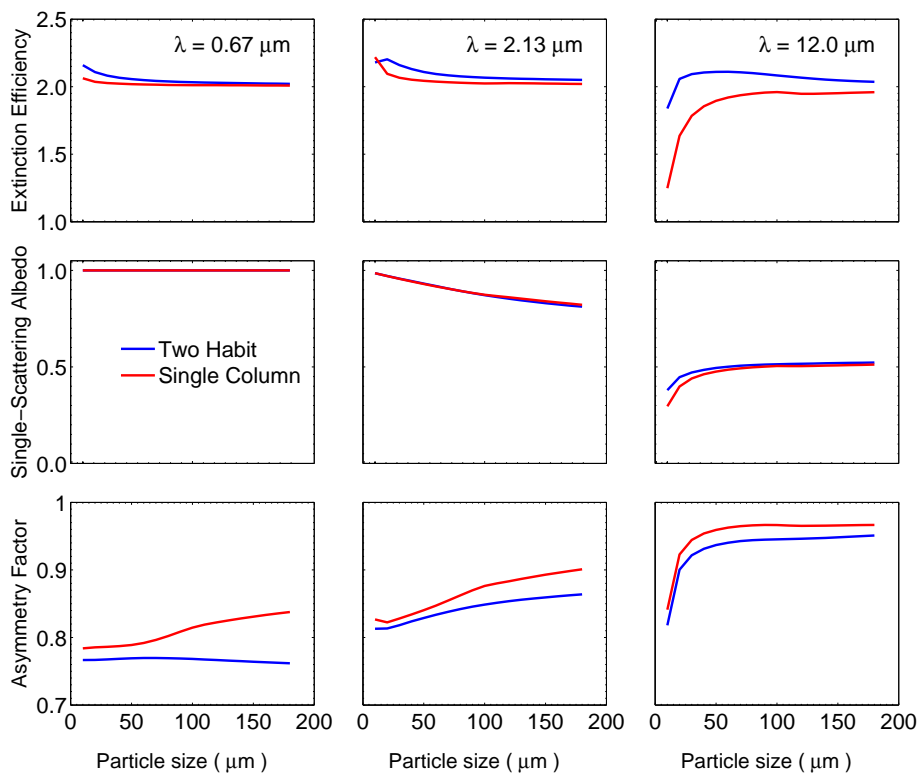
Printer-friendly Version

Interactive Discussion



## Microphysical and optical properties of ice clouds

C. Liu et al.

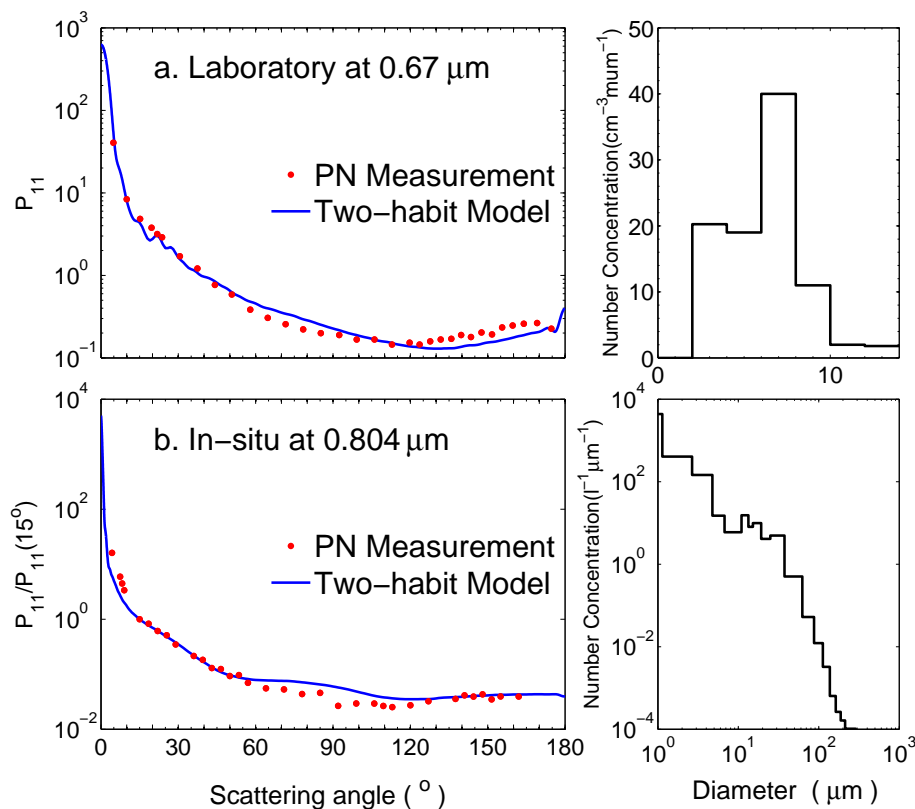


**Figure 6.** Bulk extinction efficiency (upper), single-scattering albedo (middle), and asymmetry factor (lower) of the two-habit model and the single-column model at wavelengths of 0.67, 2.13 and 12.0  $\mu\text{m}$ .

[Title Page](#)[Abstract](#)[Introduction](#)[Conclusions](#)[References](#)[Tables](#)[Figures](#)[Back](#)[Close](#)[Full Screen / Esc](#)[Printer-friendly Version](#)[Interactive Discussion](#)

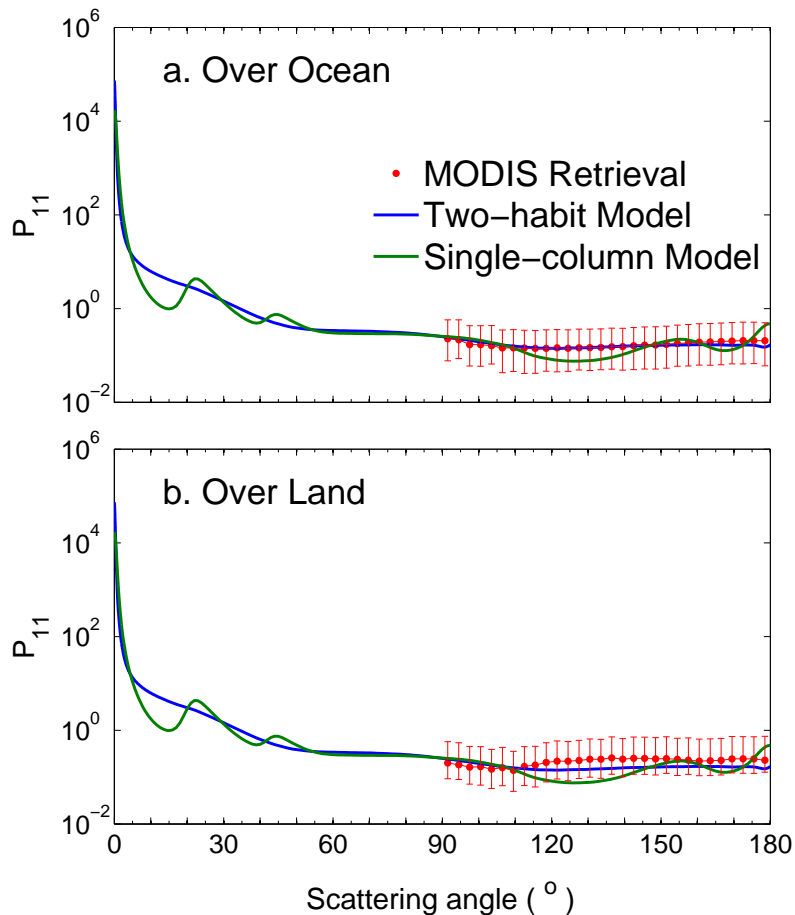
## Microphysical and optical properties of ice clouds

C. Liu et al.



**Figure 7.** Comparison between the phase functions (left panels) from the two-habit model and the polar nephelometer (PN) measurements from: **(a)** laboratory at wavelength of  $0.67\ \mu\text{m}$  and **(b)** in situ at wavelength of  $0.86\ \mu\text{m}$ . The right panels are observed particle number concentration of the corresponding measurements.

[Title Page](#)[Abstract](#)[Introduction](#)[Conclusions](#)[References](#)[Tables](#)[Figures](#)[◀](#)[▶](#)[◀](#)[▶](#)[Back](#)[Close](#)[Full Screen / Esc](#)[Printer-friendly Version](#)[Interactive Discussion](#)

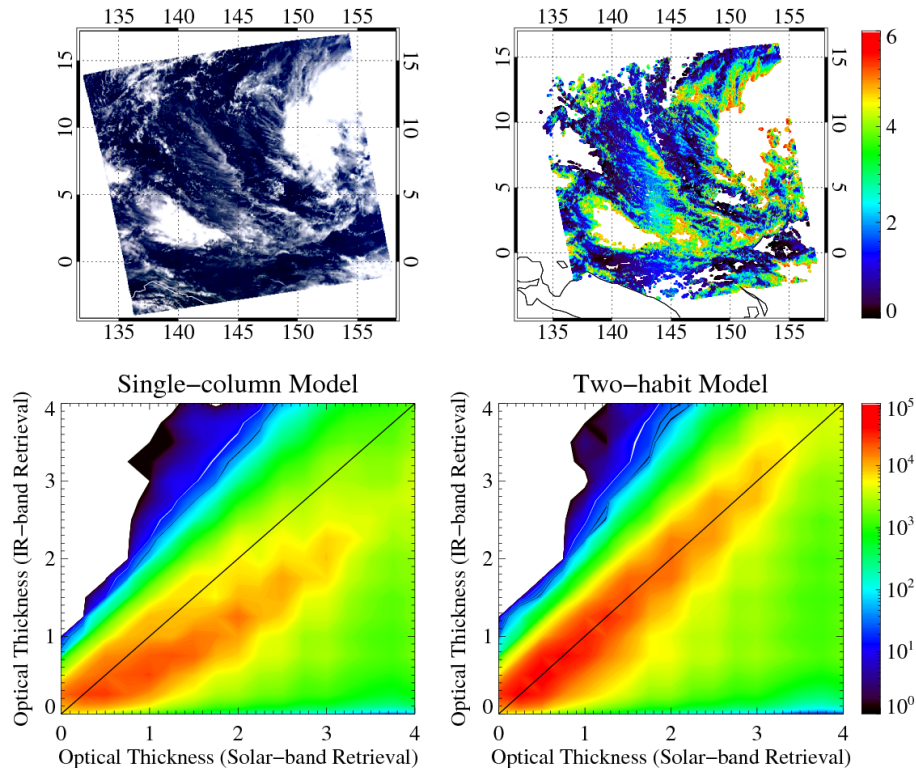


**Figure 8.** Comparison between the phase functions from the numerical models (both single-column and two-habit models) and MODIS retrieval at wavelength of  $1.38\ \mu\text{m}$  (Wang et al., 2014). The effective diameter used for the THM is  $50\ \mu\text{m}$ .



## Microphysical and optical properties of ice clouds

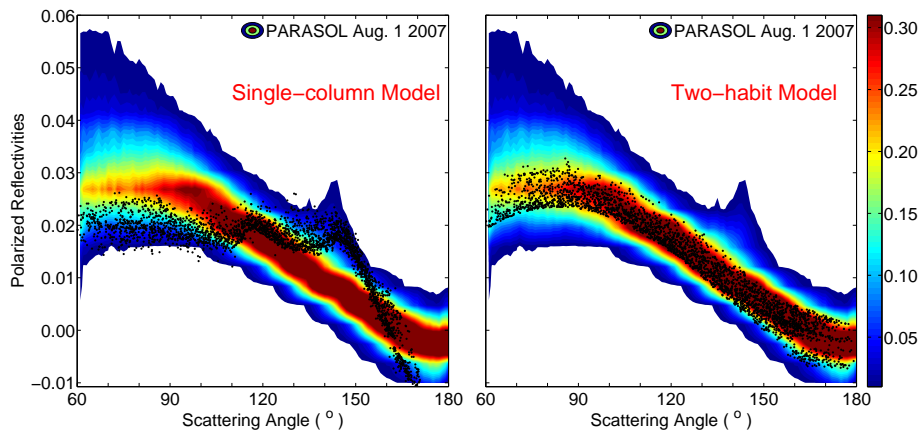
C. Liu et al.



**Figure 9.** (a) RGB image of an Aqua/MODIS granule from 24 February 2014 at 03:50 UTC. (b) Retrieved optical thickness of thin ice clouds. (c) and (d) are comparisons of ice cloud optical thicknesses retrieved from the MODIS solar bands and IR bands, and the results are based on the single-column model and two-habit model, respectively. The histograms illustrate occurrences of thin ice cloud pixels, and the red color corresponds to the high frequency of occurrence.

## Microphysical and optical properties of ice clouds

C. Liu et al.



**Figure 10.** Comparisons between the normalized polarized reflectivities obtained from one day of PARASOL data over ocean (color contours) and calculations (black dots) based on the single-column model (left) and the two-habit model (THM, right).

[Title Page](#)[Abstract](#)[Introduction](#)[Conclusions](#)[References](#)[Tables](#)[Figures](#)[Back](#)[Close](#)[Full Screen / Esc](#)[Printer-friendly Version](#)[Interactive Discussion](#)