



Ratio of stratospheric
lifetimes of CFC-11
and CFC-12

L. Hoffmann et al.

Stratospheric lifetime ratio of CFC-11 and CFC-12 from satellite and model climatologies

L. Hoffmann¹, C. M. Hoppe², R. Müller², G. S. Dutton³, J. C. Gille⁴,
S. Griessbach¹, A. Jones⁵, C. I. Meyer¹, R. Spang², C. M. Volk⁶, and
K. A. Walker^{5,7}

¹Jülich Supercomputing Centre, Forschungszentrum Jülich, Jülich, Germany

²Institut für Energie- und Klimaforschung, Forschungszentrum Jülich, Jülich, Germany

³NOAA Earth System Research Laboratory, Global Monitoring Division, Boulder, CO, USA

⁴National Center for Atmospheric Research, Boulder, CO, USA

⁵Department of Physics, University of Toronto, Toronto, Canada

⁶Bergische Universität Wuppertal, Fachbereich Physik, Wuppertal, Germany

⁷Department of Chemistry, University of Waterloo, Waterloo, Ontario, Canada

Received: 12 May 2014 – Accepted: 17 June 2014 – Published: 25 June 2014

Correspondence to: L. Hoffmann (l.hoffmann@fz-juelich.de)

Published by Copernicus Publications on behalf of the European Geosciences Union.

Title Page

Abstract

Introduction

Conclusions

References

Tables

Figures



Back

Close

Full Screen / Esc

Printer-friendly Version

Interactive Discussion



Abstract

Chlorofluorocarbons (CFCs) play a key role in stratospheric ozone loss and are strong infrared absorbers that contribute to global warming. The stratospheric lifetimes of CFCs are a measure of their global loss rates that are needed to determine global warming and ozone depletion potentials. We applied the tracer-tracer correlation approach to zonal mean climatologies from satellite measurements and model data to assess the lifetimes of CFCl_3 (CFC-11) and CF_2Cl_2 (CFC-12). We present estimates of the CFC-11/CFC-12 lifetime ratio and the absolute lifetime of CFC-12, based on a reference lifetime of 52 yr for CFC-11. We analyzed climatologies from three satellite missions, the Atmospheric Chemistry Experiment-Fourier Transform Spectrometer (ACE-FTS), the High Resolution Dynamics Limb Sounder (HIRDLS), and the Michelson Interferometer for Passive Atmospheric Sounding (MIPAS). We found a CFC-11/CFC-12 lifetime ratio of 0.47 ± 0.08 and a CFC-12 lifetime of 111(96–132) yr for ACE-FTS, a ratio of 0.46 ± 0.07 and a lifetime of 112(97–133) yr for HIRDLS, and a ratio of 0.46 ± 0.08 and a lifetime of 112(96–135) yr for MIPAS. The error-weighted, combined CFC-11/CFC-12 lifetime ratio is 0.47 ± 0.04 and the CFC-12 lifetime estimate is 112(102–123) yr. These results agree with the recent Stratosphere-troposphere Processes And their Role in Climate (SPARC) reassessment, which recommends lifetimes of 52(43–67) yr and 102(88–122) yr, respectively. Having smaller uncertainties than the results from other recent studies, our estimates can help to better constrain CFC-11 and CFC-12 lifetime recommendations in future scientific studies and assessments. Furthermore, the satellite observations were used to validate first simulation results from a new coupled model system, which integrates a Lagrangian chemistry transport model into a climate model. For the coupled model we found a CFC-11/CFC-12 lifetime ratio of 0.48 ± 0.07 and a CFC-12 lifetime of 110(95–129) yr, based on a ten-year perpetual run. Closely reproducing the satellite observations, the new model system will likely become a useful tool to assess the impact of advective transport, mixing,

ACPD

14, 16865–16906, 2014

Ratio of stratospheric lifetimes of CFC-11 and CFC-12

L. Hoffmann et al.

Title Page

Abstract

Introduction

Conclusions

References

Tables

Figures



Back

Close

Full Screen / Esc

Printer-friendly Version

Interactive Discussion



and photochemistry as well as climatological variability on the stratospheric lifetimes of long-lived tracers.

1 Introduction

Monitoring the global distributions of chlorofluorocarbons (CFCs) is important for various reasons. The chlorine released by photolytic decomposition of CFCs plays a key role in ozone depletion both in the upper stratosphere and in the polar regions (Molina and Rowland, 1974; Solomon, 1999). Furthermore, CFCs and most of their replacements are strong infrared absorbers that contribute significantly to the anthropogenic greenhouse effect (Velders et al., 2007; Hodnebrog et al., 2013). Tracer-tracer relations of long-lived trace gases, such as CFCs, are frequently examined to study dynamical processes in the stratosphere, in particular the mixing of air masses near the subtropical and polar vortex transport barriers (Volk et al., 1996; Waugh, 1997; Plumb et al., 2000; Müller et al., 2001; Morgenstern et al., 2002). The data are also used to determine age-of-air (Waugh et al., 2003; Schoeberl et al., 2005). Continuous, global measurements of CFCs are useful assets to validate the representation of transport, mixing, and photochemistry in atmospheric models (Eyring et al., 2005; Rind et al., 2007; Hoppe et al., 2014). Here we focus on CFCl_3 (CFC-11) and CF_2Cl_2 (CFC-12), which are the CFCs with the largest atmospheric abundances.

CFCs originate from anthropogenic emissions in the troposphere, where they are well-mixed and chemically stable. In the stratosphere they are removed mainly by photolytic decomposition and reaction with atomic oxygen. Their trends are controlled by the balance of the tropospheric sources and the stratospheric sinks. The lifetime τ (in yr) is one particular measure of the global loss rate of a long-lived trace gas. It is defined as the ratio

$$\tau = \frac{B}{S} \quad (1)$$

ACPD

14, 16865–16906, 2014

Ratio of stratospheric lifetimes of CFC-11 and CFC-12

L. Hoffmann et al.

Title Page

Abstract

Introduction

Conclusions

References

Tables

Figures

◀

▶

◀

▶

Back

Close

Full Screen / Esc

Printer-friendly Version

Interactive Discussion



Ratio of stratospheric lifetimes of CFC-11 and CFC-12

L. Hoffmann et al.

Title Page

Abstract

Introduction

Conclusions

References

Tables

Figures

◀

▶

◀

▶

Back

Close

Full Screen / Esc

Printer-friendly Version

Interactive Discussion



of the atmospheric burden B and the sink S . The burden B is defined as the total mass of the gas (in Tg) integrated over the atmospheric reservoir. The sink S represents the total loss of mass (in Tg yr^{-1}). For the CFCs we refer to the lifetimes as “stratospheric lifetimes”, because the sinks are mostly located in the stratosphere. The stratospheric lifetimes of CFCs are crucial in determining their global warming potentials and ozone depletion potentials, see WMO (2011) and IPCC (2013) for a more detailed discussion.

Based on various lifetime estimates derived from observations, laboratory data, and a range of modeling approaches, the World Meteorological Organisation (WMO) recommended lifetimes of 45 yr for CFC-11 and 100 yr for CFC-12 in the 1998 Scientific Assessment of Ozone Depletion (WMO, 1999). These recommendations were retained unaltered during the following three assessments. However, later studies (Douglass et al., 2008) and the WMO assessment in 2010 (WMO, 2011) indicated problems with the lifetime estimates of some halogen-containing species. As a consequence, the lifetimes of many long-lived compounds, including CFC-11 and CFC-12, have been recently reassessed within a Stratosphere-troposphere Processes And their Role in Climate (SPARC) project (SPARC, 2013). The aims of the SPARC project were to provide new estimates of the lifetimes and associated errors of many long-lived trace gases, to assess the influence of different lifetime definitions, and to assess the effect of a changing climate on lifetimes. The project results will be used to update the lifetime recommendations of the next WMO assessment. The lifetime recommendations from the SPARC project are 52(43–67) yr for CFC-11 and 102(88–122) yr for CFC-12. The errors given here for the SPARC data indicate “most likely” ranges and denote 2σ -uncertainties. In this study we aimed at providing new estimates of the ratio of the stratospheric lifetimes of CFC-11 and CFC-12 based on satellite observations and model output, which can be helpful input for future reassessments.

Various methods have been developed to determine the lifetimes of long-lived species from measurements or model output. In this study we apply the tracer-tracer correlation approach (Plumb and Ko, 1992; Plumb, 1996; Volk et al., 1997) to estimate the ratio of the stratospheric lifetimes of CFC-11 and CFC-12. Following a common

**Ratio of stratospheric
lifetimes of CFC-11
and CFC-12**

L. Hoffmann et al.

Title Page

Abstract

Introduction

Conclusions

References

Tables

Figures



Back

Close

Full Screen / Esc

Printer-friendly Version

Interactive Discussion



convention, we use the lifetime ratio to also estimate the absolute lifetime of CFC-12, based on a given reference lifetime for CFC-11. We here make use of the new SPARC recommendation of 52 yr for CFC-11. Note that all CFC-12 lifetime estimates presented in this paper will change if the reference lifetime for CFC-11 changes. We directly apply the tracer-tracer analysis to zonal mean climatologies of CFC-11 and CFC-12 that are derived from satellite measurements or atmospheric model output. This is a simple and efficient approach, as it separates the task of lifetime estimation from the task of preparing a climatology, which typically requires the processing of large satellite or model data sets. An important difference compared to previous studies is that we used in-situ surface measurements rather than satellite data to estimate the global burdens of CFC-11 and CFC-12. This yields more accurate results because the in-situ measurements are much less affected by systematic errors or data gaps, which are typical for limb and occultation satellite measurements in the troposphere. The high degree of consistency of the results for the different and independent data sets analyzed here provides confidence in the validity of our approach.

In Sect. 2 we introduce the tracer-tracer correlation method used to estimate the CFC-11/CFC-12 lifetime ratio from zonal mean climatologies. We also describe the different satellite observations and the model data set. In Sect. 3 we present estimates of the CFC-11/CFC-12 lifetime ratio and the CFC-12 lifetime for the different data sets. Section 4 shows a comparison with lifetime estimates from other studies and provides a discussion of the results. Appendix A illustrates the influence of systematic measurement errors on lifetime analyses, based on tests with idealized CFC profiles. Appendix B describes the electronic supplement of this paper.

2 Methods and data

2.1 Lifetime estimates from tracer-tracer correlations

The tracer-tracer approach to estimate stratospheric lifetimes of long-lived species is based on the theoretical work of Plumb and Ko (1992), Plumb (1996), and Volk et al. (1997). In these studies it is shown that any two species whose local lifetimes are longer than quasi-horizontal transport time scales are in climatological slope equilibrium. This means that they share surfaces of constant volume mixing ratios so that a scatter plot of their volume mixing ratios shows a compact curve. The slope of the correlation curve equals the ratio of the net global fluxes of the two species through the corresponding surface of constant volume mixing ratio, if that surface lies below all sinks. For stratospheric tracers this is the case at the tropopause. The slope of the correlation curve at the tropopause therefore can be related to the ratio of the tracer lifetimes,

$$\frac{\tau_1}{\tau_2} = \frac{B_1}{B_2} \frac{d\sigma_2}{d\sigma_1}, \quad (2)$$

where τ_1 and τ_2 denote the lifetimes, B_1 and B_2 are the global burdens, and $d\sigma_2/d\sigma_1$ is the correlation slope at steady-state conditions.

Before we discuss the estimation of the stratospheric lifetimes of CFCs in more detail, we first summarize the arguments leading to the conclusion that data from the lower stratosphere at mid-latitudes are best suited for that purpose: in general, the correlations of long-lived tracers are affected by the rates and locations of their sources and sinks as well as the typical characteristics of advective and diffusive fluid dynamical transport. Compact correlations are found if the chemical sources and sinks are weak and if mixing on isentropic surfaces is much faster than diabatic advection through those surfaces (Plumb, 2007). While the sources of the CFCs are located at the Earth's surface, the decomposition takes place mostly at low and mid-latitudes in the middle and upper stratosphere (e. g. Minschwaner et al., 2013). The tropical stratosphere is dominated by large-scale upwelling and is relatively isolated from mid-latitudes (Volk

Title Page

Abstract

Introduction

Conclusions

References

Tables

Figures



Back

Close

Full Screen / Esc

Printer-friendly Version

Interactive Discussion



Ratio of stratospheric lifetimes of CFC-11 and CFC-12

L. Hoffmann et al.

Title Page

Abstract

Introduction

Conclusions

References

Tables

Figures

◀

▶

◀

▶

Back

Close

Full Screen / Esc

Printer-friendly Version

Interactive Discussion



et al., 1996; Neu and Plumb, 1999). Thus tropical correlation curves are influenced by local tropical sinks rather than reflecting only global sinks and are therefore generally not suited to derive global stratospheric lifetimes. At high latitudes the polar vortex causes stratospheric air to subside in isolation from mid-latitudes and correlation curves within the vortex develop separately from those at mid-latitudes over the course of the winter (Müller et al., 1996, 2005; Plumb et al., 2000; Morgenstern et al., 2003). Finally, in the free troposphere complex advection and mixing processes can cause the breakdown of the compact, stratospheric correlations. In particular, fast vertical transport by convection violates the assumption that diabatic advection is slow compared with isentropic mixing (Plumb, 2007).

Equation (2) strictly applies only for steady-state conditions for which sources and sinks are balanced and for which the burdens do not change over time. In reality, depending on the age-of-air, the surface trends affect the stratospheric volume mixing ratios in different regions at different times. As a consequence, the observed transient correlation slopes $d\chi_2/d\chi_1$, with transient volume mixing ratios χ_i , typically do not match with steady-state slopes $d\sigma_2/d\sigma_1$, with steady-state volume mixing ratios σ_i . Volk et al. (1997) introduced correction factors C_i for each tracer, which depend on the correlations between the age-of-air and the tracer volume mixing ratio, to correct for the transience effect. Thereby the equation for the lifetime ratio becomes

$$\frac{\tau_1}{\tau_2} = \frac{B_1}{B_2} \frac{d\chi_2}{d\chi_1} \frac{C_2}{C_1}. \quad (3)$$

Equation (3) is used here to estimate the lifetime ratio of CFC-11 and CFC-12 and to estimate the lifetime of CFC-12, based on a given lifetime for CFC-11. In the following we will discuss the three factors in Eq. (3) that determine the lifetime ratio in more detail.

The first factor in Eq. (3) is the ratio of the burdens B_1/B_2 . This factor could, in principle, be determined directly from satellite or model climatologies. However, infrared limb or occultation satellite measurements in the troposphere are often affected by systematic errors, including, e. g., uncertainties in radiometric and spectral calibration or

pointing knowledge. Furthermore, the total number of observations in the troposphere is often limited due to the interference of clouds. As a consequence, zonal mean climatologies from satellite instruments typically have limited data quality in the troposphere. At their lowermost altitudes the climatologies often do not converge to surface values, which are very accurately known from in-situ measurements. Therefore we estimated the ratio of burdens based on global mean volume mixing ratios at the surface, $\sigma_{s,1}$ and $\sigma_{s,2}$,

$$\frac{B_1}{B_2} = \alpha \frac{\sigma_{s,1}}{\sigma_{s,2}}. \quad (4)$$

This approach is motivated by the fact that more than 90 % of the mass of CFC-11 and CFC-12 are located in the troposphere. In the troposphere CFCs are well-mixed and their concentrations are well-known from in-situ measurements. Differences between the ratio of the burdens and the ratio of the surface volume mixing ratios arise due to the different stratospheric distributions of the CFCs. To take into account the stratospheric distributions, we apply a scaling factor $\alpha = 0.97 \pm 0.01$ to convert the ratio of surface values to the ratio of burdens. This value for CFC-11 and CFC-12 was estimated from data reported by Volk et al. (1997, Table 3) and Brown et al. (2013, Table A4). We also confirmed it independently with the model data set described in Sect. 2.3 by comparing pressure- and cosine latitude-weighted averages of the zonal mean cross-sections with the surface data of the model. Although the surface volume mixing ratios and burdens show significant trends, α was found to be rather stable in time. The small uncertainty of α reported here covers the differences between the various references and data sources. Model results in the troposphere are likely not affected by systematic errors as much as satellite measurements. However, we decided to apply the same approach of transferred surface data also to the model output for consistency.

Annual global mean surface data of CFC-11 and CFC-12 were obtained from the National Oceanic and Atmospheric Administration/Earth System Research Laboratory

Ratio of stratospheric lifetimes of CFC-11 and CFC-12

L. Hoffmann et al.

Title Page

Abstract

Introduction

Conclusions

References

Tables

Figures

◀

▶

◀

▶

Back

Close

Full Screen / Esc

Printer-friendly Version

Interactive Discussion



Ratio of stratospheric lifetimes of CFC-11 and CFC-12

L. Hoffmann et al.

Title Page

Abstract

Introduction

Conclusions

References

Tables

Figures

◀

▶

◀

▶

Back

Close

Full Screen / Esc

Printer-friendly Version

Interactive Discussion



(NOAA/ESRL) halocarbons program (Elkins et al., 1993; Rigby et al., 2013).¹ Annual means are derived from weighted and smoothed averages of monthly mean data, which again are combined, interpolated, and smoothed for each sampling location of the NOAA/ESRL measurement network. Hemispheric and global means are estimated by cosine weighting by latitude. The accuracy of the data is better than 2 % (Rigby et al., 2013). A time series of the data is shown in Fig. 1. The ratio of the CFC-11 and CFC-12 surface volume mixing ratios slightly decreased from 0.48 ± 0.02 in 2002 to 0.45 ± 0.02 in 2009, which is the time period of interest for this study.

The second factor in Eq. (3) is the transient tracer-tracer slope $d\chi_2/d\chi_1$. To estimate this factor we followed the approach of Volk et al. (1997), which we applied directly to the satellite and model zonal mean climatologies of CFC-11 and CFC-12. These climatologies usually consist of sets of volume mixing ratio profiles $\chi_{1,i}$ for CFC-11 and $\chi_{2,i}$ for CFC-12 at common altitudes z_i , pressure levels p_i , or model levels ζ_i (see Sect. 2.3) for different latitude bands. As the actual vertical coordinates are not important for the tracer-tracer analysis, we simply present all data sets on approximated altitudes below. For the satellite climatologies we converted pressure levels p_i to log-pressure altitudes, $z_i = H \ln(p_0/p_i)$, with a fixed scale height $H = 7$ km and surface pressure $p_0 = 1013.25$ hPa. For the model we used geopotential heights. We will show vertical profiles and tracer-tracer correlations for all latitudes for reference below, but it should be noted that the lifetime analyses are based only on mid-latitude data (typically from 30° to 60° N/S).

To estimate the tracer-tracer slope we first sorted all correlation data points ($\chi_{1,i}, \chi_{2,i}$) into different analysis windows, covering specific ranges of CFC-11 volume mixing ratios. Our analysis windows had a width of 100 ppt and a nominal center shifting from 50 to 250 ppt in steps of 5 ppt. For each window we determined the tracer-tracer slope by means of a linear fit to the data points. As the data points are unevenly distributed within the windows, we also calculated the mean CFC-11 volume mixing ratio, to which

¹The NOAA/ESRL data are accessible at <http://www.esrl.noaa.gov/gmd/hats/>.

Ratio of stratospheric lifetimes of CFC-11 and CFC-12

L. Hoffmann et al.

Title Page

Abstract

Introduction

Conclusions

References

Tables

Figures

◀

▶

◀

▶

Back

Close

Full Screen / Esc

Printer-friendly Version

Interactive Discussion



the corresponding slope from the linear fit was assigned. By shifting the analysis window from lower to higher CFC-11 volume mixing ratios, the change of the slopes from the lower stratosphere towards the tropopause can be assessed. The tracer-tracer slope at the tropopause, which is located at the CFC-11 surface volume mixing ratio, was obtained by extrapolating a linear fit through the individual slopes of the different analysis windows. This fit through the slopes was restricted to mean CFC-11 volume mixing ratios larger than 100 ppt. Smaller CFC-11 volume mixing ratios are related to data points in the middle and upper stratosphere that cannot be used to estimate lifetimes. Our error analysis takes the statistical errors of the linear fits into account. However, the leading error of the correlation slopes is due to systematic errors of the CFC data that we assumed to be 10 % for each species (see Sect. 2.2 for a discussion of measurement errors).

Our method to estimate the tracer-tracer slope differs in some aspects from the approach developed by Volk et al. (1997): (i) Our analysis is directly based on zonal mean climatologies, while Volk et al. (1997) binned data from individual soundings in the specific analysis windows. The latter allows for more careful filtering of data points that are below the tropopause or outside the mid-latitudes. Our method assumes that the degrading effects of these outliers can be neglected because a large number of soundings is statistically combined. The method of Volk et al. (1997) was originally developed to analyse a limited number of in-situ measurements from aircraft campaigns, while our study focuses on multi-year satellite records that comprise on the order of 10^4 to 10^6 vertical soundings each. (ii) Volk et al. (1997) used slightly smaller analysis windows, i.e., 70 ppt rather than 100 ppt. We performed a sensitivity test with window widths between 50 and 150 ppt and found the most stable and consistent results for 100 ppt. Differences to 70 ppt were minor. (iii) Volk et al. (1997) used a quadratic fit rather than a linear fit to extrapolate the slope at the tropopause. However, we found that a linear fit helps to avoid problems with increasing systematic errors of the slopes towards the tropopause (see Appendix A). The linear fit is more tightly constrained by

measurements at upper altitudes. Visual inspections of the slopes for the different analysis windows helps to judge that the linear fit provides an acceptable representation.

The third factor in Eq. (3) is the ratio of correction factors $C = C_2/C_1$ for tracer transience. We determined C based on data of Volk et al. (1997) and Brown et al. (2013).

Data for different years from these studies are presented in Fig. 2. The results of a linear fit applied to the data are also presented. We use the fit to determine C for any given reference year. In the time period from 2002 to 2009 the combined transience corrections for CFC-11 and CFC-12 are typically small (below $\pm 5\%$). When estimating the error of the lifetime ratio we assumed that the correction factor C has an uncertainty of 5 %. This uncertainty is much larger than the statistical uncertainty of the linear fit, but takes into account the systematic errors of the input data. The error of the combined correction factor C for the data of Volk et al. (1997) is 9 %. Brown et al. (2013) found that the seasonal variability of the correction factors is less than 3 % each year.

2.2 Satellite observations of CFC-11 and CFC-12

In this study we make use of CFC-11 and CFC-12 data from three infrared limb and occultation satellite instruments: the Atmospheric Chemistry Experiment-Fourier Transform Spectrometer (ACE-FTS) (Bernath et al., 2005; Bernath, 2006), the High Resolution Dynamics Limb Sounder (HIRDLS) (Gille et al., 2003, 2008), and the Michelson Interferometer for Passive Atmospheric Sounding (MIPAS) (Fischer et al., 2008). There are other data sets available for CFC-11 and CFC-12 from different satellites or from the same instruments, but analyzed with different retrieval schemes (Bingham et al., 1997; Riese et al., 1999; Yokota et al., 2002; Khosrawi et al., 2004; Kuell et al., 2005; Dinelli et al., 2010; Kellmann et al., 2012). However, these data sets have not been analyzed here. We focus on data sets covering reasonably long time periods, i.e., at least a year or longer, to capture a significant part of atmospheric variability. We also focus on data sets measured after CFC-11 and CFC-12 reached their peak burdens in the years 1994 and 2002, respectively. After the peak burdens have been reached the trends of CFC-11 and CFC-12 are slower such that the correction for transience is

Ratio of stratospheric lifetimes of CFC-11 and CFC-12

L. Hoffmann et al.

Title Page

Abstract

Introduction

Conclusions

References

Tables

Figures



Back

Close

Full Screen / Esc

Printer-friendly Version

Interactive Discussion



smaller and thus introduces less uncertainty in this type of analysis. The ACE-FTS and MIPAS data were already used in other studies to estimate the stratospheric lifetimes of CFC-11 and CFC-12 (Brown et al., 2013; Minschwaner et al., 2013). The HIRDLS data are used here for the first time for that purpose.

ACE-FTS is the main instrument on the Canadian satellite SCISAT-1. The satellite was launched into a high-inclination, circular low-Earth orbit (74° inclination, 650 km altitude, 97.7 min period) in August 2003. ACE-FTS measures infrared spectra from 2.2 to 13.3 μm in solar occultation mode. We make use of a quality-controlled, validated climatology of ACE-FTS data provided by the ACE Science Operations Centre at the University of Waterloo, Canada (Jones et al., 2012).² The climatology covers the 14 baseline species for ACE-FTS, including CFC-11 and CFC-12. It is based on retrieval products obtained with processing software version 2.2, including updates for O₃ and N₂O₅. The retrievals cover an altitude range of 5 to 22 km for CFC-11 and 6 to 28 km for CFC-12. The vertical resolution is typically 3 to 4 km. The validation of the CFC data sets is described by Mahieu et al. (2008). It was found that ACE-FTS CFC-11 and CFC-12 data are systematically lower than balloon-borne measurements. For CFC-11 the difference is 10 % above 12 km and 20 % below 12 km. For CFC-12 the maximum bias is 10 % between 12 and 28 km. The precision of individual profiles is not relevant here because of the large number of profiles we analyzed. The ACE-FTS climatology of Jones et al. (2012) covers the time period from January 2004 to February 2009. During that time about 19 000 occultation measurements were performed. The original climatological data are provided on a three-monthly basis at 5° latitude spacing and on 28 pressure levels. We averaged the three-monthly data, giving them equal weight, to obtain a multi-year annual mean climatology. The ACE-FTS data of CFC-11 and CFC-12 are presented in Fig. 3, along with the other data sets used in this study.

HIRDLS is an infrared limb-sounding radiometer aboard the National Aeronautics and Space Administration's Aura satellite. Aura was launched into a near-polar, sun-synchronous orbit (98.2° inclination, 705 km altitude, 98.5 min period) in July 2004.

²The ACE-FTS climatology is accessible at <http://www.ace.uwaterloo.ca/climatology.html>.

Ratio of stratospheric lifetimes of CFC-11 and CFC-12

L. Hoffmann et al.

Title Page

Abstract

Introduction

Conclusions

References

Tables

Figures



Back

Close

Full Screen / Esc

Printer-friendly Version

Interactive Discussion



**Ratio of stratospheric
lifetimes of CFC-11
and CFC-12**

L. Hoffmann et al.

Title Page

Abstract

Introduction

Conclusions

References

Tables

Figures



Back

Close

Full Screen / Esc

Printer-friendly Version

Interactive Discussion



Being in operation till March 2008, HIRDLS measured thermal emissions from the atmospheric limb at various spectral intervals in the range from 6 to 17 μm , chosen to correspond to specific trace gases such as CFC-11 and CFC-12. We analyzed retrieval products obtained with the processing software version 7 (Gille et al., 2013).³

The retrievals cover an altitude range of 8 to 26 km for CFC-11 and 8 to 32 km for CFC-12. The vertical resolution is about 1 km. A comparison of HIRDLS and ACE-FTS for August and September 2006 showed good agreement for both CFC-11 and CFC-12 (Gille et al., 2013). The bias between both instruments is mostly below 10 %. To derive zonal mean climatologies from HIRDLS we first averaged the data on the given pressure levels in 10° latitude bins on a monthly basis. We filtered individual measurements that are affected by significant contributions of a priori data or for which the limb view is blocked by clouds. We also removed outliers that we identified based on volume mixing ratios exceeding the global mean surface values in 2006 by more than 10 %. The actual thresholds used for filtering are 275 ppt for CFC-11 and 595 ppt for CFC-12. The monthly means from January 2005 to March 2008 were averaged, giving them equal weight, to obtain a multi-year annual mean climatology of CFC-11 and CFC-12. The climatology is based on more than 6 million individual limb soundings. The data are presented in Fig. 3.

MIPAS is one of ten instruments aboard the European Space Agency's Envisat satellite. Envisat was launched in a nearly polar, sun-synchronous orbit (98.6° inclination, 790 km altitude, 100.2 min period) in March 2002. After losing contact with the satellite, the end of Envisat's mission was announced in May 2012. MIPAS measured infrared spectra from 4.1 to 15.4 μm in the limb viewing geometry. We focus on observations made in between September 2002 and March 2004. During that time period the MIPAS nominal limb scans covered 6 to 68 km altitude with 3 km vertical sampling from the troposphere to the middle stratosphere. The retrieval, validation, and preparation of climatologies of the CFC-11 and CFC-12 MIPAS data used here are described by Hoffmann

³The HIRDLS data are accessible at <http://disc.sci.gsfc.nasa.gov/Aura/data-holdings/HIRDLS>.

Ratio of stratospheric lifetimes of CFC-11 and CFC-12

L. Hoffmann et al.

Title Page

Abstract

Introduction

Conclusions

References

Tables

Figures

◀

▶

◀

▶

Back

Close

Full Screen / Esc

Printer-friendly Version

Interactive Discussion



et al. (2004, 2005, 2008). Based on comparisons with other satellite data sets and in-situ measurements it is shown that the accuracy of the MIPAS data is about 10 %. The MIPAS climatologies of CFC-11 and CFC-12 are based on more than 400 000 vertical soundings. The data are given on a 10° latitude and 1 km log-pressure altitude grid.

The zonal mean cross-sections are shown in Fig. 3. For additional consistency tests we prepared a second MIPAS climatology (not shown here) based on the new European Space Agency (ESA) MIPAS Level-2 processor version 6 data (Raspollini et al., 2013). We found that the new ESA data agree well with the data set of Hoffmann et al. (2004, 2005, 2008). The differences of the mid-latitude climatological profiles were below $\pm 5\%$ at 12 to 20 km altitude. This indicates that the two different forward models and retrieval schemes have only minor impact on the results.

All three satellite instruments, ACE-FTS, HIRDLS, and MIPAS, show reasonable zonal mean cross-sections. We found the expected spatial distributions due to upwelling of CFC-rich air in the tropics, decomposition of CFCs at low and mid-latitudes in the middle and upper stratosphere, and downwelling of CFC-poor air in the polar regions. Having more C-F bonds, CFC-12 is photochemically more stable and propagates higher up in the tropical stratosphere. Although the satellite data sets are obtained during different time periods, there is mostly good consistency of the zonal mean climatologies. The only significant difference found, based on visual inspection of the cross-sections, is a high bias of HIRDLS CFC-12 measurements at southern mid-latitudes around 20 to 30 km altitude. This anomaly is present in many, but not all of the individual profiles and was already identified by the HIRDLS team (B. Nardi, personal communication, 2013). However, at the moment no further explanation can be provided. We decided to restrict the analysis of the HIRDLS data to the Northern Hemisphere.

2.3 Coupled chemistry climate model

In this study we use the satellite observations to validate first simulation results obtained from a new coupled model system (Hoppe et al., 2014). The model integrates

a Lagrangian chemistry transport model into a climate model. It was mainly developed to assess the differences between Eulerian and Lagrangian transport modelling with respect to climate predictions. However, we expect that the new model will also help to improve long-term simulations of long-lived trace gases such as CFCs in the stratosphere, due to the very low numerical diffusion of the Lagrangian transport scheme. Here we demonstrate, based on a comparison of the lifetime diagnostics that the new model system provides realistic global distributions of CFC-11 and CFC-12 with respect to transport, mixing, and photochemistry.

One component of the coupled model is the Chemical Lagrangian Model of the Stratosphere (CLaMS) (McKenna et al., 2002b, a; Grooß et al., 2002; Konopka et al., 2004). CLaMS comprises three main modules for chemistry, advection, and mixing, as well as several submodules for the simulation of various other physical and chemical processes in the atmosphere. Due to its transport scheme, which allows for a precise control of mixing intensity, CLaMS is especially well suited for simulating transport barriers in the atmosphere, e. g., at the sub-tropical and polar jets. The trajectory module of CLaMS calculates Lagrangian non-diffusive transport of air parcels based on numerical integration with a 4th-order Runge-Kutta scheme. Trajectory calculations are based on the hybrid vertical coordinate ζ (Mahowald et al., 2002; Konopka et al., 2007). The original CLaMS version contains a detailed stratospheric chemistry scheme that involves around 150 chemical species (McKenna et al., 2002a; Grooß et al., 2002). Here, we chose a simplified chemistry scheme that is more efficient for long-term simulations (Pommrich et al., 2011). The simplified scheme uses daily-mean photolysis rates and describes the first order loss of long-lived tracers, such as CFC-11 and CFC-12.

The second component of the coupled model system is the ECHAM/MESSy Atmospheric Chemistry (EMAC) model. EMAC is a chemistry climate model that includes the climate model ECHAM5 (Roeckner et al., 2006) and the interface structure Modular Earth Submodel System (MESSy) (Jöckel et al., 2010). MESSy provides a coupling interface structure to develop Earth system models with the flexibility to vary between many processes that are included as submodels. MESSy includes a special submodel

Ratio of stratospheric lifetimes of CFC-11 and CFC-12

L. Hoffmann et al.

Title Page

Abstract

Introduction

Conclusions

References

Tables

Figures



Back

Close

Full Screen / Esc

Printer-friendly Version

Interactive Discussion



for dealing with atmospheric tracers (submodel TRACER, Jöckel et al., 2008). In the standard EMAC setup, tracers are transported using the flux-form semi-Lagrangian transport scheme of Lin and Rood (1996). The CLaMS modules for trajectory transport, mixing, simplified chemistry, and boundary conditions have been integrated into the MESSy interface structure as submodels. In the coupled EMAC/CLaMS model, ECHAM5 provides meteorological input for the CLaMS chemistry transport model.

For this study we performed a ten-year perpetual run with 2005 boundary conditions with the coupled EMAC/CLaMS model. The free running simulation was not nudged to observations. Sea surface temperatures and sea ice concentrations were taken from the Atmospheric Model Intercomparison Project (AMIP II) climatology (Hurrell et al., 2008). The EMAC spectral resolution was T42, which corresponds to a quadratic Gaussian grid of approximately $2.8^\circ \times 2.8^\circ$ in latitude and longitude, with 90 vertical levels. For the CLaMS transport core, about one million air parcels were distributed from the surface up to 2500 K potential temperature (about 60 km altitude). Initial values as well as boundary conditions for chemical species were taken from a climatological run with the stand-alone CLaMS model (Konopka et al., 2007). As CFC-12 is not included in the CLaMS climatological run, its initial values for the EMAC/CLaMS simulation were obtained using three correlation functions of CFC-12 with N_2O for the tropics ($15^\circ N$ to $15^\circ S$) and the northern or southern extratropics. To prepare a zonal mean climatology, data from the years 6 to 10 of the ten-year perpetual run with EMAC/CLaMS were averaged. The years 1 to 5 were not taken into account to minimize the influence of initialization. The EMAC/CLaMS data were binned and averaged on a 10° latitude grid for a set of 33 ζ -levels. The vertical spacing of these levels varies between 0.5 and 1.3 km in the upper troposphere and lower stratosphere. The EMAC/CLaMS zonal mean climatologies of CFC-11 and CFC-12 are presented in Fig. 3. Good agreement is found in comparison with the satellite measurements.

Ratio of stratospheric lifetimes of CFC-11 and CFC-12

L. Hoffmann et al.

Title Page

Abstract

Introduction

Conclusions

References

Tables

Figures

◀

▶

◀

▶

Back

Close

Full Screen / Esc

Printer-friendly Version

Interactive Discussion



3 Results

In this section we present our estimates of the stratospheric lifetime ratio of CFC-11 and CFC-12 and the absolute lifetime of CFC-12 for the three satellite missions and the model. All climatologies cover several years of data, i.e., about five years for ACE-FTS, three years for HIRDLS, one and a half year for MIPAS, and five years for EMAC/CLaMS. The different time periods covered by the data sets make it slightly more difficult to compare the results, but averaging over long time periods helps to reduce the influence of atmospheric variability and to constrain the results. We assigned a reference year to each data set that is used to determine the ratios of the burdens and the transience correction factors. As shown in Sect. 2, these parameters vary only slowly over time. By selecting the reference year in the middle of the time period of each data set we made sure that the errors due to a constant approximation are minor. The uncertainties of all results are given as standard deviations (1σ -values) and calculated based on conventional error propagation principles. Note that the CFC-12 lifetimes have asymmetric error bars because error propagation was calculated for their inverse. Following other studies, we here did not take the uncertainty of the CFC-11 reference lifetime into account, when we estimated the error of the CFC-12 lifetime.

The data used for the ACE-FTS lifetime analysis are presented in Fig. 4. The analysis is based on 5° latitude bands at 60 to 35° S and 40 to 60° N. For the lifetime calculations we selected the year 2006 as the reference year. The surface volume mixing ratios for the reference year are (249 ± 8) ppt for CFC-11 and (540 ± 16) ppt for CFC-12. We calculated a ratio of burdens of 0.448 ± 0.020 for CFC-11 versus CFC-12. The linear fits yielded a correlation slope of 1.05 ± 0.15 for CFC-12 versus CFC-11 at the tropopause. The ratio C of transience correction factors was estimated as 0.99 ± 0.05 . These data lead to a ratio of the steady-state lifetimes of CFC-11 and CFC-12 of 0.47 ± 0.08 and, assuming a lifetime of 52 yr for CFC-11, an estimated lifetime of 111(96–132) yr for CFC-12. A separate analysis for the Northern Hemisphere only provided a lifetime of 113(97–135) yr. For the Southern Hemisphere we found 109(94–130) yr.

Ratio of stratospheric lifetimes of CFC-11 and CFC-12

L. Hoffmann et al.

Title Page

Abstract

Introduction

Conclusions

References

Tables

Figures



Back

Close

Full Screen / Esc

Printer-friendly Version

Interactive Discussion



Figure 5 shows the data set used for the HIRDLS lifetime analysis. The analysis is based on 10° latitude bands at 30 to 60° N. Data from the Southern Hemisphere were not used due to data quality issues (Sect. 2.2). For the lifetime calculations we selected the year 2006 as the reference year, resulting in the same surface volume mixing ratios and ratio of burdens as for ACE-FTS. The linear fits yielded a correlation slope of 1.04 ± 0.15 for CFC-12 versus CFC-11 at the tropopause. Applying the same combined transience correction factor C as for ACE-FTS, this leads to a ratio of the steady-state lifetimes of CFC-11 and CFC-12 of 0.46 ± 0.07 and a lifetime of $112(97\text{--}133)$ yr for CFC-12.

The data used for the MIPAS lifetime analysis are presented in Fig. 6. The analysis is based on 10° latitude bands at 60 to 30° S and 30 to 60° N. For the lifetime calculations we selected the year 2003 as the reference year. The surface volume mixing ratios for the reference year are (256 ± 8) ppt for CFC-11 and (543 ± 16) ppt for CFC-12. We calculated a ratio of burdens of 0.458 ± 0.020 for CFC-11 versus CFC-12. Compared to ACE-FTS and HIRDLS the ratio of burdens differs only by 2 %. The linear fits yield a correlation slope of 1.07 ± 0.16 for CFC-12 versus CFC-11. The ratio C of transience correction factors was estimated as 0.95 ± 0.05 , i.e., a larger correction than the one used for ACE-FTS and HIRDLS. These data lead to a ratio of the steady-state lifetimes of CFC-11 and CFC-12 of 0.46 ± 0.08 and a lifetime of $112(96\text{--}135)$ yr for CFC-12. A separate analysis provided a lifetime of $110(94\text{--}133)$ yr for the Northern Hemisphere and $119(102\text{--}142)$ yr for the Southern Hemisphere. For the ESA data the analysis gave a lifetime of $112(95\text{--}135)$ yr globally, $112(94\text{--}138)$ yr for the Northern Hemisphere, and $111(95\text{--}133)$ yr for the Southern Hemisphere. While hemispheric data differ to some extent, the global results for the ESA data agree well with the results for the data of Hoffmann et al. (2004, 2005, 2008).

Finally, the data set used for the EMAC/CLaMS lifetime analysis is presented in Fig. 7. The analysis is based on 10° latitude bands at 60 to 30° S and 30 to 60° N. For the lifetime calculations we selected the year 2005 as the reference year. The surface volume mixing ratios for the reference year are (252 ± 8) ppt for CFC-11 and

Ratio of stratospheric lifetimes of CFC-11 and CFC-12

L. Hoffmann et al.

Title Page

Abstract

Introduction

Conclusions

References

Tables

Figures

◀

▶

◀

▶

Back

Close

Full Screen / Esc

Printer-friendly Version

Interactive Discussion



(542 ± 16) ppt for CFC-12. We calculated a ratio of burdens of 0.451 ± 0.020 for CFC-11 versus CFC-12. The linear fits yield a correlation slope of 1.05 ± 0.15 . We did not apply a transience correction, because we assume that the model approached steady-state conditions during last five years of the ten-year perpetual run. The EMAC/CLaMS model results lead to a ratio of the steady-state lifetimes of CFC-11 and CFC-12 of 0.48 ± 0.07 and a CFC-12 lifetime of 110(95–129) yr. We found a lifetime of 108(94–127) yr for the Northern Hemisphere and 111(97–131) yr for the Southern Hemisphere.

4 Discussion and conclusions

We applied the tracer-tracer approach of Plumb and Ko (1992), Plumb (1996), and Volk et al. (1997) to estimate the stratospheric lifetime ratio of CFC-11 and CFC-12 from ACE-FTS, HIRDLS, and MIPAS satellite observations as well as EMAC/CLaMS model output. We also estimated the absolute lifetime of CFC-12, based on a reference lifetime of 52 yr for CFC-11. As discussed in Sect. 2, our approach is similar to, but differs in some aspects from the method of Volk et al. (1997). The major difference is that we estimated the ratio of burdens of CFC-11 and CFC-12 based on NOAA/ESRL in-situ surface measurements rather than using the satellite data for that purpose. This avoids problems related to degraded data quality of limb and occultation satellite measurements in the troposphere due to systematic measurement errors and data gaps. Another difference between our study and the method of Volk et al. (1997) is that our analysis is based on zonal mean climatologies that are prepared beforehand and independently from the estimation of lifetimes.

The lifetime estimates from our analysis are summarized and compared to other recent studies in Table 1. Our estimates for the three satellite data sets show a very high degree of consistency and are in good agreement with the current WMO recommendation, the new SPARC reassessment, and other work. In particular, the estimated lifetime ratios are in excellent agreement with the study of Rigby et al. (2013) that is based on data from the Advanced Global Atmospheric Gases Experiment (AGAGE)

Title Page

Abstract

Introduction

Conclusions

References

Tables

Figures



Back

Close

Full Screen / Esc

Printer-friendly Version

Interactive Discussion



and the NOAA/ESRL ground-based networks, which are analyzed with a chemical transport model and a statistical inversion method. Compared to the study of Brown et al. (2013), who applied the method of Volk et al. (1997) on ACE-FTS data, we found a 16 % larger CFC-11/CFC-12 lifetime ratio for the same instrument. Part of the difference may be due to the fact that the study of Brown et al. (2013) covers ACE-FTS data for the years 2005 to 2010 whereas in our study the Jones et al. (2012) climatology was used, covering the years 2004 to 2009. Another difference is that we applied a linear fit to extrapolate the tracer-tracer slope at the tropopause, while Brown et al. (2013) applied a quadratic fit. Most notably, Brown et al. (2013) used the satellite data to estimate the ratio of burdens whereas we used surface data instead. Our CFC-11/CFC-12 lifetime ratio for MIPAS is 40 % larger than the corresponding estimate of Minschwaner et al. (2013). Both analyses are based on the same climatology. However, very different analysis techniques were used. Minschwaner et al. (2013) applied a photochemical model with additional input parameters to determine the CFC global loss rates. These are used to estimate absolute lifetimes rather than a lifetime ratio. The results of Minschwaner et al. (2013) mostly depend on CFC data in the middle and upper stratosphere at equatorial latitudes, whereas our results depend on data from the mid-latitude lower stratosphere.

In our study the results for the three satellite missions show excellent agreement among each other. The CFC-11/CFC-12 lifetime ratios vary only by 2 % and the CFC-12 lifetime estimates vary only by 1 to 2 yr. Consequently, we combined the ACE-FTS, HIRDLS, and MIPAS results to obtain error-weighted optimal estimates. This led to a CFC-11/CFC-12 lifetime ratio of 0.47 ± 0.04 and a CFC-12 lifetime of 112(102–123) yr. The combined results are in very good agreement with the current WMO recommendation ($\leq 3\%$) and in good agreement with the new SPARC reassessment ($\leq 10\%$). The WMO assessment in 2010 showed a 60 % difference between 2005 to 2008 “bottom-up” and “top-down” emission estimates for CFC-11, while good agreement was found for CFC-12 (WMO, 2011). As “top-down” estimates critically depend on the lifetimes, whereas “bottom-up” estimates do not, it was further demonstrated (WMO, 2011) that

Ratio of stratospheric lifetimes of CFC-11 and CFC-12

L. Hoffmann et al.

Title Page

Abstract

Introduction

Conclusions

References

Tables

Figures



Back

Close

Full Screen / Esc

Printer-friendly Version

Interactive Discussion



a longer CFC-11 lifetime (64 yr rather than 45 yr) and thus a larger CFC-11/CFC-12 lifetime ratio, could resolve this discrepancy. Our study indicates that the CFC-11/CFC-12 lifetime ratio is 3% larger than the current WMO recommendation (0.47 rather than 0.45). This explains some of the discrepancy identified in the last WMO assessment.

An even larger ratio was found in the new SPARC assessment, though. An important benefit of our study is that the errors of the combined data are up to a factor two smaller than the error estimates of other recent studies. We conclude that our results can contribute to further constraining the reference values for the CFC-11 and CFC-12 lifetimes in future assessments and scientific studies.

The stratospheric lifetimes of long-lived tracers such as CFC-11 and CFC-12 are important diagnostic quantities to evaluate the representation of transport and mixing in atmospheric models. Douglass et al. (2008) point out that models with faster circulation produce younger age-of-air distributions and that increasing circulation speed leads to shorter CFC lifetimes. A comparison of CFC lifetimes from a model and from observations therefore allows a judgement whether the model appropriately represents important features of the stratospheric circulation. We used the satellite results to validate the new EMAC/CLaMS coupled model system. As we applied exactly the same method to estimate the lifetimes for the satellite observations and the model, the results are indeed indicative of differences in the underlying data and are not affected by differences that could occur if different methods for lifetime estimation would be used. We found that after a spin-up phase of 5 yr the EMAC/CLaMS results are in excellent agreement ($\leq 4\%$) with the satellite observations. We conclude that the new model provides a realistic representation of stratospheric transport and will likely become a useful tool to assess the impact of advective transport, mixing, and photochemistry as well as climatological variability on the stratospheric lifetimes of long-lived tracers.

A topic of interest is the spatial and temporal variability of lifetime estimates. Rossby wave breaking and mixing in the stratosphere are typically much stronger in the winter hemisphere than in the summer hemisphere (Holton et al., 1995; Plumb, 2002). Furthermore, because of the larger continental land masses in the Northern Hemisphere,

Ratio of stratospheric lifetimes of CFC-11 and CFC-12

L. Hoffmann et al.

Title Page

Abstract

Introduction

Conclusions

References

Tables

Figures



Back

Close

Full Screen / Esc

Printer-friendly Version

Interactive Discussion



**Ratio of stratospheric
lifetimes of CFC-11
and CFC-12**

L. Hoffmann et al.

Title Page

Abstract

Introduction

Conclusions

References

Tables

Figures

◀

▶

◀

▶

Back

Close

Full Screen / Esc

Printer-friendly Version

Interactive Discussion



the northern stratosphere has more frequent and intense planetary wave activity than the southern stratosphere (Holton et al., 1995; Plumb, 2007). Stronger wave activity in Northern Hemisphere winter leads to a faster Brewer-Dobson circulation in the stratosphere. Model calculations show that faster stratospheric circulations produce younger distributions for the age of air, have larger loss-rates of long-lived stratospheric tracers, and therefore yield shorter CFC lifetimes (Douglass et al., 2008). The quasi-biennial oscillation (QBO) also has significant impact on the stratospheric distributions of CFC-11 and CFC-12, in particular in the tropics (Kellmann et al., 2012). These issues are of practical relevance for the analysis of temporally and spatially limited data sets from aircraft campaigns, for instance. Long-term satellite data sets and model simulations bear the potential to study variability of lifetimes in detail. We analyzed hemispheric differences of the CFC-11/CFC-12 lifetime ratio, but found no significant differences, when taking the error estimates of the results into account. Differences in CFC-12 lifetime estimates are 9 yr for MIPAS (only 1 yr for the ESA data), 4 yr for ACE-FTS, and 3 yr for EMAC/CLaMS.

In this study we estimated the ratio of the stratospheric lifetimes of CFC-11 and CFC-12 based on the tracer-tracer method directly from zonal mean climatologies from satellite observations and atmospheric model output. We took advantage of the fact that these climatologies provide multi-year coverage, which allowed us to neglect the statistical errors of individual measurements and take significant parts of atmospheric variability into account. In contrast to other studies using satellite measurements, we found highly consistent lifetime estimates for CFC-11 and CFC-12 for the ACE-FTS, HIRDLS, and MIPAS as well as the EMAC/CLaMS model. We also found excellent agreement with the current SPARC recommendations. Nevertheless, new infrared limb or occultation satellite measurements with high vertical resolution would help to further improve CFC-11 and CFC-12 lifetime recommendations and their error estimates in future studies.

Appendix A: Lifetime estimates for idealized CFC profiles

In order to analyze the influence of systematic measurement errors on lifetime estimates we conducted a set of tests with idealized volume mixing ratio profiles. For this purpose we constructed CFC-11 and CFC-12 profiles with a constant volume mixing ratio in the troposphere and a linear decrease towards zero in the stratosphere. The tropospheric volume mixing ratios were set to 240 ppt and 530 ppt for CFC-11 and CFC-12, respectively. The stratospheric slopes were adapted to obtain a tracer-tracer slope of $d\sigma_2/d\sigma_1 \approx 1.1$, which yields $\tau_1/\tau_2 \approx 0.5$, corresponding to the new SPARC lifetime recommendations. Obviously, real CFC profiles show more variability and structure in the stratosphere than the idealized profiles. Nevertheless, the simple and idealized profiles were found suitable to qualitatively study the impact of vertical resolution and measurement errors on observed tracer-tracer correlations. For this purpose we convolved the idealized profiles with Gaussian weighting functions with different full width at half maximum. This vertical smoothing represents on the one hand the limited vertical resolution of the satellite measurements and on the other hand the degrading effect due to averaging of profiles from different latitudes and different measurement times, for which the tropopause height varies. Different measurement errors were imposed on the profiles to assess their influence on tracer-tracer slopes.

The results of four different test cases are presented in Fig. 8. Test case 1 is a reference case that was not degraded by any assumed measurement errors, but illustrates the impact of vertical resolution. It can be seen that vertical smoothing has the largest effects around the tropopause and in the middle and upper stratosphere, where curvature of the idealized CFC profiles is largest. Other parts of the profiles are not affected at all. For test case 1 we obtain the promising result that the tracer-tracer correlations and the local slopes close to the tropopause are not affected by degraded vertical resolution at all. This might have been expected, because both CFC profiles are influenced by vertical smoothing in the same way. In reality, however, there may be differences in vertical smoothing related to the signals and constraints occurring in the CFC-11 or

ACPD

14, 16865–16906, 2014

Ratio of stratospheric lifetimes of CFC-11 and CFC-12

L. Hoffmann et al.

Title Page

Abstract

Introduction

Conclusions

References

Tables

Figures



Back

Close

Full Screen / Esc

Printer-friendly Version

Interactive Discussion



CFC-12 retrieval as well as differences due to averaging, if the CFC-11 and CFC-12 climatologies are not derived from exactly the same subsets of data.

To illustrate the influence of systematic measurement errors of the experimental data we constructed the test cases 2 to 4. For test case 2 we added a 10 % positive bias to the CFC-11 profile. This error directly maps into the tracer-tracer slopes, which are reduced by 10 %. In principle, such a bias would compensate in the lifetime analysis, if the same data are used to calculate the ratio of global burdens. However, we argue that surface data are much better suited than satellite data to accurately calculate global burdens and therefore considered a constant bias as an additional term in the error analysis. For test case 3 we distorted the CFC-11 profile with an altitude-dependent bias of $1 \% \text{ km}^{-1}$. This error leads to strongly decreasing slopes towards the tropopause. For test case 4 we shifted the CFC-11 profile 1 km upward. Such altitude displacements between the CFC profiles could arise if the climatologies are not prepared from exactly the same subsets of data, for instance. This vertical displacement also leads to significant slope errors at the tropopause. We do not expect such errors to be present in our data. However, if such errors are present it should be noted that the linear fit approach will help to reduce their influence on slope estimation.

Appendix B: Electronic supplement

We provide the zonal mean climatologies and the software used for the lifetime analysis as an electronic supplement to this paper. This allows our results to be reproduced and extended in further work. For details please see the README file contained in the supplement.

**The Supplement related to this article is available online at
doi:10.5194/acpd-14-16865-2014-supplement.**

ACPD

14, 16865–16906, 2014

Ratio of stratospheric lifetimes of CFC-11 and CFC-12

L. Hoffmann et al.

Title Page

Abstract

Introduction

Conclusions

References

Tables

Figures

◀

▶

◀

▶

Back

Close

Full Screen / Esc

Printer-friendly Version

Interactive Discussion



Acknowledgements. Combined CFC-11 and CFC-12 surface data sets were provided by the NOAA/ESRL Global Monitoring Division. Development of the ACE-FTS climatology was supported by grants from the Canadian Foundation for Climate and Atmospheric Sciences and the Canadian Space Agency. The Atmospheric Chemistry Experiment (ACE) is a Canadian-led mission mainly supported by the Canadian Space Agency. HIRDLS is a joint project between the UK and the USA. HIRDLS data are processed at the HIRDLS Science Investigator-led Processing System (SIPS) in Boulder, Colorado. Envisat MIPAS data were provided by the European Space Agency. We thank Patrick Jöckel and Nicole Thomas for support in developing the EMAC/CLaMS model. We acknowledge Jens-Uwe Grooß, Paul Konopka, and Felix Ploeger for providing climatological and initial data for the model runs. We thank Joan Alexander, Patrick Jöckel, and Steve Montzka for constructive comments on earlier drafts of this manuscript.

The service charges for this open access publication have been covered by a Research Centre of the Helmholtz Association.

References

- Bernath, P. F.: Atmospheric chemistry experiment (ACE): Analytical chemistry from orbit, TRAC-Trend. Anal. Chem., 25, 647–654, 2006. 16875
- Bernath, P. F., McElroy, C. T., Abrams, M. C., Boone, C. D., Butler, M., Camy-Peyret, C., Carleer, M., Clerbaux, C., Coheur, P., Colin, R., DeCola, P., DeMazière, M., Drummond, J. R., Dufour, D., Evans, W. F. J., Fast, H., Fussen, D., Gilbert, K., Jennings, D. E., Llewellyn, E. J., Lowe, R. P., Mahieu, E., McConnell, J. C., McHugh, M., McLeod, S. D., Michaud, R., Midwinter, C., Nassar, R., Nichitui, F., Nowlan, C., Rinsland, C. P., Rochon, Y. J., Rowlands, N., Semeniuk, K., Simon, P., Skelton, R., Sloan, J. J., Soucy, M., Strong, K., Tremblay, P., Turnbull, D., Walker, K. A., Walkty, I., Wardle, D. A., Wehrle, V., Zander, R., and Zou, J.: Atmospheric chemistry experiment (ACE): Mission overview, Geophys. Res. Lett., 32, L15S01, doi:10.1029/2005GL022386, 2005. 16875
- Bingham, G. E., Zhou, D. K., Bartschi, B. Y., Anderson, G. P., Smith, D. R., Chetwynd, J. H., and Nadile, R. M.: Cryogenic Infrared Radiance Instrumentation for Shuttle (CIRRIS 1A)

ACPD

14, 16865–16906, 2014

Ratio of stratospheric lifetimes of CFC-11 and CFC-12

L. Hoffmann et al.

Title Page

Abstract

Introduction

Conclusions

References

Tables

Figures



Back

Close

Full Screen / Esc

Printer-friendly Version

Interactive Discussion



Ratio of stratospheric lifetimes of CFC-11 and CFC-12

L. Hoffmann et al.

Title Page

Abstract

Introduction

Conclusions

References

Tables

Figures

◀

▶

◀

▶

Back

Close

Full Screen / Esc

Printer-friendly Version

Interactive Discussion



earth limb spectral measurements, calibration, and atmospheric O₃, HNO₃, CFC-12, and CFC-11 profile retrieval, *J. Geophys. Res.*, 102, 3547–3558, 1997. 16875

Brown, A. T., Volk, C. M., Schoeberl, M. R., Boone, C. D., and Bernath, P. F.: Stratospheric lifetimes of CFC-12, CCl₄, CH₄, CH₃Cl and N₂O from measurements made by the Atmospheric Chemistry Experiment-Fourier Transform Spectrometer (ACE-FTS), *Atmos. Chem. Phys.*, 13, 6921–6950, doi:10.5194/acp-13-6921-2013, 2013. 16872, 16875, 16876, 16884, 16898, 16900

Chipperfield, M. P., Liang, Q., Strahan, S. E., Morgenstern, O., Dhomse, S. S., Abraham, N. L., Archibald, A. T., Bekki, S., Braesicke, P., Di Genova, G., Fleming, E. L., Hardiman, S. C., Iachetti, D., Jackman, C. H., Kinnison, D. E., Marchand, M., Pitari, G., Pyle, J. A., Rozanov, E., Stenke, A., and Tummon, F.: Multimodel estimates of atmospheric lifetimes of long-lived ozone-depleting substances: Present and future, *J. Geophys. Res.*, 119, 2555–2573, doi:10.1002/2013JD021097, 2014. 16898

Dinelli, B. M., Arnone, E., Brizzi, G., Carlotti, M., Castelli, E., Magnani, L., Papandrea, E., Prevedelli, M., and Ridolfi, M.: The MIPAS2D database of MIPAS/ENVISAT measurements retrieved with a multi-target 2-dimensional tomographic approach, *Atmos. Meas. Tech.*, 3, 355–374, doi:10.5194/amt-3-355-2010, 2010. 16875

Douglass, A. R., Stolarski, R. S., Schoeberl, M. R., Jackman, C. H., Gupta, M. L., Newman, P. A., Nielsen, J. E., and Fleming, E. L.: Relationship of loss, mean age of air and the distribution of CFCs to stratospheric circulation and implications for atmospheric lifetimes, *J. Geophys. Res.*, 113, D14309, doi:10.1029/2007JD009575, 2008. 16868, 16885, 16886, 16898

Elkins, J. W., Thompson, T. M., Swanson, T. H., Butler, J. H., Hall, B. D., Cummings, S. O., Fisher, D. A., and Raffo, A. G.: Decrease of growth rates of atmospheric chlorofluorocarbons 11 and 12, *Nature*, 364, 780–783, 1993. 16873

Eyring, V., Harris, N. R. P., Rex, M., Shepherd, T. G., Fahey, D. W., Amanatidis, G. T., Austin, J., Chipperfield, M. P., Dameris, M., Forster, P. M. D. F., Gettelman, A., Graf, H. F., Nagashima, T., Newman, P. A., Pawson, S., Prather, M. J., Pyle, J. A., Salawitch, R. J., Santer, B. D., and Waugh, D. W.: A strategy for process-oriented validation of coupled chemistry-climate models, *B. Am. Meteorol. Soc.*, 86, 1117–1133, 2005. 16867

Fischer, H., Birk, M., Blom, C., Carli, B., Carlotti, M., von Clarmann, T., Delbouille, L., Dudhia, A., Ehhalt, D., Endemann, M., Flaud, J. M., Gessner, R., Kleinert, A., Koopman, R., Langen, J., López-Puertas, M., Mosner, P., Nett, H., Oelhaf, H., Perron, G., Remedios, J.,

- Ridolfi, M., Stiller, G., and Zander, R.: MIPAS: an instrument for atmospheric and climate research, *Atmos. Chem. Phys.*, 8, 2151–2188, doi:10.5194/acp-8-2151-2008, 2008. 16875
- Gille, J. C., Barnett, J. J., Whitney, J. G., Dials, M. A., Woodard, D., Rudolf, W. P., Lambert, A., and Mankin, W.: The High-Resolution Dynamics Limb Sounder (HIRDLS) experiment on AURA, *Proc. SPIE*, 5152, 161–171, 2003. 16875
- Gille, J., Barnett, J., Arter, P., Barker, M., Bernath, P., Boone, C., Cavanaugh, C., Chow, J., Coffey, M., Craft, J., Craig, C., Dials, M., Dean, V., Eden, T., Edwards, D. P., Francis, G., Halvorson, C., Harvey, L., Hepplewhite, C., Khosravi, R., Kinnison, D., Krinsky, C., Lambert, A., Lee, H., Lyjak, L., Loh, J., Mankin, W., Massie, S., McInerney, J., Moorhouse, J., Nardi, B., Packman, D., Randall, C., Reburn, J., Rudolf, W., Schwartz, M., Serafin, J., Stone, K., Torpy, B., Walker, K., Waterfall, A., Watkins, R., Whitney, J., Woodard, D., and Young, G.: High Resolution dynamics limb sounder: experiment overview, recovery, and validation of initial temperature data, *J. Geophys. Res.*, 113, D16S43, doi:10.1029/2007JD008824, 2008. 16875
- Gille, J., Gray, L., Cavanaugh, C., Coffey, M., Dean, V., Halvorson, C., Karol, S., Khosravi, R., Kinnison, D., Massie, S., Nardi, B., Rivas, M. B., Smith, L., Torpy, B., Waterfall, A., and Wright, C.: High Resolution Dynamics Limb Sounder, Earth Observing System (EOS), Data Description and Quality, Version 7 (V7), Tech. rep., National Center for Atmospheric Research, Boulder, Colorado, USA, available at: http://www.eos.ucar.edu/hirdls/data/products/HIRDLS-DQD_V7-1.pdf (last access: 21 June 2014), 2013. 16877
- Groß, J.-U., Günther, G., Konopka, P., Müller, R., McKenna, D. S., Stroh, F., Vogel, B., Engel, A., Müller, M., Hoppel, K., Bevilacqua, R., Richard, E., Webster, C. R., Elkins, J. W., Hurst, D. F., Romashkin, P. A., and Baumgardner, D. G.: Simulation of ozone depletion in spring 2000 with the Chemical Lagrangian Model of the Stratosphere (CLaMS), *J. Geophys. Res.*, 107, 8295, doi:10.1029/2001JD000456, 2002. 16879
- Hodnebrog, Ø., Etminan, M., Fuglestad, J. S., Marston, G., Myhre, G., Nielsen, C. J., Shine, K. P., and Wallington, T. J.: Global warming potentials and radiative efficiencies of halocarbons and related compounds: a comprehensive review, *Rev. Geophys.*, 51, 300–378, 2013. 16867
- Hoffmann, L., Spang, R., and Riese, M.: Retrieval of chlorofluorocarbon distributions from Envisat MIPAS measurements, *Proc. SPIE*, 5571, 193–204, 2004. 16877, 16878, 16882

Ratio of stratospheric lifetimes of CFC-11 and CFC-12

L. Hoffmann et al.

Title Page

Abstract

Introduction

Conclusions

References

Tables

Figures



Back

Close

Full Screen / Esc

Printer-friendly Version

Interactive Discussion



Ratio of stratospheric lifetimes of CFC-11 and CFC-12

L. Hoffmann et al.

Title Page

Abstract

Introduction

Conclusions

References

Tables

Figures



Back

Close

Full Screen / Esc

Printer-friendly Version

Interactive Discussion



Hoffmann, L., Spang, R., Kaufmann, M., and Riese, M.: Retrieval of CFC-11 and CFC-12 from Envisat MIPAS observations by means of rapid radiative transfer calculations, *Adv. Space Res.*, 36, 915–921, 2005. 16878, 16882

Hoffmann, L., Kaufmann, M., Spang, R., Müller, R., Remedios, J. J., Moore, D. P., Volk, C. M., von Clarmann, T., and Riese, M.: Envisat MIPAS measurements of CFC-11: retrieval, validation, and climatology, *Atmos. Chem. Phys.*, 8, 3671–3688, doi:10.5194/acp-8-3671-2008, 2008. 16878, 16882

Holton, J. R., Haynes, P. H., McIntyre, M. E., Douglass, A. R., Rood, R. B., and Pfister, L.: Stratosphere-Troposphere Exchange, *Rev. Geophys.*, 33, 403–439, 1995. 16885, 16886

Hoppe, C. M., Hoffmann, L., Konopka, P., Grooß, J.-U., Ploeger, F., Günther, G., Jöckel, P., and Müller, R.: The implementation of the CLaMS Lagrangian transport core into the chemistry climate model EMAC 2.40.1: application on age of air and transport of long-lived trace species, *Geosci. Model Dev. Discuss.*, 7, 1759–1790, doi:10.5194/gmdd-7-1759-2014, 2014. 16867, 16878

Hurrell, J. W., Hack, J. J., Shea, D., Caron, J. M., and Rosinski, J.: A new sea surface temperature and sea ice boundary dataset for the community atmosphere model, *J. Climate*, 21, 5145–5153, 2008. 16880

IPCC: Climate Change 2013: The Physical Science Basis. Contribution of Working Group I to the Fifth Assessment Report of the Intergovernmental Panel on Climate Change, Cambridge University Press, Cambridge, United Kingdom and New York, NY, USA, 2013. 16868

Jöckel, P., Kerkweg, A., Buchholz-Dietsch, J., Tost, H., Sander, R., and Pozzer, A.: Technical Note: Coupling of chemical processes with the Modular Earth Submodel System (MESSy) submodel TRACER, *Atmos. Chem. Phys.*, 8, 1677–1687, doi:10.5194/acp-8-1677-2008, 2008. 16880

Jöckel, P., Kerkweg, A., Pozzer, A., Sander, R., Tost, H., Riede, H., Baumgaertner, A., Gromov, S., and Kern, B.: Development cycle 2 of the Modular Earth Submodel System (MESSy2), *Geosci. Model Dev.*, 3, 717–752, doi:10.5194/gmd-3-717-2010, 2010. 16879

Jones, A., Walker, K. A., Jin, J. J., Taylor, J. R., Boone, C. D., Bernath, P. F., Brohede, S., Manney, G. L., McLeod, S., Hughes, R., and Daffer, W. H.: Technical Note: A trace gas climatology derived from the Atmospheric Chemistry Experiment Fourier Transform Spectrometer (ACE-FTS) data set, *Atmos. Chem. Phys.*, 12, 5207–5220, doi:10.5194/acp-12-5207-2012, 2012. 16876, 16884

- Kellmann, S., von Clarmann, T., Stiller, G. P., Eckert, E., Glatthor, N., Höpfner, M., Kiefer, M., Orphal, J., Funke, B., Grabowski, U., Linden, A., Dutton, G. S., and Elkins, J. W.: Global CFC-11 (CCl_3F) and CFC-12 (CCl_2F_2) measurements with the Michelson Interferometer for Passive Atmospheric Sounding (MIPAS): retrieval, climatologies and trends, *Atmos. Chem. Phys.*, 12, 11857–11875, doi:10.5194/acp-12-11857-2012, 2012. 16875, 16886
- Khosrawi, F., Müller, R., Irie, H., Engel, A., Toon, G. C., Sen, B., Aoki, S., Nakazawa, T., Traub, W. A., Jucks, K. W., Johnson, D. G., Oelhaf, H., Wetzels, G., Sugita, T., Kanzawa, H., Yokota, T., Nakajima, H., and Sasano, Y.: Validation of CFC-12 measurements from the Improved Limb Atmospheric Spectrometer (ILAS) with the version 6.0 retrieval algorithm, *J. Geophys. Res.*, 109, D06311, doi:10.1029/2003JD004325, 2004. 16875
- Konopka, P., Steinhorst, H.-M., Groöb, J.-U., Günther, G., Müller, R., Elkins, J. W., Jost, H.-J., Richard, E., Schmidt, U., Toon, G., and McKenna, D. S.: Mixing and ozone loss in the 1999–2000 Arctic vortex: simulations with the three-dimensional Chemical Lagrangian Model of the Stratosphere (CLaMS), *J. Geophys. Res.*, 109, D02315, doi:10.1029/2003JD003792, 2004. 16879
- Konopka, P., Günther, G., Müller, R., dos Santos, F. H. S., Schiller, C., Ravegnani, F., Ulanovsky, A., Schlager, H., Volk, C. M., Viciani, S., Pan, L. L., McKenna, D.-S., and Riese, M.: Contribution of mixing to upward transport across the tropical tropopause layer (TTL), *Atmos. Chem. Phys.*, 7, 3285–3308, doi:10.5194/acp-7-3285-2007, 2007. 16879, 16880
- Kueller, V., Offermann, D., Jarisch, M., Schaefer, B., Engel, A., Claude, G., Smit, H. G. J., Ebel, A., and Feldmann, H.: Tropopause region temperatures and CFC 11 mixing ratios from CRISTA 2, *J. Geophys. Res.*, 110, D16104, doi:10.1029/2004JD005592, 2005. 16875
- Laube, J. C., Keil, A., Bönisch, H., Engel, A., Röckmann, T., Volk, C. M., and Sturges, W. T.: Observation-based assessment of stratospheric fractional release, lifetimes, and ozone depletion potentials of ten important source gases, *Atmos. Chem. Phys.*, 13, 2779–2791, doi:10.5194/acp-13-2779-2013, 2013. 16898
- Lin, S. J. and Rood, R. B.: Multidimensional flux-form semi-Lagrangian transport schemes, *Mon. Weather Rev.*, 124, 2046–2070, 1996. 16880
- Mahieu, E., Duchatelet, P., Demoulin, P., Walker, K. A., Dupuy, E., Froidevaux, L., Randall, C., Catoire, V., Strong, K., Boone, C. D., Bernath, P. F., Blavier, J.-F., Blumenstock, T., Coffey, M., De Mazière, M., Griffith, D., Hannigan, J., Hase, F., Jones, N., Jucks, K. W., Kagawa, A., Kasai, Y., Mebarki, Y., Mikuteit, S., Nassar, R., Notholt, J., Rinsland, C. P., Robert, C.,

Ratio of stratospheric lifetimes of CFC-11 and CFC-12

L. Hoffmann et al.

Title Page

Abstract

Introduction

Conclusions

References

Tables

Figures



Back

Close

Full Screen / Esc

Printer-friendly Version

Interactive Discussion



Ratio of stratospheric lifetimes of CFC-11 and CFC-12

L. Hoffmann et al.

Title Page

Abstract

Introduction

Conclusions

References

Tables

Figures

◀

▶

◀

▶

Back

Close

Full Screen / Esc

Printer-friendly Version

Interactive Discussion



Schrems, O., Senten, C., Smale, D., Taylor, J., Tétard, C., Toon, G. C., Warneke, T., Wood, S. W., Zander, R., and Servais, C.: Validation of ACE-FTS v2.2 measurements of HCl, HF, CCl₃F and CCl₂F₂ using space-, balloon- and ground-based instrument observations, *Atmos. Chem. Phys.*, 8, 6199–6221, doi:10.5194/acp-8-6199-2008, 2008. 16876

5 Mahowald, N. M., Plumb, R. A., Rasch, P. J., del Corral, J., Sassi, F., and Heres, W.: Stratospheric transport in a three-dimensional isentropic coordinate model, *J. Geophys. Res.*, 107, ACH 3-1–ACH 3-14, doi:10.1029/2001JD001313, 2002. 16879

McGillen, M. R., Fleming, E. L., Jackman, C. H., and Burkholder, J. B.: CFCI₃ (CFC-11): UV absorption spectrum temperature dependence measurements and the impact on its atmospheric lifetime and uncertainty, *Geophys. Res. Lett.*, 40, 4772–4776, 2013. 16898

10 McKenna, D. S., Grooß, J.-U., Günther, G., Konopka, P., Müller, R., Carver, G., and Sasano, Y.: A new Chemical Lagrangian Model of the Stratosphere (CLaMS) 2. Formulation of chemistry scheme and initialization, *J. Geophys. Res.*, 107, ACH 4-1–ACH 4-14, doi:10.1029/2000JD000113, 2002a. 16879

15 McKenna, D. S., Konopka, P., Grooß, J.-U., Günther, G., Müller, R., Spang, R., Offermann, D., and Orsolini, Y.: A new Chemical Lagrangian Model of the Stratosphere (CLaMS) 1. Formulation of advection and mixing, *J. Geophys. Res.*, 107, ACH 15-1–ACH 15-15, doi:10.1029/2000JD000114, 2002b. 16879

20 Minschwaner, K., Hoffmann, L., Brown, A., Riese, M., Müller, R., and Bernath, P. F.: Stratospheric loss and atmospheric lifetimes of CFC-11 and CFC-12 derived from satellite observations, *Atmos. Chem. Phys.*, 13, 4253–4263, doi:10.5194/acp-13-4253-2013, 2013. 16870, 16876, 16884, 16898

Molina, M. J. and Rowland, F. S.: Stratospheric sink for chlorofluoromethanes: chlorine atom-catalyzed destruction of ozone, *Nature*, 249, 810–812, 1974. 16867

25 Morgenstern, O., Pyle, J. A., Iwi, A. M., Norton, W. A., Elkins, J. W., Hurst, D. F., and Romashkin, P. A.: Diagnosis of mixing between middle latitudes and the polar vortex from tracer-tracer correlations, *J. Geophys. Res.*, 107, 4321, doi:10.1029/2001JD001224, 2002. 16867

Morgenstern, O., Lee, A. M., and Pyle, J. A.: Cumulative mixing inferred from stratospheric tracer relationships, *J. Geophys. Res.*, 108, 8321, doi:10.1029/2002JD002098, 2003. 16871

30 Müller, R., Crutzen, P. J., Grooß, J.-U., Brühl, C., Russell III, J. M., and Tuck, A. F.: Chlorine activation and ozone depletion in the Arctic vortex: observations by the halogen occultation ex-

periment on the upper atmosphere research satellite, J. Geophys. Res., 101, 12531–12554, 1996. 16871

Müller, R., McKenna, D. S., Schmidt, U., Engel, A., and Proffitt, M. H.: The O₃–N₂O relationship from balloon-borne observations as a measure of Arctic ozone loss in 1991/92, Q. J. Roy. Meteor. Soc., 127, 1389–1412, 2001. 16867

Müller, R., Tilmes, S., Konopka, P., Grooß, J.-U., and Jost, H.-J.: Impact of mixing and chemical change on ozone-tracer relations in the polar vortex, Atmos. Chem. Phys., 5, 3139–3151, doi:10.5194/acp-5-3139-2005, 2005. 16871

Neu, J. L. and Plumb, R. A.: Age of air in a “leaky pipe” model of stratospheric transport, J. Geophys. Res., 104, 19243–19255, 1999. 16871

Plumb, R. A.: A “tropical pipe” model of stratospheric transport, J. Geophys. Res., 101, 3957–3972, 1996. 16868, 16870, 16883

Plumb, R. A.: Stratospheric Transport, J. Meteorol. Soc. Jpn., 80, 793–809, 2002. 16885

Plumb, R. A.: Tracer interrelationships in the stratosphere, Rev. Geophys., 45, RG4005, doi:10.1029/2005RG000179, 2007. 16870, 16871, 16886

Plumb, R. A. and Ko, M. K. W.: Interrelationships between mixing ratios of long-lived stratospheric constituents, J. Geophys. Res., 97, 10145–10156, 1992. 16868, 16870, 16883

Plumb, R. A., Waugh, D. W., and Chipperfield, M. P.: The effects of mixing on tracer relationships in the polar vortices, J. Geophys. Res., 105, 10047–10062, 2000. 16867, 16871

Pommrich, R., Müller, R., Grooß, J.-U., Konopka, P., Günther, G., Pumphrey, H.-C., Viciani, S., D’Amato, F., and Riese, M.: Carbon monoxide as a tracer for tropical troposphere to stratosphere transport in the Chemical Lagrangian Model of the Stratosphere (CLaMS), Geosci. Model Dev. Discuss., 4, 1185–1211, doi:10.5194/gmdd-4-1185-2011, 2011. 16879

Raspollini, P., Carli, B., Carlotti, M., Ceccherini, S., Dehn, A., Dinelli, B. M., Dudhia, A., Flaud, J.-M., López-Puertas, M., Niro, F., Remedios, J. J., Ridolfi, M., Sembhi, H., Sgheri, L., and von Clarmann, T.: Ten years of MIPAS measurements with ESA Level 2 processor V6 – Part 1: Retrieval algorithm and diagnostics of the products, Atmos. Meas. Tech., 6, 2419–2439, doi:10.5194/amt-6-2419-2013, 2013. 16878

Riese, M., Spang, R., Preusse, P., Ern, M., Jarisch, M., Offermann, D., and Grossmann, K. U.: Cryogenic Infrared Spectrometers and Telescopes for the Atmosphere (CRISTA) data processing and atmospheric temperature and trace gas retrieval, J. Geophys. Res., 104, 16349–16367, 1999. 16875

**Ratio of stratospheric
lifetimes of CFC-11
and CFC-12**

L. Hoffmann et al.

Title Page

Abstract

Introduction

Conclusions

References

Tables

Figures



Back

Close

Full Screen / Esc

Printer-friendly Version

Interactive Discussion



Ratio of stratospheric lifetimes of CFC-11 and CFC-12

L. Hoffmann et al.

Title Page

Abstract

Introduction

Conclusions

References

Tables

Figures



Back

Close

Full Screen / Esc

Printer-friendly Version

Interactive Discussion



- Rigby, M., Prinn, R. G., O'Doherty, S., Montzka, S. A., McCulloch, A., Harth, C. M., Mühle, J., Salameh, P. K., Weiss, R. F., Young, D., Simmonds, P. G., Hall, B. D., Dutton, G. S., Nance, D., Mondeel, D. J., Elkins, J. W., Krummel, P. B., Steele, L. P., and Fraser, P. J.: Re-evaluation of the lifetimes of the major CFCs and CH_3CCl_3 using atmospheric trends, *Atmos. Chem. Phys.*, 13, 2691–2702, doi:10.5194/acp-13-2691-2013, 2013. 16873, 16883, 16898
- Rind, D., Lerner, J., Jonas, J., and McLinden, C.: Effects of resolution and model physics on tracer transports in the NASA Goddard Institute for Space Studies general circulation models, *J. Geophys. Res.*, 112, D09315, doi:10.1029/2006JD007476, 2007. 16867
- Roeckner, E., Brokopf, R., Esch, M., Giorgetta, M., Hagemann, S., Kornblueh, L., Manzini, E., Schlese, U., and Schulzweida, U.: Sensitivity of simulated climate to horizontal and vertical resolution in the ECHAM5 atmosphere model, *J. Climate*, 19, 3771–3791, 2006. 16879
- Schoeberl, M. R., Douglass, A. R., Polansky, B., Boone, C., Walker, K. A., and Bernath, P.: Estimation of stratospheric age spectrum from chemical tracers, *J. Geophys. Res.*, 110, D21303, doi:10.1029/2005JD006125, 2005. 16867
- Solomon, S.: Stratospheric ozone depletion: a review of concepts and history, *Rev. Geophys.*, 37, 275–316, 1999. 16867
- SPARC: SPARC report on the lifetimes of stratospheric ozone-depleting substances, Their Replacements, and Related Species, SPARC Report No. 6, WCRP-15/2013, <http://www.sparc-climate.org/publications/sparc-reports/sparc-report-no6/> (last access: 21 June 2014), 2013. 16868, 16898
- Velders, G. J. M., Andersen, S. O., Daniel, J. S., Fahey, D. W., and McFarland, M.: The importance of the Montreal Protocol in protecting climate, *P. Natl. Acad. Sci. USA*, 104, 4814–4819, 2007. 16867
- Volk, C. M., Elkins, J. W., Fahey, D. W., Salawitch, R. J., Dutton, G. S., Gilligan, J. M., Proffitt, M. H., Loewenstein, M., Podolske, J. R., Minschwaner, K., Margitan, J. J., and Chan, K. R.: Quantifying transport between the tropical and mid-latitude lower stratosphere, *Science*, 272, 1763–1768, 1996. 16867, 16870
- Volk, C. M., Elkins, J. W., Fahey, D. W., Dutton, G. S., Gilligan, J. M., Loewenstein, M., Podolske, J. R., Chan, K. R., and Gunson, M. R.: Evaluation of source gas lifetimes from stratospheric observations, *J. Geophys. Res.*, 102, 25543–25564, 1997. 16868, 16870, 16871, 16872, 16873, 16874, 16875, 16883, 16884, 16898, 16900
- Waugh, D. W.: Mixing of polar vortex air into middle latitudes as revealed by tracer-tracer scatterplots, *J. Geophys. Res.*, 102, 13119–13134, 1997. 16867

- Waugh, D. W., Hall, T. M., and Haine, T. W. N.: Relationships among tracer ages, J. Geophys. Res., 108, 3138, doi:10.1029/2002JC001325, 2003. 16867
- WMO: Scientific Assessment of Ozone Depletion, Global Ozone Research and Monitoring Project, Report No. 44, Geneva, Switzerland, 1999. 16868
- 5 WMO: Scientific Assessment of Ozone Depletion: 2010, Global Ozone Research and Monitoring Project, Report No. 52, Geneva, Switzerland, 2011. 16868, 16884, 16898
- Yokota, T., Nakajima, H., Sugita, T., Tsubaki, H., Itou, Y., Kaji, M., Suzuki, M., Kanzawa, H., Park, J. H., and Sasano, Y.: Improved Limb Atmospheric Spectrometer (ILAS) data retrieval algorithm for Version 5.20 gas profile products, J. Geophys. Res., 107, 8216, doi:10.1029/2001JD000628, 2002. 16875
- 10

Ratio of stratospheric lifetimes of CFC-11 and CFC-12

L. Hoffmann et al.

Title Page

Abstract

Introduction

Conclusions

References

Tables

Figures

◀

▶

◀

▶

Back

Close

Full Screen / Esc

Printer-friendly Version

Interactive Discussion



Ratio of stratospheric lifetimes of CFC-11 and CFC-12

L. Hoffmann et al.

Title Page

Abstract

Introduction

Conclusions

References

Tables

Figures



Back

Close

Full Screen / Esc

Printer-friendly Version

Interactive Discussion



Table 1. Comparison of stratospheric lifetime estimates of CFC-11 and CFC-12 from different studies. The table lists the data sources of the studies and if absolute (abs) or relative (rel) lifetime estimates are provided. All relative lifetime estimates are normalized to a CFC-11 lifetime of 52 yr. A sub- and superscript notation is used to report errors. Note that error definitions vary between the studies (see individual references). In particular, for SPARC the errors represent 2σ -uncertainties.

Reference	Data source	Method	$\tau(\text{CFC-11})$ [yr]	$\tau(\text{CFC-12})$ [yr]	Ratio
this study	ACE-FTS	rel	52	111 ¹³² ₉₆	0.47 ^{0.54} _{0.39}
	HIRDLS	rel	52	112 ¹³³ ₉₇	0.46 ^{0.54} _{0.39}
	MIPAS	rel	52	112 ¹³⁴ ₉₆	0.46 ^{0.54} _{0.39}
	EMAC/CLaMS	rel	52	110 ¹²⁷ ₉₅	0.48 ^{0.55} _{0.40}
SPARC (2013)	various	both	52 ⁶⁷ ₄₃	102 ¹²² ₈₈	0.51 ^{0.76} _{0.35}
Brown et al. (2013)	ACE-FTS	rel	52	131 ¹⁶¹ ₁₁₀	0.48 ^{0.47} _{0.32}
Chipperfield et al. (2014)	model results	abs	55	95	0.58
Laube et al. (2013)	aircraft data	rel	52	87 ⁹⁷ ₇₇	0.60 ^{0.67} _{0.54}
McGillen et al. (2013)	model results	abs	58	–	–
Minschwaner et al. (2013)	ACE-FTS	abs	46 ⁶⁵ ₃₆	105 ¹³⁹ ₈₄	0.44 ^{0.77} _{0.26}
	CLAES	abs	–	108 ¹⁴⁰ ₈₈	–
	CRISTA-1	abs	53 ⁷⁵ ₄₁	–	–
	CRISTA-2	abs	61 ⁸⁶ ₄₇	–	–
	MIPAS	abs	36 ⁵⁰ ₂₈	108 ¹⁵¹ ₈₃	0.38 ^{0.60} _{0.19}
	combined	abs	45 ⁶⁸ ₃₆	107 ¹³⁰ ₉₀	0.42 ^{0.64} _{0.28}
Rigby et al. (2013)	AGAGE	abs	54 ⁶¹ ₄₈	111 ¹³² ₉₅	0.49 ^{0.64} _{0.36}
	NOAA/ESRL	abs	52 ⁶¹ ₄₅	112 ¹³⁶ ₉₅	0.48 ^{0.64} _{0.33}
WMO (2011)	various	both	45	100	0.45
Douglass et al. (2008)	model results	abs	66 ⁶⁴ ₅₆	106 ¹¹⁰ ₁₀₁	0.57 ^{0.63} _{0.51}
Volk et al. (1997)	aircraft data	abs	41 ⁵³ ₂₉	77 ¹⁰³ ₅₁	0.53 ^{0.76} _{0.3}
		rel	52	99 ¹¹² ₈₇	0.52 ^{0.59} _{0.45}

Ratio of stratospheric lifetimes of CFC-11 and CFC-12

L. Hoffmann et al.

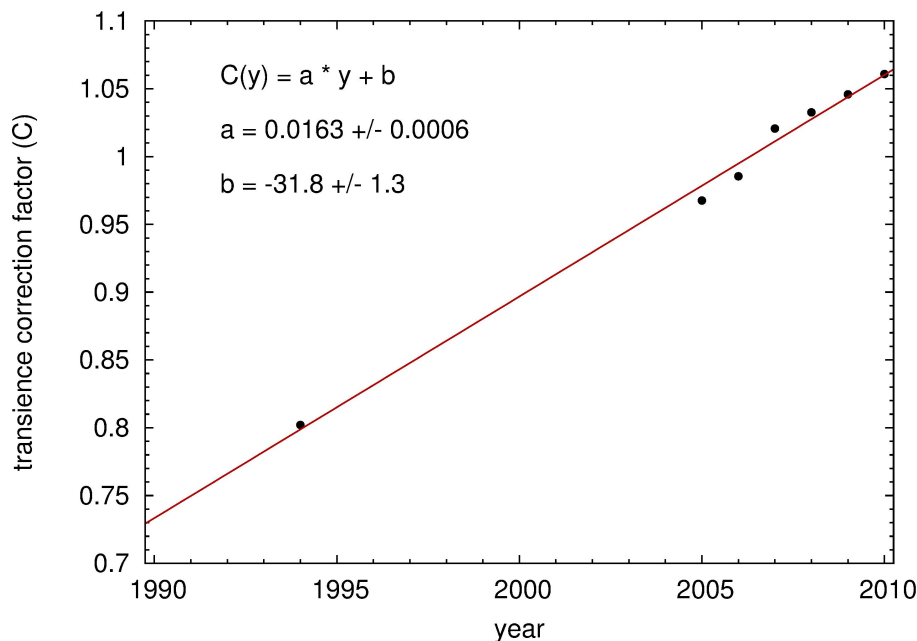


Figure 2. Combined transience correction factors $C = C_2/C_1$ for CFC-12 versus CFC-11. Data for 1994 were obtained from Volk et al. (1997). Data for 2005 to 2010 were obtained from Brown et al. (2013). The red line shows a linear fit to the data; see plot labels for fit parameters and statistical errors.

[Title Page](#)[Abstract](#)[Introduction](#)[Conclusions](#)[References](#)[Tables](#)[Figures](#)[◀](#)[▶](#)[◀](#)[▶](#)[Back](#)[Close](#)[Full Screen / Esc](#)[Printer-friendly Version](#)[Interactive Discussion](#)

Ratio of stratospheric lifetimes of CFC-11 and CFC-12

L. Hoffmann et al.

Title Page

Abstract

Introduction

Conclusions

References

Tables

Figures



Back

Close

Full Screen / Esc

Printer-friendly Version

Interactive Discussion

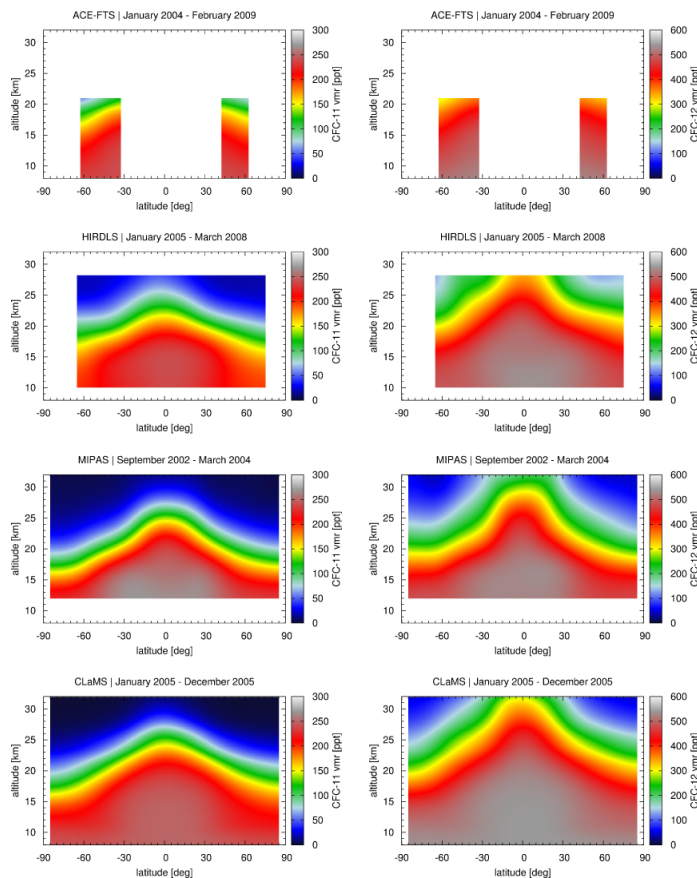


Figure 3. Zonal mean climatologies of CFC-11 (left) and CFC-12 (right) volume mixing ratios from the satellite experiments ACE-FTS, HIRDLS, and MIPAS as well as the EMAC/CLaMS model. See plot titles for time periods covered by the different climatologies. Note that altitudes are log-pressure altitudes for the satellite climatologies and geopotential heights for the EMAC/CLaMS model.

Ratio of stratospheric lifetimes of CFC-11 and CFC-12

L. Hoffmann et al.

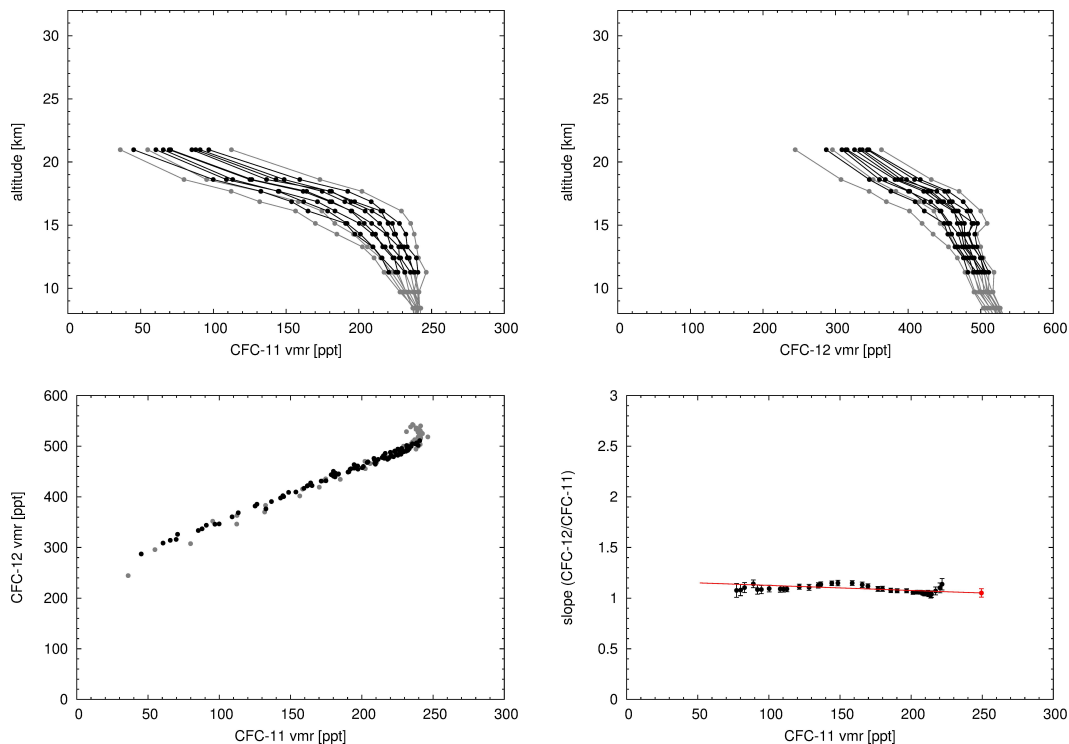


Figure 4. Volume mixing ratio (vmr) profiles of CFC-11 (top, left) and CFC-12 (top, right), tracer-tracer correlations (bottom, left), and tracer-tracer slopes (bottom, right) used to estimate lifetimes from ACE-FTS data. Black color indicates mid-latitude data. Grey color indicates data from other latitudes. The red line shows a linear fit used to extrapolate the tracer-tracer slope at the tropopause (red dot).

[Title Page](#)[Abstract](#)[Introduction](#)[Conclusions](#)[References](#)[Tables](#)[Figures](#)[Back](#)[Close](#)[Full Screen / Esc](#)[Printer-friendly Version](#)[Interactive Discussion](#)

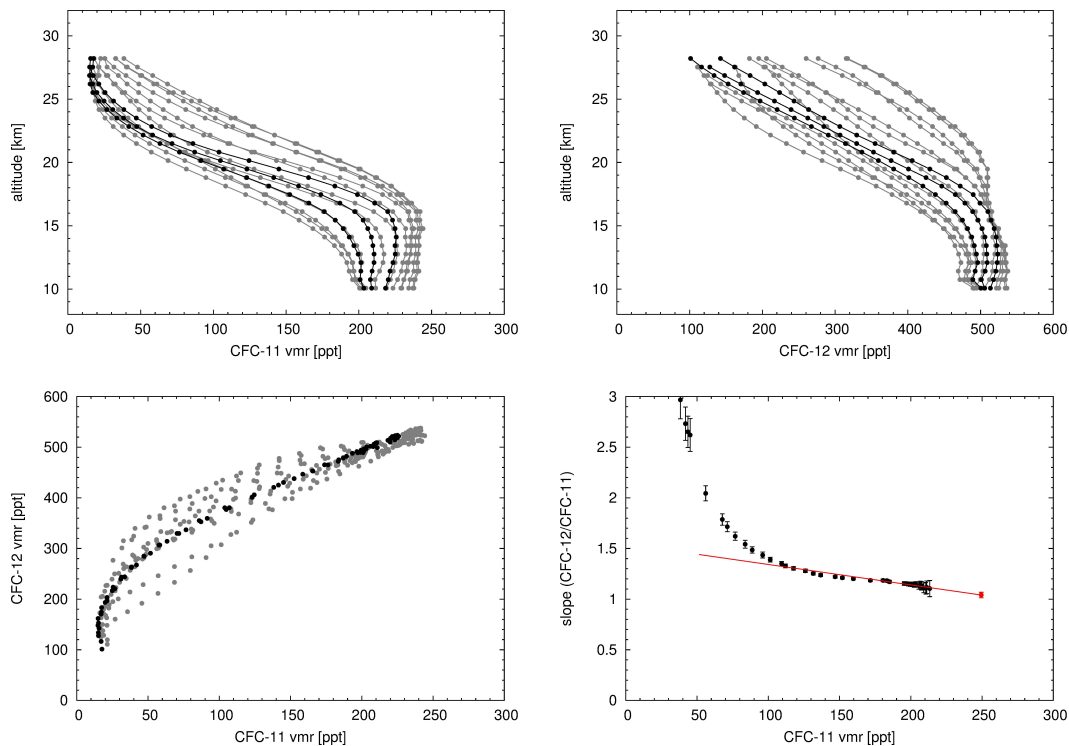


Figure 5. Same as Fig. 4, but for HIRDLS data.

Ratio of stratospheric lifetimes of CFC-11 and CFC-12

L. Hoffmann et al.

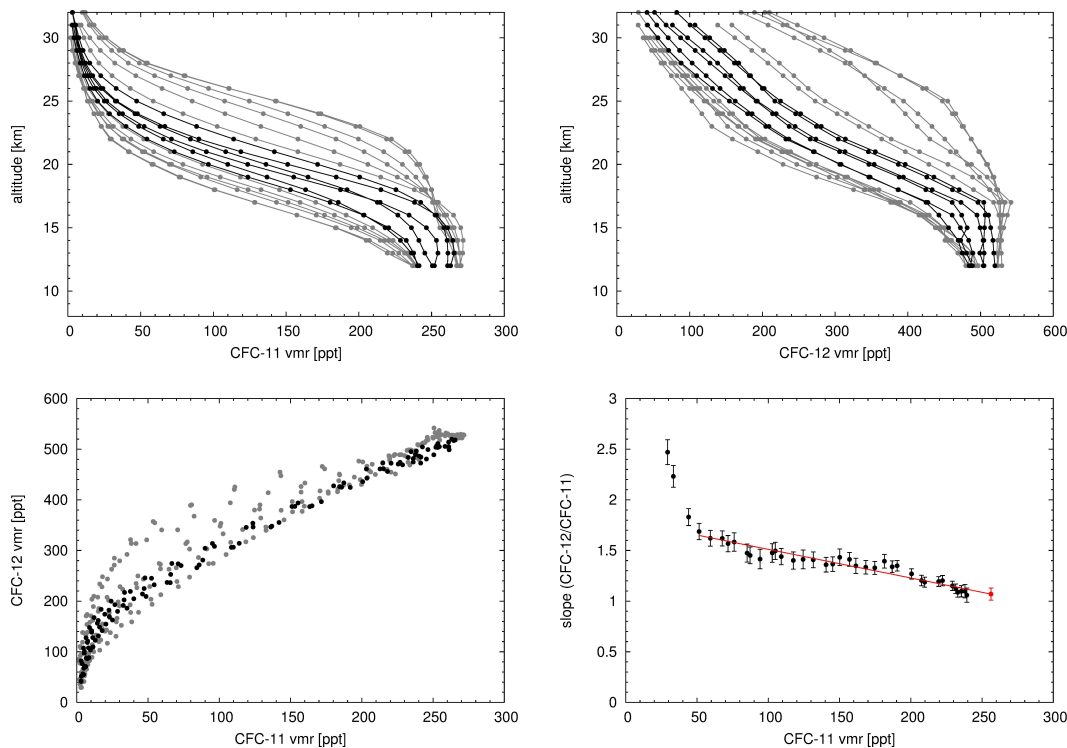
[Title Page](#)[Abstract](#)[Introduction](#)[Conclusions](#)[References](#)[Tables](#)[Figures](#)[Back](#)[Close](#)[Full Screen / Esc](#)[Printer-friendly Version](#)[Interactive Discussion](#)

Figure 6. Same as Fig. 4, but for MIPAS data.

Ratio of stratospheric lifetimes of CFC-11 and CFC-12

L. Hoffmann et al.

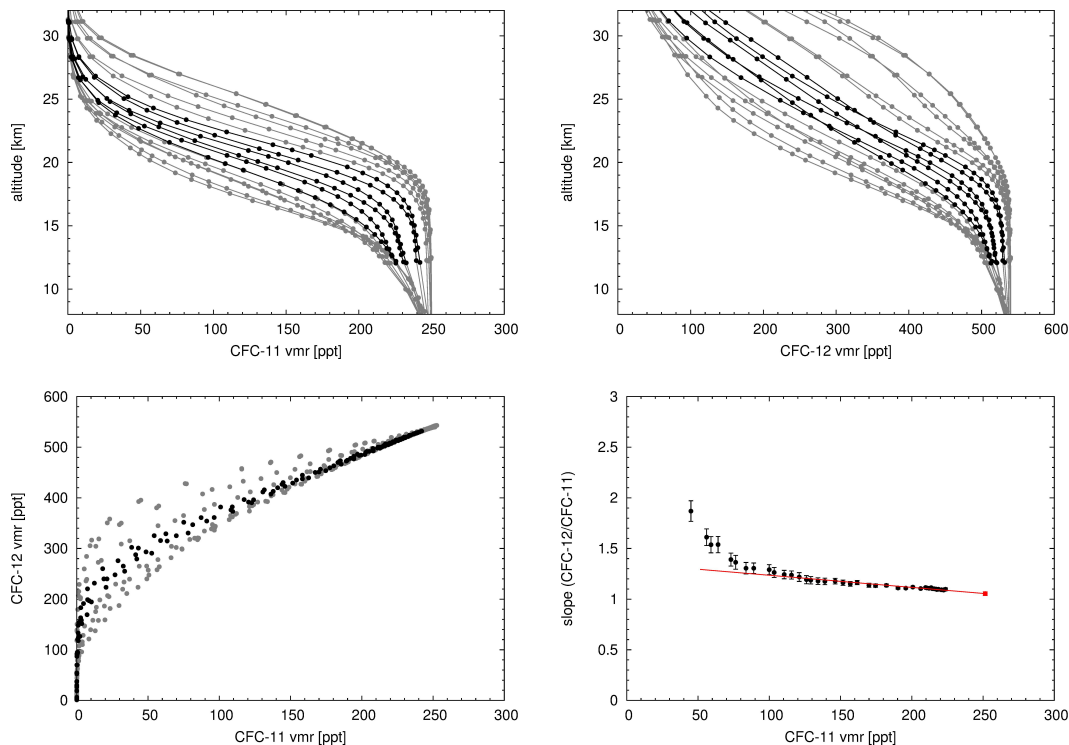
[Title Page](#)[Abstract](#)[Introduction](#)[Conclusions](#)[References](#)[Tables](#)[Figures](#)[Back](#)[Close](#)[Full Screen / Esc](#)[Printer-friendly Version](#)[Interactive Discussion](#)

Figure 7. Same as Fig. 4, but for EMAC/CLaMS data.

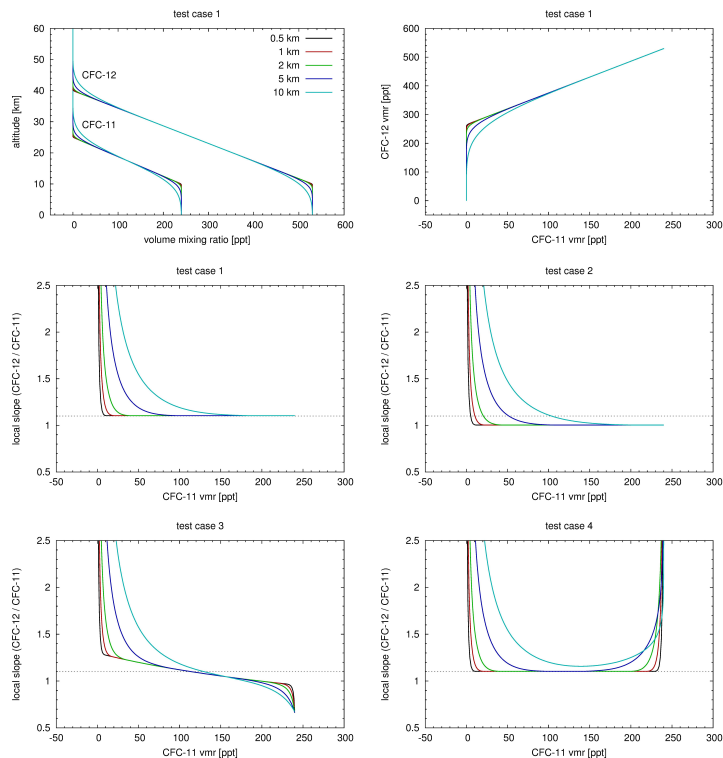


Figure 8. Idealized CFC profiles (top, left), tracer-tracer correlations (top, right), and local tracer-tracer slopes for different test cases (other). Colored curves refer to different vertical smoothing; see plot legend for full width at half maximum of the Gaussian shape function used to convolve the profiles. In test case 1 no errors are imposed on the CFC profiles. In test case 2 the CFC-11 profile has a constant 10 % bias. For test case 3 we imposed an altitude-dependent error of 1 \% km^{-1} on the CFC-11 profile. In test case 4 the CFC-11 profile is shifted upward by 1 km.