

Response to the Editor comments for the manuscript “Erythemal ultraviolet irradiation trends in the Iberian Peninsula from 1950 to 2011” By R. Román et al. in ACP

We are really grateful for the effort of Editor, for his detailed review and for the given chance. Editor comments are in black font (EC), and author comments (AC) in red font.

Author’s answer to Editor

EC: 1. In order for the paper to be published, the authors have to introduce the answers to the comments below to their manuscript and in addition, edit it again based not only on the specific comments below but in order for the manuscript to be easier and more straightforward to understand.

AC: In the revised version of the manuscript we have introduced all changes suggested by editor and referees, and we try to edit it again as editor claims “for the manuscript to be easier and more straightforward to understand”.

EC: 2. Trends

The lack of aerosol information before 2000 make the whole analysis weak. Especially for summer months when UV is most important to accurately know. The answers are not providing sufficient evidence that some of the calculated values are not artificial based on an aerosol climatology that is not trustworthy for the past decades. Actual AODs for model calculations after 2000 together with ones calculated with climatological aerosol versus real measurements could provide only a hint of the effect but it is still an improvement.

AC: This point was discussed in previous revisions. There are not available aerosol measurements before 2000 for the study places. Thus, we strictly cannot reconstruct UVER before 2000 (we have measurements before and, hence the reconstruction would not have sense). One way to solve this issue was the assumption of a monthly climatology of aerosol properties. This kind of assumption has been used in the literature by several authors like den Outer et al. (2010), who used the methods of Lindfors et al. (2007), den Outer et al. (2005), and Kazantzidis et al. (2006) to reconstruct different UVER series. In fact there are some authors who not take into account aerosol data in the reconstruction models, assuming (like us) that both cloud variability and aerosol extinction is contained in global radiation (Feister et al., 2008; Walker, 2010).

1 The last point is interesting, because as was explained in the referees' answers, the aerosol
2 and cloud effects are included in the SW measurement, and it is transferred to the UV. In
3 addition, a change in aerosol load will affect the simulations of both SW and UVER under
4 cloud-free conditions. It means that the ratio between them will be similar, since both are
5 affected in a similar way.

6 Overall, we have use an AOD monthly climatology for the cloudless radiative transfer
7 simulations, but to this end we considered the uncertainty caused by the uncertainty in the
8 AOD and by the monthly variability! It is well described in the paper of Román et al. (2014c),
9 being sometimes the monthly variability bigger than 50% of the monthly mean of AOD. It
10 means that the uncertainty in SW and UVER simulated under cloudless takes into account
11 variations of AOD about 50% (which is a high value). This uncertainty is not usually
12 calculated in other papers reconstructing UVER irradiance, and we tested how the trends of
13 reconstructed UVER series are affected by this uncertainty. Therefore, we think that the use
14 of monthly mean AOD is well justified, and the assumption is well compensated with the use
15 of the uncertainty in RTM simulations.

16 Editor suggests a comparison between the cloudless simulations after 2000 using the monthly
17 mean climatology and using the daily AOD from MODIS. We think that it is unnecessary
18 because the cloudless simulations with monthly AOD were previously compared with
19 cloudless measurements (in Román et al., 2014b) and the simulations fit within the
20 measurements (being the measurements better reference than the cloudless simulations with
21 daily AOD). On the other hand, the measurements of AOD (from MISR) are not available for
22 all days even after 2000, because MISR not takes measurements at the Iberian Peninsula all
23 days. This implies that we cannot obtain the cloudless simulations with daily AOD for all
24 days after 2000, just for one part, how we fill this data lack? The use of monthly climatology
25 solves this question.

26 Assuming that we need use AOD climatology to reconstruct data before 2000, we think that is
27 better use AOD climatology for all period, because it provides more auto-consistence and
28 homogeneity, and hence the model is developed using cloudless simulations with AOD
29 climatology.

30 Finally, we would like to remark that we assume the trends caused by aerosol and clouds
31 together. We don't discern between them because the fact that we use the AOD climatology.
32 Moreover, we include a specific section (Section 5) only to present the assumptions not
33 considered and the use of AOD monthly climatology is shown.

Feister et al. (2008): Long-term solar UV radiation reconstructed by ANN modelling with emphasis on spatial characteristics of input data, Atmos. Chem. Phys., 8, 3107–3118, 2008.

Kazantzidis, A., A. Bais, K. Garane, S. Kazadzis, and C. Meleti (2006), Estimation of UV irradiance from ancillary data and comparison with measurements at Thessaloniki, Greece (40.5°N, 23°E), Proc. SPIE Int. Soc. Opt. Eng., 6362, doi:10.1117/12.689813

EC: 3. Unclear presentation

It is still difficult to read the manuscript and follow exactly what has been done, preciseness of language (one example: Section 2.2 and section 3.1 (see previous review #2). It is still not clear to the reader how these data are used. I think putting a short statement at the top of 2.2 saying these data were used to create monthly climatological information would help; another one: Table 1

AC: We have tried to remove all the unclear presentation in the full paper. Trying to improve the part about the data, we edit the beginning of Sect. 2.2 as follows:

P6L12-16: “Other atmospheric variables were also used in this work: aerosol optical depth (AOD), Angström exponent, aerosol single scattering albedo (SSA), water vapour column (w), TOC and surface albedo. The daily data of these variables (except TOC) were used to calculate a monthly climatology in order to be used as input in a radiative transfer model to calculate UVER and SW irradiance under cloudless conditions (See Sect. 3.1). These daily data are described in this section, and the monthly climatology values were obtained from them.”

Legend and header of Table 1 have been changed also in order to clarify:

Table 1: Coordinates of the AEMet stations used, and number of data of the final reconstructed series which were filled with M-SW model, M-F model or with measurements. The total number of data of each final reconstructed series and the year when it began are included.

Location	Latitude	Longitude	Altitude (m.s.l)	M-SW data	M-F data	Measured data	Total data	First year
Ciudad Real	38°59'21''N	3°55'13''W	628	5717	9300	6	15023	1970
San Sebastián	43°18'23''N	2°02'28''W	251	7428	15029	9	22466	1950
A Coruña	43°21'57''N	8°25'17''W	58	9600	11388	2	20990	1951
Madrid	40°27'06''N	3°43'27''W	664	13208	9158	7	22373	1950
Cáceres	39°28'17''N	6°20'20''W	394	9517	1054	7	10578	1983
Murcia	38°00'07''N	1°10'15''W	61	10035	101	0	10136	1984
Tortosa	40°49'14''N	0°29'29''E	44	5081	12476	15	17572	1954
Valladolid	41°39'00''N	4°46'00''W	735	6813	7139	16	13968	1973
Villalba	41°48'50''N	4°55'48''W	840	3712	18180	0	21892	1951

EC: 4. Lack of attention to the detail and scientific interest in the material that is presented

example: strange looking features in the Coruna and Madrid time series.

The authors explain what the homogeneity tests did, but they do not at all look for reasons behind this behavior – e.g. looking into other meteo data sets of the same period could help understand the atmosphere back then and would also help convince the reader this is real)

AC: We have tried to spend more attention to this issue. Regarding the A Coruña and Madrid behavior, we explained before that Madrid series is inhomogeneity-free, and A Coruña just one month shows inhomogeneity in the 1950-1984 period (none for 1985-2011) and probably due to the lack of data from the beginning of 70s to mid 70s. In the revised version of the manuscript we say that these peaks also appeared in the F and SW values at the same places. The next sentence has been added in order to clarify this issue:

P16L19-25: “Madrid shows a strong peak increasing at the beginning of 1970s while A Coruña exhibits a negative peak around 1980. These peaks look strange, but the homogeneity tests do not consider it as inhomogeneities, and they also appeared in the sunshine fraction and SW irradiation series at the same places (Román et al., 2014a). In addition, a relative peak in the daily maximum temperature series appeared in the dates periods in the same places (not shown), which evidences that the UVER peaks were real but does not explain the cause of them.”

EC: 5. Use of literature/main results

example section 4.14: stations from the South-Pole to Sodankyla are included when comparing the trends of this study with results of the literature -- here, it would be much more informative to try to find results that are geographically closer to the Iberian peninsula and

compare those trends; also, concentrating on only statistically significant trends makes the comparison narrow, non significant trends are a result as well)

AC: In the new version we have tried to improve this issue. We would like to point out that the comparison was done with the available literature, although several of the compared places are far from Iberian sites. It is true that the comparison with closer places would be better (in fact we compare with other papers focused on the Iberian Peninsula). Sodankyla is quite far from our study region, but we think the comparison can be interesting because both are European places. South-Pole comparison has been removed following the editor's suggestion.

One advantage of the comparison with other places (further or closer) is that other periods (different than 1950-2011, 1950-1984 and 1985-2011) are analyzed at the Iberian Peninsula. It is true that not significant trends can be interesting too, but we think that the meaning of significant trends is more relevant, because they are redundantly significant.

EC: 6. Other

UVER_{ob} is a contradicting quantity, which is not introduced fairly straight forwardly. As pointed out, it is not clear what the interpretation of this kind of time series should be. In particular, I wonder how the quantity would be perceived by, for example, dermatologists. Introducing such a concept would require much more discussion and motivation, including a better connection to how the information would be interpreted in the UV effects community. In addition, in warm countries with high UV intensities it does not make very much sense to multiply the erythemal Uv dose with the open body fraction to make some statements as to possible damages to the skin. It would however make sense to compare the UV intensity (e.g. UV index) with the open body fraction in order to analyze at which periods of the year/time of the day a large open body fraction coincides with high UV intensities. Such an analysis would show when people are particularly at risk if they do not protect themselves from the sun. Within the scope of the present paper, the authors could, of course, analyze whether some changes occurred during the last years.

AC: In order to remove any problem with this part, the Section about UVER over open body has been deleted.

EC: 7. Eq. 15, implies that if $UVER_{cl_dif}=0$ then also $UVER_{all_dif}=0$, which is more or

less self-evident. Therefore, it is a waste of space to include eq. (14) and figures based on eq. (14).

AC: The equation has been removed and also two panels of the Figure 3.

EC: 8. The paper needs further editing and correction of a number of minor but important issues. Most of the minor things are connected to the readability of the manuscript, the attention to detail and physical understanding/interpretation. This is an area mentioned already in the reviews, but, there was no adequate improvement in the revised manuscript.

Examples:

P2/L11: “in at least five places”, this is misleading, the number of stations starting around 1950 is five.

AC: It has been changed by:

P1L11: “*in five of these places*”.

P3/L12: first UVER databases appeared in 1980s → it is not clear what the authors intend to say here. Also, some UV measurements were done already in the 1970s (e.g., Borkowski, 2000).

AC: To clarify this issue, and considering also the 1970s decade, the sentence has been changed by:

P2L12-14: “*However, it was not until the 1970s and 1980s that the first long-term UVER measurement databases appeared (Scotto et al., 1988; Correl et al., 1992; Borkowski, 2000).*”

P3/L13: den Outer et al. (2010) is not an appropriate reference.

AC: The reference has been removed.

P3/L16: “other available records” is not clear, would be useful to aid the reader by defining what they are

AC: In the new version of the manuscript these “other available records” are mentioned:

P2L15-18: “*In order to obtain UVER data previous to the use of instrumentation, several authors have reconstructed UVER series using other available records like SW radiation, sunshine duration, and cloud cover (Lindfors et al., 2003, 2007; den Outer et al., 2005, 2010; Rieder et al., 2008; Walker, 2010; Antón et al., 2011a; Bilbao et al., 2011 among others).*”

P3/L22: SW is not defined properly

AC: SW acronym is defined in the first line of introduction. In order to give more information, the next sentence has been added to the text:

P2L22-24: *“Solar radiation reaching the Earth's surface ranges mainly between 305 nm and 2800 nm, its wavelength integration being known as SW radiation, and it plays a key role in the Earth's energy balance and radiation budget”.*

P4/L8: 0.73%/dc, how many significant digits are needed? “dc” is not defined

AC: In this case one digit is enough, therefore, the sentence has been changed also defining the units of the trend (dc=decade):

P3L8-9: *“...a statistically significant trend of $-0.7\%dc^{-1}$ (percent per decade units) in the annual TOC between 1950 and 2011”*

P4/L24: “They often attribute increased UVER radiation to ozone depletion...and to the reduction in the amount of aerosols in the atmosphere...” → Many of these papers do not specifically account for aerosol variation and therefore are unlikely to provide strong conclusions on the role of aerosols in the trends.

AC: We agree with the Editor’s comment. The new sentence is:

P3L19-21: *“From these papers, the increase in UVER radiation values was mainly attributed to ozone depletion since the late 1970s; some of them also suggested that the UVER increase was partially caused by a diminishing of cloudiness or aerosols”.*

P5/L1: “Recently the same authors”, not clear who they are.

AC: The sentence was confuse, then it has been changed by:

P3L28-30: *“Recently Román et al. (2014d) obtained the TOC trends from 1950 to 2011 at the Iberian Peninsula; and Román et al. (2014a) the SW and temperature trends for the same period and region, but not the UVER trends due to the lack of UVER data.”*

P5/L7: “characterized the uncertainty of these simulations caused by the monthly variability”, not clear to me what this means, what is monthly variability of inputs?

AC: Some inputs are monthly climatology values (e.g, AOD). These monthly values were derived from daily data, and so they have a variability given by their standard deviation. For

example, the mean AOD value was 0.28 in June at Ciudad Real, being 0.16 the standard deviation of the daily values used to obtain that average. In this case, the uncertainty in the simulated UVER irradiance associated with this AOD variability was characterized as the maximum difference between the simulated UVER irradiance with AOD equal to 0.28 and the same simulation with 0.28-0.16 (0.12) and 0.28+0.16 (0.44). It was explained in detail in the paper Román et al. (2014c). To clarify what is the monthly variability, the revised version of the manuscript includes that it is the standard deviation.

P4L1-3: *“They also characterized the uncertainty of these simulations caused by the monthly variability (standard deviation of the used monthly climatological values) and uncertainty of the inputs.”*

P5/L12: should the method development (two new UV reconstruction methods) not be a main motivator / objective in this study?

AC: It should be, then the objectives has been redone:

P4L6-14: *“Therefore, in this framework, the main objectives of the present paper are: 1) to develop a new UVER reconstruction model and optimise another one (both models based on cloudless UVER simulations); 2) to reconstruct UVER irradiation series since 1950 using the developed models with data at certain Spanish locations over the Iberian Peninsula; and 3) to analyse their evolution and trends of the reconstructed dataset. A novel issue of this paper is the analysis of the annual and seasonal (not only summer) UVER trends at the Iberian Peninsula from 1950, since these trends were not yet calculated in previous studies. Another novel issue is the quantification of the role of aerosols and clouds (both together), and ozone in the changes of UVER during the last six decades”*

P7/L4-5: “direct solar radiation might not be enough to burn the dark paper card” → “might” ?

AC: It has been changed by:

P5L19-20: *“since direct solar radiation usually is not enough to burn the dark paper card even under cloud free conditions for a SZA below 87°”*

P7/L29 onward: contradicting sentence. First, all measurements are mentioned, but the end very much indicates that radiometers are in question.

AC: First we talk about the maintenance and calibration. These tasks are very important and needed but, even for the best instruments, problems in data sometimes appear. This is the motivation of the quality control. In fact, we use the radiometers to reconstruct UVER, we cannot question how it works, but we try to be careful with the measurements.

P10/L6-8: From this, it seems the albedo is a monthly time series rather than a monthly climatology. Is this correct?

AC: It is a monthly climatology, but for each wavelength. To clarify this issue, the paragraph has been replaced by:

P8L16-19: *“Finally, the surface albedo values were also monthly averaged for each wavelength (twelve monthly values at each location for each available wavelength), these monthly values being linearly interpolated to obtain the monthly surface albedo at all the other wavelengths to be then used as input in the radiative transfer code.”*

There is more information about this issue in Román et al. (2014d).

P10/L16-17: Not necessary to explain daily integration in this detail.

AC: It has been removed in the new version of the manuscript.

P14/L1: Why are the bins different from those in Fig. 2?

AC: The Fig. 2 only use four intervals since it just try to show the dependence on F of the relationship between g and $UVER_{cl}^{dif}$. However, we want more F resolution to develop the model, and therefore we use more bins after. To explain this issue, the following text was added to the revised version of the manuscript:

P12L15-17: *“These intervals were chosen in order to have more resolution of F for the model development; while the intervals of Fig. 2 were wider because they were enough to find the kind of dependence on F of g function versus $UVER_{cl}^{dif}$.”*

Sect. 3.2.2: would be nice to see what the reconstruction method looks like

AC: We attach in this report a figure for four random days at different places and seasons. The model looks nice within the measurements, but we think that this figure doesn't give an

1 important scientific result, because it only present four isolate days, while RMSE and MBE
2 values give more information about the behavior of the model in general. We could include it
3 in the manuscript if editor think it is necessary, but at the moment we prefer don't do it
4 because we don't extract enough important information from the figure.
5

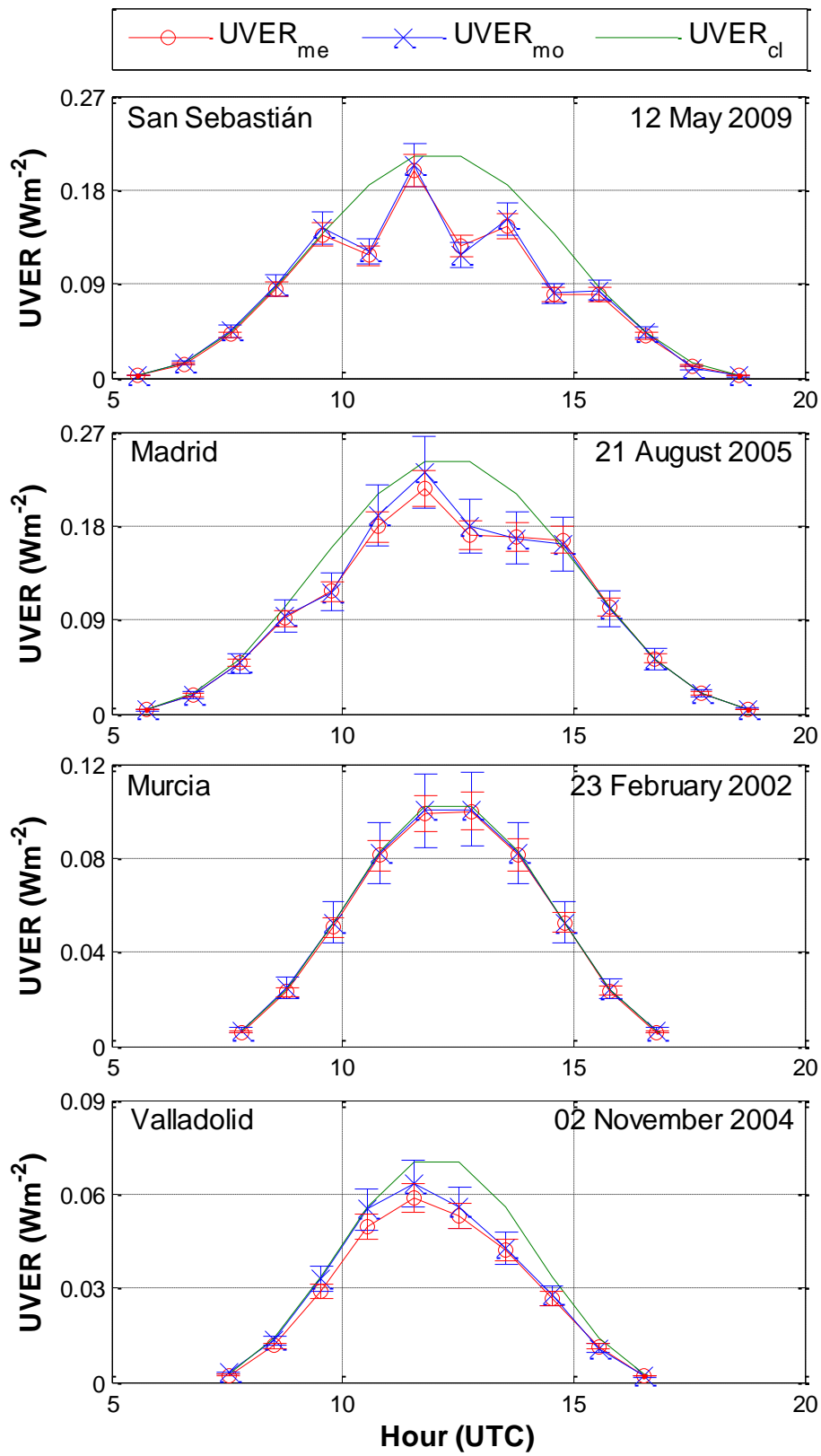


Figure: Measured ($UVER_{me}$), Modelled by M-SW ($UVER_{mo}$) and cloudless ($UVER_{cl}$) UVER irradiance at four different places and dates.

P12/L1-4: This is interesting and basically explains why the new reconstruction method is introduced. I think this should be given more weight.

AC: We agree with the Editor, therefore we change the sentence trying to emphasize this issue:

P10L13-16: *“It motivates this paper to improve the reconstruction method, hence a novelty in this paper is that c and d are calculated considering a similar number of data for different cloudiness and SZA conditions, and taking into account the uncertainty in these data, which optimised the mentioned method.”*

Erythemat ultraviolet irradiation trends in the Iberian Peninsula from 1950 to 2011

R. Román¹, J. Bilbao¹, and A. de Miguel¹

[1]{University of Valladolid, Laboratorio de Atmósfera y Energía, Department of Applied Physics, Valladolid, Spain.}

Correspondence to: R. Román (robertor@fa1.uva.es)

Abstract

Erythemat ultraviolet (UVER) irradiation was reconstructed at nine Spanish locations, with series starting around 1950 in ~~at least five~~ of these places. Each series was checked by applying homogeneity tests in order to discard non-homogeneous series. Available series were used to create an averaged Iberian Peninsula UVER series. Results indicate that annual UVER irradiation in the Iberian Peninsula increased by 155 Jm^{-2} (6.5%) between 1950 and 2011 due to ~~the~~ decrease observed in atmospheric ozone rather than changes in aerosol and clouds. By contrast, a Annual UVER irradiation increased by 135 Jm^{-2} (5.6%) between 1985 and 2011, mainly due to changes in aerosol and clouds. ~~UVER irradiation over the open human body (UVER_{ob}) was calculated by multiplying daily UVER irradiation by the daily open body fraction, a function of air temperature. Annual UVER_{ob} increased by 12.5% between 1950 and 2011 in the Iberian Peninsula, half of the increase being caused by temperature changes, and the other half by ozone changes. Annual UVER_{ob} in the Iberian Peninsula increased by a total of 10.1% between 1985 and 2011, with 20.7%, 35.1% and 44.2% of this increase being caused by changes in ozone, aerosol and clouds, and temperature, respectively.~~

1 Introduction

Among other effects, ultraviolet (UV) radiation, which is a part of total solar shortwave (SW) radiation, produces harmful effects on human skin, such as erythema (sunburn) induction (UNEP, 2003). ~~On the other hand~~ Nevertheless, UV radiation exposure ~~can be~~ also beneficial for the health-positive, for example, by contributing towards human Vitamin D synthesis (Webb, 2006). The effectiveness of UV radiation in producing erythema on human skin is usually quantified by the erythral action spectrum (McKinlay and Diffey, 1987), and the UV radiation weighted by this spectrum is erythral ultraviolet (UVER) radiation.

The damage caused to human skin by UVER radiation is cumulative and is proportional to exposure time (WHO, 1995). It is therefore important to know both present-day as well as past UVER radiation levels in order to estimate future epidemiological data related to diseases caused by sun exposure. However, it was not until the ~~1980s-1970s and 1980s~~ that the first long-term UVER measurement databases appeared (Scotto et al., 1988; Blumthaler and Ambach, 1990; Correl et al., 1992; Borkowski, 2000). ~~to be followed by more in the 1990s (den Outer et al., 2010)~~. In fact, the first longest UVER ~~records series~~ in Spain ~~commenced~~ started in ~~late 1995, and were taken in Madrid by the Spanish Meteorological Agency (AEMet)~~. In order to obtain ~~longer and older~~ UVER data previous to the use of instrumentation, several authors have reconstructed UVER ~~data series in the past~~ using other available records like SW radiation, sunshine duration, and cloud cover (Lindfors et al., 2003, 2007; den Outer et al., 2005, 2010; Rieder et al., 2008; Walker, 2010; Antón et al., 2011a; Bilbao et al., 2011 among others).

UVER radiation is sensitive to factors such as ozone, clouds, and aerosol particles in the atmosphere. Over the last few decades, the presence of these factors in the atmosphere has changed, and might have affected past UVER levels.

Solar radiation from the Sun reaching the Earth's surface ranges mainly between 305 nm and 2800 nm, its wavelength integration being known as SW radiation, and it plays an importanta key role in the Earth's energy balance and radiation budget. SW radiation decreased between 1950 and the mid 1980s in the Northern Hemisphere, a phenomenon known as "global dimming" (Stanhill and Cohen, 2001). SW radiation began to increase in the mid 1980s in the Northern Hemisphere, a phenomenon known as "global brightening" (Wild et al., 2005). Dimming ~~and brightening~~ were caused because aerosol loads increased in the Northern Hemisphere between 1950 and the mid 1980s absorbing and scattering (aerosol direct effect)

more radiation, although after the mid-1980s the aerosol load started to decrease (Wild, 2009, 2012). Changes in aerosols can modify the microphysical properties of clouds (aerosol indirect effect), since aerosols act as condensation nuclei, which contributes to enhance the dimming and brightening phenomena. The mentioned aerosol and cloud changes might cause variations in the amount of UVER radiation reaching Earth. Dimming and brightening phenomena were also observed in the Iberian Peninsula by Sánchez-Lorenzo et al. (2007, 2013a, b) and Mateos et al. (2013, 2014).

The atmospheric total ozone column (TOC) evidenced major depletion after the late 1970s up to the mid 1990s due to strong atmospheric emission of halogen gases between the 1960s and 1980s (WMO, 2011). TOC evolution in the Iberian Peninsula was studied in depth by Román et al. (2014d) in the dimming and brightening periods, with usually negative but not significant trends being reported in both periods, and a statistically significant trend of $-0.73\% \text{dc}^{-1}$ (percent per decade units) in the annual TOC between 1950 and 2011. Antón and Mateos (2013) showed that tThese TOC changes have no significant influence on SW radiation (e.g., the SW radiative effects due to TOC variations between late 1970s and 2012 were smaller than 0.2 Wm^{-2} over the Iberian Peninsula), although. Nevertheless, they these TOC changes might prove extremely relevant for UVER evolution over the last few decades, marking the difference between the SW and UVER trends in the past.

~~Another atmospheric variable to undergo changes in recent decades is air temperature, which rose after the 1970s due to the increase in the anthropogenic greenhouse gas emissions warming the Earth by the greenhouse effect, giving rise to “global warming” (IPCC, 2007). Vicente Serrano et al. (2013) studied the daily mean temperature in the Iberian Peninsula, and reported non-significant and negative trends in the dimming period, and significant and positive trends in the brightening period. Changes in air temperature have no direct influence on UVER radiation, although they can affect people’s sun exposure habits.~~

Many authors have found statistically significant positive trends over the last decades for UVER radiation at different places in the following European countries: Austria, Czech Republic, Finland, Greece, Germany, the Netherlands, Norway, Sweden, and Switzerland (Lindfors et al., 2003; 2007; Rieder et al., 2008; Walker, 2010; den Outer et al., 2010; Krzyscin et al., 2011). From these papers, the increase in UVER radiation values was mainly attributed to ozone depletion since the late 1970s; some of them also suggested that the UVER increase was partially caused by a diminishing of cloudiness or aerosol optical

~~thickness. They often attribute increased UVER radiation to ozone depletion since the late 1970s and to the reduction in the amount of aerosols in the atmosphere during the brightening period.~~

UVER radiation presents high levels in the Iberian Peninsula due to the great values of the elevation solar height the sun reaches, making it an interesting area to study the evolution of UVER radiation. However, in the Iberian Peninsula, UVER radiation has only been reconstructed at Valladolid, since 1991 (Bilbao et al., 2011), and at Badajoz and Cáceres (only in the summer months) since 1950 (Antón et al., 2011a), a significant rise in UVER radiation levels having been reported at the three sites.

Recently Román et al. (2014d) ~~the same authors of this paper~~ obtained the TOC trends from 1950 to 2011, at the Iberian Peninsula, ~~the TOC trends in Román et al. (2014d)~~; and Román et al. (2014a) the SW and temperature trends for the same period and region in Román et al. (2014a), but not the UVER trends due to the lack of UVER data. As a first step, ~~the same authors (Román et al. 2014b)~~ simulated the UVER irradiance under cloudless conditions at the Iberian Peninsula with a radiative transfer model, using as inputs monthly climatological tables-values of aerosols, water vapour, etc. ~~(which were obtained in Román et al., 2014c)~~; They also characterized the uncertainty of these simulations caused by the monthly variability (standard deviation of the used monthly climatological values) and uncertainty of the inputs. These cloudless simulations are useful to reconstruct UVER radiation under all conditions (e.g., Lindfors et al., 2003, 2007; den Outer et al., 2005; Walker, 2010; Bilbao et al., 2011).

Therefore, in this framework, the main objectives of the present paper are: 1) to develop a new UVER reconstruction model and optimise another model one (both models based on cloudless UVER simulations); 2) to reconstruct UVER irradiation series since 1950 using new and optimised reconstruction models (based on cloudless UVER simulations) the developed models and with data at certain Spanish locations over the Iberian Peninsula; and 3) to analyse their evolution and trends of the reconstructed dataset. A novel issue of this paper is the analysis of the ~~The~~ annual and seasonal (not only summer) UVER trends at the Iberian Peninsula from 1950, ~~are a novel issue of this paper~~, since these trends were not yet calculated in previous studies. ~~A further aim is to propose and study a new variable to quantify the UVER dose that reaches the body parts exposed to the sun (not covered by clothes).~~ Another goal-novel issue is ~~to quantify~~ the quantification of the role of ~~the changes in~~ aerosols and

clouds (both together), and ozone, ~~and temperature~~ in the changes of UVER ~~on an exposed body during the last six decades.~~

The paper is structured as follows: Sect. 2 shows the relevant information concerning the locations, the instrumentation, and the explanation of all the data used. The methods used to obtain the reconstructed UVER series are developed and explained in detail in Sect. 3. Sect. 4 presents the main results for the evolution and trends of UVER ~~and UVER on an exposed body in recent decades~~. The factors not taken into account in the work are mentioned in Sect. 5. Finally, Sect. 6 summarises the main results and conclusions.

2 Place, instrumentation, and data

2.1 Places and instrumentation

All data used in this paper were taken at nine Spanish radiometric stations located in the Iberian Peninsula. These locations are marked in Fig. 1 and their coordinates are also shown in Table 1. The Iberian Peninsula is well covered by these locations. One of these stations is controlled by the University of Valladolid and is located in the village of “Villalba de los Alcores” (de Miguel et al. 2012). The rest are controlled by the Spanish Meteorological Agency (Moreta et al., 2013). Hourly UVER and SW irradiance were measured at all these stations, although sunshine duration and temperature were not measured at the Villalba station. Therefore, the sunshine duration and meteorological variables, as with temperature, measured at the Valladolid Airport AEMet station were thus considered the same as at the Villalba station, since the two stations are located just a few kilometres away from each other.

Hourly UVER irradiance was recorded at the nine locations using UVB-1 pyranometers (Yankee Environmental Systems Inc.). These pyranometers were periodically calibrated by a two-step method (Vilaplana et al., 2009), which provides a combined uncertainty (68% confidence) of between 5.4% and 8.0% for the measured hourly UVER data (Hülsen and Gröbner, 2007). This uncertainty was considered the maximum (8.0%) in this work. The oldest UVER data recorded in Spain date from 1st November 1995 and continue up to the present day at the Madrid station.

Hourly SW irradiance was initially measured at each location using a CM6B pyranometer (Kipp & Zonen), whose spectral response ranges from 305 nm to 2,800 nm. The expanded

uncertainty (95% confidence) of the hourly SW recorded by this pyranometer is 8%, and was the expanded uncertainty assumed by all available hourly SW measurements even when more recent records were taken using improved pyranometers (displaying less uncertainty). The oldest-longest SW data in Spain date from 11th July 1973 and continue up to the present day at the Madrid station.

In general, it was not possible to obtain information on the instruments used for sunshine duration records at the various stations, although most were probably Campbell-Stokes heliographs (Sánchez-Lorenzo et al., 2007). This heliograph comprises a spherical lens which concentrates direct radiation from the sun onto a dark paper card, which is burned when direct radiation exceeds a certain threshold. The combined uncertainty of the sunshine duration records was assumed to be 15 minutes (0.25 h). The daily sunshine fraction (F) is the ratio of the measured sunshine duration to the same sunshine duration under cloudless conditions (SunDu_{cl}). This variable was calculated by the following equation (Iqbal, 1983):

$$SunDu_{cl} = \frac{24}{\pi} \arccos \left(\frac{\cos(\theta_s) - \sin(\delta)\sin(\phi)}{\cos(\delta)\cos(\phi)} \right) \quad (1)$$

where SunDu_{cl} is in hours, δ is the solar declination, Φ is the location latitude, and θ_s is the solar zenith angle (SZA) at sunset and sunrise (equal to 87° in this case). SunDu_{cl} was calculated between the solar zenith angle of 87° near sunrise and the SZA equal to 87° near sunset, since direct solar radiation might-usually is not ~~be~~ enough to burn the dark paper card even under cloud free conditions for a SZA below 87°. The oldest available F data in Spain date from 1st January 1920 and continue up to the present day at the Madrid station. F data have been available at certain locations (A Coruña, Madrid, San Sebastián, Tortosa, and Villalba) since the 1950s.

~~Daily mean temperature (T_m), daily mean wind speed (V_m), and relative humidity (RH) at 7:00, 13:00, and 18:00 (GMT) were also recorded at the AEMet stations. The daily effective temperature (t_{eff}), which is mainly a function of air temperature with a correction on wind velocity for negative temperatures, was calculated with the mentioned variables (Chubarova and Zhdanova, 2013). The t_{eff} can be parameterized by the following equation for the daily mean temperatures below 0°C (Chubarova and Zhdanova, 2013):~~

~~$$t_{eff} = T_m + (4.27V_m^{-0.229} - 10) \quad (2)$$~~

where T_m is the daily mean air temperature in degrees Celsius at 2 m, and V_m is the wind velocity in ms^{-1} at 10 m. The daily effective temperature for T_m values above 20°C was assumed equal to the heat index (Steadman, 1979). The Heat index is an index that combines air temperature and relative humidity in an attempt to determine the human perceived equivalent temperature, and it was calculated by an interpolation with the T_m and the averaged value of the three daily HR measurements (at 07:00, 13:00, and 18:00). The daily effective temperature was assumed to be equal to T_m for $0^\circ\text{C} < T_m < 20^\circ\text{C}$, and when HR or V_m measurements were not available. Chubarova and Zhdanova (2013) assumed that the open body fraction (S), which can be interpreted as the fraction of human body not covered by clothes, directly depends on the effective temperature:

$$S = 0.141 \exp(0.041 t_{\text{eff}}) \quad (3)$$

The daily open body fraction was calculated for each day at each location taking into account the daily effective temperature calculated with the measured AEMet data.

The instruments used to take all the mentioned measurements were well calibrated on a regular basis, following World Meteorological Organization (WMO) recommendations (Webb et al., 2006; WMO, 2008) for instrument maintenance, and involved: bubble levelling of the instruments, cleaning domes, monitoring and replacing desiccant, etc. In addition, a high-quality control of UVER, SW, and F data was applied to all available data in order to reject possible spurious and outlier data. Daily UVER and SW irradiation data were obtained integrating the hourly values each day.

2.2 Other Additional data

Other atmospheric data variables were also obtained and downloaded used in this work: aerosol optical depth (AOD), Angström exponent, aerosol single scattering albedo (SSA), water vapour column (w), TOC and surface albedo. in order to calculate UVER and SW irradiance under cloudless conditions and in Sect. 3.1.; The all of these daily data of these variables -(except TOC) were used to calculate a monthly climatology in order to be used as input in a radiative transfer model to calculate UVER and SW irradiance under cloudless conditions (See Sect. 3.1). Some of these daily data are described in this section, and the monthly climatology values were obtained from them.

Daily ~~aerosol optical depth (AOD)~~ at 433 nm and 670 nm (“MISR-Terra Prod.ver.31: MIL3DAE.004” product) from the MISR instrument (Multi-angle Imaging SpectroRadiometer) were obtained at each location from 2000 to 2012. The Angström Exponent was directly calculated using ~~both the~~ AOD values at the two wavelengths. The daily ~~water vapour column (w)~~ (“MODIS-Terra Ver. 5.1: MOD08_D3.051” product) from MODIS (MODerate resolution Imaging Spectroradiometer) was also obtained at each location between 2000 and 2012. AOD and ~~water vapour column w~~ data were downloaded from the GIOVANNI application (GES-DISC Interactive Online Visualization ANd aNalysis Infrastructure; <http://disc.sci.gsfc.nasa.gov/giovanni>) as an averaged 0.2°x0.2° square centred at each location -(Acker and Leptoukh, 2007). The ~~aerosol single scattering albedos (SSA)~~ at 354 nm and 500 nm retrieved from the OMI (Ozone Monitoring Instrument) instrument between 2004 and 2011 were also obtained for all locations as overpass files available at AVDC (Aura Validation Data Center). These data are the same as those used by Román et al. (2014c), who calculated the uncertainty of some of these products in the Iberian Peninsula. The combined uncertainty of AOD at 433 nm and 670 nm is 0.074 and 0.054, respectively. The combined uncertainty of the Angström Exponent is below 0.5 when AOD at 433 nm is above 0.25, except for high Angström Exponent values. The combined uncertainty of the water vapour column is between 0.38 cm (w=0.5 cm) and 0.52 cm (w=3 cm).

A daily ~~total ozone column~~ TOC series for 1950 to 2011 was available for each location. These series comprised different databases: ground-based ozone; ozone retrieved from TOMS (Total Ozone Mapping Spectrometer) instrument on board Nimbus-7, Meteor-3, and Earth-probe satellites; TOC from OMI; retrieved TOC from GOME (Global Ozone Monitoring Experiment) and GOME-2 instruments on board ERS-2 and MetOp-A satellites; and reconstructed ozone data from the COST-726 project (Krzyscin, 2008; www.cost726.org). The construction of these TOC series was explained by Román et al. (2014d) who, by means of an intercomparison with ground measurements, calculated that the combined uncertainty of the daily TOC values of these series was around 10-~~5~~ Dobson Unit (DU).

Surface albedo data between 2000 and 2011 were obtained each eight days at seven wavelength ranges (459-479 nm, 545-565 nm, 620-670 nm, 841-876 nm, 1230-1250 nm, 1628-1652 nm, and 2105-2155 nm) from the MCD43A3 product of MODIS instruments (Schaaf et al., 2002). In addition, daily surface albedo at 360 nm between 1957 and 2002 was obtained from the COST-726 project database as an interpolation at each location of the

available data grid (Schwander et al., 1999; Tanskanen, 2004). More information concerning the albedo and ozone data used in this work is available in Román et al. (2014d).

3 Reconstructed UVER series

3.1 Simulations under cloudless conditions

Global, diffuse and direct horizontal UVER and SW irradiance were simulated under cloudless conditions using a radiative transfer model (UVSPEC/libRadtran) from 1950 to 2011 each hour for all locations shown in Fig. 1. UVSPEC is the main tool of the libRadtran (version 1.7 in this work) software package developed by Mayer and Kylling (2005). For UVER simulations, irradiance was calculated each 1 nm from 280 nm to 400 nm under cloud-free conditions using the “cdisort” solver with six streams (Buras et al., 2011) and the “SUSIM SL2” extraterrestrial spectrum (Van Hoosier et al., 1988), these obtained values then being weighted with the erythemal action spectrum. For SW simulations, the model was run under cloudless conditions using the “twostr” solver (Kylling et al., 1995), the extraterrestrial spectrum from Kurucz (1992), and the pseudo-spectral k-distribution “SBDART” from Ricchiazzi et al. (1998). Irradiance was calculated from 305 nm to 800 nm in 2 nm intervals, from 800 nm to 1,600 nm in 5 nm intervals, and from 1,600 to 2,800 nm in 10 nm intervals, these spectral values then being spectrally integrated to obtain SW irradiance. An hourly (UVER or SW) irradiance value was simulated at a fixed SZA given by the averaged cosine of the SZA over the hour.

The UVSPEC model was run using standard vertical profiles. A mid-latitude summer atmosphere with spring-summer aerosol profiles was used as input for the months from May to October, with a mid-latitude winter atmosphere with fall-winter aerosol profiles being selected for the other months (Anderson et al., 1987; Shettle, 1989). These vertical profiles were rescaled with monthly climatological tables of water vapour, AOD at 443 nm, Angström Exponent, and SSA (at 354 nm for UVER simulations and at 500 nm for SW ones). These climatology tables (one per location and variable) comprised 12 monthly averaged (using all available data) values for each variable, said climatological tables being available in Román et al. (2014c). The daily TOC at each location was included in the inputs, changing the value for each location on each day. Finally, the ~~spectral~~-surface albedo values were also monthly averaged for each wavelength (twelve monthly values at each location for each available

wavelength), these monthly values being linearly interpolated to obtain the monthly surface albedo at each of the other wavelengths to be then used as input in the radiative transfer code (it is well explained in Román et al., 2014d).

Both the combined and the expanded uncertainty of all simulations were calculated using the results obtained by Román et al. (2014b), who calculated the maximum variations in simulated UVER and SW irradiance caused by the uncertainty of the inputs. Simulated hourly SW and UVER values were also compared with global SW and UVER irradiance measurements under cloudless conditions by Román et al. (2014b). It was found there was better agreement for low SZA values, and that the differences between simulations and measurements were in agreement within the uncertainty. Daily UVER and SW irradiation were calculated for each day at each location by adding the simulated hourly UVER and SW values and multiplying the result by 3600 s (1 hour). The uncertainties of these daily values were also calculated. Román et al. (2014b) compared these simulations with measured irradiation under cloudless conditions, with better agreement being found for the spring and summer months. For all months and locations together, a mean bias error (MBE) of -0.1% and a root mean square error (RMSE) of 3.6% for the SW case, and an MBE of 2.9% and an RMSE of 7.7% for the UVER case, were also reported.

3.2 Reconstruction models

3.2.1 Cloud Modification Factor

The cloud modification factor (CMF) is defined as the ratio between measured radiation and simulated radiation under cloudless conditions:

$$CMF_R = \frac{R_{me}}{R_{cl}} \quad (42)$$

where R can be SW or UVER, the “me” index indicating the measured R value, and the “cl” index being for simulated R radiation under cloudless conditions. CMF can be calculated for hourly irradiance or daily irradiation values. CMF is a useful variable to quantify cloudiness, CMF near 1 indicating cloudless conditions, CMF close to 0 being for high overcast cloudiness, and CMF above 1 indicating enhancement effects (Sabburg and Parisi, 2006; Sabburg and Calbó, 2009; Piedehierro et al., 2014). CMF for SW (CMF_{SW}) is usually different for UVER (CMF_{UVER}). The relationships between CMF_{UVER} and other variables, like

CMF_{SW}, are an important research topic since they prove useful for reconstructing UVER data. If a relationship between CMF_{UVER} and CMF_{SW} is given by a function f:

$$CMF_{UVER} = f(CMF_{SW}) \quad (53)$$

then UVER radiation can be obtained when the measured SW radiation, UVER and SW simulations under cloudless conditions, and the f function are known:

$$UVER = f(CMF_{SW}) UVER_{cl} \quad (64)$$

where UVER is the calculated UVER radiation, and UVER_{cl} is the simulated UVER under cloudless conditions. The main goal of this section is to obtain relationships such as the one given by Eq. (53) in order to reconstruct UVER data as a function of other variables as in Eq. (64).

3.2.2 Model based on hourly SW irradiance measurements

Some UVER reconstruction models are based on different measured variables (Calbó et al., 2005), with several UVER reconstruction models being based on SW radiation measurements, which were normally measured before UVER (Bodeker and McKenzie, 1996; Kaurola et al., 2000; Matthijsen et al., 2000; den Outer et al., 2000, 2005; Lindfors et al., 2007; Walker, 2010; Antón et al., 2011b; Bilbao et al., 2011). The data used to obtain a model based on SW were the measured values when both SW and UVER irradiance measurements were available. A total of 294,047 pairs of data (SW and UVER) were available for SZA below 85° taking all locations into account. Hourly CMF was calculated for hourly SW and UVER irradiance with the mentioned available data. The reconstruction model proposed in this paper was based on the model developed by Bilbao et al. (2011), ~~which suggests~~ing the next relationship:

$$CMF_{UVER} = CMF_{SW}^{c+d \cos(SZA)} \quad (75)$$

where c and d are two parameters which can be calculated by a least square fit. Bilbao et al. (2011) calculated c and d using all data measured at one location and did not take uncertainty into account in the variables of Eq. (75). It motivates this paper in order to improve the method, hence a novelty in this paper is that ~~The method to calculate~~ c and d ~~can be~~ calculated improved considering a similar number of data for different cloudiness and SZA conditions, and taking into account the uncertainty in these data, which optimised the

[mentioned method](#). To this end, a dataset of CMF_{UVER} - CMF_{SW} pairs of data was selected in this paper.

All available data pairs of CMF_{UVER} - CMF_{SW} from all locations were divided into data groups taking into account the cosine of SZA. Eighty-seven data groups were obtained separated by intervals of the cosine of SZA, from 0.095 to 0.965 in 0.01 steps. Each data group was divided into a further 15 subgroups considering the CMF_{SW} value in the intervals from 0 to 1.5 in 0.1 bins. A total of 1305 subgroups were available. Fifty pairs of CMF_{UVER} - CMF_{SW} data were chosen randomly for each subgroup. Some groups with high CMF_{SW} values had fewer than 50 data. Finally, 49,777 data pairs were randomly selected. This method of choosing data ensures that the number of data selected is similar and is representative for any cloudiness and SZA condition.

The combined uncertainty of each selected data was known; hence the c and d parameters of Eq. (75) were calculated by the weighted least square method using the 49,777 chosen data. The weight in the fit was the inverse of the square combined uncertainty. Uncertainty in SZA was considered null. The result of the fit gave a c value equal to 0.6106 with a combined uncertainty of 0.0014, and a d value equal to 0.358 with a combined uncertainty of 0.002. These calculated values are different to those obtained by Bilbao et al. (2011). Once the c and d values were calculated, the f function of Eq. (64) can be expressed as:

$$f(CMF_{SW}) = CMF_{SW}^{0.6106 \pm 0.0014 + (0.358 \pm 0.002) \cos(SZA)} \quad (86)$$

UVER irradiance can be reconstructed using Eq. (86) in Eq. (64) taking into account cloudless simulations and measured SW irradiance. This model for reconstructing UVER irradiance was called “M-SW”.

3.2.3 Model based on daily sunshine fraction measurements

Another variable used to reconstruct UVER radiation is sunshine fraction (Lindfors et al., 2003), due to the availability of longer series than SW; it has the advantage to reconstruct older data. The sunshine fraction represents the fraction of day when sun was not blocked by clouds. Therefore, by way of an initial approach, daily direct (on horizontal) UVER irradiation ($UVER^{dir}$) can be expressed as:

$$UVER^{dir} = UVER_{cl}^{dir} F \quad (97)$$

where $UVER^{dir}_{cl}$ is the daily direct UVER irradiation simulated under cloudless conditions on horizontal surface. Assuming Eq. (97), daily global UVER irradiation can thus be expressed as the sum of the direct (on horizontal surface) and diffuse ($UVER^{dif}$) components:

$$UVER = UVER^{dir}_{cl} F + UVER^{dif} \quad (108)$$

As a second approximation, daily diffuse UVER irradiation can be assumed as a function (g), which depends on the daily diffuse UVER under cloudless conditions ($UVER^{dif}_{cl}$) and on F:

$$UVER^{dif} = g(UVER^{dif}_{cl}, F) \quad (109)$$

Eq. (94) in Eq. (108) gives:

$$UVER = UVER^{dir}_{cl} F + g(UVER^{dif}_{cl}, F) \quad (110)$$

Global UVER irradiation can be obtained through F measurements and cloudless simulations using Eq. (102) once the g function is known. The g function can be calculated by F and UVER measurements:

$$g = \frac{UVER - UVER^{dir}_{cl} F}{UVER^{dif}_{cl}} \quad (111)$$

In order to calculate the g values a new dataset was chosen made up of daily UVER irradiation and F measurements. Days without SW, UVER or F measurements were discarded in the new dataset. Available data (all locations) were then divided by the season: winter (January, February, and December), spring (March, April, and May), summer (June, July, and August) and autumn (September, October, and November). 10% of the available data for each season were randomly selected and used to obtain the g function. Figure 2 shows the values of g calculated by Eq. (111) as a function of $UVER^{dif}_{cl}$ for four F intervals. The g values increase linearly with cloudless diffuse UVER irradiation, showing a correlation coefficient (r) above 0.87 for all F intervals. Moreover, the dependence of g on $UVER^{dif}_{cl}$ varies with F, and shows a higher slope when F increases. The y-intercept of the fits is close to zero, then, assuming that $UVER^{dif}$ should be equal to zero when $UVER^{dif}_{cl}$ was zero, This result indicates that the g function could be expressed as:

~~$$g = a(F) + b(F) UVER^{dif}_{cl} \quad (14)$$~~

$$g = B(F) UVER^{dif}_{cl} \quad (12)$$

where ~~a and b are two~~ B is a parameters which depend on F . ~~B , both the a and b parameters~~
~~were~~ B was calculated through a least square fit using the same data as in Fig. 2, but for the
following F intervals: $F=0$, $0 < F < 0.2$, $0.2 \leq F < 0.4$, $0.4 \leq F < 0.6$, $0.6 \leq F < 0.8$, $0.8 \leq F < 1$, $F \geq 1$. ~~These~~
~~intervals were chosen in order to have more resolution of F for the model development; while~~
~~the intervals of Fig. 2 were wider because they were enough to find the kind of dependence on~~
~~F of g function versus $UVER_{cl}^{dif}$.~~ The values obtained are shown in Fig. 3 ~~(left and middle~~
~~panels)~~ with their combined uncertainty as a function of F . ~~The b parameter increases with F,~~
~~although the a parameter does not present a clear dependence on F, and is always near to zero.~~
This result indicates that the a parameter can be assumed null, transforming Eq. (14) into:

$$g = B(F) \cdot UVER_{cl}^{dif} \quad (15)$$

~~where B is a new parameter which also depends on F. The B parameter was calculated by a~~
~~least square fit using the same data as in the a and b parameter calculations. Fig. 3 (right~~
~~panel) shows the B values and their combined uncertainty.~~ This B parameter increases with F ,
and is close to 1 when F tends to 1. Uncertainty is around 0.2 except for F equal to 1, when it
strongly increases up to 0.55 (caused in part by the high uncertainty in $UVER_{cl}^{dif}$, which is not
reduced multiplying by F). The B value can be obtained by interpolating the values of Fig. 3
for an F measurement. This interpolated value of B can be used to retrieve global UVER
irradiation taking into account Eq. (15) in Eq. (10):

$$UVER = UVER_{cl}^{dir} F + B(F) \cdot UVER_{cl}^{dif} \quad (16)$$

The method for retrieving global UVER irradiation finding a B value by an F measurement
interpolation in Fig. 3 and using this B value with the measured F and cloudless simulations
in Eq. (16) was called “M-F” in this paper.

3.2.4 Models vs. measurements

Hourly UVER irradiance was reconstructed with model M-SW using the available data which
were not used to develop the model M-SW. Twenty-five UVER data (three days) were
rejected applying a new quality control. A total of 220,105 pairs of measured ($UVER_{me}$) and
reconstructed ($UVER_{mo}$) UVER irradiance data were available for each model considering
 $SZA < 80^\circ$. These data pairs were used to quantify the agreement between UVER reconstructed
by model and measured UVER irradiance. The combined and expanded uncertainty of all
reconstructed values were calculated deriving the equations of the model and taking into

account the uncertainty in the used measurements and cloudless simulations. Table 2 shows the MBE and the RMSE obtained in the comparison between the reconstructed and measured hourly UVER values. The model M-SW slightly overestimates the measurements showing a MBE of 1.6% (0.7 mWm^{-2}); the RMSE was 15.8% (6.2 mWm^{-2}). A depth analysis (not shown) indicated that model M-SW fit better within the measurements for $\text{SZA} < 55^\circ$ ($\text{RMSE} < 10\%$); the MBE is close to 0% for $\text{SZA} < 75^\circ$; the best RMSE and MBE values appears for CMF_{SW} values between 0.2 and 1.1.

In order to quantify the agreement between the models and the daily UVER measurements, all data not used to develop models M-F (90% of data per season) were selected. The reconstructed UVER irradiance these days was integrated to obtain the reconstructed daily UVER irradiation by model M-SW. Daily irradiance was also reconstructed by model M-F. The available number of pairs of data for reconstructed and measured daily UVER irradiation was 21,349 as can be seen in Table 2. Table 2 also shows that model M-SW fit better (with a RMSE of 8.4%) within measurements than model M-F (RMSE higher than 20%); moreover, model M-F overestimates the daily measurements showing a MBE of 5.1%. RMSE and MBE were also calculated for different F intervals (not shown) and model M-SW presents RMSE values lower than 10% and MBE closest to 0% for all F intervals; model M-F show a good agreement with measurements for F higher than 0.5 but RMSE and MBE increases when F decreases.

All available data ~~(used and not used to develop models)~~ were used to obtain daily UVER irradiation, and these values were monthly averaged (at least 25 days per month) for each location and year. The same monthly averages were reconstructed with the models. The MBE and RMSE obtained using the monthly averages of reconstructed and measured UVER irradiation are shown in Table 2. These values are similar for both models, being the MBE around 2% and RMSE around below 6.5%. The number of data for the models is different due to the lack of F data in some periods at Madrid in the 2000s decade. Monthly averages were used to obtain the annual averaged values (always with all 12 months available) of UVER irradiation ~~value~~ at each location. Annual reconstructed and measured data were compared also in Table 2 showing the statistical estimators of the comparison. Both models present a good agreement with measurements being RMSE lower than 3% and MBE below 1% in absolute value. 95% of the reconstructed annual UVER data with model M-SW shows a difference below 5% with the measurements.

Finally, ~~as an important result (not shown)~~, the differences between measured and reconstructed values are in agreement within uncertainty for both models and for all temporal resolutions ~~(not shown)~~. Model M-F measurements are not the best for reconstructing daily UVER irradiation although it evidences great agreement with monthly and annual averaged measurements. A depth comparison not shown in this paper about these models can be found in Román (2014).

3.3 Final reconstructed series

Hourly UVER irradiance was reconstructed at each location, when hourly SW records were available, using the method referred to as M-SW. Daily reconstructed UVER irradiation was obtained by integrating the hourly reconstructed values. Table 1 (M-SW column) shows the number of daily UVER irradiation data reconstructed by the model based on SW records. This number is around 10,000 (27 years) for A Coruña, Cáceres, and Murcia, and is over 13,000 (36 years) for Madrid. Villalba shows the lowest number of reconstructed UVER data by this model due to the scant number of SW records at this location. When SW records were not available, UVER irradiation was reconstructed using the method M-F and based on F measurements. Table 1 (M-F column) shows the number of daily UVER irradiation data reconstructed by the model based on F records. This number varies with the location, and is higher for Villalba, San Sebastián, and Tortosa. The reconstructed daily UVER irradiation series were completed with daily measured UVER irradiation when SW and F records were not available. The number of measured data used to form the UVER series is shown in Table 1 (Measured data column). This number of data is low compared to the other reconstructed data, is less than 20 at all locations, and is zero in Murcia and Villalba. Finally, a long-term daily UVER irradiation series was obtained at each location using models and measurements. The total number of data of these series and the year of the first UVER irradiation value are shown in Table 1. A Coruña, Madrid, San Sebastián, and Villalba show UVER series with more than 20,000 data, all commencing in the 1950s. The lowest number of daily UVER data is around 10,000 for Cáceres and Murcia, whose UVER series ~~commenced-started~~ in the mid 1980s. The combined uncertainty of all daily UVER irradiation values of the obtained series was also calculated taking into account the uncertainty in the cloudless simulations and measured values.

4 Results and discussion

4.1 - Anomalies and homogeneity

~~4.1.1 Anomalies and homogeneity~~

Monthly averages of daily UVER irradiation were calculated using the available reconstructed series taking into account at least 20 daily UVER data per month, year, and location. The monthly series obtained were deseasonalized calculating their monthly anomalies considering the reference period from 1985 to 2011. UVER anomaly (A) in month “m” and year “y” is thus calculated as:

$$A_{m,y} = UVER_{m,y} - \frac{1}{N} \sum_{y'=1985}^{2011} UVER_{m,y'} \quad (4714)$$

where N is the number of data used in the sum of Eq. (4714). Monthly UVER irradiation anomalies were calculated for all months at all locations. The monthly anomalies of UVER irradiation at the nine locations were averaged, obtaining a new monthly series of anomalies representative of the Iberian Peninsula. This was then called the “Iberian Peninsula” series. Annual UVER anomalies were calculated averaging the monthly anomalies when at least six monthly data were available for each year. Seasonal anomalies were also calculated when at least two monthly data were available in winter (December, January, and February), spring (March, April, and May), summer (June, July, and August), and autumn (September, October, and November). Winter anomalies were calculated with the January and February anomalies for a specific year, together with the December anomaly of the previous year.

Homogeneity of all these averaged daily UVER irradiation anomaly series was tested in a similar way to the TOC and SW series analyzed by Román et al. (2014a, d). The homogeneity tests are mainly applied in order to know whether the series are valid for trend studies or, on the contrary, they are not valid due to instrumentation/measurement problems; additionally, the homogeneity tests can provide information about break points in some climatic trends. In this case, the null hypothesis assumes that a temporal series is homogenous, and this hypothesis was verified using the Standard Normal Homogeneity Test (SNHT), the Pettitt test, the Buishand test, and the Von Neumann ratio (Wijngaard et al., 2003). Hakuba et al. (2013) assumed that a temporal series is non-homogeneous when the null hypothesis is rejected with a confidence of 99% by at least three of the four mentioned tests. The four tests

were directly carried out on the annual UVER series. Eight (all except Madrid and Murcia) of the ten (nine locations plus the averaged Iberian Peninsula) annual series show non-homogeneity around the mid 1980s, which could be caused by a climate change in UVER from the dimming to brightening periods. Homogeneity analysis was thus performed for the same annual UVER series for the 1950-1984 and 1985-2011 periods. The first period evidences inhomogeneities in San Sebastián and A Coruña, and the second period is free of inhomogeneities. The same result was obtained by Román et al. (2014c) for the annual SW irradiation series.

The monthly series was also subjected to homogeneity analysis by applying the four tests to the synthetic reference series generated with UVER data from the other locations (Alexandersson and Moberg, 1997; Sánchez-Lorenzo et al., 2013c). No monthly UVER series shows inhomogeneities for the 1985-2011 period, and only one month shows inhomogeneity in Madrid and San Sebastián in the 1950-1984 period. These results thus indicate that all the UVER anomaly series can be considered homogeneous, or at least not inhomogeneous enough to change the UVER series values.

4.2 UVER temporal evolution

4.1.2 UVER temporal evolution

Figure 4 shows the annual UVER daily irradiation anomaly series for the nine locations and the averaged Iberian Peninsula series. Anomalies are shown with their combined uncertainty. Figure 4 panels present a 21-year Gaussian low-pass filter to reduce noise in the evolution. Moreover, the linear trends calculated by the least square method are plotted for the 1950-2011, 1950-1984, and 1985-2011 periods. Madrid presents a strong peak increasing at the beginning of 1970s while A Coruña presents a negative peak around 1980. These peaks look strange, but the homogeneity tests do not consider it as inhomogeneities; these peaks and they also appeared in the sunshine fraction and SW irradiation series at the same places (Román et al., 2014a). In addition, a relative peak in the daily maximum temperature series appeared in the dates periods in the same places (not shown), which evidences that the UVER peaks were real but does not explain the cause of them. All annual UVER anomalies of Fig. 4 display an increase between-for the periods 1950-~~and~~-2011, ~~this increase also appearing and from 1985-to~~ 2011, except in A Coruña. ~~However~~By contrast, in the period 1950-1984~~-period~~, the annual UVER series which contains most data shows a

~~slight decrease~~~~no increase.~~ In fact, UVER irradiation shows a slight decrease in this period. San Sebastián ~~is the location exhibiting~~~~exhibits~~ the clearest change in UVER in the 1980s, which explains the break point detected in this location with the homogeneity tests. Román et al. (2014a) ~~and Román et al. (2014d)~~ found that SW irradiation ~~and TOC at the same locations~~ decreased ~~during until mid 1980s (the dimming period),~~ ~~at the same locations~~ ~~and Román et al. (2014d) found that TOC decreased in the same period.~~ These results ~~indicate~~ ~~suggest~~ that UVER in the dimming period ~~experienced two opposite effects: UVER~~ tended to decrease due ~~mainly to increased~~~~the increase of~~ ~~aerosols and clouds~~ (as in SW irradiation) ~~but that,~~ ~~and,~~ ~~at the same time,~~ UVER tended to increase due to ozone depletion. The two effects offset one another, leading to ~~little a not significant~~ change in UVER irradiation over the dimming period.

An example of the ~~compensatory~~~~balanced~~ effects between the impact of aerosol increase and ozone depletion can be seen after a major volcanic eruption during which vast amounts of gaseous compounds can be shot into the stratosphere. These are precursors for the atmospheric formation of sulphate aerosol particles which in turn provide surfaces for heterogeneous processes on polar stratospheric clouds in the lower stratosphere, enhancing ozone depletion (Peter, 1997; Solomon, 1999; Rieder et al., 2013). In sum, aerosol load increases and ozone decreases after a violent volcanic eruption. The volcanic eruptions at El Chichón (México) and Pinatubo (Philippines) in 1982 and 1991, respectively, are highlighted in Fig. 4. Román et al. (2014a) found that ~~the~~ years after these eruptions, a reduction in SW irradiation due to the increase in sulphate aerosol particles is apparent. However, by contrast, UVER irradiation shows little increase in most of the panels in Fig. 4. The UVER increase is caused by the strong decrease in TOC after volcanic eruptions detected at these locations by Román et al. (2014d), which leads to an increase in UVER more than a UVER decrease caused by aerosols.

4.3 UVER trends: ~~D~~dimming and brightening periods

4.1.3 UVER trends: Dimming and brightening periods

Figure 4 shows the annual UVER evolution and trends in qualitative but not quantitative terms. In order to quantify them, the temporal trends of the monthly, seasonal, and annual UVER anomaly series were assumed to be the trends obtained by the Theil-Sen (TS)

estimator and its 95% confidence interval (95CI). The statistical significance of each calculated trend was evaluated by the non-parametric Mann-Kendall test, considering three types of trends: with a confidence of 99% ($p < 0.01$), with a confidence of 95% but not 99% ($p < 0.05$), or non-significant at least at 95% confidence ($p \geq 0.05$). All these estimators were calculated following the methods of Gilbert (1987). If the Mann-Kendall test considered a trend as statistically significant with at least 95% confidence, this trend was then assumed to be just significant. A trend was only calculated when a series comprised more than 10 data. TS_{03} is the TS trend calculated with the same UVER irradiation series but simulated under cloudless conditions. The TS_{03} value gives the UVER trend caused by changes in TOC because aerosol and clouds changes are not included in cloudless simulations. TS_{ac} is defined as TS minus TS_{03} , and represents the UVER trend brought about by changes in aerosol and clouds (both together).

The trends (and their significance and 95CI) of monthly, seasonal, and annual UVER irradiation series were calculated for all locations at three periods: 1950-1984 (considered as the dimming period), 1985-2011 (considered as the brightening period), and 1950-2011 (whole period). Fig. 5 shows all these values following the methodology used by Walker (2010), who plotted the trends as points which type depends on the trend significance and he also added the 95% confidence intervals as error bars. The significant seasonal and annual trends are also shown in Table 3, which also shows TS_{03} and TS_{ac} trends. The most representative trends of the dimming period are those obtained for the San Sebastián, Madrid, Villalba, and Iberian Peninsula series, since they have fewer missing data. The mentioned series show no significant trends in the dimming period except San Sebastián, which evidences a significant trend of $-211 \text{ Jm}^{-2}\text{dc}^{-1}$ ($-7.7\%\text{dc}^{-1}$) in May, and an annual trend of $-48 \text{ Jm}^{-2}\text{dc}^{-1}$ ($-2.8\%\text{dc}^{-1}$). The negative annual trend found in San Sebastián is mainly caused by changes in aerosol and clouds radiative effects rather than ozone effects since TS_{ac} is much higher than TS_{03} . Román et al. (2014a) found many more significant trends in SW irradiation for the same locations during the dimming period, underpinning the key role played by ozone decrease in UVER trends during the dimming period.

The brightening period (1985-2011) has the advantage that all UVER series are complete. UVER trends are mainly significant in summer and in the annual series. All series, except for A Coruña and Madrid, present significant trends in summer, and are $109 \text{ Jm}^{-2}\text{dc}^{-1}$ ($2.5\%\text{dc}^{-1}$) for the Iberian Peninsula series. The annual trend of the Iberian Peninsula series is $50 \text{ Jm}^{-2}\text{dc}^{-1}$

(2.1%dc⁻¹). The TS_{ac} and TS_{o3} values in Table 3 reveal that UVER irradiation increased in the brightening period due to a reduction in aerosols and clouds radiative effects and in ozone ~~effects, the trend being caused by. The~~ ozone changes ~~which are represent~~ approximately two thirds of the trend caused by aerosol and clouds changes.

As regards the 1950-2011 period, the most interesting series are San Sebastián, Madrid, Villalba, and the Iberian Peninsula series for the same reason as during the dimming period. All annual UVER series trends, except Madrid, are significant at 99% (95% for Murcia), this trend being 25 Jm⁻²dc⁻¹ (1.1%dc⁻¹) in the Iberian Peninsula, which indicates an increase of 155 Jm⁻² (6.5%) in annual UVER irradiation over the last 62 years in the Iberian Peninsula. March presents positive and significant trends for the four most complete series, ranging from 31 Jm⁻²dc⁻¹ (San Sebastián: 2.2%dc⁻¹) to 74 Jm⁻²dc⁻¹ (Villalba: 4.1%dc⁻¹). June and July exhibit the highest UVER trends, all of them proving significant except Madrid in July. The UVER trend in the Iberian Peninsula is 83 Jm⁻²dc⁻¹ (1.9%dc⁻¹) in June and 47 Jm⁻²dc⁻¹ (1.0%dc⁻¹) in July. As regards seasonal trends, all are significant in spring and summer except for spring in Madrid. The trend in the Iberian Peninsula series is 32 Jm⁻²dc⁻¹ (1.2%dc⁻¹) in spring and 54 Jm⁻²dc⁻¹ (1.2%dc⁻¹) in summer. UVER trends in the 1950-2011 period are mainly caused by changes in TOC because these trends are similar to the obtained values of TS_{o3}, TS_{ac} being around zero. This result indicates that aerosol and clouds presence increasing during dimming and decreasing during brightening are well compensated over the 1950-2011 period.

4.24.4 UVER trends: Ocomparison with literature.ther periods

~~4.2.1 UVER trends: Other periods~~

In the previous section, UVER trends were calculated for three specific periods. Other authors, however, have calculated UVER trends for other periods in the literature. UVER trends were thus recalculated with the same UVER anomaly series but for other periods in this section in order to compare them with the results of other works.

Lindfors et al. (2003) reconstructed UVER irradiation at Sodankylä (Finland) between 1950 and 1999 also using sunshine duration records, and reported two significant trends for this period: 3.9%dc⁻¹ in March and -3.3%dc⁻¹ in July. Slightly higher significant trends were found in March for Madrid (5.3%dc⁻¹), Villalba (6.6%dc⁻¹), and the Iberian Peninsula (4.4%dc⁻¹) in the same period. These series do not present statistically significant trends in July for the 1950-1999 period.

~~Bernhard et al. (2004) found no significant trend in the UVER irradiation measured in the South Pole between 1991 and 2002. Positive and significant trends were obtained at Ciudad Real (February: $19.4\%dc^{-1}$; June: $16.1\%dc^{-1}$), Madrid (February: $23.4\%dc^{-1}$), Murcia (February: $30.6\%dc^{-1}$), and Tortosa (February: $22.0\%dc^{-1}$) for the same period.~~

Josefsson (2006) analyzed the measured UVER at Norrköping (Sweden) between 1983 and 2003, finding significant trends in UVER irradiation in spring ($7.8\%dc^{-1}$), autumn ($8.2\%dc^{-1}$), and in the annual series ($5.2\%dc^{-1}$). Significant although lower trends were also detected in the same period in the series analyzed in this paper. The Iberian Peninsula series showed a significant trend of $4.4\%dc^{-1}$ in spring and of $2.7\%dc^{-1}$ for the annual series.

Lindfors et al. (2007) reconstructed UVER irradiation using SW records from 1983 to 2005 in Bergen (Norway), Jokionen (Finland), Norrköping and Sodankylä, and reported a significant increase in annual UVER at Sodankylä ($4.1\%dc^{-1}$). For the same period, trends in the annual UVER series at Cáceres, Murcia, and the Iberian Peninsula were similar and also significant, being $3.2\%dc^{-1}$, $2.7\%dc^{-1}$, and $2.7\%dc^{-1}$, respectively.

den Outer et al. (2010) obtained UVER irradiation between 1980 and 2006 using different reconstruction models at eight European locations: Sodankylä, Jokionen, Norrköping, Potsdam (Germany), Lindenberg (Germany), Bilthoven (the Netherlands), Hradec Kralove (Czech Republic), and Thessaloniki (Greece). The annual UVER trends obtained by den Outer et al. (2010) range between $2.8\%dc^{-1}$ and $5.8\%dc^{-1}$. The trends in the annual UVER series of this paper are all significant for the same period except for Murcia, and range between $1.8\%dc^{-1}$ (Madrid) and $5.3\%dc^{-1}$ (San Sebastián), with the Iberian Peninsula trend being $3.2\%dc^{-1}$. These results are similar to those obtained in literature.

Walker (2010) analyzed the trends of reconstructed UVER irradiation between 1981 and 2007 at four Swiss locations: Davos, Payerne, Locarno, and Jungfrauoch, with the UVER irradiation trend proving significant in March and June for all four locations during this period. Spring and summer months present the highest number of significant trends in the UVER series of this work for the 1981-2007 period. Annual trends in Switzerland were similar to Spain (eight of the ten are significant) with values varying between $2\%dc^{-1}$ and $4\%dc^{-1}$ from 1981 to 2007 in both countries, with $3.0\%dc^{-1}$ being the trend in the annual Iberian Peninsula series.

Krzyscin et al. (2011) studied the UVER radiation observed at Belsk (Poland) between 1976 and 2008, and found an annual trend of $5.6\%dc^{-1}$. In the same period, the trend in the annual Iberian Peninsula series was $2.8\%dc^{-1}$, half that of Belsk.

As regards UVER trends in the Iberian Peninsula obtained by other authors, three papers are well known. Bilbao et al. (2011) reconstructed UVER at Valladolid from 1991 to 2010 and found significant trends in summer ($3.5\%dc^{-1}$) and autumn ($4.1\%dc^{-1}$), similar to those obtained for the 1991-2010 period at Valladolid with the reconstructed series used in this paper: $3.6\%dc^{-1}$ (summer) and $5.9\%dc^{-1}$ (autumn). Antón et al. (2011a) reconstructed UVER irradiance at solar noon in summer from 1950 to 2000 at Badajoz (Spain) and Cáceres, and obtained a trend of $4.9\%dc^{-1}$ for the 1979-2000 period at Cáceres. The significant UVER irradiation trend at Cáceres during the same period was $5.2\%dc^{-1}$ using data from the present work, a similar value to that obtained by Antón et al. (2011a). This means that UVER irradiance trend at solar noon was similar to daily UVER irradiation trend at Cáceres. Finally, Ialongo et al. (2011) calculated UVER irradiation from 1979 to 2010 over the whole world using satellite images and found a UVER trend in the Iberian Peninsula of around $2.5\%dc^{-1}$ in March and October. The annual Iberian Peninsula series of the present work shows a similar trend ($2.8\%dc^{-1}$) for the same period.

A comparison between the results obtained and those reported in the literature reveals that UVER changes in Europe have been similar, at least over the last few decades.

~~4.34.5~~ **Effect of UVER uncertainty on trends**

~~4.3.1~~ **Effect of UVER uncertainty on trends**

The trends obtained were calculated without considering uncertainty in the UVER irradiation values, although uncertainty might influence the value and significance of trends. The effect of uncertainty on trends was studied following the method used by Román et al. (2014a, d):

For one specific series of UVER anomalies A , with N values A_i , and $\sigma(A_i)$ being the uncertainty of the i -value of A , a normally distributed (centred on zero with a standard deviation of $\sigma(A_i)$) random number (b_i) is generated for each i -value. A normal distribution with a standard deviation of $\sigma(A_i)$ is selected since it implies that the probability of finding a value A_i+b_i in the interval $[A_i -\sigma(A_i), A_i +\sigma(A_i)]$ is about 68%, a probability that increases to 95% when the interval is $[A_i -2\sigma(A_i), A_i +2\sigma(A_i)]$. Once the N values of b_i for all values of A

are obtained, a new synthetic series (SS) is formed as the sum of the original A series and the random numbers, the i-value of the SS series being equal to $A_i + b_i$. The SS series is physically valid since it is inside the uncertainty of the A series.

10,000 synthetic SS series were randomly obtained for each series analyzed in the previous section following the methodology described, and their trends and significance were calculated. The percentage of the 10,000 series whose trend is statistically significant at 95% ($P(p < 0.05)$), and at 99% ($P(p < 0.01)$), was calculated. Only the series with a value of $P(p < 0.05)$ and $P(p < 0.01)$ above 95% and 99% were considered statistically significant at 95% and 99%, respectively. 55% (65 out of 119, considering the 10 locations and the 12 monthly + 4 seasonal + 1 annual) of the significant trends (in 1950-2011, 1950-1984, and 1985-2011 periods) with at least 95% confidence are considered significant (95% confidence) using the criterion based on uncertainties. All series not considered significant in the previous section are not significant with the uncertainty-based criterion.

The $P(p < 0.05)$ and $P(p < 0.01)$ values of the seasonal and annual UVER series considered statistically significant with at least 95% confidence taking into account the uncertainty are shown in Table 4. High $P(p < 0.05)$ values do not imply high $P(p < 0.01)$ values. The median and standard deviation of the 10,000 values of TS calculated from all synthetic series are also included in Table 4. These trends are similar to the trends in Table 3, the differences between them being below $5 \text{ Jm}^{-2}\text{dc}^{-1}$ ($0.1\%\text{dc}^{-1}$) in most cases, although this difference reaches $18 \text{ Jm}^{-2}\text{dc}^{-1}$ ($0.4\%\text{dc}^{-1}$) for Ciudad Real in summer in the 1985-2011 period. These differences are always below the standard deviation of the trend given in Table 4 (except for Ciudad Real in summer in the 1985-2011 period).

~~4.4 UVER irradiation over open body~~

~~4.4.1 Temperature and open body fraction~~

~~Monthly averages of daily mean temperature, daily effective temperature, daily open body fraction, and all their monthly anomalies were calculated using the same method as in the UVER case. Seasonal and annual anomalies were also calculated. Fig. 6 shows the evolution of the annual T_m anomalies for the averaged Iberian Peninsula series. The behaviour of t_{eff} and S (not shown) is similar since S is directly connected with t_{eff} , and t_{eff} with T_m (Sect. 2). T_m (and t_{eff} and S) fell between the 1950s and the 1970s, and began to increase in the 1970s. Similar results were obtained for the whole Northern Hemisphere (Hansen and Lebedeff,~~

1987; Wild, 2012). The increase in mean temperature is usually attributed to an increase in greenhouse gases (CO_2 , CH_4 , etc.), sparking the well known “global warming” phenomenon. T_m presents significant trends in the 1950–2011 period for the Iberian Peninsula series, ranging from $0.17^\circ\text{Cde}^{-1}$ in autumn to $0.31^\circ\text{Cde}^{-1}$ in summer. A significant and negative trend was observed in T_m of $-0.44^\circ\text{Cde}^{-1}$ in the Iberian Peninsula in spring for the dimming period. This might be caused by the decrease in T_m up to the 1970s observed in Fig. 6. The mentioned decrease was caused by the dimming phenomenon, since the reduction in SW radiation (due to aerosol increase) cooled the Earth while the increase in greenhouse gases warmed it, the dimming effect proving stronger up to the 1970s (IPCC, 2007). The decrease between 1950 and 1970 was not found in the Southern Hemisphere (where aerosol emissions were one order of magnitude smaller than in the Northern Hemisphere), supporting the hypothesis that increased aerosol load cooled the Earth more strongly than greenhouse gas increases warmed it up to 1970 (Wild, 2012). On the other hand, increased SW irradiation (caused by aerosol reduction) and greenhouse gases both warmed the Earth during the brightening period. In fact, the Iberian Peninsula series of T_m presented positive and significant trends in spring ($0.55^\circ\text{Cde}^{-1}$) and summer ($0.36^\circ\text{Cde}^{-1}$) for the 1985–2011 period, which are higher than those obtained for the 1950–2011 period. The last decade in Fig. 6 shows a reduction in temperature increase, which might be linked to a new increase in sulphur aerosol particles worldwide due to emissions in Asia after the year 2000 (Streets et al., 2009). This aerosol increase was observed by Chin et al. (2013), and might be sparking a new dimming phenomenon, which might have been occurring in China and India since 2000 (Wild et al., 2009; Wild, 2012).

The increase in mean temperature leads to an increase in effective temperature and, hence, in the open body fraction. This increase means that the surface area of naked human body exposed to the sun has increased over the last few decades, mainly due to an increase in mean temperature caused by increased greenhouse gases and, for the brightening period, also by aerosol (and also clouds due to the indirect effect) reduction.

4.4.2 UVER over open body evolution

UVER irradiation quantifies the toxicity of solar radiation over human skin. However, if the human body is totally covered by clothes or anything else, the skin will not be affected by sun exposure even for high UVER irradiation values. Therefore, in order to find a new variable which quantifies the UVER dose received by human skin, the UVER over open body

($UVER_{ob}$) is defined as the UVER radiation multiplied by the open body fraction. $UVER_{ob}$ irradiation, measured in Jm^{-2} per open body unit, physically means the daily UVER irradiation received over the naked skin of a human who is exposed to sun the whole day. The open body fraction is usually multiplied by the UV radiation weighted by the vitamin D synthesis action spectrum (e.g., Chubarova and Zhdanova, 2013), but not by UVER radiation. The damage of UV over human skin is cumulative (WHO, 2002), and $UVER_{ob}$ can be used to evidences how much portion of skin is damaged or how much bigger is the redness skin after an overexposure to sun.

In this work, the daily UVER irradiation of each series was multiplied by the daily open body fraction, obtaining the daily $UVER_{ob}$ irradiation. The $UVER_{ob}$ irradiation series obtained were monthly averaged, and monthly, seasonal, and annual anomalies were then calculated following the same process as in Sect. 4.1. Figure 7 shows the annual $UVER_{ob}$ evolution for the ten series. The expected results for $UVER_{ob}$ should be different to the UVER analysis due to the changes in S. However, annual $UVER_{ob}$ evolution is similar to that of UVER in Fig. 4. The increase in $UVER_{ob}$ during the brightening period seems larger than for UVER, probably due to the increase in the open body fraction caused by T_m variations (Fig. 6). The reduction in $UVER_{ob}$ should be bigger than in UVER due to the reduction in effective temperature up to the 1970s, although this cannot be seen in Fig. 7.

4.4.3 $UVER_{ob}$ trends

In order to quantify the results observed in Fig. 7, the trends and their significance of all available $UVER_{ob}$ series were calculated in the same way as in the UVER section. Figure 8 shows the $UVER_{ob}$ trends (and their significance and 95CI) for all monthly, seasonal, and annual series for all locations at three periods. In addition, the statistically significant seasonal and annual trends are shown in Table 5 for the three periods.

As regards the 1950–1984 period, $UVER_{ob}$ irradiation shows only a few more significant trends than the UVER case. However, the Iberian Peninsula series shows a statistically significant (99% confidence) trend of $-4.3\%de^{-1}$ in spring, and a statistically significant (95% confidence) trend of $-1.5\%de^{-1}$ for the annual series. This significant reduction in spring could be related to the significant decrease observed in T_m ($-0.44^{\circ}Cde^{-1}$) during the same period.

In the brightening period, all annual $UVER_{ob}$ series, except A Coruña and Madrid, show significant trends, ranging from $2.9\%de^{-1}$ (Villalba) to $5.0\%de^{-1}$ (San Sebastián). There are more significant and higher trends, especially with 99% confidence and in summer-spring months, in the $UVER_{ob}$ series than in $UVER$ for the 1985–2011 period, which is due to the increase in T_m , and therefore in S , in this period. The difference between the $UVER_{ob}$ trend and the $UVER$ trend accounts for the part of the $UVER_{ob}$ trend caused by open body fraction changes, and therefore by effective temperature changes. $UVER$ in the Iberian Peninsula increased by $2.5\%de^{-1}$ (summer) and $2.1\%de^{-1}$ (annual) during brightening, the same trends being $3.6\%de^{-1}$ (summer) and $3.8\%de^{-1}$ (annual) in the $UVER_{ob}$ case. This implies that the effective temperature changes are responsible for more than $1\%de^{-1}$ (~30% and ~45% of the total trend) of the changes observed in $UVER_{ob}$ between 1985 and 2011 in the Iberian Peninsula. The portion of each $UVER_{ob}$ trend caused by ozone, aerosol and clouds, and effective temperature can be calculated taking into account the TS_{o3} and TS_{ae} values in Table 3. 28.9%, 39.1%, and 32.0% of the $UVER_{ob}$ trend in the Iberian Peninsula in summer ($3.6\%de^{-1}$) were caused by changes in ozone, aerosol and clouds, and effective temperature, respectively. These percentages were 20.7%, 35.1%, and 44.2% for the same trend in the $UVER_{ob}$ annual series ($3.8\%de^{-1}$).

As regards the 1950–2011 period, all annual and summer $UVER_{ob}$ trends were significant with 99% confidence. The annual $UVER_{ob}$ trends in this period were $2.3\%de^{-1}$, $1.9\%de^{-1}$, $1.8\%de^{-1}$ and $2.0\%de^{-1}$, for San Sebastián, Madrid, Villalba, and the Iberian Peninsula, respectively. In fact the annual $UVER_{ob}$ increased by a total of 12.5% between 1950 and 2011 in the Iberian Peninsula. Higher and more statistically significant trends appear in $UVER_{ob}$ series than in $UVER$ for the 1950–2011 period, especially in spring and summer months, as Fig. 8 reveals. This is caused by the rise in the open body fraction over the last six decades as a result of effective temperature increase. $UVER$ changes in this period were mainly caused by ozone changes, the $UVER_{ob}$ trends thus being mainly caused by ozone and effective temperature changes. The $UVER_{ob}$ trend in summer for the Iberian Peninsula was $2.4\%de^{-1}$, $1.1\%de^{-1}$ being caused by changes in effective temperature. Moreover, half of the annual Iberian Peninsula trend was caused by effective temperature. In the 1950–2011 period, 45.4%, 7.8%, and 46.8% of the $UVER_{ob}$ trend in the Iberian Peninsula in summer ($2.4\%de^{-1}$) was caused by changes in ozone, aerosol and clouds, and effective temperature, respectively. These percentages were 50.8%, 1.2%, and 48.0% for the same trend in the $UVER_{ob}$ annual series ($2.0\%de^{-1}$). These results reveal that changes in $UVER$ on the open body over the last six

~~decades have mainly been caused by ozone and temperature changes in a similar proportion, with the influence of aerosol and clouds changes on $UVER_{ob}$ proving to be negligible.~~

~~The same results were obtained considering the effective temperature equal to the mean temperature in order to calculate the open body fraction with Eq. (3). Hence, $UVER_{ob}$ changes caused by effective temperature can be considered to be changes caused by the mean temperature, disregarding the influence of relative humidity or wind speed changes.~~

5 Factors not taken into account

The results of this paper were obtained using reconstructed data series by models. However, the paper is not without certain limitations. Changes in aerosol optical depth, surface albedo or water vapour column were not considered, these variables being used in the radiative transfer model as monthly climatology.

The lack of AOD data ~~earlier~~ before 2000 led to use a climatological table which does not contain the aerosol changes in the 1950-2011 period. However the aerosol effect is included the SW and F measurements (like clouds) and, as a first approximation, the reconstruction models transfer this effect to the UVER radiation. This approximation is not valid for the case of water vapour because it affects SW and F but not UVER.

If the water vapour column had increased, cloudless SW irradiation would have decreased and, therefore, reconstructed UVER should be higher. Daily water vapour column trends were calculated between 1957 and 2002 in the Iberian Peninsula using the daily ERA-40 data (Uppala et al., 2005; Lindfors et al., 2007). These trends (not shown) indicate a slight water vapour decrease in recent decades, which did not always prove significant, but which might contribute to reducing the UVER trends obtained.

Trends in surface albedo at 360 nm (Sect. 2.2) from 1958 to 2002 were calculated (not shown), revealing that, apart from a slight decrease in winter months, surface albedo has suffered no significant changes in recent decades. This result indicates that the UVER trend obtained in winter might be slightly lower due to changes in albedo, but should not affect the remaining months.

A further factor to take into account should be the uncertainty of the data used (caused in part by the monthly variability of the radiative transfer inputs), since certain trends cannot be considered significant when uncertainty is taken into account, as can be seen in Sect. 4.4-5. Moreover, the averaged Iberian Peninsula anomaly series was calculated using nine locations, with only four or five locations having data available for the years prior to 1970. This number of locations might not be sufficient to obtain a representative averaged result for the Iberian Peninsula. However, by way of an initial approximation, the number of locations was considered representative since when using the same locations, Román et al. (2014a) obtained similar results in SW irradiation to Sánchez-Lorenzo et al. (2013a), who used more locations to obtain an averaged Iberian Peninsula series.

~~Finally, as regards UVER irradiation over open body, it was considered that a rise in temperature increases the surface area of naked human body exposed to the sun. However, increased temperatures might lead to the opposite effect since when temperatures increase, humans do not remove more clothing but decide to protect themselves from the sun (e.g., by staying at home), thereby preventing the impact of solar radiation on the body. A further factor not considered is the effect of the growing number of buildings in urban locations, since such an increase might lead to a rise in the number of shady areas, where UVER irradiation is less. Finally, as regards changes in UVER irradiation received by the human body, two important factors were not taken into account: firstly, the use of creams and sunscreen products whose use would curb damage to human skin; and secondly the opposite effect, the fashion for getting a tan, which leads to greater exposure to the sun and further damage to the skin, causing diseases like tanorexia (tanning addiction), in which the patient has an obsessive need to achieve a darker skin tone.~~

~~All these factors might impact the results obtained vis-à-vis changes in the real skin damage to people caused by solar radiation in the Iberian Peninsula.~~

6 Conclusions

UVER irradiation in the Iberian Peninsula increased by $2.1\%dc^{-1}$ (annual) and $2.5\%dc^{-1}$ (summer) for the 1985-2011 period, and $1.1\%dc^{-1}$ (annual) and $1.3\%dc^{-1}$ (summer) for the 1950-2011 period. The amount of ozone in the atmosphere is returning to pre-1980 levels due to the reduction in halogen gases subsequent to the Montreal Protocol. Said-This reduction decrease supports the belief that increased UVER radiation over the past 27 years has in large

part been due to a reduction in the release of aerosols into the atmosphere, also reducing the cloud presence (brightening). However, increased UVER was mainly caused by ozone depletion during the 1950-2011 period. A significant UVER trend can become non-significant when uncertainty in the reconstructed data is taken into account.

~~The major changes in UVER radiation on naked human skin (open body) are due to: changes in ozone (caused by changes in halogen gas emissions), changes in aerosols and clouds (dimming and brightening), and changes in temperature (global warming). The annual Iberian Peninsula UVER_{ob} series evidenced a significant annual increase of $3.8\% \text{dc}^{-1}$ and a significant seasonal increase of $3.6\% \text{dc}^{-1}$ in summer for the 1985-2011 period. These trends are caused mainly by temperature and aerosol and clouds changes. As regards the 1950-2011 period, the annual ($2.0\% \text{dc}^{-1}$) and summer ($2.4\% \text{dc}^{-1}$) UVER_{ob} trends in the Iberian Peninsula were mainly caused by ozone and temperature changes in a similar proportion.~~

~~In future, an increase in the amount of aerosols in the atmosphere would spark lower UVER radiation and temperature levels, leading to a reduction in UVER irradiation over the open body in two ways. However, increased air pollution is totally inadmissible, since this would lead to an increase in cardio-respiratory and other diseases, and might have a devastating effect on the climate, for instance by causing severe droughts. Once the increase in anthropogenic aerosols in the atmosphere has been discarded, and bearing in mind that ozone levels have continued to rise since the Montreal protocol, UVER irradiation over the open body should be reduced by lowering the temperature (in other words, by avoiding global warming). Reducing anthropogenic aerosols in the atmosphere leads to an increase in temperature. Hence, the amount of aerosols and greenhouse gas emissions into the atmosphere must be cut, whilst preventing increased temperatures caused by the greenhouse effect and a new brightening. Therefore, reducing air pollution and cutting greenhouse gas emissions might not only reduce global warming, with the possible benefits this would entail, but would also restrict the amount of harmful solar radiation received by human skin. Finally, human beings must be responsible for preventing diseases related to sun exposure by avoiding contact with the sun around midday and taking the necessary precautions (sunscreen creams, sunshades, etc.) in order to enjoy healthy sun exposure and the beneficial effects of solar radiation.~~

Acknowledgements

The authors gratefully acknowledge the financial support extended by the Spanish Ministry of Science and Innovation for project CGL2011-25363. The authors also thank the staff at the AEMet for the data used and for their effort in establishing and maintaining the stations. The authors gratefully thank the OMI, TOMS, GOME, GOME-2, MODIS, and MISR teams for the satellite data used in this study, as well as the staff of the COST-726 project for the reconstructed ozone data. The NASA GES DISC and the AVDC are also acknowledged for the GIOVANNI application and the satellite overpass files. Roberto Román would like to thank the University of Valladolid for its support through the PIF-UVa grant.

References

- Acker, J. G. and Leptoukh, G.: Online Analysis Enhances Use of NASA Earth Science Data, *Eos, Trans. AGU*, 88, 2 14-17, 2007.
- Alexandersson, H. and Moberg, A.: Homogenization of Swedish temperature data. Part I: Homogeneity test for linear trends, *Int. J. Climatol.*, 17, 25–34, 1997.
- Anderson, G., Clough, S., Kneizys, F., Chetwynd, J., and Shettle, E.: AFGL atmospheric constituent profiles (0-120 km), Tech. Rep. AFGL-TR-86-0110, Air Force Geophys. Lab., Hanscom Air Force Base, Bedford, Mass., 1986.
- Antón, M., Serrano, A., Cancillo, M. L., García, J. A., and Madronich, S.: Application of an analytical formula for UV Index reconstructions for two locations in Southwestern Spain, *Tellus*, 63B, 1052–1058, 2011a.

- Antón, M., Serrano, A., Cancillo, M. L., García, J.A., and Madronich, S.: Empirical evaluation of a simple analytical formula for the ultraviolet index, *Photochem. Photobiol.*, 87, 478–482, 2011b.
- [Antón, M., and Mateos, D.: Shortwave radiative forcing due to long-term changes of total ozone column over the Iberian Peninsula, *Atmos. Environ.*, 81, 532-537, doi: 10.1016/j.atmosenv.2013.09.047, 2013.](#)
- ~~Bernhard, G., Booth, C. R., and Ehramjian, J. C.: Version 2 data of the National Science Foundation's Ultraviolet Radiation Monitoring Network: South Pole, *J. Geophys. Res.*, 109, D21207, 2004.~~
- Bilbao, J., Román, R., de Miguel, A., and Mateos, D.: Long-term solar erythmal UV irradiance data reconstruction in Spain using a semiempirical method, *J. Geophys. Res.*, 116, D22211, 2011.
- [Blumthaler, M. and Ambach, W.: Indication of increasing solar ultraviolet-B radiation flux in alpine region, *Science*, 248, 206-208, 1990.](#)
- Bodeker, G. E. and McKenzie, R.L.: An algorithm for inferring surface UV irradiance including cloud effects, *J. Appl. Meteorol.*, 35, 10, 1860–1877, 1996.
- [Borkowski, J. L.: Homogenization of the Belsk UV-B series \(1976-1997\) and trend analysis, *J. Geophys. Res.*, 105, D4, 4873–4878, 2000.](#)
- Buras, R., Dowling, T., and Emde, C.: New secondary-scattering correction in DISORT with increased efficiency for forward scattering, *J. Quant. Spectrosc. Ra.*, 112, 2028–2034, doi:10.1016/j.jqsrt.2011.03.019, 2011.
- Calbó, J., Pagès, D., and González, J. A.: Empirical studies of cloud effects on UV radiation: A review, *Rev. Geophys.*, 43, 2, 1-28, 2005.
- ~~Chin, M., et al.: Multi-decadal variations of atmospheric aerosols from 1980 to 2009: sources and regional trends, *Atmos. Chem. Phys. Discuss.*, 13, 19751–19835, 2013.~~
- ~~Chubarova, N. and Zhdanova, Y.: Ultraviolet resources over Northern Eurasia, *J. Photoch. Photobiol. B.*, 127, 38–51, 2013.~~
- [Correl, D. L., Clark, O., Goldberg, B., Goodrich, V. R., Hayes Jr., D. R., Klein, W. H., and Schecher, W. D.: Spectral ultraviolet-B radiation at the Earth's surface: Long-term variations at 39°N, 77°W, *J. Geophys. Res.*, 97, 7579-7591, 1992.](#)

- 1 de Miguel, A., Bilbao, J., Román, R., and Mateos, D.: Measurements and attenuation of
2 erythemal radiation in Central Spain, *Int. J. Climatol.*, 32, 929–940, 2012.
- 3 den Outer, P. N., Slaper, H., Matthijssen, J., Reinen, H. A. J. M., and Tax, R.: Variability of
4 ground-level ultraviolet: Model and measurement, *Radiat. Prot. Dosim.*, 91, 105-110, 2000.
- 5 den Outer, P. N., Slaper, H., and Tax, R. B.: UV radiation in the Netherlands: Assessing long-
6 term variability and trends in relation to ozone and clouds, *J. Geophys. Res.*, 110, D02203,
7 2005.
- 8 den Outer, P. N., Slaper, H., Kaurola, J., Lindfors, A., Kazantzidis, A., Bais, A. F., Feister, U.,
9 Junk, J., Janouch, M., and Josefsson, W.: Reconstructing of erythemal ultraviolet radiation
10 levels in Europe for the past 4 decades, *J. Geophys. Res.*, 115, D10102, 2010.
- 11 Gilbert, R. O.: Statistical methods for environmental pollution monitoring, Van Nostrand
12 Company, Hoboken, N. J., 320 pp, 1987.
- 13 Hakuba, M. Z., Sánchez-Lorenzo, A., Folini, D., and Wild, M.: Testing the homogeneity of
14 short-term surface solar radiation series in Europe, *AIP Conf. Proc.*, 1531, 700, 2013.
- 15 ~~Hansen, J. and Lebedeff, S.: Global Trends of Measured Surface Air Temperature, *J.*~~
16 ~~*Geophys. Res.*, 92, 13345-13372, 1987.~~
- 17 Hülsen, G. and Gröbner, J.: Characterization and calibration of ultraviolet broadband
18 radiometers measuring erythemal weighted irradiance, *Appl. Opt.*, 26, 23, 5877-5886, 2007.
- 19 Ialongo, I., Arola, A., Kujanpää, J., and Tamminen, J.: Use of satellite erythemal UV products
20 in analysing the global UV changes, *Atmos. Chem. Phys.*, 11, 9649–9658, 2011.
- 21 ~~IPCC (Intergovernmental Panel on Climate Change): IPCC Fourth Assessment Reports~~
22 ~~(AR4): Working Group I Report: Climate Change 2007, The Physical Basis, WMO/UNEP~~
23 ~~Report, 2007.~~
- 24 Iqbal, M.: An introduction to solar radiation, Academic Press, 0-12-373750-8, 1983.
- 25 Josefsson, W.: UV-radiation 1983-2003 measured at Norrköping, Sweden, *Theor. Appl.*
26 *Climatol.*, 83, 59-76, 2006.
- 27 Kaurola, J., Taalas, P., Koskela, T., Borkowski, J., and Josefsson, W.: Long-term variations of
28 UV-B doses at three stations in northern Europe, *J. Geophys. Res.*, 105, D16, 20813–20820,
29 2000.

- 1 Krzyscin, J. W.: Statistical reconstruction of daily total ozone over Europe 1950 to 2004, J.
2 Geophys. Res., 113, D07112, 2008.
- 3 Krzyscin, J. W., Sobolewski, P. S., Jarosławski, J., Podgórski, J., and Rajewska-Wiech, B.:
4 Erythemal UV observations at Belsk, Poland, in the period 1976–2008: data homogenization,
5 climatology, and trends, Acta Geophys., 59, 155–182, 2011.
- 6 Kurucz, R.: Synthetic infrared spectra, Proceedings of the 154th Symposium of the
7 International Astronomical Union (IAU), 1992.
- 8 Kylling, A., Stamnes, K., and Tsay, S. C.: A reliable and efficient two-stream algorithm for
9 spherical radiative transfer: Documentation of accuracy in realistic layered media, J. Atmos.
10 Chem, 21, 115-150, 1995.
- 11 Lindfors, A., Arola, A., Kaurola, J., Arola, A., Taalas, P., and Svenoe, T.: Long-term
12 erythemal UV doses at Sodankylä estimated using total ozone, sunshine duration, and snow
13 depth, J. Geophys. Res., 108 (D16), 4518, 2003.
- 14 Lindfors, A., Kaurola, J., Arola, A., Koskela, T., Lakkala, K., Josefson, W., Olseth, J. A., and
15 Johnsen, B.: A method for reconstruction of past UV radiation based on radiative transfer
16 modeling: Applied to four stations in northern Europe, J. Geophys. Res., 112, D23201, 2007.
- 17 [Mateos, D., Antón, M., Sanchez-Lorenzo, A., Calbó, J., and Wild, M.: Long-term changes in](#)
18 [the radiative effects of aerosols and clouds in a mid-latitude region \(1985–2010\), Global and](#)
19 [Planetary Change, 111, 288–295, doi: 10.1016/j.gloplacha.2013.10.004, 2013.](#)
- 20 [Mateos, D., Sanchez-Lorenzo, A., Antón, M., Cachorro, V. E., Calbó, J., Costa, M. J., Torres,](#)
21 [B., and Wild, M.: Quantifying the respective roles of aerosols and clouds in the strong](#)
22 [brightening since the early 2000s over the Iberian Peninsula, J. Geophys. Res., 119, doi:](#)
23 [10.1002/2014JD022076, 2014.](#)
- 24 Matthijsen, J., Slaper, H., Reinen, H. A. J. M., and Velders, G. J. M.; Reduction of solar UV
25 by clouds: A comparison between satellite-derived cloud effects and ground-based radiation
26 measurements, J. Geophys. Res., 105, D4, 5069-5080, 2000.
- 27 Mayer, B. and Kylling, A.: Technical note: The libRadtran software package for radiative
28 transfer calculations – description and examples of use, Atmos. Chem. Phys., 5, 1855–1877,
29 2005.

1 McKinlay, A. F. and Diffey, B. L.: A reference action spectrum for ultraviolet induced
2 erythema in human skin, Commission Internationale de l' Eclairage (CIE), 6, 17–22, 1987.

3 Moreta J. R., García, R., Martín, L., Montero, J., San Atanasio, J. M., Hernández, J. L., Díaz,
4 A., Vicente, R., C.R.N., and López, M.: AEMet contribution to the WMO/GAW programme,
5 GAW 2013 Symposium, WMO Secretariat, Geneva, 2013.

6 Peter, T.: Microphysics and heterogeneous chemistry of polar stratospheric clouds, Annu.
7 Rev. Phys. Chem., 48, 785–822, 1997.

8 Piedehierro, A. A., Antón, M., Cazorla, A., Alados-Arboledas, L., Olmo, F. J.: Evaluation of
9 enhancement events of total solar irradiance during cloudy conditions at Granada
10 (Southeastern Spain), Atmos. Res., 135:136, 1-7, 2014.

11 Ricchiazzi, P., Yang, S., Gautier, C., and Sowle, D.: SBDART: A research and Teaching
12 software tool for plane-parallel radiative transfer in the Earth's atmosphere, Bulletin of the
13 American Meteorological Society, 79, 2101–2114, 1998.

14 Rieder, H. E., Holawe, F., Simic, S., Blumthaler, M., Krzyscin, J. W., Wagner, J. E.,
15 Schmalwieser, A. W., and Weihs, P.: Reconstruction of erythematous UV-doses for two stations
16 in Austria: a comparison between alpine and urban regions, Atmos. Chem. Phys., 8, 6309–
17 6323, 2008.

18 Rieder, H. E., Frossard, L., Ribatet, M., Staehelin, J., Maeder, J. A., Di Rocco, S., Davison, A.
19 C., Peter, T., Weihs, P., and Holawe, F.: On the relationship between total ozone and
20 atmospheric dynamics and chemistry at mid-latitudes – Part 2: The effects of the El
21 Niño/Southern Oscillation, volcanic eruptions and contributions of atmospheric dynamics and
22 chemistry to long-term total ozone changes, Atmos. Chem. Phys., 13, 165–179, 2013.

23 Román, R.: Reconstrucción y análisis de la radiación ultravioleta eritemática en la Península
24 Ibérica desde 1950, PhD Thesis, Dep. of Appl. Phys., Univ. of Valladolid, Valladolid, Spain,
25 2014.

26 |

27 Román, R., Bilbao, J., and de Miguel, A.: Reconstruction of six decades of daily total solar
28 shortwave irradiation in the Iberian Peninsula using sunshine duration records, Atmos.
29 Environ., [ATMENV-D-14-00791R1, under review](#)99, 41–50, 2014a.

1 Román, R., Bilbao, J., and de Miguel, A.: Solar radiation simulations in the Iberian Peninsula:
2 Accuracy and sensitivity to uncertainties in inputs of a radiative transfer model, *J. Quant.*
3 *Spectrosc. Ra.*, 145, 95–109, doi: [10.1016/j.jqsrt.2014.04.028](https://doi.org/10.1016/j.jqsrt.2014.04.028), 2014b.

4 Román, R., Bilbao, J., and de Miguel, A.: Uncertainty and variability in satellite-based water
5 vapor column, aerosol optical depth and Angström Exponent, and its effect on radiative
6 transfer simulations in the Iberian Peninsula, *Atmos. Environ.*, 89, 556-569, 2014c.

7 Román, R., Bilbao, J., and de Miguel, A.: Uncertainty of different atmospheric ozone
8 retrievals and its effect on temporal trends and on a radiative transfer simulations in the
9 Iberian Peninsula, *J. Geophys. Res. Atmos.*, 119, published online,
10 doi:10.1002/2013JD021260., 2014d.

11 Sabburg, J. and Parisi, A. V.: Spectral dependency of cloud enhanced UV irradiance, *Atmos.*
12 *Res.* 81, 206–214, 2006.

13 Sabburg, J., and Calbó, J.: Five years of cloud enhanced surface UV radiation measurements
14 at two sites (in the Northern and Southern Hemispheres), *Atmos. Res.*, 93, 4, 902-912, 2009.

15 Sánchez-Lorenzo, A., Brunetti, M., Calbó, J., and Martin-Vide, J.: Recent spatial and
16 temporal variability and trends of sunshine duration over the Iberian Peninsula from a
17 homogenized data set, *J. Geophys. Res.*, 112, D20115, 2007.

18 Sánchez-Lorenzo, A., Calbó, J., and Wild, M.: Global and diffuse solar radiation in Spain:
19 Building a homogeneous dataset and assessing their trends, *Global Planet. Change*, 100, 343-
20 352, 2013a.

21 Sánchez-Lorenzo, A., Wild, M., Guijarro, J. A., Brunetti, M., Bartok, B., Mystakidis, S.,
22 Hakuba, M., and Müller, G.: Reassessment and update of the trends in the surface solar
23 radiation over Europe by means of homogenized series from the GEBA, European
24 Geophysical Union (EGU) General Assembly 2013, 2013b.

25 Sánchez-Lorenzo, A., Wild, M., and Trentmann, J.: Validation and stability assessment of the
26 monthly mean CM SAF surface solar radiation dataset over Europe against a homogenized
27 surface dataset (1983-2005), *Rem. Sens. Env.*, 134 355-366, 2013c.

28 Schaaf, C. B., et al.: First Operational BRDF, Albedo and Nadir Reflectance Products from
29 MODIS, *Remote Sens. Environ.*, 83, 135-148, 2002.

Schwander, H., Mayer, B., Ruggaber, A., Albold, A., Seckmeyer G., and Koepke, P.: Method to determine snow albedo values in the UV for radiative transfer modelling, Appl. Optics, 38, 18, 3869–3875, 1999.

[Scotto, J., Cotton, G., Urbach, F., Berger, D., and Fears, T.: Biologically effective ultraviolet radiation: Surface measurement in the United States, 1974 to 1985, Science, 239, 762–764, 1988.](#)

Shettle, E.: Models of aerosols, clouds and precipitation for atmospheric propagation studies, Atmospheric propagation in the uv, visible, ir and mm-region and related system aspects, 454 in AGARD Conference Proceedings, 1989.

Solomon, S.: Stratospheric ozone depletion: a review of concepts and history, Rev. Geophys., 37, 275–316, 1999.

Stanhill, G. and Cohen, S.: Global dimming: A review of the evidence for a widespread and significant reduction in global radiation, Agric. For. Meteorol., 107, 255-278, 2001.

~~Steadman, R.G.: The assessment of sultriness. Part I: A temperature-humidity index based on human physiology and clothing science, J. Appl. Meteor., 18, 861-873, 1979.~~

~~Streets, D. G., et al.: Anthropogenic and natural contributions to regional trends in aerosol optical depth, 1980-2006, J. Geophys. Res., 114, D00D18, 2009.~~

Tanskanen, A.: Lambertian Surface Albedo Climatology at 360 nm from TOMS Data Using Moving Time-Window Technique, Proceedings of the XX Quadrennial Ozone Symposium, 2004.

UNEP (United Nations Environment Programme): UNEP assessment reports: Environmental effects of ozone depletion and its interactions with climate change: 2002 assessment, Photochem. Photobiol. Sci., 2, 1-72, 2003.

Uppala, S., et al.: The ERA-40 re-analysis, Q. J. R. Meteorol. Soc., 131, 2961-3012, 2005.

Van Hoosier, M. E., Bartoe, J.-D. F., Brueckner, G. E., and Prinz, D. K.: Absolute solar spectral irradiance 120 nm - 400 nm (Results from the Solar Ultraviolet Spectral Irradiance Monitor - SUSIM- Experiment on board Spacelab 2), Astro. Lett. and Communications, 27, 163-168, 1988.

~~Vicente-Serrano, S. M., Azorin-Molina, C., Sánchez-Lorenzo, A., Morán-Tejada, E., Lorenzo-Lacruz, J., Revuelto, J., López-Moreno, J. I., and Espejo, F.: Temporal evolution of~~

~~surface humidity in Spain: recent trends and possible physical mechanisms, Clim. Dyn., published online, doi:10.1007/s00382-013-1885-7, 2013.~~

Vilaplana, J. M., Cachorro, V. E., Sorribas, M., Luccini, E., de Frutos, A. M., Berjón, A., and de la Morena, B.: Modified calibration procedures for a yankee environmental system UVB-1 biometer based on spectral measurements with a brewer spectrophotometer, Photochem. Photobiol., 82, 508–514, 2009.

Walker, D.: Cloud effects on erythral UV radiation in a complex topography, PhD Thesis, Veröffentlichungen der MeteoSchweiz, 86, 106 p, ISSN: 1422-1381, 2010.

Webb, A. R.: Who, what, where and when-influences on cutaneous vitamin D synthesis, Prog. Biophys. Mol. Biol., 92, 17–25, 2006.

Webb, A., Gröbner, J., and Blumthaler, M.: A Practical Guide to Operating Broadband Instruments Measuring Erythemally Weighted Irradiance, COST726, 22595, 92-898-0032-1, 2006.

WHO (World Health Organization): Protection against exposure to ultraviolet radiation, Technical Report WHO/EHG 17, 1995.

WHO (World Health Organization): Global Solar UV Index: A Practical Guide, 28 pp., ISBN 92-4-159007-6, Geneva, Switzerland, 2002.

Wijngaard, J. B., Klein-Tank, A. M. G., and Können, G. P.: Homogeneity of 20th century European daily temperature and precipitation series, Int. J. Climatol., 23, 679-692, 2003.

Wild, M.: Global dimming and brightening: A review, J. Geophys. Res., 114, D00D16, 2009.

Wild, M.: Enlightening global dimming and brightening, Bull. Amer. Meteor. Soc., 93, 27–37, 2012.

Wild, M., Gilgen, H., Roesch, A., Ohmura, A., Long, C. N., Dutton, E. G., Forgan, B., Kallis, A., Russak, V., and Tsvetkov, A.: From dimming to brightening: Decadal changes in solar radiation at Earth's surface, Science, 308, 847-850, 2005.

~~Wild, M., Trüssel, B., Ohmura, A., Long, C. N., Dutton, E. G., König Langlo, G., and Tsvetkov, A.: Global dimming and brightening: An update beyond 2000, J. Geophys. Res., 114, D00D13, 2009.~~

WMO (World Meteorological Organization): Guide to meteorological instruments and methods of observation, 7th Edn. WMO Publication 8, Geneva, Switzerland, 2008.

WMO (World Meteorological Organization): WMO Scientific Assessment of Ozone Depletion: 2010, Global Ozone Research and Monitoring Project, Report No 52, World Meteorological Organization, Geneva, Switzerland, 2011.

Tables

Table 1: Coordinates of the AEMet stations used, and number of data of the final reconstructed series which were filled with M-SW model, M-F model or with measurements. The total number of data of each final reconstructed series and the year when it began are included.

<u>Location</u>	<u>Latitude</u>	<u>Longitude</u>	<u>Altitude</u> <u>(m.s.l)</u>	<u>M-SW</u> <u>data</u>	<u>M-F</u> <u>data</u>	<u>Measured</u> <u>data</u>	<u>Total</u> <u>data</u>	<u>First</u> <u>year</u>
<u>Ciudad Real</u>	<u>38°59'21''N</u>	<u>3°55'13''W</u>	<u>628</u>	<u>5717</u>	<u>9300</u>	<u>6</u>	<u>15023</u>	<u>1970</u>
<u>San Sebastián</u>	<u>43°18'23''N</u>	<u>2°02'28''W</u>	<u>251</u>	<u>7428</u>	<u>15029</u>	<u>9</u>	<u>22466</u>	<u>1950</u>
<u>A Coruña</u>	<u>43°21'57''N</u>	<u>8°25'17''W</u>	<u>58</u>	<u>9600</u>	<u>11388</u>	<u>2</u>	<u>20990</u>	<u>1951</u>
<u>Madrid</u>	<u>40°27'06''N</u>	<u>3°43'27''W</u>	<u>664</u>	<u>13208</u>	<u>9158</u>	<u>7</u>	<u>22373</u>	<u>1950</u>
<u>Cáceres</u>	<u>39°28'17''N</u>	<u>6°20'20''W</u>	<u>394</u>	<u>9517</u>	<u>1054</u>	<u>7</u>	<u>10578</u>	<u>1983</u>
<u>Murcia</u>	<u>38°00'07''N</u>	<u>1°10'15''W</u>	<u>61</u>	<u>10035</u>	<u>101</u>	<u>0</u>	<u>10136</u>	<u>1984</u>
<u>Tortosa</u>	<u>40°49'14''N</u>	<u>0°29'29''E</u>	<u>44</u>	<u>5081</u>	<u>12476</u>	<u>15</u>	<u>17572</u>	<u>1954</u>
<u>Valladolid</u>	<u>41°39'00''N</u>	<u>4°46'00''W</u>	<u>735</u>	<u>6813</u>	<u>7139</u>	<u>16</u>	<u>13968</u>	<u>1973</u>
<u>Villalba</u>	<u>41°48'50''N</u>	<u>4°55'48''W</u>	<u>840</u>	<u>3712</u>	<u>18180</u>	<u>0</u>	<u>21892</u>	<u>1951</u>

~~Table 1: Characteristics of the AEMet stations used, and number of data used by different models and measurements to form the reconstructed UVER series. The total number of data and the year when the reconstructed series began are included.~~

Location	Latitude	Longitude	Altitude (m.s.l)	Model SW	Model F	Measured data	Total	First year
Ciudad Real	38°59'21''N	3°55'13''W	628	5717	9300	6	15023	1970
San Sebastián	43°18'23''N	2°02'28''W	251	7428	15029	9	22466	1950
A Coruña	43°21'57''N	8°25'17''W	58	9600	11388	2	20990	1951
Madrid	40°27'06''N	3°43'27''W	664	13208	9158	7	22373	1950
Cáceres	39°28'17''N	6°20'20''W	394	9517	1054	7	10578	1983
Murcia	38°00'07''N	1°10'15''W	61	10035	101	0	10136	1984
Tortosa	40°49'14''N	0°29'29''E	44	5081	12476	15	17572	1954
Valladolid	41°39'00''N	4°46'00''W	735	6813	7139	16	13968	1973
Villalba	41°48'50''N	4°55'48''W	840	3712	18180	0	21892	1951

Table 2: Statistical estimators calculated with N pairs of measured and reconstructed UVER radiation for M-SW and M-F models and for different temporal resolutions. The hourly values were obtained using data with SZA below 80°.

Resolution	Model	N	MBE (%)	RMSE (%)
Hourly	M-SW	220105	1.6	15.8
Daily	M-SW	21349	1.5	8.4

Daily	M-F	21349	5.1	24.7
Monthly	M-SW	845	1.8	5.2
Monthly	M-F	783	2.3	6.4
Annual	M-SW	38	0.3	2.9
Annual	M-F	35	-0.6	2.6

1
2
3
4
5
6
7
8
9
10
11
12
13
14
15
16

Table 3: Statistically significant UVER irradiation trends with a confidence of 99% (95% marked with an asterisk) and their 95% confidence interval, at different seasons and locations for the 1950-2011, 1950-1984, and 1985-2011 periods. TS_{o3} and TS_{ac} are also included. N is the number of data used.

Location	Period	Season	N	TS ($Jm^{-2}dc^{-1}$)	TS ($\%dc^{-1}$)	TS_{o3} ($Jm^{-2}dc^{-1}$)	TS_{ac} ($Jm^{-2}dc^{-1}$)	95CI ($Jm^{-2}dc^{-1}$)
Ciudad Real	1950-2011	Spring	41	78	2.59	64	14	(15:140)
Ciudad Real	1950-2011	Summer	41	90	1.88	46	44	(26:153)

Location	Period	Season	N	TS (Jm ⁻² dc ⁻¹)	TS (%dc ⁻¹)	TS _{o3} (Jm ⁻² dc ⁻¹)	TS _{ac} (Jm ⁻² dc ⁻¹)	95CI (Jm ⁻² dc ⁻¹)
Ciudad Real	1950-2011	Annual	41	49	1.86	30	19	(19:76)
Ciudad Real	1985-2011	Summer	27	207	4.31	61	146	(52:310)
Ciudad Real	1985-2011	Annual	27	71	2.67	28	43	(23:123)
San Sebastián	1950-2011	Spring	62	42	1.98	42	0	(9:75)
San Sebastián	1950-2011	Summer	61	59	1.81	59	0	(23:92)
San Sebastián*	1950-2011	Autumn	62	13	0.96	4	9	(-2:27)
San Sebastián	1950-2011	Annual	62	28	1.56	29	-1	(10:46)
San Sebastián*	1950-1984	Winter	35	-15	-2.97	2	-17	(-27:1)
San Sebastián	1950-1984	Spring	35	-109	-5.40	-33	-76	(-173:-31)
San Sebastián	1950-1984	Annual	35	-48	-2.76	-5	-43	(-79:-15)
San Sebastián*	1985-2011	Spring	27	100	4.46	64	36	(-1:202)
San Sebastián	1985-2011	Summer	27	164	4.85	88	76	(58:269)
San Sebastián*	1985-2011	Annual	27	68	3.68	45	23	(3:114)
A Coruña*	1950-2011	Spring	57	34	1.47	30	4	(1:71)
A Coruña	1950-2011	Summer	56	67	1.85	41	26	(27:111)
A Coruña	1950-2011	Annual	58	28	1.41	20	8	(11:42)
A Coruña*	1950-1984	Spring	30	-86	-3.93	-21	-65	(-164:9)
A Coruña*	1950-1984	Annual	31	-34	-1.82	-1	-33	(-76:5)
Madrid*	1950-2011	Summer	61	33	0.71	40	-7	(2:61)
Cáceres*	1950-2011	Spring	29	94	3.04	46	48	(11:206)
Cáceres	1950-2011	Summer	29	173	3.56	66	107	(56:275)
Cáceres	1950-2011	Annual	29	87	3.29	29	58	(41:125)
Cáceres	1985-2011	Summer	27	163	3.35	54	109	(23:295)
Cáceres	1985-2011	Annual	27	82	3.05	24	58	(32:120)
Murcia	1950-2011	Summer	28	138	3.04	2	136	(31:218)
Murcia*	1950-2011	Annual	28	44	1.71	-6	50	(-11:96)
Murcia	1985-2011	Summer	27	137	3.03	-6	143	(29:226)
Tortosa	1950-2011	Spring	48	48	1.78	51	-3	(10:79)
Tortosa	1950-2011	Summer	48	63	1.50	54	9	(29:99)
Tortosa	1950-2011	Annual	48	34	1.48	31	3	(15:54)
Tortosa	1985-2011	Summer	27	111	2.61	66	45	(23:205)
Valladolid	1950-2011	Winter	38	24	3.62	13	11	(5:45)
Valladolid	1950-2011	Spring	38	103	3.70	78	25	(43:174)
Valladolid	1950-2011	Summer	38	139	3.08	68	71	(53:193)
Valladolid	1950-2011	Annual	38	68	2.84	40	28	(36:97)
Valladolid*	1985-2011	Summer	27	137	2.98	65	72	(-11:280)
Valladolid*	1985-2011	Annual	27	56	2.28	30	26	(2:111)
Villalba	1950-2011	Winter	61	17	2.52	13	4	(6:29)
Villalba	1950-2011	Spring	61	47	1.70	47	0	(10:85)
Villalba	1950-2011	Summer	60	53	1.16	50	3	(19:84)
Villalba	1950-2011	Annual	61	30	1.25	30	0	(13:47)
Villalba*	1985-2011	Summer	27	130	2.79	63	67	(6:257)
Villalba*	1985-2011	Autumn	27	83	4.94	-1	84	(6:128)
Villalba*	1985-2011	Annual	27	63	2.54	31	32	(2:125)
Iberian Peninsula	1950-2011	Spring	62	33	1.19	38	-5	(4:62)
Iberian Peninsula	1950-2011	Summer	62	54	1.25	46	8	(26:78)
Iberian Peninsula	1950-2011	Annual	62	25	1.05	24	1	(12:38)
Iberian Peninsula	1985-2011	Summer	27	109	2.47	46	63	(24:206)
Iberian Peninsula*	1985-2011	Annual	27	50	2.09	19	31	(6:91)

1

2

3

1
2
3
4
5
6
7
8
9
10
11
12
13
14
15
16
17
18
19
20
21

22 Table 4: Statistically significant UVER irradiation trends considered as the median of 10,000
23 trends (standard deviation in parenthesis), with a confidence of 99% (95% marked with an
24 asterisk), and the P(p<0.05) and P(p<0.01) values at various locations and seasons for the
25 1950-2011, 1950-1984, and 1985-2011 periods.

Location	Period	Season	TS (Jm ⁻² dc ⁻¹)	TS (%dc ⁻¹)	P(p<0.05) (%)	P(p<0.01) (%)
Ciudad Real*	1950-2011	Spring	78 (5.9)	2.59 (0.19)	99.98	73.97

Ciudad Real*	1950-2011	Summer	88 (8.8)	1.84 (0.19)	99.99	91.96
Ciudad Real	1950-2011	Annual	48 (3.2)	1.81 (0.12)	100	99.98
Ciudad Real*	1985-2011	Summer	189 (17.9)	3.92 (0.37)	99.99	91.40
Ciudad Real*	1985-2011	Annual	73 (5.7)	2.75 (0.21)	100	98.52
San Sebastián*	1950-2011	Spring	41 (3.0)	1.95 (0.14)	99.98	57.53
San Sebastián	1950-2011	Summer	60 (4.5)	1.83 (0.14)	100	99.97
San Sebastián	1950-2011	Annual	28 (1.5)	1.54 (0.08)	100	100
San Sebastián*	1950-1984	Spring	-106 (9.2)	-5.24 (0.46)	100	99.01
San Sebastián*	1950-1984	Annual	-46 (4.4)	-2.63 (0.25)	100	95.18
San Sebastián	1985-2011	Summer	161 (12.7)	4.76 (0.38)	100	99.46
San Sebastián*	1985-2011	Annual	67 (4.4)	3.56 (0.24)	99.19	21.76
A Coruña	1950-2011	Summer	68 (4.3)	1.86 (0.12)	100	100
A Coruña	1950-2011	Annual	27 (1.4)	1.39 (0.07)	100	100
Cáceres*	1950-2011	Spring	95 (8.3)	3.06 (0.27)	100	30.58
Cáceres	1950-2011	Summer	177 (12.1)	3.65 (0.25)	100	99.96
Cáceres	1950-2011	Annual	88 (3.5)	3.28 (0.13)	100	100
Cáceres*	1985-2011	Summer	168 (14.0)	3.45 (0.29)	99.97	83.57
Cáceres	1985-2011	Annual	79 (4.4)	2.96 (0.16)	100	100
Murcia*	1950-2011	Summer	136 (10.2)	3.00 (0.23)	100	94.61
Murcia*	1985-2011	Summer	135 (10.9)	2.99 (0.24)	99.99	78.76
Tortosa*	1950-2011	Spring	46 (4.1)	1.72 (0.16)	99.51	51.72
Tortosa	1950-2011	Summer	65 (6.0)	1.56 (0.14)	100	99.91
Tortosa	1950-2011	Annual	34 (2.1)	1.48 (0.09)	100	100
Valladolid*	1950-2011	Winter	24 (2.2)	3.62 (0.34)	99.93	69.07
Valladolid	1950-2011	Spring	103 (7.2)	3.71 (0.26)	100	99.98
Valladolid	1950-2011	Summer	130 (10.3)	2.87 (0.23)	100	99.94
Valladolid	1950-2011	Annual	68 (3.2)	2.83 (0.13)	100	100
Villalba	1950-2011	Winter	17 (1.4)	2.57 (0.20)	100	99.78
Villalba*	1950-2011	Spring	47 (4.2)	1.68 (0.15)	99.80	62.46
Villalba*	1950-2011	Summer	55 (7.1)	1.20 (0.16)	99.79	91.98
Villalba	1950-2011	Annual	31 (2.3)	1.26 (0.10)	100	99.99
Iberian Peninsula*	1950-2011	Spring	33 (1.9)	1.22 (0.07)	100	41.45
Iberian Peninsula	1950-2011	Summer	54 (2.7)	1.25 (0.06)	100	100
Iberian Peninsula	1950-2011	Annual	25 (0.9)	1.05 (0.04)	100	100
Iberian Peninsula*	1985-2011	Summer	111 (6.1)	2.53 (0.14)	100	94.36
Iberian Peninsula*	1985-2011	Annual	50 (2.1)	2.06 (0.09)	100	36.93

Table 5: Statistically significant $UVER_{ob}$ irradiation trends with a confidence of 99% (95% marked with an asterisk) and their 95% confidence interval, at different seasons and locations for the 1950-2011, 1950-1984, and 1985-2011 periods. N is the number of data used.

Location	Period	Season	N	TS ($Jm^{-2}de^{-1}$)	TS ($\%de^{-1}$)	95CI ($Jm^{-2}de^{-1}$)
Ciudad Real*	1950-2011	Winter	41	5	3.18	(0:10)
Ciudad Real	1950-2011	Spring	41	57	7.28	(32:80)
Ciudad Real	1950-2011	Summer	41	119	6.42	(93:146)

Location	Period	Season	N	TS (Jm ⁻² de ⁻¹)	TS (%de ⁻¹)	95CI (Jm ⁻² de ⁻¹)
Ciudad Real [‡]	1950-2011	Autumn	41	14	2.42	(0:27)
Ciudad Real	1950-2011	Annual	41	49	5.78	(38:61)
Ciudad Real	1950-1984	Summer	14	141	8.35	(55:262)
Ciudad Real [‡]	1985-2011	Spring	27	43	5.25	(-1:89)
Ciudad Real	1985-2011	Summer	27	107	5.55	(46:170)
Ciudad Real	1985-2011	Annual	27	41	4.64	(18:63)
San Sebastián	1950-2011	Spring	62	14	2.73	(1:25)
San Sebastián	1950-2011	Summer	61	26	2.64	(10:40)
San Sebastián	1950-2011	Annual	62	11	2.29	(5:18)
San Sebastián	1950-1984	Spring	35	-36	-7.57	(-56:16)
San Sebastián	1950-1984	Annual	35	-16	-3.41	(-28:5)
San Sebastián	1985-2011	Summer	27	69	6.54	(25:111)
San Sebastián	1985-2011	Annual	27	26	5.00	(7:43)
A Coruña [‡]	1950-2011	Winter	59	2	1.44	(0:4)
A Coruña	1950-2011	Spring	57	15	2.62	(4:27)
A Coruña	1950-2011	Summer	56	36	3.24	(20:51)
A Coruña	1950-2011	Autumn	56	8	2.03	(3:12)
A Coruña	1950-2011	Annual	58	15	2.70	(9:19)
A Coruña	1950-1984	Spring	30	-26	-4.95	(-47:6)
Madrid	1950-2011	Summer	61	40	2.35	(23:58)
Madrid	1950-2011	Annual	62	14	1.85	(7:21)
Cáceres	1950-2011	Spring	29	57	6.87	(8:92)
Cáceres	1950-2011	Summer	29	86	4.53	(36:144)
Cáceres	1950-2011	Annual	29	38	4.42	(16:56)
Cáceres [‡]	1985-2011	Spring	27	40	4.78	(-8:81)
Cáceres	1985-2011	Summer	27	68	3.53	(18:140)
Cáceres	1985-2011	Annual	27	32	3.60	(11:50)
Murcia	1950-2011	Summer	28	127	6.63	(76:183)
Murcia	1950-2011	Annual	28	51	5.47	(29:70)
Murcia	1985-2011	Summer	27	122	6.30	(63:175)
Murcia	1985-2011	Annual	27	45	4.87	(25:64)
Tortosa	1950-2011	Spring	48	26	3.40	(12:41)
Tortosa	1950-2011	Summer	48	70	4.13	(57:91)
Tortosa	1950-2011	Autumn	48	12	2.09	(3:21)
Tortosa	1950-2011	Annual	48	29	3.59	(21:38)
Tortosa [‡]	1950-1984	Summer	21	32	2.01	(-8:68)
Tortosa	1985-2011	Summer	27	91	5.05	(45:154)
Tortosa	1985-2011	Annual	27	38	4.56	(17:59)
Valladolid [‡]	1950-2011	Winter	38	5	4.19	(0:9)
Valladolid	1950-2011	Spring	38	46	7.03	(24:70)
Valladolid	1950-2011	Summer	38	71	4.70	(41:102)
Valladolid [‡]	1950-2011	Autumn	39	11	2.50	(-2:23)
Valladolid	1950-2011	Annual	38	34	4.98	(22:44)
Valladolid [‡]	1950-1984	Autumn	12	50	11.28	(-14:132)
Valladolid [‡]	1985-2011	Spring	27	38	5.48	(-1:81)
Valladolid [‡]	1985-2011	Summer	27	48	3.07	(7:102)
Valladolid	1985-2011	Annual	27	26	3.62	(4:44)
Villalba	1950-2011	Winter	61	3	2.96	(1:6)
Villalba [‡]	1950-2011	Spring	61	13	2.16	(1:27)
Villalba	1950-2011	Summer	60	27	1.87	(15:39)
Villalba	1950-2011	Annual	61	11	1.76	(5:17)
Villalba [‡]	1950-1984	Spring	34	-29	-4.81	(-55:2)
Villalba [‡]	1985-2011	Annual	27	20	2.94	(0:42)
Iberian Peninsula [‡]	1950-2011	Winter	62	2	1.50	(0:4)
Iberian Peninsula	1950-2011	Spring	62	14	2.02	(4:26)
Iberian Peninsula	1950-2011	Summer	62	37	2.35	(22:48)
Iberian Peninsula	1950-2011	Annual	62	15	2.02	(9:21)

Location	Period	Season	N	TS (Jm ⁻² de ⁻¹)	TS (%de ⁻¹)	95CI (Jm ⁻² de ⁻¹)
Iberian Peninsula	1950-1984	Spring	35	-26	-4.25	(-50;-6)
Iberian Peninsula*	1950-1984	Annual	35	-10	-1.52	(-23;2)
Iberian Peninsula*	1985-2011	Spring	27	34	4.62	(-1;66)
Iberian Peninsula	1985-2011	Summer	27	59	3.63	(23;109)
Iberian Peninsula	1985-2011	Annual	27	28	3.75	(8;46)

Figures

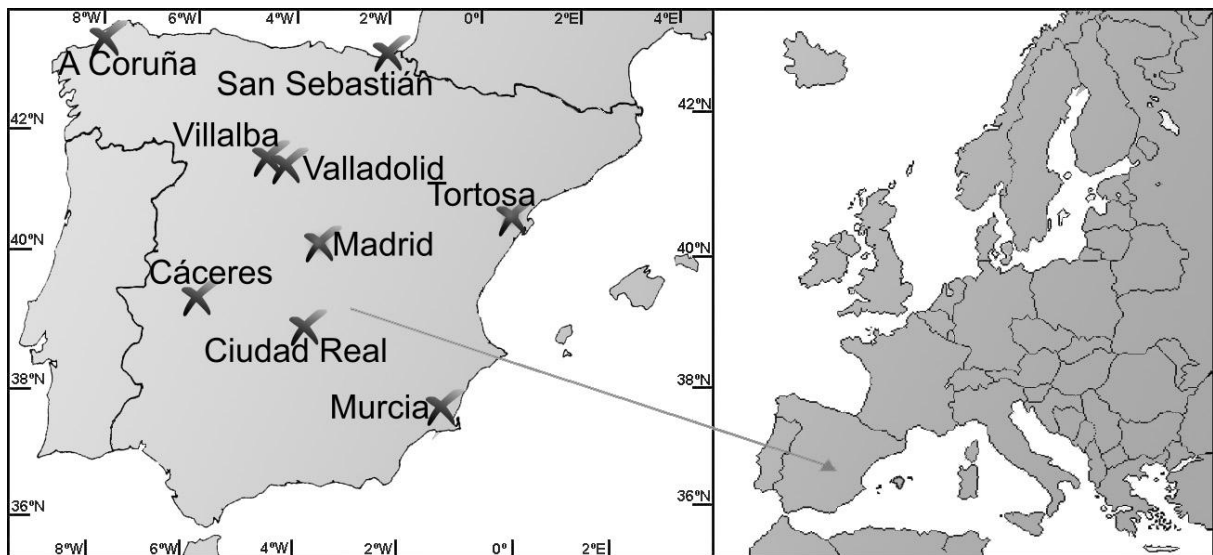


Figure 1: Distribution of selected Spanish stations located in the Iberian Peninsula.

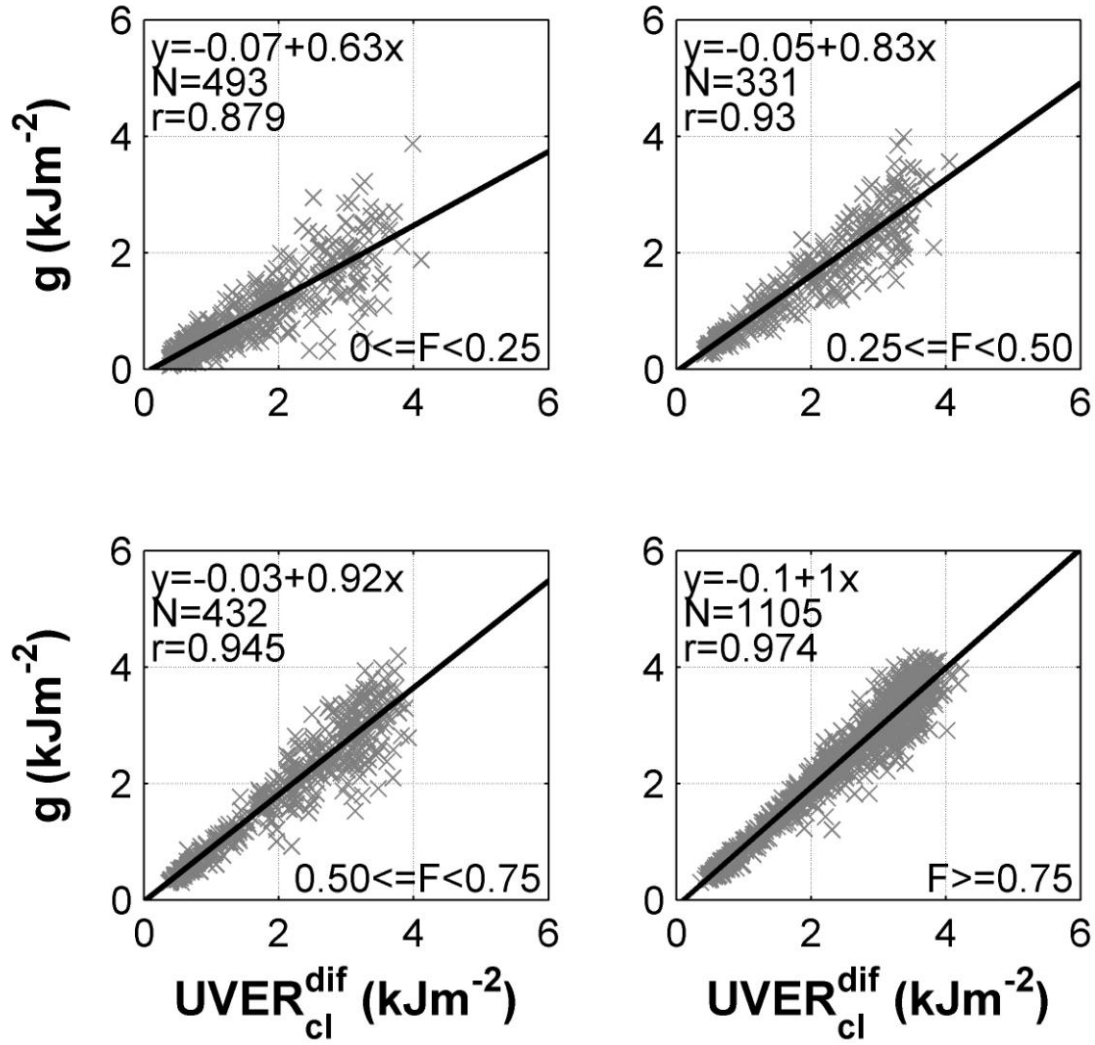


Figure 2: the g function against the simulated diffuse UVER under cloudless conditions for four sunshine fraction (F) intervals. A linear fit calculated with the N data, and its equation and correlation coefficient (r) are included in each panel.

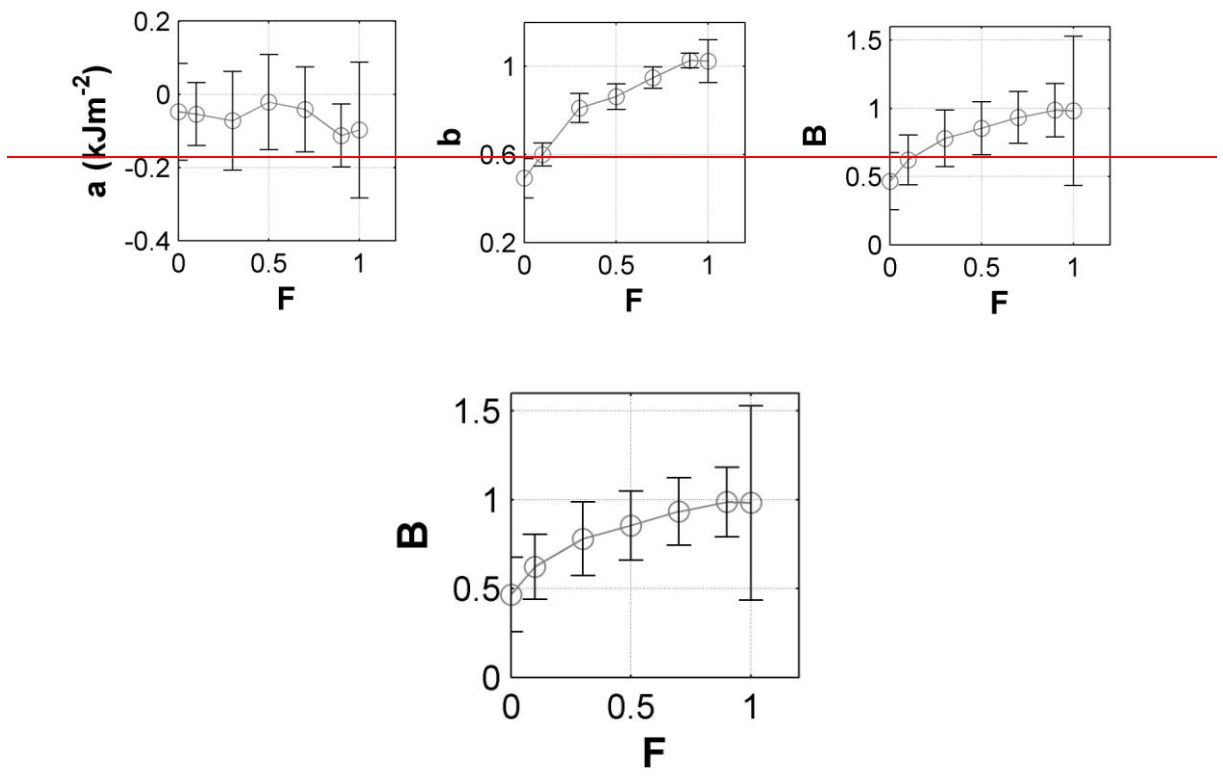


Figure 3: Parameters a (left), b (middle), and B (right) calculated for different sunshine fraction (F) intervals. The error bar represents the combined uncertainty.

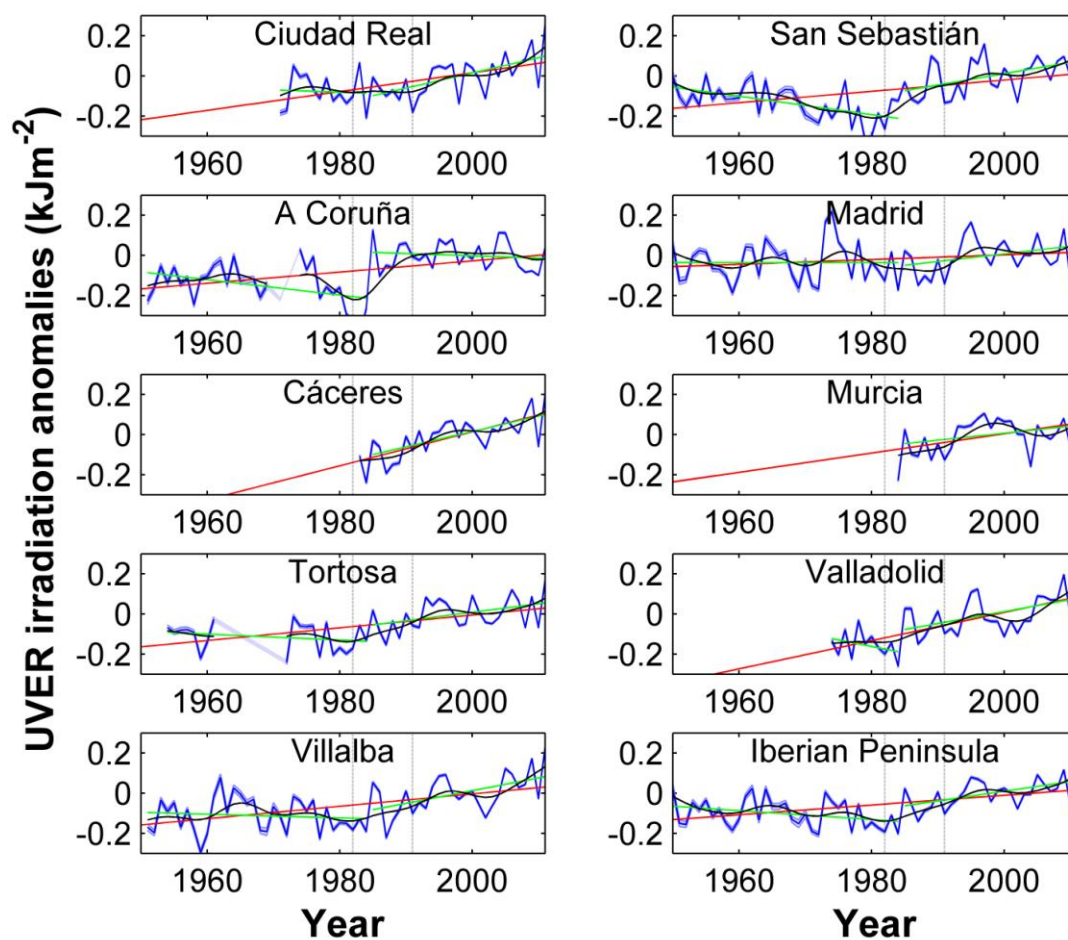


Figure 4: Evolution of the annual UVER irradiation anomalies and their uncertainties for ten series. The red line corresponds to a linear fit between 1950 and 2011, and green lines to linear fits in the 1950-1984 and 1985-2011 periods. The solid black line is a 21-year Gaussian low-pass filter, and the years 1982 and 1991 are marked with a dashed black line.

- 1
- 2
- 3
- 4
- 5
- 6
- 7

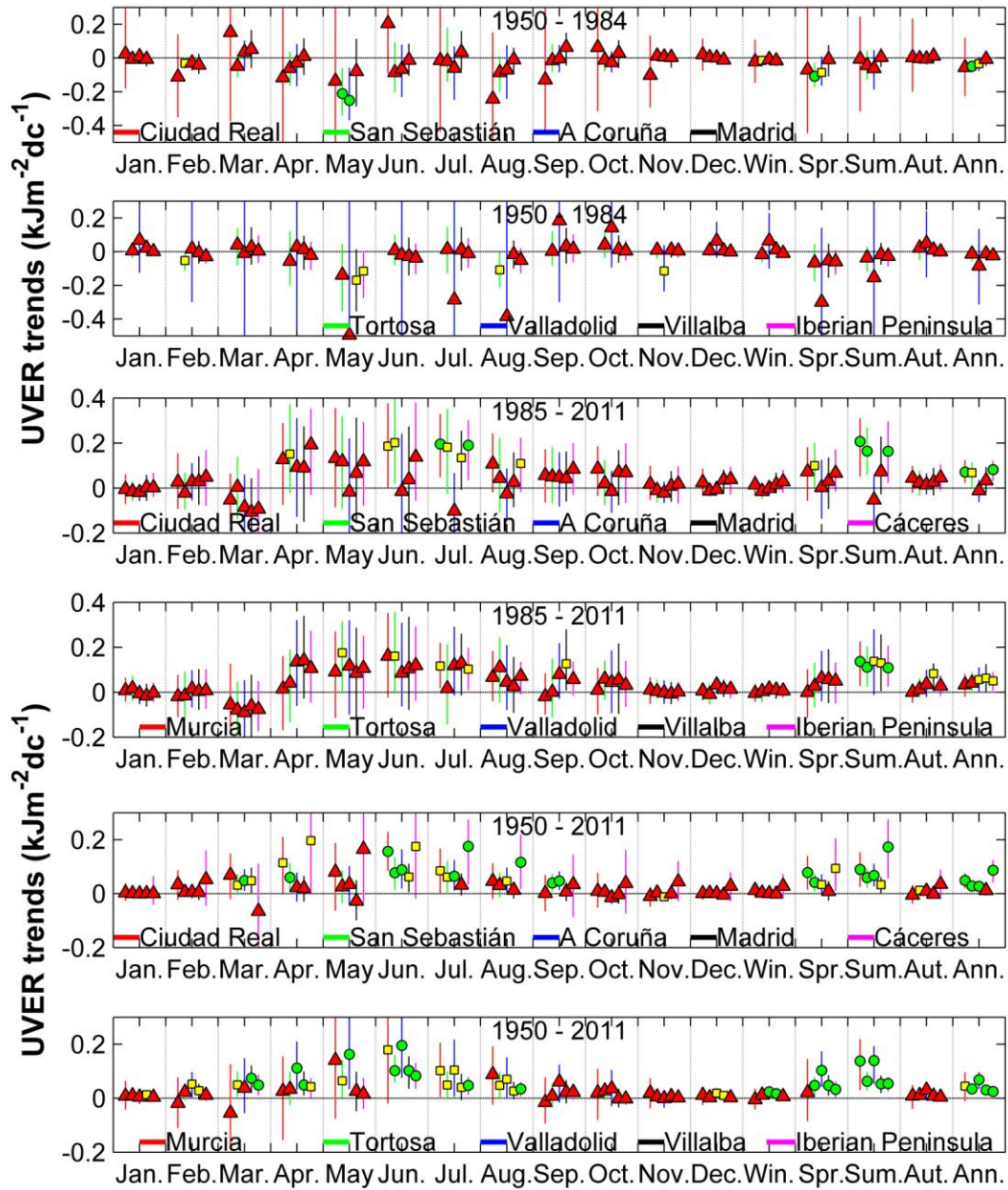


Figure 5: UVER trends for different months, seasons, and for annual and three periods. The error bars are the 95% confidence interval and their colour represents the location of the legend. The green circles represent statistically significant trends with 99% confidence ($p < 0.01$), yellow squares represent statistically significant trends with 95% confidence ($p < 0.05$), and red triangles represent non-statistically significant trends with at least 95% confidence.

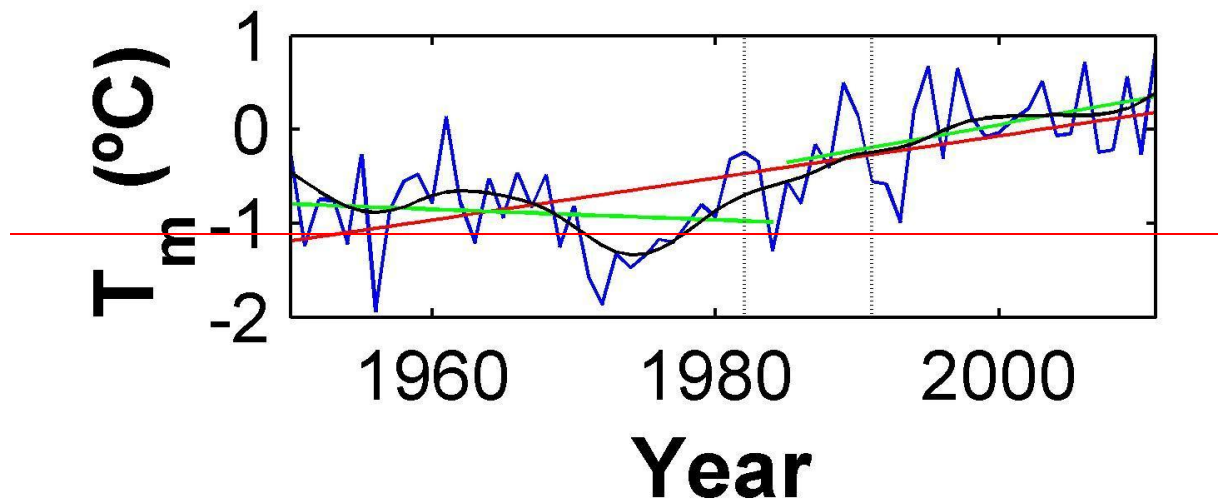


Figure 6: Evolution of the annual mean temperature anomalies and its uncertainties for the Iberian Peninsula series. The red line corresponds to a linear fit between 1950 and 2011, and green lines to linear fits in the 1950-1984 and 1985-2011 periods. The solid black line is a 21-year Gaussian low pass filter, and the years 1982 and 1991 are marked with a dashed black line.

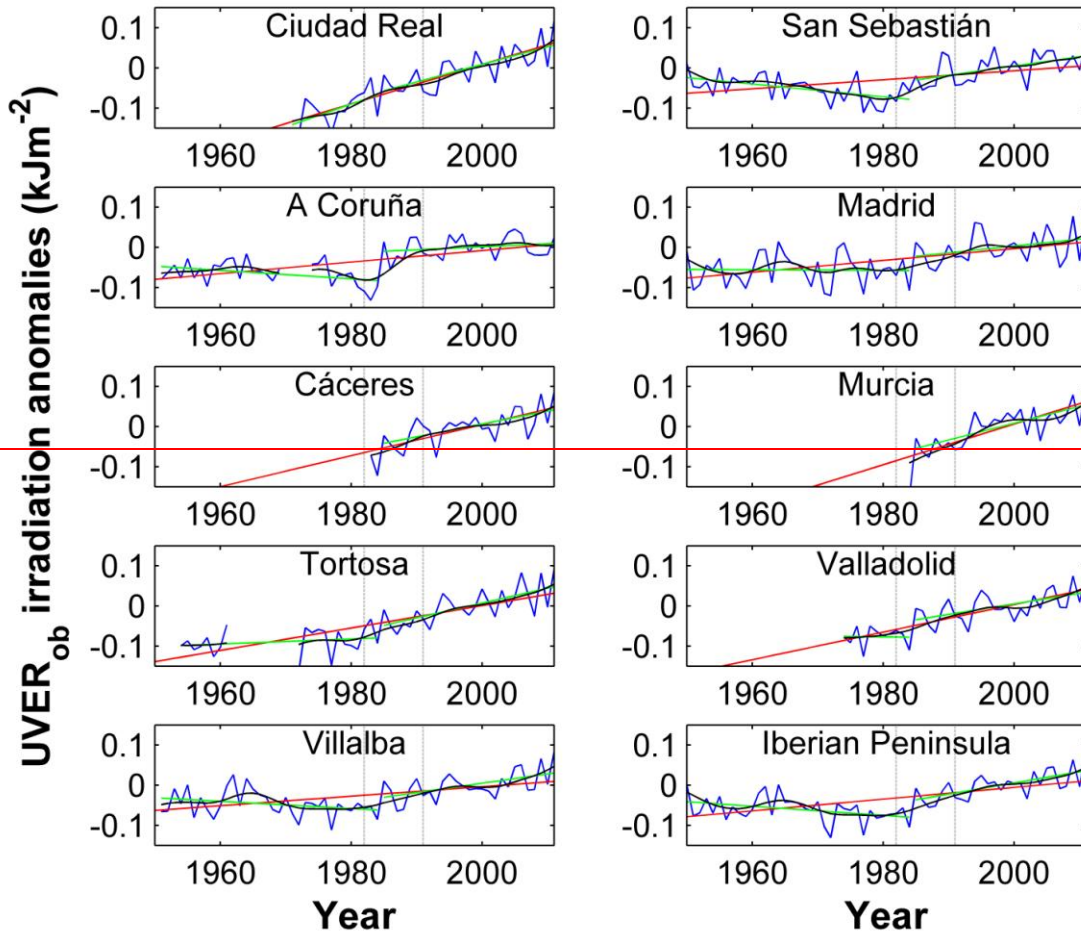


Figure 7: Evolution of the annual $UVER_{ob}$ irradiation anomalies and their uncertainties for ten series. The red line corresponds to a linear fit between 1950 and 2011, and green lines to linear fits in the 1950–1984 and 1985–2011 periods. The solid black line is a 21-year Gaussian low-pass filter, and the years 1982 and 1991 are marked with a dashed black line.

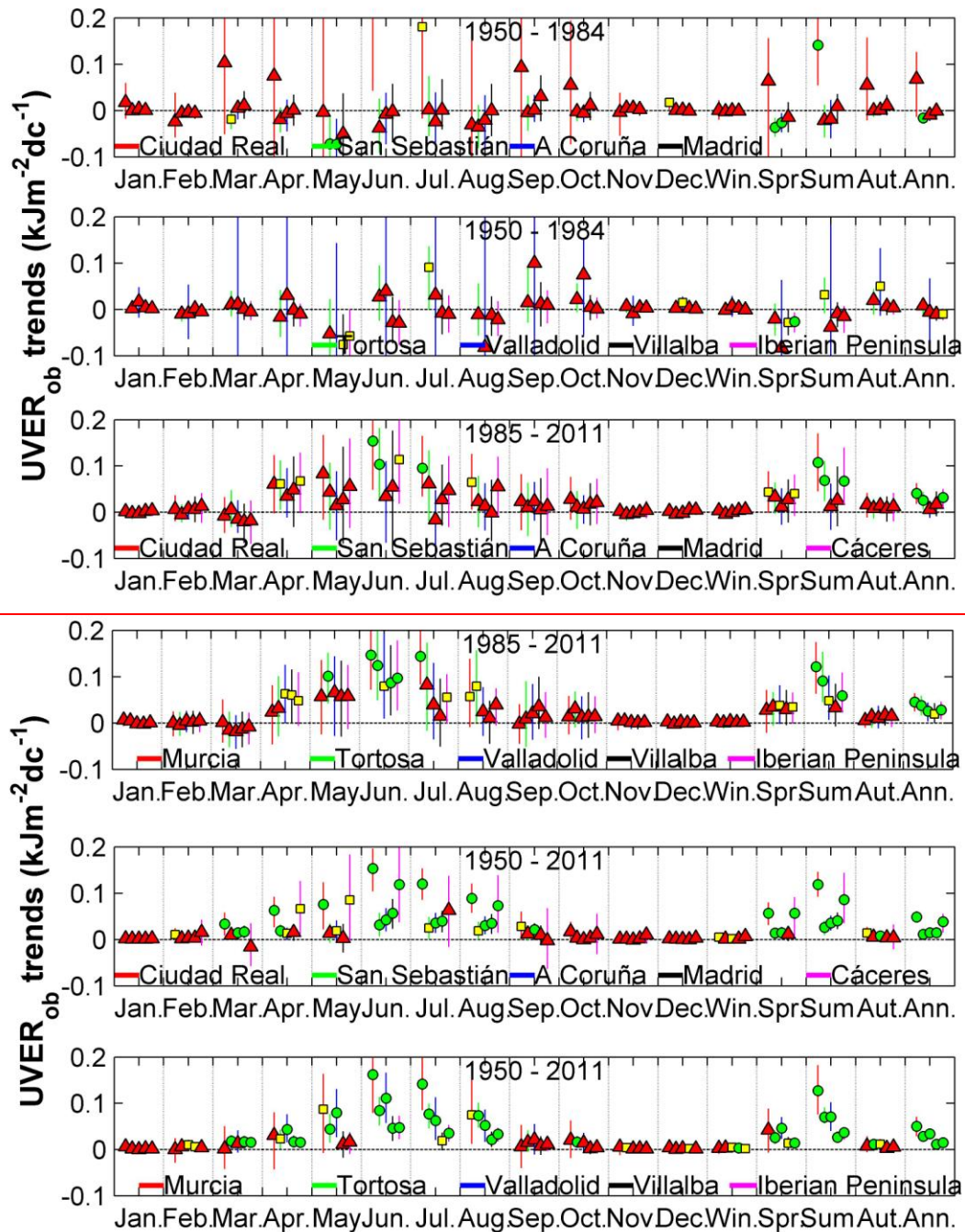


Figure 8: $UVER_{ob}$ trends for different months, seasons, and for annual and three periods. The error bars are the 95% confidence interval and their colour represents the location of the legend. The green circles represent statistically significant trends with 99% confidence ($p<0.01$), yellow squares represent statistically significant trends with 95% confidence ($p<0.05$), and red triangles represent non-statistically significant trends with at least 95% confidence.