



Supplement of

Atmospheric black carbon and warming effects influenced by the source and absorption enhancement in Central Europe

S. Nordmann et al.

Correspondence to: S. Nordmann (stephan.nordmann@mpic.de)

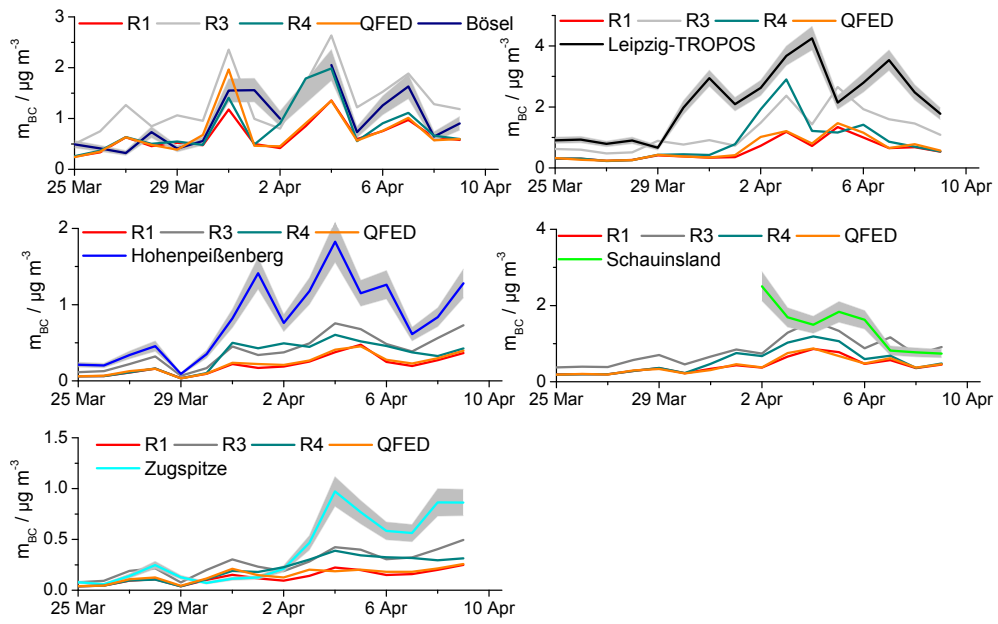


Fig. S1. Time series of modeled and observed BC mass concentrations for different observation sites. Model results for 4 different model runs are shown, R1 base run with EUCAARI emissions, R3 run with doubled EUCAARI emissions, R4 run with EUCAARI emissions scaled by a factor of 5 in locations to the east from 15E and QFED run with base emissions and QFED biomass burning.

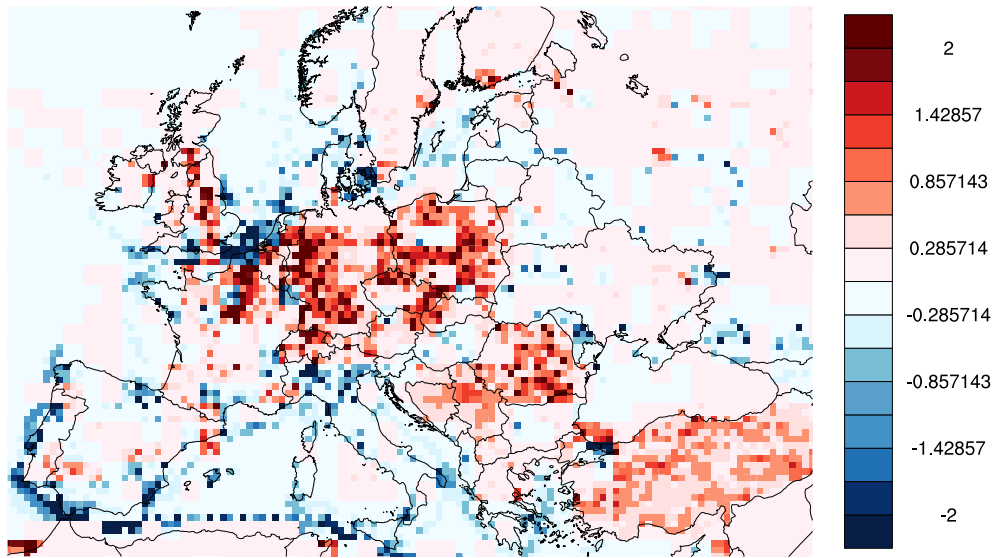


Fig. S2. Difference between EUCAARI BC emissions scaled to Arctas BC emissions and the original EUCAARI BC emissions in $\text{ngm}^2\text{s}^{-1}$.