



Interactive  
Comment

# ***Interactive comment on “Characterizing the impact of urban emissions on regional aerosol particles; airborne measurements during the MEGAPOLI experiment” by E. J. Freney et al.***

**E. J. Freney et al.**

e.freney@opgc.univ-bpclermont.fr

Received and published: 9 December 2013

The comment was uploaded in the form of a supplement

Please also note the supplement to this comment:

<http://www.atmos-chem-phys-discuss.net/13/C9803/2013/acpd-13-C9803-2013-supplement.pdf>

Interactive comment on Atmos. Chem. Phys. Discuss., 13, 24885, 2013.

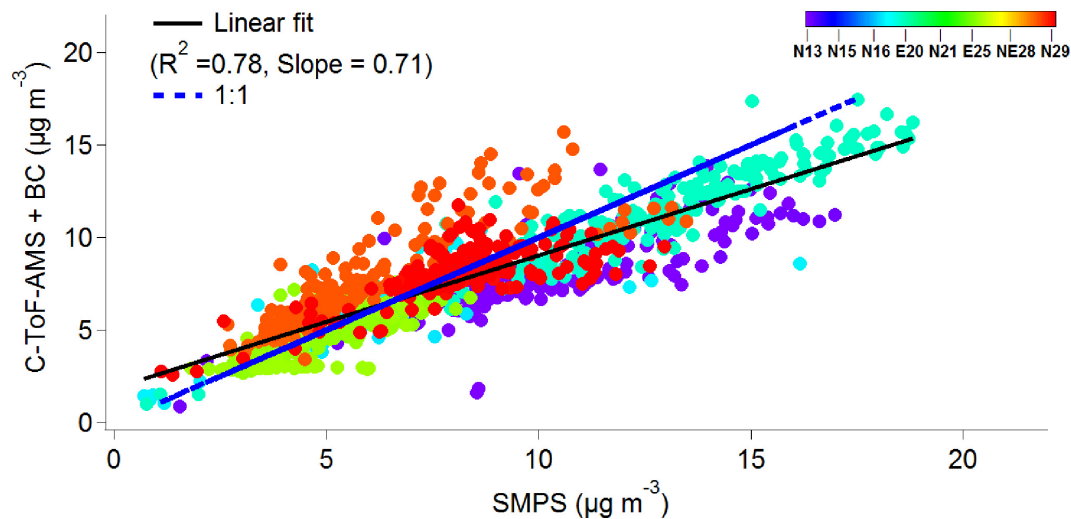
Full Screen / Esc

Printer-friendly Version

Interactive Discussion

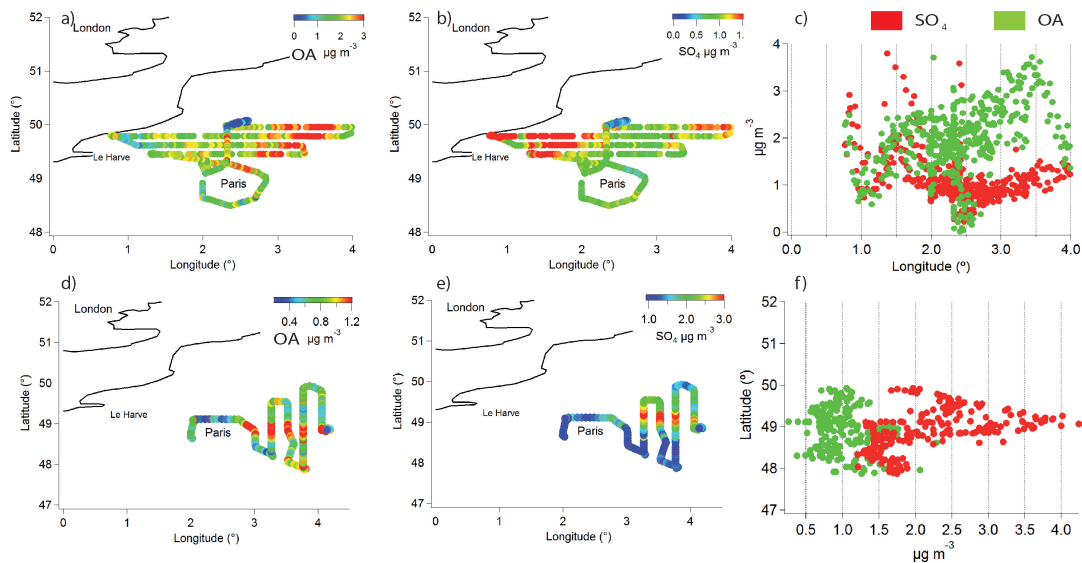
Discussion Paper





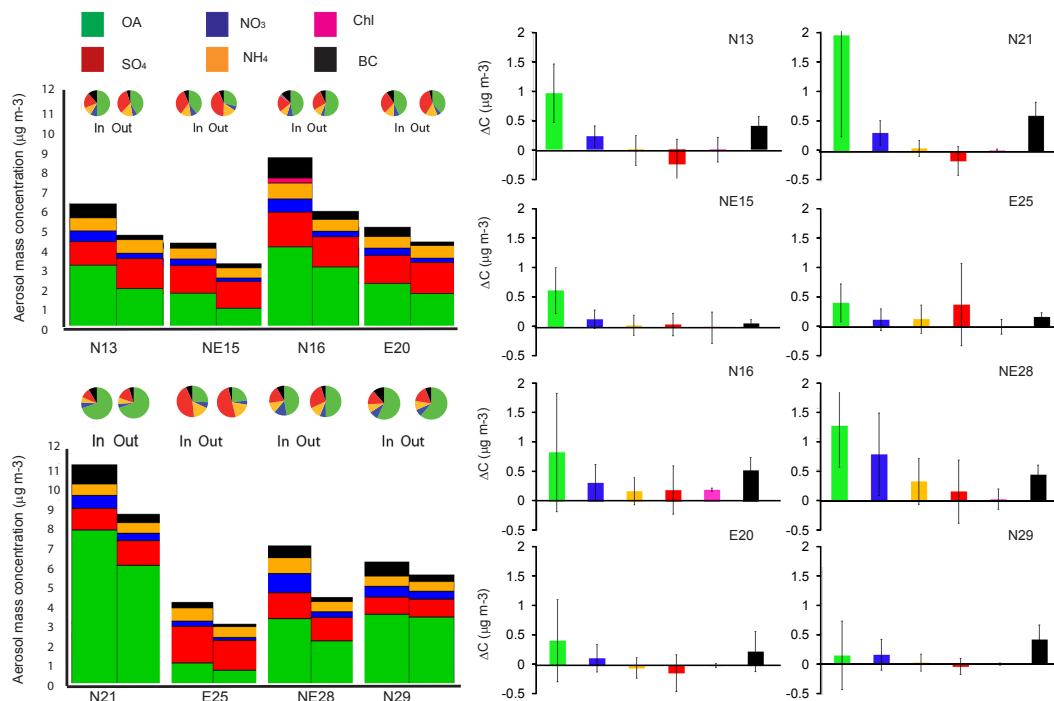
**Fig. 1.** Figure S1. Comparison between the total mass concentration of the C-ToF-AMS and SMPS for all flights. Points are coloured by flight time. The blue line shows a 1:1 fit and the black line shows the lin

[Full Screen / Esc](#)[Printer-friendly Version](#)[Interactive Discussion](#)[Discussion Paper](#)



**Fig. 2.** Figure 4: Flight tracks around the Paris region for N13 ((a) and (b)) and E25 ((c) and (d)) colored by  $\text{SO}_4$  ((b) and (e)) and OA ((a) and (d)). c) and f) show OA vs longitude and Latitude vs  $\text{SO}_4$ , resp

[Full Screen / Esc](#)[Printer-friendly Version](#)[Interactive Discussion](#)[Discussion Paper](#)



**Fig. 3.** Figure 3. The left hand side of the figure shows the aerosol composition measured inside and outside of the plume during each research flight. On the right hand side the average difference in composition

Interactive  
Comment

Full Screen / Esc

Printer-friendly Version

Interactive Discussion

Discussion Paper

