



Interactive
Comment

Interactive comment on “Characterizing the impact of urban emissions on regional aerosol particles; airborne measurements during the MEGAPOLI experiment” by E. J. Freney et al.

E. J. Freney et al.

e.freney@opgc.univ-bpclermont.fr

Received and published: 9 December 2013

The comment was uploaded in the form of a supplement.

Please also note the supplement to this comment:

<http://www.atmos-chem-phys-discuss.net/13/C9800/2013/acpd-13-C9800-2013-supplement.pdf>

Interactive comment on Atmos. Chem. Phys. Discuss., 13, 24885, 2013.

Full Screen / Esc

Printer-friendly Version

Interactive Discussion

Discussion Paper



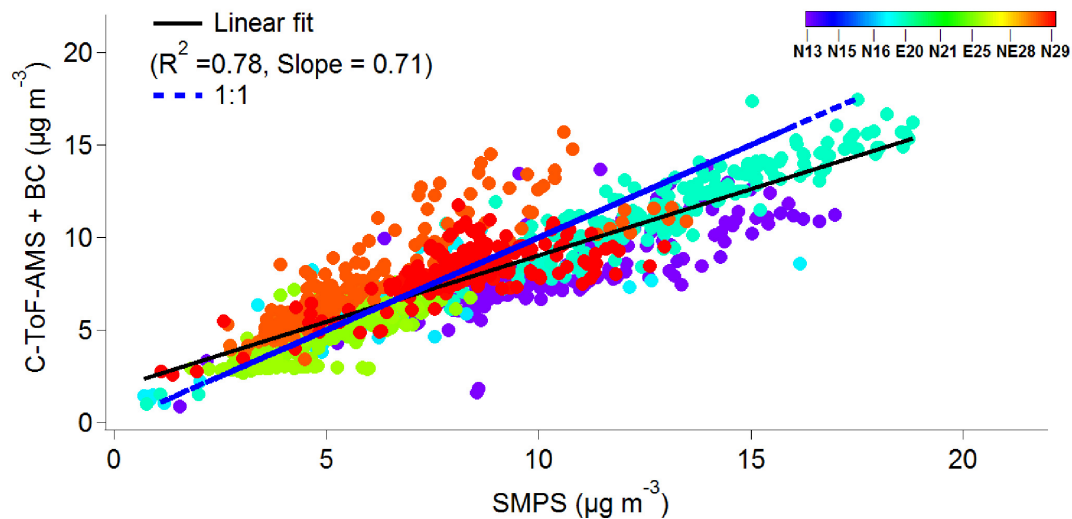


Fig. 1. Comparison between the total mass concentration of the C-ToF-AMS and SMPS for all flights. Points are coloured by flight time. The blue line shows a 1:1 fit and the black line shows the linear fit thr

[Full Screen / Esc](#)[Printer-friendly Version](#)[Interactive Discussion](#)[Discussion Paper](#)

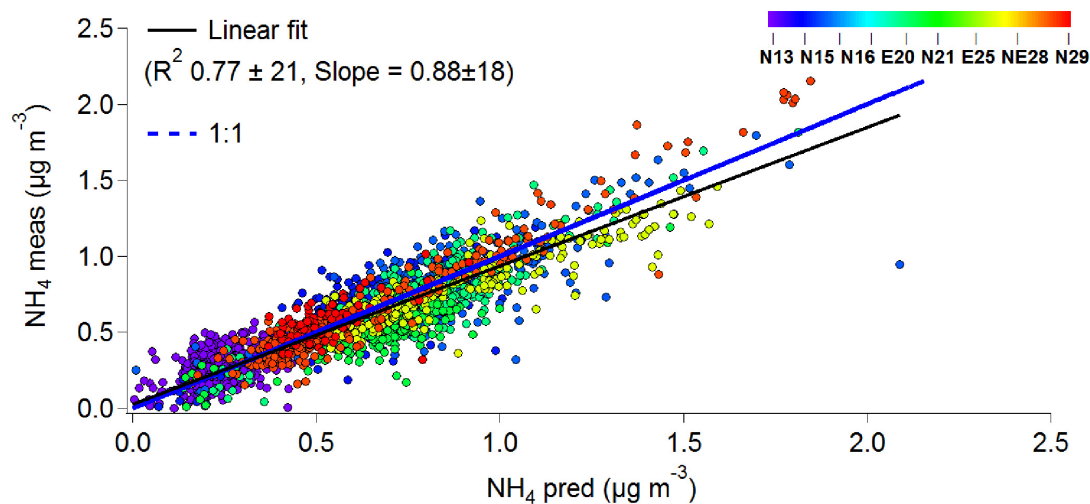


Fig. 2. Figure S2: NH_4MEAS vs NH_4PRED for all flights. Points are coloured by flight time. The blue line shows a 1:1 fit and the black line shows the linear fit through the data points.

[Full Screen / Esc](#)[Printer-friendly Version](#)[Interactive Discussion](#)[Discussion Paper](#)