



[Interactive
Comment](#)

Interactive comment on “Analysis of the PKT correction for direct CO₂ flux measurements over the ocean” by S. Landwehr et al.

S. Landwehr

s.landwehr1@nuigalway.ie

Received and published: 26 November 2013

Technical corrections

We were notified by the Referee John Prytherch, that most of the figures in the submission have missing – signs, in the legends, the labels and the axes tick labels. This was due to an error during the latex typesetting process, when the submitted *.eps figures files were converted to *.pdf. We apologize having overlooked this important details and supply the corrected figures for the discussion article below. (For technical reasons the figure captions are shortened.)

Interactive comment on Atmos. Chem. Phys. Discuss., 13, 28279, 2013.

C9456

[Full Screen / Esc](#)

[Printer-friendly Version](#)

[Interactive Discussion](#)

[Discussion Paper](#)



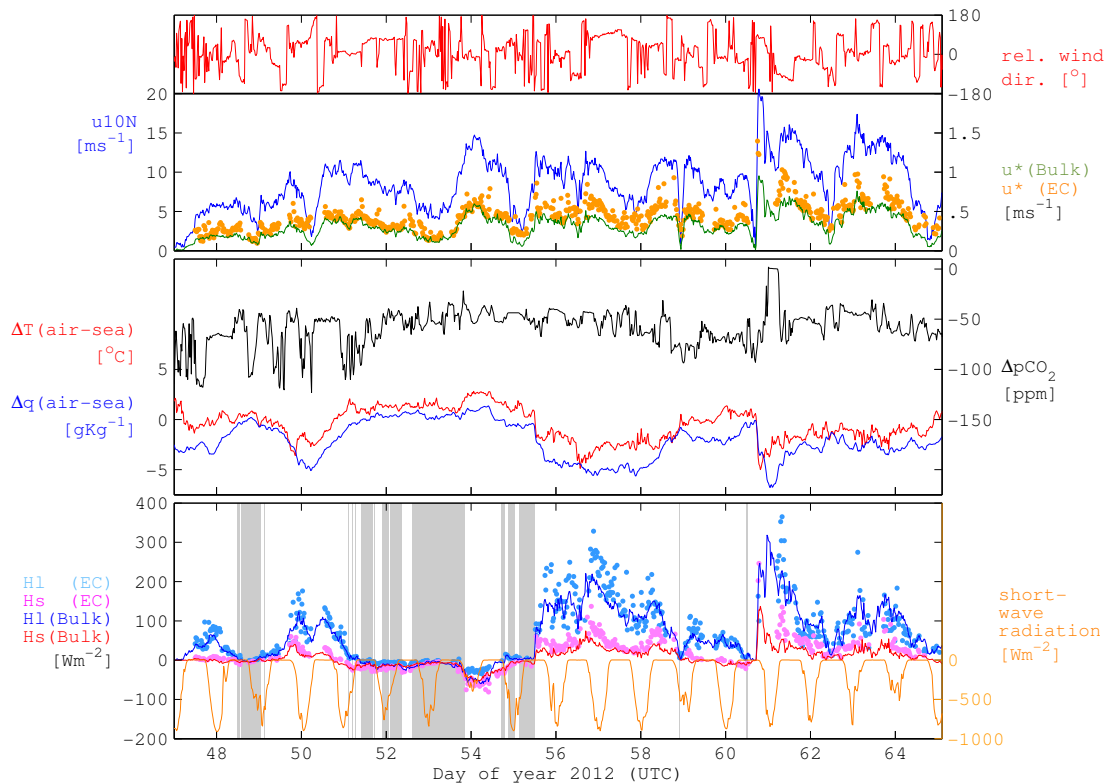
Interactive
Comment

Fig. 1. Fig. 2. Overview of the conditions encountered during the SOAP experiment. Shaded areas mark low latent heat fluxes ($< 7 \text{ W/m}^2$). (...)

[Full Screen / Esc](#)[Printer-friendly Version](#)[Interactive Discussion](#)[Discussion Paper](#)

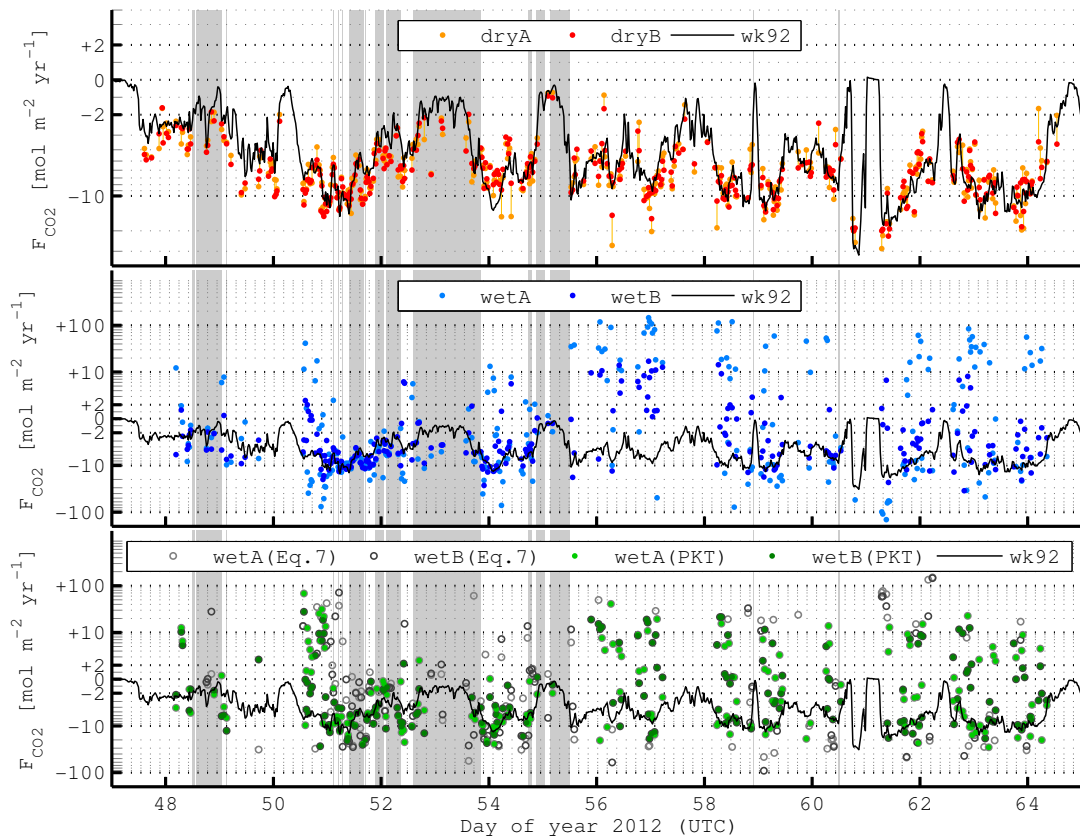


Fig. 2. Fig. 3. Time series of the direct CO₂ fluxes and the parametrisation of Wanninkhof (1992), plotted on logarithmic scale with sing. Shaded areas mark low latent heat fluxes (< 7W/m²). (...)

[Full Screen / Esc](#)[Printer-friendly Version](#)[Interactive Discussion](#)[Discussion Paper](#)

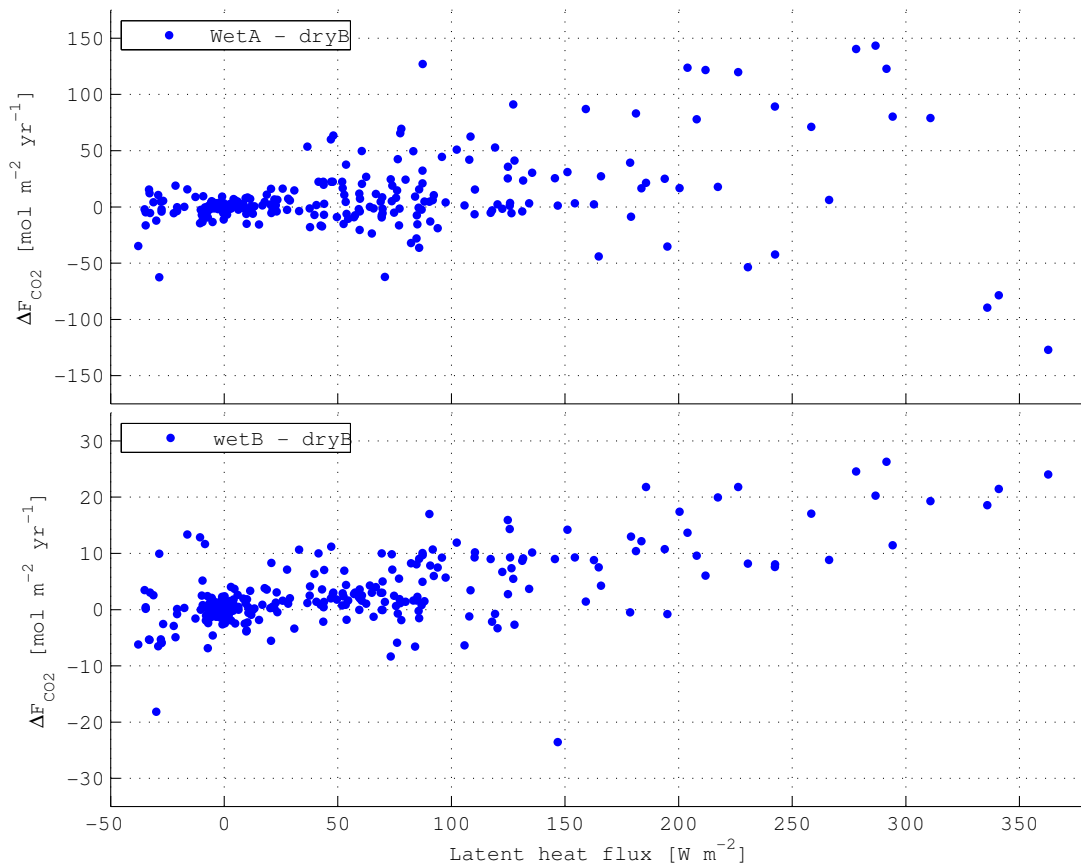


Fig. 3. Fig. 4. Difference of the CO₂ flux calculated from the measured IRGAwet signals xcm to the flux from IRGAdryB as a function of the latent heat flux calculated from the IRGAwet signals. (...)

[Full Screen / Esc](#)[Printer-friendly Version](#)[Interactive Discussion](#)[Discussion Paper](#)

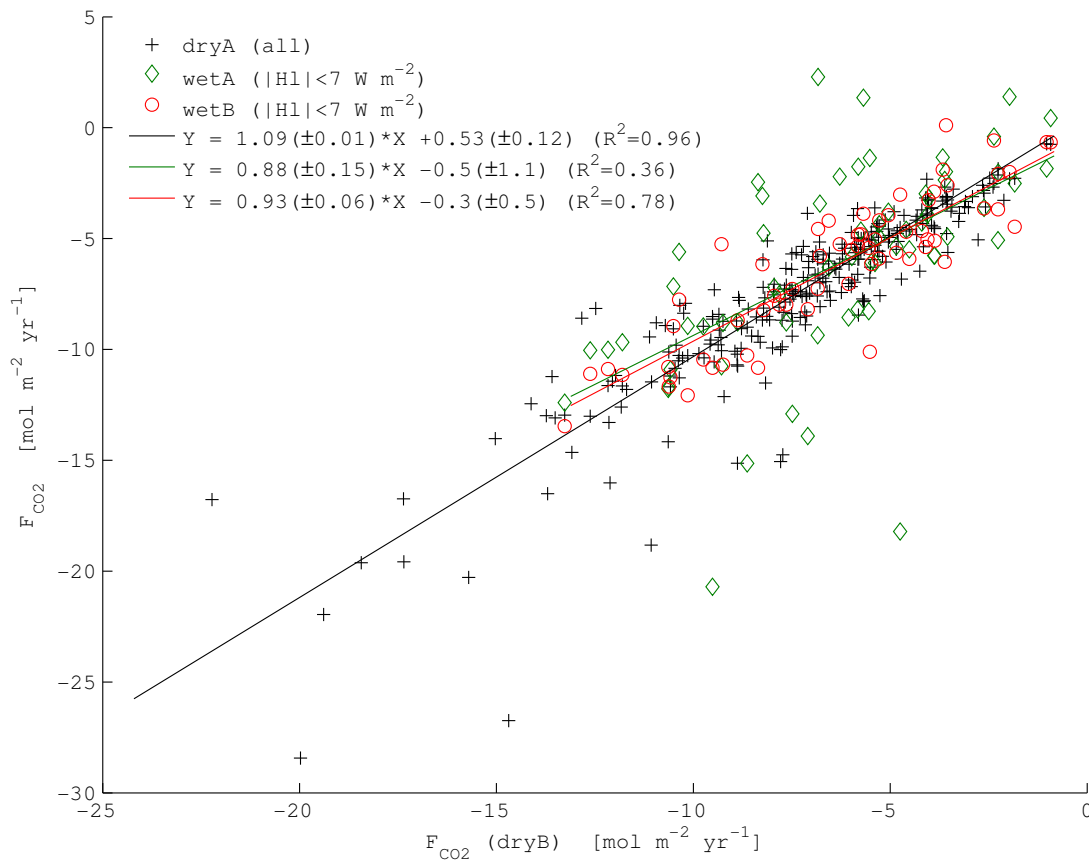
[Interactive
Comment](#)

Fig. 4. Fig. 5. Scatter plot of the CO₂ flux measurements (without PKT correction) from IRGawetA, IRGawetB and IRGAdryA against those from IRGAdryB. (...)

[Full Screen / Esc](#)[Printer-friendly Version](#)[Interactive Discussion](#)[Discussion Paper](#)

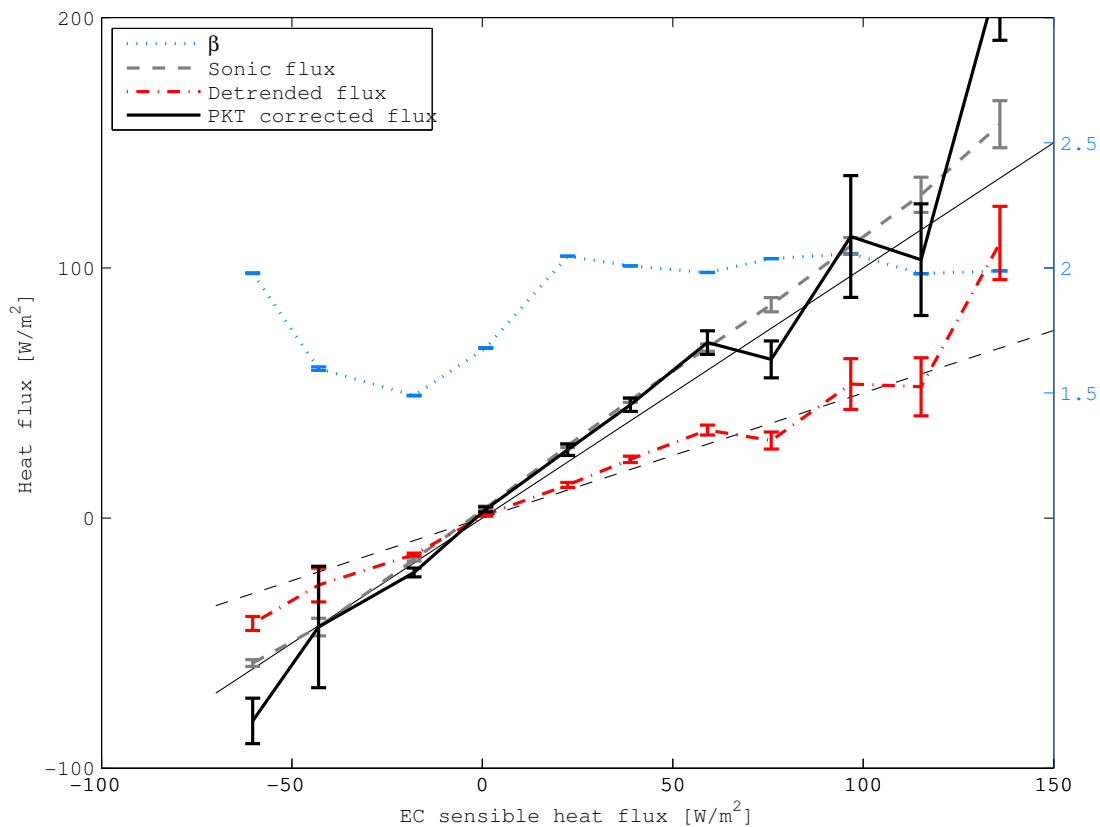
[Interactive
Comment](#)

Fig. 5. Fig. 8. Bin averaged heat fluxes plotted against the standard EC sensible heat flux results (to be compared with Fig. 2 in Prytherch et al.,2010a). (...)

[Full Screen / Esc](#)[Printer-friendly Version](#)[Interactive Discussion](#)[Discussion Paper](#)

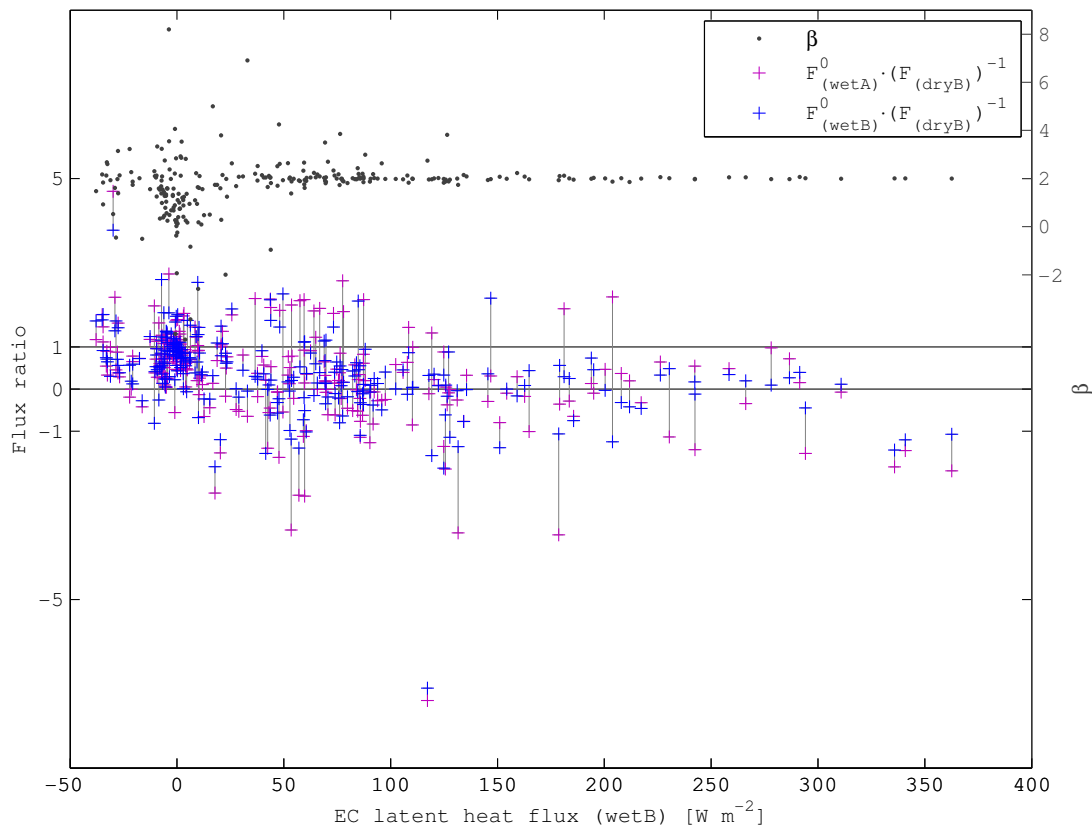
[Interactive
Comment](#)

Fig. 6. Fig. 9. Ratio of the detrended CO₂ fluxes F_{c0} from IRGAwet as used for the PKT correction to the average CO₂ flux calculated from the IRGAdry. (...)

[Full Screen / Esc](#)[Printer-friendly Version](#)[Interactive Discussion](#)[Discussion Paper](#)