

Interactive comment on “Analysis of the PKT correction for direct CO₂ flux measurements over the ocean” by S. Landwehr et al.

S. Landwehr

s.landwehr1@nuigalway.ie

Received and published: 26 November 2013

Technical corrections

We were notified by the Referee John Prytherch, that most of the figures in the submission have missing – signs, in the legends, the labels and the axes tick labels. This was due to an error during the latex typesetting process, when the submitted *.eps figures files were converted to *.pdf. We apologize having overlooked this important details and supply the corrected figures for the discussion article below. (For technical reasons the figure captions are shortened.)

Interactive comment on Atmos. Chem. Phys. Discuss., 13, 28279, 2013.

C9456

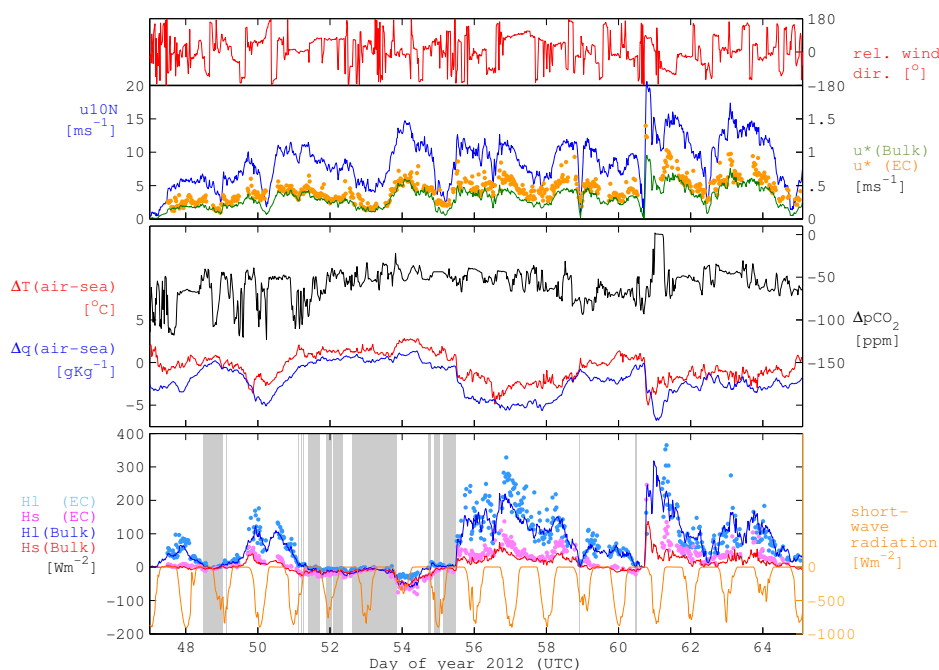


Fig. 1. Fig. 2. Overview of the conditions encountered during the SOAP experiment. Shaded areas mark low latent heat fluxes ($< 7\text{W/m}^2$). (...)

C9457

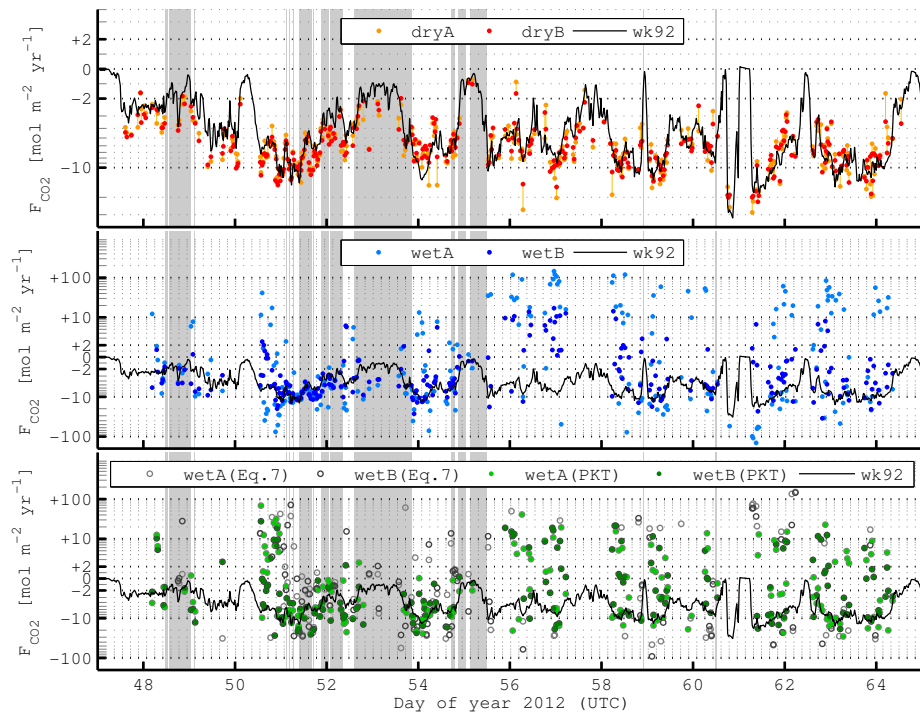


Fig. 2. Fig. 3. Time series of the direct CO₂ fluxes and the parametrisation of Wanninkhof (1992), plotted on logarithmic scale with sing. Shaded areas mark low latent heat fluxes (< 7W/m²). (...)

C9458

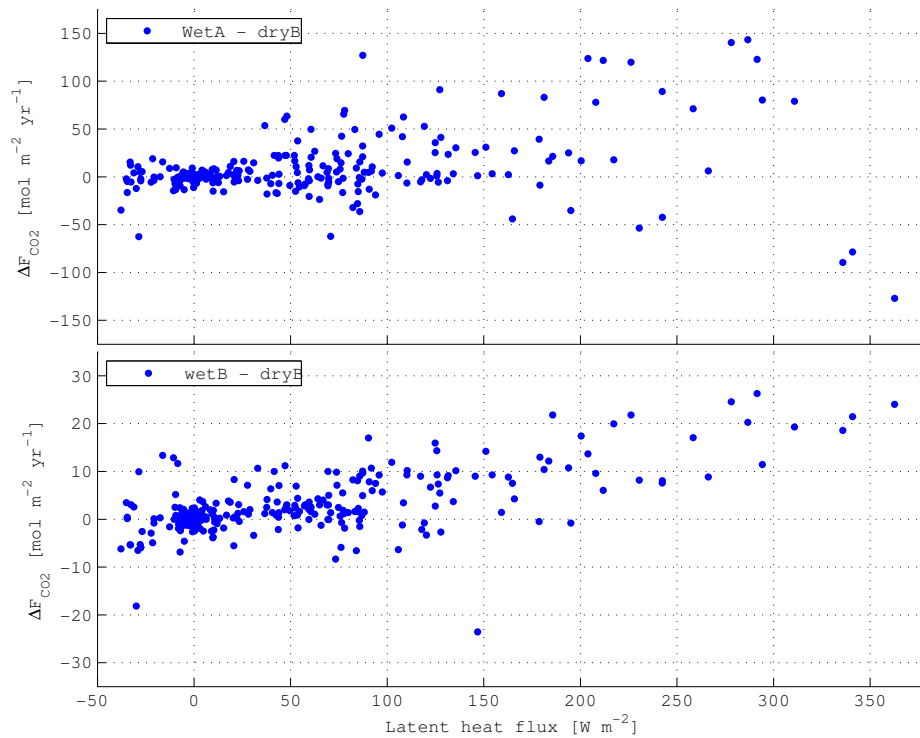


Fig. 3. Fig. 4. Difference of the CO₂ flux calculated from the measured IRGAwet signals xcm to the flux from IRGAdryB as a function of the latent heat flux calculated from the IRGAwet signals. (...)

C9459

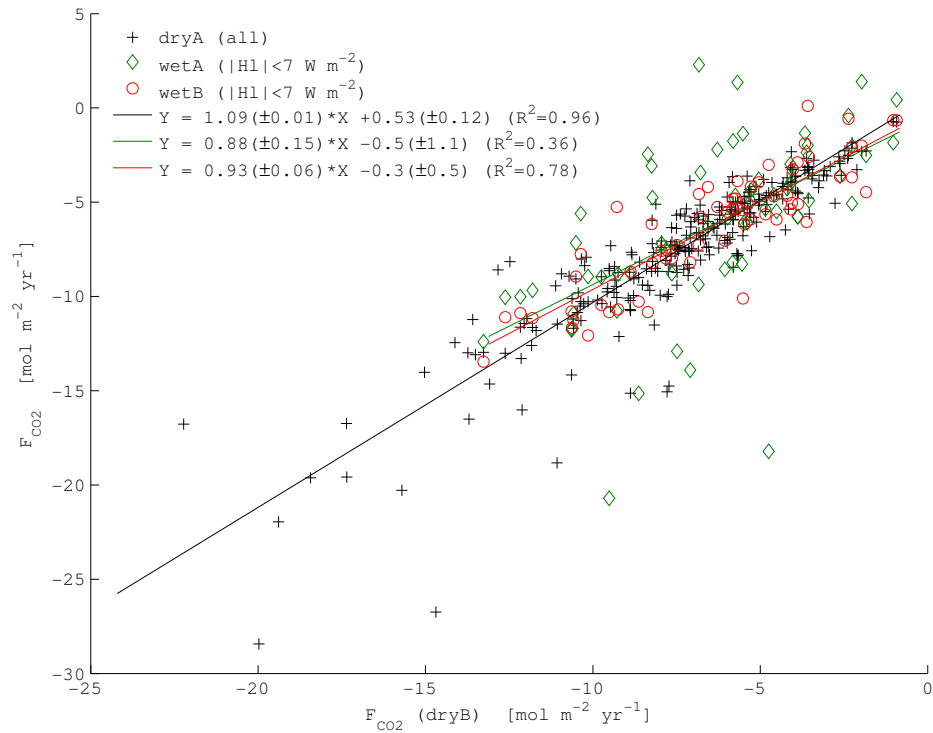


Fig. 4. Fig. 5. Scatter plot of the CO₂ flux measurements (without PKT correction) from IRGAdryA, IRGAdryB and IRGAWetA against those from IRGAdryB. (...)

C9460

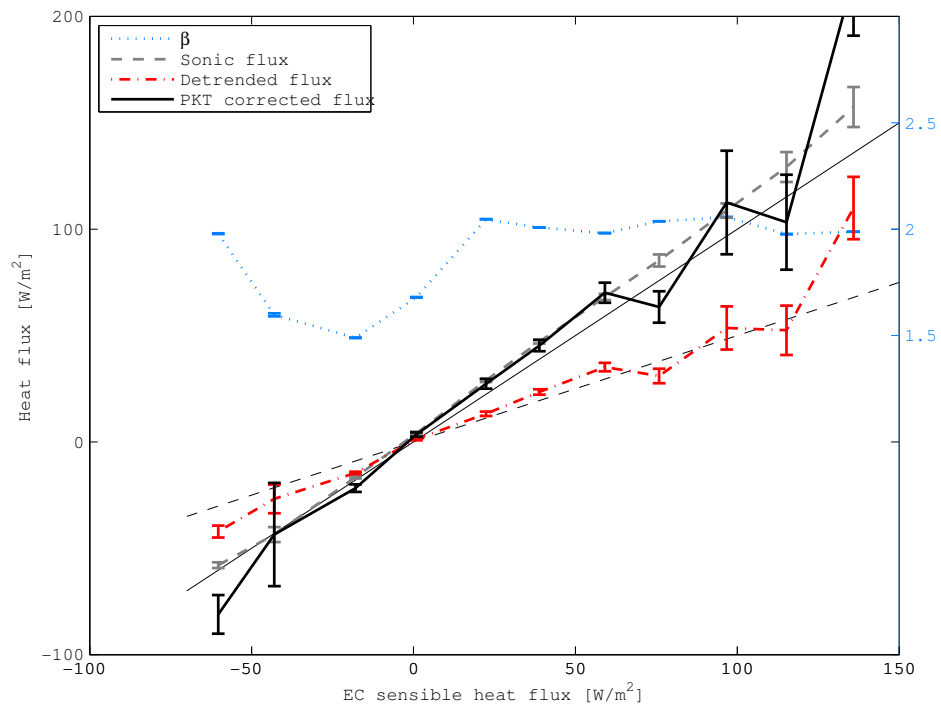


Fig. 5. Fig. 8. Bin averaged heat fluxes plotted against the standard EC sensible heat flux results (to be compared with Fig. 2 in Prytherch et al., 2010a). (...)

C9461

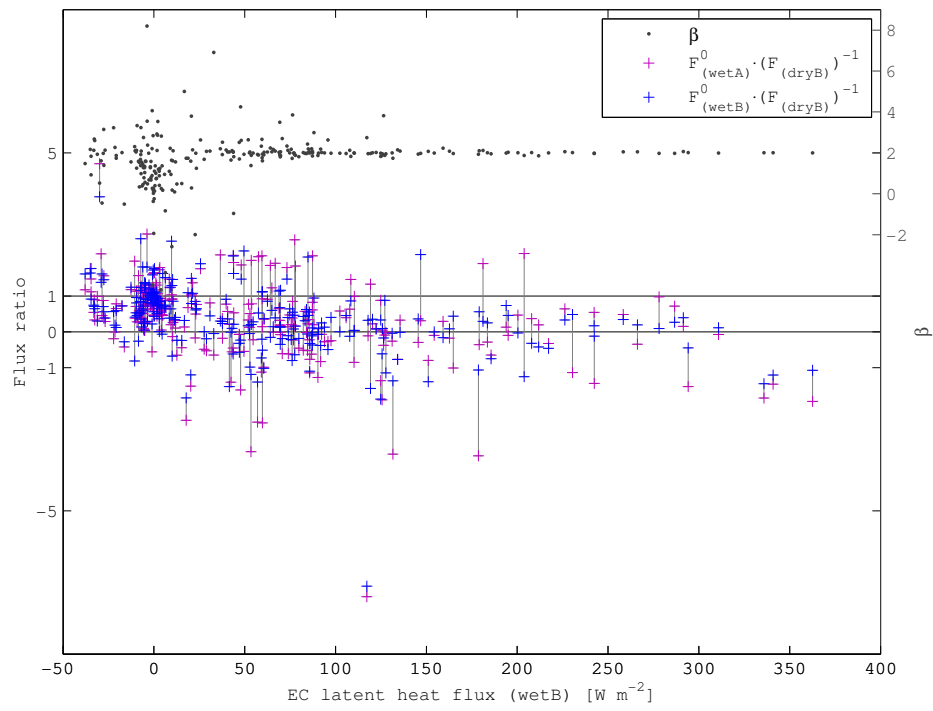


Fig. 6. Fig. 9. Ratio of the detrended CO₂ fluxes F_{c0} from IRGAwet as used for the PKT correction to the average CO₂ flux calculated from the IRGAdry. (...)