

Noon-time UV Index

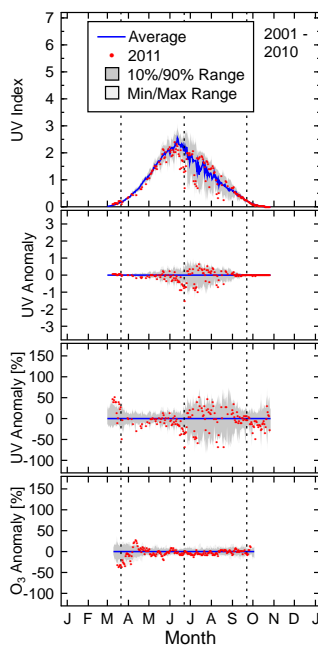
Noon-time UV Index

Absolute UVI Anomaly

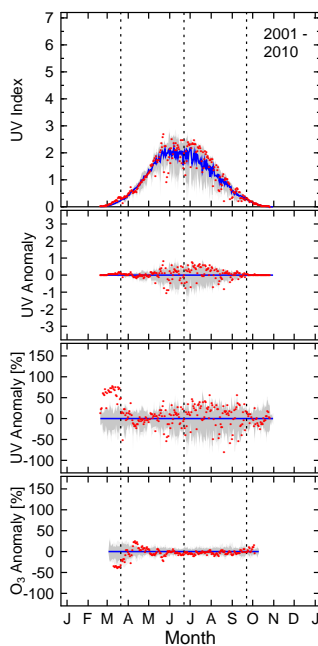
Relative UVI Anomaly

Relative Ozone Anomaly

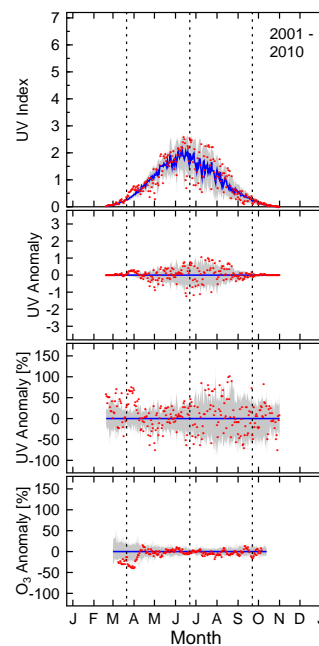
Alert, Canada (83°N, 62°W)



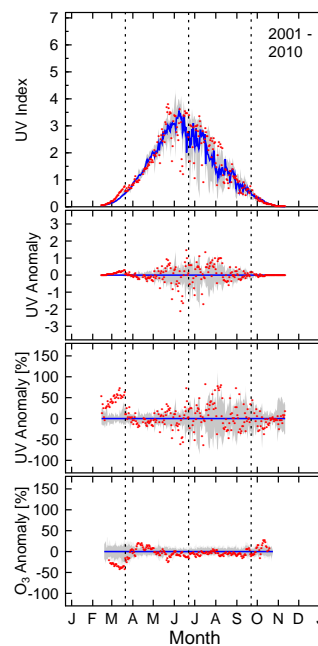
Eureka, Canada (80°N, 86°W)



Ny-Alesund, Svalbard (79°N, 12°E)



Resolute, Canada (75°N, 95°E)



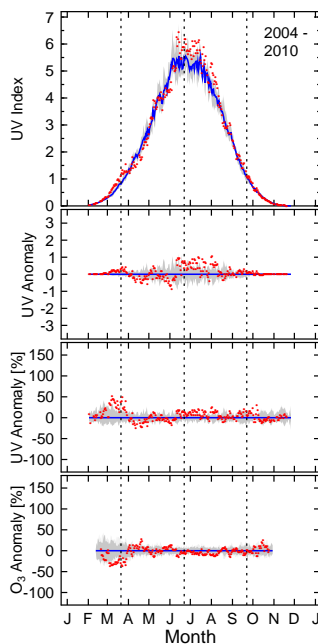
Noon-time UV Index

Absolute UVI Anomaly

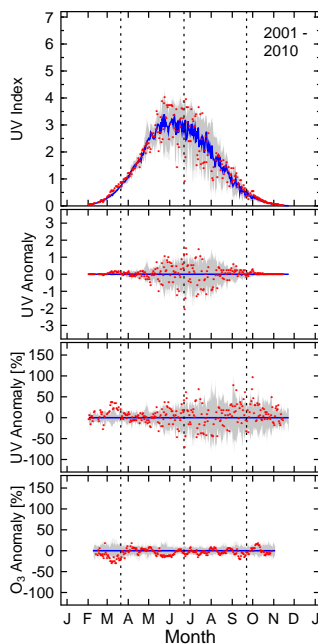
Relative UVI Anomaly

Relative Ozone Anomaly

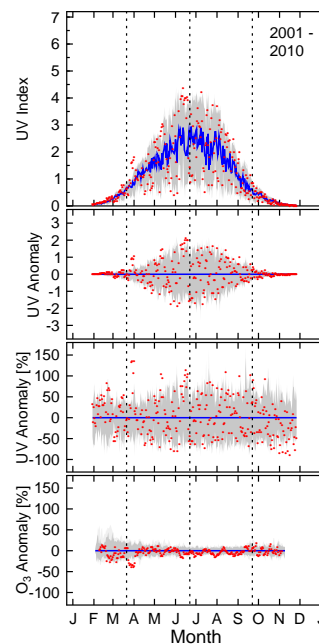
Summit, Greenland (73°N, 38°W)



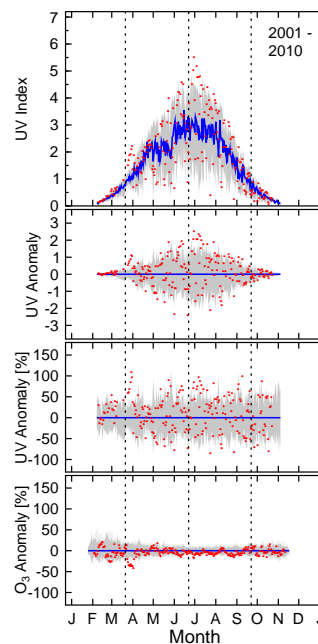
Barrow, Alaska (71°N, 157°W)



Andoya, Norway (69°N, 16°E)



Sodankyla, Finland (67°N, 27°E)



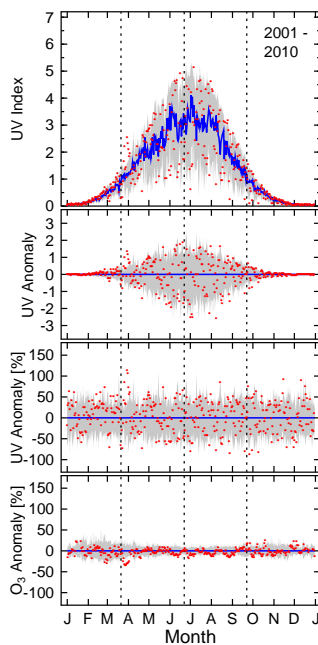
Noon-time UV Index

Absolute UVI Anomaly

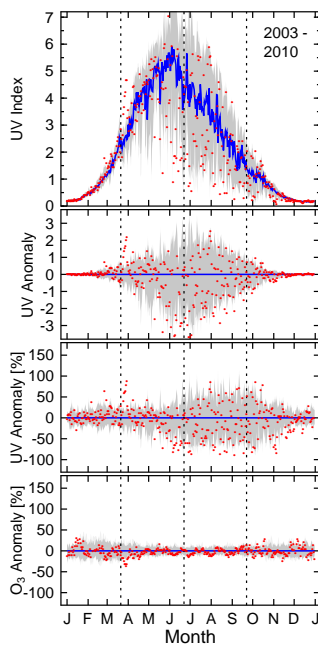
Relative UVI Anomaly

Relative Ozone Anomaly

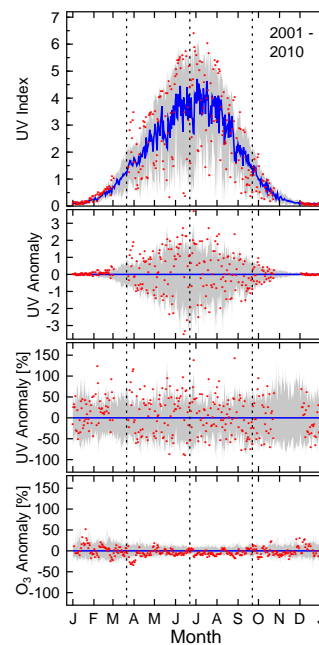
Trondheim, Norway (63°N, 10°E)



Finse, Norway (61°N, 8°E)



Jokioinen, Finland (61°N, 24°E)



Blindern, Norway (60°N, 11°E)

