

Interactive comment on “Total ozone trends and variability during 1979–2012 from merged datasets of various satellites” by W. Chehade et al.

W. Chehade et al.

chehade@iup.physik.uni-bremen.de

Received and published: 28 March 2014

The answers and supporting figures to the comment of Referee 1 are provided as supplements

Please also note the supplement to this comment:

<http://www.atmos-chem-phys-discuss.net/13/C13156/2014/acpd-13-C13156-2014-supplement.pdf>

Interactive comment on Atmos. Chem. Phys. Discuss., 13, 30407, 2013.

C13156

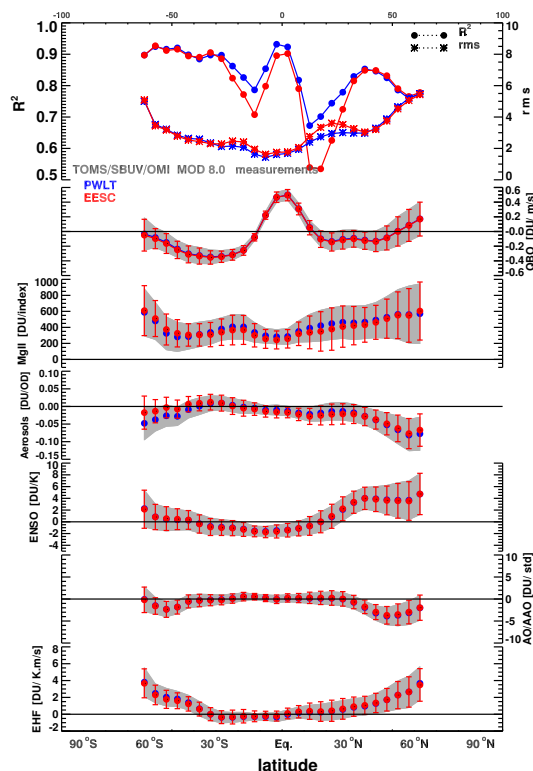


Fig. 1. Differences between the zonal proxy contributions estimated from EESC and PWLT regressions for MOD 8.0 dataset.

C13157

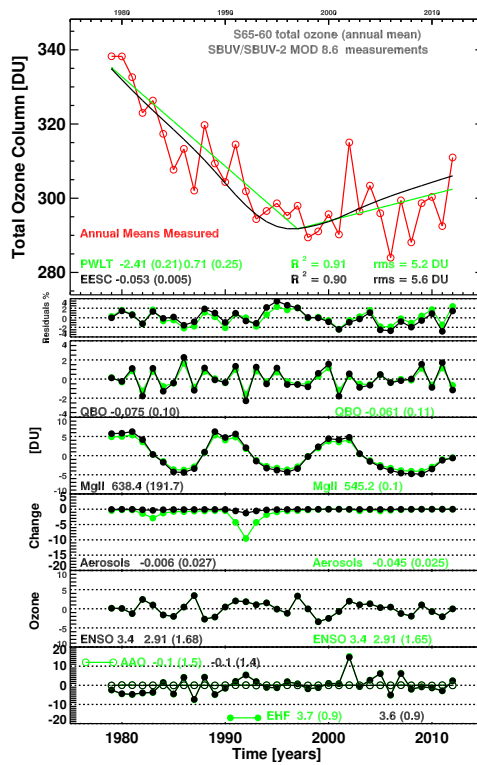


Fig. 2. Differences between the proxy contributions estimated from EESC and PWT regressions for MOD 8.6 dataset for the 60-65°S latitude band.

C13158

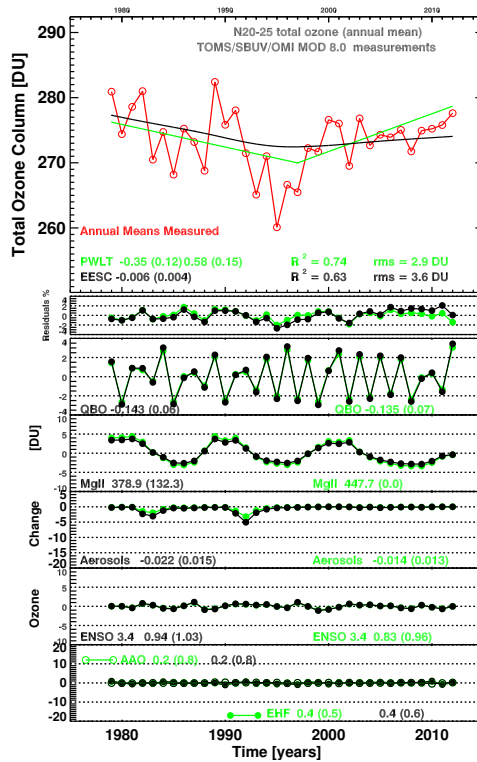


Fig. 3. Differences between the proxy contributions estimated from EESC and PWT regressions for MOD 8.0 dataset for the 20-25°N latitude band.

C13159