

FIG. 2. Time series for the clean ( $N_a = 25 \text{ mg}^{-1}$ ) and polluted ( $N_a = 2000 \text{ mg}^{-1}$ ) cases for the base simulations: (a) cloud fraction, (b) domain-averaged LWP, (c) cloud-averaged LWP (averaged over cloudy columns), (d) cloud-top height, (e) cloud-base height, (f) vertically integrated TKE, and (g) domain-averaged surface precipitation rate. Surface precipitation rate in the polluted case is negligible so only the precipitation for the clean case is shown. Line types are solid for the clean case and dashed for the highly polluted case, are used consistently in all figures.

Figure 1: A reproduction of Figure 2 from Xue and Feingold 2006.

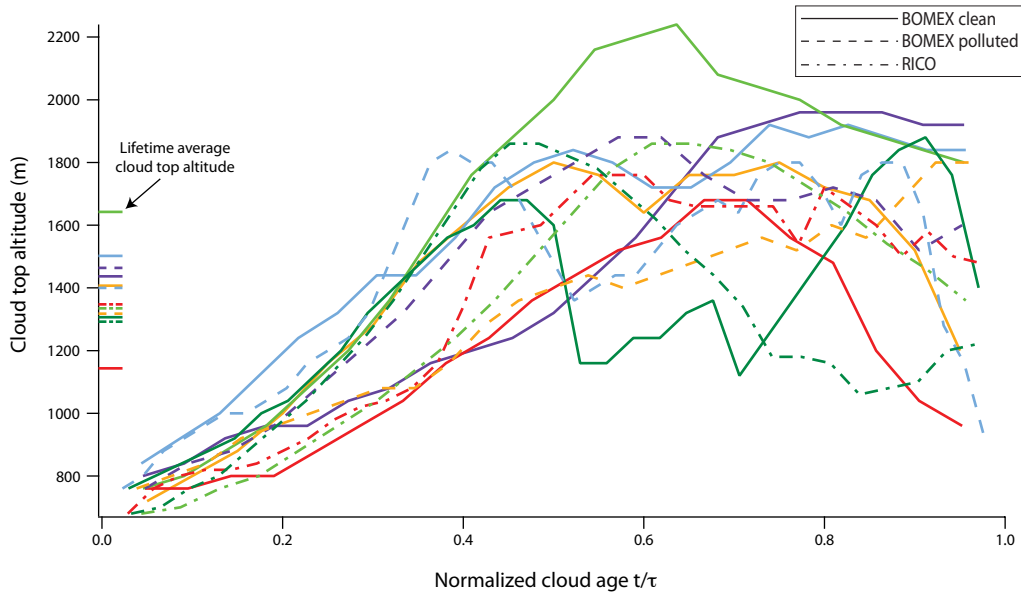


Figure 2: Time series of cloud top height. The colored and patterned ticks on the ordinate are lifetime average cloud top altitude for each cloud.

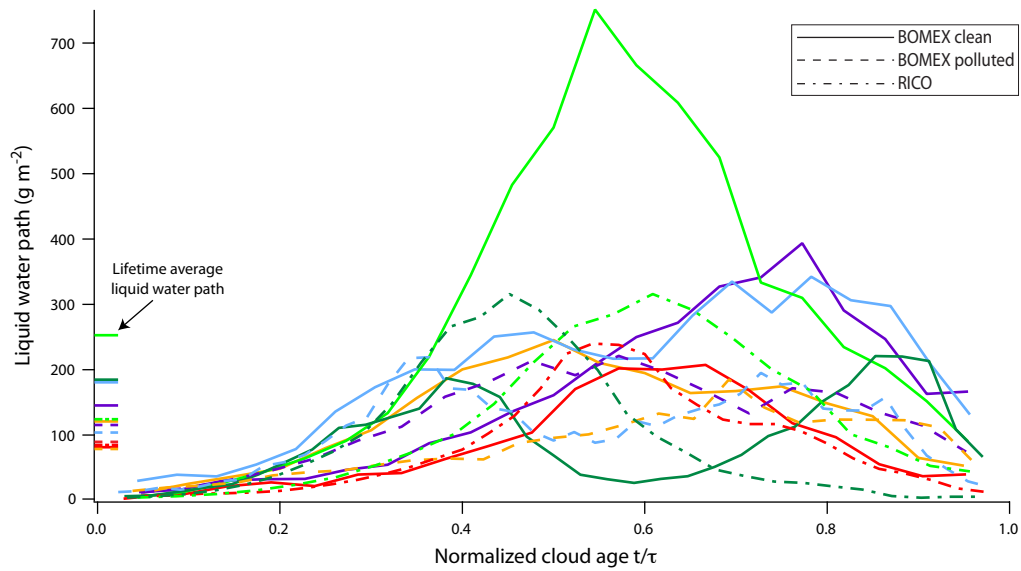


Figure 3: Time series of LWP. The colored and patterned ticks on the ordinate are lifetime average LWP for each cloud.