

Supplementary materials of
“Characterization of particle number concentrations in urban environment
of Taipei, Taiwan”

H. C. Cheung, C. C.-K. Chou*, W.-R. Huang, and C.-Y. Tsai

Research Center for Environmental Changes, Academia Sinica, Taipei 11529, Taiwan

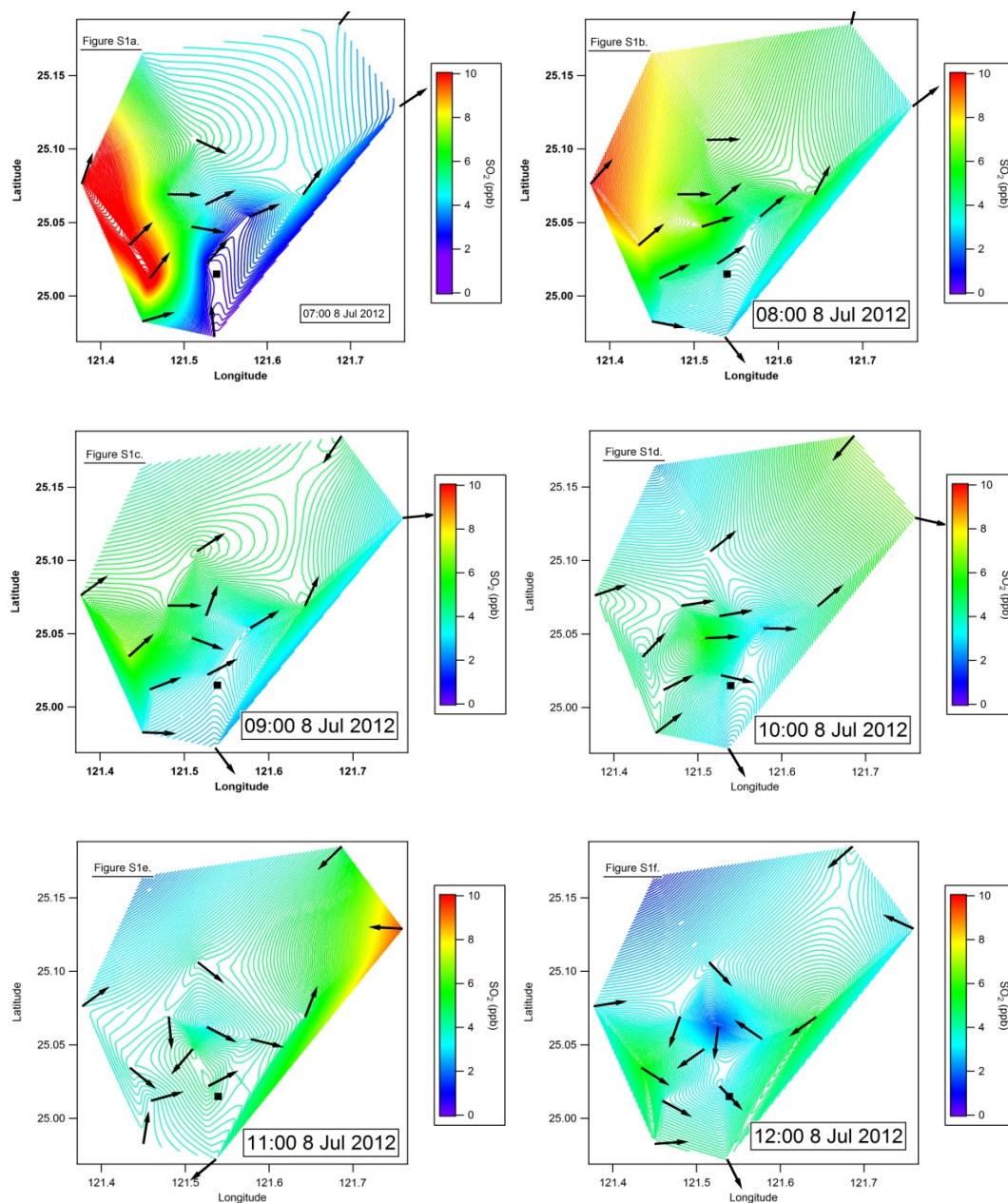


Figure S1 (a-f). Hourly spatial variations of SO_2 and surface wind directions measured in Taipei city on 8 July 2012. Square dot: TARO.

* Correspondence to C. C.-K. Chou (ckchou@rcec.sinica.edu.tw)

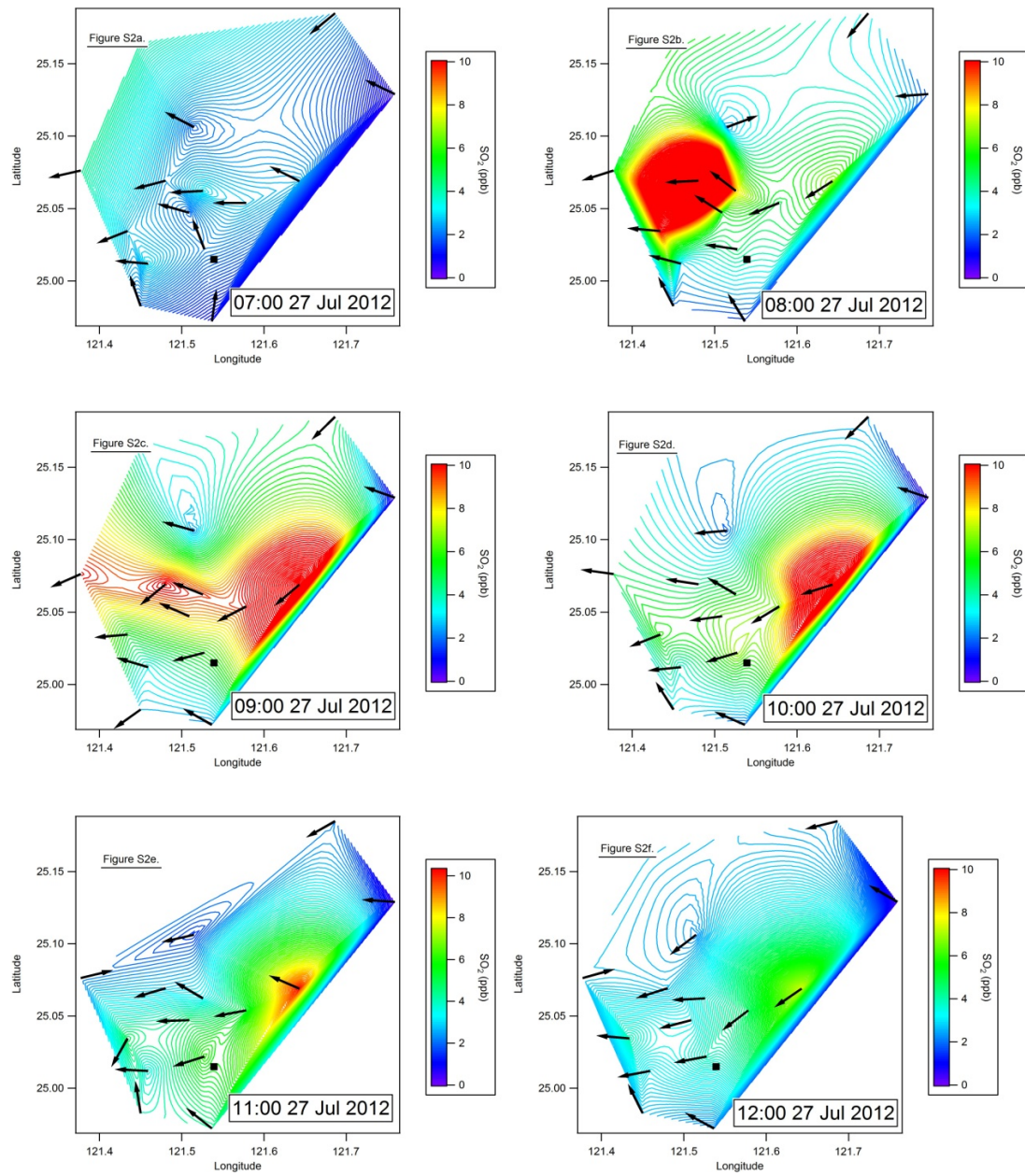


Figure S2 (a-f). Hourly spatial variations of SO₂ and surface wind directions measured in Taipei city on 27 July 2012. Square dot: TARO.

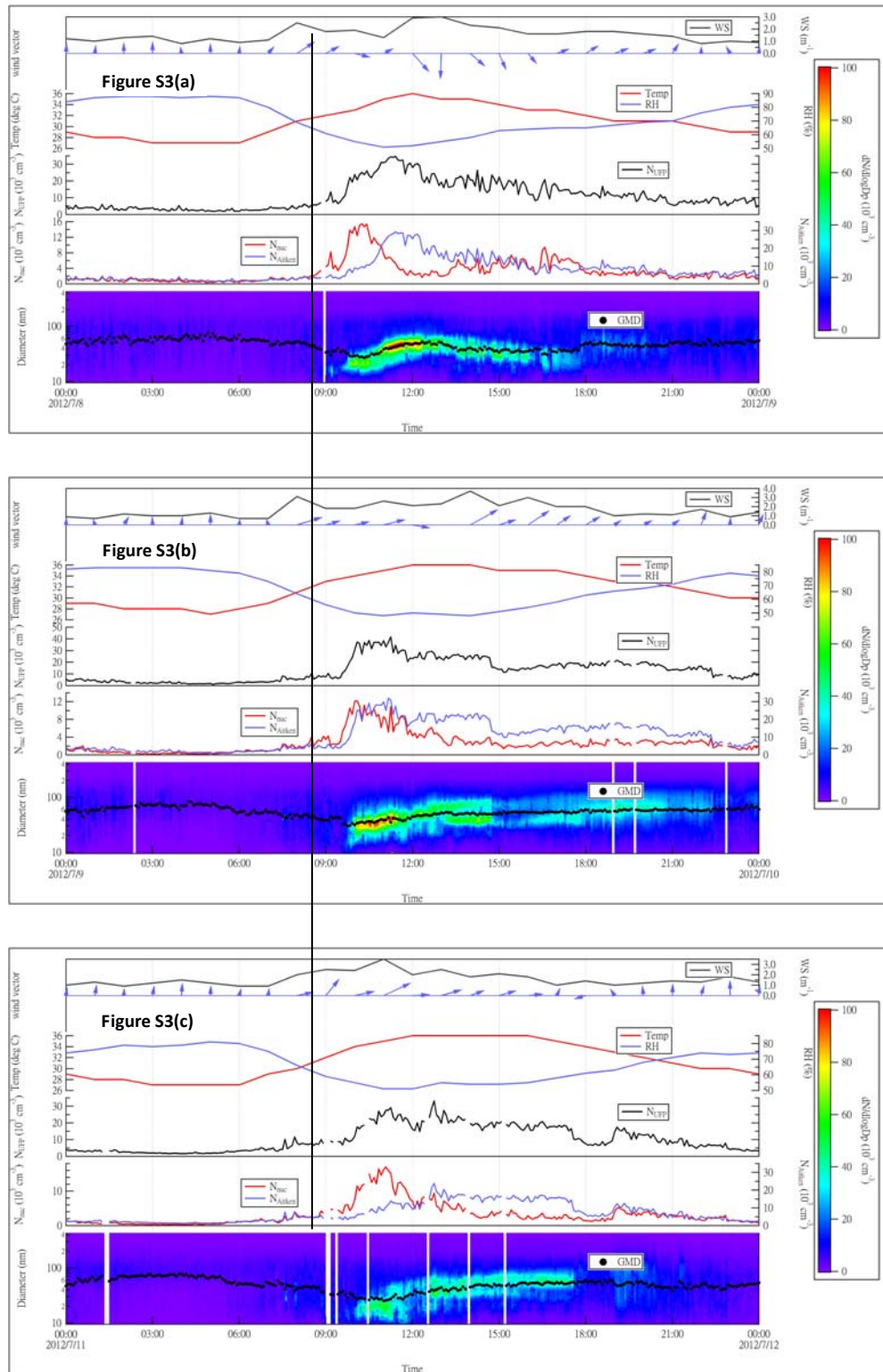


Figure S3. Time series of measured parameters for identified NPF event days. From bottom to upper panels are: i) Particle size distribution, ii) N_{nuc} and N_{Aitken} iii) N_{UFP} , iv) ambient temperature and RH, v) wind direction and speed.

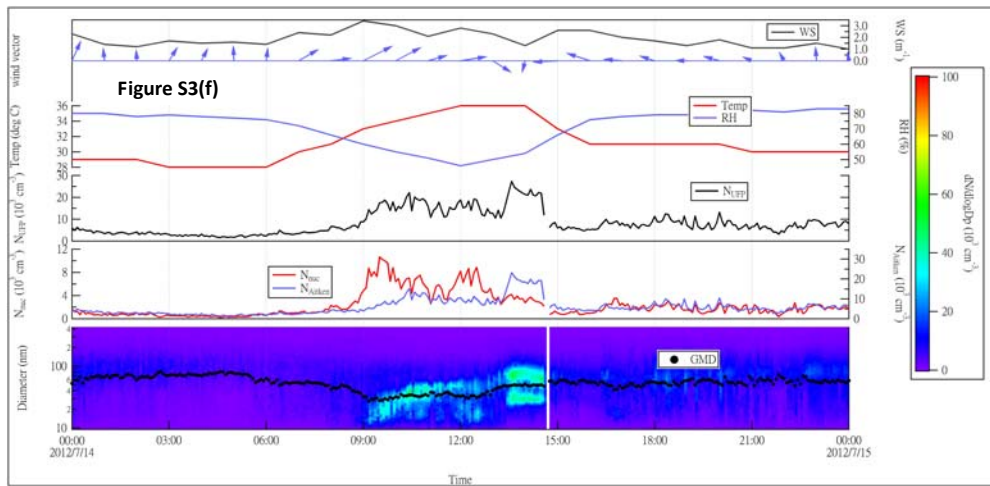
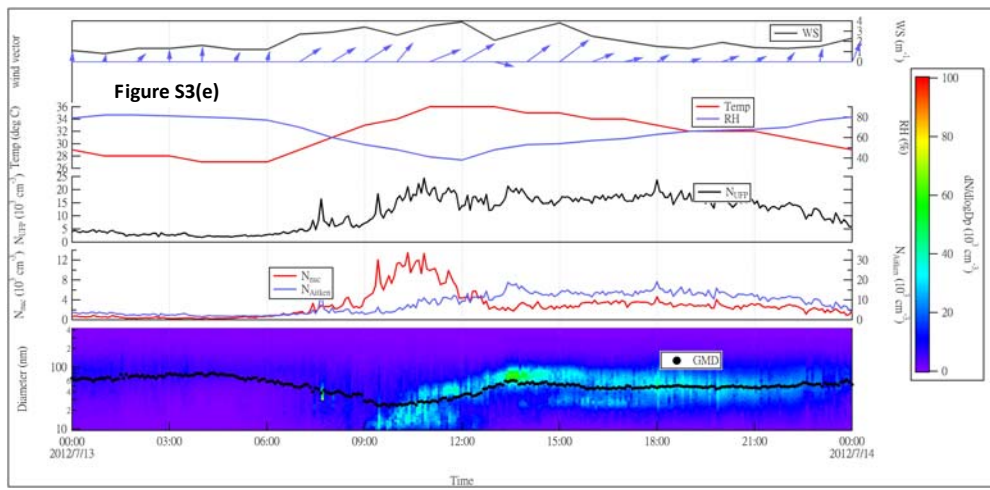
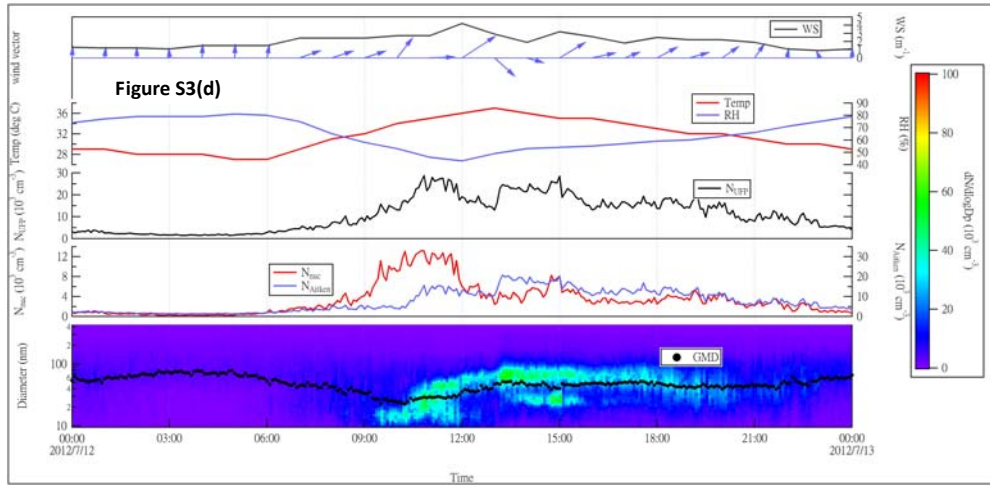


Figure S3. Continued.

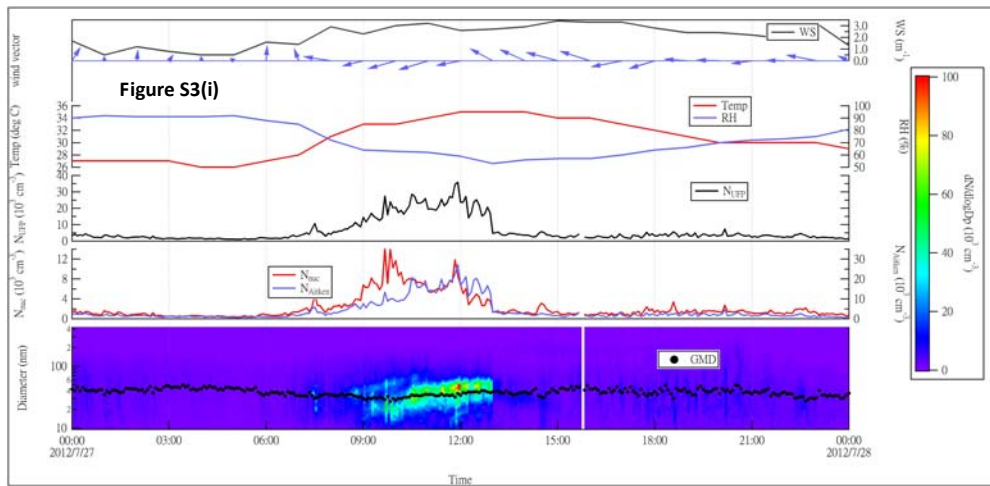
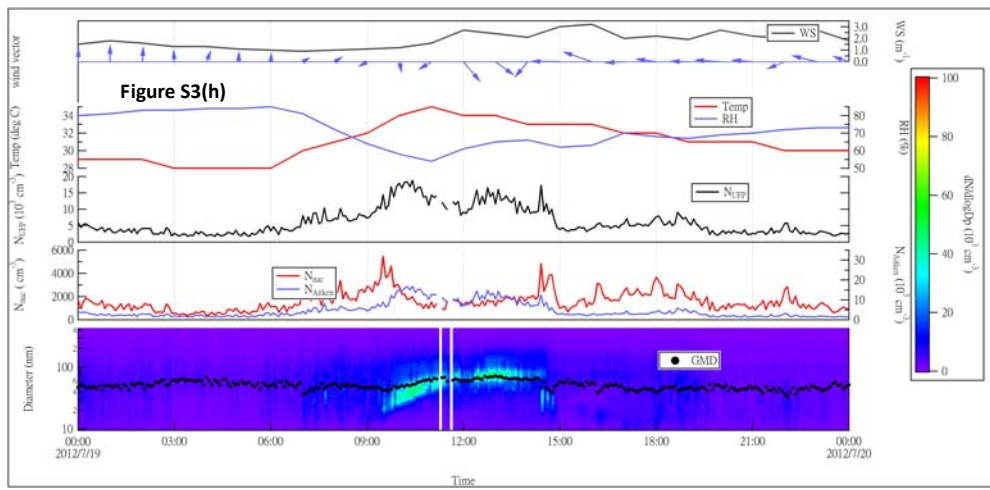
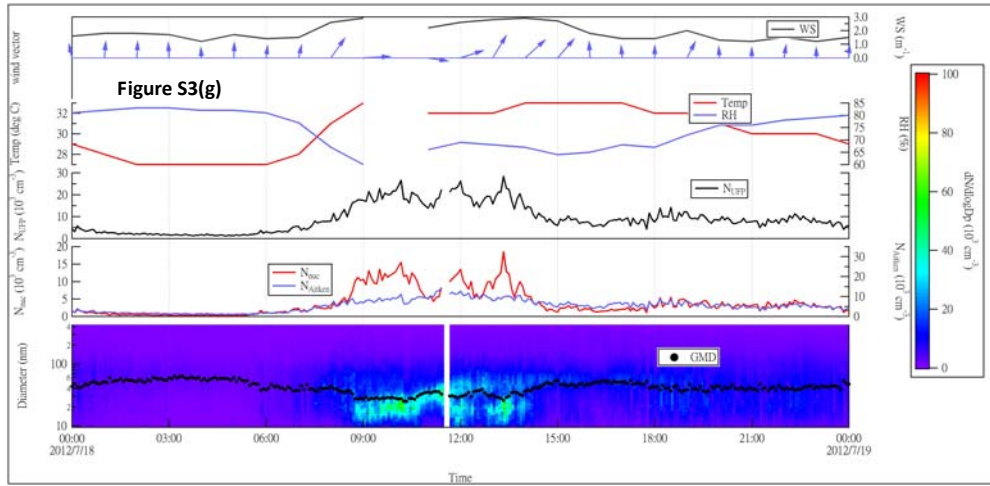


Figure S3. Continued.