

This discussion paper is/has been under review for the journal Atmospheric Chemistry and Physics (ACP). Please refer to the corresponding final paper in ACP if available.

Halogen species record Antarctic sea ice extent over glacial-interglacial periods

A. Spolaor^{1,2}, P. Vallelonga³, J. M. C. Plane⁴, N. Kehrwald⁵, J. Gabrieli², C. Varin⁵, C. Turetta², G. Cozzi², C. Boutron⁶, and C. Barbante^{2,5}

¹Department of Earth Science, University of Siena, Via Laterina 8, 53100 Siena, Italy

²Institute for the Dynamics of Environmental Processes – CNR, University of Venice, Dorsoduro 2137, 30123 Venice, Italy

³Centre for Ice and Climate, Niels Bohr Institute, Juliane Maries Vej 30, 2100 Copenhagen, Denmark

⁴School of Chemistry, University of Leeds, Leeds, LS2 9JT, UK

⁵Department of Environmental Sciences, Informatics and Statistics, Ca' Foscari University of Venice, Dorsoduro 2137, 30123 Venice, Italy

⁶Laboratoire de Glaciologie et Géophysique de l'Environnement (UMR UJF/CNRS 5183), 54, Rue Molière, Domaine Universitaire, BP 96, 38402 Saint Martin d' Hères, France

Received: 12 December 2012 – Accepted: 31 January 2013 – Published: 12 February 2013

Correspondence to: A. Spolaor (andrea.spolaor@unive.it)

Published by Copernicus Publications on behalf of the European Geosciences Union.

Title Page

Abstract

Introduction

Conclusions

References

Tables

Figures

◀

▶

◀

▶

Back

Close

Full Screen / Esc

Printer-friendly Version

Interactive Discussion



Abstract

Sea ice is an integral part of the Earth's climate system because it affects planetary albedo, sea surface salinity, and the atmosphere-ocean exchange of reactive gases and aerosols. Bromine and iodine chemistry is active at polar sea ice margins with the occurrence of bromine explosions and the biological production of organo-iodine from sea ice algae. Satellite measurements demonstrate that concentrations of bromine oxide (BrO) and iodine oxide (IO) decrease over sea ice toward the Antarctic interior. Here we present speciation measurements of bromine and iodine in the TALDICE (Talos Dome Ice Core) ice core (159°11' E, 72°49' S, 2315 m.a.s.l.) spanning the last 215 ky. The Talos Dome ice core is located 250 km inland and is sensitive to marine air masses intruding onto the Antarctic Plateau. Talos Dome bromide (Br⁻) is positively correlated with temperature and negatively correlated with sodium (Na). Based on the Br⁻/Na seawater ratio, bromide is depleted in the ice during glacial periods and enriched during interglacial periods. Total iodine, consisting of iodide (I⁻) and iodate (IO₃⁻), peaks during glacials with lower values during interglacial periods. Although IO₃⁻ is considered the most stable iodine species in the atmosphere it was only observed in the TALDICE record during glacial maxima. Sea ice dynamics are arguably the primary driver of halogen fluxes over glacial-interglacial timescales, by altering the distance between the sea ice edge and the Antarctic plateau and by altering the surface area of sea ice available to algal colonization. Based on our results we propose the use of both halogens for examining Antarctic variability of past sea ice extent.

1 Introduction

The atmospheric chemistry of iodine (I) and bromine (Br) are receiving increasing attention on account of their importance for photochemical atmospheric processes. Recent developments in atmospheric iodine chemistry include gas phase reaction kinetics, breakthroughs in the understanding of iodine reaction cycles in ambient air and

ACPD

13, 3881–3913, 2013

Halogen species record Antarctic sea ice extent

A. Spolaor et al.

Title Page

Abstract

Introduction

Conclusions

References

Tables

Figures

◀

▶

◀

▶

Back

Close

Full Screen / Esc

Printer-friendly Version

Interactive Discussion



ensuing CCN production (Saiz-Lopez et al., 2012). Bromine is important for its ozone depletion capabilities (Simpson et al., 2007b) and associated applications in atmospheric research (Wofsy et al., 1975).

The main source of atmospheric iodine is oceanic biogenic production (Wong, 1991; Saiz-Lopez et al., 2012), in which iodine is injected into the atmosphere as organic iodine compound (R-I) that is subsequently oxidized into inorganic species in the presence of ozone and light (Vogt et al., 1999). However recent laboratory data has suggested additional abiotic production with a non negligible contribution of I₂ to atmospheric iodine (Saiz-Lopez et al., 2012) In polar regions bromine is mostly emitted as sea spray aerosol by wave breaking. The oceans are the main reservoirs and emission sources of I and Br (Greenwood and Earnshaw, 2005), however satellite observations (Schönhardt et al., 2011; Kaleschke et al., 2004; Frieß et al., 2004; Nghiem et al., 2012; Schonhardt et al., 2008; Saiz-Lopez et al., 2007a) have linked I and Br activity to sea ice. Recently it has been postulated that algae growing under sea ice also contribute to the total iodine concentration in the atmosphere (Saiz-Lopez et al., 2007b).

Iodine is a highly reactive element and undergoes rapid photochemical reactions in the polar atmosphere. In Antarctica, thin seasonal sea ice acts as a substrate for algal growth and permits the percolation of iodine compounds up to the atmosphere. Satellite images clearly demonstrate enhanced concentrations of IO above circum-Antarctic sea ice during spring time (Schonhardt et al., 2008). The production of IO is attributable to the photochemical degradation of compounds such as CH₂I₂ and I₂; the resulting iodine atoms then react with O₃. Iodine monoxide can also promote autocatalyzing reactions. For example IO can react with another IO molecule producing I₂O₂ and OIO, a precursor of IOPs (iodine oxide particles) which then accumulate into cloud condensation nuclei (CCN). IO can also react with other halogens such as BrO and ClO, which enhances their ozone-depleting potential (Saiz-Lopez et al., 2012)

Photochemical atmospheric reactions transform iodine and organic iodine to iodide (I⁻), iodate (IO₃⁻), all of which have been found in atmospheric aerosols (Vogt, 1999). Current models of atmospheric chemistry (McFiggans et al., 2004) indicate that the

Halogen species record Antarctic sea ice extent

A. Spolaor et al.

Title Page

Abstract

Introduction

Conclusions

References

Tables

Figures

◀

▶

◀

▶

Back

Close

Full Screen / Esc

Printer-friendly Version

Interactive Discussion



Halogen species record Antarctic sea ice extent

A. Spolaor et al.

Title Page

Abstract

Introduction

Conclusions

References

Tables

Figures

◀

▶

◀

▶

Back

Close

Full Screen / Esc

Printer-friendly Version

Interactive Discussion



aerosol I^- concentration is negligible due to its transformation into species that revert to the gas phase by reaction with ozone. Instead IO_3^- is relatively inert and therefore readily accumulates in particles (Pechtl et al., 2006; Saunders et al., 2012b). Iodine speciation in water varies where in anoxic water most of iodine exists as I^- . In oxygenated waters, such as surface (300 m) ocean water, the dominant species is IO_3^- . Bluhm et al. (2010) demonstrated that phytoplankton can reduce IO_3^- to I^- , while UV light can also drive the reduction of IO_3^- to I^- in seawater (Saunders et al., 2012b; Wong, 1991). Doubts remain regarding iodine inorganic speciation in aerosols and which factors are able to control this speciation (Saiz-Lopez and Plane, 2004); UV light and ozone have been proposed to play important roles (Saunders et al., 2012a).

The first connections between bromine and ozone depletion were identified in the 1980's. Oltmans (1981) was the first to observe surface ozone variations on timescales of hours to years. Connections between atmospheric bromine excess and ozone depletions were suggested later in 1988 when Barrie et al. (1988) measured an "excess of filterable bromine" that could not be explained by wind-blown sea salt. A strong negative correlation between ozone and bromine was detected suggesting a linear correlation between the two compounds. Bromine-induced ozone depletion events (ODEs) are started by photochemical activation of bromide present in the sea salt causing a cascade of chemical reactions able to drastically reduce the ozone concentration in the boundary layer (Simpson et al., 2007b). It has been suggested that sea-salt bromide is present in young sea-ice surfaces, frost flowers, snow pack, sea water, and marine aerosols due to its photochemistry which converts Br^- into reactive halogen species (e.g. Br atoms and BrO) that are able to deplete ozone in the remote atmosphere (Simpson et al., 2007a). ODEs are caused by so-called "bromine explosions", a series of photochemical and heterogeneous acid catalyzed reactions. Vogt et al. (1996) proposed a mechanism for bromine activation where sulphur and nitrogen acid species such as MSA, SO_4^{2-} and NO_x are able to activate the reactions between ozone and bromide producing the gas phase species BrO, Br_2 and HOBr. The bromine explosion is strongly dependent on pH because the key reaction of HOBr with Cl^- or Br^-

is pH dependent (Ayers et al., 1999; Simpson et al., 2007a). Satellite measurements show enhanced atmospheric bromine oxide (BrO) in the polar spring, coinciding with an ozone minimum measured by ground-based instruments (Simpson et al., 2007a). The bromine explosion may be promoted by the presence of frost flowers that grow above the young sea ice; they are ice crystals of extremely high salinity and are an efficient substrate for the atmospheric emission of chemicals due to their high surface area (Kaleschke et al., 2004).

The current utility of polar ice cores for quantifying sea ice variability is minimal, due to the lack of a sufficiently reliable and specific proxy. Methansulphonic acid (MSA) has been used to estimate sea ice variations over the last century at Law Dome in coastal Antarctica (Curran et al., 2003) however, this compound is unstable and easily remobilised in the ice matrix after deposition (Smith et al., 2004) limiting its utility for long-term sea ice reconstructions. Further, it has been demonstrated that MSA is not a reliable indicator for sea ice extent at some other coastal sectors of Antarctica (Abram et al., 2011). Sea salt sodium has also been used to quantify sea ice variations (Wolff et al., 2006) based on the formation of high salinity frost flowers and brine (Rankin et al., 2000) on sea ice surfaces. Such influences are difficult to distinguish from the dominating sodium input from sea spray aerosol (Petit et al., 1999) and open-waters have been shown to be the dominant source of sodium deposited at many Antarctic sites e.g. Law Dome (Curran et al., 1998) and James Ross Island (Abram et al., 2011).

Even though iodine and bromine species have already been measured in polar snow, to our knowledge no measurement of this species have yet been carried out in Antarctic ice cores. Based on the method developed by Spolaor et al. (2012), we present here the first extended (200 ky) record of iodine and bromine species from the Talos Dome ice core and evaluate the implications of these halogen species for reconstruction of sea ice variability on millennial timescales.

Halogen species record Antarctic sea ice extent

A. Spolaor et al.

Title Page

Abstract

Introduction

Conclusions

References

Tables

Figures

◀

▶

◀

▶

Back

Close

Full Screen / Esc

Printer-friendly Version

Interactive Discussion



2 Samples and methods

2.1 Ice core samples

The Talos Dome ice core drilling site (159°4'21" E, 72°47'14" S, 2318.5 m.a.s.l.) is located over approximately 1880 m of ice, the deepest of which has been dated to 250 ky before present (BP). Featuring a mean annual temperature of -41° and an average annual accumulation rate of 80 mm water equivalent, the site is an excellent location for the long-term preservation of climatic signals of Southern Hemispheric climate change. There are currently only a few ice cores from coastal sites (EPICA-DML, Berkner Island, Taylor Dome, Siple Dome) that record Holocene and post-Holocene climate change or the retreat of the ice sheet since the Last Glacial Maximum (LGM). The coastal position of the Talos Dome (TD) ice core makes this core important for studying marine-related processes during the Antarctic deglaciation. Analyses were conducted on discrete samples of Talos Dome ice sampled for Continuous Flow Analysis (Kaufmann et al., 2008). For each 1 m long ice sample, 15 mL was collected in coulter counter accuvettes at a rate of 0.5 mL min^{-1} . The samples were kept frozen and shielded from light until analysis.

2.2 Determination of halogens, sodium and iron

Iodine (I and IO_3) and bromine (Br) species were measured at picogram-per-gram levels by coupling high-performance liquid chromatography (HPLC), ion chromatography (IC) and inductively coupled plasma mass spectrometry (ICP-MS). All reagent solutions and samples were prepared in a shipping container converted into a particle-free laboratory. The air qualities ranged from classes 10 to 100 (US Fed. Std 209E, equivalent to ISO 4 to 5). Chromatographic separation was achieved using an IONPAC[®] AS16 Analytical Column (Dionex, US) with 35 mM NaOH 99.99%, Sigma-Aldrich, Missouri, USA) eluent. The flow was set to 0.280 mL per min with a run time of 9 min and 70 bar operating pressure. The samples were melted without acidification to avoid any Br or I

Title Page

Abstract

Introduction

Conclusions

References

Tables

Figures

◀

▶

◀

▶

Back

Close

Full Screen / Esc

Printer-friendly Version

Interactive Discussion



Halogen species record Antarctic sea ice extent

A. Spolaor et al.

Title Page

Abstract

Introduction

Conclusions

References

Tables

Figures

◀

▶

◀

▶

Back

Close

Full Screen / Esc

Printer-friendly Version

Interactive Discussion



volatilization and a volume of 0.3 mL was used for analysis. The detector was an Agilent 7500 series ICP-MS (Agilent, CA, USA) with monoisotopic I measured at mass 127 and Br measured at mass 81. Detection limits for I and Br species were 5 to 9 pg g^{-1} with an uncertainty of less than 2.5 % for all considered species. Iodide had a recovery of 80 % while Br and IO_3^- had higher recoveries around 90 %. For the determination of sodium and iron concentrations, samples were melted and acidified to pH 1 using sub-boiling distilled HNO_3 (Romil, Cambridge, UK) and analysed at least 24 h later by Inductively Coupled Plasma Sector Field Mass Spectrometry (ICP-SFMS; FinniganTM ELEMENT2, Thermo Fisher Scientific Inc., Bremen, Germany) coupled to an APEX Q desolvating introduction unit (Elemental Scientific, Omaha, NE, USA). The detection limit, defined as three times the standard deviation of the instrument blank, was 0.029 ng g^{-1} , with precisions of 16 % for Holocene samples and 10 % for Last Glacial Maximum (LGM) samples.

2.3 Iodate stability experiment

Although it has been demonstrated (Saunders et al., 2012b) that IO_3^- is stable in water at least for 30 h in the absence of humic acid or hydrogen peroxide, changes in IO_3^- reactivity have been detected in frozen solutions.

A number of experiments (Table 1 lists the experimental parameters), were conducted to determine if IO_3^- is unstable in ice under near-UV/visible light irradiation. These experiments were conducted in a photo-chemical flow reactor (PCFR) under conditions described in detail by Saiz-Lopez et al. (2004) and Saunders and Plane (2005). Solar irradiance was simulated between wavelengths 300 to 750 nm ($\lambda_{\text{max}} = 583 \text{ nm}$) using a 1000 W Oriel[®] Xenon Arc Lamp Solar Simulator (Oriel Instruments, Model 91191) with a water filter for removal of infrared light. The PCFR featured a flow cell with an inner volume of 0.2 L and equipped with an external cooling-jacket filled with methanol (Fig. 1). The flow cell was filled with 0.1 L of 10^{-5} M IO_3^- solution (produced from sodium salt) and subsequently cooled to -20°C until the solution was

**Halogen species
record Antarctic sea
ice extent**

A. Spolaor et al.

Title Page

Abstract

Introduction

Conclusions

References

Tables

Figures

◀

▶

◀

▶

Back

Close

Full Screen / Esc

Printer-friendly Version

Interactive Discussion

frozen. The temperature was kept at $-20 \pm 2^\circ\text{C}$ for the duration of the experiment (4 h). The gas-phase iodine species produced in the flow cell were then converted into iodine oxide particles (IOPs) in a downstream photolysis cell by the presence of visible light from a tungsten lamp, and O_3 (produced by illuminating a flow of O_2 with a low pressure Hg pen ray lamp at 180 nm). Briefly, production of IOPs first require the formation of gas phase iodine as IO from the oxidation of I by O_3 ; IO then self-reacts to form OIO, which can then go on to form higher oxides which polymerize to generate IOPs (Saunders et al., 2010; Saiz-Lopez et al., 2012). The IOP size distribution, and hence total mass, was measured using an electrical mobility spectrometer (EMS VIE10: Tapcon GmbH), consisting of a nano-differential mobility analyzer (nano-DMA) and a Faraday cup electrometer (FCE). Particles were counted in the range from 2 nm to 40 nm in diameter.

A 650 sccm (standard cubic centimeter per minute) flow of pure N_2 gas was used as the carrier gas for the PCFR system with an O_3 concentration of 78 ppbv. The gas flow in the flow cell was maintained at 50 sccm of pure N_2 except for experiment 4 in which the gas flow was composed of a mixture of 40 sccm of N_2 and 10 sccm O_3 , giving a total flux of 50 sccm. To compare the IOP mass production for each experiment, reported in Table 1, we used the sum of IOPs produced in 180 min (expressed in g cm^{-3}) while the blank was assessed by repeating the experiment three times using only N_2 as carrier gas in the absence of light, thus obtaining a value of $4.3 \pm 1.0 \cdot 10^{-13} \text{ g cm}^{-3}$ (Table 1).

To avoid potential interference from the presence of other iodine species, all glassware was carefully cleaned with deionized water and a spectrophotometer analysis in the 200–600 nm range was carried out to ensure the absence of any such species (Fig. 2). The PCFR system was cleaned by fluxing N_2 and O_3 for 2 h (the time necessary to reach a stable blank value) thus removing any iodine compounds that may have resided on the inner tube surface. The blank signal was checked before each experiment (Fig. 8) to ensure that no contaminants were present in the system.

2.4 Statistical data analysis

Confidence intervals for Pearson correlations can be computed with the Fisher z transformation approach. However, this statistical method requires a pair of variables with a bivariate normal distribution. Such an assumption is not met by TD elemental and species data whose sample distributions differ substantially from the normal shape. A more robust approach for confidence intervals of correlations that does not rely on the normality assumption is the nonparametric bootstrap percentile method (Efron, 1987). Nonparametric bootstrap is a simulation method which consists of random sampling with replacement from the original data in order to quantify uncertainty of a sample estimate, such as the Pearson correlation index. The R package “boot” (Davison and Hinkley, 1997) provides a convenient implementation of this simulation approach. In this paper, we employ the nonparametric bootstrap percentile method using 1000 bootstrap replicates, as suggested in the statistical literature.

3 Results and discussion

3.1 Bromide

Talos Dome (TD) bromide concentrations range from below the detection limit (9 pg g^{-1}) to 200 pg g^{-1} , corresponding to fluxes from < 0.3 to $17.8 \text{ } \mu\text{g m}^{-2} \text{ yr}^{-1}$ (Fig. 3). The greatest Br^- fluxes occurred during interglacial periods with an average value of $9.5 \text{ } \mu\text{g m}^{-2} \text{ yr}^{-1}$, while during glacials the average flux decreased to $2.9 \text{ } \mu\text{g m}^{-2} \text{ yr}^{-1}$ (Fig. 3). The sodium (Na) content was used to evaluate the influence of maritime air masses on Antarctic deposition (Wolff et al., 2006). Na is a conservative element that is not transformed after sea spray emission (Simpson et al., 2005; Ayers et al., 1999), whereas Br^- is not stable in sea-salt aerosols and is depleted with respect to seawater (Ayers et al., 1999).

Title Page

Abstract

Introduction

Conclusions

References

Tables

Figures



Back

Close

Full Screen / Esc

Printer-friendly Version

Interactive Discussion



Halogen species record Antarctic sea ice extent

A. Spolaor et al.

Title Page

Abstract

Introduction

Conclusions

References

Tables

Figures

◀

▶

◀

▶

Back

Close

Full Screen / Esc

Printer-friendly Version

Interactive Discussion



Bromide concentrations in the TD ice core negatively correlate with Na concentrations (Fig. 3) (hereafter described as: correlation (R) = -0.54 , 95 % confidence interval (CI) = $[-0.40, -0.64]$), and are uncorrelated with crustal elements including Ca ($R = -0.12$; CI = $[-0.25, 0.01]$), Fe ($R = -0.10$; CI = $[-0.23, 0.05]$) and Mn ($R = -0.29$; CI = $[-0.38, -0.14]$). In contrast to almost all of the other elements in TD ice, Br^- correlates ($R = 0.79$; CI = $[0.71, 0.84]$) with the $\delta^{18}\text{O}$ temperature proxy (Stenni et al., 2011). The respective correlations between Br^- and MSA ($R = -0.1$; CI = $[-0.23, 0.04]$) and SO_4^{2-} ($R = 0.03$; CI = $[-0.15, 0.20]$) indicate that glacial-interglacial changes in SO_4^{2-} and MSA are insufficient to modify bromide depletion reaction kinetics.

We use Na as a sea-salt proxy (Wolff et al., 2010) to calculate the bromide depletion percentage ($\% \text{Br}_{\text{dep}}$) with respect to sea-salt concentrations using the formula $\% \text{Br}_{\text{dep}} = ([\text{Na}] \cdot 0.006 - \text{Br}_{\text{measured}}) \cdot 100 / ([\text{Na}] \cdot 0.006)$, which assumes a constant Br/Na mass ratio of 0.006 (Millero, 1974) for seawater and fresh sea spray through time (Ayers et al., 1999). The glacial $\% \text{Br}_{\text{dep}}$ is positive, (mean 68 %, up to 100 %) while interglacial $\% \text{Br}_{\text{dep}}$ values are negative (up to -440 %) (Fig. 4). Talos Dome $\% \text{Br}_{\text{dep}}$ and sea ice presence (SIP) (Crosta et al., 2004) correlate ($R = 0.55$; CI = $[0.45, 0.62]$) and increase ($R = 0.65$; CI = $[0.52, 0.73]$) if considering only bromide depletion periods (typically when $\delta^{18}\text{O} < -38.2$ ‰). SIP and February sea-surface temperatures (SSTs) have been determined by Crosta et al. (2004) using Modern Analog Techniques (MAT₅201/31) applied to fossil diatom assemblages in the SO136-111 core, located at $56^\circ 40' \text{S}$ and $160^\circ 14' \text{E}$. SIP is expressed as months of sea ice presence per year.

Both investigated glacial cycles (marine isotope stage (MIS) 2 to MIS 5, and MIS 6 to MIS 7) show similar $\% \text{Br}_{\text{dep}}$ values. Factors that may influence $\% \text{Br}_{\text{dep}}$ include the acidity of the aerosols catalyzing the bromide depletion (Ayers et al., 1999; Vogt et al., 1996), and atmospheric residence time which is linked to the distance from source to sink, i.e. sea ice extent.

Bromine explosions cause an excess of total (gas and aerosol phase) bromine compared to sea-salt in the atmospheric boundary layer (Simpson et al., 2005). During spring, bromine explosions are favoured at the seasonal sea ice surface by the

expulsion of salts from freezing seawater. The reduced extent of multi-year sea ice during interglacials implies that bromine explosions are located nearer to the Antarctic coast during such climatic phases. Bromine explosions result in an increased atmospheric Br^-/Na ratio with respect to seawater (Simpson et al., 2005), and these Br^- enriched air masses are then transported by the prevailing winds to TD. On this basis, we hypothesize that the extended multi-year sea ice surface during glacial periods increases the distance between bromine explosions and the TD ice core site.

HBr is the end product of the bromine atmospheric chemistry chain (Vogt et al., 1996). We assume that the deposition velocities of gas-phase HBr and sea-salt aerosols to the snowpack lead to differential deposition rates as these species are carried inland by cyclonic winds. When seasonal sea ice is located farther from the Antarctic landmass, the increased atmospheric travel time allows the quickly-deposited HBr to deplete relative to atmospheric sea-salt aerosol. Thus the Br^- enhancement observed during interglacial periods changes to a Br^- depletion in colder climates because of the reduced proximity to multi-year sea ice. This hypothesis is supported by Br^- and Na measurements in inland interglacial EPICA Dome C ($75^\circ 06' \text{ S}$, $123^\circ 21' \text{ E}$, 3233 m a.s.l.) ice core samples showing small depletions of Br ($\% \text{Br}_{\text{dep}} = 14\%$) compared to an enrichment of -63% detected in TD ice.

If Br^-/Na ratios and $\% \text{Br}_{\text{dep}}$ are linked with air mass travel times it is important to consider changes in atmospheric circulation between cold and warm periods. Hemispheric-scale models, as well as observations of dust particle sizes, indicate only modest changes in surface winds, atmospheric circulation, and meridional transport over Antarctica between glacial and interglacial climates (Petit and Delmonte, 2009; Fischer et al., 2007). Although the deglacial retreat of the Ross Ice Shelf has been related to activation of local dust deflation zones (Albani et al., 2012), it has been observed that only 25 % of air mass trajectories arriving at TD originate from this sector: the majority of air masses at TD originate from the westerly Atlantic-Indian Ocean sector (Scarchilli et al., 2011). The constant Na fluxes observed throughout the Holocene at TD (Fig. 3) are indicative of a constant flux of marine air masses during this period,

Halogen species record Antarctic sea ice extent

A. Spolaor et al.

Title Page

Abstract

Introduction

Conclusions

References

Tables

Figures

◀

▶

◀

▶

Back

Close

Full Screen / Esc

Printer-friendly Version

Interactive Discussion



suggesting that any deglacial changes to regional atmospheric circulation did not considerably affect the influence of marine air masses on TD.

Bromide model calculation and outcome

The Tropospheric HALogen chemistry MModel (THAMO) is a 1-D chemistry transport model (Saiz-Lopez et al., 2008) with 200 stacked boxes at a vertical resolution of 1 m (total height 200 m). The model was developed to interpret measurements made at Halley Bay (Antarctica) of IO and BrO in the coastal boundary layer (Saiz-Lopez et al., 2007b). The model treats iodine, bromine, O₃, NO_x and HO_x chemistry using over 210 reactions. The chemical scheme is from Saiz-Lopez et al. (2008) and has been updated by Mahajan et al. (2010). The model is used here to follow the evolution of the halogens in an air parcel which crosses the summer sea-ice edge and then travels across the sea ice and coastal margin to Talos Dome. If the average wind speed is 9 m s⁻¹ (Scarchilli et al., 2011), then it would take about 7 h to transport air from the sea-ice edge to Talos Dome (~ 230 km). This corresponds to the interglacial situation. During glacial times, the air would travel about 780 km in 24 h, which is similar to the distance from the sea-ice edge to Dome C at present (Scarchilli et al., 2011).

The following conditions were used. The temperature was set to 250 K at the base of the boundary layer, and the vertical eddy diffusion coefficient (K_z) was set to be constant ($3 \times 10^4 \text{ cm}^2 \text{ s}^{-1}$), based on the wind speed vertical profile at Halley (Saiz-Lopez et al., 2008). The model was constrained with typical measured values of the following species which interact directly with halogens: [O₃] = 30 ppb; [NO_x] = 25 ppt; [DMS] = 80 ppt; [CH₃CHO] = 200 ppt; [HCHO] = 200 ppt. The modelled HO_x concentrations ([OH] = $1.3 \times 10^6 \text{ cm}^{-3}$, [HO₂] = $1.7 \times 10^8 \text{ cm}^{-3}$ at midday) are in sensible accord with measured values at Halley Bay (Saiz-Lopez et al., 2008).

The initial sea-salt aerosol loading was set to 40 particles cm⁻³ of 0.5 μm diameter, providing a volumetric surface area of $3.0 \times 10^{-7} \text{ cm}^2 \text{ cm}^{-3}$ and a volumetric volume of $2.6 \times 10^{-15} \text{ dm}^3 \text{ cm}^{-3}$. The initial Br⁻ concentration was assumed to be that of

Halogen species record Antarctic sea ice extent

A. Spolaor et al.

Title Page

Abstract

Introduction

Conclusions

References

Tables

Figures



Back

Close

Full Screen / Esc

Printer-friendly Version

Interactive Discussion



seawater, 65 mg L^{-1} , so the Br^-/Na^+ elemental ratio was 1.5×10^{-3} . The deposition velocities of HBr and HI to the snowpack were set to 1 cm s^{-1} , typical of acidic gases that stick readily to a water surface. The deposition velocity of sea-salt aerosol was set to 0.2 cm s^{-1} . This combination of deposition velocity and K_z profile in the model gives an e-folding lifetime for the removal of sea-salt aerosol from the BL of around 30 h.

The ice core record contains the integrated annual accumulation of Br^- and Na. The annual BrO record in the boundary layer at Halley Bay exhibits active springtime bromine explosion chemistry averaging around 10 ppt of BrO, less bromine in the summer and autumn (around 4 ppt), and essentially nothing during the polar night (Saiz-Lopez et al., 2007b). In order to account for this seasonal variation, 1 ppt of Br_2 was injected into the first 40 m of the boundary layer at time zero, when the air parcel crossed the sea-ice edge. This injection simulated the effect of a time-averaged “bromine explosion”. An I_2 flux of $7 \times 10^7 \text{ cm}^{-2} \text{ s}^{-1}$ was included to generate an IO concentration of 1–2 ppt while the air parcel was over the sea ice. The uptake of iodine species such as HOI and IONO_2 on sea-salt aerosol converts aerosol bromide into gas-phase BrO etc.

Figure 5 compares the modelled deposition fluxes with the measurements at Talos Dome and Dome C, using the travel times from the sea ice edge (Talos Dome = 7 h during interglacials, 22 h during glacial; Dome C = 24 h during interglacials). Using the assumptions listed above, good agreement is achieved between this simple model and the measured fluxes. While there are too many assumptions in the model to readily constrain them all, the purpose of this exercise is to show that the observed changes in fluxes can be explained from a change in the distance of the sea-ice edge from the continent.

Our model calculations demonstrate the dependence of Br^-/Na ratios on air mass transport times where the transition from Br enrichment to depletion is approximately 8–9 h (Fig. 6). Considering an average air mass speed of 850 km day^{-1} (Scarchilli et al., 2011) and the average Holocene $\% \text{Br}_{\text{dep}}$ value (–60%) we calculate that the air masses travelled approximately 300 km, the distance between TD and the coast. The 70% depletion observed during glacial times would require a travel time of 700–800 km

Halogen species record Antarctic sea ice extent

A. Spolaor et al.

Title Page

Abstract

Introduction

Conclusions

References

Tables

Figures

◀

▶

◀

▶

Back

Close

Full Screen / Esc

Printer-friendly Version

Interactive Discussion



suggesting that the young sea ice was likely located 500 km farther north than the interglacial extent, which is consistent with other estimates of the Antarctic sea ice in the literature (Gersonde et al., 2005).

3.2 Iodine

3.2.1 Total iodine

Iodine speciation can also provide information on sea ice (Atkinson et al., 2012). In contrast to I_2 and iodocarbons produced from algae on the underside of sea ice (Saiz-Lopez et al., 2007b; Saiz-Lopez and Boxe, 2008), sea-salt iodine (ss-I) accounts for less than 1 %. The total iodine deposition flux ($I_{\text{tot}} = IO_3^- + I^-$) was highest during glacial periods, with a mean of $3.2 \mu\text{g m}^{-2} \text{yr}^{-1}$ and values up to $11.2 \mu\text{g m}^{-2} \text{yr}^{-1}$ during the LGM, compared to the interglacial average of $1.1 \mu\text{g m}^{-2} \text{yr}^{-1}$ (Fig. 7). Increased iodine fluxes during glacials are consistent with a greater seasonal sea ice area colonized by algae. This connection is also supported by anti-correlations between I_{tot} and $\delta^{18}\text{O}$ ($R = -0.55$; $[-0.66, -0.34]$) and correlations between I_{tot} and sea ice presence (SIP) ($R = 0.65$; $CI = [0.53, 0.73]$) (Crosta et al., 2004).

While the iodine record is consistent with the Antarctic spring sea ice extension (Schönhardt et al., 2011), other factors may have contributed to the glacial-interglacial changes in I_{tot} . Such factors include dust-induced ocean fertilization (Martin, 1990) and potential algal population changes. The iodine fluxes doubled between the two investigated glacial periods: $3.6 \mu\text{g m}^{-2} \text{yr}^{-1}$ (MIS 2 to MIS 5) and $1.6 \mu\text{g m}^{-2} \text{yr}^{-1}$ (MIS 6 to MIS 7), and correspond to dust flux changes and therefore the potential aeolian nutrient supply. We evaluated correlations between I_{tot} flux and Fe (aeolian nutrient supply, $R = 0.25$; $CI = [0.05, 0.48]$), MSA ($R = -0.15$; $CI = [-0.31, 0.01]$) and non-sea-salt sulphate (nss- SO_4 , $R = -0.06$; $CI = [-0.19, 0.10]$). Aeolian ocean fertilization appears to impact atmospheric iodine concentrations less than the influence of sea ice extent. The differences between the two glacial stages may also be due to the slightly warmer glacial between MIS 5 to 7 (mean $\delta^{18}\text{O} = 40.1 \text{‰}$) compared to MIS 2 to 4 (mean

Halogen species record Antarctic sea ice extent

A. Spolaor et al.

Title Page

Abstract

Introduction

Conclusions

References

Tables

Figures

◀

▶

◀

▶

Back

Close

Full Screen / Esc

Printer-friendly Version

Interactive Discussion



$\delta^{18}\text{O} - 40.6\text{‰}$) (Stenni et al., 2011). These local temperature data agree with the LR04 global benthic marine stack (Lisiecki and Raymo, 2005) as a proxy for global ice volume. Assuming a linear relation between sea ice and I_2 production, we calculate that the LGM summer sea ice extent was approximately double that of the penultimate glacial maximum.

3.2.2 Iodine speciation and iodate reactivity

Iodate is the most stable iodine species in the atmosphere (Saiz-Lopez et al., 2012; Pechtl et al., 2006) although the atmospheric iodate/iodide ratio is variable (Baker, 2004; Gilfedder et al., 2008). Iodide is present throughout the TD record, from interglacial fluxes of $1.1 \mu\text{g m}^{-2} \text{yr}^{-1}$ to glacial fluxes of $2.9 \mu\text{g m}^{-2} \text{yr}^{-1}$, while IO_3^- is only present above the detection limit during the glacial maxima (Fig. 7). Two iodate horizons between 16.8–33.8 kyBP and 134.2–143.2 kyBP contain concentrations up to 30 times more than the detection limit. Observational evidence (Baker et al., 2001) and model calculations (Pechtl et al., 2006; Saunders et al., 2012b) suggest that IO_3^- should accumulate in marine aerosol while iodide should be considered negligible due to its transformation into species that revert to the gas phase after reaction with hypohalous acids (HOX , $\text{X} = \text{Cl}, \text{Br}, \text{I}$) to form volatile IX (Baker, 2004) by reaction cycles proposed by Vogt et al. (1999). However, disagreement exists between observations of the atmospheric ratio of I^-/IO_3^- , where a study from the tropical Atlantic Ocean detected a majority of IO_3^- and negligible I^- (Saiz-Lopez and Plane, 2004) whereas another study found non-negligible I^- concentrations in aerosols (Baker, 2004). Although IO_3^- has been considered an inert inorganic iodine species our results suggest substantial reactivity. In Talos Dome ice samples, IO_3^- is present only during glacial maxima when dust fluxes were at their maximum and temperatures were at their minimum, while iodide is present in all samples. These observations suggest that in polar ice I^- is the more stable species, while IO_3^- is present only under particular conditions.

Halogen species record Antarctic sea ice extent

A. Spolaor et al.

Title Page

Abstract

Introduction

Conclusions

References

Tables

Figures

◀

▶

◀

▶

Back

Close

Full Screen / Esc

Printer-friendly Version

Interactive Discussion



Halogen species record Antarctic sea ice extent

A. Spolaor et al.

Title Page

Abstract

Introduction

Conclusions

References

Tables

Figures

◀

▶

◀

▶

Back

Close

Full Screen / Esc

Printer-friendly Version

Interactive Discussion



Considering the results of the IO_3^- stability experiments, it was found that IOPs were produced from aqueous solutions (experiments 2, 3, 4 and 6), but not from humic acid solutions (experiment 5), in the presence of light. These results are shown in Fig. 8. IOP formation results from the release of iodine gas compounds (likely HOI, IO and I_2) from the frozen solution surface indicating reduction of IO_3^- has occurred. It is important to note that only IO_3^- was dissolved in deionized water, so the IO_3^- reduction must have been photochemically driven. Though IO_3^- in aqueous media absorbs light only in the UV range (Awtrey and Connick, 1951) at wavelengths below 270 nm (Fig. 2), theoretical calculations indicate the photochemical threshold for the reaction $\text{IO}_3^- + h\nu \rightarrow \text{IO}(\text{g}) + \text{O}_2^-$ in ice is 315 nm which is consistent with the large IO concentration which has been observed spectroscopically within the polar snow pack (Frieß et al., 2010). In the presence of light, our experiments demonstrate greatest IOP production, $1.0 \times 10^{-12} \text{ g cm}^{-3}$, with O_3 present in the N_2 carrier gas and the RC activated. Lowest IOP production occurred when the RC was not activated ($7.1 \times 10^{-13} \text{ g cm}^{-3}$). Similar intermediate levels of mass production, $8.5 \times 10^{-12} \text{ g cm}^{-3}$, were obtained in experiments 2 and 3 where the only difference was the absence of light of $\lambda > 310 \text{ nm}$ in experiment 3. This demonstrates that, under the experimental conditions, visible light did not contribute to IOP production.

It is evident from these experiments that the release of gas-phase iodine from frozen IO_3^- solutions can occur, however it is difficult to distinguish which type of inorganic iodine was formed. Considering the UV-VIS spectra (Fig. 2) before and after irradiation it is likely that I_2 was present, as suggested by the increased absorbance in the range 270–400 nm where I_3^- and I_2 have absorbance maxima. The presence of other iodine gas species such as IO and OIO is suggested by a comparison of the results of experiments 2 and 3 with experiment 6, in which the RC was deactivated. If only I_2 was produced no IOP formation would be possible since both ozone and visible light are necessary to convert I_2 to IOPs. As previously noted, IO and OIO are able to produce IOPs in the absence of O_3 and visible light. The presence of IO and OIO is suggested by the difference in mass production between the blank ($4.3 \times 10^{-13} \text{ g cm}^{-3}$)

and experiment 6 ($7.1 \times 10^{-13} \text{ g cm}^{-3}$), in which light was present but the reaction cell was deactivated. The possibility exists that IO_3^- could be reduced to these forms and then dissolve in the liquid water present in ice crystal boundaries (Sazaki et al., 2012). This could explain the fact that the production of IOPs and hence the release of gas-phase iodine from ice is not uniform but presents an increase after at least 100 min (Fig. 8) suggesting a complex chemistry and diffusion of I_2 and likely IO through the matrix.

In the light of these experiment we propose that IO_3^- , though it has been found stable in liquid water, is not stable in ice and is photoreduced to other iodine species, principally IO and I_2 but with the possibility of also other species such as I^- , I_3^- and OIO. Regarding the presence of IO_3^- only in the dusty and cold glacial climate periods, it seems that increased dust fluxes (from $1\text{--}2 \text{ mgm}^{-2} \text{ yr}^{-1}$ during interglacials to $15\text{--}20 \text{ mgm}^{-2} \text{ yr}^{-1}$ during glacials (Lambert et al., 2008)) favour the formation of metal iodates by interactions of gas phase iodine oxide molecules and dust and, together with decreasing temperature (10°C lower from interglacial to glacial (Petit et al., 1999)) could promote greater IO_3^- stability. The correlation ($R = 0.77$) obtained between IO_3^- and fine dust ($0.7\text{--}5 \mu\text{m}$) (Delmonte et al., 2004) suggests that during glacial periods gas-phase molecules such as I_2O_4 attach to dust particles during transport.

4 Conclusions

We report the first bromine and iodine concentrations in ice cores as well their speciation. Based on the presented data and our simple Br depletion model, we estimate that glacial summer sea ice extended $\sim 500 \text{ km}$ north of the Antarctic coast, with maximum extension from 16 to 80 ky BP and 134 to 205 ky BP. This interpretation is also consistent with the increased iodine fluxes observed during glacial periods, which imply an approximate doubling of LGM winter sea ice extent compared to the penultimate glacial maximum. In addition, our results seem to suggest a reduction of iodate after

Halogen species record Antarctic sea ice extent

A. Spolaor et al.

Title Page

Abstract

Introduction

Conclusions

References

Tables

Figures

◀

▶

◀

▶

Back

Close

Full Screen / Esc

Printer-friendly Version

Interactive Discussion



deposition that could lead to iodide formation. Further studies should be carried out at other coastal and inland stations of Antarctica to compare with the results presented here.

It is now well known that bromine and iodine chemistry are particularly active in the polar atmosphere and have been linked by satellite observations to Antarctic sea ice, as opposed to the interior of Antarctica where background levels are observed (Schönhardt et al., 2011). This may be due to the temperature dependence of bromine activation (Oldridge and Abbatt, 2011), in which the lower temperatures of the Antarctic plateau (TD mean temperature -41°) (Frezzotti et al., 2004) reduces the reactivity of bromine and iodine. It is important to further study the depositional and post-depositional chemical processes of halogens in polar ice to confirm the validity of these species as long-term proxies of sea ice location and extent.

Acknowledgements. We thank Roberto Udisti for TALDICE MSA and SO_4^{2-} data. This work was supported by European Union Marie Curie IIF Fellowship (MIF1-CT-2006-039529, TDICOSO) within the VII Framework Program. The Talos Dome Ice Core Project (TALDICE), a joint European programme, is funded by national contributions from Italy, France, Germany, Switzerland and the UK. Primary logistical support was provided by PNRA at Talos Dome. This is TALDICE publication no. 29.

References

- Abram, N. J., Mulvaney, R., and Arrowsmith, C.: Environmental signals in a highly resolved ice core from James Ross Island, Antarctica, *J. Geophys. Res.*, 116, D20116, doi:10.1029/2011jd016147, 2011.
- Albani, S., Delmonte, B., Maggi, V., Baroni, C., Petit, J.-R., Stenni, B., Mazzola, C., and Frezzotti, M.: Interpreting last glacial to Holocene dust changes at Talos Dome (East Antarctica): implications for atmospheric variations from regional to hemispheric scales, *Clim. Past*, 8, 741–750, doi:10.5194/cp-8-741-2012, 2012.
- Atkinson, H. M., Huang, R.-J., Chance, R., Roscoe, H. K., Hughes, C., Davison, B., Schönhardt, A., Mahajan, A. S., Saiz-Lopez, A., Hoffmann, T., and Liss, P. S.: Iodine

Halogen species record Antarctic sea ice extent

A. Spolaor et al.

Title Page

Abstract

Introduction

Conclusions

References

Tables

Figures



Back

Close

Full Screen / Esc

Printer-friendly Version

Interactive Discussion



**Halogen species
record Antarctic sea
ice extent**

A. Spolaor et al.

Title Page

Abstract

Introduction

Conclusions

References

Tables

Figures

◀

▶

◀

▶

Back

Close

Full Screen / Esc

Printer-friendly Version

Interactive Discussion



emissions from the sea ice of the Weddell Sea, *Atmos. Chem. Phys.*, 12, 11229–11244, doi:10.5194/acp-12-11229-2012, 2012.

Awtrey, A. D. and Connick, R. E.: The absorption spectra of I_2 , I_3^- , I^- , IO_3^- , $S_4O_6^{2-}$ and $S_2O_3^{2-}$. Heat of the reaction $I_3^- = I_2 + I$, *J. Am. Chem. Soc.*, 73, 1842–1843, doi:10.1021/ja01148a504, 1951.

Ayers, G. P., Gillett, R. W., Caaney, J. M., and Dick, A. L.: Chloride and Bromide loss from sea-salt particles in Southern Ocean air, *J. Atmos. Chem.*, 33, 299–319, doi:10.1023/a:1006120205159, 1999.

Baker, A., Tunnicliffe, C., and Jickells, T.: Iodine speciation and deposition fluxes from the marine atmosphere, *J. Geophys. Res.*, 106, 28743–28749, doi:10.1029/2000JD000004, 2001.

Baker, A. R.: Inorganic iodine speciation in tropical Atlantic aerosol, *Geophys. Res. Lett.*, 31, L23S02, doi:10.1029/2004gl020144, 2004.

Barrie, L. A., Bottenheim, J. W., Schnell, R. C., Crutzen, P. J., and Rasmussen, R. A.: Ozone destruction and photochemical reactions at polar sunrise in the lower Arctic atmosphere, *Nature*, 334, 138–141, 1988.

Bluhm, K., Croot, P., and Wuttig, K.: Transformation of iodate to iodide in marine phytoplankton driven by cell senescence, *Aquat. Biol.*, 11, 1–15, doi:10.3354/ab00284, 2010.

Crosta, X., Sturm, A., Armand, L., and Pichon, J.-J.: Late Quaternary sea ice history in the Indian sector of the Southern Ocean as recorded by diatom assemblages, *Mar. Micropaleontol.*, 50, 209–223, 2004.

Curran, M. A. J., Van Ommen, T. D., and Morgan, V.: Seasonal characteristics of the major ions in the high-accumulation Dome Summit South ice core, Law Dome, Antarctica, *Ann. Glaciol.*, 27, 385–390, 1998.

Curran, M. A. J., van Ommen, T. D., Morgan, V. I., Phillips, K. L., and Palmer, A. S.: Ice core evidence for antarctic sea ice decline since the 1950 s, *Science*, 302, 1203–1206, 2003.

Davison, A. C. and Hinkley, D. V.: *Bootstrap Methods and Their Applications*, Cambridge University Press, Cambridge, 1997.

Delmonte, B., Basile-Doelsch, I., Petit, J. R., Maggi, V., Revel-Rolland, M., Michard, A., Jagoutz, E., and Grousset, F.: Comparing the Epica and Vostok dust records during the last 220 000 years: stratigraphical correlation and provenance in glacial periods, *Earth-Sci. Rev.*, 66, 63–87, 2004.

Efron, B.: Better bootstrap confidence intervals, *J. Am. Stat. Assoc.*, 82, 171–185, 1987.

**Halogen species
record Antarctic sea
ice extent**A. Spolaor et al.

[Title Page](#)[Abstract](#)[Introduction](#)[Conclusions](#)[References](#)[Tables](#)[Figures](#)[◀](#)[▶](#)[◀](#)[▶](#)[Back](#)[Close](#)[Full Screen / Esc](#)[Printer-friendly Version](#)[Interactive Discussion](#)

- Fischer, H., Siggaard-Andersen, M.-L., Ruth, U., Rothlisberger, R., and Wolff, E.: Glacial/interglacial changes in mineral dust and sea-salt records in polar ice cores: sources, transport, and deposition, *Rev. Geophys.*, 45, RG1002, doi:10.1029/2005rg000192, 2007.
- 5 Frezzotti, M., Bitelli, G., de Michelis, P., Deponti, A., Forieri, A., Gandolfi, S., Maggi, V., Mancini, F., Remy, F., Tabacco, I. E., Urbini, S., Vittuari, L., and Zirizzotti, A.: Geophysical survey at Talos Dome, East Antarctica: the search for a new deep-drilling site, *Ann. Glaciol.*, 39, 423–432, doi:10.3189/172756404781814591, 2004.
- Frieß, U., Hollwedel, J., König-Langlo, G., Wagner, T., and Platt, U.: Dynamics and chemistry of tropospheric bromine explosion events in the Antarctic coastal region, *J. Geophys. Res.*, 109, D06305, doi:10.1029/2003jd004133, 2004.
- 10 Frieß, U., Deutschmann, T., Gilfedder, B. S., Weller, R., and Platt, U.: Iodine monoxide in the Antarctic snowpack, *Atmos. Chem. Phys.*, 10, 2439–2456, doi:10.5194/acp-10-2439-2010, 2010.
- Gersonde, R., Crosta, X., Abelmann, A., and Armand, L.: Sea-surface temperature and sea ice distribution of the Southern Ocean at the EPILOG last glacial maximum – a circum-Antarctic view based on siliceous microfossil records, *Quaternary Sci. Rev.*, 24, 869–896, 2005.
- Gilfedder, B. S., Lai, S. C., Petri, M., Biester, H., and Hoffmann, T.: Iodine speciation in rain, snow and aerosols, *Atmos. Chem. Phys.*, 8, 6069–6084, doi:10.5194/acp-8-6069-2008, 2008.
- 20 Greenwood, N. N. and Earnshaw, A.: *Chemistry of the Elements*, Elsevier, Amsterdam, the Netherlands, 1342 pp., 2005.
- Kaleschke, L., Richter, A., Burrows, J., Afe, O., Heygster, G., Notholt, J., Rankin, A., Roscoe, H., Hollwedel, J., and Wagner, T.: Frost flowers on sea ice as a source of sea salt and their influence on tropospheric halogen chemistry, *Geophys. Res. Lett.*, 31, L16114, doi:10.1029/2004GL020655, 2004.
- 25 Kaufmann, P. R., Federer, U., Hutterli, M. A., Bigler, M., Schupbach, S., Ruth, U., Schmitt, J., and Stocker, T. F.: An improved continuous flow analysis system for high-resolution field measurements on ice cores, *Environ. Sci. Technol.*, 42, 8044–8050, doi:10.1021/es8007722, 2008.
- 30 Lambert, F., Delmonte, B., Petit, J. R., Bigler, M., Kaufmann, P. R., Hutterli, M. A., Stocker, T. F., Ruth, U., Steffensen, J. P., and Maggi, V.: Dust-climate couplings over the past 800 000 years from the EPICA Dome C ice core, *Nature*, 452, 616–619, 2008.

- Lisiecki, L. E. and Raymo, M. E.: A Plio-Pleistocene stack of 57 globally distributed benthic $\delta^{18}\text{O}$ records, *Paleoceanography*, 20, PA1003, doi:10.1029/2004pa001071, 2005.
- Mahajan, A. S., Plane, J. M. C., Oetjen, H., Mendes, L., Saunders, R. W., Saiz-Lopez, A., Jones, C. E., Carpenter, L. J., and McFiggans, G. B.: Measurement and modelling of tropospheric reactive halogen species over the tropical Atlantic Ocean, *Atmos. Chem. Phys.*, 10, 4611–4624, doi:10.5194/acp-10-4611-2010, 2010.
- Martin, J. H.: Glacial-interglacial CO_2 change: the iron hypothesis, *Paleoceanography*, 5, 1–13, doi:10.1029/PA005i001p00001, 1990.
- McFiggans, G., Coe, H., Burgess, R., Allan, J., Cubison, M., Alfarra, M. R., Saunders, R., Saiz-Lopez, A., Plane, J. M. C., Wevill, D., Carpenter, L., Rickard, A. R., and Monks, P. S.: Direct evidence for coastal iodine particles from *Laminaria* macroalgae – linkage to emissions of molecular iodine, *Atmos. Chem. Phys.*, 4, 701–713, doi:10.5194/acp-4-701-2004, 2004.
- Millero, F. J.: The physical chemistry of seawater, *Annu. Rev. Earth Pl. Sc.*, 2, 101–150, doi:10.1146/annurev.ea.02.050174.000533, 1974.
- Nghiem, S. V., Rigor, I. G., Richter, A., Burrows, J. P., Shepson, P. B., Bottenheim, J., Barber, D. G., Steffen, A., Latonas, J., Wang, F., Stern, G., Clemente-Colòn, P., Martin, S., Hall, D. K., Kaleschke, L., Tackett, P., Neumann, G., and Asplin, M. G.: Field and satellite observations of the formation and distribution of Arctic atmospheric bromine above a rejuvenated sea ice cover, *J. Geophys. Res.*, 117, D00S05, doi:10.1029/2011JD016268, 2012.
- Oldridge, N. W. and Abbatt, J. P. D.: Formation of gas-phase bromine from interaction of ozone with frozen and liquid NaCl/NaBr solutions: quantitative separation of surficial chemistry from bulk-phase reaction, *J. Phys. Chem. A*, 115, 2590–2598, doi:10.1021/jp200074u, 2011.
- Oltmans, S. J.: Surface ozone measurements in clean air, *J. Geophys. Res.*, 86, 1174–1180, doi:10.1029/JC086iC02p01174, 1981.
- Pechtl, S., Lovejoy, E. R., Burkholder, J. B., and von Glasow, R.: Modeling the possible role of iodine oxides in atmospheric new particle formation, *Atmos. Chem. Phys.*, 6, 505–523, doi:10.5194/acp-6-505-2006, 2006.
- Petit, J. R. and Delmonte, B.: A model for large glacial–interglacial climate-induced changes in dust and sea salt concentrations in deep ice cores (central Antarctica): palaeoclimatic implications and prospects for refining ice core chronologies, *Tellus B*, 61, 768–790, 2009.
- Petit, J. R., Jouzel, J., Raynaud, D., Barkov, N. I., Barnola, J. M., Basile, I., Bender, M., Chappellaz, J., Davis, M., Delaygue, G., Delmotte, M., Kotlyakov, V. M., Legrand, M., Lipenkov, V. Y., Lorius, C., Pepin, L., Ritz, C., Saltzman, E., and Stievenard, M.: Climate and atmospheric

Halogen species record Antarctic sea ice extent

A. Spolaor et al.

Title Page

Abstract

Introduction

Conclusions

References

Tables

Figures

◀

▶

◀

▶

Back

Close

Full Screen / Esc

Printer-friendly Version

Interactive Discussion



Halogen species record Antarctic sea ice extent

A. Spolaor et al.

Title Page

Abstract

Introduction

Conclusions

References

Tables

Figures

◀

▶

◀

▶

Back

Close

Full Screen / Esc

Printer-friendly Version

Interactive Discussion



history of the past 420 000 years from the Vostok ice core, Antarctica, *Nature*, 399, 429–436, 1999.

Rankin, A. M., Auld, V., and Wolff, E. W.: Frost flowers as a source of fractionated sea salt aerosol in the polar regions, *Geophys. Res. Lett.*, 27, 3469–3472, 2000.

5 Saiz-Lopez, A. and Boxe, C. S.: A mechanism for biologically-induced iodine emissions from sea-ice, *Atmos. Chem. Phys. Discuss.*, 8, 2953–2976, doi:10.5194/acpd-8-2953-2008, 2008.

Saiz-Lopez, A. and Plane, J.: Novel iodine chemistry in the marine boundary layer, *Geophys. Res. Lett.*, 31, L04112, doi:10.1029/2003GL019215, 2004.

10 Saiz-Lopez, A., Saunders, R. W., Joseph, D. M., Ashworth, S. H., and Plane, J. M. C.: Absolute absorption cross-section and photolysis rate of I₂, *Atmos. Chem. Phys.*, 4, 1443–1450, doi:10.5194/acp-4-1443-2004, 2004.

Saiz-Lopez, A., Chance, K., Liu, X., Kurosu, T. P., and Sander, S. P.: First observations of iodine oxide from space, *Geophys. Res. Lett.*, 34, L12812, doi:10.1029/2007GL030111, 2007a.

15 Saiz-Lopez, A., Mahajan, A. S., Salmon, R. A., Bauguitte, S. J. B., Jones, A. E., Roscoe, H. K., and Plane, J. M. C.: Boundary layer halogens in coastal Antarctica, *Science*, 317, 348–351, 2007b.

Saiz-Lopez, A., Plane, J. M. C., Mahajan, A. S., Anderson, P. S., Bauguitte, S. J.-B., Jones, A. E., Roscoe, H. K., Salmon, R. A., Bloss, W. J., Lee, J. D., and Heard, D. E.: On the vertical distribution of boundary layer halogens over coastal Antarctica: implications for O₃, HO_x, NO_x and the Hg lifetime, *Atmos. Chem. Phys.*, 8, 887–900, doi:10.5194/acp-8-887-2008, 2008.

20 Saiz-Lopez, A., Plane, J. M. C., Baker, A. R., Carpenter, L. J., von Glasow, R., Gómez Martín, J. C., McFiggans, G., and Saunders, R. W.: Atmospheric chemistry of iodine, *Chem. Rev.*, 112, 1773–1804, 2012.

Saunders, R. W. and Plane, J. M. C.: Formation pathways and composition of iodine oxide ultra-fine particles, *Environ. Chem.*, 2, 299–303, 2005.

Saunders, R. W., Kumar, R., Gomez Martin, J. C., Mahajan, A. S., Murray, B. J., and Plane, J. M. C.: Studies of the formation and growth of aerosol from molecular iodine precursor, *Z. Phys. Chem.*, 224, 1095–1117, doi:10.1524/zpch.2010.6143, 2010.

30 Saunders, R. W., Dhomse, S., Tian, W. S., Chipperfield, M. P., and Plane, J. M. C.: Interactions of meteoric smoke particles with sulphuric acid in the Earth's stratosphere, *Atmos. Chem. Phys.*, 12, 4387–4398, doi:10.5194/acp-12-4387-2012, 2012a.

**Halogen species
record Antarctic sea
ice extent**

A. Spolaor et al.

Title Page

Abstract

Introduction

Conclusions

References

Tables

Figures

◀

▶

◀

▶

Back

Close

Full Screen / Esc

Printer-friendly Version

Interactive Discussion



Saunders, R. W., Kumar, R., MacDonald, S. M., and Plane, J. M. C.: Insights into the photochemical transformation of iodine in aqueous systems: humic acid photosensitized reduction of iodate, *Environ. Sci. Technol.*, 46, 11854–11861, doi:10.1021/es3030935, 2012b.

Sazaki, G., Zepeda, S., Nakatsubo, S., Yokomine, M., and Furukawa, Y.: Quasi-liquid layers on ice crystal surfaces are made up of two different phases, *P. Natl. Acad. Sci.*, 2012.

Scarchilli, C., Frezzotti, M., and Ruti, P.: Snow precipitation at four ice core sites in East Antarctica: provenance, seasonality and blocking factors, *Clim. Dynam.*, 37, 2107–2125, doi:10.1007/s00382-010-0946-4, 2011.

Schönhardt, A., Richter, A., Wittrock, F., Kirk, H., Oetjen, H., Roscoe, H. K., and Burrows, J. P.: Observations of iodine monoxide columns from satellite, *Atmos. Chem. Phys.*, 8, 637–653, doi:10.5194/acp-8-637-2008, 2008.

Schönhardt, A., Begoin, M., Richter, A., Wittrock, F., Kaleschke, L., Gómez Martín, J. C., and Burrows, J. P.: Simultaneous satellite observations of IO and BrO over Antarctica, *Atmos. Chem. Phys.*, 12, 6565–6580, doi:10.5194/acp-12-6565-2012, 2012.

Simpson, W. R., Alvarez-Aviles, L., Douglas, T. A., Sturm, M., and Domine, F.: Halogens in the coastal snow pack near Barrow, Alaska: evidence for active bromine air-snow chemistry during springtime, *Geophys. Res. Lett.*, 32, L04811, doi:10.1029/2004gl021748, 2005.

Simpson, W. R., Carlson, D., Hönninger, G., Douglas, T. A., Sturm, M., Perovich, D., and Platt, U.: First-year sea-ice contact predicts bromine monoxide (BrO) levels at Barrow, Alaska better than potential frost flower contact, *Atmos. Chem. Phys.*, 7, 621–627, doi:10.5194/acp-7-621-2007, 2007a.

Simpson, W. R., von Glasow, R., Riedel, K., Anderson, P., Ariya, P., Bottenheim, J., Burrows, J., Carpenter, L. J., Frieß, U., Goodsite, M. E., Heard, D., Hutterli, M., Jacobi, H.-W., Kaleschke, L., Neff, B., Plane, J., Platt, U., Richter, A., Roscoe, H., Sander, R., Shepson, P., Sodeau, J., Steffen, A., Wagner, T., and Wolff, E.: Halogens and their role in polar boundary-layer ozone depletion, *Atmos. Chem. Phys.*, 7, 4375–4418, doi:10.5194/acp-7-4375-2007, 2007b.

Smith, B. T., Van Ommen, T. D., and Curran, M. A. J.: Methanesulphonic acid movement in solid ice cores, *Ann. Glaciol.*, 39, 540–544, 2004.

Spolaor, A., Vallelonga, P., Gabrieli, J., Kehrwald, N., Turetta, C., Cozzi, G., Poto, L., Plane, J. C., Boutron, C., and Barbante, C.: Speciation analysis of iodine and bromine at picogram-per-gram levels in polar ice, *Anal. Bioanal. Chem.*, 405, 647–654, doi:10.1007/s00216-012-5806-0, 2012.

**Halogen species
record Antarctic sea
ice extent**

A. Spolaor et al.

Title Page

Abstract

Introduction

Conclusions

References

Tables

Figures

◀

▶

◀

▶

Back

Close

Full Screen / Esc

Printer-friendly Version

Interactive Discussion



Stenni, B., Buiron, D., Frezzotti, M., Albani, S., Barbante, C., Bard, E., Barnola, J. M., Baroni, M., Baumgartner, M., Bonazza, M., Capron, E., Castellano, E., Chappellaz, J., Delmonte, B., Falourd, S., Genoni, L., Iacumin, P., Jouzel, J., Kipfstuhl, S., Landais, A., Lemieux-Dudon, B., Maggi, V., Masson-Delmotte, V., Mazzola, C., Minster, B., Montagnat, M., Mulvaney, R., Narcisi, B., Oerter, H., Parrenin, F., Petit, J. R., Ritz, C., Scarchilli, C., Schilt, A., Schupbach, S., Schwander, J., Selmo, E., Severi, M., Stocker, T. F., and Udisti, R.: Expression of the bipolar see-saw in Antarctic climate records during the last deglaciation, *Nat. Geosci.*, 4, 46–49, 2011.

Vogt, R.: Iodine compounds in the atmosphere, in: *Reactive Halogen Compounds in the Atmosphere*, edited by: Fabian, P. and Singh, O. N., Springer-Verlag, Berlin, 113–128 pp., 1999.

Vogt, R., Crutzen, P. J., and Sander, R.: A mechanism for halogen release from sea-salt aerosol in the remote marine boundary layer, *Nature*, 383, 327–330, 1996.

Vogt, R., Sander, R., Von Glasow, R., and Crutzen, P.: Iodine chemistry and its role in halogen activation and ozone loss in the marine boundary layer: a model study, *J. Atmos. Chem.*, 32, 375–395, 1999.

Wofsy, S. C., McElroy, M. B., and Yung, Y. L.: The chemistry of atmospheric bromine, *Geophys. Res. Lett.*, 2, 215–218, doi:10.1029/GL002i006p00215, 1975.

Wolff, E., Fischer, H., Fundel, F., Ruth, U., Twarloh, B., Littot, G. C., Mulvaney, R., Rothlisberger, R., de Angelis, M., Boutron, C. F., Hansson, M., Jonsell, U., Hutterli, M. A., Lambert, F., Kaufmann, P., Stauffer, B., Stocker, T. F., Steffensen, J. P., Bigler, M., Siggaard-Andersen, M. L., Udisti, R., Becagli, S., Castellano, E., Severi, M., Wagenbach, D., Barbante, C., Gabrielli, P., and Gaspari, V.: Southern Ocean sea-ice extent, productivity and iron flux over the past eight glacial cycles, *Nature*, 440, 491–496, doi:10.1038/nature04614 2006.

Wolff, E., Barbante, C., Becagli, S., Bigler, M., Boutron, C., Castellano, E., De Angelis, M., Federer, U., Fischer, H., and Fundel, F.: Changes in environment over the last 800 000 years from chemical analysis of the EPICA Dome C ice core, *Quaternary Sci. Rev.*, 29, 285–295, 2010.

Wong, G. T. F.: The marine geochemistry of iodine, *Rev. Aquat. Sci.*, 4, 45–73, 1991.

Halogen species record Antarctic sea ice extent

A. Spolaor et al.

Title Page

Abstract

Introduction

Conclusions

References

Tables

Figures

◀

▶

◀

▶

Back

Close

Full Screen / Esc

Printer-friendly Version

Interactive Discussion



Table 1. IOP production experiment conditions and results. IOP mass productions are expressed as g cm^{-3} measured for 180 min (3 h). Mass production expressed in g cm^{-3} . Abbreviations: Light – solar simulator, CG – carrier gas, BF – blue filter, O_3 – ozone in the flow cell, RC – reaction cell, Sol – solutions (W: water, HA: humic acid), an “x” represents an active parameter while “–” represents an inactive parameter.

Experiment	Light	CG	BF	O_3	RC	Sol	Mass production in 3 h
1	–	N_2	–	–	x	10^{-5} W	4.3×10^{-13}
2	x	N_2	–	–	x	10^{-5} W	8.5×10^{-13}
3	x	N_2	x	–	x	10^{-5} W	8.5×10^{-13}
4	x	N_2	–	x	x	10^{-5} W	1.0×10^{-12}
5	x	N_2	–	–	x	10^{-5} HA	3.3×10^{-13}
6	x	N_2	–	–	–	10^{-5} W	7.1×10^{-13}

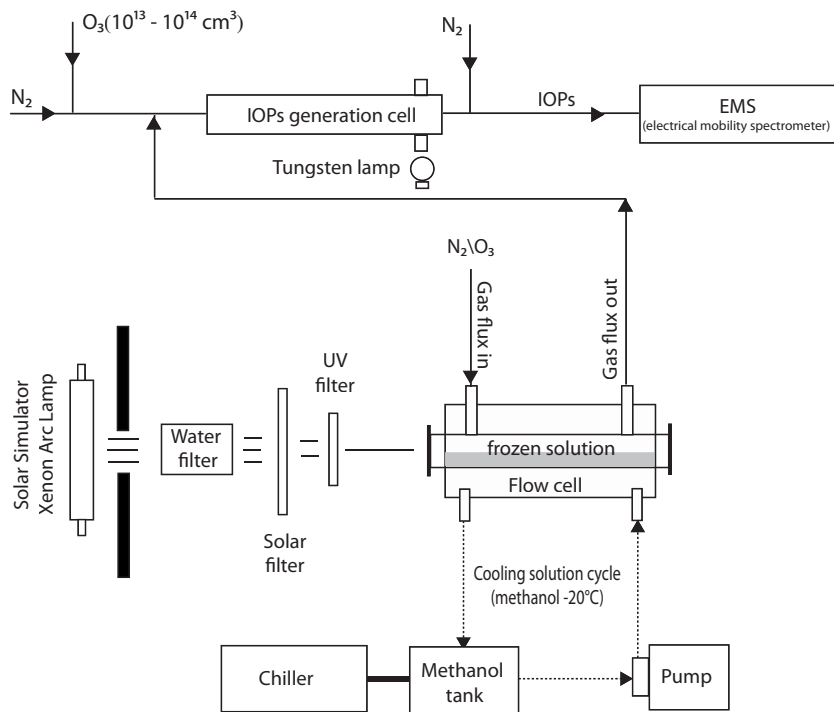


Fig. 1. Schematic diagram of the photochemical flow reactor set up to study the stability/reactivity of IO₃⁻ in ice. The solid line represents the gas flow pattern, the dashed line shows the chilled methanol circulation.

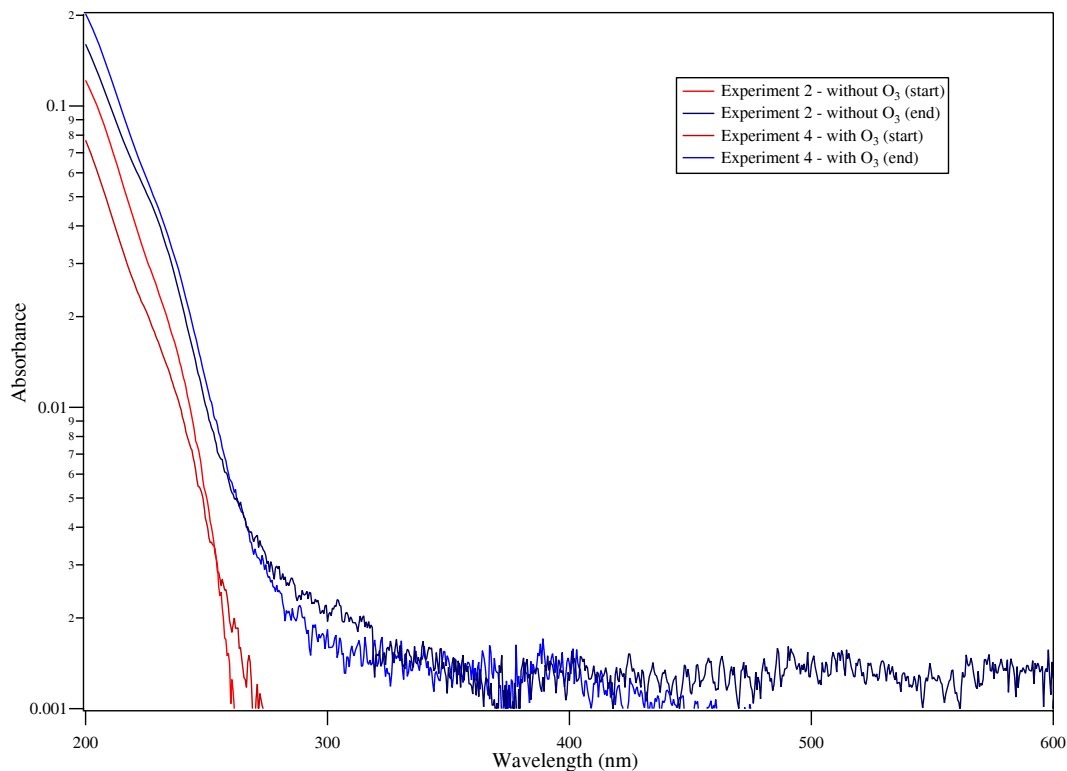


Fig. 2. Results of two Iodine Oxide Particle (IOP) production experiments, showing the spectrophotometric spectra of 10^{-5} M IO_3^- solutions in the presence of O_3 (experiment 4) and without O_3 (experiment 2). Blue lines represent the UV-VIS spectra at the end of experiment while the red lines show initial conditions (fresh solution). IOPs were produced in both experiments, indicated by the increased absorbance in the range 270–400 nm where I_3^- and I_2 have absorbance maxima.

Halogen species
record Antarctic sea
ice extent

A. Spolaor et al.

Title Page

Abstract

Introduction

Conclusions

References

Tables

Figures

⏪

⏩

◀

▶

Back

Close

Full Screen / Esc

Printer-friendly Version

Interactive Discussion



Halogen species
record Antarctic sea
ice extent

A. Spolaor et al.

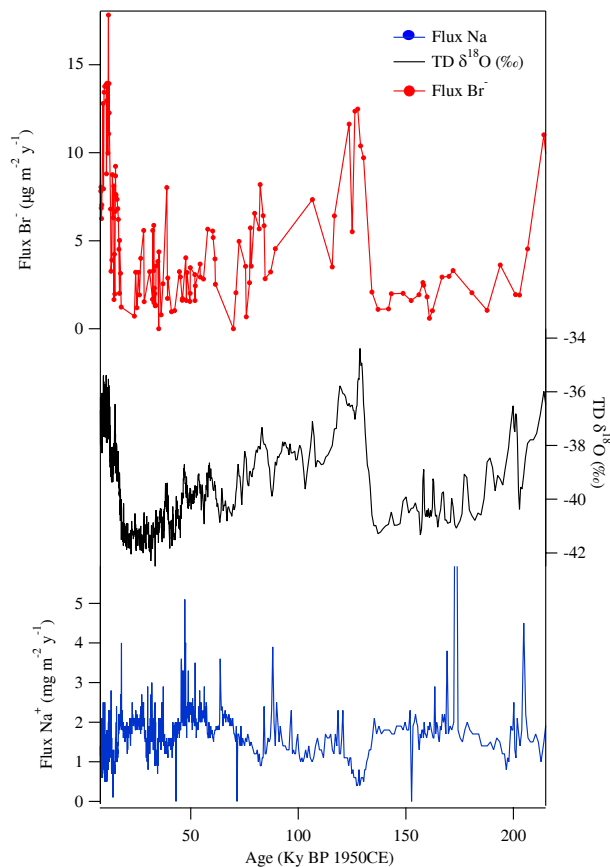


Fig. 3. Br⁻ fluxes (red) anticorrelate with sodium (blue). Sodium is recorded as a high-resolution data set while bromide was measured at lower resolution.

[Title Page](#)[Abstract](#)[Introduction](#)[Conclusions](#)[References](#)[Tables](#)[Figures](#)[◀](#)[▶](#)[◀](#)[▶](#)[Back](#)[Close](#)[Full Screen / Esc](#)[Printer-friendly Version](#)[Interactive Discussion](#)

Halogen species record Antarctic sea ice extent

A. Spolaor et al.

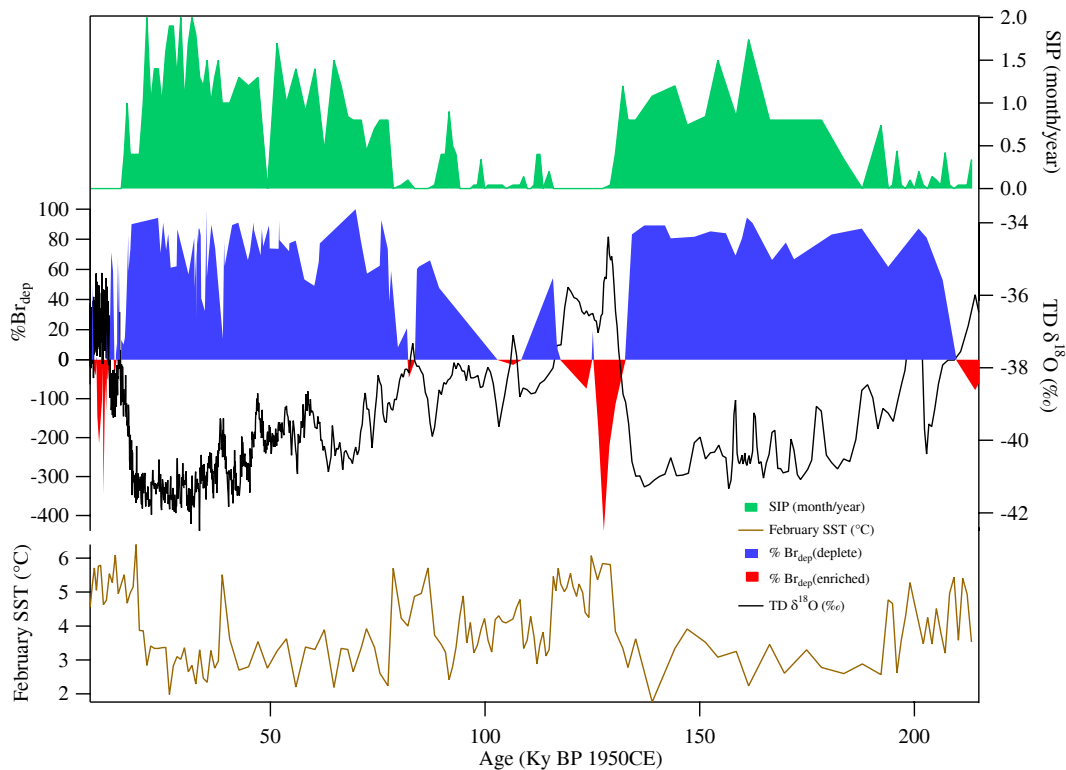


Fig. 4. % Br_{dep} is plotted with sea ice presence (SIP, green area) and February sea surface temperature (red line, Crosta et al., 2004) and Talos Dome $\delta^{18}\text{O}$. The red areas indicate Br^- enrichment (i.e. negative % Br_{dep}) while blue areas indicate bromide depletion.

Title Page

Abstract

Introduction

Conclusions

References

Tables

Figures

⏪

⏩

◀

▶

Back

Close

Full Screen / Esc

Printer-friendly Version

Interactive Discussion



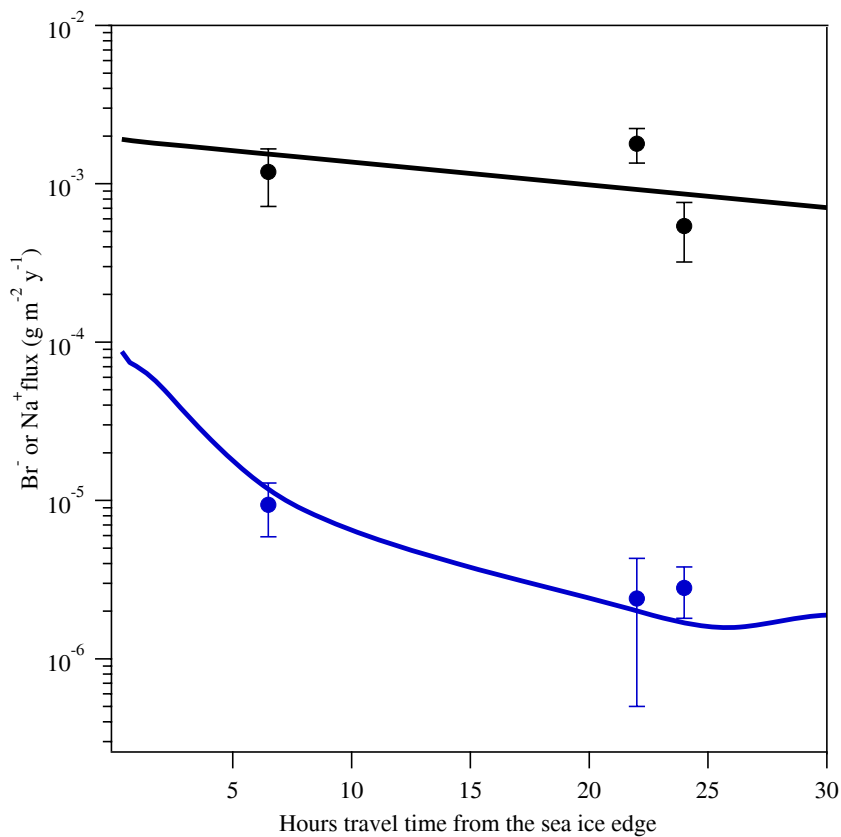


Fig. 5. Comparison between the modelled deposition fluxes (lines) with measurements at Talos Dome (Circles, 7 h from sea ice edge) and Dome C (Circles, 22 and 24 h from sea ice edge).

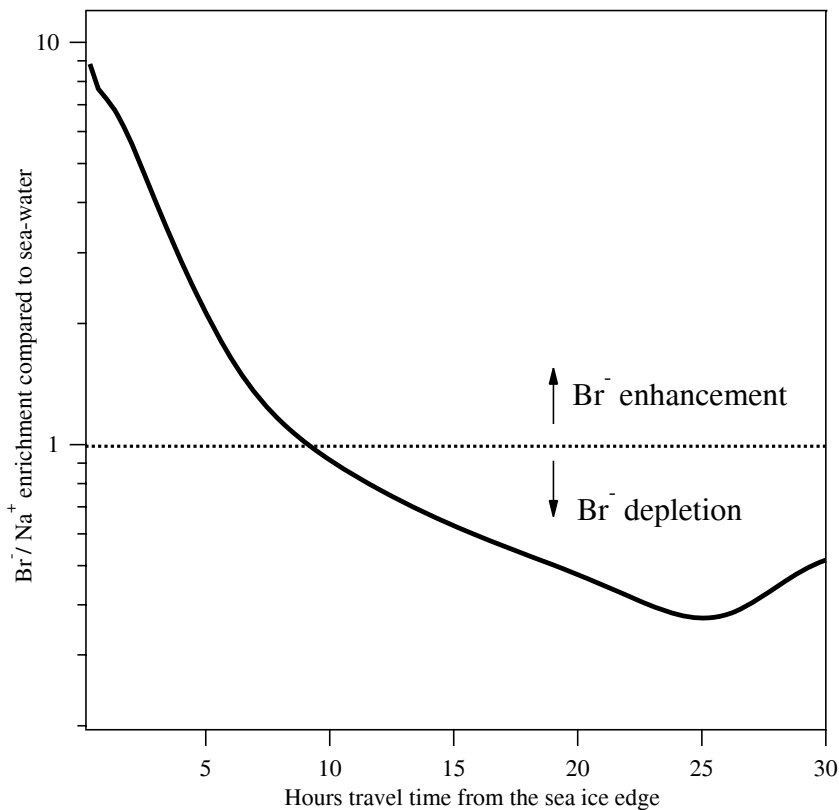


Fig. 6. Variability in the observed Br/Na ratios expressed as a function of the air mass travel time due to the different deposition velocities of HBr and sea-salt in the model. After 8 h of transport, bromide begins to be depleted relative to sea-salt.

Halogen species
record Antarctic sea
ice extent

A. Spolaor et al.

Title Page

Abstract

Introduction

Conclusions

References

Tables

Figures

◀

▶

◀

▶

Back

Close

Full Screen / Esc

Printer-friendly Version

Interactive Discussion



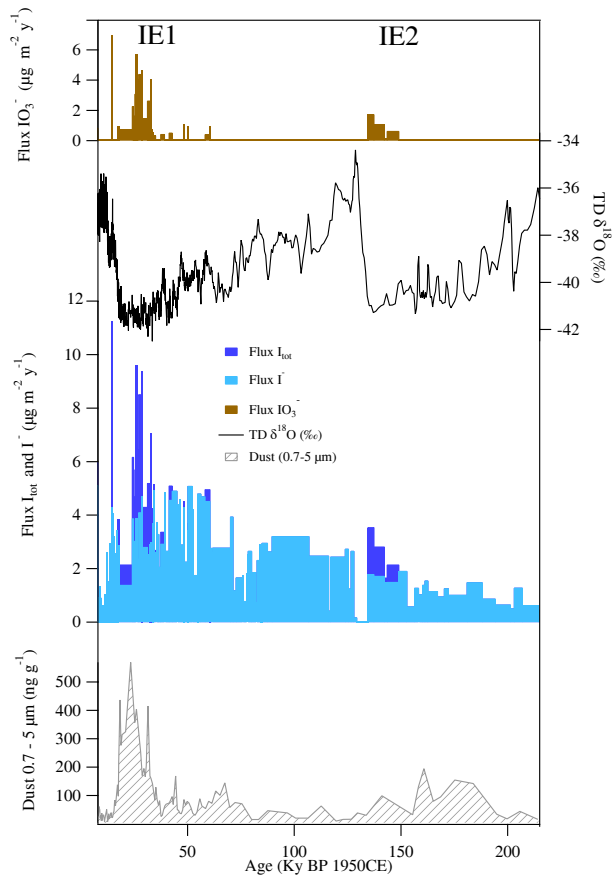


Fig. 7. Iodate (IO_3^- , brown), iodide (I^- , light blue) and total iodine (I_{tot} , blue) in Talos Dome ice core samples. While I^- is present in all samples with a similar trend to Na, IO_3^- is closely linked with the fine dust load (grey shaded area, Delmonte et al., 2004) and is present only from 16.8 to 33.8 ky BP and 134.2 to 143.2 ky BP.

Halogen species record Antarctic sea ice extent

A. Spolaor et al.

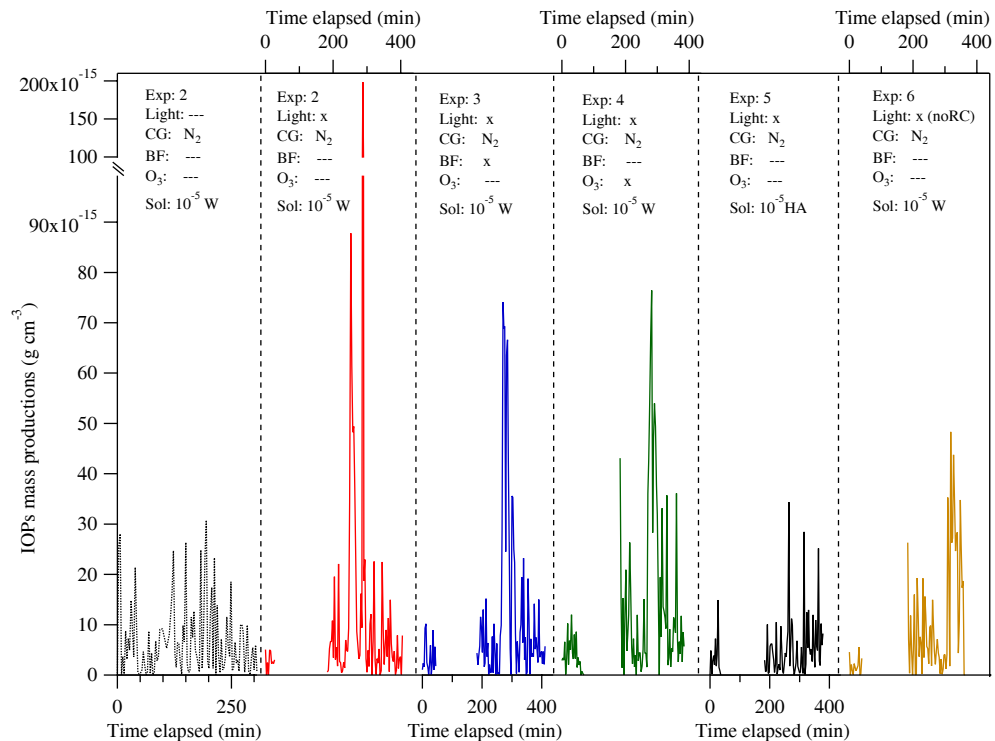


Fig. 8. Rates of IOP particle production (in g cm^{-3}) from the frozen IO_3^- solutions under different experimental conditions as summarized in Table 1. The blank is shown at the beginning of each experiment. Abbreviations: Light – solar simulator, CG – carrier gas, BF – blue filter, O₃ – ozone in the flow cell, RC – reaction cell, Sol – solutions (W: water, HA: humic acid). An “x” represents an active parameter while “--” represents an inactive parameter.

Title Page

Abstract

Introduction

Conclusions

References

Tables

Figures

◀

▶

◀

▶

Back

Close

Full Screen / Esc

Printer-friendly Version

Interactive Discussion

