

# Sources and geographical origins of fine aerosols in Paris (France)

M. Bressi<sup>1,2</sup>, J. Sciare<sup>1</sup>, V. Gherzi<sup>3</sup>, N. Mihalopoulos<sup>4</sup>, J.-E. Petit<sup>1,5</sup>, J. B. Nicolas<sup>1,2</sup>, S. Moukhtar<sup>3</sup>, A. Rosso<sup>3</sup>, A. Féron<sup>1</sup>, N. Bonnaire<sup>1</sup>, E. Poulakis<sup>4</sup> and C. Theodosi<sup>4</sup>.

<sup>1</sup>Laboratoire des Sciences du Climat et de l'Environnement, LSCE, UMR8212, CNRS-CEA-UVSQ, Gif-sur-Yvette, 91191, France.

<sup>2</sup>French Environment and Energy Management Agency, ADEME, 20 avenue du Grésillé, BP90406 49004, Angers Cedex 01, France.

<sup>3</sup>AIRPARIF, Surveillance de la Qualité de l'Air en Ile-de-France, Paris, 75004, France.

<sup>4</sup>Environmental Chemical Processes Laboratory, ECPL, Heraklion, Voutes, Greece.

<sup>5</sup>INERIS, DRC/CARA/CIME, Parc Technologique Alata, BP2, Verneuil-en-Halatte, 60550, France.

Correspondence to: michael.bressi@ensiacet.fr

## Abstract

The present study aims at identifying and apportioning the major sources of fine aerosols in Paris (France) -the second most populated "Larger Urban Zone" in Europe-, and determining their geographical origins. It is based on the daily chemical composition of PM<sub>2.5</sub> characterised during one year at an urban background site of Paris (Bressi et al., 2013). Positive Matrix Factorization (EPA PMF3.0) was used to identify and apportion the sources of fine aerosols; bootstrapping was performed to determine the adequate number of PMF factors, and statistics (root mean square error, coefficient of determination, etc.) were examined to better model PM<sub>2.5</sub> mass and chemical components. Potential Source Contribution Function (PSCF) and Conditional Probability Function (CPF) allowed the geographical origins of the sources to be assessed; special attention was paid to implement suitable weighting functions. Seven factors named ammonium sulfate (A.S.) rich factor, ammonium nitrate (A.N.) rich factor, heavy oil combustion, road traffic, biomass burning, marine aerosols and metals industry were identified; a detailed discussion of their chemical characteristics is reported. They respectively contribute 27, 24, 17, 14, 12, 6 and 1% of PM<sub>2.5</sub> mass (14.7 µg/m<sup>3</sup>) on the annual average; their seasonal variability is discussed. The A.S. and A.N. rich factors have undergone north-eastward mid- or long-range transport from Continental Europe, heavy oil combustion mainly stems from northern France and the English Channel, whereas road traffic and biomass burning are primarily locally emitted. Therefore, on average more than half of PM<sub>2.5</sub> mass measured in the city of

Paris is due to mid- or long-range transport of secondary aerosols stemming from continental Europe, whereas local sources only contribute a quarter of the annual averaged mass. These results imply that fine aerosols abatement policies conducted at the local scale may not be sufficient to notably reduce PM<sub>2.5</sub> levels at urban background sites in Paris, suggesting instead more coordinated strategies amongst neighbouring countries. Similar conclusions might be drawn in other continental urban background sites given the transboundary nature of PM<sub>2.5</sub> pollution.

## 1. Introduction

Aerosols are airborne solid or liquid particles arising from various natural and anthropogenic sources (IPCC, 2007). They are directly emitted in the atmosphere as particles (primary aerosols) or result from gas to particle conversions (secondary aerosols, Raes et al., 2000). Their chemical characteristics are miscellaneous given the diversity of their sources as well as their formation and transformation processes. Aerosols are subjects of concern for sanitary (Bernstein et al., 2004; Pope and Dockery, 2006), climatic (Forster et al., 2007; Isaksen et al., 2009) and economic reasons (Aphekom, 2012; US-EPA, 2011a), to name a few (see US-EPA, 2011b for further details). Due to their enhanced adverse health effects in particular, fine particles (PM<sub>2.5</sub> i.e. particles with an aerodynamic diameter less than or equal to 2.5 µm) have been subject to a stringent legislative framework during the last years.

The city of Paris (France) is concerned by the aforementioned issues. First, about 11 million inhabitants (ca. 18% of the French population) are exposed to PM<sub>2.5</sub> pollution in this “Larger Urban Zone” (LUZ), which is the second most populated in Europe (Eurostat, 2012). Aphekom (2011) estimated that reducing PM<sub>2.5</sub> levels in Paris to the recommended World Health Organisation (WHO) value of 10 µg/m<sup>3</sup> would lead to a gain in life expectancy of ca. half a year in this city. Second, because different megacities in the world have been reported to impact their regional climates (Molina and Molina, 2004 and references therein), the anthropogenic emissions of air pollutants in Paris could lead to the same consequences. Third, substantial economic benefits should result from a reduction of PM<sub>2.5</sub> levels in Paris, due to the decrease of hospital admissions and corresponding work losses. For instance, Aphekom (2011) estimated that a reduction of PM<sub>2.5</sub> levels in Paris to the WHO guidelines would lead to more than 4 billion euros benefits. Therefore, there is a need to lower fine aerosol levels in Paris, which requires effective PM<sub>2.5</sub> abatement strategies. It should be mentioned that in a broader context, PM<sub>2.5</sub> levels measured in Paris are generally lower than in other European urban environments: Paris (17.8 µg.m<sup>-3</sup>), Zurich (19.0 µg.m<sup>-3</sup>), Prague (19.8 µg.m<sup>-3</sup>), Vienna (21.8 µg.m<sup>-3</sup>), Barcelona (28.2 µg.m<sup>-3</sup>) (Bressi, 2012; Putaud et al., 2010). Implementing effective PM<sub>2.5</sub> abatement strategies is thus not only necessary in Paris but also in most European urban environments.

At the present times, such strategies seem to be rather insufficient in this city. Despite the abatement policies implemented (e.g. prefectural order n° 2011-00832 of the 27 October 2011 targeting sources such as wood burning, agricultural fertilizers, industrial emissions, etc.), PM<sub>2.5</sub> annual levels in Paris have remained rather stable during the last ten years (AIRPARIF, 2012). The lack of knowledge of the sources and the geographical origins of fine aerosols in this city may explain the ineffectiveness of such policies. In fact, until now the major sources of PM<sub>2.5</sub> have only been estimated through emission inventories (EI), a methodology that leads to significant uncertainties. As an illustration, the French Interprofessional Technical Centre for Studies on Air Pollution (CITEPA) estimated uncertainties of 48% for PM<sub>2.5</sub> emissions in France in 2008 (CITEPA, 2010). Comparisons with the EI implemented by AIRPARIF (which is the regional air quality network of Paris) lead to substantial differences (Bressi, 2012); discrepancies between AIRPARIF EI and the European Monitoring and Evaluation Program (EMEP) are also considerable (Hodzic et al., 2005). Furthermore, such approaches do not take into account the secondary fraction of fine aerosols, which are however predominant in Europe (Putaud et al., 2010) and in Paris in particular (Bressi et al., 2013). By contrast, source apportionment (SA) techniques -such as Positive Matrix Factorization (PMF)- would allow considering this secondary aerosol fraction, and would thus appear more suitable to identify and apportion PM sources (Viana et al., 2008; Belis et al., 2013). Nonetheless, this type of studies has not been conducted on aerosols on the annual scale in Paris yet and is rare in France (Karagulian and Belis, 2011).

In addition, the geographical origins of PM<sub>2.5</sub> are poorly documented in this city. To the best of our knowledge, only one study conducted by Sciare et al. (2010) has addressed this issue for PM<sub>2.5</sub>. They reported that eastward long-range transport can significantly affect PM<sub>2.5</sub> levels in the region of Paris by bringing high levels of secondary aerosols mainly composed of ammonium sulfate (A.S.) and ammonium nitrate (A.N.). Freutel et al. (2013) reach the same conclusion, reporting the highest PM<sub>1</sub> levels in the region of Paris when air masses are advected from continental Europe. Interestingly, modelling studies conducted by Vautard et al. (2003) and Bessagnet et al. (2005) have also reported a noticeable influence of eastward long-range transport on ozone and PM<sub>10</sub> levels, respectively, observed in the region of Paris. Nevertheless, the results reported by Sciare et al. (2010) and Freutel et al. (2013) on fine aerosols were based on few weeks periods (19 and 30 days, respectively) occurring during late spring/summer and thus suffer from a lack of representativeness on a longer time scale. The determination of the geographical origins of PM<sub>2.5</sub> in Paris thus requires longer observations to reach more robust conclusions, which could ask for the use of statistical tools such as Potential Source Contribution Function (PSCF) and Conditional Probability Function (CPF).

In this context, the "Particles" research project involving the regional air quality network (AIRPARIF) and the Climate and Environmental Sciences Laboratory (LSCE) was implemented. It aims

at documenting the chemistry, the sources and the geographical origins of fine aerosols in the region of Paris, during one-year, on a daily basis. A full description of the project can be found in AIRPARIF and LSCE (2012) and Gherzi et al. (2010, 2012). The daily chemical composition of PM<sub>2.5</sub> in the region of Paris obtained within the "Particles" project has been discussed in details in Bressi et al. (2013). Based on this work, the present paper aims at:

- (1) identifying the sources of fine aerosols at an urban site in Paris (Sect. 4.1),
- (2) identifying the geographical origins of these sources (Sect. 4.2),
- (3) determining the contribution of each source to PM<sub>2.5</sub> mass on yearly and seasonal bases (Sect. 4.3).

Section 2 will briefly describe i) the sampling procedure and the chemical analyses conducted and ii) the statistical tools used to fulfil these objectives (PMF, PSCF and CPF). Section 3 will show how the appropriate number of PMF factors can be chosen through the bootstrap technique. Technical results regarding the ability of PMF to model PM<sub>2.5</sub> mass and chemical components will be presented, and the methodology used to determine the suitable PSCF and CPF weighting functions discussed. The identification of PMF factors to real physical sources will be reported in Sect. 4.1, after having compared their chemical profiles to the literature. Section 4.2 will focus on the geographical origins of PM<sub>2.5</sub> sources discussing PSCF and CPF results. Finally, the yearly and seasonal contributions of each source will be compared to other European studies, chosen according to their presumable geographical origins (Sect. 4.3).

## **2. Material and methods**

### **2.1. Sampling and chemical analyses**

A full description of the sampling site and the analytical methods used can be found in Bressi et al. (2013) and Poulakis et al. (2012); only the essential information will be reported here.

#### **2.1.1 Sampling**

The sampling site is located in the city centre of Paris (4<sup>th</sup> district, 48°50'56"N, 02°21'55"E, 20 m above ground level, a.g.l.) and is representative of an urban background (Bressi et al., 2013; Gherzi et al., 2010, 2012). It is worthwhile noting that PM<sub>2.5</sub> levels and chemical composition are very homogeneous in the Paris LUZ (Bressi et al., 2013). For instance, urban and suburban sites (distant by 10 km) typically exhibit PM<sub>2.5</sub> levels that are not statistically significantly different, whereas levels

measured at rural locations (distant by 50 km) are ca. 25% lower than at the urban site. This urban sampling site is thus regarded as being representative of Paris metropolitan area. It should however be highlighted that this site is at 20m a.g.l. which might prevent near ground sources (e.g. road dust) to be considered in our study. Fine aerosols ( $PM_{2.5}$ ) were collected every day from 00:00 to 23:59 LT, during one year from 11 September 2009 to 10 September 2010. Two collocated Leckel low volume samplers (SEQ47/50) running at  $2.3\text{ m}^3/\text{h}$  were used for filter sampling. One Leckel sampler was equipped with Quartz filters (QMA, Whatman, 47 mm diameter) for carbon analyses, the other with Teflon filters (PTFE, Pall, 47 mm diameter,  $2.0\text{ }\mu\text{m}$  porosity) for gravimetric, ion and metal measurements. 28 samples (i.e. 8% of the dataset) were discarded because of power failures, analytical problems, etc. (see Table S1 for the detailed list).

### 2.1.2 Chemical analyses

Chemical analyses of the major  $PM_{2.5}$  components are thoroughly described in Bressi et al. (2013). Briefly i) gravimetric mass ( $PM_{\text{grav}}$ ) was determined with a microbalance (Sartorius, MC21S), ii) elemental and organic carbon (EC and OC, respectively) were analysed by a thermal-optical method (Sunset Lab., OR, USA) using the EUSAAR\_2 protocol (Cavalli et al., 2010) and iii) water-soluble ions ( $\text{Cl}^-$ ,  $\text{NO}_3^-$ ,  $\text{SO}_4^{2-}$ ,  $\text{Na}^+$ ,  $\text{NH}_4^+$ ,  $\text{K}^+$ ,  $\text{Mg}^{2+}$ ,  $\text{Ca}^{2+}$ ) were quantified with Ion Chromatographs (IC). Note that the gravimetric procedure used underestimates  $PM_{2.5}$  mass compared to EU reference methods (EN 14907) by ca. 20% on average (see Bressi et al., 2013). Organic matter (OM) was inferred from OC measurements using an OC to OM conversion factor of 1.95 (Bressi et al., 2013). Metals including Al, Ca, Ti, V, Cr, Mn, Fe, Ni, Cu, Zn, As, Cd and Pb were analysed after acid microwave digestion by Inductively Coupled Plasma and Mass Spectrometry as reported in Poulakis et al. (2012) and Theodosi et al. (2010). Note that some minerals (e.g. Al, Ti, etc.) might be underestimated due to the acid microwave digestion procedure used here (with  $\text{HNO}_3$ ), which might not be able to dissolve entirely these compounds (see e.g. Robache et al., 2000).

Monosaccharides and sugar alcohols, comprising levoglucosan, mannosan, arabitol and mannitol were also analysed. They were determined following the technique reported in Iinuma et al. (2009), using a high performance anion exchange chromatograph (HPAEC, DIONEX, model ICS 3000) with pulsed amperometric detection (PAD). Separation was performed with a Dionex CarboPac MA1 4-mm diameter column (see Sciare et al., 2011 for further information).

## 2.2. Identification and contribution of the major sources of $PM_{2.5}$

To identify the major sources of PM<sub>2.5</sub> and estimate their contribution to fine aerosol masses, source apportionment (SA) models have been extensively developed in the last three decades (Cooper and Watson, 1980; Gordon, 1980; Hopke, 1981, 1985; Hopke et al., 2006; Watson et al., 2002). An extensive description of SA methods and receptor models can be found in the supplementary material (Sect. S1).

### 2.2.1. Positive Matrix Factorization (PMF)

The PMF model (Paatero and Tapper, 1994; Paatero, 1997; Ulbrich et al., 2009; Zhang et al., 2011) is used here (see Sect. S1). PMF is a receptor model that assumes mass conservation and uses a mass balance analysis to identify and apportion sources of PM; it aims at resolving the following equation:

$$x_{ij} = \sum_{k=1}^p g_{ik} * f_{kj} + e_{ij} \quad (1)$$

where  $x_{ij}$  is the measured concentration of the  $j^{\text{th}}$  species in the  $i^{\text{th}}$  sample,  $g_{ik}$  is the contribution of the  $k^{\text{th}}$  source to the  $i^{\text{th}}$  sample,  $f_{kj}$  is the concentration of the  $j^{\text{th}}$  chemical species in the material emitted by the  $k^{\text{th}}$  source and  $e_{ij}$  represents the residual element, or the PMF model error, for the species  $j$  measured in the sample  $i$ . Equation 1 is solved by minimising a Q function defined as:

$$Q = \sum_{i=1}^n \sum_{j=1}^m \left( \frac{e_{ij}}{\sigma_{ij}} \right)^2 \quad (2)$$

where  $\sigma_{ij}$  is the uncertainty associated to the  $j^{\text{th}}$  species in the  $i^{\text{th}}$  sample. Different Q functions can be defined:  $Q_{\text{true}}$  calculated including all data and  $Q_{\text{robust}}$  calculated excluding outliers i.e. data for which the scaled residual ( $e_{ij}/\sigma_{ij}$ ) is greater than 4. (Note that  $Q_{\text{theoretical}}$  will not be studied here as explained in Sect. S2.) A standalone version of PMF using the second version of the multi-linear engine algorithm (ME-2; Paatero, 2000; Norris et al., 2009; Canonaco et al., 2013) has been developed by the United States Environmental Protection Agency (US-EPA) and is used in our study. This version will be named EPA PMF3.0 in the following and can be downloaded at <http://www.epa.gov/heasd/products/pmf/pmf.html>.

### 2.2.2 Data preparation

Two input datasets are required by the EPA PMF3.0 model: one with the chemical species atmospheric concentrations of every sample, the other with their associated uncertainties. Both datasets were here constructed following the advices given by Reff et al. (2007) in his review on PMF existing methods and Norris et al. (2008) in the EPA PMF3.0 user guide. A detailed description of both datasets can be found in Sect. S2. It is worthwhile noting that Al, Cr, As, arabitol and mannitol

1 have not been taken into account for PMF analysis since their atmospheric concentrations were  
2 mostly below their Method Quantification Limit (see Sect. S2).

### 3 4 2.2.3 Robustness of PMF results

5  
6 Robustness of PMF results can be assessed by different methods that will be discussed in Sect. 3,  
7 including Q function analysis, residual analysis, predicted versus observed concentrations  
8 interpretation, etc. In addition, the bootstrap method (Davison and Hinkley, 1997; Efron, 1979; Efron  
9 and Tibshirani, 1993; Singh, 1981; Wehrens et al, 2000) implemented in the EPA PMF3.0 software has  
10 been performed to estimate the stability and the uncertainty of the PMF solution, with a focus on  
11 the F matrix. It will be shown in Sect. 3.1 that it will also help in better determining the adequate  
12 number of factors to choose. Further information on the bootstrap theory and its application to our  
13 study can be found in Sect. S3. Note that bootstrap matrices will be noted with an “\*” in the  
14 following.

### 15 16 2.2.4 PMF technical parameters

17  
18 Concerning base model runs -i.e. runs without performing bootstrapping- (1) twenty runs were  
19 conducted, (2) the initial F and G matrices (so-called "seed") were randomly selected and (3)  
20 different numbers of factors ranging from 3 to 10 were tested (a detailed discussion of the number of  
21 factor chosen will be made in Sect. 3.1). The run exhibiting the lowest  $Q_{\text{robust}}$  value was retained for  
22 further analysis. Bootstrapping was then carried out, performing 100 bootstrap runs, using a random  
23 seed (initial F\* and G\* matrices), a block size of 52 - determined by the methodology of Politis and  
24 White (2004) - and a minimum correlation coefficient (R-value) of 0.6 (unless otherwise stated later  
25 on). Results will be discussed in Sect. 3.1.

## 26 27 2.3. Geographical origins of PM<sub>2.5</sub>

28  
29 Geographical origins of PM<sub>2.5</sub> chemical compounds and sources were assessed by two different  
30 methods that are the Conditional Probability Function (CPF) and the Potential Source Contribution  
31 Function (PSCF).

### 32 33 2.3.1 Conditional Probability Function

The Conditional Probability Function was applied to PMF results. It estimates the probability that a source contribution, from a given wind direction, exceeds a predetermined threshold criterion (Ashbaugh et al., 1985; Kim and Hopke, 2004; Kim et al., 2003). It is defined as:

$$CPF_{\theta} = \frac{m_{\theta}}{n_{\theta}} \quad (3)$$

where  $m_{\theta}$  is the number of occurrence that a source contribution, coming from the wind direction  $\theta$ , exceeds a pre-determined threshold criterion, and  $n_{\theta}$  is the total number of times the wind came from that same  $\theta$  direction. 48-hours air mass back-trajectories with an altitude endpoint of 500 meters were calculated every 6 hours from 11 September 2009 06:00:00 LT to 11 September 2010 00:00:00 LT using the Hybrid Single Particle Lagrangian Integrated Trajectory (HYSPLIT) model (Draxler and Rolph, 2011). Backtrajectories were then defined according to their overall path in one of the sixteen  $\theta$  directions separated by  $22.5^{\circ}$  (i.e. N, NNE, NE, etc.). This procedure allows curved backtrajectories to be binned in the appropriate direction, but is laborious and prone to user-approximations. Calm winds (i.e. wind speed below  $1 \text{ m.s}^{-1}$ ) were excluded from the dataset, which represents 3% of wind data. A total of 1,417 air mass back-trajectories were taken into account for CPF calculations. Different threshold criteria were tested and the 75<sup>th</sup> percentile was retained as it better illustrates source locations. This threshold is in line with what is reported elsewhere (e.g. Amato and Hopke, 2012; Jeong et al., 2011a; Kim et al., 2004). Furthermore, a weighting function was empirically implemented to lower uncertainties associated with low  $n_{\theta}$  values (thus resulting in high  $CPF_{\theta}$  values, see Sect. 3.4). This function was defined as:

$$W_{CPF}(n_{\theta}) = \begin{cases} 1.00 & \text{for } n_{\theta} \geq 0.75 * \max(n_{\theta}) \\ 0.75 & \text{for } 0.75 * \max(n_{\theta}) > n_{\theta} \geq 0.50 * \max(n_{\theta}) \\ 0.50 & \text{for } 0.50 * \max(n_{\theta}) > n_{\theta} \geq 0.25 * \max(n_{\theta}) \\ 0.25 & \text{for } 0.25 * \max(n_{\theta}) > n_{\theta} \end{cases} \quad (4)$$

where  $\max(n_{\theta})=131$  in this study (for the SW direction).

### 2.3.2 Potential Source Contribution Function

Potential Source Contribution Function (PSCF) was introduced by Ashbaugh et al. (1985) and can be defined as "a conditional probability describing the spatial distribution of probable geographical source locations inferred by using trajectories arriving at the sampling site" (Polissar et al., 1999).

48-hour back-trajectories, with an altitude endpoint of 500m, were calculated every six hours from 11 September 2009 06:00:00 LT to 11 September 2010 00:00:00 LT, using a PC-based version of HYSPLIT (version 4.9; Draxler and Hess, 1997). Meteorological parameters comprising ambient temperature, relative humidity and precipitation were determined along each trajectory. Wet deposition was estimated by assuming that precipitation ( $\geq 0.1 \text{ mm}$ ) will clean up the air parcel



(PSCF=0). PSCF was set to 0 for all air parcels determined before (in terms of time, but after in terms of back-trajectory calculation) precipitation occurred.

The PSCF calculation method (Polissar et al., 1999, 2001a) can be resumed as:

$$PSCF_{ij} = \frac{m_{ij}}{n_{ij}} \quad (5)$$

where  $n_{ij}$  is the total number of endpoints falling in the air parcel of address (i, j), and  $m_{ij}$  is the number of endpoints of that parcel for which measured concentrations exceed a user-determined threshold criterion. The threshold chosen is the 75<sup>th</sup> percentile, which will allow a comparison with CPF results, and which is in agreement with the literature (e.g. Begum et al., 2010; Hsu et al., 2003; Sunder Raman and Hopke, 2007).

To remove high PSCF uncertainties associated with small  $n_{ij}$  values, a weighting function -  $W_{PSCF}(n_{ij})$  - is generally implemented (e.g. Hwang and Hopke, 2007; Jeong et al., 2011b; Polissar et al., 2001a, 2001b; Zeng and Hopke, 1989). Weighting factors were empirically determined and the resulting weighting function is defined as:

$$W_{PSCF}(n_{ij}) = \begin{cases} 1.00 & \text{for } n_{ij} \geq 0.85 * \max[\log(n_{ij} + 1)] \\ 0.73 & \text{for } 0.85 * \max[\log(n_{ij} + 1)] > n_{ij} \geq 0.60 * \max[\log(n_{ij} + 1)] \\ 0.48 & \text{for } 0.60 * \max[\log(n_{ij} + 1)] > n_{ij} \geq 0.35 * \max[\log(n_{ij} + 1)] \\ 0.18 & \text{for } 0.35 * \max[\log(n_{ij} + 1)] > n_{ij} \end{cases} \quad (6)$$

where  $\max[\log(n_{ij}+1)]=3.6$  or  $\max(n_{ij})=3980$  in our study. The latter value corresponds to the maximum number of trajectories going through a sole cell. A binomial smoothing (i.e. a Gaussian filter) implemented in the IGOR Pro 6 software (<http://www.wavemetrics.com/>) was then applied to PSCF results.

### 3. Results

#### 3.1. Factors and chemical species to retain

##### 3.1.1 Number of factors

Choosing the accurate number of factors (p-values) in models has always been a challenging question (Cattell, 1966; Henry, 2002; Henry et al., 1999; Malinowski, 1977). Too few factors will result in a mixing of different sources in the same factor as well as high residuals, whereas too many factors will lead to meaningless sources made up of a sole chemical species. Different parameters are used to determine the appropriate p-value, including the examination of Q-values, scaled residuals, or post-PMF regression, to name a few (Norris et al., 2008; Reff et al., 2007). All these parameters are

here investigated, but a special focus on Q-values, bootstrap results and the physical meaning of factor profiles has been made to determine the adequate number of factors to choose.

The figures mentioned in the following refer to simulations run with the optimal number of chemical species (discussed below). Eight different configurations are tested, with p-values ranging from 3 to 10, each configuration being run 20 times as mentioned in Sect. 2.2.4. Configurations with 3, 4, 5, 9 and 10 factors are not suitable because:

i) a high base run variability is noticeable (unless for 3 factors) when examining the sum of the squared difference between the scaled residuals for each pair of base runs (d-values) and

ii) they lead to questionable factor profiles with a clear combinations of multiple sources in an individual factor for 3, 4 and 5 factor configurations, and factors with a single chemical species for 9 and 10 factor configurations.

Configurations with 6, 7 and 8 factors give on the other hand fairly good results with i) stable base runs and ii) meaningful factor profiles. To discriminate between these three simulations, bootstrap results are inspected in more details (Table S4). Regarding the 6- and 7-factor configurations, each boot factor is assigned ( $r \geq 0.6$ ) to base factors for at least 94 and 96% of the runs ( $n=100$ ), respectively, hence highlighting their robustness. On the other hand, the 8-factor configuration shows less satisfactory results, with a boot factor being assigned to the corresponding base factor for 78% of the runs. This 8-factors configuration was consequently rejected. Since no significant bootstrap discrepancies are observed for 6 and 7 factors, further tests are conducted by increasing the r-value of the bootstrap mapping. With  $r \geq 0.7$ , the 6-factor configuration shows a less robust factor (83%), than the 7-factor one (95%); the latter assumption will therefore be retained in the following. Although bootstrapping is usually not used for this purpose, it consequently appears to be a valuable statistical tool to choose the adequate number of factors in PMF simulations.

The physical meaning of factor profiles will be discussed in details in Sect. 4.1.

### 3.1.2 Appropriate chemical species

Chemical species were primarily retained in or excluded from simulations according to the coefficient of determination of their observed versus predicted concentrations. We decided to categorise as bad (i.e. exclude from the dataset) every species exhibiting an r-value lower than 0.5, which concerns  $\text{Ca}^{2+}$ , Zn and Ti ( $r=0.08$ , 0.13 and 0.17, respectively). The only exception was made for Ni showing a coefficient of determination equal to 0.47, partly due to a lack of data during the months of April and May, nevertheless bringing valuable information for sources' identification (Sect. 4.1).

### 3.2. Technical results

Further technical results concerning the 7-factor configuration will now be reported to discuss the robustness and the quality of our PMF results. First, no significant base run variability is observed as it is attested by  $Q_{\text{robust}}$  values ( $5569.0 \pm 0.1$  on average,  $n=20$ ) and d-values (Table S5). The  $Q_{\text{true}}$  to  $Q_{\text{robust}}$  ratio is equal to one ( $1.00 \pm 0.00$  on average,  $n=20$ ) indicating that no peak events are substantially influencing the model.

Table 1 reports statistics based on the annual comparison between observed (i.e. measured) and predicted (i.e. modelled) concentrations for each chemical species and for PM mass. PM is very well reproduced by PMF, showing a coefficient of determination and a slope close to one ( $r^2=0.97$ ,  $y=1.01 \pm 0.01x - 0.25 \pm 0.18 \mu\text{g}/\text{m}^3$ ,  $n=337$ ). Most chemical species also exhibit very good coefficient of determinations ( $r^2$  higher than 0.8 for 11 compounds, and between 0.7 and 0.8 for 4 compounds), with the exception of EC, Cd and Ni showing reasonably good coefficients (between 0.4 and 0.6). Slopes are close to one for most species (higher than 0.7 for 14 compounds), except for Ni (0.4). The limitations regarding the ability of the model to simulate Ni concentrations should be bear in mind when discussing its results.

The seasonal variability of statistics describing the ability of PMF to simulate  $\text{PM}_{2.5}$  mass is reported in Table 2. Three variables were studied: the coefficient of determination ( $r^2$ ), the Root Mean Square Error (RMSE) and the Mean Absolute Percentage Error (MAPE). The two latter are defined as:

$$RMSE = \sqrt{\frac{1}{n} \sum_i (PM_{\text{modeled}} - PM_{\text{measured}})^2} \quad (7)$$

$$MAPE = \frac{100}{n} \sum_i \frac{|PM_{\text{modeled}} - PM_{\text{measured}}|}{0.5 * (PM_{\text{modeled}} + PM_{\text{measured}})} \quad (8)$$

where  $PM_{\text{modeled}}$  is the sum of the seven sources' contributions for a given day, and  $n$  is the number of samples. These statistics are widely used for the evaluation of models (eg. Stern et al., 2008). Very good coefficients of determination are found all along the year, ranging from 0.89 to 0.98. Good RMSE are also observed and range from 1.4 to  $2.0 \mu\text{g}/\text{m}^3$ , whereas MAPE values vary between 6 and 10 %. The summer season is the less well simulated. This can be due to the lower PM levels observed during this season, resulting in lower  $r^2$  and MAPE, but comparable RMSE values compared with other seasons. It could also be related to the absence of clearly identified biogenic and mineral dust sources in our study (see Sect. 4.1) for which emissions are prevalent during summer. Although those statistics give valuable information on the ability of PMF to model PM mass, they are generally not reported in PMF studies thus making impossible comparisons with our results.

### 3.3. PMF factors

The 7-factor profiles are reported in Fig. 1 and Fig. 2. Figure 1 allows factor's identification, by highlighting the relative contribution of every chemical species in a given factor. Fig. 2 gives the contribution (in  $\mu\text{g}/\text{m}^3$ ) of chemical species to each source, i.e. gives the influence of each chemical compound on sources' contributions to PM mass. Interpreting bootstrap profiles, instead of factor's profiles of the optimal base run, is preferred here as it allows uncertainties to be estimated. These uncertainties are displayed different percentiles of bootstrap runs (Fig. 1). Figures 1 and 2 will be discussed in detail in Sect. 4.1.

Regarding factor contributions, to the best of our knowledge bootstrap results are not documented for the G matrix in EPA PMF3.0 output files. This thus does not allow the uncertainties associated with this G matrix to be estimated. The results given here correspond to the base run that gave the smallest  $Q_{\text{robust}}$ . Figure 3 and S1 report the daily contribution (in  $\mu\text{g}/\text{m}^3$ ) of each source to PM mass during the whole campaign; it should be recalled that some days were excluded from the dataset (Table S1). Correlations between factor time series and their presumable tracers are reported in Table S6. Figure 4 shows the relative contribution (in %) of each source to every chemical species, giving valuable information on the apportionment of compounds emitted by different sources (e.g. OM), and on the real ability of chemical constituents to be source-tracers (e.g. levoglucosan). The contribution of the unaccounted fractions (i.e. proportion of a chemical species that is not attributed to any factor) is below 5% for most species, with the exception of nitrate, K, Cu, Pb and Cd (6, 7, 10, 13 and 17%, respectively). Figure 3, 4 and S1 will be discussed in Sect. 4.3.

### 3.4. Geographical origins

The geographical distribution of the 48-hour air mass back-trajectories observed during the entire project is reported in Fig. S2. On the left hand side, a logarithmic scale was implemented to better illustrate the number of trajectories going through each cell ( $n_{ij}$ , ranging from 0 to 3980). This figure was constructed by plotting the logarithm of ( $n_{ij}+1$ ) for each cell of address ( $i, j$ ). Note that  $n_{ij}$  values will be used for PSCF calculations (see Sect. 2.3.2). On the right hand side, the number of trajectories per wind direction ( $n_{\theta}$ ) is plotted and is used for CPF calculations (Sect. 2.3.1). Regarding this last method, relatively high numbers of air mass trajectories are observed from SSW to NE sectors (ranging from 90 to 131 trajectories according to wind directions) and lower numbers are reported from ENE to S sectors (from 26 to 78). Applying the weighting function defined in Eq. 4 allows CPF values to be lowered for ENE to S sectors. Comparable results are found with the PSCF methodology, exhibiting a high number of trajectories per air parcel all around the region of Paris (>500) but in the S to ENE directions. Contrarily to the previous figure, this illustration gives further information on the

distances travelled by air masses with respect to Paris. The number of trajectories per cell is generally i) higher than 500 from west of France to Benelux, ii) between 50 and 500 from southwest of France, through England until Denmark and eastern Germany and iii) lower than 20 for further geographical regions. The PSCF weighting function (Eq. 6) will again allow PSCF values to be reduced in the cells exhibiting low  $n_{ij}$  values. Hence, the assessment of the influence of emissions from southern or eastern Europe on the city of Paris will not be possible in our study, due to the low number of trajectories per cell found in these areas, leading to a lack of statistical robustness of CPF and PSCF results.

## 4. Discussion

### 4.1 Source identification

Each PMF factor was interpreted by studying its chemical profile (F matrix). The interpretation of the 7 factors will be discussed from the easiest to the most complicated PMF factor to interpret. A comparison with other European source apportionment studies will be given at the end of this Sect.

#### 4.1.

##### 4.1.1. Biomass burning

The physical and chemical characteristics of biomass burning aerosols have extensively been studied (Crutzen and Goldammer, 1993; Reid et al., 2005). Submicron particles of biomass burning origin are typically made up of OC (80%), EC (5-9%) and trace inorganic compounds (12-15%) such as potassium, sulfate, chloride and nitrate (Reid et al., 2005). Carbonaceous material (EC and a proportion of OC), potassium and chloride are likely in the particle core (Posfai et al., 2003), whereas sulfate, nitrate, organic acids and semi-volatile organic species are condensed on pre-existing particles (Reid et al., 2005). It should be noted that fuel types and combustion efficiencies will lead to a wide variety of specific chemical compositions (Fine et al., 2001, 2002, 2004). Good tracers of this source are monosaccharide derivatives from the pyrolysis of cellulose and hemicellulose, such as levoglucosan, mannosan and galactosan (Locker, 1988; Puxbaum et al., 2007; Simoneit, 2002; Simoneit et al., 1999).

In this study, a biomass burning (BB) source is identified through the strong presence of levoglucosan and mannosan in a single factor (84 and 80% of their mass, respectively, Fig. 1; unless otherwise stated median values will be reported when referring to Fig. 1). In addition, noticeable proportions of potassium, OM, chloride, EC, nitrate and ammonium are present (26, 19, 15, 12, 9 and 4%, respectively). Trace metal elements such as Pb and Ni are also observed (11 and 7%,

respectively) and may result from the absorption of heavy metals present in soil and water by biomass (Sharma and Dubey, 2005). Both compounds have been found in PM<sub>2.5</sub> resulting from wood combustion in Europe (Alves et al., 2011).

Figure 2 reports the mass contribution (in  $\mu\text{g}/\text{m}^3$ ) of every chemical compound in this BB source. The major contributors are OM, nitrate, EC and levoglucosan (61, 13, 9 and 7% of the source mass, respectively; unless otherwise stated average values will be reported when referring to Fig. 2), the other compounds accounting for less than 5% by weight of this source. Hence, the wood burning contribution to PM<sub>2.5</sub> mass is mainly governed by carbonaceous materials, and especially organic matter. Interestingly, the relatively high proportion (by weight) of nitrate suggests that this biomass burning source has undergone atmospheric ageing, implying that BB aerosols freshly emitted by the region of Paris may not be the main contributor to this source, which is in agreement with its geographical origin (see later in Sect. 4.2) and the literature (Crippa et al., 2013a, 2013b).

The OC/EC, OC/Levoglucosan, K<sup>+</sup>/Levoglucosan ratios are 3.4, 4.7, and 0.24, respectively (with an OC to OM conversion factor of 1.95, Bressi et al., 2013). Only insights into the nature of this biomass source can be given through these ratios, as they are highly variable according to the type of biomass combusted (softwood, hardwood, leaves, straws, etc.), the combustion conditions, the type of locations and the measurement techniques used (especially for EC and OC concentrations). Our OC to EC ratio of 3.4 is on the same order of magnitude as the ratios reported by Schmidl (2005 cited by Puxbaum et al., 2007) for beech and spruce (2.7 and 2.6, respectively) that are widespread trees in France and neighbouring countries (Simpson et al., 1999). Our OC to Levoglucosan ratio of 4.7 is close to the ratios reported by Schauer et al. (2001) of 3.9 and 4.3 for pine and oak, respectively, and by Schmidl (2005 cited by Puxbaum et al., 2007) of 5.0 for spruce. It is however lower than the recommended average US ratio of 7.35 (Fine et al., 2002), and Austria ratio of 7.1 (Schmidl, 2005 cited by Puxbaum et al., 2007). Interestingly, our corresponding OM to levoglucosan ratio of 9.2 is close to the values of 10.3 and 10.8 estimated for fine wood burning aerosols in the region of Paris by Sciare et al. (2011) and in the French Alpine region (Grenoble) by Favez et al. (2010), respectively. Finally, our K<sup>+</sup> to Levoglucosan ratio of 0.24 is in the 0.03 to 0.90 range of the different types of biomass combustion ratios compiled by Puxbaum et al. (2007), and appeared to be close to the 0.20 value reported by Schauer et al. (2001) for pine, or 0.16 value reported by Fine et al. (2001) for softwood.

To summarize, a biomass burning source was identified with the help of specific tracers, and could possibly originate from the wood combustion of trees such as beech, spruce, pine and oak (that are widespread in France and surrounding countries), although the contribution of agricultural and garden waste burning cannot be excluded. This source has undergone atmospheric ageing, suggesting that a proportion is imported from outside Paris.

#### 4.1.2. Road traffic

Road traffic aerosols are of high complexity due to the diversity of emission processes (exhaust versus non-exhaust), and their primary and secondary natures. Tailpipe aerosols are primarily composed of OC and EC, although significant amounts of inorganic species such as ammonium nitrate can rapidly be formed by gas-to-particle conversion (Fraser et al., 1998). Non-exhaust aerosols typically arise from brake wear, tyre wear, road wear, and road dust abrasion, and can be distinguished from exhaust aerosols by their high contents of heavy metals (e.g. Fe, Cu, Mn, Sb, etc.). However, the finding of chemical tracers related to each abrasion process still constitute an active field of research (Thorpe and Harrison, 2008).

In our study, the road traffic source was identified through the presence of characteristic metals and carbonaceous materials. Figure 1 shows that 87, 75, 58, 41, 25, 12 and 8% of Mn, Fe, Cu, EC, OM, Ni and  $Mg^{2+}$ , respectively, contribute to this source. Mn, Fe, Cu, Ni and  $Mg^{2+}$  certainly stem from non-exhaust processes, and have all been detected from brake wear (Garg et al., 2000; Hildemann et al., 1991; Kennedy and Gadd, 2003), tire wear (Adachi and Tainosho, 2004), road wear (Kennedy and Gadd, 2003) and road dust (Schauer et al., 2006) emissions. As already mentioned, it remains complicated - if not impossible - to discriminate the contribution of each abrasion process to non-exhaust road particles; Thorpe and Harrison (2008) state that only brake dust particles may be identified from copper, but the wide range of proportions found in the literature do not allow a single Cu-to-brake dust particles conversion factor to be used. OM and EC arise from exhaust and non-exhaust emissions and will be discussed in more details later on. Interestingly, no significant amounts of secondary inorganic species (ammonium, sulfate and nitrate) are found here, suggesting that this source is most plausibly freshly emitted and of local origin. Hence, it can be inferred that OM and EC are also likely of primary origin. Finally, given that road salt are exclusively made of NaCl (99% of its mass) in Paris (Le Priol et al., 2013), the absence of sodium and chloride in this factor indicates that road salting does not influence this traffic-related source on a year-basis, which give further confidence on the abrasion nature of magnesium here. Note that the lack of mineral tracers mentioned in Sect. 2.1.2 might prevent us from identifying a road dust fraction in this factor.

As shown in Fig. 2, road traffic source mass is essentially composed of OM and EC (63 and 28%, respectively) and to a very lesser extent of Fe (6%). Both OM and EC are thought to stem from exhaust and non-exhaust processes in comparable proportions. In fact, in different European cities the contributions of exhaust and non-exhaust processes to traffic-related emissions of PM are approximately equals (Querol et al., 2004). In addition, the importance of non-exhaust particles emitted in the region of Paris has been reported in an emission inventory study (Jaecker-Voirol and

Pelt, 2000). Since carbonaceous materials represent more than 90% of our road traffic source's mass, an equal contribution of both processes to OM and EC can be assumed. The low OC to EC ratio of 1.2 found in this source can be explained by the large proportion of diesel vehicles in the region of Paris, the low influence of secondary organic aerosols in this factor and the analytical method used to quantify both chemical compounds (EUSAAR\_2 protocol). As a comparison, Ruellan and Cachier (2001) reported a 2.4 OC to Black Carbon ratio near a high flow road in Paris, Giugliano et al. (2005) a 1.3 OC to EC ratio at a tunnel site in Milan (Italy) and El Haddad et al. (2009) a 0.6 value for primary vehicular exhaust emissions in France. The secondary nature of road traffic related aerosols will be found in other factors (see Sect. 4.1.6 for instance).

In a few words, a factor was interpreted as a road traffic source mainly composed of primary carbonaceous and metallic particles that are likely freshly emitted and result from exhaust and non-exhaust processes.

#### 4.1.3. Marine aerosols

A marine aerosol source was identified by the high proportion of sodium, chloride and magnesium in a single factor (79, 77 and 68%, respectively, Fig. 1). These chemical compounds are related to primary sea-salt aerosols produced by the mechanical disruption of the ocean surface (O'Dowd et al., 1997). The  $\text{Cl}^-/\text{Na}^+$  and  $\text{Mg}^{2+}/\text{Na}^+$  ionic ratios of 0.96 and 0.13, respectively, are on the same order of magnitude as the standard sea water composition of 1.17 and 0.11, respectively (Sverdrup et al., 1942; Tang et al., 1997). The lower proportion of chloride with respect to sodium can be due to acid-base reactions between sea salt particles and sulphuric and/or nitric acids, which would lead to the evaporation of gaseous HCl in the atmosphere (Eriksson, 1959 in McInnes et al., 1994). The high sulfate to sodium ratio of 0.096 compared to 0.060 in sea water is in agreement with this assumption; the very high nitrate to sodium ratio of 1.08 likely implies another source for this latter compound. In fact, the amount of nitrate plus twice the sulfate formed should not exceed the chloride lost, on a molar basis.

To a lower extent, a small proportion of EC, Cu,  $\text{K}^+$ , nitrate, OM and Ni is found in this marine source (10, 7, 6, 6, 5 and 4%, respectively). As mentioned above, nitrate and a fraction of OM might originate from gas-to-particle conversion of  $\text{NO}_x$  and organic compounds, respectively, onto pre-existing sea-salt particles (Fitzgerald, 1991). EC, Cu,  $\text{K}^+$  and Ni are unlikely associated with natural marine processes as these chemical compounds are mainly of anthropogenic origin (with the exception of potassium). Shipping transport is a possible source of EC and Ni, because it emits large amounts of particles made of carbonaceous material and heavy metals in marine areas (Lack et al., 2009; Murphy et al., 2009), onto which nitrate could condense. However, the presence of sulfate for



both interpretations would be expected. Sea salt particles could also be enriched by anthropogenic compounds during their transport from marine regions to Paris, due to inland emissions (e.g. of EC, Ni, K, Cu) from combustion processes. Finally, uncertainties related to PMF simulations should not be excluded as well (e.g. the slope of the linear regression between observed and predicted concentrations for chloride and EC are 0.62 and 0.68, respectively, Table 1).

The resulting mass contributions to this source are  $0.24 \pm 0.08$ ,  $0.17 \pm 0.05$  and  $0.13 \pm 0.03$   $\mu\text{g}/\text{m}^3$  for OM, nitrate and EC, respectively,  $0.15 \pm 0.04$  and  $0.15 \pm 0.02$   $\mu\text{g}/\text{m}^3$  for  $\text{Na}^+$  and  $\text{Cl}^-$ , respectively, and minor for the other compounds (Fig. 2). The primary sea-salt fraction of this source ( $\text{Na}^+$ ,  $\text{Cl}^-$  and  $\text{Mg}^{2+}$ ) hence account for ca. 37% of its mass and the likely anthropogenic fraction (EC, OM and nitrate) for the other 63%.

In conclusion, a marine aerosol source comprising sea salt particles and a large fraction of anthropogenic aerosols - that could possibly originate from combustion processes - has been identified.

#### 4.1.4. Heavy oil combustion

A strong proportion of V, Ni and  $\text{SO}_4^{2-}$  (87, 64 and 33%, respectively) is found in a single factor. Vanadium and nickel are primarily emitted by heavy oil combustion, whose sources are industrial boilers (e.g. used in refineries), electricity generation boilers (e.g. oil power stations), large shipping ports, etc. (Jang et al., 2007; Moreno et al., 2010; Pacyna et al., 2007). It is difficult to distinguish between these sources, and "heavy oil combustion" seems to be the most suitable label for this factor. The presence of a significant proportion of sulfate is in agreement with most source apportionment studies having identified this type of source (e.g. Vallius et al., 2005; Viana et al., 2008). A part of ammonium, OM, EC,  $\text{Mg}^{2+}$  and Fe is also noticeable (17, 16, 15, 13 and 9%, respectively). Typical fuel oils naturally contain carbonaceous material, but also magnesium and iron (Miller et al., 1998), whereas ammonium is a secondary compound resulting here from the reaction with acidic sulfate to form ammonium sulfate. Larger uncertainties are associated with the other chemical elements (e.g. 25<sup>th</sup>-75<sup>th</sup> percentiles of 1-32, 2-25 and 0-12% for Cd, Pb and Cu, respectively), which will therefore not be regarded as part of this factor.

The main contributors to the mass of this heavy oil combustion source are OM, sulfate, ammonium, EC and nitrate ( $0.82 \pm 0.25$ ,  $0.71 \pm 0.23$ ,  $0.24 \pm 0.07$ ,  $0.20 \pm 0.13$  and  $0.15 \pm 0.18$   $\mu\text{g}/\text{m}^3$  on average, respectively). Hence, this source is at least for 45% of its mass of secondary nature, if OM and EC are assumed to be of primary origin only. This probably implies an aged and imported, instead of freshly emitted and local source. The V/Ni ratio might give insights on the sources associated with oil combustion as suggested by Pandolfi et al. (2010) and Moreno et al. (2010). Pandolfi et al. (2010)

managed to discriminate between shipping and industrial emissions in a study conducted in the vicinity of a port in southern Spain (Algeciras), and showed that the former source exhibit higher vanadium to nickel ratio (ca. 3.0, range 2.1–3.1) than the later (range 0.9–1.9 for a stainless steel plant). The same conclusions are reached by Moreno et al. (2010). In our study, the V/Ni ratio in the heavy oil combustion factor is 1.4 on average, suggesting that industrial emissions (e.g. oil power station, petrochemical complex, boilers and furnaces) are prevalent. However, the geographical origin of this factor (Sect. 4.2) indicates that shipping emissions cannot be neglected either.

#### 4.1.5. Metals industry

As shown in Fig. 1, strong proportions of Cd, Pb and Cu are found in the same factor (47, 32 and 16% of their mass, respectively), although high interquartile ranges are observed (25<sup>th</sup>-75<sup>th</sup> percentiles of 29-55, 21-45, and 9-30%, respectively). High uncertainties are thus associated with this source, which is partly due to the difficulty for PMF to model cadmium (coefficient of determination of 0.58 for observed versus predicted concentrations, see Table 1). Cadmium and lead emission inventories have been reported for Europe by Pacyna et al. (2007) for the year 2000. The major sources of heavy metals have been taken into account, including combustion of coal/oil in industrial, residential, and commercial boilers, iron and steel production, waste incineration, gasoline combustion, etc. Although substantial uncertainties are associated with each emission category (e.g.  $\pm 20\%$  for stationary fossil fuel combustion,  $\pm 25\%$  for iron and steel production, etc.), they conclude that the main source of cadmium is fuel combustion to produce heat and electricity (62% by weight), whereas Pb is first emitted by gasoline combustion (51%).

The Pb/Cd ratio can be further investigated to discriminate between these types of sources. In our study, the Pb/Cd ratio is 27 on average (weight/weight ratio), which is far lower than the expected value for gasoline combustion aerosols (2,300), but closer to the mean ratio of anthropogenic European emissions (46), and to the low range of values (5-15) reported for non-ferrous metal production (Dulac et al., 1987; Pacyna, 1983). This is in agreement with the geographical origins of this source (see later in Sect. 4.2). The highest mass contributions to this source are attributed to OM, nitrate, sulfate and EC (0.03, 0.03, 0.02 and 0.01  $\mu\text{g}/\text{m}^3$ , respectively, Fig. 2). Very high uncertainties are associated with these concentrations that are close to, or lower than, method quantification limits. The overall contribution to PM mass will also be negligible (0.10  $\mu\text{g}/\text{m}^3$ ).

To summarize, this PMF "metals industry" source presumably reflects a mesoscale background aerosol, composed of a high proportion of heavy metals that likely originate from industrial activities (non-ferrous metal production, industrial boilers, etc.).

#### 4.1.6. Ammonium nitrate (A.N.) rich factor

The majority of nitrate and ammonium is found in a single factor (75 and 52%, respectively) while an important proportion of sulfate is also present (17%). Smaller contributions of Cd, Mn,  $\text{Cl}^-$ ,  $\text{K}^+$  and OM are also observable (9, 9, 7, 6 and 5%, respectively). Figure 2 shows that nitrate, ammonium, sulfate and OM account for  $1.98 \pm 0.23$ ,  $0.71 \pm 0.06$ ,  $0.35 \pm 0.11$ ,  $0.31 \pm 0.15 \mu\text{g}/\text{m}^3$ , respectively. This source thus represents secondary inorganic aerosols, with a stronger proportion of ammonium nitrate than ammonium sulfate, the latter being discussed in details in the following section (Sect. 4.1.7). Ammonium nitrate stems from chemical reactions between ammonia and nitric acid, the latter compound resulting from the oxidation of  $\text{NO}_x$  ( $\text{NO}$  and  $\text{NO}_2$ ), (Schaap et al., 2004). It therefore appears necessary to identify the major sources of  $\text{NO}_x$  and ammonia to know the sources of this factor.

In Europe, atmospheric ammonia is predominantly emitted by agricultural activities -such as volatilization from animal waste and synthetic fertilizers- which have been estimated to contribute 94% of their mass emissions in 2004 for example (Pay et al., 2012). In France, emission inventories also reach the same conclusion, with agricultural activities accounting for 97% of total emissions during the same year, but also during the years 2009 and 2010 corresponding to this study (CITEPA, 2012). Other sources of ammonia such as biomass burning, fossil fuel combustion, natural emissions, etc. (Krupa, 2003; Simpson et al., 1999) will thus not be regarded as contributing to ammonia emissions here.

$\text{NO}_x$  on the other hand are produced by a variety of sources, including the combustion of fossil fuel, biomass burning, lightning, microbiological emissions from soils, etc. (Lee et al., 1997; Logan, 1983). In Europe, based on emissions of 2004 reported by Pay et al. (2012), the major anthropogenic sources of  $\text{NO}_x$  are road and non-road transport (33 and 31%, respectively), followed by energy transformation and industrial combustion (17 and 11%, respectively), using the Selected Nomenclature for Air Pollution. In France, using a slightly different nomenclature (so-called SECTEN), CITEPA (2012) reported ,for the selected years 2004, 2009 and 2010, that  $\text{NO}_x$  emissions primarily stem from road transport (55%), manufacturing industry (13-15% according to years), agriculture (9-10%), residential and service sectors (7-10%), and energy transformation (8-9%). The heavy metals present in this factor presumably come from some of the aforementioned activities such as road transport, manufacturing industry, energy transformation, etc. In addition, although they are not referred to in these emission inventories, the possible contribution of biomass burning in this factor should not be excluded, as suggested by the presence of potassium, chloride and OM. In that case, the unexpected absence of levoglucosan and mannosan could be explained by the imported nature

of this source (see Sect. 4.2), which could lead to the degradation of these tracers during their transport (Hoffmann et al., 2009, see Sect. 4.1.7 for further details).

To summarize, the univocal identification of this PMF factor is rendered difficult by its secondary nature and the diversity of the sources of its precursor gases. It can only be inferred from emission inventories that this factor stems from a large variety of sources, likely mainly being road and non-road transport, industrial activity, agriculture, and biomass burning.

#### 4.1.7. Ammonium sulfate (A.S.) rich factor

This last factor is certainly the most complicated to interpret given the high proportions of miscellaneous chemical compounds (Fig. 1), implying the contribution of a wide variety of sources. A strong proportion of  $K^+$ ,  $SO_4^{2-}$ , OM,  $NH_4^+$ , Pb, EC and Cd (54, 46, 29, 26, 24, 17 and 17%, respectively) and a smaller fraction of  $Mg^{2+}$ ,  $Na^+$ , Ni and Fe (17, 8, 6, 5 and 5%, respectively) are observed. Mass contributions to this source are dominated by OM,  $SO_4^{2-}$ ,  $NH_4^+$  and EC ( $1.57 \pm 0.30$ ,  $0.98 \pm 0.23$ ,  $0.36 \pm 0.11$  and  $0.28 \pm 0.15 \mu g/m^3$ , respectively, Fig. 2). Based on these data, we will try to associate chemical compounds likely to result from the same source.

Sulfate is certainly primarily bound with ammonium -  $(NH_4)_2SO_4$  - as aerosols sampled in Paris are neutral, and as ammonium neutralizes most of nitrate and sulfate (Bressi et al., 2013). Ammonium sulfate aerosols come from the chemical reaction between ammonia and sulfuric acid, the latter compound resulting from the oxidation of sulfur dioxide. Ammonia is almost exclusively emitted by agricultural activities as mentioned in the previous section, whereas sulfur dioxide is principally emitted by energy transformation (56%), non-road transport (17%) and industrial combustion (13%), according to the aforementioned study of Pay et al. (2012). In France, CITEPA (2012) states that energy transformation (54%) and manufacturing industry (30%) are the main sources of  $SO_2$  (in 2009), without taking into account maritime transport. These industrial activities could explain the presence of metals such as Ni, Cd, Fe and Pb, as well as a fraction of carbonaceous matter in this factor. Ni, Cd, Fe and Pb might also come from coal burning emissions (Junninen et al., 2009) which could have been transported from Central/Eastern Europe to Paris (see Sect. 4.2.).

The substantial presence of potassium is presumably related to biomass burning emissions. The absence of levoglucosan and mannosan is unexpected but could be explained by their degradation during transport due to oxidative reactions with OH radicals (Hoffmann et al., 2009; Kundu et al., 2010), as this source is thought to be mainly imported (Sect. 4.2). For instance, the seasonal average levoglucosan concentration of our dataset ( $13.5$  and  $411.8 \text{ ng/m}^3$  in summer and winter, respectively) could be degraded in less than 2 hours in summer, and less than two days and a half in winter (57h), following the degradation rates given in Hoffmann et al. (2009) of  $7.2 \text{ ng.m}^{-3}.\text{h}^{-1}$

1 and  $4.7 \text{ ng.m}^{-3}.\text{h}^{-1}$  in summer and winter, respectively. The aged property of biomass burning  
2 particles contributing to this source is in line with the absence of chloride in this factor, which could  
3 be due to the chemical conversion of KCl particles to  $\text{K}_2\text{SO}_4$  (or to a lesser extent  $\text{KNO}_3$ ), after having  
4 undergone similar heterogeneous reactions mentioned for marine aerosol particles in Sect. 4.1.3 (Li,  
5 2003). The aforementioned literature study reported that more than 90% of KCl particles coming  
6 from biomass burning were converted to potassium sulfate or nitrate after only 24 minutes in  
7 southern Africa. Nevertheless, given the geographical origins of this source, we do not exclude the  
8 potential contribution of potassium industries (e.g. fertilizer industries) in this source as well, which  
9 could produce potassium sulfate and potassium nitrate compounds.

10 Finally, because of the high proportions of sulfate and ammonium, this source is essentially  
11 secondary in nature. Therefore, OM can here be assumed to principally refer to secondary organic  
12 aerosols (SOA), as it is supported by the high OM to EC ratio of 5.6. The complexity and the  
13 multiplicity of the chemical processes leading to the formation of SOA do not allow us to determine  
14 its precise sources. Beekmann et al. (2012) reported that SOA could be of mixed anthropogenic (fossil  
15 fuel) and biogenic origins in the region of Paris (see also Crippa et al., 2013a, 2013b on this subject).

16 To summarize, this factor is primarily made of secondary aerosols, which stem from a variety  
17 of sources including agriculture, industrial activities, non-road transport and biomass burning, to  
18 name a few.

#### 19 20 4.1.8. Comparison with other source apportionment (SA) studies

21  
22 A comparison with source apportionment studies conducted throughout Europe, based on the  
23 review of Viana et al. (2008), will now be presented here. As reported in our work, most studies  
24 identify a vehicular (with carbon, Fe, Cu), a sea salt ( $\text{Na}^+$ ,  $\text{Mg}^{2+}$ ,  $\text{Cl}^-$ ), a mixed industrial/fuel-oil  
25 combustion (V, Ni,  $\text{SO}_4^{2-}$ ) and a secondary aerosol ( $\text{SO}_4^{2-}$ ,  $\text{NO}_3^-$ ,  $\text{NH}_4^+$ ) source (Viana et al., 2008) -  
26 although the secondary aerosol source has been apportioned in two distinct factors in our case-  
27 Biomass burning sources have been reported worldwide in more recent SA studies (Gu et al., 2011;  
28 Larsen et al., 2012; Thurston et al., 2011). The metals industry source found in our work is less  
29 common, which could be related to its very low contribution to  $\text{PM}_{2.5}$  mass. Finally, it can be noted  
30 that a crustal or mineral dust source has not been identified in our work, contrary to what is  
31 ordinarily reported elsewhere. This type of source is generally characterised by high contents of  
32 aluminium, silicon, calcium and iron. Calcium in particular, has already been used to trace mineral  
33 dusts in the city of Paris (Guinot et al., 2007); discarding this element from PMF simulations thus  
34 appears problematic. The difficulty encountered by PMF to model this compound is certainly related  
35 to a local source contamination of calcium (renovation of building façades) near the sampling site

(Bressi et al., 2013). Nonetheless, it has been estimated to only contribute 3% of PM<sub>2.5</sub> mass on average during this one-year project (Bressi et al., 2013), and hence does not represent a major source of fine aerosols in Paris. Further research should however be conducted to better characterize mineral dust contribution to fine aerosols in the region of Paris.

#### 4.2 Source geographical origins

The geographical origins of each PM<sub>2.5</sub> source determined by PSCF and CPF are reported in Fig. 5. This figure aims at providing insights on sources' localisation but does not claim to be accurate at the pixel or the degree level. PSCF and CPF results will first be compared and similar results only will be further interpreted for each source. Note that the values of the probabilities given by PSCF and CPF are not directly comparable as weighting functions and smoothing procedures differ from one methodology to the other.

Regarding the A.S. rich factor, its high probability to come from geographical regions located northeast of Paris is highlighted by both methodologies. In fact, the probabilities for this factor to exceed the 75<sup>th</sup> percentile in CPF are clearly higher for air masses coming from NNE to ENE than from other directions (40 versus 12% on average, respectively). Similarly, a hot spot is observable in this NE direction with PSCF, with probabilities to exceed the aforementioned criterion being higher than 80% from northeast of France to Benelux and southwest Germany. Interestingly, these geographical regions are amongst the major emitters of sulfur dioxide in Europe (Pay et al., 2012), which is - with ammonia - a precursor of ammonium sulfate. High probabilities (ca. 55%) are however observed with PSCF for almost all France and southeast England contrarily to CPF. Given the long lifetime compounds present in this factor, it is possible that its high contributions result from anticyclonic conditions, involving stagnating air masses that could come from any regions around Paris. In addition, because such results are not observed in CPF, bias related to the binomial smoothing used in PSCF may not be excluded.

The A.N. rich factor is likely coming from regions located NNE of Paris. CPF values are significantly higher for NNE and NE than for the other directions (49 versus 11% on average, respectively). Similarly, PSCF probabilities are the highest in this direction (generally above 60%), against probabilities generally below 20% in the other directions. This is also in line with the European map depicted by Pay et al (2012) for total nitrate (HNO<sub>3</sub>+NO<sub>3</sub><sup>-</sup>) concentrations, which appear higher in this geographical area.

The heavy oil combustion source presumably comes from north of France although a local influence is not excluded. CPF suggests this source originates from NNW to NNE directions (mean of 42% against 12% for the other directions), and PSCF shows its highest probabilities in the NNW

direction (higher than 80% in northern France and the English Channel). Northern France is a highly industrialized region (e.g. the so-called Nord-Pas-de-Calais region, located near Belgium and the English Channel is the fourth industrialized French region), comprising some of the largest harbours of the country (e.g. Le Havre, Dunkirk, Calais, etc.). These activities are in line with the industrial feature of this source mentioned in Sect. 4.1.4, and will be further discussed in Sect. 4.3.1. On the other hand, the high PSCF values observed in the English Channel suggests that maritime transport clearly affects the contribution of this factor. The low V to Ni ratio reported in our study (Sect. 4.1.4) might thus not be the best proxy to distinguish between industrial and maritime heavy oil combustion. Finally, influences of local sources cannot be excluded as well, given the high number of industrial activities in the region of Paris. As PSCF and CPF only focus on the highest contributions of sources, local emissions could be omitted by both methodologies, because they would constantly increase the concentrations of this factor without however triggering pollution events.

The road traffic source is primarily of local origin. Nevertheless, CPF and PSCF also indicate the influence of central France, which is unlikely and could be related to an artefact discussed below. High probabilities are observed with CPF for S to SSW (42% on average) and E directions (33%) compared with the other air mass origins (16% on average). PSCF probabilities are also higher for S to SW directions (above 80%), but contrarily to CPF the eastern direction is not highlighted here. Instead, moderate probabilities are rather uniformly distributed all around the region of Paris (ranging from 50 to 70%) that could be related to a local origin for this source. The eastern influence shown by CPF will not be regarded as meaningful given its divergence with PSCF values. Differences between both methodologies could also be related to the local feature of this source. In addition, it is very unlikely that primary particles with road transport characteristics measured in Paris were imported from central France given the high number of vehicles present in the former megacity. Furthermore, a comparison between our EC concentrations (45% of EC is found in this factor; Fig. 4) and those measured at a rural site located 60 km southward does not show any correlation ( $r^2=0.03$ , slope=0.27,  $n=335$ , Bressi et al., 2013). Instead, air masses originating from south of Paris could be related to low boundary layer heights that would enhance local road traffic aerosol concentrations. We attempted to quantify this phenomenon and found that 40% of southward back-trajectories ( $n=123$ ) displays BLH below 600m (corresponding to 26<sup>th</sup> percentile of BLH values measured during the campaign, see Bressi et al., 2013 for further information on BLH measurements). Other meteorological parameters (e.g. atmospheric pressure) should be taken into account to fully understand the characteristics of these southward air masses.

The biomass burning source is likely both locally emitted and imported from south of Paris. CPF shows fairly homogeneous probabilities from WSW to SSE (ranging from 9 to 20%) and higher values from S to SW directions (22-30%). Note that the absolute values of CPF probabilities are the

lowest for this source, signifying that its geographical origins are less marked. PSCF also shows relatively homogeneous probabilities all around Paris (ca. 60%) with however significantly higher values south to southwest of this megacity (higher than 80%). Two assumptions could explain such results. First, this BB source could be locally emitted as suggested by relatively isentropic results for both approaches with the exception of S to SW directions. In that case, the hot spot highlighted S to SW of Paris would be due to the same feature described previously for the road traffic source (specific meteorological conditions related to southward air masses such as low BLH). This assumption is in line with previous studies stating that BB aerosols are locally emitted in the region of Paris (Favez et al., 2009; Sciare et al., 2011). Second, a proportion of this source could actually be imported from south of Paris. This is supported by a comparison conducted between atmospheric concentrations of levoglucosan measured at our urban site and at the aforementioned rural site (located 60 km southward our sampling site). Very good correlations are observed between both datasets on the entire duration of the project ( $r^2=0.84$ , slope=0.84,  $n=331$ ; Beekmann et al., 2012), suggesting that a noticeable proportion of biomass burning aerosols could be imported from south of Paris. Further research should be conducted on biomass burning sources in Paris to fully explain this surprisingly influence of southward geographical areas.

Marine aerosols are mostly coming from the Atlantic Ocean and to a lower extent the North Sea, although anthropogenic contributions from inland emissions are noticeable. CPF exhibits high probabilities from SSW to W (38% on average), intermediates from NNW to N (24%) and low values from NE to S (4%). PSCF results are in agreement showing high probabilities from the Atlantic Ocean to western France (above 80%), intermediates in the North Sea (ca. 60%) and low values from NE to S (typically below 20%). Interestingly, the hot spot highlighted in the Atlantic Ocean corresponds to a geographical area where the biggest salt ponds of the country lie (e.g. Guérande, Noirmoutier, etc.). As suggested by high PSCF probabilities in western France, the anthropogenic fraction of this source most plausibly stem from inland anthropogenic emissions that could be (internally or externally) mixed with sea-salt particles, or could affect their chemical compositions.

Lastly, the metals industry source seems to reflect a regional haze, although the influence of areas located northeast of Paris are underlined. CPF displays higher probabilities from NNW to NE than for the other directions (31 versus 14% on average, respectively). PSCF also points high probabilities in the NE direction with values higher than 80% in northeastern France. Contrarily to CPF, Paris and Central France also exhibit high PSCF values (above 80%). Discrepancies observed between CPF and PSCF results might reflect the presumable regional background properties of this factor, characterizing a mesoscale haze of metals industry emissions. They could also be due to the very low atmospheric concentrations of this source (representing 1% of  $PM_{2.5}$  mass on average) leading to large uncertainties.



## 4.3 Source contribution

### 4.3.1 Annual average

The annual average contribution of the seven sources to  $PM_{2.5}$  mass is reported in Fig. 6. The two predominant factors are the ammonium sulfate and the ammonium nitrate rich factors accounting for ca. half of  $PM_{2.5}$  mass (51%). Heavy oil combustion, road traffic and biomass burning also contribute significantly to fine aerosol mass (17, 14 and 12%, respectively), whereas marine aerosols and metals industry sources have a far lower contribution (6 and 1%, respectively). These contributions were compared with source apportionment studies (see Fig. 7 and Table S7), chosen according to the following criteria:

- i) SA is performed on PM mass ( $PM_{2.5}$  in most of the cases);
- ii) each SA study is representative of one year minimum;
- iii) when possible, SA studies have been chosen according to their presumable geographical origins (e.g. continental Europe for A.S. and A.N. rich sources);
- iv) similar source categories (i.e. factor identifications) are reported.

The prevalence of an ammonium sulfate rich factor in European SA studies is widely reported (Viana et al., 2008). It is for instance illustrated in a study conducted by Mooibroek et al. (2011) on  $PM_{2.5}$  sampled during one year (2007-2008), at five sites in the Netherlands (one urban, one kerbside and three rural sites). An A.S. rich factor was identified by EPA PMF3.0, and contributes from 20 to 30% of  $PM_{2.5}$  mass, with a  $PM_{2.5}$  annual average concentration ranging from 12.5 to 17.5  $\mu g/m^3$  (i.e. on the same order of magnitude as our mean  $PM_{2.5}$  level of 14.7  $\mu g/m^3$ ). The absolute contributions of this source are 4.4 and 4.9  $\mu g/m^3$  at two rural sites (Vredepeel and Cabauw sites, respectively, values calculated from concentrations given in Weijers et al., 2011), which is higher than the contribution of 3.9  $\mu g/m^3$  reported in our study. Interesting results are also reported in a SA study conducted at an urban background site in Copenhagen (Denmark) by Andersen et al. (2007). The comparison with our results is much more limited here, as this study was conducted on  $PM_{10}$ , for a 6-year period (1999-2004), and as a hybrid receptor model combining CMB and PMF approaches (COPREM model) was used. Nevertheless, most of the compounds found in our A.S. rich factor (ammonium sulfate and SOA) are assumed to be in the fine mode, and the sources identified with COPREM are very similar to ours. The resulting contribution of their A.S. rich factor is 3.5  $\mu g/m^3$ , which is again close to the value of 3.9  $\mu g/m^3$  reported in our study. The contribution of the ammonium sulfate rich factor to  $PM_{2.5}$  mass found in our work is hence in the range of values reported in other European SA studies, and the presumable influence of countries located northeast

1 of France appears relevant, regarding the high contributions of this A.S. factor in this geographical  
2 area.

3 The A.N. rich factor is also a predominant contributor to PM<sub>2.5</sub> in European SA studies (Viana  
4 et al., 2008). Mooibroek et al. (2011) report a very high contribution of this source in the  
5 Netherlands, ranging from 5.6 to 7.7 µg/m<sup>3</sup> according to sites, against a contribution of 3.5 µg/m<sup>3</sup> in  
6 our study. Andersen et al. (2007) report a contribution of 3.3 µg/m<sup>3</sup> on average in Copenhagen,  
7 which is in line with our value.

8 Considering both A.S. and A.N. factors as a single source would allow more comparisons with  
9 other SA studies. Combining both factors is acceptable as they mainly stem from common sources of  
10 precursor gases and are imported from the same geographical area in our study (see Sect. 4.1.6,  
11 4.1.7 and 4.2). A secondary aerosol source was identified by Quass et al. (2004) with PMF in Duisburg  
12 (Germany), based on one-year measurements of PM<sub>2.5</sub> (2003-2004). Its annual contribution to PM<sub>2.5</sub>  
13 mass is higher than the value reported in our study (57% versus 51%, respectively), so are its  
14 absolute concentrations (13.0 µg/m<sup>3</sup> versus 7.4 µg/m<sup>3</sup>, respectively). On the other hand, Vallius et al.  
15 (2005) reported at an urban site in Amsterdam (study conducted from November 1998 to June 1999)  
16 a contribution of a PM<sub>2.5</sub> secondary aerosol source of 6.8 µg/m<sup>3</sup> that is comparable to ours. Finally  
17 the summed contribution of A.S. and A.N. factors reaches 6.8 µg/m<sup>3</sup> in the study of Andersen et al.  
18 (2007), and ranges from 8.6 to 12.6 µg/m<sup>3</sup> according to sites in Mooibroek et al. (2011). Therefore,  
19 the predominant contribution of secondary aerosol sources to fine aerosol mass estimated in Paris is  
20 in line with most SA studies conducted in Europe. The high proportions of such sources in countries  
21 located northeast of France support the idea that this region area significantly affects secondary  
22 aerosol concentration levels measured in Paris.

23 Regarding the heavy oil combustion source, its important contribution to PM<sub>2.5</sub> mass of 17%  
24 (2.4 µg/m<sup>3</sup>) is relevant with its imported feature from northern France (Cf. Sect. 4.2), where lies a  
25 high density of industries and strong emissions from maritime transport in the English Channel. The  
26 influence of industrial activities on aerosol levels in this geographical area has been reported by  
27 Alleman et al. (2010) in a study conducted in the highly industrialised harbour of Dunkirk, which is  
28 one of the largest French commercial harbours (freight transport: 58 million tons in 2008). These  
29 authors applied various SA techniques including PMF to identify and apportion the sources of PM<sub>10</sub>  
30 sampled at an urban background site during almost two years (June 2003 – March 2005). A source  
31 labelled "petrochemistry" was identified because of its high contents of vanadium and nickel, and  
32 includes emissions from fuel refineries, fossil fuel power plants but also boat transport. Note that  
33 only small proportions of V and Ni are found in the coarse fraction at our site (Poulakis et al., 2012)  
34 thus making the comparison between our heavy oil combustion factor and this petrochemistry factor  
35 pertinent. This source shows a mean contribution of 2.3 µg/m<sup>3</sup> in Dunkirk (value calculated from a

mean PM<sub>10</sub> concentration of 25 µg/m<sup>3</sup> estimated from [www.atmo-npdc.fr/home.htm](http://www.atmo-npdc.fr/home.htm)), which is very close to the contribution of our heavy oil combustion source of 2.4 µg/m<sup>3</sup> in Paris. In addition, if all industry-related sources identified in Dunkirk (such as metallurgical sintering plant, metallurgical coke plant, etc.) are taken into account, their average contribution reaches 9.3 µg/m<sup>3</sup>, which represents 37% of PM<sub>10</sub> mass. The different types of plants located in Dunkirk may all contribute to our oil combustion factor by increasing its carbonaceous and secondary inorganic content, but may not be distinguished as specific tracers analysed in the Dunkirk study were not quantified in Paris (e.g. Rb, Cs, Bi, Th, etc.). The levels measured for this oil combustion source in Paris (2.4 µg/m<sup>3</sup>) are comparable to what has been reported in Amsterdam and Copenhagen, which cities are located in the vicinity of petrochemical activities and maritime transport. In the former city, a mean contribution of 2.2 µg/m<sup>3</sup> was estimated by Vallius et al. (2005) whereas in the latter, this contribution reaches 3.5 µg/m<sup>3</sup> (Andersen et al., 2007). Further research investigating the contribution of heavy oil combustion sources to fine aerosols should be conducted in the region of Paris, given the surprisingly high levels found in our study.

The road traffic source contributes 14% of PM<sub>2.5</sub> mass which represents 2.1 µg/m<sup>3</sup>. This contribution is noticeable, but was expected to be more important given the high density of vehicles in Paris. It is for instance markedly lower than the 3.8 µg/m<sup>3</sup> estimated by PMF for PM<sub>1.0</sub> though, at an urban background site in Zurich (Switzerland) by Minguillón et al. (2012) from a winter and summer campaign. It is also significantly lower than the 7.8 µg/m<sup>3</sup> estimated by CMB for PM<sub>2.5</sub>, at an urban background site in Milan (Italy) by Perrone et al. (2012) for a 3-year period (2006-2009). As mentioned in Sect. 4.1.2, the absence of a road dust fraction might partly explain the relatively low contribution of our road traffic source. Nevertheless the level estimated in our study is comparable with other highly populated urban areas in the world. For instance, at an urban site in Toronto (Canada, ca. 5.6 million inhabitants in the metropolitan area), from PM<sub>2.5</sub> sampled during one year (2000-2001) and apportioned by PMF, Lee et al. (2003) estimated a contribution of 2.3 µg/m<sup>3</sup> to a road transport source. Their resulting contribution to PM<sub>2.5</sub> mass is slightly higher than ours (18 versus 14%, respectively). Similar levels were also reported in Seattle (U.S.A., ca. 3.5 million inhabitants in the metropolitan area) by Maykut et al. (2003) from multiannual measurements (1996-1999) conducted at an urban site. The PMF and UNMIX approaches lead to a contribution of 2.0 and 2.5 µg/m<sup>3</sup> for this source, i.e. 22 and 28% of PM<sub>2.5</sub> mass respectively.

The biomass burning source is the last considerable contributor to PM<sub>2.5</sub> in Paris (12%, 1.8 µg/m<sup>3</sup>). To the best of our knowledge, the contribution of such source to particulate matter mass in Paris is estimated for the first time on the annual scale in our study. However, two studies attempted to estimate it from campaigns of few days or weeks (Favez et al., 2009; Sciare et al., 2011) that do not allow suitable comparisons to be performed on the annual scale. (Note that comparisons will

nonetheless be conducted in the next section on the seasonal scale only.) In Europe as well, few studies report the contribution of BB to PM mass. Andersen et al. (2007) estimated a very large contribution of  $7.3 \mu\text{g}/\text{m}^3$  for this BB source, representing 15% of their  $\text{PM}_{10}$  samples in Copenhagen. Note that biomass burning sources are presumably entirely found in the fine fraction (e.g. Karanasiou et al., 2009), making the previous comparison relevant. Perrone et al. (2012) also report a substantial contribution of  $7.1 \mu\text{g}/\text{m}^3$  representing 16% of their  $\text{PM}_{2.5}$  samples in Milan (Italy). Finally, Karanasiou et al. (2009) estimated by PMF this contribution to be  $0.8 \mu\text{g}/\text{m}^3$  in Athens (Greece), representing 15% of their  $\text{PM}_{2.0}$  samples.

The contribution of the marine aerosol source is fairly low (6%,  $0.8 \mu\text{g}/\text{m}^3$ ), likely because its mass size distribution is mainly located in the coarse mode. It is comparable to values reported in the Netherlands (e.g.  $0.8 \mu\text{g}/\text{m}^3$  at a rural site, Mooibroek et al., 2011), in Finland ( $0.9 \mu\text{g}/\text{m}^3$  at an urban site of Helsinki, Vallius et al., 2003) or in Greece ( $1.1 \mu\text{g}/\text{m}^3$  at an urban site in Athens, Karanasiou et al., 2009). This comparison however presents some limitations since the distance from the coast is substantially higher for our sampling site (ca. 300-500 km depending on the directions) compared to the aforementioned sites (around or below 100km). Finally, metals industry contribute to very low levels of  $\text{PM}_{2.5}$  in our study (1%,  $0.1 \mu\text{g}/\text{m}^3$ ) that certainly reflects a haze due to large scale pollutions, as it is reported in Poulakis et al. (2012).

#### 4.3.2 Seasonal variability

The seasonal variability of the sources of  $\text{PM}_{2.5}$  is reported in Table 3, Figs. 8, 9, S3 and S4. As expected, each source presents singular patterns due to variations of source emissions, thermodynamic conditions or meteorological parameters in general according to seasons. First, the A.S. rich factor exhibits high contributions all along the year, ranging from 2.7 to  $5.6 \mu\text{g}/\text{m}^3$  i.e. from 21 to 39% of  $\text{PM}_{2.5}$  mass on average according to seasons (Table 3). Its highest contribution in absolute concentrations is observed during winter and is more than 40% higher than its annual average value. This can be explained by the numerous pollution events occurring during January and February (e.g. 26 January 2010:  $31.9 \mu\text{g}/\text{m}^3$  or 9 February 2010:  $23.5 \mu\text{g}/\text{m}^3$ ; Fig. 3) that are related to specific meteorological conditions (anticyclonic conditions, eastward imported air masses and low boundary layer heights; Bressi et al., 2013). Note that in terms of relative proportion to  $\text{PM}_{2.5}$  mass, the highest contribution of this A.S. rich factor is on the other hand observed during summer (39%, Table 3, Fig. 9), which can mathematically be explained by its continuously high absolute concentrations along the year whereas  $\text{PM}_{2.5}$  levels are notably lower during summer. Photochemistry could also play a role in the high contribution observed for this secondary source during summer.

1 The A.N. rich factor shows a very clear seasonal pattern with significantly higher  
2 concentrations during winter and spring than autumn and summer seasons (6.8, 5.1, 1.9 and 0.5  
3  $\mu\text{g}/\text{m}^3$ , respectively). This was expected due to thermodynamic conditions (especially low  
4 temperatures) observed during winter and spring in Paris (see Bressi et al., 2013), thus favouring the  
5 condensation of ammonium nitrate (Clegg et al., 1998). This source contributes ca. one third of  $\text{PM}_{2.5}$   
6 mass on average during winter and spring (32 and 34%, respectively), against a lower contribution  
7 during autumn and especially summer (15 and 5%, respectively).

8 The heavy oil combustion source presents fairly stable seasonal concentrations ranging from  
9 2.0 to 3.0  $\mu\text{g}/\text{m}^3$  (Table 3). Higher concentrations are however observed during spring and summer  
10 (Fig. S4), which could have different explanations. First, this could be an artefact due to the high  
11 number of Ni values replaced by the median of its concentrations during May and June months (61%,  
12  $n=61$ ), as it is suggested by the increased base line during these months on Fig. 3. However, the  
13 methodology detailed in Sects. 2.2.2 and S2 was implemented to lower the influence of median-  
14 replaced concentrations and this artefact should be minimal. Second, it could be due to enhanced  
15 marine vessel activities during spring and summer, in addition to non-dispersive meteorological  
16 conditions enhancing the influence of industrial activities. Such phenomenon has been reported by  
17 Mooibroek et al. (2011) who also found a clear seasonal pattern for their oil combustion source in  
18 the Netherlands, exhibiting an increased contribution during summer (summer median more than  
19 twice higher than the annual one). They partly explain this pattern by the significant height of the  
20 flue gas stacks of petrochemical industry: during winter, the flue gases and particles can be  
21 exhausted above the boundary layer height whereas during summer they are exhausted below,  
22 which results on greater impacts on ground level atmospheric concentrations during the latter  
23 season. This interpretation appears suitable to our heavy oil combustion source as well, given the  
24 presumably high contributions of industrial activities. Third, during summer photochemistry could  
25 favour the formation of secondary compounds such as ammonium sulfate (representing 39% of this  
26 factor's mass).

27 The road traffic source exhibits rather stable concentrations all along the year (annual  
28 average of  $2.1 \pm 2.1 \mu\text{g}/\text{m}^3$ ), with however a smaller contribution during winter ( $1.3 \pm 1.4 \mu\text{g}/\text{m}^3$ ). An  
29 overestimation of EC content in the biomass burning factor and an underestimation in the road  
30 traffic one could explain this observation. However, fairly good correlations between fossil fuel black  
31 carbon and the road traffic source are observed all along the year ( $r=0.50$ ,  $n=327$ , Table S6 and  
32 Bressi, 2012), suggesting that this pattern is real although it is not fully explained by the authors.  
33 From a mathematical standpoint, this could be explained by the absence of clear pollution events for  
34 this (primary) road traffic source during winter, in contrary to what is observed during the other  
35 seasons. In fact, 8, 1, 5 and 8 days show contributions higher than  $6 \mu\text{g}/\text{m}^3$  during autumn, winter,

spring and summer, respectively (Fig. 3). These pollution events are mostly driven by low boundary layer height conditions instead of increased emissions from road traffic.

As expected, the biomass burning source exhibits significantly higher concentrations during autumn and winter than during spring and summer seasons. The maximum contribution of  $4.7 \pm 3.7 \mu\text{g}/\text{m}^3$  is observed during winter and represents 22% of  $\text{PM}_{2.5}$  levels on average during this season (Table 3). A day by day calculation leads to an averaged relative contribution of the BB source to  $\text{PM}_{2.5}$  mass of  $24 \pm 14\%$ . This estimation is on the same order of magnitude as, but slightly higher than, the previous estimations made for  $\text{PM}_{2.5}$  at urban sites of Paris during shorter time periods in winter. Based on light absorption measurements, the averaged contribution of a biomass burning source to  $\text{PM}_{2.5}$  mass has been estimated to be  $20 \pm 10\%$  in Favez et al. (2009), and  $15 \pm 11\%$  in Sciare et al. (2011), after 40- and 10-days measurements, respectively. A similar result has been reported by Perrone et al. (2012) in Milan (Italy), where a biomass burning source has shown to contribute 25% of  $\text{PM}_{2.5}$  on average during winter, with however an absolute concentration more than 3 times higher than in Paris ( $14.6 \pm 6.5$  against  $4.7 \pm 3.7 \mu\text{g}/\text{m}^3$ , respectively).

The seasonal variations of marine aerosols and metals industry sources are illustrated in more details in Fig. S4. Marine aerosols display higher contributions during autumn than the rest of the year ( $1.3$  against  $0.6\text{--}0.7 \mu\text{g}/\text{m}^3$ , respectively) due to higher occurrences of air masses originating from the Atlantic Ocean or the North Sea. The metals industry source does not show any seasonal pattern, with seasonal averaged concentrations ranging from  $0.10$  to  $0.12 \mu\text{g}/\text{m}^3$ , which is in line with its regional background characteristic.

## 5. Conclusions and perspectives

Based on one-year  $\text{PM}_{2.5}$  sampling at an urban site located in Paris (France), and on the use of statistical tools (EPA PMF3.0, CPF, PSCF), this paper allowed i) the identification of seven PMF factors that were related to real aerosol sources, ii) the identification of the geographical origins of each factor, and iii) the apportionment of each factor to  $\text{PM}_{2.5}$  mass discussed on yearly and seasonal bases. The main results can be summarized as follow:

- (1) the ammonium sulfate and ammonium nitrate rich factors contribute ca. half of  $\text{PM}_{2.5}$  mass on average during the whole study (27 and 24%, or  $3.9$  and  $3.5 \mu\text{g}/\text{m}^3$ , respectively). These factors are made of secondary organic and inorganic aerosols, originating from various sources (including road traffic, industry, agriculture and biomass burning) that are difficult to distinguish. Both factors have primarily undergone north-eastward mid- or long-range transport.

(2) a heavy oil combustion source exhibits a noticeable contribution to  $PM_{2.5}$  mass (17%,  $2.4 \mu\text{g}/\text{m}^3$  on average). It has been identified through a strong signature of specific tracers (V and Ni), and mainly stems from industrial activities (e.g. oil power station, petrochemical complex, etc.) and shipping emissions. It likely originates from northern France and the English Channel where a high density of industries, large harbours and shipping lies, although a local influence may not be excluded.

(3) a road traffic source accounts for 14% of  $PM_{2.5}$  mass on average ( $2.1 \mu\text{g}/\text{m}^3$ ), which is relatively low regarding the expected high contribution of the numerous vehicles of Paris. This source includes exhaust and non-exhaust particles that are almost solely composed of carbonaceous materials. It is a local source which contributions could be enhanced by the meteorological conditions associated with southward air masses (e.g. low BLHs).

(4) a biomass burning source contributes 12% of  $PM_{2.5}$  mass on average ( $1.8 \mu\text{g}/\text{m}^3$ ). It includes both primary and secondary aerosols that mainly come from wood combustion, even though agricultural and garden waste burning contributions may not be excluded. It is likely both locally emitted and imported from southward of Paris. The two last sources named marine aerosols and metals industry only contribute 6 and 1% of  $PM_{2.5}$  mass on average, respectively.

Based on these source apportionment results, more than half of  $PM_{2.5}$  levels in Paris is therefore associated with (mid-) long-range transported pollution of secondary organic and inorganic aerosols. Further work is still required to better characterise their sources. For instance, gas precursors including  $\text{SO}_2$ ,  $\text{NO}_x$ ,  $\text{NH}_3$  and Volatile Organic Compounds could be simultaneously measured with aerosol chemical components, before being investigated by PMF. Additional aerosol chemical characteristics such as the isotopic composition of individual elements (e.g. S, N, C, O) would also be valuable for PMF interpretation. The influence of (mid-) long-range transport in Paris suggests that abatement policies implemented at the local, or regional level, may not be sufficient to notably reduce  $PM_{2.5}$  concentrations in this city. Instead, a collaborative work should be conducted between surrounding regions or even countries. Similar conclusions may presumably be drawn for studies conducted in the vicinity of France aiming at determining the geographical origins of  $PM_{2.5}$ , given that French emissions of gaseous precursors of secondary aerosols ( $\text{NH}_3$ ,  $\text{NO}_x$ ,  $\text{SO}_x$  and VOCs) are estimated to be of the same order of magnitude as, or higher than, those of neighbouring countries (e.g. Visser et al., 2001). The investigation of forward trajectories from our study would help evaluating the influence of Paris emissions on surrounding geographical areas. It would likely support the idea that a significant part of  $PM_{2.5}$  pollution in Europe is transboundary, hence requiring coordinated abatement policies amongst E.U. countries.

1 *Disclaimer.* This document has been subjected to Airparif and Ineris reviews and approved for  
2 publication. Nevertheless, the conclusions drawn do not necessarily reflect the views of these  
3 organizations.

5 *Acknowledgements.* The French Environment and Energy Management Agency (ADEME), the French  
6 Alternative Energies and Atomic Energy Commission (CEA), the region of Paris (Ile-de-France), the  
7 city of Paris, the National Centre for Scientific Research (CNRS) and the University of Versailles Saint-  
8 Quentin-en-Yvelines are acknowledged for their support. M. Reynaud and M. Artufel are thanked for  
9 their technical and analytical help.

## 11 **References**

13 Adachi, K. and Tainosho, Y.: Characterization of heavy metal particles embedded in tire dust,  
14 *Environment International*, 30(8), 1009–1017, doi:10.1016/j.envint.2004.04.004, 2004.

15 AIRPARIF: Airparif - Association de surveillance de la qualité de l'air en Île-de-France, Available from:  
16 <http://www.airparif.asso.fr/> (Accessed 30 August 2012), 2012.

17 AIRPARIF and LSCE: Source apportionment of airborne particles in the Ile-de-France region, Available  
18 from: [http://www.airparif.asso.fr/\\_pdf/publications/rapport-particules-anglais-120829.pdf](http://www.airparif.asso.fr/_pdf/publications/rapport-particules-anglais-120829.pdf)  
19 (Accessed 18 September 2012), 2012.

20 Alleman, L. Y., Lamaison, L., Perdrix, E., Robache, A. and Galloo, J.-C.: PM10 metal concentrations and  
21 source identification using positive matrix factorization and wind sectoring in a French  
22 industrial zone, *Atmospheric Research*, 96(4), 612–625, doi:10.1016/j.atmosres.2010.02.008,  
23 2010.

24 Alves, C., Gonçalves, C., Fernandes, A. P., Tarelho, L. and Pio, C.: Fireplace and woodstove fine  
25 particle emissions from combustion of western Mediterranean wood types, *Atmospheric*  
26 *Research*, 101(3), 692–700, doi:10.1016/j.atmosres.2011.04.015, 2011.

27 Amato, F. and Hopke, P. K.: Source apportionment of the ambient PM2.5 across St. Louis using  
28 constrained positive matrix factorization, *Atmospheric Environment*, 46(0), 329–337,  
29 doi:10.1016/j.atmosenv.2011.09.062, 2012.

30 Andersen, Z. J., Wahlin, P., Raaschou-Nielsen, O., Scheike, T. and Loft, S.: Ambient particle source  
31 apportionment and daily hospital admissions among children and elderly in Copenhagen,  
32 *Journal of Exposure Science and Environmental Epidemiology*, 17(7), 625–636,  
33 doi:10.1038/sj.jes.7500546, 2007.

34 Aphekom: Improving Knowledge and Communication for Decision Making on Air Pollution and Health  
35 in Europe, Local city report, Paris, available at:



[http://www.aphekom.org/c/document\\_library/get\\_file?uuid=aaf201bf-2b4e-429e-be65-d33d3b34c005&groupId=10347](http://www.aphekom.org/c/document_library/get_file?uuid=aaf201bf-2b4e-429e-be65-d33d3b34c005&groupId=10347) (last access: 2 December 2013), 2011.

Aphekom: Aphekom, Available from: <http://www.aphekom.org/web/aphekom.org/home> (Accessed 21 May 2012), 2012.

Ashbaugh, L. L., Malm, W. C. and Sadeh, W. Z.: A residence time probability analysis of sulfur concentrations at grand Canyon National Park, *Atmospheric Environment* (1967), 19(8), 1263–1270, doi:10.1016/0004-6981(85)90256-2, 1985.

Beekmann, M., Prévôt, A. S. H., Drewnick, F., Sciare, J., Pandis, S. N., van der Gon, H. A. C. D., Crippa, M., Freutel, F., Poulain, L., Gherzi, V., Rodriguez, E., Beirle, S., Zotter, P., von der Weiden-Reinmuller, S.-L., Bressi, M., Fountoukis, C., Petetin, H., Szidat, S., Schneider, J., Rosso, A., El Haddad, I., Megaritis, A., Zhang, Q., Slowik, J. G., Moukhtar, S., Kolmonen, P., Stohl, A., Eckhardt, S., Borbon, A., Gros, V., Marchand, N., Jaffrezo, J. L., Schwarzenboeck, A., Colomb, A., Wiedensohler, A., Borrmann, S., Lawrence, M., Baklanov, A., and Baltensperger, U.: Regional emissions control fine particulate matter levels in the Paris Megacity, in preparation, 2013.

Begum, B. A., Biswas, S. K., Markwitz, A. and Hopke, P. K.: Identification of Sources of Fine and Coarse Particulate Matter in Dhaka, Bangladesh, *Aerosol Air Qual. Res.*, 10(4), 345–U1514, doi:10.4209/aaqr.2009.12.0082, 2010.

Belis, C.A., Karagulian, F., Larsen, B.R., Hopke, P.K.: Critical review and meta-analysis of ambient particulate matter source apportionment using receptor models in Europe, *Atmos. Environ.*, 69, 94–108, 2013.

Bernstein, J. A., Alexis, N., Barnes, C., Bernstein, I. L., Bernstein, J. A., Nel, A., Peden, D., Diaz-Sanchez, D., Tarlo, S. M. and Williams, P. B.: Health effects of air pollution, *J. Allergy Clin. Immunol.*, 114(5), 1116–1123, doi:10.1016/j.jaci.2004.08.030, 2004.

Bessagnet, B., Hodzic, A., Blanchard, O., Lattuati, M., Le Bihan, O., Marfaing, H. and Rouil, L.: Origin of particulate matter pollution episodes in wintertime over the Paris Basin, *Atmospheric Environment*, 39(33), 6159–6174, 2005.

Bressi, M.: Les aérosols fins en Ile-de-France: chimie, sources et origines, PhD thesis, Université de Versailles Saint-Quentin-en-Yvelines, 2012.

Bressi, M., Sciare, J., Gherzi, V., Bonnaire, N., Nicolas, J. B., Petit, J.-E., Moukhtar, S., Rosso, A., Mihalopoulos, N. and Féron, A.: A one-year comprehensive chemical characterisation of fine aerosols (PM<sub>2.5</sub>) at urban, suburban and rural background sites in the region of Paris (France), *Atmos. Chem. Phys.*, 13, 7825–7844, doi:10.5194/acp-13-7825-2013, 2013.

Canonaco, F., Crippa, M., Slowik, J.G., Baltensperger, U. and Prévôt, A.S.H.: SoFi, an Igor based interface for the efficient use of the generalized multilinear engine (ME-2) for source

apportionment: application to aerosol mass spectrometer data, *Atmos. Meas. Tech.*, 6, 3649–3661. doi:10.5194/amt-6-3649-2013, 2013.

Cattell, R. B.: The Scree Test For The Number Of Factors, *Multivariate Behavioral Research*, 1(2), 245–276, doi:10.1207/s15327906mbr0102\_10, 1966.

Cavalli, F., Viana, M., Yttri, K. E., Genberg, J. and Putaud, J. P.: Toward a standardised thermal-optical protocol for measuring atmospheric organic and elemental carbon: the EUSAAR protocol, *Atmos. Meas. Tech*, 3, 79–89, 2010.

CITEPA: Inventaire des émissions de polluants atmosphériques en France - Séries sectorielles et analyses étendues, Available from: [http://www.picardie.developpement-durable.gouv.fr/IMG/pdf/Inventaire\\_Sectoriel\\_2011.pdf](http://www.picardie.developpement-durable.gouv.fr/IMG/pdf/Inventaire_Sectoriel_2011.pdf) (Accessed 25 April 2012), 2010.

CITEPA: Inventaire des émissions de polluants atmosphériques et de gaz à effet de serre en France – Séries sectorielles et analyses étendues, available at: <http://www.citepa.org/en/activities/emission-inventories/secten> (last access: 13 June 2012), 2012.

Clegg, S. L., Brimblecombe, P. and Wexler, A. S.: Thermodynamic Model of the System  $\text{H}^+ - \text{NH}_4^+ - \text{SO}_4^{2-} - \text{NO}_3^- - \text{H}_2\text{O}$  at Tropospheric Temperatures, *J. Phys. Chem. A*, 102(12), 2137–2154, doi:10.1021/jp973042r, 1998.

Cooper, J. and Watson, J.: Receptor Oriented Methods of Air Particulate Source Apportionment, *Journal of the Air Pollution Control Association*, 30(10), 1116–1125, 1980.

Crippa, M., Canonaco, F., Slowik, J.G., El Haddad, I., DeCarlo, P.F., Mohr, C., Heringa, M.F., Chirico, R., Marchand, N., Temime-Roussel, B., Abidi, E., Poulain, L., Wiedensohler, A., Baltensperger, U. and Prévôt, A.S.H.: Primary and secondary organic aerosol origin by combined gas-particle phase source apportionment, *Atmos Chem Phys*, 13, 8411–8426, doi:10.5194/acp-13-8411-2013, 2013a.

Crippa, M., DeCarlo, P.F., Slowik, J.G., Mohr, C., Heringa, M.F., Chirico, R., Poulain, L., Freutel, F., Sciare, J., Cozic, J., Di Marco, C.F., Elsasser, M., Nicolas, J.B., Marchand, N., Abidi, E., Wiedensohler, A., Drewnick, F., Schneider, J., Borrmann, S., Nemitz, E., Zimmermann, R., Jaffrezo, J.-L., Prévôt, A.S.H. and Baltensperger, U.: Wintertime aerosol chemical composition and source apportionment of the organic fraction in the metropolitan area of Paris, *Atmos. Chem. Phys.*, 13, 961–981, doi:10.5194/acp-13-961-2013, 2013b.

Crutzen, P. J. and Goldammer, J. G., Eds.: *Fire in the Environment: The Ecological, Atmospheric, and Climatic Importance of Vegetation Fires*, 1st ed., John Wiley & Sons, 1993.

Davison, A. C. and Hinkley, D. V.: *Bootstrap Methods and Their Application*, Cambridge University Press, 1997.

- 1 Draxler, R. R. and Hess, G. D.: Description of the HYSPLIT\_4 modeling system, Air Resources  
2 Laboratory, Silver Spring, Maryland, 1997.
- 3 Draxler, R. R. and Rolph, G. D.: HYSPLIT (Hybrid Single Particle Lagrangian Integrated Trajectory),  
4 NOAA Air Ressources Laboratory, Silver Spring, MD, Available from: [http://ready.arl.noaa.gov/](http://ready.arl.noaa.gov/HYSPLIT.php)  
5 HYSPLIT.php (Accessed 6 November 2013), 2011.
- 6 Dulac, F., Buatmenard, P., Arnold, M., Ezat, U. and Martin, D.: Atmospheric Input of Trace-Metals to  
7 the Western Mediterranean-Sea .1. Factors Controlling the Variability of Atmospheric  
8 Concentrations, *J. Geophys. Res.-Atmos.*, 92(D7), 8437–8453, doi:10.1029/JD092iD07p08437,  
9 1987.
- 10 Efron, B.: 1977 Rietz Lecture - Bootstrap Methods - Another Look at the Jackknife, *Ann. Stat.*, 7(1), 1–  
11 26, doi:10.1214/aos/1176344552, 1979.
- 12 Efron, B. and Tibshirani, R.: *An Introduction to the Bootstrap*, Chapman & Hall, 1993.
- 13 El Haddad, I., Marchand, N., Dron, J., Temime-Roussel, B., Quivet, E., Wortham, H., Jaffrezo, J. L.,  
14 Baduel, C., Voisin, D., Besombes, J. L. and Gille, G.: Comprehensive primary particulate organic  
15 characterization of vehicular exhaust emissions in France, *Atmospheric Environment*, 43(39),  
16 6190–6198, doi:10.1016/j.atmosenv.2009.09.001, 2009.
- 17 Eriksson, E.: The Yearly Circulation of Chloride and Sulfur in Nature - Meteorological, Geochemical  
18 and Pedological Implications .1., *Tellus*, 11(4), 375–403, 1959.
- 19 Eurostat: Available from: [http://appsso.eurostat.ec.europa.eu/nui/show.do?dataset=demo\\_r\\_d2jan](http://appsso.eurostat.ec.europa.eu/nui/show.do?dataset=demo_r_d2jan&lang=en)  
20 &lang=en (Accessed 30 August 2012), 2012.
- 21 Favez, O., Cachier, H., Sciare, J., Sarda-Esteve, R. and Martinon, L.: Evidence for a significant  
22 contribution of wood burning aerosols to PM(2.5) during the winter season in Paris, France,  
23 *Atmos. Environ.*, 43(22-23), 3640–3644, doi:10.1016/j.atmosenv.2009.04.035, 2009.
- 24 Favez, O., El Haddad, I., Piot, C., Boréave, A., Abidi, E., Marchand, N., Jaffrezo, J. L., Besombes, J. L.,  
25 Personnaz, M. B., Sciare, J. and others: Inter-comparison of source apportionment models for  
26 the estimation of wood burning aerosols during wintertime in an Alpine city (Grenoble,  
27 France), *Atmospheric Chemistry and Physics*, 10(12), 5295–5314, 2010.
- 28 Fine, P. M., Cass, G. R. and Simoneit, B. R. T.: Chemical Characterization of Fine Particle Emissions  
29 from Fireplace Combustion of Woods Grown in the Northeastern United States, *Environmental*  
30 *Science & Technology*, 35(13), 2665–2675, doi:10.1021/es001466k, 2001.
- 31 Fine, P. M., Cass, G. R. and Simoneit, B. R. T.: Chemical Characterization of Fine Particle Emissions  
32 from the Fireplace Combustion of Woods Grown in the Southern United States, *Environ. Sci.*  
33 *Technol.*, 36(7), 1442–1451, doi:10.1021/es0108988, 2002.

- 1 Fine, P. M., Cass, G. R. and Simoneit, B. R. T.: Chemical characterization of fine particle emissions  
2 from the fireplace combustion of wood types grown in the Midwestern and Western United  
3 States, *Environ. Eng. Sci.*, 21(3), 387–409, doi:10.1089/109287504323067021, 2004.
- 4 Fitzgerald, J. W.: Marine aerosols: A review, *Atmospheric Environment. Part A. General Topics*, 25(3–  
5 4), 533–545, doi:10.1016/0960-1686(91)90050-H, 1991.
- 6 Forster, P., Ramaswamy, V., Artaxo, P., Berntsen, T., Betts, R., Fahey, D. W., Haywood, J., Lean, J.,  
7 Lowe, D. C., Myhre, G., Nganga, J., Prinn, R., Raga, G., Schulz, M., van Dorland, R., Bodeker, G.,  
8 Boucher, O., Collins, W. D., Conway, T. J., Dlugokencky, E., Elkins, J. W., Etheridge, D., Foukal,  
9 P., Fraser, P., Geller, M., Joos, F., Keeling, C. D., Kinne, S., Lassey, K., Lohmann, U., Manning, A.  
10 C., Montzka, S., Oram, D., O’Shaughnessy, K., Piper, S., Plattner, G.-K., Ponater Michael,  
11 Ramankutty, N., Reid, G., Rind, D., Rosenlof, K., Sausen, R., Schwarzkopf, D., Solanki, S. K.,  
12 Stenchikov, G., Stuber, N., Takemura, T., Textor, C., Wang, R., Weiss, R., and Whorf, T.:  
13 Changes in atmospheric constituents and in radiative forcing, in: *Climate Change 2007: the*  
14 *Physical Science Basis. Contribution of Working Group I to the Fourth Assessment Report of*  
15 *the Intergovernmental Panel on Climate Change*, edited by: Solomon, S., Qin, D., Manning, M.,  
16 Chen, Z., Marquis, M., Averyt, K. B., Tignor, M., and Miller, H. L., Cambridge University Press,  
17 United Kingdom and New York, NY, USA, 2007.
- 18 Fraser, M. P., Cass, G. R. and Simoneit, B. R. T.: Gas-Phase and Particle-Phase Organic Compounds  
19 Emitted from Motor Vehicle Traffic in a Los Angeles Roadway Tunnel, *Environ. Sci. Technol.*,  
20 32(14), 2051–2060, doi:10.1021/es970916e, 1998.
- 21 Freutel, F., Schneider, J., Drewnick, F., von der Weiden-Reinmüller, S.-L., Crippa, M., Prévôt, A.S.H.,  
22 Baltensperger, U., Poulain, L., Wiedensohler, A., Sciare, J., Sarda-Estève, R., Burkhardt, J.F.,  
23 Eckhardt, S., Stohl, A., Gros, V., Colomb, A., Michoud, V., Doussin, J.F., Borbon, A., Haeffelin,  
24 M., Morille, Y., Beekmann, M. and Borrmann, S.: Aerosol particle measurements at three  
25 stationary sites in the megacity of Paris during summer 2009: meteorology and air mass origin  
26 dominate aerosol particle composition and size distribution, *Atmos. Chem. Phys.*, 13, 933–959,  
27 doi:10.5194/acp-13-933-2013, 2013.
- 28 Garg, B. D., Cadle, S. H., Mulawa, P. A., Groblicki, P. J., Laroo, C. and Parr, G. A.: Brake Wear  
29 Particulate Matter Emissions, *Environ. Sci. Technol.*, 34(21), 4463–4469, doi:10.1021/  
30 es001108h, 2000.
- 31 Gherzi, V., Rosso, A., Moukhtar, S., Lameloise, P., Sciare, J., Bressi, M., Nicolas, J., Féron, A., and  
32 Bonnaire, N.: A comprehensive source apportionment study of fine aerosol (PM<sub>2.5</sub>) in the  
33 region of Paris, France, *Pollution Atmosphérique, Numéro Spécial*, 63–72, 2010.

- 1 Gherzi, V., Rosso, A., Moukhtar, S., Léger, K., Sciare, J., Bressi, M., Nicolas, J., Féron, A., and Bonnaire,  
2 N.: Sources of fine aerosol (PM<sub>2.5</sub>) in the region of Paris, *Pollution Atmosphérique*, Numéro  
3 Spécial, Novembre, 2012.
- 4 Giugliano, M., Lonati, G., Butelli, P., Romele, L., Tardivo, R. and Grosso, M.: Fine particulate (PM<sub>2.5</sub>–  
5 PM<sub>1</sub>) at urban sites with different traffic exposure, *Atmospheric Environment*, 39(13), 2421–  
6 2431, doi:10.1016/j.atmosenv.2004.06.050, 2005.
- 7 Gordon, G. E.: Receptor models, *Environ. Sci. Technol.*, 14(7), 792–800, doi:10.1021/es60167a006,  
8 1980.
- 9 Gu, J., Pitz, M., Schnelle-Kreis, J., Diemer, J., Reller, A., Zimmermann, R., Soentgen, J., Stoelzel, M.,  
10 Wichmann, H.-E., Peters, A. and Cyrys, J.: Source apportionment of ambient particles:  
11 Comparison of positive matrix factorization analysis applied to particle size distribution and  
12 chemical composition data, *Atmospheric Environment*, 45(10), 1849–1857, doi:10.1016/  
13 j.atmosenv.2011.01.009, 2011.
- 14 Guinot, B., Cachier, H., Oikonomou, K. and others: Geochemical perspectives from a new aerosol  
15 chemical mass closure, *Atmospheric Chemistry and Physics*, 7(6), 1670, 2007.
- 16 Henry, R. C.: Multivariate receptor models—current practice and future trends, *Chemometrics and*  
17 *intelligent laboratory systems*, 60(1), 43–48, 2002.
- 18 Henry, R. C., Park, E. S. and Spiegelman, C. H.: Comparing a new algorithm with the classic methods  
19 for estimating the number of factors, *Chemometrics and Intelligent Laboratory Systems*, 48(1),  
20 91–97, doi:10.1016/S0169-7439(99)00015-5, 1999.
- 21 Hildemann, L. M., Markowski, G. R. and Cass, G. R.: Chemical composition of emissions from urban  
22 sources of fine organic aerosol, *Environ. Sci. Technol.*, 25(4), 744–759, doi:10.1021/  
23 es00016a021, 1991.
- 24 Hodzic, A., Vautard, R., Bessagnet, B., Lattuati, M. and Moreto, F.: Long-term urban aerosol  
25 simulation versus routine particulate matter observations, *Atmospheric Environment*, 39(32),  
26 5851–5864, doi:10.1016/j.atmosenv.2005.06.032, 2005.
- 27 Hoffmann, D., Tilgner, A., Iinuma, Y. and Herrmann, H.: Atmospheric Stability of Levoglucosan: A  
28 Detailed Laboratory and Modeling Study, *Environ. Sci. Technol.*, 44(2), 694–699, doi:10.1021/  
29 es902476f, 2009.
- 30 Hopke, P. K.: Application of factor analysis to urban aerosol source resolution, *American Chemical*  
31 *Society, ACS Symposium Series*, 1981.
- 32 Hopke, P. K.: *Receptor Modeling in Environmental Chemistry*, 1st ed., Wiley-Interscience., 1985.
- 33 Hopke, P. K., Ito, K., Mar, T., Christensen, W.F., Eatough, D.J., Henry, R.C., Kim, E., Laden, F., Lall, R.,  
34 Larson, T.V., Liu, H., Neas, L., Pinto, J., Stölzel, M., Suh, H., Paatero, P., and Thurston, G.D.: PM

source apportionment and health effects: 1. Intercomparison of source apportionment results, J. Expo. Sci. Env. Epid., 16, 275–286, 2006.

Hsu, Y. K., Holsen, T. M. and Hopke, P. K.: Comparison of hybrid receptor models to locate PCB sources in Chicago, Atmospheric Environment, 37(4), 545–562, 2003.

Hwang, I. and Hopke, P. K.: Estimation of source apportionment and potential source locations of PM<sub>2.5</sub> at a west coastal IMPROVE site, Atmospheric Environment, 41(3), 506–518, doi:10.1016/j.atmosenv.2006.08.043, 2007.

Iinuma, Y., Engling, G., Puxbaum, H. and Herrmann, H.: A highly resolved anion-exchange chromatographic method for determination of saccharidic tracers for biomass combustion and primary bio-particles in atmospheric aerosol, Atmospheric Environment, 43(6), 1367–1371, 2009.

IPCC (Intergovernmental Panel on Climate Change): Climate Change 2007: Synthesis Report. A Contribution of Working Groups I, II and III to the Fourth Assessment Report of the Intergovernmental Panel on Climate Change, edited by: Core Writing Team, Pachauri, R. K., and Reisinger, A., IPCC, Geneva, Switzerland, 104p, 2007.

Isaksen, I.S.A., Granier, C., Myhre, G., Berntsen, T.K., Dalsøren, S.B., Gauss, M., Klimont, Z., Benestad, R., Bousquet, P., Collins, W., Cox, T., Eyring, V., Fowler, D., Fuzzi, S., Jöckel, P., Laj, P., Lohmann, U., Maione, M., Monks, P., Prevot, A.S.H., Raes, F., Richter, A., Rognerud, B., Schulz, M., Shindell, D., Stevenson, D.S., Storelvmo, T., Wang, W.-C., van Weele, M., Wild, M., and Wuebbles, D.: Atmospheric composition change: Climate–Chemistry interactions, Atmos. Environ., 43, 5138–5192, 2009.

Jaecker-Voirol, A. and Pelt, P.: PM<sub>10</sub> emission inventory in Ile de France for transport and industrial sources: PM<sub>10</sub> re-suspension, a key factor for air quality, Environmental Modelling & Software, 15(6–7), 575–581, doi:10.1016/S1364-8152(00)00044-X, 2000.

Jang, H.-N., Seo, Y.-C., Lee, J.-H., Hwang, K.-W., Yoo, J.-I., Sok, C.-H. and Kim, S.-H.: Formation of fine particles enriched by V and Ni from heavy oil combustion: Anthropogenic sources and drop-tube furnace experiments, Atmospheric Environment, 41(5), 1053–1063, doi:10.1016/j.atmosenv.2006.09.011, 2007.

Jeong, C. H., McGuire, M. L., Herod, D., Dann, T., Dabek-Zlotorzynska, E., Wang, D., Ding, L., Celo, V., Mathieu, D. and Evans, G.: Receptor model based identification of PM<sub>2.5</sub> sources in Canadian cities, Atmospheric Pollution Research, 2(2), 158–171, 2011a.

Jeong, U., Kim, J., Lee, H., Jung, J., Kim, Y. J., Song, C. H. and Koo, J.-H.: Estimation of the contributions of long range transported aerosol in East Asia to carbonaceous aerosol and PM concentrations in Seoul, Korea using highly time resolved measurements: a PSCF model approach, Journal of Environmental Monitoring, 13(7), 1905, doi:10.1039/c0em00659a, 2011b.

- 1 Junninen, H., Mønster, J., Rey, M., Cancelinha, J., Douglas, K., Duane, M., Forcina, V., Müller, A.,  
2 Lagler, F., Marelli, L., Borowiak, A., Niedzialek, J., Paradiz, B., Mira-Salama, D., Jimenez, J.,  
3 Hansen, U., Astorga, C., Stanczyk, K., Viana, M., Querol, X., Duvall, R.M., Norris, G.A., Tsakovski,  
4 S., Wählin, P., Horák, J. and Larsen, B.R.: Quantifying the Impact of Residential Heating on the  
5 Urban Air Quality in a Typical European Coal Combustion Region, *Environ. Sci. Technol.*, 43,  
6 7964–7970, doi:10.1021/es8032082, 2009.
- 7 Karagulian, F. and Belis, C. A.: European Commission, JRC, Unit Climate Change and Air Quality, Ispra,  
8 Italy, 14th Conference on Harmonisation within Atmospheric Dispersion Modelling for  
9 Regulatory Purposes, Kos, Greece, Available from: [http://www.harmo.org/conferences/](http://www.harmo.org/conferences/proceedings/_Kos/publishedSections/H14-182.pdf)  
10 [proceedings/\\_Kos/publishedSections/H14-182.pdf](http://www.harmo.org/conferences/proceedings/_Kos/publishedSections/H14-182.pdf) (Accessed 27 July 2012), 2011.
- 11 Karanasiou, A. A., Siskos, P. A. and Eleftheriadis, K.: Assessment of source apportionment by Positive  
12 Matrix Factorization analysis on fine and coarse urban aerosol size fractions, *Atmospheric*  
13 *Environment*, 43(21), 3385–3395, doi:10.1016/j.atmosenv.2009.03.051, 2009.
- 14 Kennedy, P. and Gadd, J.: Preliminary examination of trace elements in tyres, brake pads and road  
15 bitumen in New Zealand, Prepared for Ministry of Transport, NewZealand, Infrastructure  
16 Auckland. Available from: [http://www.transport.govt.nz/research/Documents/stormwater-](http://www.transport.govt.nz/research/Documents/stormwater-inorganic3.pdf)  
17 [inorganic3.pdf](http://www.transport.govt.nz/research/Documents/stormwater-inorganic3.pdf) (Accessed 8 June 2012), 2003.
- 18 Kim, E. and Hopke, P. K.: Comparison between conditional probability function and nonparametric  
19 regression for fine particle source directions, *Atmospheric Environment*, 38(28), 4667–4673,  
20 2004.
- 21 Kim, E., Hopke, P. K. and Edgerton, E. S.: Source identification of Atlanta aerosol by positive matrix  
22 factorization, *J. Air Waste Manage. Assoc.*, 53(6), 731–739, 2003.
- 23 Kim, E., Hopke, P. K., Larson, T. V. and Covert, D. S.: Analysis of ambient particle size distributions  
24 using unmix and positive matrix factorization, *Environmental science & technology*, 38(1), 202–  
25 209, 2004.
- 26 Krupa, S.: Effects of atmospheric ammonia (NH<sub>3</sub>) on terrestrial vegetation: a review, *Environmental*  
27 *Pollution*, 124(2), 179–221, doi:10.1016/S0269-7491(02)00434-7, 2003.
- 28 Kundu, S., Kawamura, K., Andreae, T. W., Hoffer, A. and Andreae, M. O.: Molecular distributions of  
29 dicarboxylic acids, ketocarboxylic acids and alpha-dicarbonyls in biomass burning aerosols:  
30 implications for photochemical production and degradation in smoke layers, *Atmos. Chem.*  
31 *Phys.*, 10(5), 2209–2225, 2010.
- 32 Lack, D. A., Corbett, J. J., Onasch, T., Lerner, B., Massoli, P., Quinn, P. K., Bates, T. S., Covert, D. S.,  
33 Coffman, D., Sierau, B., Herndon, S., Allan, J., Baynard, T., Lovejoy, E., Ravishankara, A. R., and  
34 Williams, E.: Particulate emissions from commercial shipping: Chemical, physical, and optical  
35 properties, *J. Geophys. Res.-Atmos.*, 114, D00F04, doi:10.1029/2008JD011300, 2009.

- 1 Larsen, B. R., Gilardoni, S., Stenström, K., Niedzialek, J., Jimenez, J. and Belis, C. A.: Sources for PM air  
2 pollution in the Po Plain, Italy: II. Probabilistic uncertainty characterization and sensitivity  
3 analysis of secondary and primary sources, *Atmospheric Environment*, 50(0), 203–213,  
4 doi:10.1016/j.atmosenv.2011.12.038, 2012.
- 5 Lee, D. S., Köhler, I., Grobler, E., Rohrer, F., Sausen, R., Gallardo-Klenner, L., Olivier, J. G. J., Dentener,  
6 F. J. and Bouwman, A. F.: Estimations of global NO<sub>x</sub> emissions and their uncertainties,  
7 *Atmospheric Environment*, 31(12), 1735–1749, doi:10.1016/S1352-2310(96)00327-5, 1997.
- 8 Lee, P. K. H., Brook, J. R., Dabek-Zlotorzynska, E. and Mabury, S. A.: Identification of the Major  
9 Sources Contributing to PM<sub>2.5</sub> Observed in Toronto, *Environ. Sci. Technol.*, 37(21), 4831–4840,  
10 doi:10.1021/es026473i, 2003.
- 11 Le Priol, T., Favez, O., Amato, F., Moukhtar, S. and Sciare, J.: Impact de la remise en suspension par le  
12 trafic sur le niveau de PM<sub>10</sub> en Ile-de-France, Direction régionale et interdépartementale de  
13 l'Équipement et de l'Aménagement ILE-DE-France, 2013.
- 14 Li, J.: Individual aerosol particles from biomass burning in southern Africa: 2, Compositions and aging  
15 of inorganic particles, *Journal of Geophysical Research*, 108(D13), doi:10.1029/2002JD002310  
16 Available from: <http://www.agu.org/pubs/crossref/2003/2002JD002310.shtml> (Accessed 19  
17 June 2012), 2003.
- 18 Locker, H. B.: The Use of Levoglucosan to Assess the Environmental Impact of Residential Wood-  
19 burning on Air Quality, Dartmouth College, 1988.
- 20 Logan, J.: Nitrogen-Oxides in the Troposphere - Global and Regional Budgets, *Journal of Geophysical*  
21 *Research-Oceans and Atmospheres*, 88(NC15), 785–807, doi:10.1029/JC088iC15p10785, 1983.
- 22 Malinowski, E. R.: Determination of the number of factors and the experimental error in a data  
23 matrix, *Anal. Chem.*, 49(4), 612–617, doi:10.1021/ac50012a027, 1977.
- 24 Maykut, N. N., Lewtas, J., Kim, E. and Larson, T. V.: Source Apportionment of PM<sub>2.5</sub> at an Urban  
25 IMPROVE Site in Seattle, Washington, *Environ. Sci. Technol.*, 37(22), 5135–5142,  
26 doi:10.1021/es030370y, 2003.
- 27 McInnes, L., Covert, D., Quinn, P. and Germani, M.: Measurements of Chloride Depletion and Sulfur  
28 Enrichment in Individual Sea-Salt Particles Collected from the Remote Marine Boundary-Layer,  
29 *J. Geophys. Res.-Atmos.*, 99(D4), 8257–8268, doi:10.1029/93JD03453, 1994.
- 30 Miller, C. A., Linak, W. P., King, C. and Wendt, J. O. L.: Fine particle emissions from heavy fuel oil  
31 combustion in a firetube package boiler, *Combust. Sci. Technol.*, 134(1-6), 477–502,  
32 doi:10.1080/00102209808924146, 1998.
- 33 Minguillón, M. C., Querol, X., Baltensperger, U. and Prévôt, A. S. H.: Fine and coarse PM composition  
34 and sources in rural and urban sites in Switzerland: Local or regional pollution?, *Science of The*  
35 *Total Environment*, 427–428(0), 191–202, doi:10.1016/j.scitotenv.2012.04.030, 2012.



- 1 Molina, M. J. and Molina, L. T.: Megacities and atmospheric pollution, *J Air Waste Manag. Assoc.*,  
2 54(6), 644–680, 2004.
- 3 Mooibroek, D., Schaap, M., Weijers, E. P. and Hoogerbrugge, R.: Source apportionment and spatial  
4 variability of PM<sub>2.5</sub> using measurements at five sites in the Netherlands, *Atmospheric*  
5 *Environment*, 45(25), 4180–4191, doi:10.1016/j.atmosenv.2011.05.017, 2011.
- 6 Moreno, T., Querol, X., Alastuey, A., de la Rosa, J., Sánchez de la Campa, A. M., Minguillón, M.,  
7 Pandolfi, M., González-Castanedo, Y., Monfort, E. and Gibbons, W.: Variations in vanadium,  
8 nickel and lanthanoid element concentrations in urban air, *Science of The Total Environment*,  
9 408(20), 4569–4579, doi:10.1016/j.scitotenv.2010.06.016, 2010.
- 10 Murphy, S. M., Agrawal, H., Sorooshian, A., Padró, L. T., Gates, H., Hersey, S., Welch, W. A., Jung, H.,  
11 Miller, J. W., Cocker, D. R., Nenes, A., Jonsson, H.H., Flagan, R.C., and Seinfeld, J. H.:  
12 Comprehensive Simultaneous Shipboard and Airborne Characterization of Exhaust from a  
13 Modern Container Ship at Sea, *Env. Sci. Technol.*, 43, 4626–4640, doi:10.1021/es802413j,  
14 2009.
- 15 Norris, G. A., Vedantham, R., Wade, K., Zhan, P., Brown, S., Pentti, P., Eberly, S. I. and Foley, C.:  
16 Guidance document for PMF applications with the Multilinear Engine, U.S. Environmental  
17 Protection agency, Washington DC. Available from: [cfpub.epa.gov/si/si\\_public\\_file\\_download.](http://cfpub.epa.gov/si/si_public_file_download.cfm?p_download_id=488084)  
18 [cfm?p\\_download\\_id=488084](http://cfpub.epa.gov/si/si_public_file_download.cfm?p_download_id=488084) (Accessed 28 June 2012), 2009.
- 19 Norris, G., Vedantham, R., Wade, K., Brown, S., Prouty, J. and Foley, C.: EPA Positive Matrix  
20 Factorization (PMF) 3.0: fundamentals & user guide, U.S. Environmental Protection Agency,  
21 2008.
- 22 O'Dowd, C. D., Smith, M. H., Consterdine, I. E. and Lowe, J. A.: Marine aerosol, sea-salt, and the  
23 marine sulphur cycle: a short review, *Atmospheric Environment*, 31(1), 73–80,  
24 doi:10.1016/S1352-2310(96)00106-9, 1997.
- 25 Paatero, P.: Least squares formulation of robust non-negative factor analysis, *Chemometrics and*  
26 *Intelligent Laboratory Systems*, 37(1), 23–35, 1997.
- 27 Paatero, P.: User's guide for the multilinear engine program "ME2" for fitting multilinear and  
28 quasimultilinear models, University of Helsinki, Finland, 2000.
- 29 Paatero, P. and Tapper, U.: Positive Matrix Factorization - a Nonnegative Factor Model with Optimal  
30 Utilization of Error-Estimates of Data Values, *Environmetrics*, 5(2), 111–126, doi:10.1002/  
31 [env.3170050203](http://env.3170050203), 1994.
- 32 Pacyna, E. G., Pacyna, J. M., Fudala, J., Strzelecka-Jastrzab, E., Hlawiczka, S., Panasiuk, D., Nitter, S.,  
33 Pregger, T., Pfeiffer, H. and Friedrich, R.: Current and future emissions of selected heavy metals  
34 to the atmosphere from anthropogenic sources in Europe, *Atmospheric Environment*, 41(38),  
35 8557–8566, doi:10.1016/j.atmosenv.2007.07.040, 2007.

- 1 Pacyna, J. M.: Trace element emission from anthropogenic sources in Europe, Norw. Inst. for Air Res.,  
2 Lillestrom, 1983.
- 3 Pandolfi, M., Gonzalez-Castanedo, Y., Alastuey, A., Rosa, J. D., Mantilla, E., Campa, A. S., Querol, X.,  
4 Pey, J., Amato, F. and Moreno, T.: Source apportionment of PM<sub>10</sub> and PM<sub>2.5</sub> at multiple sites  
5 in the strait of Gibraltar by PMF: impact of shipping emissions, *Environmental Science and*  
6 *Pollution Research*, 18(2), 260–269, doi:10.1007/s11356-010-0373-4, 2010.
- 7 Pay, M. T., Jiménez-Guerrero, P. and Baldasano, J. M.: Assessing sensitivity regimes of secondary  
8 inorganic aerosol formation in Europe with the CALIOPE-EU modeling system, *Atmospheric*  
9 *Environment*, 51(0), 146–164, doi:10.1016/j.atmosenv.2012.01.027, 2012.
- 10 Perrone, M. G., Larsen, B. R., Ferrero, L., Sangiorgi, G., De Gennaro, G., Udisti, R., Zangrando, R.,  
11 Gambaro, A. and Bolzacchini, E.: Sources of high PM<sub>2.5</sub> concentrations in Milan, Northern  
12 Italy: Molecular marker data and CMB modelling, *Science of The Total Environment*, 414(0),  
13 343–355, doi:10.1016/j.scitotenv.2011.11.026, 2012.
- 14 Polissar, A. V., Hopke, P. K., Paatero, P., Kaufmann, Y. J., Hall, D. K., Bodhaine, B. A., Dutton, E. G. and  
15 Harris, J. M.: The aerosol at Barrow, Alaska: long-term trends and source locations,  
16 *Atmospheric Environment*, 33(16), 2441–2458, doi:10.1016/S1352-2310(98)00423-3, 1999.
- 17 Polissar, A. V., Hopke, P. K. and Harris, J. M.: Source Regions for Atmospheric Aerosol Measured at  
18 Barrow, Alaska, *Environ. Sci. Technol.*, 35(21), 4214–4226, doi:10.1021/es0107529, 2001a.
- 19 Polissar, A. V., Hopke, P. K. and Poirot, R. L.: Atmospheric aerosol over Vermont: chemical  
20 composition and sources, *Environmental science & technology*, 35(23), 4604–4621, 2001b.
- 21 Politis, D. N. and White, H.: Automatic Block-Length Selection for the Dependent Bootstrap,  
22 *Econometric Reviews*, 23(1), 53–70, doi:10.1081/ETC-120028836, 2004.
- 23 Pope, C. A. and Dockery, D. W.: Health effects of fine particulate air pollution: Lines that connect, J.  
24 *Air Waste Manage. Assoc.*, 56(6), 709–742, 2006.
- 25 Posfai, M., Simonics, R., Li, J., Hobbs, P. V., and Buseck, P. R.: Individual aerosol particles from  
26 biomass burning in southern Africa: 1. Compositions and size distributions of carbonaceous  
27 particles, *J. Geophys. Res.-Atmos.*, 108, D13, 8483, doi:10.1029/2002JD002291, 2003.
- 28 Poulakis, E., Theodosi, C., Sciare, J., Bressi, M., Gherzi, V. and Mihalopoulos, N.: Airborne mineral  
29 components and trace metals in Paris region: Spatial and temporal variability, manuscript in  
30 preparation, 2012.
- 31 Putaud, J.-P., Van Dingenen, R., Alastuey, A., Bauer, H., Birmili, W., Cyrys, J., Flentje, H., Fuzzi, S.,  
32 Gehrig, R., Hansson, H. C., Harrison, R. M., Herrmann, H., Hitzenberger, R., Hüglin, C., Jones, A.  
33 M., Kasper-Giebl, A., Kiss, G., Kousa, A., Kuhlbusch, T. A. J., Loschau, G., Maenhaut, W., Molnar,  
34 A., Moreno, T., Pekkanen, J., Perrino, C., Pitz, M., Puxbaum, H., Querol, X., Rodriguez, S., Salma,  
35 I., Schwarz, J., Smolik, J., Schneider, J., Spindler, G., ten Brink, H., Tursic, J., Viana, M.,

- Wiedensohler, A., Raes, F.: A European aerosol phenomenology – 3: Physical and chemical characteristics of particulate matter from 60 rural, urban, and kerbside sites across Europe, *Atmos. Environ.*, 44, 1308–1320, 2010.
- Puxbaum, H., Caseiro, A., Sánchez-Ochoa, A., Kasper-Giebl, A., Claeys, M., Gelencsér, A., Preunkert, S., Legrand, M., and Pio, C. A.: Levoglucosan levels at background sites in Europe for assessing the impact of biomass combustion on the European aerosol background, *J. Geophys. Res.*, 112, D23S05, doi:10.1029/2006JD008114, 2007.
- Quass, U., Kuhlbusch, T. and Koch, M.: Identification of source groups of fine dust, Public report to the Environment Ministry of North Rhine Westphalia, Germany. Available from: [http://www.lanuv.nrw.de/luft/berichte/FeinstaubNRW\\_2004\\_Summary.pdf](http://www.lanuv.nrw.de/luft/berichte/FeinstaubNRW_2004_Summary.pdf) (Accessed 24 July 2012), 2004.
- Querol, X., Alastuey, A., Ruiz, C. R., Artinano, B., Hansson, H. C., Harrison, R. M., Buringh, E., ten Brink, H. M., Lutz, M., Bruckmann, P., Straehl, P., and Schneider, J.: Speciation and origin of PM<sub>10</sub> and PM<sub>2.5</sub> in selected European cities, *Atmos. Environ.*, 38, 6547–6555, doi:10.1016/j.atmosenv.2004.08.037, 2004.
- Raes, F., Dingenen, R. V., Vignati, E., Wilson, J., Putaud, J.-P., Seinfeld, J. H. and Adams, P.: Formation and cycling of aerosols in the global troposphere, *Atmospheric Environment*, 34(25), 4215–4240, doi:10.1016/S1352-2310(00)00239-9, 2000.
- Reff, A., Eberly, S. I. and Bhawe, P. V.: Receptor modeling of ambient particulate matter data using positive matrix factorization: review of existing methods, *Journal of the Air & Waste Management Association*, 57(2), 146, 2007.
- Reid, J. S., Koppmann, R., Eck, T. F., Eleuterio, D. P. and others: A review of biomass burning emissions part II: intensive physical properties of biomass burning particles, *Atmospheric Chemistry and Physics*, 5(3), 799–825, 2005.
- Robache, A., Mathé, F., Galloo, J.-C. and Guillermo, R.: Multi-element analysis by inductively coupled plasma optical emission spectrometry of airborne particulate matter collected with a low-pressure cascade impactor, *The Analyst*, 125, 1855–1859, doi:10.1039/b003048l, 2000.
- Ruellan, S. and Cachier, H.: Characterisation of fresh particulate vehicular exhausts near a Paris high flow road, *Atmos. Environ.*, 35(2), 453–468, doi:10.1016/S1352-2310(00)00110-2, 2001.
- Schaap, M., Van Loon, M., Ten Brink, H. M., Dentener, F. J., Builtjes, P. J. H. and others: Secondary inorganic aerosol simulations for Europe with special attention to nitrate, *Atmospheric Chemistry and Physics*, 4(3), 857–874, 2004.
- Schauer, J. J., Kleeman, M. J., Cass, G. R. and Simoneit, B. R. T.: Measurement of Emissions from Air Pollution Sources. 3. C<sub>1</sub>–C<sub>29</sub> Organic Compounds from Fireplace Combustion of Wood, *Environ. Sci. Technol.*, 35(9), 1716–1728, doi:10.1021/es001331e, 2001.

- 1 Schauer, J. J., Lough, G. C., Shafer, M. M., Christensen, W. F., Arndt, M. F., DeMinter, J. T. and Park, J.-  
2 S.: Characterization of metals emitted from motor vehicles, Research report (Health Effects  
3 Institute), (133), 2006.
- 4 Schmidl, C.: PM10 – Quellenprofile von Holzrauchemissionen aus Kleinf Feuerungen diploma thesis,  
5 Vienna Univ. of Technol., Vienna, Austria, 2005.
- 6 Sciare, J., d'Argouges, O., Sarda-Estève, R., Gaimoz, C., Dolgorouky, C., Bonnaire, N., Favez, O.,  
7 Bonsang, B., and Gros, V.: Large contribution of water-insoluble secondary organic aerosols in  
8 the region of Paris (France) during wintertime, *J. Geophys. Res.*, 116, D22203,  
9 doi:10.1029/2011JD015756, 2011.
- 10 Sciare, J., d' Argouges, O., Zhang, Q. J., Sarda-Esteve, R., Gaimoz, C., Gros, V., Beekmann, M. and  
11 Sanchez, O.: Comparison between simulated and observed chemical composition of fine  
12 aerosols in Paris (France) during springtime: contribution of regional versus continental  
13 emissions., *Atmos. Chem. Phys.*, 10(24), 11987–12004, doi:10.5194/acp-10-11987-2010, 2010.
- 14 Sharma, P. and Dubey, R. S.: Lead toxicity in plants, *Brazilian Journal of Plant Physiology*, 17(1), 35–  
15 52, doi:10.1590/S1677-04202005000100004, 2005.
- 16 Simoneit, B. R. T.: Biomass burning—a review of organic tracers for smoke from incomplete  
17 combustion, *Applied Geochemistry*, 17(3), 129–162, 2002.
- 18 Simoneit, B. R. T., Schauer, J. J., Nolte, C. G., Oros, D. R., Elias, V. O., Fraser, M. P., Rogge, W. F. and  
19 Cass, G. R.: Levoglucosan, a tracer for cellulose in biomass burning and atmospheric particles,  
20 *Atmospheric Environment*, 33(2), 173–182, doi:10.1016/S1352-2310(98)00145-9, 1999.
- 21 Simpson, D., Winiwarter, W., Borjesson, G., Cinderby, S., Ferreira, A., Guenther, A., Hewitt, C. N.,  
22 Janson, R., Khalil, M. a. K., Owen, S., Pierce, T. E., Puxbaum, H., Shearer, M., Skiba, U.,  
23 Steinbrecher, R., Tarrason, L., and Oquist, M. G.: Inventorying emissions from nature in Europe,  
24 *J. Geophys. Res.-Atmos.*, 104, 8113–8152, doi:10.1029/98JD02747, 1999.
- 25 Singh, K.: On the Asymptotic Accuracy of Efron's Bootstrap, *Ann. Statist.*, 9(6), 1187–1195,  
26 doi:10.1214/aos/1176345636, 1981.
- 27 Stern, R., Builtjes, P., Schaap, M., Timmermans, R., Vautard, R., Hodzic, A., Memmesheimer, M.,  
28 Feldmann, H., Renner, E. and Wolke, R.: A model inter-comparison study focussing on episodes  
29 with elevated PM10 concentrations, *Atmospheric Environment*, 42(19), 4567–4588,  
30 doi:10.1016/j.atmosenv.2008.01.068, 2008.
- 31 Sunder Raman, R. and Hopke, P. K.: Source apportionment of fine particles utilizing partially  
32 speciated carbonaceous aerosol data at two rural locations in New York State, *Atmospheric*  
33 *Environment*, 41(36), 7923–7939, doi:10.1016/j.atmosenv.2007.06.066, 2007.
- 34 Sverdrup, H. U., Johnson, M. W. and Fleming, R. H.: *The Oceans : Their physics, Chemistry, and*  
35 *General Biology*, Prentice-Hall, Inc., New York, 1942.

- 1 Tang, I. N., Tridico, A. C. and Fung, K. H.: Thermodynamic and optical properties of sea salt aerosols, J.  
2 Geophys. Res.-Atmos., 102(D19), 23269–23275, doi:10.1029/97JD01806, 1997.
- 3 Theodosi, C., Markaki, Z., Tselepidis, A. and Mihalopoulos, N.: The significance of atmospheric inputs  
4 of soluble and particulate major and trace metals to the eastern Mediterranean seawater,  
5 Marine Chemistry, 120(1-4), 154–163, 2010.
- 6 Thorpe, A. and Harrison, R. M.: Sources and properties of non-exhaust particulate matter from road  
7 traffic: A review, Science of The Total Environment, 400(1–3), 270–282, doi:10.1016/  
8 j.scitotenv.2008.06.007, 2008.
- 9 Thurston, G. D., Ito, K. and Lall, R.: A source apportionment of U.S. fine particulate matter air  
10 pollution, Atmospheric Environment, 45(24), 3924–3936, doi:10.1016/j.atmosenv.  
11 2011.04.070, 2011.
- 12 Ulbrich, I.M., Canagaratna, M.R., Zhang, Q., Worsnop, D.R. and Jimenez, J.L.: Interpretation of organic  
13 components from Positive Matrix Factorization of aerosol mass spectrometric data, Atmos.  
14 Chem. Phys., 9, 2891–2918, 2009.
- 15 US-EPA: Report to Congress on Black Carbon\_ External Peer Review Draft, U.S. Environmental  
16 Protection Agency. Available from: [http://yosemite.epa.gov/sab/sabproduct.nsf/0/050114](http://yosemite.epa.gov/sab/sabproduct.nsf/0/05011472499C2FB28525774A0074DADE/$File/BC+RTC+External+Peer+Review+Draft-opt.pdf)  
17 [72499C2FB28525774A0074DADE/\\$File/BC+RTC+External+Peer+Review+Draft-opt.pdf](http://yosemite.epa.gov/sab/sabproduct.nsf/0/05011472499C2FB28525774A0074DADE/$File/BC+RTC+External+Peer+Review+Draft-opt.pdf)  
18 (Accessed 29 May 2012), 2011a.
- 19 US-EPA: Policy assessment for the review of the Particulate Matter National Ambient Air Quality  
20 Standards, Available from: [http://www.epa.gov/ttn/naaqs/standards/pm/data/20110419](http://www.epa.gov/ttn/naaqs/standards/pm/data/20110419pmpafinal.pdf)  
21 [pmpafinal.pdf](http://www.epa.gov/ttn/naaqs/standards/pm/data/20110419pmpafinal.pdf) (Accessed 29 May 2012), 2011b.
- 22 Vallius, M., Lanki, T., Tiittanen, P., Koistinen, K., Ruuskanen, J. and Pekkanen, J.: Source  
23 apportionment of urban ambient PM<sub>2.5</sub> in two successive measurement campaigns in  
24 Helsinki, Finland, Atmospheric Environment, 37(5), 615–623, doi:10.1016/S1352-  
25 2310(02)00925-1, 2003.
- 26 Vallius, M., Janssen, N. A. H., Heinrich, J., Hoek, G., Ruuskanen, J., Cyrys, J., Van Grieken, R., de  
27 Hartog, J. J., Kreyling, W. G. and Pekkanen, J.: Sources and elemental composition of ambient  
28 PM<sub>2.5</sub> in three European cities, Science of The Total Environment, 337(1–3), 147–162,  
29 doi:10.1016/j.scitotenv.2004.06.018, 2005.
- 30 Vautard, R., Menut, L., Beekmann, M., Chazette, P., Flamant, P., Gombert, D., Guedalia, D., Kley, D.,  
31 Lefebvre, M., Martin, D., Megie, G., Perros, P., and Toupance, G.: A synthesis of the Air  
32 Pollution over the Paris Region (ESQUIF) field campaign, J. Geophys. Res.-Atmos., 108, D17,  
33 8558, doi:10.1029/2003JD003380, 2003.
- 34 Viana, M., Kuhlbusch, T. A. J., Querol, X., Alastuey, A., Harrison, R. M., Hopke, P. K., Winiwarter, W.,  
35 Vallius, M., Szidat, S., Prévôt, A. S. H., Hueglin, C., Bloemen, H., Wählin, P., Vecchi, R., Miranda,

- 1 A. I., Kasper-Giebl, A., Maenhaut, W., and Hitzenberger, R.: Source apportionment of  
2 particulate matter in Europe: A review of methods and results, *J. Aerosol Sci.*, 39, 827–849,  
3 doi:10.1016/j.jaerosci.2008.05.007, 2008.
- 4 Visser, H., Buringh, E. and Breugel, P. B. van: Composition and Origin of Airborne Particulate Matter  
5 in the Netherlands, National Institute of Public Health and the Environment, 2001.
- 6 Watson, J. G., Zhu, T., Chow, J. C., Engelbrecht, J., Fujita, E. M. and Wilson, W. E.: Receptor modeling  
7 application framework for particle source apportionment, *Chemosphere*, 49(9), 1093–1136,  
8 doi:10.1016/S0045-6535(02)00243-6, 2002.
- 9 Wehrens, R., Putter, H. and Buydens, L.: The bootstrap: a tutorial, *Chemometrics and Intelligent*  
10 *Laboratory Systems*, 54(1), 35–52, 2000.
- 11 Weijers, E. P., Schaap, M., Nguyen, L., Matthijsen, J., Denier van der Gon, H. A. C., ten Brink, H. M.  
12 and Hoogerbrugge, R.: Anthropogenic and natural constituents in particulate matter in the  
13 Netherlands, *Atmospheric Chemistry and Physics*, 11(5), 2281–2294, doi:10.5194/acp-11-2281-  
14 2011, 2011.
- 15 Zhang, Q., Jimenez, J. L., Canagaratna, M. R., Ulbrich, I. M., Ng, N. L., Worsnop, D. R. and Sun, Y.:  
16 Understanding atmospheric organic aerosols via factor analysis of aerosol mass spectrometry:  
17 a review, *Anal. Bioanal. Chem.*, 401, 3045–3067, doi:10.1007/s00216-011-5355-y, 2011.
- 18 Zeng, Y. and Hopke, P. K.: A study of the sources of acid precipitation in Ontario, Canada,  
19 *Atmospheric Environment* (1967), 23(7), 1499–1509, doi:10.1016/0004-6981(89)90409-5,  
20 1989.
- 21

# Tables and Figures

Table 1. Statistics describing measured versus modelled concentrations for each chemical species and for PM<sub>2.5</sub> mass.

Legend: Interc.: Intercept ( $\mu\text{g}/\text{m}^3$ ), SE: Standard Error.

	$r^2$	Slope	Slope SE	Interc.	Interc. SE
<b>PM</b>	0.97	1.01	0.01	-2.5E-01	1.8E-01
<b>OM</b>	0.85	0.87	0.02	4.9E-01	1.3E-01
<b>EC</b>	0.56	0.68	0.03	3.6E-01	5.3E-02
<b>NO3</b>	0.99	1.00	0.01	1.8E-02	2.6E-02
<b>SO4</b>	0.89	0.89	0.02	2.0E-01	4.4E-02
<b>NH4</b>	0.95	0.95	0.01	6.5E-02	2.4E-02
<b>Na</b>	0.82	0.81	0.02	2.5E-02	5.2E-03
<b>Cl</b>	0.76	0.62	0.02	6.0E-02	5.6E-03
<b>Mg</b>	0.79	0.82	0.02	3.0E-03	7.9E-04
<b>K</b>	0.91	0.86	0.01	1.3E-02	2.3E-03
<b>Lev</b>	0.98	0.91	0.01	8.3E-03	2.1E-03
<b>Man</b>	0.97	0.96	0.01	2.5E-04	2.0E-05
<b>V</b>	0.89	0.87	0.02	1.5E-04	2.0E-05
<b>Ni</b>	0.47	0.42	0.02	6.6E-04	4.0E-05
<b>Fe</b>	0.84	0.80	0.02	2.4E-02	3.8E-03
<b>Mn</b>	0.86	0.68	0.01	9.7E-04	9.0E-05
<b>Cu</b>	0.71	0.72	0.02	1.2E-03	2.0E-04
<b>Cd</b>	0.58	0.85	0.04	4.0E-05	1.0E-05
<b>Pb</b>	0.73	0.76	0.03	1.2E-03	1.8E-04

Table 2. Seasonal variability of statistics describing the ability of PMF to model PM<sub>2.5</sub>.

Legend: RMSE: Root Mean Square Error, MAPE: Mean Absolute Percentage Error.

Note:  $r^2$  was determined by plotting the modelled (sum of the contributions of the sources) versus the measured PM<sub>2.5</sub> mass. Calendar seasons were used (see Table 3).

		Autumn	Winter	Spring	Summer	Annual
number of days		85	82	84	86	337
$r^2$		0.97	0.98	0.95	0.89	0.97
RMSE	$\mu\text{g}/\text{m}^3$	1.4	1.9	2.0	1.6	1.7
MAPE	%	6	6	9	10	8

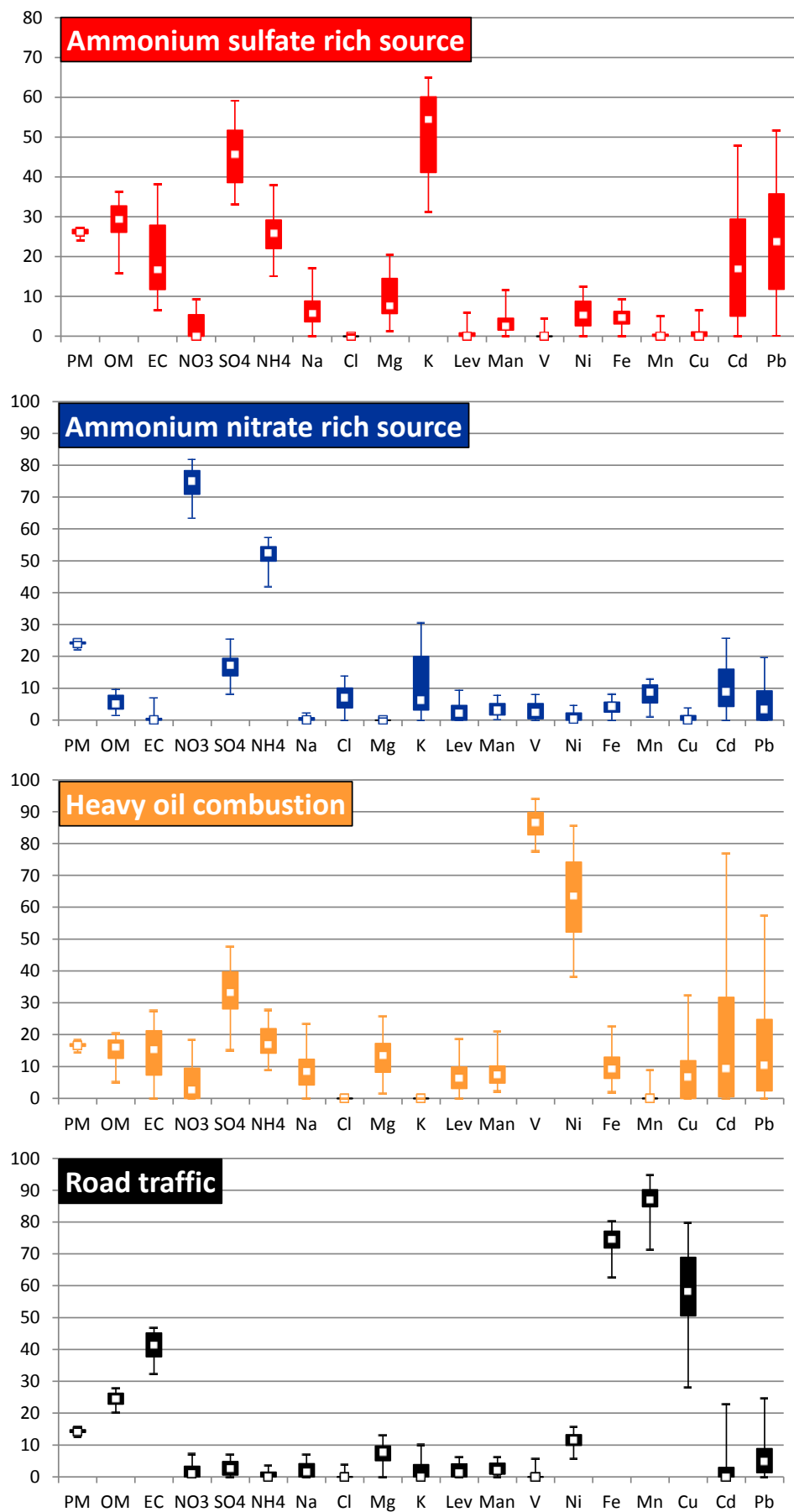
Table 3. Seasonal variations of the absolute concentrations of the sources ( $\mu\text{g}/\text{m}^3$ ), and their relative proportions to the averaged  $\text{PM}_{2.5}$  mass (%).

*Legend: std: standard deviation, A.S.: Ammonium Sulfate, A.N.: Ammonium Nitrate.*

*Note: Calendar seasons were used i.e. Autumn: from 23 September to 21 December 2009; Winter from 22 December 2009 to 20 March 2010; Spring: from 21 March to 21 June 2010 and Summer: from 11 September to 22 September 2009 plus from 22 June to 10 September 2010. Annual: from 11 September 2009 to 10 September 2010. The meaningless negative contribution of the biomass burning source (marked with an asterisk \*) during summer is due to analytical problems with levoglucosan during September 2009.*

			Autumn	Winter	Spring	Summer	Annual
	number of days		85	82	84	86	337
<b>A.S. rich factor</b>	$\mu\text{g}/\text{m}^3$	mean	2.7	5.6	3.5	3.8	3.9
		std	2.5	6.2	2.8	2.7	4.0
	%	-	21	26	24	39	27
<b>A.N. rich factor</b>	$\mu\text{g}/\text{m}^3$	mean	1.9	6.8	5.1	0.5	3.5
		std	3.4	6.5	6.8	1.7	5.6
	%	-	15	32	34	5	24
<b>Heavy oil combustion</b>	$\mu\text{g}/\text{m}^3$	mean	2.0	2.1	3.0	2.6	2.4
		std	2.1	1.7	2.0	2.1	2.0
	%	-	15	10	20	27	17
<b>Road traffic</b>	$\mu\text{g}/\text{m}^3$	mean	2.5	1.3	2.3	2.3	2.1
		std	2.3	1.4	2.2	2.1	2.1
	%	-	19	6	15	24	14
<b>Biomass burning</b>	$\mu\text{g}/\text{m}^3$	mean	2.4	4.7	0.2	-0.1*	1.8
		std	3.0	3.7	0.4	0.2	3.0
	%	-	18	22	1	-1*	12
<b>Marine aerosols</b>	$\mu\text{g}/\text{m}^3$	mean	1.3	0.7	0.6	0.6	0.8
		std	1.4	1.0	0.6	0.7	1.0
	%	-	10	4	4	6	6
<b>Metals industry</b>	$\mu\text{g}/\text{m}^3$	mean	0.1	0.1	0.1	0.1	0.1
		std	0.1	0.1	0.1	0.1	0.1
	%	-	1	0	1	1	1





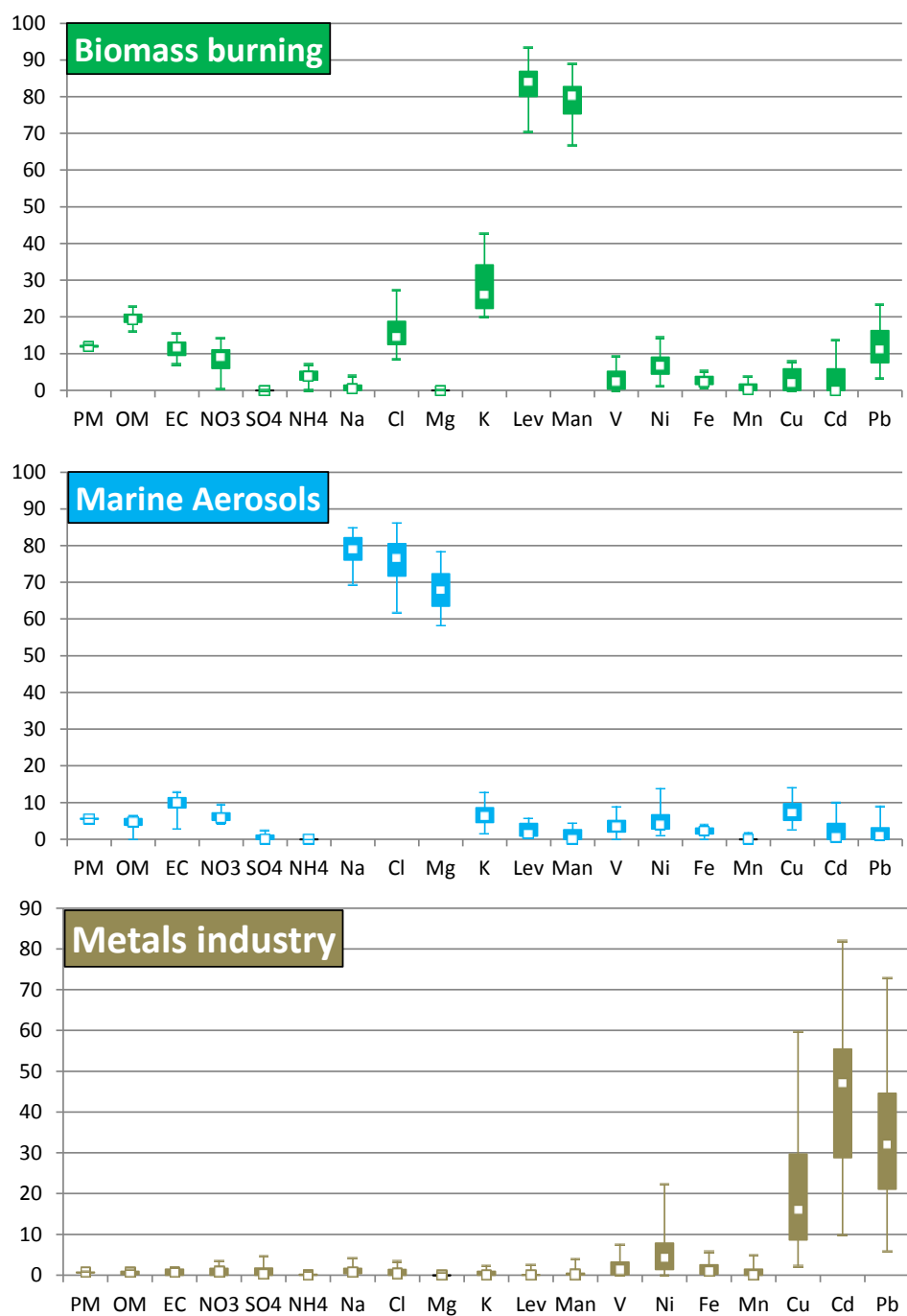
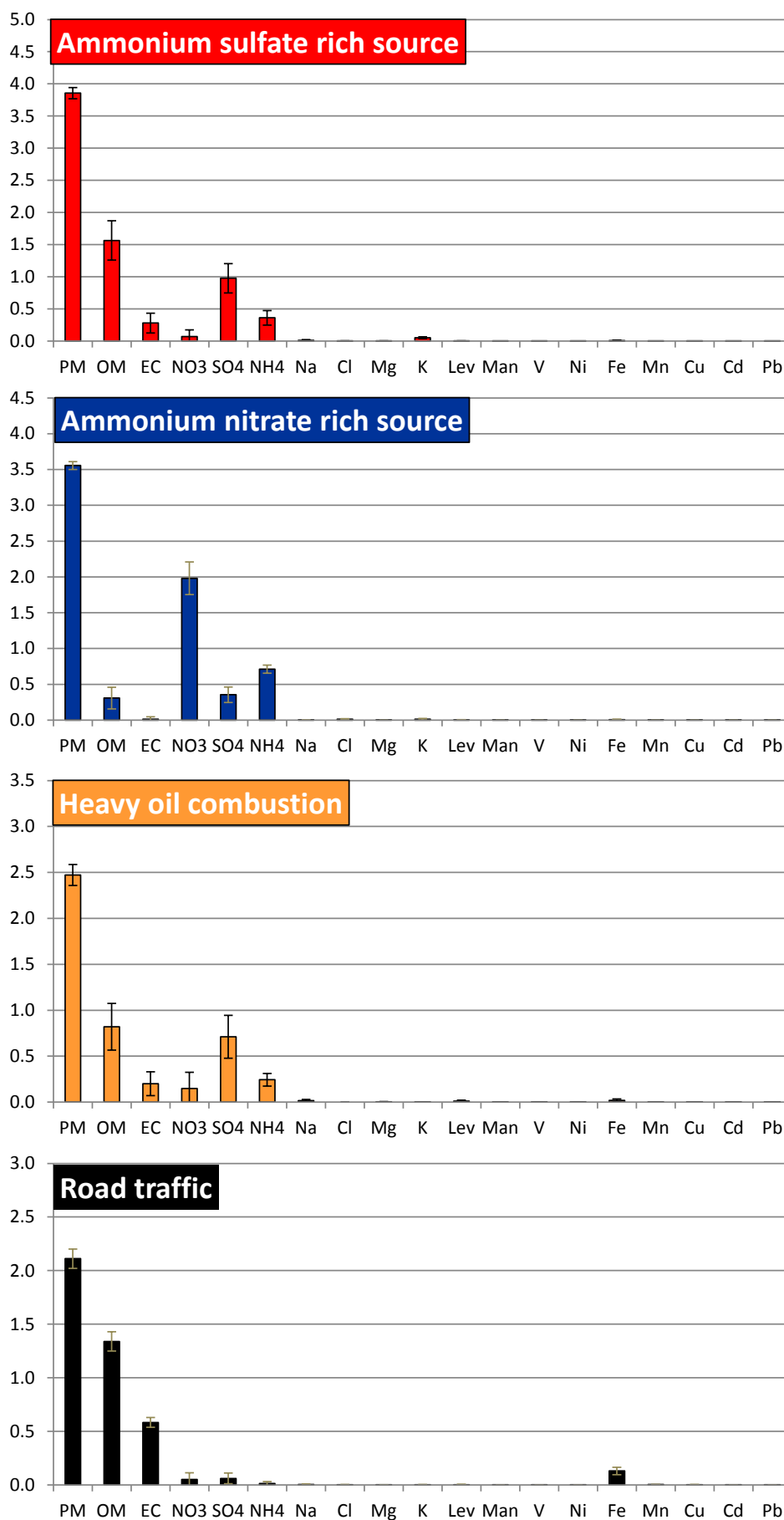
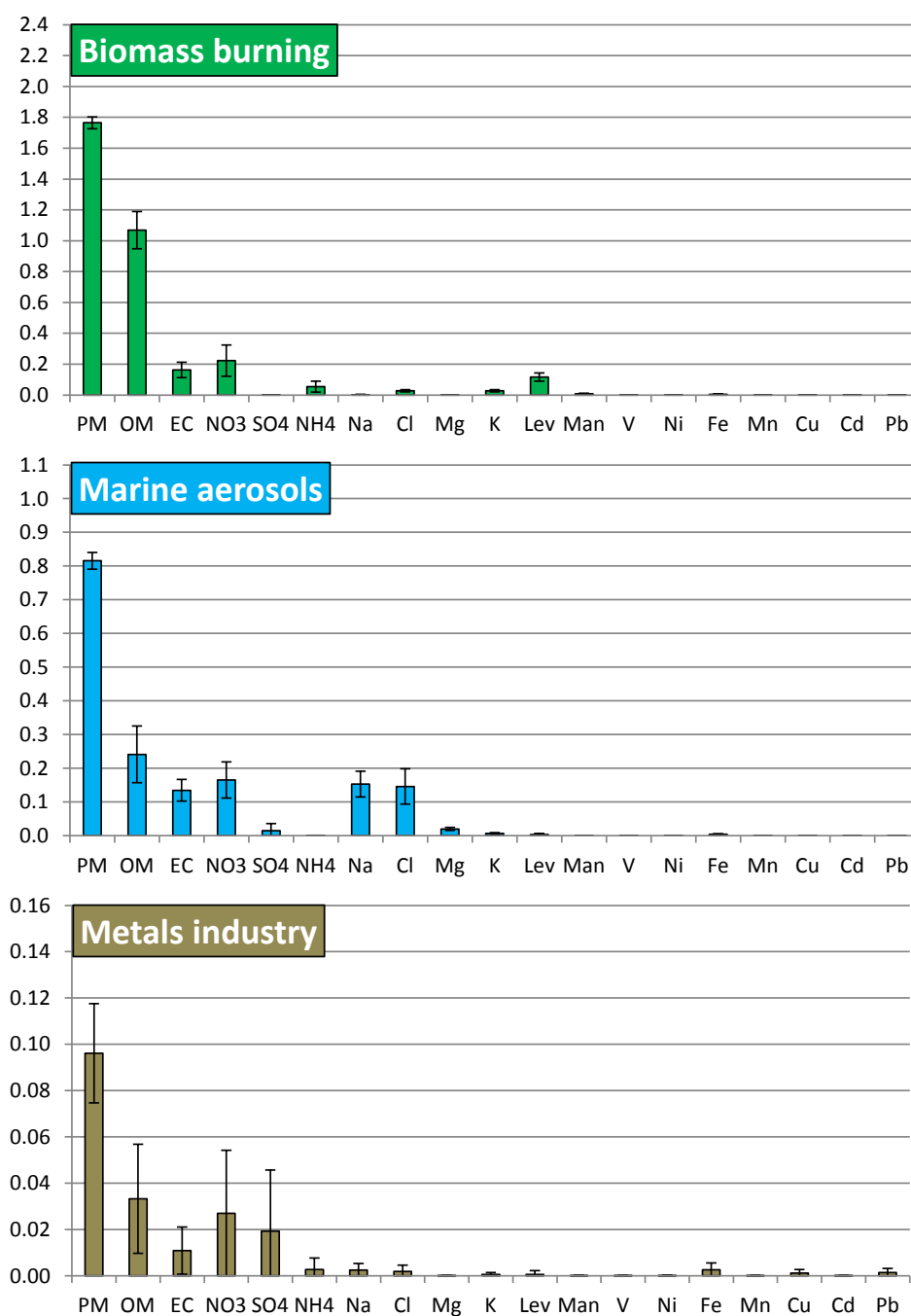


Fig. 1. Relative contribution (%) of each chemical species in a given PMF factor. Boxplots are constructed with the 5<sup>th</sup>, 25<sup>th</sup>, 50<sup>th</sup>, 75<sup>th</sup> and 95<sup>th</sup> percentiles of bootstrap runs (n=100).  
 Legend: Lev: Levoglucosan, Man: Mannosan.





1

2 Fig. 2. Contribution ( $\mu\text{g}/\text{m}^3$ ) of the chemical species to each source (mean  $\pm$  standard deviation of the

3 bootstrap results,  $n=100$ ).

4 Legend: Lev: Levoglucosan, Man: Mannosan.

5

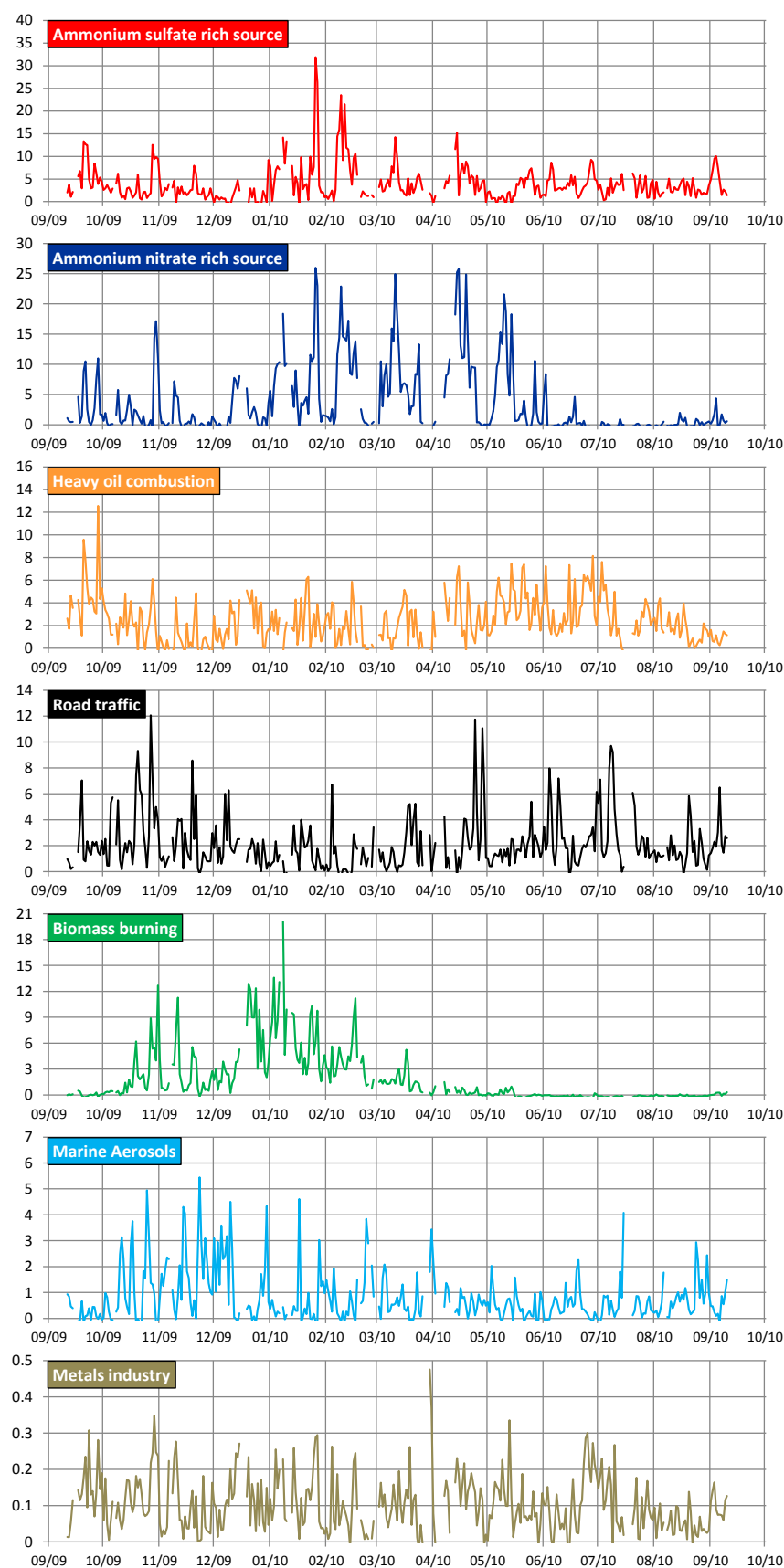
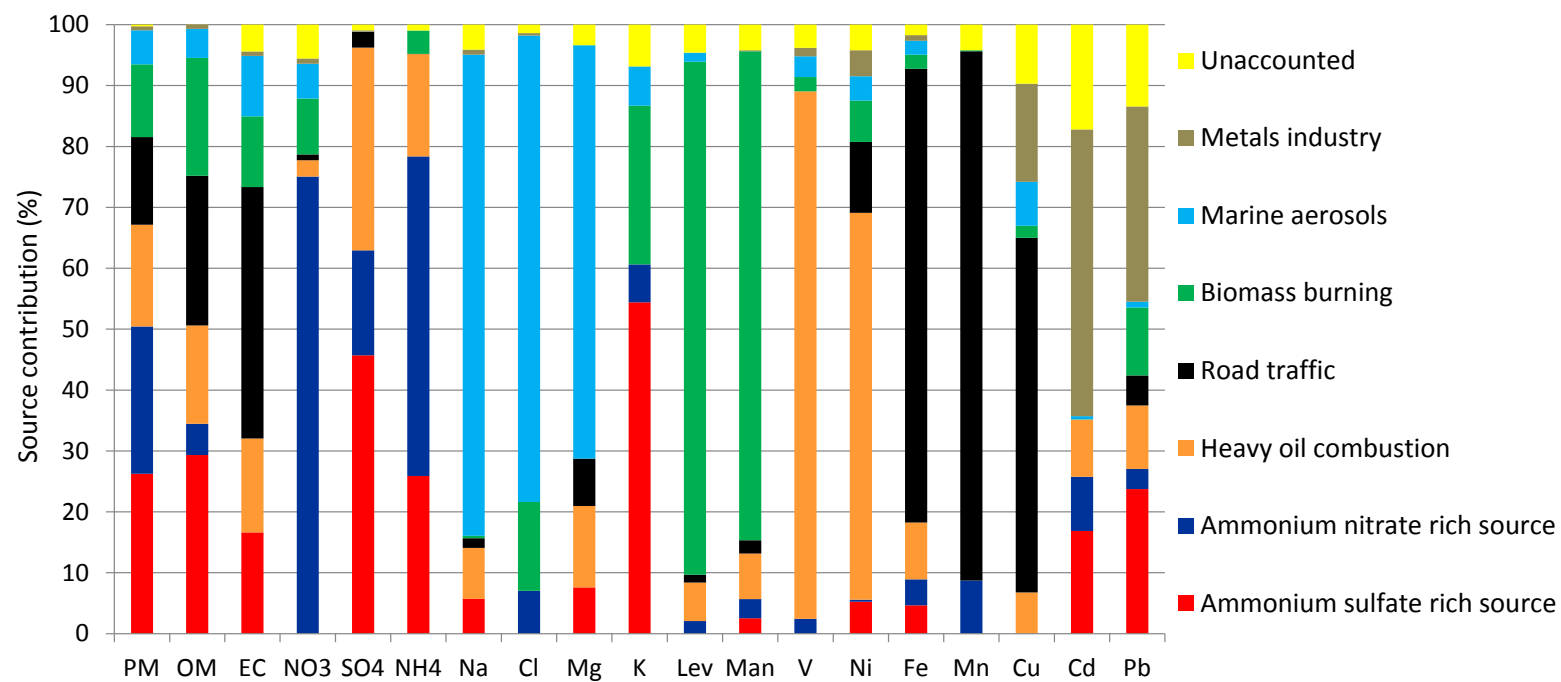


Fig. 3. Daily contribution ( $\mu\text{g}/\text{m}^3$ ) of each source to PM mass from 11 September 2009 to 10 September 2010.

Note: results were taken from the base run exhibiting the lowest  $Q_{\text{robust}}$ .

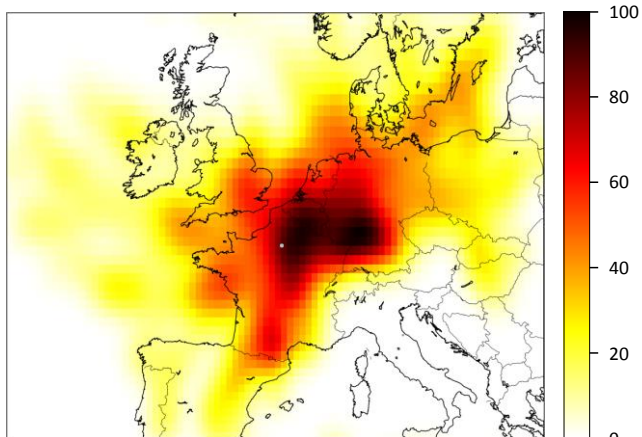


1

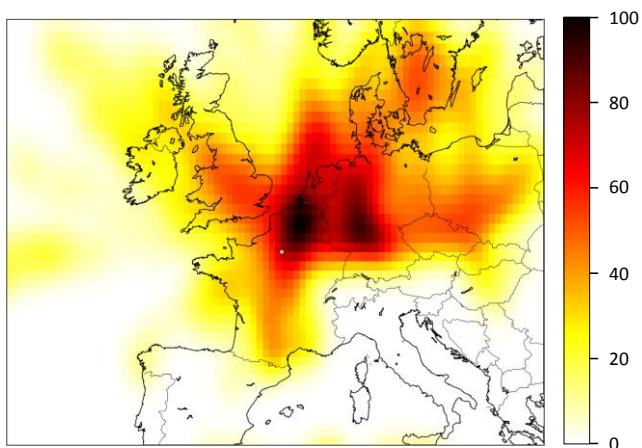
2 Fig. 4. Source contribution (%) to each chemical species (median of the bootstrap results, n=100).

3 Legend: Lev: Levoglucosan, Man: Mannosan, Unaccounted: proportion of a chemical species that is not attributed to any factor.

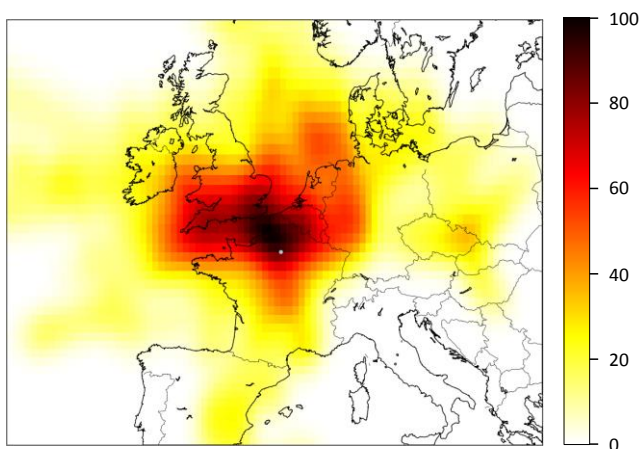
Ammonium sulfate rich source



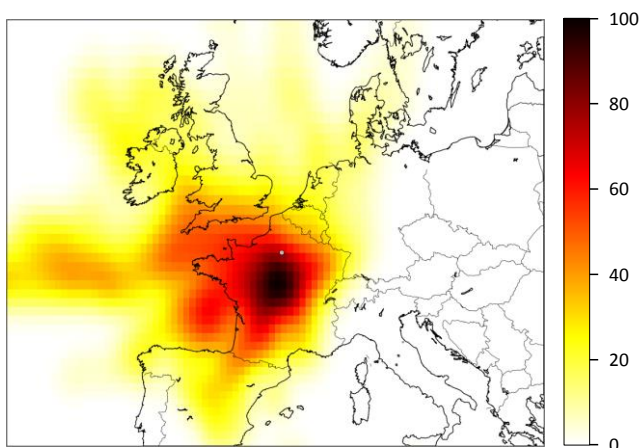
Ammonium nitrate rich source

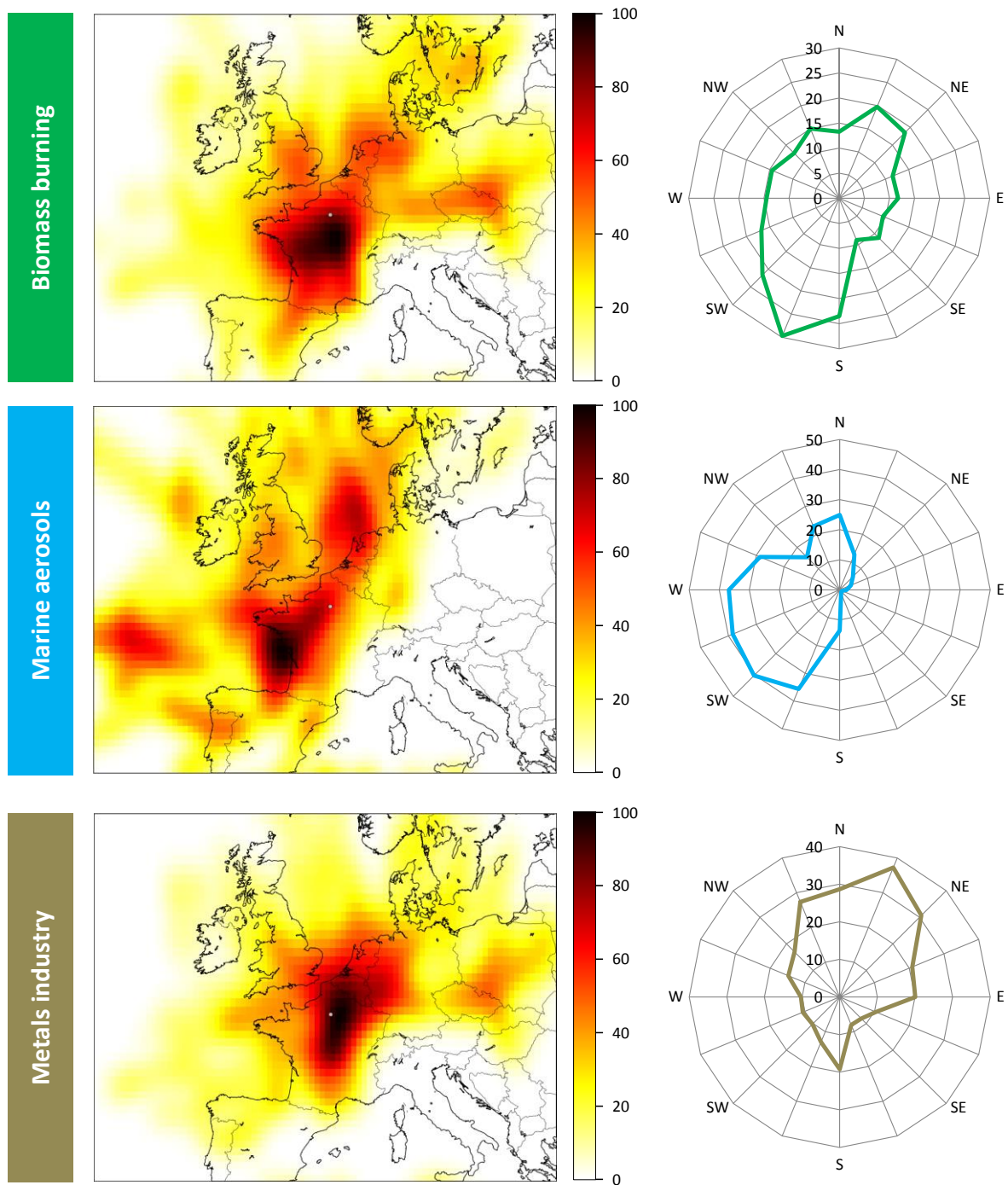


Heavy oil combustion



Road traffic





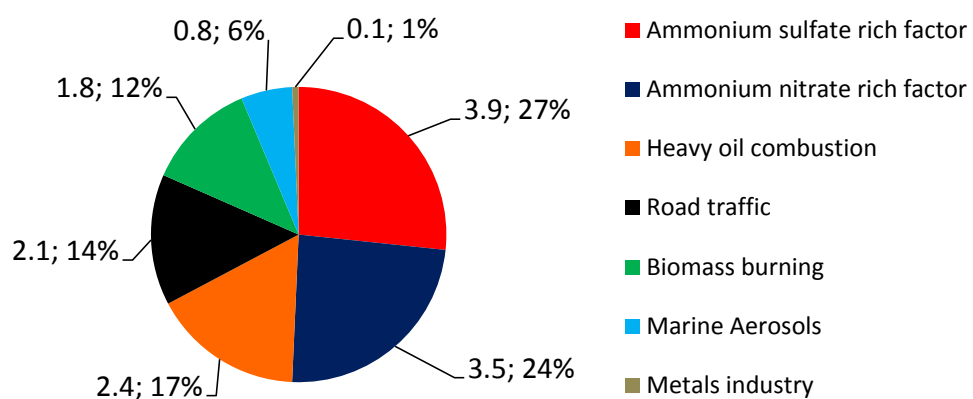
1

2 Fig. 5. Probability (in %) that the contribution of a source exceeds the 75<sup>th</sup> percentile of all its  
 3 contributions, when air masses came from a given air parcel (left, PSCF), or a given wind direction  
 4 (right, CPF).

5 *Note: The city of Paris is indicated by a grey dot on PSCF figures; for each source, PSCF probabilities*  
 6 *have been normalized to 100%.*



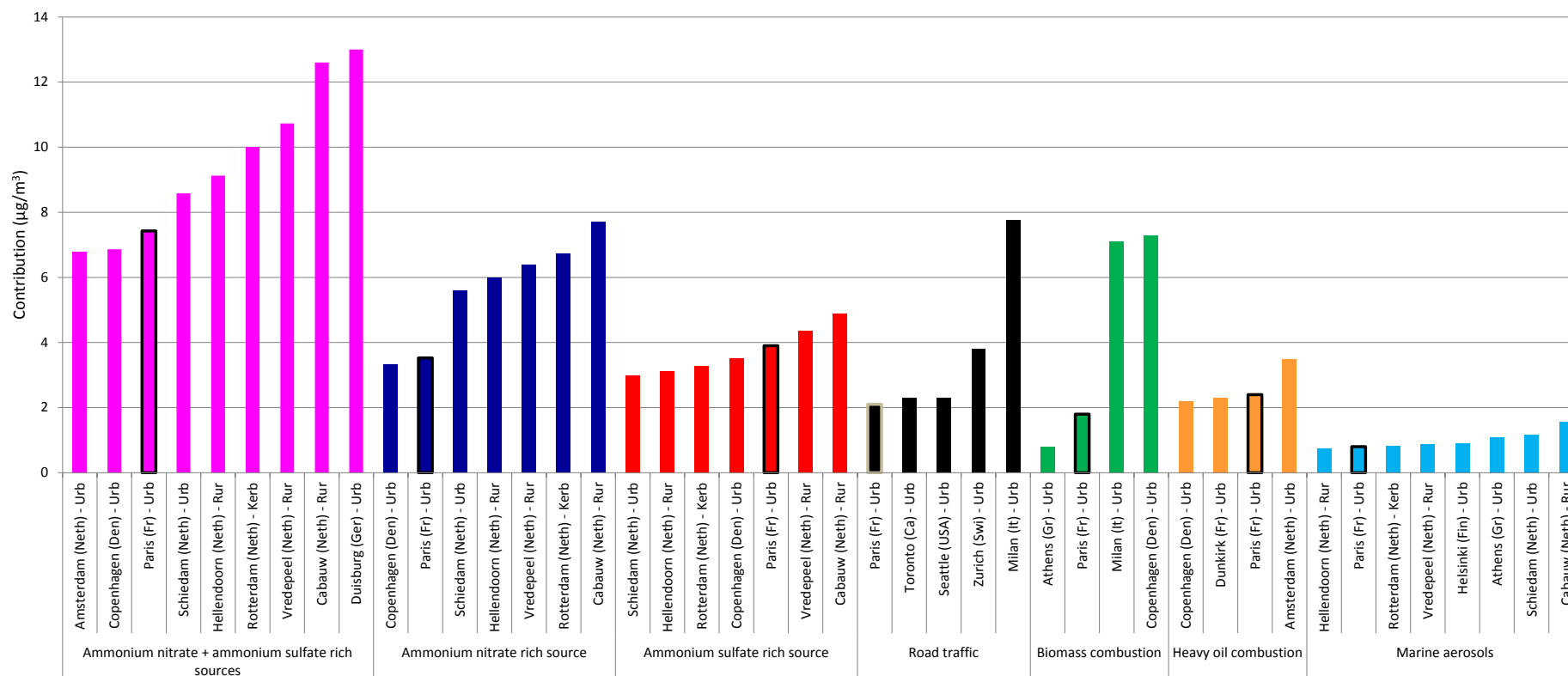
1



2

3

4 Fig. 6. Annual average contribution (µg/m<sup>3</sup>; %) to PM<sub>2.5</sub> mass (14.7 µg/m<sup>3</sup>) of the seven sources, from  
5 11 September 2009 to 10 September 2010.

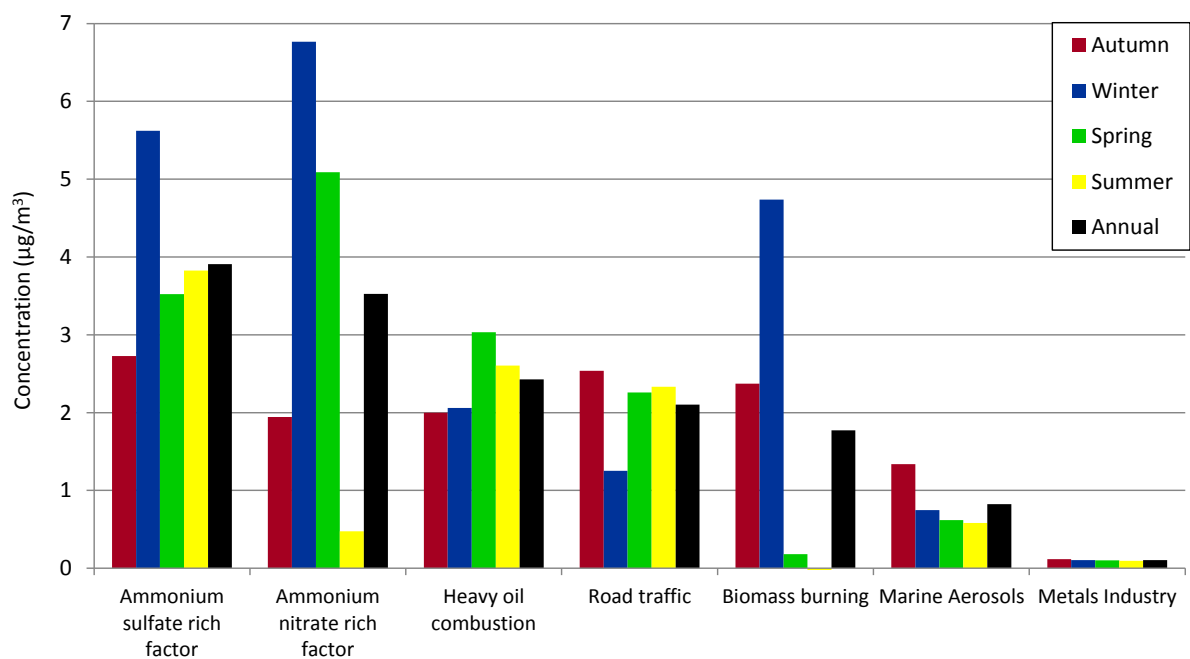


1

2

3 Fig. 7. Comparison of the contribution (in  $\mu\text{g}/\text{m}^3$ ) of the major sources of PM determined by receptor model studies at different European locations (see  
 4 Bressi, 2012, Table S6 and text for more details).

5 Note: Sites are indicated as: "City (Country)-Type of sites". Urb: urban, Rur: rural, Kerb: kerbside.



1

2 Fig. 8. Variations of the seasonal averaged contributions ( $\mu\text{g}/\text{m}^3$ ) of the seven sources of  $\text{PM}_{2.5}$ .

3 Note: Calendar seasons were used (see Table 3 for more details).

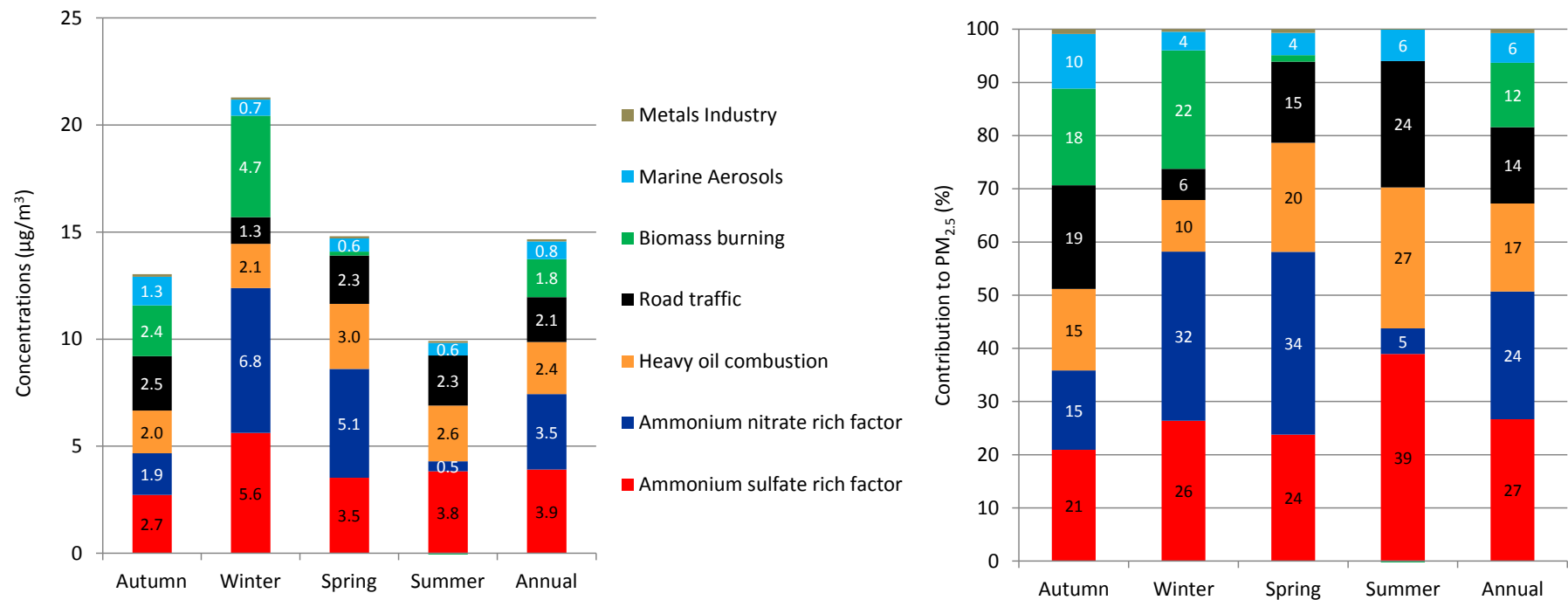


Fig. 9. Averaged seasonal and annual contributions in  $\mu\text{g}/\text{m}^3$  (left) and in % (right) of the seven sources to  $\text{PM}_{2.5}$  mass ( $14.7 \mu\text{g}/\text{m}^3$ ).  
 Note: Contributions below  $0.2 \mu\text{g}/\text{m}^3$  (left) and 1% of  $\text{PM}_{2.5}$  mass (right) are not indicated. Calendar seasons were used. Cf. Table 3 for additional information.