

This discussion paper is/has been under review for the journal Atmospheric Chemistry and Physics (ACP). Please refer to the corresponding final paper in ACP if available.

## Interpreting aerosol lifetimes

B. Croft et al.

# Interpreting aerosol lifetimes using the GEOS-Chem model and constraints from radionuclide measurements

B. Croft<sup>1</sup>, J. R. Pierce<sup>1,2</sup>, and R. V. Martin<sup>1,3</sup>

<sup>1</sup>Department of Physics and Atmospheric Science, Dalhousie University, Halifax, Canada

<sup>2</sup>Colorado State University, Fort Collins, CO, USA

<sup>3</sup>Harvard-Smithsonian Center for Astrophysics, Cambridge, MA, USA

Received: 30 October 2013 – Accepted: 26 November 2013 – Published: 10 December 2013

Correspondence to: B. Croft (croft@mathstat.dal.ca)

Published by Copernicus Publications on behalf of the European Geosciences Union.

Title Page

Abstract

Introduction

Conclusions

References

Tables

Figures

◀

▶

◀

▶

Back

Close

Full Screen / Esc

Printer-friendly Version

Interactive Discussion



## Abstract

Aerosol removal processes control global aerosol abundance, but the rate of that removal remains uncertain. A recent study of aerosol-bound radionuclide measurements after the Fukushima Dai-ichi nuclear power plant accident documents  $^{137}\text{Cs}$  removal (e-folding) times of 10.0 to 13.9 days, suggesting that mean aerosol lifetimes in the range of 3–7 days in global models might be too short by a factor of two. In this study, we attribute this discrepancy to differences between the e-folding and mean aerosol lifetimes. We implement a simulation of  $^{137}\text{Cs}$  and  $^{133}\text{Xe}$  into the GEOS-Chem chemical transport model and examine the removal rates for the Fukushima case. We find a general consistency between modelled and measured e-folding times. The simulated  $^{137}\text{Cs}$  global burden e-folding time is about 14 days. However, the simulated mean lifetime of aerosol-bound  $^{137}\text{Cs}$  over a 6 month post-accident period is only 1.8 days. We find that the mean lifetime depends strongly on the removal rates in the first few days after emissions, before the aerosols leave the boundary layer and are transported to altitudes and latitudes where lifetimes with respect to wet removal are longer by a few orders of magnitude.

We present sensitivity simulations that demonstrate the influence of differences in altitude and location of the radionuclides on the mean lifetime. Global mean lifetimes are shown to strongly depend on the altitude of injection. The global mean  $^{137}\text{Cs}$  lifetime is more than one order of magnitude greater for the injection at 7 km than into the boundary layer above the Fukushima site. Instantaneous removal rates are slower during the first few days after the emissions for a free tropospheric vs. boundary layer injection and this strongly controls the mean lifetimes. Global mean aerosol lifetimes for the GEOS-Chem model are 3–6 days, which is longer than for the  $^{137}\text{Cs}$  injected at the Fukushima site (likely due to precipitation shortly after Fukushima emissions), but about the same as the mean lifetime of 3.9 days for the  $^{137}\text{Cs}$  emissions injected with a uniform spread through the model's Northern Hemisphere boundary layer.

## Interpreting aerosol lifetimes

B. Croft et al.

Title Page

Abstract

Introduction

Conclusions

References

Tables

Figures

◀

▶

◀

▶

Back

Close

Full Screen / Esc

Printer-friendly Version

Interactive Discussion



## Interpreting aerosol lifetimes

B. Croft et al.

Title Page

Abstract

Introduction

Conclusions

References

Tables

Figures

◀

▶

◀

▶

Back

Close

Full Screen / Esc

Printer-friendly Version

Interactive Discussion



Despite the reasonable global mean agreement of GEOS-Chem with measurement e-folding times, site by site comparisons yield differences of up to a factor of two, which suggest possible deficiencies in either the model transport, removal processes or the representation of  $^{137}\text{Cs}$  removal, particularly in the tropics and at high latitudes. There is an ongoing need to develop constraints on aerosol lifetimes, but these measurement-based constraints must be carefully interpreted given the sensitivity of mean and e-folding times to both mixing and removal processes.

## 1 Introduction

Aerosols have important impacts on global air quality (van Donkelaar et al., 2010), human health (Dockery et al., 1993; Pope III et al., 2009) and climate (Twomey, 1991; Charlson et al., 1992; Lohmann and Feichter, 2005). Simulations of aerosol three-dimensional distributions with global models play an essential role in understanding and quantifying these effects. Aerosol lifetimes control regional and global aerosol abundance. However, as noted by Textor et al. (2006), global aerosol lifetimes depend on a number of processes and parameters, including their source and sink functions, particle sizes and spatial dispersion, which have a wide diversity between models. Recently, Kristiansen et al. (2012) presented e-folding times of measured aerosol-bound  $^{137}\text{Cs}$  and  $^{131}\text{I}$  surface layer activity concentrations at remote, global atmospheric sites after the March 2011 Fukushima Dai-ichi nuclear power plant (FD-NPP) accident as a constraint on atmospheric removal times for global models. Based on this constraint, Kristiansen et al. (2012) suggest that global models with mean aerosol lifetimes of 3–7 days may under-estimate lifetimes by as much as a factor of two. However, this comparison implicitly assumes that the measured e-folding time and the mean lifetime in models are directly comparable.

In this study we implement a simulation of  $^{137}\text{Cs}$  and  $^{133}\text{Xe}$  into the GEOS-Chem chemical transport model (Bey et al., 2001) and examine the lifetime of  $^{137}\text{Cs}$  for the Fukushima case. Our goal is to document, compare, and explain differences between

mean aerosol lifetimes and e-folding times over several months following the FD-NPP accident. Additionally, a set of sensitivity simulations are presented, which examine the dependence of mean lifetimes and e-folding times on the altitude and location of the aerosol-bound  $^{137}\text{Cs}$  and the time after emission.

Aerosol lifetimes depend on the removal of aerosols from the atmosphere by both dry and wet deposition processes (Rasch et al., 2000; Textor et al., 2006; Croft et al., 2009, 2010, 2012). The aerosol-bound radionuclides emitted after the FD-NPP accident attach primarily (by mass) to aerosols in the size range of the accumulation mode, similar to sulfate (radii 0.05–0.5  $\mu\text{m}$ ) (Kaneyasu et al., 2012) due to the peak of the aerosol surface area distribution for this mode, and thus undergo similar removal processes. These aerosols are removed primarily by wet scavenging processes, which occur both in and below clouds. As a result,  $^{137}\text{Cs}$  surface layer concentration measurement e-folding times of 10.0–13.9 days primarily characterize accumulation mode aerosol wet removal rates since  $^{137}\text{Cs}$  has a long half-life (about 30 yr) and dry deposition is a relatively minor sink for aerosols in this size range. Measurements taken remote to the emissions site also characterize free tropospheric lifetimes since long-range transport generally occurs above the boundary layer, but obviously aerosols mix back into the boundary layer, or rain out of the free troposphere to be removed.

For this investigation, we implement into GEOS-Chem the radionuclide emission dataset of Stohl et al. (2012), who prepared the dataset by improving first guess estimates of  $^{137}\text{Cs}$  and  $^{133}\text{Xe}$  emissions from the FD-NPP using the atmospheric transport model FLEXPART combined with concentration and deposition measurement data from several dozen sites. The following sections present the lifetime definitions used for this study and give the GEOS-Chem model description. Section 4 provides our lifetime results and discussion. We compare to Comprehensive Nuclear Test-Ban Treaty Organization (CTBTO) site surface layer activity concentration ( $^{137}\text{Cs}/^{133}\text{Xe}$  ratio) e-folding times presented by Kristiansen et al. (2012). We then go on to explain differences between the simulated mean lifetimes and e-folding times during the six months after the nuclear accident. Section 4 also includes the results of our sensitivity simula-

## Interpreting aerosol lifetimes

B. Croft et al.

Title Page

Abstract

Introduction

Conclusions

References

Tables

Figures

◀

▶

◀

▶

Back

Close

Full Screen / Esc

Printer-friendly Version

Interactive Discussion



tions, which examine the dependence of mean lifetimes and e-folding times on injection heights, altitude and location of the radionuclides, and the time after emission.

## 2 Lifetime definitions

Several definitions are used to describe aerosol lifetimes in the Earth's atmosphere. In a steady state, where aerosol emissions are continuous and there is a quasi-equilibrium between sources and sinks, the global and annual mean steady-state aerosol lifetime  $\tau_{ss}$  is defined as

$$\tau_{ss} = \frac{C}{S} \quad (1)$$

where  $C$  is the global, annual mean burden.  $S$  is the global, annual mean emission rate, which is equal to the global, annual removal rate.

In the case of an emission pulse (either instantaneous or over a short period) followed by a removal period considerably longer than the pulse, the mean lifetime can be similarly defined. For example, over a period of six months (6 mo), the mean lifetime is

$$\tau_{6mo} = 6mo \left( \frac{\sum_{i=0}^{i=6mo} C_i}{\sum_{i=0}^{i=6mo} S_i} \right) \quad (2)$$

where  $C_i$  is the global aerosol burden at time  $i$ , and  $S_i$  is the burden emitted at time  $i$ . This is expected to be a close approximation to the steady-state mean lifetime if the mean is taken over a period of time extending considerably longer than the emissions pulse.

The e-folding time,  $\tau_e$  is also commonly used to describe the measured decay of aerosol concentrations following an emissions pulse. This is defined as

Title Page

Abstract

Introduction

Conclusions

References

Tables

Figures

◀

▶

◀

▶

Back

Close

Full Screen / Esc

Printer-friendly Version

Interactive Discussion



$$\tau_e = \frac{-t_i}{\ln\left(\frac{C_i}{C_0}\right)} \quad (3)$$

where  $C_0$  is the initial concentration.

The instantaneous lifetime can be used to characterize exponentially decreasing aerosol concentrations with a time-dependent  $\tau_e$ . For an exponential decrease, we can define the instantaneous lifetime as

$$\tau_{\text{instant}} = \frac{t_i - t_{i-1}}{-\ln\left(\frac{C_i}{C_{i-1}}\right)} \quad (4)$$

where  $t_i$  and  $t_{i-1}$  are adjacent timesteps.  $\tau_{\text{instant}}$  is equivalent to  $\tau_e$  if  $\tau_e$  is constant. The differences between these characterizations of aerosol lifetime are examined and quantified in the following sections.

### 3 Model description

We use the GEOS-Chem chemical transport model version 9–01-03 ([www.geos-chem.org](http://www.geos-chem.org)) to interpret aerosol-bound  $^{137}\text{Cs}$  and  $^{133}\text{Xe}$  activity concentrations following the FD-NPP accident. The model is driven by assimilated meteorology from the Goddard Earth Observing System (GEOS-5) of the NASA Global Modeling and Assimilation Office (GMAO). The horizontal resolution used for this study is  $2^\circ \times 2.5^\circ$ , with 47 vertical layers (model lid at 0.01 hPa). The time period simulated is from 1 March 2011 to 1 September 2011.  $^{137}\text{Cs}$  and  $^{133}\text{Xe}$  are added to the radionuclide simulation described in Liu et al. (2001). The model uses the advection scheme of Lin and Rood (1996) and the moist convective mixing scheme of Allen et al. (1997) applied to mass fluxes from the relaxed Arakawa–Schubert algorithm (Arakawa and Schubert, 1974; Moorthi and Suarez, 1992). The standard GEOS-Chem model includes a bulk aerosol mass simulation of the sulfate-ammonium-nitrate system (Park et al., 2004), as well as sea salt

Title Page

Abstract

Introduction

Conclusions

References

Tables

Figures

◀

▶

◀

▶

Back

Close

Full Screen / Esc

Printer-friendly Version

Interactive Discussion



(Alexander et al., 2005; Jaeglé et al., 2011), dust (Fairlie et al., 2007, 2010) and carbonaceous aerosols (Park et al., 2003; Liao et al., 2007; Henze et al., 2008; Wang et al., 2011). Carbonaceous aerosols are considered as either hydrophobic or hydrophilic, with a fixed e-folding time for conversion from the hydrophobic to hydrophylic state. Hydrophylic aerosols are removed by in-cloud rainout and all aerosols are subject to dry deposition and below cloud washout by precipitation. The original aerosol dry and wet deposition scheme in GEOS-Chem is described in Bey et al. (2001); Liu et al. (2001). Modifications to the wet deposition scheme described in Wang et al. (2011) are used for this study.

### 3.1 Radionuclide simulations

We implemented the emissions of Stohl et al. (2012) for  $^{137}\text{Cs}$  (an aerosol-bound radionuclide) and  $^{133}\text{Xe}$  (a noble gas) in the GEOS-Chem model. The total emissions for the FD-NPP accident are  $36.6 \pm 16.5 \text{ PBq } ^{137}\text{Cs}$  and  $15.3 (-3.1, +3.0) \text{ E bq } ^{133}\text{Xe}$ .  $^{133}\text{Xe}$  is treated as a passive tracer and does not undergo any wet or dry removal processes. To allow direct comparison with published decay-corrected surface layer  $^{133}\text{Xe}$  activity concentration measurement e-folding times presented by Kristiansen et al. (2012), we do not allow radioactive decay of  $^{133}\text{Xe}$ . The long  $^{137}\text{Cs}$  half-life of about 30 yr allows radioactive decay to be neglected for the time frame of this study. We parameterize  $^{137}\text{Cs}$  to undergo the same dry and wet deposition processes as sulfate aerosols.

Table 1 summarizes the simulations conducted to examine the sensitivity of the aerosol removal times to injection altitude, to the altitude and location of the radionuclides, and to the time after emission. The CTL simulation injects the emissions in layers up to 3 km in the model grid boxes over the Fukushima Dai-ichi power plant location, as described in Stohl et al. (2012). The emissions are ongoing for about 40 days, with the majority of the emissions in the first week after the earthquake. The USFC simulation assumes the total emissions of Stohl et al. (2012) are injected with a uniform distribution across the entire Northern Hemisphere and into the surface model layer with a one-time instantaneous pulse injection on 11 March 2011. The U5K and U7K

simulations are similar, except that the emissions are injected in the atmospheric layer at 5 and 7 km, respectively.

## 4 Results

### 4.1 Simulated global lifetimes

5 Figure 1 shows the geographic distribution of the simulated  $^{137}\text{Cs}$  burden for the control (CTL) simulation on days 10 and 20 after the onset of the nuclear accident. Qualitatively our results are quite similar to those presented by Stohl et al. (2012). The  $^{137}\text{Cs}$  plumes encircle the Northern Hemisphere after about 10 days and  $^{137}\text{Cs}$  mixes throughout the Northern Hemisphere after about 3 weeks. CTBTO sites where  $^{137}\text{Cs}$  and  $^{133}\text{Xe}$  activity concentration measurements are taken are indicated by the black circles. Kristiansen et al. (2012) give  $^{137}\text{Cs}/^{133}\text{Xe}$  surface layer concentration ratio e-folding times at these sites that are compared to our simulations in the following section.  $^{137}\text{Cs}$  activity concentrations at all of these sites were strongly influenced by the radionuclide plumes travelling out from the FD-NPP site, which is indicated by the white circle.

15 Figure 2 shows the simulated global  $^{137}\text{Cs}$  burden as a function of days after the 11 March 2011 earthquake for simulation CTL (black symbols). Equations (2) and (3) are used to calculate the global mean lifetime over the 6 month simulation and the e-folding time (fit between days 20 and 80) for the global burden. For the CTL simulation, the global mean aerosol-bound  $^{137}\text{Cs}$  lifetime is about 1.8 days and the e-folding time for the global burden is 14.1 days. Thus, there is almost one order-of-magnitude difference between these two characterizations of lifetime. The mean lifetime of aerosol-bound  $^{137}\text{Cs}$  is strongly controlled by the removal of the majority of the global burden, which occurs in the first few days after the emissions and before the radionuclides have left the boundary layer and entered the free troposphere. This is evidenced by the one order of magnitude reduction in the global burden within about one week after the onset of emissions.

## Interpreting aerosol lifetimes

B. Croft et al.

Title Page

Abstract

Introduction

Conclusions

References

Tables

Figures

◀

▶

◀

▶

Back

Close

Full Screen / Esc

Printer-friendly Version

Interactive Discussion





## Interpreting aerosol lifetimes

B. Croft et al.

[Title Page](#)[Abstract](#)[Introduction](#)[Conclusions](#)[References](#)[Tables](#)[Figures](#)[◀](#)[▶](#)[◀](#)[▶](#)[Back](#)[Close](#)[Full Screen / Esc](#)[Printer-friendly Version](#)[Interactive Discussion](#)

Figure 2 also shows the global  $^{137}\text{Cs}$  burden for the three sensitivity simulations. Simulation USFC with surface layer injection throughout the Northern Hemisphere and the CTL simulation have similar global burdens. Differences between simulation CTL and simulation USFC in the first few days can be attributed to the efficient aerosol removal by rain events close to the FD-NPP site during that time. After 20 days, the  $^{137}\text{Cs}$  is reaching a quasi-steady-state gradient of concentration throughout the Northern Hemisphere troposphere, and thereafter the magnitude and rate of decrease of the global burden is similar between simulations CTL and USFC. The emissions for simulation USFC were emitted into regions of the Northern Hemisphere with less efficient wet removal (pole-ward and arid zones); this gives slower removal in the first few days after the emissions and a slightly larger global burden (by about a factor of two) after 6 months.

Figure 2 also shows that for simulations U5K and U7K, the global burden decreases more slowly during the first two weeks than for simulations CTL and USFC. This decrease is slowest for simulation U7K. For these higher altitudes of injection, the aerosol-bound  $^{137}\text{Cs}$  is already higher in the free troposphere, where removal is less efficient, and the particles must mix down towards the boundary layer before their removal rates are comparable to the surface-injection simulations.

The residual global burden after 6 months shown in Fig. 2 increases with the altitude of injection. At six months, there is a two order-of-magnitude difference in burden between simulations CTL and U7K. This residual burden depends on the removal rates in the first three weeks, before the aerosol-bound  $^{137}\text{Cs}$  reaches a quasi-steady-state gradient of concentration in the Northern Hemisphere troposphere. Scavenging in the first few days when the emissions are close to the surface controls this residual burden.

Figure 3 shows the instantaneous lifetimes for the aerosol-bound global  $^{137}\text{Cs}$  burden. For simulations CTL and USFC, instantaneous lifetimes are short (less than 5 days) during the initial period before transport into the free troposphere. Simulation CTL has the lowest instantaneous lifetimes during the first two weeks due to a combination of dry deposition near the source and wet scavenging by rain events near the



## Interpreting aerosol lifetimes

B. Croft et al.

Title Page

Abstract

Introduction

Conclusions

References

Tables

Figures

◀

▶

◀

▶

Back

Close

Full Screen / Esc

Printer-friendly Version

Interactive Discussion



for simulation CTL is lower than for the aerosols (except sea salt, which is mostly in the coarse mode). The rapid removal by precipitation events near the source contributes to this lower  $^{137}\text{Cs}$  lifetime. Table 2 also shows that about 85 % of the  $^{137}\text{Cs}$  removal is attributed to wet deposition. This fraction is about 97 % for the sulfate-nitrate-ammonium system, 90 % for the carbonaceous aerosols, 65 % for sea salt and 60 % for dust. Thus, these lifetimes are strongly controlled by wet deposition.

Figure 3 also shows instantaneous lifetimes of about 100 days in the first few days after emission for simulation U7K (about 30 days for U5K), which yields a 6 month mean lifetime of 21.1 days for simulation U7K (14.7 days for U5K). After about 3 weeks, there is a quasi-steady-state gradient of concentration through the troposphere with mixing into the boundary layer. At this point for simulations U5K and U7K, the removal becomes more efficient, with minimum instantaneous lifetimes of about 10 days, similar to simulation USFC. Thus, there is a strong divergence in the instantaneous lifetimes between our four simulations for the first three weeks of the simulations. However, after three weeks, the instantaneous lifetimes converge for the three sensitivity simulations. The convergence occurs later for simulation CTL due to the ongoing emissions over about forty days. Thereafter, the instantaneous lifetimes increase with time and are similar (within 10–20 %) in magnitude for all simulations. This is due to the similar nature of the ongoing removal and mixing processes after the radionuclides have a quasi-steady-state gradient of concentration through the troposphere.

Since the instantaneous lifetimes are not constant, the time period chosen for the e-folding fit will strongly influence the calculated e-folding times. For a consistent comparison with the results of Kristiansen et al. (2012) we chose days 20 to 80 after the onset of emissions for the fit. The e-folding times of the global burden shown on Fig. 2 range from 14.1 to 19.0 days for simulations USFC and U7K, respectively. This is a smaller range than for the mean lifetimes. Injection heights above the boundary layer increase the e-folding times by 30 % for the chosen fit period (simulations U5K and U7K relative to simulations CTL and USFC).

## 4.2 Site-specific lifetimes

Table 3 gives the  $^{137}\text{Cs}$  to  $^{133}\text{Xe}$  surface layer concentration ratio e-folding times for our simulations (fit over days 20 to 80 of the simulation) and also shows the e-folding times presented by Kristiansen et al. (2012) based on measured surface layer activity concentrations over the same time period. We focus on the ratio of  $^{137}\text{Cs}$  to  $^{133}\text{Xe}$  for consistency with their approach and to remove the influence of transport into the stratosphere and Southern Hemisphere as described in Kristiansen et al. (2012). The e-folding times for all of these sites generally represent air that has left the boundary layer and been transported through the free troposphere. Thus, these e-folding times are not strongly influenced by the quick removal of mass that occurs in the boundary layer near the emissions source, in contrast with the global, 6 month mean lifetimes. The e-folding time combining all sites together is 16.7 days for simulation CTL, which is 20 % longer than that reported for the measurements (13.9 days). Errors in the removal or transport parameterizations in our model may contribute to these differences. However, our results differ from the factor-of-two under-estimation in global model lifetimes, suggested by Kristiansen et al. (2012). For simulation CTL, the surface layer concentration e-folding time for the sites combined is also about 20 % longer than the simulated global burden e-folding time of 14.1 days. This slight difference in the e-folding time for the simulated global burden relative to the site-mean arises since the geographic distribution of the CTBTO sites will not yield an exact representation of the global mean.

Table 3 shows that for the mid-latitudes sites, the simulated e-folding times agree closely with the measurements, but with a consistent under-estimation of the measurements of about 10 %. For the tropical sites (Oahu and Wake Island), the e-folding times are over-estimated by about a factor of two relative to the measurements. Possible explanations are errors in simulating convective scavenging, convective transport, mixing from the free troposphere to the marine boundary layer, or assuming that  $^{137}\text{Cs}$  attaches only to sulfate. For Wake Island, the e-folding time was fit over days 40 to 80

[Title Page](#)[Abstract](#)[Introduction](#)[Conclusions](#)[References](#)[Tables](#)[Figures](#)[◀](#)[▶](#)[◀](#)[▶](#)[Back](#)[Close](#)[Full Screen / Esc](#)[Printer-friendly Version](#)[Interactive Discussion](#)

since the simulated concentration ratios did not exhibit a steady decrease until after day 40. For the mountainous Ulan-Bator site, the model also over-estimates lifetime. This site may be influenced by orographic precipitation (Kristiansen et al., 2012) at scales finer than the GEOS-Chem horizontal resolution.

Table 3 also shows that the e-folding times at the surface sites are similar (within 10–30 %) for all the simulations. The emission injection farthest outside of the boundary layer yields e-folding times that are longest by about 30 % (simulation U7K with respect to CTL and USFC).

Figure 4 shows the simulated radionuclide concentration ratios at each of the 11 CTBTO sites for the 6 month period after the earthquake for the simulations CTL and U7K. For the CTL simulation, the concentration ratios at these sites peak after 10–20 days. Thus, the e-folding fitting time was chosen to start at day 20 similar to Kristiansen et al. (2012). The ratios for simulation U7K show an initially slower decay over the first 20 days of the simulation at these sites. After day 20, the radionuclides have a quasi-steady-state gradient of concentration in the troposphere for both simulations and the decay rates become quite similar. However, the residual concentration ratios after 6 months differ by more than an order of magnitude and increase with injection height, similar to our findings for the global burden.

### 4.3 Dependence of simulated burden and lifetime vertical profiles on altitude and location

Figure 5 shows the vertical profile of the Northern Hemisphere zonal layer-mean  $^{137}\text{Cs}$  burden for the simulation USFC over the final four months of the 6 month simulation. For this time period the  $^{137}\text{Cs}$  has a quasi-steady-state gradient of concentration throughout the Northern Hemisphere with concentrations increasing with altitude. The  $^{137}\text{Cs}$  is maximum in the Northern Hemisphere upper troposphere since this is the region of least efficient removal. Figure 5 also shows the vertical profile of the  $^{137}\text{Cs}$  wet removal rates. Maximum removal rates occur between 2 and 6 km in the mid-latitudes and in the

## Interpreting aerosol lifetimes

B. Croft et al.

Title Page

Abstract

Introduction

Conclusions

References

Tables

Figures

◀

▶

◀

▶

Back

Close

Full Screen / Esc

Printer-friendly Version

Interactive Discussion



tropics at about 1 km. The initial quick removal rates following the emissions into the surface layer are excluded since the mean is for the last four months of the simulation.

The bottom panel of Fig. 5 shows the vertical profile of the layer-mean  $^{137}\text{Cs}$  lifetimes with respect to wet removal. Lifetimes are lowest and less than 5 days in the boundary layer below 2 km. Lifetimes generally increase (by several orders of magnitude) with altitude since wet removal mechanisms become increasingly less efficient with altitude. The minimum in the lifetimes has a greater vertical extent in the tropics (lifetimes are less than 5 days below 6 km) and in the mid-latitudes. Wet removal is less in the subtropics and in the polar regions and this yields a relative maximum in the lifetimes in the layers between 2 and 6 km. We emphasize that the actual lifetime of a particle at a given location is not necessarily the same as what is shown in this figure since these lifetimes with respect to wet removal neglect the influence of advection. In general, the lifetimes of particles in the slow-removal parts of the atmosphere (e.g. upper troposphere and at high latitudes) will be shorter than what this figure shows since particles can move out of these regions.

These location-dependent lifetimes shown in Fig. 5 are similar for all four simulations for the final four months of the 6 month simulation (not shown). After the radionuclides have a quasi-steady-state gradient of concentration in the troposphere, the location-dependent lifetime is independent of the initial locations of the injection, although the magnitude of the 4 month mean burdens and removal rates are different between the four simulations. Figure 3 also illustrated that once the particles move all away from the 5 and 7 km injection altitude (after the initial few days), the instantaneous lifetimes decrease and the overall mean lifetime is less than the 100 days implied by the initial losses before the influence of advection.

The preceding figures illustrated that the mean lifetime of aerosol-bound  $^{137}\text{Cs}$  depends strongly on where the aerosol is located in the troposphere in terms of altitude and geographic location. As a result, e-folding times at sites remote to a source do not reflect global mean lifetimes for species emitted into the boundary layer, which is controlled by initial quick removal after emission. Mean lifetimes and e-folding times

## Interpreting aerosol lifetimes

B. Croft et al.

Title Page

Abstract

Introduction

Conclusions

References

Tables

Figures

◀

▶

◀

▶

Back

Close

Full Screen / Esc

Printer-friendly Version

Interactive Discussion



would only be the same for species emitted into the boundary layer if they stayed in the boundary layer and did not undergo any vertical mixing into the free troposphere where lifetimes are significantly longer.

Figure 6 shows the vertical profiles of the zonal and annual mean layer burden, wet removal rates and lifetimes for one of the aerosol species in the GEOS-Chem model, black carbon. The near-surface maximum in the mean layer burden in the tropics/subtropics is associated with biomass burning sources. The maximum in the wet removal rates occurs in the boundary layer close to the burden maxima. The minima of less than 5 days in the black carbon lifetime with respect to wet deposition has the same spatial distribution as for the  $^{137}\text{Cs}$ , with minima in the mid-latitude storm tracks and regions of convection in the tropics. Similar profiles are seen for the other aerosol species (not shown) with differences due to the different relative contributions of wet and dry removal to the total removal rates for the different aerosol species. These differences in relative contributions of wet and dry removal prevent an apples-to-apples comparison between the vertical profiles of the lifetimes of any aerosol species and  $^{137}\text{Cs}$ , but we can see similarities under the same wet scavenging scheme.

## 5 Conclusions

In this study, we used the GEOS-Chem model to interpret lifetimes of aerosol-bound radionuclides emitted after the Fukushima Dai-ichi nuclear power plant (FD-NPP) accident of March 2011. The  $^{137}\text{Cs}$  lifetimes have implications for understanding aerosol lifetimes since  $^{137}\text{Cs}$  immediately attaches to aerosols upon emission to the atmosphere. Aerosol lifetimes and removal processes are poorly constrained in present-generation global models (Textor et al., 2006), and as a result the constraints given by  $^{137}\text{Cs}$  measurements are valuable. We found a 1.8 day mean lifetime of the global  $^{137}\text{Cs}$  burden for our simulation of the FD-NPP accident using the emissions data set of Stohl et al. (2012). However, an exponential fit over days 20 to 80 after the onset of emissions yielded an e-folding time of 14.1 days for the simulated global burden

## Interpreting aerosol lifetimes

B. Croft et al.

Title Page

Abstract

Introduction

Conclusions

References

Tables

Figures

◀

▶

◀

▶

Back

Close

Full Screen / Esc

Printer-friendly Version

Interactive Discussion



and 16.7 days for the site-mean of the simulated surface layer  $^{137}\text{Cs}/^{133}\text{Xe}$  concentration ratios at 11 Comprehensive Nuclear Test-Ban Treaty Organization (CTBTO) sites. This is at the upper end of the 10.0–13.9 days range of the e-folding times for measurements of surface-layer  $^{137}\text{Cs}/^{133}\text{Xe}$  concentration ratios at the same CTBTO sites (Kristiansen et al., 2012), also considering days 20–80 after the onset of emissions.

The study by Kristiansen et al. (2012) suggested that the e-folding times based on CTBTO measurement data may indicate that global models with mean aerosol lifetimes of 3–7 days underestimate aerosol lifetimes by as much as a factor of two. However, we found that the site-mean e-folding times for the GEOS-Chem model and the measurements agree within 30 %, whereas the simulated global mean  $^{137}\text{Cs}$  differed from simulated e-folding times by about one order of magnitude. Thus, mean lifetimes and e-folding times are not directly comparable.

We examined the reasons for this difference between mean lifetimes and e-folding times. Mean lifetimes strongly depend on the location and altitude of the radionuclide injection. We showed that for simulated injections into the boundary layer, the majority of the mass is removed within the first few days and this yielded mean lifetimes of only a few days. The mean lifetime for  $^{137}\text{Cs}$  for our control simulation with the emissions dataset of Stohl et al. (2012) was lower than typical aerosol mean lifetimes of 3–7 days in global models due to the fast removal of aerosols by precipitation events near the emission site that were coincident with the periods of strongest emissions. Both global mean aerosol lifetimes and  $^{137}\text{Cs}$  mean lifetimes are strongly controlled by this rapid removal that occurs in the boundary layer prior to mixing into the free troposphere. Our sensitivity simulations with injections into layers at 5 and 7 km yielded mean lifetimes of 14.7 and 21.1 days, respectively. These mean lifetimes were longer than for boundary layer injections due to slower removal in the first few days after emissions until the radionuclides have a quasi-steady-state gradient of concentration in the Northern Hemisphere troposphere with mixture between the free troposphere and boundary layer.



## Interpreting aerosol lifetimes

B. Croft et al.

Title Page

Abstract

Introduction

Conclusions

References

Tables

Figures

◀

▶

◀

▶

Back

Close

Full Screen / Esc

Printer-friendly Version

Interactive Discussion



E-folding times based on fits over days 20–80 after the onset of emissions exclude the influence of the initial rapid removal of the majority of mass that occurs for a boundary layer injection. A fit taken over only the first few days after a pulse emission would yield a lifetime close to the mean lifetime. However, a fit taken after a period of mixing into the free troposphere (days 20–80) was shown to yield e-folding times in the range of 10 to 20 days. We found that the decrease of the global  $^{137}\text{Cs}$  burden for our simulations was not perfectly exponential since the instantaneous e-folding times between adjacent timesteps changed due to ongoing mixing into regions where removal is less efficient. As a result, exponential fits are strongly sensitive to the period of time taken for the fit.

These results have implications for the interpretation of the aerosol lifetime constraint provided by an exponential fit to measurement data at sites remote to the emissions. The aerosol mean lifetimes and the radionuclide e-folding times (remote to emission site and after the majority of the emission pulse has ended) cannot be directly compared since the e-folding times exclude the influence of the initial rapid removal in the boundary layer unlike the former. A uniform Northern Hemisphere surface layer  $^{137}\text{Cs}$  injection simulation, which had a mean lifetime of 5.3 days (global burden e-folding time of 15.3 days) can be considered a closer surrogate to global mean aerosol lifetime.

A site-by-site comparison of our simulated to the measurement (Kristiansen et al., 2012) surface layer  $^{137}\text{Cs}/^{133}\text{Xe}$  ratio e-folding times showed over-estimations as large as a factor of two at tropical and high-latitude sites, and a tendency for the simulated results to be 10–30 % lower than the measurement e-folding times at the mid-latitude sites. This suggests the possible need for improvements in the model transport and scavenging parameterizations, possible issues with comparison with sites at a sub-grid scale level, and possible deficiencies in representing  $^{137}\text{Cs}$  removal (i.e. that it has the same removal efficiencies as sulfate). Further investigation is warranted.

We examined zonal mean profiles of  $^{137}\text{Cs}$  lifetimes with respect to wet removal considering the final four months of our six month simulations in order to eliminate the influence of the initial, quick boundary layer removal. These profiles were indepen-

## Interpreting aerosol lifetimes

B. Croft et al.

Title Page

Abstract

Introduction

Conclusions

References

Tables

Figures

◀

▶

◀

▶

Back

Close

Full Screen / Esc

Printer-friendly Version

Interactive Discussion



dent of the initial altitude of the radionuclide injection, although layer burden and wet deposition rates are strongly dependent of the injection altitude. There was a strong altitude and latitude dependence of these lifetimes. Lifetimes were generally 5 days and shorter in the boundary layer below 2 km. In the tropics and mid-latitudes these shorter lifetimes extended up to 6 km (due scavenging to convective towers and mid-latitude storms). Lifetimes generally decrease strongly with altitude in the free troposphere (by a few orders of magnitude). These lifetimes were 50 days or more in the high latitudes and in the subtropics where there is less efficient wet removal. Aerosol lifetimes in the GEOS-Chem model show a similar behavior.

Parameterizations for aerosol removal processes (dry and wet deposition) contribute strongly to differences in three-dimension aerosol concentrations predicted by global models (Textor et al., 2006). Simulations of aerosol-bound radionuclide concentrations after an emissions pulse, such as for the Fukushima Dai-ichi nuclear power plant accident, provide an instructive opportunity to characterize the diversity in transport and removal between global models and will be the subject of a future model intercomparison study proposed by Kristiansen et al. (2012). Future model-measurement intercomparisons should examine the sensitivity of  $^{137}\text{Cs}$  removal to assumptions about the type of aerosol to which it attaches.

There is an ongoing need for the development of datasets to provide constraints on aerosol removal processes (measurements of aerosol concentrations and deposition). However, as a result of the tight connections between removal and mixing, the careful interpretation of measurement-based constraints is essential.

*Acknowledgements.* The authors thank the Atlantic Computational Excellence Network (ACEnet) and NSERC for funding and computational resources. We thank the Preparatory Commission for the Comprehensive Nuclear-test-ban Treaty Organisation (CTBTO) for the provision of the data used in this paper. The views expressed are those of the authors and do not necessarily represent the views of the CTBTO Preparatory Commission. We also thank A. Stohl and N. Kristiansen for making available the  $^{137}\text{Cs}$  and  $^{133}\text{Xe}$  emission data sets used for this study.

## References

- Alexander, B., Park, R. J., Jacob, D. J., Li, Q. B., Yantosca, R. M., Savarino, J., Lee, C. C. W., and Thiemens, M. H.: Sulfate formation in sea-salt aerosols: constraints from oxygen isotopes, *J. Geophys. Res.*, 110, D10307, doi:10.1029/2004JD005659, 2005. 32397
- 5 Allen, D. J., Pickering, K. E., and Molod, A.: An evaluation of deep convective mixing in the Goddard Chemical Transport Model using International Satellite Cloud Climatology Project cloud parameters, *J. Geophys. Res.*, 102, 25467–25476, 1997. 32396
- Arakawa, A. and Schubert, W. H.: Interactions of cumulus cloud ensemble with the large-scale environment, *J. Atmos. Sci.*, 31, 671–701, 1974. 32396
- 10 Bey, I., Jacob, D. J., Logan, J. A., and Yantosca, R. M.: Asian chemical outflow to the Pacific in spring: origins, pathways and budgets, *J. Geophys. Res.*, 106, 23097–23113, 2001. 32393, 32397
- Charlson, R. J., Schwartz, S. E., Hales, J. M., Cess, R. D., Coakley, J. A., Hansen, J. E., and Hofmann, D. J.: Climate forcing by anthropogenic aerosols., *J. Geophys. Res.*, 255, 423–430, 1992. 32393
- 15 Croft, B., Lohmann, U., Martin, R. V., Stier, P., Wurzler, S., Feichter, J., Posselt, R., and Ferrachat, S.: Aerosol size-dependent below-cloud scavenging by rain and snow in the ECHAM5-HAM, *Atmos. Chem. Phys.*, 9, 4653–4675, doi:10.5194/acp-9-4653-2009, 2009. 32394
- 20 Croft, B., Lohmann, U., Martin, R. V., Stier, P., Wurzler, S., Feichter, J., Hoose, C., Heikkilä, U., van Donkelaar, A., and Ferrachat, S.: Influences of in-cloud aerosol scavenging parameterizations on aerosol concentrations and wet deposition in ECHAM5-HAM, *Atmos. Chem. Phys.*, 10, 1511–1543, doi:10.5194/acp-10-1511-2010, 2010. 32394
- Croft, B., Pierce, J. R., Martin, R. V., Hoose, C., and Lohmann, U.: Uncertainty associated with convective wet removal of entrained aerosols in a global climate model, *Atmos. Chem. Phys.*, 25, 10725–10748, doi:10.5194/acp-12-10725-2012, 2012. 32394
- 25 Dockery, D. W., Pope III, C. A., Xu, X., Spengler, J. D., Ware, J. H., Fay, M. E., Ferris, B. G., and Speizer, F. E.: An association between air pollution and mortality in six US Cities, *N. Engl. J. Med.*, 329, 1753–1759, 1993. 32393
- 30 Fairlie, T. D., Jacob, D. J., and Park, R. J.: The impact of transpacific transport of mineral dust in the United States, *Atmos. Environ.*, 41, 1251–1266, 2007. 32397

Title Page

Abstract

Introduction

Conclusions

References

Tables

Figures

◀

▶

◀

▶

Back

Close

Full Screen / Esc

Printer-friendly Version

Interactive Discussion



## Interpreting aerosol lifetimes

B. Croft et al.

Title Page

Abstract

Introduction

Conclusions

References

Tables

Figures

◀

▶

◀

▶

Back

Close

Full Screen / Esc

Printer-friendly Version

Interactive Discussion



- Fairlie, T. D., Jacob, D. J., Dibb, J. E., Alexander, B., Avery, M. A., van Donkelaar, A., and Zhang, L.: Impact of mineral dust on nitrate, sulfate, and ozone in transpacific Asian pollution plumes, *Atmos. Chem. Phys.*, 10, 3999–4012, doi:10.5194/acp-10-3999-2010, 2010. 32397
- 5 Henze, D. K., Seinfeld, J. H., Ng, N. L., Kroll, J. H., Fu, T.-M., Jacob, D. J., and Heald, C. L.: Global modeling of secondary organic aerosol formation from aromatic hydrocarbons: high- vs. low-yield pathways, *Atmos. Chem. Phys.*, 8, 2405–2420, doi:10.5194/acp-8-2405-2008, 2008. 32397
- Jaeglé, L., Quinn, P. K., Bates, T. S., Alexander, B., and Lin, J.-T.: Global distribution of sea salt aerosols: new constraints from in situ and remote sensing observations, *Atmos. Chem. Phys.*, 11, 3137–3157, doi:10.5194/acp-11-3137-2011, 2011. 32397
- 10 Kaneyasu, N., Ohashi, H., Suzuki, F., Okuda, T., and Ikemori, F.: Sulfate aerosol as a potential transport medium of radiocesium from the Fukushima nuclear accident, *Environ. Sci. Technol.*, 46, 5720–5726, doi:10.1021/es204667h, 2012. 32394
- Kristiansen, N. I., Stohl, A., and Wotawa, G.: Atmospheric removal times of the aerosol-bound radionuclides  $^{137}\text{Cs}$  and  $^{131}\text{I}$  measured after the Fukushima Dai-ichi nuclear accident – a constraint for air quality and climate models, *Atmos. Chem. Phys.*, 12, 10759–10769, doi:10.5194/acp-12-10759-2012, 2012. 32393, 32394, 32397, 32398, 32401, 32402, 32403, 32406, 32407, 32408, 32415
- 15 Liao, H., Henze, D. K., Seinfeld, J. H., Wu, S., and Mickley, L. J.: Biogenic secondary organic aerosols over the United States: comparison of climatological simulations with observations, *J. Geophys. Res.*, 112, D06201, doi:10.1029/2006JD007813, 2007. 32397
- Lin, S. J. and Rood, R. B.: Multidimensional flux from semi-Lagrangian transport, *Mon. Weather Rev.*, 124, 2046–2068, 1996. 32396
- Liu, H., Jacob, D. J., Bey, I., and Yantosca, R. M.: Constraints from  $^{210}\text{Pb}$  and  $^7\text{Be}$  on wet deposition and transport in a global three-dimensional chemical tracer model driven by assimilated meteorological fields, *J. Geophys. Res.*, 106, 12109–12128, 2001. 32396, 32397
- 25 Lohmann, U. and Feichter, J.: Global indirect aerosol effects: a review, *Atmos. Chem. Phys.*, 5, 715–737, doi:10.5194/acp-5-715-2005, 2005. 32393
- Moorthi, S. and Suarez, M. J.: Relaxed Arakawa–Schubert: a parameterization of moist convection for general circulation models, *Mon. Weather Rev.*, 120, 137–160, 1992. 32396
- 30 Park, R. J., Jacob, D. J., Chin, M., and Martin, R. V.: Sources of carbonaceous aerosols over the United States and implications for natural visibility, *J. Geophys. Res.*, 109, D15204, doi:10.1029/2002JD003190, 2003. 32397

## Interpreting aerosol lifetimes

B. Croft et al.

Title Page

Abstract

Introduction

Conclusions

References

Tables

Figures

◀

▶

◀

▶

Back

Close

Full Screen / Esc

Printer-friendly Version

Interactive Discussion



- Park, R. J., Jacob, D. J., Field, B. D., Yantosca, R. M., and Chin, M.: Natural and transboundary pollution influences on sulfate-nitrate-ammonium aerosols in the United States: implications for policy, *J. Geophys. Res.*, 109, D15204, doi:10.1029/2003JD004473, 2004. 32396
- Pope III, C. A., Ezzati, M., and Dockery, D. W.: Fine-particulate air pollution and life expectancy in the United States, *N. Engl. J. Med.*, 360, 376–386, 2009. 32393
- Rasch, P. J., Feitcher, J., Law, J., Mahowald, N., Penner, J., Benkovitz, C., Genthon, C., Giannakopoulos, C., Kasibhatla, P., Koch, D., Levy, H., Maki, T., Prather, M., Roberts, D. L., Roelefs, G.-J., Stevenson, D., Stockwell, Z., Taguchi, S., Kritz, M., Chipperfield, M., Baldochi, D., McMurry, P., Barry, L., Balkanski, Y., Chatfield, R., Kjellstrom, E., Lawrence, M., Lee, H. N., Lelieveld, J., Noone, K. J., Seinfeld, J. H., Stenchikov, G., Schwartz, S., Walcek, C., and Williamson, D.: A comparison of scavenging and deposition processes in global models: results from the WCRP Cambridge Workshop of 1995, *Tellus B*, 52, 1025–1056, 2000. 32394
- Stohl, A., Seibert, P., Wotawa, G., Arnold, D., Burkhardt, J. F., Eckhardt, S., Tapia, C., Vargas, A., and Yasunari, T. J.: Xenon-133 and caesium-137 releases into the atmosphere from the Fukushima Dai-ichi nuclear power plant: determination of the source term, atmospheric dispersion, and deposition, *Atmos. Chem. Phys.*, 12, 2313–2343, doi:10.5194/acp-12-2313-2012, 2012. 32394, 32397, 32398, 32400, 32405, 32406, 32413, 32416
- Textor, C., Schulz, M., Guibert, S., Kinne, S., Balkanski, Y., Bauer, S., Berntsen, T., Berglen, T., Boucher, O., Chin, M., Dentener, F., Diehl, T., Easter, R., Feichter, H., Fillmore, D., Ghan, S., Ginoux, P., Gong, S., Grini, A., Hendricks, J., Horowitz, L., Huang, P., Isaksen, I., Iversen, I., Kloster, S., Koch, D., Kirkevåg, A., Kristjansson, J. E., Krol, M., Lauer, A., Lamarque, J. F., Liu, X., Montanaro, V., Myhre, G., Penner, J., Pitari, G., Reddy, S., Seland, Ø., Stier, P., Takemura, T., and Tie, X.: Analysis and quantification of the diversities of aerosol life cycles within AeroCom, *Atmos. Chem. Phys.*, 6, 1777–1813, doi:10.5194/acp-6-1777-2006, 2006. 32393, 32394, 32400, 32405, 32408
- Twomey, S.: Aerosol, clouds, and radiation, *Atmos. Environ. A*, 25, 2435–2442, 1991. 32393
- van Donkelaar, A., Martin, R. V., Brauer, M., Kahn, R., Levy, R., Verduzco, C., and Villeneuve, P.: Global estimates of exposure to fine particulate matter concentrations from satellite-based aerosol optical depth, *Environ. Health Perspec.*, 118, 847–855, doi:10.1289/ehp.0901623, 2010. 32393
- Wang, Q., Jacob, D. J., Fisher, J. A., Mao, J., Leibensperger, E. M., Carouge, C. C., Le Sager, P., Kondo, Y., Jimenez, J. L., Cubison, M. J., and Doherty, S. J.: Sources of carbonaceous

aerosols and deposited black carbon in the Arctic in winter-spring: implications for radiative forcing, *Atmos. Chem. Phys.*, 11, 12453–12473, doi:10.5194/acp-11-12453-2011, 2011. 32397

- 5 Wang, Q., Jacob, D. J., Spackman, J. R., Perring, A. E., Schwarz, J. P., Moteki, N., Marais, E. A., Ge, C., Wang, J., and Barrett, S. R. H.: Global budget and radiative forcing of black carbon aerosol: constraints from pole-to-pole (HIPPO) observations across the Pacific, *J. Geophys. Res.*, submitted, 2013. 32400

ACPD

13, 32391–32421, 2013

## Interpreting aerosol lifetimes

B. Croft et al.

Title Page

Abstract

Introduction

Conclusions

References

Tables

Figures

◀

▶

◀

▶

Back

Close

Full Screen / Esc

Printer-friendly Version

Interactive Discussion



## Interpreting aerosol lifetimes

B. Croft et al.

Title Page

Abstract

Introduction

Conclusions

References

Tables

Figures

◀

▶

◀

▶

Back

Close

Full Screen / Esc

Printer-friendly Version

Interactive Discussion

**Table 1.** Summary of the simulations conducted for this study.

Simulation name	Description
CTL	Emissions of Stohl et al. (2012) implemented in GEOS-Chem radionuclide simulation for March 2011 to September 2011
USFC	Total emissions of Stohl et al. (2012) uniformly spread throughout Northern Hemisphere (0–90° N, 180° W–180° E) in an instantaneous pulse injection in model surface layer on 11 March 2011.
U5K	Same as USFC but instantaneous injection into 5 km layer
U7K	Same as USFC but instantaneous injection into 7 km layer

## Interpreting aerosol lifetimes

B. Croft et al.

Title Page

Abstract

Introduction

Conclusions

References

Tables

Figures

◀

▶

◀

▶

Back

Close

Full Screen / Esc

Printer-friendly Version

Interactive Discussion



**Table 2.** Global and annual mean aerosol lifetimes, burdens, and deposition rates in the GEOS-Chem model. Round brackets indicate relative contribution to total deposition. Dust bin radii range given in square brackets. Also shown are the global, 6 month mean  $^{137}\text{Cs}$  lifetime, burden, and deposition rates for the four simulations of this study described in Table 1.

Aerosol Species	Lifetime [days]	Burden [Tg]	Wet deposition [Tgyr <sup>-1</sup> ]	Dry deposition [Tgyr <sup>-1</sup> ]
Black carbon	6.1	0.12	5.65 (82 %)	1.23 (18 %)
Organic carbon	5.9	0.63	33.0 (85 %)	5.75 (15 %)
Sulfate-nitrate-ammonium	2.6	1.1	152 (97 %)	4.2 (3 %)
Dust (total)	5.8	19.7	731 (61 %)	476 (39 %)
Dust [0.1–1.0 μm]	9.3	3.9	143 (92 %)	12.8 (8 %)
Dust [1.0–1.8 μm]	8.2	7.1	262 (82 %)	58.9 (28 %)
Dust [1.8–3.0 μm]	6.1	6.7	242 (60 %)	162 (40 %)
Dust [3.0–6.0 μm]	2.1	2.1	119 (32 %)	252 (68 %)
Sea salt (total)	0.4	4.0	2250 (65 %)	1190 (35 %)
Sea salt (accumulation)	1.2	0.18	54.5 (96 %)	2.0 (4 %)
Sea salt (coarse)	0.4	3.8	2200 (65 %)	1190 (35 %)
Total (aerosols)	1.9	25.6	3170 (65 %)	1680 (35 %)
Radionuclide	[days]	[PBq]	[GBqs <sup>-1</sup> ]	[GBqs <sup>-1</sup> ]
$^{137}\text{Cs}$ CTL	1.8	0.372	2.07 (85 %)	0.37 (15 %)
$^{137}\text{Cs}$ USFC	3.9	0.825	1.96 (81 %)	0.44 (19 %)
$^{137}\text{Cs}$ U5K	14.7	3.11	2.17 (89 %)	0.27 (11 %)
$^{137}\text{Cs}$ U7K	21.1	4.45	2.17 (89 %)	0.26 (11 %)



## Interpreting aerosol lifetimes

B. Croft et al.

**Table 3.** Surface layer activity concentration ratio ( $^{137}\text{Cs}/^{133}\text{Xe}$ ) e-folding times [days] from measurements (Kristiansen et al., 2012) (square brackets indicate 95% confidence interval) and for the four simulations of this study described in Table 1. \* Wake Island e-folding time fit over days 40 to 80 after onset of emissions, remaining sites fit over days 20 to 80.

Site name	Latitude	Longitude	Altitude [m]	Measurements	CTL	USFC	U5K	U7K
Wake Island*	19.3	166.6	5	8.8 [6.6, 13.9]	17.9	15.8	16.8	18.4
Oahu	21.5	-158.0	250	9.6 [7.7, 12.9]	19.7	15.8	16.6	17.6
Ashland	37.2	-99.8	600	18.1 [13.6, 27.2]	16.5	16.6	17.1	18.3
Charlottesville	38.0	-78.4	250	15.7 [12.2, 22.0]	14.5	14.5	14.9	16.4
Ussuriysk	44.2	132.0	50	14.1 [8.4, 47.6]	12.4	12.7	13.0	14.3
St John's	47.6	-52.7	130	14.3 [11.0, 20.8]	10.1	9.8	9.9	10.9
Shauinsland	47.9	7.9	270	16.2 [12.6, 22.6]	15.9	15.2	16.1	17.7
Ulan-Bator	47.9	106.3	1340	8.8 [7.4, 10.8]	15.7	15.2	15.9	17.8
Stockholm	59.2	17.6	50	15.3 [11.0, 25.1]	13.9	13.4	13.7	15.1
Yellowknife	62.5	-114.5	200	13.1 [11.7, 14.9]	22.6	17.3	18.3	21.9
Spitsbergen	78.2	15.4	500	15.1 [12.3, 19.4]	18.8	15.9	17.4	20.1
All sites				13.9 [12.8, 15.2]	16.7	15.0	15.4	16.8

Title Page

Abstract

Introduction

Conclusions

References

Tables

Figures

◀

▶

◀

▶

Back

Close

Full Screen / Esc

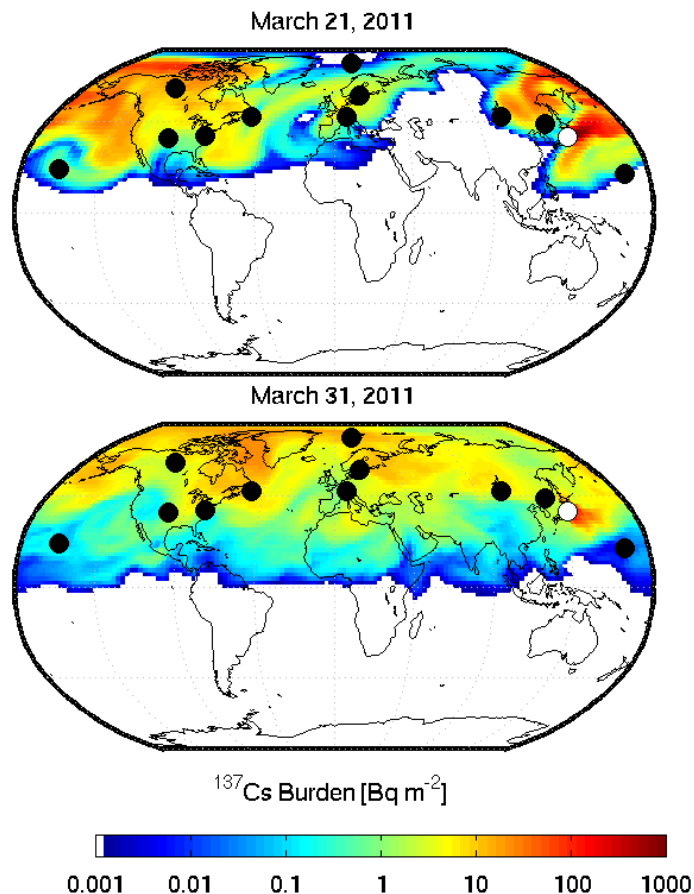
Printer-friendly Version

Interactive Discussion



## Interpreting aerosol lifetimes

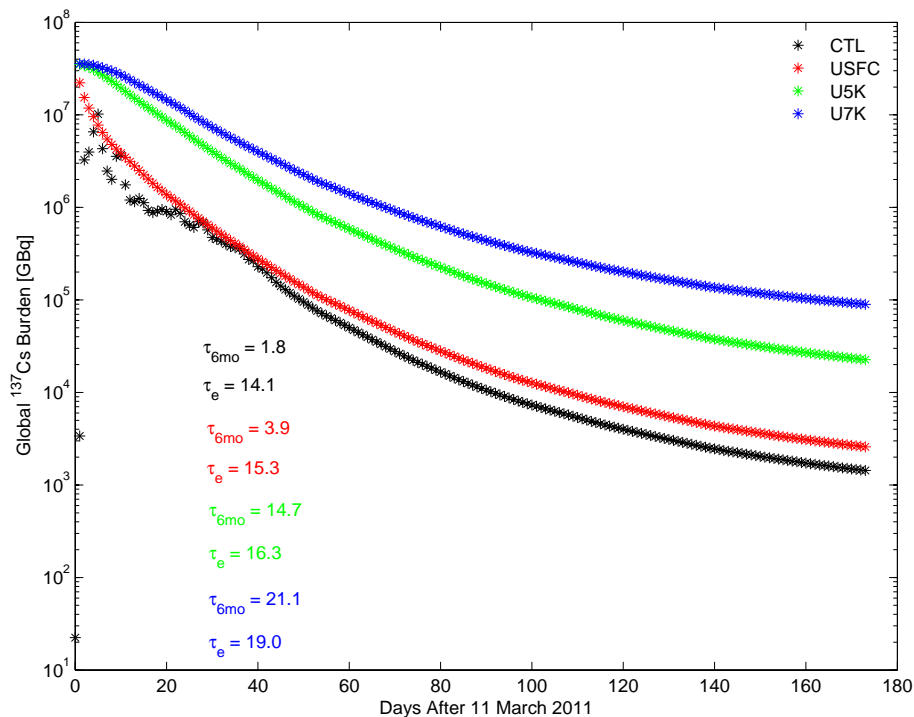
B. Croft et al.



**Fig. 1.** Geographic distribution of  $^{137}\text{Cs}$  burden on 21 March 2011 and 31 March 2011 for the control simulation (CTL) of the GEOS-Chem model using the emissions of Stohl et al. (2012). The accident site is indicated by a white dot and Comprehensive Nuclear Test-Ban Treaty Organization (CTBTO) measurements sites are indicated by black dots.

## Interpreting aerosol lifetimes

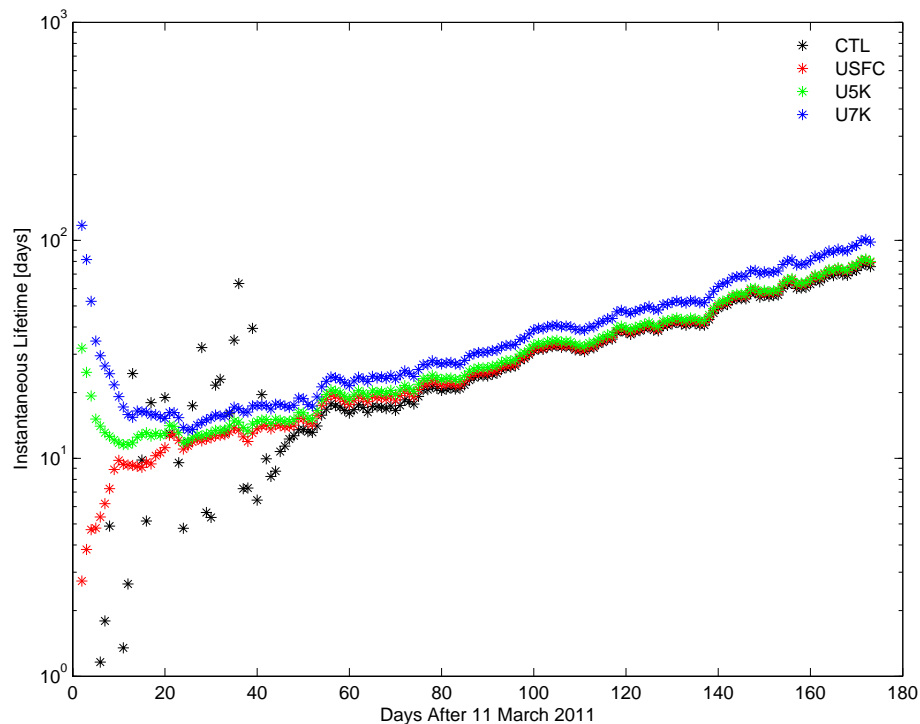
B. Croft et al.



**Fig. 2.** Global  $^{137}\text{Cs}$  burden for the four GEOS-Chem simulations of this study described in Table 1. The global 6 month mean lifetime and the e-folding time (days) fit over days 20 to 80 are color-coded to match the four simulations as indicated by the legend.

## Interpreting aerosol lifetimes

B. Croft et al.

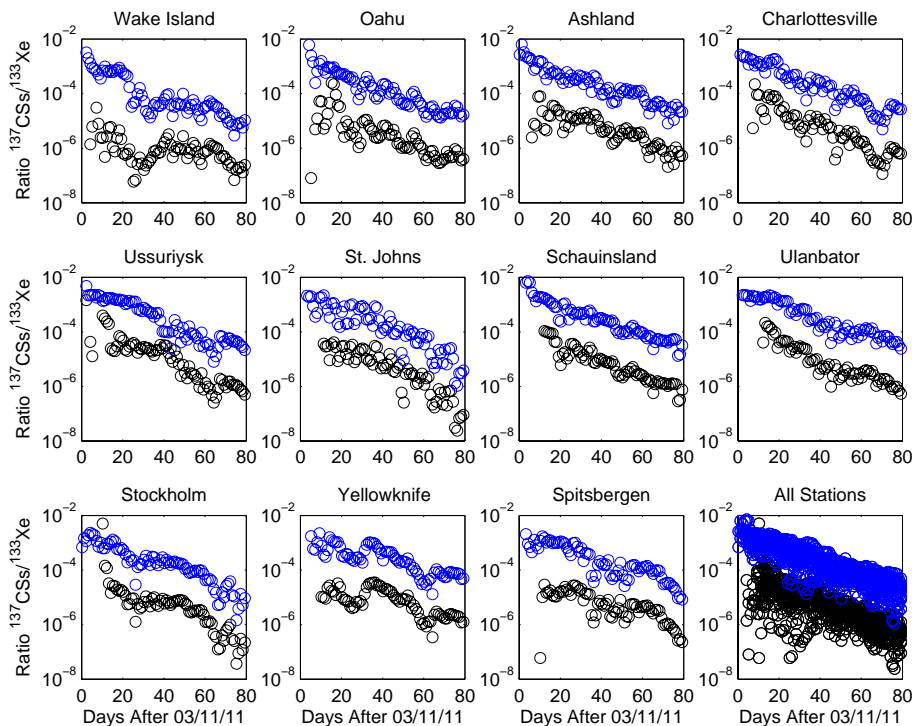


**Fig. 3.** Instantaneous lifetime of the global  $^{137}\text{Cs}$  burden calculated with Eq. (4), for the four GEOS-Chem simulations of this study described in Table 1.

[Title Page](#)[Abstract](#)[Introduction](#)[Conclusions](#)[References](#)[Tables](#)[Figures](#)[◀](#)[▶](#)[◀](#)[▶](#)[Back](#)[Close](#)[Full Screen / Esc](#)[Printer-friendly Version](#)[Interactive Discussion](#)

Interpreting aerosol lifetimes

B. Croft et al.



**Fig. 4.** Surface layer  $^{137}\text{Cs}/^{133}\text{Xe}$  activity concentration ratio for the GEOS-Chem simulations CTL (black) and U7K (blue) as described in Table 1. The e-folding times and station latitude and longitude are shown in Table 3.

Title Page

Abstract Introduction

Conclusions References

Tables Figures

◀ ▶

◀ ▶

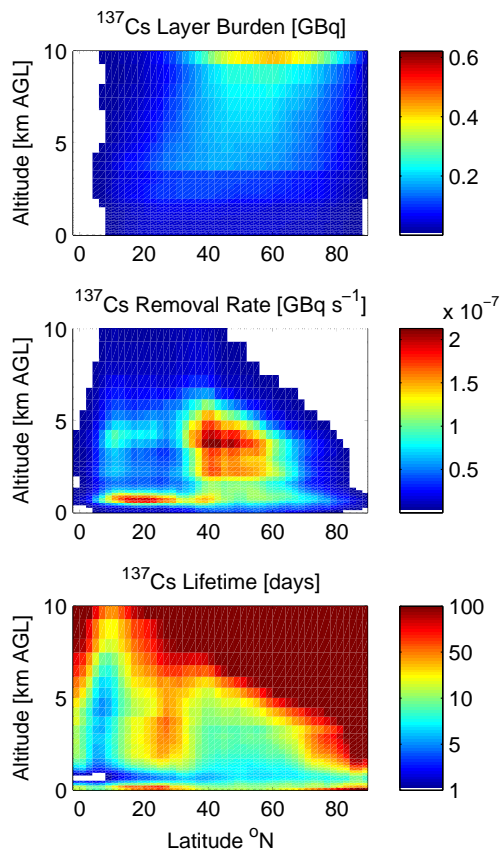
Back Close

Full Screen / Esc

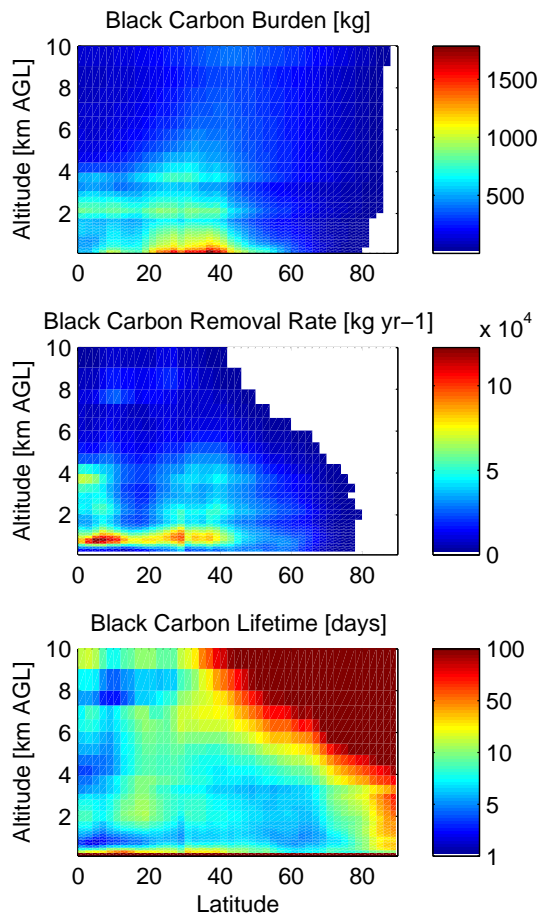
Printer-friendly Version

Interactive Discussion





**Fig. 5.** Zonal, 4 month mean  $^{137}\text{Cs}$  layer burdens (top panel), zonal, 4 month mean  $^{137}\text{Cs}$  wet removal rates (middle panel), and zonal, 4 month mean  $^{137}\text{Cs}$  lifetimes with respect to wet deposition (bottom panel). All zonal means are taken over the final four months of the simulation USFC.



**Fig. 6.** Zonal, annual mean black carbon layer burdens (top panel), zonal, annual mean black carbon wet removal rates (middle panel), zonal, annual mean black carbon lifetimes with respect to wet deposition (bottom panel) for the standard GEOS-Chem aerosol simulation