



This discussion paper is/has been under review for the journal Atmospheric Chemistry and Physics (ACP). Please refer to the corresponding final paper in ACP if available.

A multi-year methane inversion using SCIAMACHY, accounting for systematic errors using TCCON measurements

S. Houweling^{1,2}, M. Krol^{1,2,3}, P. Bergamaschi⁴, C. Frankenberg⁵,
E. J. Dlugokencky⁶, I. Morino⁷, J. Notholt⁸, V. Sherlock⁹, D. Wunch¹⁰, V. Beck¹¹,
C. Gerbig¹¹, H. Chen^{12,13}, E. A. Kort¹⁴, T. Röckmann², and I. Aben¹

¹SRON Netherlands Institute for Space Research, Utrecht, the Netherlands

²Institute for Marine and Atmospheric Research (IMAU), Utrecht University, Utrecht, the Netherlands

³Department of Meteorology and Air Quality (MAQ), Wageningen University and Research Centre, Wageningen, the Netherlands

⁴European Commission Joint Research Centre, Institute for Environment and Sustainability, Ispra (Va), Italy

⁵Jet Propulsion Laboratory, Pasadena, USA

⁶NOAA Earth System Research Laboratory, Global Monitoring Division, Boulder, USA

⁷Center for Global Environmental Research, National Institute for Environmental Studies (NIES) Onogawa 16-2, Tsukuba, Ibaraki 305-8506, Japan

⁸Institute of Environmental Physics, University of Bremen, Bremen, Germany

Title Page

Abstract

Introduction

Conclusions

References

Tables

Figures

◀

▶

◀

▶

Back

Close

Full Screen / Esc

Printer-friendly Version

Interactive Discussion



⁹National Institute of Water and Atmospheric Research (NIWA), P.O. Box 14-901, Wellington, New Zealand

¹⁰Caltech, Pasadena, USA

¹¹Max-Planck-Institute for Biogeochemistry, Jena, Germany

¹²Center for Isotope Research (CIO), University of Groningen, the Netherlands

¹³CIRES, University of Colorado, Boulder, USA

¹⁴Department of Atmospheric, Oceanic and Space Sciences, University of Michigan, Ann Arbor, MI, USA

Received: 21 August 2013 – Accepted: 9 October 2013 – Published: 30 October 2013

Correspondence to: S. Houweling (s.houweling@sron.nl)

Published by Copernicus Publications on behalf of the European Geosciences Union.

ACPD

13, 28117–28171, 2013

Multi-year inversion of SCIAMACHY CH₄

S. Houweling et al.

Title Page

Abstract

Introduction

Conclusions

References

Tables

Figures

◀

▶

◀

▶

Back

Close

Full Screen / Esc

Printer-friendly Version

Interactive Discussion



Abstract

This study investigates the use of total column CH_4 ($X\text{CH}_4$) retrievals from the SCIAMACHY satellite instrument for quantifying large scale emissions of methane. A unique data set from SCIAMACHY is available spanning almost a decade of measurements, covering a period when the global CH_4 growth rate showed a marked transition from stable to increasing mixing ratios. The TM5 4DVAR inverse modelling system has been used to infer CH_4 emissions from a combination of satellite and surface measurements for the period 2003–2010. In contrast to earlier inverse modelling studies, the SCIAMACHY retrievals have been corrected for systematic errors using the TCCON network of ground based Fourier transform spectrometers. The aim is to further investigate the role of bias correction of satellite data in inversions. Methods for bias correction are discussed, and the sensitivity of the optimized emissions to alternative bias correction functions is quantified. It is found that the use of SCIAMACHY retrievals in TM5 4DVAR increases the estimated inter-annual variability of large-scale fluxes by 22 % compared with the use of only surface observations. The difference in global methane emissions between two year periods before and after July 2006 is estimated at 27–35 Tg yr^{-1} . The use of SCIAMACHY retrievals causes a shift in the emissions from the extra-tropics to the tropics of $50 \pm 25 \text{Tg yr}^{-1}$. The large uncertainty in this value arises from the uncertainty in the bias correction functions. Using measurements from the HIPPO and BARCA aircraft campaigns, we show that systematic errors are a main factor limiting the performance of the inversions. To further constrain tropical emissions of methane using current and future satellite missions, extended validation capabilities in the tropics are of critical importance.

1 Introduction

To reduce the uncertainty of climate change prediction, improved understanding of the global cycles of long lived greenhouse gases is needed. This is true in particular

ACPD

13, 28117–28171, 2013

Multi-year inversion of SCIAMACHY CH_4

S. Houweling et al.

Title Page

Abstract

Introduction

Conclusions

References

Tables

Figures

◀

▶

◀

▶

Back

Close

Full Screen / Esc

Printer-friendly Version

Interactive Discussion



Multi-year inversion
of SCIAMACHY CH₄

S. Houweling et al.

Title Page

Abstract

Introduction

Conclusions

References

Tables

Figures

◀

▶

◀

▶

Back

Close

Full Screen / Esc

Printer-friendly Version

Interactive Discussion



for methane, the second most important anthropogenic greenhouse gas, which has shown important growth rate variations in the past two decades that are only poorly understood. To study the drivers of changes in the methane growth rate requires tools for quantifying its sources and sinks at large scales, which remains a scientifically challenging task.

Inverse modelling techniques make use of independent information from atmospheric measurements, to improve the available emission estimates and to reduce their uncertainties. In the past, these techniques have most commonly been applied to ground-based measurements from global monitoring networks (Bousquet et al., 2006, 2011; Houweling et al., 1999; Hein et al., 1997). In recent years, measurements from satellites have become available, such as from SCIAMACHY (Bovensmann et al., 1999; Frankenberg et al., 2005, 2008a, 2011; Schneising et al., 2011) and more recently also from GOSAT (Yokota et al., 2009; Kuze et al., 2009; Butz et al., 2011; Schepers et al., 2012), and significant efforts have been spent to investigate their use in inverse modelling (Meirink et al., 2008a; Bergamaschi et al., 2009, 2013; Fraser et al., 2012).

Satellite instruments offer spectacular improvements in measurement coverage, particularly over tropical continents, which have been the Achilles heel of the surface monitoring networks for many years. Using satellite retrievals, several studies have addressed the size of the tropical methane flux, pointing to previously underestimated emissions (Frankenberg et al., 2005, 2008a; Bergamaschi et al., 2009; Beck et al., 2012; Bergamaschi et al., 2013) that were corrected downward in part after revisions of the methane and water vapor spectroscopy (Frankenberg et al., 2008b, a). Despite these efforts, however, inversion-derived tropical methane emissions remain highly uncertain due to the methodological difficulty to account for poorly characterized measurement and transport model uncertainties.

The use of SCIAMACHY retrievals in inverse modelling requires a bias correction algorithm (Bergamaschi et al., 2009, 2013). The common approach is to account for inconsistencies between surface and satellite measurements using a set of bias correction functions that are optimized along with the methane sources and sinks. Here,

Multi-year inversion
of SCIAMACHY CH₄

S. Houweling et al.

Title Page

Abstract

Introduction

Conclusions

References

Tables

Figures

◀

▶

◀

▶

Back

Close

Full Screen / Esc

Printer-friendly Version

Interactive Discussion



surface measurements are used in addition to the satellite data to provide additional constraints on the surface fluxes and act as anchor points to constrain the parameters of the bias correction functions. However, it is not clear how to best define the bias correction functions and to account for their uncertainties. The problem is further complicated by transport model uncertainties and model-data representation errors, which have systematic error components also. The approach taken by Meirink et al. (2008b) and Bergamaschi et al. (2013) is to optimize a quadratic function of latitude for each month of available data, to account for inconsistencies between modelled and observed latitudinal and seasonal variations in the total column-averaged methane mixing ratio (XCH_4).

For inverse modelling applications spanning many years of data this approach has two important limitations. First, since the bias functions have no direct relationship with known shortcomings of the measurements, it is unclear to which extent the optimized parameters account for systematic error in the measurements, or systematic model error, or real signals in the satellite data. Secondly, the number of bias parameters increases proportionally with the number of years, introducing additional degrees of freedom capable of absorbing much of the information on inter-annual variation provided by the measurements.

The purpose of this study is to further investigate the role of measurement bias in methane inversions using satellite data, to assess how sensitive studies such as Bergamaschi et al. (2013) are to the bias correction method that is used. For this purpose, an alternative approach to bias correction is introduced, which makes use of measurements from the Total Carbon Column Observing Network (TCCON) (Wunch et al., 2011a) to identify systematic errors in satellite retrievals. Several versions are tested to study the sensitivity of the optimized fluxes to the bias correction method, including a direct comparison with results from Bergamaschi et al. (2013). Further, we test whether comparisons with independent measurements allow evaluation of the bias correction approach.

Multi-year inversion
of SCIAMACHY CH₄

S. Houweling et al.

Title Page

Abstract

Introduction

Conclusions

References

Tables

Figures

I◀

▶I

◀

▶

Back

Close

Full Screen / Esc

Printer-friendly Version

Interactive Discussion



Inverse modelling calculations are carried out using TM5 4DVAR (Meirink et al., 2008b; Bergamaschi et al., 2013) for the period 2003–2010, with and without the use of SCIAMACHY retrievals (Frankenberg et al., 2011). This period covers the transition from stationary to increasing methane mixing ratios, and therefore allows us to contribute to the ongoing discussion about the underlying causes. Optimized fluxes derived using only surface measurements act as a reference for assessing the contribution from SCIAMACHY in joined inversions of surface and satellite data.

Section 2.1 describes the various elements of our inversion set up, including a priori assumptions, and the bias correction functions that are used. In Sects. 3.1 and 3.2 we analyze the statistical consistency of the inversion-derived fits to the data and investigate the performance of the optimized TM5 model against independent measurements. In Sect. 3.3 we analyze the posterior fluxes, and assess the sensitivity of the inversion-derived flux adjustments to the bias correction algorithm. Section 4 discusses the implications for our understanding of the recent evolution of the global methane cycle.

2 Methods

2.1 TM5 4DVAR

The TM5 4DVAR inverse modelling system has been used in studies of several atmospheric trace gases, including CH₄ (Meirink et al., 2008b; Bergamaschi et al., 2009, 2010), CO (Hooghiemstra et al., 2012a, b), CO₂ (Basu et al., 2013; Guerlet et al., 2013), and CH₃CCl₃ (Montzka et al., 2011). Here it is used for estimating large-scale emissions of CH₄, by optimizing the agreement between measured and model simulated mixing ratios. This is achieved by minimizing a Bayesian cost function $\mathbf{J}(\mathbf{x})$, defined as

$$\mathbf{J}(\mathbf{x}) = \frac{1}{2}((\mathbf{y} - \mathbf{H}\mathbf{x})^T \mathbf{R}^{-1}(\mathbf{y} - \mathbf{H}\mathbf{x}) + (\mathbf{x} - \mathbf{x}_0)^T \mathbf{B}^{-1}(\mathbf{x} - \mathbf{x}_0)), \quad (1)$$

with respect to a state vector of surface fluxes \mathbf{x} . \mathbf{H} is a Jacobian matrix of the sensitivity of the observed mixing ratios to the surface fluxes, calculated using the atmospheric transport model TM5 (Krol et al., 2005). The misfits to the measurements \mathbf{y} and a priori fluxes \mathbf{x}_0 are weighted by their respective uncertainties (\mathbf{R} and \mathbf{B}).

Equation (1) is solved using the variational approach described by Meirink et al. (2008b). In short, an iterative procedure is followed of alternate forward and adjoint model simulations. The forward model is used to calculate model-data mismatches ($\mathbf{y} - \mathbf{H}\mathbf{x}$) for each successive update of the flux vector \mathbf{x} . The adjoint model (\mathbf{H}^T) uses the model-data mismatch vector to evaluate the cost function gradient ($\nabla \mathbf{J}(\mathbf{x})$), represented by:

$$\nabla \mathbf{J}(\mathbf{x}) = \mathbf{B}^{-1}(\mathbf{x} - \mathbf{x}_0) - \mathbf{H}^T \mathbf{R}^{-1}(\mathbf{y} - \mathbf{H}\mathbf{x}). \quad (2)$$

The trial state vector \mathbf{x} and corresponding cost function gradient are input to a Lanczos minimization algorithm (Lanczos, 1950), yielding an updated state vector. The procedure is terminated after a fixed number of iterations or after the remaining gradient passes a preset convergence criterion. The inversion results presented in this article are obtained after 55 iterations, which corresponds to a gradient norm reduction of about a factor 5000.

TM5 simulations were performed for the period 2003–2010 using meteorological fields from the ECMWF ERA Interim reanalysis project (Dee et al., 2011), preprocessed for use in TM5 at $4^\circ \times 6^\circ$ (latitude \times longitude) and 25 hybrid sigma pressure levels from the surface to the top of the atmosphere. The inversion makes use of the “cy1” version of TM5-4DVAR, extended with a parametrization of horizontal diffusion using the modified version of Prather et al. (1987) described in Monteil et al. (2013). This scheme has been introduced to account for the underestimated inter-hemispheric mixing in TM5 reported in Patra et al. (2011). The tuning parameter for the horizontal diffusion strength (D in Prather et al., 1987) is adjusted such that the TM5 simulated North–South gradient for the year 2003 is brought in agreement with available measurements SF_6 (see Monteil et al., 2013).

Multi-year inversion
of SCIAMACHY CH_4

S. Houweling et al.

Title Page

Abstract

Introduction

Conclusions

References

Tables

Figures

◀

▶

◀

▶

Back

Close

Full Screen / Esc

Printer-friendly Version

Interactive Discussion



Multi-year inversion
of SCIAMACHY CH₄

S. Houweling et al.

Title Page

Abstract

Introduction

Conclusions

References

Tables

Figures

◀

▶

◀

▶

Back

Close

Full Screen / Esc

Printer-friendly Version

Interactive Discussion



The inversion solves for the monthly mean CH₄ flux into each surface grid box of the model. Note, that in contrast to Bergamaschi et al. (2013) no distinction is made between contributions from different processes, because the measurements provide only limited process-specific information at the resolution of the transport model. Also, they provide limited information to distinguish between surface fluxes and atmospheric sinks. For this reason we choose to solve for surface fluxes only, which are thus optimized given the assumed atmospheric sinks.

2.2 A priori fluxes

Anthropogenic emissions from fossil fuel use, agricultural practices, and waste treatment are taken from the EDGAR4.1 emission inventory (European Commission, Joint Research Centre, JRC), which provides annual emissions at 0.1° × 0.1° resolution until the end of 2005. For the period 2005–2010 we extrapolate the EDGAR4.1 emission maps of 2005 using global statistics made available by BP (statistical review of world energy 2011, <http://www.bp.com>) and FAO (FAOSTAT, see <http://faostat.fao.org>). For fossil fuel use, we scale the gridded EDGAR4.1 emissions for 2005 by the fractional increase of global fuel production and consumption since 2005. Our extrapolation procedure differentiates between different fuel types (oil, coal, and gas), and sources classified as “energy production”. For remaining fossil sources, such as the EDGAR category “residential commercial and others”, we choose BP reported production/consumption categories that best reproduce the EDGAR emissions for the period until 2005.

For agricultural sources, we apply the same procedure using FAO reported indices for gross production, rice production and cattle number. Remaining categories, for example waste treatment, are extrapolated using a linear regression of the global EDGAR4.1 emissions for the period 2000–2005. This procedure yields an increase of anthropogenic CH₄ emissions between the years 2003 and 2010 of 37 Tg CH₄ yr⁻¹. EDGAR4.1 does not provide information on intra-annual emission variations. In TM5 we neglect seasonal variations in fossil and agricultural sources, except emissions from

Multi-year inversion
of SCIAMACHY CH₄

S. Houweling et al.

Title Page

Abstract

Introduction

Conclusions

References

Tables

Figures

◀

▶

◀

▶

Back

Close

Full Screen / Esc

Printer-friendly Version

Interactive Discussion



and hydrates of 17 Tgyr⁻¹ uniformly over the continental shelves (see Table 1). This simplified approach does not account for what is known from ongoing regional efforts to quantify, for example, the hot spot of geologic emissions in Azerbaijan (Etiopie and Klusman, 2002) or the reported marine seepages in the Laptev Sea (Shakhova et al., 2010). A priori flux uncertainties are set to 50 % of the combined monthly flux in each grid box of the model, with uniform and exponentially decaying spatial and temporal correlation scales amounting to, respectively, 1000 km and 3 months.

Tropospheric methane oxidation is represented using methyl chloroform optimized OH distributions (Huijnen et al., 2010). A single scaling factor of 0.92 is applied to the seasonal varying global OH field of Spivakovski et al. (2000), which is recycled each year of simulation, hence ignoring inter-annual variability. We do not account for the estimated contribution of marine Cl radicals to the tropospheric CH₄ sink (Allan et al., 2001, 2005; Lassey et al., 2011). Stratospheric CH₄ lifetimes are derived from the Cambridge 2-D model (Law and Pyle, 1993), and account for CH₄ oxidation by OH, O(¹D), and Cl radicals.

Like most off-line transport models, TM5 tends to underestimate the stratospheric age of air (Jones et al., 2001). To account for the generally overestimated contribution of upper stratospheric CH₄ to XCH₄ in TM5, we correct model sampled vertical profiles above 50 hPa using a CH₄ climatology based on HALOE/CLAES observations (Randel et al., 1998). This procedure includes a linear correction for the CH₄ increase since the period of observation. Table 1 summarizes the prescribed a priori fluxes, including their corresponding global emissions for the year 2005.

2.3 Measurements

Inverse model calculations were carried out using either surface measurements (referred to as NOAA-only) or a combination of surface measurements and SCIAMACHY satellite retrievals (referred to as SCIAMACHY). The surface measurements are taken from selected sampling sites of NOAA-ESRL's global cooperative air sampling network

(Dlugokencky et al., 2009). Sites were selected (see Fig. 1) that had been operational for the full period of our simulations, with limited data gaps. The measurements, as used in the inversion, represent averages of samples that fall in the same model grid box in 3 hourly time intervals.

The data covariance matrix accounts for measurement uncertainties and model representation errors. We use the local concentration variability as a proxy for model representation error (also referred to as model data mismatch error). The assigned value is the maximum of: (i) the standard deviation of the samples that are averaged, and (ii) the standard deviation of the simulated CH₄ mixing ratios in the surrounding grid boxes. The measurement uncertainty is set to 2.4 ppb for surface measurements, which represents the average pair difference of the NOAA flask measurements. All errors are assumed independent.

We use SCIAMACHY retrievals from the IMAV5.5 proxy retrieval reported by Frankenberg et al. (2011). The retrieved CH₄/CO₂ ratios have been converted into XCH₄ using CarbonTracker derived XCO₂ (Peters et al., 2007). Optimized CarbonTracker fields were unavailable for the last 3 yr of our simulation. The CarbonTracker estimates for 2007 were extrapolated for those years using the global growth rate of CO₂, estimated by averaging the surface measurements from South Pole, Mauna Loa, and Alert. The use of SCIAMACHY retrievals is limited to 50° N to 50° S.

Representation errors for SCIAMACHY are calculated from the modelled local variability in XCH₄, using the simulated columns in the surrounding grid boxes. For the measurement uncertainty we take the maximum of the retrieval uncertainty and the standard deviation of the averaged retrievals. The spatio-temporal interval for averaging is the same as for the surface measurements. The uncertainties of the averaged SCIAMACHY retrievals are assumed to be uncorrelated. To account for correlated retrieval error of nearby retrievals, we treat the errors of the retrievals within the 6° × 4° grid boxes and 3 hourly intervals as fully correlated. In addition, we account for measurement bias as described in the next section.

Multi-year inversion of SCIAMACHY CH₄

S. Houweling et al.

Title Page

Abstract

Introduction

Conclusions

References

Tables

Figures

◀

▶

◀

▶

Back

Close

Full Screen / Esc

Printer-friendly Version

Interactive Discussion



2.4 Bias correction

A common approach to account for systematic measurement errors in inversions is to define a set of functions describing the spatio-temporal dependence of these errors, with uncertain parameters that are optimized in the inversion along with the other elements of the state vector. Following this approach, the comparison between modeled and observed mixing ratios can be written as,

$$\mathbf{y}_{\text{obs}} = \mathbf{H}\mathbf{x}_{\text{true}} + \epsilon + \sum_{i=0}^n f_b(\alpha_i), \quad (3)$$

where ϵ and $f_b(\alpha_i)$ represent, respectively, the random and systematic component of the data uncertainty. The systematic error components $f_b(\alpha_i)$ are functions of the added state vector elements α_i . As for the random error ϵ , the systematic error has contributions from both the measurements and the model. In practise, well quantified biases are usually directly corrected in the model or the measurements. Therefore, the bias correction we are dealing with here targets ill-defined residual biases. In our experience, the optimization of bias terms in the inversion can lead to solutions that are out of their a priori assigned uncertainty ranges. This is a sign that a bias function ends up accounting for other uncertain elements in the inversion, such as unaccounted model errors or even the sources and sinks, which are meant to be estimated by the inversion. In that case, it may be preferable to prescribe the initial bias correction, without further optimization. In this study, we perform inversions with and without optimization of bias corrections to investigate the impact.

Different strategies can be followed for defining $f_b(\alpha_i)$, using

1. Empirical functions of space and time.
2. Information about known retrieval uncertainties.
3. Differences between retrievals and independent measurements.

Multi-year inversion
of SCIAMACHY CH₄

S. Houweling et al.

Title Page

Abstract

Introduction

Conclusions

References

Tables

Figures

◀

▶

◀

▶

Back

Close

Full Screen / Esc

Printer-friendly Version

Interactive Discussion



An example of strategy 1 is the use of seasonal and latitudinally varying functions in Bergamaschi et al. (2010, 2013), based on the difference between SCIAMACHY and TM5 after optimization using surface measurements. The limitation of this approach is that some unknown portion of the correction may reflect real signal, which is accounted for as bias and therefore cannot improve the model anymore. In our view, a preferable approach is to combine strategies 2 and 3, by making use of independent measurements to support the quantification of known terms in the retrieval error budget. A good example is the study by Wunch et al. (2011b) on the use of TCCON data for evaluating systematic errors in ACOS-GOSAT XCO₂ retrievals.

For SCIAMACHY XCH₄, we constructed a model of known retrieval uncertainties on the basis of Butz et al. (2010), accounting for spectroscopic errors varying with the sampled air mass and residual aerosol errors varying with the difference in surface albedo between the weak Short Wave Infra Red (SWIR) CO₂ and CH₄ absorption bands. Optimization of the bias coefficients in the inversion, however, turned out to be rather inefficient in correcting apparent inconsistencies in the optimized fits to surface and total column measurements (not shown). Analysis of the difference between co-located SCIAMACHY and TCCON measurements pointed to a seasonal pattern that correlates well with climatic variables such as temperature and humidity. These parameters lag variations in solar zenith angle (SZA), due to the inertia in the Earth's climate system, which may explain why the use of air mass for seasonal bias correction did not work well.

Figure 2 demonstrates the relation between the SCIAMACHY seasonal bias with respect to TCCON and ERA-interim derived specific humidity. Vertical profiles of specific humidity are used that have also been used in the IMA Pv5.5 retrieval. The values represent averages over the lowest 3 km of the vertical profile (up to ~ 700 hPa over sea). Influences of water vapor on the SCIAMACHY CH₄ retrieval were discussed by Frankenberg et al. (2008a), who corrected the water vapor spectroscopy in the 1.6 micron CH₄ absorption band. It is not clear whether water vapor is the cause of the seasonal bias discussed here, or that it only happens to covary with a different under-

lying cause. In either case, the correlation of the SCIAMACHY-TCCON residuals with water vapor offers a useful proxy for SCIAMACHY bias correction.

This finding motivated us to define a bias correction using a limited set of functions accounting for the main differences between SCIAMACHY and TCCON (i.e. a combination of strategies 1 and 3). Besides seasonality, our bias correction method accounts for a global offset and a latitudinal correction. Note that the humidity proxy already introduces a latitudinal correction (as well as corrections on other time scales, including that of inter-annual variability). However, differences with TCCON remain, which are corrected separately. Unfortunately, the TCCON network is not dense enough to derive a latitudinal correction function. To extend coverage, we make use of GOSAT proxy XCH₄ retrievals reported by Schepers et al. (2012), which are significantly more accurate than SCIAMACHY retrievals (see Schepers et al., 2012; Monteil et al., 2013). This is confirmed by Fig. 3, which shows that residuals between TCCON and seasonality corrected SCIAMACHY show a similar latitudinal variation as residuals between SCIAMACHY and GOSAT. To isolate the large-scale component of this relationship, the SCIAMACHY minus GOSAT residuals have been smoothed using a boxcar filter (width = 20° latitude).

In summary, the bias correction functions that we will investigate are the following:

- S: A global uniform scaling factor only.
- SQ: As “S”, extended with the seasonal correction using humidity.
- SQG: As “SQ”, extended with a latitudinal correction using GOSAT.

The corresponding bias coefficients α are determined by linear regression to the TCCON–SCIAMACHY residuals. To obtain a single set of coefficients for use in S, SQ, and SQG, the regressions were carried out in this order. Each extension was regressed to the TCCON–SCIAMACHY residuals up to that extension. To avoid interference with S, functions Q and G were normalized by taking out their means.

Table 2 summarizes general statistics of the difference between TCCON and collocated SCIAMACHY retrievals for the different stages of bias correction. As can be seen

Multi-year inversion of SCIAMACHY CH₄

S. Houweling et al.

Title Page

Abstract

Introduction

Conclusions

References

Tables

Figures

◀

▶

◀

▶

Back

Close

Full Screen / Esc

Printer-friendly Version

Interactive Discussion



in Table 2, the uniform scaling factor decreases the RMS difference between TCCON and SCIAMACHY by about a factor of two. Smaller additional improvements are obtained after introducing the seasonal and latitudinal corrections. A large fraction of the remaining RMS is explained by scatter in the retrievals on relatively small scales.

2.5 Experimental set up and scenarios

Inverse modeling calculations have been performed for the period 2003–2010. For efficient calculation of inversions covering 8 yr, the target period is split into three blocks of 4 yr each, overlapping the adjacent inversion(s) by 2 yr. The calculations for these blocks are carried out in parallel. The initial concentration field was optimized following the approach of Meirink et al. (2008b). For the NOAA-only inversion the 2 yr overlap is sufficient to allow reconstruction of the full time series without significant discontinuities at the inversion boundaries. For the SCIAMACHY inversions larger differences were found initially due to trade offs between the optimization of bias parameters and the initial condition. This problem has been circumvented by using the NOAA-only optimized initial conditions as prior for the SCIAMACHY inversions, with the corresponding prior uncertainties reduced by a factor 10.

Table 3 summarizes the inverse modelling calculations that were performed. The SCIAMACHY inversions consist of two sets; with “flex”) and without “fix”) optimization of bias parameters. In the “flex” inversions, the bias coefficients of the corresponding “fix” inversions are taken as first guess. The a priori uncertainty of the bias coefficients has somewhat arbitrarily been set to 100 %. This is a conservative estimate given the statistics of the TCCON corrections. However, an unquantified additional uncertainty comes from the assumption that the TCCON comparisons are representative for the full global domain. The bias coefficients for the seasonal and latitudinal bias functions represent fractional adjustments of the TCCON-derived a priori corrections. For the humidity correction, the TCCON-derived regression coefficient amounts to $3.42 \text{ ppb kg g}^{-1}$. As can be seen in Table 3, the bias optimization leads to significant corrections of the global

Multi-year inversion of SCIAMACHY CH₄

S. Houweling et al.

Title Page

Abstract

Introduction

Conclusions

References

Tables

Figures

◀

▶

◀

▶

Back

Close

Full Screen / Esc

Printer-friendly Version

Interactive Discussion



scaling factor (α_1) and the latitudinal correction (α_3), whereas the seasonal correction (α_2) remains close to the TCCON-derived estimate.

Since the 4 yr blocks are computed independently, the optimized bias parameters vary between the blocks. It is possible to pre-optimize the bias parameters to enforce consistency between the blocks. This is not done in this study, because the differences between the blocks may provide valuable information, for example about instrumental drift (see Sect. 3.3 for further discussion).

3 Results

3.1 Posterior concentrations and bias optimization

Before we analyze the statistics of inversion fit residuals and comparisons with independent data, we first verify that the inversion results support the bias correction functions derived in the previous section.

3.1.1 Seasonal cycle

To test the seasonal cycle correction, the inversion-derived posterior CH₄ mixing ratios are sampled at the TCCON sites, using averaging kernels that were made available for the FTS at Lamont and site specific seasonally varying a priori profiles (TCCON GGG2012 release). Figure 4 shows average seasonal cycles for northern and southern hemispheric TCCON sites. Averages were taken by combining samples for the period 2009–2010, and smoothing the data by boxcar filtering. For the Southern Hemisphere only two sites are available (Lauder and Wollongong), which do not provide sufficient data. This problem was solved by extending the averaging period to 2007–2010 and combining the Bruker 120 and 125 data from Lauder. For the Northern Hemisphere 6 sites were selected with good coverage during 2009–2010, representing North America (Park Falls, Lamont), Europe (Bialystok, Garmisch, Orleans), and Japan (Tsukuba). Uneven data coverage between years and sites, in combination with a positive trend in

Title Page

Abstract

Introduction

Conclusions

References

Tables

Figures

◀

▶

◀

▶

Back

Close

Full Screen / Esc

Printer-friendly Version

Interactive Discussion



this period, may influence the shape of the derived seasonal cycles. However, since all simulations are sampled the same way as the data the comparison is still valid.

The results in Fig. 4 for the northern hemispheric TCCON sites clearly show a phase-shifted seasonal cycle in the uncorrected SCIAMACHY inversion (S_{fix}). In contrast, the seasonality of the NOAA-only inversion agrees closely with TCCON. This is explained in part by the constraints of the surface measurements on the seasonal cycle in the troposphere. However, the seasonal dynamics of tropopause height contributes significantly to the seasonality of total column CH_4 also Warneke et al. (see e.g. 2006); Washenfelder et al. (see e.g. 2003). The close agreement between the NOAA-only simulated and TCCON observed seasonal cycle therefore supports the TM5 simulated seasonality of the stratospheric partial column.

The results for the seasonally-corrected SCIAMACHY inversion (SQ_{fix}) confirm that the humidity-proxy largely accounts for the seasonal misfit of the uncorrected IMAV5.5 retrievals. In the Southern Hemisphere the seasonal misfit between the uncorrected SCIAMACHY data and TCCON is much smaller, in agreement with a smaller seasonal variation of specific humidity. This means that the humidity proxy accounts for a north-south asymmetry in the seasonal bias of the SCIAMACHY retrieval.

3.1.2 SCIAMACHY vs. NOAA-only

Next we investigate whether the SCIAMACHY bias corrections improve the consistency with the NOAA-only optimized model. Figure 5 shows maps of the residual differences between the two, averaged seasonally. These differences can be interpreted as the signal that is brought in by SCIAMACHY, in addition to what is provided by the surface network. At temperate latitudes the residuals are on average -30 ppb, roughly consistent with the 2% underestimation of the SCIAMACHY retrievals at the TCCON sites. Over tropical Africa and tropical South America, however, the residuals change sign with regional averages up to 18 ppb. As can be seen in the other panels of Fig. 5, this difference between the tropics and extratropics is corrected to a large extent, albeit not fully, by the seasonal bias correction. This is because the humidity proxy varies not only

Title Page

Abstract

Introduction

Conclusions

References

Tables

Figures

◀

▶

◀

▶

Back

Close

Full Screen / Esc

Printer-friendly Version

Interactive Discussion



temporally, but also spatially with a significant latitudinal component. The SQ_{fix} bias correction leads to a systematic overestimation of XCH_4 compared to the NOAA-only inversion (13 ppb on average), which is largely reduced if the scaling factors are further optimized in the SQ_{flex} inversion (−5 ppb on average). This result can be explained by the general tendency of the NOAA-only inversion to slightly underestimate TCCON.

3.1.3 Extended comparison to TCCON

The SCIAMACHY calibration using TCCON mainly represents the period after the launch of GOSAT (2009–2010), when most sites became operational. It raises the question whether the inferred bias corrections are valid also for other years. With only a limited number of available TCCON stations for years prior to 2009, this is difficult to assess. Nevertheless, an attempt is made as shown in Fig. 6. Reasonable agreements are found, except that the “flex” inversions show systematic underestimation of the TCCON measurements, which is seen most prominent at Darwin. The NOAA-only inversion underestimates TCCON also, with systematic differences increasing towards southern latitudes (3 ppb for Park Falls, 10 ppb for Lauder). This finding is in line with Monteil et al. (2013), who point to inaccuracies in the TM5 simulated atmospheric transport or the chemical oxidation of methane, which are not optimized in the current inversion setup. It should be realized that the aircraft measurements for calibrating the TCCON network cover only a small fraction of the presented time series, and therefore the calibration of the TCCON-observed inter-annual variability has its limitations also. The comparison at Park Falls shows clear examples of the phase shifted seasonality of the S_{fix} corrected SCIAMACHY data, in particular during the first months of 2005 and 2006. Overall, the SQ_{fix} inversion shows the best agreement with the three long-term TCCON time series (RMS = 9.0 ppb), followed by SQ_{flex} (RMS = 9.6 ppb).

Title Page

Abstract

Introduction

Conclusions

References

Tables

Figures

◀

▶

◀

▶

Back

Close

Full Screen / Esc

Printer-friendly Version

Interactive Discussion



3.1.4 Statistics of fit residuals

Next, we analyze the distributions of residuals between the optimized models and the NOAA measurements that were used in the inversions (see Fig. 7). Deviations from a Gaussian distribution centered around the origin may point to remaining inconsistencies between the bias corrected SCIAMACHY data and the surface measurements. As can be seen, the a priori model systematically overestimates the measurements. The NOAA-only inversion shows on average the smallest residuals. This result is expected, since this inversion fits the surface measurements, without constraints to also fit satellite retrievals. SCIAMACHY inversions with fixed biases lead to systematic overestimation of the NOAA flask measurements, which is effectively corrected in the “flex” inversions by reducing the uniform bias component (see Table 3). Of the alternative SCIAMACHY bias corrections that were tested, SQ_{flex} and SQ_{flex} show the smallest residuals, with little difference in performance between these two.

3.2 Performance evaluation using independent data

Aircraft measurements are particularly useful for evaluating inversion optimized concentration fields, since they address the modeled vertical profile of CH_4 , which connects the observational constraints on the surface and the total column that are used in the inversions. Figure 8 shows comparisons between inversion optimized mixing ratios and measurements from the HIPPO aircraft campaigns (Wofsy, 2011; Kort et al., 2012), representing north-south cross sections across the Pacific Ocean covering altitudes between the planetary boundary layer and the tropopause. The HIPPO measurements were taken from campaigns 1–3, which took place between January 2009 and April 2010. The comparisons between model and measurements for these campaigns are combined in one figure. The HIPPO measurements have been linked to the NOAA scale using coincident measurements from discrete samples collected during the flights and analyzed at NOAA. The remote Southern Hemisphere offers a good opportunity to verify this approach, since the concentration gradients in the marine boundary layer are

Title Page

Abstract

Introduction

Conclusions

References

Tables

Figures

◀

▶

◀

▶

Back

Close

Full Screen / Esc

Printer-friendly Version

Interactive Discussion



small. Therefore a good agreement is expected between the NOAA optimized model and the HIPPO measurements. Indeed, at latitudes southward of about 30° S differences are within 3 ppb.

The differences between S_{fix} and HIPPO show the expected pattern of over- and underestimation of respectively tropical and extra-tropical CH₄ in absence of a latitudinal varying SCIAMACHY bias correction. When such corrections are applied the latitudinal differences reduce, although minor differences remain (within ~ 10 ppb). The inversions with the fixed, TCCON-derived, bias corrections tend to overestimate the HIPPO measurements by 6–12 ppb. Further optimization of the bias coefficients in the inversion improves the agreement with HIPPO, with a low bias of close to 5 ppb. When comparing the results in Figs. 8 and 6 it becomes clear that surface and aircraft data support lower CH₄ mixing ratios than TCCON. This happens despite the fact that TCCON has been validated using aircraft measurements also (see e.g. Deutscher et al., 2010; Wunch et al., 2010; Geibel et al., 2012). The remaining differences could be explained by the stratospheric contribution to the total column, which is the subject of ongoing investigations (see Monteil et al., 2013). The residuals between HIPPO and TM5 point to overestimated mixing ratios in the lower stratosphere at higher latitudes (> 50°). The SCIAMACHY retrievals at those latitudes, however, are not used in the inversion.

The question remains if independent data support the residual differences between bias corrected SCIAMACHY and NOAA optimized TM5 over tropical continents. To address this question, comparisons are presented between optimized TM5 and aircraft measurements from the BARCA campaigns (Beck et al., 2012) over the Amazon rain forest (see Fig. 9). Results are shown for campaigns in November 2008 (end of the dry season) and May 2009 (end of the wet season). All measurements are combined in single profiles, since the resolution of the model is not considered adequate to resolve regional gradients within the Amazon basin. Overall the results confirm the conclusions from Beck et al. (2012) that using of only surface data in the inversion leads to underestimated posterior mixing ratios. Including SCIAMACHY increases the mixing ratios over

Multi-year inversion of SCIAMACHY CH₄

S. Houweling et al.

Title Page

Abstract

Introduction

Conclusions

References

Tables

Figures

◀

▶

◀

▶

Back

Close

Full Screen / Esc

Printer-friendly Version

Interactive Discussion



Multi-year inversion
of SCIAMACHY CH₄

S. Houweling et al.

Title Page

Abstract

Introduction

Conclusions

References

Tables

Figures

◀

▶

◀

▶

Back

Close

Full Screen / Esc

Printer-friendly Version

Interactive Discussion



South America, to an extent which varies considerably between the different bias correction approaches. Using only a uniform scaling factor leads to overestimated mixing ratios. The SQ and SQG inversions are in closer agreement with the measurements. The relative performance of the “flex” and “fix” inversions differs between the two campaigns. Whereas the “flex” inversions are in close agreement with measurements from the BARCA-A campaign, they tend to underestimate the observed mixing ratios during BARCA-B. None of the inversions are capable of capturing the seasonal dynamics of the BARCA measurements. The seasonal bias correction hardly influences the difference between BARCA 1 and 2, because the ECMWF-derived regional humidities for the end of the dry and wet season are rather similar.

3.3 Inversion-estimated fluxes

In this section we analyze the inversion-derived surface fluxes of CH₄, and their sensitivity to the SCIAMACHY bias correction. We concentrate on fluxes that are integrated annually and over large enough regions to avoid interpretation of results that are compromised by the generally limited spatio-temporal resolution of the global inversions. Figure 10 shows flux time series for the period of July 2003 to July 2010 for six large regions. Monthly time series of annual fluxes are derived using a boxcar filter with a width of a year. The uncertainties represent 2σ intervals of the annual uncertainty for each region, computed by integrating the posterior covariance matrix in space and time, in 6 months intervals. The first and final half years of the inversion time window have been removed to avoid influences of inversion spin up and spin down, and end effects of the box car filter. Note that each line is a composite of three 4 yr inversions since the full period is split up in three overlapping blocks (as described in Sect. 2). The two year overlap allows us to reduce end effects of each of these blocks. Full time series are constructed by connecting the blocks in the middle of the overlapping periods. The NOAA-only and “fix” inversions show insignificant jumps between the blocks. For the “flex” inversions, differences are larger because the optimized bias correction pa-

rameters in subsequent blocks may differ. Nevertheless these differences remain small compared with the inversion-derived inter-annual variability.

Compared with the a priori fluxes, the a posteriori fluxes show increased inter-annual variability (IAV), by 40 % for NOAA-only and 70 % for the SCIAMACHY inversions for the regions and data shown in Fig. 10. This increase may in part be real, since the a priori fluxes do not account for some sources of inter-annual variation, such as the year-to-year variation in wetland area. In addition, we do not account for inter-annual variability in the OH sink. As the sink is not optimized in our inversion, the influence of its IAV on the observed mixing ratios is projected on the surface fluxes. Studies of OH using methyl chloroform point to interannual variations within $\pm 5\%$ (see e.g. Holmes et al., 2013), which corresponds to variations in methane oxidation of about $25 \text{ Tg CH}_4 \text{ yr}^{-1}$. This is significant, but also difficult to account for in global inversions since the available a priori estimates vary substantially and the CH_4 measurements used in this study provide limited independent constraints on surface emissions and atmospheric sinks.

The increased IAV of the SCIAMACHY inversions can be explained by stronger signals of source variability in the SCIAMACHY data than in the surface measurements in regions such as the tropics, where there is a paucity of surface measurements. As discussed earlier, however, we have limited means to verify the performance of SCIAMACHY on inter-annual time scales. Therefore, we cannot exclude the possibility that the enhanced variability is caused in part by changes in the performance of the instrument over time. Some regions, such as “Globe” and “Tropics”, show a similar phasing of the SCIAMACHY and NOAA-only inferred IAVs, but with a different amplitude. Those results are more likely explained by the strengthening of a common signal by joined observational constraints, rather than temporal variations in instrument performance.

The inversions show a significant increase in the global CH_4 flux starting in 2006, in line with the observed change in growth rate starting in 2007 (Dlugokencky et al., 2009). The tropics explain much of the global variability, consistent with the study of Bousquet et al. (2011) who point to a tropical origin of the 2007 growth rate anomaly. In

Multi-year inversion
of SCIAMACHY CH_4

S. Houweling et al.

Title Page

Abstract

Introduction

Conclusions

References

Tables

Figures

◀

▶

◀

▶

Back

Close

Full Screen / Esc

Printer-friendly Version

Interactive Discussion



Multi-year inversion
of SCIAMACHY CH₄

S. Houweling et al.

Title Page

Abstract

Introduction

Conclusions

References

Tables

Figures

◀

▶

◀

▶

Back

Close

Full Screen / Esc

Printer-friendly Version

Interactive Discussion



the SCIAMACHY inversions the flux increase during 2006 is larger than for NOAA-only. Looking at the estimates for the year 2005, however, it becomes clear that this increase is in large part a compensation for a reduction in the SCIAMACHY inferred flux at the end of 2005. This reduction is consistent with reductions in the observed total columns over the tropics during this period, reported by Frankenberg et al. (2011).

In the inversion, this signal is attributed mostly to tropical South America. This is not easily explained, as such a reduction would rather have been expected during the anomalous drought of 2005. An alternative explanation could be the loss of detector pixels in the 1.6 micron absorption band of CH₄ in SCIAMACHY's channel 6. Artificial jumps in the retrieval due to variations in the dead and bad pixel mask are avoided in the retrieval by using only those pixels that were functioning properly throughout the whole analyzed period. The instrumental damage nevertheless had an impact on the retrieval, as indicated by a marked increase in the variability of the data after November 2005 reported by Frankenberg et al. (2011).

The difference between the red and green lines in Fig. 10 highlights the impact of SCIAMACHY bias correction. Overall, it leads to a reduction of tropical emissions compensated by increases in the extra-tropics, consistent with the latitudinally varying adjustments of the total columns discussed earlier. The size of this difference varies between about 10 and 50 Tgyr⁻¹ between the regions that were analyzed. For emissions integrated over large zonal bands, as shown for "Tropics" and "ExtraTrop NH", SQG_{flex} is fairly consistent with NOAA-only, although towards smaller regions the differences become larger. Despite the shift towards higher latitudes in the bias corrected inversions, tropical emissions remain higher compared with the a priori by 40 Tgyr⁻¹, and 10 Tgyr⁻¹ compared with the NOAA-only inversion.

Average emissions over Tropical America vary between 75 and 88 Tgyr⁻¹ for our SCIAMACHY inversions, in close agreement with 79 Tgyr⁻¹ reported in Frankenberg et al. (2008a) using SCIAMACHY IMAV50 retrievals. Our NOAA-only emissions, however, are lower by 27 Tgyr⁻¹ compared with that study, which can be explained by the SF₆-tuned inter-hemispheric exchange in TM5 (Monteil et al., 2013). The most signifi-

cant increase in tropical emissions is found for Africa, where the SQx inversions show on average a 60 % increase compared with the prior. In contrast to this, the NOAA-only inversion remains close to the prior.

The differences in temporal variability between S_{fix} and SQ_{flex} are relatively small compared with the latitudinal differences described above. This is true also for the other SCIAMACHY inversions, as can be seen in Fig. 11, and more clearly after removing the mean (see Fig. 12). The remaining differences are on average well within the posterior flux uncertainty, whereas the differences between the absolute fluxes grossly exceed those uncertainty ranges. It can be concluded that the biases of SCIAMACHY introduce important uncertainty in the spatial distribution of the global CH_4 emissions, but affect the deseasonalized temporal variability to a lesser extent. Note that the mean-subtracted time series show a striking difference in trend between the “flex” and “fix” inversions for the Tropics. This arises from the independent optimization of bias parameters in the three inversion blocks. It leads to a systematic reduction in the long-term trend, with important implications for the inversion-derived trend over South East Asia.

4 Discussion

Overall, the results presented in the previous section confirm that the SCIAMACHY-inferred CH_4 emissions are sensitive to the bias correction method. This is true in particular for the emission difference between the tropics and the extra-tropics. The range of results obtained using different bias correction formulations exceeds the inversion-derived posterior flux uncertainty by up to a factor 5. Differences in inter-annual variation are much smaller, but difficult to evaluate because of the low density of the TCCON network during a large part of the SCIAMACHY operation. Further analysis of the fit residuals at background sites of the NOAA network (not shown) showed no clear relation with the differences between the NOAA and SCIAMACHY derived fluxes, which would have hinted to remaining interannually varying biases. Because of this, no further attempt was made to investigate the use of inter-annually varying bias functions.

Title Page

Abstract

Introduction

Conclusions

References

Tables

Figures

◀

▶

◀

▶

Back

Close

Full Screen / Esc

Printer-friendly Version

Interactive Discussion



Multi-year inversion
of SCIAMACHY CH₄

S. Houweling et al.

Title Page

Abstract

Introduction

Conclusions

References

Tables

Figures

◀

▶

◀

▶

Back

Close

Full Screen / Esc

Printer-friendly Version

Interactive Discussion



The time dependence of the inversion-optimized bias parameters points to a longer term drift, which influences the inferred emission trends most clearly in the tropics. Regression of the residuals between the long-record TCCON time series and inversion optimized TM5 confirms a drift using “fix” bias corrections of 1.6 ppbyr^{-1} . The largest drift is found for Darwin, although the regression is influenced by relatively large residuals at the end of the record. Without Darwin the slope of the regression drops to 0.6 ppbyr^{-1} , and is adjusted to -0.2 ppbyr^{-1} when bias parameters are optimized in the inversion.

The comparisons with independent measurements show residuals with changing sign dependent on the bias correction method. It indicates that the systematic errors we are trying to correct are an important factor limiting the performance of the inversion optimized model. Extended bias correction can further reduce the difference between SCIAMACHY and NOAA-only inversions as demonstrated by Bergamaschi et al. (2013). However, the options for deriving such corrections from independent data such as TCCON are limited. It highlights the importance of measurements from monitoring networks for surface and total column CH₄, as well as aircraft measurement programs. The recent expansion of the TCCON network greatly improved its usefulness, from which current and future satellite missions will benefit much more than SCIAMACHY. Still, the coverage is not yet sufficient, as indicated by the results of this study, which would have benefited from extended coverage over tropical continents.

To investigate common signals of SCIAMACHY in our inversions and those reported by Bergamaschi et al. (2013), the time series of inversion-derived fluxes are compared in Fig. 13. Although Bergamaschi et al. (2013) (referred to as B13 hereafter) make use of TM5 4DVAR also, the inversion setups are quite different. Besides the use of different bias correction functions, important differences include the use of either Gaussian or log normal probability density functions for the surface fluxes, optimization of net fluxes or separate flux components, and the selection of measurement sites. The differences between the NOAA only and SCIAMACHY + NOAA inversions are smaller in B13, which can be explained by the larger number of bias correction parameters that is

accounted for (288 vs. 9 in our “flex” inversions). Some common differences between inversions with and without satellite data are found, such as the minimum in emissions over tropical America during 2006.

Besides the differences in inter-annual variability highlighted in Fig. 13, multi-year mean fluxes show important differences also. A summary of mean fluxes is presented in Fig. 14, including all inversions of this study combined with results from B13. Integrated over the globe, the average of the posterior emissions of our inversions amount to $527 \pm 4 \text{ Tg CH}_4 \text{ yr}^{-1}$, in close agreement with B13. Note that, despite the significant differences in inter-annual variation between the inversions, the 8 yr integrated fluxes span only a small range. The Northern Hemisphere accounts for 78 % of global emissions, without a significant shift from a priori to a posteriori. The results of B13 show a shift towards the Southern Hemisphere of 42 Tgyr^{-1} compared with our inversions, consistent with the SF_6 calibrated inter-hemispheric exchange used in this study but not in B13. A sizable shift of 50 Tgyr^{-1} is found from the extra-tropics to the tropics, although this number varies substantially between the inversions ($\sigma = 25 \text{ Tgyr}^{-1}$). S_{fix} and S_{flex} show a net sink in the SH extra-tropics, which is brought in a more realistic range when the seasonal bias correction is used. Since we assume Gaussian flux uncertainties, nothing prevents the inversion from changing the sign of the fluxes. Note that the values found here are small compared with the corresponding uncertainties.

To address the question which region contributed most to the CH_4 increase since 2007, the difference is plotted between a two year period before and after July 2006, when according to our inversion results the emission increase started (see Fig. 15). As can be seen, the global difference varies between 27 and 35 Tgyr^{-1} across our inversions, most of which is attributed to the tropics with the northern hemispheric part of this zone contributing most. Splitting the tropics up by continent the resolution of the inversion becomes limited, as indicated by the size of the error bars exceeding the flux difference. The largest portion is attributed to South East Asia (9 Tgyr^{-1}), consistent with the growing demand for energy and food in rapidly developing economies. However, the low significance of this value does not allow us to draw strong conclusions.

Multi-year inversion
of SCIAMACHY CH_4

S. Houweling et al.

Title Page

Abstract

Introduction

Conclusions

References

Tables

Figures

◀

▶

◀

▶

Back

Close

Full Screen / Esc

Printer-friendly Version

Interactive Discussion



Multi-year inversion
of SCIAMACHY CH₄

S. Houweling et al.

Title Page

Abstract

Introduction

Conclusions

References

Tables

Figures

◀

▶

◀

▶

Back

Close

Full Screen / Esc

Printer-friendly Version

Interactive Discussion



Compared to our estimates, B13 report a smaller emission increase across the 2007 growth rate transition (16–20 vs. 27–35 Tgyr⁻¹). The B13 estimates in Fig. 15 are slightly higher than reported in the original publication, due to a difference in the time intervals used to quantify the emission increase. The same holds for the comparison with numbers reported by Bousquet et al. (2011). Their INV2 shows a difference between 2006 and 2007–2008 of 23 Tgyr⁻¹, compared to 19 Tgyr⁻¹ as the average of our inversions for the same period. Our inversions show smaller increases using these time intervals, because emissions start increasing already in the course of 2006. Nevertheless, evaluated over a 4 yr time period our SCIAMACHY inversions show larger increases compared with B13 and Bousquet et al. (2011), which we attribute to the reduction in the IMAPv5.5 retrieved XCH₄ in the tropics in 2006.

Bousquet et al. (2011) conclude that an important fraction of the increase can be attributed to increasing natural wetland emissions. Although our inversion set-up does not separate between different processes, the emission increase over South East Asia agrees well with B13 who point to increasing anthropogenic emissions in that region. Our uncertainty analysis, however, indicates that the inversion is incapable of resolving the difference between these explanations. The three studies do agree on an important contribution from the tropics. The answer to the question which processes are primarily responsible may come from isotopic analysis. The recent downward trend (see <http://www.esrl.noaa.gov/gmd/dv/iadv/>) in global $\delta^{13}\text{C-CH}_4$ can be interpreted as a shift in the global CH₄ source mixture towards microbial methane production. However, even in the absence of an isotopic shift in the source mixture, a change in the CH₄ growth rate itself is expected to deplete atmospheric $\delta^{13}\text{C-CH}_4$ by increasing the isotopic disequilibrium. Whether this can account for the observed trend will have to be investigated in further detail in the future.

5 Conclusions

We have investigated the use of SCIAMACHY retrievals spanning multiple years, for estimating temporal variations in the global sources of CH₄. Inverse modelling calculations were performed using TM5 4DVAR, for the period 2003–2010. The challenge of using CH₄ retrievals from SCIAMACHY is to account for systematic retrieval uncertainty, which complicates the interpretation of inverse modelling results. We made use of the available TCCON measurements to define and calibrate bias correction functions. In comparison with TCCON, the SCIAMACHY IMAV5.5 XCH₄ retrievals show an important seasonally varying bias, which can be effectively corrected using specific humidity in the lower troposphere as a proxy. Inverse modelling calculations were carried out using alternative formulations of the bias correction functions, with the coefficients either calibrated to TCCON or optimized in the inversion. Evaluation of the results against aircraft measurements from the HIPPO and BARCA campaigns shows important sensitivity to the bias correction approach, confirming that systematic uncertainties are a critical factor limiting the performance of the inversion. The TCCON total column measurements are of crucial importance for identifying and quantifying those uncertainties. To take full advantage of satellite retrievals, extended validation capabilities are needed, in particular, over tropical continents.

Our inversions shift emissions from the extra-tropics to the tropics by 50 Tg yr⁻¹ compared with the prior, but this number varies by 25 Tg yr⁻¹ among the different setups that were tested. The inversion-derived inter-annual variability is less sensitive to the bias correction method, in part because limited information is available to base such corrections on. Comparisons with inversion results from Bergamaschi et al. (2013) show that the SCIAMACHY-derived inter-annual emission variations become less robust when the bias correction is extended with additional degrees of freedom on inter-annual time scales. Integrated over large scales, the use of SCIAMACHY data leads to a 22 % increase in the inversion-estimated inter-annual variability compared with the use of only surface measurements. Increased variability is expected since the use of SCIAMACHY

Title Page

Abstract

Introduction

Conclusions

References

Tables

Figures

◀

▶

◀

▶

Back

Close

Full Screen / Esc

Printer-friendly Version

Interactive Discussion



Multi-year inversion
of SCIAMACHY CH₄

S. Houweling et al.

Title Page

Abstract

Introduction

Conclusions

References

Tables

Figures

◀

▶

◀

▶

Back

Close

Full Screen / Esc

Printer-friendly Version

Interactive Discussion



improves the coverage over tropical continents, which host important sources of IAV such as biomass burning and tropical wetlands. The fact that SCIAMACHY amplifies tropical variability that is already seen in the NOAA-only inversion, increases our confidence that part of the difference is real. In our inversions, the observed transition to increasing CH₄ mixing ratios in 2007 is attributed mostly to the tropics. The difference in global emissions between a two year period before and after July 2006 amounts to 27–35 Tgyr⁻¹. Within the tropical band an important contribution is found from South East Asia, although the associated posterior flux uncertainties are too large to identify the emissions from growing Asian economies as the main cause. Therefore our results are also consistent with a scenario of coincident increases in emissions from tropical wetlands.

Acknowledgements. We would like to thank the TICON PI's for making their measurements available, notably Paul Wennberg (CalTech, USA), David Griffith (Uni. Wollongong, Australia), Ralf Sussman (Karlsruhe Institute of Technology, Germany), and Thorsten Warnecke (Uni. Bremen, Germany). We thank Remco Scheepmaker (SRON, the Netherlands) for his support making SCIAMACHY data available. We thank Guisepppe Etiope (Istituto Nazionale di Geofisica e Vulcanologia, Italy) for support and the use of the GLOGOS database, and R. Spahni (University of Bern) for providing recent years of LPX output. This work was supported by the EU FP7 project GeoCarbon. Computer calculations were performed using the Huygens super computer of the dutch high performance computing centre SARA, and we thank SURFsara for support (www.surfsara.nl).

References

- Allan, W., Manning, M. R., Lassey, K. R., Lowe, D. C., and Gomez, A. J.: Modeling the variation of $\delta^{13}\text{C}$ in atmospheric methane: phase ellipses and the kinetic isotope effect, *Global Biogeochem. Cy.*, 15, 467–481, 2001. 28126
- Allan, W., Lowe, D. C., Gomez, A. J., Struthers, H., and Brailsford, G. W.: Interannual variation of ^{13}C in tropospheric methane: implications for a possible atomic chlorine sink in the marine boundary layer, *J. Geophys. Res.*, 110, D11306, doi:10.1029/2004JD005650, 2005. 28126

Multi-year inversion
of SCIAMACHY CH₄

S. Houweling et al.

Title Page

Abstract

Introduction

Conclusions

References

Tables

Figures

◀

▶

◀

▶

Back

Close

Full Screen / Esc

Printer-friendly Version

Interactive Discussion



Bange, H. W., Bell, T. G., and Cornejo, M.: MEMENTO: a proposal to develop a database of marine nitrous oxide and methane measurements, *Environ. Chem.*, 6, 195–197, doi:10.1071/en09033, 2009. 28125

Basu, S., Guerlet, S., Butz, A., Houweling, S., Hasekamp, O., Aben, I., Krummel, P., Steele, P., Langenfelds, R., Torn, M., Biraud, S., Stephens, B., Andrews, A., and Worthy, D.: Global CO₂ fluxes estimated from GOSAT retrievals of total column CO₂, *Atmos. Chem. Phys.*, 13, 8695–8717, doi:10.5194/acp-13-8695-2013, 2013. 28122

Bates, T. S., Kelly, K. C., Johnson, J. E., and Gammon, R. H.: A reevaluation of the open ocean source of methane to the atmosphere, *J. Geophys. Res.*, 101, 6953–6961, 1996. 28154

Beck, V., Chen, H., Gerbig, C., Bergamaschi, P., Bruhwiler, L., Houweling, S., Röckmann, T., Kolle, O., Steinbach, J., Koch, T., Sapart, C. J., van der Veen, C., Frankenberg, C., Andreae, M. O., Artaxo, P., Longo, K. M., and Wofsy, S. C.: Methane airborne measurements and comparison to global models during BARCA, *J. Geophys. Res.*, 117, D15310, doi:10.1029/2011JD017345, 2012. 28120, 28136

Bergamaschi, P., Frankenberg, C., Meirink, J.-F., Krol, M., Gabriella Villani, M., Houweling, S., Dentener, F., Dlugokencky, E. J., Miller, J. B., Gatti, L. V., Engel, A., and Levin, I.: Inverse modeling of global and regional CH₄ emissions using SCIAMACHY satellite retrievals, *J. Geophys. Res.*, 114, D22301, doi:10.1029/2009JD012287, 2009. 28120, 28122

Bergamaschi, P., Krol, M., Meirink, J. F., Dentener, F., Segers, A., van Aardenne, J., Monni, S., Vermeulen, A. T., Schmidt, M., Ramonet, M., Yver, C., Meinhardt, F., Nisbet, E. G., Fisher, R. E., O'Doherty, S., and Dlugokencky, E. J.: Inverse modeling of European CH₄, *J. Geophys. Res.*, 115, D22309, doi:10.1029/2010JD014180, 2010. 28122, 28129

Bergamaschi, P., Houweling, S., Segers, A., Krol, M., Frankenberg, C., Scheepmaker, R. A., Dlugokencky, E., Wofsy, S. C., Kort, E. A., Sweeney, C., Schuck, T., Brenninkmeijer, C., Chen, H., Beck, V., and Gerbig, C.: Atmospheric CH₄ in the first decade of the 21st century: inverse modeling analysis using SCIAMACHY satellite retrievals and NOAA surface measurements, *J. Geophys. Res.*, 118, 7350–7369, doi:10.1002/jgrd.50480, 2013. 28120, 28121, 28122, 28124, 28129, 28141, 28144, 28169, 28170

Bousquet, P., Ciais, P., Miller, J. B., Dlugokencky, E. J., Hauglustaine, D. A., Prigent, C., Van der Werf, G. R., Peylin, P., Brunke, E.-G., Carouge, C., Langenfelds, R. L., Lathière, J., Papa, F., Ramonet, M., Schmidt, M., Steele, L. P., Tyler, S. C., and White, J.: Contribution of anthropogenic and natural sources to atmospheric methane variability, *Nature*, 443, 439–443, doi:10.1038/nature05132, 2006. 28120

Multi-year inversion
of SCIAMACHY CH₄

S. Houweling et al.

Title Page

Abstract

Introduction

Conclusions

References

Tables

Figures

◀

▶

◀

▶

Back

Close

Full Screen / Esc

Printer-friendly Version

Interactive Discussion



- Bousquet, P., Ringeval, B., Pison, I., Dlugokencky, E. J., Brunke, E.-G., Carouge, C., Chevalier, F., Fortems-Cheiney, A., Frankenberg, C., Hauglustaine, D. A., Krummel, P. B., Langenfelds, R. L., Ramonet, M., Schmidt, M., Steele, L. P., Szopa, S., Yver, C., Viovy, N., and Ciais, P.: Source attribution of the changes in atmospheric methane for 2006–2008, *Atmos. Chem. Phys.*, 11, 3689–3700, doi:10.5194/acp-11-3689-2011, 2011. 28120, 28138, 28143
- 5 Bovensmann, H., Burrows, J. P., Buchwitz, M., Frerick, J., Noël, S., Rozanov, V. V., Chance, K. V., and Goede, A. P. H.: SCIAMACHY: mission objectives and measurement modes, *J. Atmos. Sci.*, 56, 127–150, 1999. 28120
- Braga do Carmo, J., Keller, M., Dezincourt Dias, J., Barbosa de Camargo, P., and Crill, P.: A source of methane from upland forests in the Brazilian Amazon, *Geophys. Res. Lett.*, 33, L04809, doi:10.1029/2005GL025436, 2006. 28154
- 10 Butz, A., Hasekamp, O. P., Frankenberg, C., Vidot, J., and Aben, I.: CH₄ retrievals from space-based solar backscatter measurements: Performance evaluation against simulated aerosol and cirrus loaded scenes, *J. Geophys. Res.*, 115, L14812, doi:10.1029/2010JD014514, 2010. 28129
- 15 Butz, A., Guerlet, S., Hasekamp, O., Schepers, D., Galli, A., Aben, I., Frankenberg, C., Hartmann, J. M., Tran, H., Kuze, A., Keppel-Aleks, G., Toon, G., Wunch, D., Wennberg, P., Deutscher, N., Griffith, D., Macatangay, R., Messerschmidt, J., Notholt, J., and Warneke, T.: Toward accurate CO₂ and CH₄ observations from GOSAT, *Geophys. Res. Lett.*, 38, L14812, doi:10.1029/2011GL047888, 2011. 28120
- 20 Dee, D. P., Uppala, S. M., Simmons, A. J., Berrisford, P., Poli, P., Kobayashi, S., Andrae, U., Balmaseda, M. A., Balsamo, G., Bauer, P., Bechtold, P., Beljaars, A. C. M., van de Berg, L., Bidlot, J., Bormann, N., Delsol, C., Dragani, R., Fuentes, M., Geer, A. J., Haimberger, L., Healy, S. B., Hersbach, H., Holm, E. V., Isaksen, L., Kallberg, P., Kohler, M., Matricardi, M., McNally, A. P., Monge-Sanz, B. M., Morcrette, J.-J., Park, B.-K., Peubey, C., de Rosnay, P., Tavolato, C., Thepaut, J.-N., and Vitart, F.: The ERA-Interim reanalysis: configuration and performance of the data assimilation system, *Q. J. Roy. Meteor. Soc.*, 137, 553–579, 2011. 28123
- 25 Deutscher, N. M., Griffith, D. W. T., Bryant, G. W., Wennberg, P. O., Toon, G. C., Washenfelder, R. A., Keppel-Aleks, G., Wunch, D., Yavin, Y., Allen, N. T., Blavier, J.-F., Jiménez, R., Daube, B. C., Bright, A. V., Matross, D. M., Wofsy, S. C., and Park, S.: Total column CO₂ measurements at Darwin, Australia – site description and calibration against in situ aircraft profiles, *Atmos. Meas. Tech.*, 3, 947–958, doi:10.5194/amt-3-947-2010, 2010. 28136
- 30

Multi-year inversion
of SCIAMACHY CH₄

S. Houweling et al.

Title Page

Abstract

Introduction

Conclusions

References

Tables

Figures

◀

▶

◀

▶

Back

Close

Full Screen / Esc

Printer-friendly Version

Interactive Discussion



- Dlugokencky, E. J., Bruhwiler, L., White, J. W. C., Emmons, L. K., Novelli, P. C., Montzka, S. A., Masarie, K. A., Lang, P. M., Crotwell, A. M., Miller, J. B., and Gatti, L. V.: Observational constraints on recent increases in the atmospheric CH₄ burden, *Geophys. Res. Lett.*, 36, L18803, doi:10.1029/2009GL039780, 2009. 28127, 28138
- 5 Etiope, G. and Klusman, R. W.: Geologic emissions of methane to the atmosphere, *Chemosphere*, 49, 777–789, 2002. 28125, 28126, 28154
- Etiope, G. and Klusman, R. W.: Microseepage in drylands: flux and implications in the global atmospheric source/sink budget of methane, *Global Planet. Change*, 72, 265–274, 2010. 28125
- 10 Etiope, G. and Milkov, A. V.: A new estimate of global methane flux from onshore and shallow submarine mud volcanoes to the atmosphere, *Environ. Geol.*, 46, 997–1002, doi:10.1007/s00254-004-1085-1, 2004. 28125
- Etiope, G., Lassey, K. R., Klusman, R. W., and Boschi, E.: Reappraisal of the fossil methane budget and related emission from geologic sources, *Geophys. Res. Lett.*, 35, L09307, doi:10.1029/2008GL033623, 2008. 28125
- 15 European Commission, Joint Research Centre (JRC)/Netherlands Environmental Assessment Agency (PBL): Emission Database for Global Atmospheric Research (EDGAR), release version 4.1, available at: <http://edgar.jrc.ec.europa.eu>, 2010. 28124, 28154
- Frankenberg, C., Meirink, J. F., van Weele, M., Platt, U., and Wagner, T.: Assessing methane emissions from global space-borne observations, *Science*, 308, 1010–1014, 2005. 28120
- 20 Frankenberg, C., Bergamaschi, P., Butz, A., Houweling, S., Meirink, J.-F., Notholt, J., Petersen, A. K., Schrijver, H., Warneke, T., and Aben, I.: Tropical methane emissions: a revised view from SCIAMACHY onboard ENVISAT, *Geophys. Res. Lett.*, 35, 1010–1014, doi:10.1029/2008GL034300, 2008a. 28120, 28129, 28139
- 25 Frankenberg, C., Warneke, T., Butz, A., Aben, I., Hase, F., Spietz, P., and Brown, L. R.: Pressure broadening in the 2ν₃ band of methane and its implication on atmospheric retrievals, *Atmos. Chem. Phys.*, 8, 5061–5075, doi:10.5194/acp-8-5061-2008, 2008b. 28120
- Frankenberg, C., Aben, I., Bergamaschi, P., Dlugokencky, E. J., van Hees, R., Houweling, S., van der Meer, P., Snel, R., and Tol, P.: Global column-averaged methane mixing ratios from 2003 to 2009 as derived from SCIAMACHY: trends and variability, *J. Geophys. Res.*, 116, L15811, doi:10.1029/2010JD014849, 2011. 28120, 28122, 28127, 28139
- 30 Fraser, A., Palmer, P. I., Feng, L., Boesch, H., Cogan, A., Parker, R., Dlugokencky, E. J., Fraser, P. J., Krummel, P. B., Langenfelds, R. L., O'Doherty, S., Prinn, R. G., Steele, L. P.,

Multi-year inversion
of SCIAMACHY CH₄

S. Houweling et al.

van der Schoot, M., and Weiss, R. F.: Estimating regional methane surface fluxes: the relative importance of surface and GOSAT mole fraction measurements, *Atmos. Chem. Phys.*, 13, 5697–5713, doi:10.5194/acp-13-5697-2013, 2013. 28120

5 Geibel, M. C., Messerschmidt, J., Gerbig, C., Blumenstock, T., Chen, H., Hase, F., Kolle, O., Lavrič, J. V., Notholt, J., Palm, M., Rettinger, M., Schmidt, M., Sussmann, R., Warneke, T., and Feist, D. G.: Calibration of column-averaged CH₄ over European TCCON FTS sites with airborne in-situ measurements, *Atmos. Chem. Phys.*, 12, 8763–8775, doi:10.5194/acp-12-8763-2012, 2012. 28136

10 Guerlet, S., Basu, S., Butz, A., Krol, M., Hahne, P., and Houweling, S.: Reduced carbon uptake during the 2010 Northern Hemisphere summer from GOSAT, *Geophys. Res. Lett.*, 40, 2378–2383, doi:10.1002/grl.50402, 2013. 28122

Hein, R., Crutzen, P. J., and Heimann, M.: An inverse modeling approach to investigate the global atmospheric methane cycle, *Global Biogeochem. Cy.*, 11, 43–76, 1997. 28120

15 Holmes, C. D., Prather, M. J., Søvdé, O. A., and Myhre, G.: Future methane, hydroxyl, and their uncertainties: key climate and emission parameters for future predictions, *Atmos. Chem. Phys.*, 13, 285–302, doi:10.5194/acp-13-285-2013, 2013. 28138

Hooghiemstra, P. B., Krol, M. C., Bergamaschi, P., de Laat, A. T. J., van der Werf, G. R., Novelli, P. C., Deeter, M. N., Aben, I., and Röckmann, T.: Comparing optimized CO emission estimates using MOPITT or NOAA surface network observations, *J. Geophys. Res.*, 117, D06309, doi:10.1029/2011JD017043, 2012a. 28122

20 Hooghiemstra, P. B., Krol, M. C., van Leeuwen, T. T., van der Werf, G. R., Novelli, P. C., Deeter, M. N., Aben, I., and Röckmann, T.: Interannual variability of carbon monoxide emission estimates over South America from 2006 to 2010, *J. Geophys. Res.*, 117, D15308, doi:10.1029/2012JD017758, 2012b. 28122

25 Houweling, S., Kaminski, T., Dentener, F. J., Lelieveld, J., and Heimann, M.: Inverse modeling of methane sources and sinks using the adjoint of a global transport model, *J. Geophys. Res.*, 104, 26137–26160, 1999. 28120

Huijnen, V., Williams, J., van Weele, M., van Noije, T., Krol, M., Dentener, F., Segers, A., Houweling, S., Peters, W., de Laat, J., Boersma, F., Bergamaschi, P., van Velthoven, P., Le Sager, P., Eskes, H., Alkemade, F., Scheele, R., Nédélec, P., and Pätz, H.-W.: The global chemistry transport model TM5: description and evaluation of the tropospheric chemistry version 3.0, *Geosci. Model Dev.*, 3, 445–473, doi:10.5194/gmd-3-445-2010, 2010. 28126, 28154

[Title Page](#)[Abstract](#)[Introduction](#)[Conclusions](#)[References](#)[Tables](#)[Figures](#)[◀](#)[▶](#)[◀](#)[▶](#)[Back](#)[Close](#)[Full Screen / Esc](#)[Printer-friendly Version](#)[Interactive Discussion](#)

Multi-year inversion
of SCIAMACHY CH₄

S. Houweling et al.

Title Page

Abstract

Introduction

Conclusions

References

Tables

Figures

◀

▶

◀

▶

Back

Close

Full Screen / Esc

Printer-friendly Version

Interactive Discussion



- Jones, D. B. A., Andrews, A. E., Schneider, H. R., and McElroy, M. B.: Constraints on meridional transport in the stratosphere imposed by the mean age of air in the lower stratosphere, *J. Geophys. Res.*, 106, 10243–10256, 2001. 28126
- Judd, A. G.: Natural seabed seeps as sources of atmospheric methane, *Environ. Geol.*, 46, 988–996, 2004. 28125
- Kort, E. A., Wofsy, S. C., Daube, B. C., Diao, M., Elkins, J. W., Gao, R. S., Hints, E. J., Hurst, D. F., Jimenez, R., Moore, F. L., Spackman, J. R., and Zondlo, M. A.: Atmospheric observations of Arctic Ocean methane emissions up to 82° north, *Nat. Geosci.*, 5, 318–321, doi:10.1038/ngeo1452, 2012. 28135
- Krol, M., Houweling, S., Bregman, B., van den Broek, M., Segers, A., van Velthoven, P., Peters, W., Dentener, F., and Bergamaschi, P.: The two-way nested global chemistry-transport zoom model TM5: algorithm and applications, *Atmos. Chem. Phys.*, 5, 417–432, doi:10.5194/acp-5-417-2005, 2005. 28123
- Kuze, A., Suto, H., Nakajima, M., and Hamazaki, T.: Thermal and near infrared sensor for carbon observation Fourier-transform spectrometer on the Greenhouse Gases Observing SATellite for greenhouse gases monitoring, *Appl. Optics*, 48, 6716–6733, doi:10.1364/AO.48.006716, 2009. 28120
- Kvenvolden, K. A. and Rogers, B. W.: Gaia's breath-global methane exhalations, *Mar. Petrol. Geol.*, 22, 579–590, 2005. 28125, 28154
- Lanczos, C.: An iteration method for the solution of the eigenvalue problem of linear differential and integral operators, *J. Res. Nat. Bur. Stand.*, 45, 255–282, 1950. 28123
- Lassey, K. R., Allan, W., and Fletcher, S. E. M.: Seasonal inter-relationships in atmospheric methane and companion $\delta^{13}\text{C}$ values: effects of sinks and sources, *Tellus B*, 63, 287–301, 2011. 28126
- Law, K. S. and Pyle, J. A.: Modelling trace gas budgets in the troposphere, CH₄ and CO, *J. Geophys. Res.*, 98, 18401–18412, 1993. 28126, 28154
- Martinson, G. O., Werner, F. A., Scherber, C., Conrad, R., Corre, M. D., Flessa, H., Wolf, K., Klose, M., Gradstein, S. R., and Veldkamp, E.: Methane emissions from tank bromeliads in neotropical forests, *Nat. Geosci.*, 3, 766–769, doi:10.1038/ngeo980, 2010. 28154
- Matthews, E. and Fung, I.: Methane emissions from natural wetlands: global distribution, area, and environmental characteristics of sources, *Global Biogeochem. Cy.*, 1, 61–86, 1987. 28125

Multi-year inversion
of SCIAMACHY CH₄

S. Houweling et al.

Title Page

Abstract

Introduction

Conclusions

References

Tables

Figures

◀

▶

◀

▶

Back

Close

Full Screen / Esc

Printer-friendly Version

Interactive Discussion



- Meirink, J.-F., Bergamaschi, P., Frankenberg, C., d'Amelio, M. T. S., Dlugokencky, E. J., Gatti, L. V., Houweling, S., Miller, J. B., Röckmann, T., Villani, M. G., and Krol, M. C.: Four-dimensional variational data assimilation for inverse modeling of atmospheric methane emissions: analysis of SCIAMACHY observations, *J. Geophys. Res.*, 113, D17301, doi:10.1029/2007JD009740, 2008a. 28120
- 5 Meirink, J. F., Bergamaschi, P., and Krol, M. C.: Four-dimensional variational data assimilation for inverse modelling of atmospheric methane emissions: method and comparison with synthesis inversion, *Atmos. Chem. Phys.*, 8, 6341–6353, doi:10.5194/acp-8-6341-2008, 2008b. 28121, 28122, 28123, 28131
- 10 Monteil, G., Houweling, S., Guerlet, S., Schepers, D., Frankenberg, C., Scheepmaker, R., Aben, I., Butz, A., Hasekamp, O., Landgraf, J., Wofsy, S. C., and Röckmann, T.: Intercomparison of 15 months inversions of GOSAT and SCIAMACHY CH₄ retrievals, *J. Geophys. Res.*, 118, 1–17, doi:10.1002/2013JD019760, 2013. 28123, 28130, 28134, 28136, 28139
- 15 Montzka, S. A., Krol, M., Dlugokencky, E. J., Hall, B., Joeckel, P., and Lelieveld, J.: Small inter-annual variability of global atmospheric hydroxyl, *Science*, 331, 67–69, 2011. 28122
- Patra, P. K., Houweling, S., Krol, M., Bousquet, P., Belikov, D., Bergmann, D., Bian, H., Cameron-Smith, P., Chipperfield, M. P., Corbin, K., Fortems-Cheiney, A., Fraser, A., Gloor, E., Hess, P., Ito, A., Kawa, S. R., Law, R. M., Loh, Z., Maksyutov, S., Meng, L., Palmer, P. I., Prinn, R. G., Rigby, M., Saito, R., and Wilson, C.: TransCom model simulations of CH₄ and related species: linking transport, surface flux and chemical loss with CH₄ variability in the troposphere and lower stratosphere, *Atmos. Chem. Phys.*, 11, 12813–12837, doi:10.5194/acp-11-12813-2011, 2011. 28123
- 20 Peters, W., Jacobson, A. R., Sweeney, C., Andrews, A. E., Conway, T. J., Masarie, K., Miller, J. B., Bruhwiler, L. M. P., Petron, G., Hirsch, A. I., Worthy, D. E. J., van der Werf, G. R., Randerson, J. T., Wennberg, P. O., Krol, M. C., and Tans, P. P.: An atmospheric perspective on North American carbon dioxide exchange: CarbonTracker, *Proc. Nat. Acad. Sci. USA*, 104, 18925–18930, 2007. 28127
- 25 Prather, M., McElroy, M., Wofsy, S., Russell, G., and Rind, D.: Chemistry of the global troposphere: fluorocarbons as tracers of air motion, *J. Geophys. Res.*, 92, 6579–6613, 1987. 28123
- 30 Randel, W. J., Wu, F., Russell III, J. M., Roche, A., and Waters, J. W.: Seasonal cycles and QBO variations in stratospheric CH₄ and H₂O observed in UARS HALOE data, *J. Atmos. Sci.*, 55, 163–185, 1998. 28126

Multi-year inversion
of SCIAMACHY CH₄

S. Houweling et al.

Title Page

Abstract

Introduction

Conclusions

References

Tables

Figures

◀

▶

◀

▶

Back

Close

Full Screen / Esc

Printer-friendly Version

Interactive Discussion



- Sanderson, M. G.: Biomass of termites and their emissions of methane and carbon dioxide: a global database, *Global Biogeochem. Cy.*, 10, 543–557, 1996. 28154
- Schepers, D., Guerlet, S., Butz, A., Landgraf, J., Frankenberg, C., Hasekamp, O., Blavier, J.-F., Deutscher, N. M., Griffith, D. W. T., Hase, F., Kyro, E., Morino, I., Sherlock, V., Sussmann, R., and Aben, I.: Methane retrievals from Greenhouse Gases Observing Satellite (GOSAT) shortwave infrared measurements: performance comparison of proxy and physics retrieval algorithms, *J. Geophys. Res.*, 117, D10307, doi:10.1029/2012JD017549, 2012. 28120, 28130
- Schneising, O., Buchwitz, M., Reuter, M., Heymann, J., Bovensmann, H., and Burrows, J. P.: Long-term analysis of carbon dioxide and methane column-averaged mole fractions retrieved from SCIAMACHY, *Atmos. Chem. Phys.*, 11, 2863–2880, doi:10.5194/acp-11-2863-2011, 2011. 28120
- Shakhova, N., Semiletov, I., Salyuk, A., Yusupov, V., Kosmach, D., and Gustafsson, Ö.: Extensive methane venting to the atmosphere from sediments of the East Siberian Arctic Shelf, *Science*, 327, 1246–1250, doi:10.1126/science.1182221, 2010. 28126
- Spahni, R., Wania, R., Neef, L., van Weele, M., Pison, I., Bousquet, P., Frankenberg, C., Foster, P. N., Joos, F., Prentice, I. C., and van Velthoven, P.: Constraining global methane emissions and uptake by ecosystems, *Biogeosciences*, 8, 1643–1665, doi:10.5194/bg-8-1643-2011, 2011. 28125, 28154
- Spivakovski, C. M., Logan, J. A., Montzka, S. A., Balkanski, Y. J., Foreman-Fowler, M., Jones, D. B. A., Horowitz, L. W., Brenninkmeijer, A. C. F. A. M., Prather, M. J., Wofsy, S. C., and McElroy, M. B.: Three dimensional climatological distribution of tropospheric OH: update and evaluation, *J. Geophys. Res.*, 105, 8931–8980, doi:10.1029/1999JD901006, 2000. 28126
- van der Werf, G. R., Randerson, J. T., Giglio, L., Collatz, G. J., Mu, M., Kasibhatla, P. S., Morton, D. C., DeFries, R. S., Jin, Y., and van Leeuwen, T. T.: Global fire emissions and the contribution of deforestation, savanna, forest, agricultural, and peat fires (1997–2009), *Atmos. Chem. Phys.*, 10, 11707–11735, doi:10.5194/acp-10-11707-2010, 2010. 28125, 28154
- Vigano, I., van Weelden, H., Holzinger, R., Keppler, F., McLeod, A., and Röckmann, T.: Effect of UV radiation and temperature on the emission of methane from plant biomass and structural components, *Biogeosciences*, 5, 937–947, doi:10.5194/bg-5-937-2008, 2008. 28154
- Warneke, T., Meirink, J. F., Bergamaschi, P., Grooss, J.-U., Notholt, J., Toon, G. C., Velasco, V., Goede, A. P. H., and Schrems, O.: Seasonal and latitudinal variation of atmospheric

Multi-year inversion
of SCIAMACHY CH₄

S. Houweling et al.

Title Page

Abstract

Introduction

Conclusions

References

Tables

Figures

◀

▶

◀

▶

Back

Close

Full Screen / Esc

Printer-friendly Version

Interactive Discussion



methane: a ground-based and ship-borne solar IR spectroscopic study, *J. Geophys. Res.*, **33**, L14812, doi:10.1029/2006GL025874, 2006. 28133

Washenfelder, R. A., Wennberg, P. O., and Toon, G. C.: Tropospheric methane retrieved from ground-based near-IR solar absorption spectra, *Geophys. Res. Lett.*, **30**, 2226, doi:10.1029/2003GL017969, 2003. 28133

Wofsy, S. C.: HIAPER Pole-to-Pole Observations (HIPPO): fine-grained, global-scale measurements of climatically important atmospheric gases and aerosols, *Philos. Trans. R. Soc. A*, **369**, 2073–2086, 2011. 28135

Wunch, D., Toon, G. C., Wennberg, P. O., Wofsy, S. C., Stephens, B. B., Fischer, M. L., Uchino, O., Abshire, J. B., Bernath, P., Biraud, S. C., Blavier, J.-F. L., Boone, C., Bowman, K. P., Browell, E. V., Campos, T., Connor, B. J., Daube, B. C., Deutscher, N. M., Diao, M., Elkins, J. W., Gerbig, C., Gottlieb, E., Griffith, D. W. T., Hurst, D. F., Jiménez, R., Keppel-Aleks, G., Kort, E. A., Macatangay, R., Machida, T., Matsueda, H., Moore, F., Morino, I., Park, S., Robinson, J., Roehl, C. M., Sawa, Y., Sherlock, V., Sweeney, C., Tanaka, T., and Zondlo, M. A.: Calibration of the Total Carbon Column Observing Network using aircraft profile data, *Atmos. Meas. Tech.*, **3**, 1351–1362, doi:10.5194/amt-3-1351-2010, 2010. 28136

Wunch, D., Toon, G. C., Blavier, J.-F. L., Washenfelder, R. A., Notholt, J., Connor, B. J., Griffith, D. W. T., Sherlock, V., and Wennberg, P. O.: The total carbon column observing network, *Philos. Trans. R. Soc.*, **369**, 2087–2112, doi:10.1098/rsta.2010.0240, 2011a. 28121

Wunch, D., Wennberg, P. O., Toon, G. C., Connor, B. J., Fisher, B., Osterman, G. B., Frankenberg, C., Mandrake, L., O'Dell, C., Ahonen, P., Biraud, S. C., Castano, R., Cressie, N., Crisp, D., Deutscher, N. M., Eldering, A., Fisher, M. L., Griffith, D. W. T., Gunson, M., Heikkinen, P., Keppel-Aleks, G., Kyrö, E., Lindenmaier, R., Macatangay, R., Mendonca, J., Messerschmidt, J., Miller, C. E., Morino, I., Notholt, J., Oyafuso, F. A., Rettinger, M., Robinson, J., Roehl, C. M., Salawitch, R. J., Sherlock, V., Strong, K., Sussmann, R., Tanaka, T., Thompson, D. R., Uchino, O., Warneke, T., and Wofsy, S. C.: A method for evaluating bias in global measurements of CO₂ total columns from space, *Atmos. Chem. Phys.*, **11**, 12317–12337, doi:10.5194/acp-11-12317-2011, 2011b. 28129

Yokota, T., Yoshida, Y., Eguchi, N., Ota, Y., Tanaka, T., Watanabe, H., and Maksyutov, S.: Global concentrations of CO₂ and CH₄ retrieved from GOSAT, first preliminary results, *Sci. Online Lett. Atmos.*, **5**, 160–163, 2009. 28120

[Title Page](#)[Abstract](#)[Introduction](#)[Conclusions](#)[References](#)[Tables](#)[Figures](#)[◀](#)[▶](#)[◀](#)[▶](#)[Back](#)[Close](#)[Full Screen / Esc](#)[Printer-friendly Version](#)[Interactive Discussion](#)**Table 1.** A priori CH₄ fluxes for the year 2005^a.

Process	Flux (TgCH ₄ yr ⁻¹)	Reference ^b
Ruminants	102	edg4
Rice cultivation	34	edg4
Fossil fuel use	17	edg4
Oil production	26	edg4
Gas production	47	edg4
Coal production	40	edg4
Waste treatment	69	edg4
Biomass burning	26	gfd3
Soils and wetlands	110	lpjwm ^c
Forests	12	
Oceans	17	^d
Termites	19	san96
Geological	8	^e
Total sources	527	
Sinks troposphere	489	mk10
Sinks stratosphere	38	law93
Total sinks	527	

^a The numbers in this table correspond to what has been used as a priori information, but do not necessarily reflect the potential importance of each source. This is true in particular for geological sources (see text).

^b edg4: European Commission, Joint Research Centre (JRC), gfd3: van der Werf et al. (2010), lpjwm: Spahni et al. (2011), san96: Sanderson (1996), mk10: Huijnen et al. (2010), law93: Law and Pyle (1993).

^c Accounts for reported emissions from organic material (Vigano et al., 2008), tank bromeliads (Martinson et al., 2010), and other sources in upland tropical forests (Braga do Carmo et al., 2006).

^d Includes emissions from open oceans (3 TgCH₄yr⁻¹, Bates et al., 1996) and continental shelves (14 TgCH₄yr⁻¹, Kvenvolden and Rogers, 2005; Etiope and Klusman, 2002).

^e Emissions from mud volcanoes, oil and gas seeps (GLOGOS database: <http://www.searchanddiscovery.com/documents/2009/090806etiope/>).

Multi-year inversion
of SCIAMACHY CH₄

S. Houweling et al.

[Title Page](#)[Abstract](#)[Introduction](#)[Conclusions](#)[References](#)[Tables](#)[Figures](#)[◀](#)[▶](#)[◀](#)[▶](#)[Back](#)[Close](#)[Full Screen / Esc](#)[Printer-friendly Version](#)[Interactive Discussion](#)**Table 2.** Statistics of XCH₄ residuals between TCCON and bias corrected SCIAMACHY retrievals.

	mean bias (ppb)	r^2 (–)	RMS (ppb)
No correction	–37.1	0.80	42.7
S ^a	0.0	0.80	21.2
SQ ^b	0.0	0.85	18.7
SQG ^c	–0.4	0.82	17.0

^a Uniform bias correction.^b Uniform + seasonal bias correction.^c Uniform + seasonal + latitudinal bias correction.

Multi-year inversion
of SCIAMACHY CH₄

S. Houweling et al.

Table 3. Inverse modelling scenarios and bias parametrization.

Scenario	NOAA data	SCIAMACHY data	parameter optimization	α_1^a	α_2^b	α_3^c
NOAA-only	+	–	–	–	–	–
S_{fix}	+	+	–	0.02	–	–
S_{flex}	+	+	+	0.016 ± 0.0029^d	–	–
SQ_{fix}	+	+	–	0.02	1	–
SQ_{flex}	+	+	+	0.013 ± 0.0029	0.94 ± 0.014	–
SQG_{fix}	+	+	–	0.02	1	1
SQG_{flex}	+	+	+	0.013 ± 0.0035	0.95 ± 0.016	1.56 ± 0.38

^a Bias parameter: Uniform correction.^b Bias parameter: Normalized seasonal correction.^c Bias parameter: Normalized latitudinal correction.^d Average of the 3 inversion blocks, \pm the maximum deviation from the mean.

Title Page

Abstract

Introduction

Conclusions

References

Tables

Figures

◀

▶

◀

▶

Back

Close

Full Screen / Esc

Printer-friendly Version

Interactive Discussion



Multi-year inversion of
SCIAMACHY CH₄

S. Houweling et al.

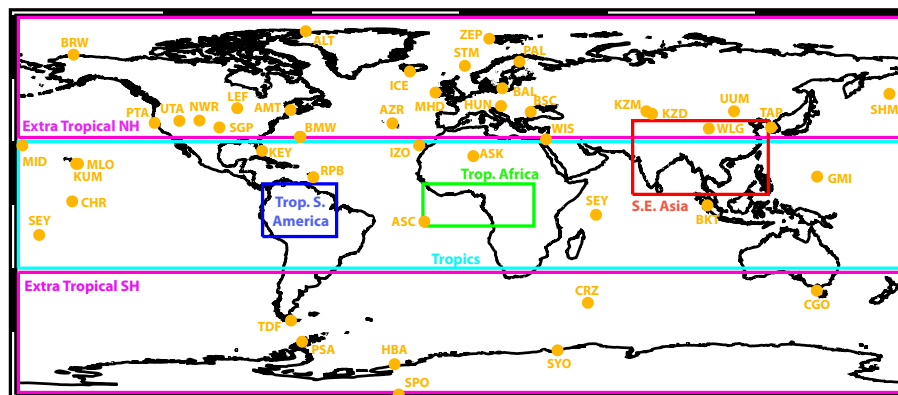


Fig. 1. Location of NOAA sampling sites used in the inversions, and of the regions used for integrating inversion-estimated fluxes.

Title Page

Abstract

Introduction

Conclusions

References

Tables

Figures

◀

▶

◀

▶

Back

Close

Full Screen / Esc

Printer-friendly Version

Interactive Discussion



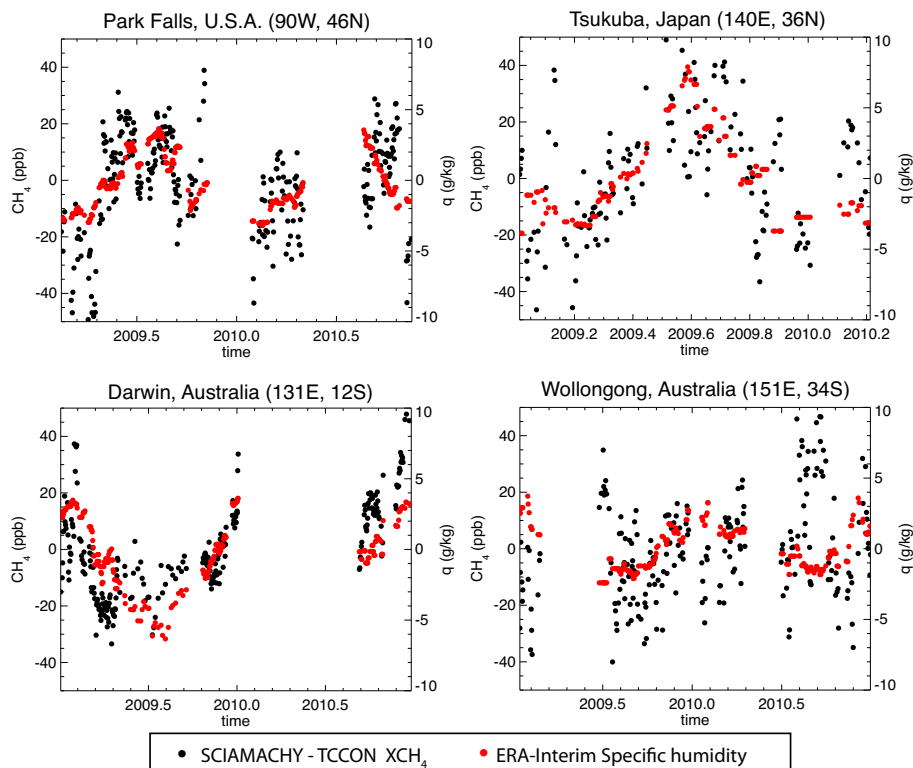


Fig. 2. Seasonal variation of residuals between collocated SCIAMACHY and TCCON measurements (black, left y-axis) and its relation with ERA-interim derived specific humidity averaged between the surface and 3 km altitude (red, right y-axis).

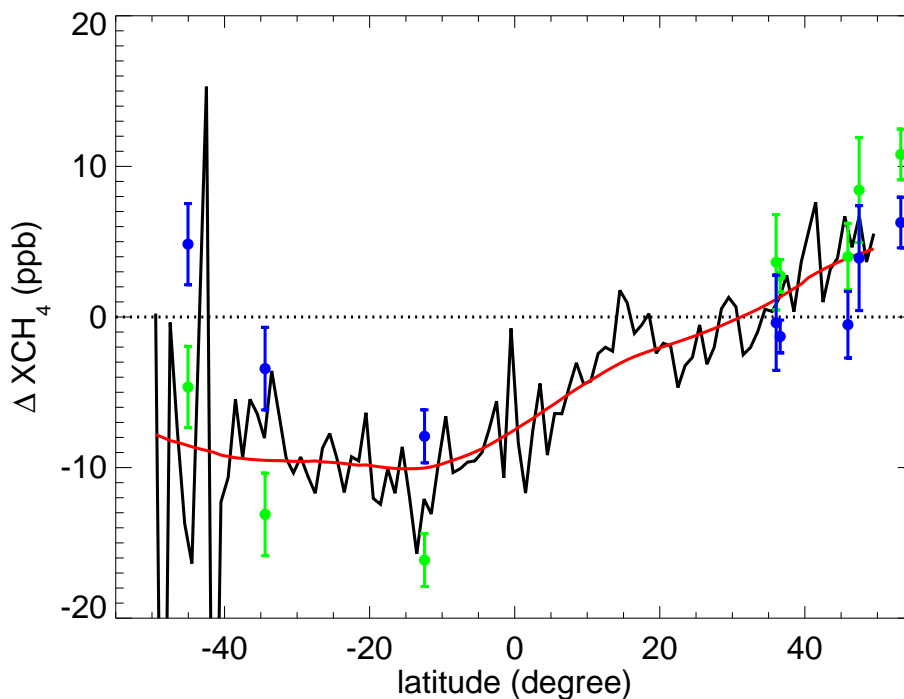


Fig. 3. Latitudinal variation of residuals between TCCON and colocated SCIAMACHY retrievals (green) and residuals between SCIAMACHY and GOSAT (black) using data from June 2009 to June 2010. The red curve is a box car smoothed version of the black curve, which is used to correct SCIAMACHY, resulting in the residuals with TCCON shown in blue.

[Title Page](#)[Abstract](#)[Introduction](#)[Conclusions](#)[References](#)[Tables](#)[Figures](#)[◀](#)[▶](#)[◀](#)[▶](#)[Back](#)[Close](#)[Full Screen / Esc](#)[Printer-friendly Version](#)[Interactive Discussion](#)

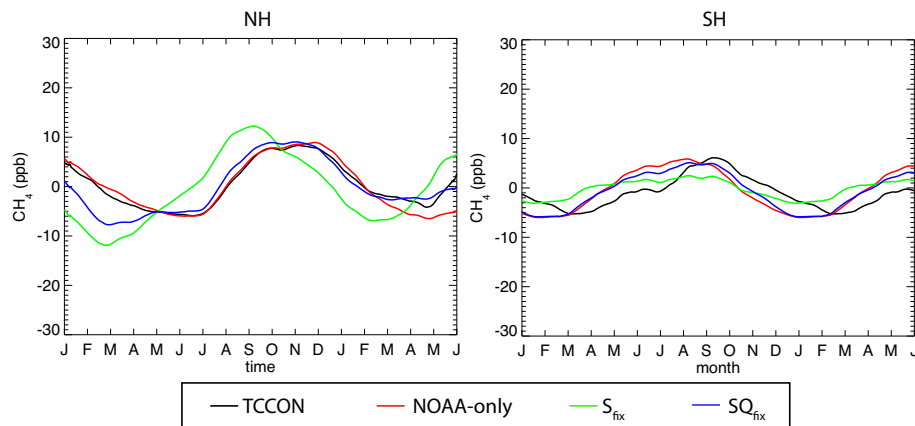


Fig. 4. Comparisons between detrended TCCON and inversion-derived seasonal cycles of XCH₄ averaged over TCCON sites in the Northern (left) and Southern Hemisphere (right). Black: TCCON, red: NOAA only, green: S_{fix} corrected SCIAMACHY, blue: SQ_{fix} corrected SCIAMACHY.

[Title Page](#)[Abstract](#)[Introduction](#)[Conclusions](#)[References](#)[Tables](#)[Figures](#)[◀](#)[▶](#)[◀](#)[▶](#)[Back](#)[Close](#)[Full Screen / Esc](#)[Printer-friendly Version](#)[Interactive Discussion](#)

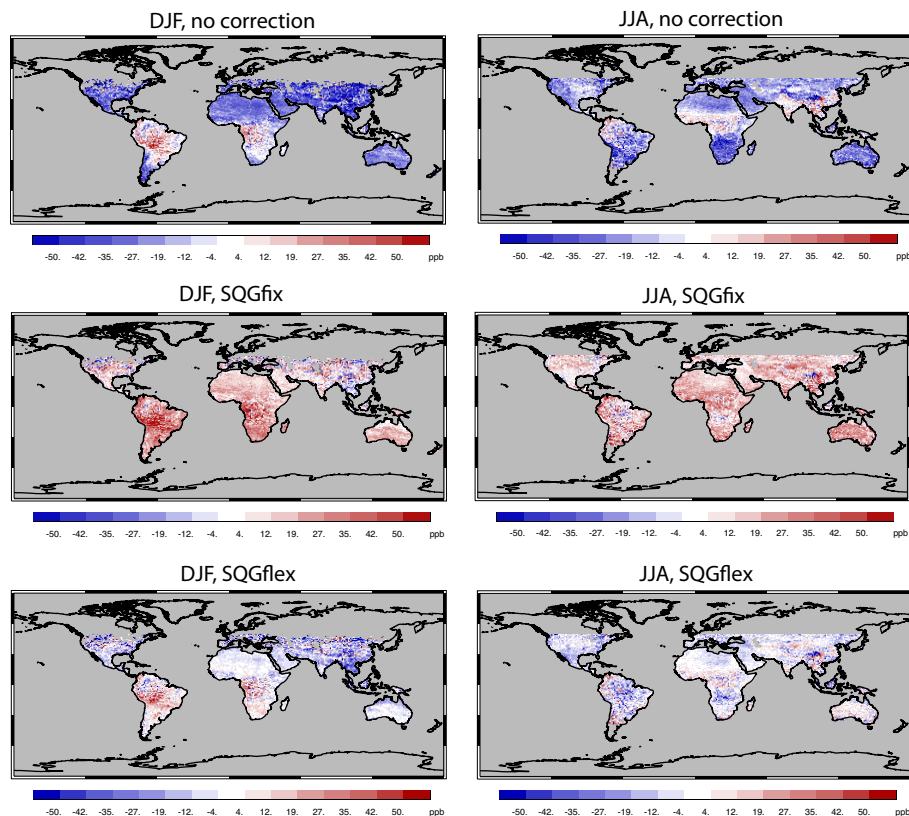


Fig. 5. The difference in XCH_4 between SCIAMACHY and NOAA optimized TM5 (SCIAMACHY–TM5) with and without SCIAMACHY bias correction. Results represent seasonal averages for DJF (left) and JJA (right). Top: Uncorrected SCIAMACHY, middle: SQG_{fix} corrected SCIAMACHY, bottom: SQG_{flex} corrected SCIAMACHY. For the corresponding bias coefficients see Table 2.

Multi-year inversion of SCIAMACHY CH_4

S. Houweling et al.

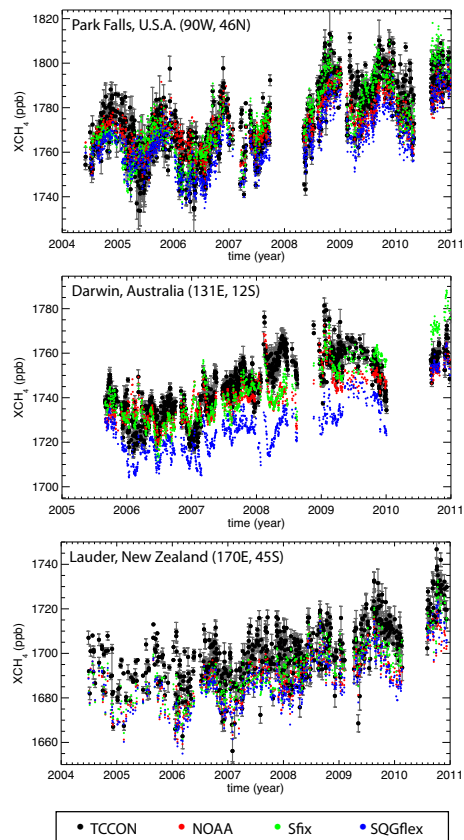


Fig. 6. Comparison between inversion derived and TCCON observed XCH_4 , at sites with multiple years of data. Black: TCCON, red: NOAA inversion, green: S_{fix} inversion, blue: SQG_{flex} inversion. Error bars represent the standard deviation of the plotted diurnal averages.

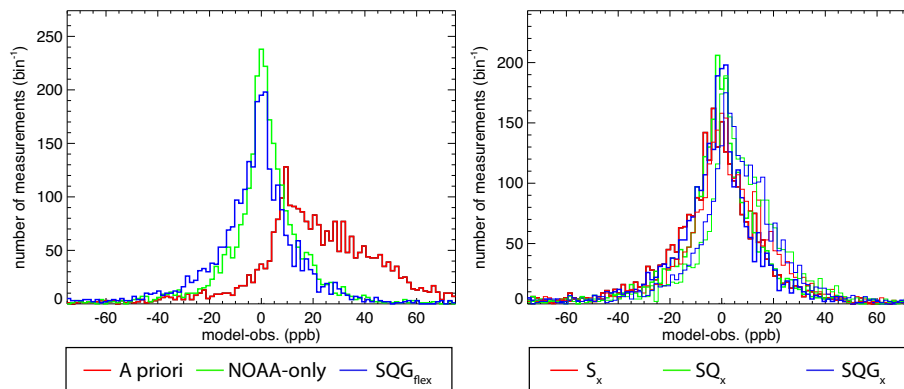


Fig. 7. Frequency distribution of fit residuals between surface measurements and optimized TM5. (Left panel) red: a priori, green: NOAA inversion, blue: SQG_{flex}. (Right panel) red: S_x, green: SQ_x, blue: SQG_x. Bold lines: flex scenarios, thin lines, fix scenarios.

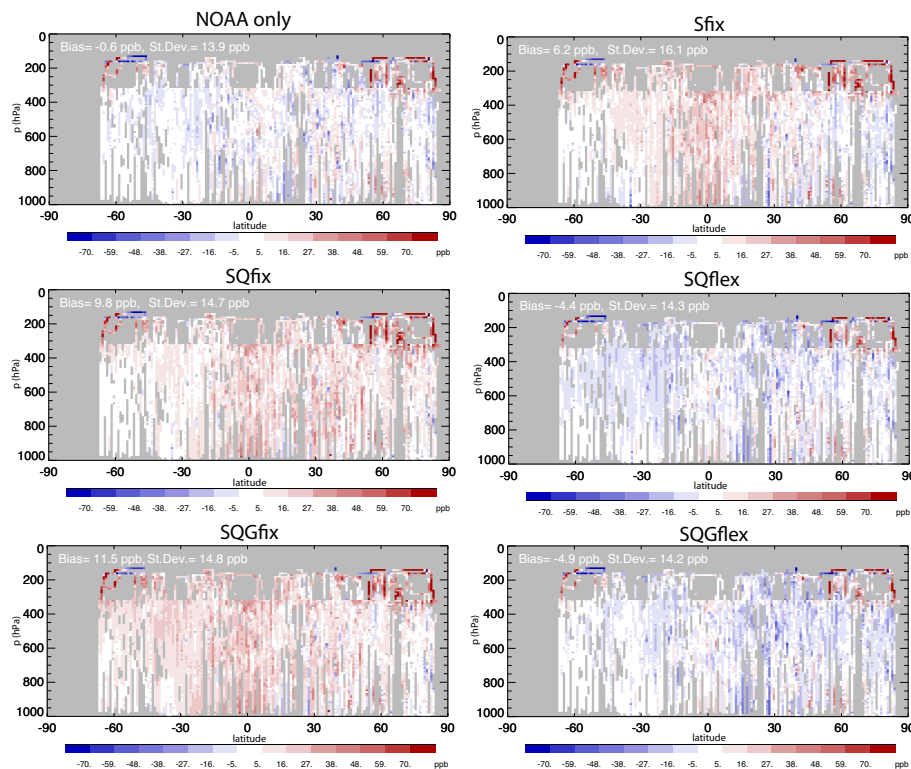


Fig. 8. Differences between simulated and observed CH₄ over the Pacific for the HIPPO measurement campaign. (Top) NOAA only and S_{fix} , (middle) SQ_{fix} and SQ_{flex} , (bottom) SQG_{fix} and SQG_{flex} .

Title Page

Abstract

Introduction

Conclusions

References

Tables

Figures

◀

▶

◀

▶

Back

Close

Full Screen / Esc

Printer-friendly Version

Interactive Discussion



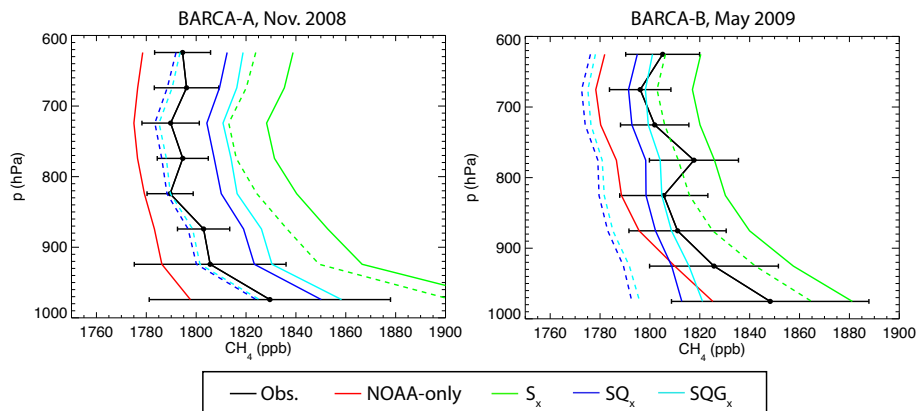


Fig. 9. Average vertical CH₄ profiles comparing simulations and measurements from the BARCA campaigns in November 2008 (left) and May 2009 (right). Black: Measurements with 1 σ standard deviations, red: NOAA only, green: S, dark blue: SQ, light blue: SQG. Solid lines are from “fix” scenarios, dashed from “flex”.

[Title Page](#)
[Abstract](#)
[Introduction](#)
[Conclusions](#)
[References](#)
[Tables](#)
[Figures](#)
[◀](#)
[▶](#)
[◀](#)
[▶](#)
[Back](#)
[Close](#)
[Full Screen / Esc](#)
[Printer-friendly Version](#)
[Interactive Discussion](#)

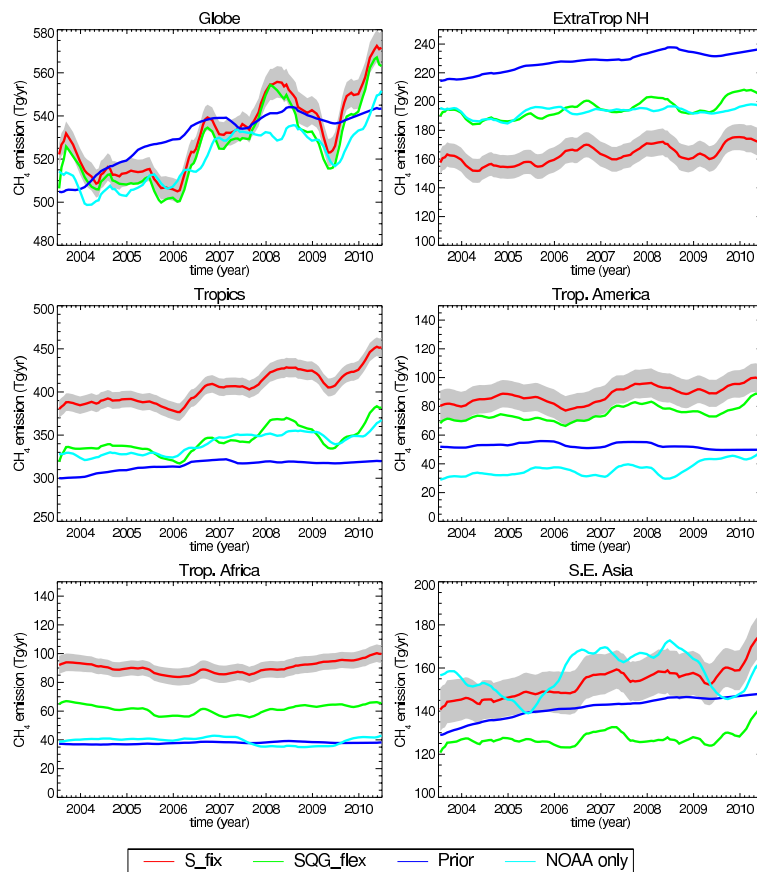



Fig. 10. Inter-annual variability of inversion derived CH₄ fluxes integrated over large regions. Dark blue: a priori flux, light blue: NOAA only, red: $S_{\text{fix}} + 2\sigma$ posterior uncertainty, green: SQG_{flex} . For the region definition see Fig. 1.

[Title Page](#)
[Abstract](#)
[Introduction](#)
[Conclusions](#)
[References](#)
[Tables](#)
[Figures](#)
[Back](#)
[Close](#)
[Full Screen / Esc](#)
[Printer-friendly Version](#)
[Interactive Discussion](#)

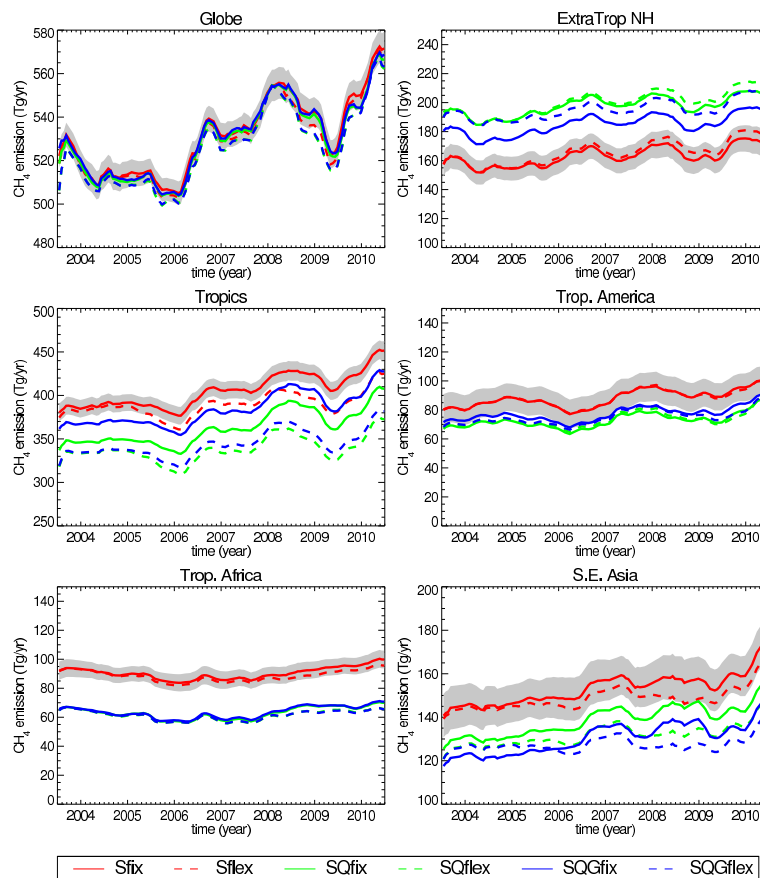


Fig. 11. As Fig. 10 comparing fluxes derived using different SCIAMACHY bias corrections. Solid lines: “fix” scenarios, dashed lines: “flex” scenarios. Red: S, green: SQ, blue: SQG.

Title Page

Abstract Introduction

Conclusions References

Tables Figures

◀ ▶

◀ ▶

Back Close

Full Screen / Esc

Printer-friendly Version

Interactive Discussion



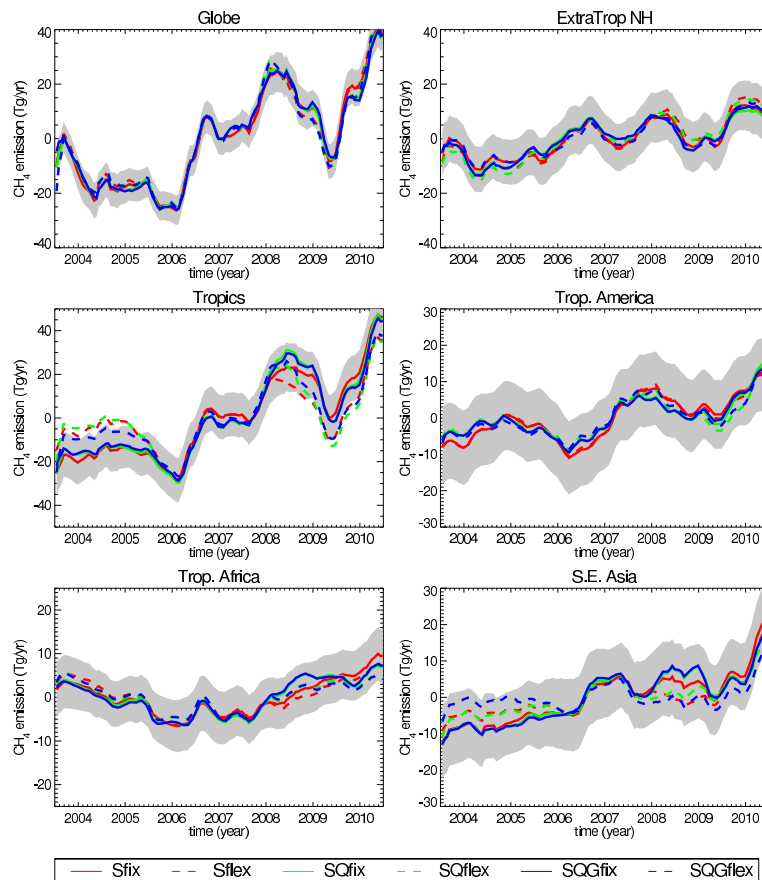


Fig. 12. As Fig. 11, with means subtracted.

Title Page

Abstract Introduction

Conclusions References

Tables Figures

◀ ▶

◀ ▶

Back Close

Full Screen / Esc

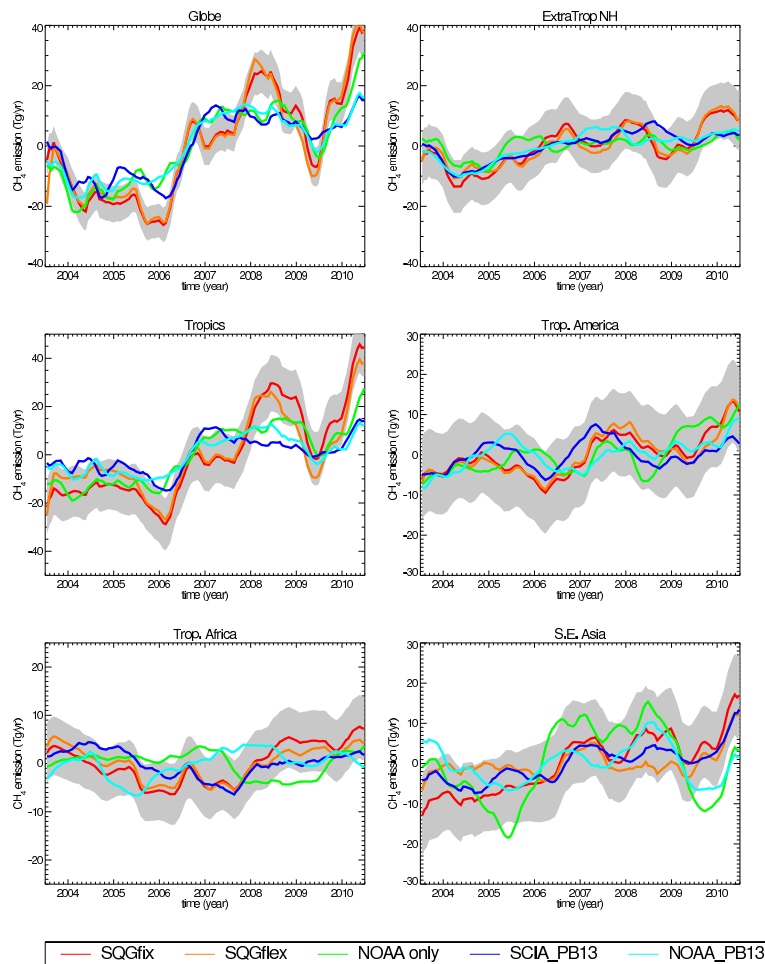
Printer-friendly Version

Interactive Discussion



Multi-year inversion of SCIAMACHY CH₄

S. Houweling et al.



Title Page

Abstract

Introduction

Conclusions

References

Tables

Figures

◀

▶

◀

▶

Back

Close

Full Screen / Esc

Printer-friendly Version

Interactive Discussion



Fig. 13. As Fig. 12, with comparison to the results from the NOAA-only (S1-NOAA) and NOAA + SCIA (S1-SCIA) inversion from Bergamaschi et al. (2013).

Multi-year inversion of SCIAMACHY CH₄

S. Houweling et al.

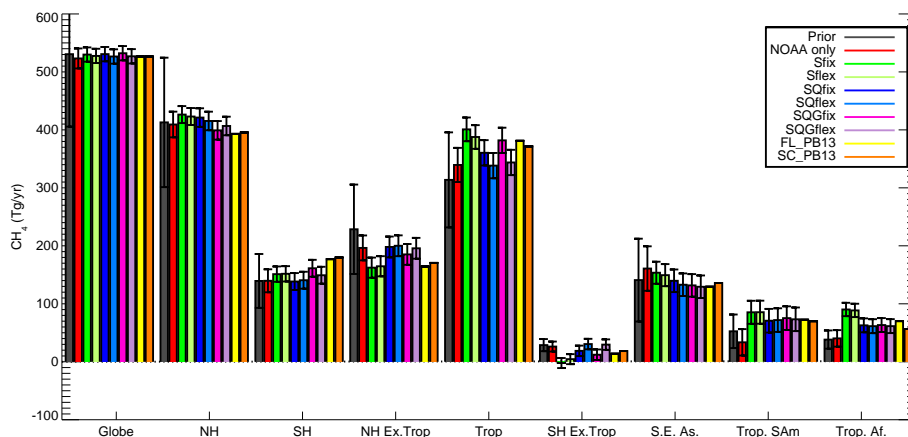


Fig. 14. Comparison of inversion derived fluxes integrated over regions and over the period 2003–2010, including results from the NOAA-only (S1-NOAA) and NOAA + SCIA (S1-SCIA) inversion from Bergamaschi et al. (2013). Error bars represent 2σ uncertainties. For the region definition see Fig. 1.

Title Page

Abstract

Introduction

Conclusions

References

Tables

Figures

◀

▶

◀

▶

Back

Close

Full Screen / Esc

Printer-friendly Version

Interactive Discussion



Multi-year inversion of SCIAMACHY CH₄

S. Houweling et al.

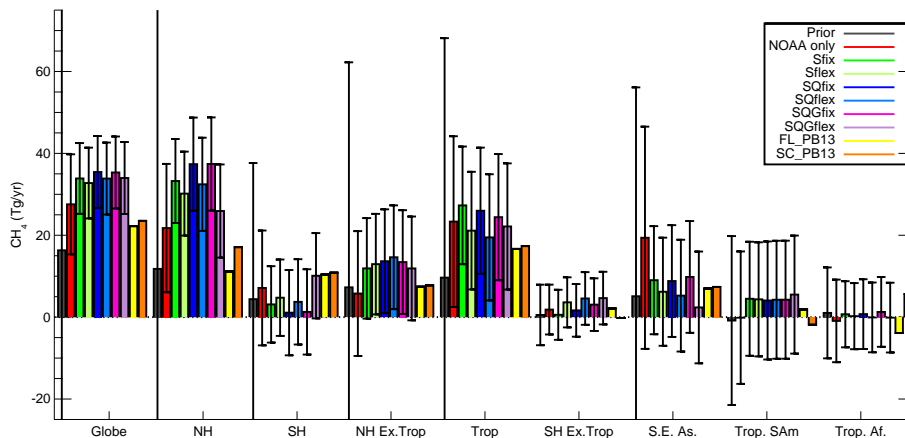


Fig. 15. As Fig. 14 with fluxes representing the difference between 2 yr preceding and following July 2006. The uncertainties for the two time intervals are assumed independent.

[Title Page](#)
[Abstract](#)
[Introduction](#)
[Conclusions](#)
[References](#)
[Tables](#)
[Figures](#)
[◀](#)
[▶](#)
[◀](#)
[▶](#)
[Back](#)
[Close](#)
[Full Screen / Esc](#)
[Printer-friendly Version](#)
[Interactive Discussion](#)
