



WRF-Chem
simulations of a
pre-monsoon dust
storm

R. Kumar et al.

WRF-Chem simulations of a typical pre-monsoon dust storm in northern India: influences on aerosol optical properties and radiation budget

R. Kumar^{1,2}, M. C. Barth², G. G. Pfister², M. Naja³, and G. P. Brasseur^{1,4}

¹Advanced Study Program, National Center for Atmospheric Research, Boulder, USA

²Atmospheric Chemistry Division, National Center for Atmospheric Research, Boulder, USA

³Aryabhata Research Institute of Observational Sciences, Nainital, India

⁴Climate Service Center, Helmholtz Zentrum Geesthacht, Hamburg, Germany

Received: 12 June 2013 – Accepted: 12 August 2013 – Published: 23 August 2013

Correspondence to: R. Kumar (rkumar@ucar.edu)

Published by Copernicus Publications on behalf of the European Geosciences Union.

Title Page

Abstract

Introduction

Conclusions

References

Tables

Figures



Back

Close

Full Screen / Esc

Printer-friendly Version

Interactive Discussion



Abstract

The impact of a typical pre-monsoon season (April–June) dust storm event on the regional aerosol optical properties and radiation budget in northern India is analyzed. The dust storm event lasted from 17 to 22 April 2010 and the WRF-Chem model estimated total dust emissions of 7.5 Tg over the model domain. Both in situ (AERONET) and satellite observations show significant increase (>50 %) in local to regional scale aerosol optical depth (AOD) and decrease (>70 %) in the Angström exponent (α) during this period. Amongst the AERONET sites in this region, Kanpur was influenced the most where the AOD reached up to 2.1 and the α decreased to -0.09 during the dust storm period. The WRF-Chem model reproduced the spatial and temporal distributions of dust plumes and aerosol optical properties but generally underestimated the AOD. The average MODIS and WRF-Chem AOD (550 nm) values in high dust laden region are estimated as 0.80 ± 0.30 and 0.68 ± 0.28 , respectively. Model results show that dust particles cool the surface and the top of the atmosphere, and warm the atmosphere. The regionally averaged radiative perturbation due to dust aerosols is estimated as $-2.0 \pm 3.0 \text{ W m}^{-2}$ at the top of the atmosphere, $2.3 \pm 1.8 \text{ W m}^{-2}$ in the atmosphere and $-4.4 \pm 3.1 \text{ W m}^{-2}$ at the surface. The impact of these radiative perturbations on the surface energy budget is estimated to be small on a regional scale but significant locally.

1 Introduction

Dust storms frequently occur throughout the desert regions of the world especially during springtime, injecting large amounts of mineral dust aerosols into the atmosphere. Dust aerosols have a wide range of potential consequences for ambient air quality, global climate, atmospheric chemistry, and biogeochemical processes. Higher levels of particulate matter during dust storms can lead to serious health problems (e.g. Dey et al., 2004; El-Askary et al., 2006). Dust aerosols perturb the Earth's radiation bud-

ACPD

13, 21837–21881, 2013

WRF-Chem simulations of a pre-monsoon dust storm

R. Kumar et al.

Title Page

Abstract

Introduction

Conclusions

References

Tables

Figures

◀

▶

◀

▶

Back

Close

Full Screen / Esc

Printer-friendly Version

Interactive Discussion

et al., 2007; Pandithurai et al., 2008; Sharma et al., 2012). Knowledge of the regional scale distribution of dust aerosols and their impact on the regional radiation budget over the Indian region is still very limited.

Dust storms are often observed in the northern part of India where their primary source is the Great Indian Thar Desert located in north-western India (Washington et al., 2003; Gautam et al., 2009). The dust storms over this region show a distinct seasonal cycle with higher frequency and intensity during the pre-monsoon season (April–June) (Sikka, 1997; Dey et al., 2004; Prasad and Singh, 2007). The generation of dust storms over northern India in the pre-monsoon season is supported by hotter and drier weather conditions (Kumar et al., 2012a). The prevailing westerly/south-westerly winds in the lower atmosphere facilitate the transport of dust aerosols from the Thar Desert to the Indo-Gangetic Plain (IGP) region (Sikka, 1997). The IGP region is one of the most densely populated regions in the world accommodating 250–1000 people per km² (CIESIN, <http://sedac.ciesin.columbia.edu/gpw>) and is a source region of several other types of anthropogenic aerosols with aerosol loadings 5–8 times higher than those observed at sites outside the IGP region in India (Nair et al., 2007). Elevated dust loadings over the IGP region during the pre-monsoon season have also been seen in satellite data (Prospero et al., 2002; Washington et al., 2003). These dust storms are observed to significantly affect aerosol optical properties over Delhi (Pandithurai et al., 2008), Kanpur (Dey et al., 2004; Prasad and Singh, 2007), and Patiala (Sharma et al., 2012) on the IGP, and Nainital in the central Himalayas (Hegde et al., 2007). These studies based on observations at few sites show an increase in aerosol optical depths by more than 50 %, and decrease of 70–90 % in Angström exponent and a reduction of 50–100 Wm⁻² in solar radiation reaching the surface.

In light of the above conditions, the present study focuses on understanding the regional distribution of dust aerosols and their impact on the radiation and surface energy budget during a typical pre-monsoon dust storm by applying the Weather Research and Forecasting Model coupled with Chemistry (WRF-Chem) to a dust storm event that occurred in northern India during 17–22 April 2010. The WRF-Chem model has

WRF-Chem simulations of a pre-monsoon dust storm

R. Kumar et al.

Title Page

Abstract

Introduction

Conclusions

References

Tables

Figures

⏪

⏩

◀

▶

Back

Close

Full Screen / Esc

Printer-friendly Version

Interactive Discussion



been used in previous studies over the Indian region and has been shown to capture well the important features of meteorological (Kumar et al., 2012a), chemical (Kumar et al., 2012b; Ghude et al., 2013) and particulate matter distributions (Seethala et al., 2012; Dipu et al., 2013).

The remainder of the manuscript is organized as follows. The WRF-Chem model domain and configuration are described in Sect. 2. Different ground- and satellite-based observations used to understand the influence of the dust storm on aerosol optical properties and to evaluate the model performance are discussed in Sect. 3. The distribution of dust aerosols and their impact on the radiation and surface energy budget are presented in Sect. 4. The findings from this study are summarized in Sect. 5.

2 The WRF-Chem model

This study uses version 3.4.1 of the Weather Research and Forecasting Model (Skamarock et al., 2008) coupled with Chemistry (Grell et al., 2005; Fast et al., 2006) to simulate the meteorology and chemistry over the model domain shown in Fig. 1a. The model domain is defined on a Mercator projection and extends from about 56° E to 93° E (120 grid points) in the east-west direction and from about 17° N to 41° N (90 grid points) in the north-south direction at a spatial resolution of 30 x 30 km². The vertical grid is composed of 51 levels from the surface to 10 hPa (~ 30 km) with a resolution of about 60 m near the surface, 200–400 m for altitudes around 1–3 km altitudes and 540–600 m for altitudes around 5–13 km. The static geographical fields such as terrain height, soil properties, vegetation fraction, land-use and albedo etc. are interpolated from 10 min (~ 19 km) United States Geological Survey (USGS) data to the model domain by using the WRF preprocessing system (WPS). The model domain encompasses a widely varying landscape with elevated Himalayan terrain, low altitude (< 500 m) Indo-Gangetic Plain, semi-arid and desert land masses and sea-shores (Fig. 1a and b). This complex terrain has an important influence on the meteorology and the distribution of chemical species.

WRF-Chem simulations of a pre-monsoon dust storm

R. Kumar et al.

Title Page

Abstract

Introduction

Conclusions

References

Tables

Figures

⏪

⏩

◀

▶

Back

Close

Full Screen / Esc

Printer-friendly Version

Interactive Discussion



**WRF-Chem
simulations of a
pre-monsoon dust
storm**

R. Kumar et al.

Title Page

Abstract

Introduction

Conclusions

References

Tables

Figures

⏪

⏩

◀

▶

Back

Close

Full Screen / Esc

Printer-friendly Version

Interactive Discussion

The initial and lateral boundary conditions for the meteorological fields are obtained from the National Center for Environmental Predictions (NCEP) Final Analysis (FNL) fields available every 6 h at a spatial resolution of $1^\circ \times 1^\circ$. The resolved scale cloud physics is represented by the Thompson microphysics scheme (Thompson et al., 2004) and sub-grid scale effects of convective and shallow clouds are parameterized according to the Kain-Fritsch convective scheme (Kain, 2004). The short- and long-wave radiative transfer in the atmosphere is represented by the Rapid Radiative Transfer Model (RRTM) (Mlawer et al., 1997) which allows for online interaction between aerosols and meteorology in the model. For surface processes, the model setup uses the NOAA Land Surface model (Chen and Dudhia, 2001) and Janjic Eta surface layer scheme (Janjic, 1996). The vertical sub-grid scale fluxes due to eddy transport in the planetary boundary layer and the free troposphere are parameterized according to the Mellor–Yamada–Janjic (MYJ) boundary layer scheme (Janjic, 1996, 2002). Four dimensional data assimilation (FDDA) technique is also applied to limit the model errors in the simulated meteorological fields (Lo et al., 2008). The horizontal winds, moisture and temperature are nudged at all vertical levels with a nudging coefficient of $6 \times 10^{-4} \text{ s}^{-1}$. The temperature and pressure show a mixed response to FDDA with changes of $\pm 2 \text{ K}$ and $\pm 1 \text{ g kg}^{-1}$ while wind speed generally decreases over the model domain due to FDDA. The difference in wind speed is especially higher over the Thar Desert region ($2\text{--}3 \text{ m s}^{-1}$). The change in wind speed has direct consequences for dust emissions which are discussed later in this section. Analysis of other consequences of analysis nudging through changes in dust emissions and their subsequent impacts on aerosol budget, their optical properties, photolysis rates and tropospheric chemistry deserves to be examined in a separate study and are not analyzed here.

The gas-phase chemistry is represented by the Model for Ozone and Related Chemical Tracers (MOZART-4) chemical scheme (Emmons et al., 2010) and the aerosol processes are represented by the Goddard Chemistry Aerosol Radiation and Transport (GOCART) bulk aerosol scheme (Chin et al., 2002; Pfister et al., 2011). The bulk aerosol mass simulated by GOCART scheme is converted into assumed modal distri-

WRF-Chem simulations of a pre-monsoon dust storm

R. Kumar et al.

Title Page

Abstract

Introduction

Conclusions

References

Tables

Figures

⏪

⏩

◀

▶

Back

Close

Full Screen / Esc

Printer-friendly Version

Interactive Discussion

butions and divided into eight size bins in the model to allow for interaction between GOCART aerosols and radiation. The initial and lateral boundary conditions for the chemical species are provided from six hourly output of MOZART-4 (Emmons et al., 2010). Anthropogenic emissions of CO, NO_x, SO₂, NH₃, OC and BC and non-methane volatile organic compounds (NMVOC) are taken from the MACCity emission inventory (Granier et al., 2011) and emissions for PM_{2.5} and PM₁₀ are taken from the Intercontinental Chemical Transport Experiment – Phase B (INTEX-B) inventory (Zhang et al., 2009). Daily varying emissions of trace species from biomass burning are taken from the Fire Inventory from NCAR version 1 (FINN v1) (Wiedinmyer et al., 2011) and distributed vertically in the model following the online plume-rise module (Freitas et al., 2007). Note that FINN v1 accounts only for open biomass burning and the residential biomass burning is included in anthropogenic emissions. Biogenic emissions of trace species from terrestrial ecosystems are calculated online using the Model of Emissions of Gases and Aerosols from Nature (MEGAN) version 2.04 (Guenther et al., 2006). The aerosols are allowed to provide feedback to the radiation scheme in the simulations but through direct effects only.

The GOCART scheme (Ginoux et al., 2001) calculates the dust emission flux online in the model by using the following expression:

$$F_p = \begin{cases} CSs_p u_{10m}^2 (u_{10m} - u_t) & \text{if } u_{10m} > u_t \\ 0 & \text{otherwise} \end{cases} \quad (1)$$

where F_p ($\text{kg m}^{-2} \text{s}^{-1}$) represents the emission flux for size bin p , C is an empirical proportionality constant ($\text{kg m}^{-5} \text{s}^2$), S is the source function representing the fraction of alluvium available for wind erosion, s_p is the fraction of each size class of dust in the emission, u_{10m} (m s^{-1}) is the horizontal wind speed at 10 m above the surface and u_t is the threshold velocity (m s^{-1}) below which dust emission does not occur and is a function of particle size, air density and surface moisture. The value of C was proposed initially as $1 \times 10^{-9} \text{ kg m}^{-5} \text{ s}^2$ (Ginoux et al., 2001) but is suggested to be highly

tuneable. Previous studies over the Sahara Desert (Zhao et al., 2010) and Arabian Peninsula (Kalenderski et al., 2013) found the model AOD greater than observations thus requiring a decrease in dust emissions, which was achieved by reducing C to $0.4 - 0.65 \times 10^{-9} \text{ kg m}^{-5} \text{ s}^2$. In contrast, the default C value is found to yield very low dust emissions over the Indian region (Dipu et al., 2013).

Here, we used AOD (500 nm) and Angström exponent (α) observations at seven AERONET sites in the model domain to constrain the C value and dust emissions in northern India. Several sensitivity experiments suggest that a C value of $2.2 \times 10^{-8} \text{ kg m}^{-5} \text{ s}^2$ leads to the best agreement between modeled and observed AOD (500 nm) and α at all these sites. It should be noted that this large increase (by a factor of 22) in the C value is partly due to use of FDDA in the present model configuration as FDDA nudges simulated wind fields towards analysis fields and thus leads to lower wind speeds. A sensitivity experiment showed that similar dust emission can be obtained with a C value of $9 \times 10^{-9} \text{ kg m}^{-5} \text{ s}^2$ without the use of FDDA. But we chose to use FDDA as the model configuration with FDDA is found to better reproduce the variations in observed aerosol optical properties as compared to one without FDDA (not shown). The time series of dust emission at a location (71° E , 27° N) in the Thar Desert (indicated by a black triangle in Fig. 1a and b) is shown in Fig. 1c. The dust outbreak started on 17 April 2010, reached its maximum intensity on 21 April 2010 and ended on 22 April 2010. The total dust emissions over the model domain are estimated to be 11.8 Tg during 13–25 April 2010 out of which 7.5 Tg of dust was emitted during 17–22 April 2010 with emissions reaching as high as 2.1 Tg on 20 April 2010.

The model simulation began on 10 April 2010 at 00:00 UTC and ended on 25 April 2010 at 12:00 GMT, with model output every hour. The WRF-Chem model with this configuration has been evaluated in detail and is found to reproduce the meteorological features of this region fairly well (Kumar et al., 2012a). Two simulations, with and without dust aerosols are conducted to assess the impact of the dust storm on aerosol optical properties and the radiation budget. The model results for the first three

WRF-Chem simulations of a pre-monsoon dust storm

R. Kumar et al.

Title Page

Abstract

Introduction

Conclusions

References

Tables

Figures

⏪

⏩

◀

▶

Back

Close

Full Screen / Esc

Printer-friendly Version

Interactive Discussion

model AOD at 500 and 550 nm, the Angström power law is used:

$$W(\lambda) = W(400) \times \left(\frac{\lambda}{400}\right)^{-\alpha} \quad (2)$$

where $W(\lambda)$ is the WRF-Chem AOD at wavelength λ (500 or 550) nm and α is the Angström exponent calculated from WRF-Chem AOD at 300 and 999 nm using the following relation:

$$\alpha = \frac{\ln\left(\frac{W(300)}{W(999)}\right)}{\ln\left(\frac{999}{300}\right)} \quad (3)$$

The Eqs. (2) and (3) are consistent with the WRF-Chem framework as the model also use these equations to interpolate/extrapolate the AOD (300–999 nm) to RRTM spectra (0.2–12 μm) for aerosol-radiation interaction in the model. The model SSA at 675 nm is derived by linearly interpolating model SSA between 300 and 999 nm. The WRF-Chem AOD and SSA are matched with AERONET/satellite data in space and time using a bilinear interpolation of the four nearest model grid points. The co-located model and observed data are then used for further analysis.

4 Results and discussion

4.1 General meteorology

This section discusses the general meteorological features of the northern Indian region to understand the cause of this dust storm. The average modeled temperature and relative humidity over the Thar Desert and IGP region during 13–25 April are estimated as 31–35 °C and 10–20 % respectively, and the total rainfall is estimated to be less than 10 mm over both these regions indicating the presence of hot and dry conditions during this period. The modeled spatial distribution of sea level pressure along

WRF-Chem simulations of a pre-monsoon dust storm

R. Kumar et al.

Title Page

Abstract

Introduction

Conclusions

References

Tables

Figures

⏪

⏩

◀

▶

Back

Close

Full Screen / Esc

Printer-friendly Version

Interactive Discussion

with 10 m wind vectors from 17 to 22 April 2010 at 00:00 GMT are shown in Fig. 2. The winds blowing into the Thar Desert were mostly south-westerly and changed to westerly/north-westerly while moving along the IGP. The sea level pressure shows the presence of a low pressure system over the IGP on 17 April increasing in strength from 17 through 21 April. This low pressure system generated strong winds which in turn led to higher dust emissions during this period (Fig. 1c). The sea level pressure increased on 22 April and consequently the wind speed and dust emissions decreased. However, AOD levels at some AERONET sites were still high on 22 April (Sect. 4.3) despite the decreased dust emission and thus further analysis in this study is restricted to the period of 17–22 April 2010, unless stated otherwise.

The spatial distributions of the daytime (09:30–16:30 IST or 04:00–11:00 UTC) average planetary boundary layer (PBL) height and tropopause height a.g.l. over the model domain during 17–22 April 2010 are shown in Fig. 3 to help the interpretation of the PBL and free tropospheric dust load calculations shown in Sect. 4.2. The tropopause altitude is determined using the thermal tropopause definition (Reichler et al., 2003). The daytime average PBL height is 1500–3500 m over the Indian region and shows strong diurnal variability with daytime heights reaching up to 3000–5000 m and nighttime values remaining below 500 m. The average PBL height over the oceanic regions shows little diurnal variation and on average is 150–600 m. The average tropopause height is 12–17 km over regions south of 30° N and decreases to 7–12 km for 30°–40° N.

4.2 Spatial and vertical distribution of dust

The natural color image captured by MODIS aboard Aqua on 21 April 2010 at 07:45 GMT shows an event of dust blowing through northern India (Fig. 4). This natural color image is used to examine the ability of WRF-Chem in simulating the transport of dust which is done by comparing to the modeled column integrated dust load for particles with effective radius of 2.4 μm and 10 m wind vectors. The comparison shows that WRF-Chem reproduces the spatial pattern of the dust plume on this day fairly

**WRF-Chem
simulations of a
pre-monsoon dust
storm**

R. Kumar et al.

Title Page

Abstract

Introduction

Conclusions

References

Tables

Figures

⏪

⏩

◀

▶

Back

Close

Full Screen / Esc

Printer-friendly Version

Interactive Discussion

well. Both MODIS and WRF-Chem show dust blowing along the Indo-Pakistan border and changing direction just west of the Himalayas followed by southward transport along the Indo-Gangetic Plain alongside the southern face of the Himalayas. The role of south-westerly winds in redistributing dust is consistent with previous studies (Sikka, 1997; Dey et al., 2004; Prasad and Singh, 2007).

To examine where the dust emitted from the Thar Desert was transported, the spatial distributions of WRF-Chem simulated daytime (09:30 to 16:30 LT) average dust loadings in the boundary layer and free troposphere over the model domain during 17–22 April 2010 are shown in Fig. 5 for dust particles of 0.73 μm , 2.4 μm 8.0 μm effective radii representing small, coarse and giant mode dust particles respectively. The dust loadings in the boundary layer and free troposphere are obtained every hour by integrating dust mass concentrations from the surface to the top of the PBL, and from the PBL height to the tropopause height, respectively. Dust loading distributions in the boundary layer are consistent with patterns of dust emissions with highest values over the source region (Thar Desert) and nearby downwind regions (western IGP). The average dust loadings for small, coarse and giant mode particles range from 0–32, 0–60 and 0–40 g m^{-2} , respectively. The small and coarse mode dust particles show similar distributions but coarse particles are mostly responsible for the higher dust loadings over the Thar Desert and western IGP region. This is consistent with observations detecting a small change in fine mode particles and large increases (~ 3 times) in coarse mode aerosols at Kanpur during dust storms (Dey et al., 2004). The giant mode particle distribution shows higher concentrations only in the source regions because they quickly fall back to the surface and are not transported over longer distances. The domain averaged total dust loadings in the daytime boundary layer is estimated as $21 \pm 42 \text{ g m}^{-2}$ out of which 68 % is attributed to dust emissions for 1.4 and 2.4 μm effective radii.

The dust loadings in the free troposphere are lower than those in the boundary layer and range from 0–12 and 0–22 g m^{-2} for small and coarse mode particles, respectively. The giant particles are not lifted to the free troposphere and their contributions

WRF-Chem simulations of a pre-monsoon dust storm

R. Kumar et al.

Title Page

Abstract

Introduction

Conclusions

References

Tables

Figures

⏪

⏩

◀

▶

Back

Close

Full Screen / Esc

Printer-friendly Version

Interactive Discussion

a.m.s.l.) being a low altitude site and the second biggest city of Nepal with a population of about 200 000 people representing an urban environment whereas EVK2-CNR (~ 5050 m a.m.s.l.) and Nainital (~ 1939 m a.m.s.l.) being high altitude sites located far from the major anthropogenic activities in the Himalayas representing cleaner environments. This indicates that the uncertainties in aerosol emissions could be a major contributor to the model bias at Pokhara whereas errors in modeled transport processes could be of more importance for EVK2-CNR. However, a quantification of the relative contribution of these factors is not possible here due to lack of suitable aerosol and meteorological measurements. The horizontal resolution of the model is another important factor affecting the simulated trace species in the model domain especially in the Himalayan region. Note that the sites of EVK2-CNR (5050 m), Nainital (1936 m) and Pokhara (807 m) are located in the region of rapidly varying topography (Fig. 1a) and modeled altitude of these sites is estimated to be off by 400–900 m. The errors in model topography will induce errors in modeled meteorology and thus transport of aerosols to these sites. However, the coarse horizontal resolution (50 km) of MACCity emission inventory used here limit the applicability of model at a much finer resolution (< 10 km). The lack of a secondary organic aerosol formation scheme in the current model set-up might also have some contribution to the model-observation discrepancies.

The WRF-Chem simulated single scattering albedo (SSA) values are also compared to AERONET observed SSA at 675 nm. There are very few SSA observations available at the AERONET sites and more than 10 data points are available only at Kanpur ($N = 31$), Nainital ($N = 24$), Lahore ($N = 42$) and Pokhara ($N = 26$) during 13–25 April 2010. The column-averaged modeled and observed SSA values during 13–25 April 2010 are estimated to be 0.877 ± 0.006 and 0.900 ± 0.036 ($r = 0.80$) at Kanpur, 0.871 ± 0.002 and 0.929 ± 0.027 ($r = 0.72$) at Nainital, 0.877 ± 0.004 and 0.916 ± 0.018 ($r = 0.43$) at Lahore, and 0.877 ± 0.002 and 0.847 ± 0.029 ($r = 0.21$) at Pokhara, respectively. The underestimation of SSA by WRF-Chem suggests that model aerosols are slightly more absorbing than the observed aerosols except at Pokhara where they are more scattering.

**WRF-Chem
simulations of a
pre-monsoon dust
storm**

R. Kumar et al.

Title Page

Abstract

Introduction

Conclusions

References

Tables

Figures

⏪

⏩

◀

▶

Back

Close

Full Screen / Esc

Printer-friendly Version

Interactive Discussion

Satellite observations of AOD and aerosol index are used to examine the dust storm induced changes in aerosol properties on a regional scale. The spatial distributions of aerosol optical depth at 550 nm retrieved by SeaWiFS and MODIS, and the OMI retrieved ultraviolet aerosol index during 13–16 April and 17–22 April 2010 are shown in Fig. 9. The periods of 13–16 April and 17–22 April 2010 represent periods of low and high dust emissions respectively (Fig. 1c). AOD retrievals from both the satellites show similar spatial structure ($r = 0.75$) during both low and high dust emission periods and an increase of more than 50 % between the period with low (0.2 to 0.4) and the period with high (0.5 to more than 1) dust emissions over the Thar Desert and western IGP region. MODIS and SeaWiFS show similar relative changes, but, AOD from SeaWiFS is only about half of the value retrieved by MODIS indicating the large uncertainty in satellite AOD retrievals. The OMI UV aerosol index also shows an increase of more than 50 % between the low and high dust emission period indicating increased abundance of absorbing aerosols. Agricultural crop residue burning might also be an important source of absorbing aerosols during the pre-monsoon season in northern India (Kumar et al., 2011). However, the analysis of MODIS fire counts suggests low biomass burning activity over this region (<http://firms.modaps.eosdis.nasa.gov/firemap/>) during 17–22 April 2010 and thus enhancement in aerosol index is likely due to increase in dust aerosols. The presence of biomass burning aerosols is also ruled out by sharp decrease in α values during this period.

The ability of WRF-Chem in simulating the spatial distribution of AOD during low and high dust emission periods is also examined by comparing the model results with co-located Level 2 MODIS retrieved AOD at 550 nm as shown in Fig. 10. MODIS retrievals of AOD are used for evaluation because previous studies have shown that MODIS AOD compares well with in situ observations over the Indian region (Ramachandran, 2007; Sharma et al., 2012). The WRF-Chem model significantly underestimates MODIS retrieved AOD during 13–16 April 2010 and even fails to capture the higher AOD values particularly over the western Indo-Gangetic Plain region. This could be attributed to the uncertainties in anthropogenic aerosol emissions over the Indian region. It has been

**WRF-Chem
simulations of a
pre-monsoon dust
storm**

R. Kumar et al.

Title Page

Abstract

Introduction

Conclusions

References

Tables

Figures

⏪

⏩

◀

▶

Back

Close

Full Screen / Esc

Printer-friendly Version

Interactive Discussion

clouds over the model domain during the simulation period and those clouds that were simulated were located outside the region impacted by the dust storm. Therefore, the radiative changes reported here are expected to be close to the actual radiative forcing values. The difference between TOA and SFC radiative perturbations represents a change in radiation budget for the entire atmosphere and is termed as atmospheric radiative perturbation (ATM). The net radiative fluxes (either SW or LW) at the SFC and TOA are calculated as the difference between down-welling and up-welling fluxes.

The spatial distributions of diurnally averaged all-sky SW, LW and net radiative perturbation induced by dust aerosols during 17–22 April 2010 at the TOA, in the ATM and at the SFC are shown in Fig. 11. The spatial distributions of the dust radiative perturbation (either SW or LW or Net) are consistent with simulated distributions of dust with highest values over the Thar Desert and western IGP region. The dust SW radiative perturbation at the TOA is generally negative over the model domain except over the regions of higher surface albedo such as the Himalayan glaciers, the Thar Desert, and arid regions of Pakistan and Middle East. The SW radiative perturbation of dust at TOA depends strongly on the SW absorptivity of dust and generally has a cooling effect over the land regions for moderately absorbing dust (imaginary part of refractive index = 0.003; Kalenderski et al., 2013) as is the case here.

The domain averaged dust SW radiative perturbation at TOA is $-3.6 \pm 3.4 \text{ W m}^{-2}$ with a maximum value of -43.0 W m^{-2} . The WRF-Chem simulated diurnally averaged SW aerosol radiative perturbation at the TOA are compared with the radiative forcing estimates available for dusty days in the literature (Table 1). The WRF-Chem estimates at the TOA are similar to the observation based estimates at Patiala and Kanpur but are much lower than those reported for Delhi. The differences at Delhi could be due to the difference in SW aerosol absorptivity as WRF-Chem considers dust as moderately absorbing in the model while Pandithurai et al. (2008) used a strongly absorbing aerosol (mixture of dust and black carbon) with SSA of 0.74–0.84 in their radiative transfer calculations. The LW radiative perturbation of dust at the TOA is generally small and has a domain averaged value of $1.6 \pm 1.1 \text{ W m}^{-2}$ with a maximum of

**WRF-Chem
simulations of a
pre-monsoon dust
storm**

R. Kumar et al.

Title Page

Abstract

Introduction

Conclusions

References

Tables

Figures

⏪

⏩

◀

▶

Back

Close

Full Screen / Esc

Printer-friendly Version

Interactive Discussion

10.6 W m⁻². The net (SW + LW) radiative perturbation of dust is thus controlled mostly by SW radiative effects and has a small cooling effect with domain averaged value of -2.0 ± 3.0 W m⁻². Similar values have been reported for the Arabian Peninsula and Red Sea (-2.3 W m⁻²) (Kalenderski et al., 2013). The analysis of vertical profiles of SW and LW heating rates (not shown) revealed that the dust induced perturbations in radiation fluxes and heating rate are consistent with vertical distribution of dust and decrease as we move from the surface to higher altitudes. The changes in both SW and LW heating rates approaches zero near 6 km.

The dust SW radiative perturbation in the atmosphere is positive throughout the model domain because dust absorbs SW radiation and warms the atmosphere. The domain averaged SW dust radiative perturbation in the atmosphere is 6.6 ± 5.2 W m⁻² with a maximum value of 41.1 W m⁻². The LW radiative perturbation of dust has a cooling effect in the atmosphere with highest values over the Thar Desert (-28.9 W m⁻²). This is because of the hotter desert surface and strong interaction between LW radiation and coarse particles that remain confined to the source region due to their shorter atmospheric lifetimes. Overall, the net (SW + LW) radiative perturbation of dust has a small warming effect in the atmosphere with domain averaged value of 2.3 ± 1.8 W m⁻² and a maximum of 13.7 W m⁻².

At the surface, the dust SW radiative perturbation has a cooling effect because dust aerosols attenuate the incoming radiation through absorption and scattering in the atmosphere. The modeled diurnally averaged SW dust radiative perturbation estimated at the surface is less than the observation based estimates available for Patiala and Delhi but are similar for Kanpur (Table 1). The domain averaged dust SW radiative perturbation at the surface is -10.1 ± 7.1 W m⁻² with a maximum value of -49.2 W m⁻². This regional mean value of -10.1 W m⁻² is comparable to the values of SW dust radiative forcing at the surface reported for East Asia (-8 to -12 W m⁻²) (Han et al., 2011), and the Arabian Peninsula and Red Sea (-6.0 W m⁻²) (Kalenderski et al., 2013). The dust LW effect warms the surface by trapping LW radiation emitted by the Earth's surface with a domain averaged value of 5.8 ± 5.0 W m⁻² and highest warming over the

**WRF-Chem
simulations of a
pre-monsoon dust
storm**

R. Kumar et al.

Title Page

Abstract

Introduction

Conclusions

References

Tables

Figures

⏪

⏩

◀

▶

Back

Close

Full Screen / Esc

Printer-friendly Version

Interactive Discussion

and satellite based observations with WRF-Chem model results. The model predicted a total amount of 7.5 Tg dust emitted during 17–22 April 2010 with values reaching as high as 2.1 Tg on 20 April 2010. The dust storm and its impact on aerosol optical properties are captured by both in situ and satellite observations. Analysis of AERONET observations shows that Kanpur and Nainital are influenced the most by dust plumes where 500 nm AOD increased by more than 50 % and Angström exponent decreased by more than 70 %. The consistency of these changes in aerosol optical properties with general features of dust storm events reported for Kanpur (Dey et al., 2004; Prasad and Singh, 2007) indicate that this was a typical pre-monsoon season dust storm. Satellite observations show a substantial increase in the regional aerosol loading resulting in a 550 nm AOD increase of more than 50 % over the Thar Desert and Indo-Gangetic Plain region due to increase in the abundance of absorbing aerosols.

We use the WRF-Chem model to understand the evolution and impact of this dust storm on the radiation and the surface energy budget. Analysis of modeled meteorology shows that this dust storm was generated by the presence of a low pressure area over the Indo-Gangetic Plain region that created high surface winds. WRF-Chem predicted domain-averaged daytime average total dust loadings of 21 and 19 g m⁻² in the boundary layer and free troposphere, respectively with 68–71 % of the dust loading from coarse mode dust particles of 1.4 and 2.4 μm effective radii. The model is found to reproduce the observed variations in AOD, Angström exponent and single scattering albedo well at most of the sites ($r = 0.4$ to 0.8). Model results clearly indicate this dust storm significantly influenced the regional radiation budget. The presence of dust aerosols reduced the regional solar radiation reaching the surface by on average -10.1 W m^{-2} and increased the mean surface long wave radiation by 5.8 W m^{-2} . The influence of dust particles on the top of atmosphere radiation was smaller with regional averages of -3.6 and 1.6 W m^{-2} for short and long-wave radiative perturbation, respectively. Model results also show that radiative perturbation due to dust aerosols can cause significant changes locally in sensible (-69.4 W m^{-2}) and latent (-34.2 W m^{-2}) heat fluxes, 2 m temperature (4.4 K) and in PBL height (-215.3 m).

WRF-Chem simulations of a pre-monsoon dust storm

R. Kumar et al.

Title Page

Abstract

Introduction

Conclusions

References

Tables

Figures



Back

Close

Full Screen / Esc

Printer-friendly Version

Interactive Discussion

The accumulation of dust and black carbon aerosols over the IGP region and Himalayan foothills in Northern India during the pre-monsoon season has been suggested to have important implications for the onset and advancement of the Indian summer monsoon (e.g. Lau et al., 2006). However, the models generally underestimate the AOD in this region and low dust emissions along with uncertainties in anthropogenic aerosol emissions are suggested to be responsible for this discrepancy (e.g. Cherian et al., 2012; Nair et al., 2012). The AERONET observations based tuning of dust emissions presented in this study could be helpful for future studies focusing on modeling of aerosols in this region. Nevertheless, in situ observations of dust aerosols in the source as well as downwind regions are still highly essential for improving the regional dust emissions further. In addition to aerosol optical properties and radiation budget, dust aerosols can potentially affect tropospheric chemistry and the impact of this dust storm on tropospheric chemistry in Northern India are being analyzed in a future study.

Acknowledgements. We thank J. F. Lamarque and S. Madronich for their constructive suggestions on the manuscript. the principal investigators and their staff for establishing and maintaining 7 AERONET sites used in this study. The datasets of initial and boundary conditions for meteorological fields is downloaded from <http://rda.ucar.edu/datasets/ds083.2/>. The datasets for initial and boundary conditions for chemical fields, biogenic emissions, biomass burning emissions and programs used to process these datasets are downloaded from the website <http://www.acd.ucar.edu/wrf-chem/>. We thank the SeaWiFS, MODIS, OMI and CALIPSO science teams for providing the retrievals. The SeaWiFS, MODIS and OMI satellite products used in this study were acquired using the GES-DISC Interactive Online Visualization and Analysis Infrastructure (Giovanni). The National Center for Atmospheric Research is supported by the National Science Foundation.

WRF-Chem simulations of a pre-monsoon dust storm

R. Kumar et al.

Title Page

Abstract

Introduction

Conclusions

References

Tables

Figures

◀

▶

◀

▶

Back

Close

Full Screen / Esc

Printer-friendly Version

Interactive Discussion

Baughcum, S. L., and Kloster, S.: Description and evaluation of the Model for Ozone and Related chemical Tracers, version 4 (MOZART-4), *Geosci. Model Dev.*, 3, 43–67, doi:10.5194/gmd-3-43-2010, 2010.

5 Fast, J. D., Gustafson Jr., W. I., Easter, R. C., Zaveri, R. A., Barnard, J. C., Chapman, E. G., and Grell, G. A.: Evolution of ozone, particulates, and aerosol direct forcing in an urban area using a new fully-coupled meteorology, chemistry, and aerosol model, *J. Geophys. Res.*, 111, D21305, doi:10.1029/2005JD006721, 2006

10 Freitas, S. R., Longo, K. M., Chatfield, R., Latham, D., Silva Dias, M. A. F., Andreae, M. O., Prins, E., Santos, J. C., Gielow, R., and Carvalho Jr., J. A.: Including the sub-grid scale plume rise of vegetation fires in low resolution atmospheric transport models, *Atmos. Chem. Phys.*, 7, 3385–3398, doi:10.5194/acp-7-3385-2007, 2007.

Gautam, R., Liu, Z., Singh, R. P., and Hsu, N. C.: Two contrasting dust-dominant periods over India observed from MODIS and CALIPSO data, *Geophys. Res. Lett.*, 36, L06813, doi:10.1029/2008GL036967, 2009.

15 Ge, J. M., Su, J., Ackerman, T. P., Fu, Q., Huang, J. P., and Shi, J. S.: Dust aerosol optical properties retrieval and radiative forcing over northwestern China during the 2008 China–US joint field experiment, *J. Geophys. Res.*, 115, D00K12, doi:10.1029/2009JD013263, 2010.

20 Ghude, S. D., Pfister, G. G., Jena, C., van der A, R. J., Emmons, L. K., and Kumar, R.: Satellite constraints of nitrogen oxide (NO_x) emissions from India based on OMI observations and WRF-Chem simulations, *Geophys. Res. Lett.*, 40, 423–428, doi:10.1002/grl.50065, 2013.

Ginoux, P., Chin, M., Tegen, I., Prospero, J. M., Holben, B., Dubovik, O., and Lin, S. J.: Sources and distributions of dust aerosols simulated with the GOCART model, *J. Geophys. Res.-Atmos.*, 106, 20255–20273, 2001.

25 Granier, C., Bessagnet, B., Bond, T., D'Angiola, A., van der Gon, H. G., Frost, G. J., Heil, A., Kaiser, J. W., Kinne, S., Klimont, Z., Kloster, S., Lamarque, J.-F., Liousse, C., Masui, T., Meleux, F., Mieville, A., Ohara, T., Raut, J.-C., Riahi, K., Schultz, M. G., Smith, S. J., Thompson, A., van Aardenne, J., van der Werf, G. R., and van Vuuren, D. P.: Evolution of anthropogenic and biomass burning emissions of air pollutants at global and regional scales during the 1980–2010 period, *Climate Change*, 109, 163–190, doi:10.1007/s10584-011-0154-1, 2011.

30 Grell, G. A., Peckham, S. E., Schmitz, R., McKeen, S. A., Frost, G., Skamarock, W. C., and Eder, B.: Fully coupled “online” chemistry within the WRF model, *Atmos. Environ.*, 39, 6957–6975, 2005.

WRF-Chem simulations of a pre-monsoon dust storm

R. Kumar et al.

Title Page

Abstract

Introduction

Conclusions

References

Tables

Figures

⏪

⏩

◀

▶

Back

Close

Full Screen / Esc

Printer-friendly Version

Interactive Discussion

- howald, N., Prospero, J. M., Ridgwell, A. J., Tegen, I., and Torres, R.: Global iron connections between desert dust, ocean biogeochemistry and climate, *Science*, 308, 67–71, 2005.
- Kain, J. S.: The Kain–Fritsch convective parameterization: an update, *J. Appl. Meteor.*, 43, 170–181, 2004.
- 5 Kalenderski, S., Stenchikov, G., and Zhao, C.: Modeling a typical winter-time dust event over the Arabian Peninsula and the Red Sea, *Atmos. Chem. Phys.*, 13, 1999–2014, doi:10.5194/acp-13-1999-2013, 2013.
- Kaufman, Y. J., Tanre, D., Remer, L. A., Vermote, E. F., Chu, A., and Holben, B. N.: Operational remote sensing of tropospheric aerosol over land from EOS moderate resolution imaging spectroradiometer, *J. Geophys. Res.*, 102, 17051–17067, 1997.
- 10 Kumar, R., Naja, M., Satheesh, S. K., Ojha, N., Joshi, H., Sarangi, T., Pant, P., Dumka, U. C., Hegde, P., and Venkataramani, S.: Influences of the springtime northern Indian biomass burning over the central Himalayas, *J. Geophys. Res.*, 116, D19302, doi:10.1029/2010JD015509, 2011.
- 15 Kumar, R., Naja, M., Pfister, G. G., Barth, M. C., and Brasseur, G. P.: Simulations over South Asia using the Weather Research and Forecasting model with Chemistry (WRF-Chem): set-up and meteorological evaluation, *Geosci. Model Dev.*, 5, 321–343, doi:10.5194/gmd-5-321-2012, 2012a.
- Kumar, R., Naja, M., Pfister, G. G., Barth, M. C., Wiedinmyer, C., and Brasseur, G. P.: Simulations over South Asia using the Weather Research and Forecasting model with Chemistry (WRF-Chem): chemistry evaluation and initial results, *Geosci. Model Dev.*, 5, 619–648, doi:10.5194/gmd-5-619-2012, 2012b.
- 20 Lau, K. M., Kim, M. K., and Kim, K. M.: Asian summer monsoon anomalies induced by aerosol direct forcing: the role of the Tibetan Plateau, *Clim. Dynam.*, 26, 855–864, doi:10.1007/s00382-006-0114-z, 2006.
- Li, F., Ginoux, P., and Ramaswamy, V.: Distribution, transport, and deposition of mineral dust in the Southern Ocean and Antarctica: contribution of major sources, *J. Geophys. Res.*, 113, D10207, doi:10.1029/2007JD009190, 2008.
- 30 Lo, J. C.-F., Yang, Z.-L., and Pielke Sr., R. A.: Assessment of three dynamical climate downscaling methods using the Weather Research and Forecasting (WRF) model, *J. Geophys. Res.*, 113, D09112, doi:10.1029/2007JD009216, 2008.

**WRF-Chem
simulations of a
pre-monsoon dust
storm**

R. Kumar et al.

Title Page

Abstract

Introduction

Conclusions

References

Tables

Figures

◀

▶

◀

▶

Back

Close

Full Screen / Esc

Printer-friendly Version

Interactive Discussion

- Mahowald, N. M., Baker, A. R., Bergametti, G., Brooks, N., Duce, R. A., Jickells, T. D., Kubilay, N., Prospero, J. M., and Tegen, I.: Atmospheric global dust cycle and iron inputs to the ocean, *Global Biogeochem. Cy.*, 19, GB4025, doi:10.1029/2004GB002402, 2005.
- Miller, R. L., Tegen, I., and Perlwitz, J.: Surface radiative forcing by soil dust aerosols and the hydrologic cycle, *J. Geophys. Res.*, 109, D04203, doi:10.1029/2003JD004085, 2004.
- Mlawer, E. J., Taubman, S., Brown, P., Iacono, M., and Clough, S.: Radiative transfer for inhomogenous atmosphere: RRTM, a validated correlated-k model for the long-wave, *J. Geophys. Res.*, 102, D14, doi:10.1029/97JD00237, 1997.
- Nair, V. S., Moorthy, K. K., Alappattu, D. P., Kunhikrishnan, P. K., George, S., Nair, P. R., Babu, S. S., Abish, B., Satheesh, S. K., Tripathi, S. N., Niranjana, K., Madhavan, B. L., Srikant, V. K., Dutt, C. B. S., Badrinath, K. V. S., and Reddy, R. R.: Wintertime aerosol characteristics over the Indo-Gangetic Plain (IGP): impacts of local boundary layer processes and long-range transport, *J. Geophys. Res.*, 112, D13205, doi:10.1029/2006JD008099, 2007.
- Nair, V. S., Solmon, F., Giorgi, F., Mariotti, L., Babu, S. S., and Moorthy, K. K.: Simulation of South Asian aerosols for regional climate studies, *J. Geophys. Res.*, 117, D04209, doi:10.1029/2011JD016711, 2012.
- Pandithurai, G., Dipu, S., Dani, K. K., Tiwari, S., Bisht, D. S., Devara, P. C. S., and Pinker, R. T.: Aerosol radiative forcing during dust events over New Delhi, India, *J. Geophys. Res.*, 113, D13209, doi:10.1029/2008JD009804, 2008.
- Pfister, G. G., Parrish, D. D., Worden, H., Emmons, L. K., Edwards, D. P., Wiedinmyer, C., Diskin, G. S., Huey, G., Oltmans, S. J., Thouret, V., Weinheimer, A., and Wisthaler, A.: Characterizing summertime chemical boundary conditions for air masses entering the US West Coast, *Atmos. Chem. Phys.*, 11, 1769–1790, doi:10.5194/acp-11-1769-2011, 2011.
- Prasad, A. K. and Singh R. P.: Changes in aerosol parameters during major dust storm events (2001–2005) over the Indo-Gangetic Plains using AERONET and MODIS data, *J. Geophys. Res.*, 112, D09208, doi:10.1029/2006JD007778, 2007.
- Prasad, A. K., Singh, S., Chauhan, S. S., Srivastava, M. K., Singh, R. P., and Singh, R.: Aerosol radiative forcing over the Indo-Gangetic Plains during major storms, *Atmos. Environ.*, 41, 29, 6289–6301, 2007.
- Prospero, J. M. and Lamb, J. P.: African droughts and dust transport to the Caribbean: climate change and implications, *Science*, 302, 1024–1027, 2003.
- Prospero, J. M., Ginoux, P., Torres, O., Nicholson, S. E., and Gill, T. E.: Environmental characterization of global sources of atmospheric soil dust identified with the Nimbus 7 Total

WRF-Chem simulations of a pre-monsoon dust storm

R. Kumar et al.

Title Page

Abstract

Introduction

Conclusions

References

Tables

Figures

◀

▶

◀

▶

Back

Close

Full Screen / Esc

Printer-friendly Version

Interactive Discussion

ozone Mapping Spectrometer (TOMS) absorbing aerosol product, *Rev. Geophys.*, 40, 1002, doi:10.1029/2000RG000095, 2002.

Prospero, J. M., Landing, W. M., and Schulz, M.: African dust deposition to Florida: temporal and spatial variability and comparisons to models, *J. Geophys. Res.-Atmos.*, 115, D13304, doi:10.1029/2009jd012773, 2010.

Reichler, T., Dameris, M., and Sausen, R.: Determining the tropopause height from gridded data, *Geophys. Res. Lett.*, 30, 2042, doi:10.1029/2003GL018240, 2003.

Ramachandran, S.: Aerosol optical depth and fine mode fraction variations deduced from Moderate Resolution Imaging Spectroradiometer (MODIS) over four urban areas in India, *J. Geophys. Res.*, 112, D16207, doi:10.1029/2007JD008500, 2007.

Satheesh, S. K. and Moorthy, K. K.: Radiative effects of natural aerosols, A review, *Atmos. Environ.*, 39, 2089–2110, 2005.

Seethala, C., Pandithurai, G., Fast, J., Polade, S., Reddy, M., and Peckham, S.: Evaluating WRF-Chem multi-scale model in simulating aerosol radiative properties over the tropics – A case study over India. *Mapan – J. Meteorol. Soc. India*, 26, 269–284, doi:10.1007/s12647-011-0025-2, 2011.

Seinfeld, J. H., Carmichael, G., Arimoto, R., Conant, W. C., Brechtel, F. J., Bates, T. S., Cahill, T. A., Clarke, A. D., Doherty, S. J., Flatau, F. J., Huebert, B. J., Kim, J., Markowicz, K. M., Quinn, P. K., Russell, L. M., Russell, P. B., Shimizu, A., Y., Song, C. H., Tang, Y., Uno, I., Vogelmann, A. M., Weber, R. J., Woo, J., and Zhang, X. Y.: ACE-ASIA, Regional climatic and atmospheric chemical effects of Asian dust and pollution, *B. Am. Meteorol. Soc.*, 85, 367–380, 2004.

Sharma, D., Singh, D., and Kaskaoutis, D. G.: Impact of two intense dust storms on aerosol characteristics and radiative forcing over Patiala, Northwestern India, *Adv. Meteor.*, 2012, 956814, doi:10.1155/2012/956814, 2012.

Sikka, D. R.: Desert climate and its dynamics, *Curr. Sci.*, 72, 35–46, 1997.

Skamarock, W. C., Klemp, J. B., Dudhia, J., Gill, D. O., Barker, D. M., Wang, W., and Powers, J. G.: A description of the advancedresearch WRF version 2, NCAR Tech. Note, NCAR/TN-468+STR, Natl. Cent. for Atmos. Res., Boulder, Colo, available at: <http://wrf-model.org/wrfadmin/publications.php> (last access: 22 August 2013), 2008.

Tegen, I. and Fung, I.: Modeling of mineral dust in the atmosphere: Sources, transport, and optical thickness, *J. Geophys. Res.*, 99, 22897–22914, doi:10.1029/94JD01928, 1994.

WRF-Chem simulations of a pre-monsoon dust storm

R. Kumar et al.

Title Page

Abstract

Introduction

Conclusions

References

Tables

Figures

◀

▶

◀

▶

Back

Close

Full Screen / Esc

Printer-friendly Version

Interactive Discussion

Teller, A., Xue, L., and Levin, Z.: The effects of mineral dust particles, aerosol regeneration and ice nucleation parameterizations on clouds and precipitation, *Atmos. Chem. Phys.*, 12, 9303–9320, doi:10.5194/acp-12-9303-2012, 2012.

5 Textor, C., Schulz, M., Guibert, S., Kinne, S., Balkanski, Y., Bauer, S., Berntsen, T., Berglen, T., Boucher, O., Chin, M., Dentener, F., Diehl, T., Easter, R., Feichter, H., Fillmore, D., Ghan, S., Ginoux, P., Gong, S., Grini, A., Hendricks, J., Horowitz, L., Huang, P., Isaksen, I., Iversen, I., Kloster, S., Koch, D., Kirkevåg, A., Kristjansson, J. E., Krol, M., Lauer, A., Lamarque, J. F., Liu, X., Montanaro, V., Myhre, G., Penner, J., Pitari, G., Reddy, S., Seland, Ø., Stier, P., Takemura, T., and Tie, X.: Analysis and quantification of the diversities of aerosol life cycles within AeroCom, *Atmos. Chem. Phys.*, 6, 1777–1813, doi:10.5194/acp-6-1777-2006, 2006.

10 Thompson, G., Rasmussen, R. M., and Manning, K.: Explicit forecasts of winter precipitation using an improved bulk microphysics scheme, Part I: Description and sensitivity analysis, *Mon. Weather Rev.*, 132, 519–542, 2004.

15 Uno, I., Wang, Z., Chiba, M., Chun, Y. S., Gong, S. L., Hara, Y., Jung, E., Lee, S. S., Liu, M., Mikami, M., Music, S., Nickovic, S., Satake, S., Shao, Y., Song, Z., Sugimoto, N., Tanaka, T., and Westphal, D. L.: Dust model intercomparison (DMIP) study over Asia: overview, *J. Geophys. Res.-Atmos.*, 111, D12213, doi:10.1029/2005JD006575, 2005.

20 Wang, K., Zhang, Y., Nenes, A., and Fountoukis, C.: Implementation of dust emission and chemistry into the Community Multiscale Air Quality modeling system and initial application to an Asian dust storm episode, *Atmos. Chem. Phys.*, 12, 10209–10237, doi:10.5194/acp-12-10209-2012, 2012.

Washington, R., Todd, M., Middleton, N. J., and Goudie, A. S.: Dust storm source areas determined by the Total Ozone Monitoring Spectrometer and surface observations, *Ann. Assoc. Am. Geogr.*, 93, 297–313, 2003.

25 Wiedinmyer, C., Akagi, S. K., Yokelson, R. J., Emmons, L. K., Al-Saadi, J. A., Orlando, J. J., and Soja, A. J.: The Fire INventory from NCAR (FINN): a high resolution global model to estimate the emissions from open burning, *Geosci. Model Dev.*, 4, 625–641, doi:10.5194/gmd-4-625-2011, 2011.

30 Winker, D. M., Tackett, J. L., Getzewich, B. J., Liu, Z., Vaughan, M. A., and Rogers, R. R.: The global 3-D distribution of tropospheric aerosols as characterized by CALIOP, *Atmos. Chem. Phys.*, 13, 3345–3361, doi:10.5194/acp-13-3345-2013, 2013.

Zhang, Q., Streets, D. G., Carmichael, G. R., He, K. B., Huo, H., Kannari, A., Klimont, Z., Park, I. S., Reddy, S., Fu, J. S., Chen, D., Duan, L., Lei, Y., Wang, L. T., and Yao, Z. L.:

Asian emissions in 2006 for the NASA INTEX-B mission, Atmos. Chem. Phys., 9, 5131–5153, doi:10.5194/acp-9-5131-2009, 2009.

Zhao, C., Liu, X., Leung, L. R., Johnson, B., McFarlane, S. A., Gustafson Jr., W. I., Fast, J. D., and Easter, R.: The spatial distribution of mineral dust and its shortwave radiative forcing over North Africa: modeling sensitivities to dust emissions and aerosol size treatments, Atmos. Chem. Phys., 10, 8821–8838, doi:10.5194/acp-10-8821-2010, 2010.

Zhao, C., Liu, X., Ruby Leung, L., and Hagos, S.: Radiative impact of mineral dust on monsoon precipitation variability over West Africa, Atmos. Chem. Phys., 11, 1879–1893, doi:10.5194/acp-11-1879-2011, 2011.

**WRF-Chem
simulations of a
pre-monsoon dust
storm**

R. Kumar et al.

Title Page

Abstract

Introduction

Conclusions

References

Tables

Figures

⏪

⏩

◀

▶

Back

Close

Full Screen / Esc

Printer-friendly Version

Interactive Discussion



WRF-Chem simulations of a pre-monsoon dust storm

R. Kumar et al.

Title Page

Abstract

Introduction

Conclusions

References

Tables

Figures

◀

▶

◀

▶

Back

Close

Full Screen / Esc

Printer-friendly Version

Interactive Discussion



Table 1. Comparison of WRF-Chem simulated radiative perturbation values with the available SW radiative forcing estimates at the top of the atmosphere (TOA) and the surface (SFC) at three sites in northern India.

	Patiala		Kanpur		Delhi	
	WRF-Chem	Observed ^a	WRF-Chem	Observed ^b	WRF-Chem	Observed ^c
TOA	−14.8	−16.4	−10.4	−11	−4	−18.7
SFC	−45.1	−75.9	−19	−23	−37.5	−64

^a Sharma et al. (2012);

^b Prasad et al. (2007);

^c Pandithurai et al. (2008).

WRF-Chem
simulations of a
pre-monsoon dust
storm

R. Kumar et al.

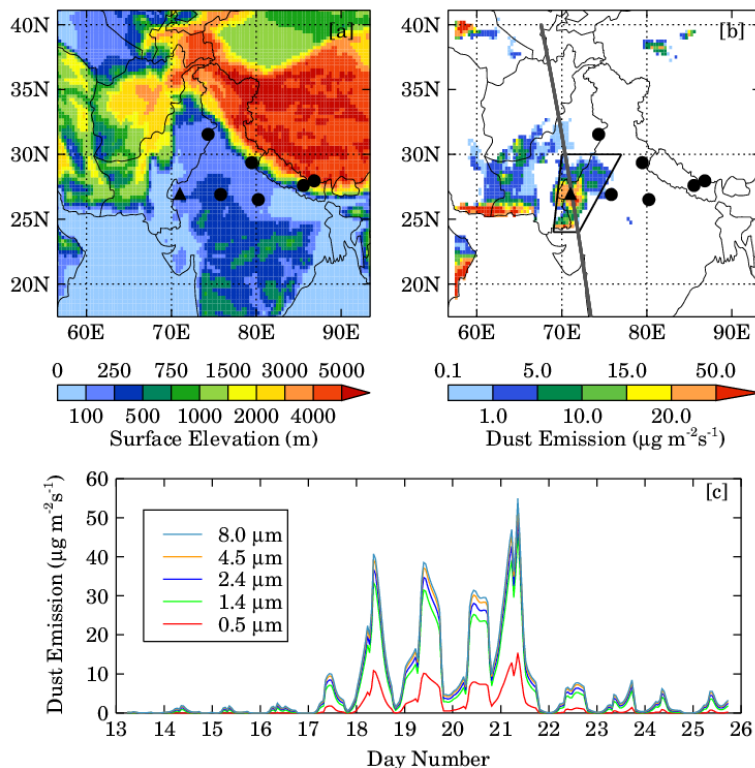


Fig. 1. The WRF-Chem model domain showing (a) topography and (b) spatial distribution of dust emissions averaged over 13–25 April 2010. Black circles show the geographical location of AERONET sites and the black triangle shows the location where the time series of dust emissions from WRF-Chem is shown in (c) for the period of 13–25 April 2010. (b) also shows the location of Thar Desert (enclosed by solid black lines) and CALIPSO satellite overpass (grey line) over the model domain on 20 April 2010.

WRF-Chem simulations of a pre-monsoon dust storm

R. Kumar et al.

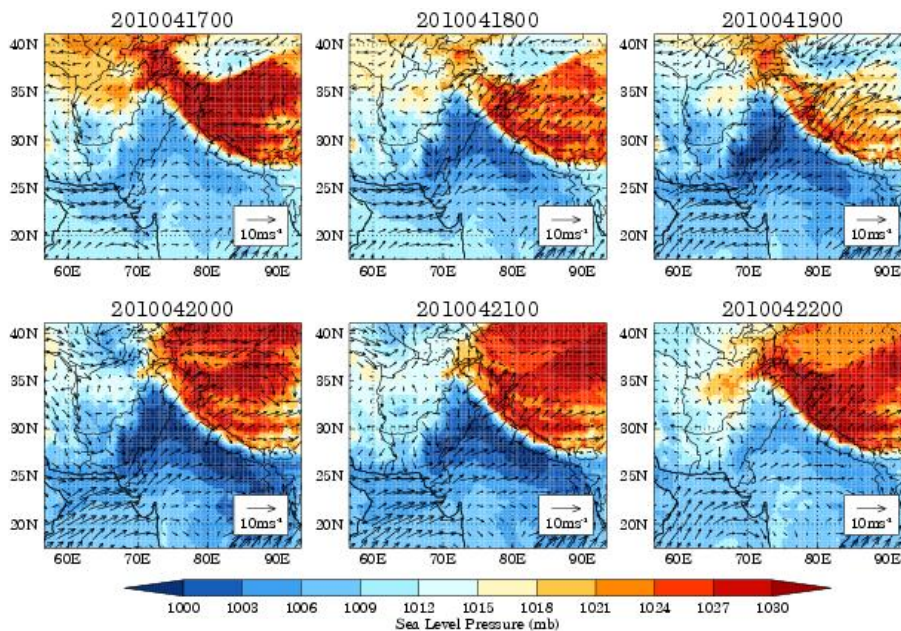


Fig. 2. Day to day variations in mean sea level pressure and 10 m wind vectors over the model domain from 17 to 22 April 2010 at 00:00 UTC. The wind vectors are shown every 5th grid point for clarity.

WRF-Chem
simulations of a
pre-monsoon dust
storm

R. Kumar et al.

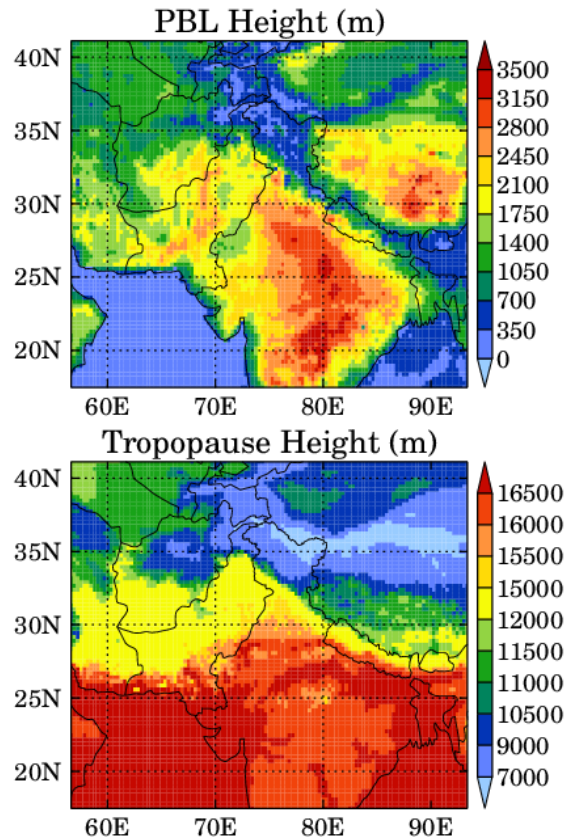


Fig. 3. Spatial distributions of WRF-Chem simulated daytime (09:30 to 16:30 IST) average planetary boundary layer (PBL) and tropopause height over the model domain during 17–22 April 2010. Indian standard time (IST) is 5.5 h ahead of UTC.

WRF-Chem
simulations of a
pre-monsoon dust
storm

R. Kumar et al.

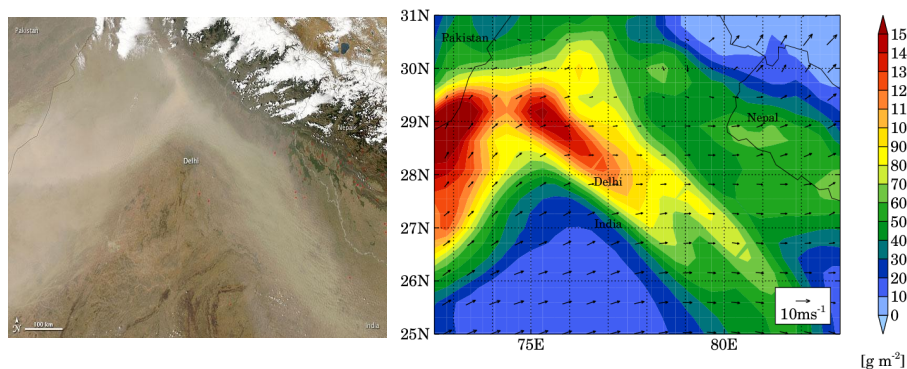


Fig. 4. Natural color image captured by Moderate Resolution Imaging Spectroradiometer (MODIS) aboard Aqua on 21 April 2010 at 07:45 GMT (left panel) and WRF-Chem simulated spatial distribution of column integrated dust load at 2.4 μm and 10 m wind vectors over the model domain on 21 April 2010 at 08:00 GMT (right panel). The wind vectors are shown every second grid point for clarity.

WRF-Chem
simulations of a
pre-monsoon dust
storm

R. Kumar et al.

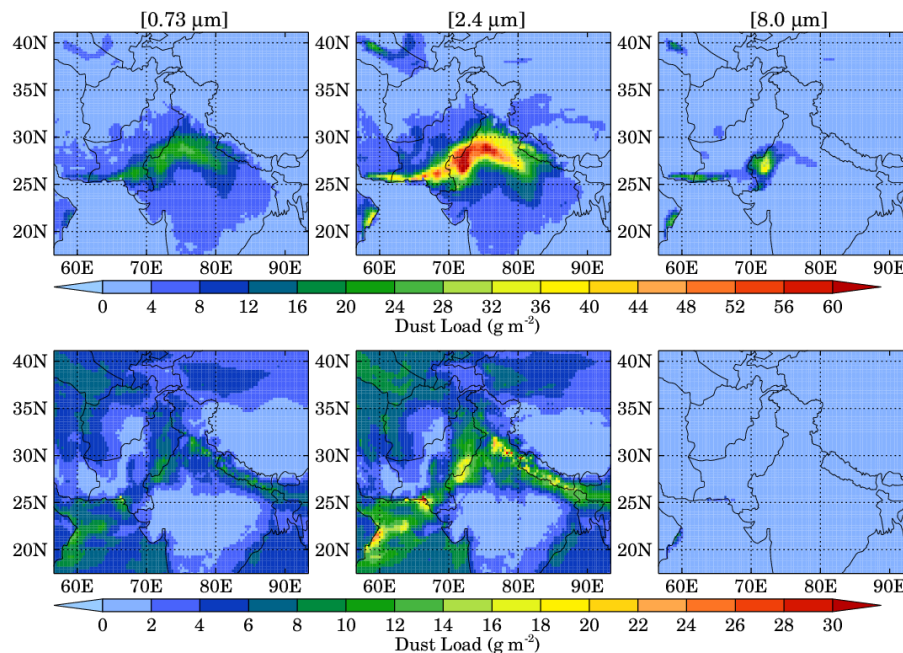


Fig. 5. Spatial distributions of WRF-Chem simulated daytime (09:30 to 16:30 IST) average boundary layer (top panel) and free tropospheric (bottom panel) integrated dust load over the model domain during 17–22 April 2010. The distributions are shown at 0.73, 2.4 and 8.0 μm effective radii representing accumulation, coarse and giant mode dust particles.

WRF-Chem simulations of a pre-monsoon dust storm

R. Kumar et al.

Title Page

Abstract

Introduction

Conclusions

References

Tables

Figures

⏪

⏩

⏴

⏵

Back

Close

Full Screen / Esc

Printer-friendly Version

Interactive Discussion

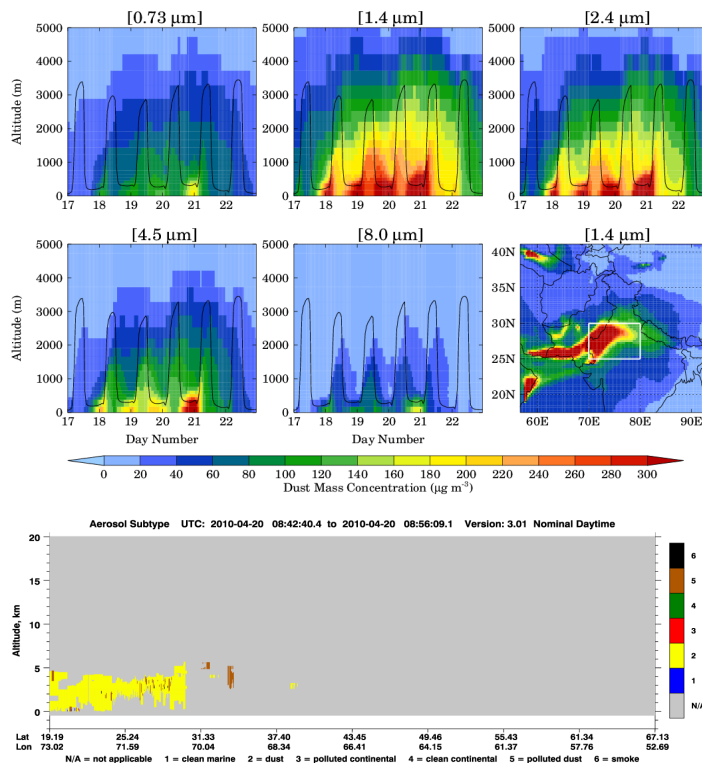


Fig. 6. Vertical distributions of mass concentration of dust particles with 0.73, 1.4, 2.4, 4.5 and 8.0 μm effective radii during 17–22 April 2010. The black lines represent the temporal variations of average PBL height. The geographical region (70°–80° E, 25°–30° N) over which dust mass concentrations and PBL height are averaged is shown by white outlined box in the figure in rightmost corner of middle panel which also shows the spatial distributions of dust mass concentration at 1.4 μm at the surface. The time-altitude image of aerosol subtypes retrieved by CALIPSO on 20 April 2010 (see track in Fig. 1b) is also shown.

WRF-Chem
simulations of a
pre-monsoon dust
storm

R. Kumar et al.

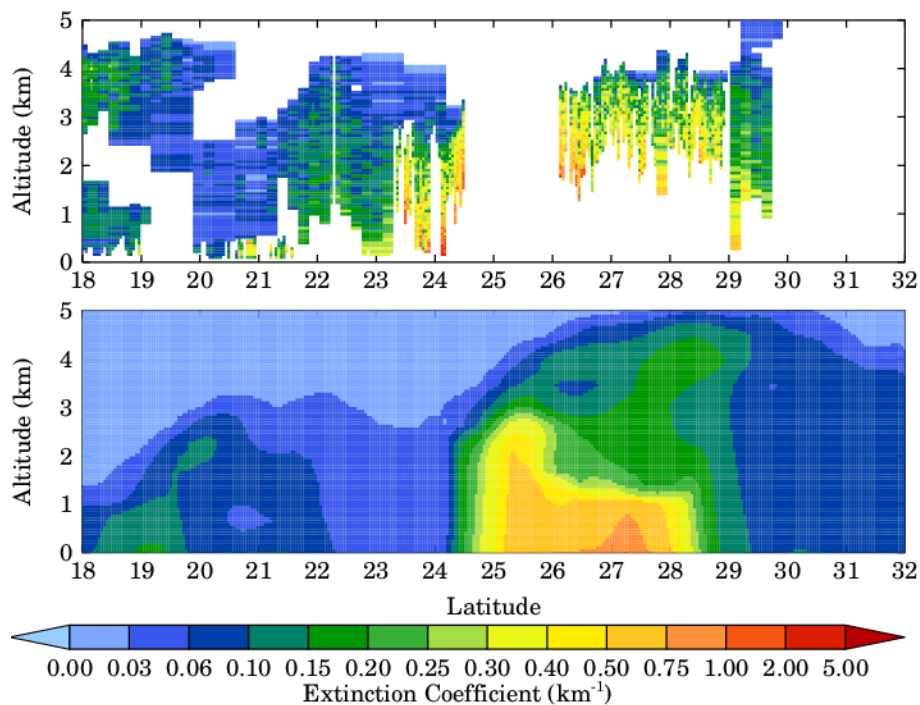


Fig. 7. Comparison of CALIPSO retrieved extinction coefficient at 532 nm (top panel) with WRF-Chem simulated extinction coefficient at 550 nm (lower panel) on 20 April 2010.

**WRF-Chem
simulations of a
pre-monsoon dust
storm**

R. Kumar et al.

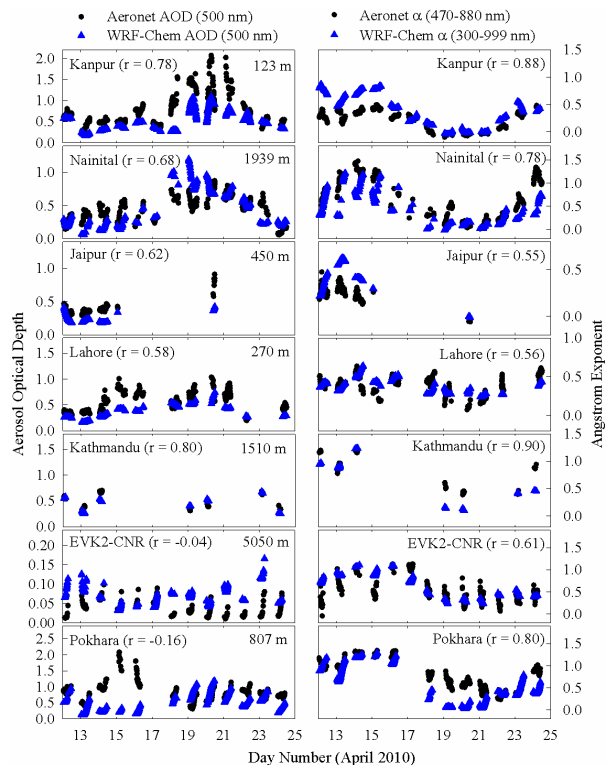


Fig. 8. Variations in co-located AERONET observed and WRF-Chem simulated aerosol optical depth at 550 nm (left panel) and angstrom exponent (right panel) at seven sites located in the model domain during 13–25 April 2010. The correlation coefficients (r) are also shown for both the parameters at all the seven sites and numbers in the upper right corner of left panel figures represents the altitude of site.

Title Page

Abstract Introduction

Conclusions References

Tables Figures

◀ ▶

◀ ▶

Back Close

Full Screen / Esc

Printer-friendly Version

Interactive Discussion



**WRF-Chem
simulations of a
pre-monsoon dust
storm**

R. Kumar et al.

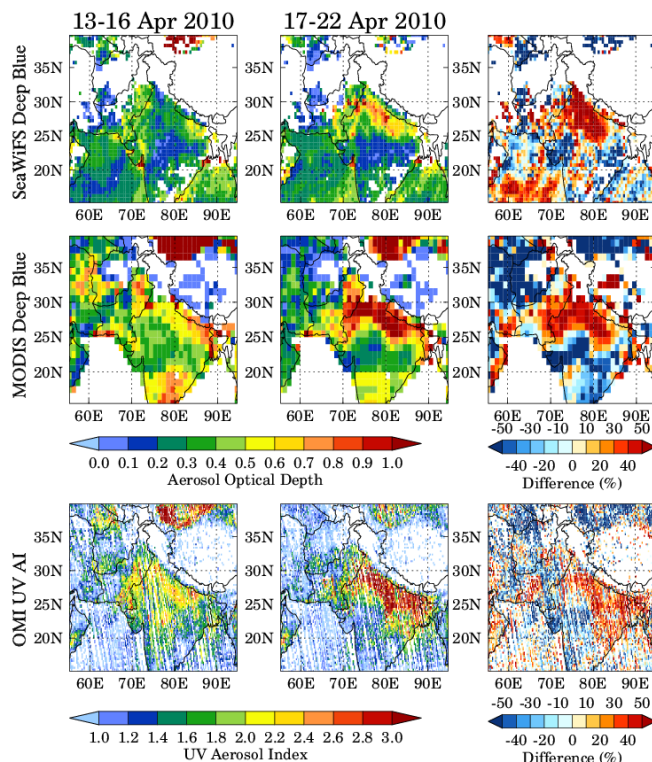


Fig. 9. Spatial distributions of aerosol optical depth at 550 nm from SeaWiFS at $0.5^\circ \times 0.5^\circ$ (top panel) and MODIS aboard Aqua at $1^\circ \times 1^\circ$ (middle panel), and OMI UV aerosol index at $0.25^\circ \times 0.25^\circ$ (bottom panel) during 13–16 April 2010 (low dust period) and 17–22 April 2010 (high dust period). The percentage change in aerosol properties during high dust period relative to low dust periods is also shown.

Title Page

Abstract Introduction

Conclusions References

Tables Figures

◀ ▶

◀ ▶

Back Close

Full Screen / Esc

Printer-friendly Version

Interactive Discussion

WRF-Chem simulations of a pre-monsoon dust storm

R. Kumar et al.

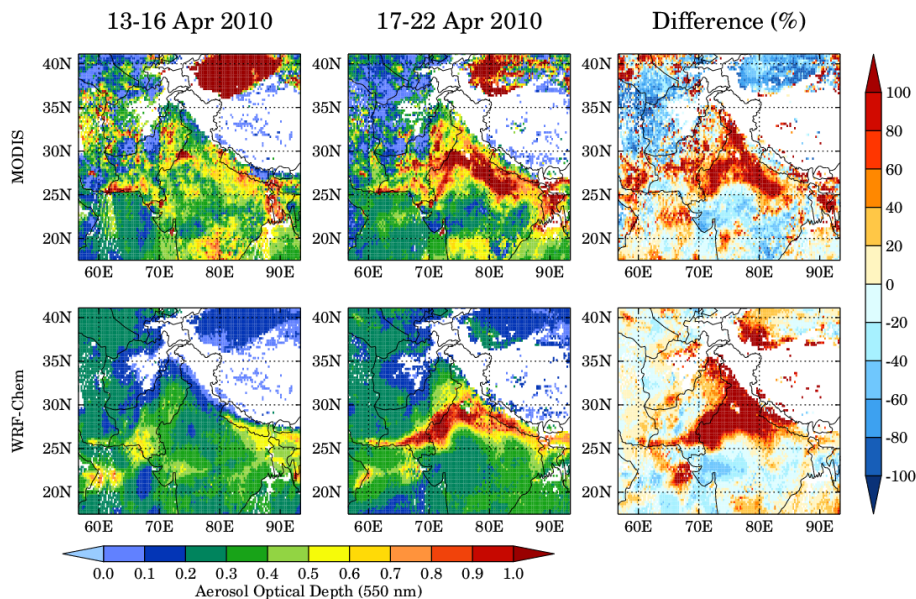


Fig. 10. Spatial distributions of aerosol optical depth at 550 nm retrieved by MODIS aboard Aqua (top panel) and simulated by WRF-Chem (bottom panel) during 13–16 April (low dust period) and 17–22 April 2010 (high dust period). Model results are co-located in space and time with MODIS retrievals and white space indicates missing data. MODIS AOD over land is from the “Deep Blue” algorithm and that over ocean is from the standard ocean algorithm. Percentage change in AOD during high dust period relative to low dust period is also shown.

WRF-Chem
simulations of a
pre-monsoon dust
storm

R. Kumar et al.

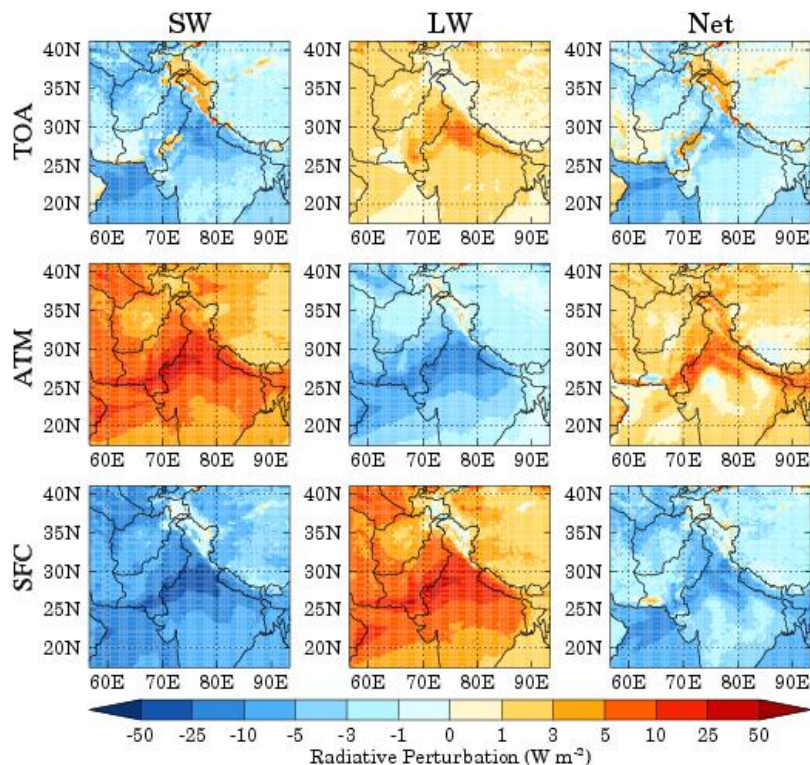


Fig. 11. Spatial distributions of diurnally averaged all-sky short-wave (SW), long-wave (LW) and Net (SW + LW) radiative perturbation due to dust aerosols over the model domain from WRF-Chem simulations during 17–22 April 2010 at the top of atmosphere (TOA; top panel), in the atmosphere (ATM; middle panel) and at the surface (SFC; bottom panel). Positive values refer to an overall warming effect and negative values refer to an overall cooling effect. Radiative perturbation is calculated using two parallel simulations with and without dust.

WRF-Chem simulations of a pre-monsoon dust storm

R. Kumar et al.

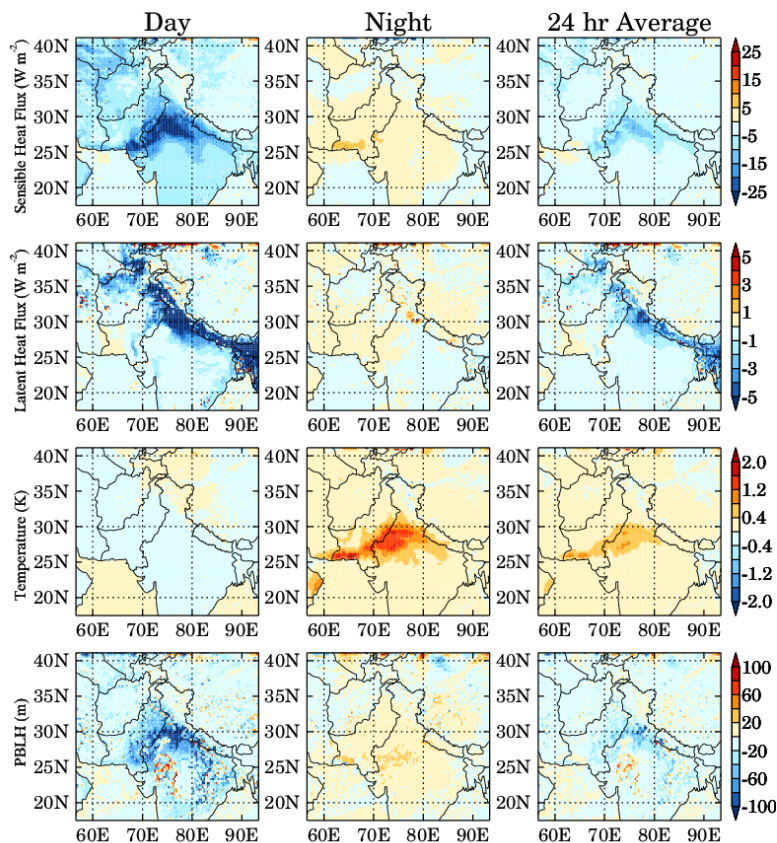


Fig. 12. Spatial distributions of changes in daytime (07:30–18:30 IST), nighttime (18:30–07:30 IST) and 24h average sensible heat flux, latent heat flux, 2 m temperature and planetary boundary layer height during 17–22 April 2010. The changes are calculated by comparing two parallel WRF-Chem simulations with and without dust.

Title Page

Abstract

Introduction

Conclusions

References

Tables

Figures

◀

▶

◀

▶

Back

Close

Full Screen / Esc

Printer-friendly Version

Interactive Discussion