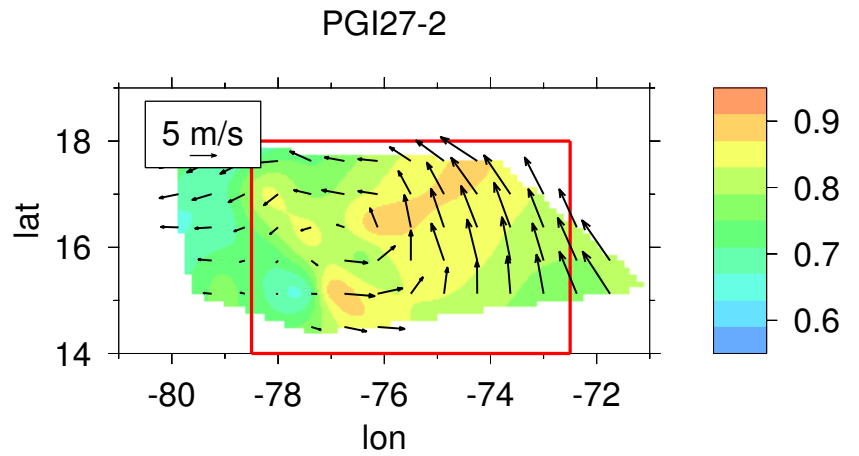
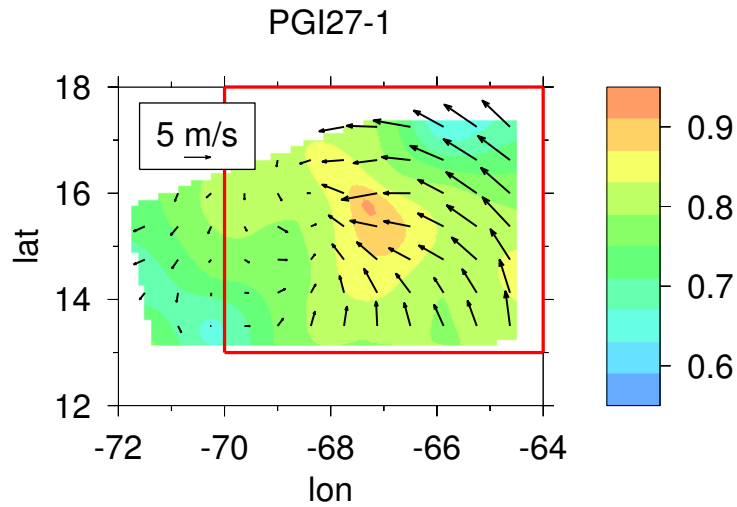
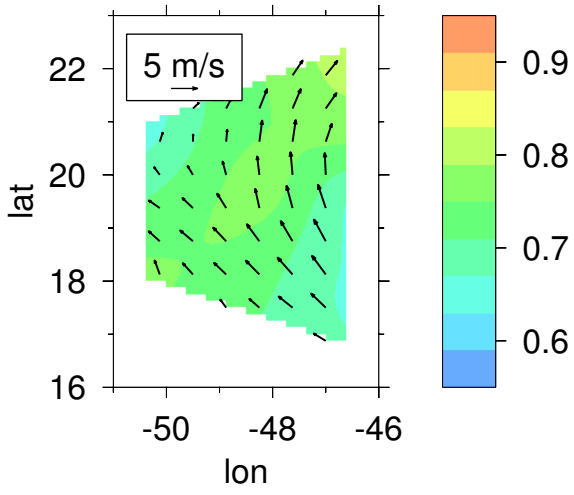


Selected areas for analysis for the observational cases in Table 1 of the manuscript

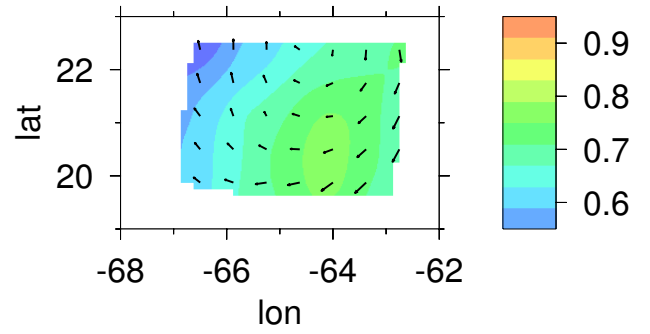
The color gradient plot in all the figures represents the saturation fraction for the respective disturbance, and the vectors represent the relative wind at 5 km elevation. The shaded area enclosed with a red box is the area considered for analysis for each case. For cases with no red box the entire shaded area is used.



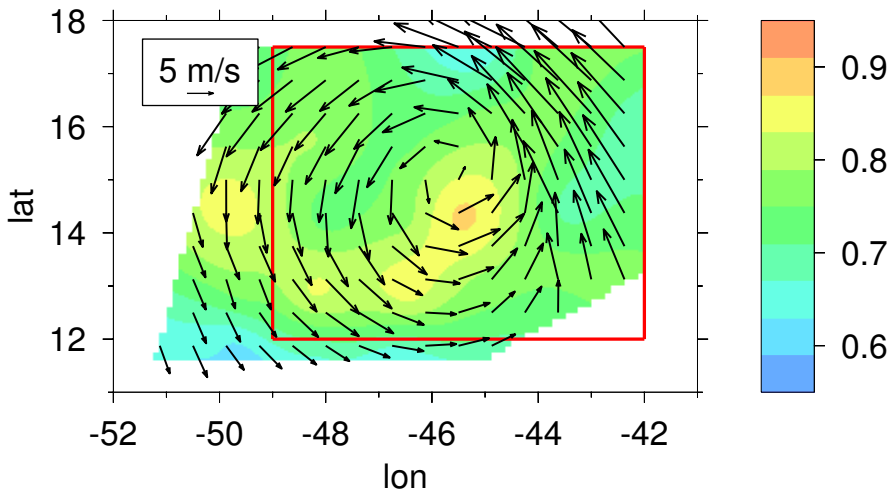
PGI30-1



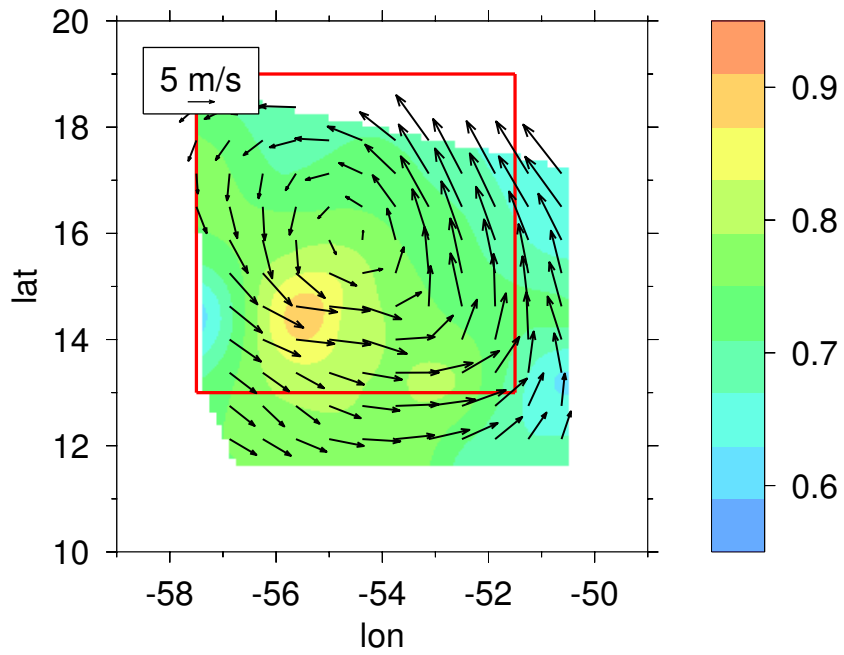
PGI30-2



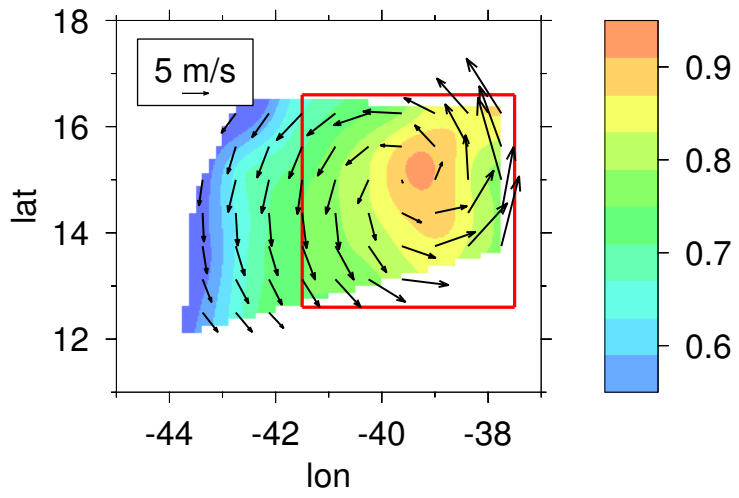
Fiona 1



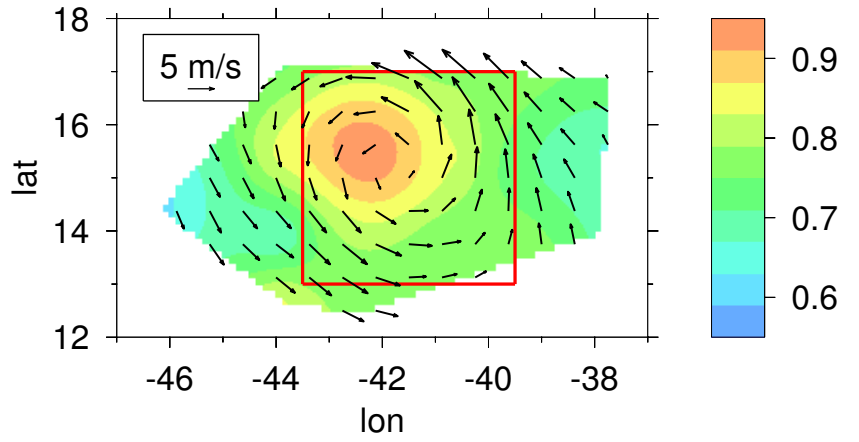
Fiona 2



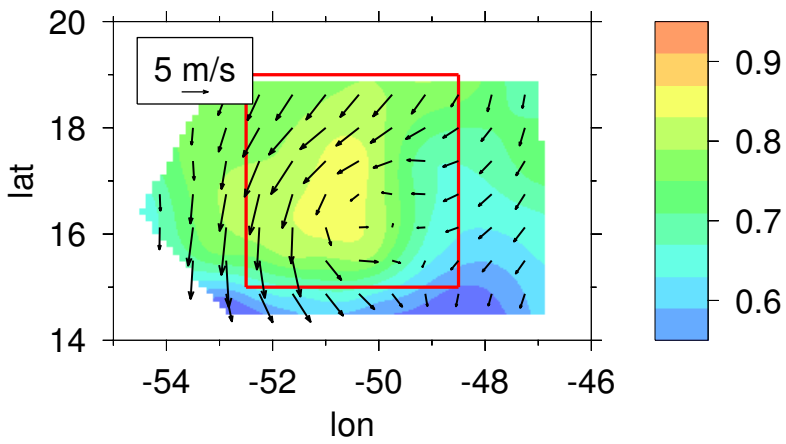
Gaston 1



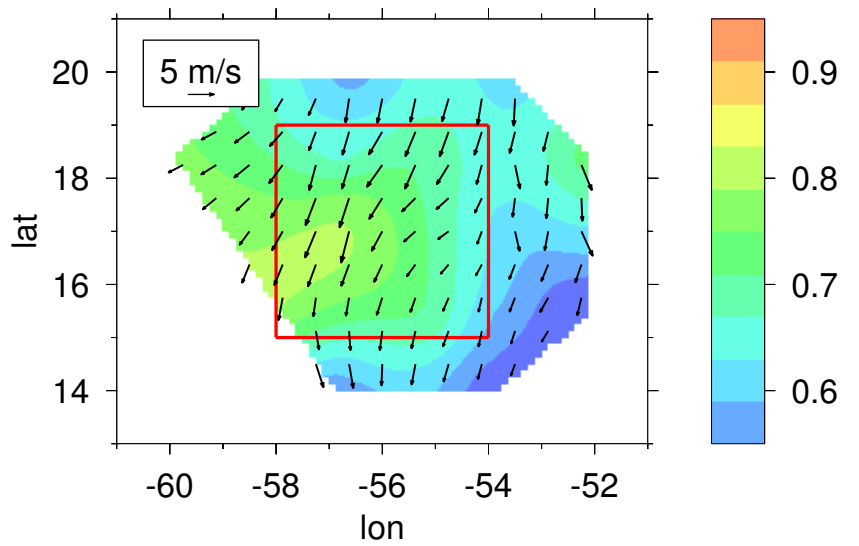
Gaston 2



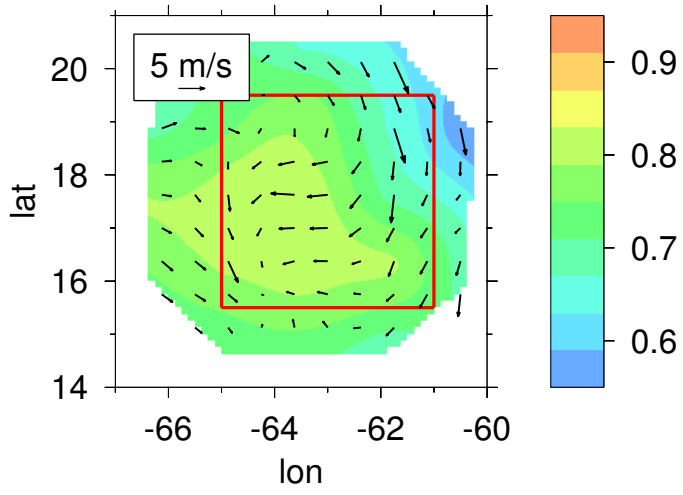
Gaston 3



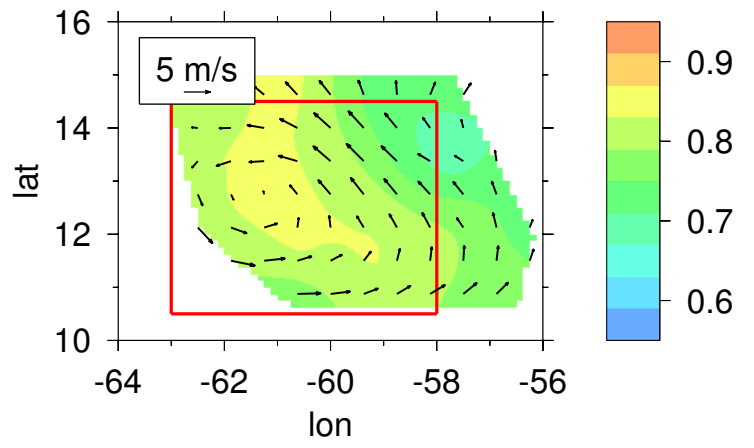
Gaston 4



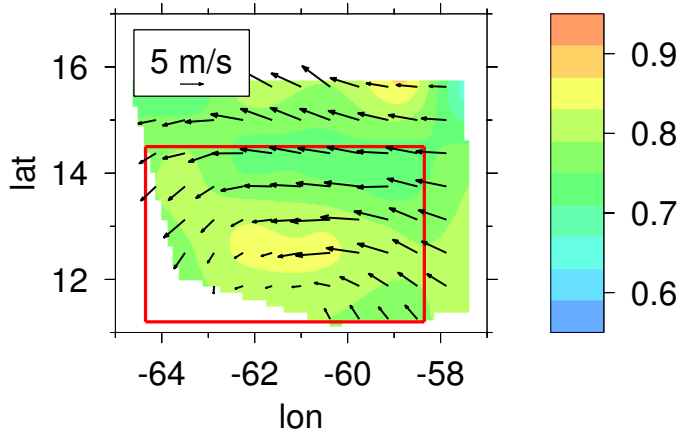
Gaston 5



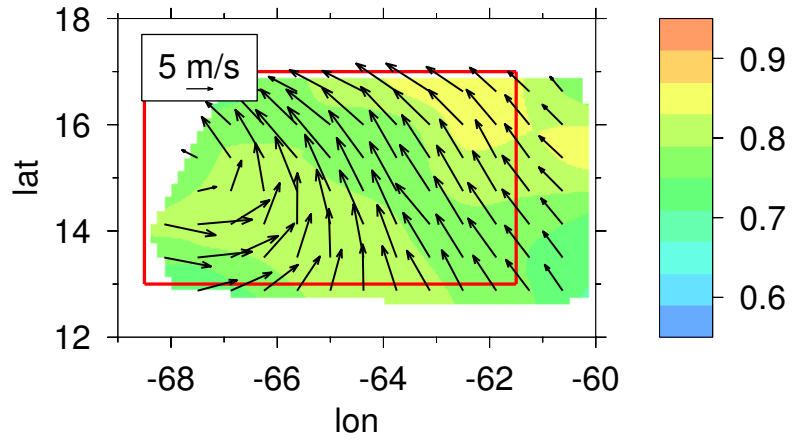
Karl 1



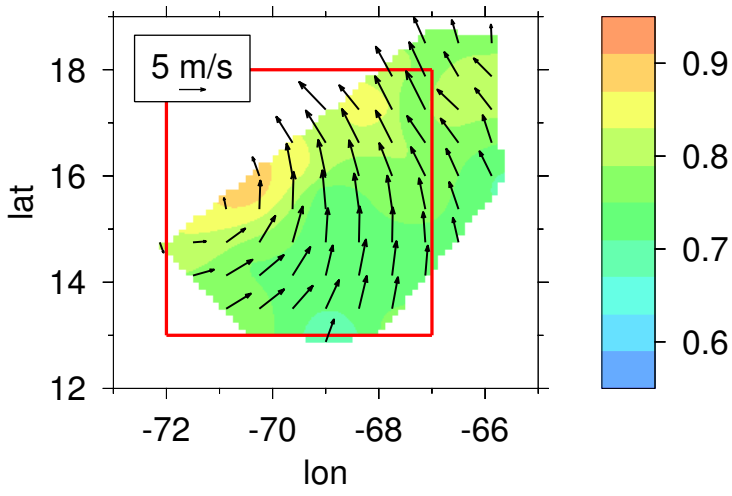
Karl 2



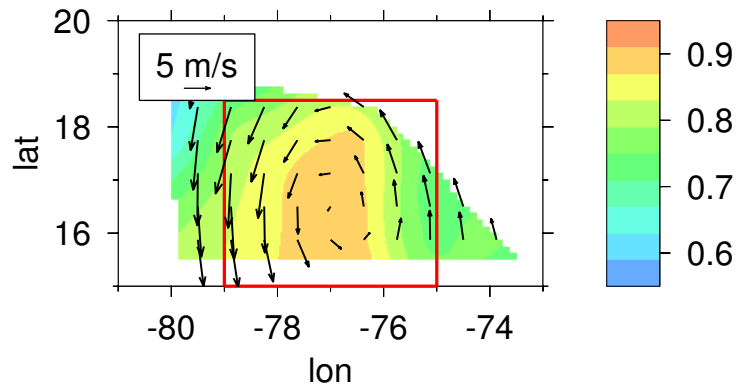
Karl 3



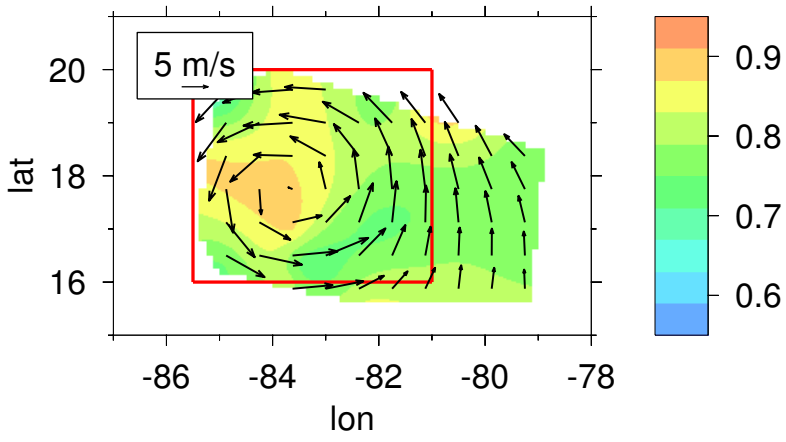
Karl 4



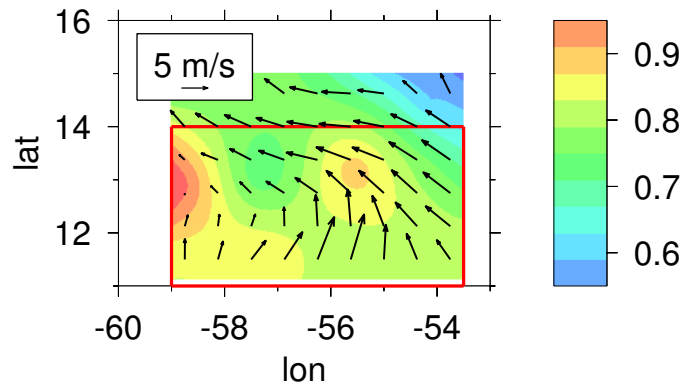
Karl 5



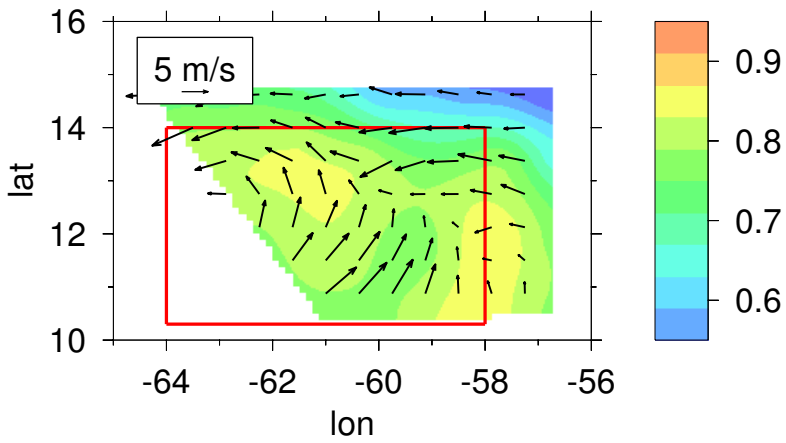
Karl 6



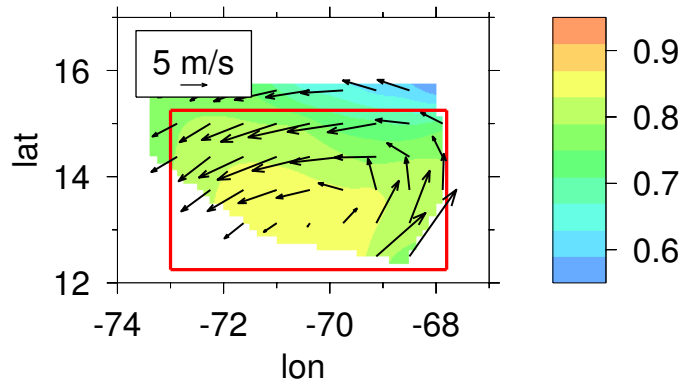
Matthew 1



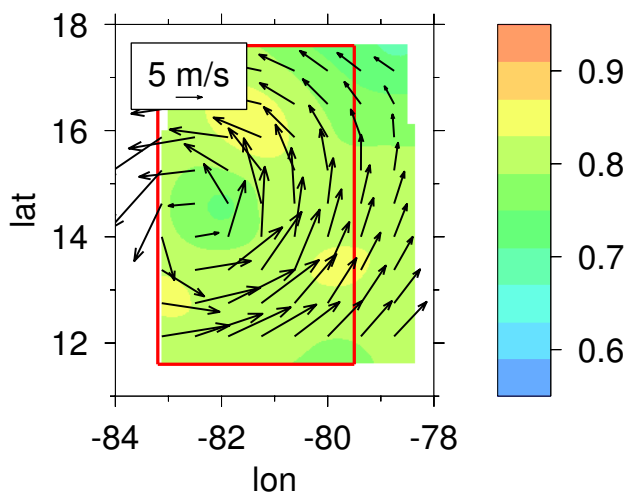
Matthew 2



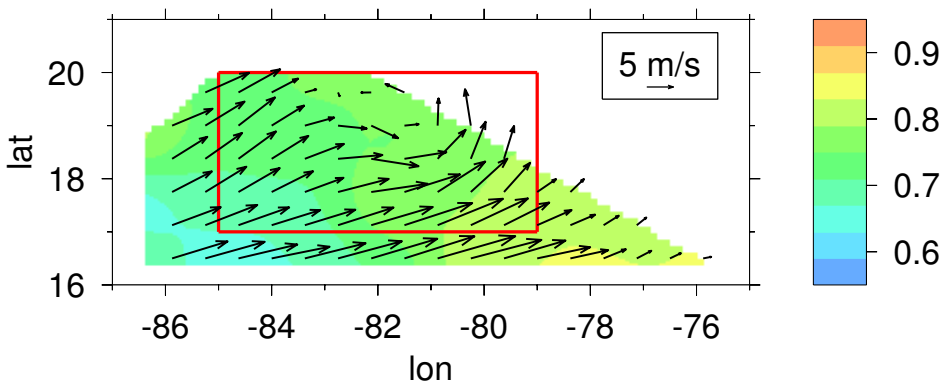
Matthew 3



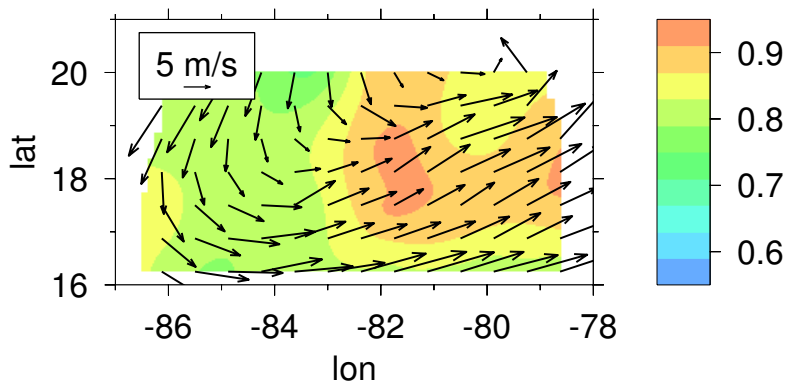
Matthew 4



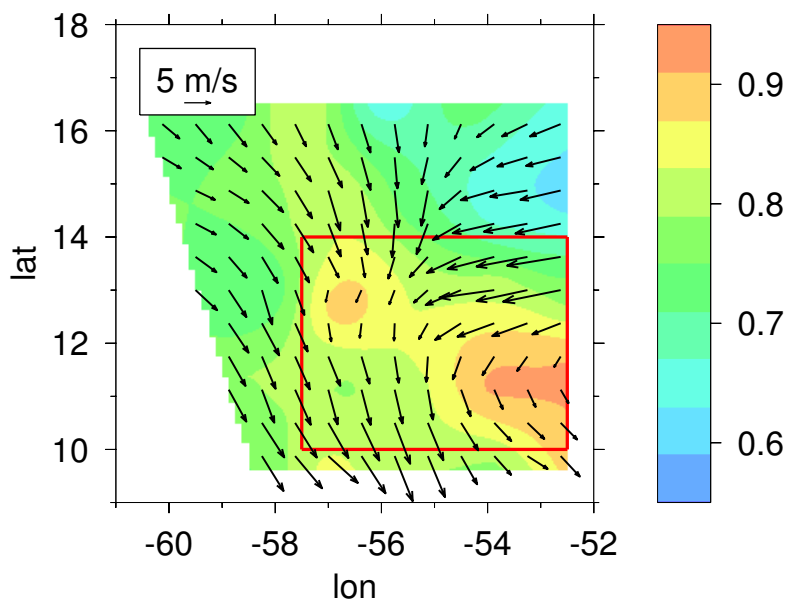
Nicole 1



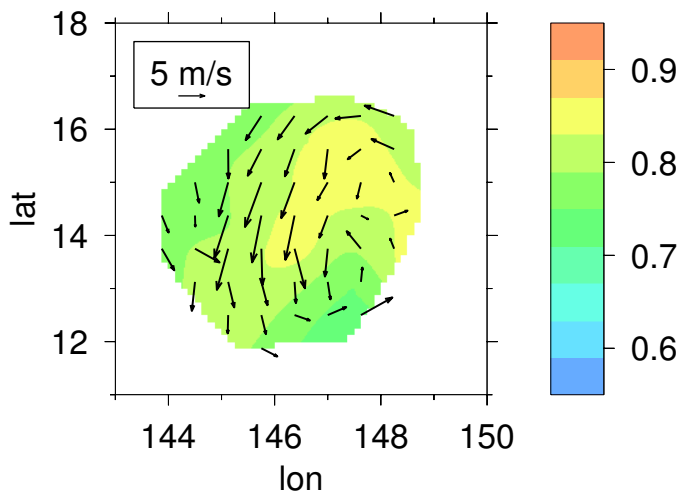
Nicole 2



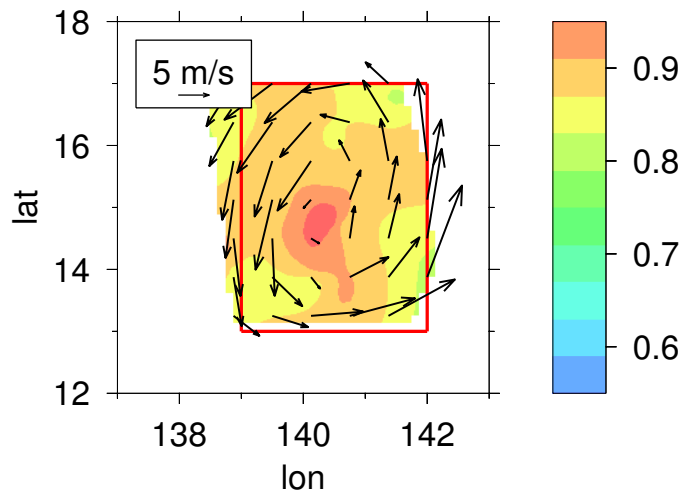
PGI48/50



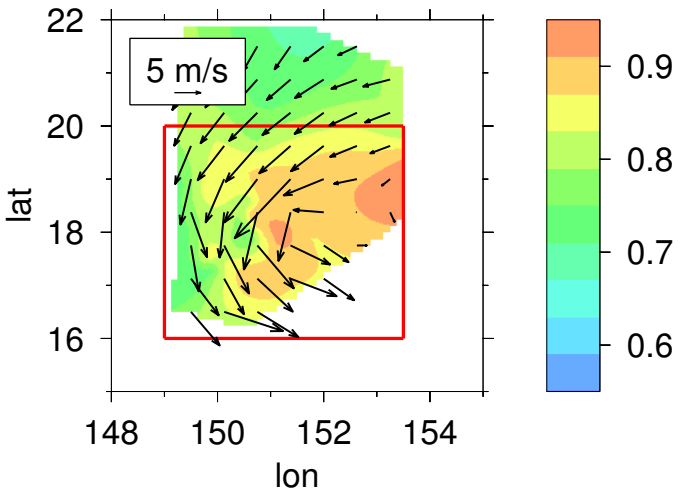
Nuri 1



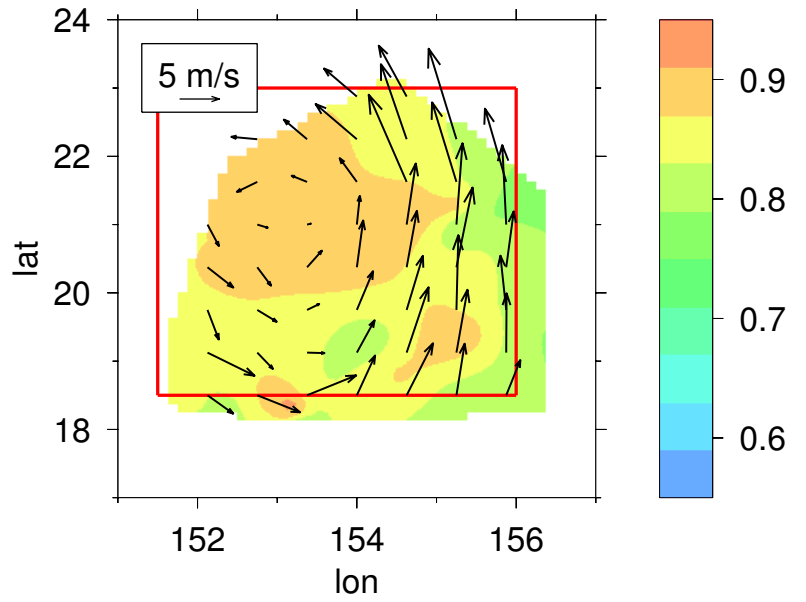
Nuri 2



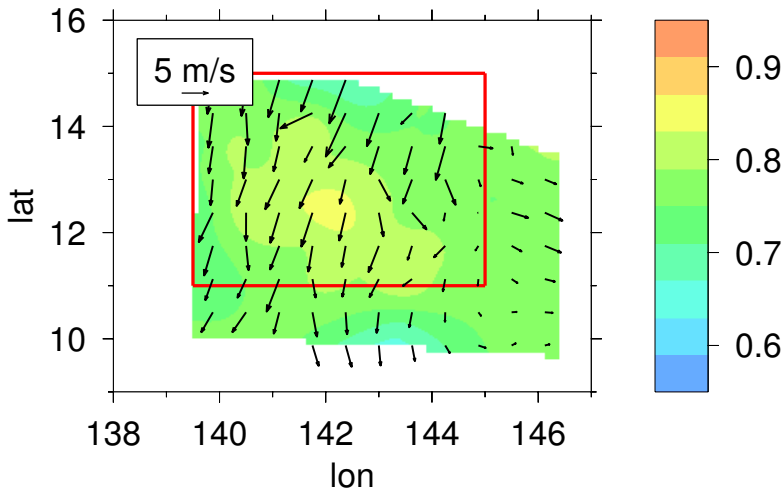
TCS025-1



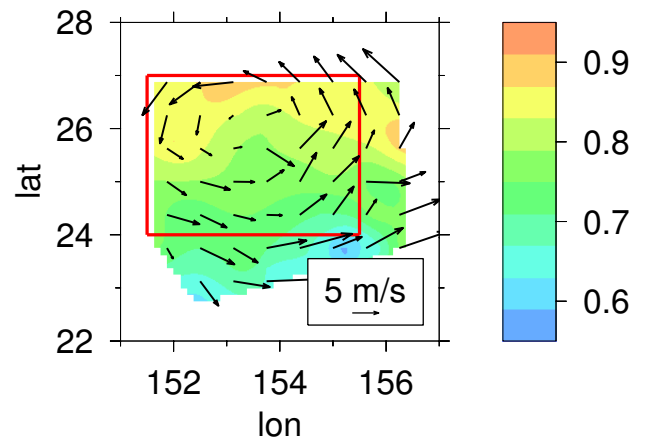
TCS025-2



TCS030



TCS037



Hagupit 2

