

This discussion paper is/has been under review for the journal Atmospheric Chemistry and Physics (ACP). Please refer to the corresponding final paper in ACP if available.

Estimating aerosol effects on cloud radiative forcing

S. J. Ghan

Technical Note: Estimating aerosol effects on cloud radiative forcing

S. J. Ghan

Pacific Northwest National Laboratory, USA

Received: 11 June 2013 – Accepted: 9 July 2013 – Published: 12 July 2013

Correspondence to: S. J. Ghan (steve.ghan@pnnl.gov)

Published by Copernicus Publications on behalf of the European Geosciences Union.

Title Page

Abstract

Introduction

Conclusions

References

Tables

Figures

⏪

⏩

◀

▶

Back

Close

Full Screen / Esc

Printer-friendly Version

Interactive Discussion



Abstract

Estimating anthropogenic aerosol effects on the planetary energy balance through the aerosol influence on clouds using the difference in cloud radiative forcing from simulations with and without anthropogenic emissions produces estimates that are positively biased. A more representative method is suggested using the difference in cloud radiative forcing calculated as a diagnostic with aerosol scattering and absorption neglected. The method also yields an aerosol radiative forcing decomposition that includes a term quantifying the impact of changes in surface albedo. The method requires only two additional diagnostic calculations: the whole-sky and clear-sky top-of-atmosphere radiative flux with aerosol scattering and absorption neglected.

1 Introduction

Anthropogenic aerosol effects on the planetary energy balance are most effectively estimated using the radiative flux perturbation (RFP) method from the top-of-atmosphere energy balance difference between simulations with and without anthropogenic emissions but the same ocean surface conditions (Haywood et al., 2009; Lohmann et al., 2010). Lohmann et al. (2010) showed that the RFP estimate of aerosol radiative forcing agrees well with estimates using diagnostic radiation calls with present day and preindustrial aerosol and the same meteorology. This suggest the RFP method can be used to estimate aerosol effects involving all of the “fast physics” of climate, in particular precipitation.

Estimates of anthropogenic aerosol effects through the aerosol influence on clouds are often approximated (Rotstajn and Liu, 2005; Hoose et al., 2009; Chen et al., 2010; Gettelman et al., 2012) by the change in the cloud radiative forcing when anthropogenic emissions are introduced in simulations: ΔC , where Δ is the difference between atmosphere simulations with and without anthropogenic emissions but the same ocean conditions (Rotstajn and Penner, 2001; Haywood et al., 2009) and natural emissions, and

Estimating aerosol effects on cloud radiative forcing

S. J. Ghan

Title Page

Abstract

Introduction

Conclusions

References

Tables

Figures



Back

Close

Full Screen / Esc

Printer-friendly Version

Interactive Discussion



$C = F - F_{\text{clear}}$ is the cloud radiative forcing, with F the shortwave radiative flux at the top of the atmosphere and F_{clear} the flux calculated as a diagnostic with clouds neglected.

While such an estimate is easy to calculate, I show here that ΔC is a significantly biased estimate of anthropogenic aerosol effects on cloud radiative forcing (the sum of aerosol indirect effects and semi-direct effects). Since the total aerosol forcing from the RFP method is simply ΔF , using ΔC to estimate anthropogenic aerosol effects on cloud radiative forcing implies the direct anthropogenic radiative forcing from scattering and absorption by anthropogenic aerosol, which (neglecting contributions from aerosol effects on surface albedo) equals the difference between the total forcing and the change in cloud forcing, is equivalent to ΔF_{clear} . This estimate of direct radiative forcing is biased because it neglects radiative warming enhancement by absorbing aerosol above clouds and it exaggerates radiative cooling by scattering aerosol above clouds. If the direct forcing estimate is biased, then that implies the estimate of aerosol effects on cloud radiative forcing is also biased.

2 A more representative method

A more realistic estimate of direct forcing is $\Delta(F - F_{\text{clean}})$ (Lohmann et al., 2010; Ghan et al., 2012; hereafter G12), where Δ is defined as above and F_{clean} is the radiative flux calculated as a diagnostic neglecting the scattering and absorption of solar radiation by all of the aerosol. Similarly, a more realistic estimate of aerosol effects on cloud radiative forcing is $\Delta(F_{\text{clean}} - F_{\text{clear, clean}}) = \Delta C_{\text{clean}}$, where $F_{\text{clear, clean}}$ is the flux calculated as a diagnostic neglecting both clouds and aerosols. The total aerosol forcing then becomes $\Delta F = \Delta(F - F_{\text{clean}}) + \Delta C_{\text{clean}} + \Delta F_{\text{clear, clean}}$. The last term is largely the contribution of changes in surface albedo induced by the aerosol. As we shall see, it is small but not negligible, particularly in some regions.

Figure 1 shows the spatial distributions of the annual mean ΔC , ΔC_{clean} , and the difference $(\Delta C - \Delta C_{\text{clean}})$ from present day and preindustrial simulations by version 5.1 of the Community Atmosphere Model, CAM5.1 (G12). The ΔC and ΔC_{clean} dis-

Estimating aerosol effects on cloud radiative forcing

S. J. Ghan

Title Page

Abstract

Introduction

Conclusions

References

Tables

Figures

◀

▶

◀

▶

Back

Close

Full Screen / Esc

Printer-friendly Version

Interactive Discussion



Estimating aerosol effects on cloud radiative forcing

S. J. Ghan

Title Page

Abstract

Introduction

Conclusions

References

Tables

Figures

◀

▶

◀

▶

Back

Close

Full Screen / Esc

Printer-friendly Version

Interactive Discussion



tributions look quite similar. However, the bias $\Delta C - \Delta C_{\text{clean}}$ is positive almost everywhere, with a global mean of 0.42 W m^{-2} , which is 22% of the global mean of $\Delta C_{\text{clean}} = -1.92 \text{ W m}^{-2}$. The bias is particularly large off the coast of Angola, where absorbing aerosol above cloud is known to produce positive direct forcing (Chand et al., 2009) and over south China, where direct forcing is also estimated by CAM5.1 to be positive (G12). The positive bias can be explained by the tendency of absorbing aerosol to make shortwave cloud forcing more positive by increasing radiative warming when the absorbing aerosol lies above cloud (such as off the coast of Angola), and by the tendency of scattering aerosol to make shortwave cloud forcing more positive by enhancing radiative cooling more over clear sky and dark surfaces than when clouds are present. Since these two mechanisms add rather than cancel, this positive bias is likely to be robust, i.e., common to other models, particularly those including absorbing anthropogenic aerosol.

The annual mean surface albedo term, also shown in Fig. 1, ranges regionally between -10 and $+10 \text{ W m}^{-2}$, and is -0.07 W m^{-2} in the global mean. This term includes effects of both changes in snow albedo due to deposition of absorbing aerosol, and changes in snow cover induced by deposition and by the other aerosol forcing mechanisms. The positive forcing in Alaska, eastern Europe and especially Tibet is a signature of snow albedo reduction due to deposition of black carbon on snow. Since the forcing is negative in the Arctic, where one expects snow albedo changes to produce a radiative warming, the warming due to reduction in snow albedo in the Arctic is apparently dominated by radiative cooling due to increases in snow cover. This interpretation is confirmed by simulated increases in snowfall and snow water over the Arctic (not shown).

Although one might expect the expression for the surface albedo term to overestimate the magnitude of the impact of surface albedo changes on the planetary energy balance because it neglects the attenuation of the surface signal by clouds, for CAM5.1 the surface albedo term actually dominates the other aerosol forcing terms in the Arctic and hence drives the total aerosol radiative forcing there. Since the simulated direct

forcing and cloud forcing by anthropogenic aerosol are small in the Arctic, the enhanced snowfall there must be driven by either radiative forcing from elsewhere or by aerosol-induced reduction in precipitation efficiency from warm clouds leading to more transport of water to the Arctic. This surprising result might not be produced by other climate models, but it certainly suggests care is needed in attributing aerosol radiative forcing to direct and cloud effects.

3 Recommendation

In summary, for future estimates of aerosol radiative forcing I recommend use of the following decomposition:

Direct radiative forcing: $\Delta(F - F_{\text{clean}})$

Cloud radiative forcing: $\Delta(F_{\text{clean}} - F_{\text{clear, clean}}) = \Delta C_{\text{clean}}$

Surface albedo forcing: $\Delta F_{\text{clear, clean}}$

All simulations performed to quantify aerosol radiative forcing should save F , F_{clean} , and $F_{\text{clear, clean}}$ in the simulation history. Further decomposition of the cloud radiative forcing into contributions from indirect effects and semi-direct effects would require another pair of simulations in which aerosol absorption is neglected (G12).

Acknowledgements. Phil Rasch prodded me to think more deeply about decomposition, and Xiaohong Liu ran the simulations and provided the model history. This work was funded by the US Department of Energy, Office of Science, Scientific Discovery through Advanced Computing (SciDAC) Program and by the Office of Science Earth System Modeling Program. The CESM project is supported by the National Science Foundation and the Office of Science (BER) of the US Department of Energy. Computing resources were provided by the Climate Simulation Laboratory at NCAR's Computational and Information Systems Laboratory (CISL), sponsored by the National Science Foundation and other agencies. The Pacific Northwest National Laboratory is operated for DOE by Battelle Memorial Institute under Contract DE-AC06-76RLO 1830.

Estimating aerosol effects on cloud radiative forcing

S. J. Ghan

Title Page

Abstract

Introduction

Conclusions

References

Tables

Figures

◀

▶

◀

▶

Back

Close

Full Screen / Esc

Printer-friendly Version

Interactive Discussion



References

- Chand, D., Wood, R., Anderson, T. L., Satheesh, S. K., and Charlson, R. J.: Satellite-derived direct radiative effect of aerosols dependent on cloud cover, *Nat. Geosci.*, 2, 181–184, doi:10.1038/Ngeo437, 2009.
- 5 Chen, W. T., Lee, Y. H., Adams, P. J., Nenes, A., and Seinfeld, J. H.: Will black carbon mitigation dampen aerosol indirect forcing?, *Geophys. Res. Lett.*, 37, L09801, doi:10.1029/2010gl042886, 2010.
- Gettelman, A., Liu, X., Barahona, D., Lohmann, U., and Chen, C.: Climate impacts of ice nucleation, *J. Geophys. Res.-Atmos.*, 117, D20201, doi:10.1029/2012JD017950, 2012.
- 10 Ghan, S. J., Liu, X., Easter, R. C., Zaveri, R., Rasch, P. J., Yoon, J. H., and Eaton, B.: Toward a minimal representation of aerosols in climate models: comparative decomposition of aerosol direct, semidirect, and indirect radiative forcing, *J. Climate*, 25, 6461–6476, 2012.
- Haywood, J. M., Donner, L. J., Jones, A., and Golaz, J.-C.: Global indirect radiative forcing caused by aerosols: IPCC (2007) and beyond, in: *Clouds in the Perturbed Climate System*, edited by: Heintzenberg, J. and Charlson, R. J., 451–467, MIT Press, Cambridge, 2009.
- 15 Hoose, C., Kristjánsson, J. E., Iversen, T., Kirkevåg, A., Seland, Ø., and Gettelman, A.: Constraining cloud droplet number concentration in GCMs suppresses the aerosol indirect effect, *Geophys. Res. Lett.*, 36, L12807, doi:10.1029/2009GL038568, 2009.
- Lohmann, U., Rotstayn, L., Storelvmo, T., Jones, A., Menon, S., Quaas, J., Ekman, A. M. L., Koch, D., and Ruedy, R.: Total aerosol effect: radiative forcing or radiative flux perturbation?, *Atmos. Chem. Phys.*, 10, 3235–3246, doi:10.5194/acp-10-3235-2010, 2010.
- 20 Rotstayn, L. D. and Liu, Y.: A smaller global estimate of the second indirect aerosol effect, *Geophys. Res. Lett.*, 32, L05708, doi:10.1029/2004GL021922, 2005.
- Rotstayn, L. D. and Penner, J. E.: Indirect aerosol forcing, quasi forcing, and climate response, *J. Climate*, 14, 2960–2975, 2001.
- 25

Estimating aerosol effects on cloud radiative forcing

S. J. Ghan

Title Page

Abstract

Introduction

Conclusions

References

Tables

Figures

◀

▶

◀

▶

Back

Close

Full Screen / Esc

Printer-friendly Version

Interactive Discussion



Estimating aerosol effects on cloud radiative forcing

S. J. Ghan

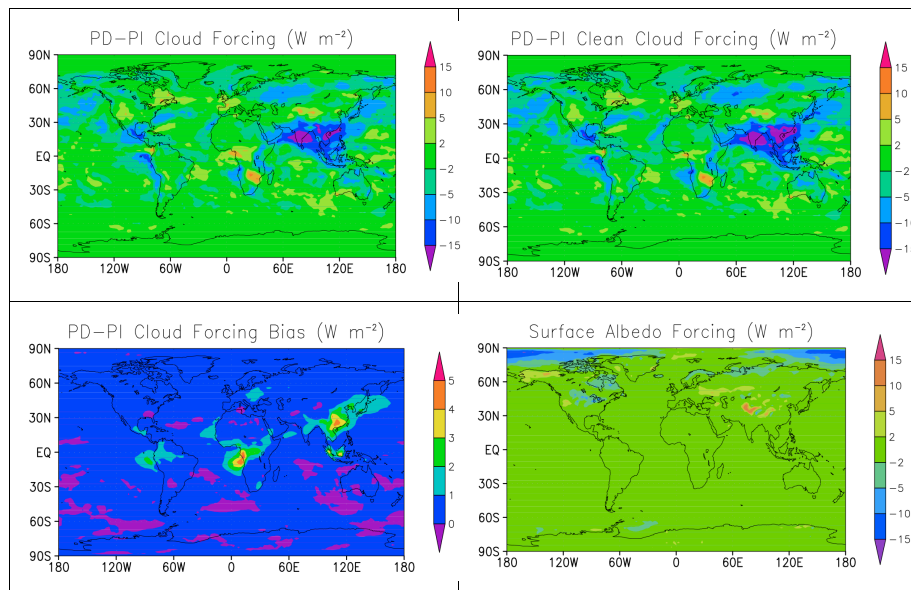


Fig. 1. Present day – pre-industrial difference in five-year annual mean top-of-atmosphere shortwave cloud radiative forcing (top left), clean-sky shortwave cloud radiative forcing (top right), the difference (bottom left) and the surface albedo forcing (bottom right) simulated by CAM5.1.

[Title Page](#)[Abstract](#)[Introduction](#)[Conclusions](#)[References](#)[Tables](#)[Figures](#)[◀](#)[▶](#)[◀](#)[▶](#)[Back](#)[Close](#)[Full Screen / Esc](#)[Printer-friendly Version](#)[Interactive Discussion](#)