

Supplementary material for “Simulation of Trace Gases and Aerosols Over the Indian Domain: Evaluation of the WRF-Chem Model” by Michael et al.

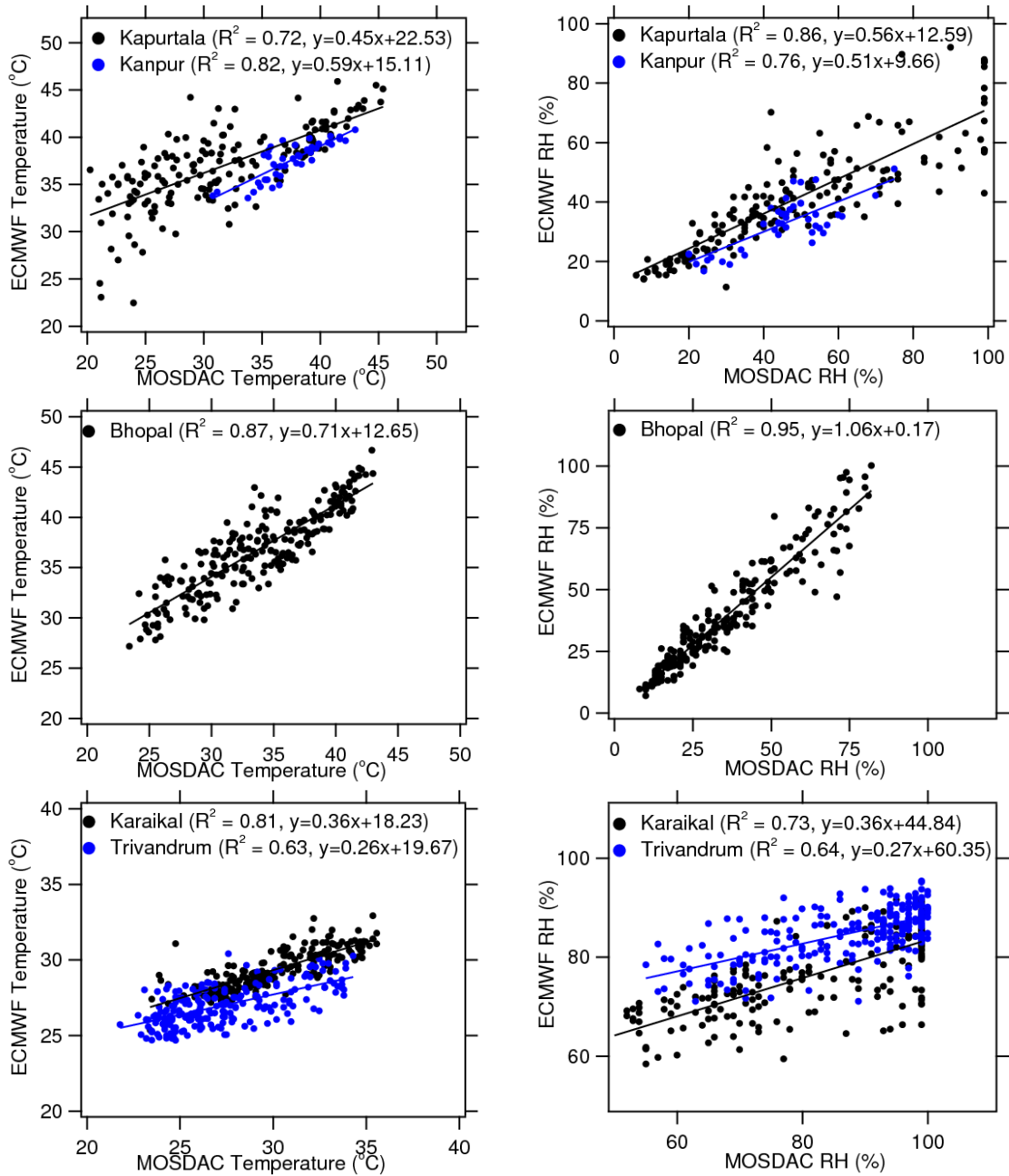


Figure S1. Scatter plot of temperature and RH data from ECMWF and MOSDAC stations for May-June 2010; a) temperature for IGP, b) RH for IGP, c) temperature for central India, d) RH for central India, e) temperature for coastal India, f) RH for coastal India.